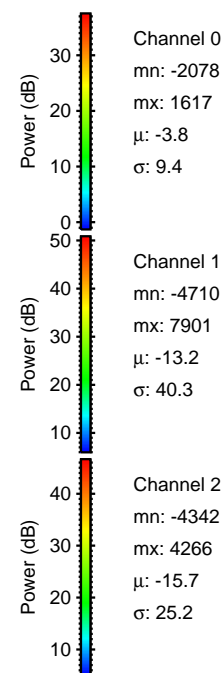
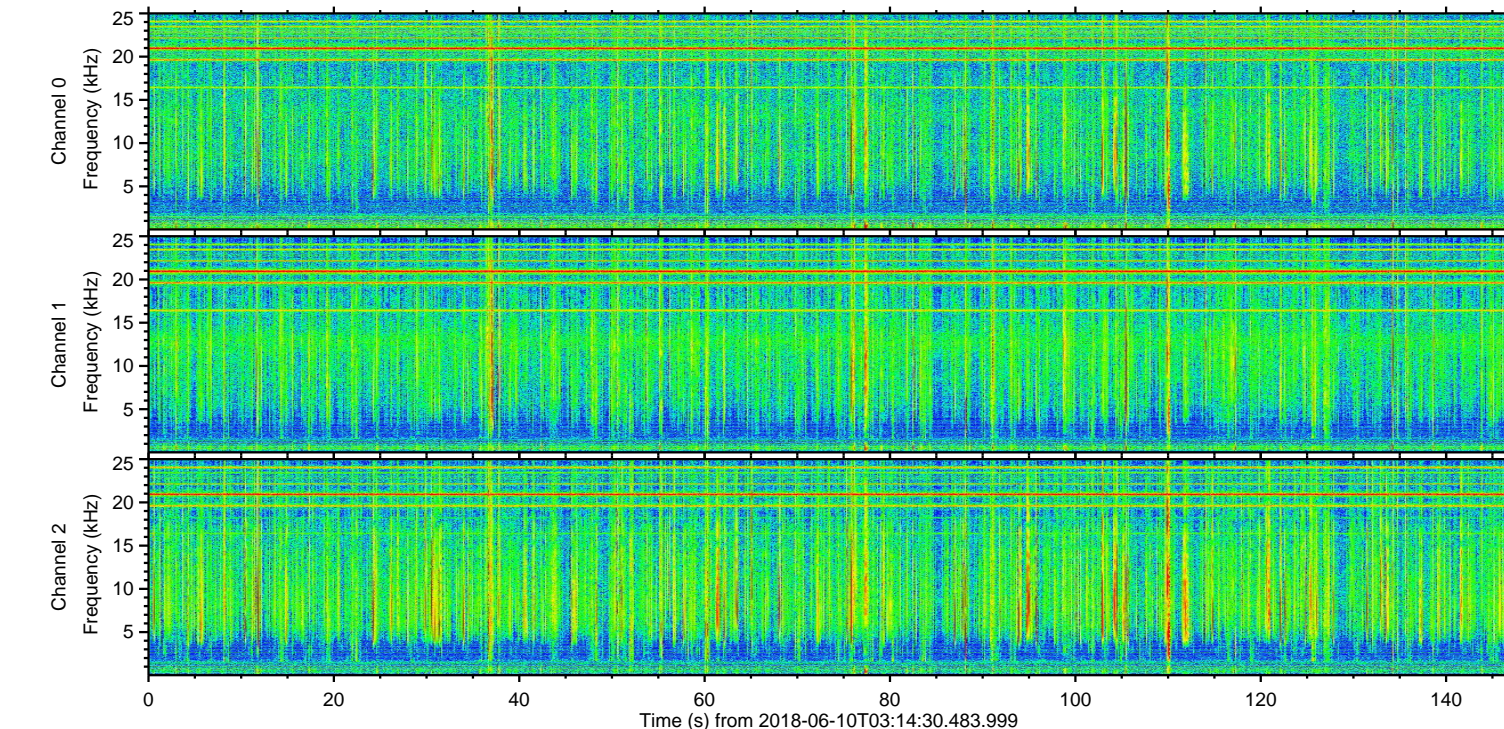
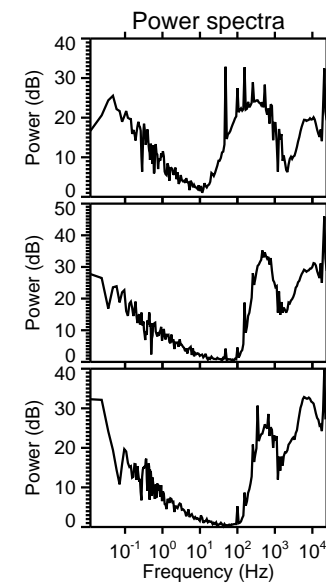
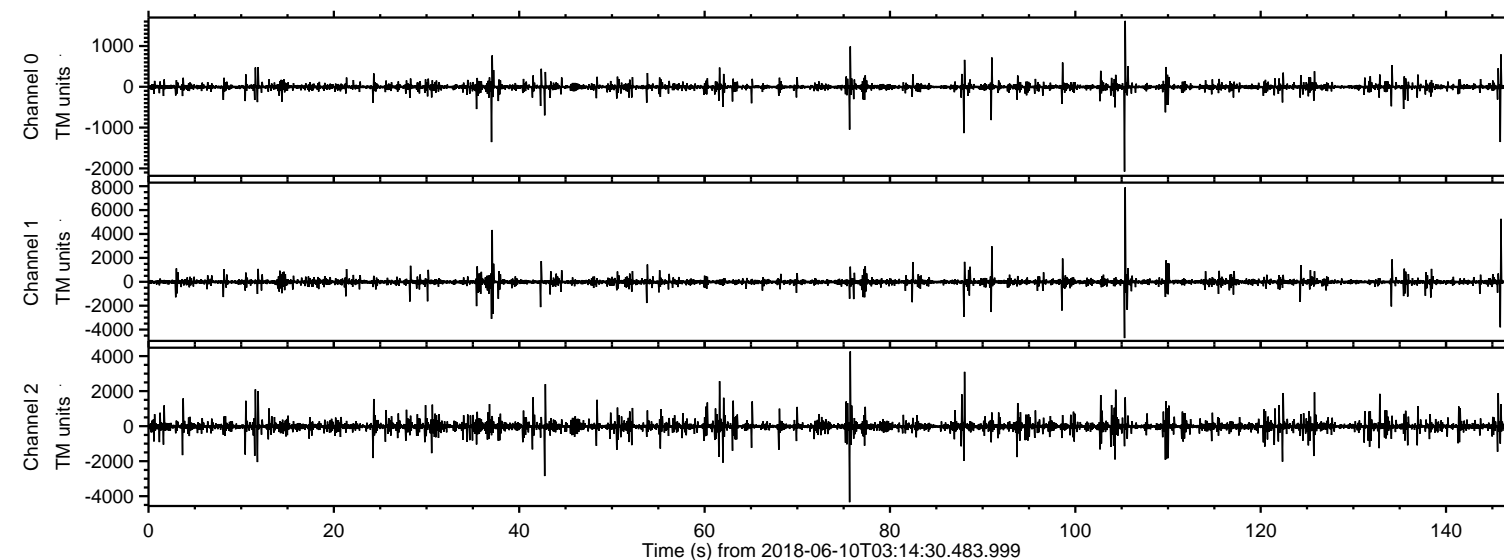


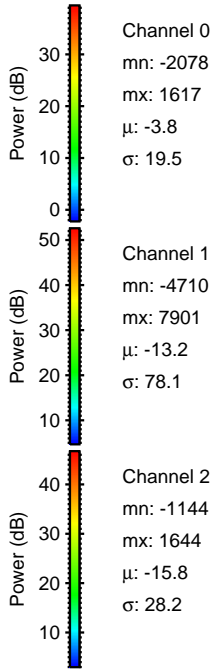
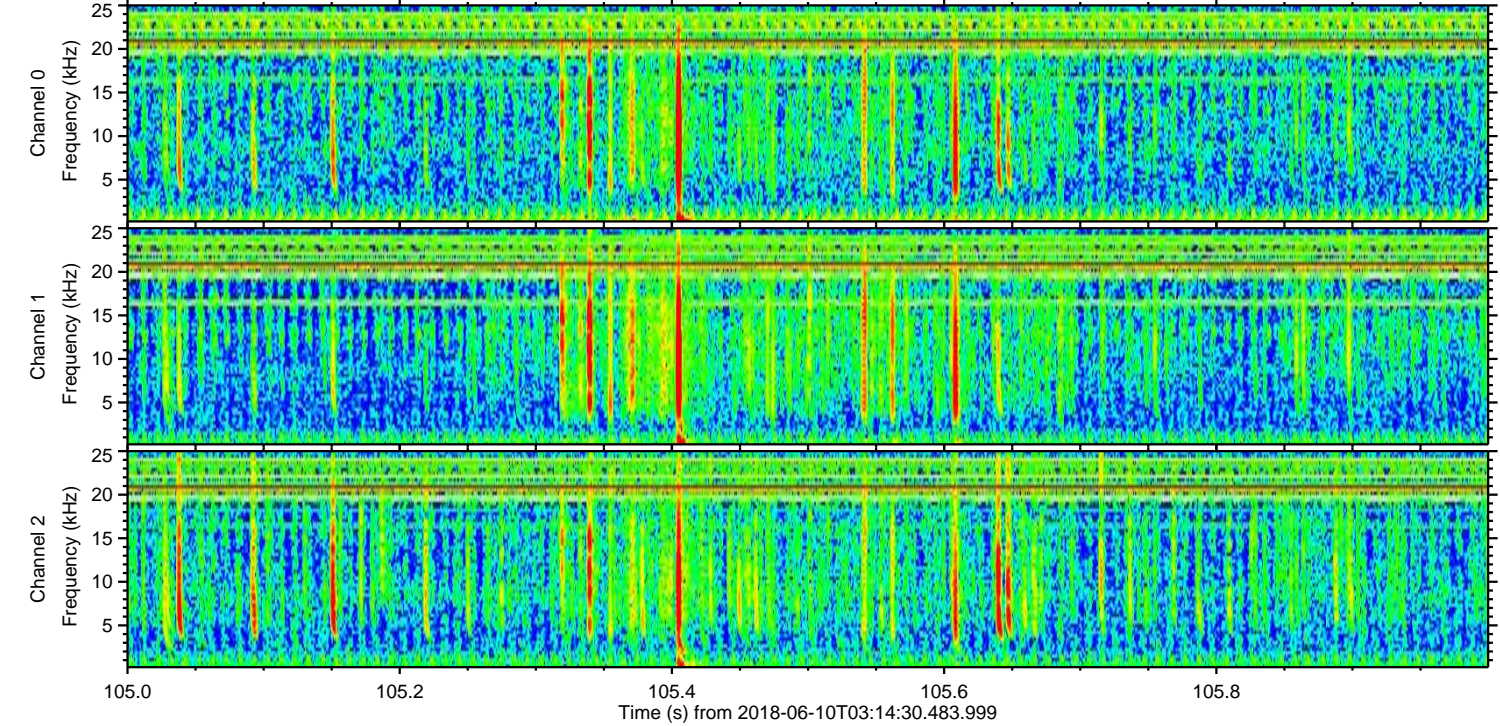
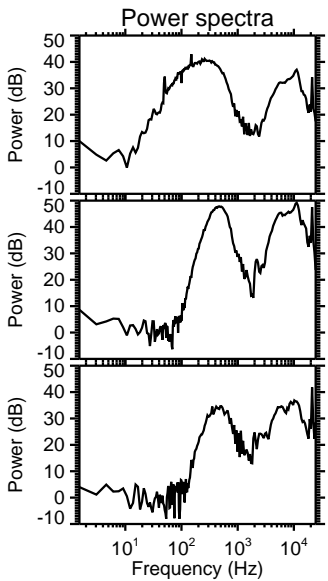
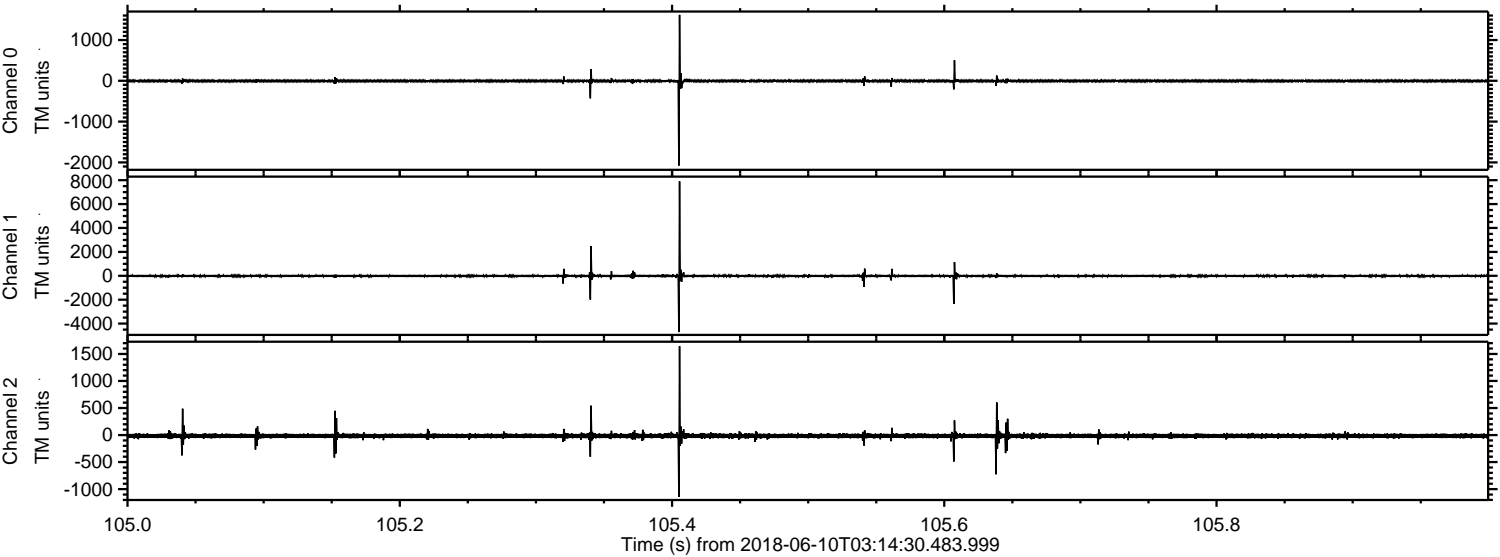
ELMAVAN 3D WAVEFORMS (Measured data sampled at 50 kHz) 51000 packets of 144 samples from 2018-06-10T03:14:30.483.999.

Processed Sun Jun 10 05:22:51 2018 by ELM ver.2012-10-06 from 001__elm20180610_031429__dat00.bin



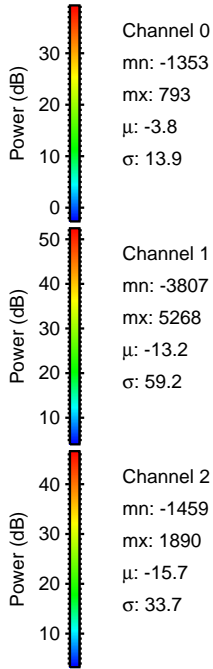
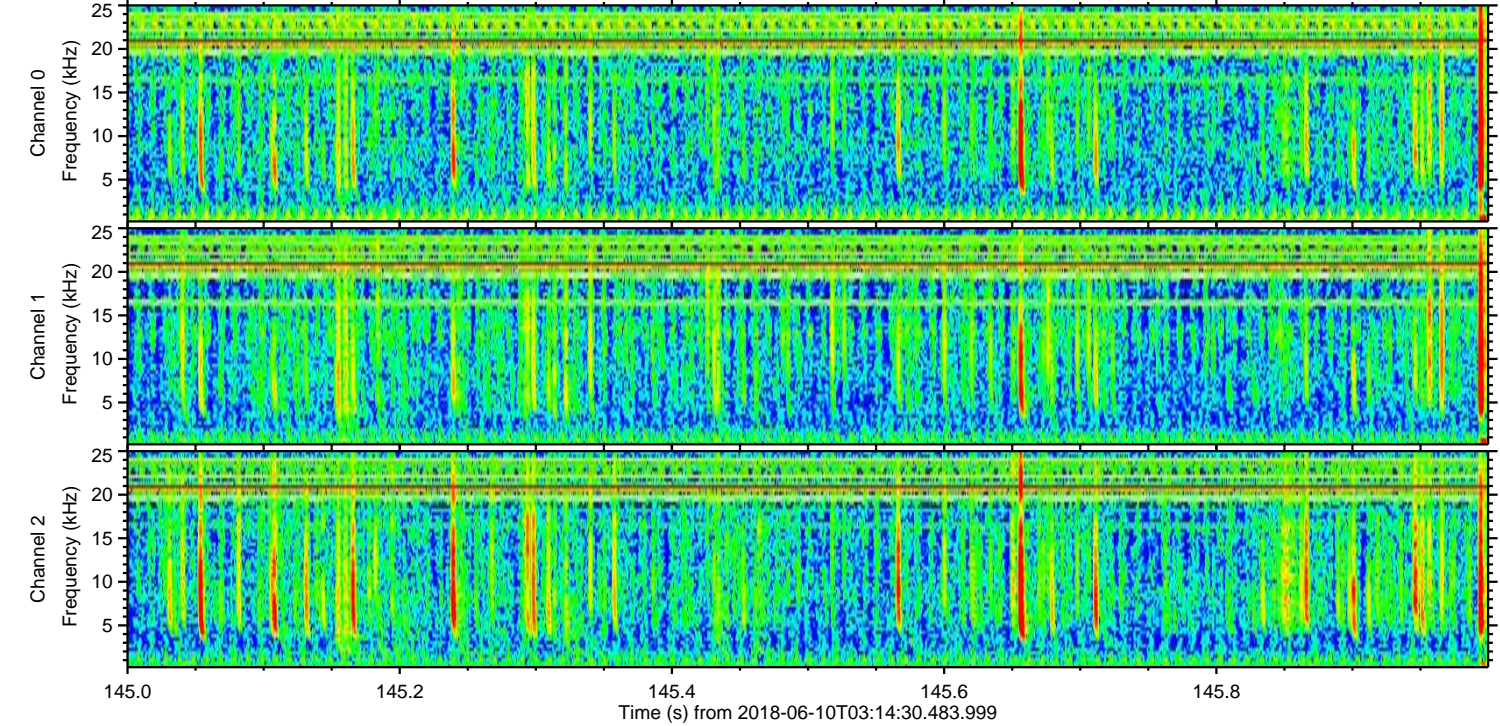
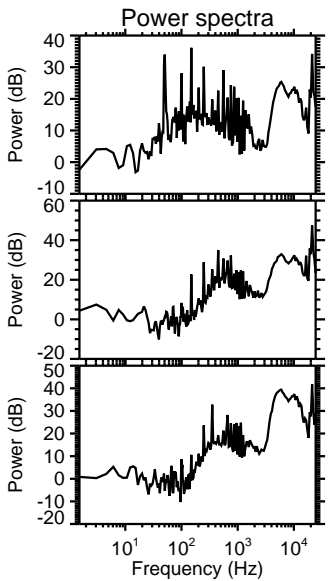
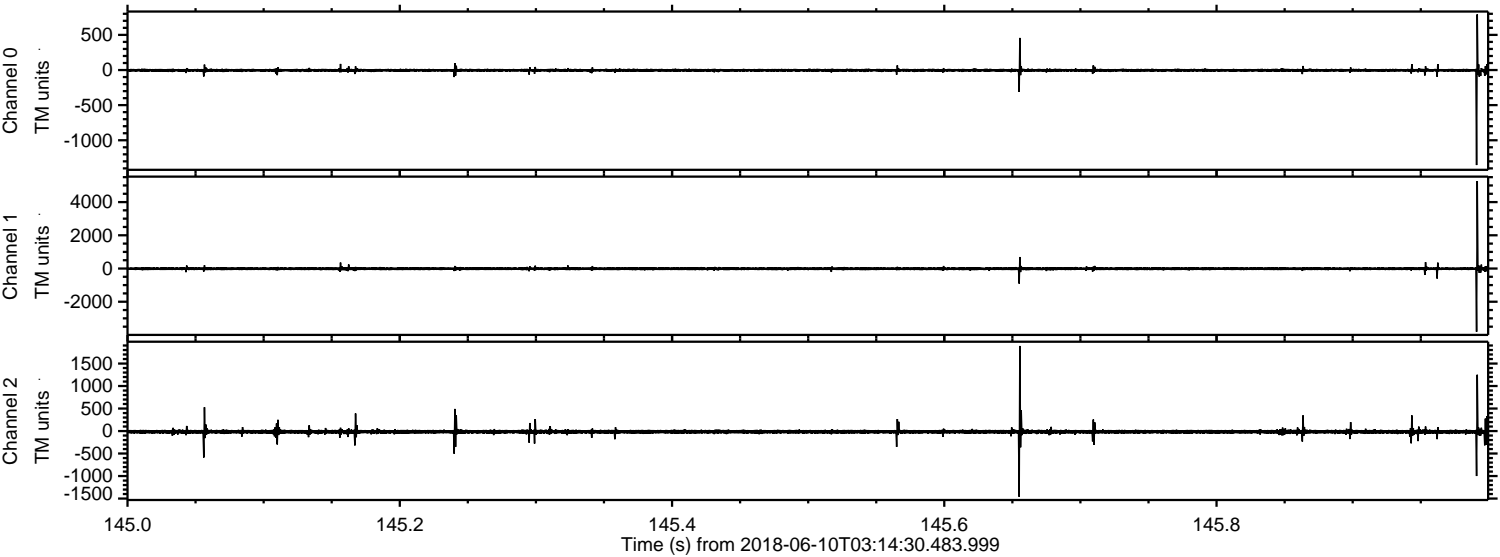
ELMAVAN 3D WAVEFORMS (Measured data sampled at 50 kHz) 51000 packets of 144 samples from 2018-06-10T03:14:30.483.999. Part 106/147

Processed Sun Jun 10 05:22:58 2018 by ELM ver.2012-10-06 from 001__elm20180610_031429__dat00.bin



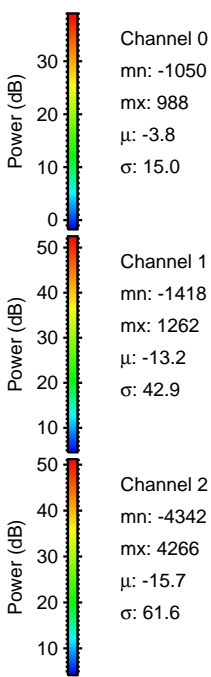
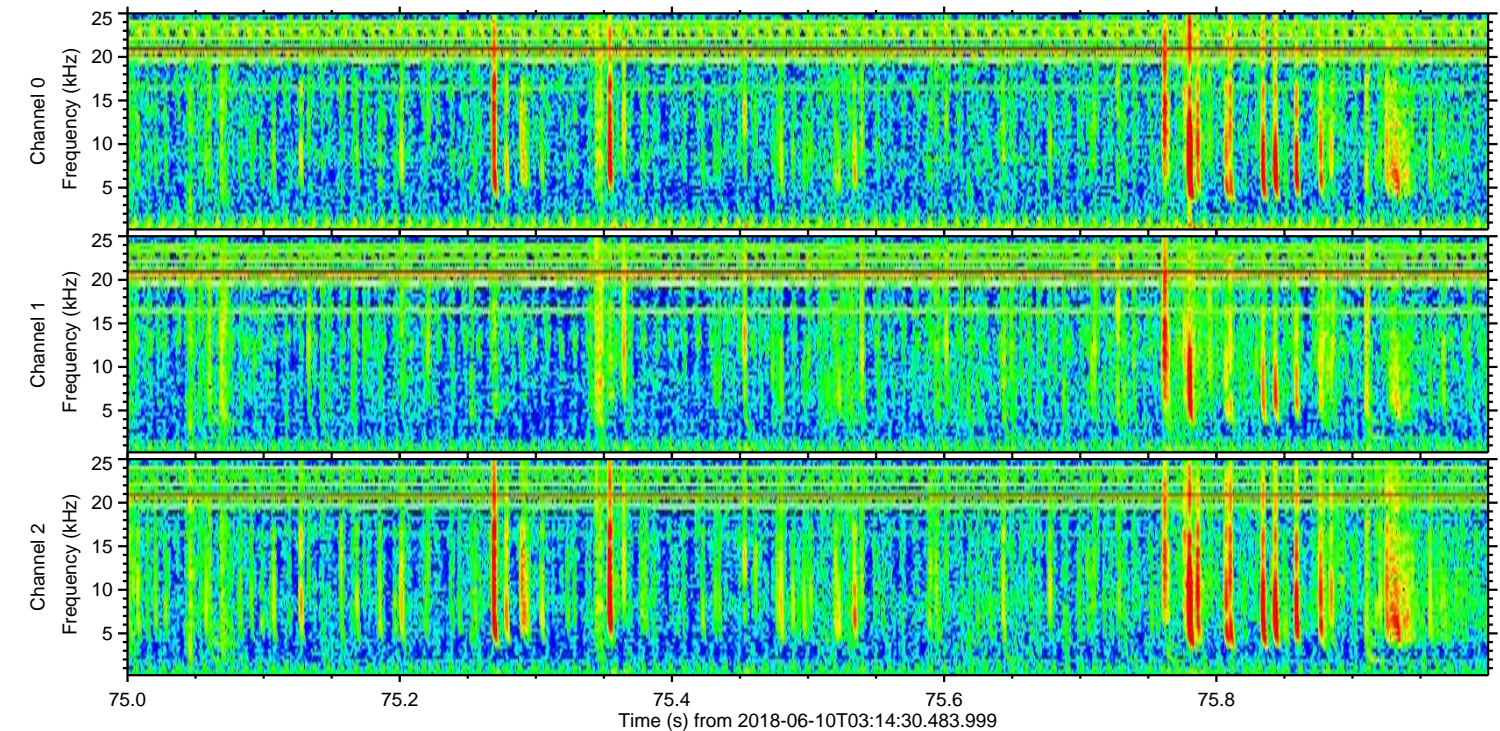
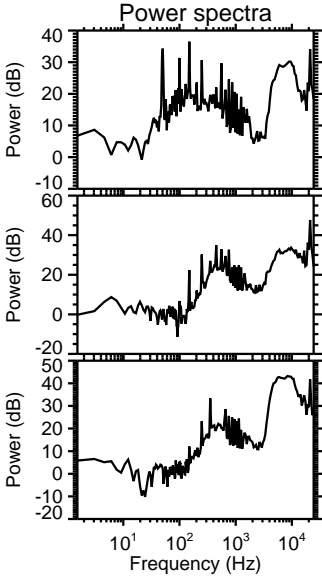
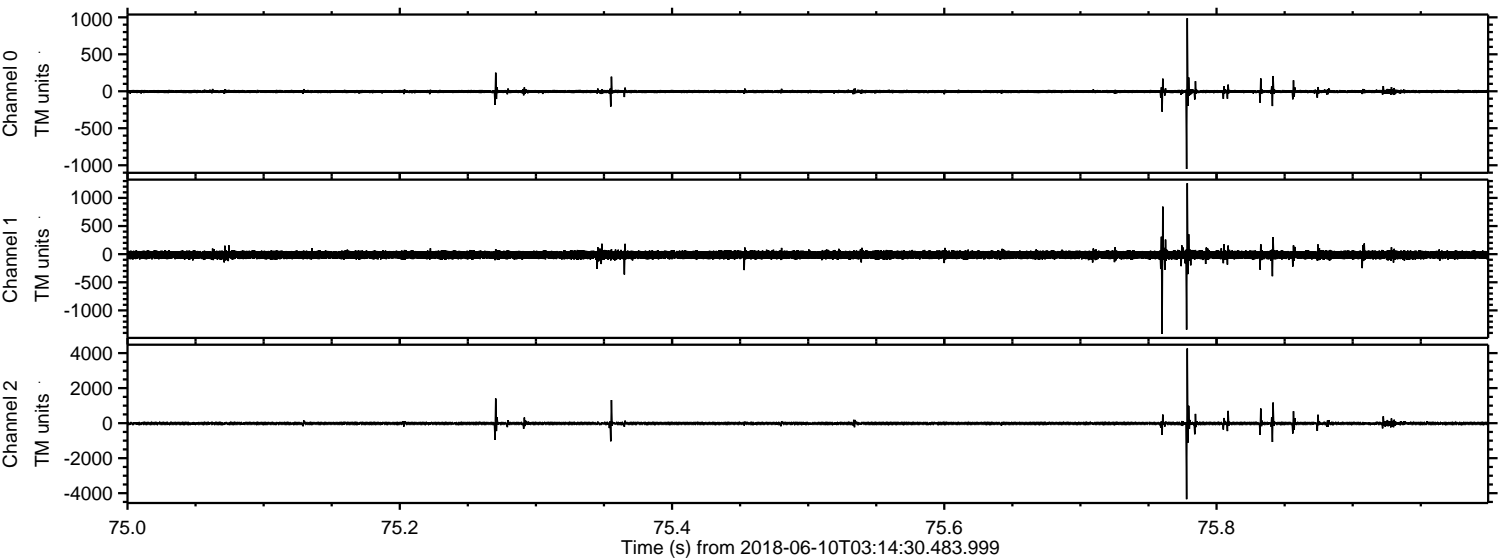
ELMAVAN 3D WAVEFORMS (Measured data sampled at 50 kHz) 51000 packets of 144 samples from 2018-06-10T03:14:30.483.999. Part 146/147

Processed Sun Jun 10 05:22:58 2018 by ELM ver.2012-10-06 from 001__elm20180610_031429__dat00.bin

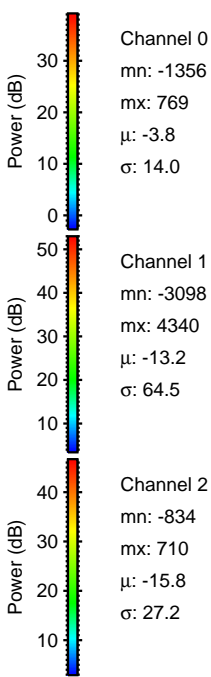
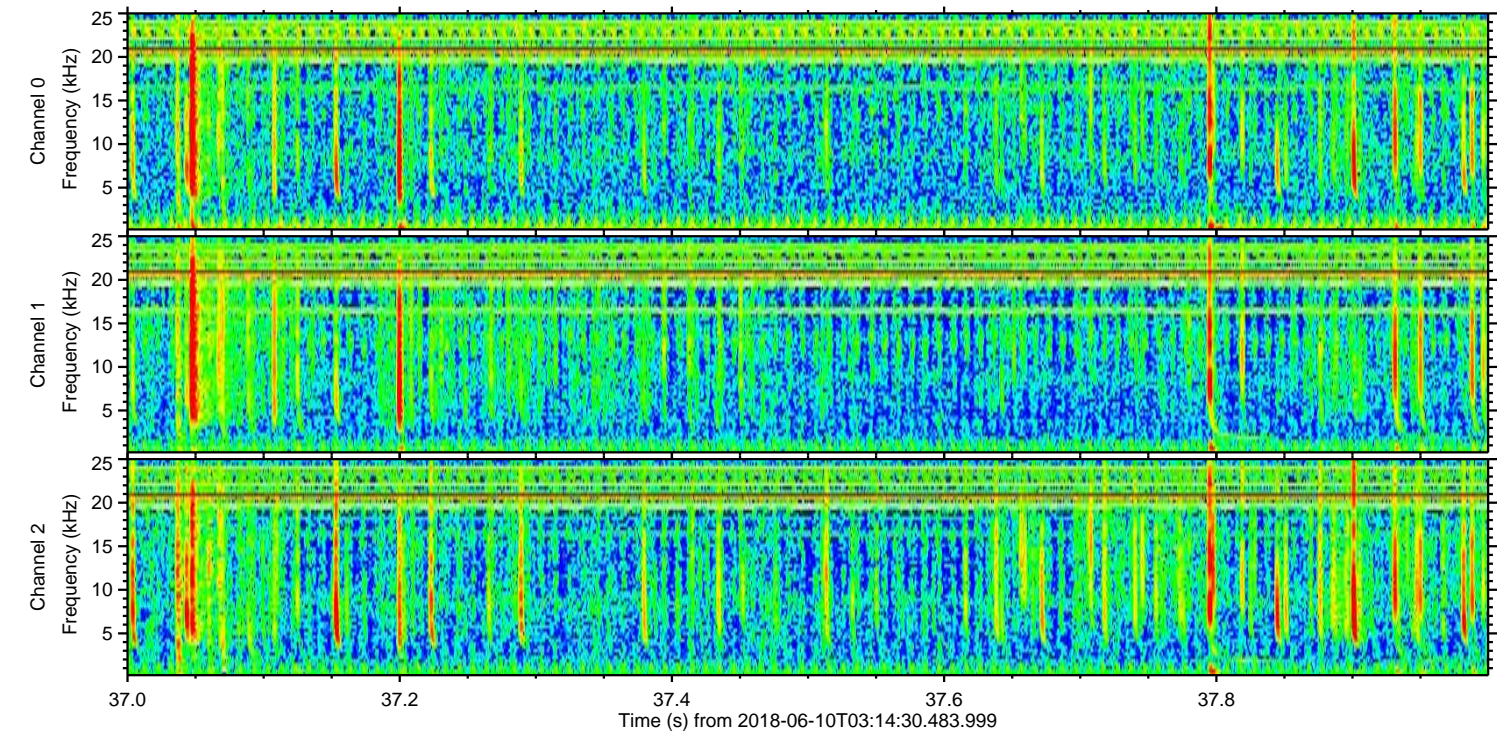
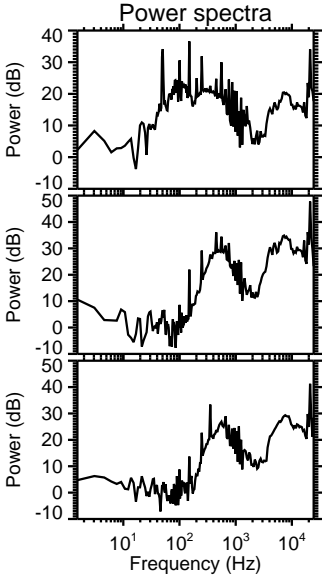
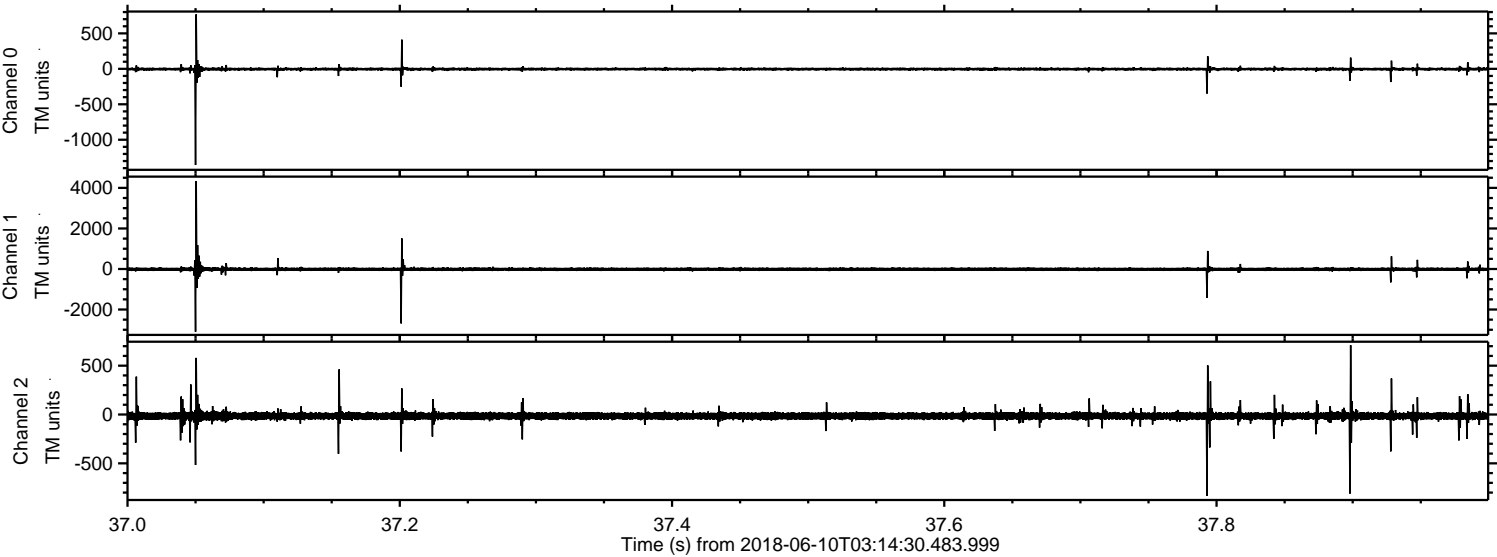


ELMAVAN 3D WAVEFORMS (Measured data sampled at 50 kHz) 51000 packets of 144 samples from 2018-06-10T03:14:30.483.999. Part 76/147

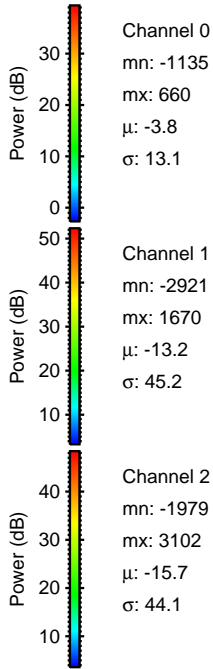
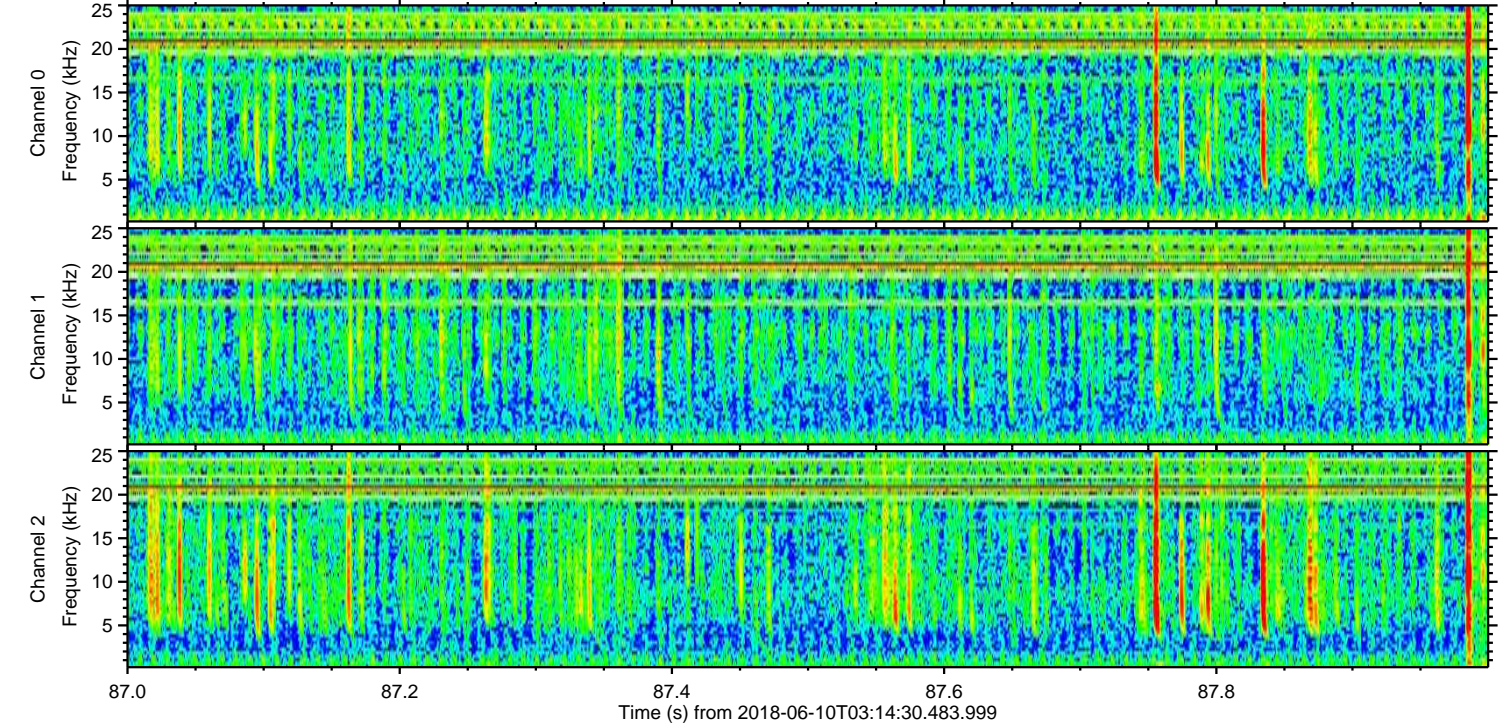
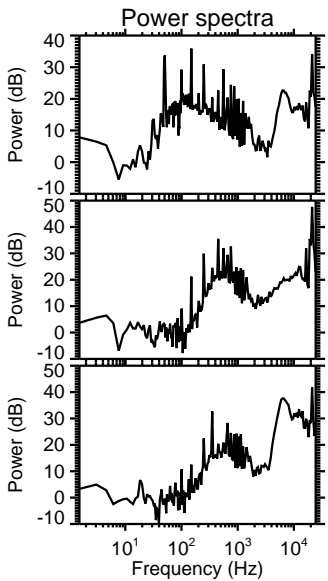
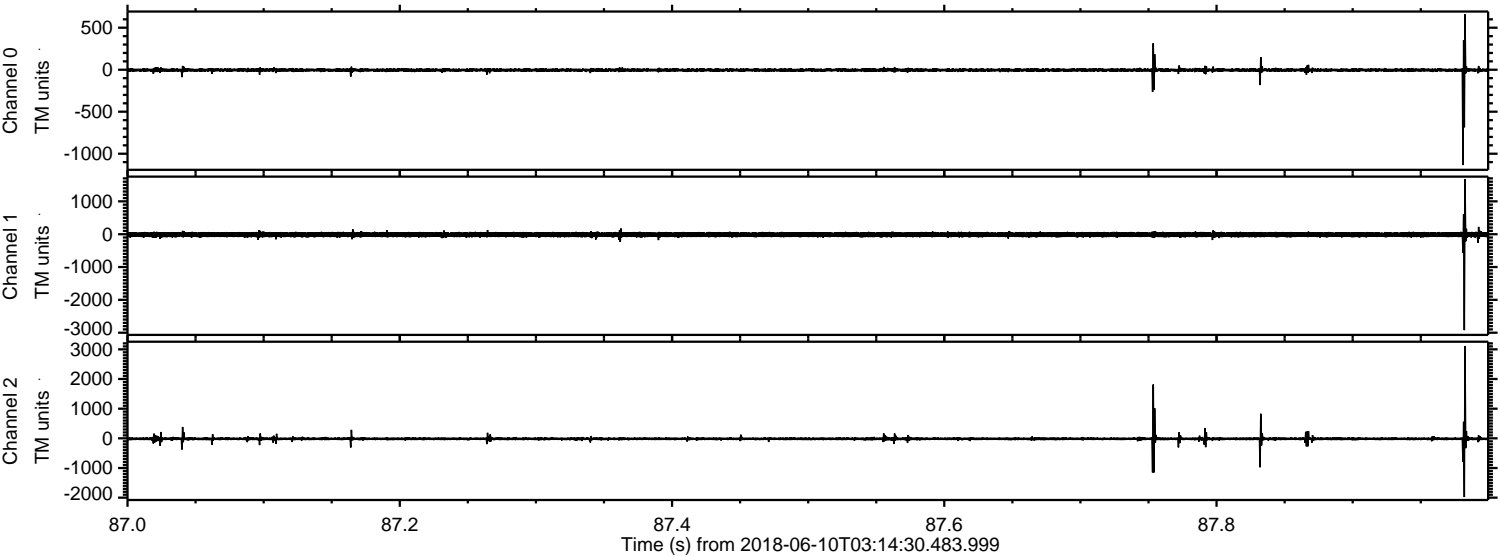
Processed Sun Jun 10 05:22:59 2018 by ELM ver.2012-10-06 from 001__elm20180610_031429__dat00.bin



Processed Sun Jun 10 05:23:00 2018 by ELM ver.2012-10-06 from 001__elm20180610_031429__dat00.bin



Processed Sun Jun 10 05:23:00 2018 by ELM ver.2012-10-06 from 001__elm20180610_031429__dat00.bin

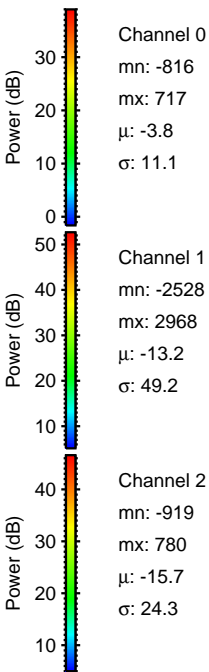
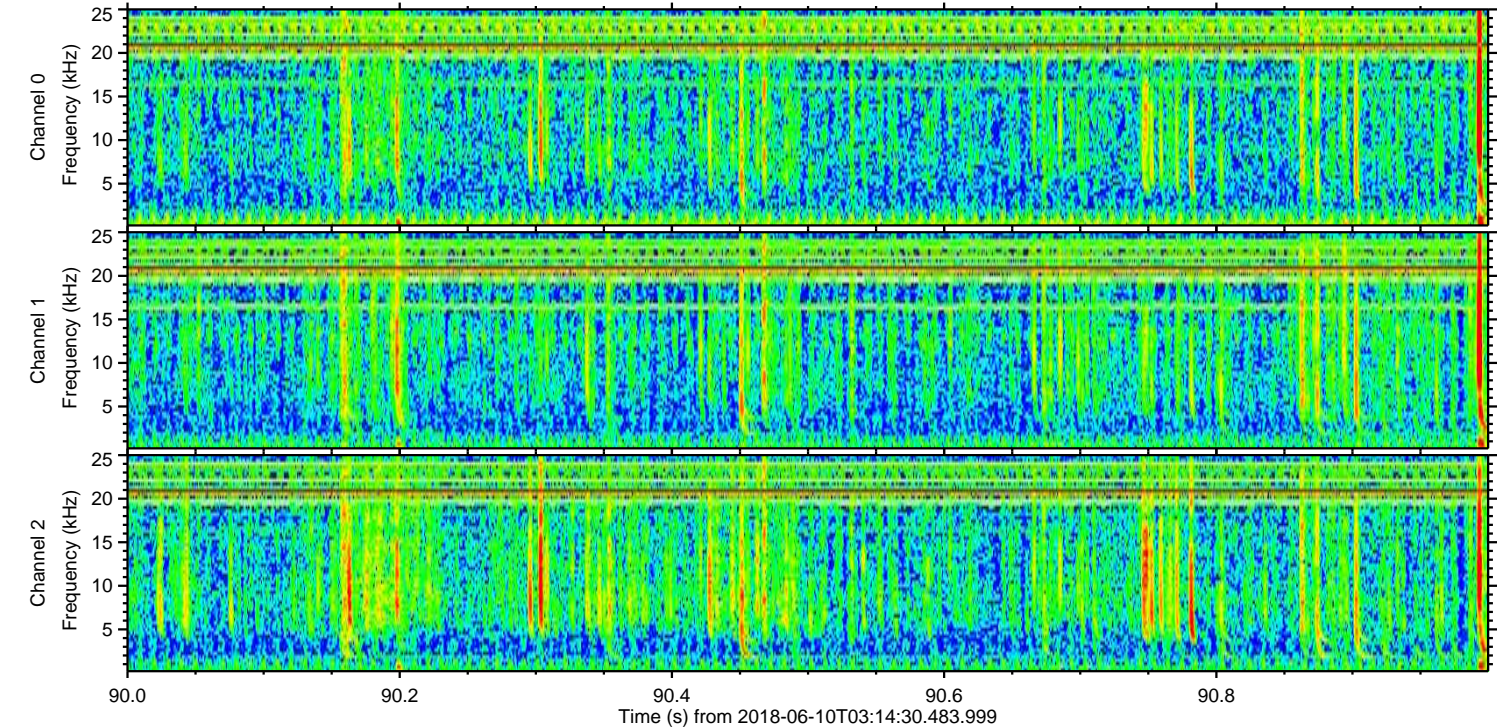
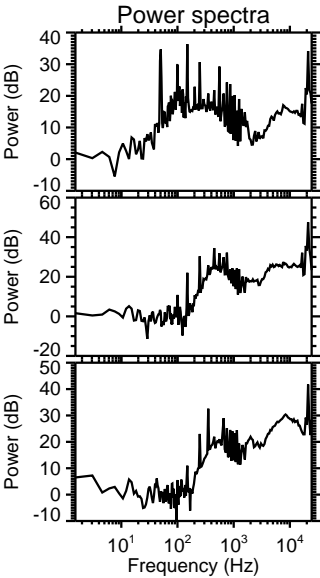
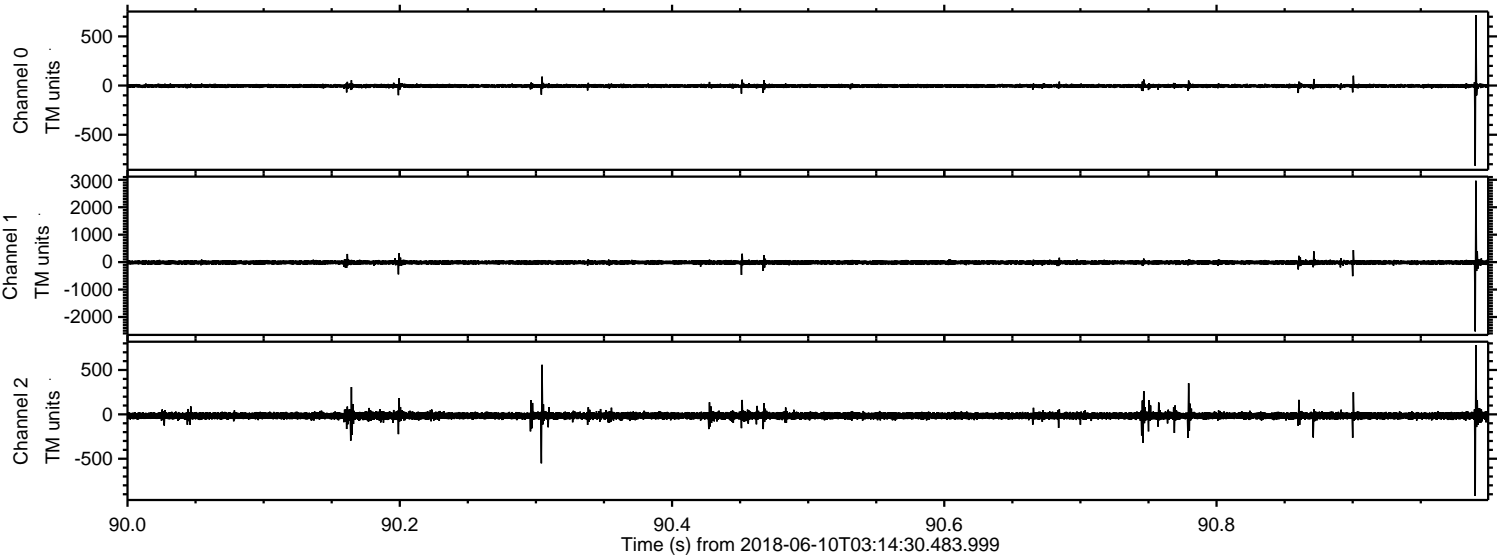


Channel 0
mn: -1135
mx: 660
 μ : -3.8
 σ : 13.1

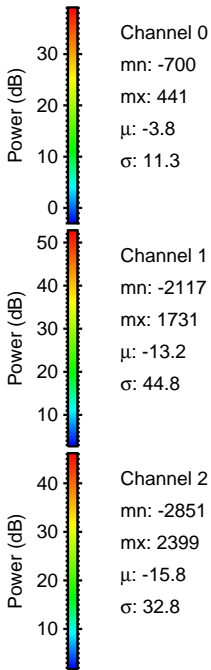
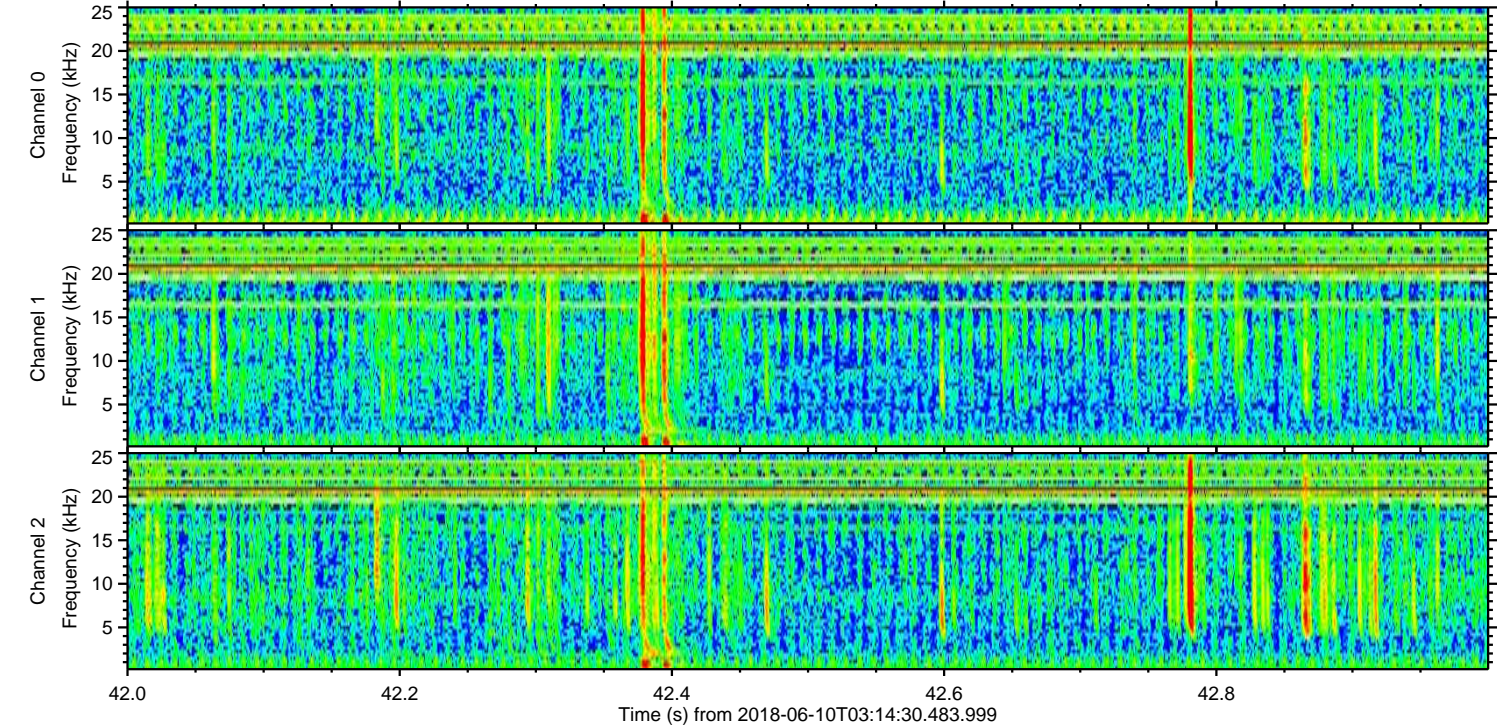
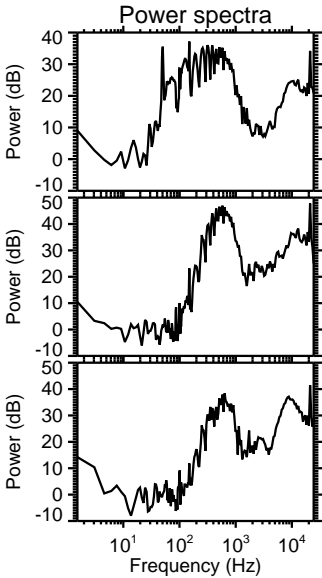
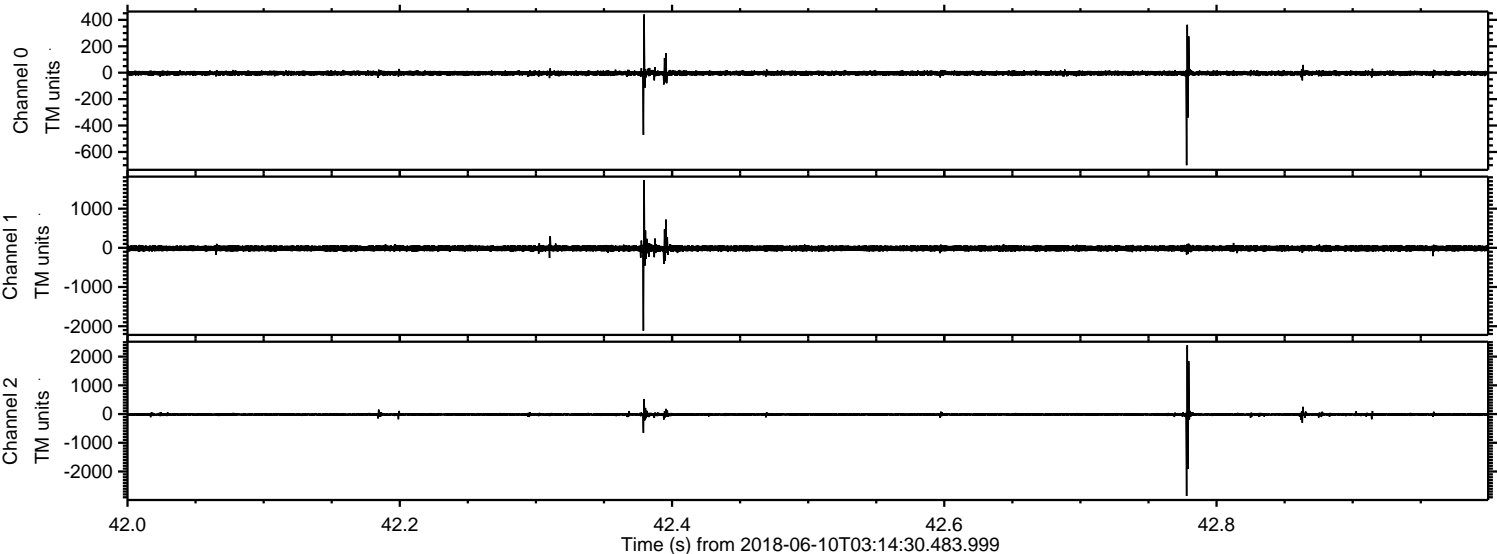
Channel 1
mn: -2921
mx: 1670
 μ : -13.2
 σ : 45.2

Channel 2
mn: -1979
mx: 3102
 μ : -15.7
 σ : 44.1

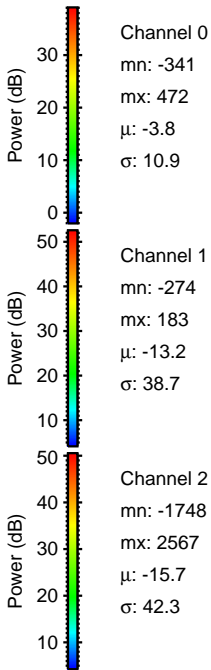
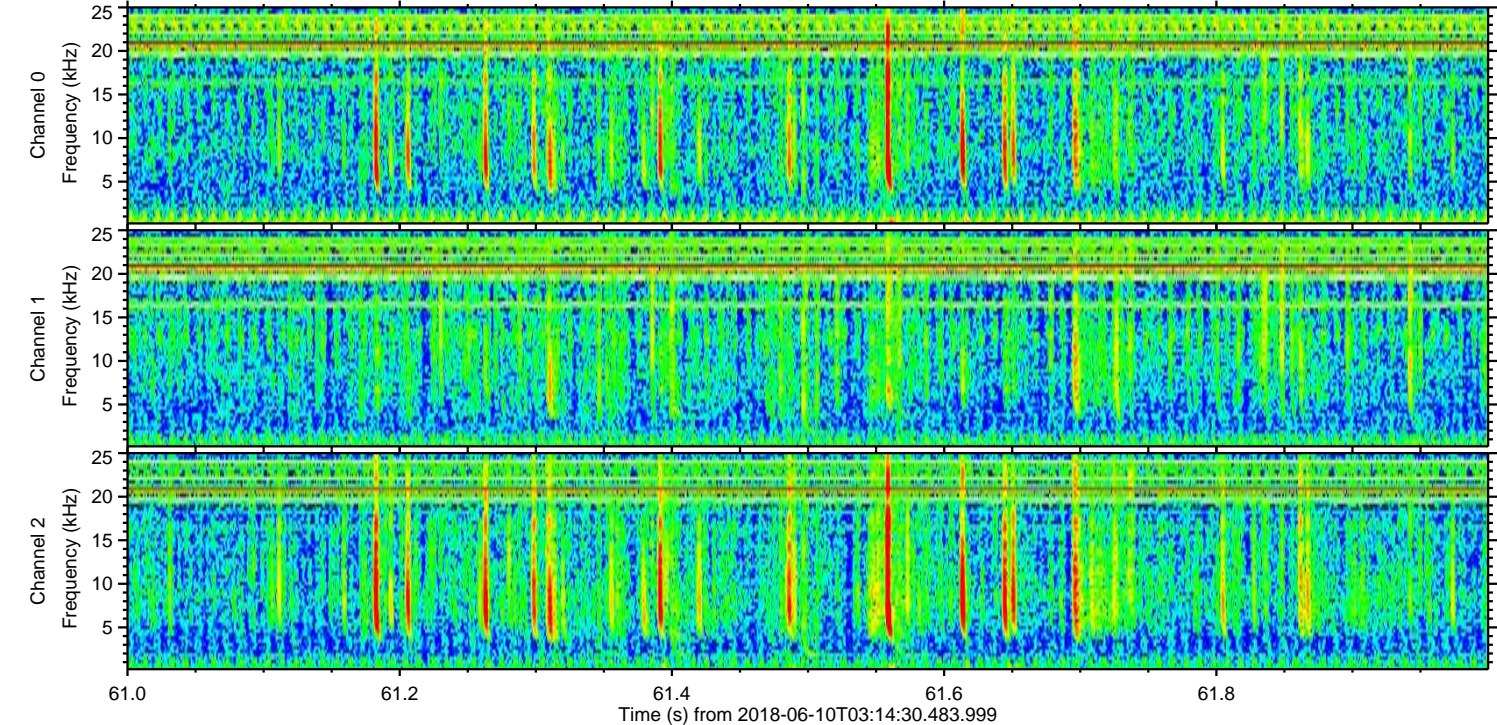
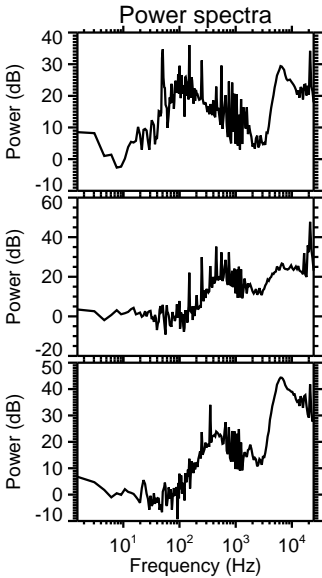
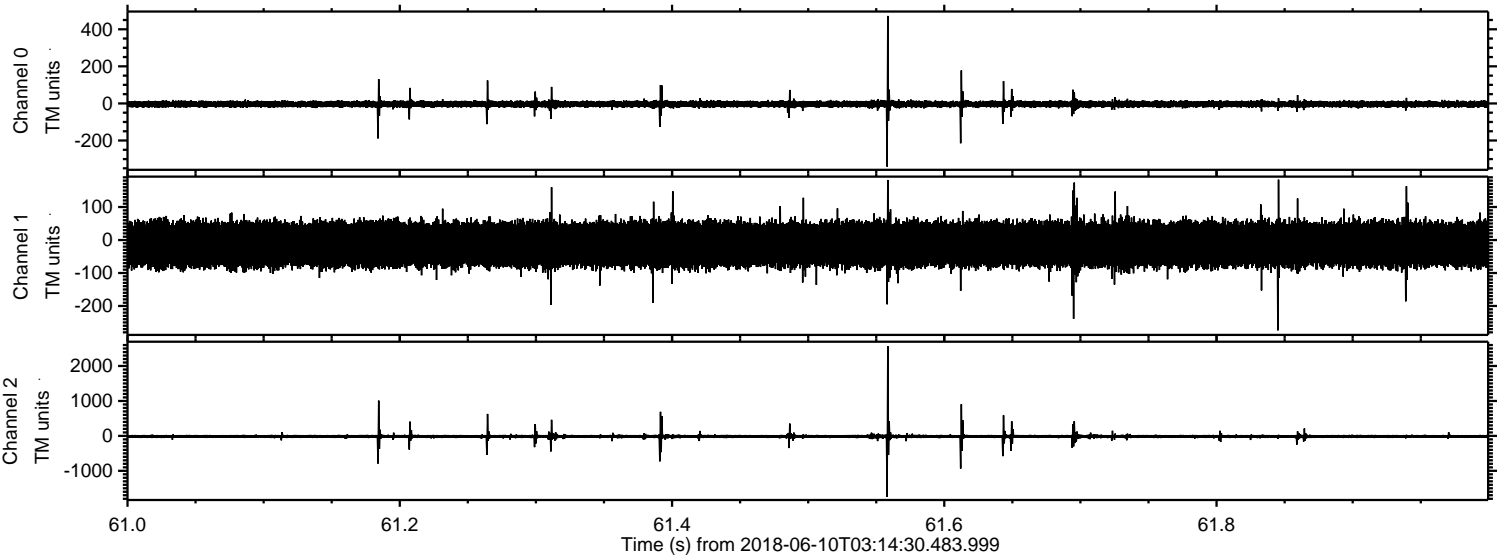
Processed Sun Jun 10 05:23:01 2018 by ELM ver.2012-10-06 from 001__elm20180610_031429__dat00.bin



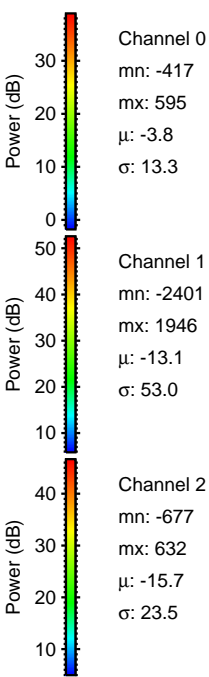
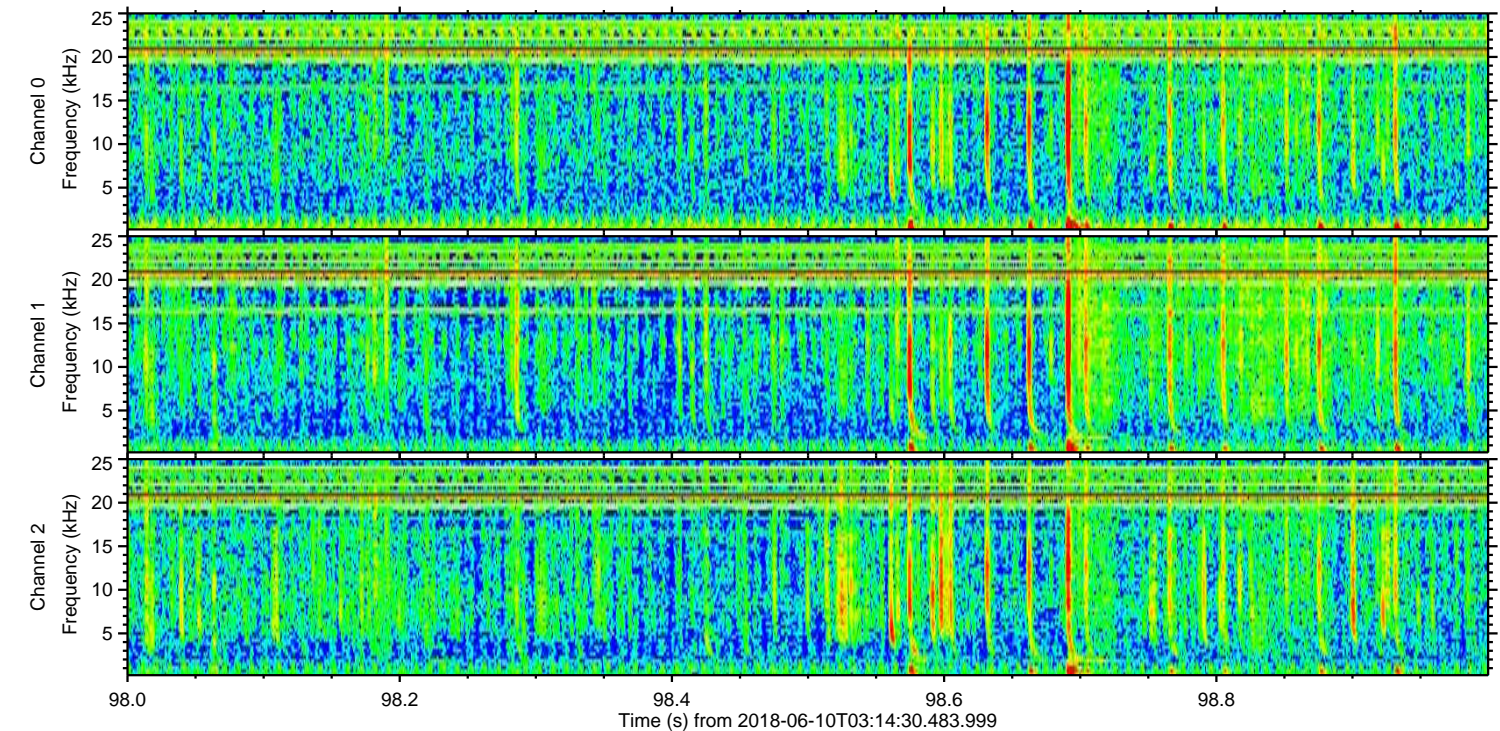
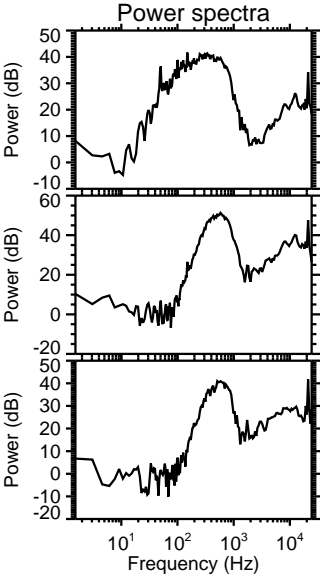
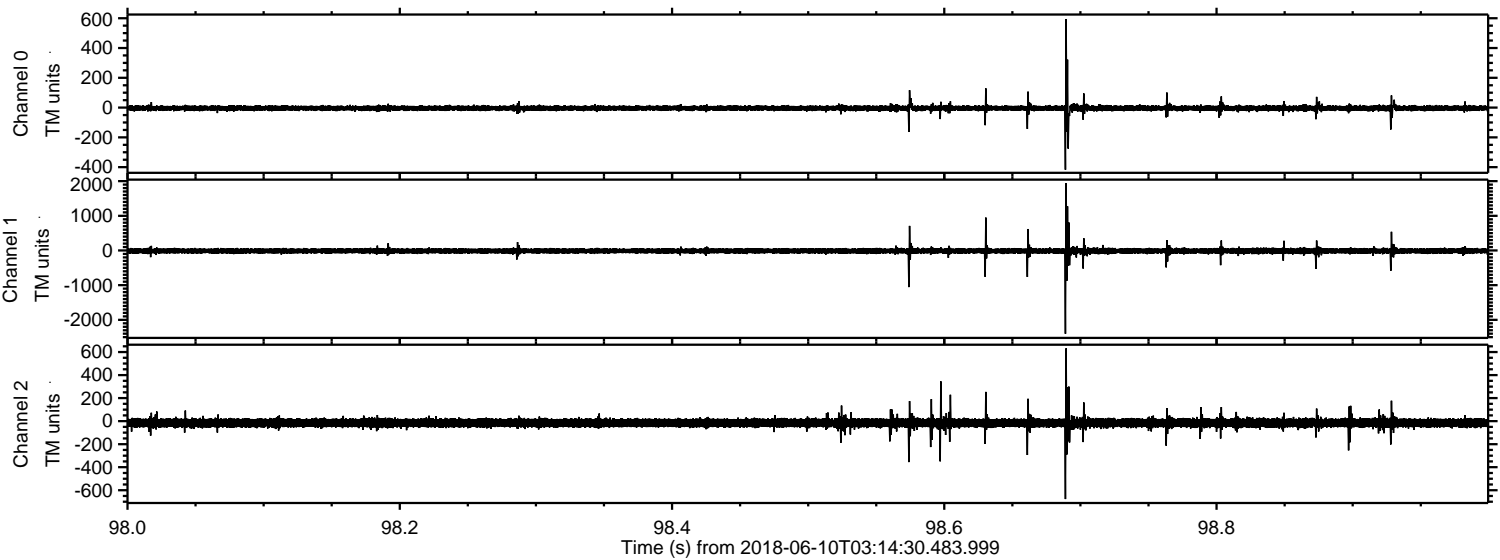
Processed Sun Jun 10 05:23:02 2018 by ELM ver.2012-10-06 from 001__elm20180610_031429__dat00.bin



Processed Sun Jun 10 05:23:03 2018 by ELM ver.2012-10-06 from 001__elm20180610_031429__dat00.bin



Processed Sun Jun 10 05:23:03 2018 by ELM ver.2012-10-06 from 001__elm20180610_031429__dat00.bin



Channel 0
mn: -417
mx: 595
 μ : -3.8
 σ : 13.3

Channel 1
mn: -2401
mx: 1946
 μ : -13.1
 σ : 53.0

Channel 2
mn: -677
mx: 632
 μ : -15.7
 σ : 23.5

Processed Sun Jun 10 05:23:04 2018 by ELM ver.2012-10-06 from 001__elm20180610_031429__dat00.bin

