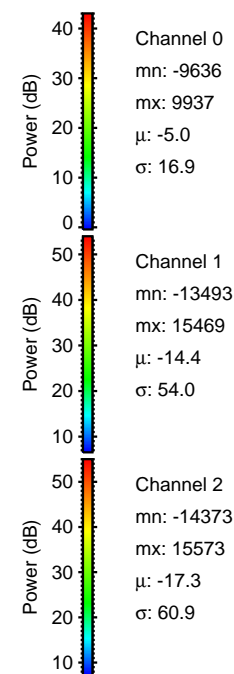
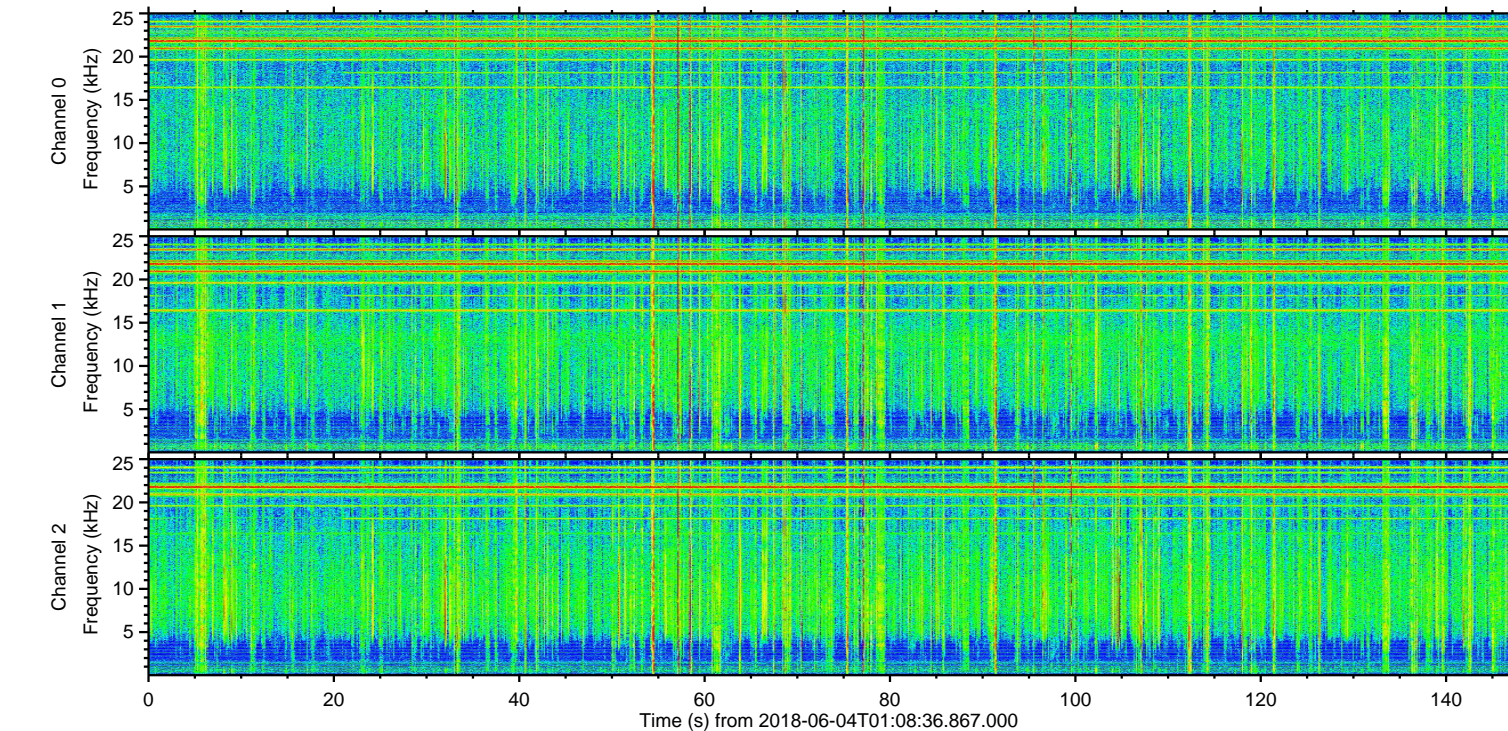
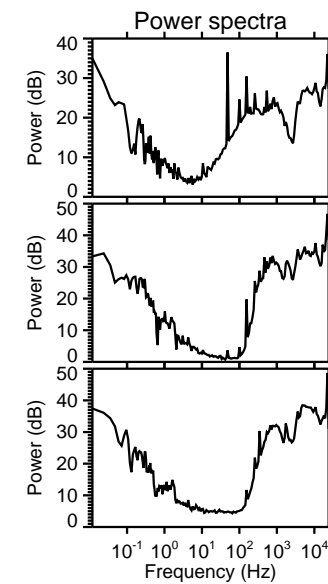
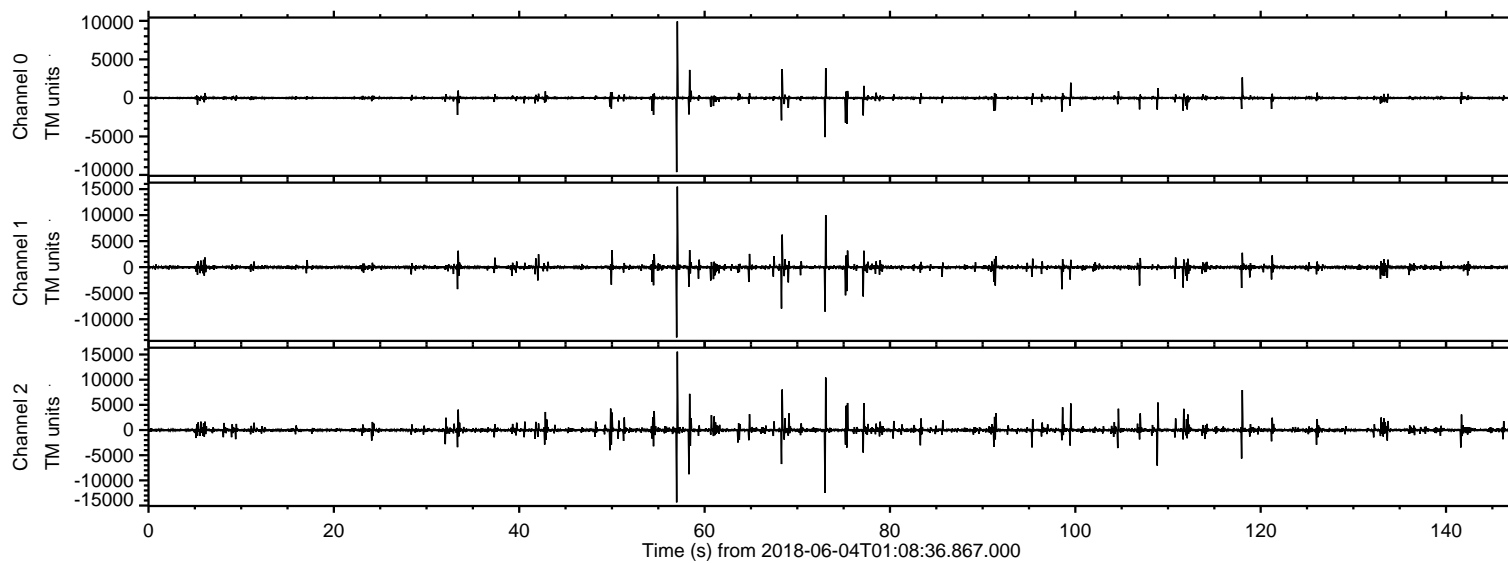
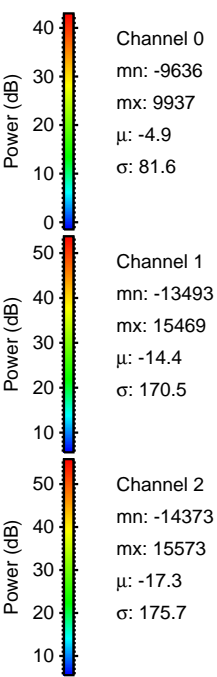
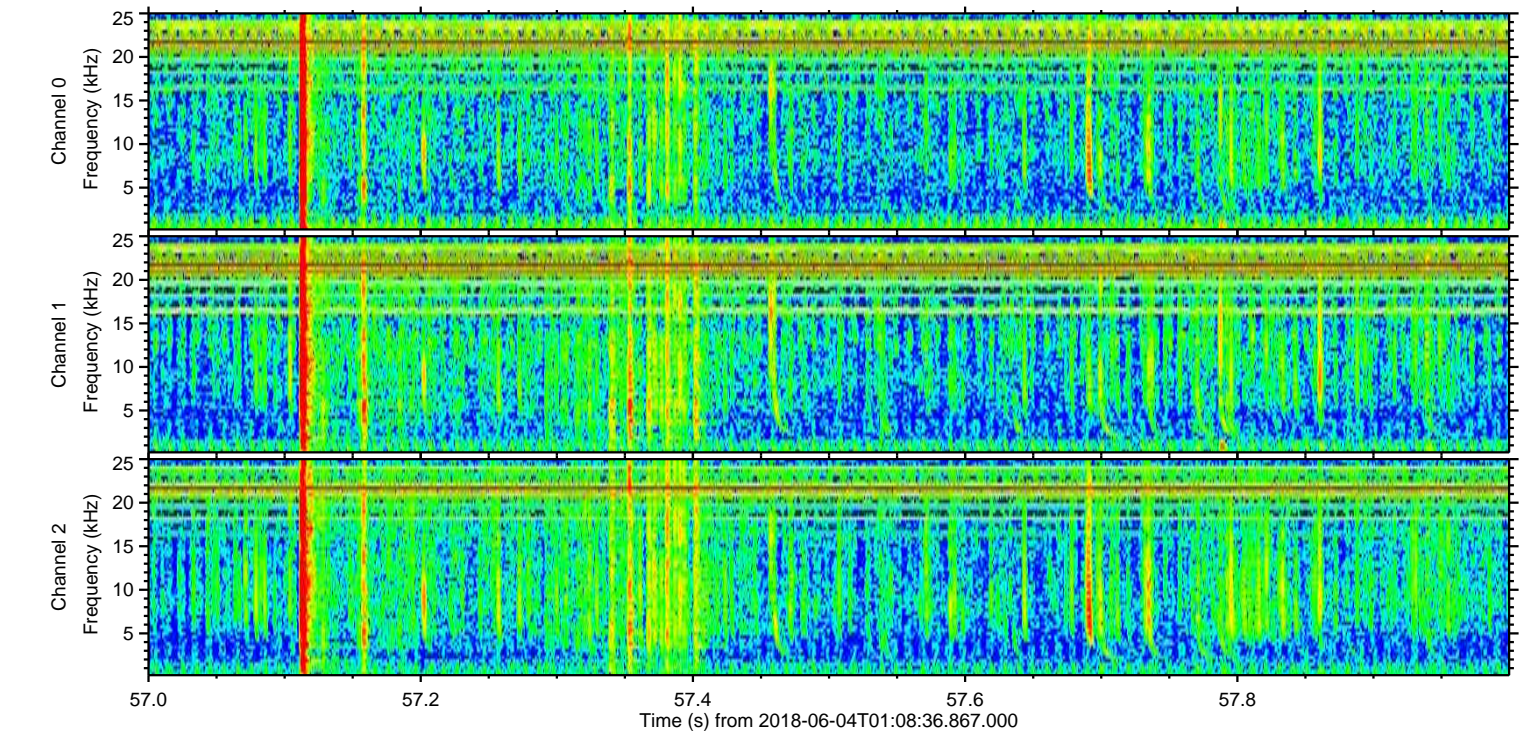
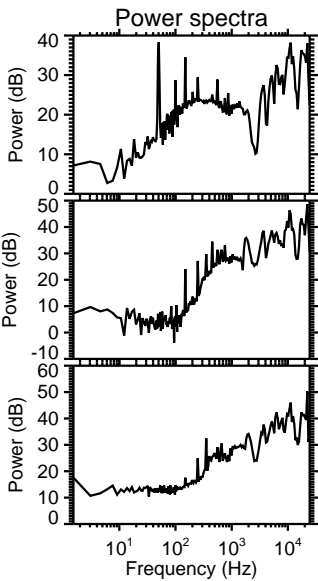
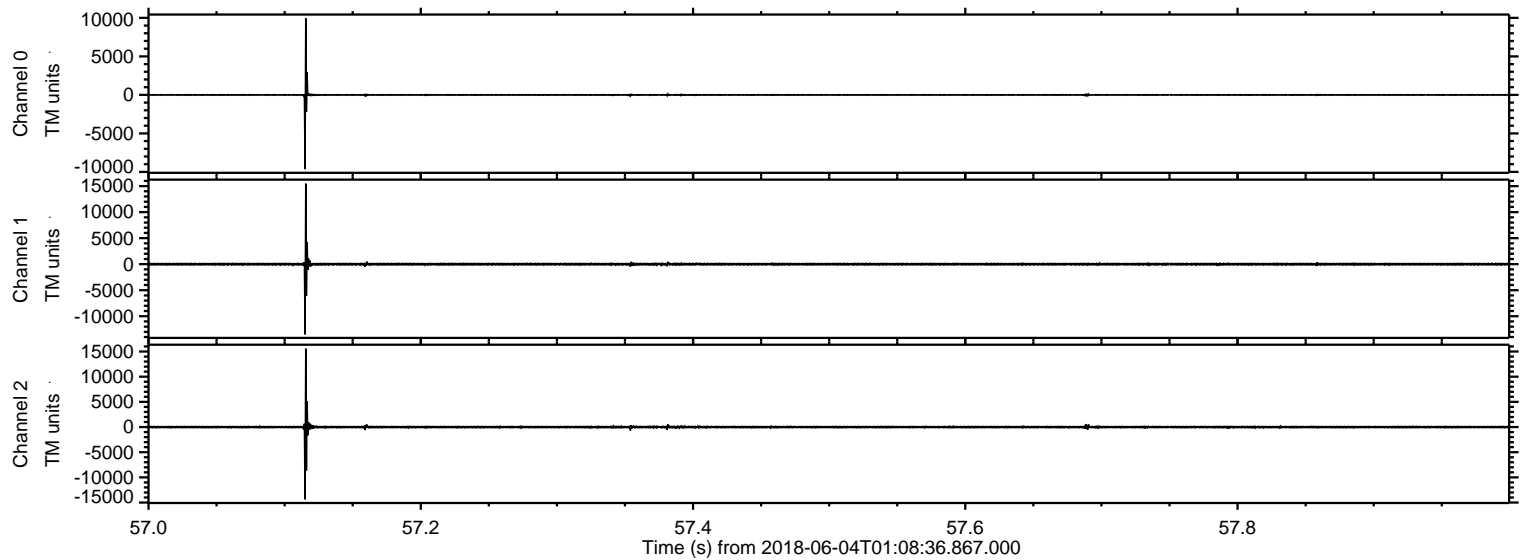


ELMAVAN 3D WAVEFORMS (Measured data sampled at 50 kHz) 51000 packets of 144 samples from 2018-06-04T01:08:36.867.000.

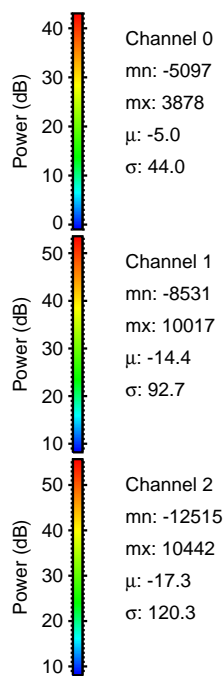
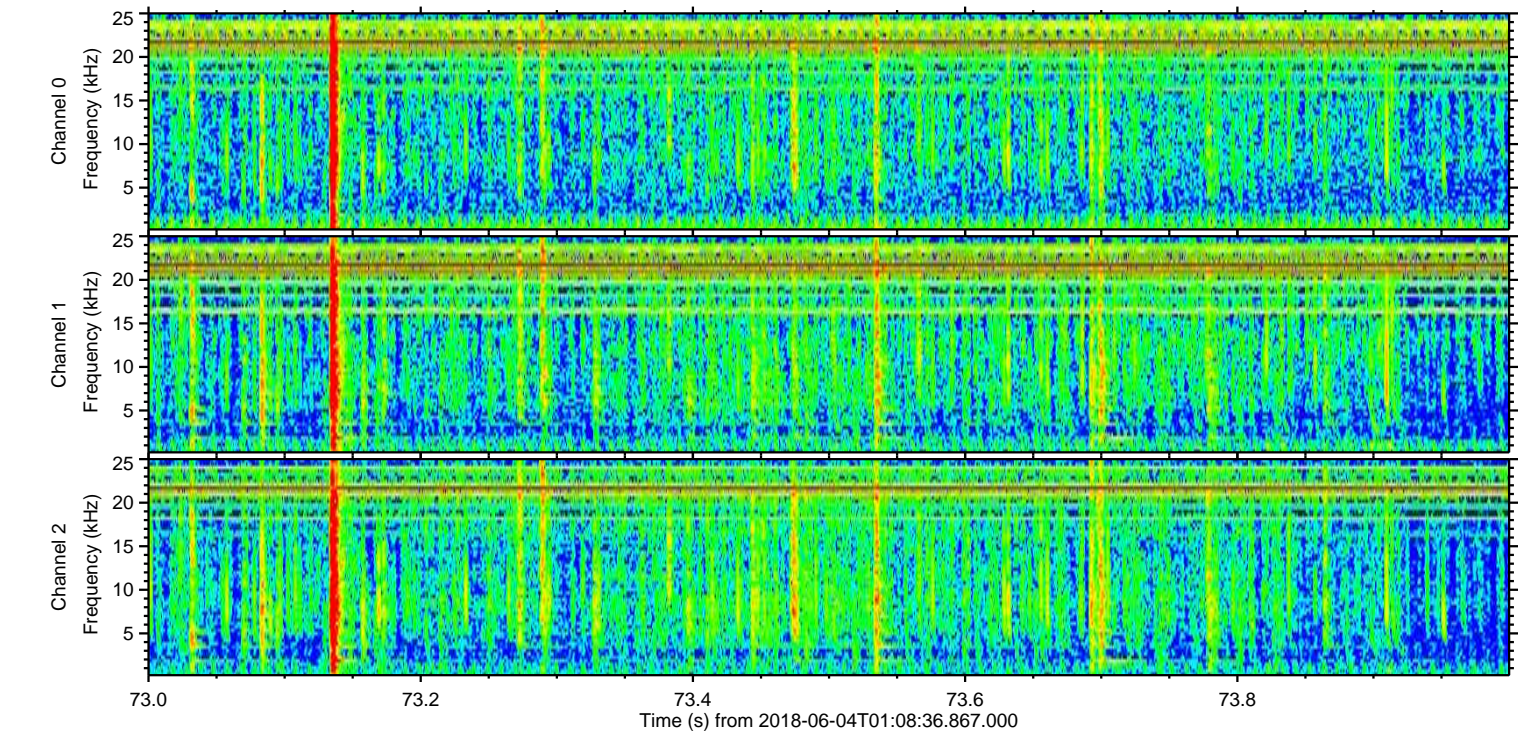
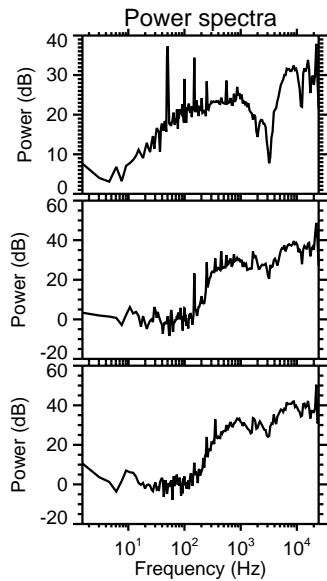
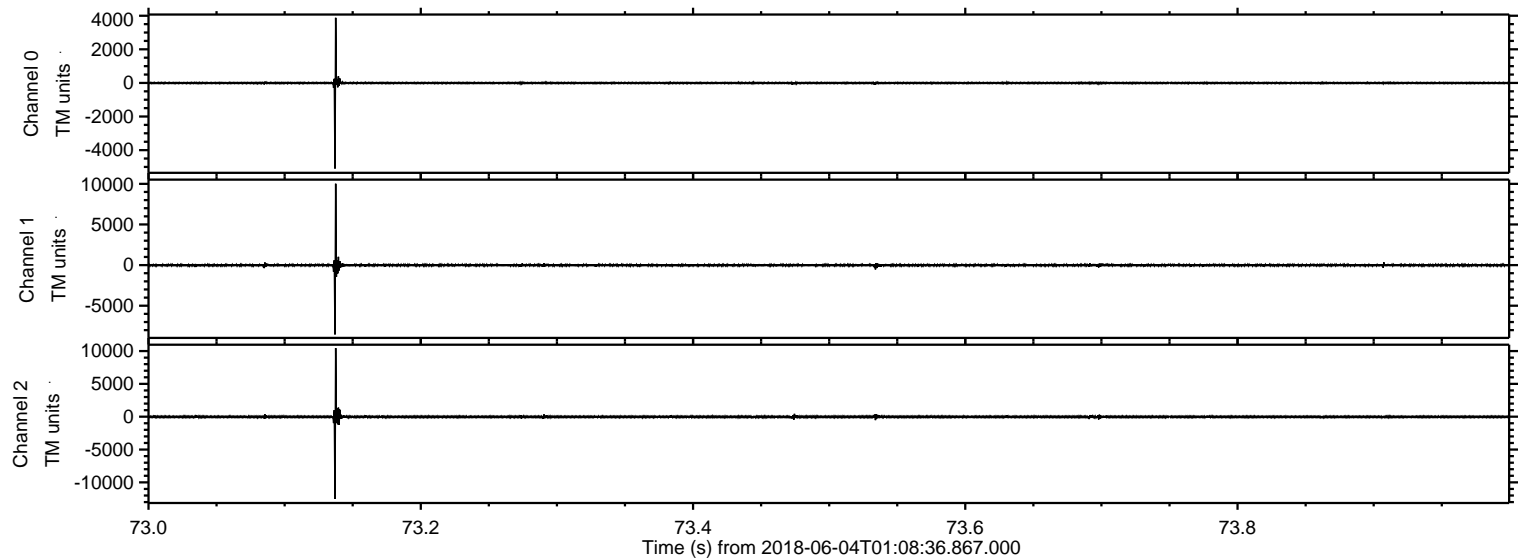
Processed Mon Jun 4 03:16:06 2018 by ELM ver.2012-10-06 from 001__elm20180604_010835__dat00.bin



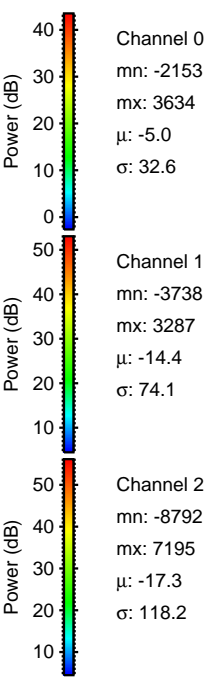
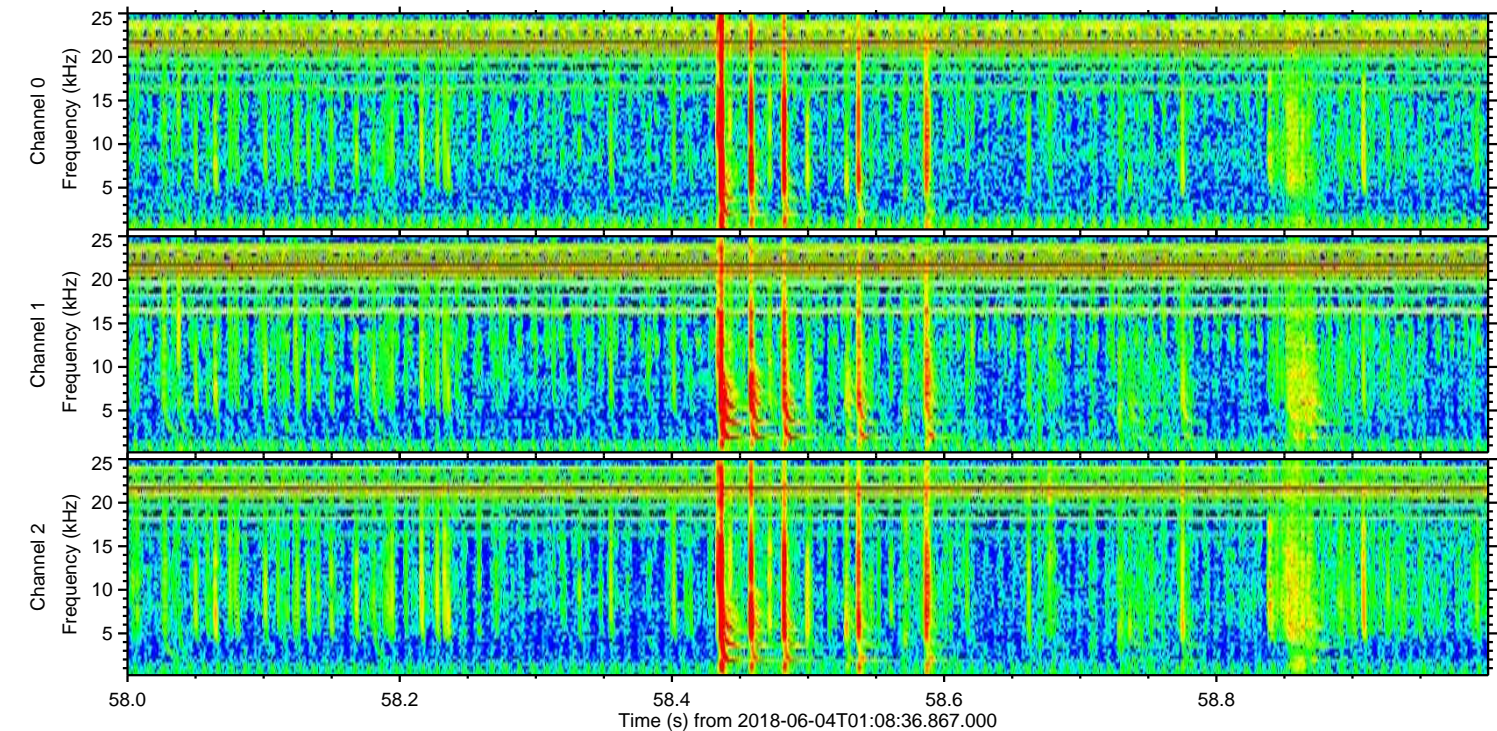
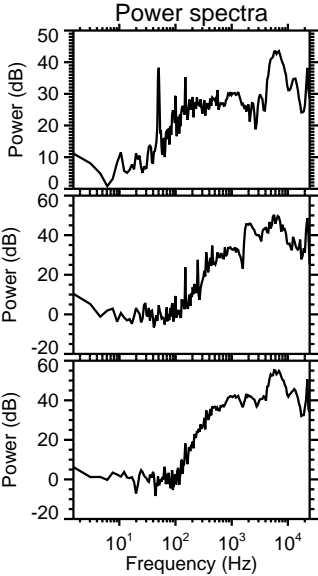
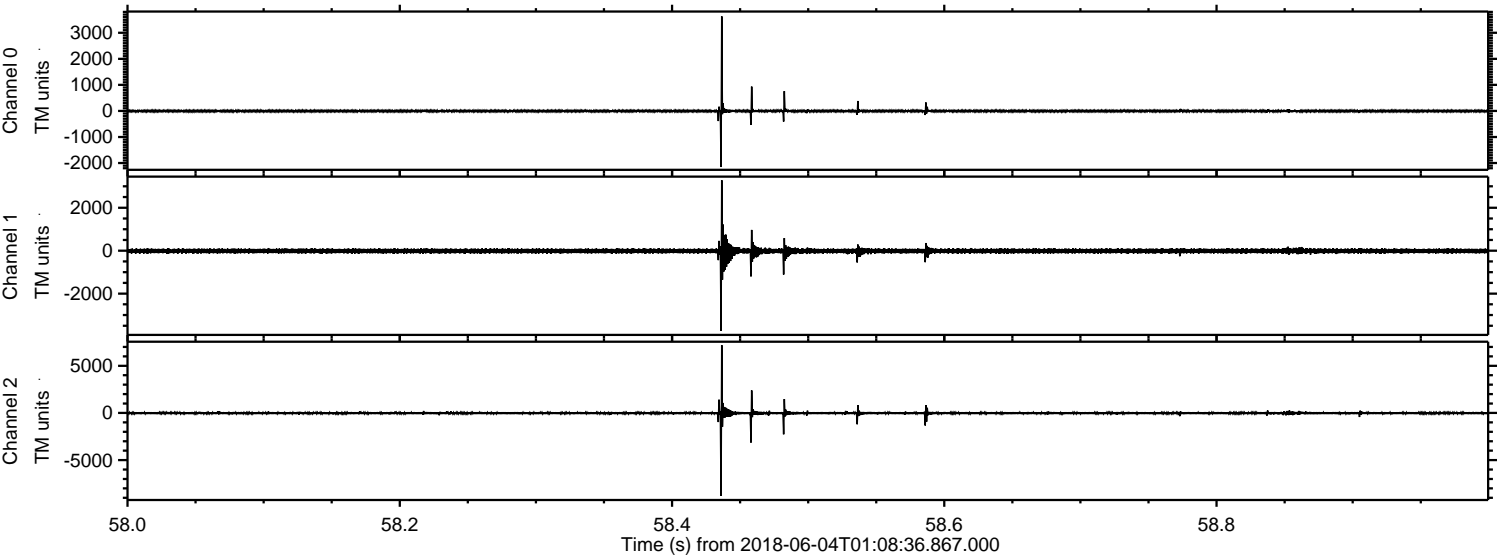
Processed Mon Jun 4 03:16:14 2018 by ELM ver.2012-10-06 from 001__elm20180604_010835__dat00.bin



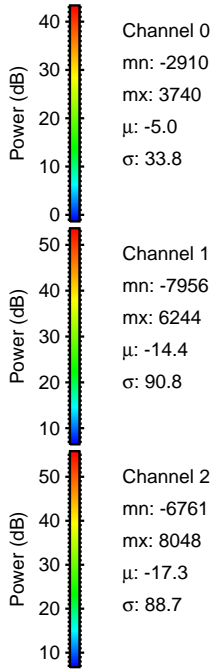
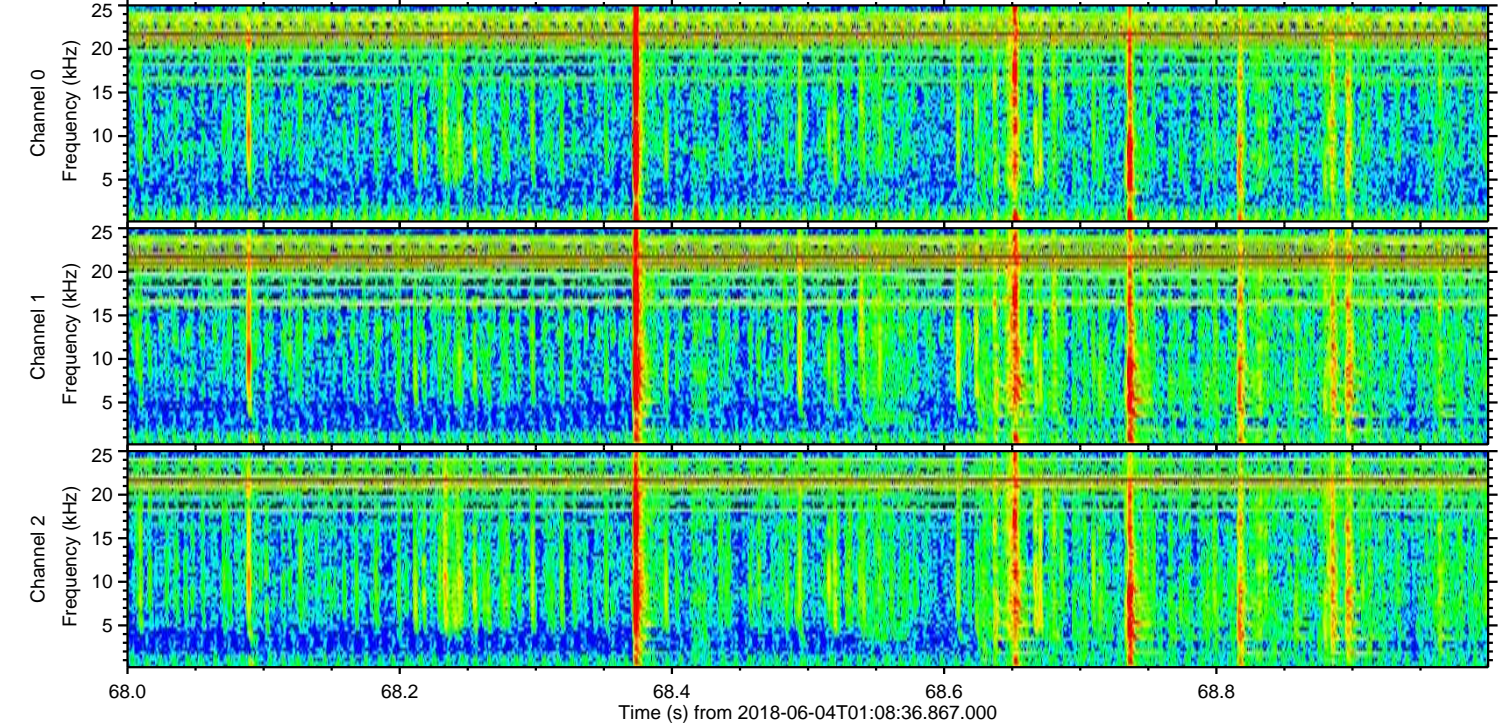
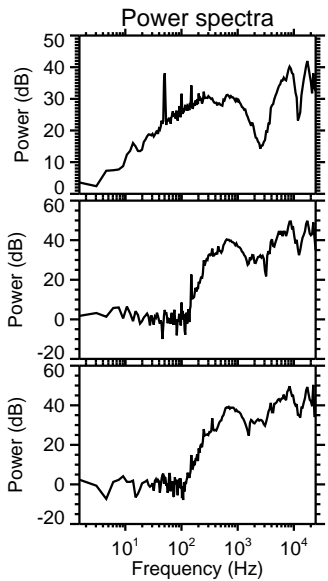
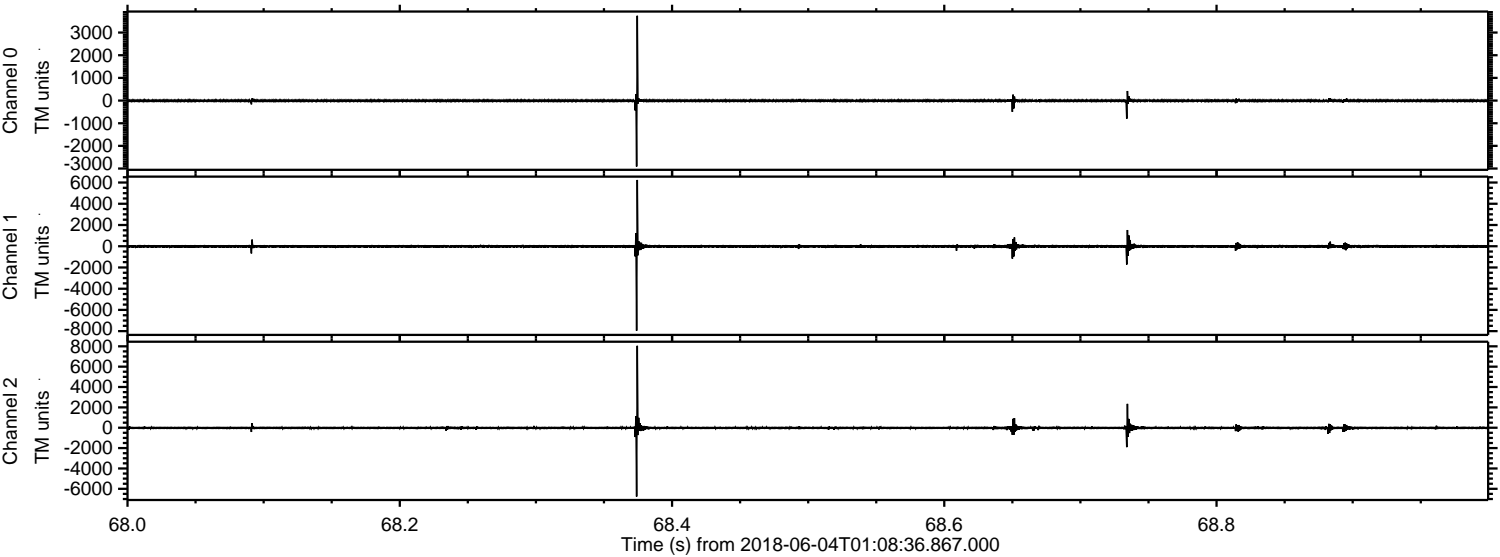
Processed Mon Jun 4 03:16:15 2018 by ELM ver.2012-10-06 from 001__elm20180604_010835__dat00.bin



Processed Mon Jun 4 03:16:16 2018 by ELM ver.2012-10-06 from 001__elm20180604_010835__dat00.bin

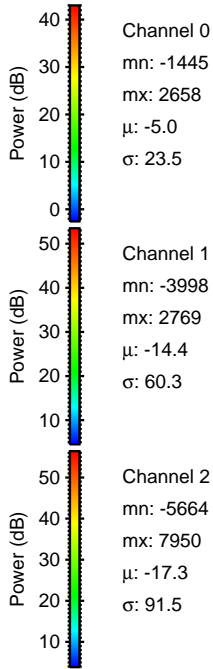
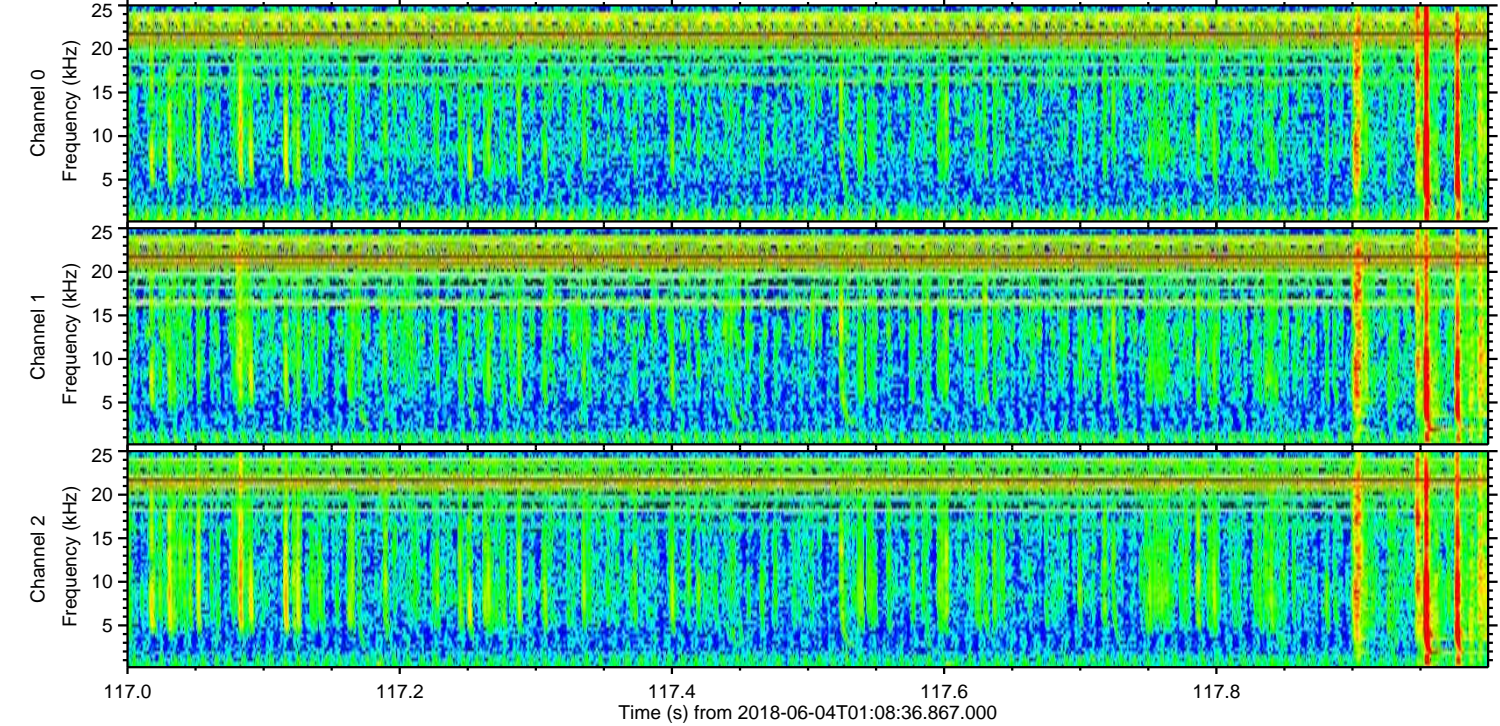
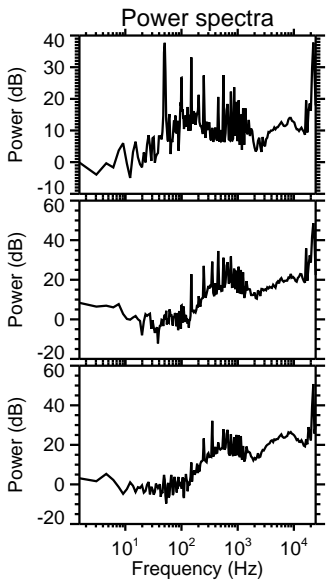
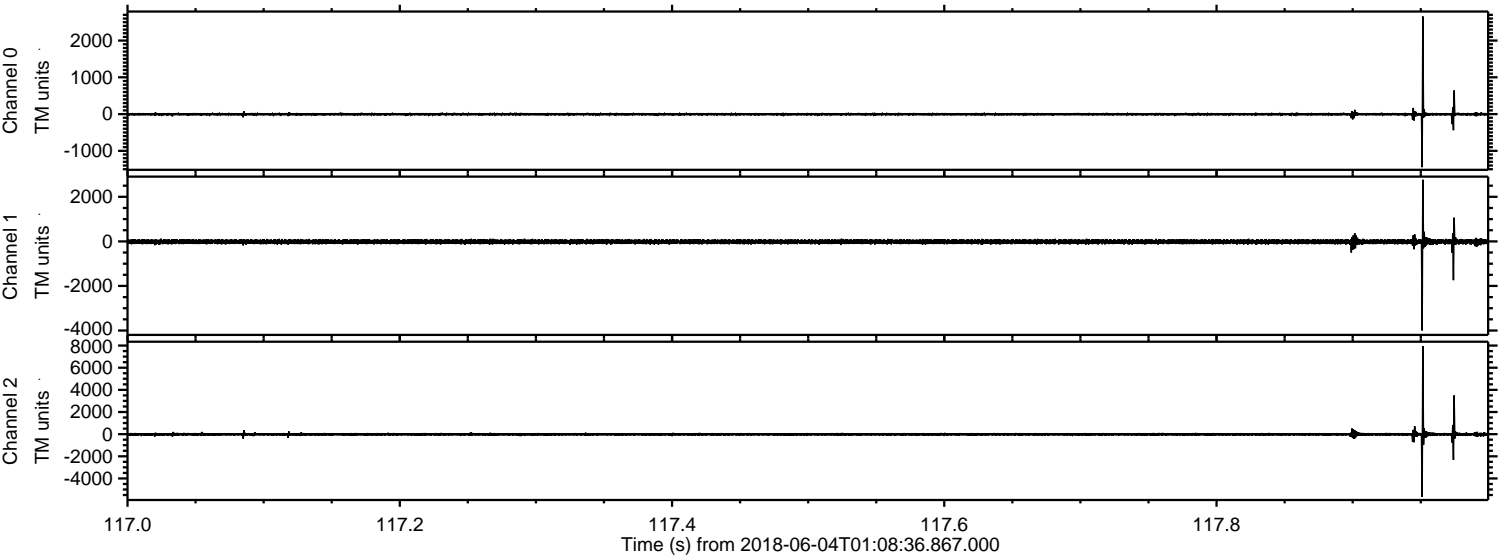


Processed Mon Jun 4 03:16:16 2018 by ELM ver.2012-10-06 from 001__elm20180604_010835__dat00.bin



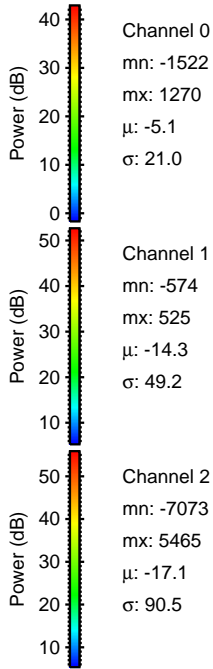
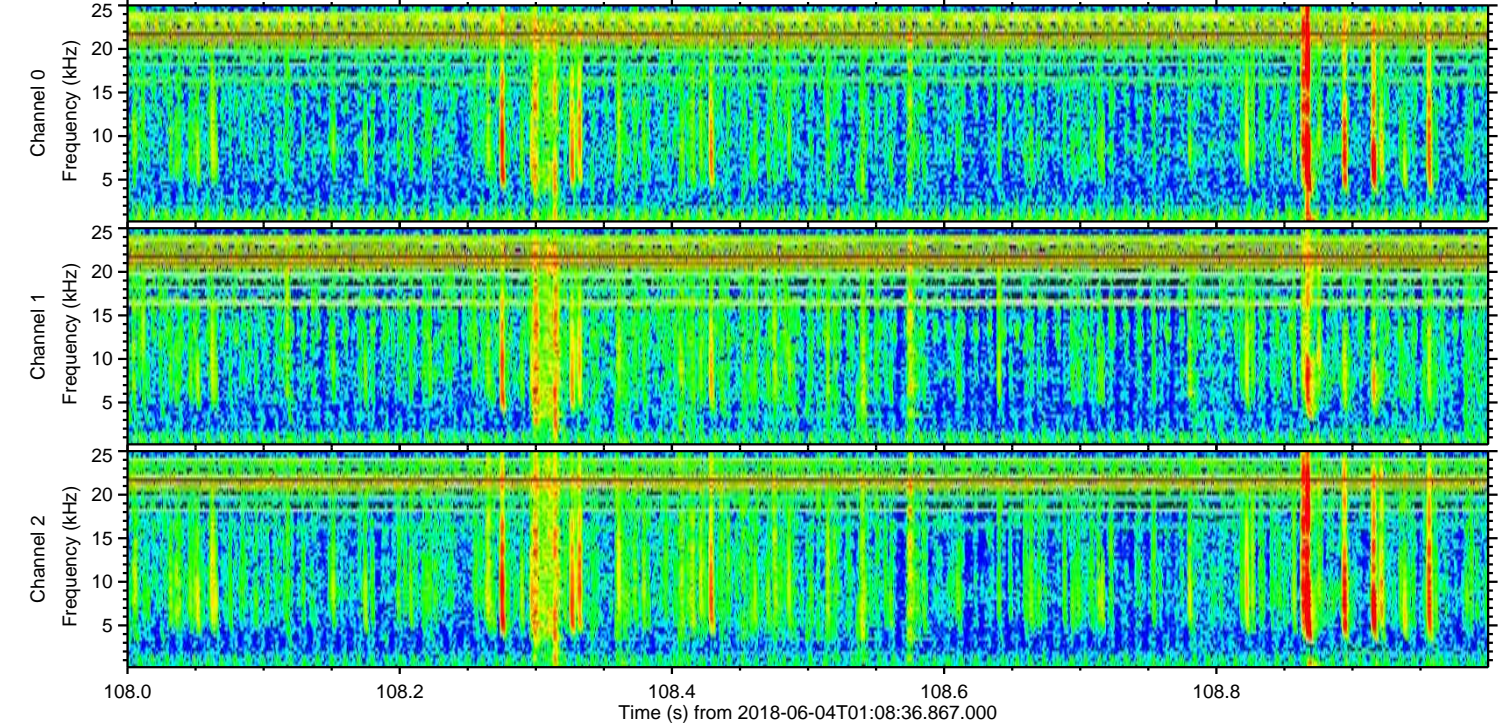
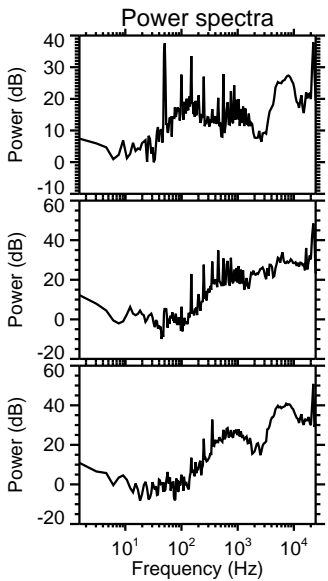
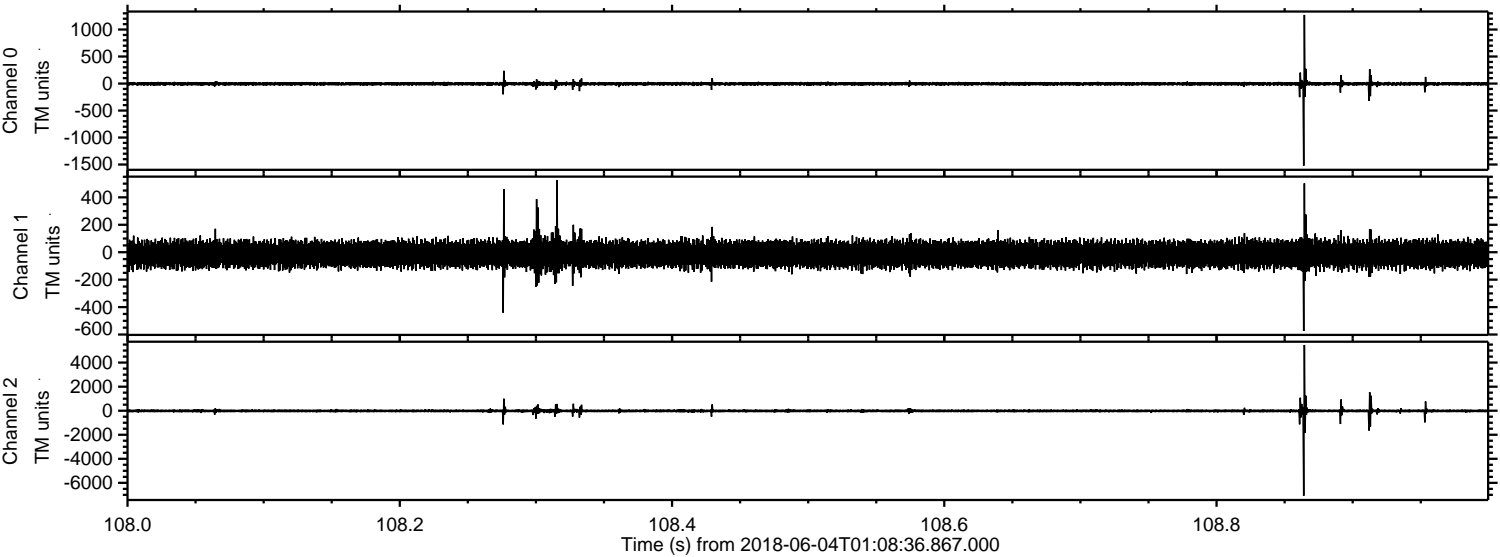
ELMAVAN 3D WAVEFORMS (Measured data sampled at 50 kHz) 51000 packets of 144 samples from 2018-06-04T01:08:36.867.000. Part 118/147

Processed Mon Jun 4 03:16:17 2018 by ELM ver.2012-10-06 from 001__elm20180604_010835__dat00.bin

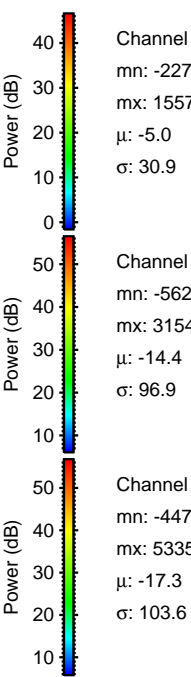
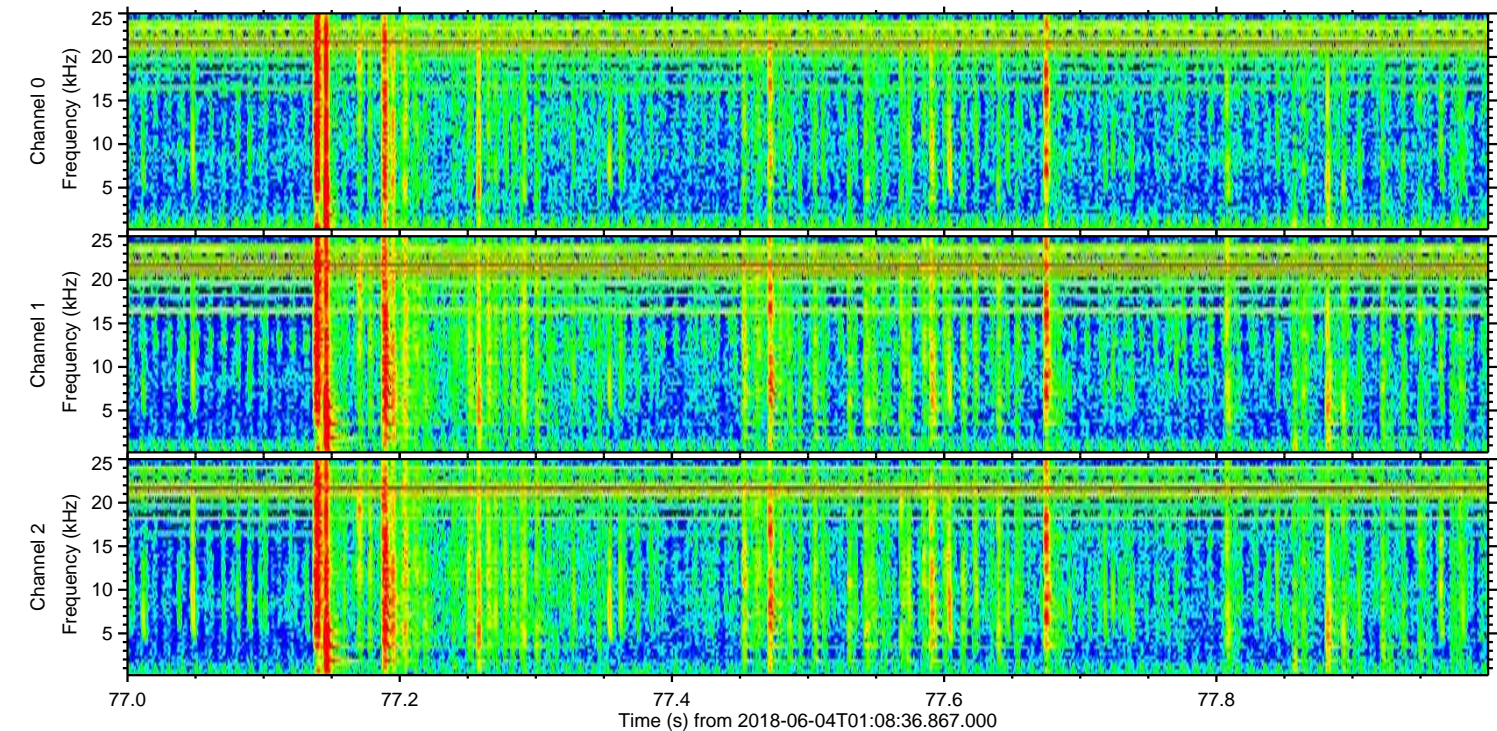
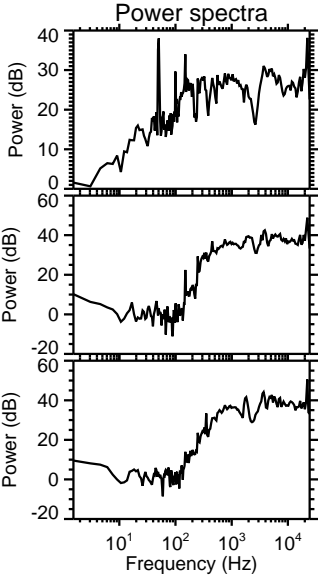
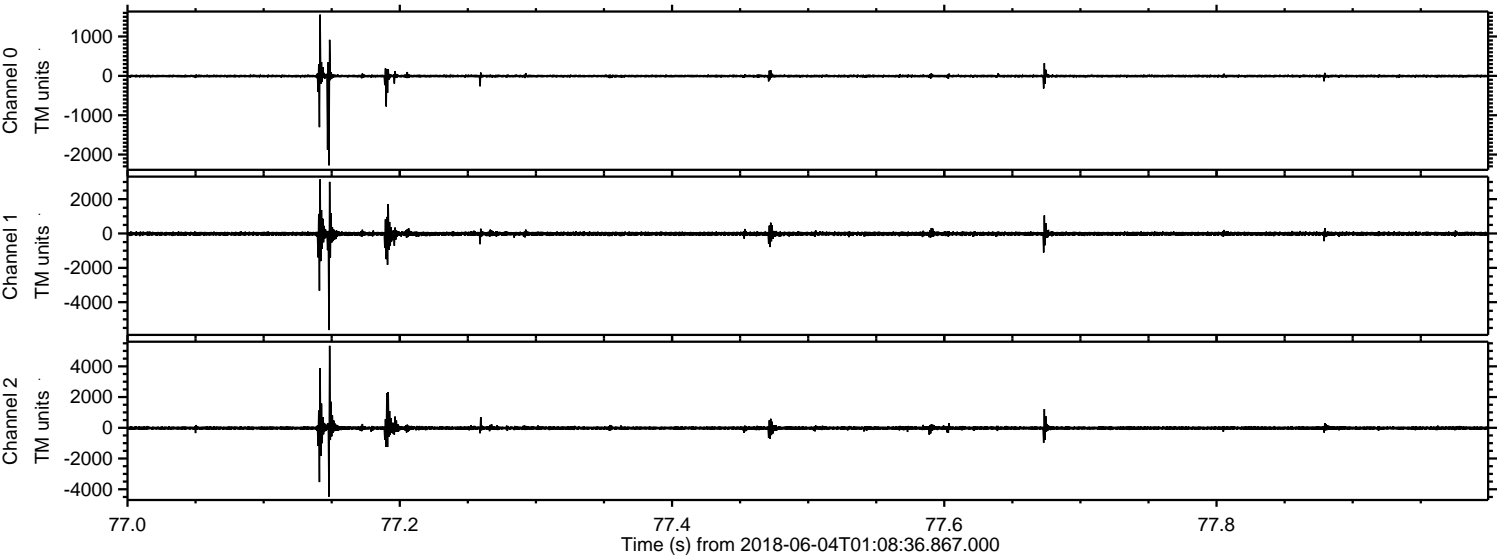


ELMAVAN 3D WAVEFORMS (Measured data sampled at 50 kHz) 51000 packets of 144 samples from 2018-06-04T01:08:36.867.000. Part 109/147

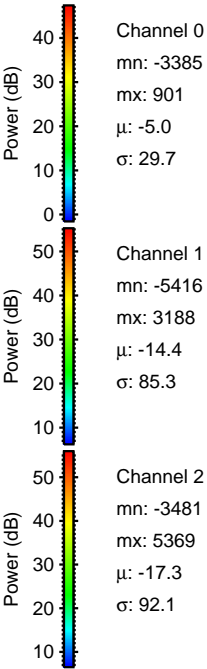
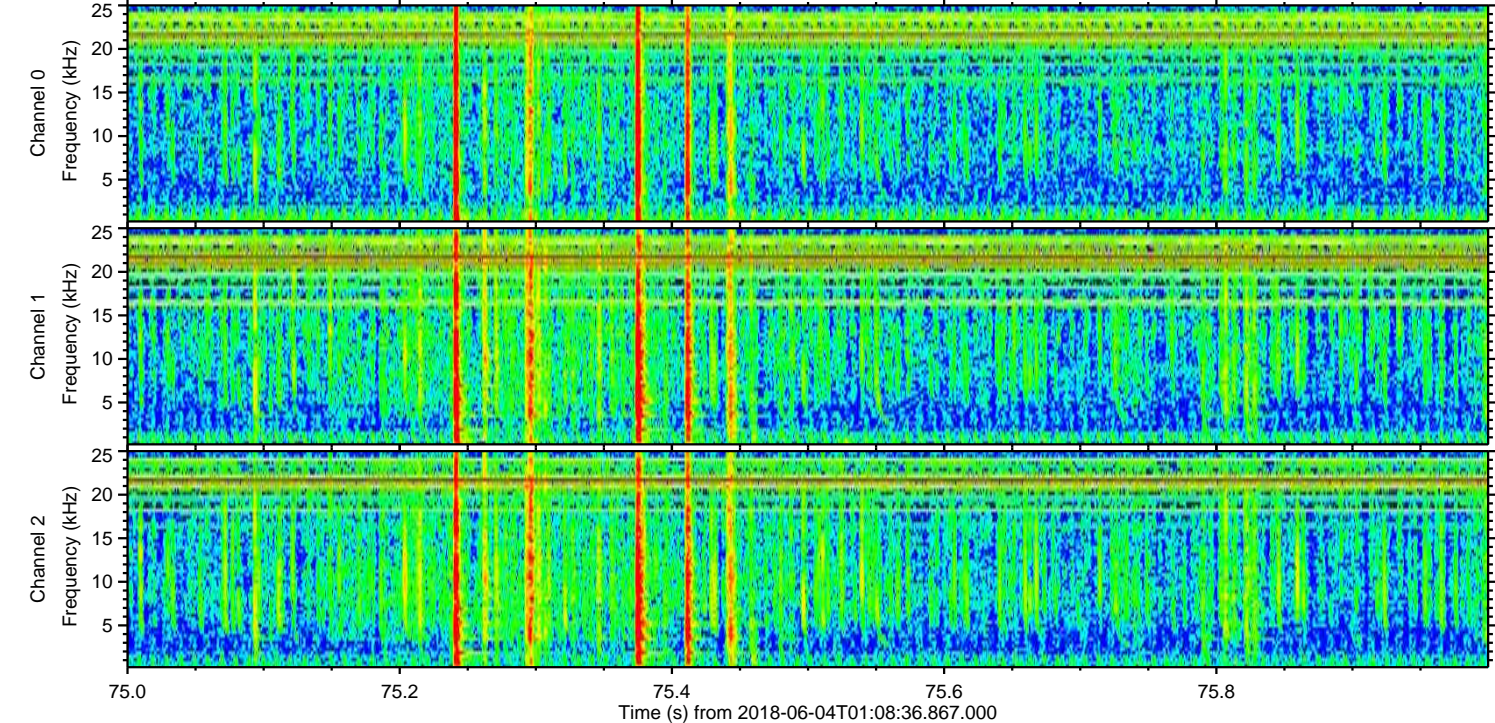
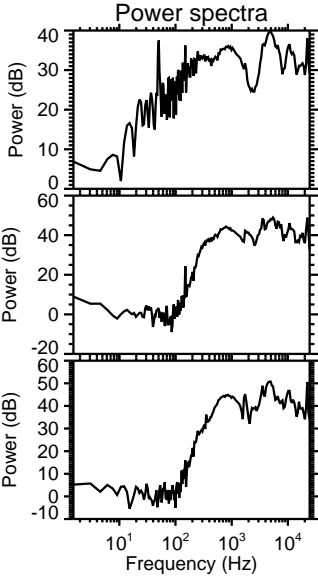
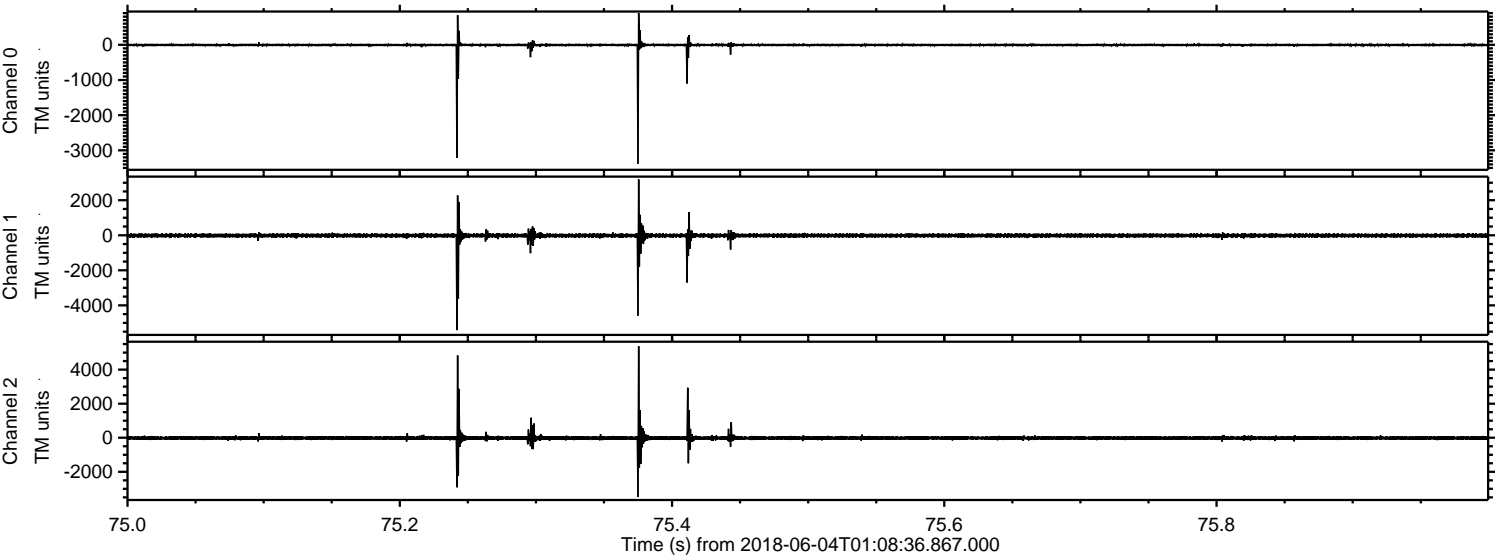
Processed Mon Jun 4 03:16:18 2018 by ELM ver.2012-10-06 from 001__elm20180604_010835__dat00.bin



Processed Mon Jun 4 03:16:18 2018 by ELM ver.2012-10-06 from 001__elm20180604_010835__dat00.bin

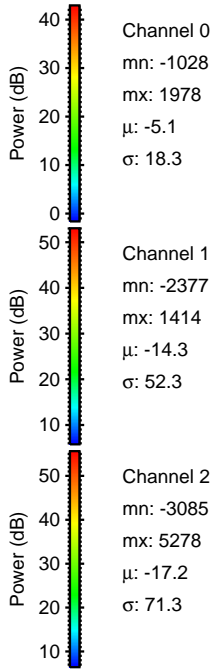
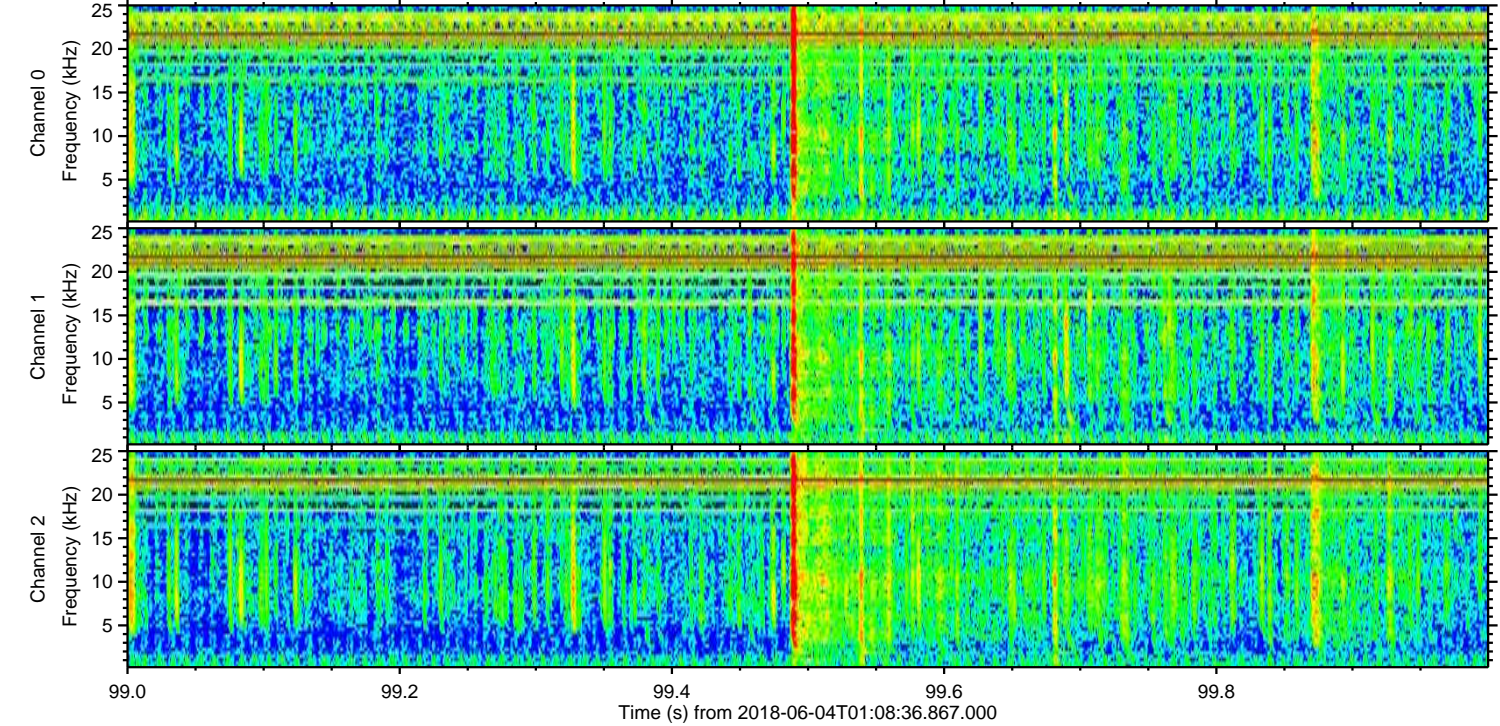
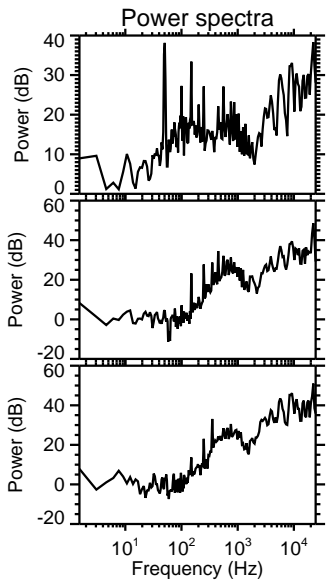
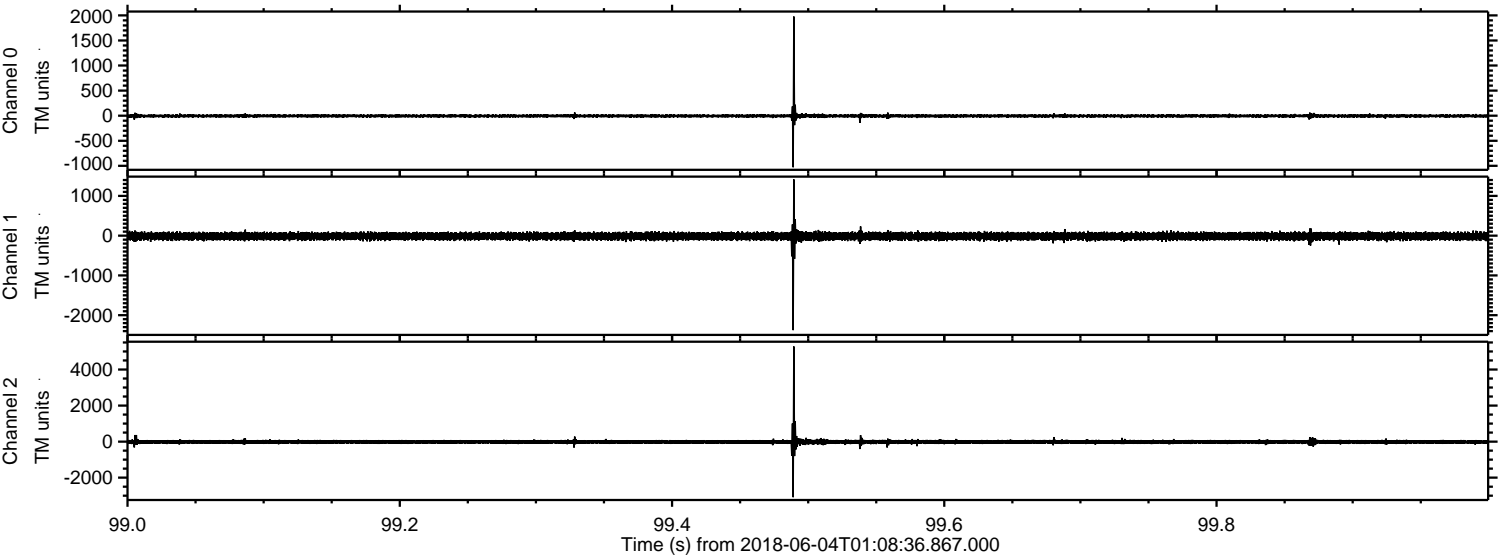


Processed Mon Jun 4 03:16:19 2018 by ELM ver.2012-10-06 from 001__elm20180604_010835__dat00.bin



ELMAVAN 3D WAVEFORMS (Measured data sampled at 50 kHz) 51000 packets of 144 samples from 2018-06-04T01:08:36.867.000. Part 100/147

Processed Mon Jun 4 03:16:20 2018 by ELM ver.2012-10-06 from 001__elm20180604_010835__dat00.bin



Channel 0
mn: -1028
mx: 1978
 μ : -5.1
 σ : 18.3

Channel 1
mn: -2377
mx: 1414
 μ : -14.3
 σ : 52.3

Channel 2
mn: -3085
mx: 5278
 μ : -17.2
 σ : 71.3

