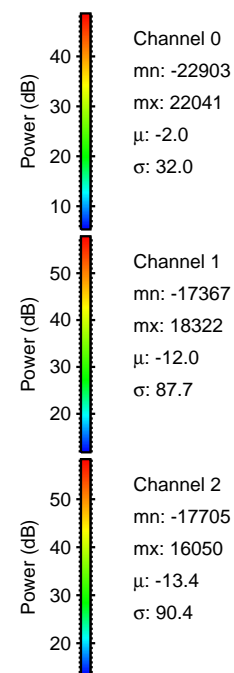
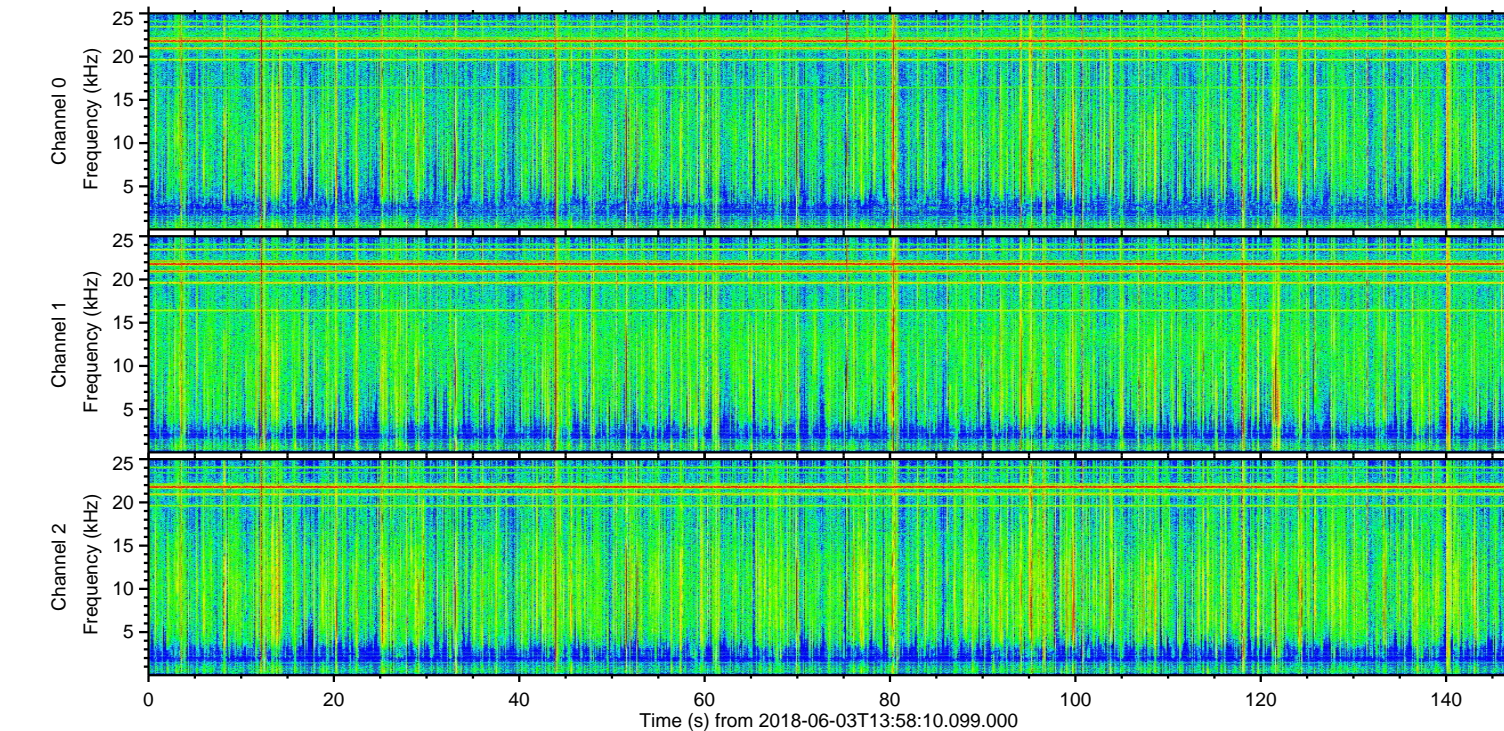
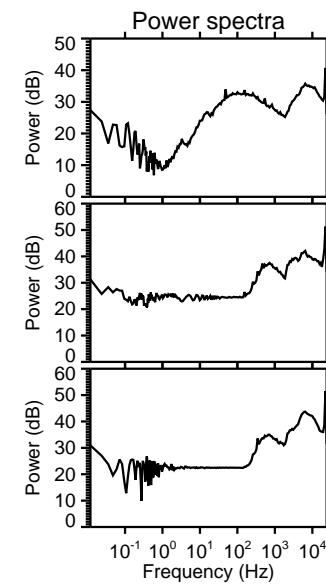
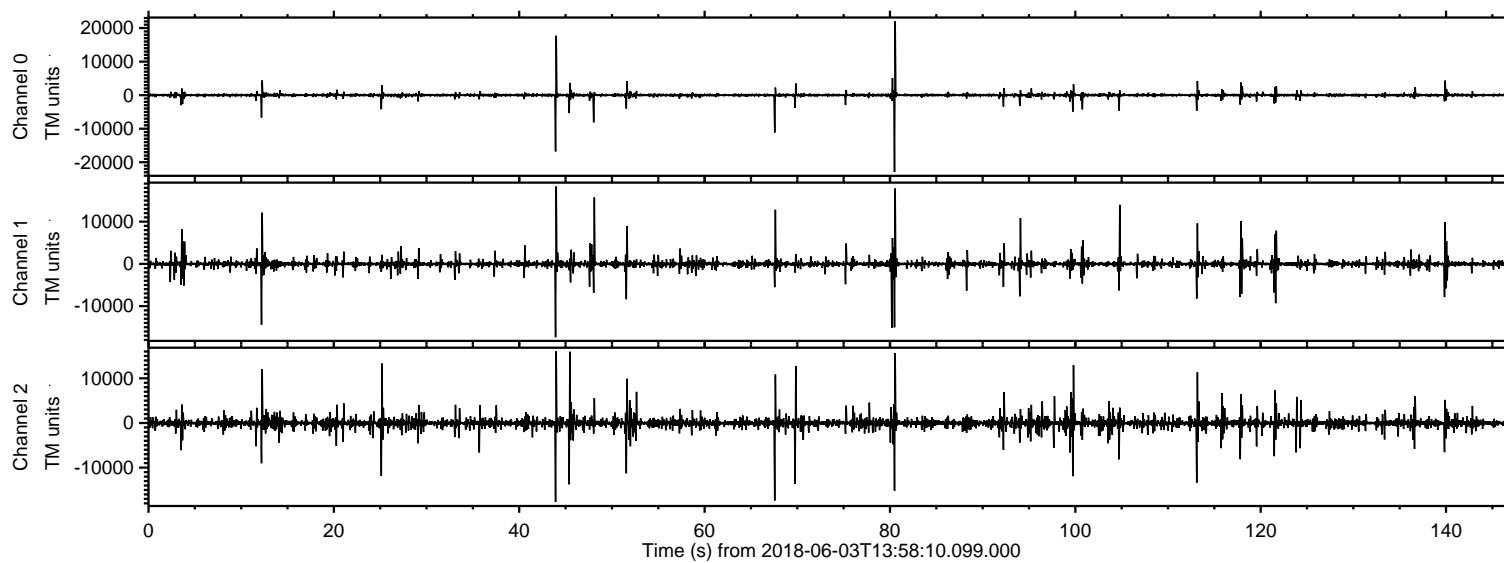


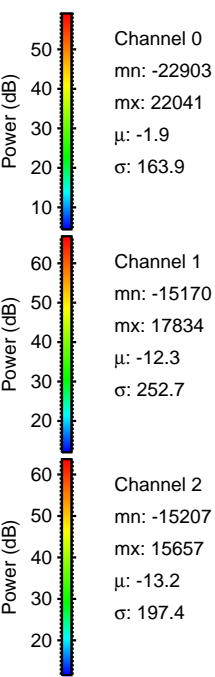
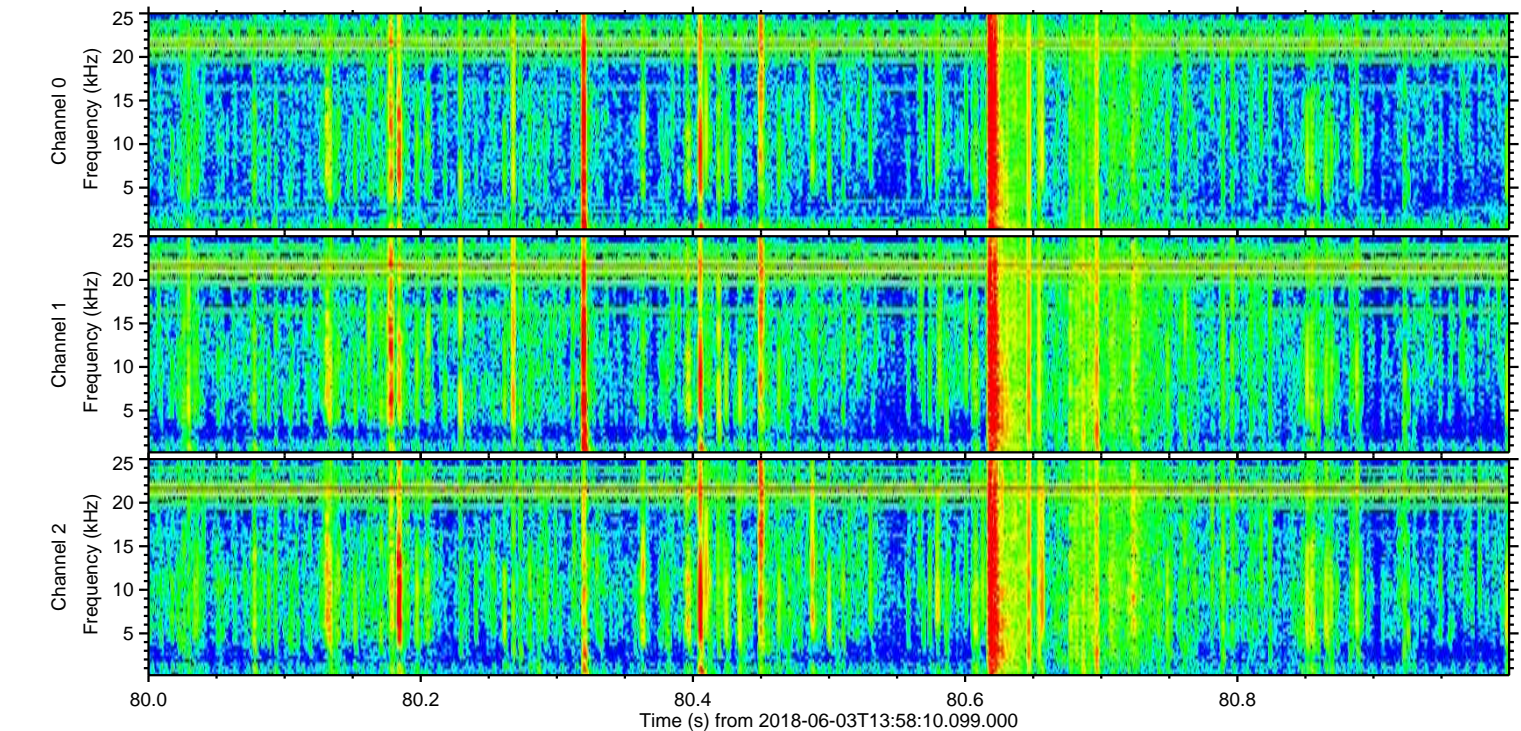
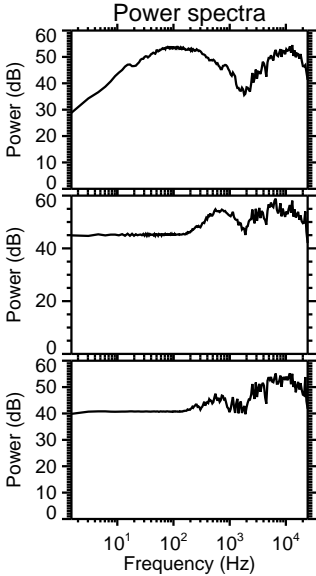
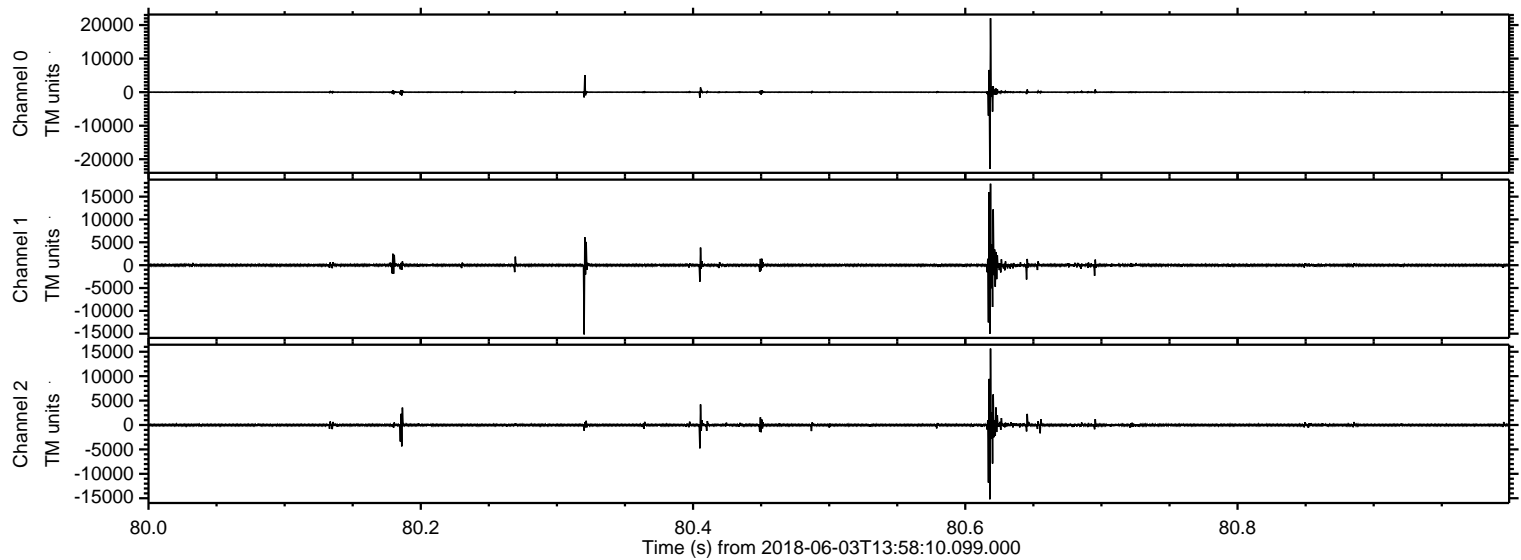
# ELMAVAN 3D WAVEFORMS (Measured data sampled at 50 kHz) 51000 packets of 144 samples from 2018-06-03T13:58:10.099.000.

Processed Sun Jun 3 16:06:16 2018 by ELM ver.2012-10-06 from 001\_\_elm20180603\_135809\_\_dat00.bin

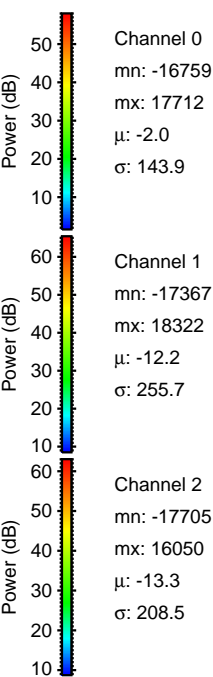
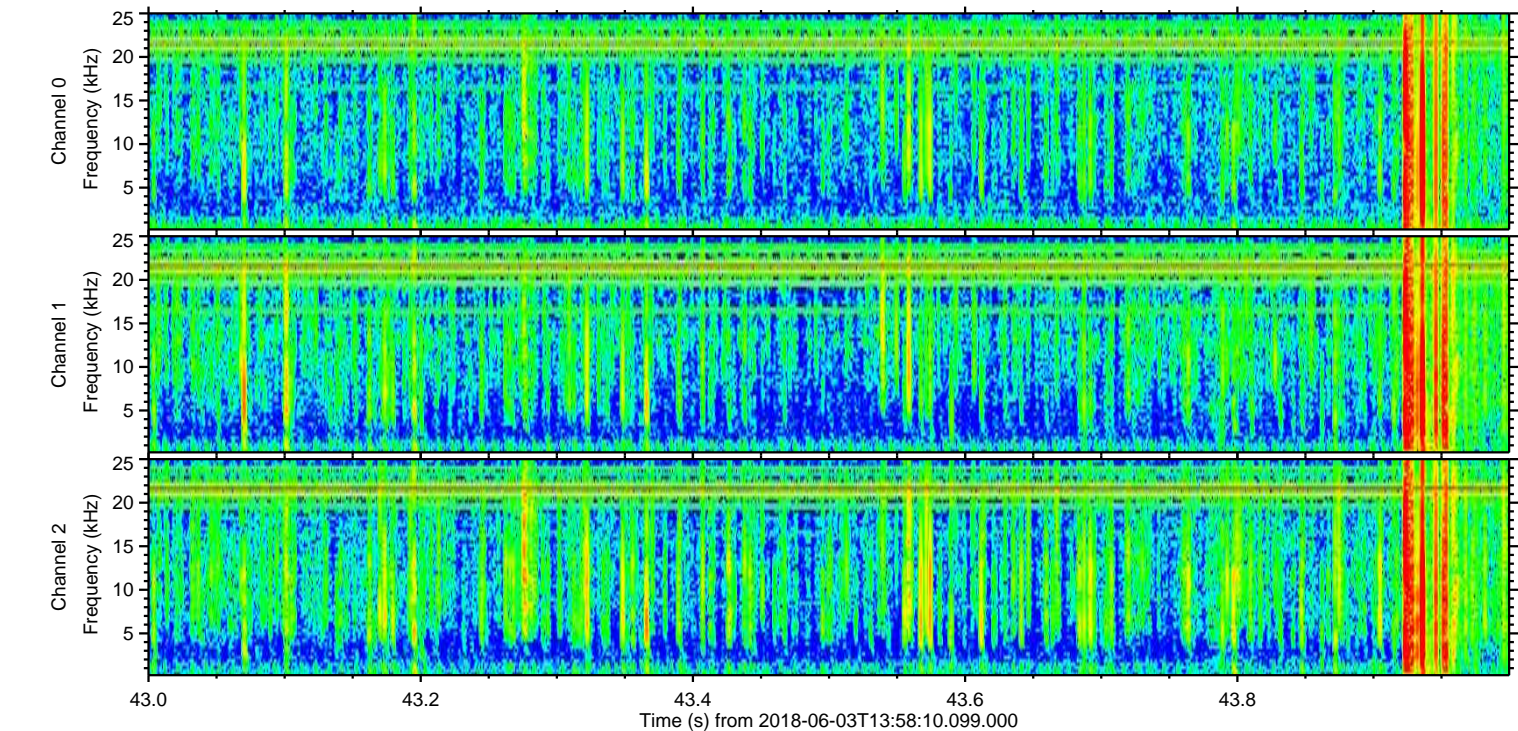
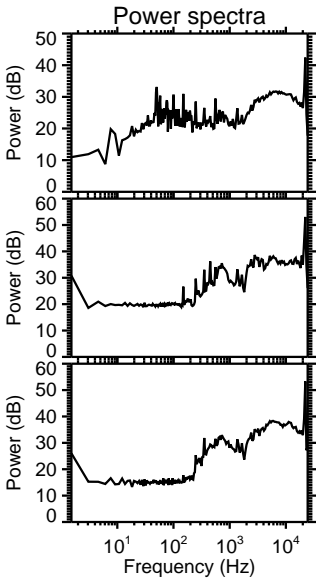
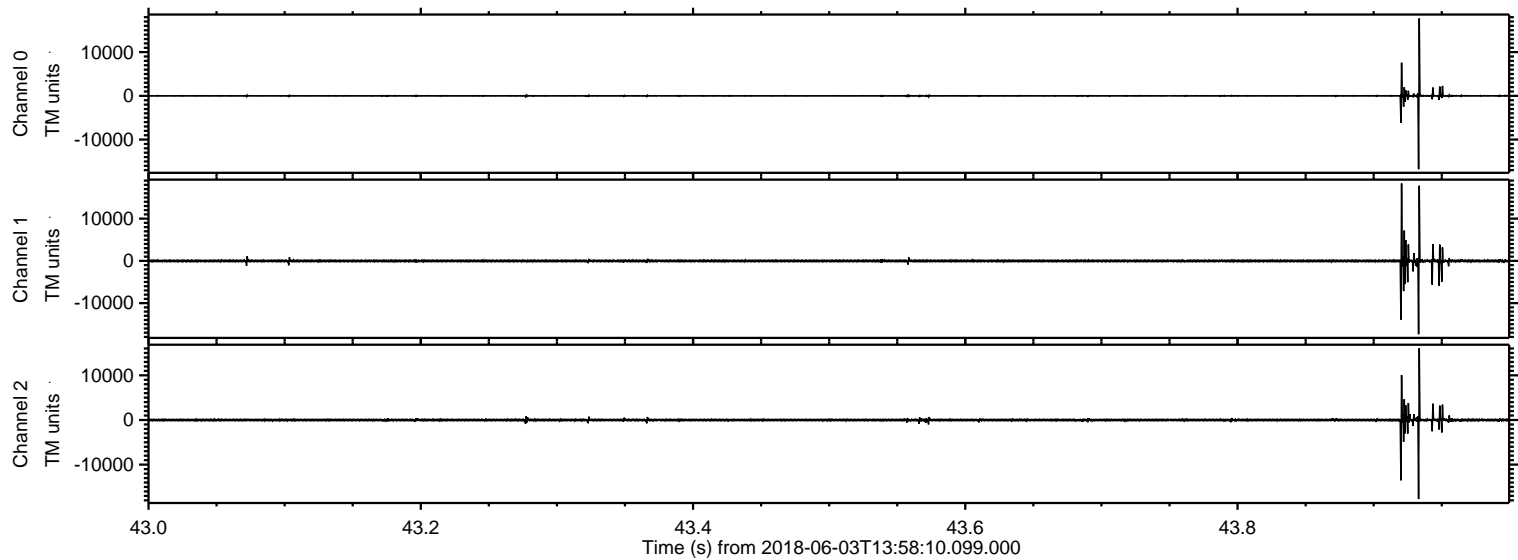




Processed Sun Jun 3 16:06:22 2018 by ELM ver.2012-10-06 from 001\_\_elm20180603\_135809\_\_dat00.bin

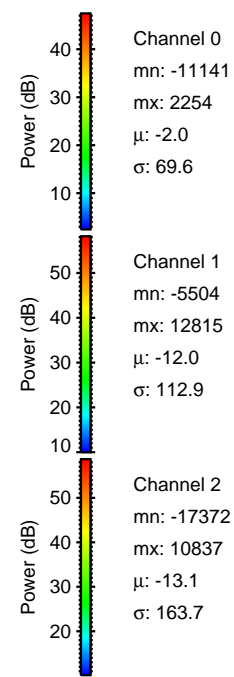
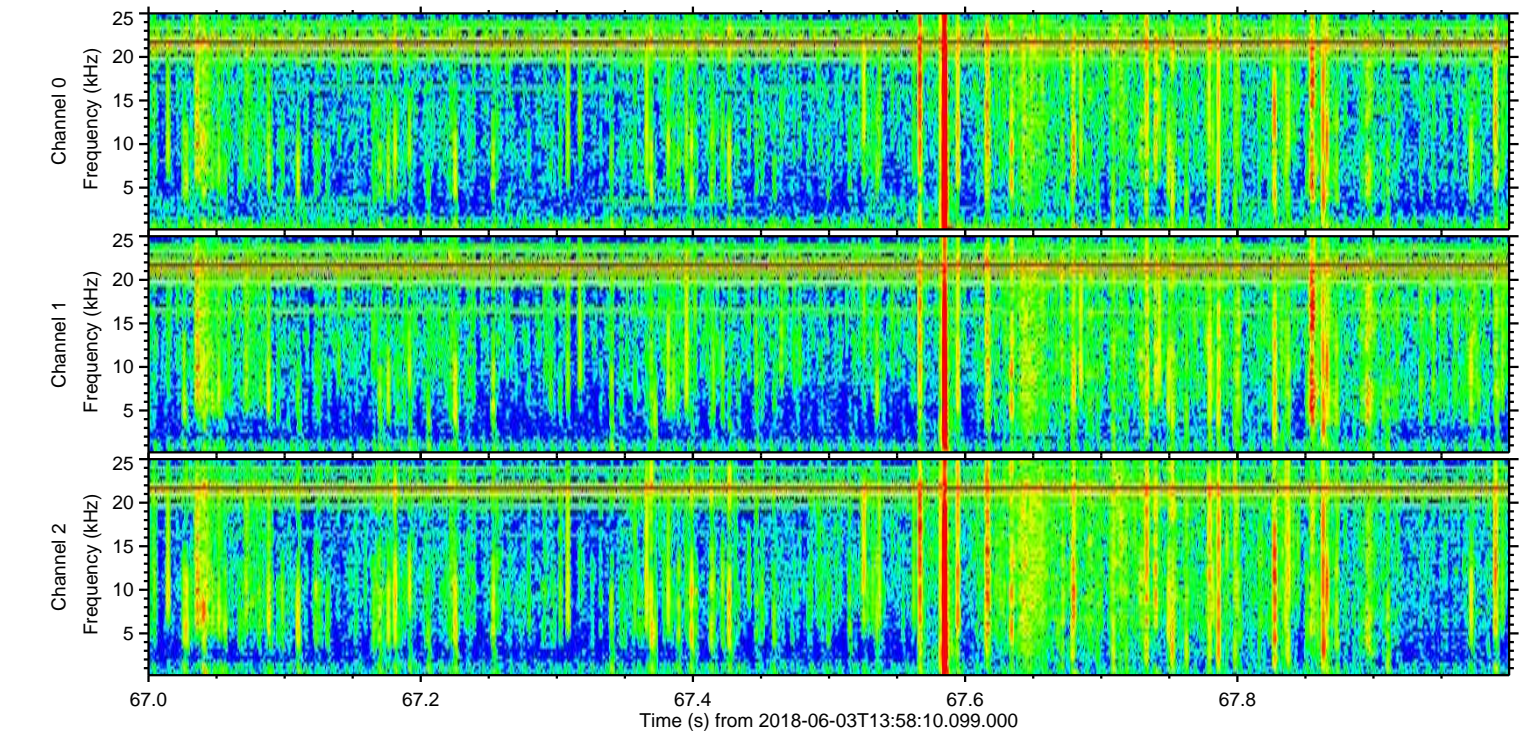
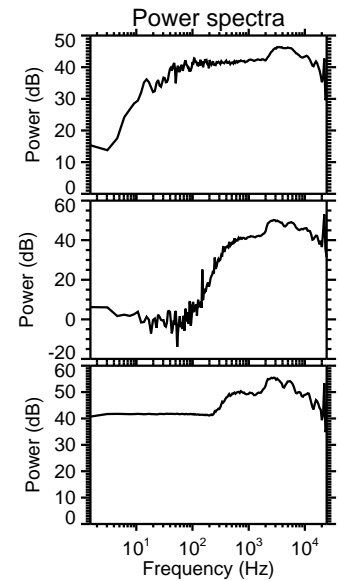
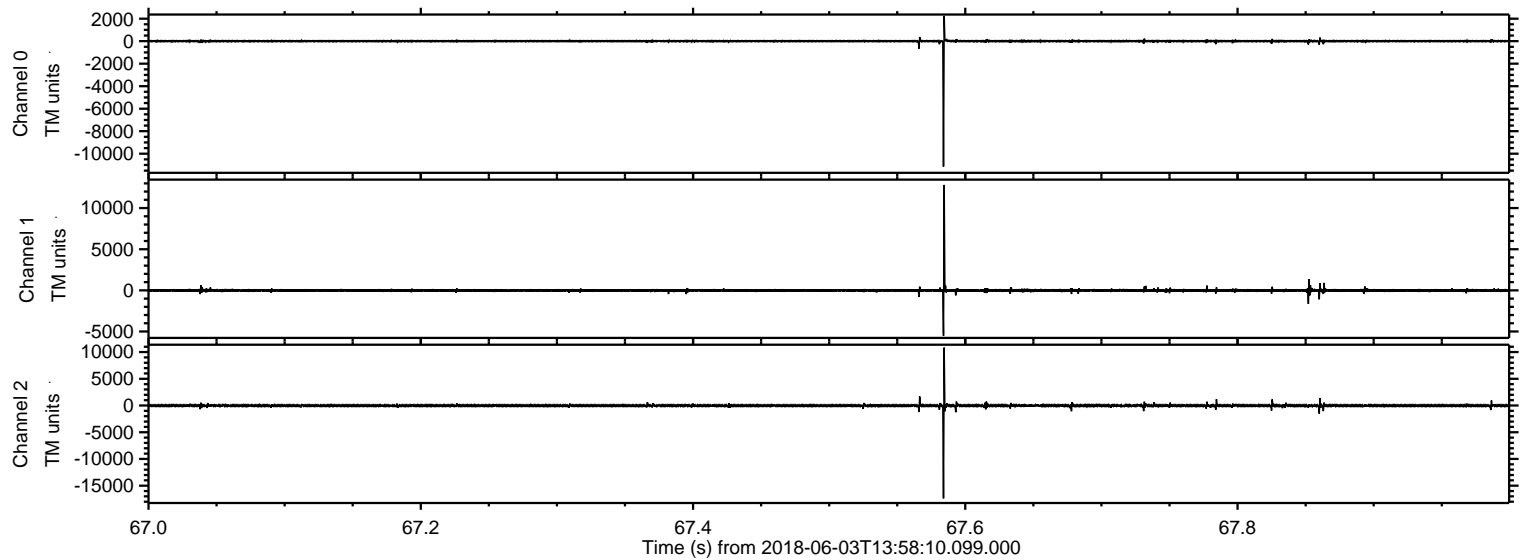


Processed Sun Jun 3 16:06:22 2018 by ELM ver.2012-10-06 from 001\_\_elm20180603\_135809\_\_dat00.bin



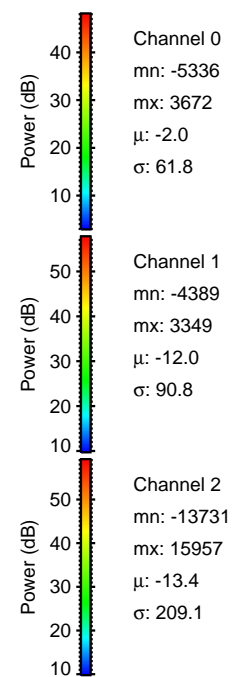
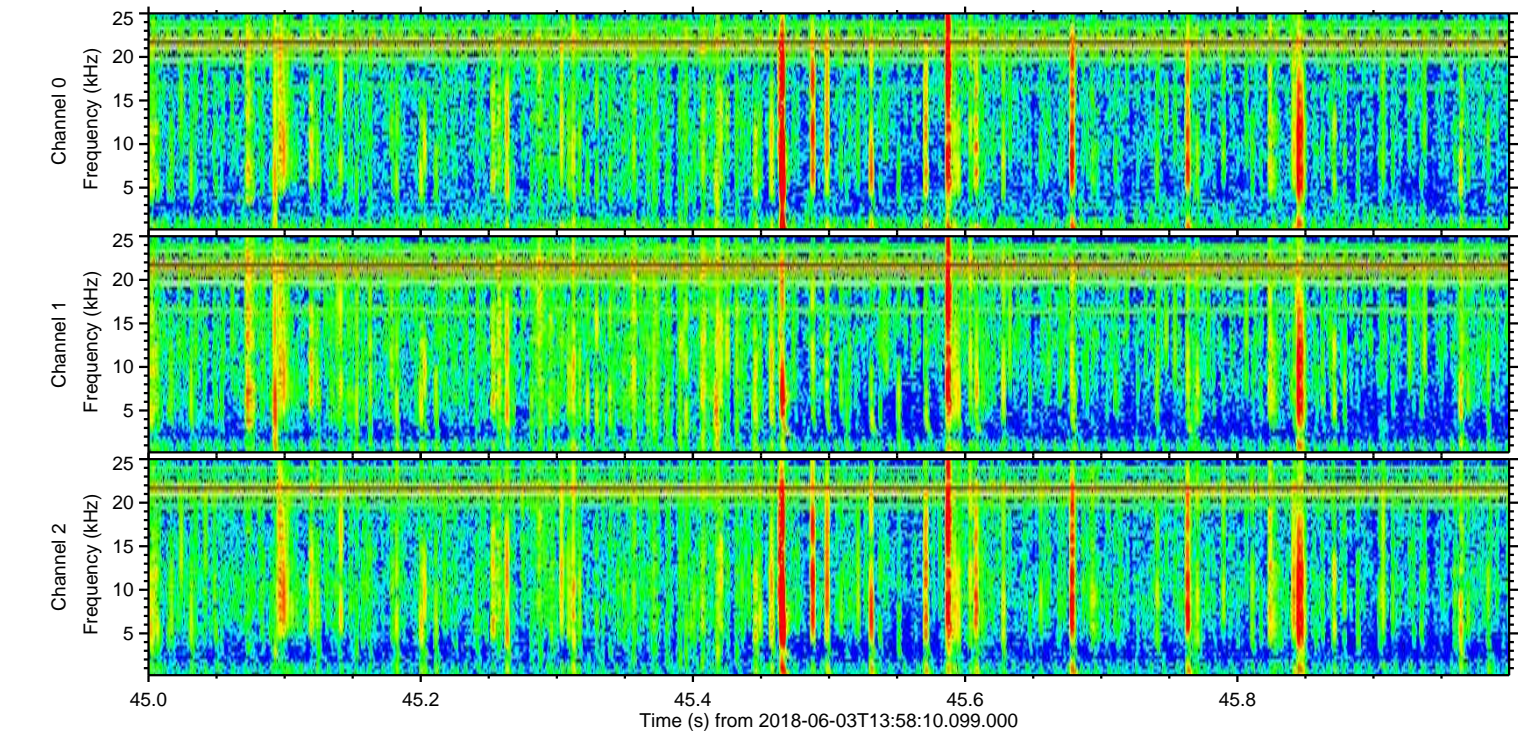
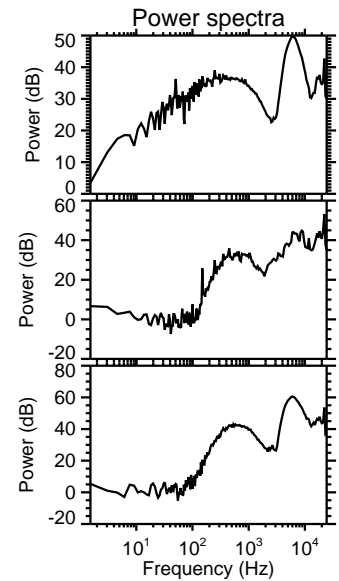
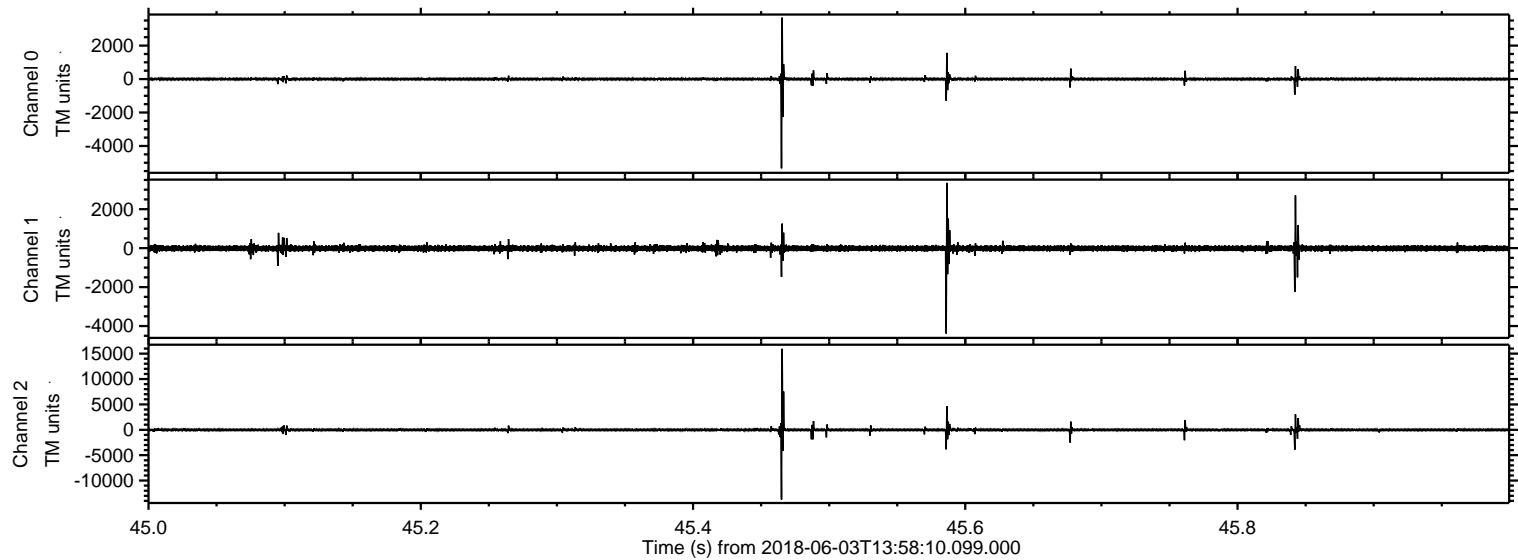


Processed Sun Jun 3 16:06:23 2018 by ELM ver.2012-10-06 from 001\_\_elm20180603\_135809\_\_dat00.bin



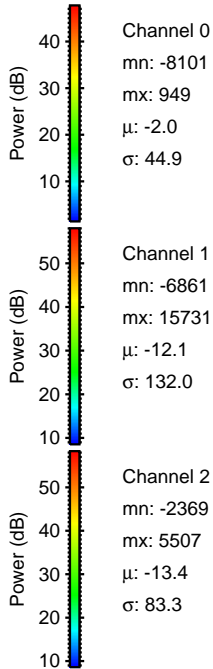
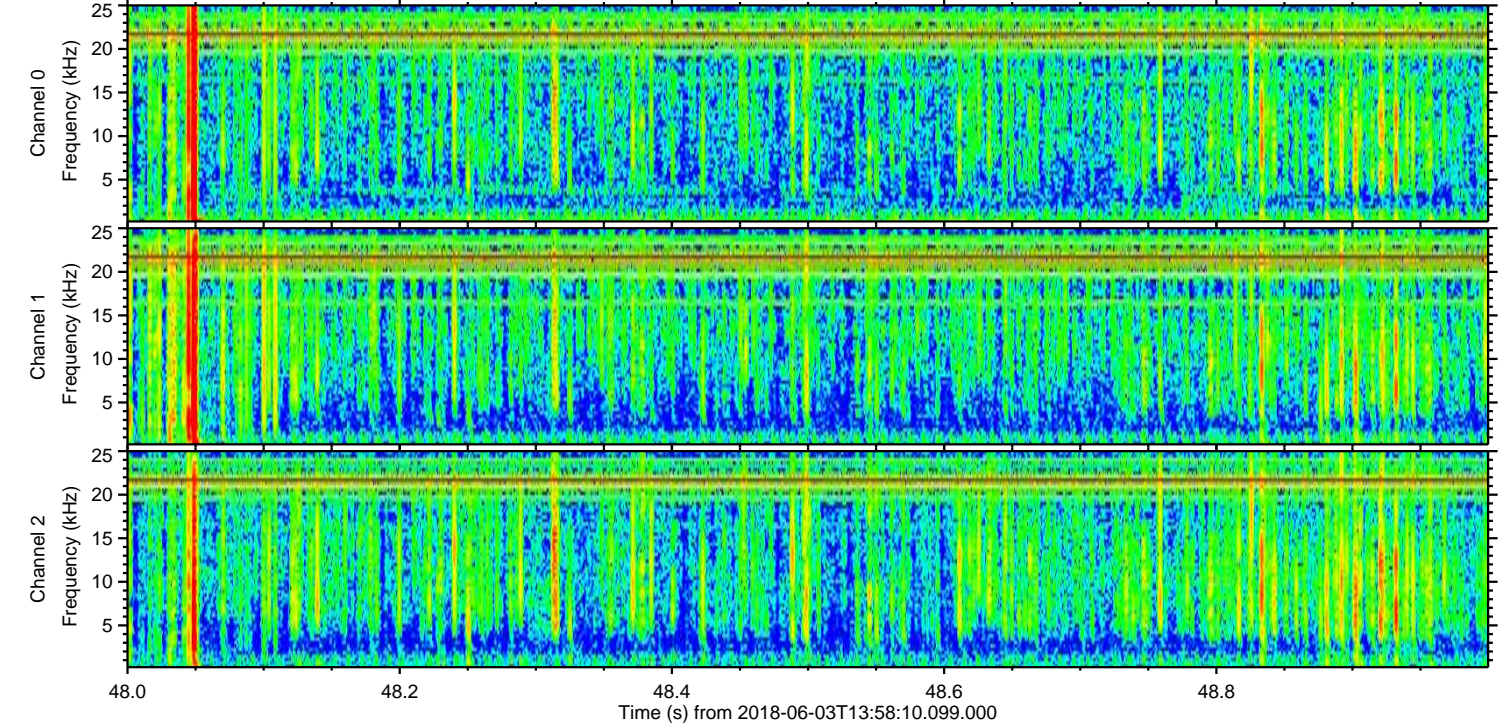
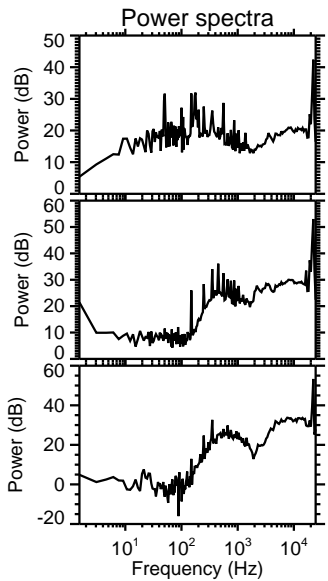
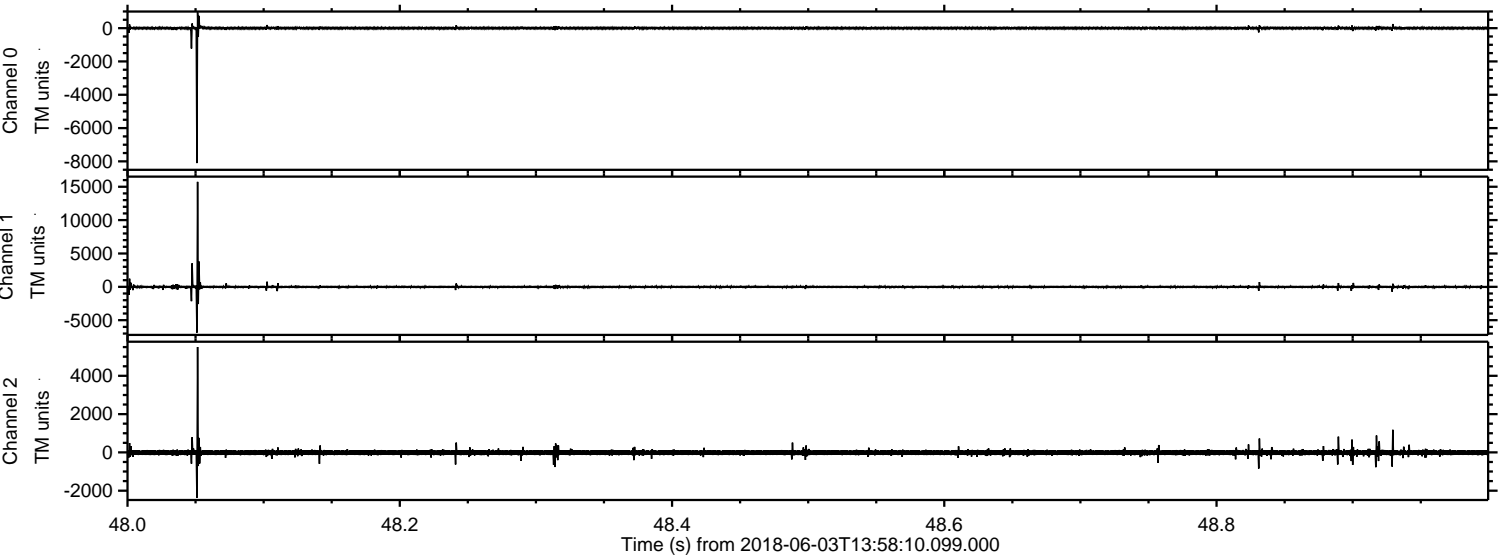


Processed Sun Jun 3 16:06:24 2018 by ELM ver.2012-10-06 from 001\_\_elm20180603\_135809\_\_dat00.bin



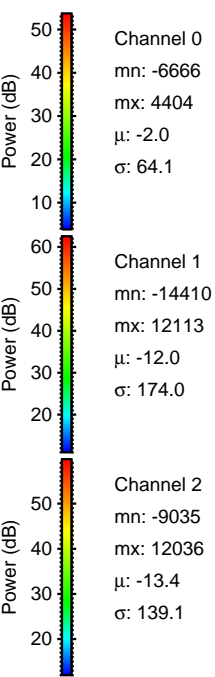
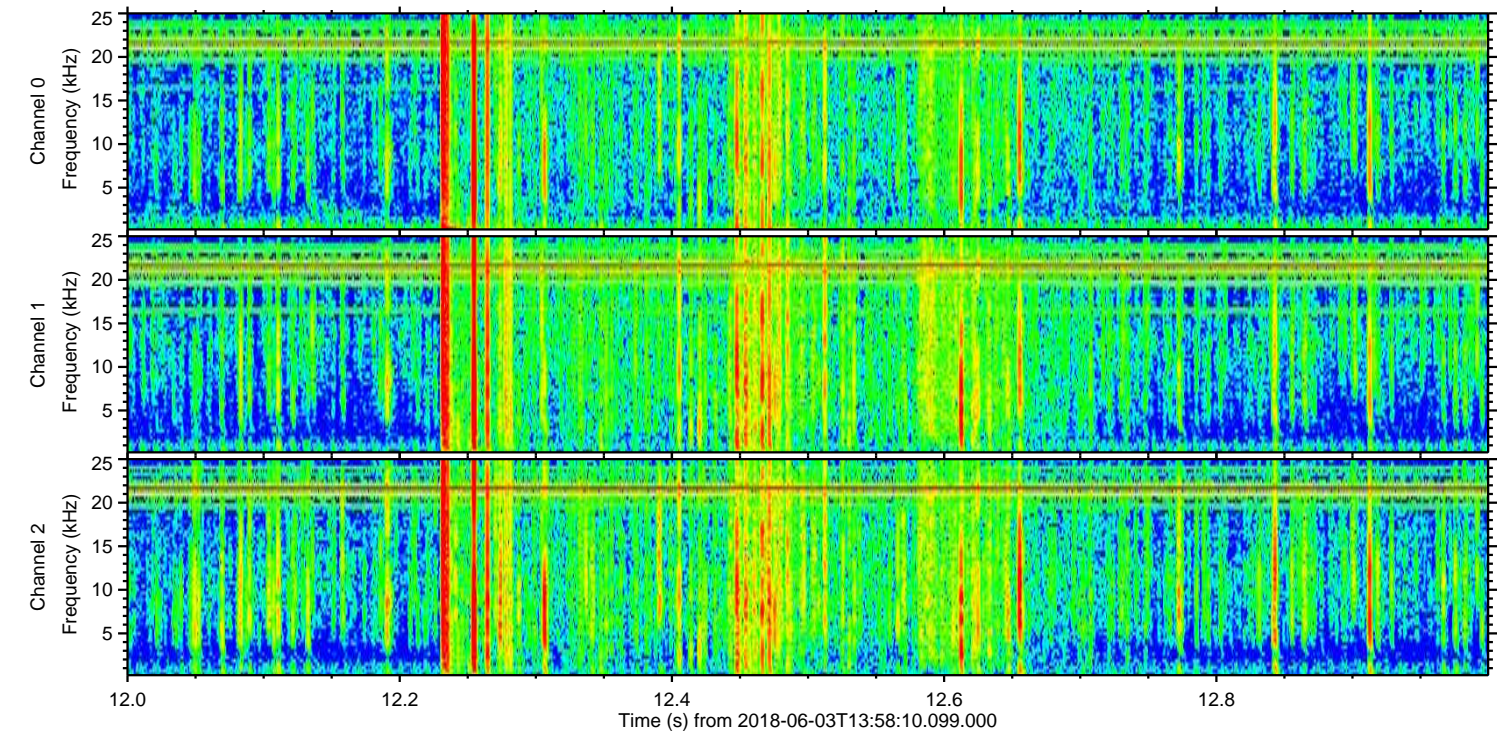
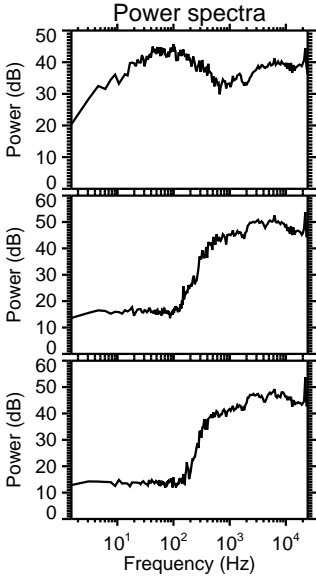
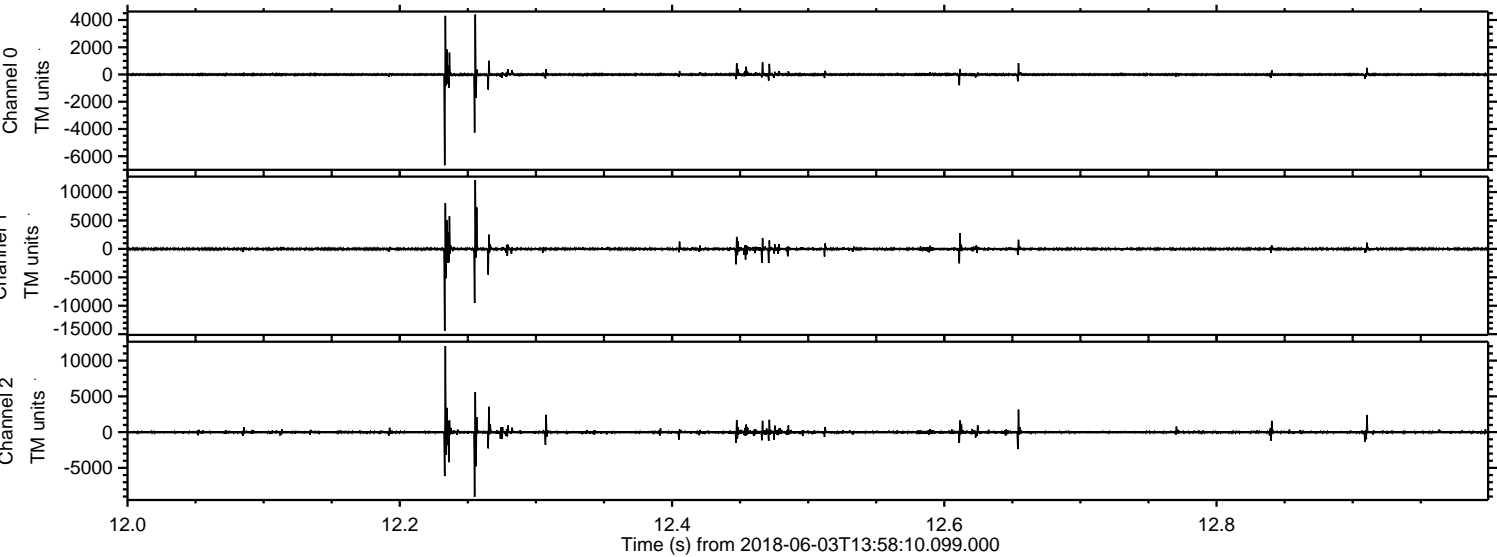


Processed Sun Jun 3 16:06:24 2018 by ELM ver.2012-10-06 from 001\_\_elm20180603\_135809\_\_dat00.bin





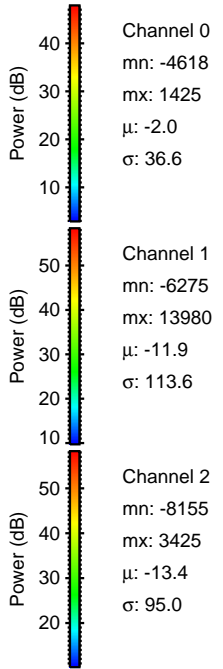
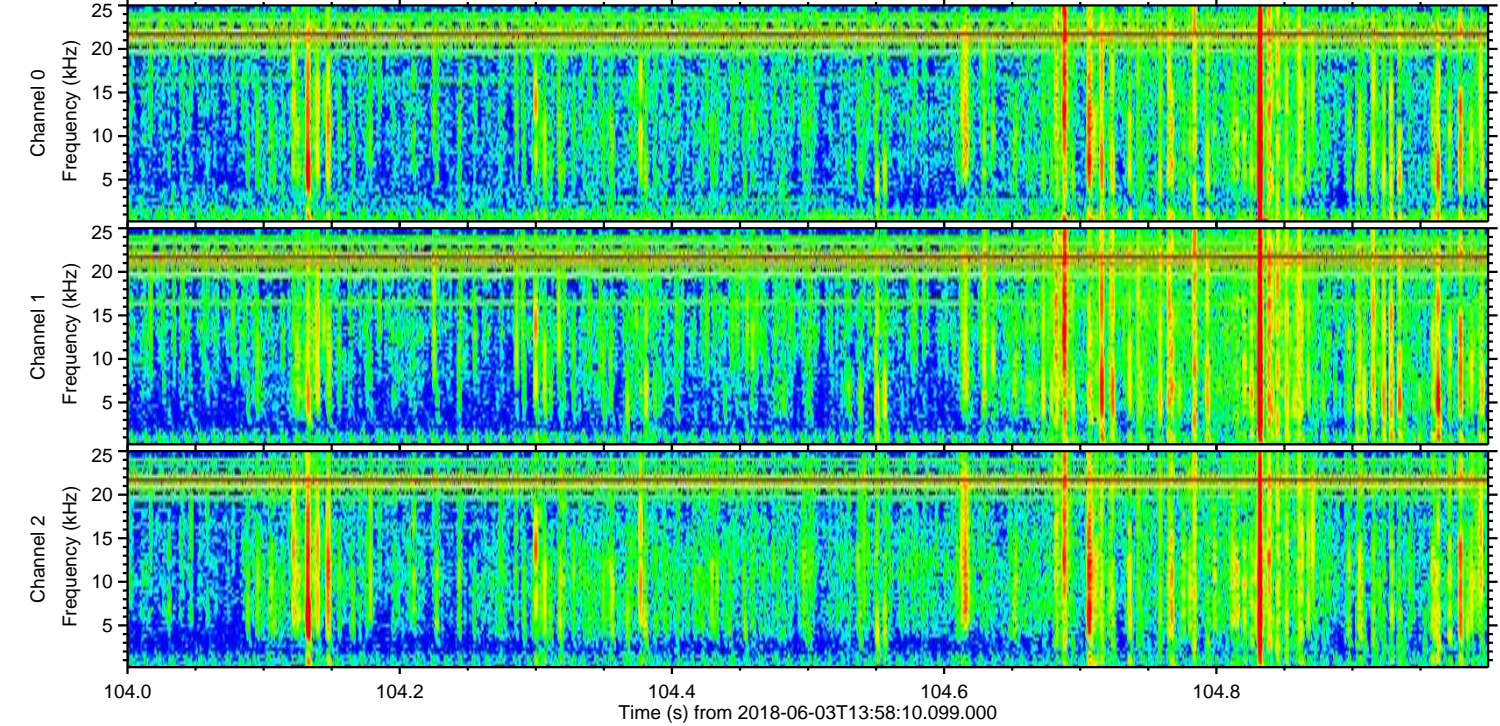
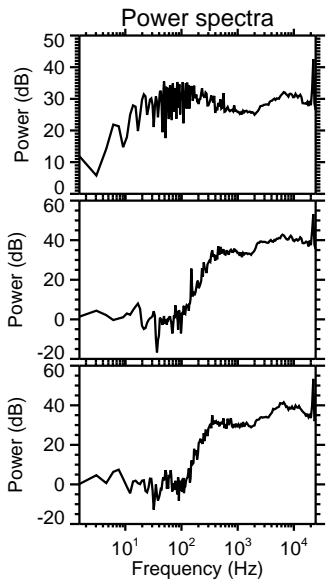
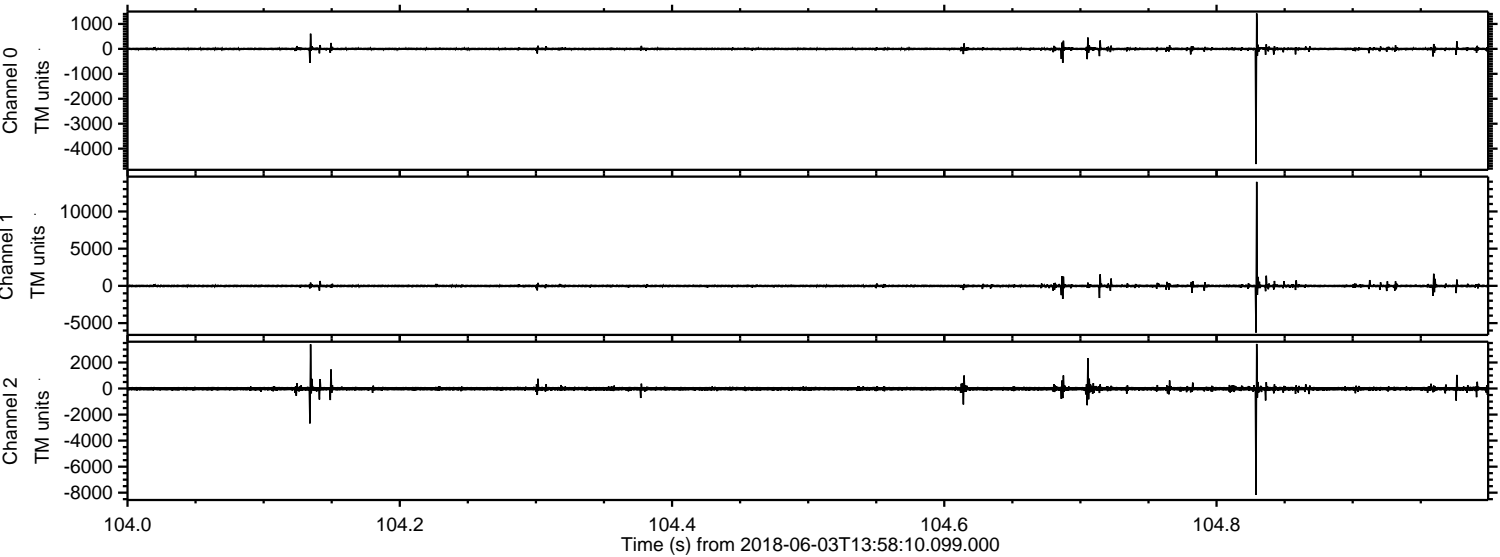
Processed Sun Jun 3 16:06:25 2018 by ELM ver.2012-10-06 from 001\_\_elm20180603\_135809\_\_dat00.bin





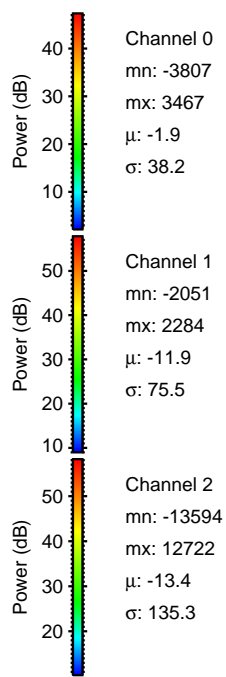
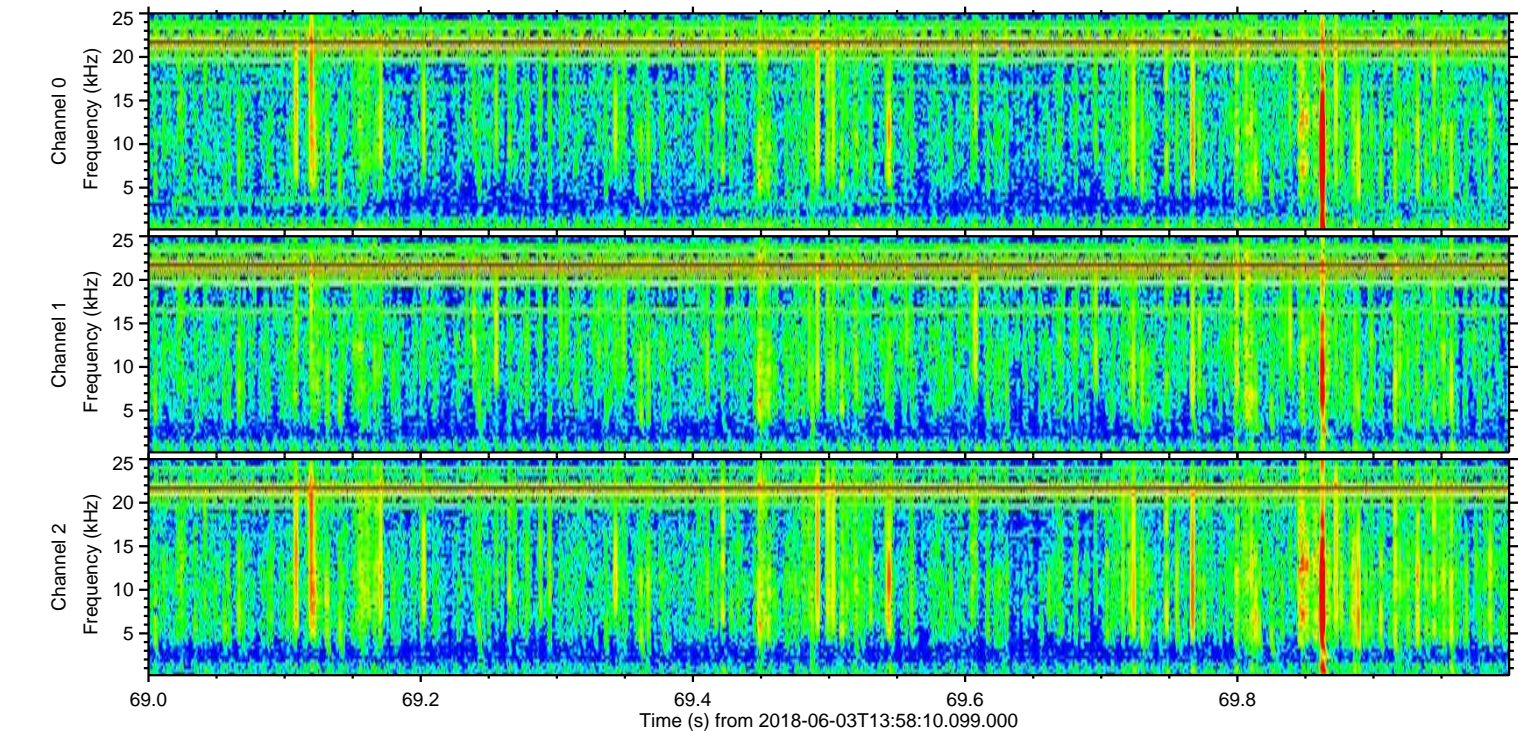
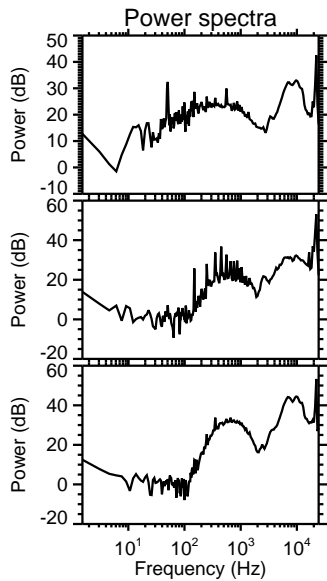
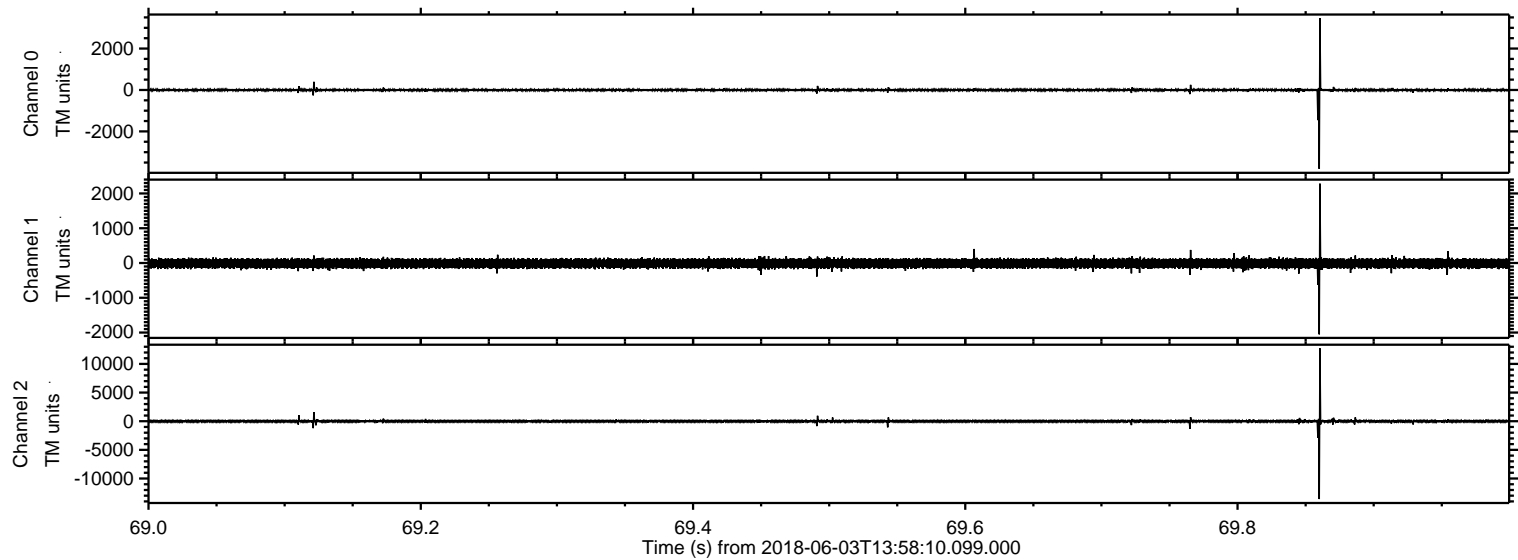
ELMAVAN 3D WAVEFORMS (Measured data sampled at 50 kHz) 51000 packets of 144 samples from 2018-06-03T13:58:10.099.000. Part 105/147

Processed Sun Jun 3 16:06:25 2018 by ELM ver.2012-10-06 from 001\_\_elm20180603\_135809\_\_dat00.bin





Processed Sun Jun 3 16:06:26 2018 by ELM ver.2012-10-06 from 001\_\_elm20180603\_135809\_\_dat00.bin





ELMAVAN 3D WAVEFORMS (Measured data sampled at 50 kHz) 51000 packets of 144 samples from 2018-06-03T13:58:10.099.000. Part 114/147

Processed Sun Jun 3 16:06:27 2018 by ELM ver.2012-10-06 from 001\_\_elm20180603\_135809\_\_dat00.bin

