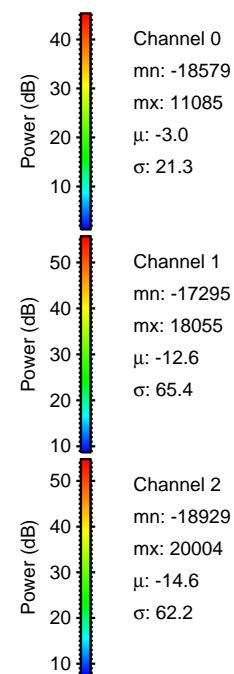
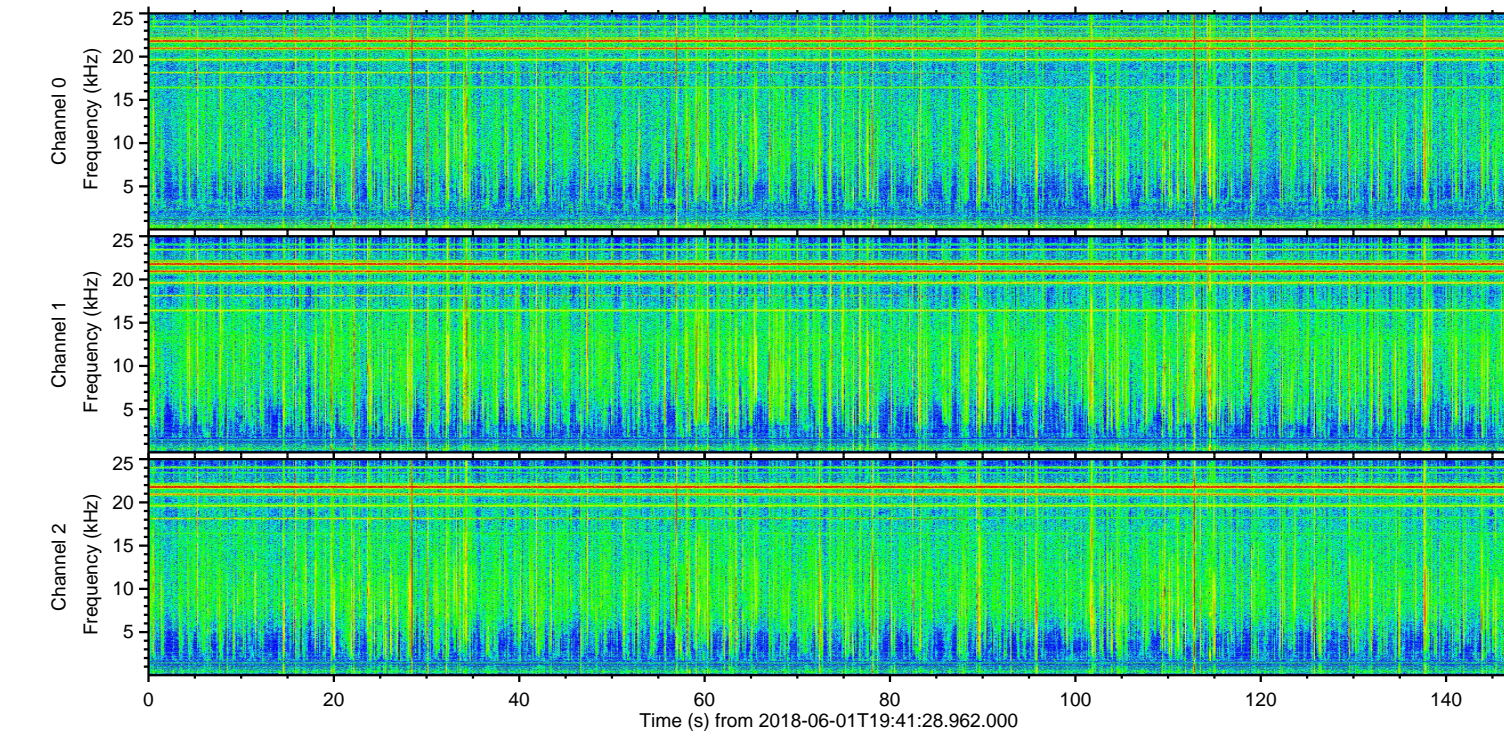
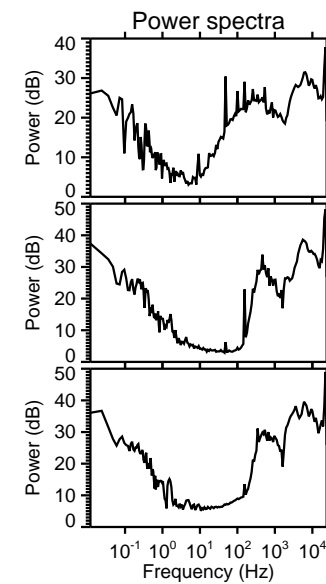
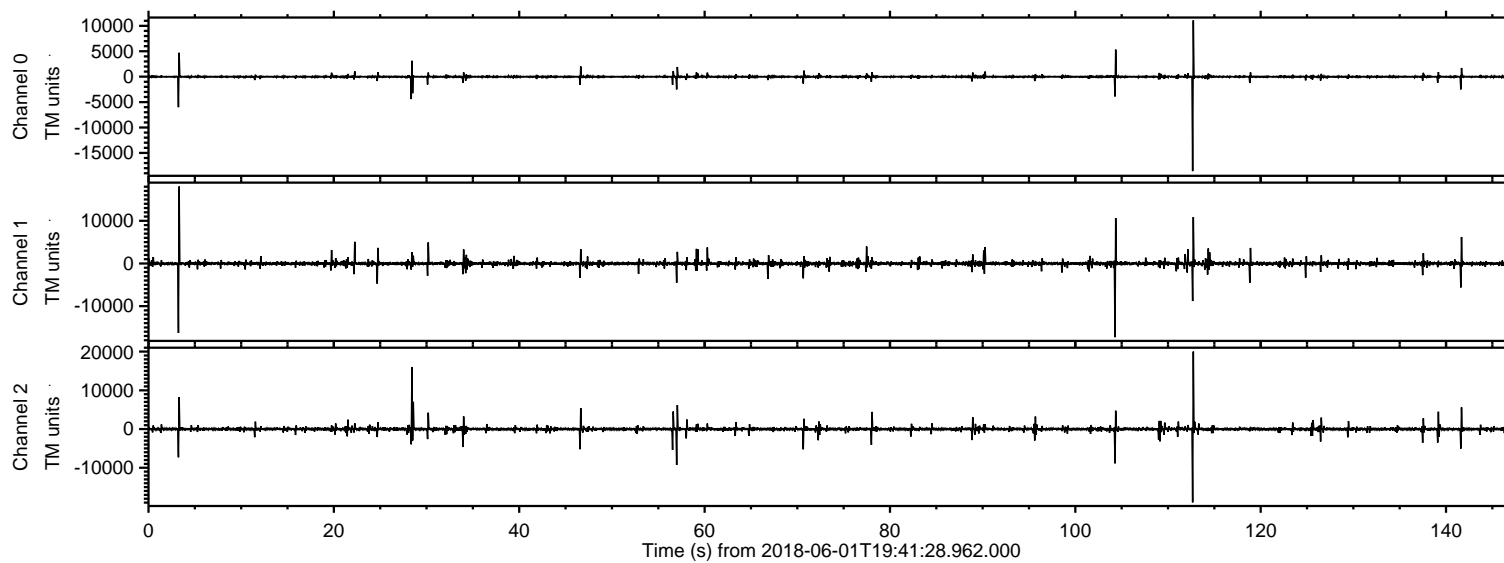


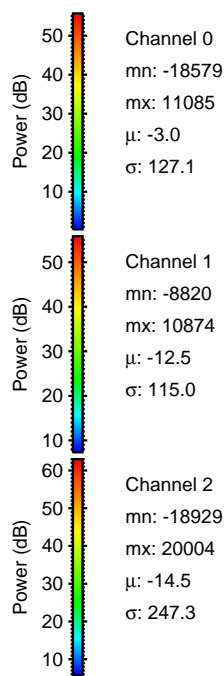
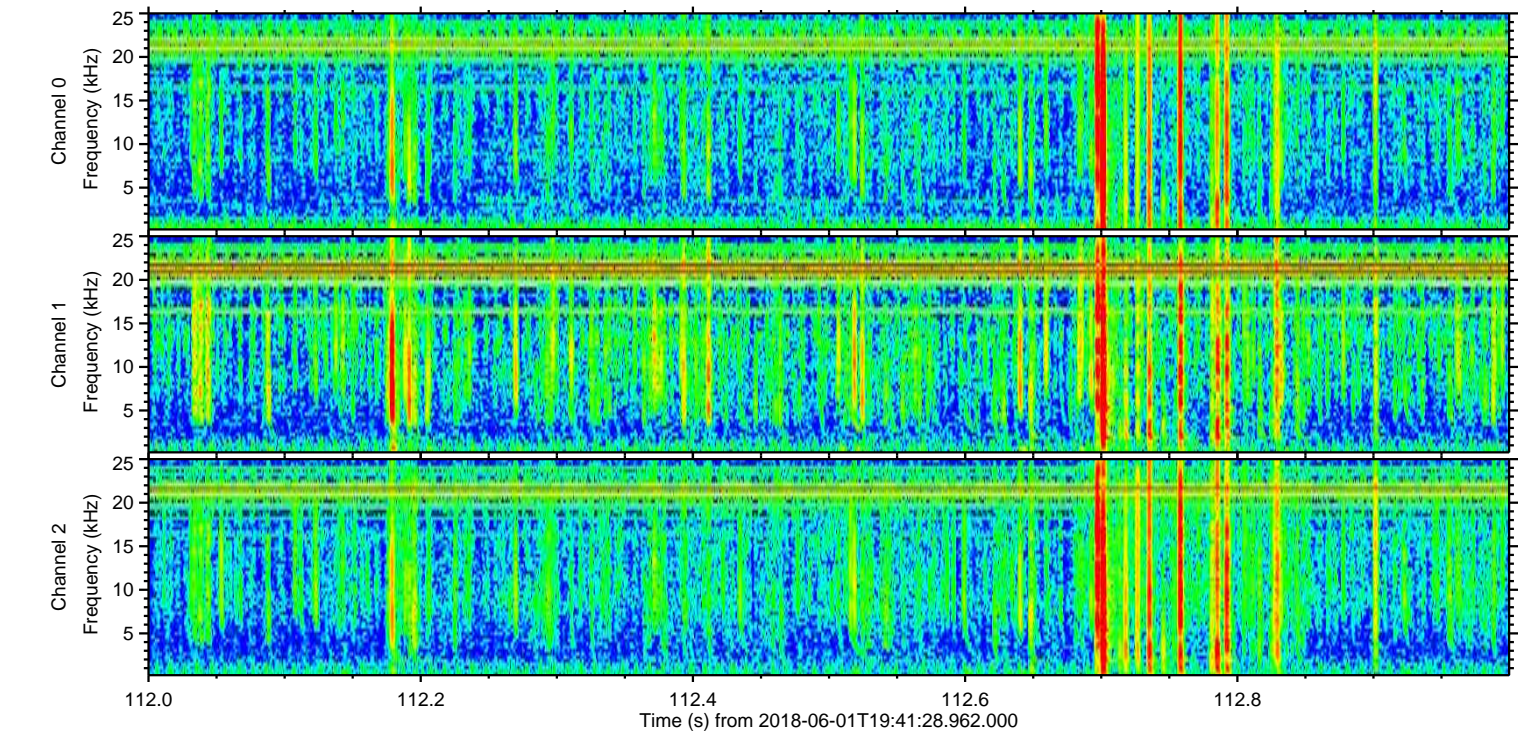
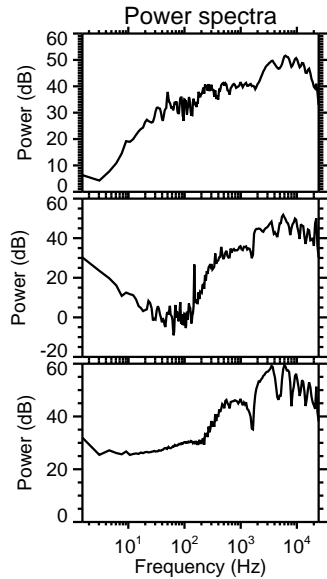
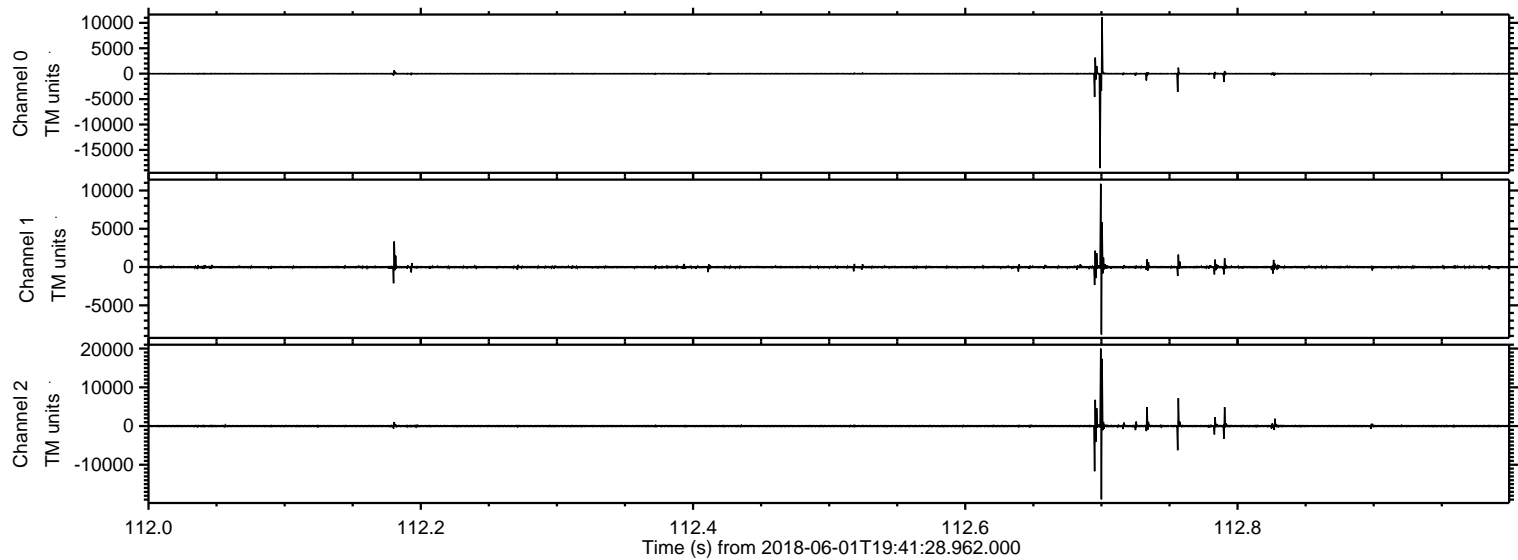
ELMAVAN 3D WAVEFORMS (Measured data sampled at 50 kHz) 51000 packets of 144 samples from 2018-06-01T19:41:28.962.000.

Processed Fri Jun 1 21:49:39 2018 by ELM ver.2012-10-06 from 001__elm20180601_194127__dat00.bin

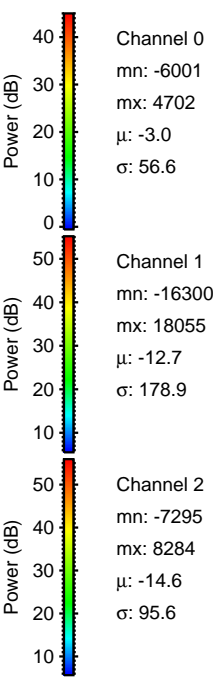
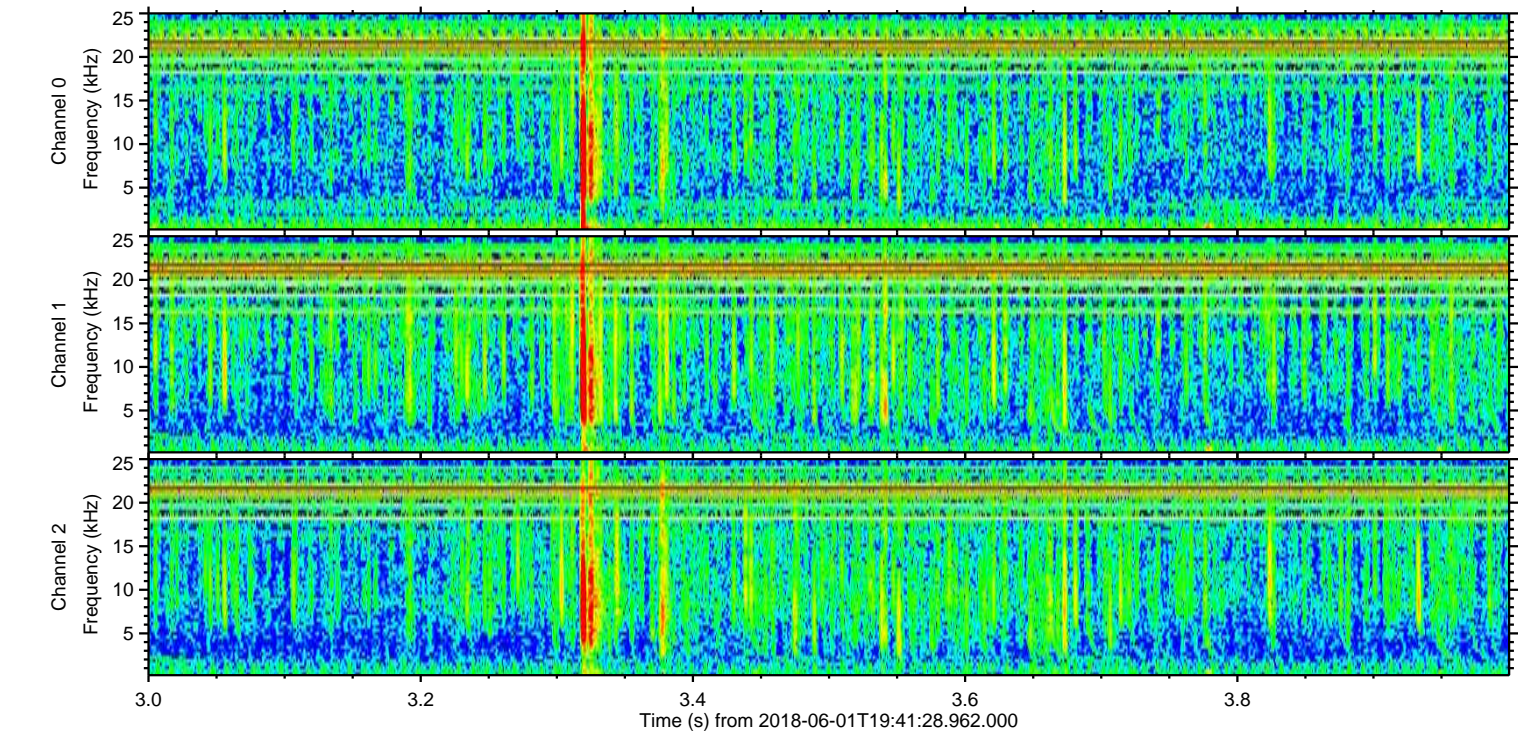
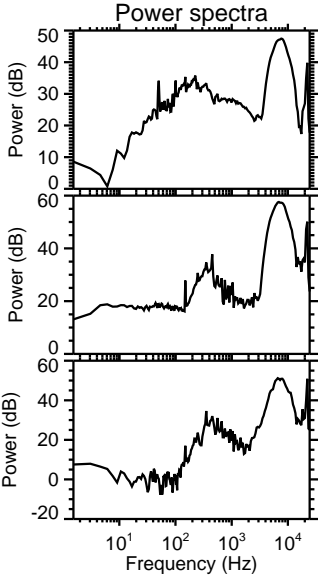
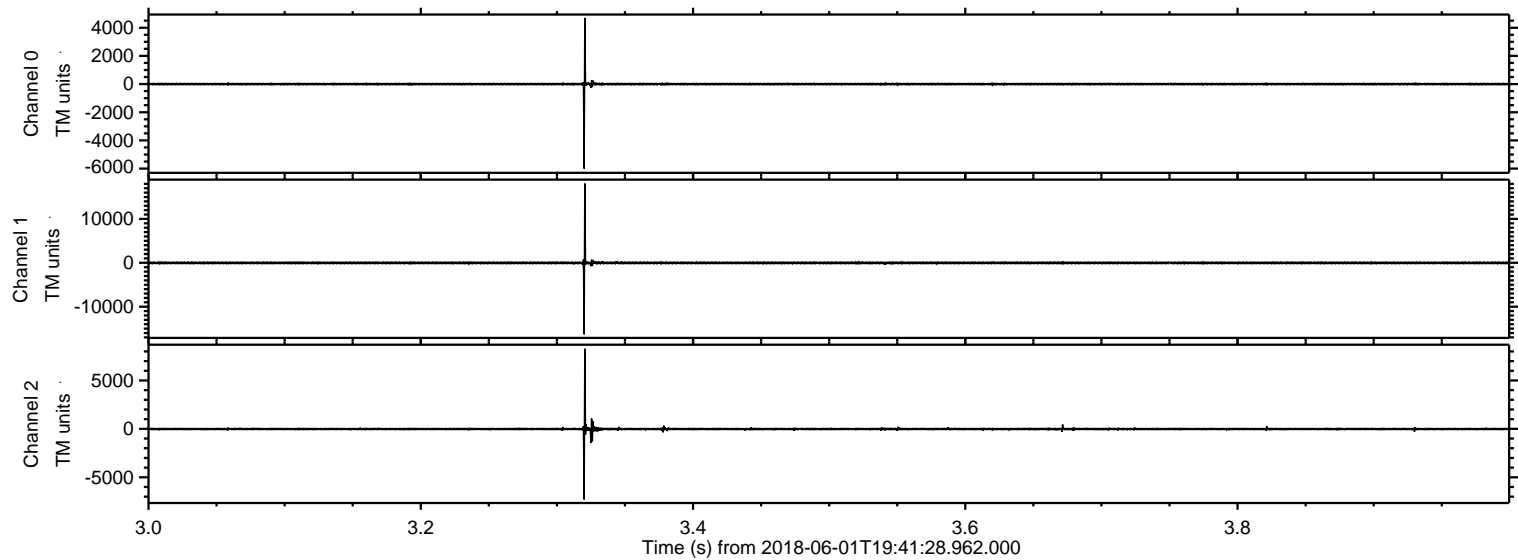


ELMAVAN 3D WAVEFORMS (Measured data sampled at 50 kHz) 51000 packets of 144 samples from 2018-06-01T19:41:28.962.000. Part 113/147

Processed Fri Jun 1 21:49:48 2018 by ELM ver.2012-10-06 from 001__elm20180601_194127__dat00.bin

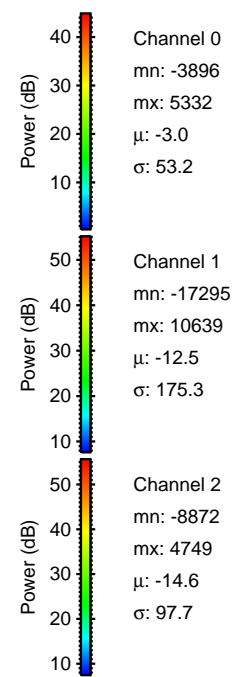
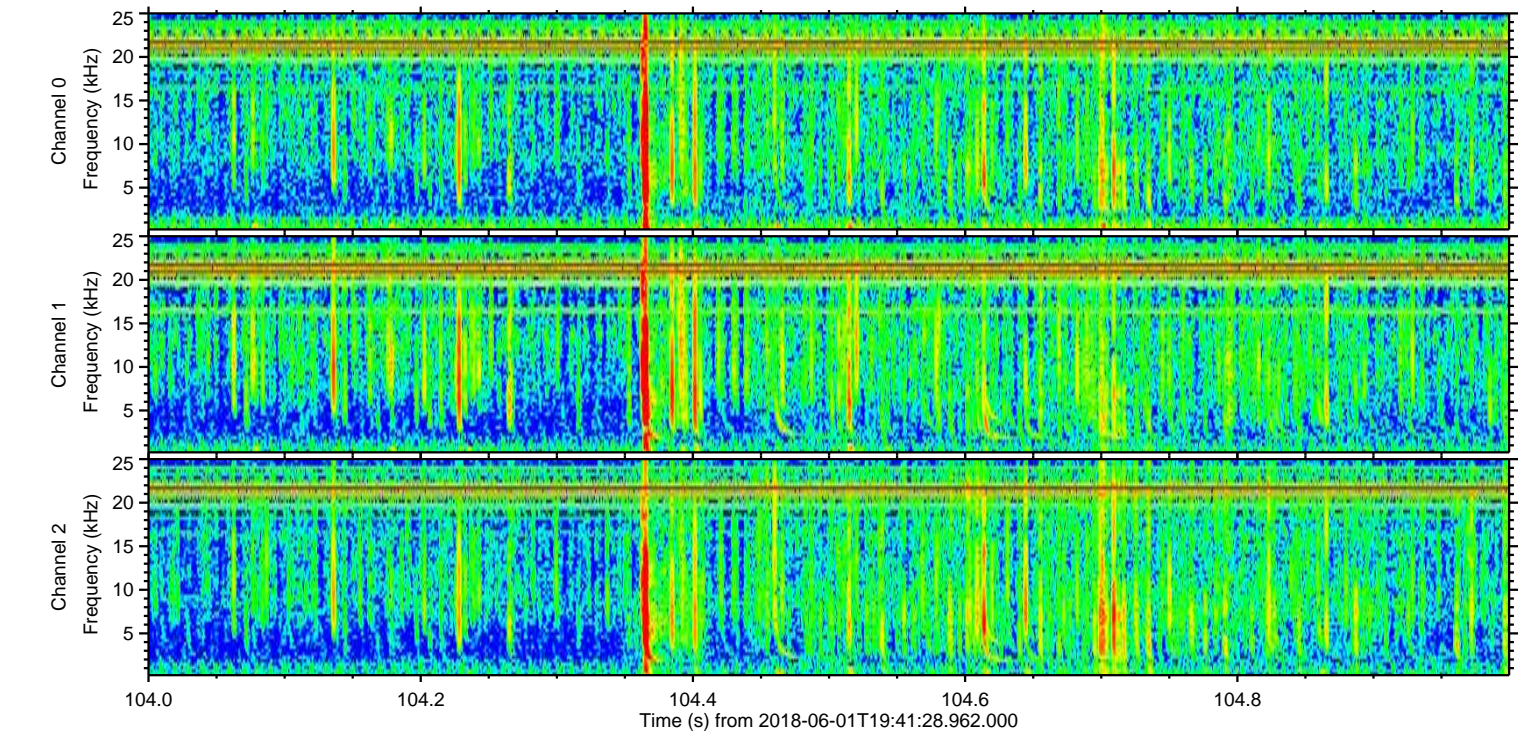
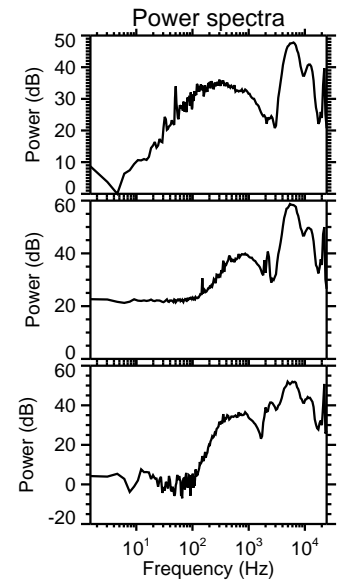
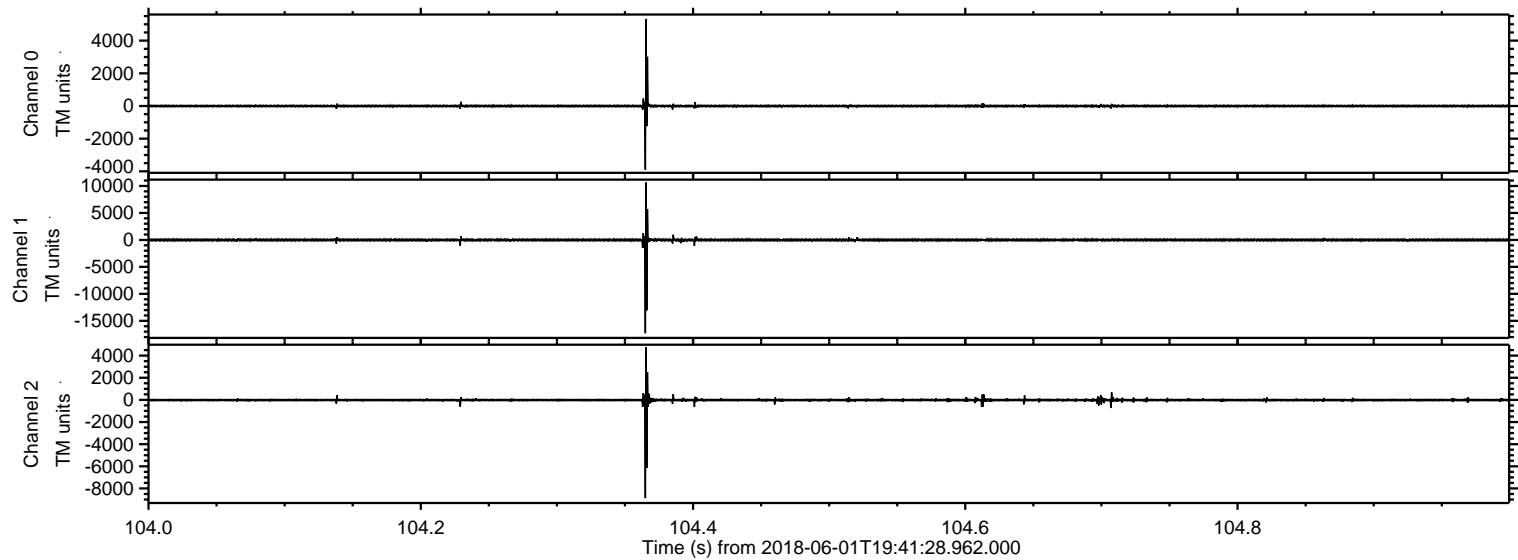


Processed Fri Jun 1 21:49:49 2018 by ELM ver.2012-10-06 from 001__elm20180601_194127__dat00.bin

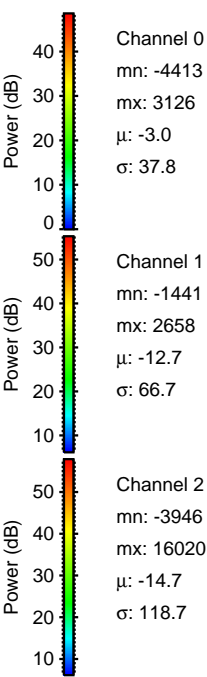
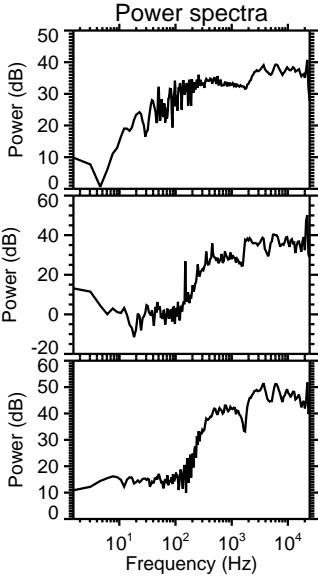
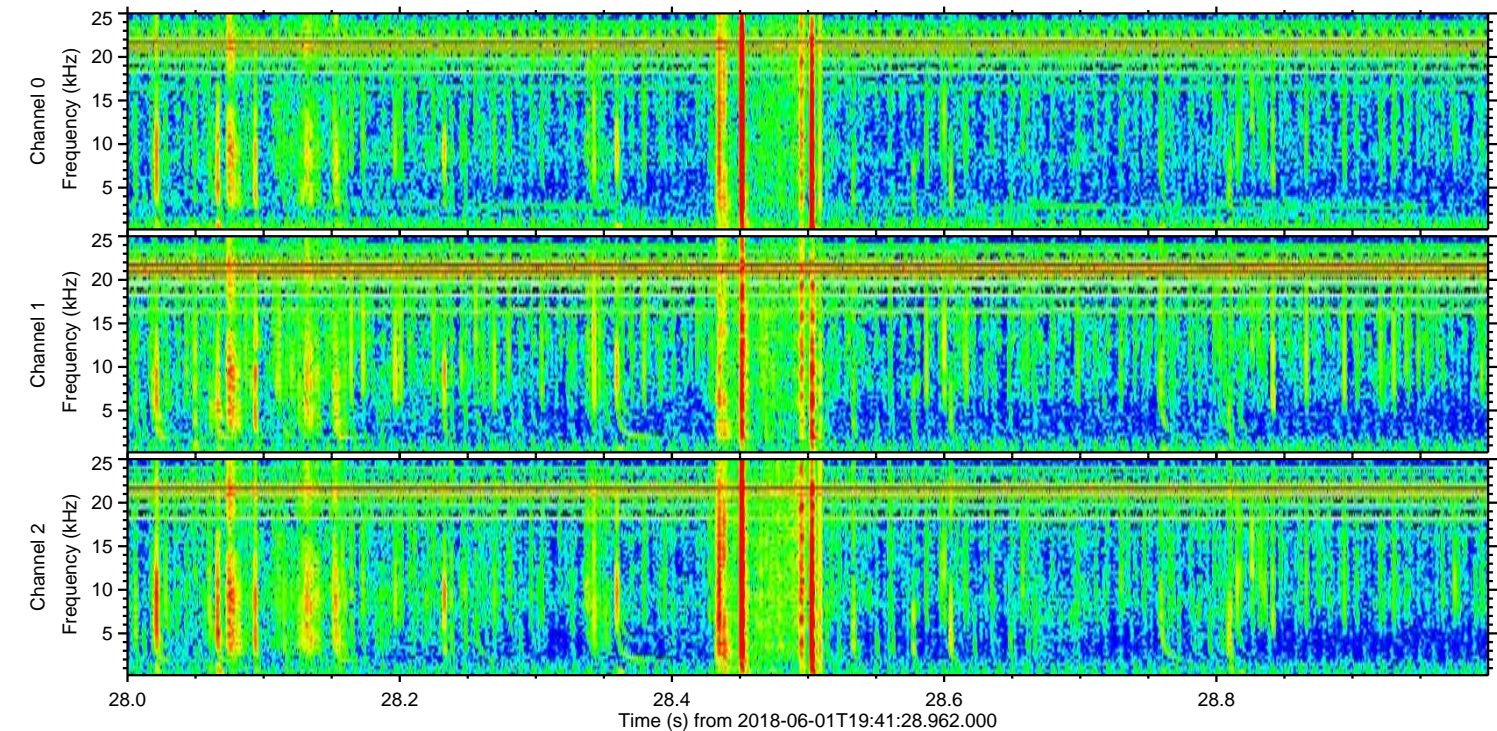
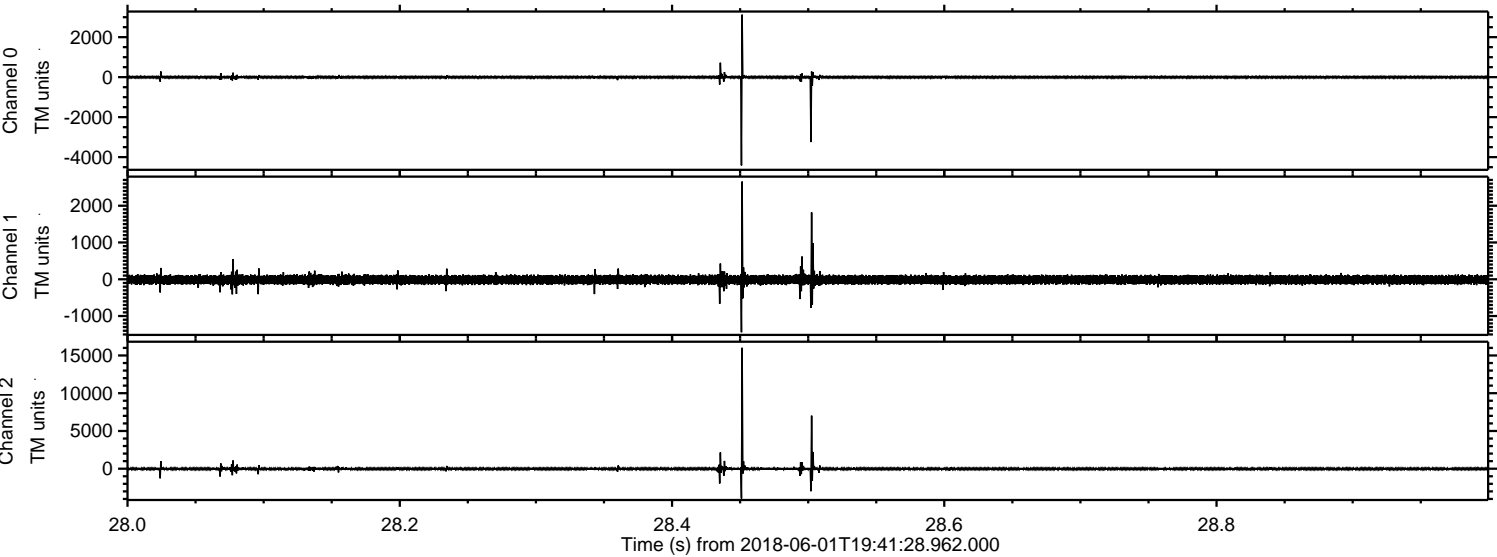


ELMAVAN 3D WAVEFORMS (Measured data sampled at 50 kHz) 51000 packets of 144 samples from 2018-06-01T19:41:28.962.000. Part 105/147

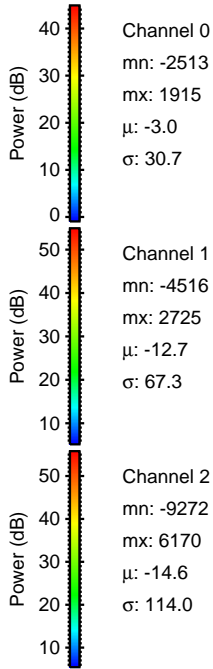
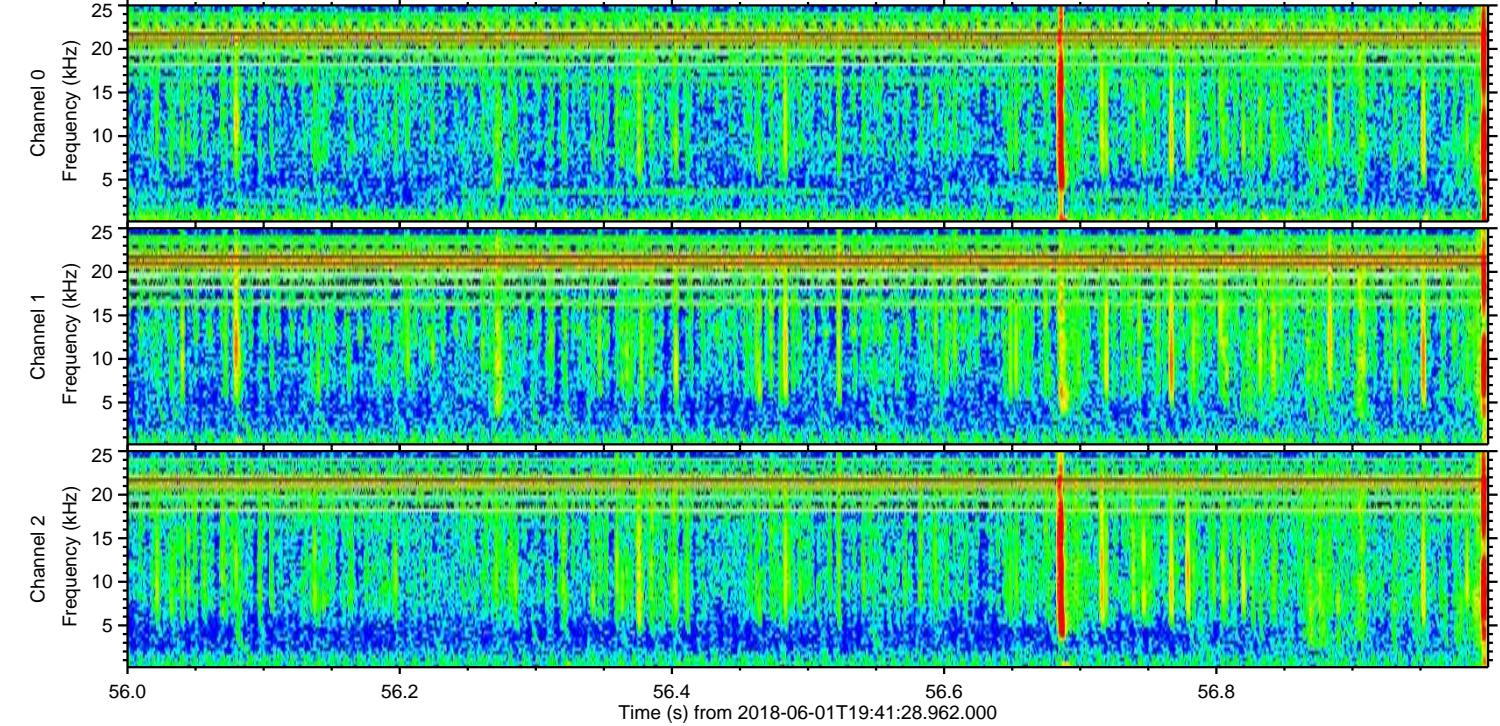
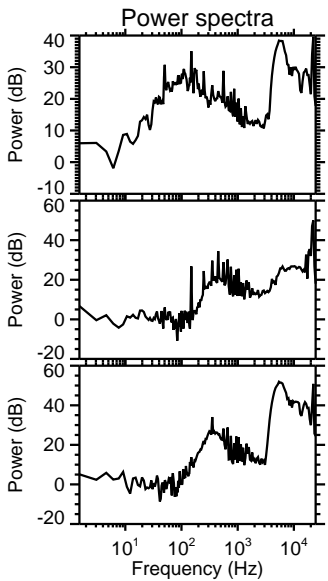
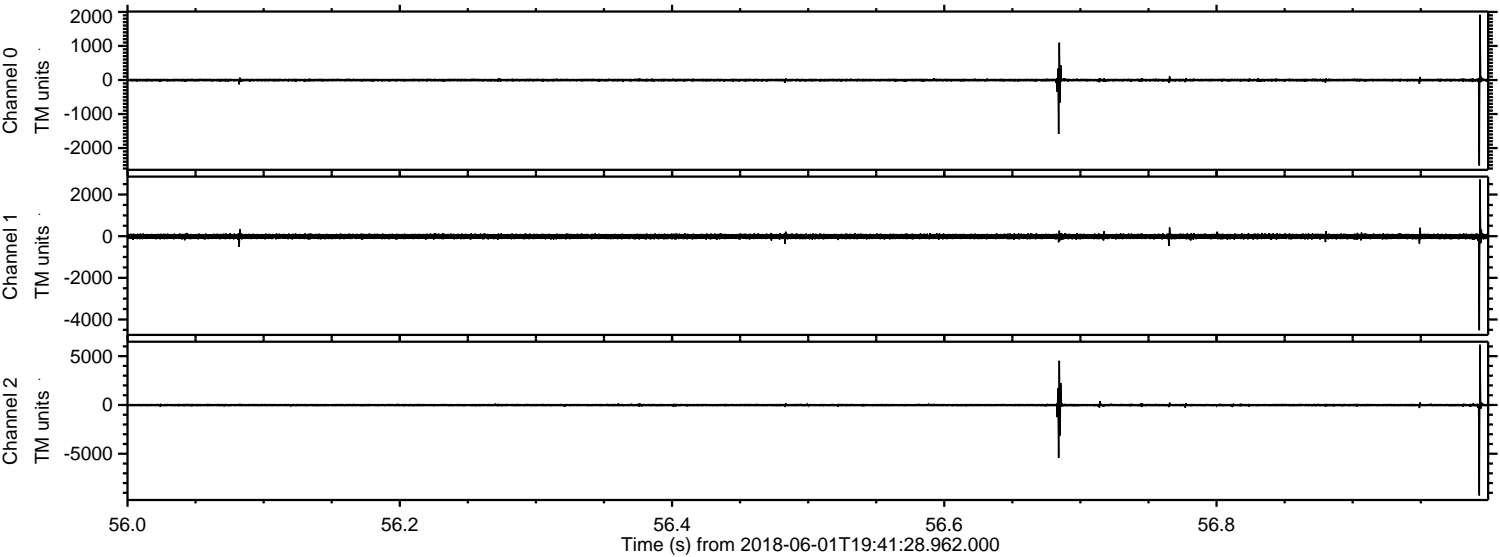
Processed Fri Jun 1 21:49:50 2018 by ELM ver.2012-10-06 from 001__elm20180601_194127__dat00.bin



Processed Fri Jun 1 21:49:50 2018 by ELM ver.2012-10-06 from 001__elm20180601_194127__dat00.bin

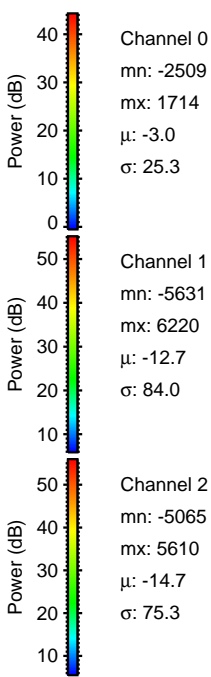
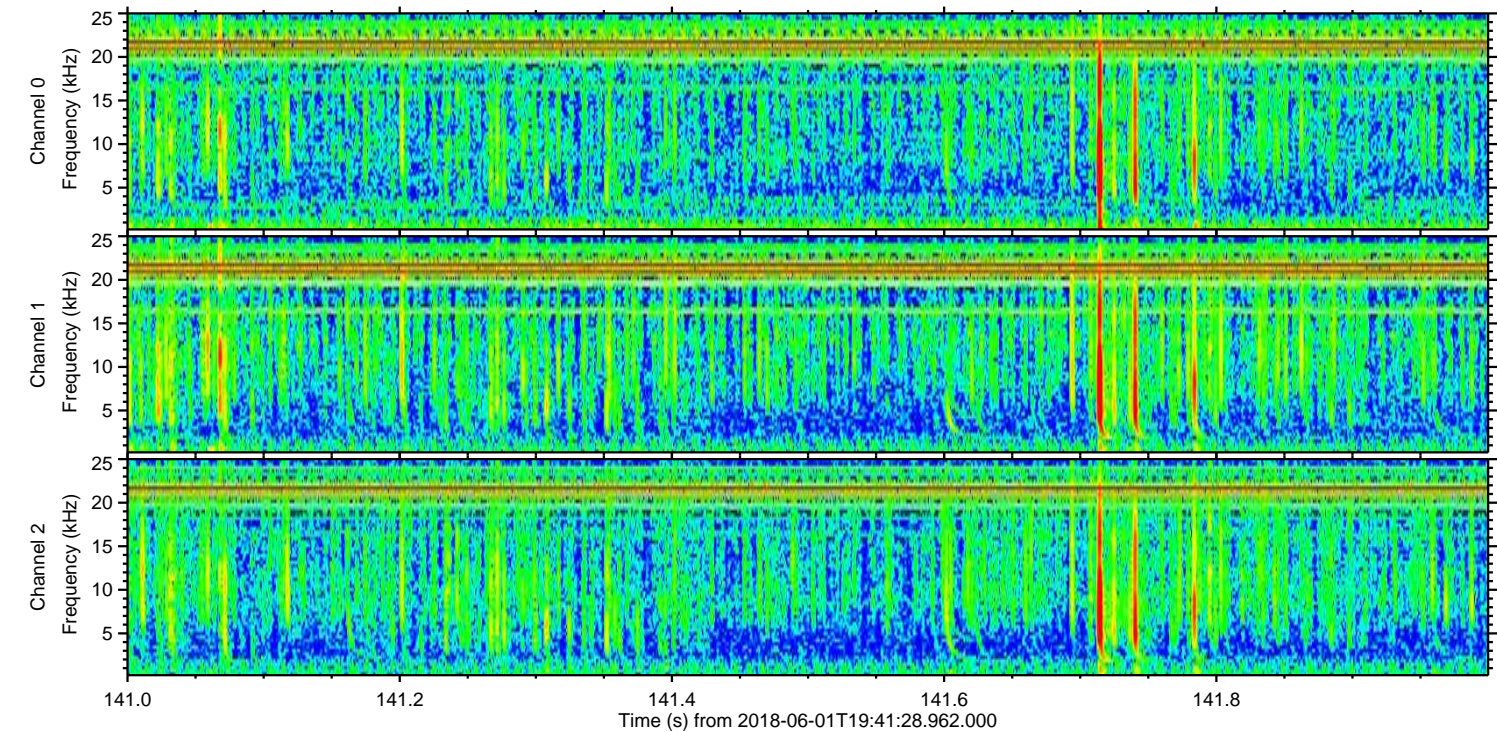
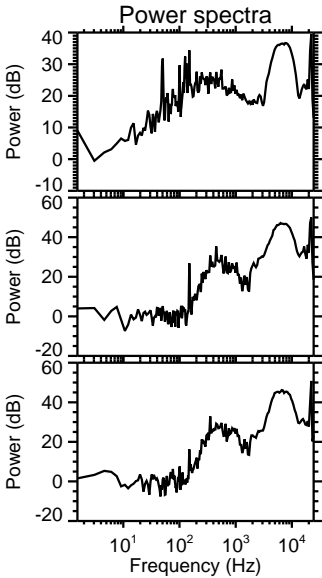
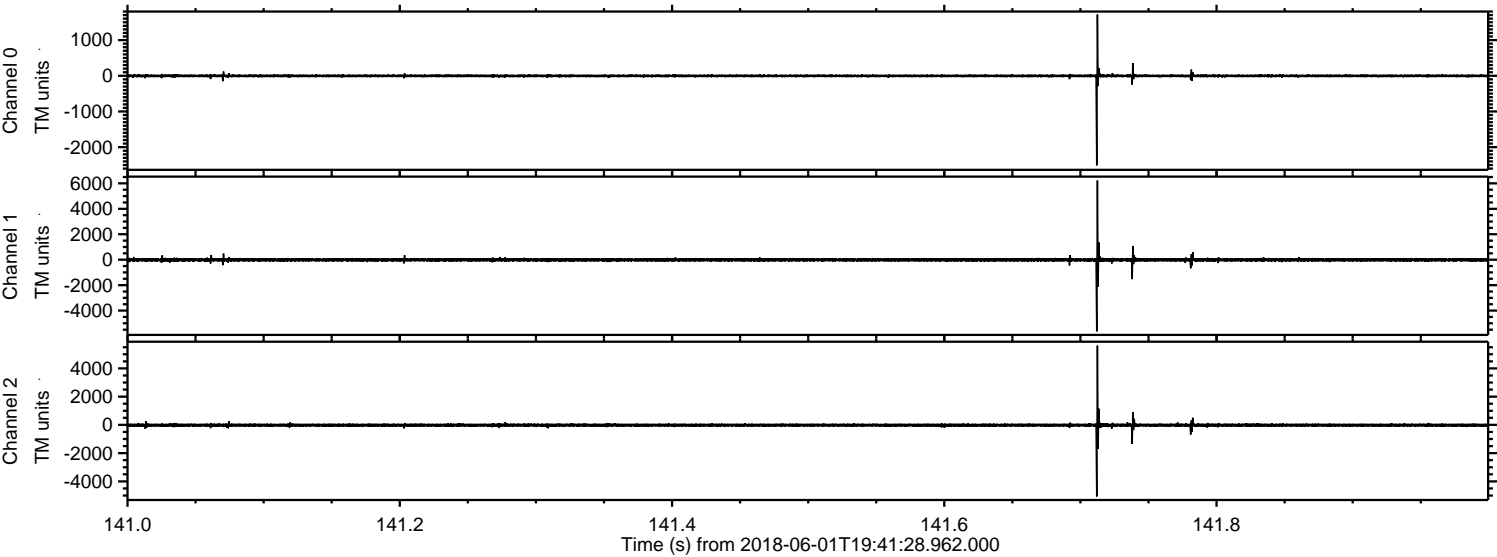


Processed Fri Jun 1 21:49:51 2018 by ELM ver.2012-10-06 from 001__elm20180601_194127__dat00.bin

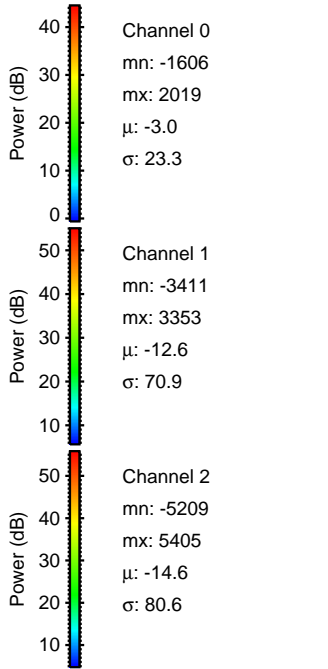
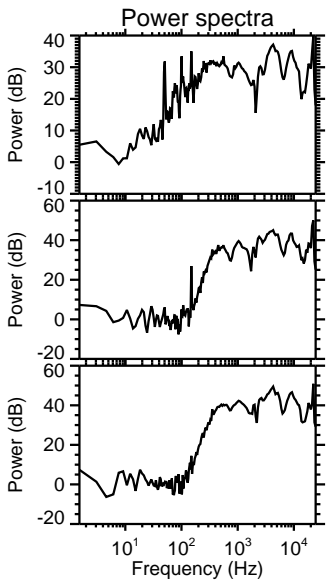
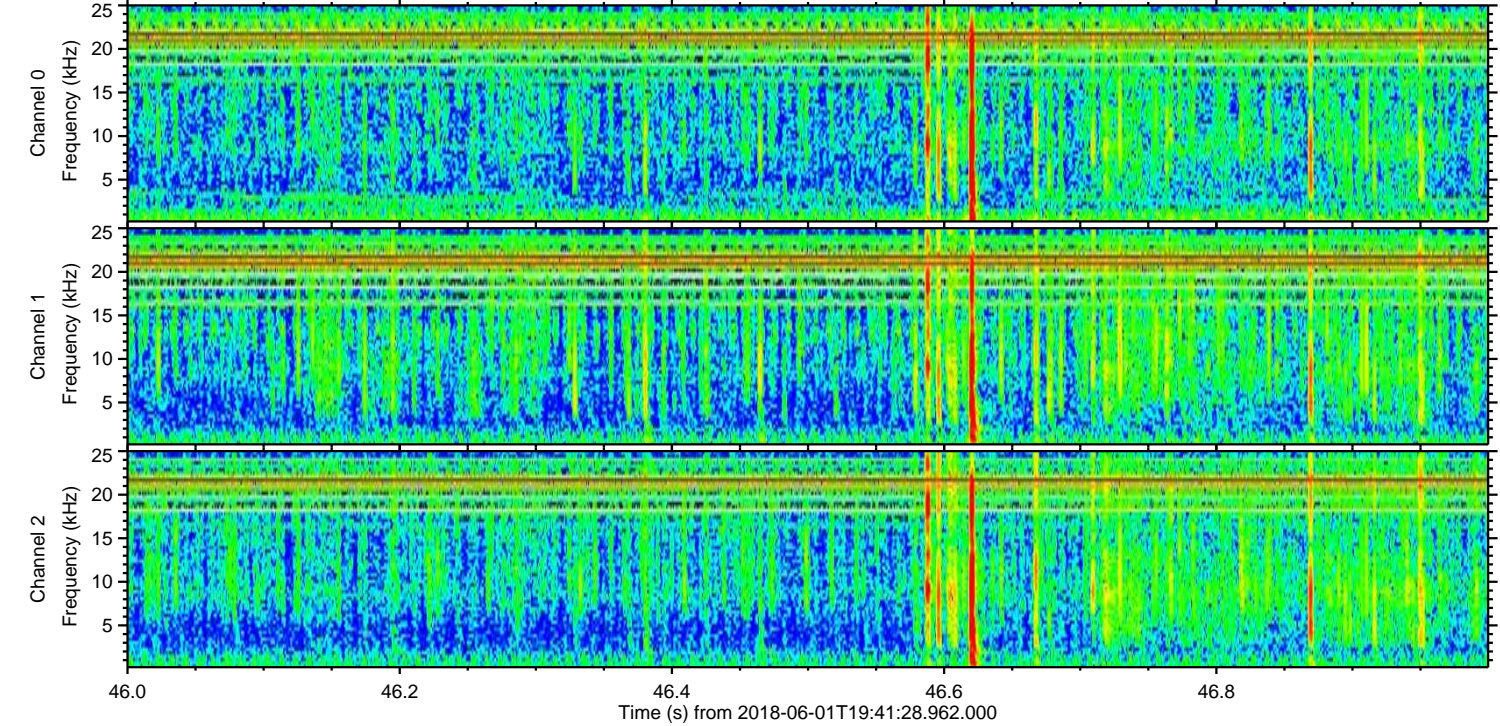
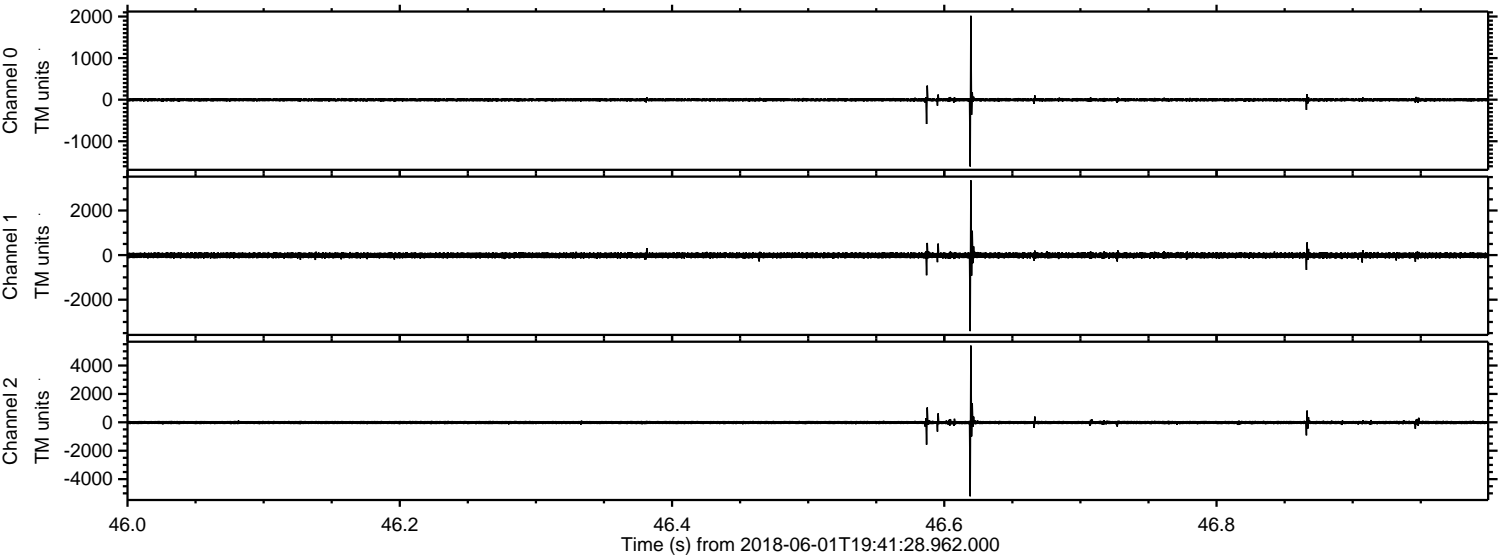


ELMAVAN 3D WAVEFORMS (Measured data sampled at 50 kHz) 51000 packets of 144 samples from 2018-06-01T19:41:28.962.000. Part 142/147

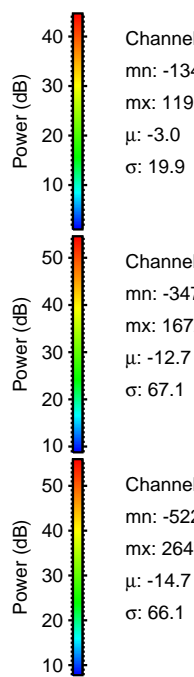
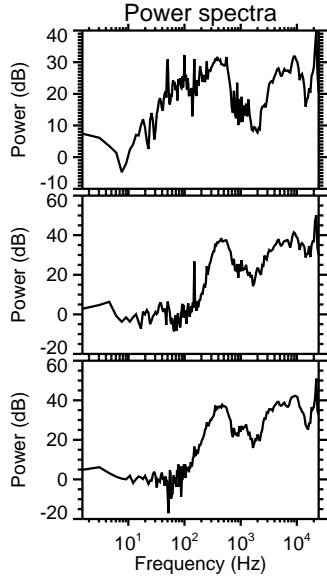
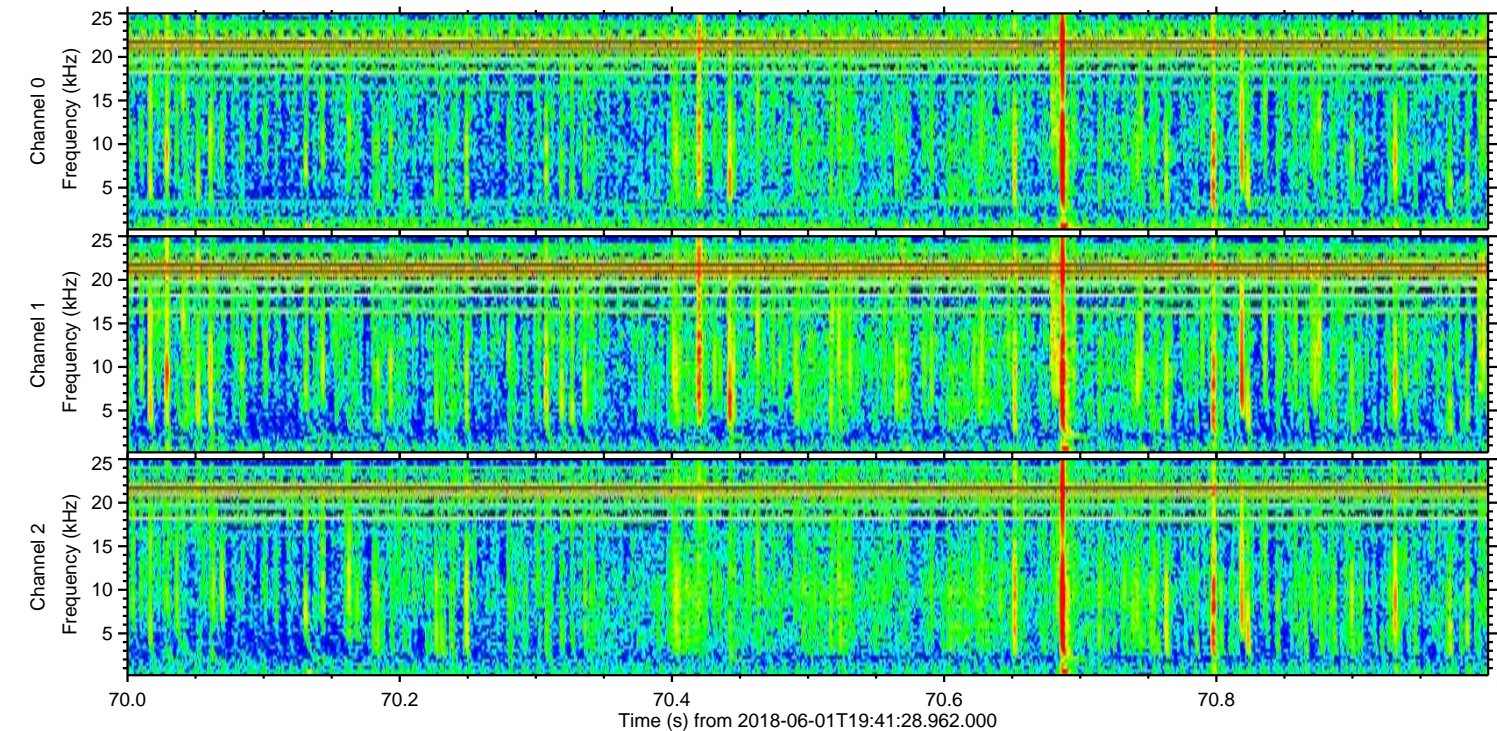
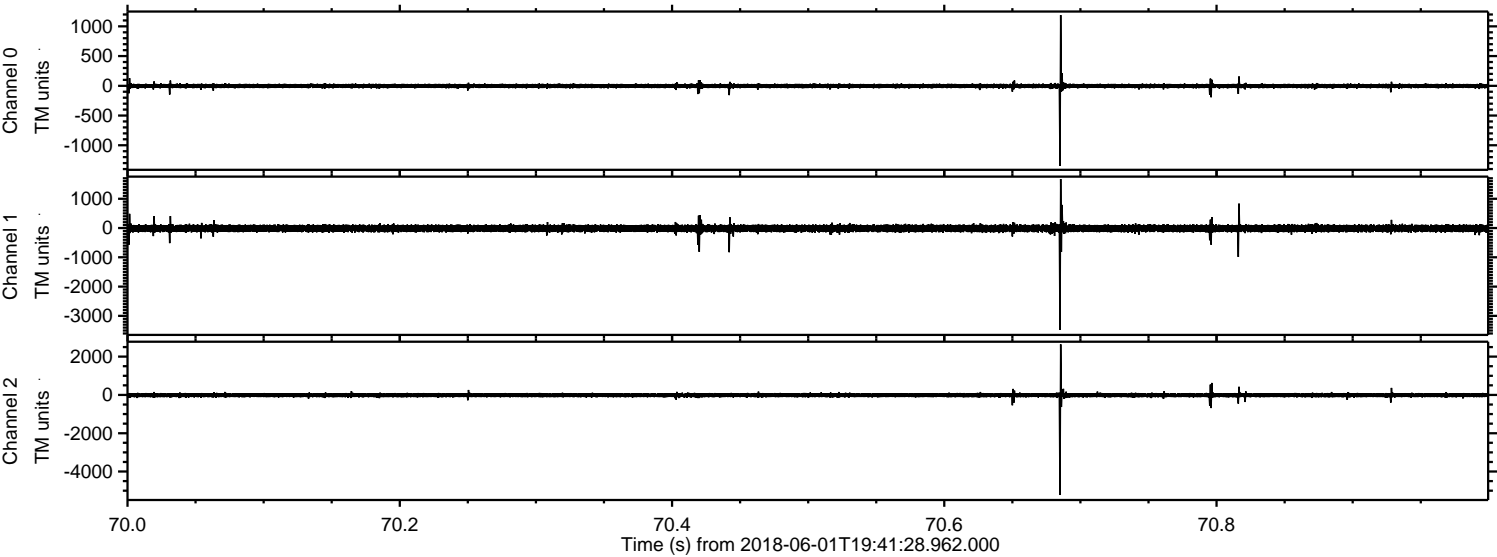
Processed Fri Jun 1 21:49:52 2018 by ELM ver.2012-10-06 from 001__elm20180601_194127__dat00.bin



Processed Fri Jun 1 21:49:53 2018 by ELM ver.2012-10-06 from 001__elm20180601_194127__dat00.bin



Processed Fri Jun 1 21:49:53 2018 by ELM ver.2012-10-06 from 001__elm20180601_194127__dat00.bin



Channel 0
mn: -1346
mx: 1190
 μ : -3.0
 σ : 19.9

Channel 1
mn: -3476
mx: 1672
 μ : -12.7
 σ : 67.1

Channel 2
mn: -5226
mx: 2647
 μ : -14.7
 σ : 66.1

Processed Fri Jun 1 21:49:54 2018 by ELM ver.2012-10-06 from 001__elm20180601_194127__dat00.bin

