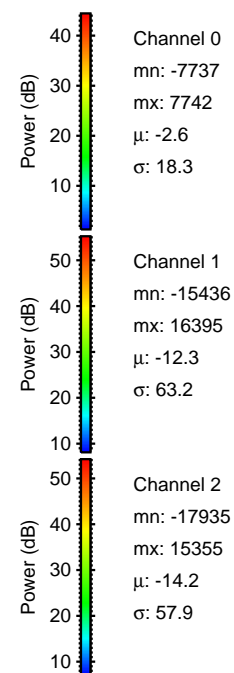
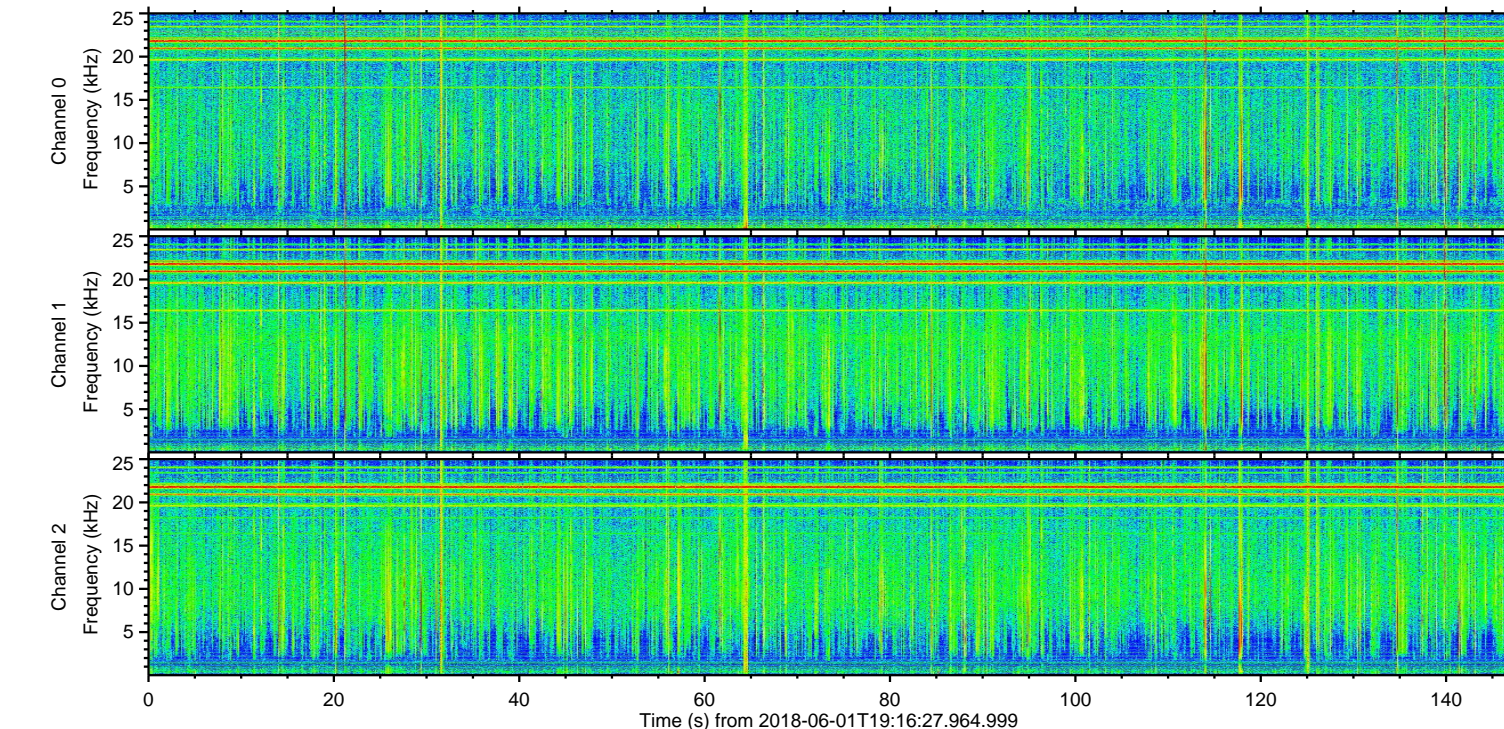
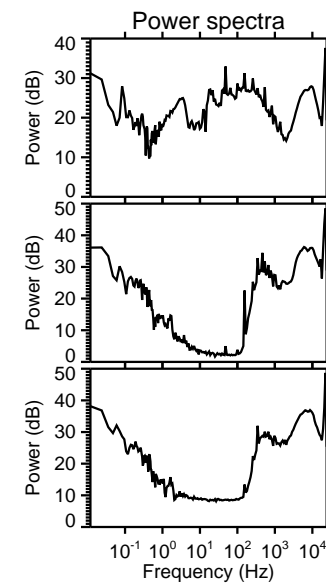
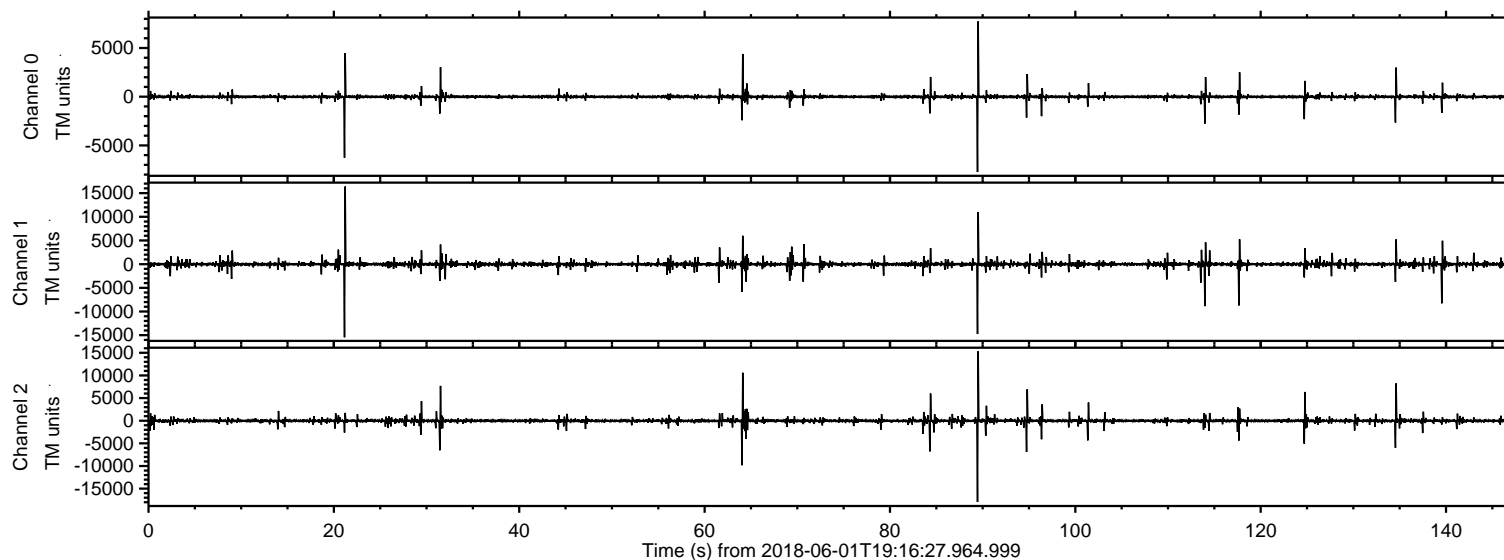
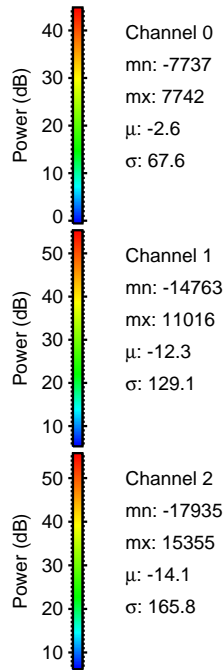
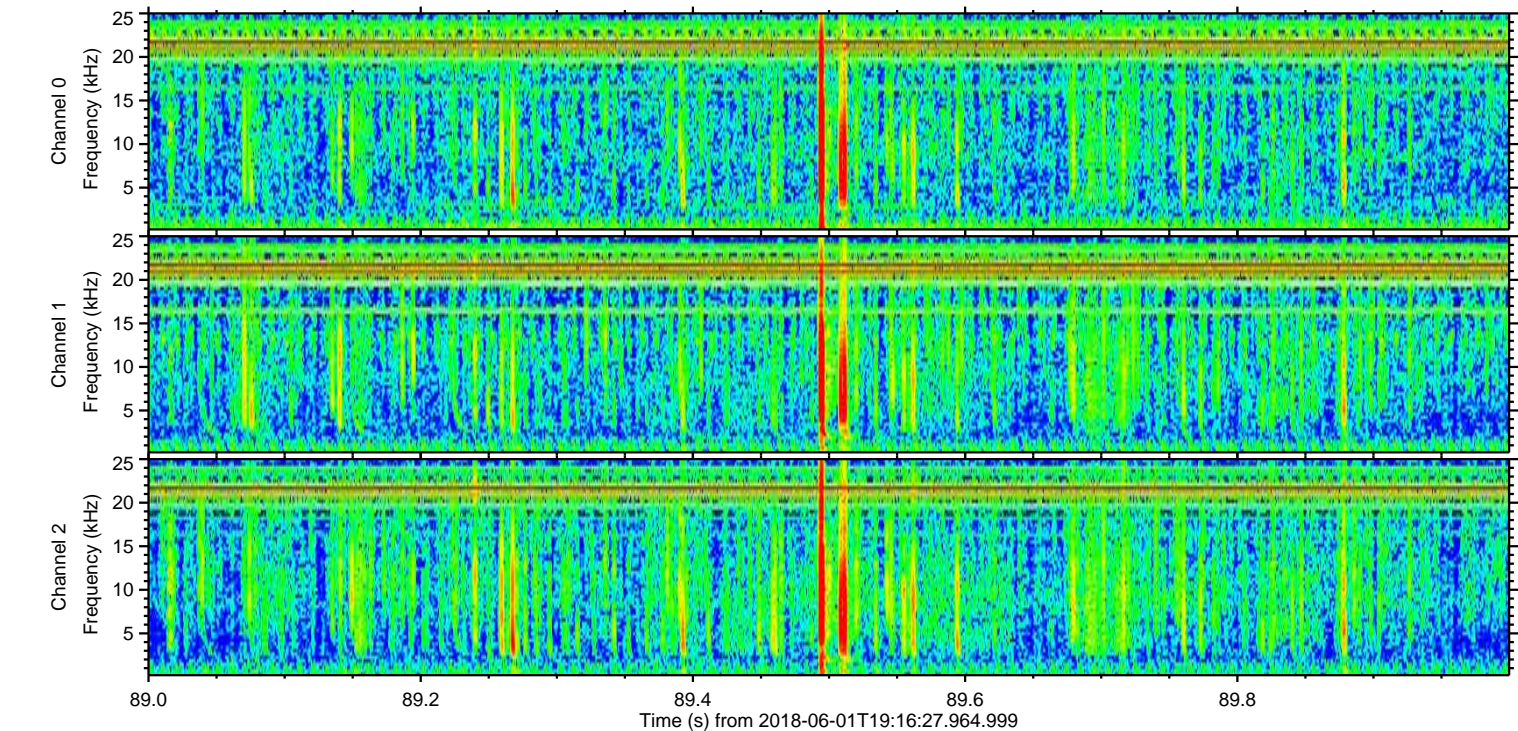
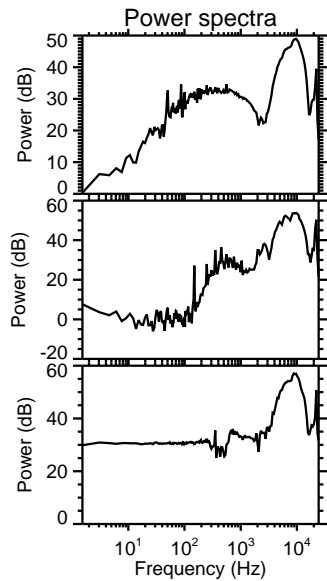
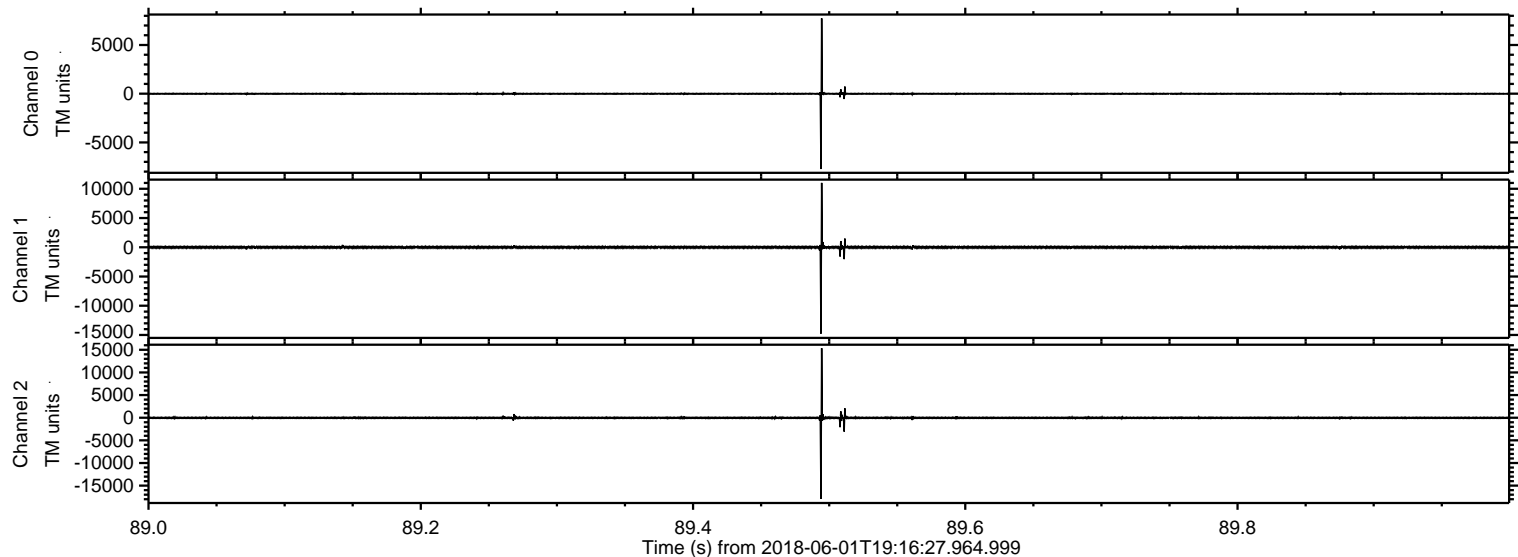


ELMAVAN 3D WAVEFORMS (Measured data sampled at 50 kHz) 51000 packets of 144 samples from 2018-06-01T19:16:27.964.999.

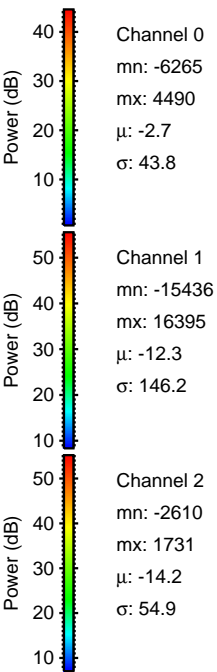
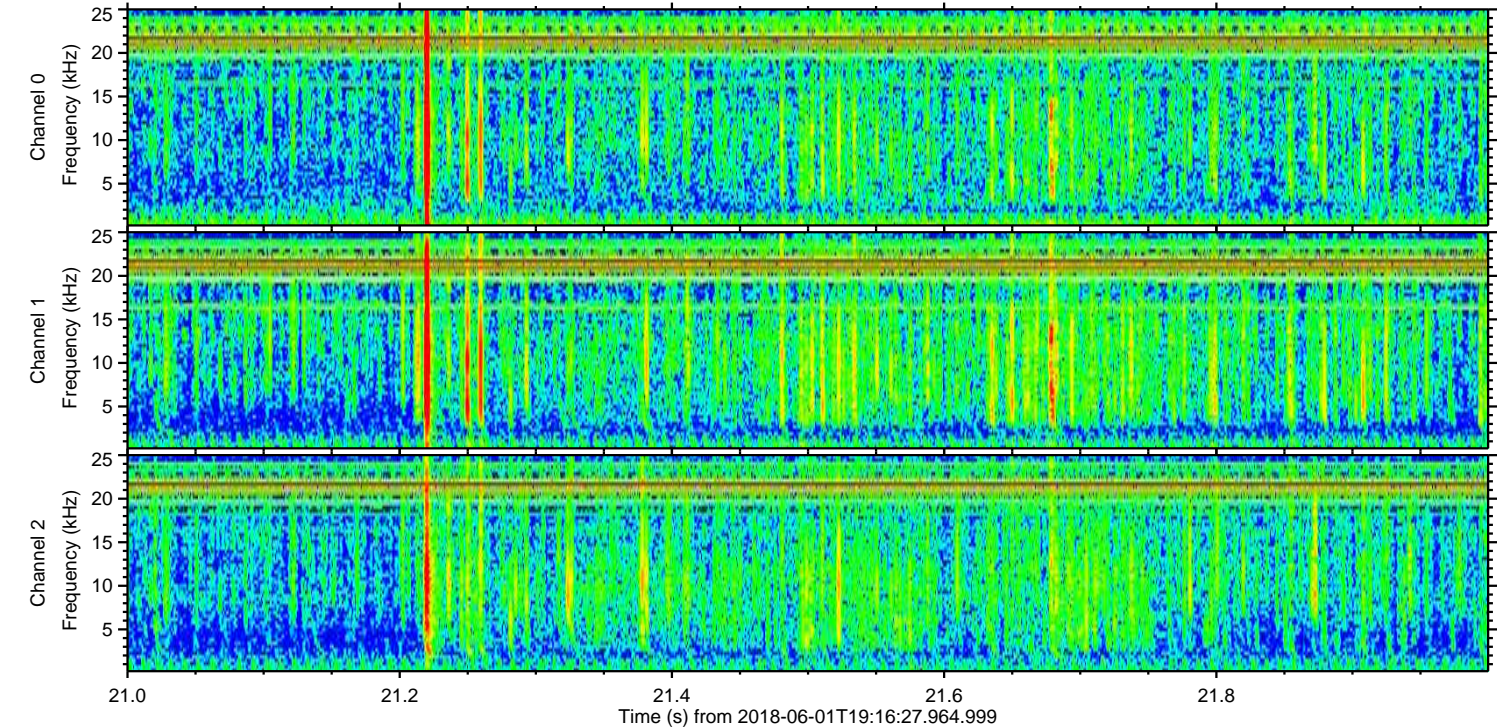
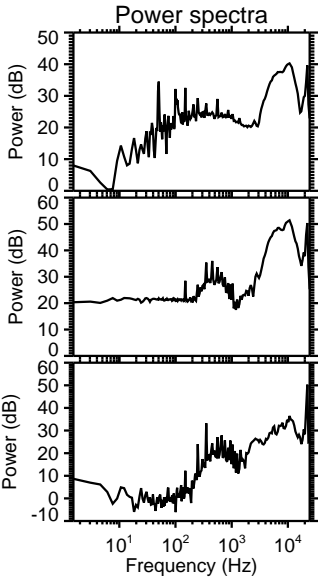
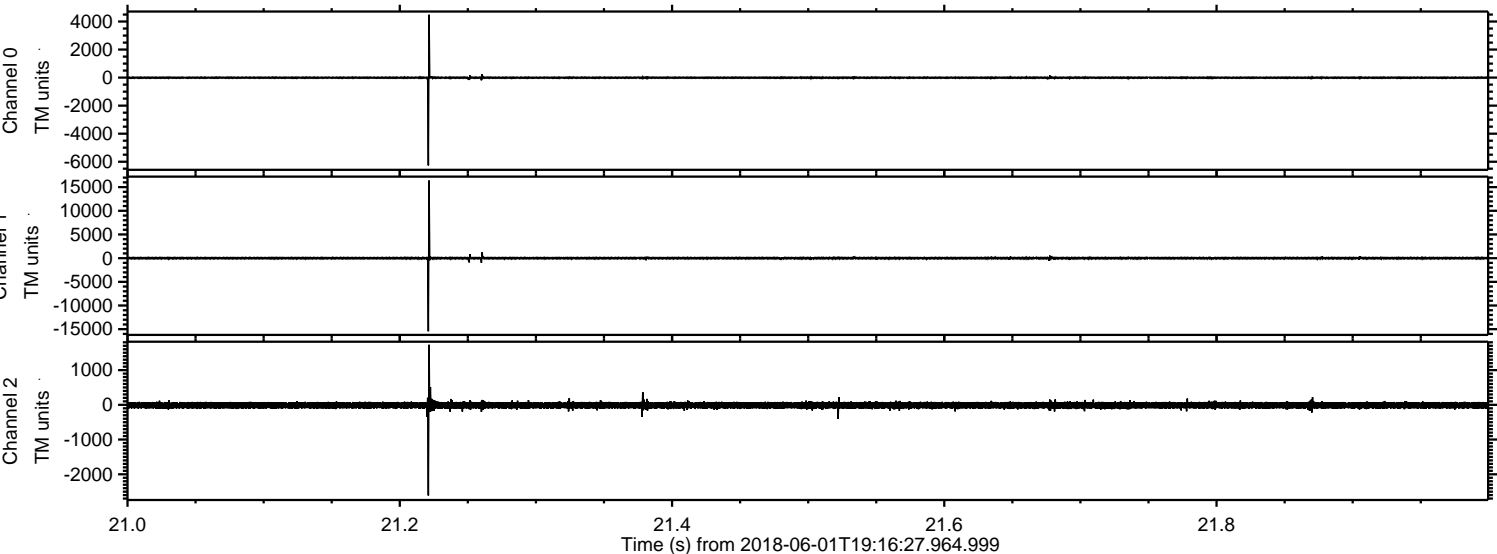
Processed Fri Jun 1 21:24:38 2018 by ELM ver.2012-10-06 from 001__elm20180601_191626__dat00.bin



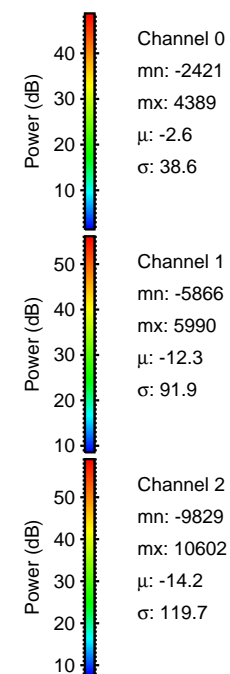
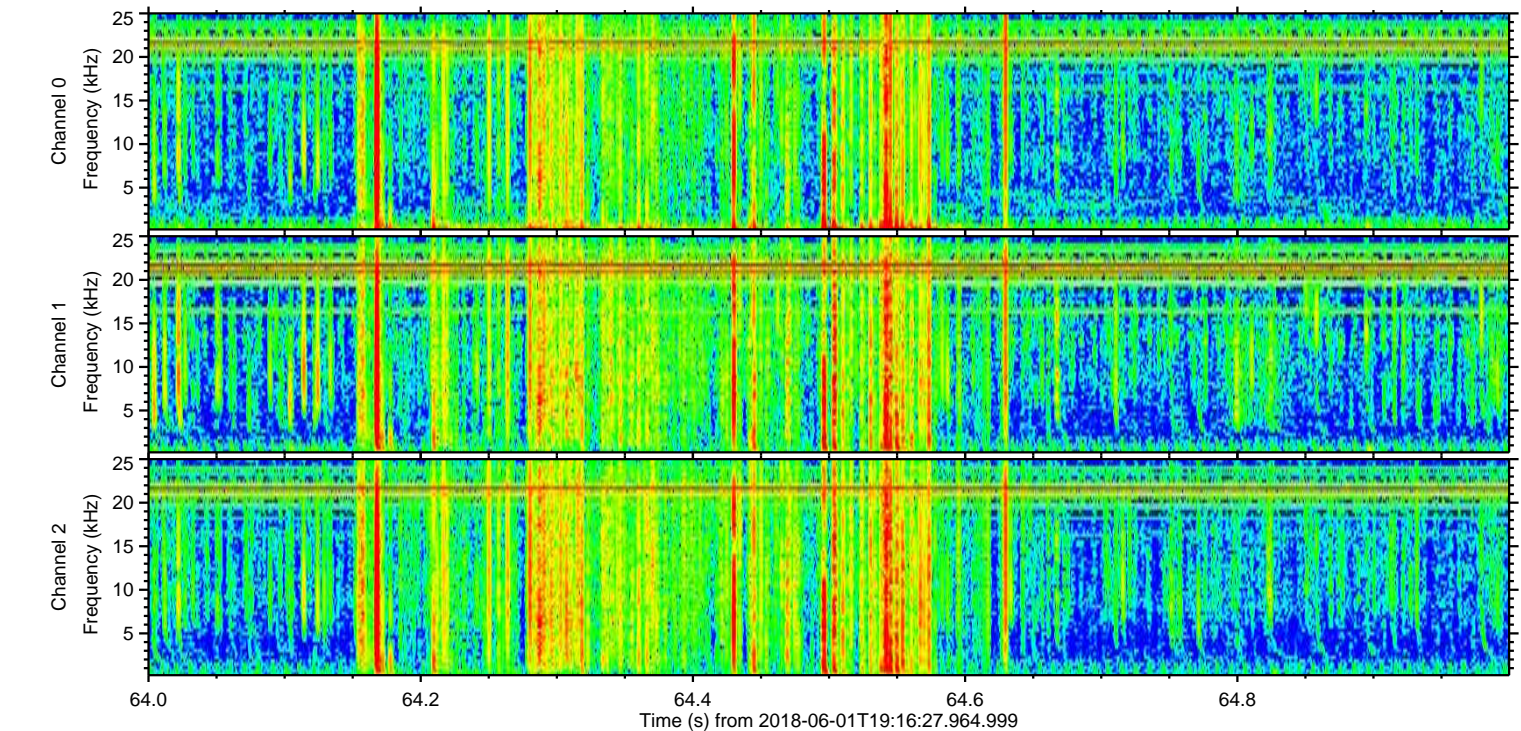
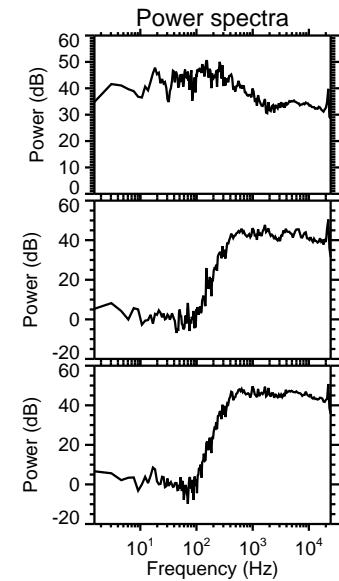
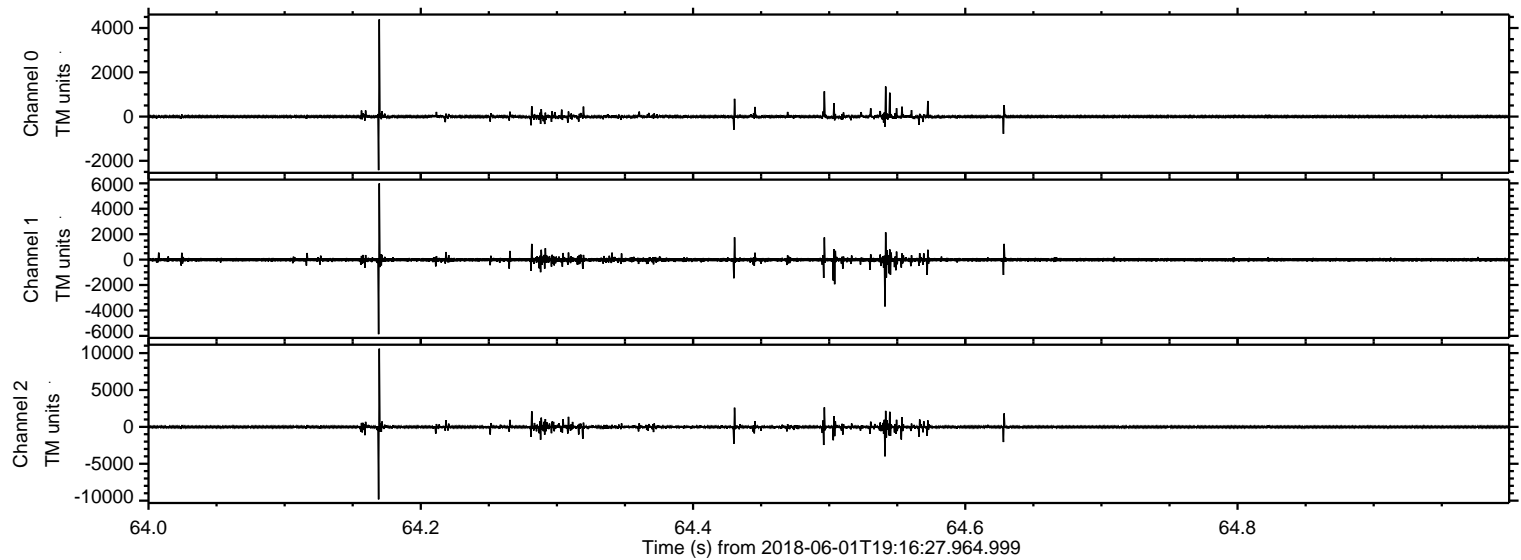
Processed Fri Jun 1 21:24:46 2018 by ELM ver.2012-10-06 from 001__elm20180601_191626__dat00.bin



Processed Fri Jun 1 21:24:47 2018 by ELM ver.2012-10-06 from 001__elm20180601_191626__dat00.bin

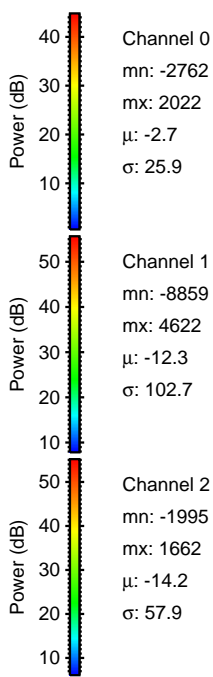
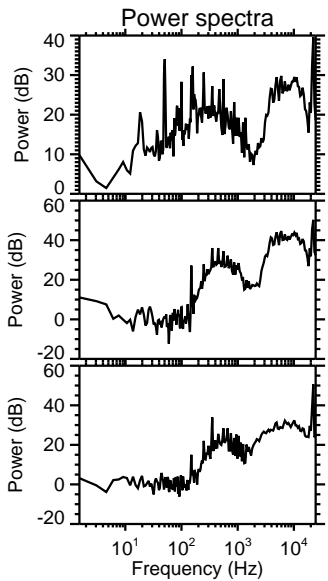
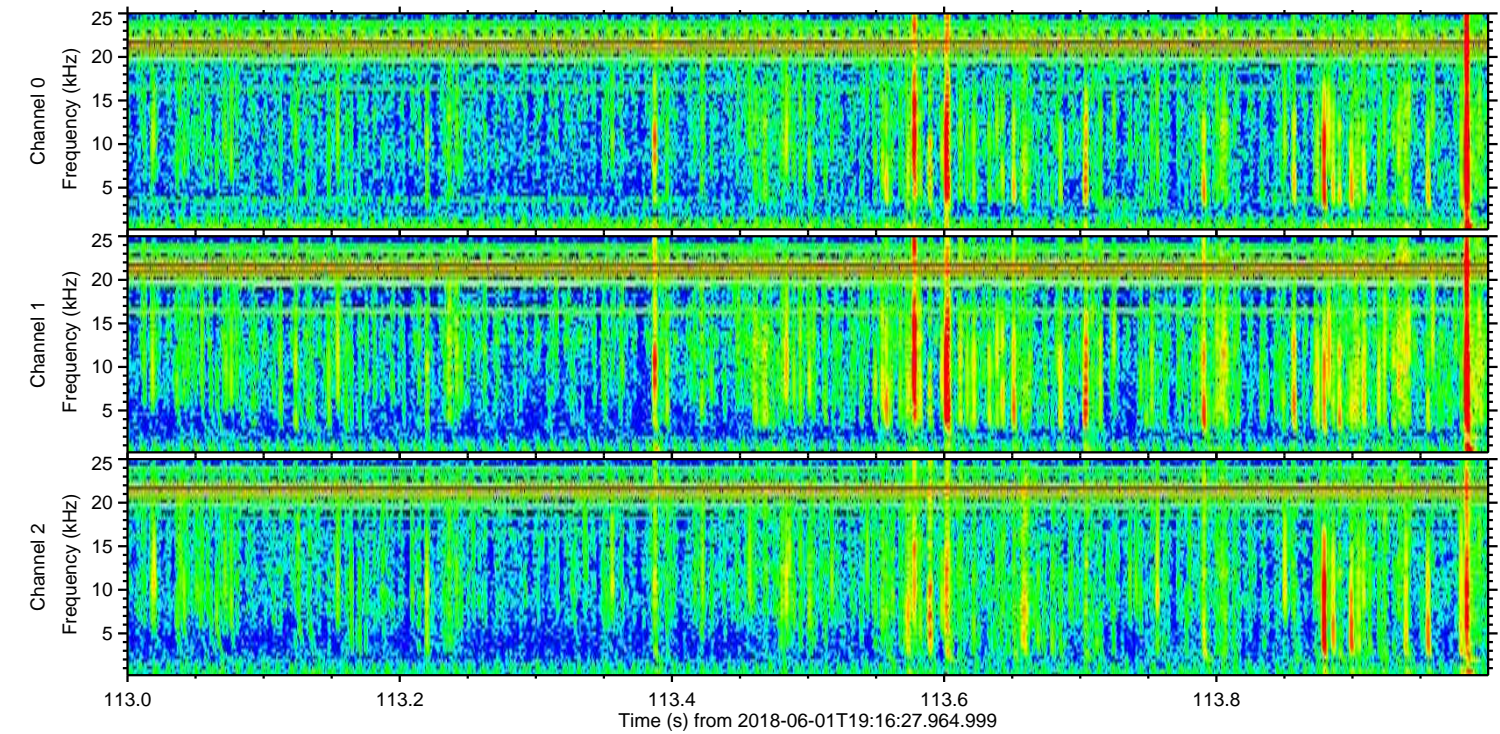
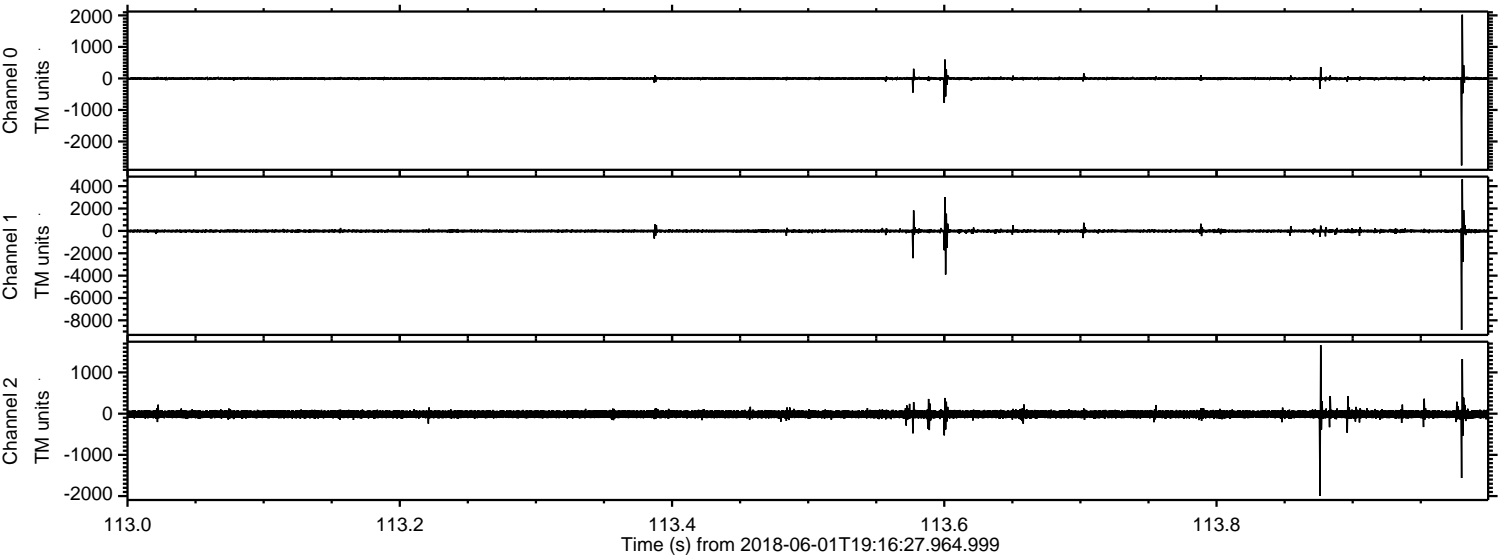


Processed Fri Jun 1 21:24:48 2018 by ELM ver.2012-10-06 from 001__elm20180601_191626__dat00.bin



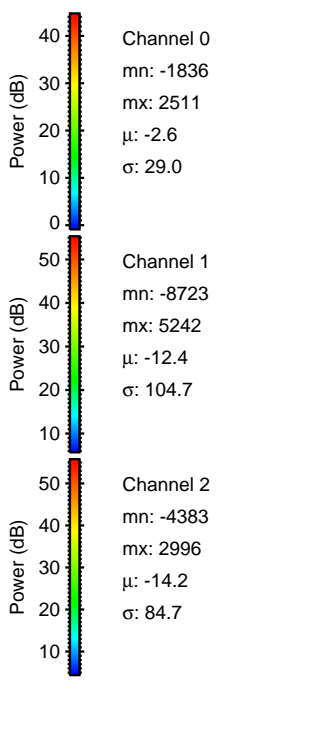
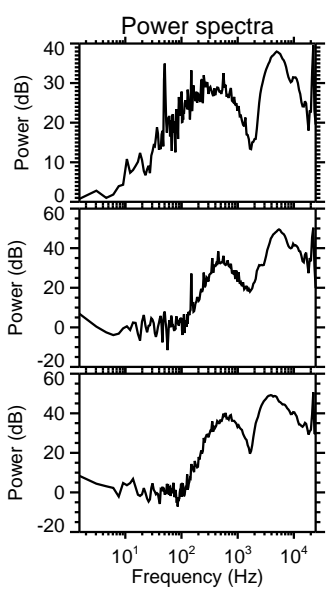
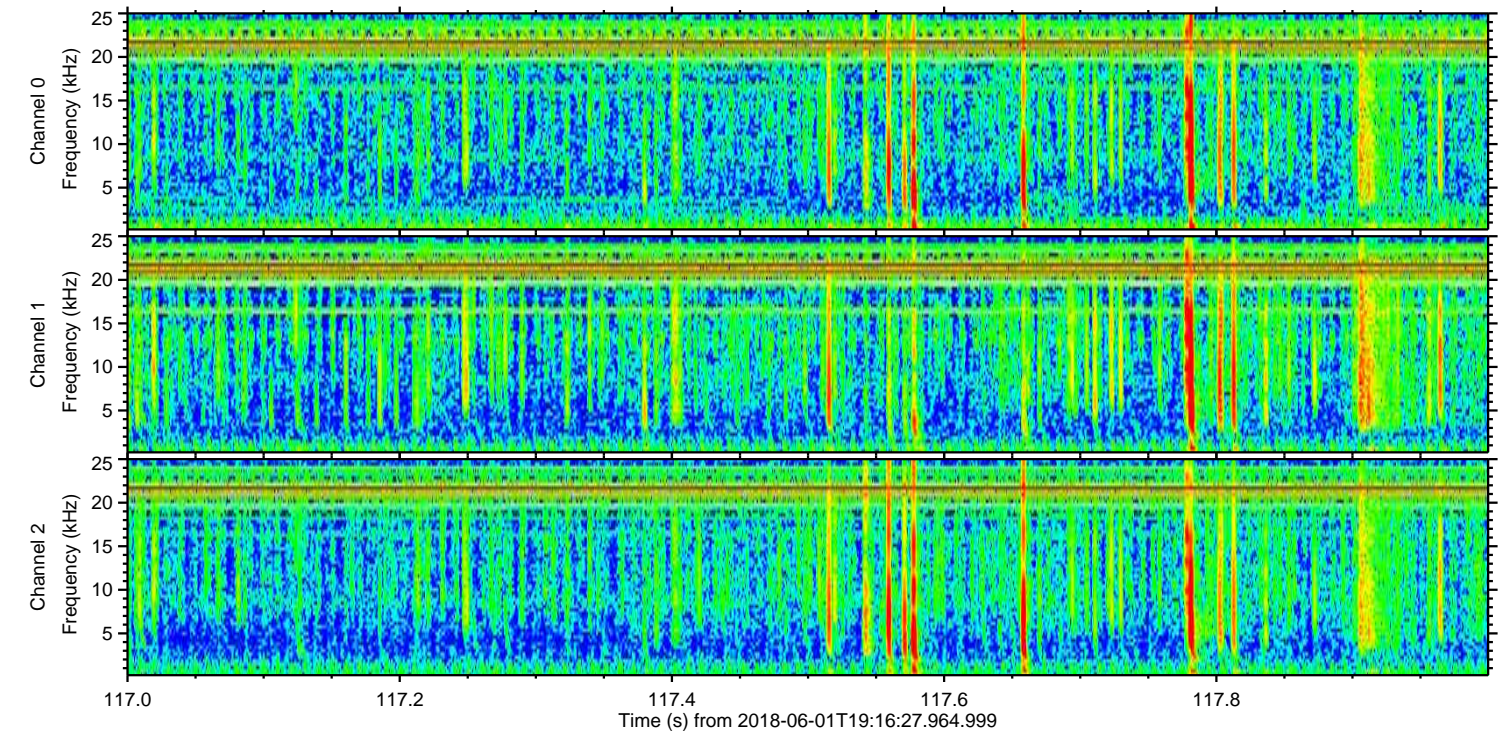
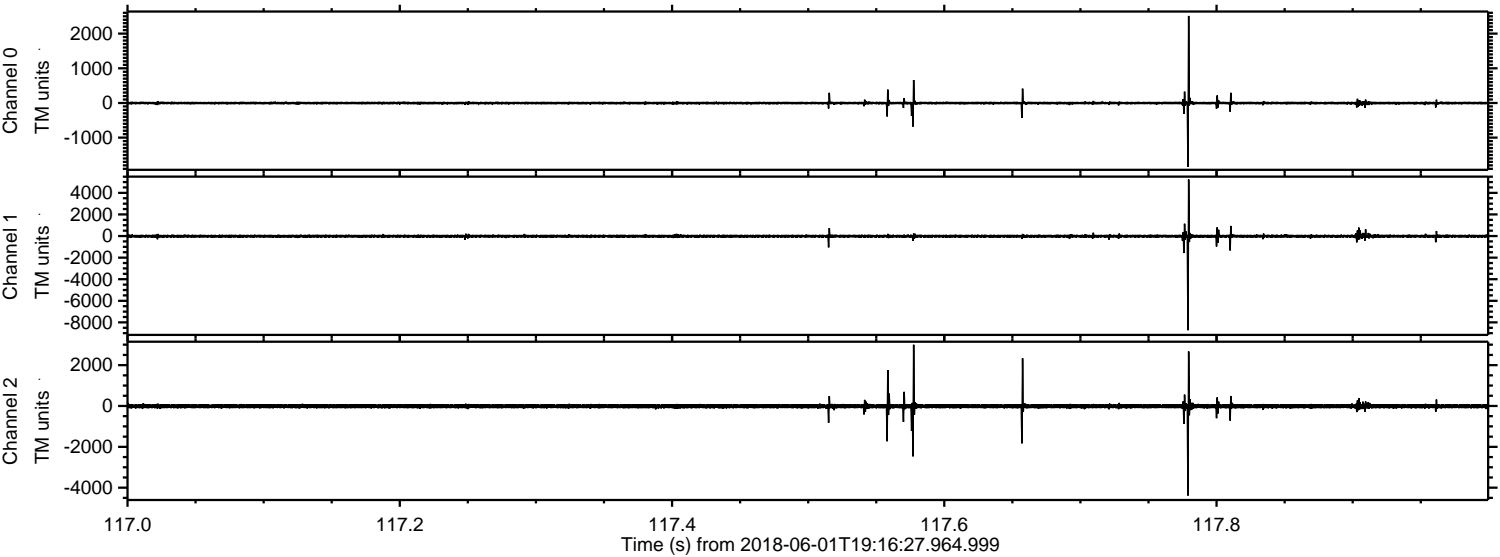
ELMAVAN 3D WAVEFORMS (Measured data sampled at 50 kHz) 51000 packets of 144 samples from 2018-06-01T19:16:27.964.999. Part 114/147

Processed Fri Jun 1 21:24:49 2018 by ELM ver.2012-10-06 from 001__elm20180601_191626__dat00.bin



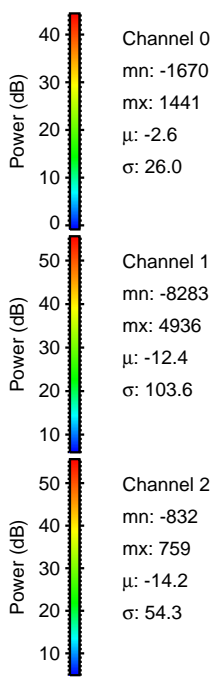
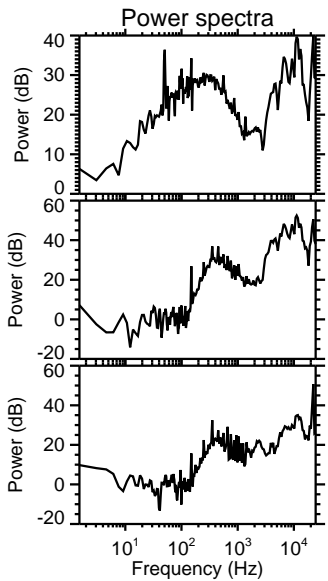
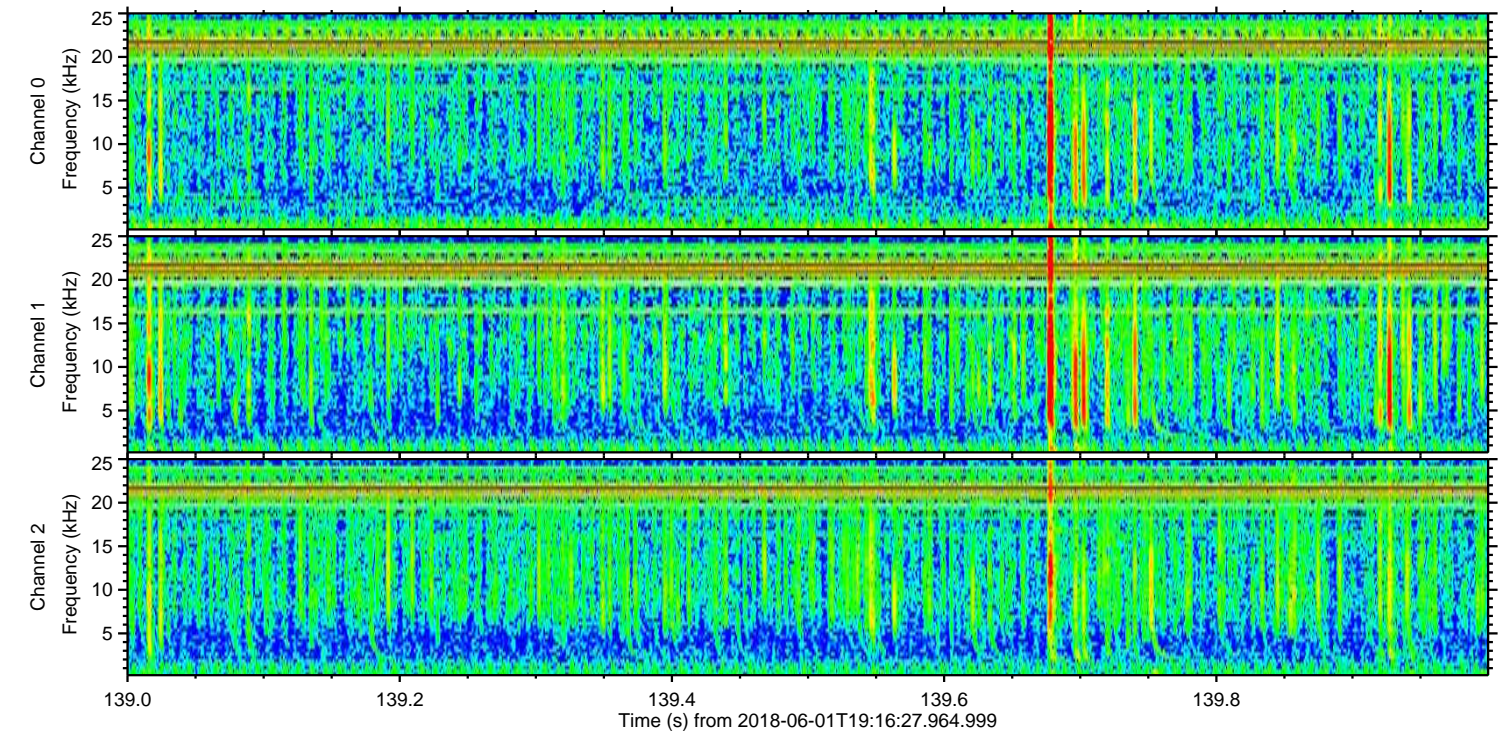
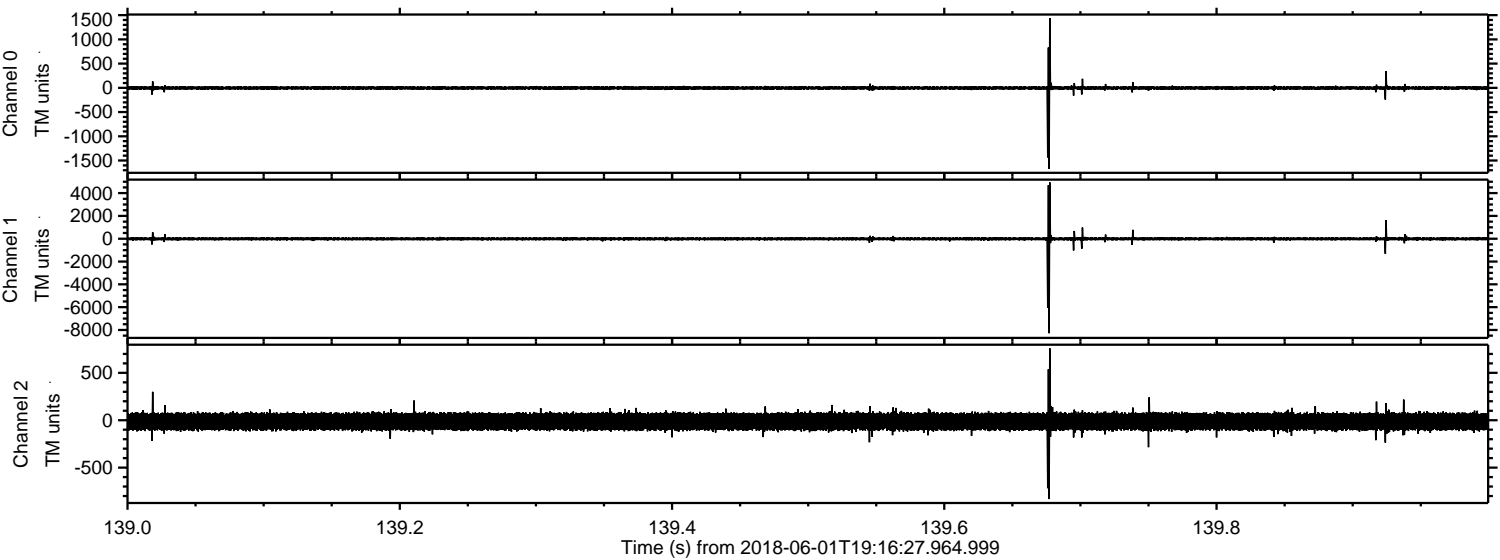
ELMAVAN 3D WAVEFORMS (Measured data sampled at 50 kHz) 51000 packets of 144 samples from 2018-06-01T19:16:27.964.999. Part 118/147

Processed Fri Jun 1 21:24:49 2018 by ELM ver.2012-10-06 from 001__elm20180601_191626__dat00.bin



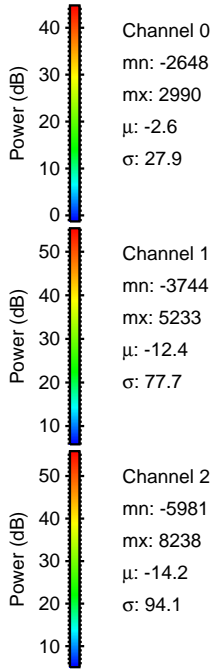
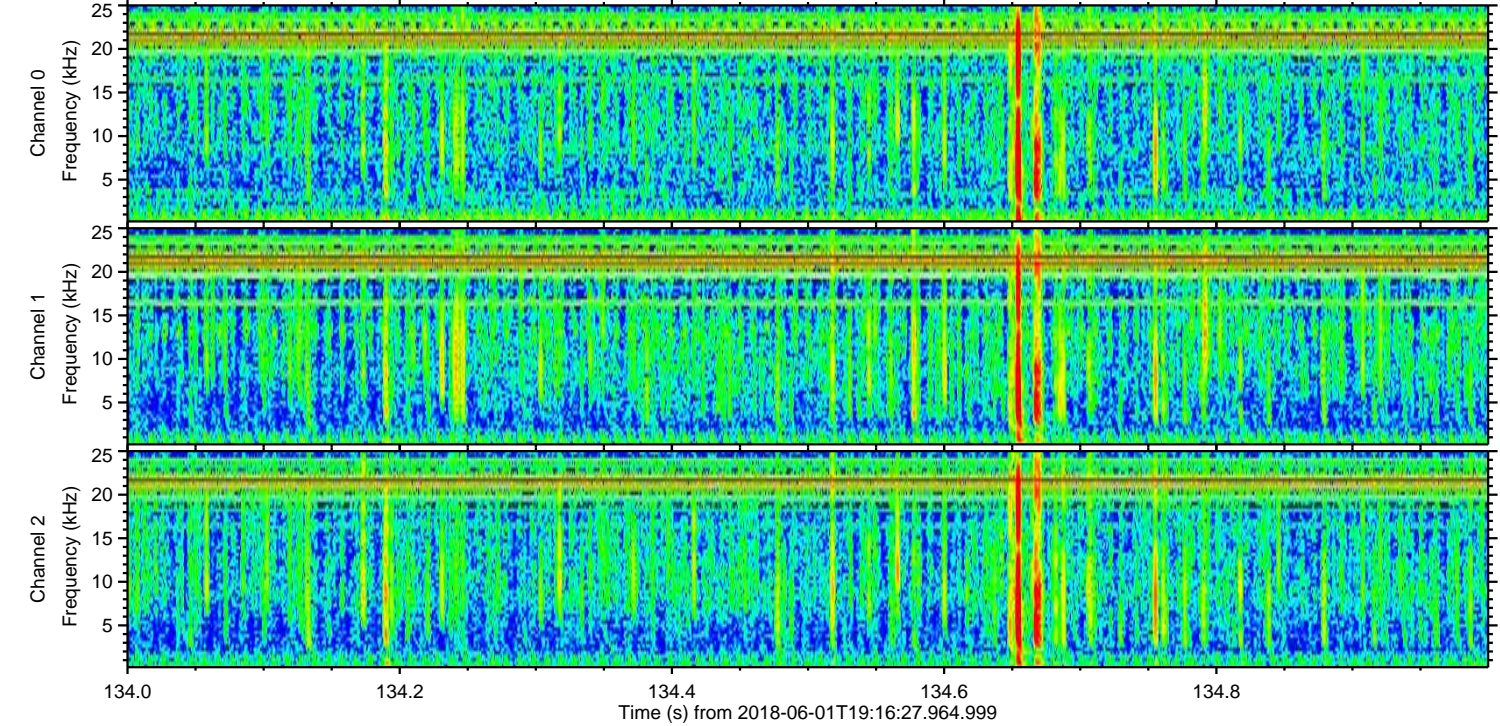
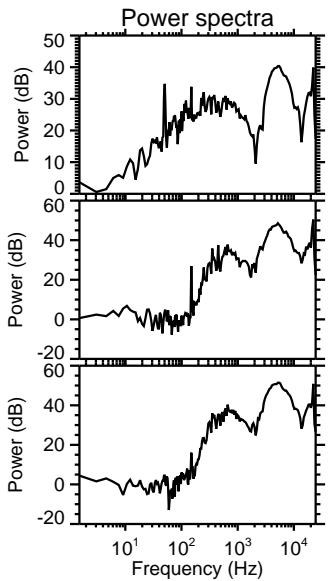
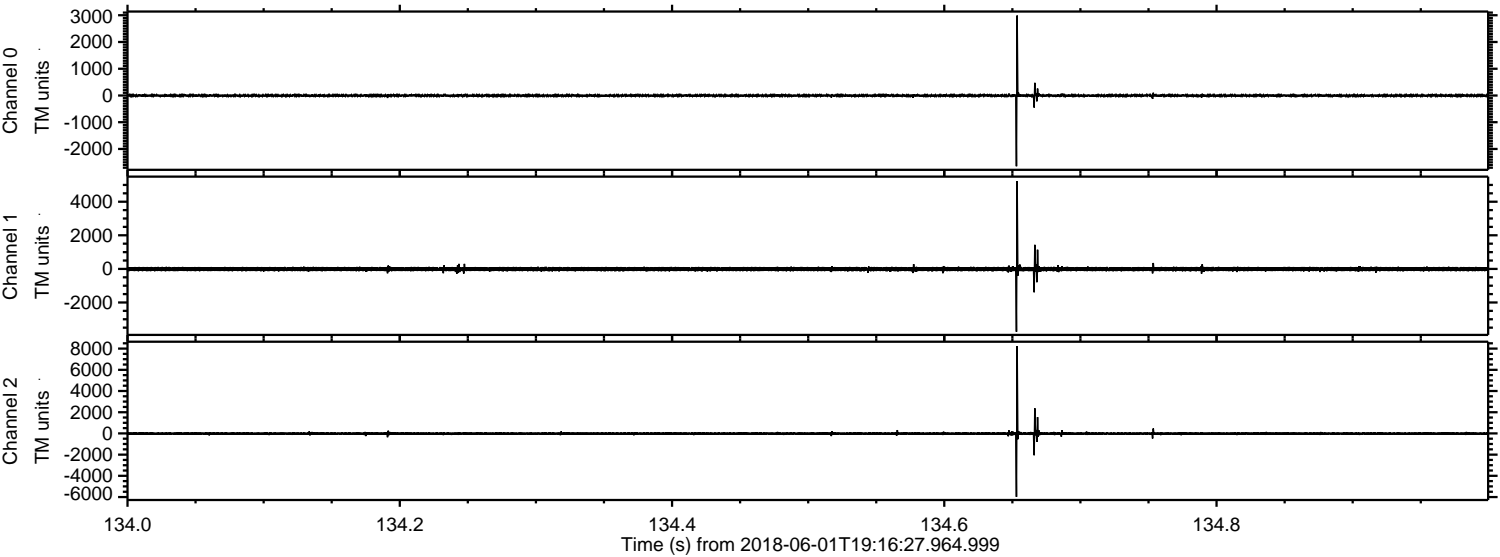
ELMAVAN 3D WAVEFORMS (Measured data sampled at 50 kHz) 51000 packets of 144 samples from 2018-06-01T19:16:27.964.999. Part 140/147

Processed Fri Jun 1 21:24:50 2018 by ELM ver.2012-10-06 from 001__elm20180601_191626__dat00.bin



ELMAVAN 3D WAVEFORMS (Measured data sampled at 50 kHz) 51000 packets of 144 samples from 2018-06-01T19:16:27.964.999. Part 135/147

Processed Fri Jun 1 21:24:51 2018 by ELM ver.2012-10-06 from 001__elm20180601_191626__dat00.bin

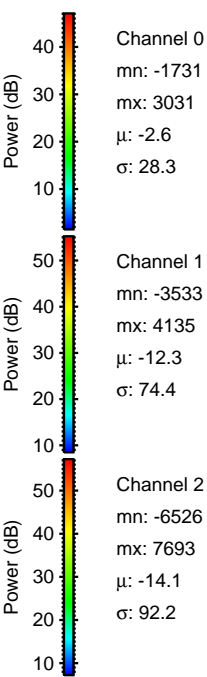
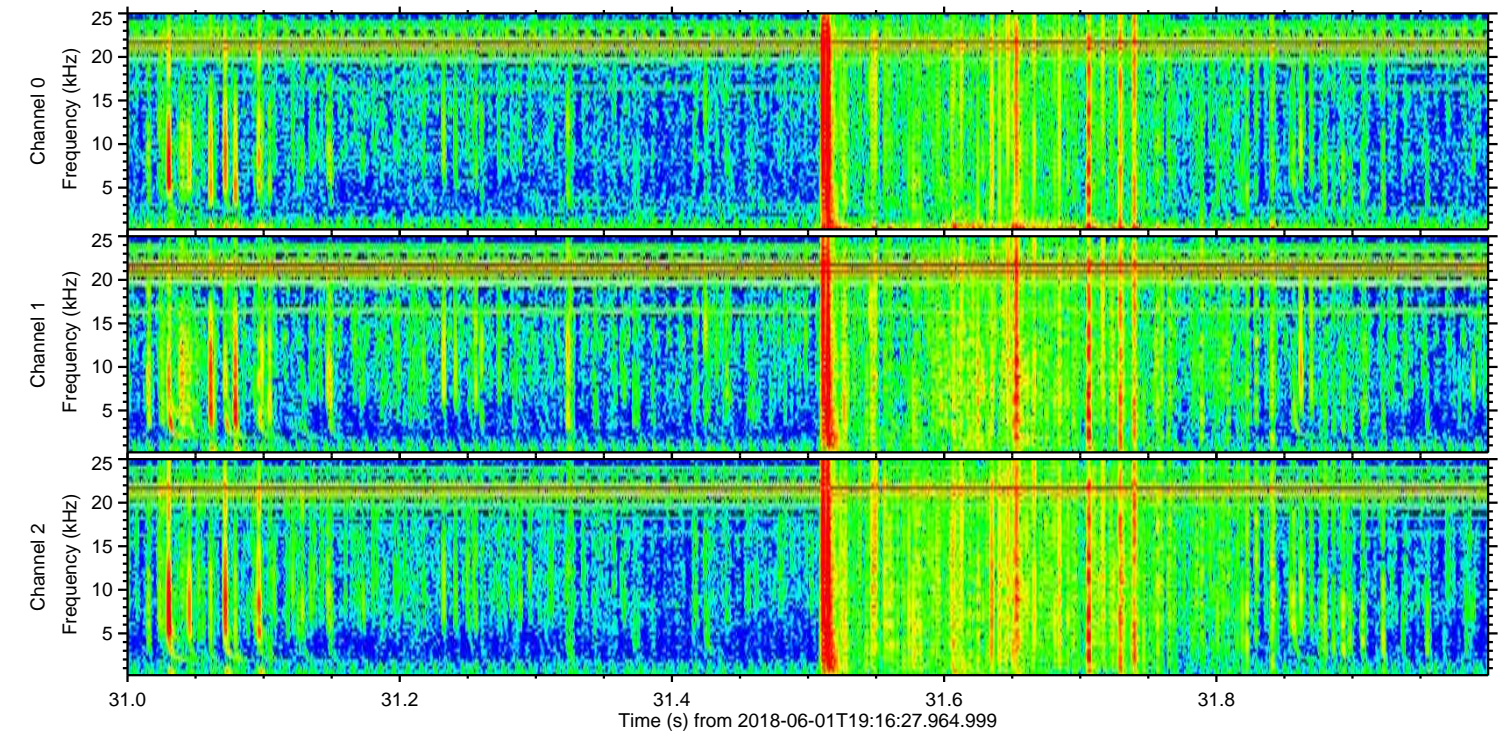
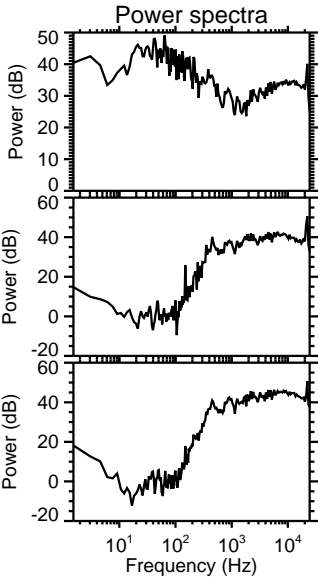
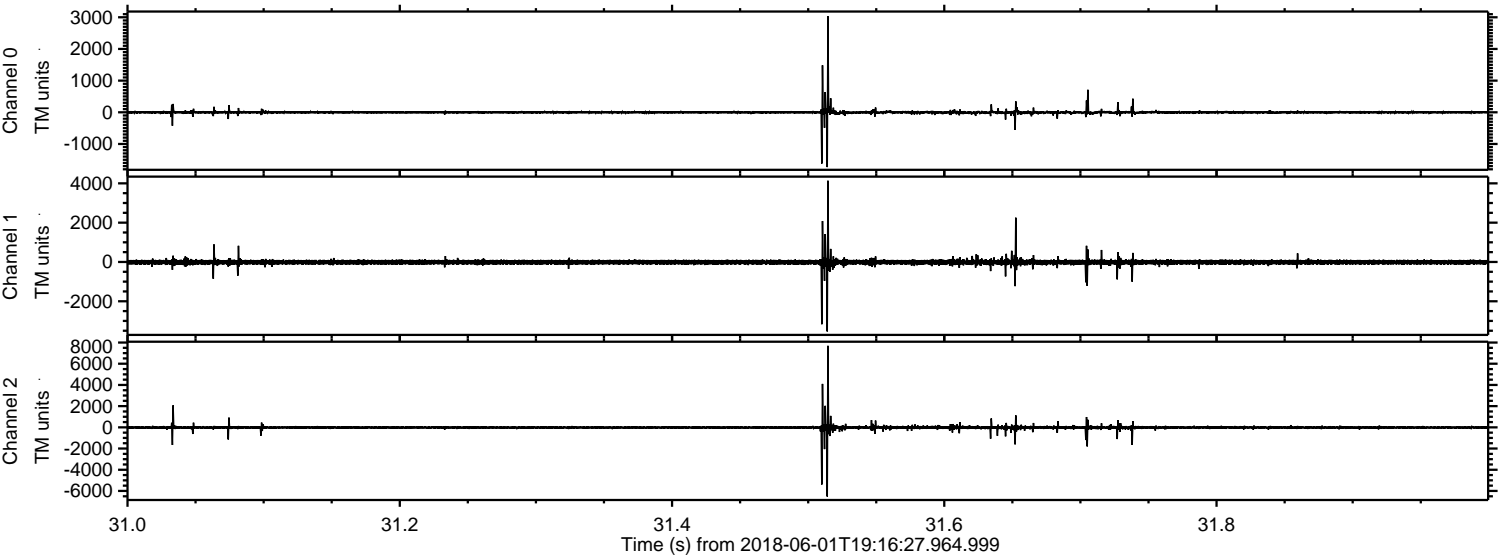


Channel 0
mn: -2648
mx: 2990
 μ : -2.6
 σ : 27.9

Channel 1
mn: -3744
mx: 5233
 μ : -12.4
 σ : 77.7

Channel 2
mn: -5981
mx: 8238
 μ : -14.2
 σ : 94.1

Processed Fri Jun 1 21:24:51 2018 by ELM ver.2012-10-06 from 001__elm20180601_191626__dat00.bin



Processed Fri Jun 1 21:24:52 2018 by ELM ver.2012-10-06 from 001__elm20180601_191626__dat00.bin

