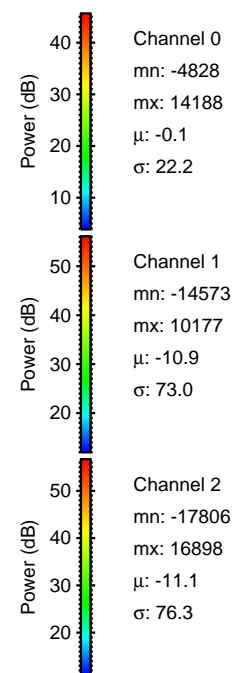
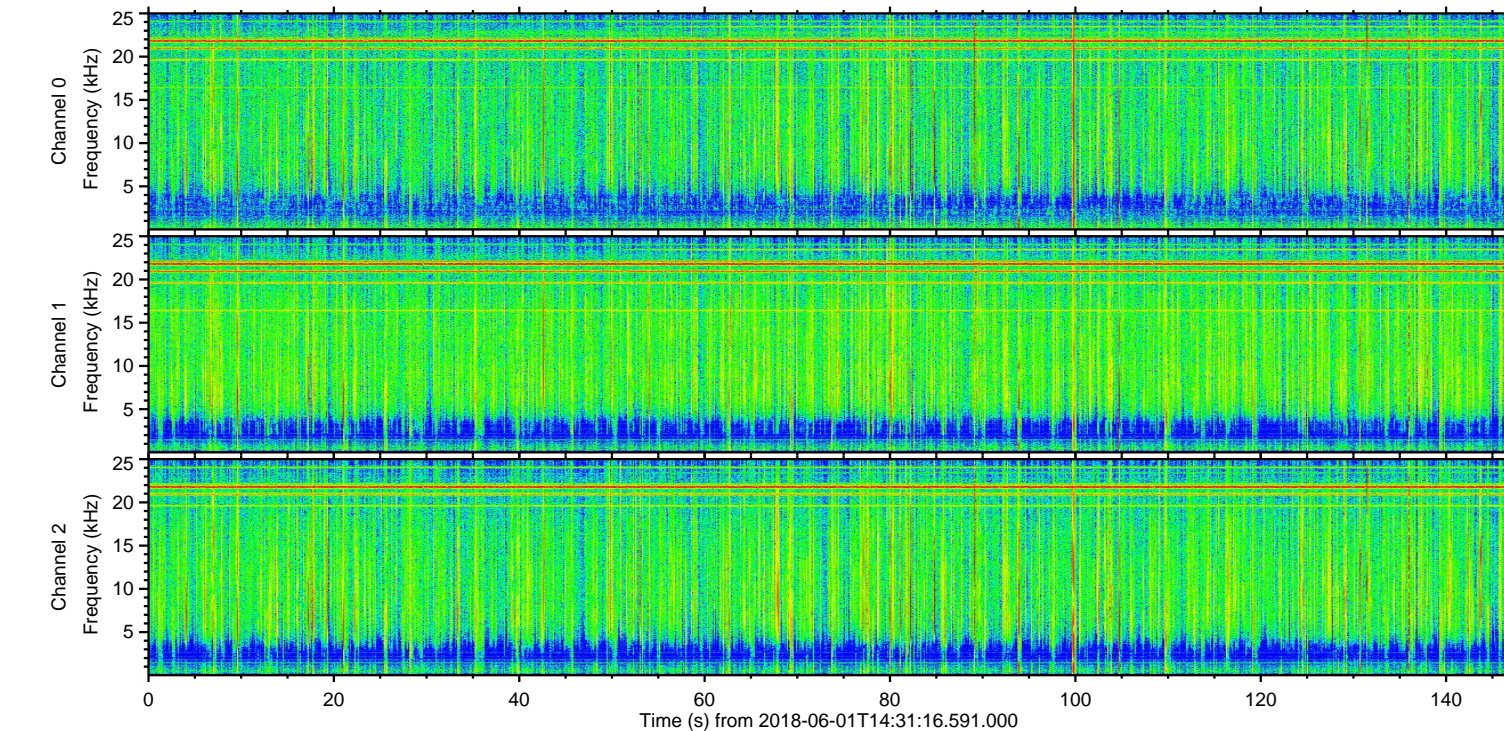
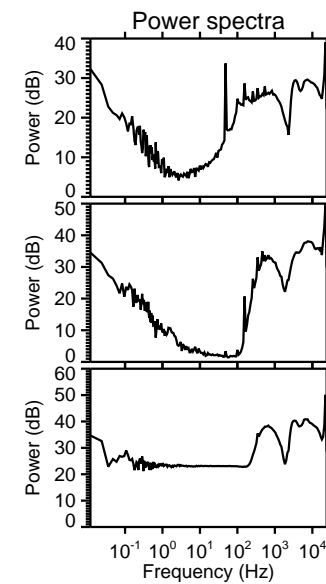
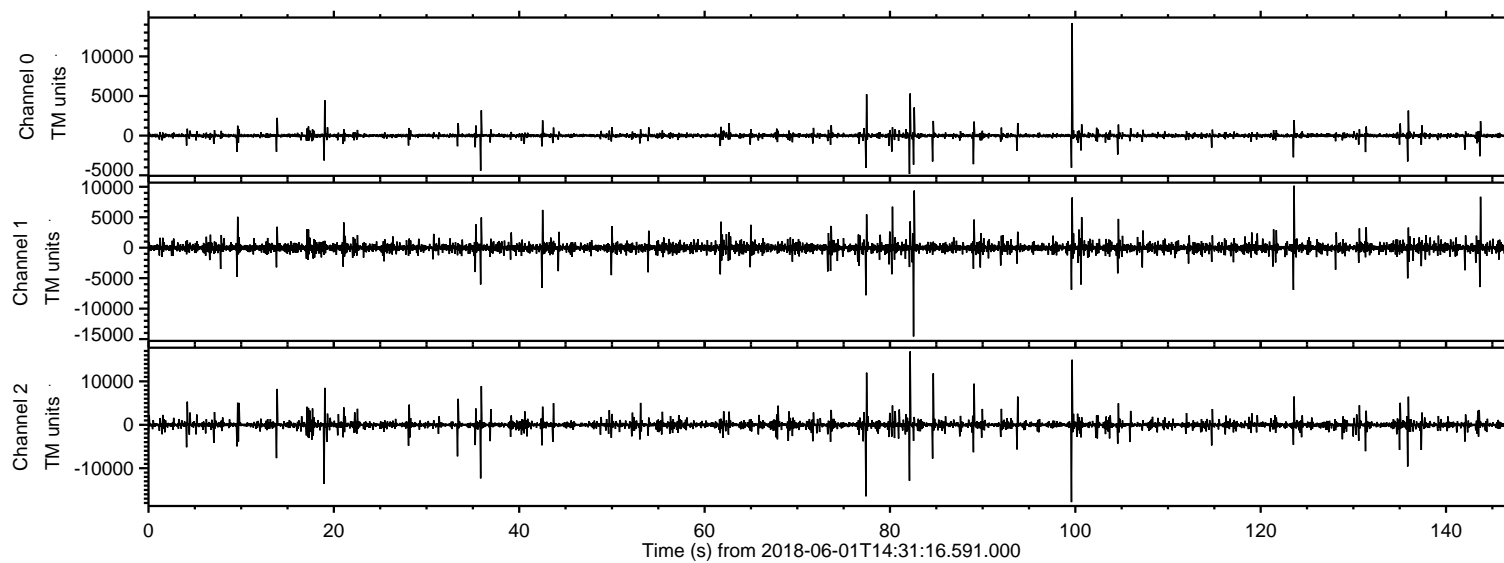


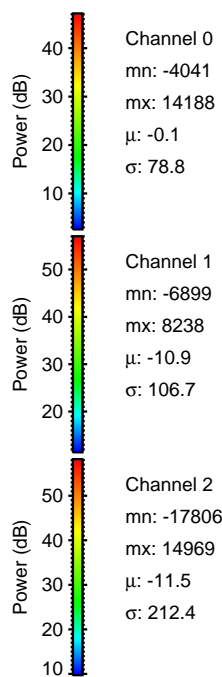
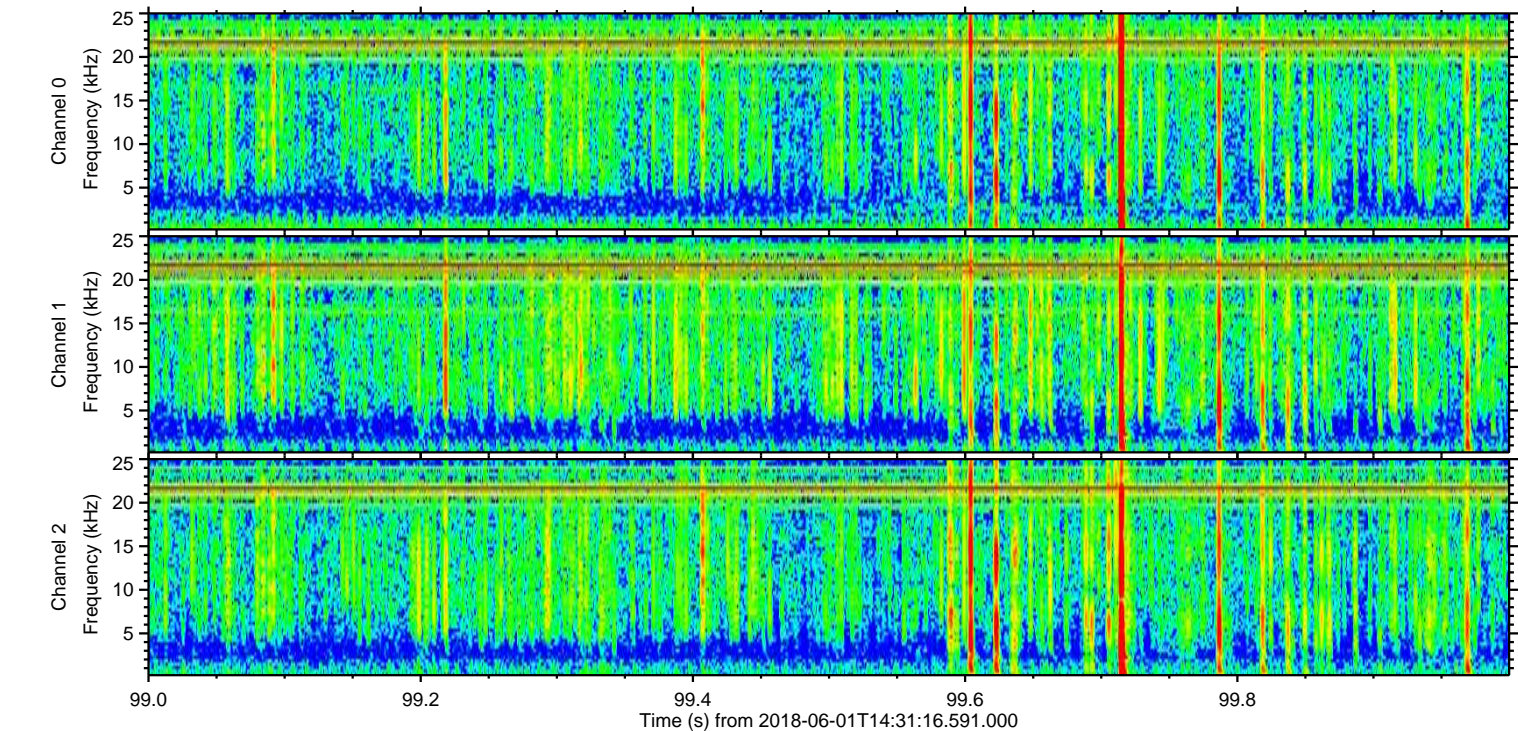
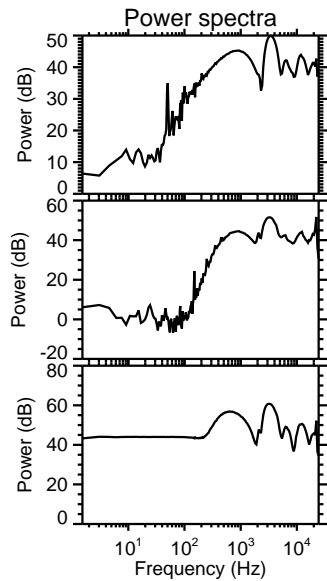
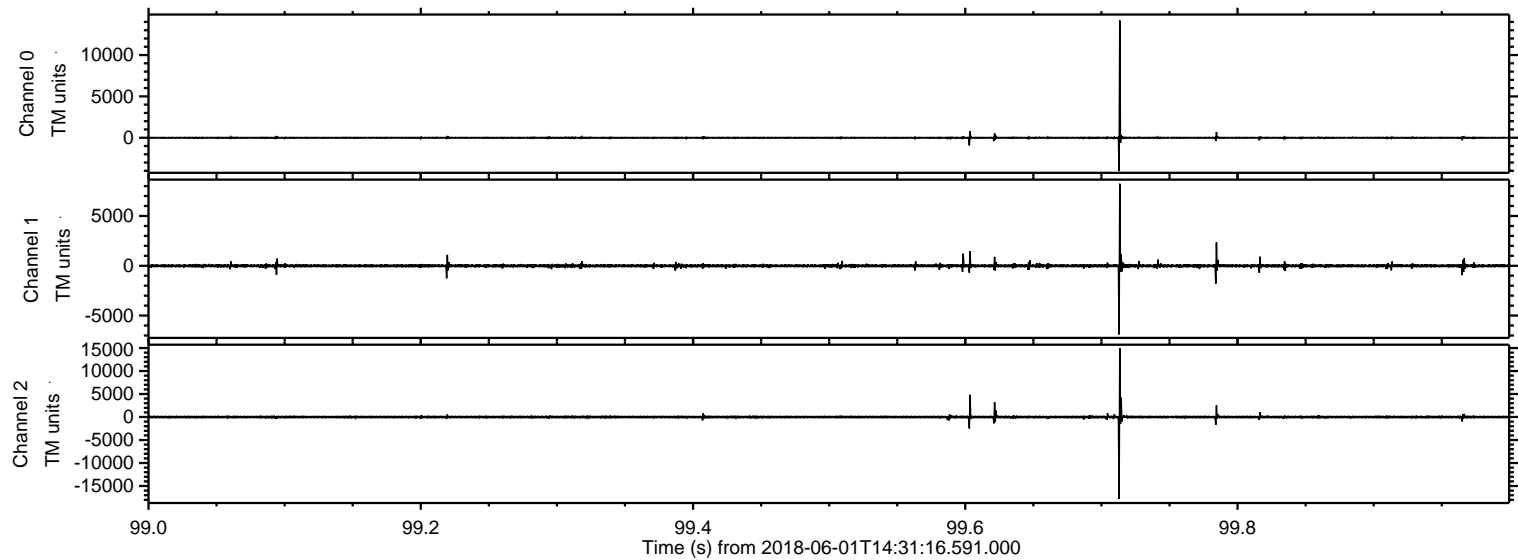
ELMAVAN 3D WAVEFORMS (Measured data sampled at 50 kHz) 51000 packets of 144 samples from 2018-06-01T14:31:16.591.000.

Processed Fri Jun 1 16:39:21 2018 by ELM ver.2012-10-06 from 001__elm20180601_143115__dat00.bin

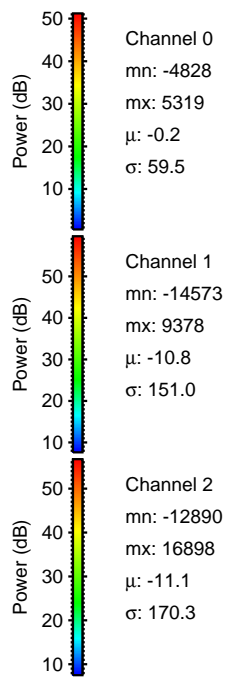
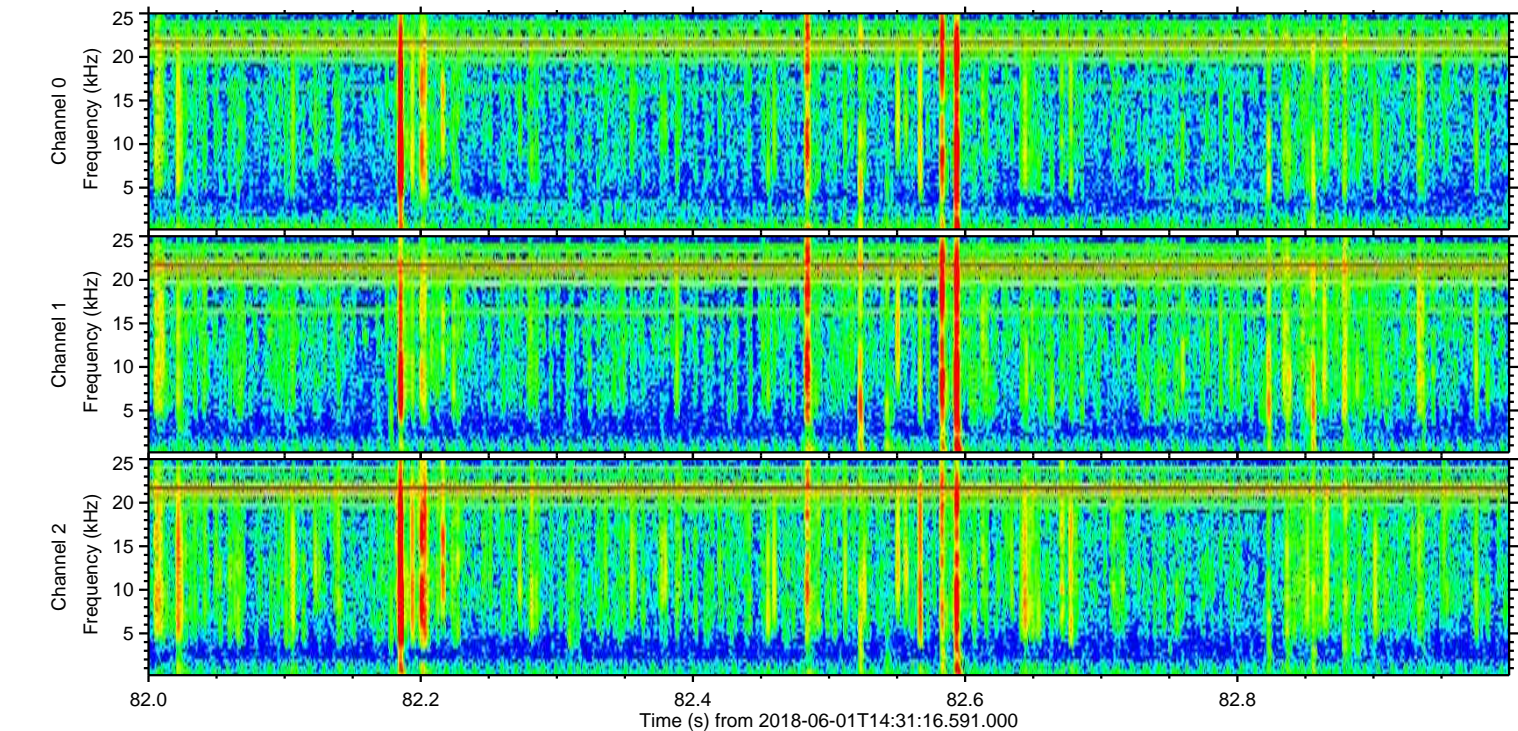
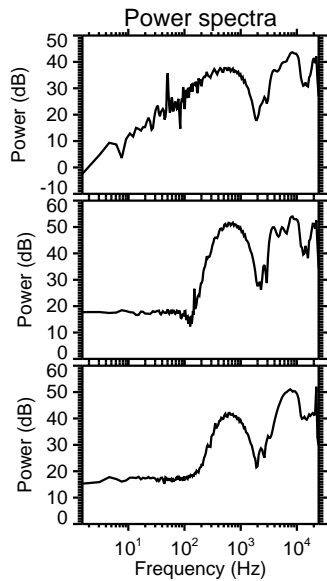
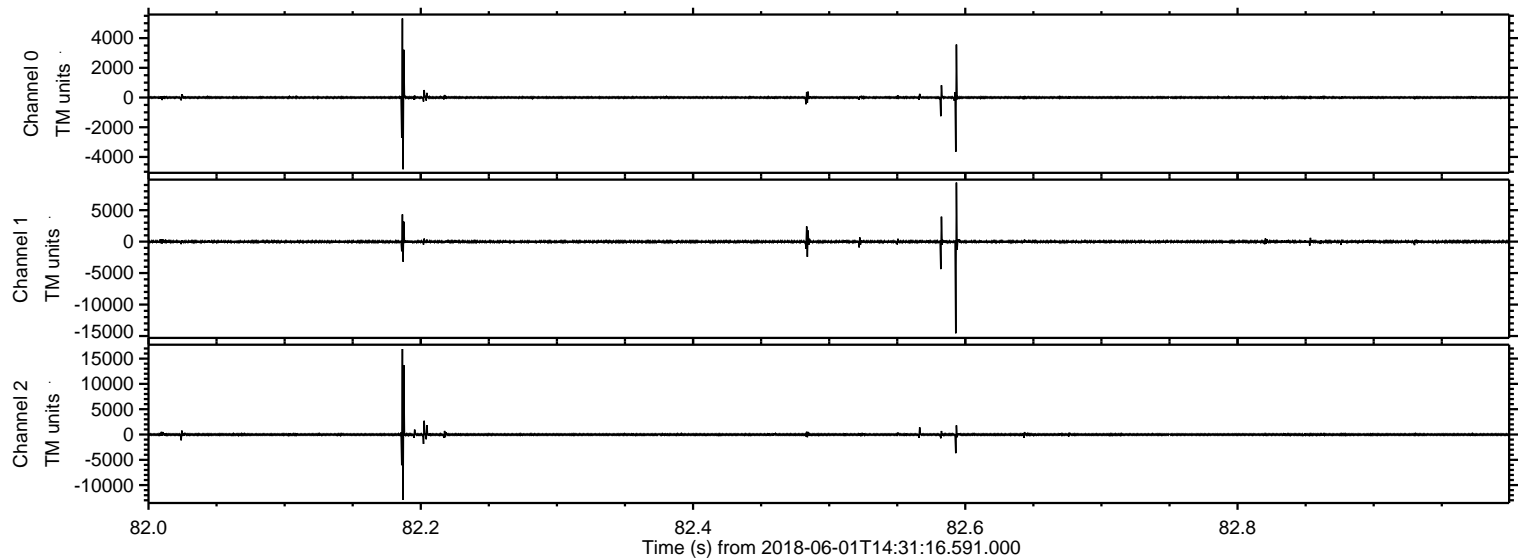


ELMAVAN 3D WAVEFORMS (Measured data sampled at 50 kHz) 51000 packets of 144 samples from 2018-06-01T14:31:16.591.000. Part 100/147

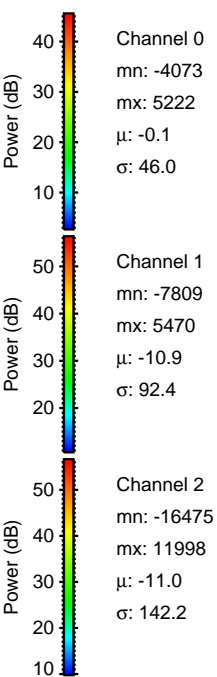
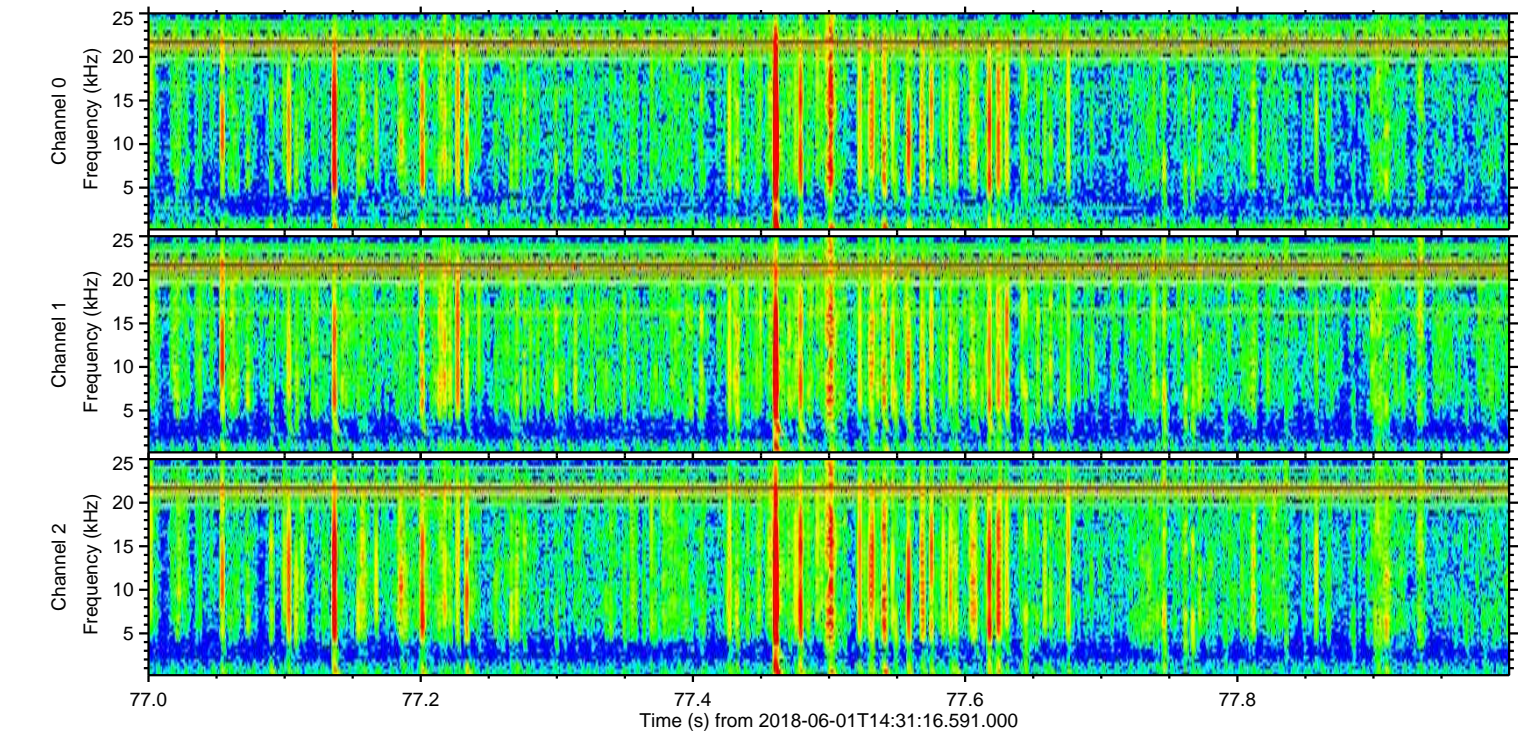
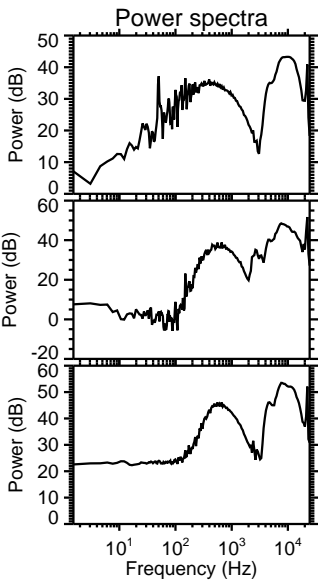
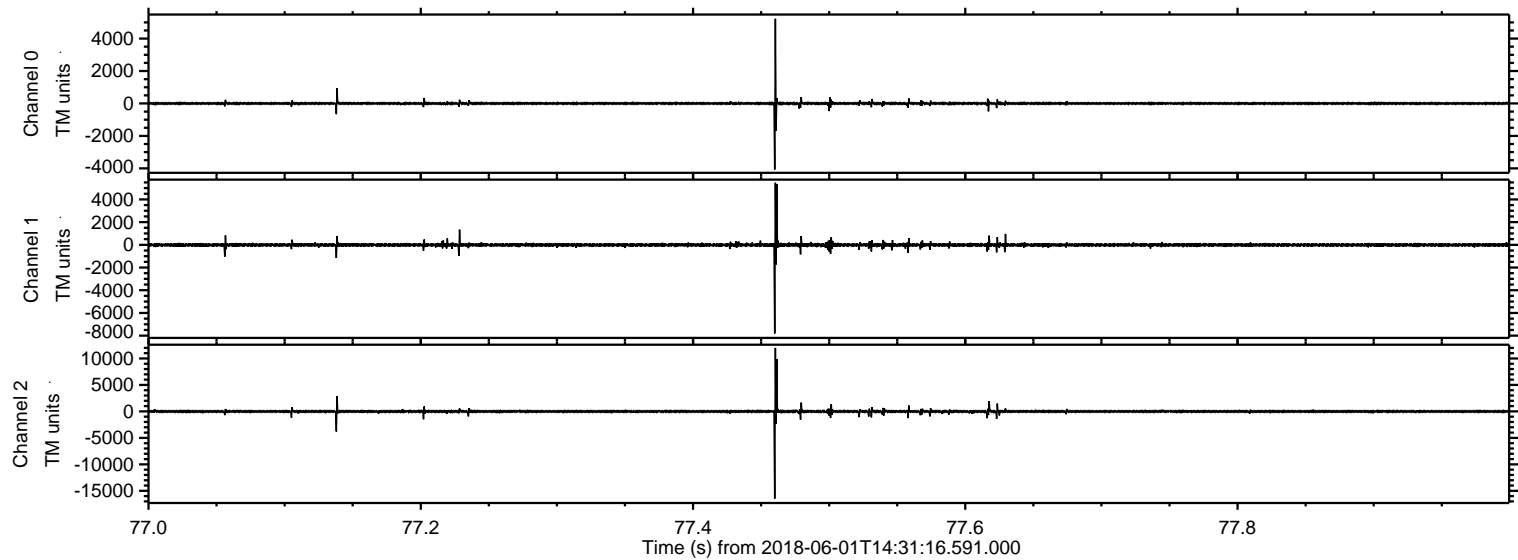
Processed Fri Jun 1 16:39:27 2018 by ELM ver.2012-10-06 from 001__elm20180601_143115__dat00.bin



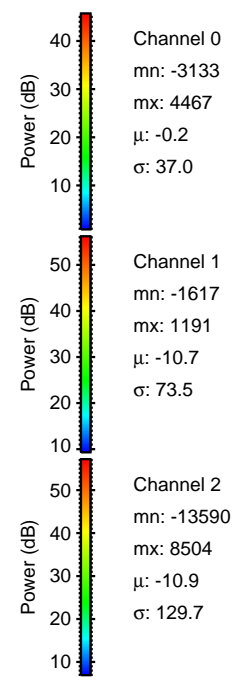
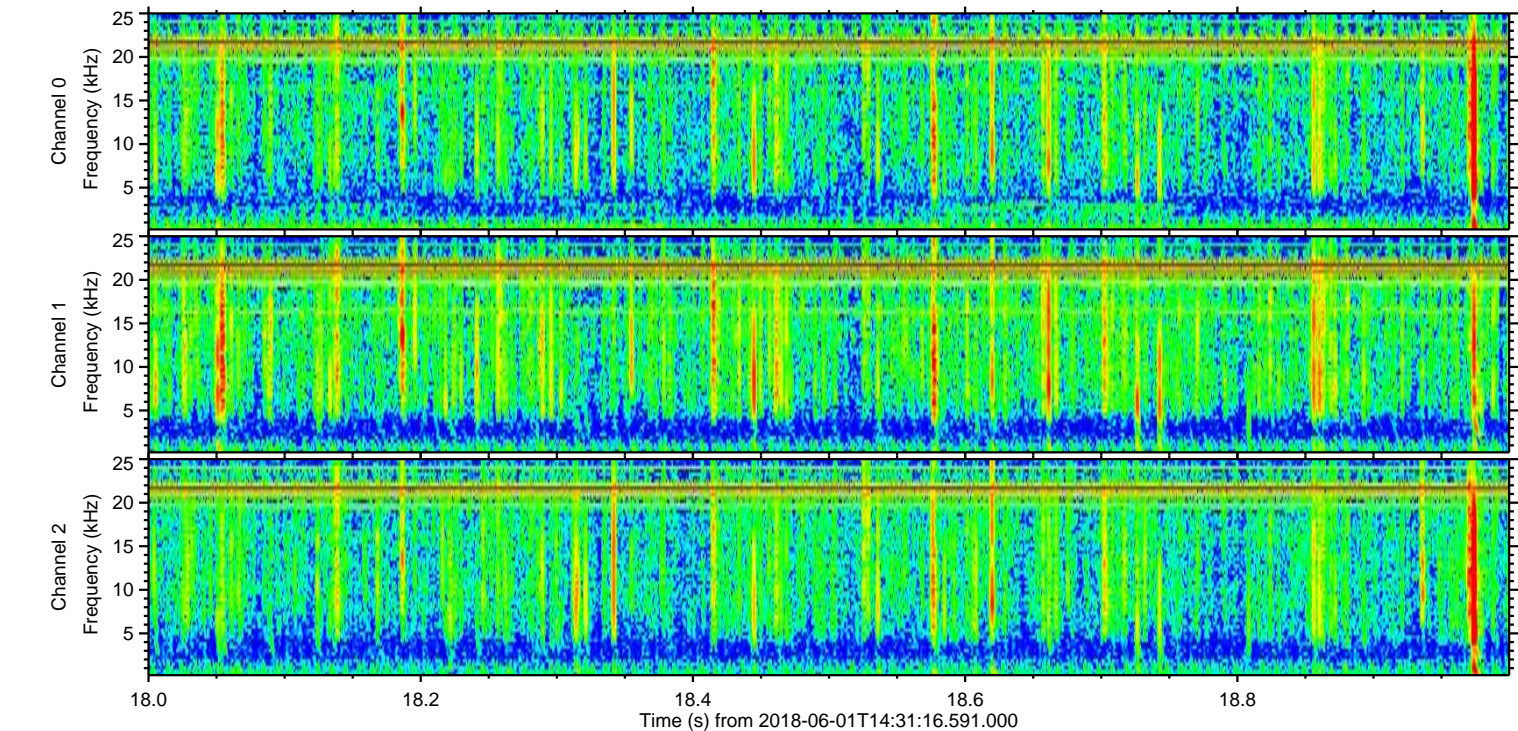
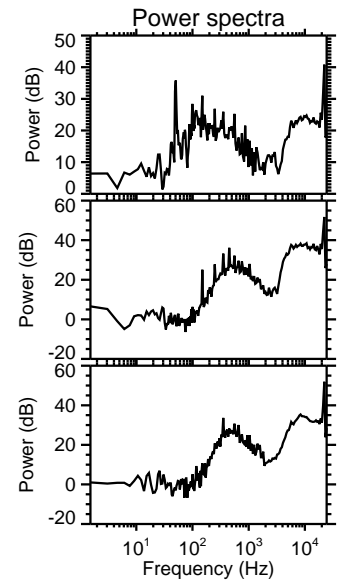
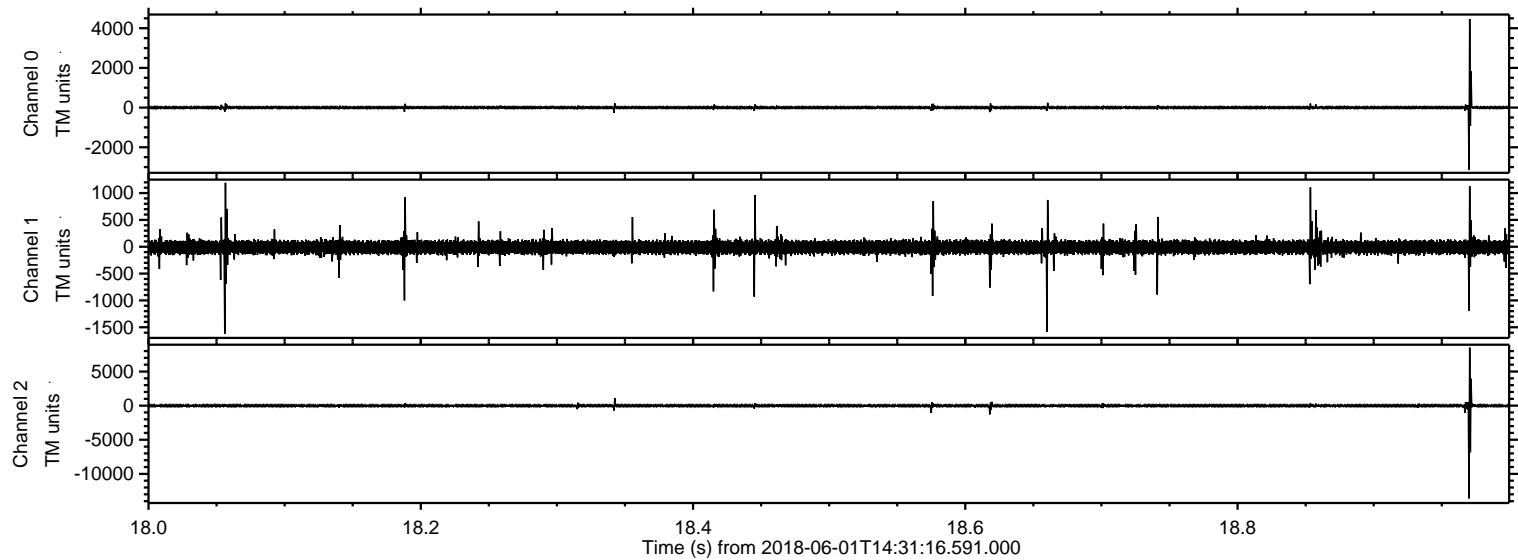
Processed Fri Jun 1 16:39:28 2018 by ELM ver.2012-10-06 from 001__elm20180601_143115__dat00.bin



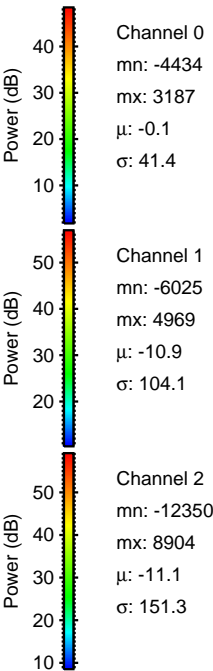
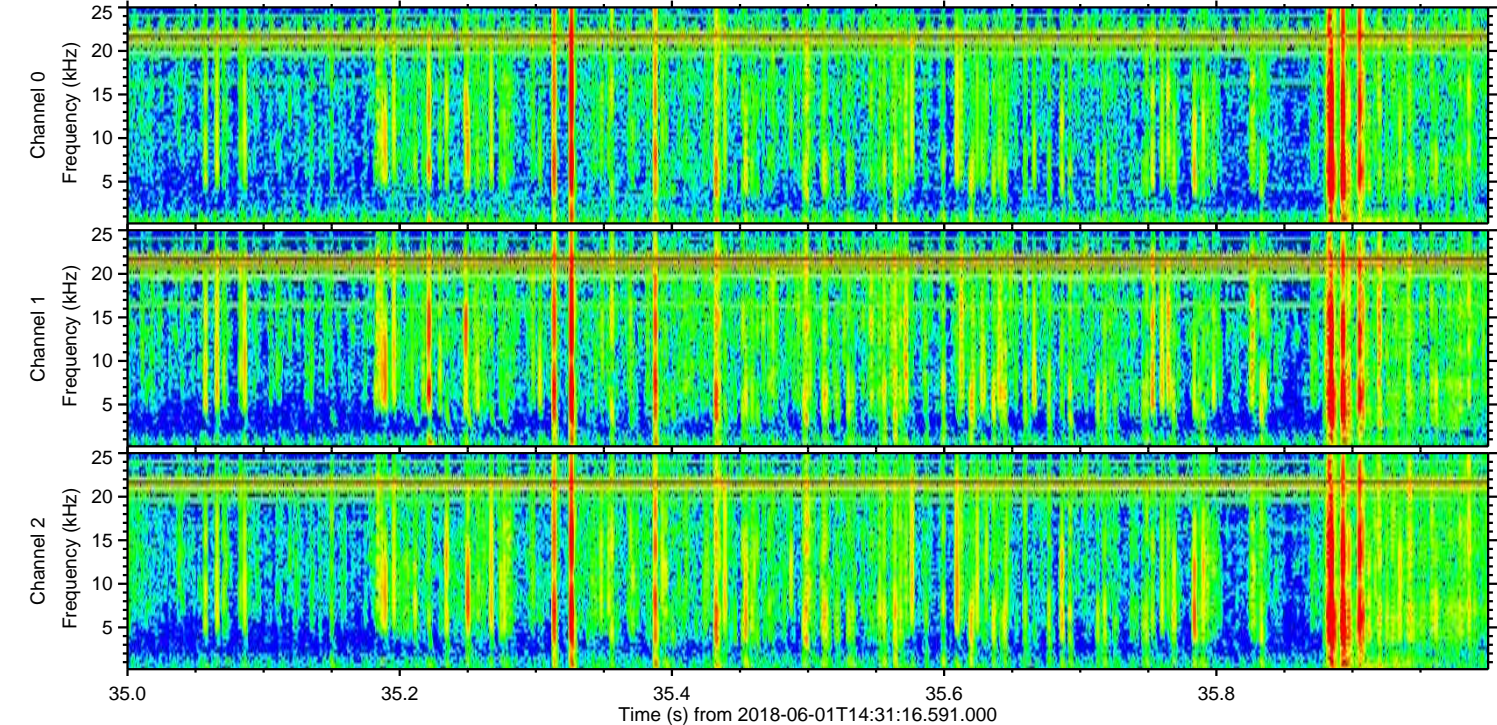
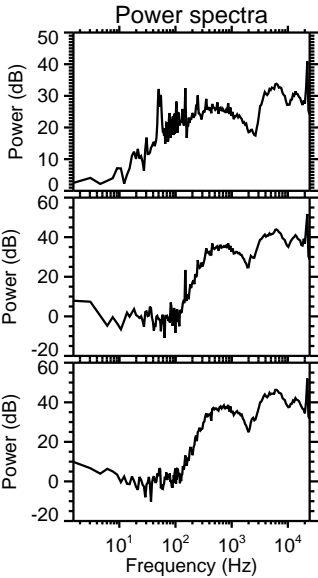
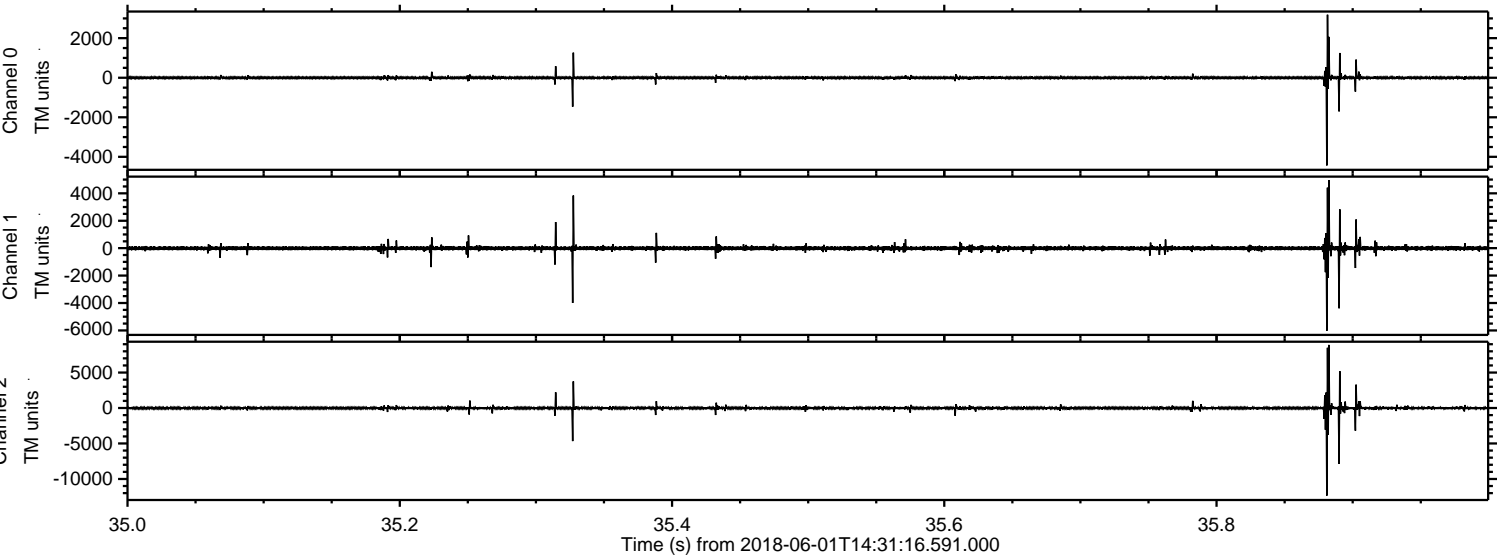
Processed Fri Jun 1 16:39:28 2018 by ELM ver.2012-10-06 from 001__elm20180601_143115__dat00.bin



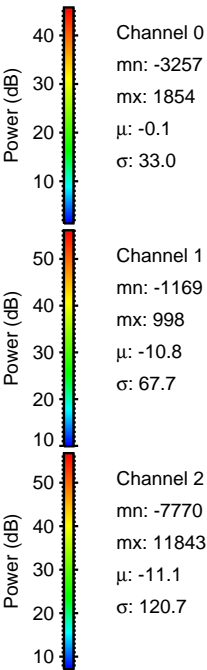
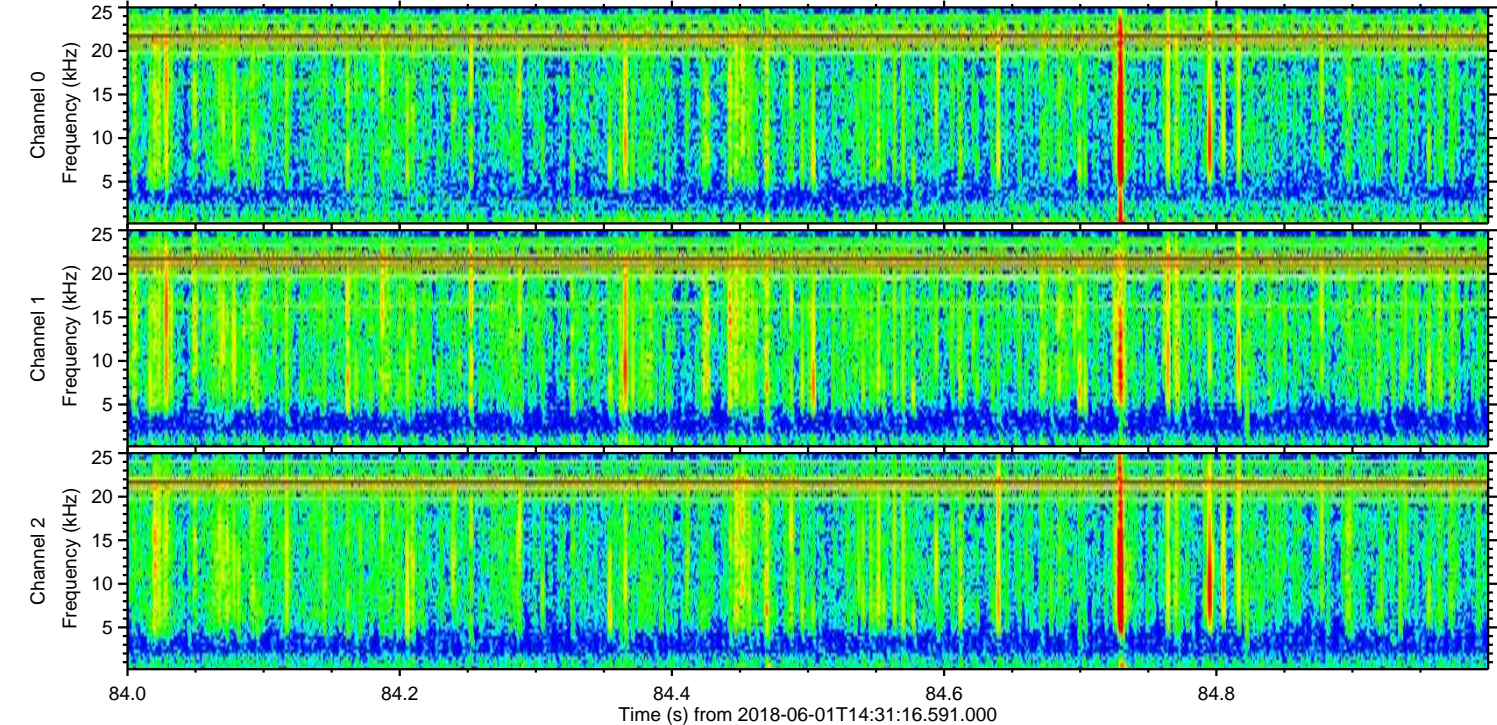
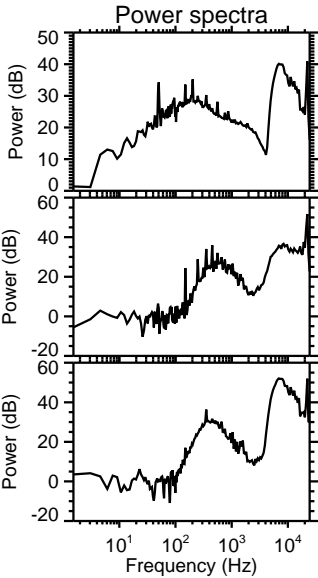
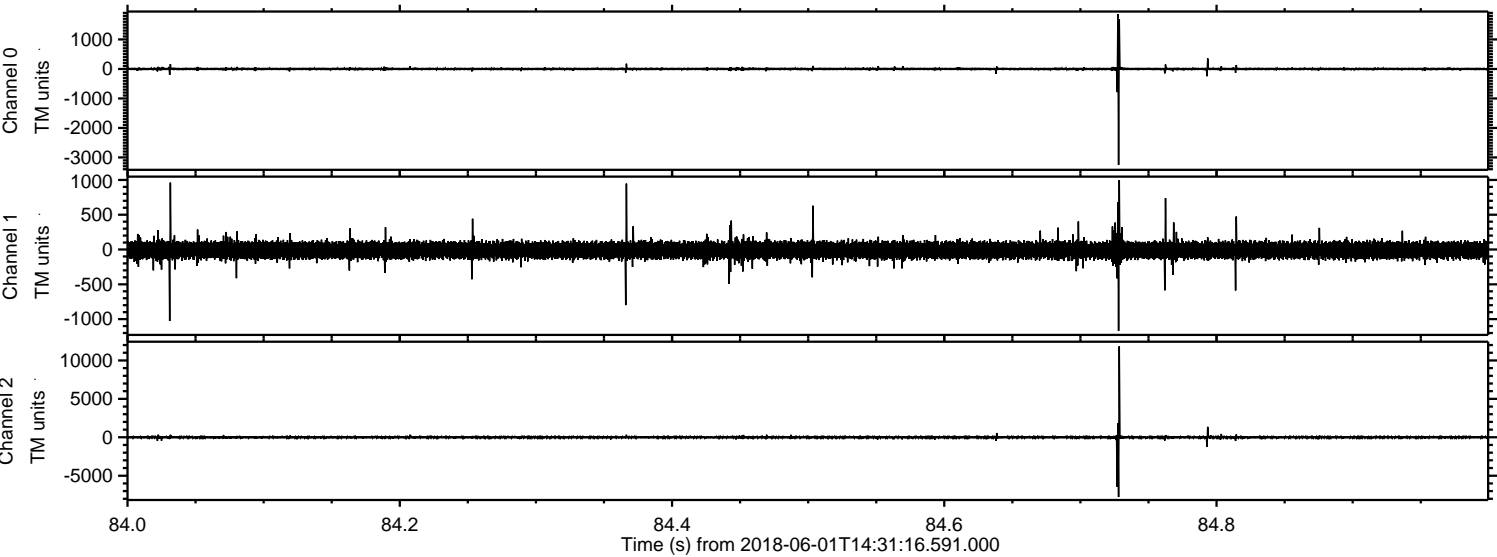
Processed Fri Jun 1 16:39:29 2018 by ELM ver.2012-10-06 from 001__elm20180601_143115__dat00.bin



Processed Fri Jun 1 16:39:29 2018 by ELM ver.2012-10-06 from 001__elm20180601_143115__dat00.bin

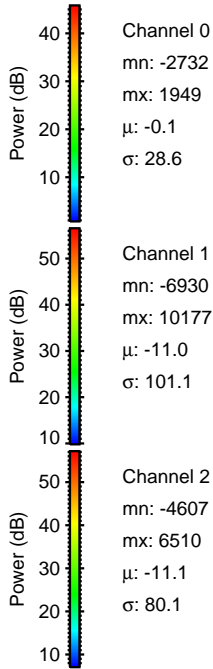
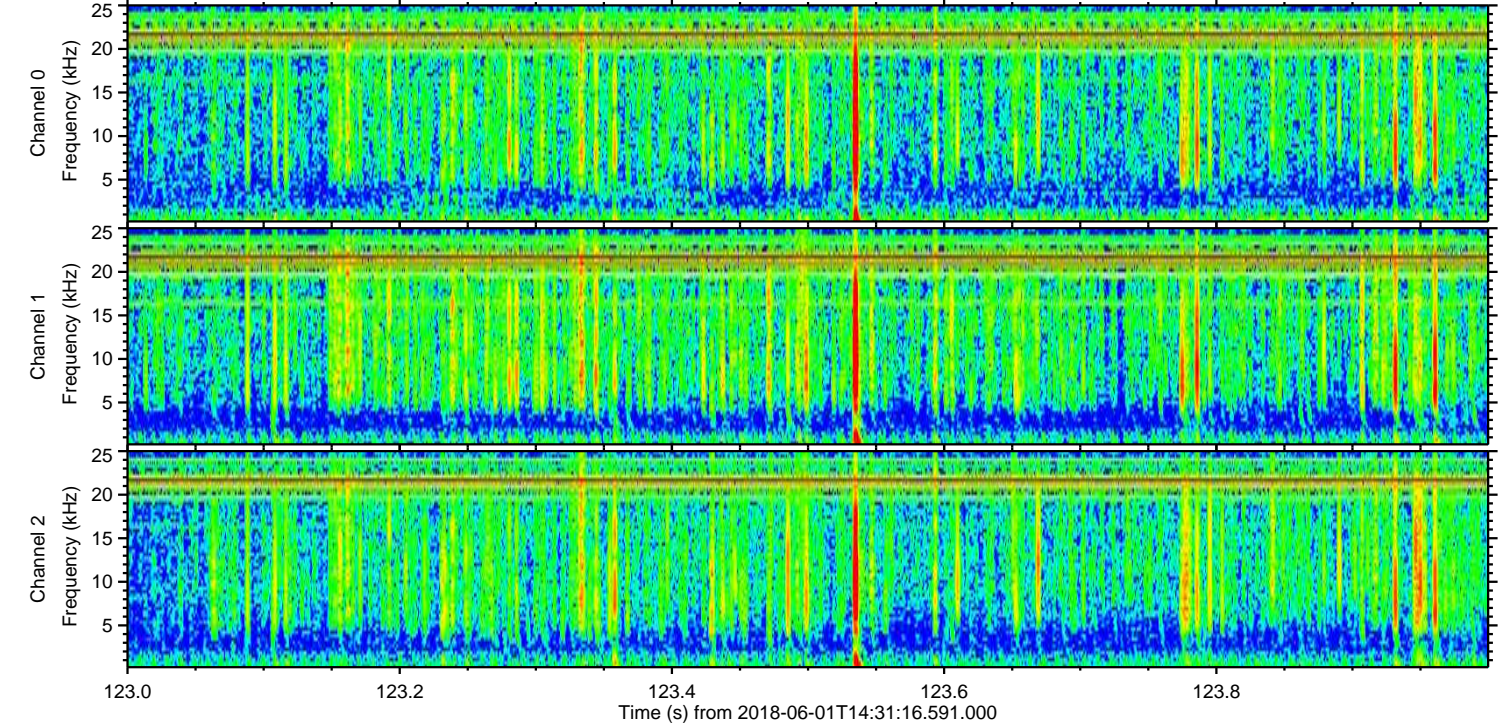
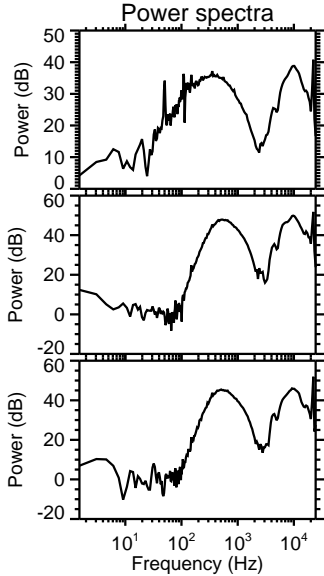
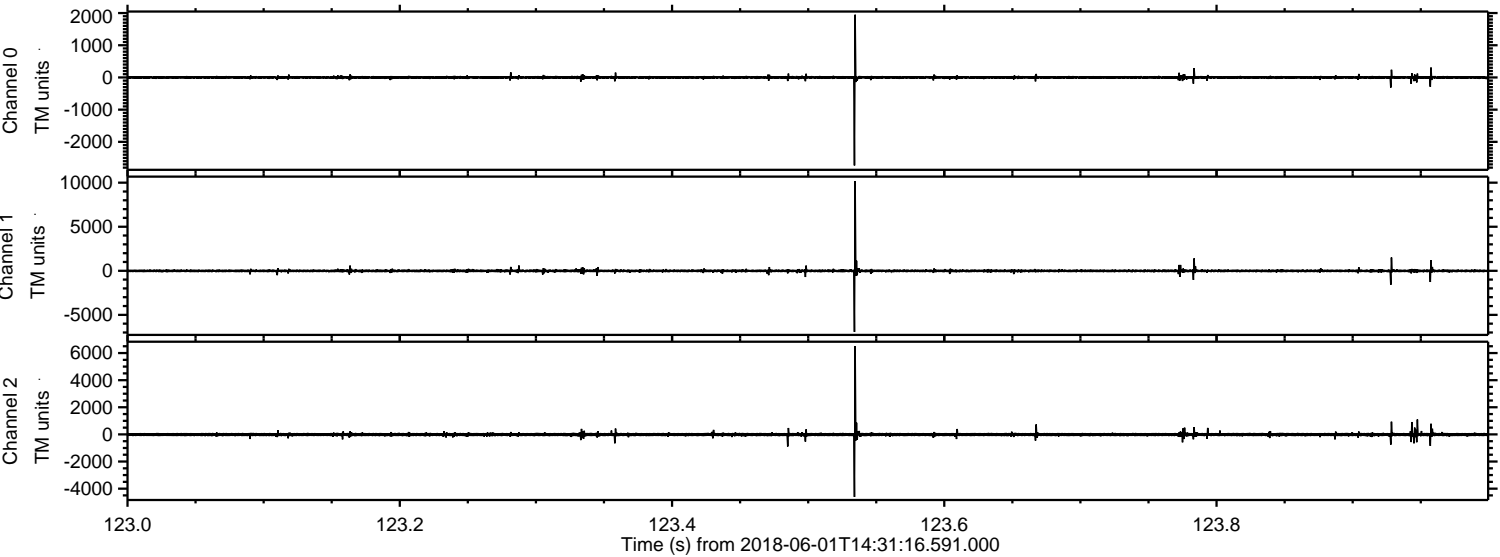


Processed Fri Jun 1 16:39:30 2018 by ELM ver.2012-10-06 from 001__elm20180601_143115__dat00.bin



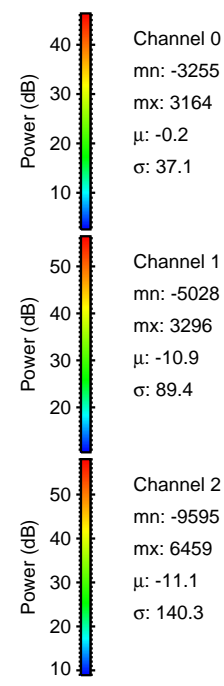
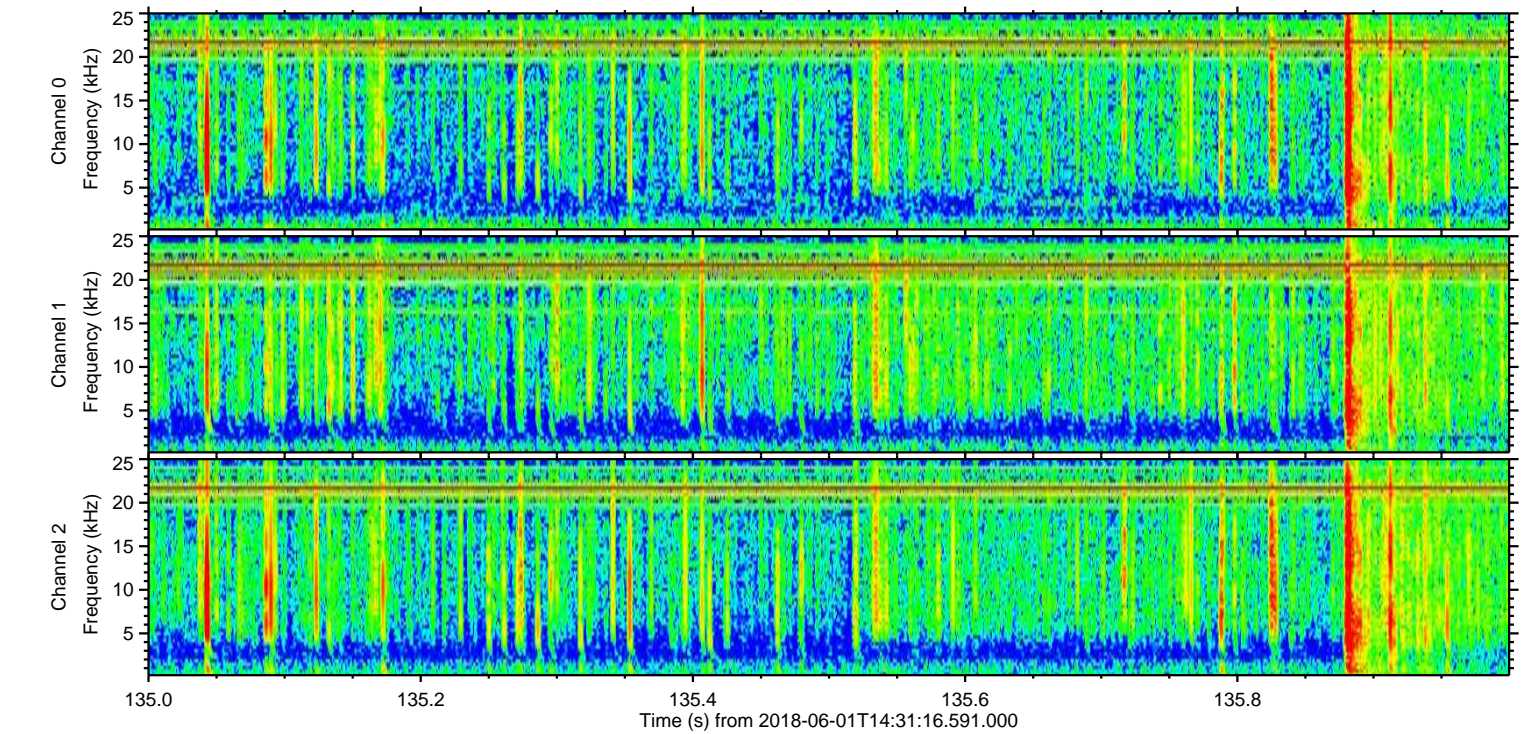
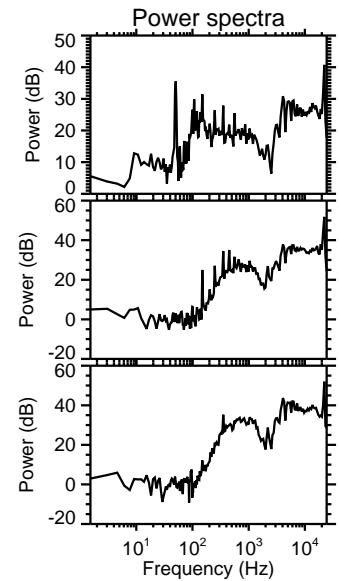
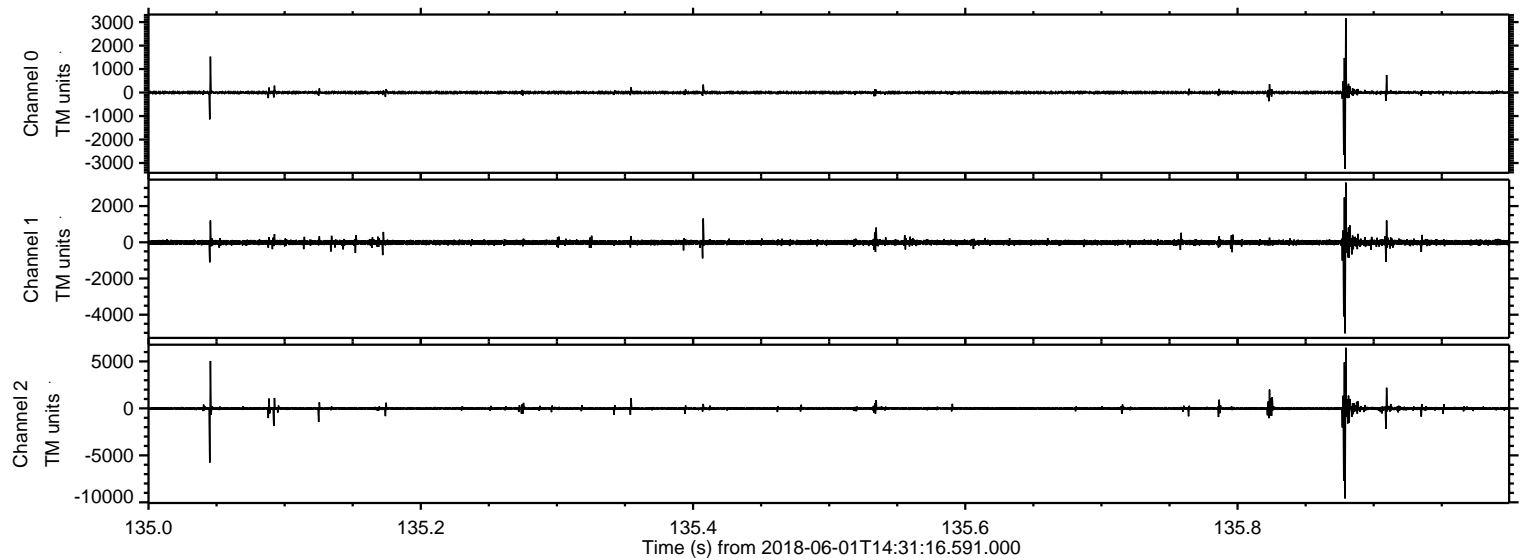
ELMAVAN 3D WAVEFORMS (Measured data sampled at 50 kHz) 51000 packets of 144 samples from 2018-06-01T14:31:16.591.000. Part 124/147

Processed Fri Jun 1 16:39:31 2018 by ELM ver.2012-10-06 from 001__elm20180601_143115__dat00.bin



ELMAVAN 3D WAVEFORMS (Measured data sampled at 50 kHz) 51000 packets of 144 samples from 2018-06-01T14:31:16.591.000. Part 136/147

Processed Fri Jun 1 16:39:32 2018 by ELM ver.2012-10-06 from 001__elm20180601_143115__dat00.bin



Channel 0
mn: -3255
mx: 3164
 μ : -0.2
 σ : 37.1

Channel 1
mn: -5028
mx: 3296
 μ : -10.9
 σ : 89.4

Channel 2
mn: -9595
mx: 6459
 μ : -11.1
 σ : 140.3

Processed Fri Jun 1 16:39:32 2018 by ELM ver.2012-10-06 from 001__elm20180601_143115__dat00.bin

