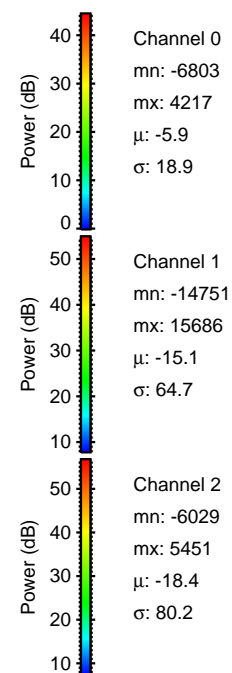
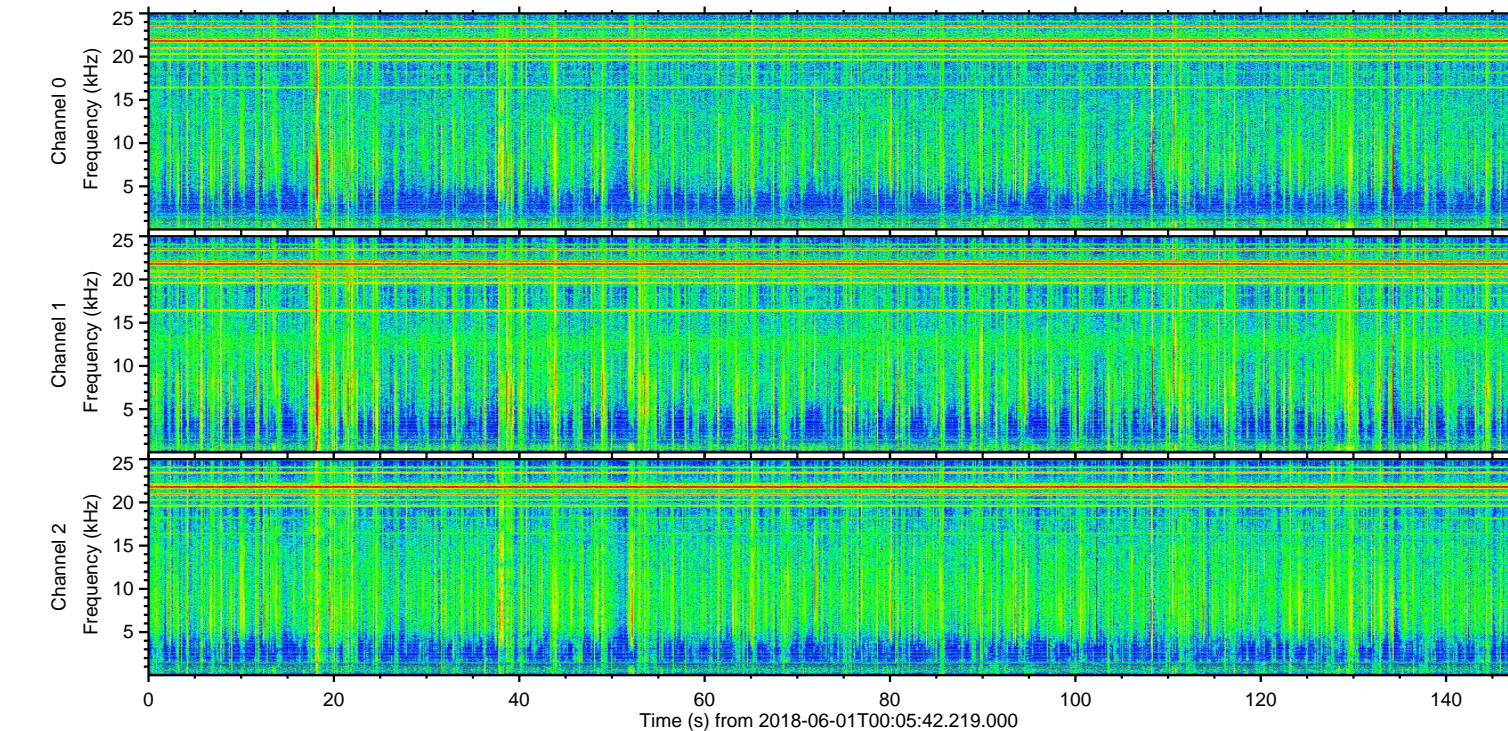
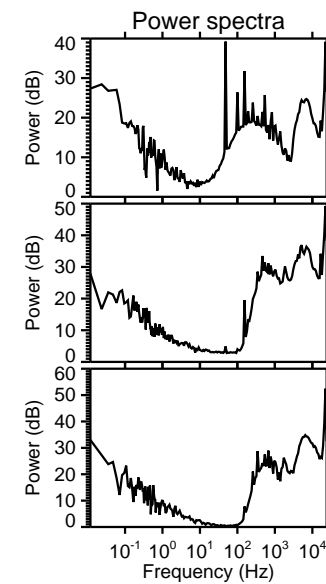
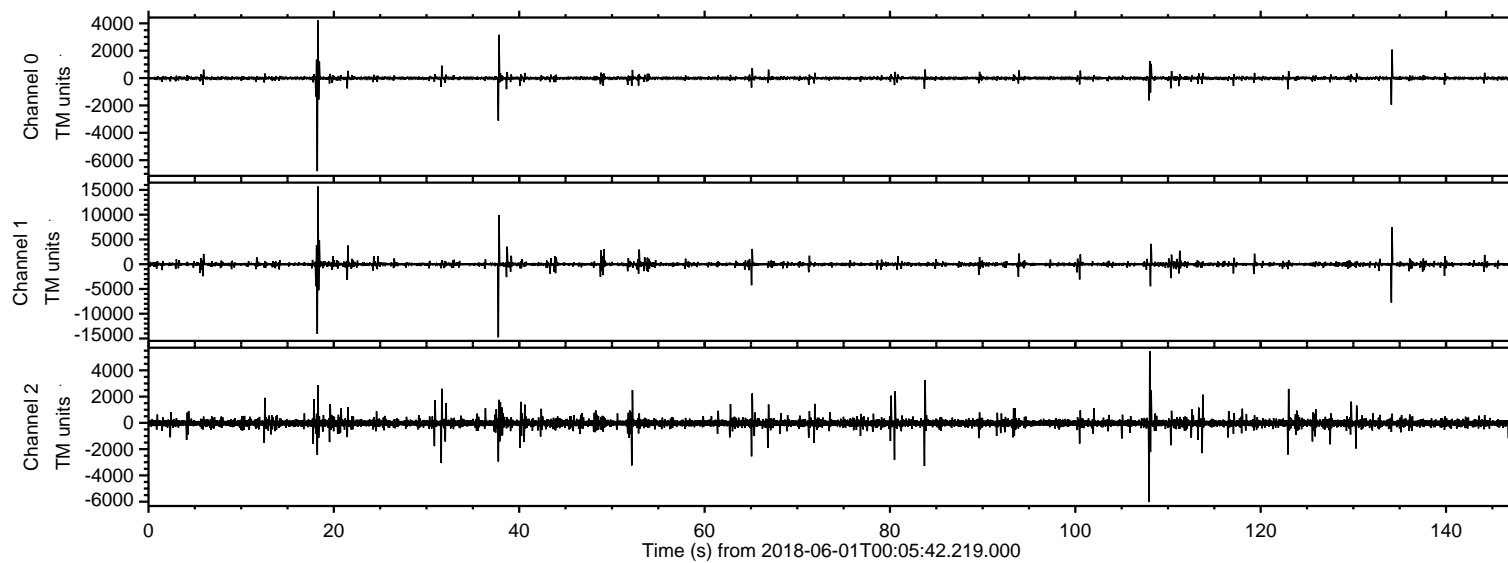
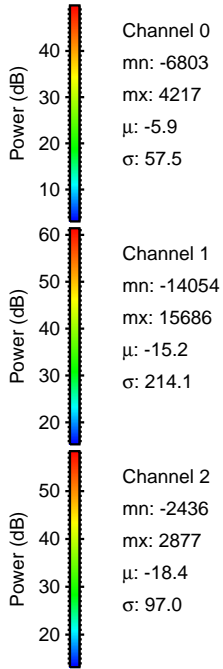
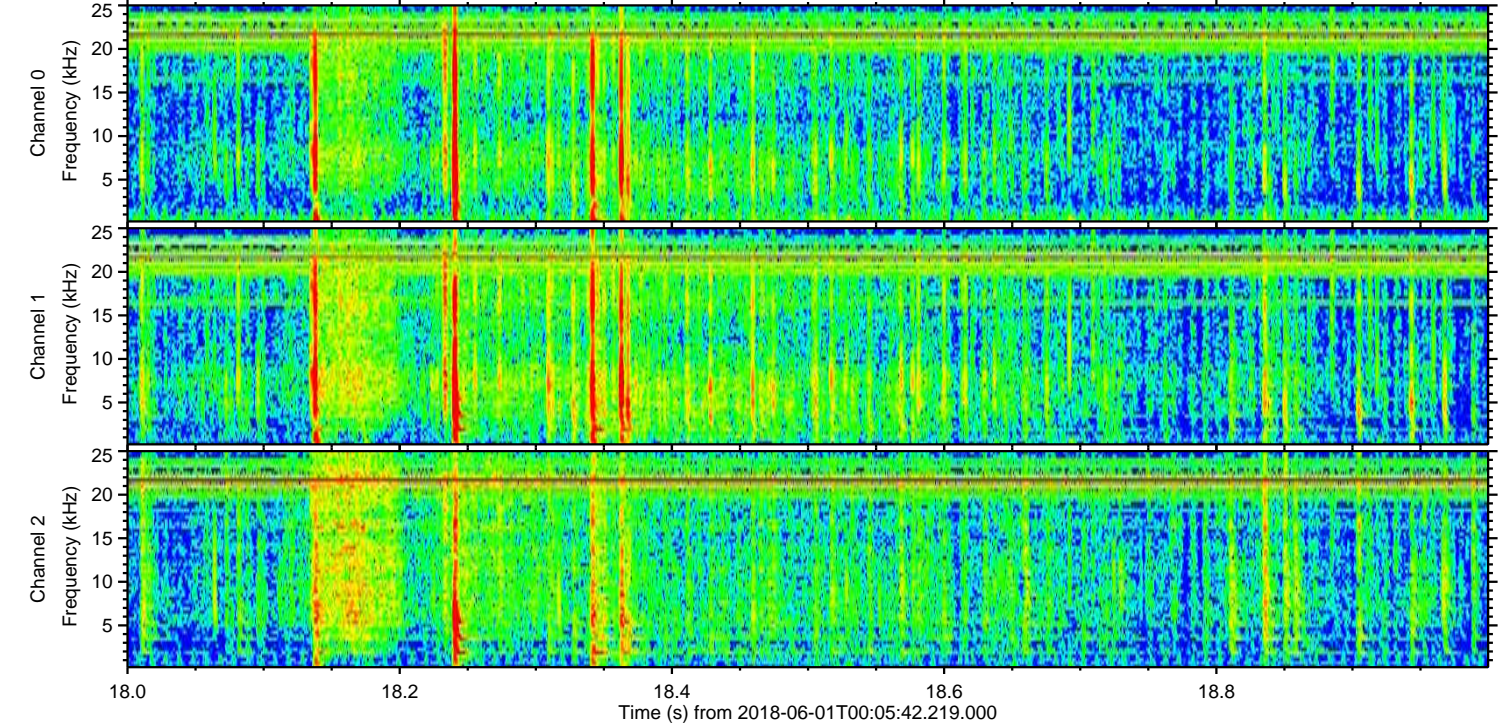
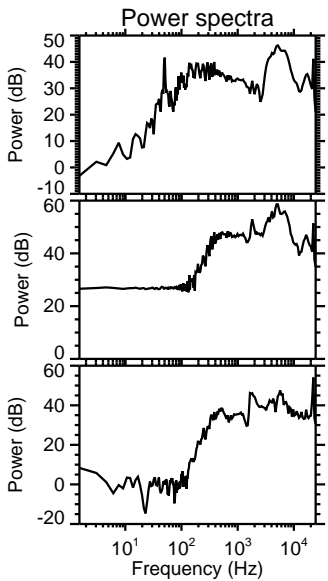
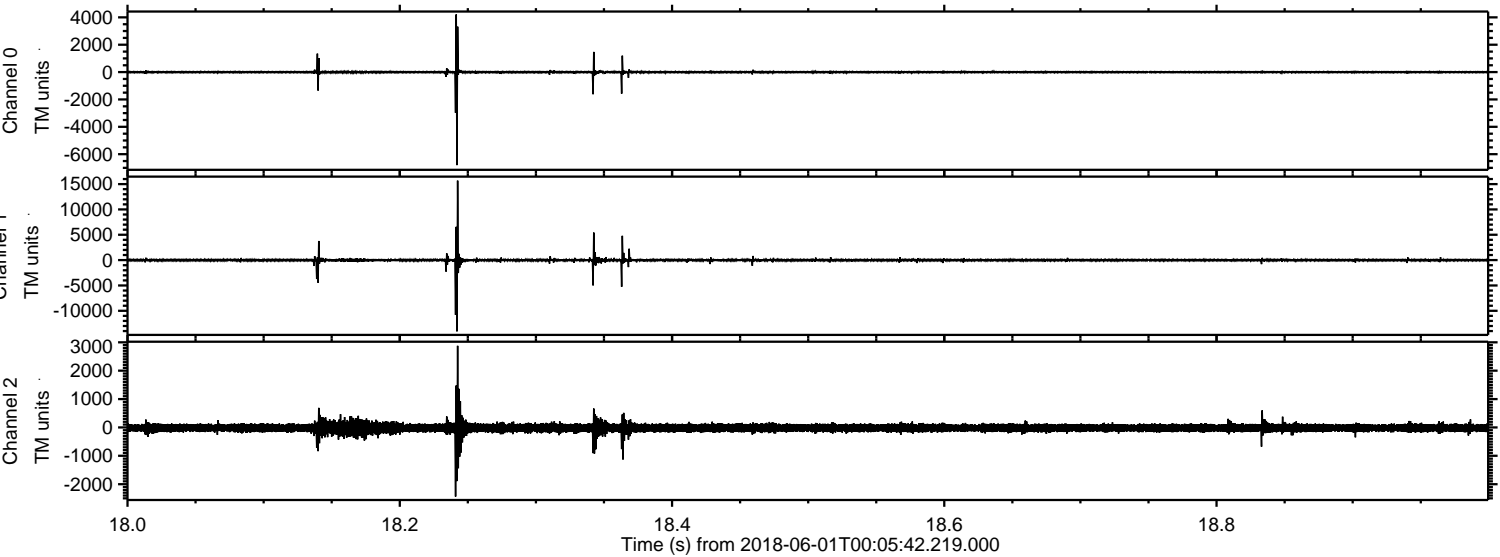


ELMAVAN 3D WAVEFORMS (Measured data sampled at 50 kHz) 51000 packets of 144 samples from 2018-06-01T00:05:42.219.000.

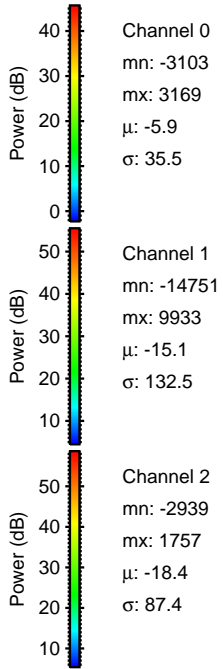
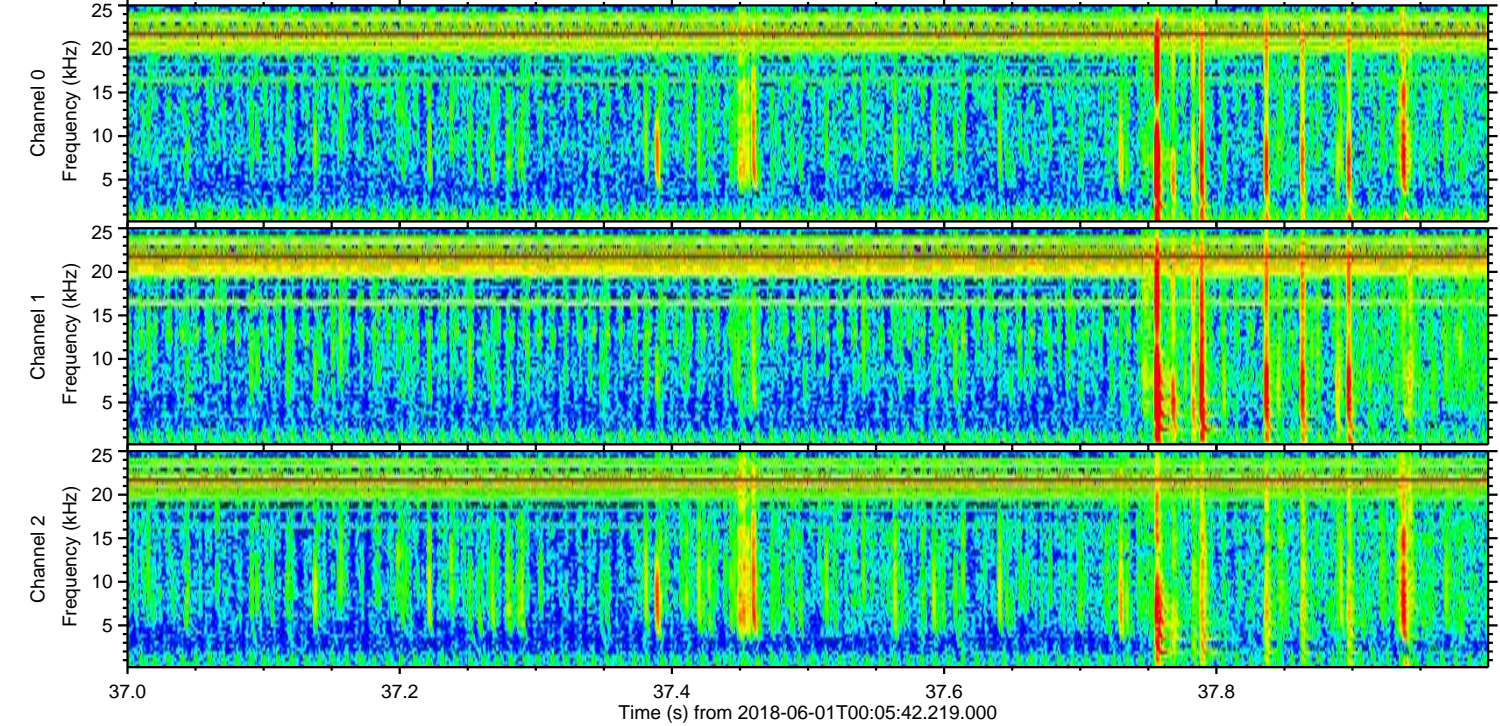
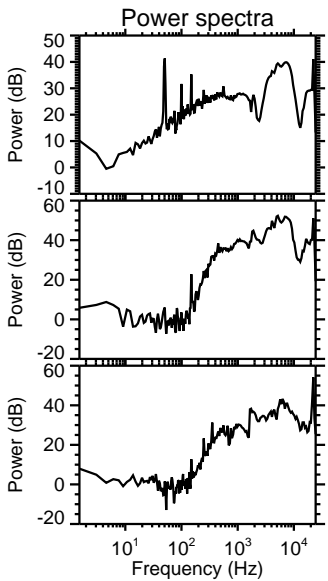
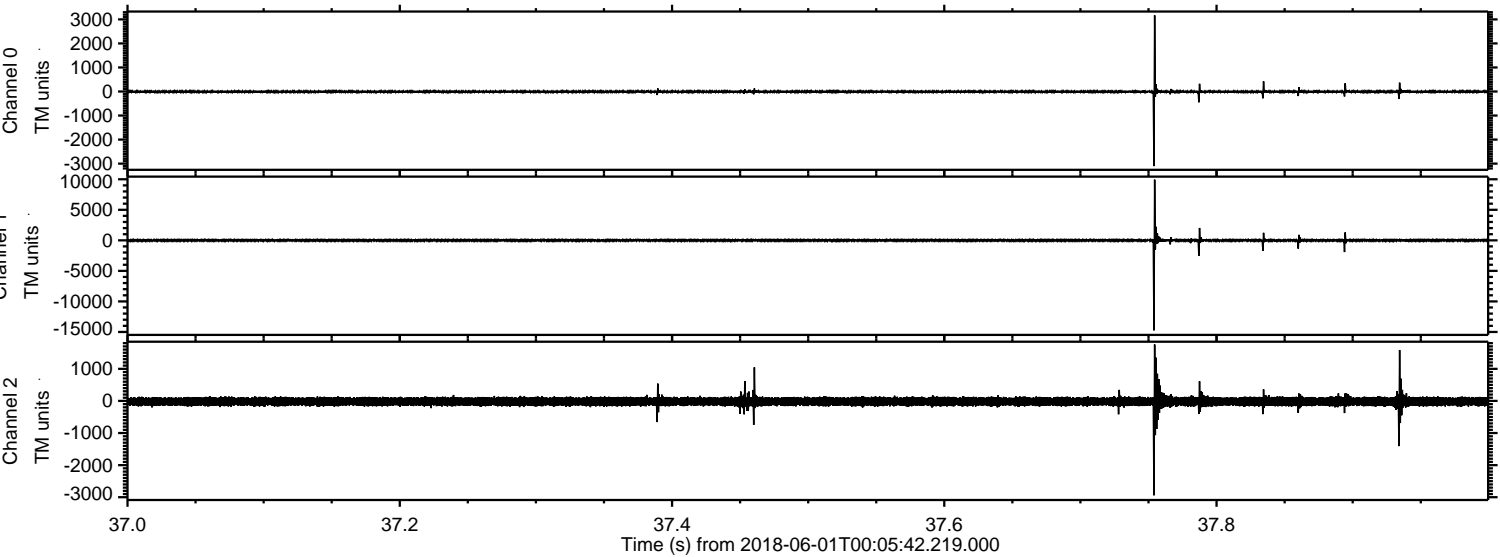
Processed Fri Jun 1 02:13:59 2018 by ELM ver.2012-10-06 from 001__elm20180601_000541__dat00.bin



Processed Fri Jun 1 02:14:05 2018 by ELM ver.2012-10-06 from 001__elm20180601_000541__dat00.bin

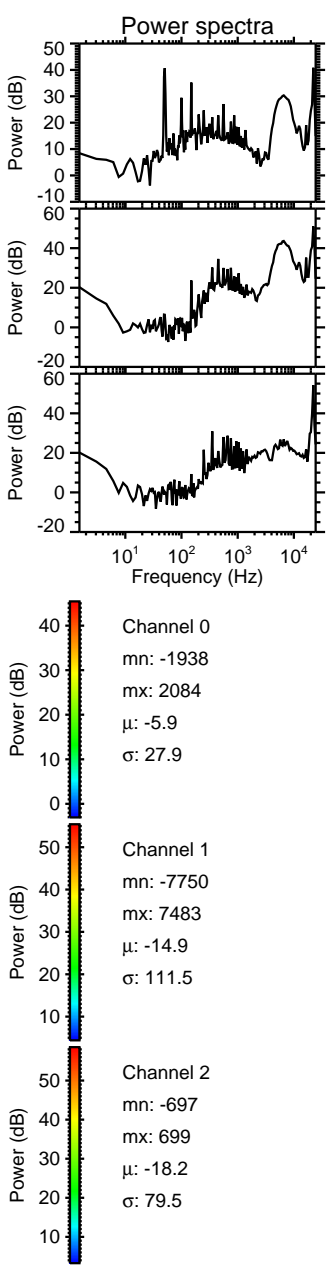
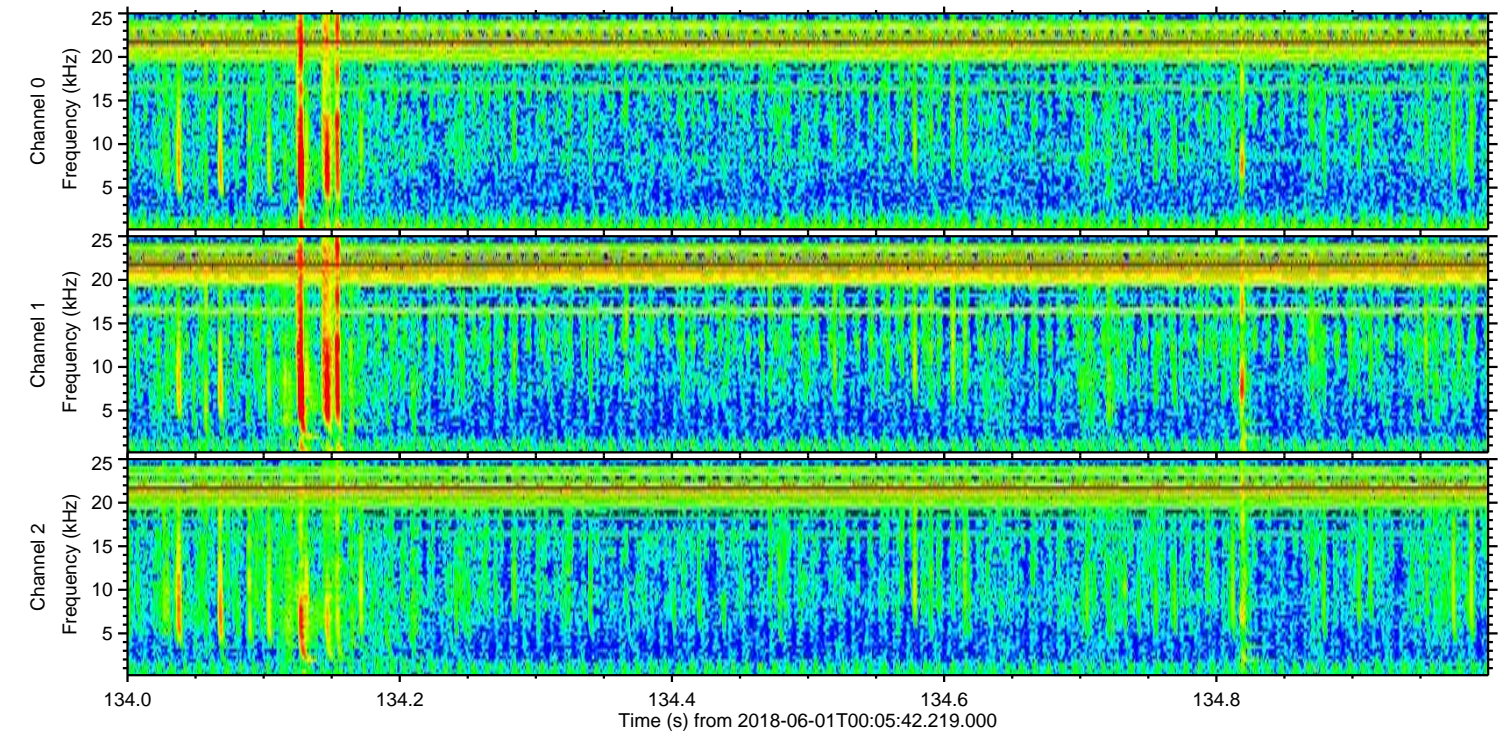
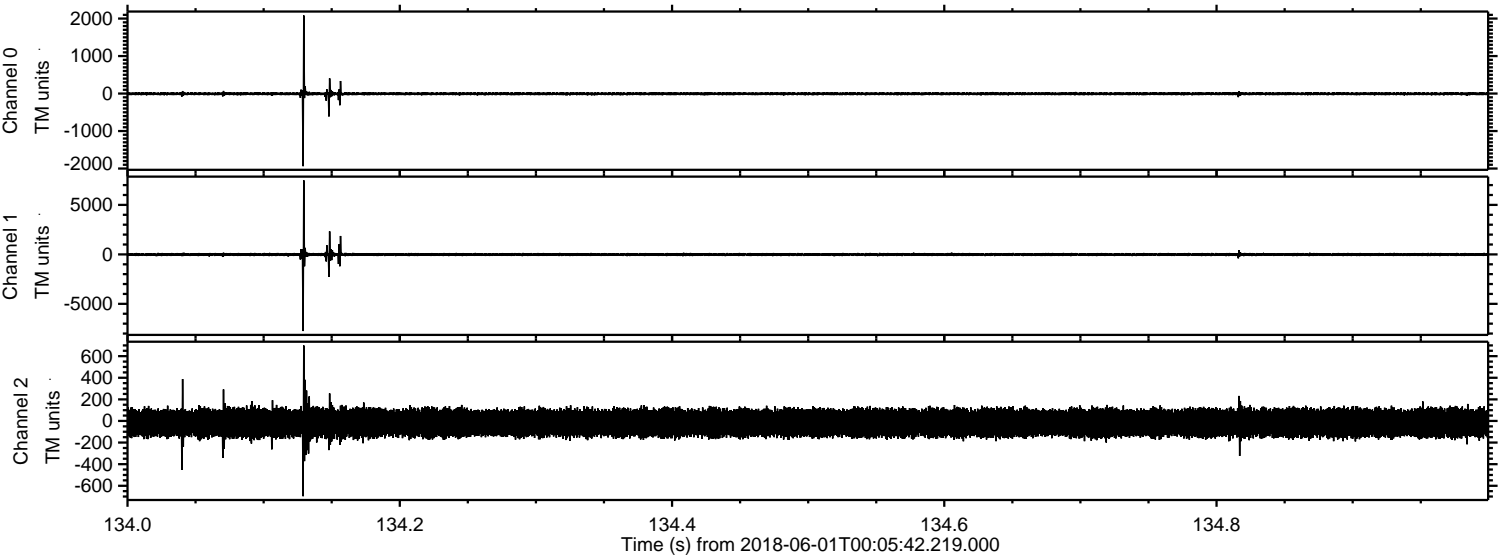


Processed Fri Jun 1 02:14:05 2018 by ELM ver.2012-10-06 from 001__elm20180601_000541__dat00.bin



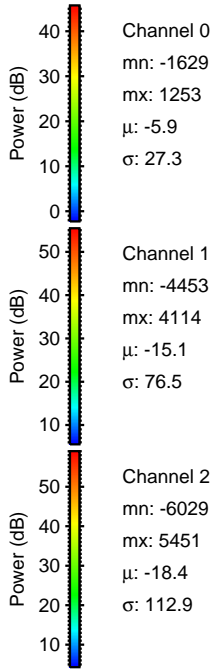
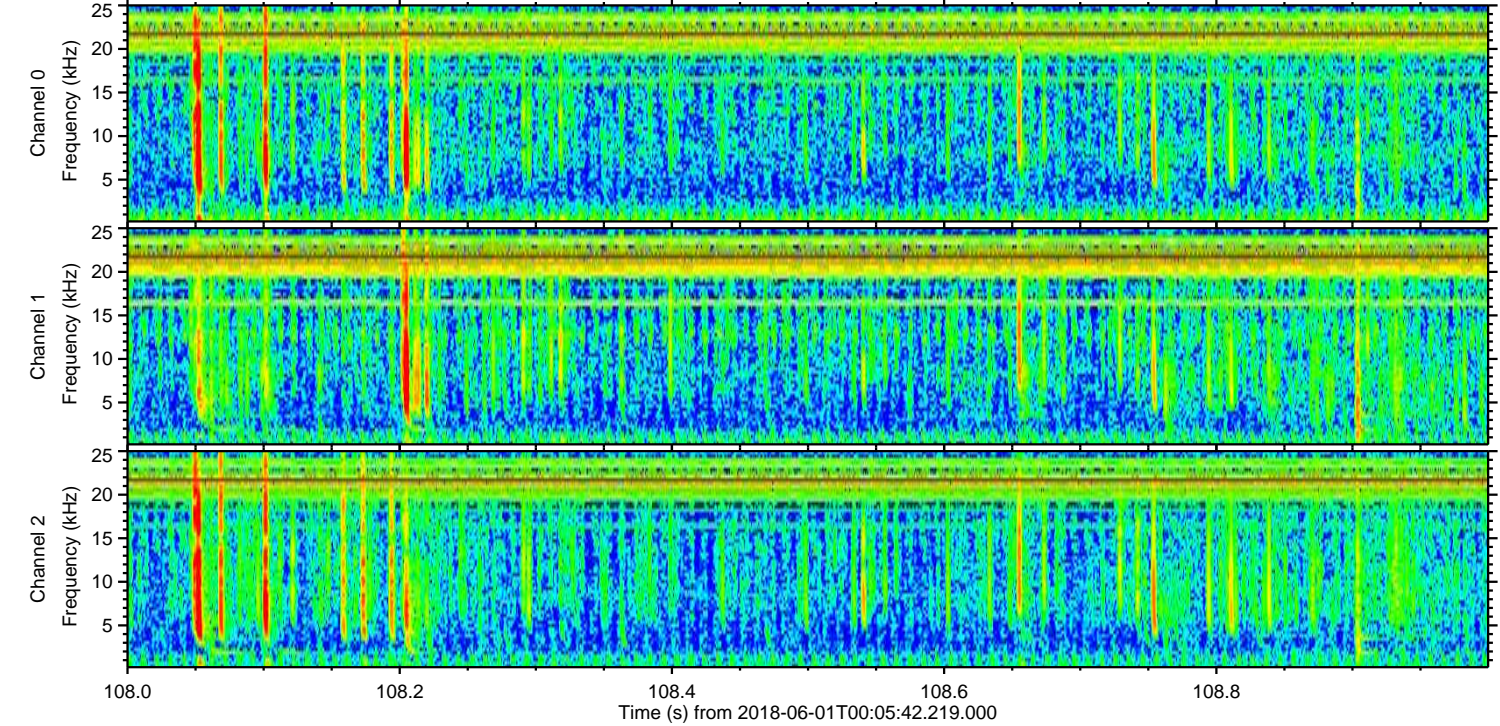
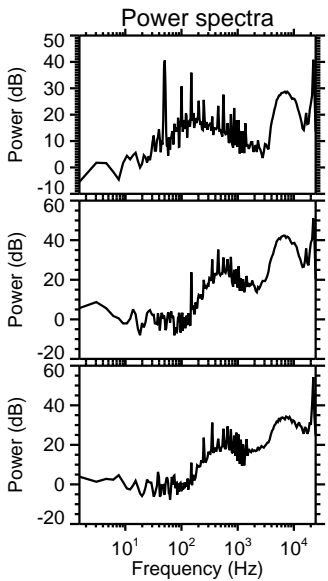
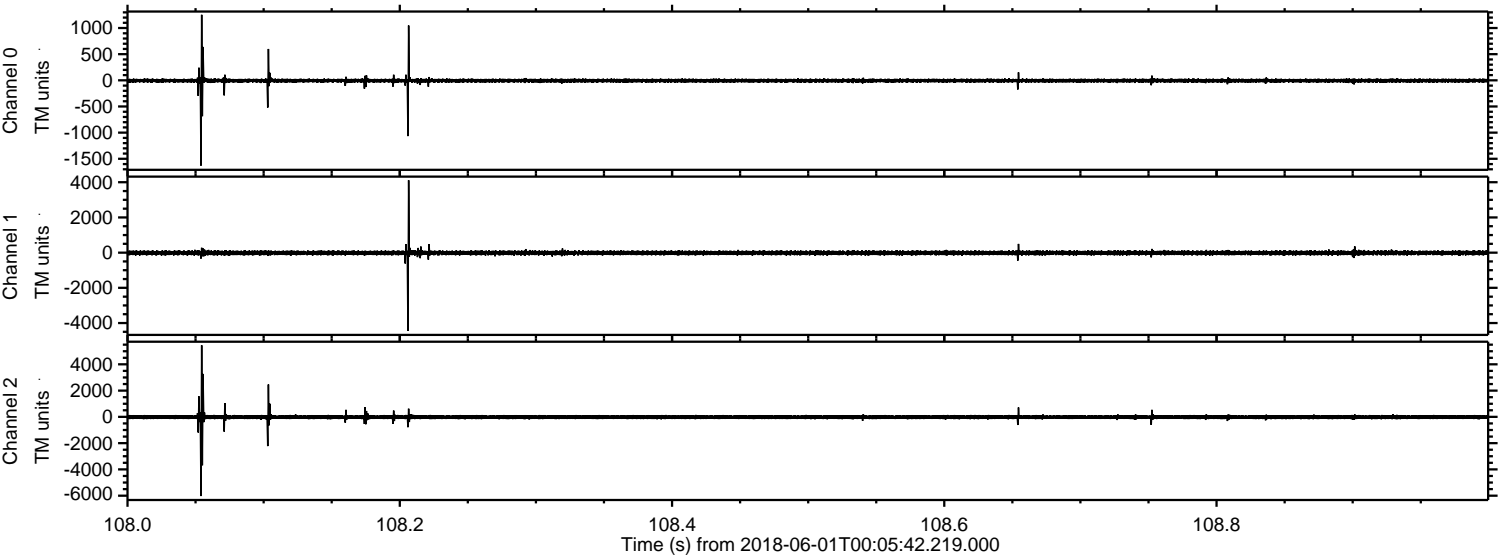
ELMAVAN 3D WAVEFORMS (Measured data sampled at 50 kHz) 51000 packets of 144 samples from 2018-06-01T00:05:42.219.000. Part 135/147

Processed Fri Jun 1 02:14:06 2018 by ELM ver.2012-10-06 from 001__elm20180601_000541__dat00.bin

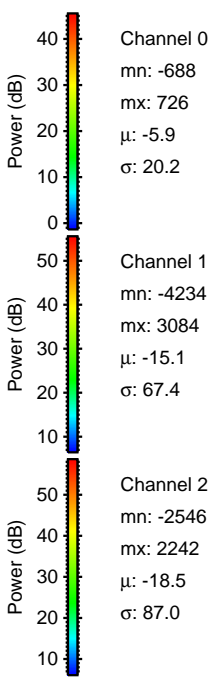
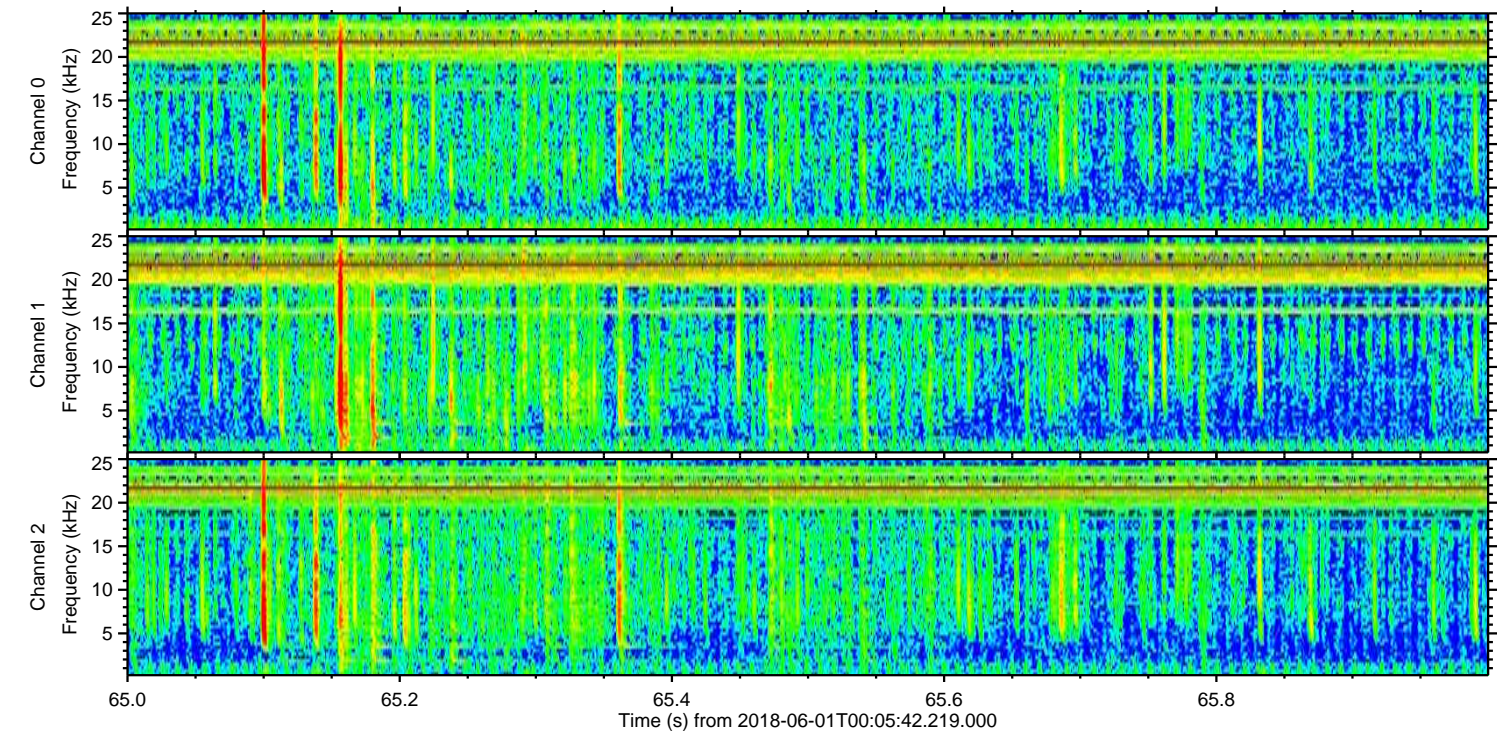
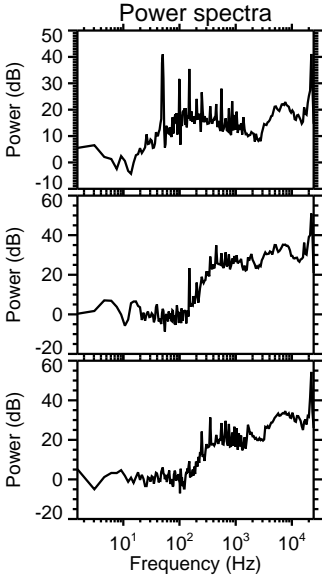
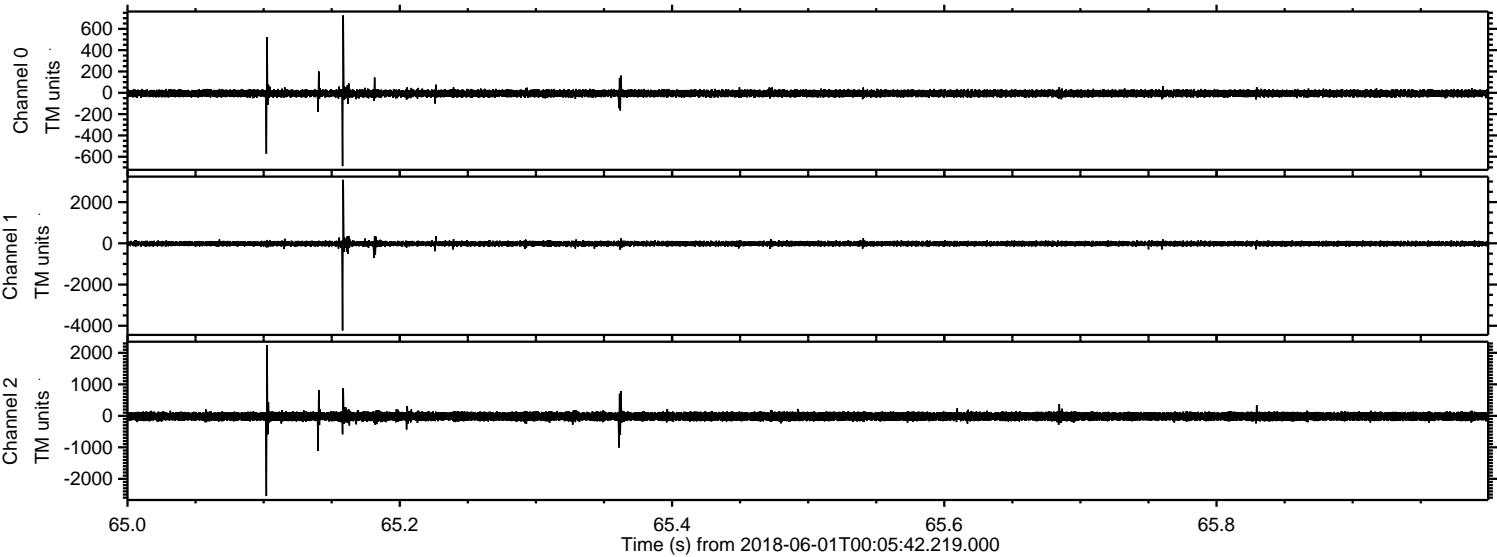


ELMAVAN 3D WAVEFORMS (Measured data sampled at 50 kHz) 51000 packets of 144 samples from 2018-06-01T00:05:42.219.000. Part 109/147

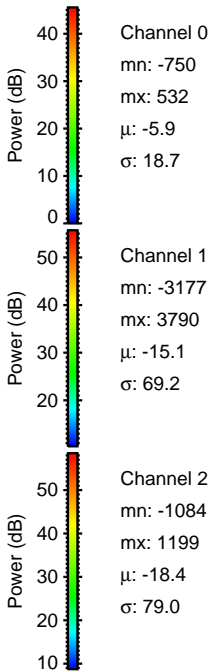
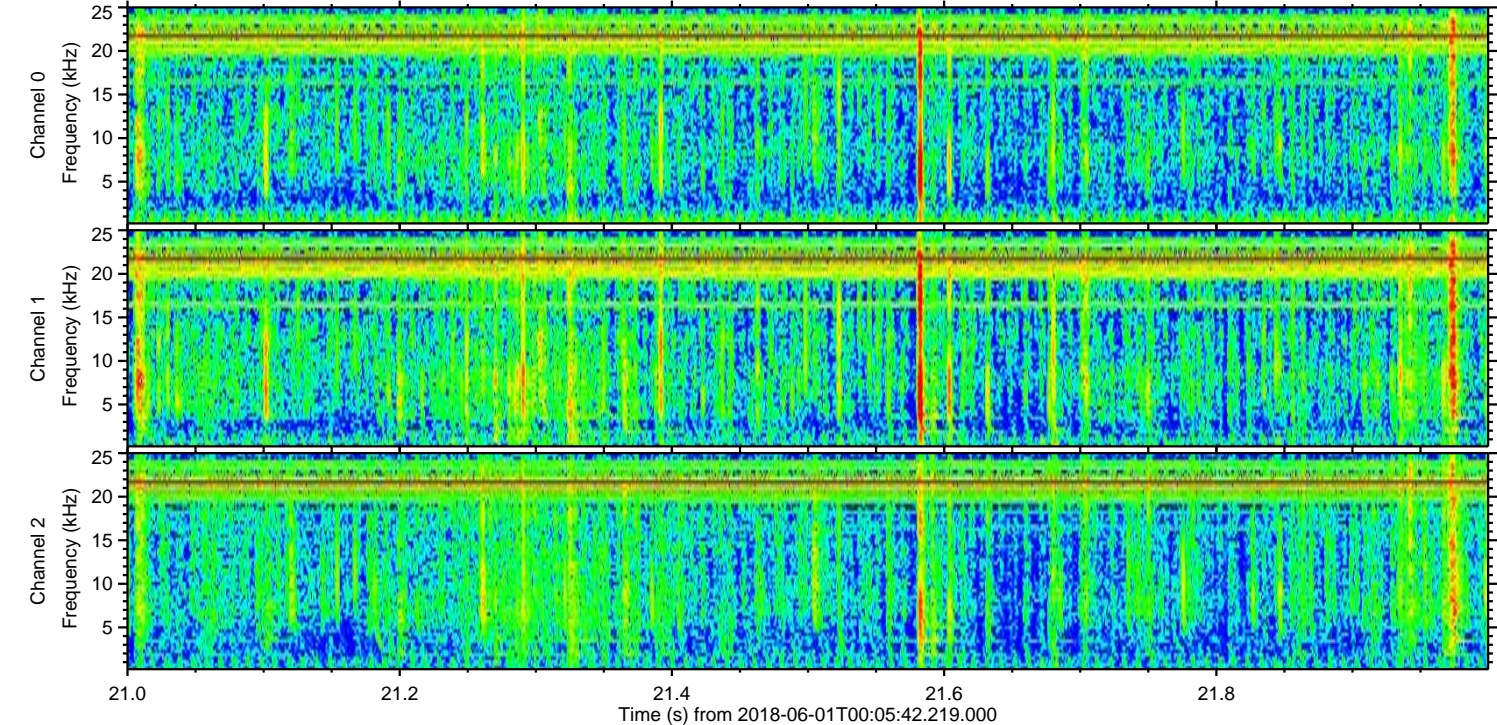
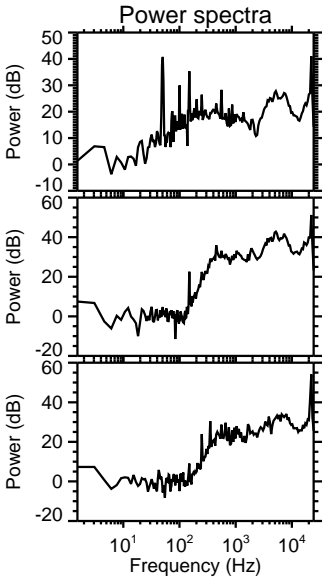
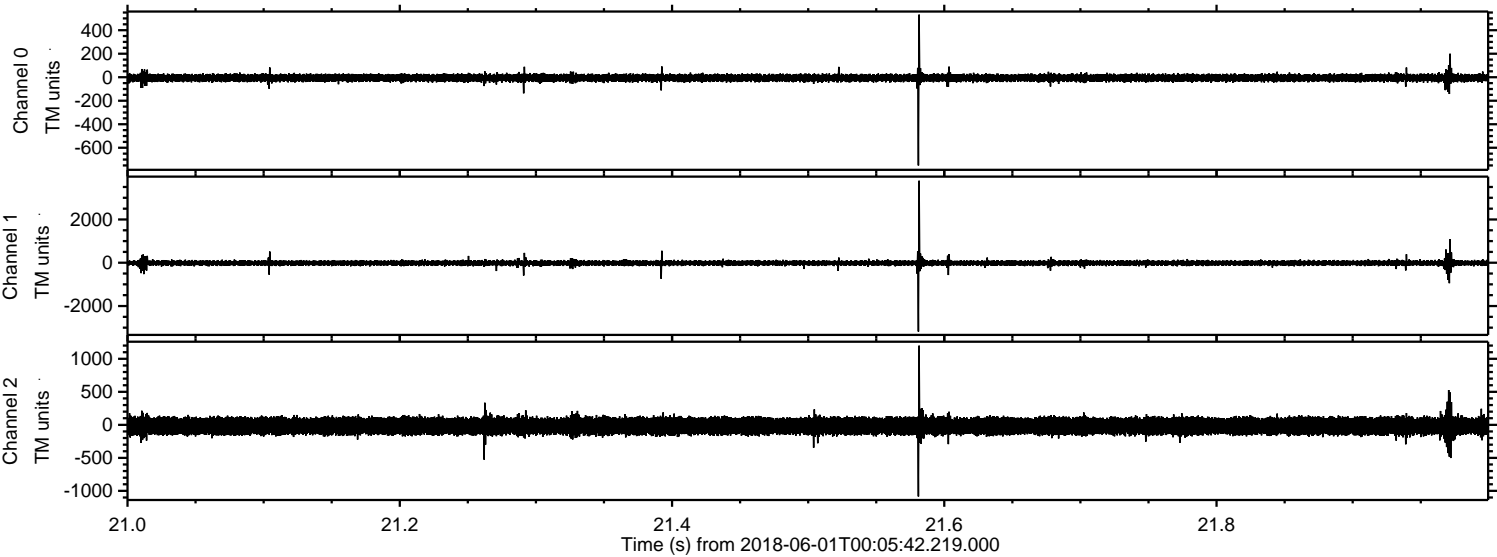
Processed Fri Jun 1 02:14:07 2018 by ELM ver.2012-10-06 from 001__elm20180601_000541__dat00.bin



Processed Fri Jun 1 02:14:07 2018 by ELM ver.2012-10-06 from 001__elm20180601_000541__dat00.bin



Processed Fri Jun 1 02:14:08 2018 by ELM ver.2012-10-06 from 001__elm20180601_000541__dat00.bin

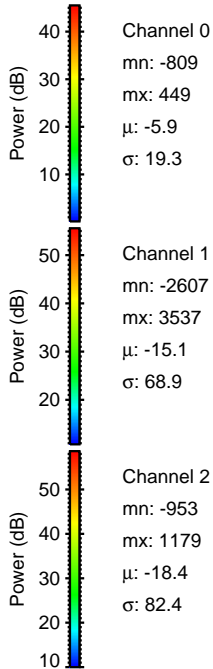
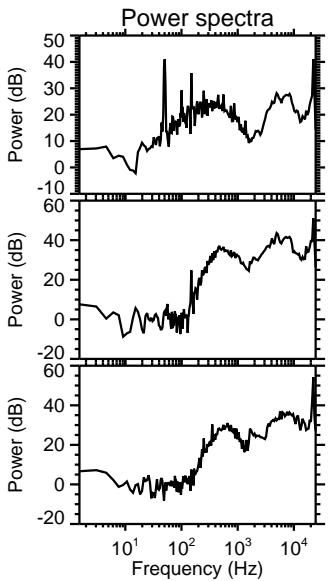
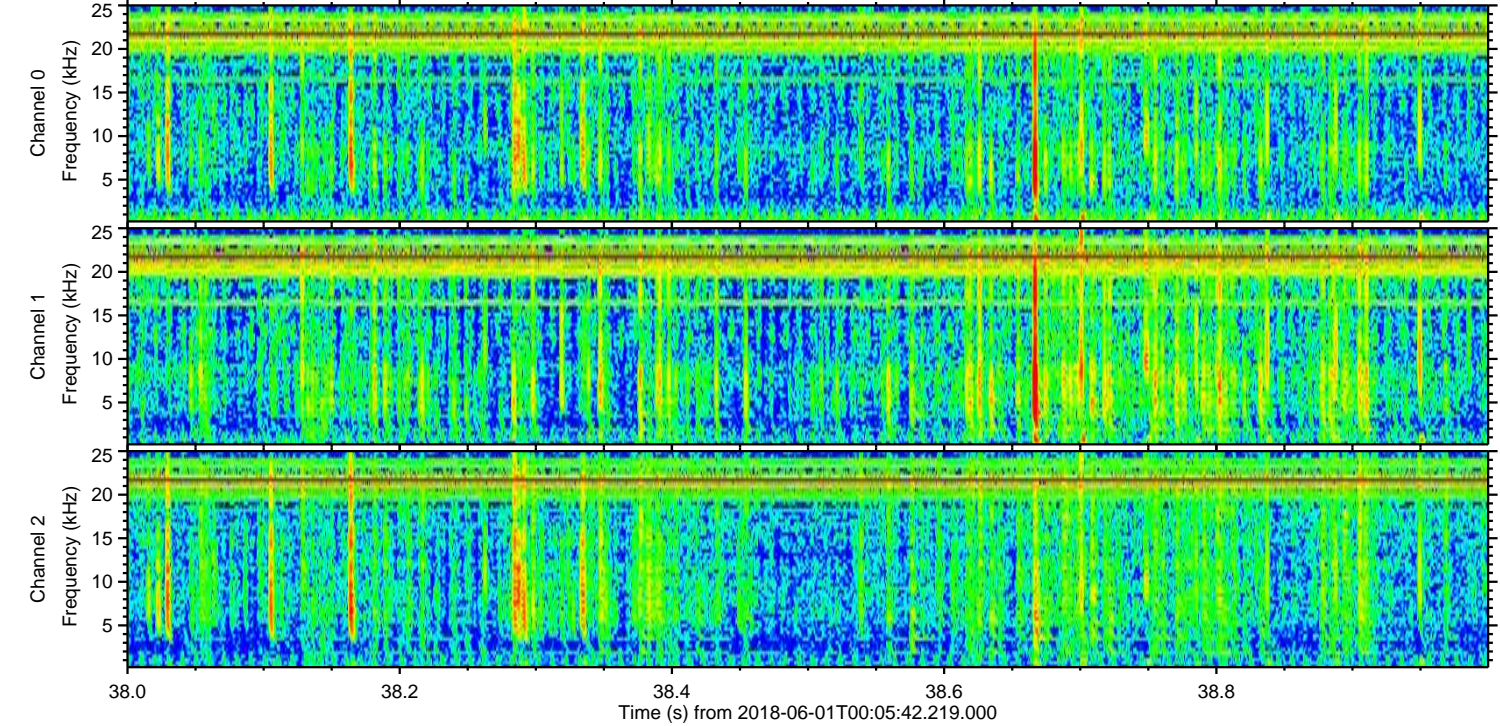
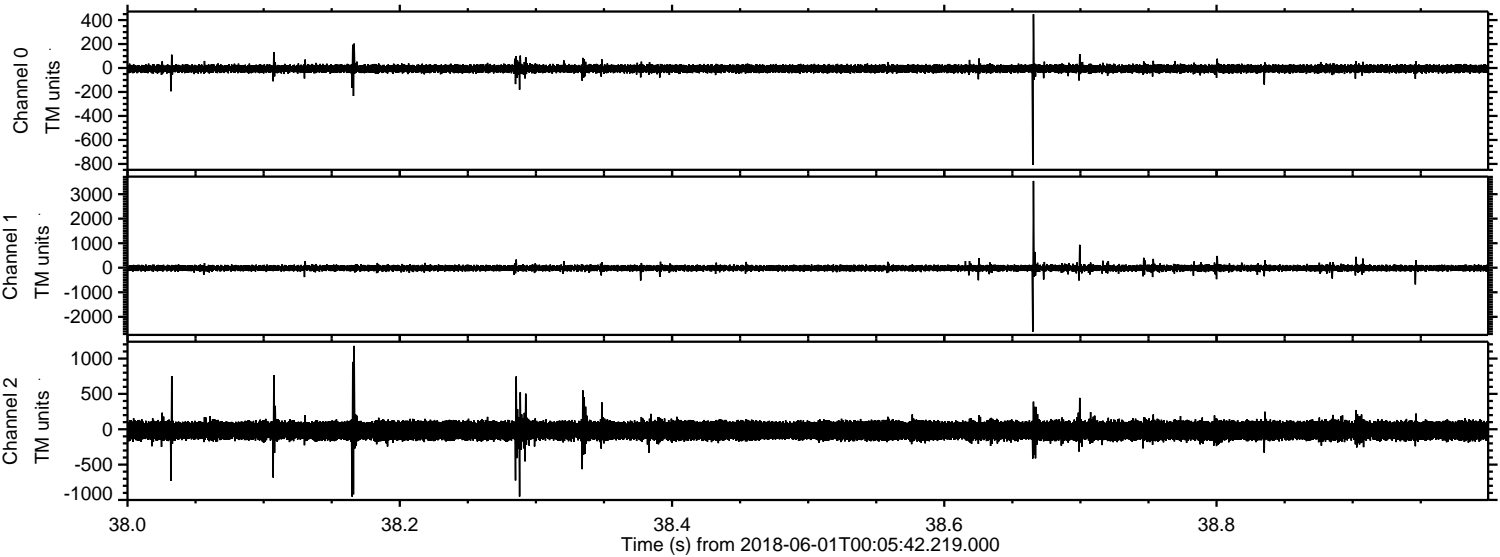


Channel 0
mn: -750
mx: 532
 μ : -5.9
 σ : 18.7

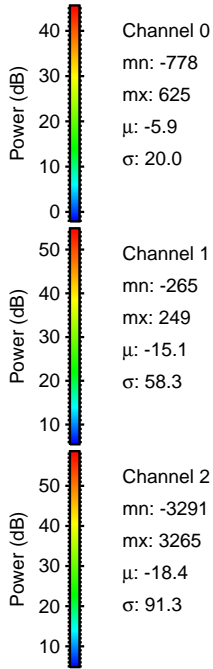
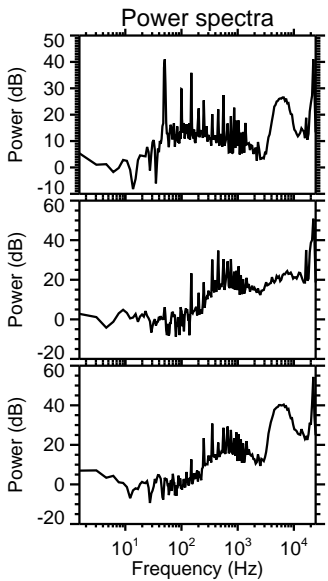
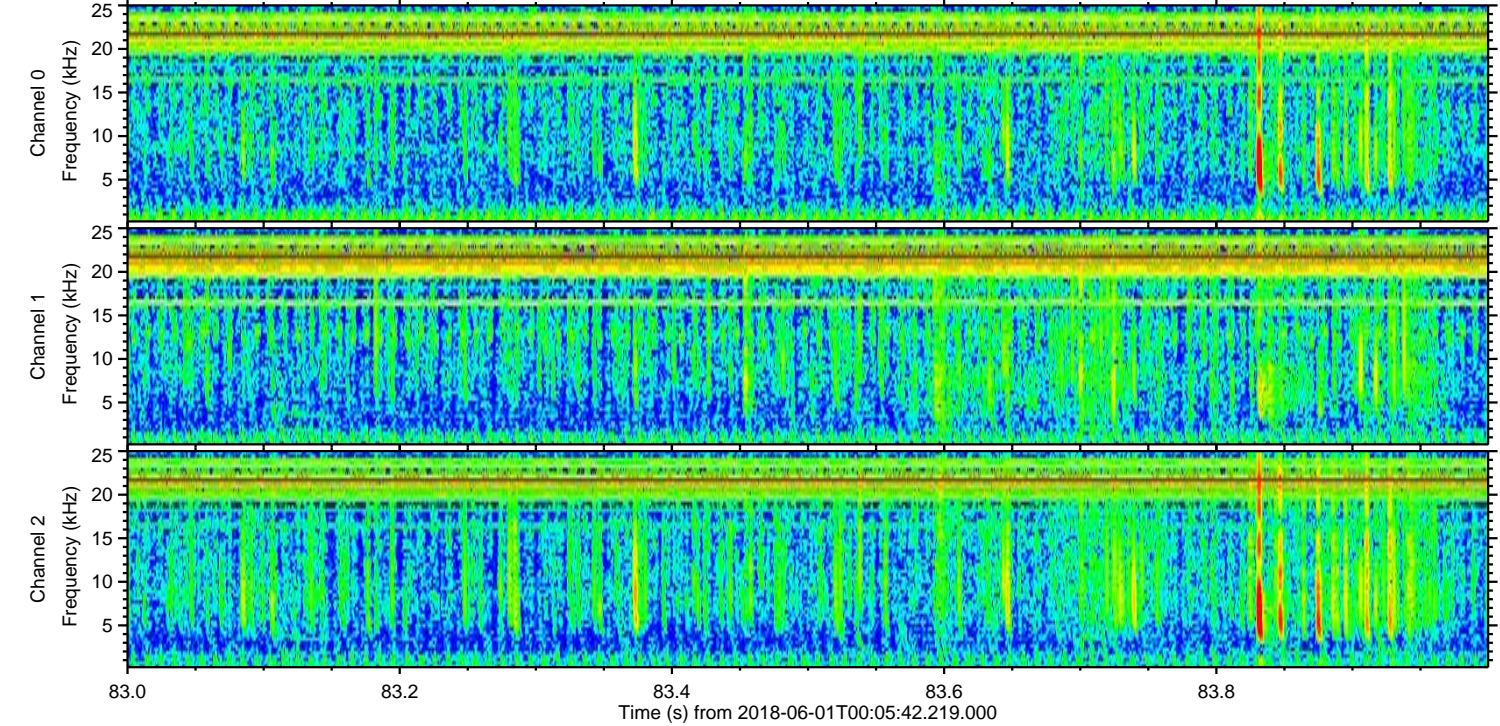
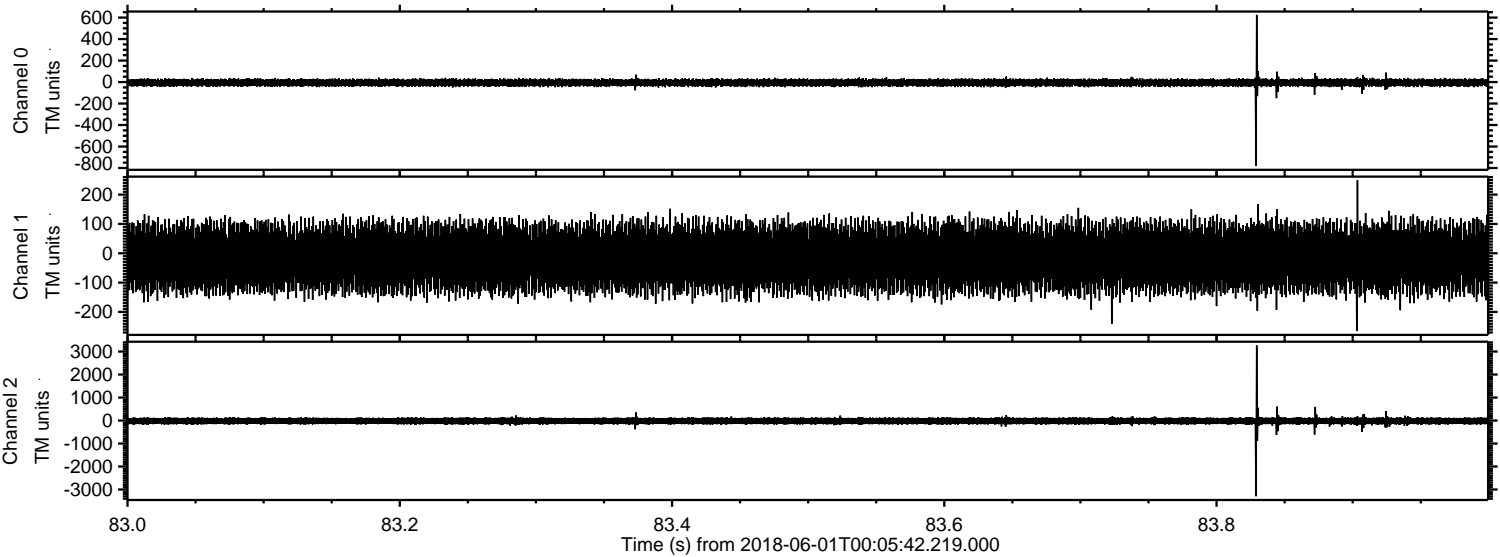
Channel 1
mn: -3177
mx: 3790
 μ : -15.1
 σ : 69.2

Channel 2
mn: -1084
mx: 1199
 μ : -18.4
 σ : 79.0

Processed Fri Jun 1 02:14:09 2018 by ELM ver.2012-10-06 from 001__elm20180601_000541__dat00.bin



Processed Fri Jun 1 02:14:09 2018 by ELM ver.2012-10-06 from 001__elm20180601_000541__dat00.bin



Channel 0
mn: -778
mx: 625
 μ : -5.9
 σ : 20.0

Channel 1
mn: -265
mx: 249
 μ : -15.1
 σ : 58.3

Channel 2
mn: -3291
mx: 3265
 μ : -18.4
 σ : 91.3

Processed Fri Jun 1 02:14:10 2018 by ELM ver.2012-10-06 from 001__elm20180601_000541__dat00.bin

