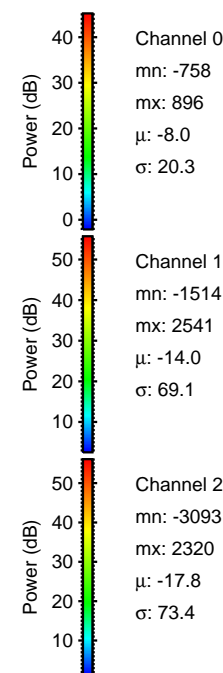
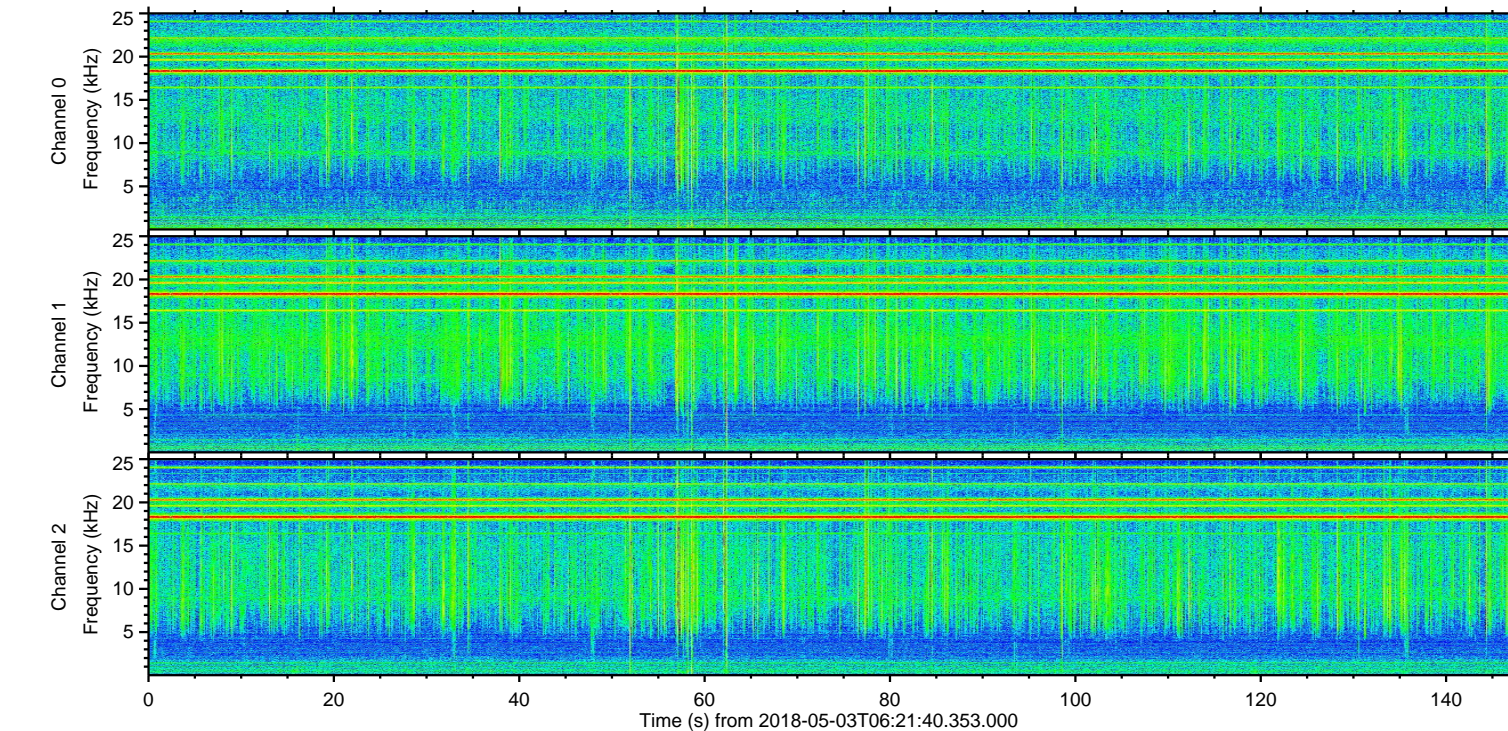
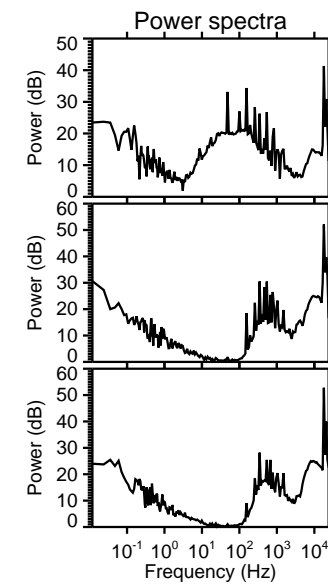
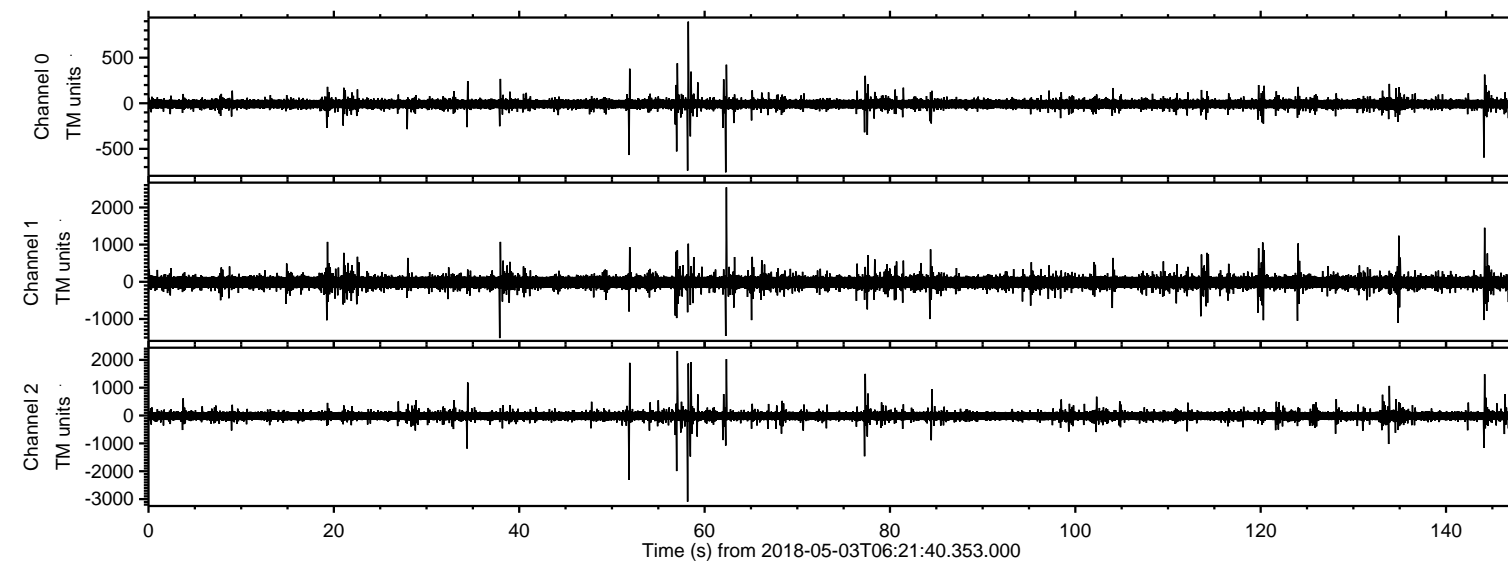


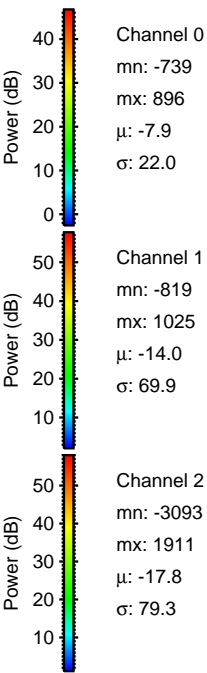
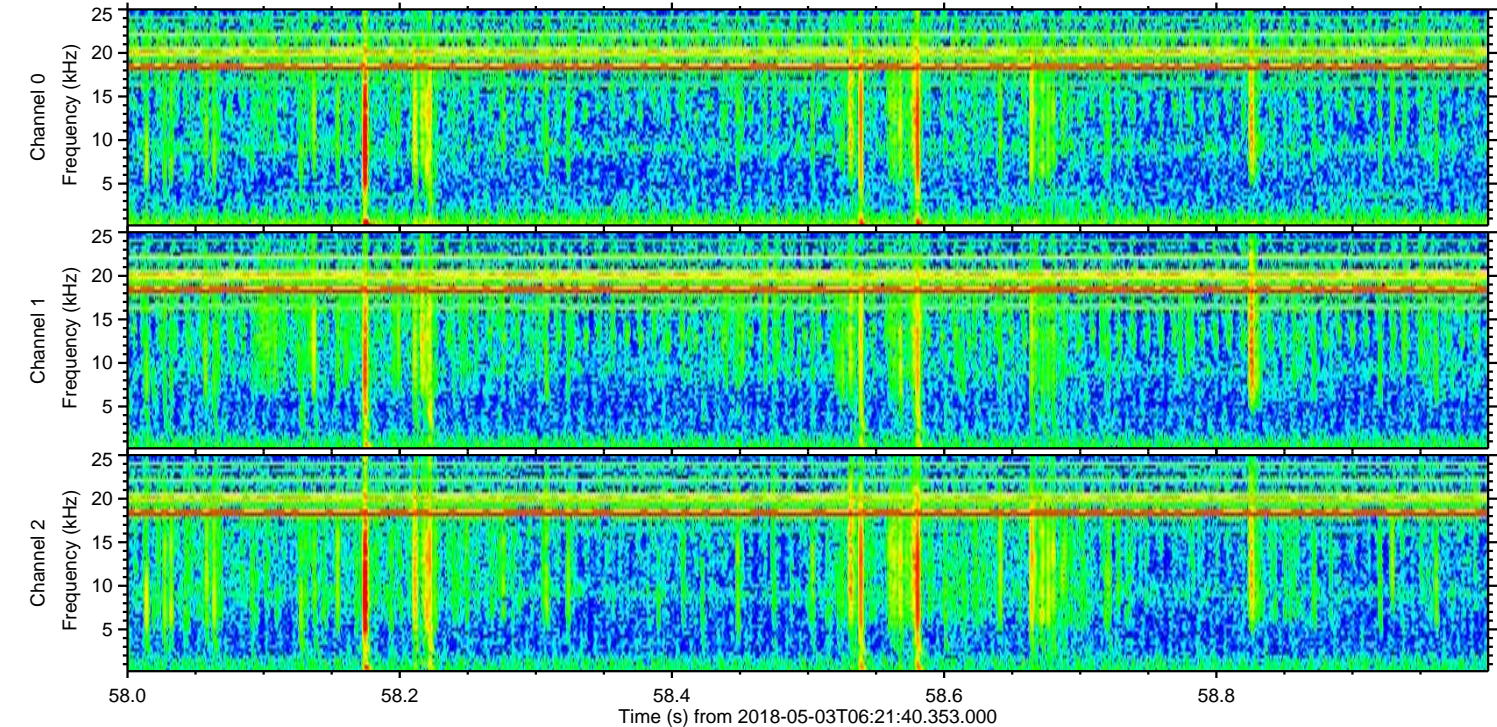
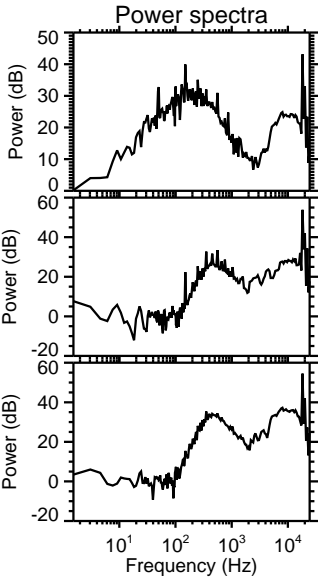
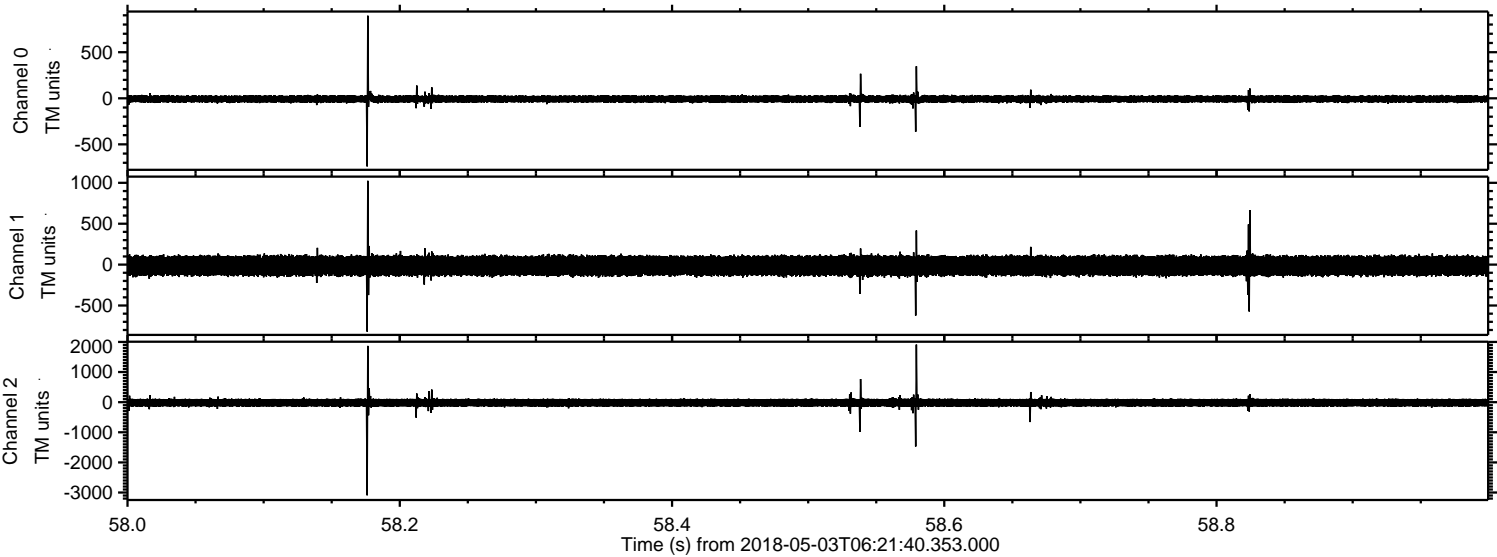
# ELMAVAN 3D WAVEFORMS (Measured data sampled at 50 kHz) 51000 packets of 144 samples from 2018-05-03T06:21:40.353.000.

Processed Thu May 3 08:29:17 2018 by ELM ver.2012-10-06 from 001\_\_elm20180503\_062139\_\_dat00.bin



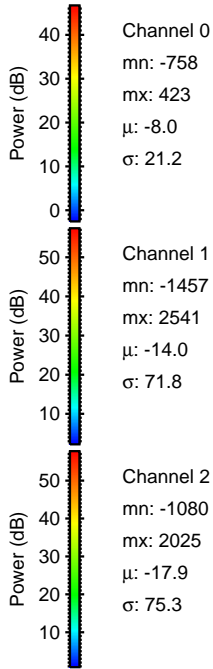
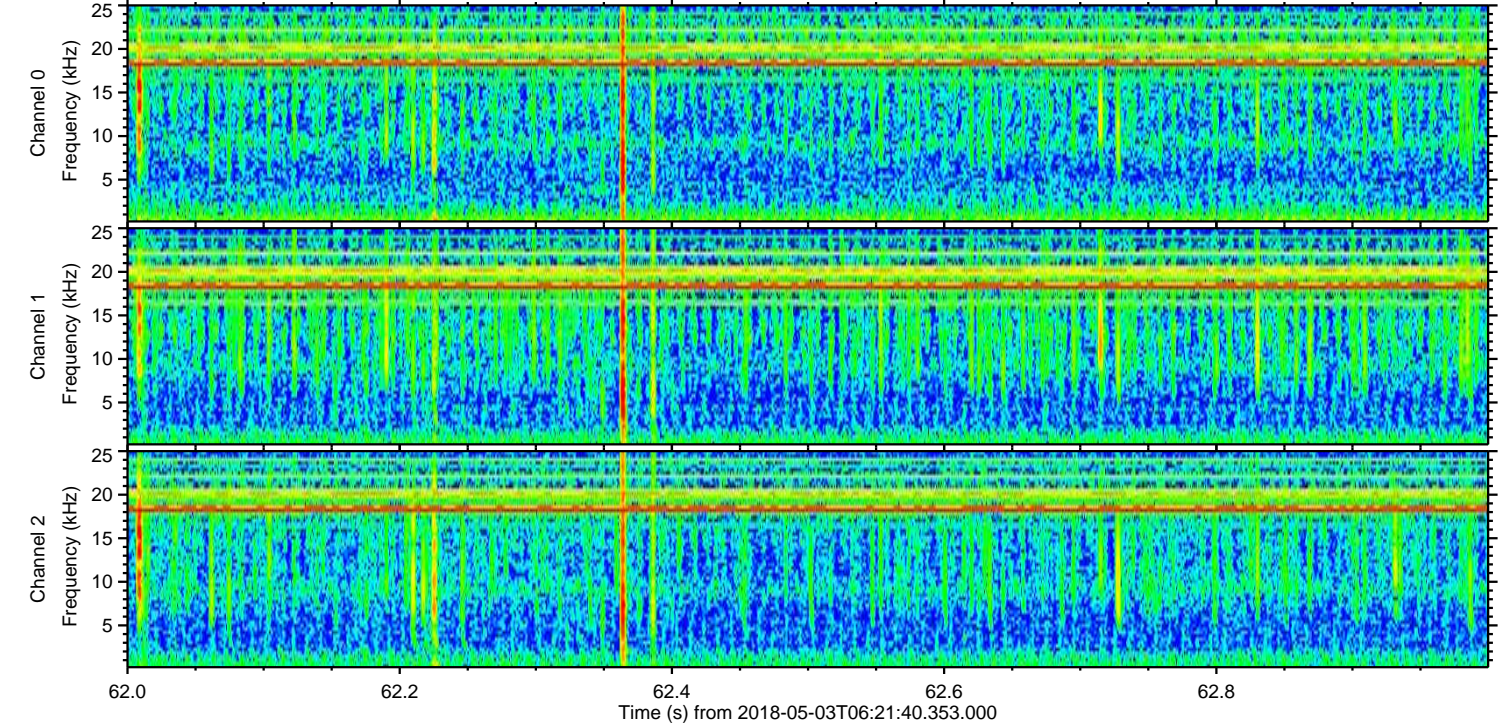
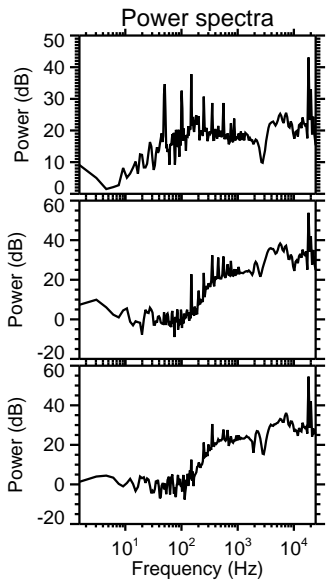
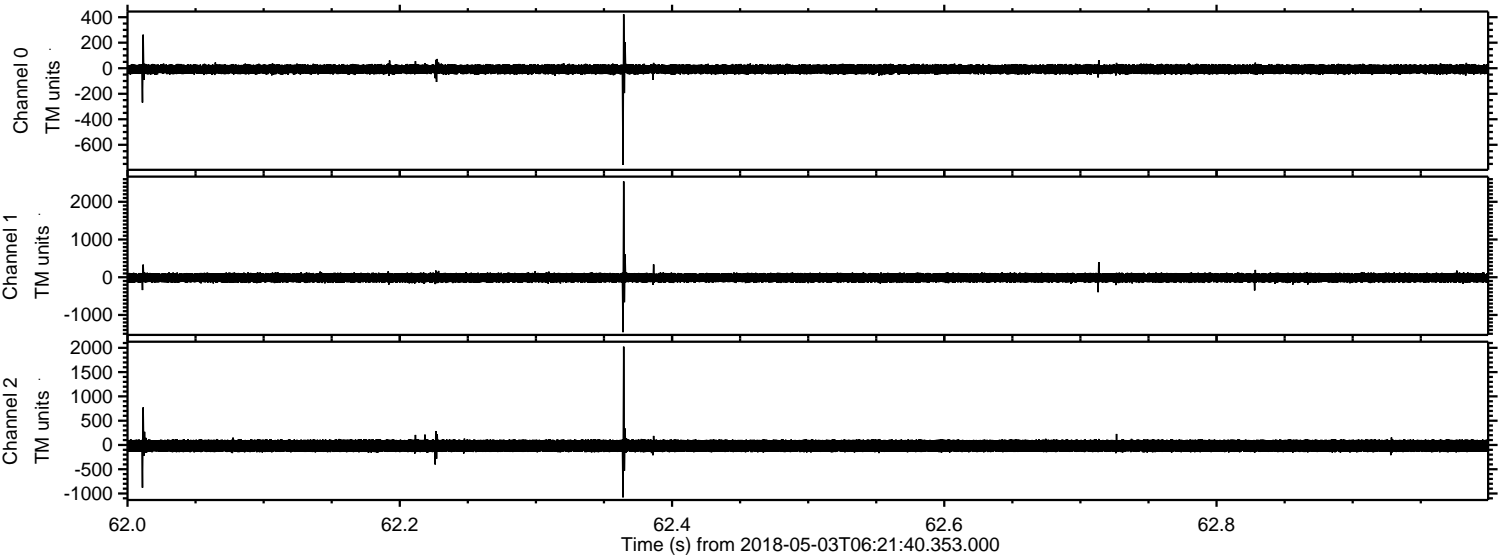


Processed Thu May 3 08:29:23 2018 by ELM ver.2012-10-06 from 001\_\_elm20180503\_062139\_\_dat00.bin



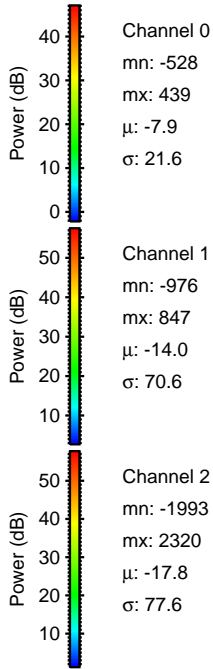
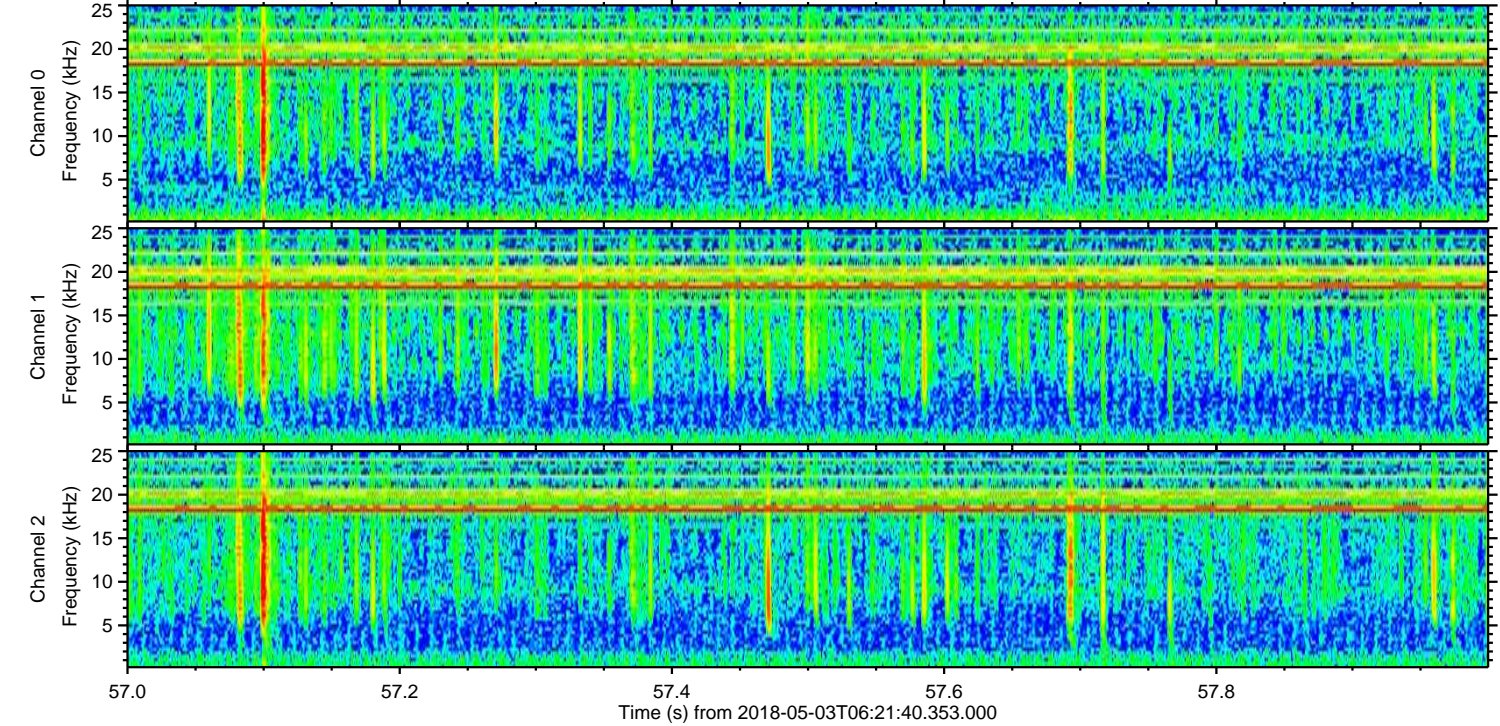
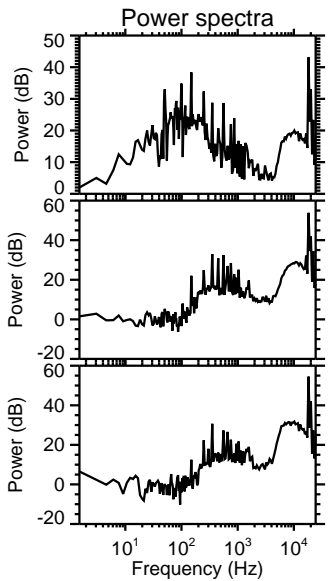
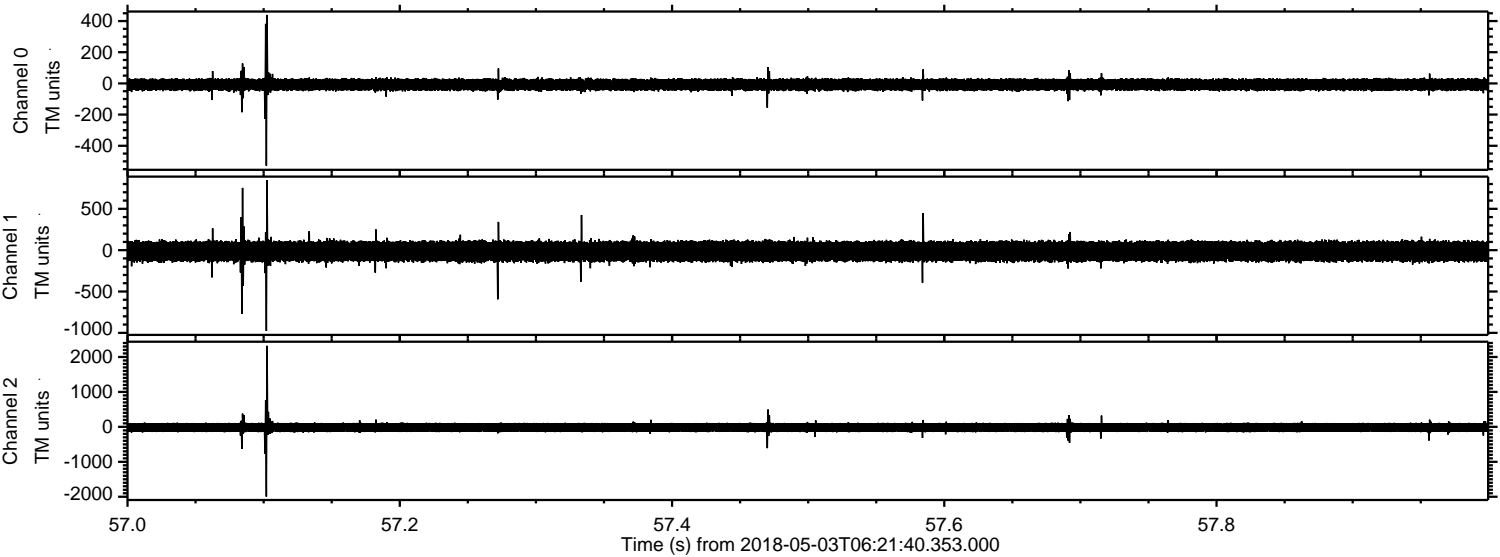


Processed Thu May 3 08:29:24 2018 by ELM ver.2012-10-06 from 001\_\_elm20180503\_062139\_\_dat00.bin



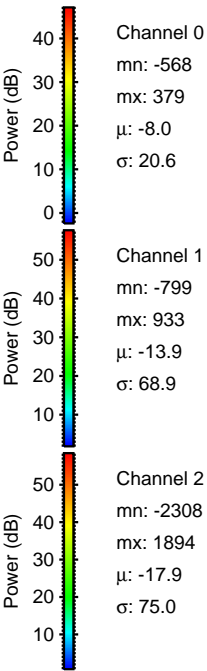
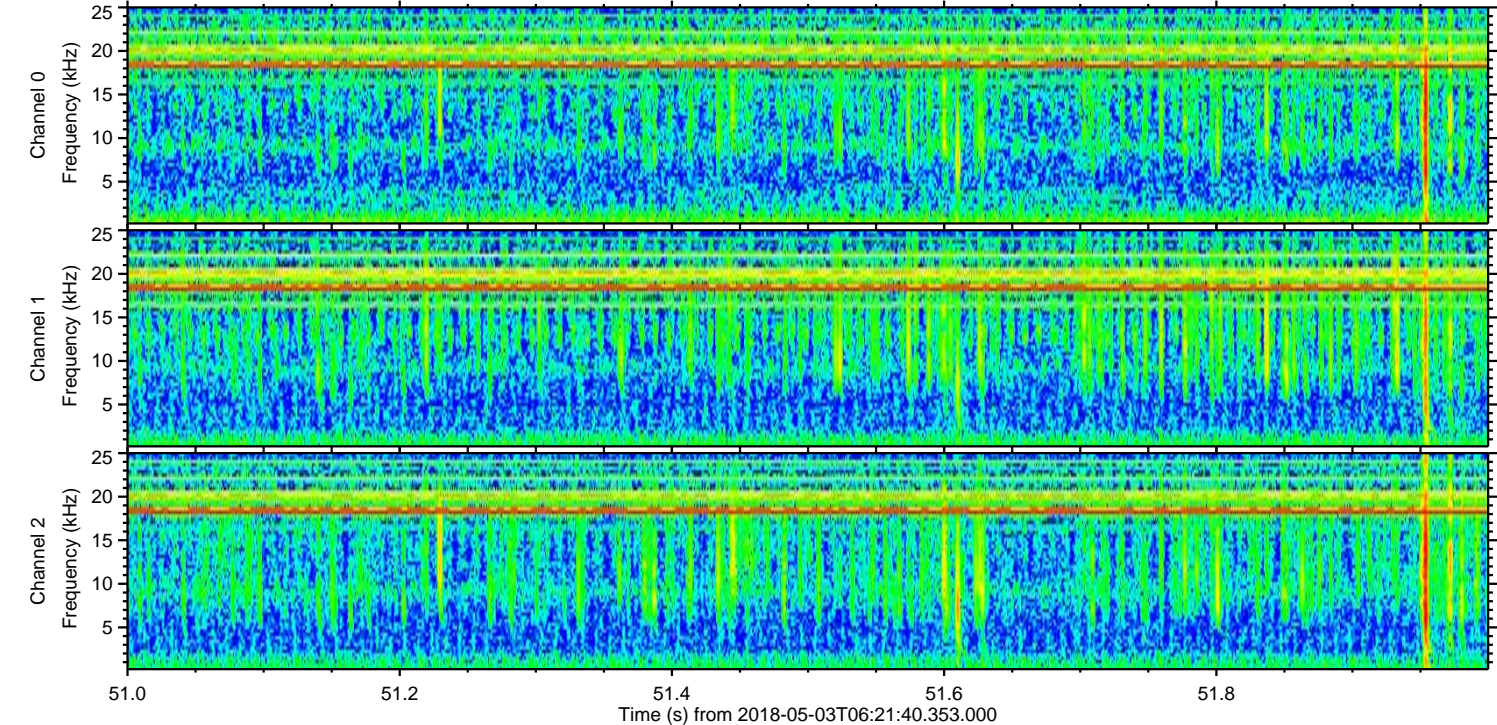
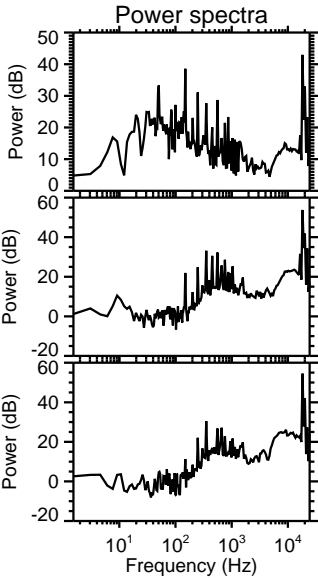
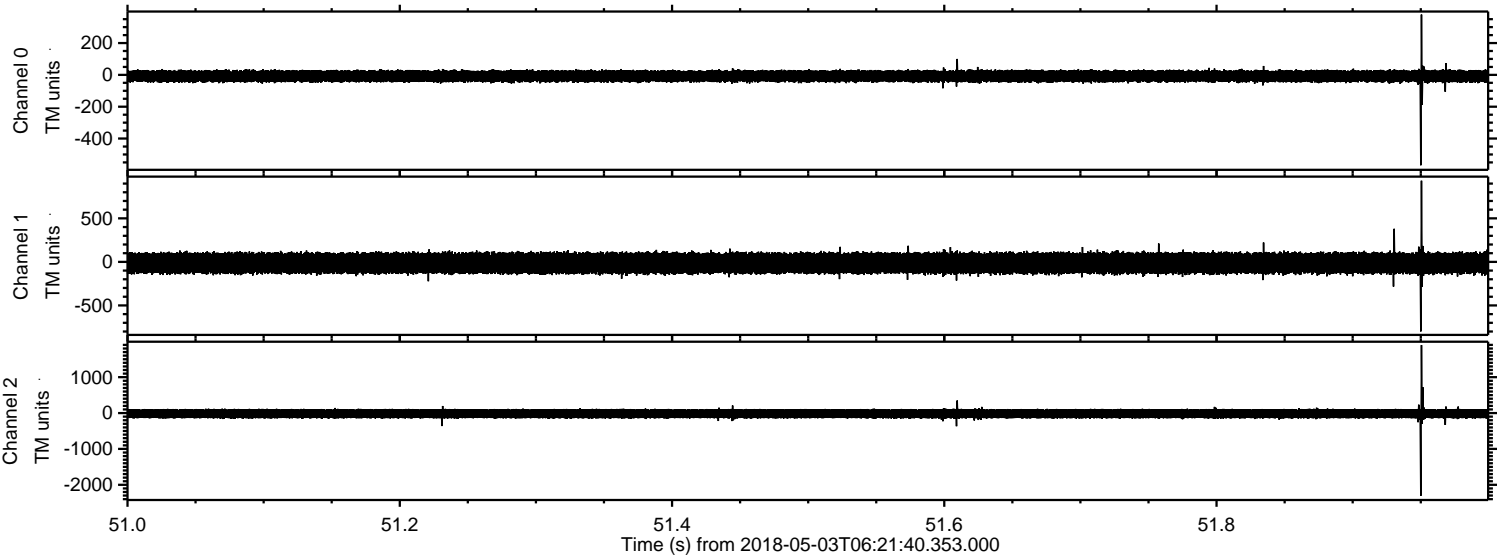


Processed Thu May 3 08:29:25 2018 by ELM ver.2012-10-06 from 001\_\_elm20180503\_062139\_\_dat00.bin



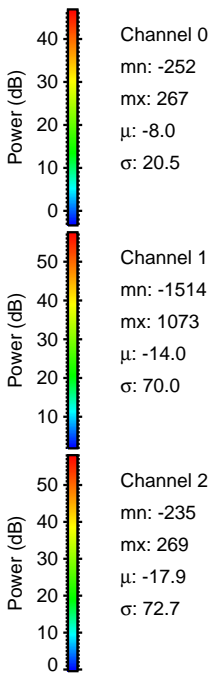
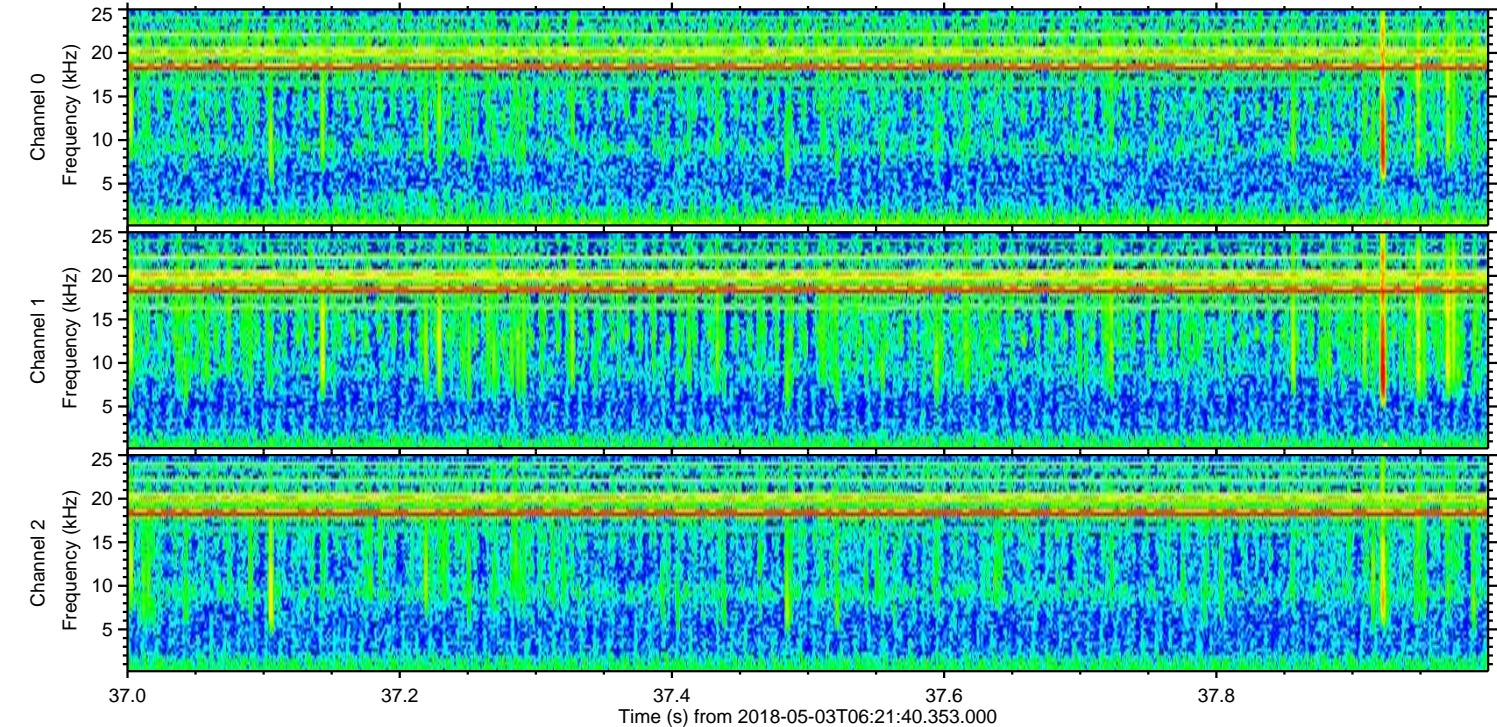
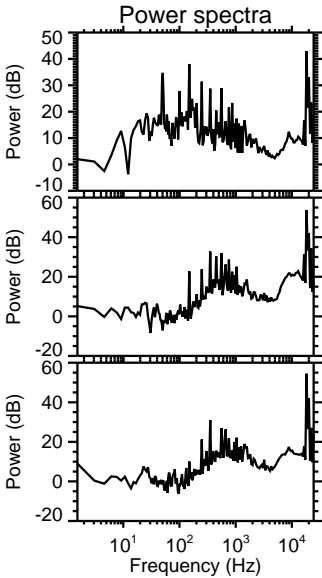
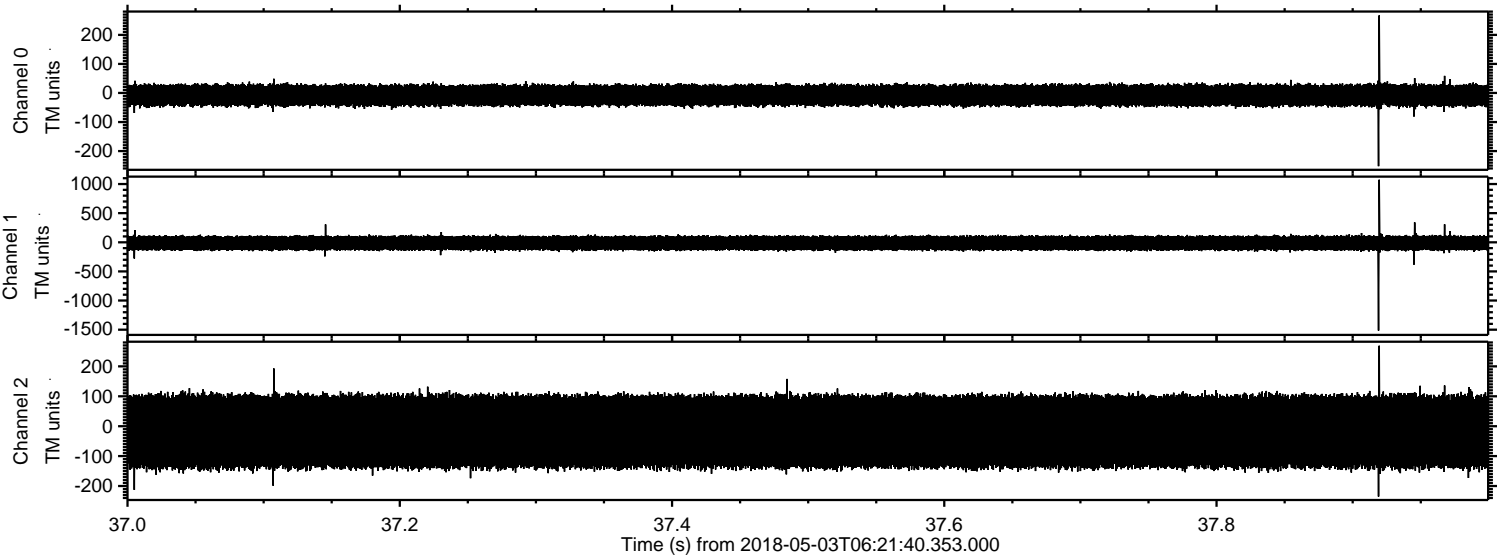


Processed Thu May 3 08:29:25 2018 by ELM ver.2012-10-06 from 001\_\_elm20180503\_062139\_\_dat00.bin



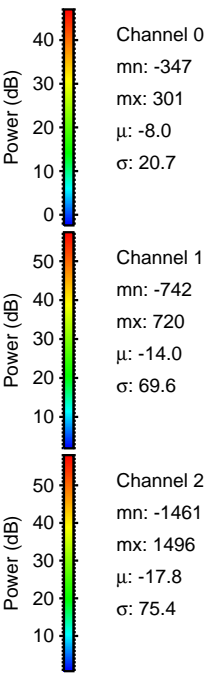
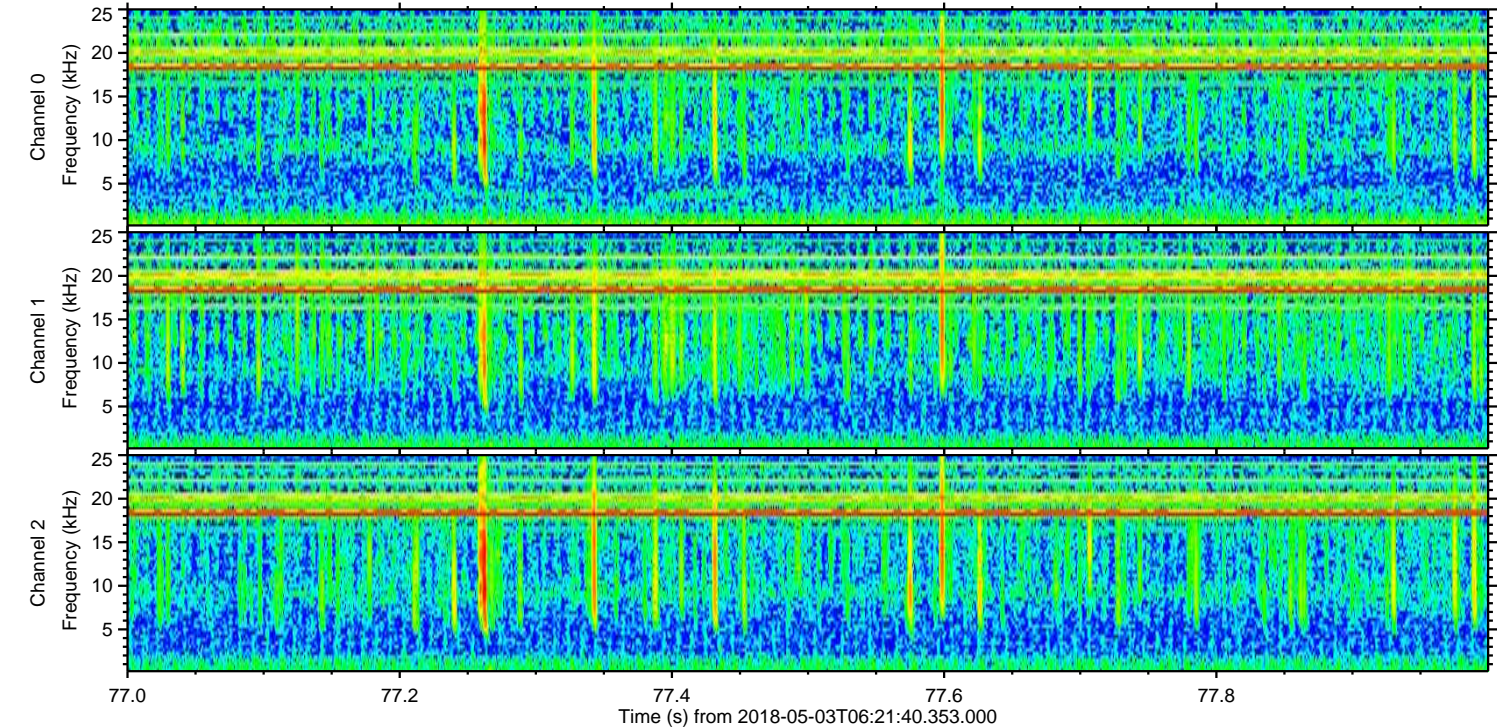
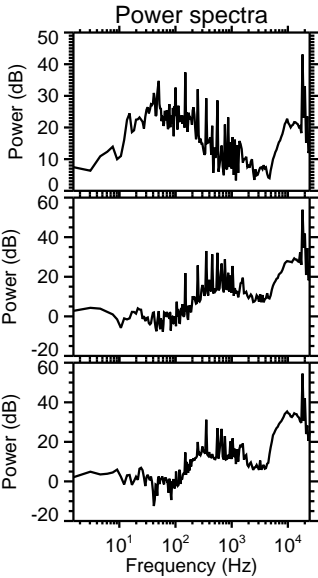
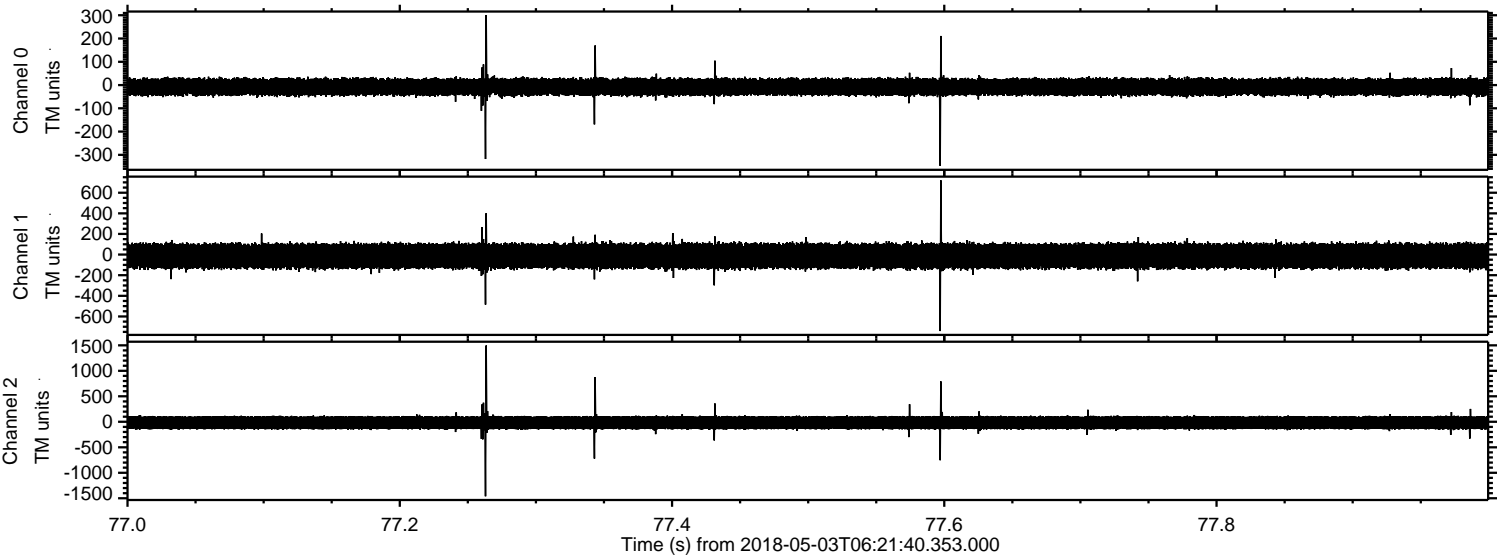


Processed Thu May 3 08:29:26 2018 by ELM ver.2012-10-06 from 001\_\_elm20180503\_062139\_\_dat00.bin





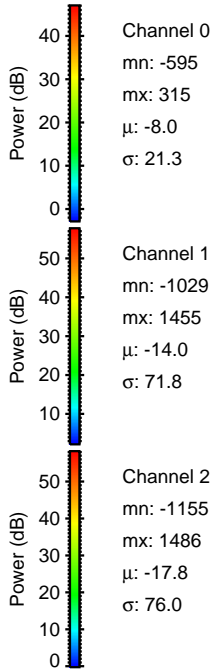
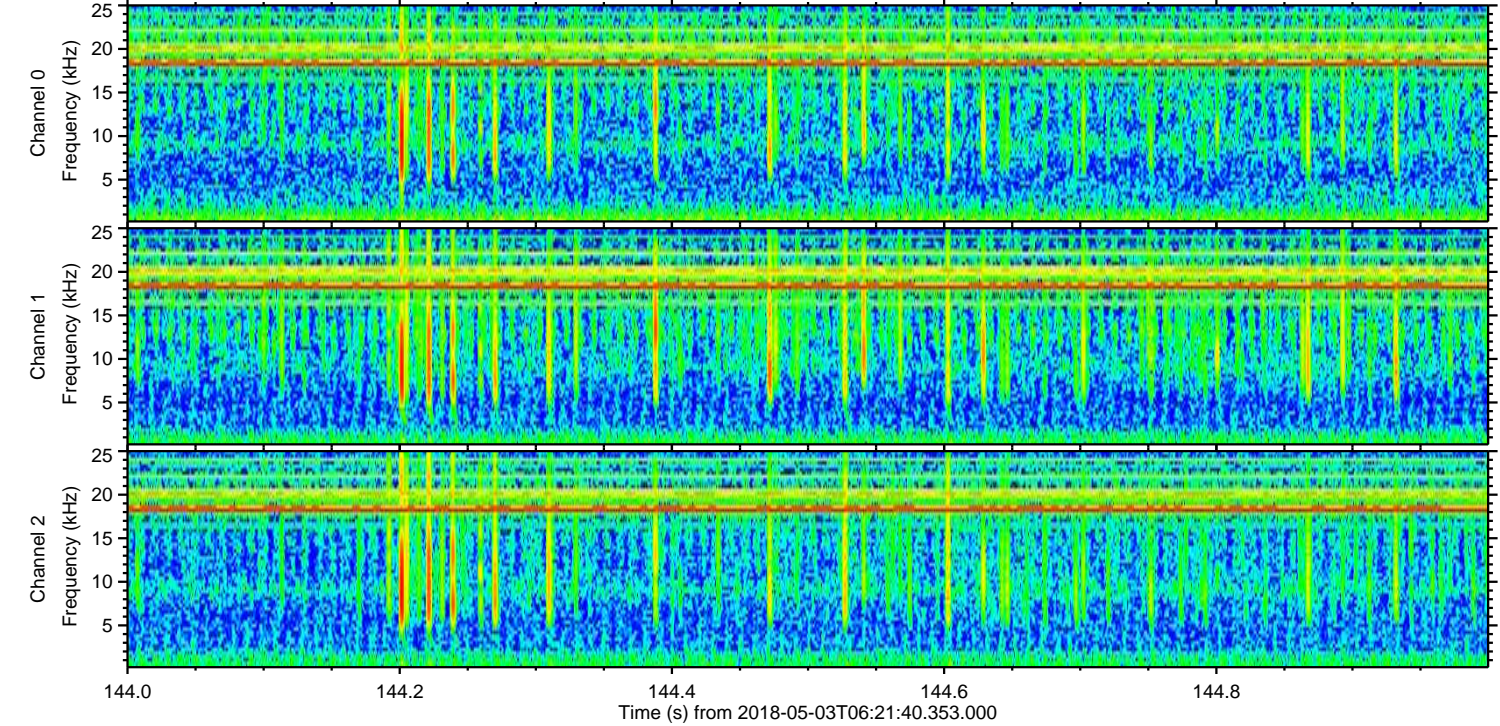
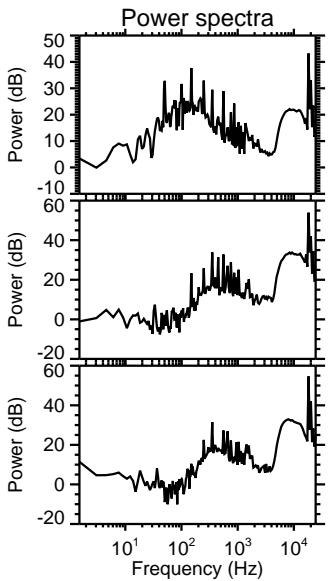
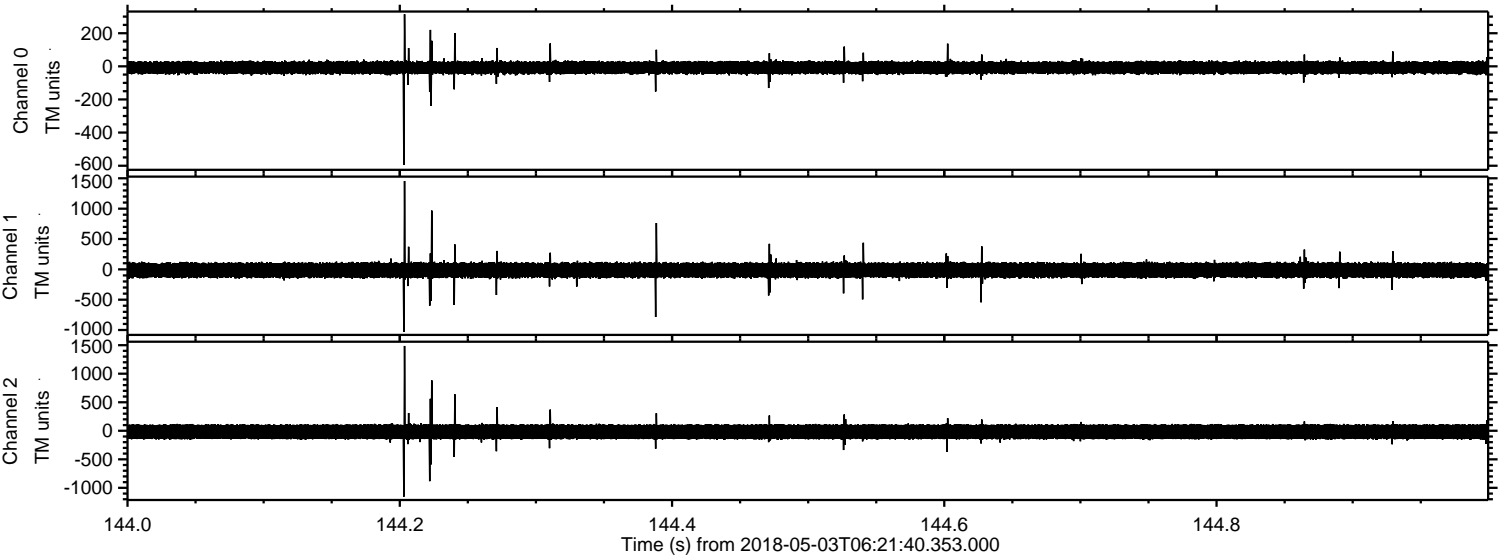
Processed Thu May 3 08:29:26 2018 by ELM ver.2012-10-06 from 001\_\_elm20180503\_062139\_\_dat00.bin





ELMAVAN 3D WAVEFORMS (Measured data sampled at 50 kHz) 51000 packets of 144 samples from 2018-05-03T06:21:40.353.000. Part 145/147

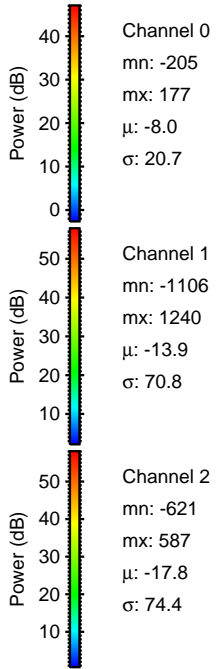
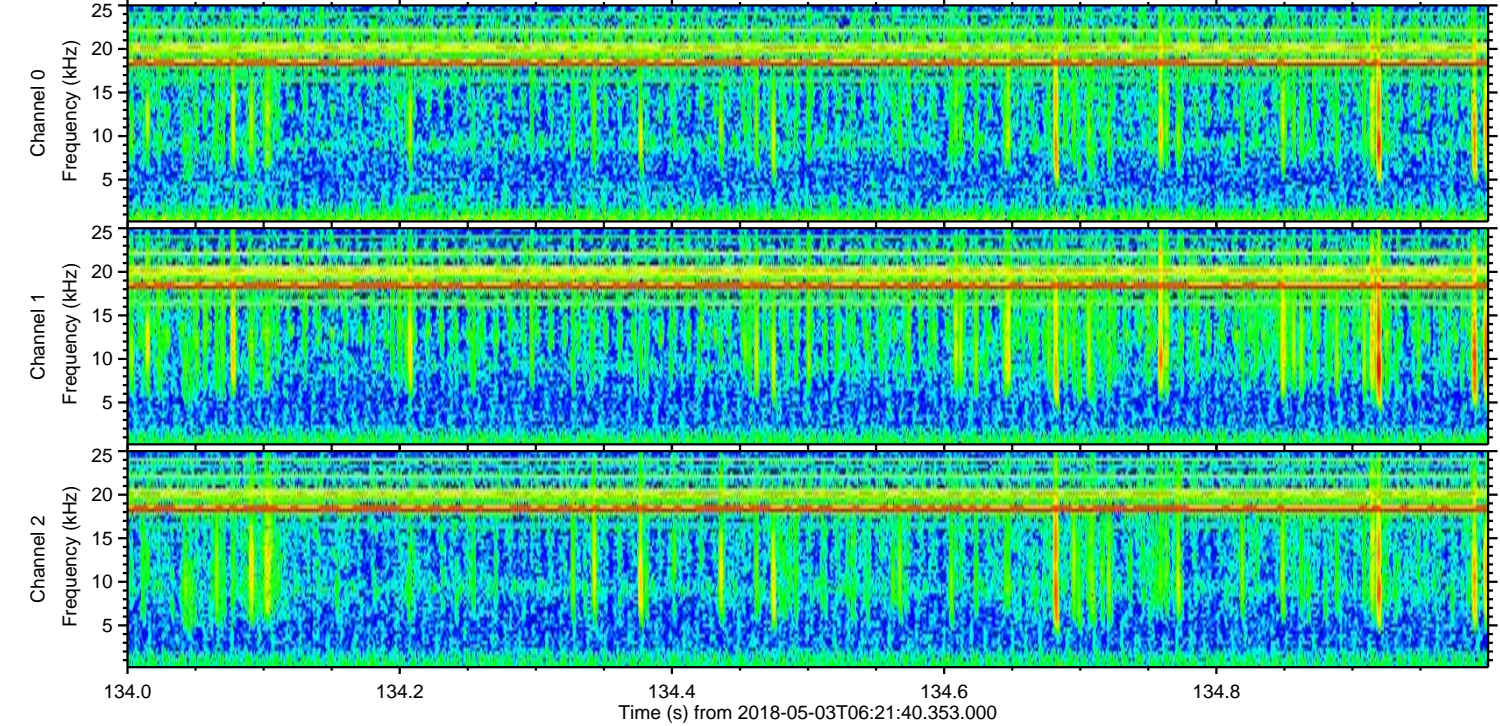
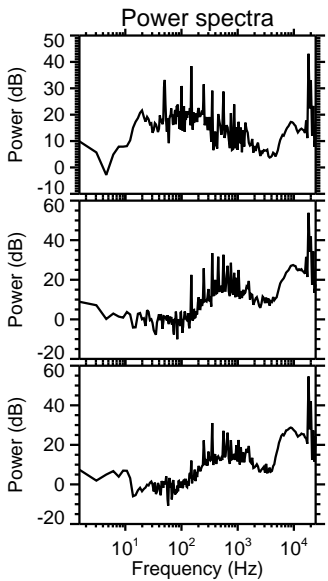
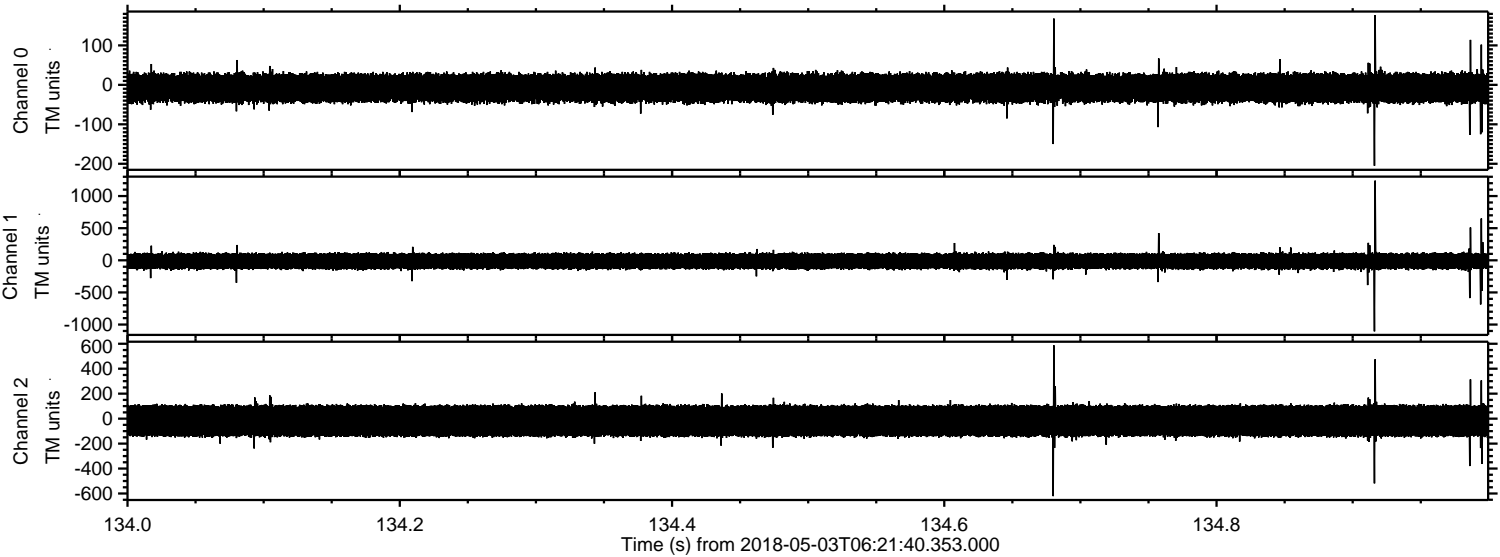
Processed Thu May 3 08:29:27 2018 by ELM ver.2012-10-06 from 001\_\_elm20180503\_062139\_\_dat00.bin





ELMAVAN 3D WAVEFORMS (Measured data sampled at 50 kHz) 51000 packets of 144 samples from 2018-05-03T06:21:40.353.000. Part 135/147

Processed Thu May 3 08:29:28 2018 by ELM ver.2012-10-06 from 001\_\_elm20180503\_062139\_\_dat00.bin





Processed Thu May 3 08:29:28 2018 by ELM ver.2012-10-06 from 001\_\_elm20180503\_062139\_\_dat00.bin

