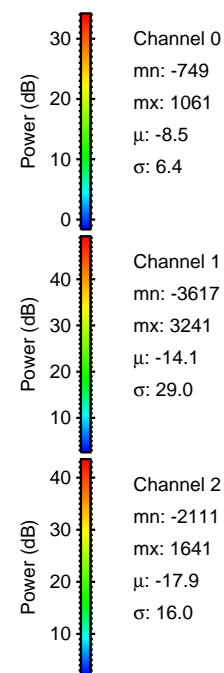
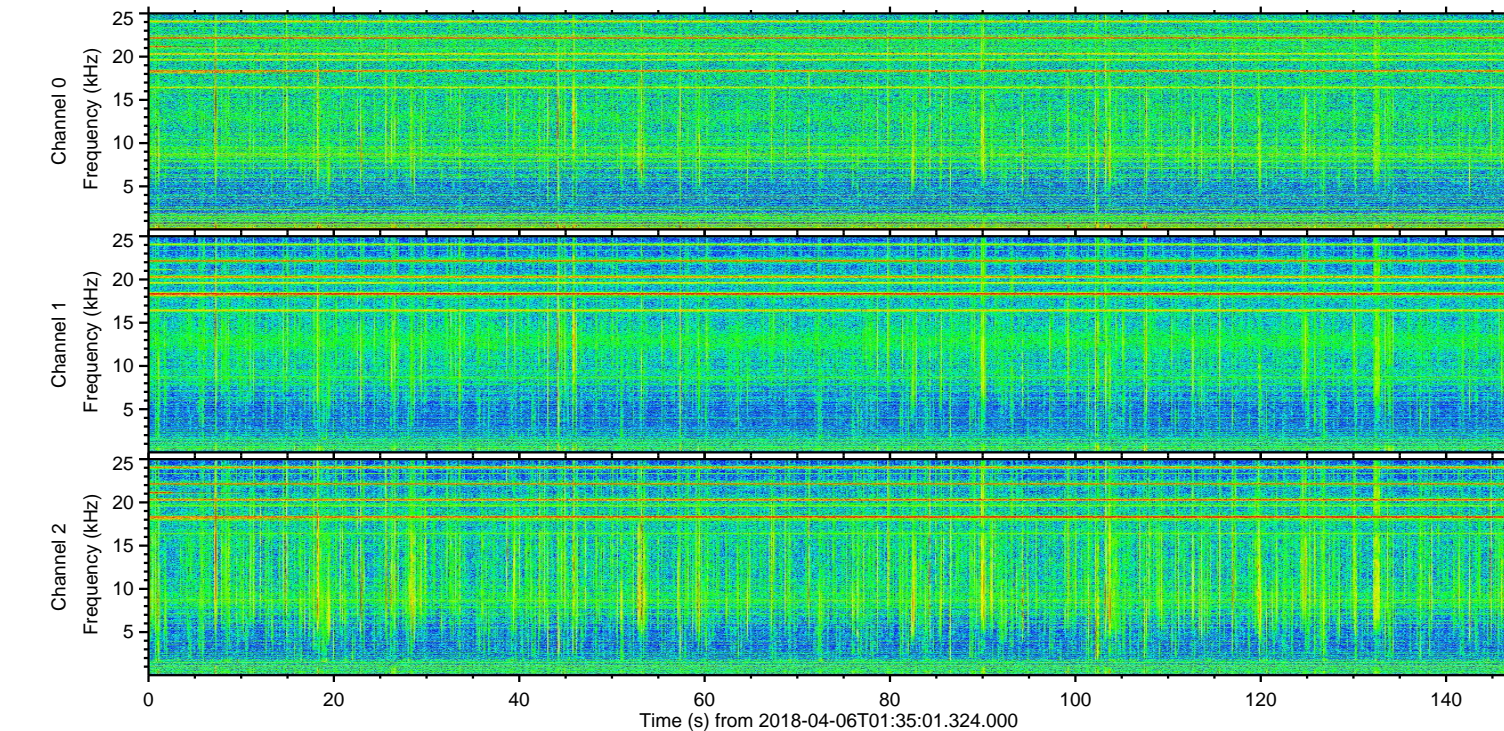
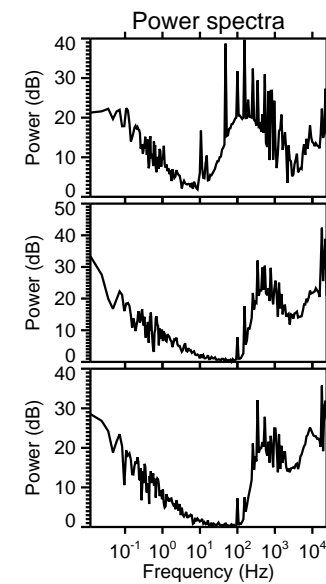
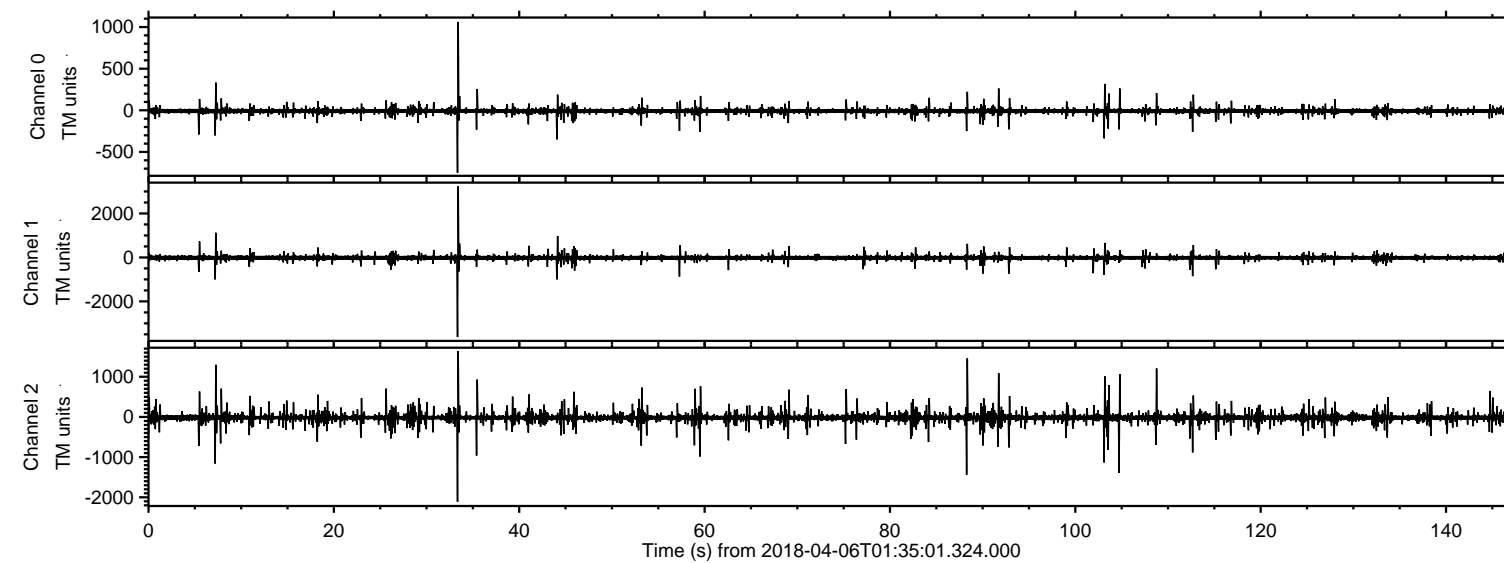
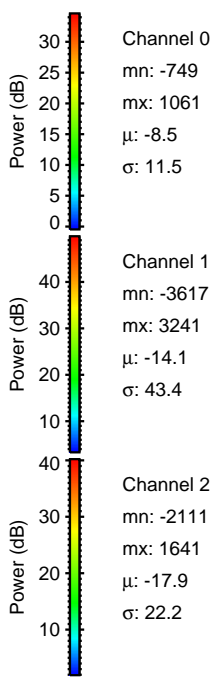
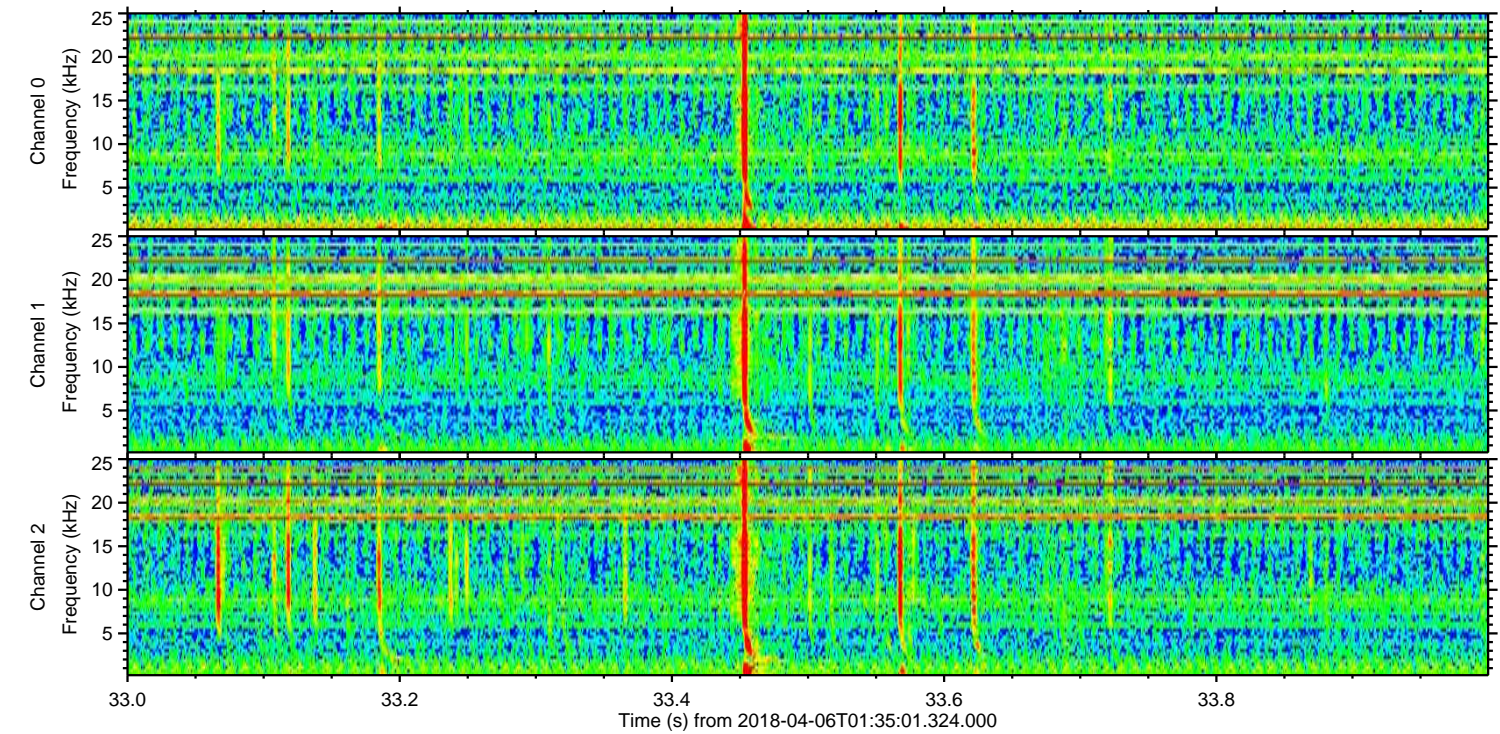
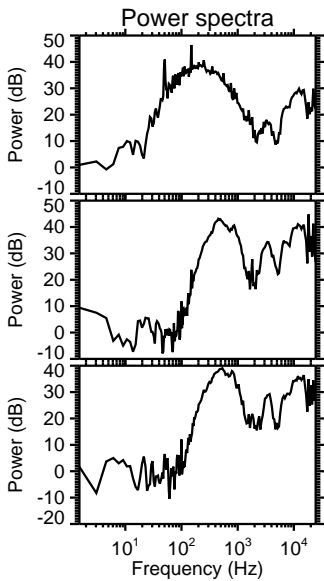
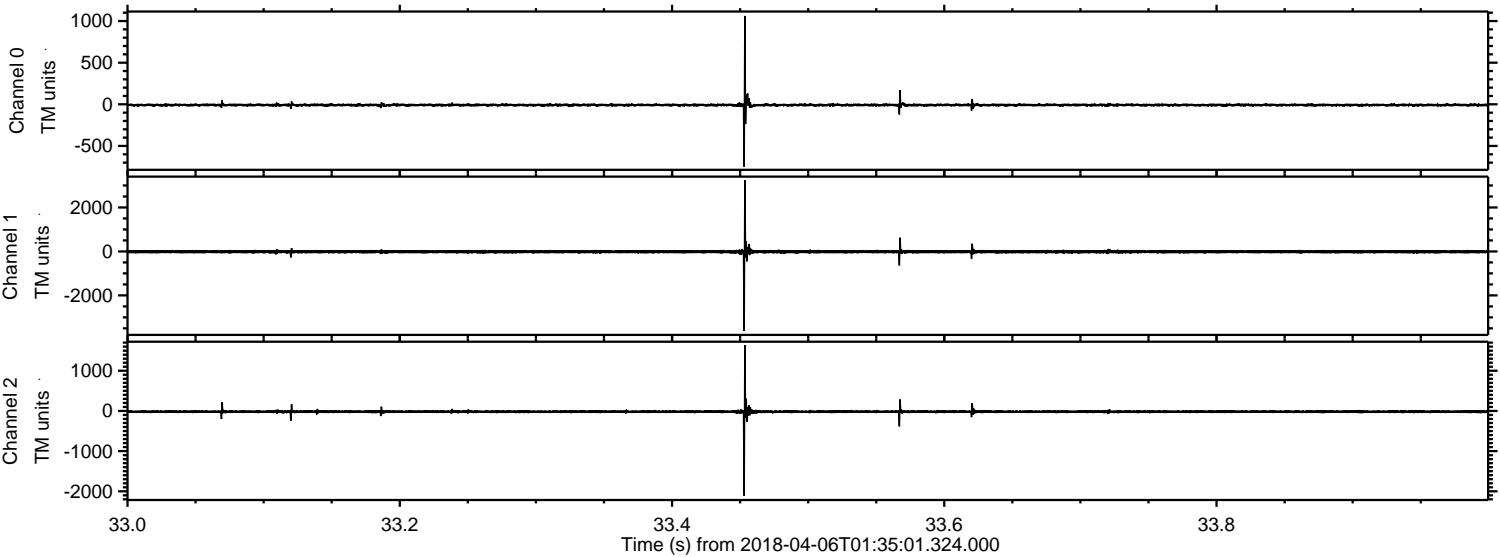


ELMAVAN 3D WAVEFORMS (Measured data sampled at 50 kHz) 51000 packets of 144 samples from 2018-04-06T01:35:01.324.000.

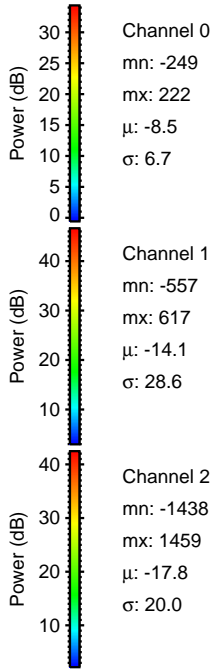
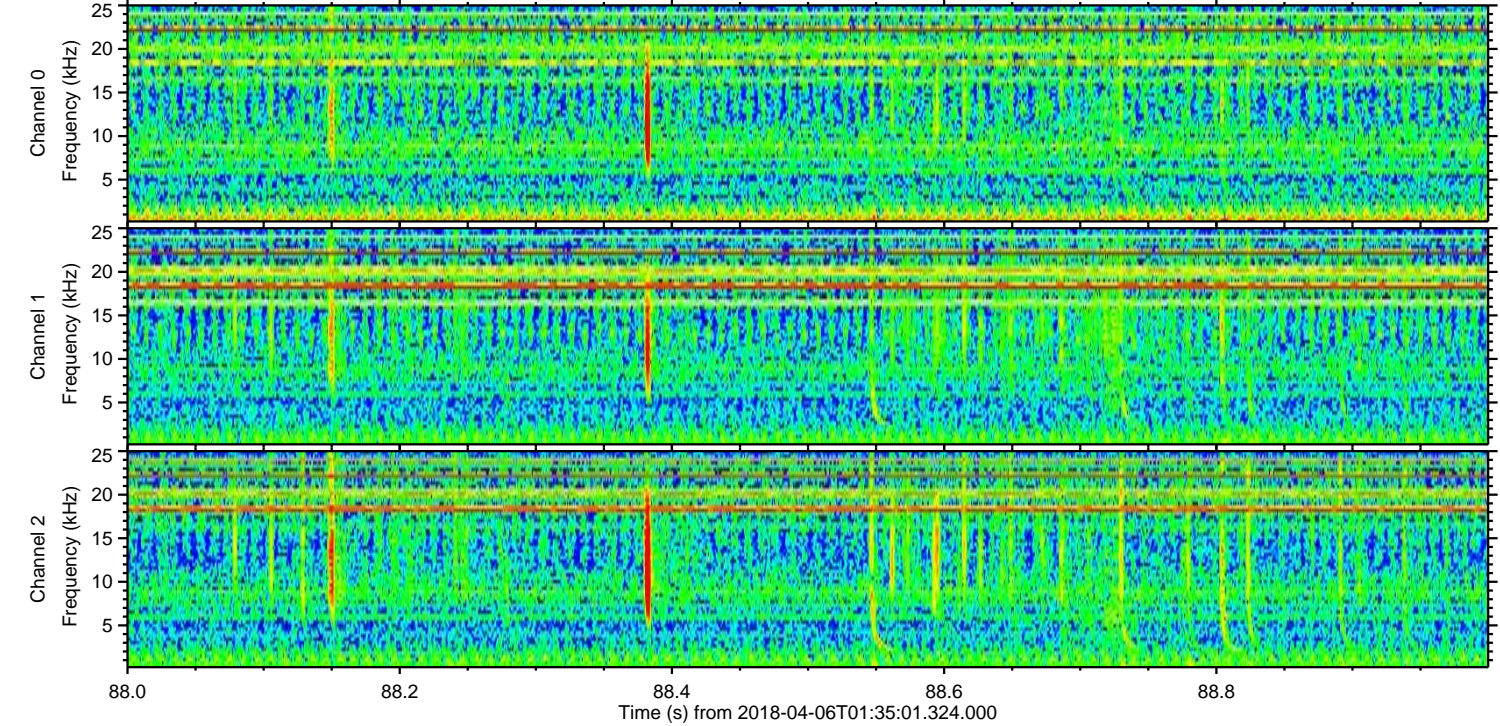
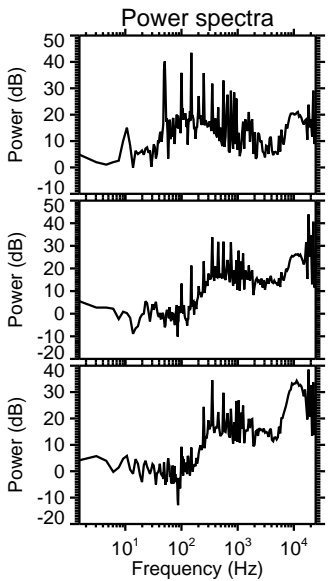
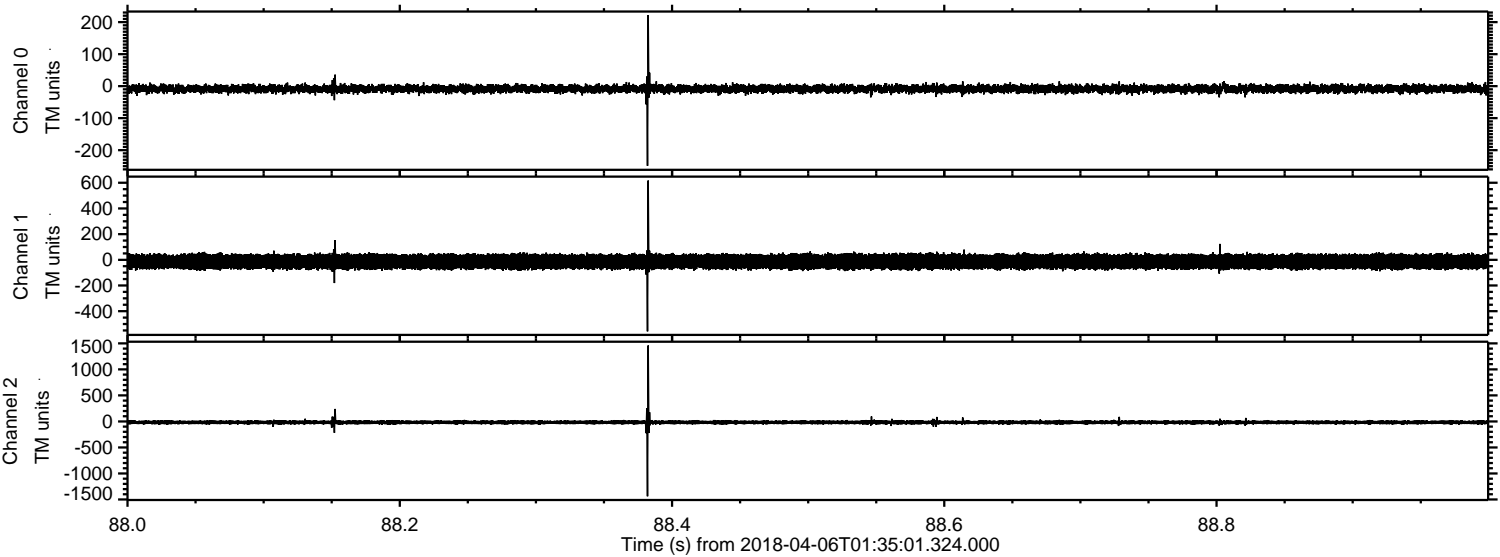
Processed Fri Apr 6 03:42:49 2018 by ELM ver.2012-10-06 from 001__elm20180406_013500__dat00.bin



Processed Fri Apr 6 03:42:57 2018 by ELM ver.2012-10-06 from 001__elm20180406_013500__dat00.bin

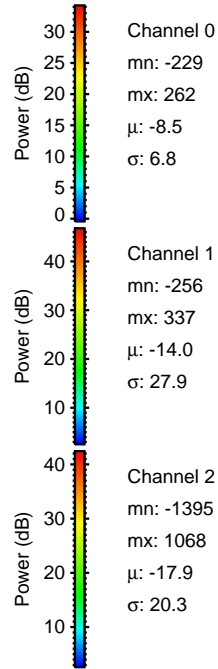
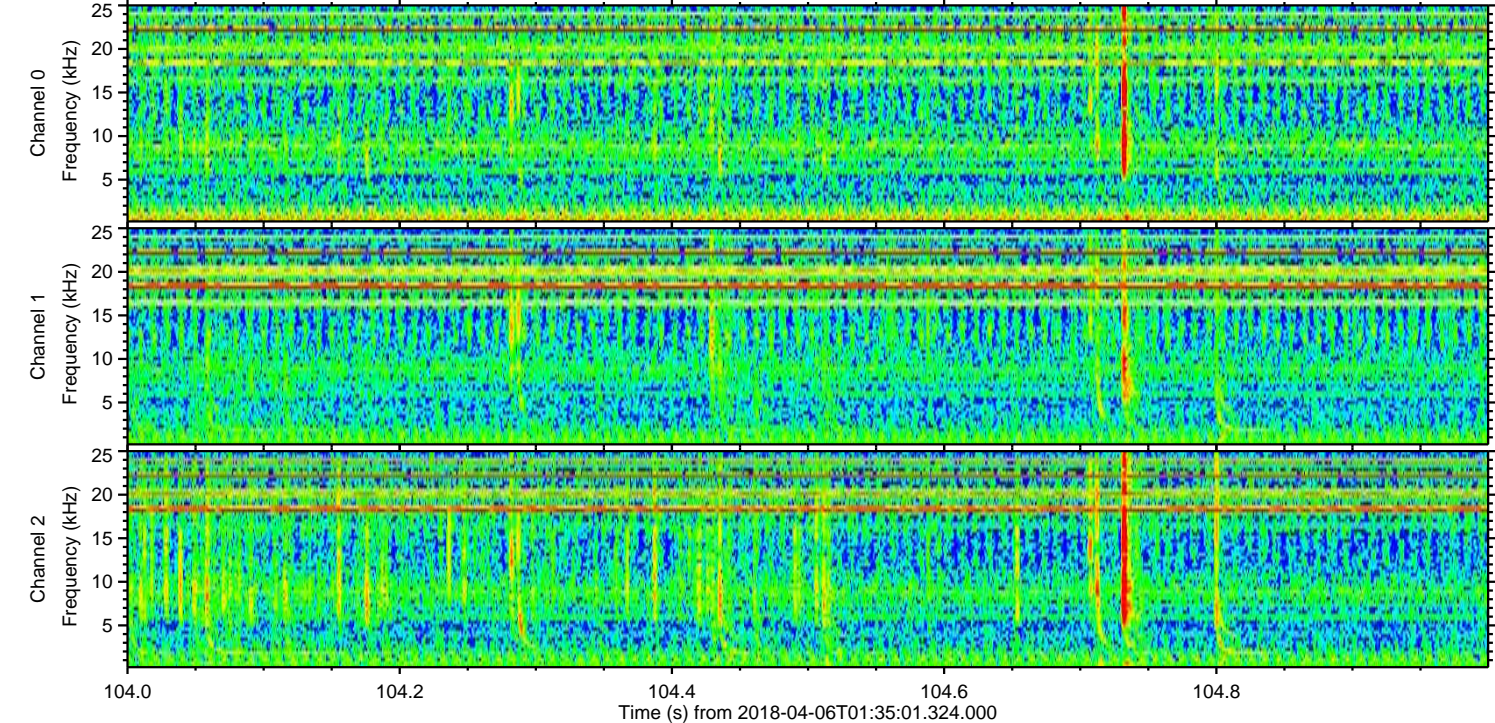
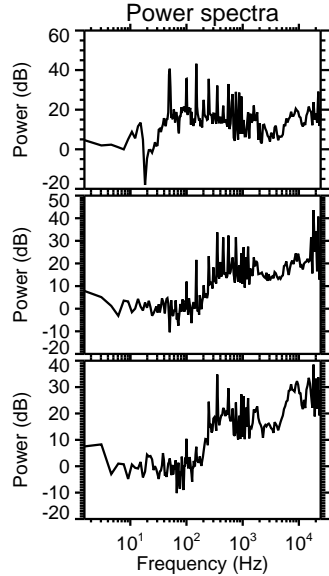
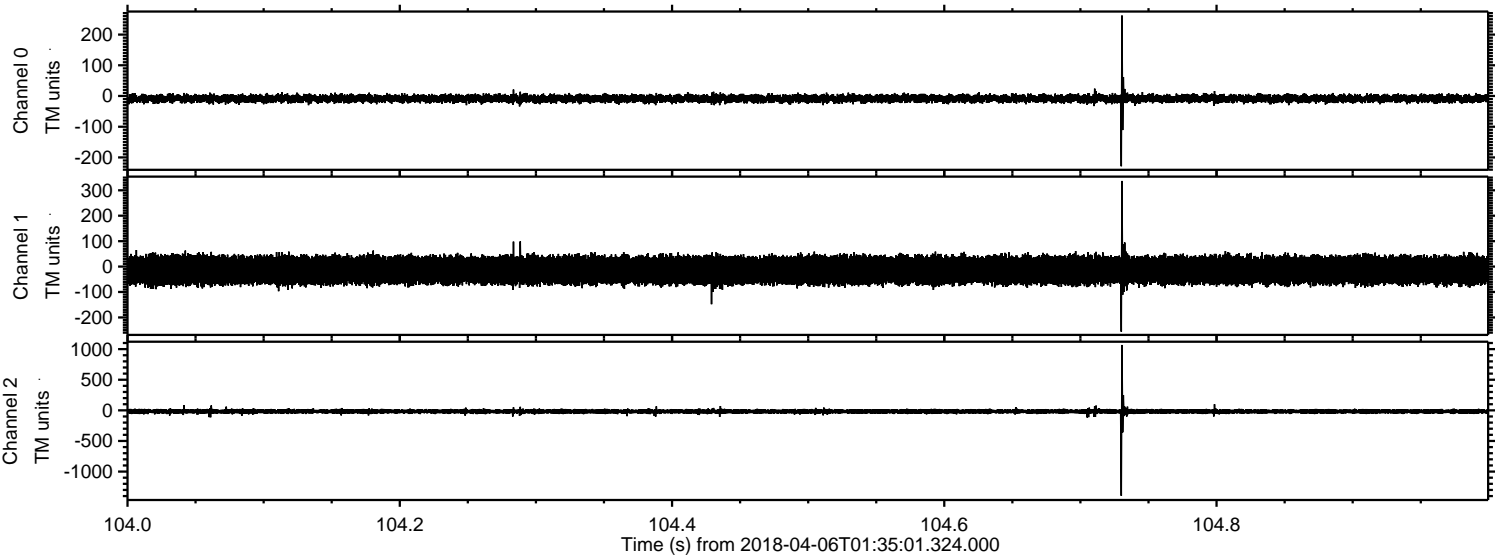


Processed Fri Apr 6 03:42:58 2018 by ELM ver.2012-10-06 from 001__elm20180406_013500__dat00.bin

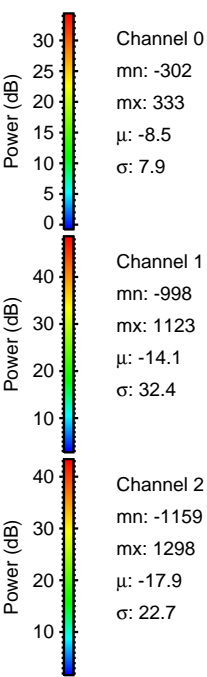
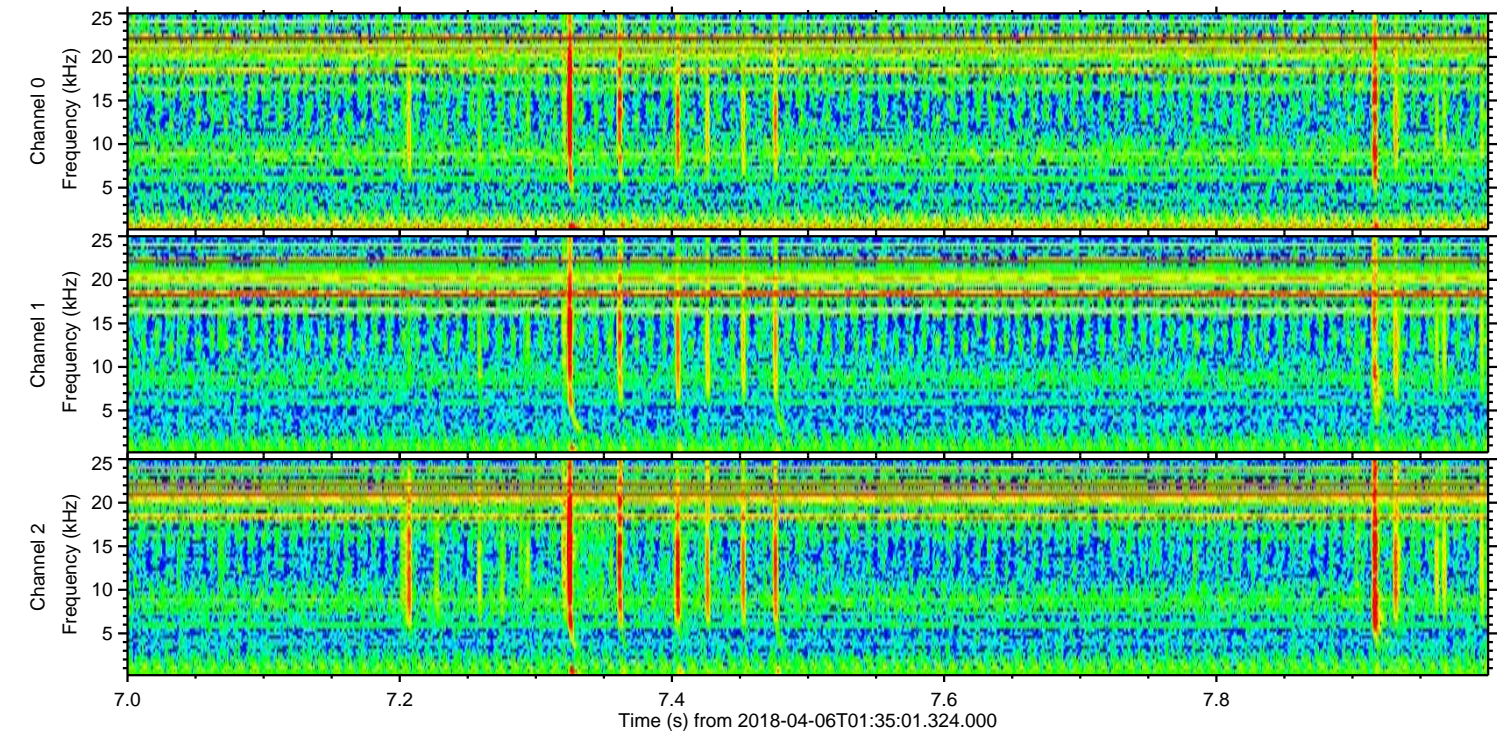
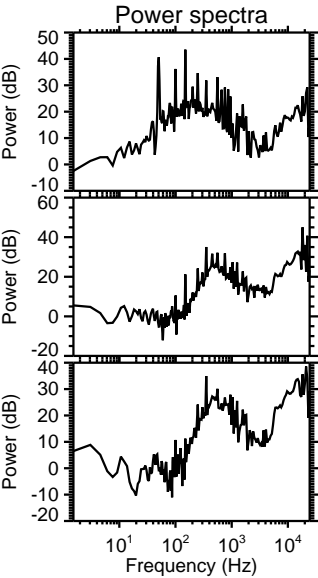
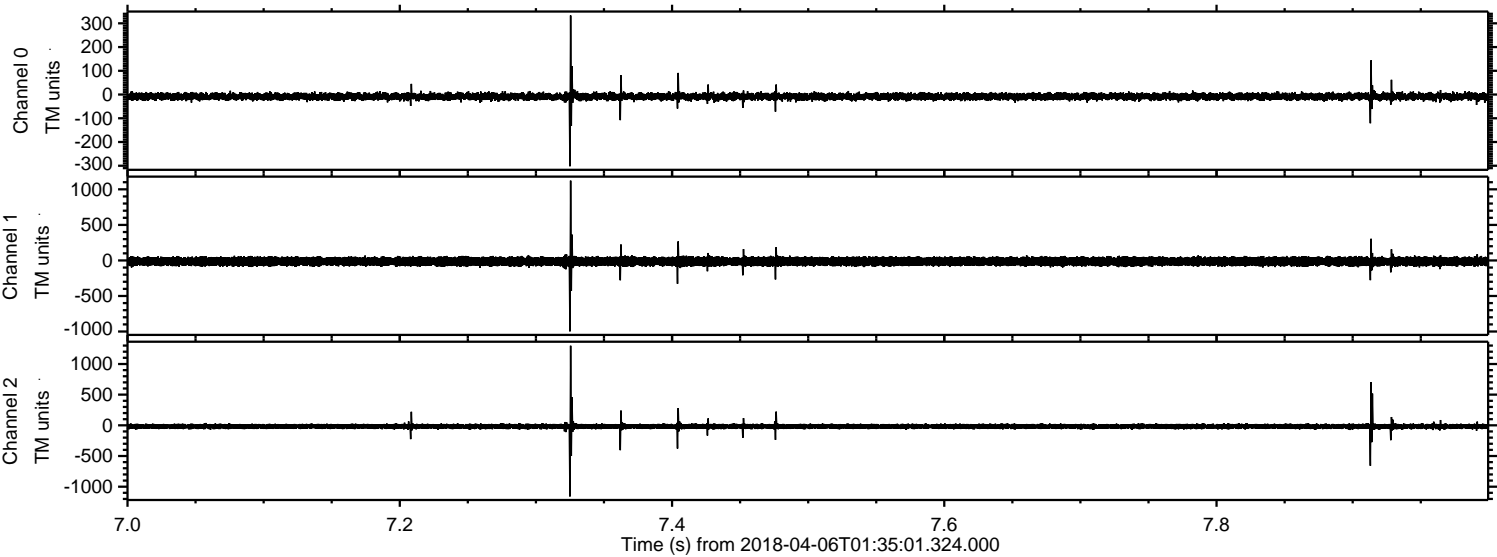


ELMAVAN 3D WAVEFORMS (Measured data sampled at 50 kHz) 51000 packets of 144 samples from 2018-04-06T01:35:01.324.000. Part 105/147

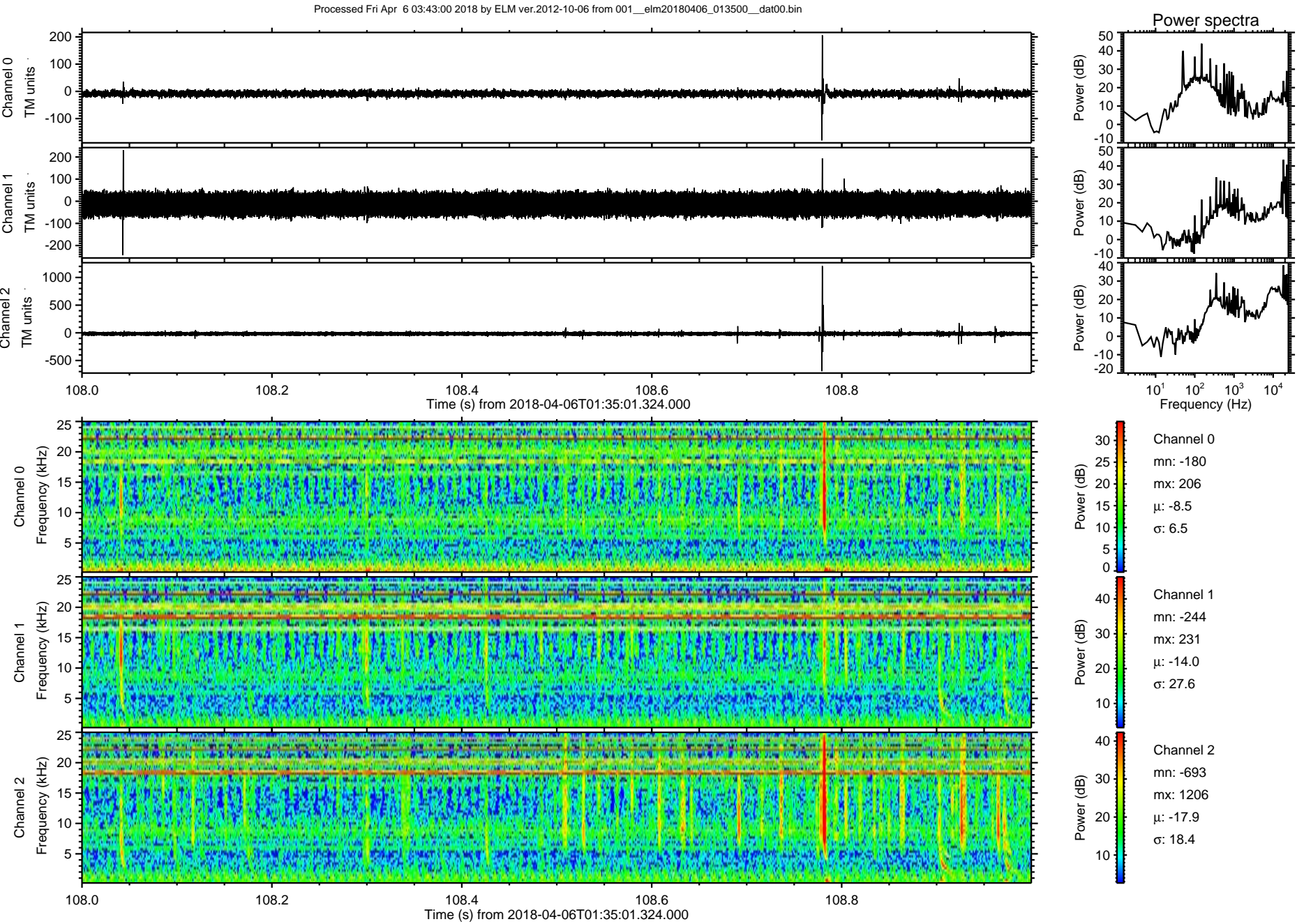
Processed Fri Apr 6 03:42:58 2018 by ELM ver.2012-10-06 from 001__elm20180406_013500__dat00.bin



Processed Fri Apr 6 03:42:59 2018 by ELM ver.2012-10-06 from 001__elm20180406_013500__dat00.bin

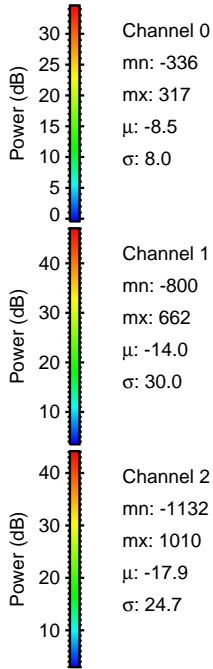
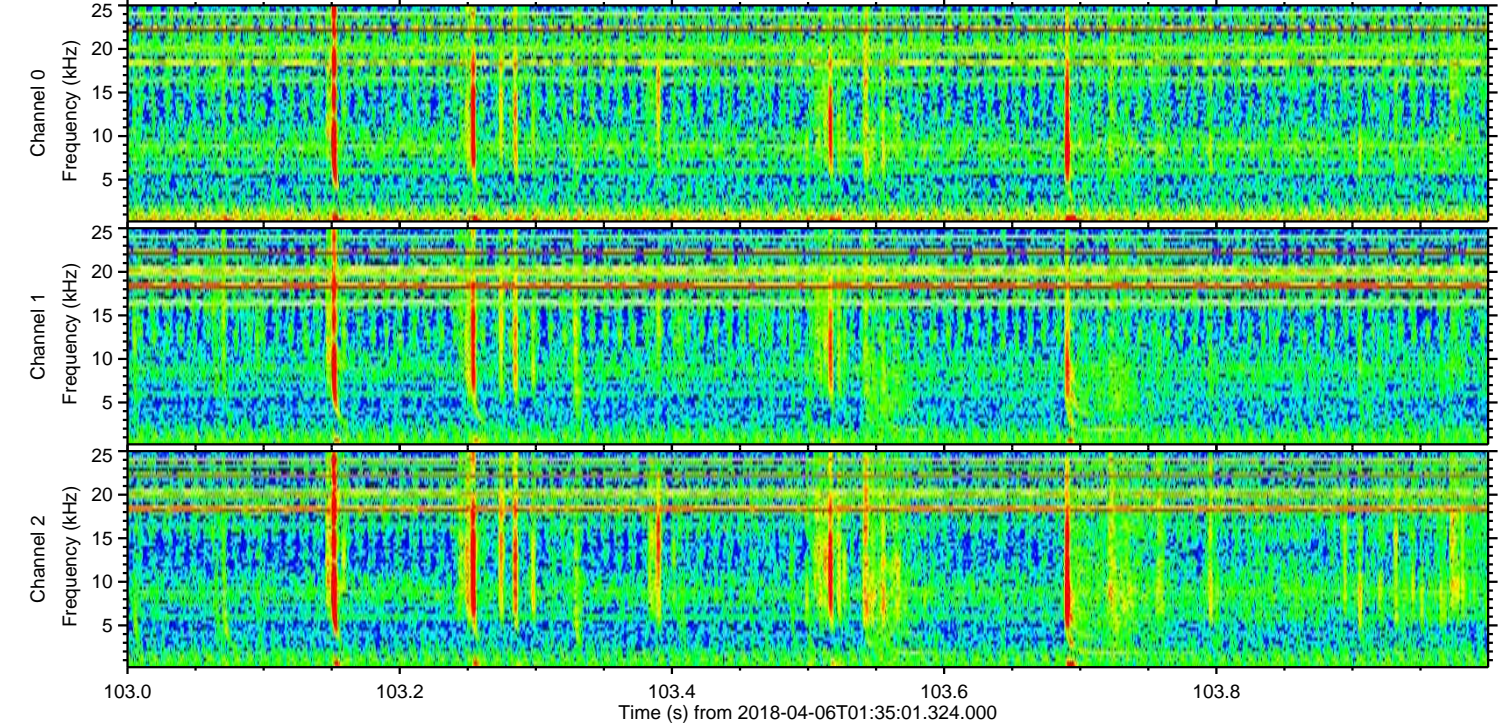
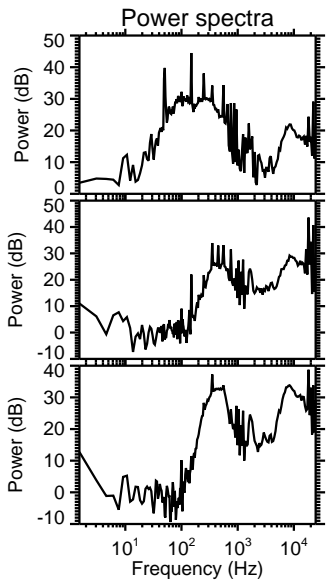
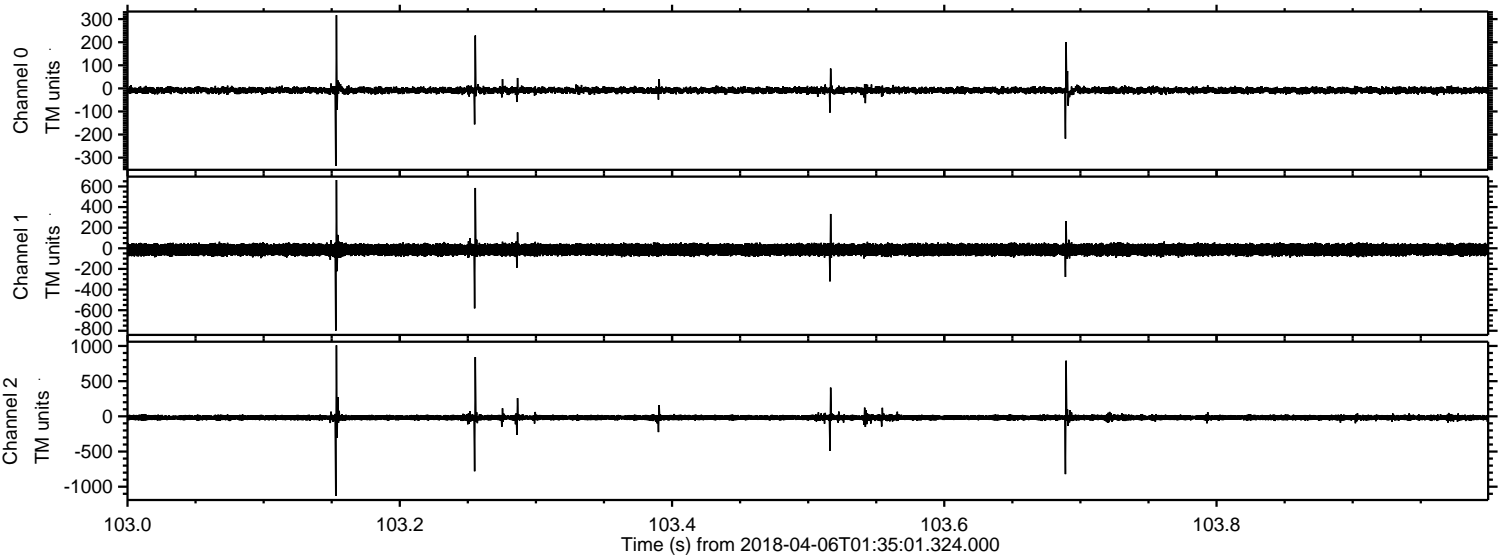


ELMAVAN 3D WAVEFORMS (Measured data sampled at 50 kHz) 51000 packets of 144 samples from 2018-04-06T01:35:01.324.000. Part 109/147

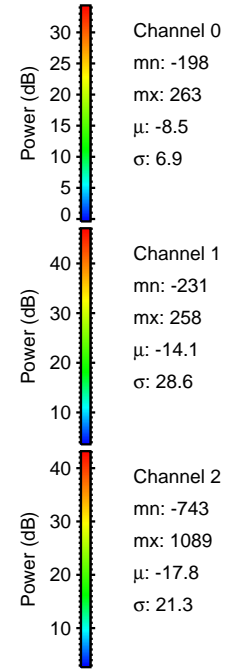
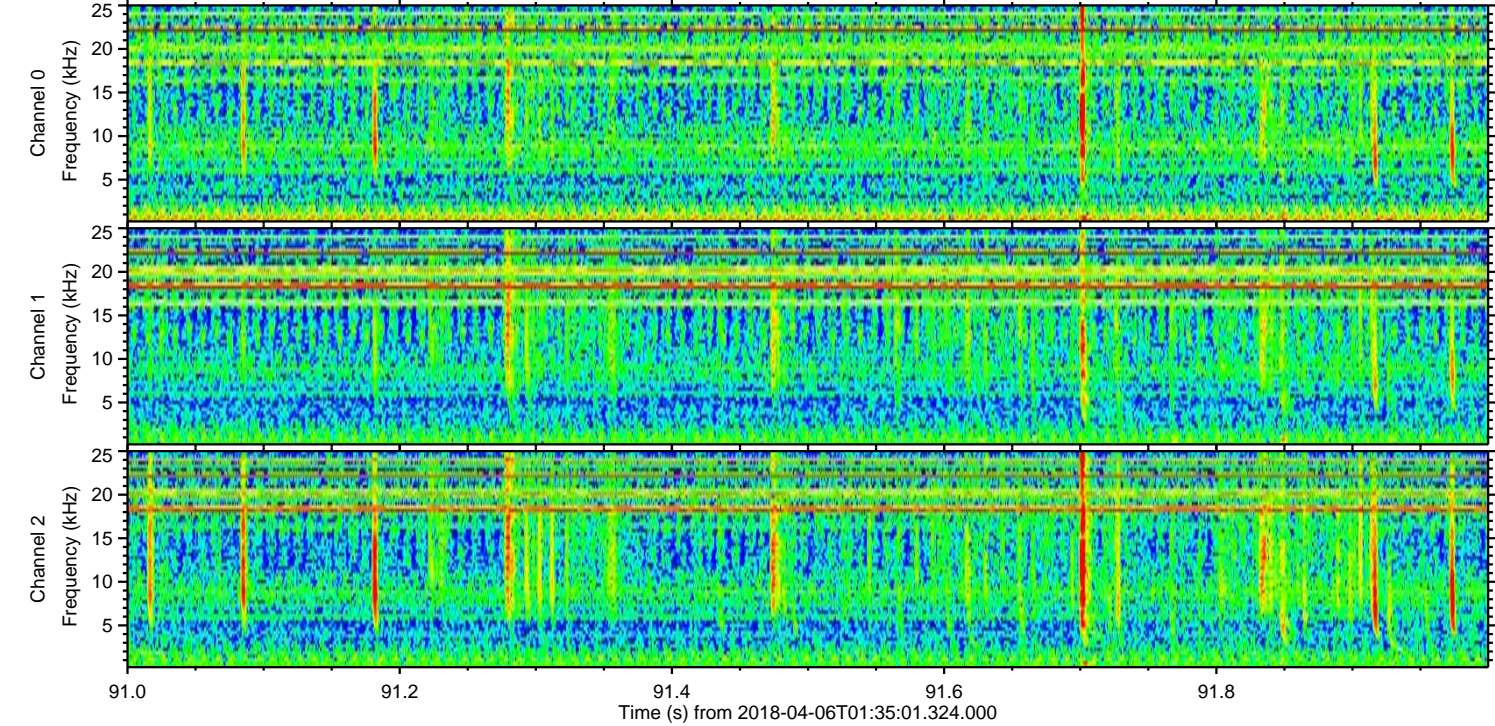
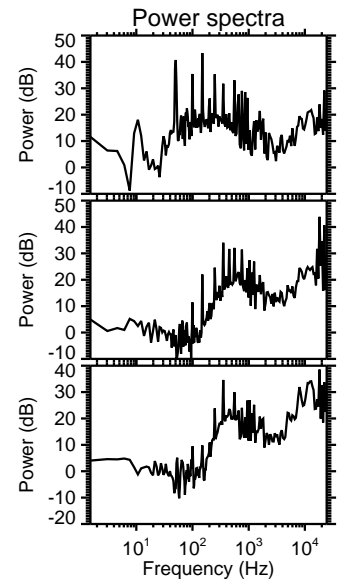
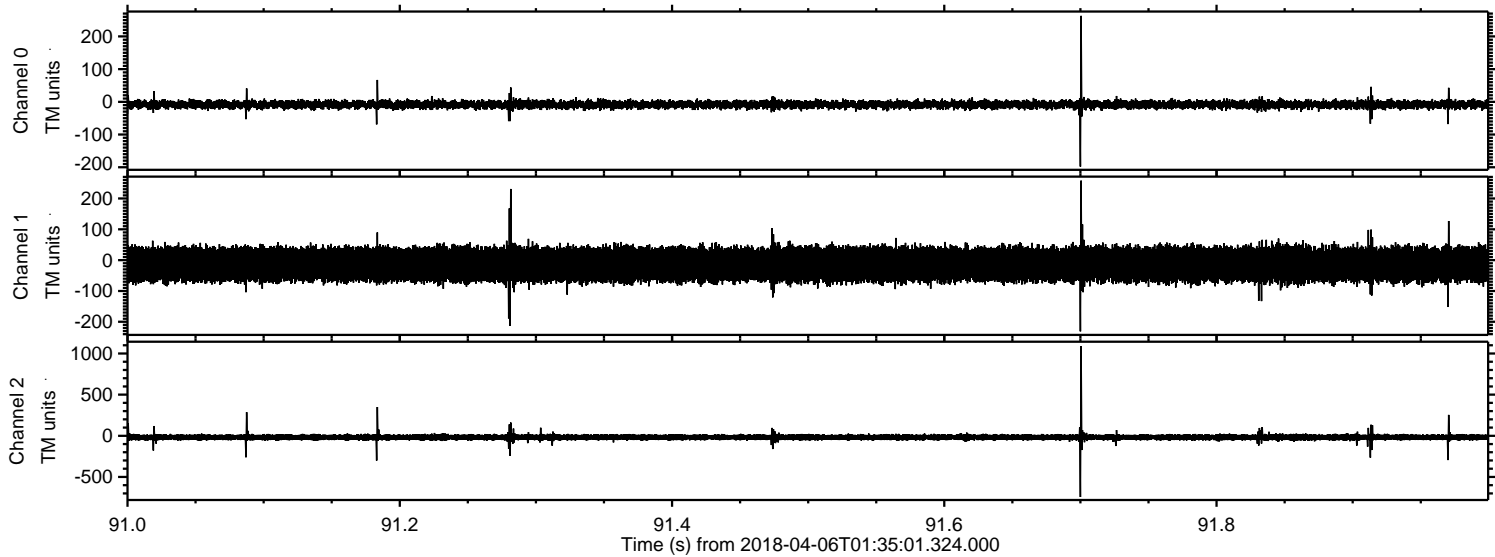


ELMAVAN 3D WAVEFORMS (Measured data sampled at 50 kHz) 51000 packets of 144 samples from 2018-04-06T01:35:01.324.000. Part 104/147

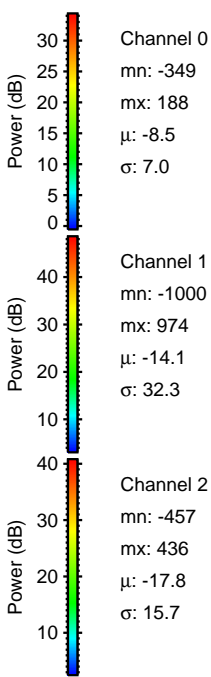
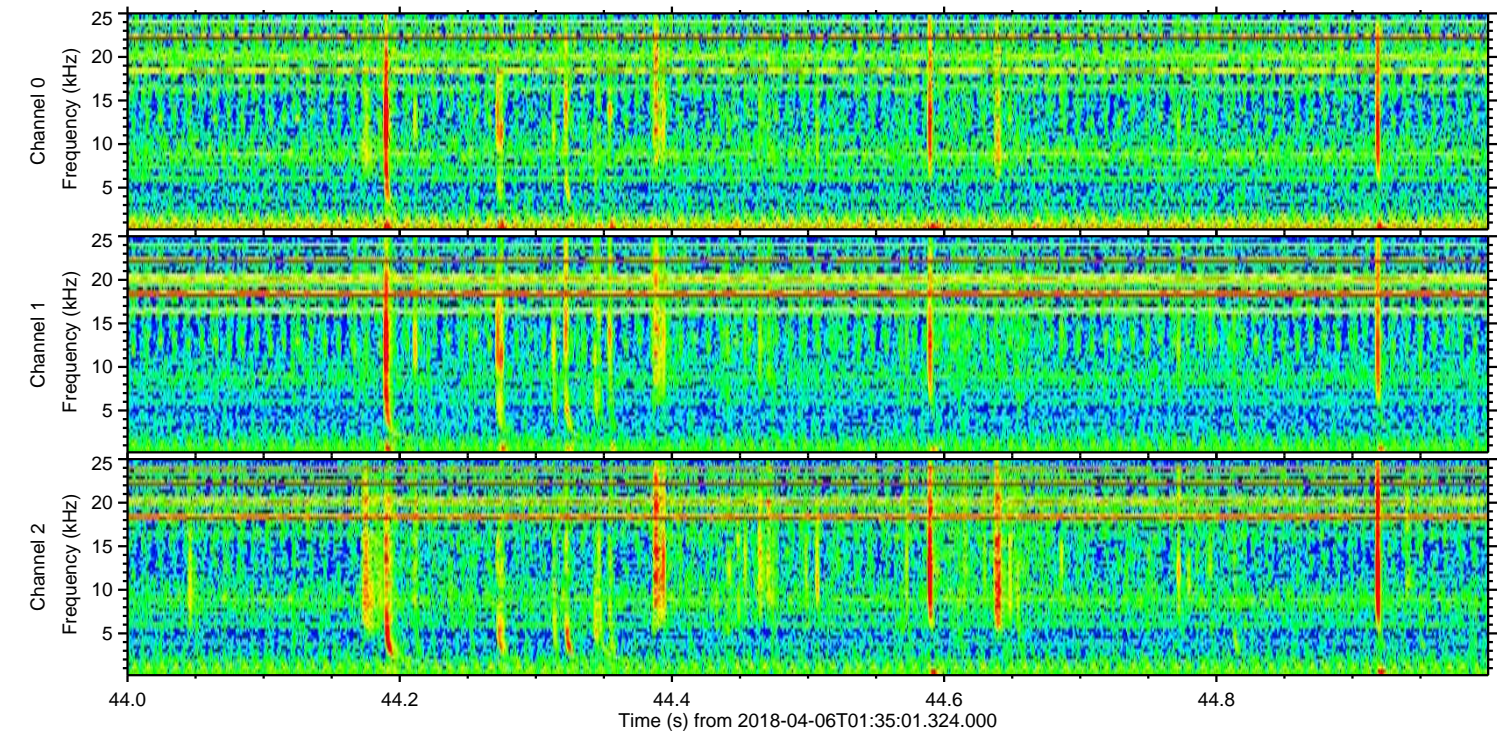
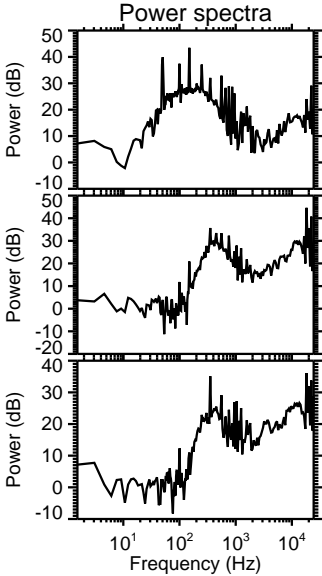
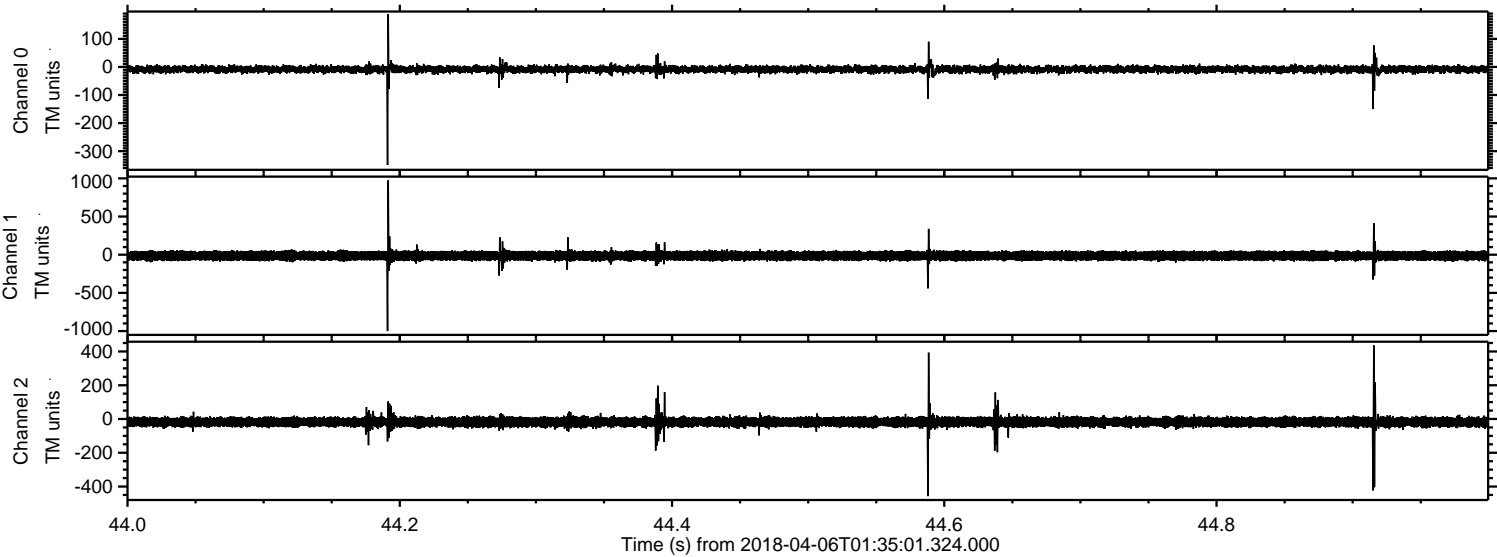
Processed Fri Apr 6 03:43:01 2018 by ELM ver.2012-10-06 from 001__elm20180406_013500__dat00.bin



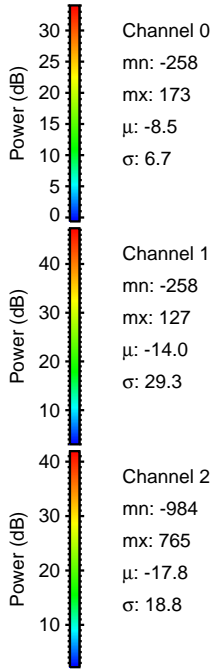
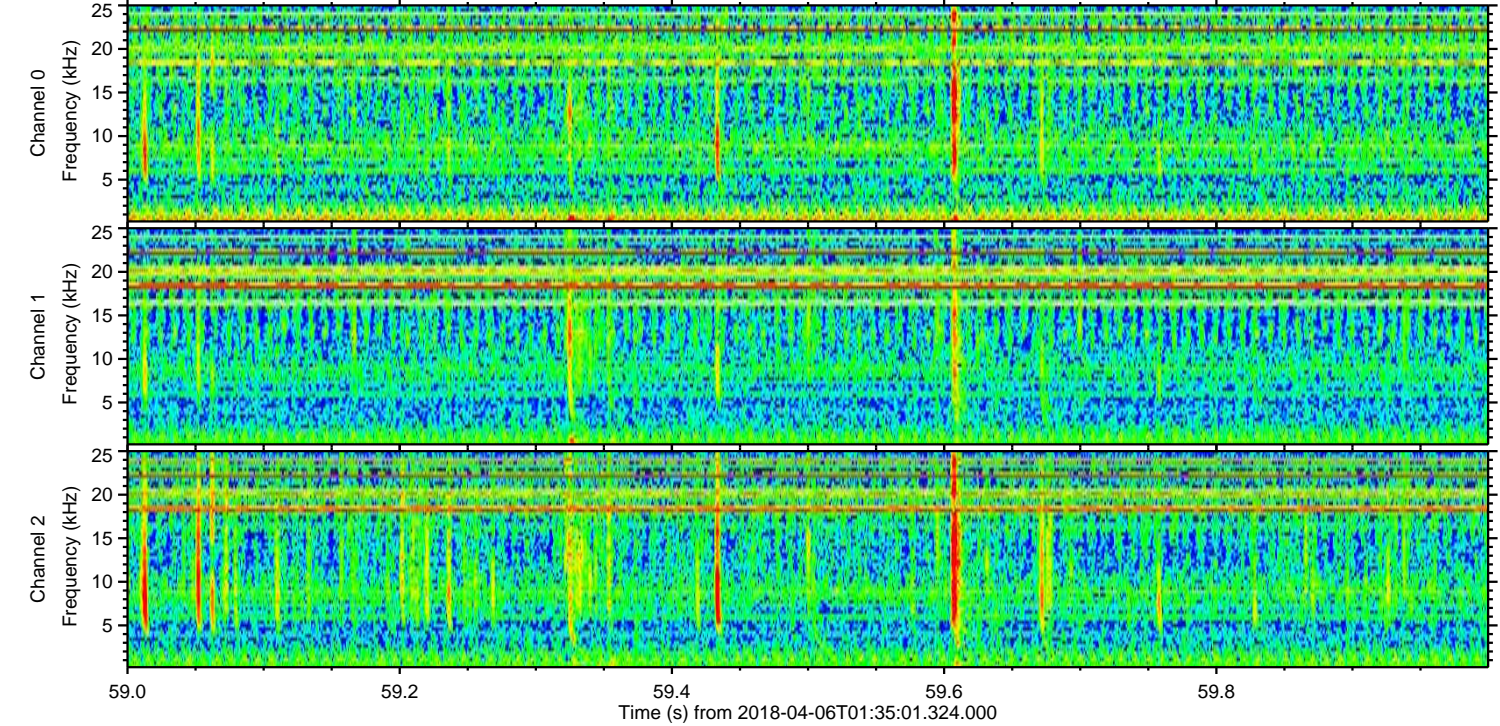
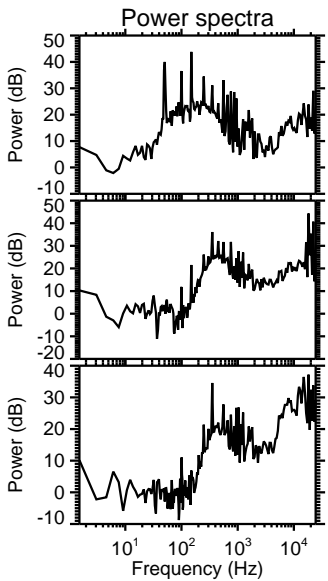
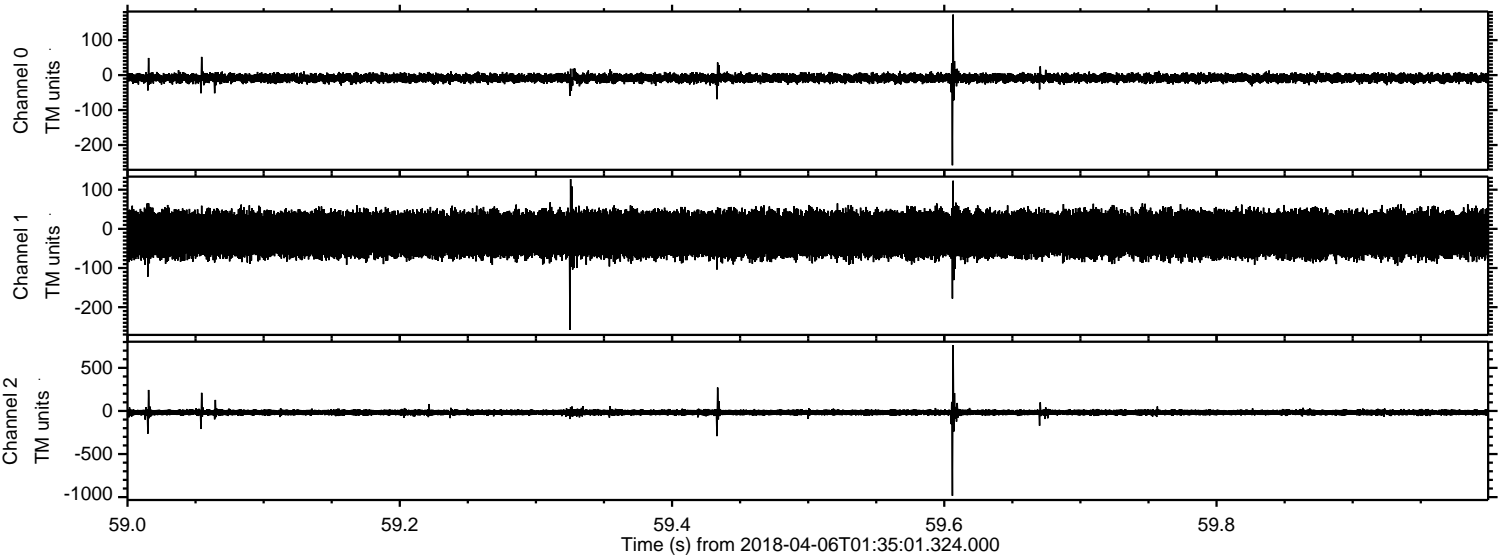
Processed Fri Apr 6 03:43:02 2018 by ELM ver.2012-10-06 from 001__elm20180406_013500__dat00.bin



Processed Fri Apr 6 03:43:02 2018 by ELM ver.2012-10-06 from 001__elm20180406_013500__dat00.bin



Processed Fri Apr 6 03:43:03 2018 by ELM ver.2012-10-06 from 001__elm20180406_013500__dat00.bin



Channel 0
mn: -258
mx: 173
 μ : -8.5
 σ : 6.7

Channel 1
mn: -258
mx: 127
 μ : -14.0
 σ : 29.3

Channel 2
mn: -984
mx: 765
 μ : -17.8
 σ : 18.8

