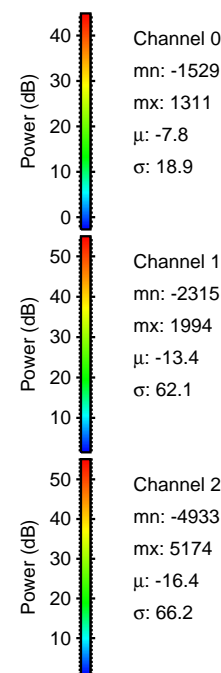
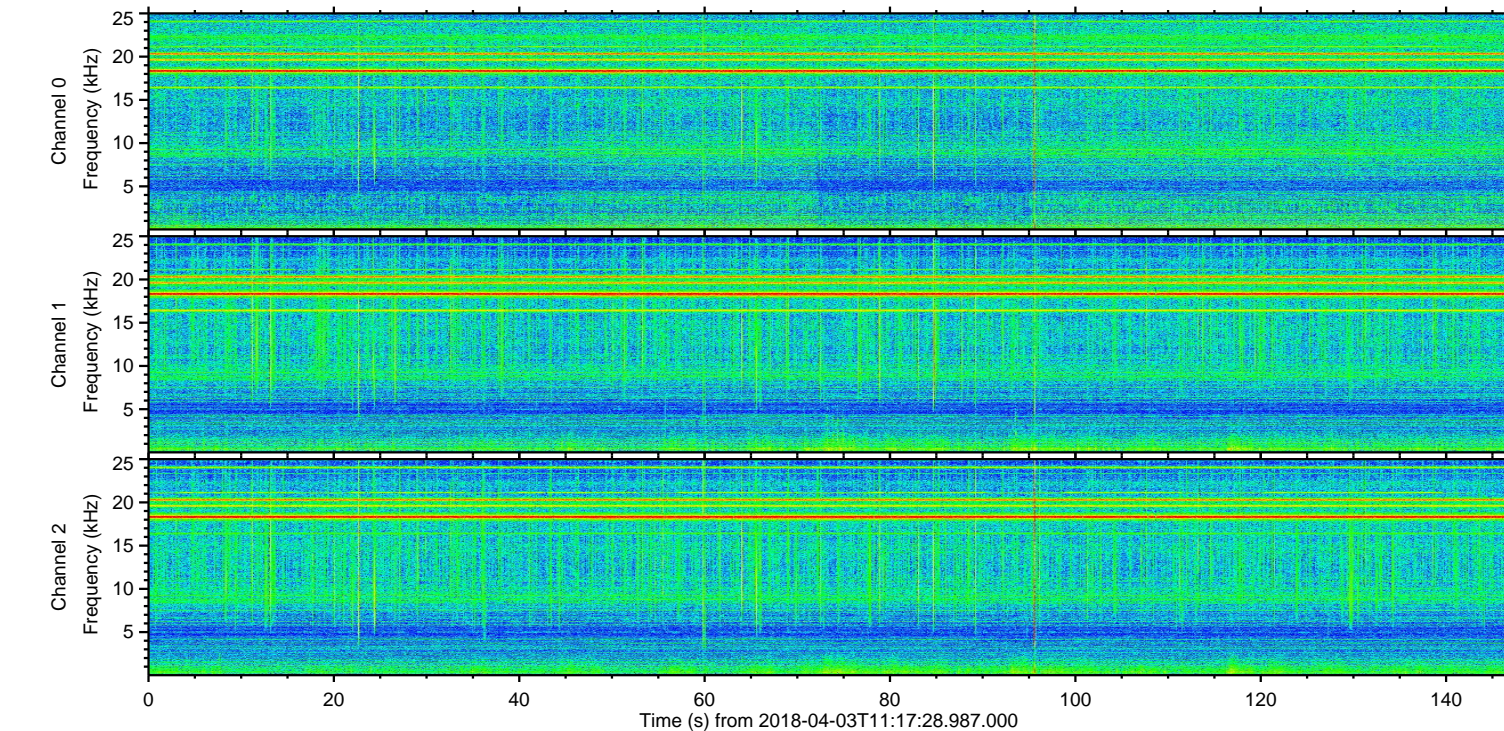
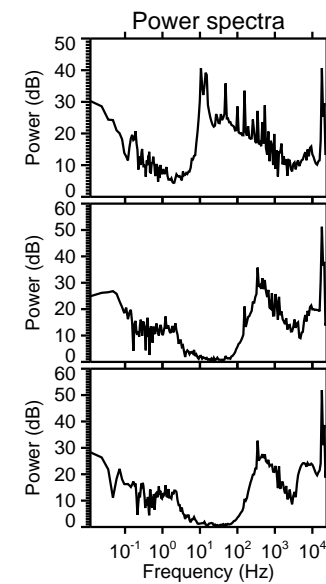
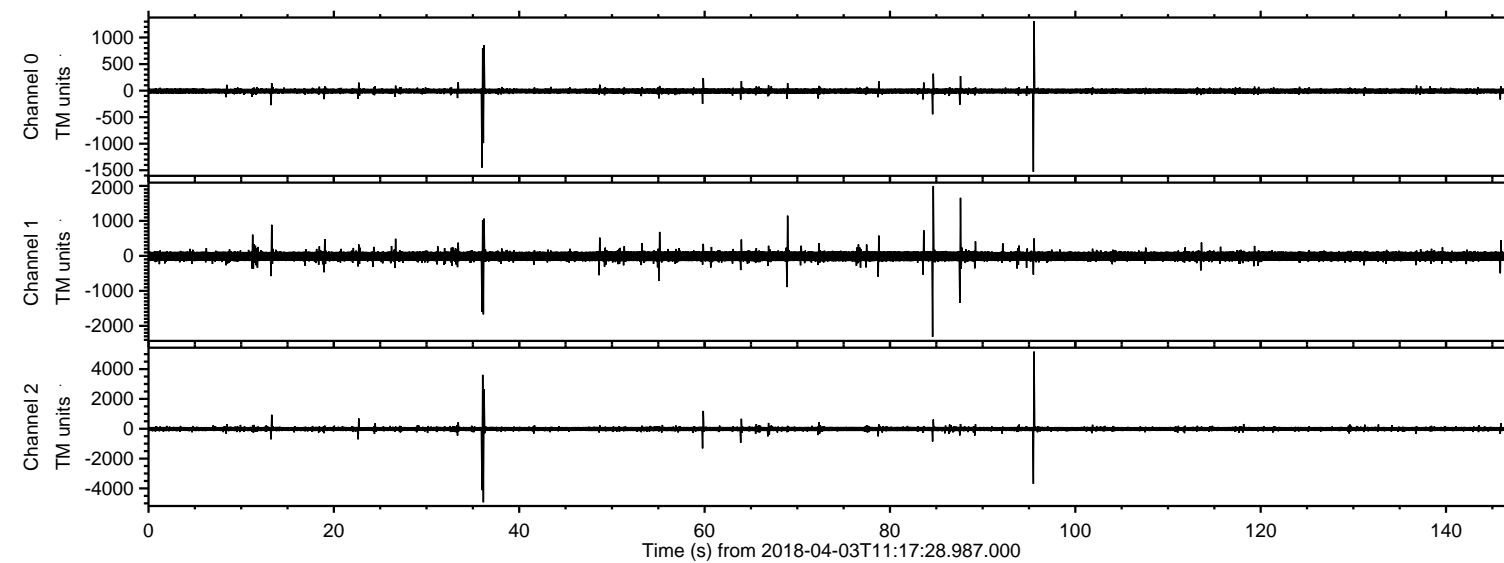


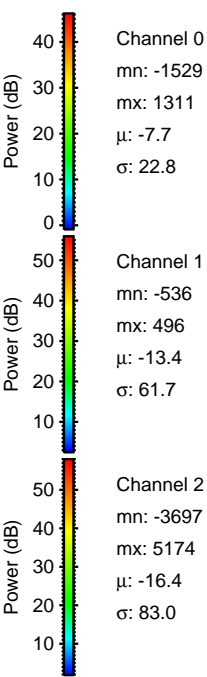
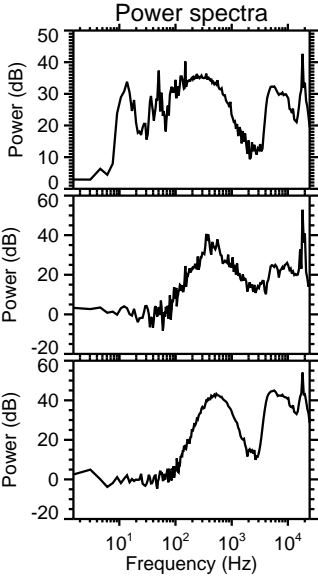
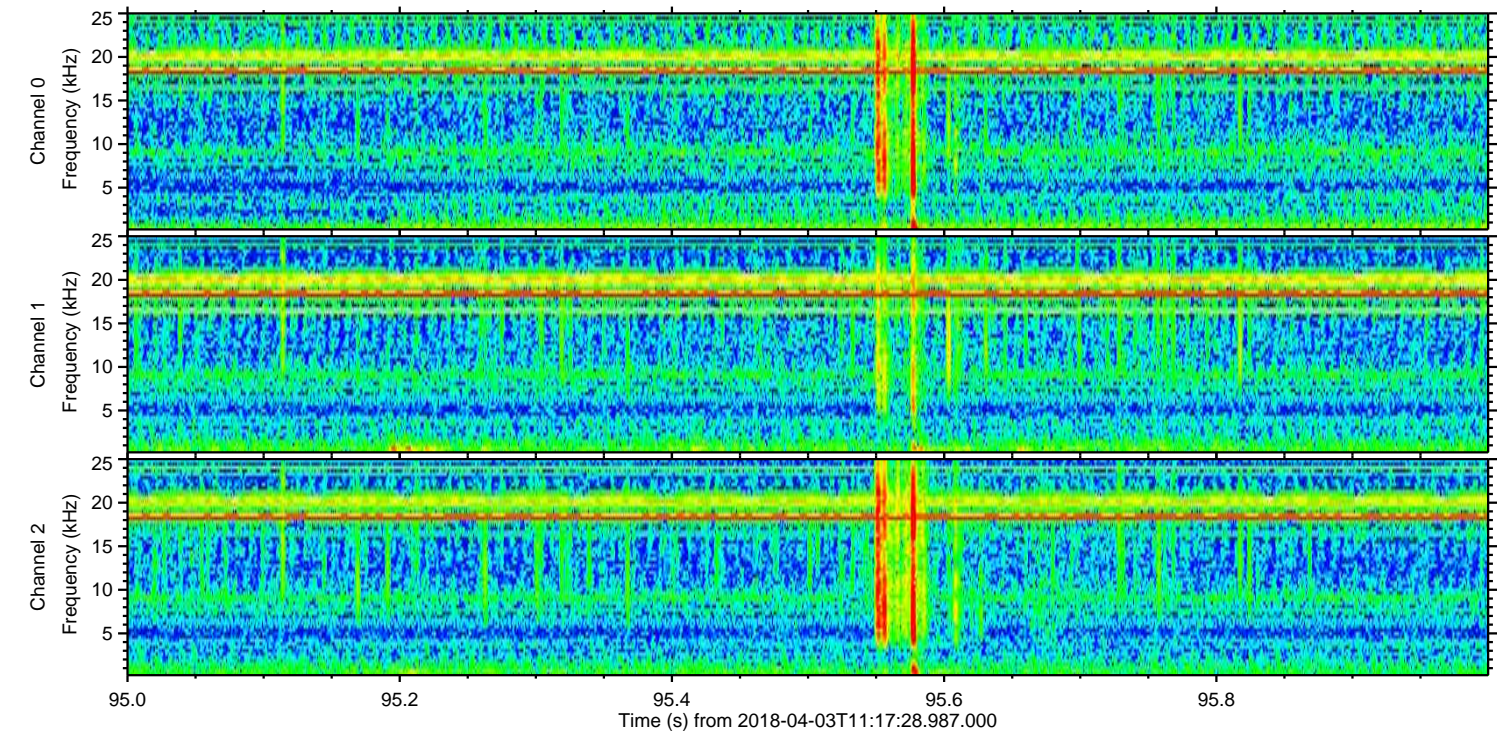
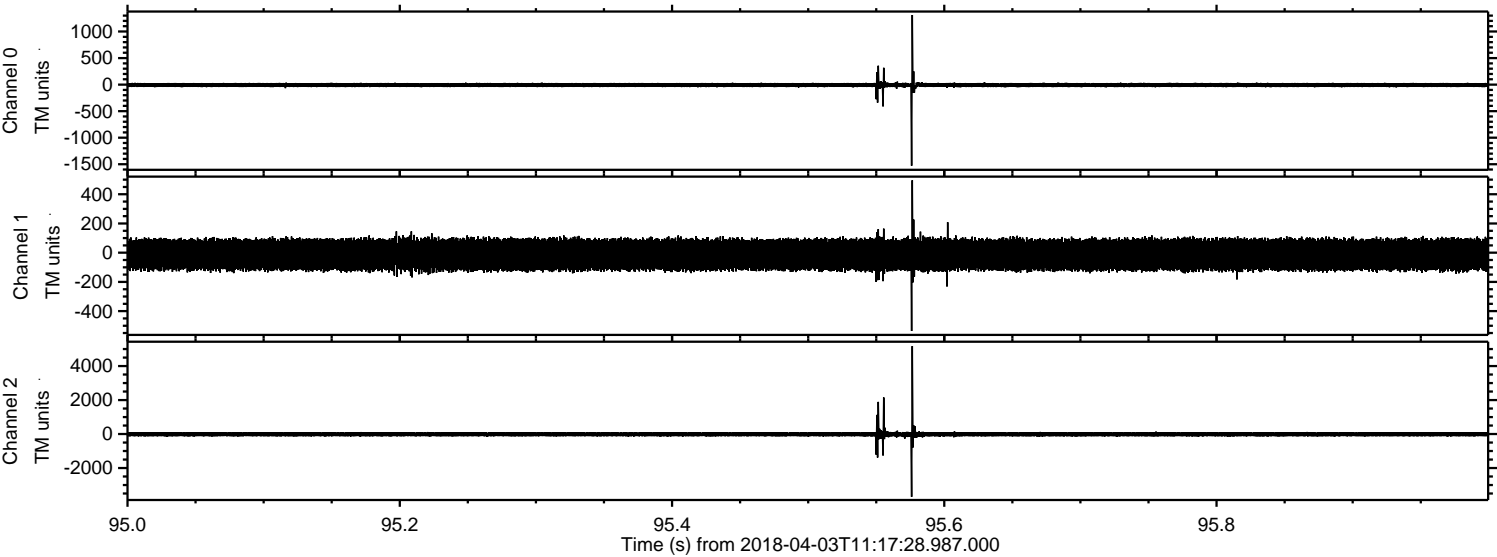
# ELMAVAN 3D WAVEFORMS (Measured data sampled at 50 kHz) 51000 packets of 144 samples from 2018-04-03T11:17:28.987.000.

Processed Tue Apr 3 13:25:01 2018 by ELM ver.2012-10-06 from 001\_\_elm20180403\_111727\_\_dat00.bin



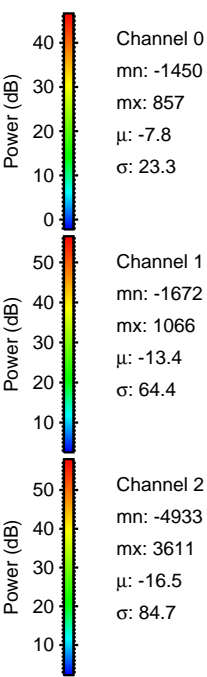
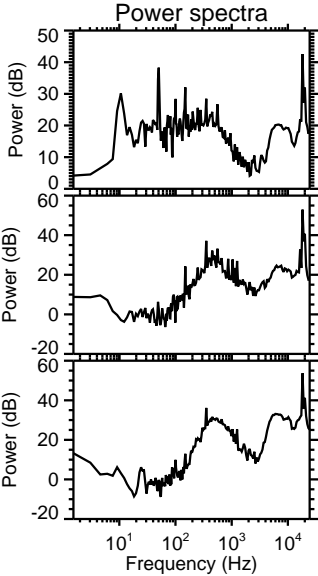
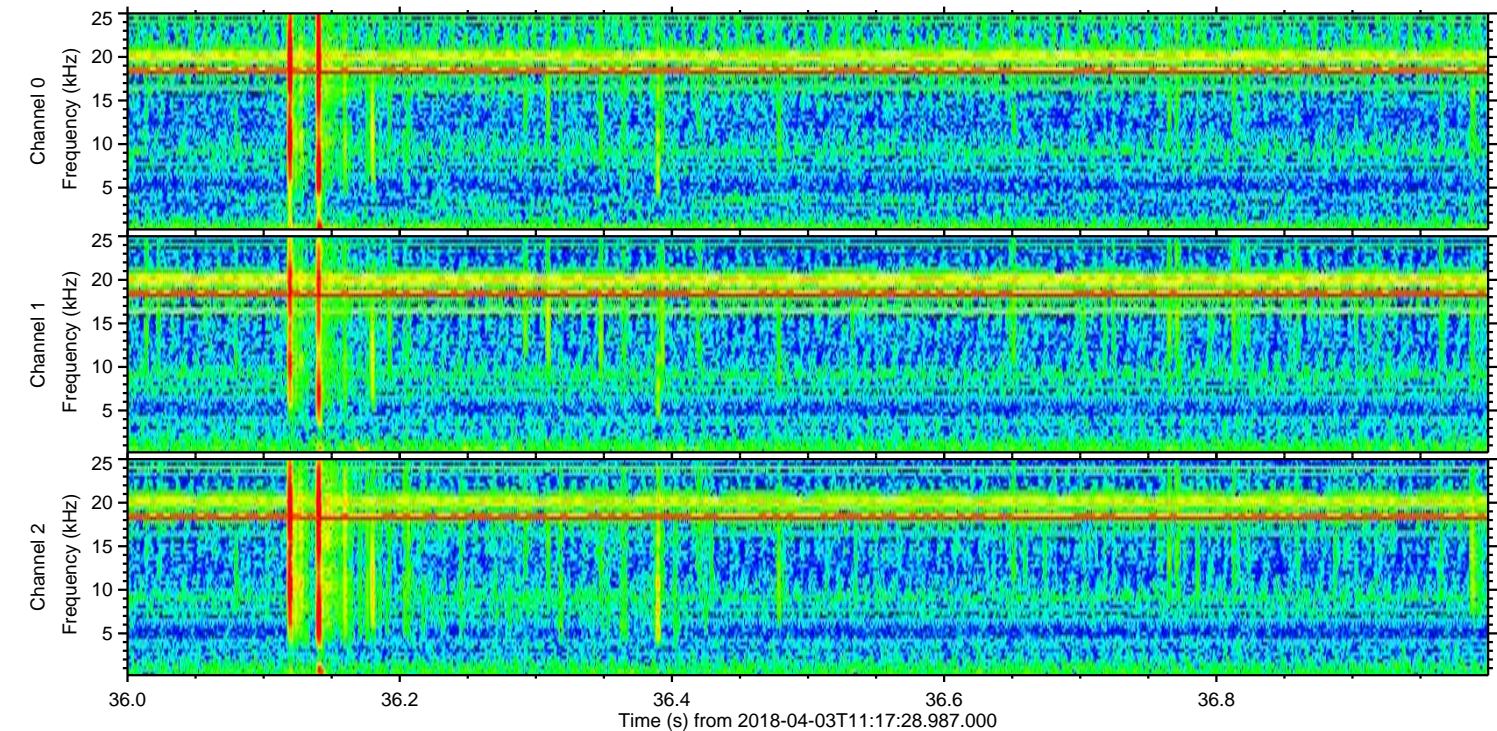
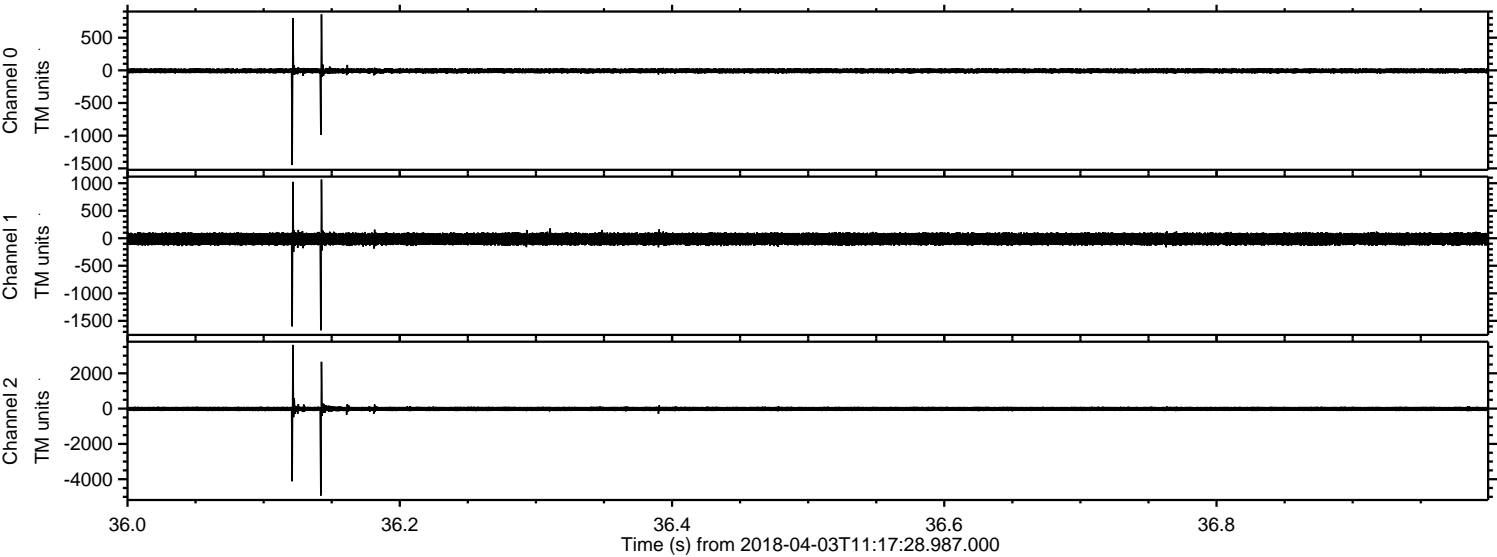


Processed Tue Apr 3 13:25:09 2018 by ELM ver.2012-10-06 from 001\_\_elm20180403\_111727\_\_dat00.bin



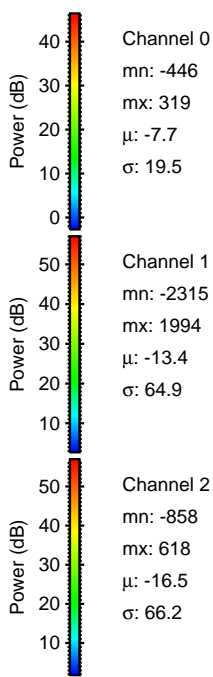
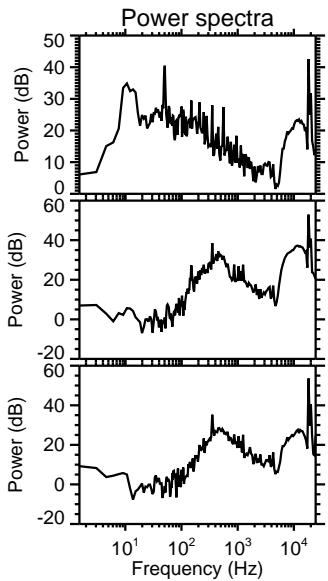
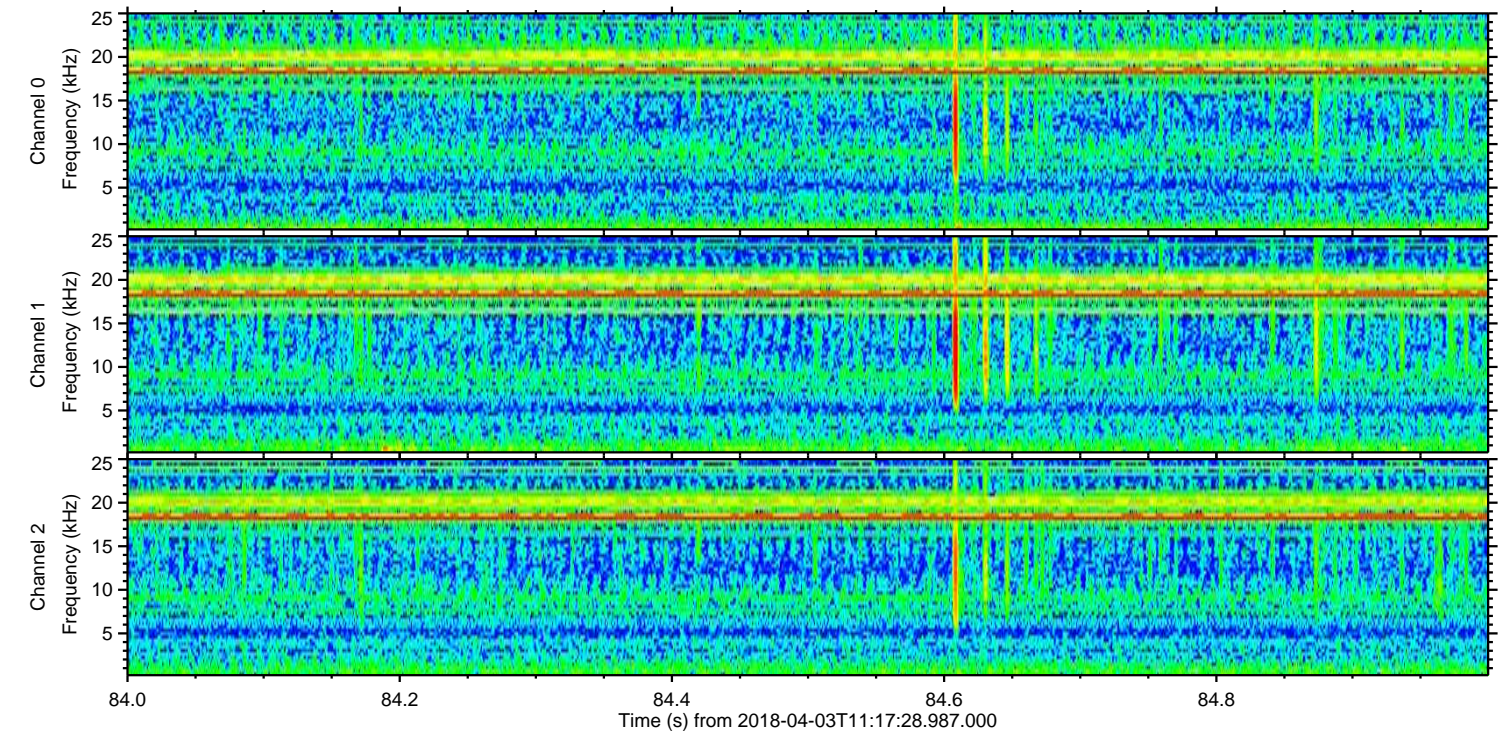
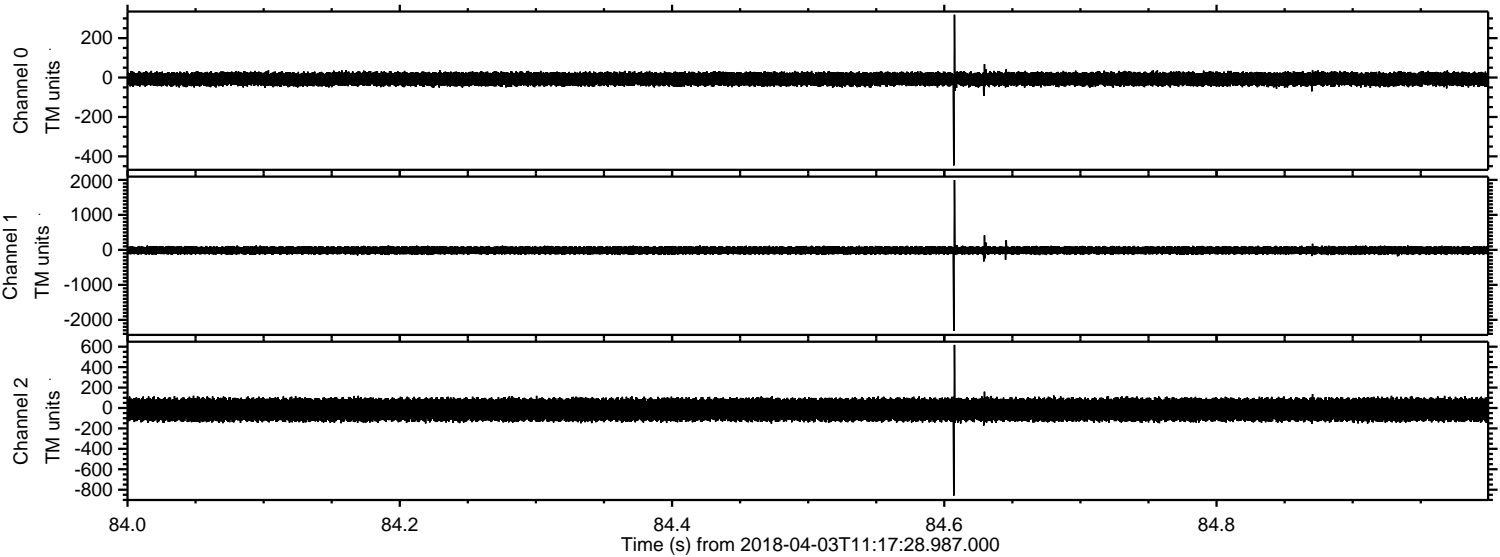


Processed Tue Apr 3 13:25:10 2018 by ELM ver.2012-10-06 from 001\_\_elm20180403\_111727\_\_dat00.bin



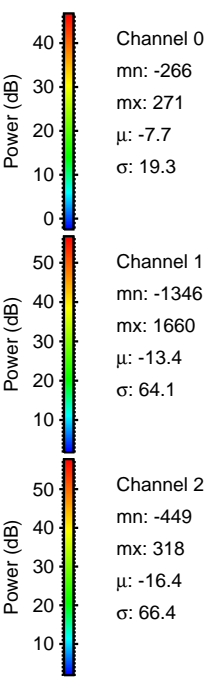
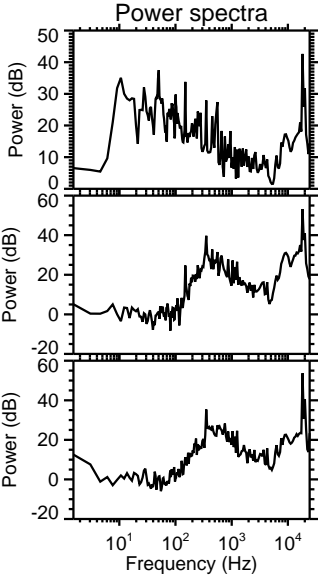
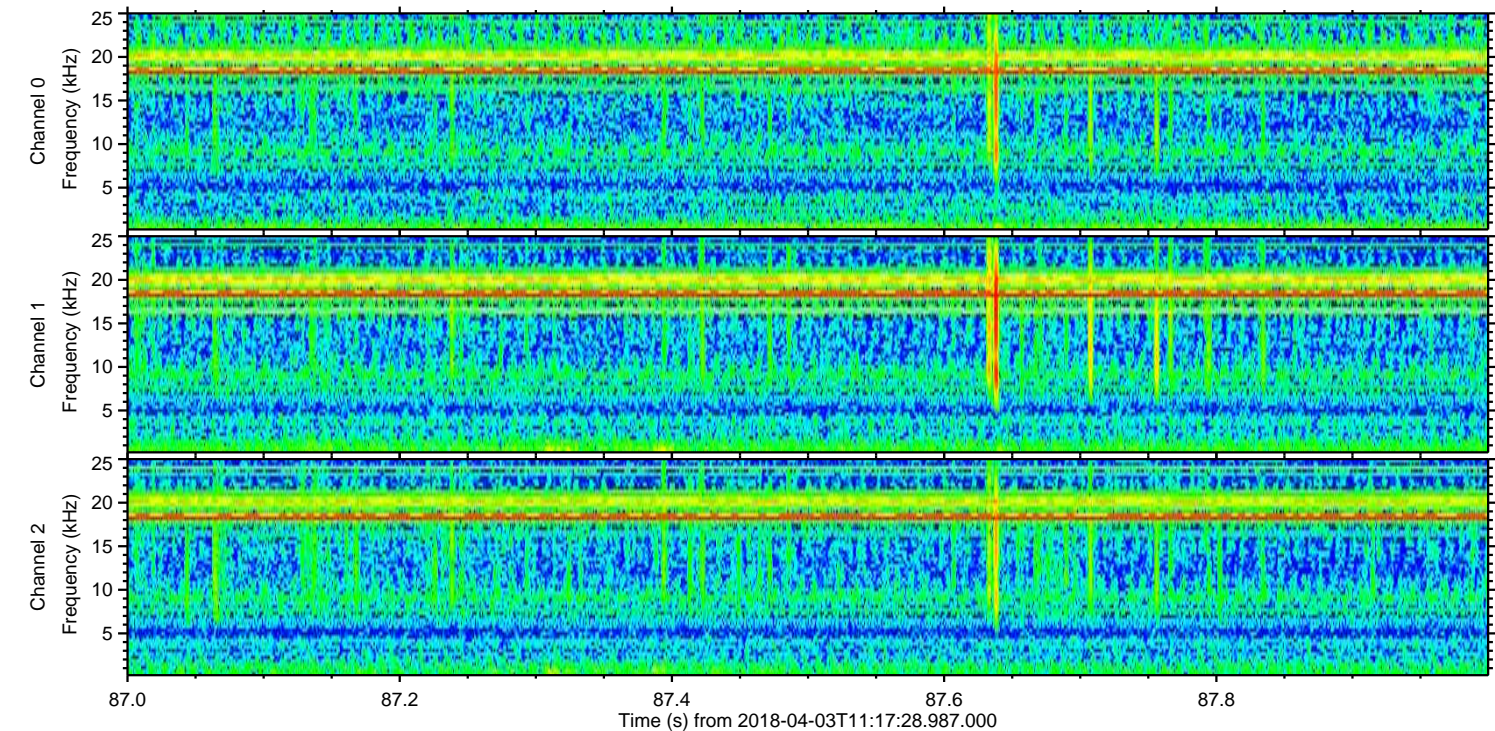
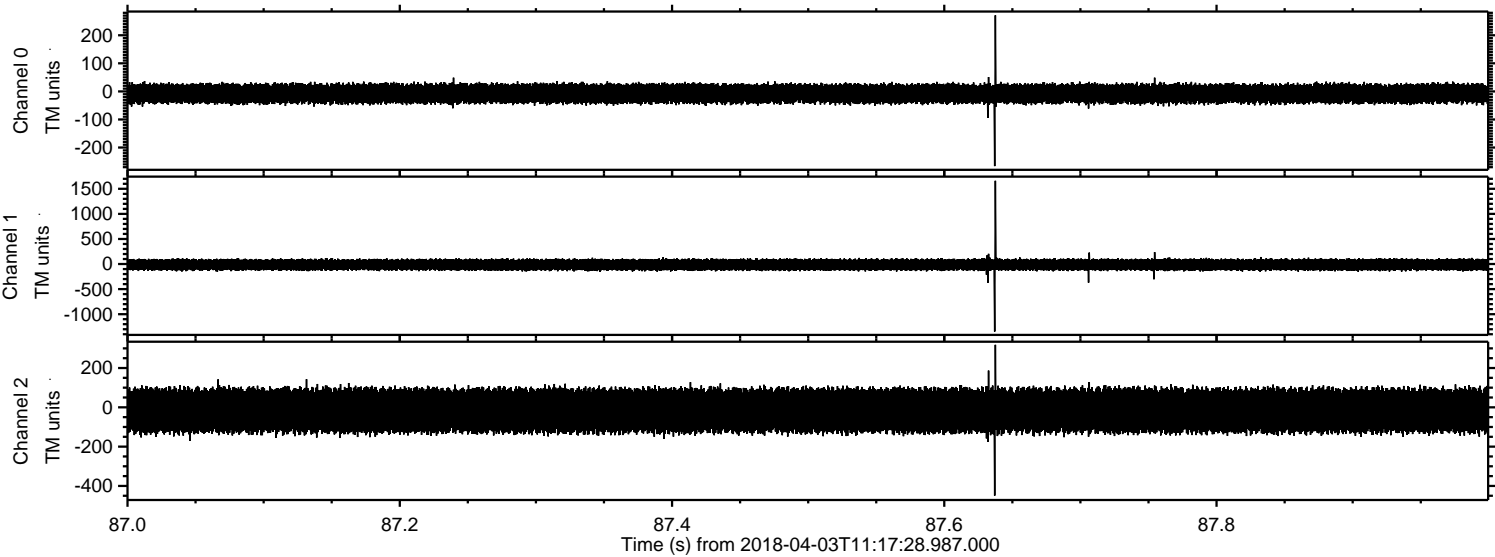


Processed Tue Apr 3 13:25:10 2018 by ELM ver.2012-10-06 from 001\_\_elm20180403\_111727\_\_dat00.bin





Processed Tue Apr 3 13:25:11 2018 by ELM ver.2012-10-06 from 001\_\_elm20180403\_111727\_\_dat00.bin



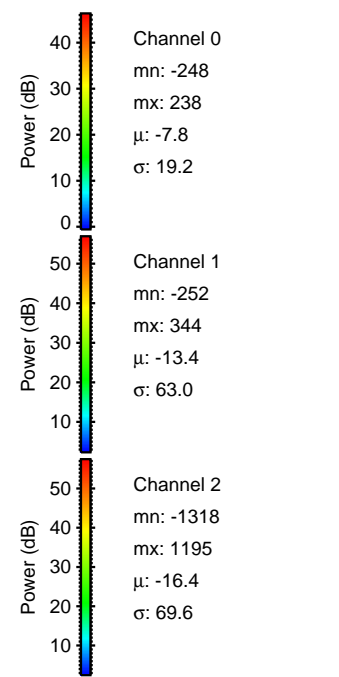
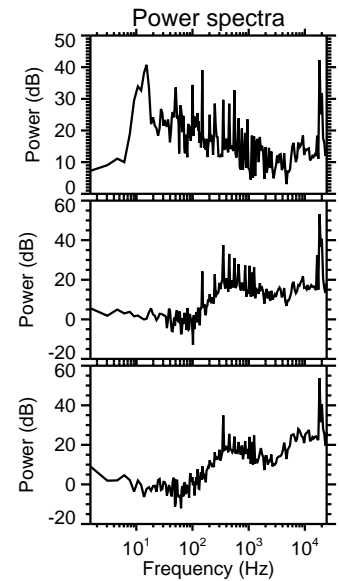
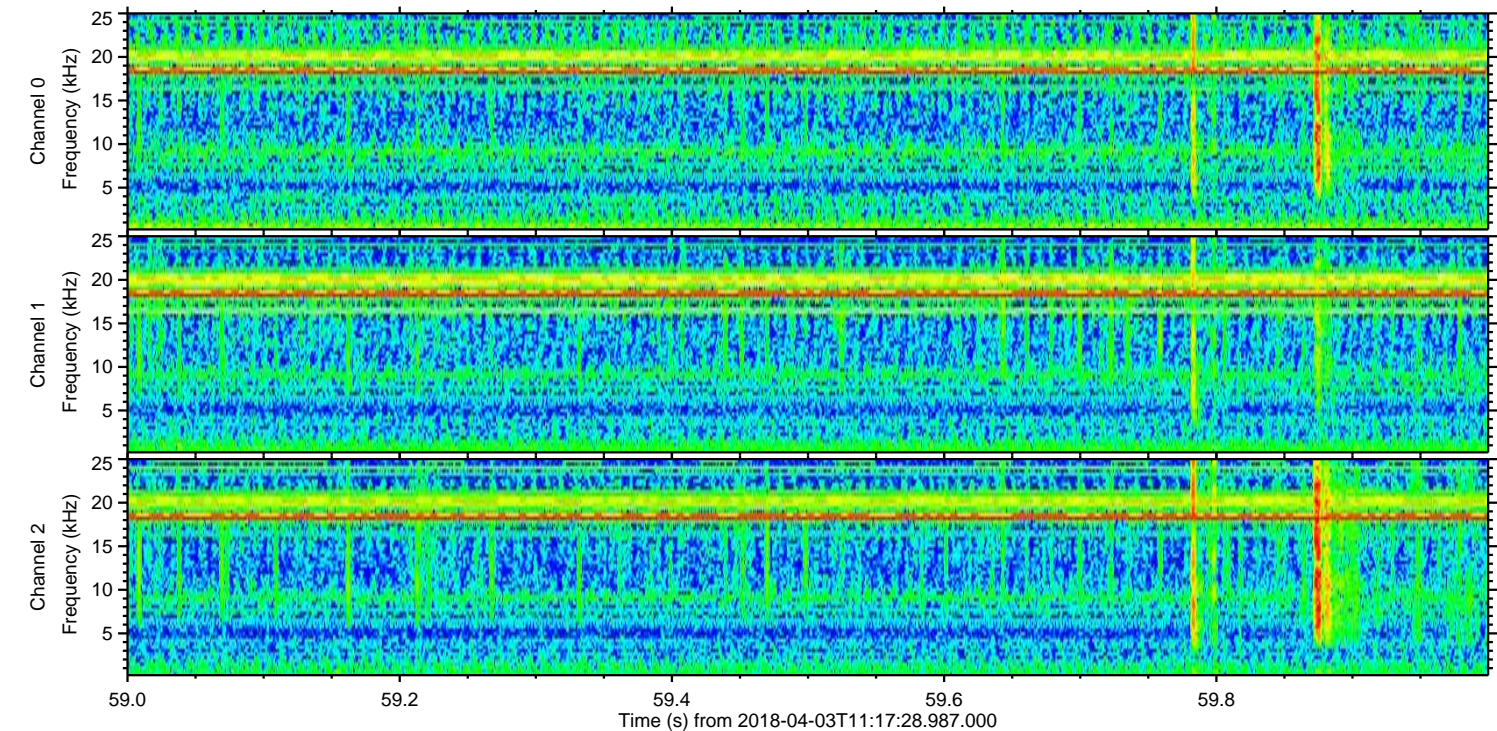
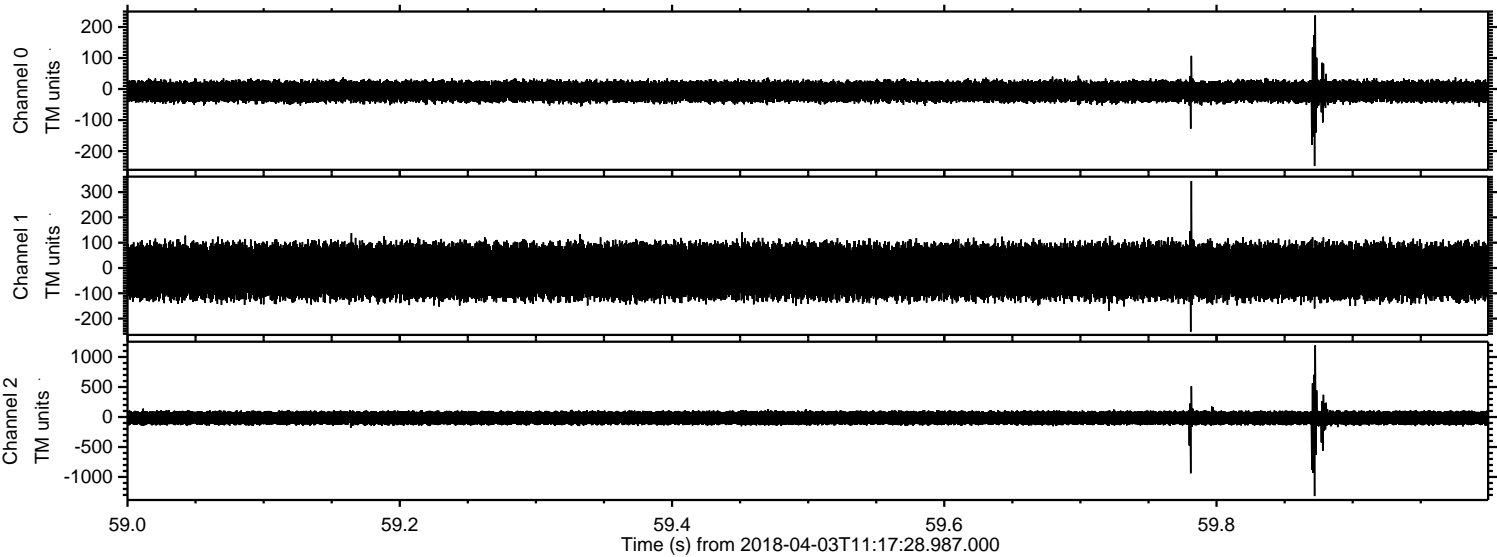
Channel 0  
mn: -266  
mx: 271  
 $\mu$ : -7.7  
 $\sigma$ : 19.3

Channel 1  
mn: -1346  
mx: 1660  
 $\mu$ : -13.4  
 $\sigma$ : 64.1

Channel 2  
mn: -449  
mx: 318  
 $\mu$ : -16.4  
 $\sigma$ : 66.4

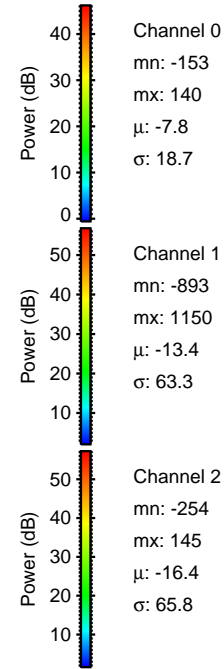
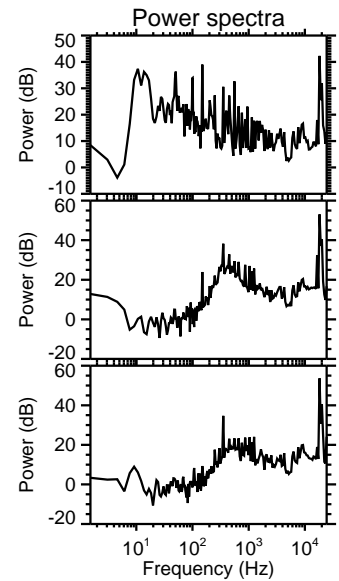
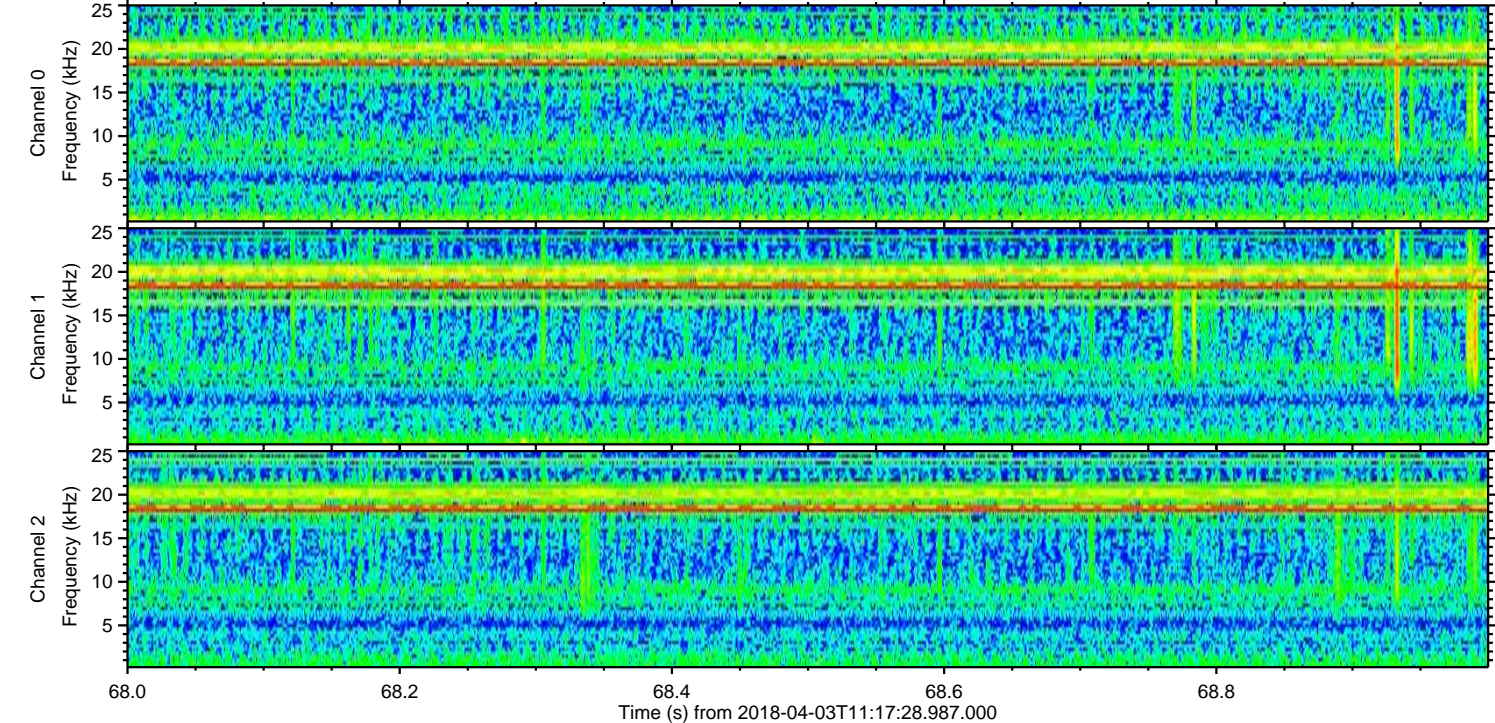
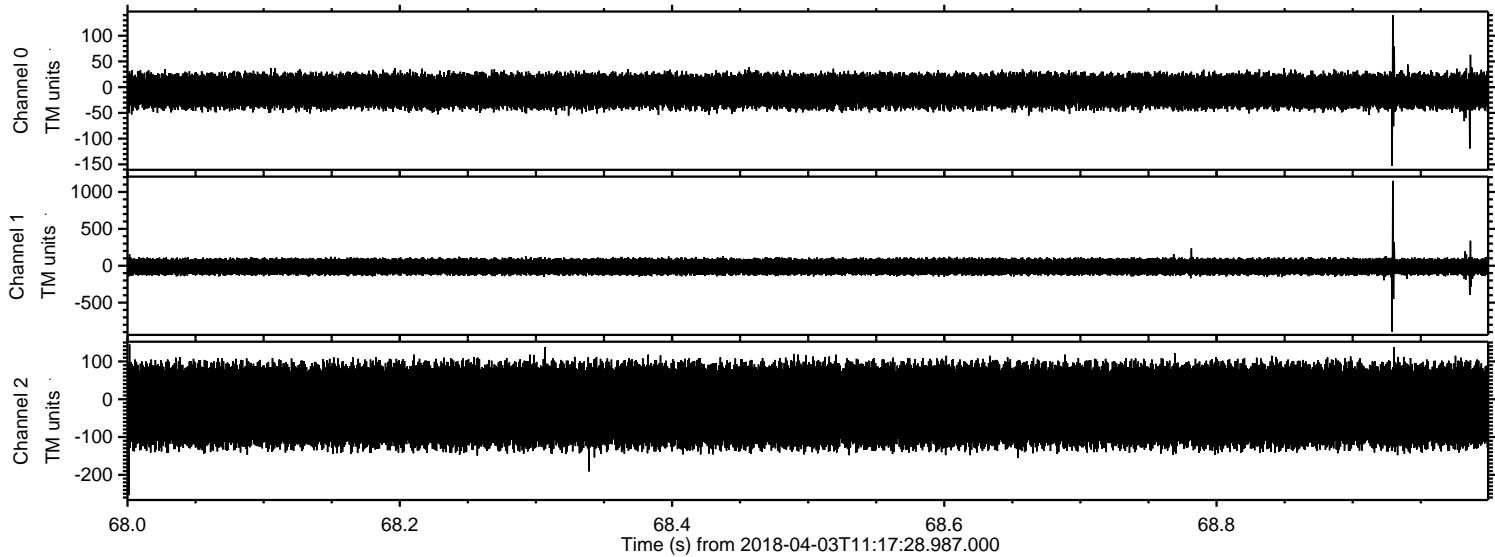


Processed Tue Apr 3 13:25:12 2018 by ELM ver.2012-10-06 from 001\_\_elm20180403\_111727\_\_dat00.bin



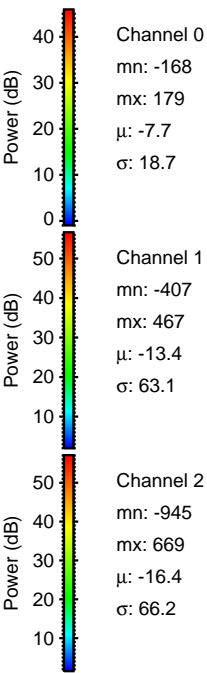
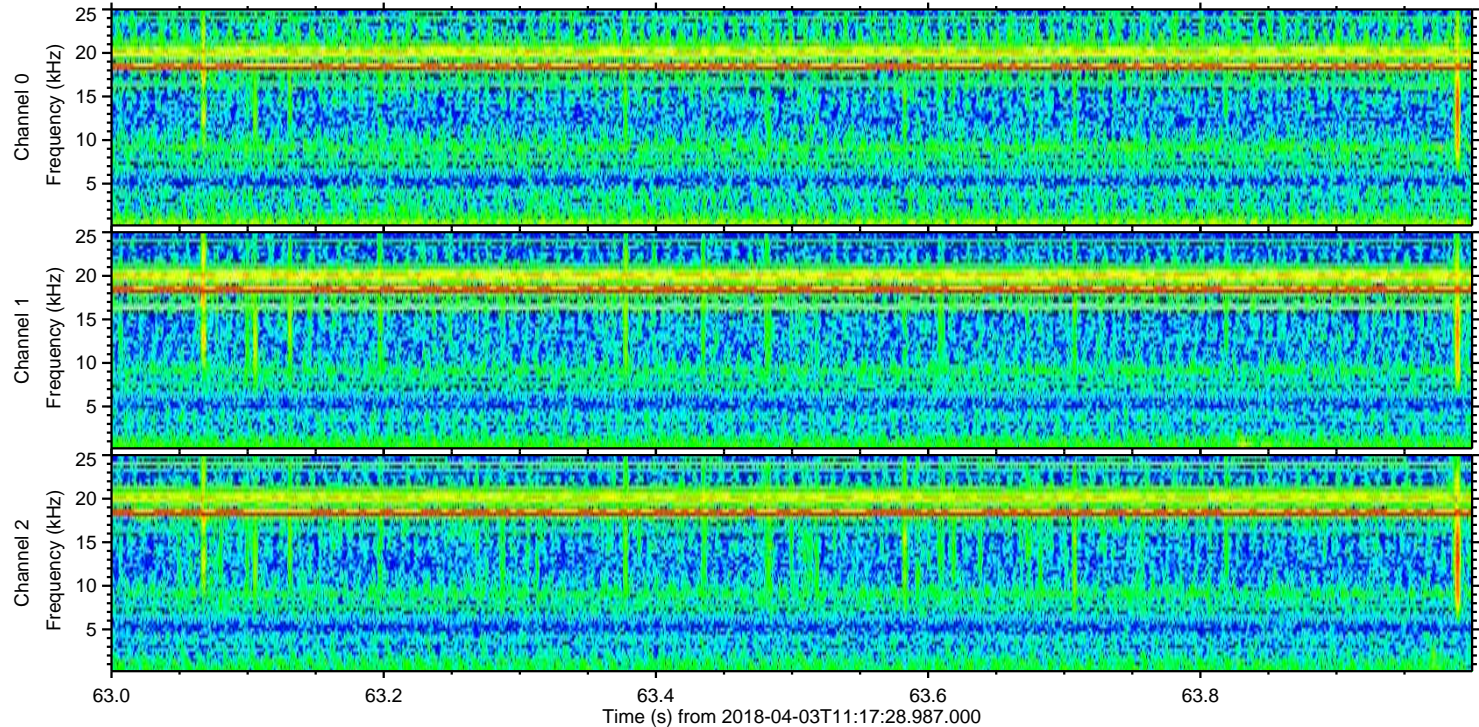
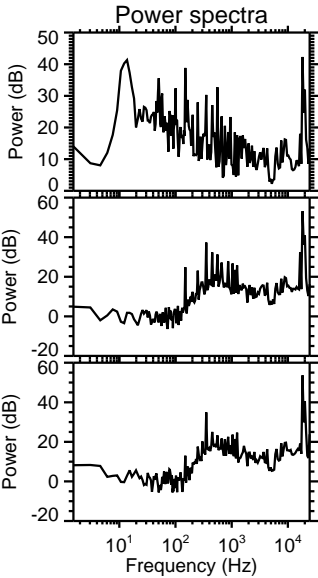
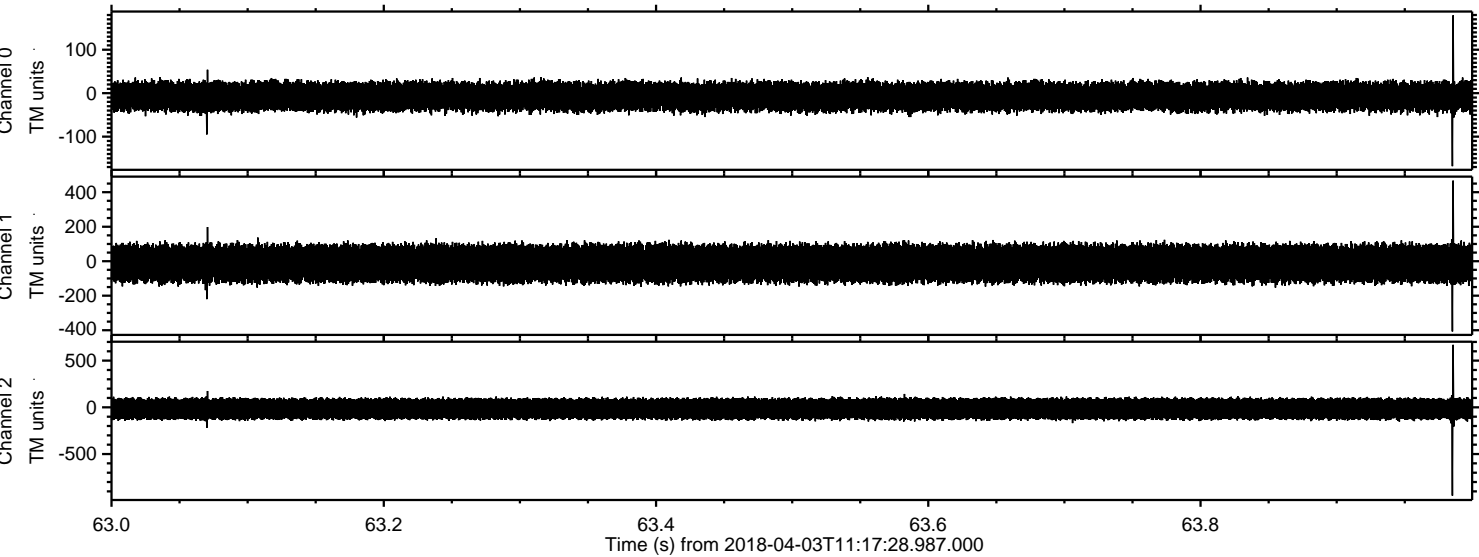


Processed Tue Apr 3 13:25:13 2018 by ELM ver.2012-10-06 from 001\_\_elm20180403\_111727\_\_dat00.bin



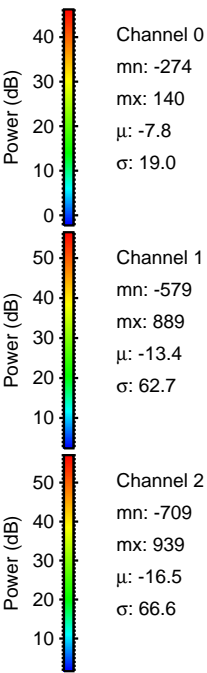
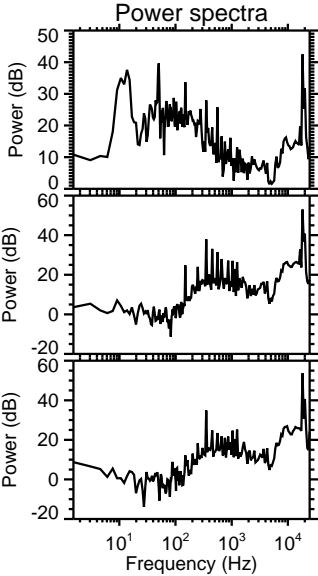
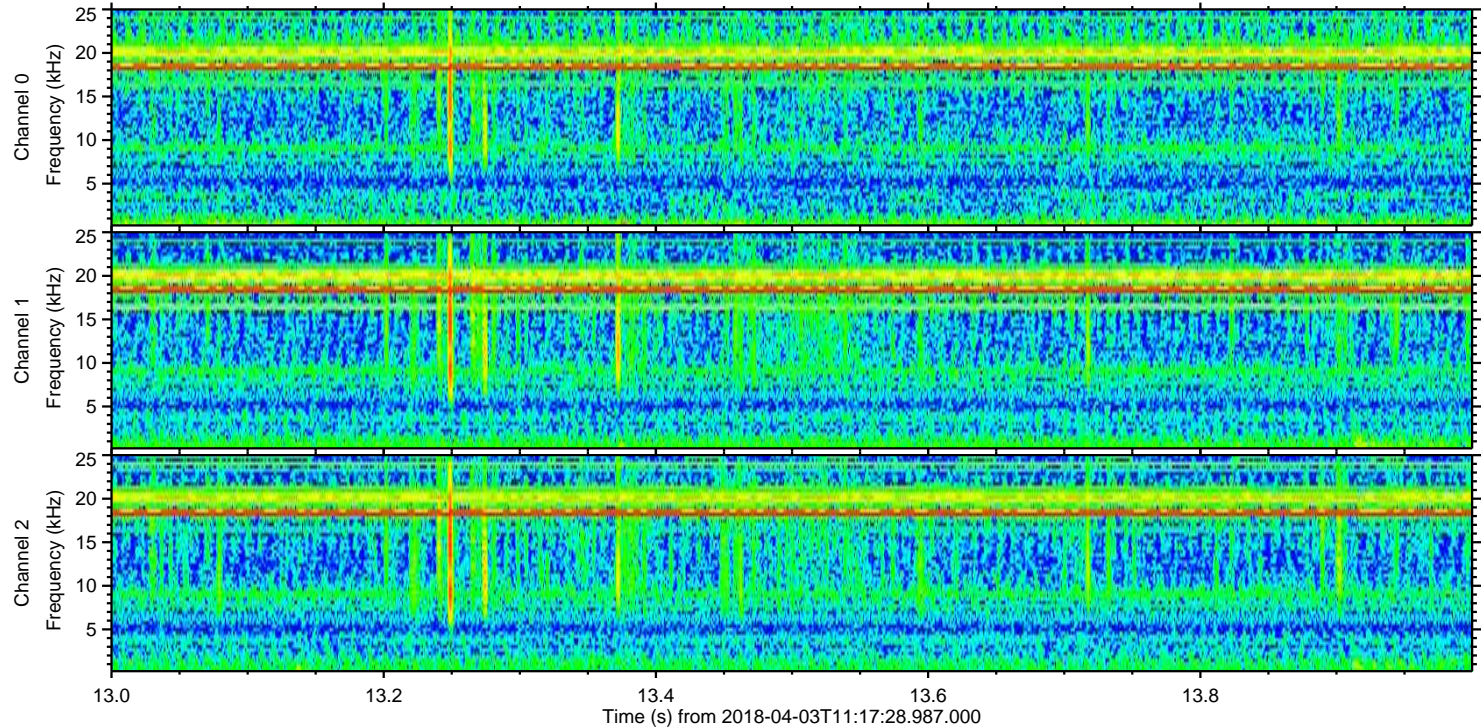
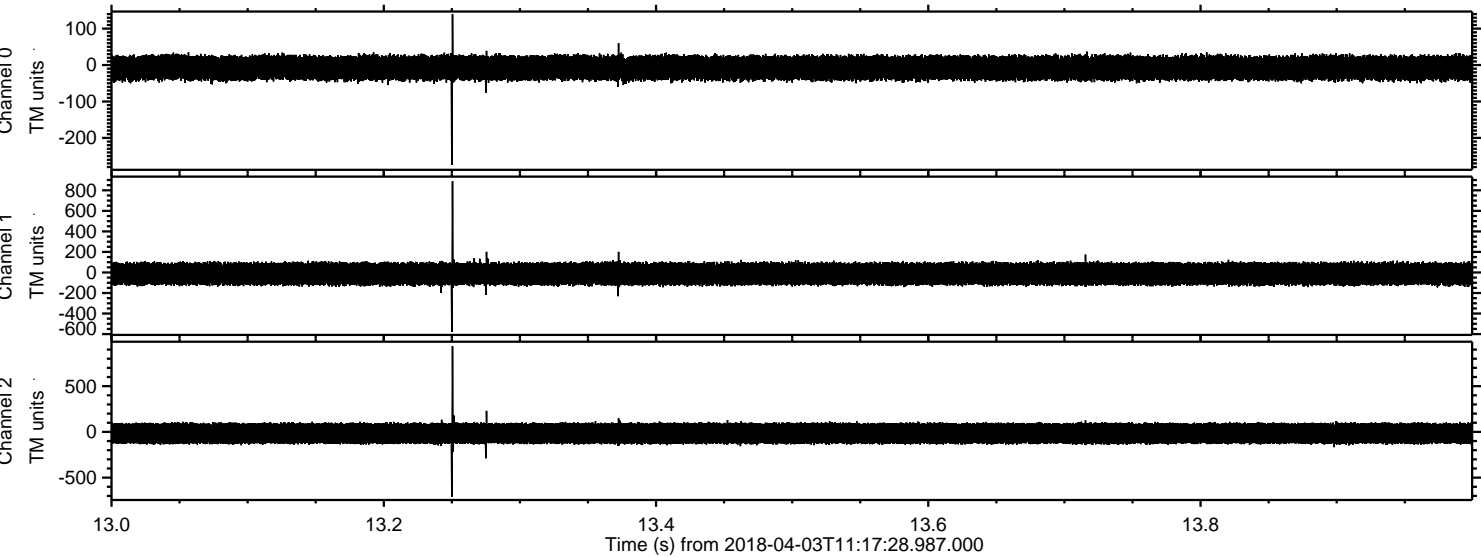


Processed Tue Apr 3 13:25:13 2018 by ELM ver.2012-10-06 from 001\_\_elm20180403\_111727\_\_dat00.bin





Processed Tue Apr 3 13:25:14 2018 by ELM ver.2012-10-06 from 001\_\_elm20180403\_111727\_\_dat00.bin



Channel 0  
mn: -274  
mx: 140  
 $\mu$ : -7.8  
 $\sigma$ : 19.0

Channel 1  
mn: -579  
mx: 889  
 $\mu$ : -13.4  
 $\sigma$ : 62.7

Channel 2  
mn: -709  
mx: 939  
 $\mu$ : -16.5  
 $\sigma$ : 66.6



