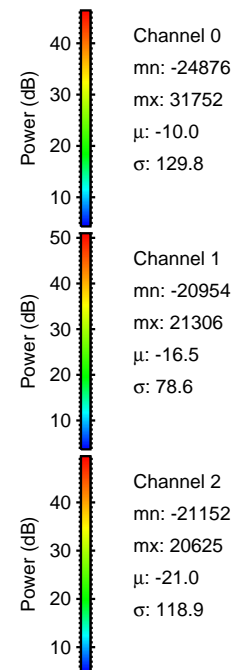
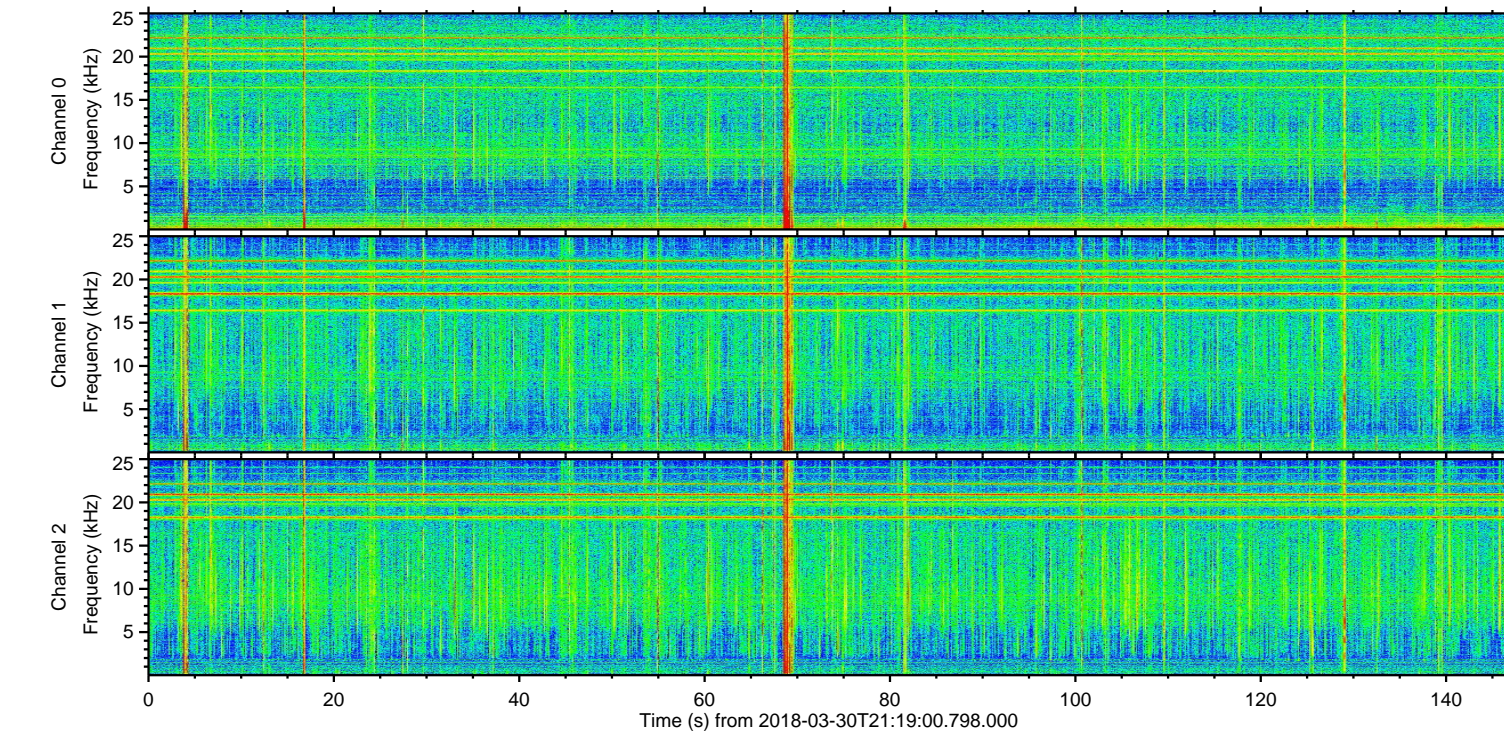
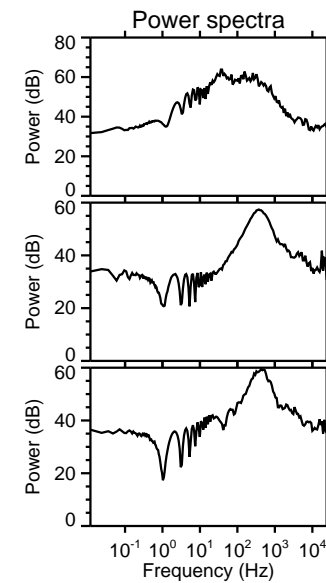
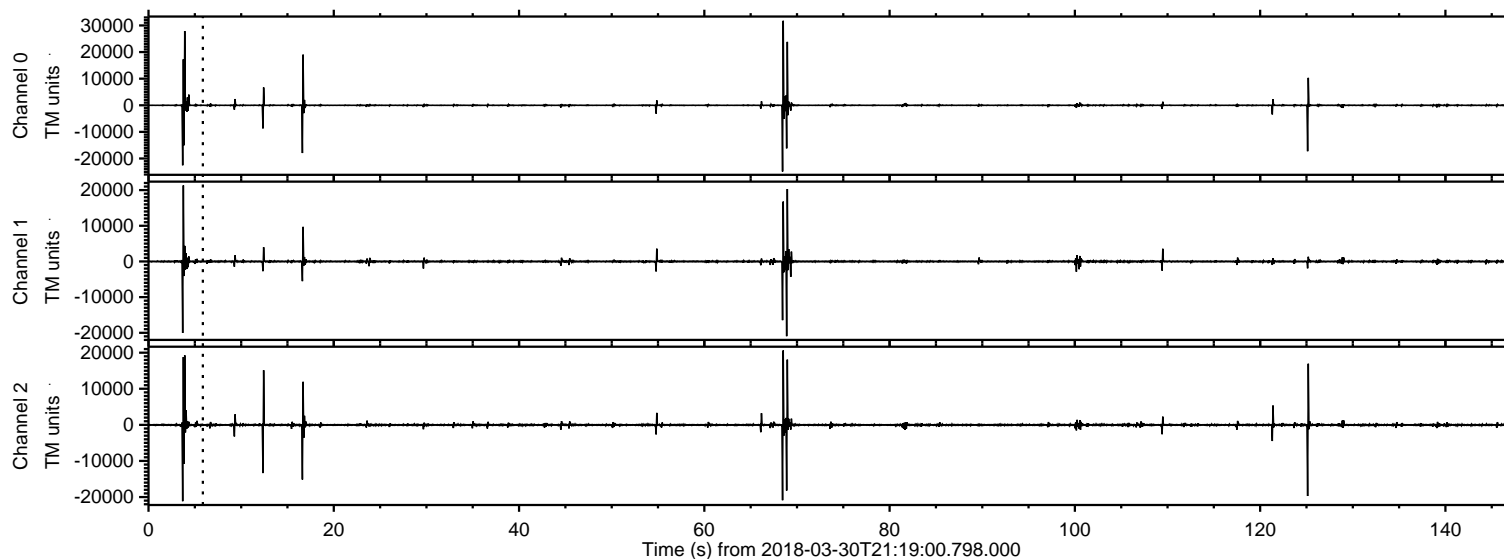
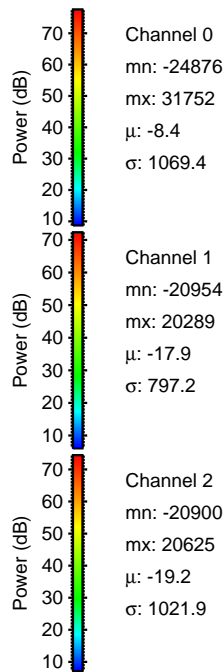
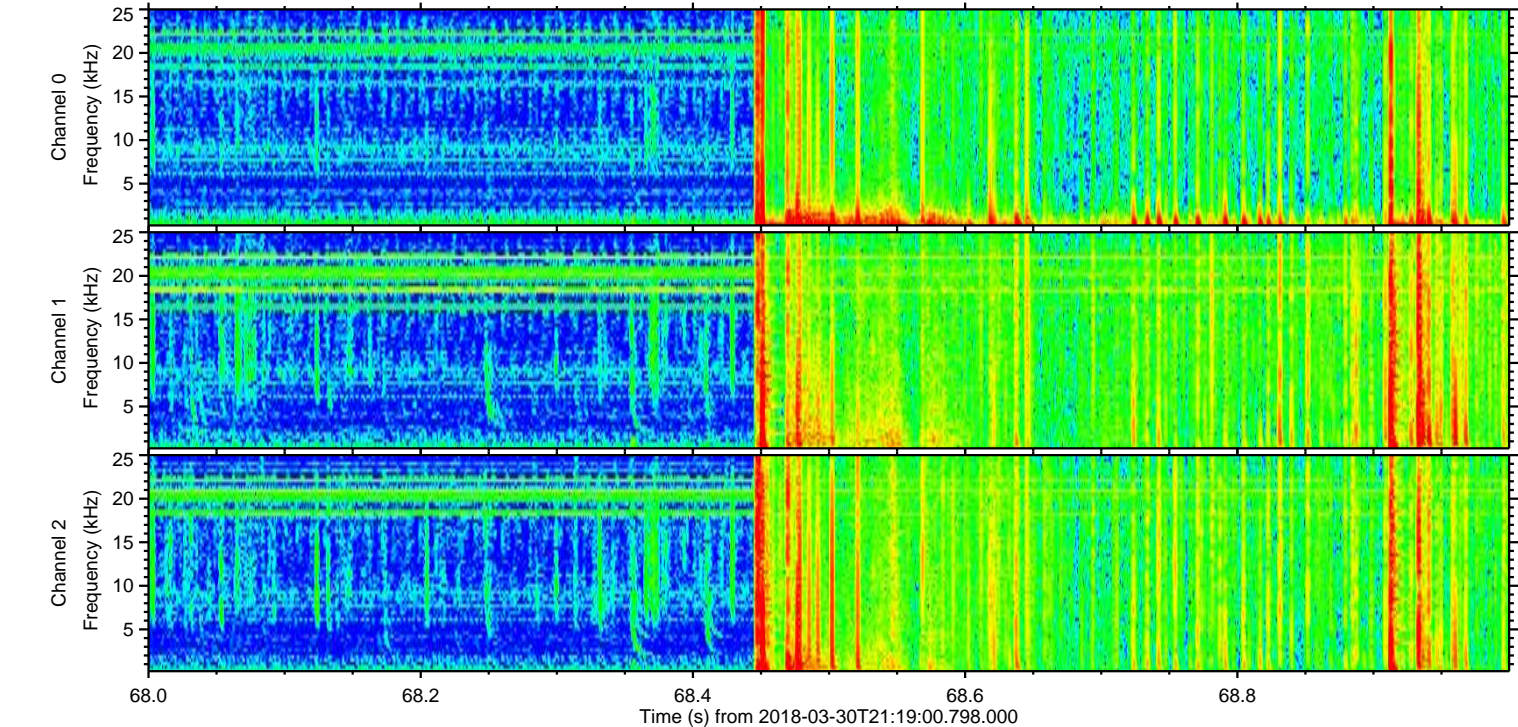
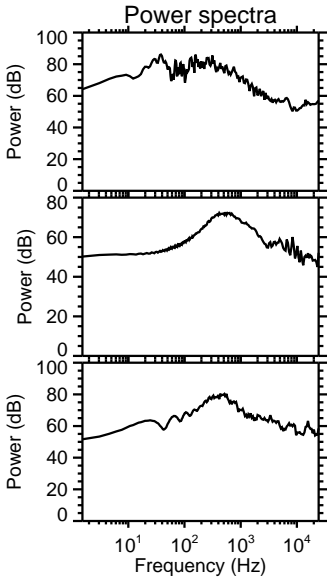
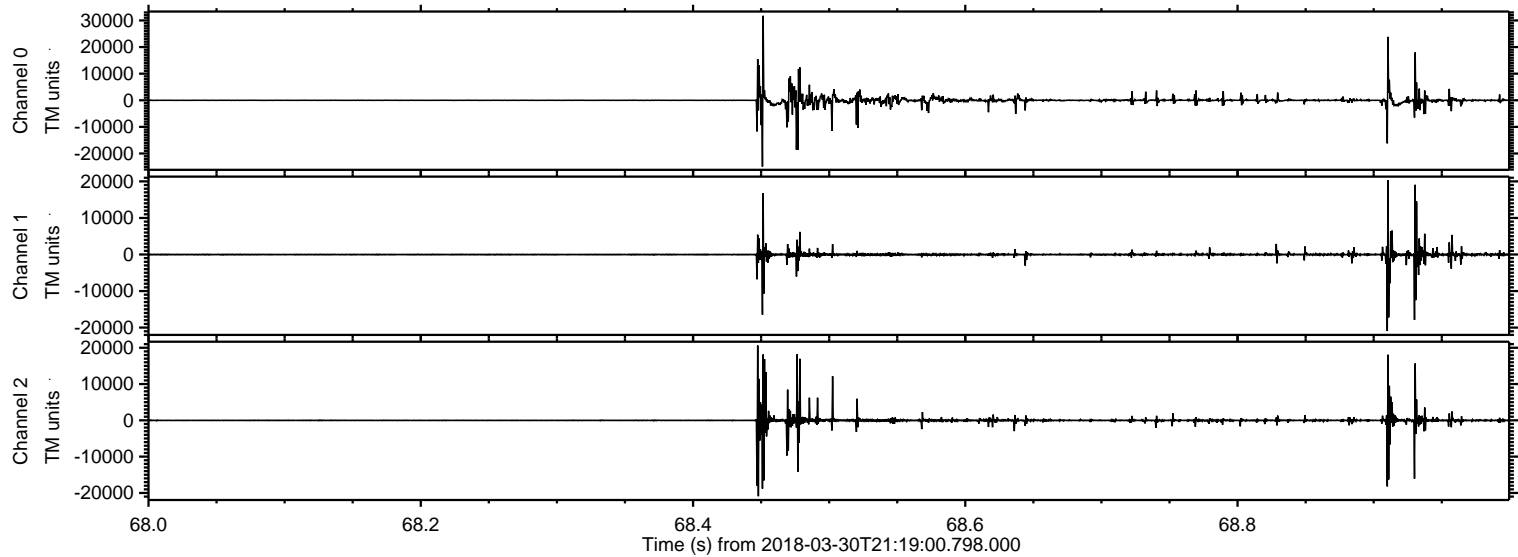


ELMAVAN 3D WAVEFORMS (Measured data sampled at 50 kHz) 50999 packets of 144 samples from 2018-03-30T21:19:00.798.000.

Processed Fri Mar 30 23:26:54 2018 by ELM ver.2012-10-06 from 001__elm20180330_211859__dat00.bin

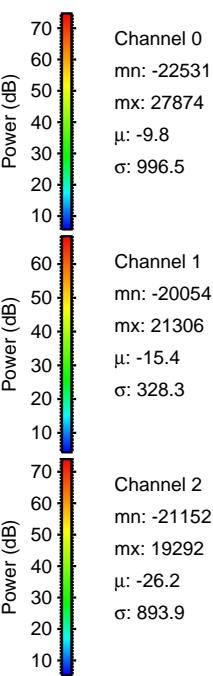
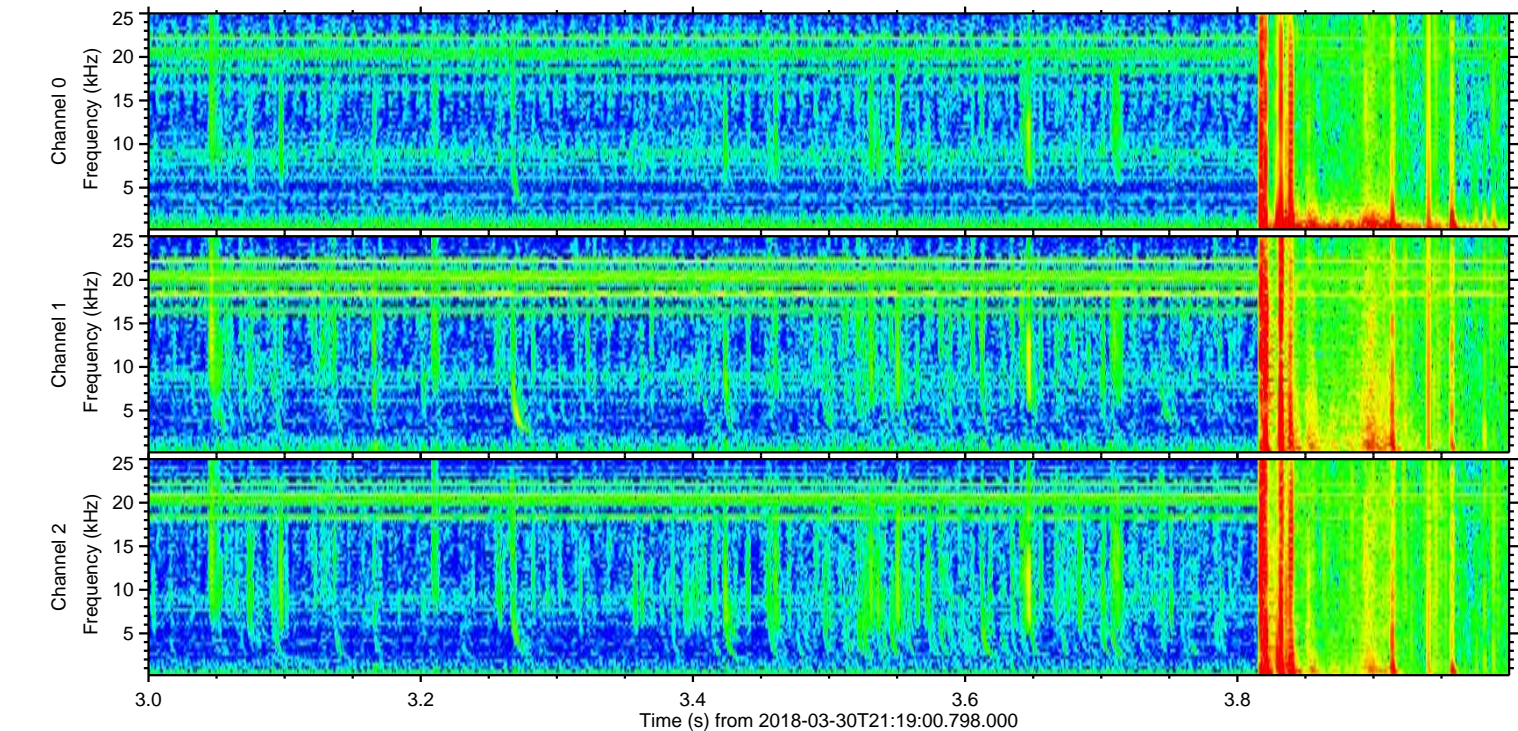
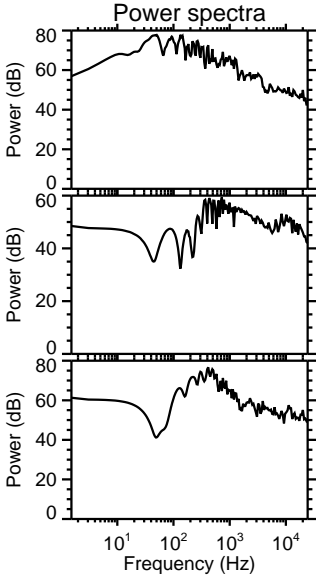
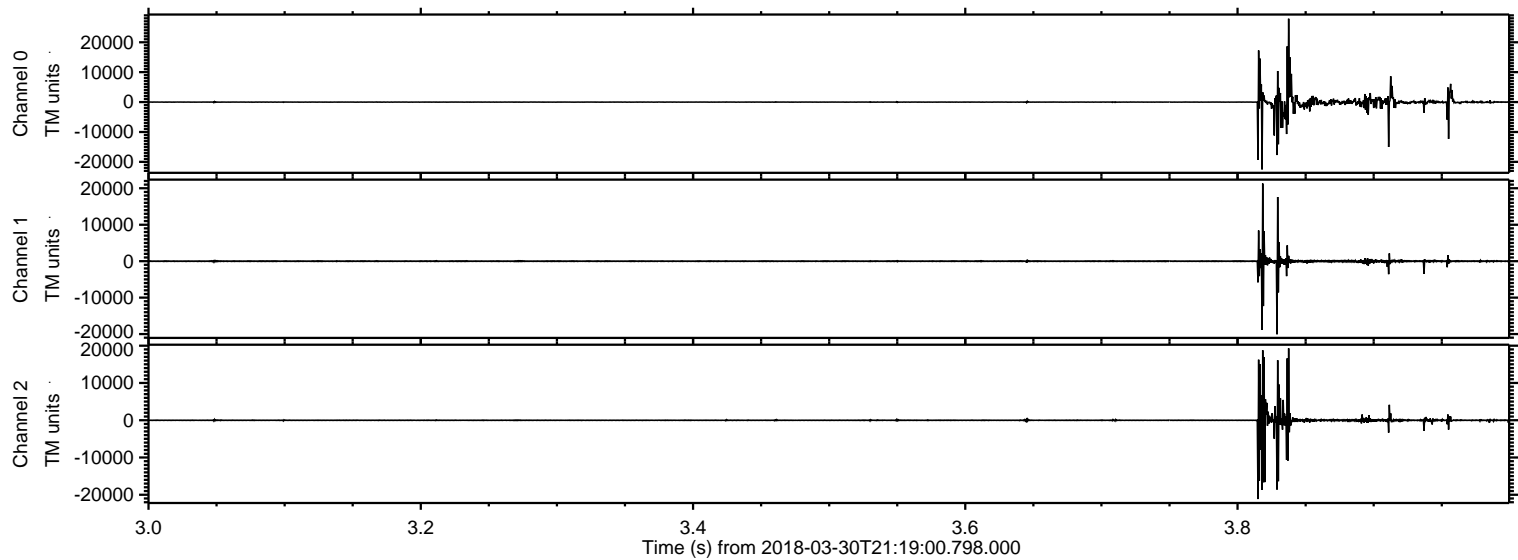


Processed Fri Mar 30 23:27:01 2018 by ELM ver.2012-10-06 from 001__elm20180330_211859__dat00.bin



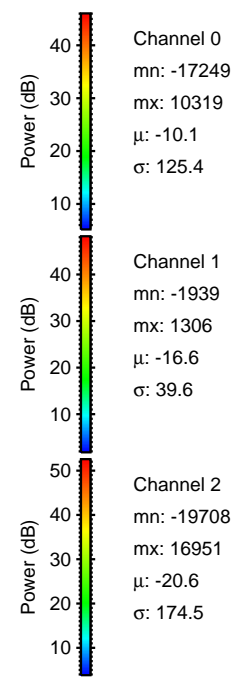
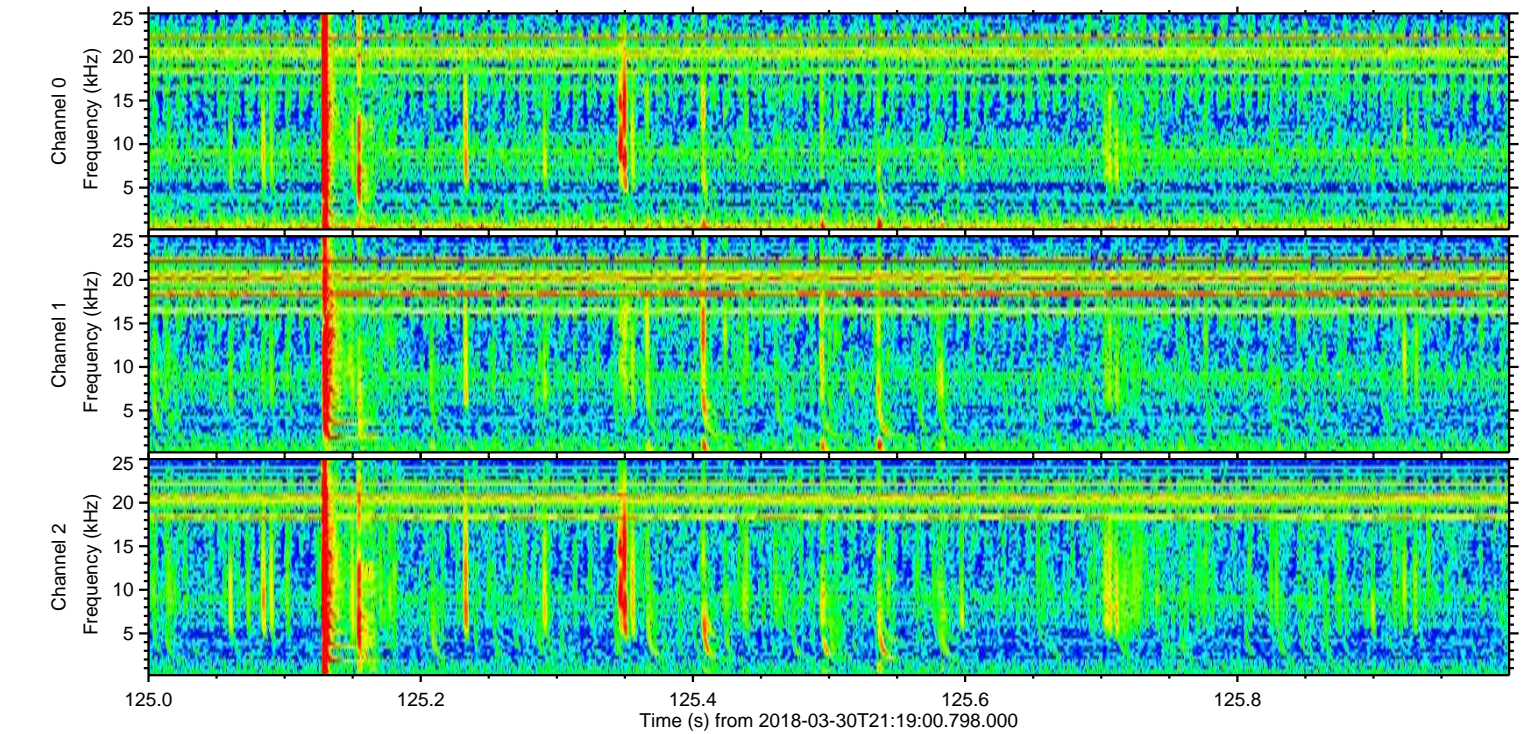
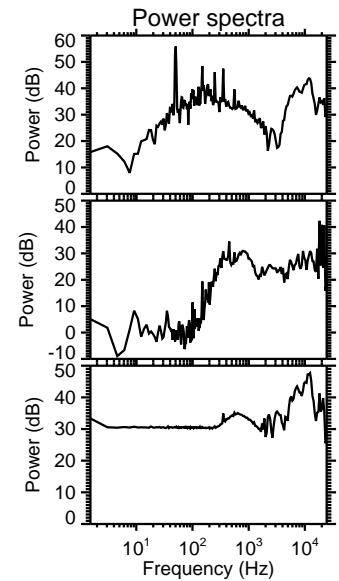
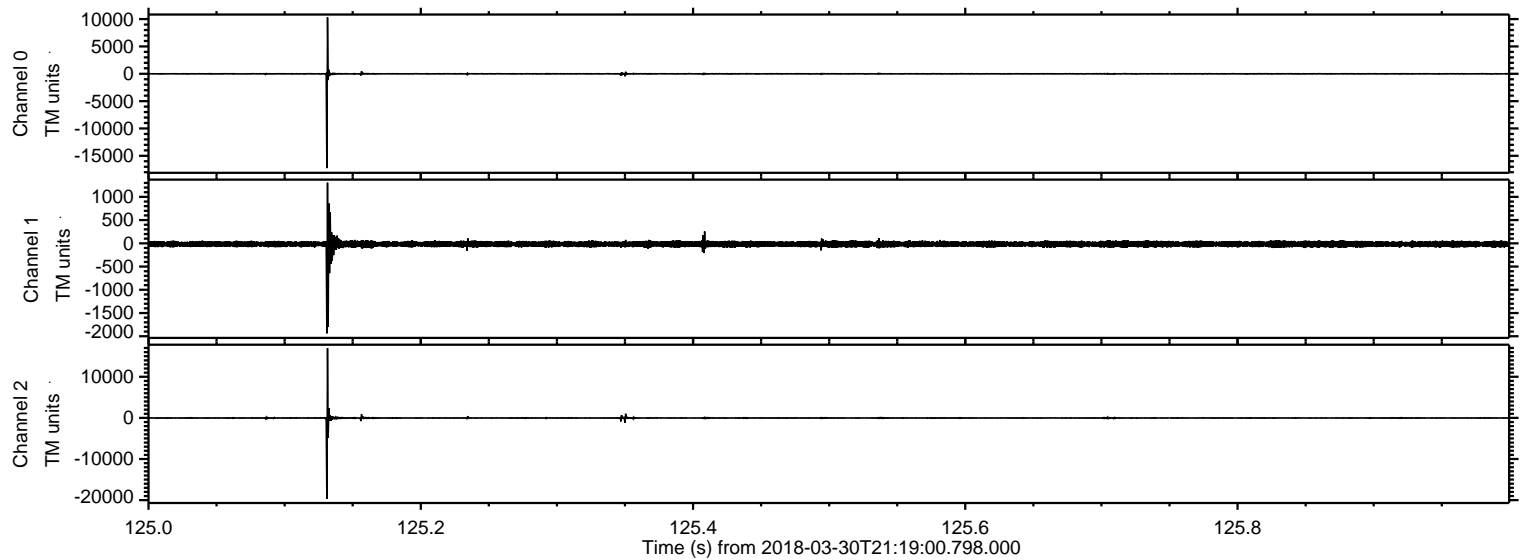
ELMAVAN 3D WAVEFORMS (Measured data sampled at 50 kHz) 50999 packets of 144 samples from 2018-03-30T21:19:00.798.000. Part 4/147

Processed Fri Mar 30 23:27:02 2018 by ELM ver.2012-10-06 from 001__elm20180330_211859__dat00.bin



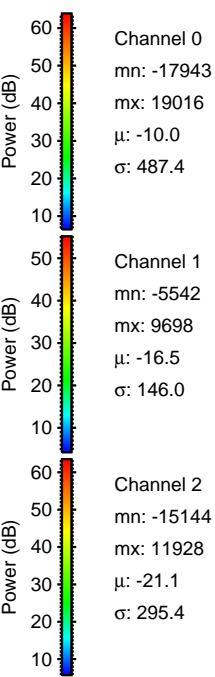
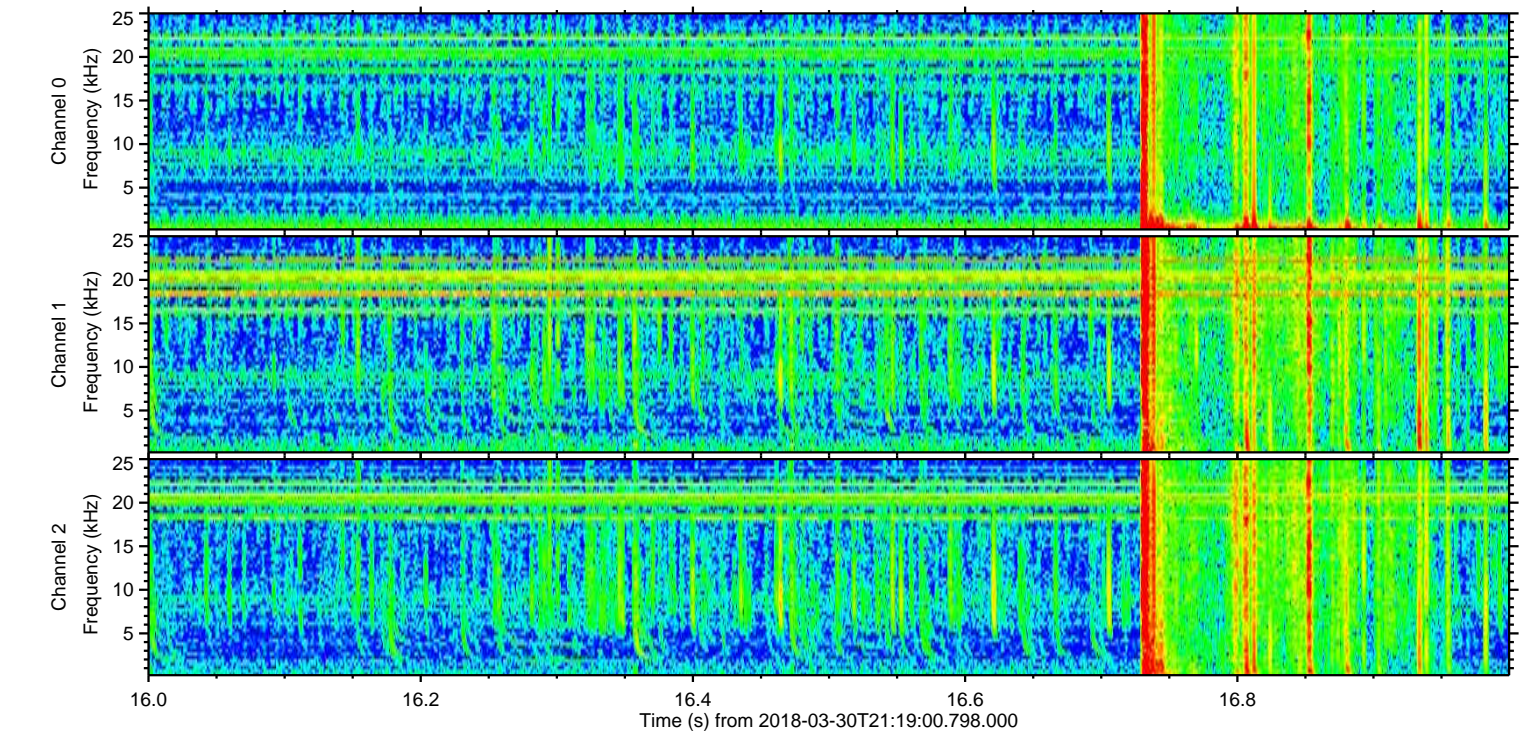
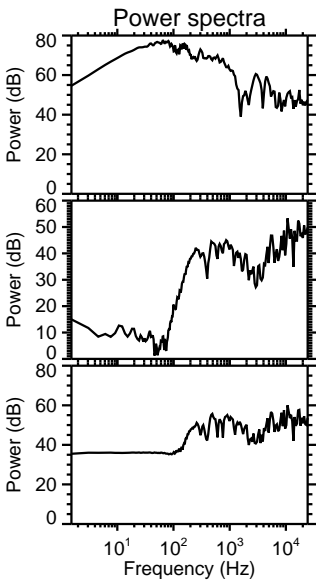
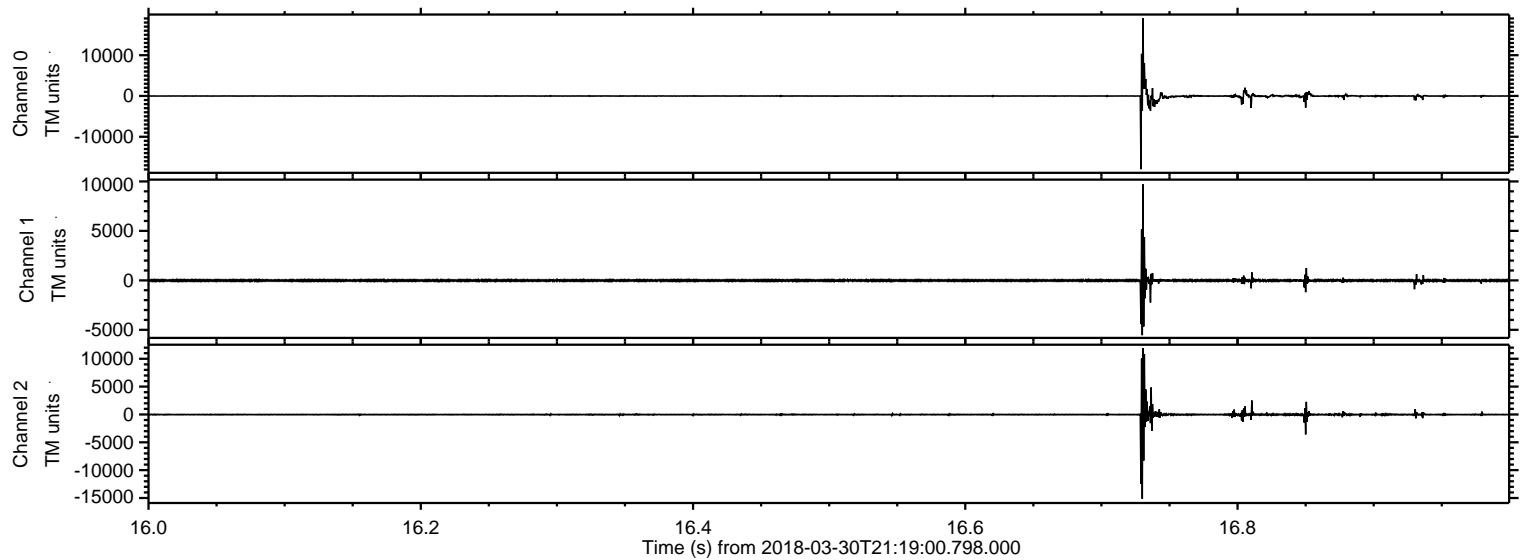
ELMAVAN 3D WAVEFORMS (Measured data sampled at 50 kHz) 50999 packets of 144 samples from 2018-03-30T21:19:00.798.000. Part 126/147

Processed Fri Mar 30 23:27:03 2018 by ELM ver.2012-10-06 from 001__elm20180330_211859__dat00.bin

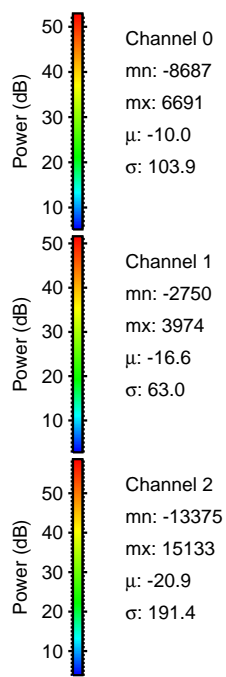
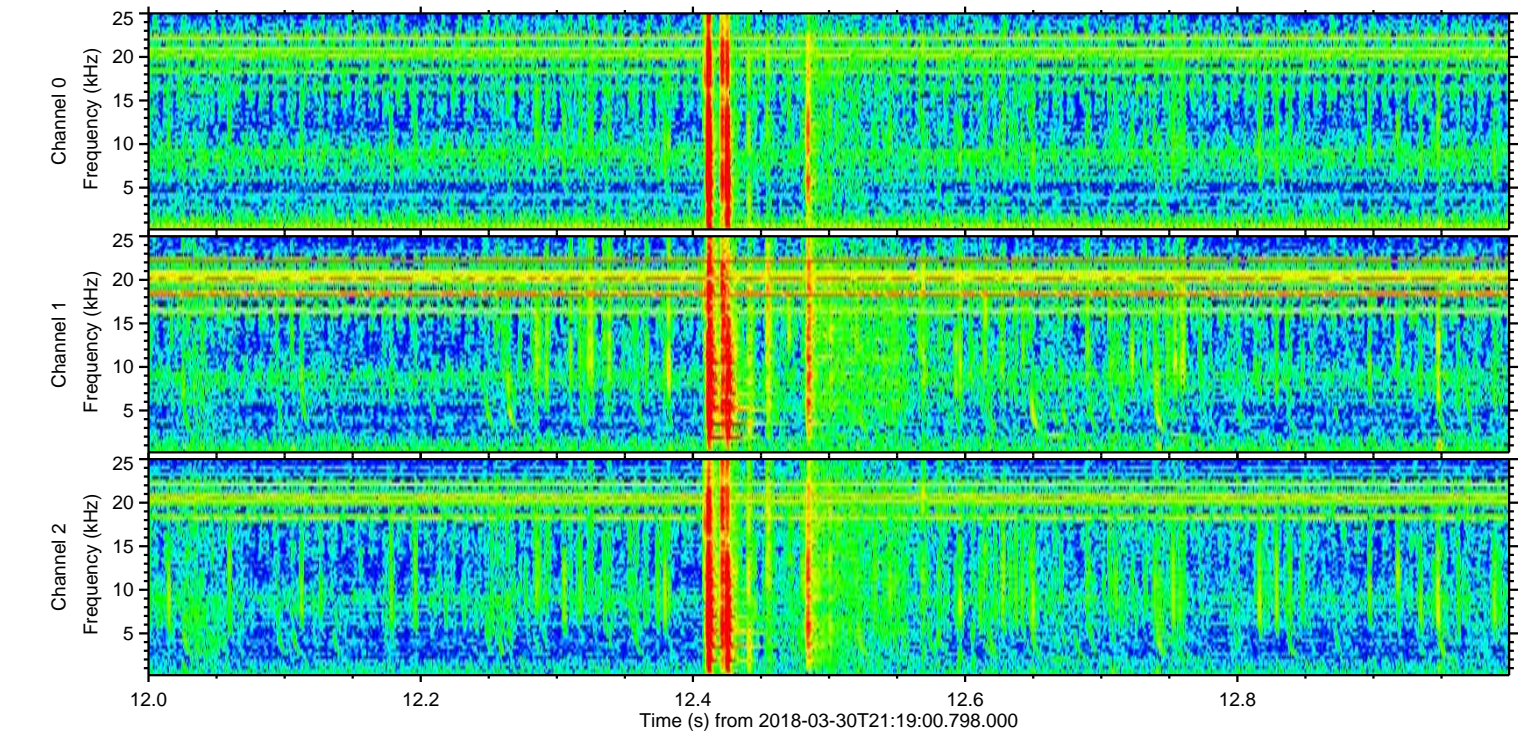
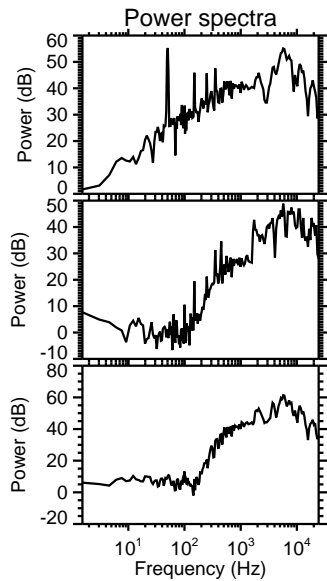
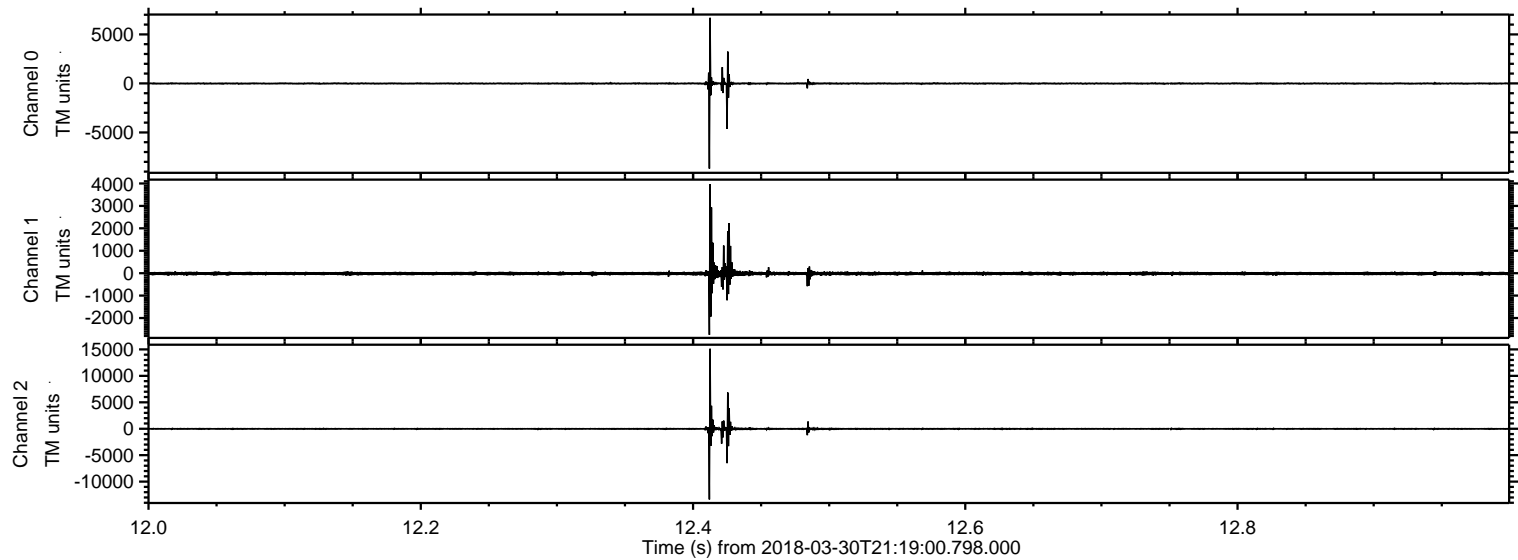


ELMAVAN 3D WAVEFORMS (Measured data sampled at 50 kHz) 50999 packets of 144 samples from 2018-03-30T21:19:00.798.000. Part 17/147

Processed Fri Mar 30 23:27:04 2018 by ELM ver.2012-10-06 from 001__elm20180330_211859__dat00.bin

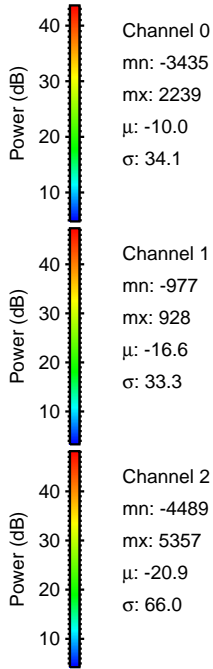
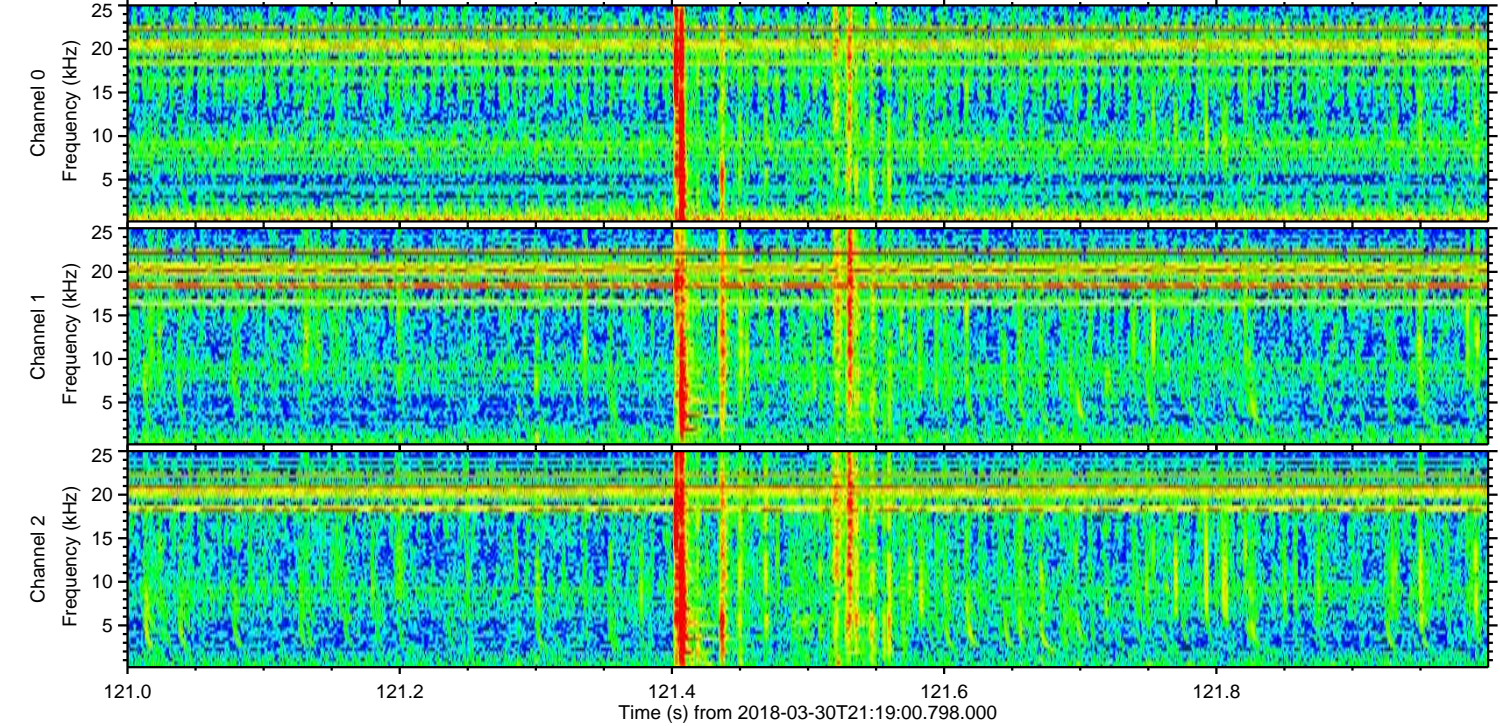
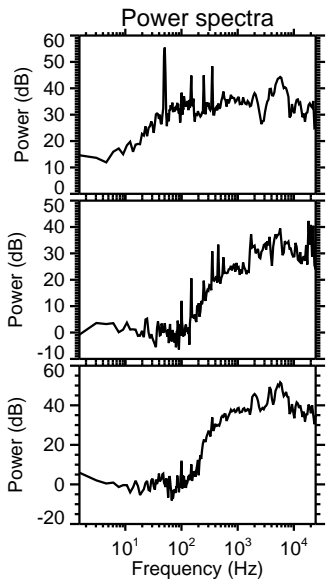
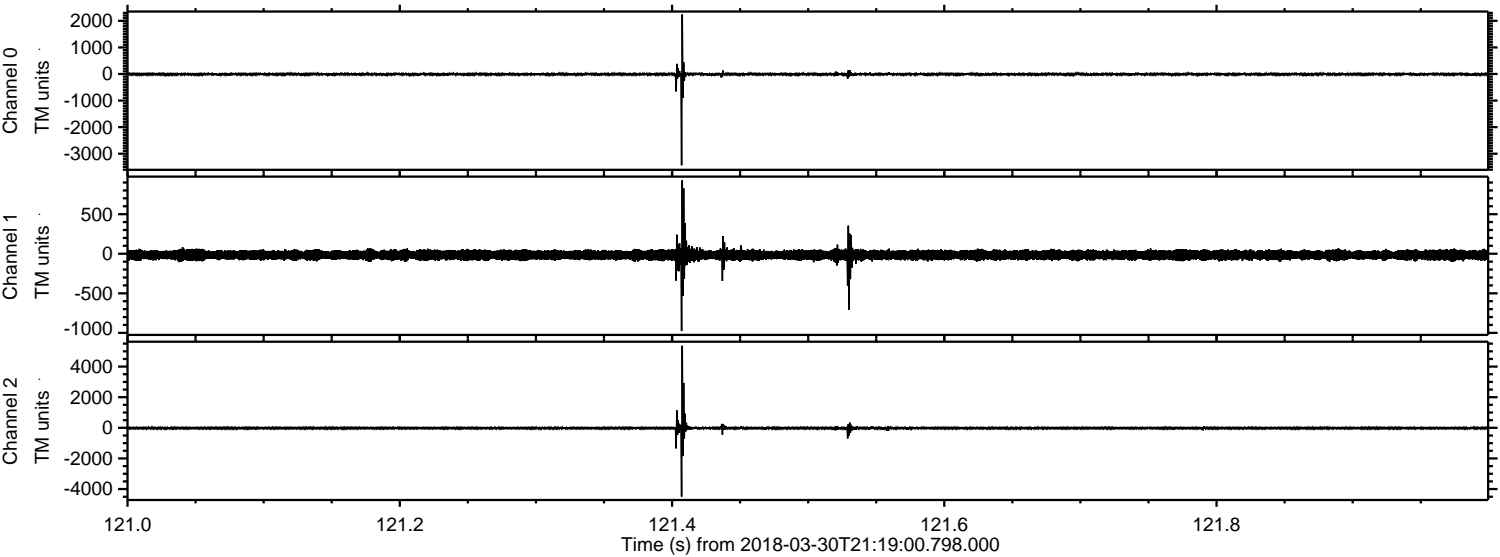


Processed Fri Mar 30 23:27:05 2018 by ELM ver.2012-10-06 from 001__elm20180330_211859__dat00.bin



ELMAVAN 3D WAVEFORMS (Measured data sampled at 50 kHz) 50999 packets of 144 samples from 2018-03-30T21:19:00.798.000. Part 122/147

Processed Fri Mar 30 23:27:05 2018 by ELM ver.2012-10-06 from 001__elm20180330_211859__dat00.bin

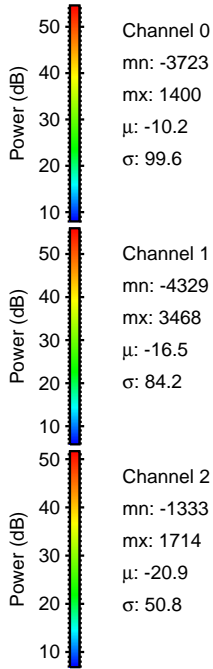
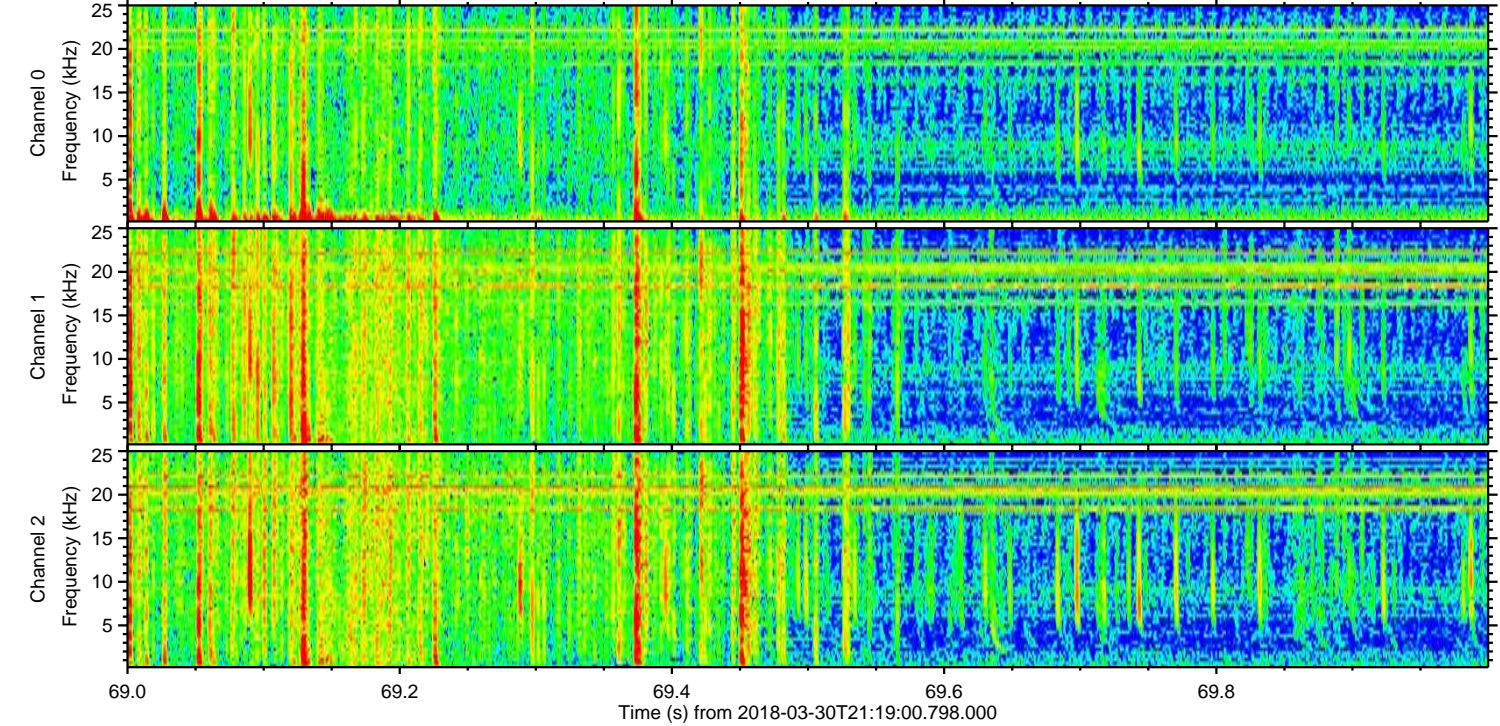
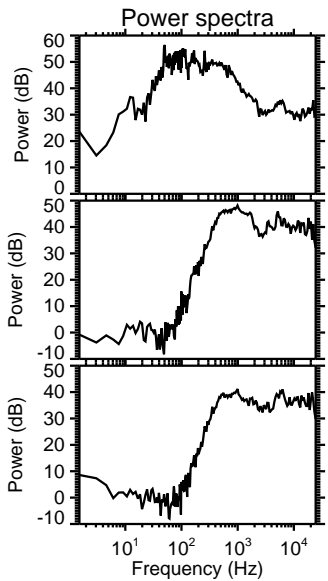
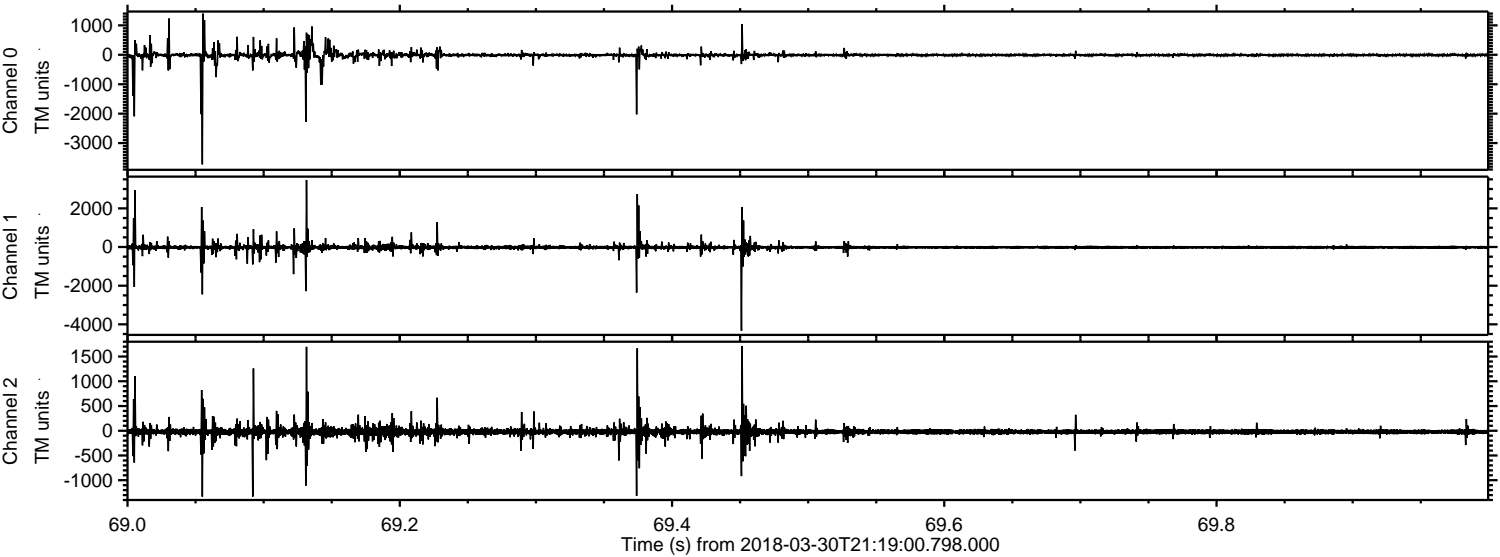


Channel 0
mn: -3435
mx: 2239
 μ : -10.0
 σ : 34.1

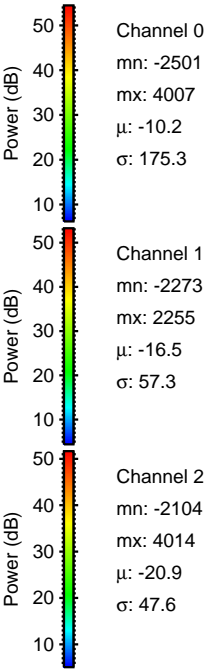
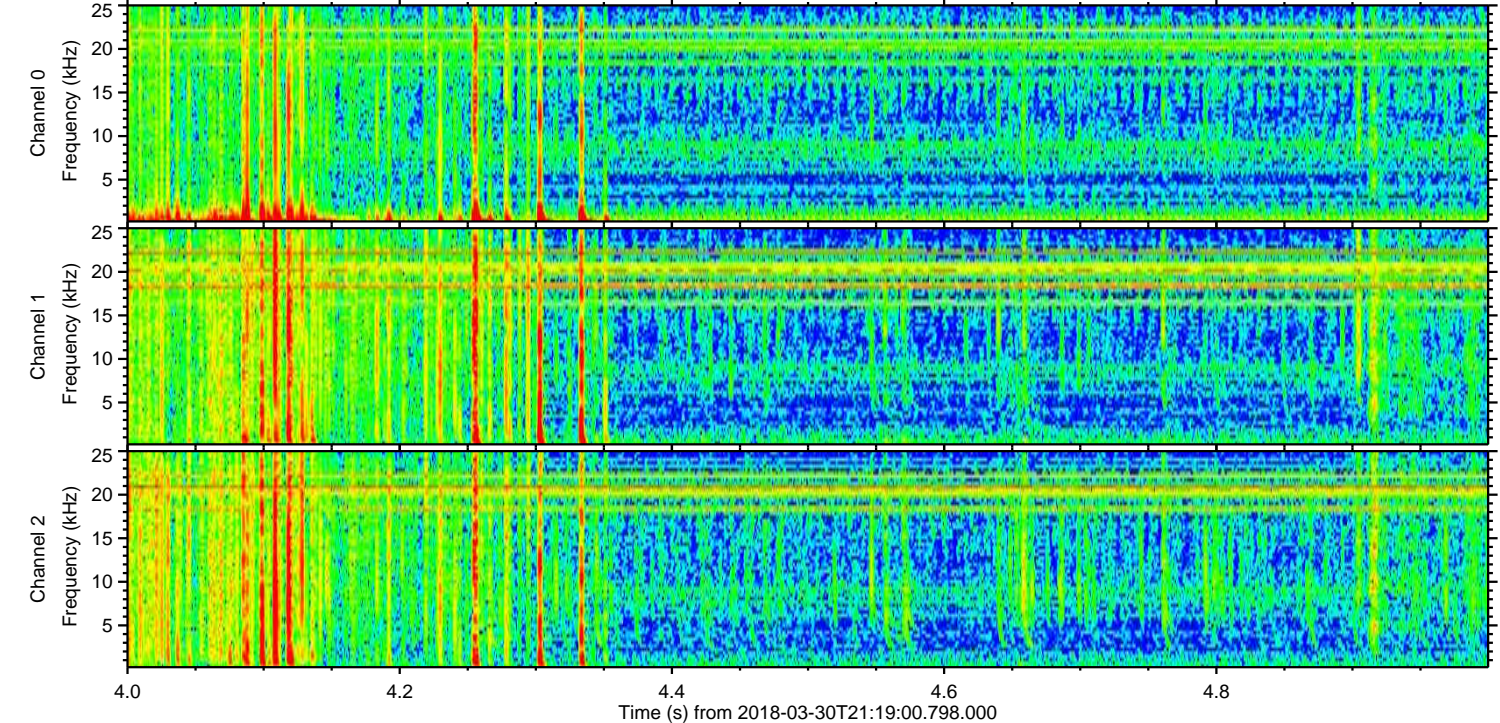
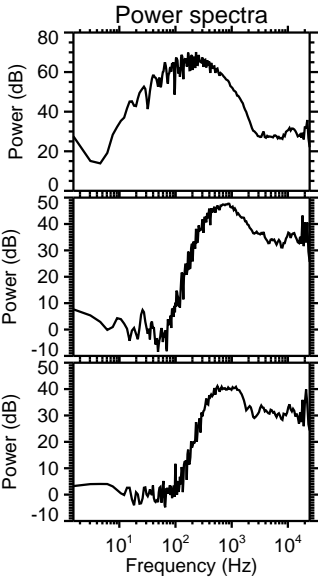
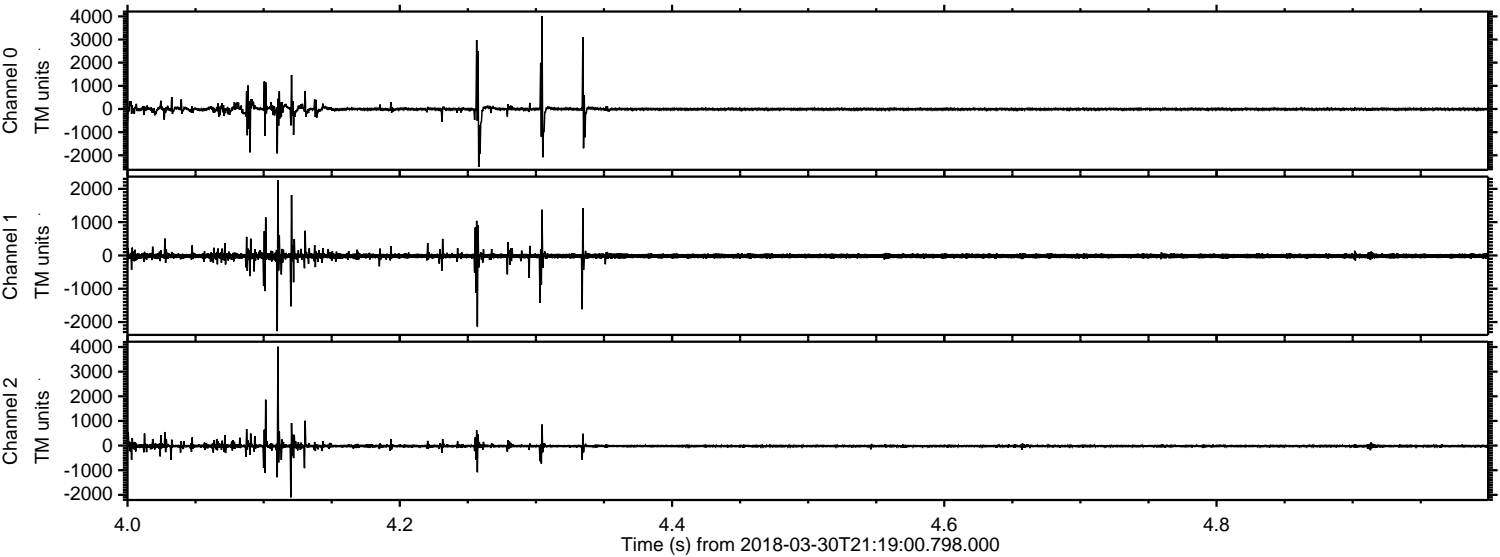
Channel 1
mn: -977
mx: 928
 μ : -16.6
 σ : 33.3

Channel 2
mn: -4489
mx: 5357
 μ : -20.9
 σ : 66.0

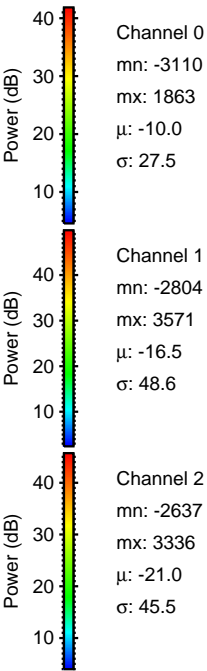
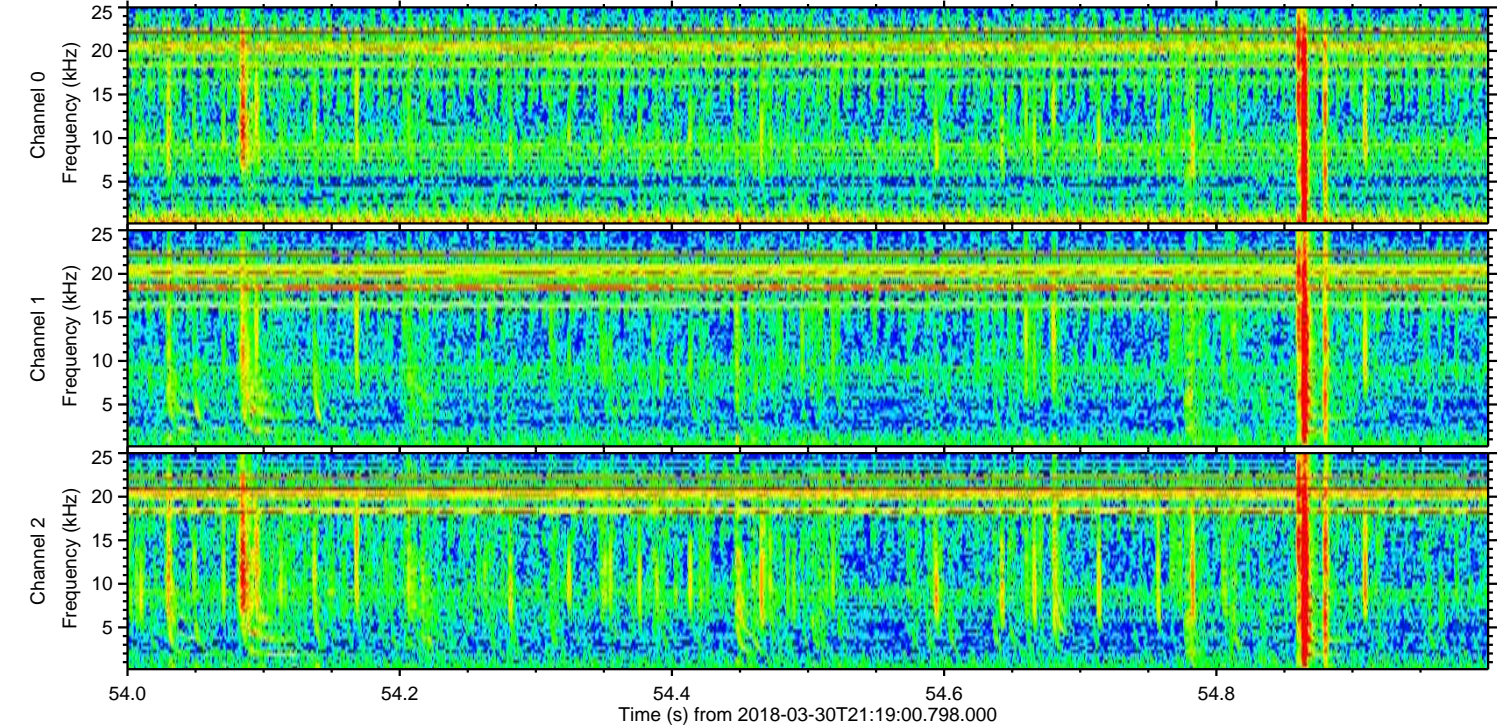
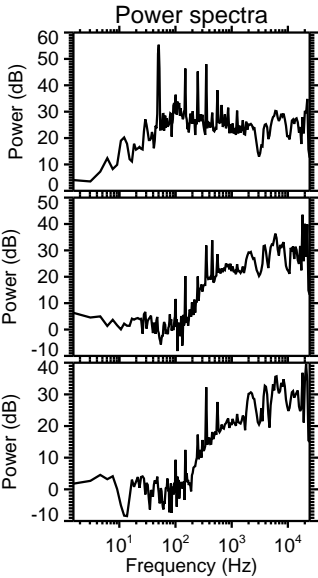
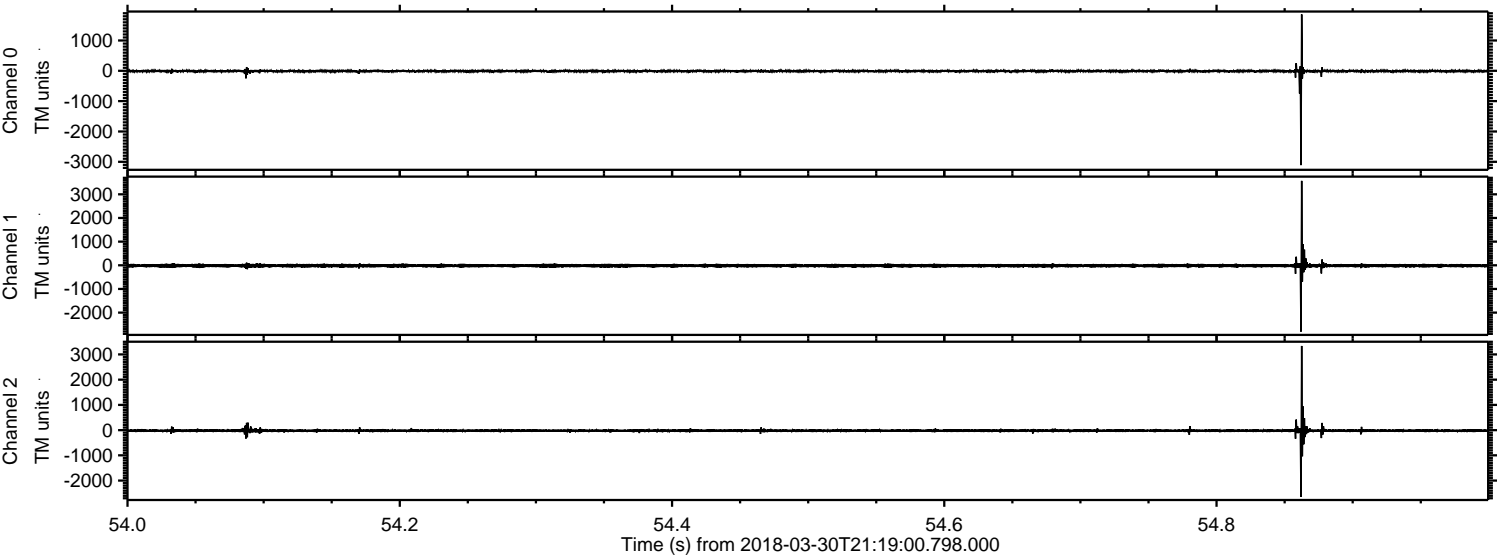
Processed Fri Mar 30 23:27:06 2018 by ELM ver.2012-10-06 from 001__elm20180330_211859__dat00.bin



Processed Fri Mar 30 23:27:07 2018 by ELM ver.2012-10-06 from 001__elm20180330_211859__dat00.bin



Processed Fri Mar 30 23:27:08 2018 by ELM ver.2012-10-06 from 001__elm20180330_211859__dat00.bin



Channel 0
mn: -3110
mx: 1863
 μ : -10.0
 σ : 27.5

Channel 1
mn: -2804
mx: 3571
 μ : -16.5
 σ : 48.6

Channel 2
mn: -2637
mx: 3336
 μ : -21.0
 σ : 45.5

Processed Fri Mar 30 23:27:08 2018 by ELM ver.2012-10-06 from 001__elm20180330_211859__dat00.bin

