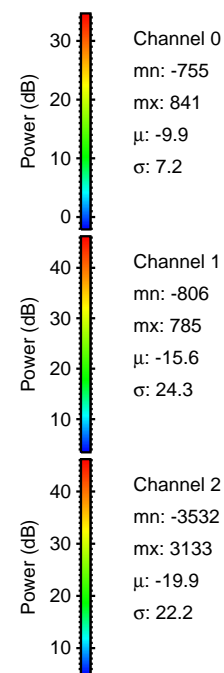
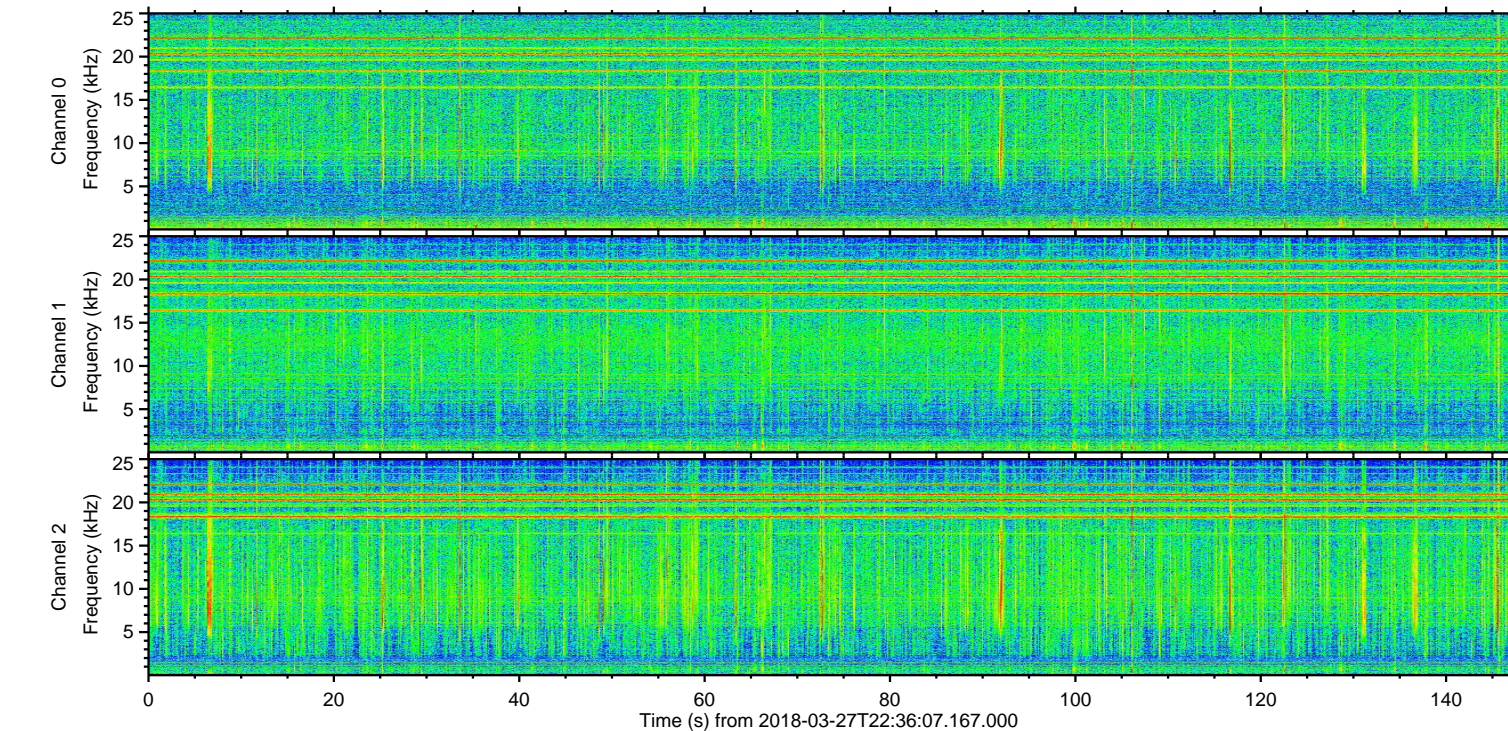
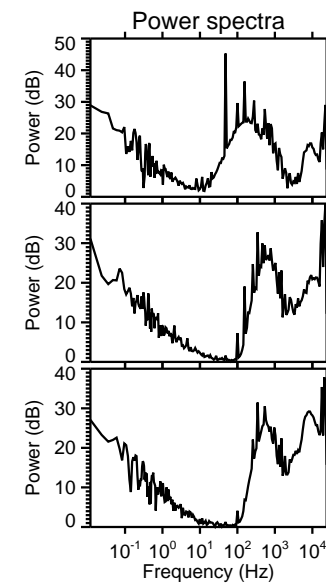
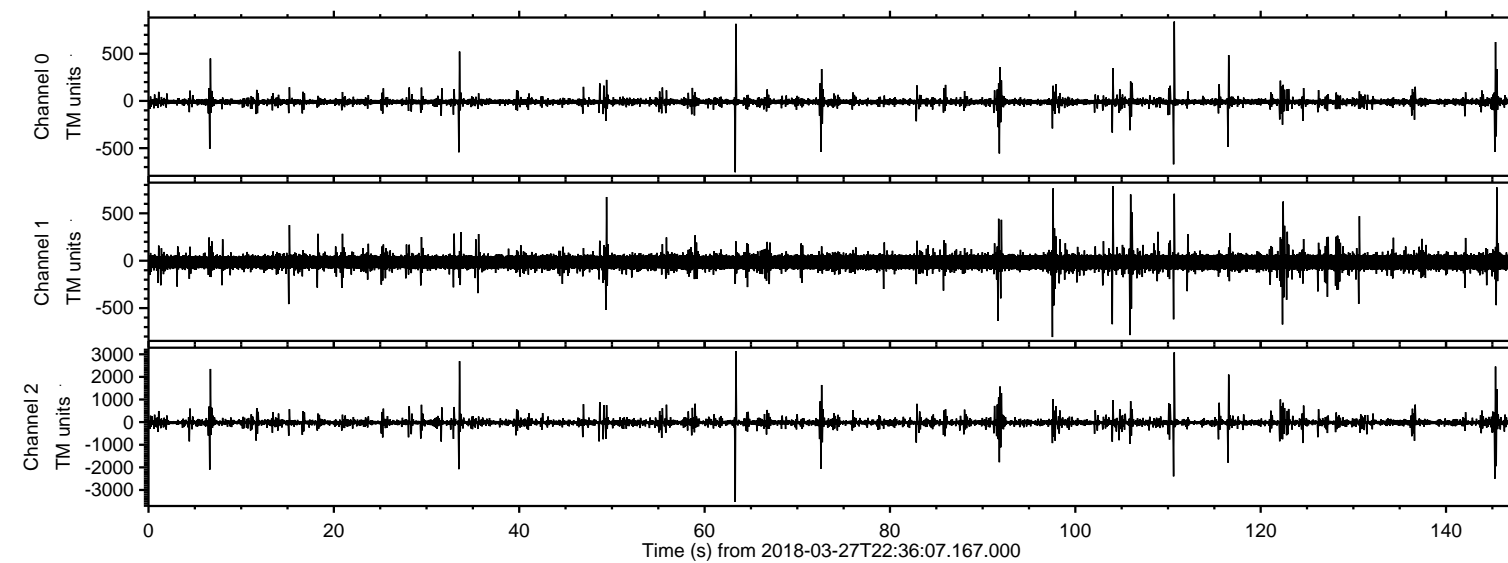
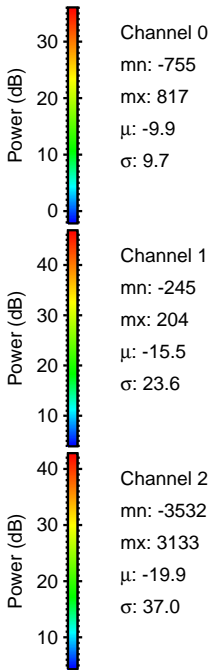
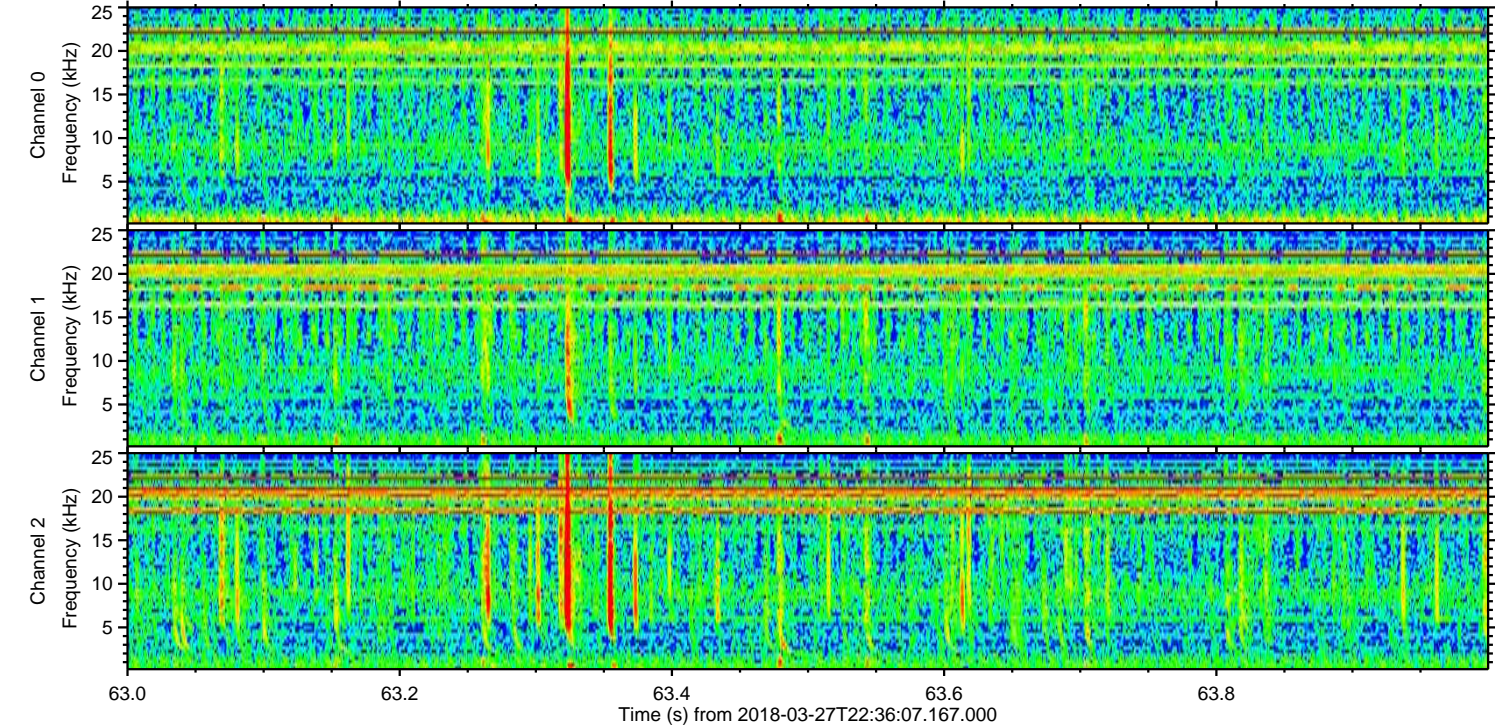
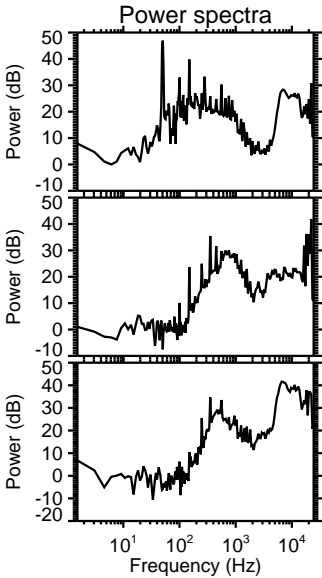
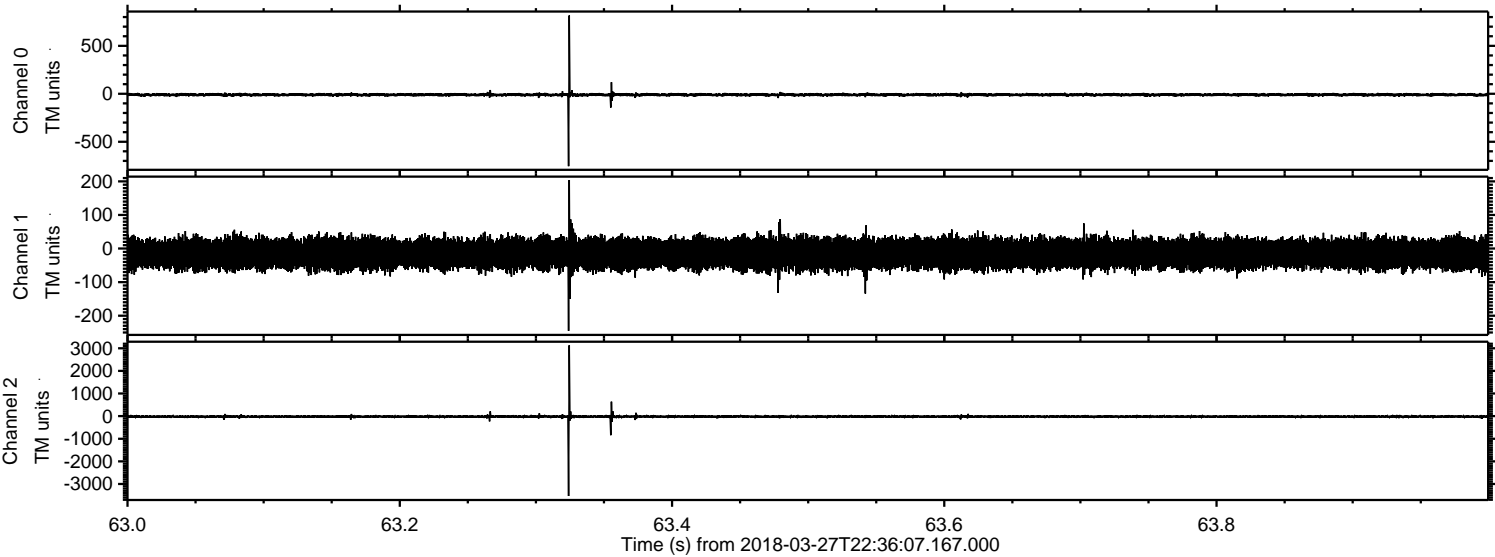


ELMAVAN 3D WAVEFORMS (Measured data sampled at 50 kHz) 51000 packets of 144 samples from 2018-03-27T22:36:07.167.000.

Processed Wed Mar 28 00:44:08 2018 by ELM ver.2012-10-06 from 001__elm20180327_223606__dat00.bin

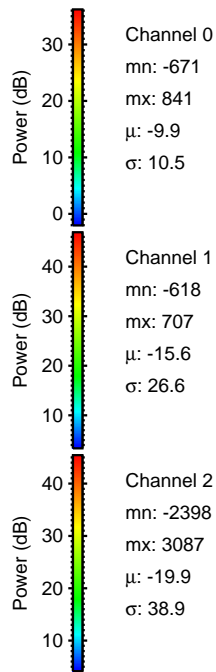
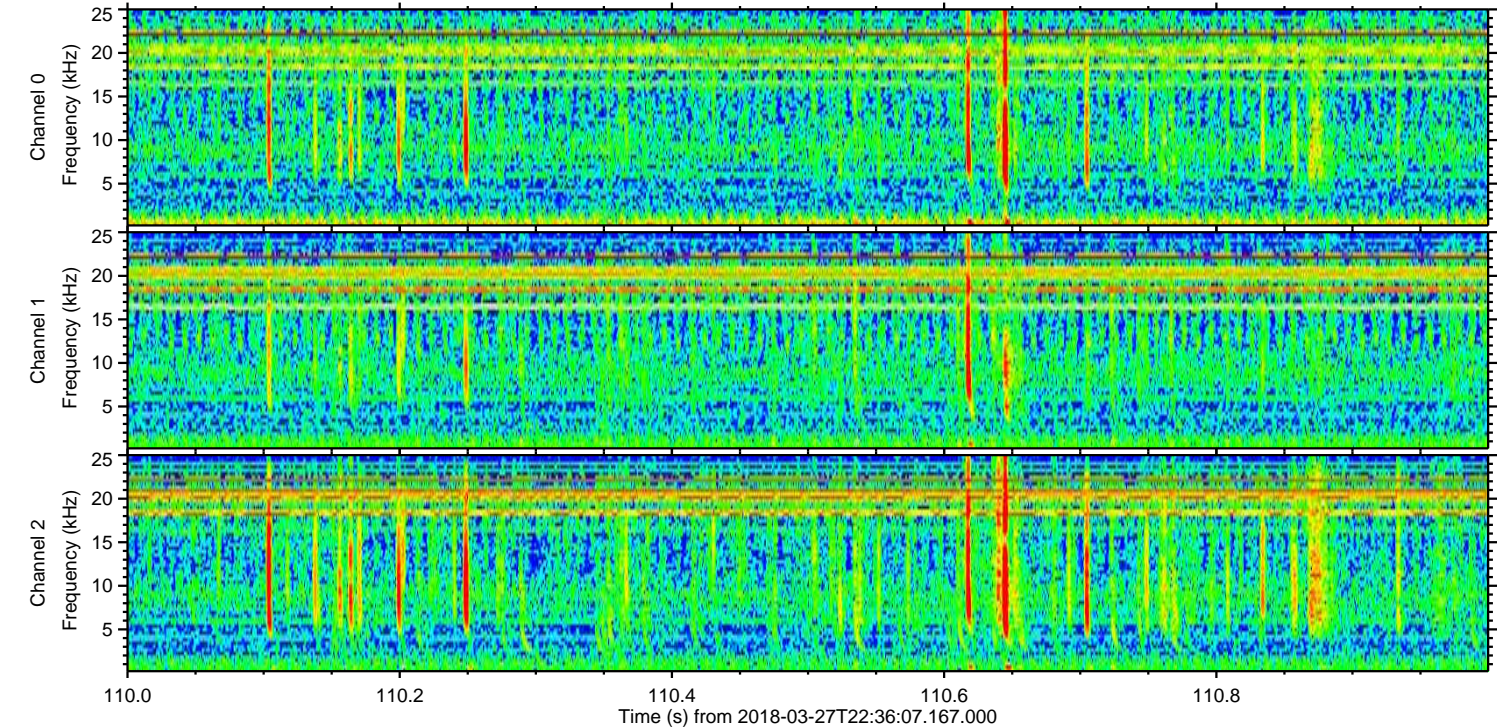
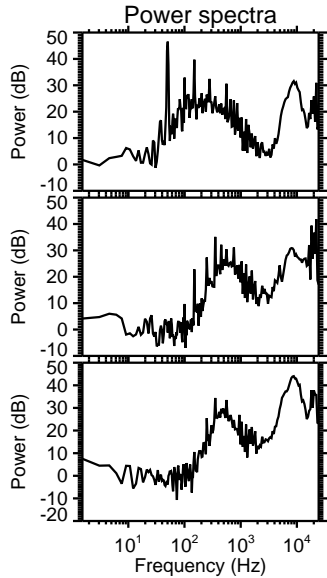
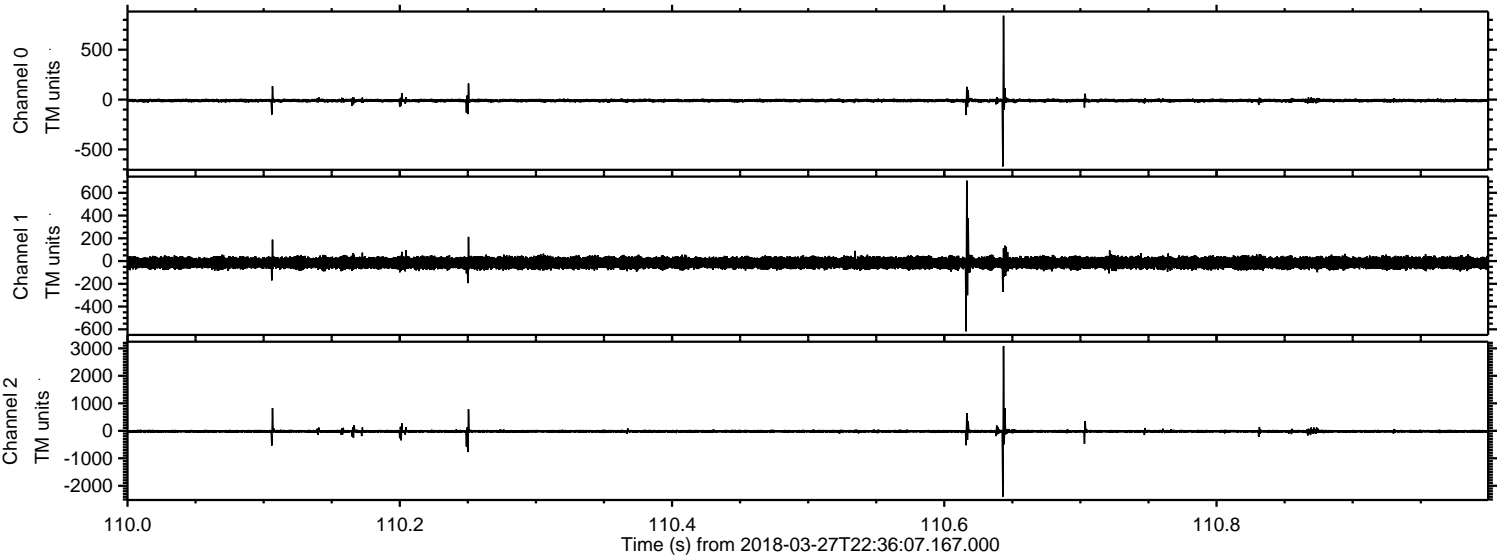


Processed Wed Mar 28 00:44:16 2018 by ELM ver.2012-10-06 from 001__elm20180327_223606__dat00.bin

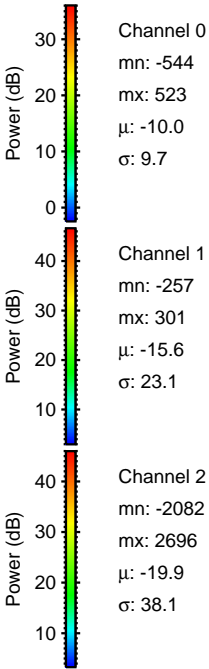
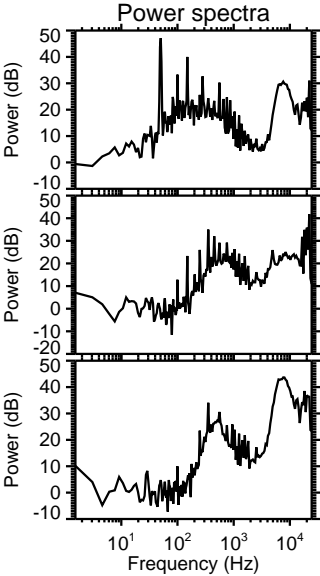
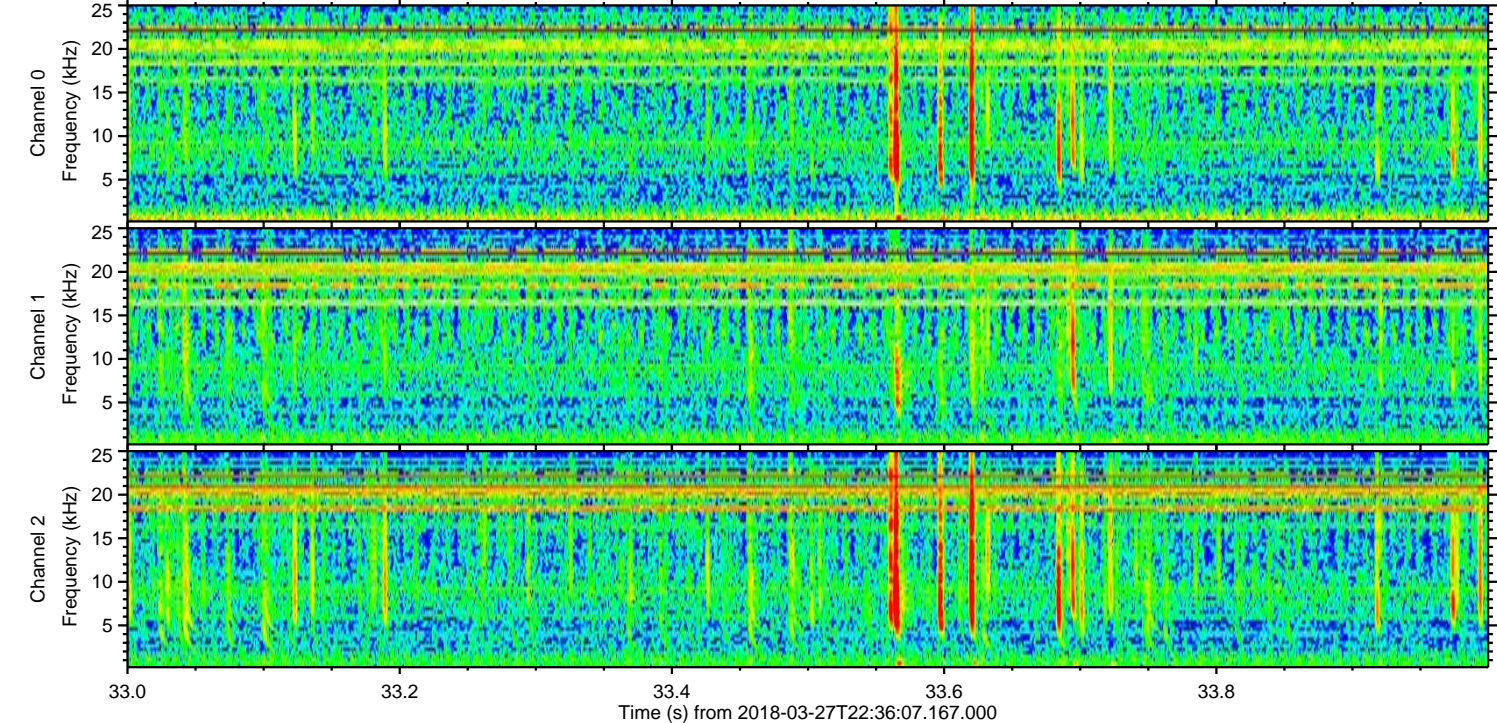
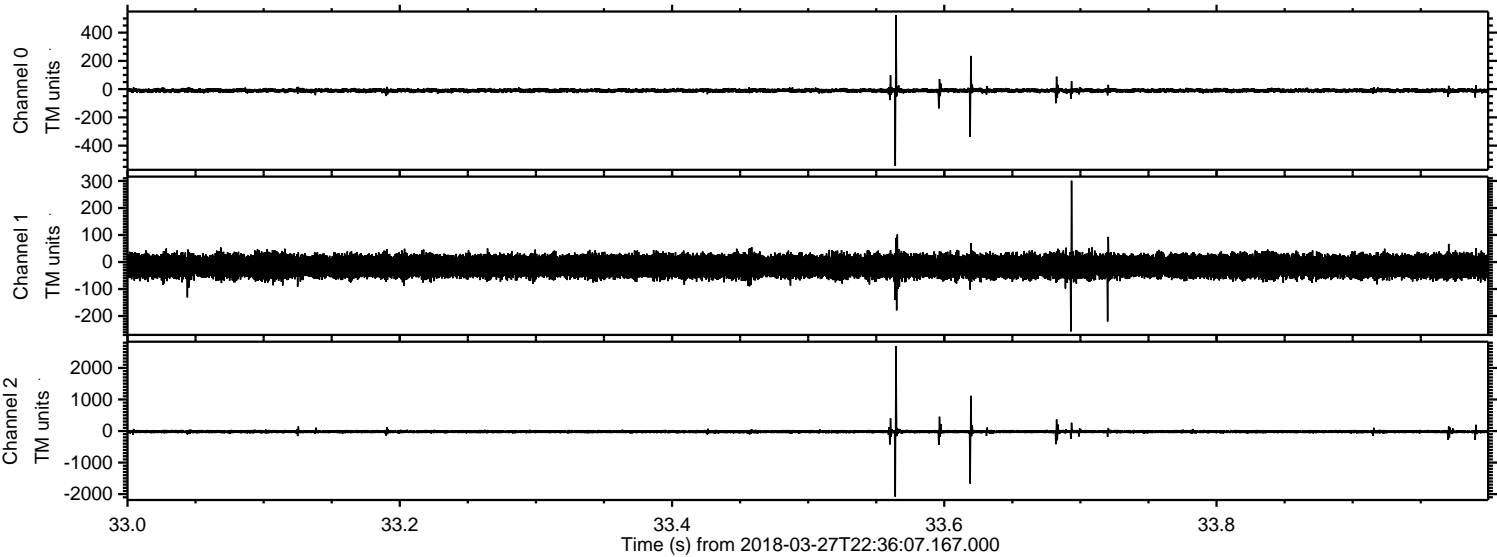


ELMAVAN 3D WAVEFORMS (Measured data sampled at 50 kHz) 51000 packets of 144 samples from 2018-03-27T22:36:07.167.000. Part 111/147

Processed Wed Mar 28 00:44:17 2018 by ELM ver.2012-10-06 from 001__elm20180327_223606__dat00.bin

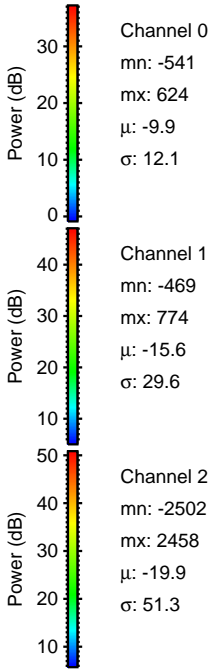
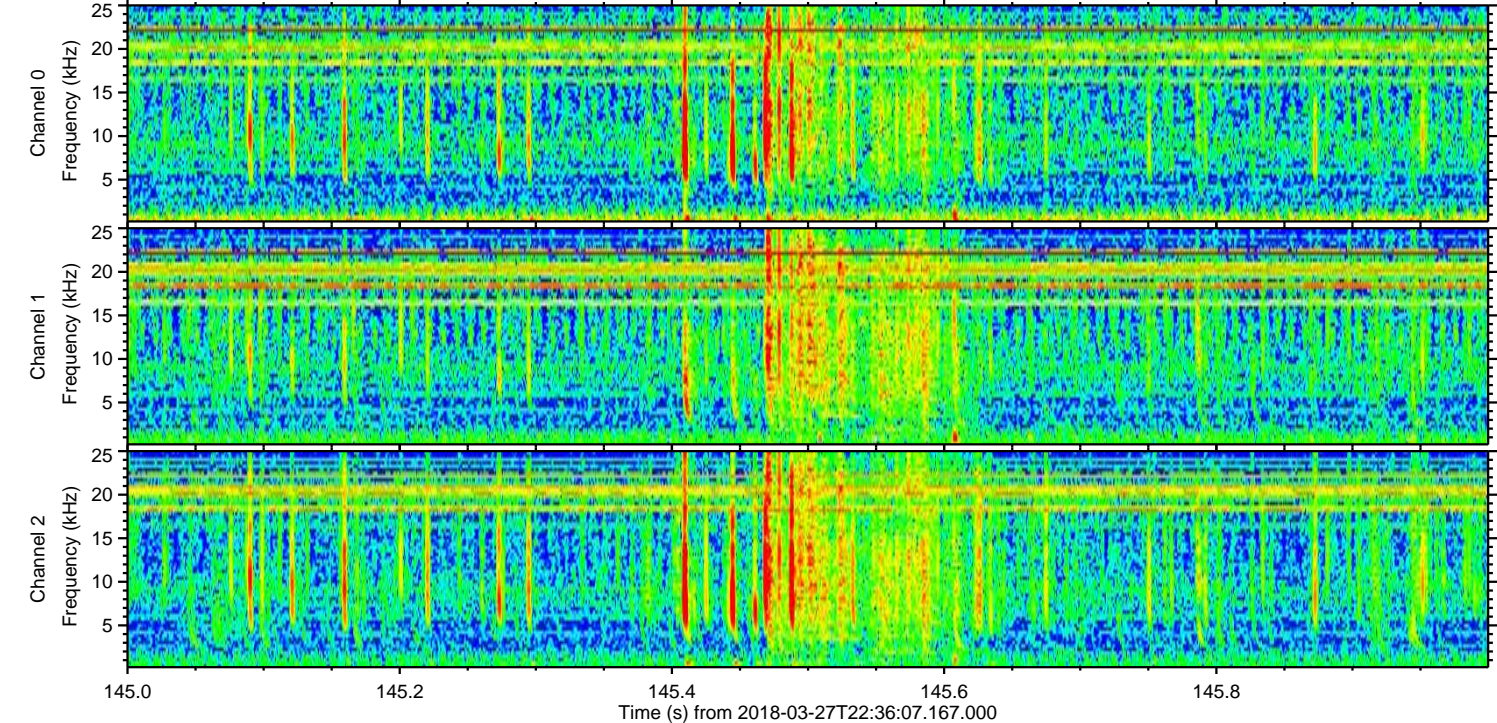
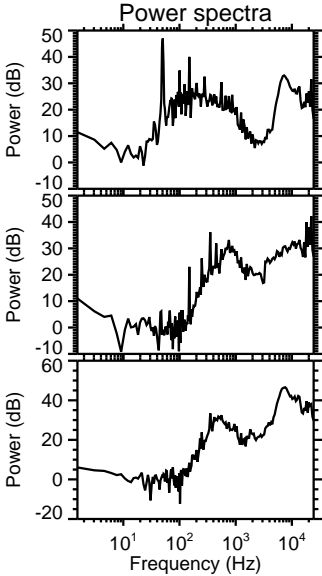
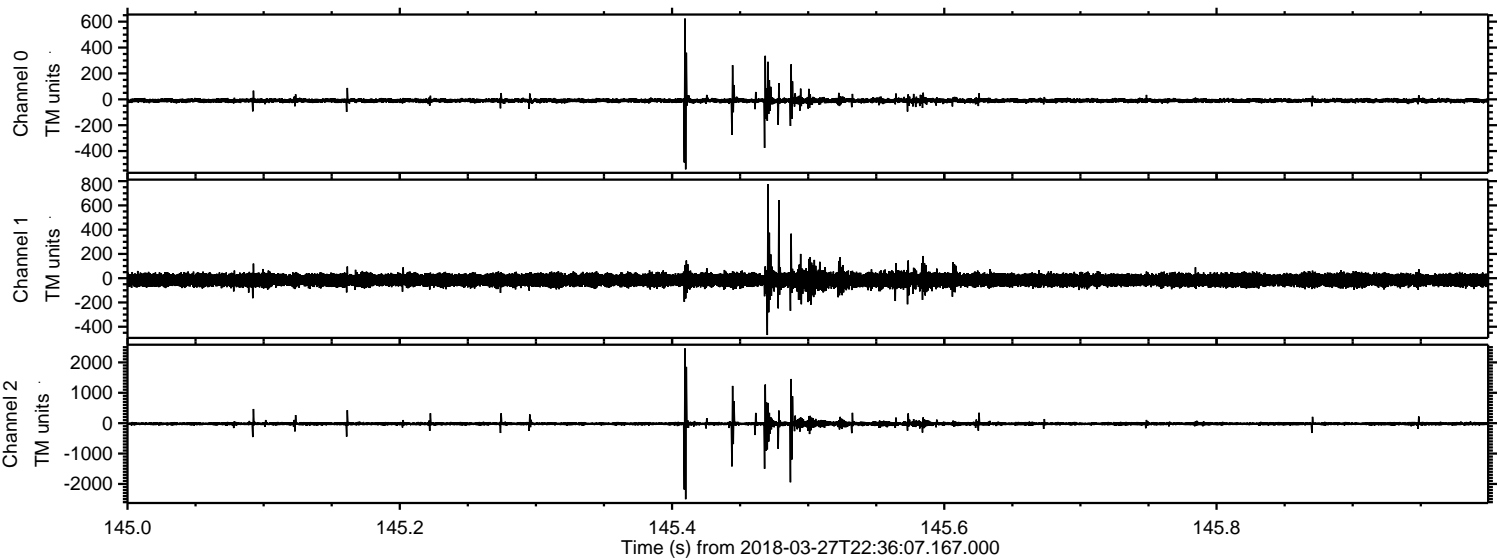


Processed Wed Mar 28 00:44:18 2018 by ELM ver.2012-10-06 from 001__elm20180327_223606__dat00.bin

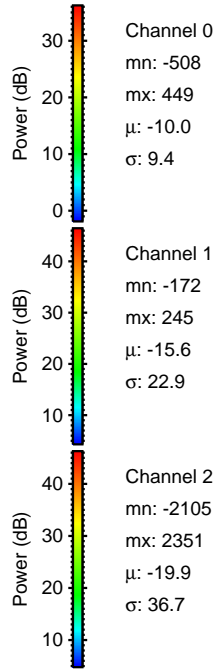
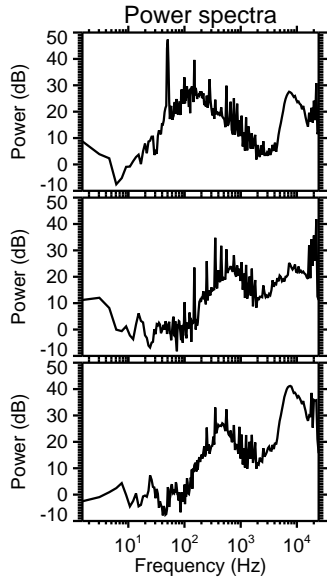
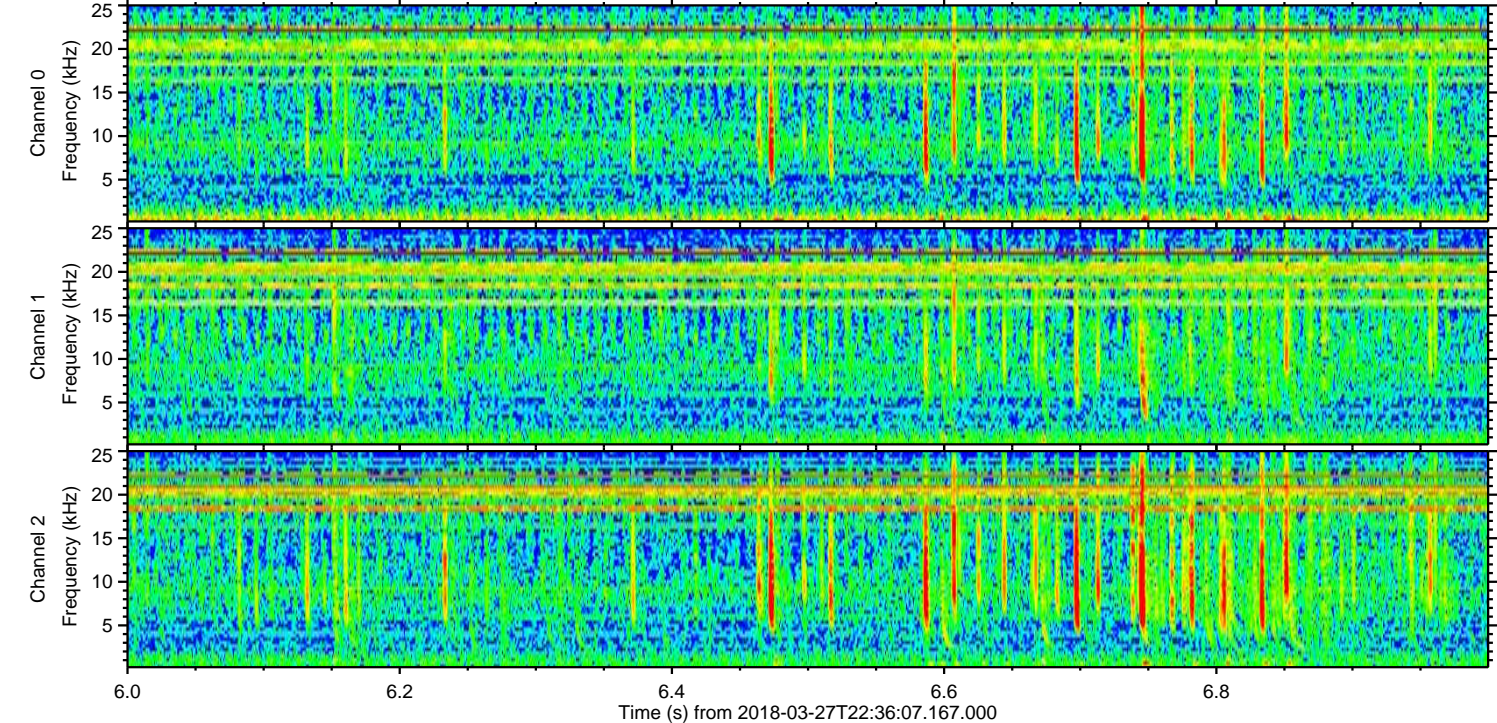
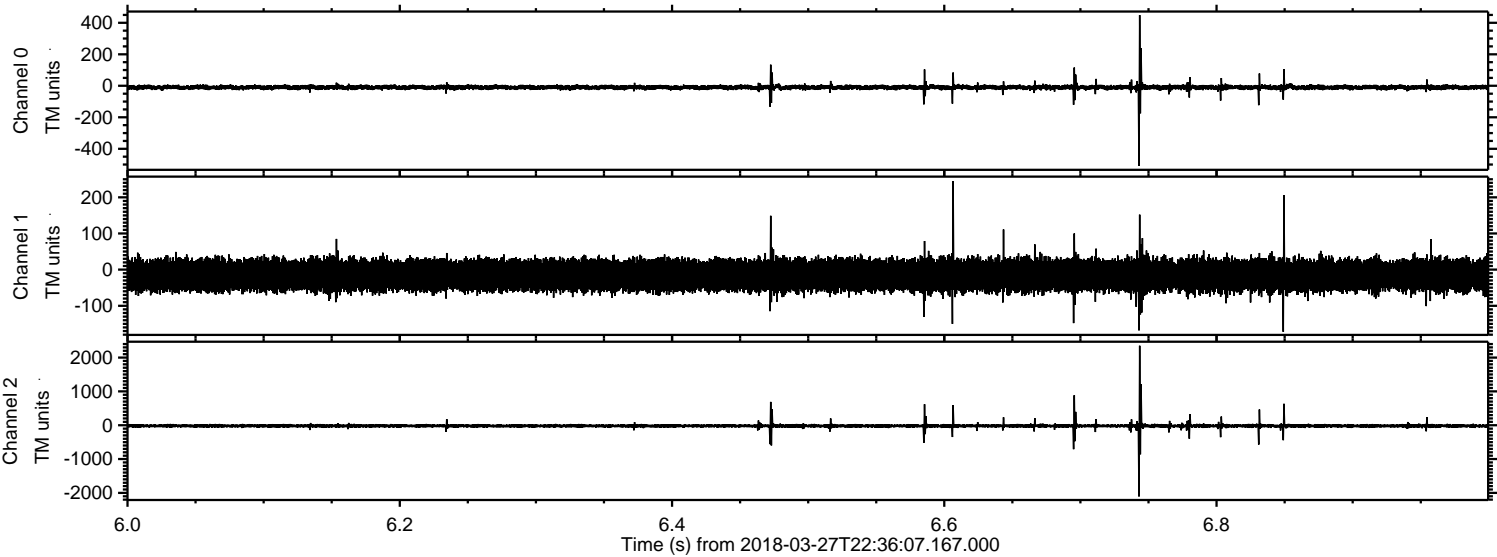


ELMAVAN 3D WAVEFORMS (Measured data sampled at 50 kHz) 51000 packets of 144 samples from 2018-03-27T22:36:07.167.000. Part 146/147

Processed Wed Mar 28 00:44:19 2018 by ELM ver.2012-10-06 from 001__elm20180327_223606__dat00.bin

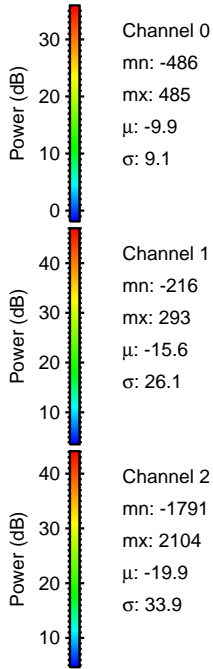
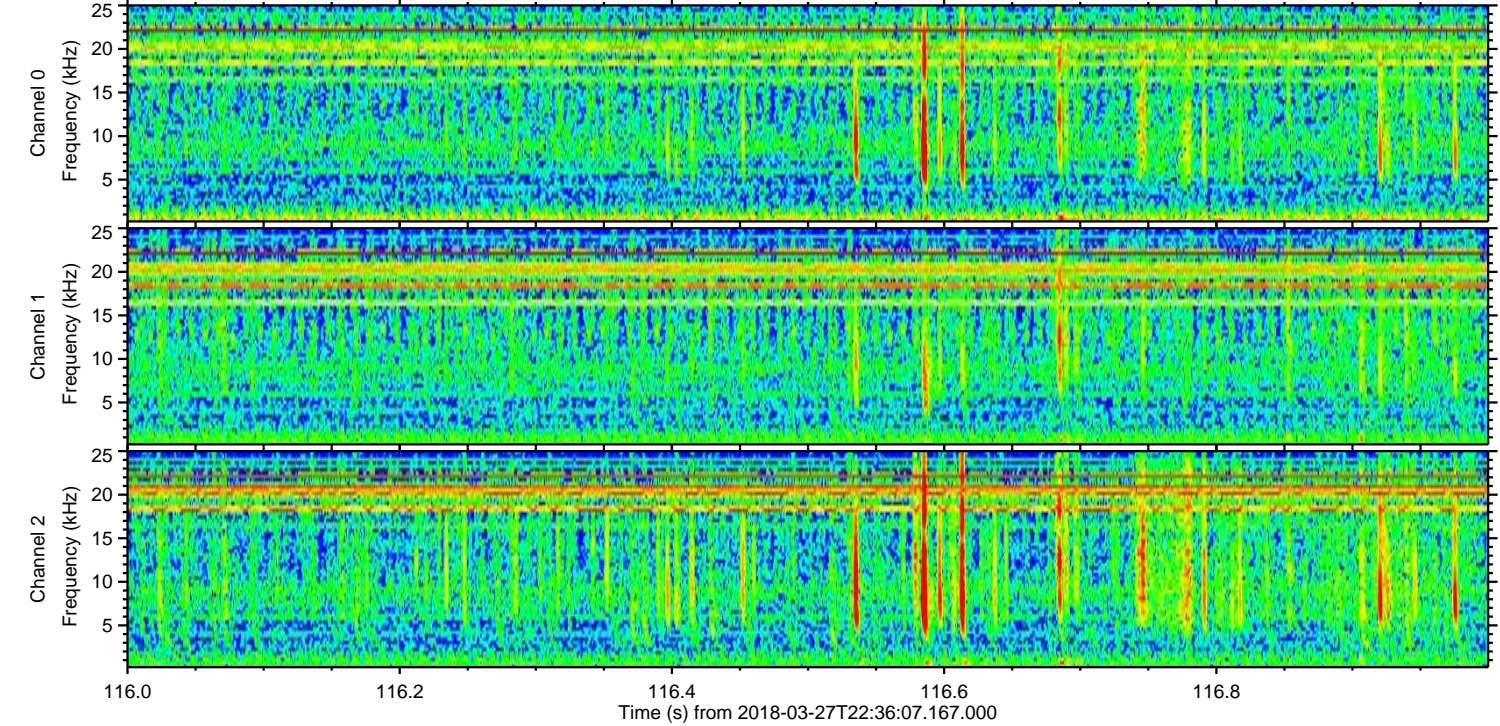
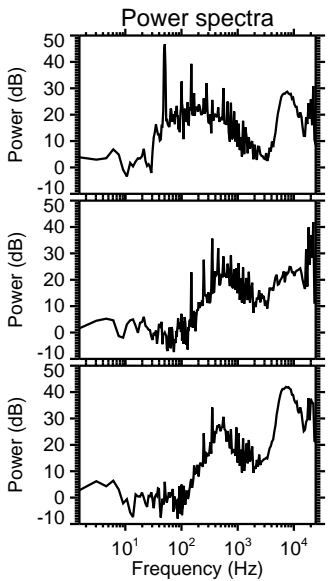
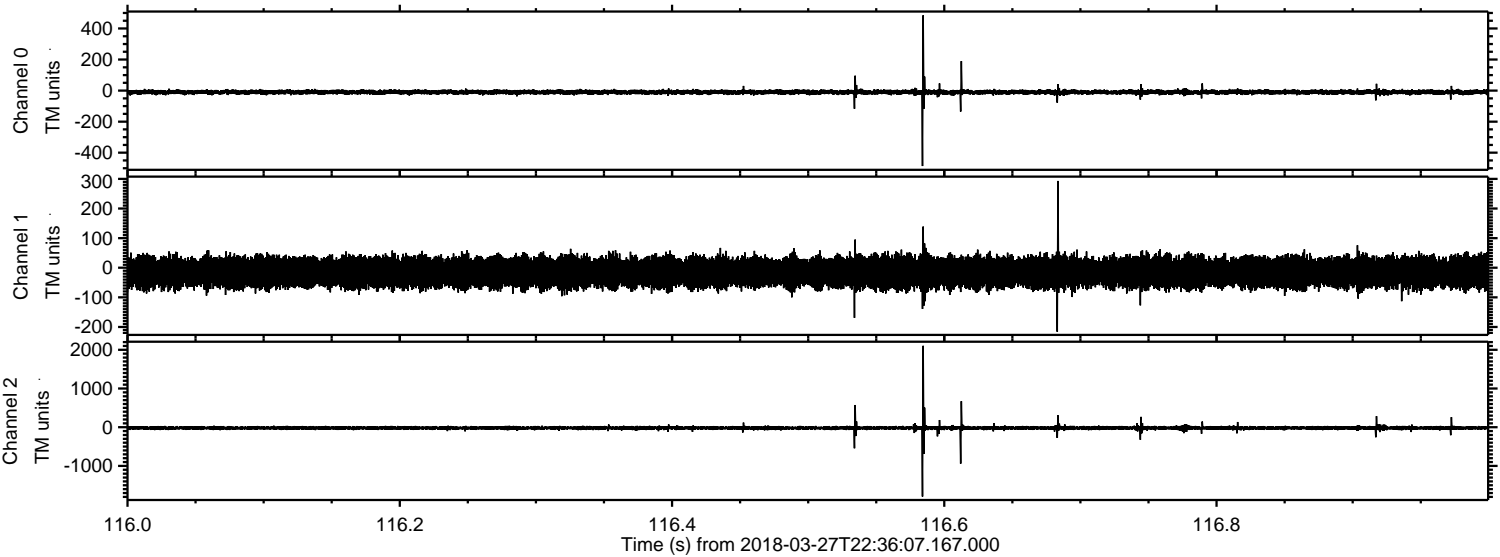


Processed Wed Mar 28 00:44:20 2018 by ELM ver.2012-10-06 from 001__elm20180327_223606__dat00.bin

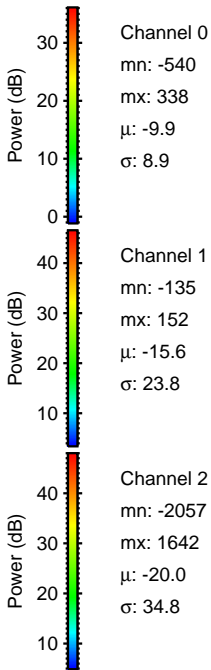
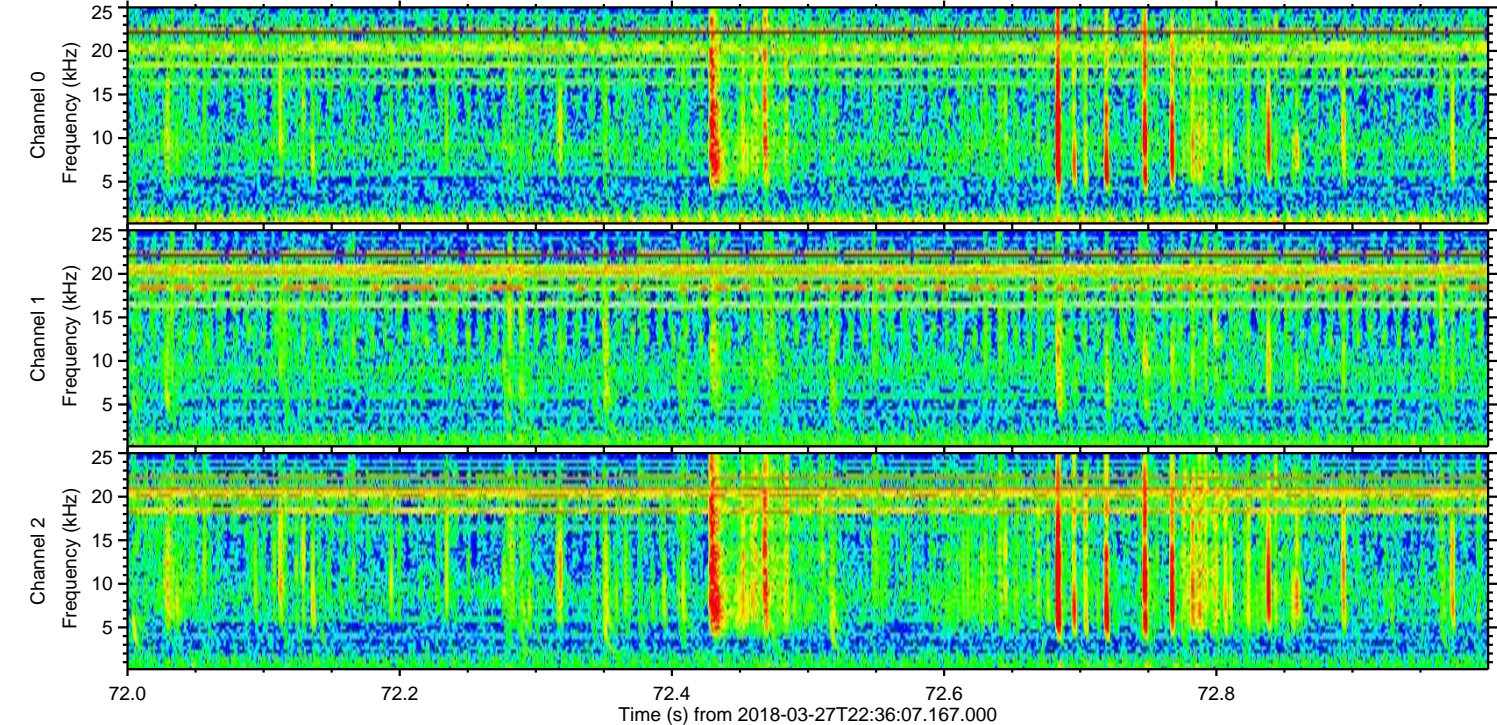
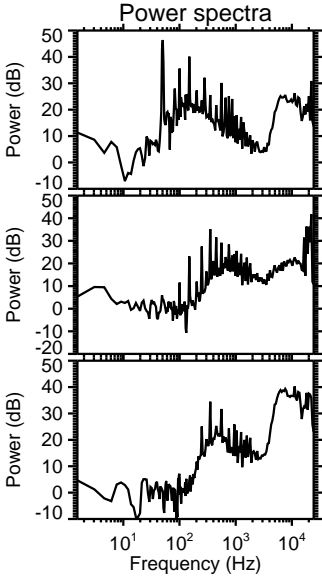
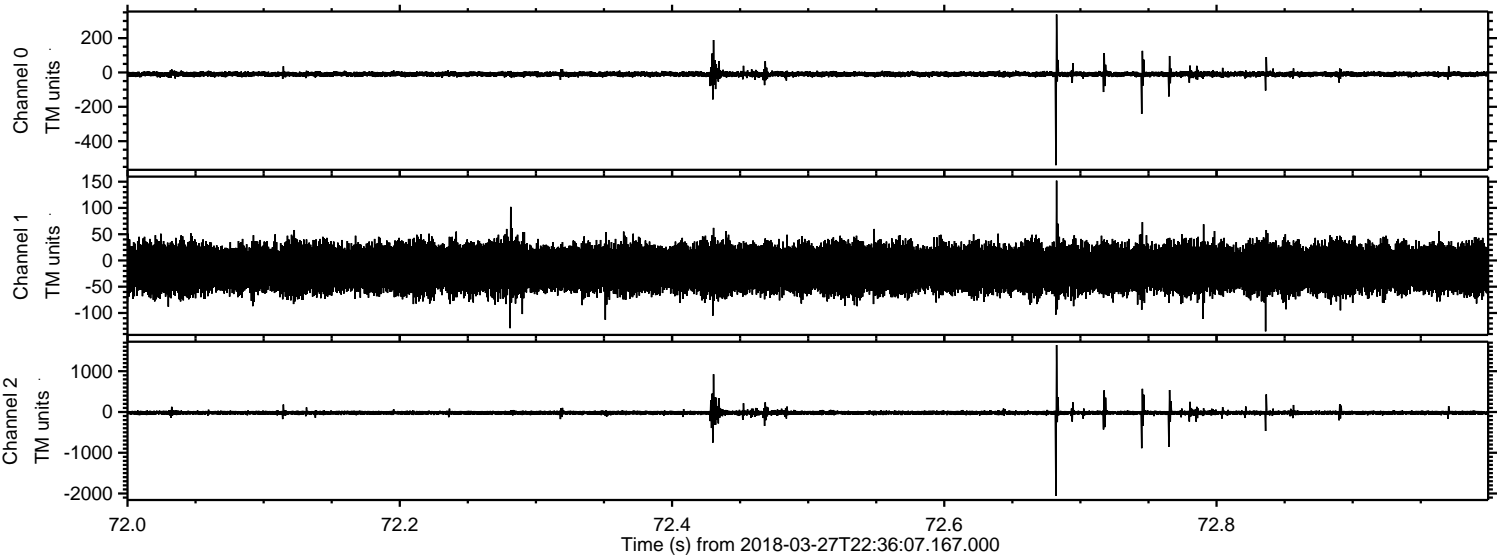


ELMAVAN 3D WAVEFORMS (Measured data sampled at 50 kHz) 51000 packets of 144 samples from 2018-03-27T22:36:07.167.000. Part 117/147

Processed Wed Mar 28 00:44:20 2018 by ELM ver.2012-10-06 from 001__elm20180327_223606__dat00.bin



Processed Wed Mar 28 00:44:21 2018 by ELM ver.2012-10-06 from 001__elm20180327_223606__dat00.bin

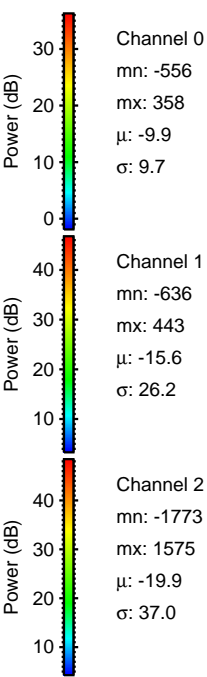
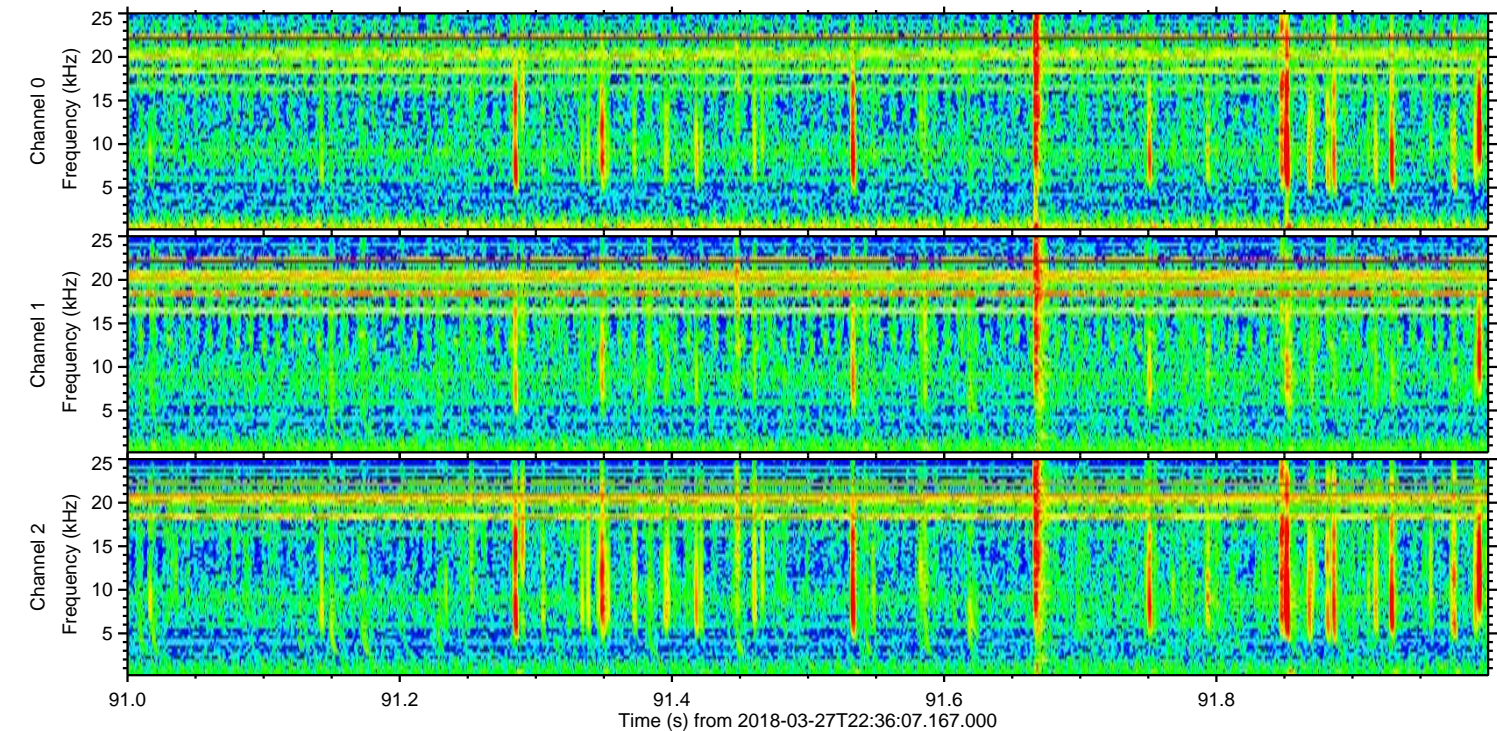
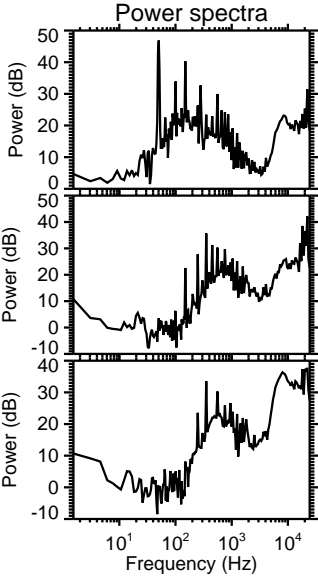
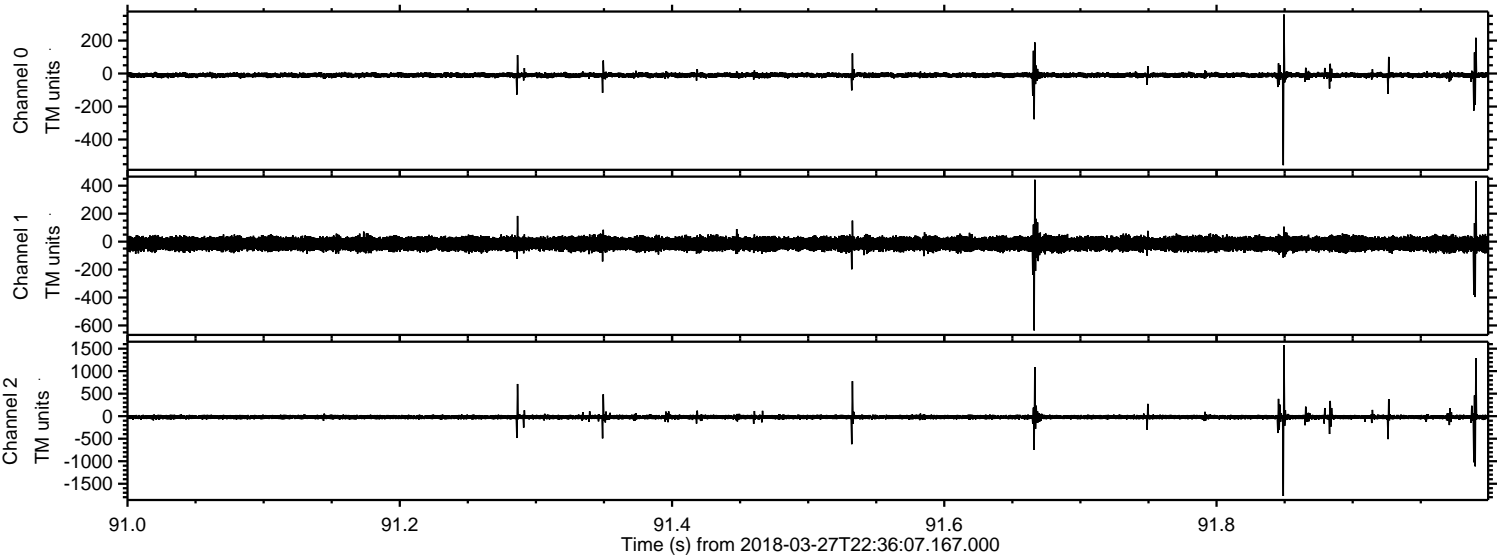


Channel 0
mn: -540
mx: 338
 μ : -9.9
 σ : 8.9

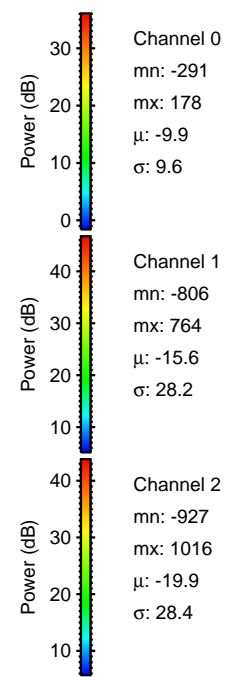
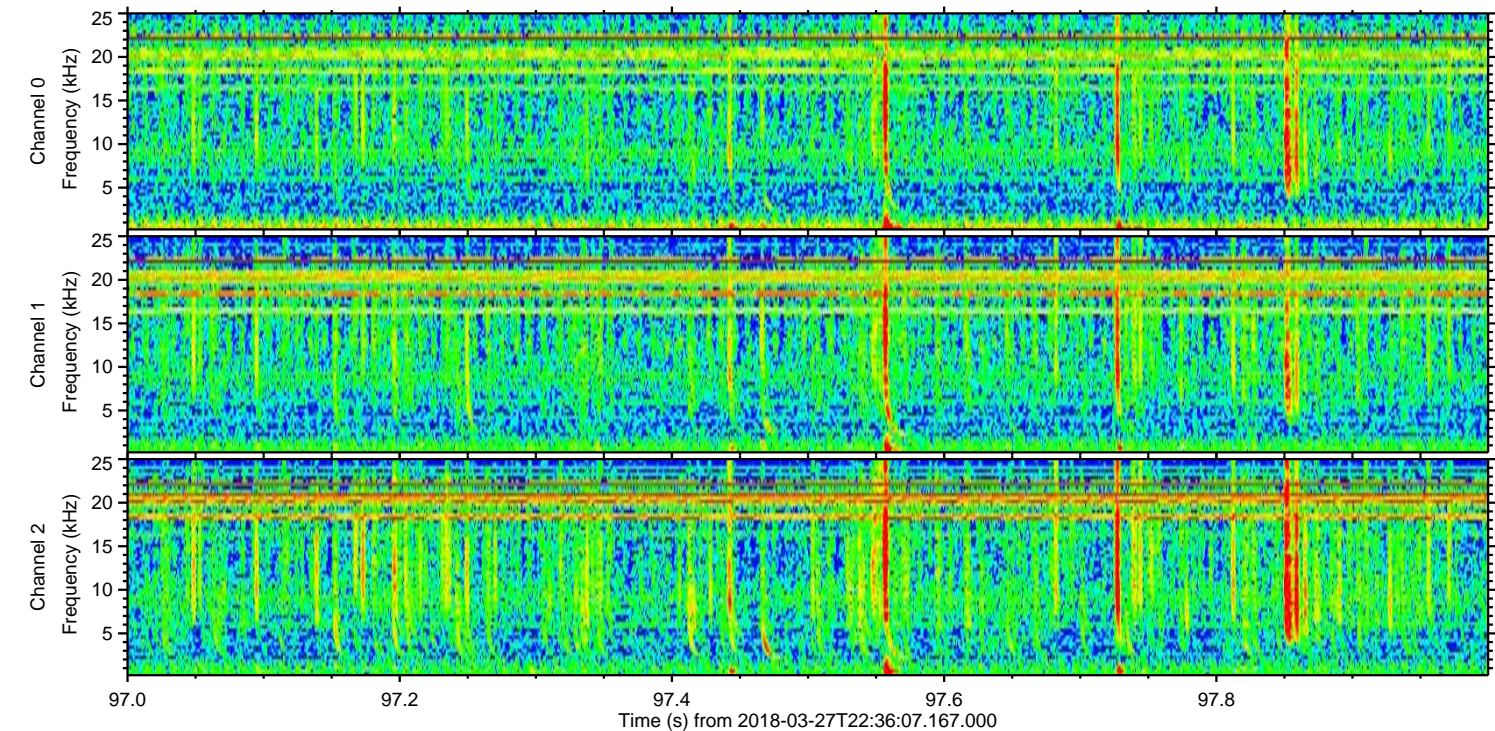
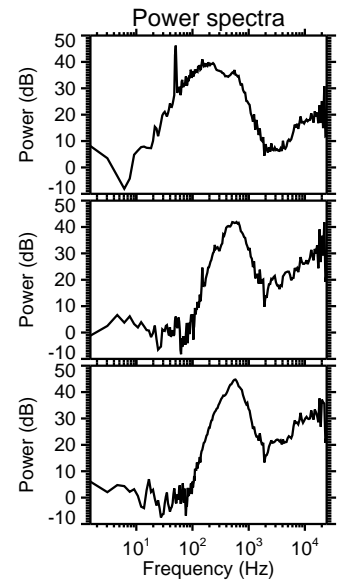
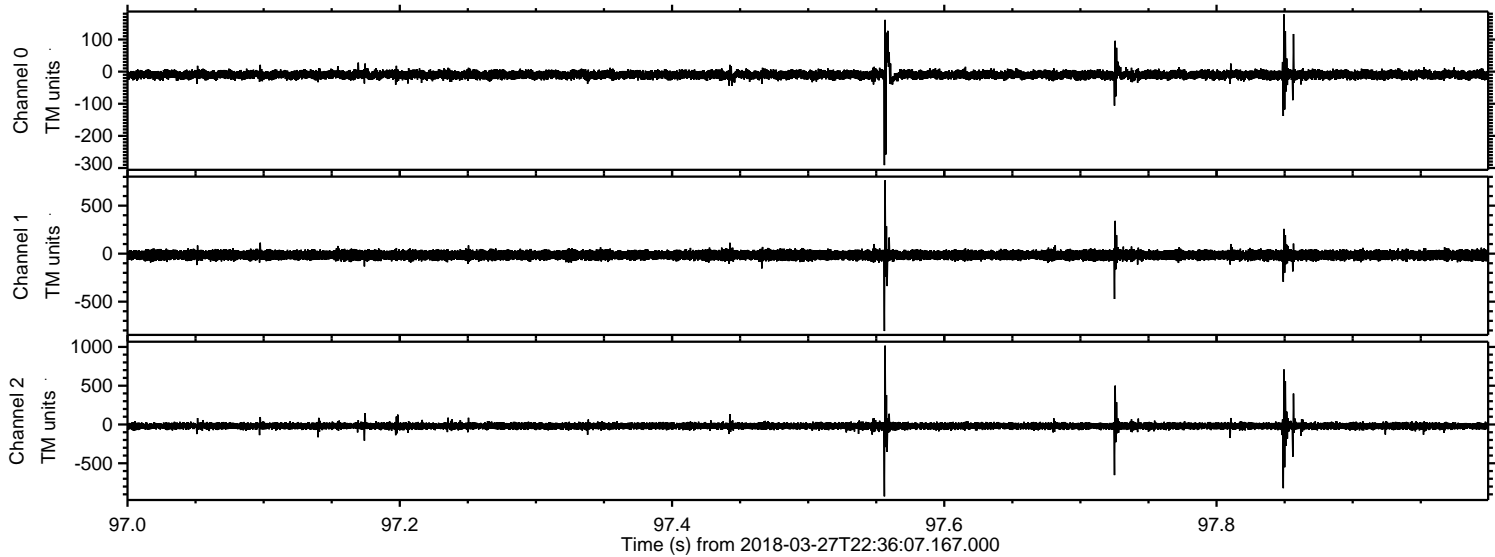
Channel 1
mn: -135
mx: 152
 μ : -15.6
 σ : 23.8

Channel 2
mn: -2057
mx: 1642
 μ : -20.0
 σ : 34.8

Processed Wed Mar 28 00:44:22 2018 by ELM ver.2012-10-06 from 001__elm20180327_223606__dat00.bin



Processed Wed Mar 28 00:44:23 2018 by ELM ver.2012-10-06 from 001__elm20180327_223606__dat00.bin



Processed Wed Mar 28 00:44:23 2018 by ELM ver.2012-10-06 from 001__elm20180327_223606__dat00.bin

