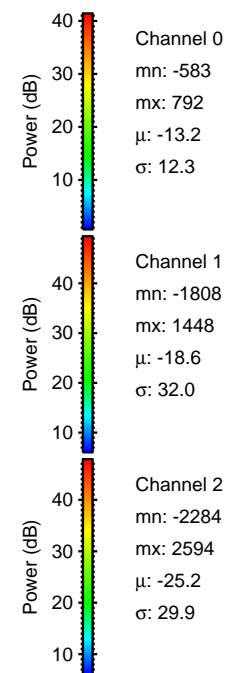
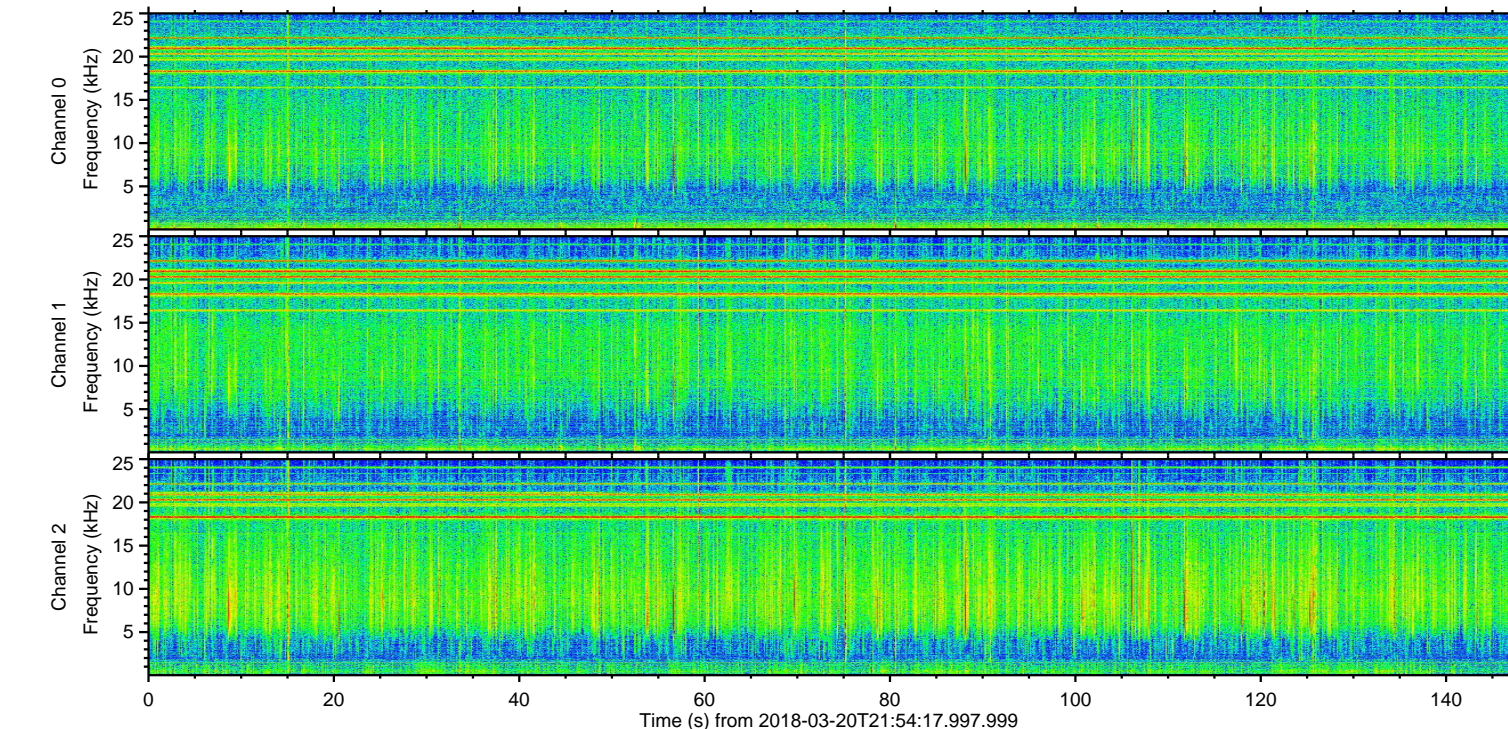
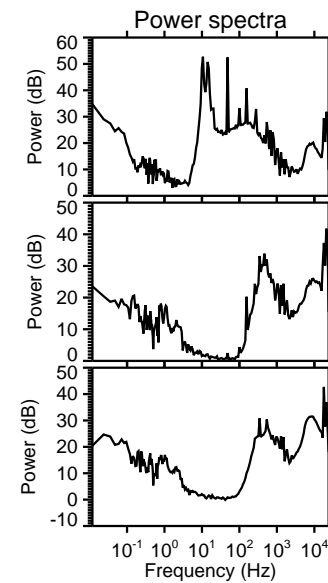
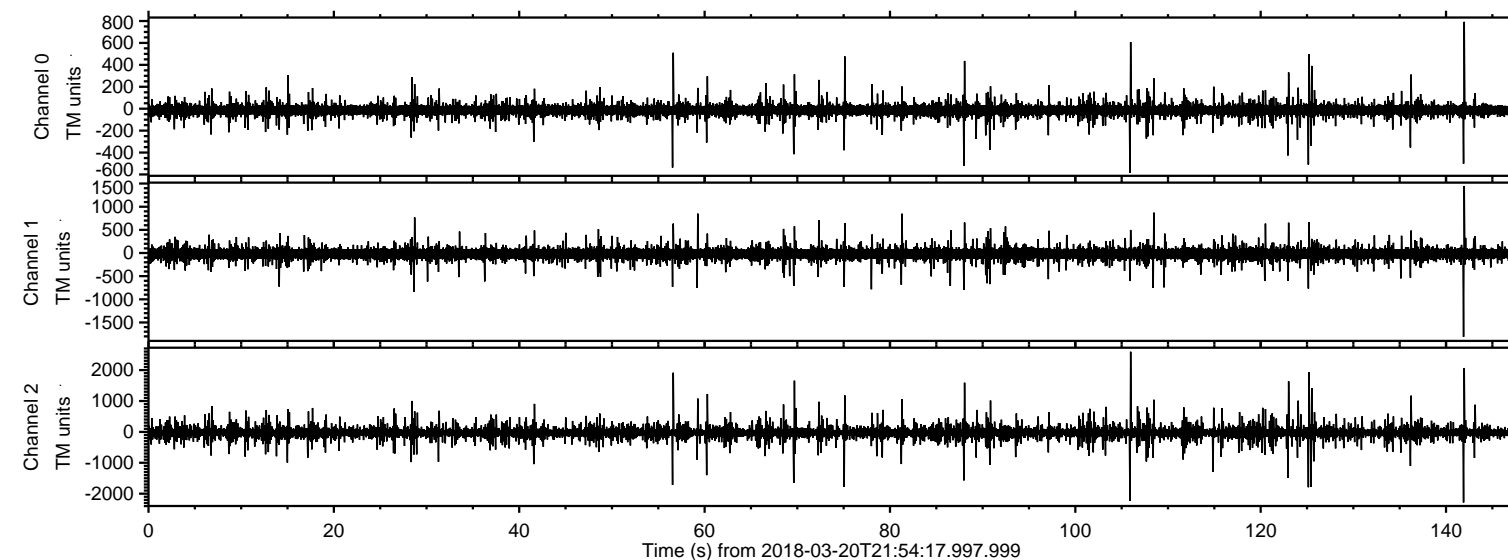


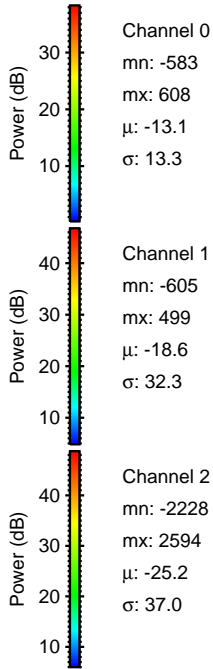
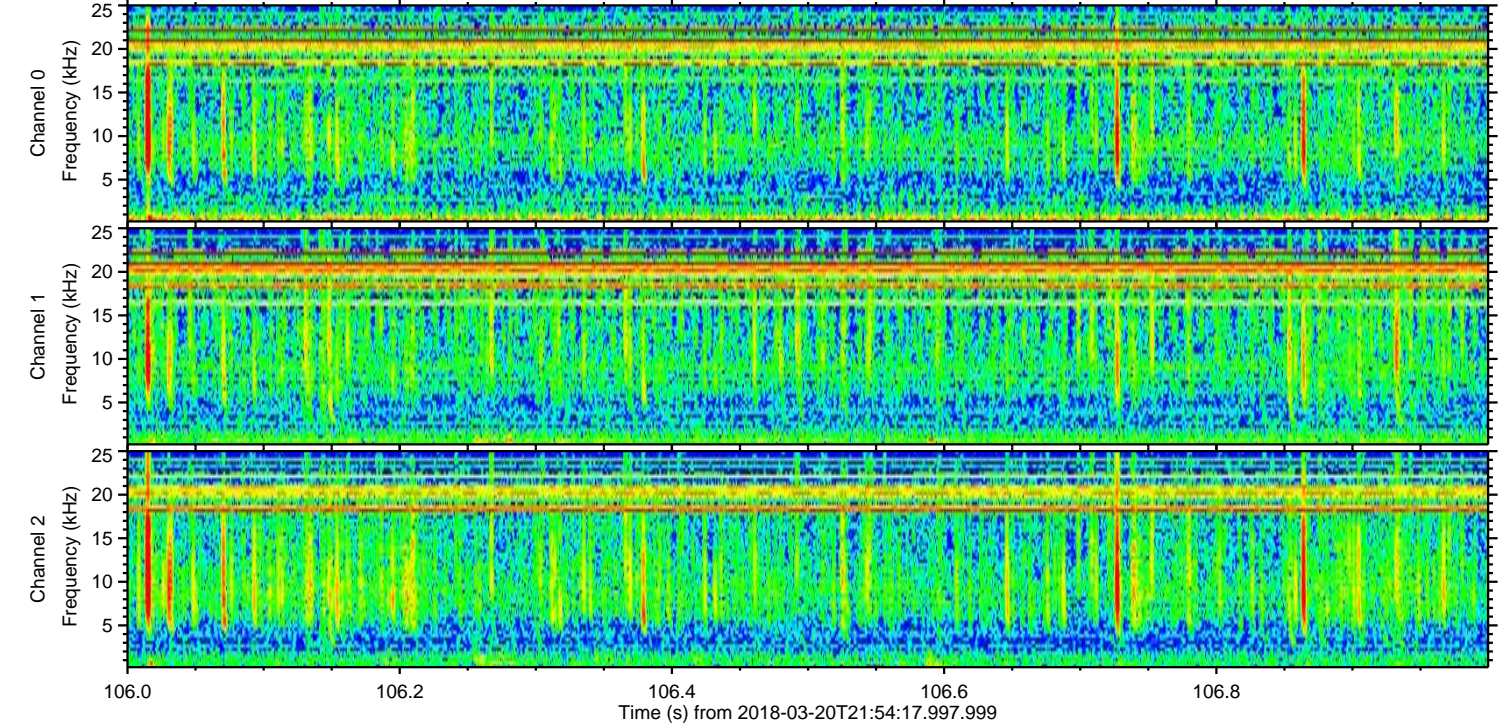
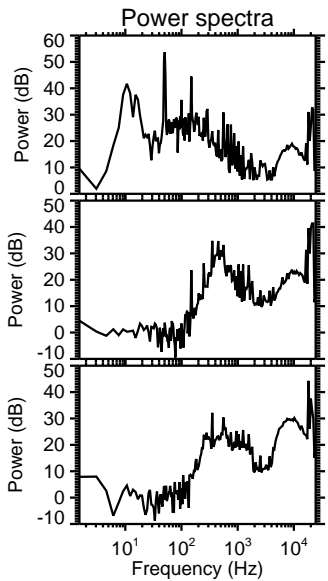
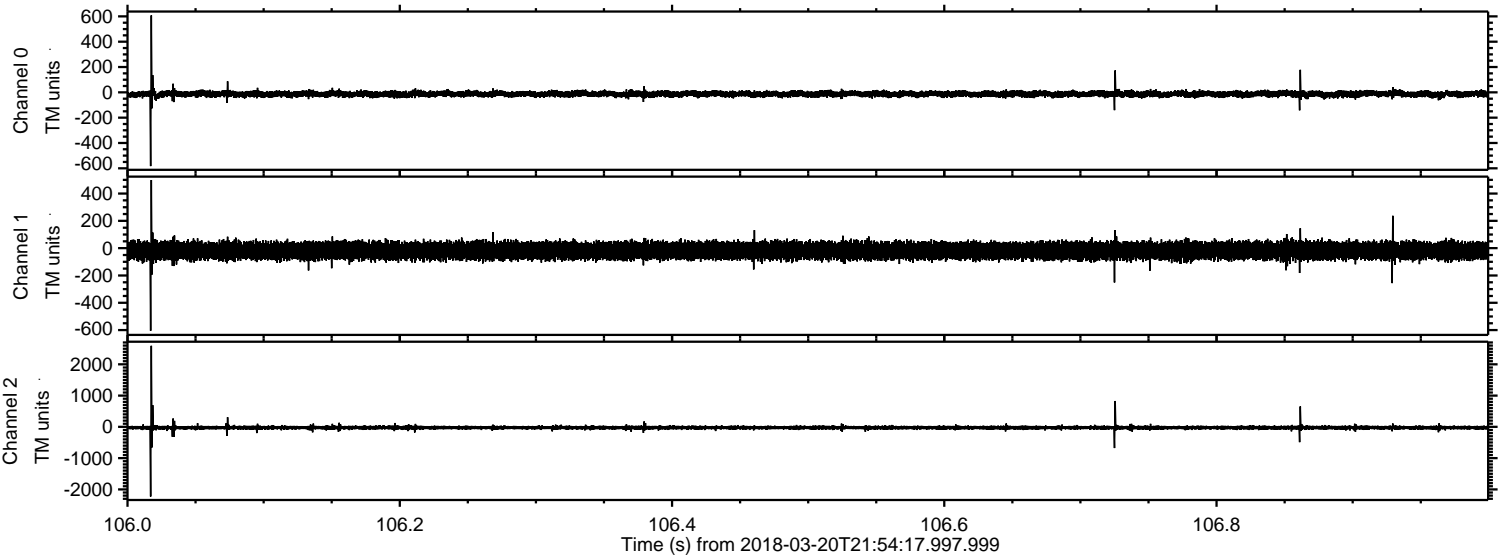
ELMAVAN 3D WAVEFORMS (Measured data sampled at 50 kHz) 51000 packets of 144 samples from 2018-03-20T21:54:17.997.999.

Processed Tue Mar 20 23:02:59 2018 by ELM ver.2012-10-06 from 001__elm20180320_215416__dat00.bin



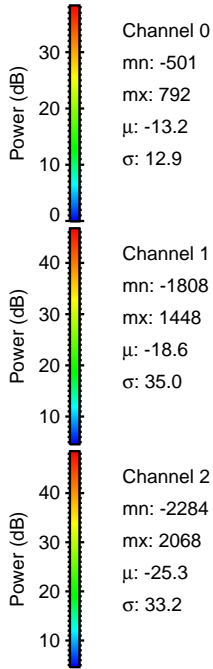
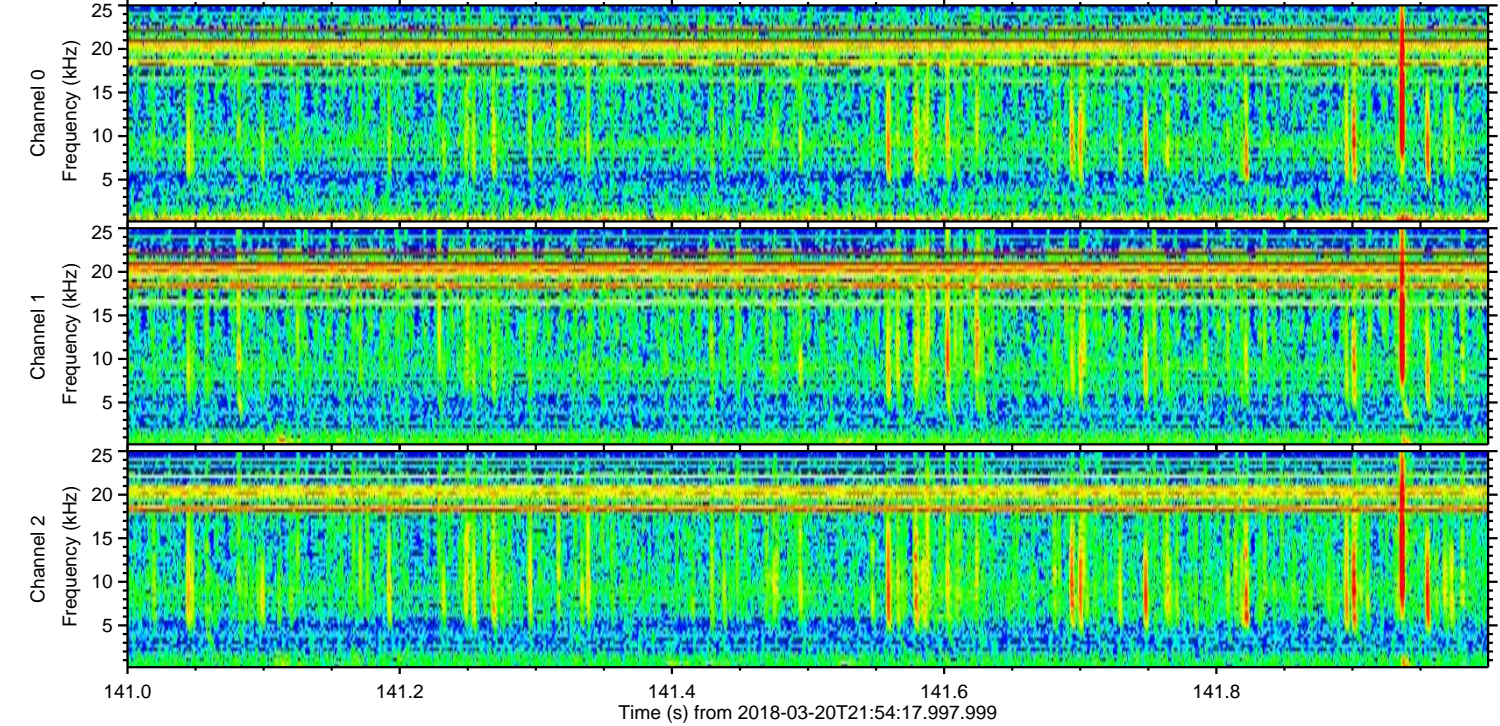
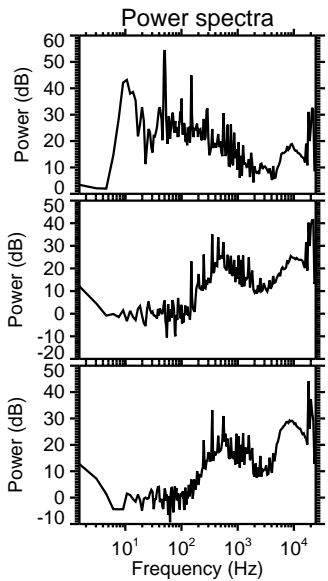
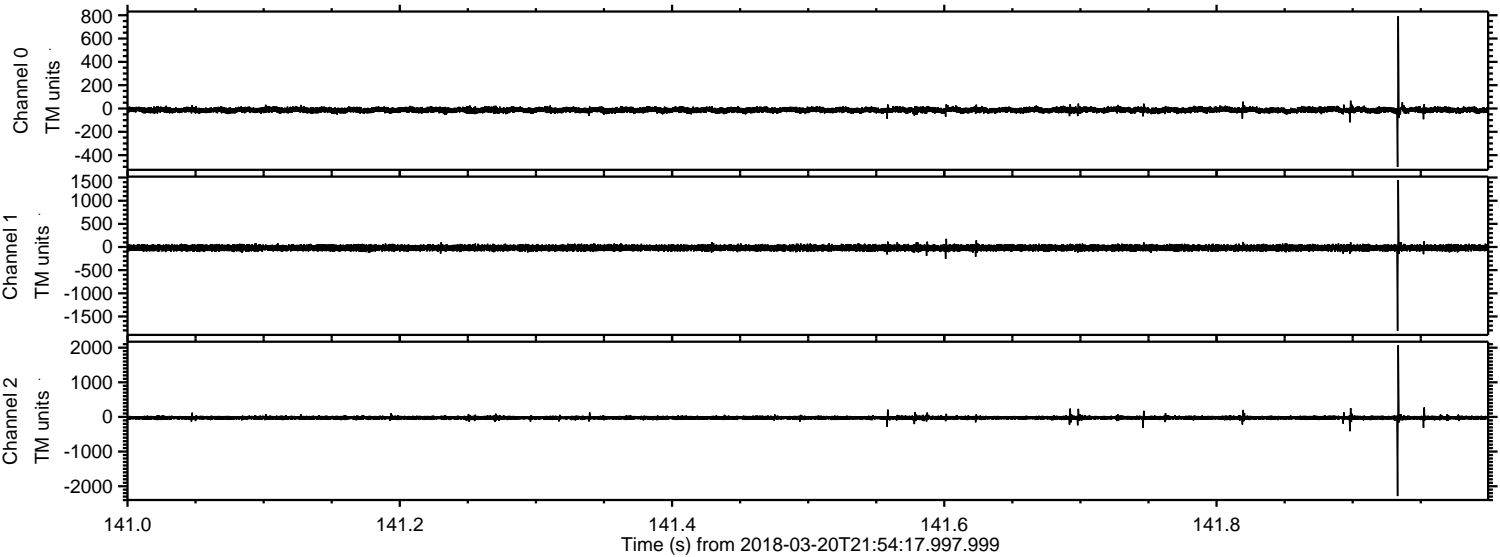
ELMAVAN 3D WAVEFORMS (Measured data sampled at 50 kHz) 51000 packets of 144 samples from 2018-03-20T21:54:17.997.999. Part 107/147

Processed Tue Mar 20 23:03:07 2018 by ELM ver.2012-10-06 from 001__elm20180320_215416__dat00.bin



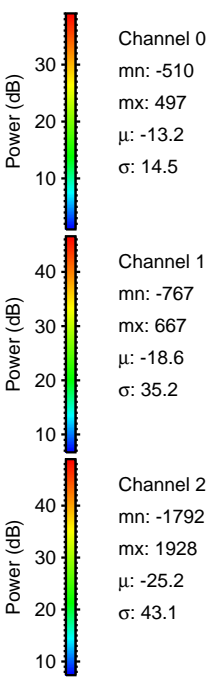
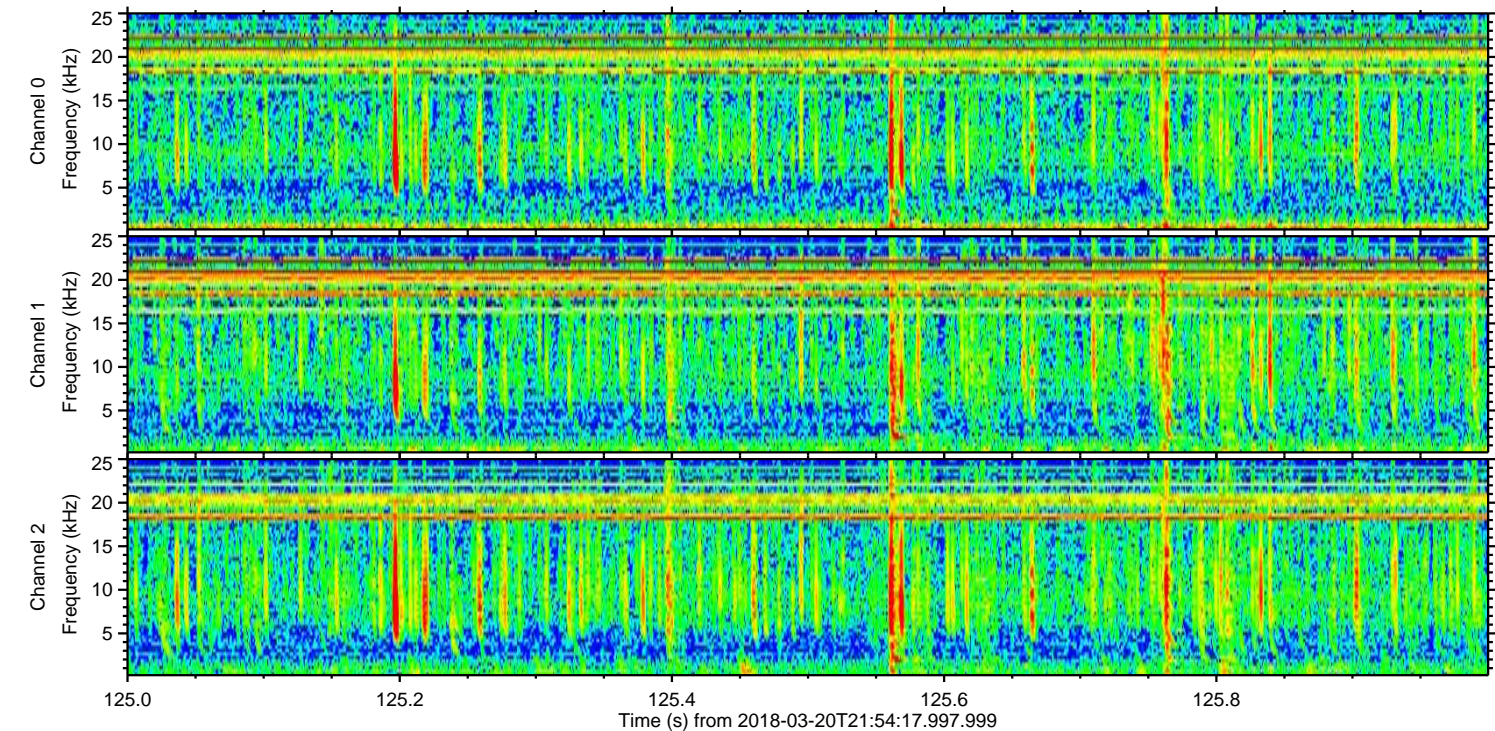
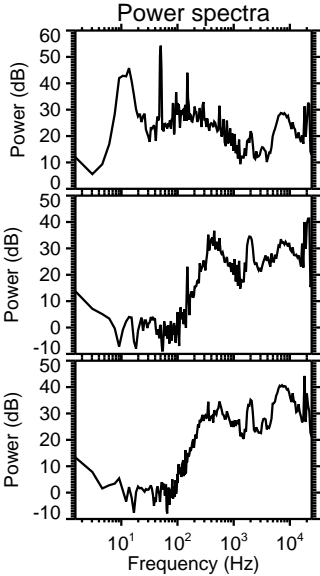
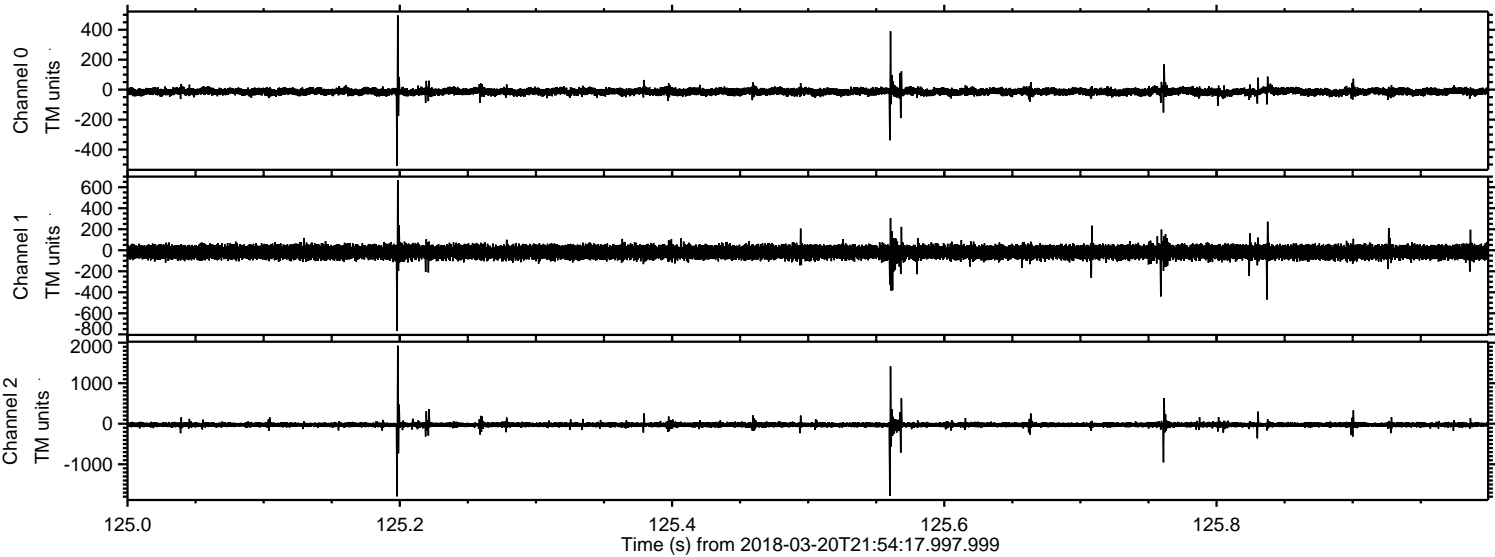
ELMAVAN 3D WAVEFORMS (Measured data sampled at 50 kHz) 51000 packets of 144 samples from 2018-03-20T21:54:17.997.999. Part 142/147

Processed Tue Mar 20 23:03:08 2018 by ELM ver.2012-10-06 from 001__elm20180320_215416__dat00.bin

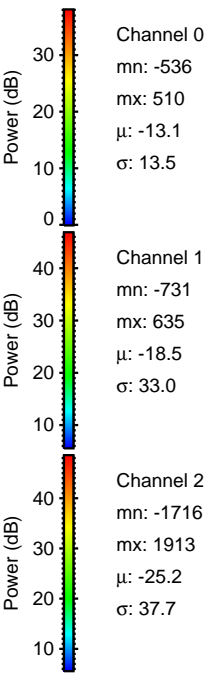
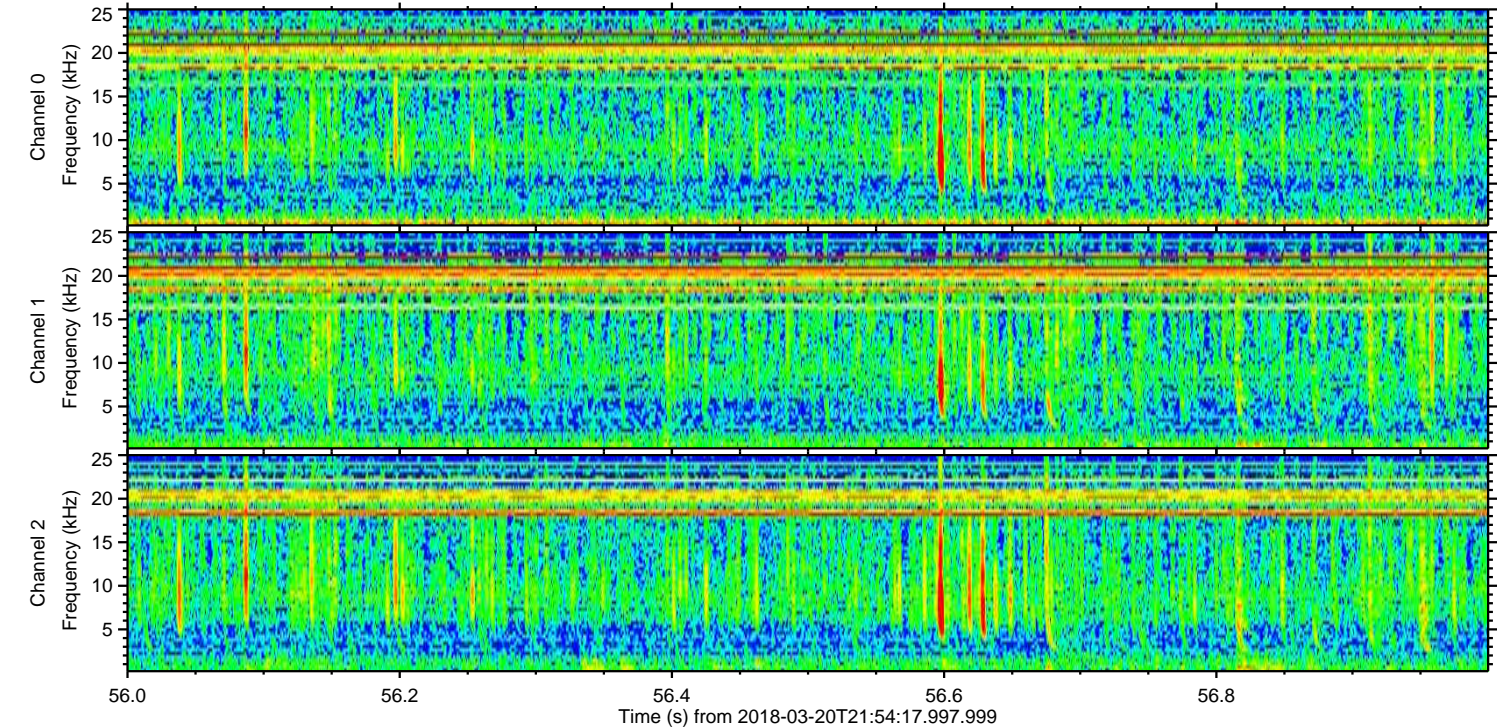
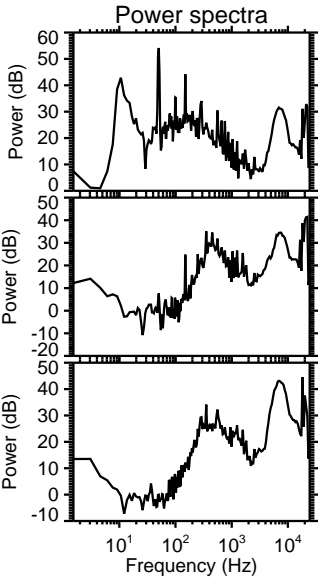
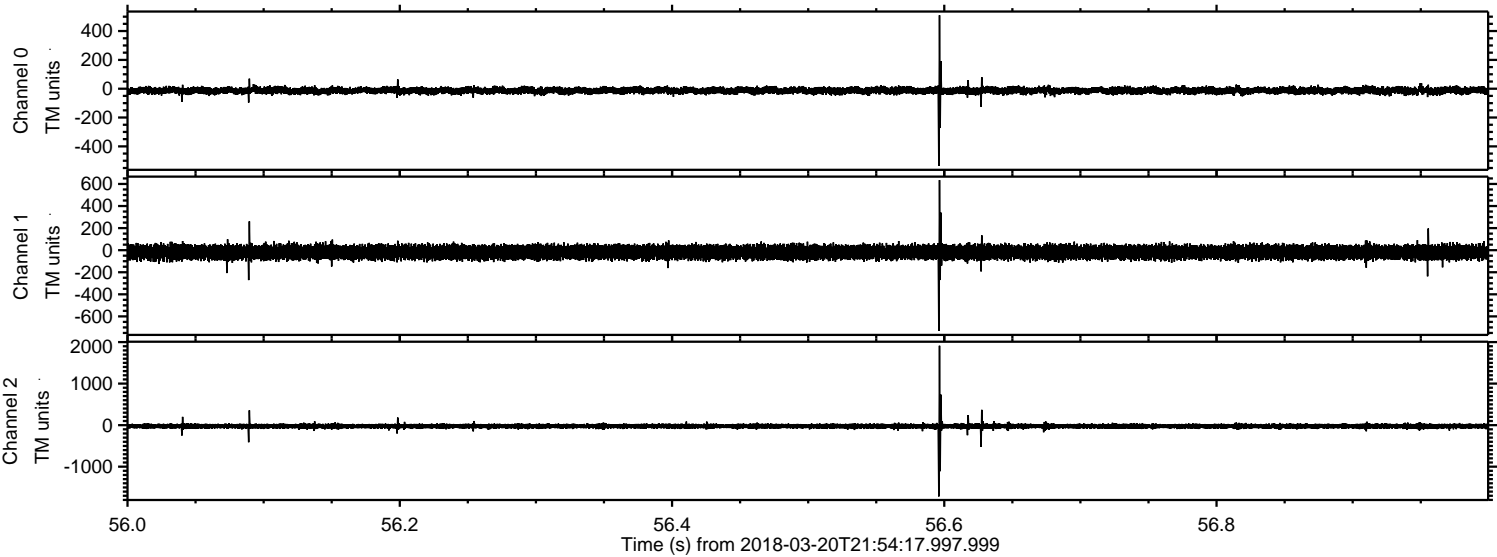


ELMAVAN 3D WAVEFORMS (Measured data sampled at 50 kHz) 51000 packets of 144 samples from 2018-03-20T21:54:17.997.999. Part 126/147

Processed Tue Mar 20 23:03:09 2018 by ELM ver.2012-10-06 from 001__elm20180320_215416__dat00.bin



Processed Tue Mar 20 23:03:10 2018 by ELM ver.2012-10-06 from 001__elm20180320_215416__dat00.bin

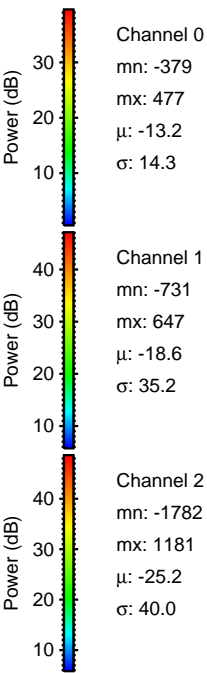
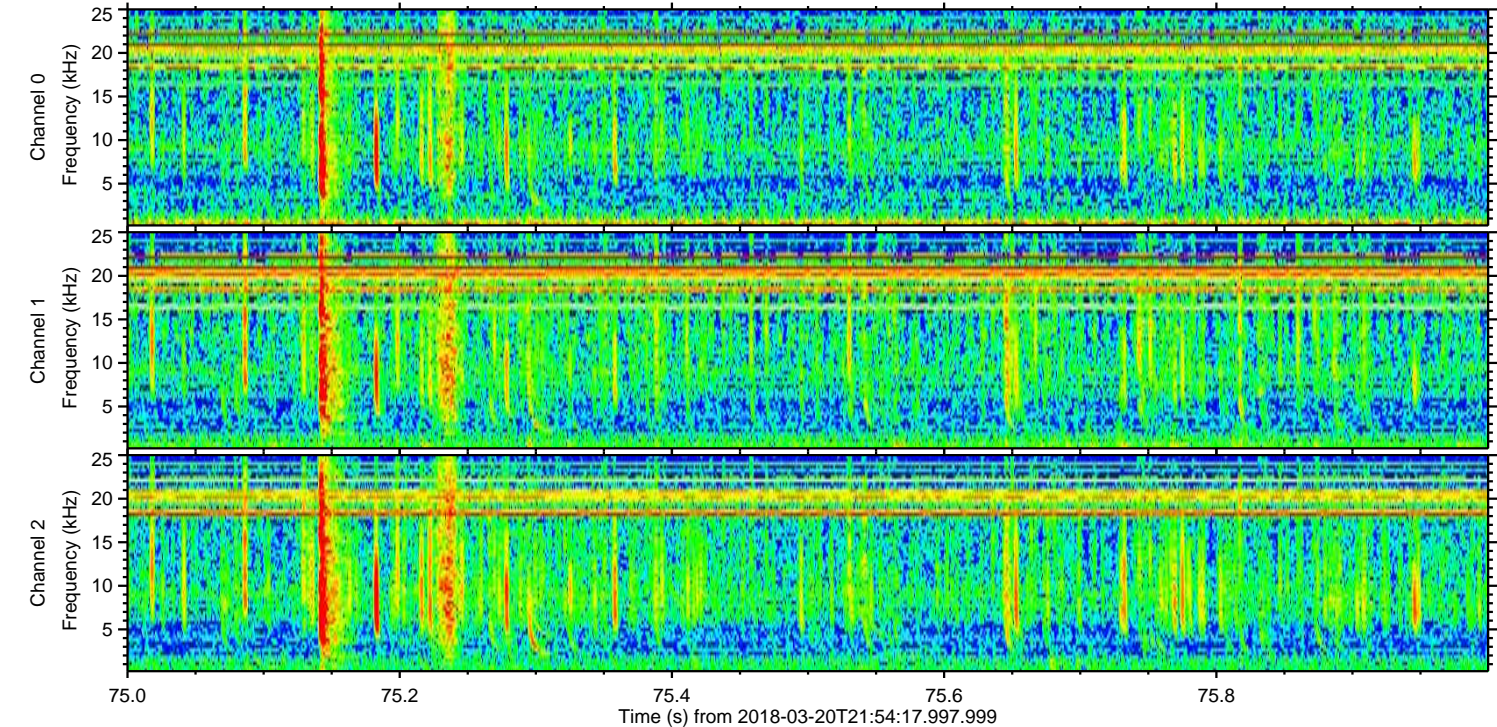
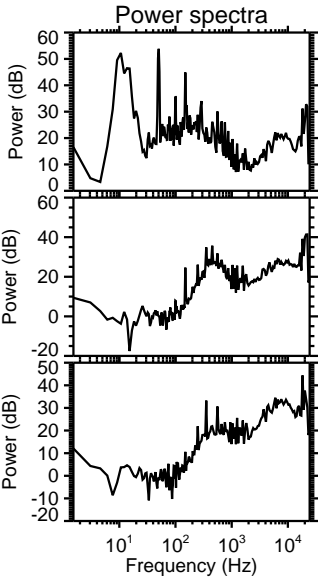
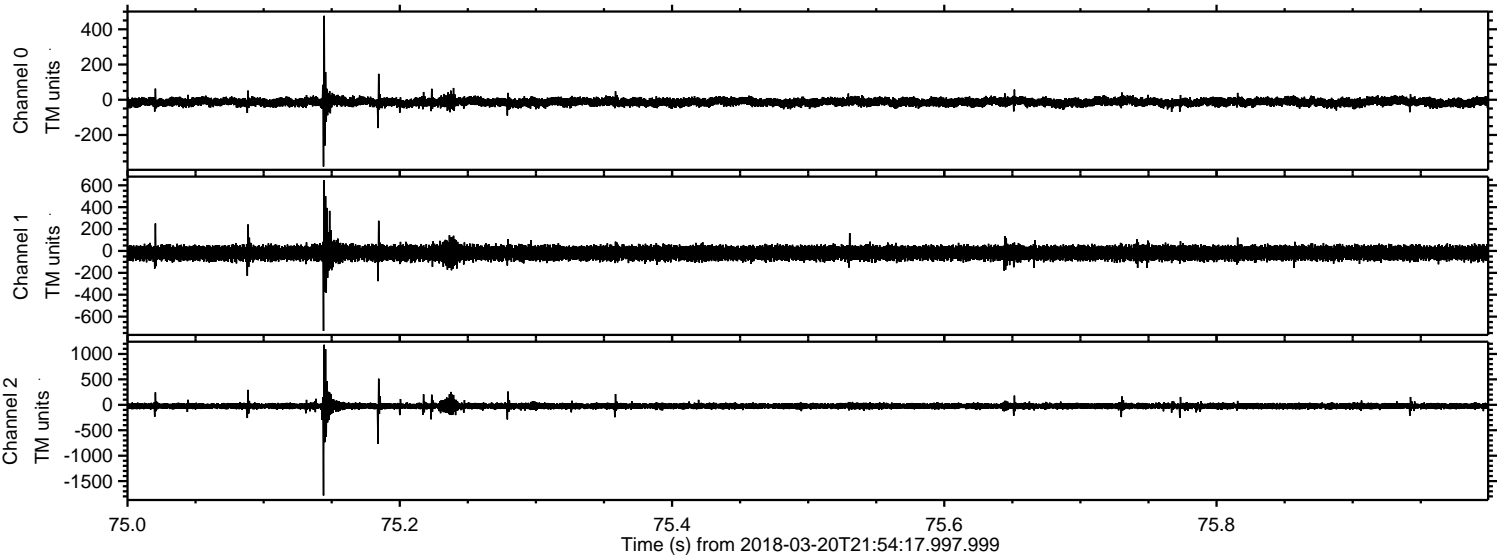


Channel 0
mn: -536
mx: 510
 μ : -13.1
 σ : 13.5

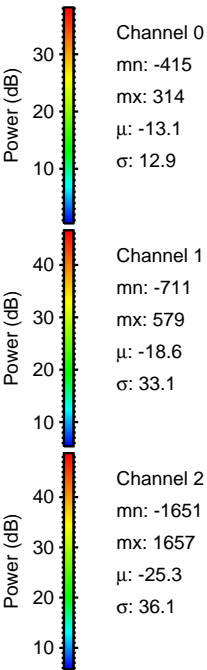
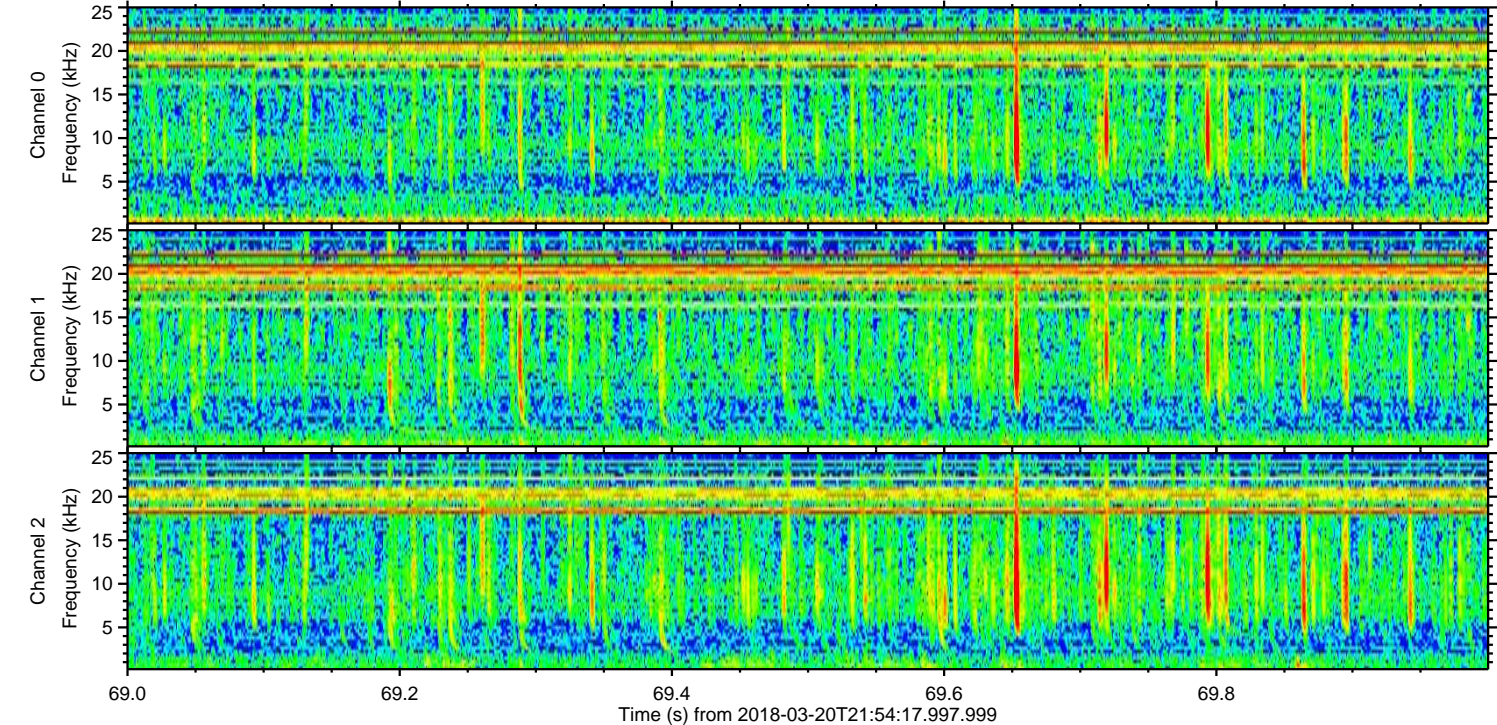
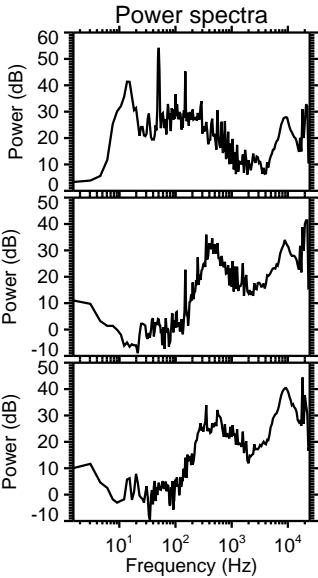
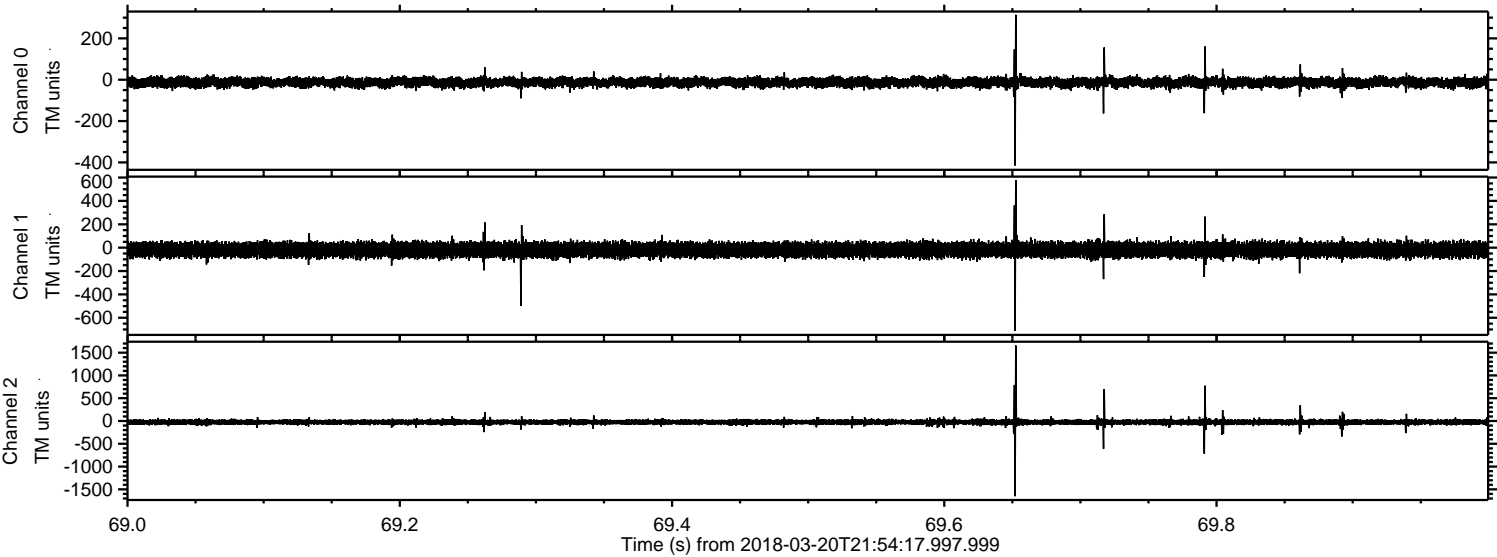
Channel 1
mn: -731
mx: 635
 μ : -18.5
 σ : 33.0

Channel 2
mn: -1716
mx: 1913
 μ : -25.2
 σ : 37.7

Processed Tue Mar 20 23:03:10 2018 by ELM ver.2012-10-06 from 001__elm20180320_215416__dat00.bin

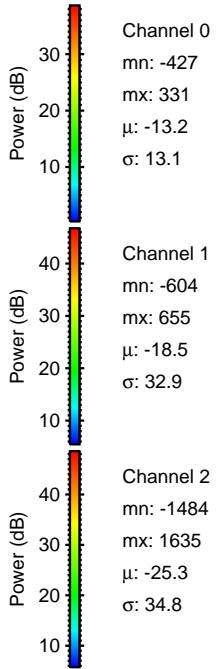
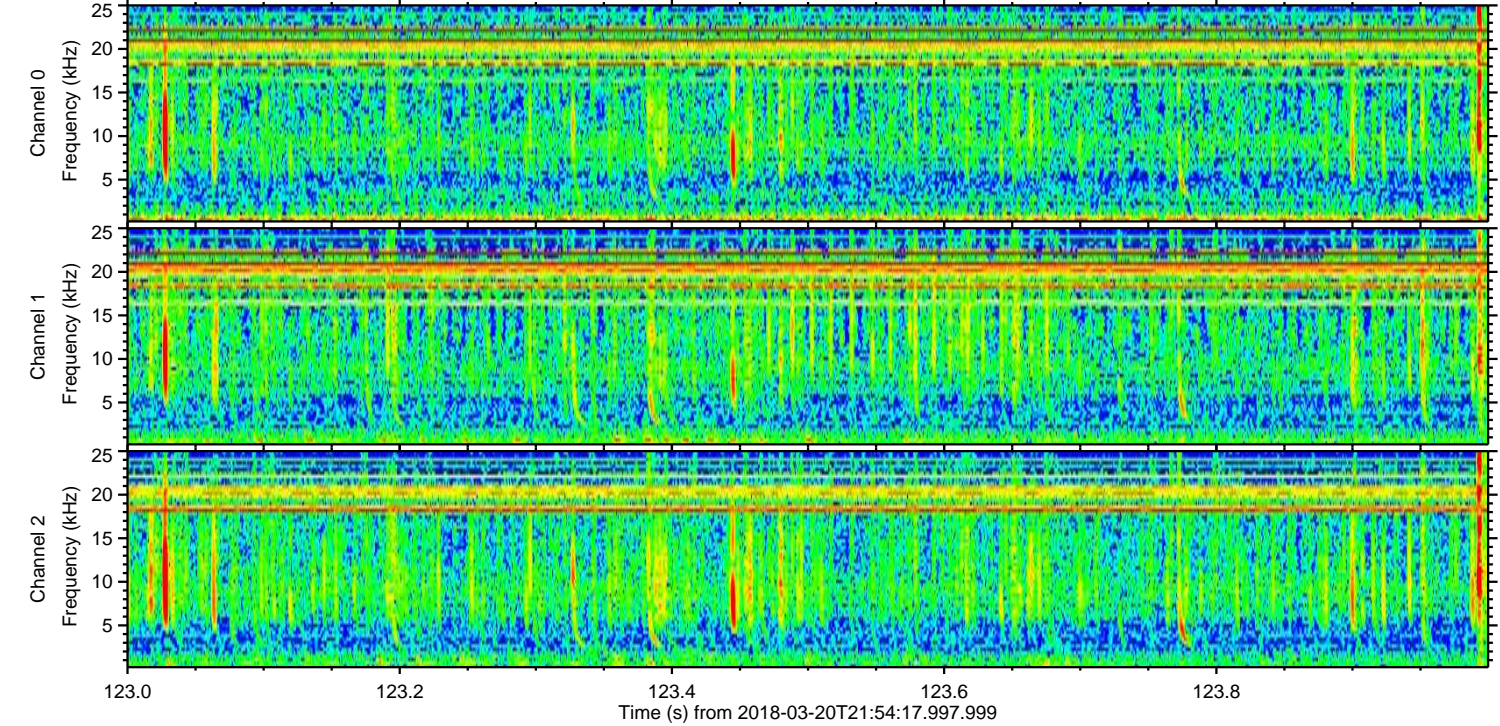
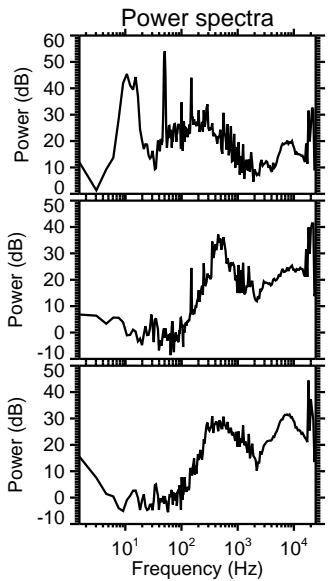
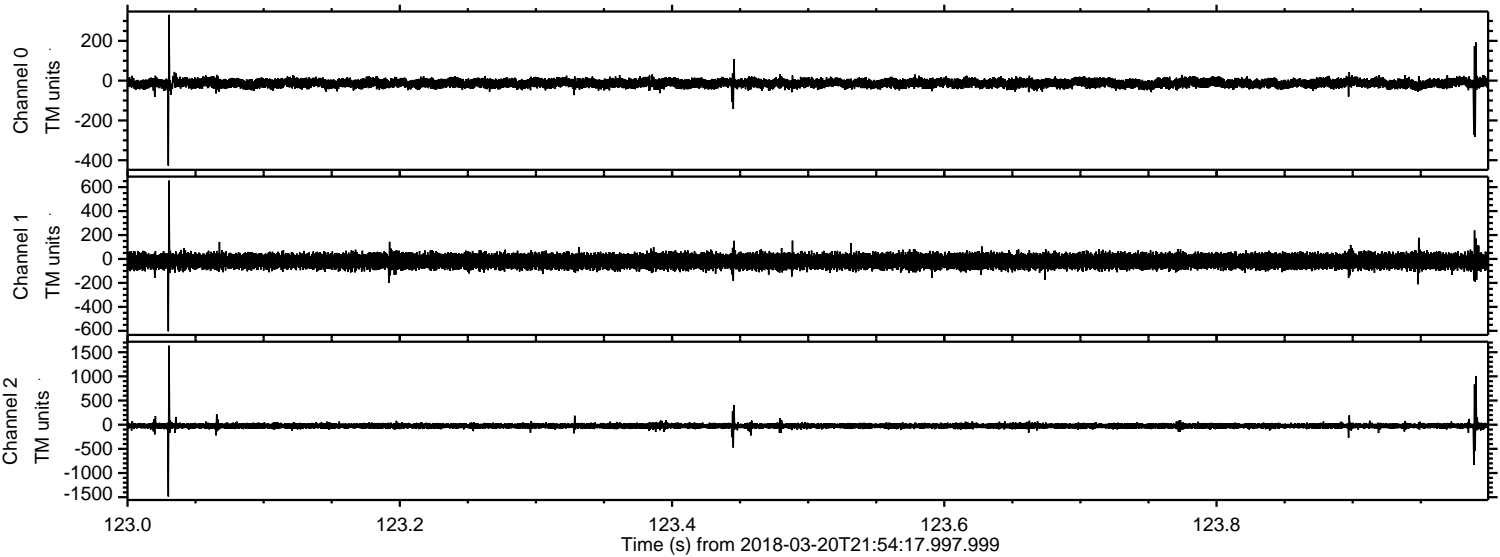


Processed Tue Mar 20 23:03:11 2018 by ELM ver.2012-10-06 from 001__elm20180320_215416__dat00.bin

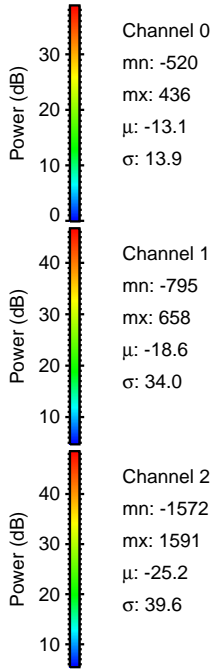
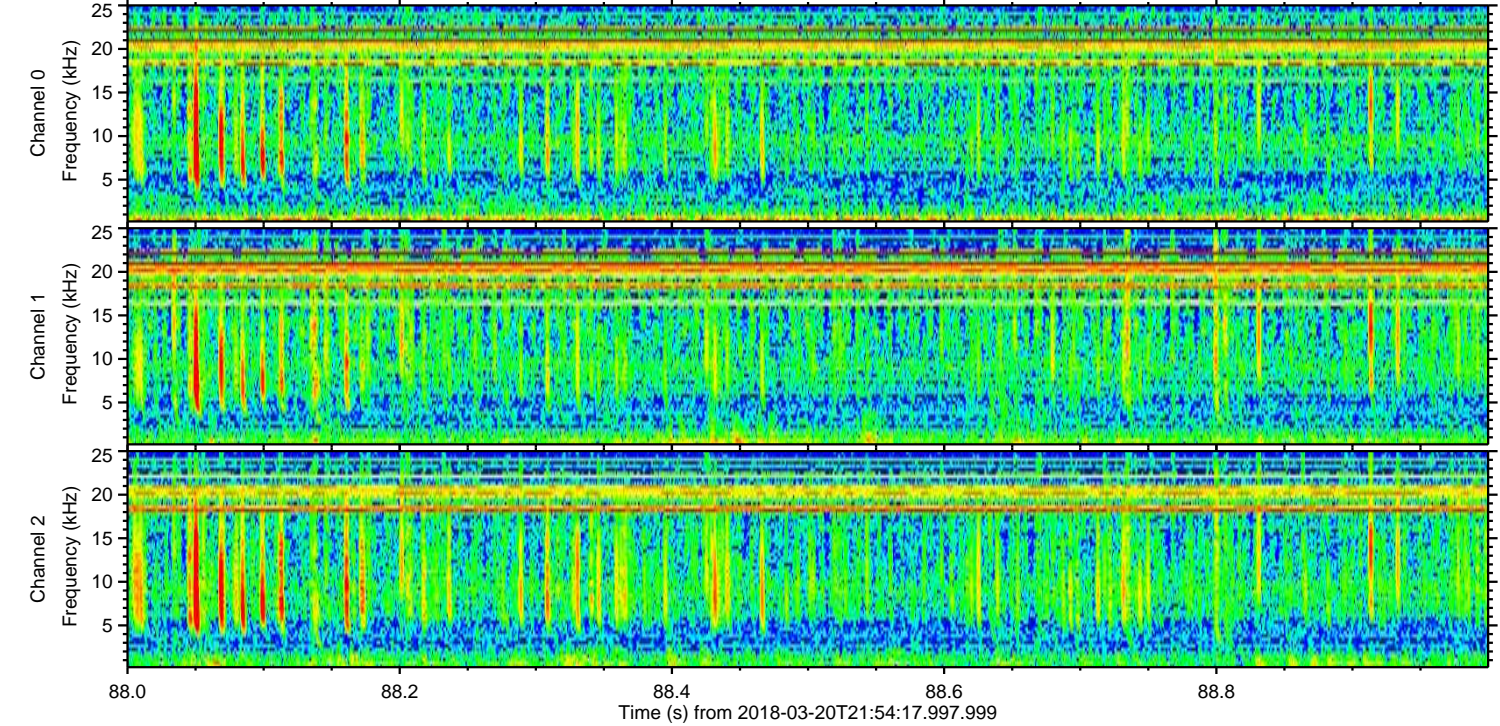
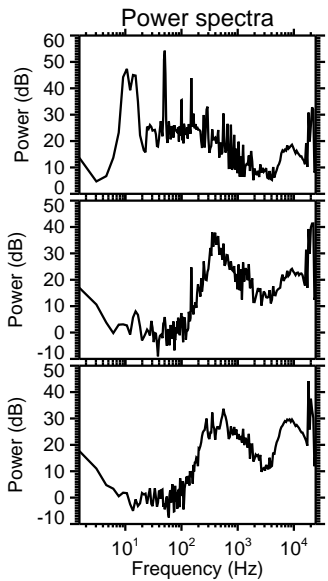
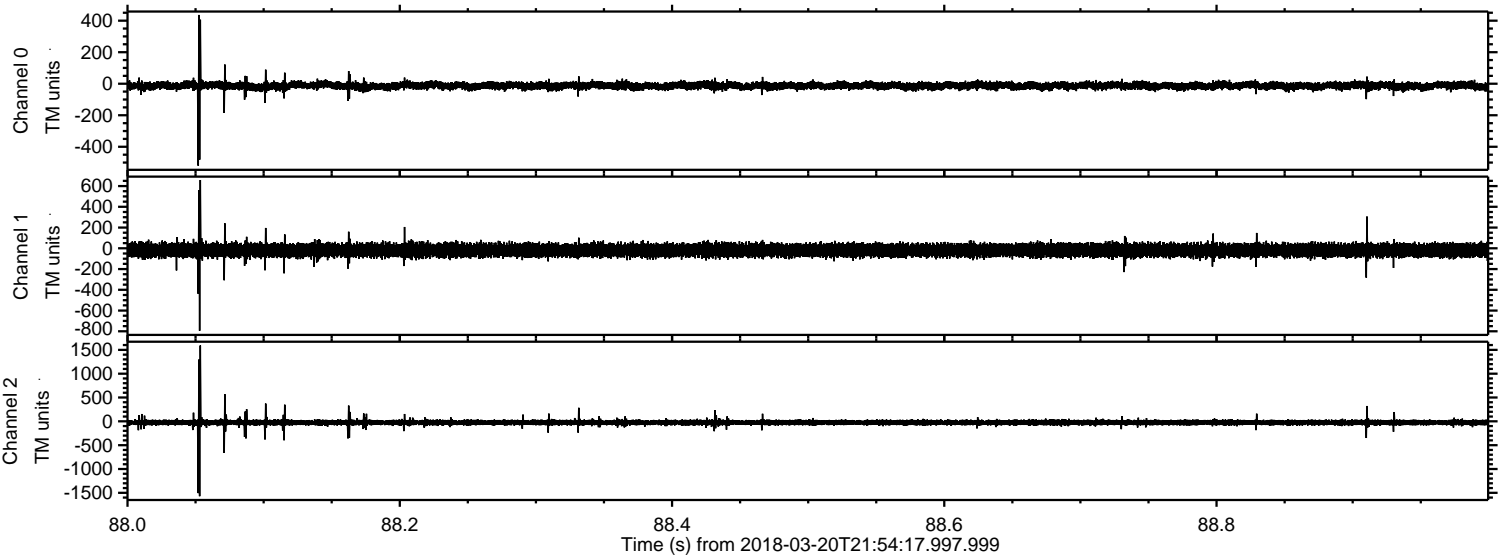


ELMAVAN 3D WAVEFORMS (Measured data sampled at 50 kHz) 51000 packets of 144 samples from 2018-03-20T21:54:17.997.999. Part 124/147

Processed Tue Mar 20 23:03:12 2018 by ELM ver.2012-10-06 from 001__elm20180320_215416__dat00.bin



Processed Tue Mar 20 23:03:13 2018 by ELM ver.2012-10-06 from 001__elm20180320_215416__dat00.bin

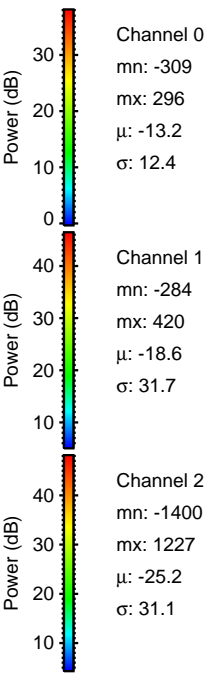
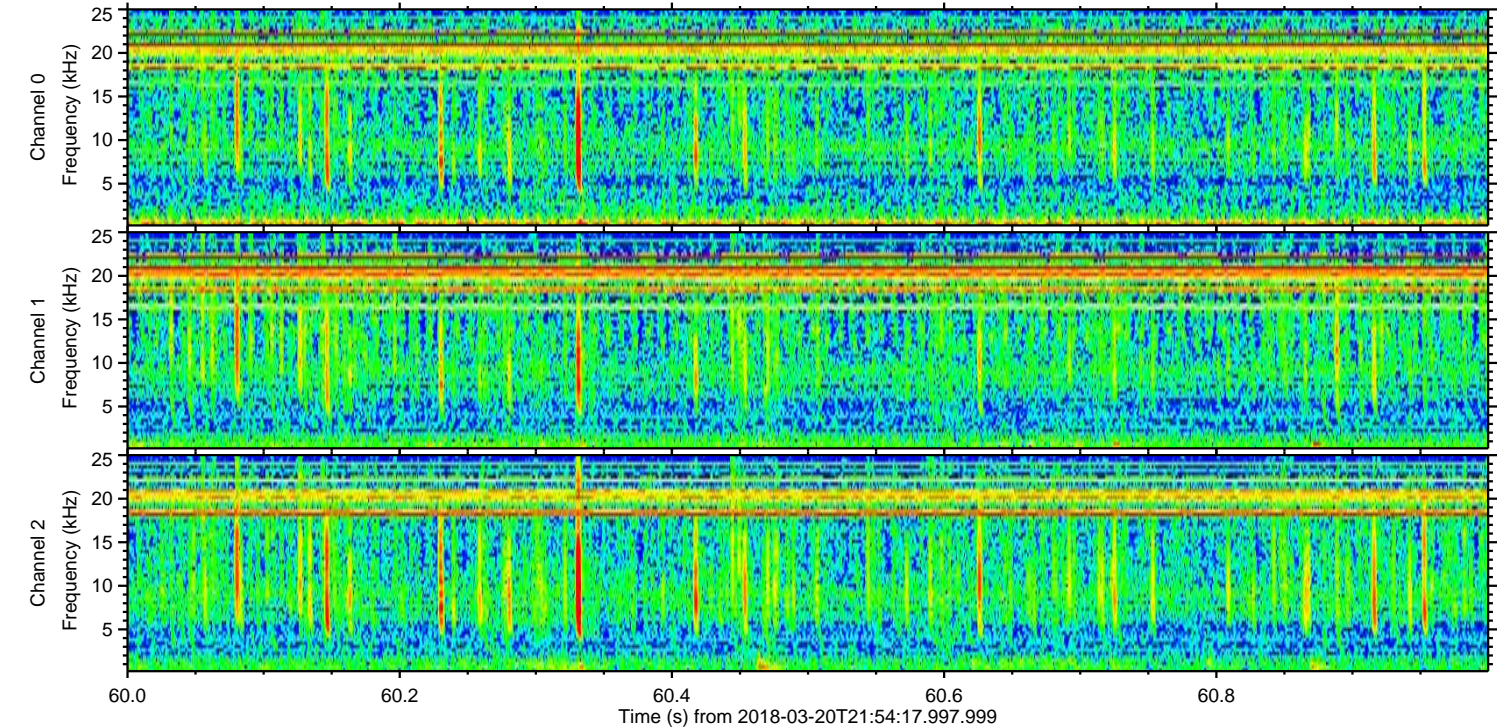
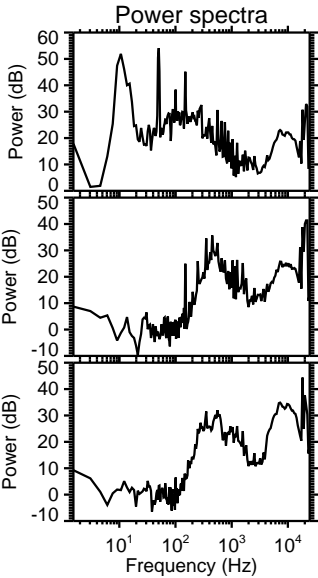
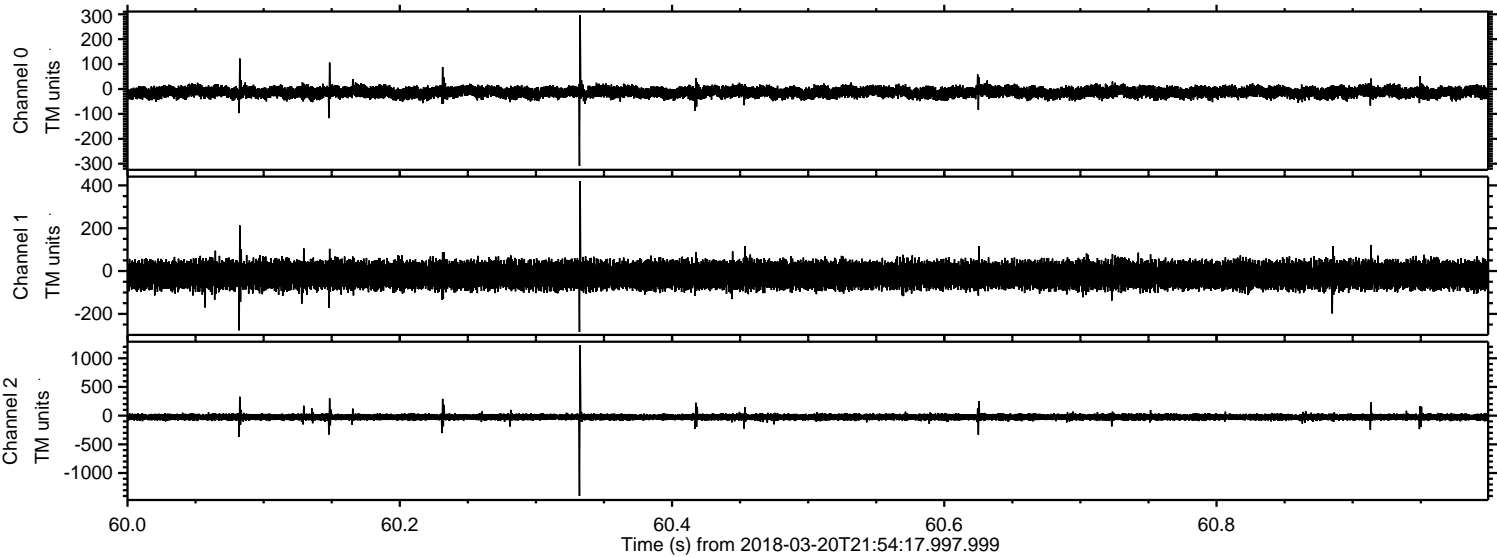


Channel 0
mn: -520
mx: 436
 μ : -13.1
 σ : 13.9

Channel 1
mn: -795
mx: 658
 μ : -18.6
 σ : 34.0

Channel 2
mn: -1572
mx: 1591
 μ : -25.2
 σ : 39.6

Processed Tue Mar 20 23:03:13 2018 by ELM ver.2012-10-06 from 001__elm20180320_215416__dat00.bin



Channel 0
mn: -309
mx: 296
 μ : -13.2
 σ : 12.4

Channel 1
mn: -284
mx: 420
 μ : -18.6
 σ : 31.7

Channel 2
mn: -1400
mx: 1227
 μ : -25.2
 σ : 31.1

