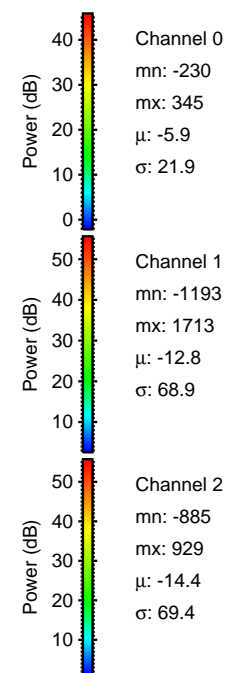
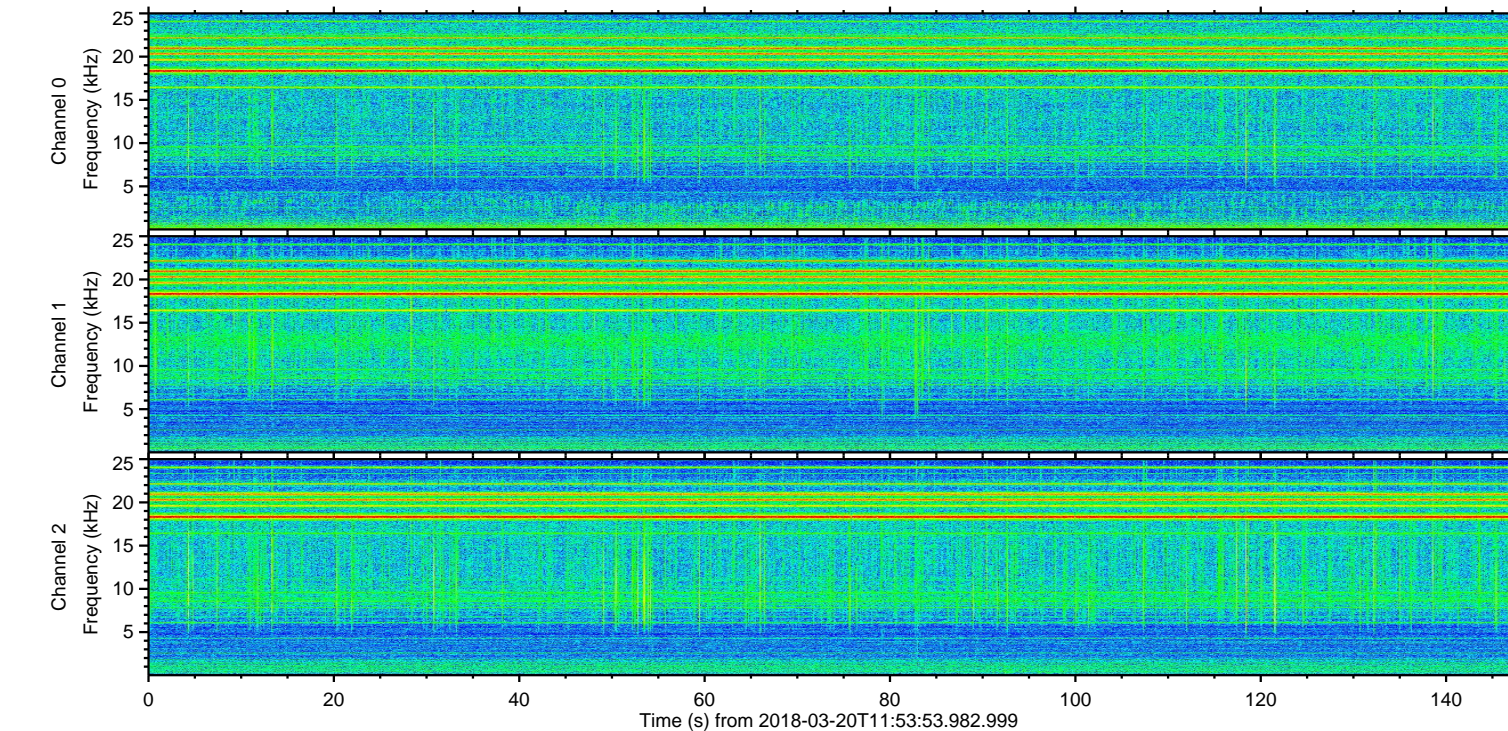
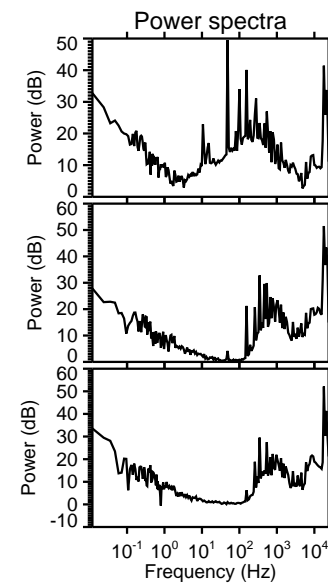
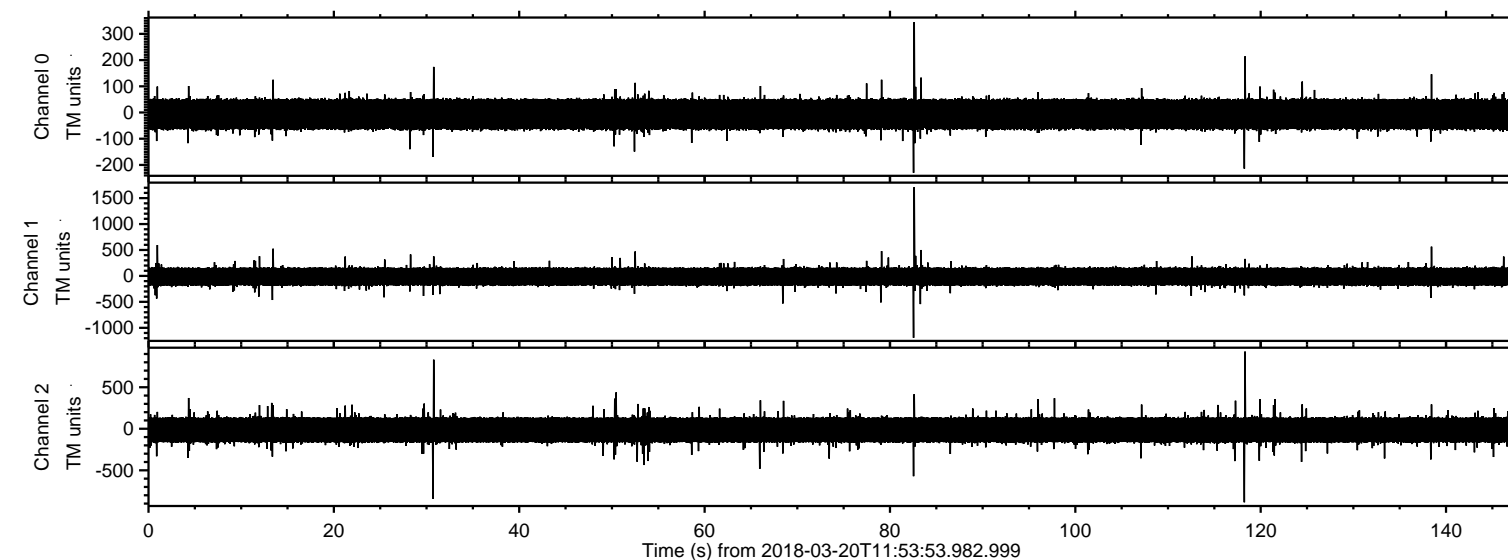
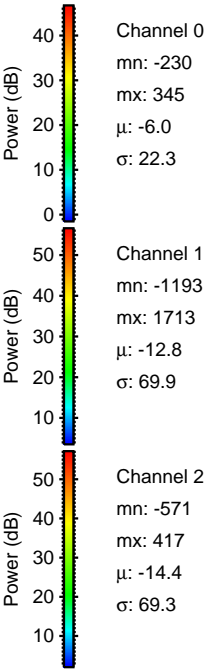
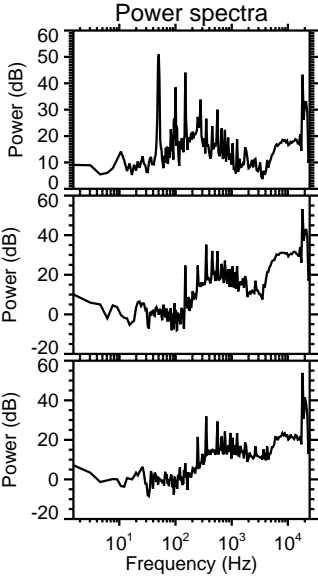
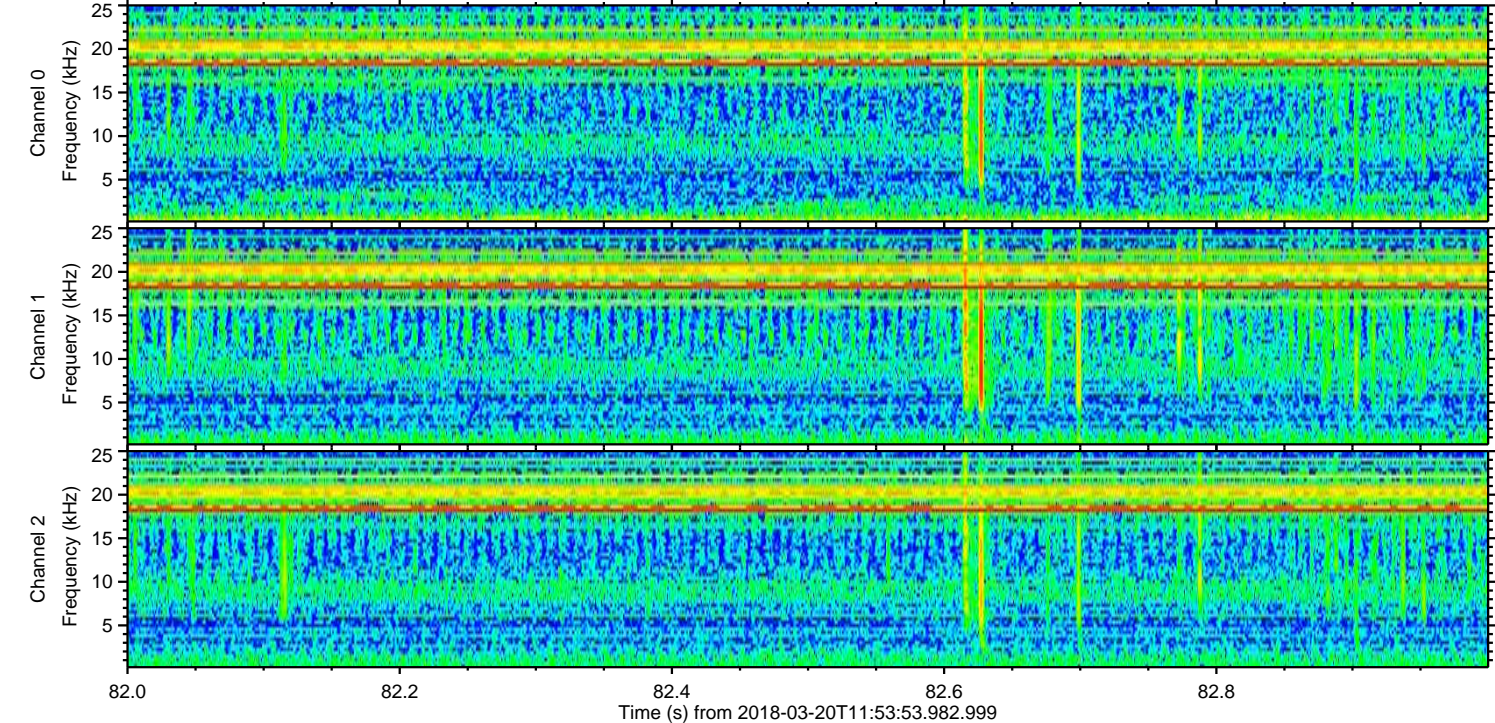
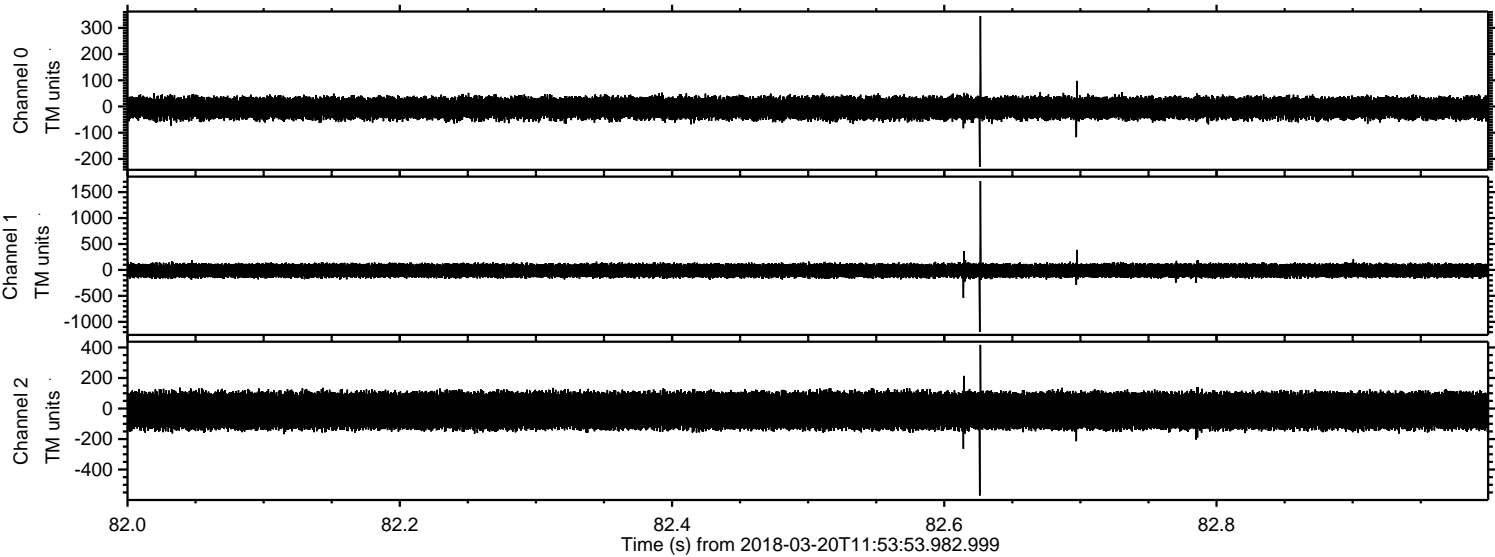


ELMAVAN 3D WAVEFORMS (Measured data sampled at 50 kHz) 51000 packets of 144 samples from 2018-03-20T11:53:53.982.999.

Processed Tue Mar 20 13:01:52 2018 by ELM ver.2012-10-06 from 001__elm20180320_115352__dat00.bin



Processed Tue Mar 20 13:02:00 2018 by ELM ver.2012-10-06 from 001__elm20180320_115352__dat00.bin

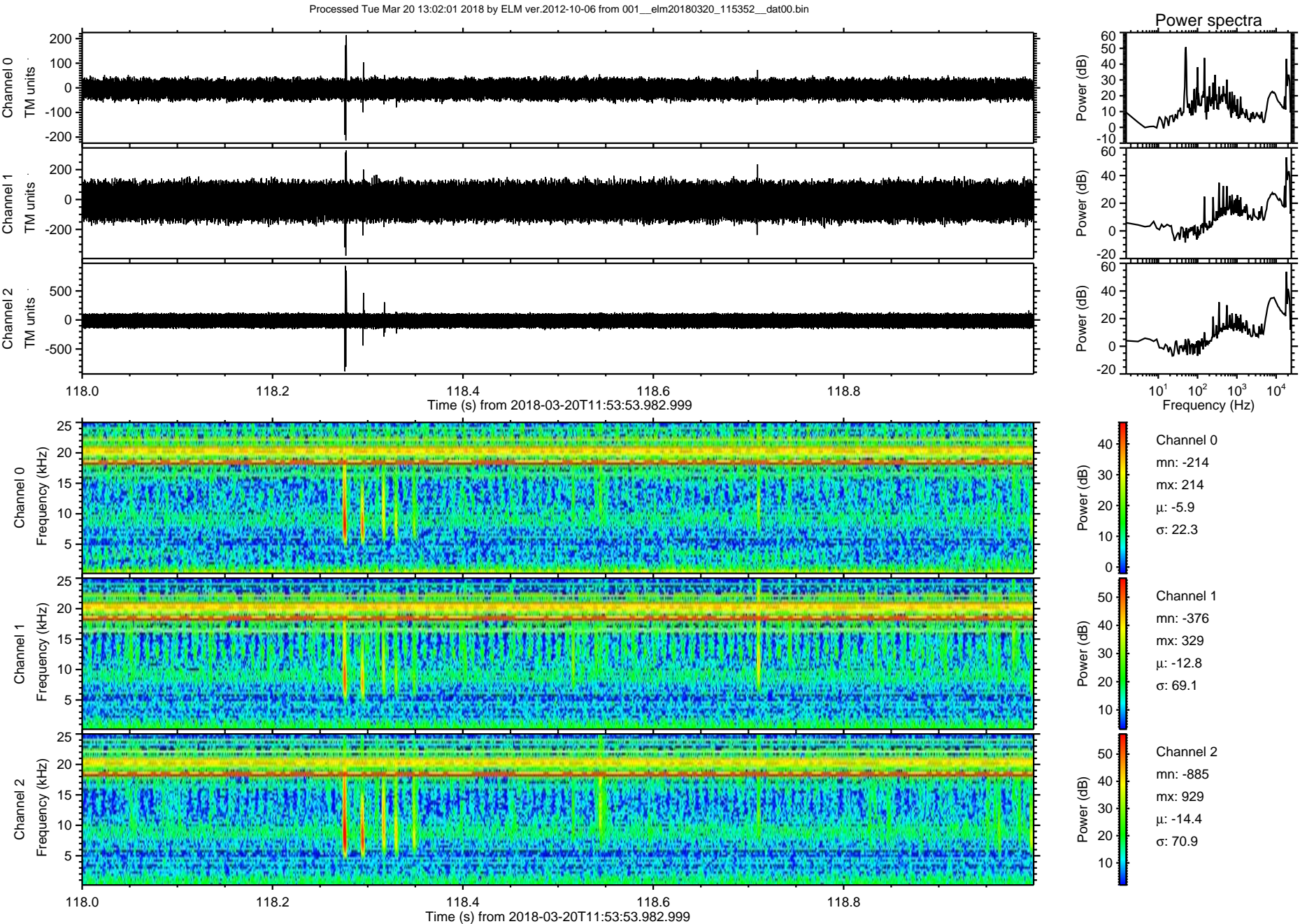


Channel 0
mn: -230
mx: 345
 μ : -6.0
 σ : 22.3

Channel 1
mn: -1193
mx: 1713
 μ : -12.8
 σ : 69.9

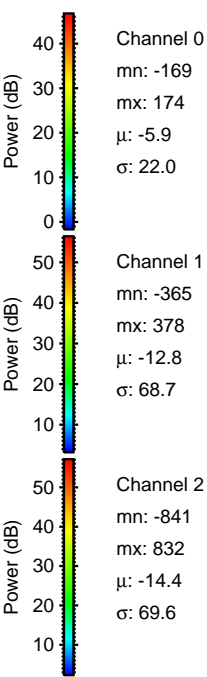
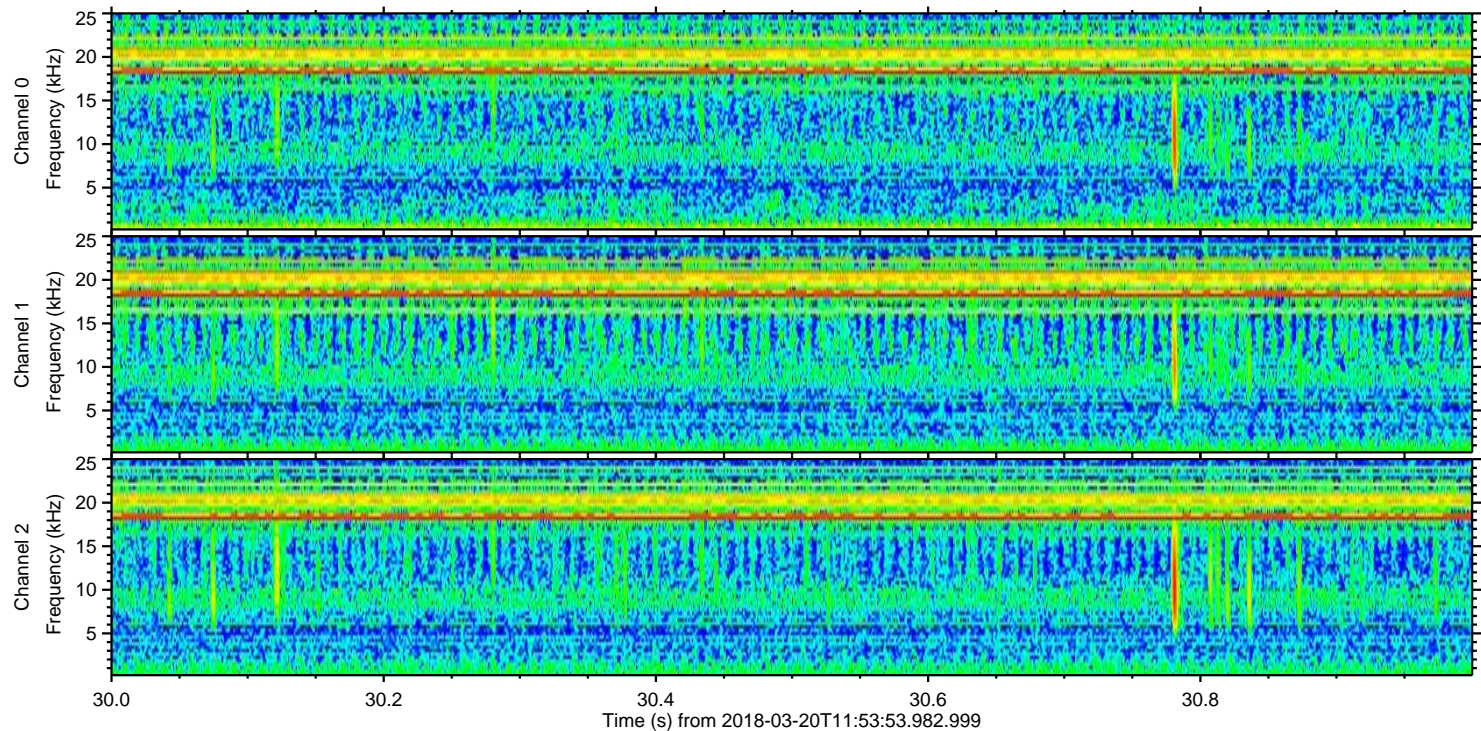
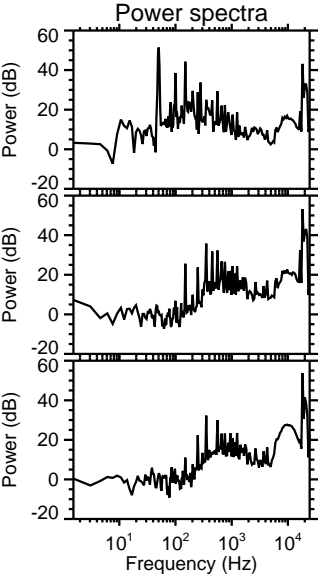
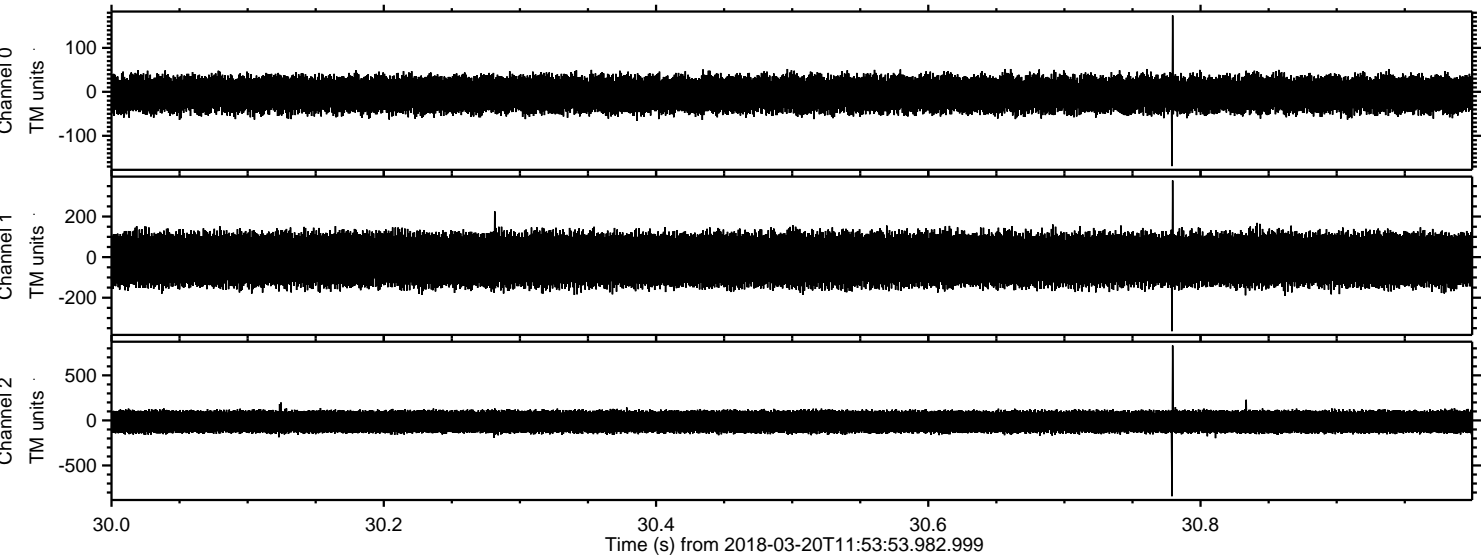
Channel 2
mn: -571
mx: 417
 μ : -14.4
 σ : 69.3

ELMAVAN 3D WAVEFORMS (Measured data sampled at 50 kHz) 51000 packets of 144 samples from 2018-03-20T11:53:53.982.999. Part 119/147



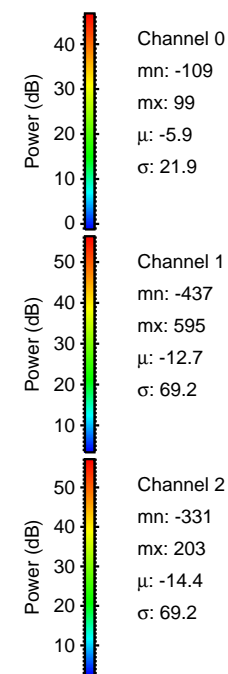
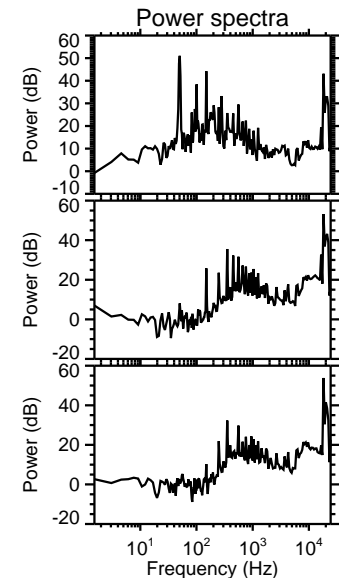
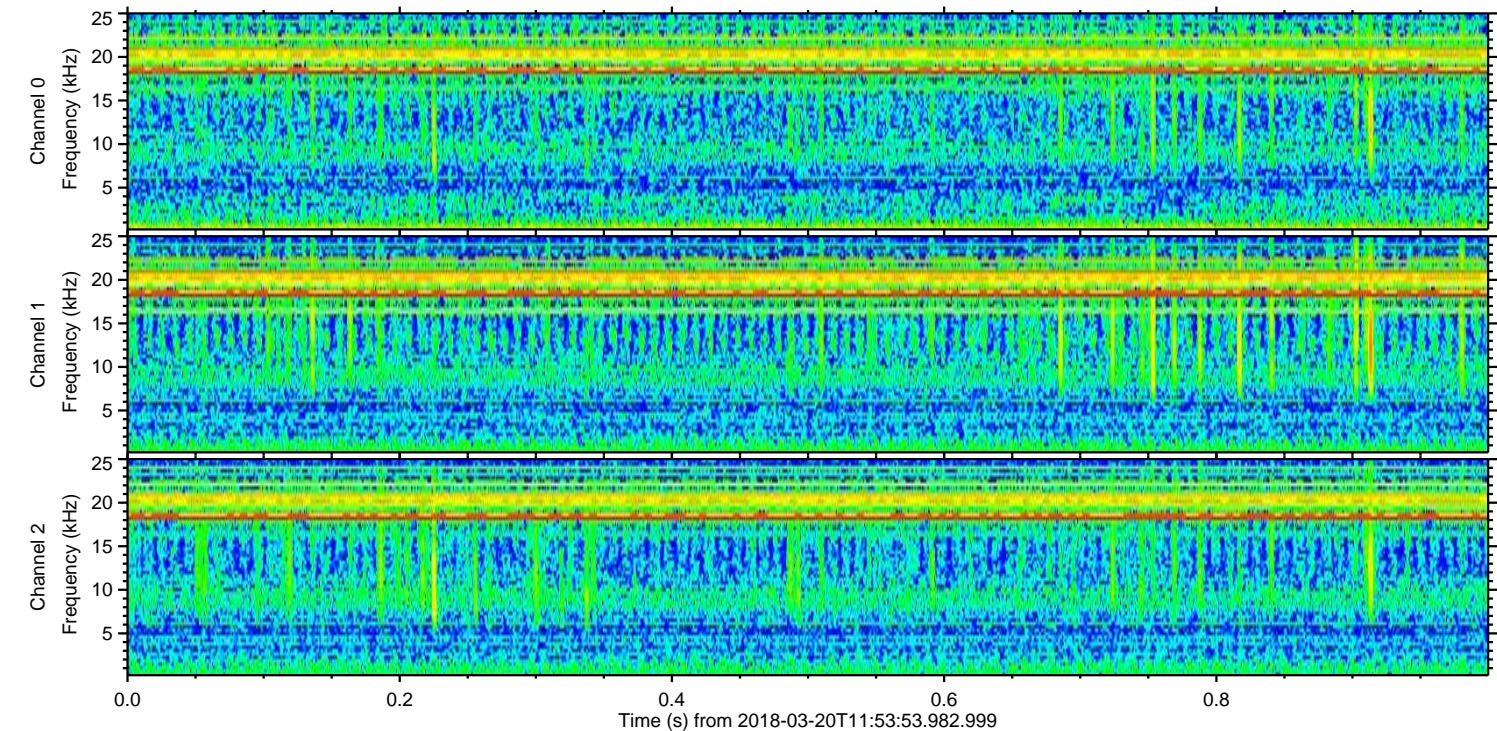
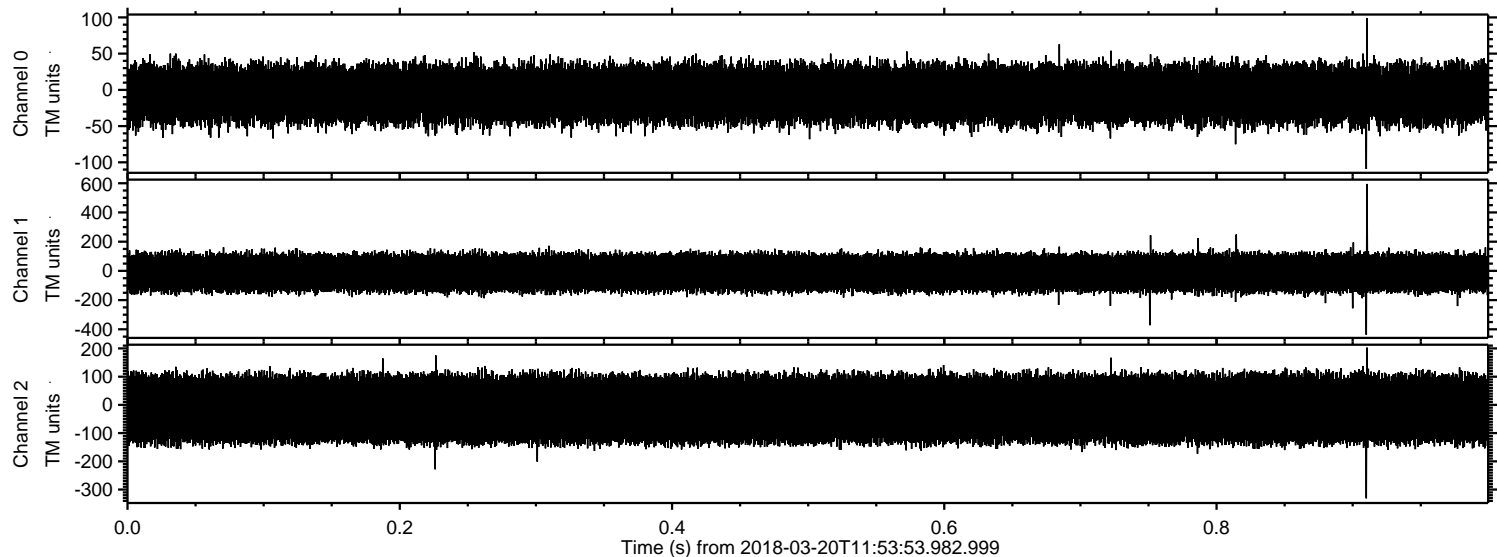
ELMAVAN 3D WAVEFORMS (Measured data sampled at 50 kHz) 51000 packets of 144 samples from 2018-03-20T11:53:53.982.999. Part 31/147

Processed Tue Mar 20 13:02:02 2018 by ELM ver.2012-10-06 from 001__elm20180320_115352__dat00.bin

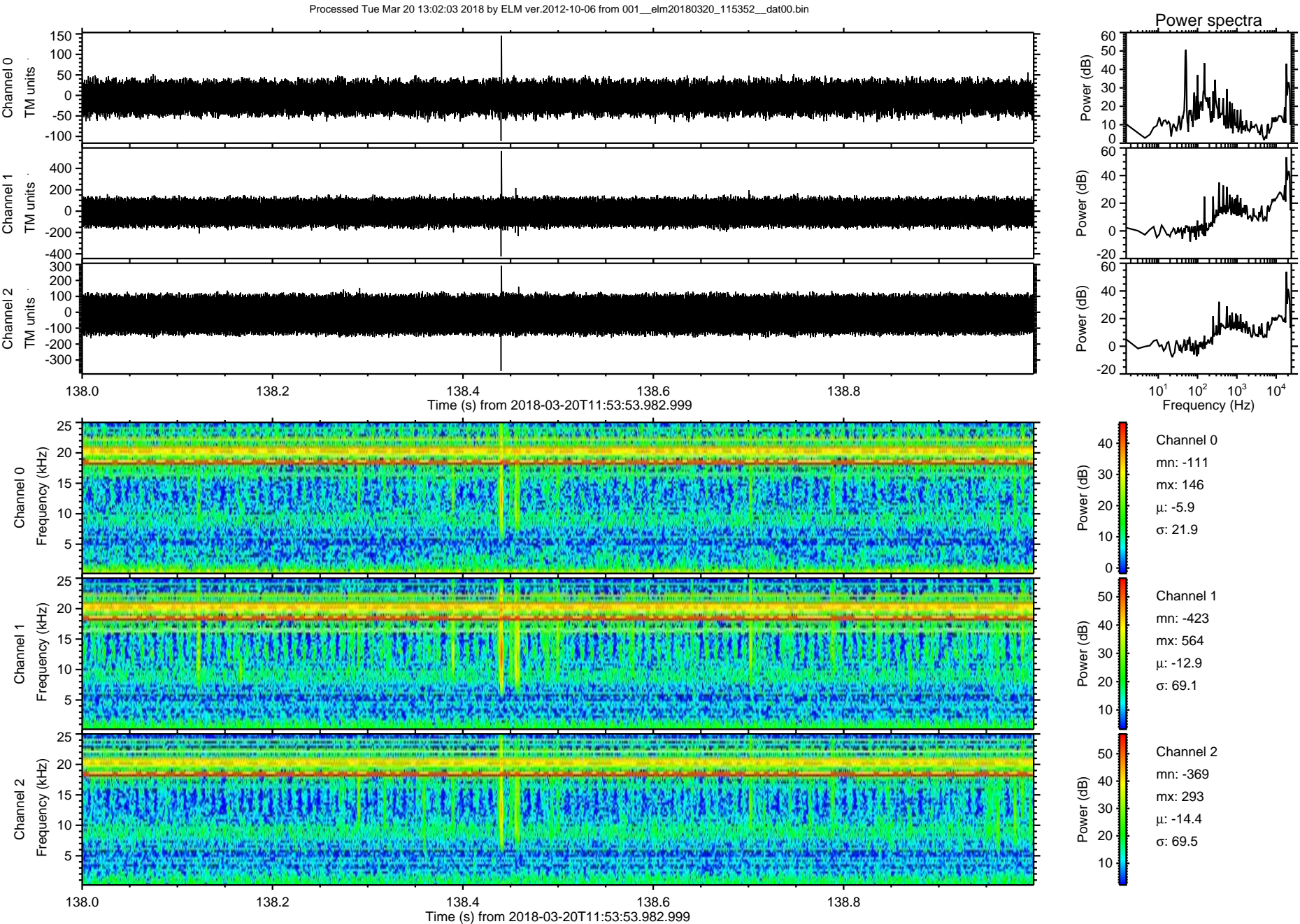


ELMAVAN 3D WAVEFORMS (Measured data sampled at 50 kHz) 51000 packets of 144 samples from 2018-03-20T11:53:53.982.999. Part 1/147

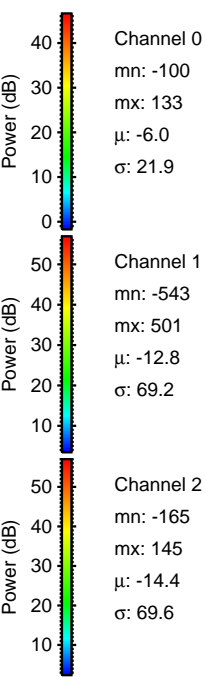
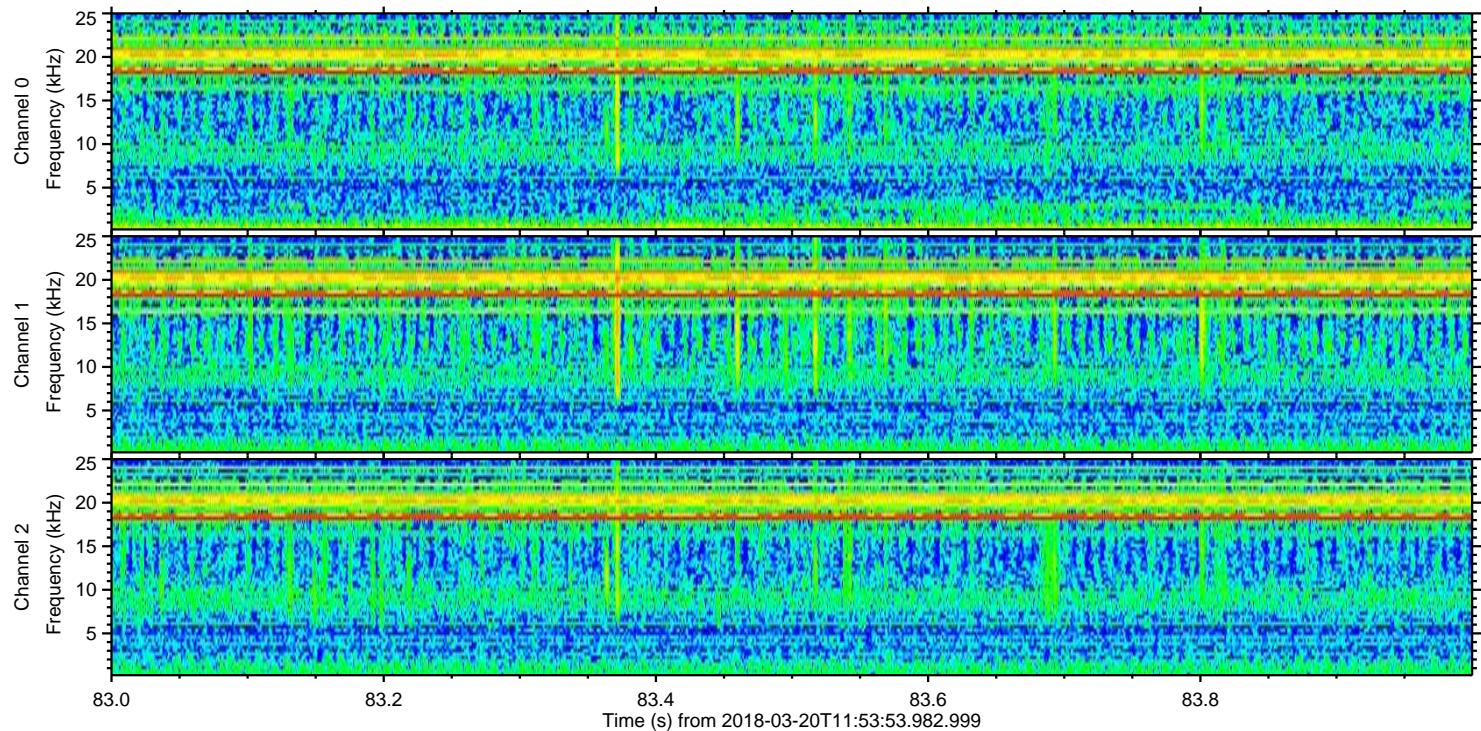
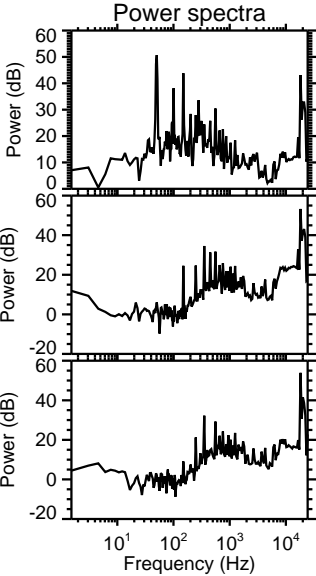
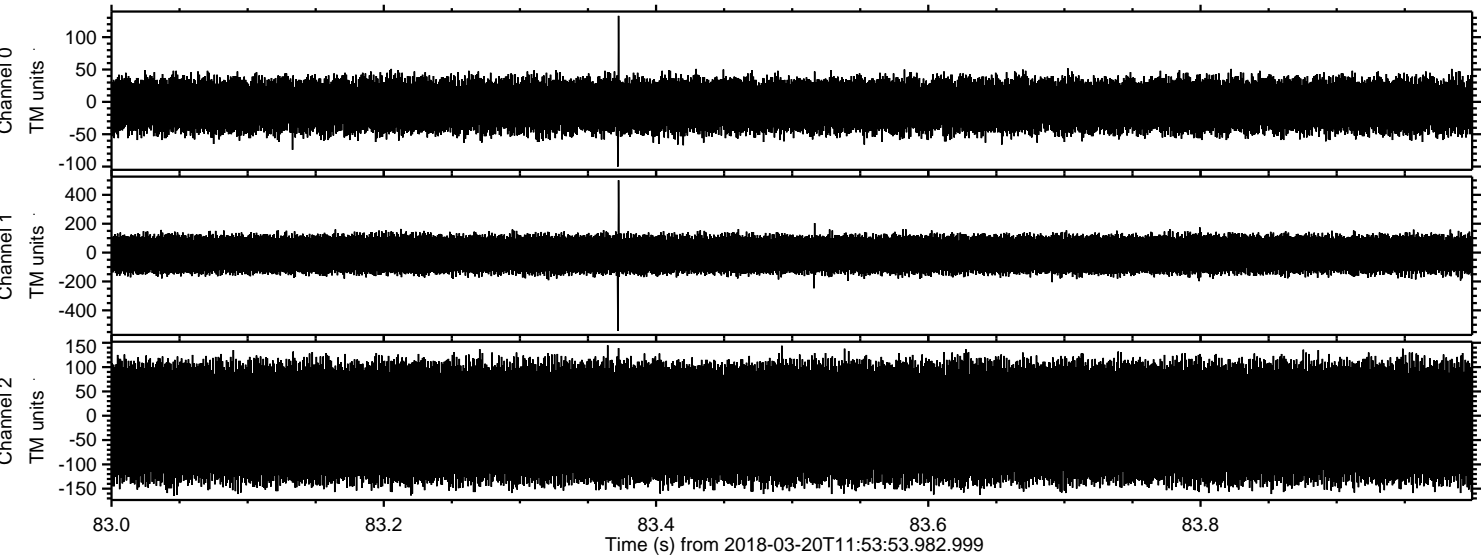
Processed Tue Mar 20 13:02:03 2018 by ELM ver.2012-10-06 from 001__elm20180320_115352__dat00.bin



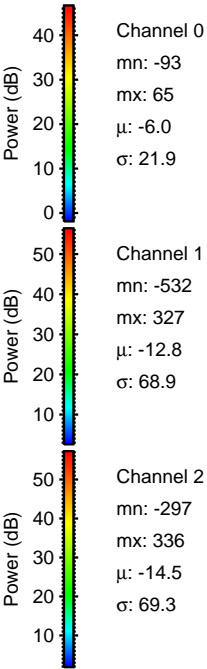
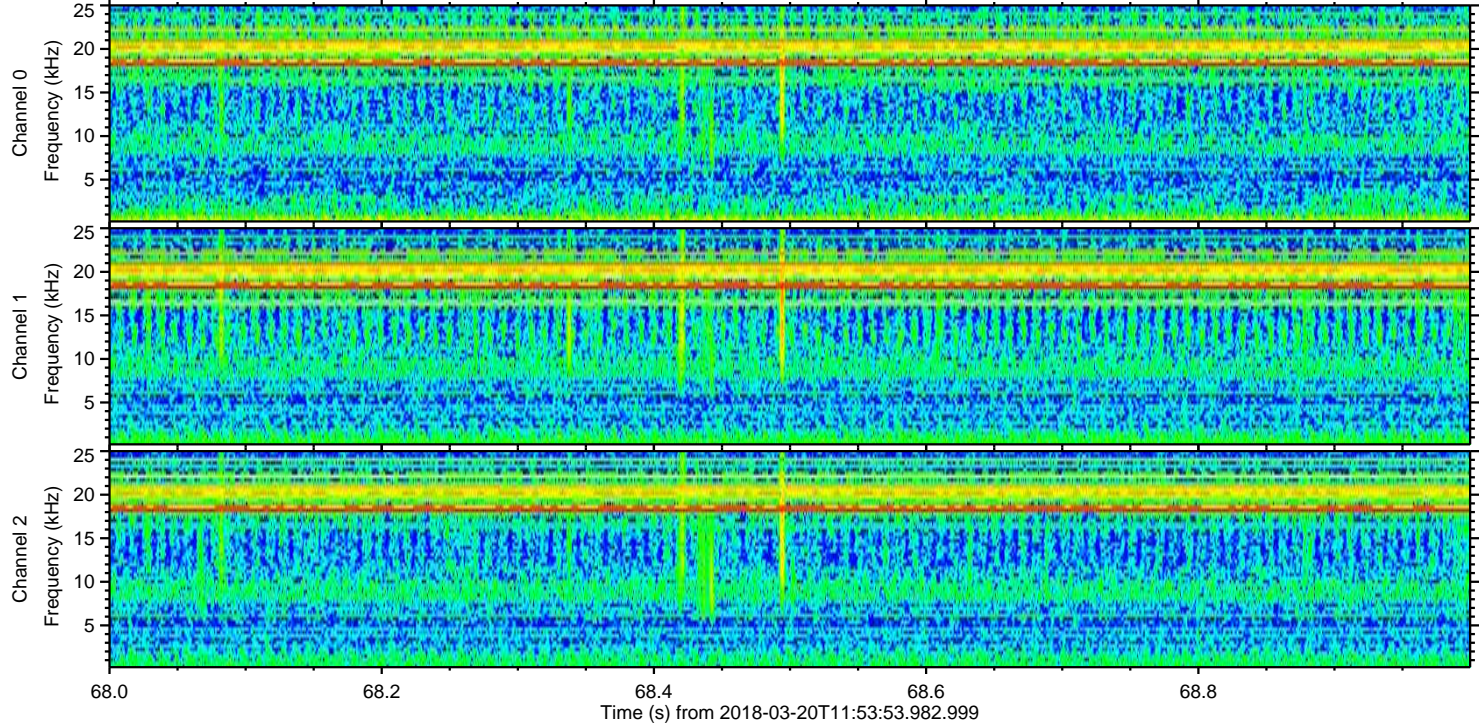
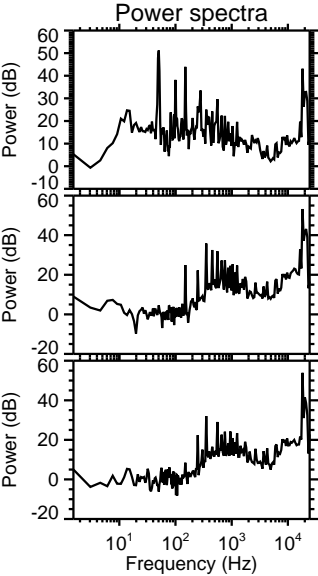
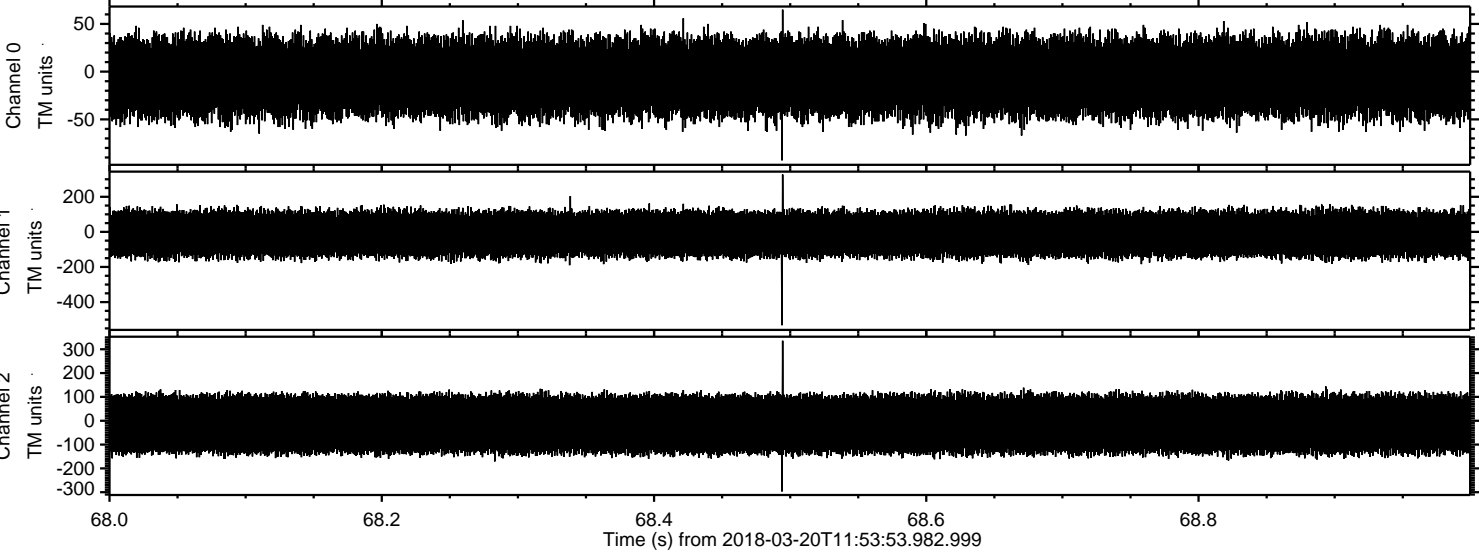
ELMAVAN 3D WAVEFORMS (Measured data sampled at 50 kHz) 51000 packets of 144 samples from 2018-03-20T11:53:53.982.999. Part 139/147



Processed Tue Mar 20 13:02:04 2018 by ELM ver.2012-10-06 from 001__elm20180320_115352__dat00.bin

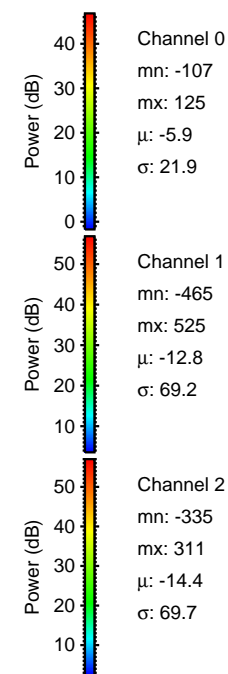
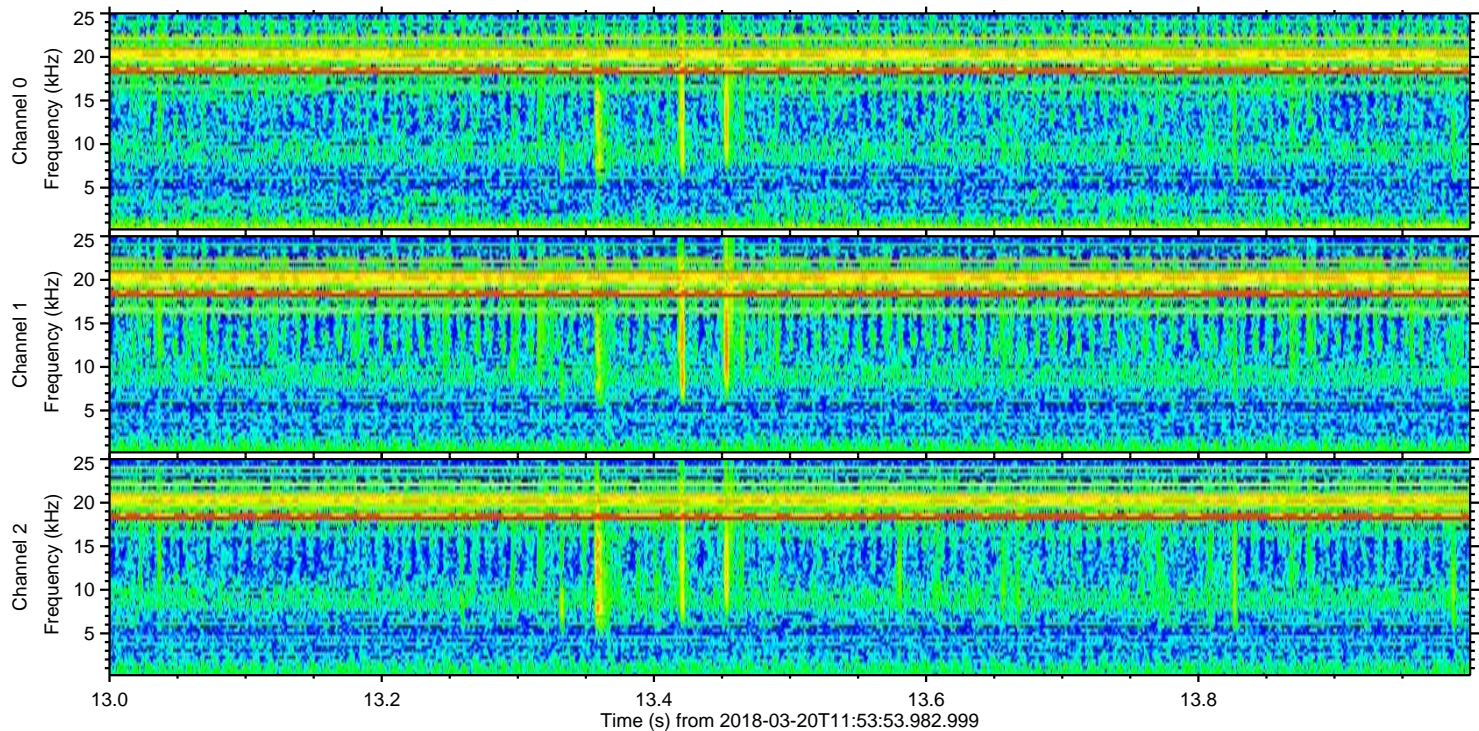
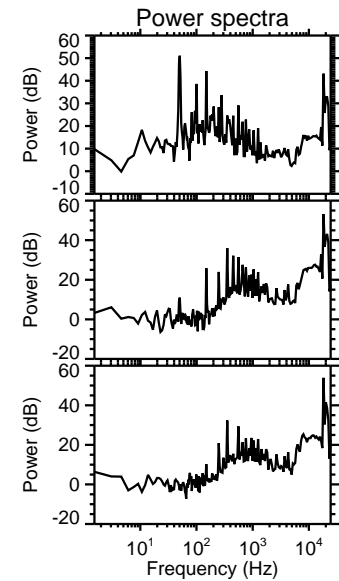
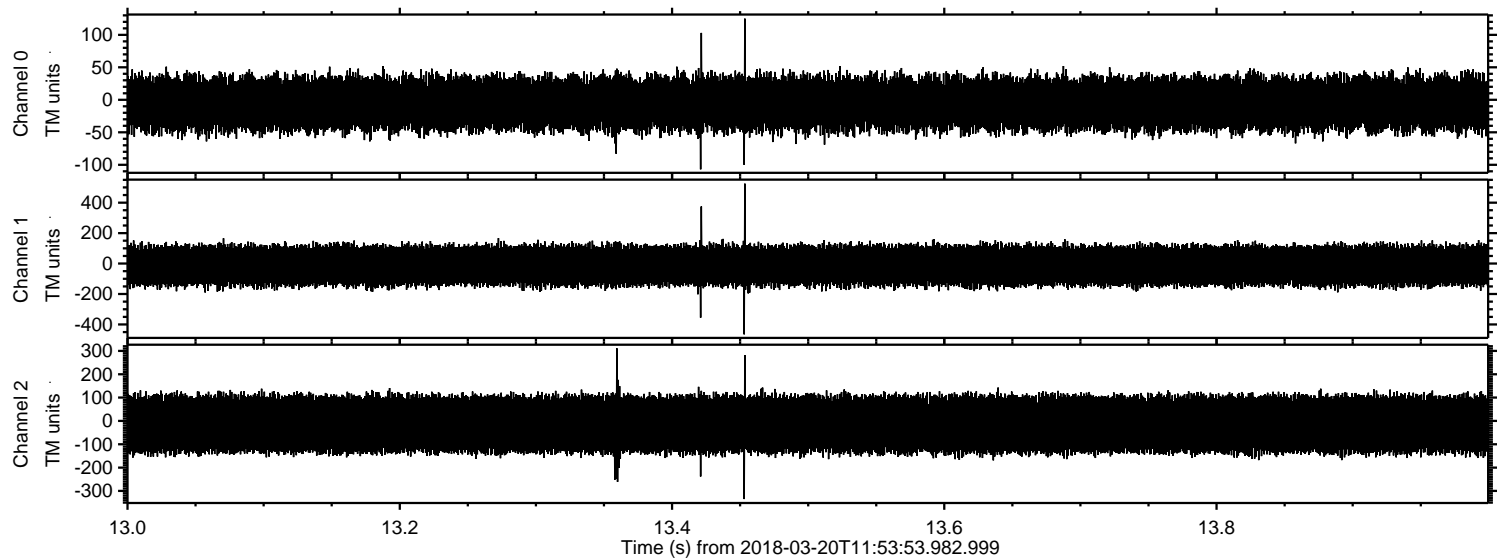


Processed Tue Mar 20 13:02:05 2018 by ELM ver.2012-10-06 from 001__elm20180320_115352__dat00.bin

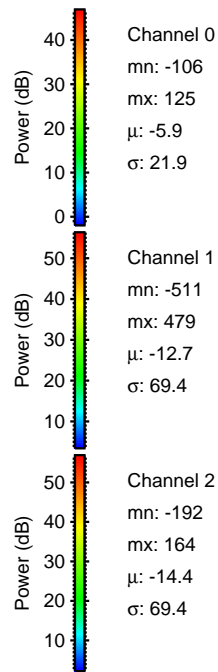
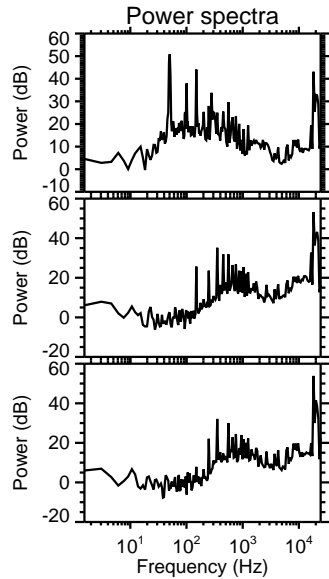
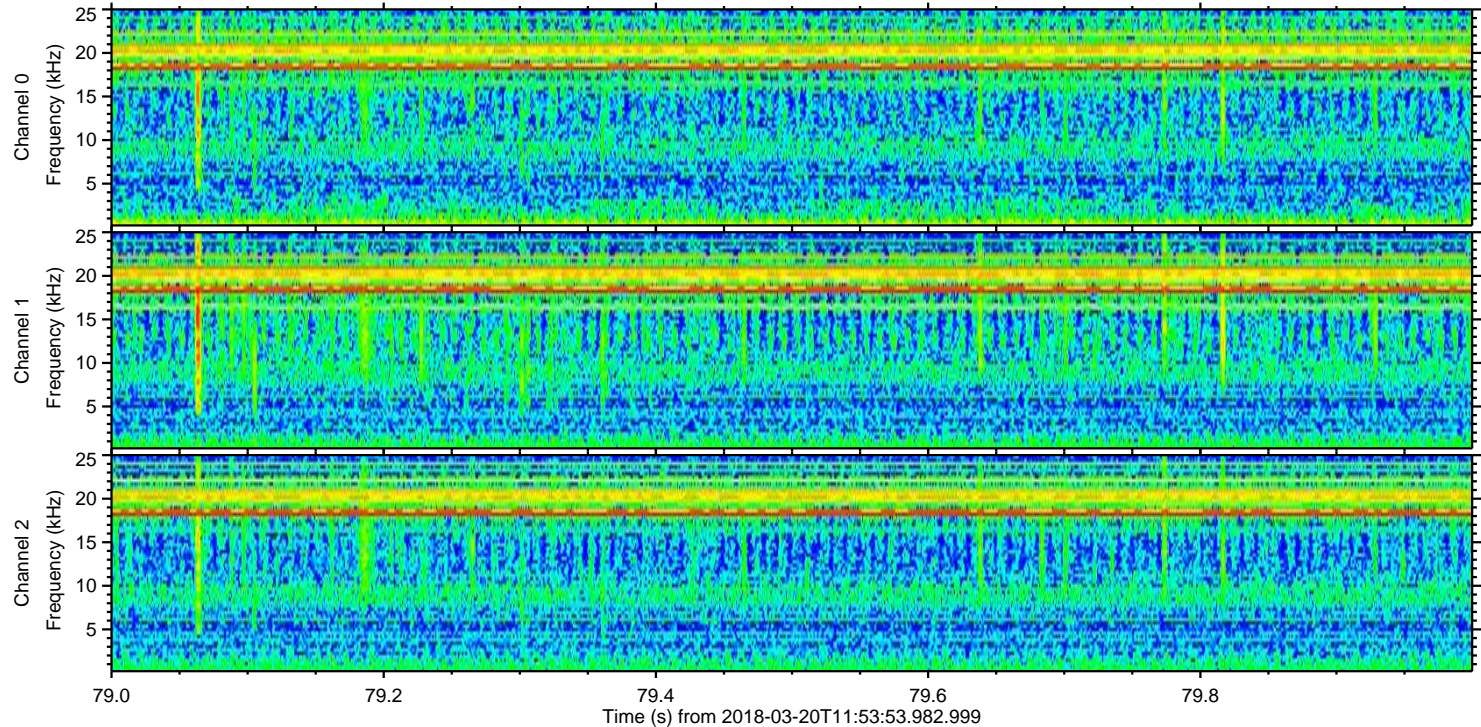
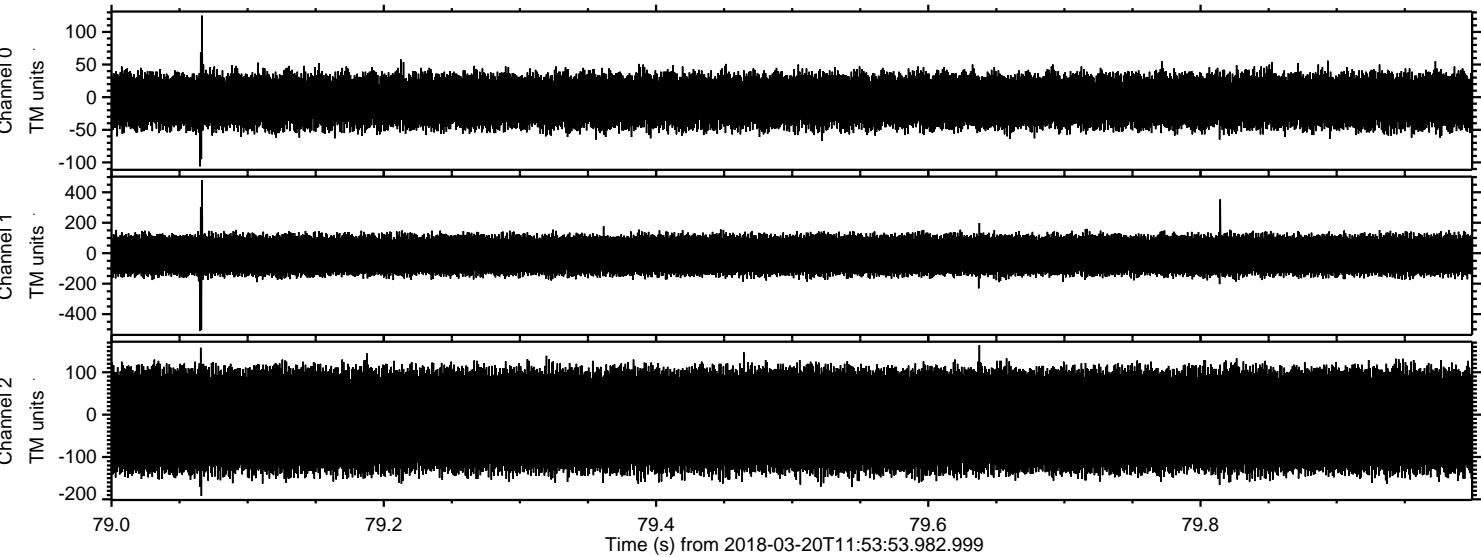


ELMAVAN 3D WAVEFORMS (Measured data sampled at 50 kHz) 51000 packets of 144 samples from 2018-03-20T11:53:53.982.999. Part 14/147

Processed Tue Mar 20 13:02:06 2018 by ELM ver.2012-10-06 from 001__elm20180320_115352__dat00.bin



Processed Tue Mar 20 13:02:07 2018 by ELM ver.2012-10-06 from 001__elm20180320_115352__dat00.bin



Channel 0
mn: -106
mx: 125
 μ : -5.9
 σ : 21.9

Channel 1
mn: -511
mx: 479
 μ : -12.7
 σ : 69.4

Channel 2
mn: -192
mx: 164
 μ : -14.4
 σ : 69.4

Processed Tue Mar 20 13:02:07 2018 by ELM ver.2012-10-06 from 001__elm20180320_115352__dat00.bin

