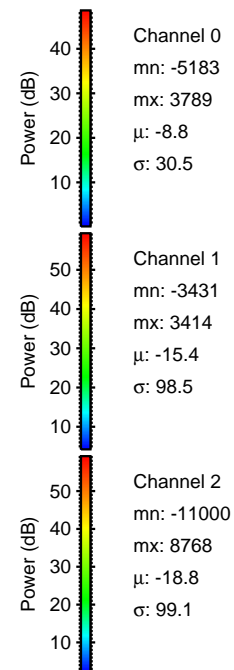
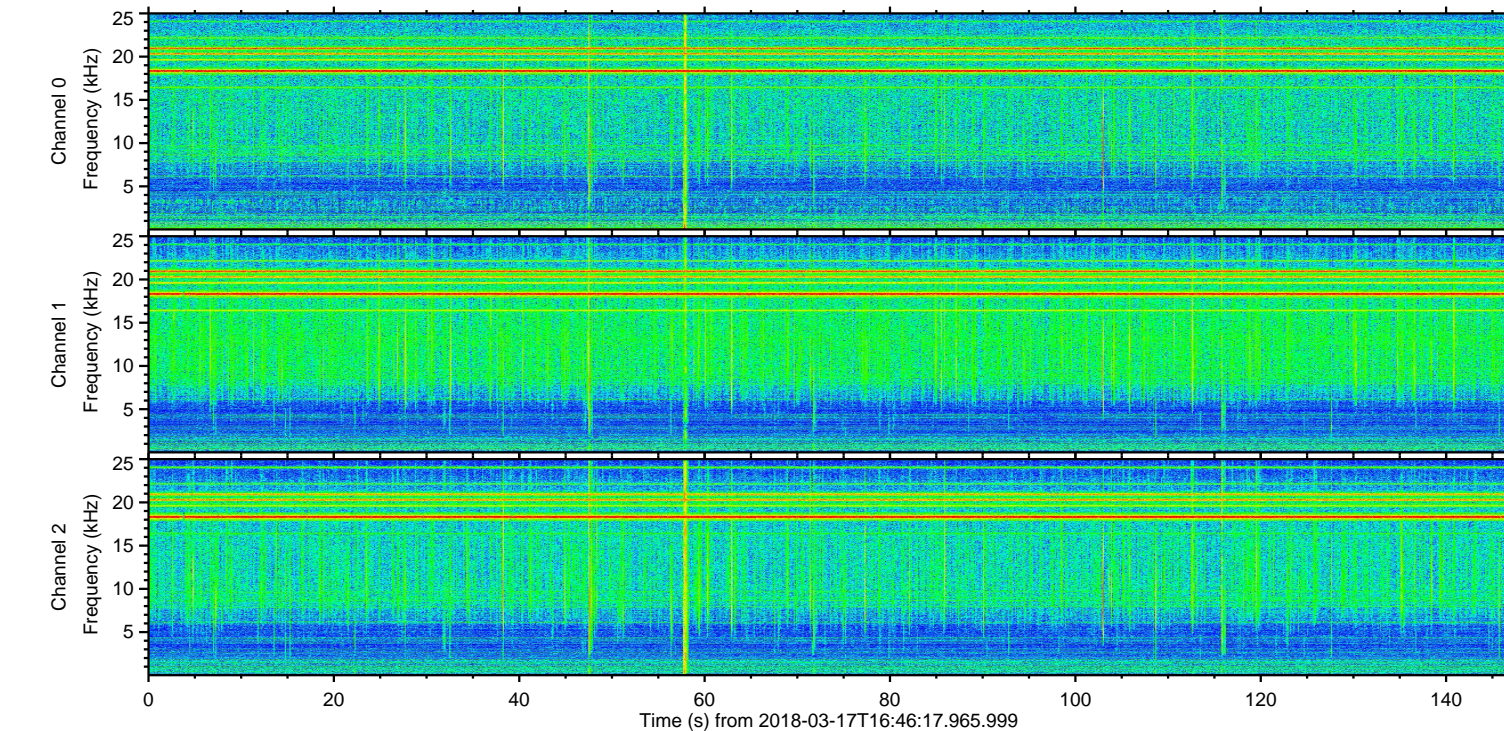
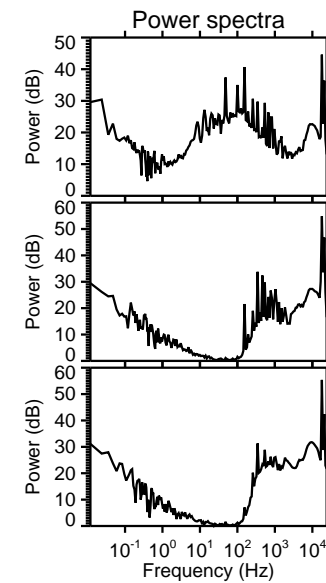
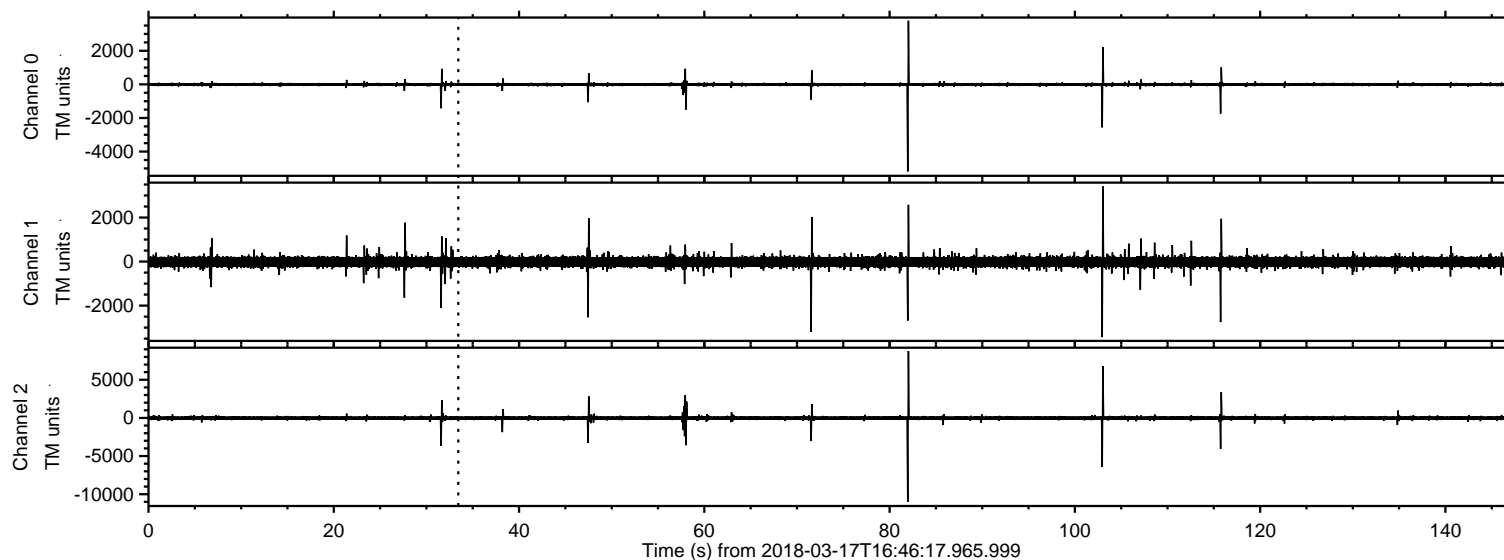
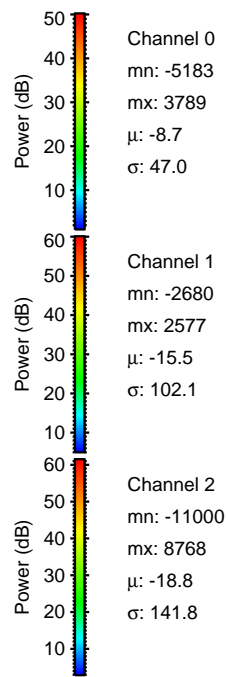
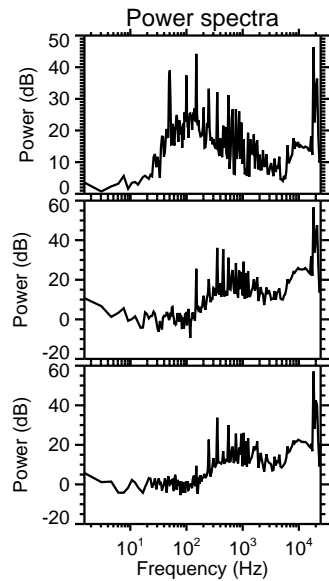
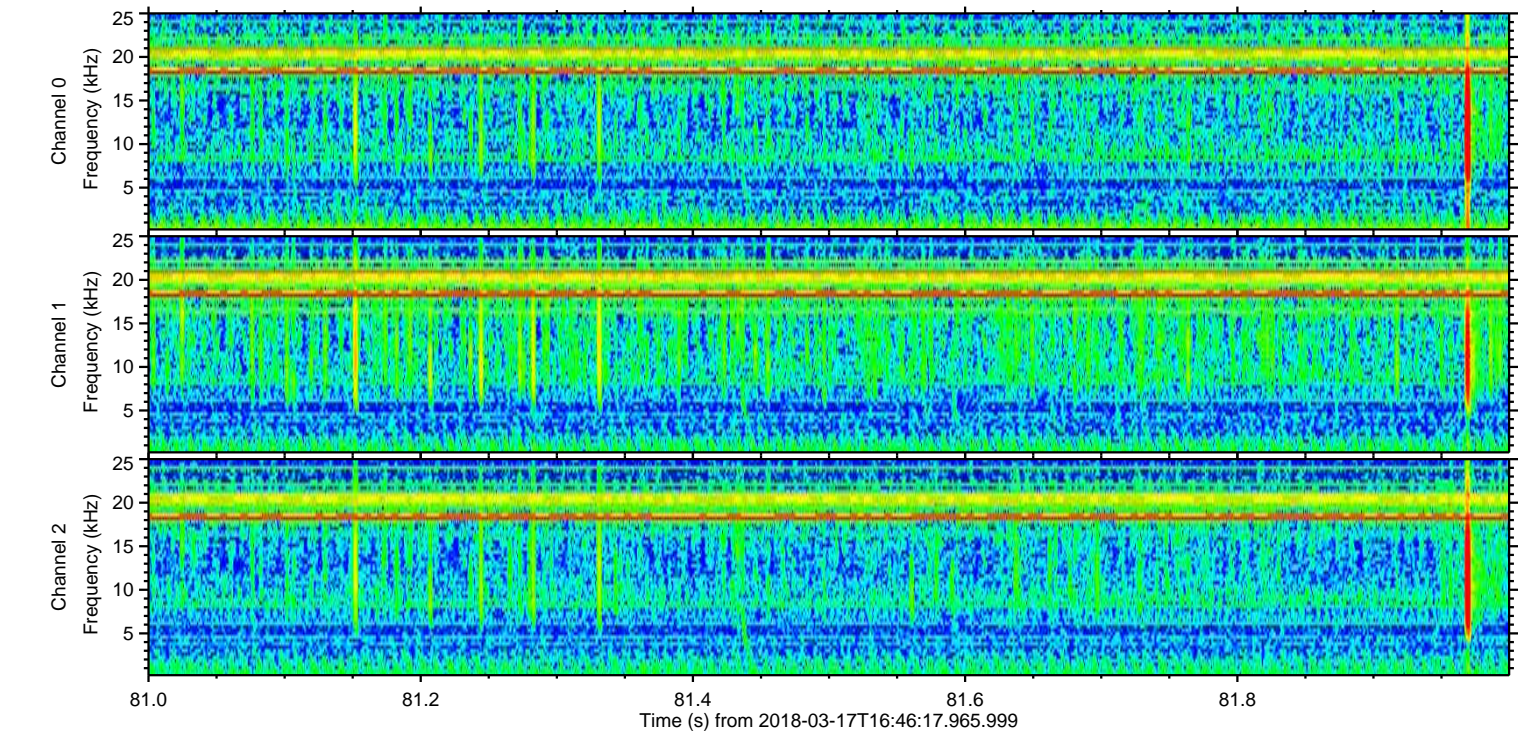
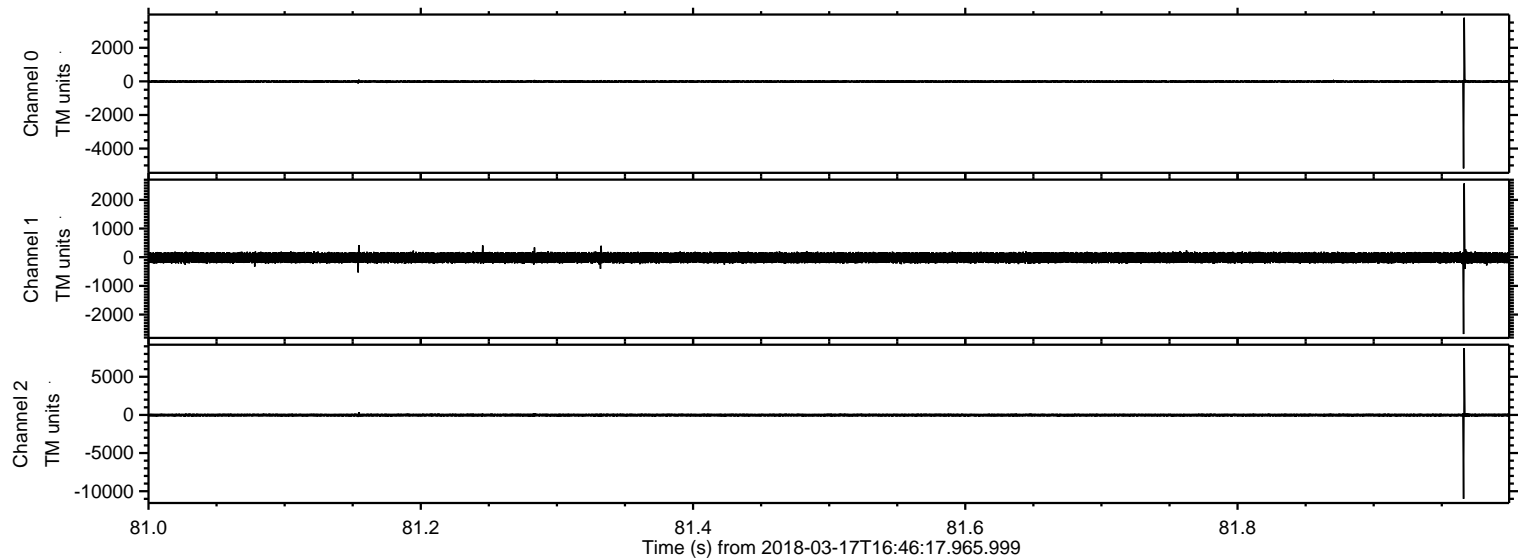


ELMAVAN 3D WAVEFORMS (Measured data sampled at 50 kHz) 50999 packets of 144 samples from 2018-03-17T16:46:17.965.999.

Processed Sat Mar 17 17:54:28 2018 by ELM ver.2012-10-06 from 001__elm20180317_164616__dat00.bin

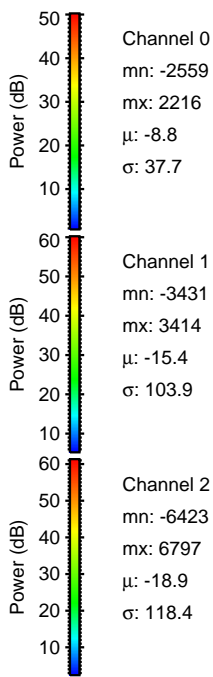
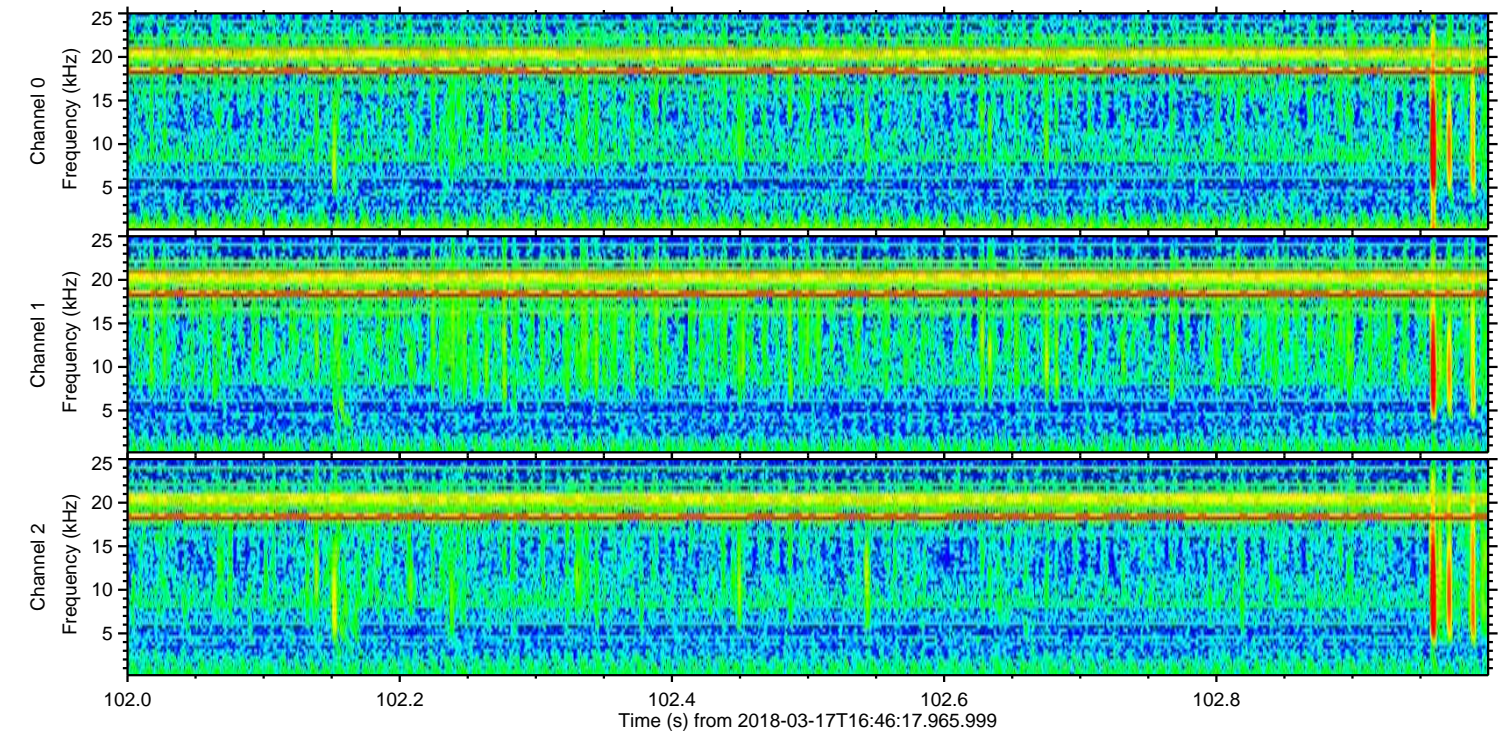
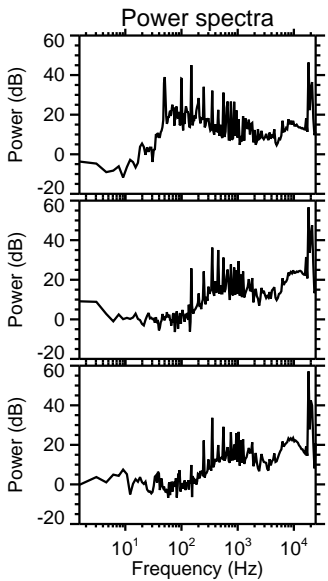
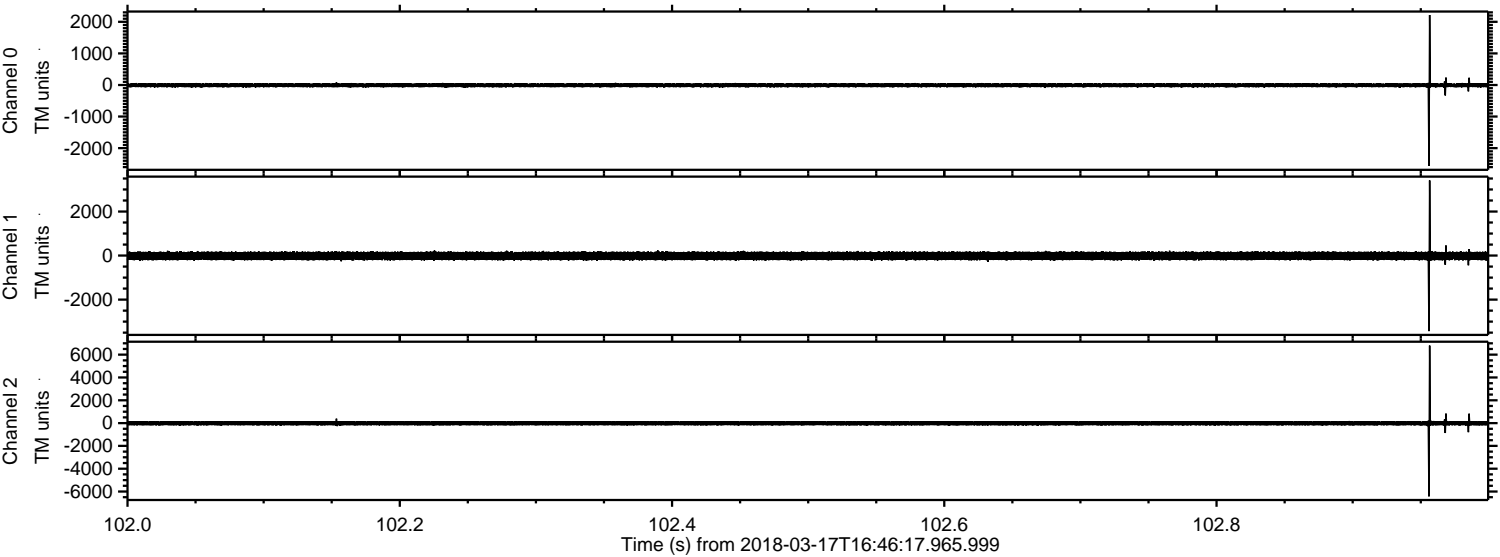


Processed Sat Mar 17 17:54:36 2018 by ELM ver.2012-10-06 from 001__elm20180317_164616__dat00.bin



ELMAVAN 3D WAVEFORMS (Measured data sampled at 50 kHz) 50999 packets of 144 samples from 2018-03-17T16:46:17.965.999. Part 103/147

Processed Sat Mar 17 17:54:37 2018 by ELM ver.2012-10-06 from 001__elm20180317_164616__dat00.bin



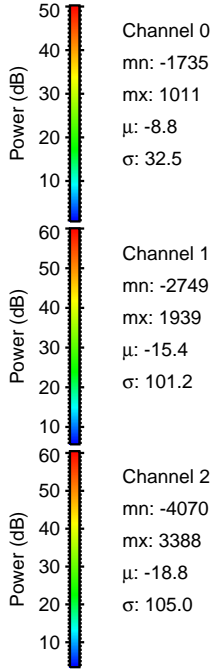
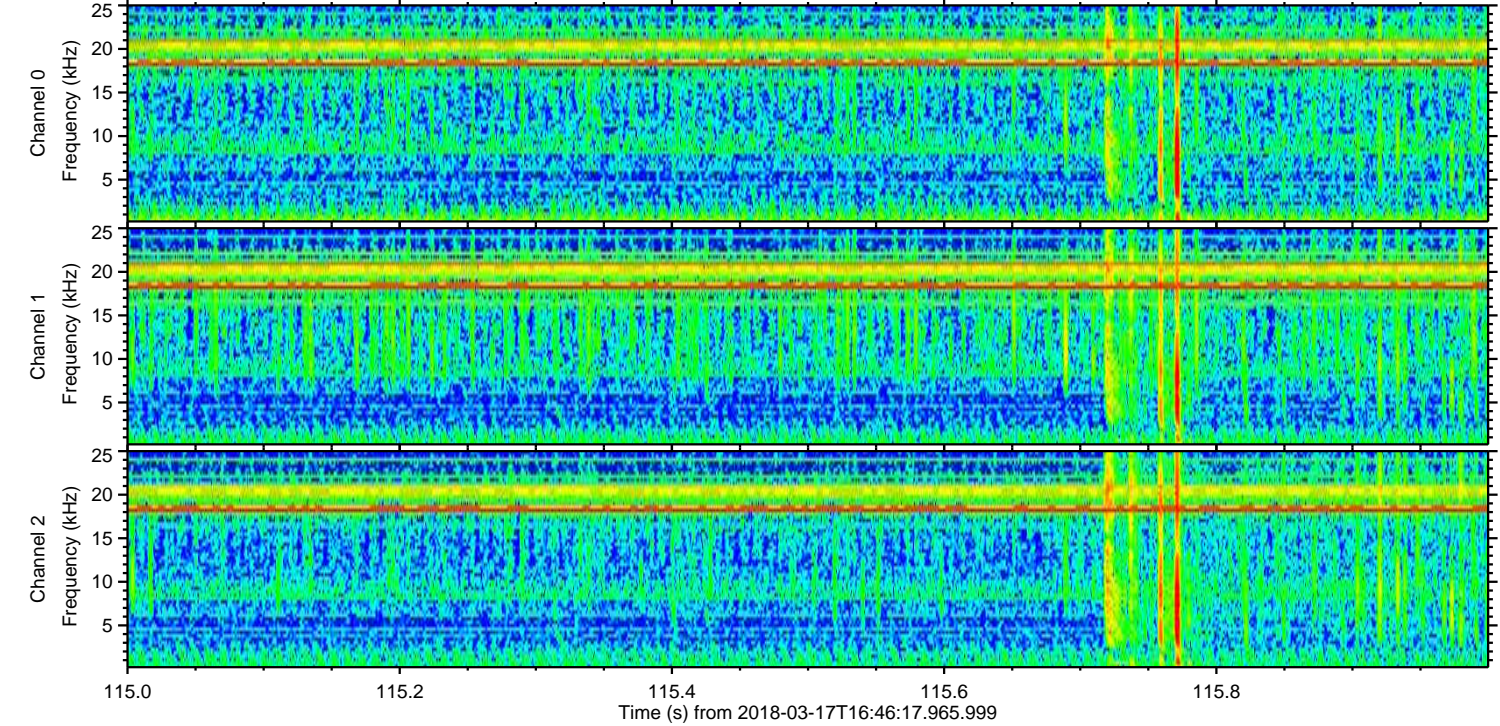
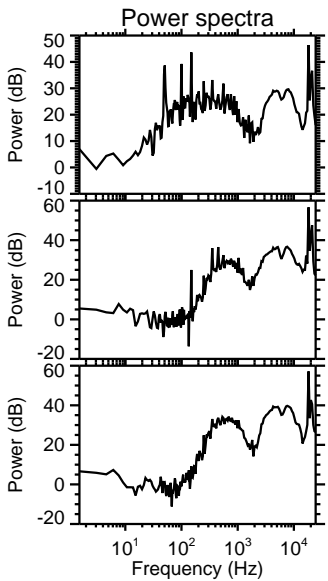
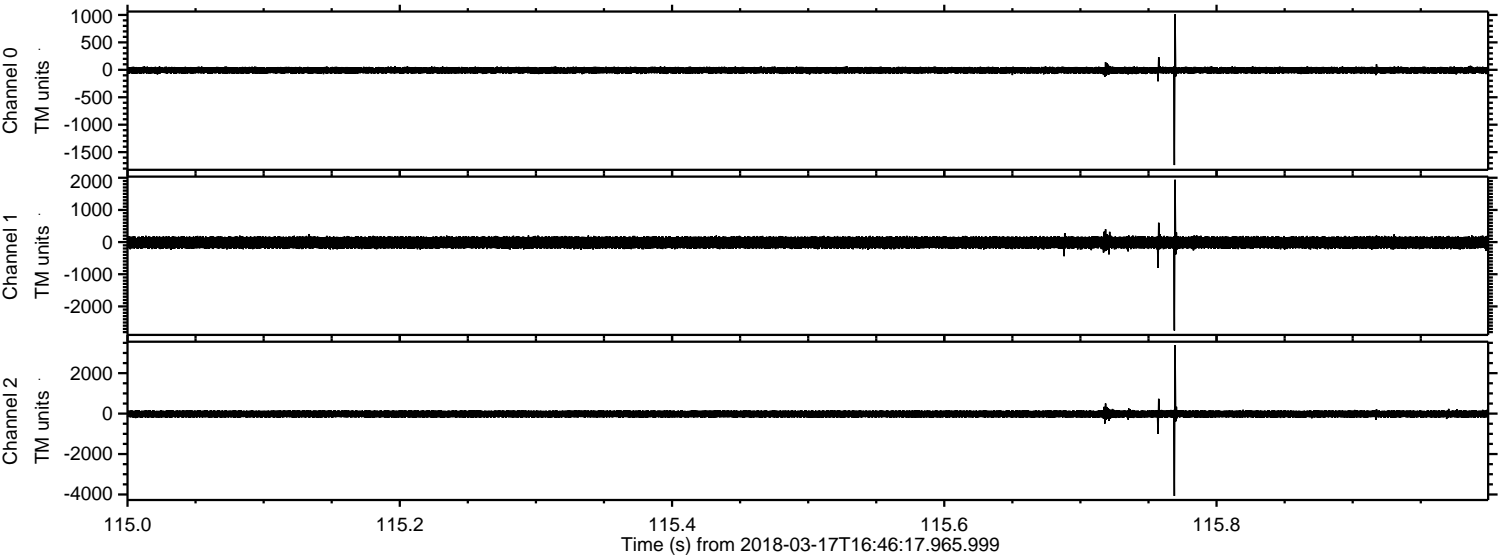
Channel 0
mn: -2559
mx: 2216
 μ : -8.8
 σ : 37.7

Channel 1
mn: -3431
mx: 3414
 μ : -15.4
 σ : 103.9

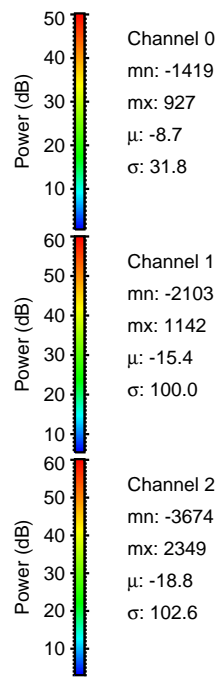
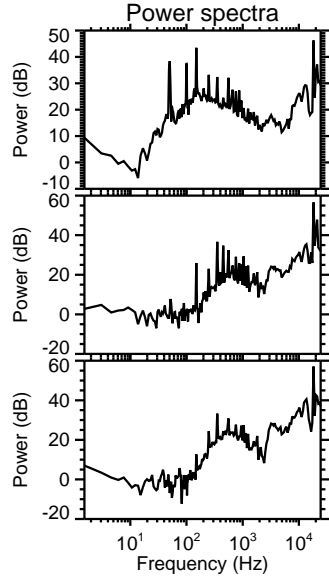
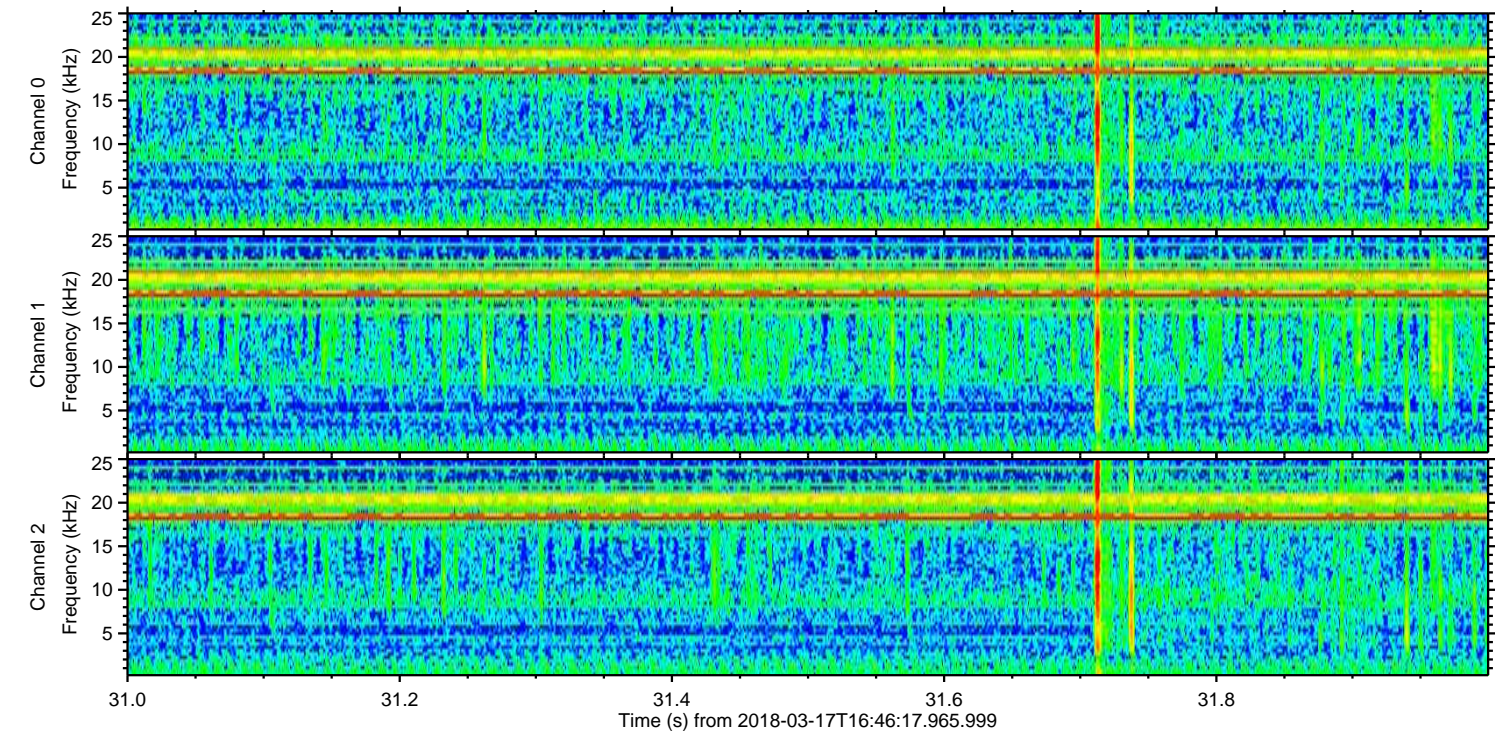
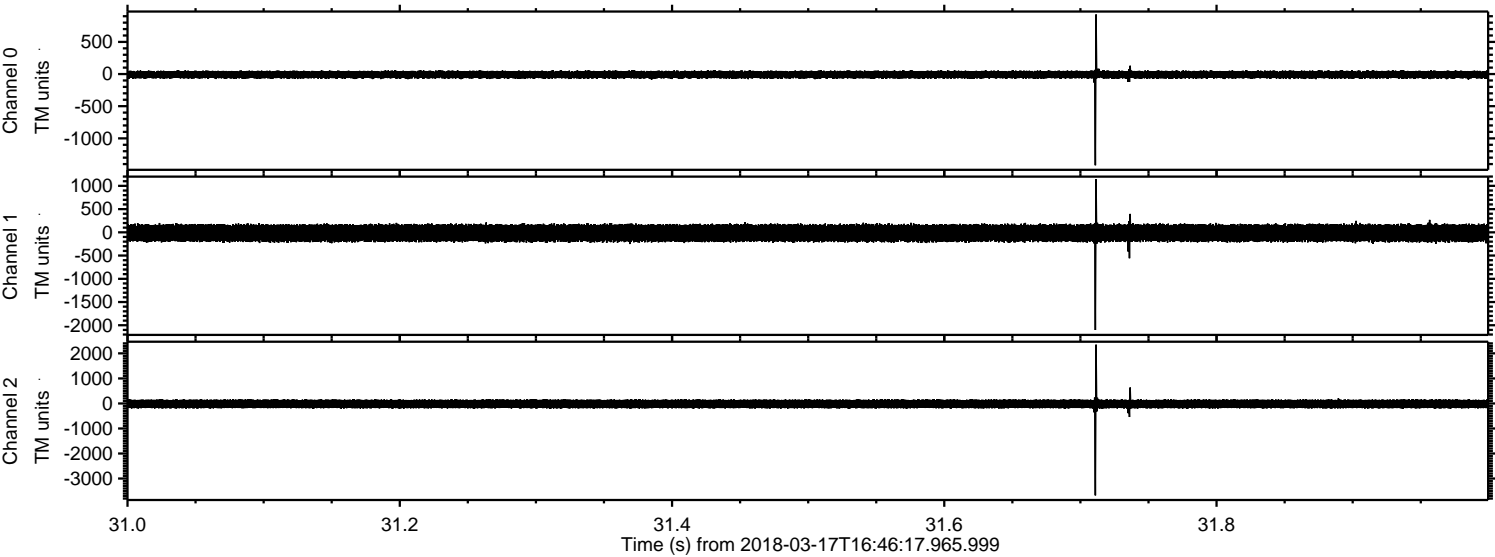
Channel 2
mn: -6423
mx: 6797
 μ : -18.9
 σ : 118.4

ELMAVAN 3D WAVEFORMS (Measured data sampled at 50 kHz) 50999 packets of 144 samples from 2018-03-17T16:46:17.965.999. Part 116/147

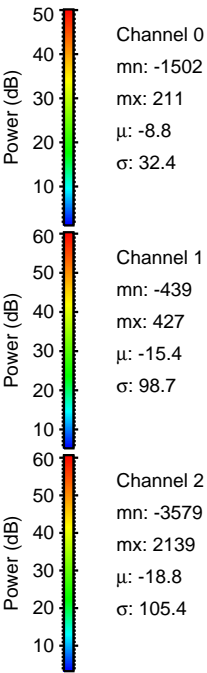
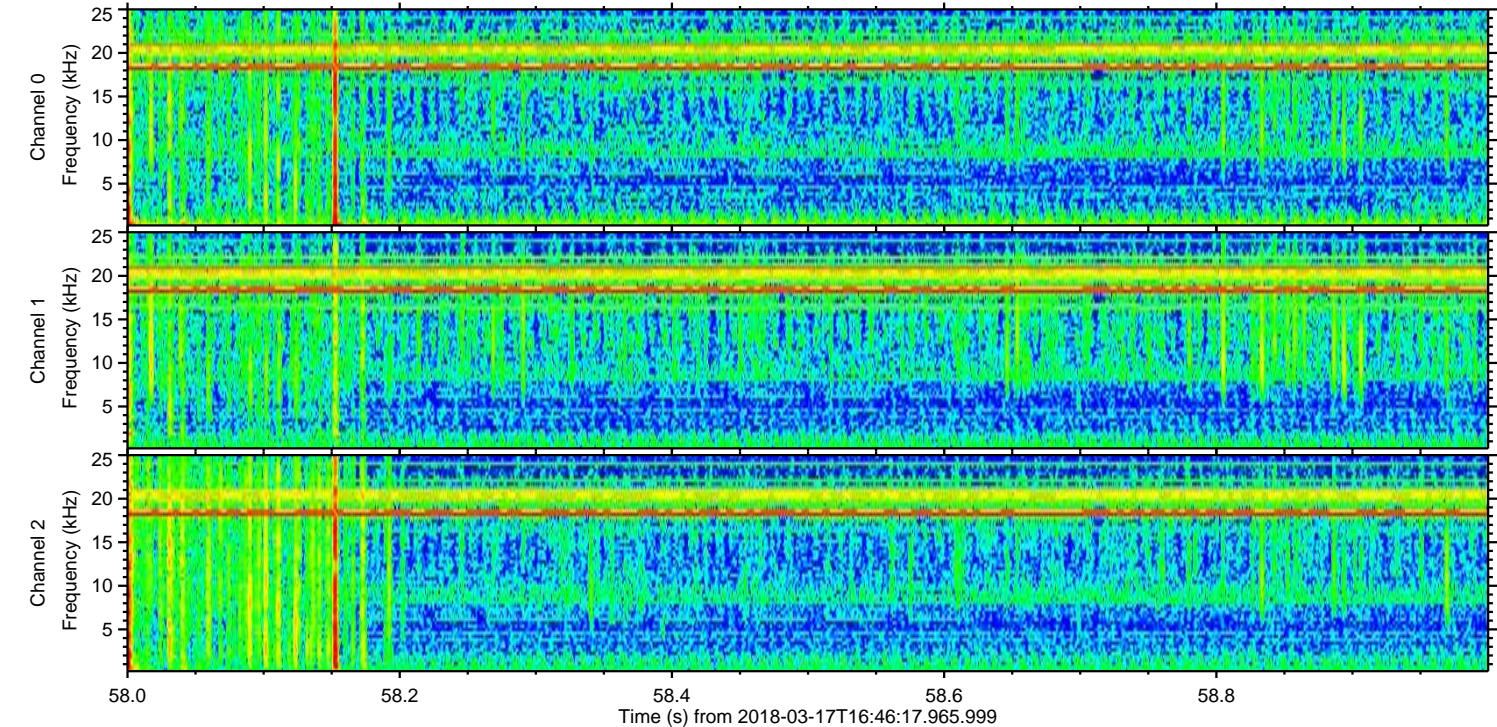
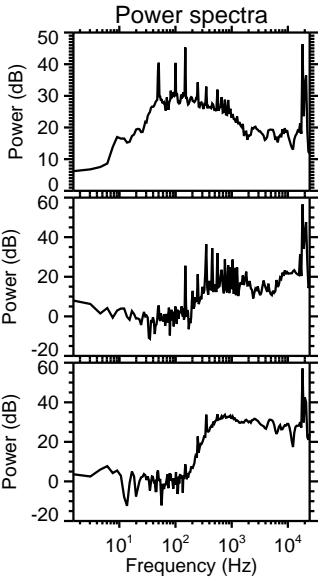
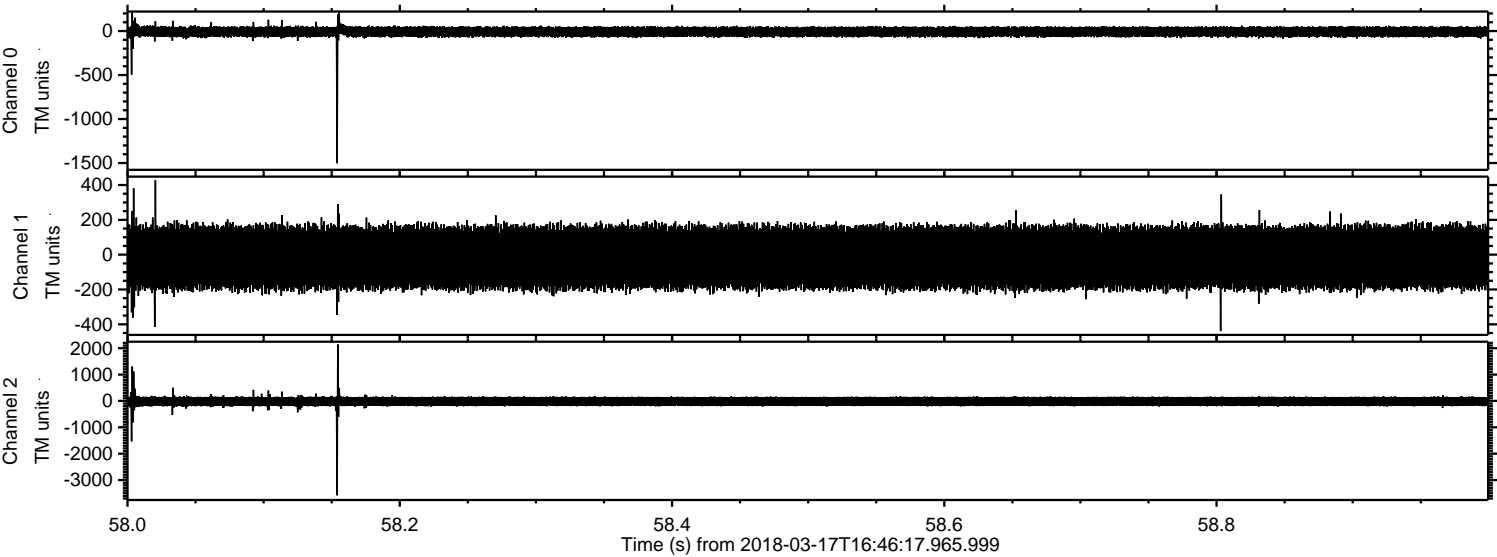
Processed Sat Mar 17 17:54:38 2018 by ELM ver.2012-10-06 from 001__elm20180317_164616__dat00.bin



Processed Sat Mar 17 17:54:39 2018 by ELM ver.2012-10-06 from 001__elm20180317_164616__dat00.bin

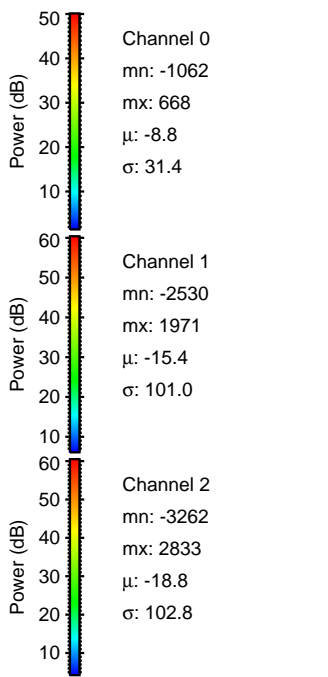
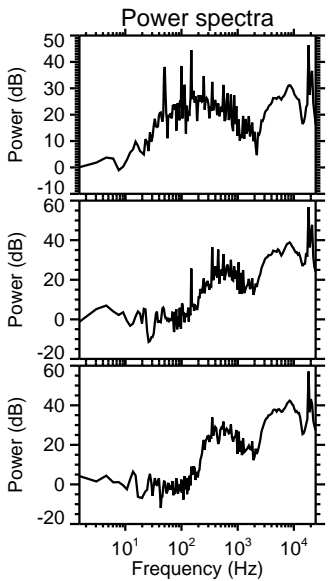
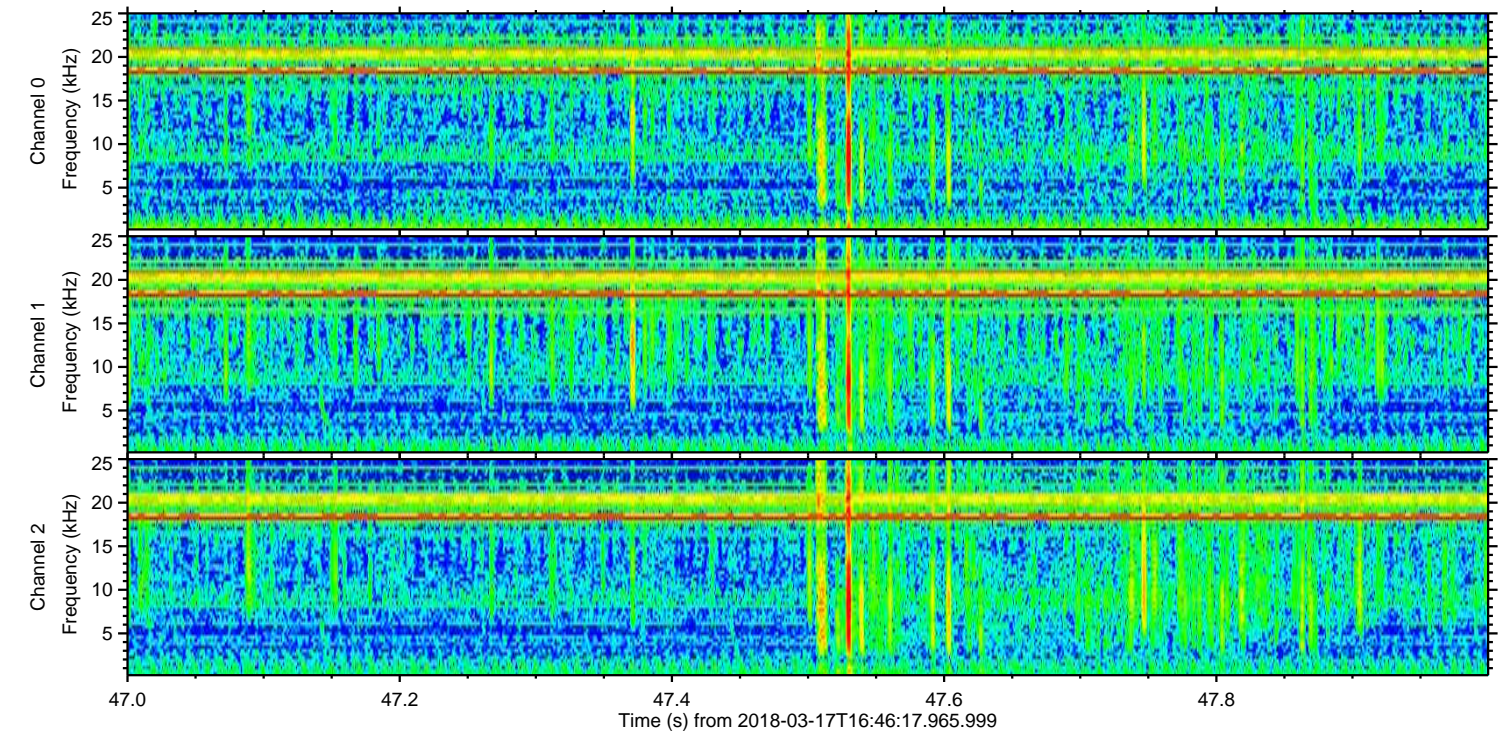
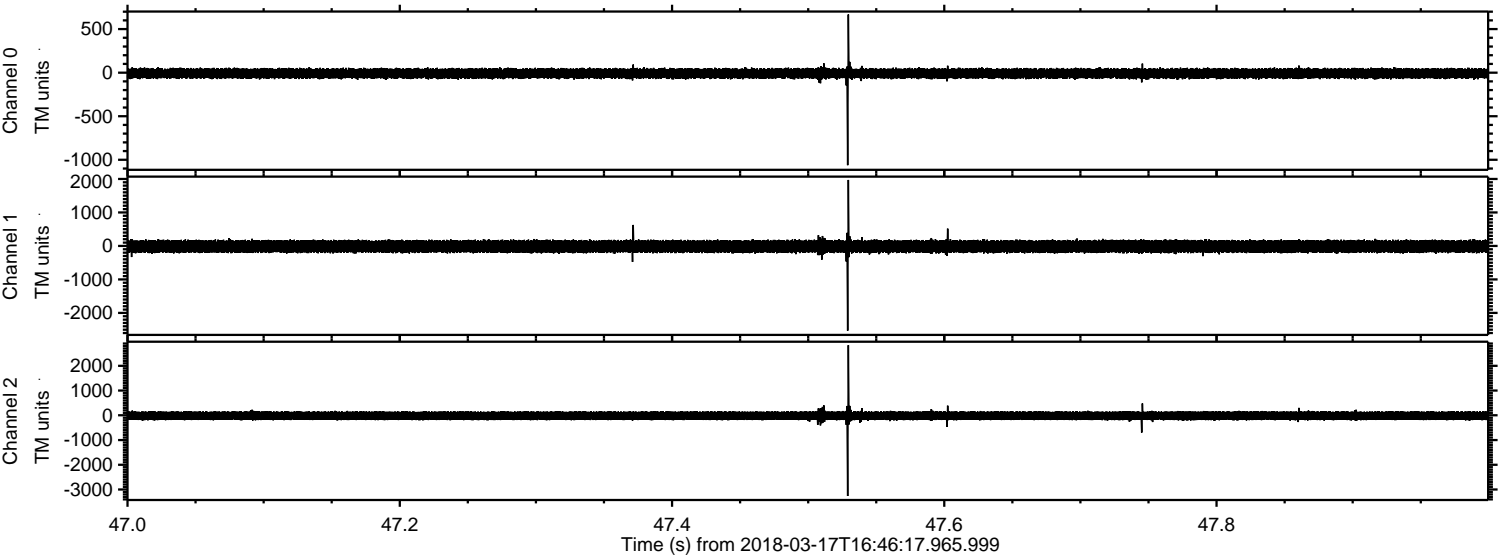


Processed Sat Mar 17 17:54:39 2018 by ELM ver.2012-10-06 from 001__elm20180317_164616__dat00.bin



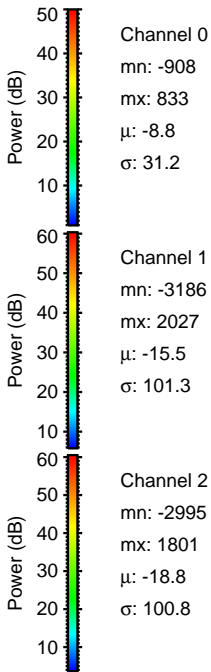
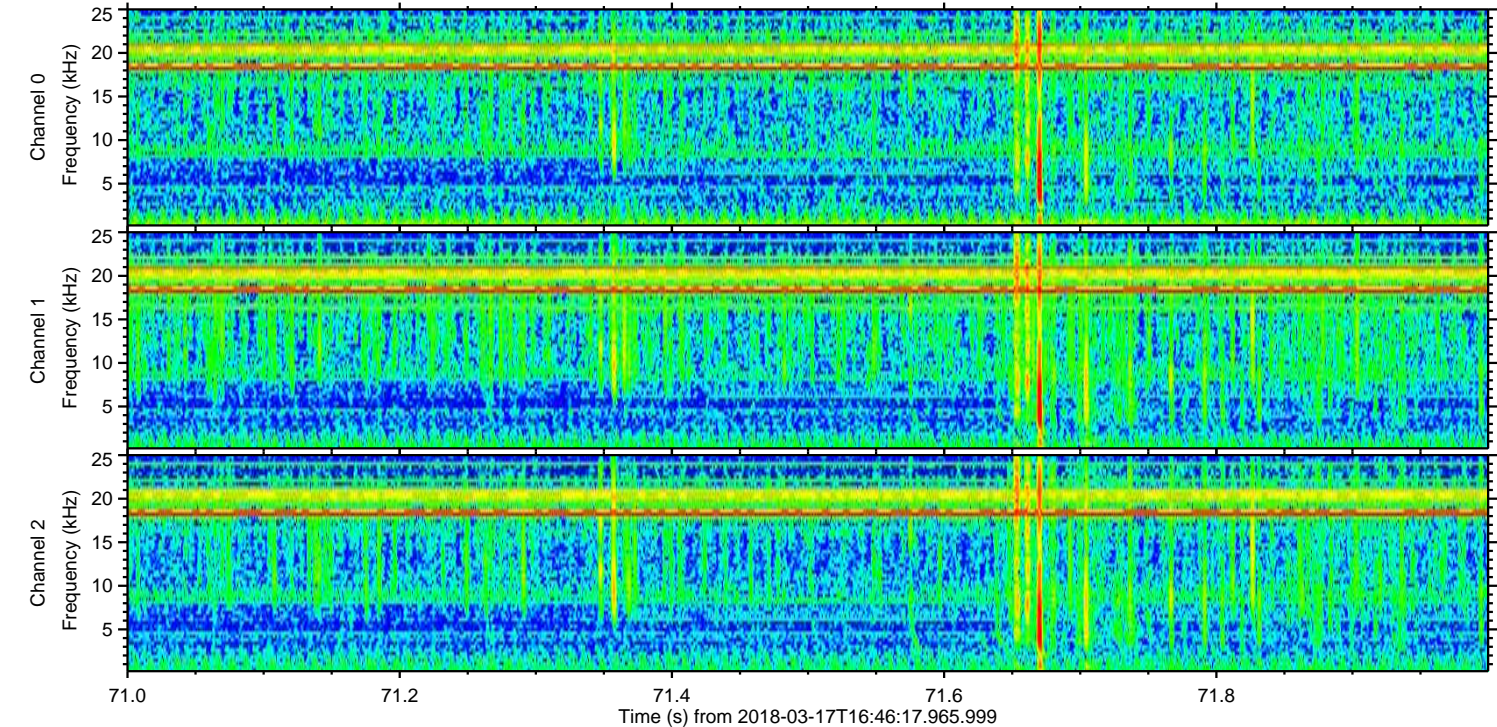
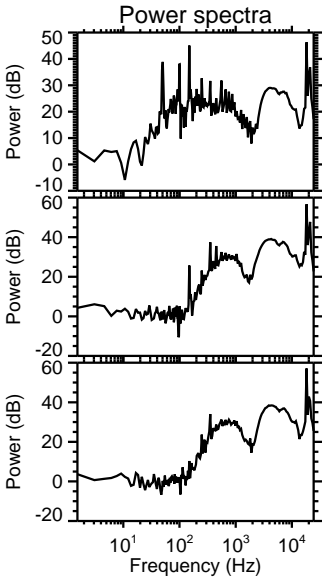
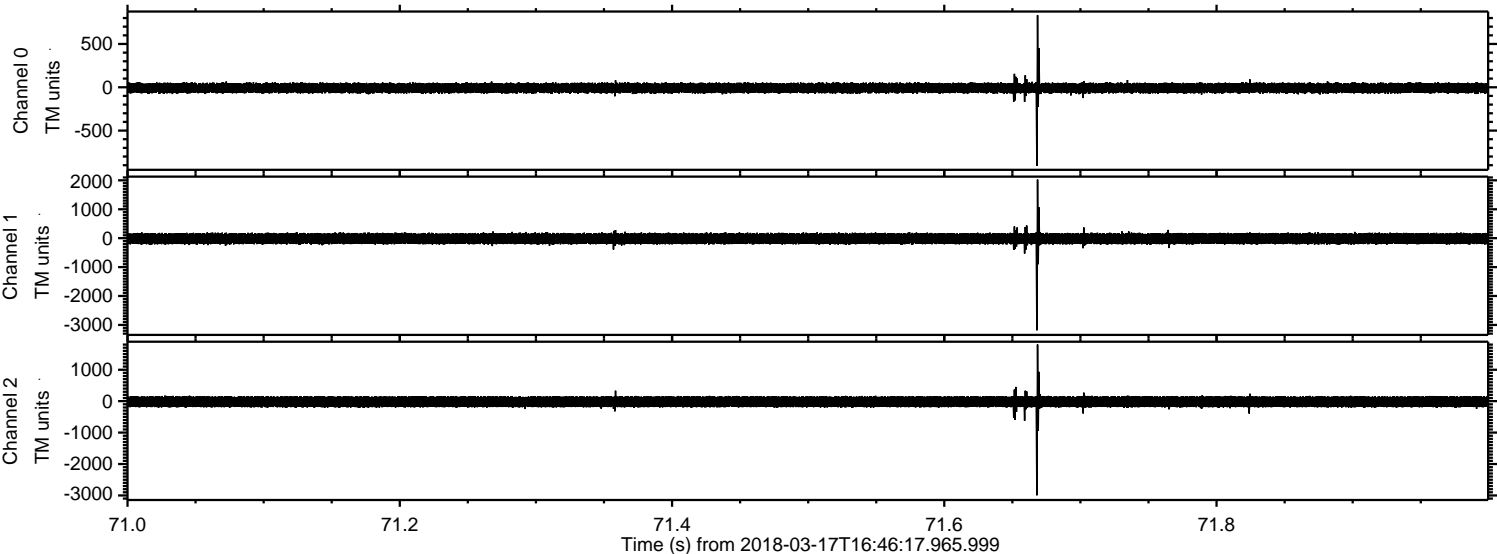
ELMAVAN 3D WAVEFORMS (Measured data sampled at 50 kHz) 50999 packets of 144 samples from 2018-03-17T16:46:17.965.999. Part 48/147

Processed Sat Mar 17 17:54:40 2018 by ELM ver.2012-10-06 from 001__elm20180317_164616__dat00.bin

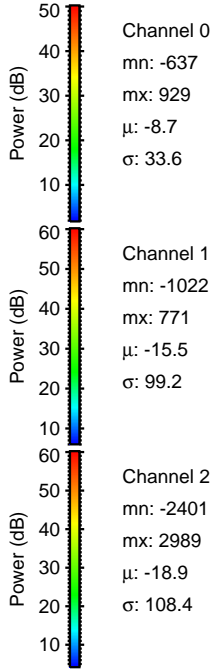
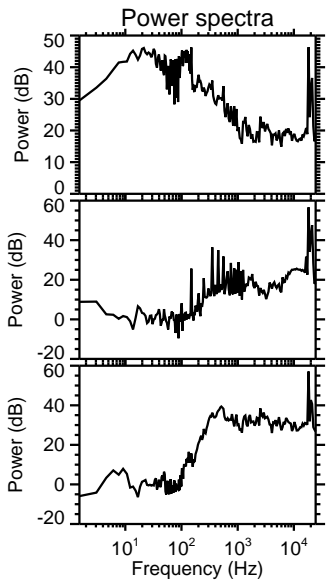
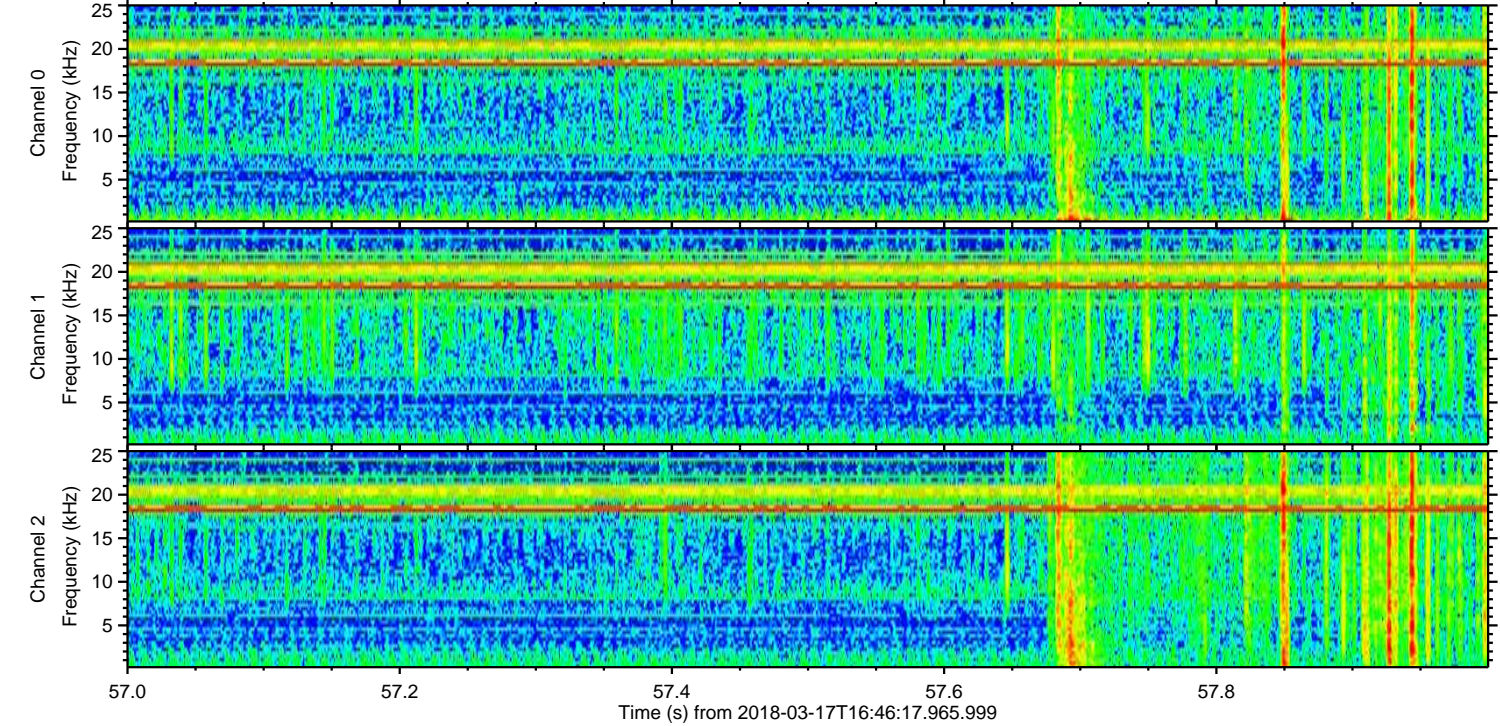
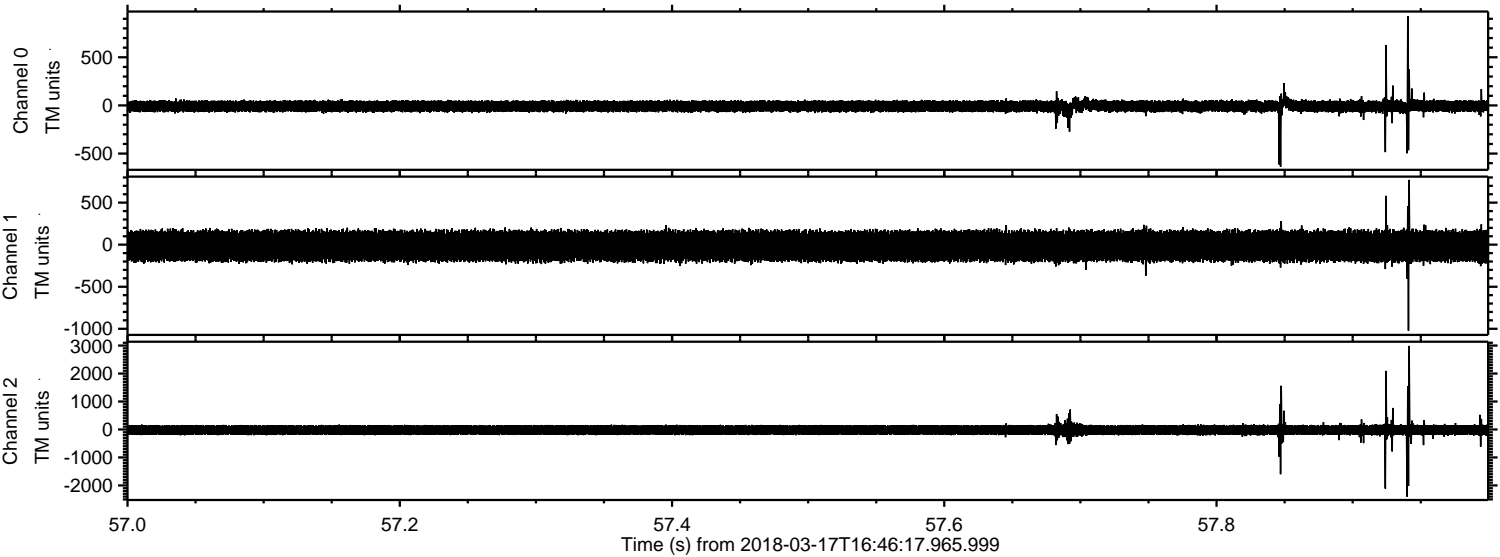


ELMAVAN 3D WAVEFORMS (Measured data sampled at 50 kHz) 50999 packets of 144 samples from 2018-03-17T16:46:17.965.999. Part 72/147

Processed Sat Mar 17 17:54:41 2018 by ELM ver.2012-10-06 from 001__elm20180317_164616__dat00.bin



Processed Sat Mar 17 17:54:42 2018 by ELM ver.2012-10-06 from 001__elm20180317_164616__dat00.bin

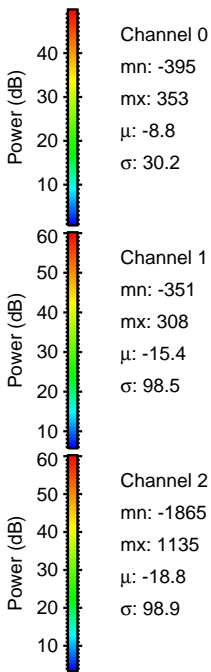
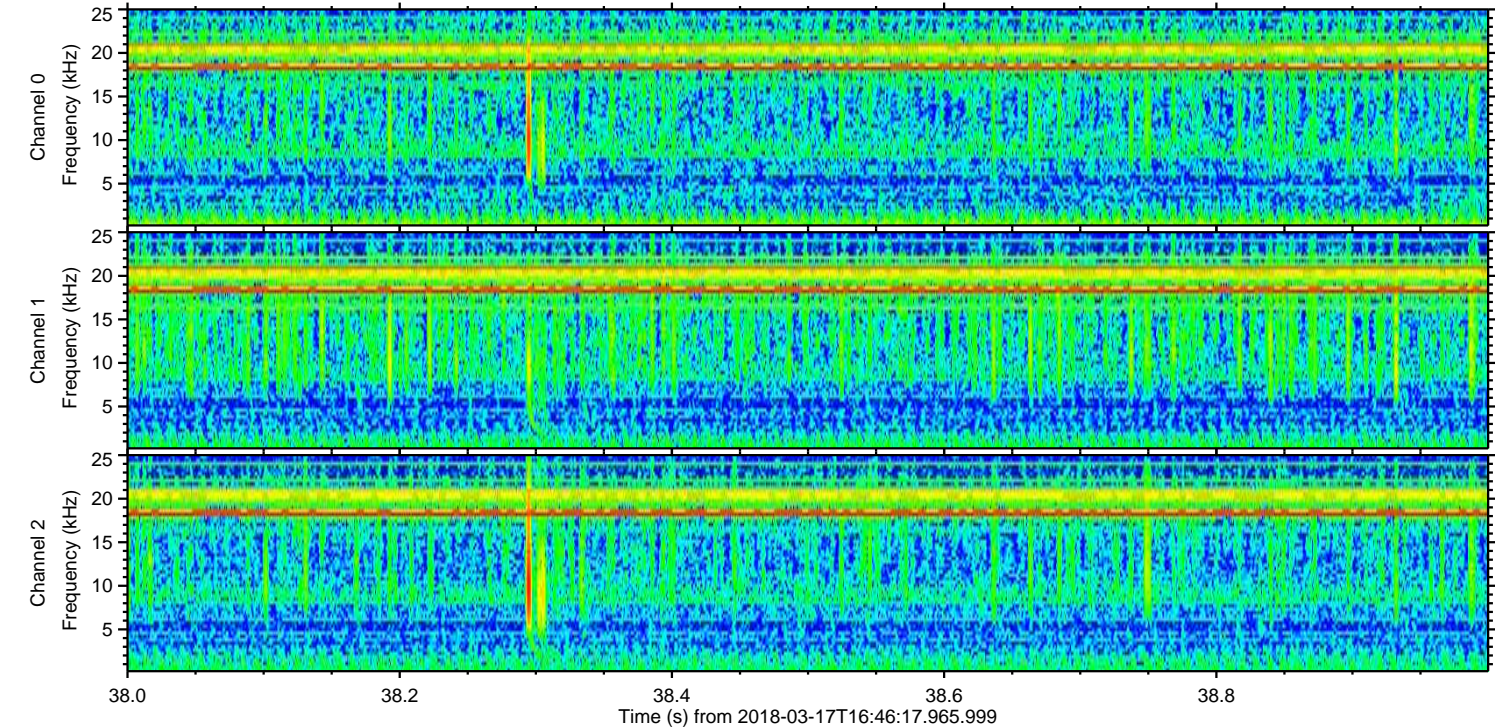
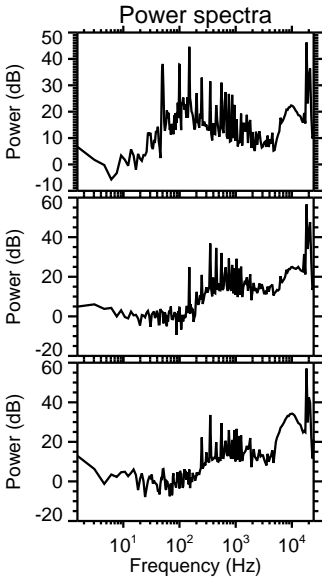
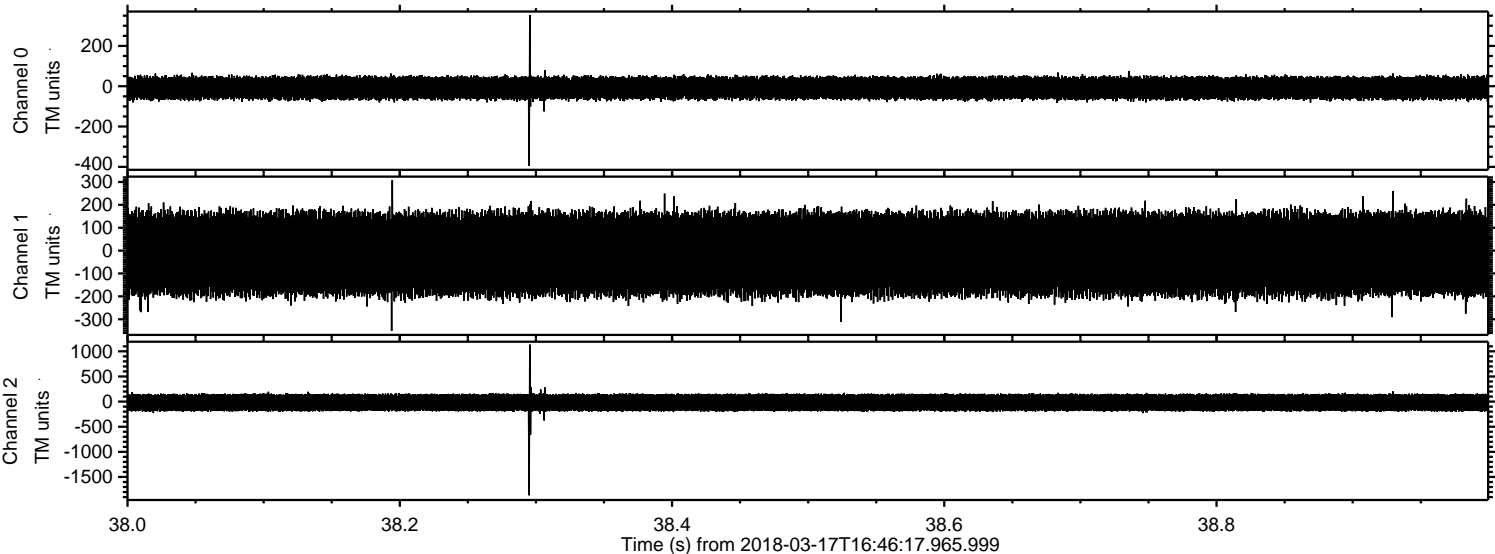


Channel 0
mn: -637
mx: 929
 μ : -8.7
 σ : 33.6

Channel 1
mn: -1022
mx: 771
 μ : -15.5
 σ : 99.2

Channel 2
mn: -2401
mx: 2989
 μ : -18.9
 σ : 108.4

Processed Sat Mar 17 17:54:43 2018 by ELM ver.2012-10-06 from 001__elm20180317_164616__dat00.bin



Processed Sat Mar 17 17:54:43 2018 by ELM ver.2012-10-06 from 001__elm20180317_164616__dat00.bin

