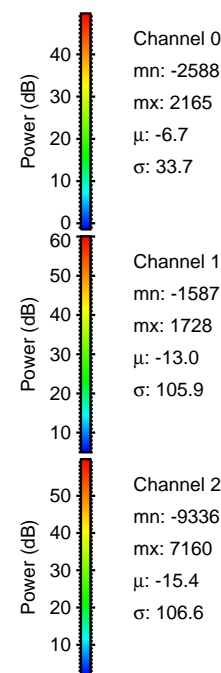
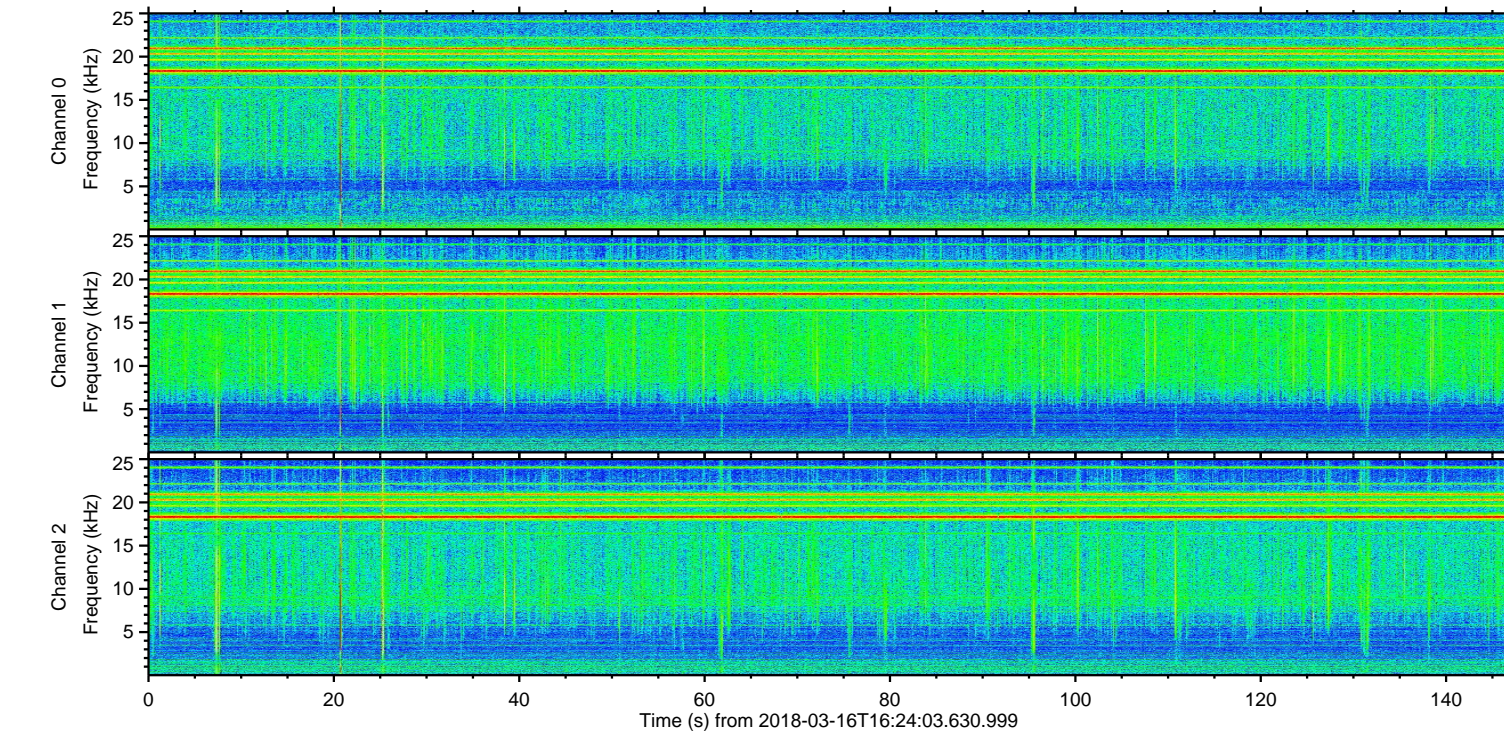
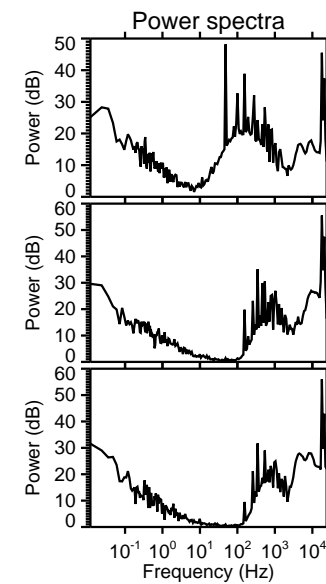
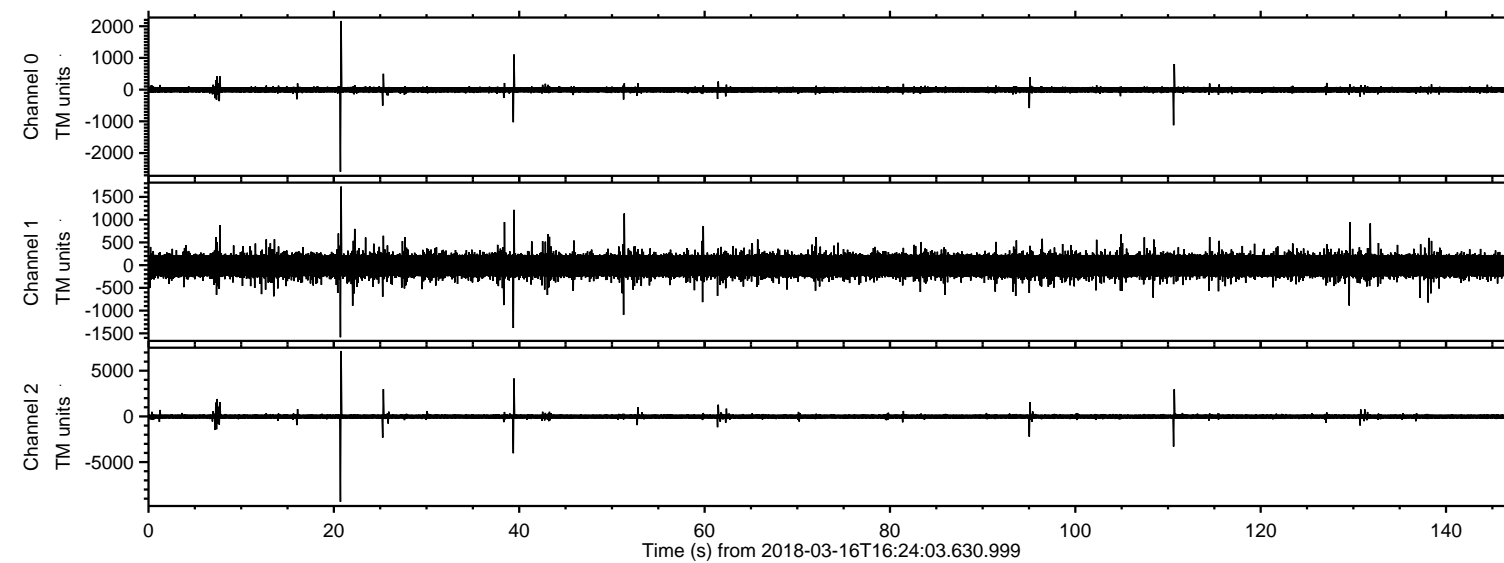
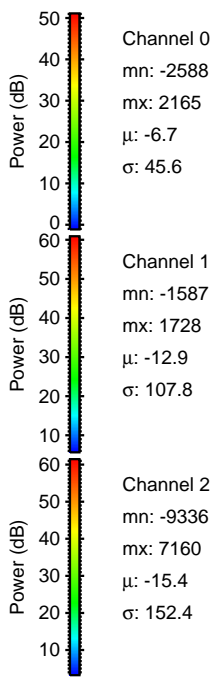
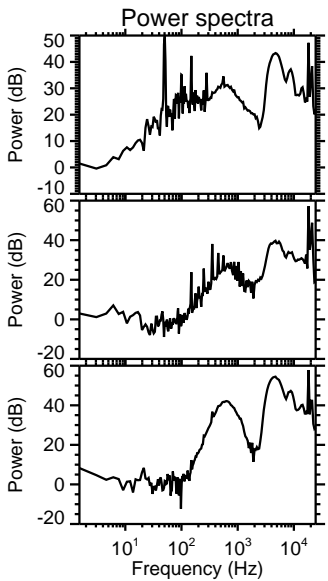
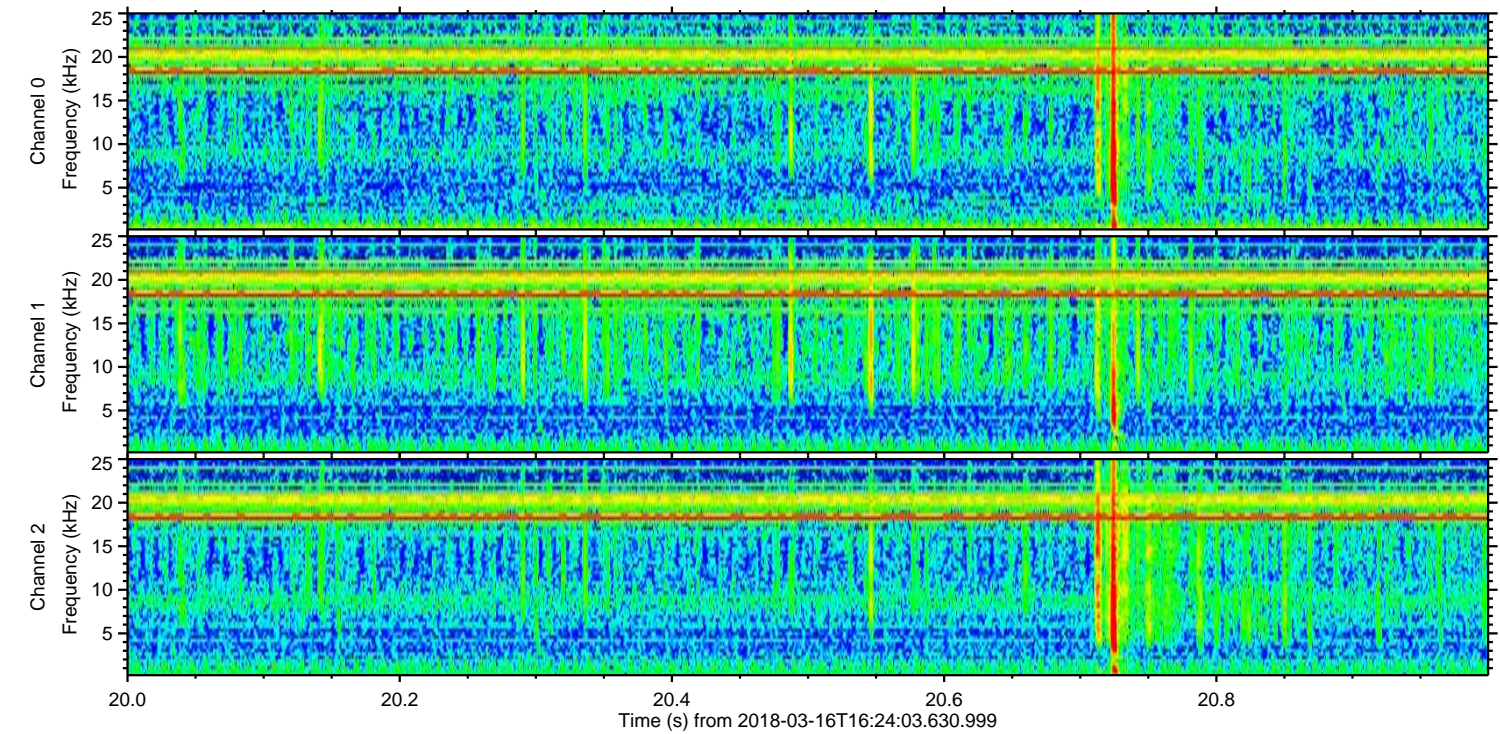
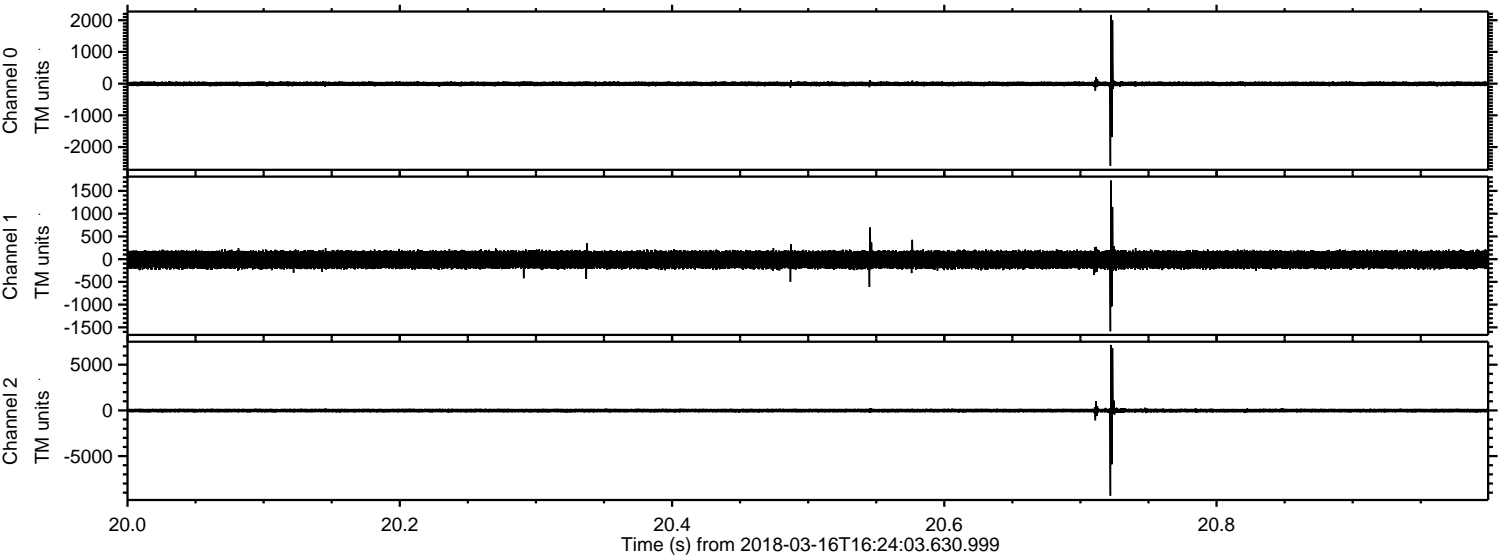


ELMAVAN 3D WAVEFORMS (Measured data sampled at 50 kHz) 51000 packets of 144 samples from 2018-03-16T16:24:03.630.999.

Processed Fri Mar 16 17:31:52 2018 by ELM ver.2012-10-06 from 001__elm20180316_162402__dat00.bin



Processed Fri Mar 16 17:32:00 2018 by ELM ver.2012-10-06 from 001__elm20180316_162402__dat00.bin

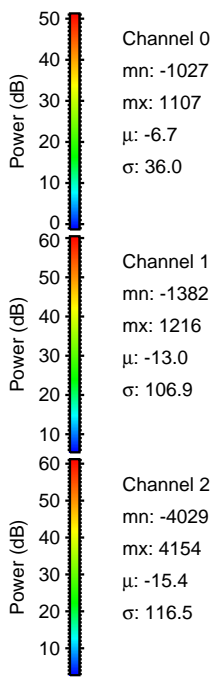
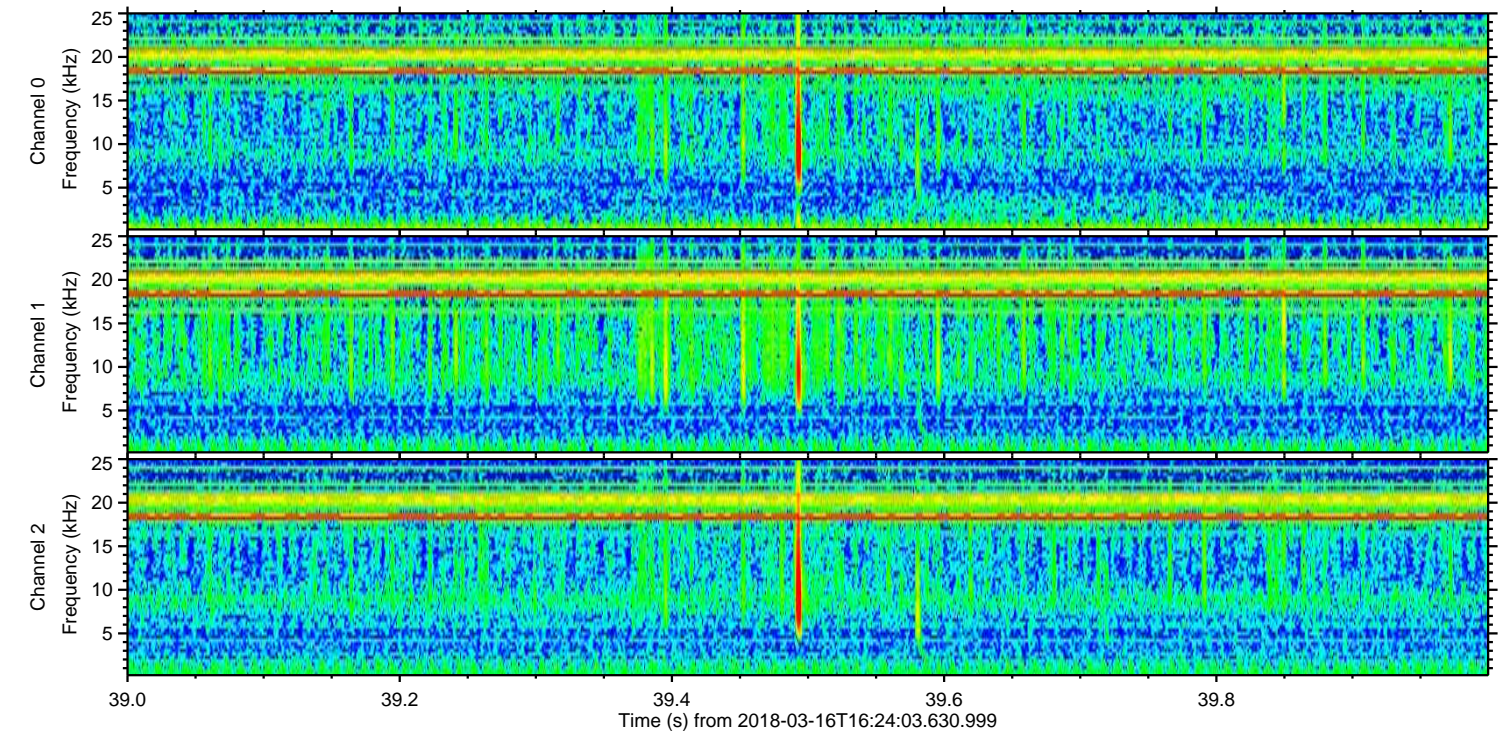
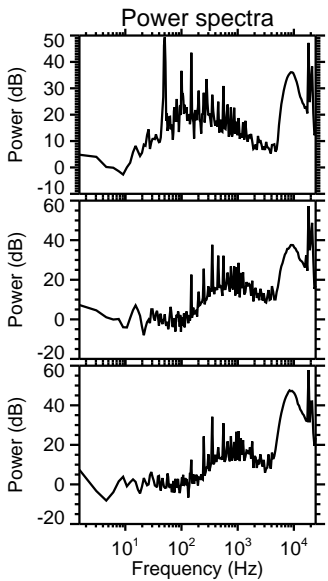
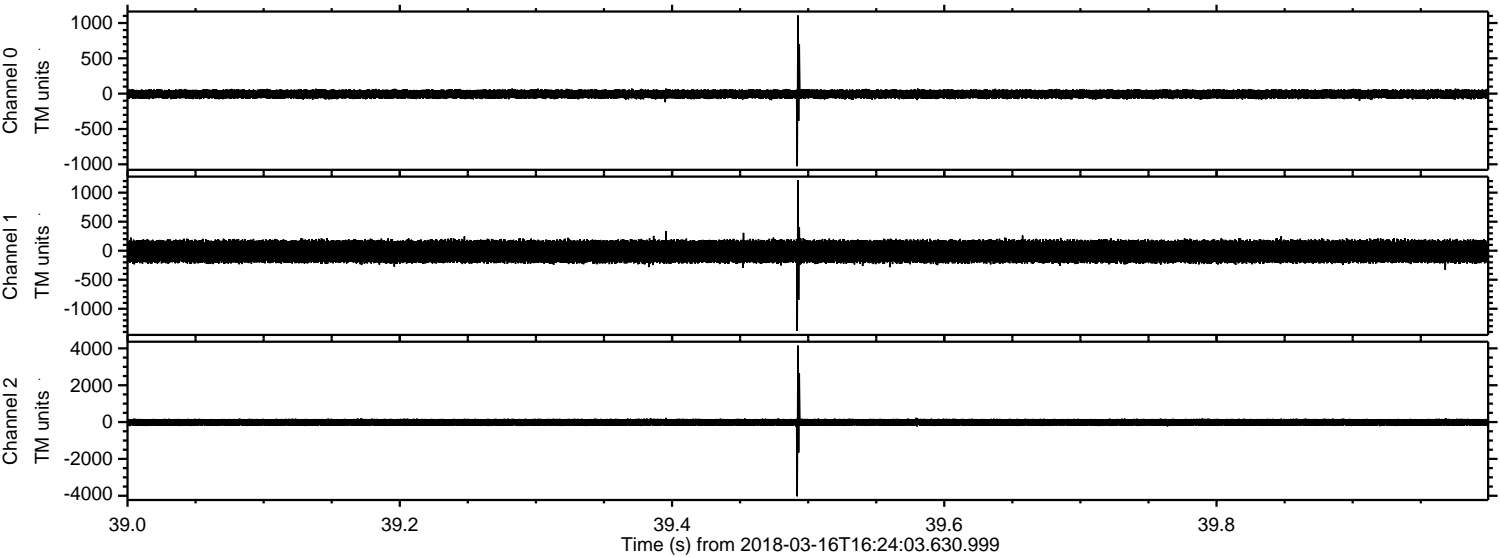


Channel 0
mn: -2588
mx: 2165
 μ : -6.7
 σ : 45.6

Channel 1
mn: -1587
mx: 1728
 μ : -12.9
 σ : 107.8

Channel 2
mn: -9336
mx: 7160
 μ : -15.4
 σ : 152.4

Processed Fri Mar 16 17:32:01 2018 by ELM ver.2012-10-06 from 001__elm20180316_162402__dat00.bin



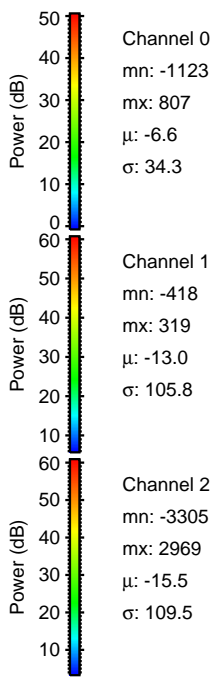
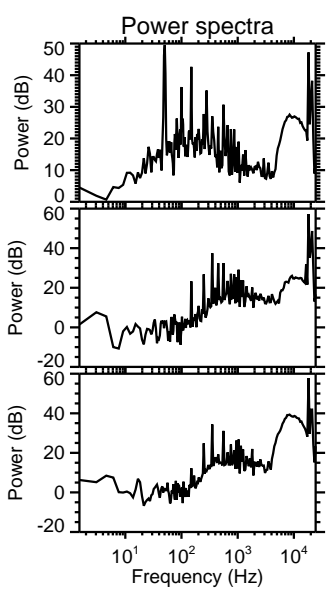
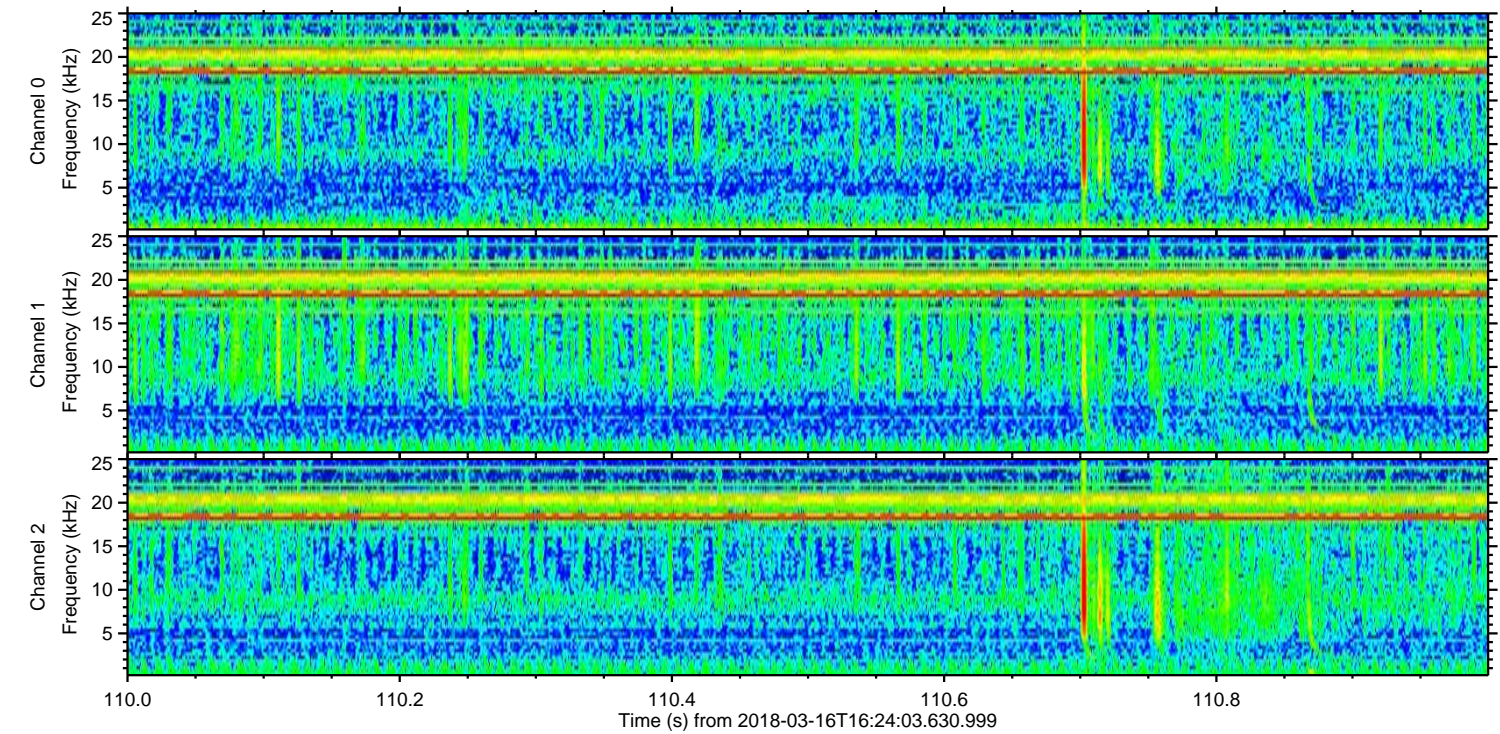
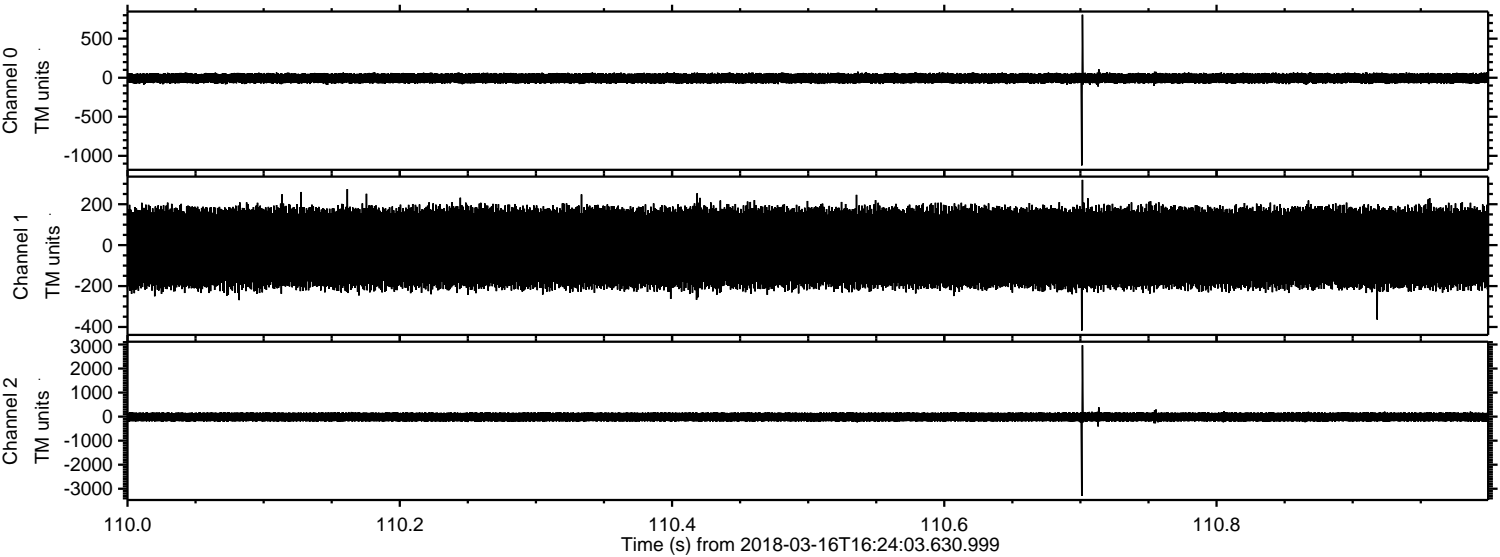
Channel 0
mn: -1027
mx: 1107
 μ : -6.7
 σ : 36.0

Channel 1
mn: -1382
mx: 1216
 μ : -13.0
 σ : 106.9

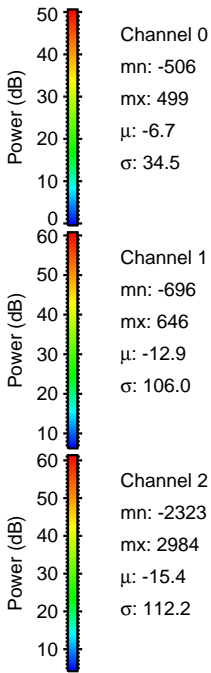
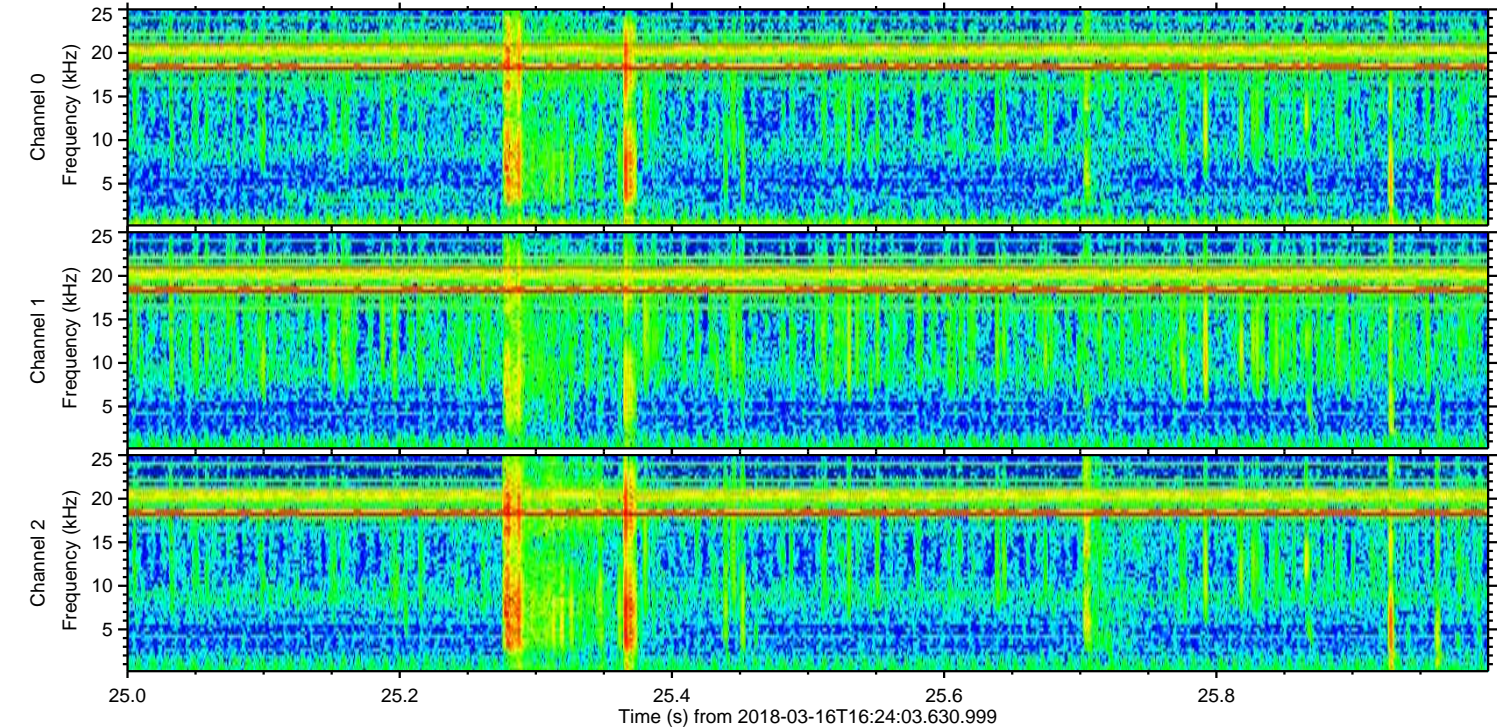
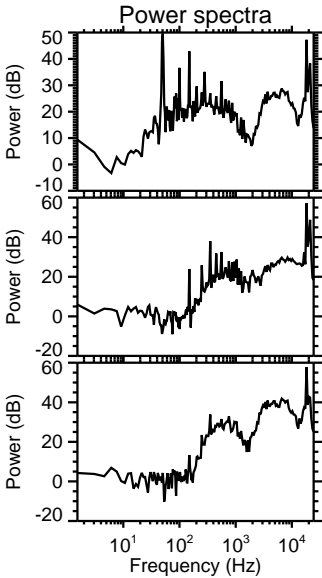
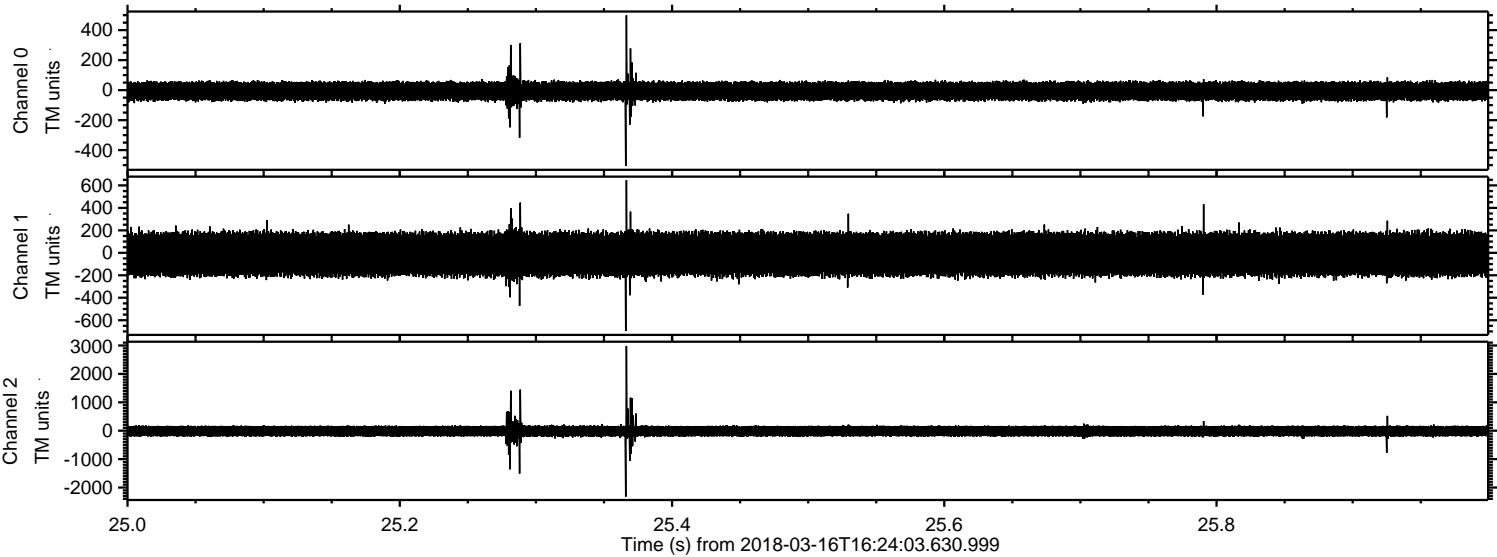
Channel 2
mn: -4029
mx: 4154
 μ : -15.4
 σ : 116.5

ELMAVAN 3D WAVEFORMS (Measured data sampled at 50 kHz) 51000 packets of 144 samples from 2018-03-16T16:24:03.630.999. Part 111/147

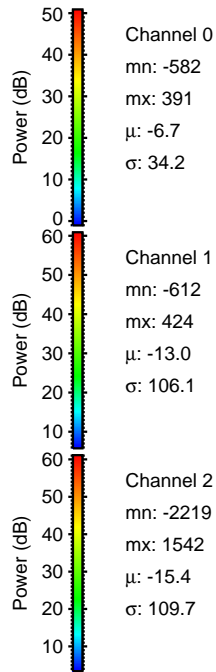
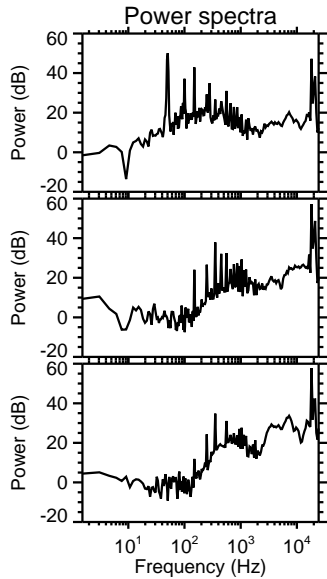
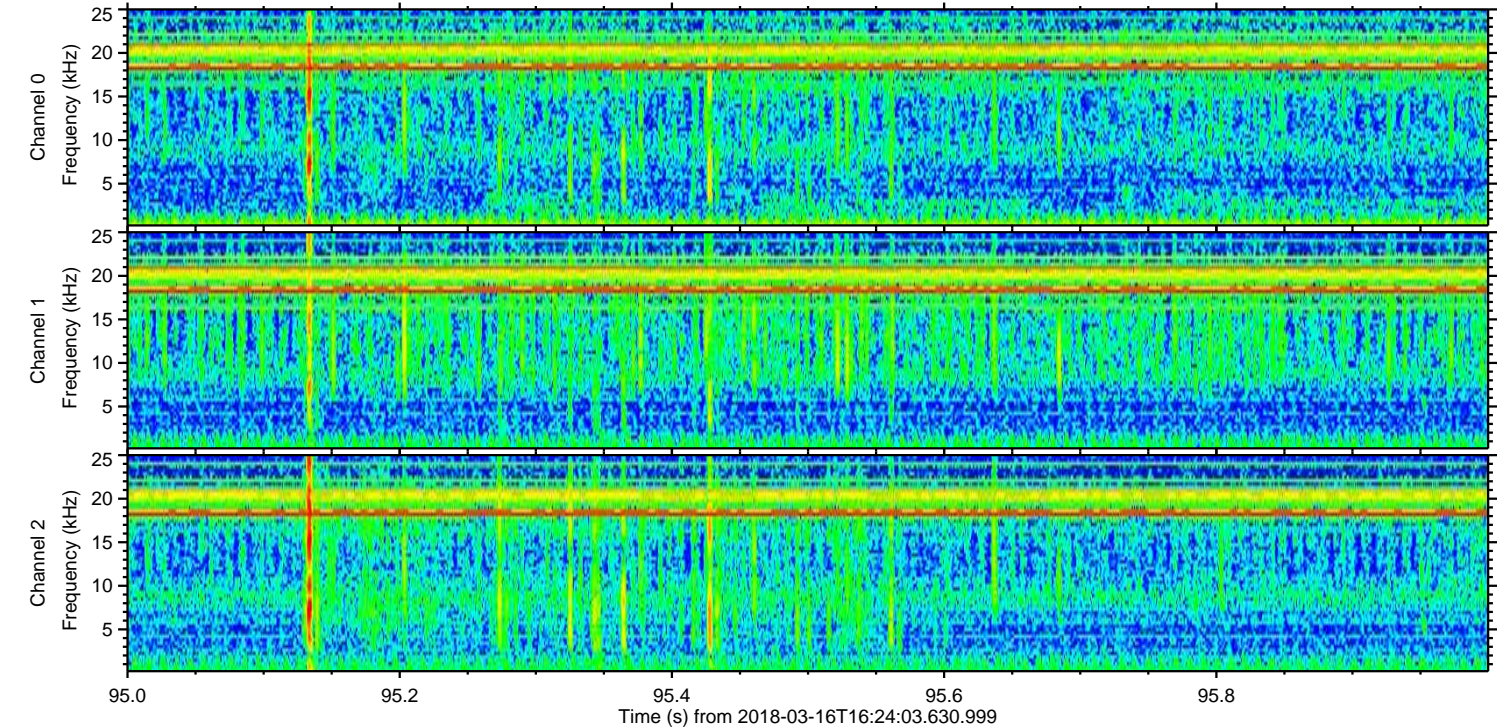
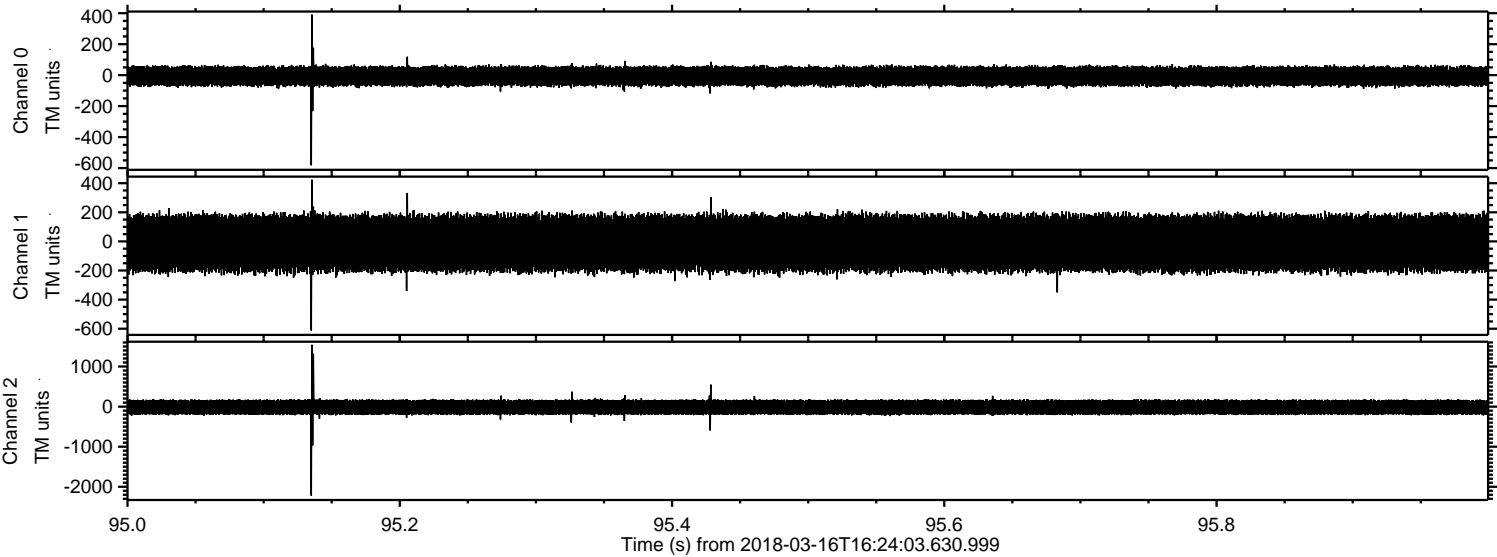
Processed Fri Mar 16 17:32:02 2018 by ELM ver.2012-10-06 from 001__elm20180316_162402__dat00.bin



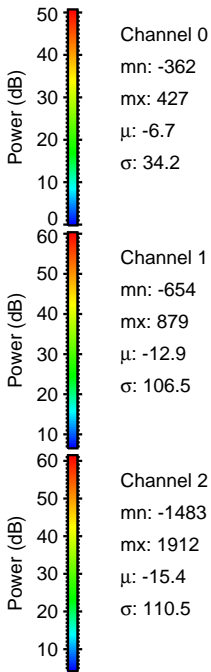
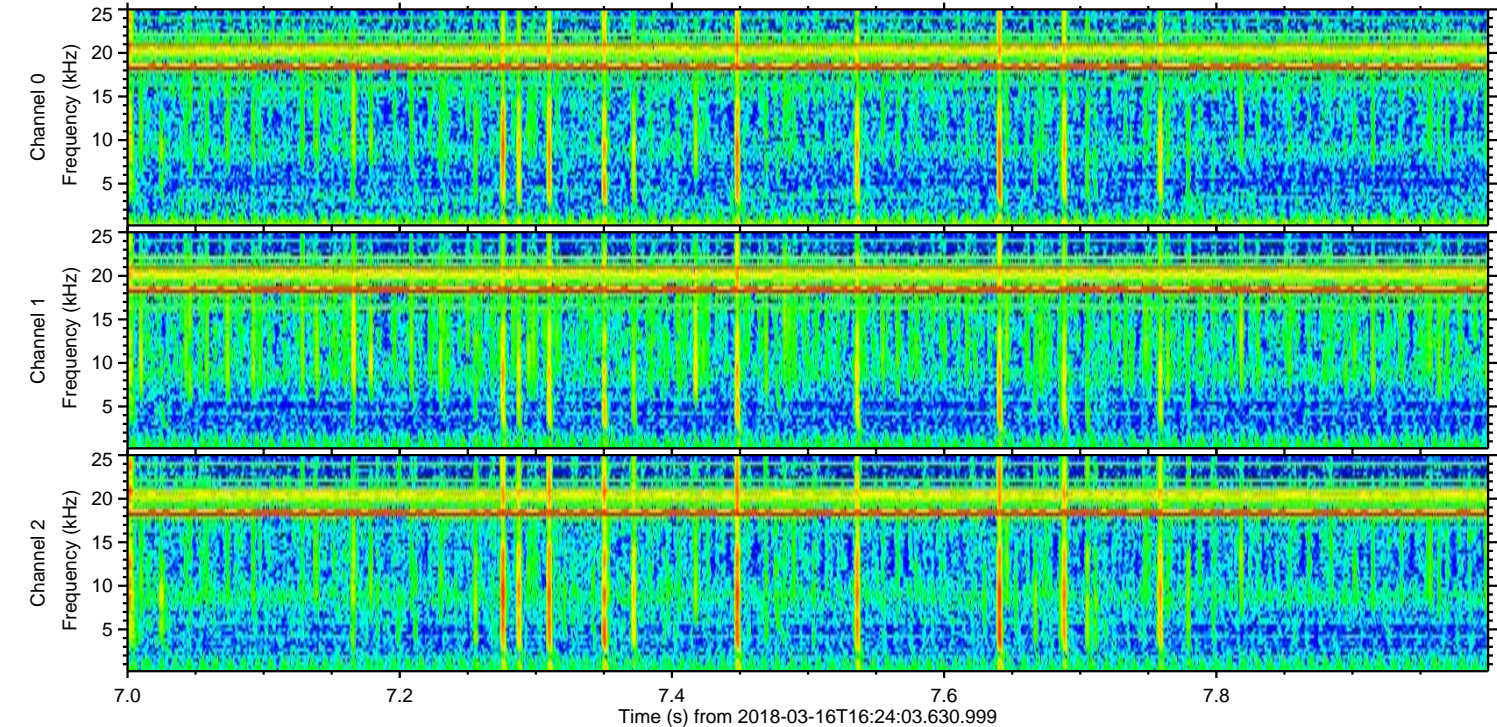
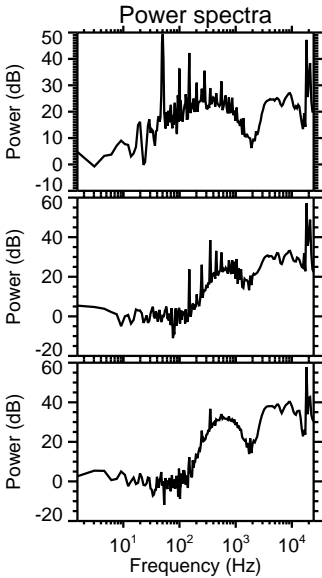
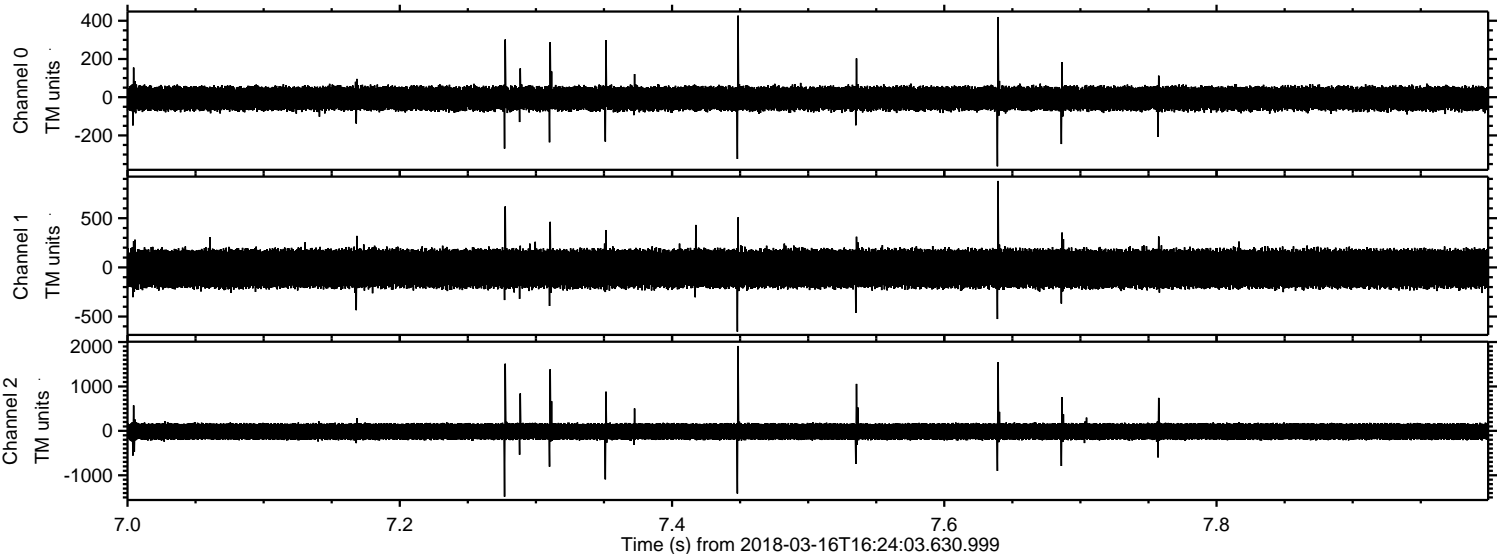
Processed Fri Mar 16 17:32:03 2018 by ELM ver.2012-10-06 from 001__elm20180316_162402__dat00.bin



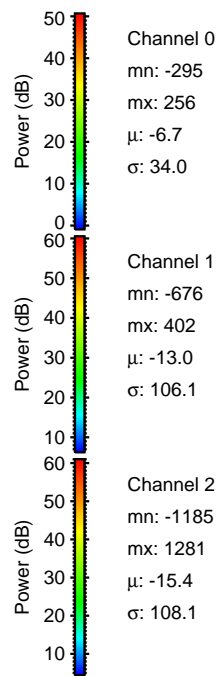
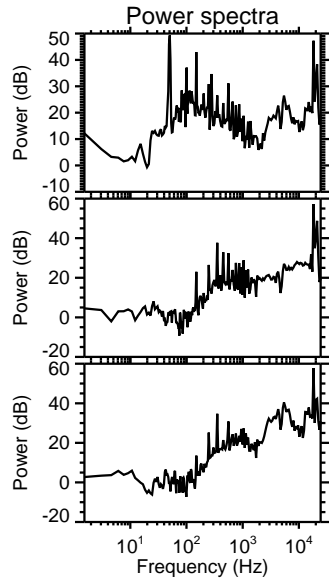
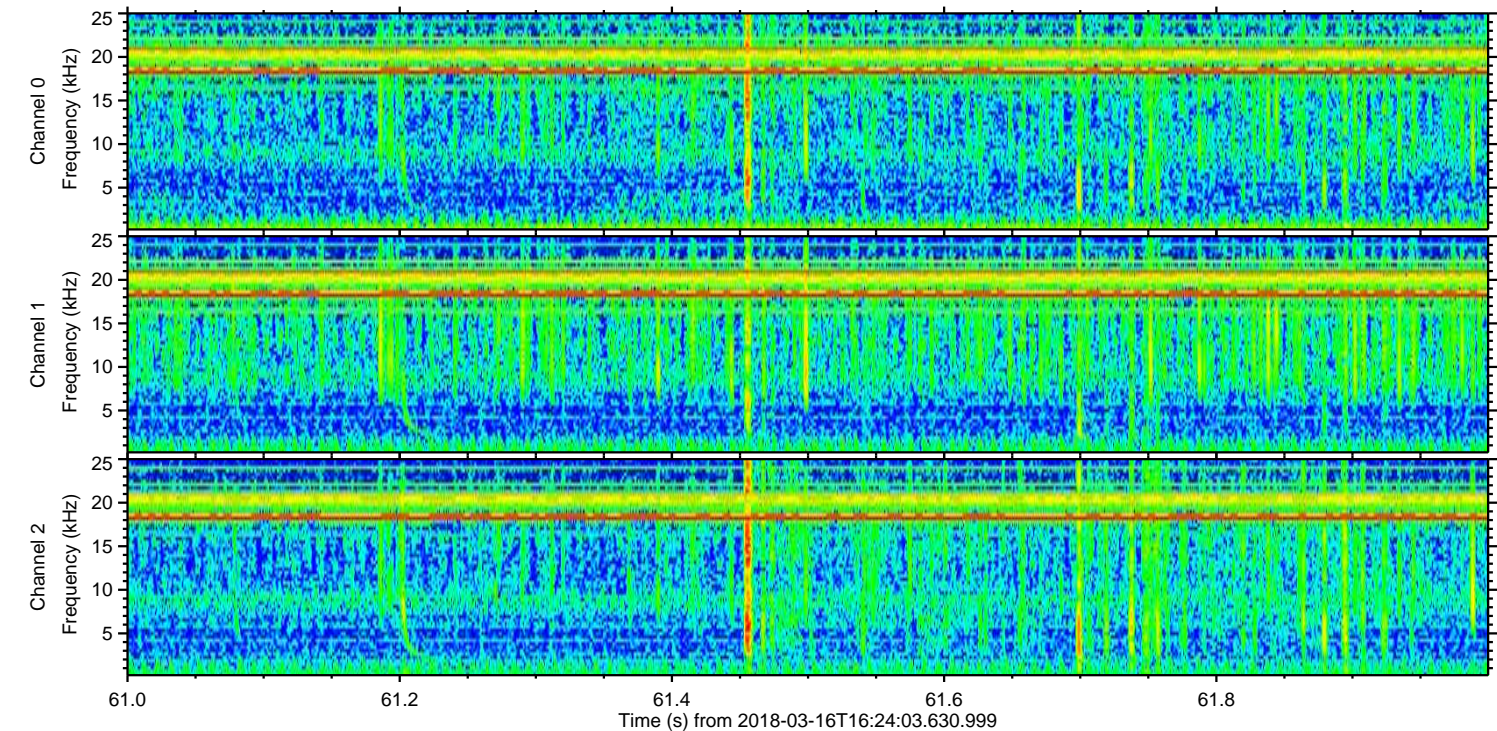
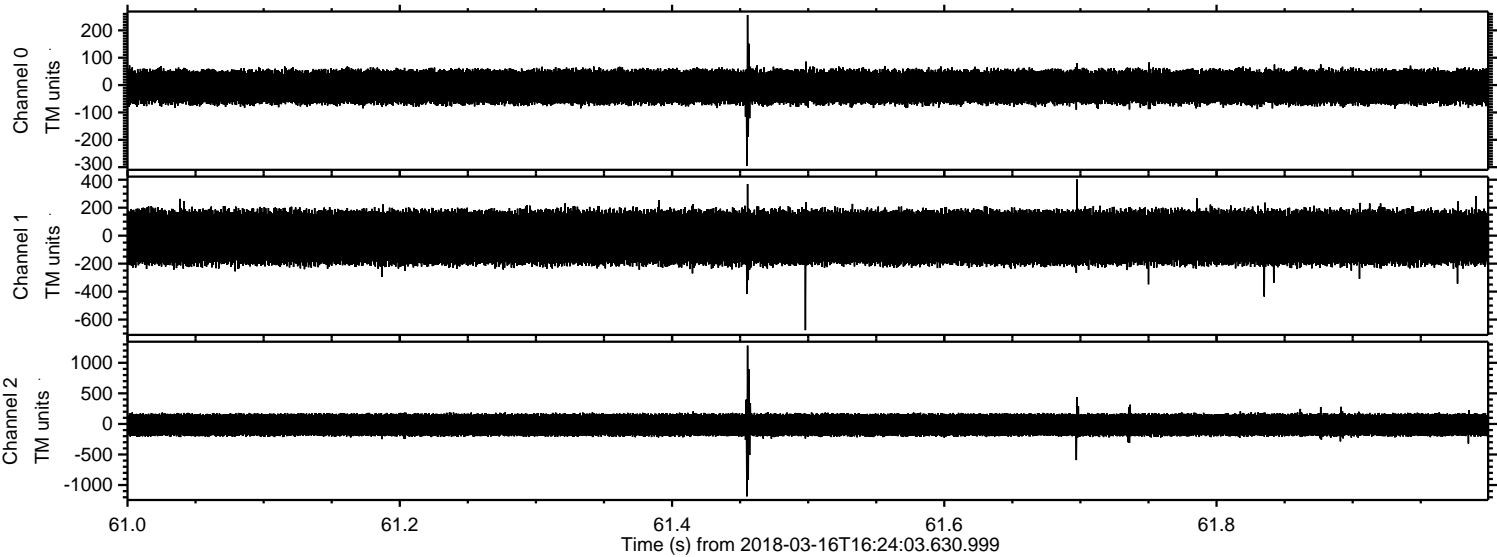
Processed Fri Mar 16 17:32:04 2018 by ELM ver.2012-10-06 from 001__elm20180316_162402__dat00.bin



Processed Fri Mar 16 17:32:04 2018 by ELM ver.2012-10-06 from 001__elm20180316_162402__dat00.bin



Processed Fri Mar 16 17:32:05 2018 by ELM ver.2012-10-06 from 001__elm20180316_162402__dat00.bin

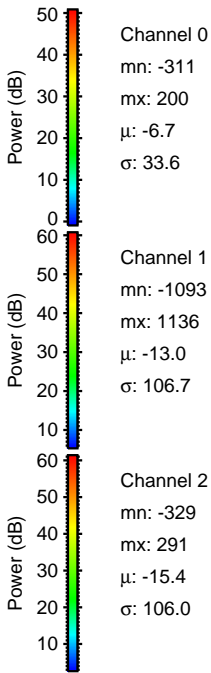
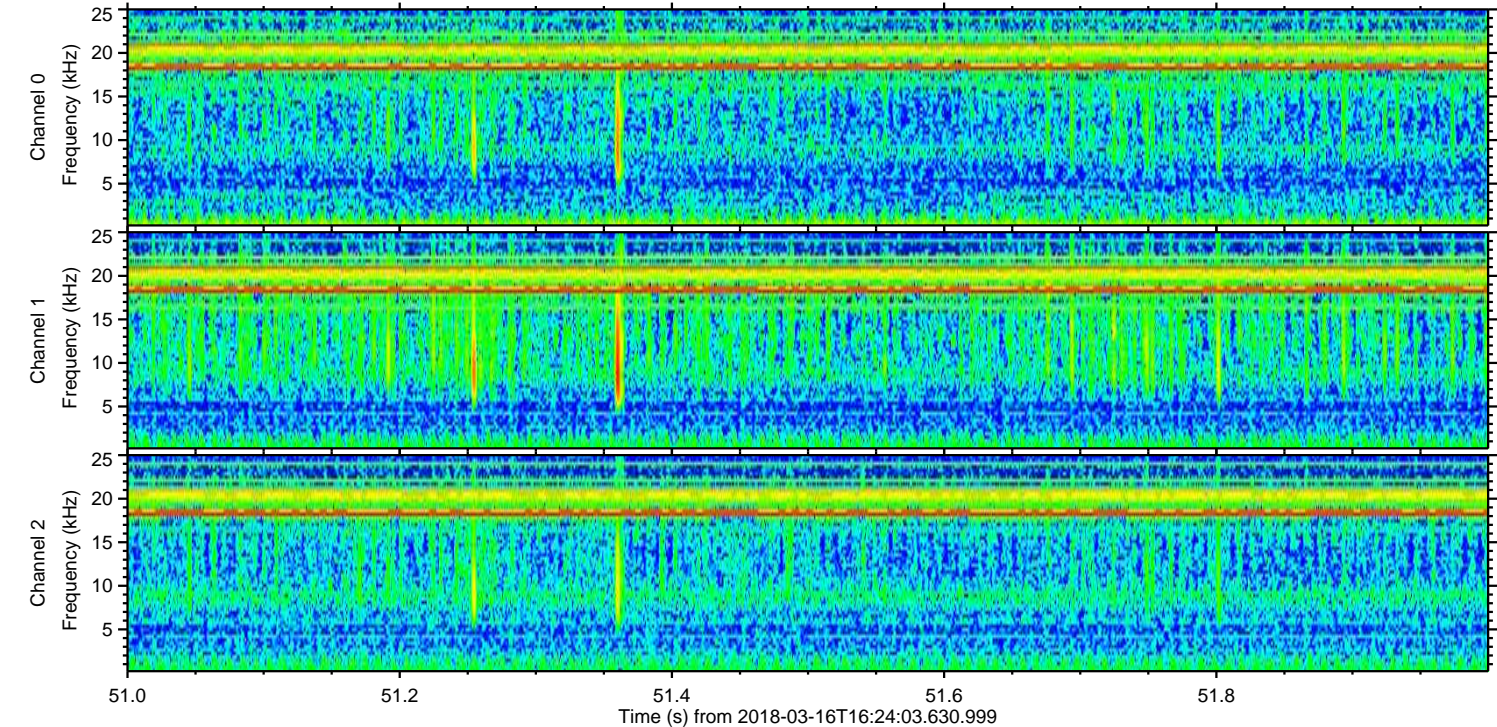
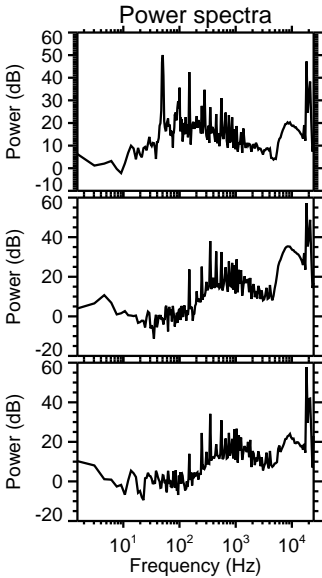
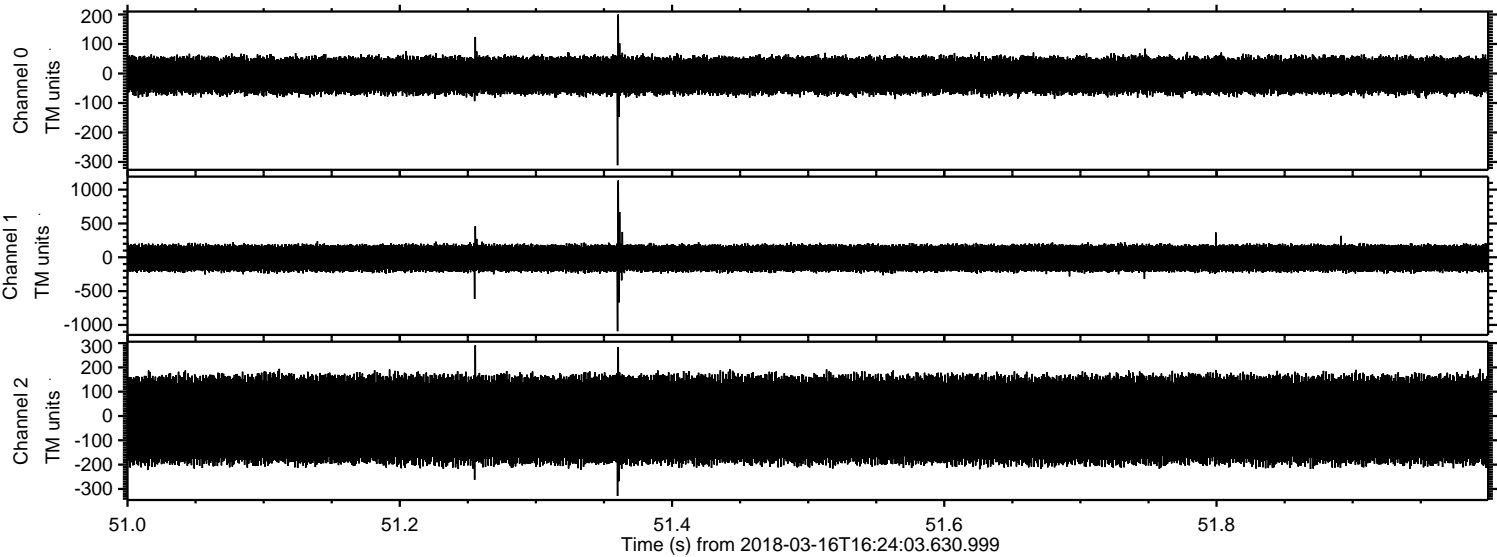


Channel 0
mn: -295
mx: 256
 μ : -6.7
 σ : 34.0

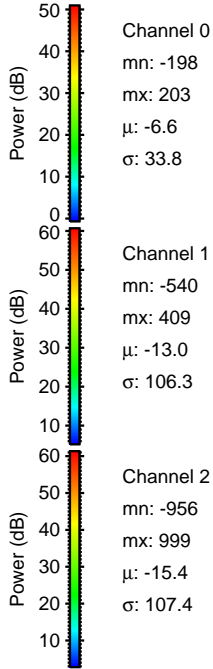
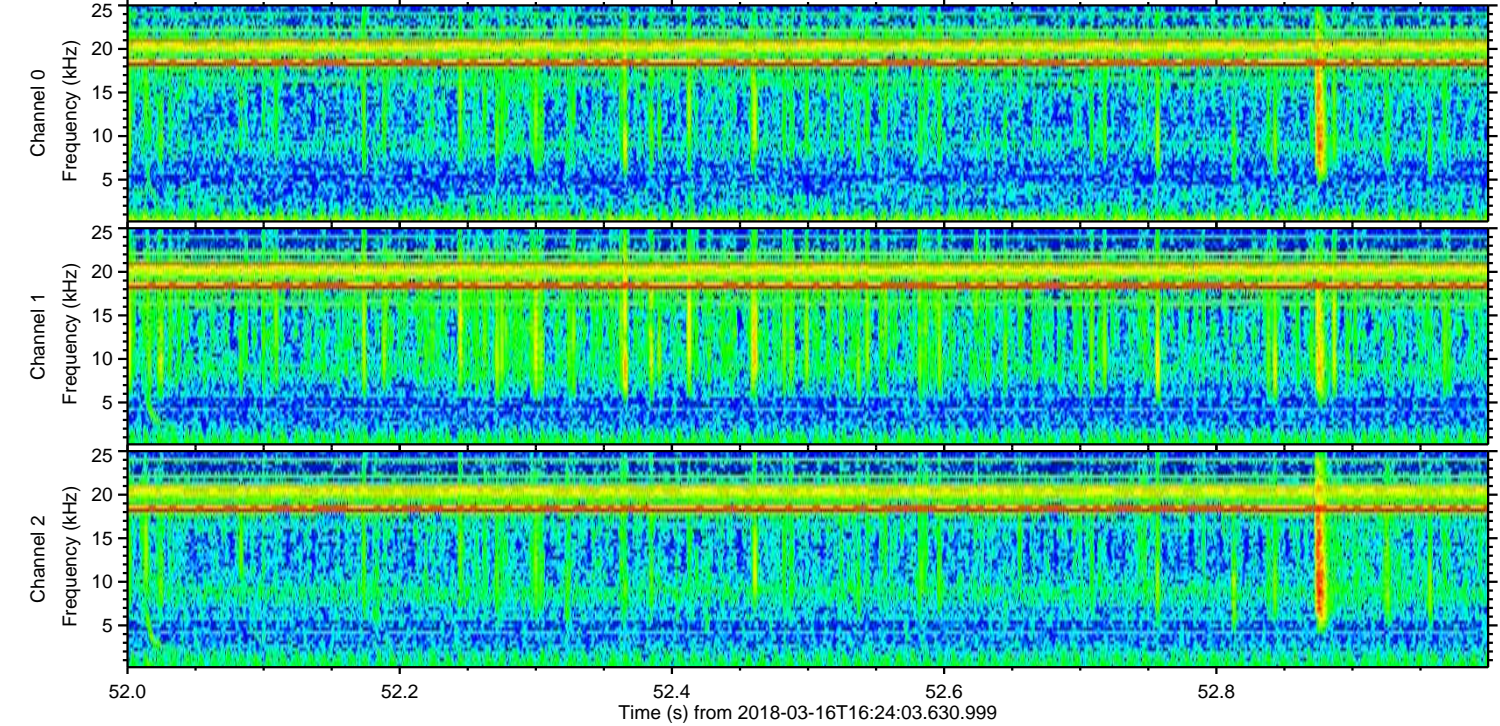
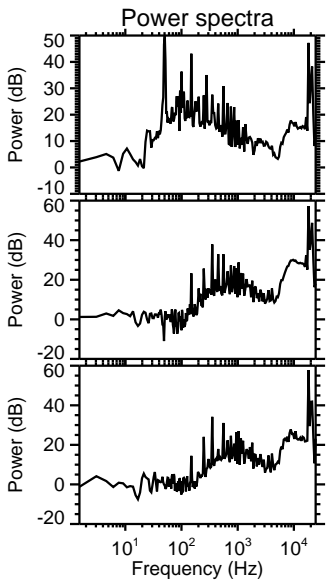
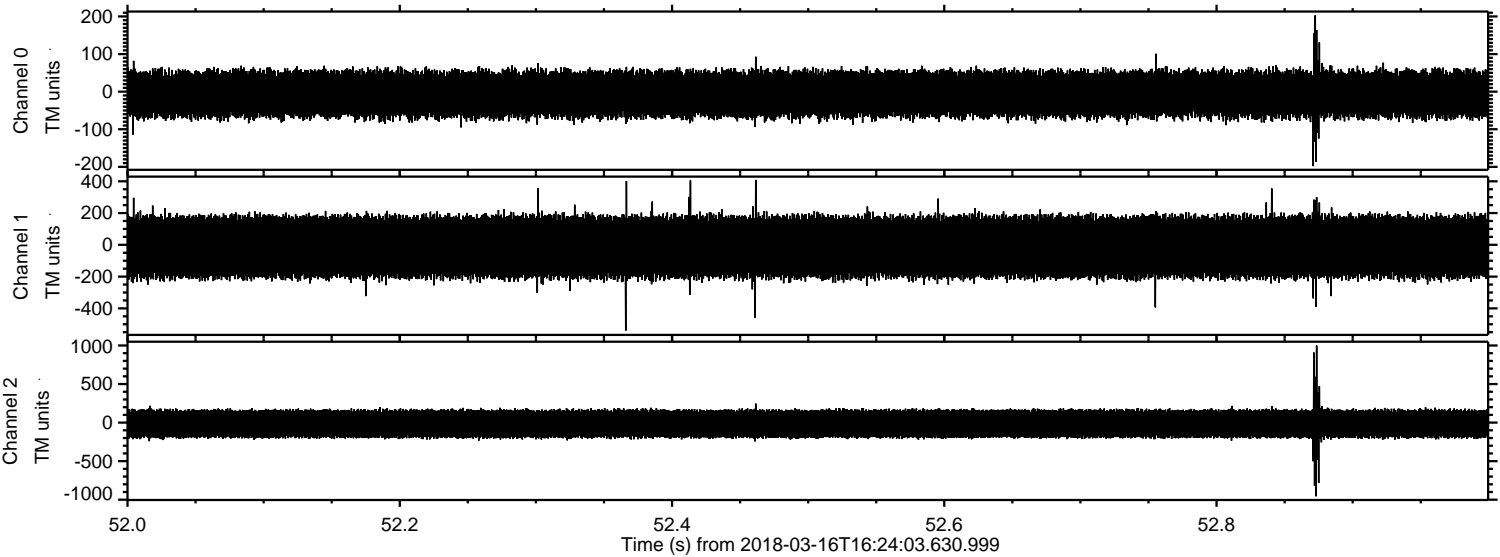
Channel 1
mn: -676
mx: 402
 μ : -13.0
 σ : 106.1

Channel 2
mn: -1185
mx: 1281
 μ : -15.4
 σ : 108.1

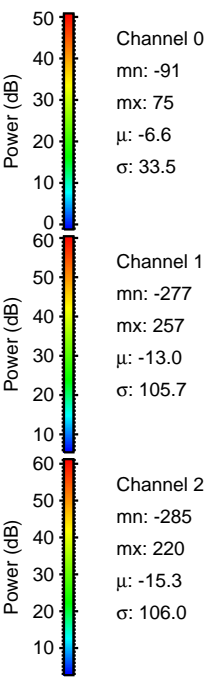
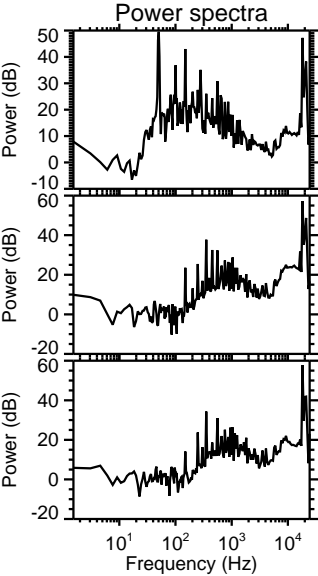
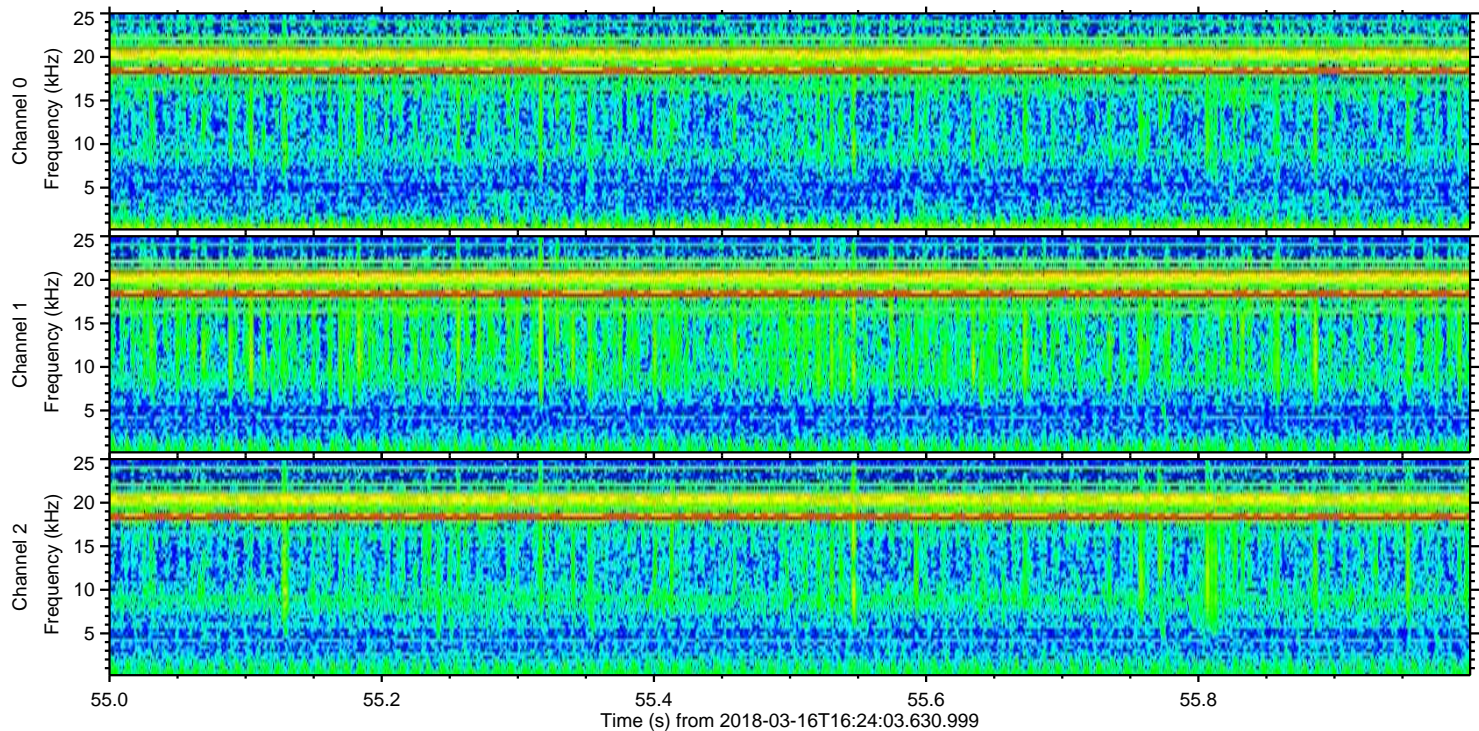
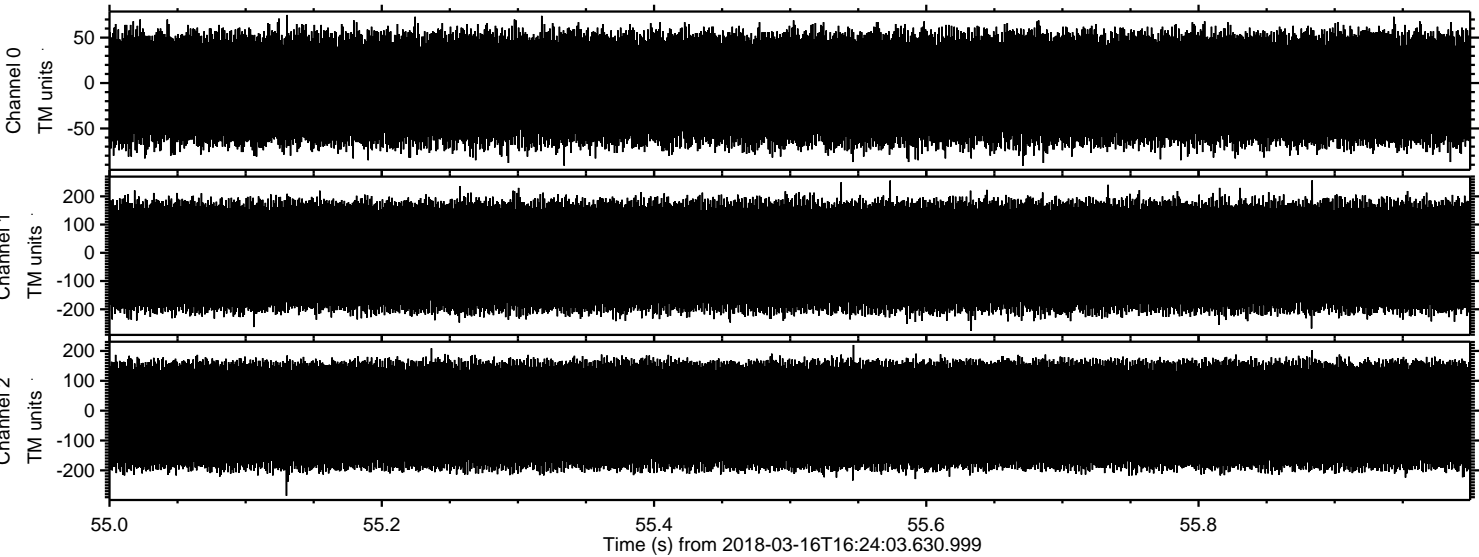
Processed Fri Mar 16 17:32:06 2018 by ELM ver.2012-10-06 from 001__elm20180316_162402__dat00.bin



Processed Fri Mar 16 17:32:07 2018 by ELM ver.2012-10-06 from 001__elm20180316_162402__dat00.bin



Processed Fri Mar 16 17:32:08 2018 by ELM ver.2012-10-06 from 001__elm20180316_162402__dat00.bin



Channel 0
mn: -91
mx: 75
 μ : -6.6
 σ : 33.5

Channel 1
mn: -277
mx: 257
 μ : -13.0
 σ : 105.7

Channel 2
mn: -285
mx: 220
 μ : -15.3
 σ : 106.0