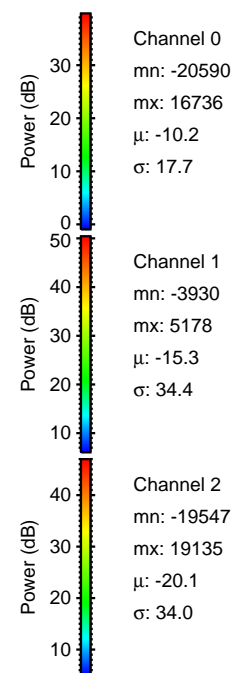
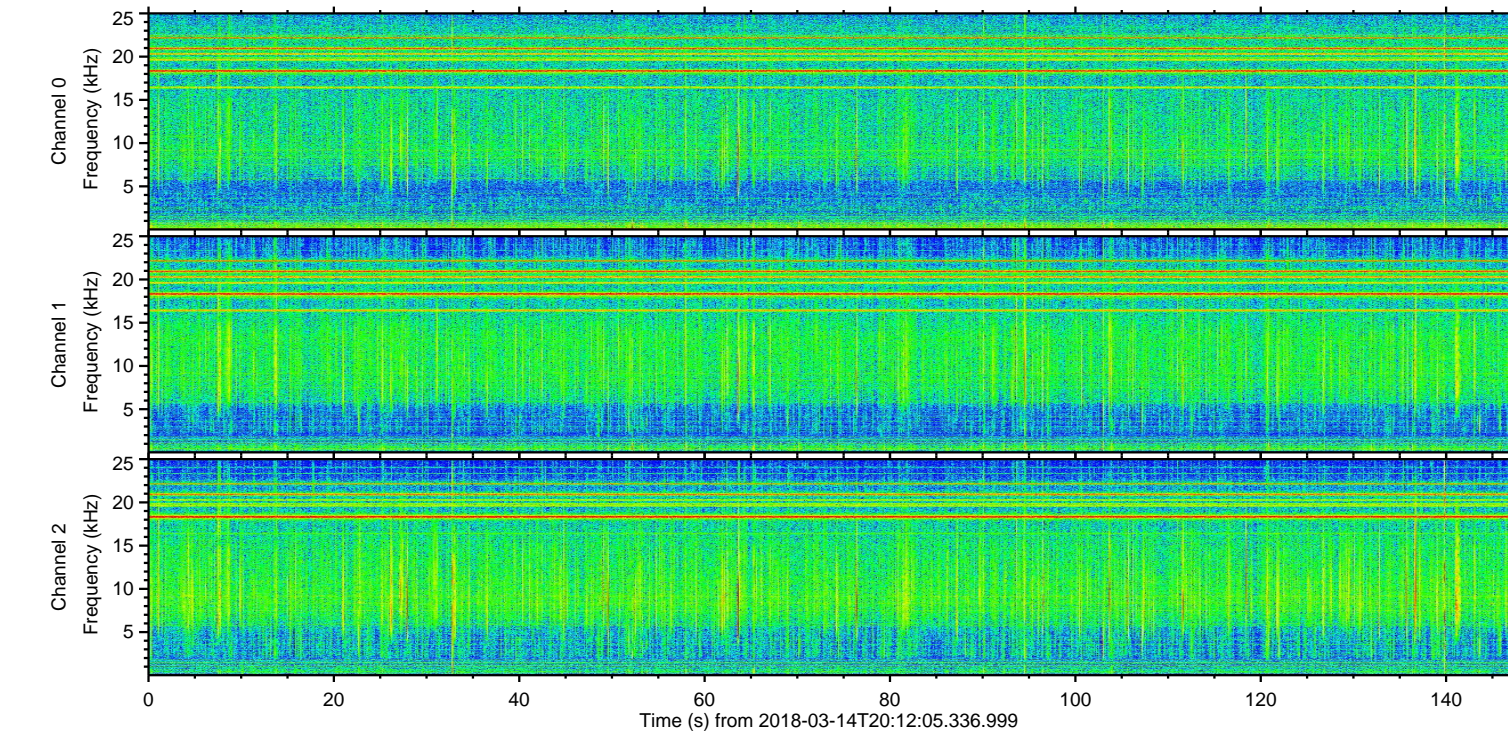
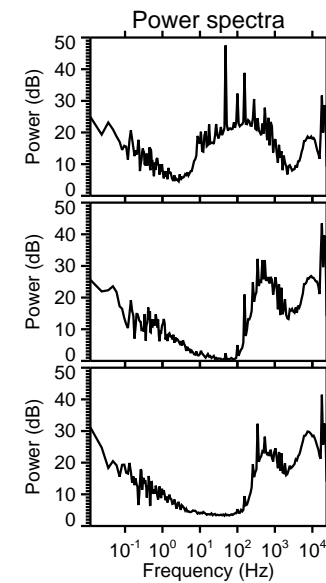
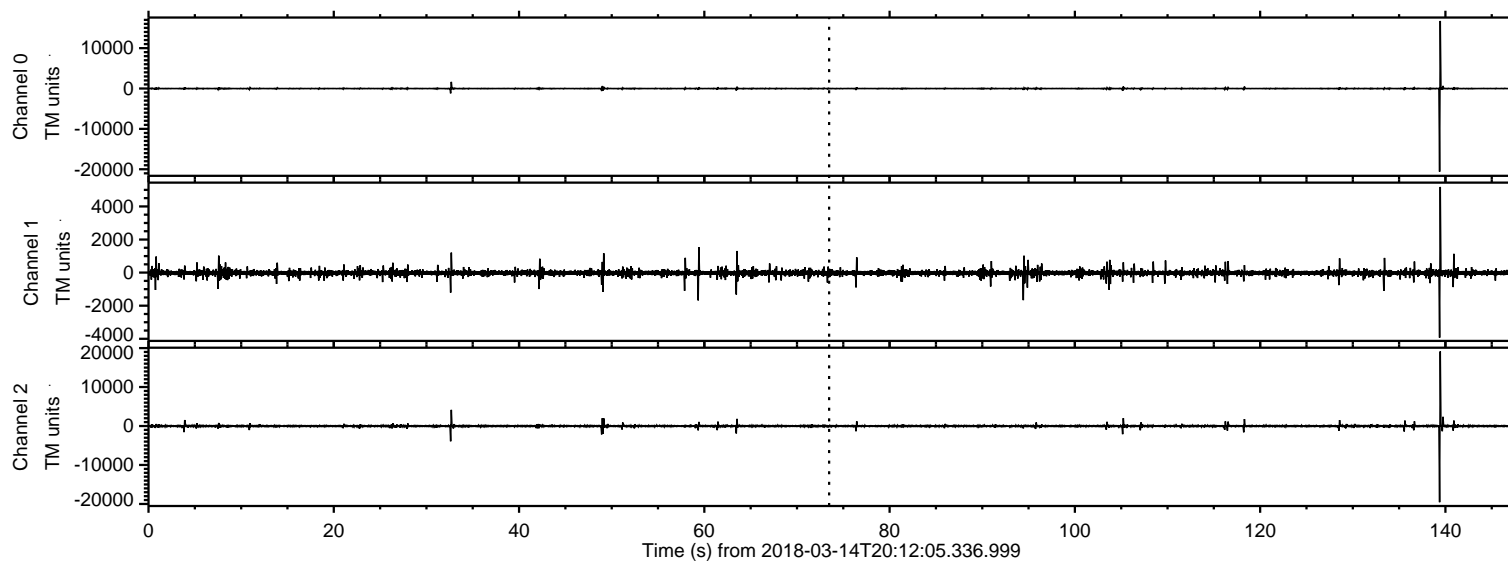


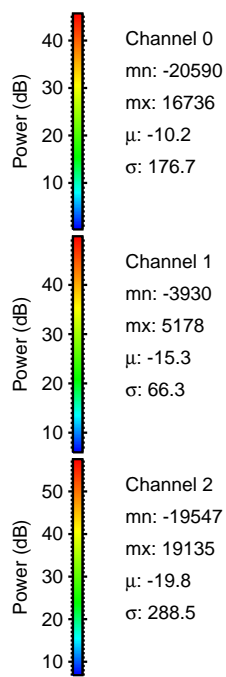
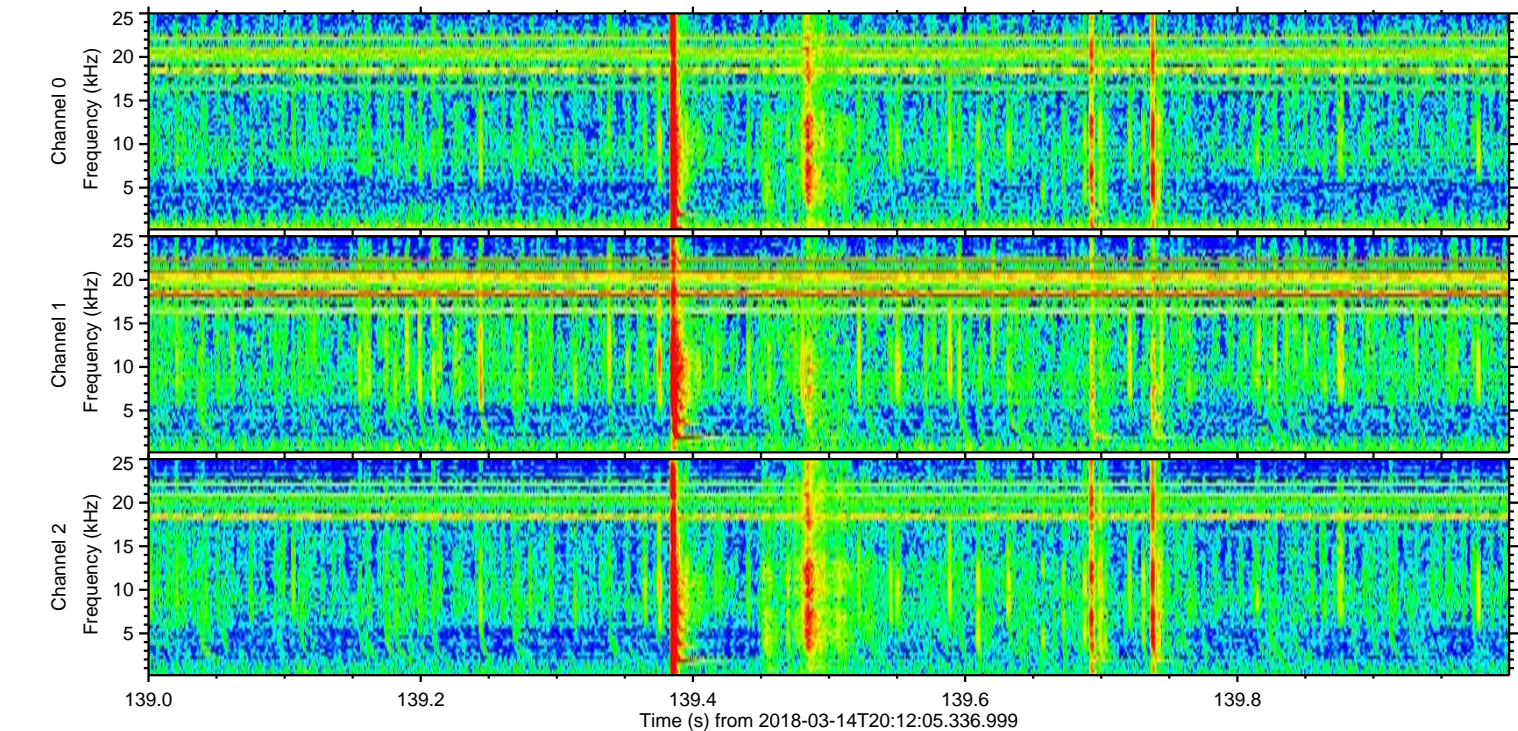
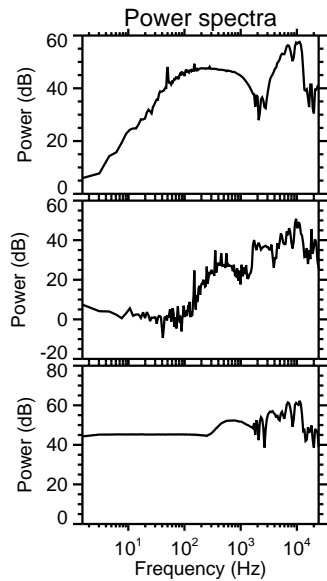
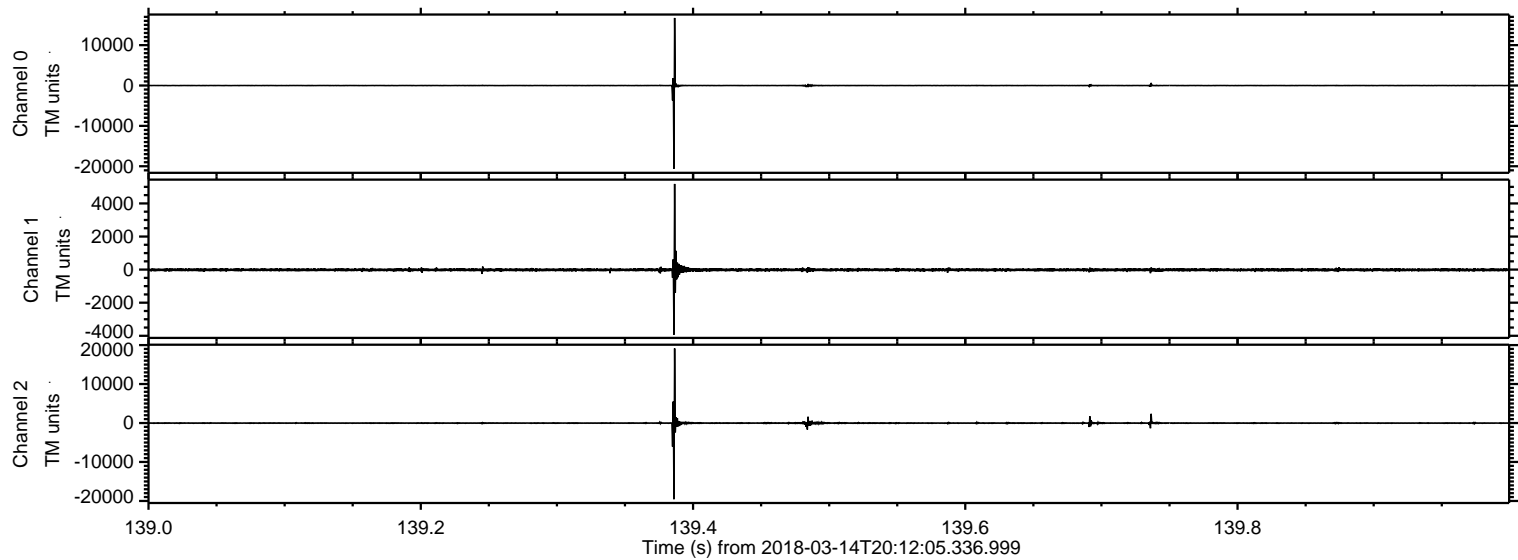
ELMAVAN 3D WAVEFORMS (Measured data sampled at 50 kHz) 50999 packets of 144 samples from 2018-03-14T20:12:05.336.999.

Processed Wed Mar 14 21:20:13 2018 by ELM ver.2012-10-06 from 001__elm20180314_201204__dat00.bin

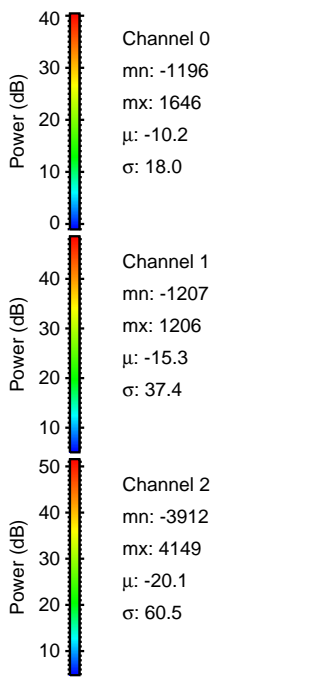
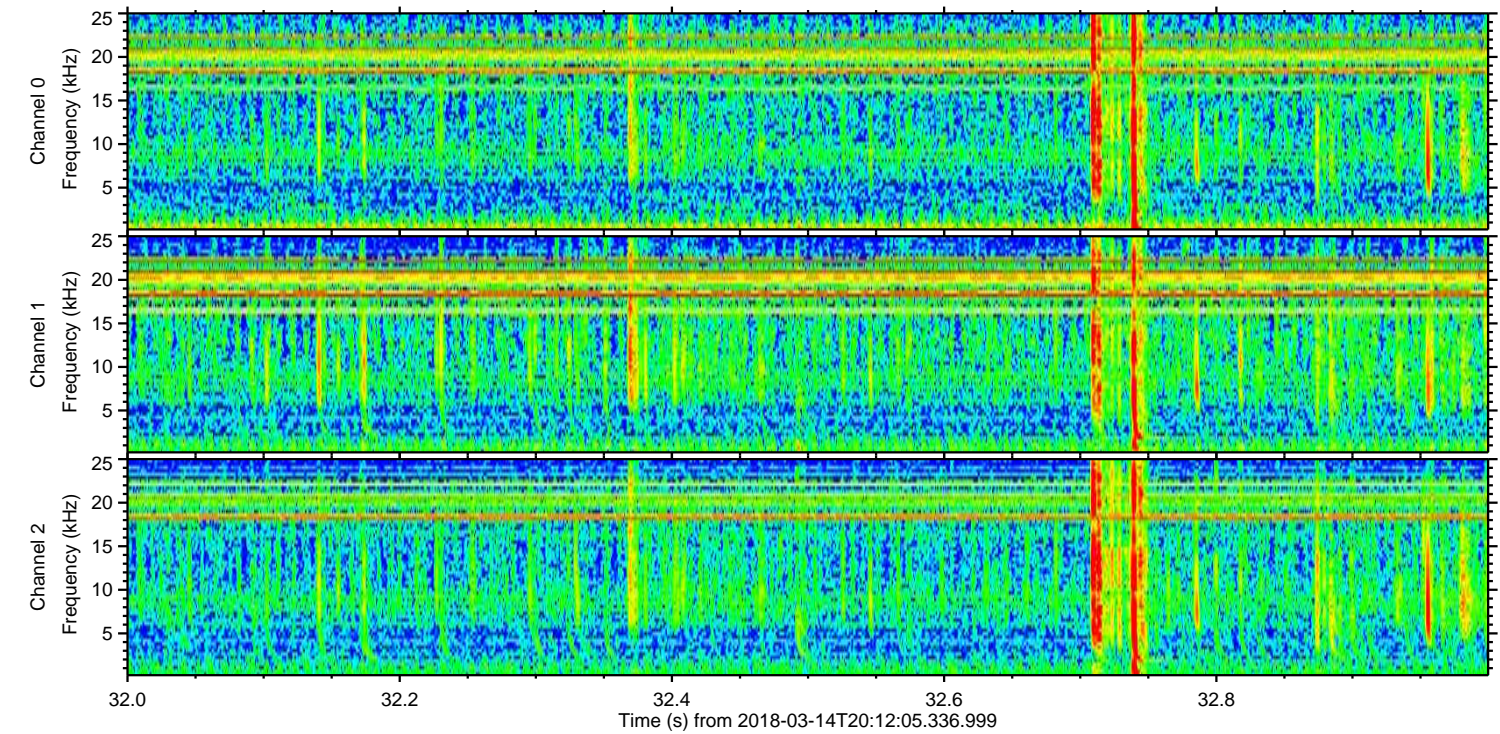
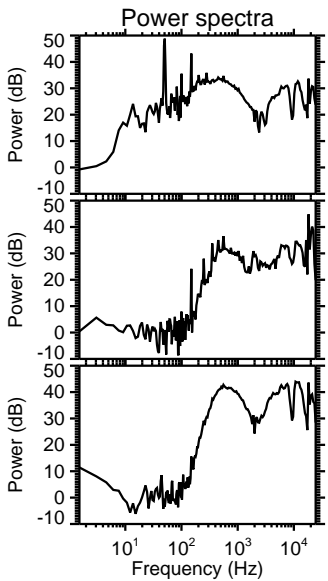
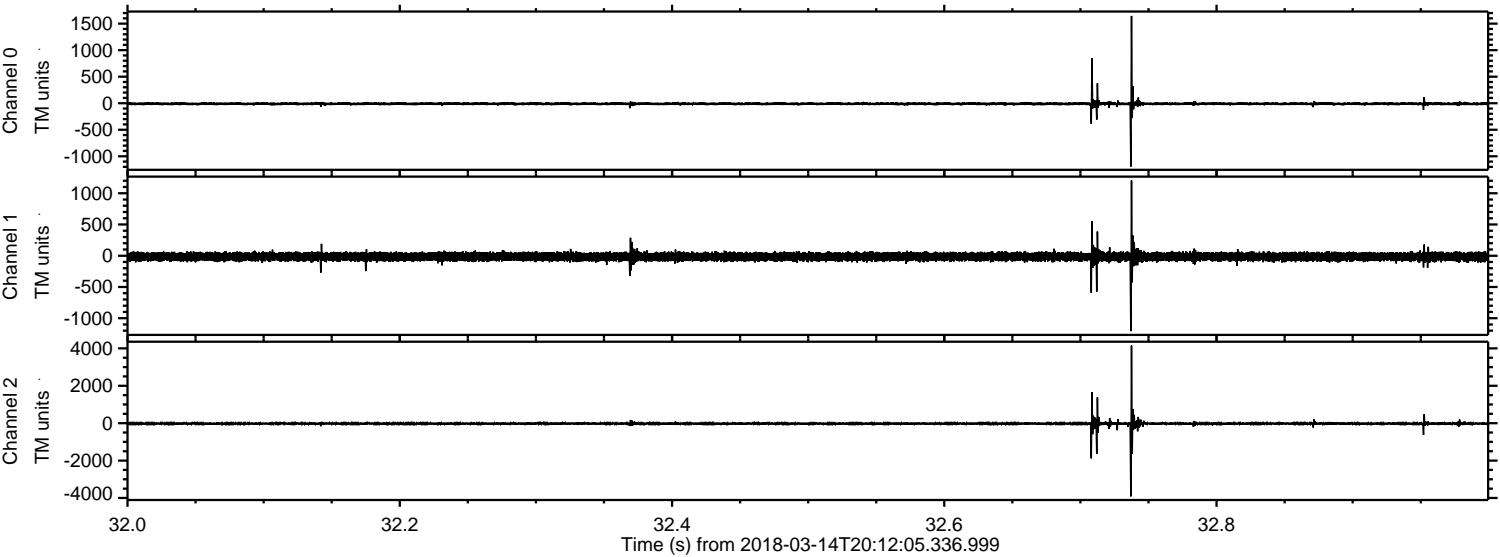


ELMAVAN 3D WAVEFORMS (Measured data sampled at 50 kHz) 50999 packets of 144 samples from 2018-03-14T20:12:05.336.999. Part 140/147

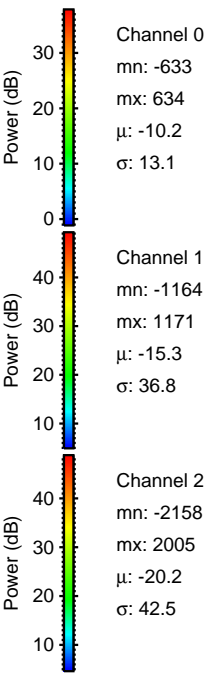
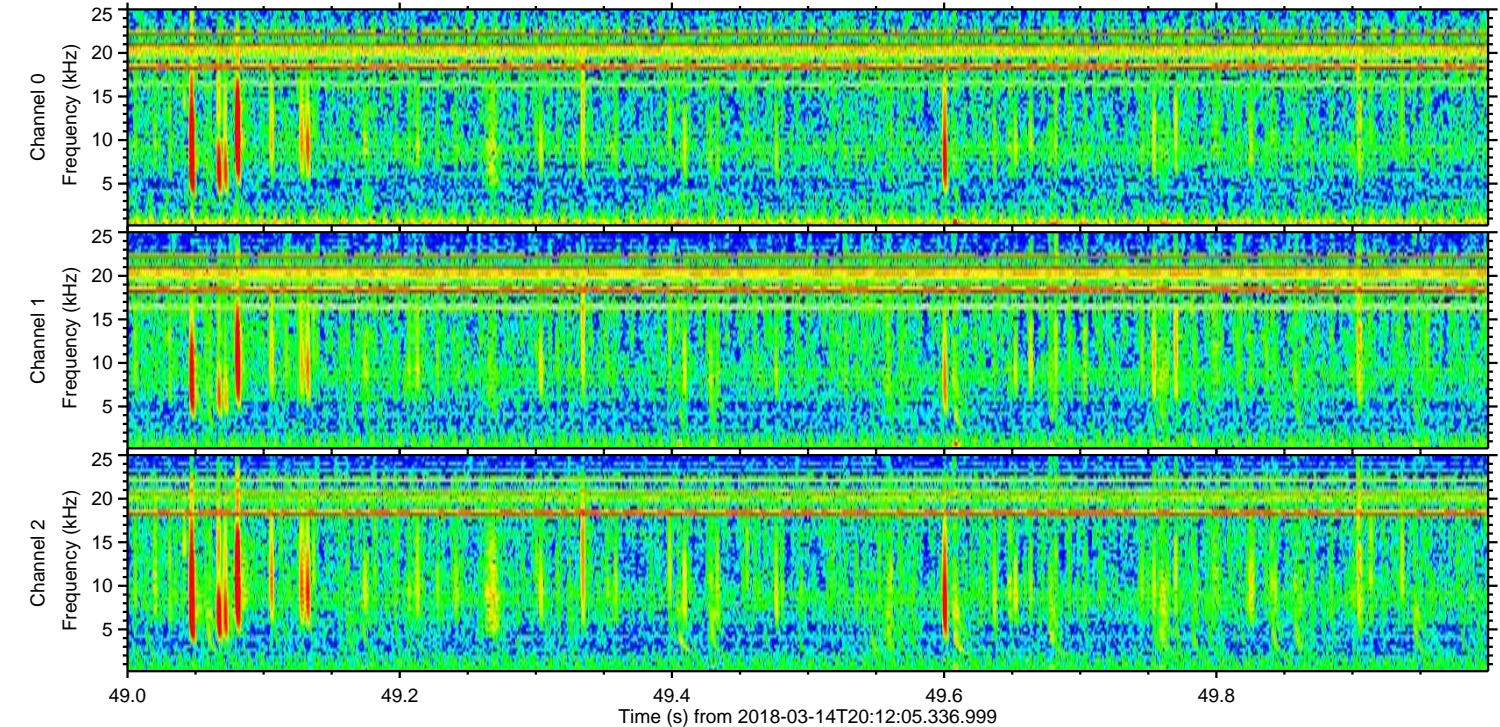
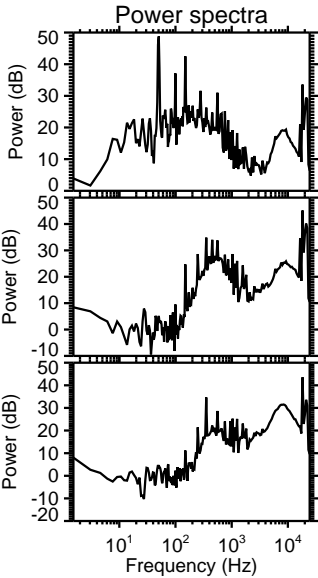
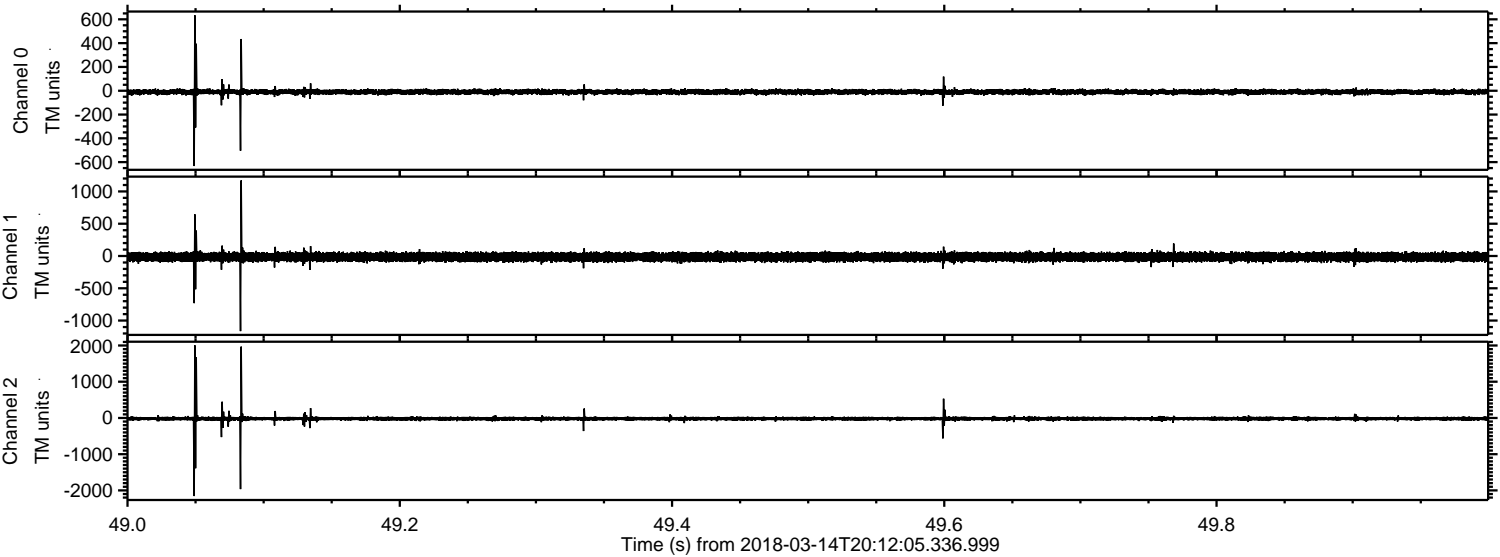
Processed Wed Mar 14 21:20:20 2018 by ELM ver.2012-10-06 from 001__elm20180314_201204__dat00.bin



Processed Wed Mar 14 21:20:21 2018 by ELM ver.2012-10-06 from 001__elm20180314_201204__dat00.bin

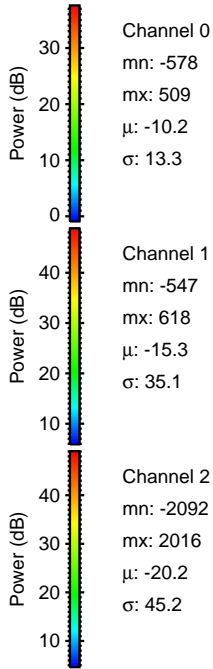
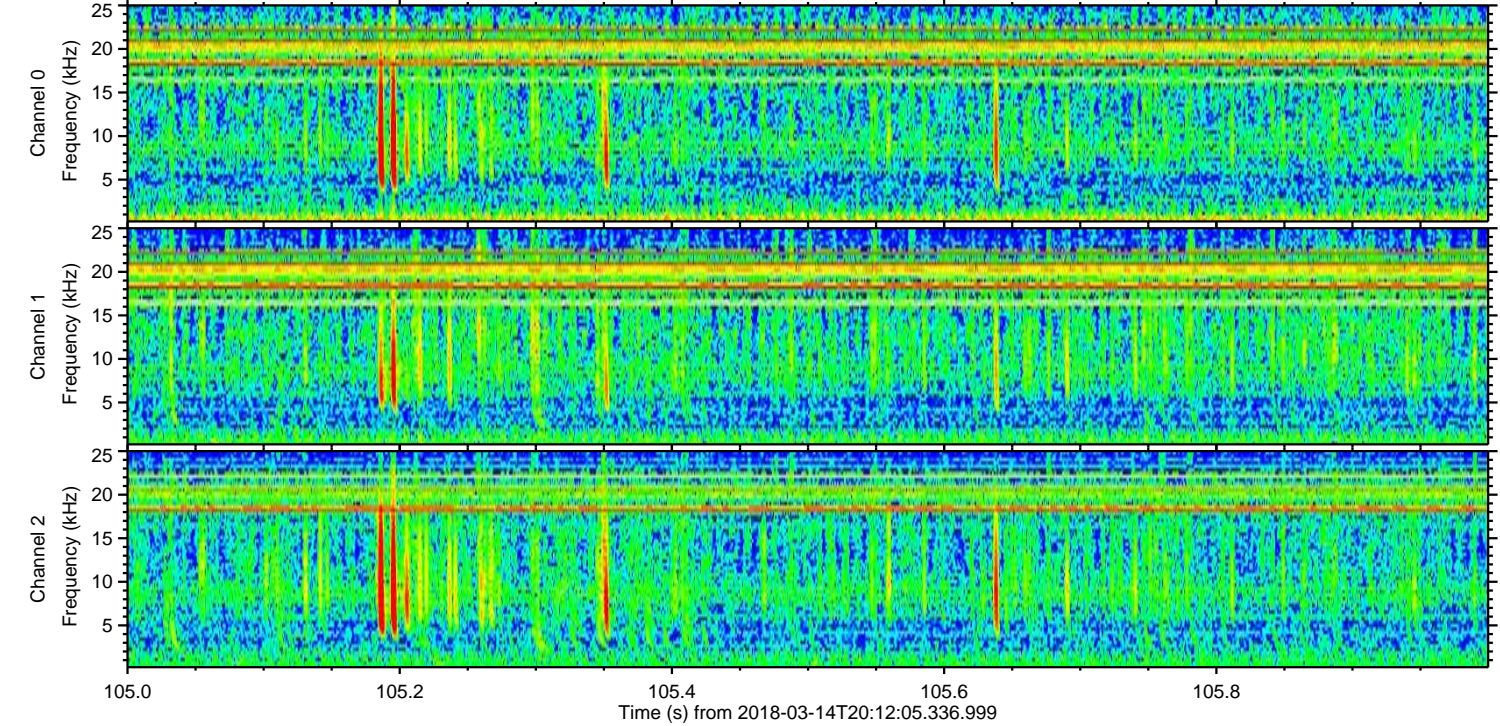
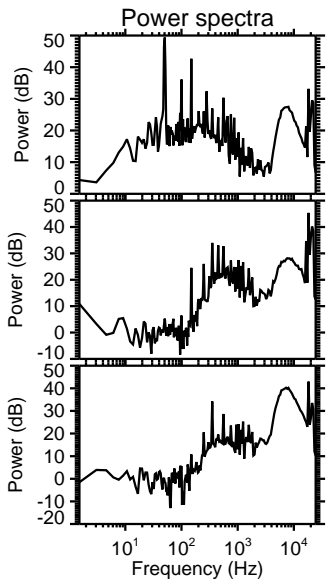
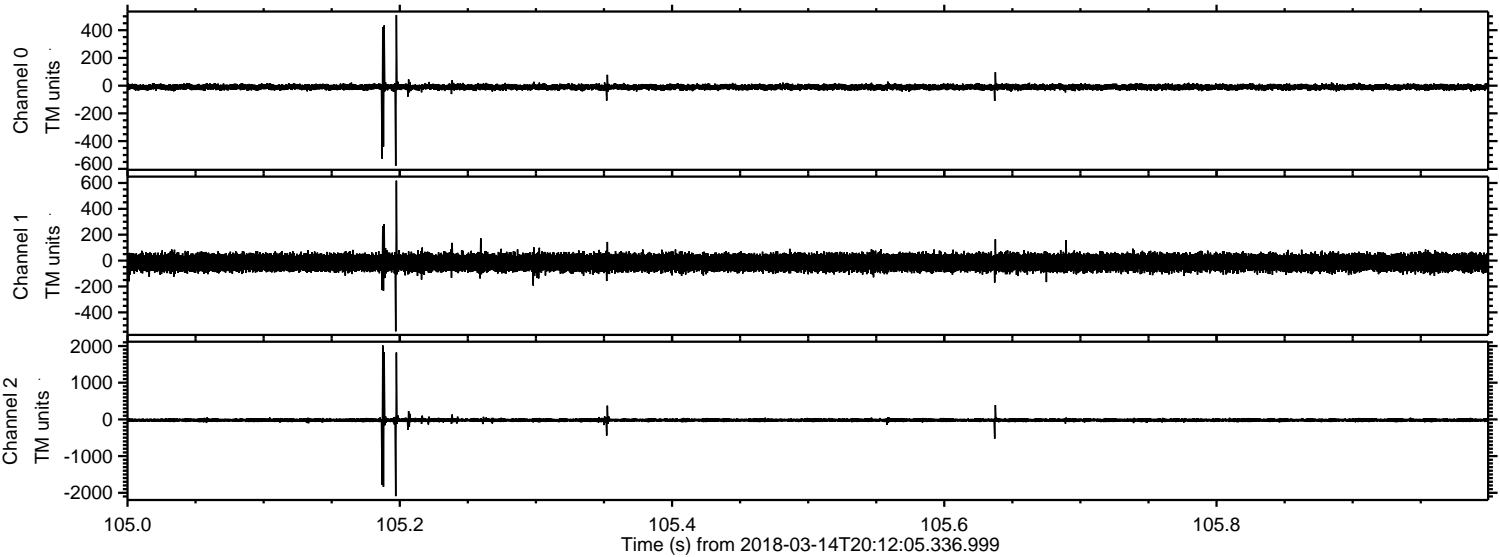


Processed Wed Mar 14 21:20:22 2018 by ELM ver.2012-10-06 from 001__elm20180314_201204__dat00.bin

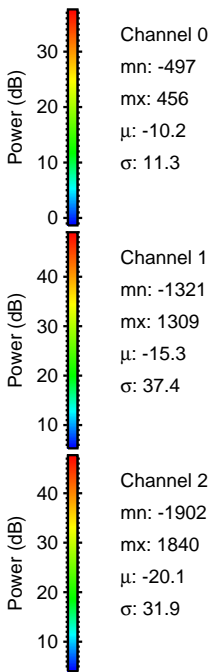
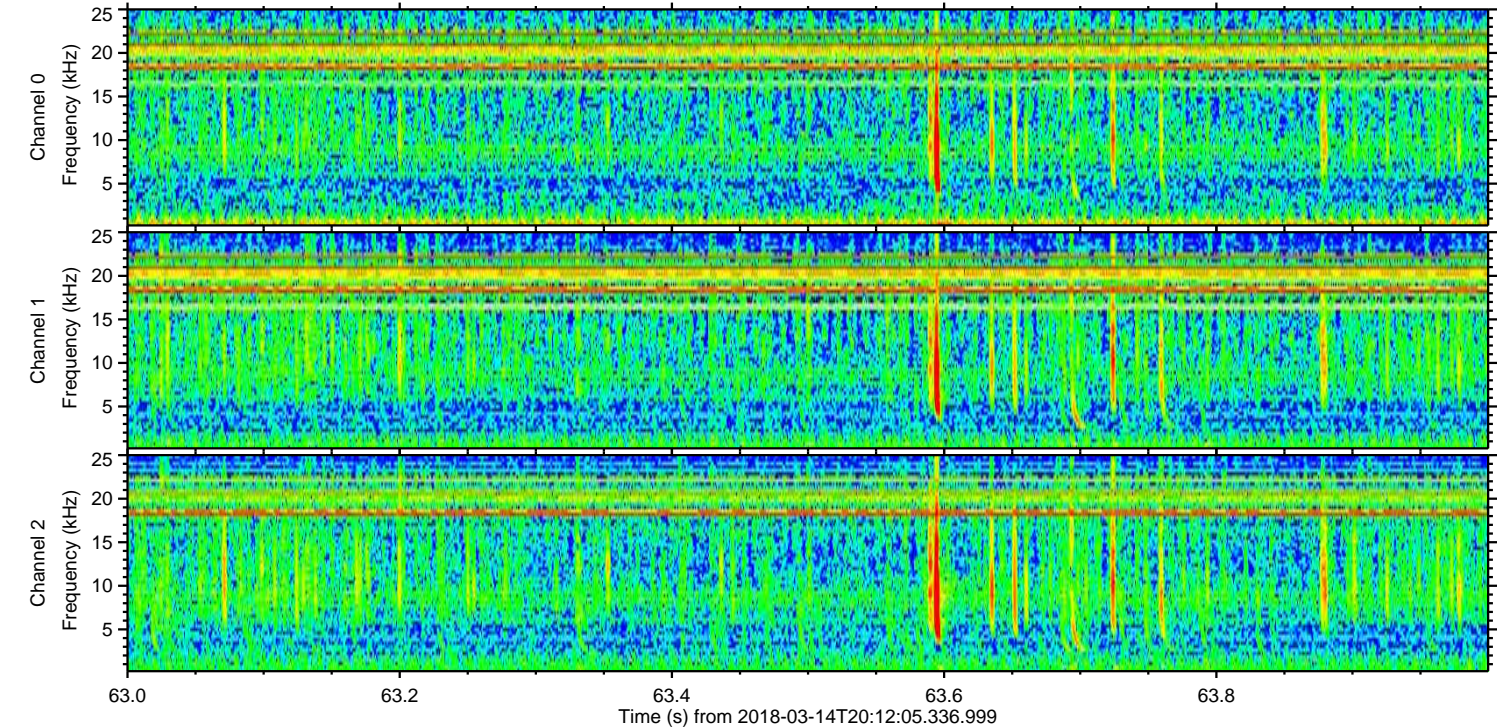
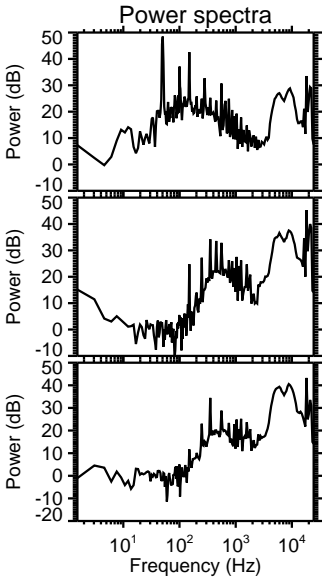
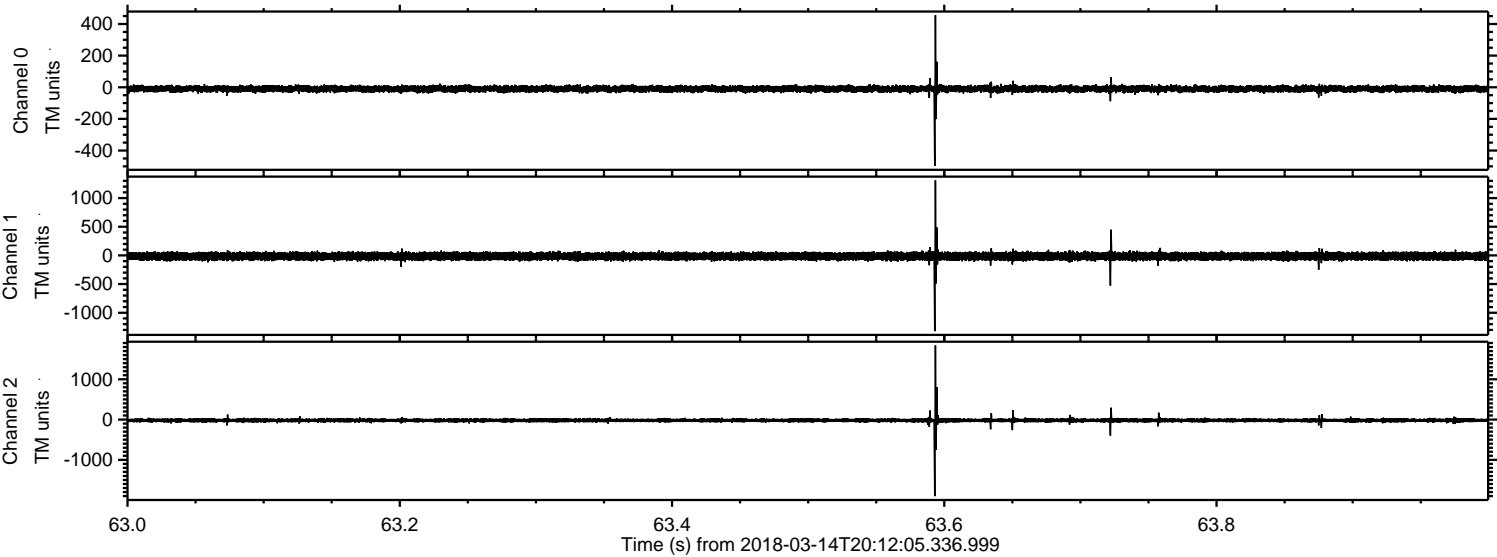


ELMAVAN 3D WAVEFORMS (Measured data sampled at 50 kHz) 50999 packets of 144 samples from 2018-03-14T20:12:05.336.999. Part 106/147

Processed Wed Mar 14 21:20:23 2018 by ELM ver.2012-10-06 from 001__elm20180314_201204__dat00.bin

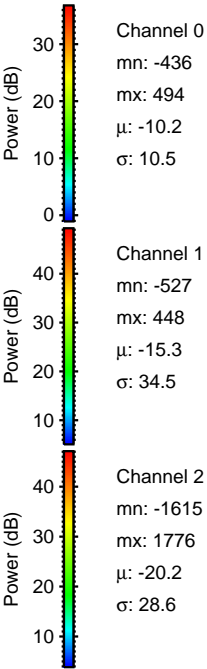
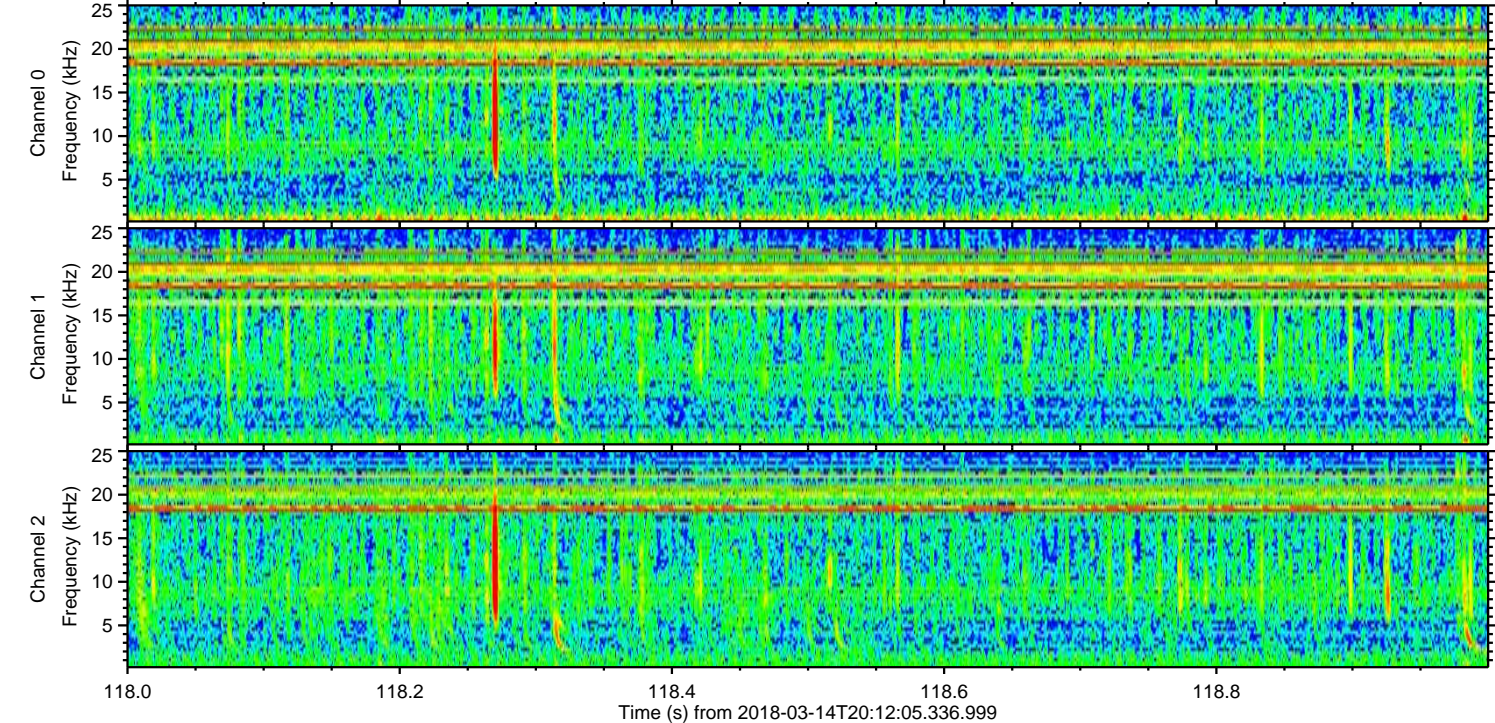
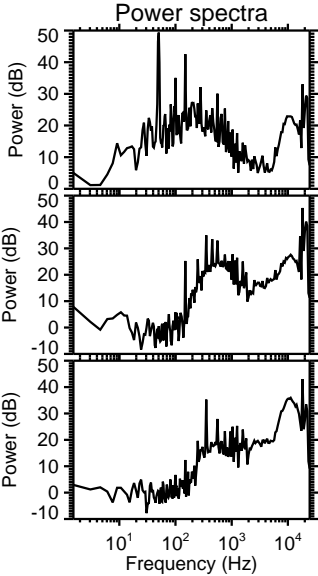
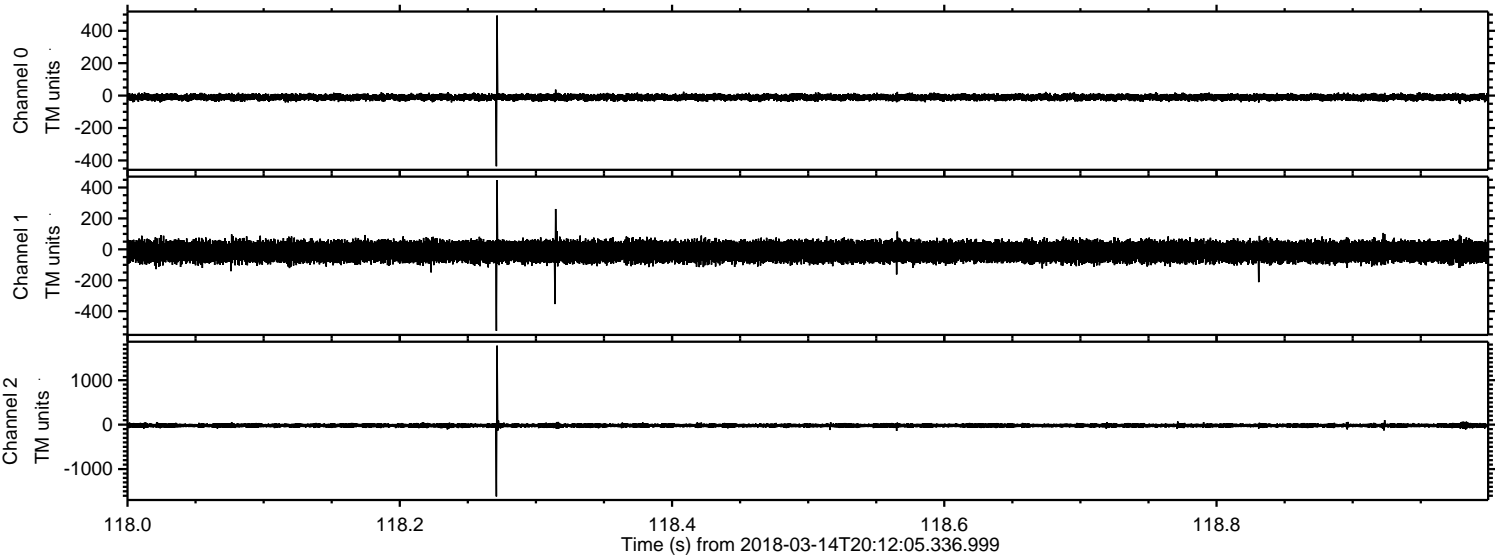


Processed Wed Mar 14 21:20:24 2018 by ELM ver.2012-10-06 from 001__elm20180314_201204__dat00.bin

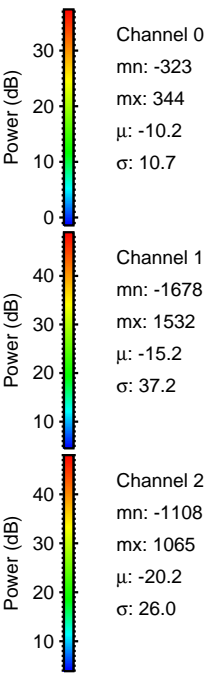
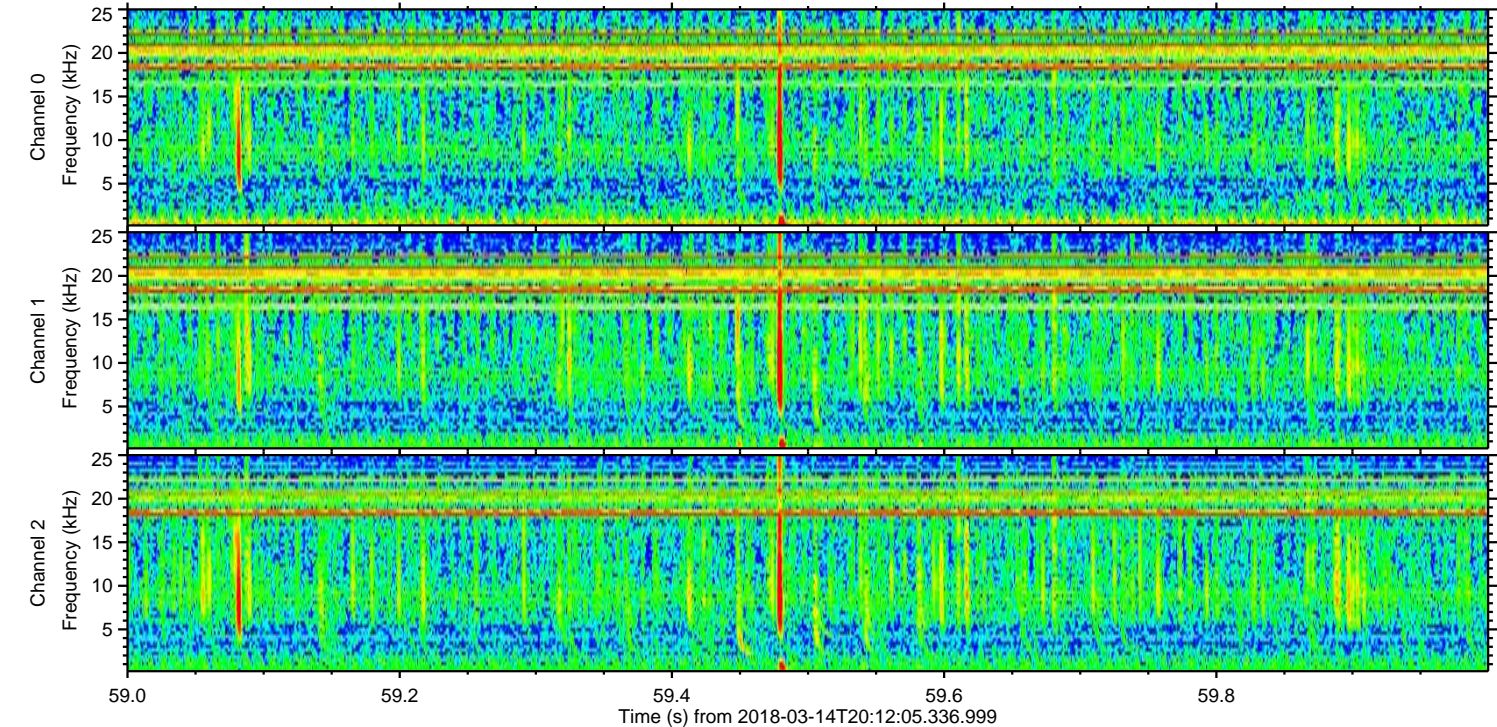
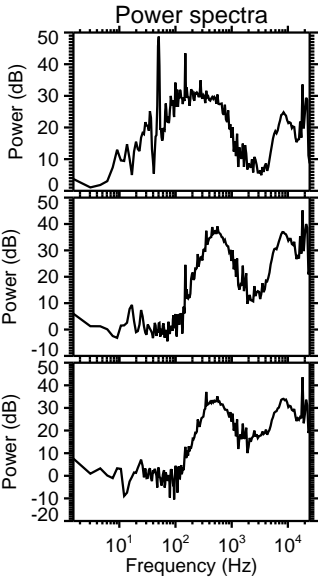
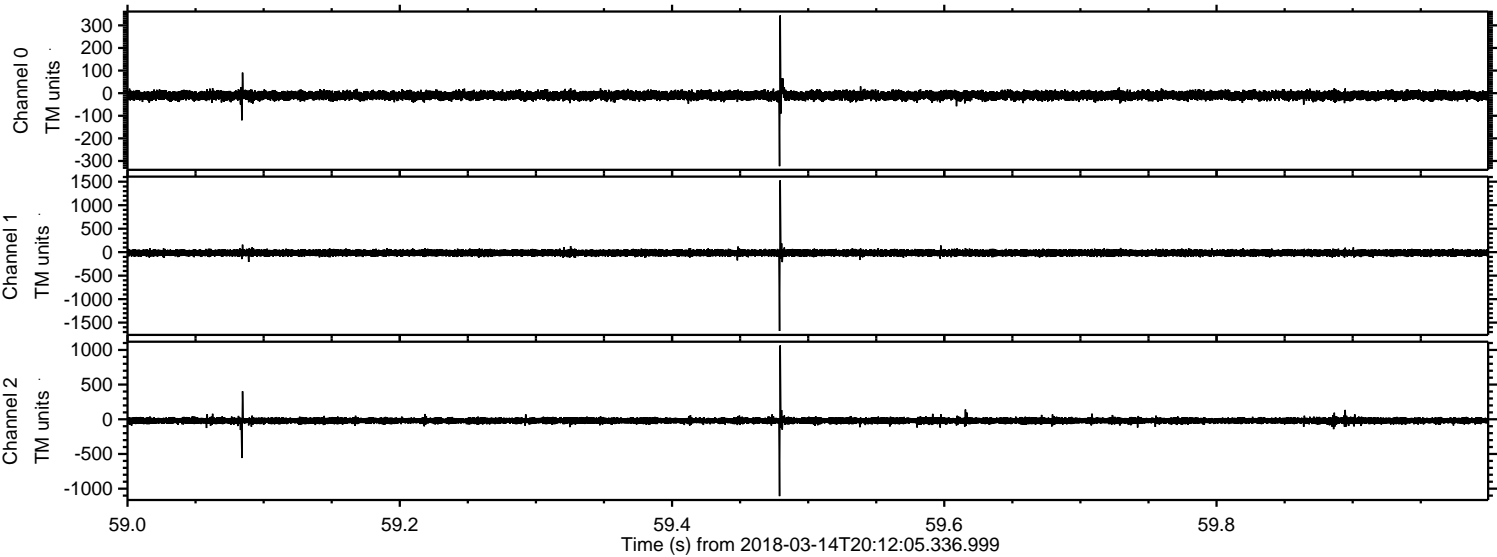


ELMAVAN 3D WAVEFORMS (Measured data sampled at 50 kHz) 50999 packets of 144 samples from 2018-03-14T20:12:05.336.999. Part 119/147

Processed Wed Mar 14 21:20:24 2018 by ELM ver.2012-10-06 from 001__elm20180314_201204__dat00.bin



Processed Wed Mar 14 21:20:25 2018 by ELM ver.2012-10-06 from 001__elm20180314_201204__dat00.bin

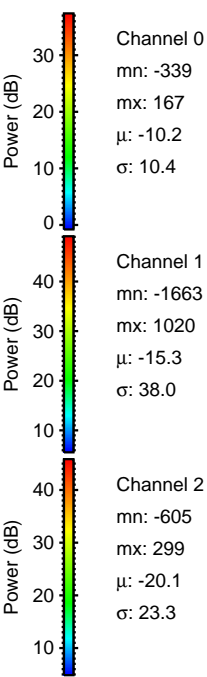
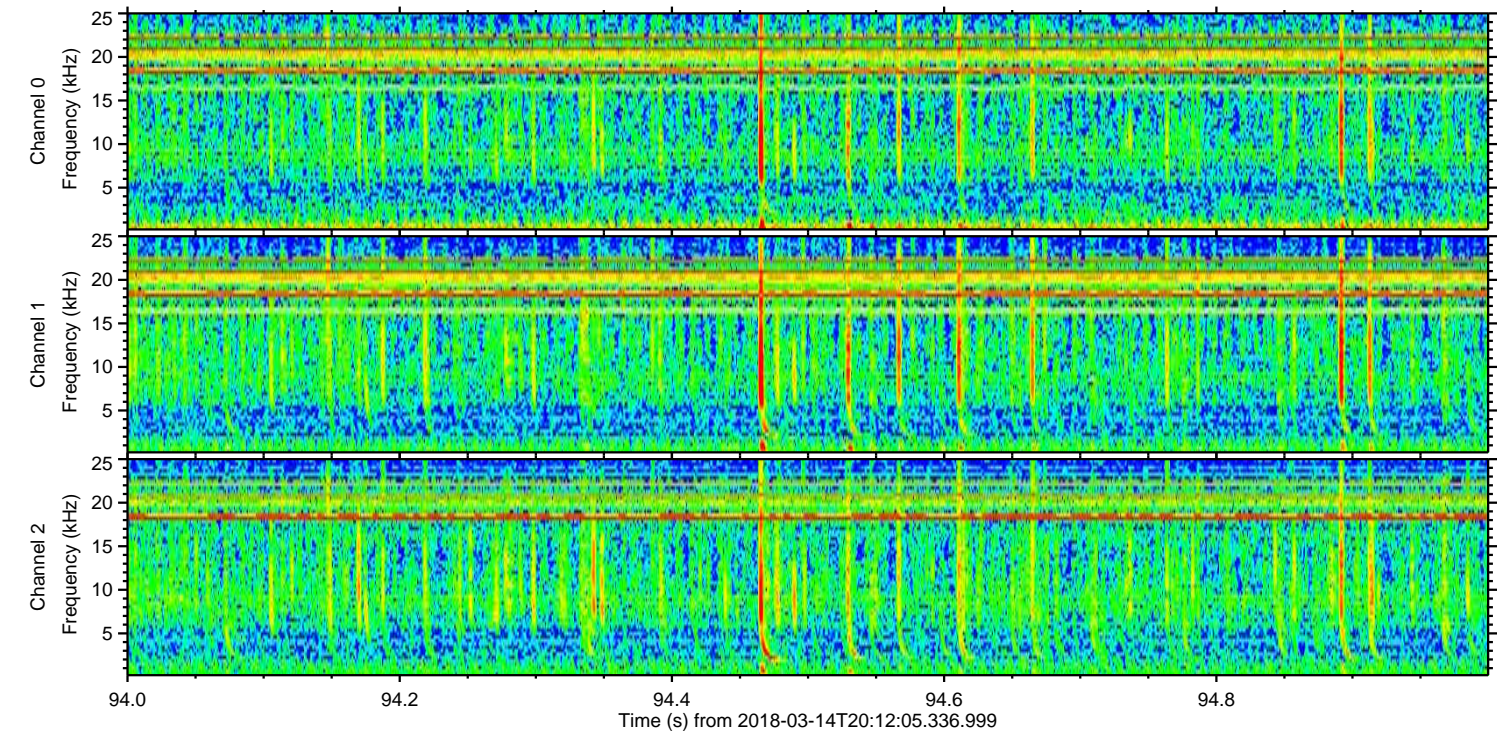
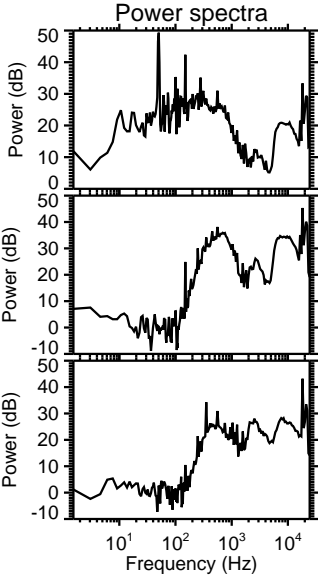
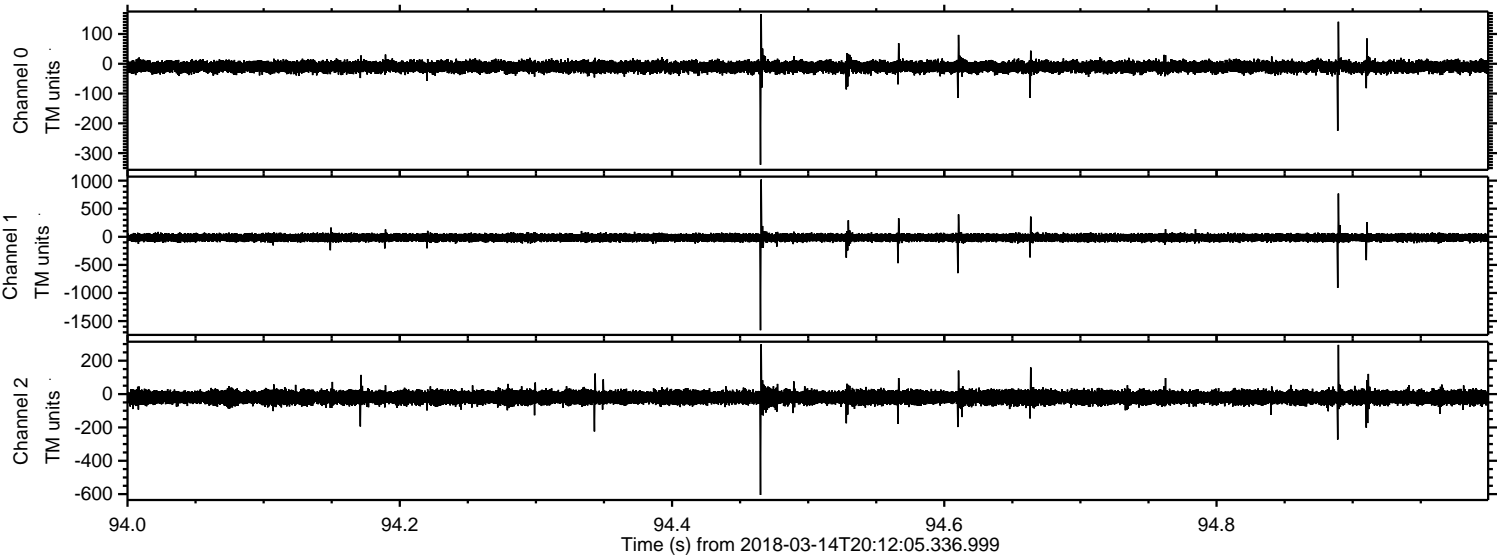


Channel 0
mn: -323
mx: 344
 μ : -10.2
 σ : 10.7

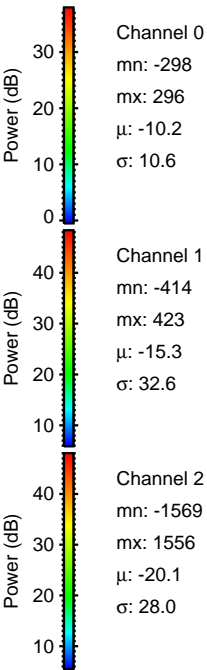
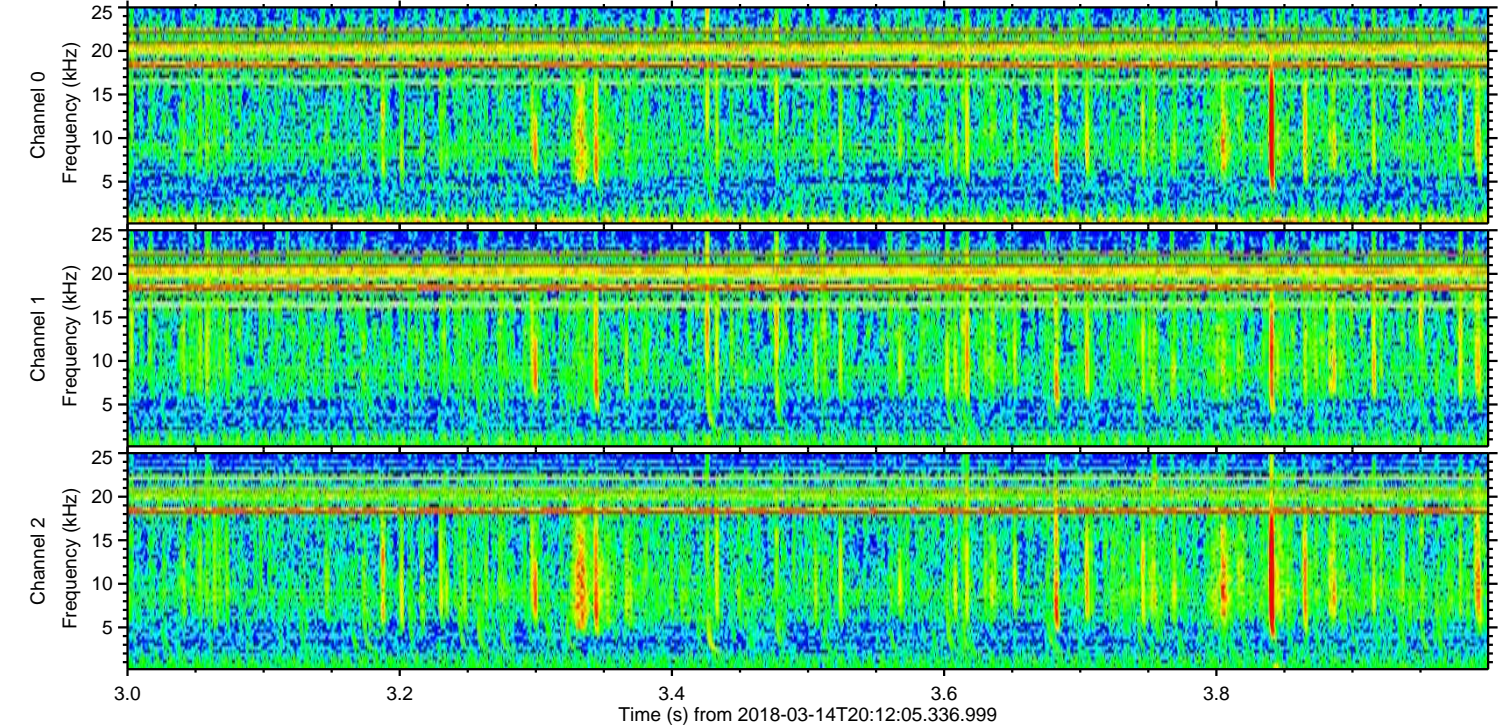
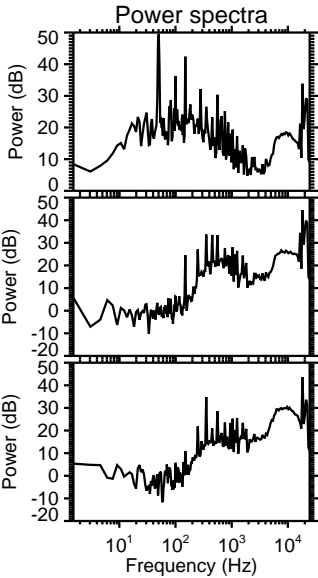
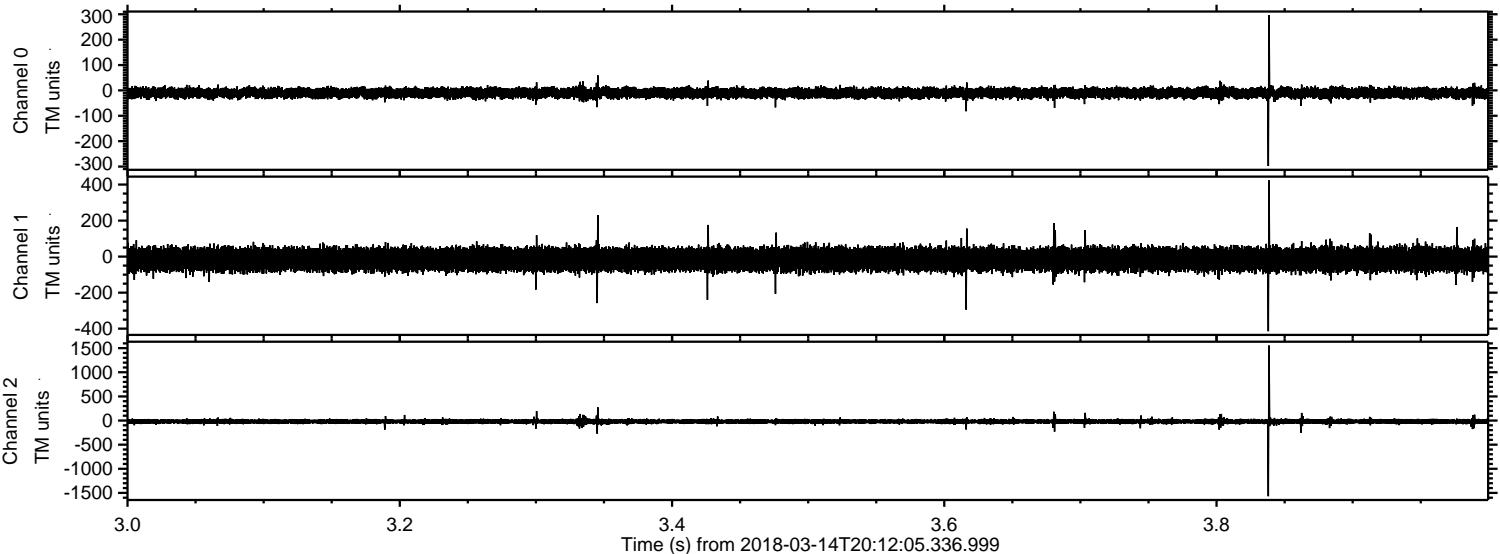
Channel 1
mn: -1678
mx: 1532
 μ : -15.2
 σ : 37.2

Channel 2
mn: -1108
mx: 1065
 μ : -20.2
 σ : 26.0

Processed Wed Mar 14 21:20:26 2018 by ELM ver.2012-10-06 from 001__elm20180314_201204__dat00.bin



Processed Wed Mar 14 21:20:27 2018 by ELM ver.2012-10-06 from 001__elm20180314_201204__dat00.bin



Processed Wed Mar 14 21:20:27 2018 by ELM ver.2012-10-06 from 001__elm20180314_201204__dat00.bin

