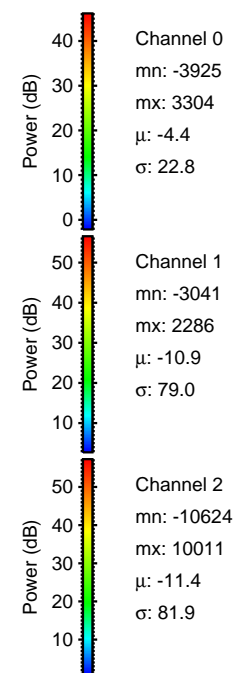
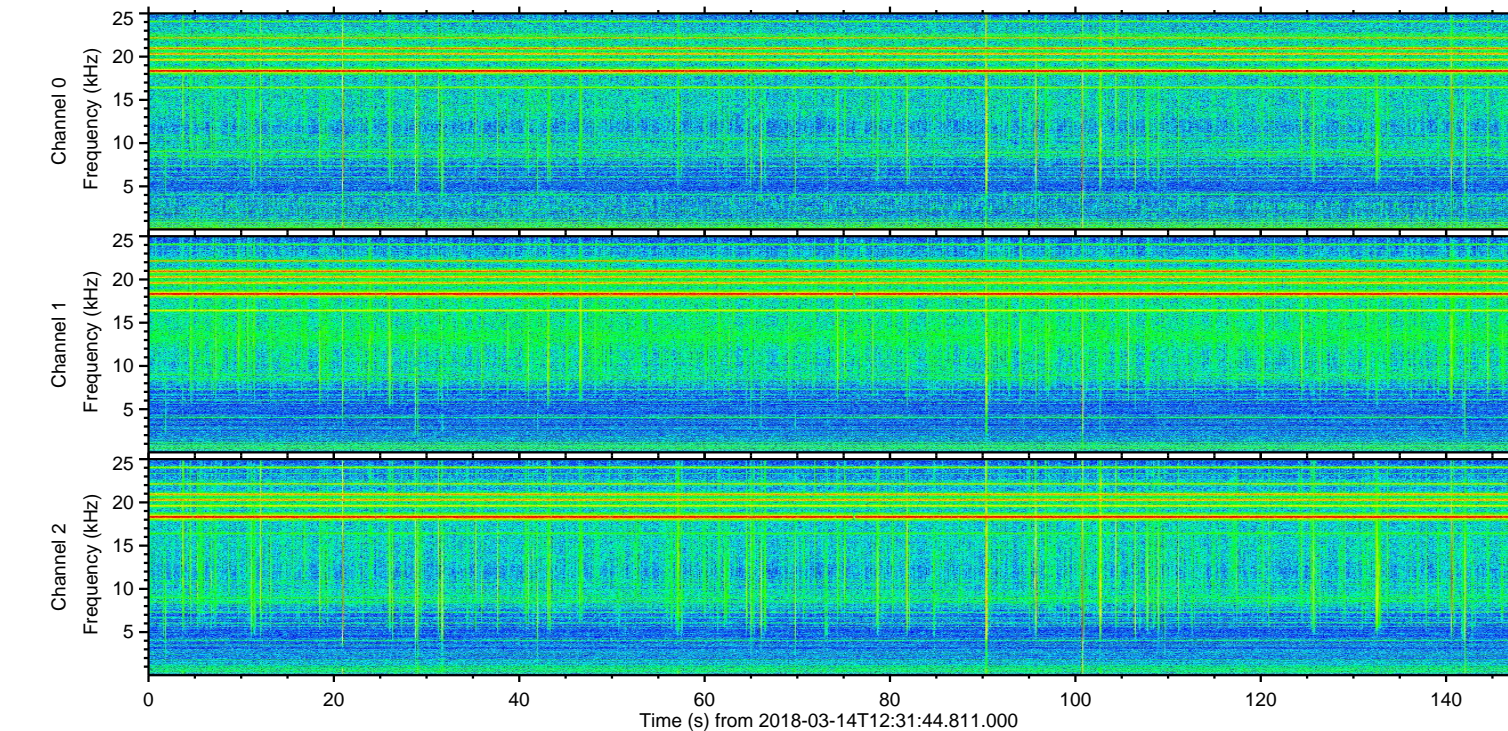
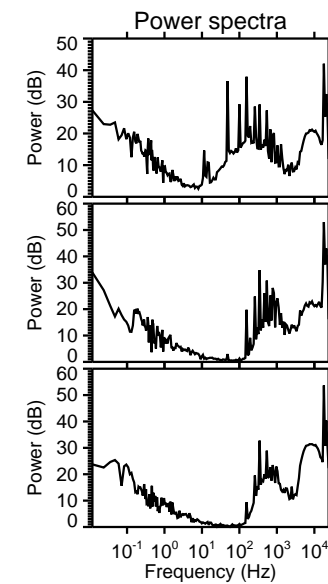
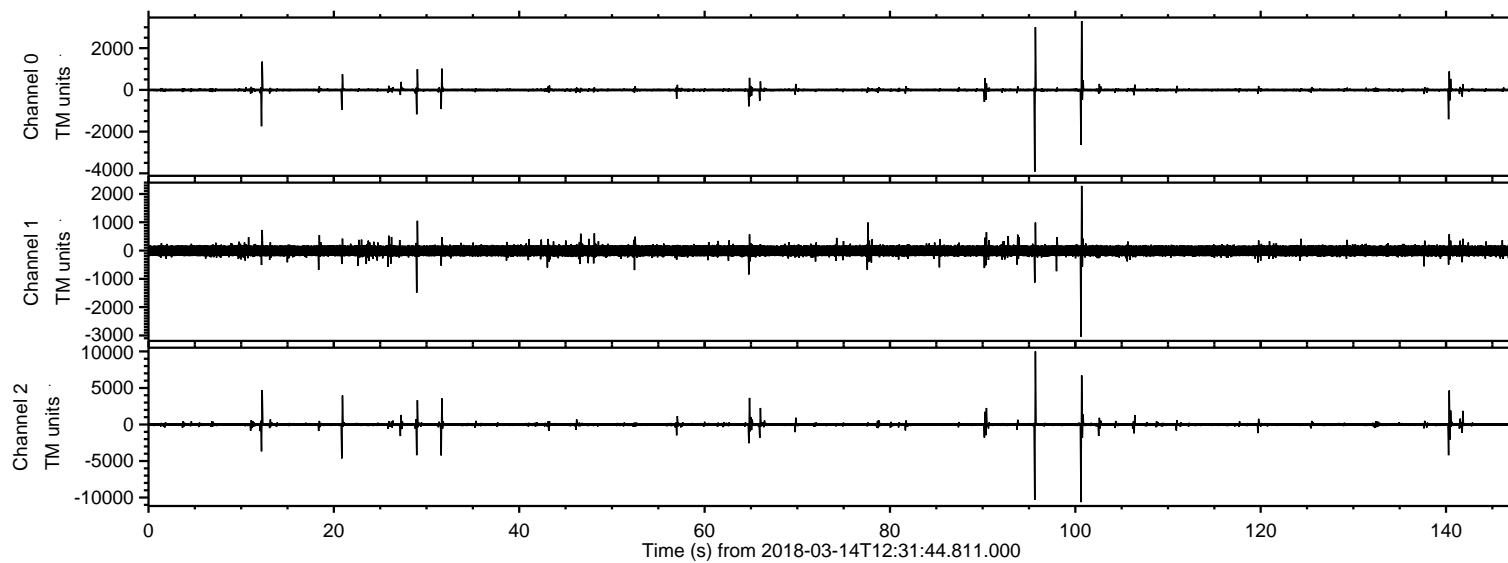


# ELMAVAN 3D WAVEFORMS (Measured data sampled at 50 kHz) 51000 packets of 144 samples from 2018-03-14T12:31:44.811.000.

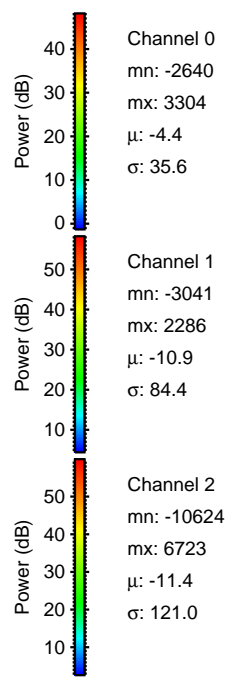
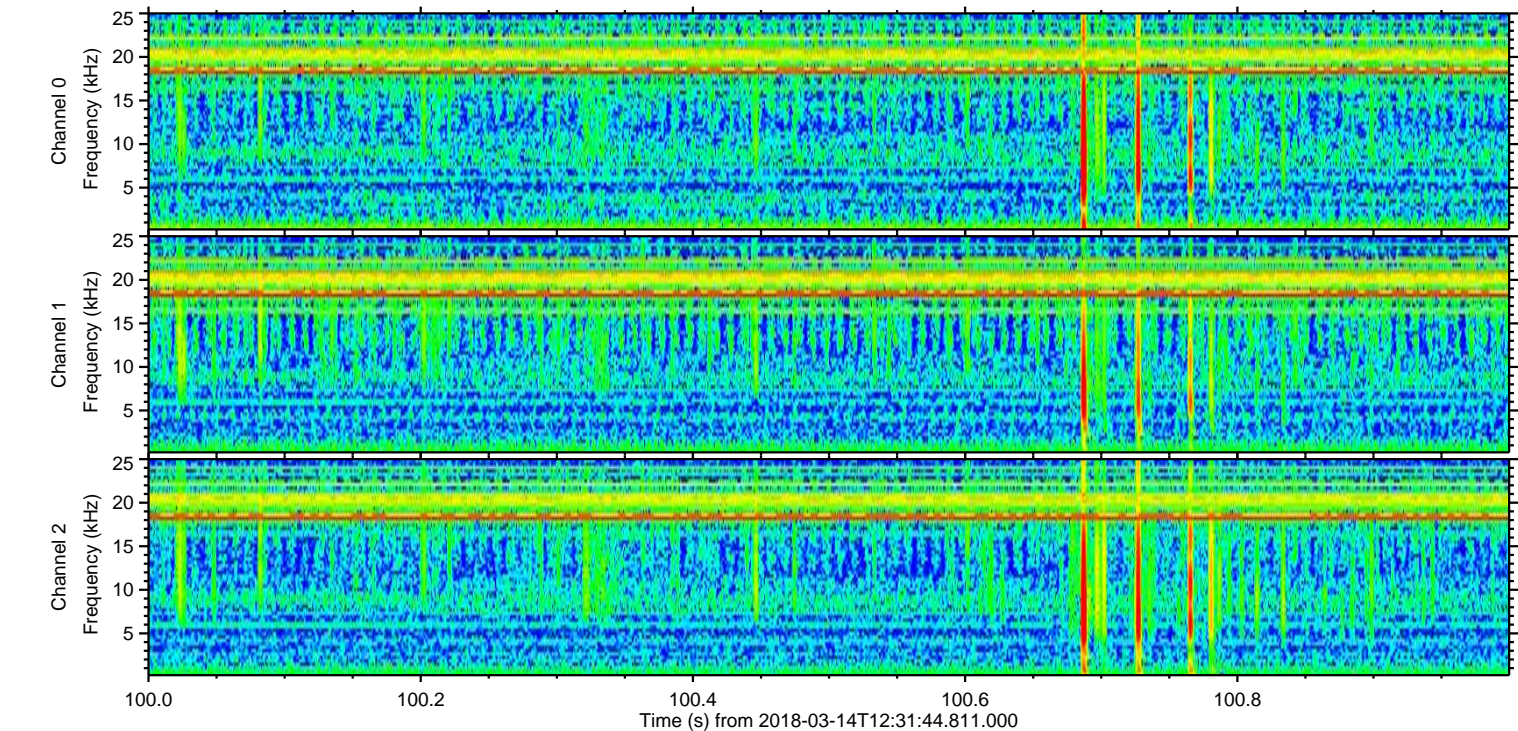
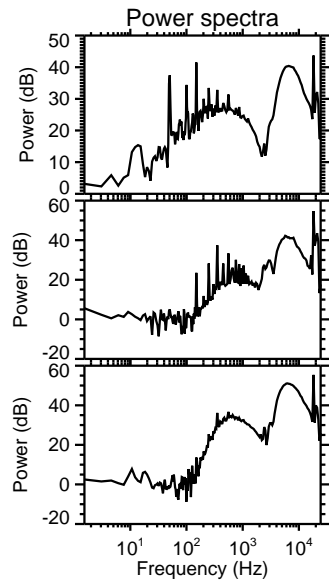
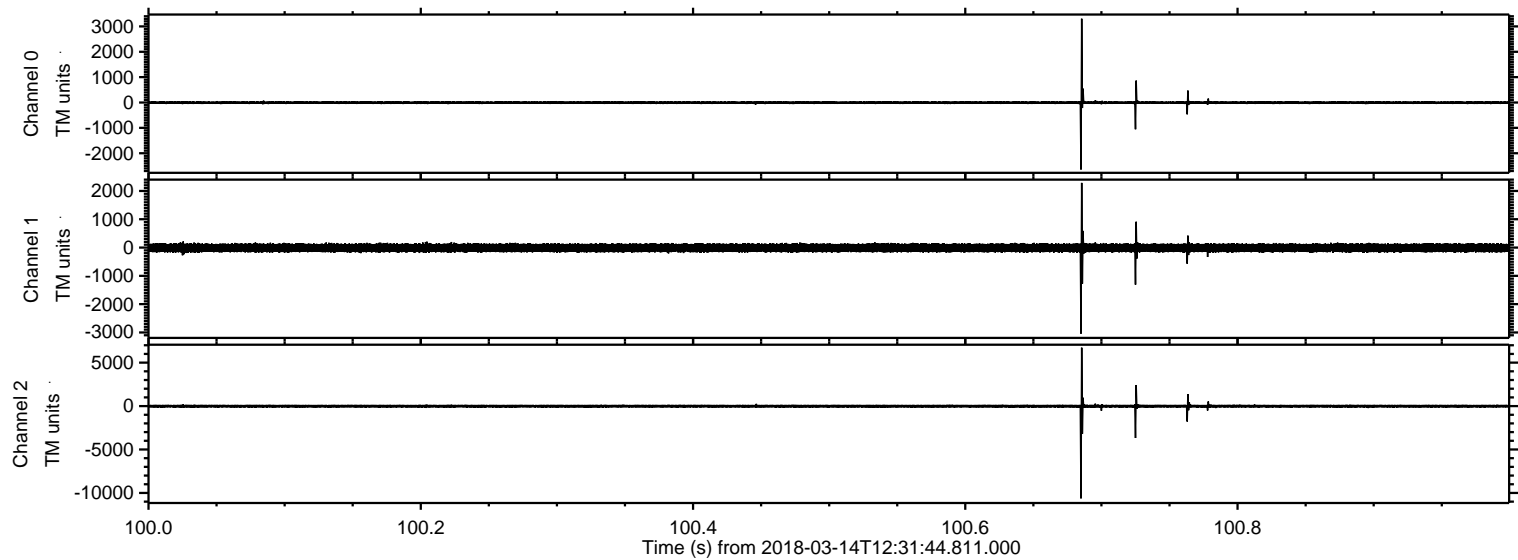
Processed Wed Mar 14 13:39:48 2018 by ELM ver.2012-10-06 from 001\_\_elm20180314\_123143\_\_dat00.bin





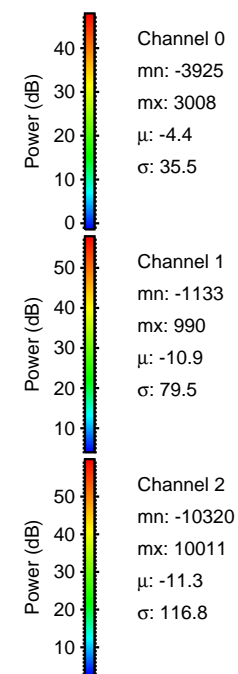
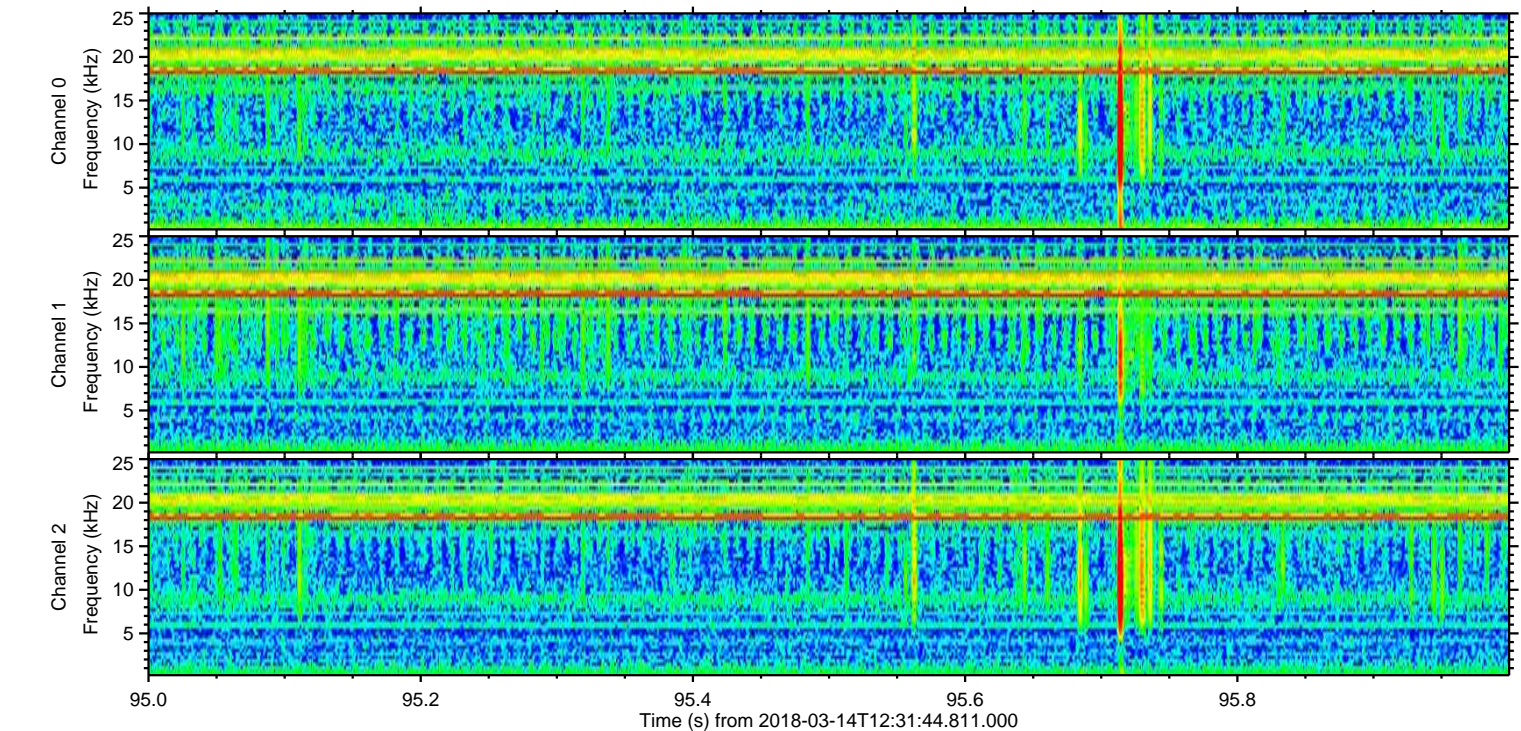
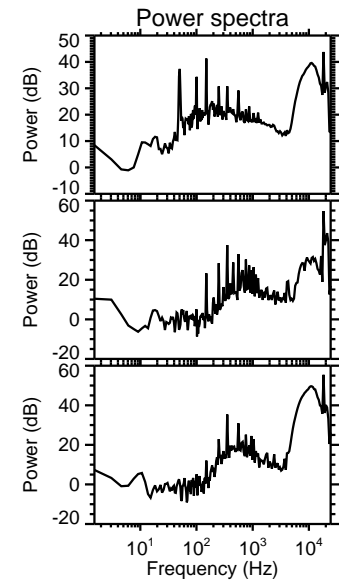
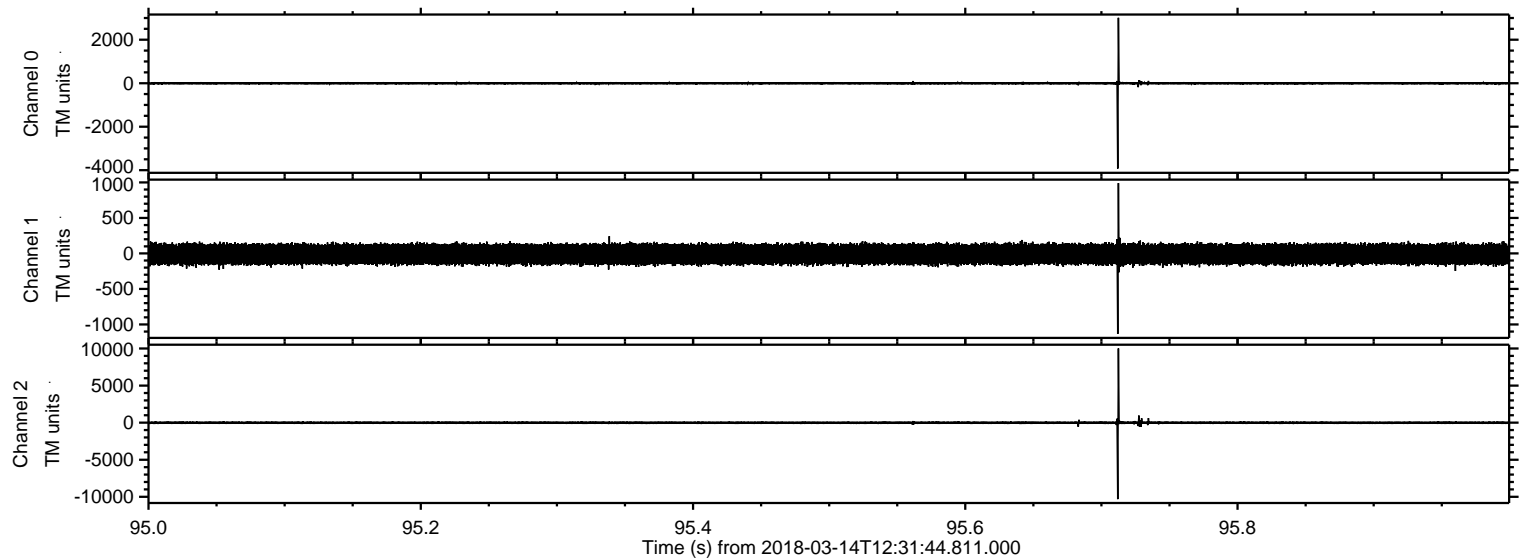
ELMAVAN 3D WAVEFORMS (Measured data sampled at 50 kHz) 51000 packets of 144 samples from 2018-03-14T12:31:44.811.000. Part 101/147

Processed Wed Mar 14 13:39:58 2018 by ELM ver.2012-10-06 from 001\_\_elm20180314\_123143\_\_dat00.bin



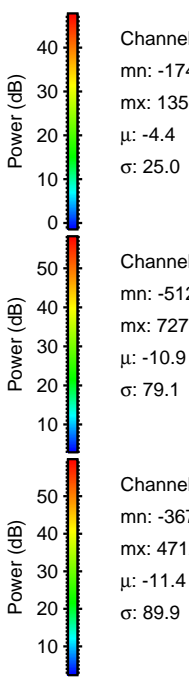
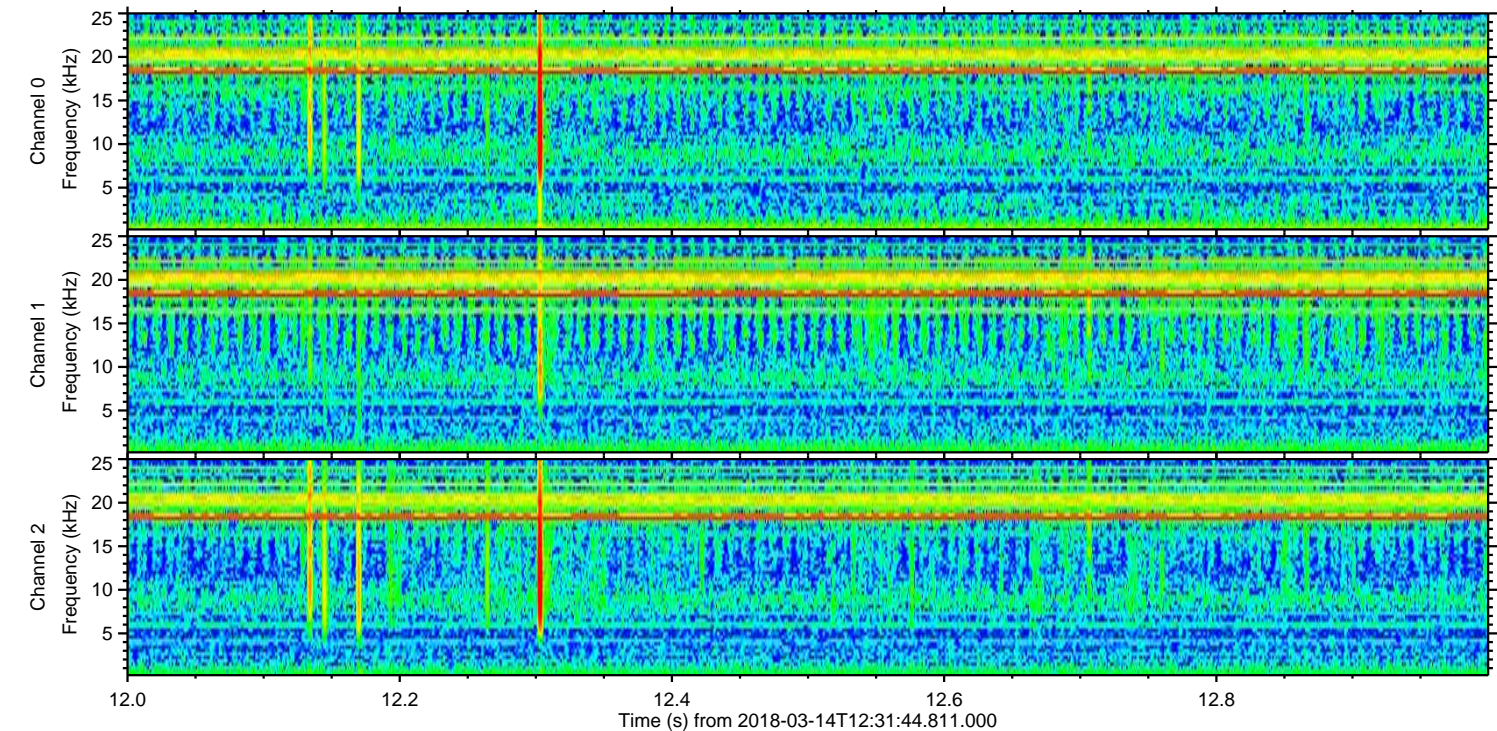
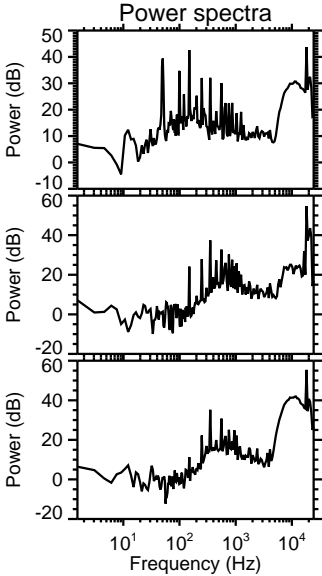
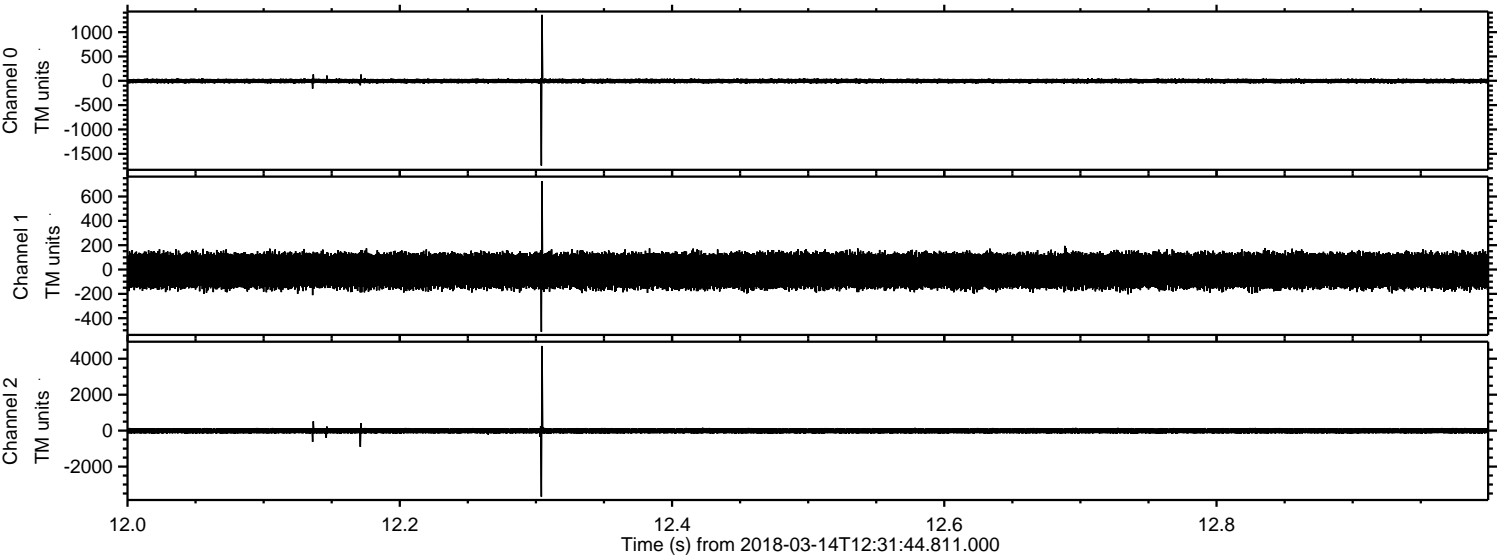


Processed Wed Mar 14 13:39:59 2018 by ELM ver.2012-10-06 from 001\_\_elm20180314\_123143\_\_dat00.bin





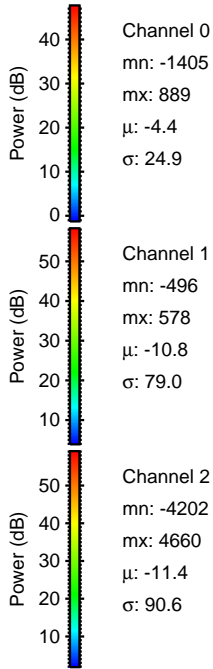
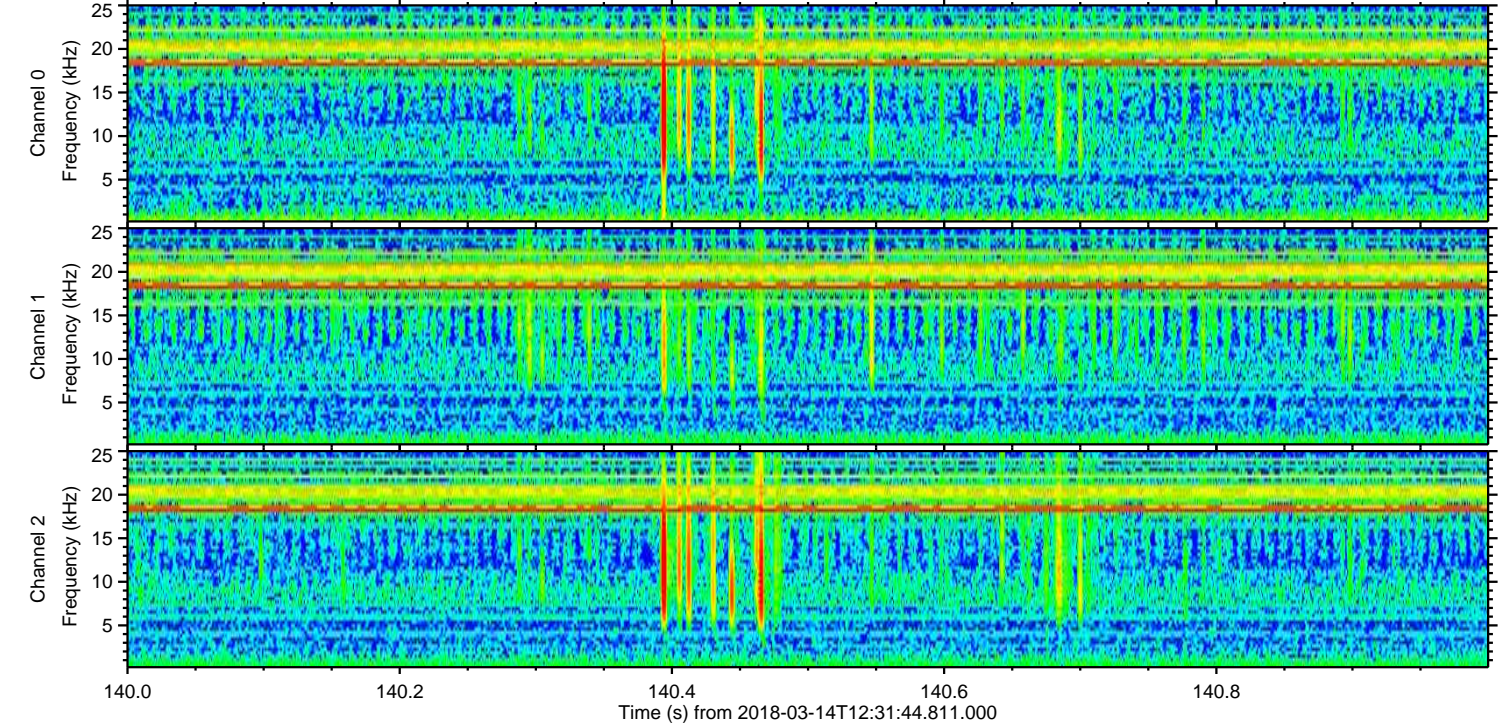
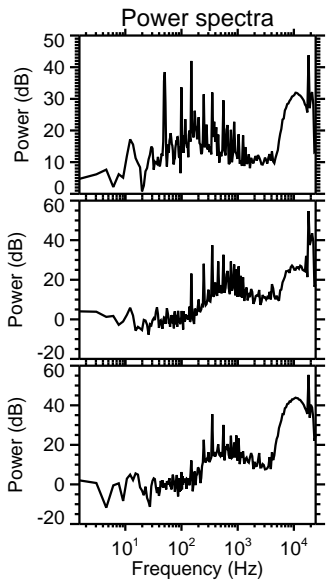
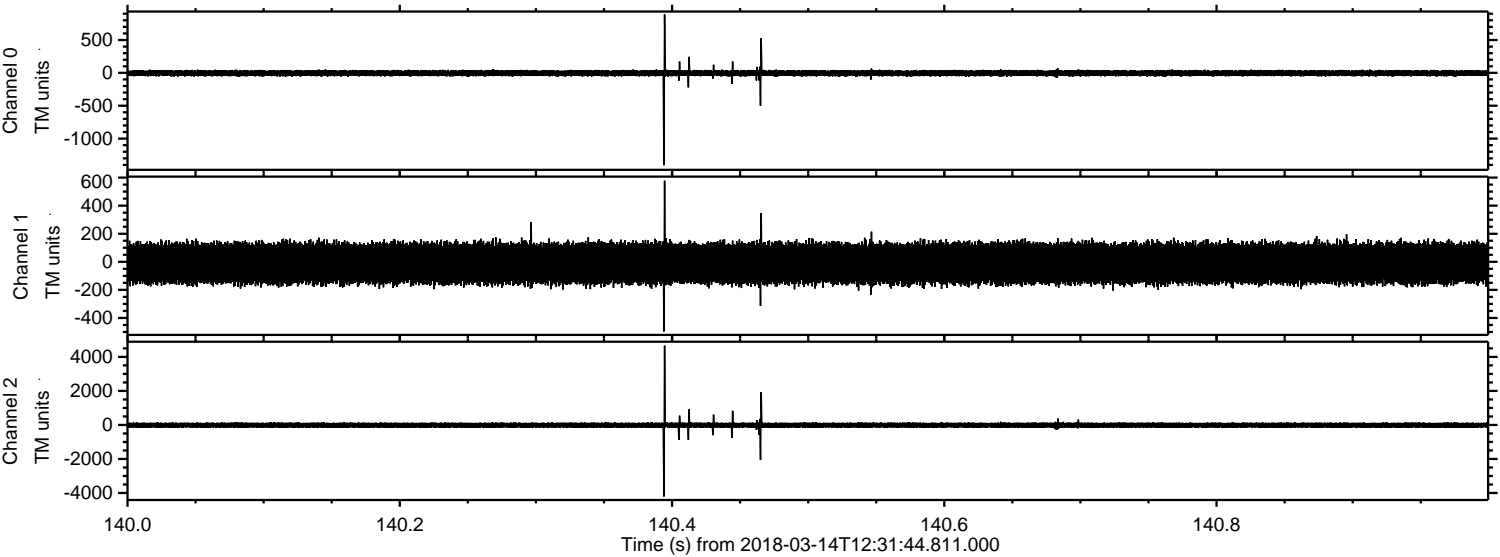
Processed Wed Mar 14 13:40:00 2018 by ELM ver.2012-10-06 from 001\_\_elm20180314\_123143\_\_dat00.bin





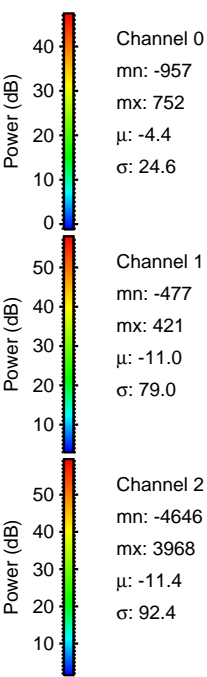
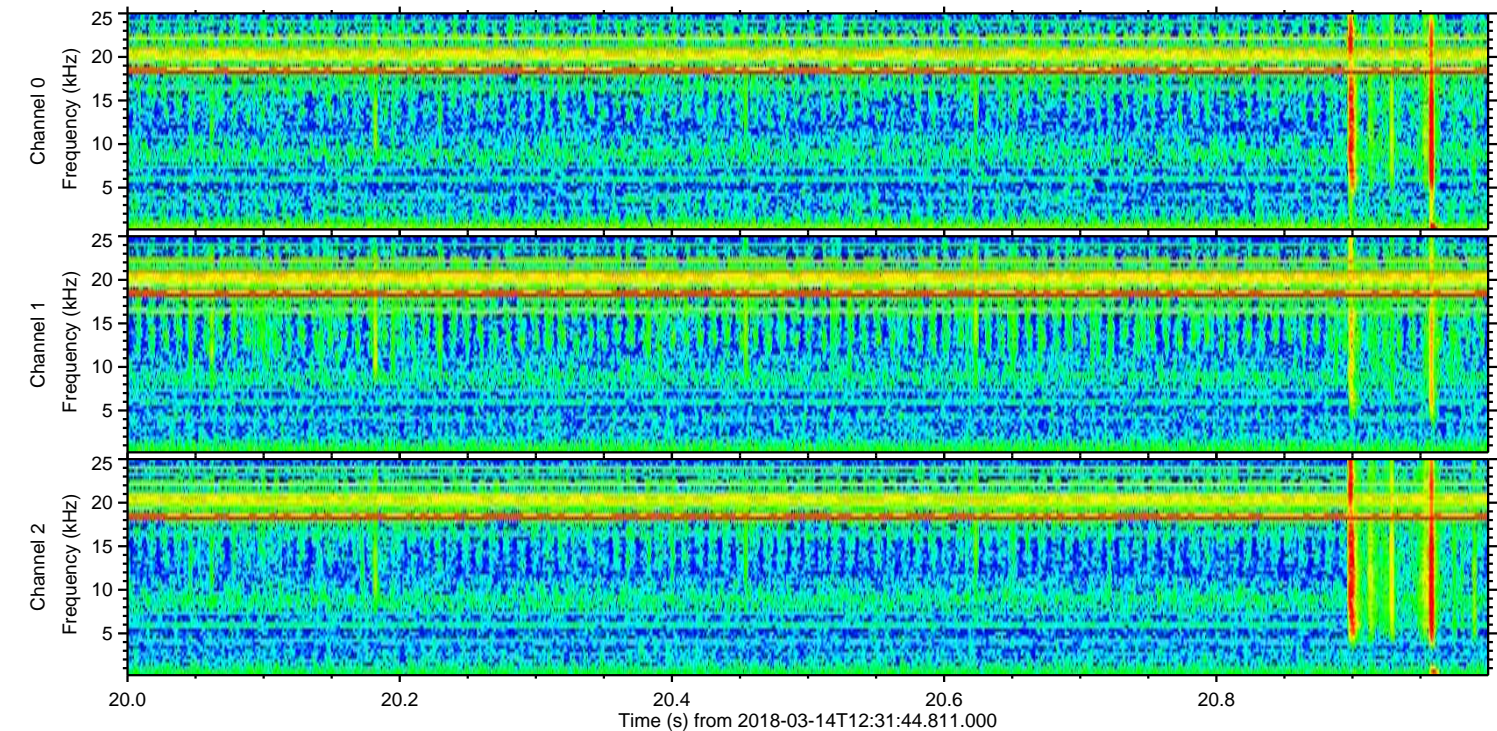
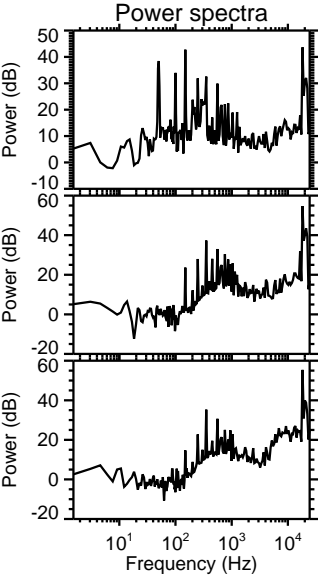
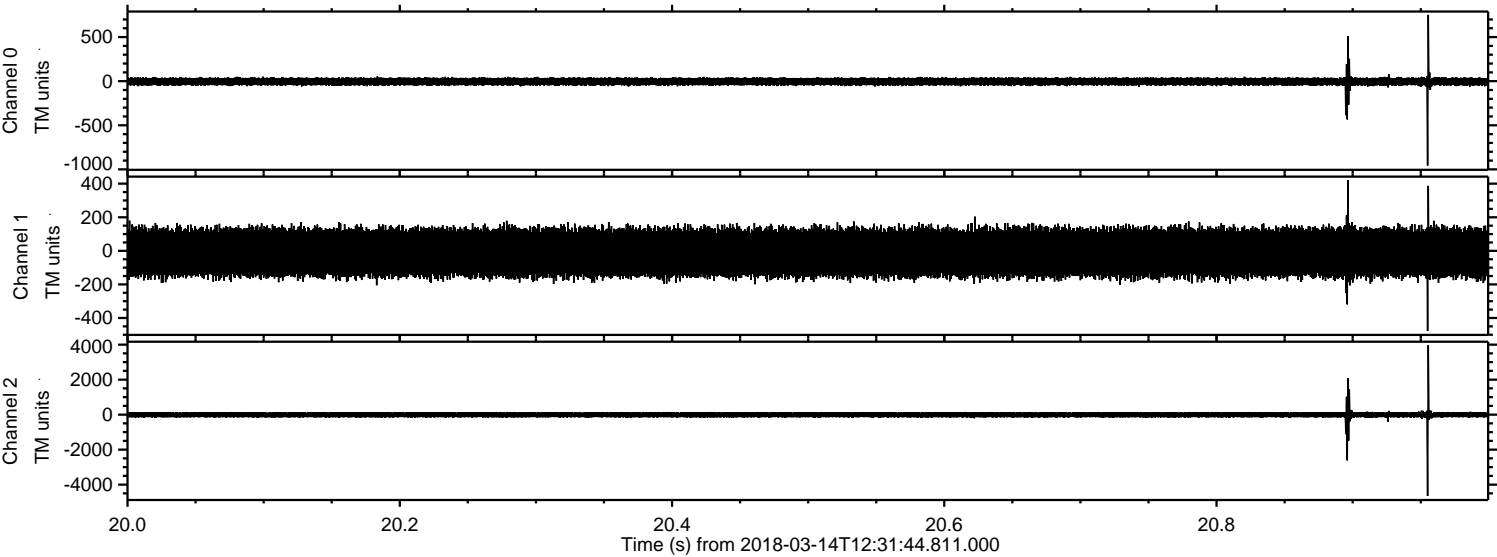
ELMAVAN 3D WAVEFORMS (Measured data sampled at 50 kHz) 51000 packets of 144 samples from 2018-03-14T12:31:44.811.000. Part 141/147

Processed Wed Mar 14 13:40:01 2018 by ELM ver.2012-10-06 from 001\_\_elm20180314\_123143\_\_dat00.bin



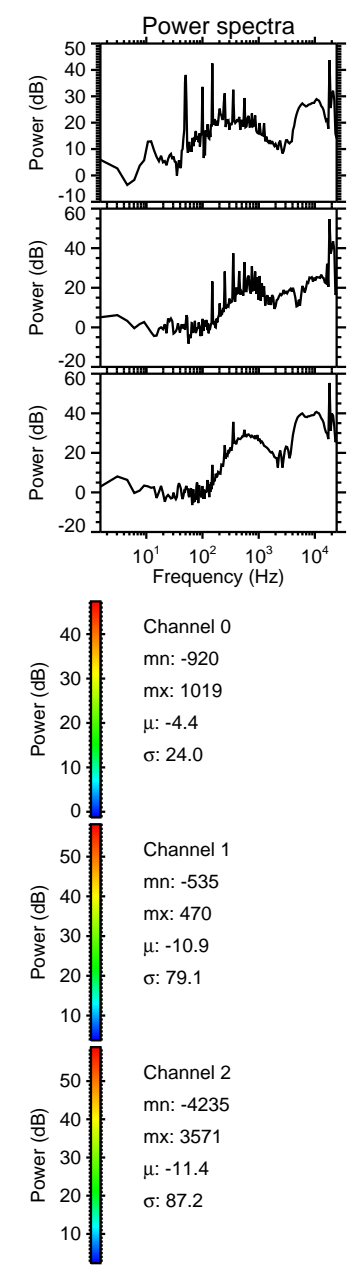
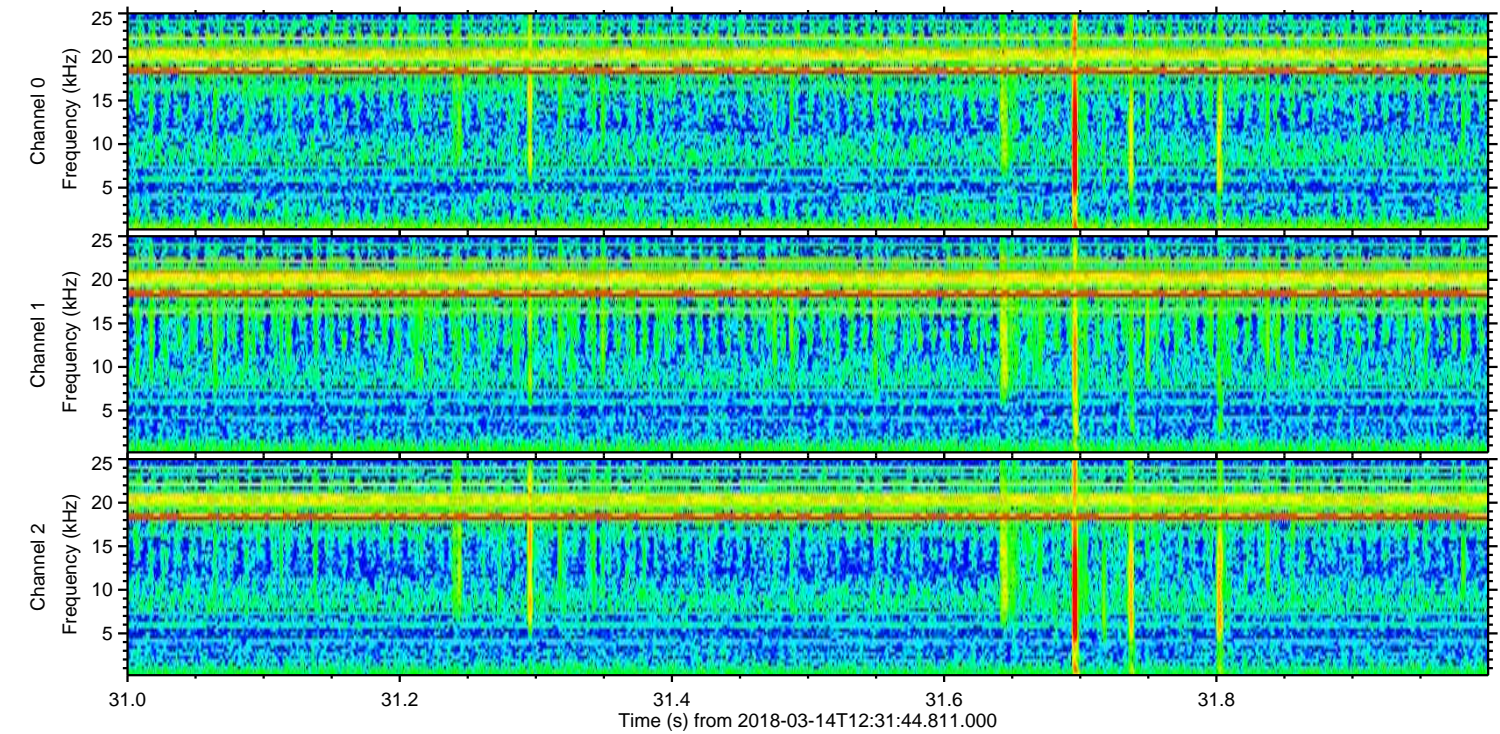
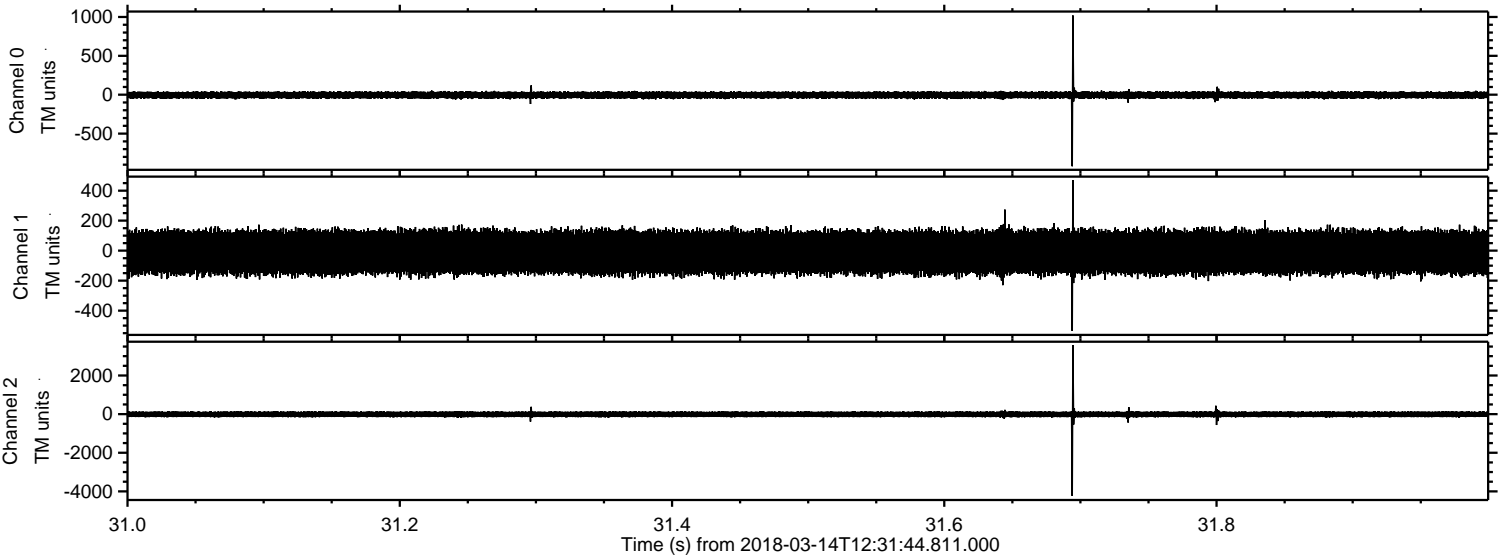


Processed Wed Mar 14 13:40:02 2018 by ELM ver.2012-10-06 from 001\_\_elm20180314\_123143\_\_dat00.bin



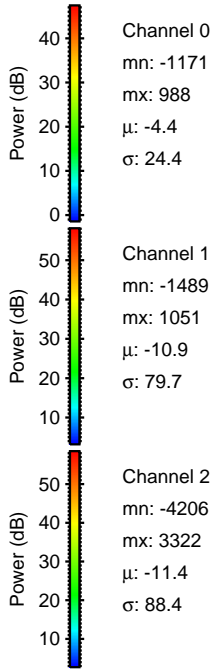
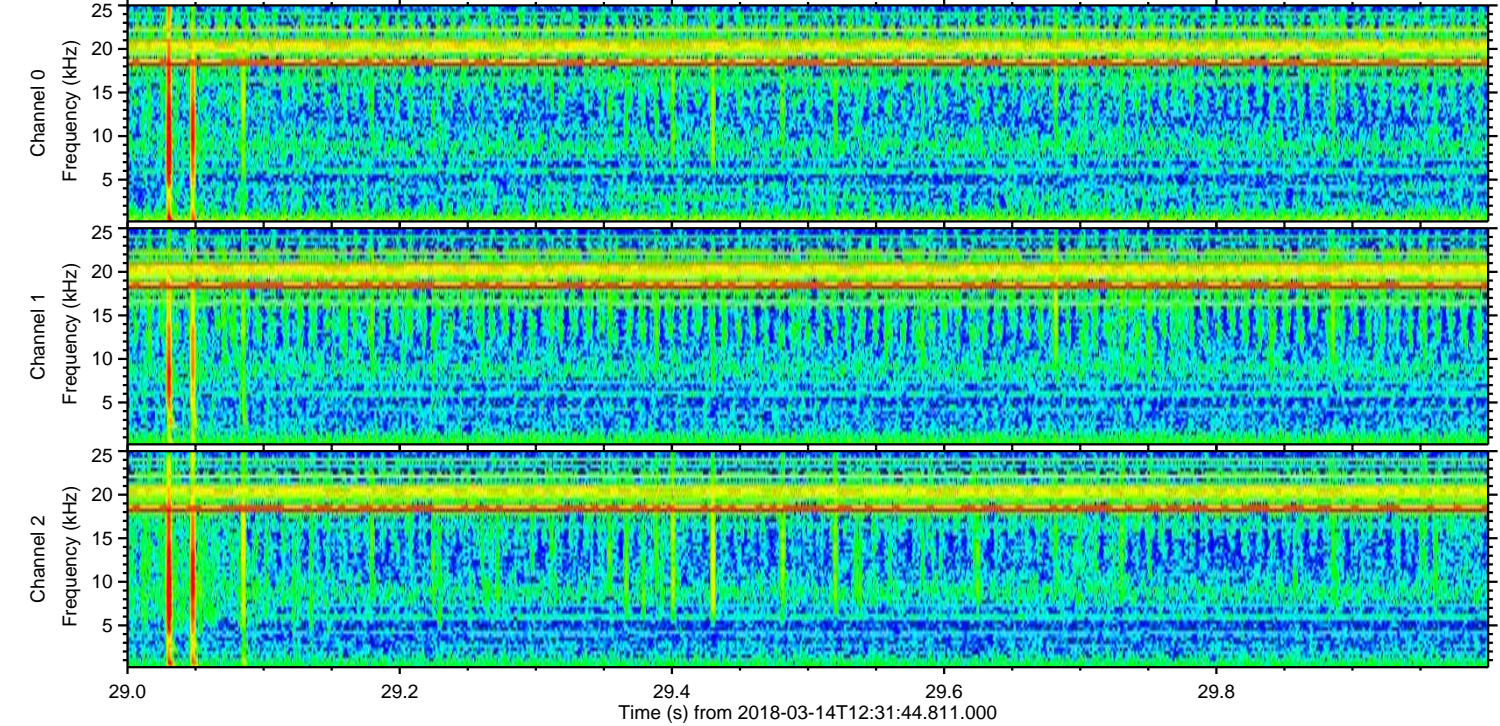
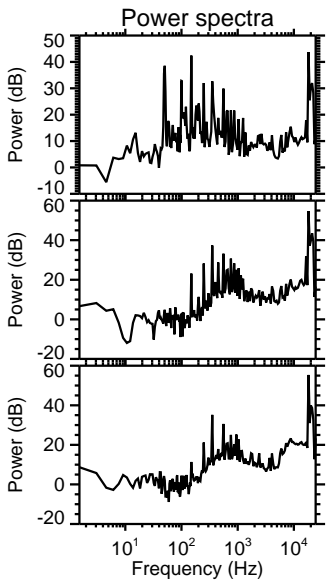
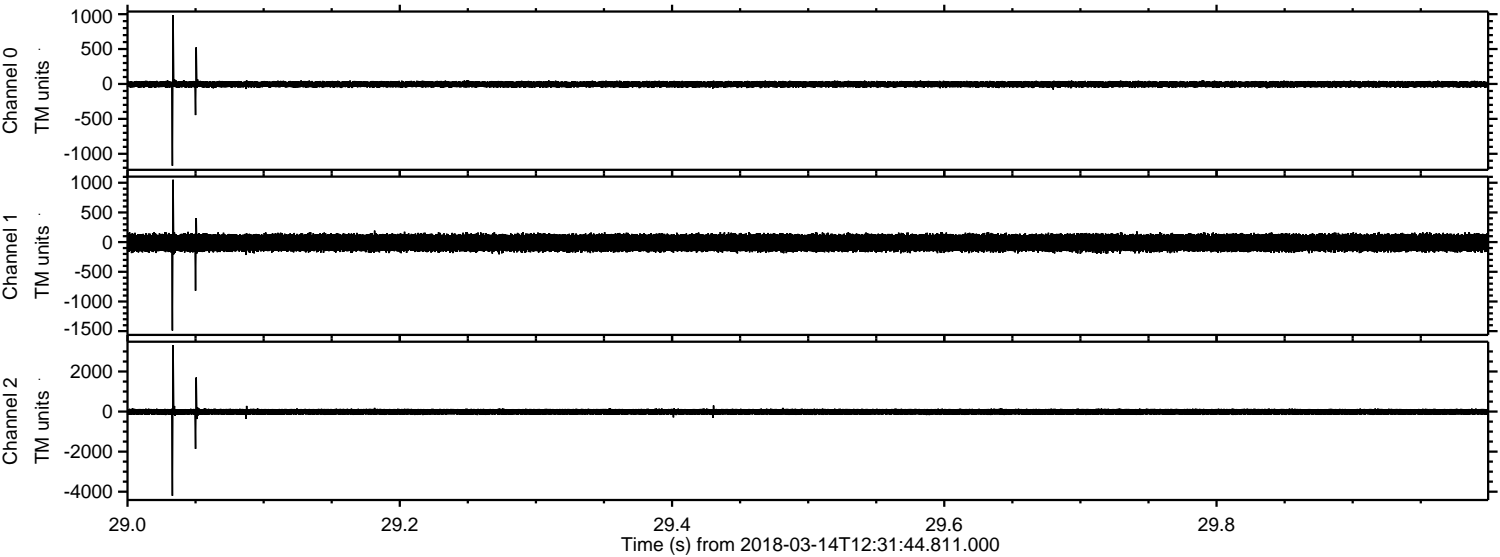


Processed Wed Mar 14 13:40:03 2018 by ELM ver.2012-10-06 from 001\_\_elm20180314\_123143\_\_dat00.bin



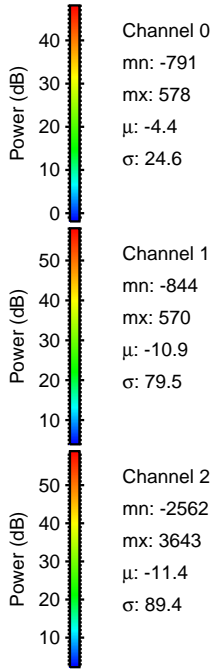
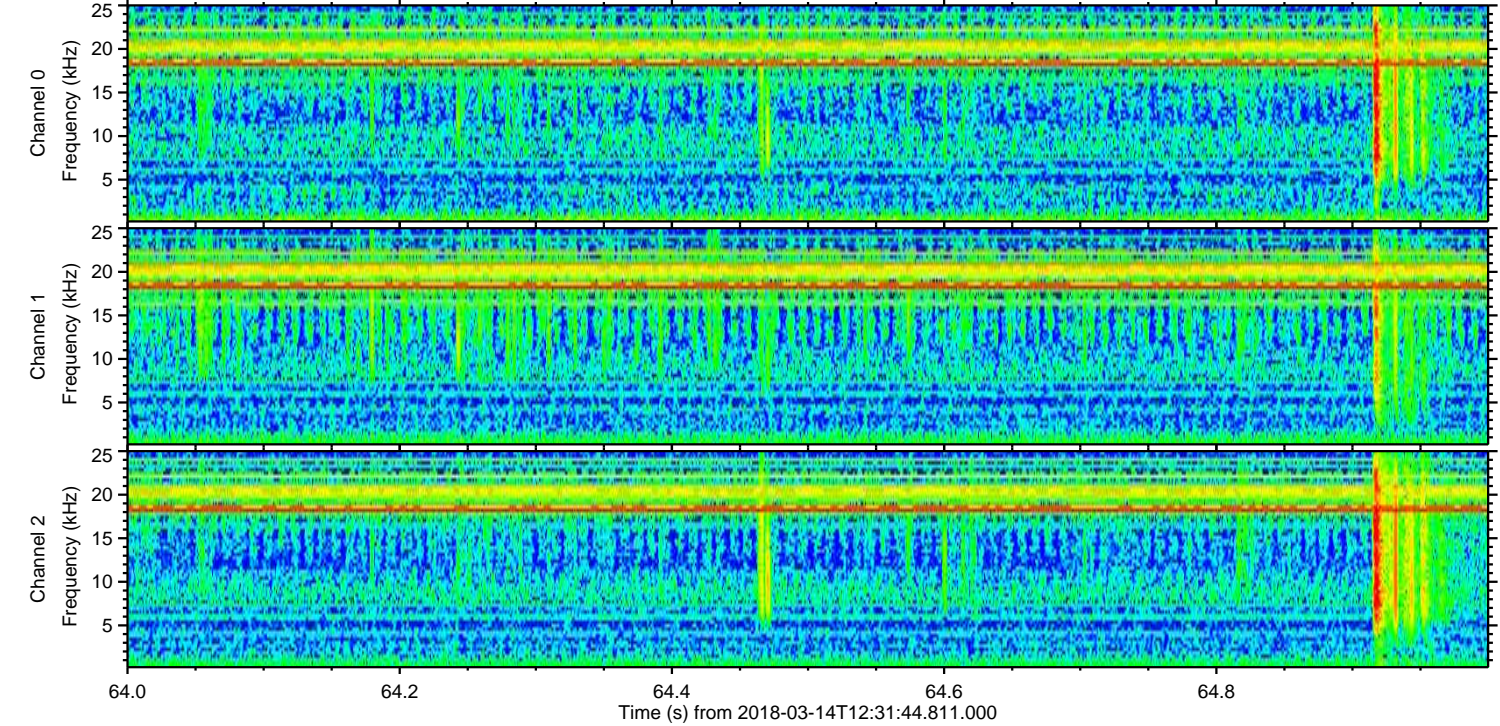
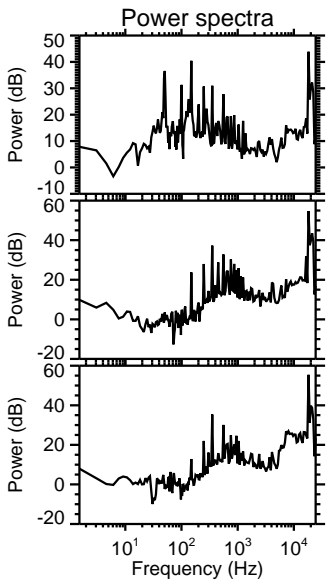
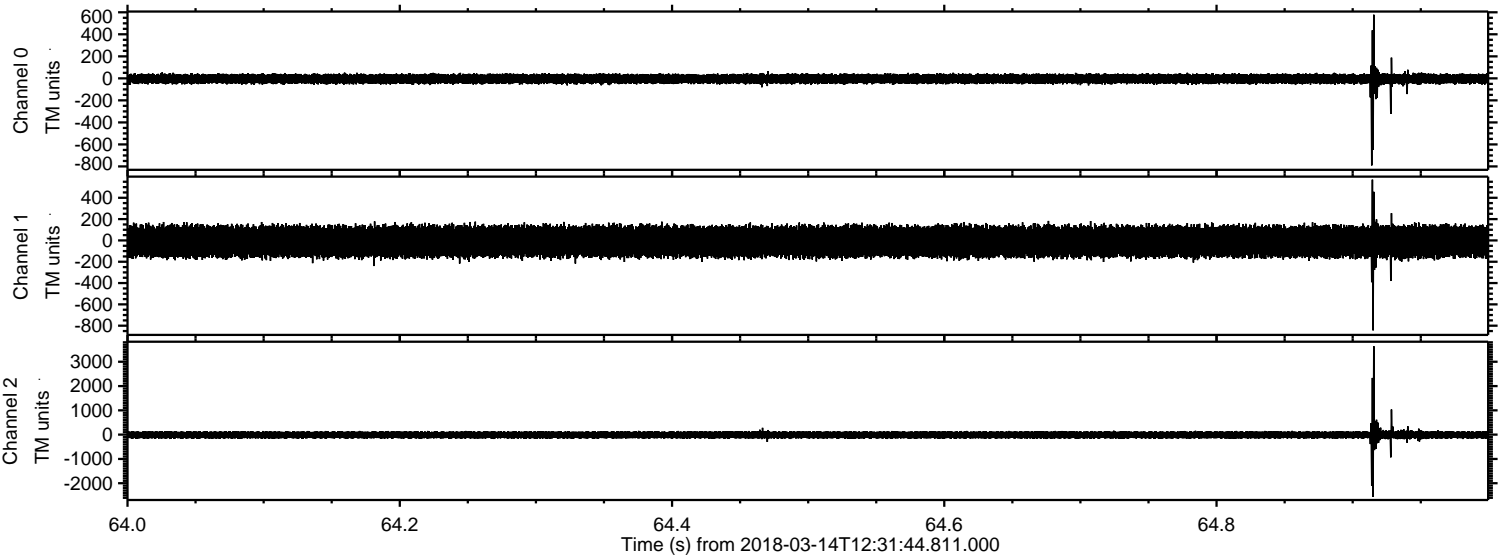


Processed Wed Mar 14 13:40:03 2018 by ELM ver.2012-10-06 from 001\_\_elm20180314\_123143\_\_dat00.bin





Processed Wed Mar 14 13:40:04 2018 by ELM ver.2012-10-06 from 001\_\_elm20180314\_123143\_\_dat00.bin



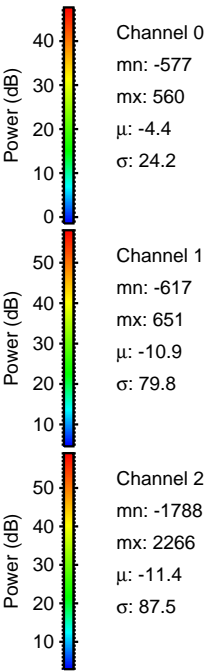
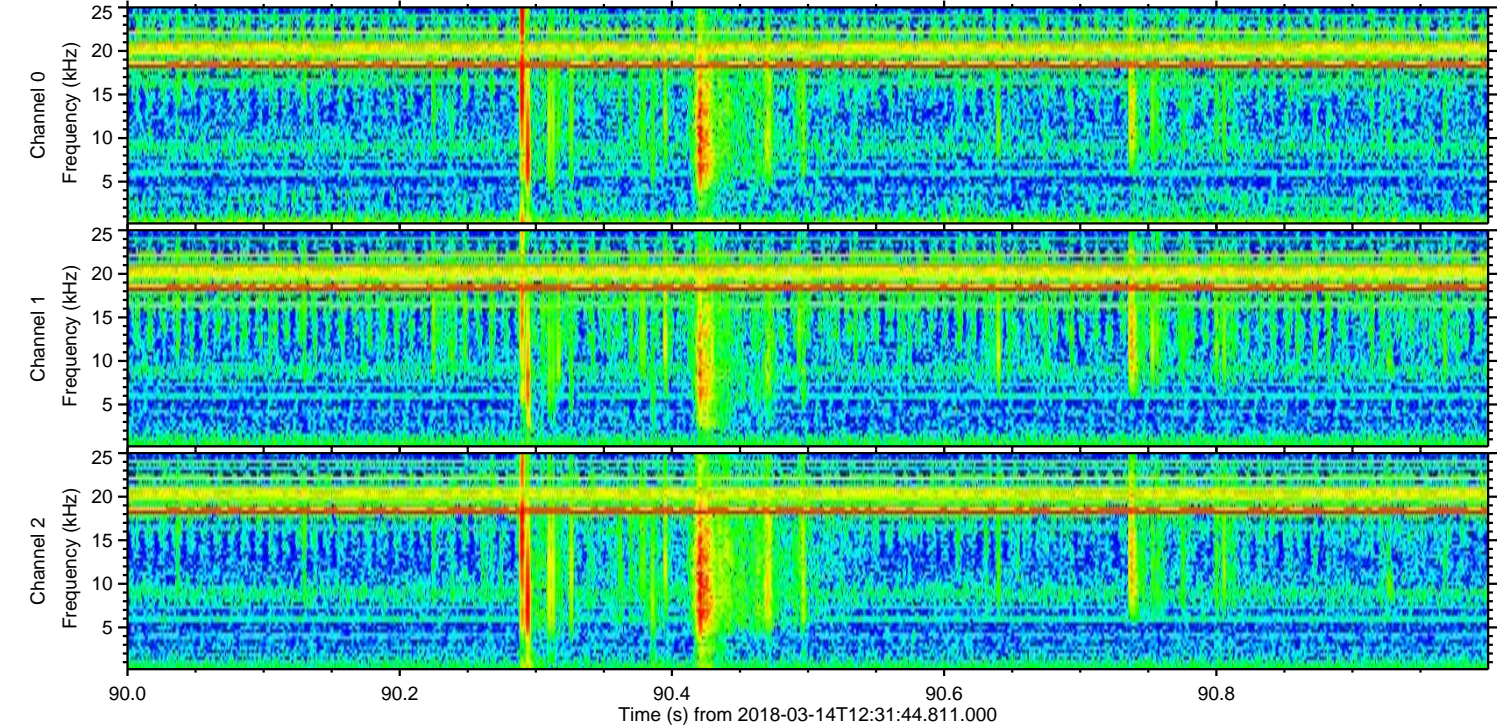
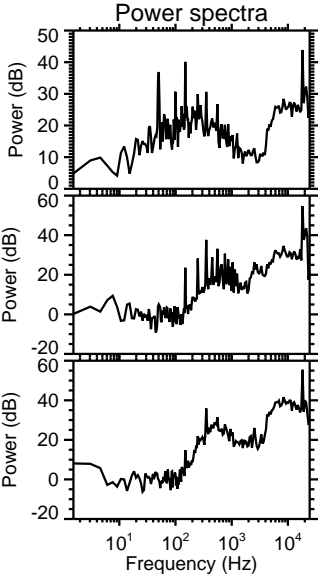
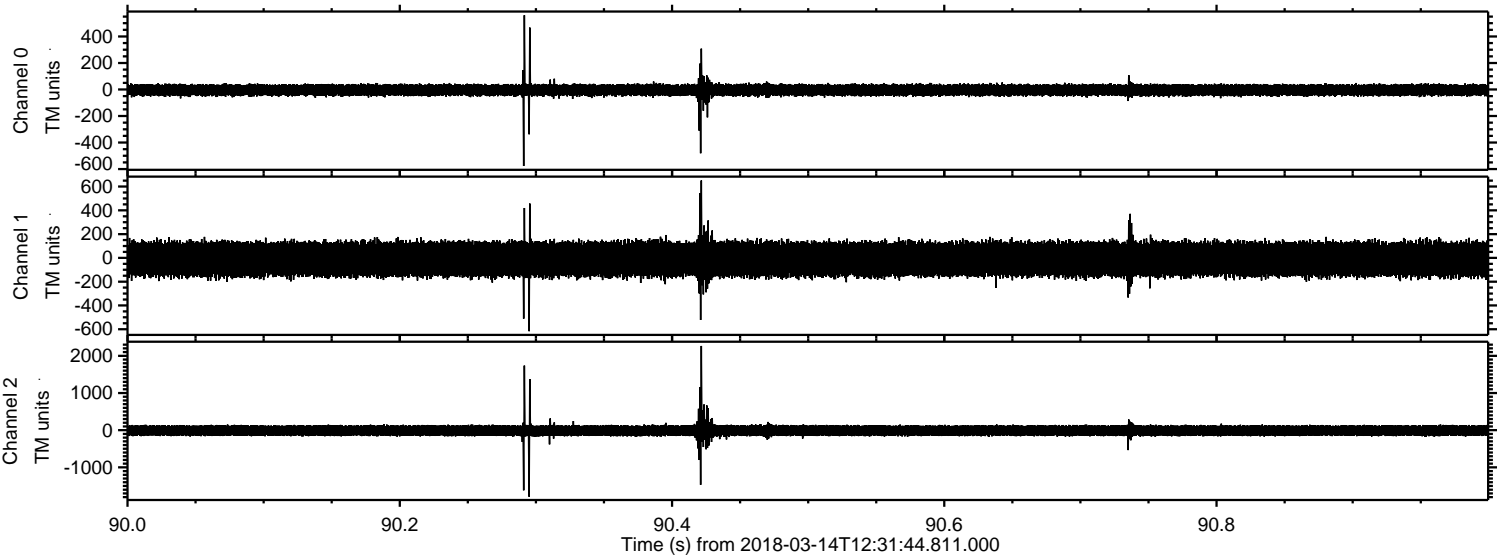
Channel 0  
mn: -791  
mx: 578  
 $\mu$ : -4.4  
 $\sigma$ : 24.6

Channel 1  
mn: -844  
mx: 570  
 $\mu$ : -10.9  
 $\sigma$ : 79.5

Channel 2  
mn: -2562  
mx: 3643  
 $\mu$ : -11.4  
 $\sigma$ : 89.4



Processed Wed Mar 14 13:40:05 2018 by ELM ver.2012-10-06 from 001\_\_elm20180314\_123143\_\_dat00.bin





Processed Wed Mar 14 13:40:06 2018 by ELM ver.2012-10-06 from 001\_\_elm20180314\_123143\_\_dat00.bin

