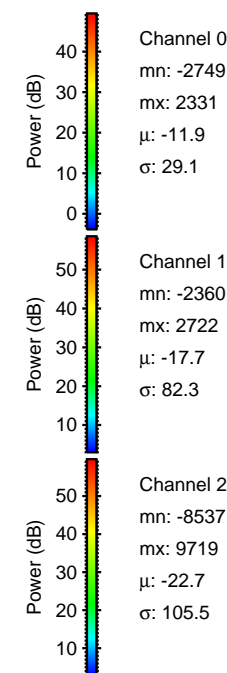
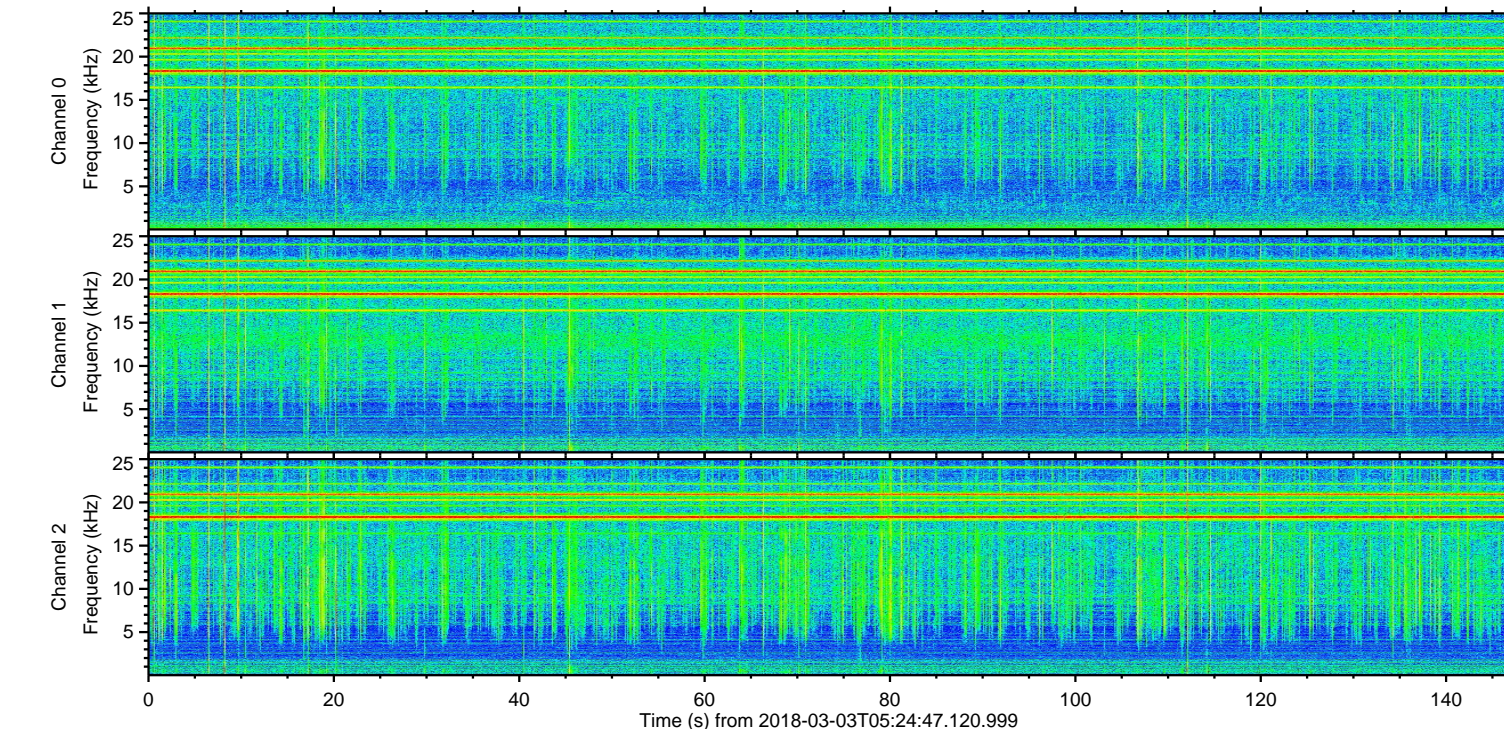
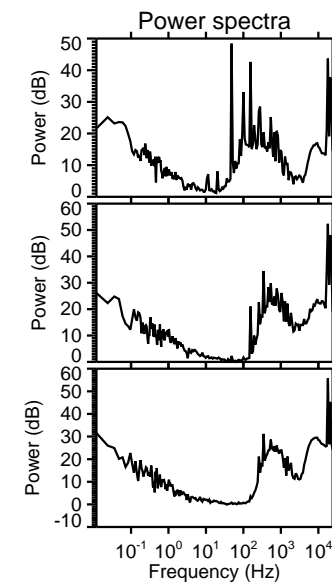
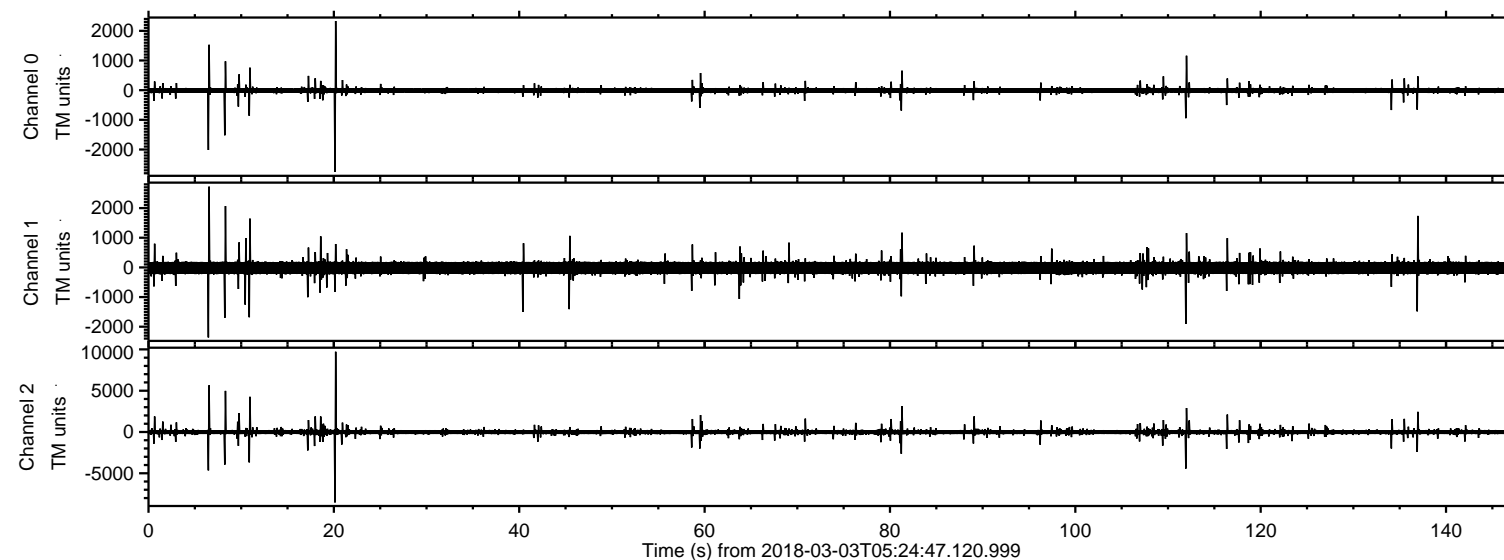


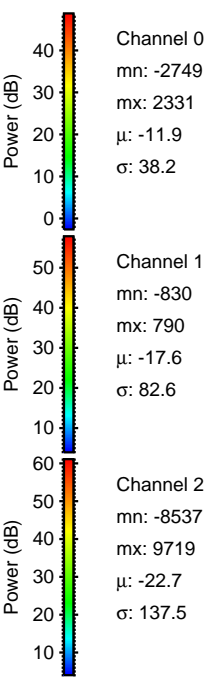
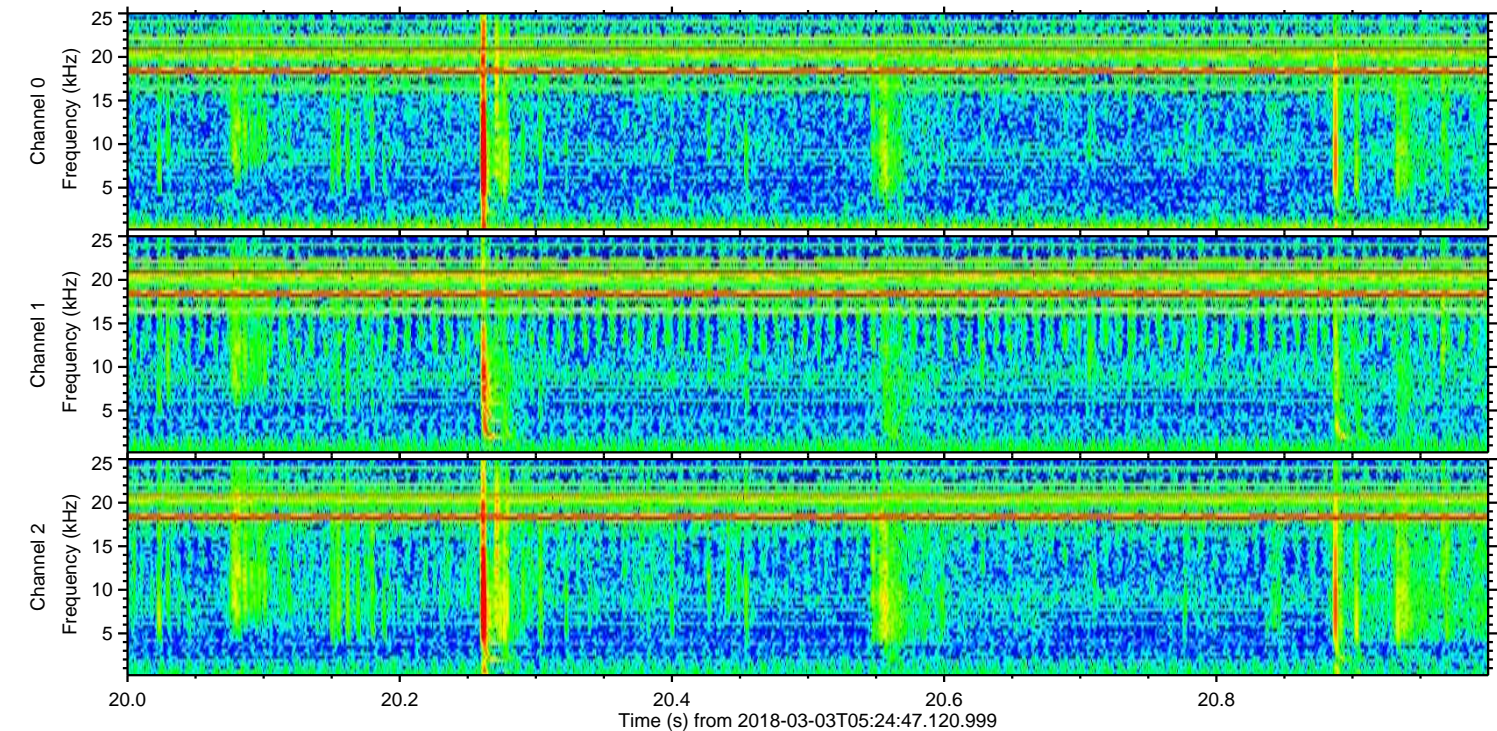
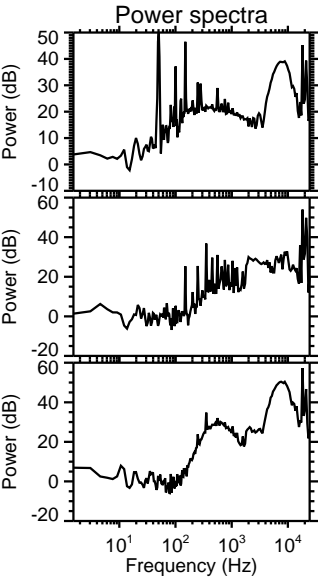
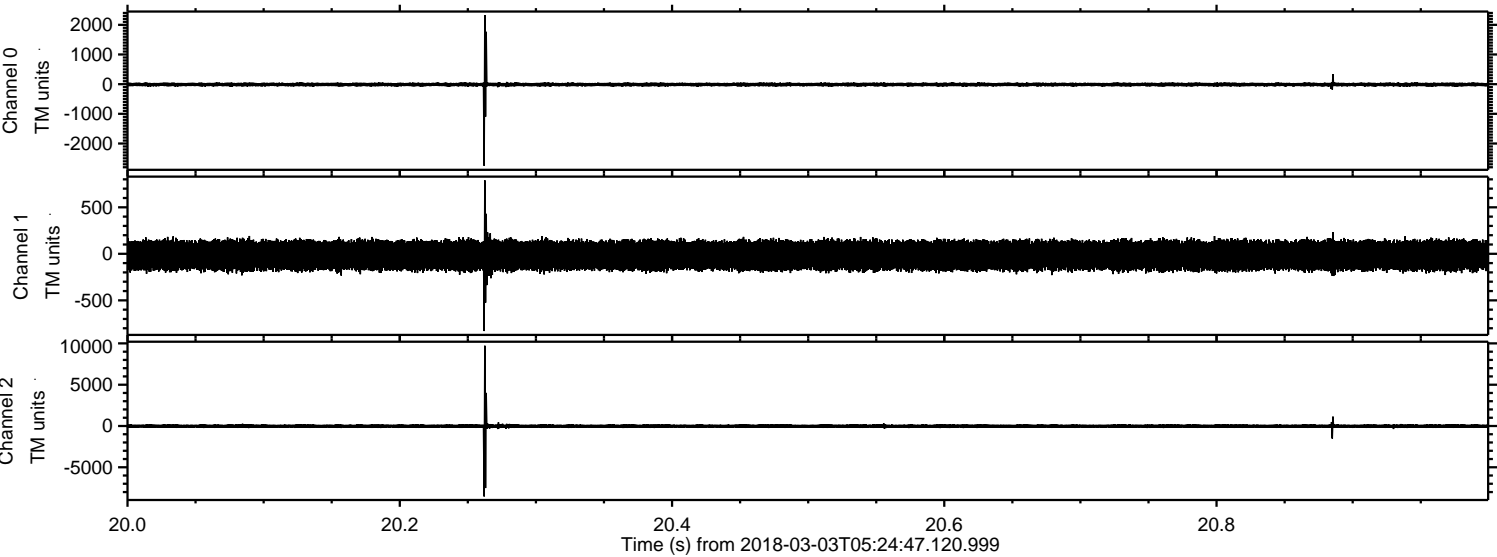
ELMAVAN 3D WAVEFORMS (Measured data sampled at 50 kHz) 51000 packets of 144 samples from 2018-03-03T05:24:47.120.999.

Processed Sat Mar 3 06:32:47 2018 by ELM ver.2012-10-06 from 001__elm20180303_052446__dat00.bin

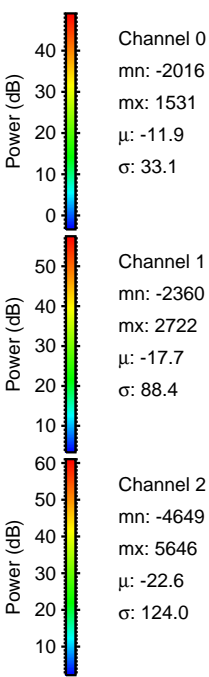
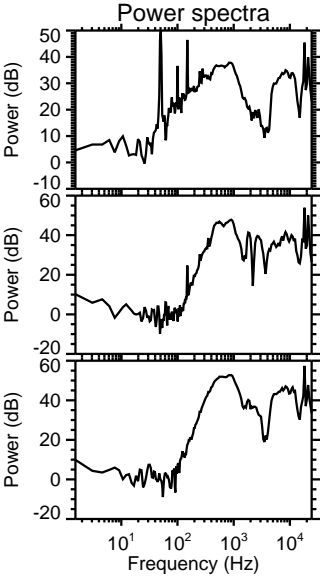
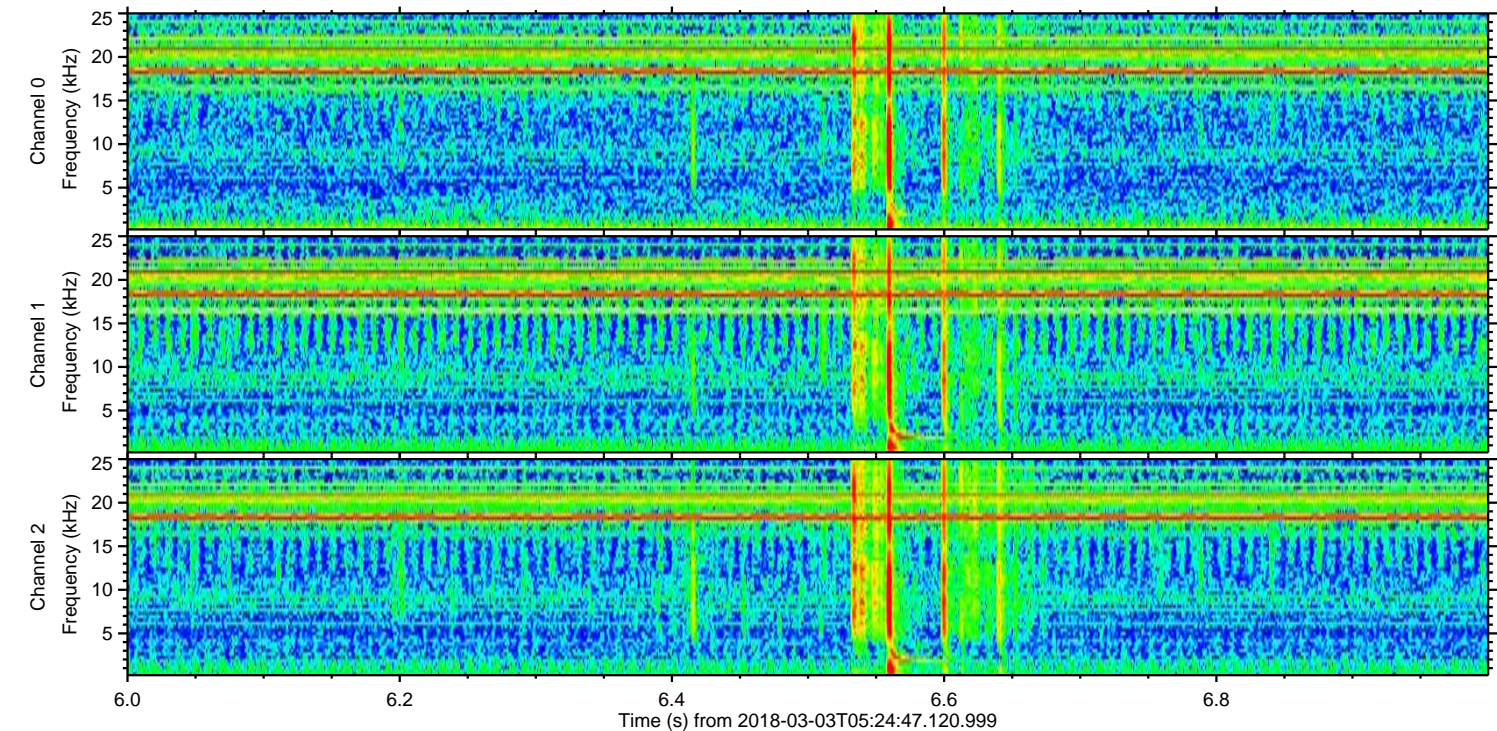
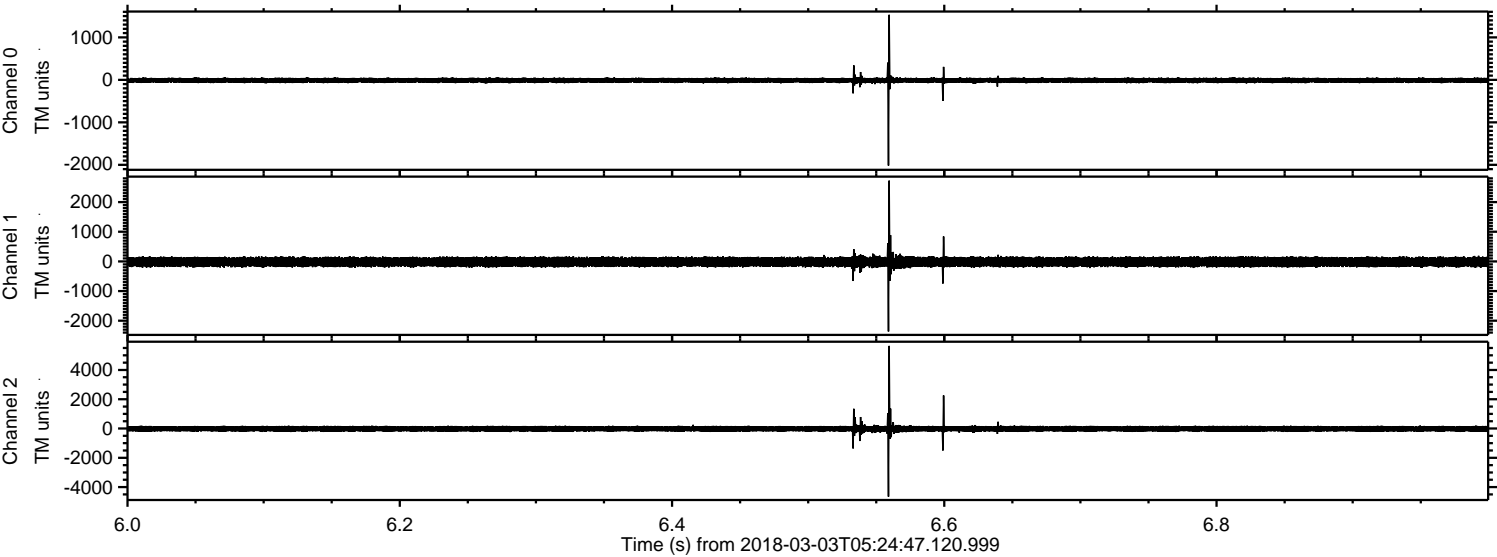


ELMAVAN 3D WAVEFORMS (Measured data sampled at 50 kHz) 51000 packets of 144 samples from 2018-03-03T05:24:47.120.999. Part 21/147

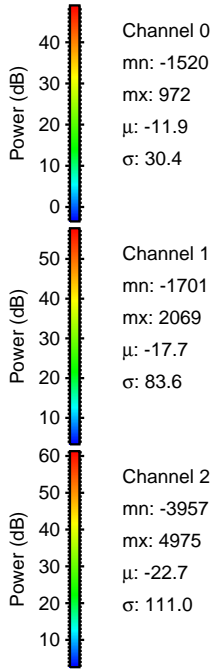
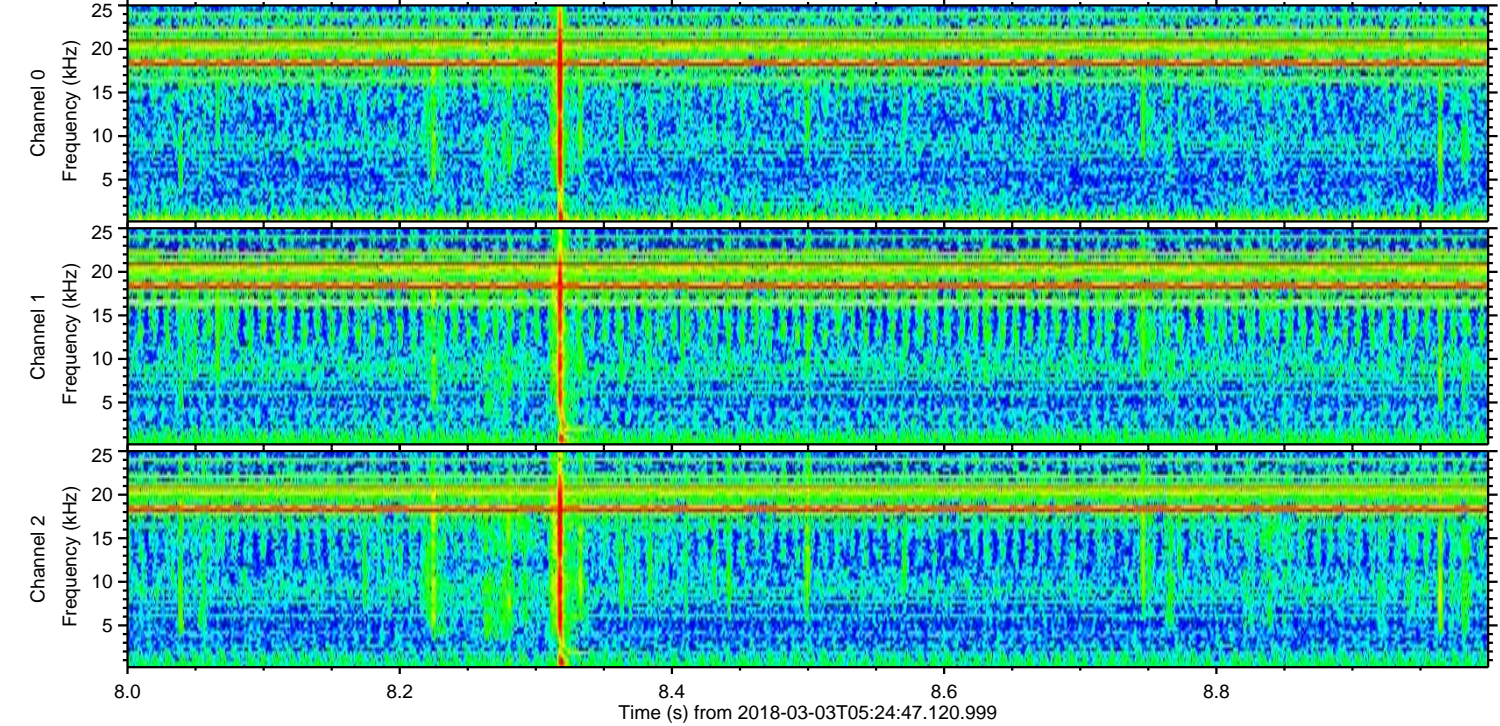
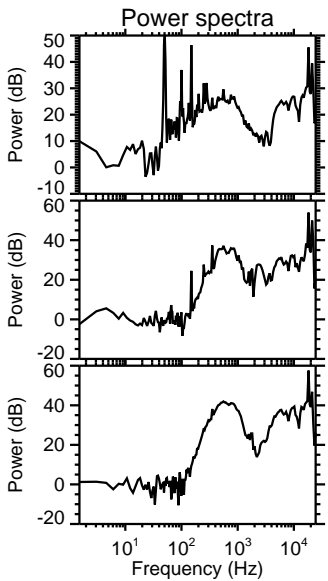
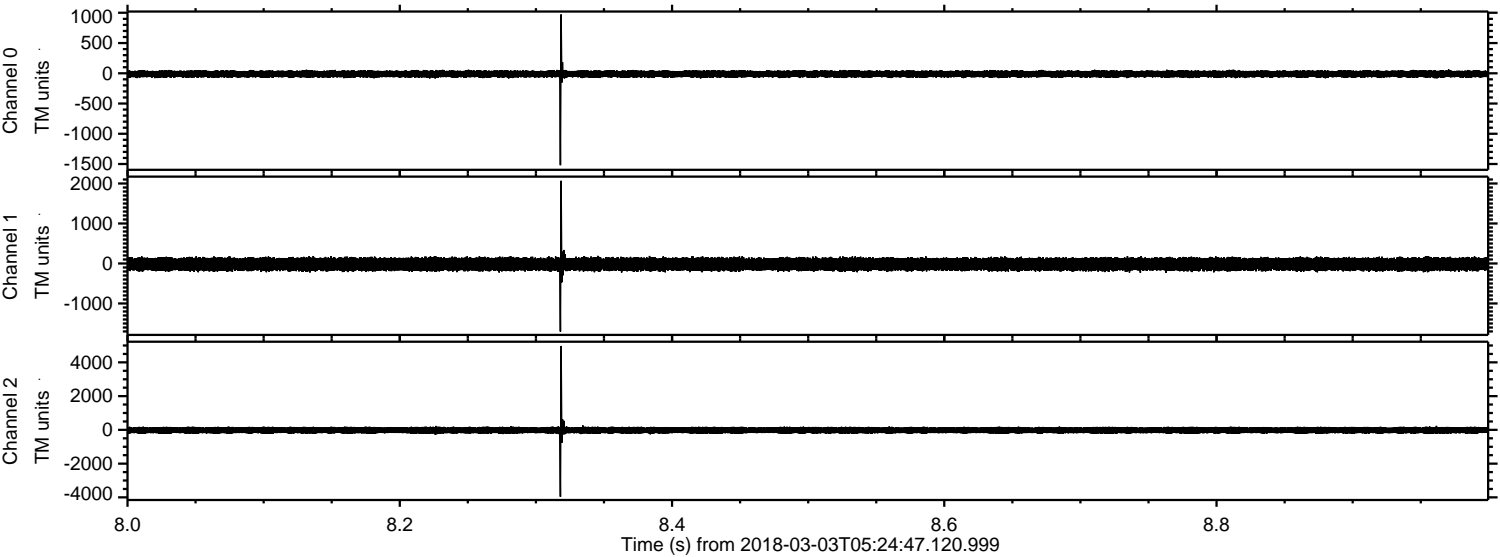
Processed Sat Mar 3 06:32:54 2018 by ELM ver.2012-10-06 from 001__elm20180303_052446__dat00.bin



Processed Sat Mar 3 06:32:55 2018 by ELM ver.2012-10-06 from 001__elm20180303_052446__dat00.bin

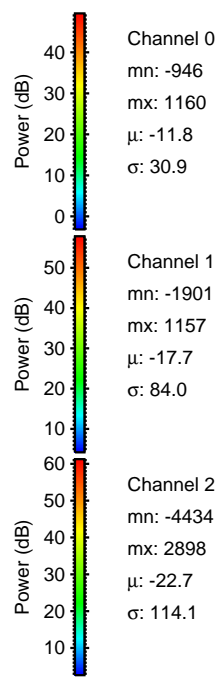
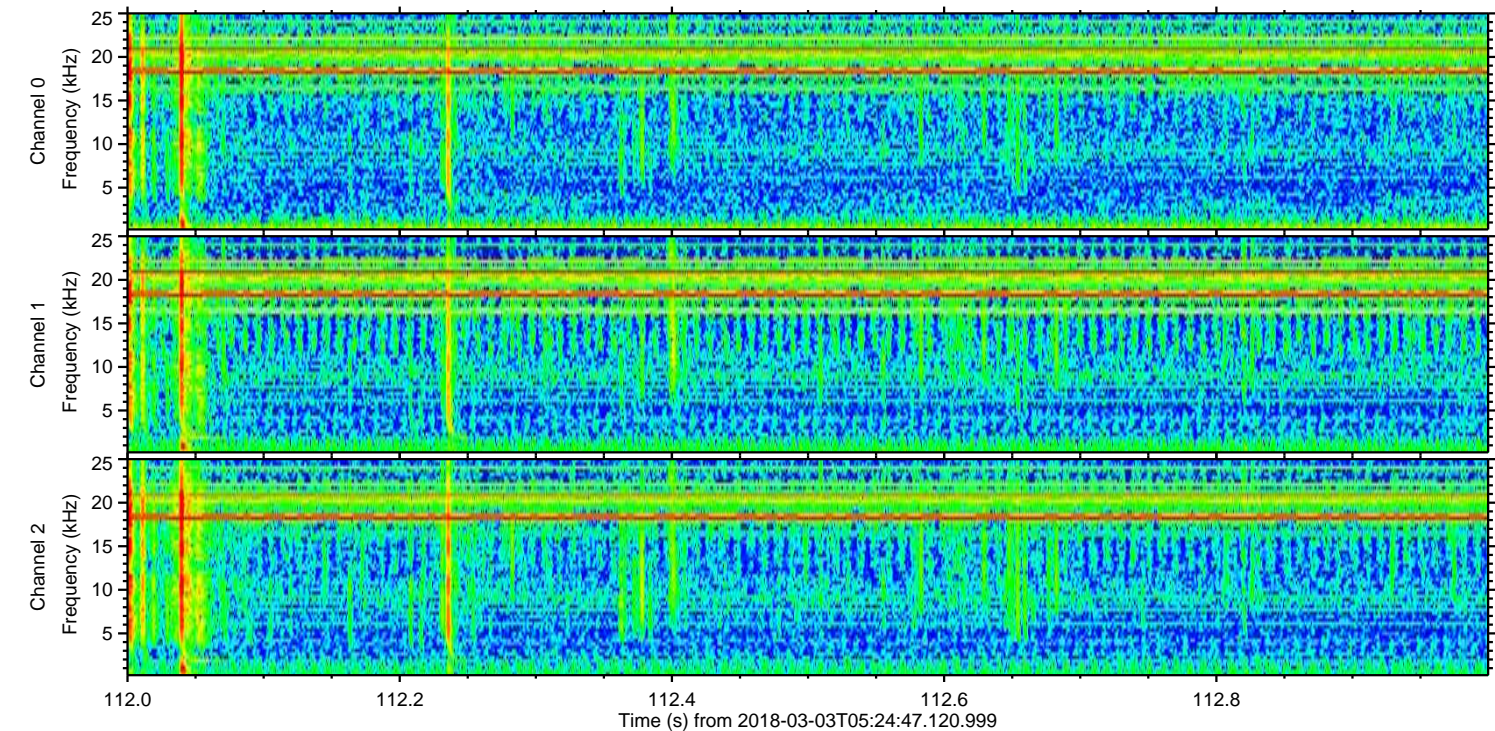
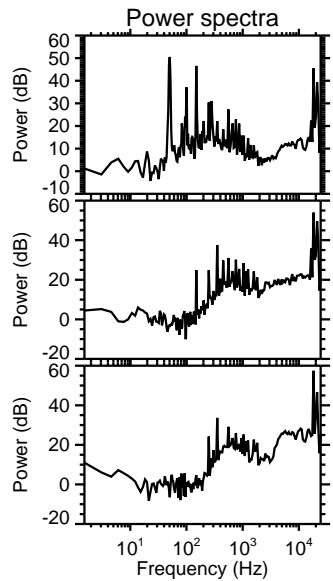
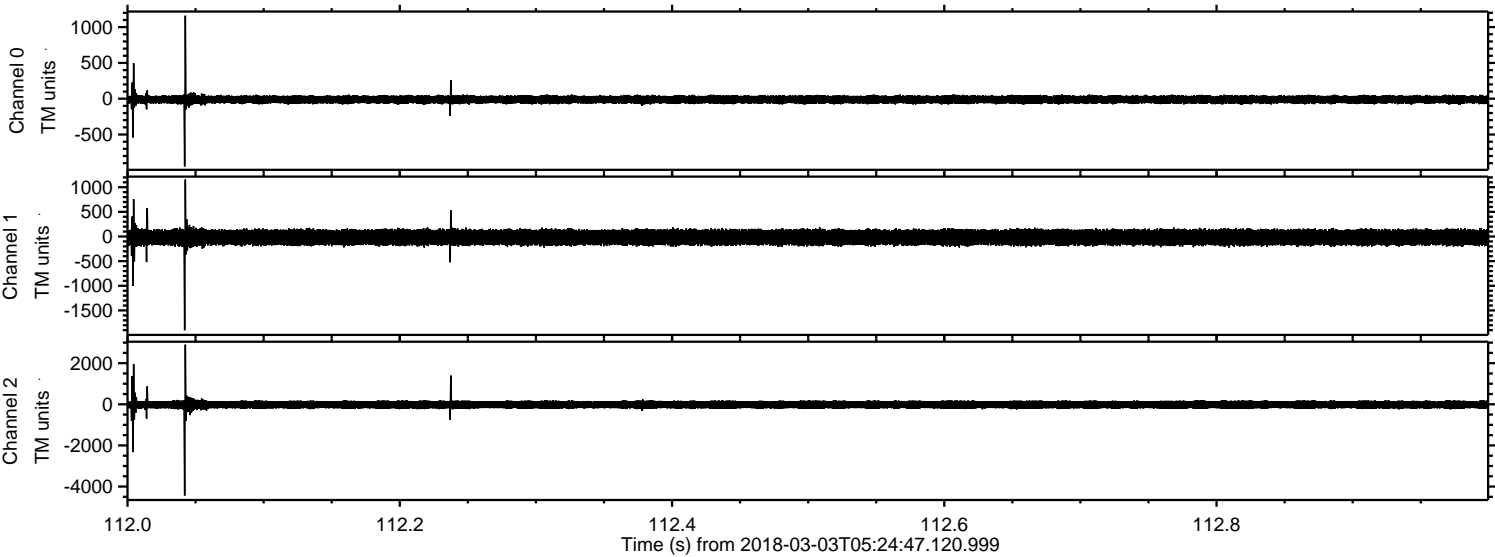


Processed Sat Mar 3 06:32:57 2018 by ELM ver.2012-10-06 from 001__elm20180303_052446__dat00.bin



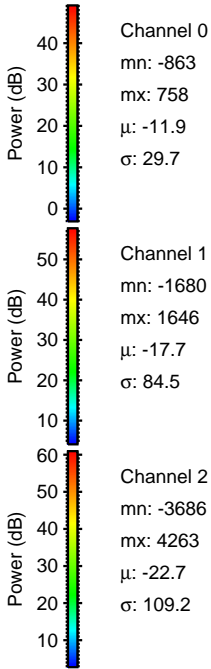
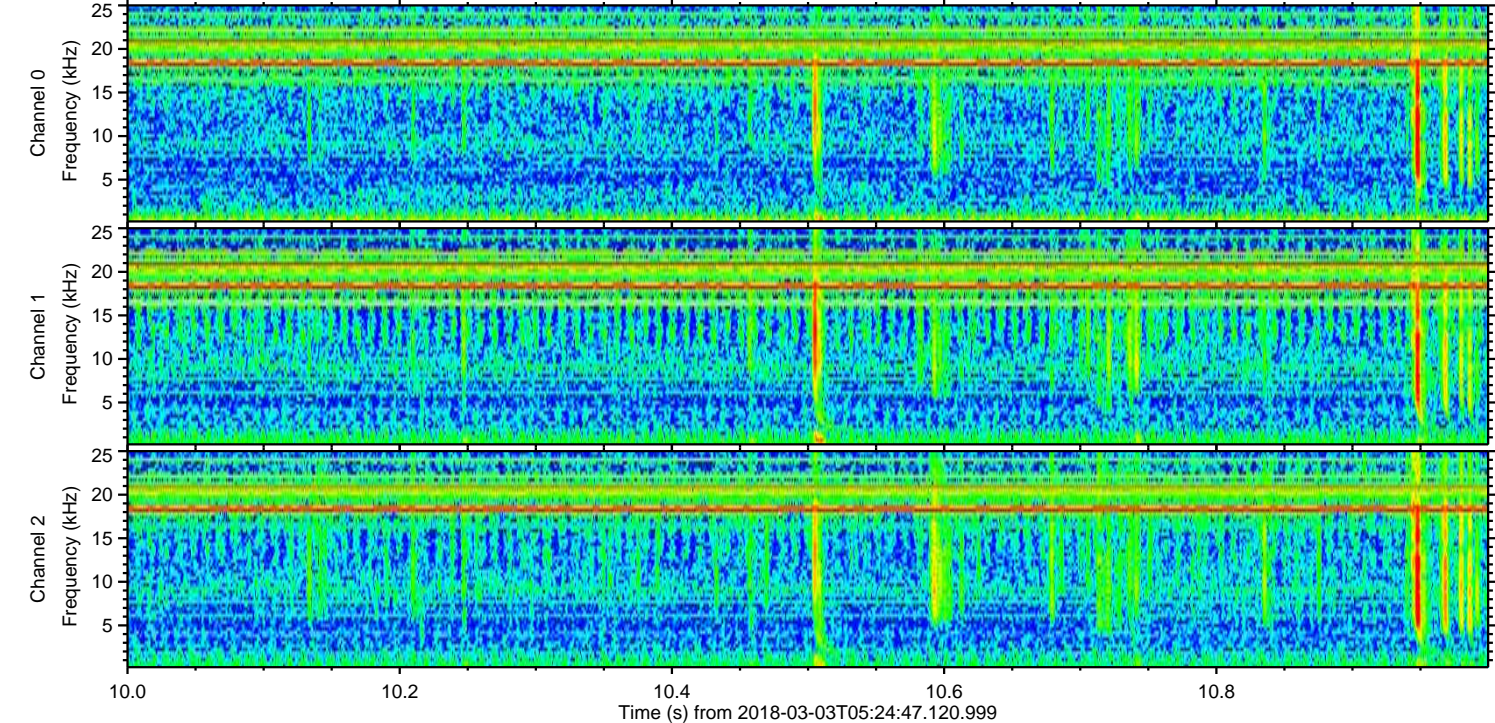
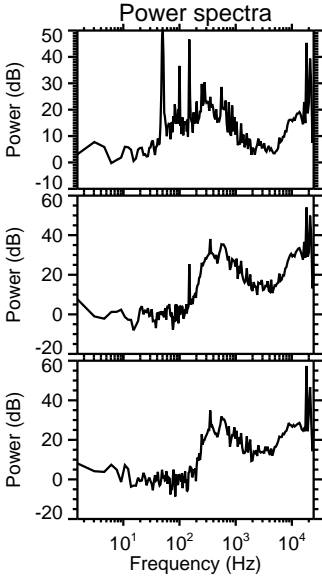
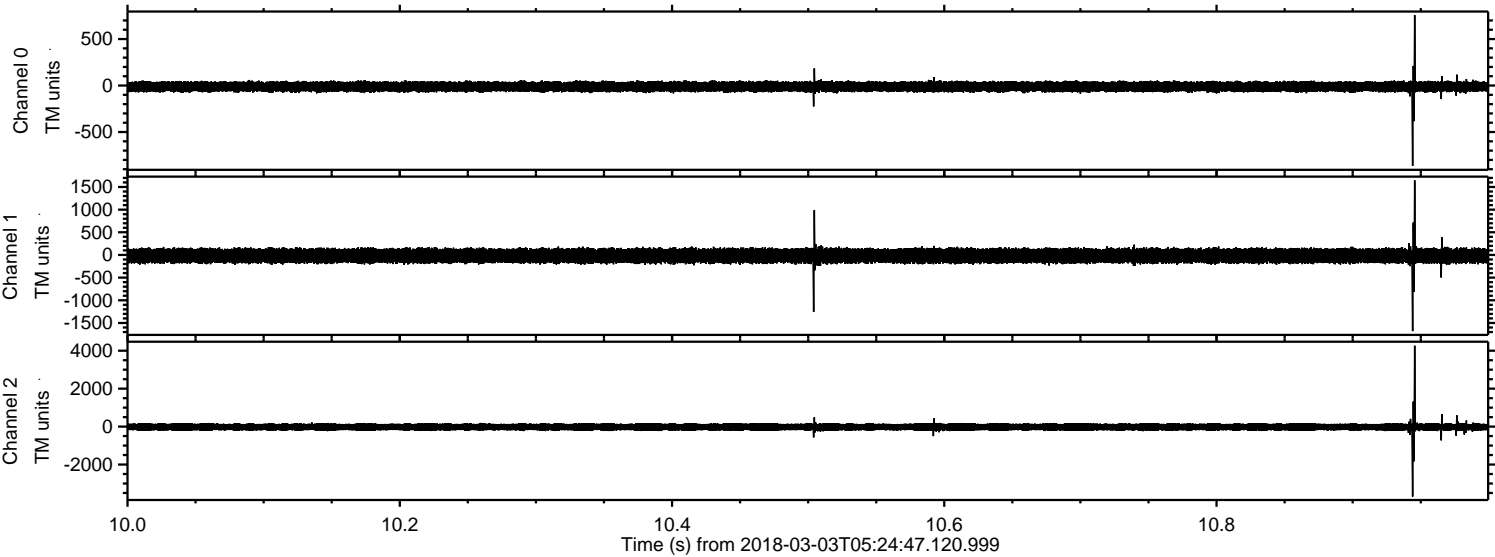
ELMAVAN 3D WAVEFORMS (Measured data sampled at 50 kHz) 51000 packets of 144 samples from 2018-03-03T05:24:47.120.999. Part 113/147

Processed Sat Mar 3 06:32:58 2018 by ELM ver.2012-10-06 from 001__elm20180303_052446__dat00.bin

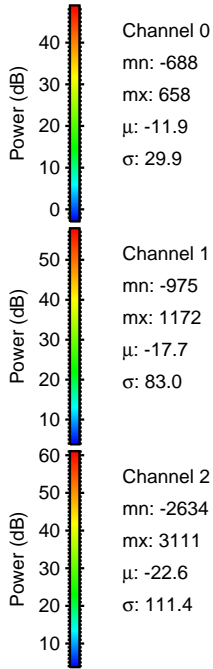
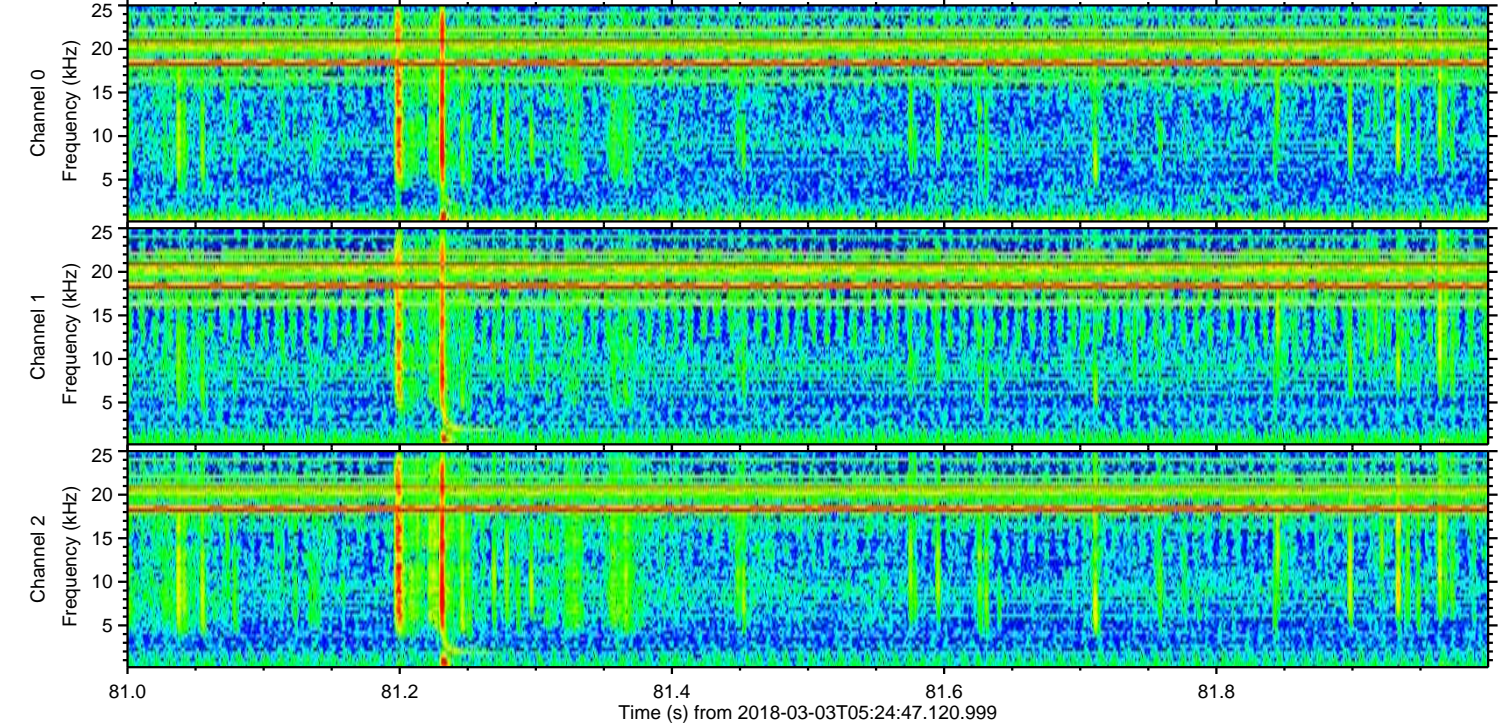
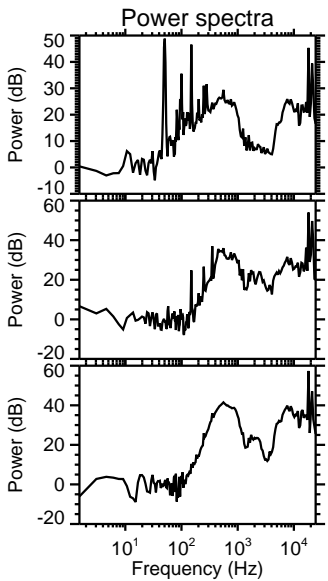
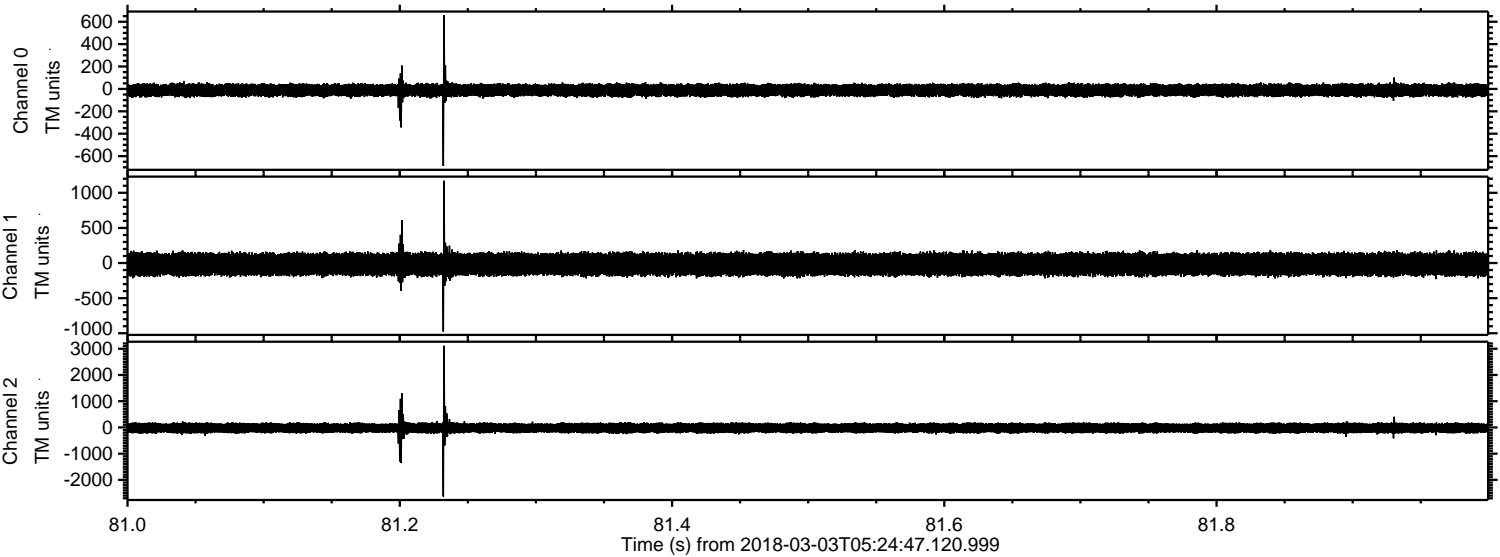


ELMAVAN 3D WAVEFORMS (Measured data sampled at 50 kHz) 51000 packets of 144 samples from 2018-03-03T05:24:47.120.999. Part 11/147

Processed Sat Mar 3 06:32:59 2018 by ELM ver.2012-10-06 from 001__elm20180303_052446__dat00.bin

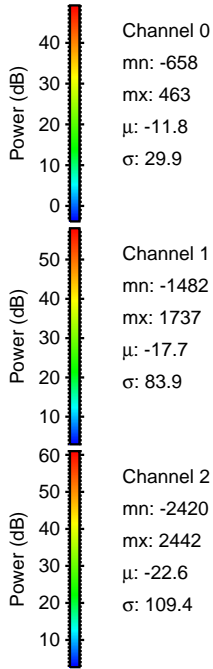
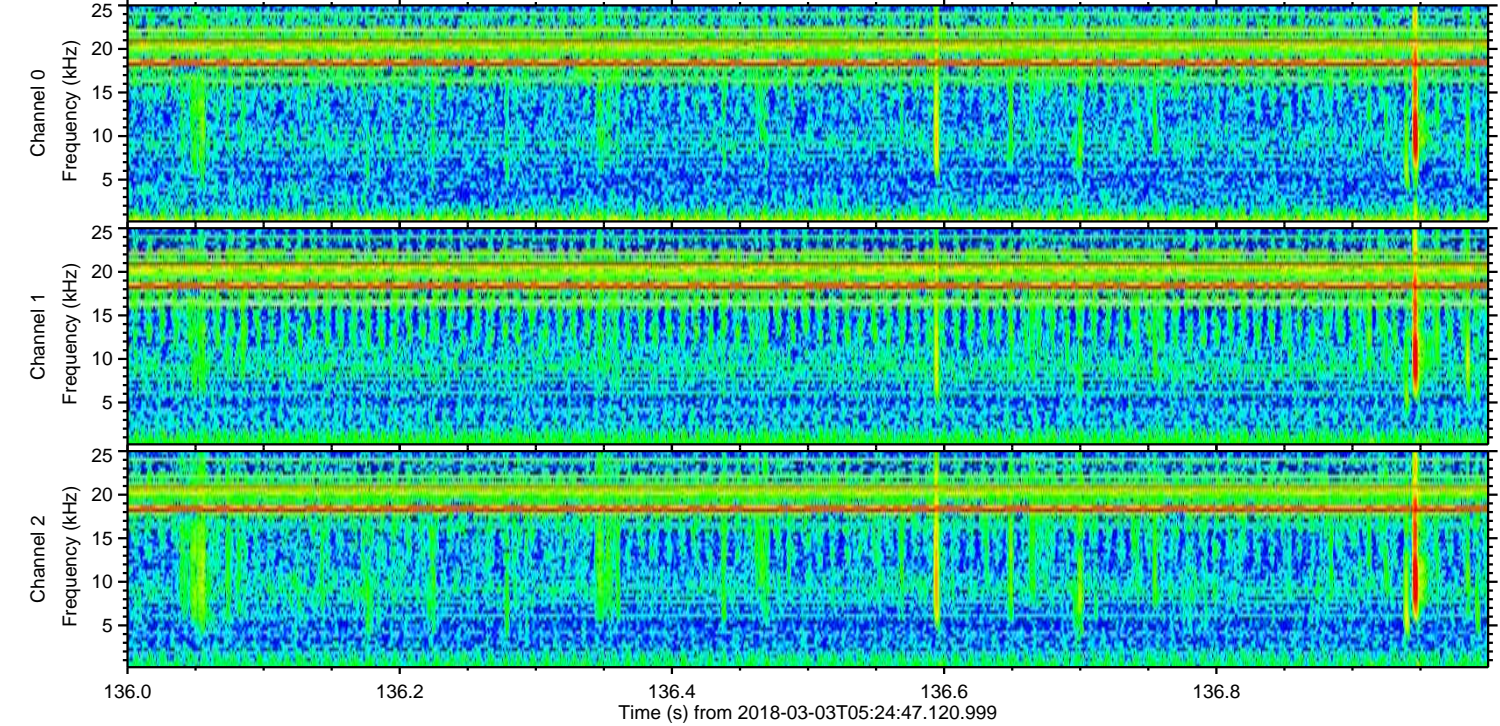
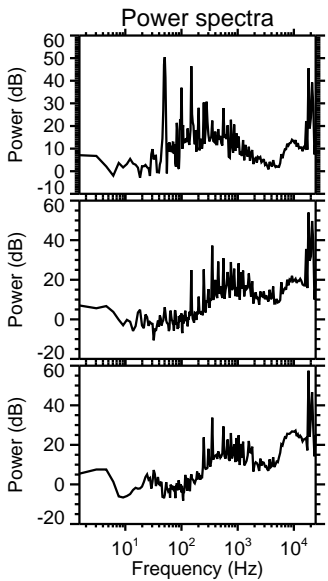
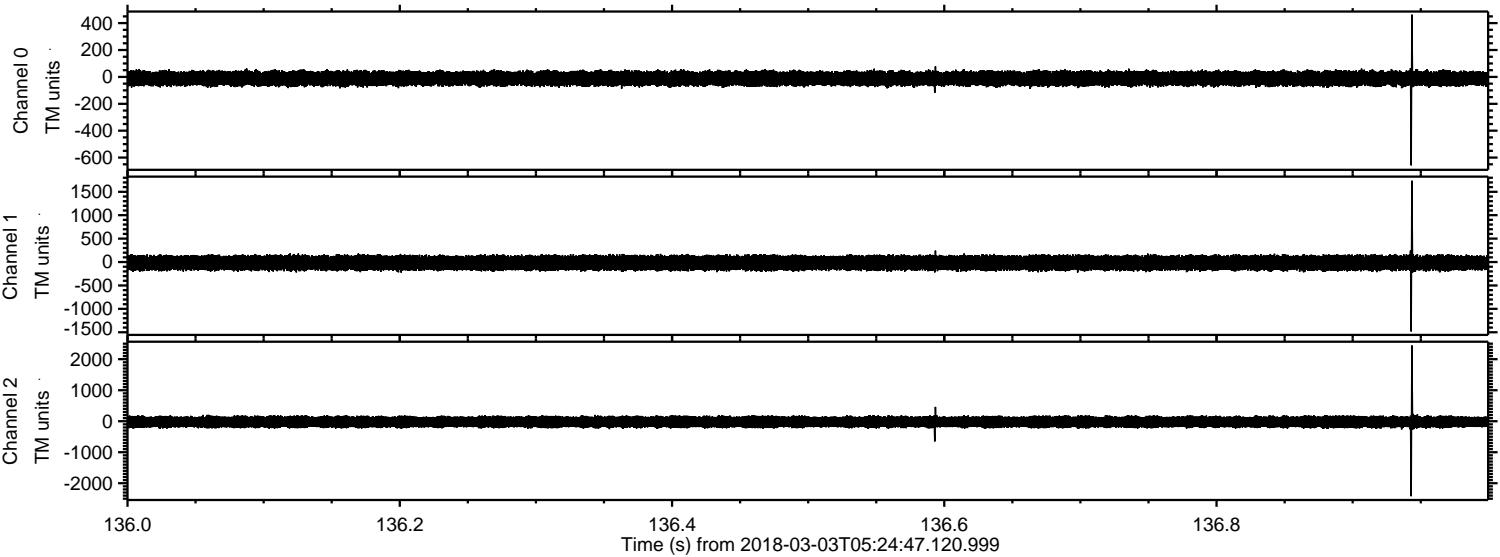


Processed Sat Mar 3 06:33:01 2018 by ELM ver.2012-10-06 from 001__elm20180303_052446__dat00.bin

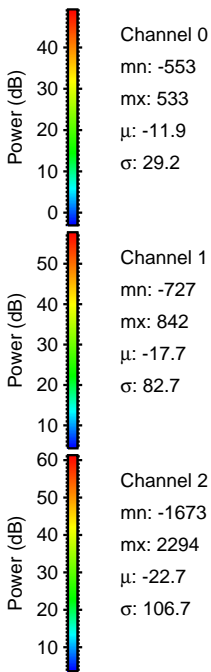
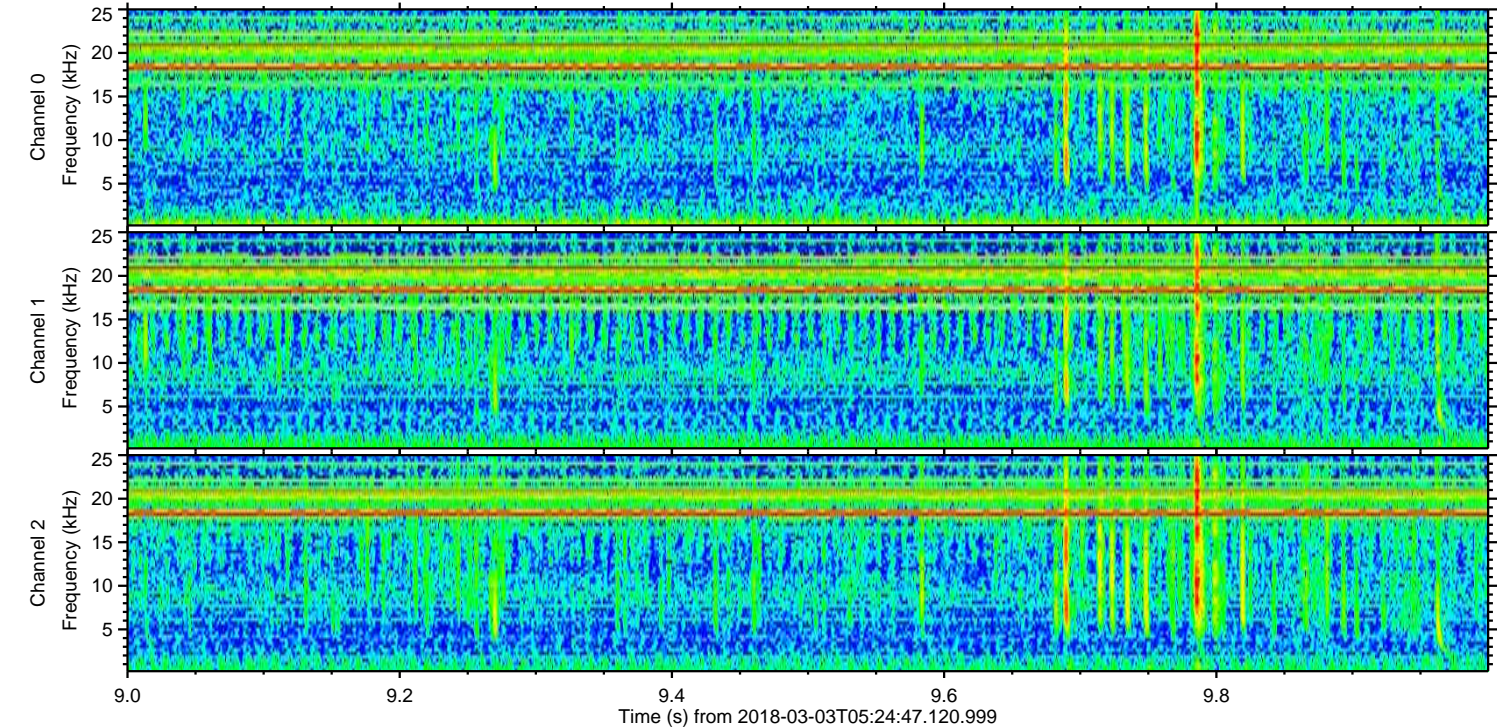
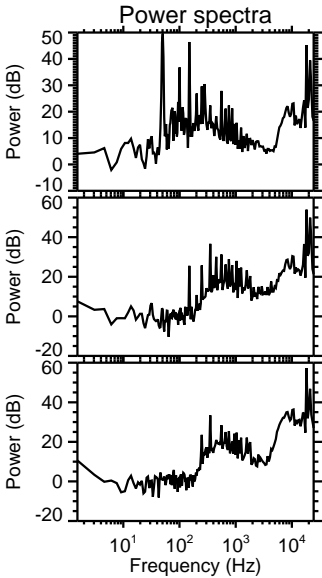
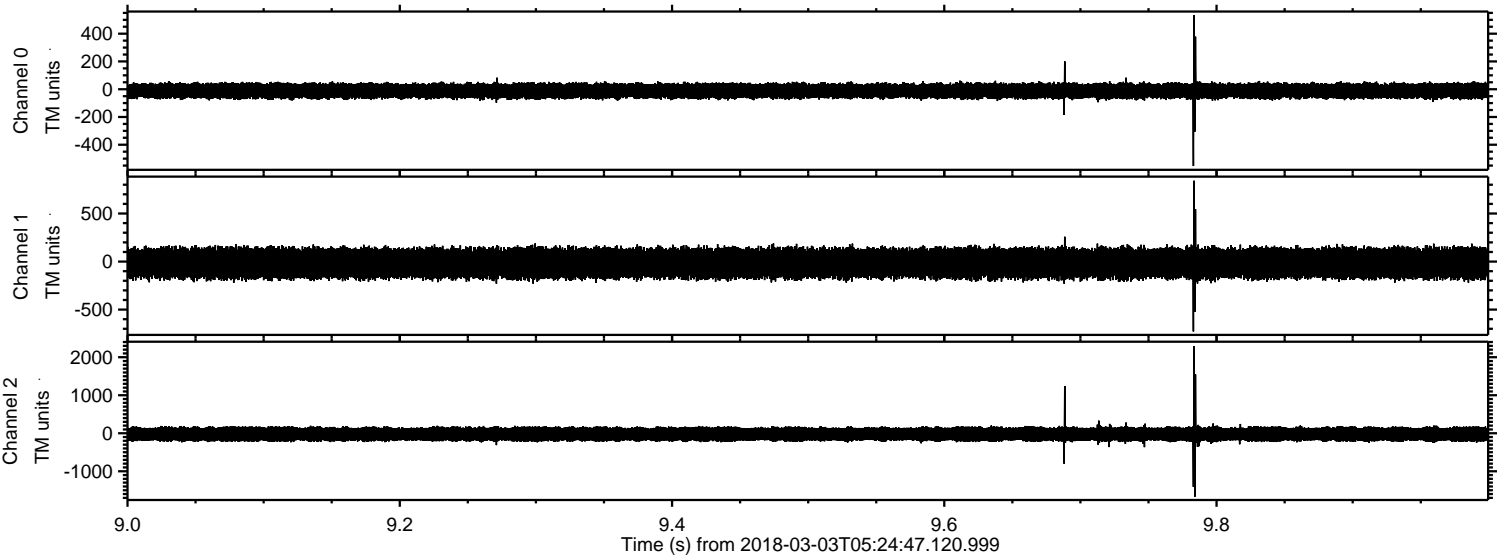


ELMAVAN 3D WAVEFORMS (Measured data sampled at 50 kHz) 51000 packets of 144 samples from 2018-03-03T05:24:47.120.999. Part 137/147

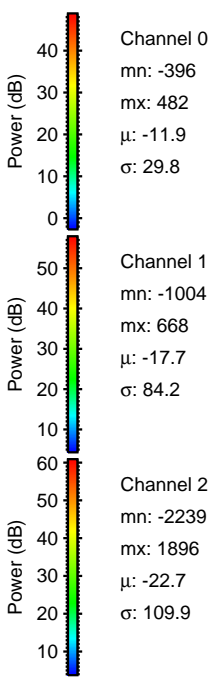
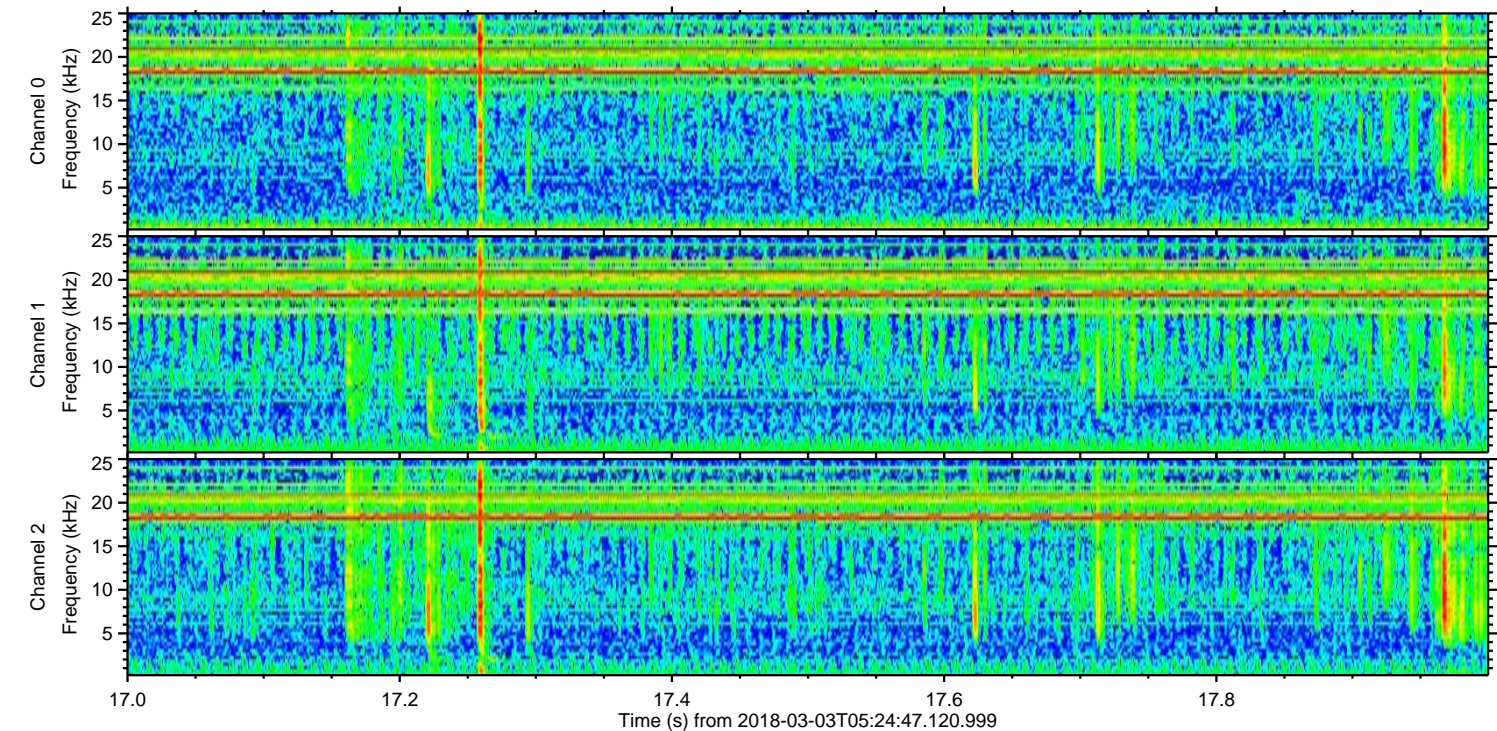
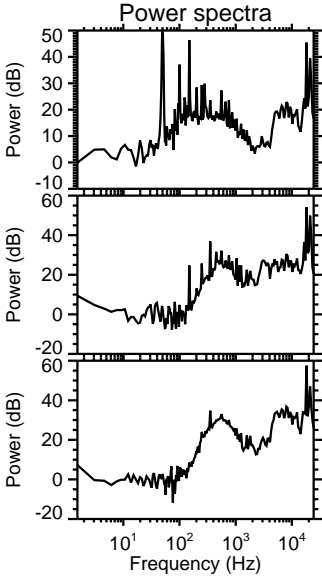
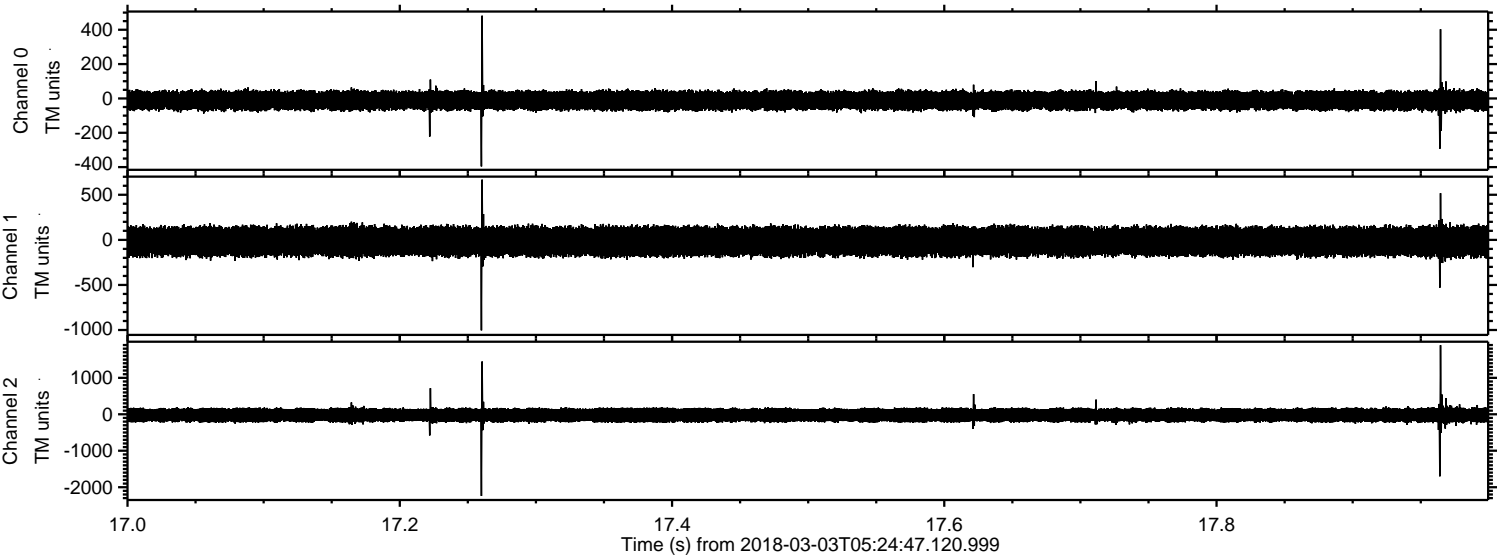
Processed Sat Mar 3 06:33:02 2018 by ELM ver.2012-10-06 from 001__elm20180303_052446__dat00.bin



Processed Sat Mar 3 06:33:02 2018 by ELM ver.2012-10-06 from 001__elm20180303_052446__dat00.bin



Processed Sat Mar 3 06:33:03 2018 by ELM ver.2012-10-06 from 001__elm20180303_052446__dat00.bin



Channel 0
mn: -396
mx: 482
 μ : -11.9
 σ : 29.8

Channel 1
mn: -1004
mx: 668
 μ : -17.7
 σ : 84.2

Channel 2
mn: -2239
mx: 1896
 μ : -22.7
 σ : 109.9

Processed Sat Mar 3 06:33:04 2018 by ELM ver.2012-10-06 from 001__elm20180303_052446__dat00.bin

