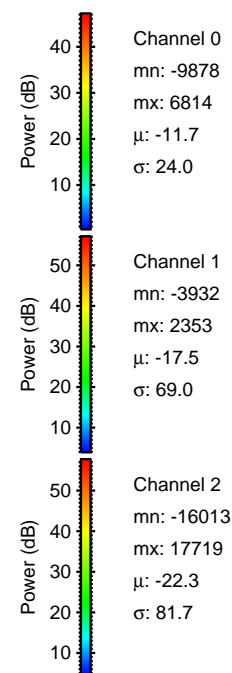
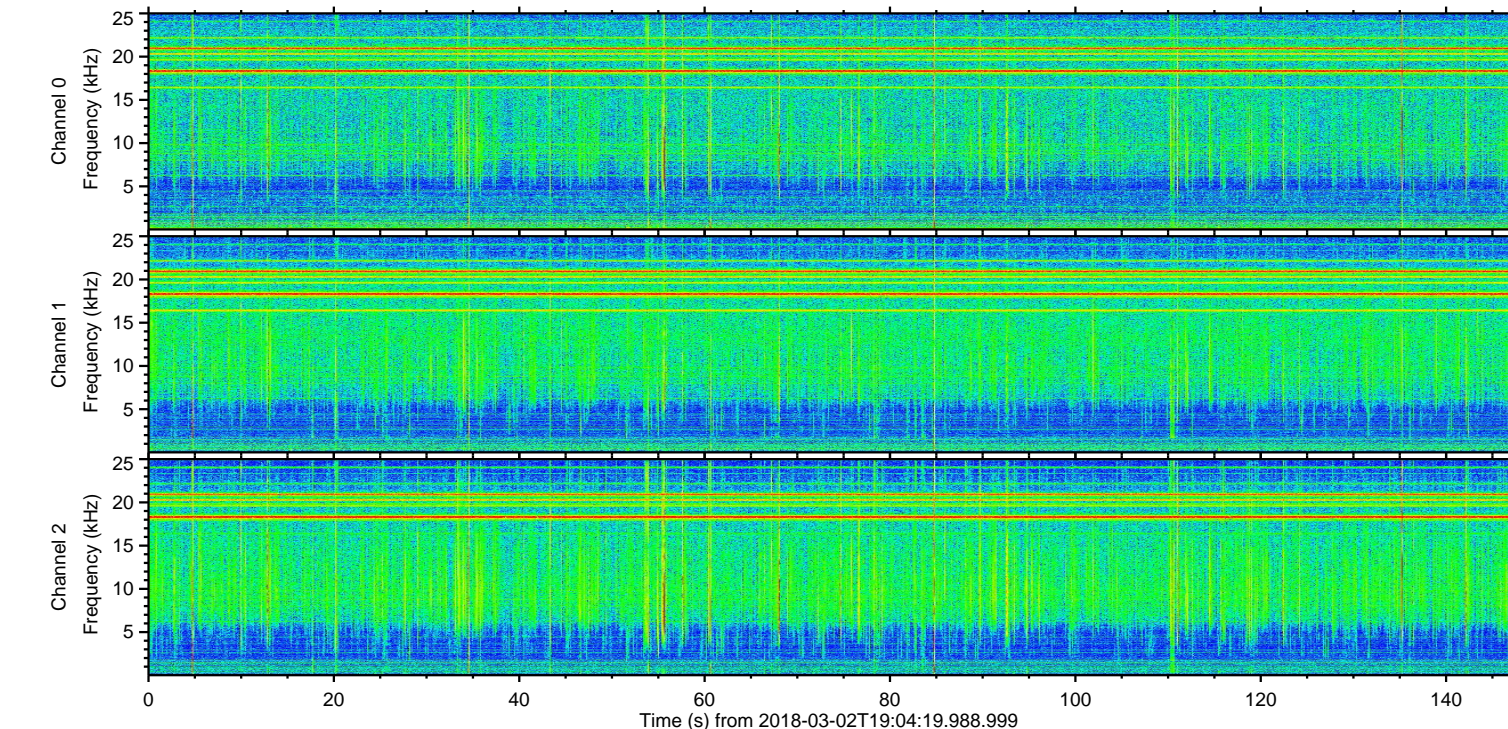
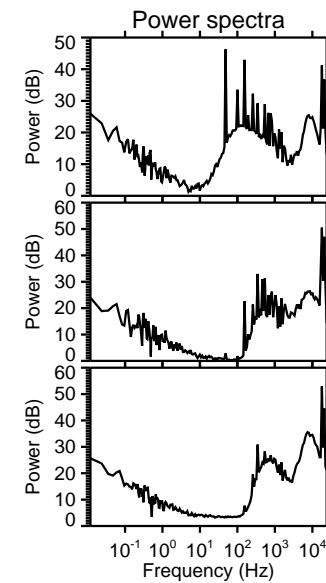
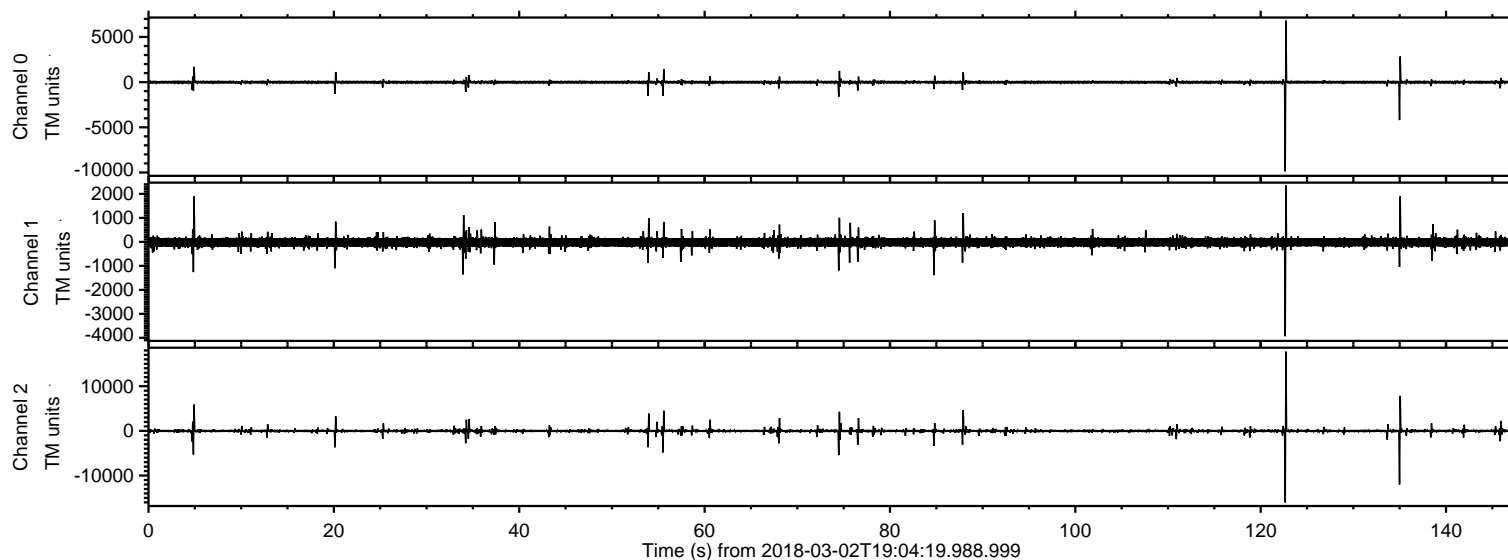


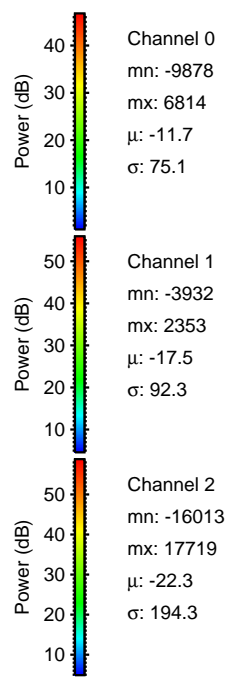
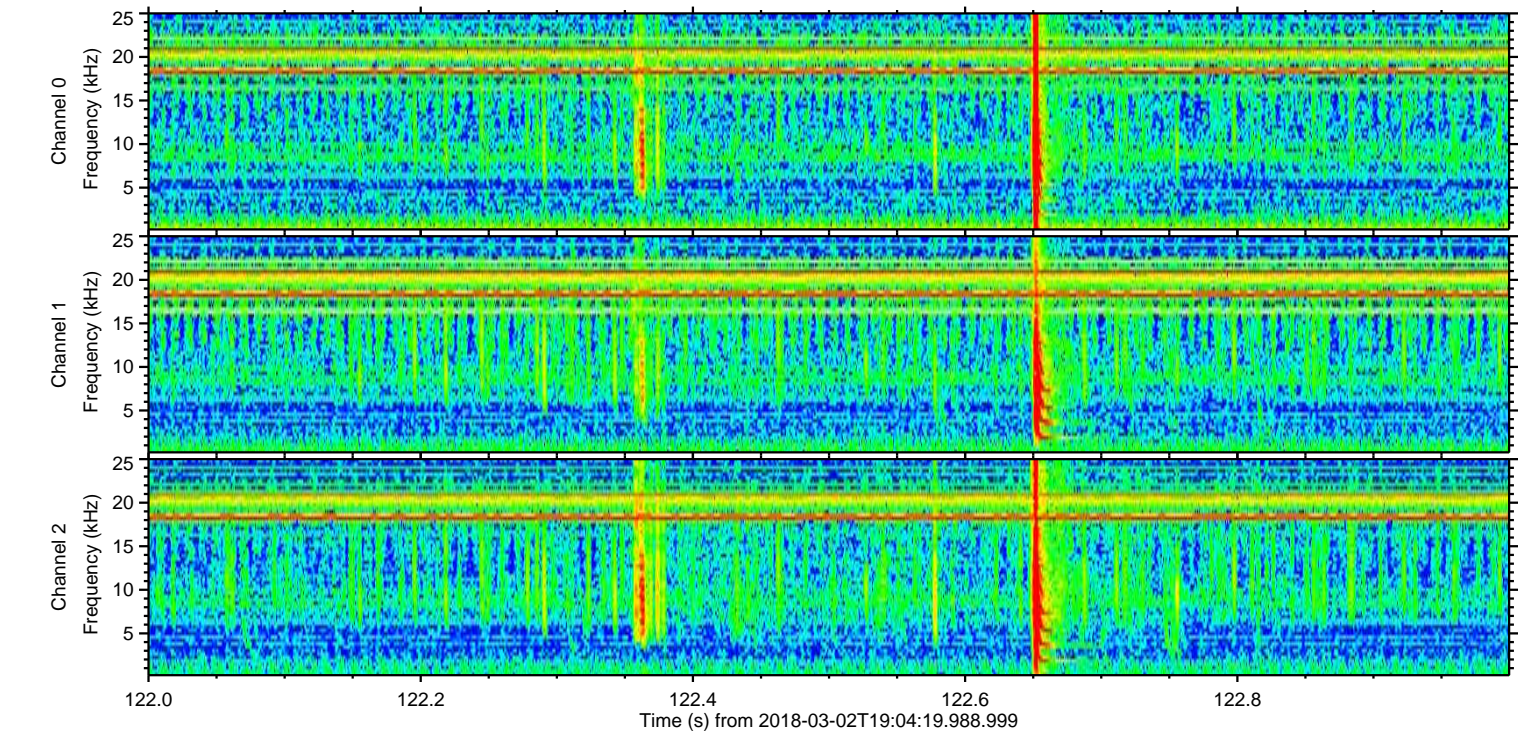
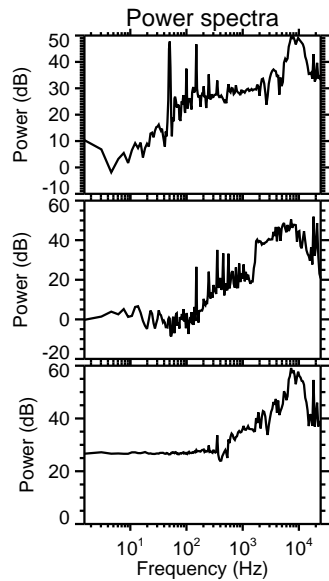
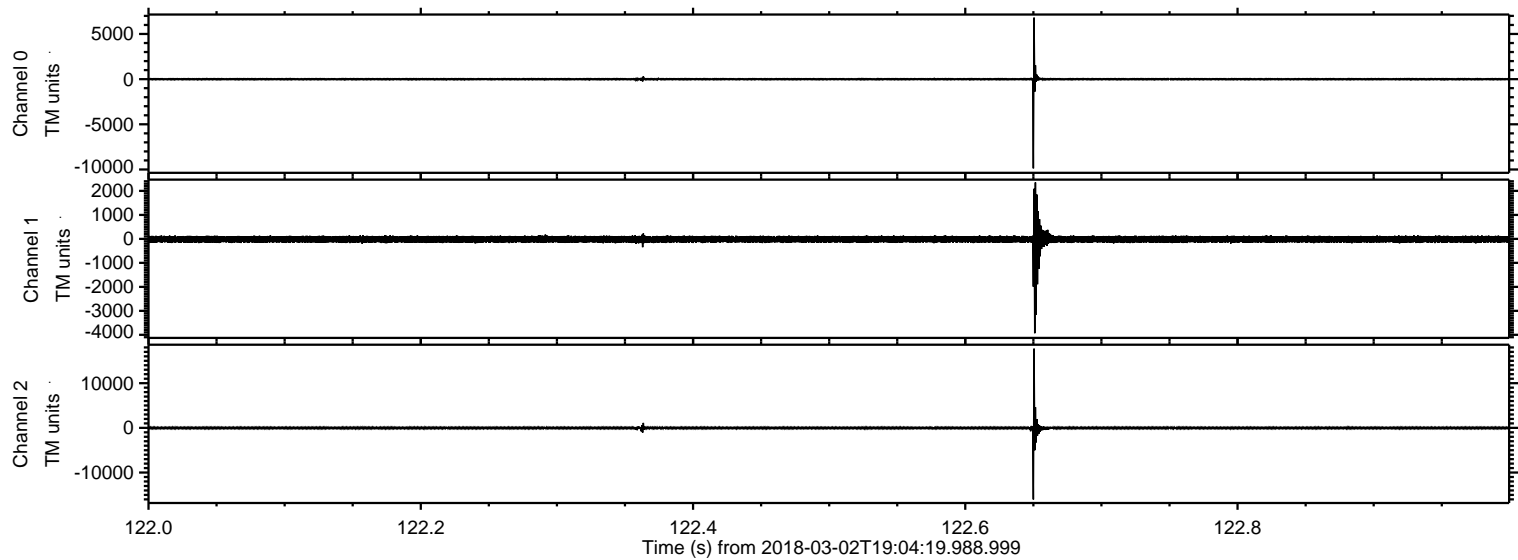
ELMAVAN 3D WAVEFORMS (Measured data sampled at 50 kHz) 51000 packets of 144 samples from 2018-03-02T19:04:19.988.999.

Processed Fri Mar 2 20:12:19 2018 by ELM ver.2012-10-06 from 001__elm20180302_190418__dat00.bin



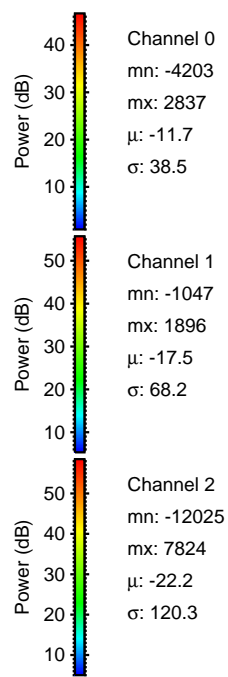
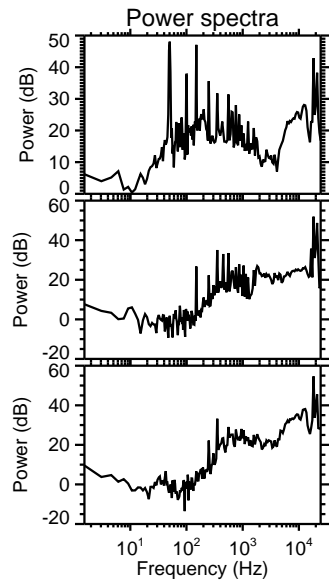
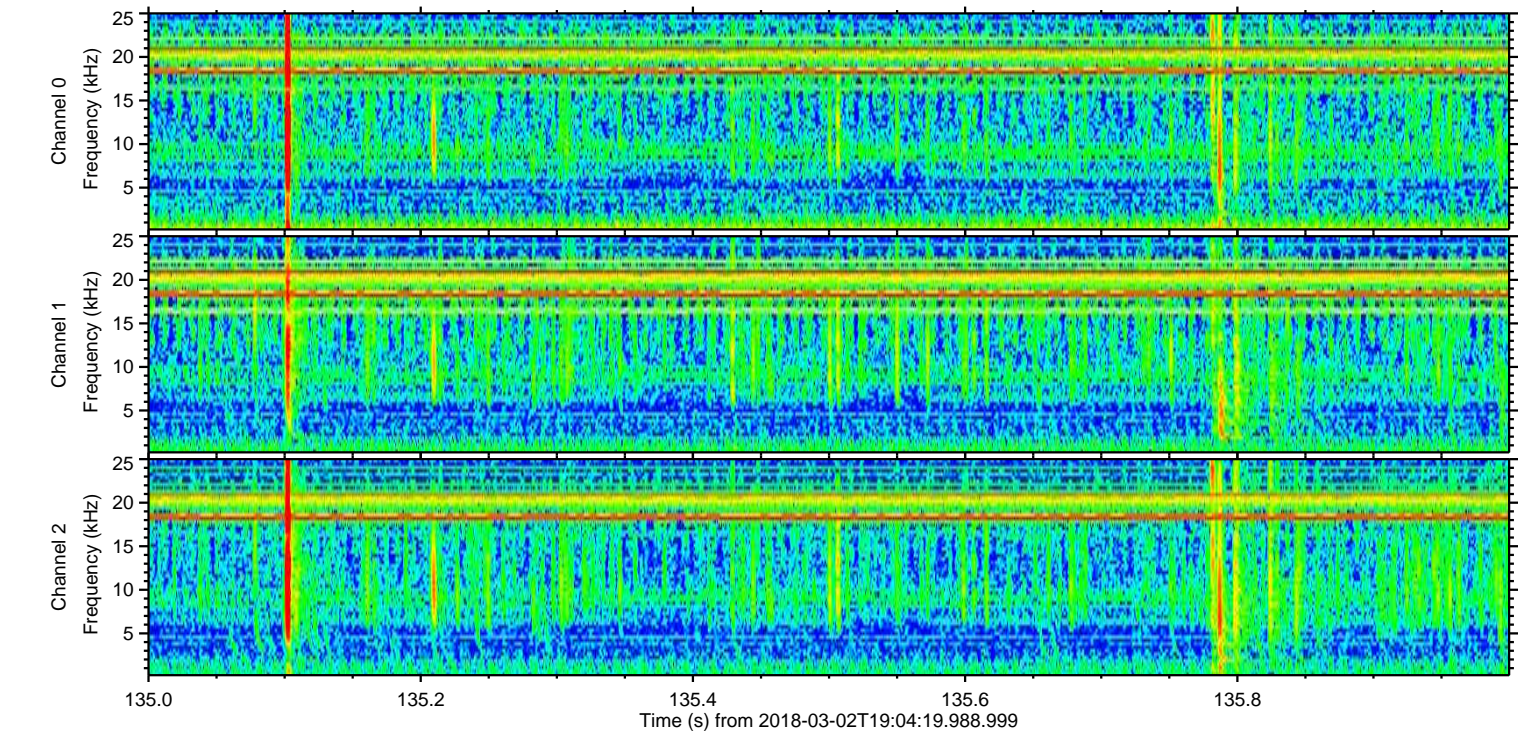
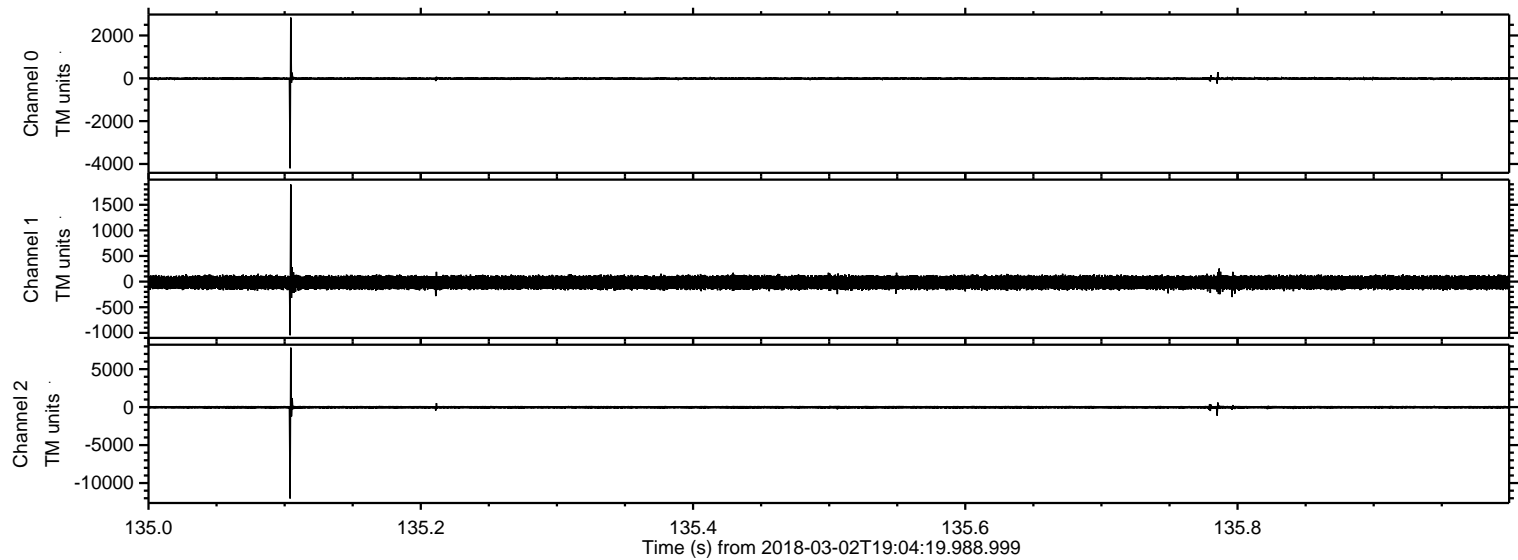
ELMAVAN 3D WAVEFORMS (Measured data sampled at 50 kHz) 51000 packets of 144 samples from 2018-03-02T19:04:19.988.999. Part 123/147

Processed Fri Mar 2 20:12:27 2018 by ELM ver.2012-10-06 from 001__elm20180302_190418__dat00.bin



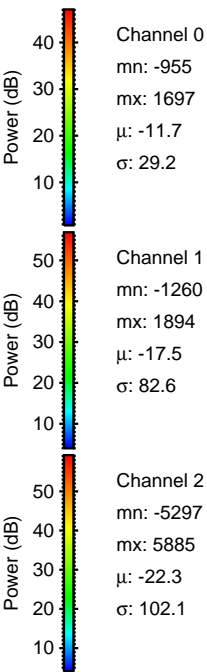
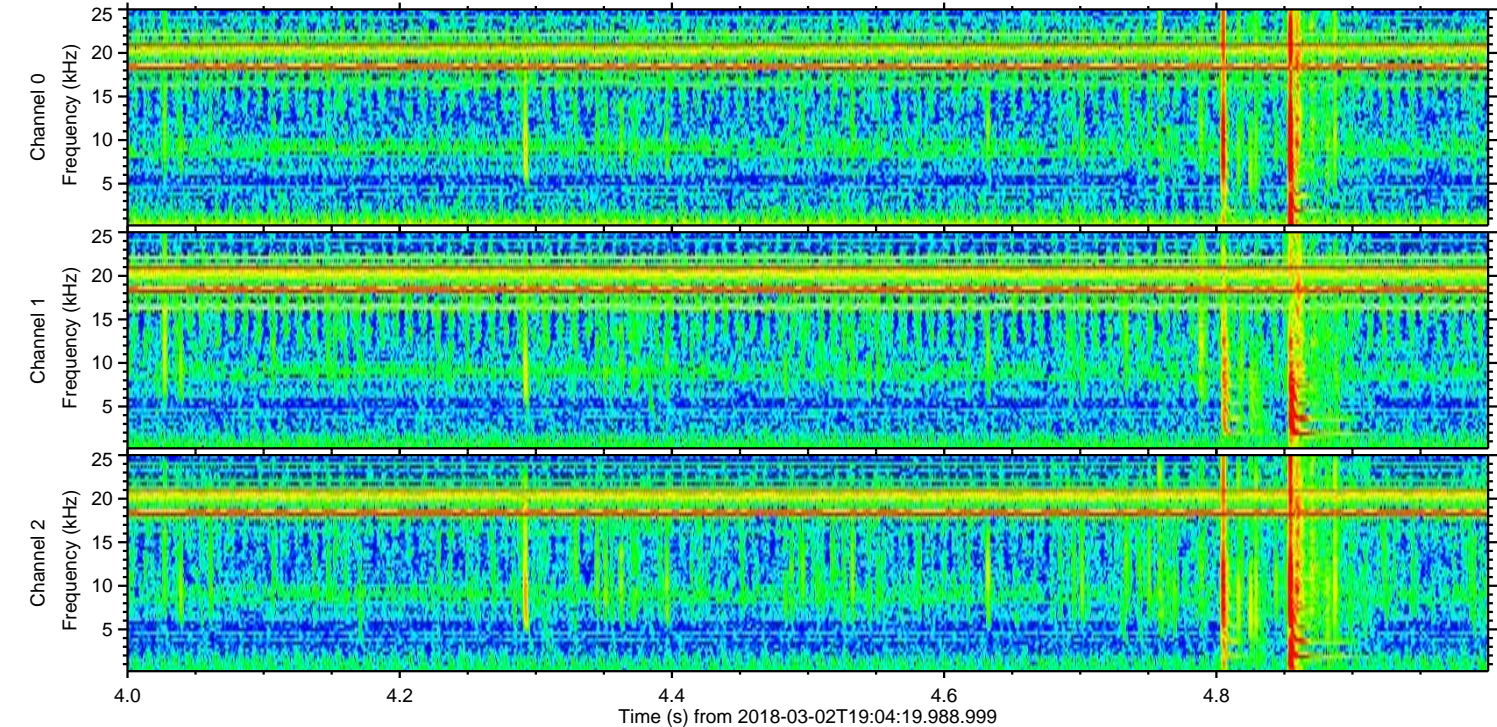
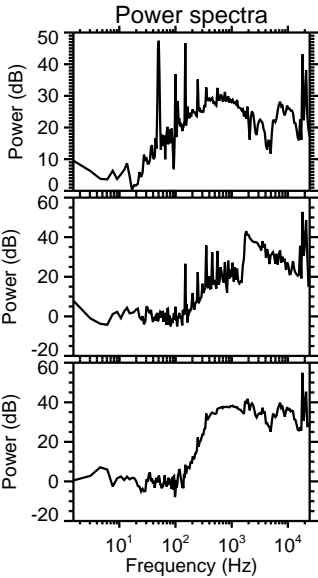
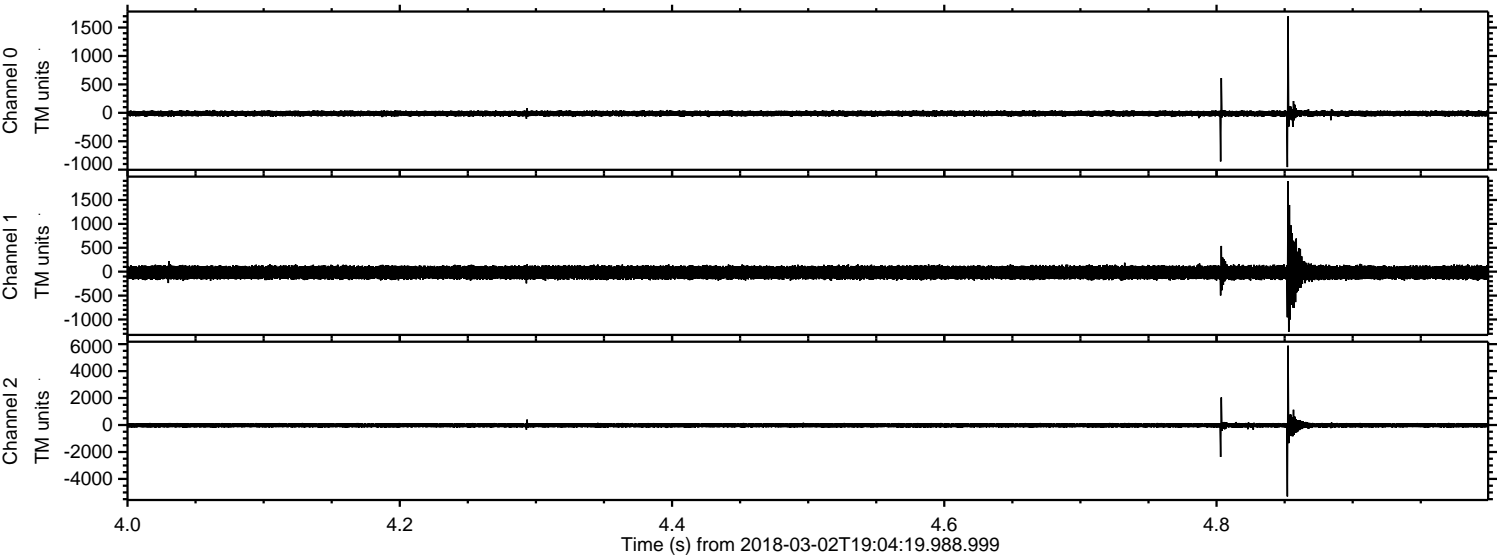
ELMAVAN 3D WAVEFORMS (Measured data sampled at 50 kHz) 51000 packets of 144 samples from 2018-03-02T19:04:19.988.999. Part 136/147

Processed Fri Mar 2 20:12:27 2018 by ELM ver.2012-10-06 from 001__elm20180302_190418__dat00.bin

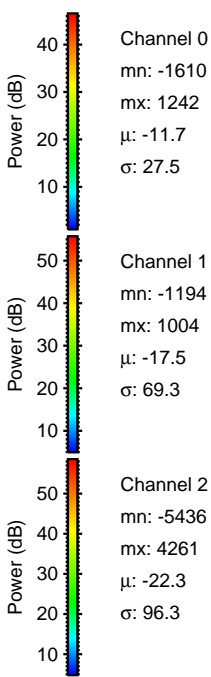
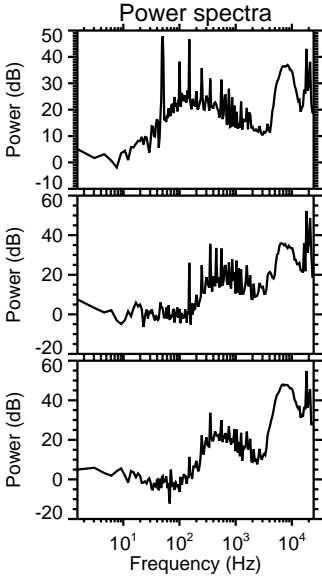
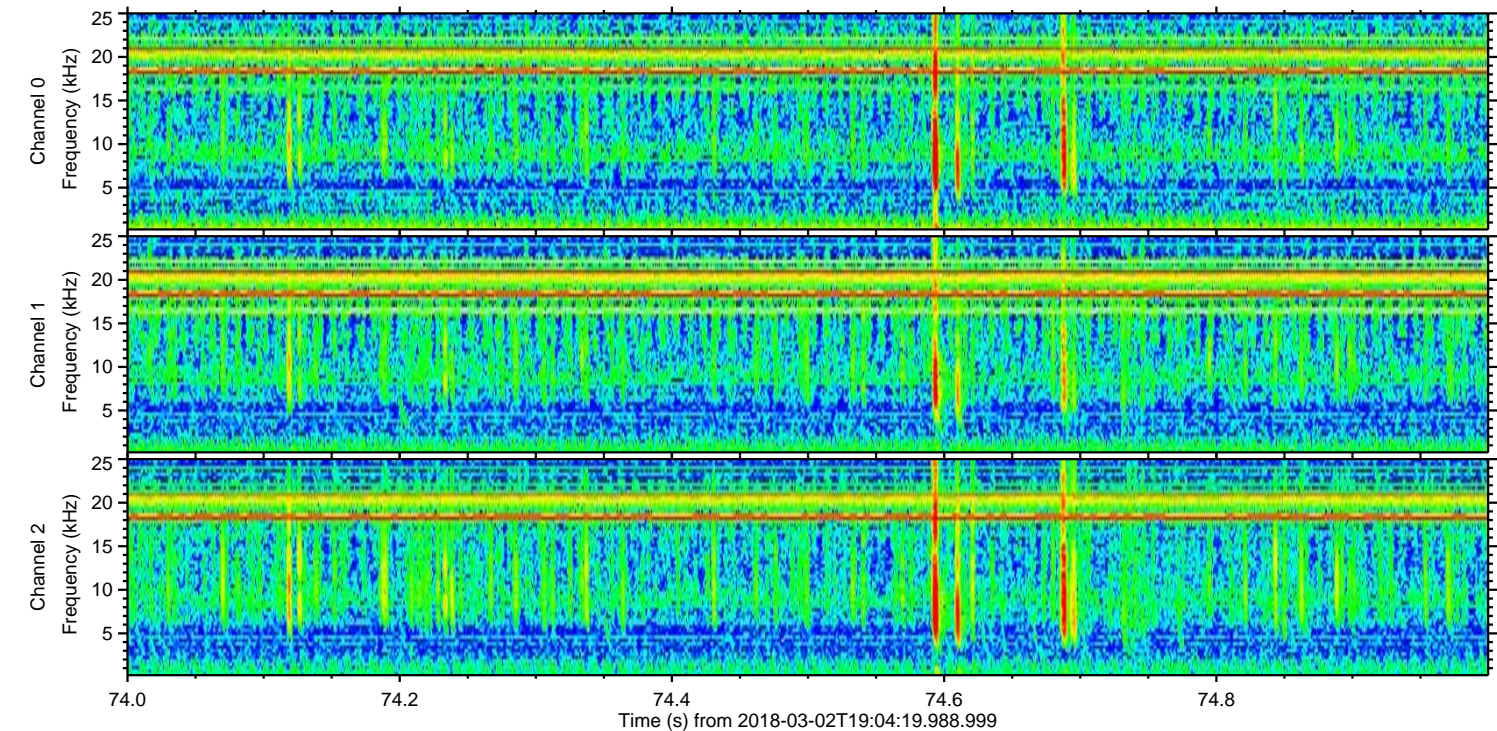
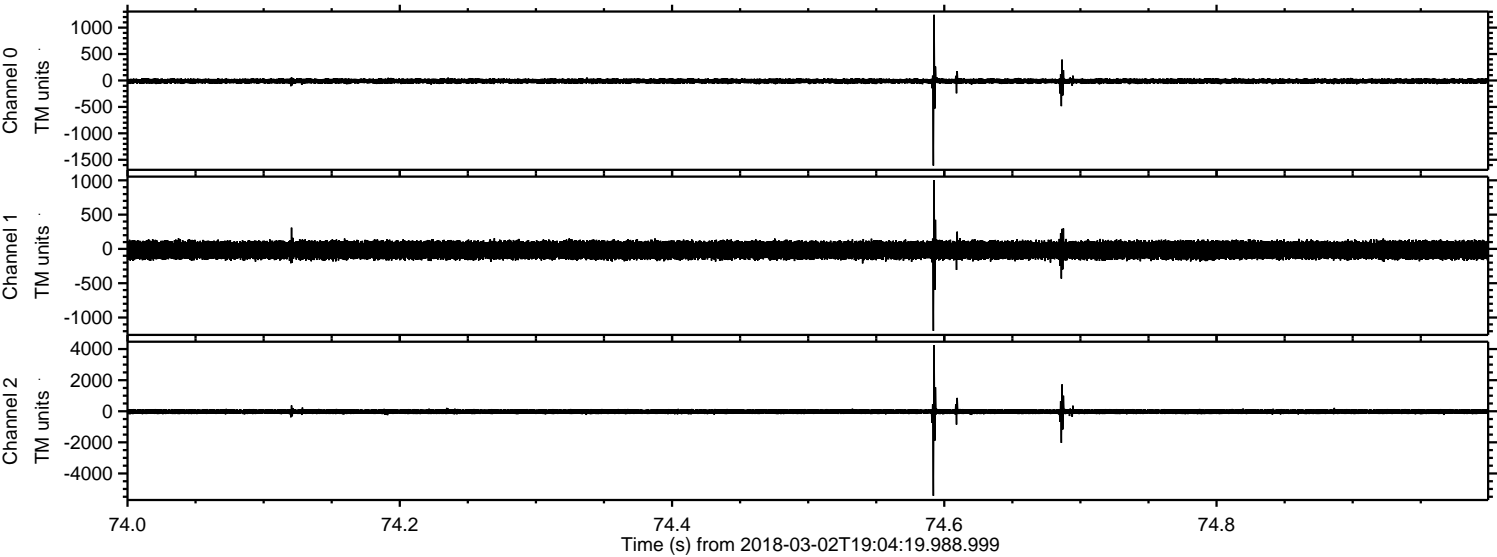


ELMAVAN 3D WAVEFORMS (Measured data sampled at 50 kHz) 51000 packets of 144 samples from 2018-03-02T19:04:19.988.999. Part 5/147

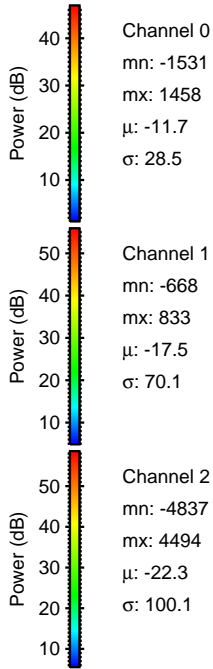
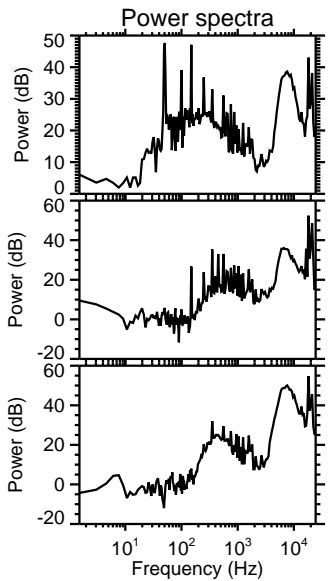
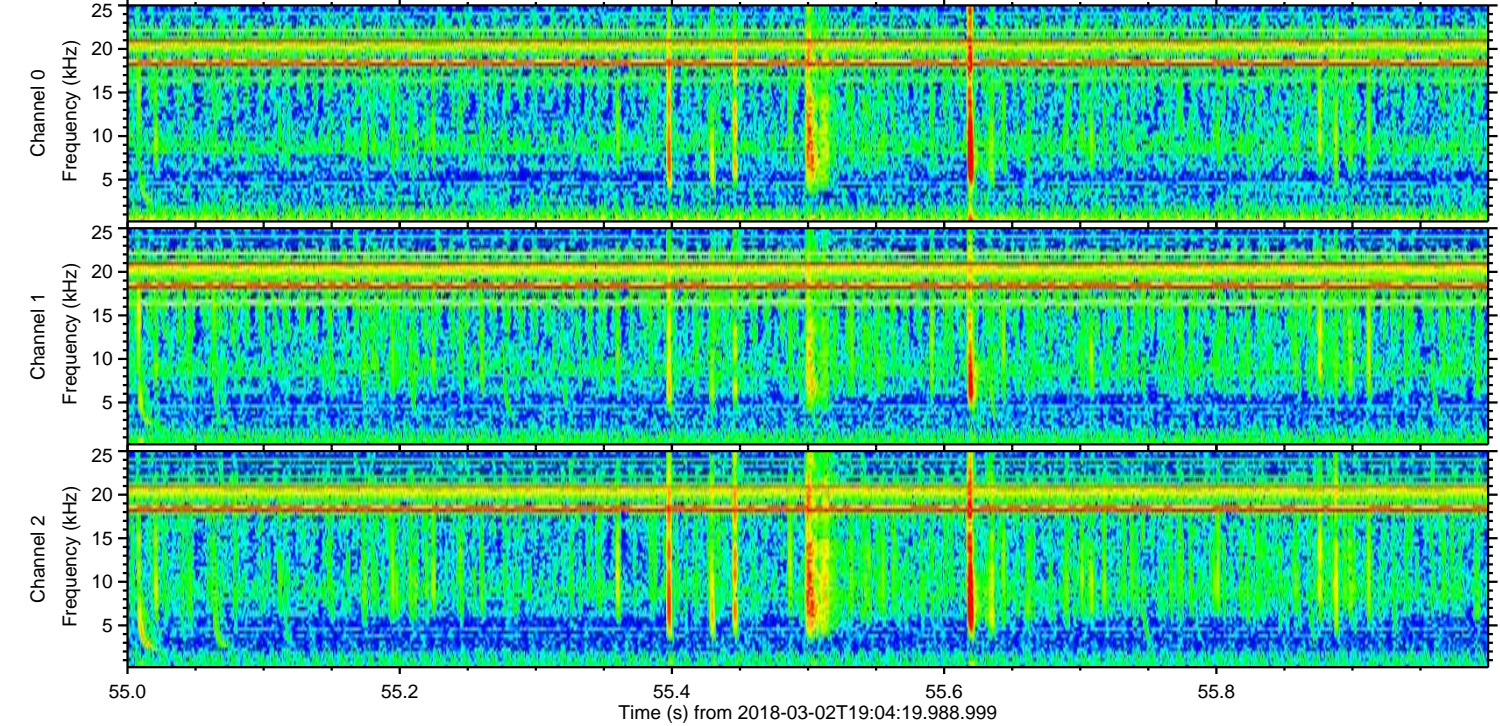
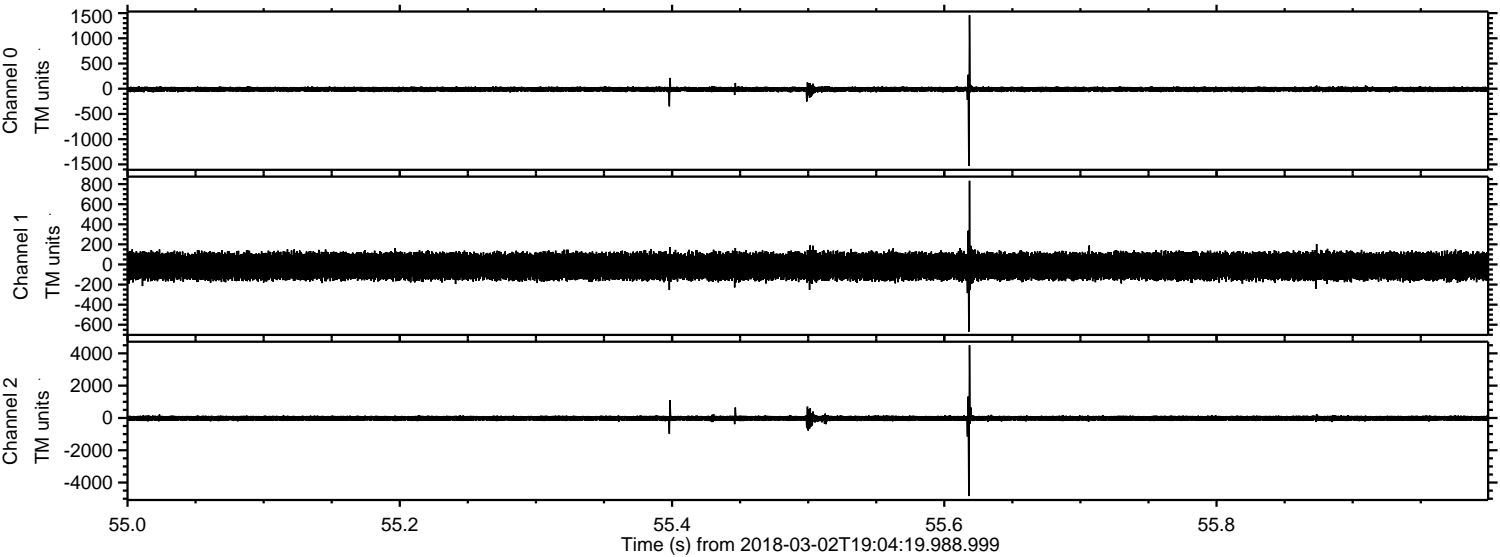
Processed Fri Mar 2 20:12:28 2018 by ELM ver.2012-10-06 from 001__elm20180302_190418__dat00.bin



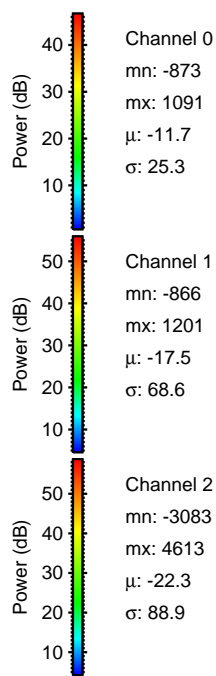
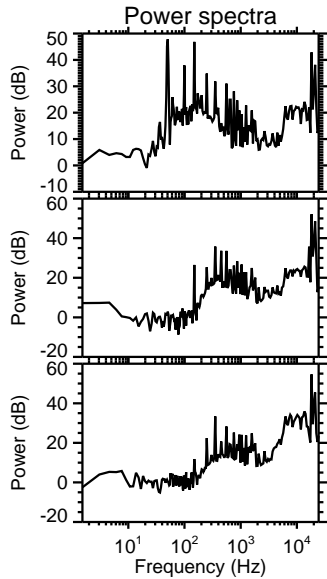
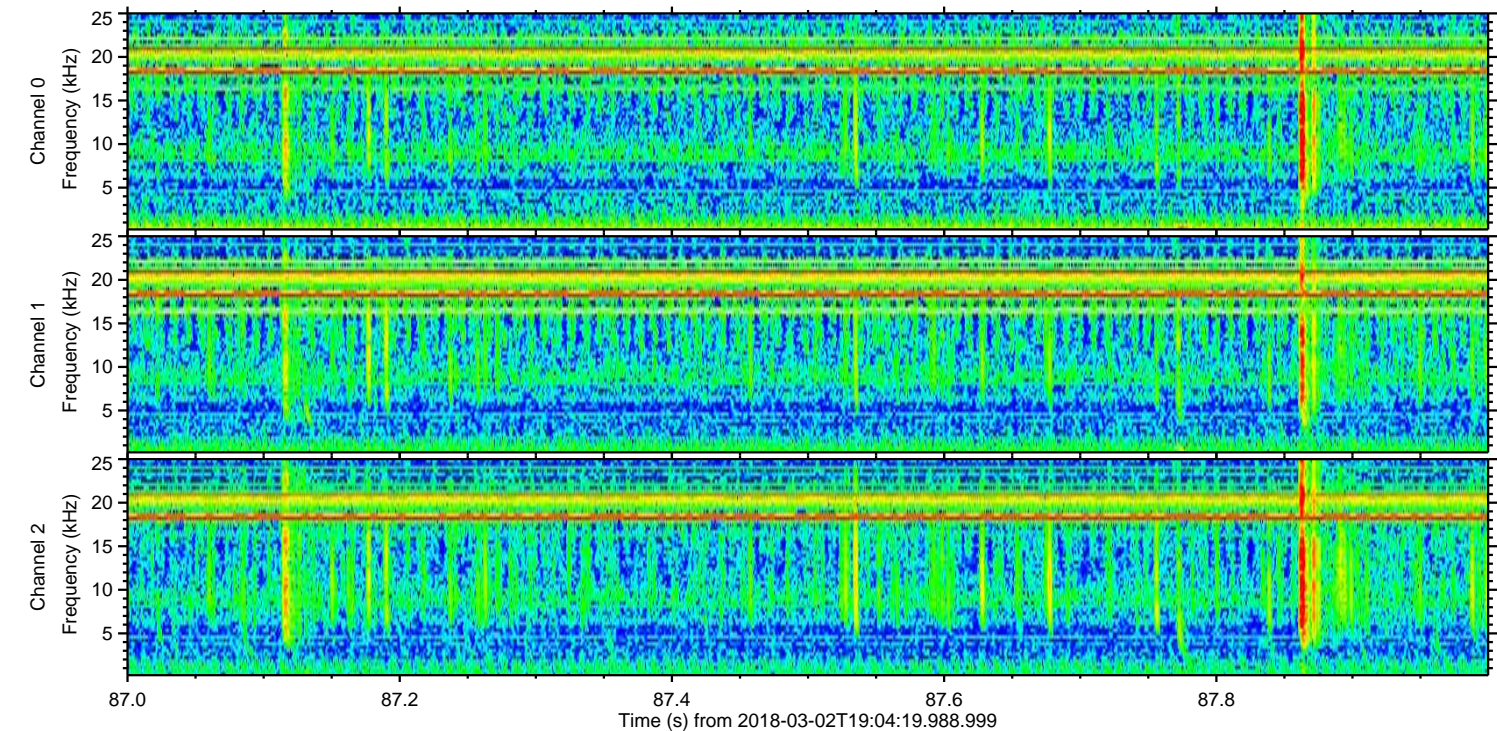
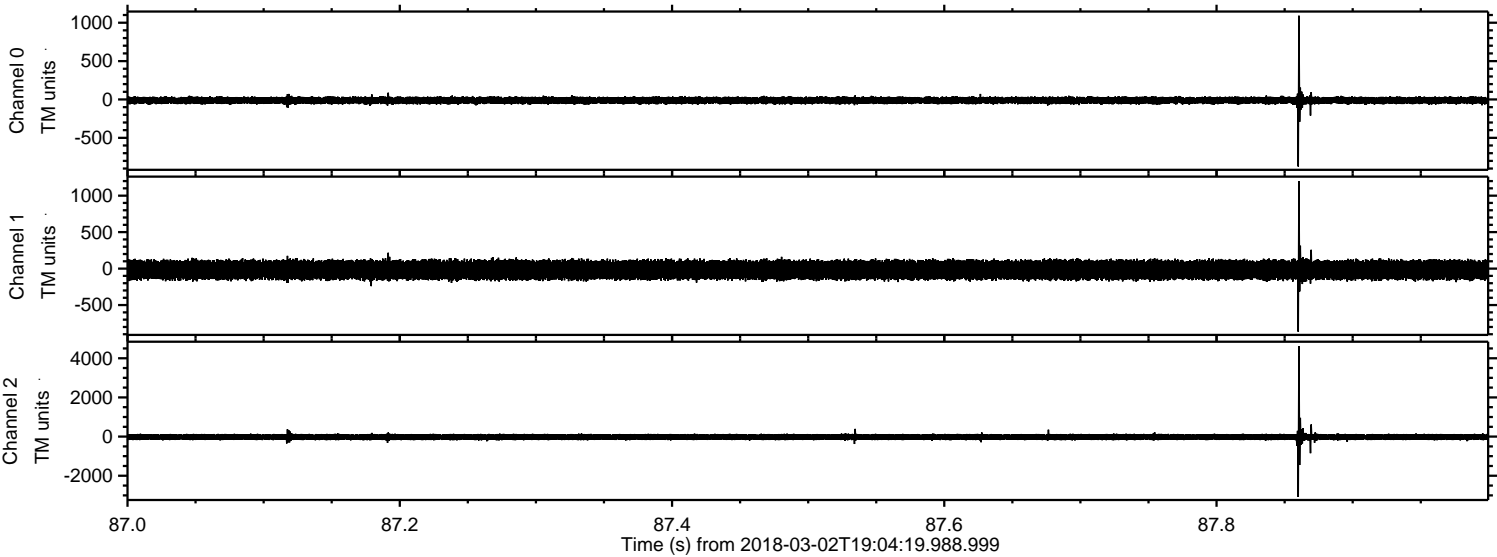
Processed Fri Mar 2 20:12:29 2018 by ELM ver.2012-10-06 from 001__elm20180302_190418__dat00.bin



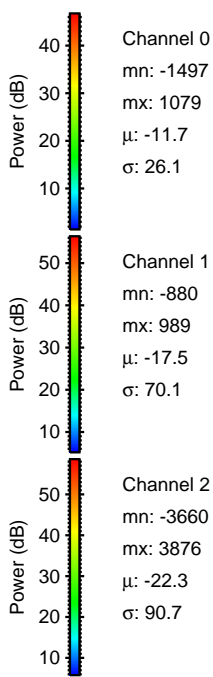
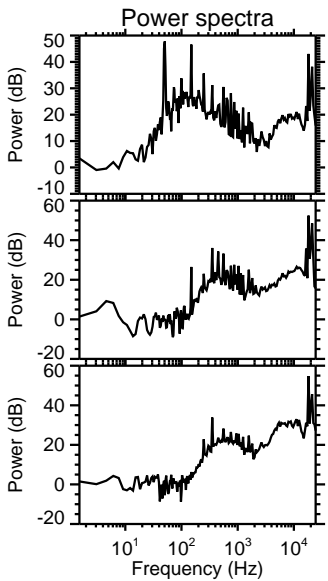
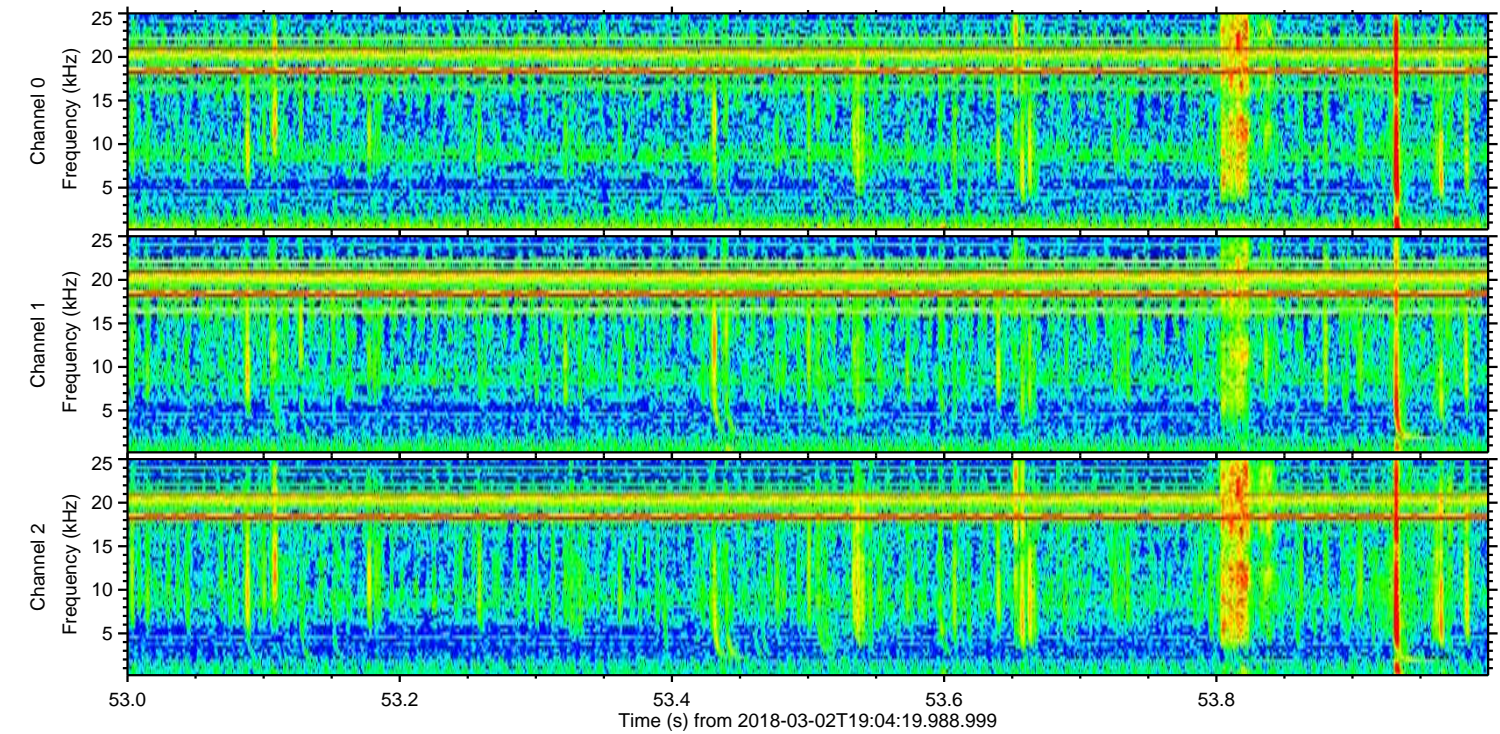
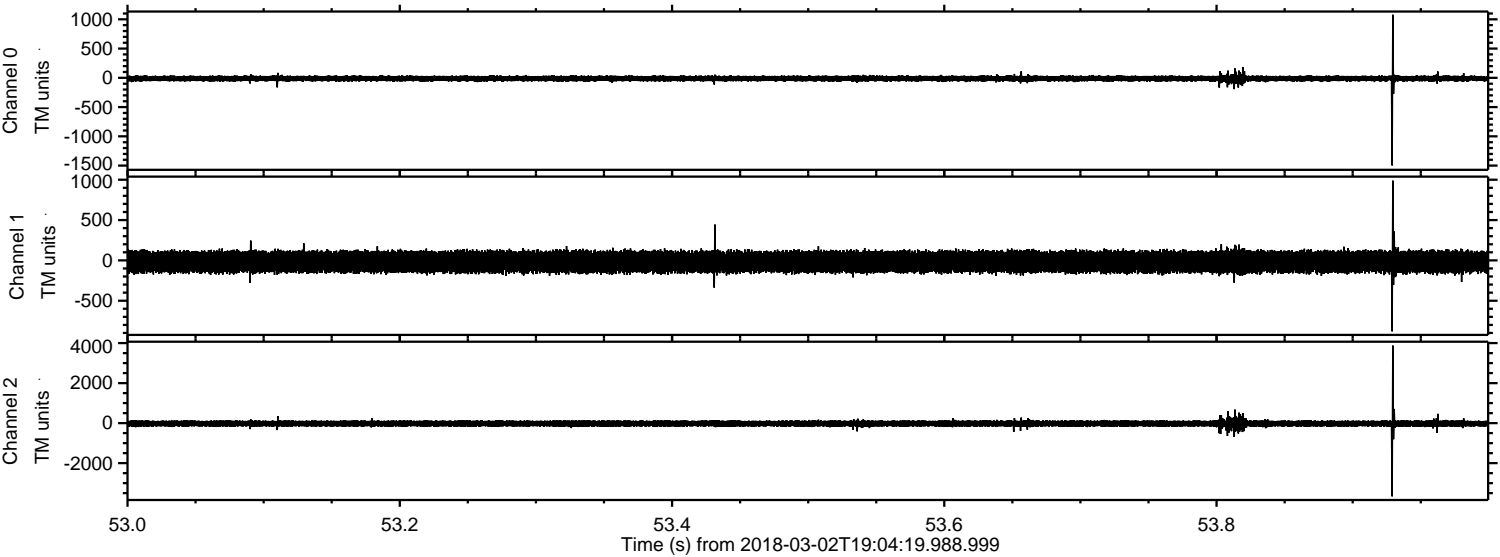
Processed Fri Mar 2 20:12:30 2018 by ELM ver.2012-10-06 from 001__elm20180302_190418__dat00.bin



Processed Fri Mar 2 20:12:31 2018 by ELM ver.2012-10-06 from 001__elm20180302_190418__dat00.bin



Processed Fri Mar 2 20:12:32 2018 by ELM ver.2012-10-06 from 001__elm20180302_190418__dat00.bin

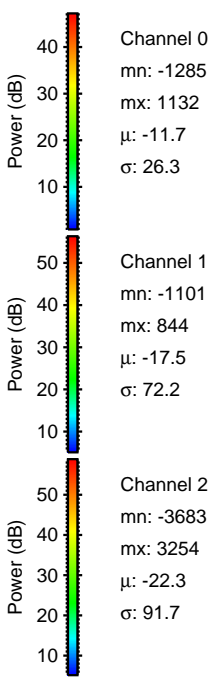
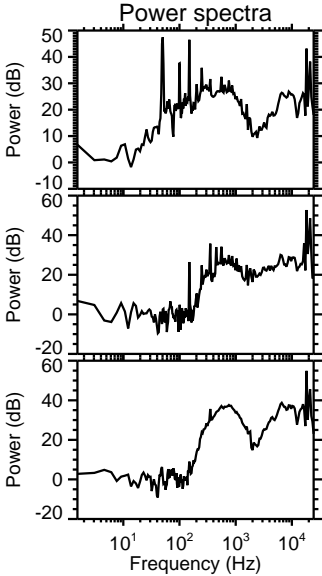
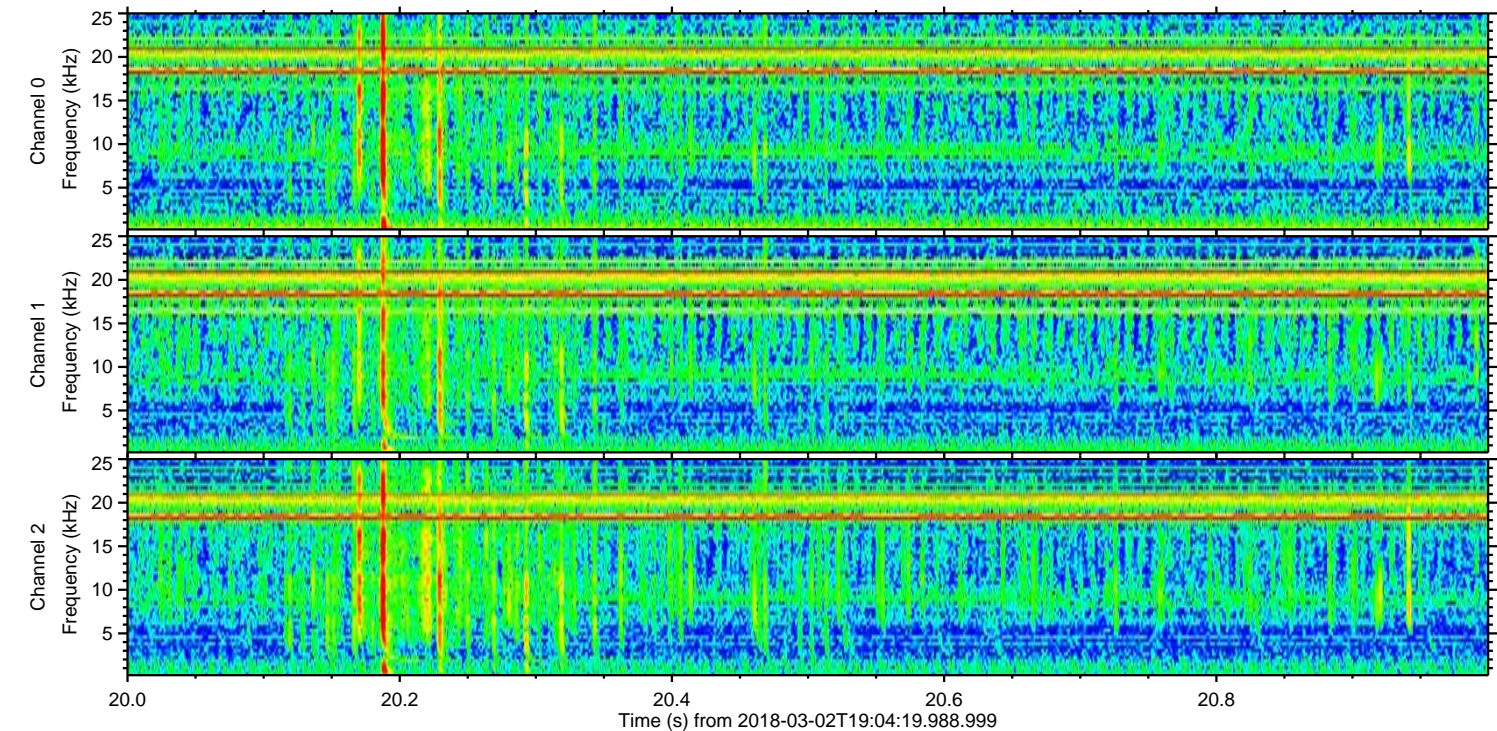
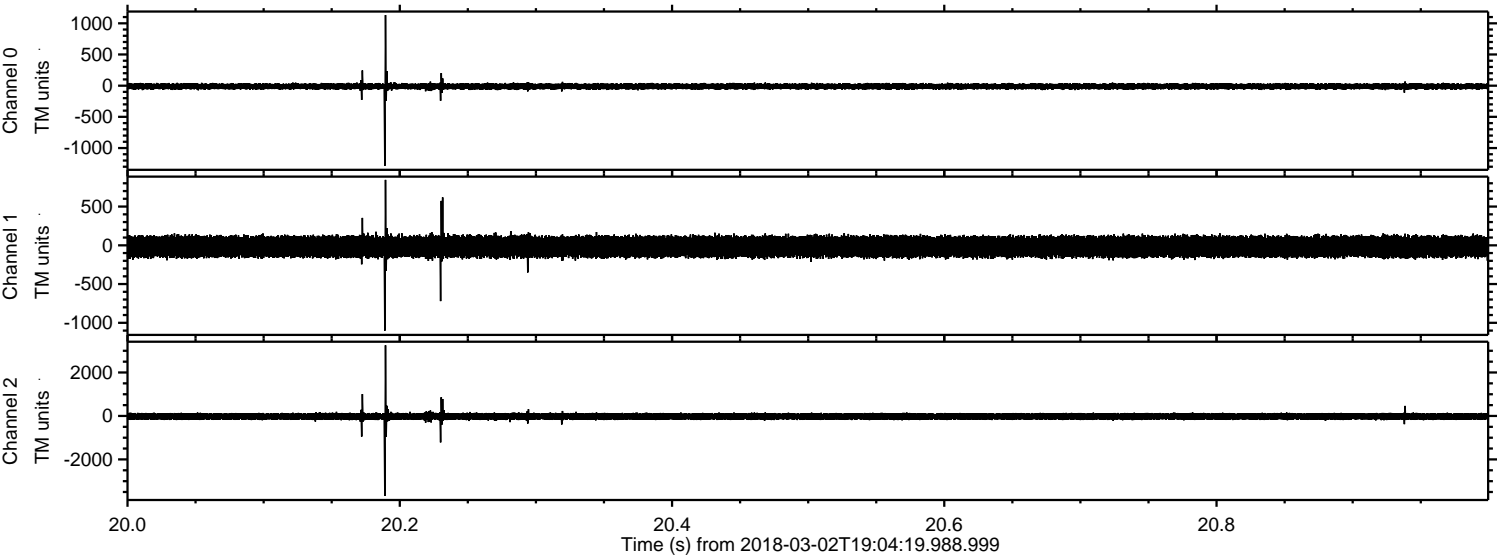


Channel 0
mn: -1497
mx: 1079
 μ : -11.7
 σ : 26.1

Channel 1
mn: -880
mx: 989
 μ : -17.5
 σ : 70.1

Channel 2
mn: -3660
mx: 3876
 μ : -22.3
 σ : 90.7

Processed Fri Mar 2 20:12:33 2018 by ELM ver.2012-10-06 from 001__elm20180302_190418__dat00.bin



Channel 0
mn: -1285
mx: 1132
 μ : -11.7
 σ : 26.3

Channel 1
mn: -1101
mx: 844
 μ : -17.5
 σ : 72.2

Channel 2
mn: -3683
mx: 3254
 μ : -22.3
 σ : 91.7

Processed Fri Mar 2 20:12:33 2018 by ELM ver.2012-10-06 from 001__elm20180302_190418__dat00.bin

