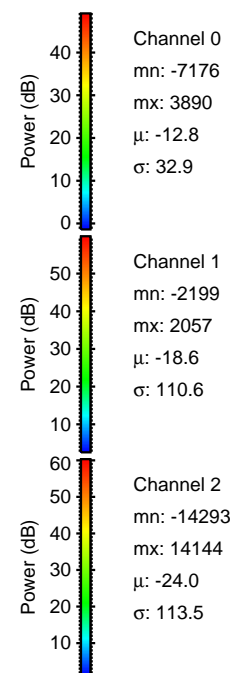
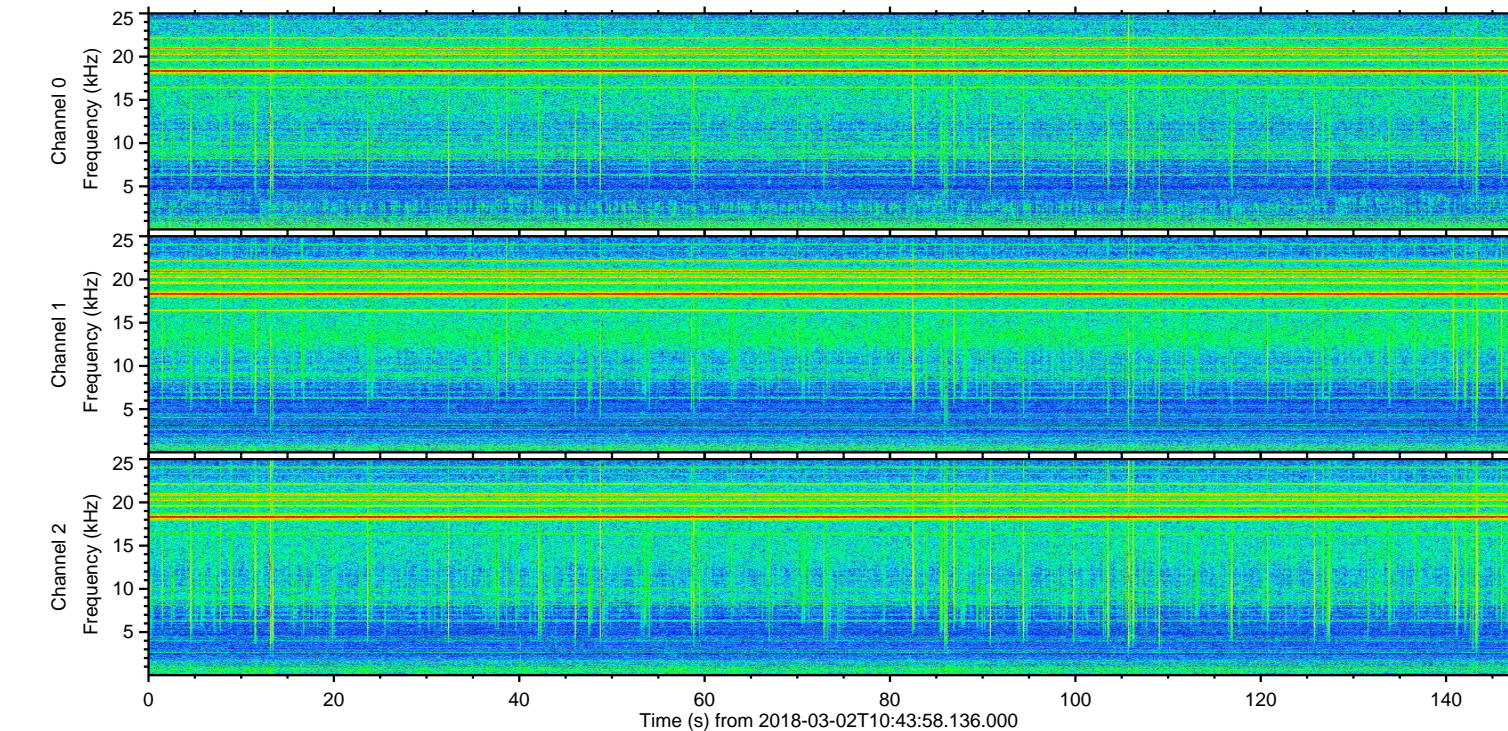
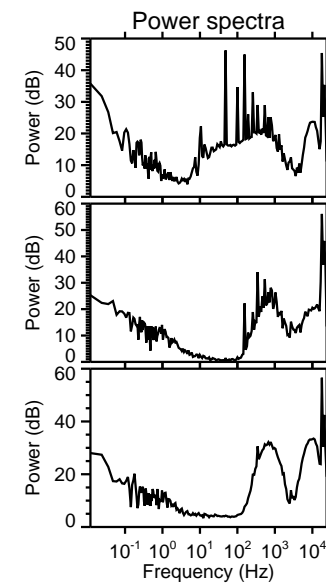
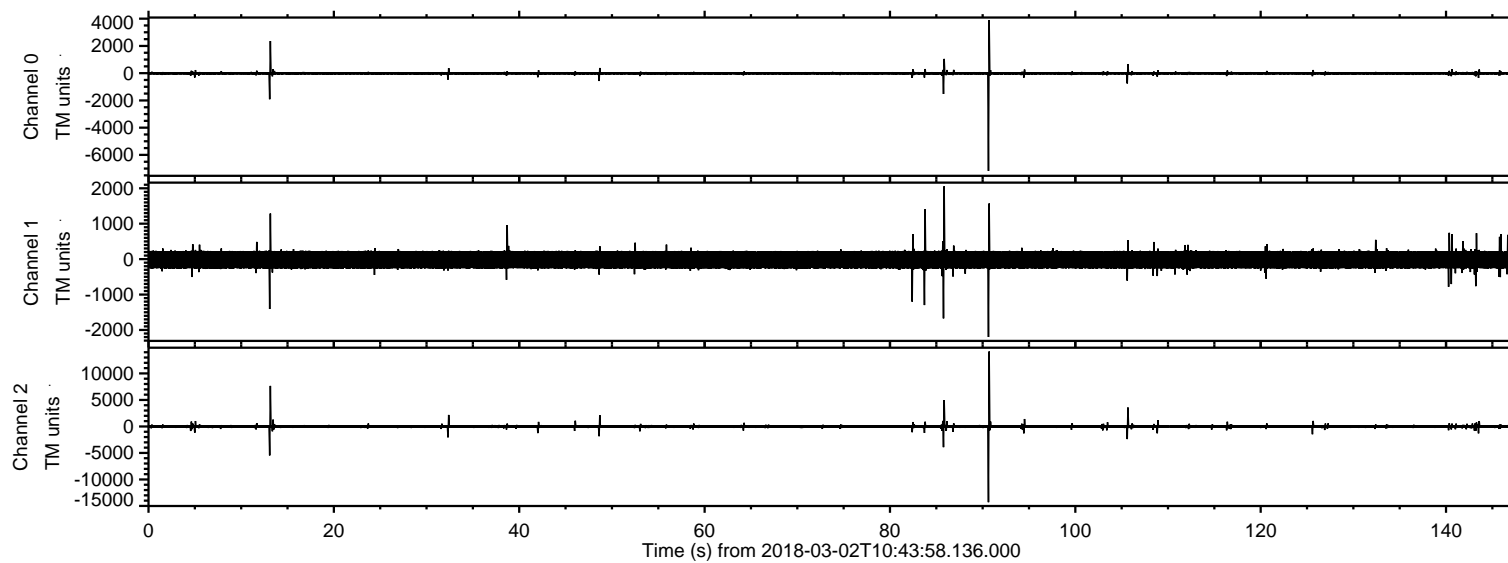


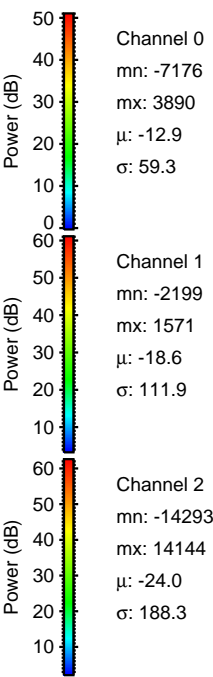
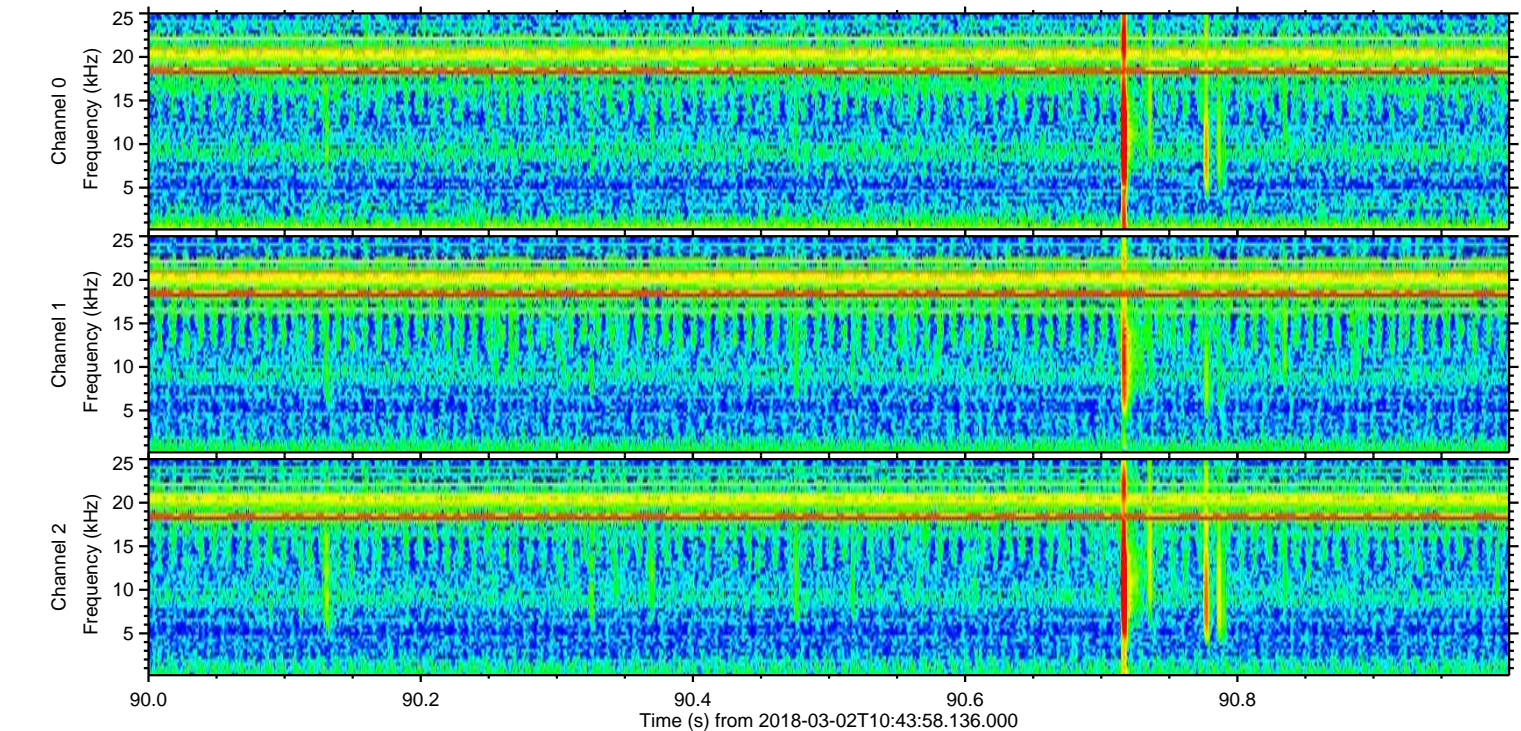
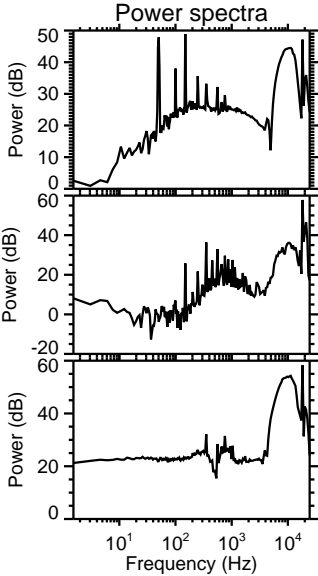
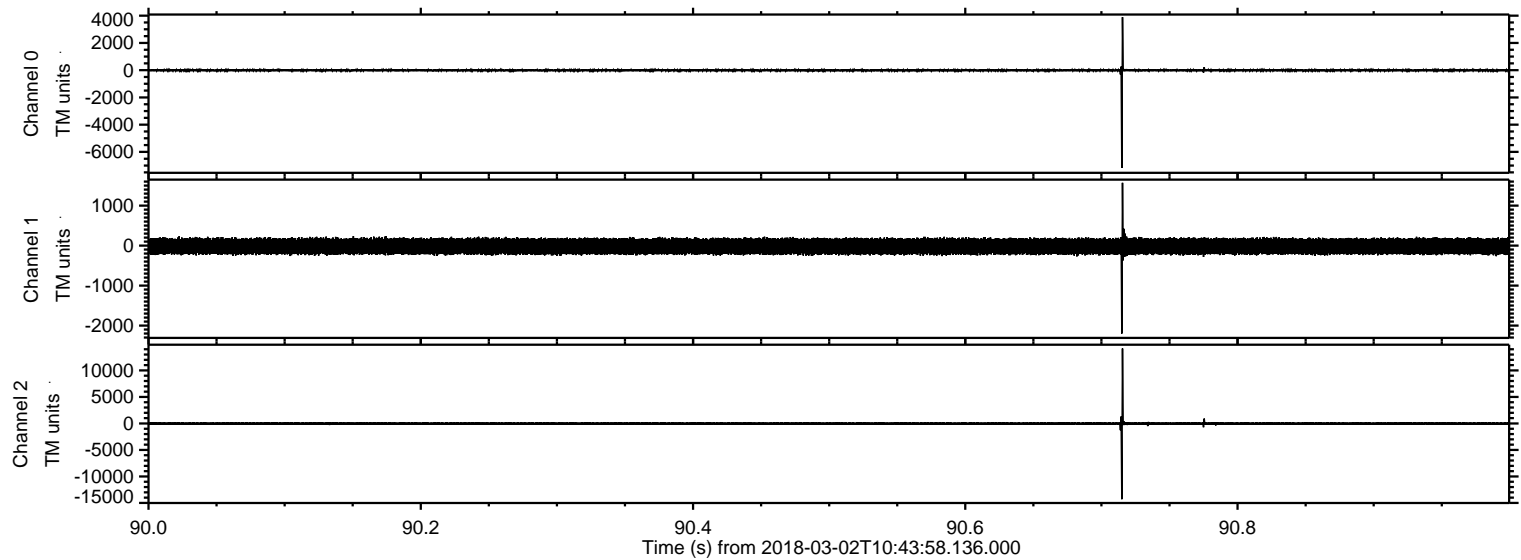
# ELMAVAN 3D WAVEFORMS (Measured data sampled at 50 kHz) 51000 packets of 144 samples from 2018-03-02T10:43:58.136.000.

Processed Fri Mar 2 11:52:03 2018 by ELM ver.2012-10-06 from 001\_\_elm20180302\_104357\_\_dat00.bin



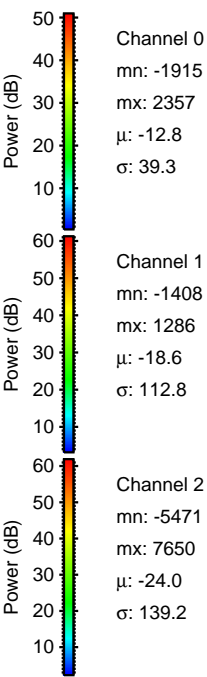
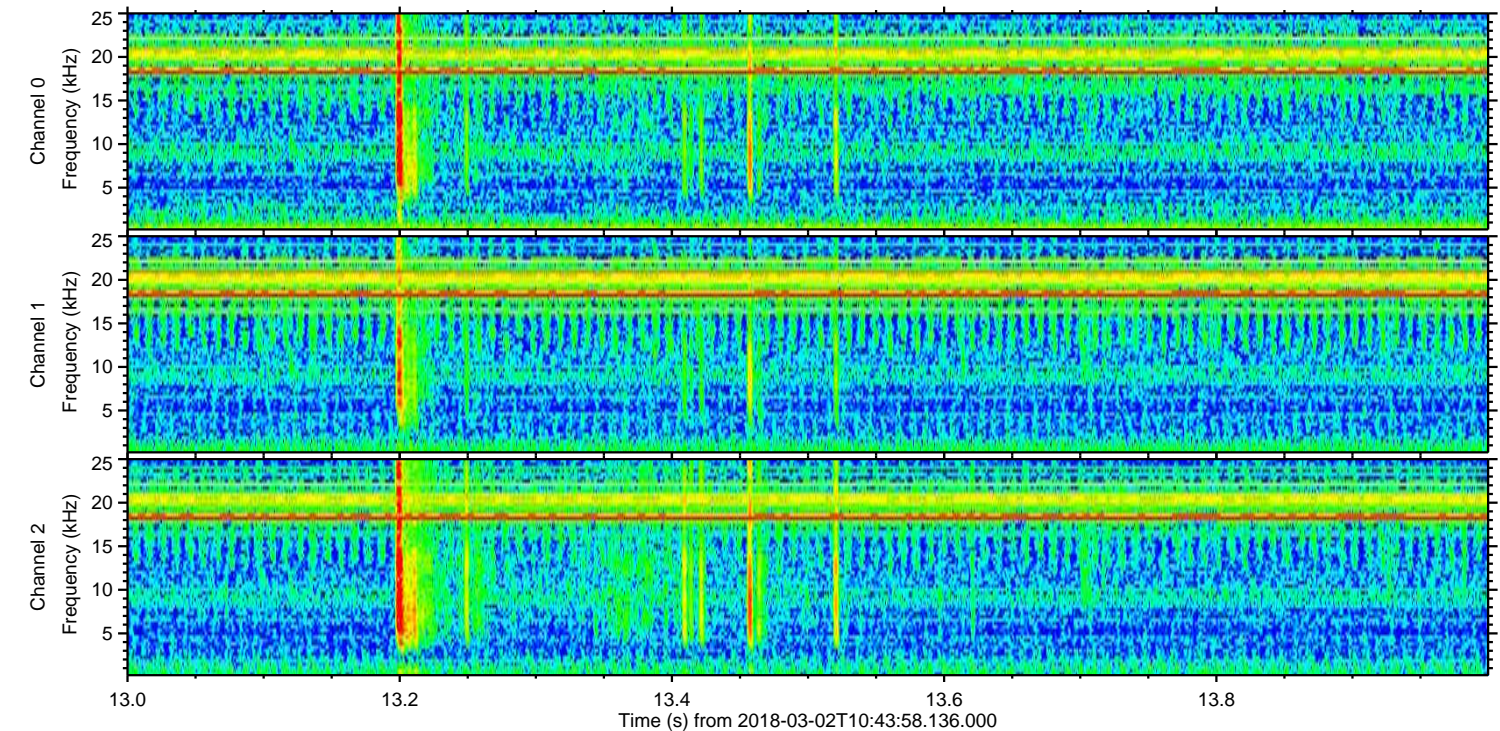
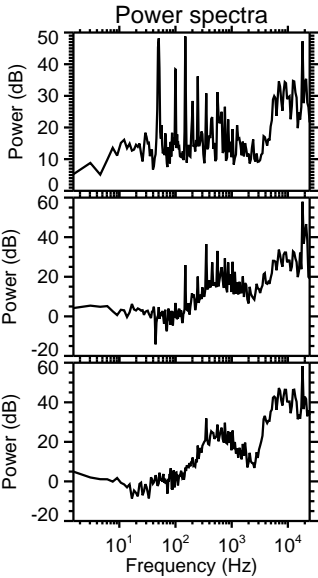
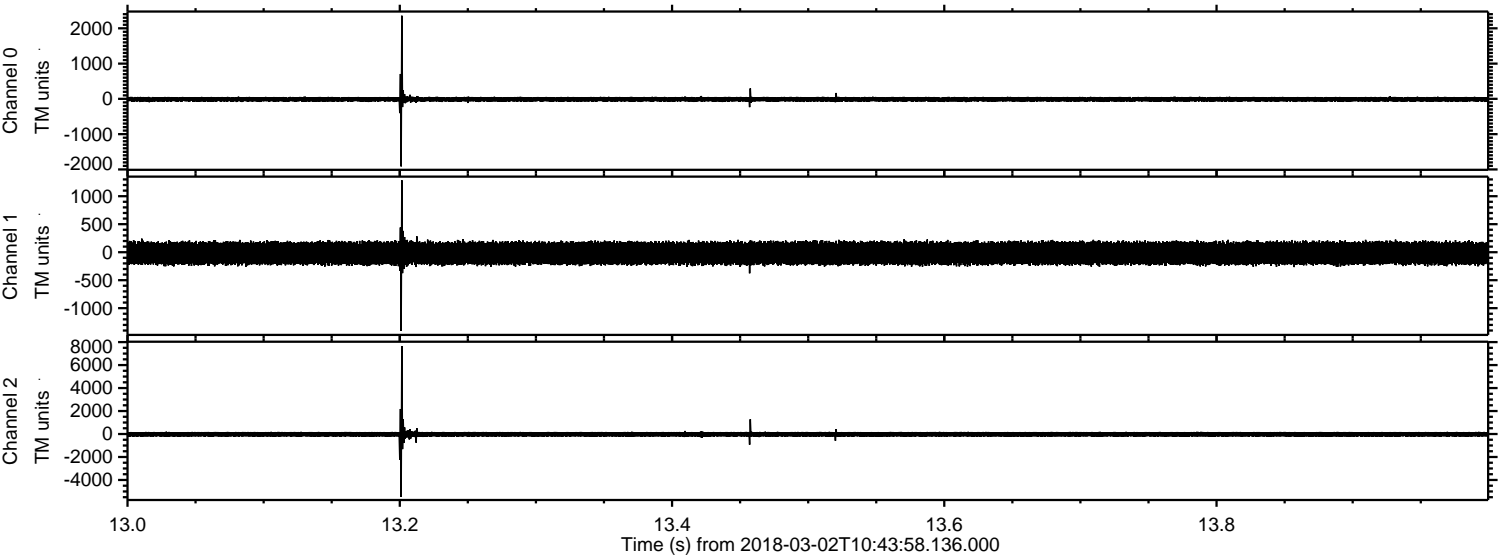


Processed Fri Mar 2 11:52:14 2018 by ELM ver.2012-10-06 from 001\_\_elm20180302\_104357\_\_dat00.bin



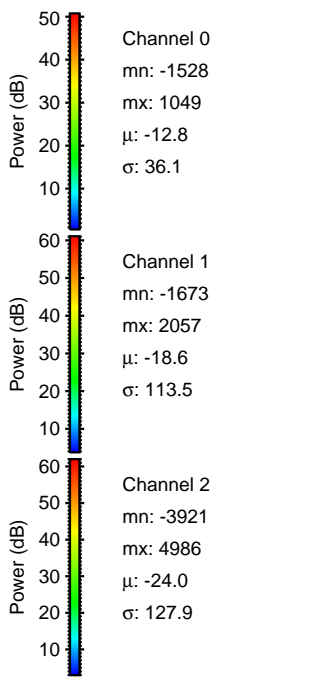
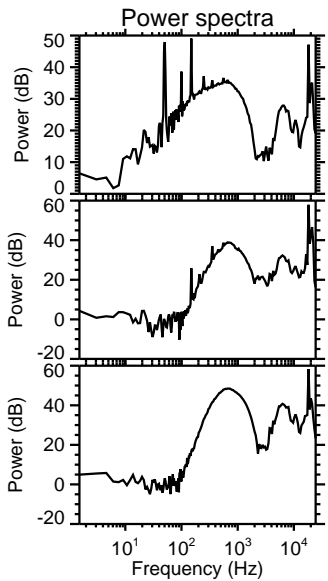
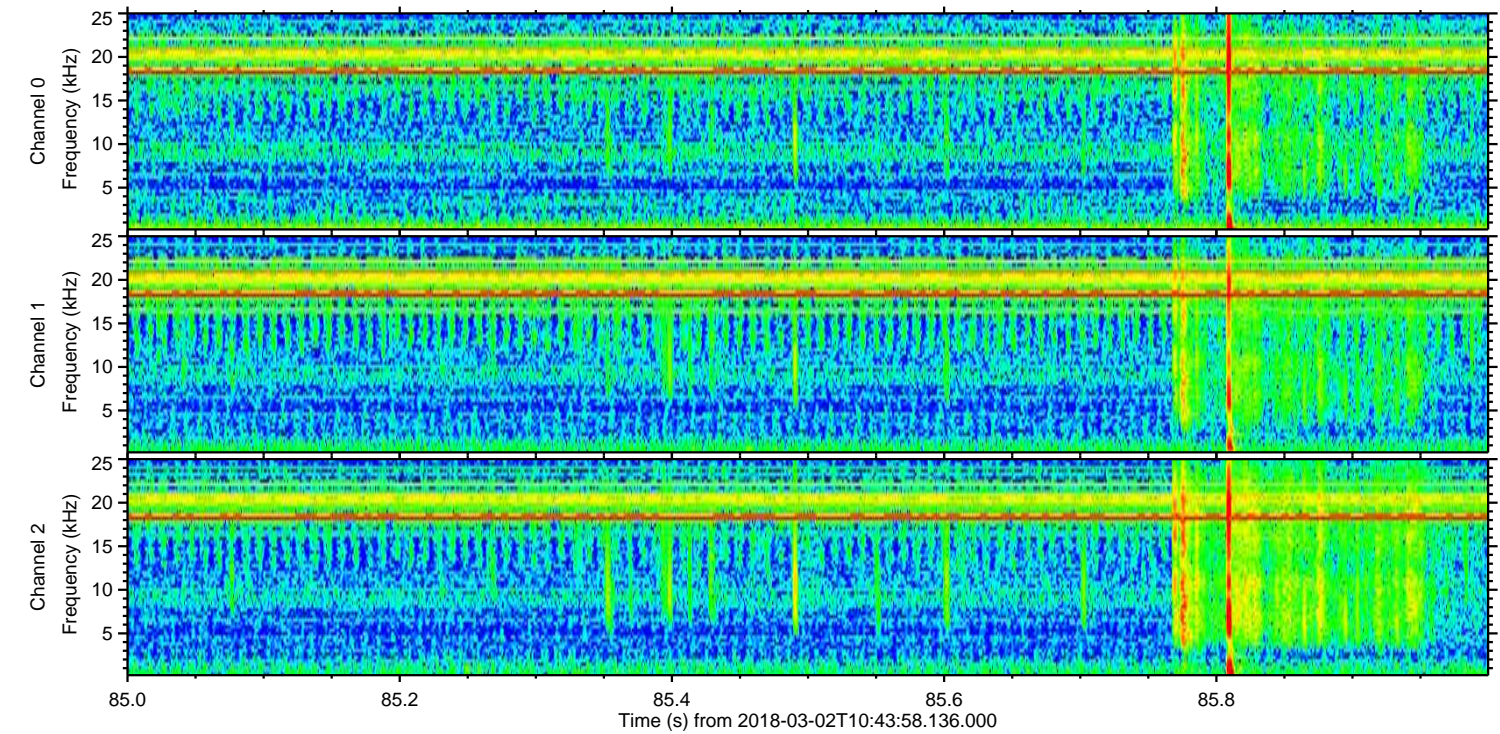
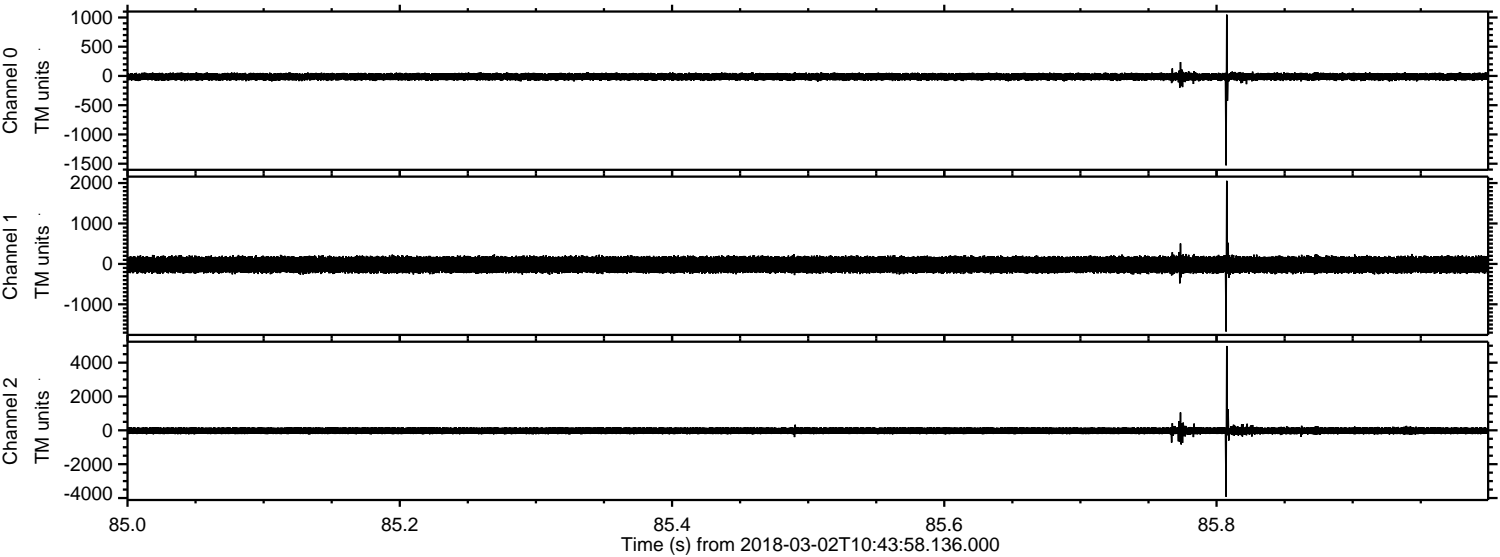


Processed Fri Mar 2 11:52:14 2018 by ELM ver.2012-10-06 from 001\_\_elm20180302\_104357\_\_dat00.bin





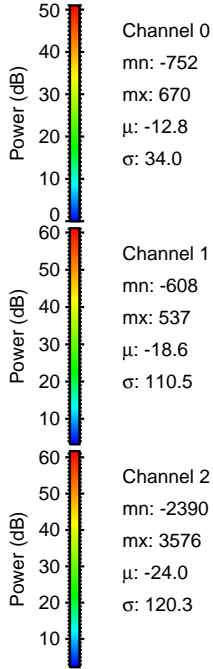
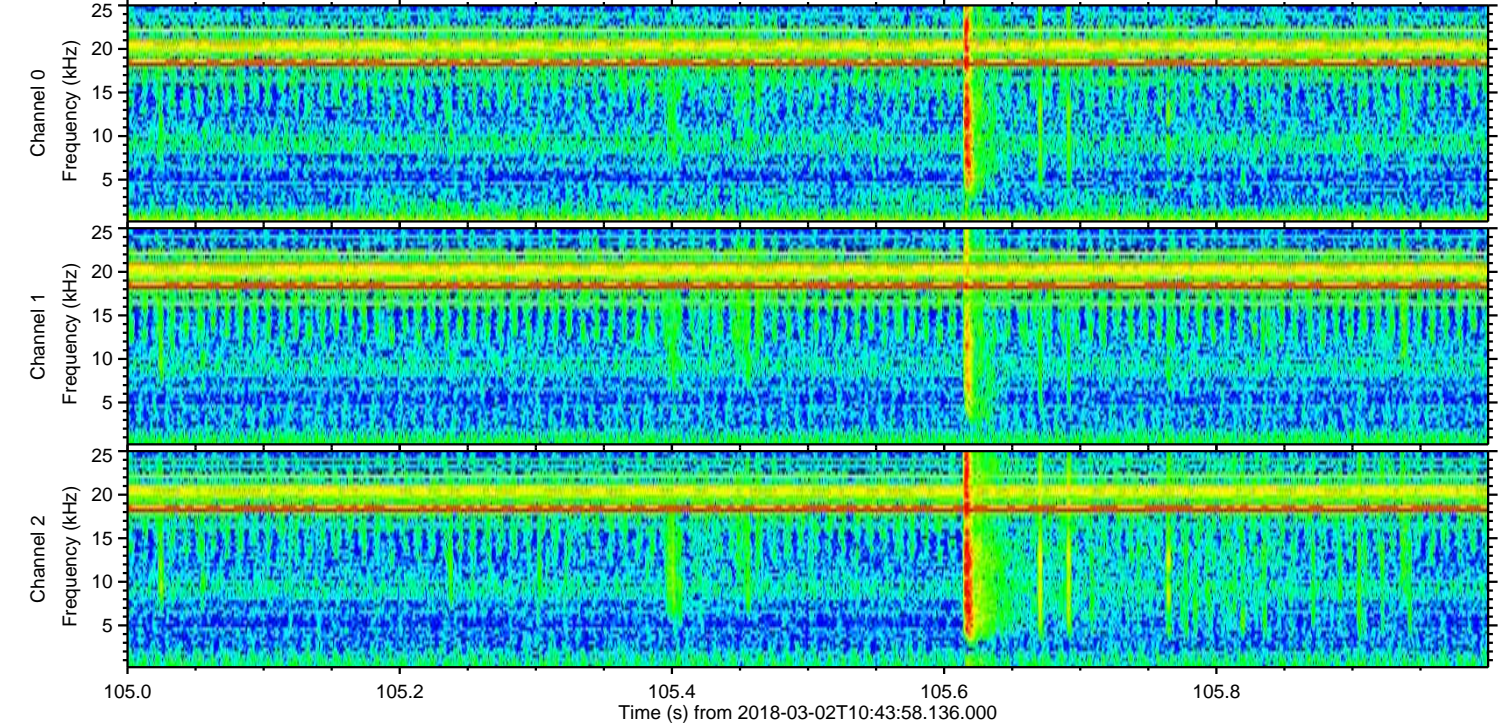
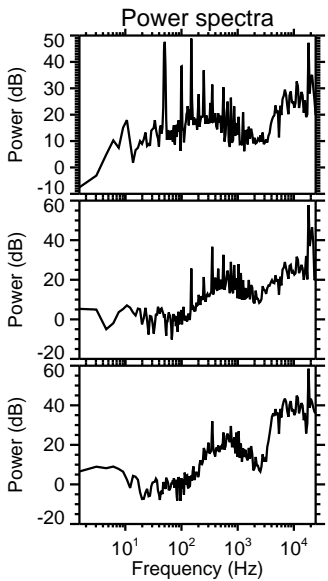
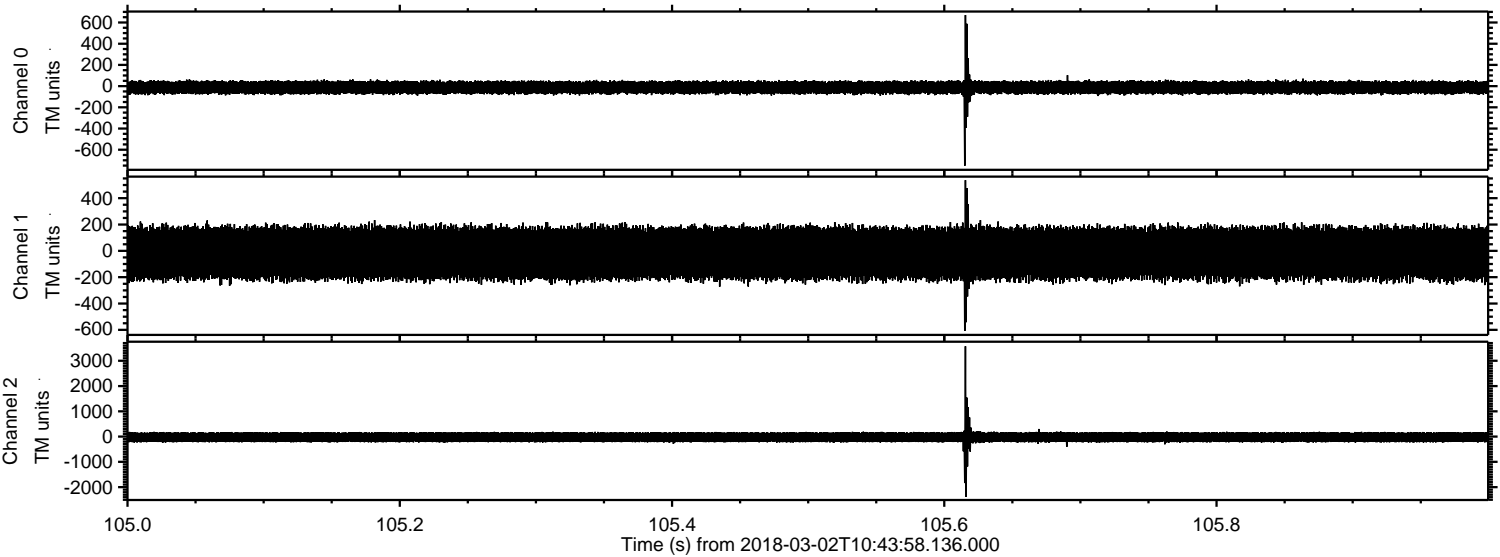
Processed Fri Mar 2 11:52:15 2018 by ELM ver.2012-10-06 from 001\_\_elm20180302\_104357\_\_dat00.bin





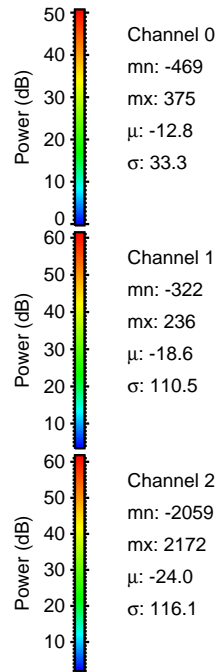
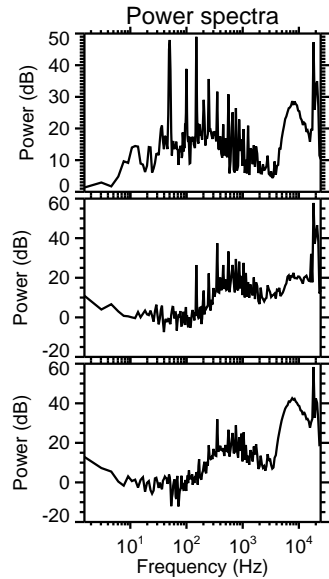
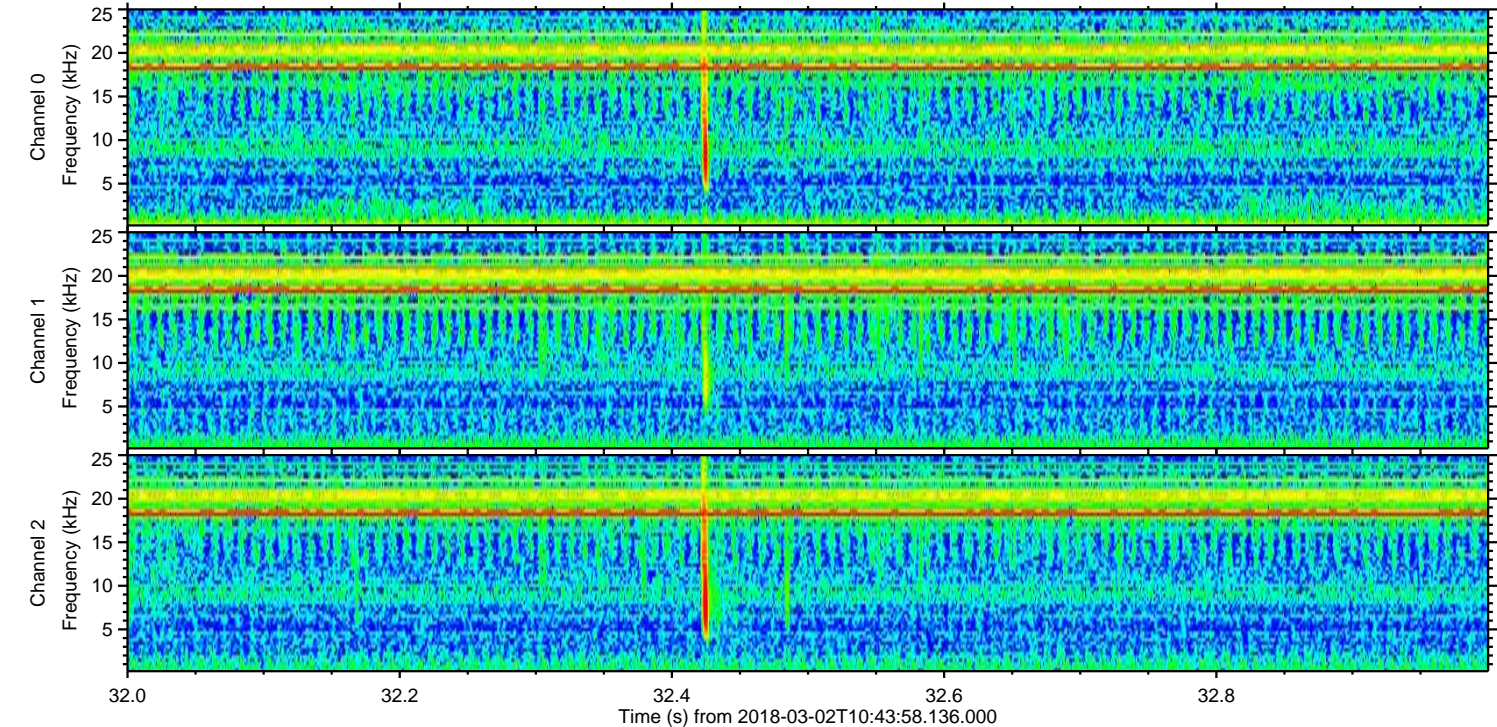
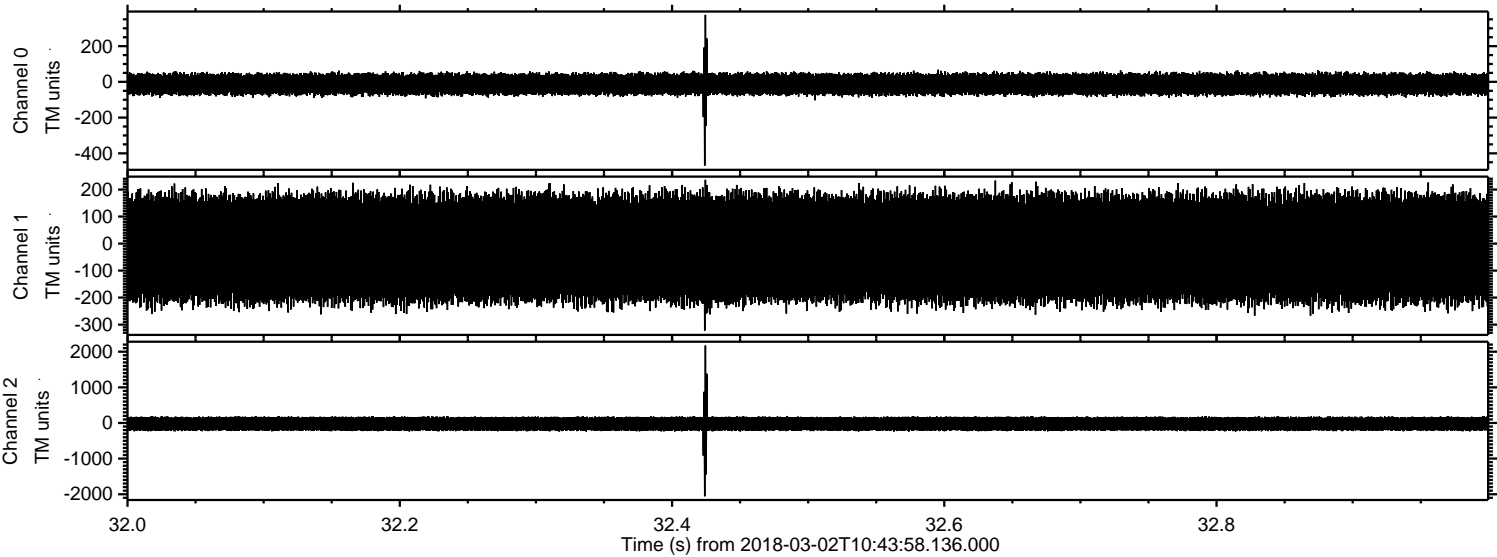
ELMAVAN 3D WAVEFORMS (Measured data sampled at 50 kHz) 51000 packets of 144 samples from 2018-03-02T10:43:58.136.000. Part 106/147

Processed Fri Mar 2 11:52:16 2018 by ELM ver.2012-10-06 from 001\_\_elm20180302\_104357\_\_dat00.bin



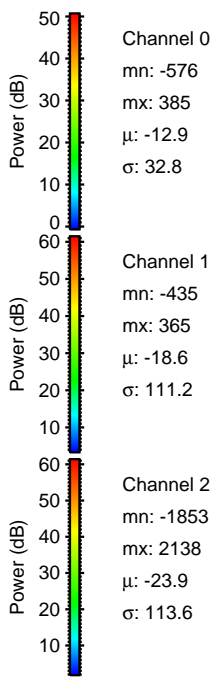
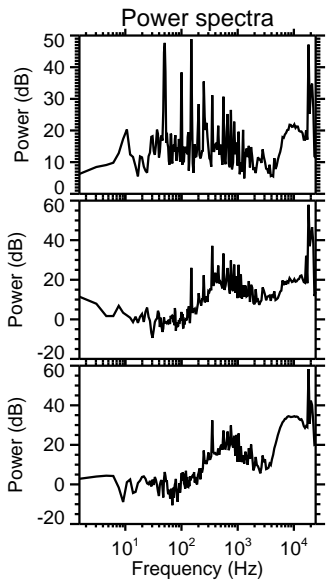
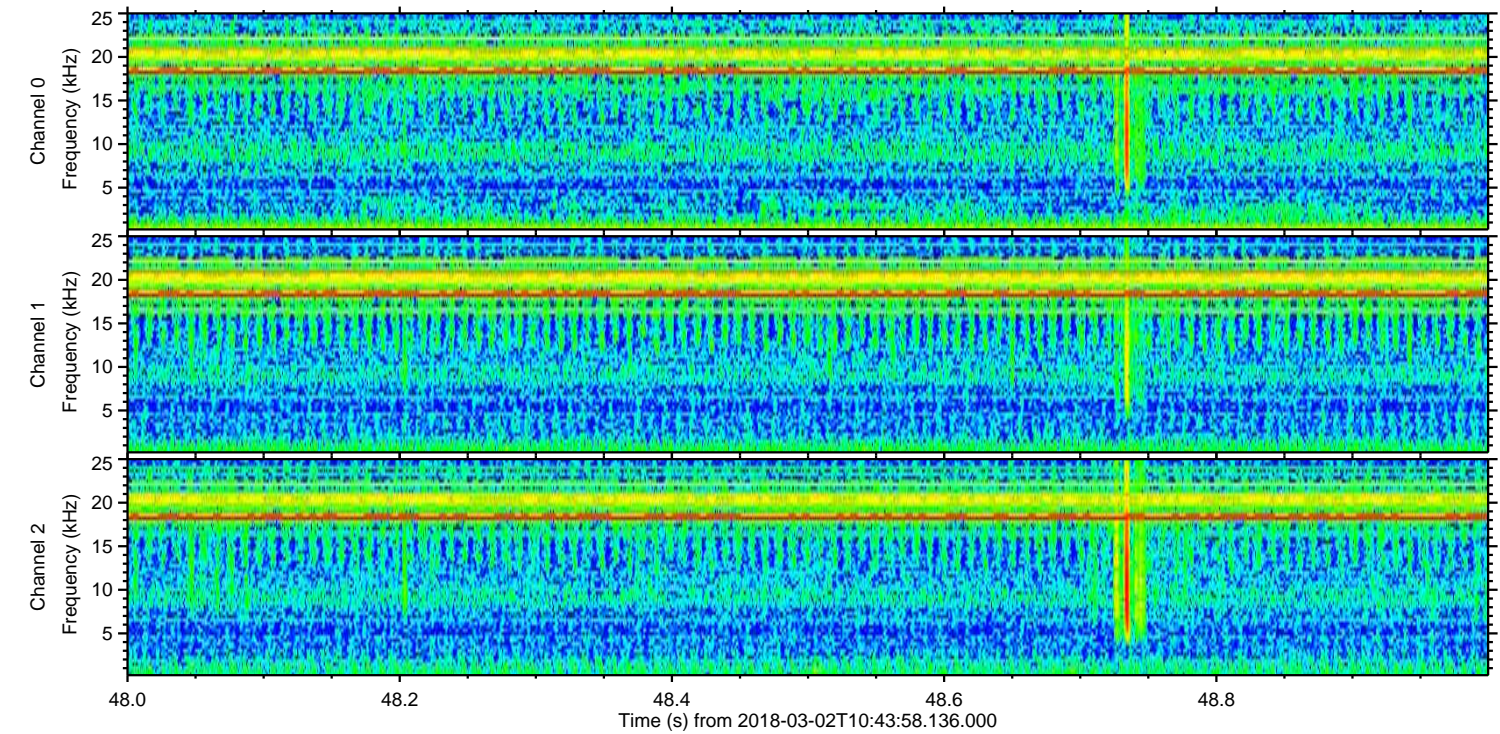
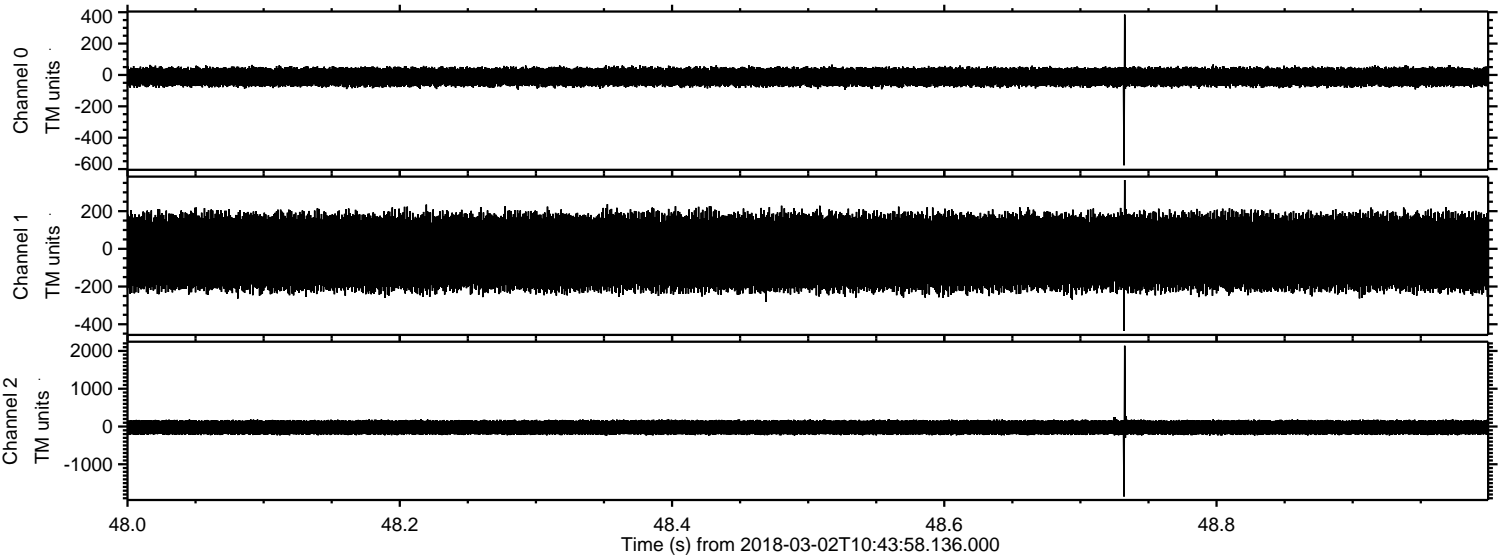


Processed Fri Mar 2 11:52:17 2018 by ELM ver.2012-10-06 from 001\_\_elm20180302\_104357\_\_dat00.bin





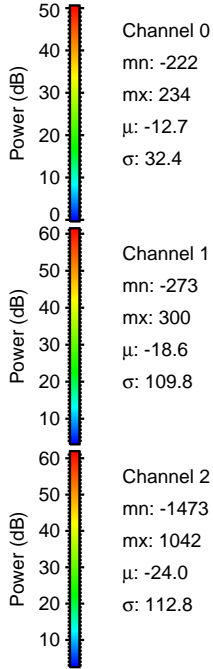
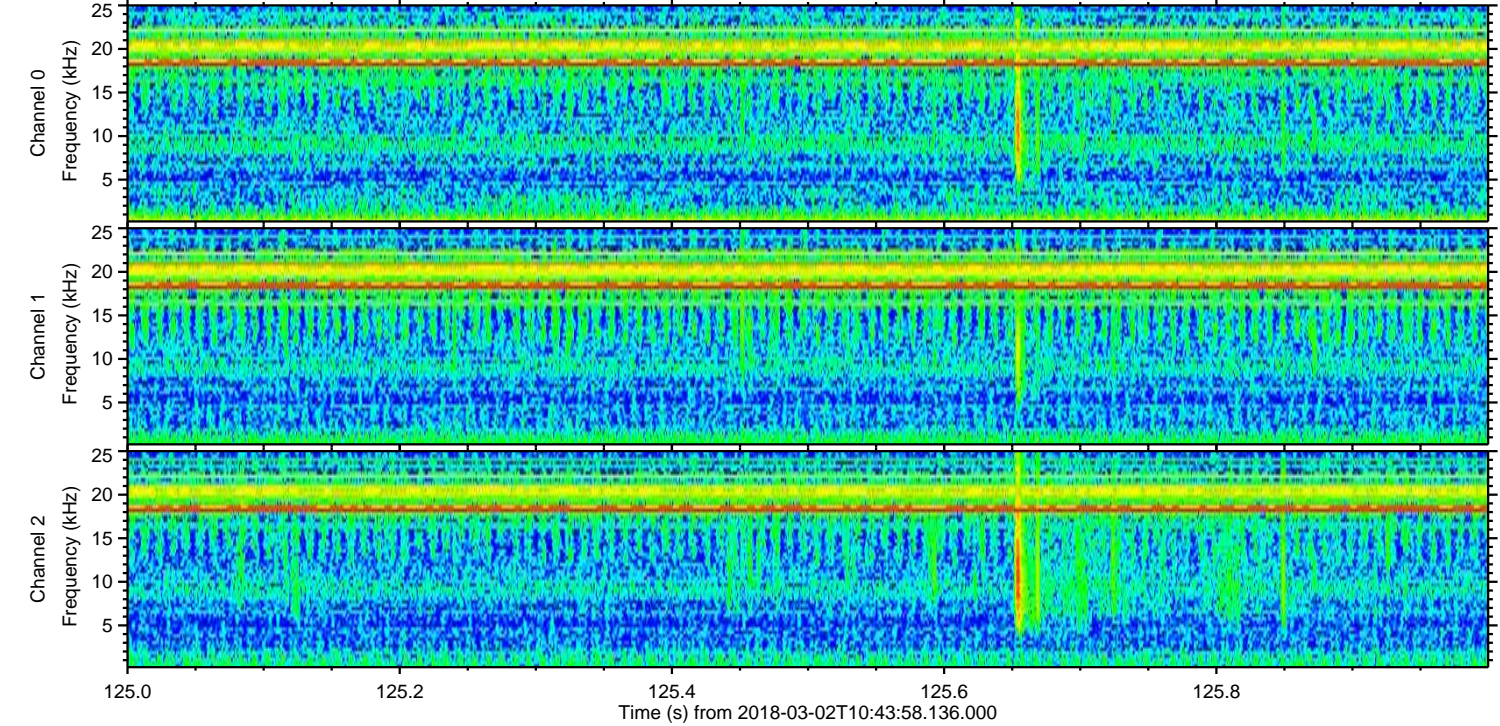
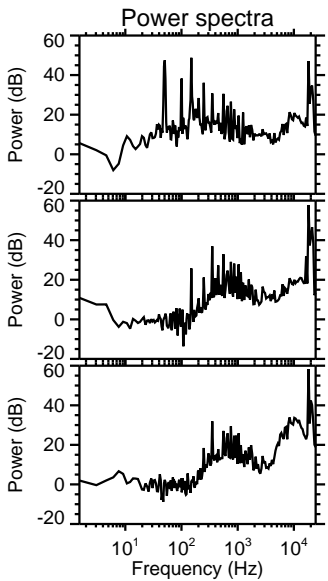
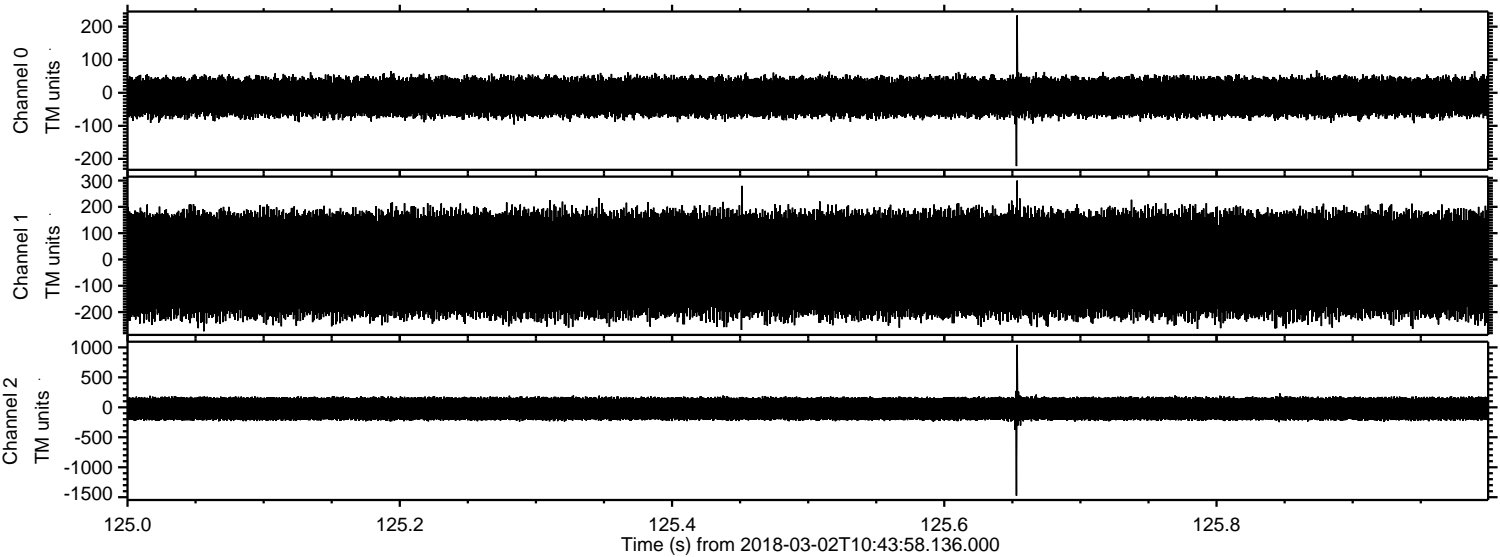
Processed Fri Mar 2 11:52:18 2018 by ELM ver.2012-10-06 from 001\_\_elm20180302\_104357\_\_dat00.bin





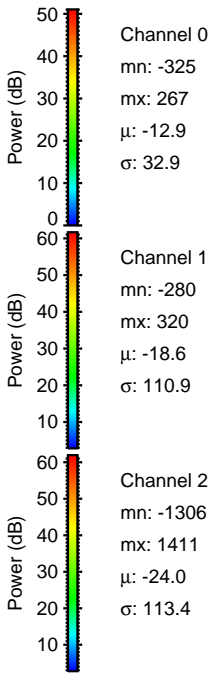
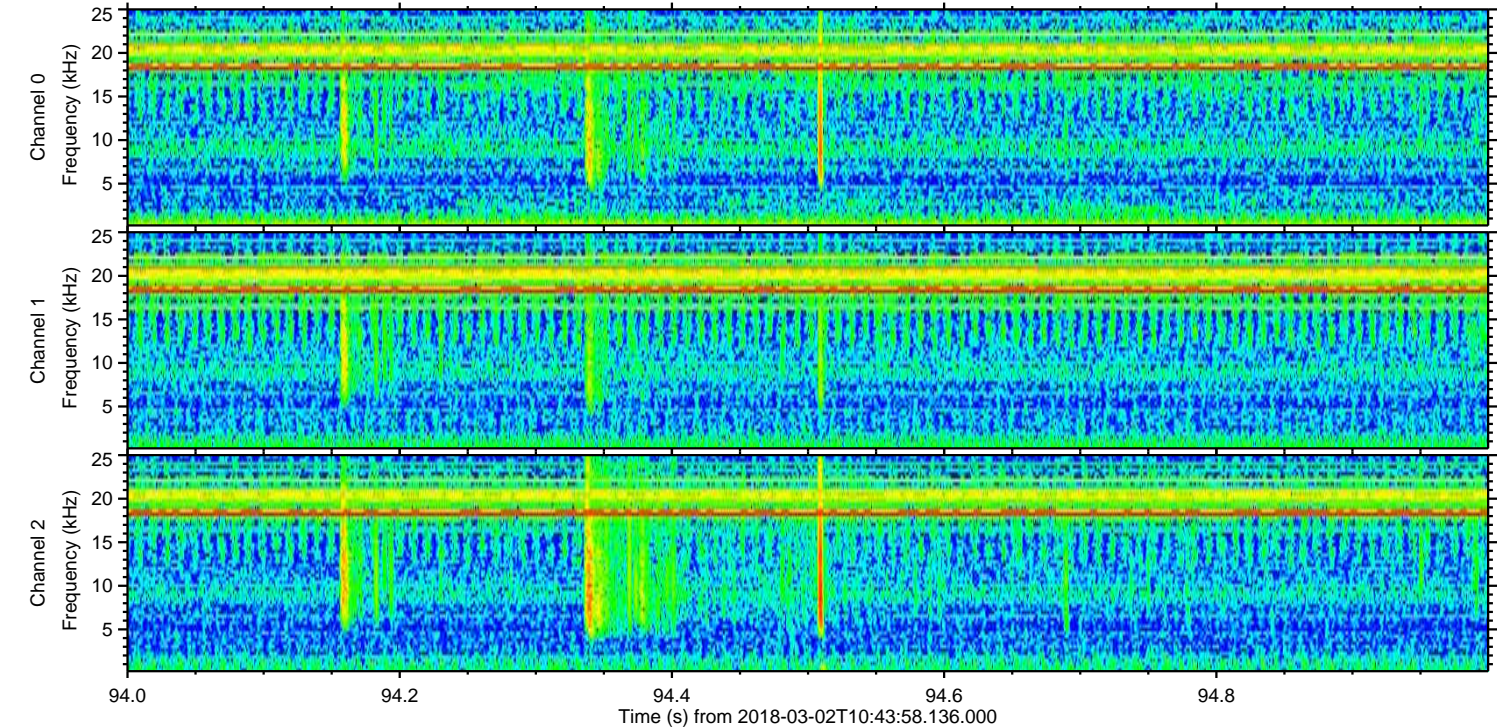
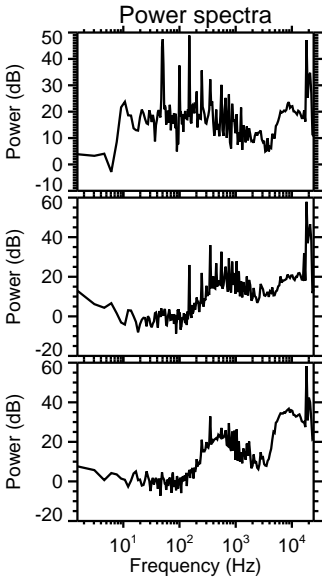
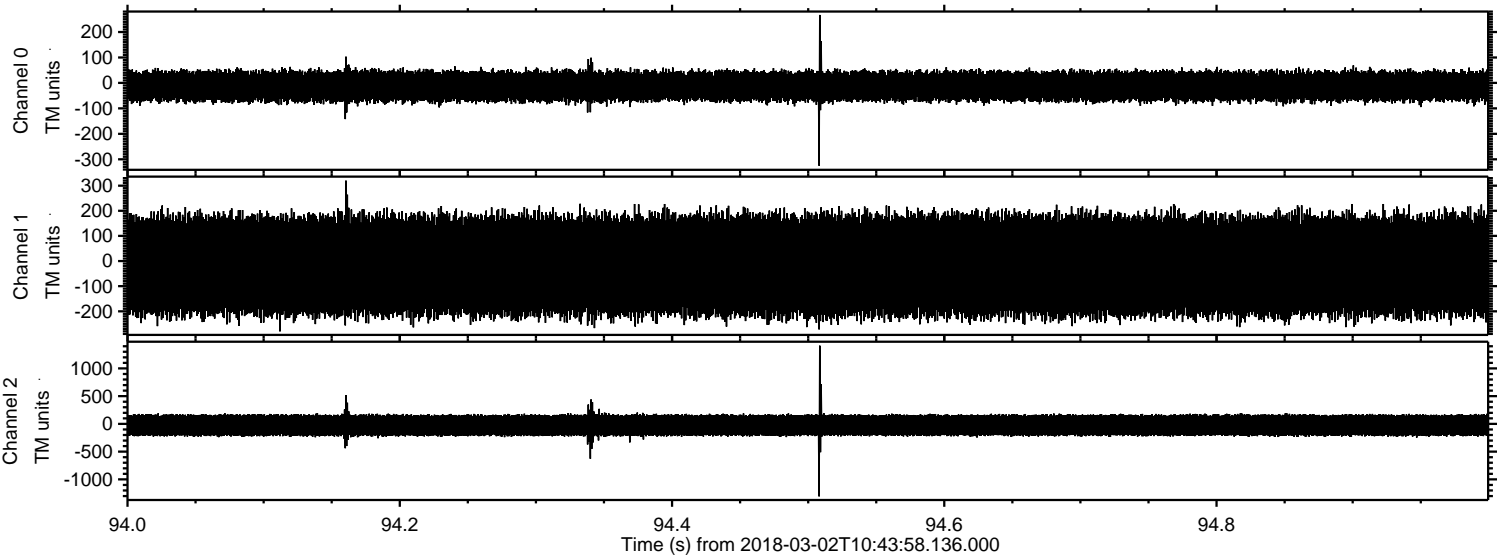
ELMAVAN 3D WAVEFORMS (Measured data sampled at 50 kHz) 51000 packets of 144 samples from 2018-03-02T10:43:58.136.000. Part 126/147

Processed Fri Mar 2 11:52:19 2018 by ELM ver.2012-10-06 from 001\_\_elm20180302\_104357\_\_dat00.bin





Processed Fri Mar 2 11:52:20 2018 by ELM ver.2012-10-06 from 001\_\_elm20180302\_104357\_\_dat00.bin





Processed Fri Mar 2 11:52:21 2018 by ELM ver.2012-10-06 from 001\_\_elm20180302\_104357\_\_dat00.bin

