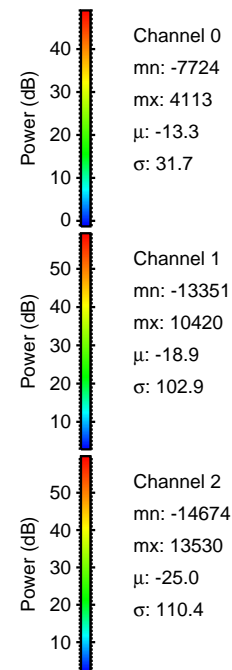
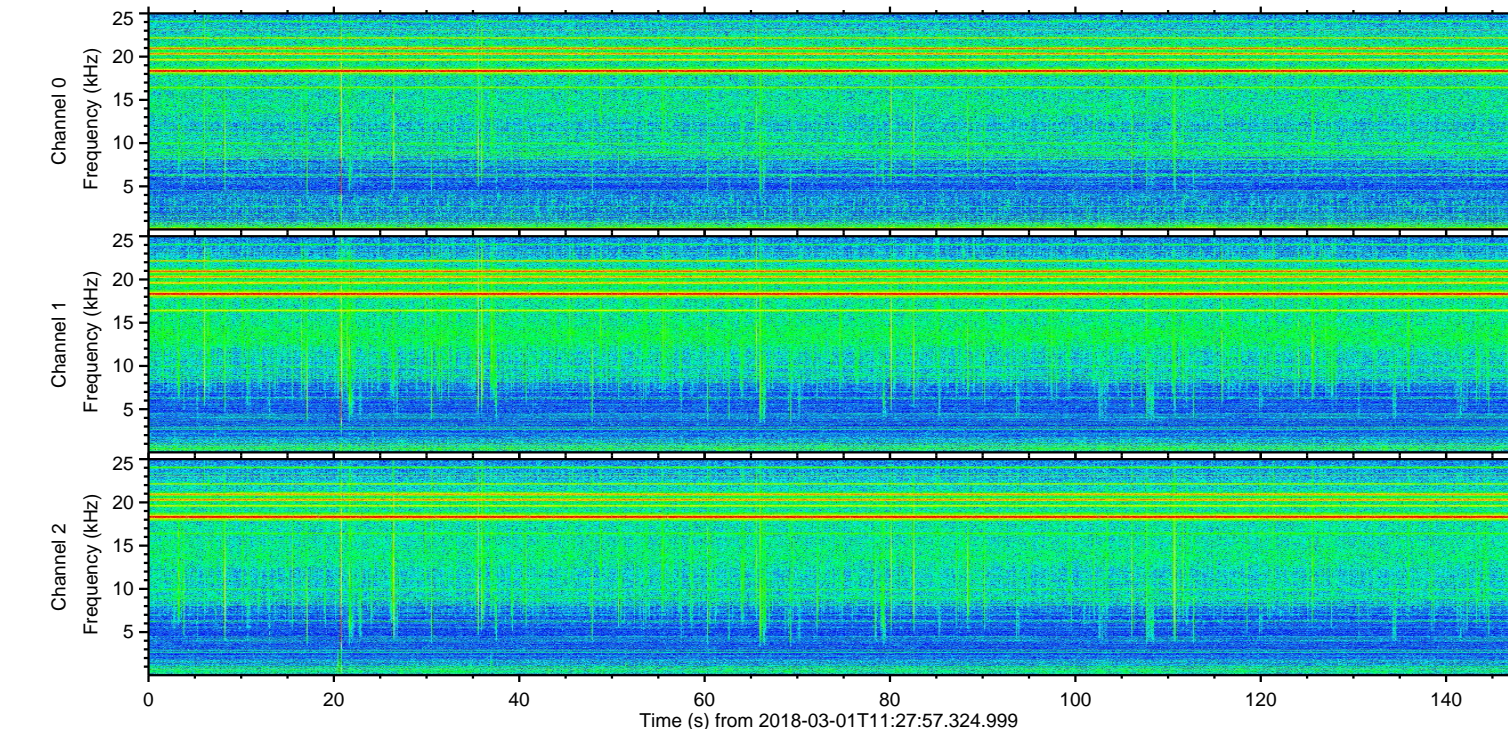
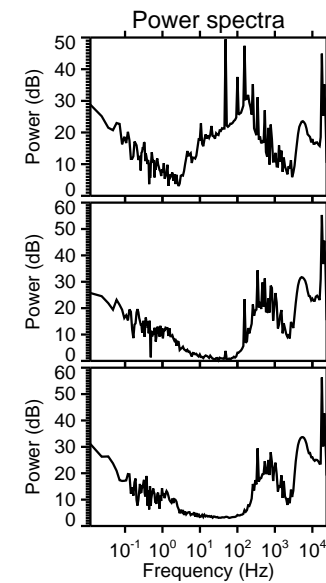
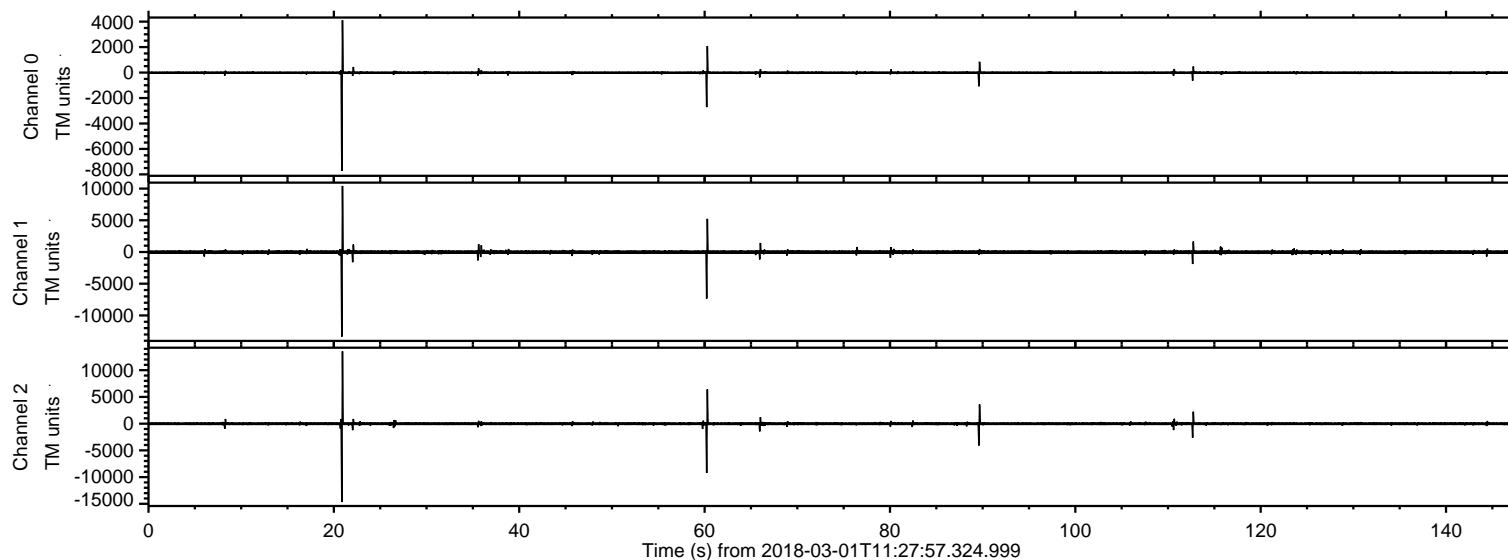
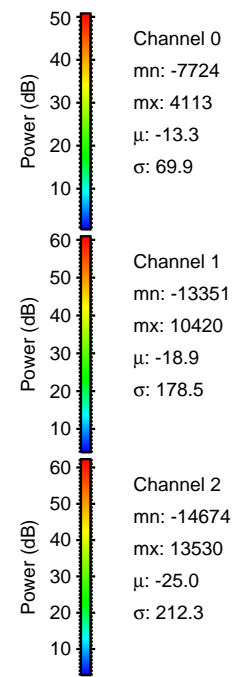
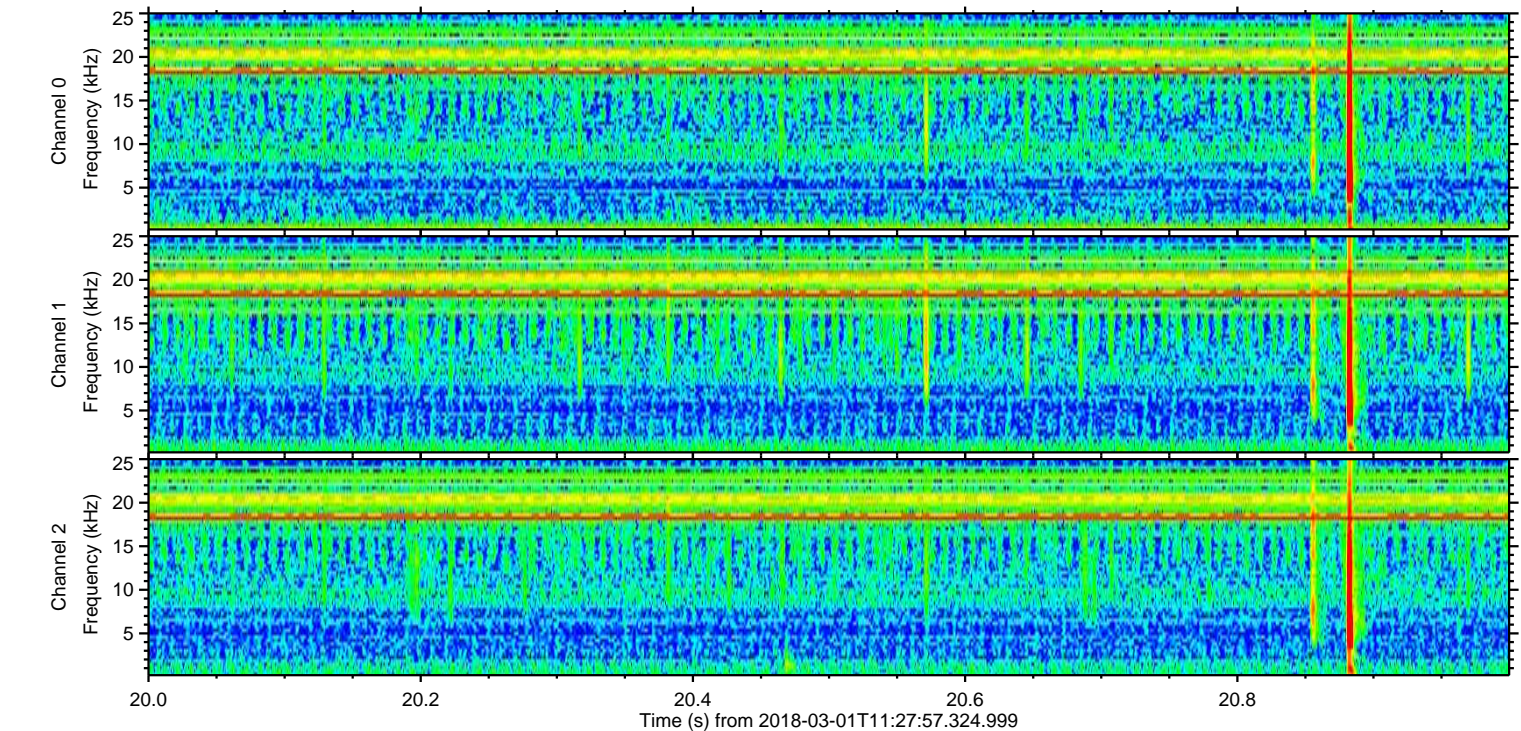
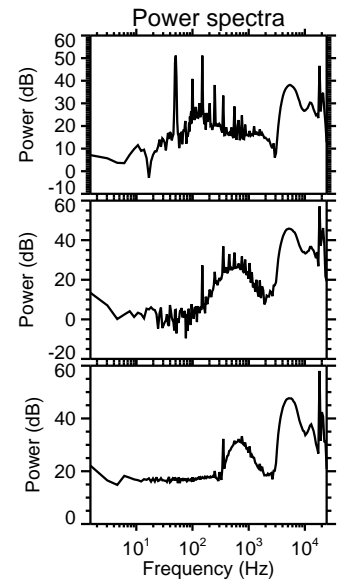
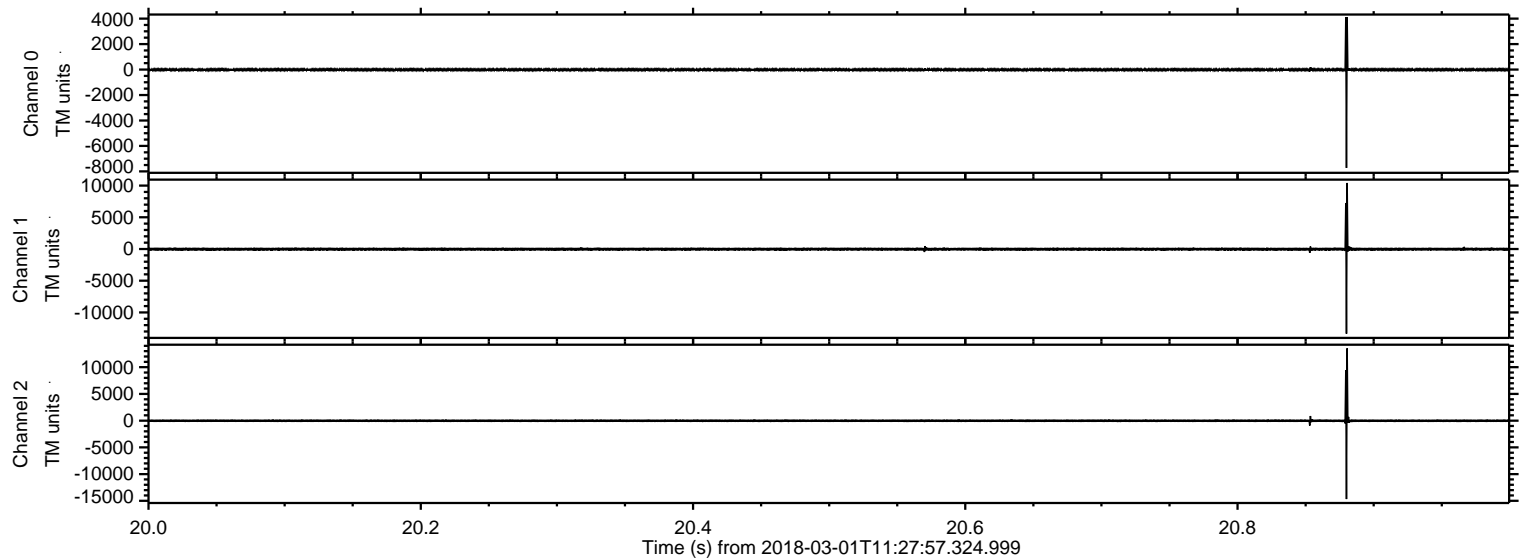


ELMAVAN 3D WAVEFORMS (Measured data sampled at 50 kHz) 51000 packets of 144 samples from 2018-03-01T11:27:57.324.999.

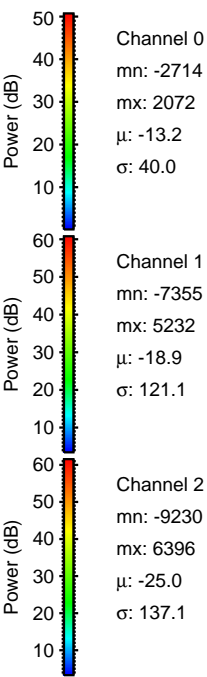
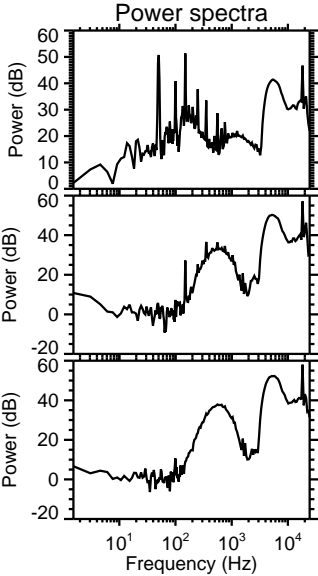
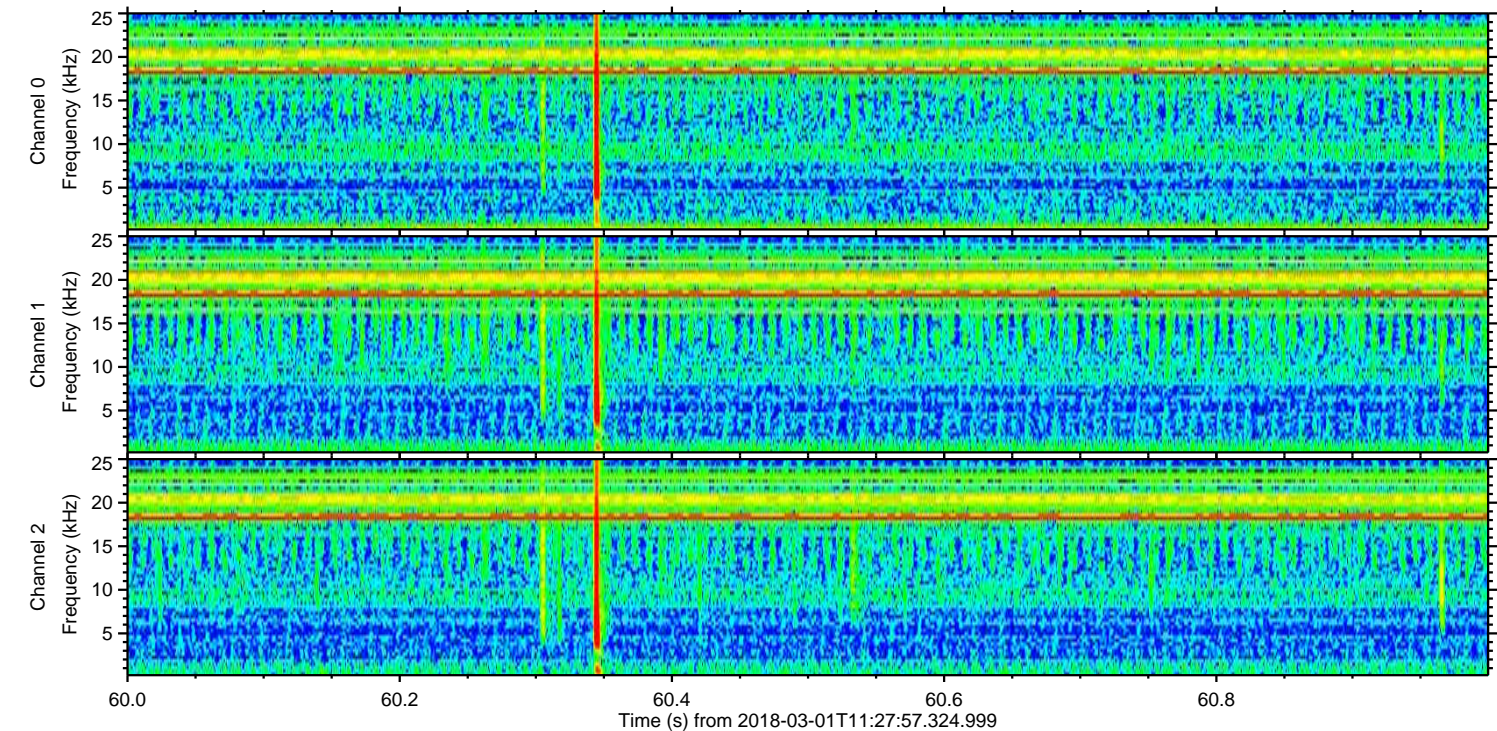
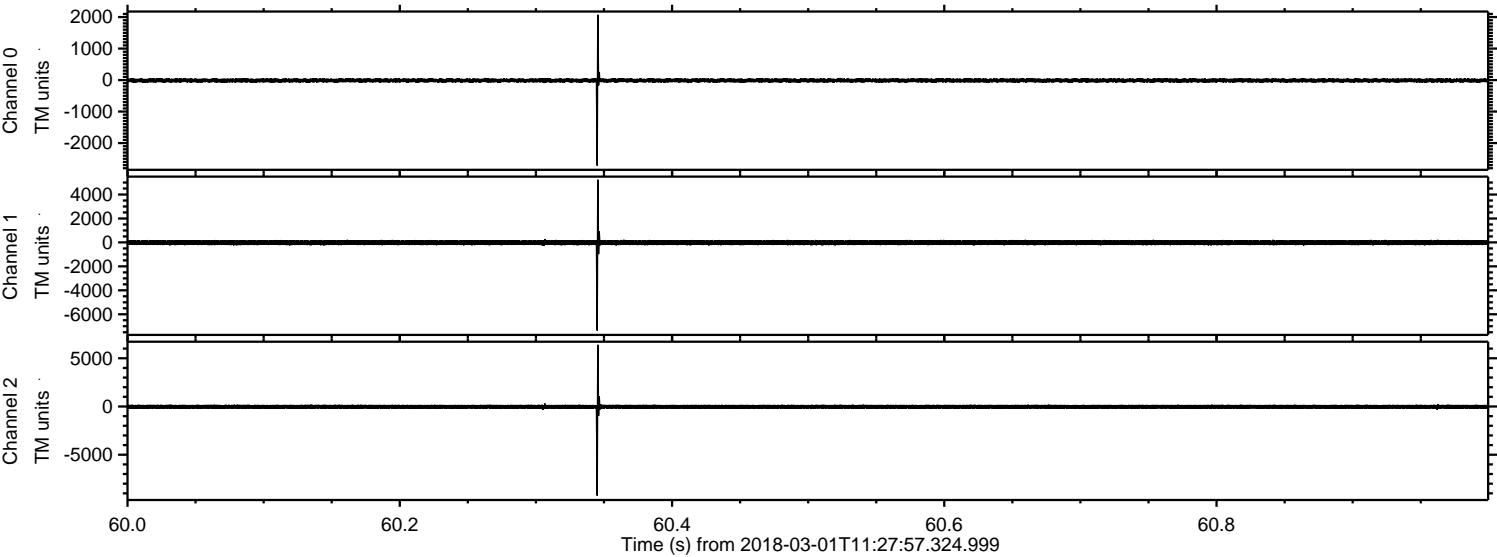
Processed Thu Mar 1 12:36:07 2018 by ELM ver.2012-10-06 from 001__elm20180301_112756__dat00.bin



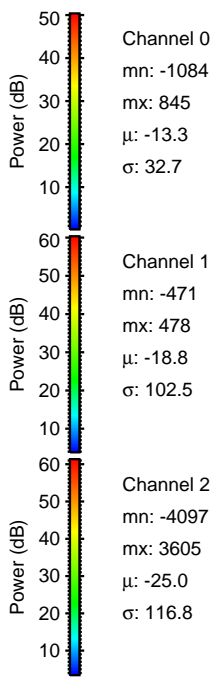
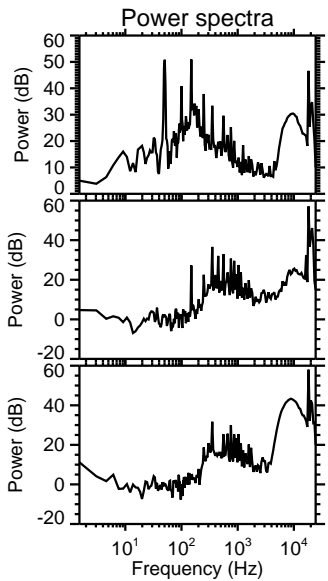
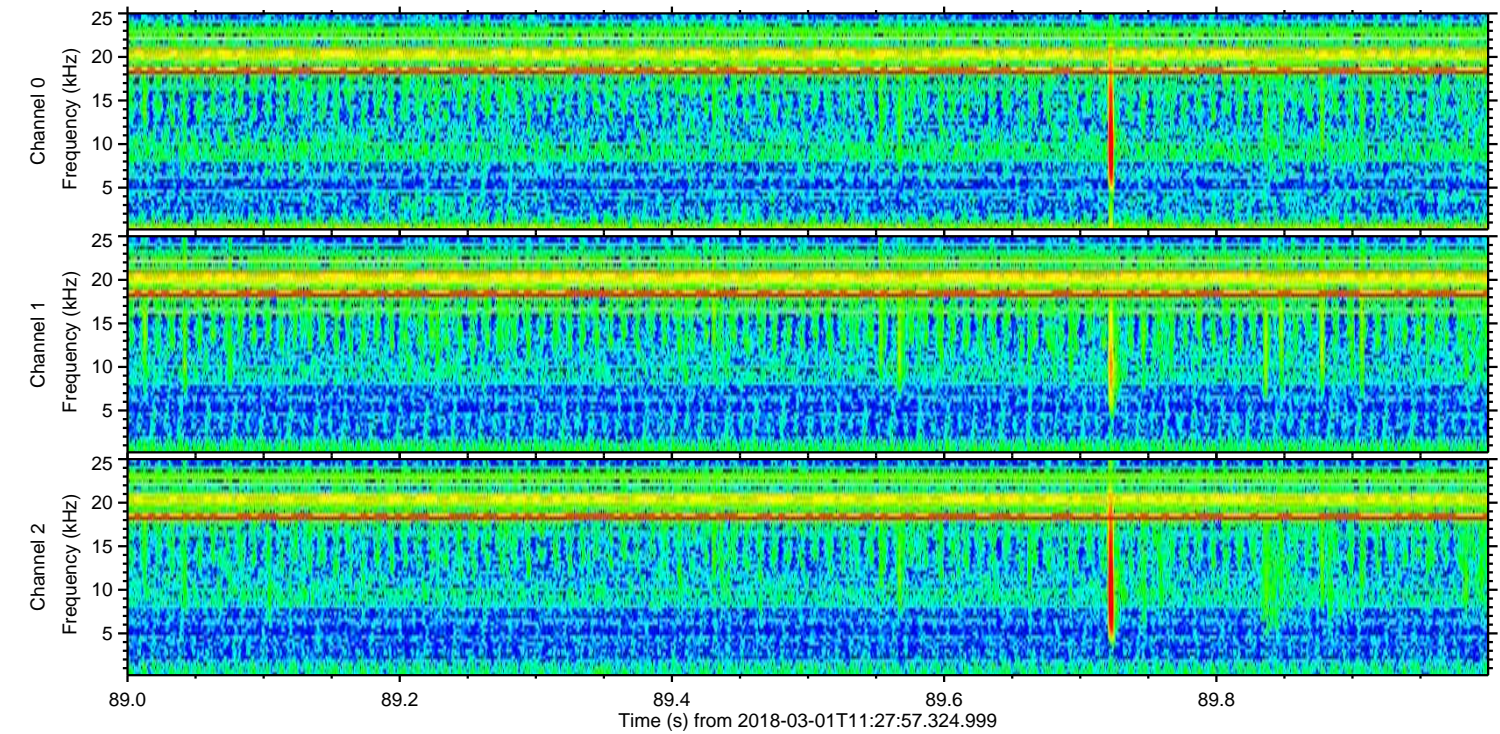
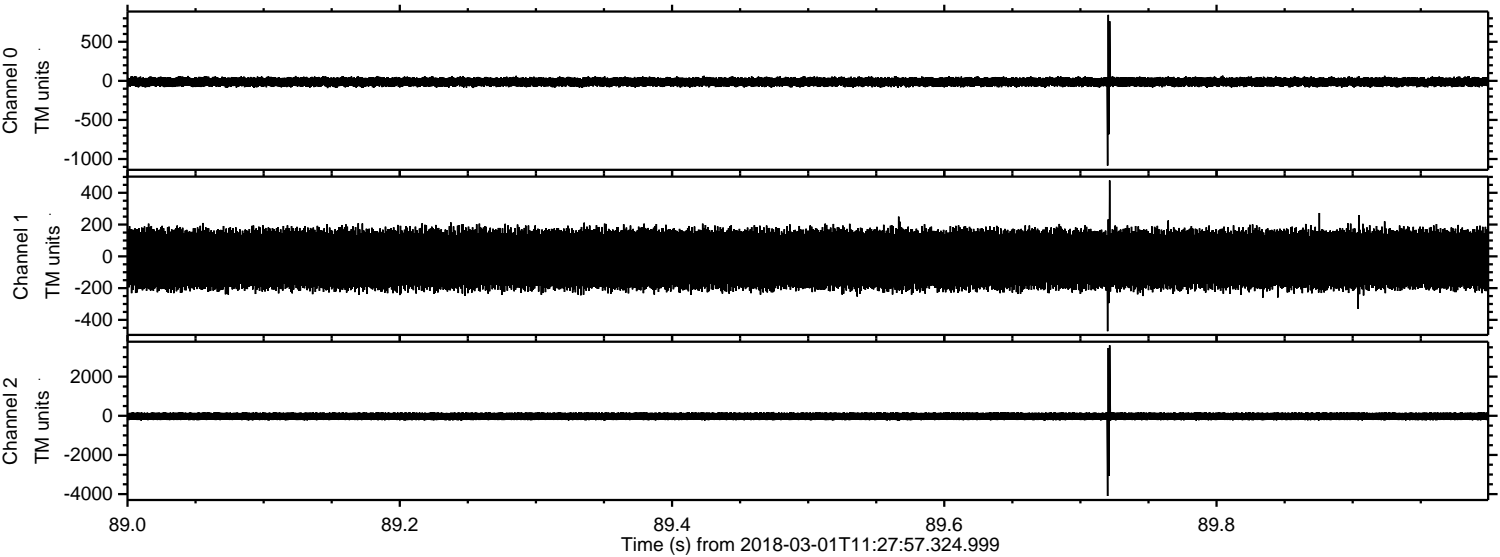
Processed Thu Mar 1 12:36:15 2018 by ELM ver.2012-10-06 from 001__elm20180301_112756__dat00.bin



Processed Thu Mar 1 12:36:16 2018 by ELM ver.2012-10-06 from 001__elm20180301_112756__dat00.bin

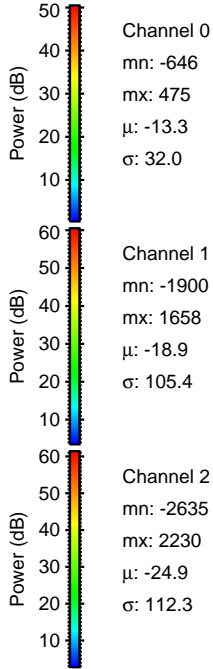
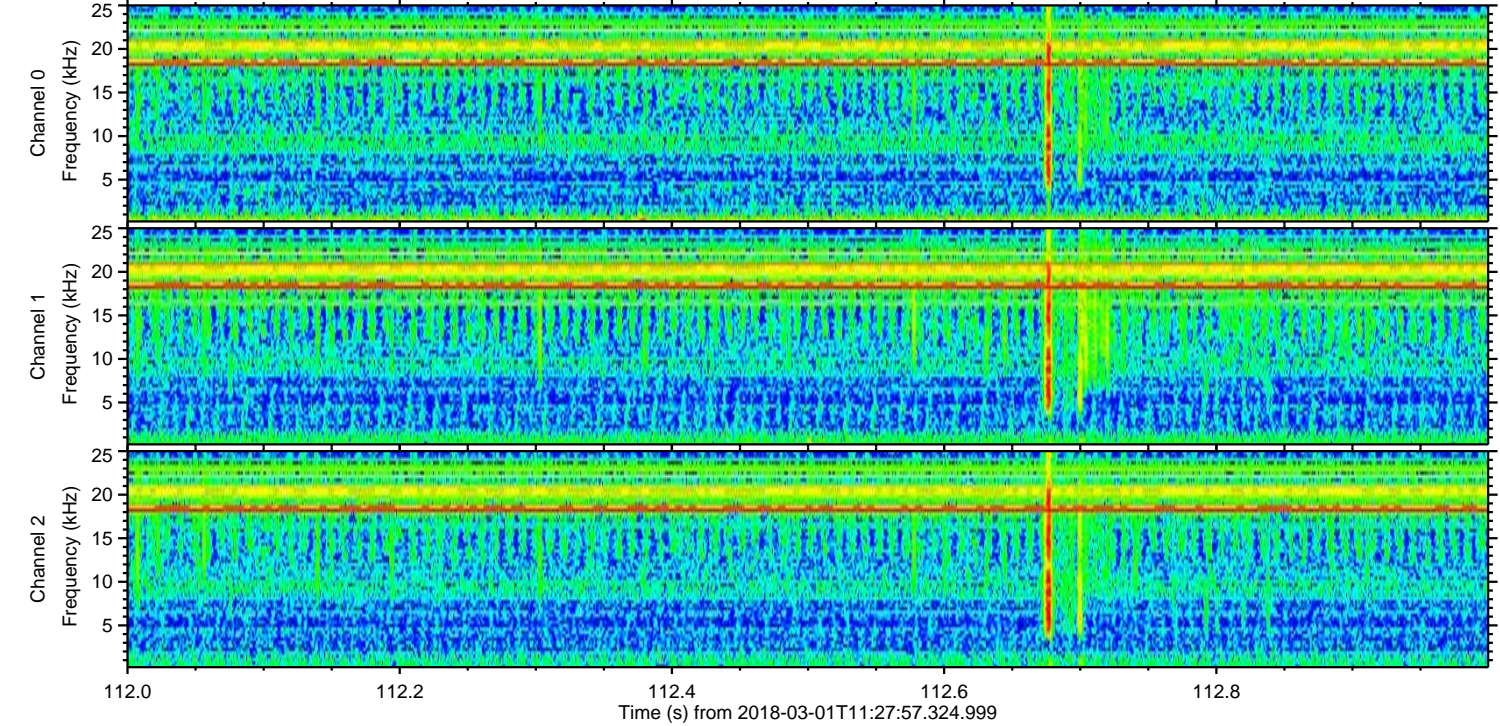
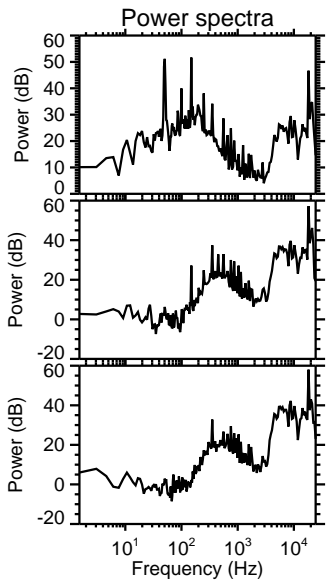
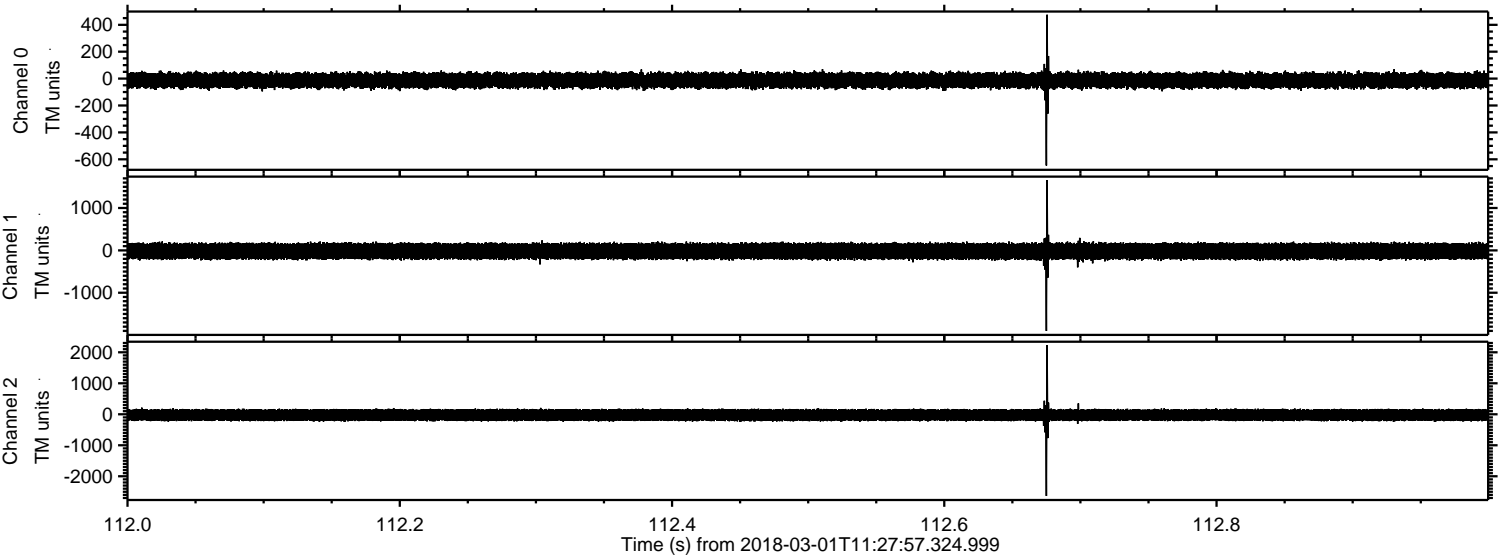


Processed Thu Mar 1 12:36:16 2018 by ELM ver.2012-10-06 from 001__elm20180301_112756__dat00.bin

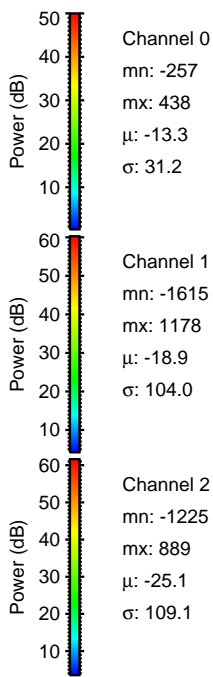
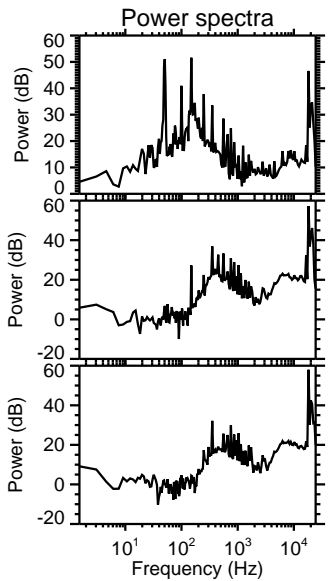
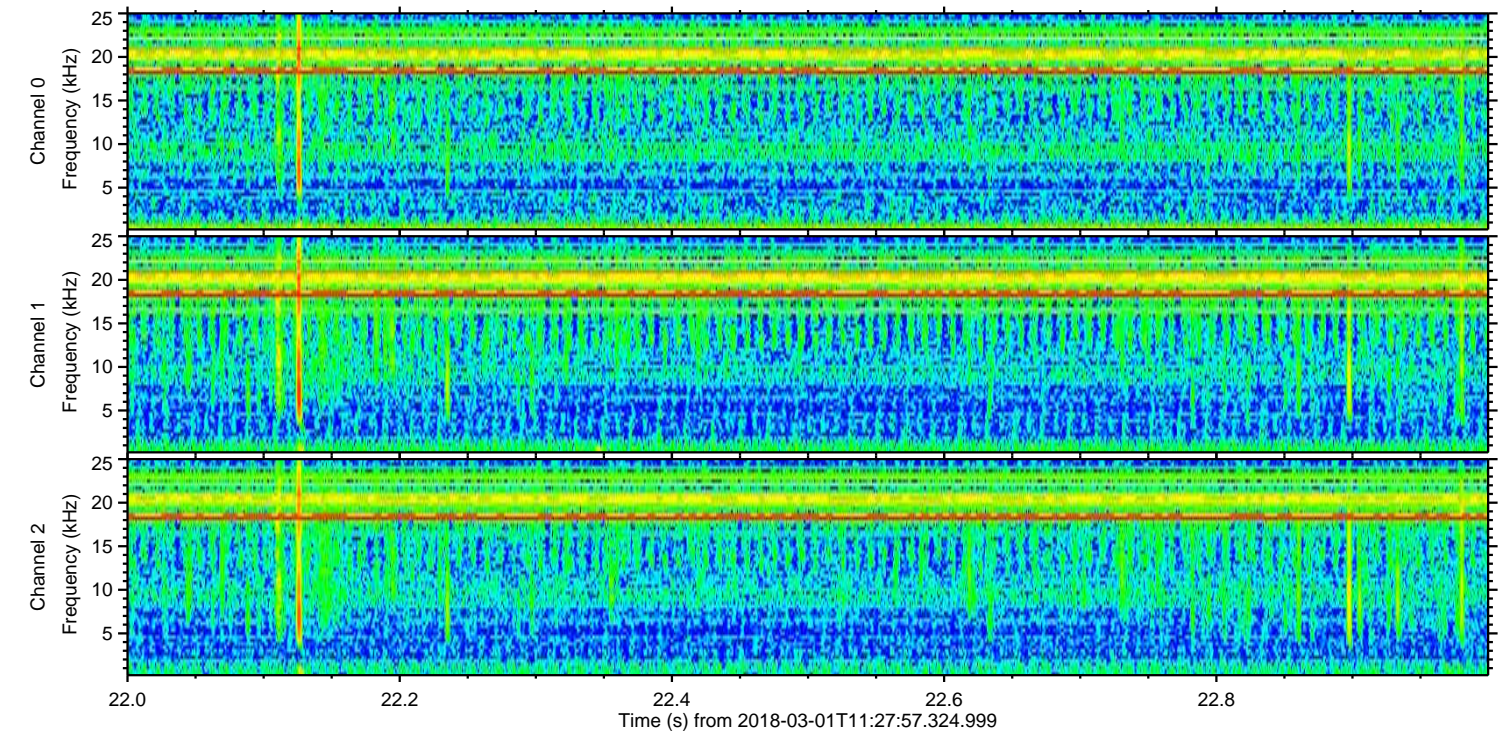
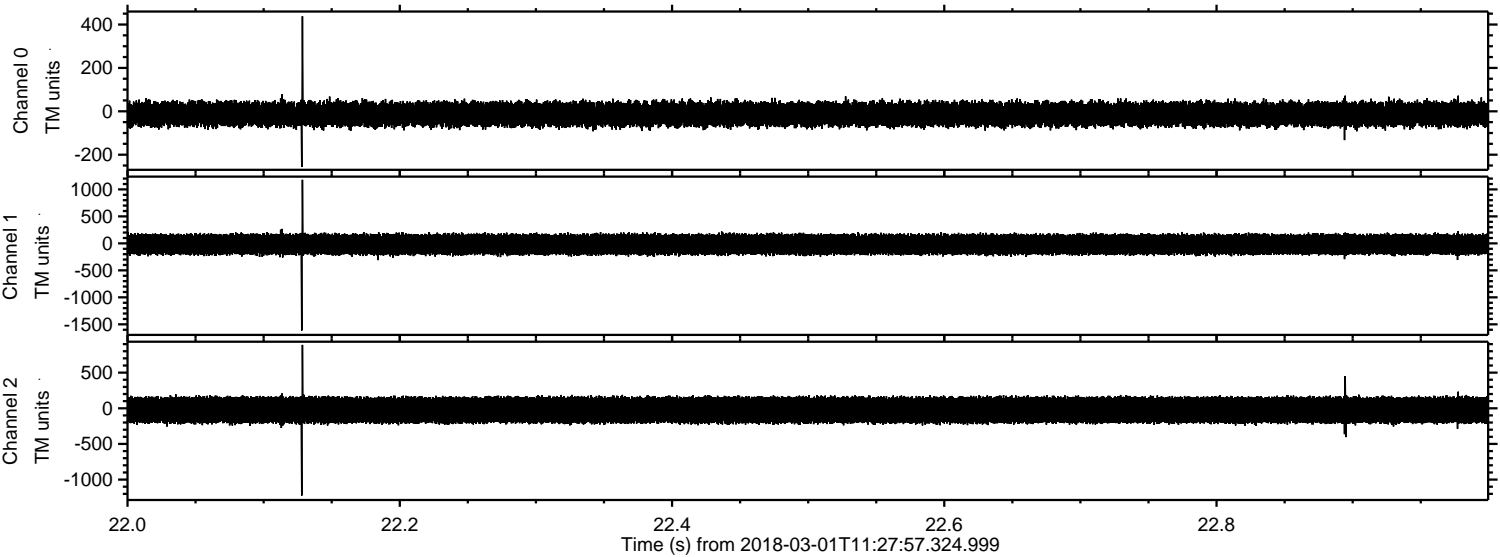


ELMAVAN 3D WAVEFORMS (Measured data sampled at 50 kHz) 51000 packets of 144 samples from 2018-03-01T11:27:57.324.999. Part 113/147

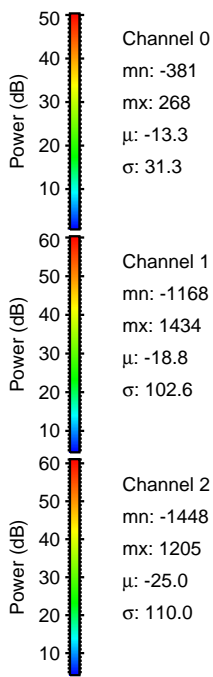
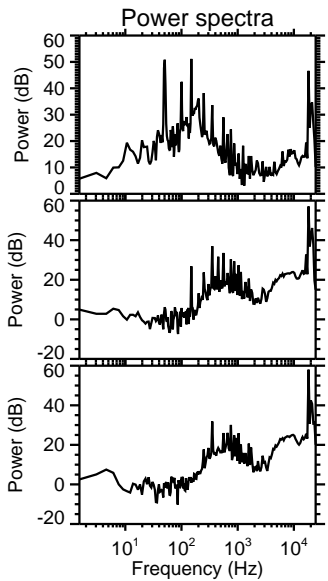
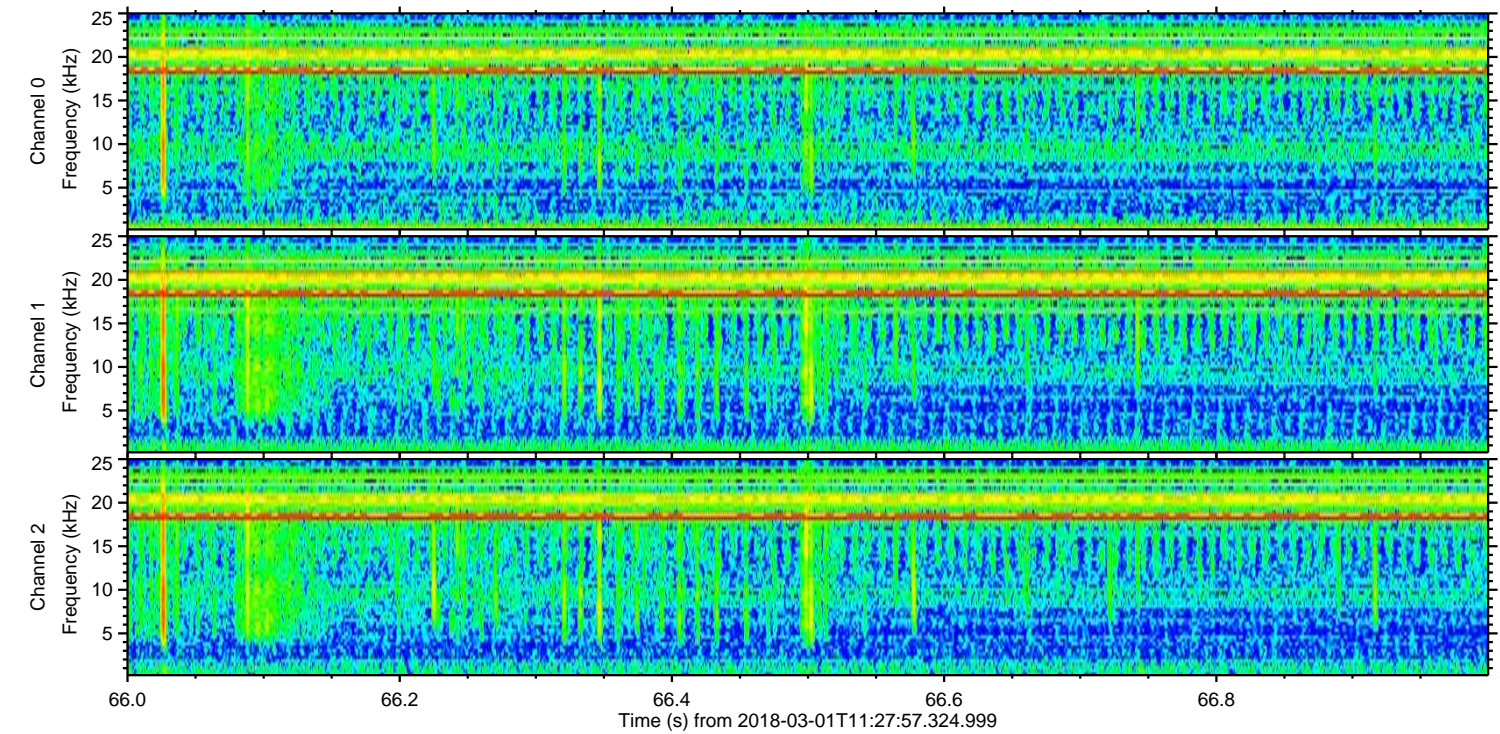
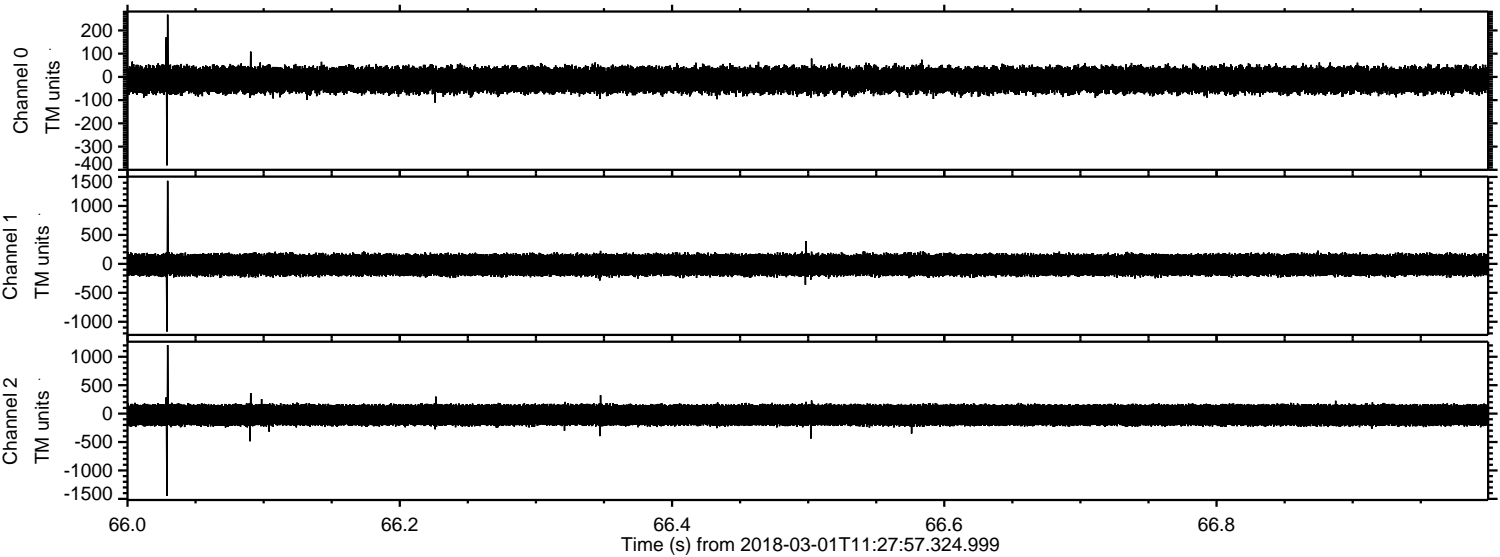
Processed Thu Mar 1 12:36:17 2018 by ELM ver.2012-10-06 from 001__elm20180301_112756__dat00.bin



Processed Thu Mar 1 12:36:18 2018 by ELM ver.2012-10-06 from 001__elm20180301_112756__dat00.bin



Processed Thu Mar 1 12:36:19 2018 by ELM ver.2012-10-06 from 001__elm20180301_112756__dat00.bin

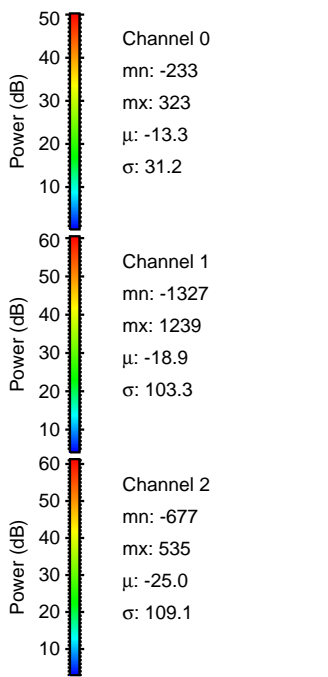
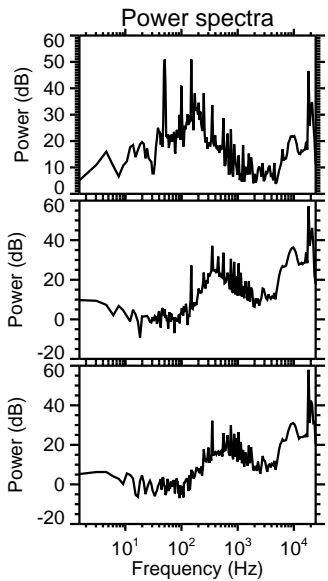
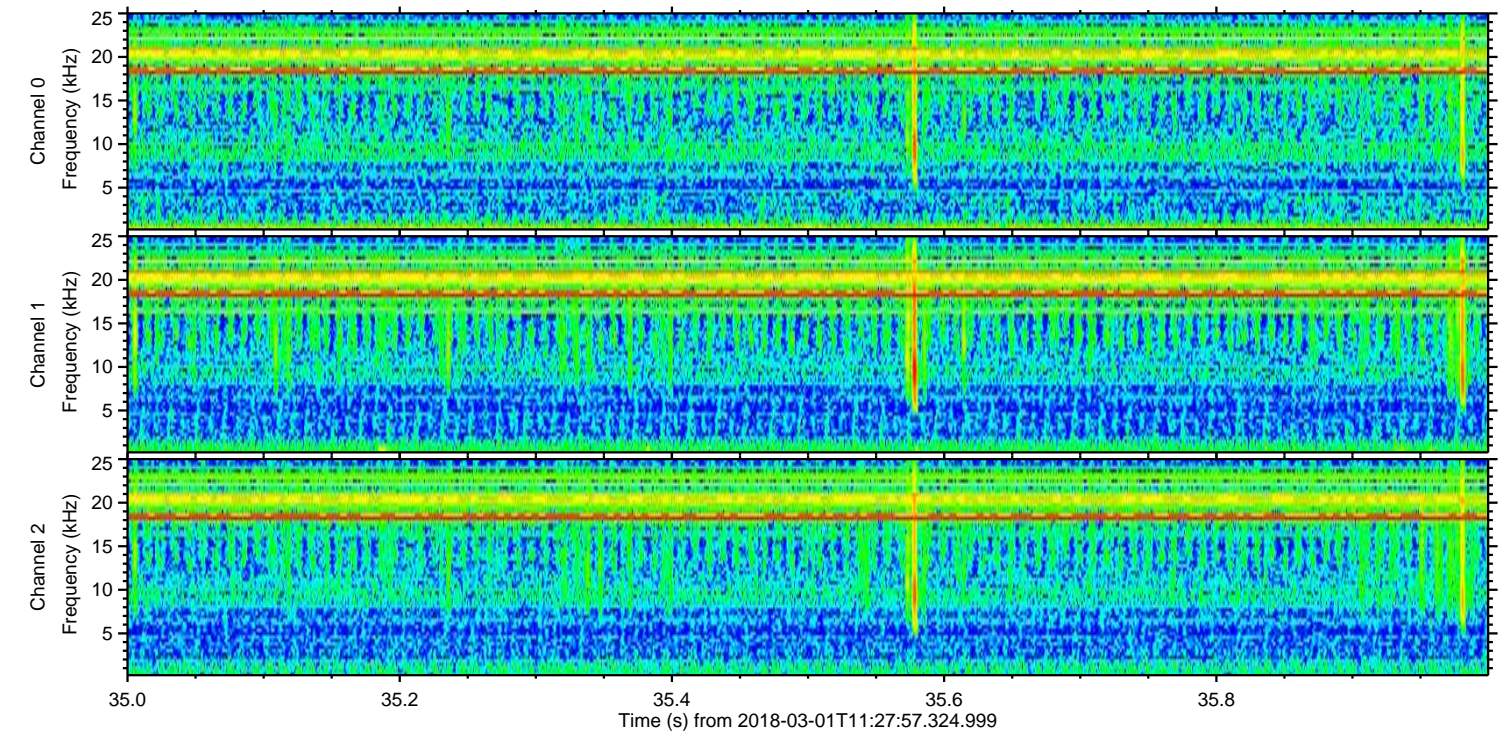
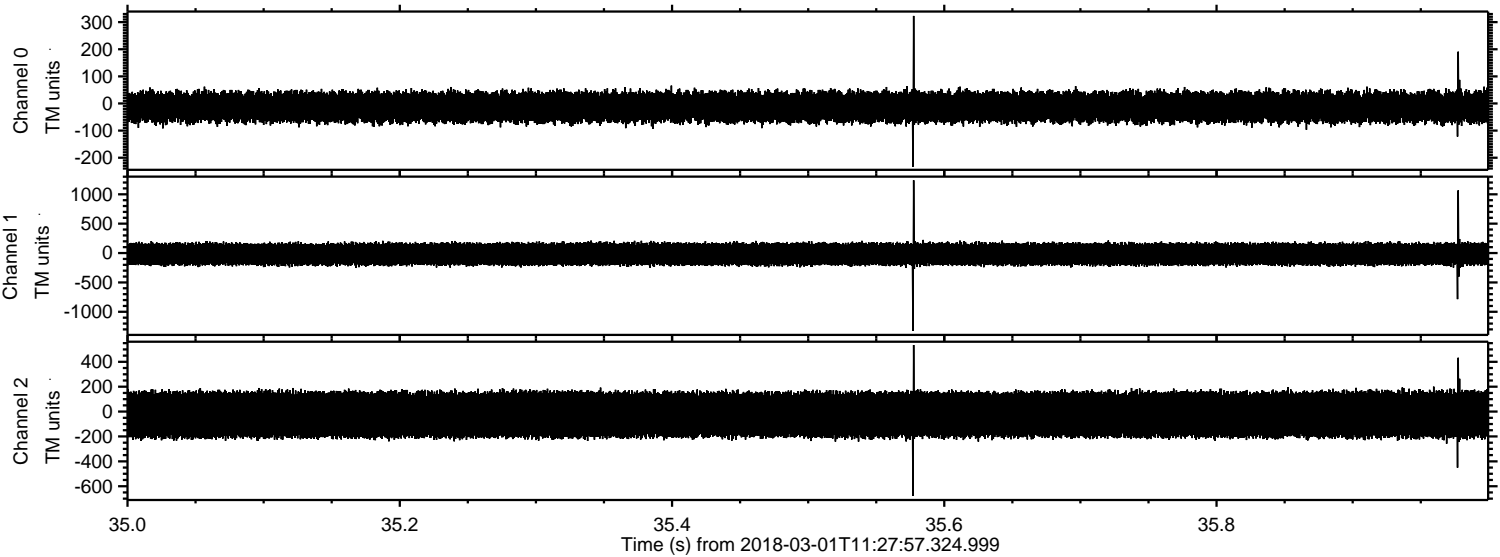


Channel 0
mn: -381
mx: 268
 μ : -13.3
 σ : 31.3

Channel 1
mn: -1168
mx: 1434
 μ : -18.8
 σ : 102.6

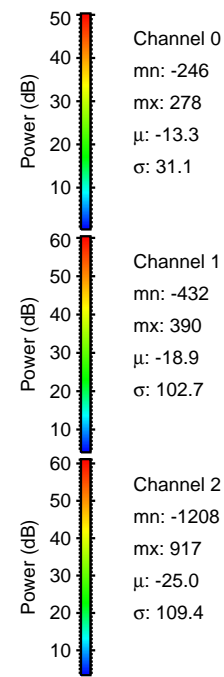
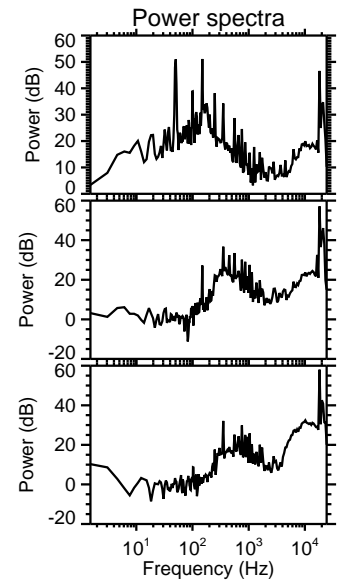
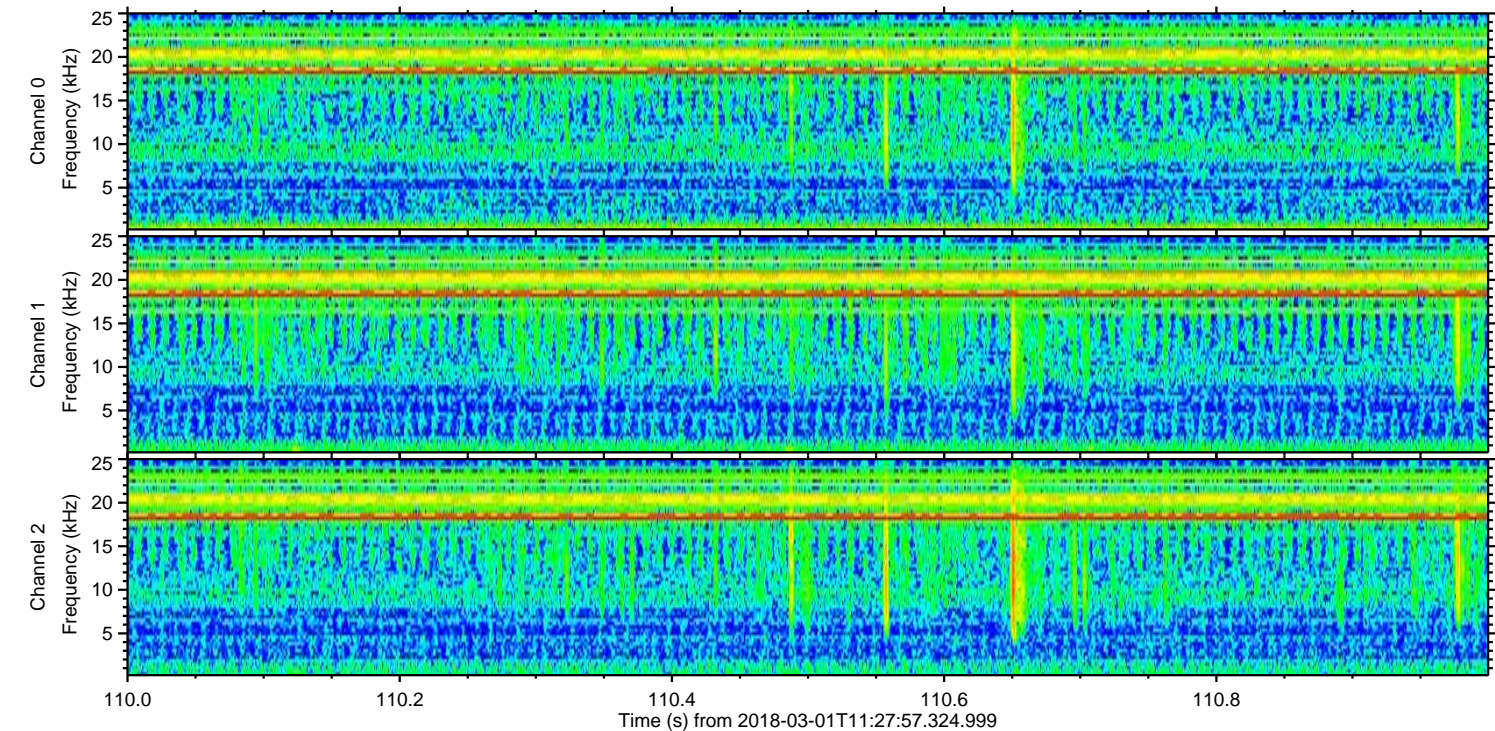
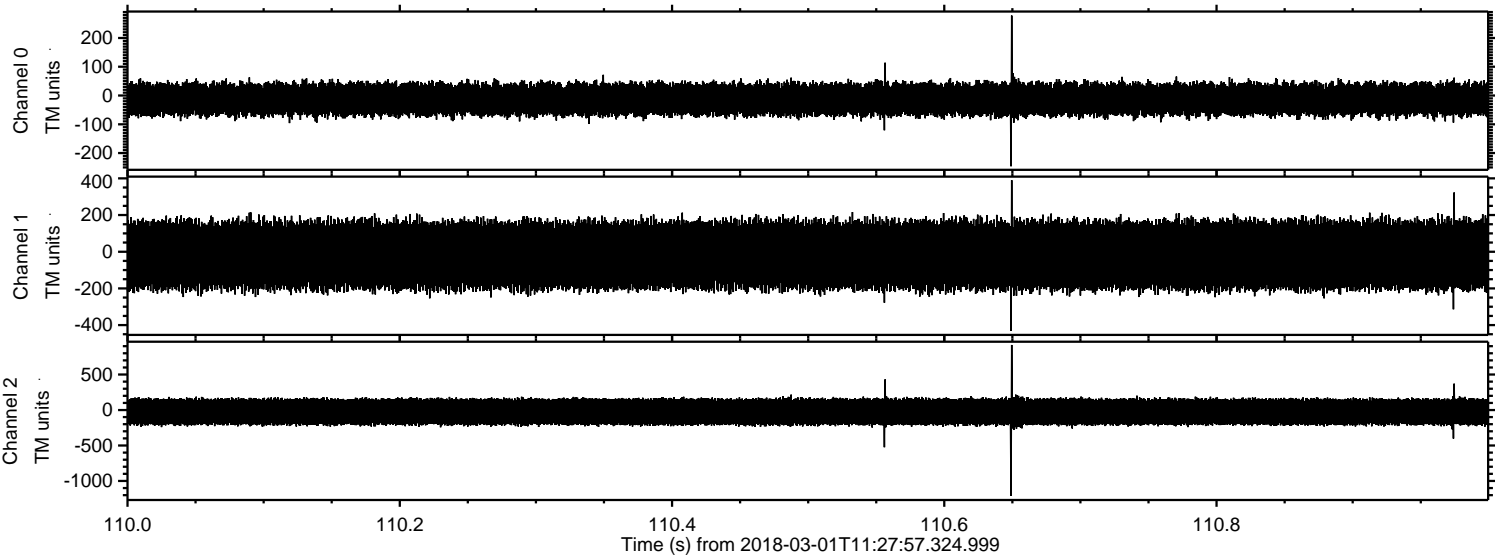
Channel 2
mn: -1448
mx: 1205
 μ : -25.0
 σ : 110.0

Processed Thu Mar 1 12:36:20 2018 by ELM ver.2012-10-06 from 001__elm20180301_112756__dat00.bin



ELMAVAN 3D WAVEFORMS (Measured data sampled at 50 kHz) 51000 packets of 144 samples from 2018-03-01T11:27:57.324.999. Part 111/147

Processed Thu Mar 1 12:36:20 2018 by ELM ver.2012-10-06 from 001__elm20180301_112756__dat00.bin



Channel 0
mn: -246
mx: 278
 μ : -13.3
 σ : 31.1

Channel 1
mn: -432
mx: 390
 μ : -18.9
 σ : 102.7

Channel 2
mn: -1208
mx: 917
 μ : -25.0
 σ : 109.4

Processed Thu Mar 1 12:36:21 2018 by ELM ver.2012-10-06 from 001__elm20180301_112756__dat00.bin

