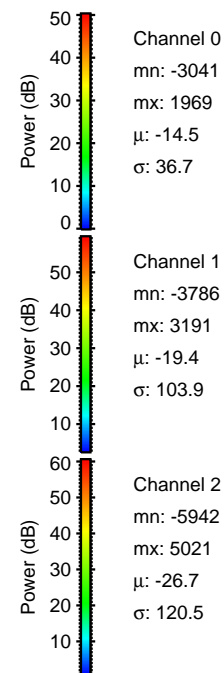
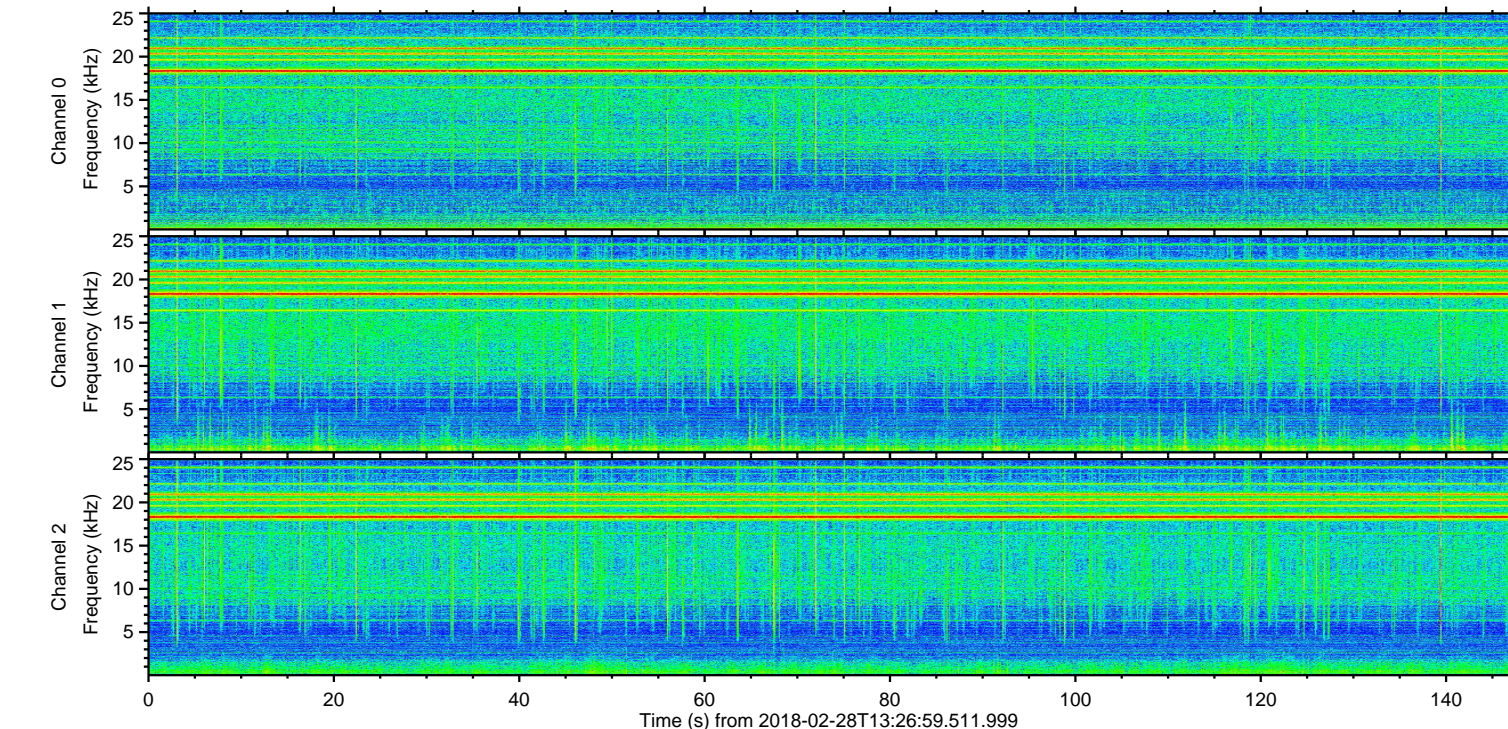
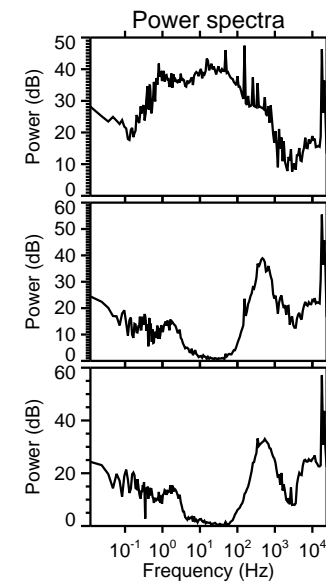
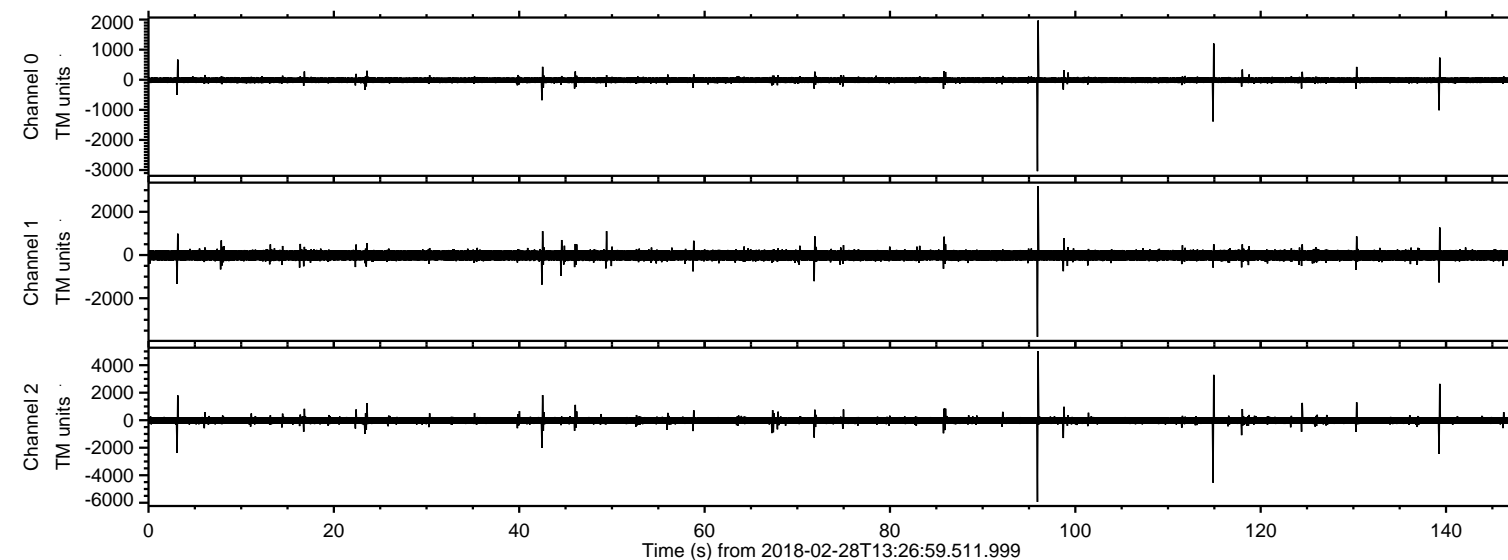
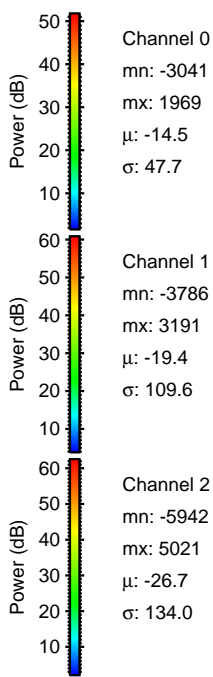
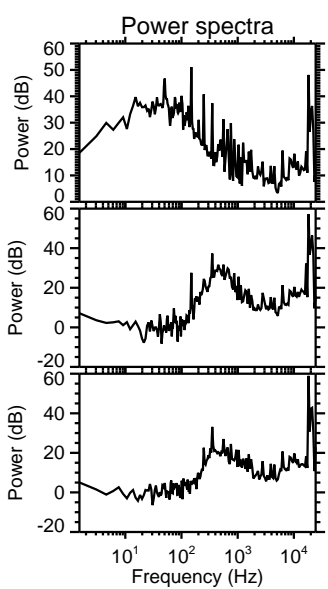
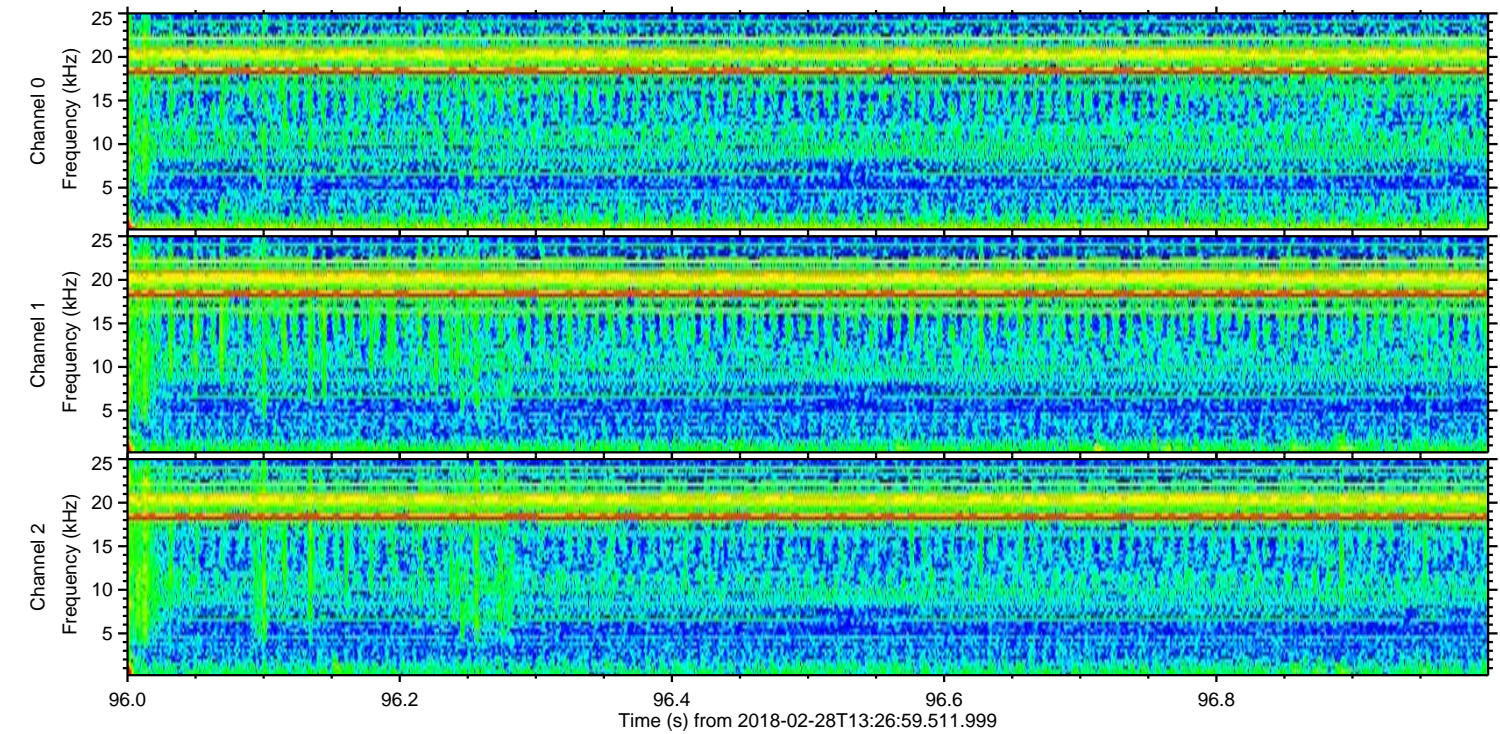
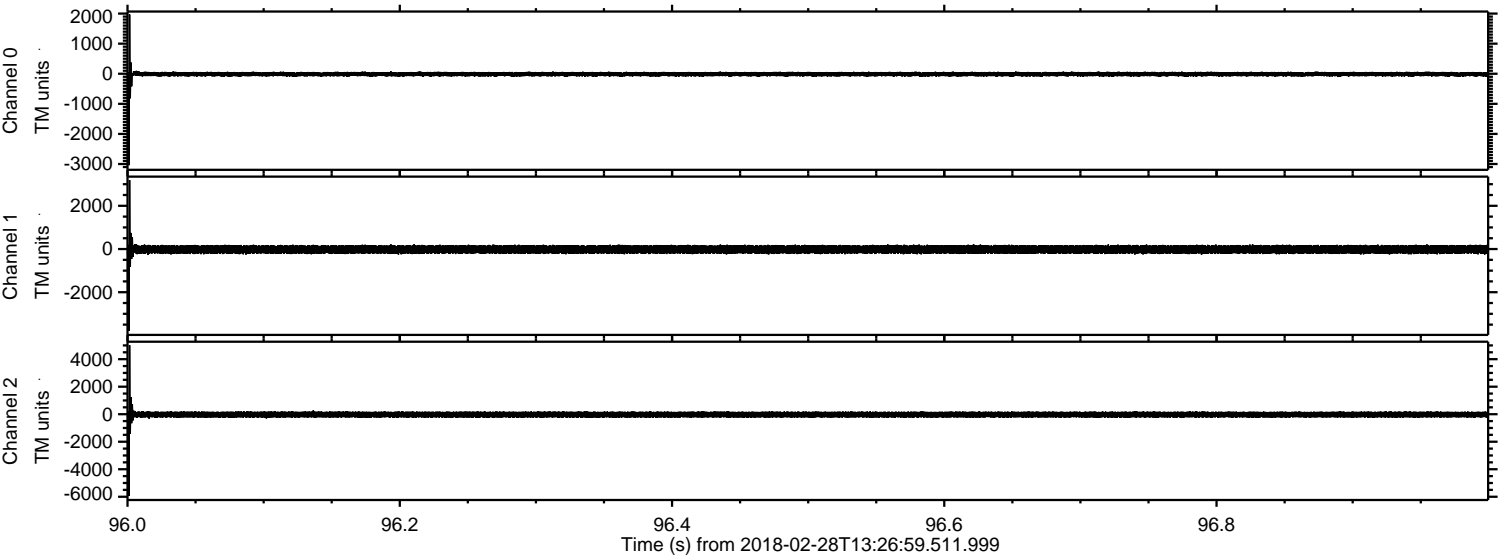


ELMAVAN 3D WAVEFORMS (Measured data sampled at 50 kHz) 51000 packets of 144 samples from 2018-02-28T13:26:59.511.999.

Processed Wed Feb 28 14:35:26 2018 by ELM ver.2012-10-06 from 001__elm20180228_132658__dat00.bin

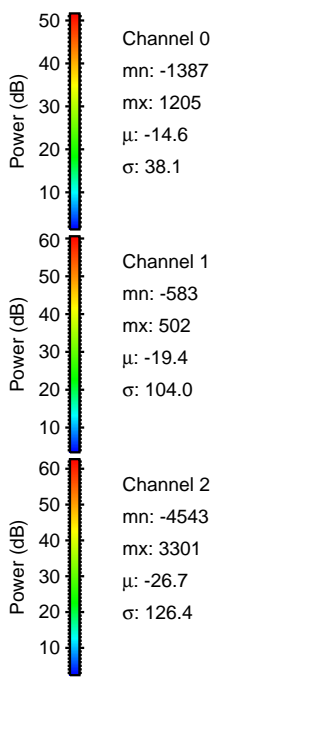
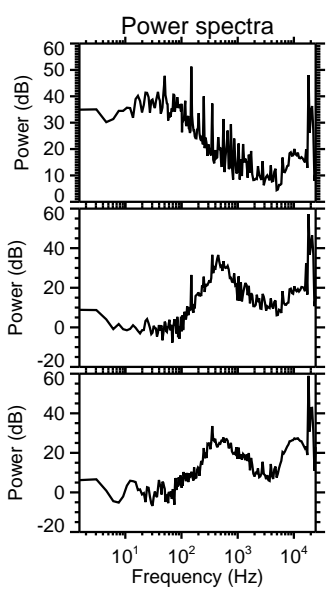
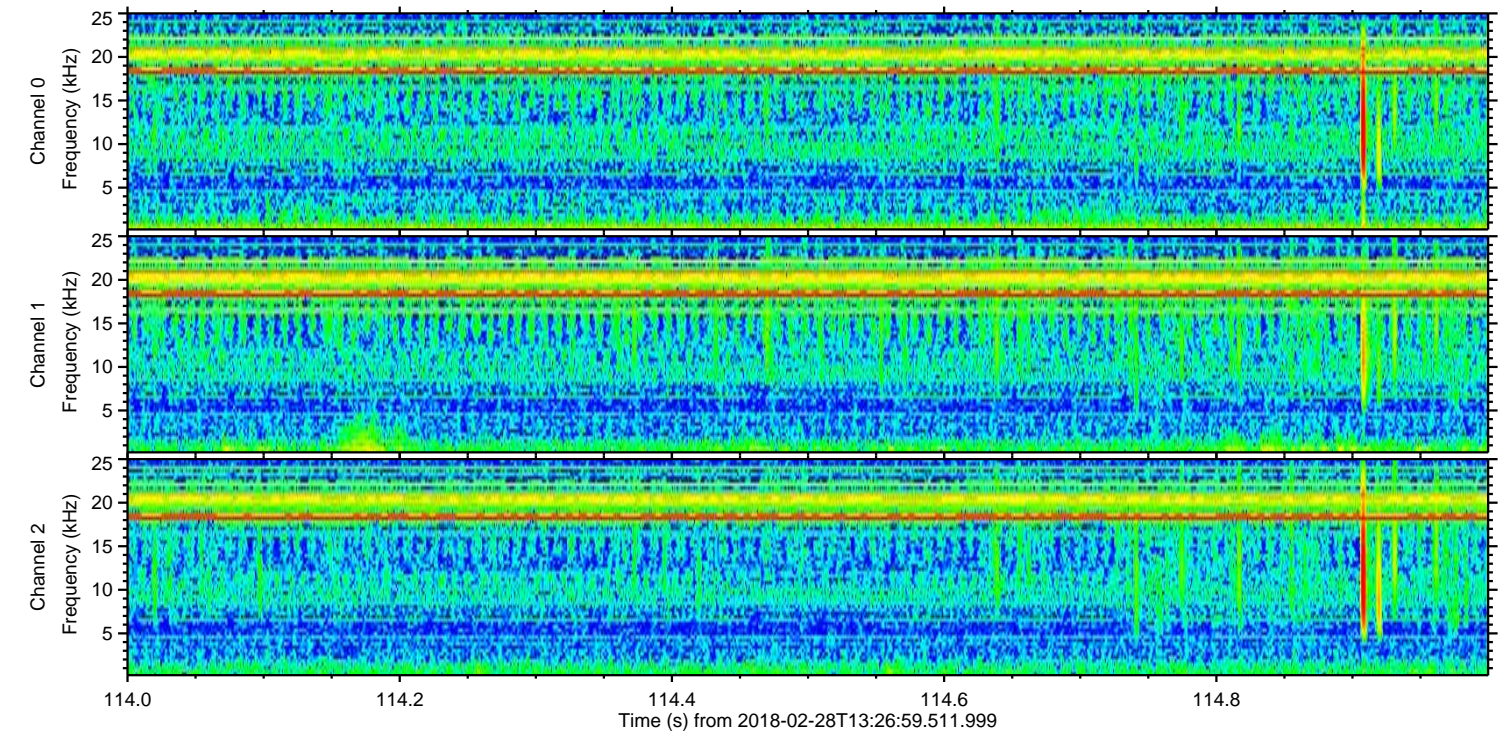
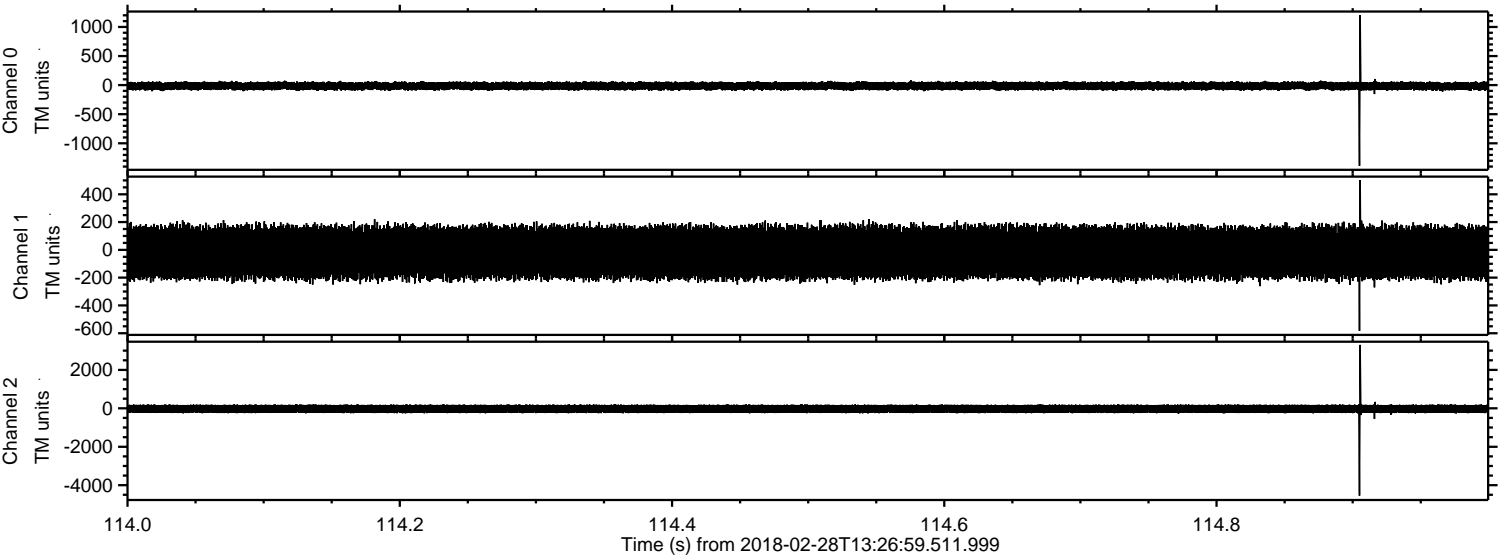


Processed Wed Feb 28 14:35:34 2018 by ELM ver.2012-10-06 from 001__elm20180228_132658__dat00.bin

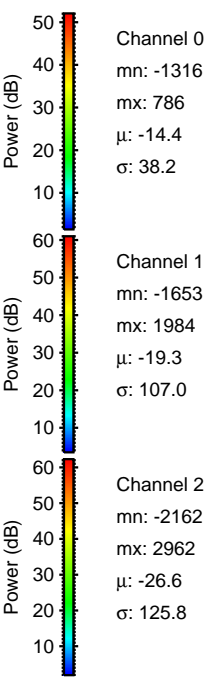
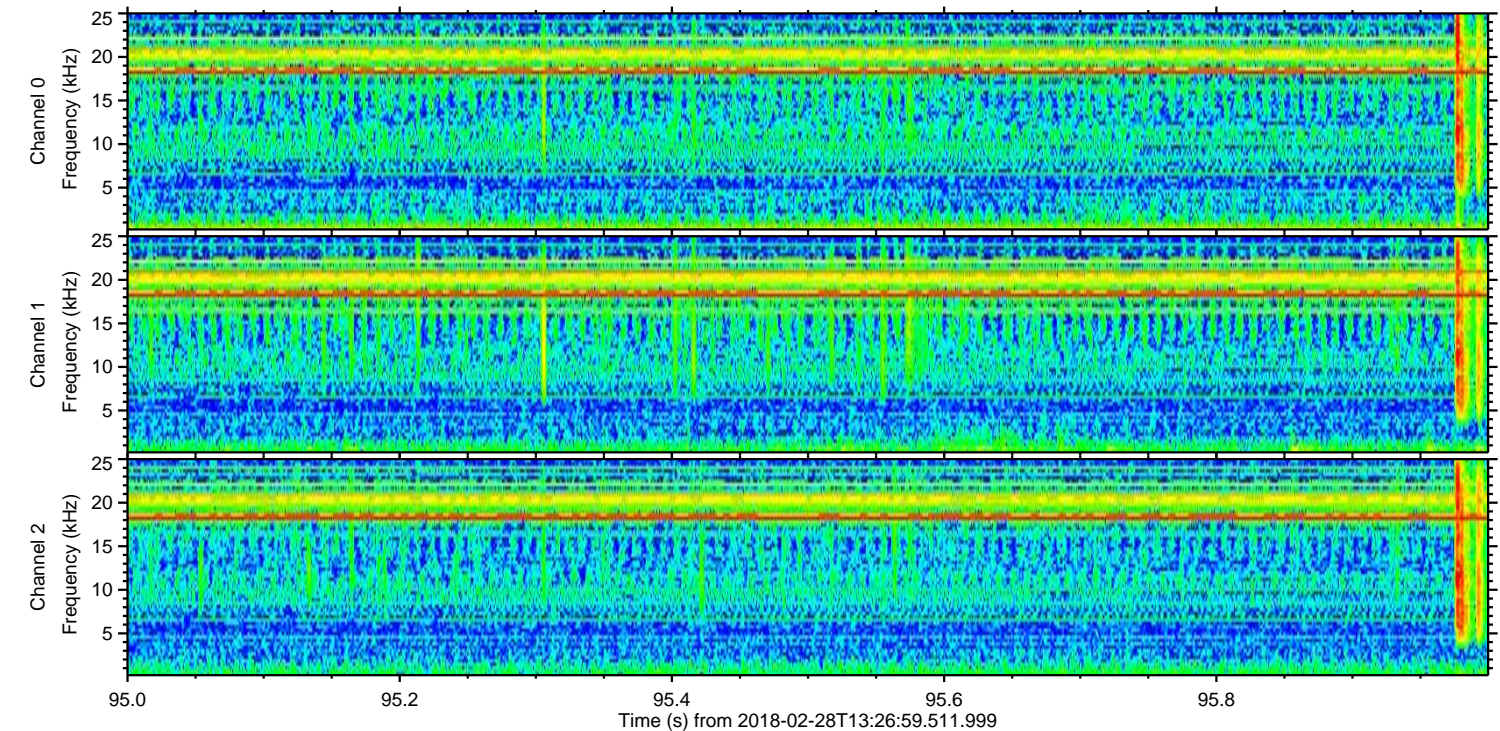
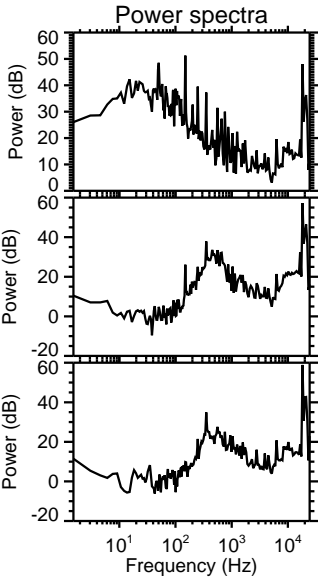
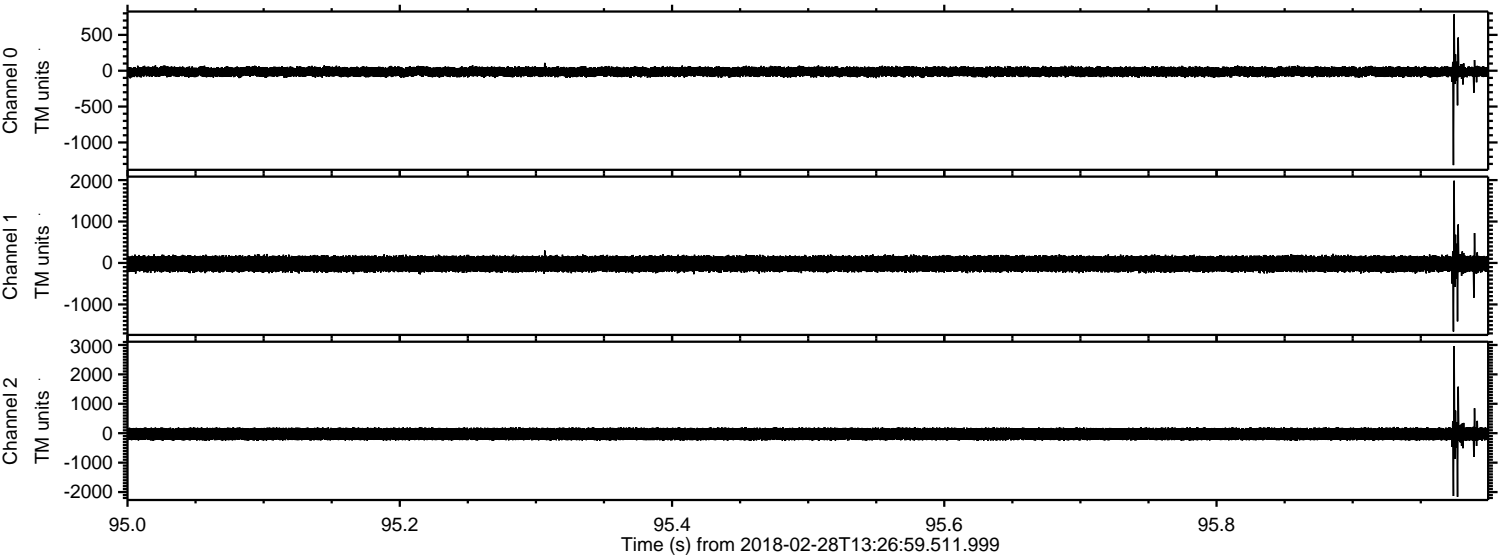


ELMAVAN 3D WAVEFORMS (Measured data sampled at 50 kHz) 51000 packets of 144 samples from 2018-02-28T13:26:59.511.999. Part 115/147

Processed Wed Feb 28 14:35:35 2018 by ELM ver.2012-10-06 from 001__elm20180228_132658__dat00.bin

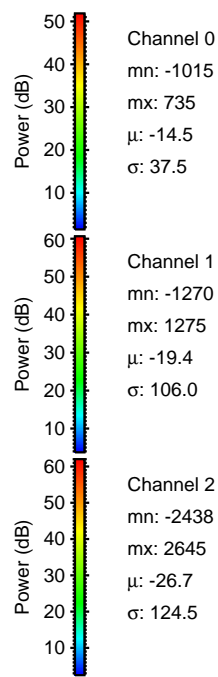
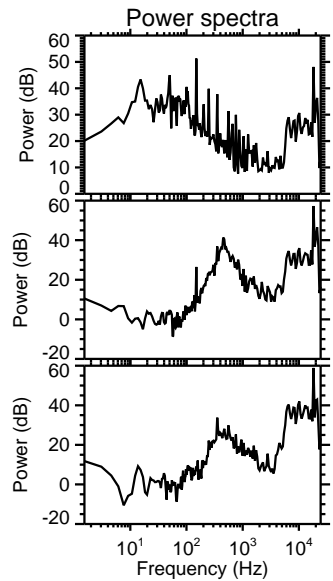
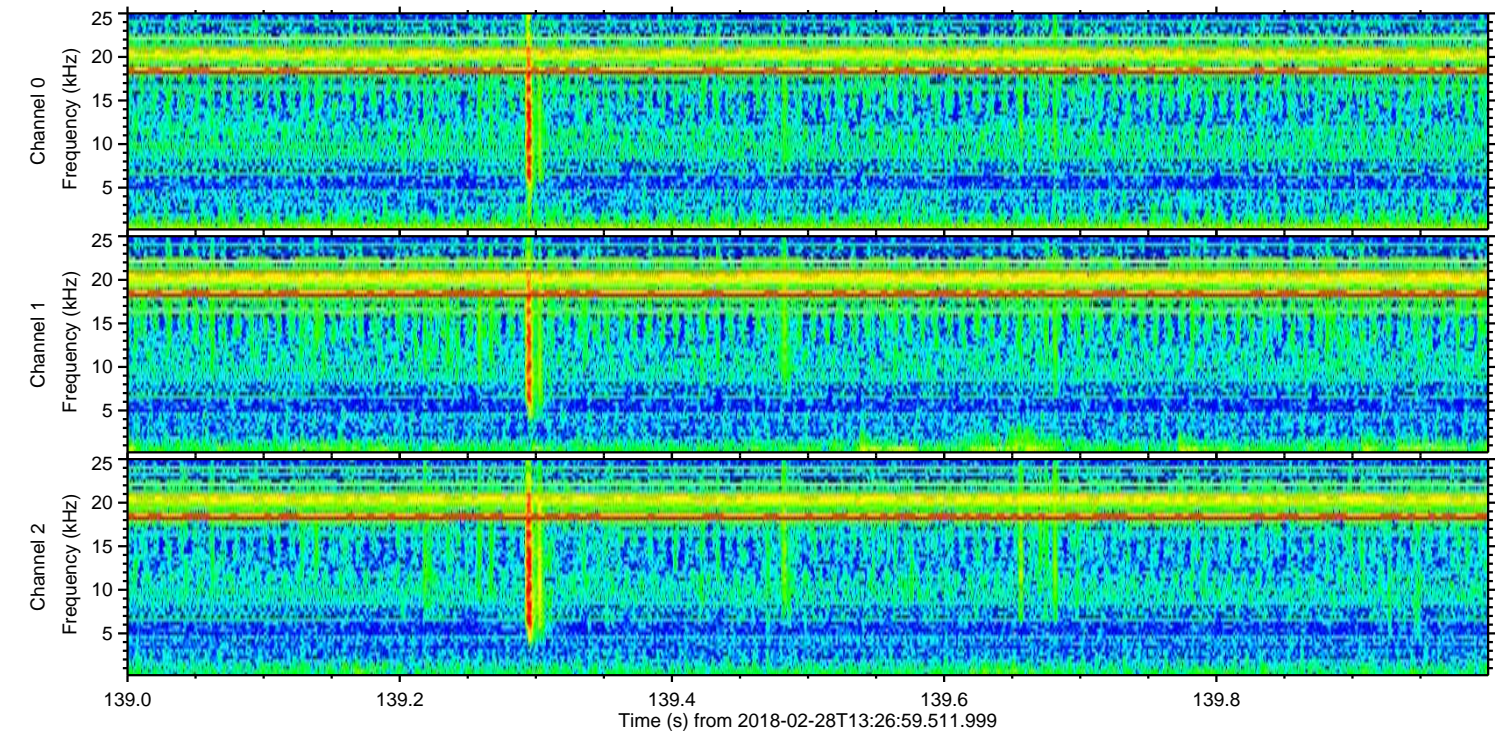
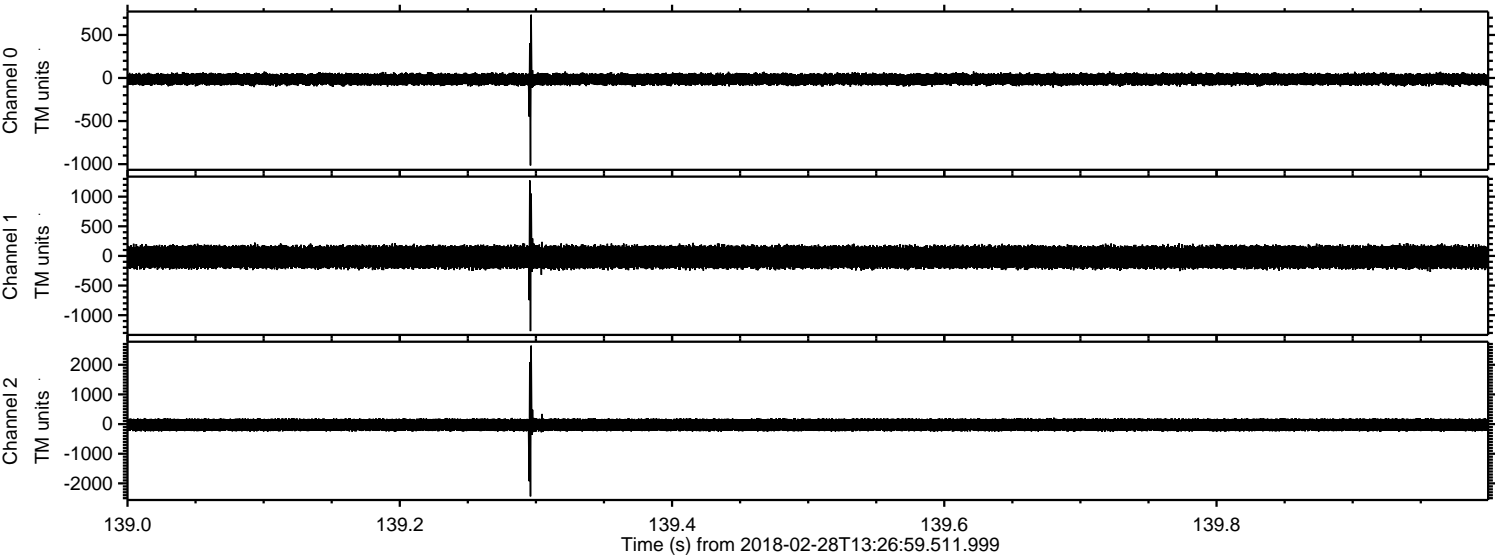


Processed Wed Feb 28 14:35:35 2018 by ELM ver.2012-10-06 from 001__elm20180228_132658__dat00.bin

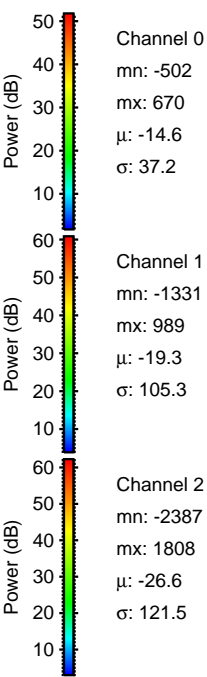
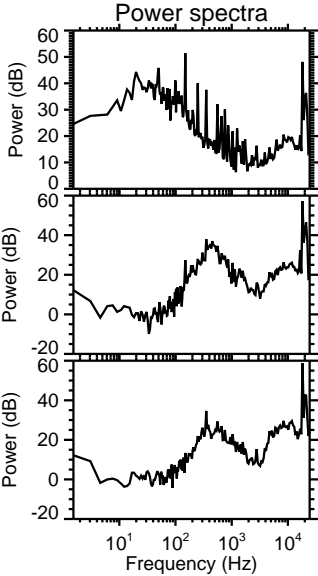
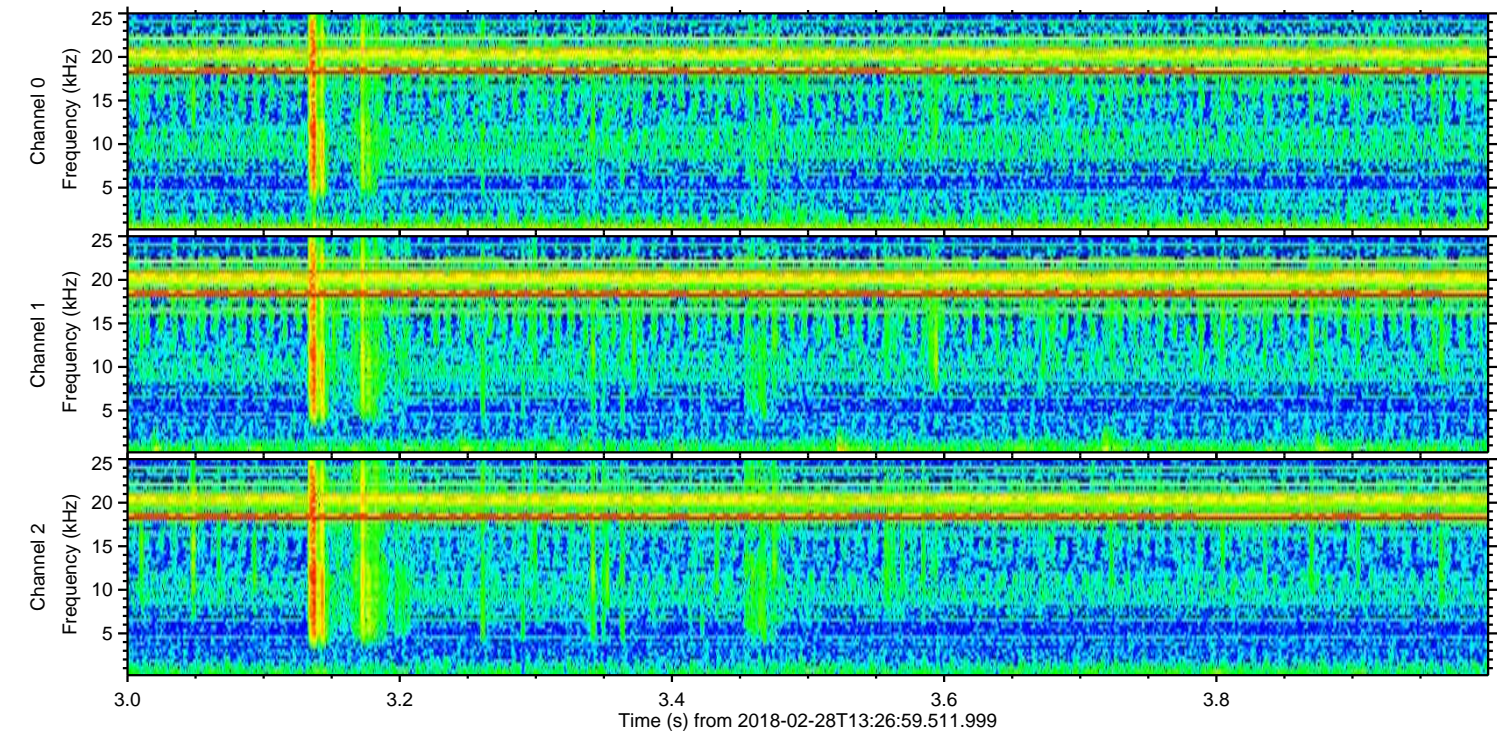
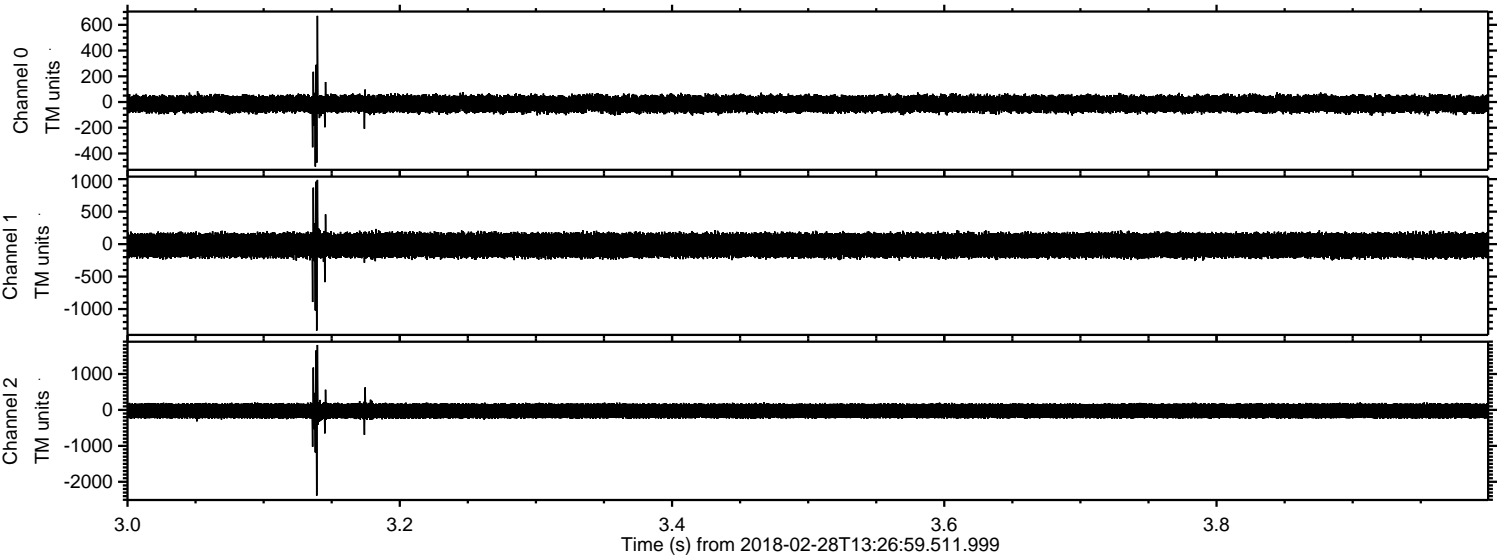


ELMAVAN 3D WAVEFORMS (Measured data sampled at 50 kHz) 51000 packets of 144 samples from 2018-02-28T13:26:59.511.999. Part 140/147

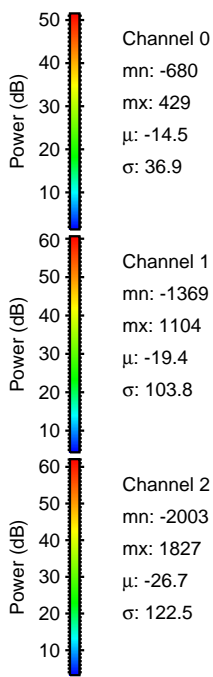
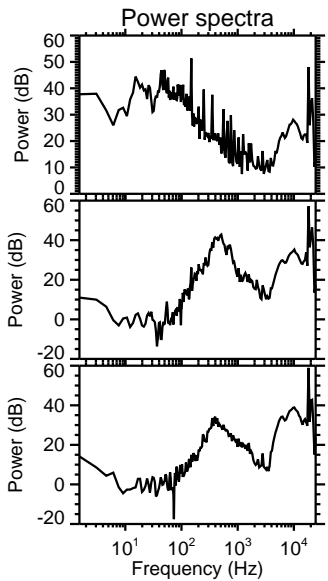
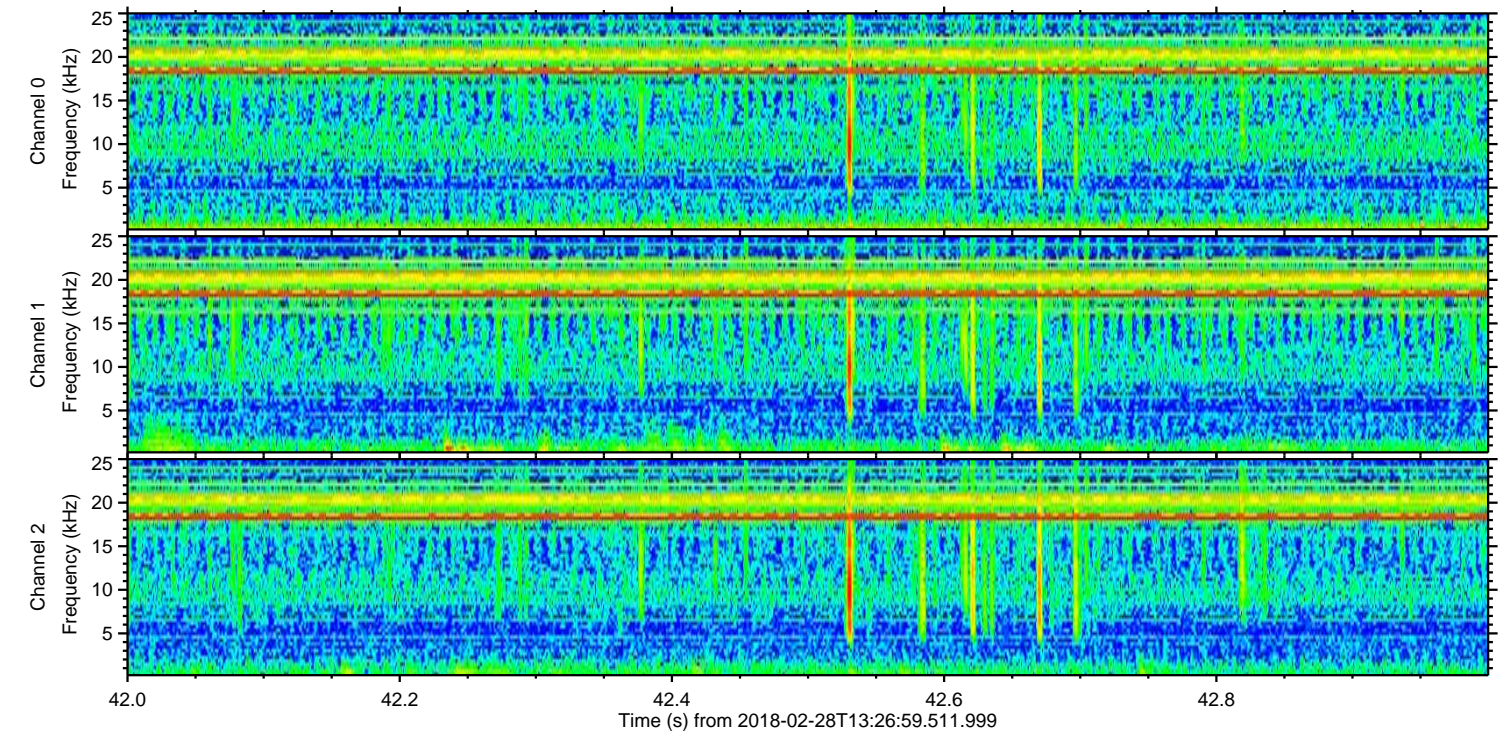
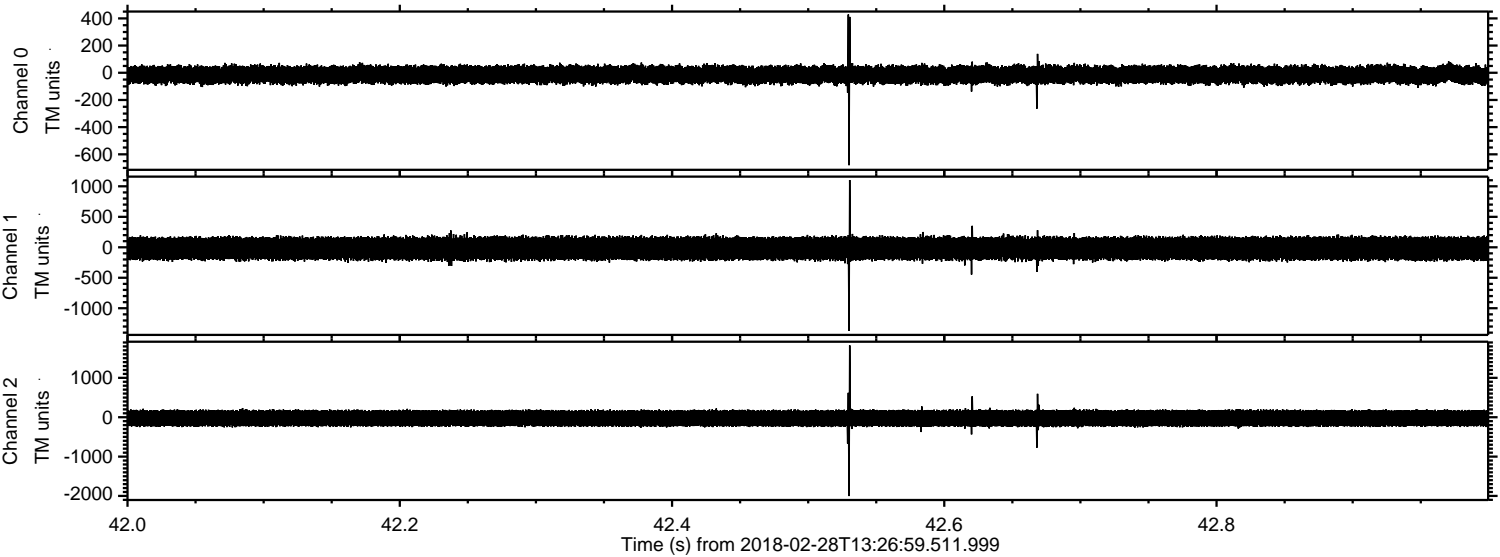
Processed Wed Feb 28 14:35:36 2018 by ELM ver.2012-10-06 from 001__elm20180228_132658__dat00.bin



Processed Wed Feb 28 14:35:37 2018 by ELM ver.2012-10-06 from 001__elm20180228_132658__dat00.bin

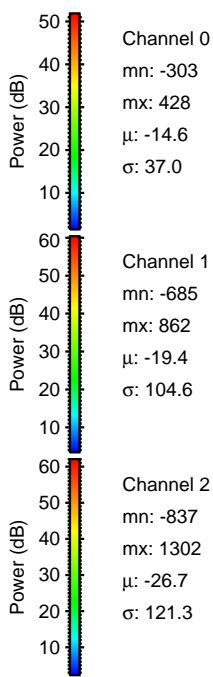
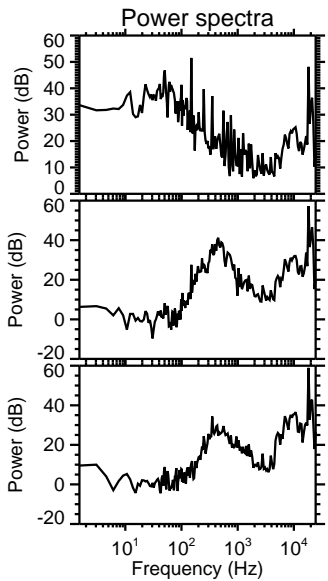
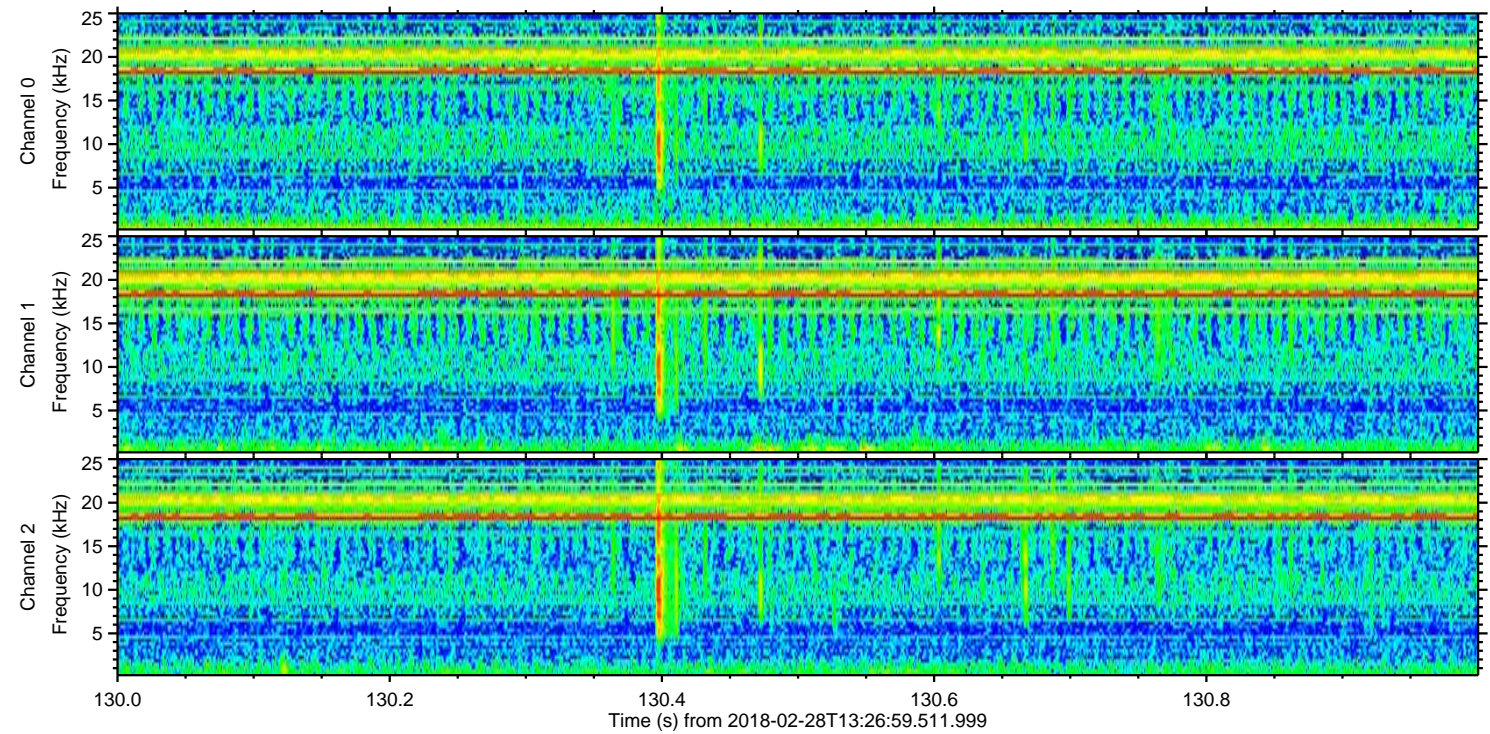
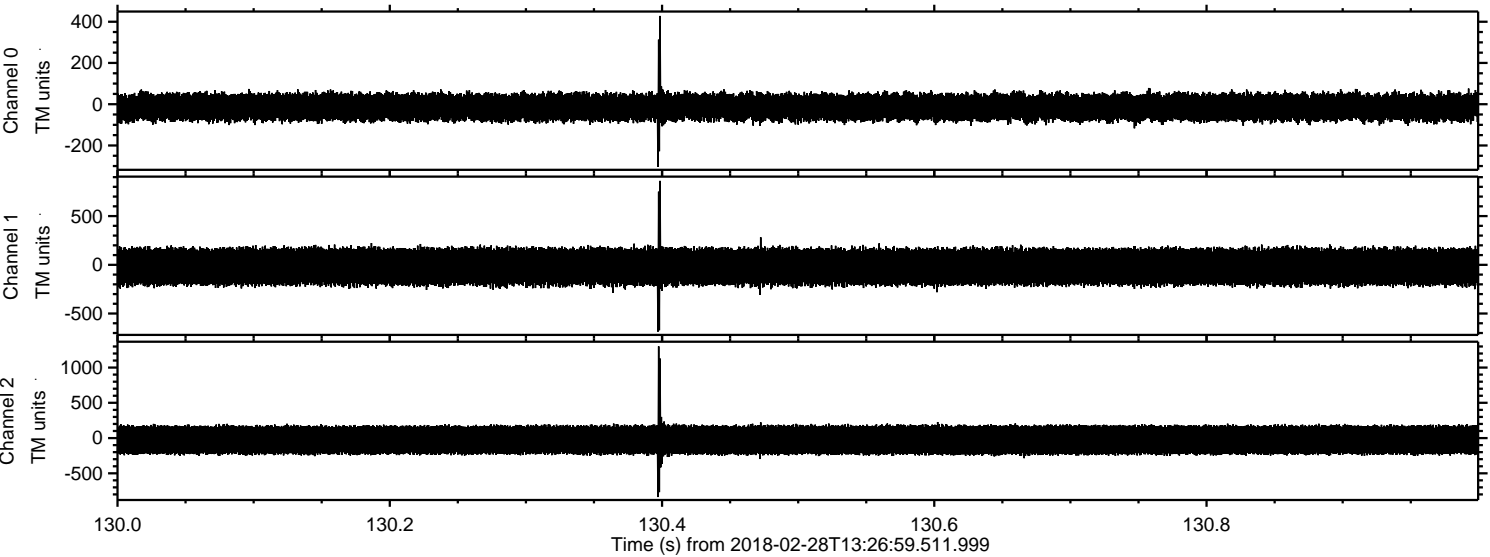


Processed Wed Feb 28 14:35:38 2018 by ELM ver.2012-10-06 from 001__elm20180228_132658__dat00.bin



ELMAVAN 3D WAVEFORMS (Measured data sampled at 50 kHz) 51000 packets of 144 samples from 2018-02-28T13:26:59.511.999. Part 131/147

Processed Wed Feb 28 14:35:38 2018 by ELM ver.2012-10-06 from 001__elm20180228_132658__dat00.bin

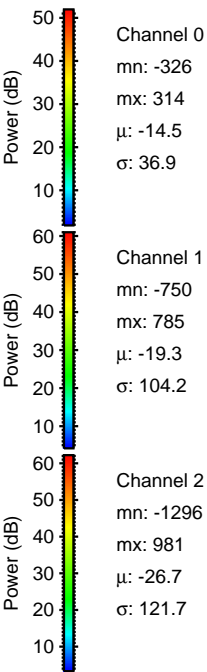
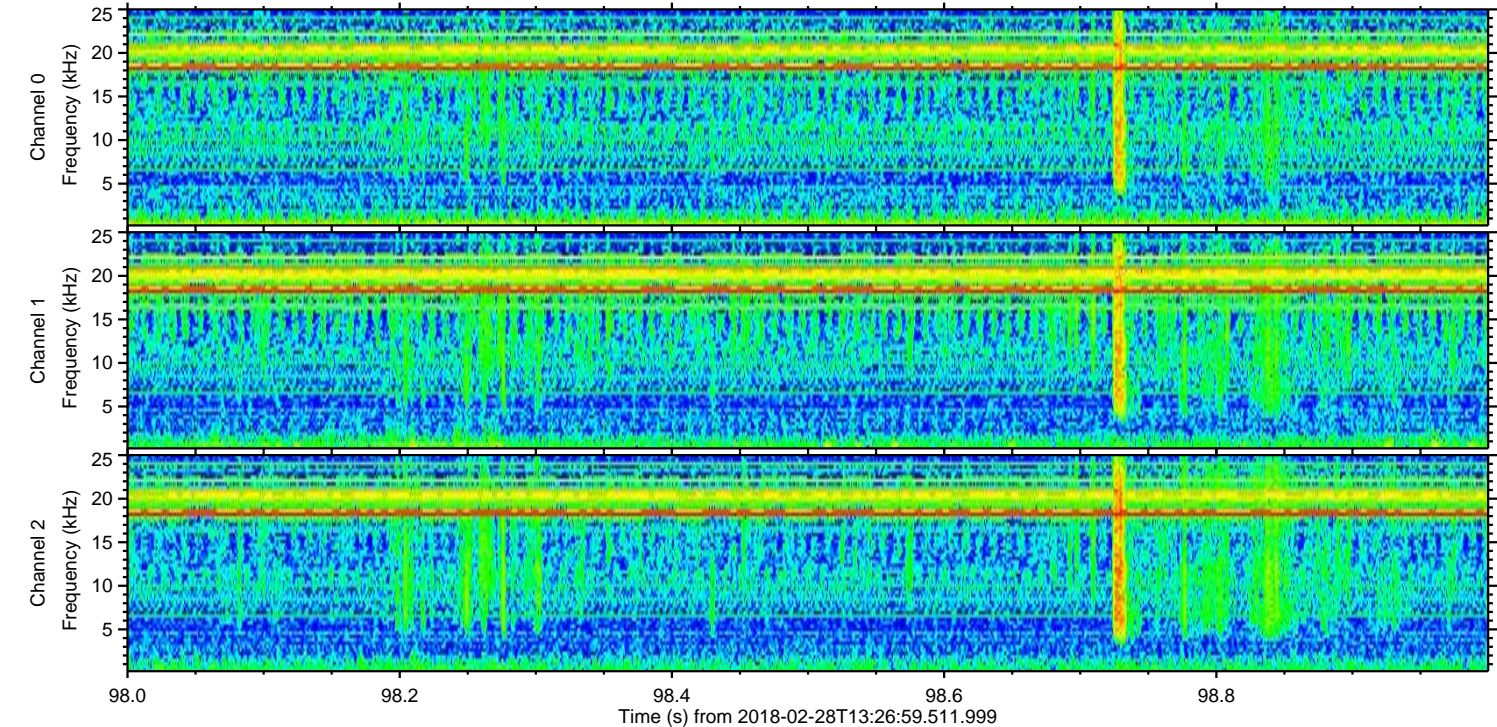
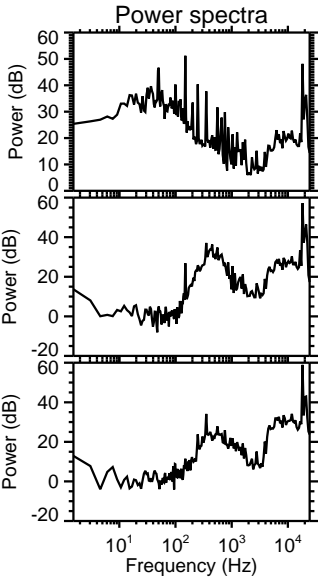
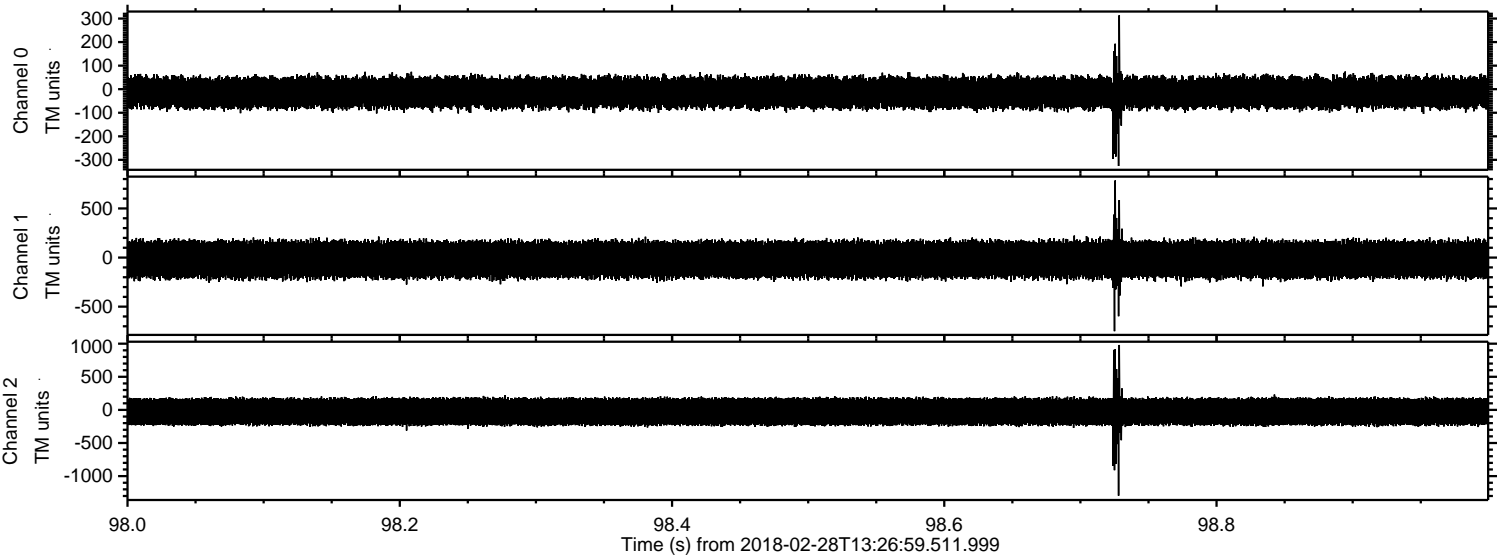


Channel 0
mn: -303
mx: 428
 μ : -14.6
 σ : 37.0

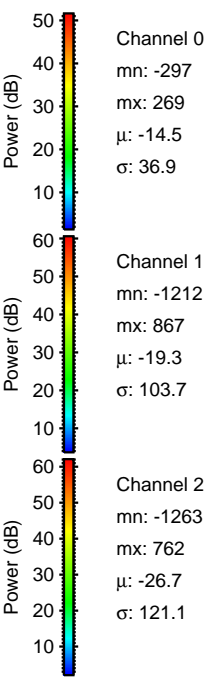
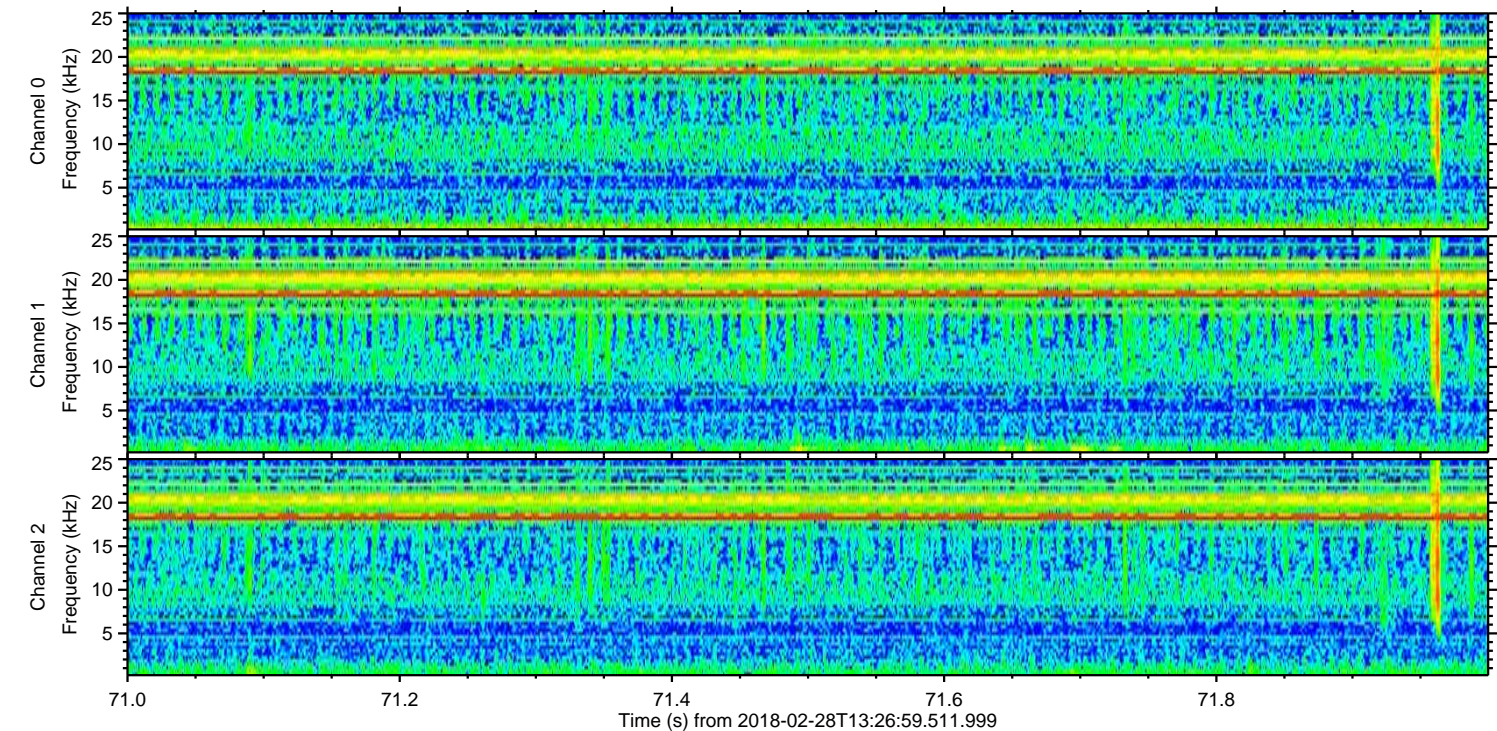
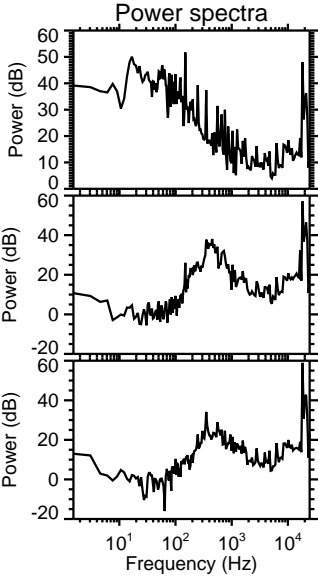
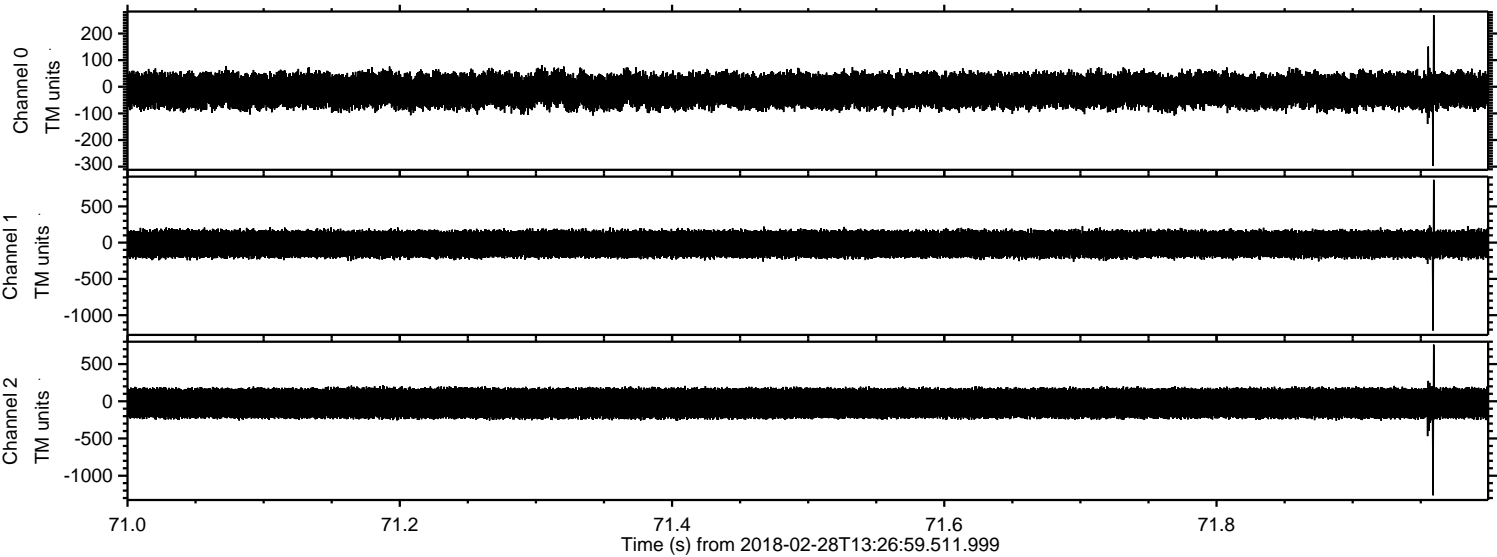
Channel 1
mn: -685
mx: 862
 μ : -19.4
 σ : 104.6

Channel 2
mn: -837
mx: 1302
 μ : -26.7
 σ : 121.3

Processed Wed Feb 28 14:35:39 2018 by ELM ver.2012-10-06 from 001__elm20180228_132658__dat00.bin



Processed Wed Feb 28 14:35:40 2018 by ELM ver.2012-10-06 from 001__elm20180228_132658__dat00.bin



Processed Wed Feb 28 14:35:41 2018 by ELM ver.2012-10-06 from 001__elm20180228_132658__dat00.bin

