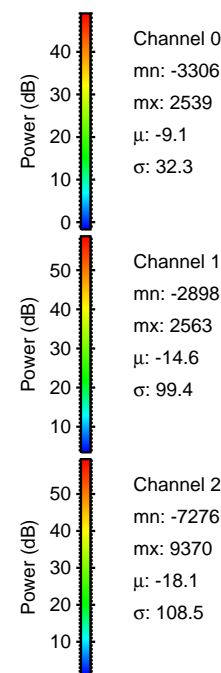
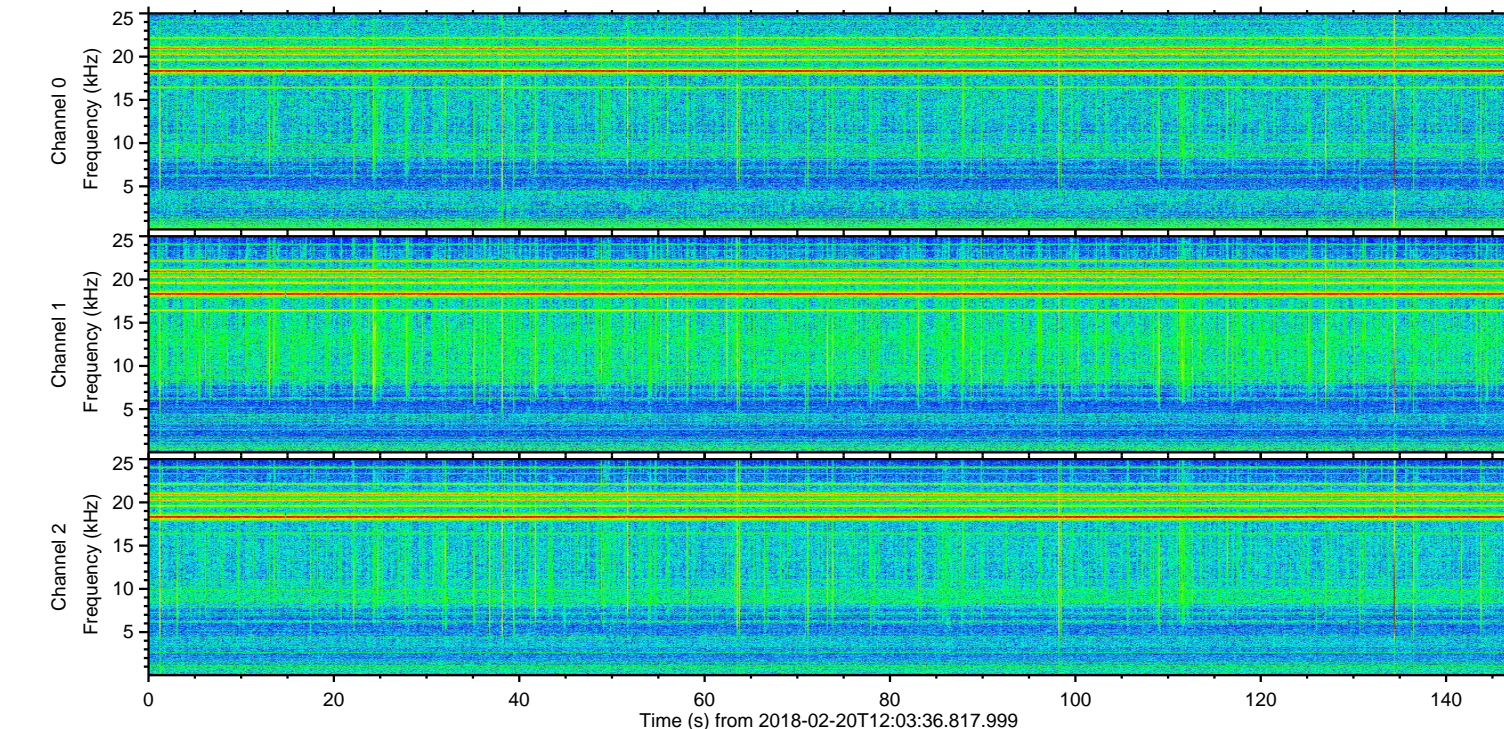
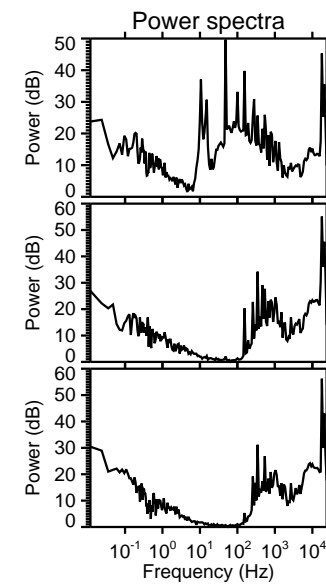
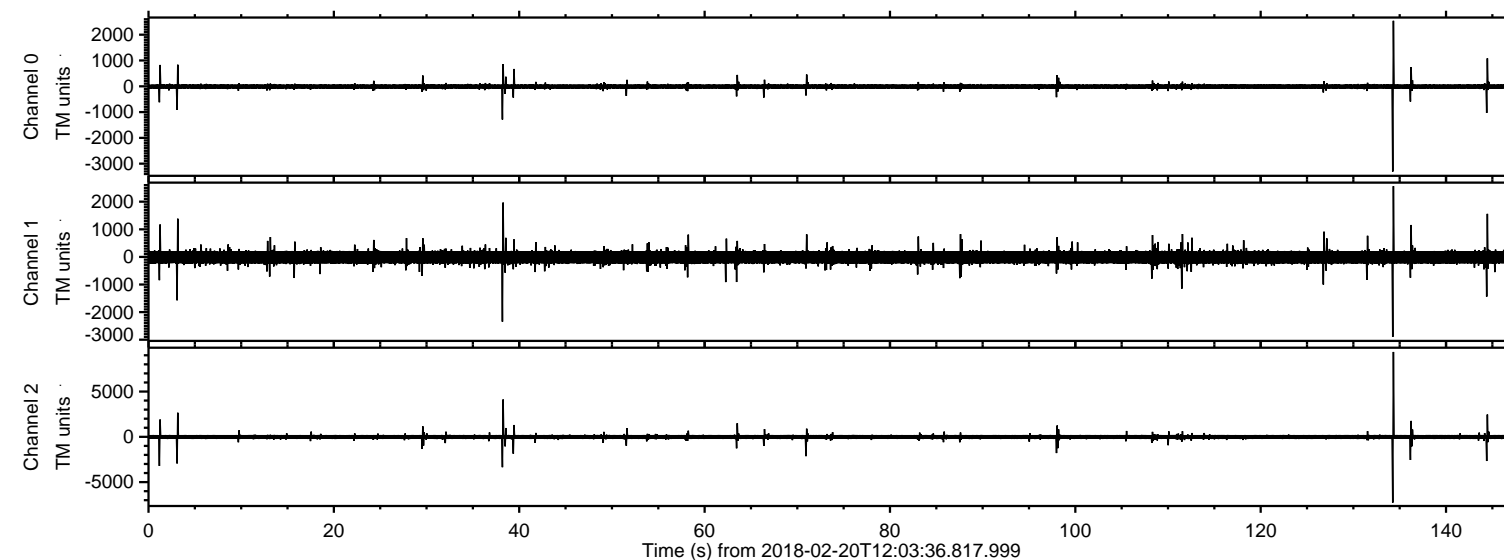


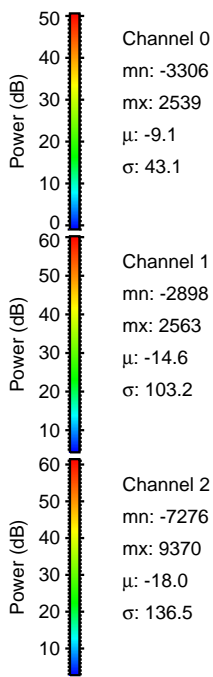
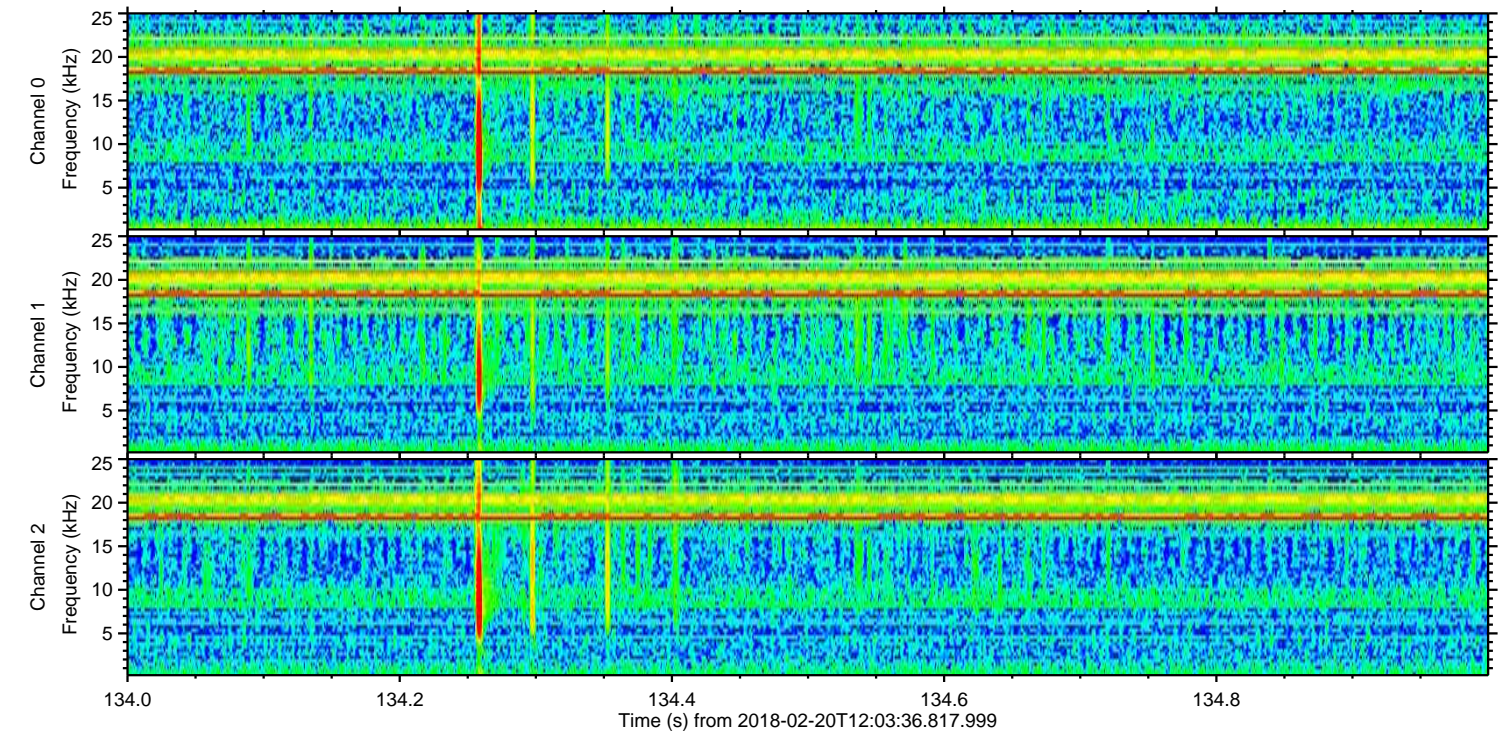
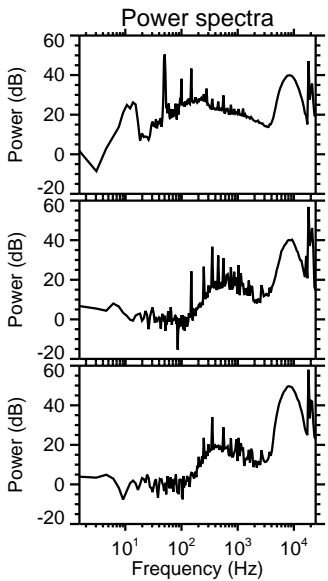
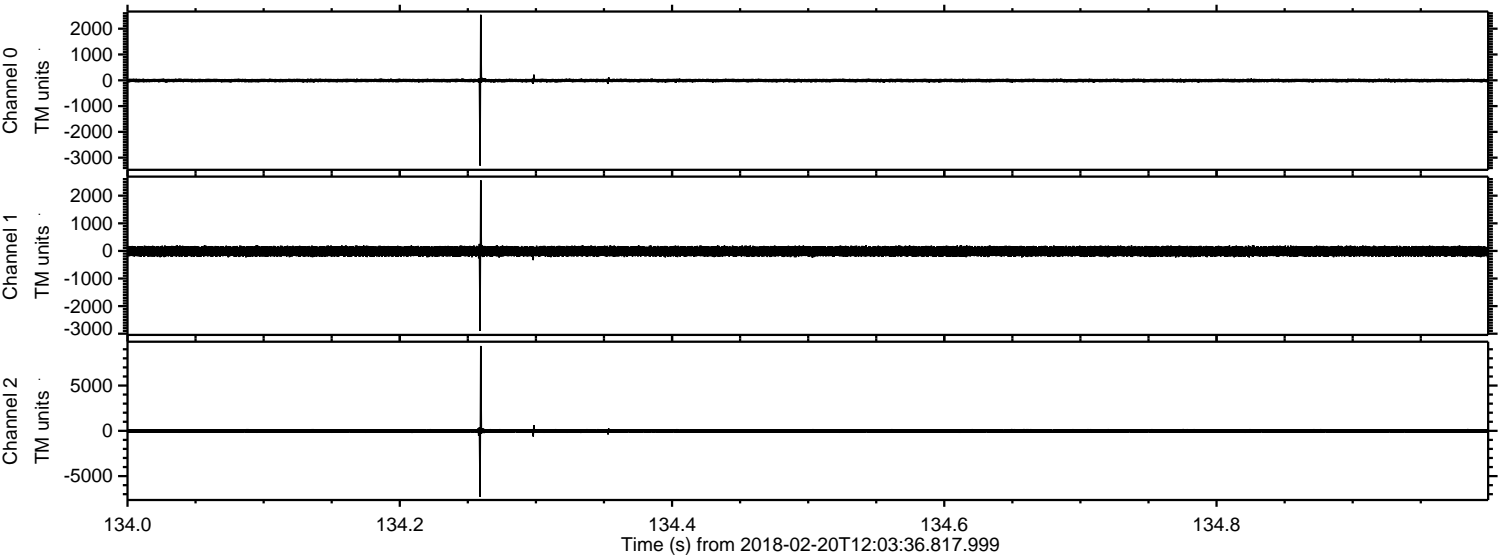
ELMAVAN 3D WAVEFORMS (Measured data sampled at 50 kHz) 51000 packets of 144 samples from 2018-02-20T12:03:36.817.999.

Processed Tue Feb 20 13:11:53 2018 by ELM ver.2012-10-06 from 001__elm20180220_120335__dat00.bin

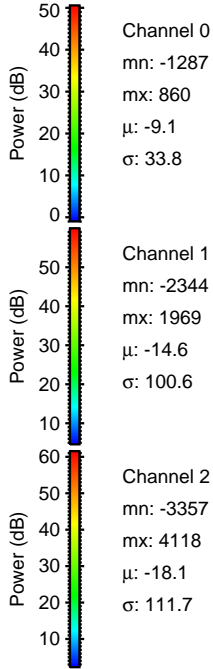
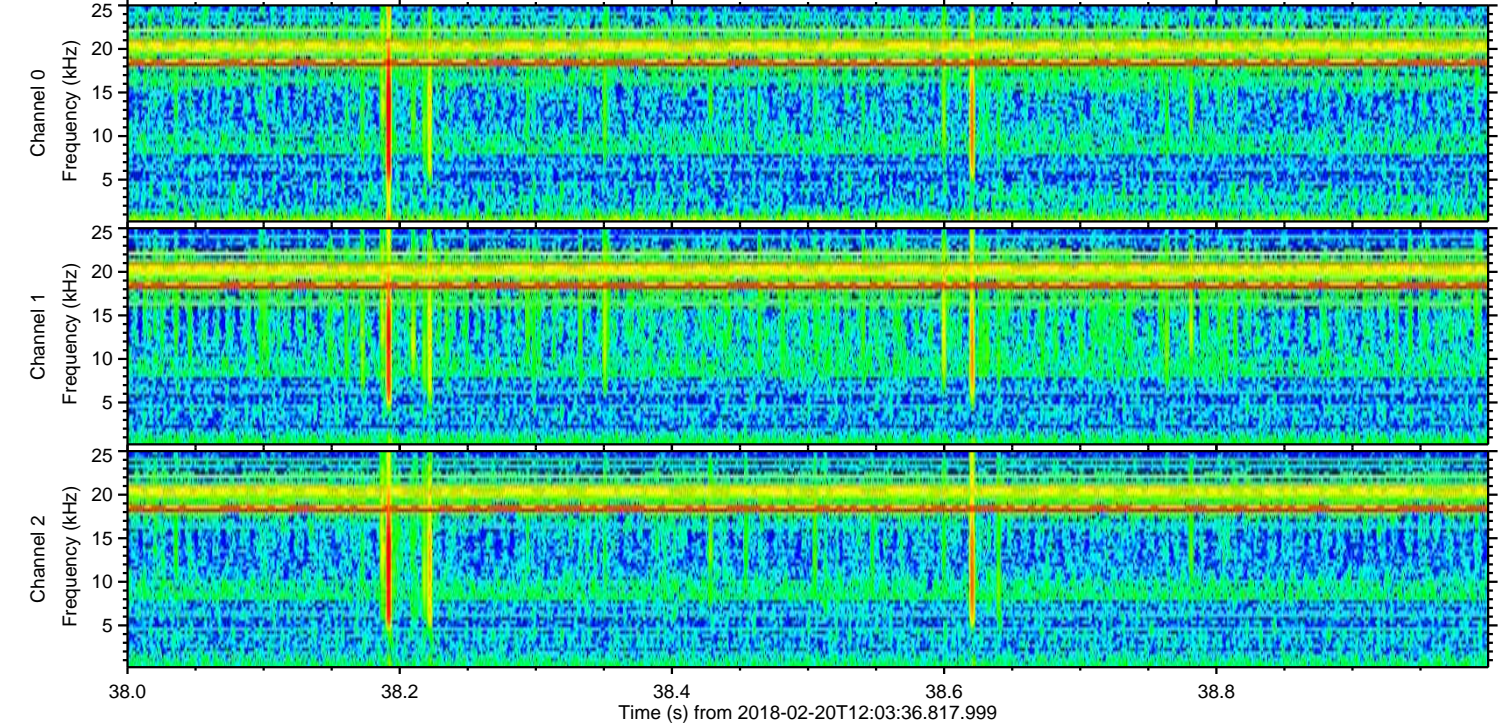
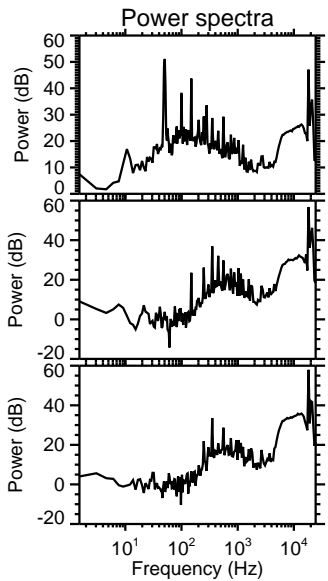
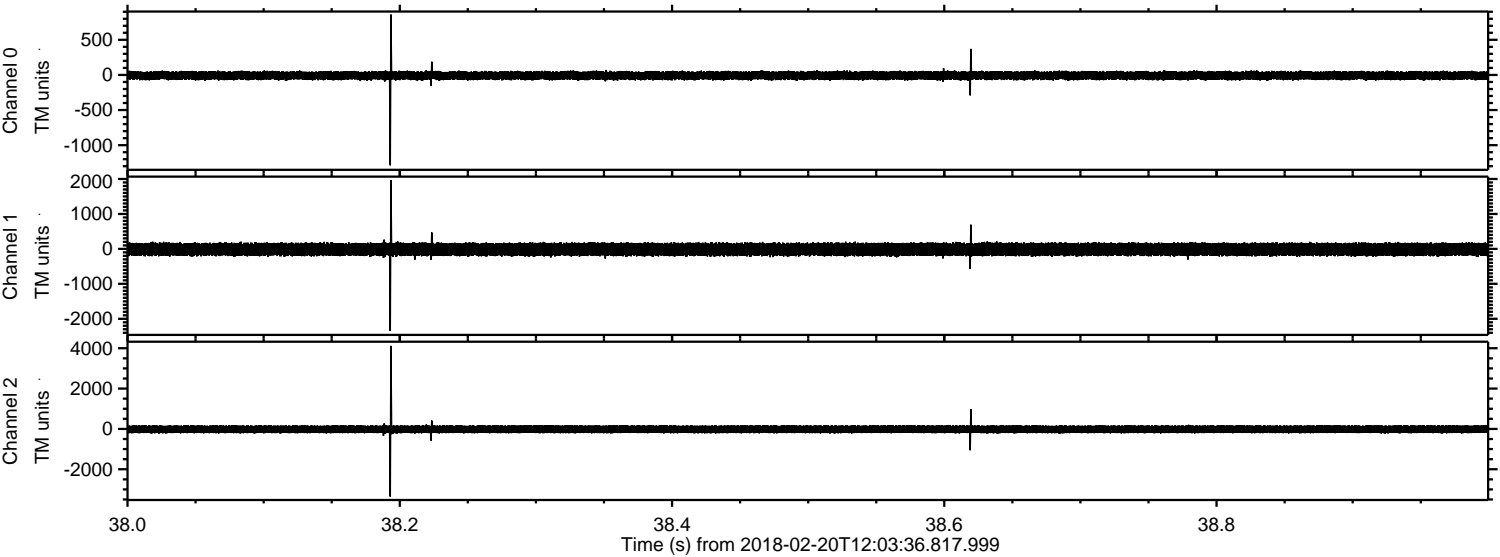


ELMAVAN 3D WAVEFORMS (Measured data sampled at 50 kHz) 51000 packets of 144 samples from 2018-02-20T12:03:36.817.999. Part 135/147

Processed Tue Feb 20 13:12:00 2018 by ELM ver.2012-10-06 from 001__elm20180220_120335__dat00.bin

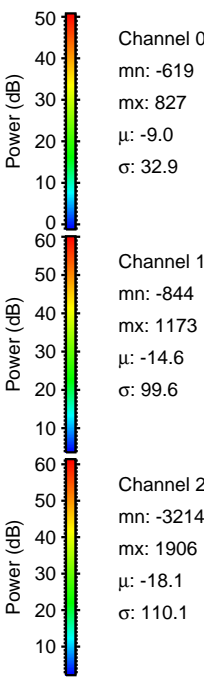
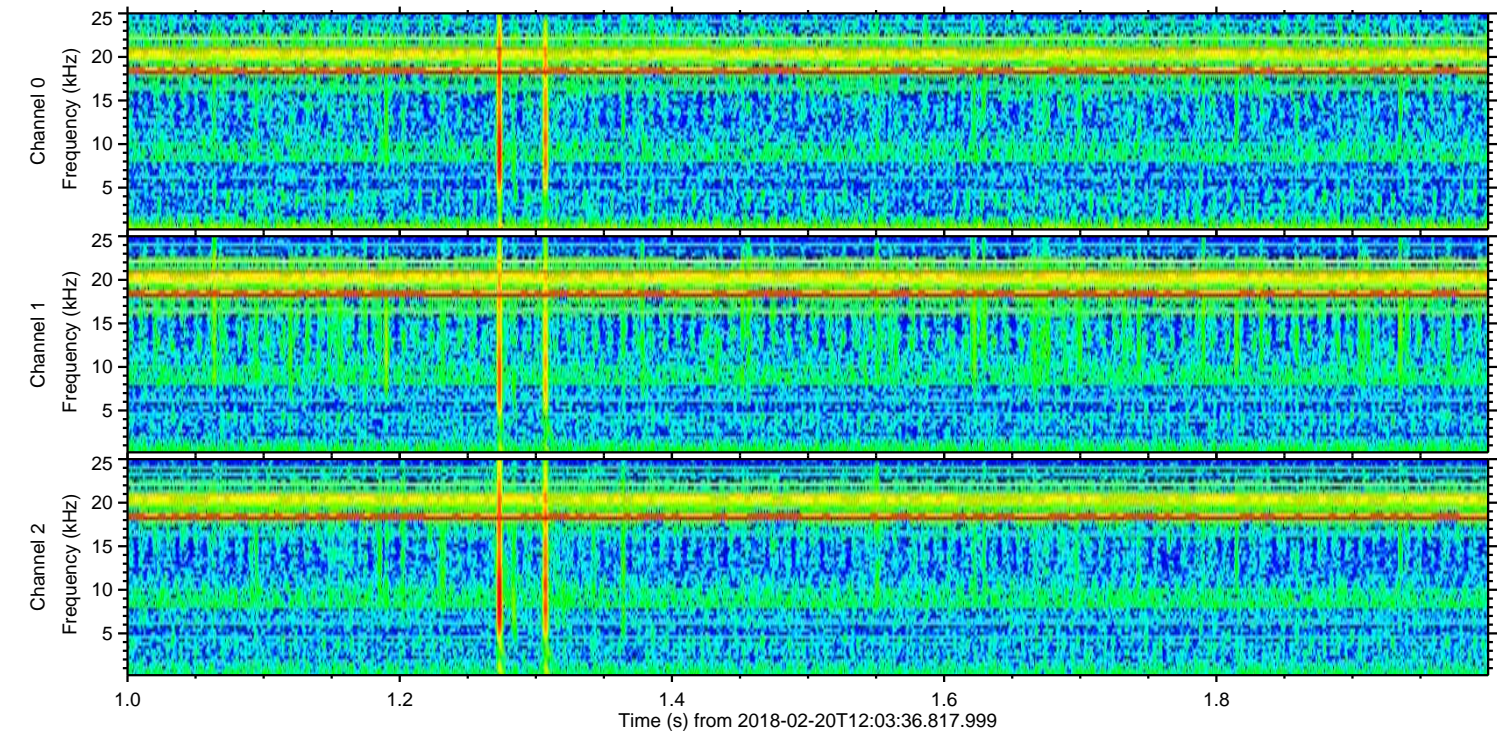
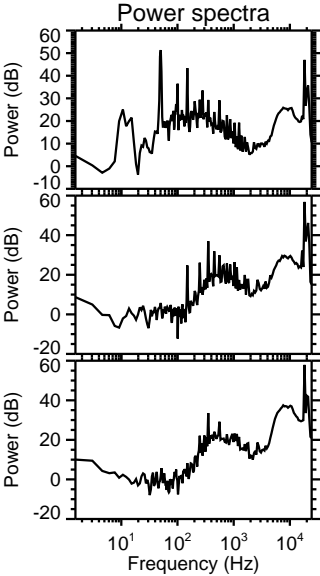
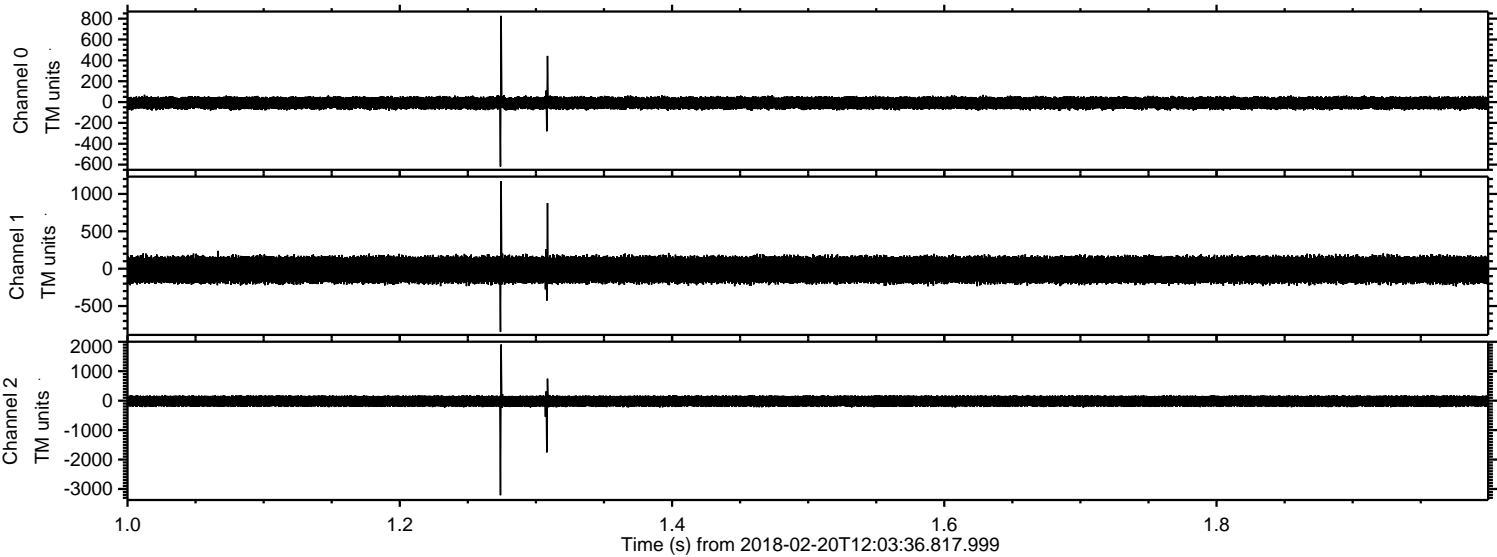


Processed Tue Feb 20 13:12:01 2018 by ELM ver.2012-10-06 from 001__elm20180220_120335__dat00.bin

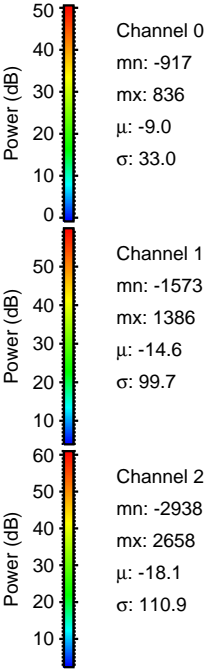
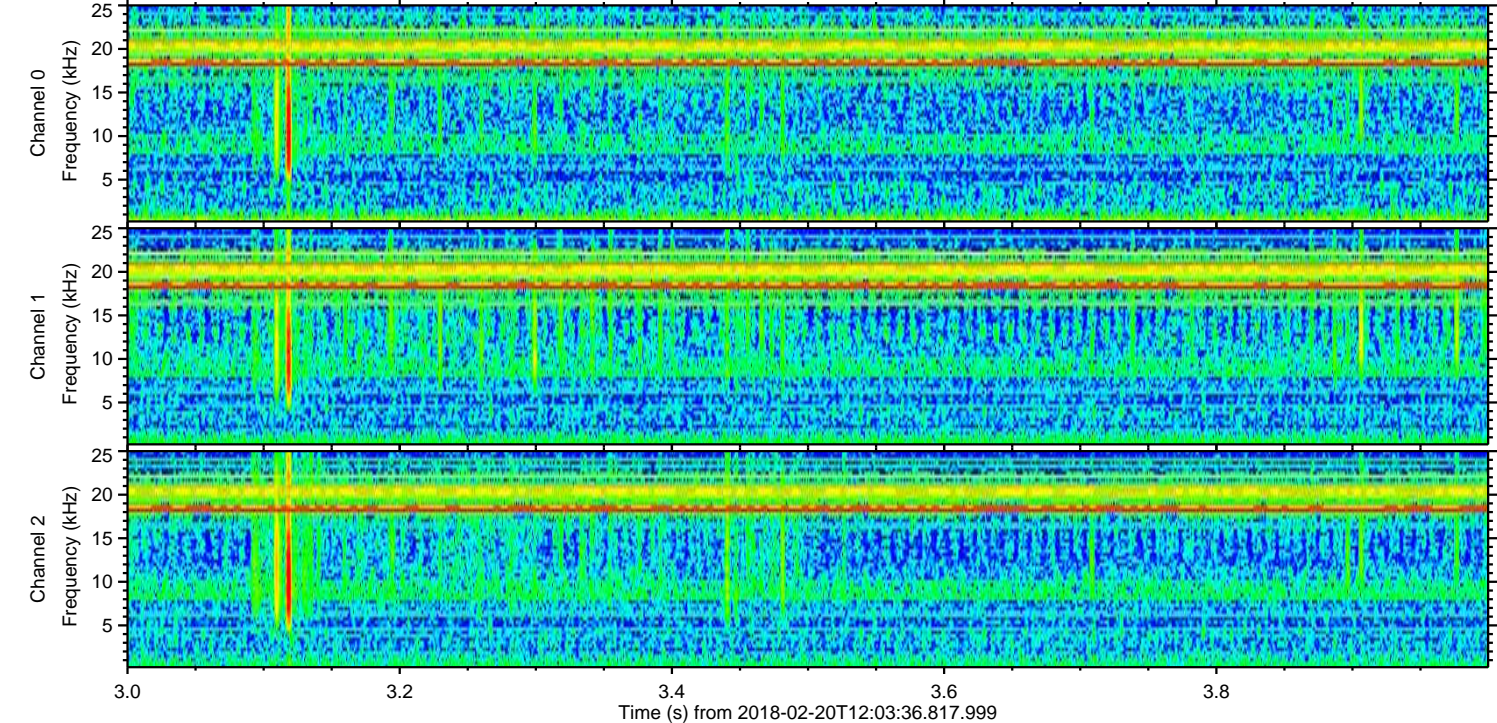
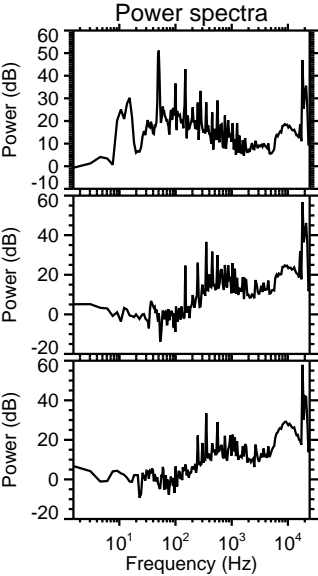
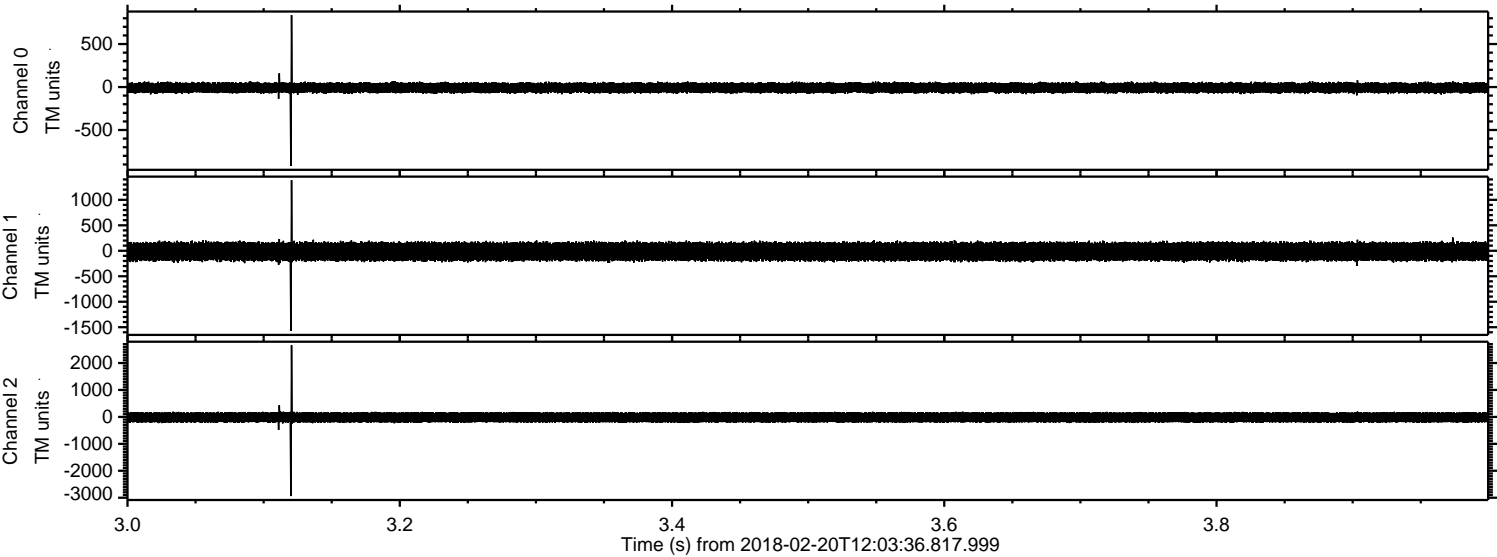


ELMAVAN 3D WAVEFORMS (Measured data sampled at 50 kHz) 51000 packets of 144 samples from 2018-02-20T12:03:36.817.999. Part 2/147

Processed Tue Feb 20 13:12:02 2018 by ELM ver.2012-10-06 from 001__elm20180220_120335__dat00.bin

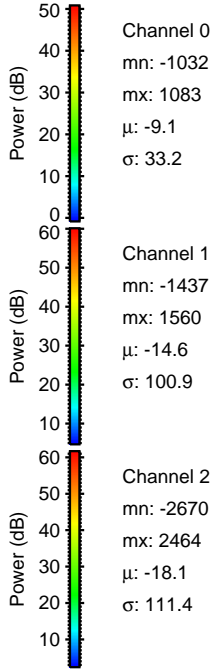
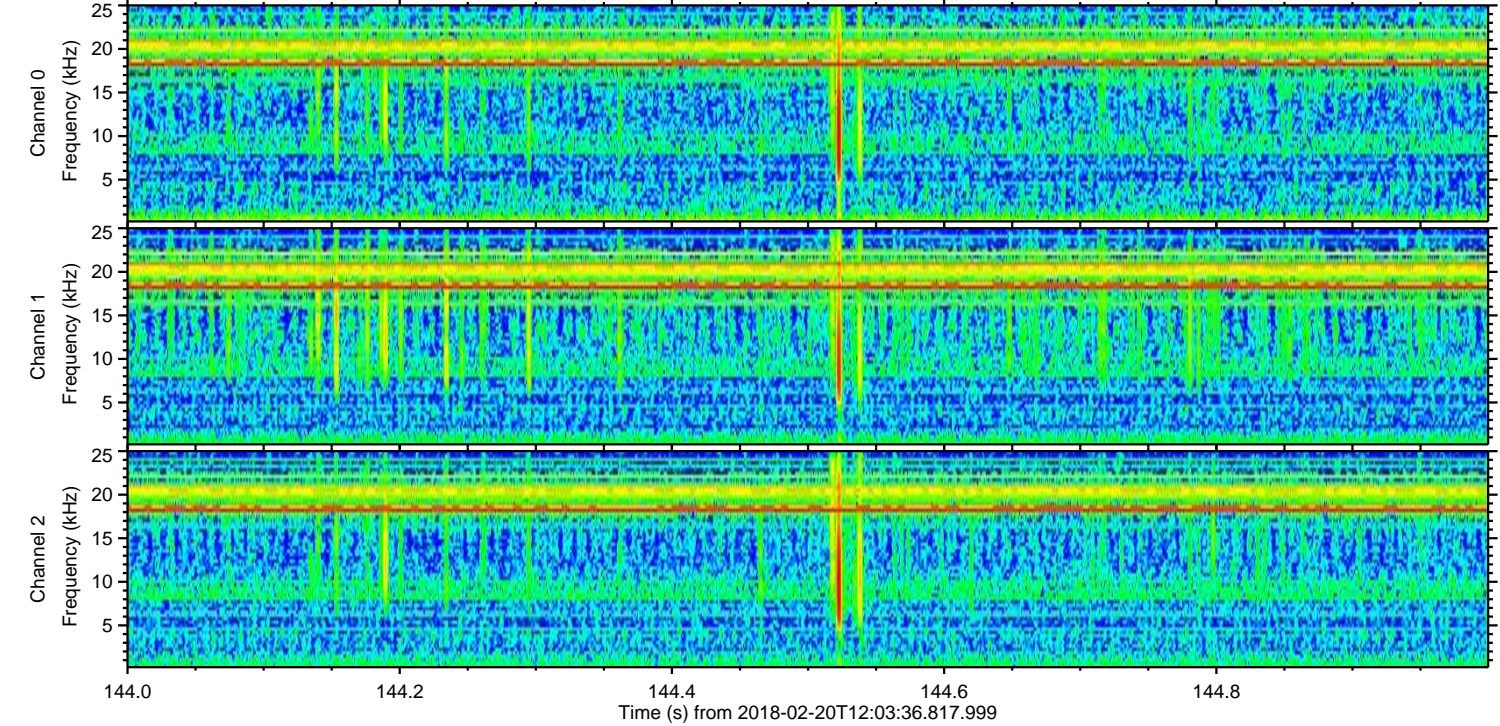
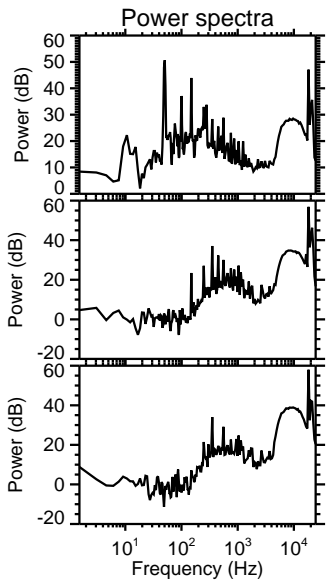
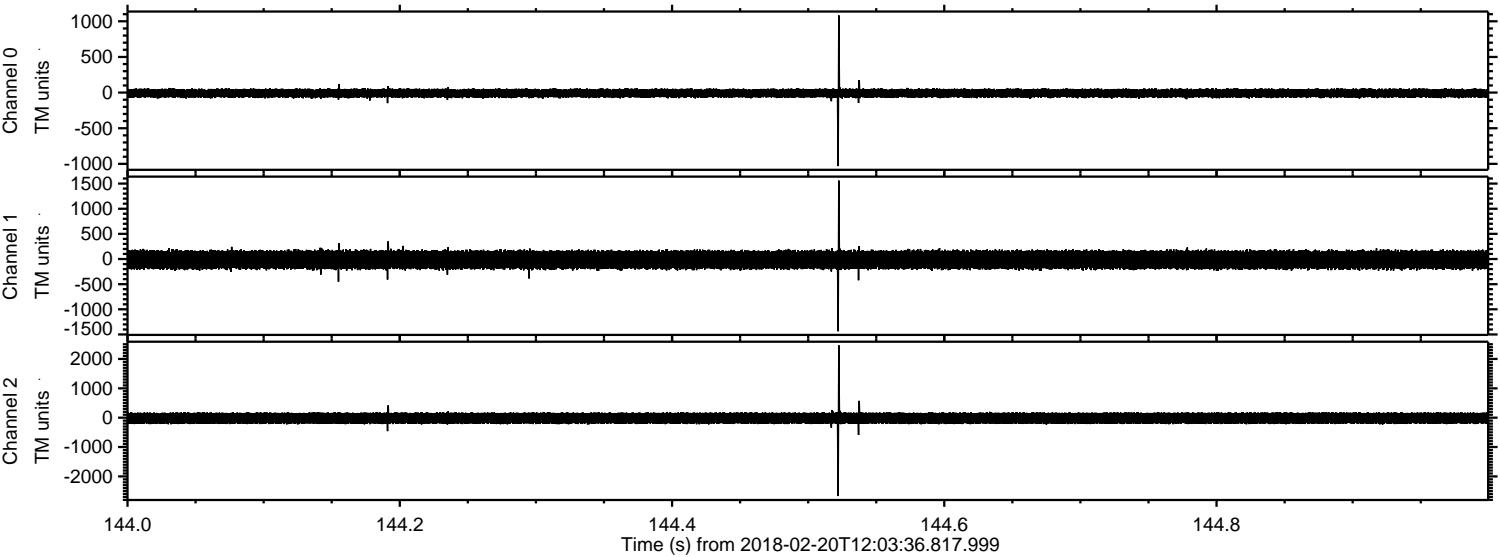


Processed Tue Feb 20 13:12:03 2018 by ELM ver.2012-10-06 from 001__elm20180220_120335__dat00.bin



ELMAVAN 3D WAVEFORMS (Measured data sampled at 50 kHz) 51000 packets of 144 samples from 2018-02-20T12:03:36.817.999. Part 145/147

Processed Tue Feb 20 13:12:04 2018 by ELM ver.2012-10-06 from 001__elm20180220_120335__dat00.bin



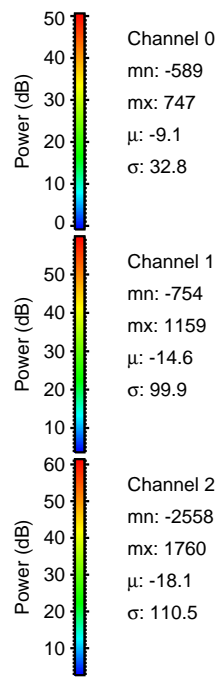
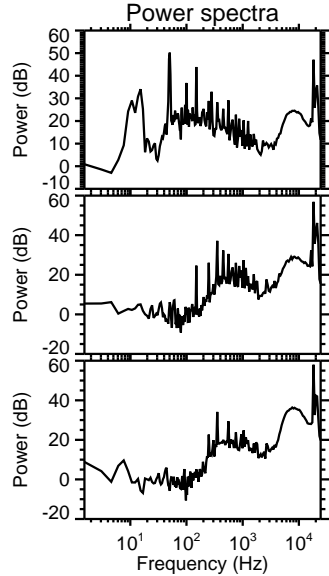
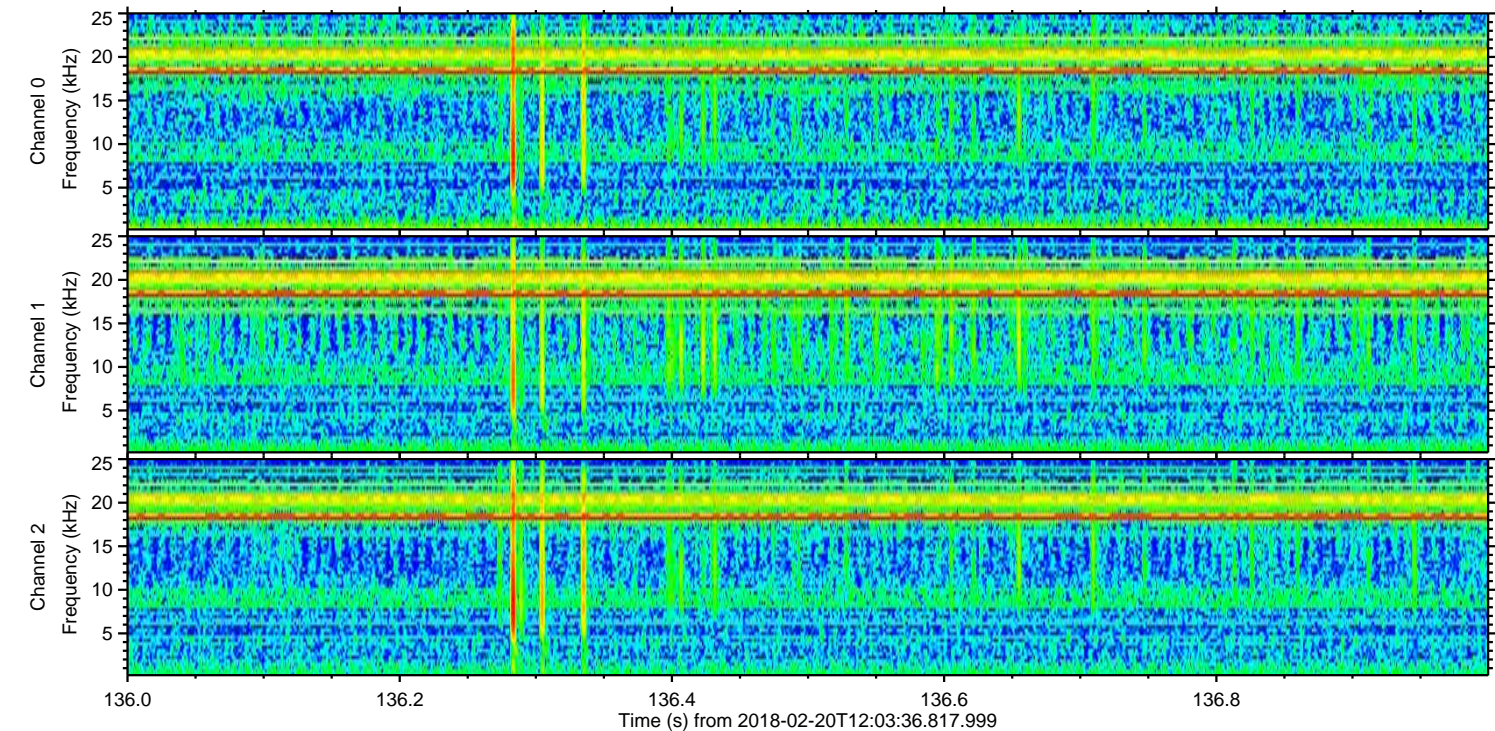
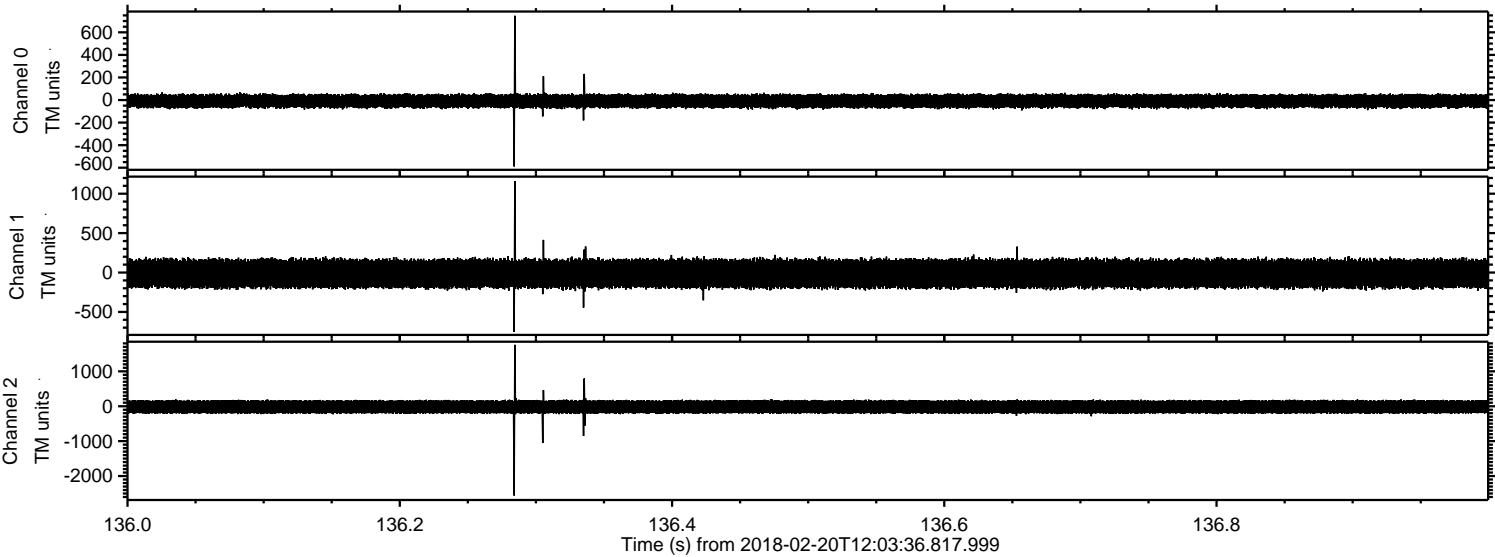
Channel 0
mn: -1032
mx: 1083
 μ : -9.1
 σ : 33.2

Channel 1
mn: -1437
mx: 1560
 μ : -14.6
 σ : 100.9

Channel 2
mn: -2670
mx: 2464
 μ : -18.1
 σ : 111.4

ELMAVAN 3D WAVEFORMS (Measured data sampled at 50 kHz) 51000 packets of 144 samples from 2018-02-20T12:03:36.817.999. Part 137/147

Processed Tue Feb 20 13:12:04 2018 by ELM ver.2012-10-06 from 001__elm20180220_120335__dat00.bin

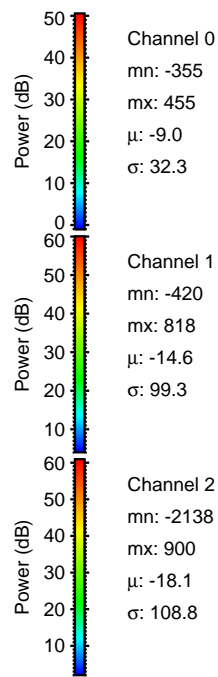
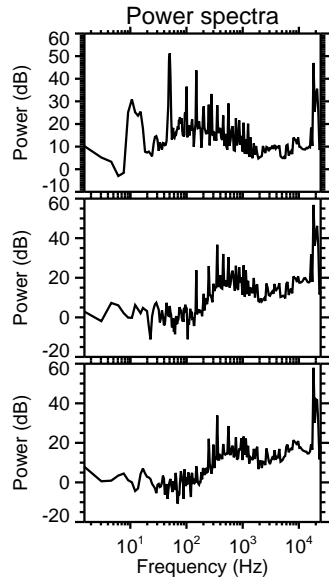
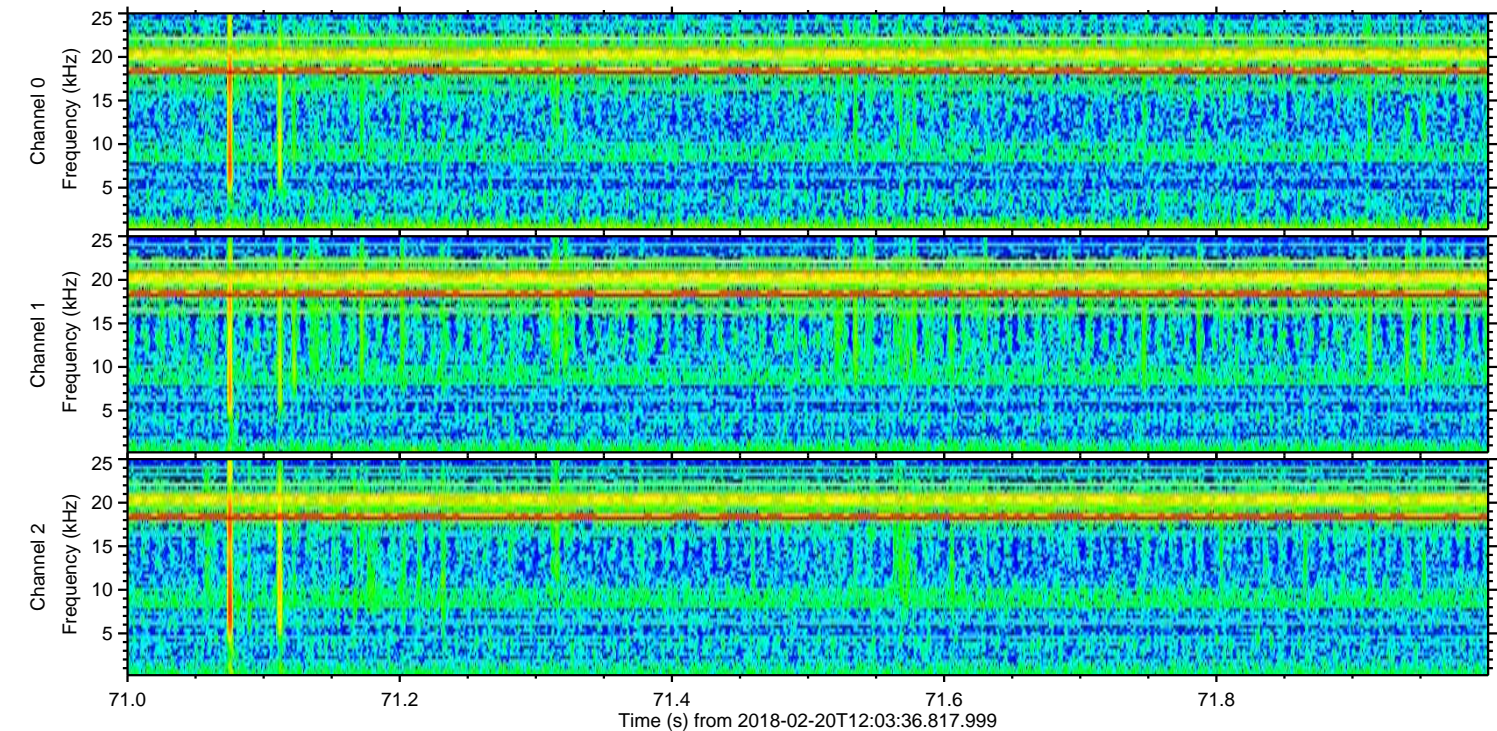
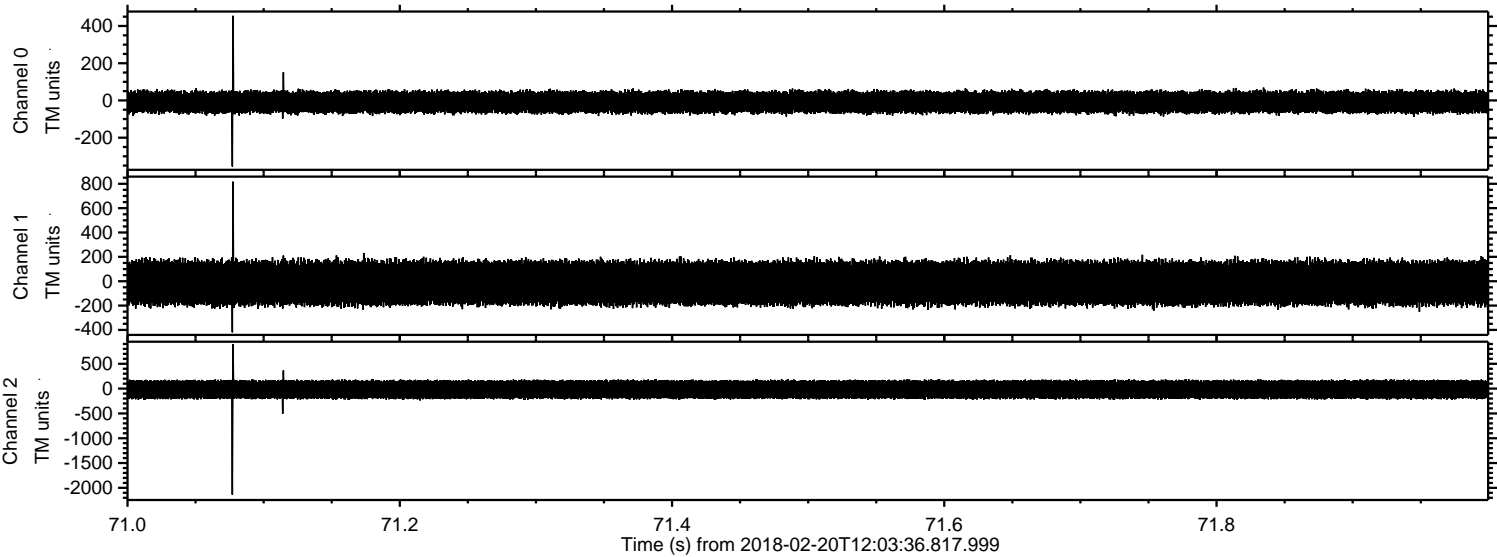


Channel 0
mn: -589
mx: 747
 μ : -9.1
 σ : 32.8

Channel 1
mn: -754
mx: 1159
 μ : -14.6
 σ : 99.9

Channel 2
mn: -2558
mx: 1760
 μ : -18.1
 σ : 110.5

Processed Tue Feb 20 13:12:05 2018 by ELM ver.2012-10-06 from 001__elm20180220_120335__dat00.bin

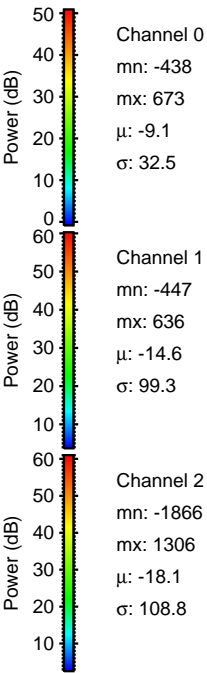
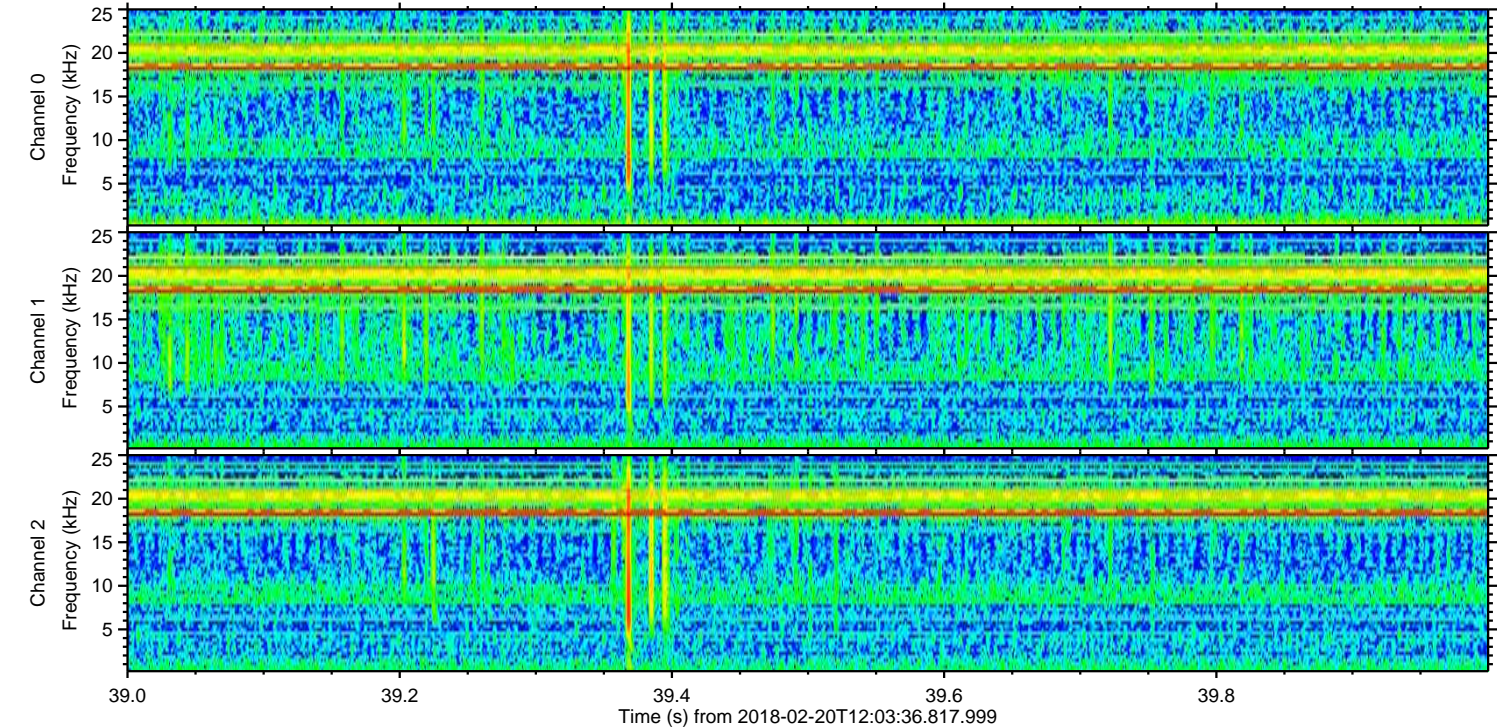
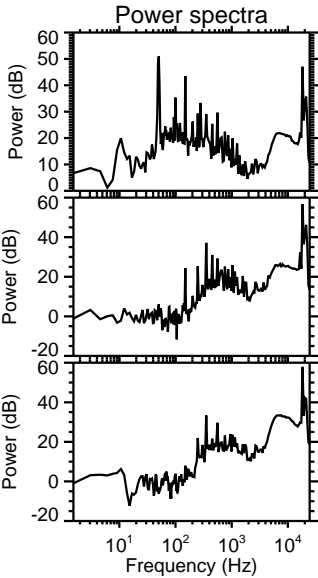
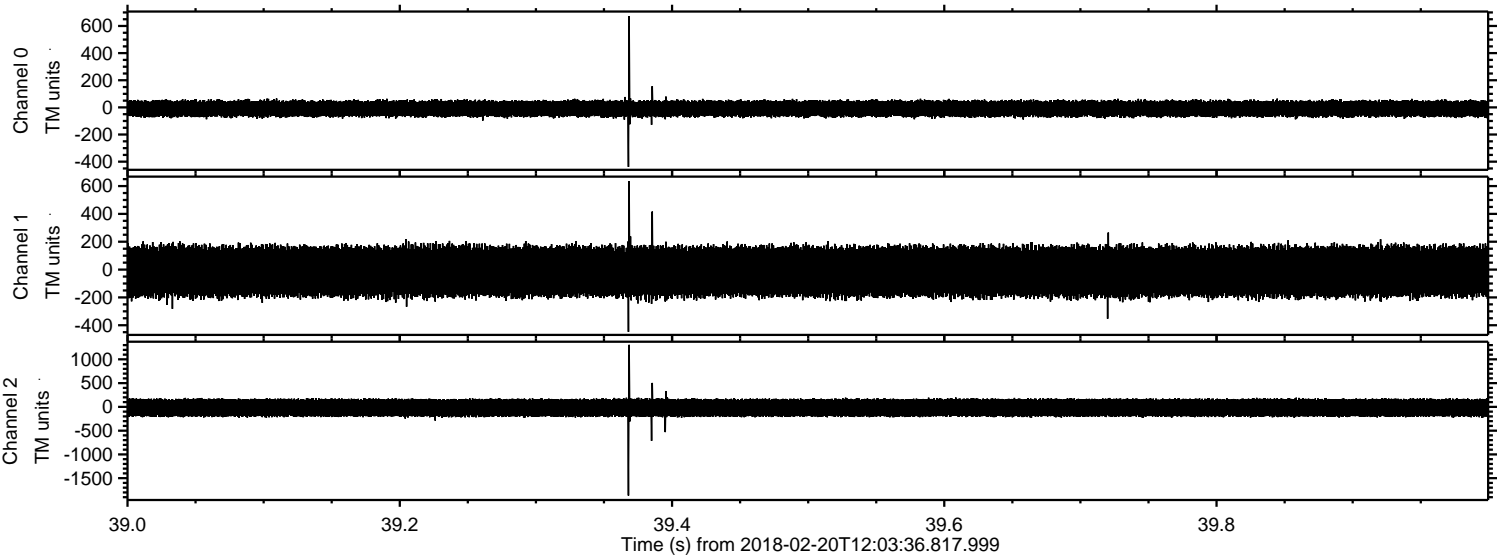


Channel 0
mn: -355
mx: 455
 μ : -9.0
 σ : 32.3

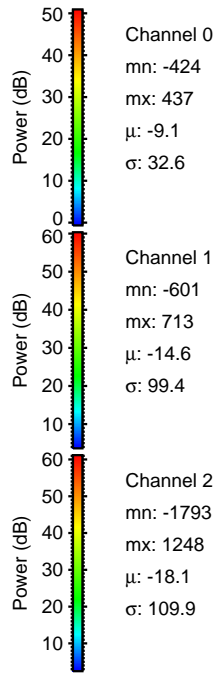
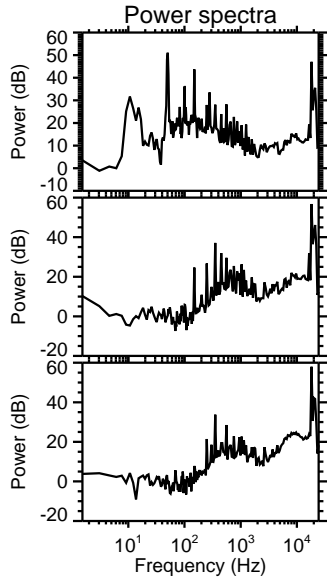
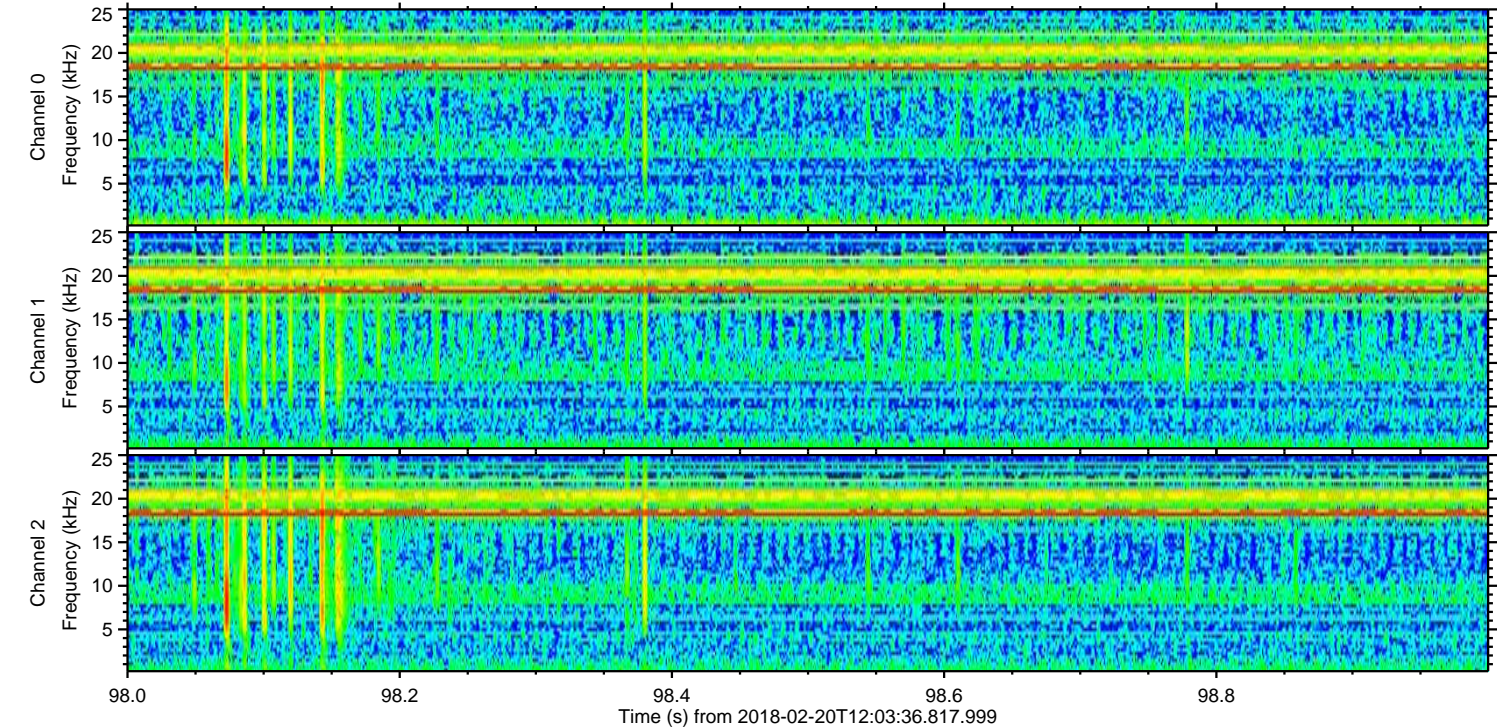
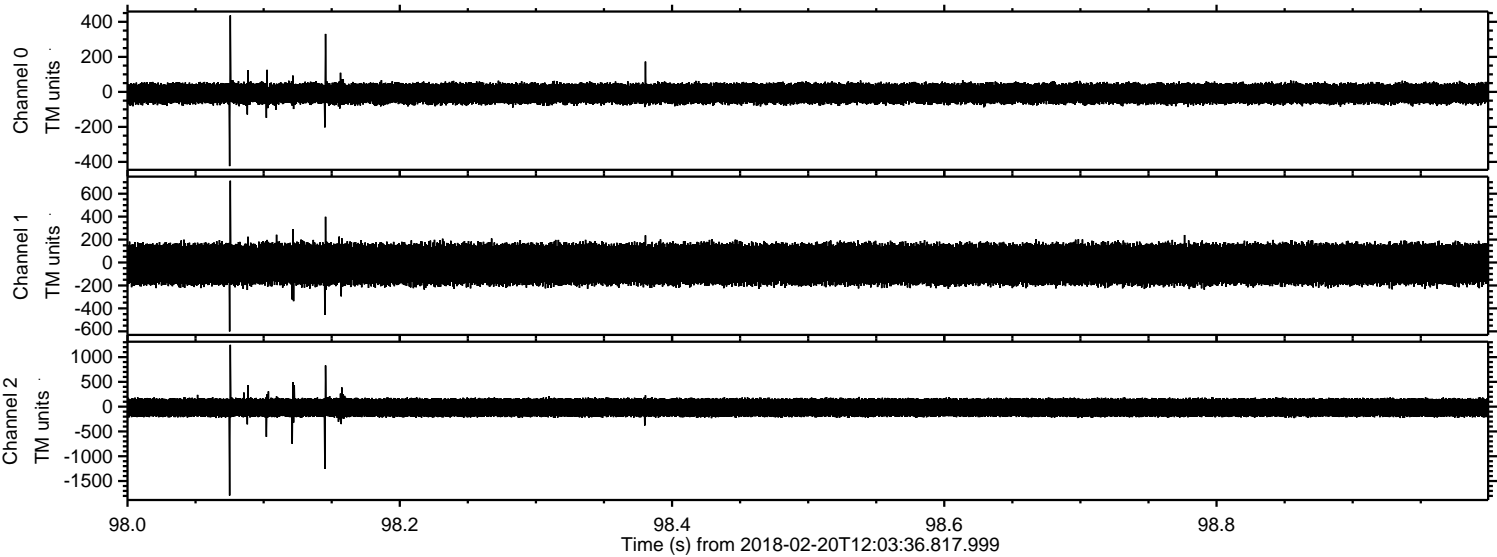
Channel 1
mn: -420
mx: 818
 μ : -14.6
 σ : 99.3

Channel 2
mn: -2138
mx: 900
 μ : -18.1
 σ : 108.8

Processed Tue Feb 20 13:12:06 2018 by ELM ver.2012-10-06 from 001__elm20180220_120335__dat00.bin



Processed Tue Feb 20 13:12:07 2018 by ELM ver.2012-10-06 from 001__elm20180220_120335__dat00.bin



Channel 0
mn: -424
mx: 437
 μ : -9.1
 σ : 32.6

Channel 1
mn: -601
mx: 713
 μ : -14.6
 σ : 99.4

Channel 2
mn: -1793
mx: 1248
 μ : -18.1
 σ : 109.9

Processed Tue Feb 20 13:12:07 2018 by ELM ver.2012-10-06 from 001__elm20180220_120335__dat00.bin

