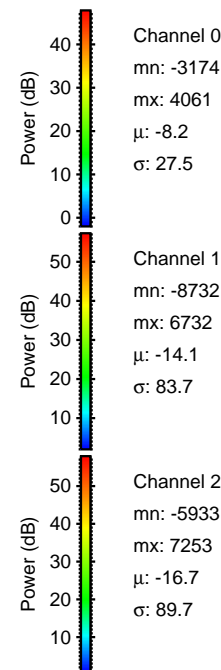
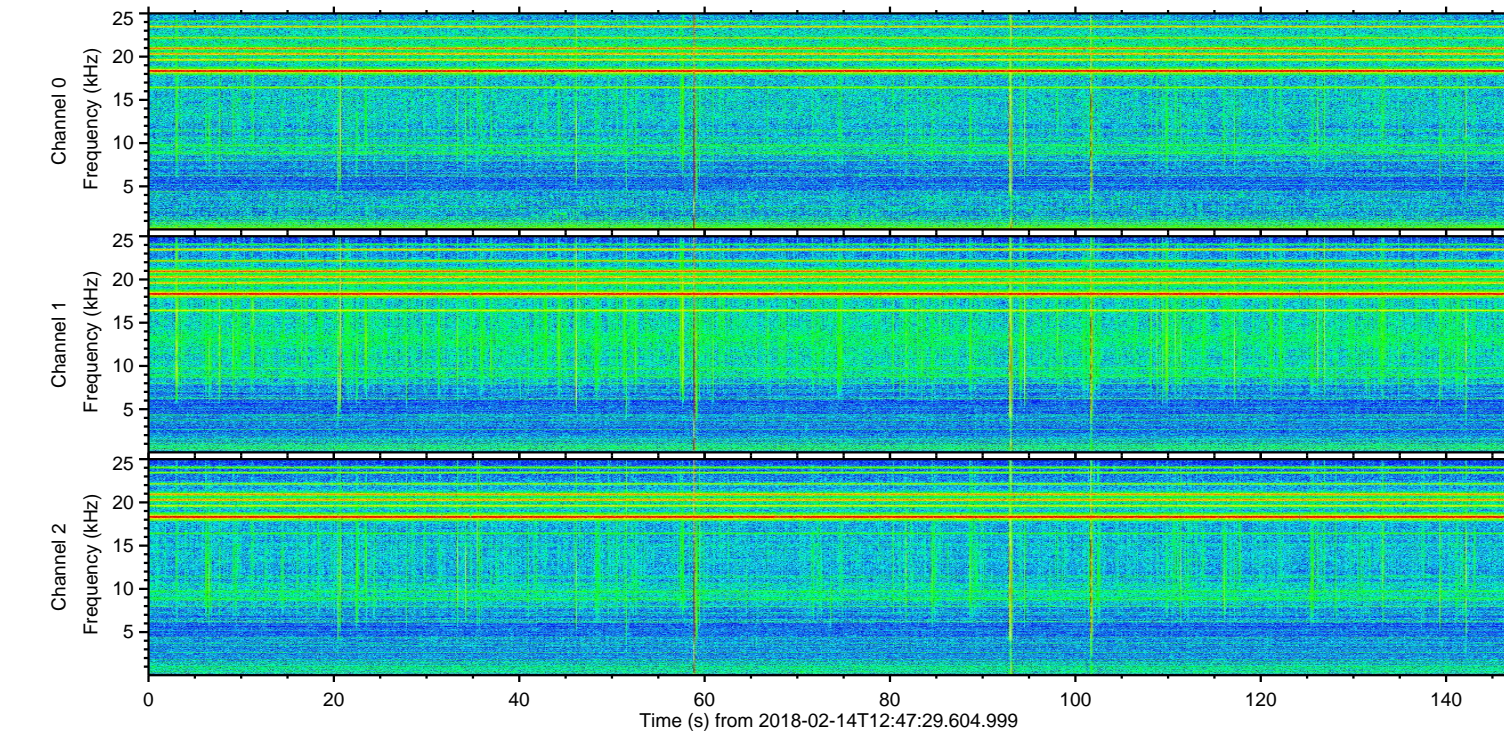
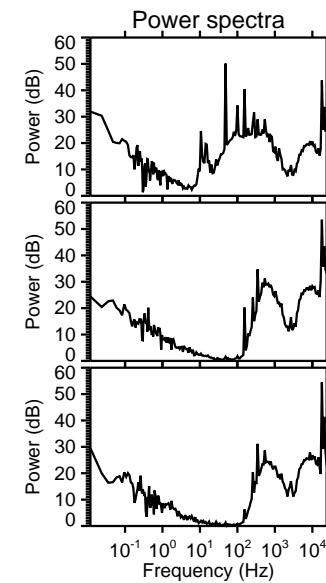
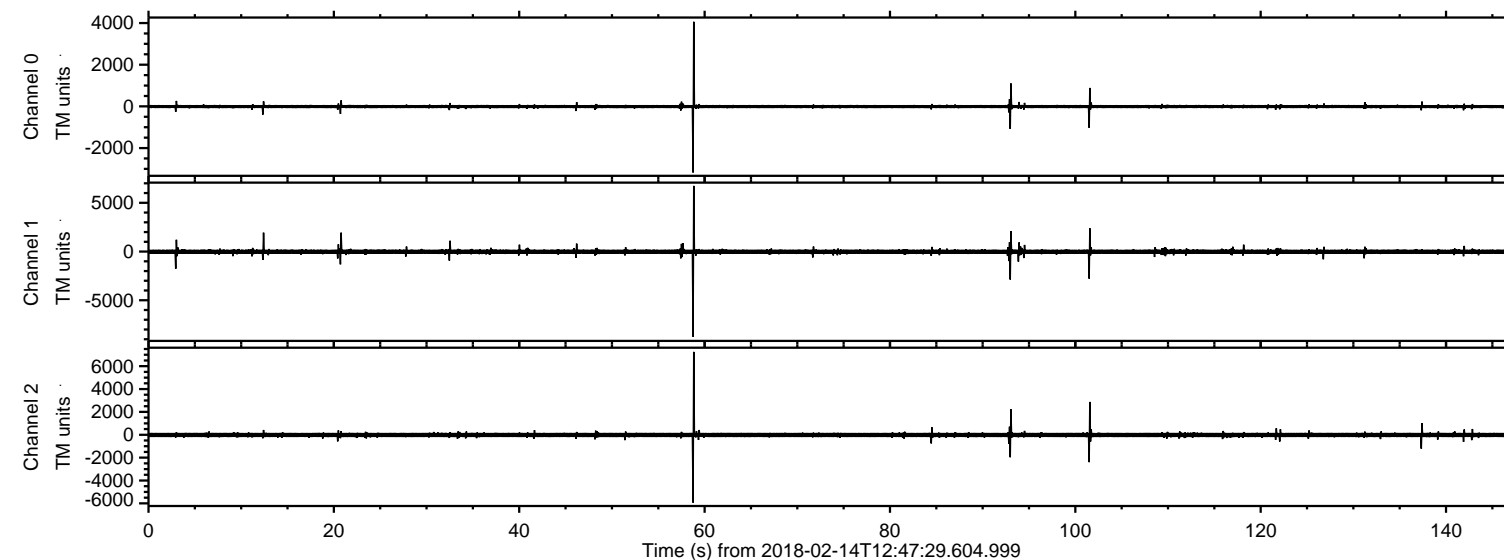
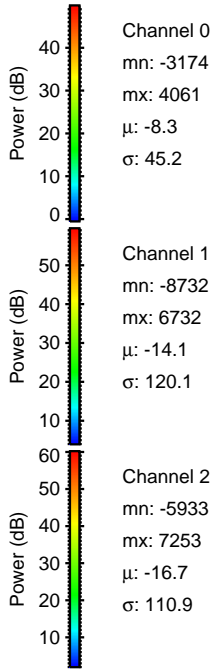
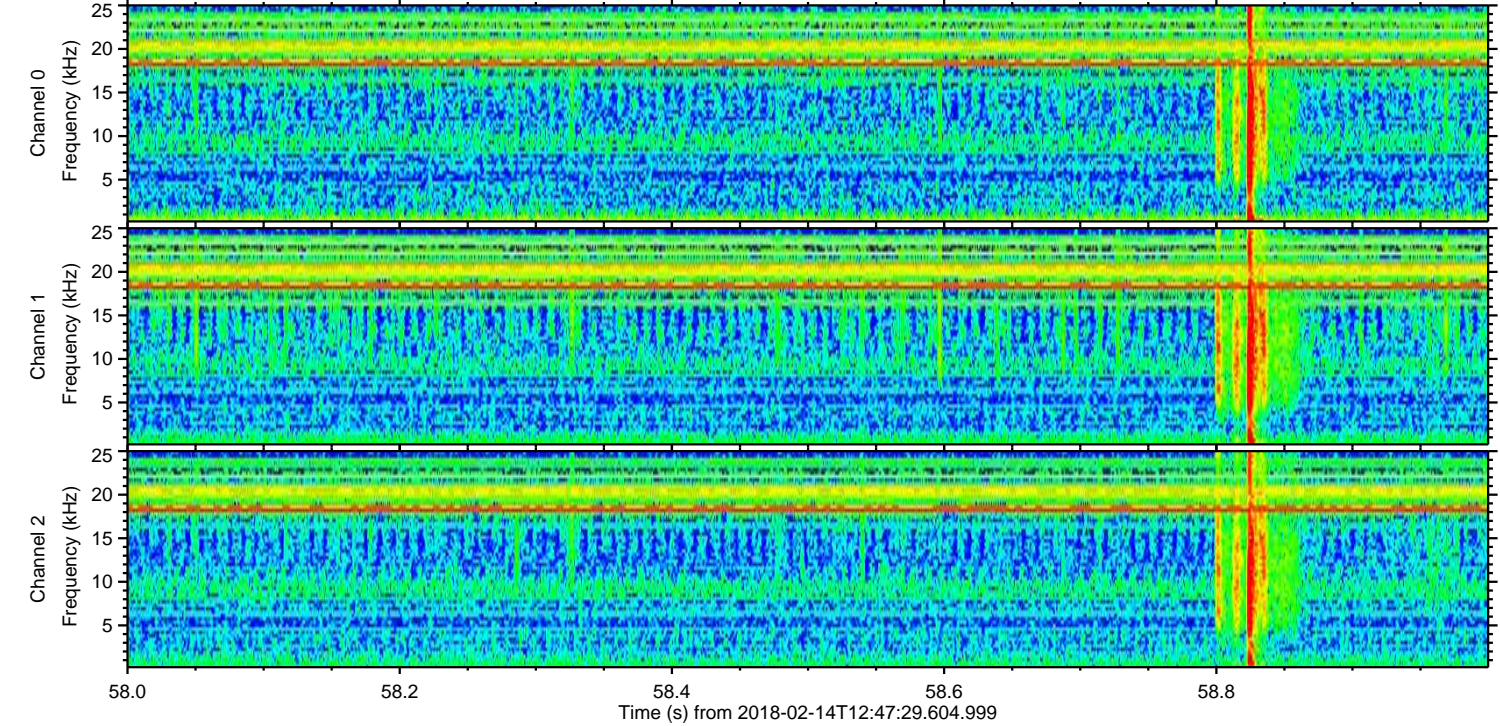
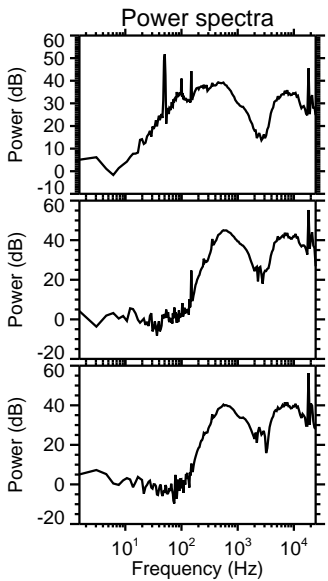
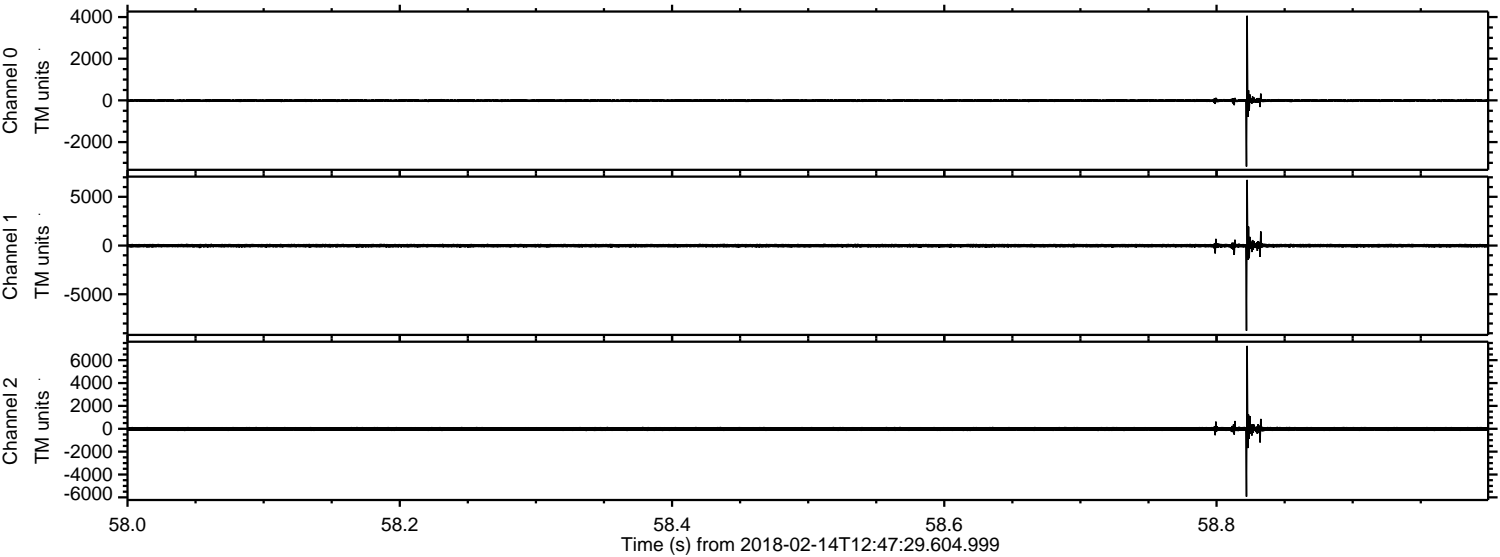


ELMAVAN 3D WAVEFORMS (Measured data sampled at 50 kHz) 51000 packets of 144 samples from 2018-02-14T12:47:29.604.999.

Processed Wed Feb 14 13:55:33 2018 by ELM ver.2012-10-06 from 001__elm20180214_124728__dat00.bin

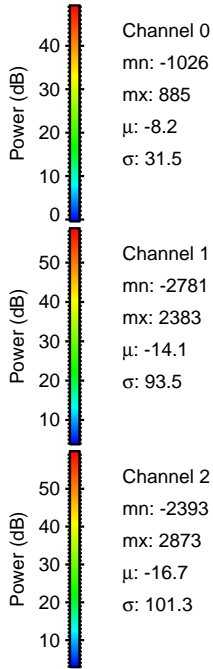
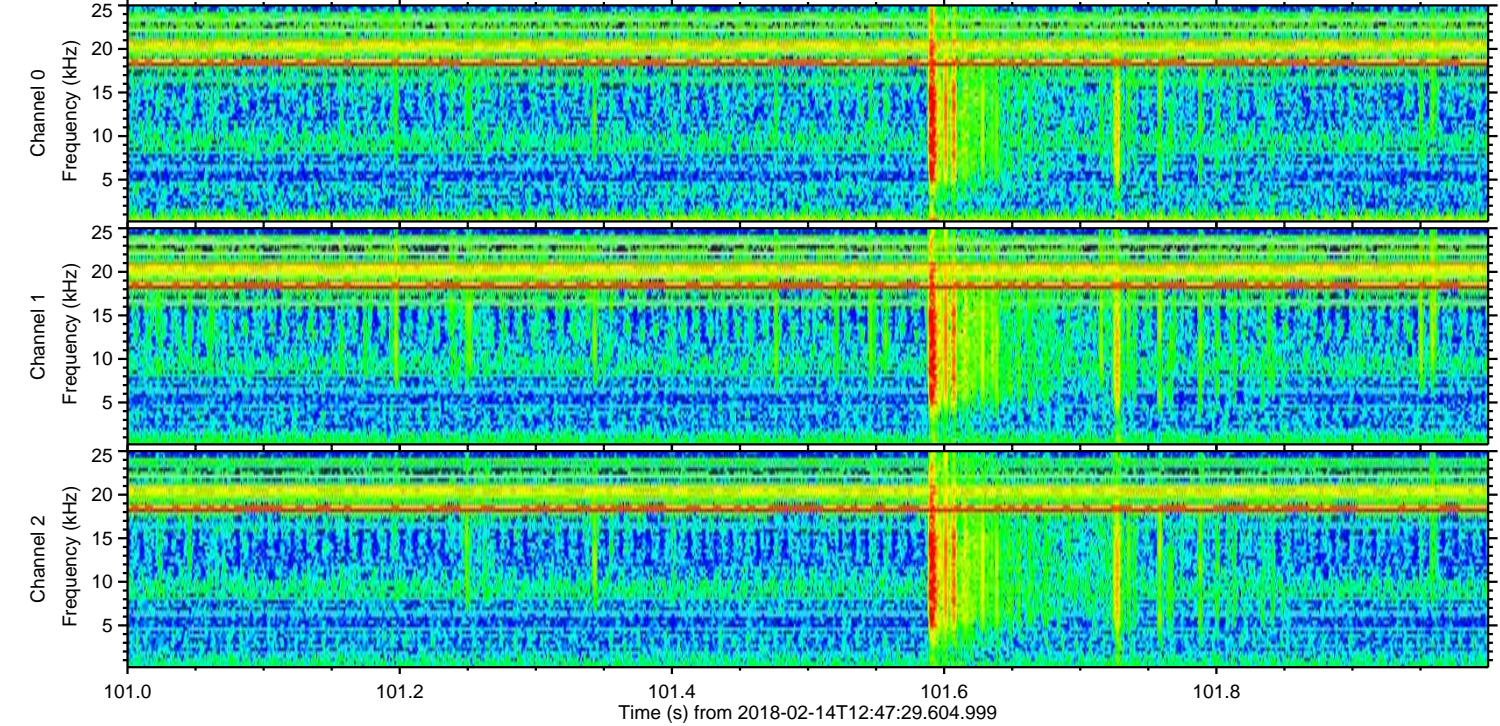
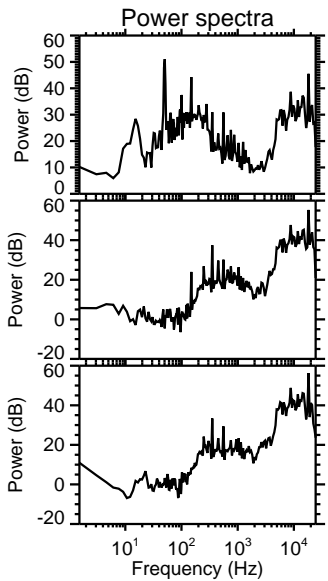
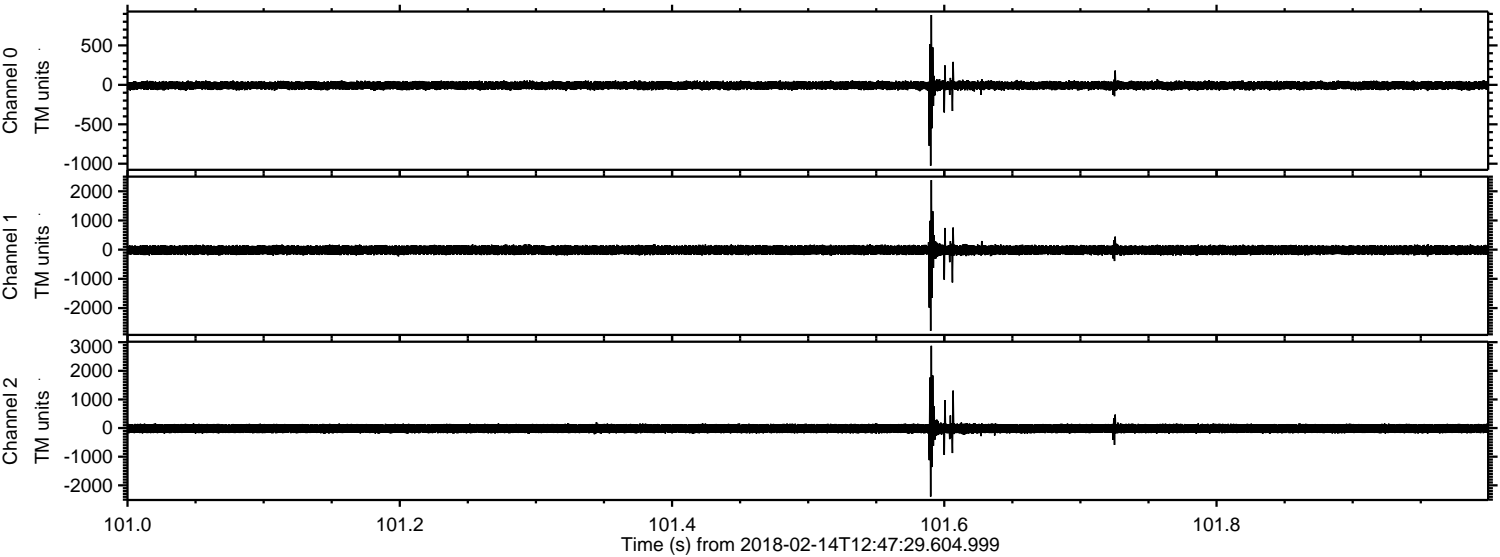


Processed Wed Feb 14 13:55:42 2018 by ELM ver.2012-10-06 from 001__elm20180214_124728__dat00.bin



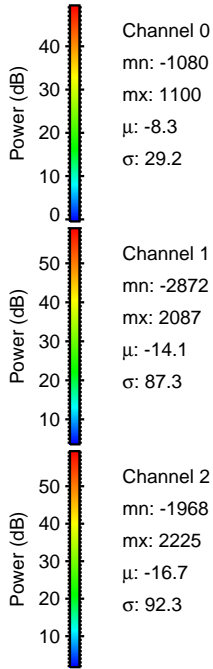
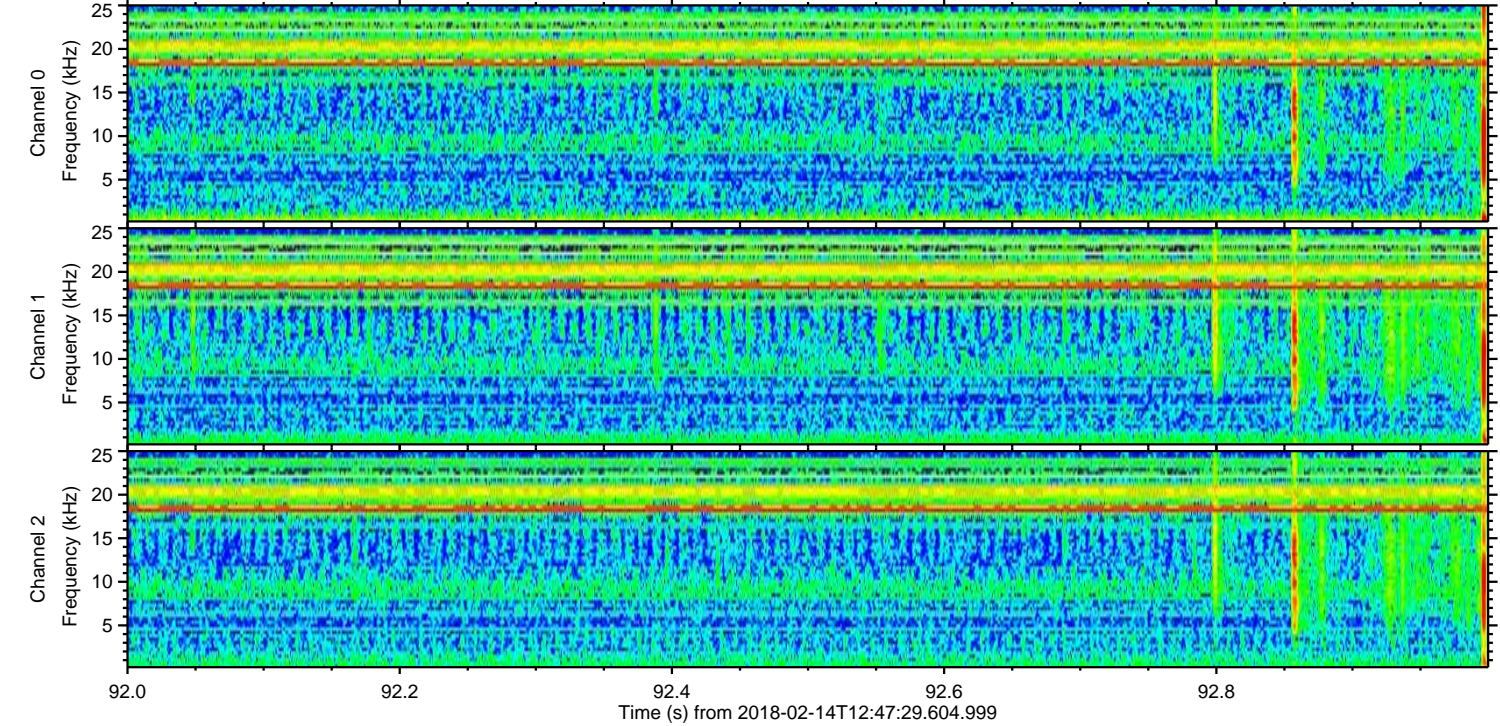
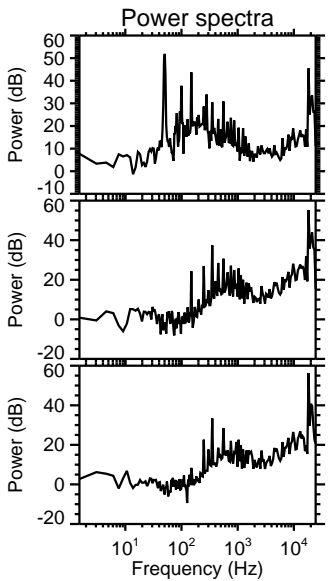
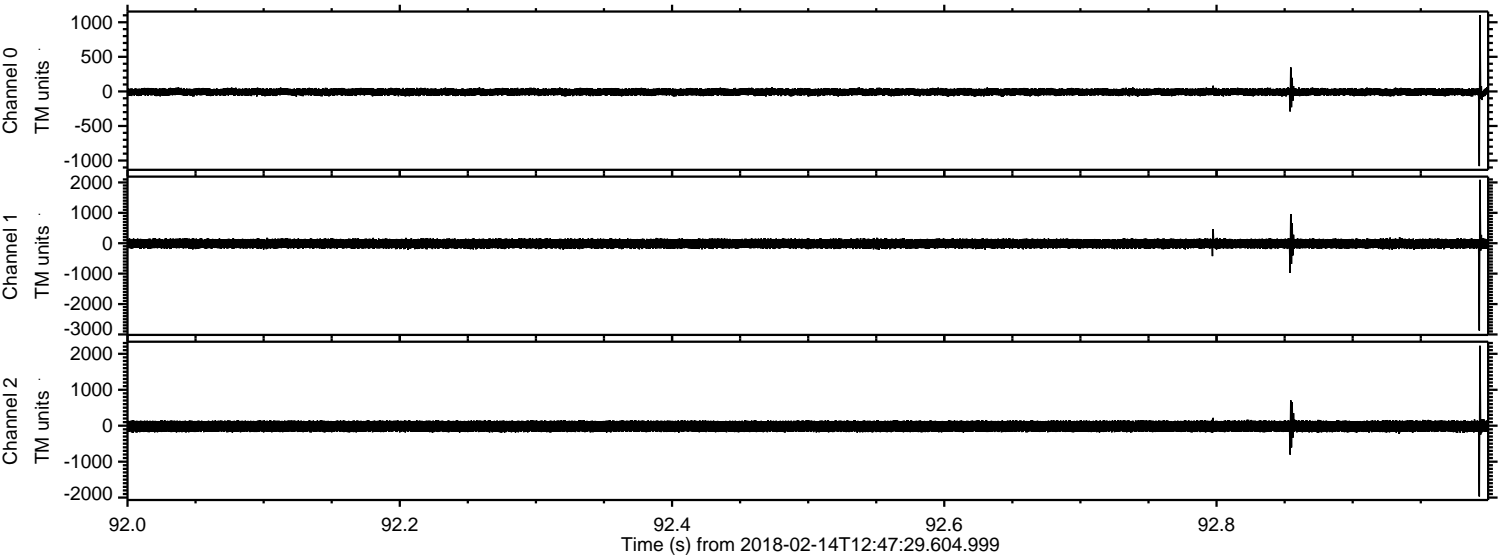
ELMAVAN 3D WAVEFORMS (Measured data sampled at 50 kHz) 51000 packets of 144 samples from 2018-02-14T12:47:29.604.999. Part 102/147

Processed Wed Feb 14 13:55:43 2018 by ELM ver.2012-10-06 from 001__elm20180214_124728__dat00.bin

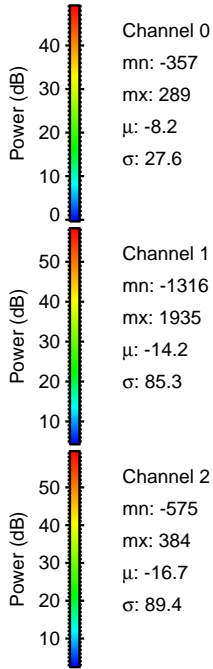
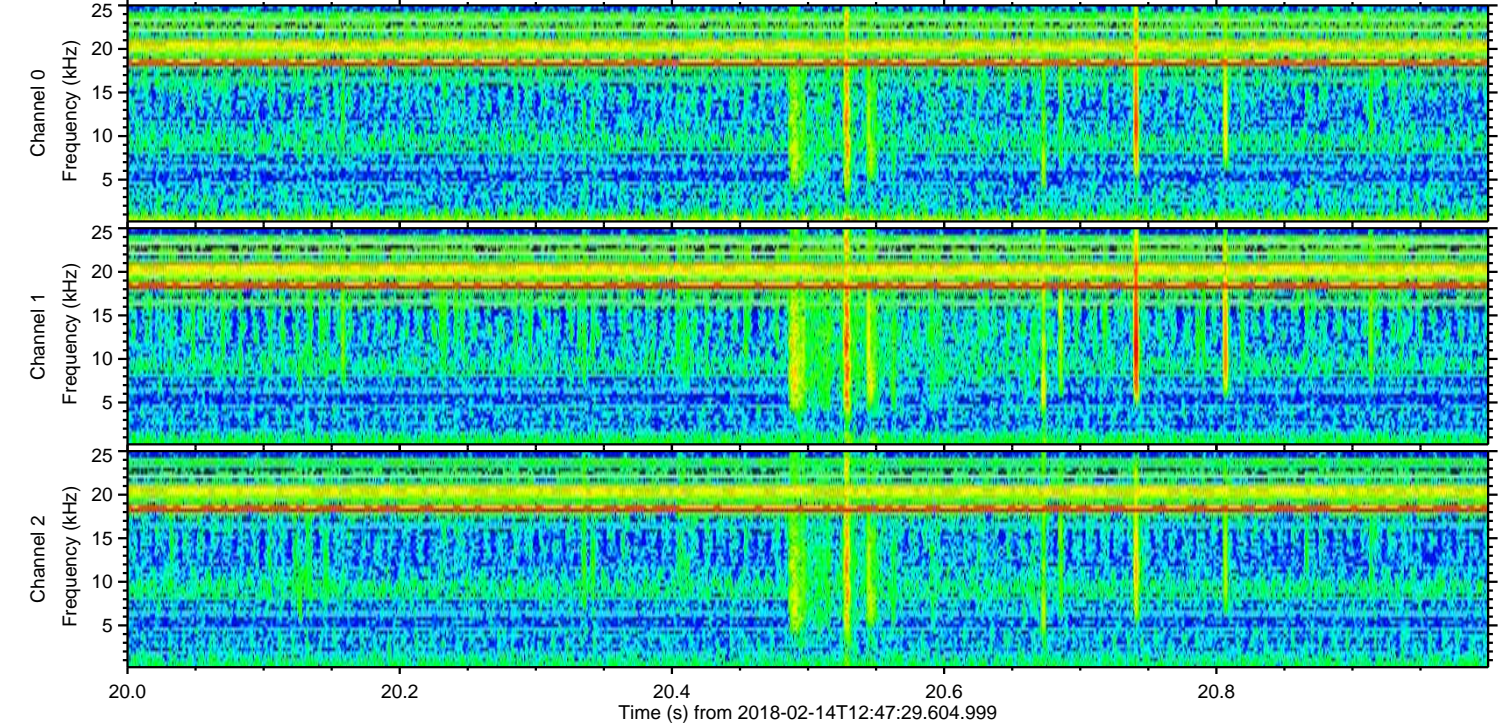
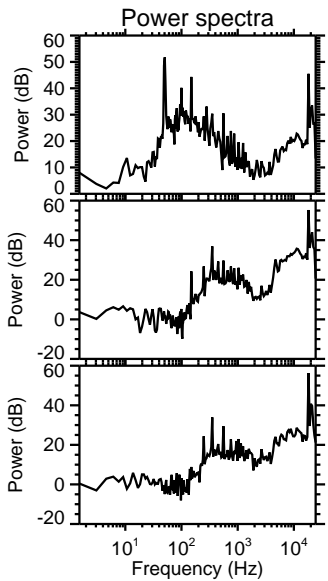
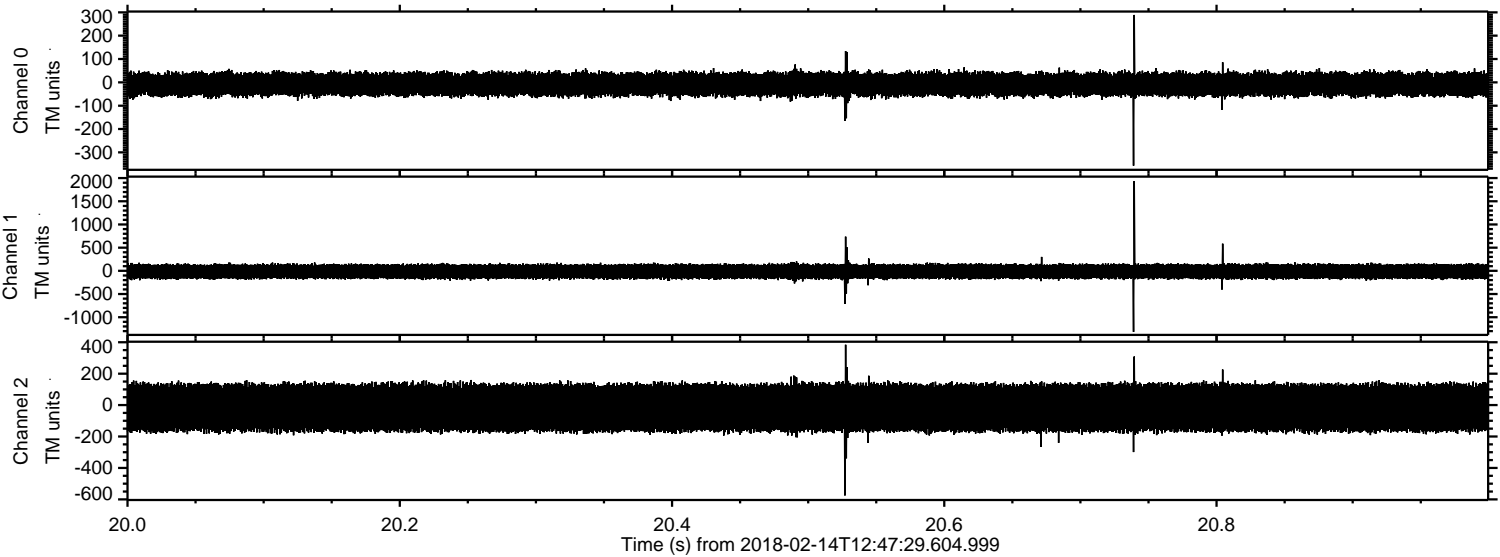


ELMAVAN 3D WAVEFORMS (Measured data sampled at 50 kHz) 51000 packets of 144 samples from 2018-02-14T12:47:29.604.999. Part 93/147

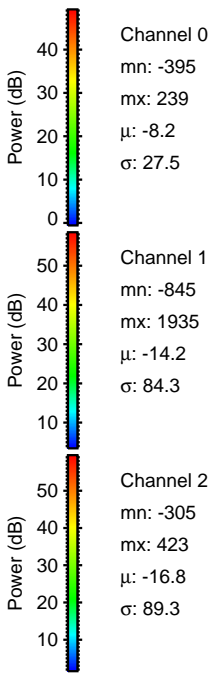
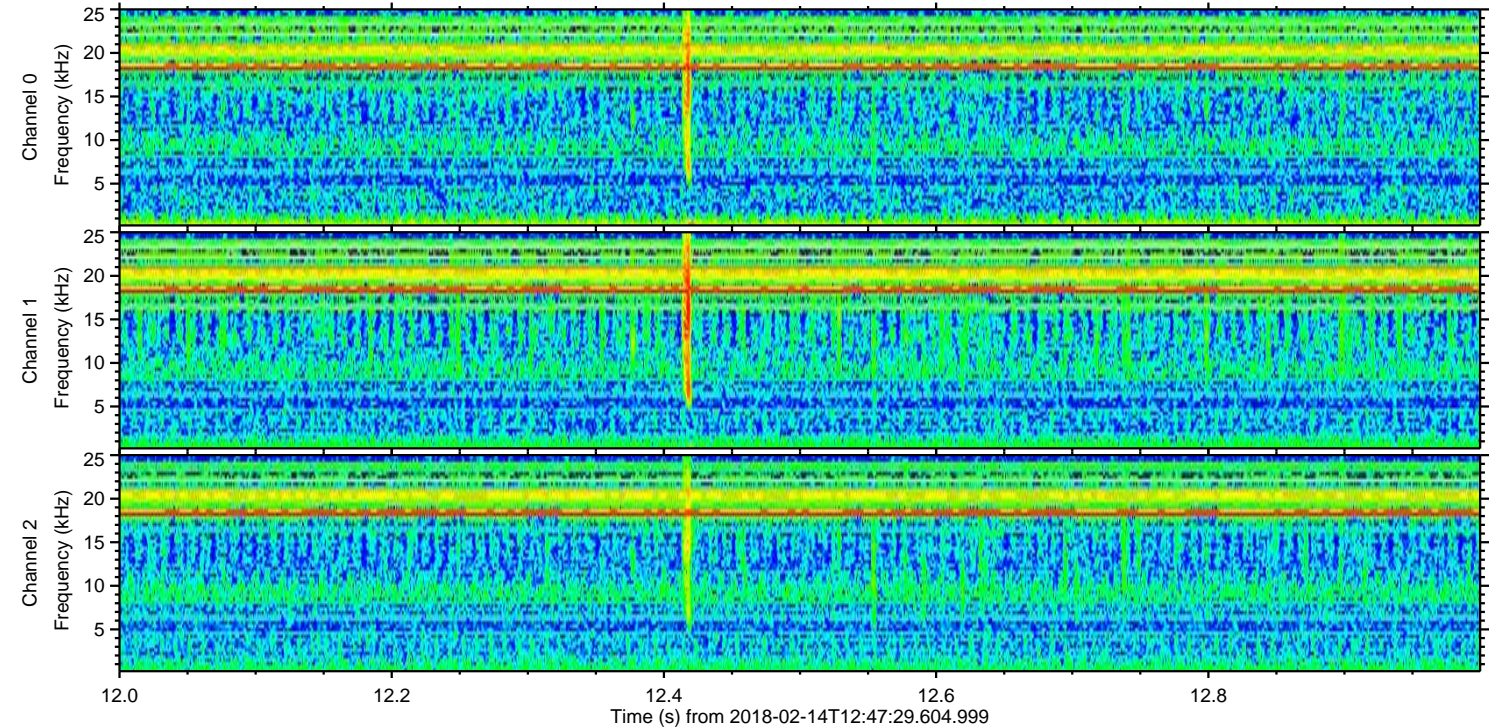
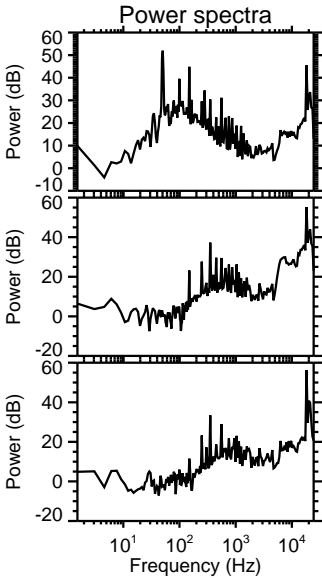
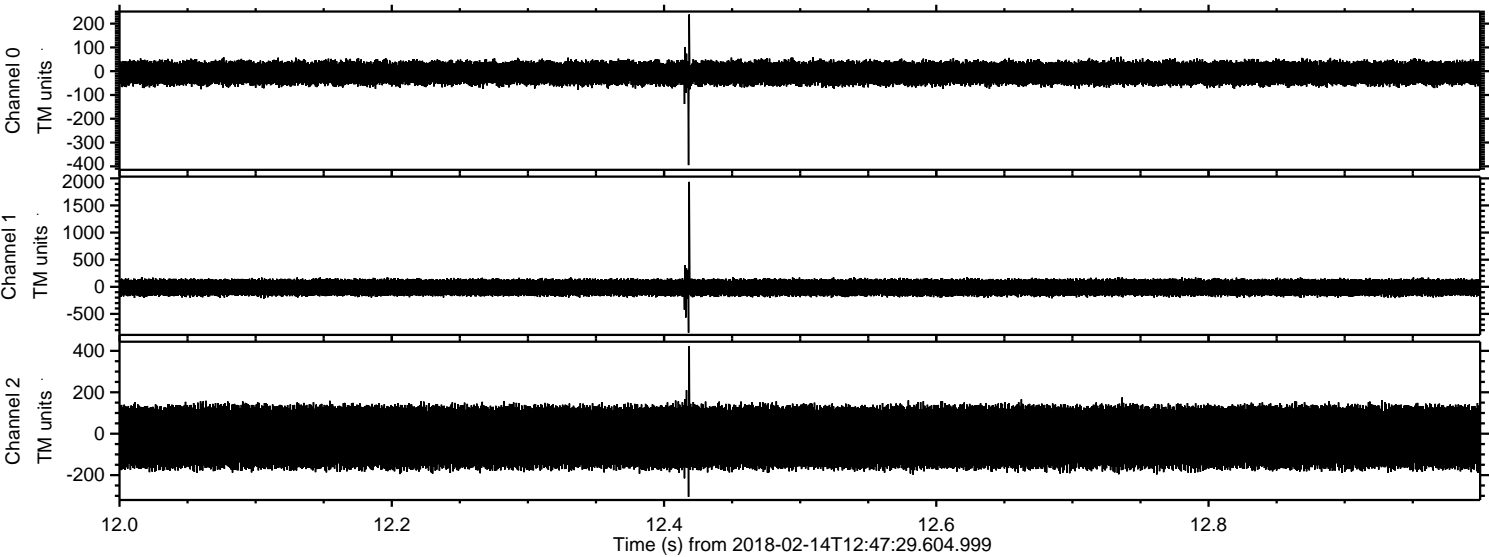
Processed Wed Feb 14 13:55:44 2018 by ELM ver.2012-10-06 from 001__elm20180214_124728__dat00.bin



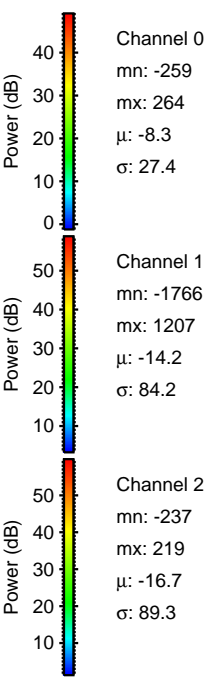
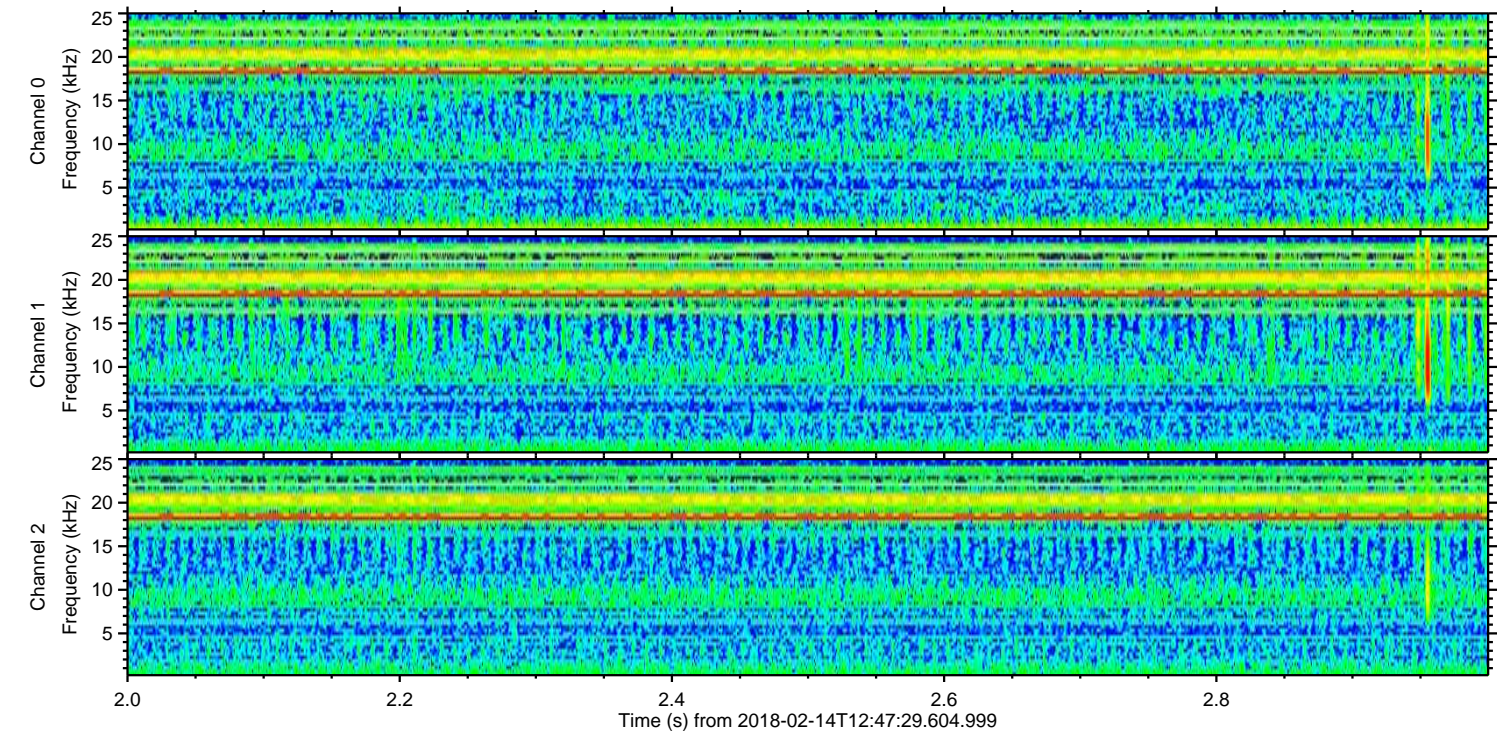
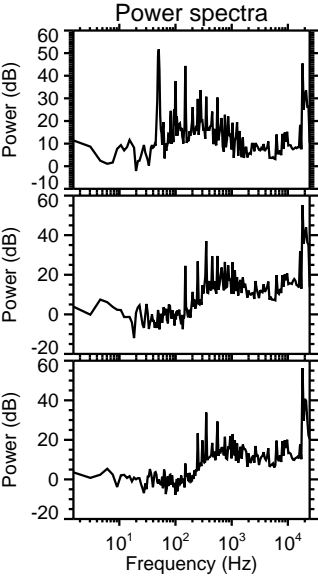
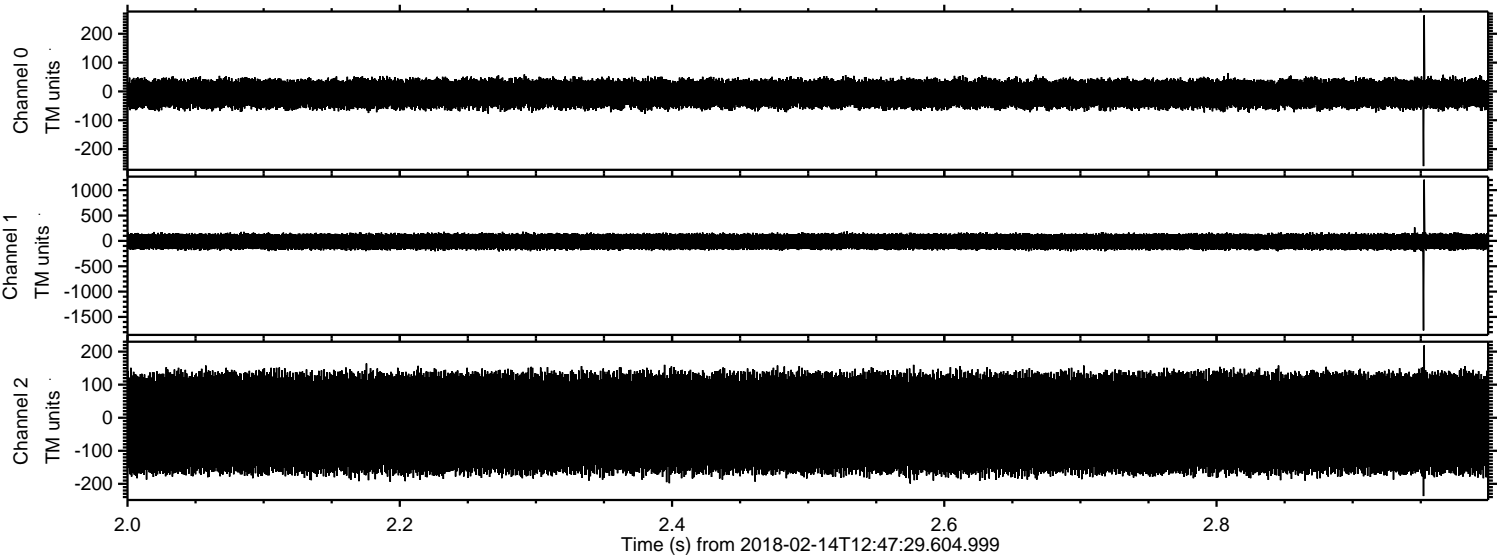
Processed Wed Feb 14 13:55:45 2018 by ELM ver.2012-10-06 from 001__elm20180214_124728__dat00.bin



Processed Wed Feb 14 13:55:46 2018 by ELM ver.2012-10-06 from 001__elm20180214_124728__dat00.bin

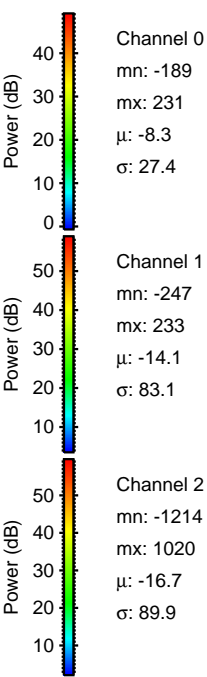
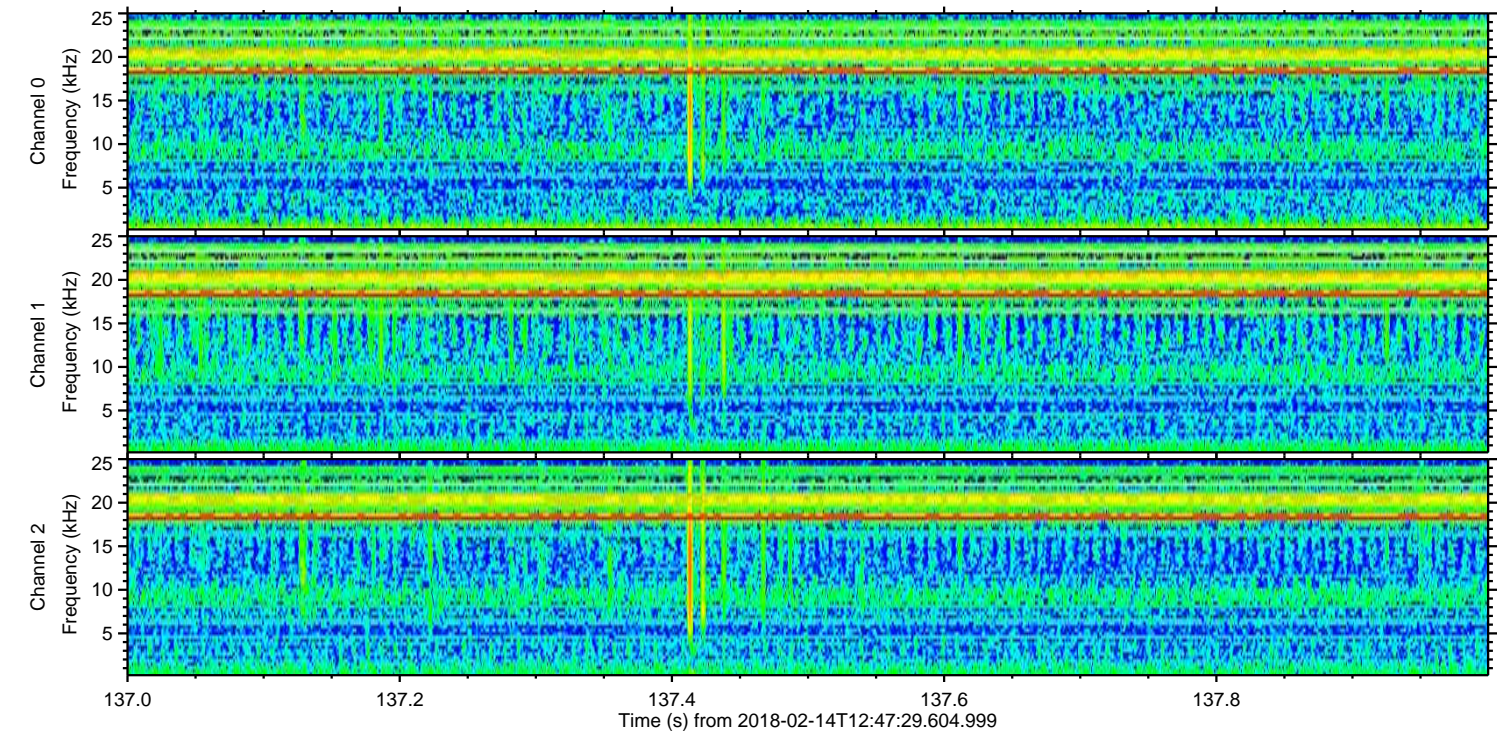
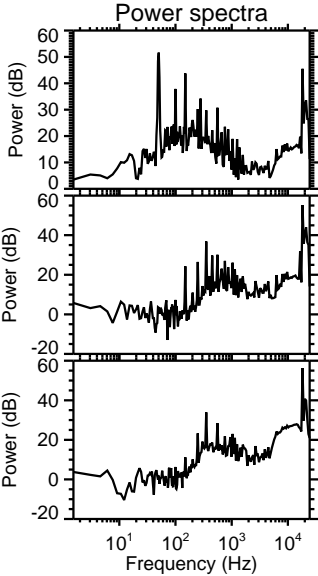
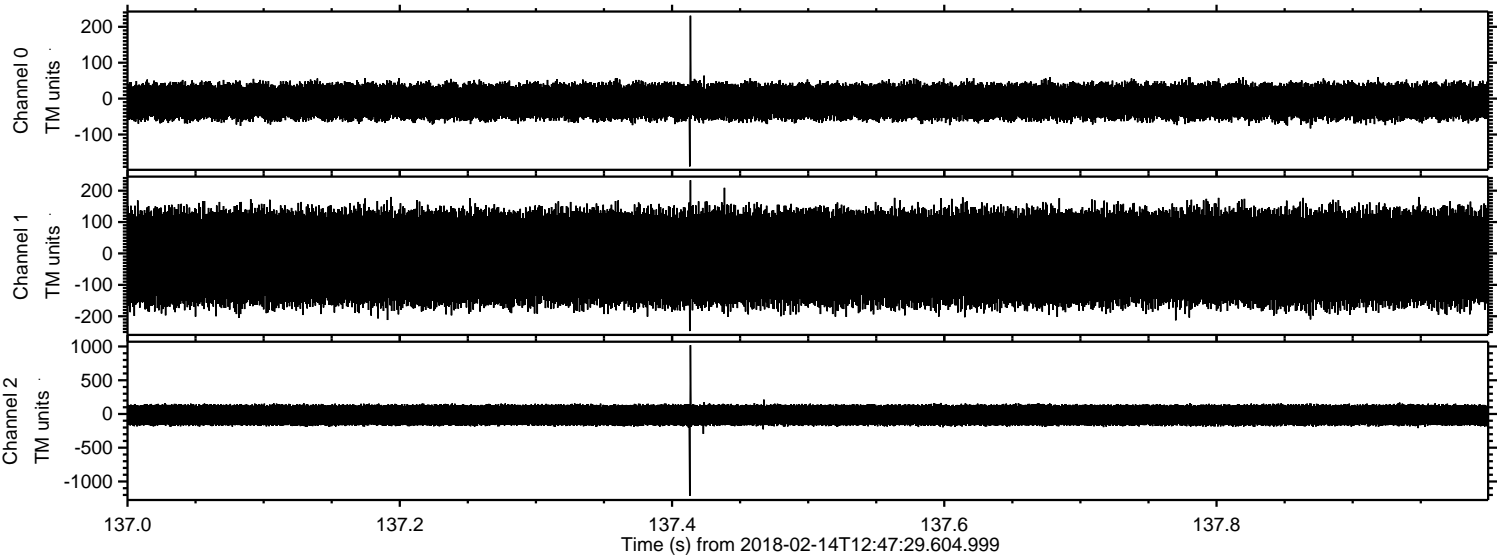


Processed Wed Feb 14 13:55:47 2018 by ELM ver.2012-10-06 from 001__elm20180214_124728__dat00.bin



ELMAVAN 3D WAVEFORMS (Measured data sampled at 50 kHz) 51000 packets of 144 samples from 2018-02-14T12:47:29.604.999. Part 138/147

Processed Wed Feb 14 13:55:48 2018 by ELM ver.2012-10-06 from 001__elm20180214_124728__dat00.bin

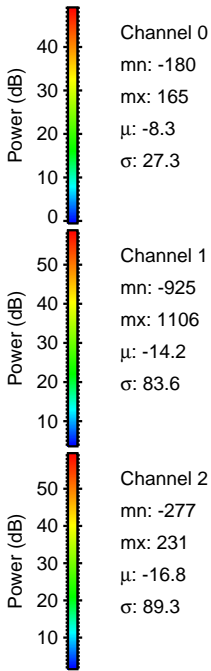
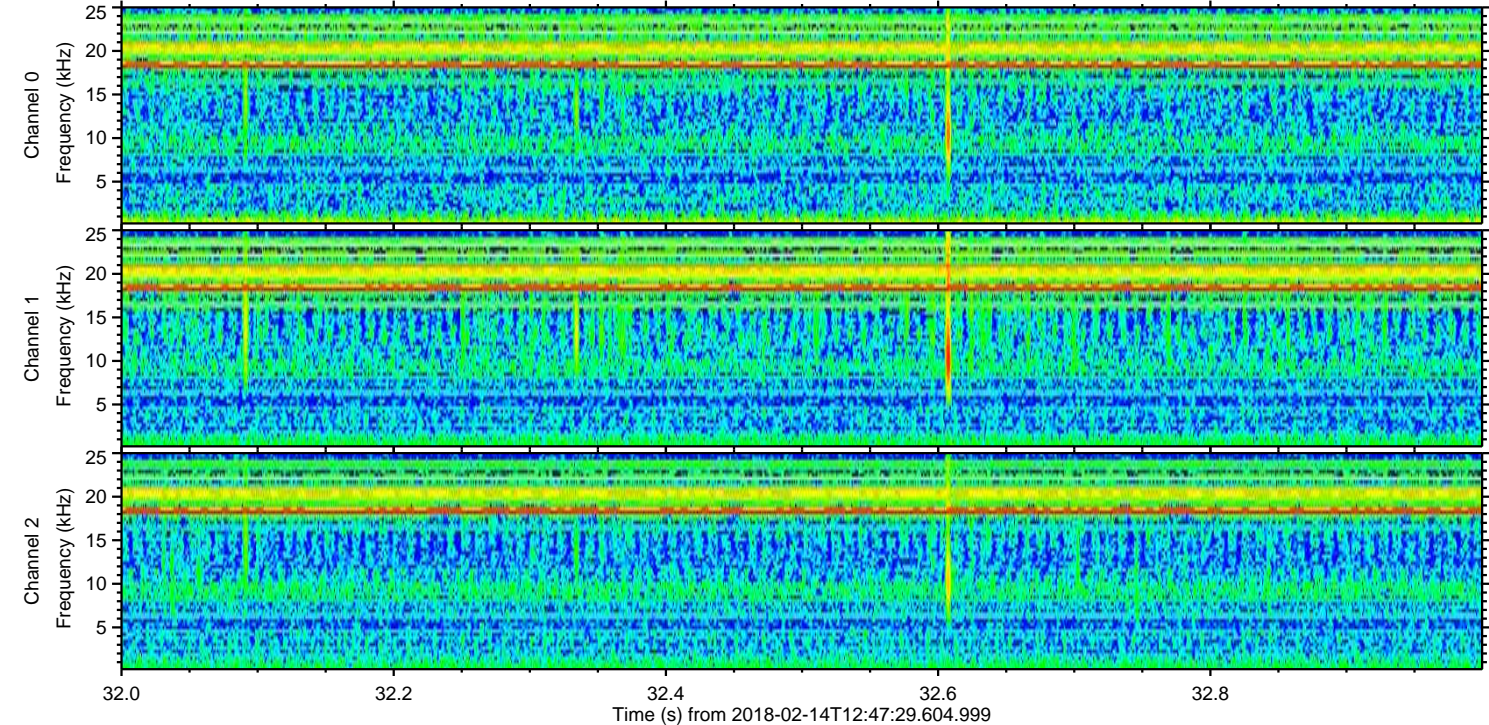
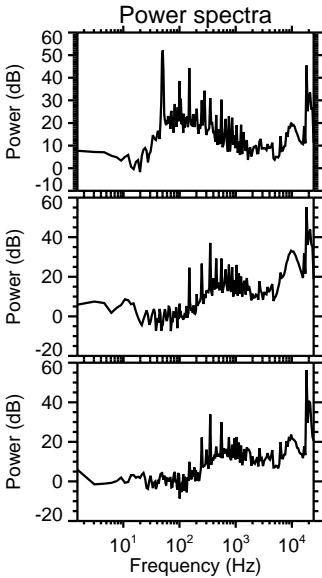
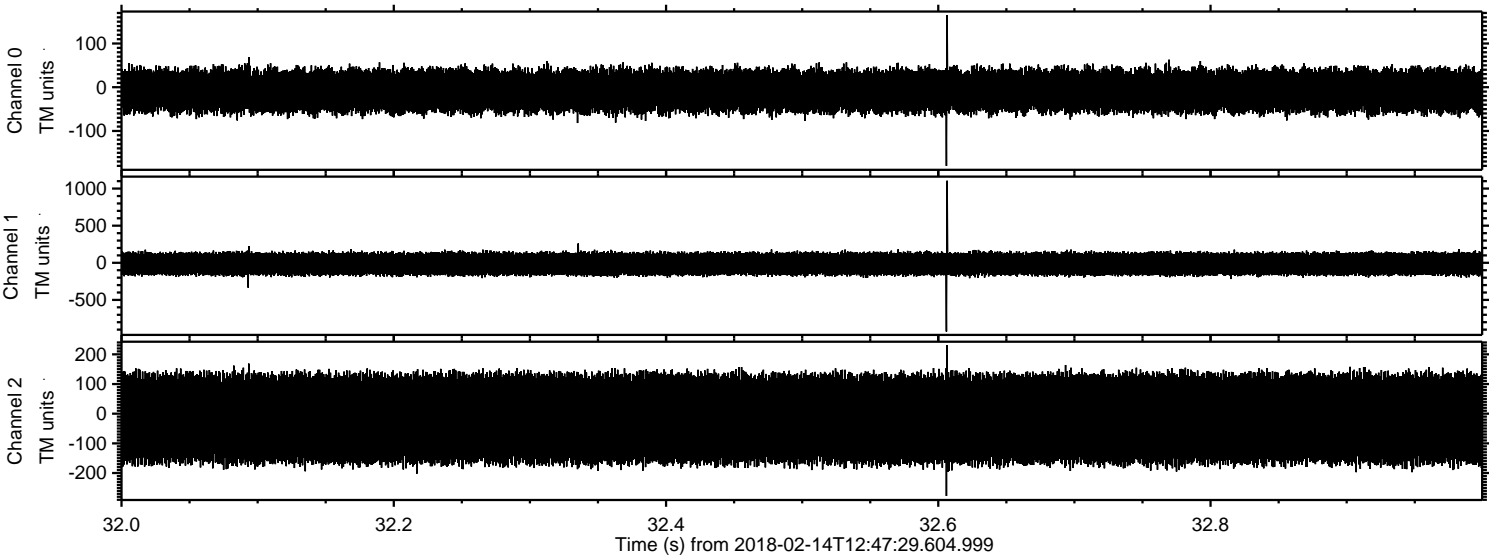


Channel 0
mn: -189
mx: 231
 μ : -8.3
 σ : 27.4

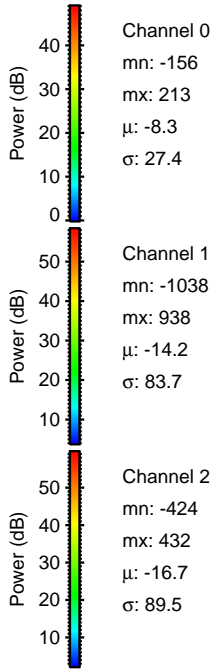
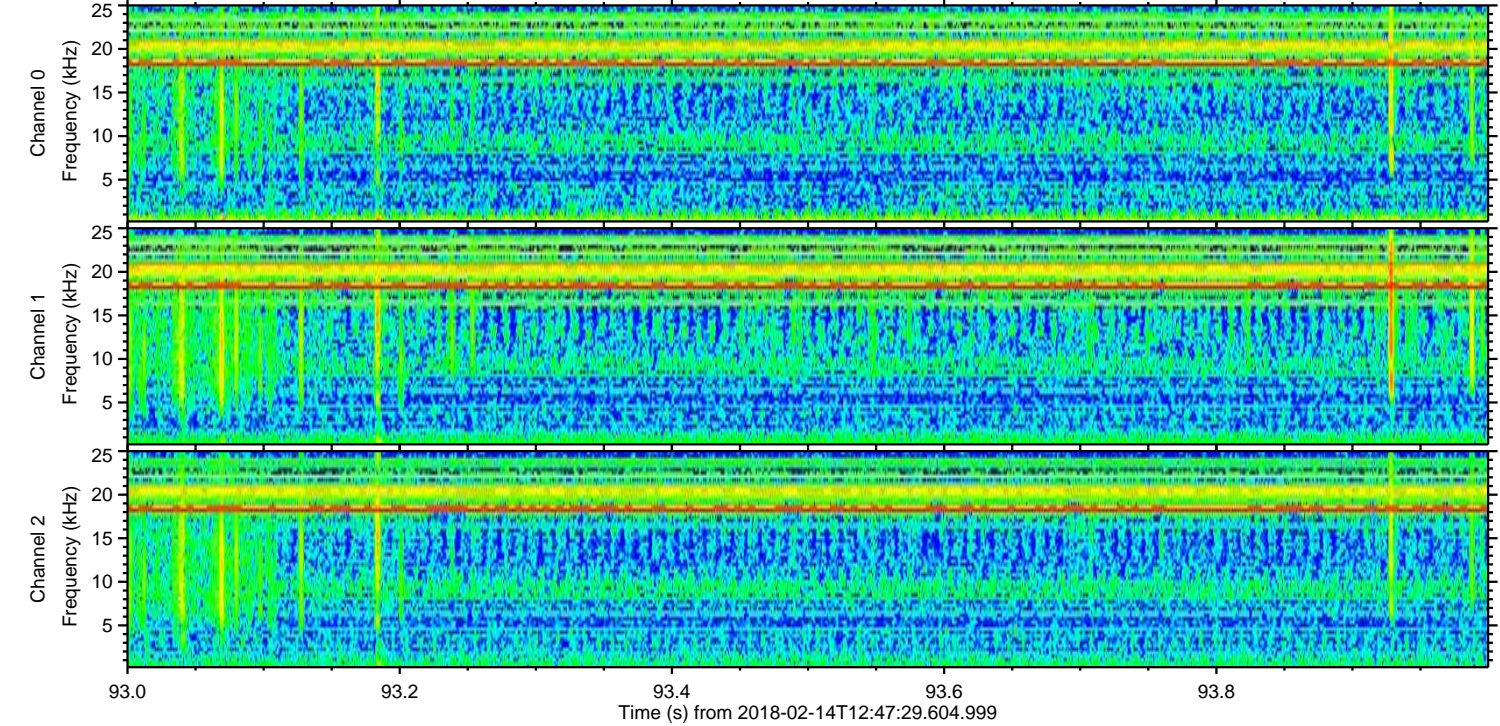
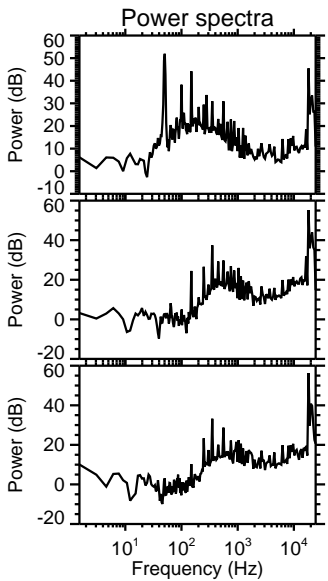
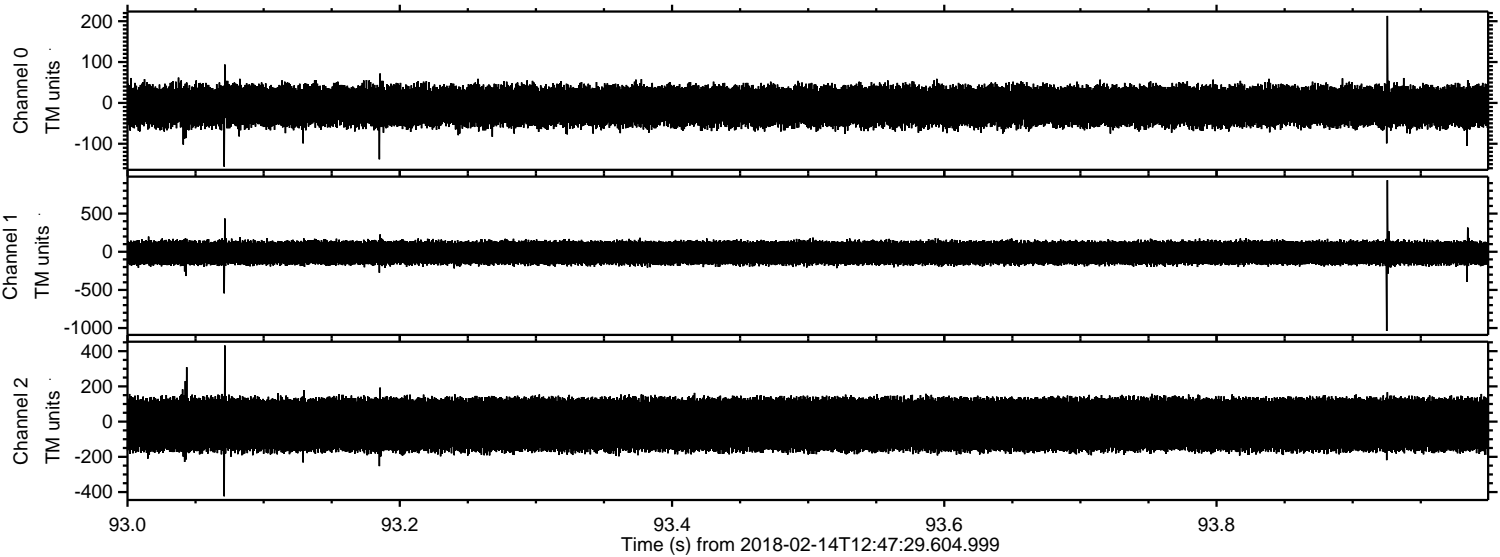
Channel 1
mn: -247
mx: 233
 μ : -14.1
 σ : 83.1

Channel 2
mn: -1214
mx: 1020
 μ : -16.7
 σ : 89.9

Processed Wed Feb 14 13:55:49 2018 by ELM ver.2012-10-06 from 001__elm20180214_124728__dat00.bin



Processed Wed Feb 14 13:55:49 2018 by ELM ver.2012-10-06 from 001__elm20180214_124728__dat00.bin



Processed Wed Feb 14 13:55:50 2018 by ELM ver.2012-10-06 from 001__elm20180214_124728__dat00.bin

