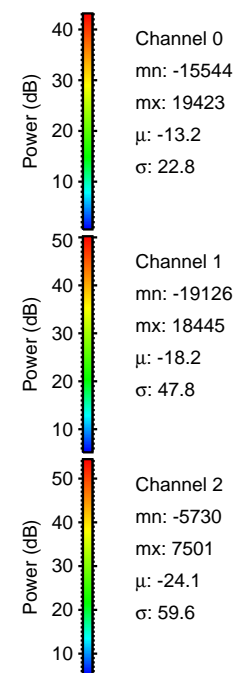
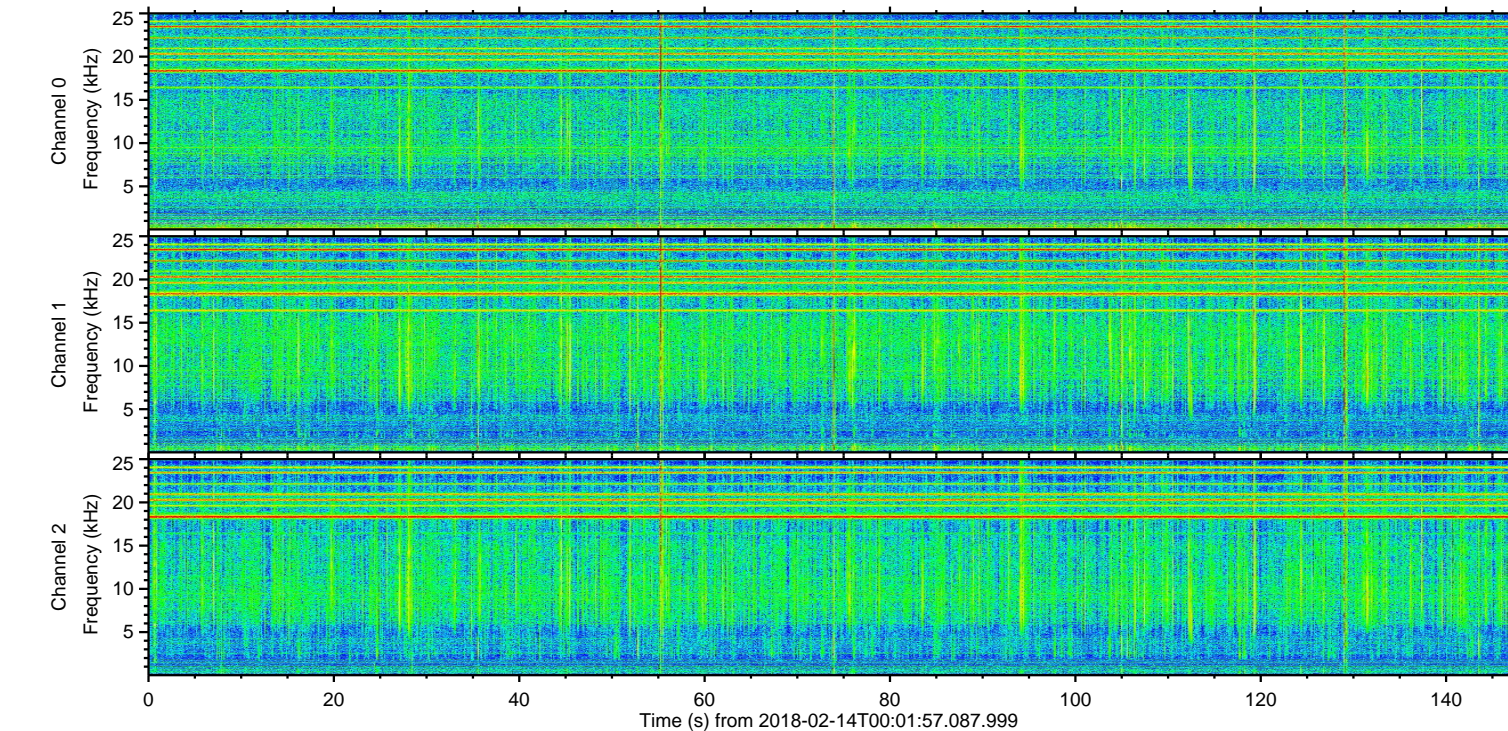
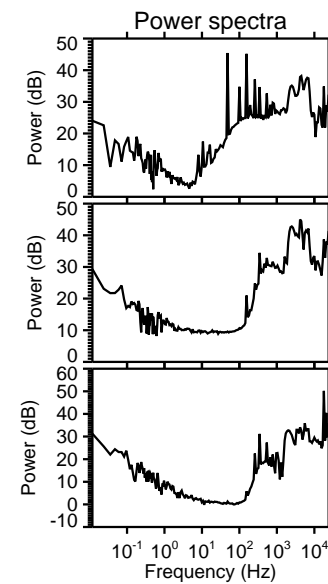
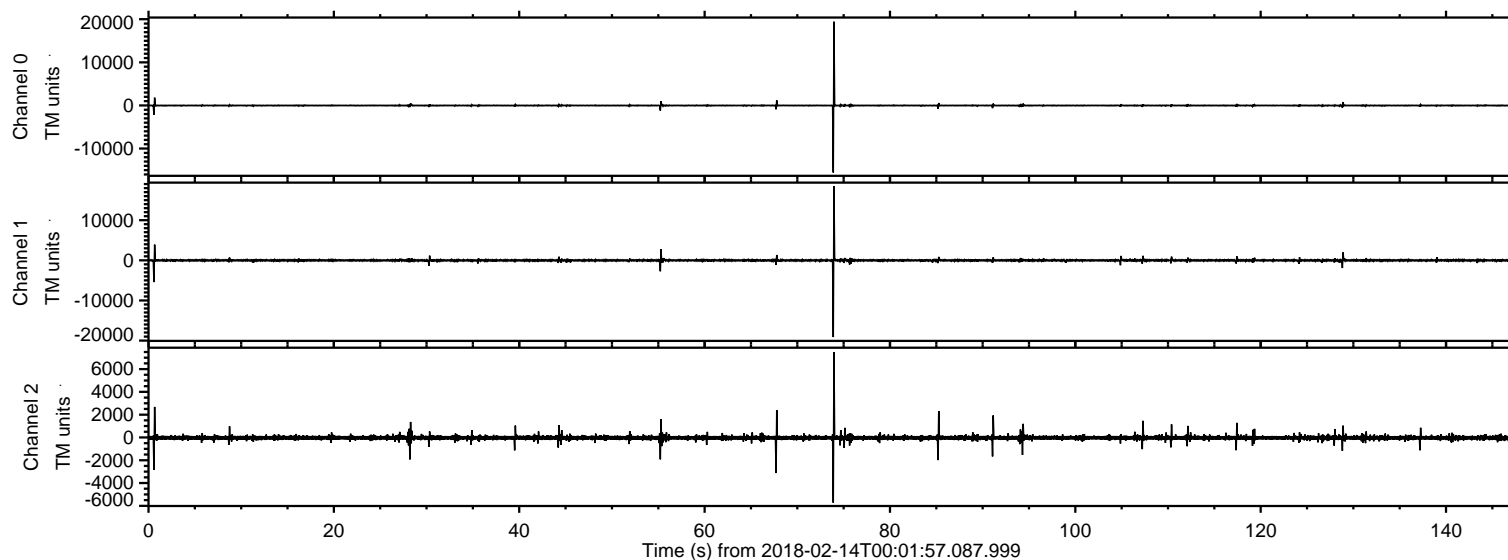


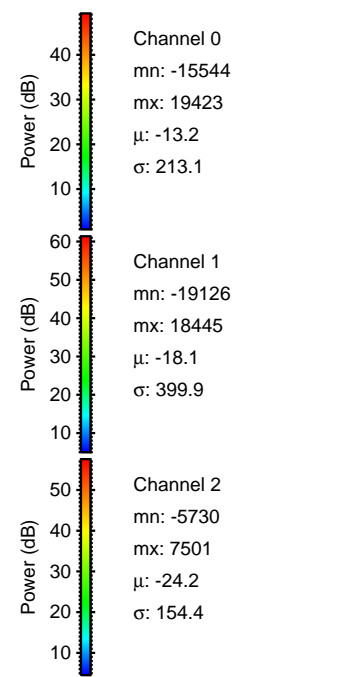
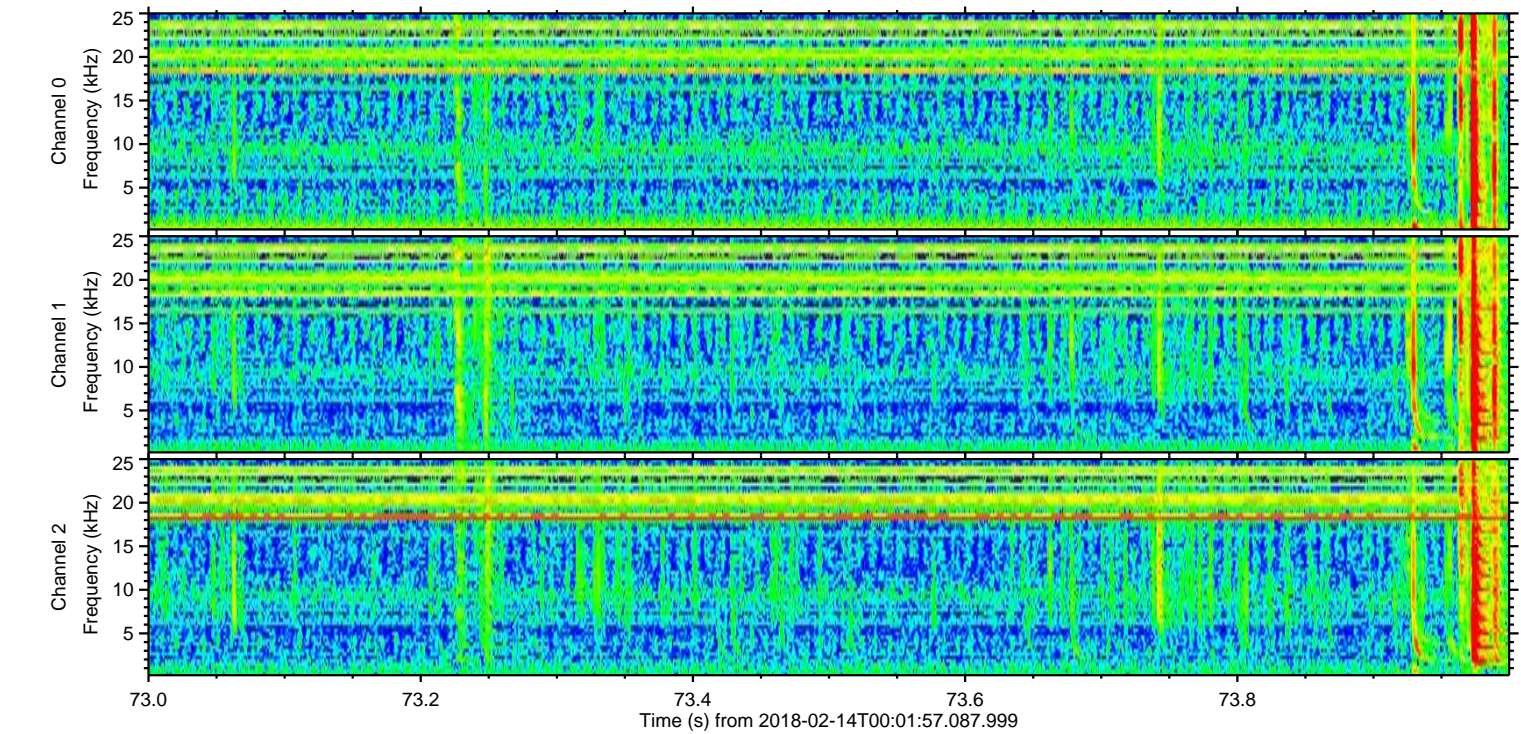
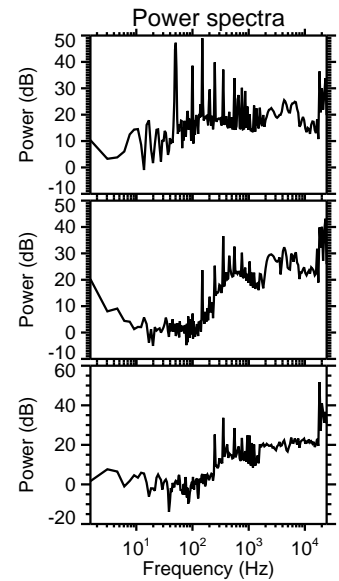
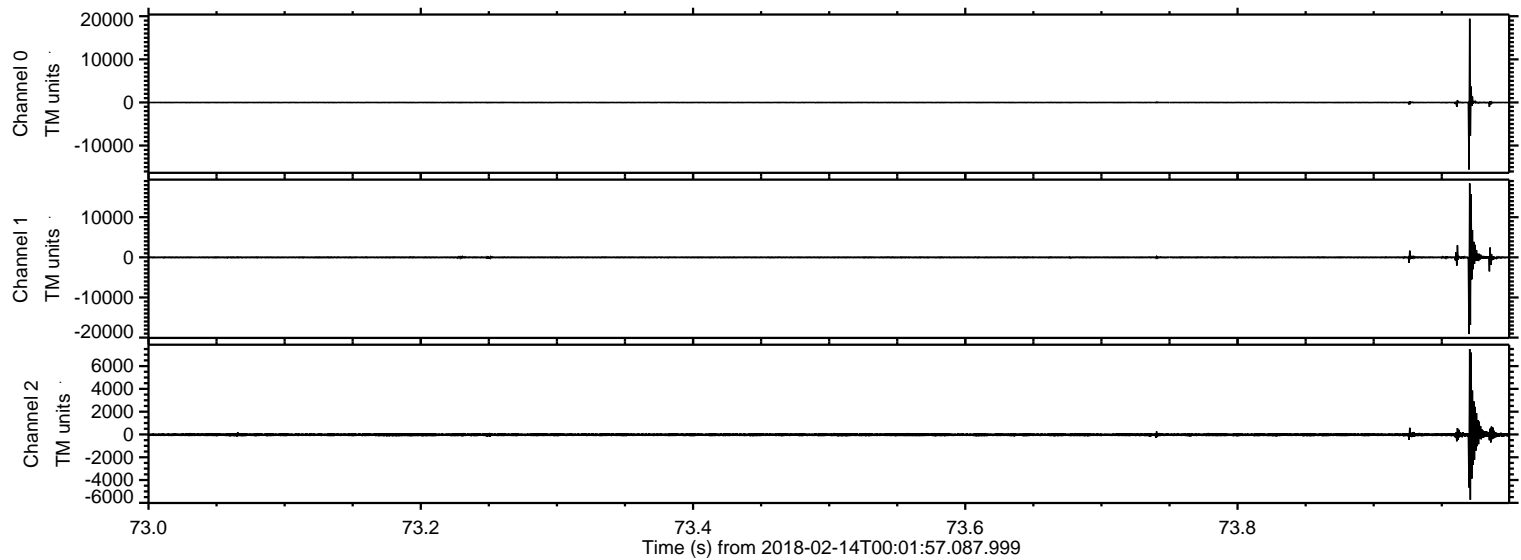
ELMAVAN 3D WAVEFORMS (Measured data sampled at 50 kHz) 51000 packets of 144 samples from 2018-02-14T00:01:57.087.999.

Processed Wed Feb 14 01:12:03 2018 by ELM ver.2012-10-06 from 001__elm20180214_000156__dat00.bin



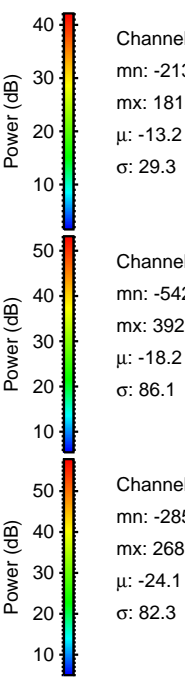
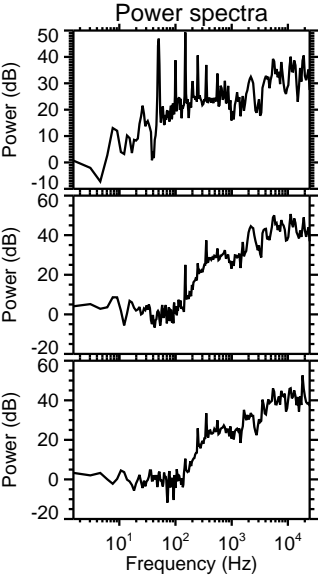
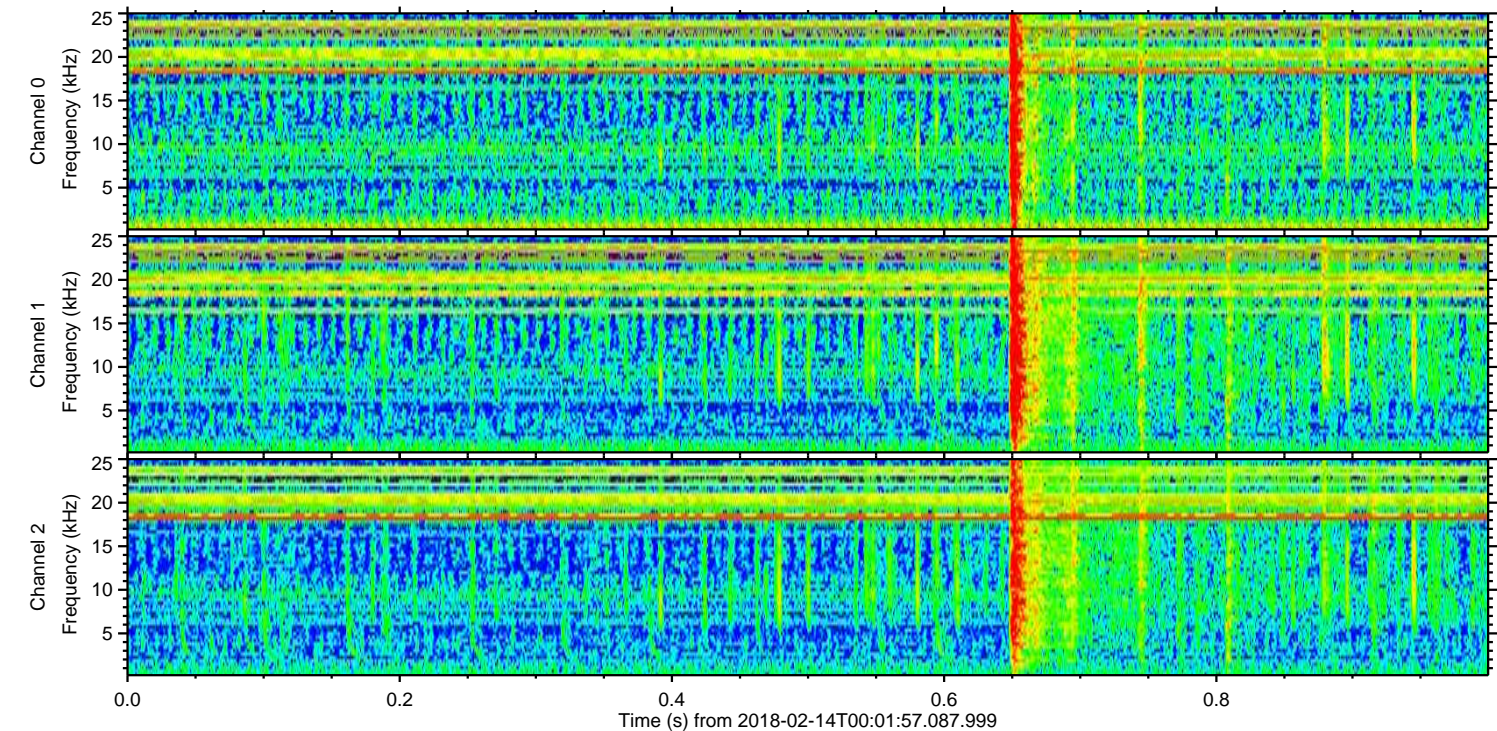
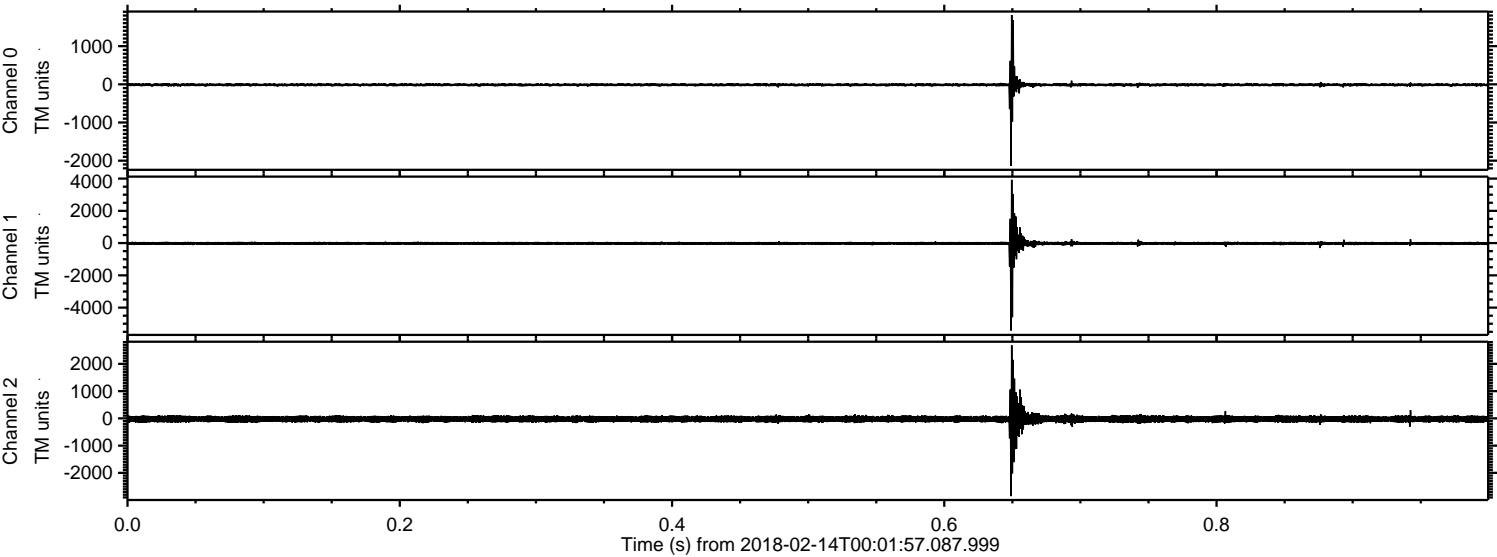
ELMAVAN 3D WAVEFORMS (Measured data sampled at 50 kHz) 51000 packets of 144 samples from 2018-02-14T00:01:57.087.999. Part 74/147

Processed Wed Feb 14 01:12:13 2018 by ELM ver.2012-10-06 from 001__elm20180214_000156__dat00.bin

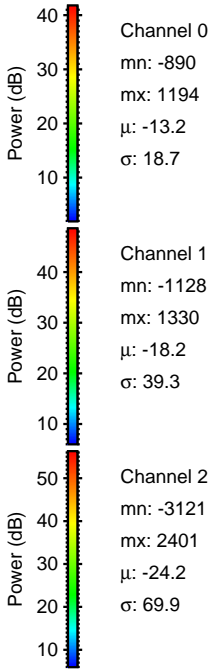
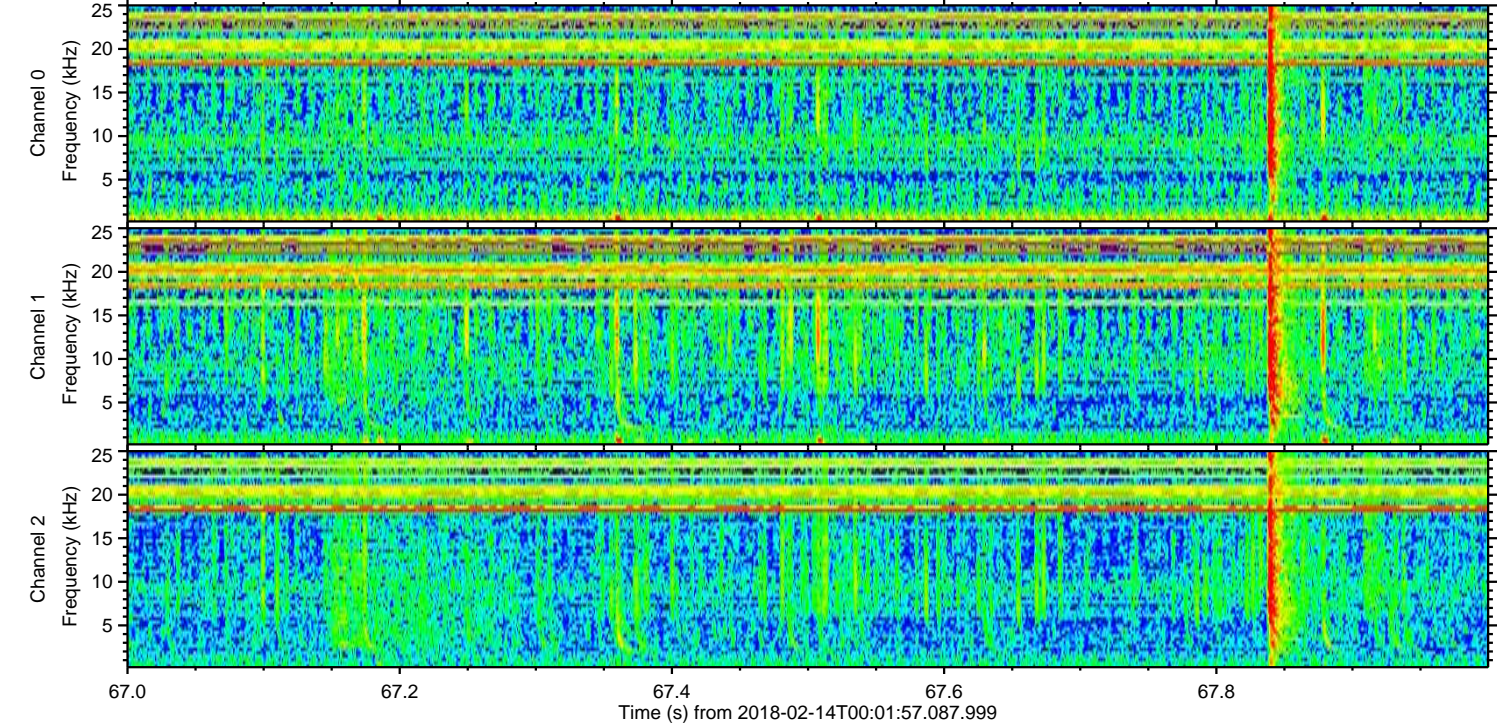
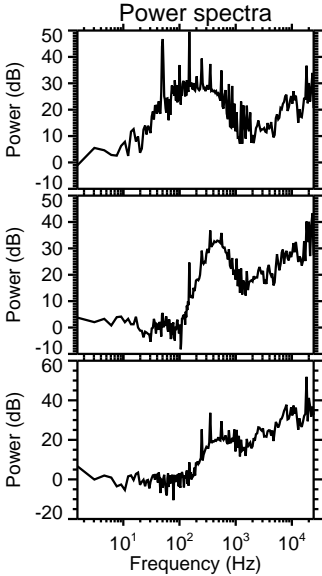
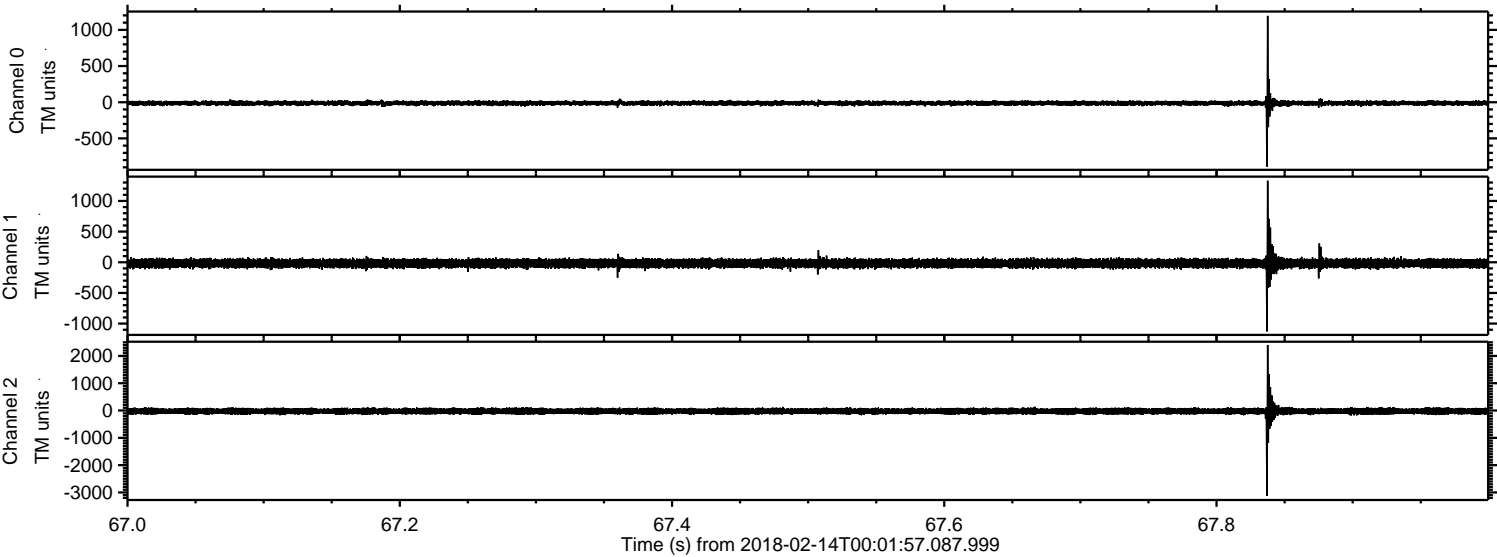


ELMAVAN 3D WAVEFORMS (Measured data sampled at 50 kHz) 51000 packets of 144 samples from 2018-02-14T00:01:57.087.999. Part 1/147

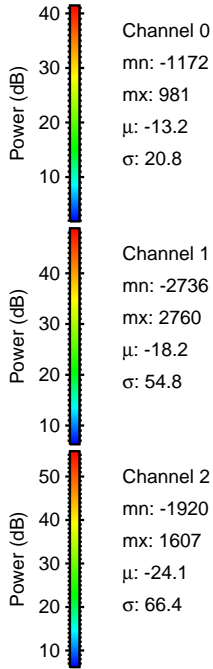
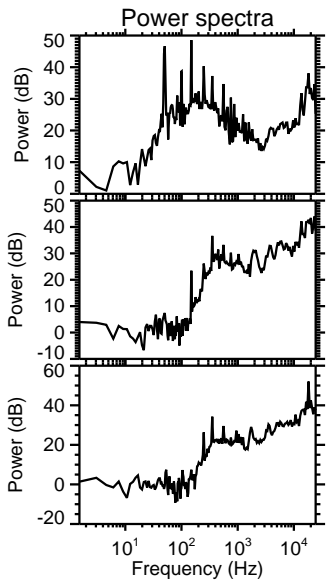
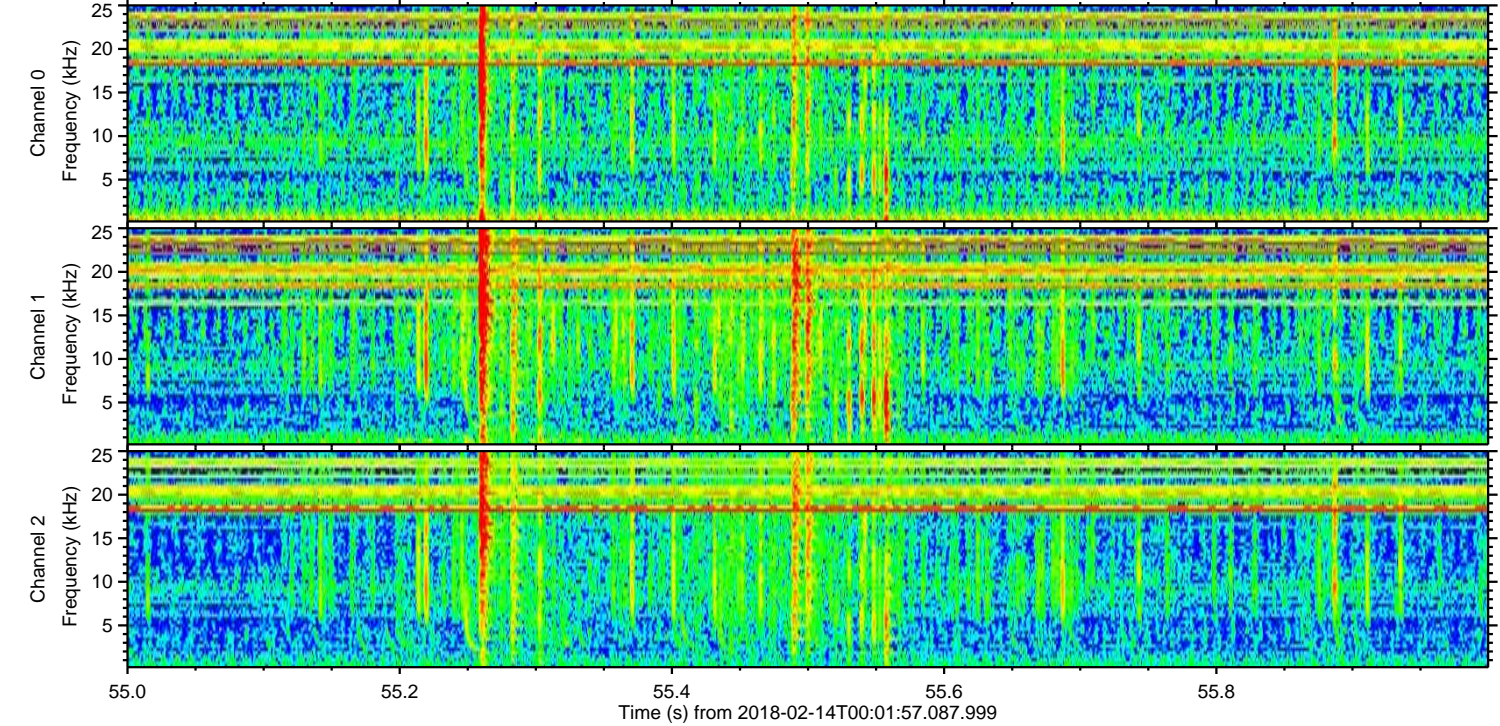
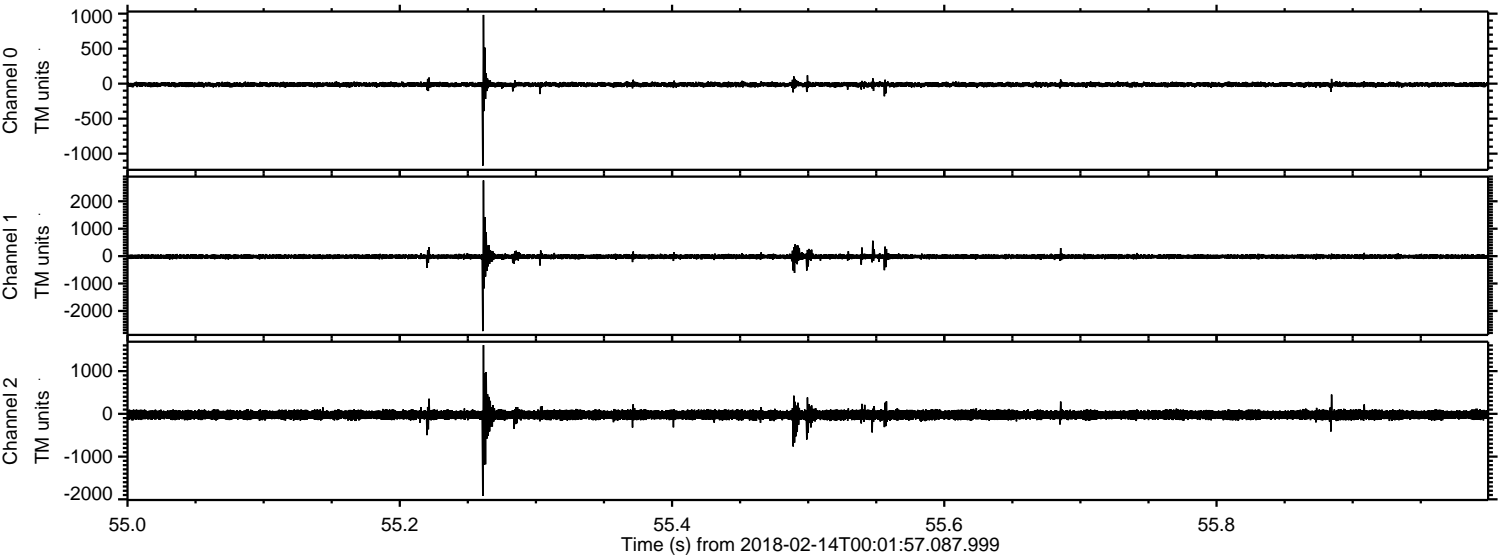
Processed Wed Feb 14 01:12:14 2018 by ELM ver.2012-10-06 from 001__elm20180214_000156__dat00.bin



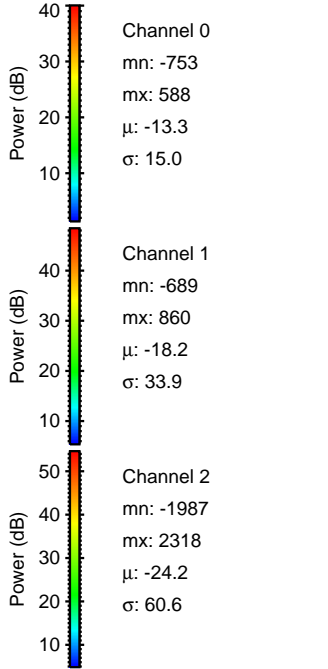
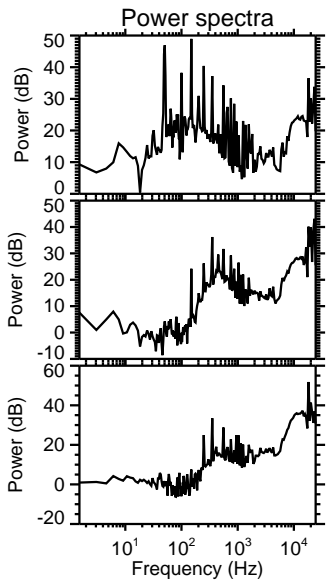
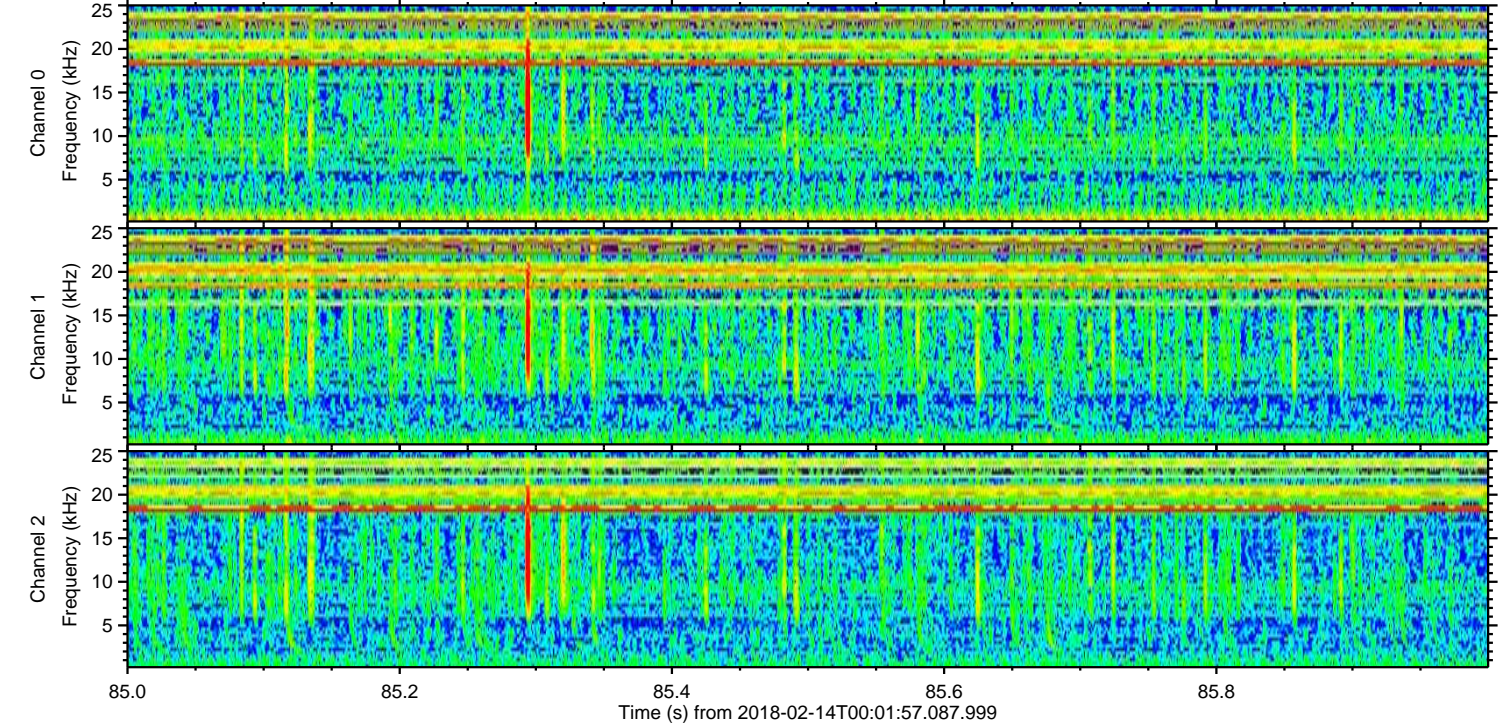
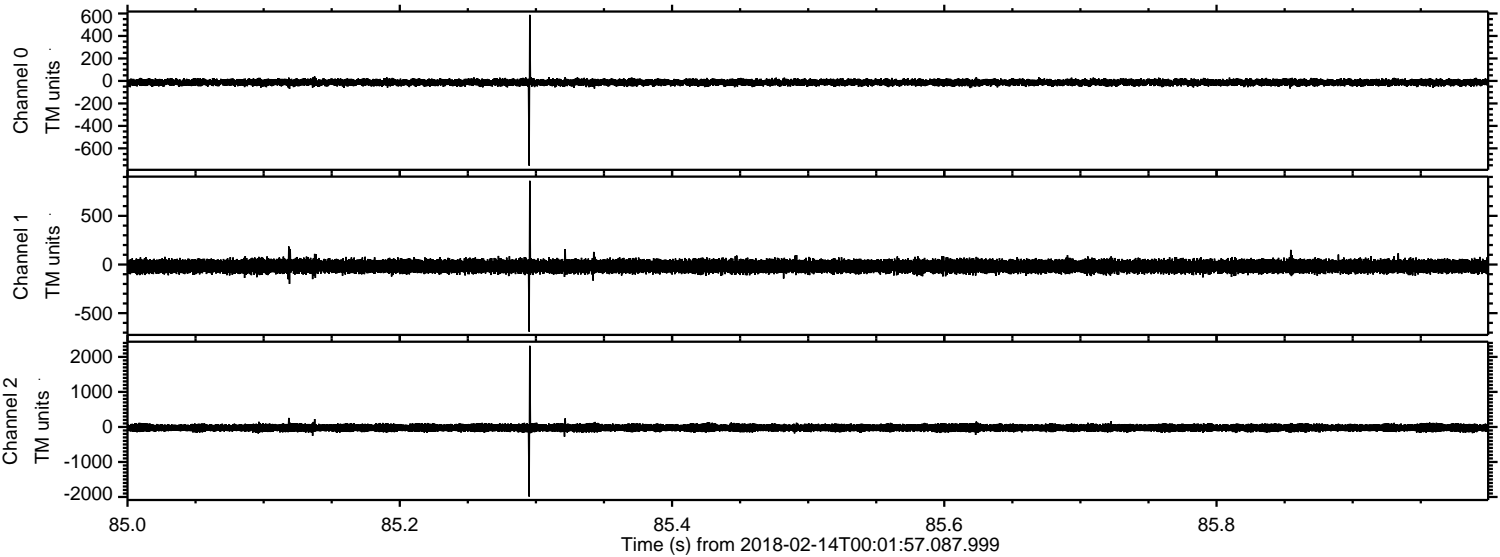
Processed Wed Feb 14 01:12:15 2018 by ELM ver.2012-10-06 from 001__elm20180214_000156__dat00.bin



Processed Wed Feb 14 01:12:16 2018 by ELM ver.2012-10-06 from 001__elm20180214_000156__dat00.bin

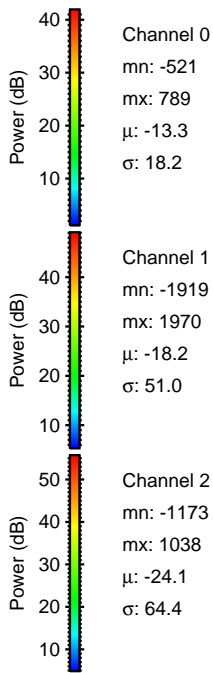
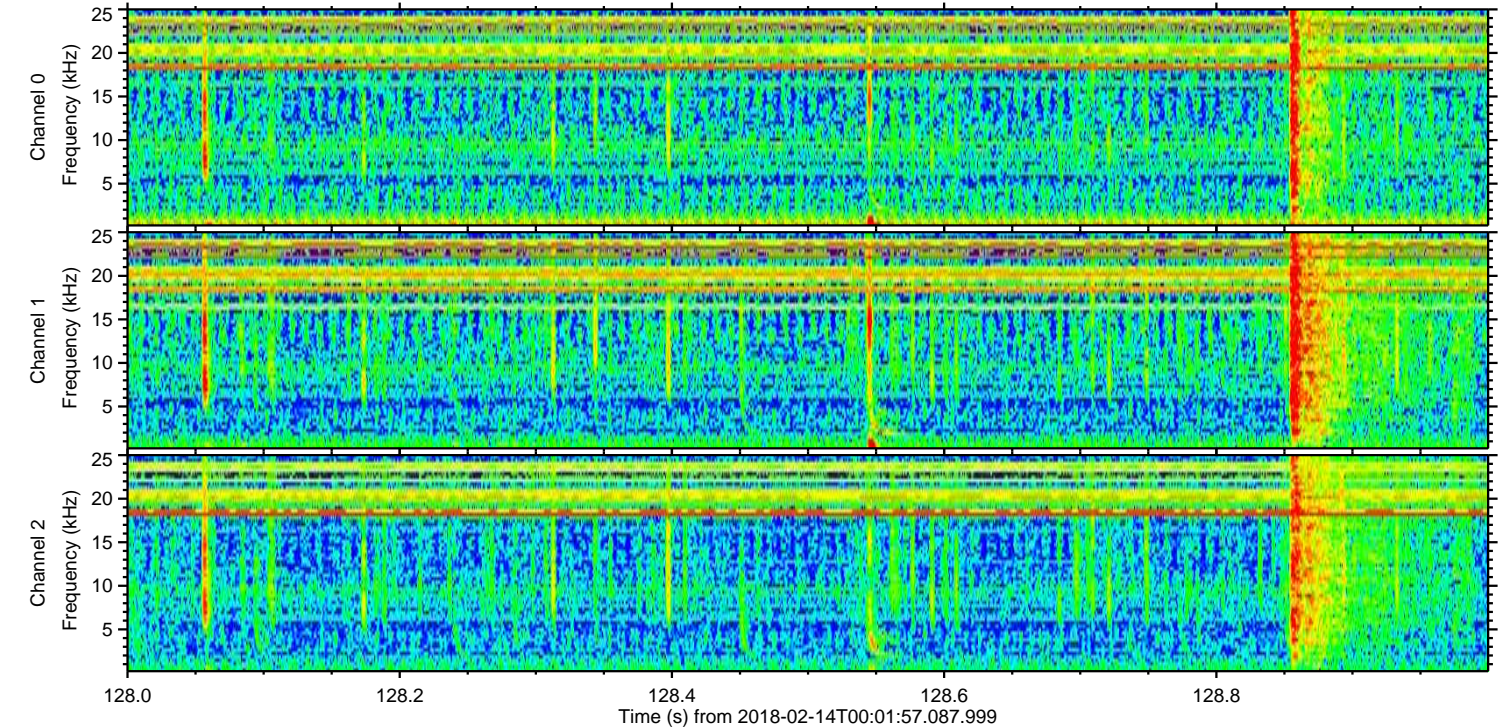
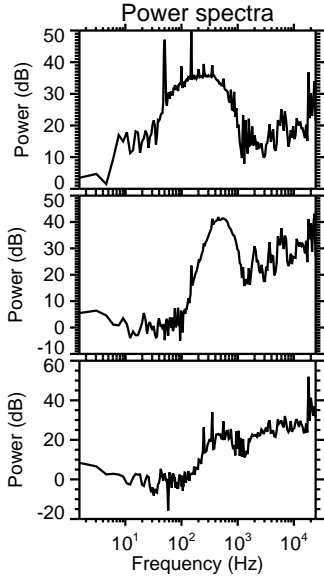
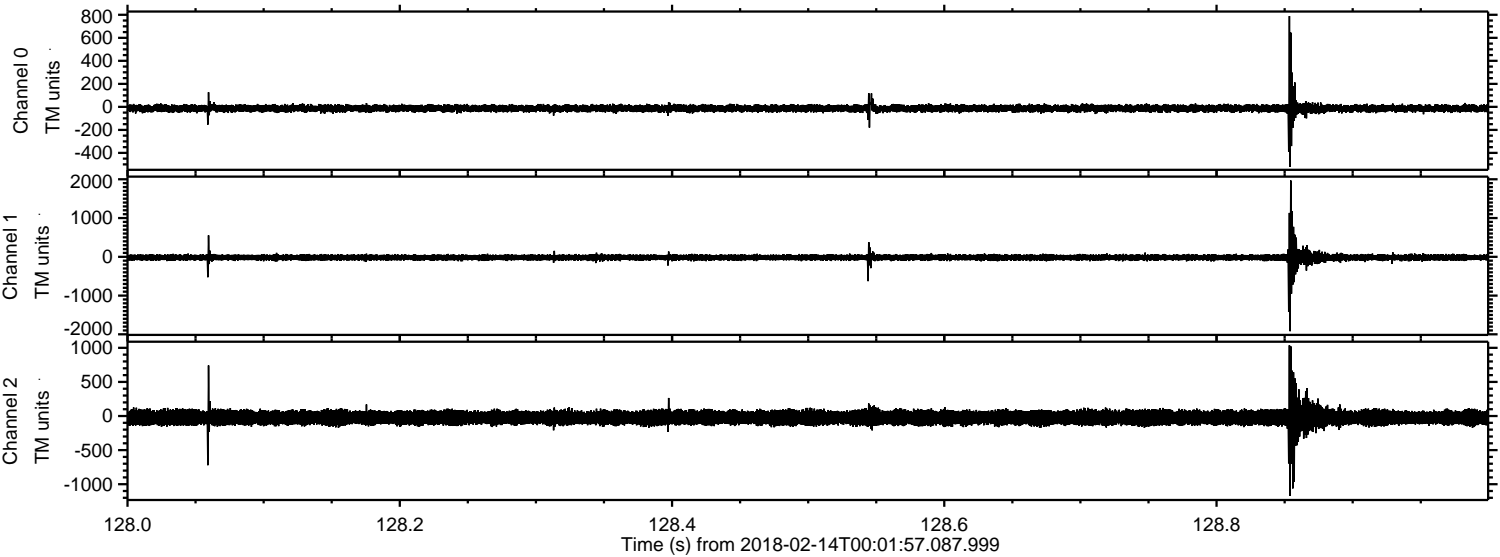


Processed Wed Feb 14 01:12:17 2018 by ELM ver.2012-10-06 from 001__elm20180214_000156__dat00.bin



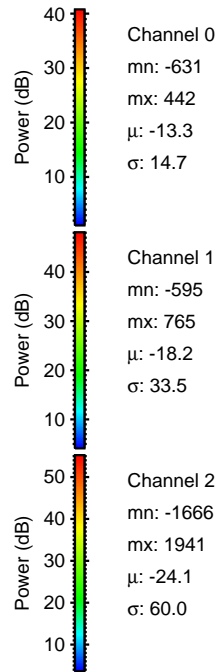
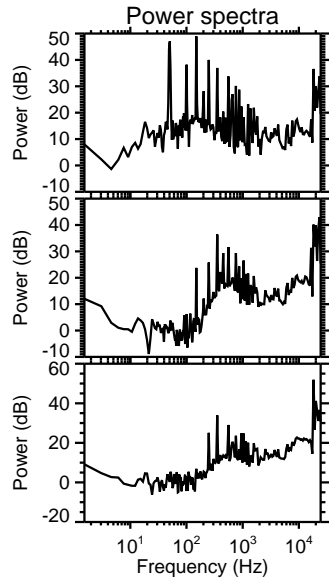
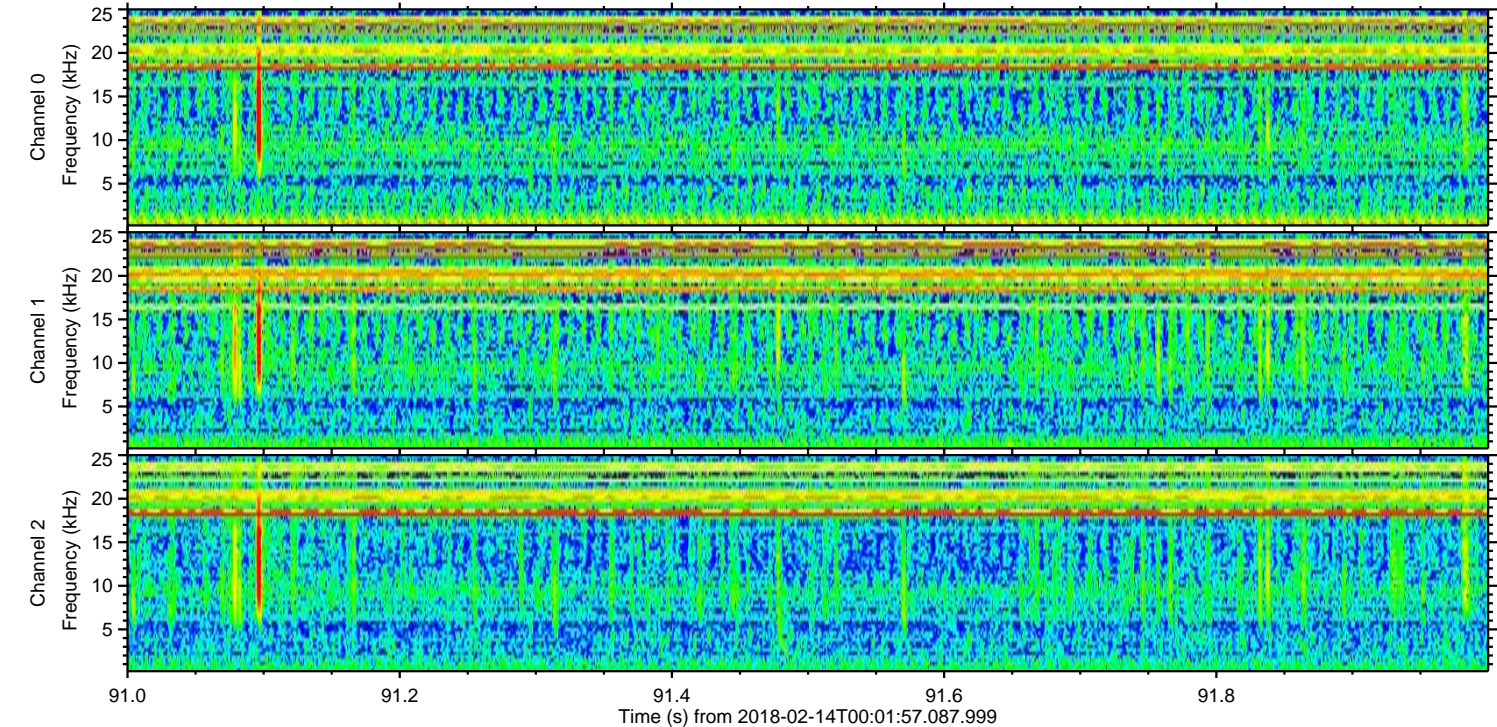
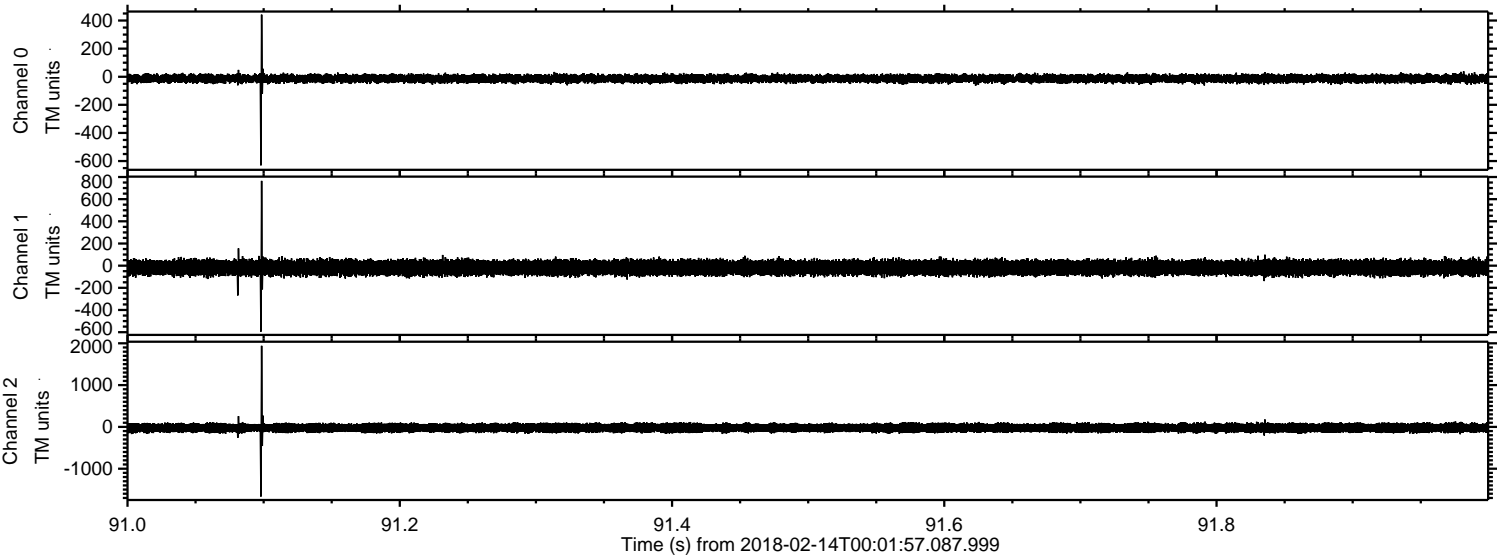
ELMAVAN 3D WAVEFORMS (Measured data sampled at 50 kHz) 51000 packets of 144 samples from 2018-02-14T00:01:57.087.999. Part 129/147

Processed Wed Feb 14 01:12:18 2018 by ELM ver.2012-10-06 from 001__elm20180214_000156__dat00.bin



ELMAVAN 3D WAVEFORMS (Measured data sampled at 50 kHz) 51000 packets of 144 samples from 2018-02-14T00:01:57.087.999. Part 92/147

Processed Wed Feb 14 01:12:19 2018 by ELM ver.2012-10-06 from 001__elm20180214_000156__dat00.bin

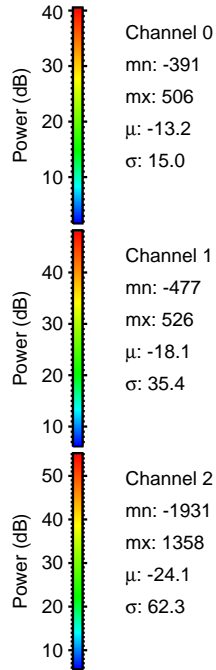
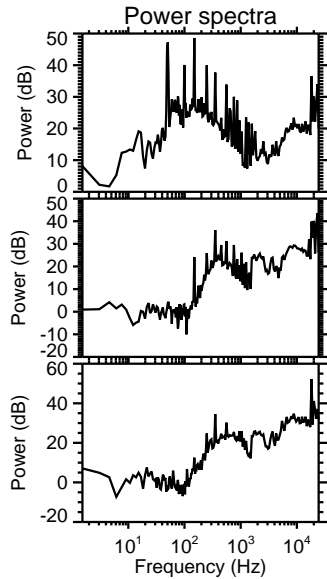
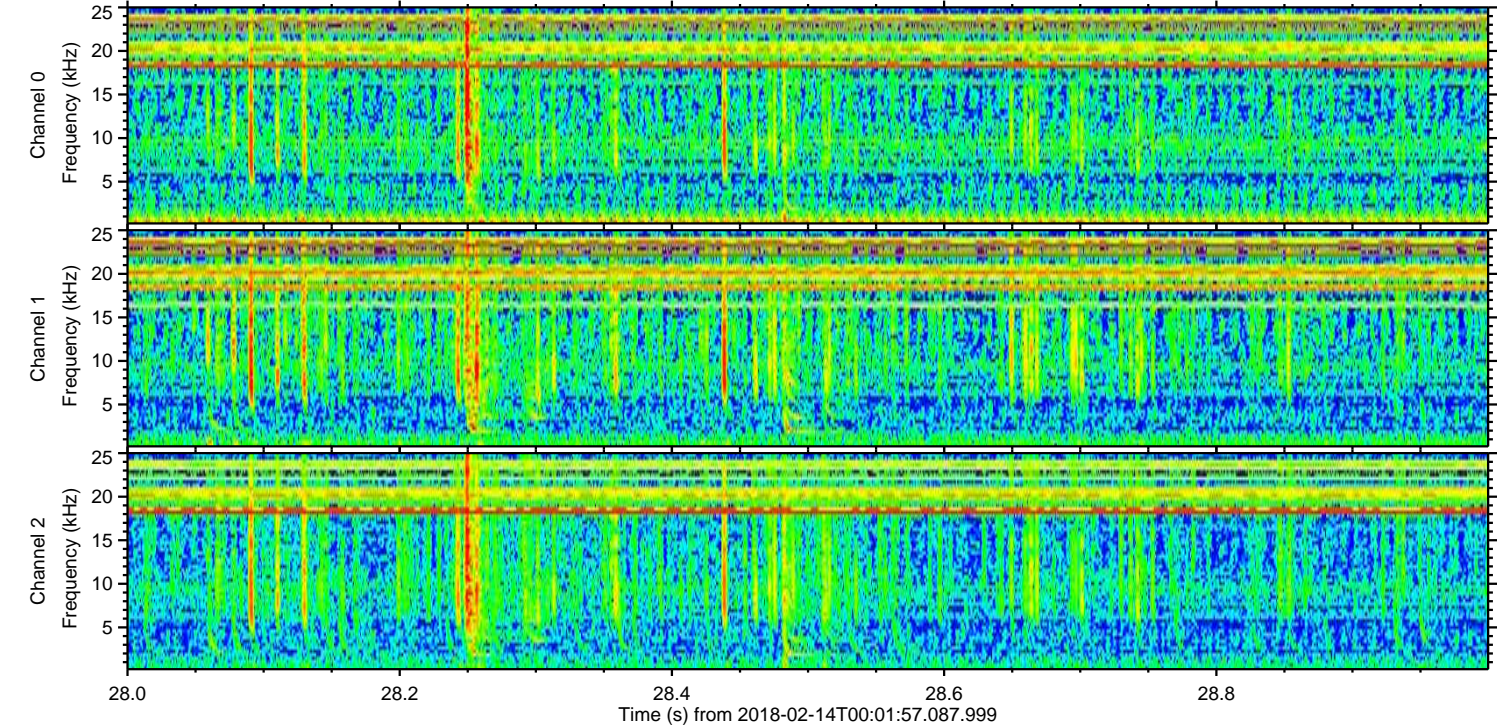
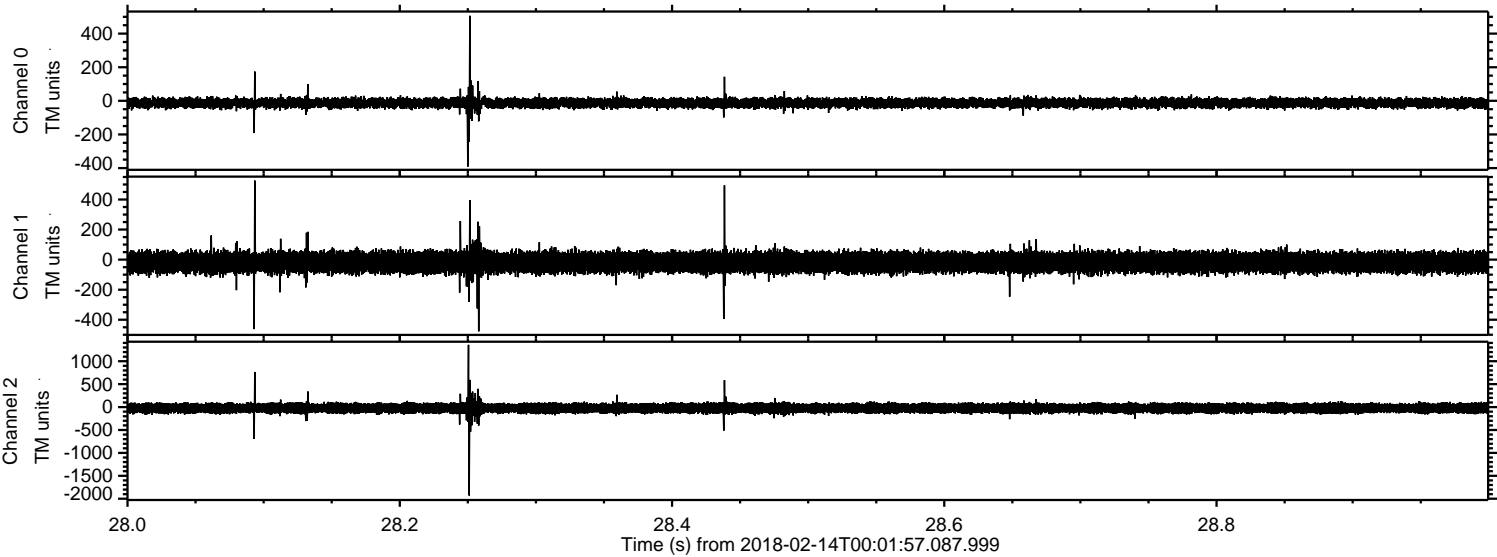


Channel 0
mn: -631
mx: 442
 μ : -13.3
 σ : 14.7

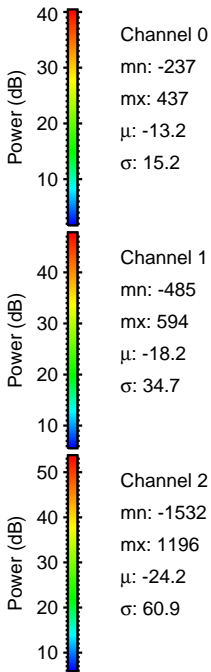
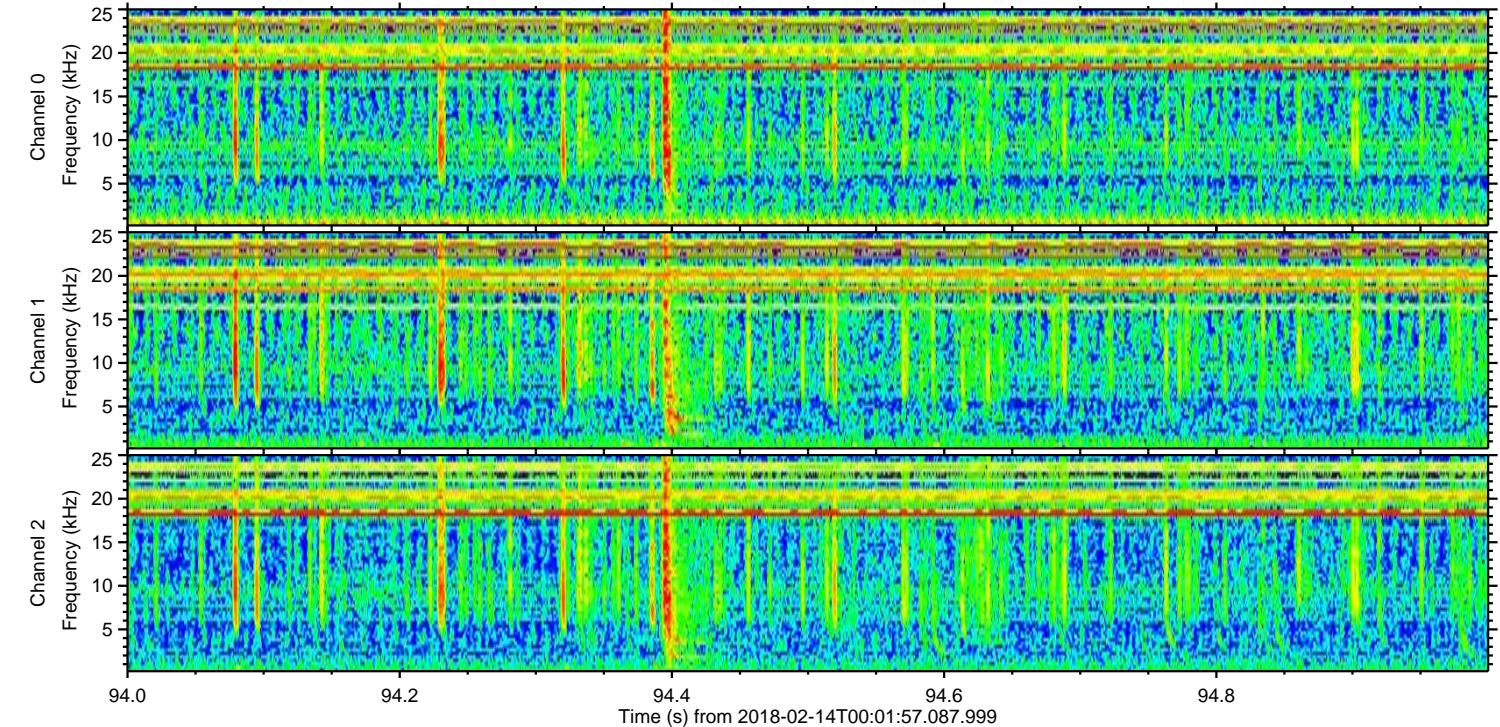
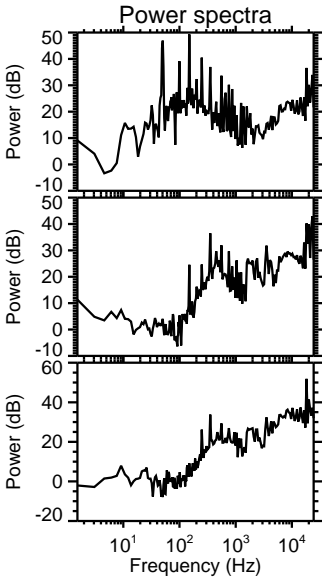
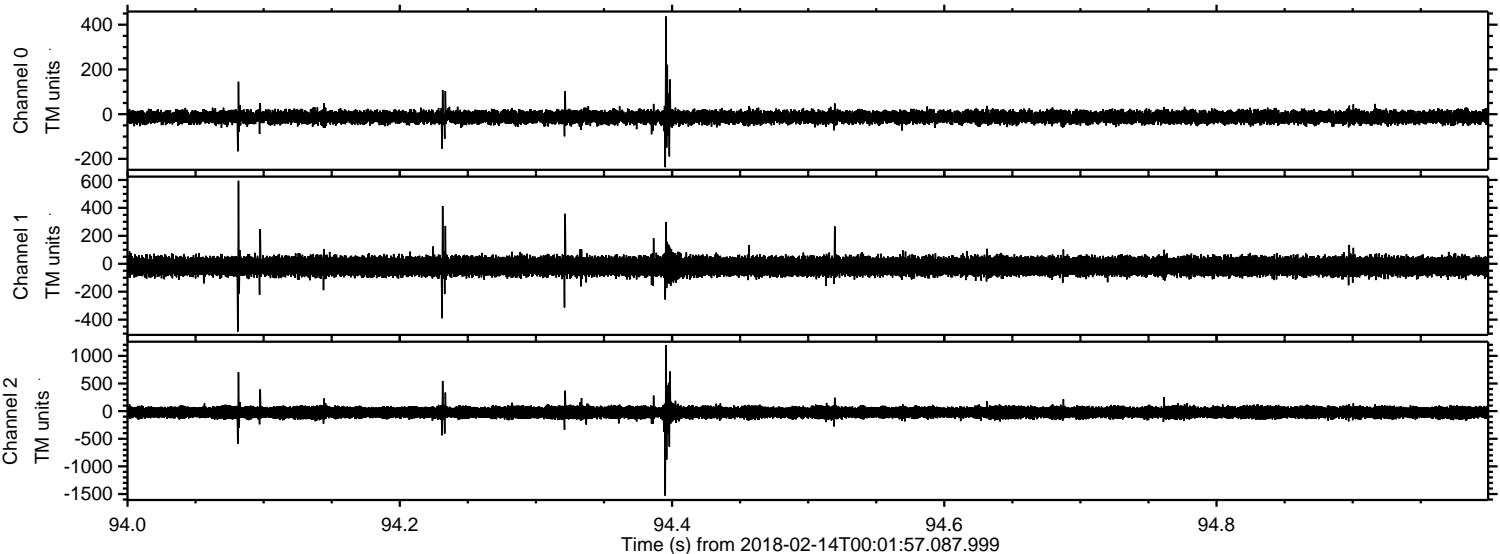
Channel 1
mn: -595
mx: 765
 μ : -18.2
 σ : 33.5

Channel 2
mn: -1666
mx: 1941
 μ : -24.1
 σ : 60.0

Processed Wed Feb 14 01:12:20 2018 by ELM ver.2012-10-06 from 001__elm20180214_000156__dat00.bin



Processed Wed Feb 14 01:12:21 2018 by ELM ver.2012-10-06 from 001__elm20180214_000156__dat00.bin



Processed Wed Feb 14 01:12:22 2018 by ELM ver.2012-10-06 from 001__elm20180214_000156__dat00.bin

