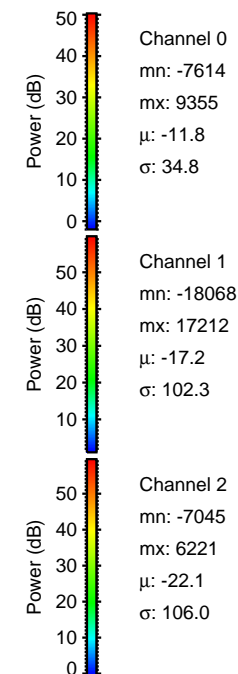
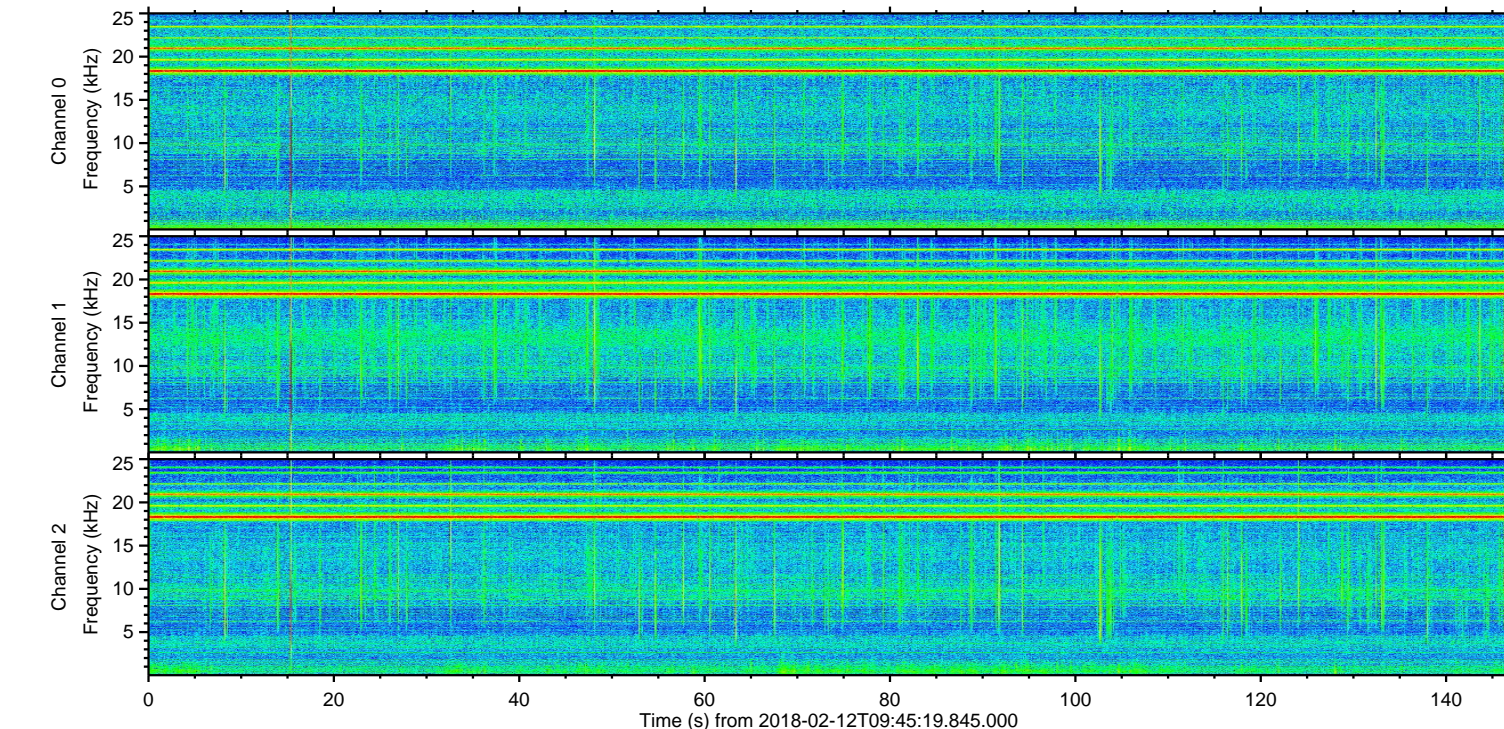
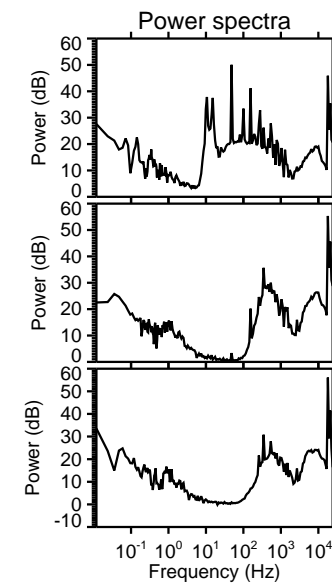
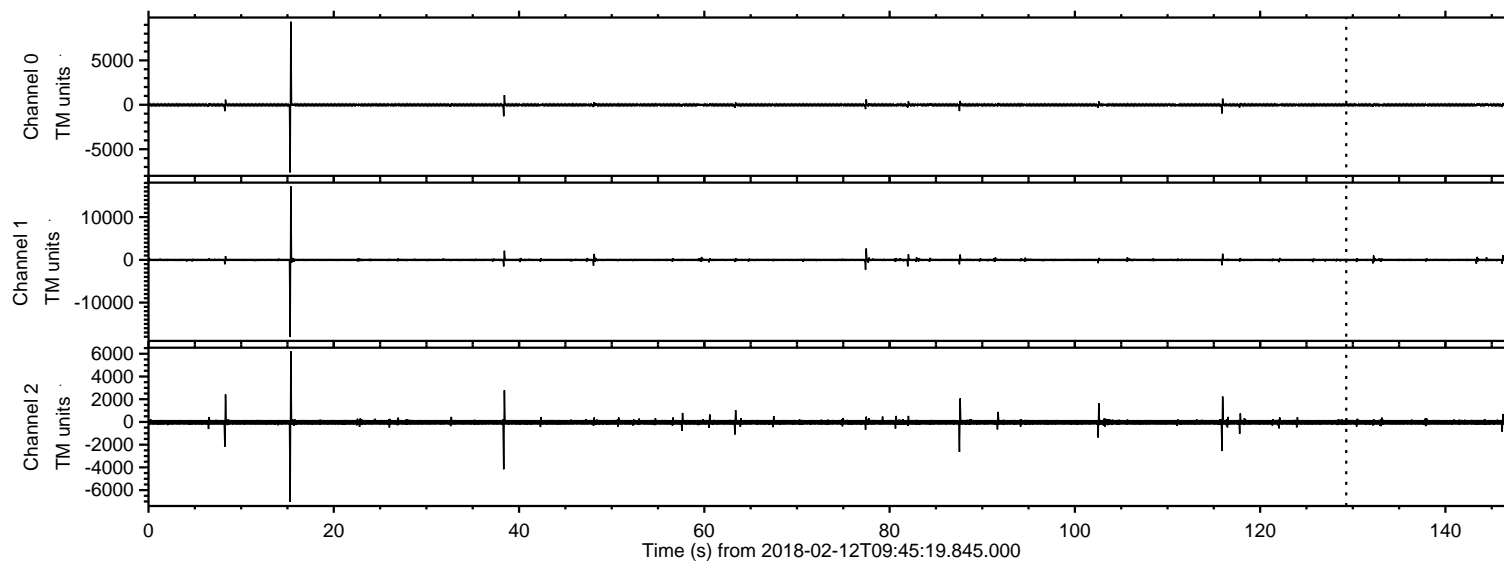
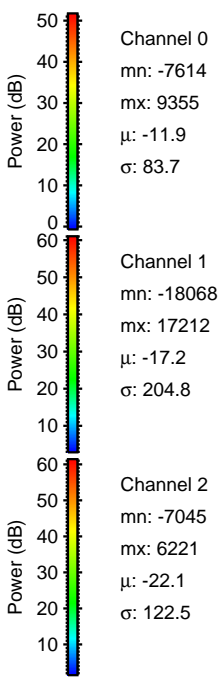
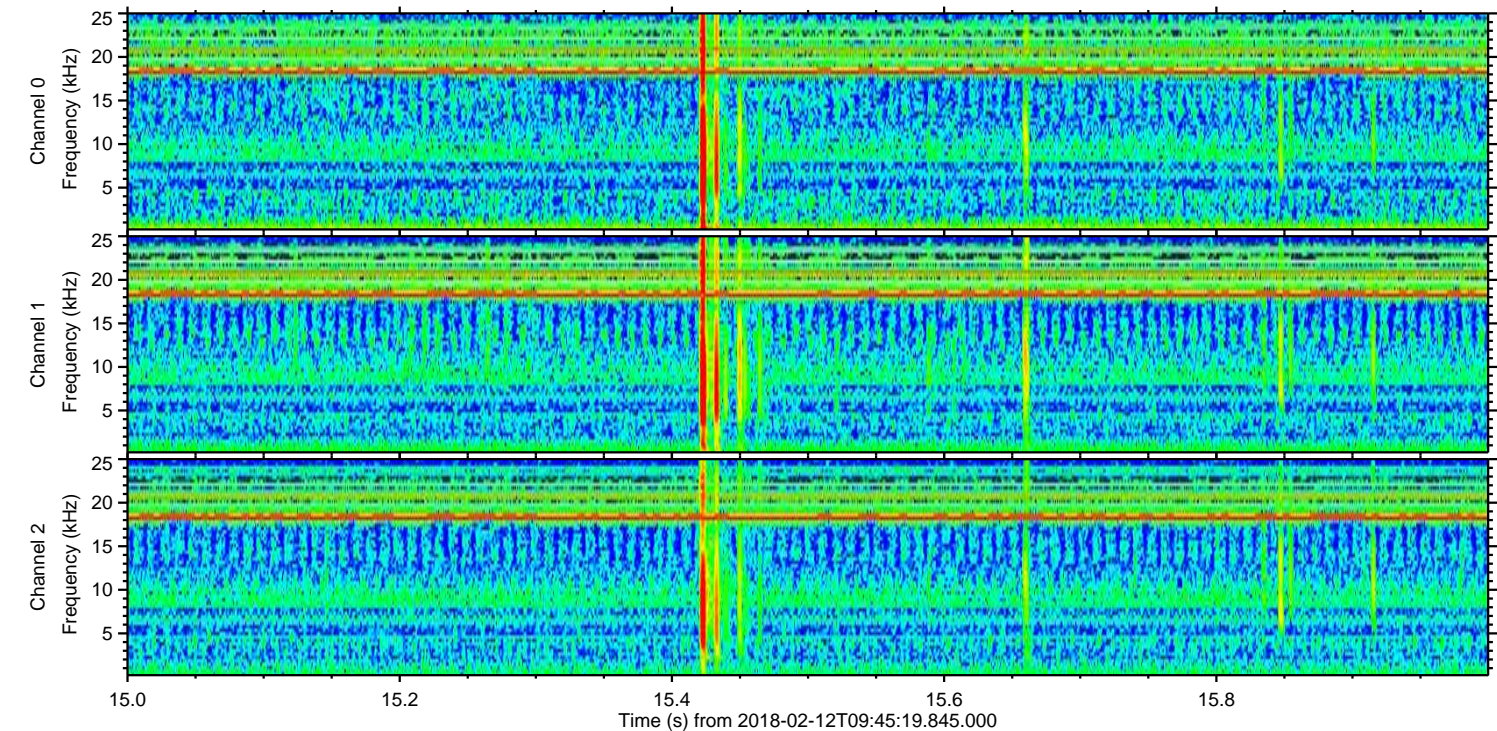
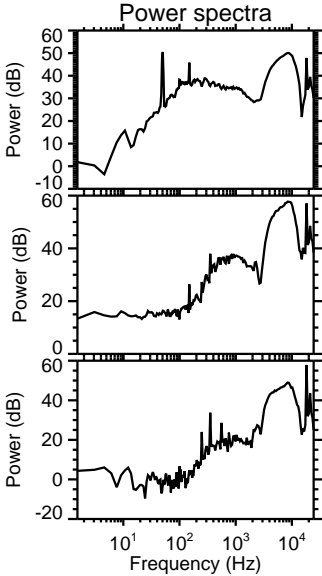
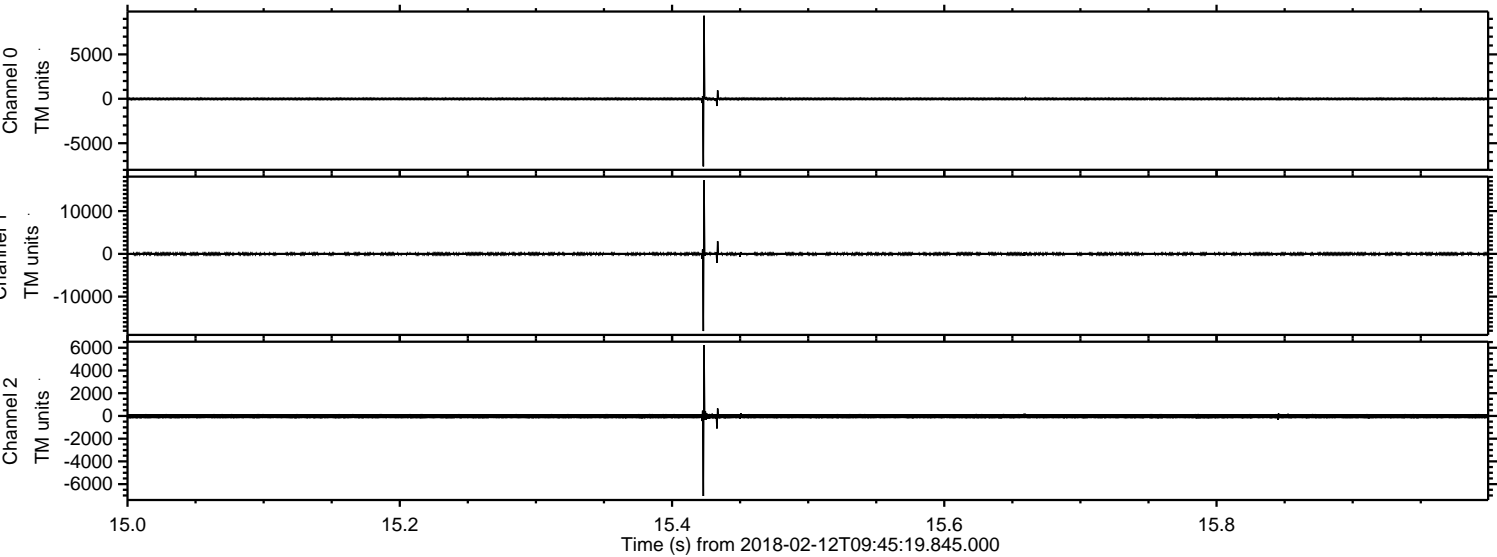


ELMAVAN 3D WAVEFORMS (Measured data sampled at 50 kHz) 50999 packets of 144 samples from 2018-02-12T09:45:19.845.000.

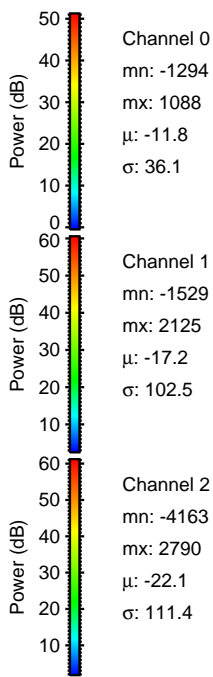
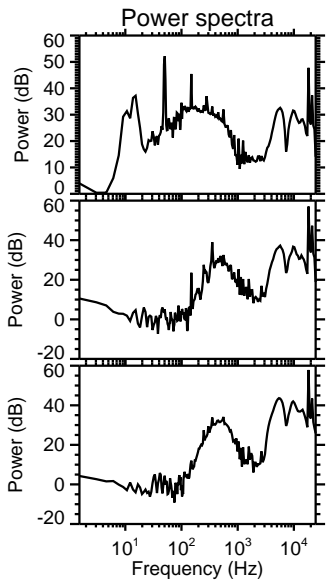
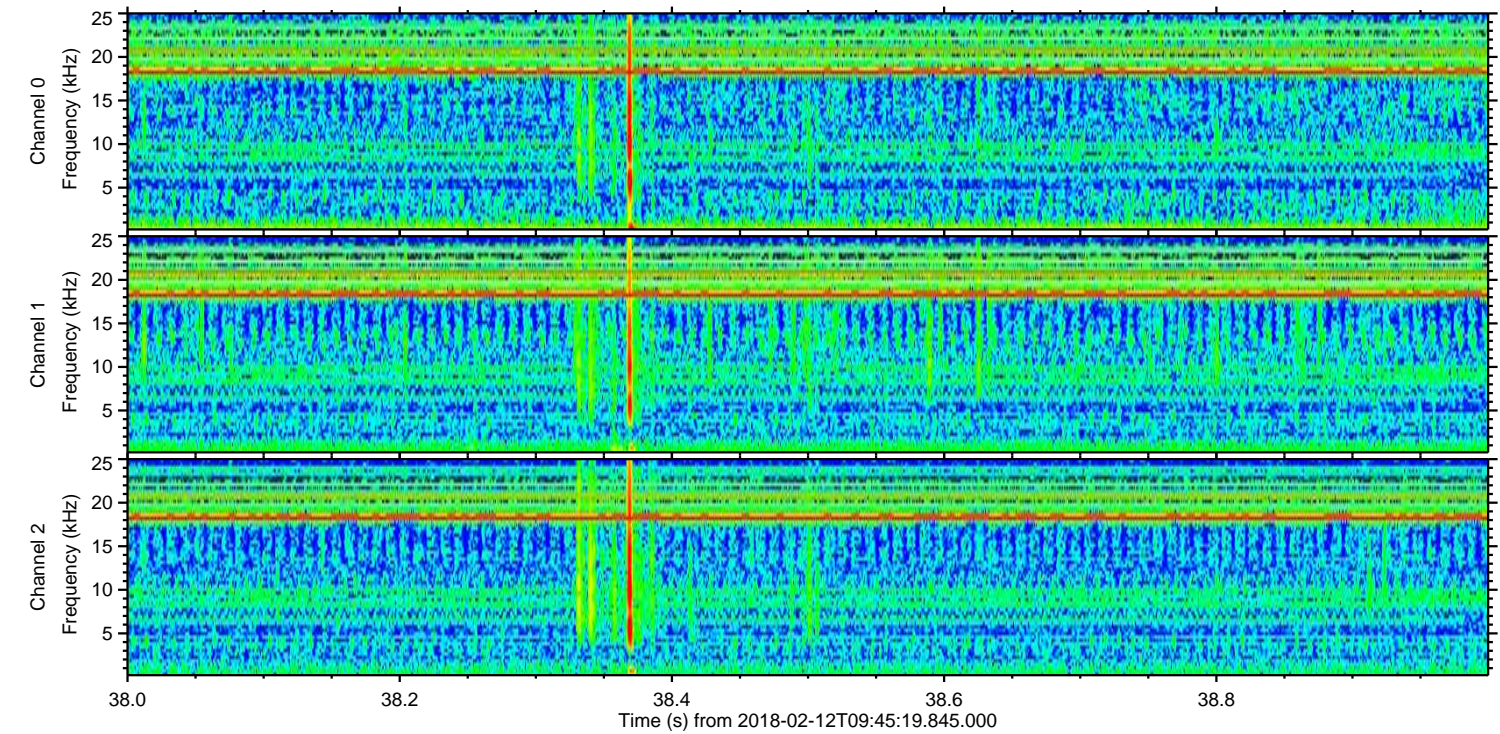
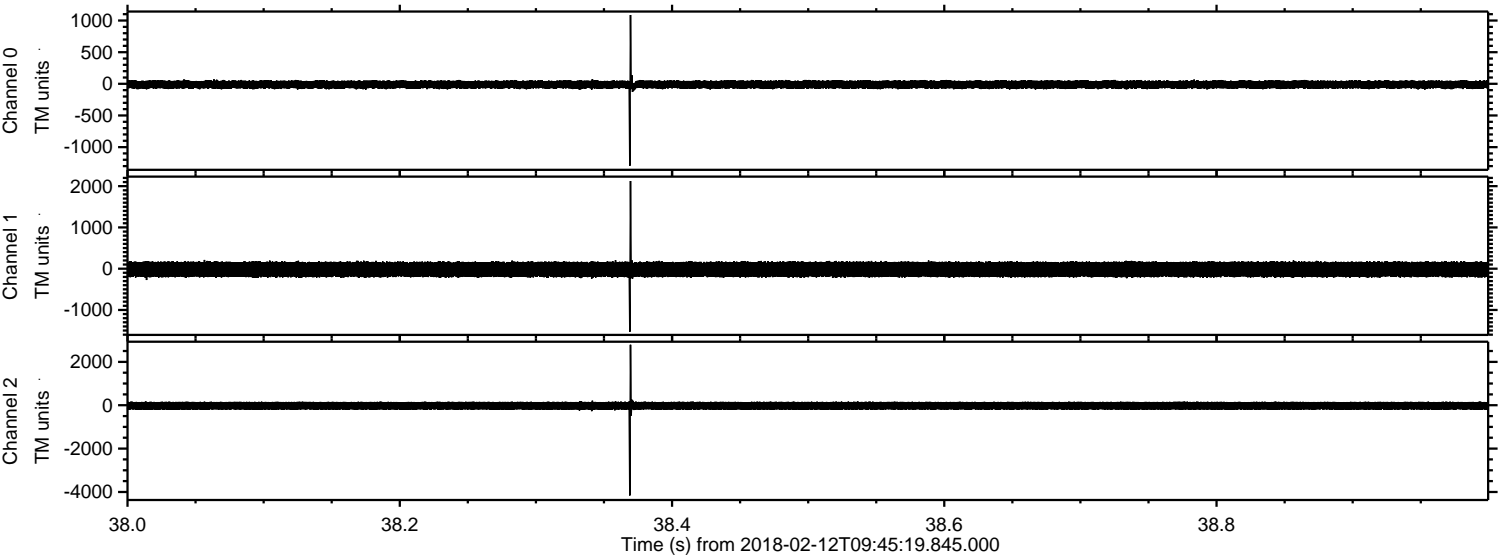
Processed Mon Feb 12 10:52:43 2018 by ELM ver.2012-10-06 from 001__elm20180212_094518__dat00.bin



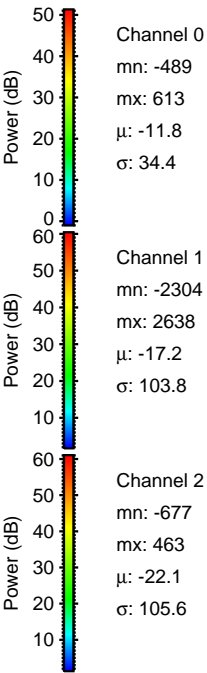
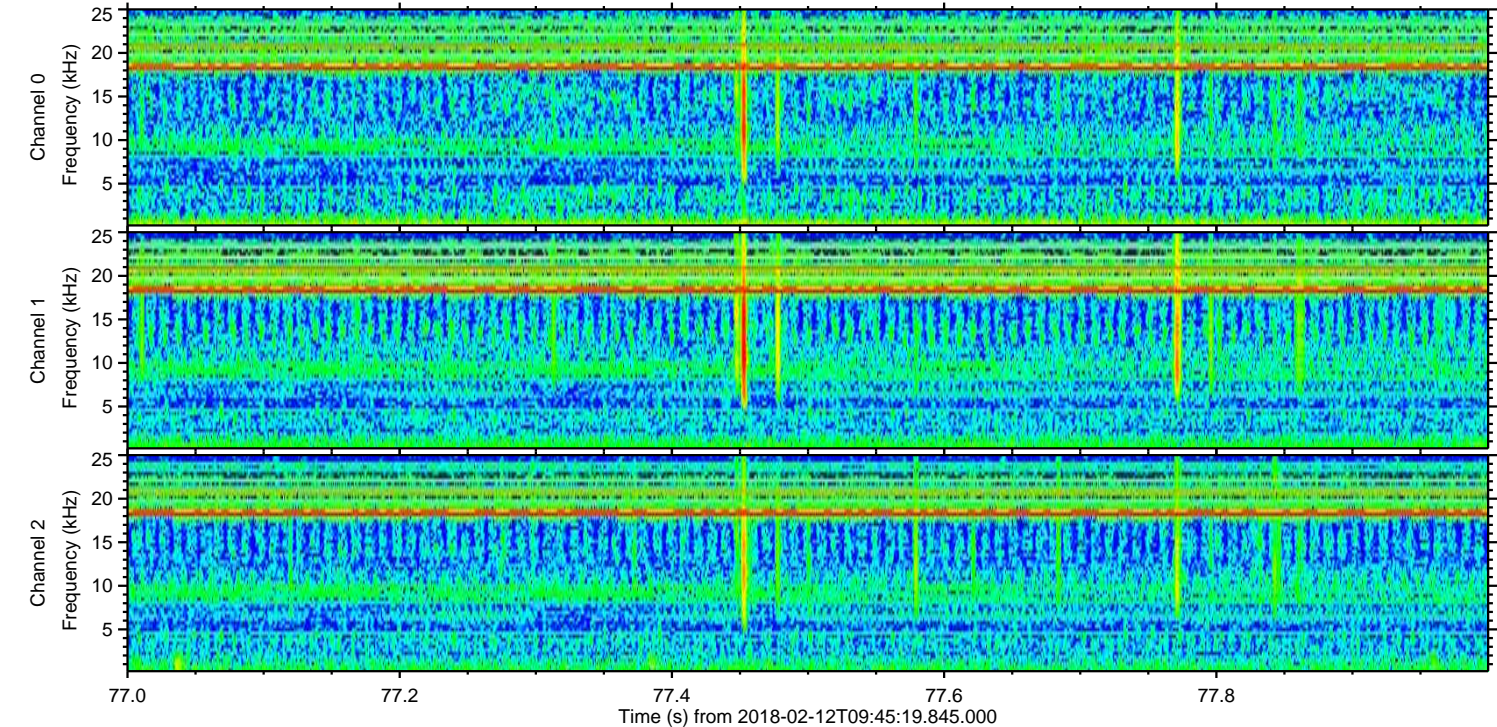
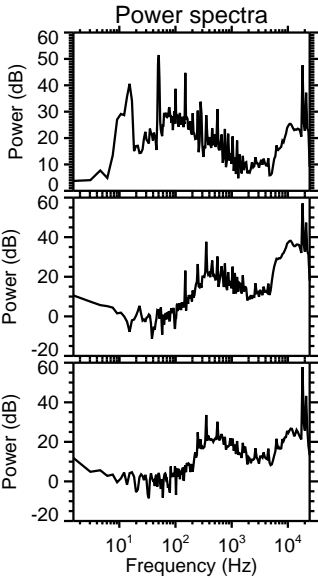
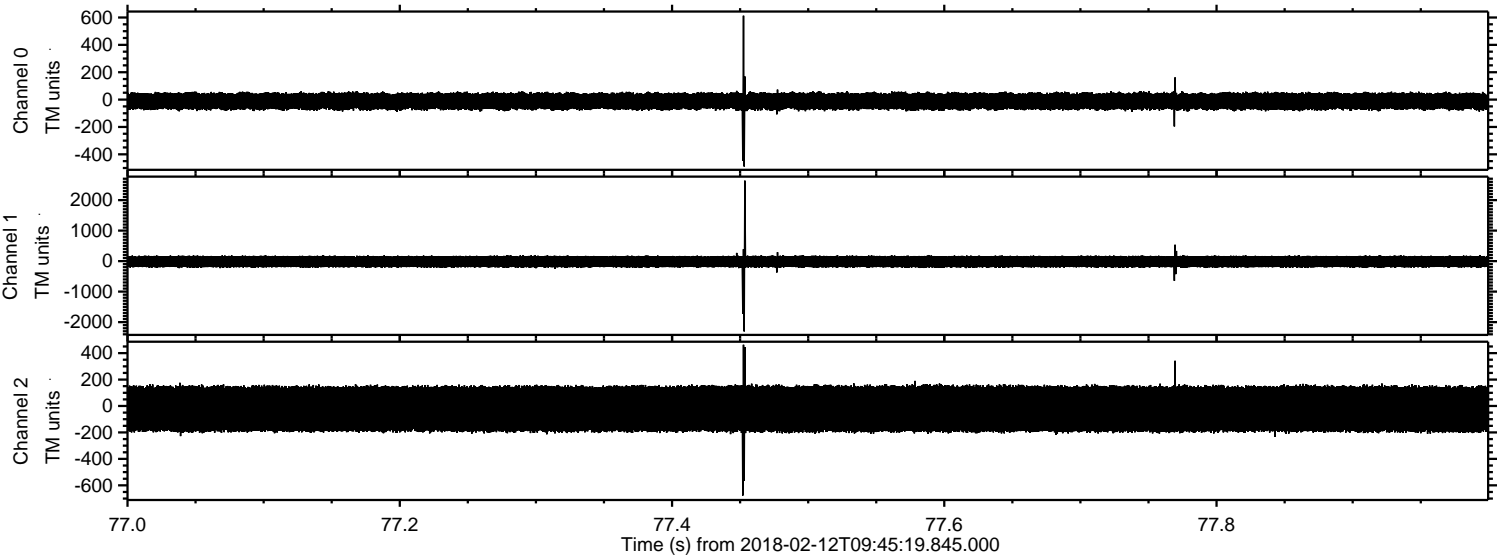
Processed Mon Feb 12 10:52:51 2018 by ELM ver.2012-10-06 from 001__elm20180212_094518__dat00.bin



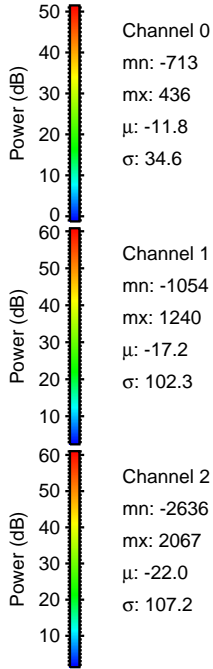
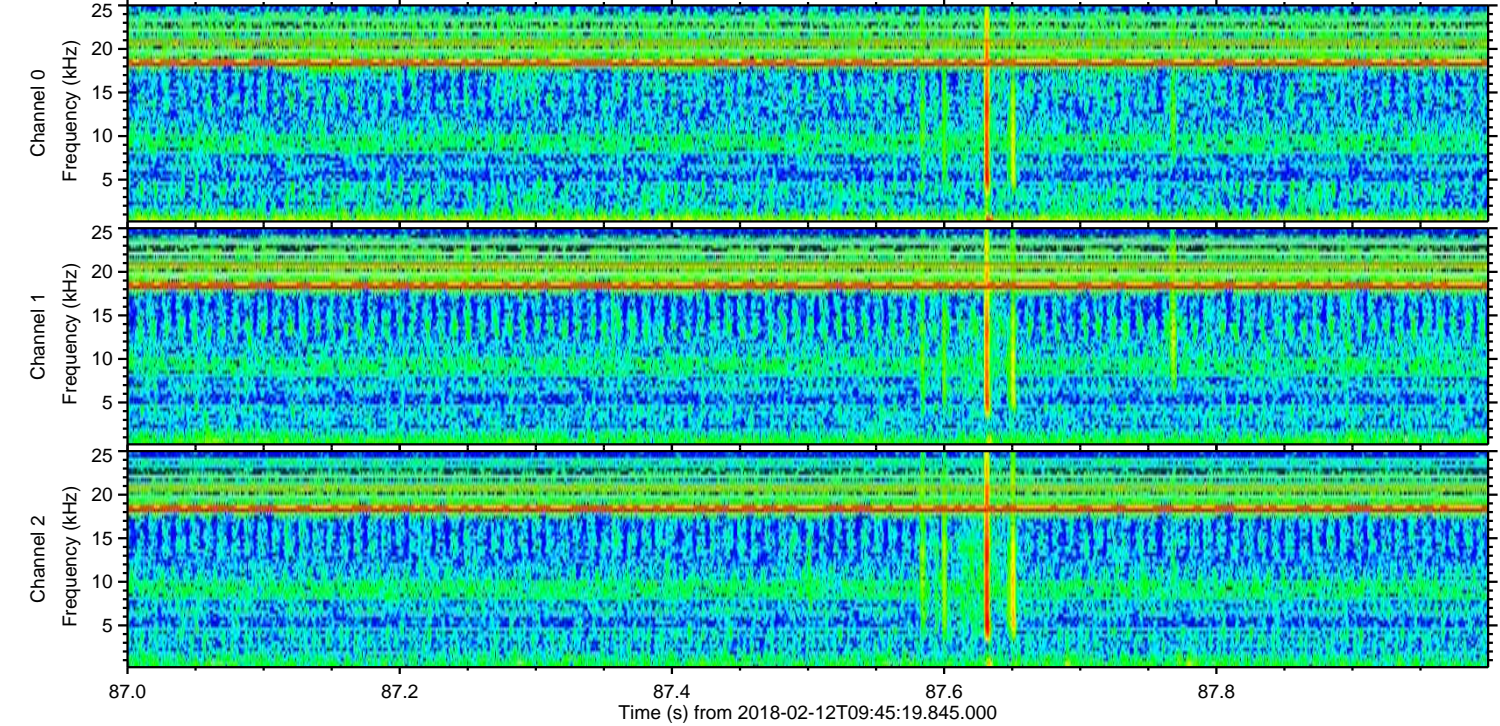
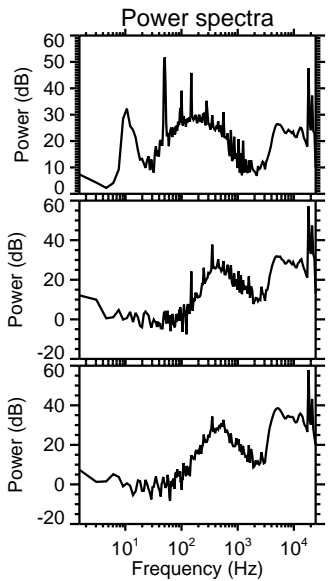
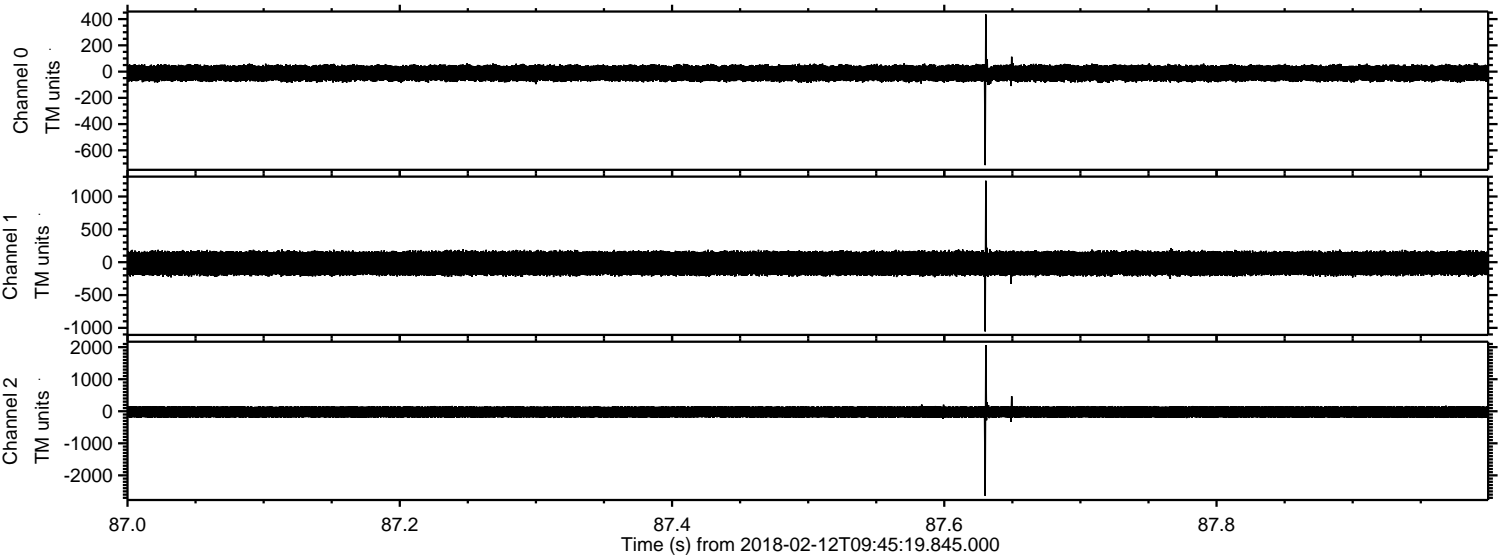
Processed Mon Feb 12 10:52:51 2018 by ELM ver.2012-10-06 from 001__elm20180212_094518__dat00.bin



Processed Mon Feb 12 10:52:52 2018 by ELM ver.2012-10-06 from 001__elm20180212_094518__dat00.bin

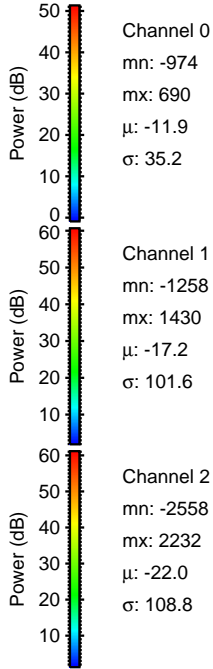
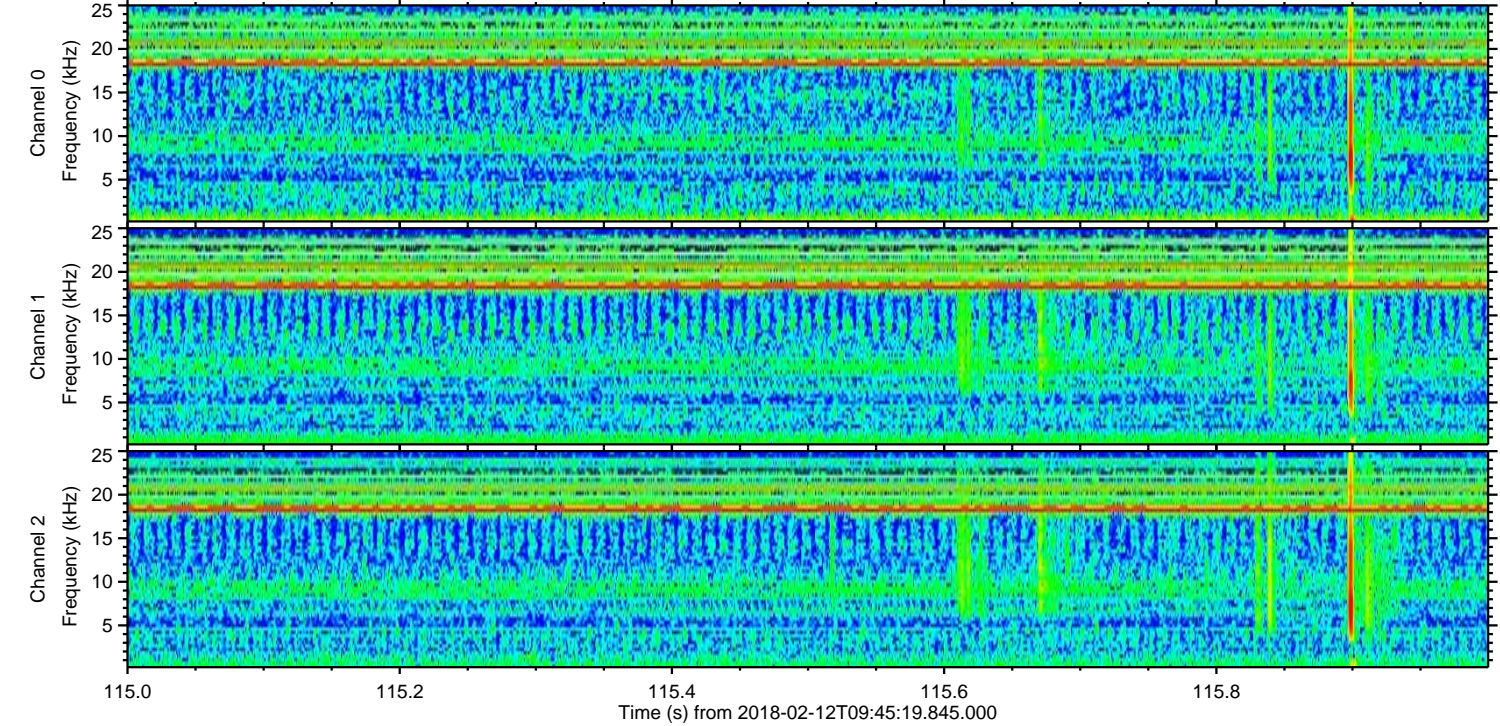
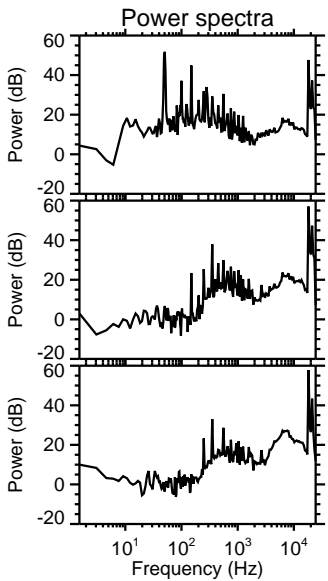
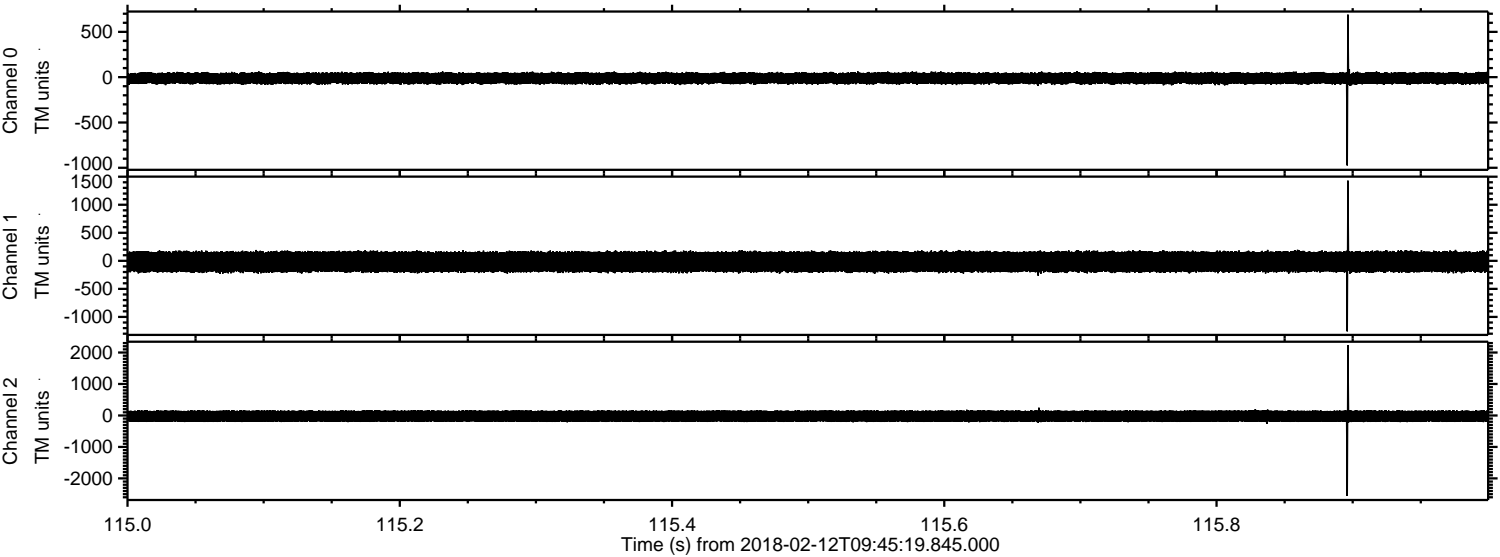


Processed Mon Feb 12 10:52:53 2018 by ELM ver.2012-10-06 from 001__elm20180212_094518__dat00.bin

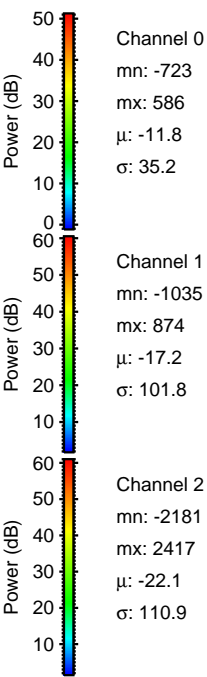
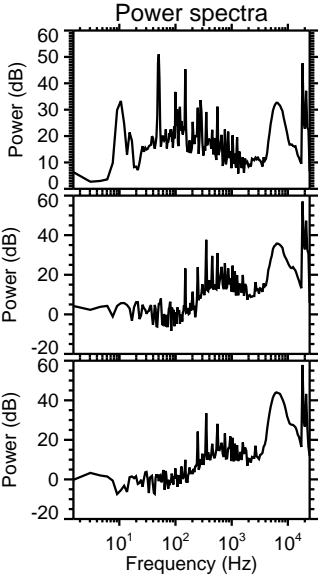
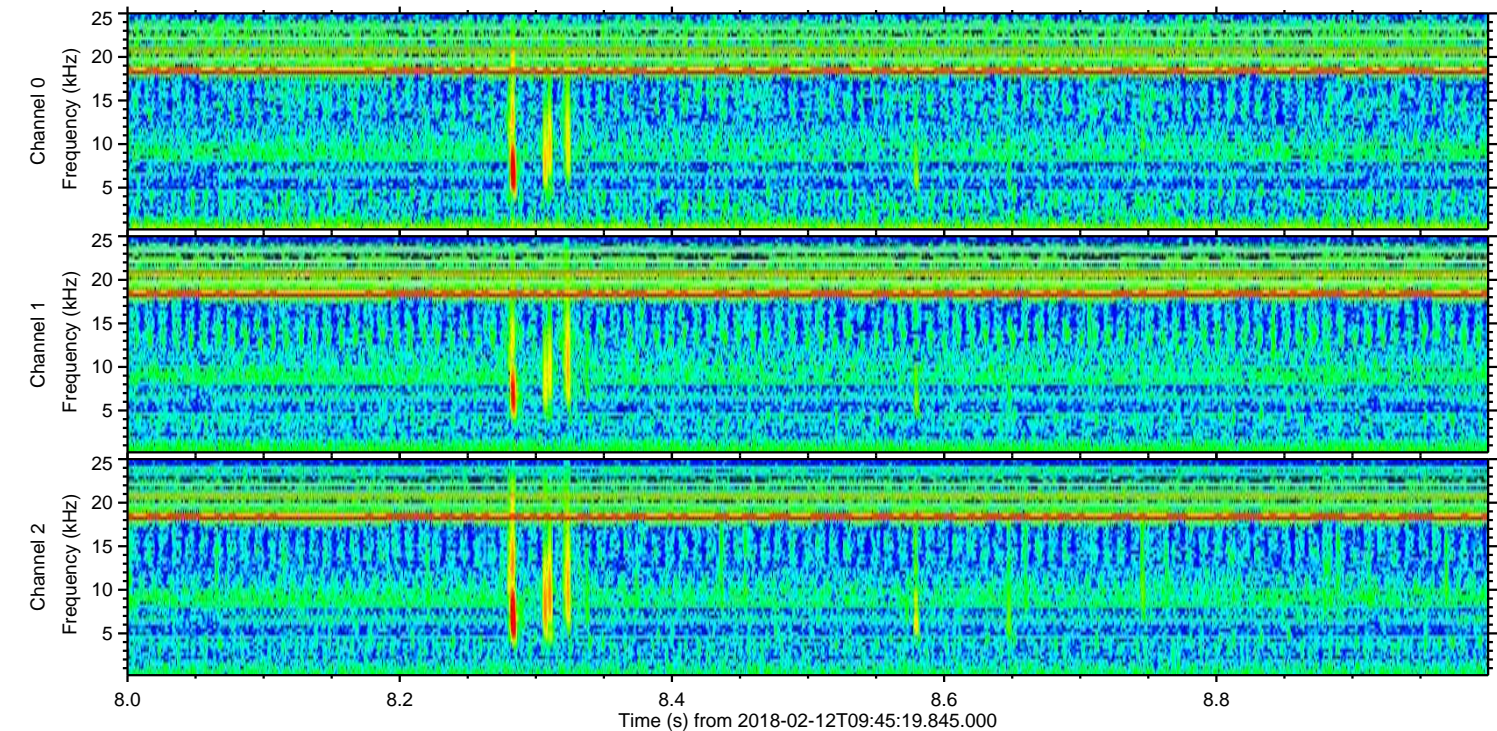
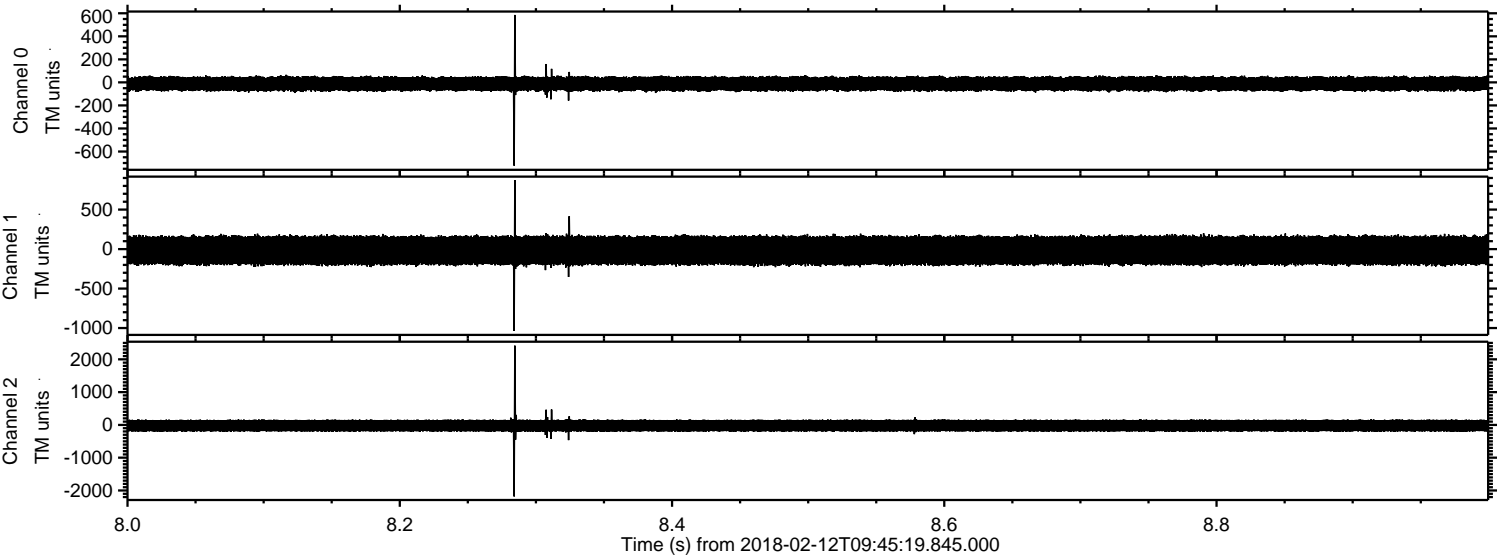


ELMAVAN 3D WAVEFORMS (Measured data sampled at 50 kHz) 50999 packets of 144 samples from 2018-02-12T09:45:19.845.000. Part 116/147

Processed Mon Feb 12 10:52:54 2018 by ELM ver.2012-10-06 from 001__elm20180212_094518__dat00.bin

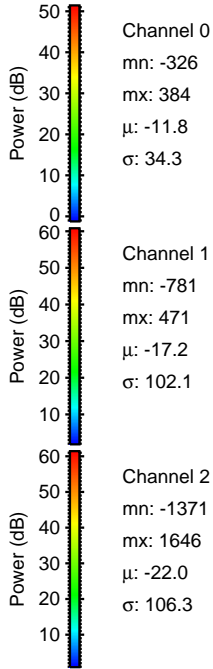
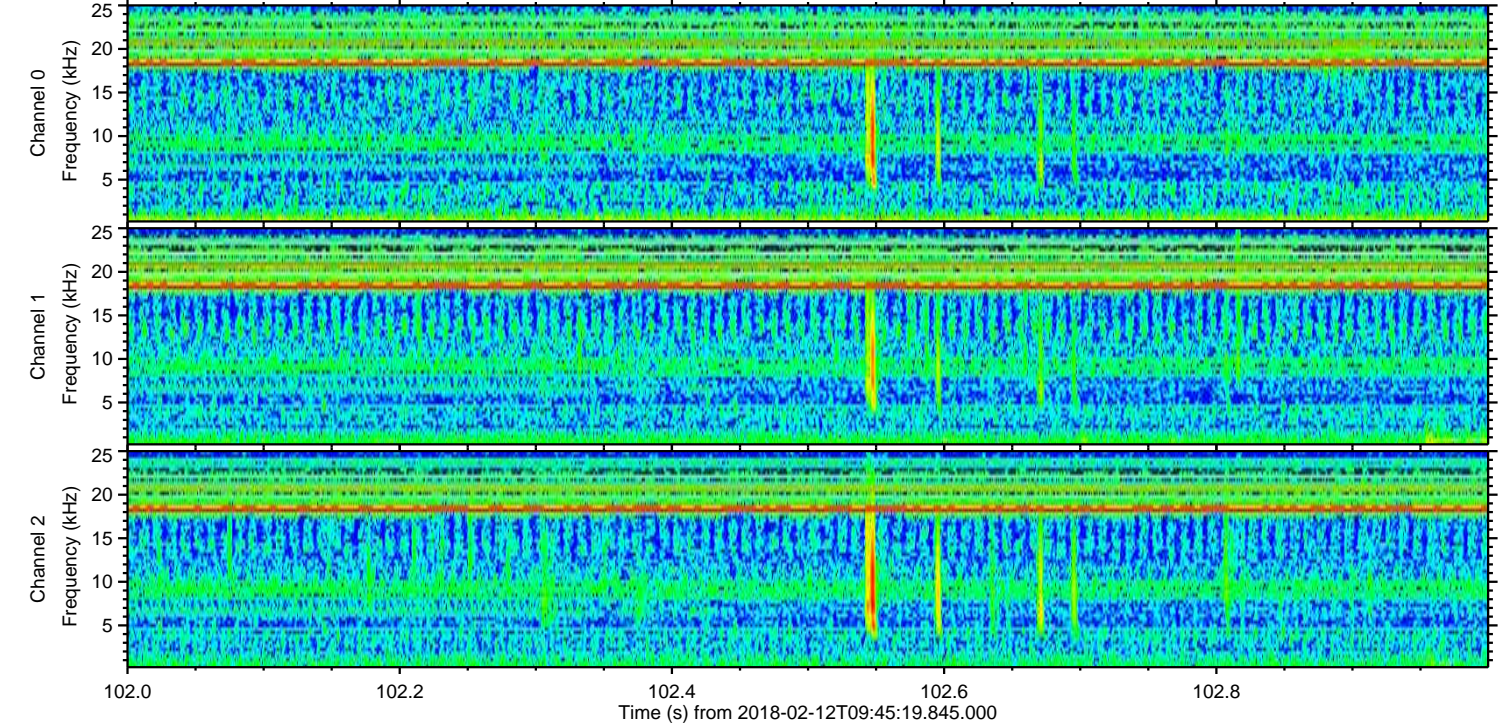
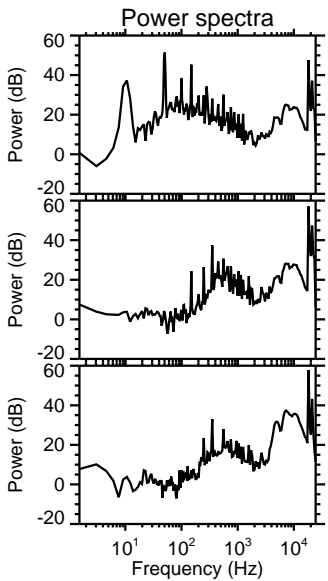
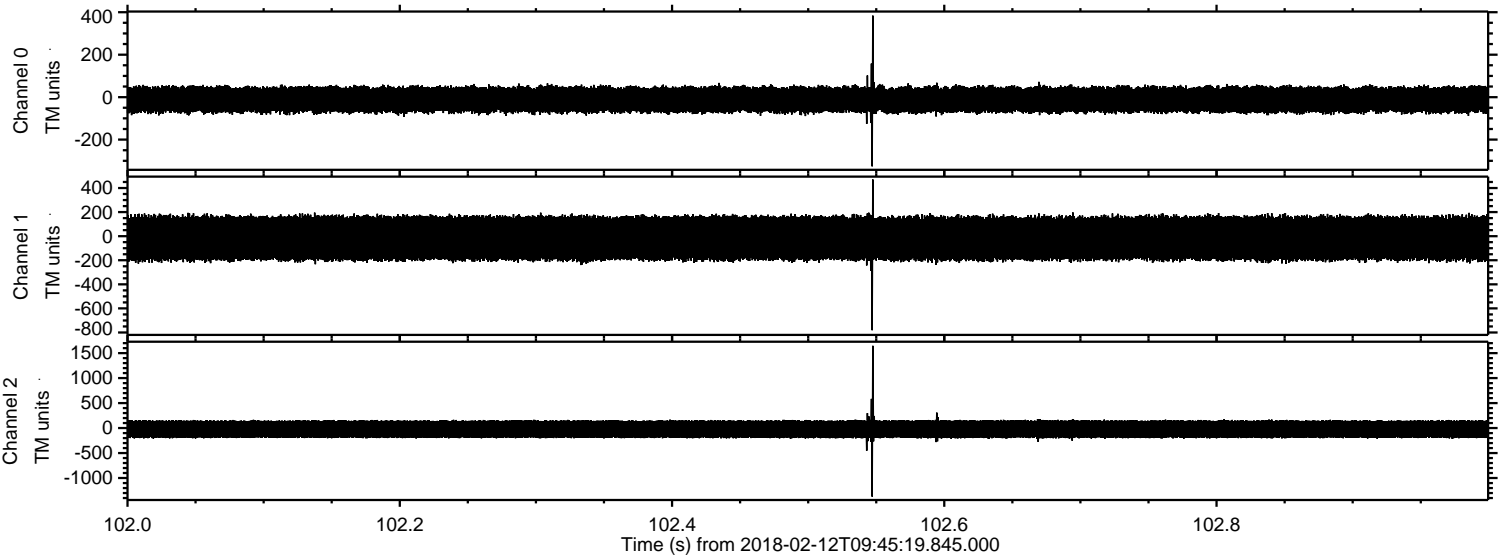


Processed Mon Feb 12 10:52:54 2018 by ELM ver.2012-10-06 from 001__elm20180212_094518__dat00.bin

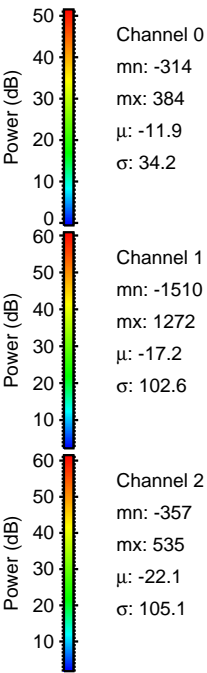
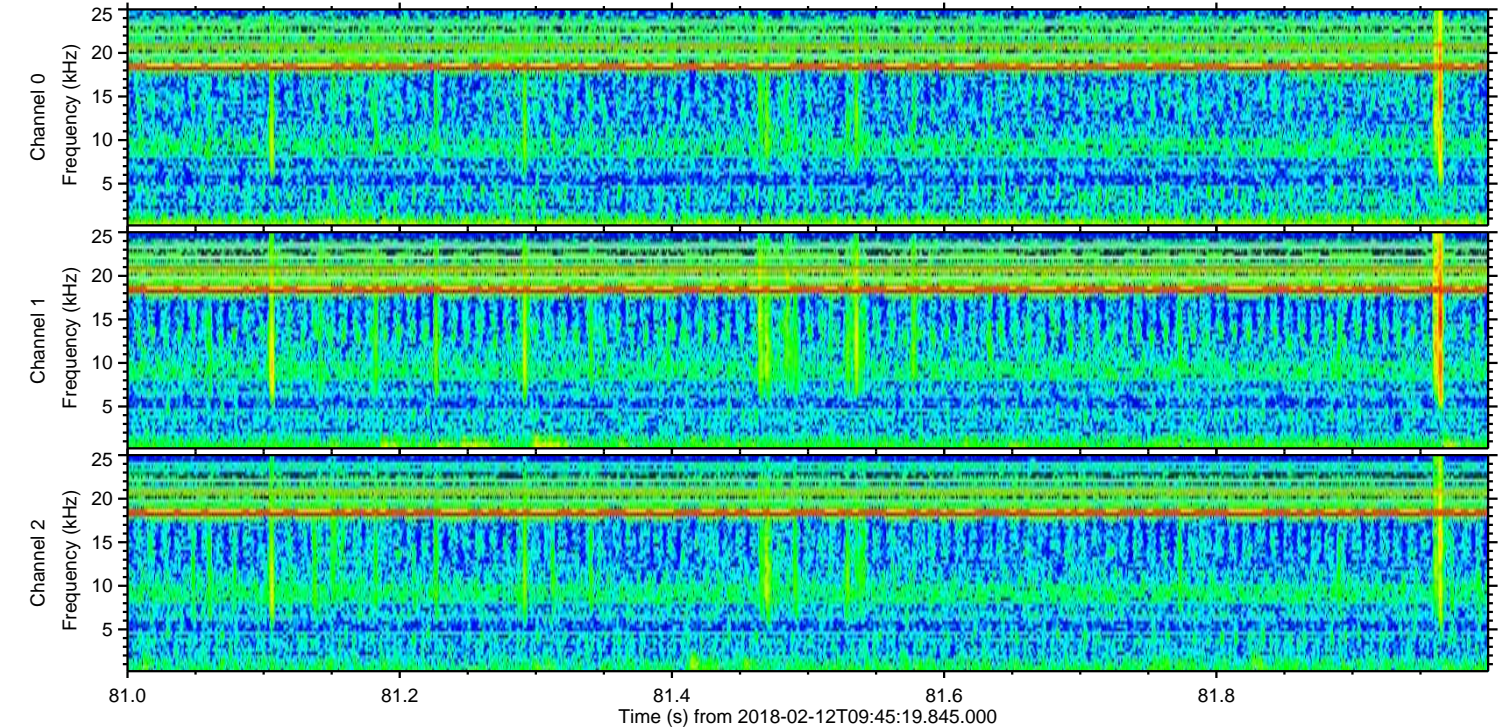
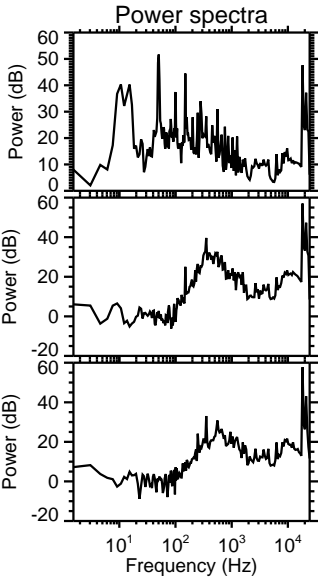
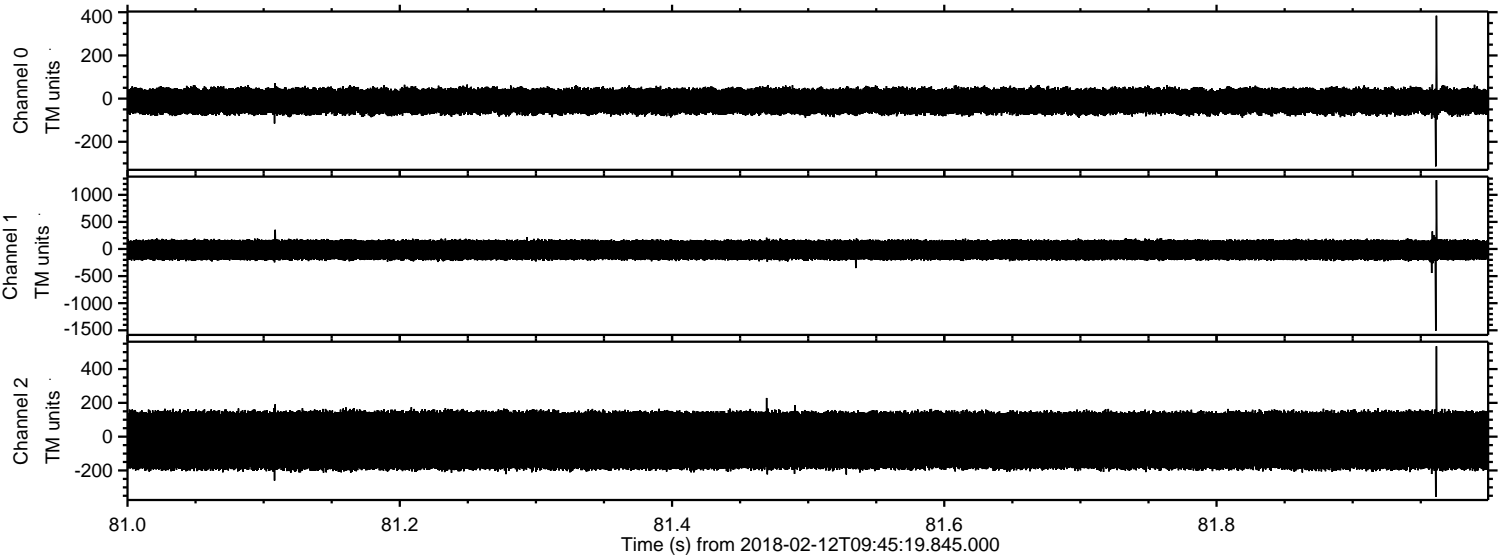


ELMAVAN 3D WAVEFORMS (Measured data sampled at 50 kHz) 50999 packets of 144 samples from 2018-02-12T09:45:19.845.000. Part 103/147

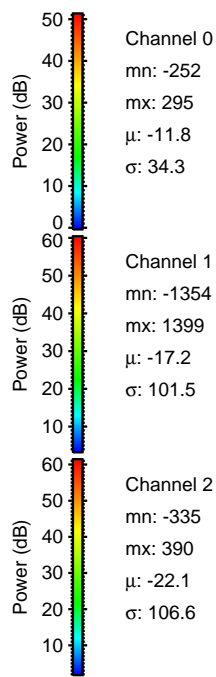
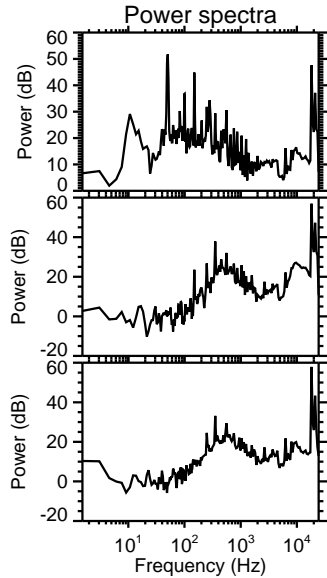
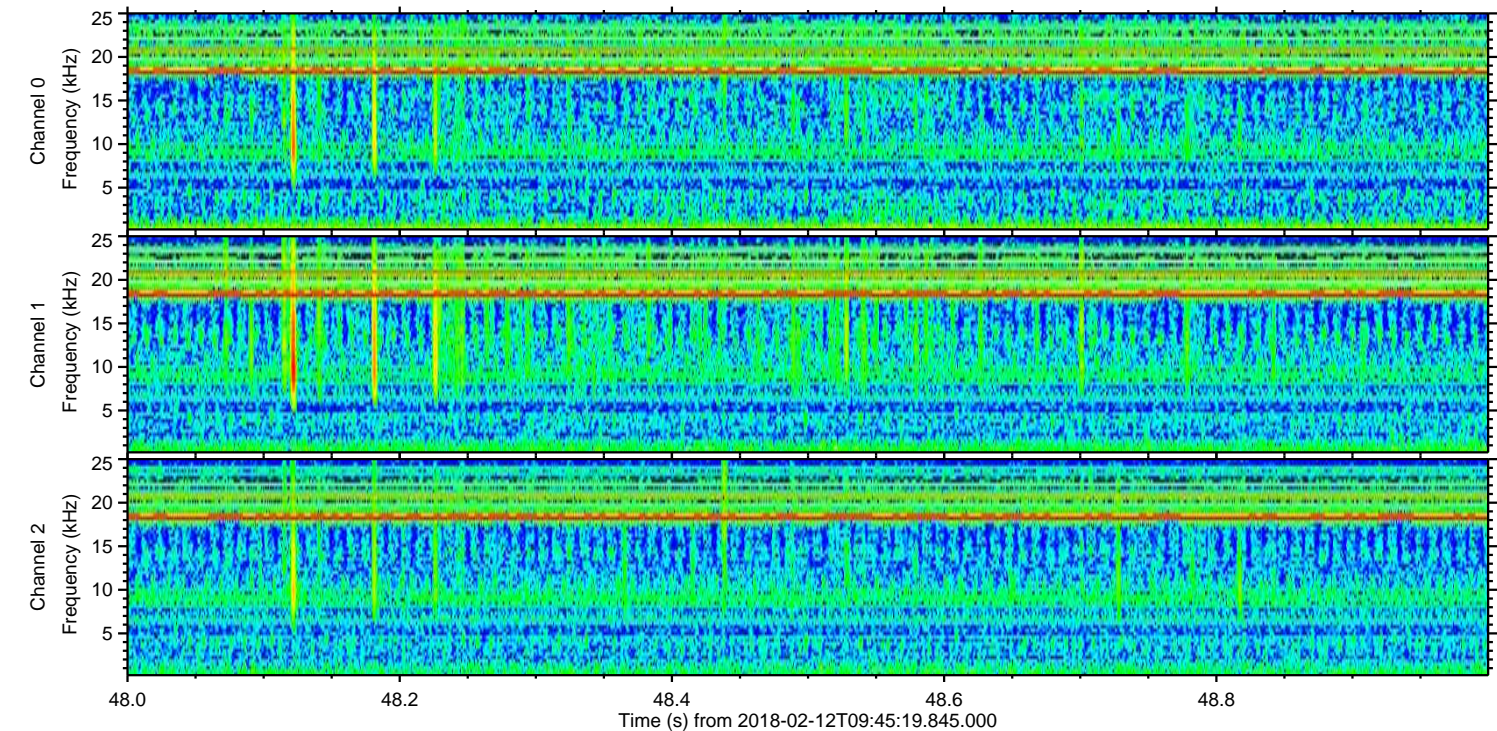
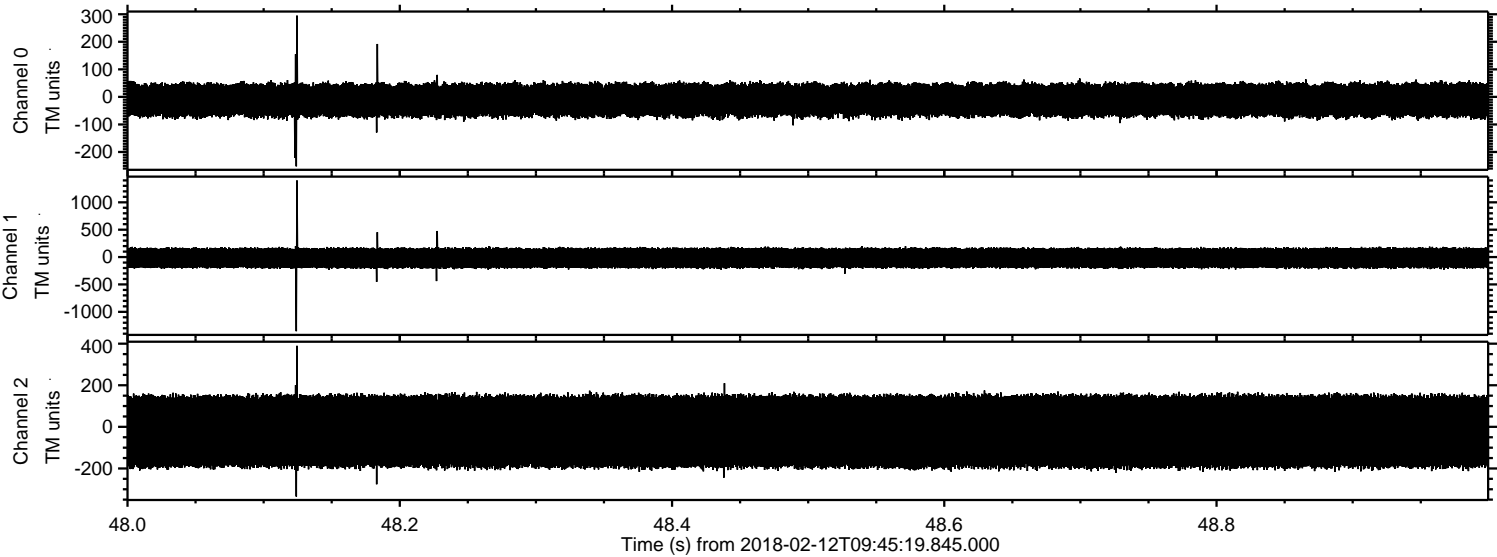
Processed Mon Feb 12 10:52:55 2018 by ELM ver.2012-10-06 from 001__elm20180212_094518__dat00.bin



Processed Mon Feb 12 10:52:56 2018 by ELM ver.2012-10-06 from 001__elm20180212_094518__dat00.bin



Processed Mon Feb 12 10:52:57 2018 by ELM ver.2012-10-06 from 001__elm20180212_094518__dat00.bin



Channel 0
mn: -252
mx: 295
 μ : -11.8
 σ : 34.3

Channel 1
mn: -1354
mx: 1399
 μ : -17.2
 σ : 101.5

Channel 2
mn: -335
mx: 390
 μ : -22.1
 σ : 106.6

Processed Mon Feb 12 10:52:58 2018 by ELM ver.2012-10-06 from 001__elm20180212_094518__dat00.bin

