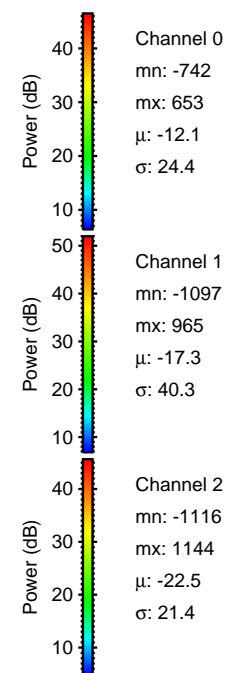
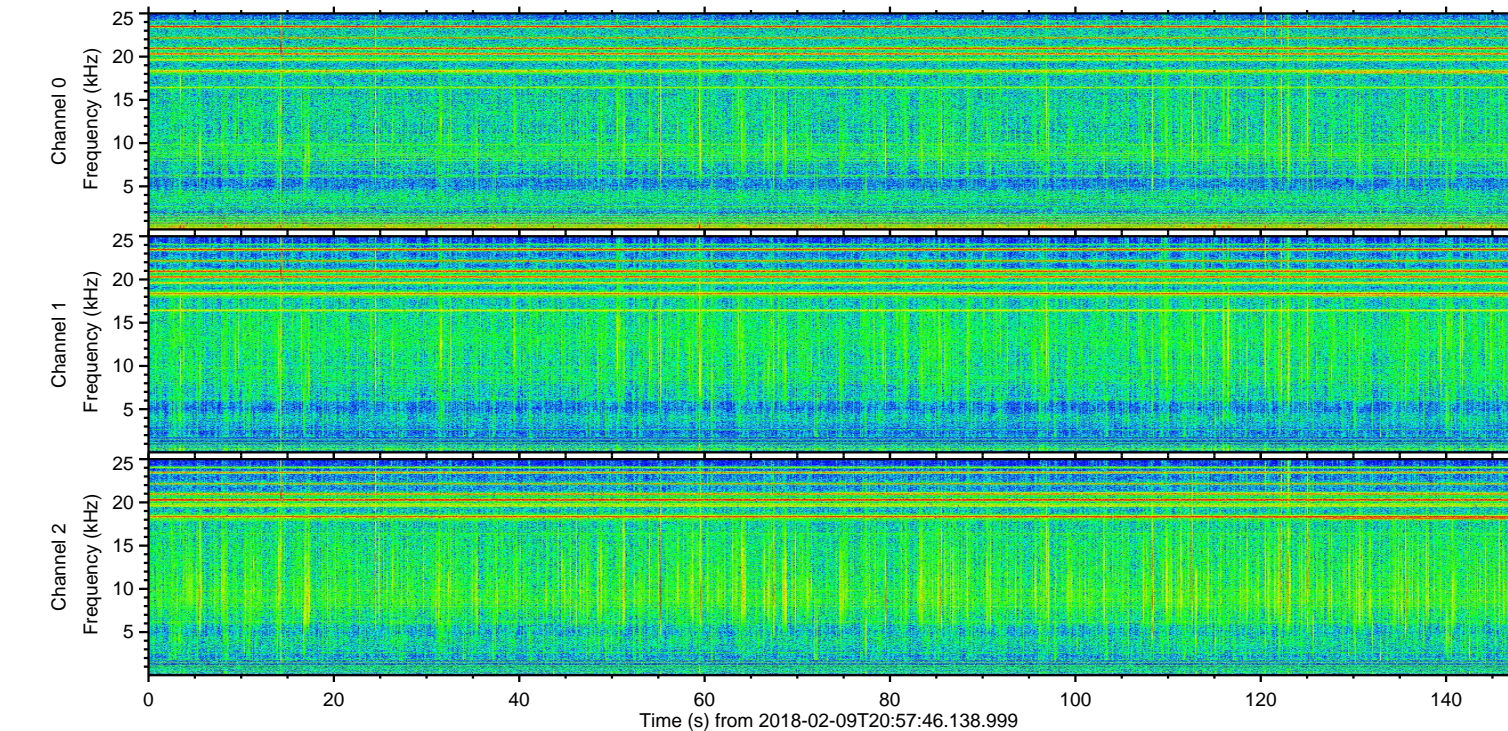
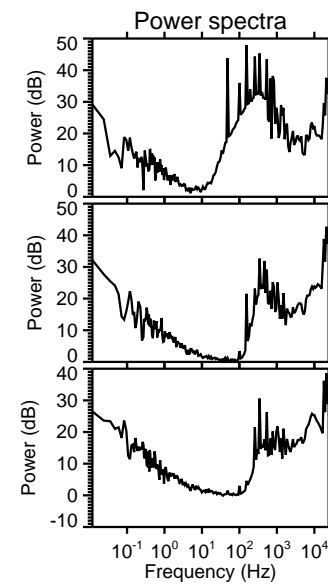
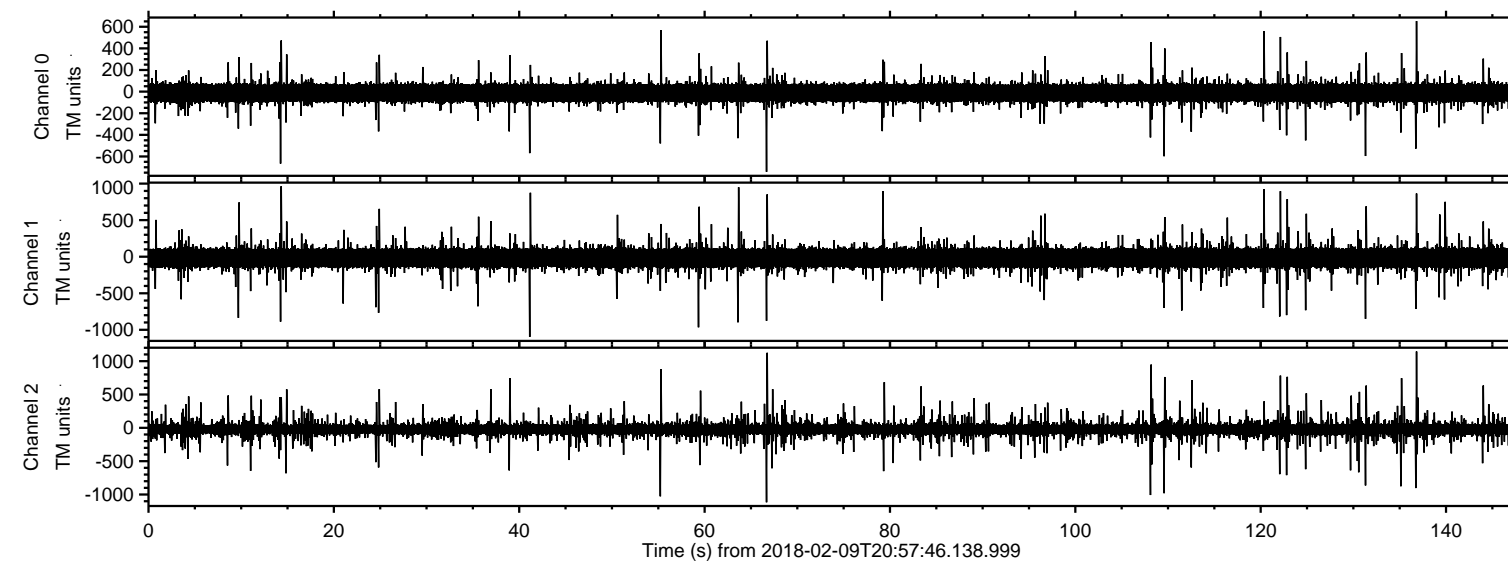


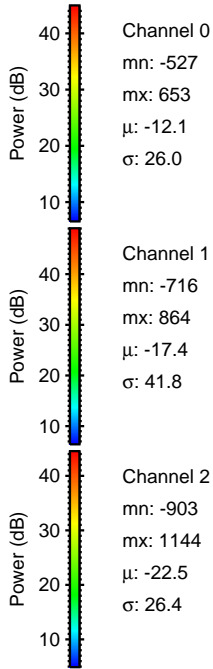
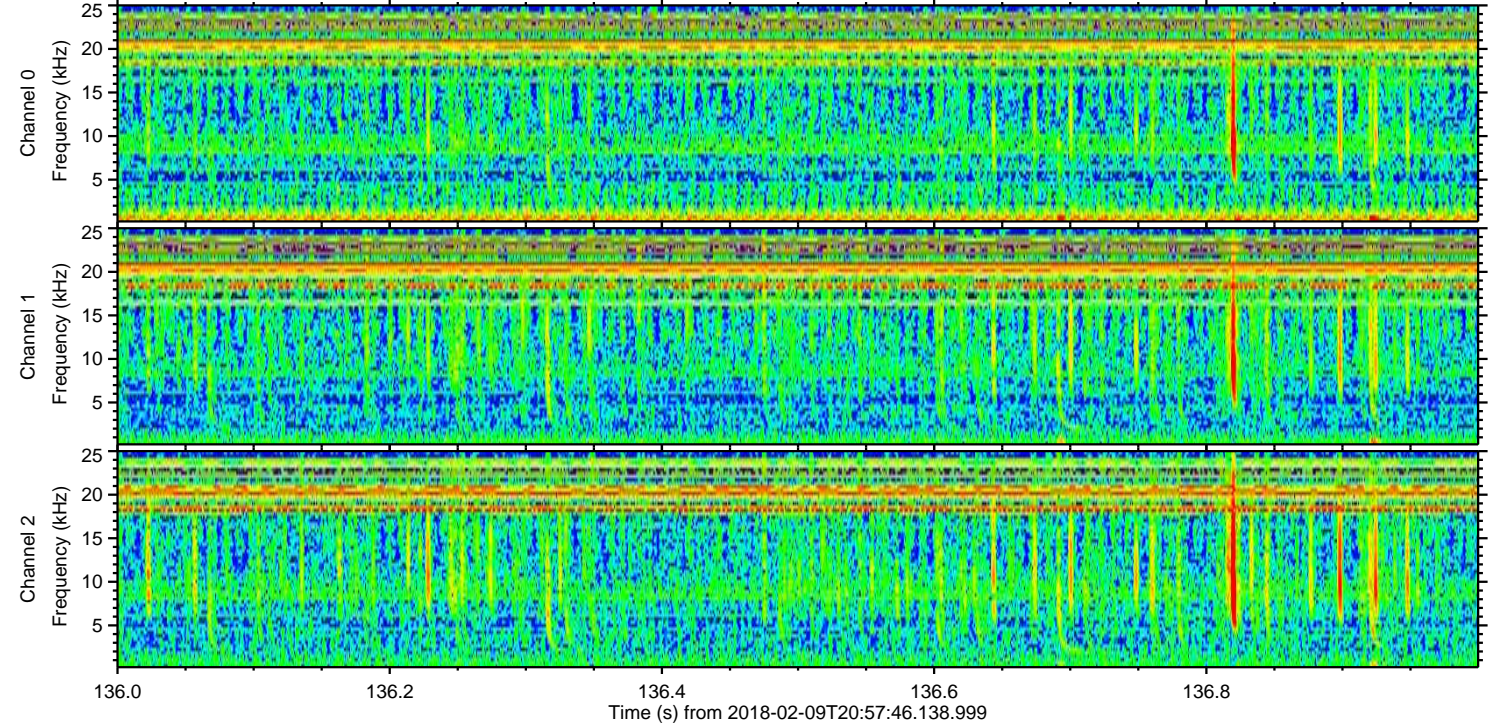
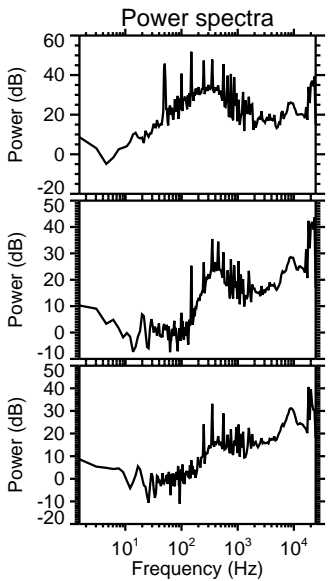
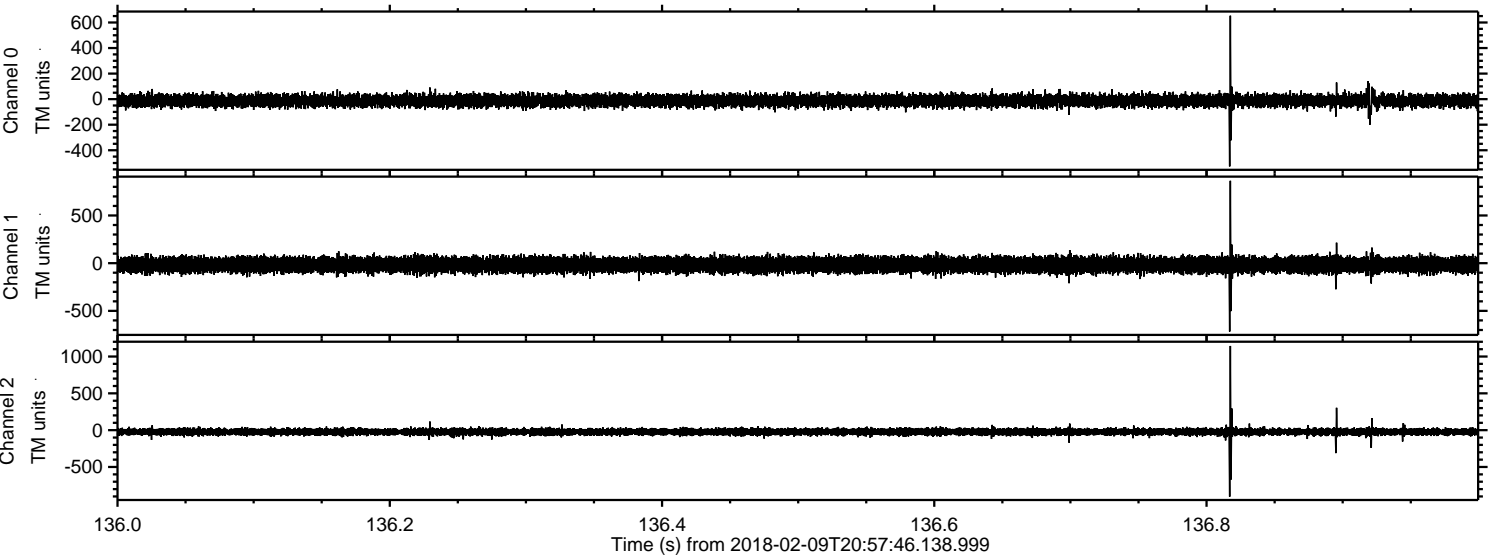
ELMAVAN 3D WAVEFORMS (Measured data sampled at 50 kHz) 51000 packets of 144 samples from 2018-02-09T20:57:46.138.999.

Processed Fri Feb 9 22:06:13 2018 by ELM ver.2012-10-06 from 001__elm20180209_205745__dat00.bin

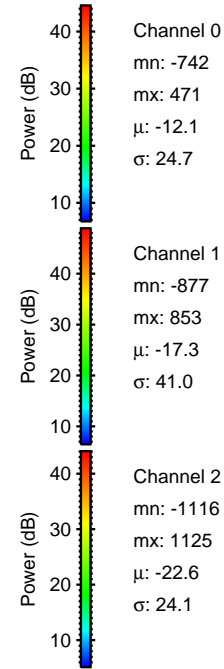
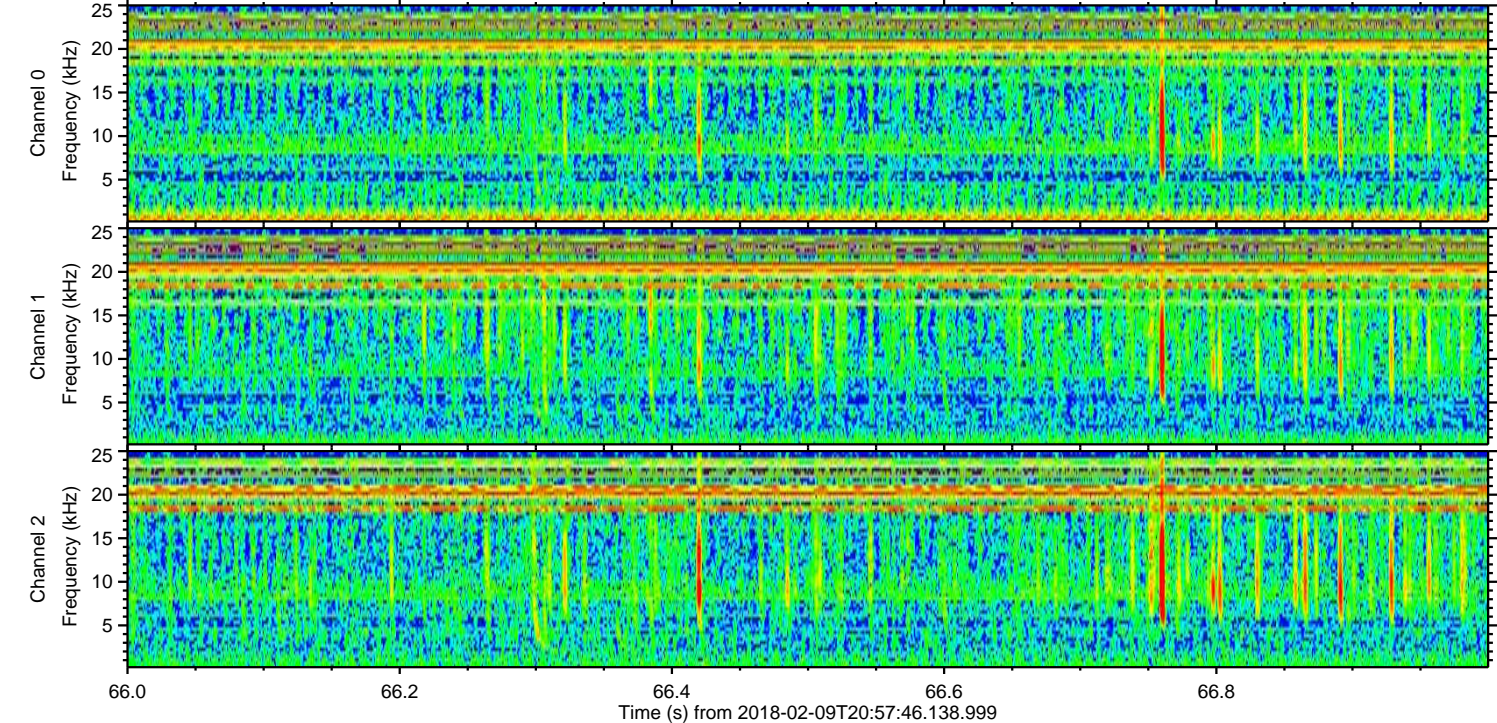
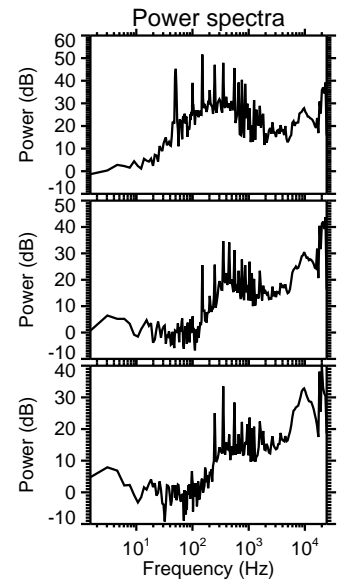
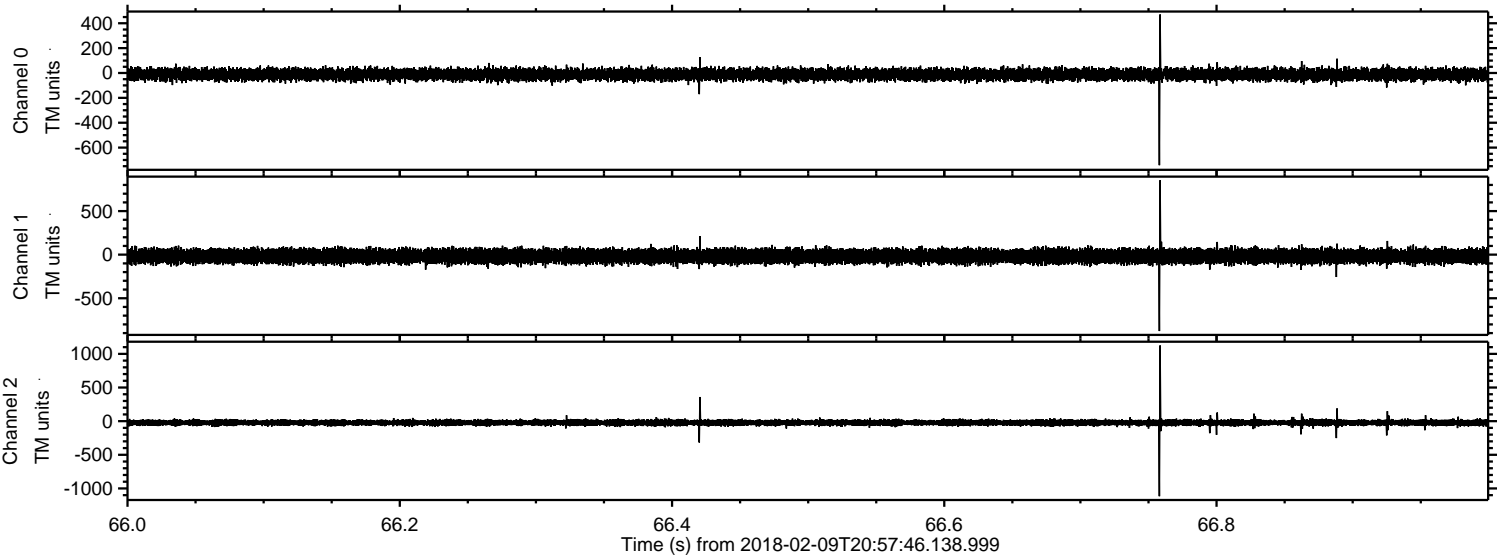


ELMAVAN 3D WAVEFORMS (Measured data sampled at 50 kHz) 51000 packets of 144 samples from 2018-02-09T20:57:46.138.999. Part 137/147

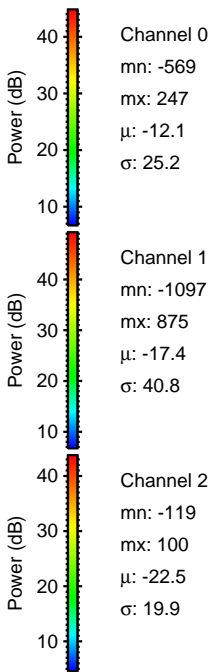
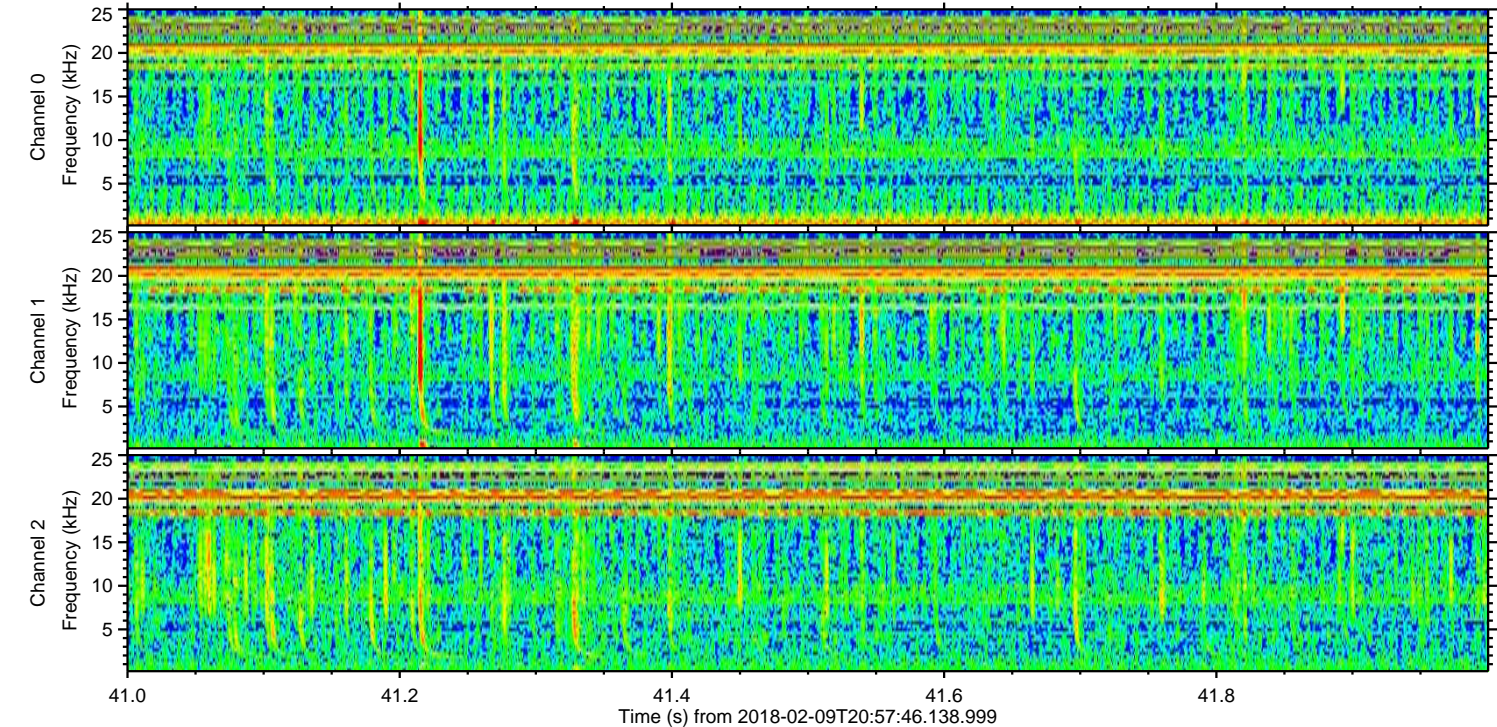
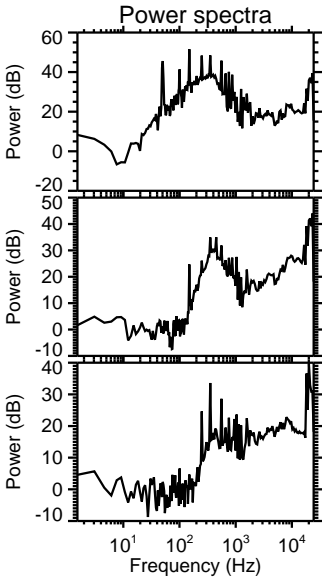
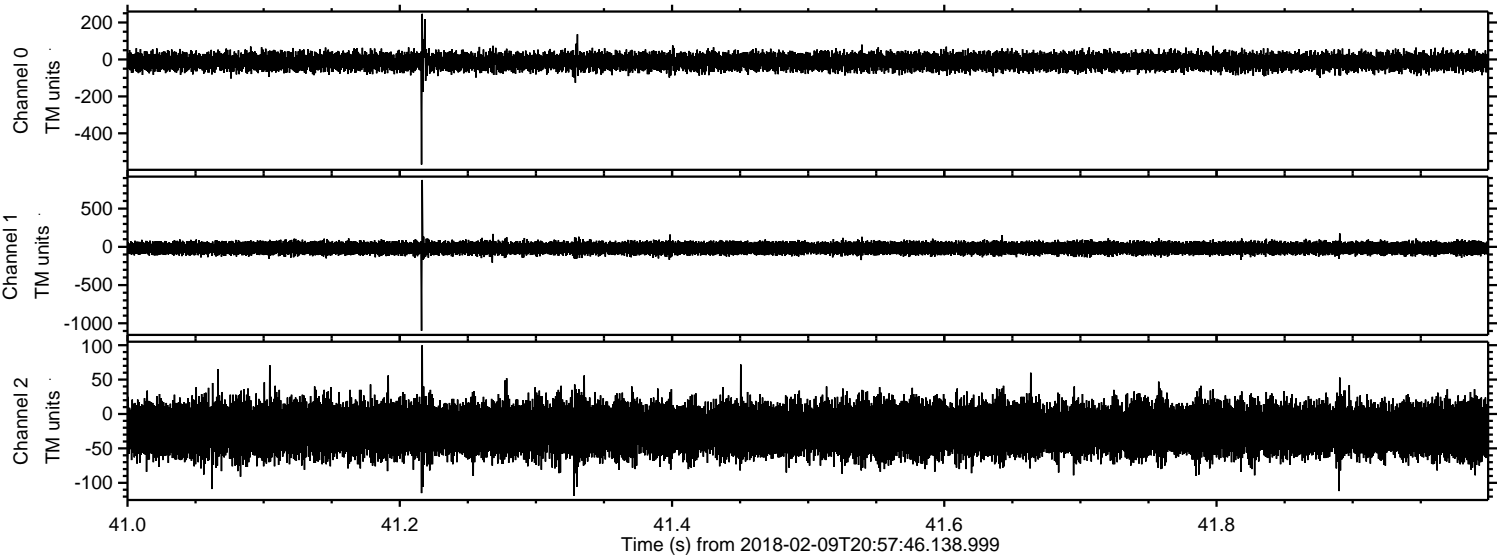
Processed Fri Feb 9 22:06:24 2018 by ELM ver.2012-10-06 from 001__elm20180209_205745__dat00.bin



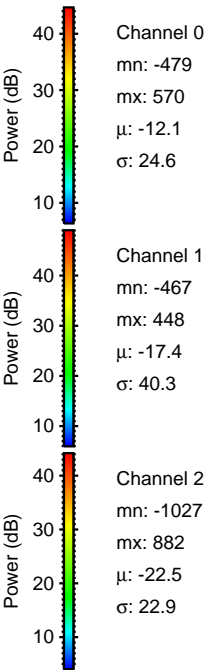
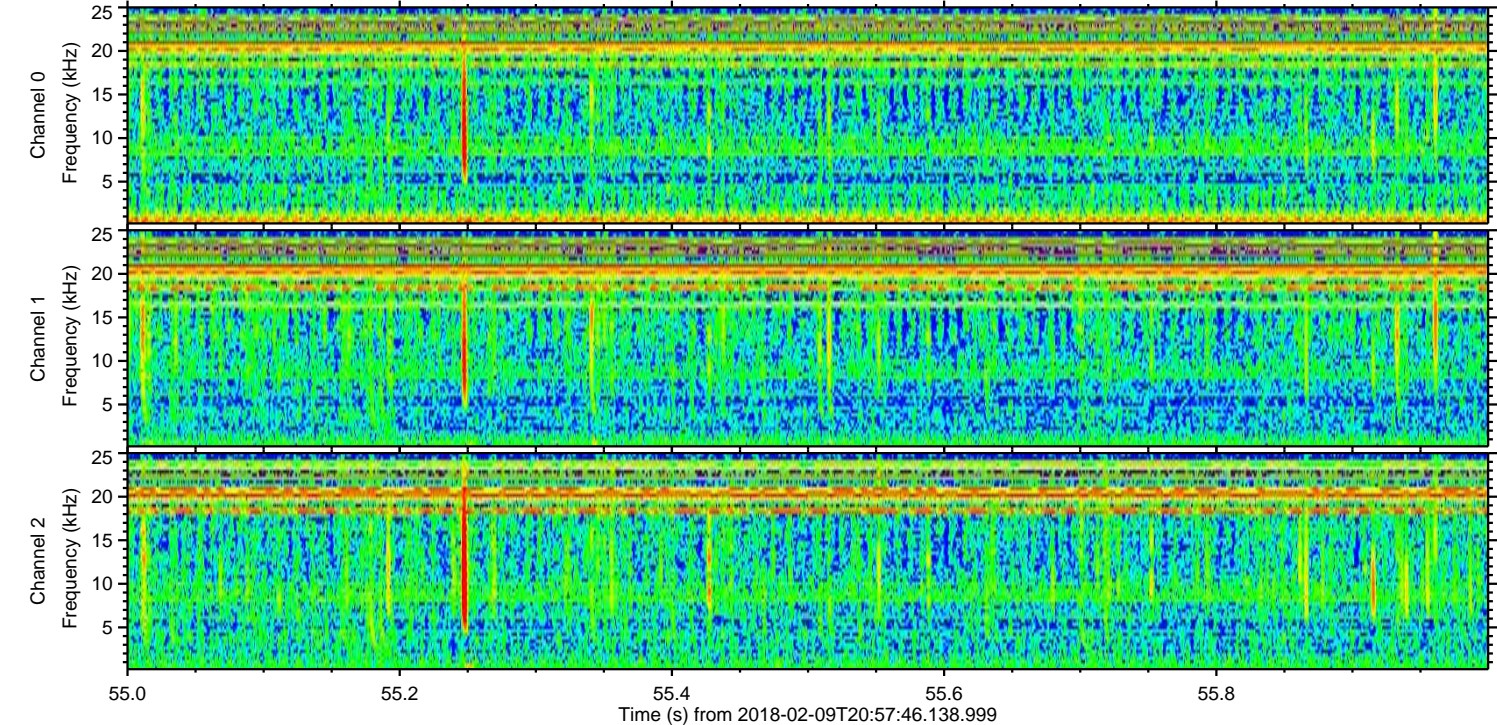
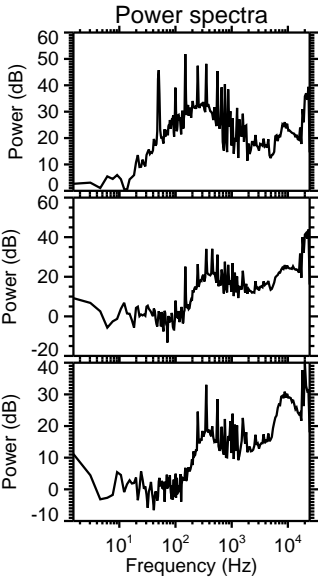
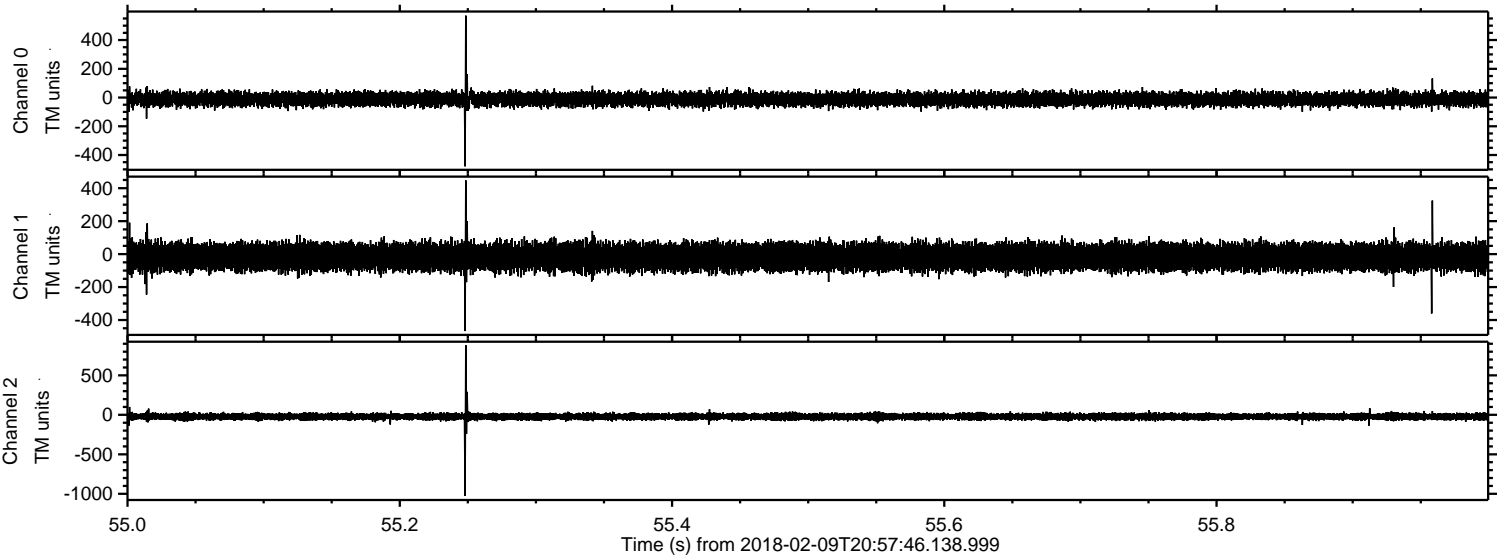
Processed Fri Feb 9 22:06:25 2018 by ELM ver.2012-10-06 from 001__elm20180209_205745__dat00.bin



Processed Fri Feb 9 22:06:26 2018 by ELM ver.2012-10-06 from 001__elm20180209_205745__dat00.bin

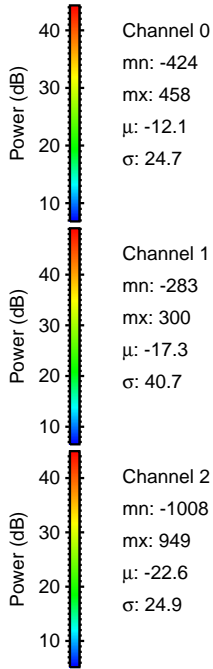
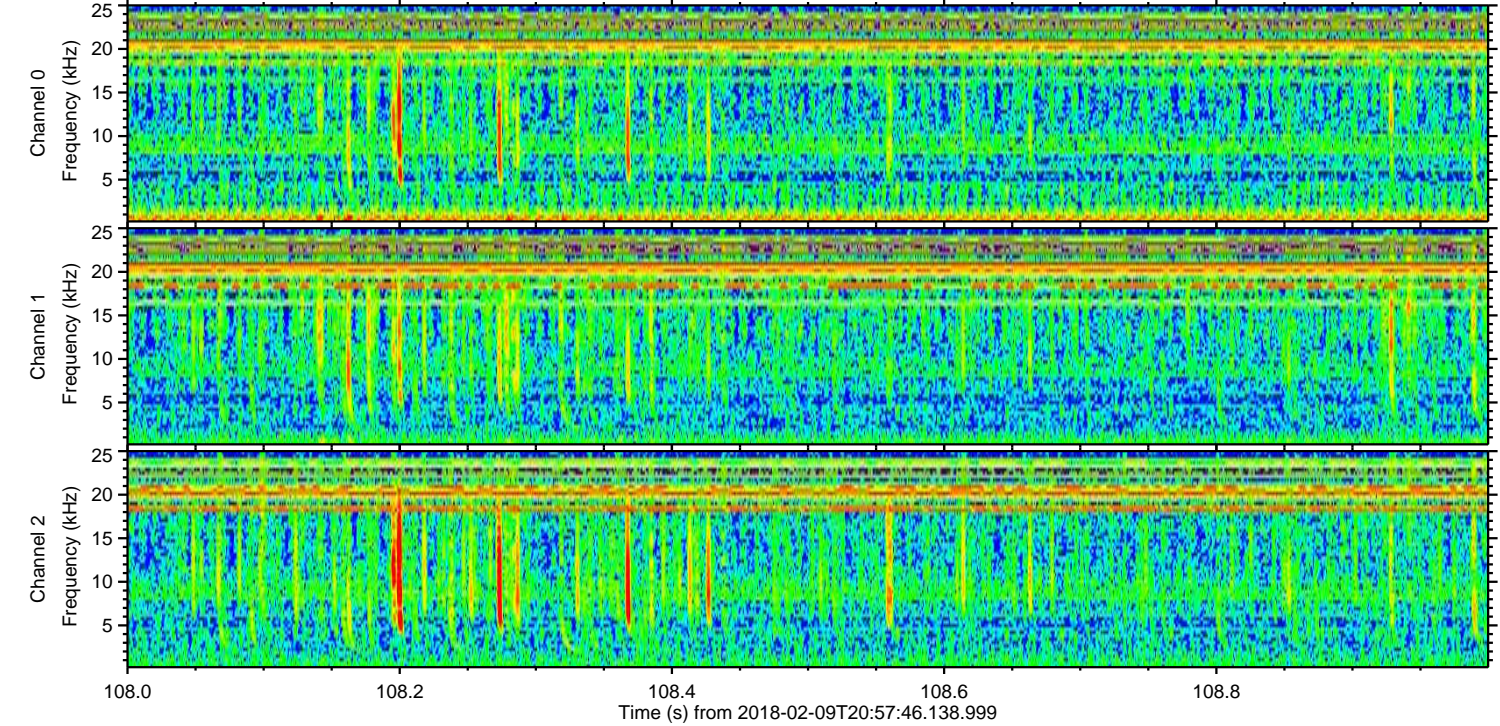
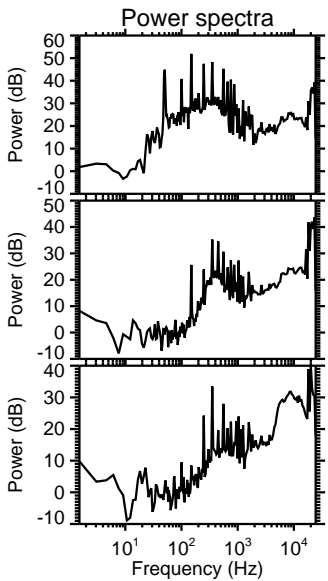
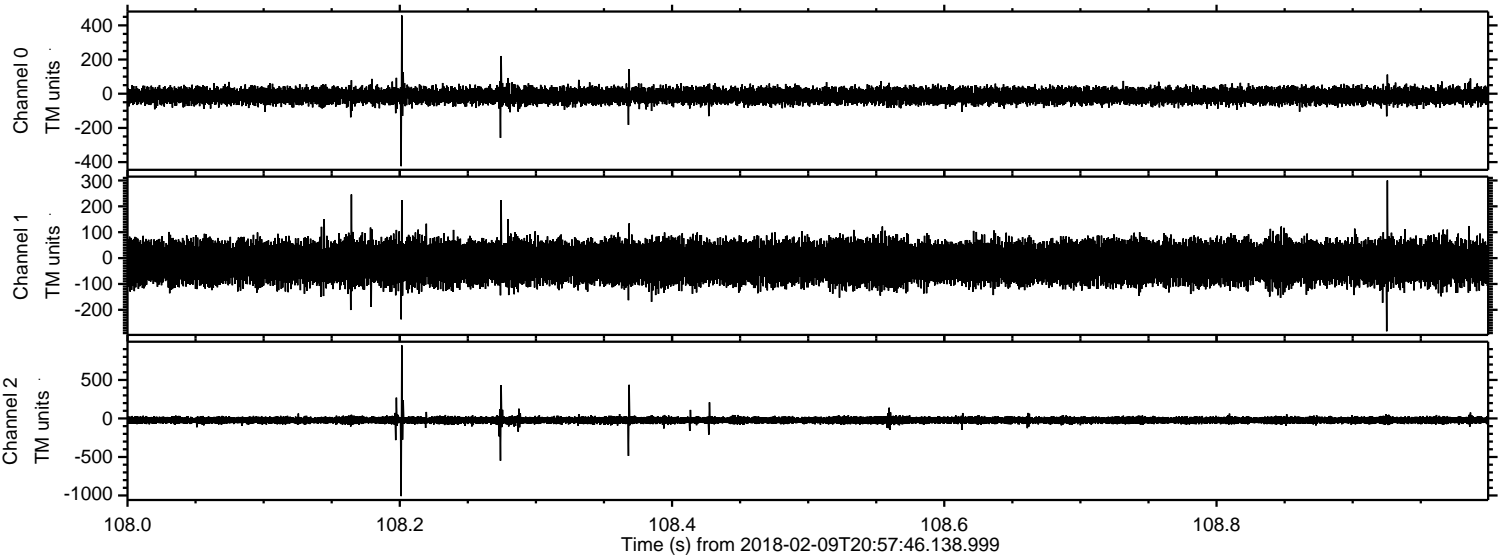


Processed Fri Feb 9 22:06:27 2018 by ELM ver.2012-10-06 from 001__elm20180209_205745__dat00.bin



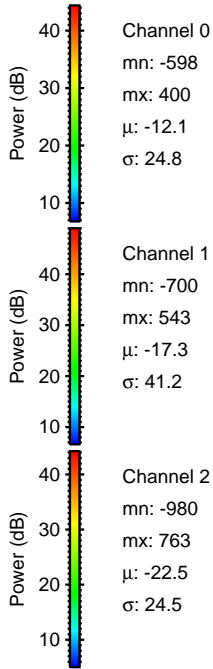
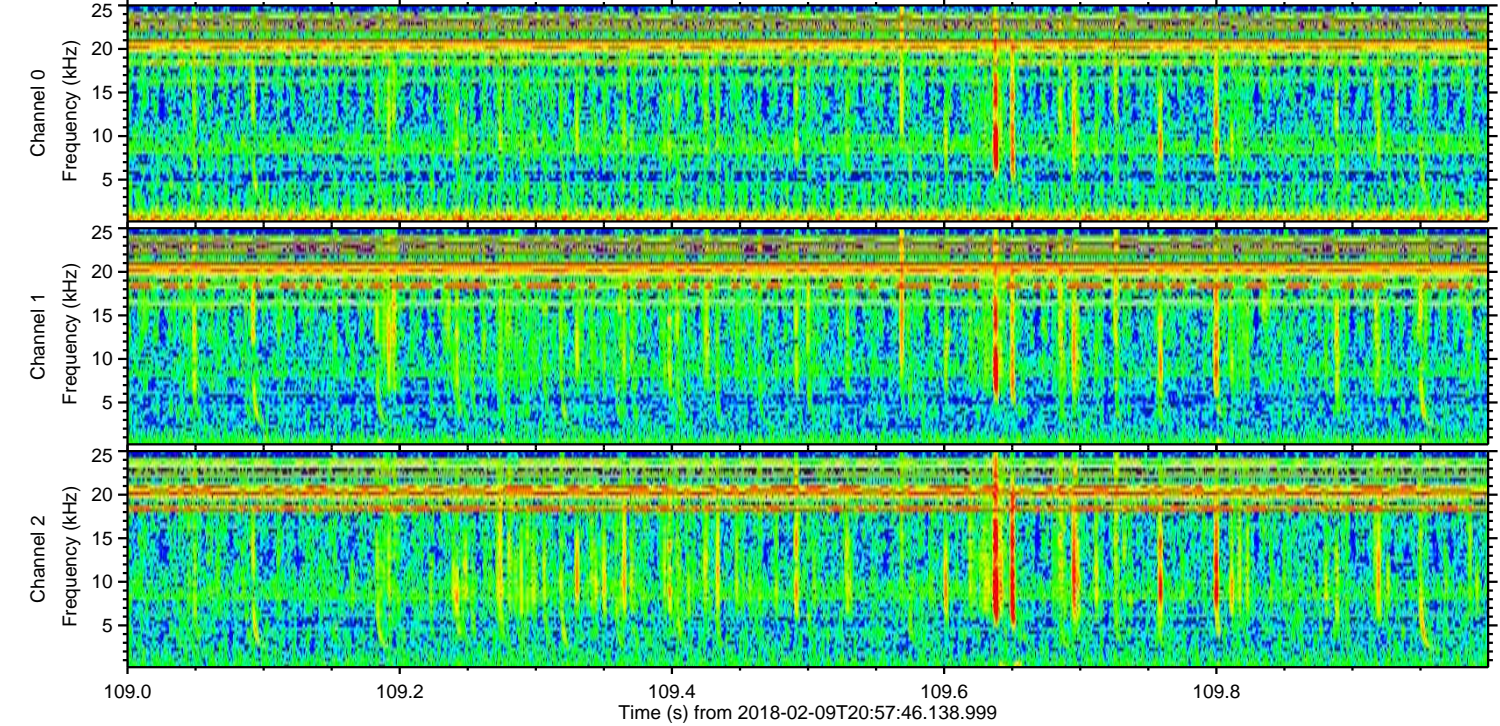
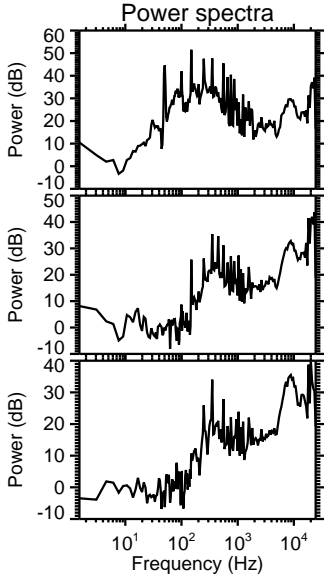
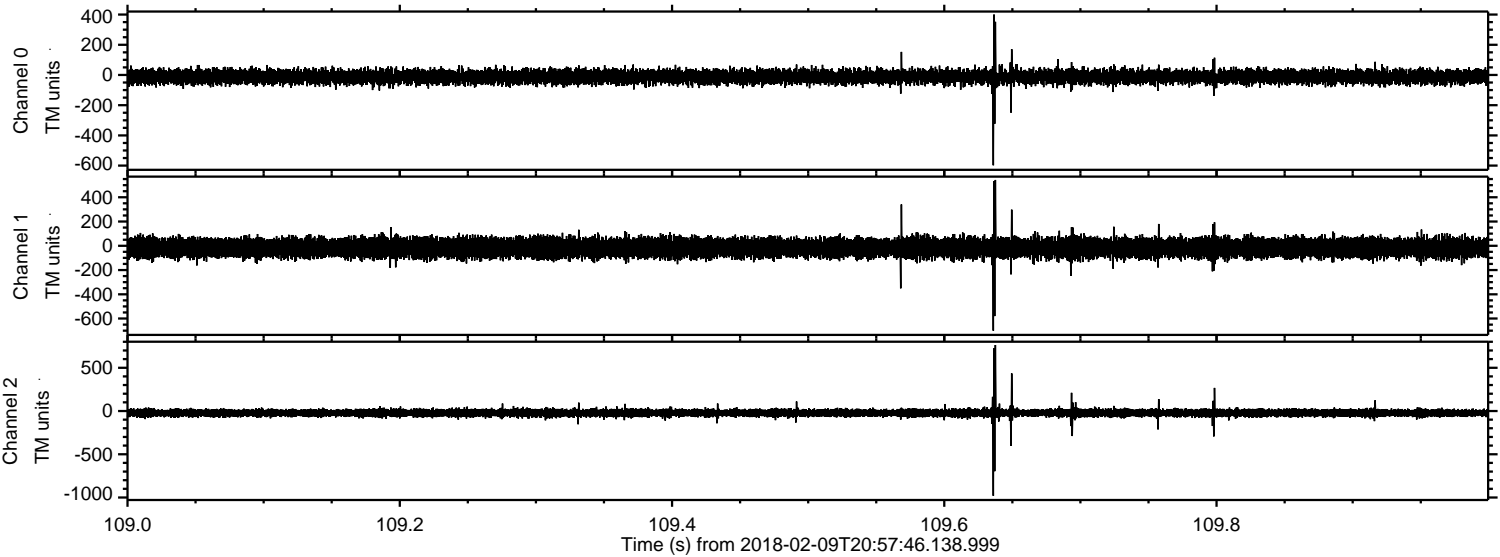
ELMAVAN 3D WAVEFORMS (Measured data sampled at 50 kHz) 51000 packets of 144 samples from 2018-02-09T20:57:46.138.999. Part 109/147

Processed Fri Feb 9 22:06:28 2018 by ELM ver.2012-10-06 from 001__elm20180209_205745__dat00.bin

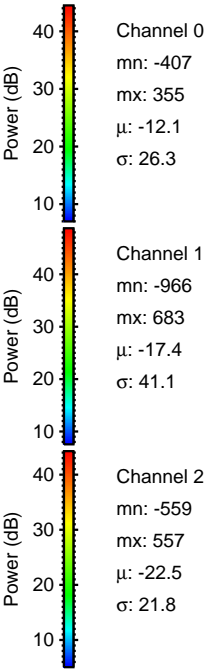
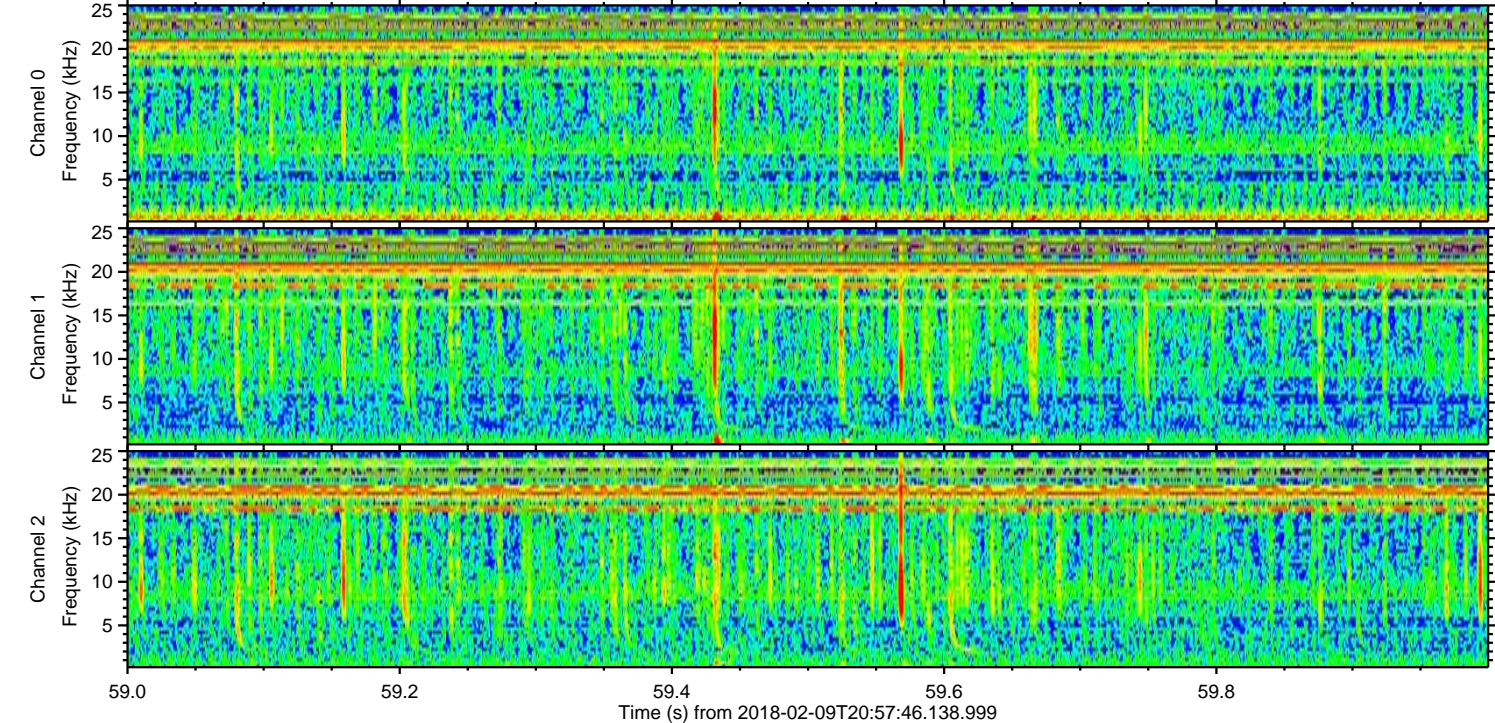
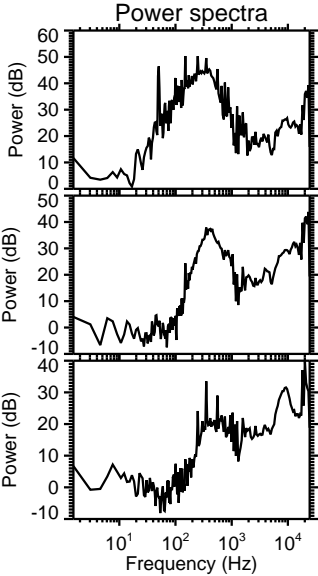
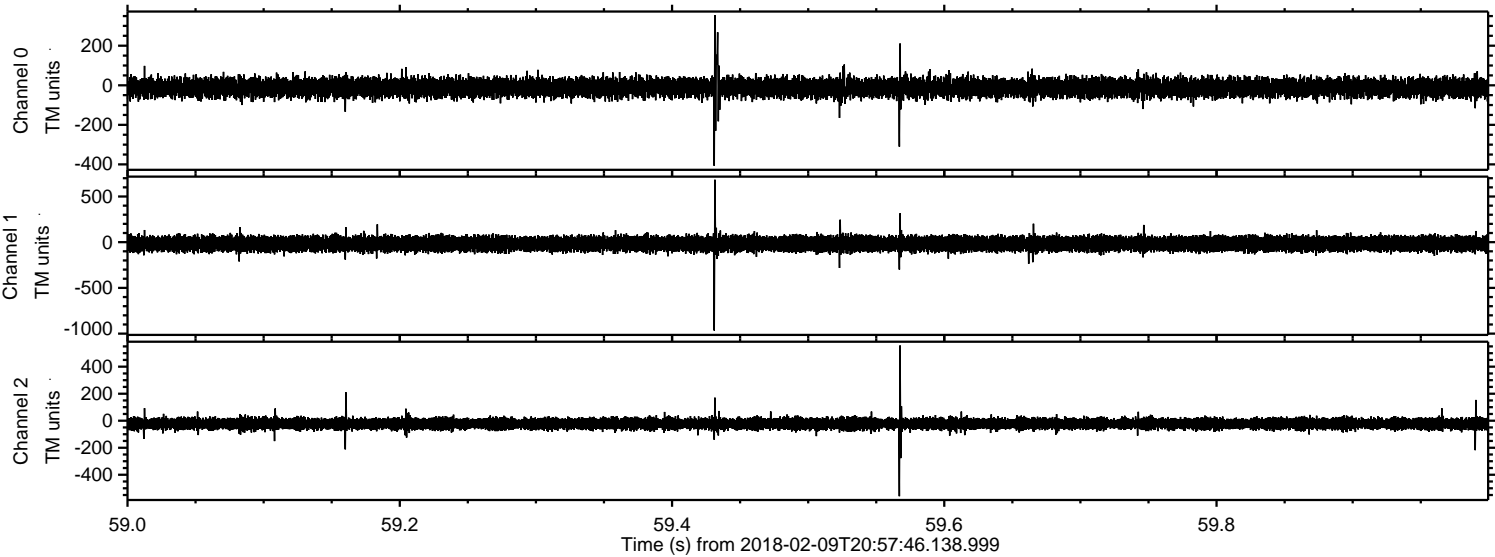


ELMAVAN 3D WAVEFORMS (Measured data sampled at 50 kHz) 51000 packets of 144 samples from 2018-02-09T20:57:46.138.999. Part 110/147

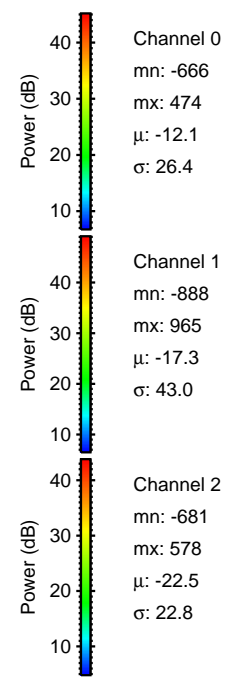
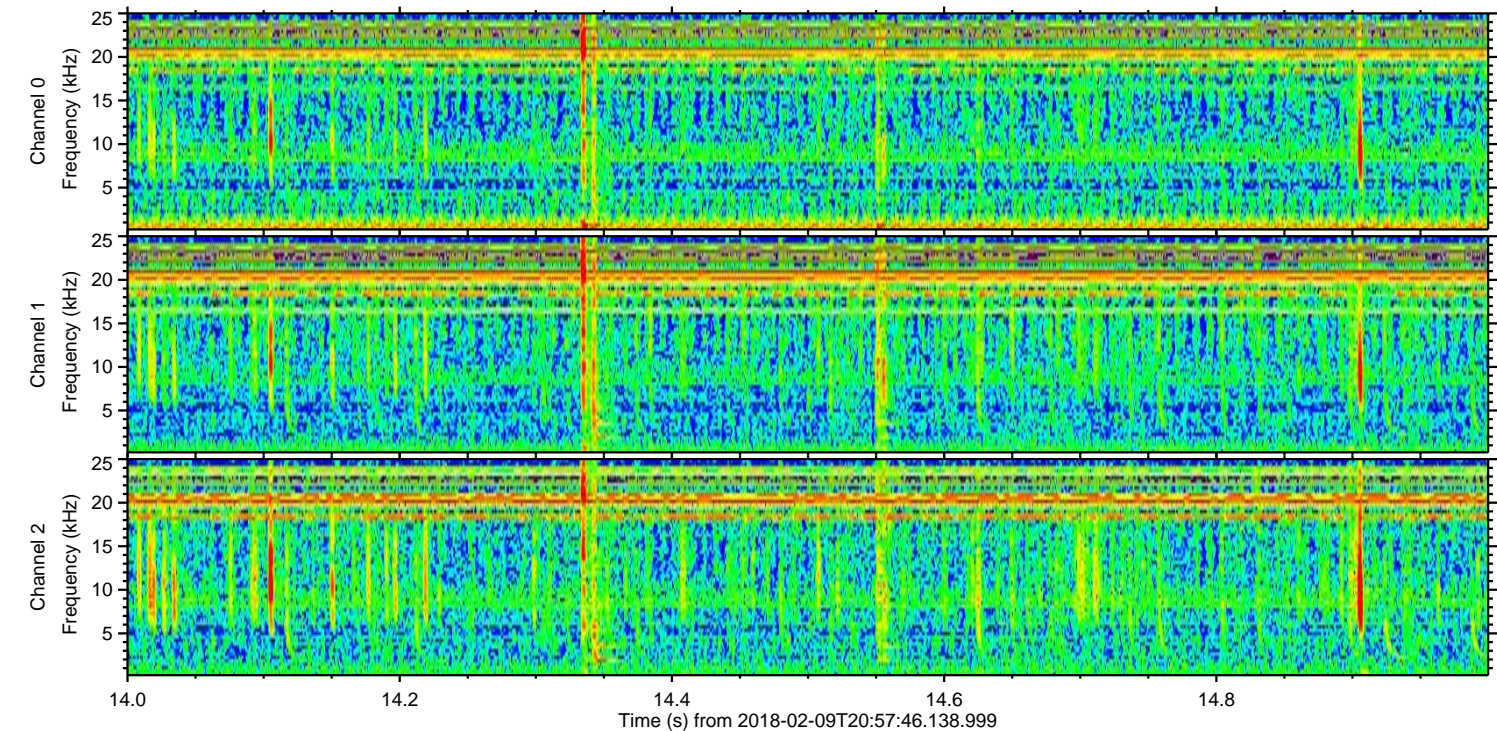
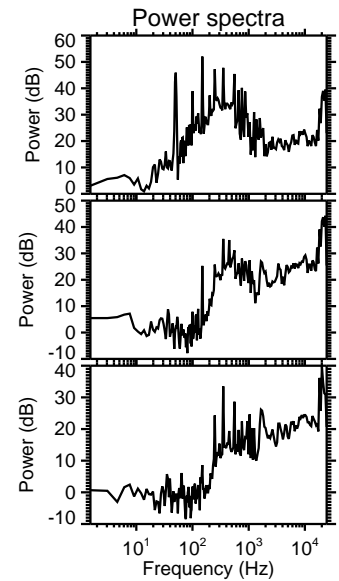
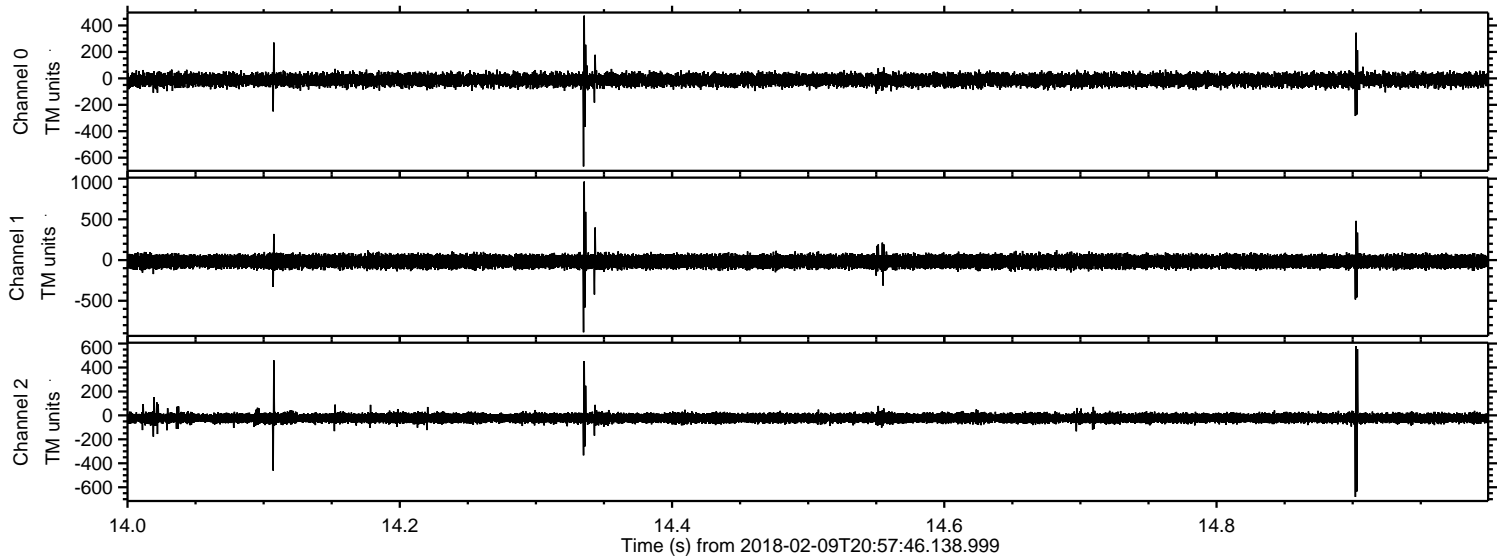
Processed Fri Feb 9 22:06:29 2018 by ELM ver.2012-10-06 from 001__elm20180209_205745__dat00.bin



Processed Fri Feb 9 22:06:30 2018 by ELM ver.2012-10-06 from 001__elm20180209_205745__dat00.bin



Processed Fri Feb 9 22:06:31 2018 by ELM ver.2012-10-06 from 001__elm20180209_205745__dat00.bin

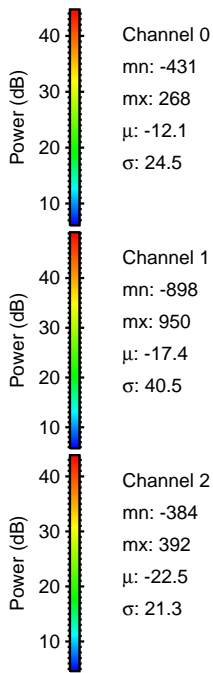
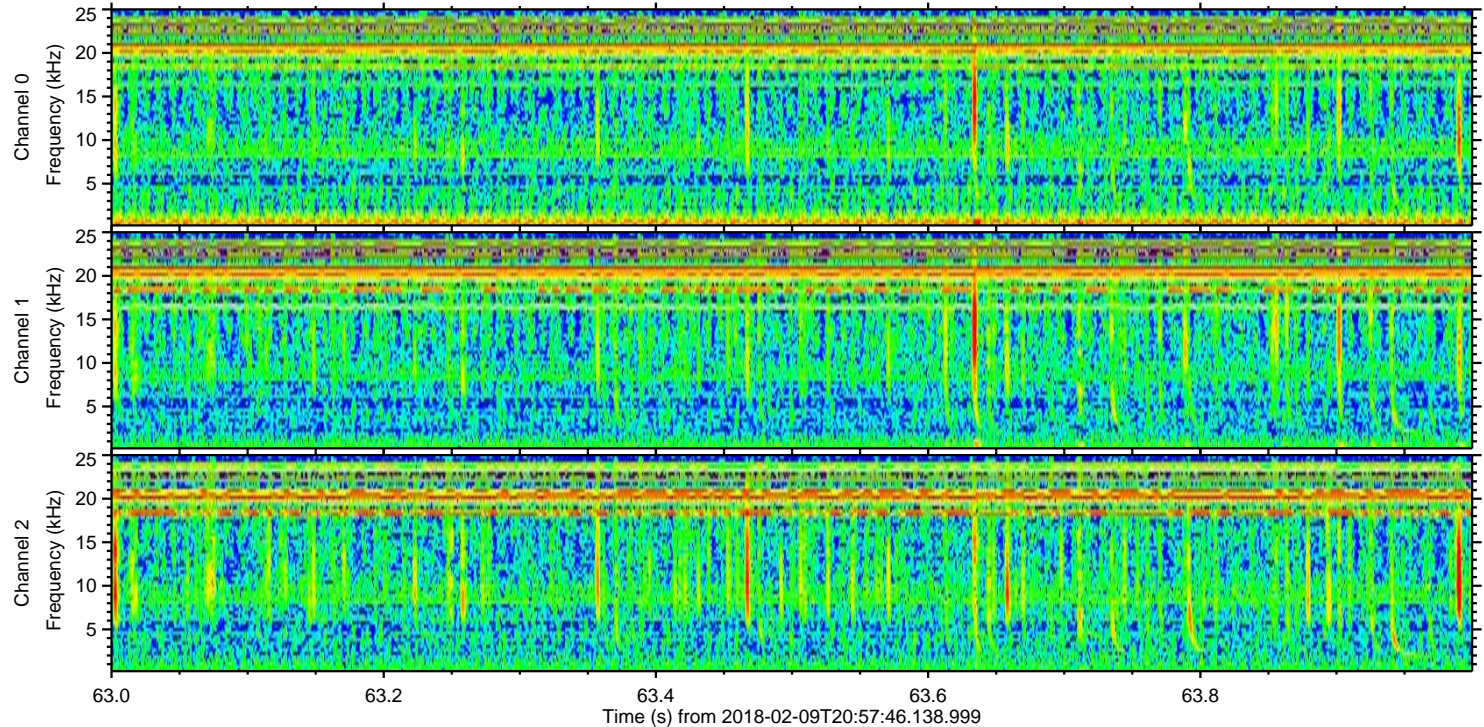
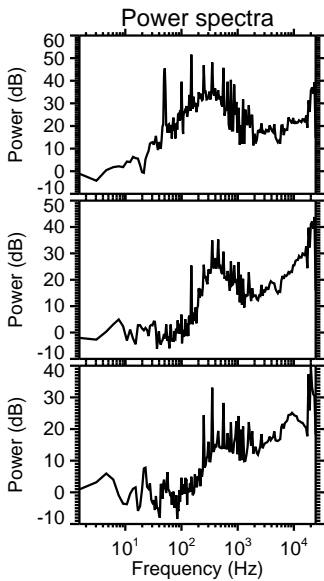
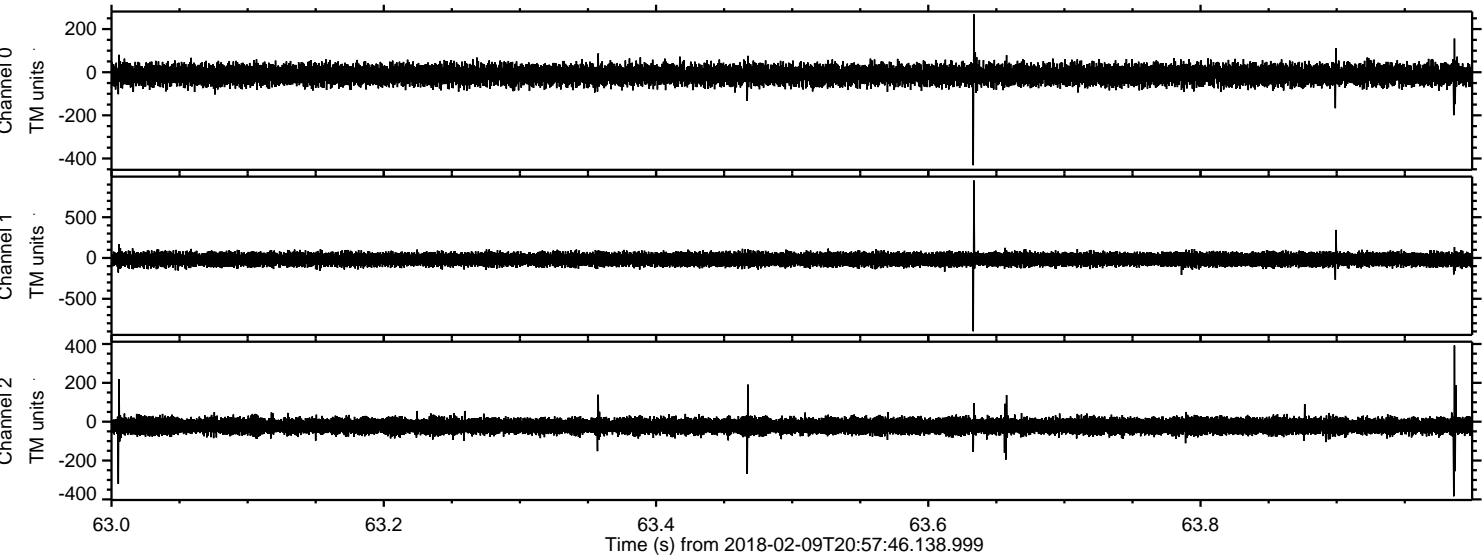


Channel 0
mn: -666
mx: 474
 μ : -12.1
 σ : 26.4

Channel 1
mn: -888
mx: 965
 μ : -17.3
 σ : 43.0

Channel 2
mn: -681
mx: 578
 μ : -22.5
 σ : 22.8

Processed Fri Feb 9 22:06:31 2018 by ELM ver.2012-10-06 from 001__elm20180209_205745__dat00.bin



Processed Fri Feb 9 22:06:33 2018 by ELM ver.2012-10-06 from 001__elm20180209_205745__dat00.bin

