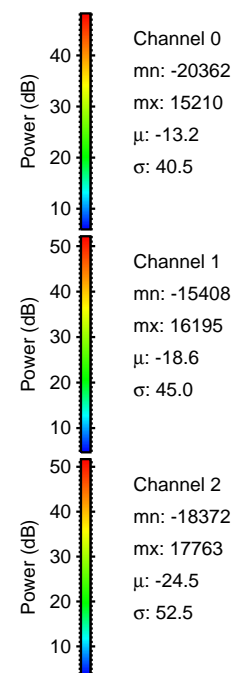
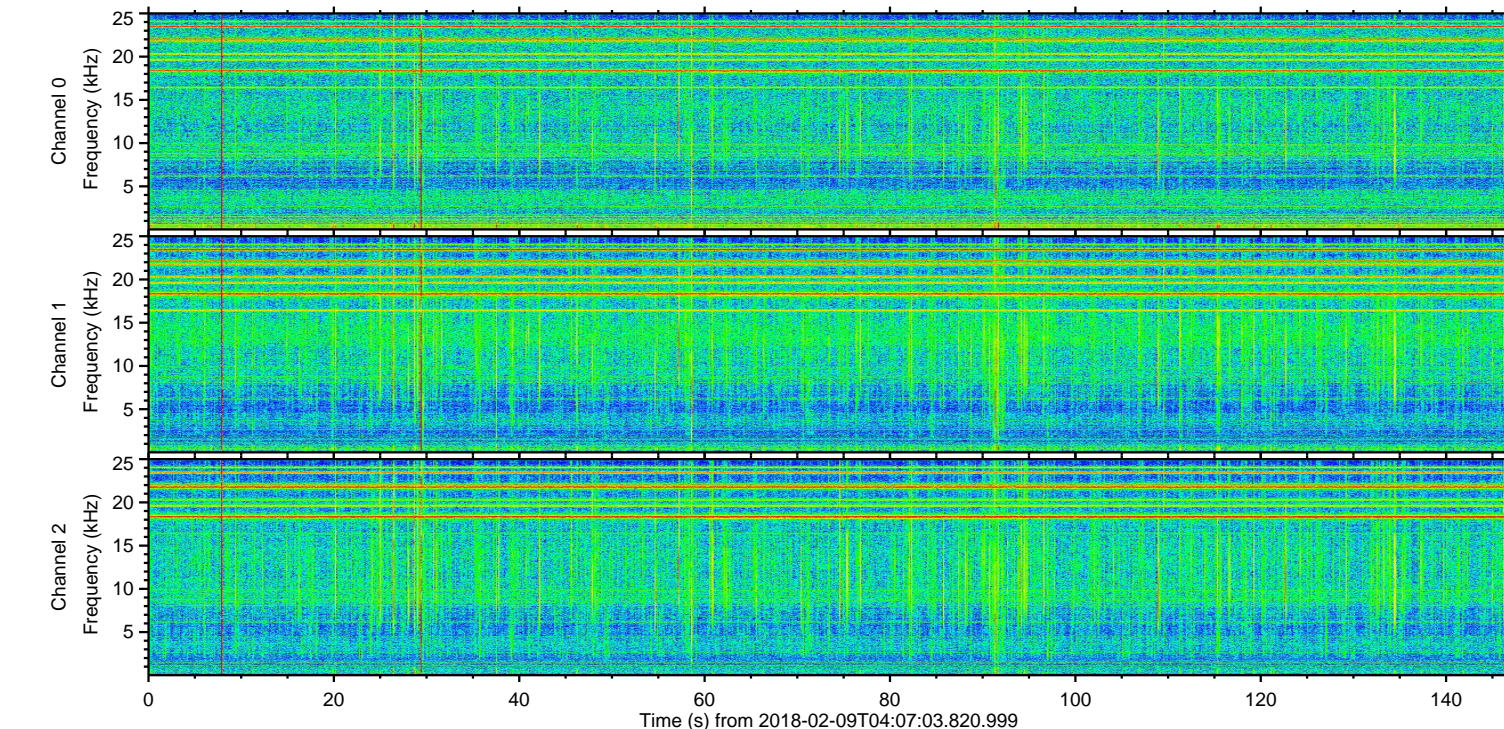
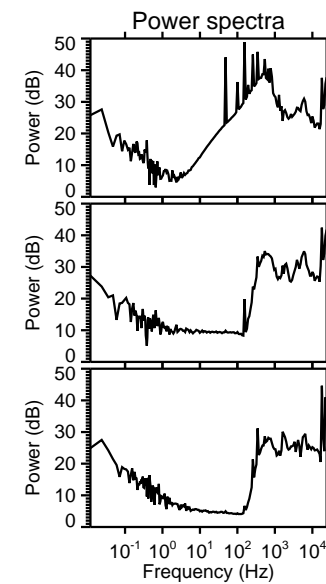
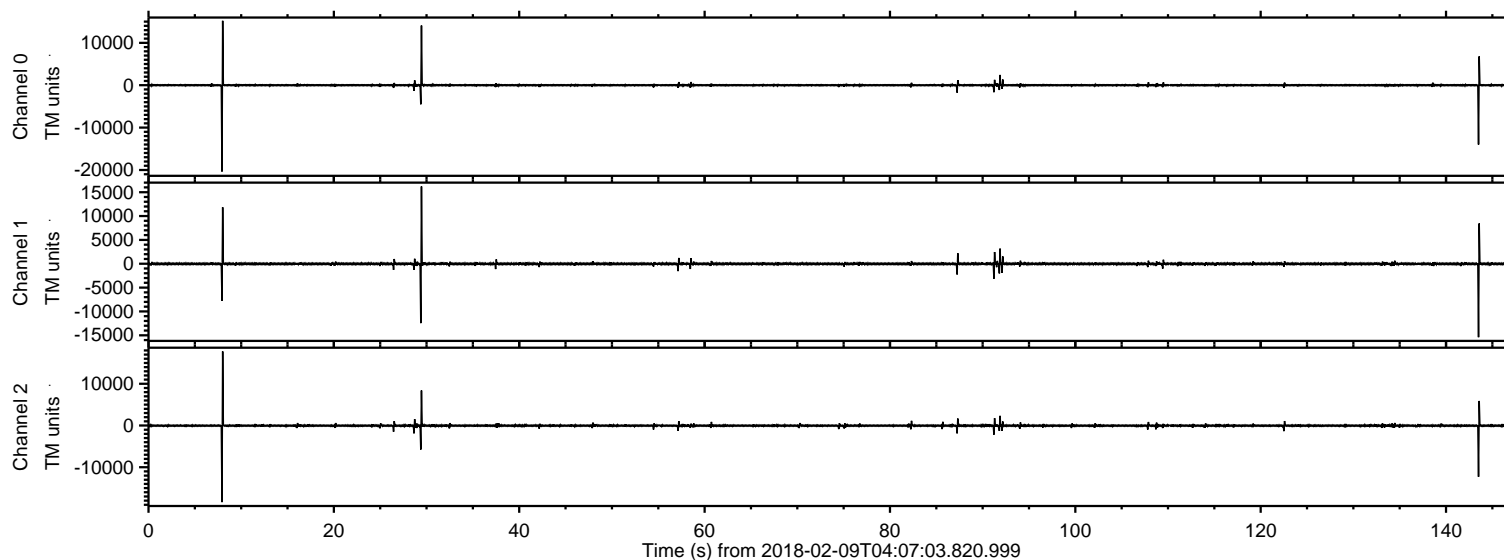


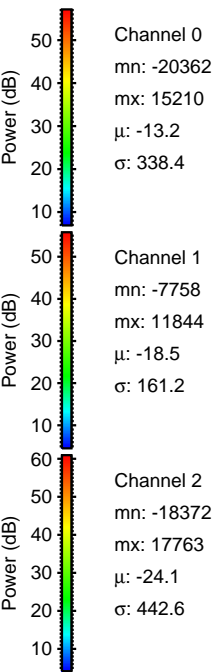
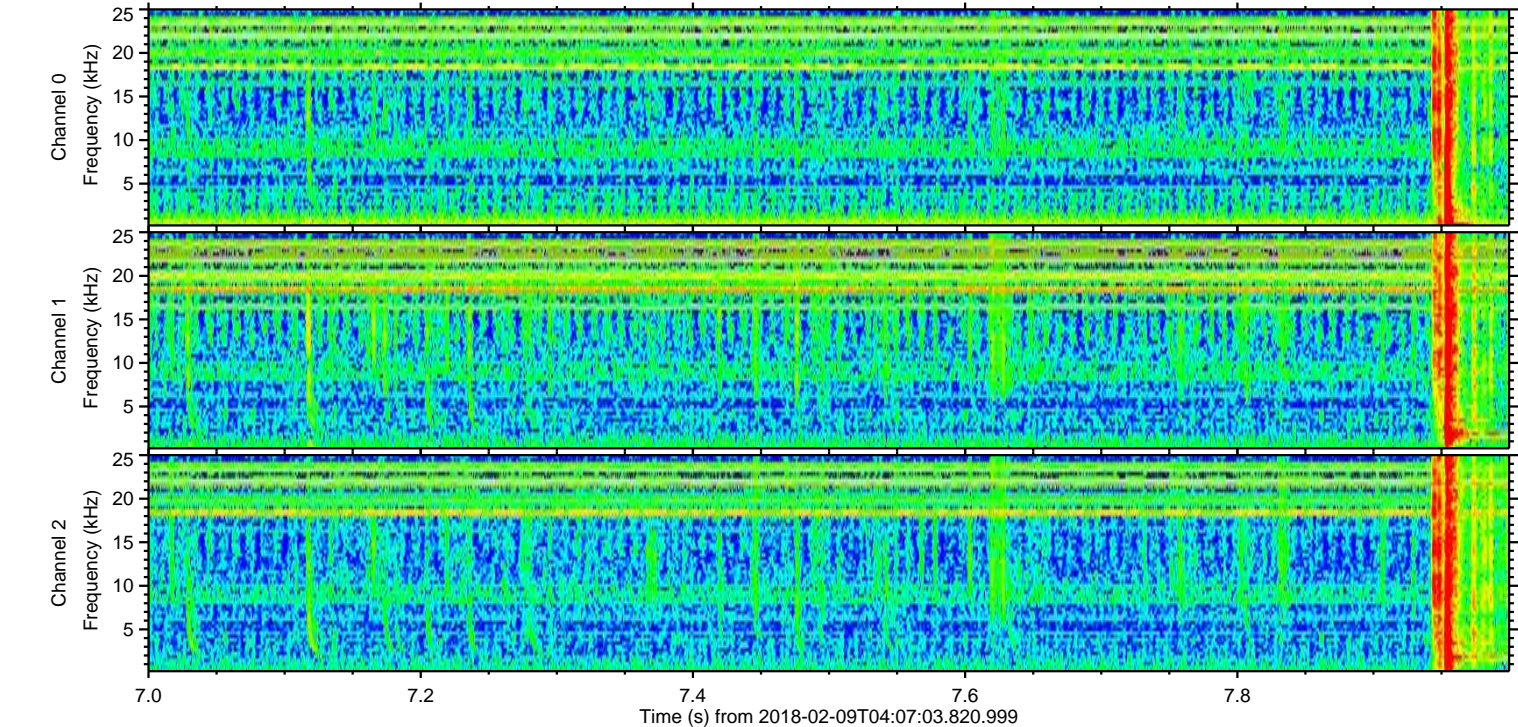
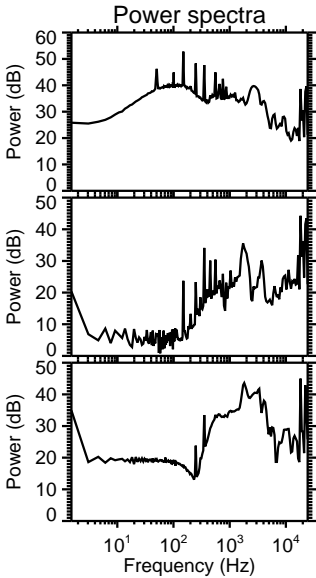
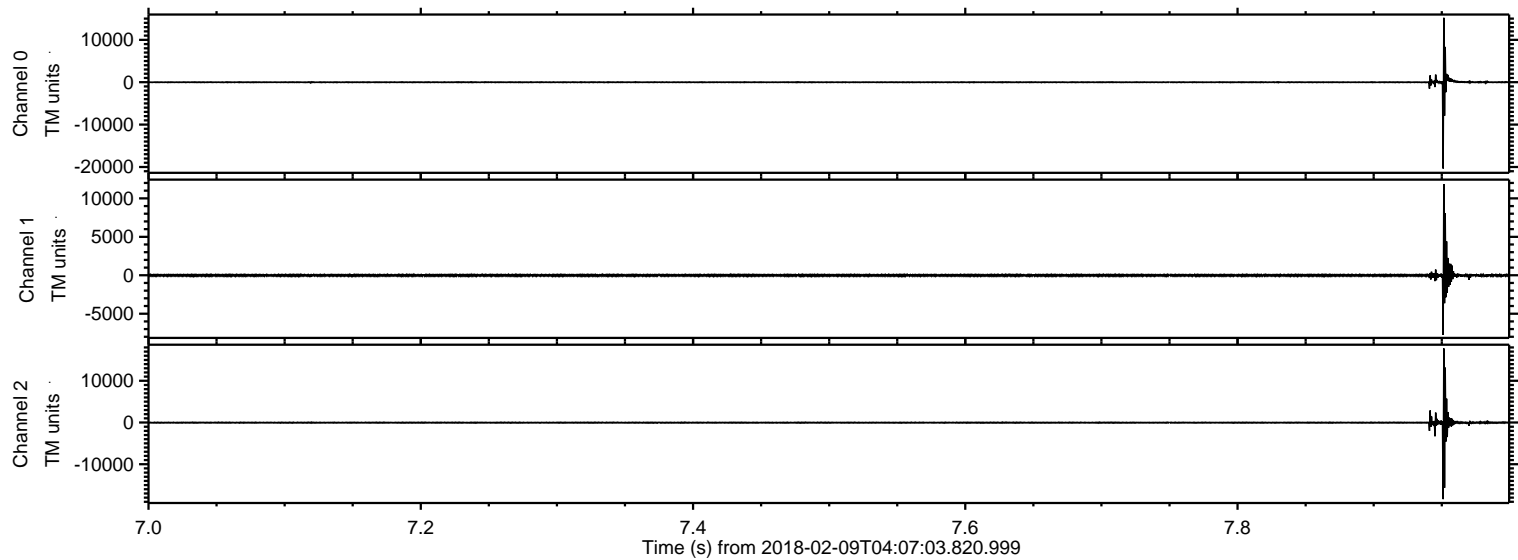
ELMAVAN 3D WAVEFORMS (Measured data sampled at 50 kHz) 51000 packets of 144 samples from 2018-02-09T04:07:03.820.999.

Processed Fri Feb 9 05:15:12 2018 by ELM ver.2012-10-06 from 001__elm20180209_040702__dat00.bin



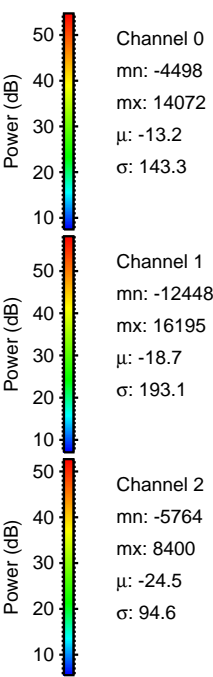
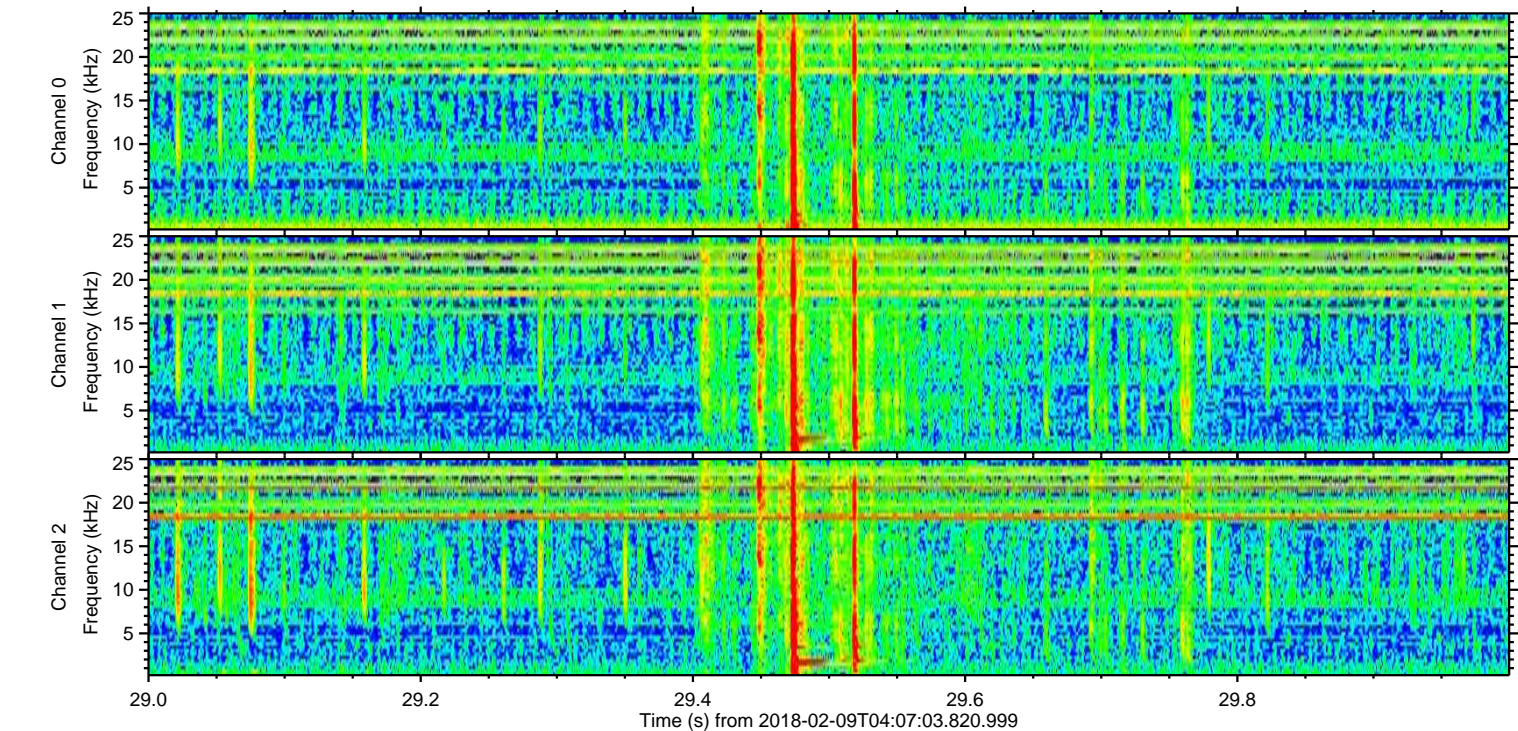
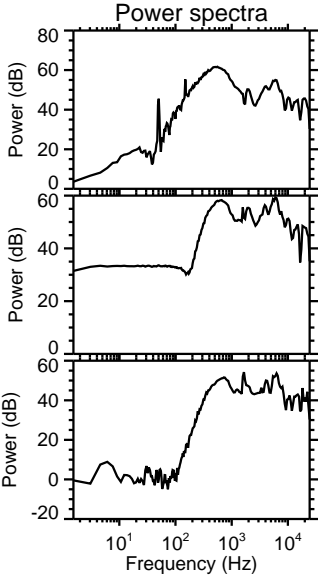
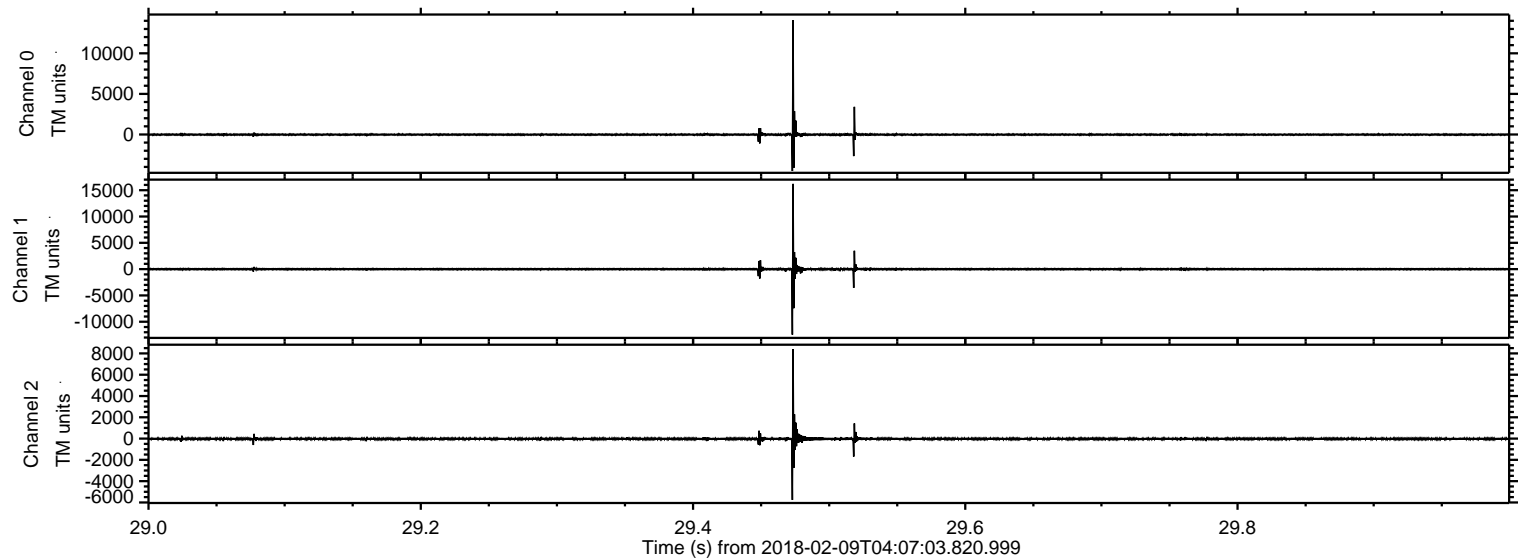
ELMAVAN 3D WAVEFORMS (Measured data sampled at 50 kHz) 51000 packets of 144 samples from 2018-02-09T04:07:03.820.999. Part 8/147

Processed Fri Feb 9 05:15:20 2018 by ELM ver.2012-10-06 from 001__elm20180209_040702__dat00.bin



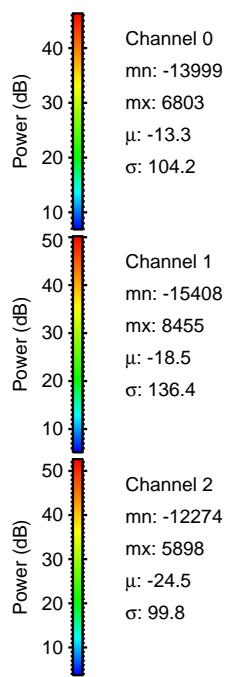
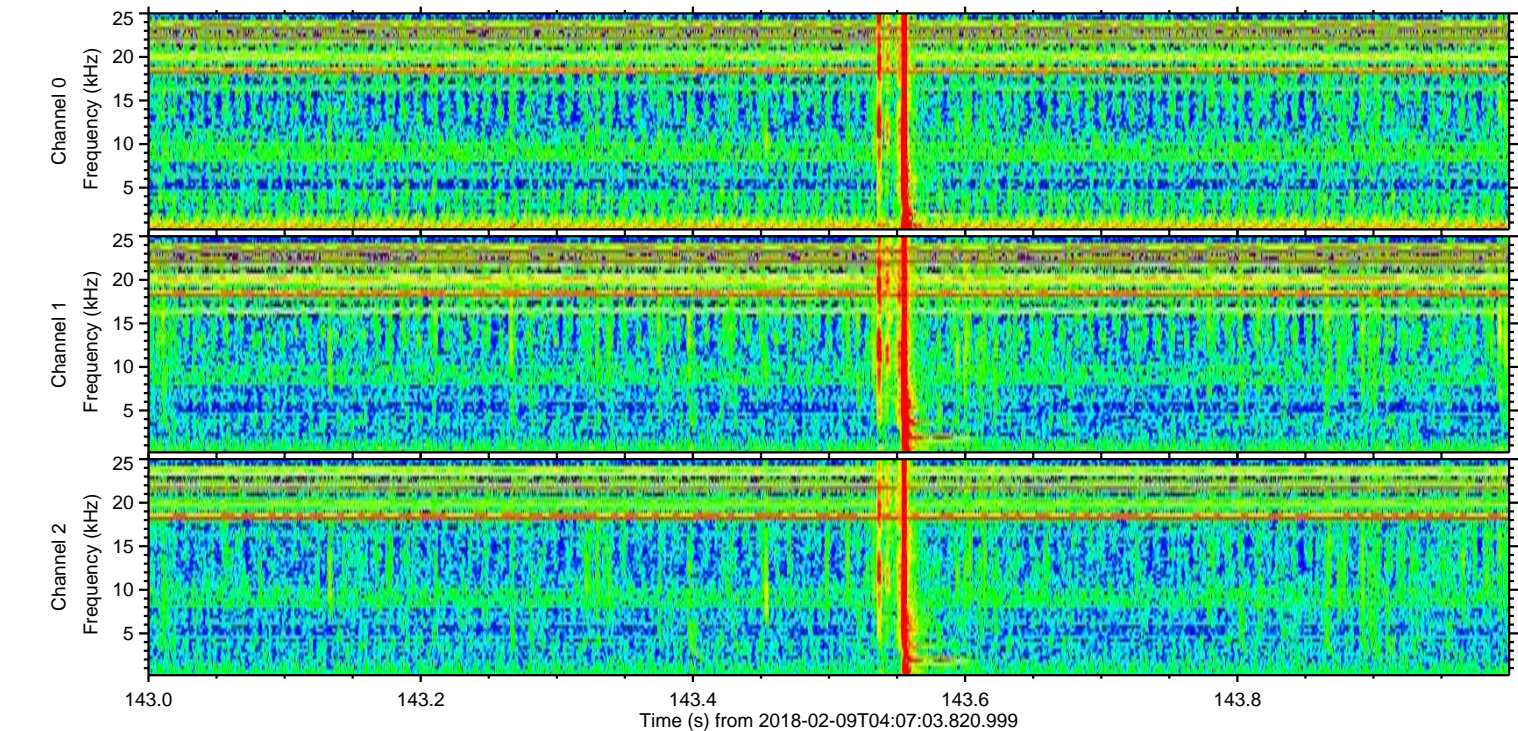
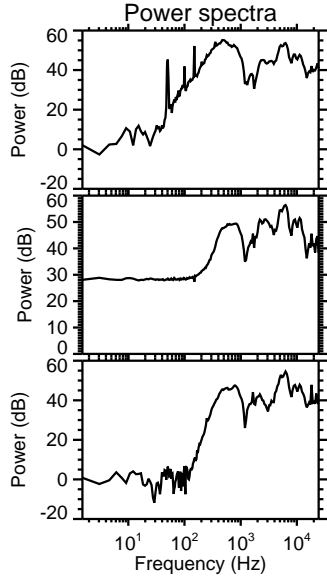
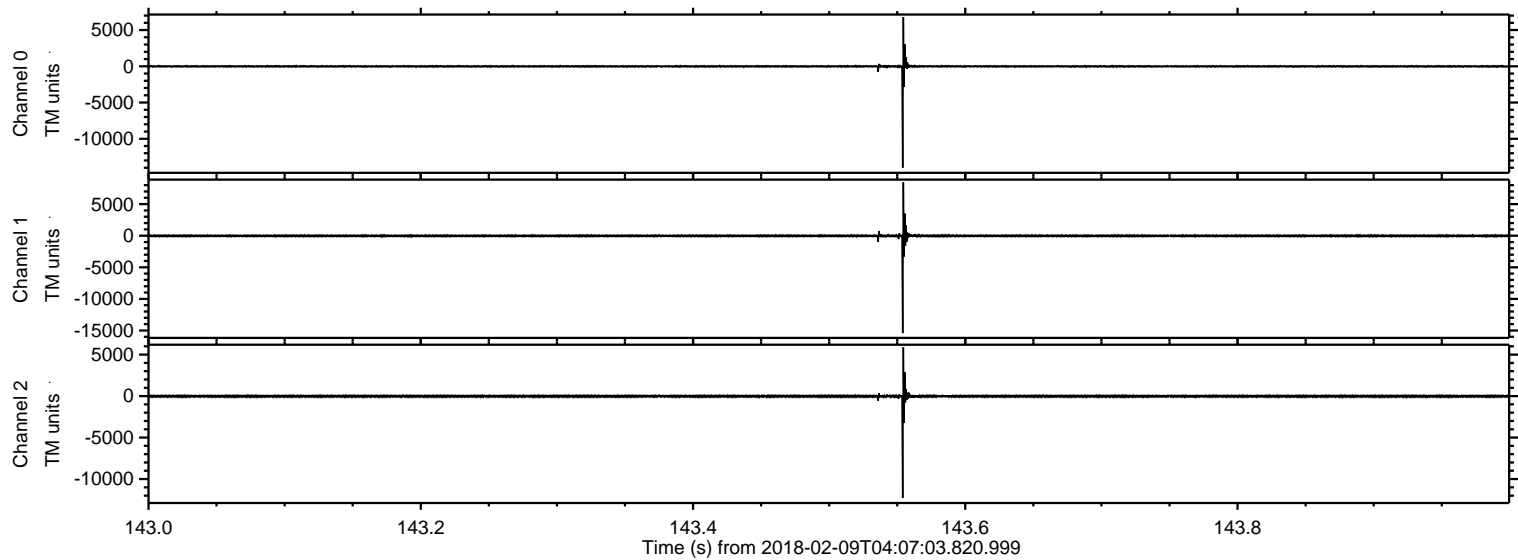
ELMAVAN 3D WAVEFORMS (Measured data sampled at 50 kHz) 51000 packets of 144 samples from 2018-02-09T04:07:03.820.999. Part 30/147

Processed Fri Feb 9 05:15:21 2018 by ELM ver.2012-10-06 from 001__elm20180209_040702__dat00.bin

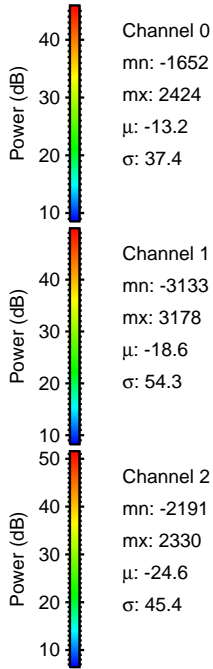
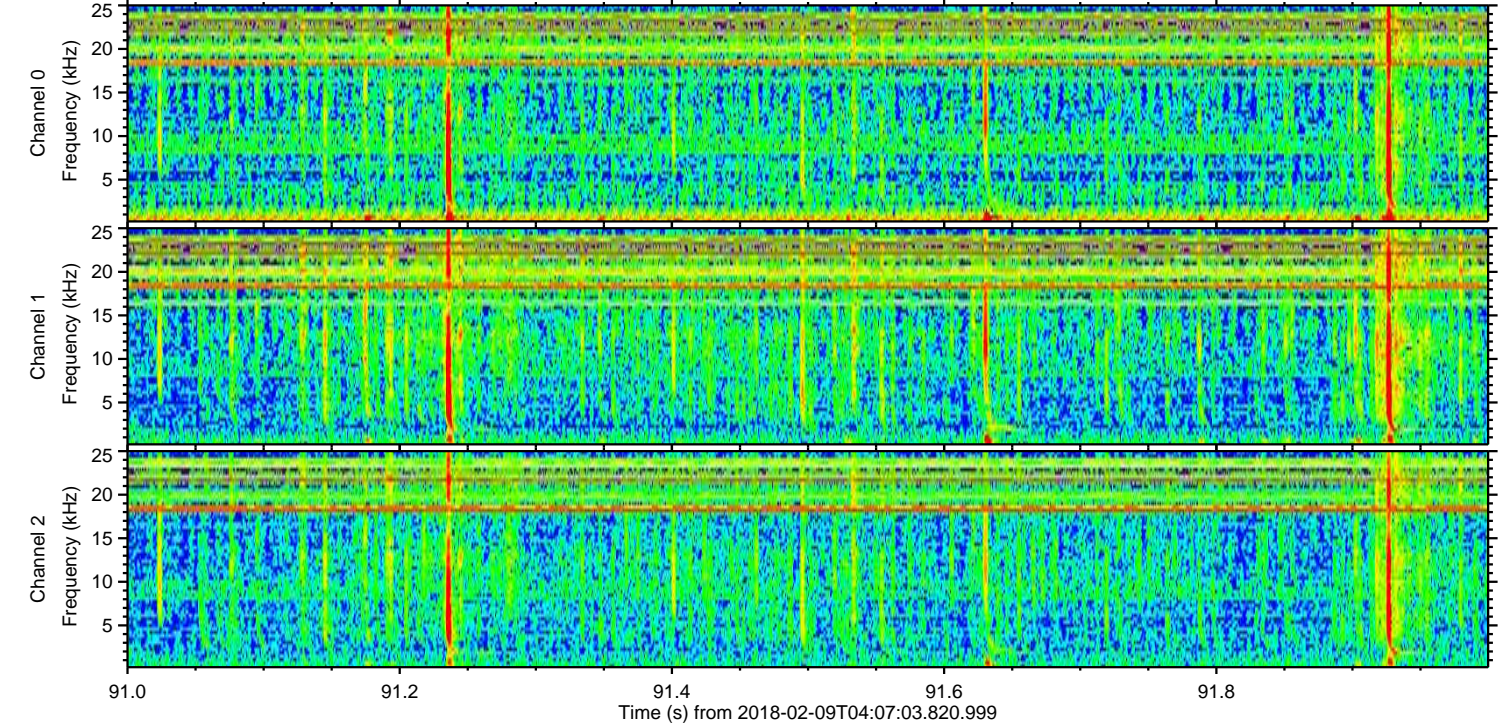
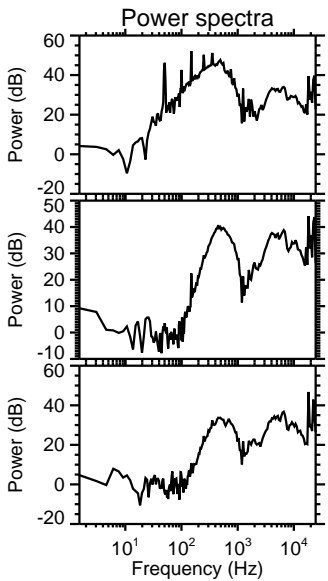
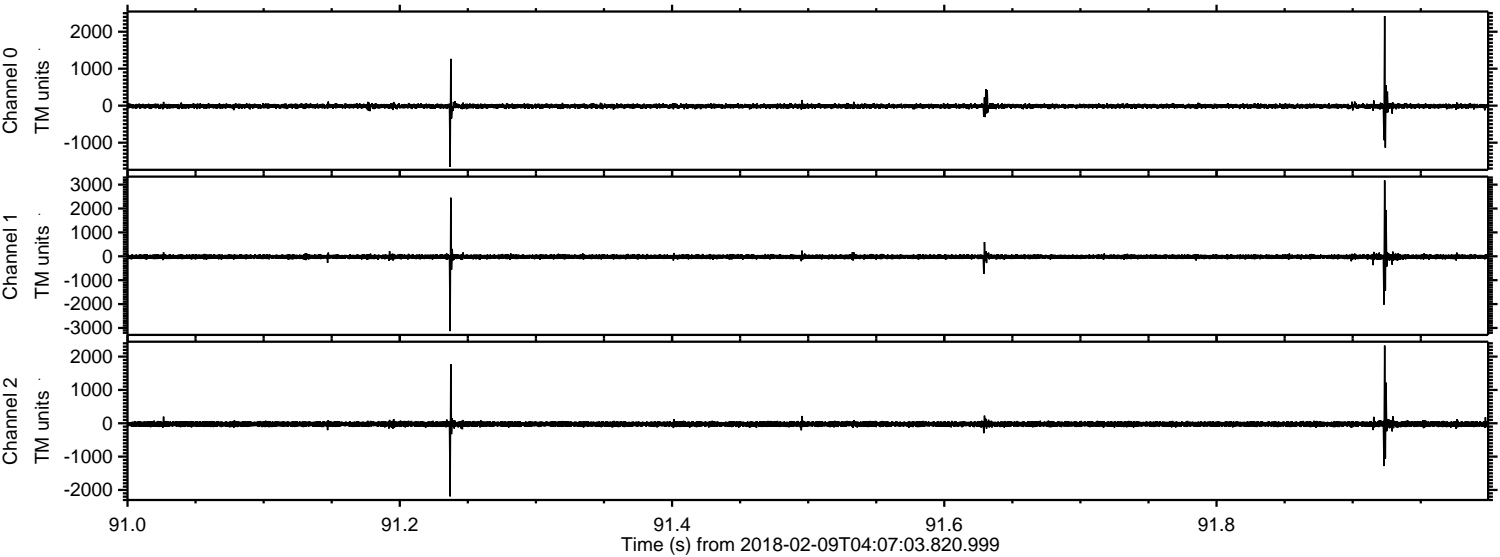


ELMAVAN 3D WAVEFORMS (Measured data sampled at 50 kHz) 51000 packets of 144 samples from 2018-02-09T04:07:03.820.999. Part 144/147

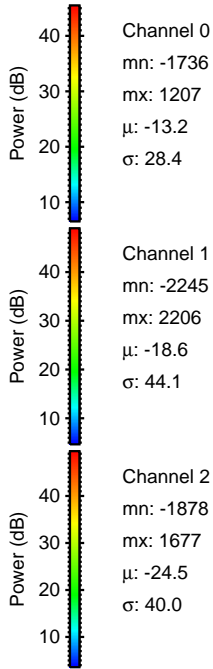
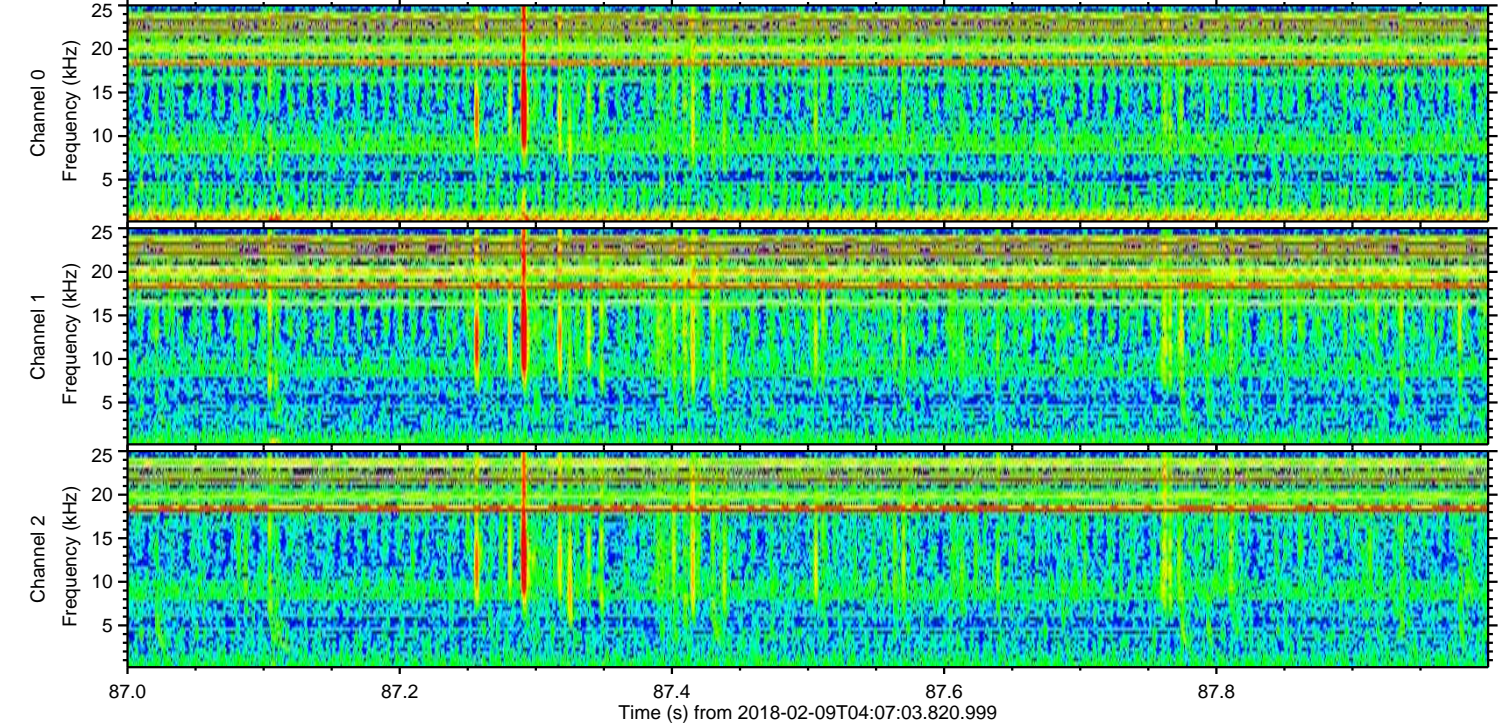
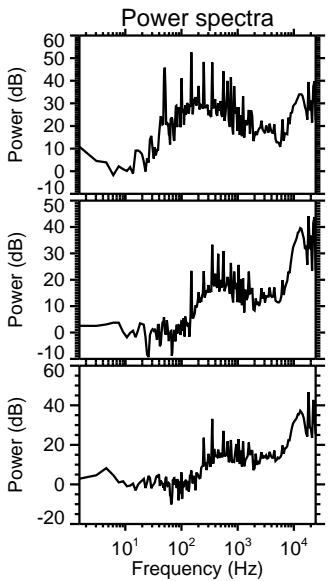
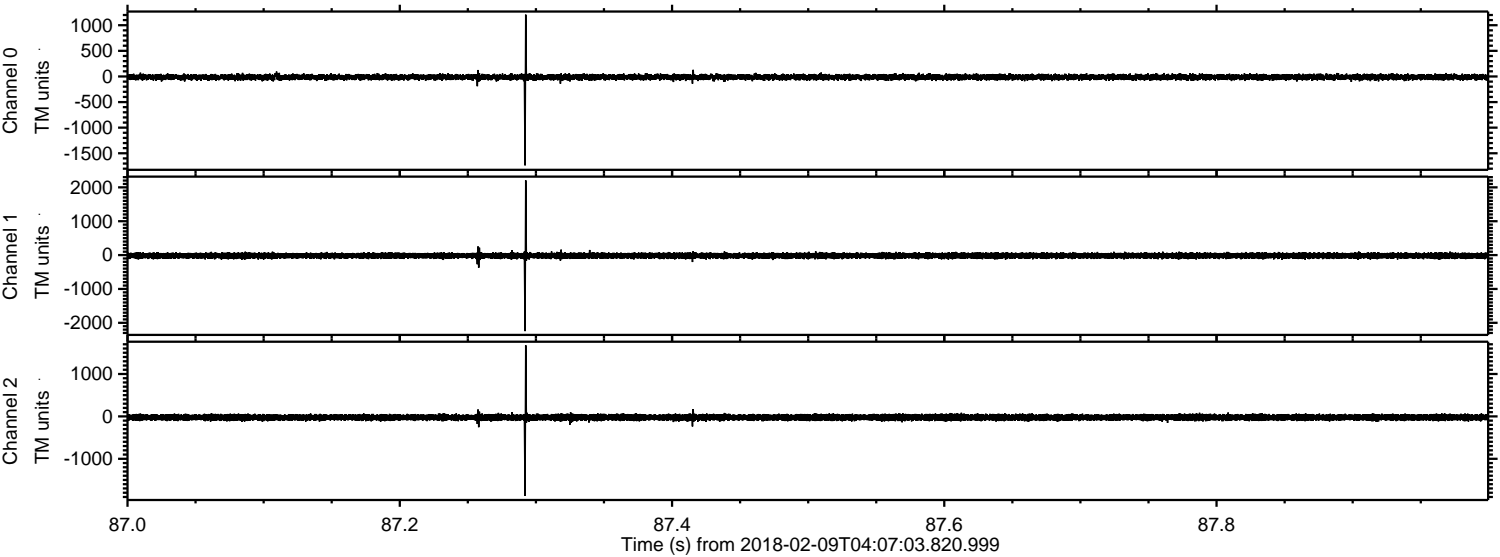
Processed Fri Feb 9 05:15:22 2018 by ELM ver.2012-10-06 from 001__elm20180209_040702__dat00.bin



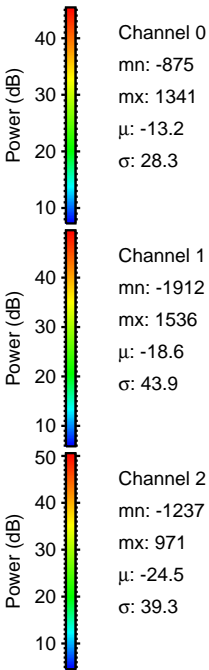
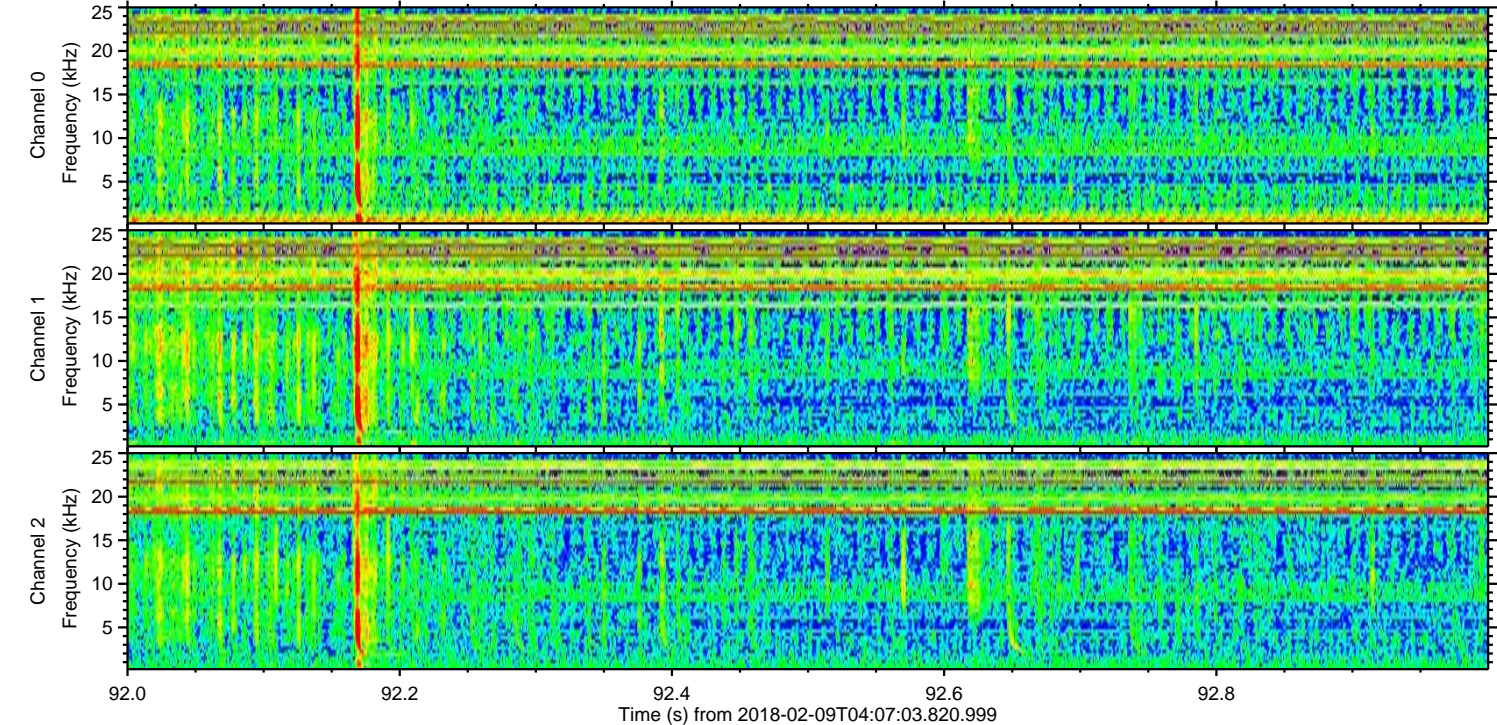
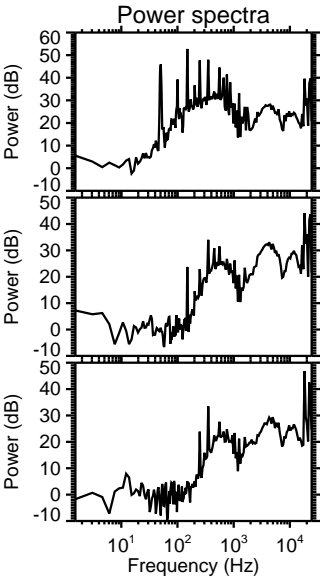
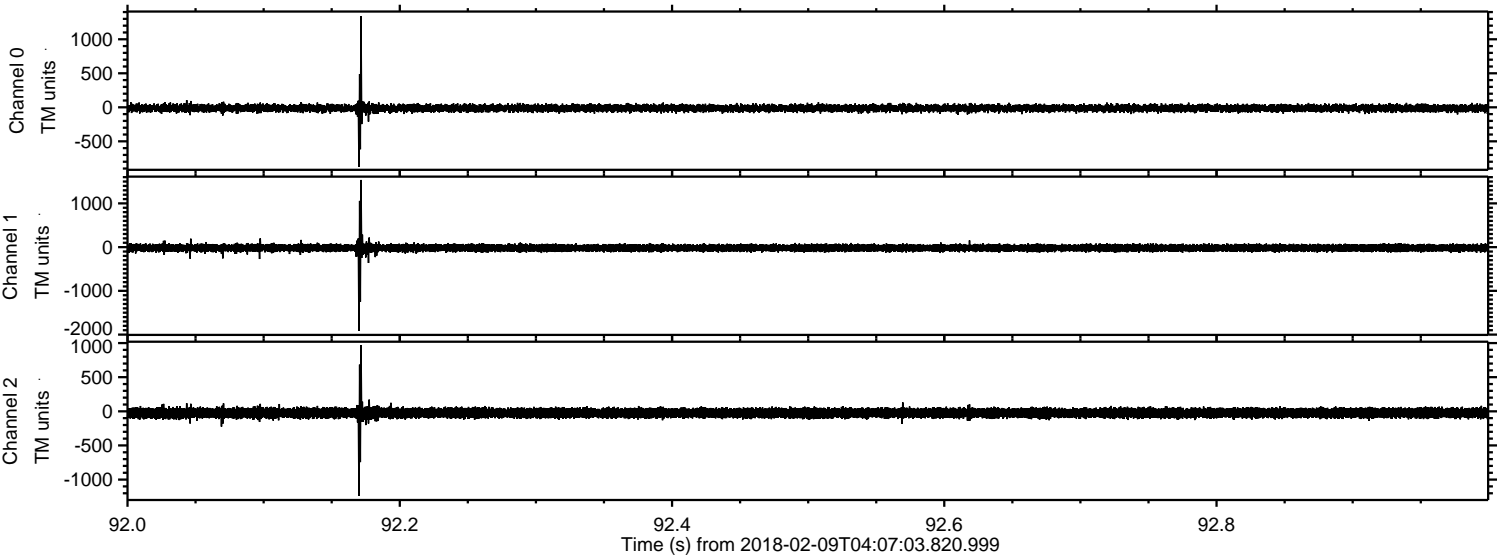
Processed Fri Feb 9 05:15:23 2018 by ELM ver.2012-10-06 from 001__elm20180209_040702__dat00.bin



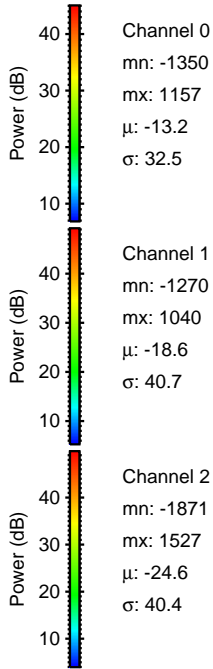
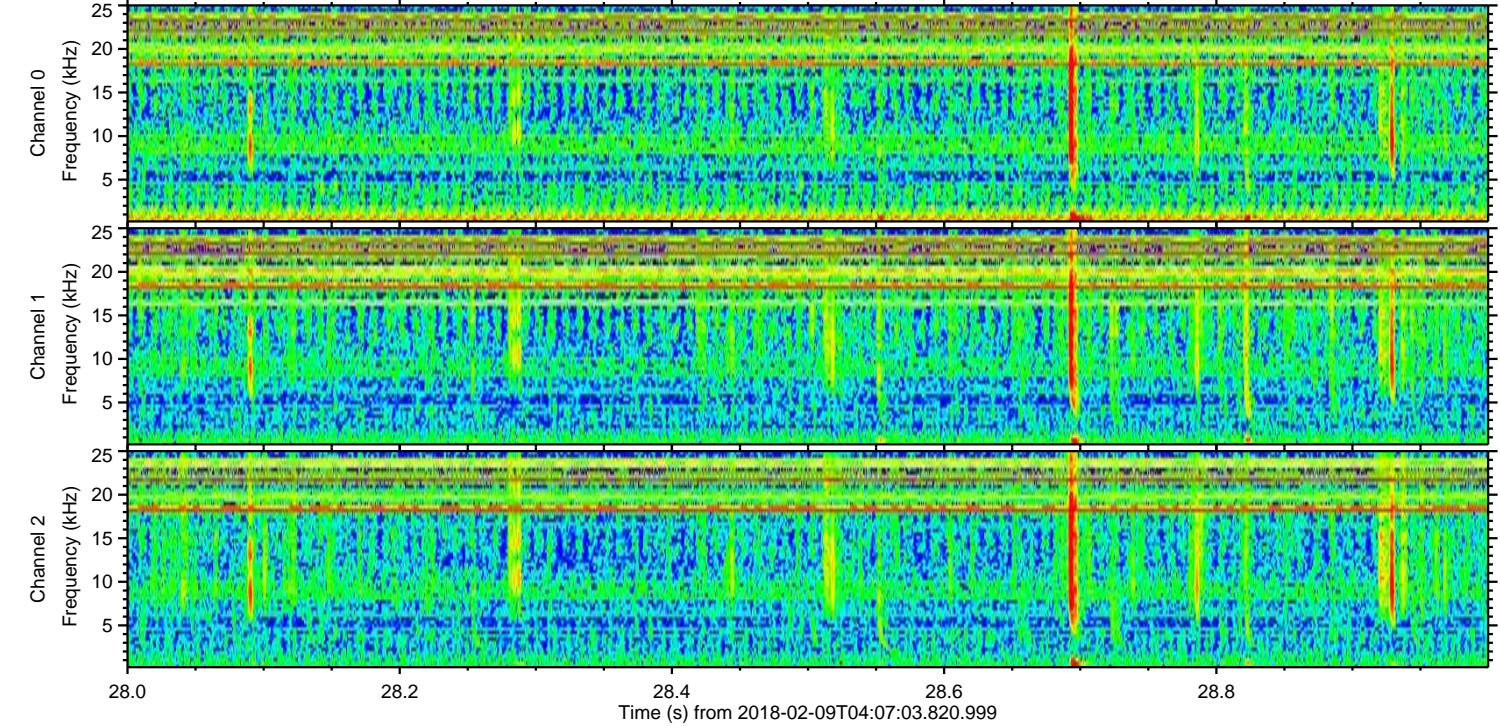
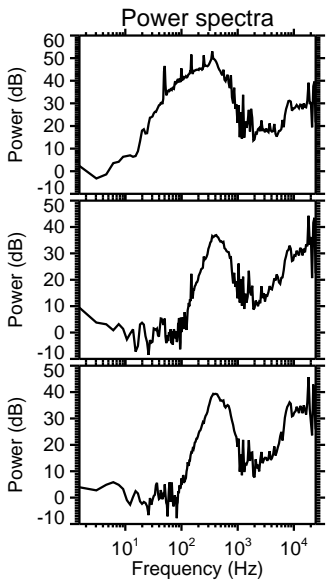
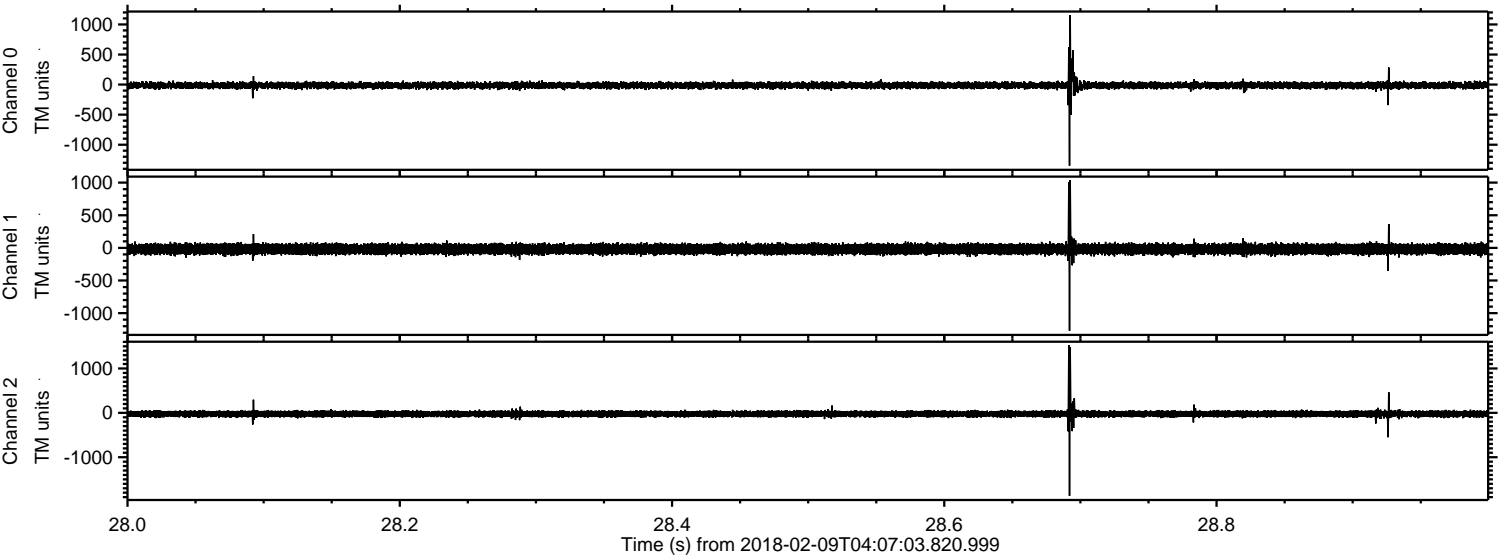
Processed Fri Feb 9 05:15:23 2018 by ELM ver.2012-10-06 from 001__elm20180209_040702__dat00.bin



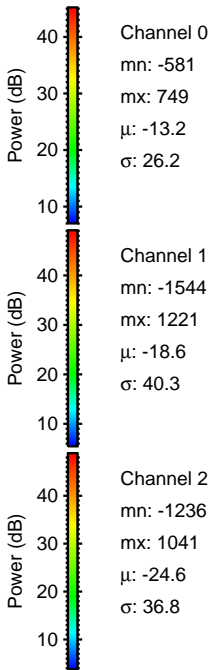
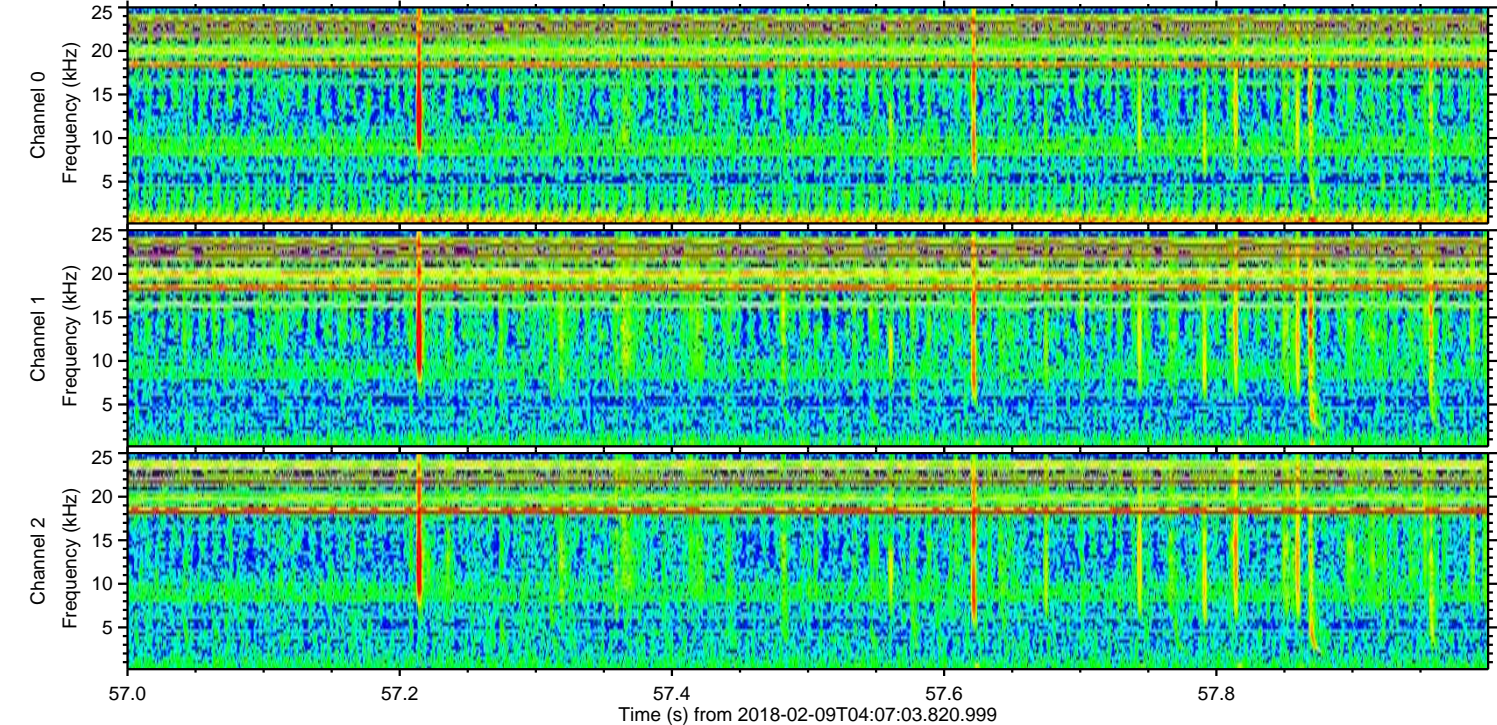
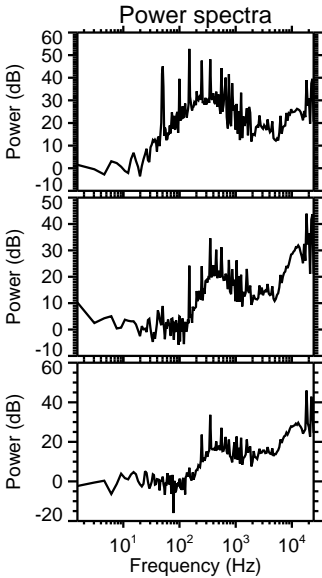
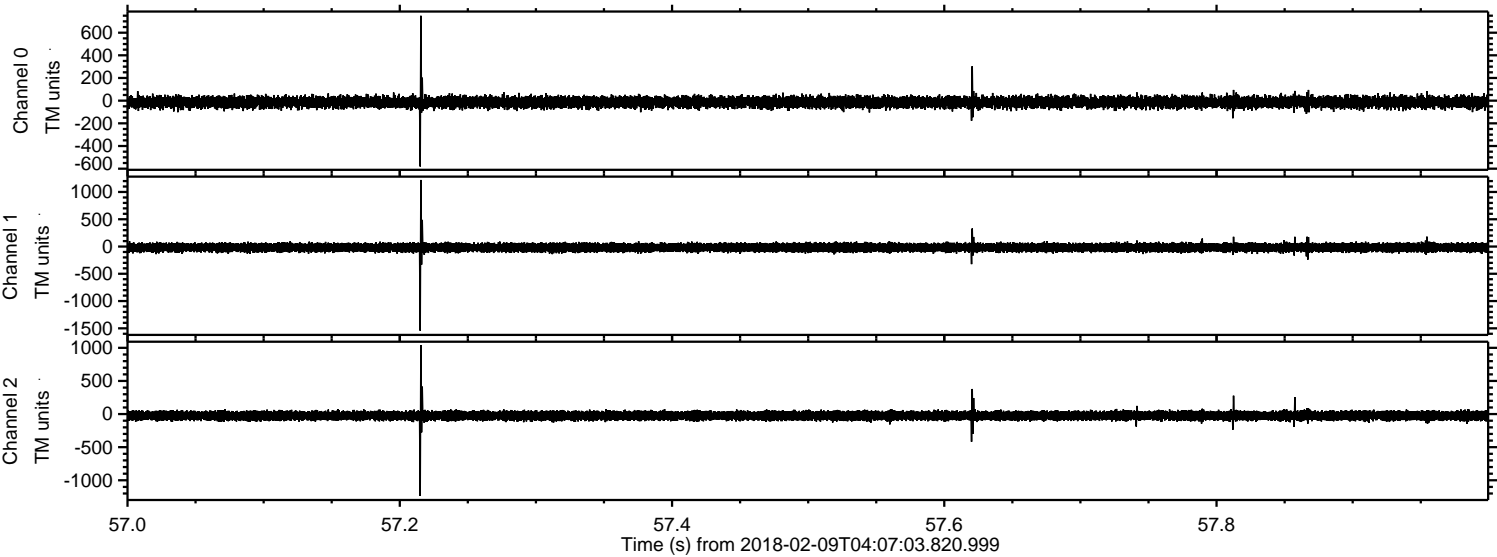
Processed Fri Feb 9 05:15:24 2018 by ELM ver.2012-10-06 from 001__elm20180209_040702__dat00.bin



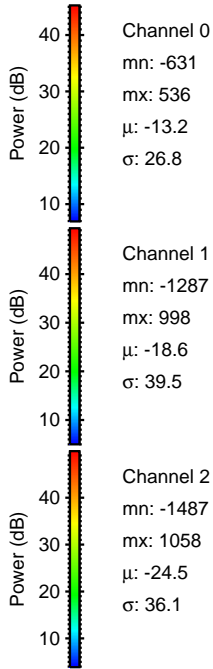
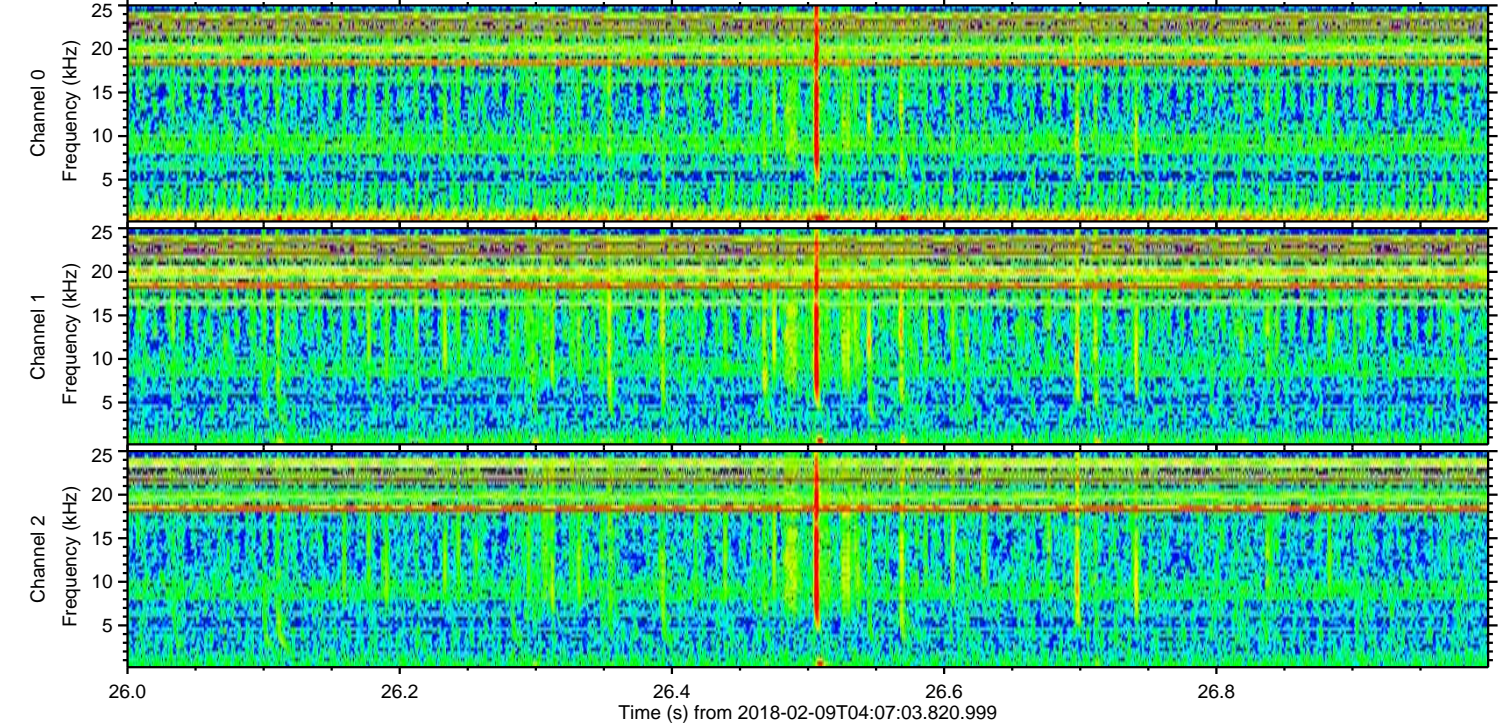
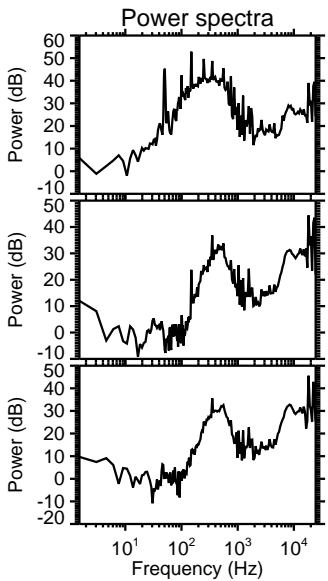
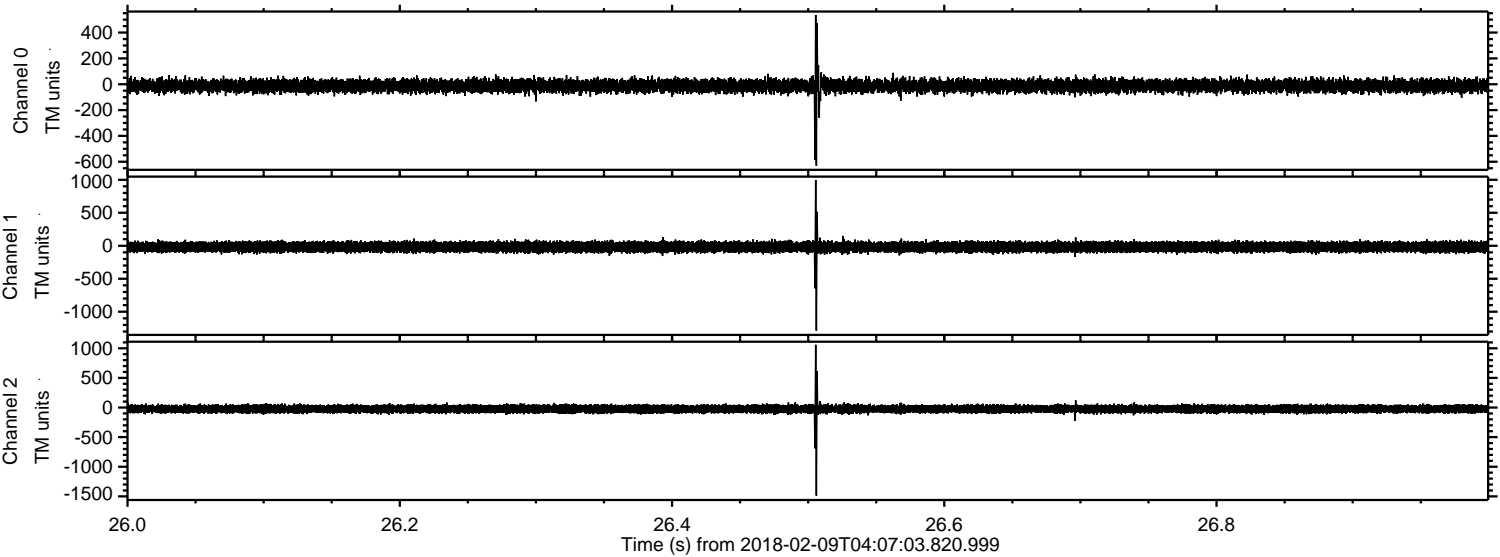
Processed Fri Feb 9 05:15:25 2018 by ELM ver.2012-10-06 from 001__elm20180209_040702__dat00.bin



Processed Fri Feb 9 05:15:26 2018 by ELM ver.2012-10-06 from 001__elm20180209_040702__dat00.bin



Processed Fri Feb 9 05:15:26 2018 by ELM ver.2012-10-06 from 001__elm20180209_040702__dat00.bin



Channel 0
mn: -631
mx: 536
 μ : -13.2
 σ : 26.8

Channel 1
mn: -1287
mx: 998
 μ : -18.6
 σ : 39.5

Channel 2
mn: -1487
mx: 1058
 μ : -24.5
 σ : 36.1

Processed Fri Feb 9 05:15:27 2018 by ELM ver.2012-10-06 from 001__elm20180209_040702__dat00.bin

