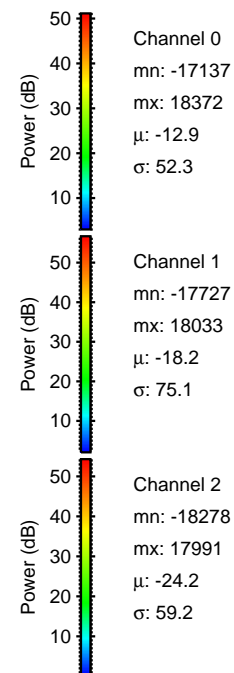
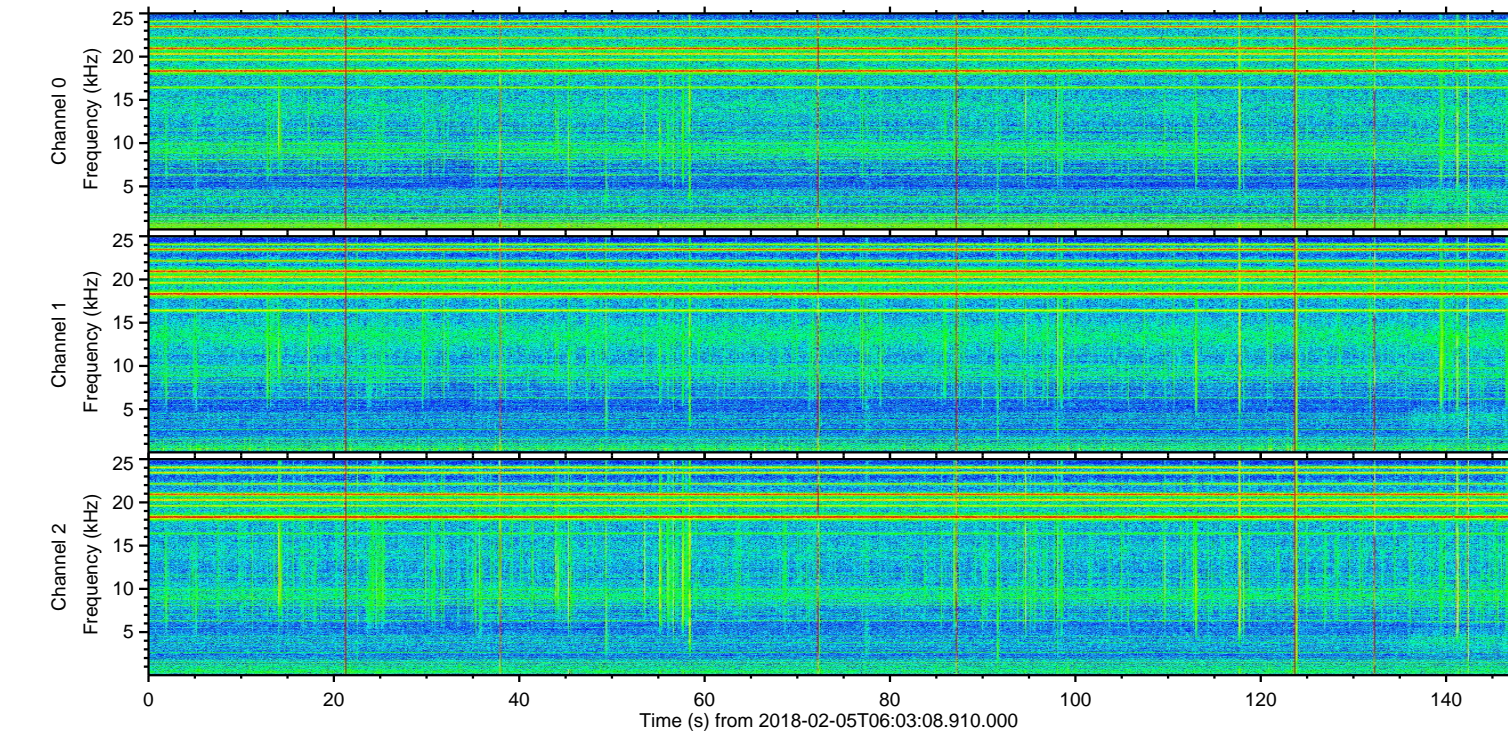
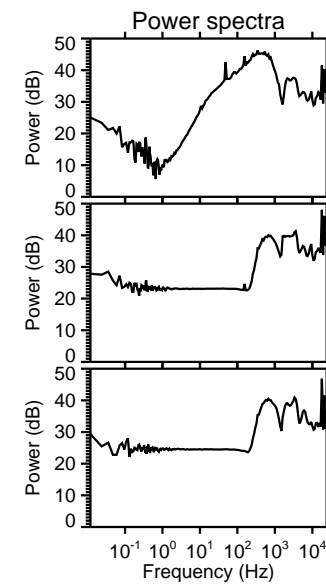
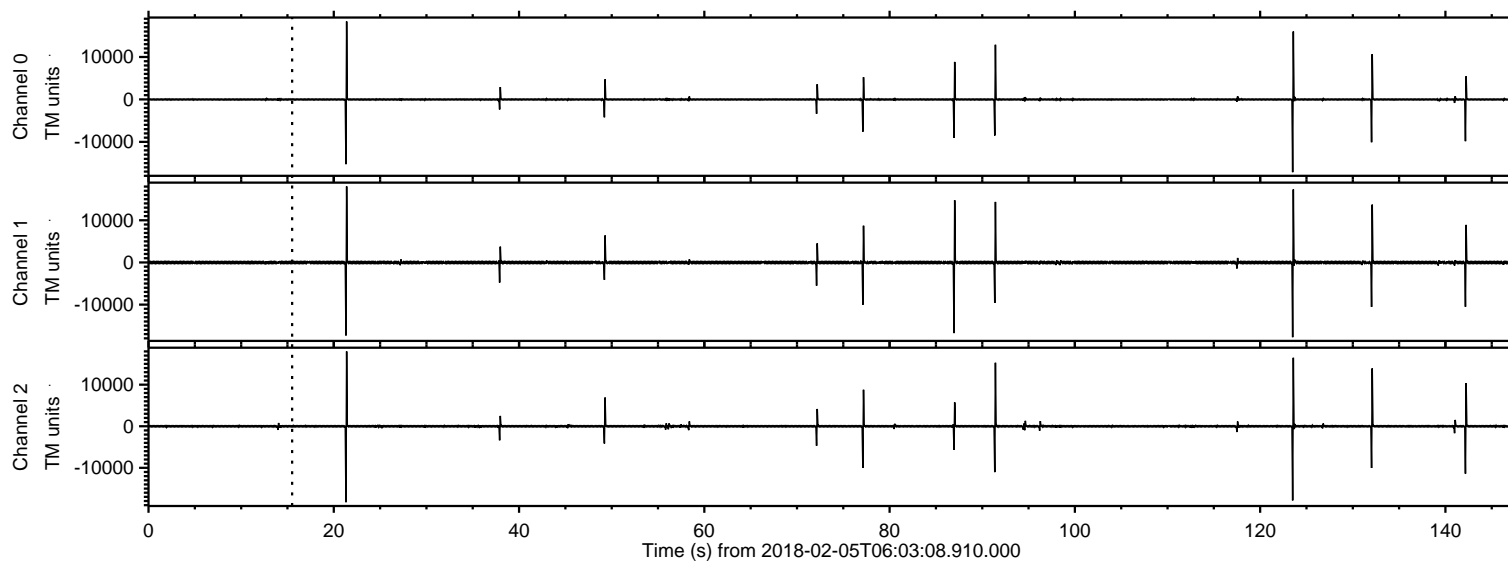
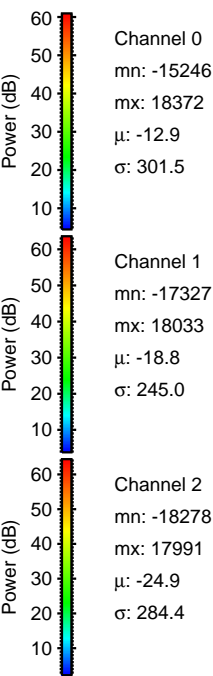
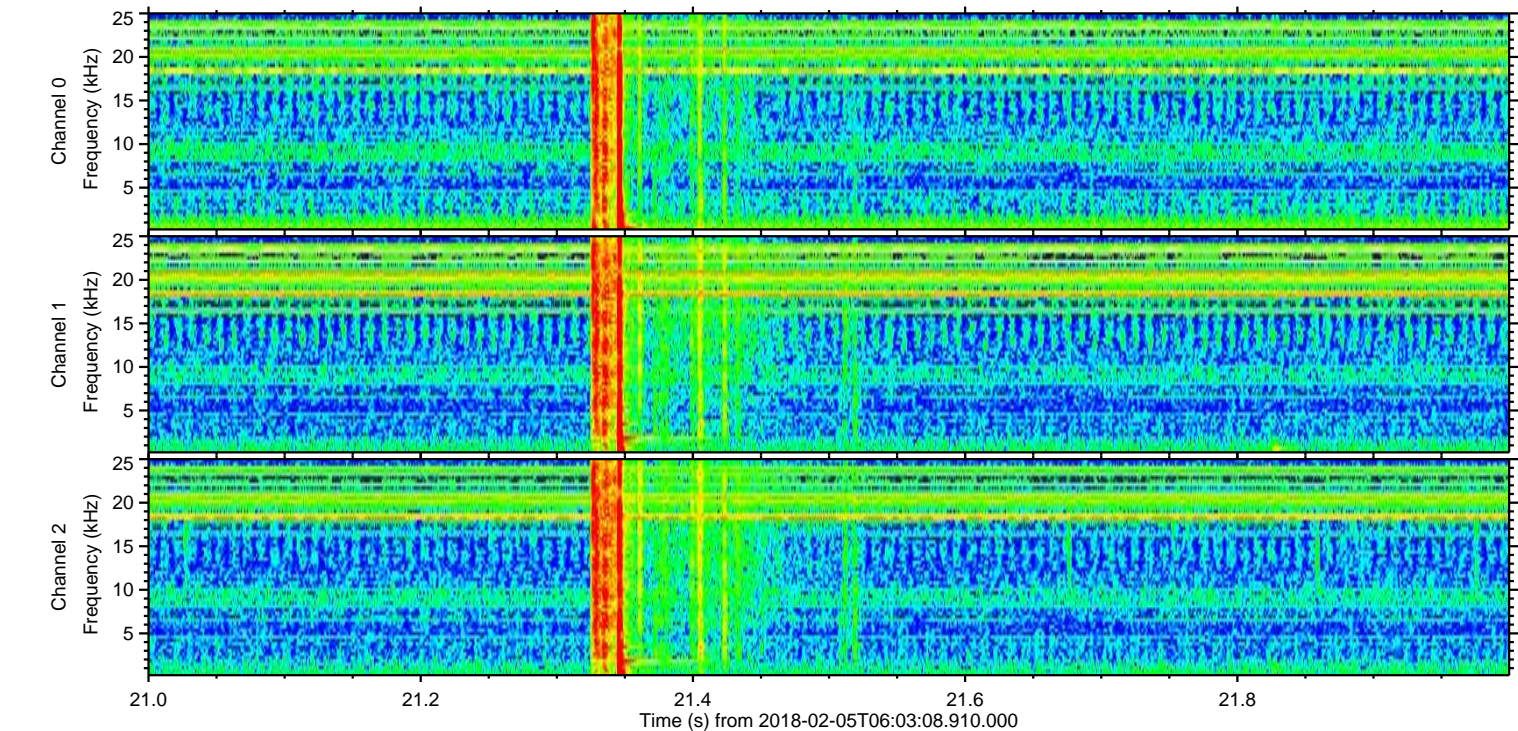
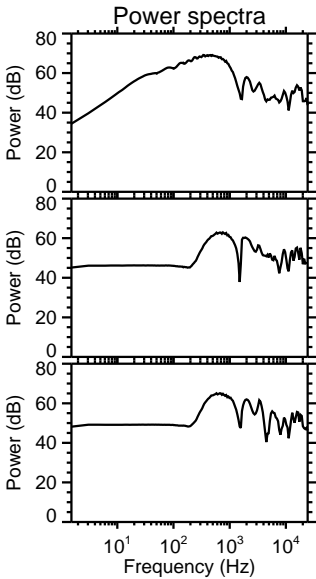
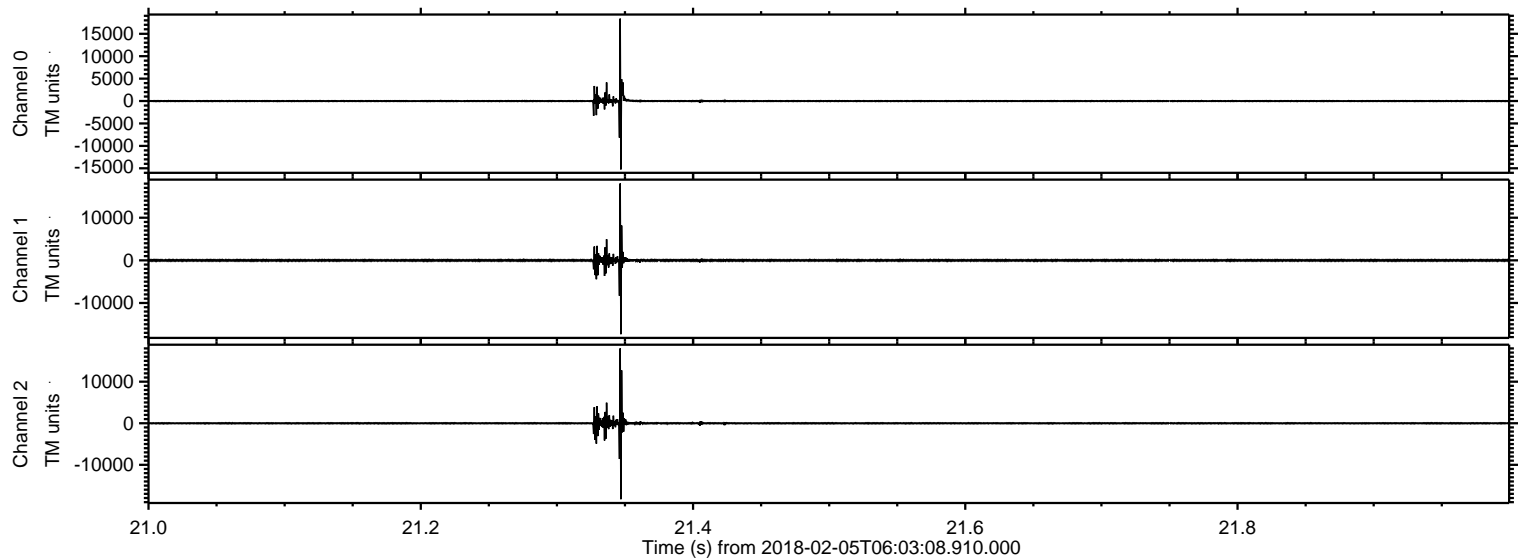


ELMAVAN 3D WAVEFORMS (Measured data sampled at 50 kHz) 50999 packets of 144 samples from 2018-02-05T06:03:08.910.000.

Processed Mon Feb 5 07:11:50 2018 by ELM ver.2012-10-06 from 001__elm20180205_060307__dat00.bin

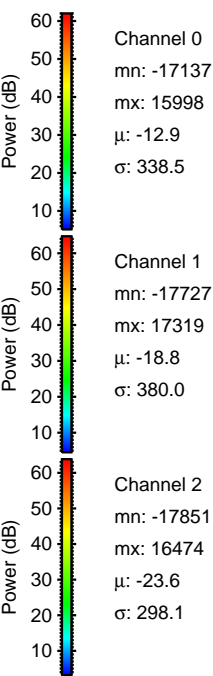
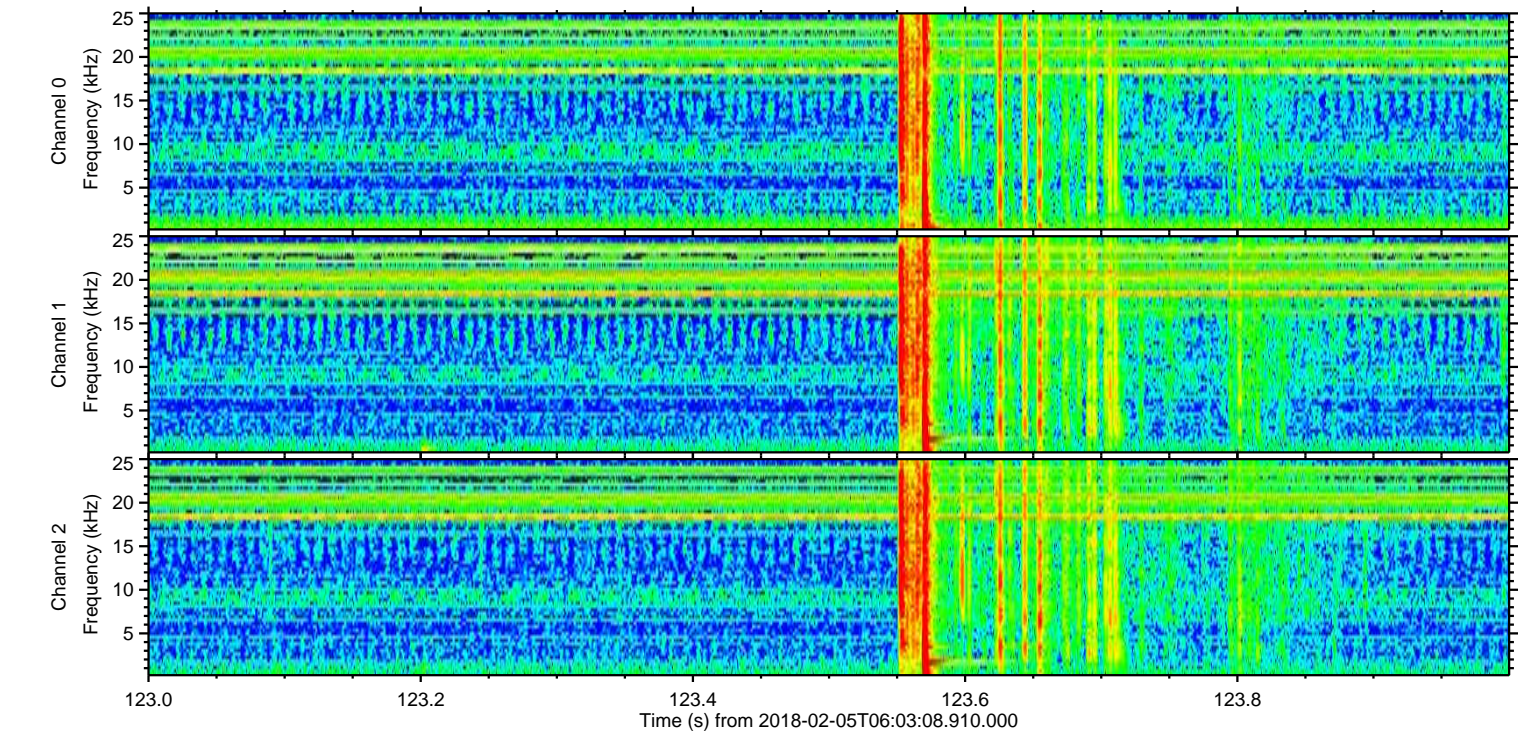
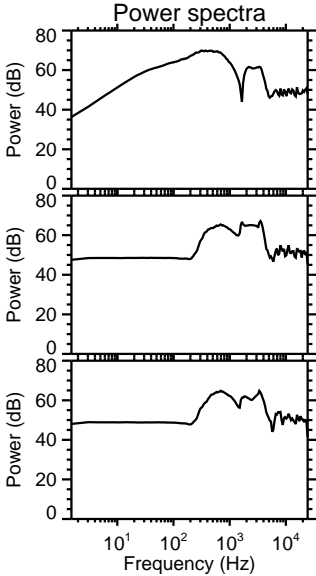
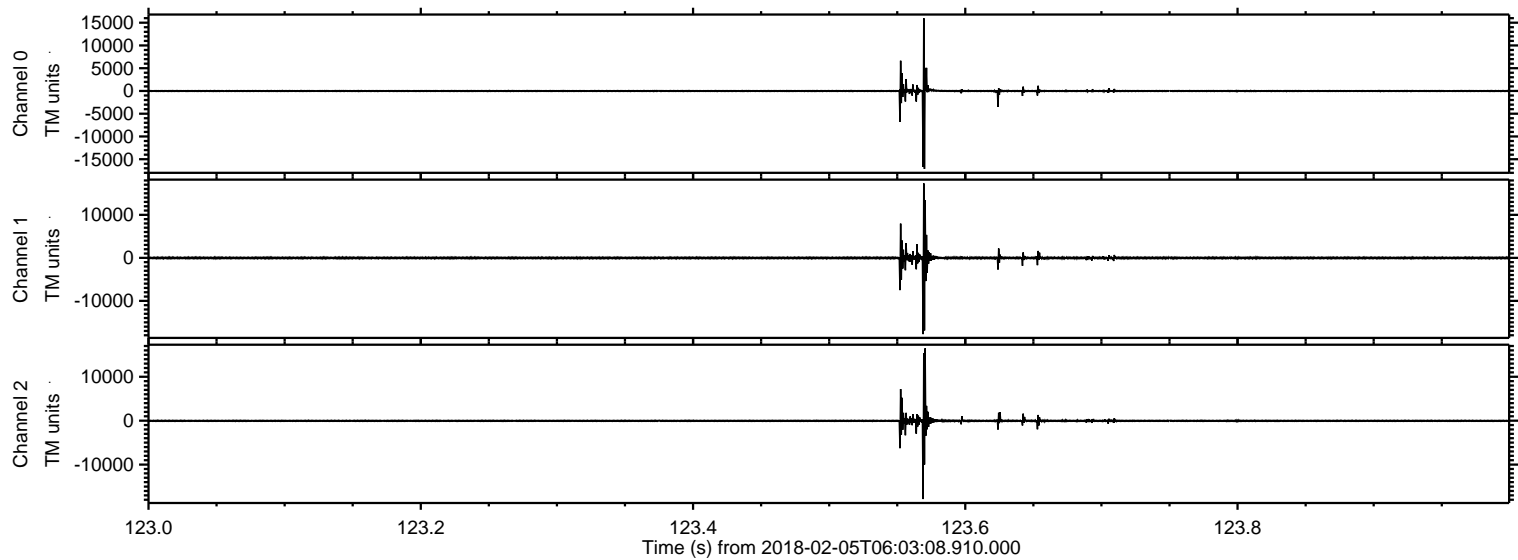


Processed Mon Feb 5 07:11:59 2018 by ELM ver.2012-10-06 from 001__elm20180205_060307__dat00.bin

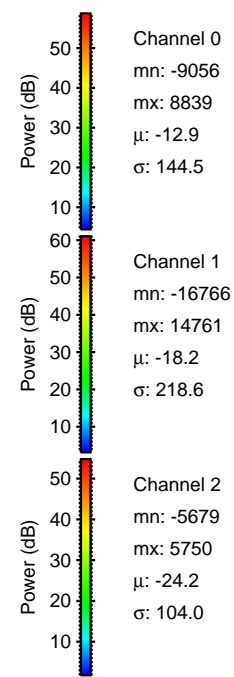
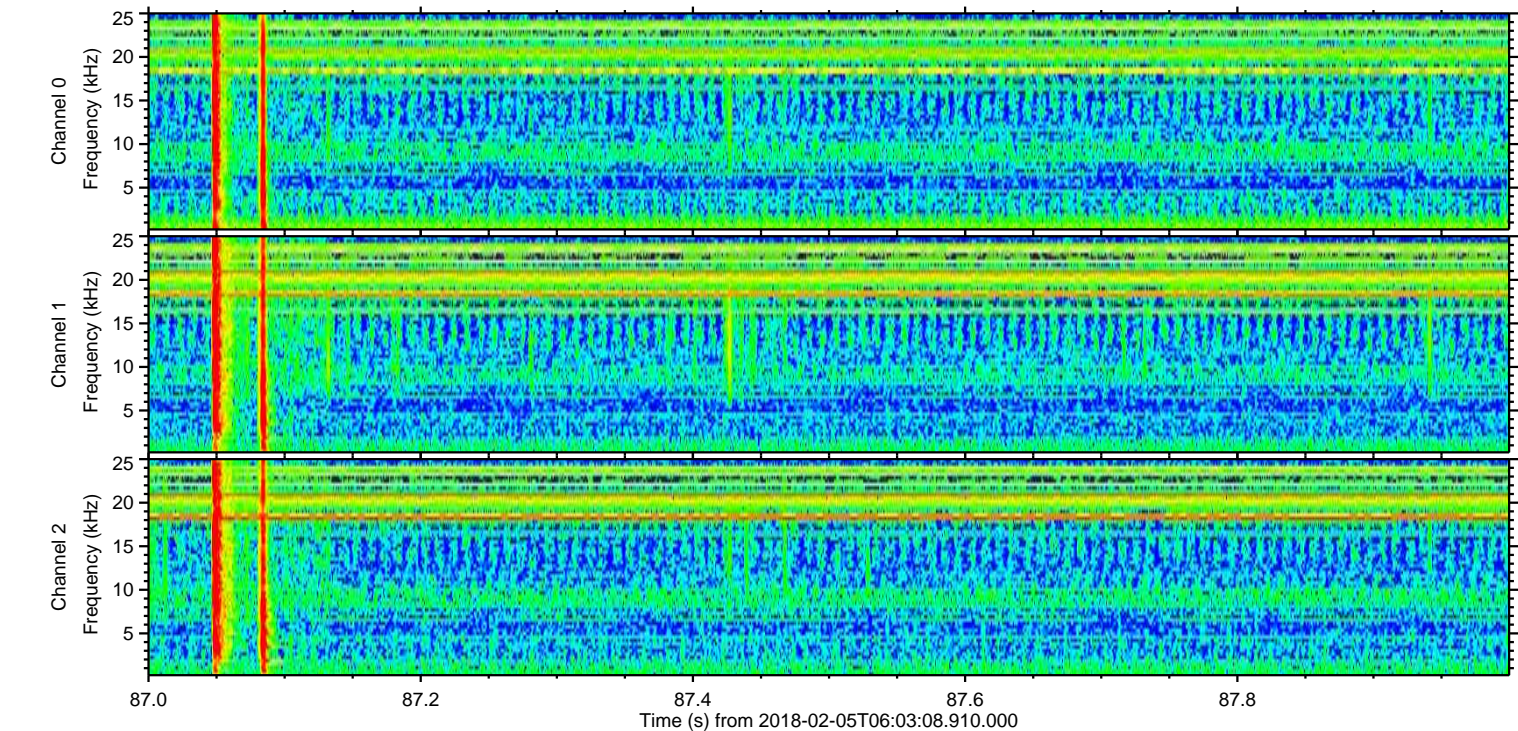
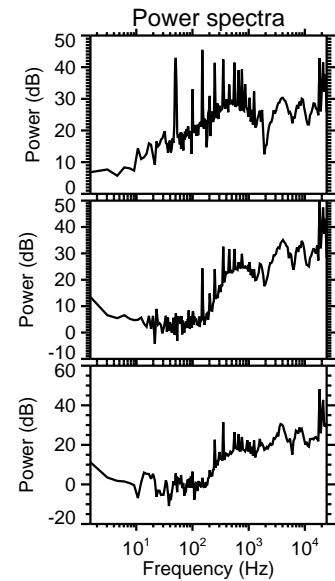
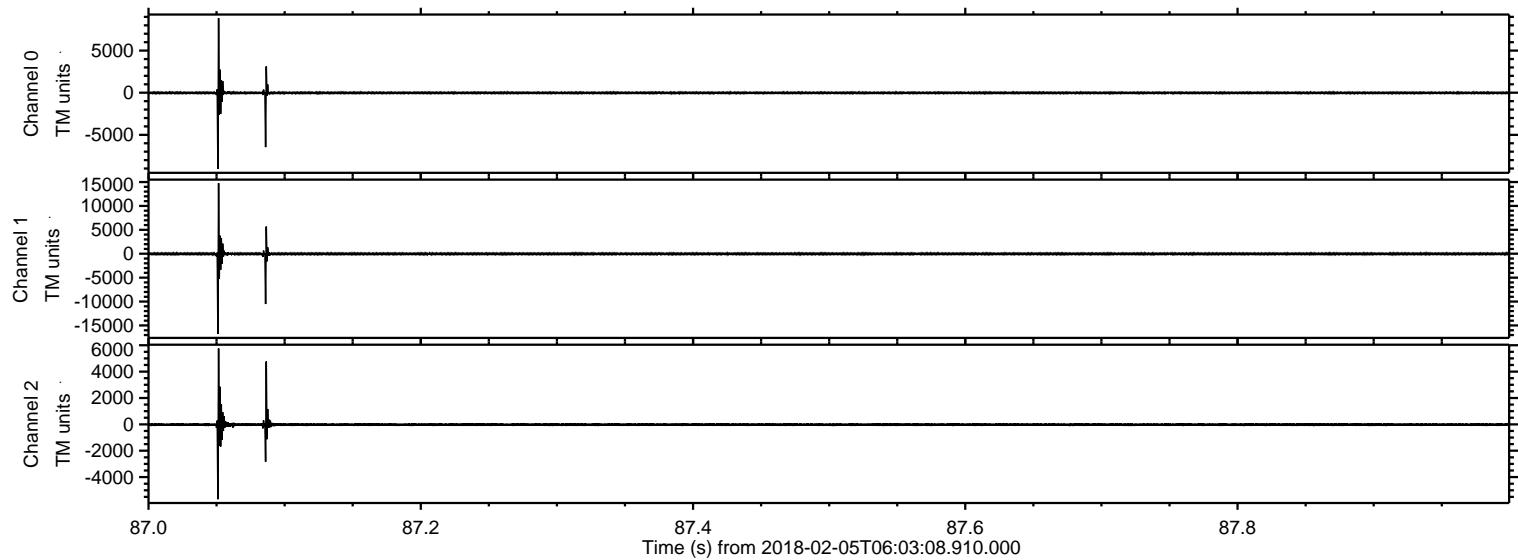


ELMAVAN 3D WAVEFORMS (Measured data sampled at 50 kHz) 50999 packets of 144 samples from 2018-02-05T06:03:08.910.000. Part 124/147

Processed Mon Feb 5 07:12:00 2018 by ELM ver.2012-10-06 from 001__elm20180205_060307__dat00.bin

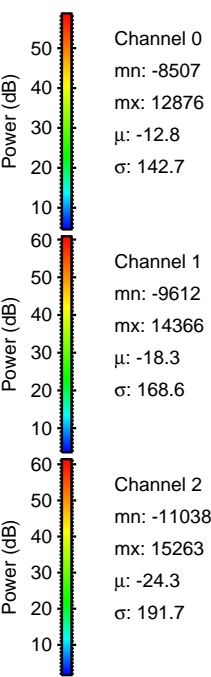
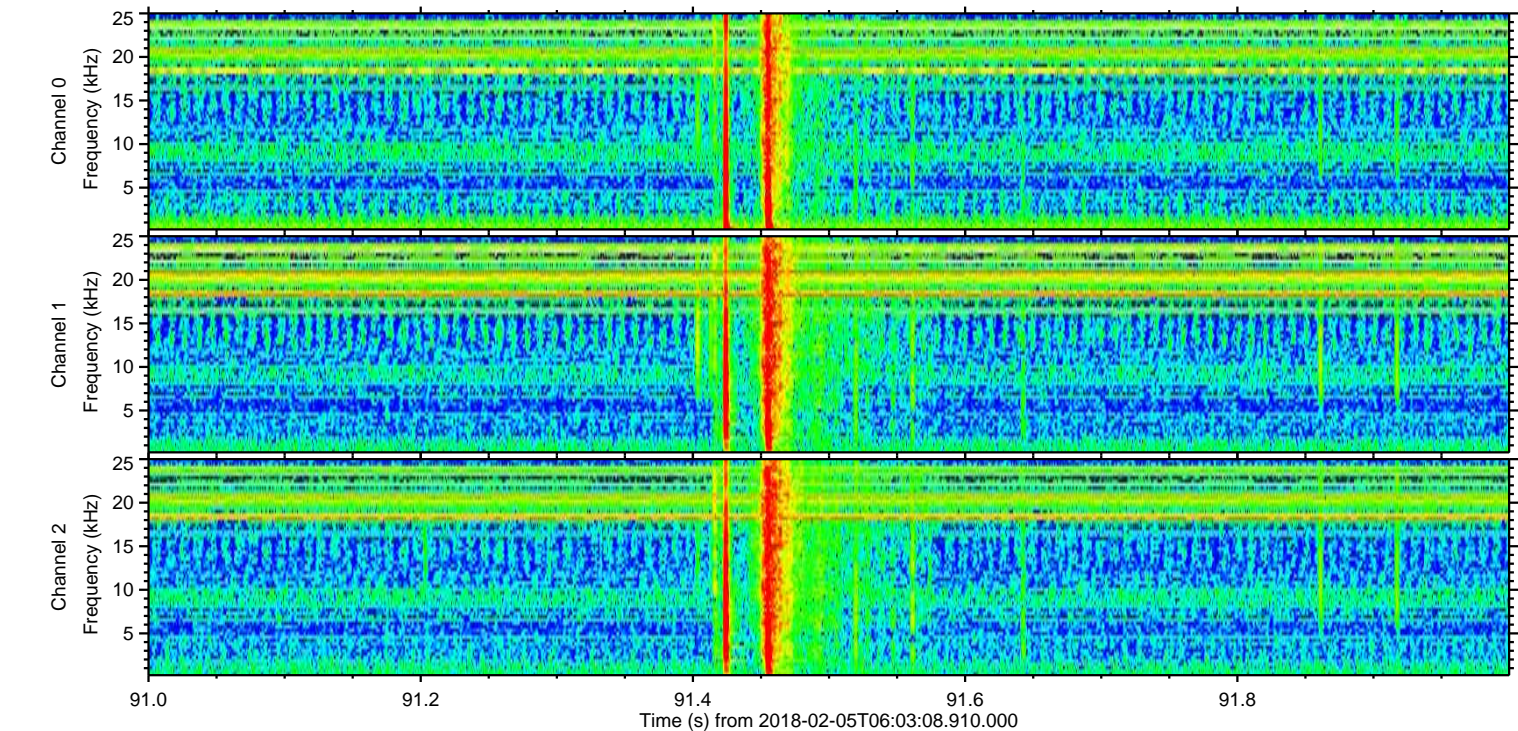
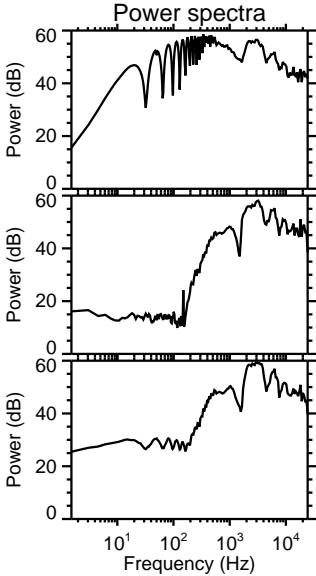
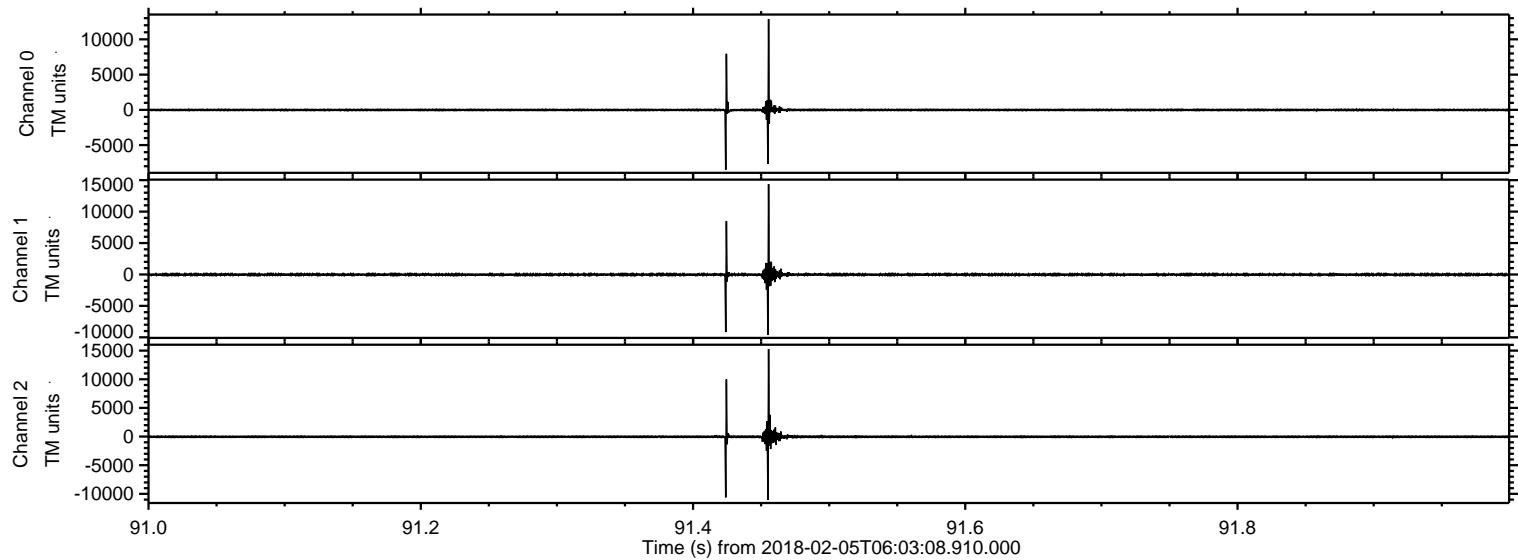


Processed Mon Feb 5 07:12:01 2018 by ELM ver.2012-10-06 from 001__elm20180205_060307__dat00.bin



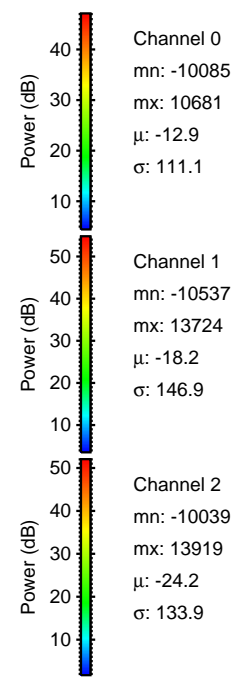
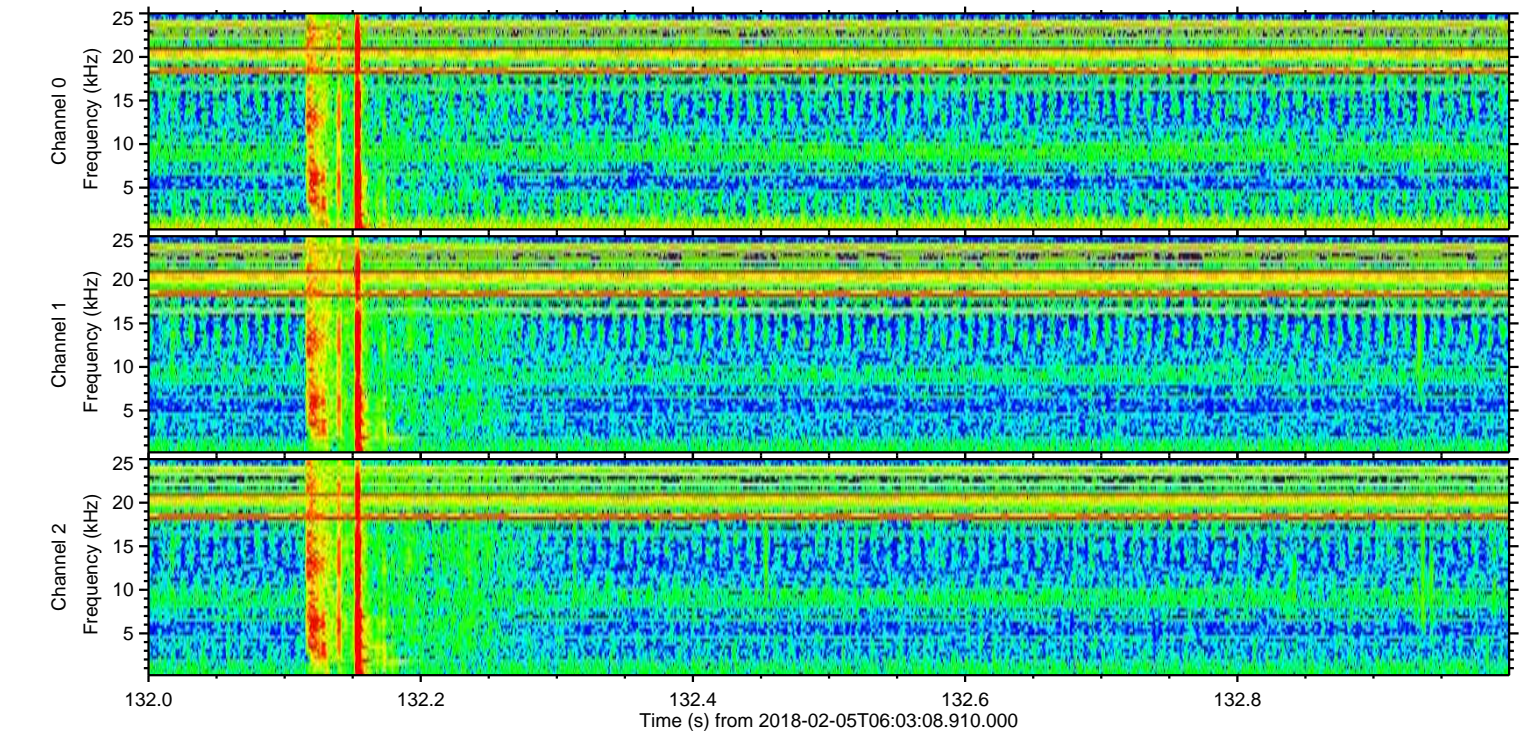
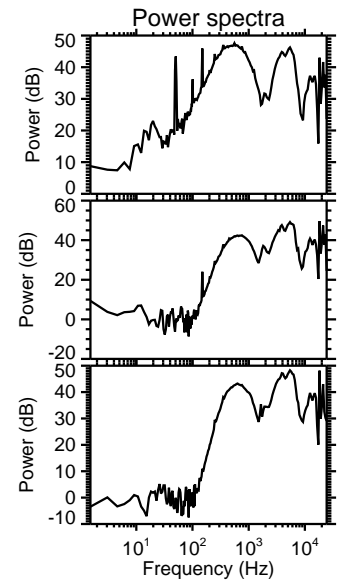
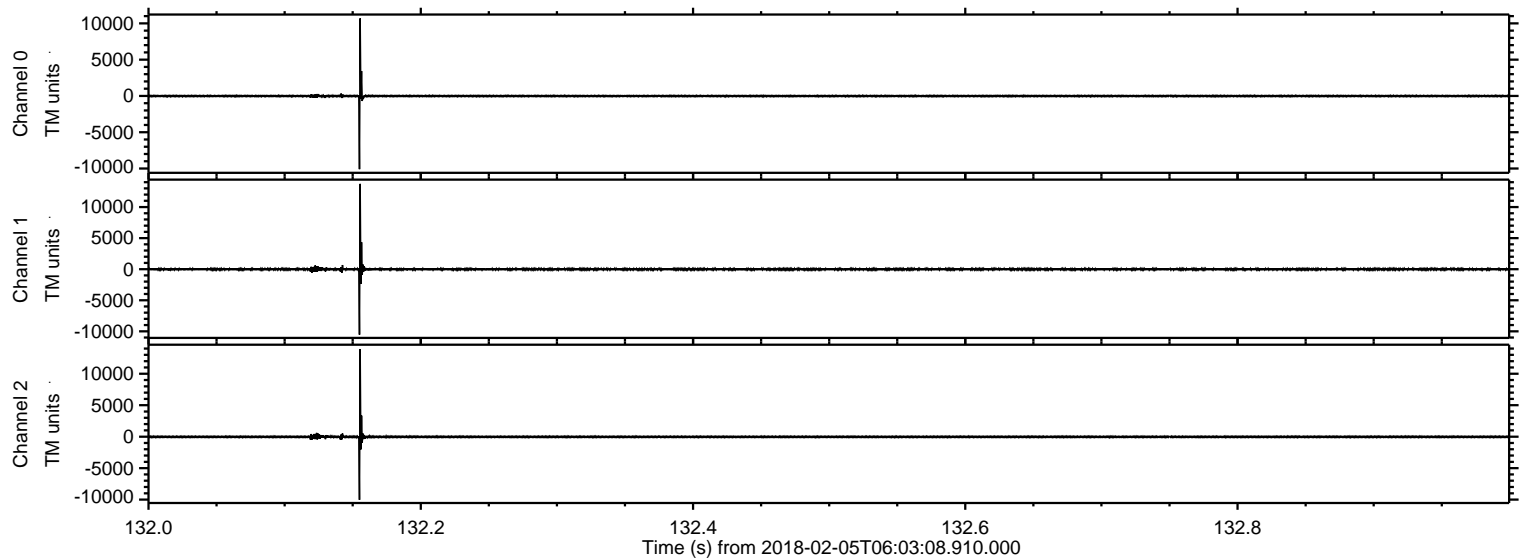
ELMAVAN 3D WAVEFORMS (Measured data sampled at 50 kHz) 50999 packets of 144 samples from 2018-02-05T06:03:08.910.000. Part 92/147

Processed Mon Feb 5 07:12:02 2018 by ELM ver.2012-10-06 from 001__elm20180205_060307__dat00.bin



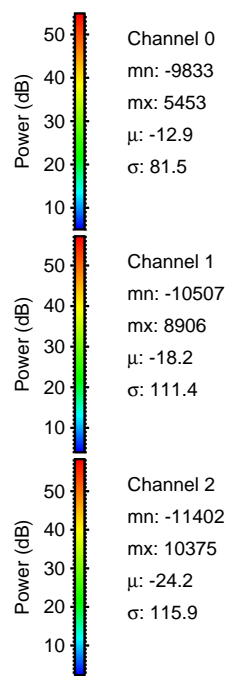
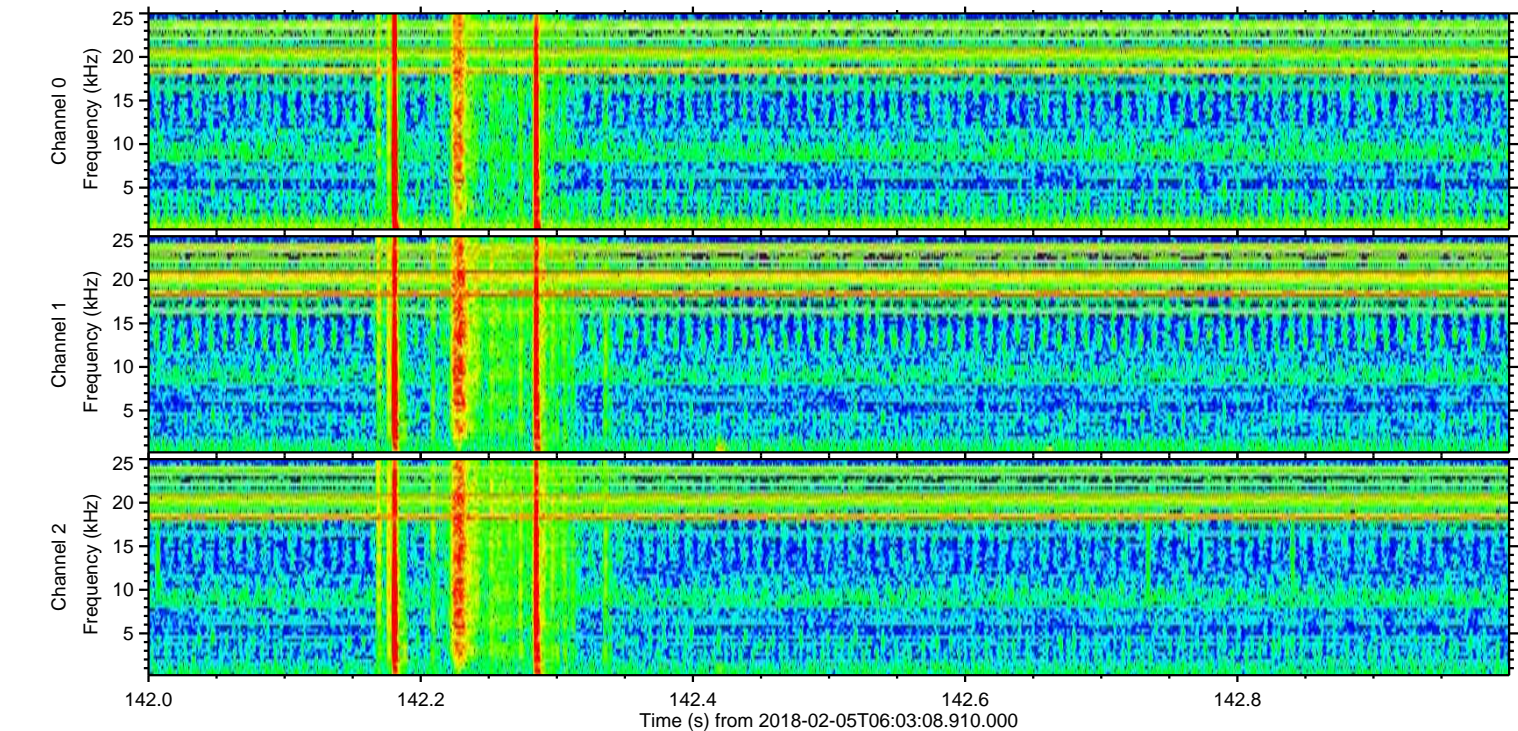
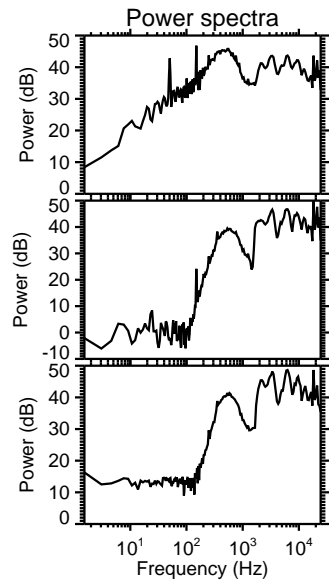
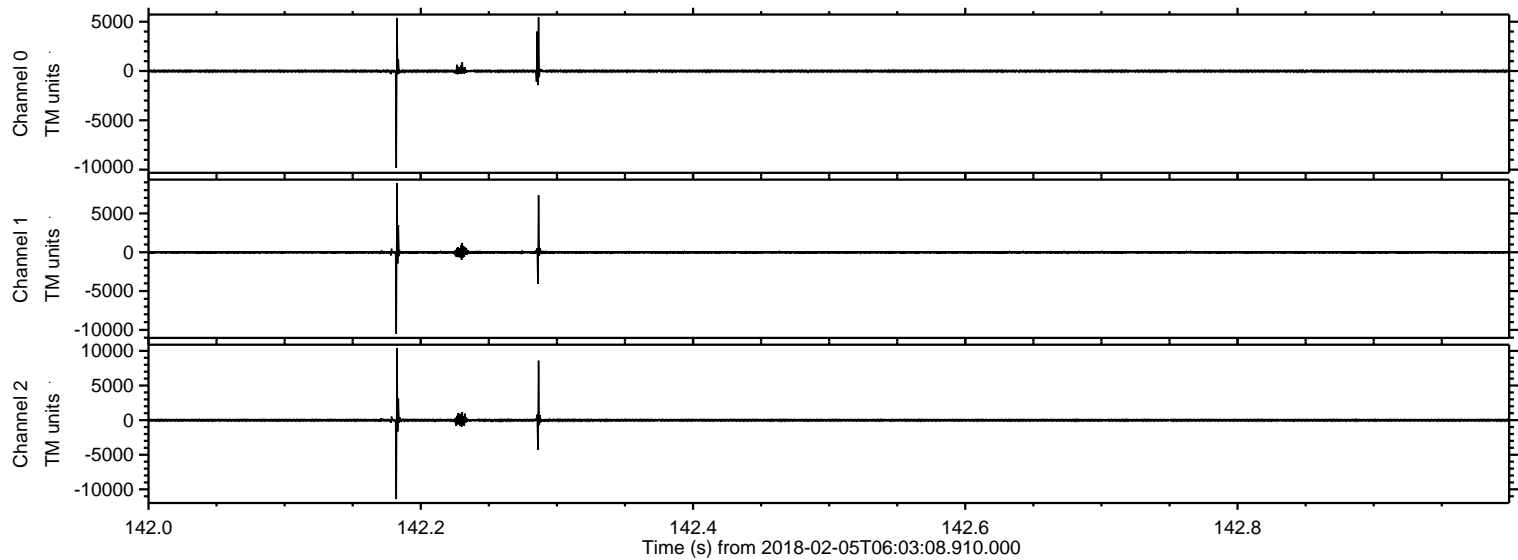
ELMAVAN 3D WAVEFORMS (Measured data sampled at 50 kHz) 50999 packets of 144 samples from 2018-02-05T06:03:08.910.000. Part 133/147

Processed Mon Feb 5 07:12:03 2018 by ELM ver.2012-10-06 from 001__elm20180205_060307__dat00.bin

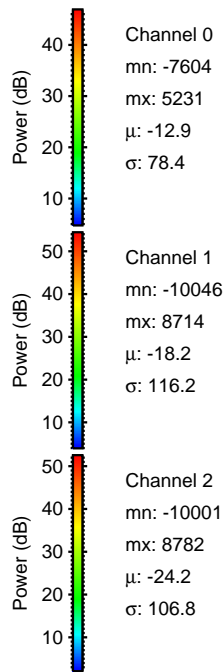
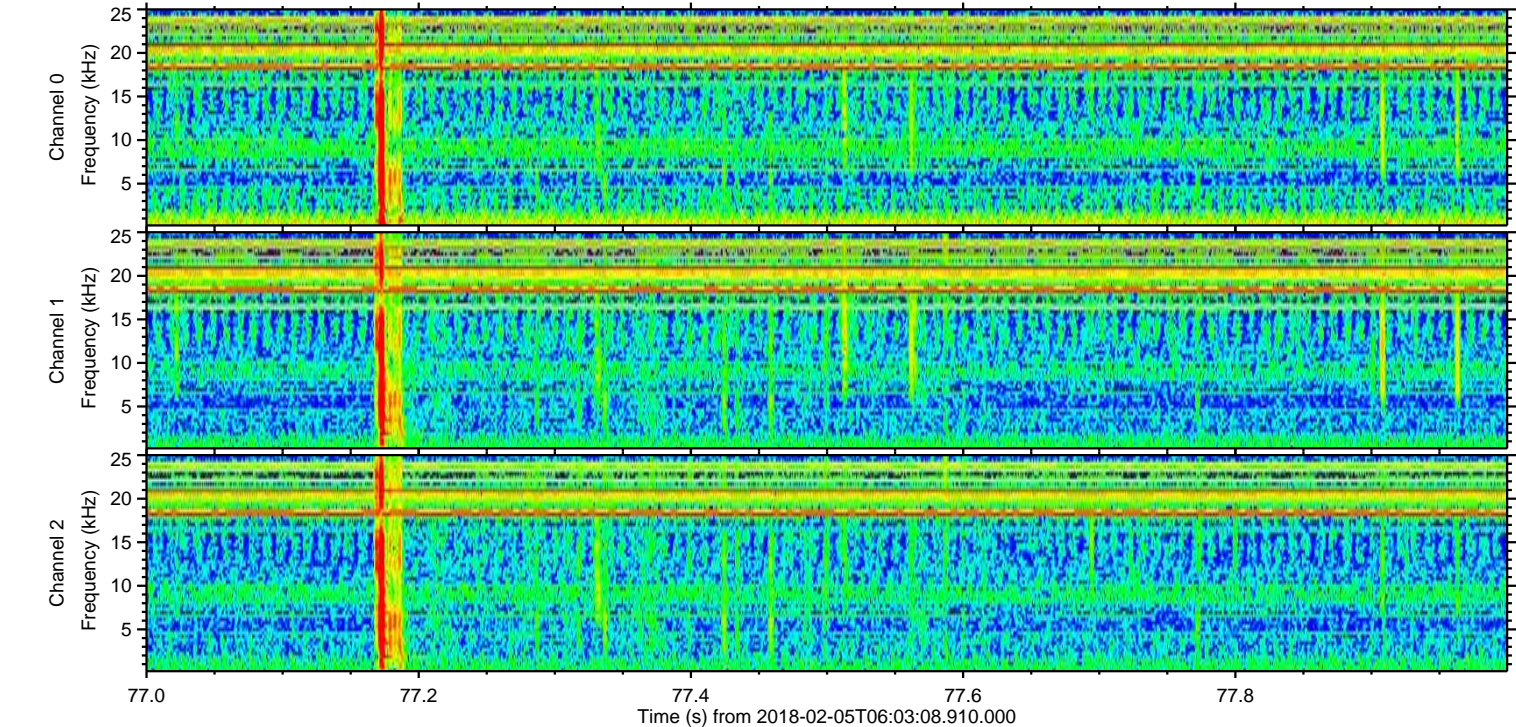
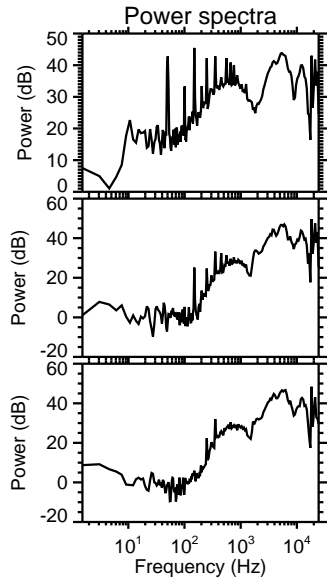
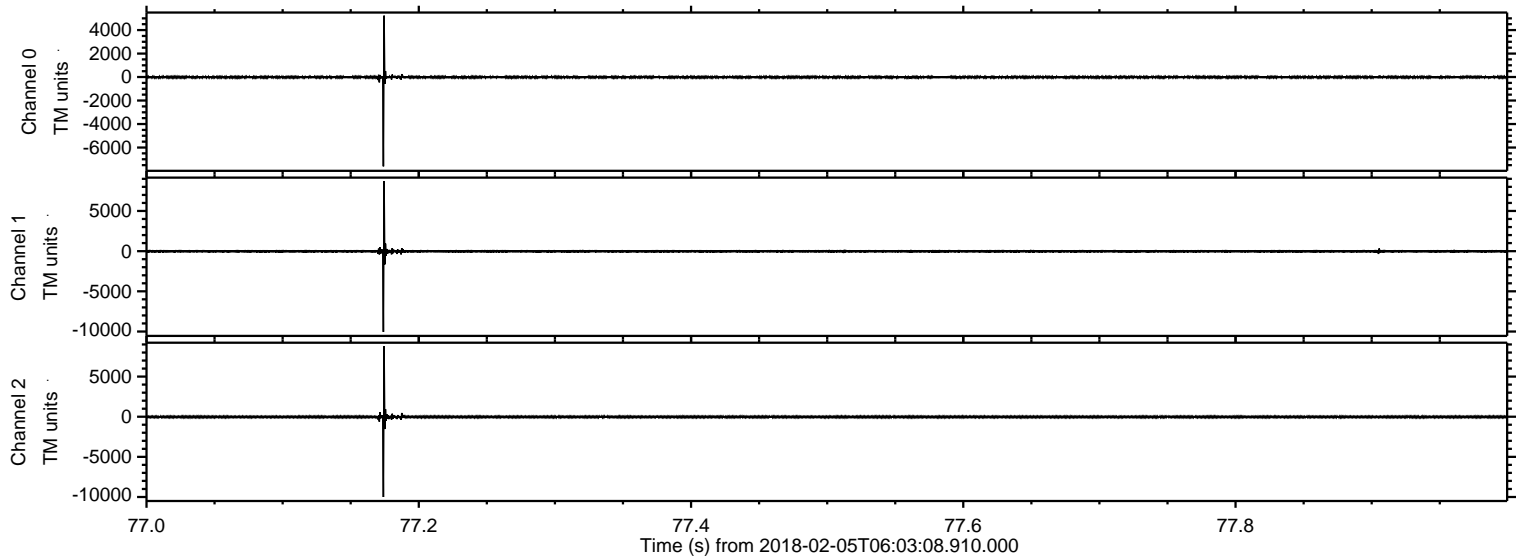


ELMAVAN 3D WAVEFORMS (Measured data sampled at 50 kHz) 50999 packets of 144 samples from 2018-02-05T06:03:08.910.000. Part 143/147

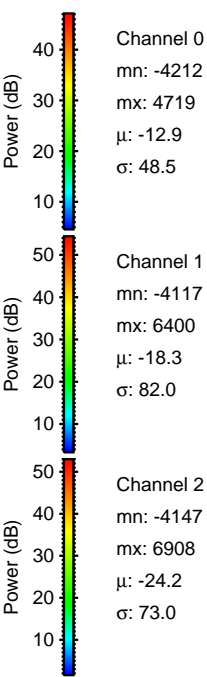
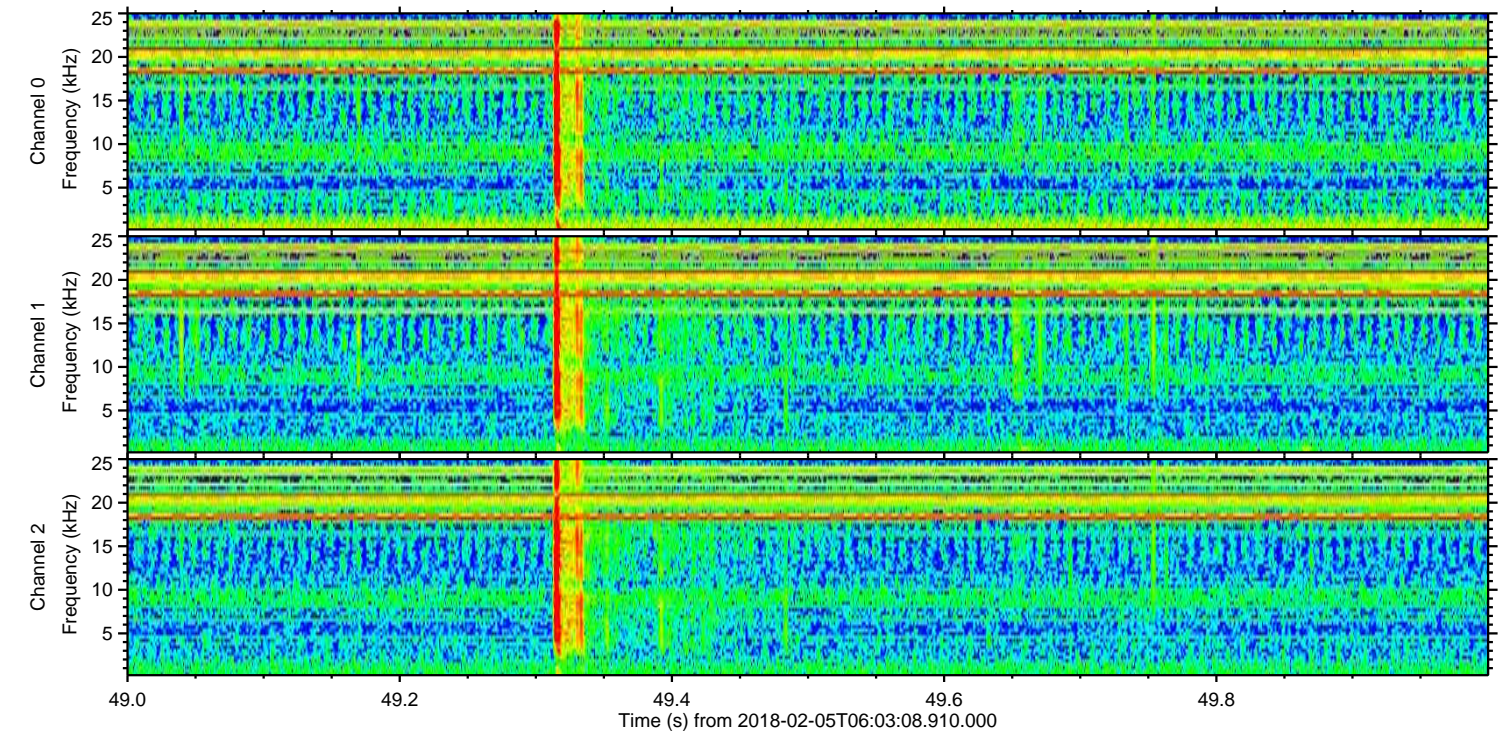
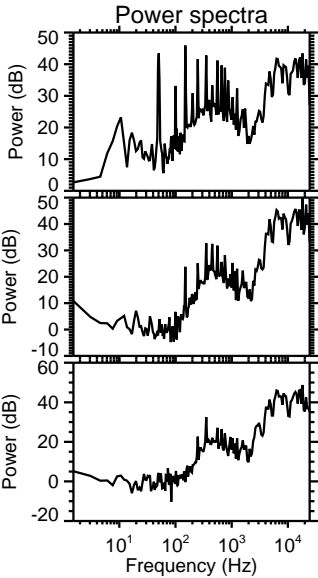
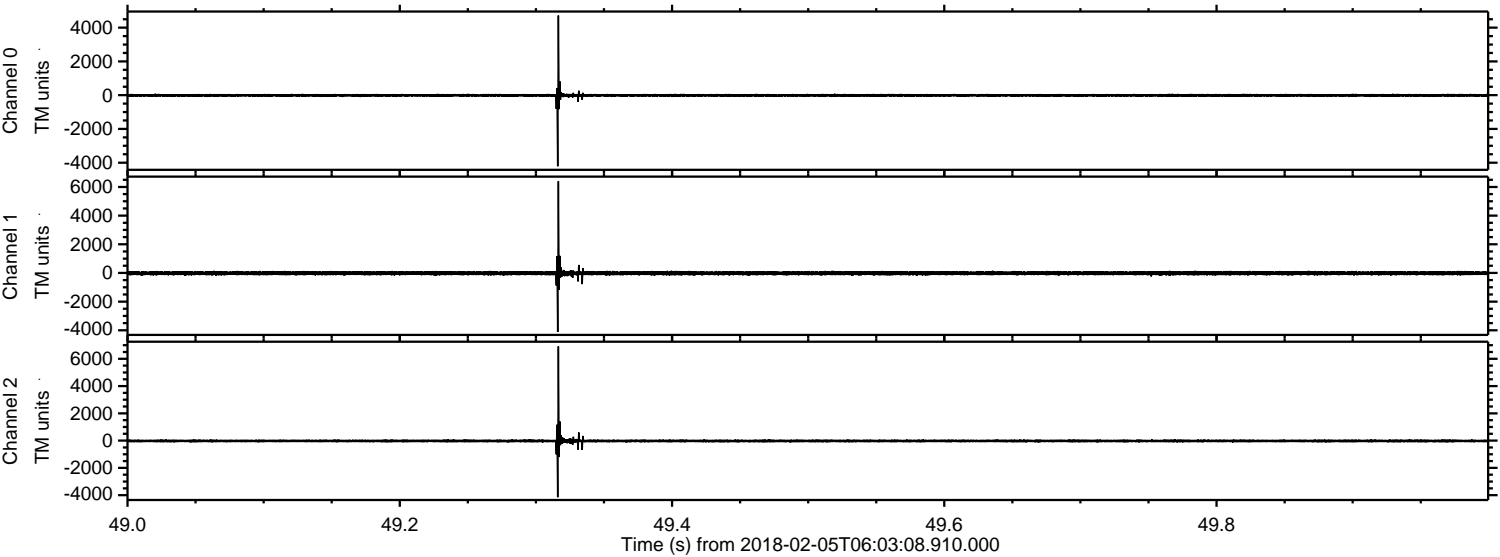
Processed Mon Feb 5 07:12:03 2018 by ELM ver.2012-10-06 from 001__elm20180205_060307__dat00.bin



Processed Mon Feb 5 07:12:04 2018 by ELM ver.2012-10-06 from 001__elm20180205_060307__dat00.bin



Processed Mon Feb 5 07:12:05 2018 by ELM ver.2012-10-06 from 001__elm20180205_060307__dat00.bin



Channel 0
mn: -4212
mx: 4719
 μ : -12.9
 σ : 48.5

Channel 1
mn: -4117
mx: 6400
 μ : -18.3
 σ : 82.0

Channel 2
mn: -4147
mx: 6908
 μ : -24.2
 σ : 73.0

Processed Mon Feb 5 07:12:06 2018 by ELM ver.2012-10-06 from 001__elm20180205_060307__dat00.bin

