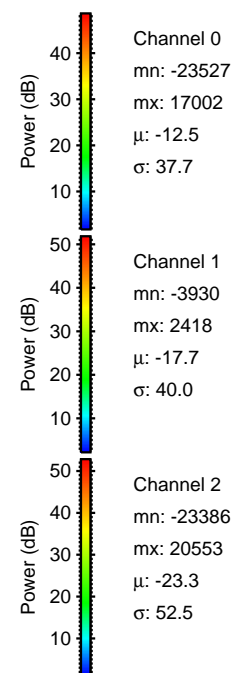
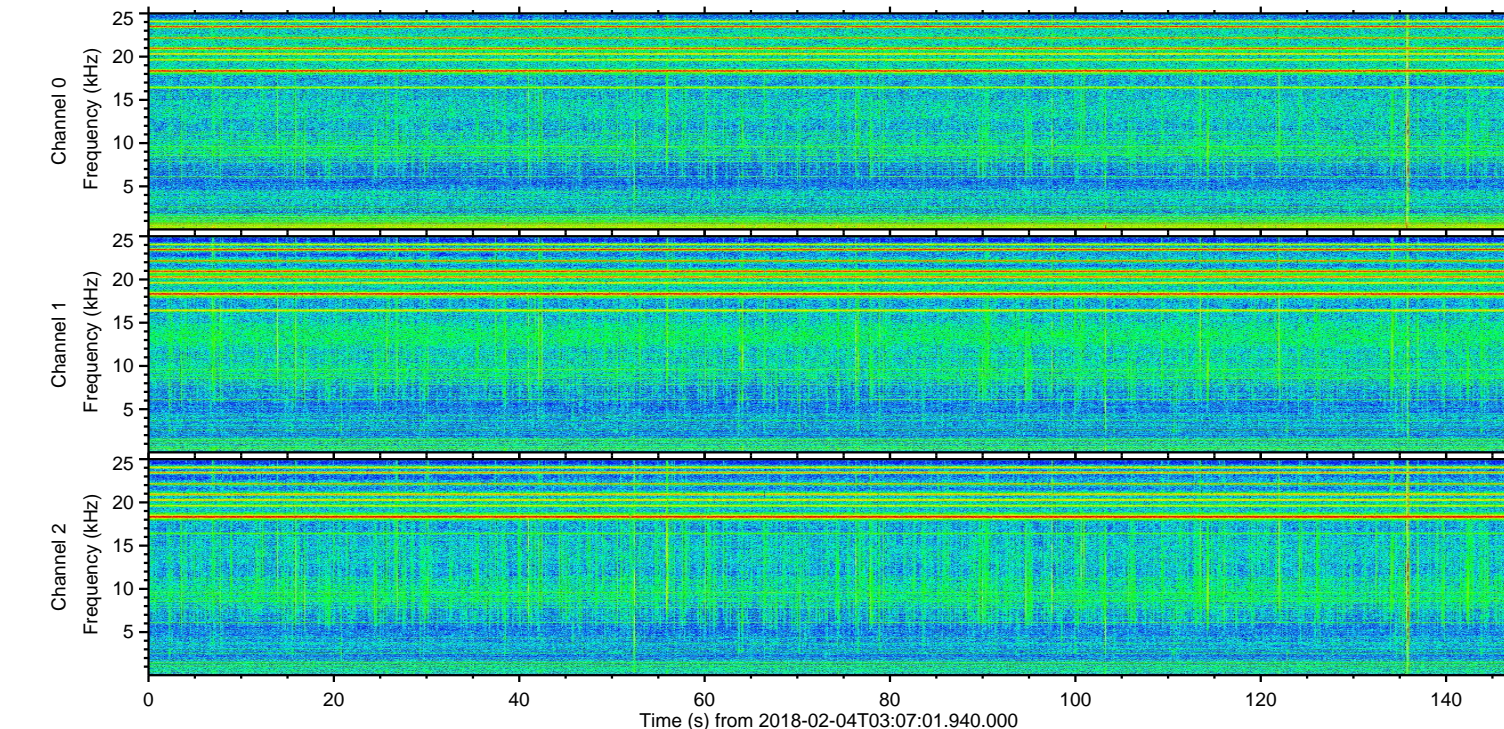
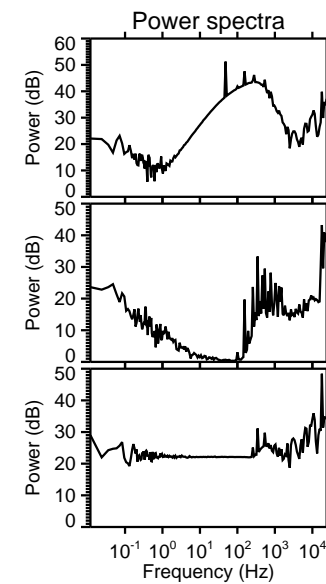
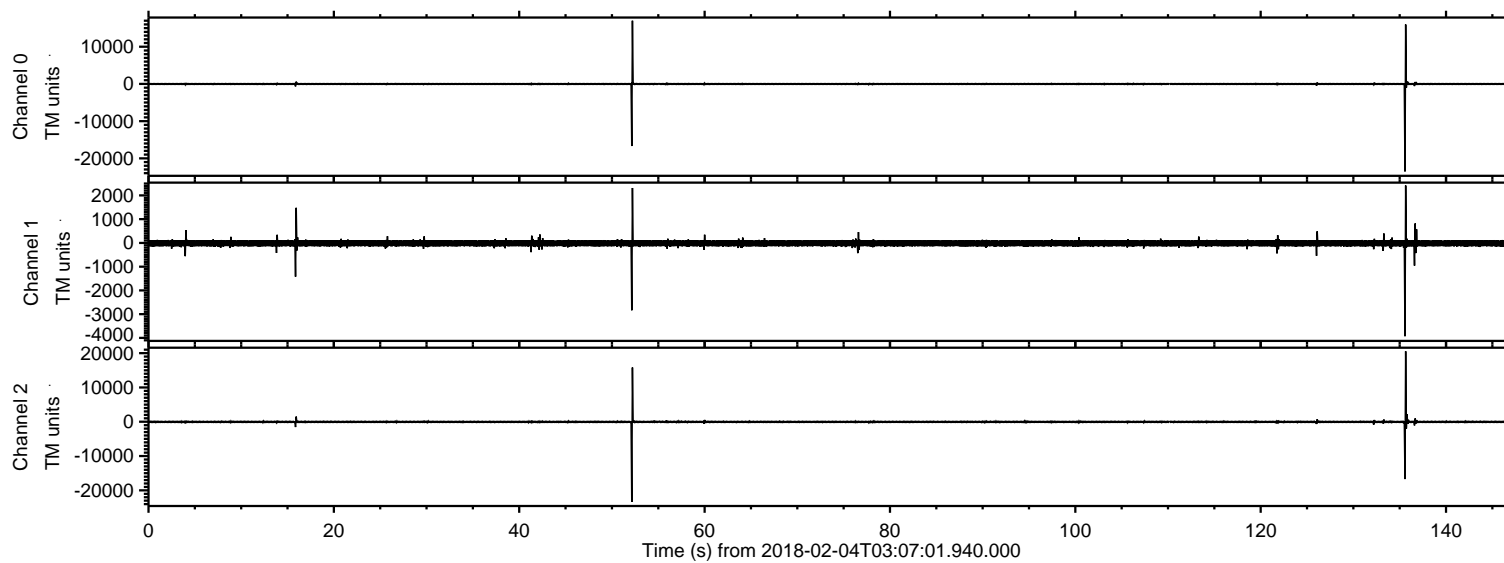


# ELMAVAN 3D WAVEFORMS (Measured data sampled at 50 kHz) 51000 packets of 144 samples from 2018-02-04T03:07:01.940.000.

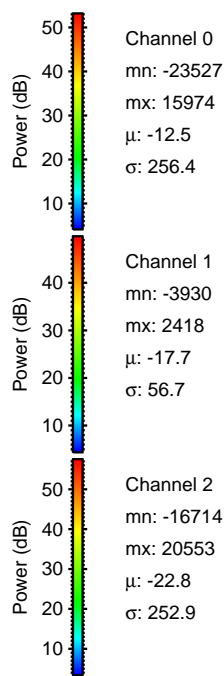
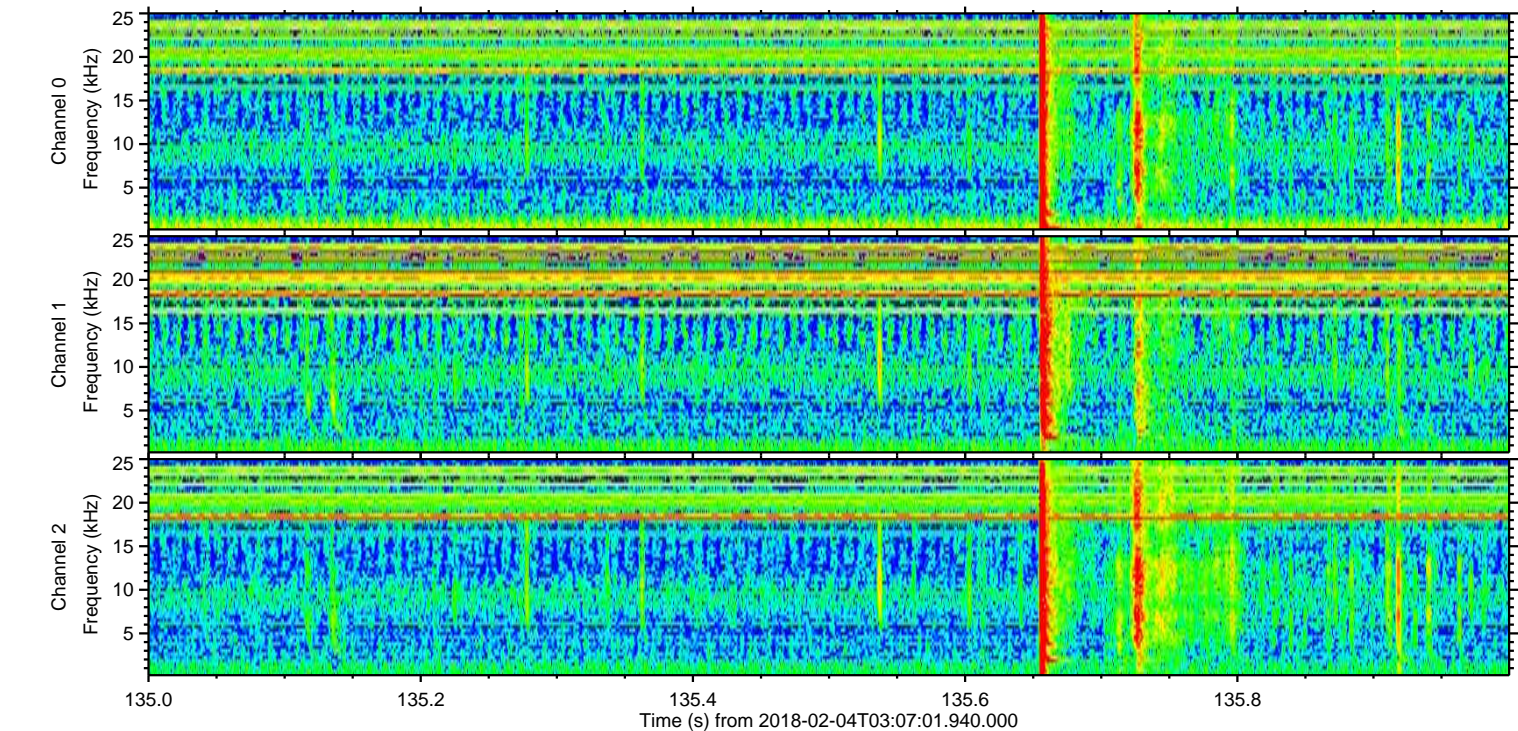
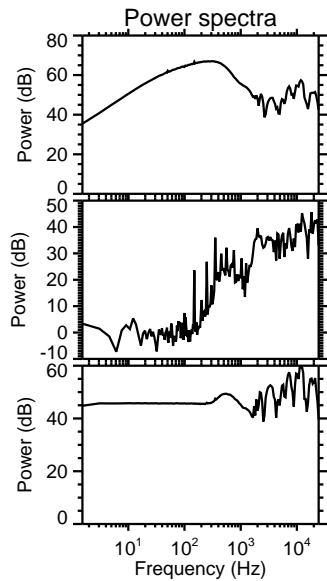
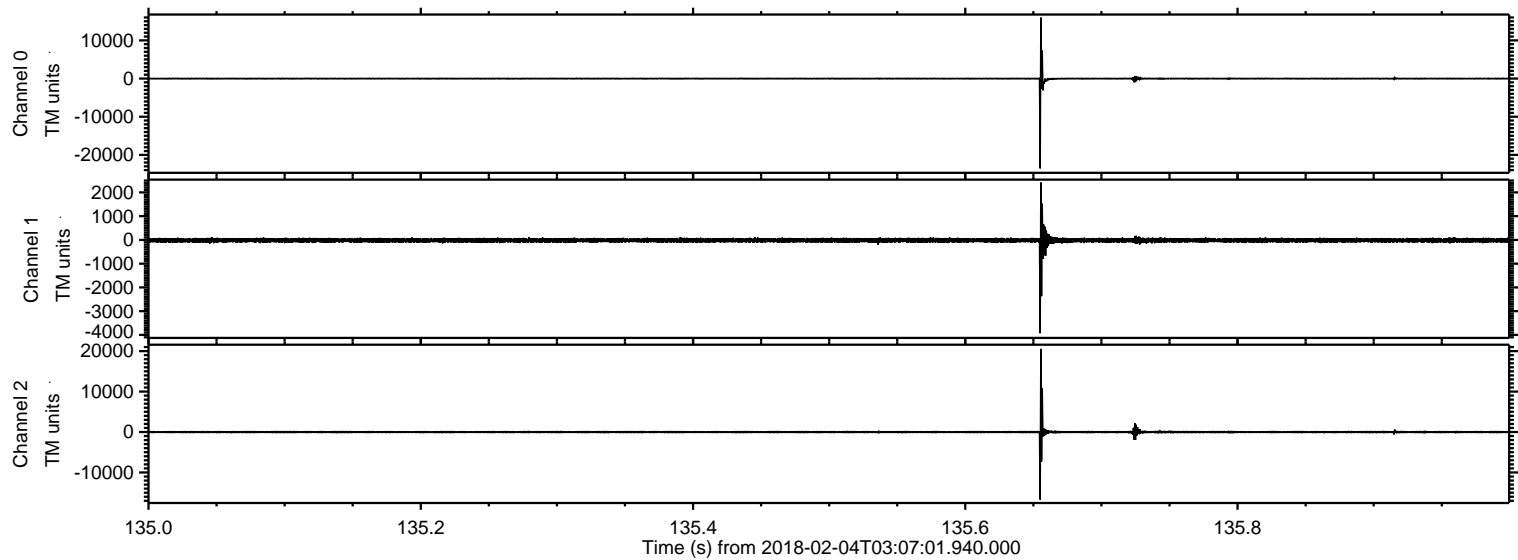
Processed Sun Feb 4 04:15:34 2018 by ELM ver.2012-10-06 from 001\_\_elm20180204\_030700\_\_dat00.bin





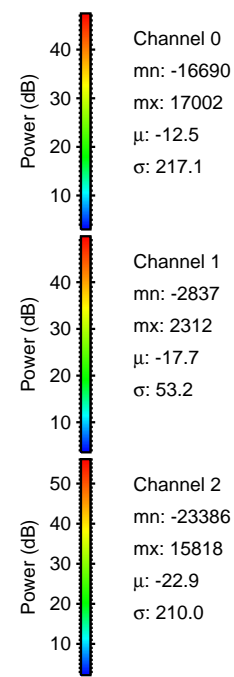
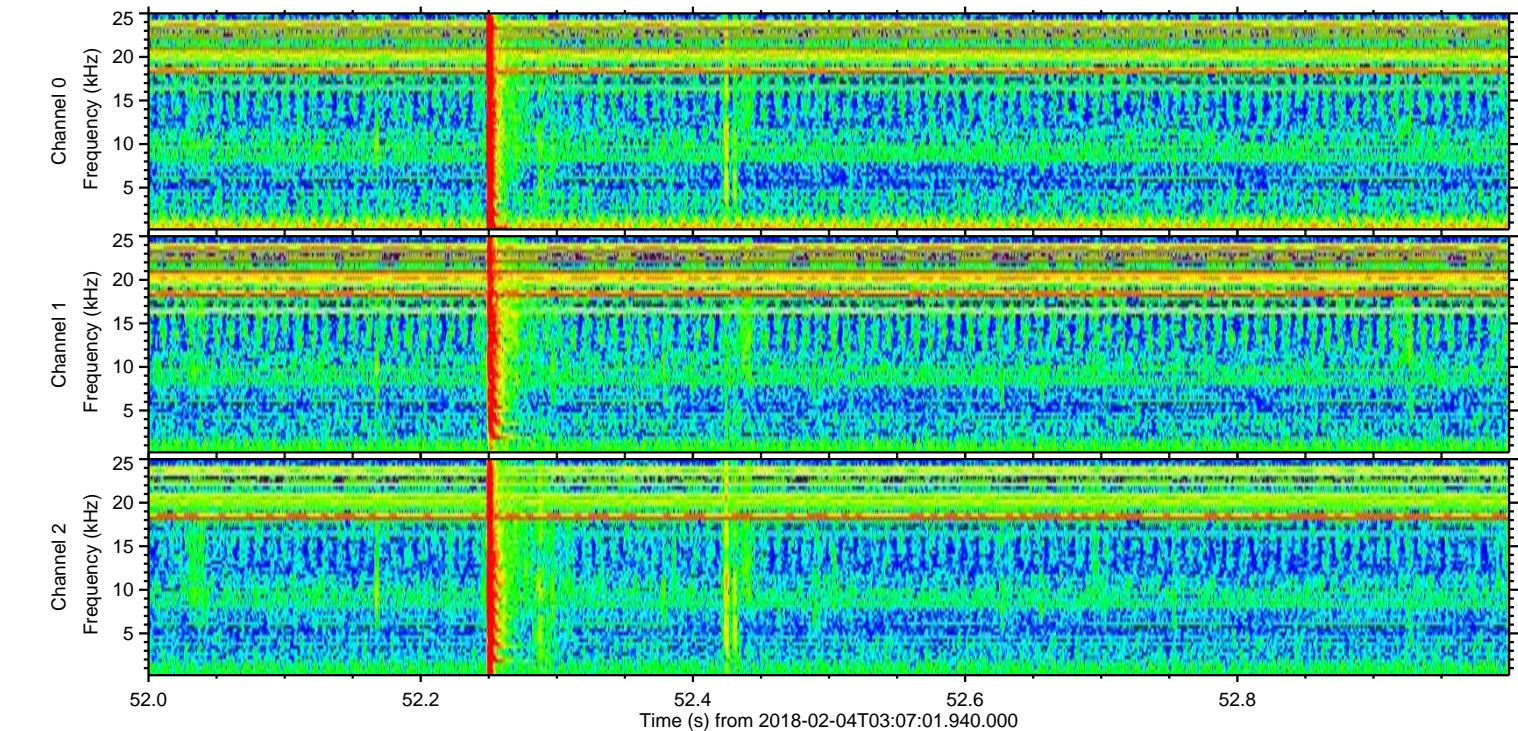
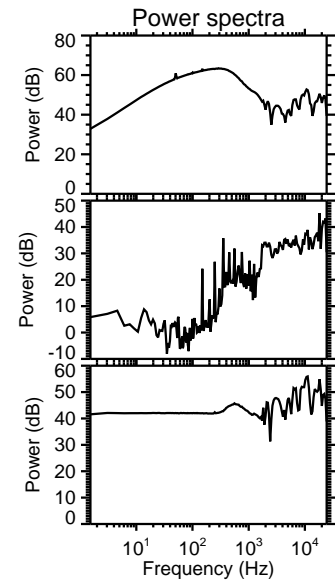
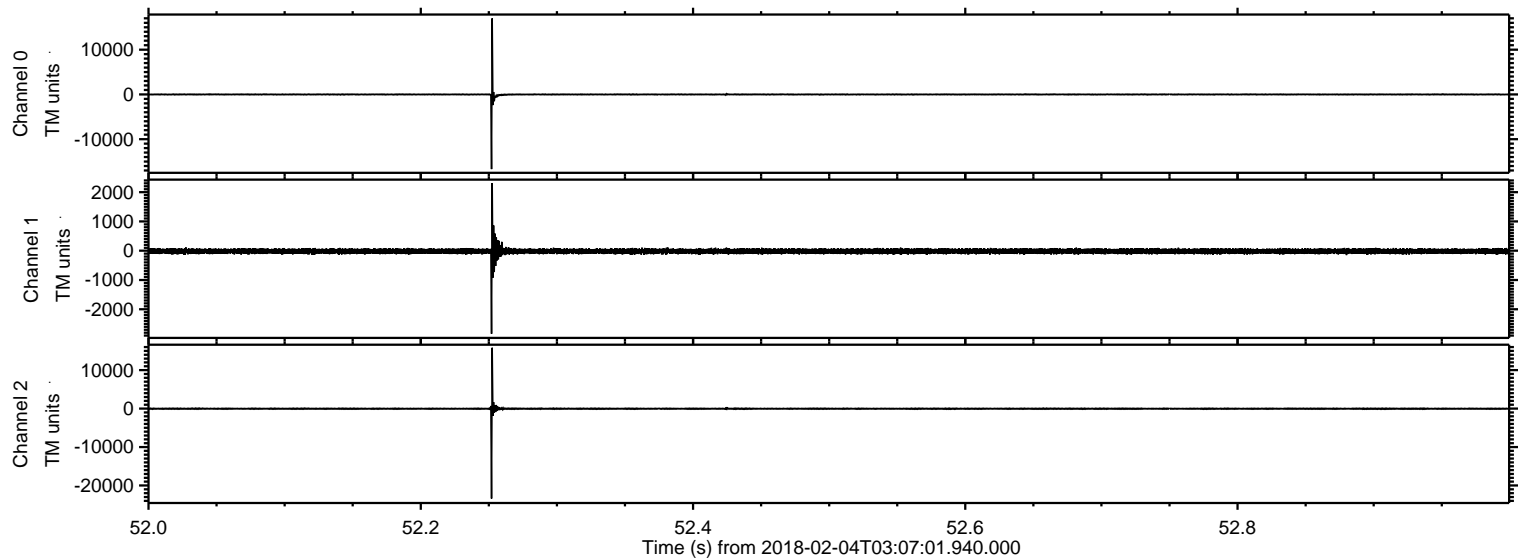
ELMAVAN 3D WAVEFORMS (Measured data sampled at 50 kHz) 51000 packets of 144 samples from 2018-02-04T03:07:01.940.000. Part 136/147

Processed Sun Feb 4 04:15:42 2018 by ELM ver.2012-10-06 from 001\_\_elm20180204\_030700\_\_dat00.bin





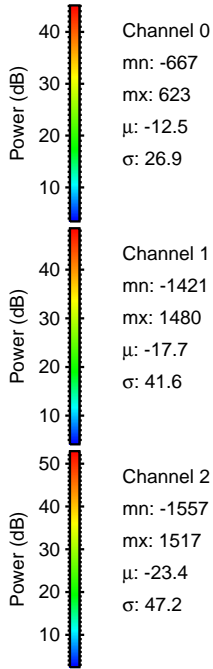
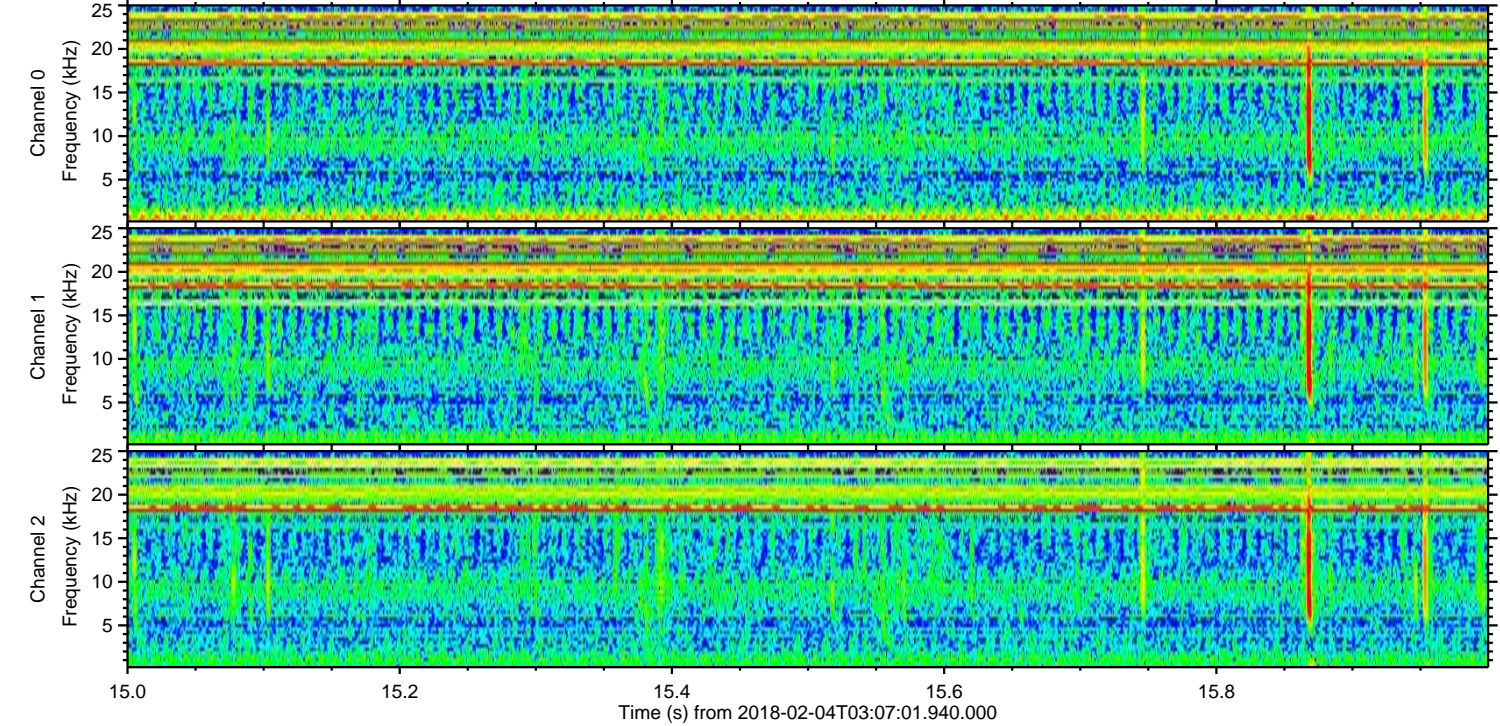
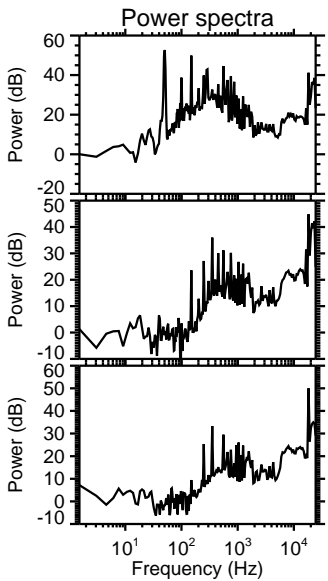
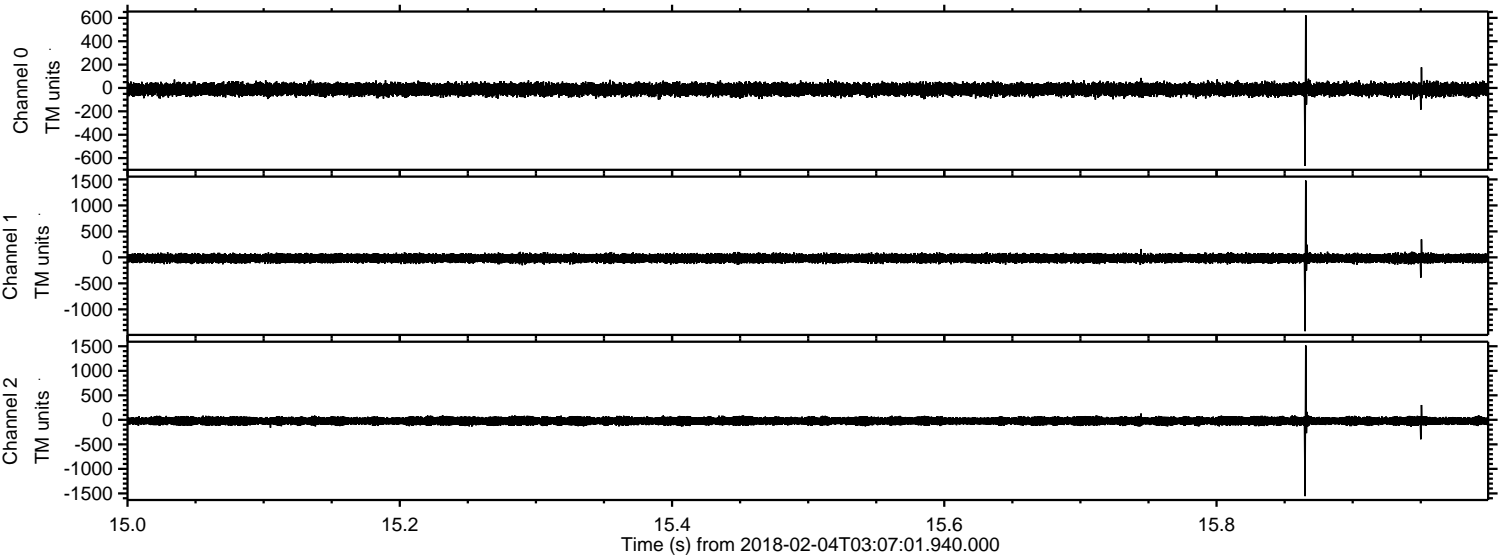
Processed Sun Feb 4 04:15:43 2018 by ELM ver.2012-10-06 from 001\_\_elm20180204\_030700\_\_dat00.bin





ELMAVAN 3D WAVEFORMS (Measured data sampled at 50 kHz) 51000 packets of 144 samples from 2018-02-04T03:07:01.940.000. Part 16/147

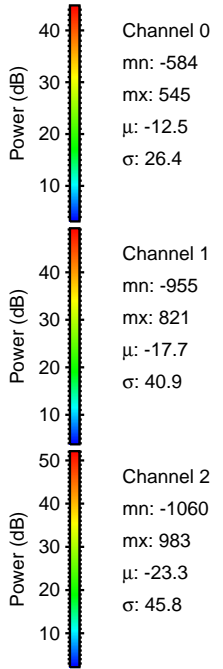
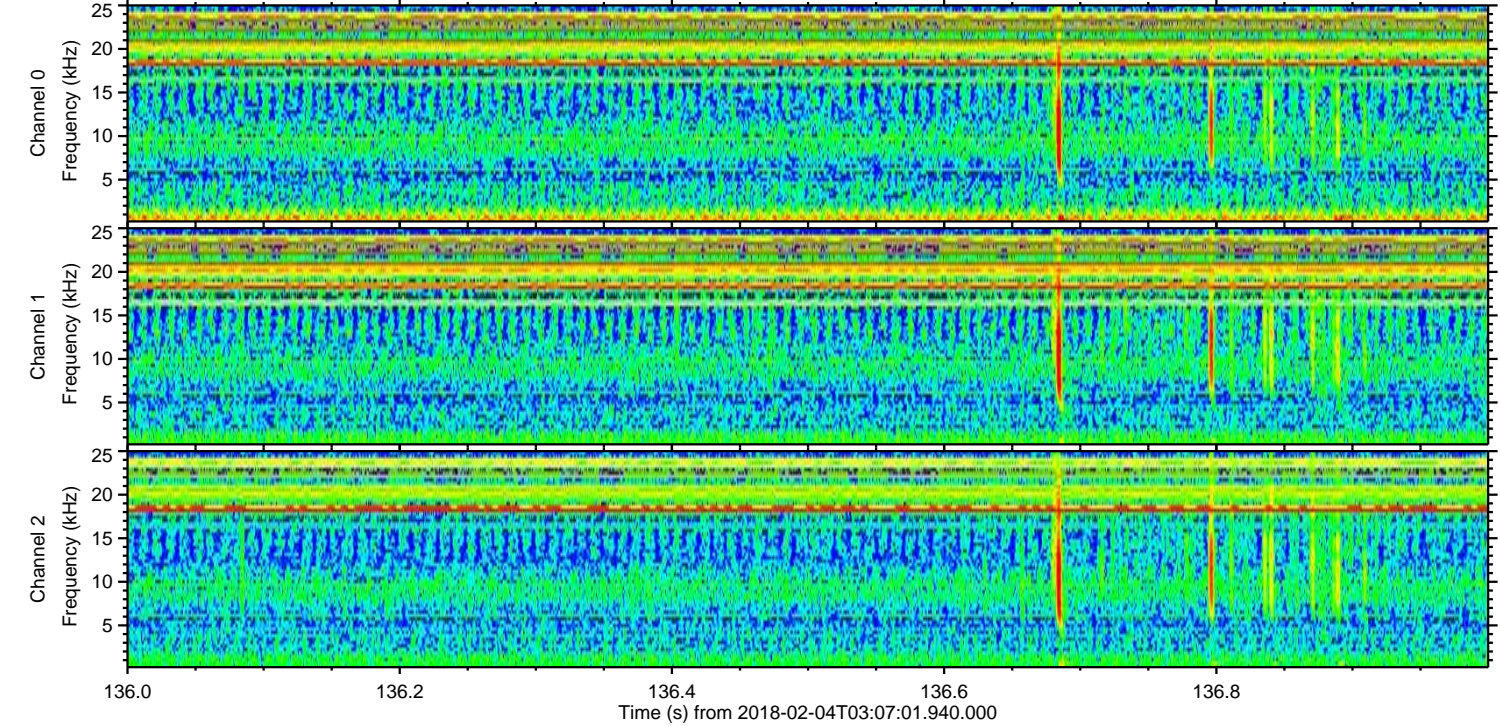
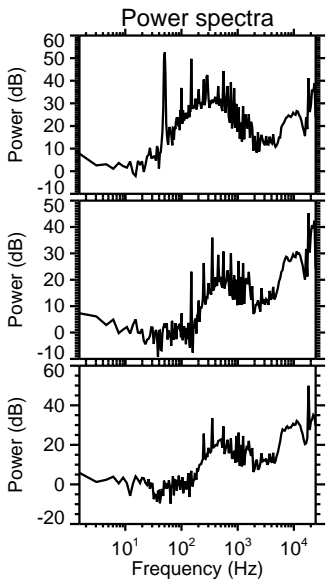
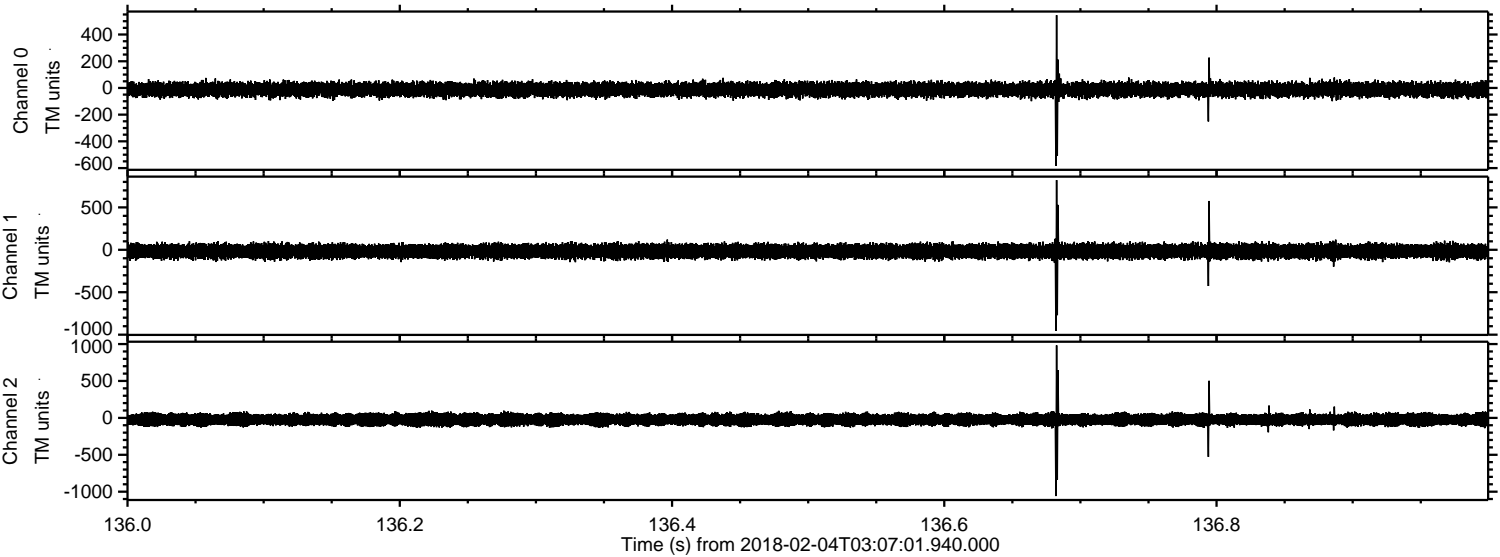
Processed Sun Feb 4 04:15:44 2018 by ELM ver.2012-10-06 from 001\_\_elm20180204\_030700\_\_dat00.bin





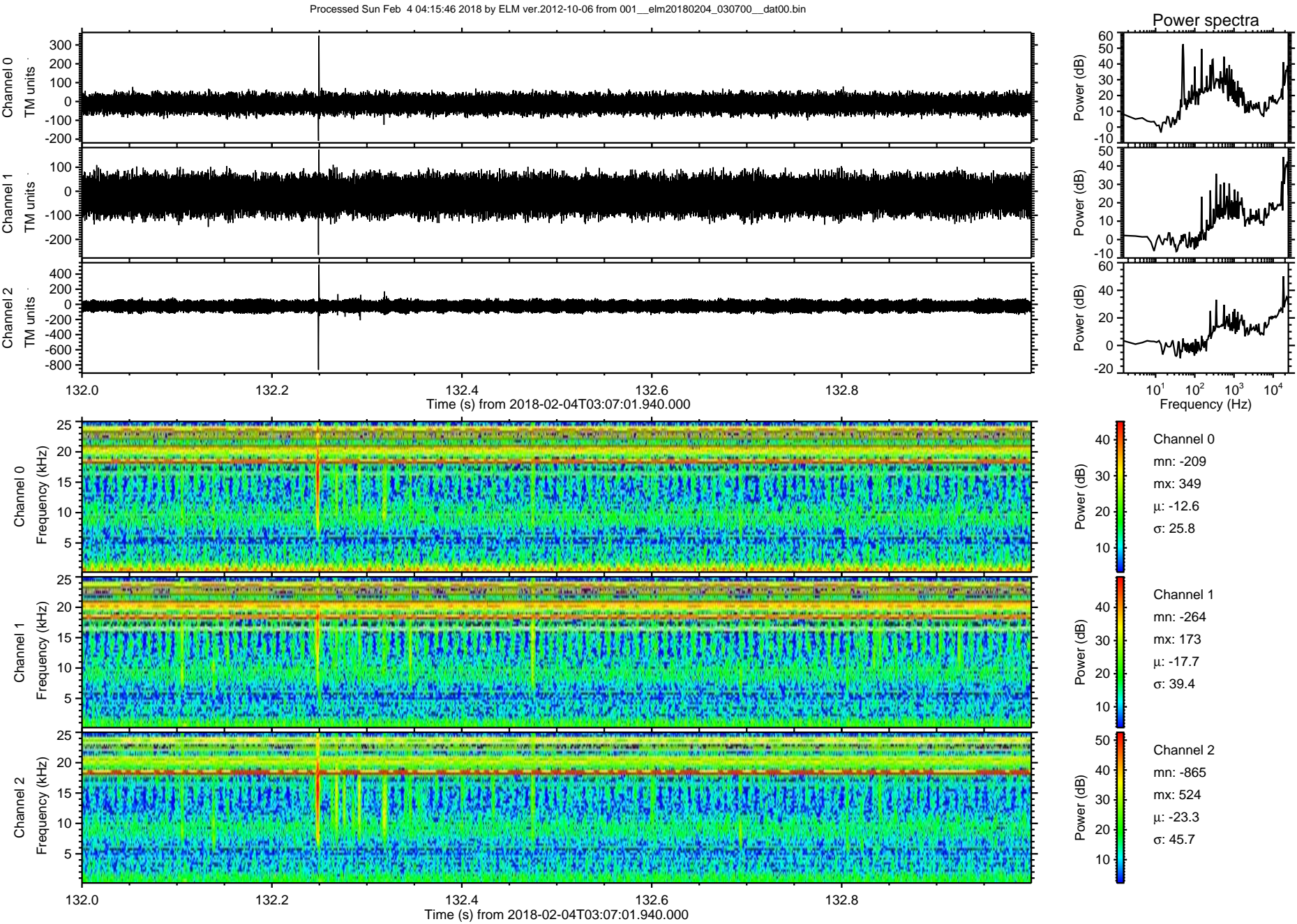
ELMAVAN 3D WAVEFORMS (Measured data sampled at 50 kHz) 51000 packets of 144 samples from 2018-02-04T03:07:01.940.000. Part 137/147

Processed Sun Feb 4 04:15:45 2018 by ELM ver.2012-10-06 from 001\_\_elm20180204\_030700\_\_dat00.bin





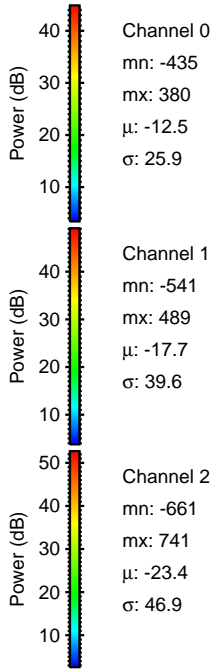
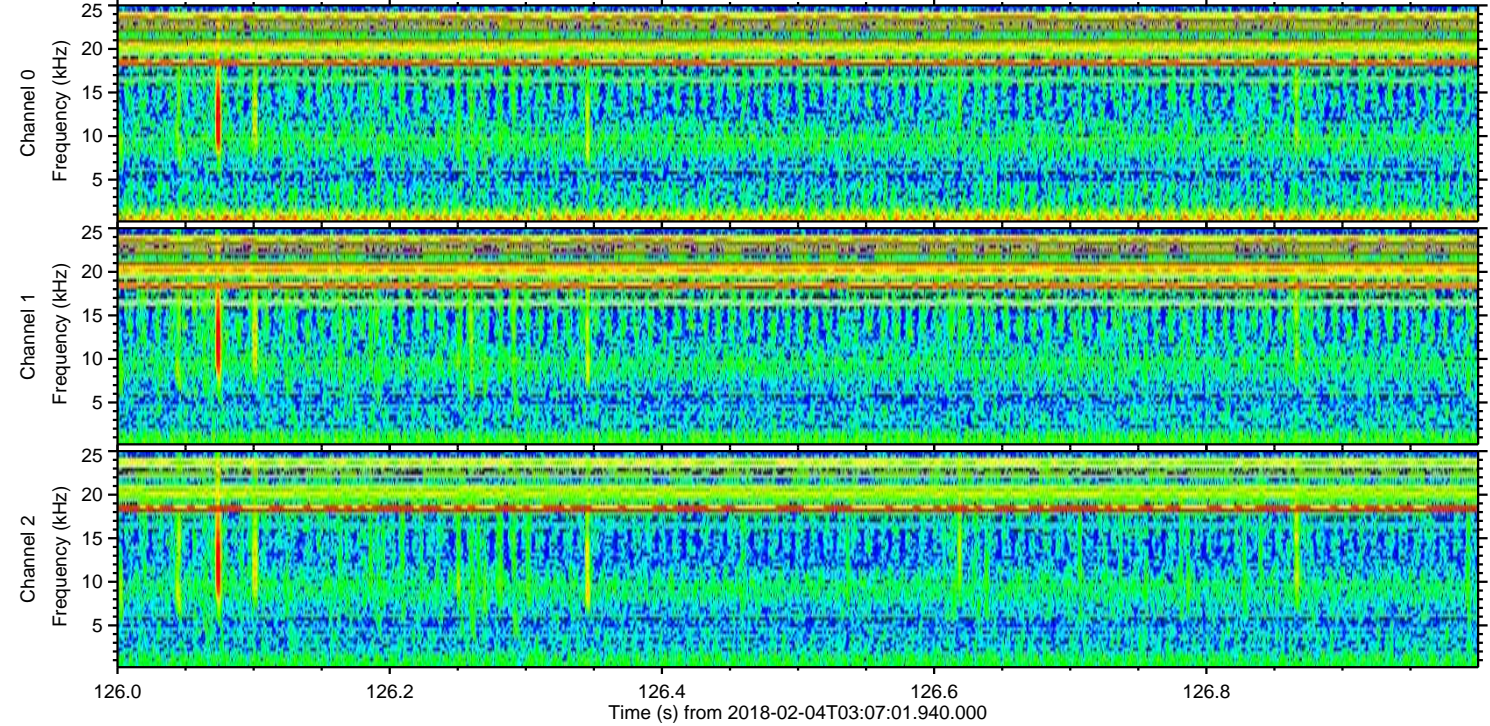
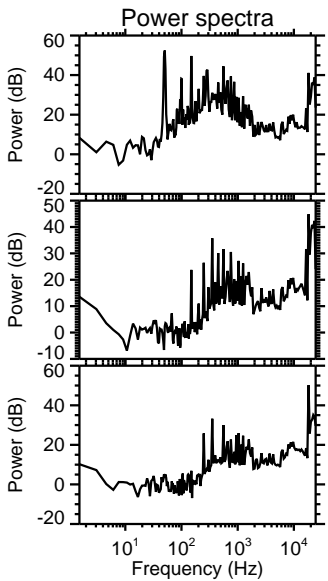
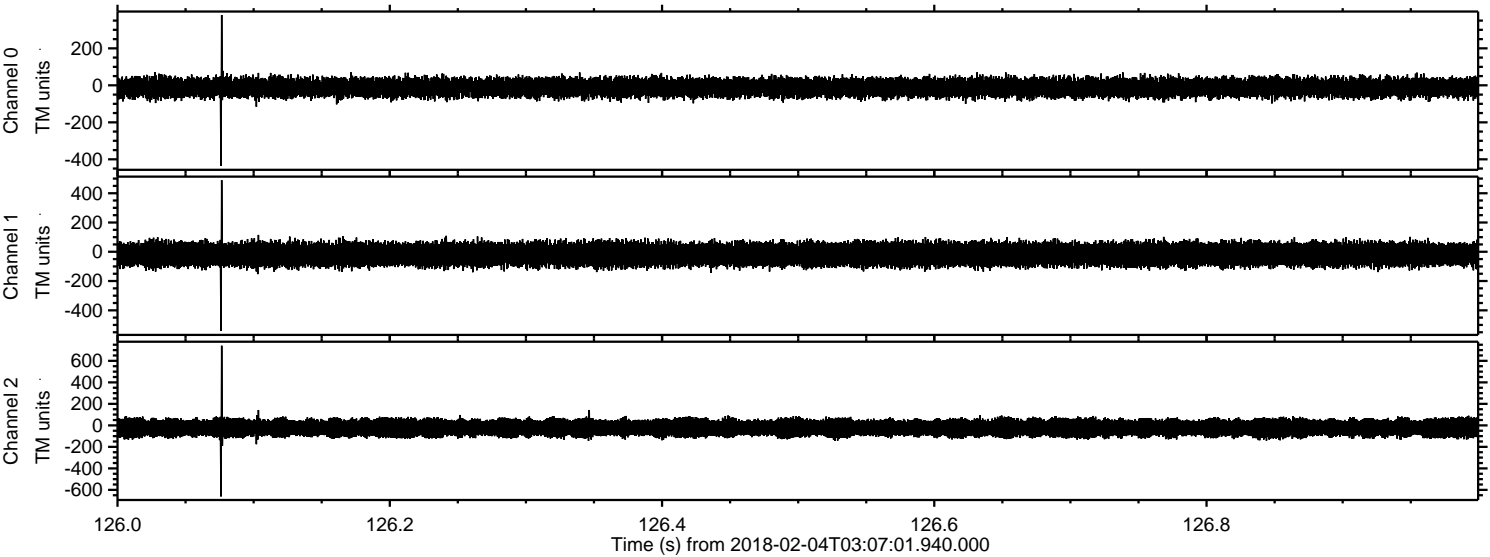
ELMAVAN 3D WAVEFORMS (Measured data sampled at 50 kHz) 51000 packets of 144 samples from 2018-02-04T03:07:01.940.000. Part 133/147





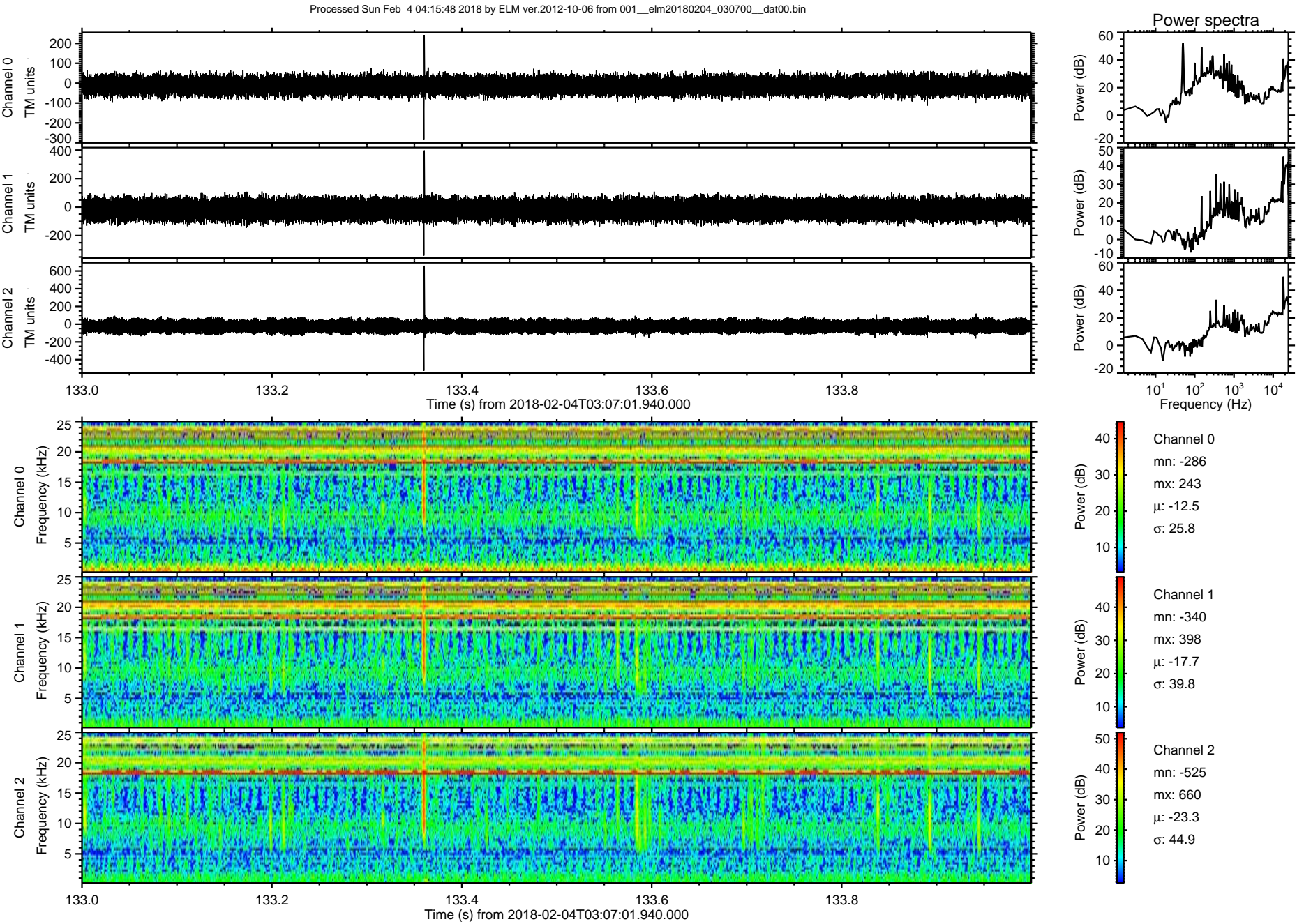
ELMAVAN 3D WAVEFORMS (Measured data sampled at 50 kHz) 51000 packets of 144 samples from 2018-02-04T03:07:01.940.000. Part 127/147

Processed Sun Feb 4 04:15:47 2018 by ELM ver.2012-10-06 from 001\_\_elm20180204\_030700\_\_dat00.bin



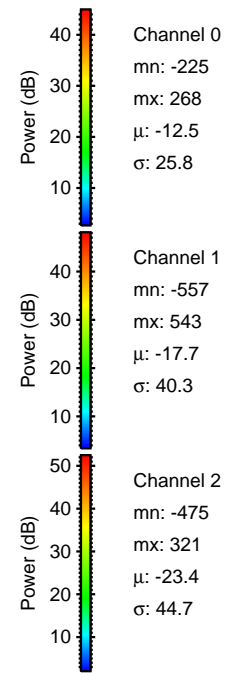
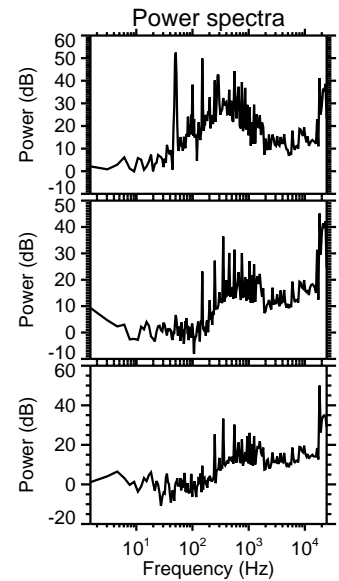
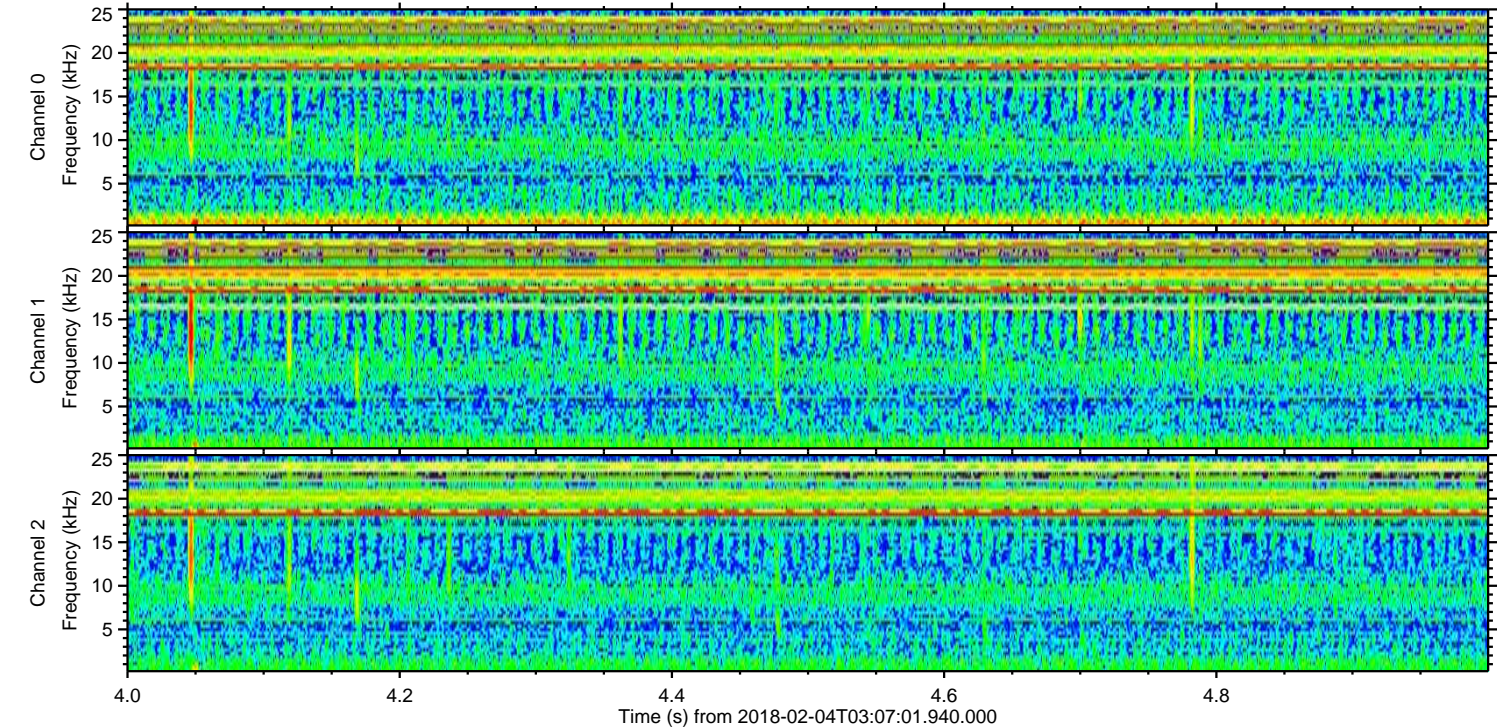
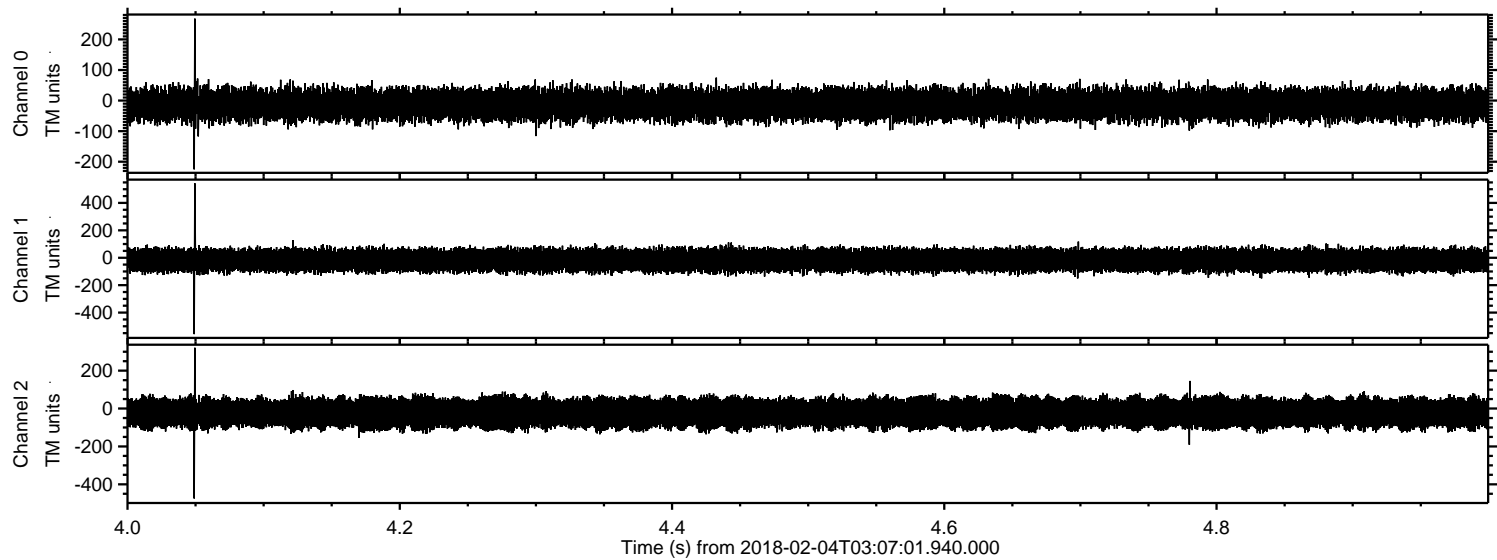


ELMAVAN 3D WAVEFORMS (Measured data sampled at 50 kHz) 51000 packets of 144 samples from 2018-02-04T03:07:01.940.000. Part 134/147





Processed Sun Feb 4 04:15:49 2018 by ELM ver.2012-10-06 from 001\_\_elm20180204\_030700\_\_dat00.bin



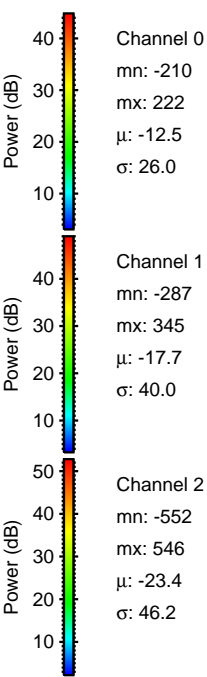
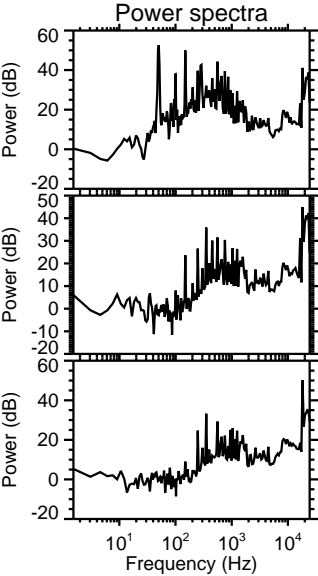
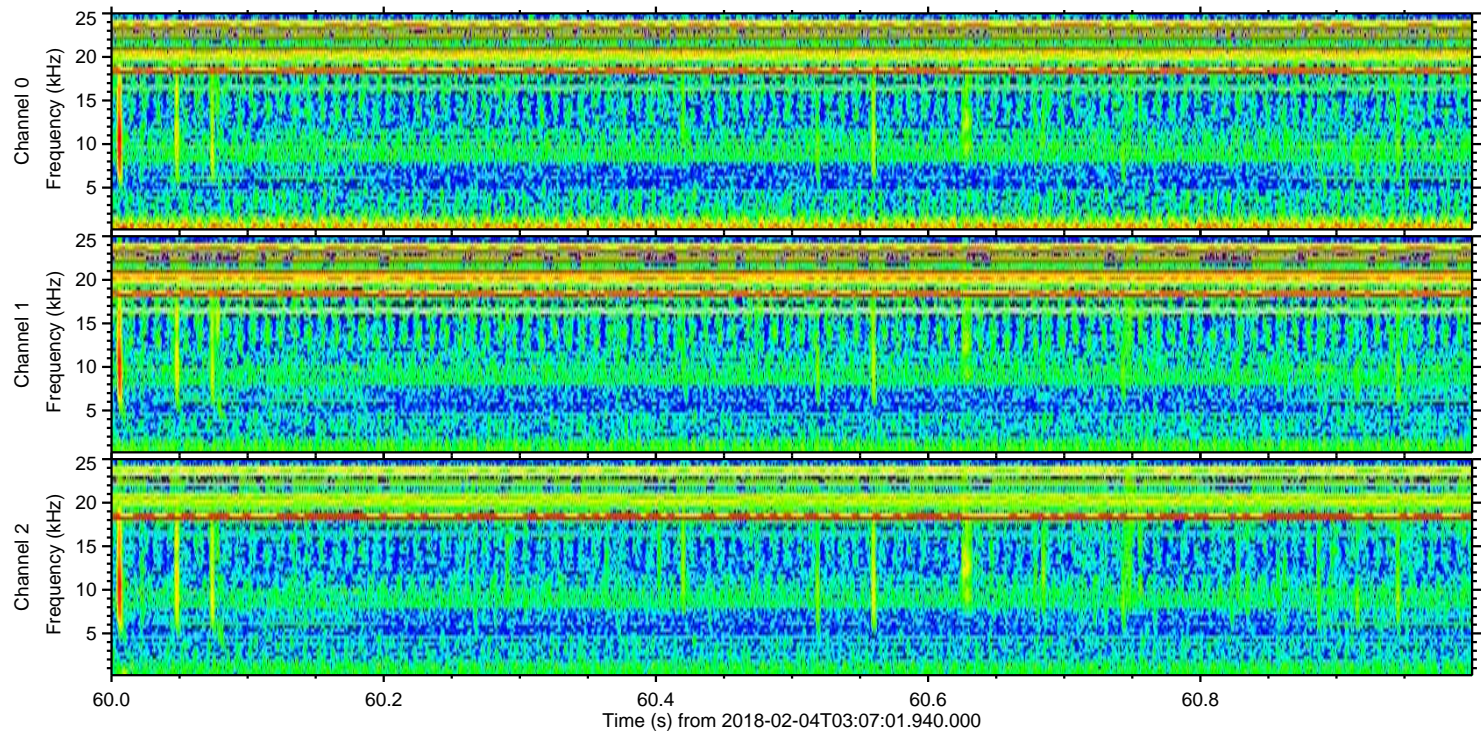
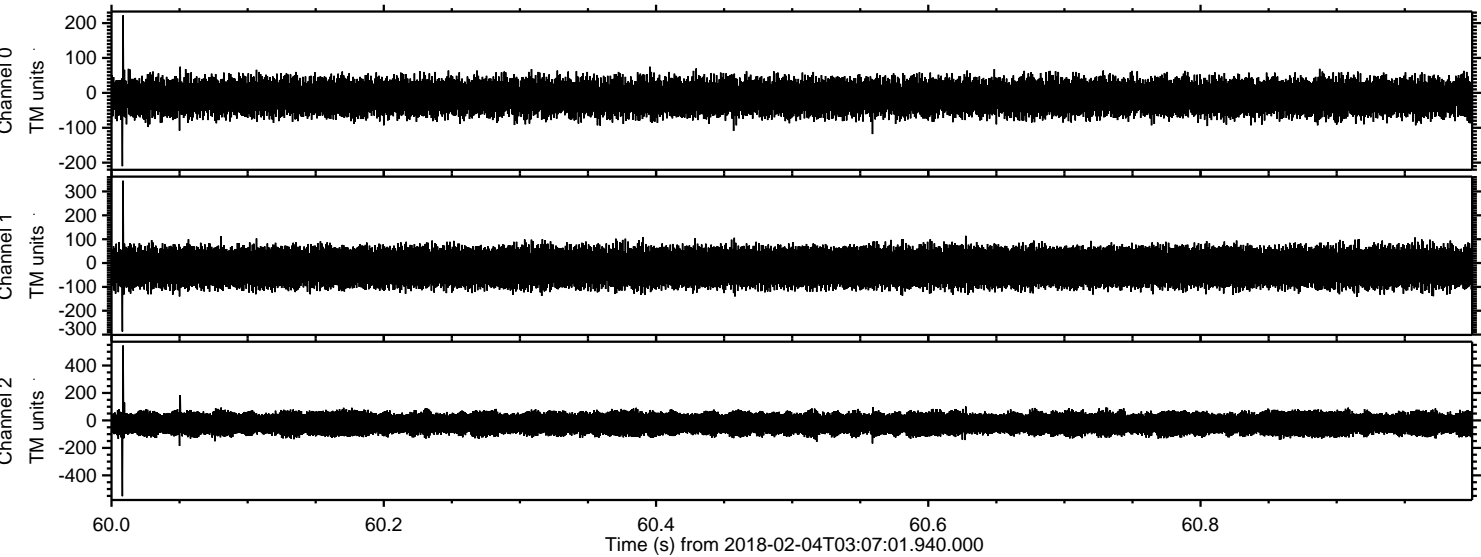
Channel 0  
mn: -225  
mx: 268  
 $\mu$ : -12.5  
 $\sigma$ : 25.8

Channel 1  
mn: -557  
mx: 543  
 $\mu$ : -17.7  
 $\sigma$ : 40.3

Channel 2  
mn: -475  
mx: 321  
 $\mu$ : -23.4  
 $\sigma$ : 44.7



Processed Sun Feb 4 04:15:50 2018 by ELM ver.2012-10-06 from 001\_\_elm20180204\_030700\_\_dat00.bin





Processed Sun Feb 4 04:15:50 2018 by ELM ver.2012-10-06 from 001\_\_elm20180204\_030700\_\_dat00.bin

