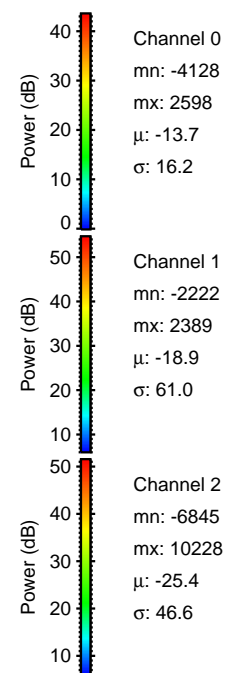
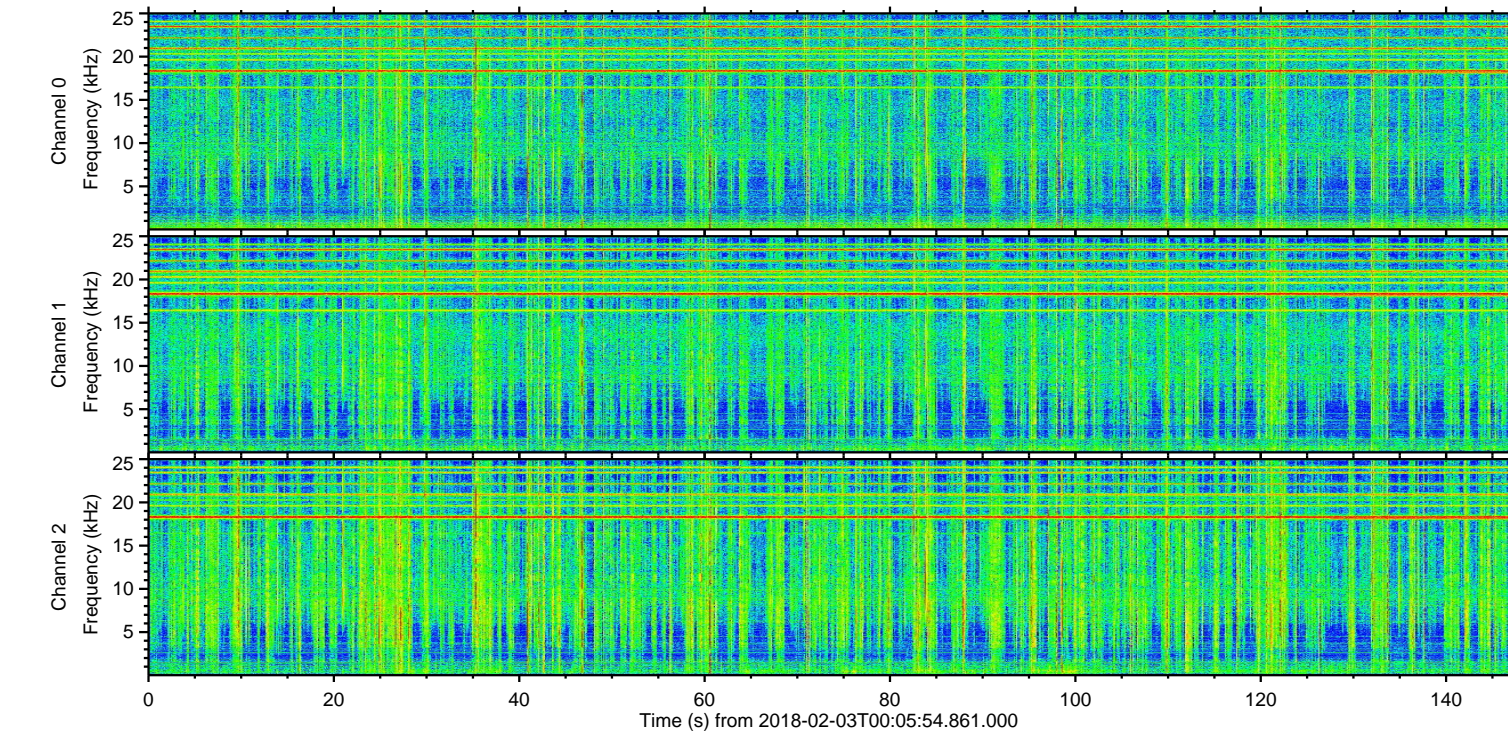
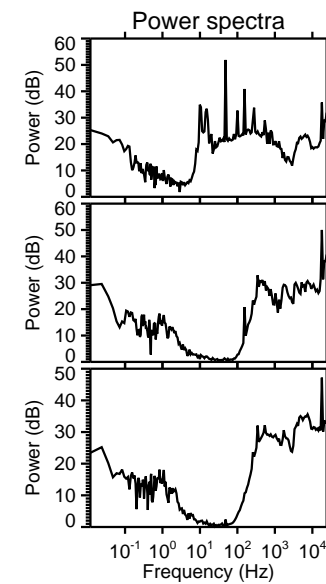
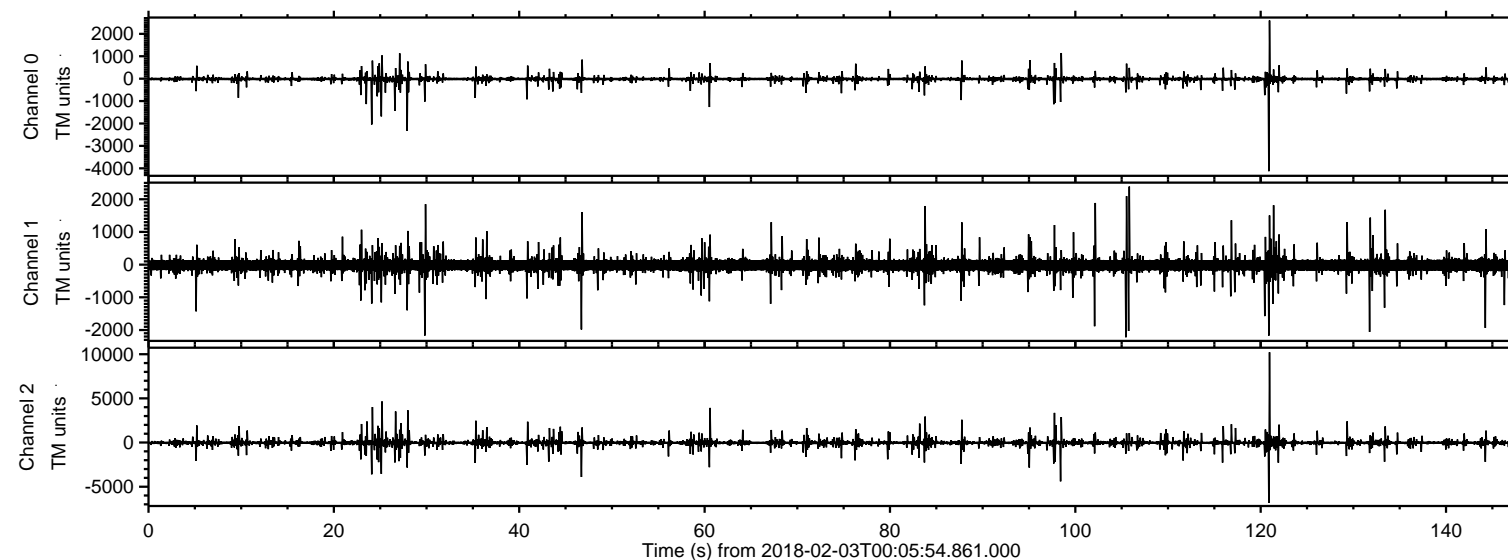


# ELMAVAN 3D WAVEFORMS (Measured data sampled at 50 kHz) 51000 packets of 144 samples from 2018-02-03T00:05:54.861.000.

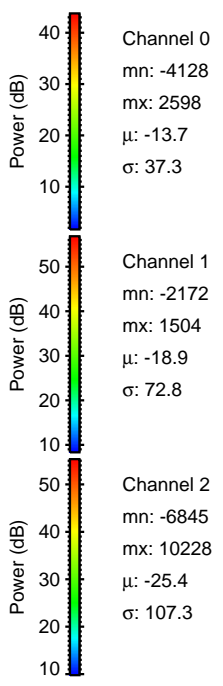
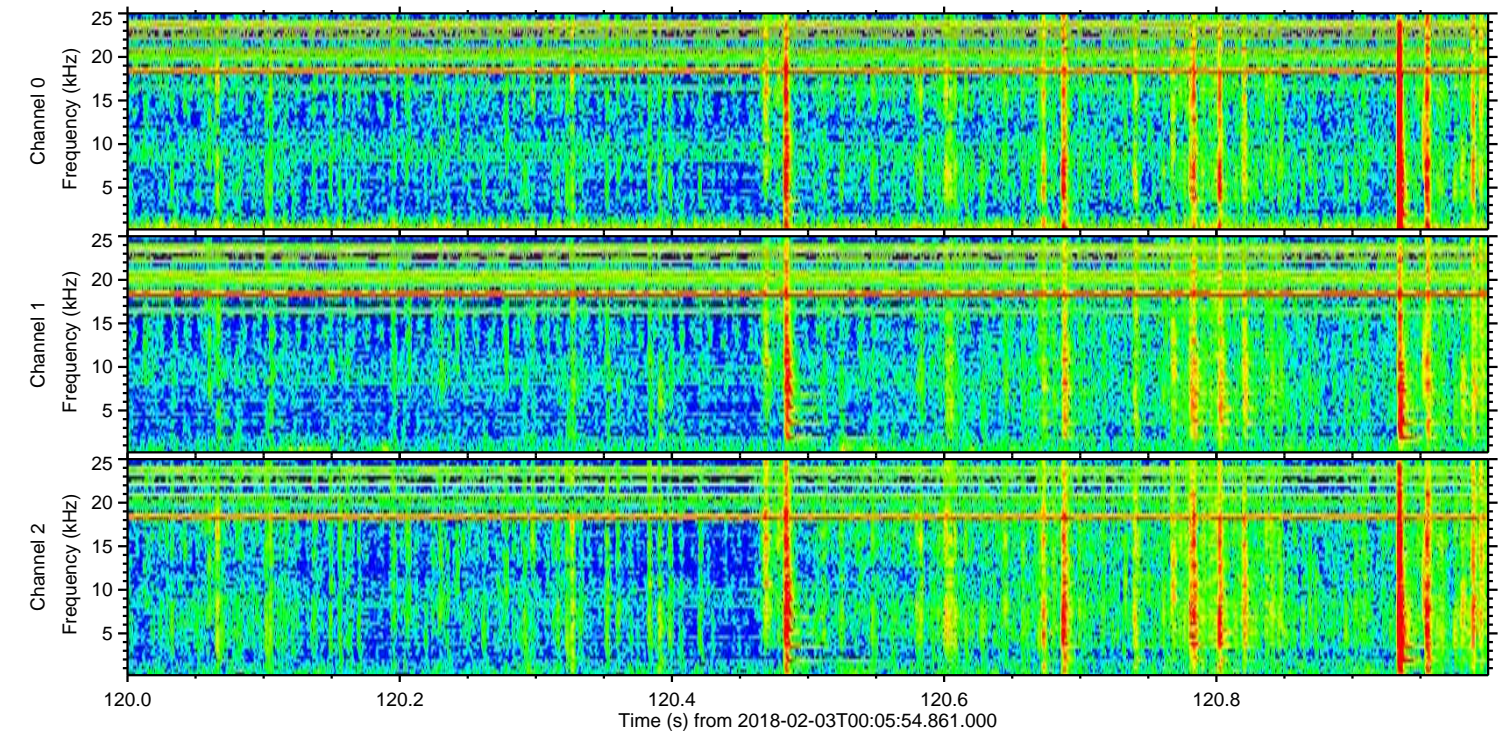
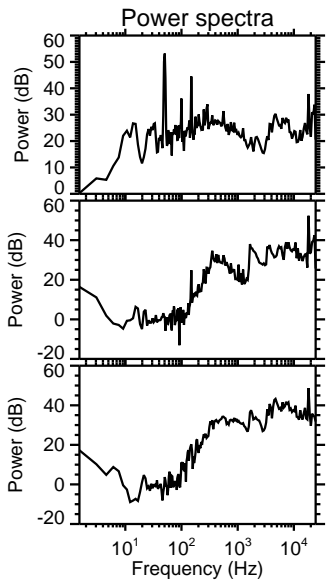
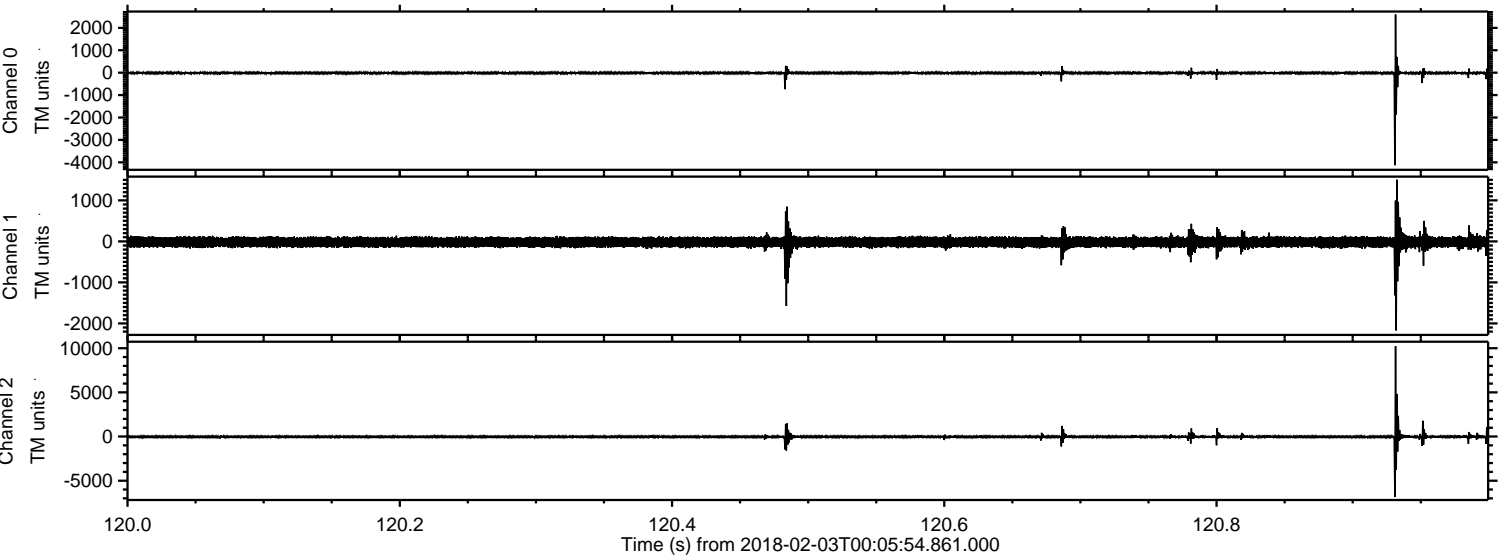
Processed Sat Feb 3 01:13:43 2018 by ELM ver.2012-10-06 from 001\_\_elm20180203\_000553\_\_dat00.bin





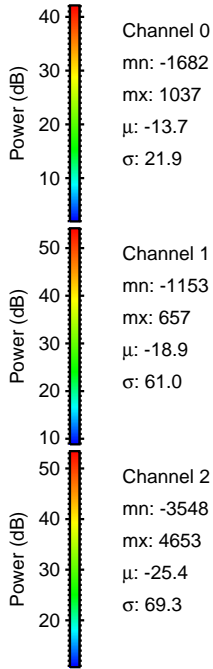
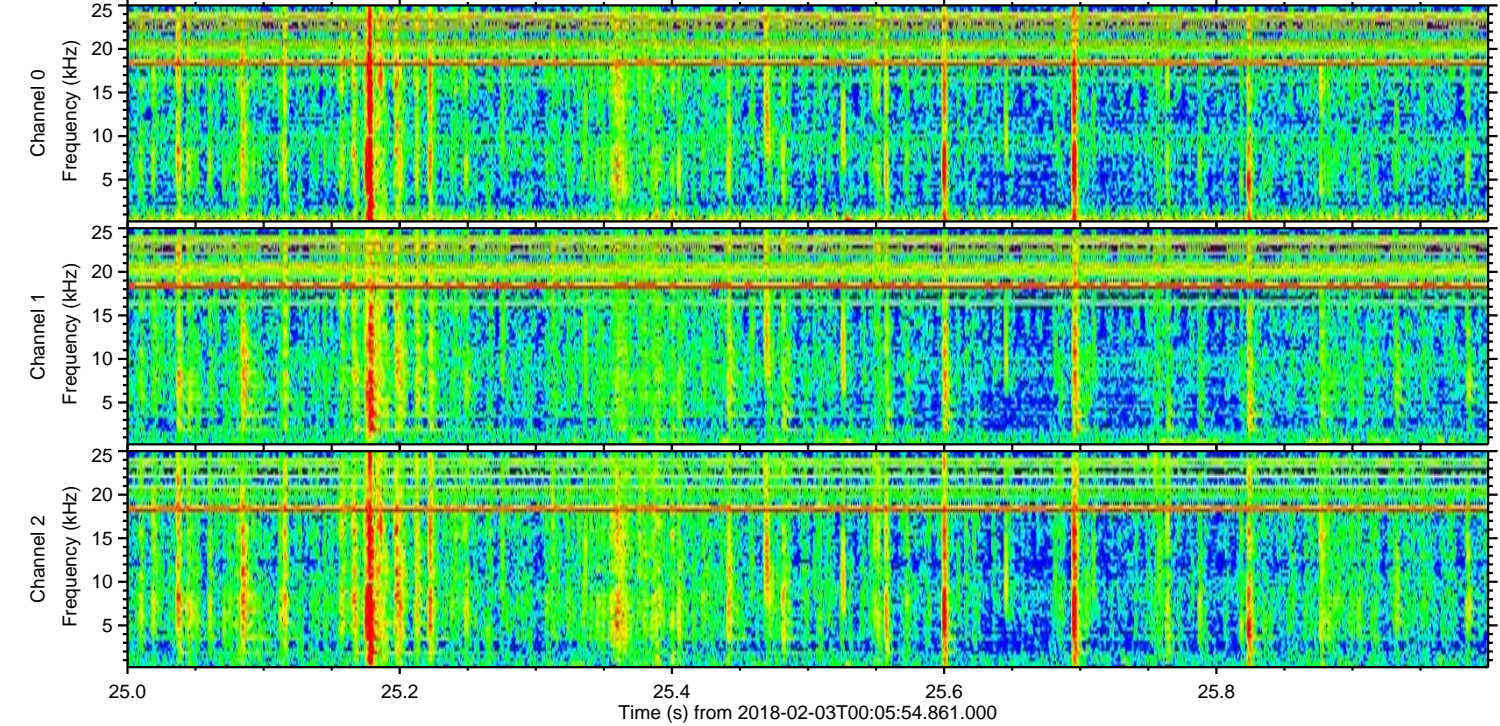
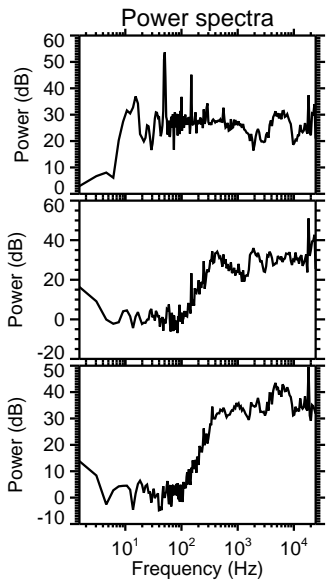
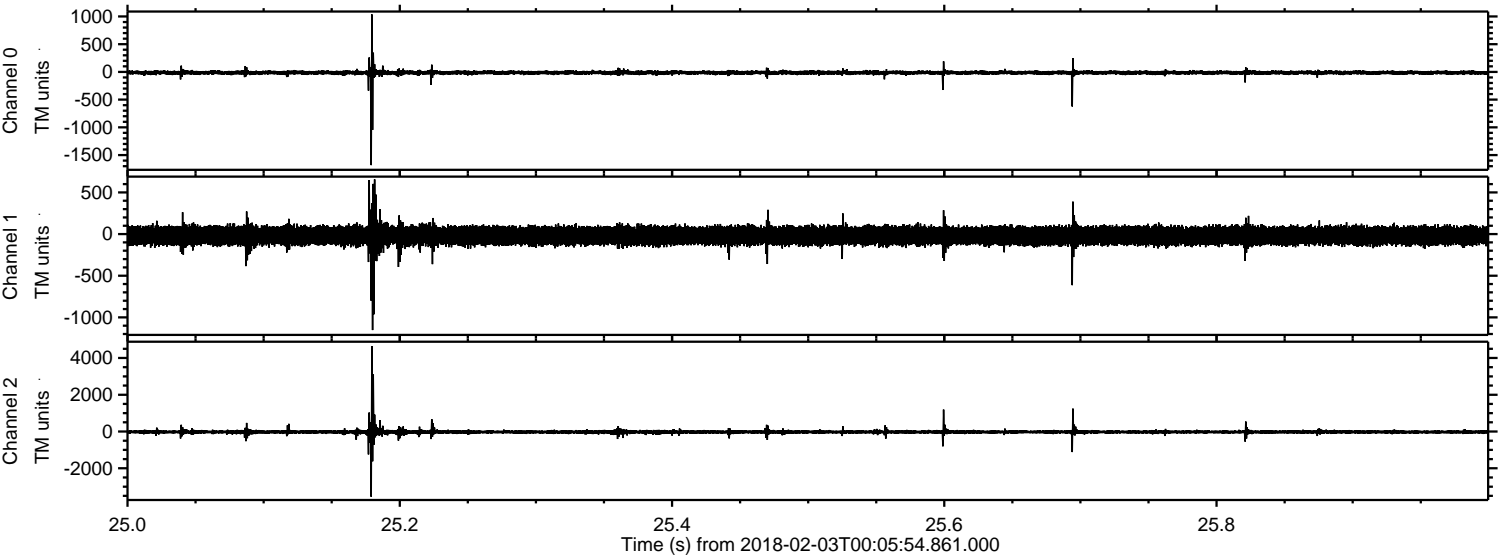
ELMAVAN 3D WAVEFORMS (Measured data sampled at 50 kHz) 51000 packets of 144 samples from 2018-02-03T00:05:54.861.000. Part 121/147

Processed Sat Feb 3 01:13:50 2018 by ELM ver.2012-10-06 from 001\_\_elm20180203\_000553\_\_dat00.bin



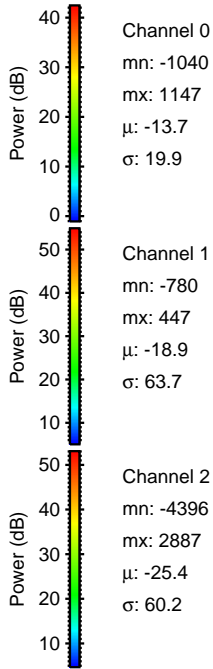
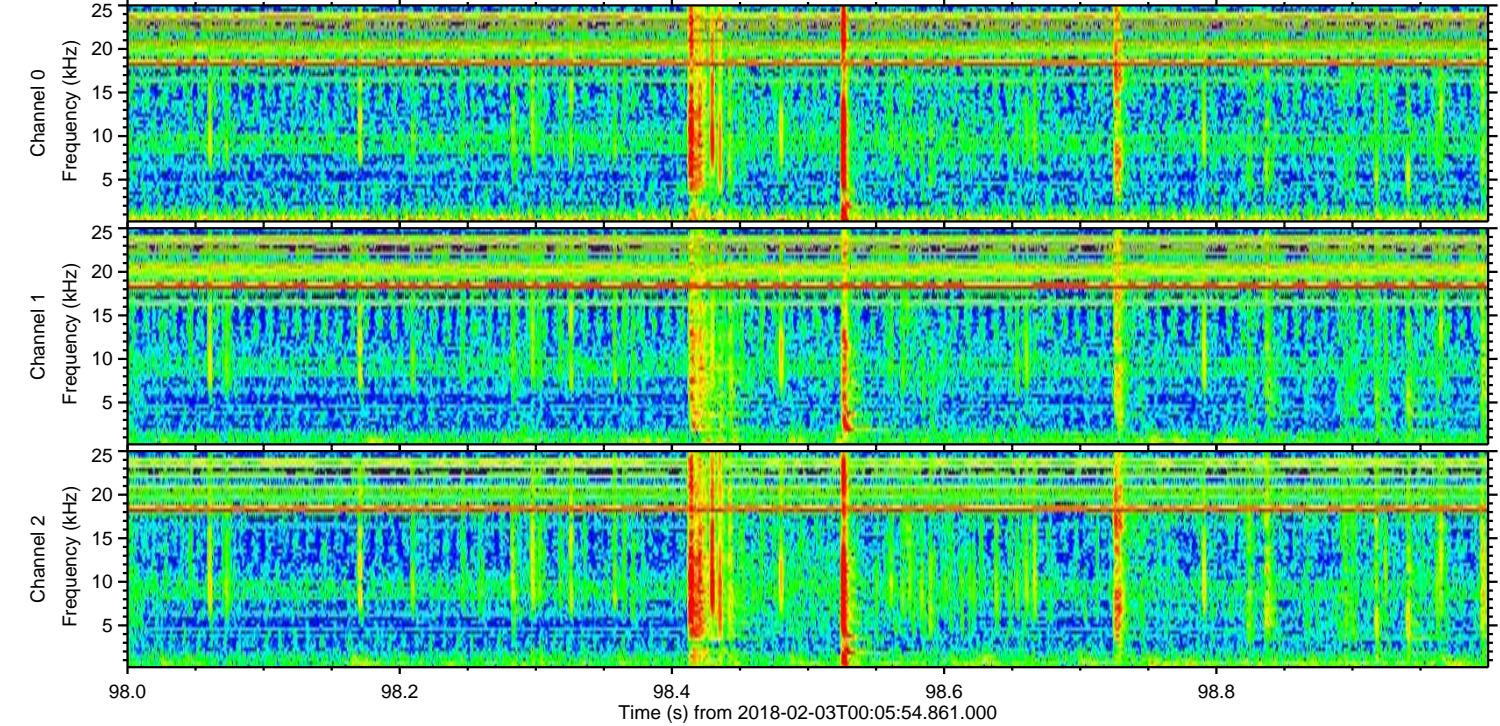
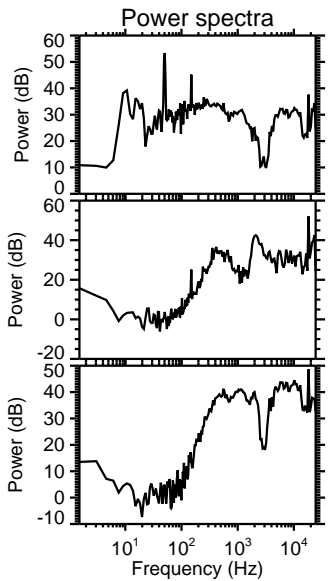
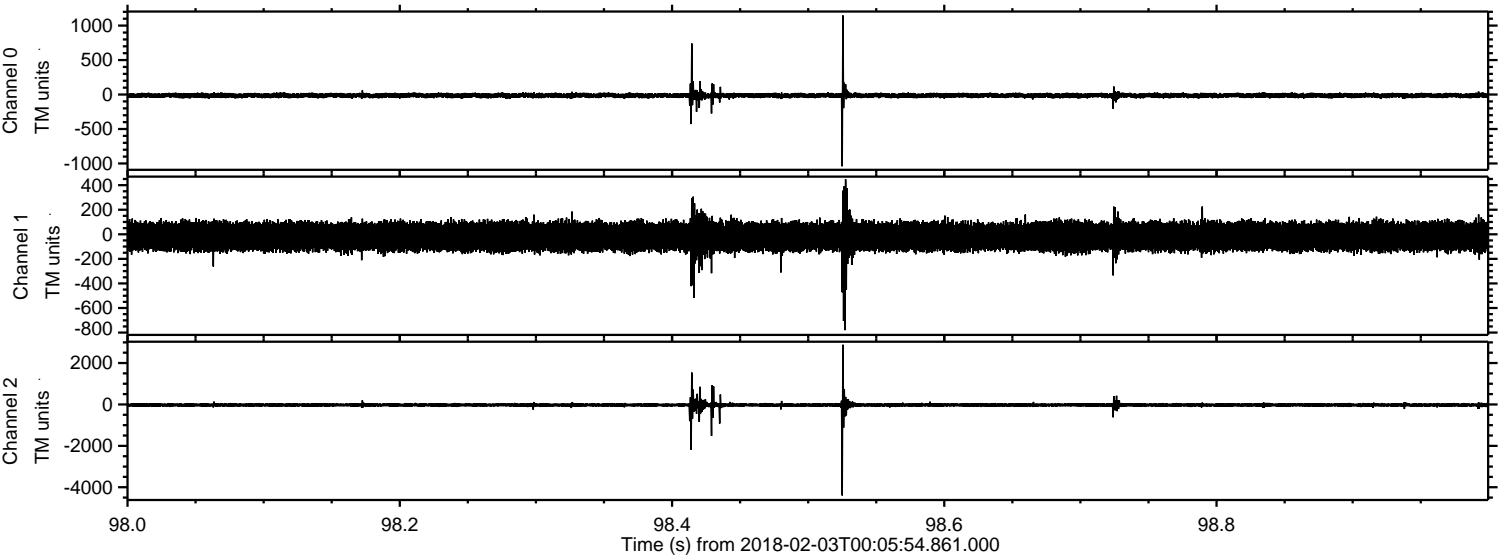


Processed Sat Feb 3 01:13:51 2018 by ELM ver.2012-10-06 from 001\_\_elm20180203\_000553\_\_dat00.bin





Processed Sat Feb 3 01:13:52 2018 by ELM ver.2012-10-06 from 001\_\_elm20180203\_000553\_\_dat00.bin



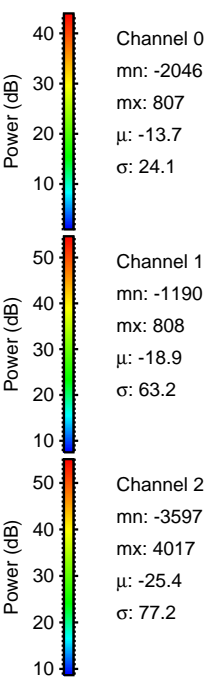
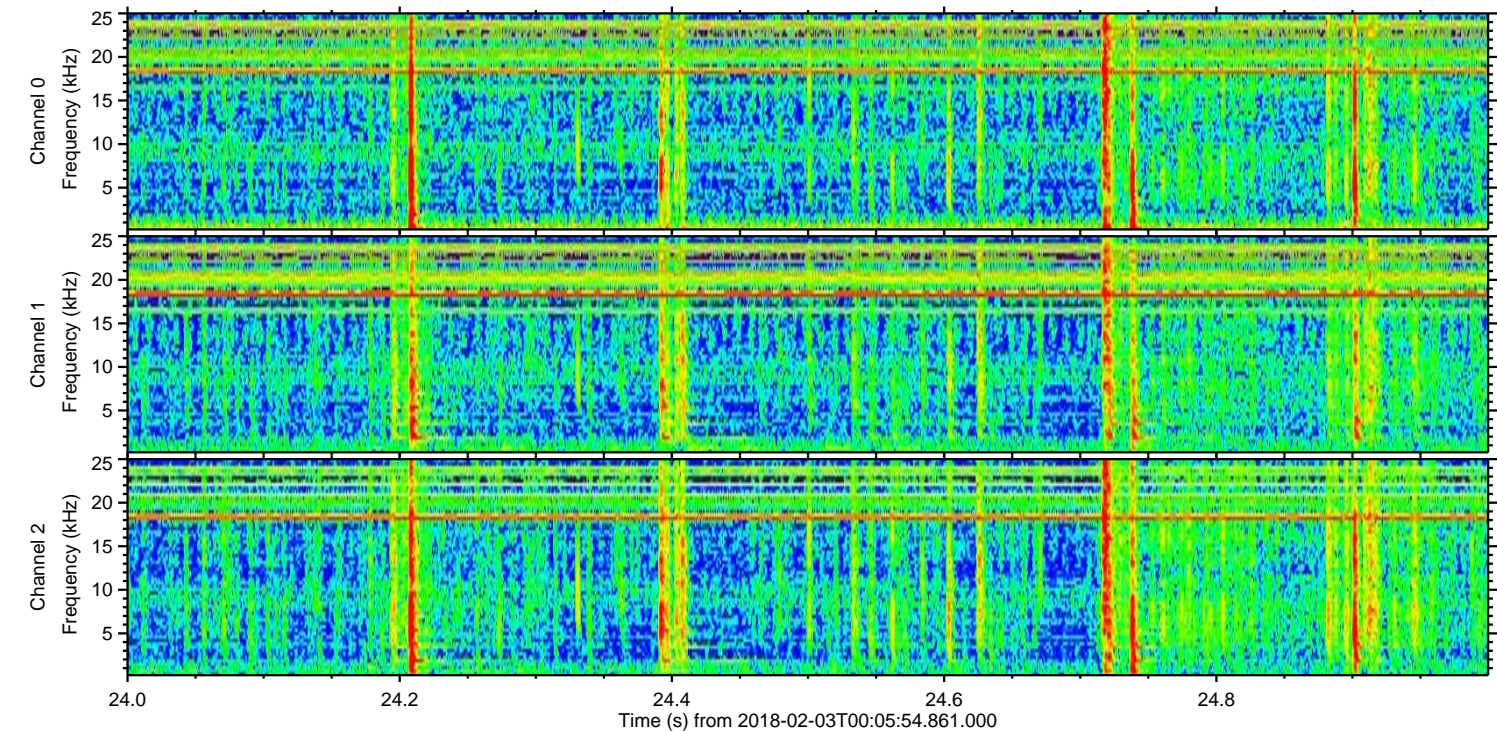
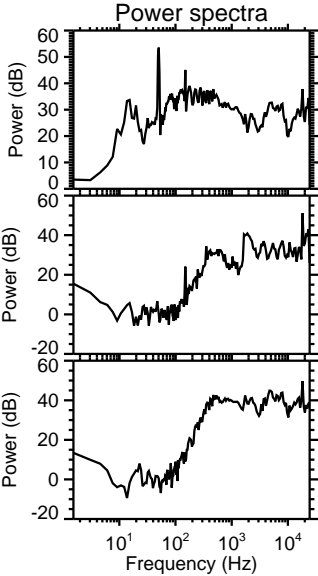
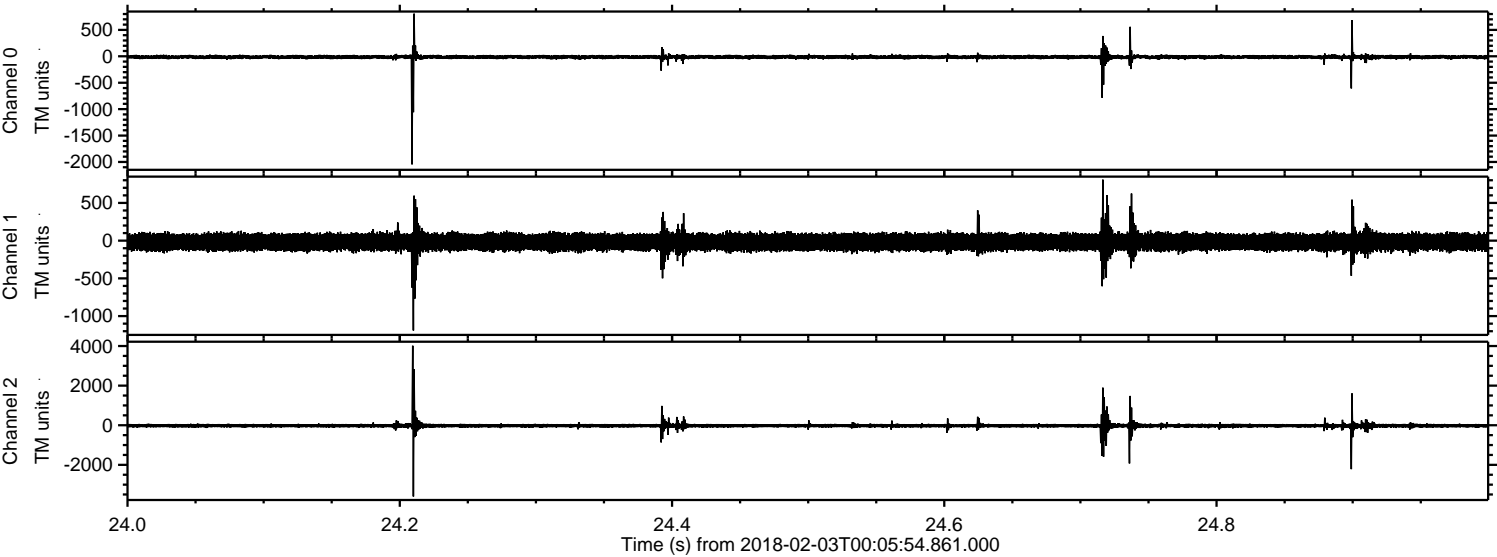
Channel 0  
mn: -1040  
mx: 1147  
 $\mu$ : -13.7  
 $\sigma$ : 19.9

Channel 1  
mn: -780  
mx: 447  
 $\mu$ : -18.9  
 $\sigma$ : 63.7

Channel 2  
mn: -4396  
mx: 2887  
 $\mu$ : -25.4  
 $\sigma$ : 60.2

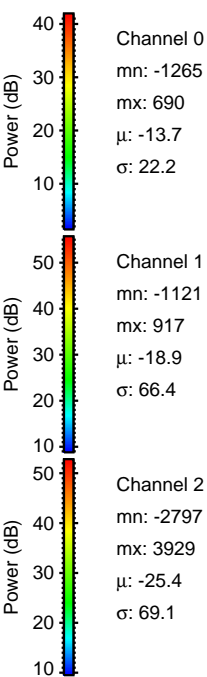
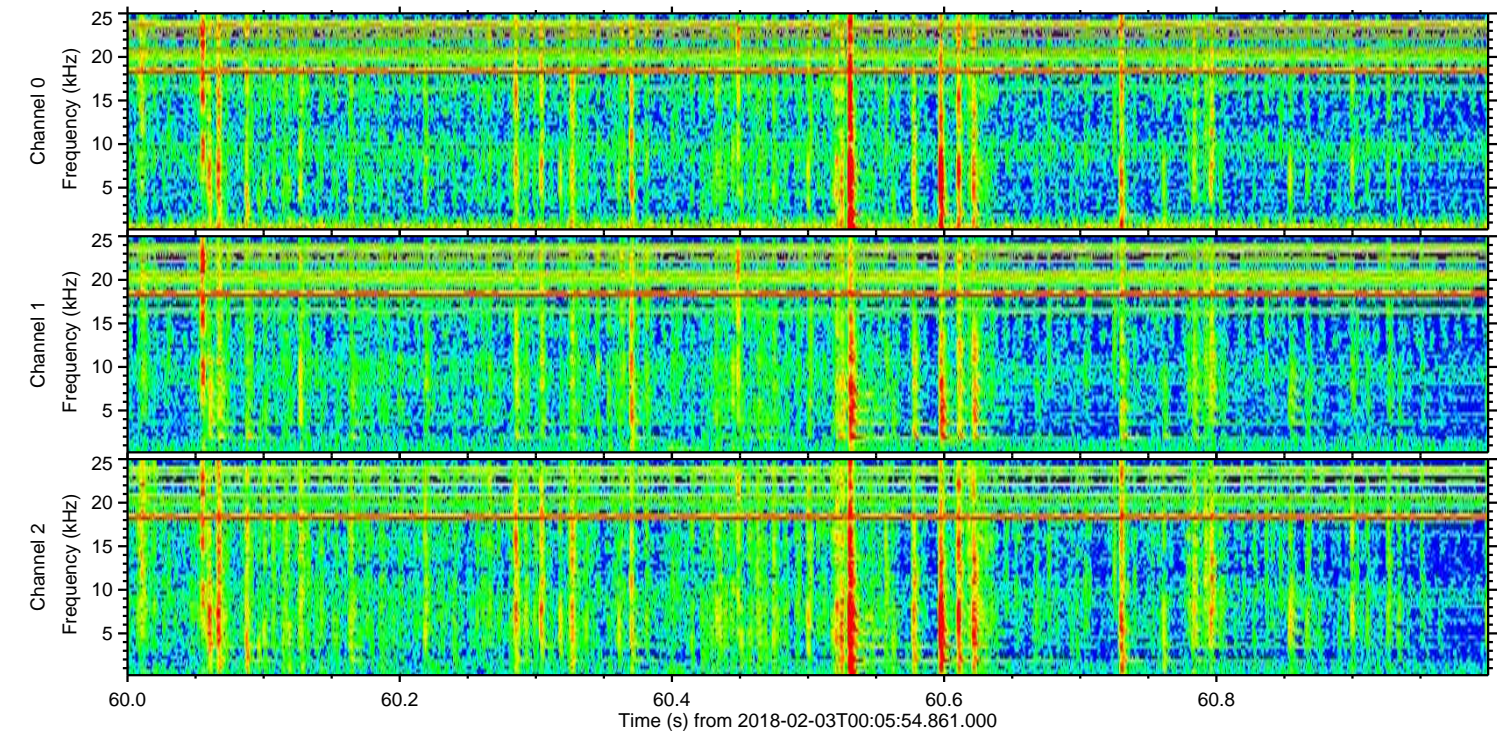
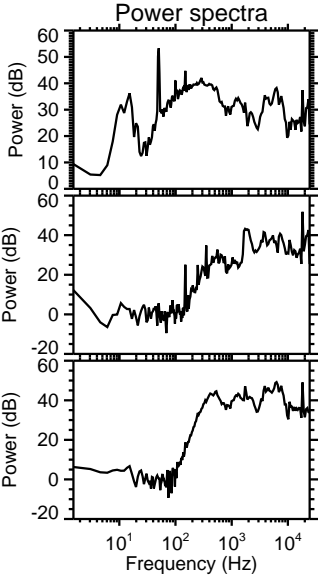
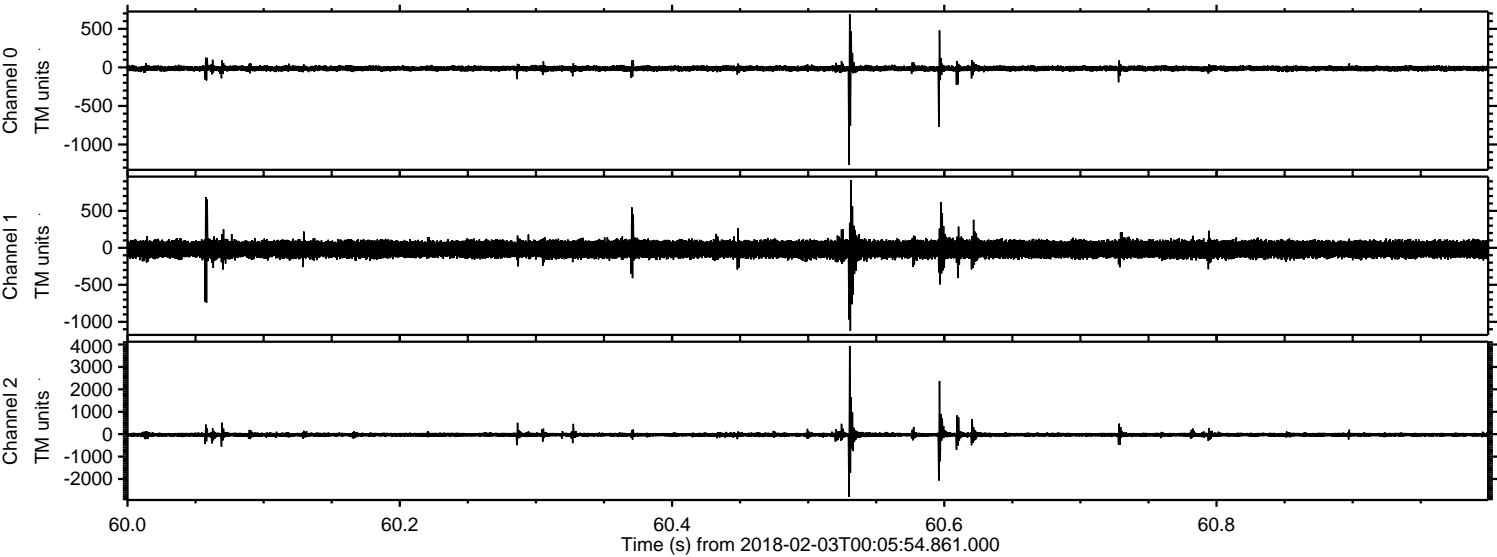


Processed Sat Feb 3 01:13:53 2018 by ELM ver.2012-10-06 from 001\_\_elm20180203\_000553\_\_dat00.bin





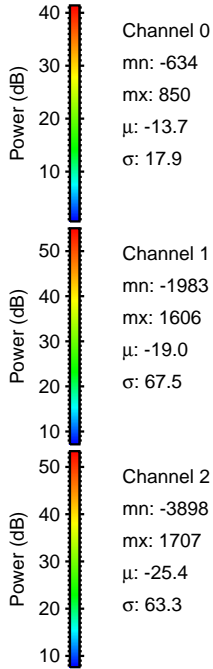
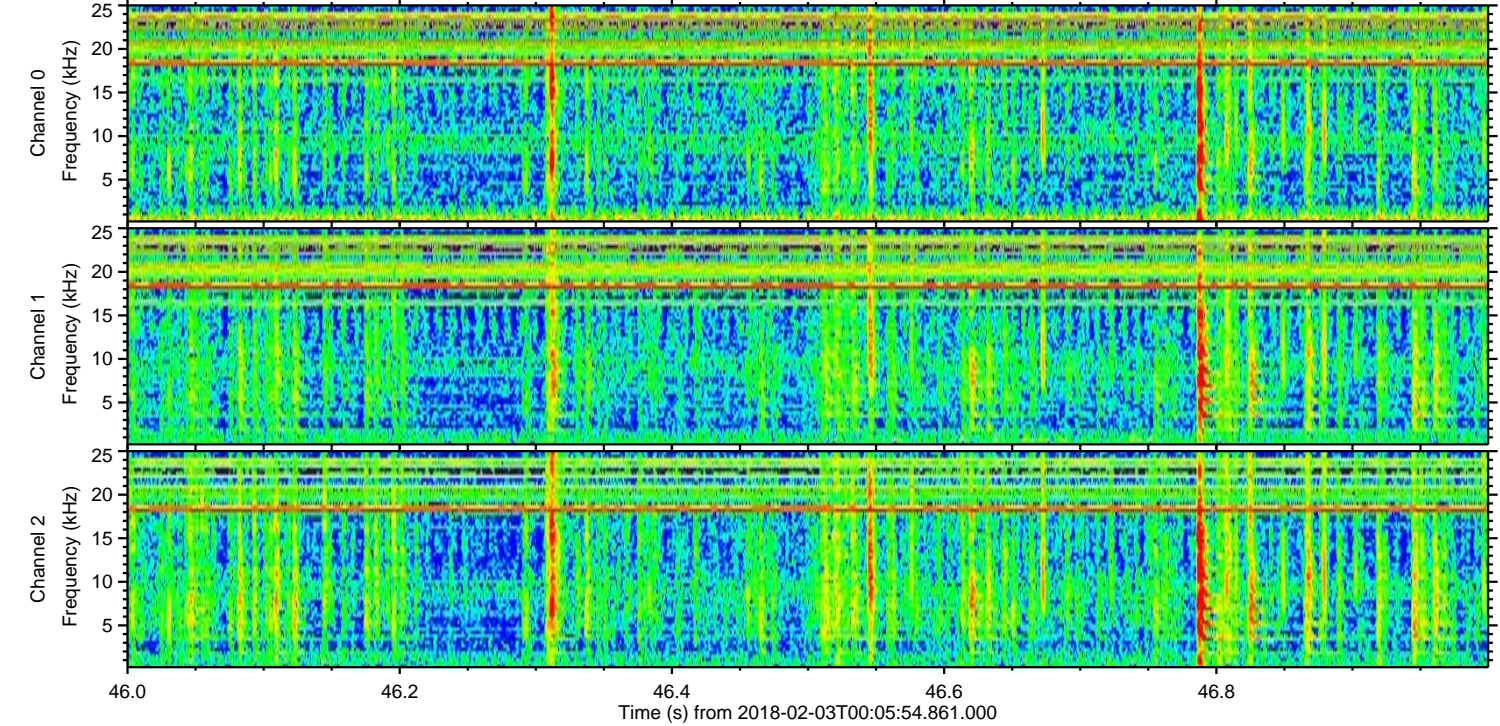
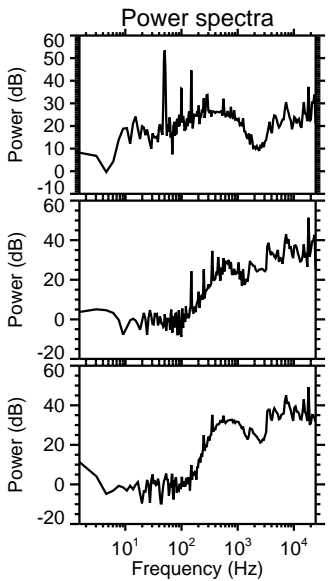
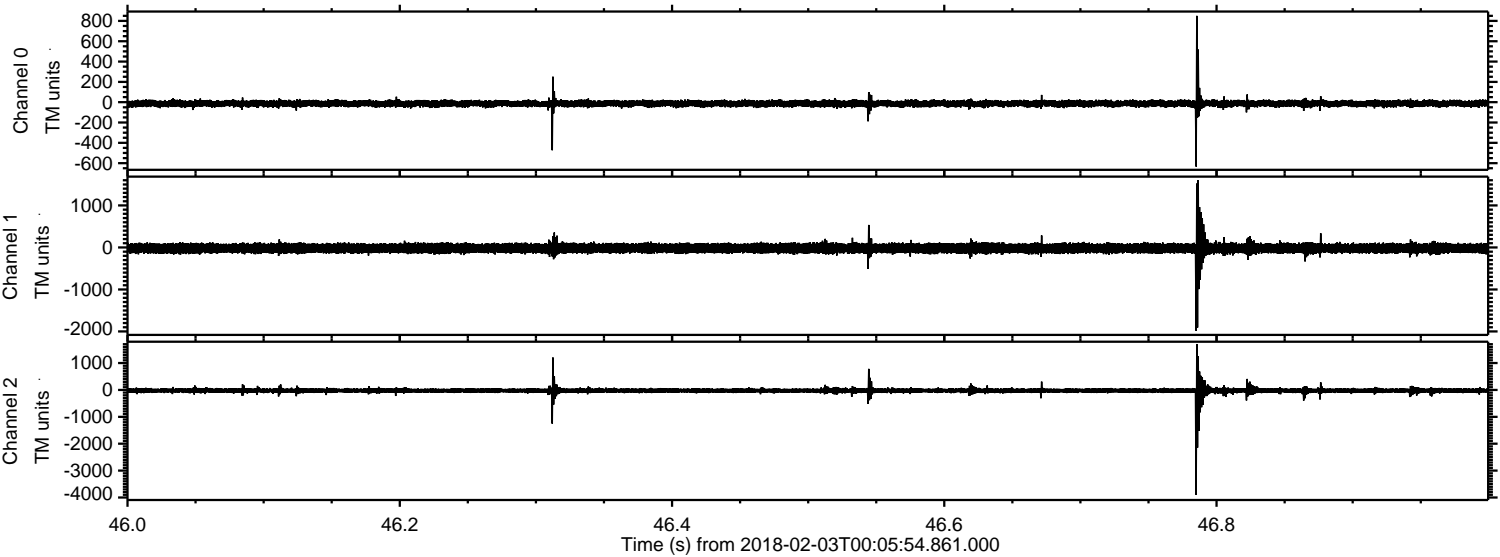
Processed Sat Feb 3 01:13:53 2018 by ELM ver.2012-10-06 from 001\_\_elm20180203\_000553\_\_dat00.bin





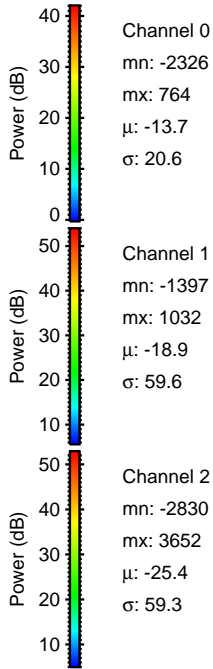
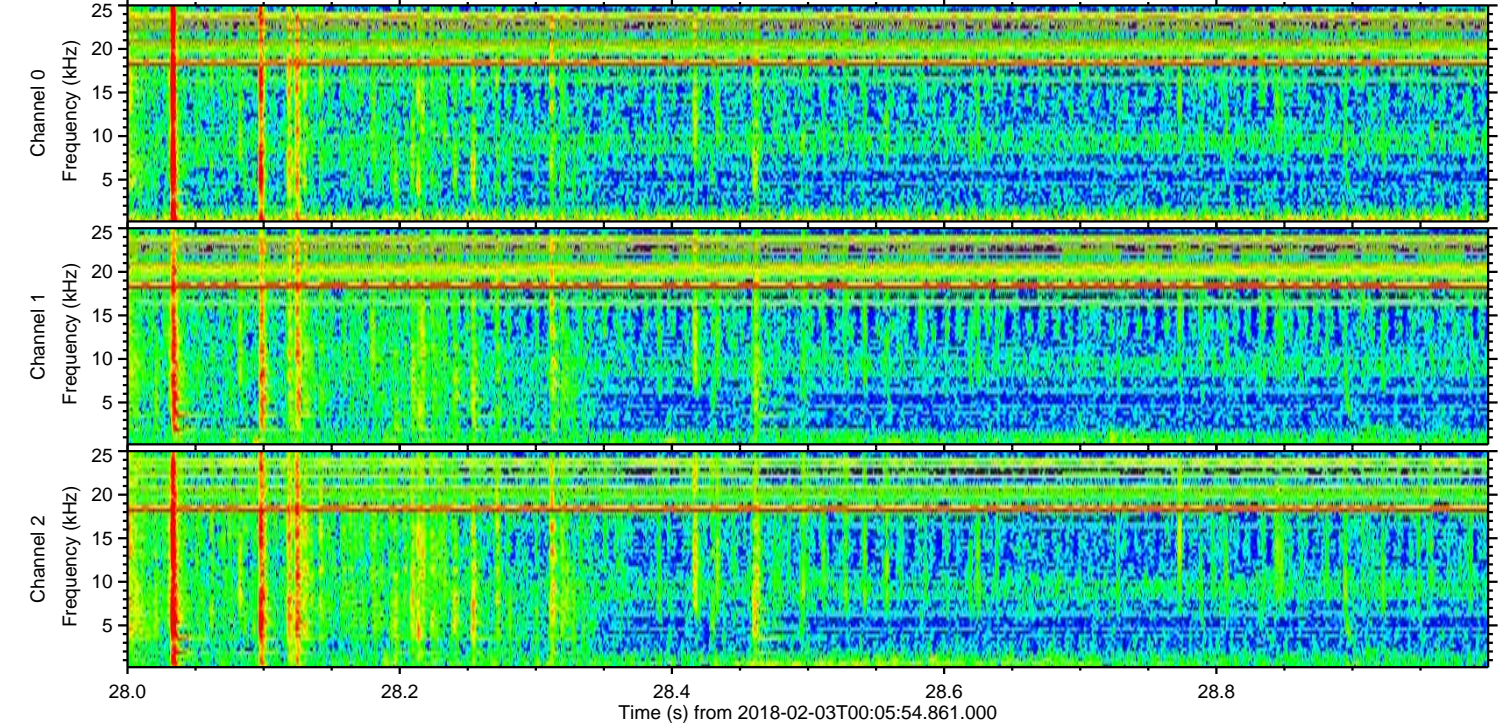
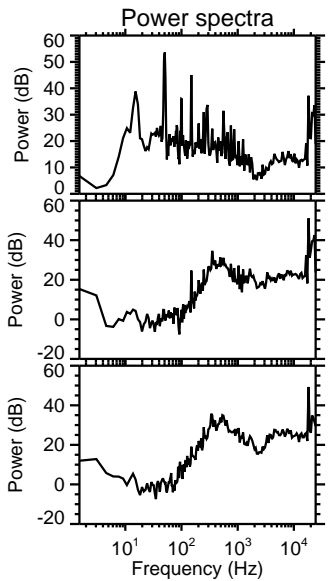
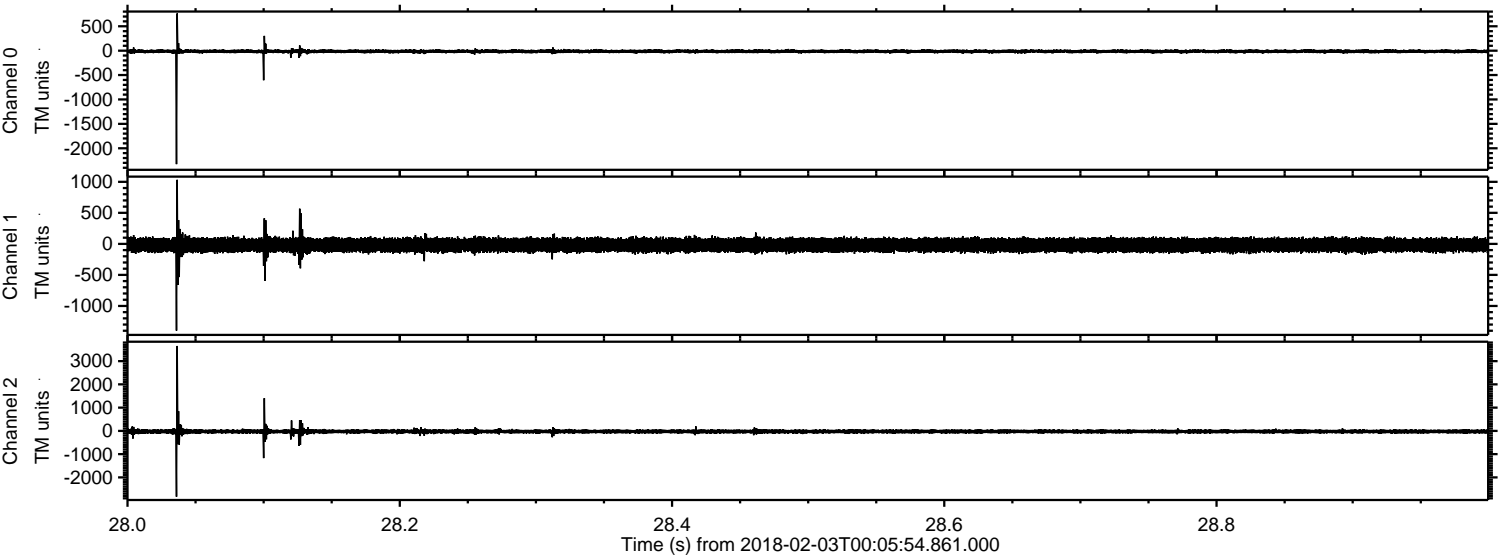
ELMAVAN 3D WAVEFORMS (Measured data sampled at 50 kHz) 51000 packets of 144 samples from 2018-02-03T00:05:54.861.000. Part 47/147

Processed Sat Feb 3 01:13:54 2018 by ELM ver.2012-10-06 from 001\_\_elm20180203\_000553\_\_dat00.bin





Processed Sat Feb 3 01:13:55 2018 by ELM ver.2012-10-06 from 001\_\_elm20180203\_000553\_\_dat00.bin



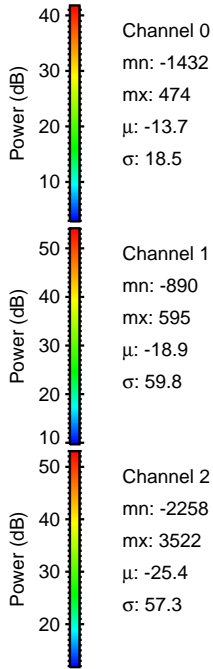
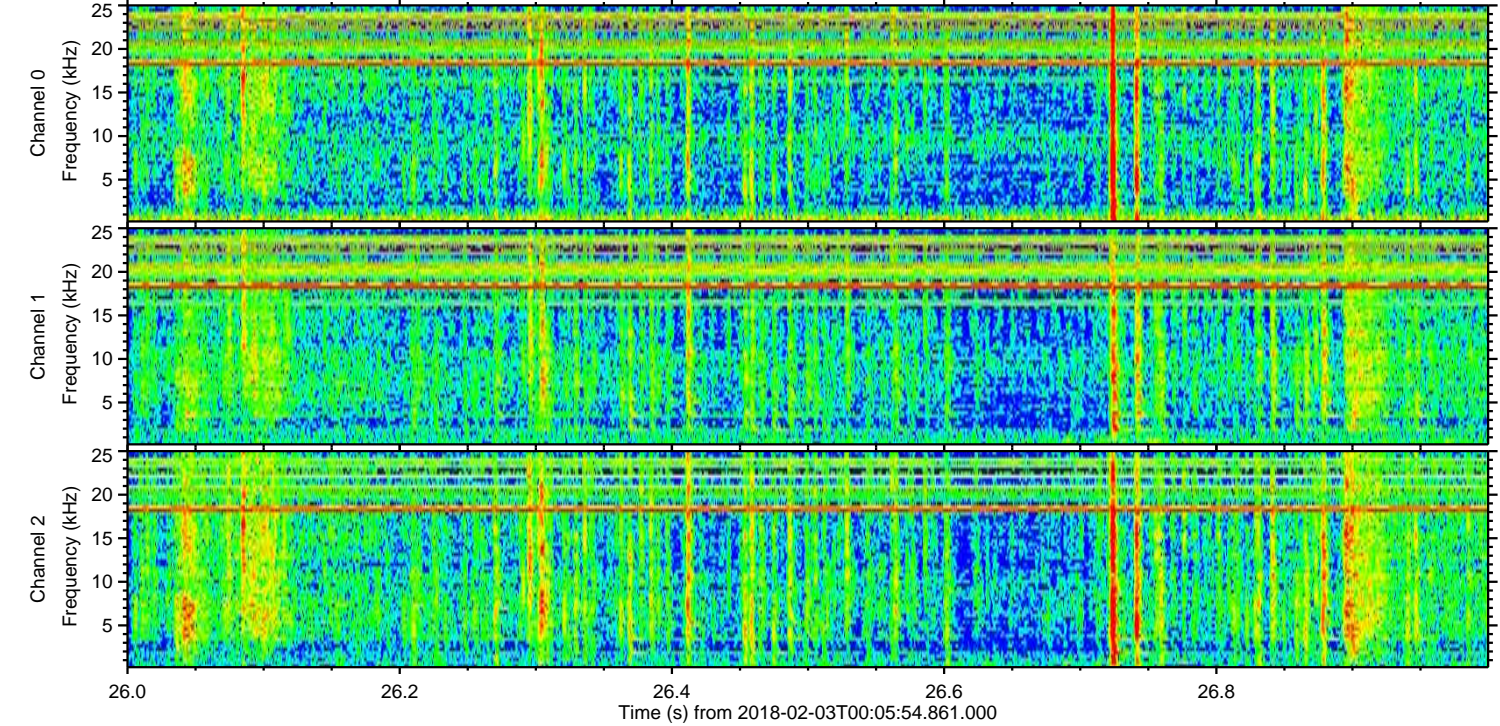
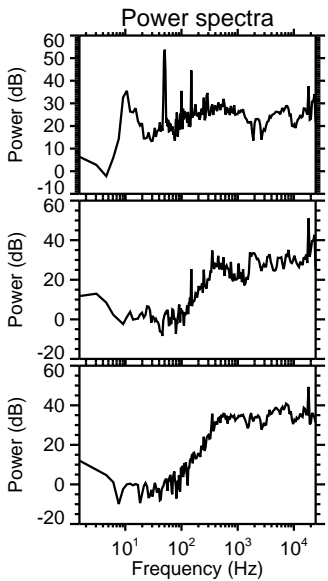
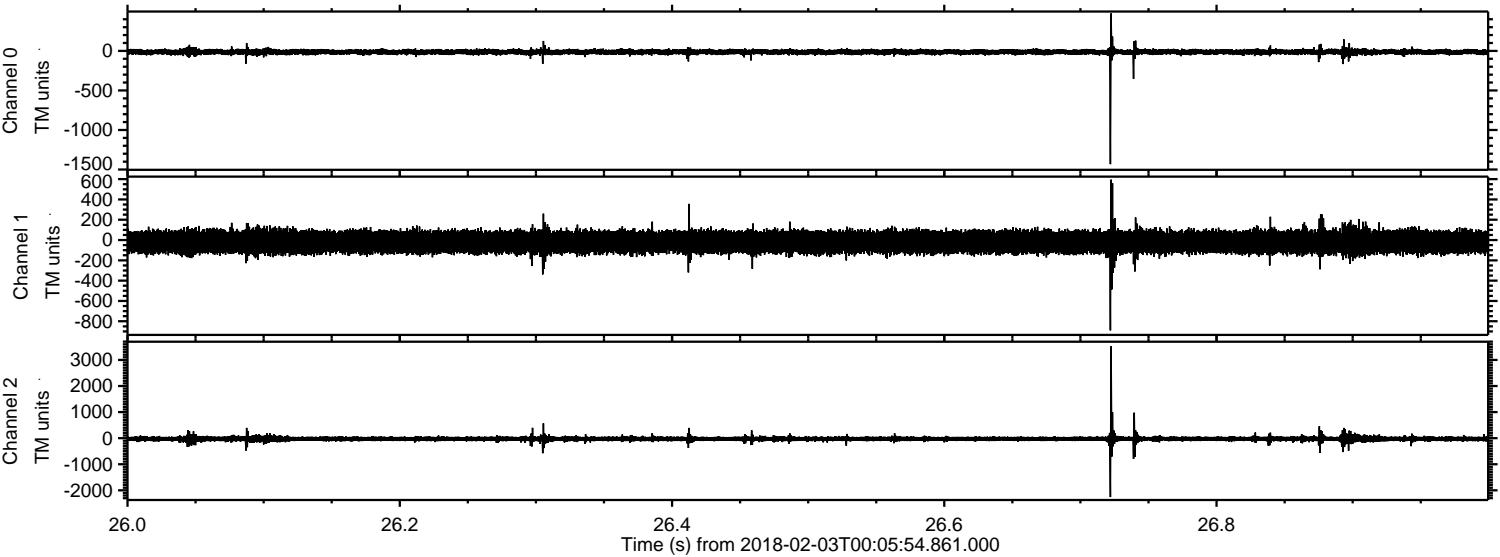
Channel 0  
mn: -2326  
mx: 764  
 $\mu$ : -13.7  
 $\sigma$ : 20.6

Channel 1  
mn: -1397  
mx: 1032  
 $\mu$ : -18.9  
 $\sigma$ : 59.6

Channel 2  
mn: -2830  
mx: 3652  
 $\mu$ : -25.4  
 $\sigma$ : 59.3

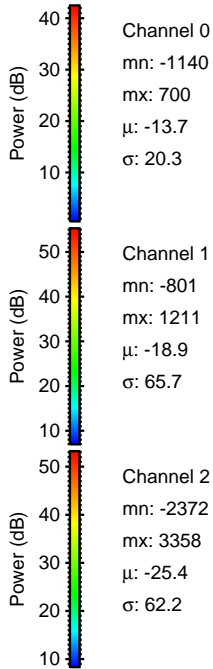
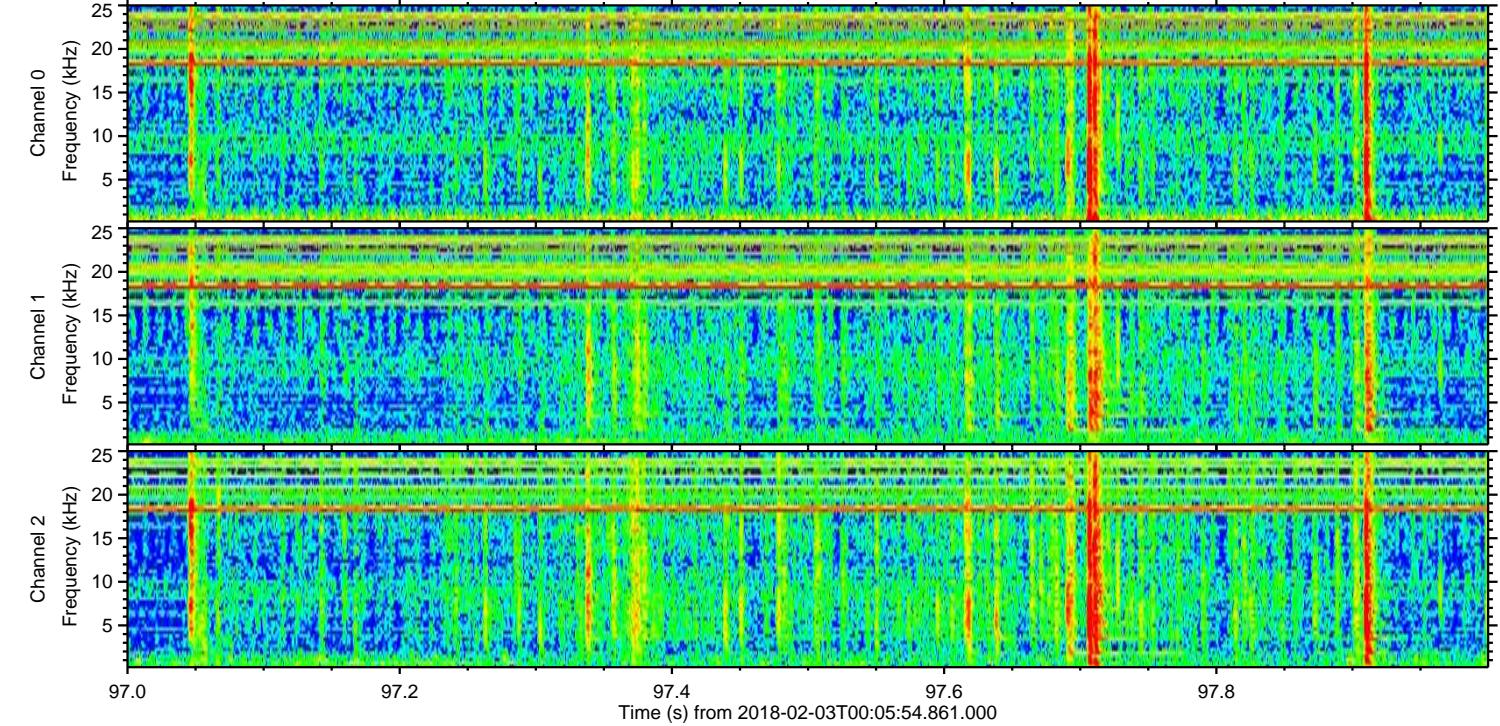
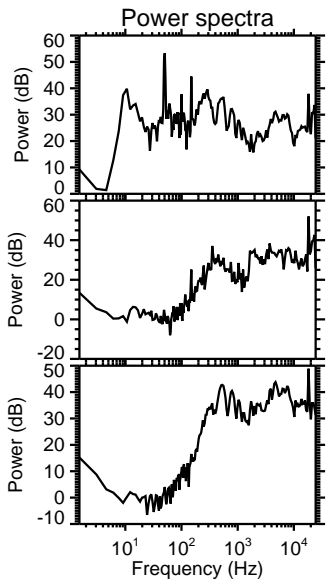
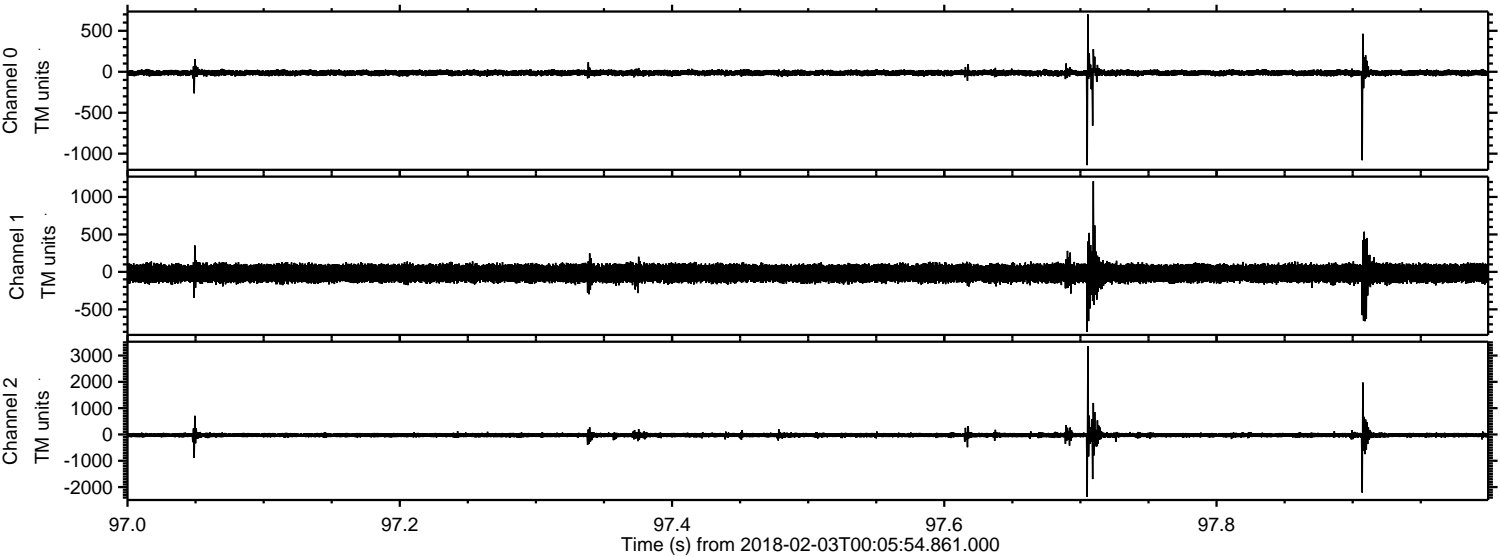


Processed Sat Feb 3 01:13:57 2018 by ELM ver.2012-10-06 from 001\_\_elm20180203\_000553\_\_dat00.bin





Processed Sat Feb 3 01:13:57 2018 by ELM ver.2012-10-06 from 001\_\_elm20180203\_000553\_\_dat00.bin





Processed Sat Feb 3 01:13:58 2018 by ELM ver.2012-10-06 from 001\_\_elm20180203\_000553\_\_dat00.bin

