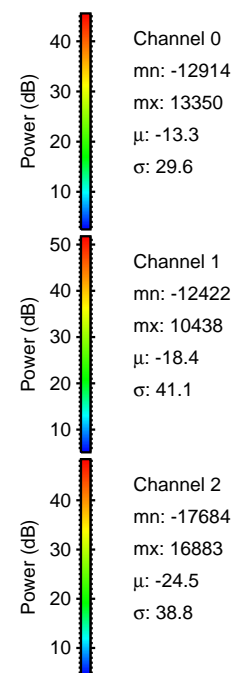
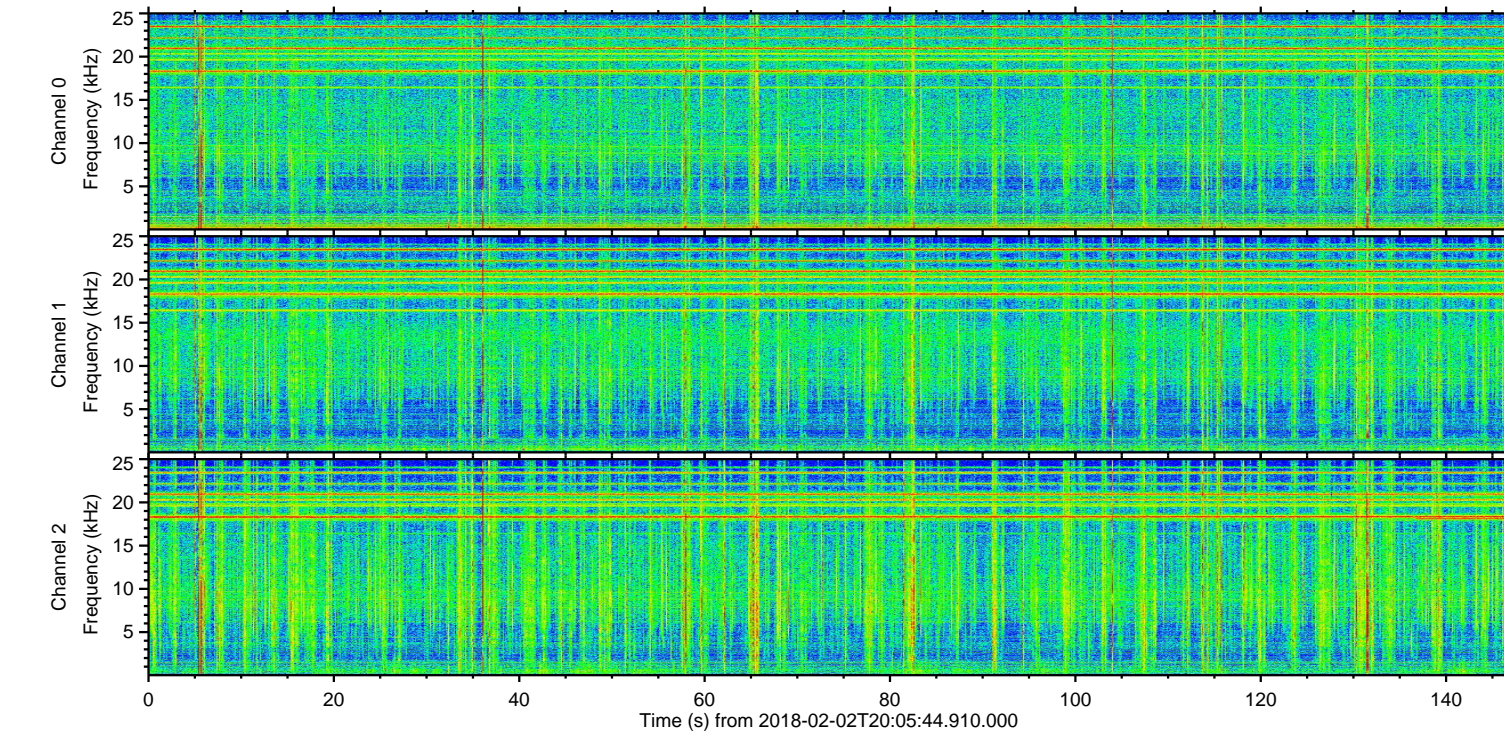
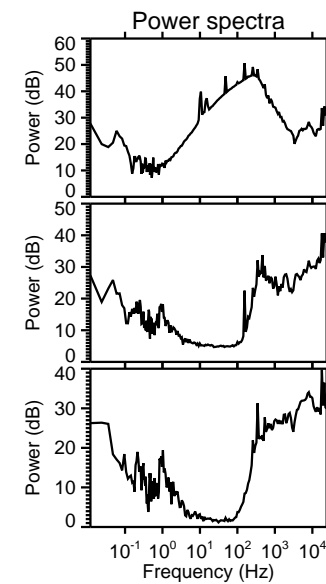
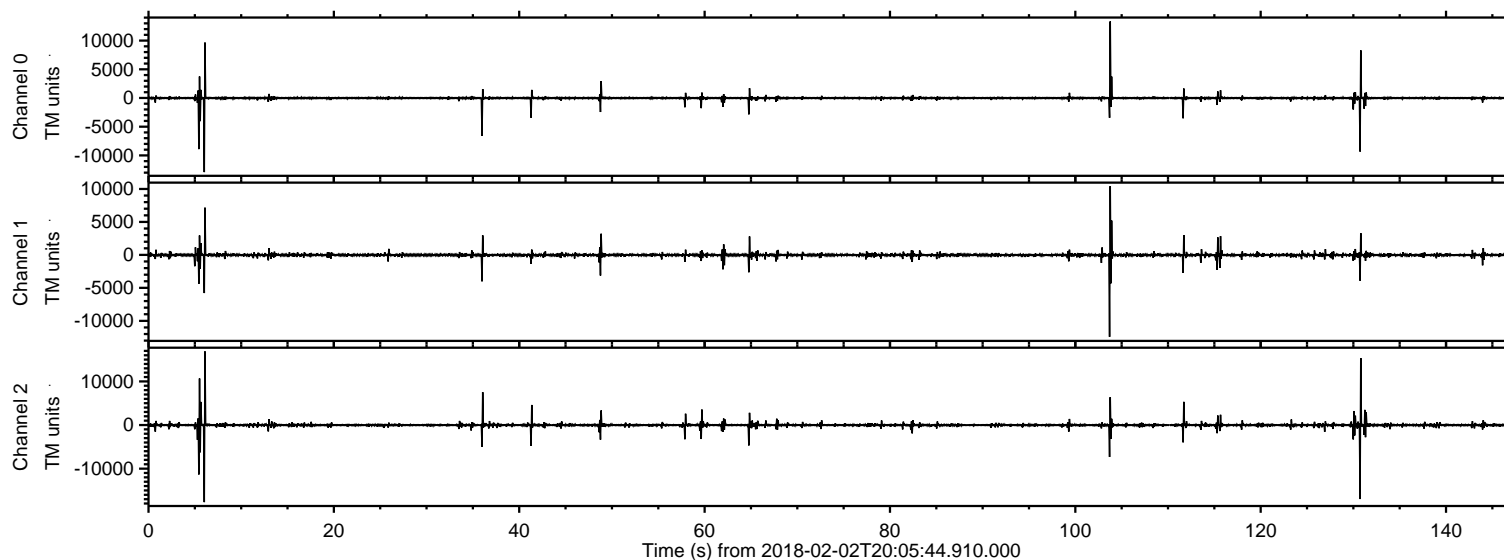
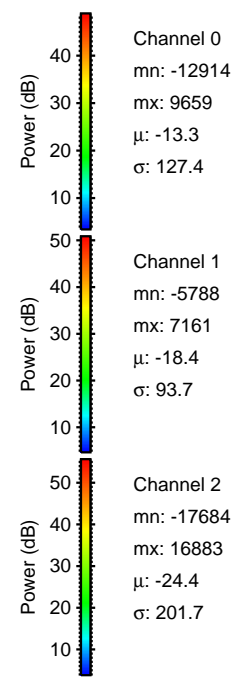
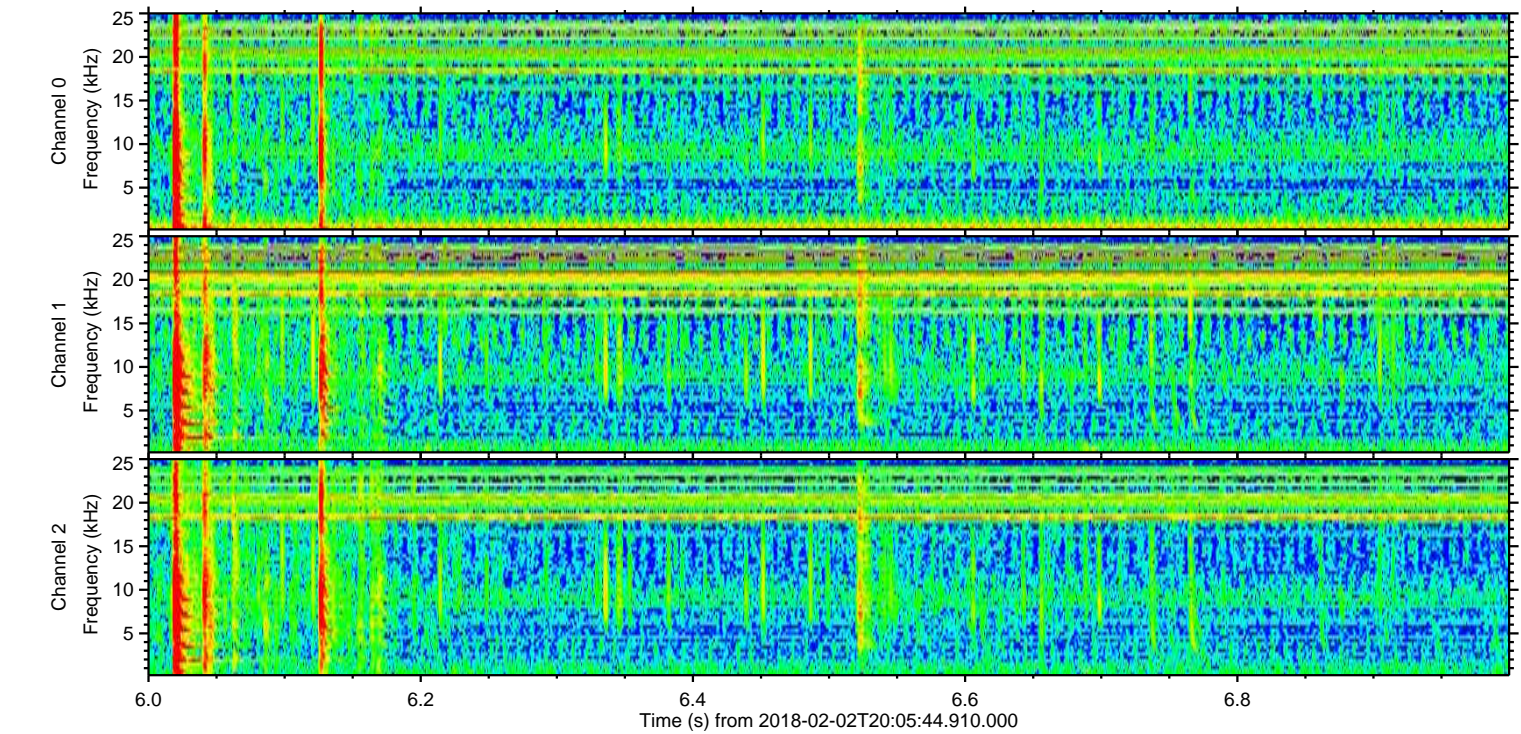
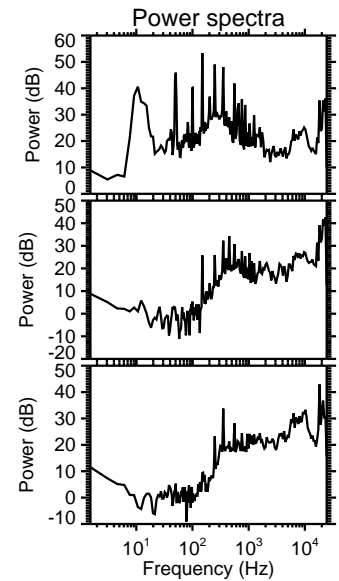
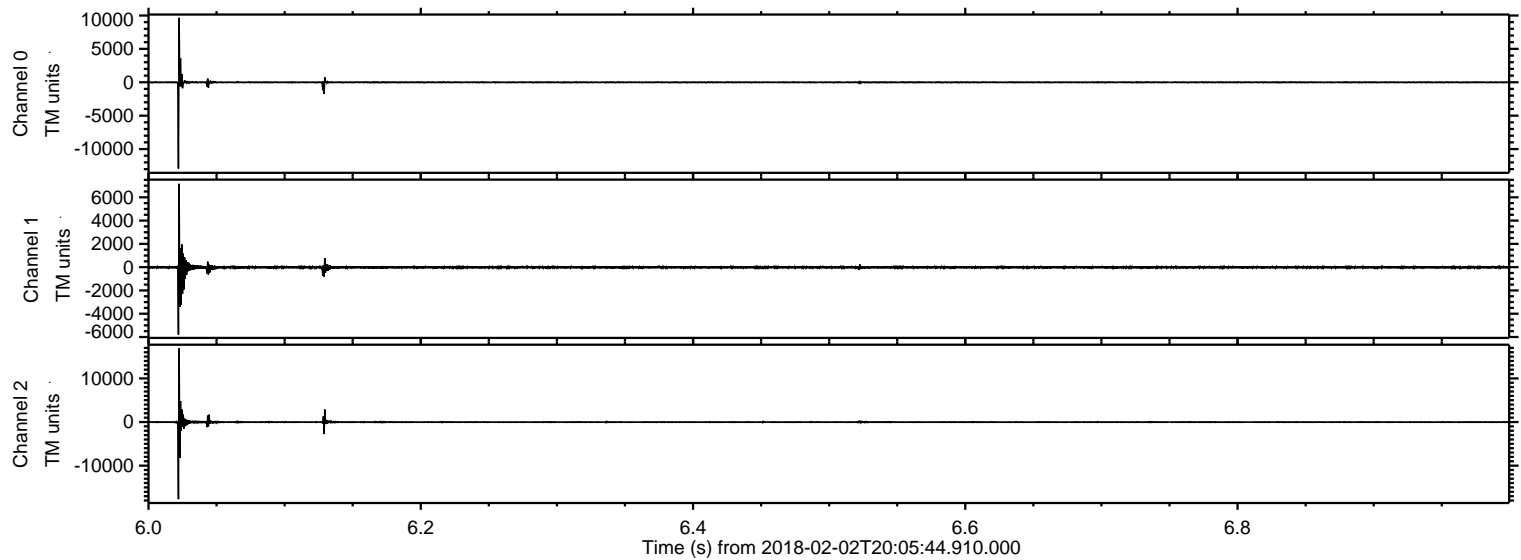


ELMAVAN 3D WAVEFORMS (Measured data sampled at 50 kHz) 51000 packets of 144 samples from 2018-02-02T20:05:44.910.000.

Processed Fri Feb 2 21:13:32 2018 by ELM ver.2012-10-06 from 001__elm20180202_200543__dat00.bin

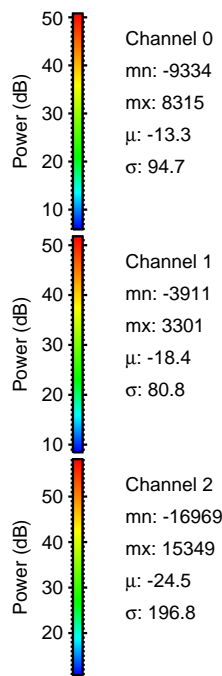
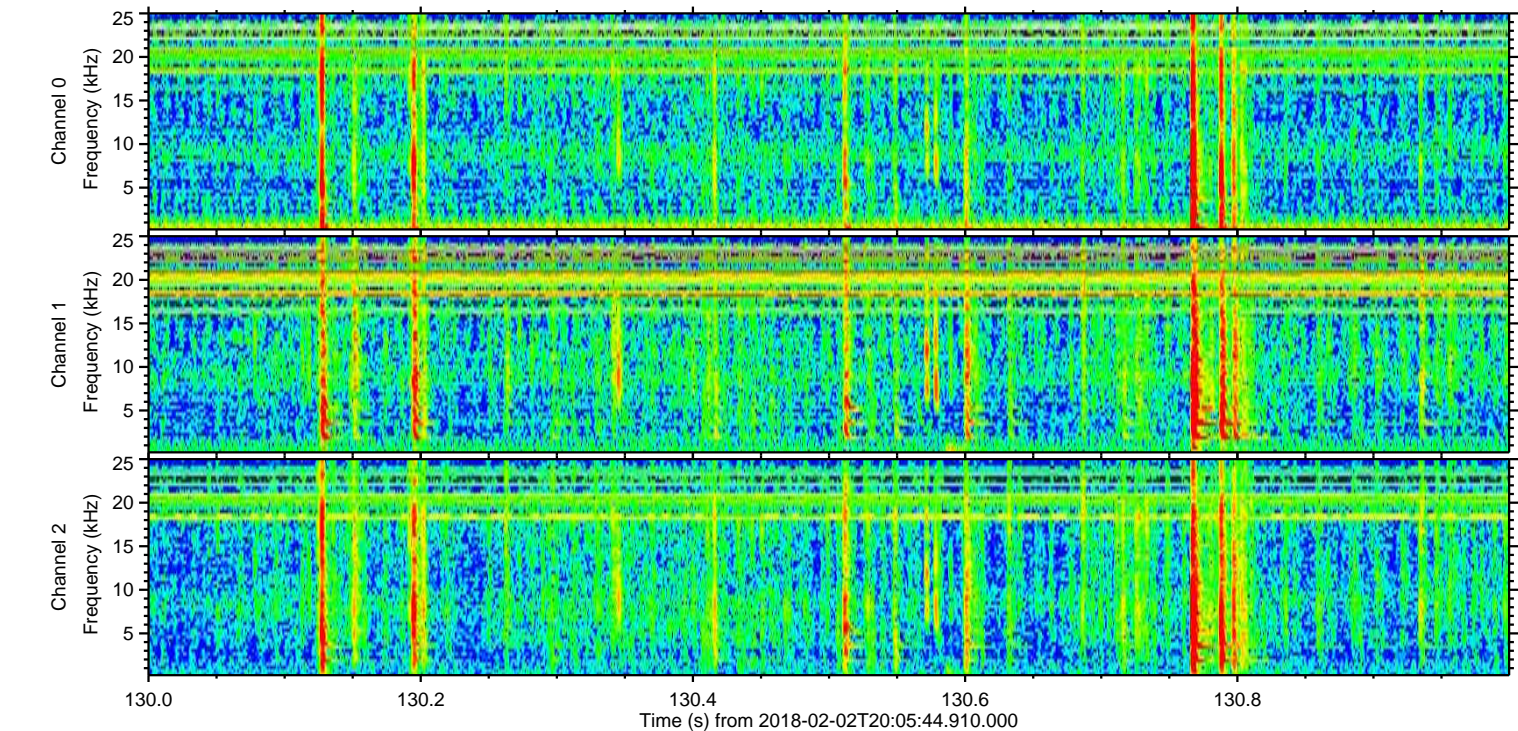
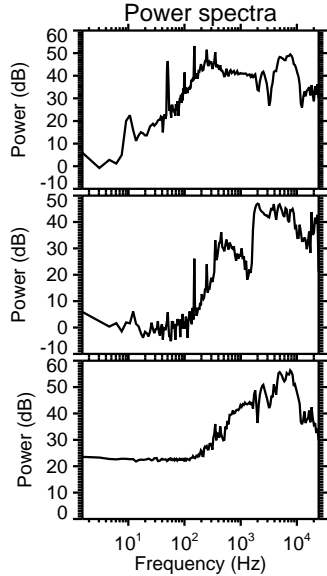
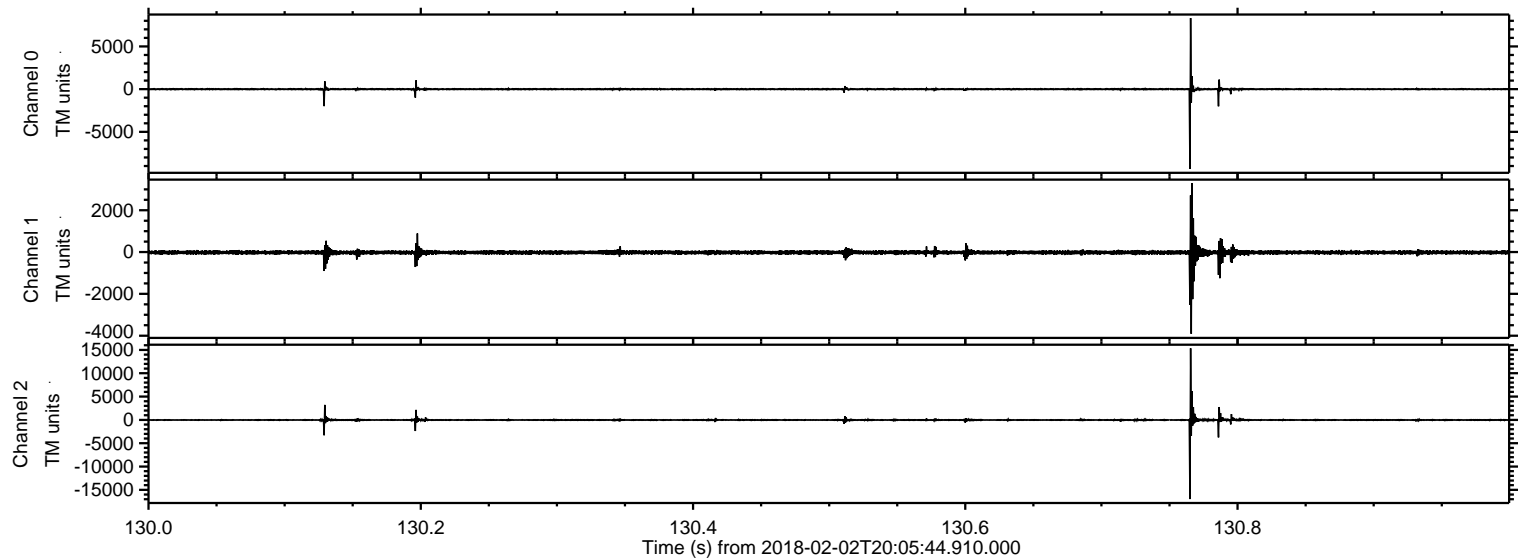


Processed Fri Feb 2 21:13:40 2018 by ELM ver.2012-10-06 from 001__elm20180202_200543__dat00.bin



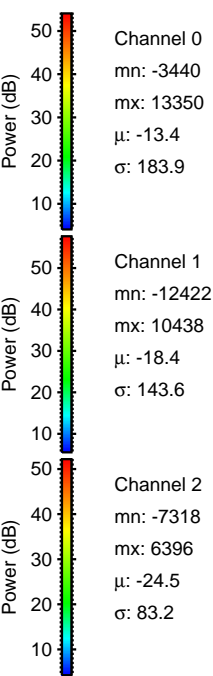
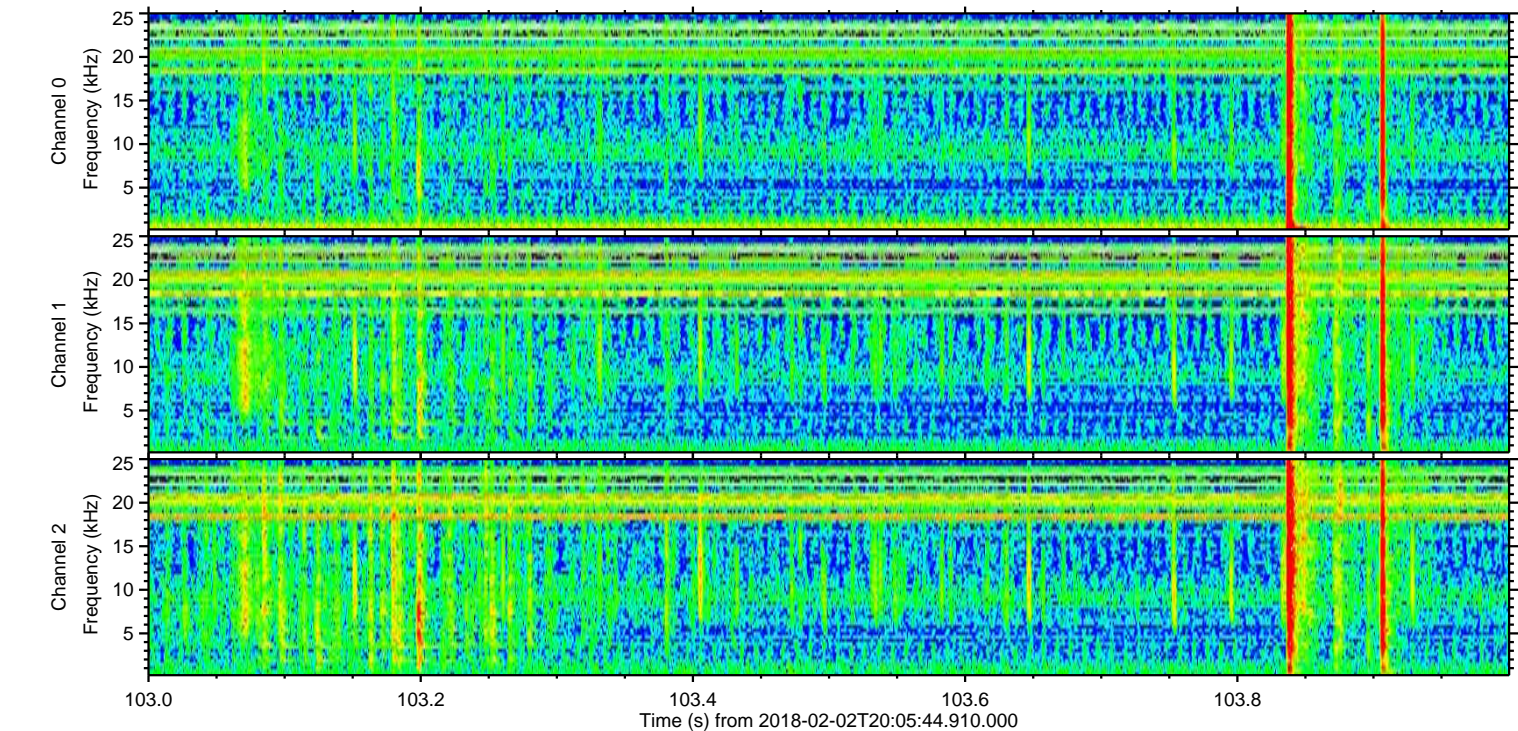
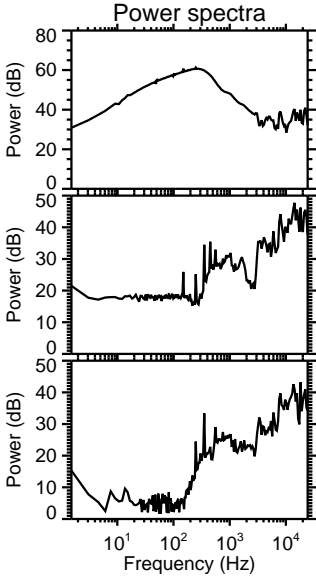
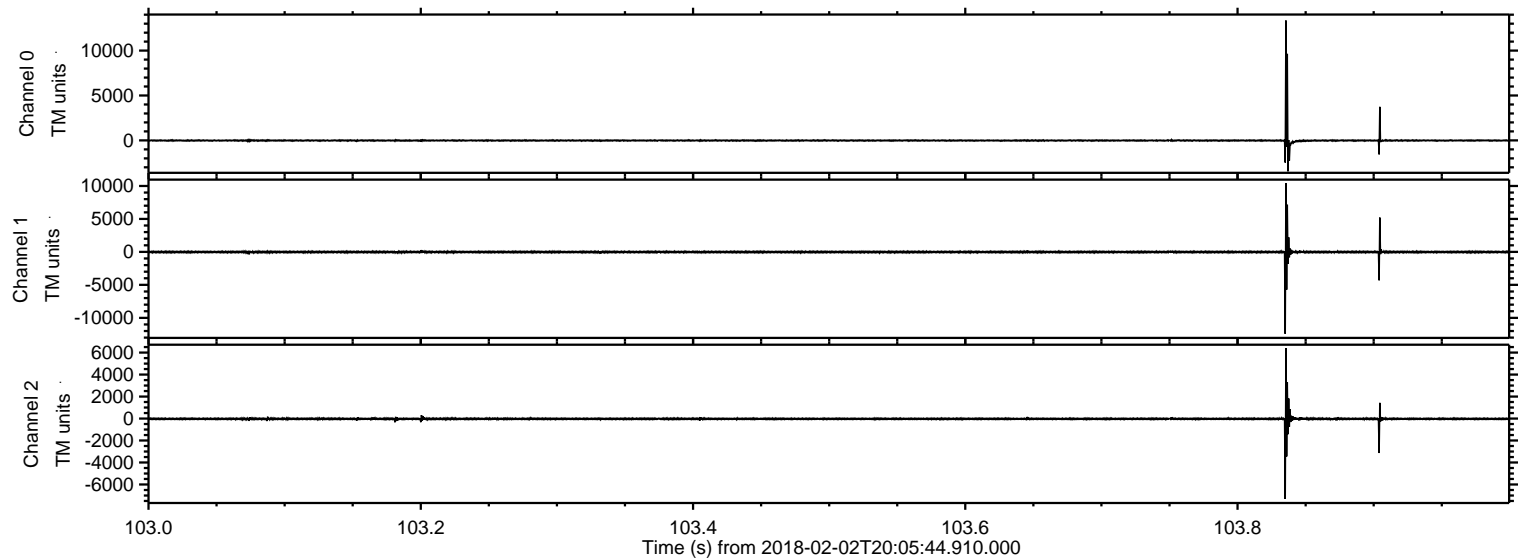
ELMAVAN 3D WAVEFORMS (Measured data sampled at 50 kHz) 51000 packets of 144 samples from 2018-02-02T20:05:44.910.000. Part 131/147

Processed Fri Feb 2 21:13:41 2018 by ELM ver.2012-10-06 from 001__elm20180202_200543__dat00.bin

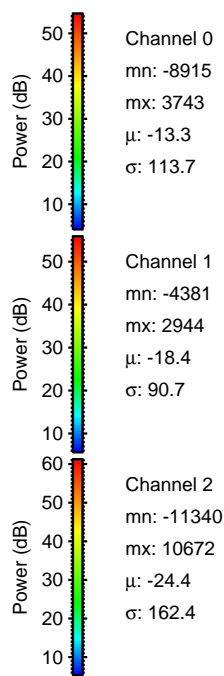
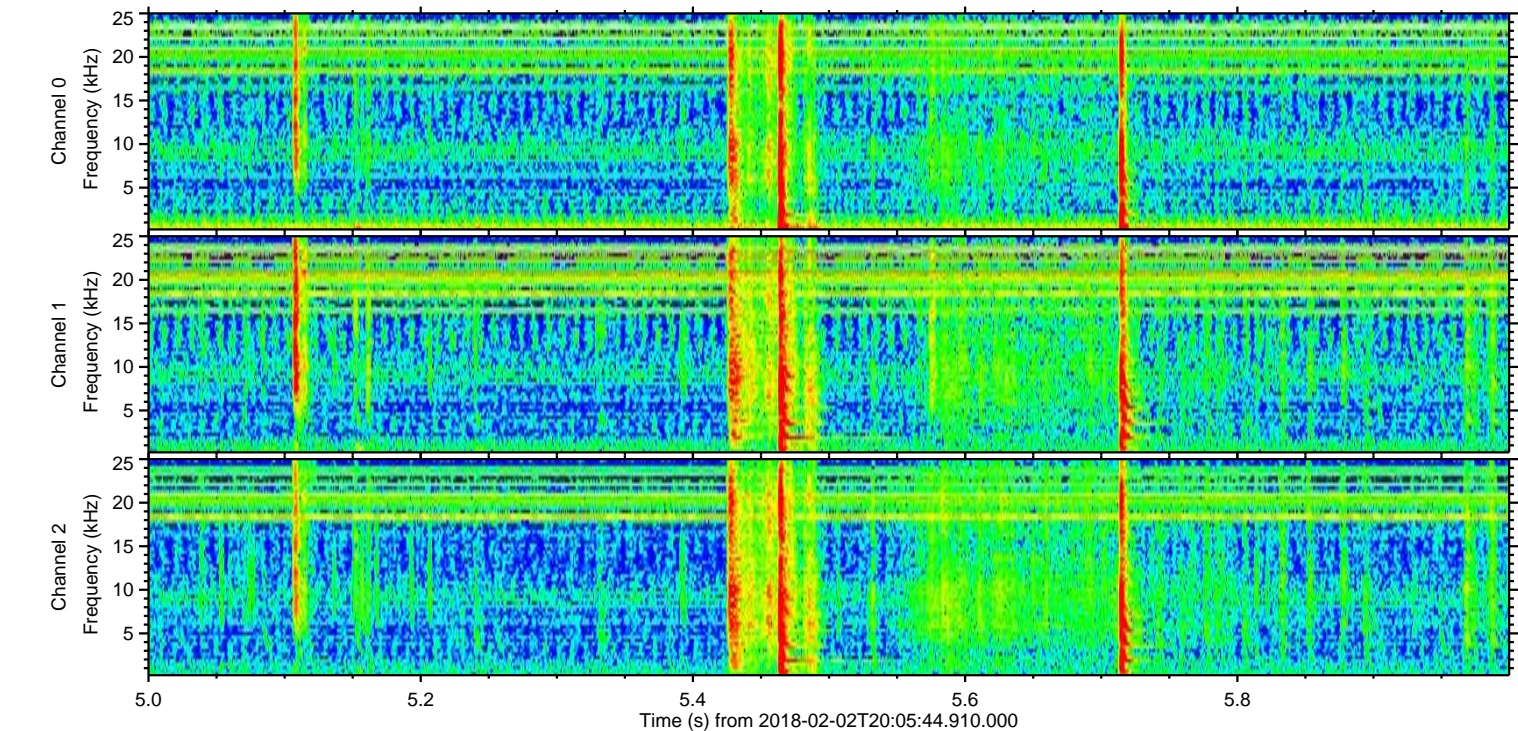
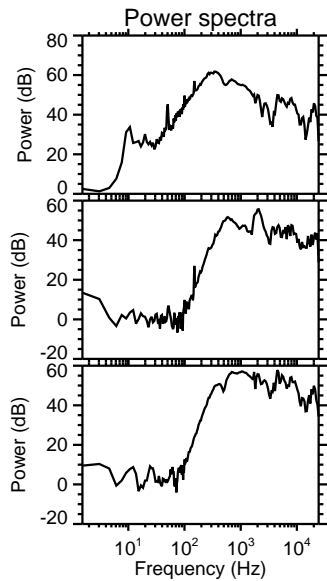
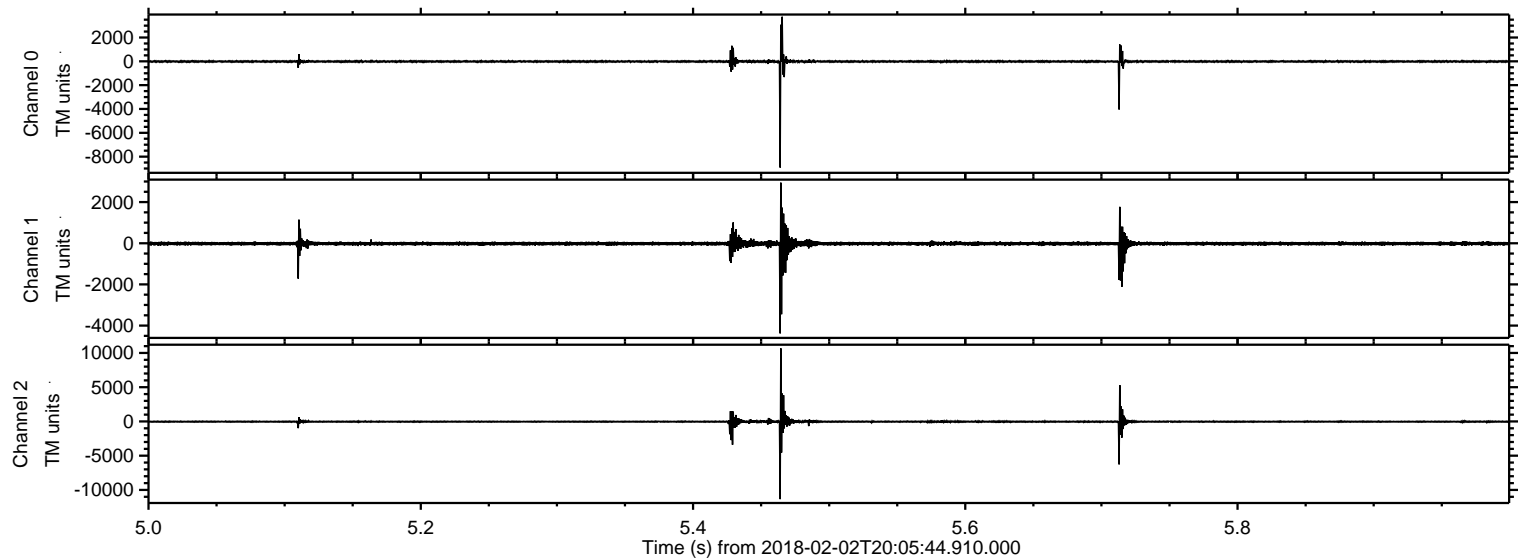


ELMAVAN 3D WAVEFORMS (Measured data sampled at 50 kHz) 51000 packets of 144 samples from 2018-02-02T20:05:44.910.000. Part 104/147

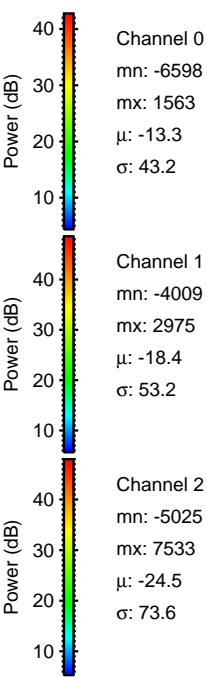
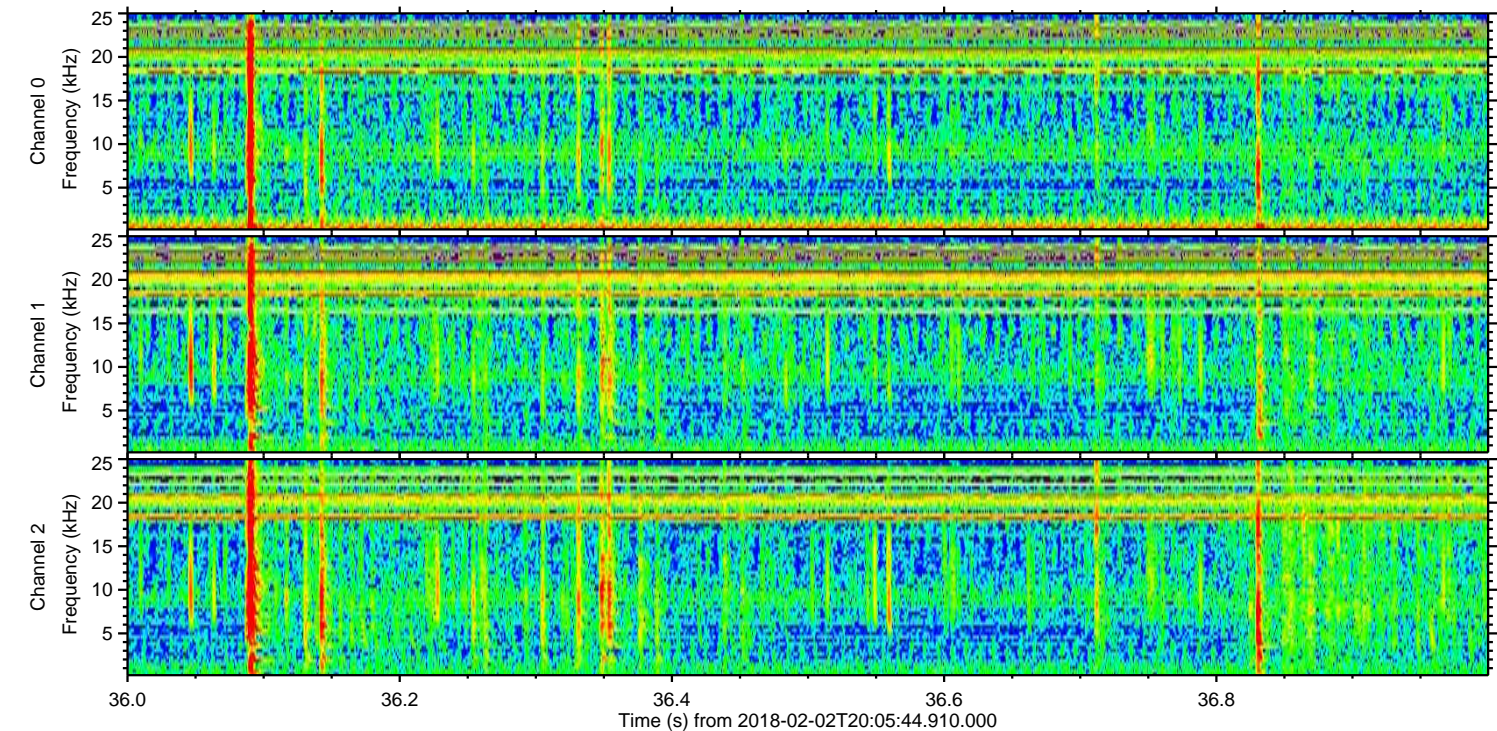
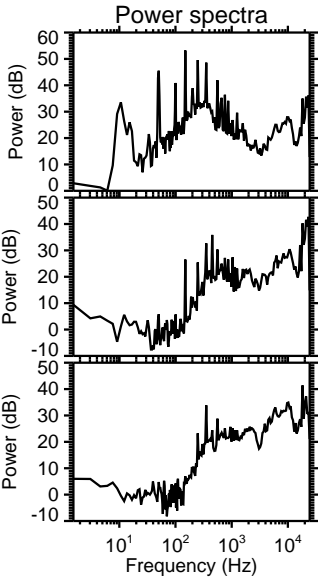
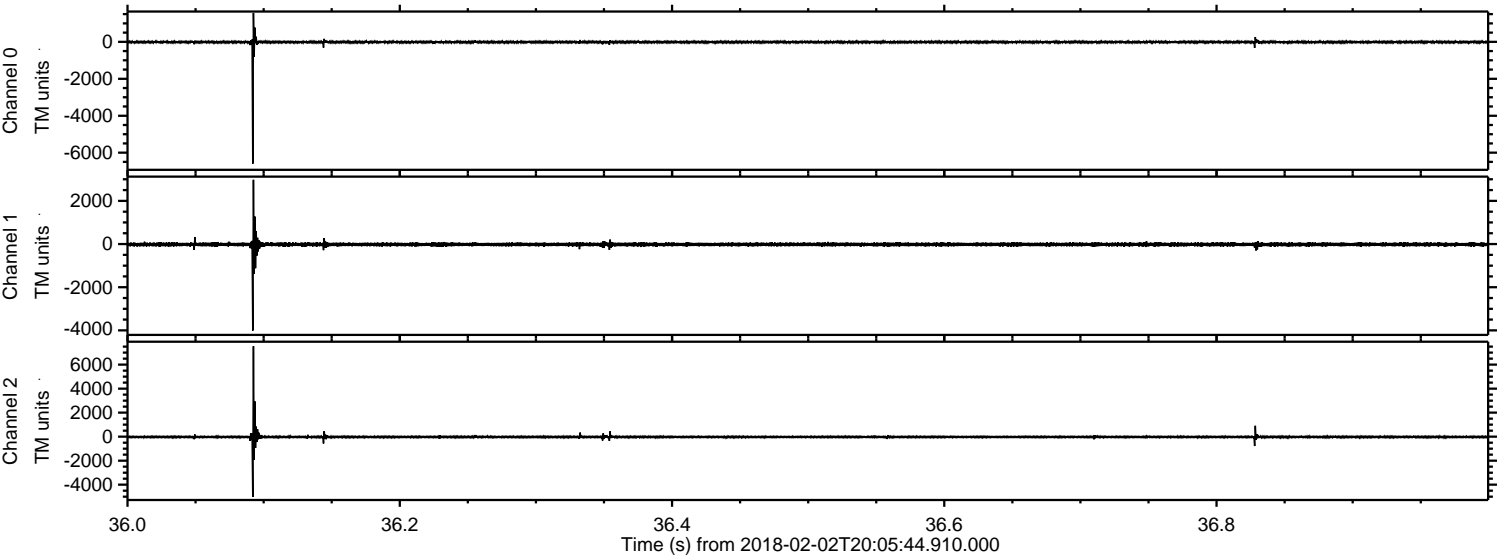
Processed Fri Feb 2 21:13:42 2018 by ELM ver.2012-10-06 from 001__elm20180202_200543__dat00.bin



Processed Fri Feb 2 21:13:43 2018 by ELM ver.2012-10-06 from 001__elm20180202_200543__dat00.bin

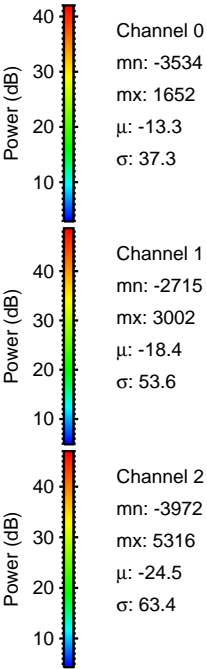
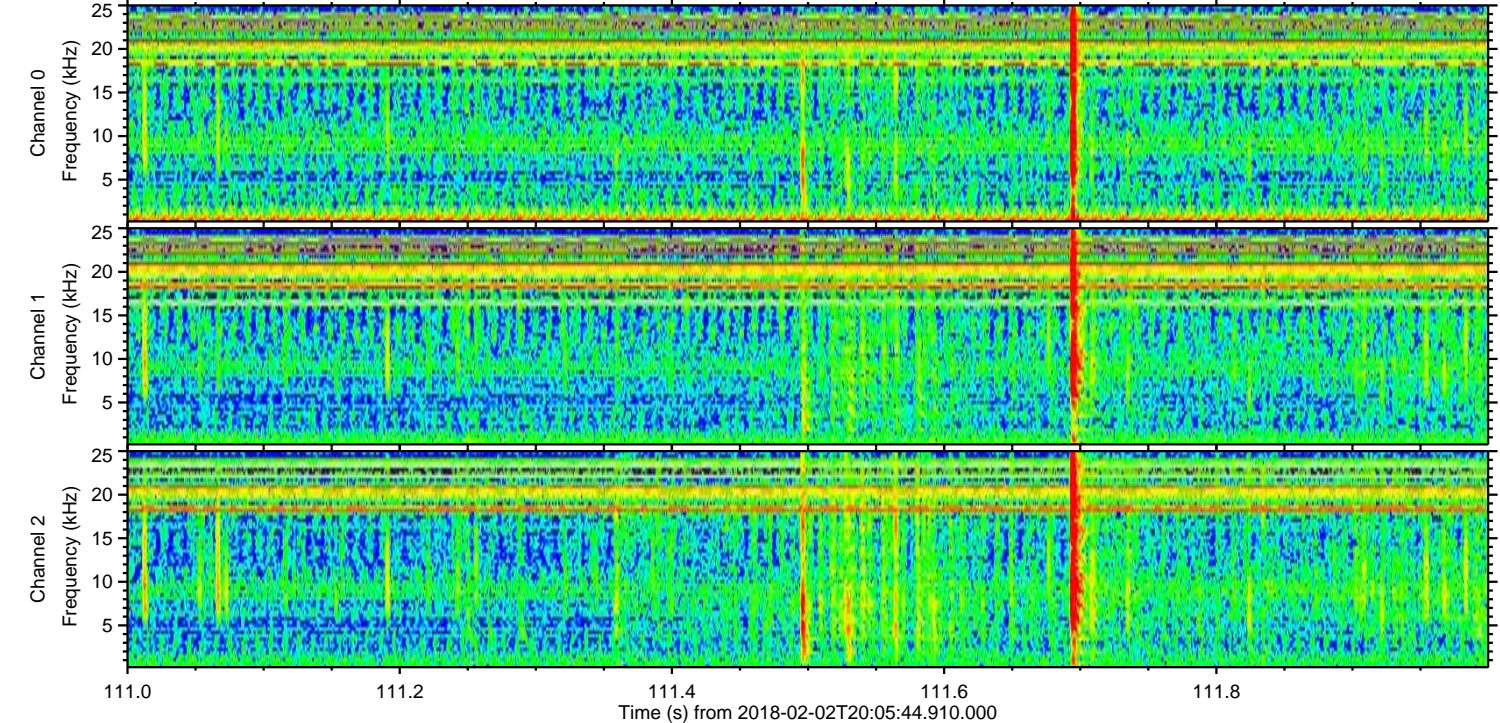
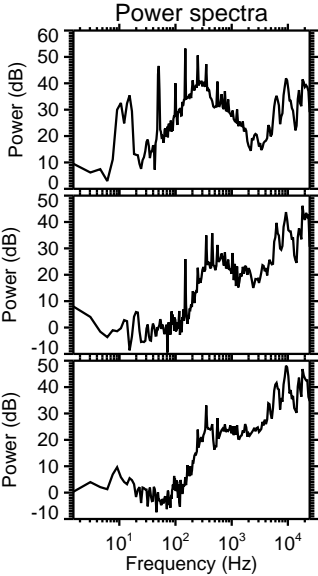
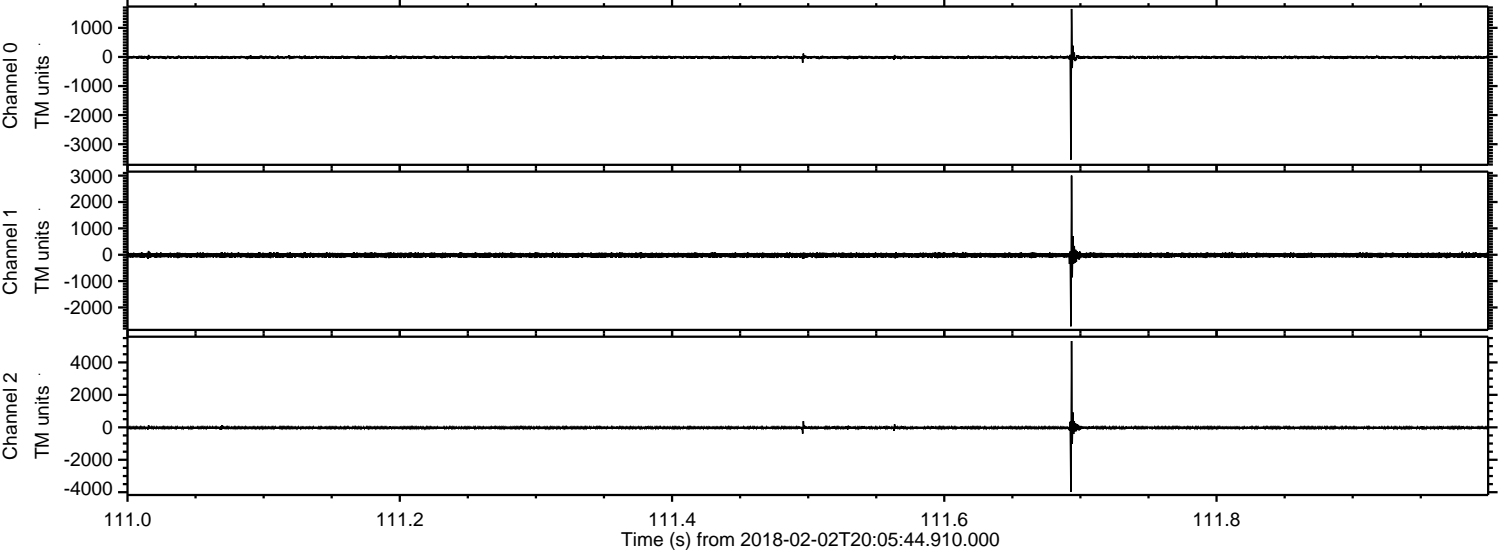


Processed Fri Feb 2 21:13:44 2018 by ELM ver.2012-10-06 from 001__elm20180202_200543__dat00.bin

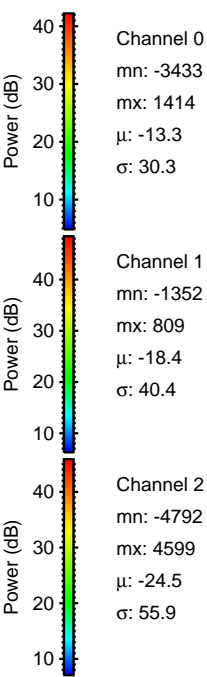
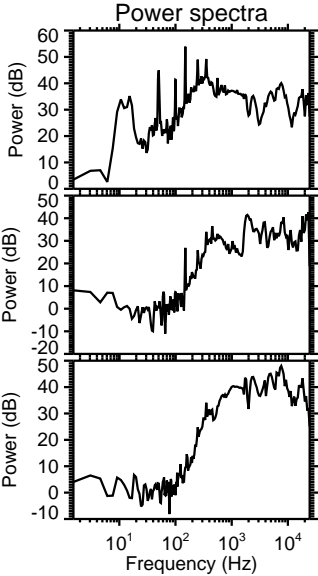
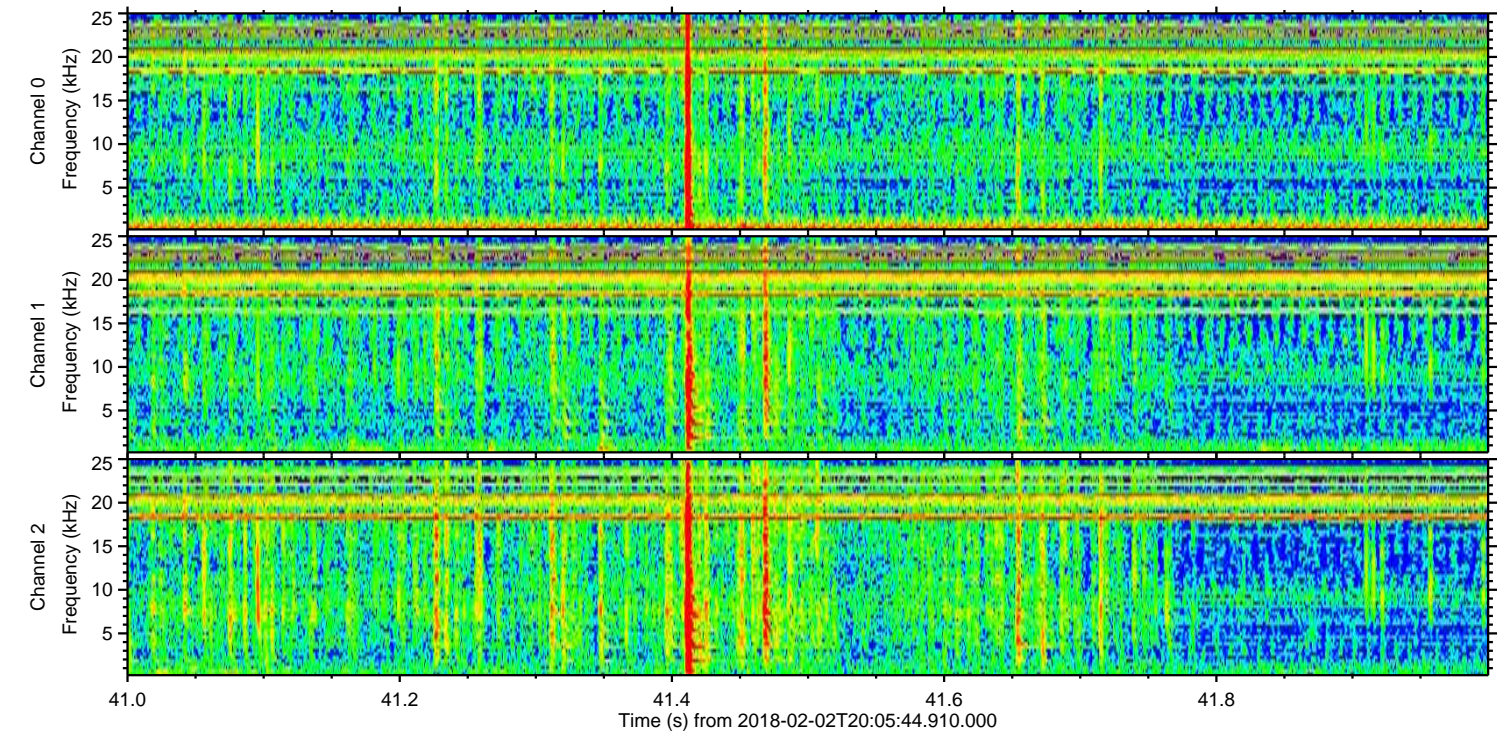
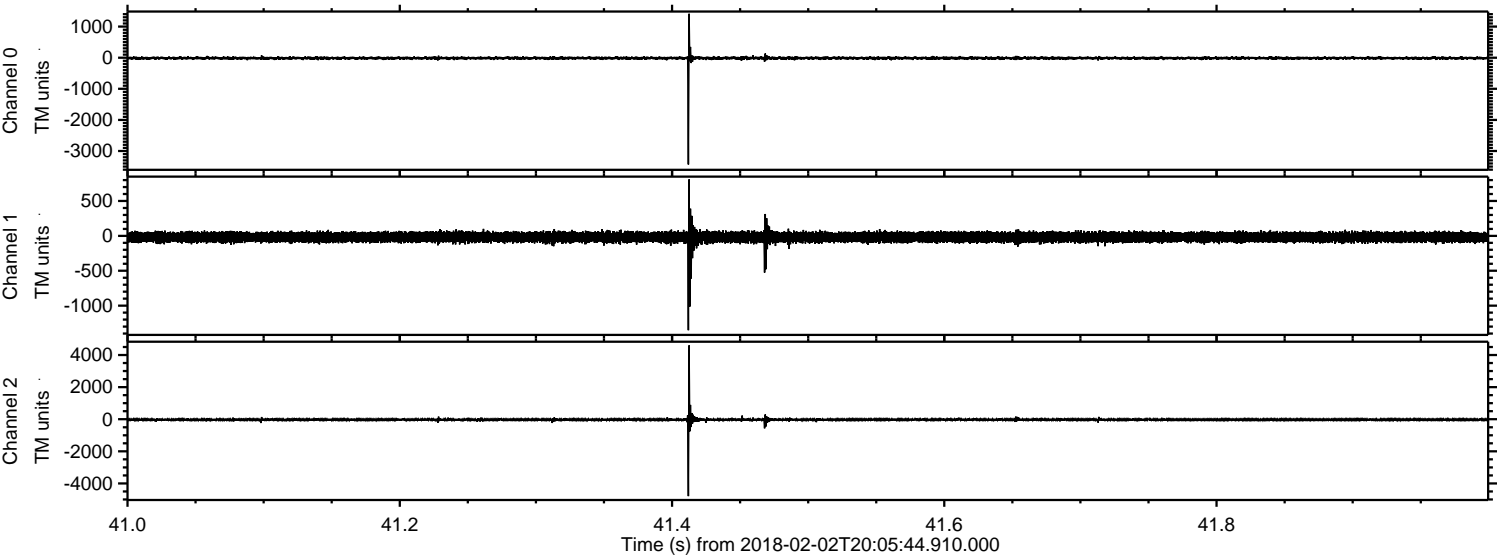


ELMAVAN 3D WAVEFORMS (Measured data sampled at 50 kHz) 51000 packets of 144 samples from 2018-02-02T20:05:44.910.000. Part 112/147

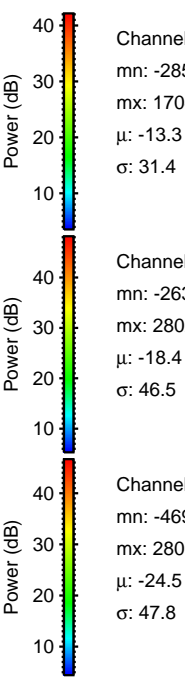
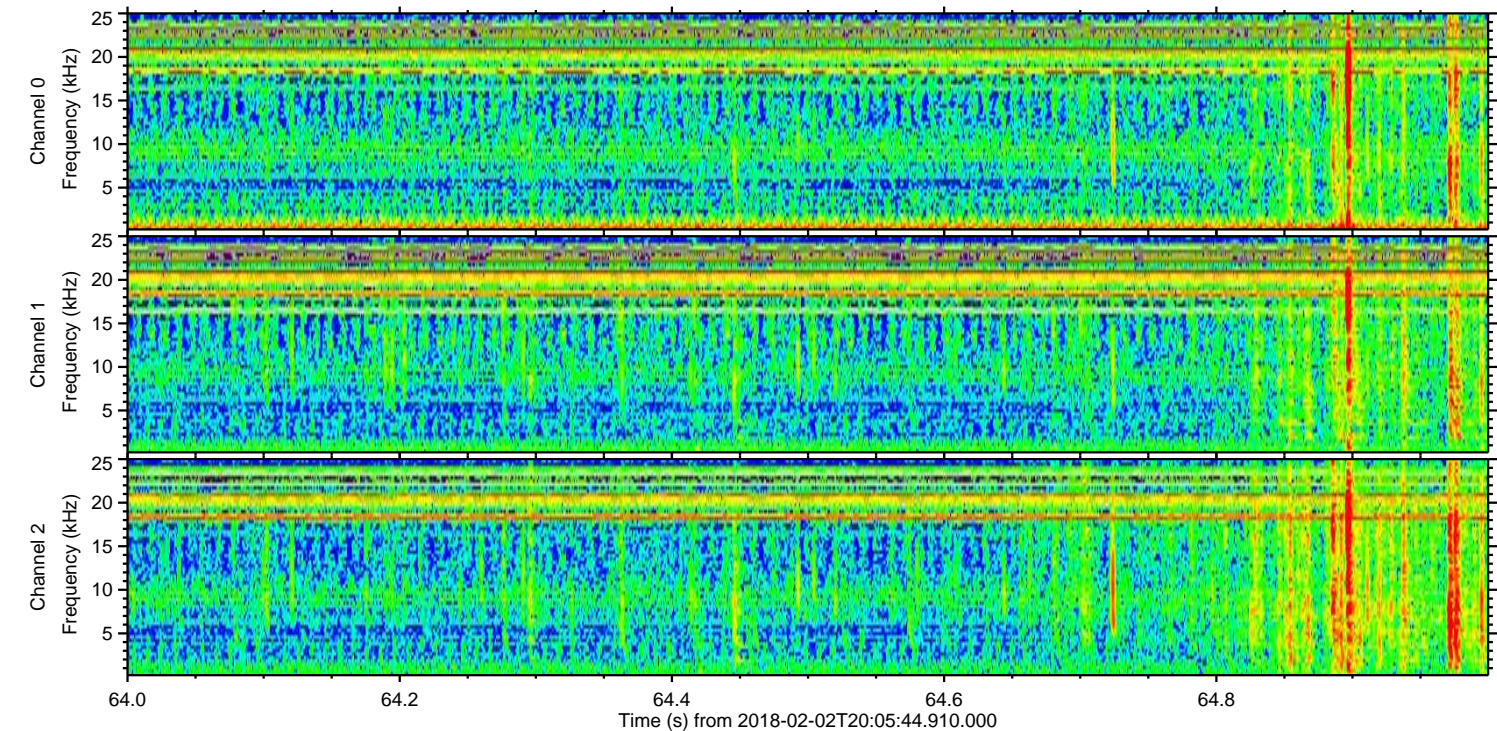
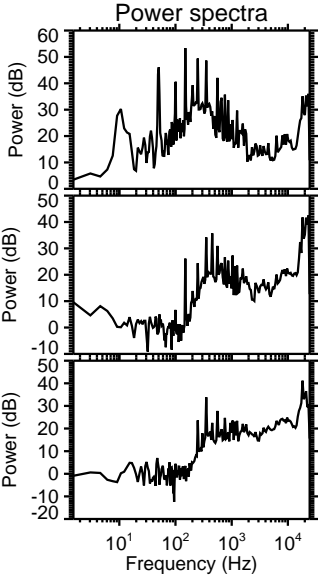
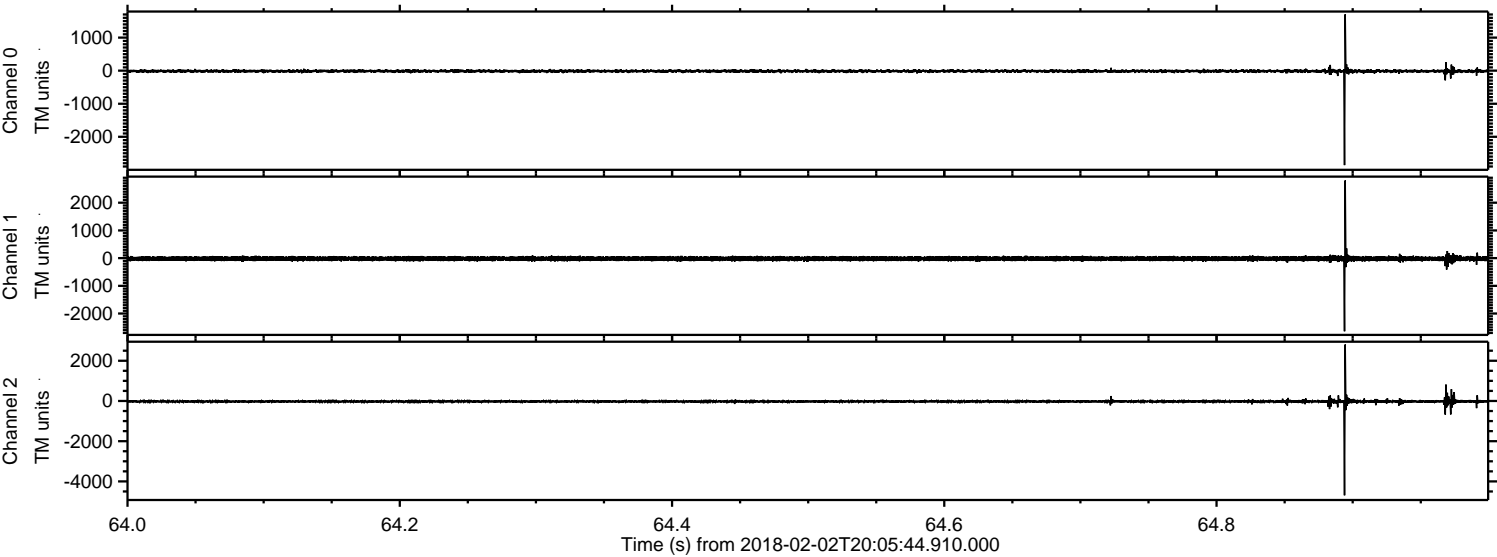
Processed Fri Feb 2 21:13:45 2018 by ELM ver.2012-10-06 from 001__elm20180202_200543__dat00.bin



Processed Fri Feb 2 21:13:46 2018 by ELM ver.2012-10-06 from 001__elm20180202_200543__dat00.bin



Processed Fri Feb 2 21:13:46 2018 by ELM ver.2012-10-06 from 001__elm20180202_200543__dat00.bin

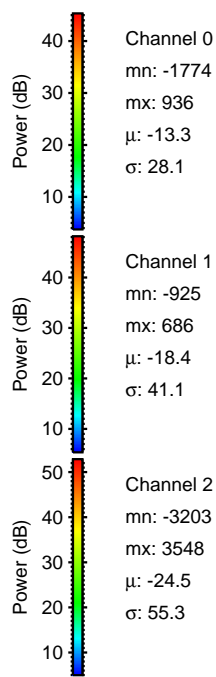
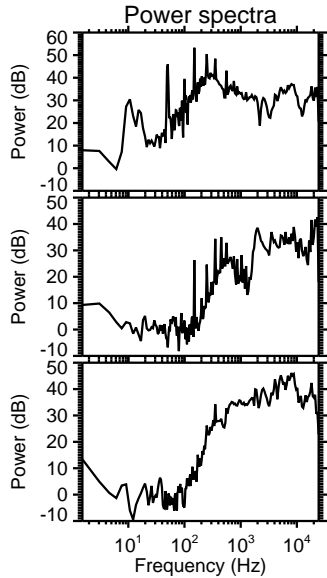
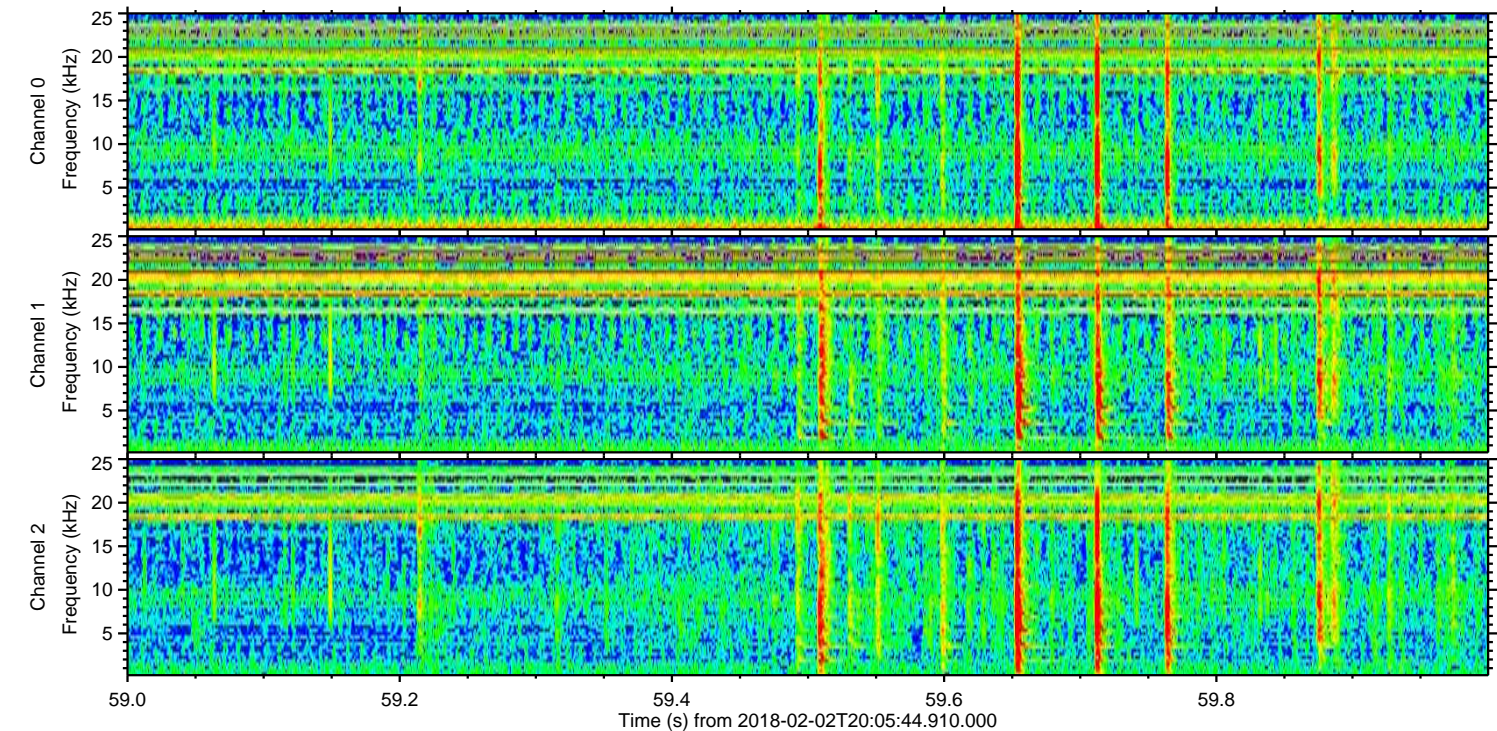
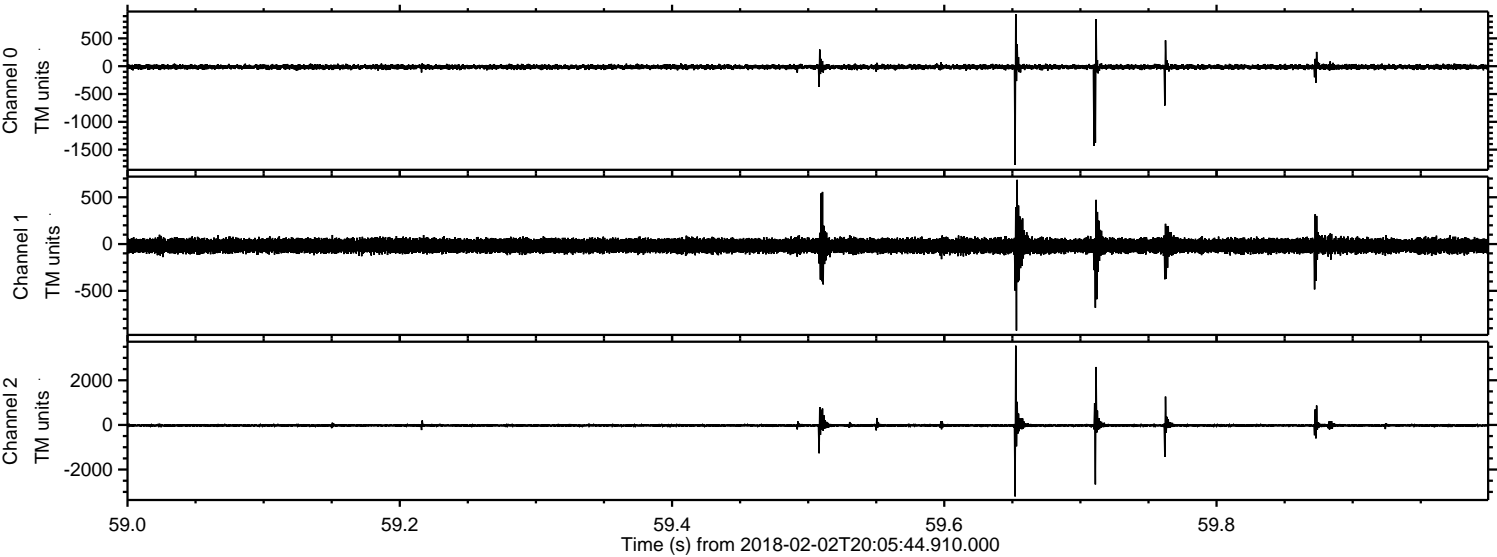


Channel 0
mn: -2857
mx: 1704
 μ : -13.3
 σ : 31.4

Channel 1
mn: -2639
mx: 2802
 μ : -18.4
 σ : 46.5

Channel 2
mn: -4690
mx: 2807
 μ : -24.5
 σ : 47.8

Processed Fri Feb 2 21:13:47 2018 by ELM ver.2012-10-06 from 001__elm20180202_200543__dat00.bin



Processed Fri Feb 2 21:13:48 2018 by ELM ver.2012-10-06 from 001__elm20180202_200543__dat00.bin

