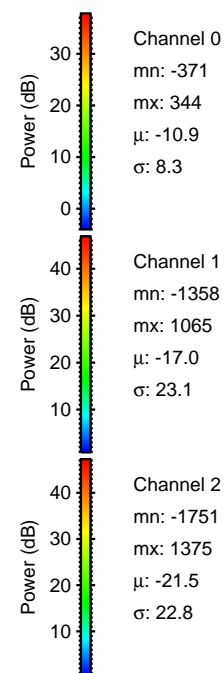
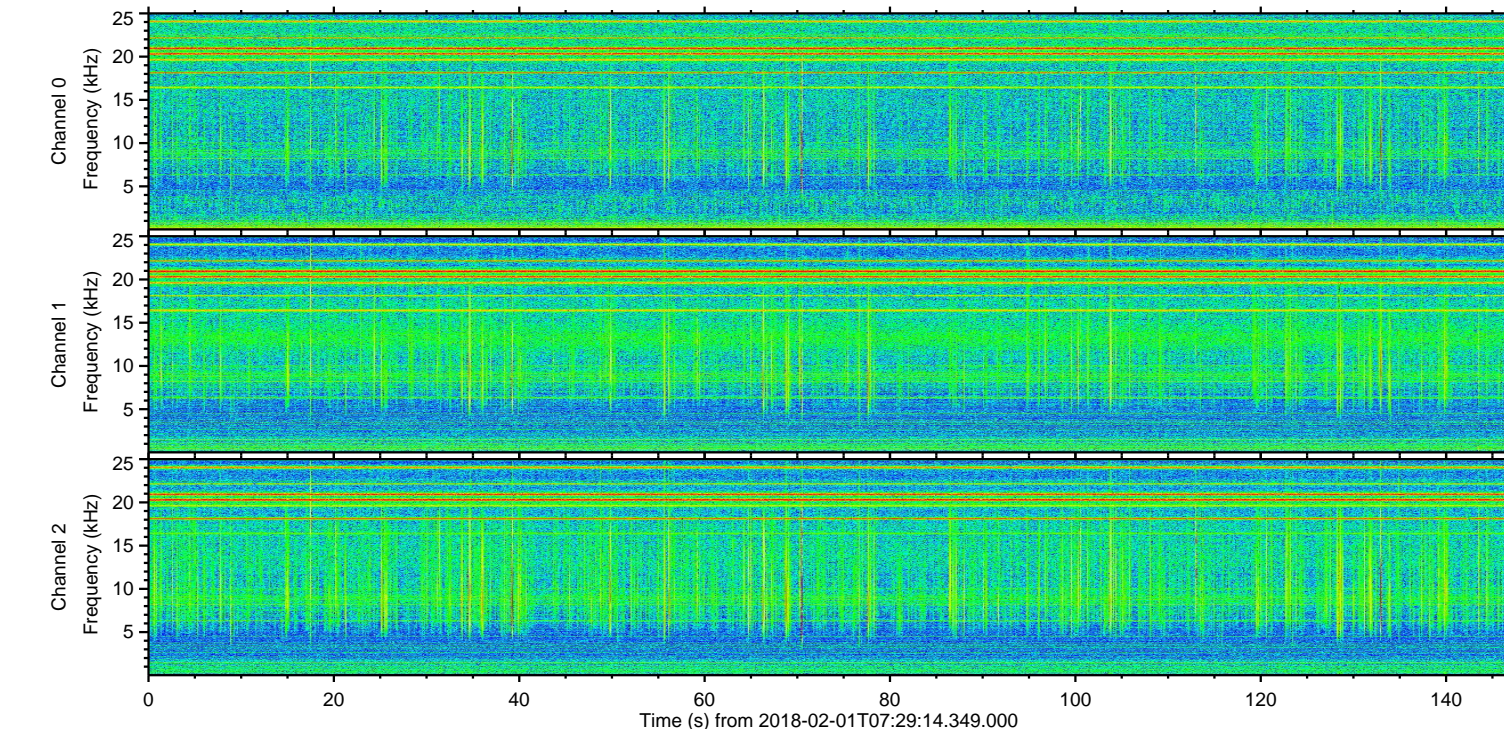
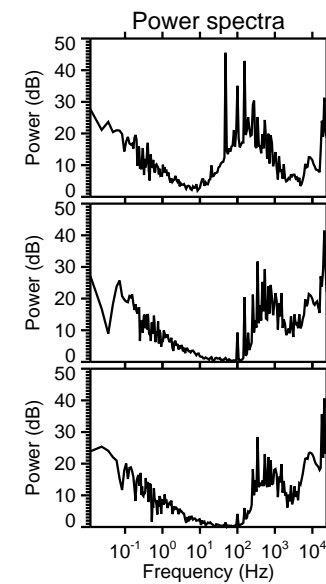
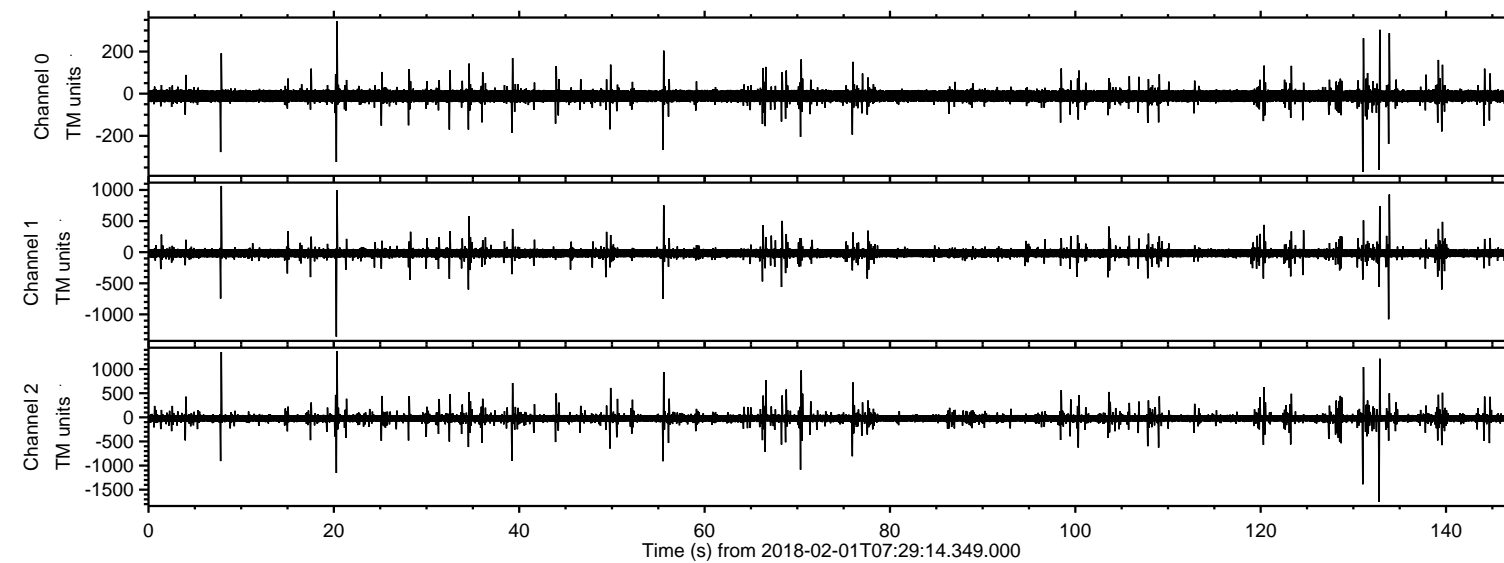


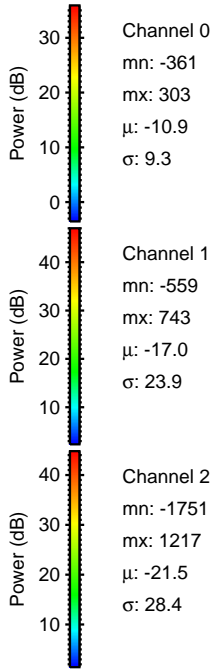
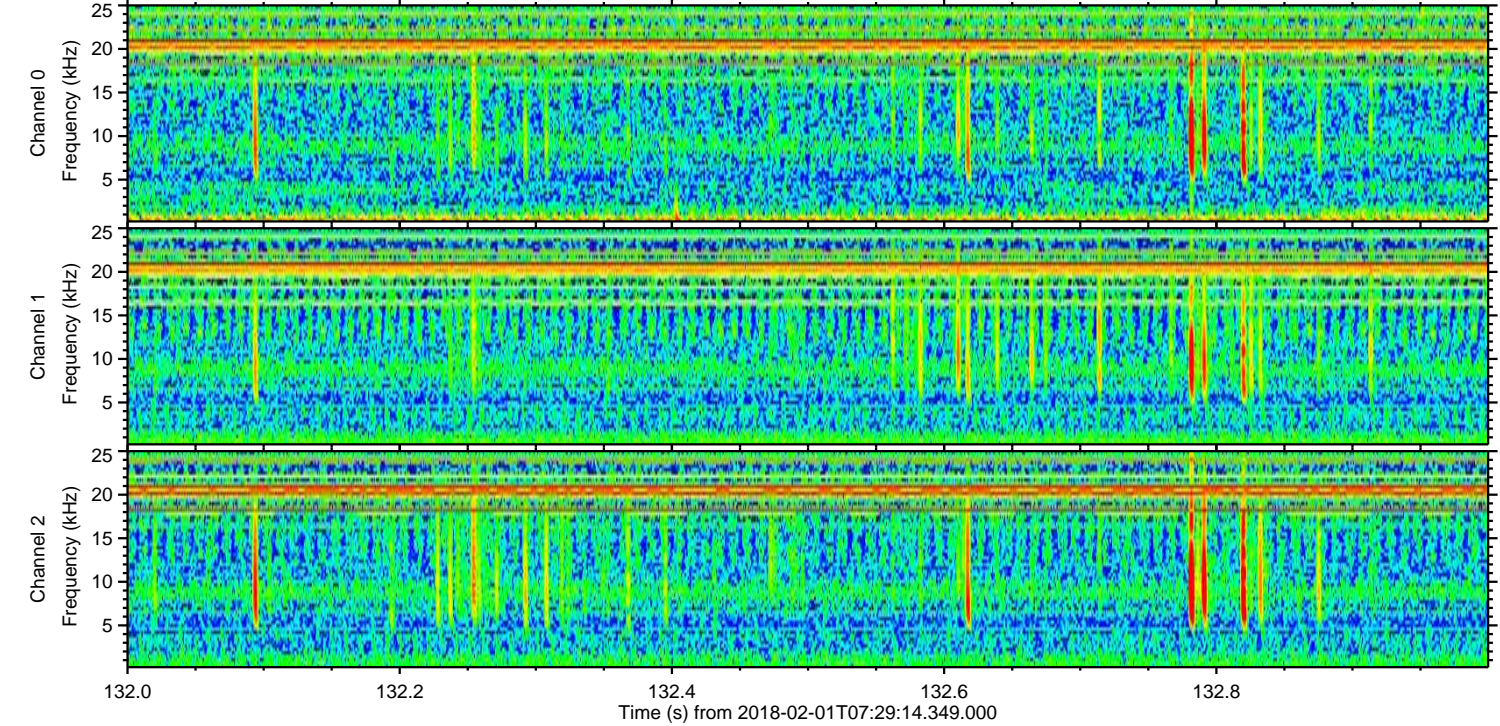
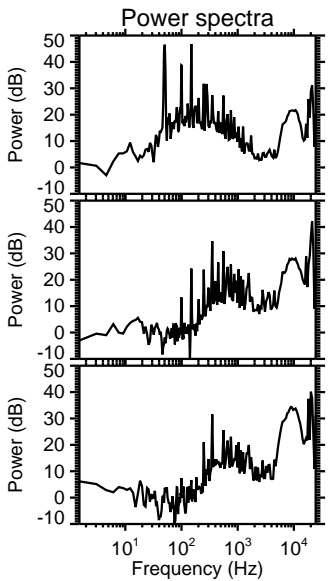
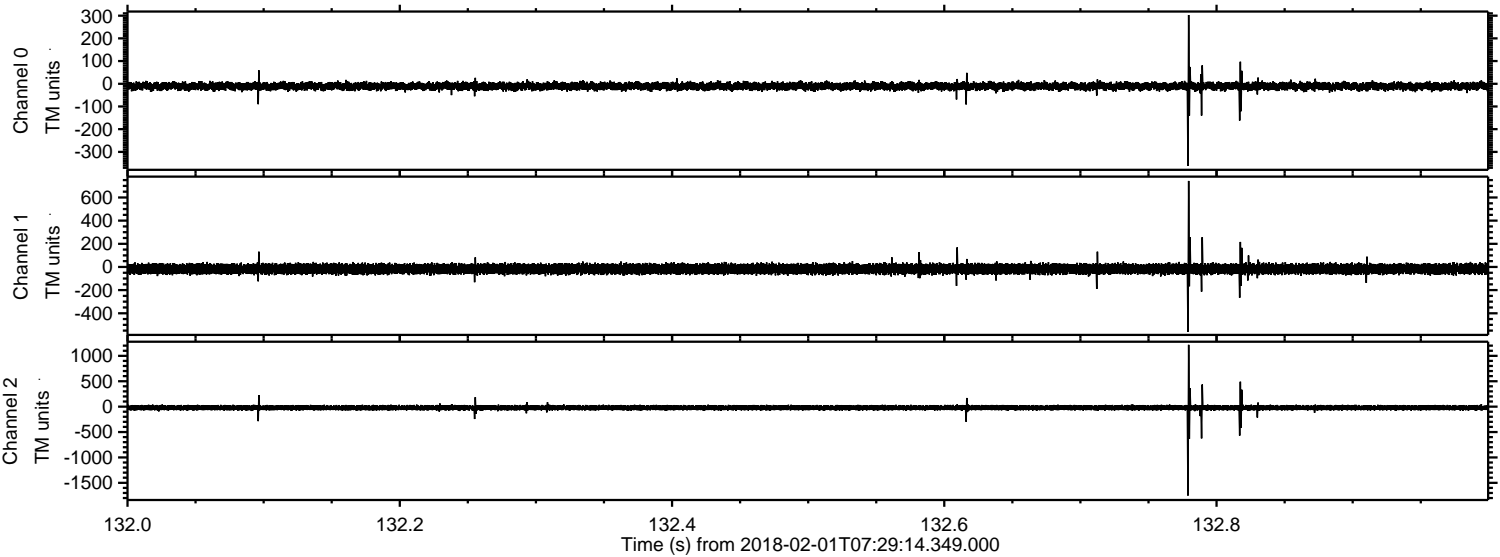
ELMAVAN 3D WAVEFORMS (Measured data sampled at 50 kHz) 51000 packets of 144 samples from 2018-02-01T07:29:14.349.000.

Processed Thu Feb 1 08:37:40 2018 by ELM ver.2012-10-06 from 001__elm20180201_072913__dat00.bin



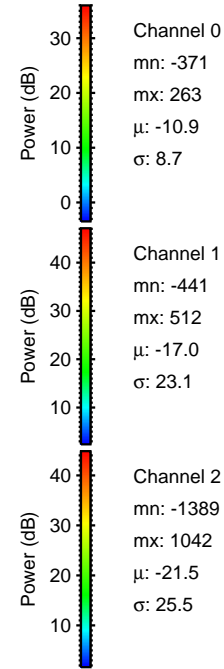
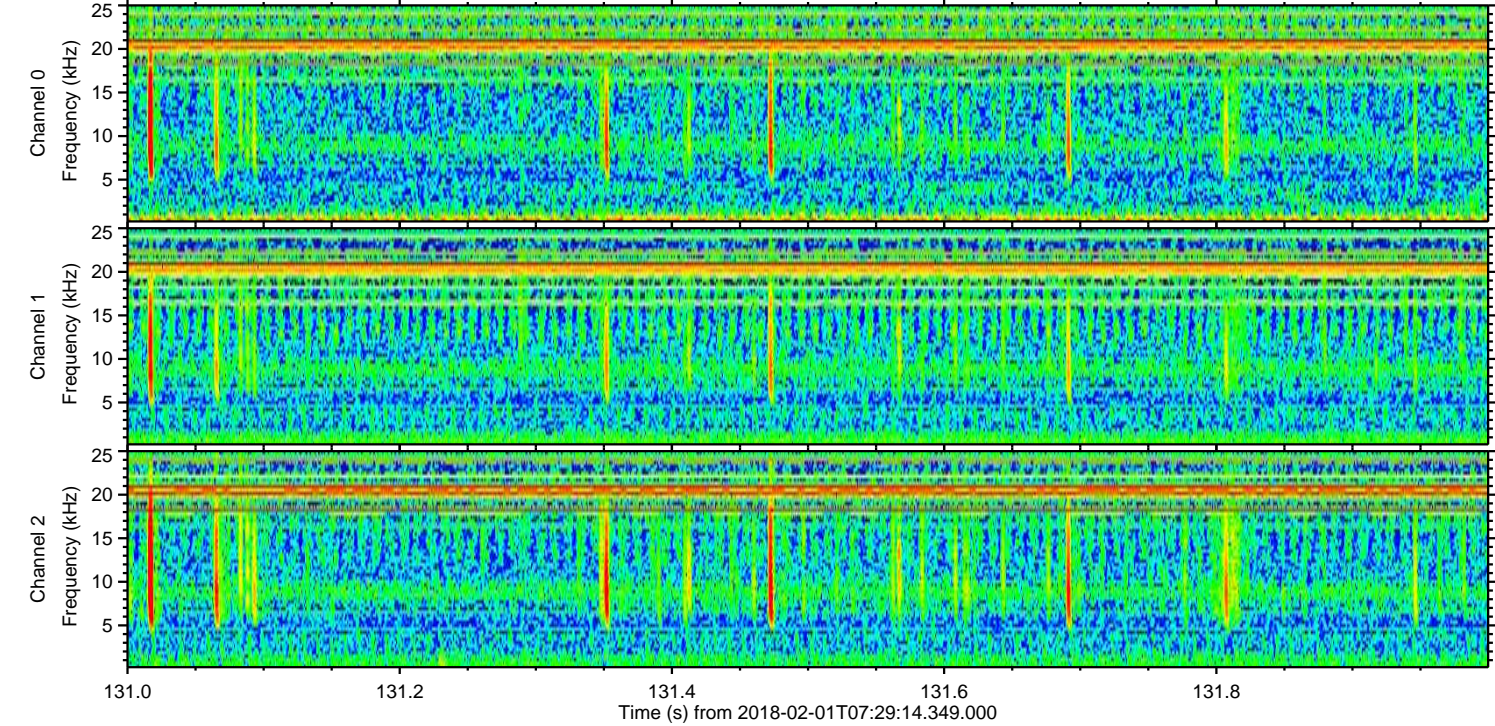
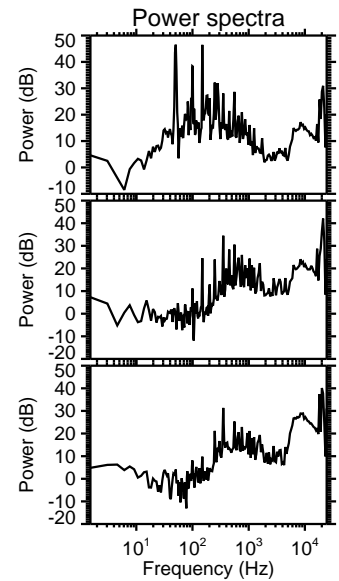
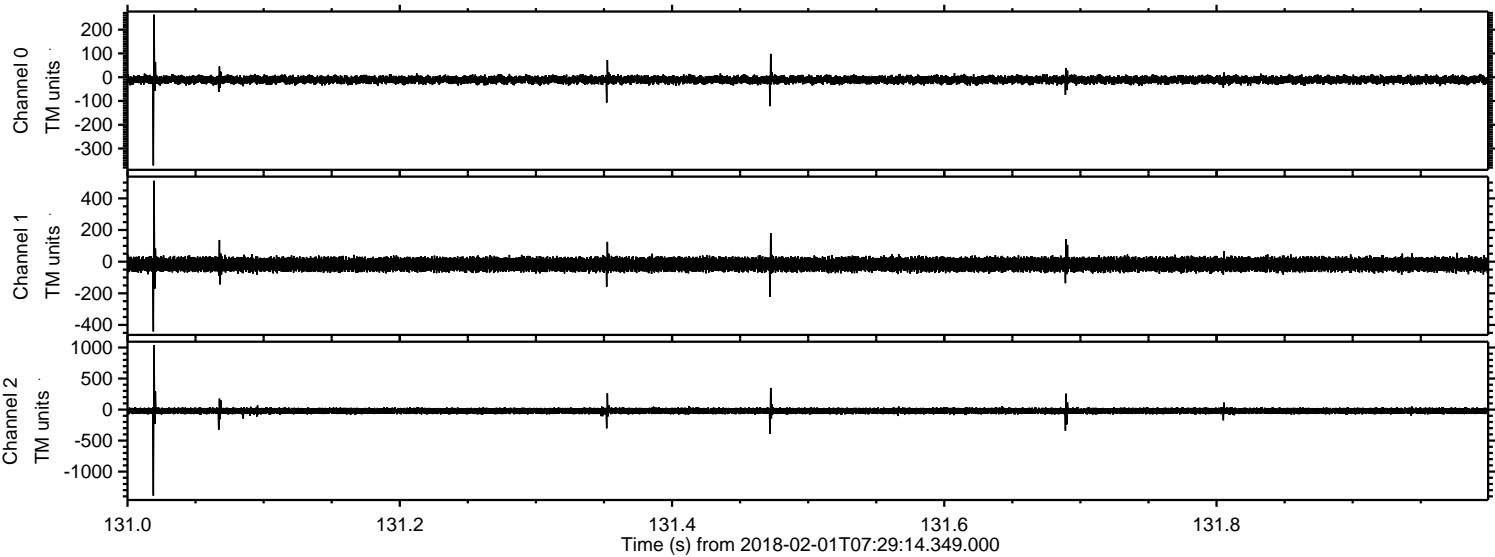
ELMAVAN 3D WAVEFORMS (Measured data sampled at 50 kHz) 51000 packets of 144 samples from 2018-02-01T07:29:14.349.000. Part 133/147

Processed Thu Feb 1 08:37:48 2018 by ELM ver.2012-10-06 from 001__elm20180201_072913__dat00.bin



ELMAVAN 3D WAVEFORMS (Measured data sampled at 50 kHz) 51000 packets of 144 samples from 2018-02-01T07:29:14.349.000. Part 132/147

Processed Thu Feb 1 08:37:49 2018 by ELM ver.2012-10-06 from 001__elm20180201_072913__dat00.bin

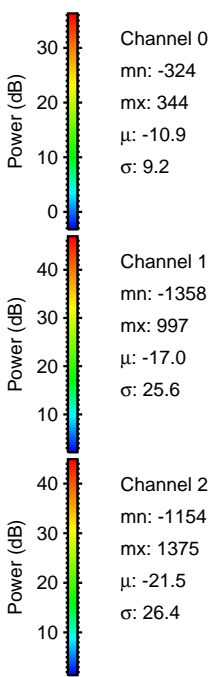
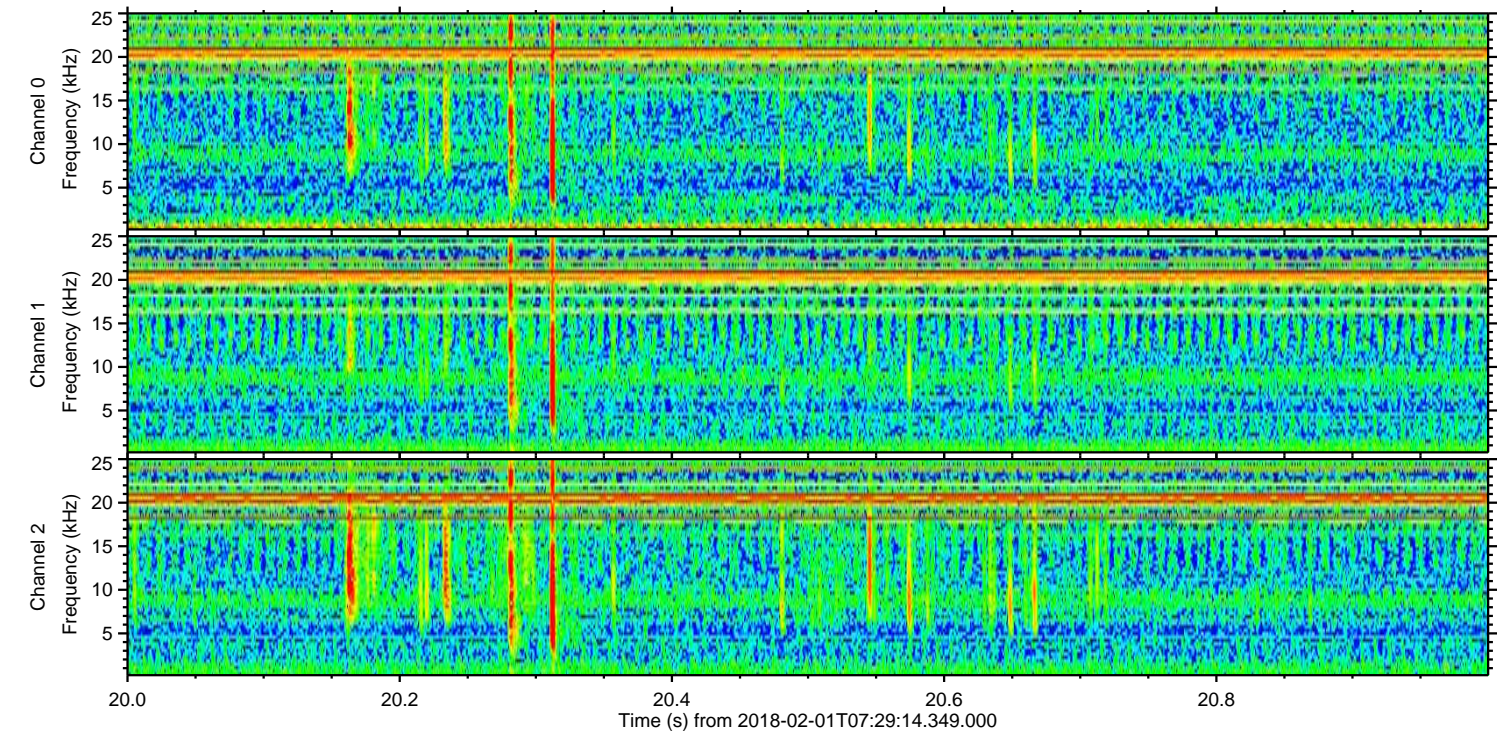
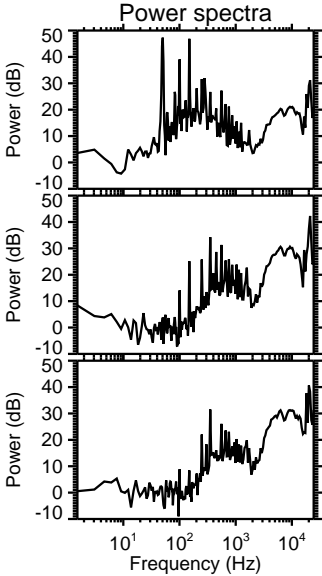
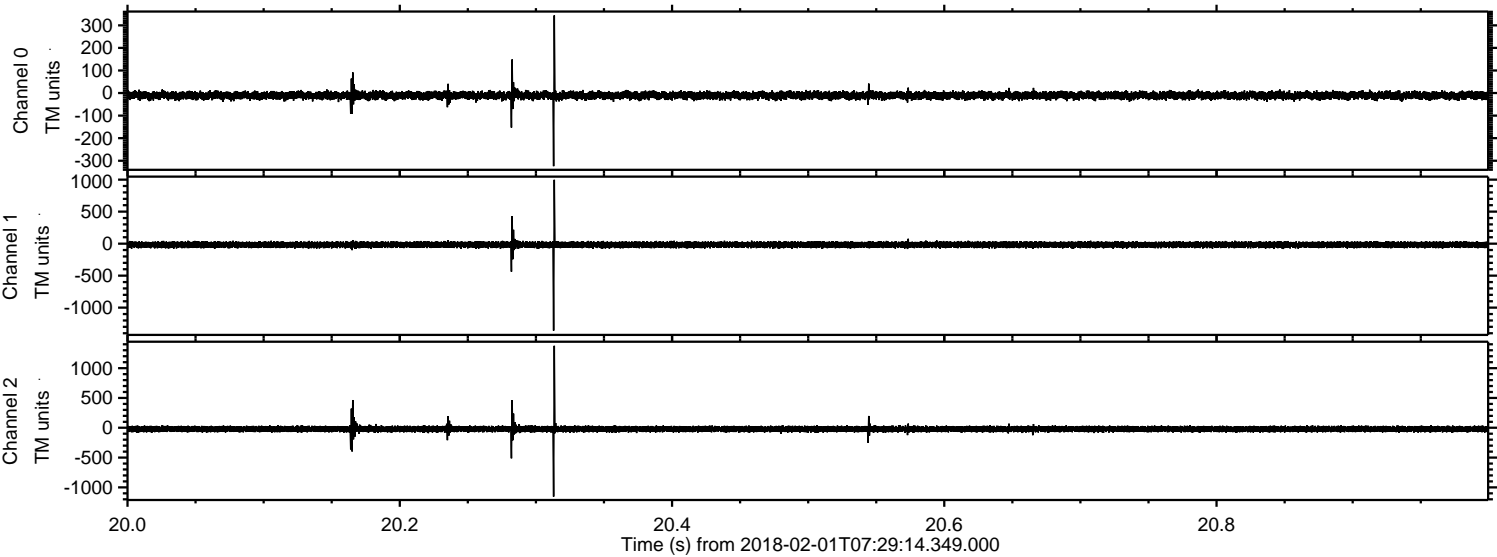


Channel 0
mn: -371
mx: 263
 μ : -10.9
 σ : 8.7

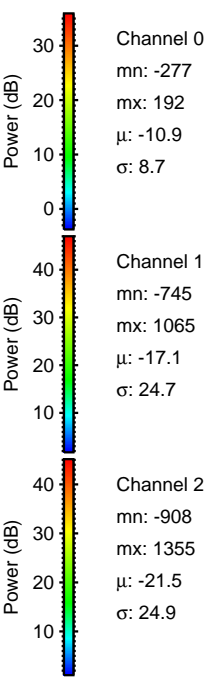
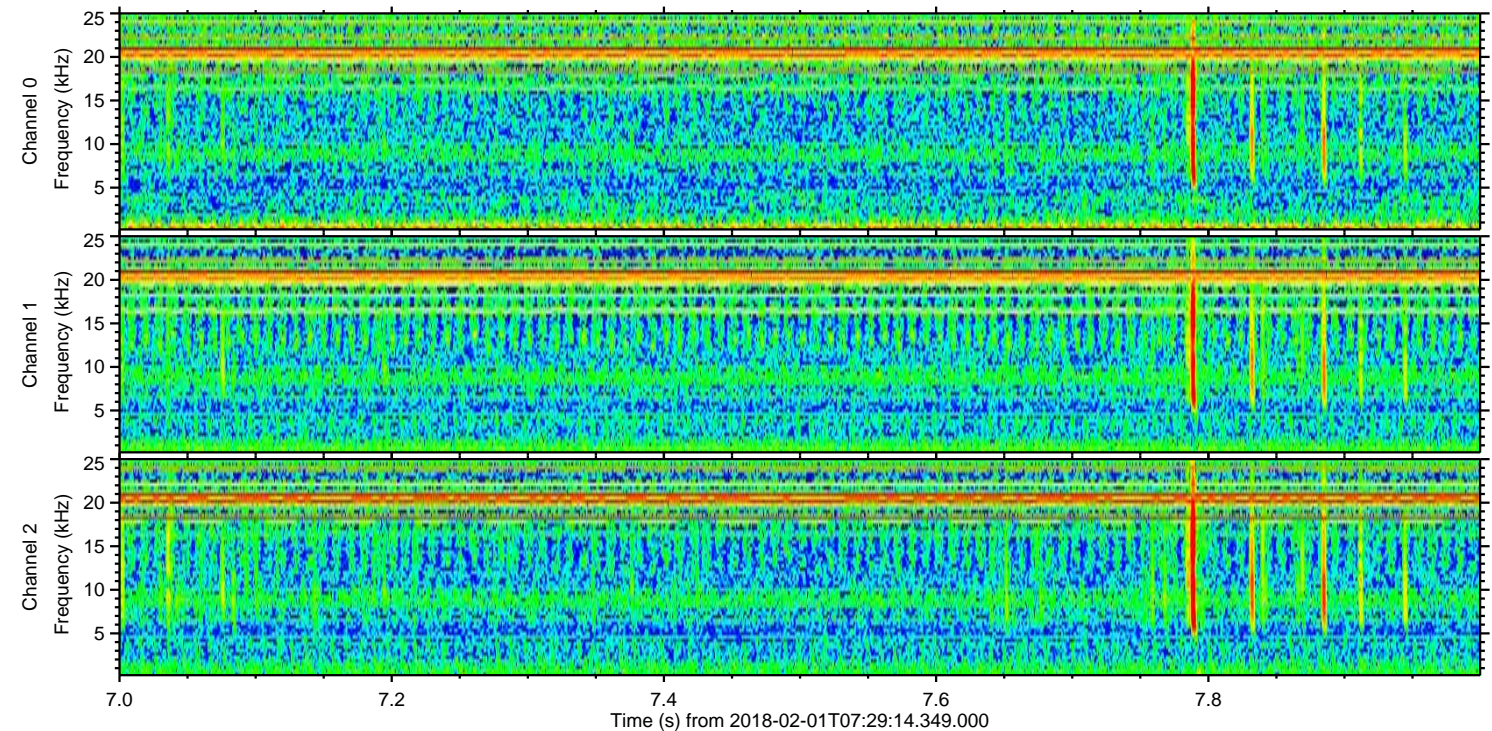
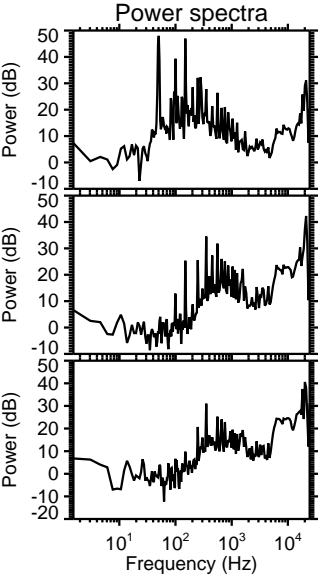
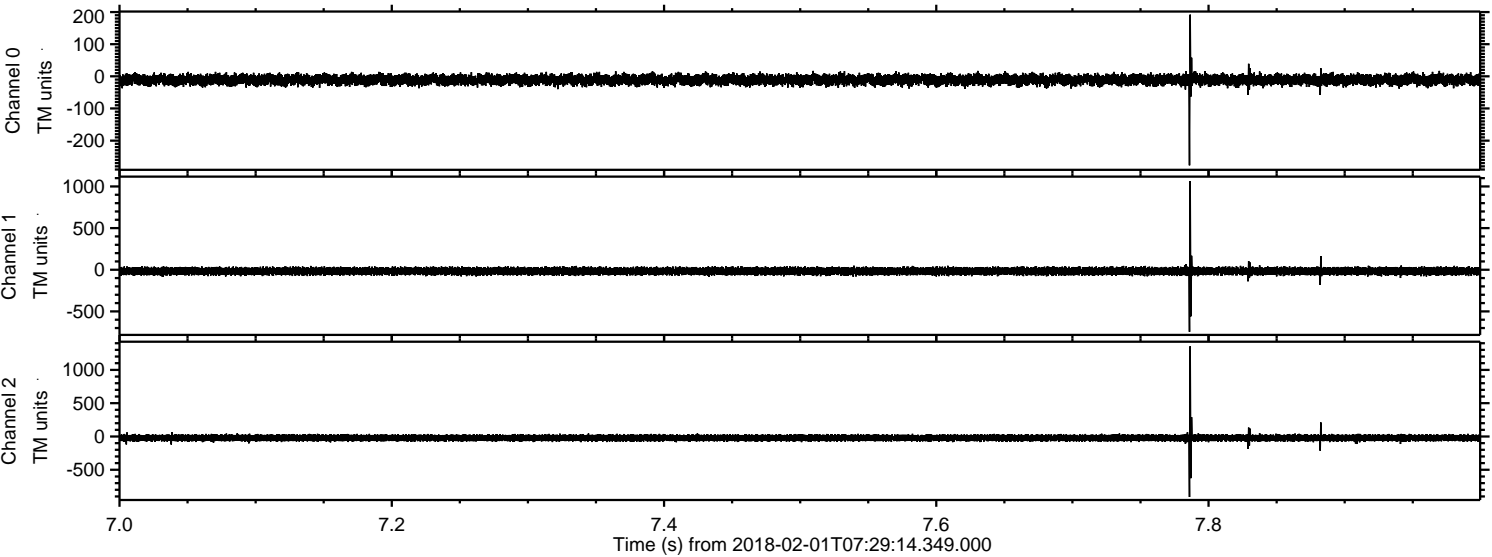
Channel 1
mn: -441
mx: 512
 μ : -17.0
 σ : 23.1

Channel 2
mn: -1389
mx: 1042
 μ : -21.5
 σ : 25.5

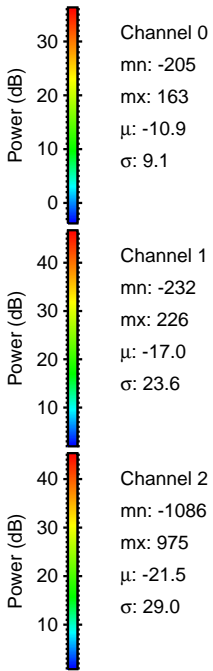
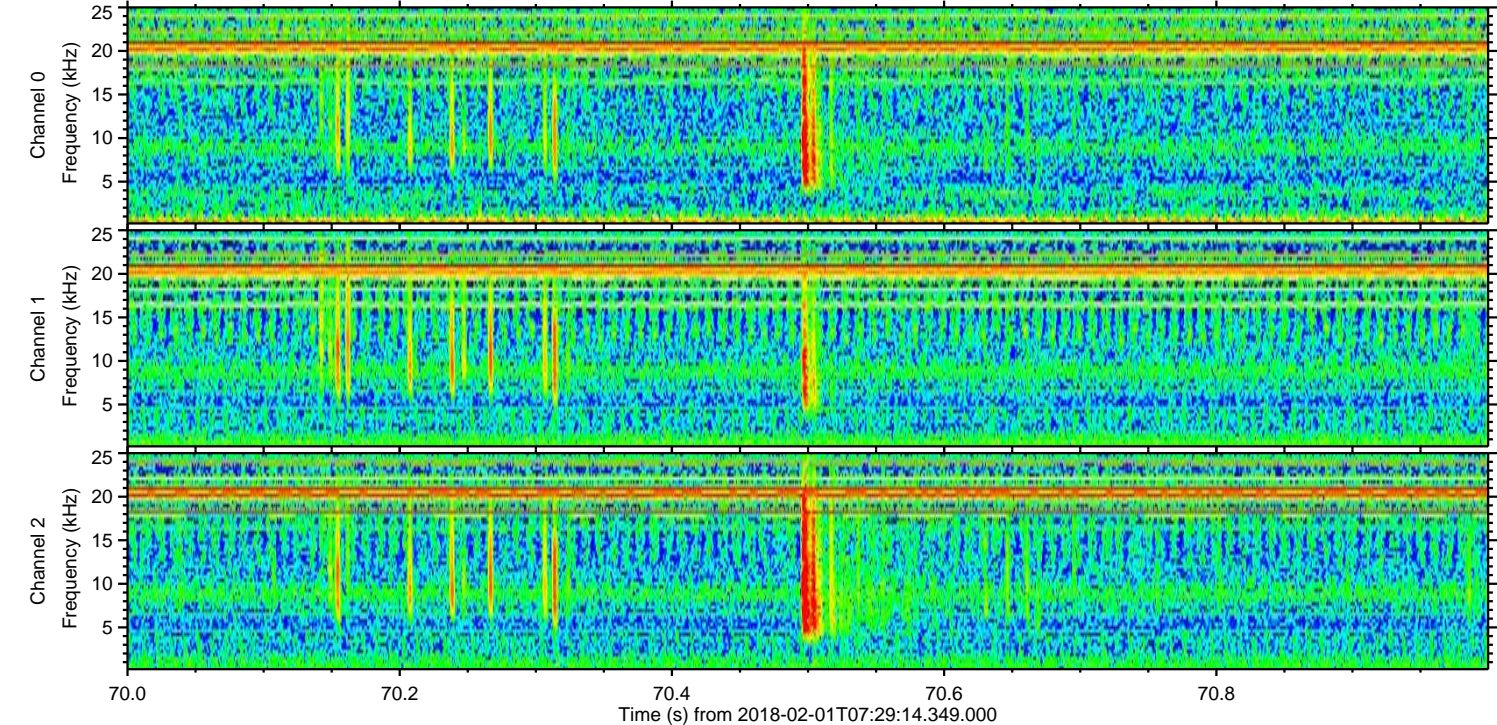
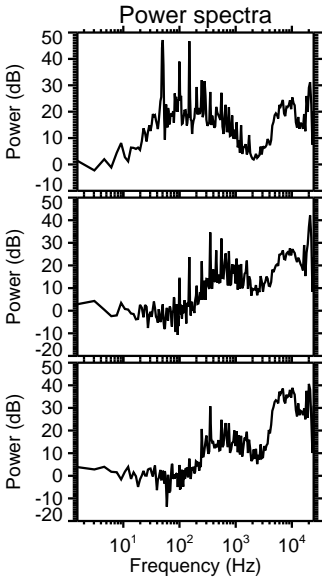
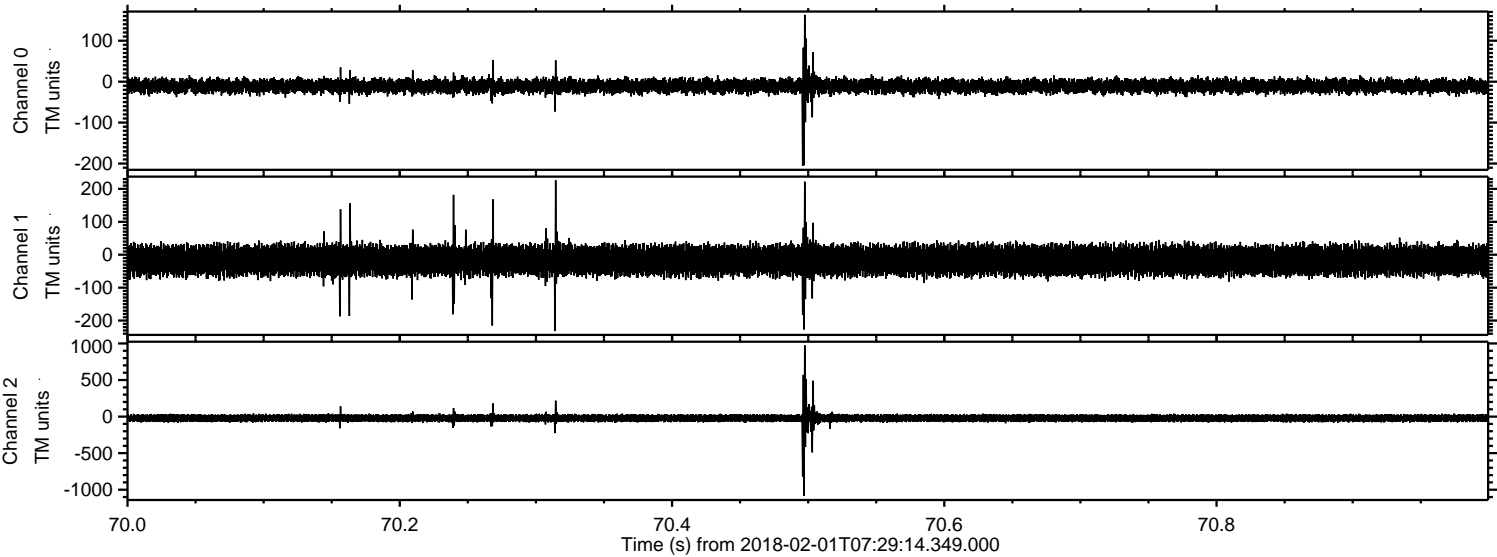
Processed Thu Feb 1 08:37:50 2018 by ELM ver.2012-10-06 from 001__elm20180201_072913__dat00.bin



Processed Thu Feb 1 08:37:51 2018 by ELM ver.2012-10-06 from 001__elm20180201_072913__dat00.bin

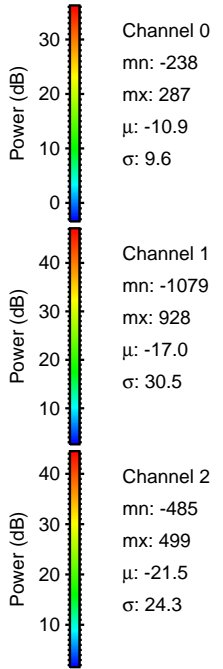
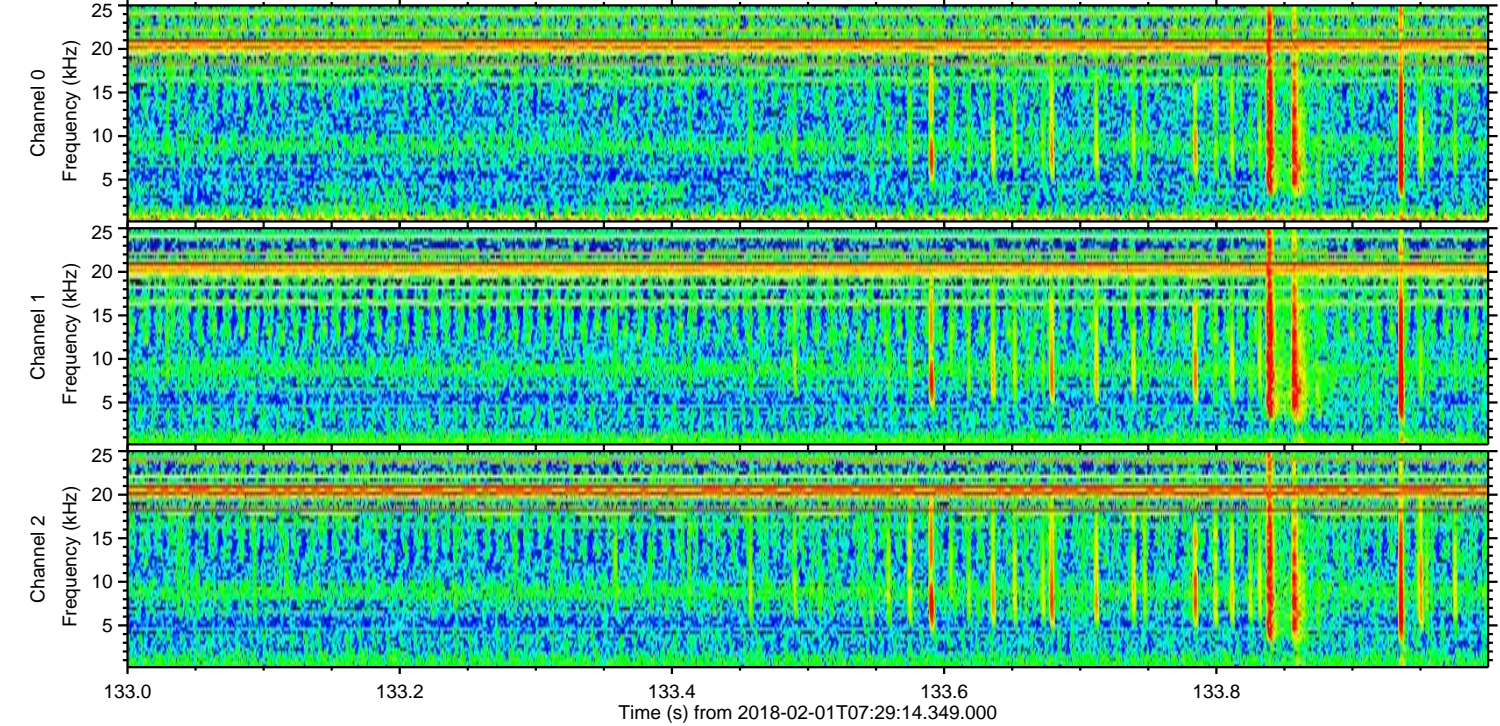
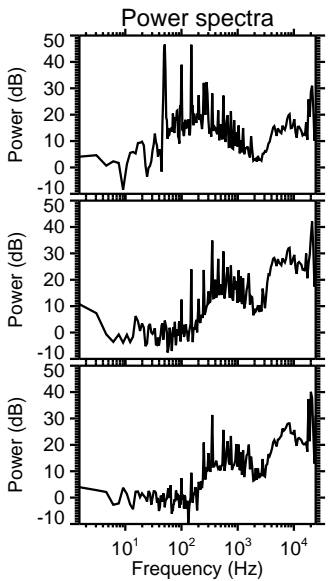
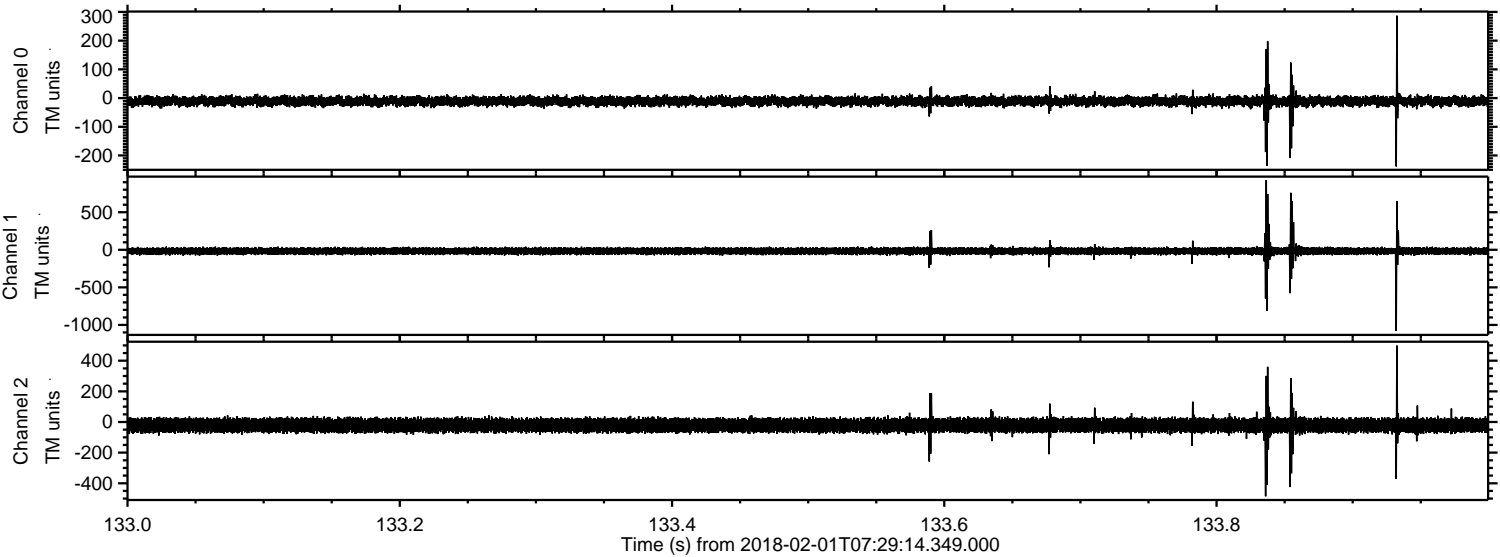


Processed Thu Feb 1 08:37:51 2018 by ELM ver.2012-10-06 from 001__elm20180201_072913__dat00.bin

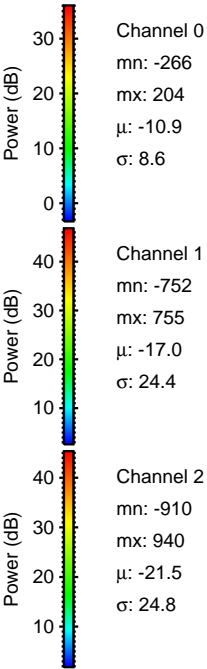
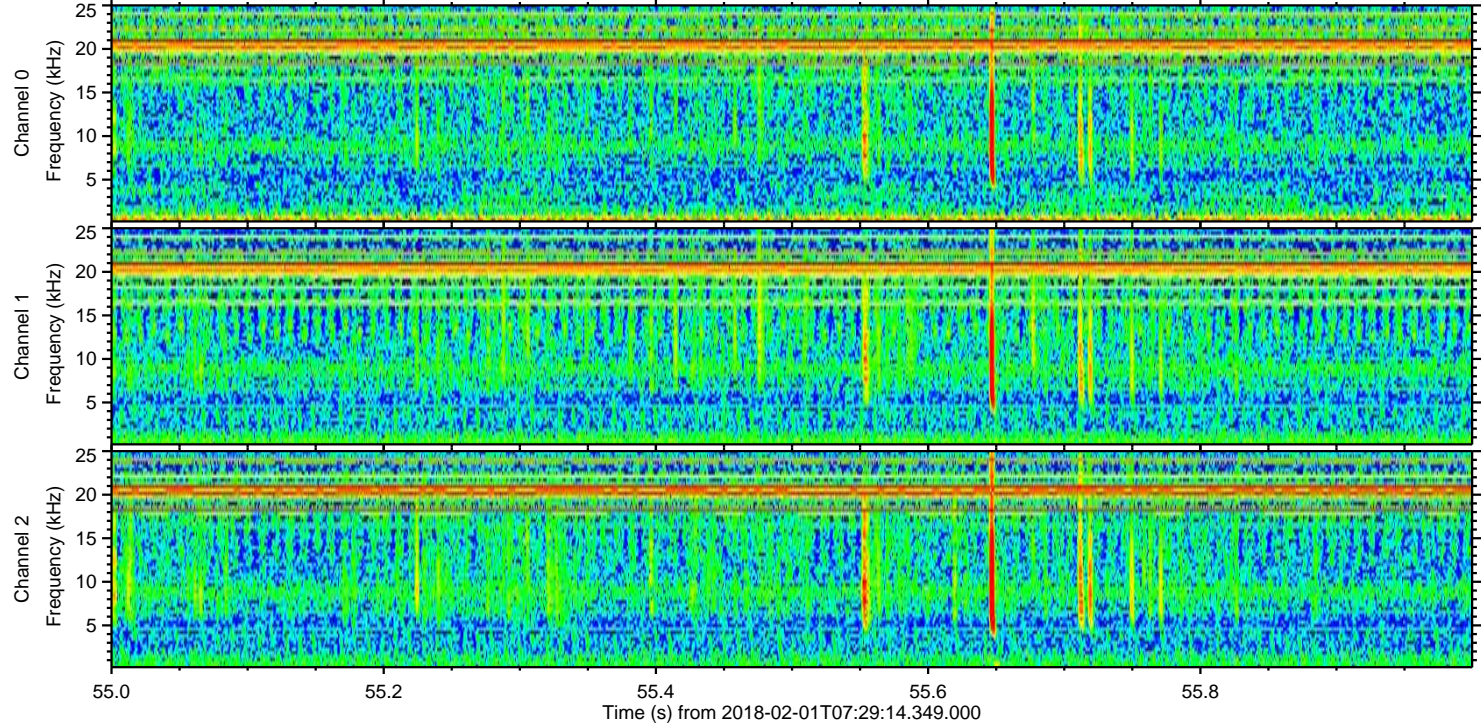
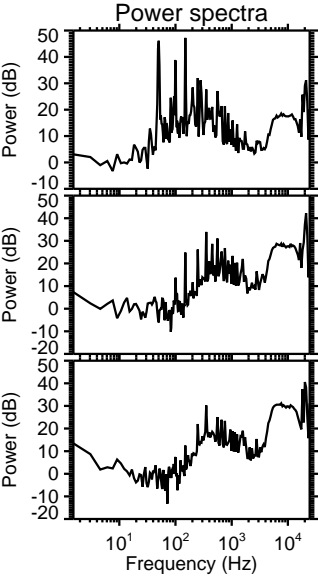
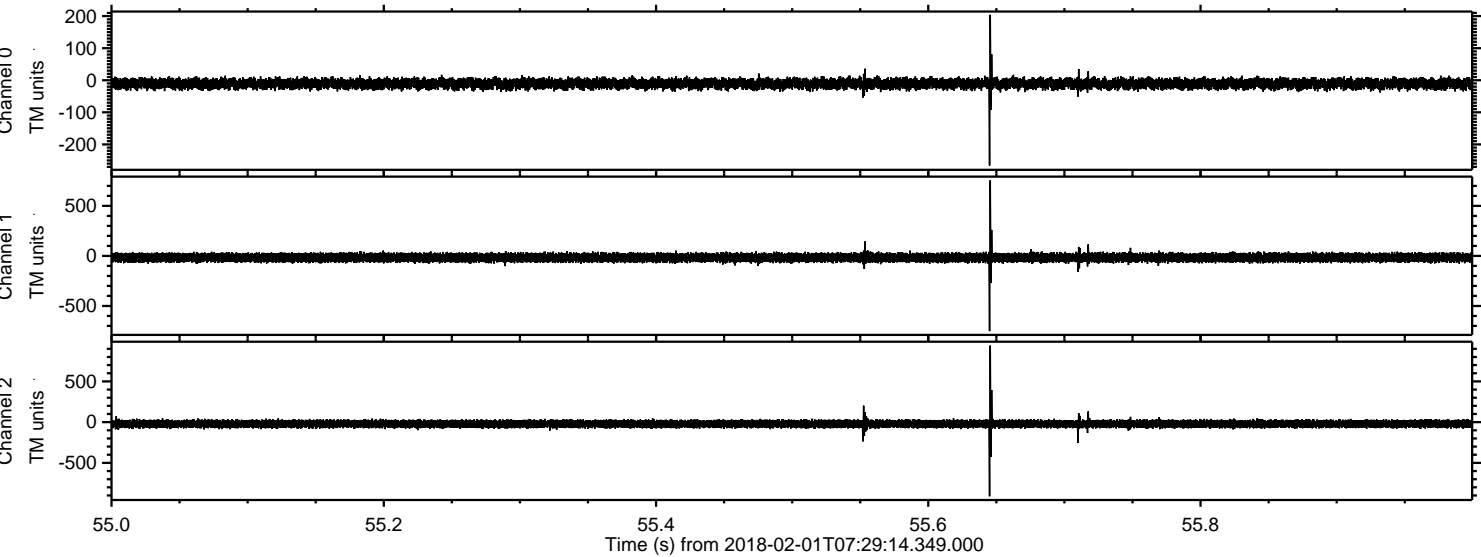


ELMAVAN 3D WAVEFORMS (Measured data sampled at 50 kHz) 51000 packets of 144 samples from 2018-02-01T07:29:14.349.000. Part 134/147

Processed Thu Feb 1 08:37:52 2018 by ELM ver.2012-10-06 from 001__elm20180201_072913__dat00.bin



Processed Thu Feb 1 08:37:53 2018 by ELM ver.2012-10-06 from 001__elm20180201_072913__dat00.bin

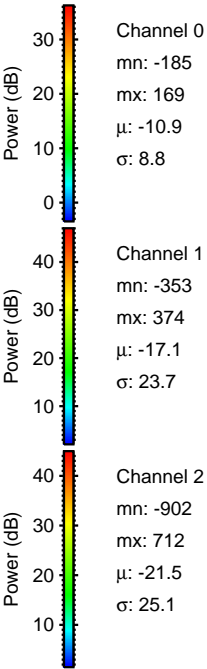
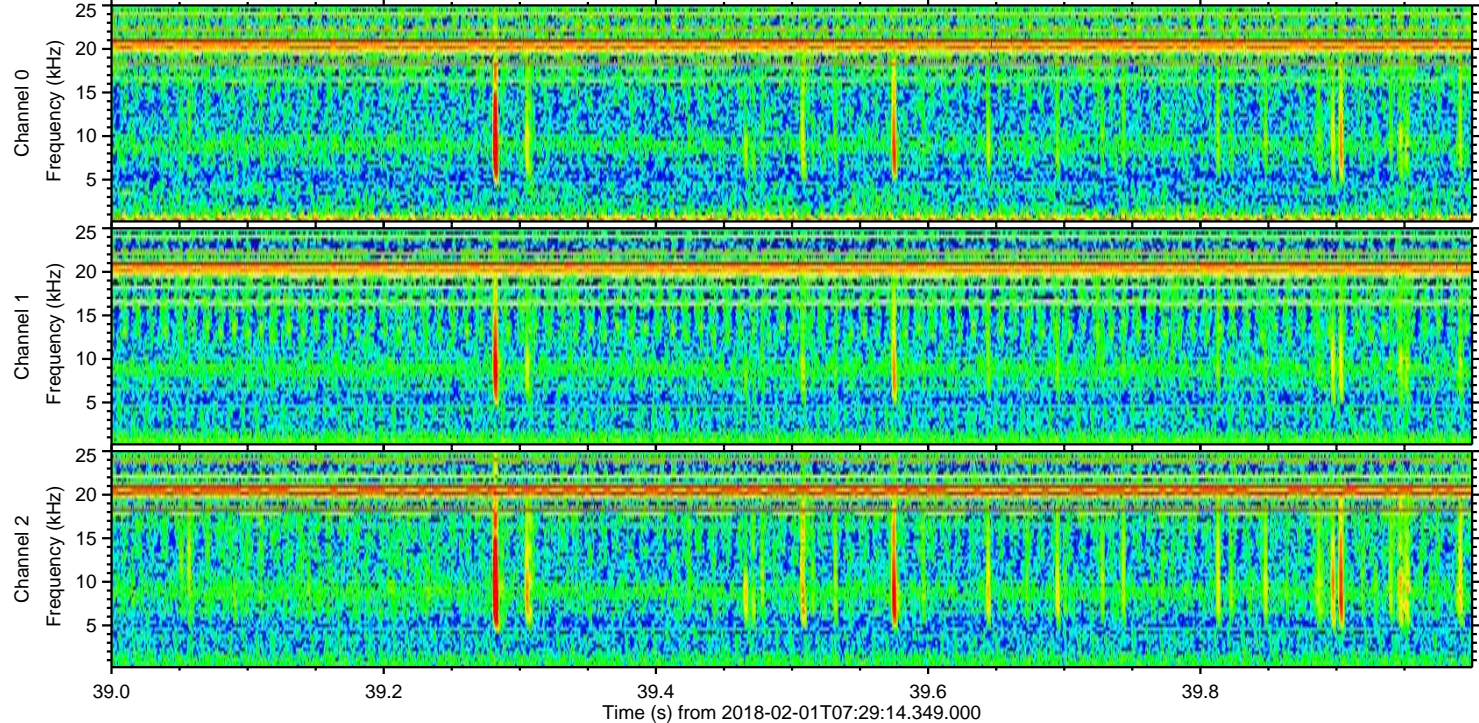
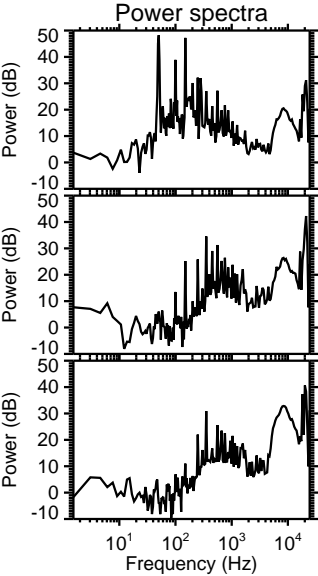
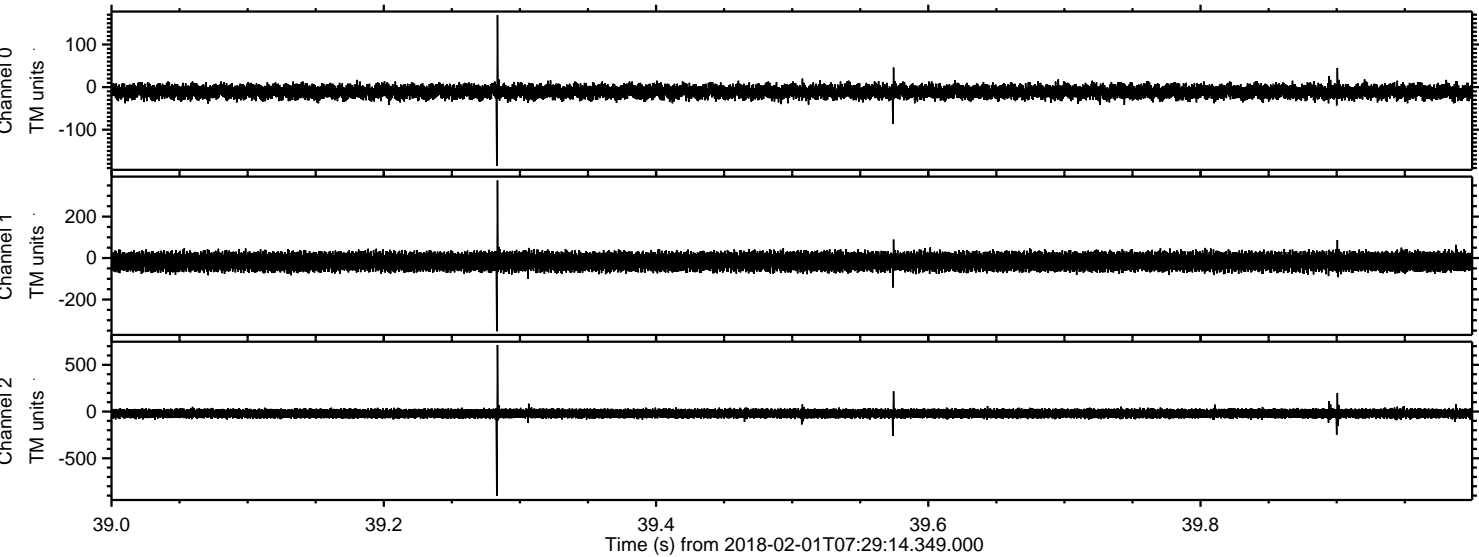


Channel 0
mn: -266
mx: 204
 μ : -10.9
 σ : 8.6

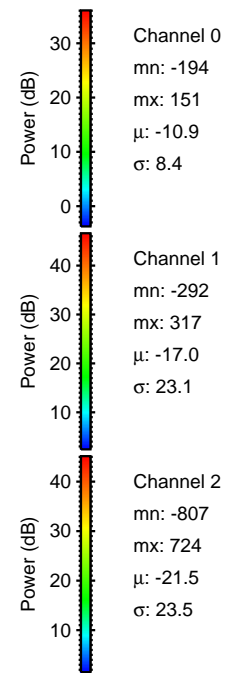
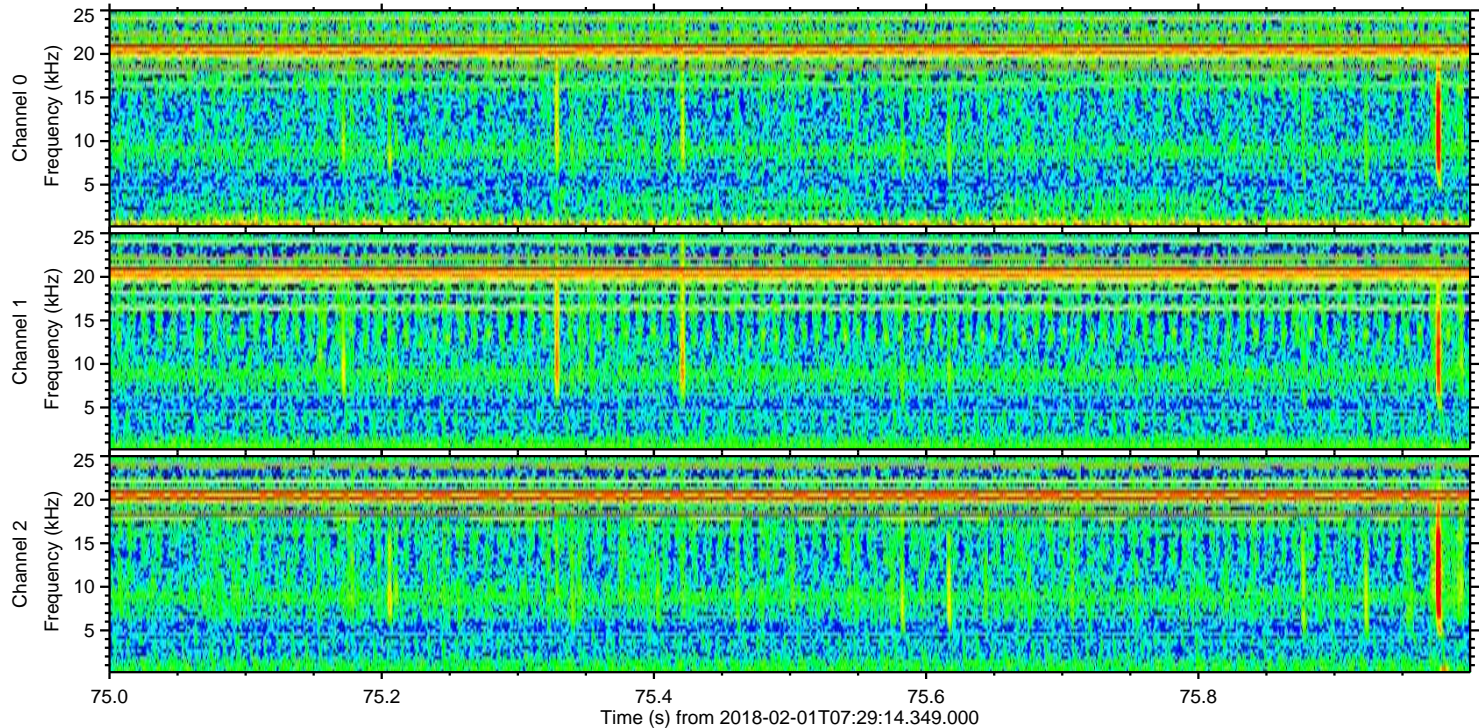
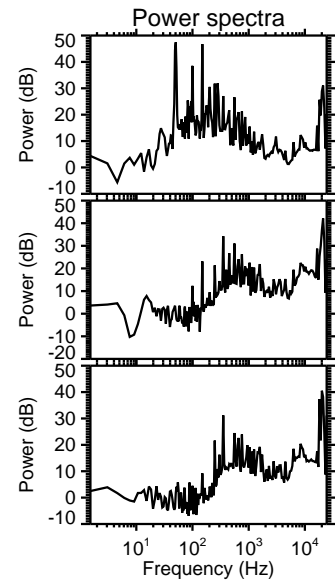
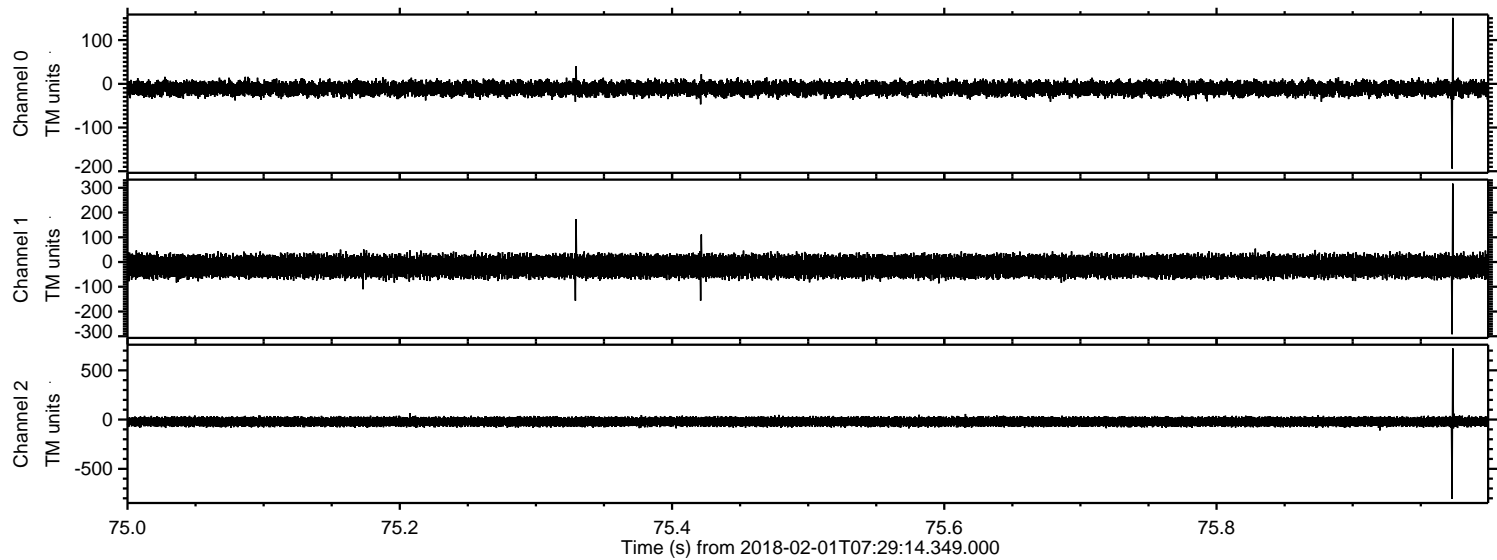
Channel 1
mn: -752
mx: 755
 μ : -17.0
 σ : 24.4

Channel 2
mn: -910
mx: 940
 μ : -21.5
 σ : 24.8

Processed Thu Feb 1 08:37:54 2018 by ELM ver.2012-10-06 from 001__elm20180201_072913__dat00.bin



Processed Thu Feb 1 08:37:54 2018 by ELM ver.2012-10-06 from 001__elm20180201_072913__dat00.bin



Processed Thu Feb 1 08:37:55 2018 by ELM ver.2012-10-06 from 001__elm20180201_072913__dat00.bin

