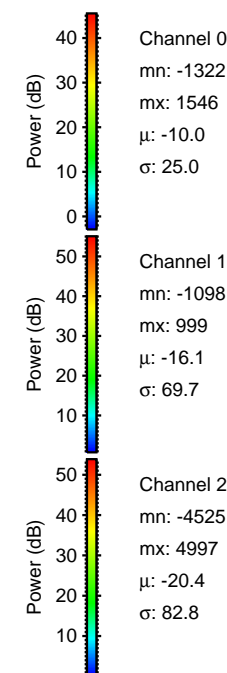
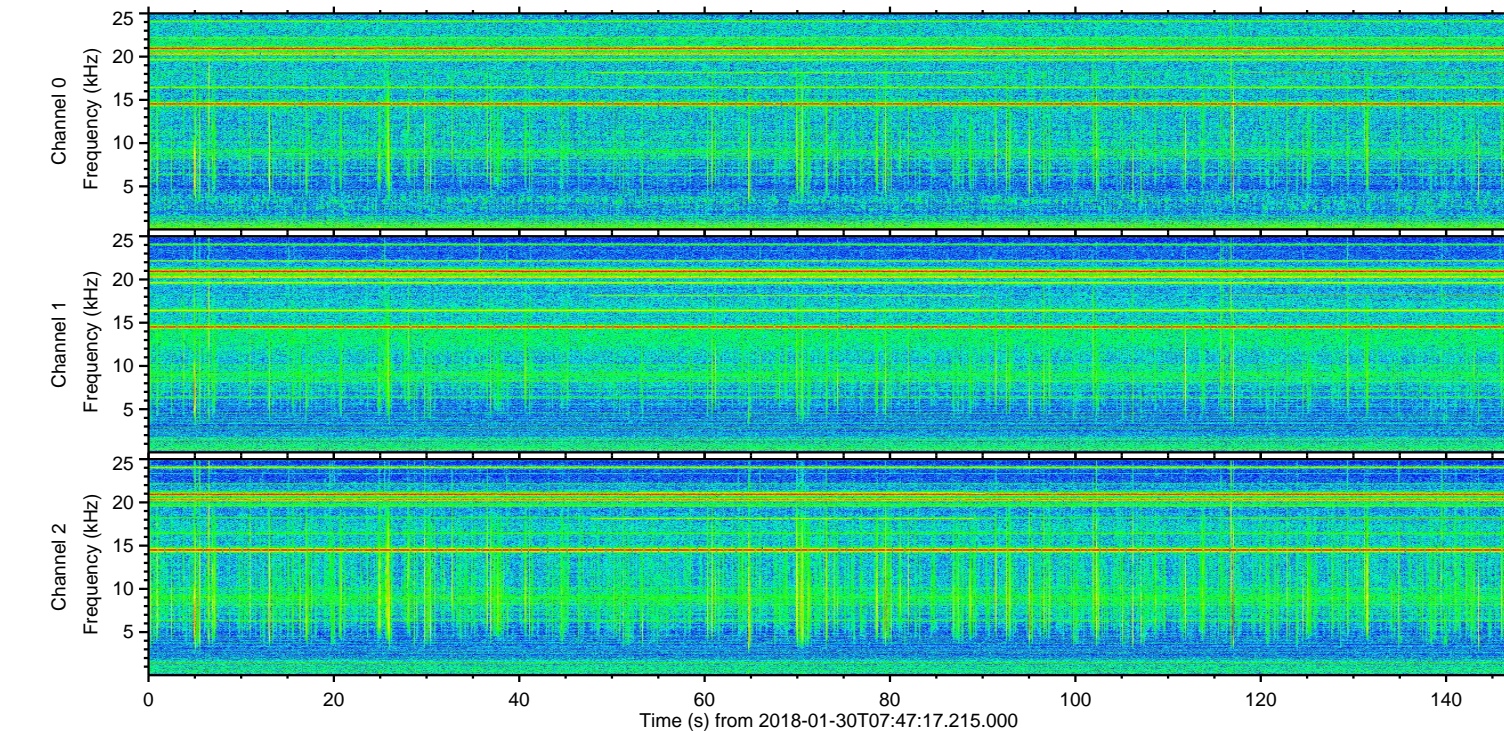
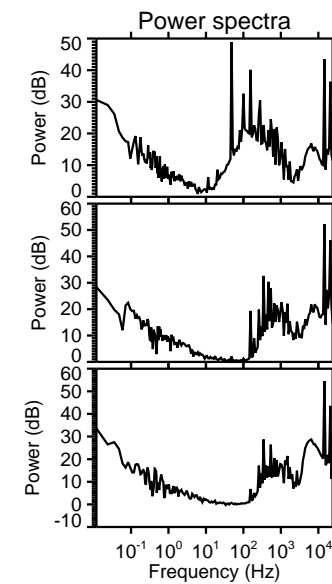
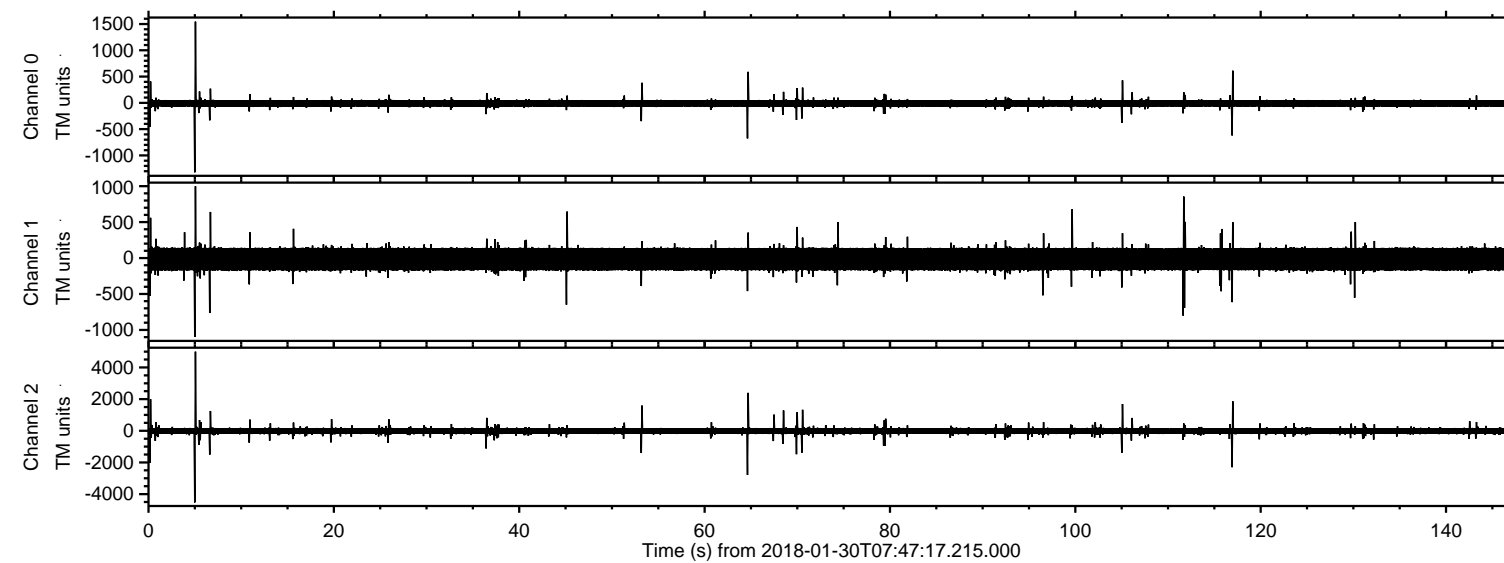
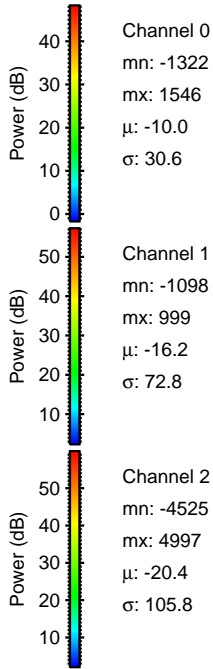
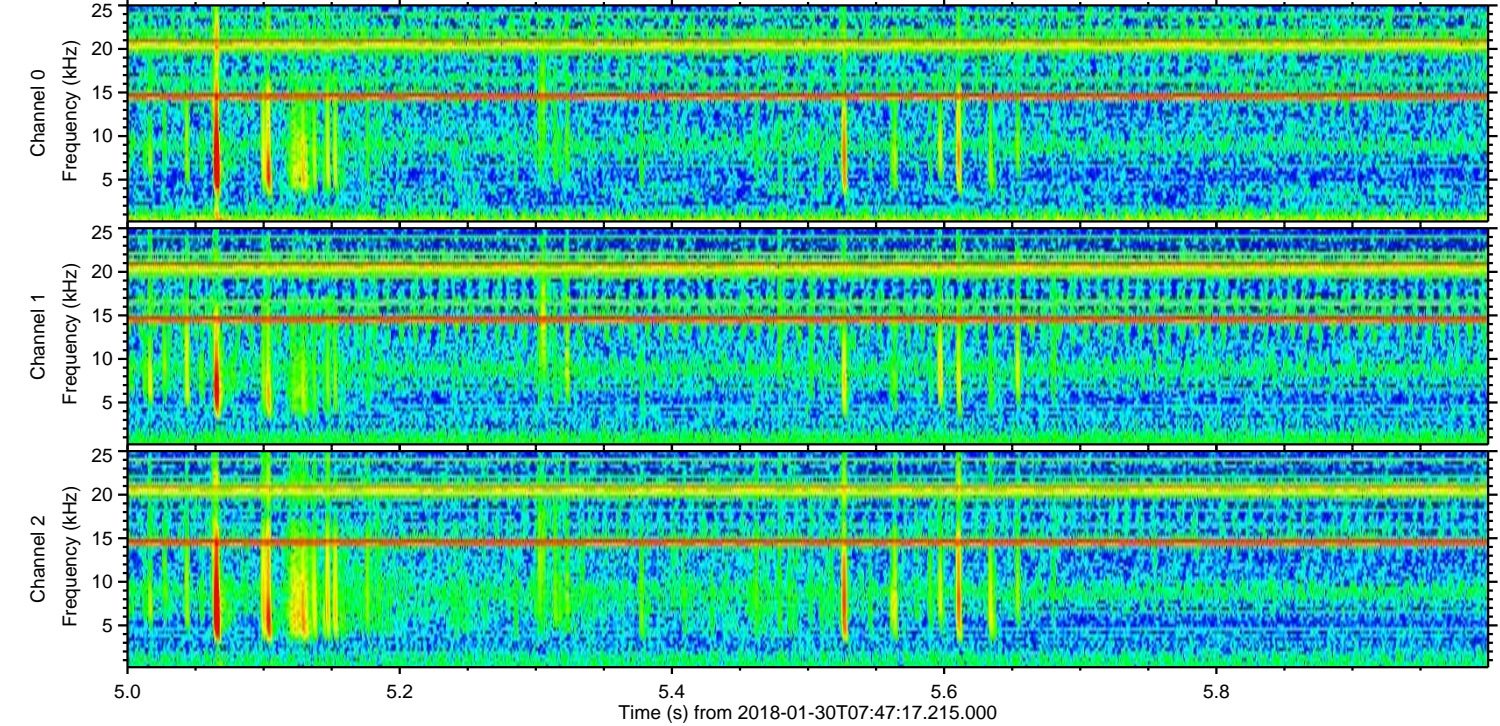
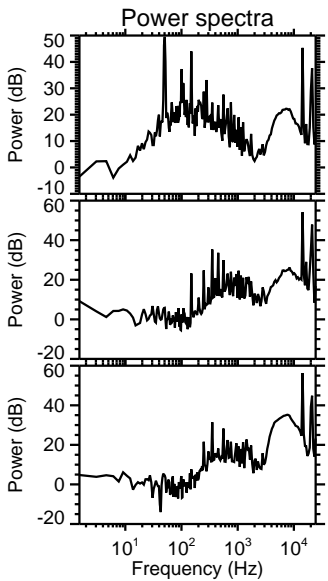
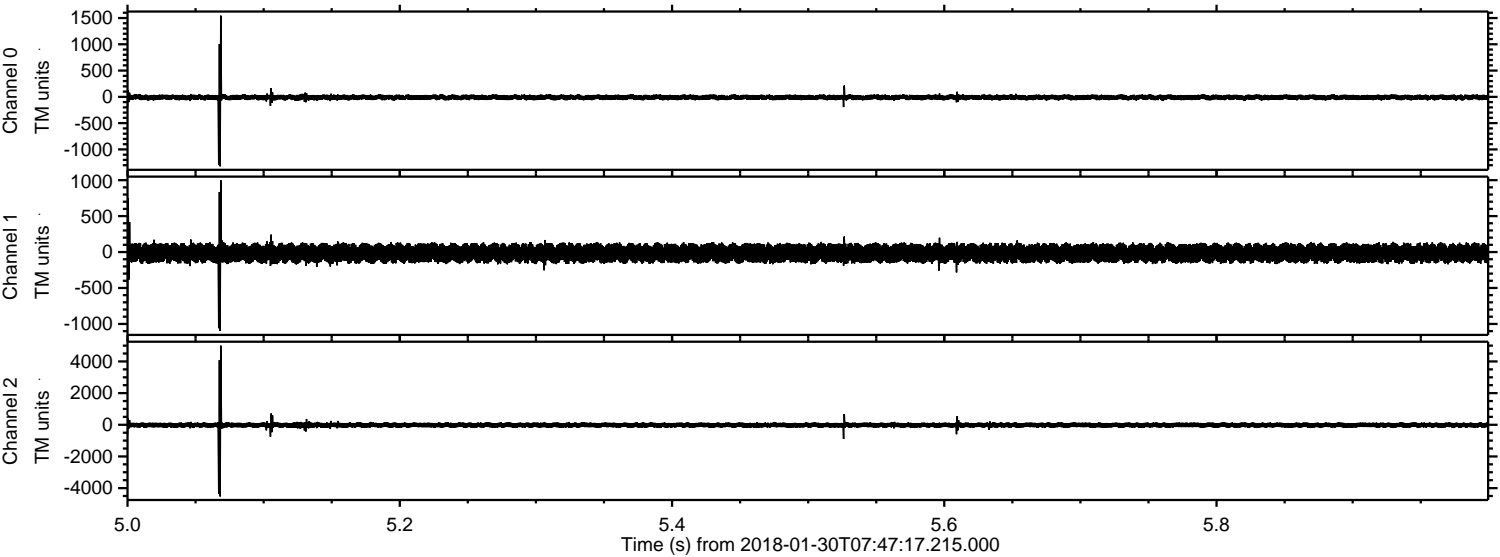


ELMAVAN 3D WAVEFORMS (Measured data sampled at 50 kHz) 51000 packets of 144 samples from 2018-01-30T07:47:17.215.000.

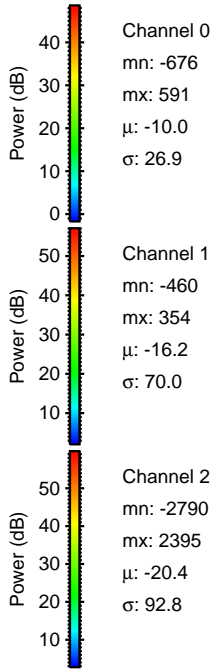
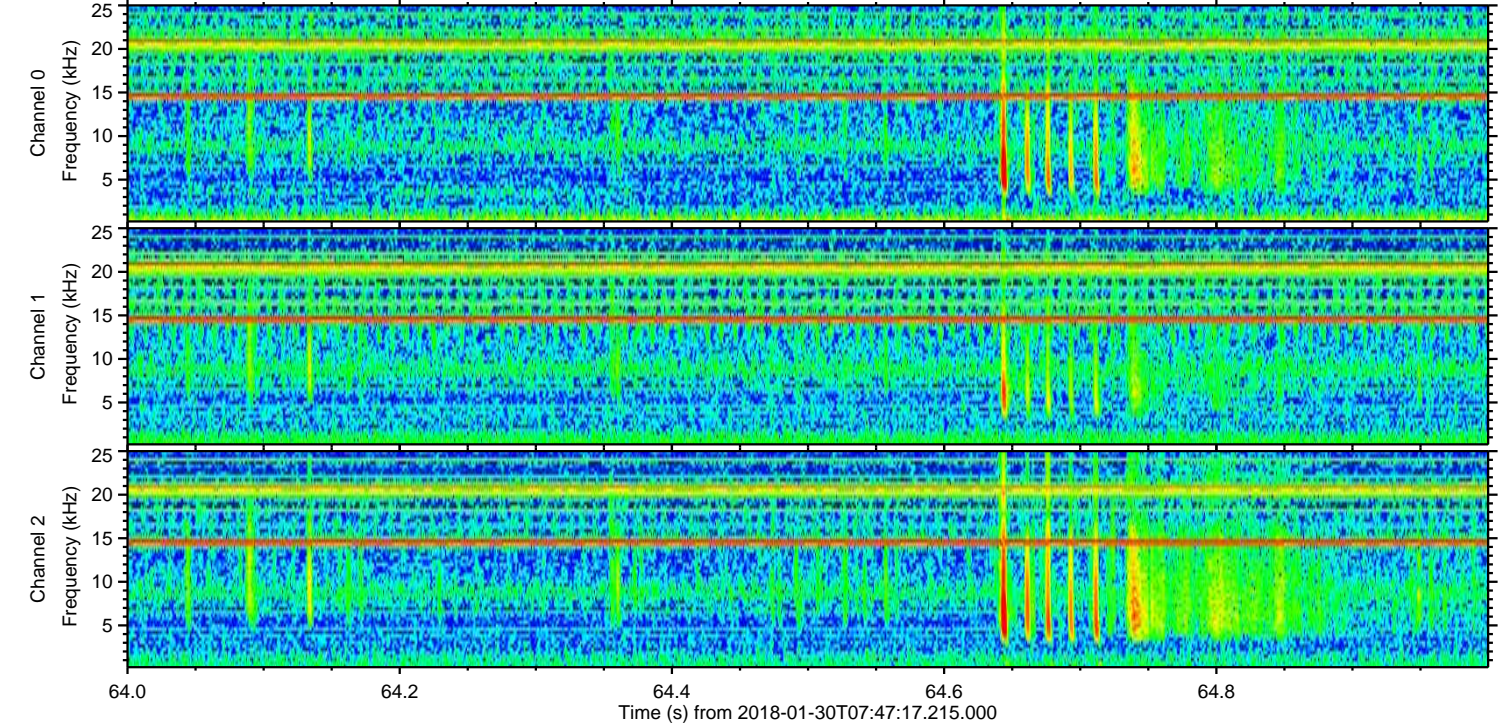
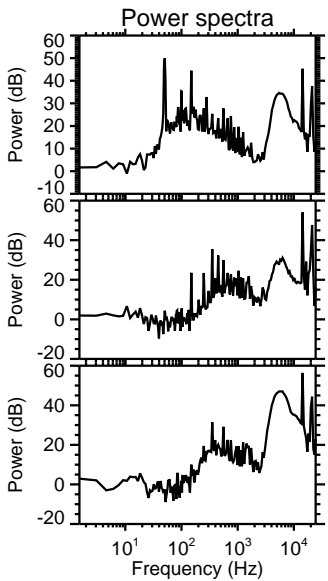
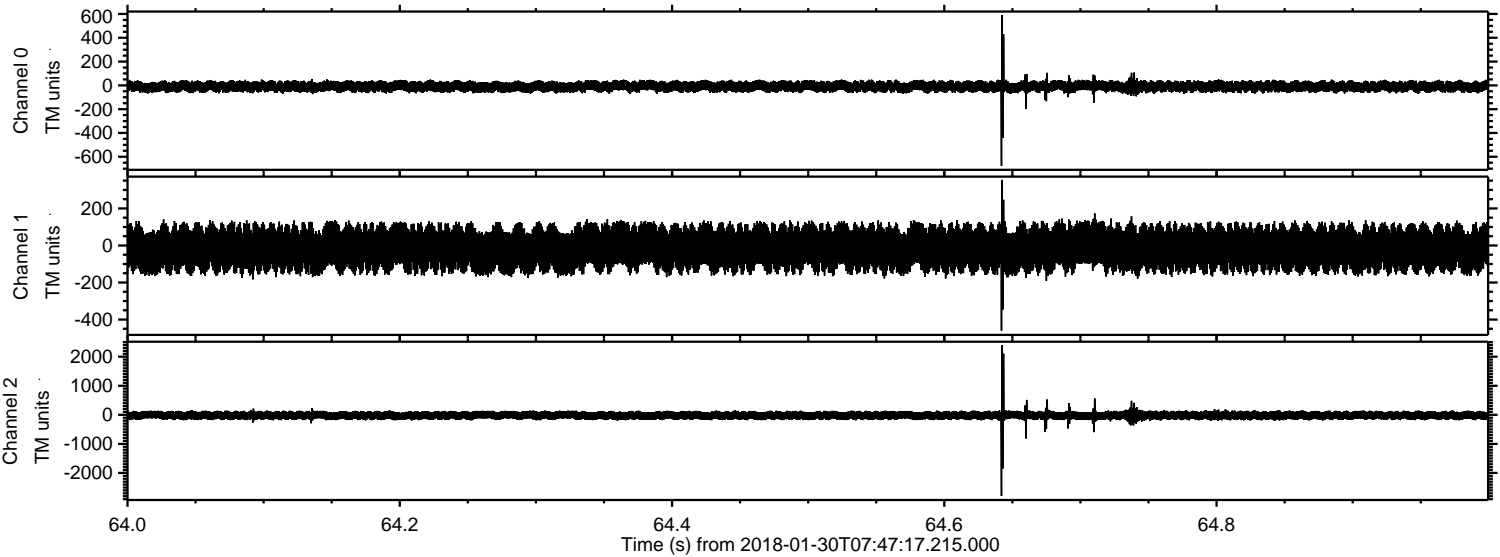
Processed Tue Jan 30 08:55:16 2018 by ELM ver.2012-10-06 from 001__elm20180130_074716__dat00.bin



Processed Tue Jan 30 08:55:24 2018 by ELM ver.2012-10-06 from 001__elm20180130_074716__dat00.bin

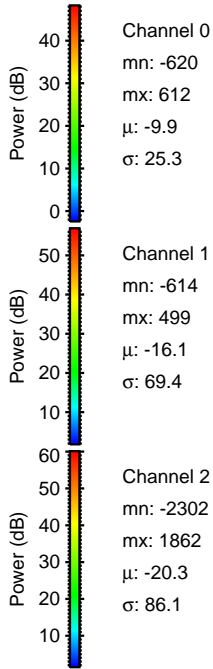
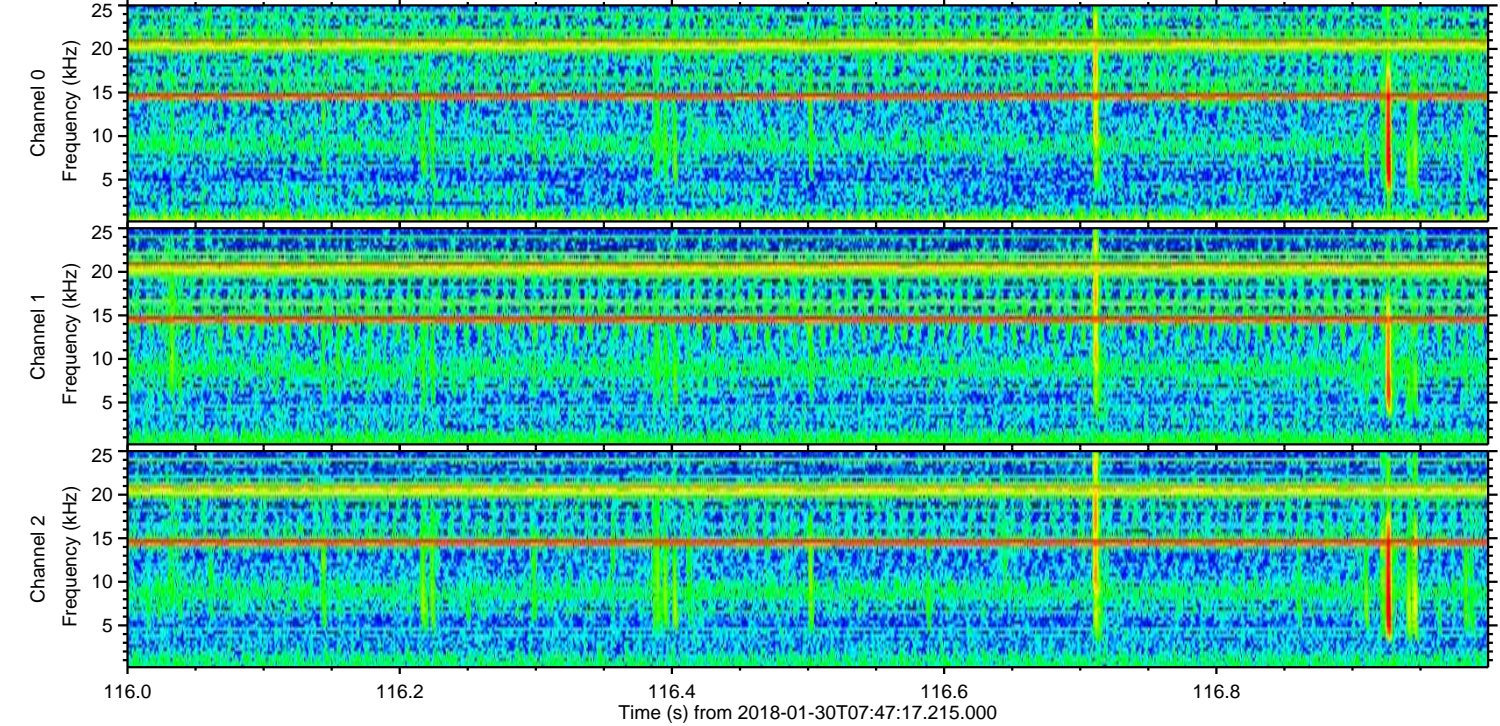
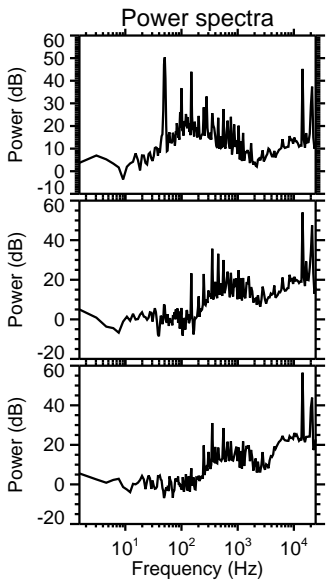
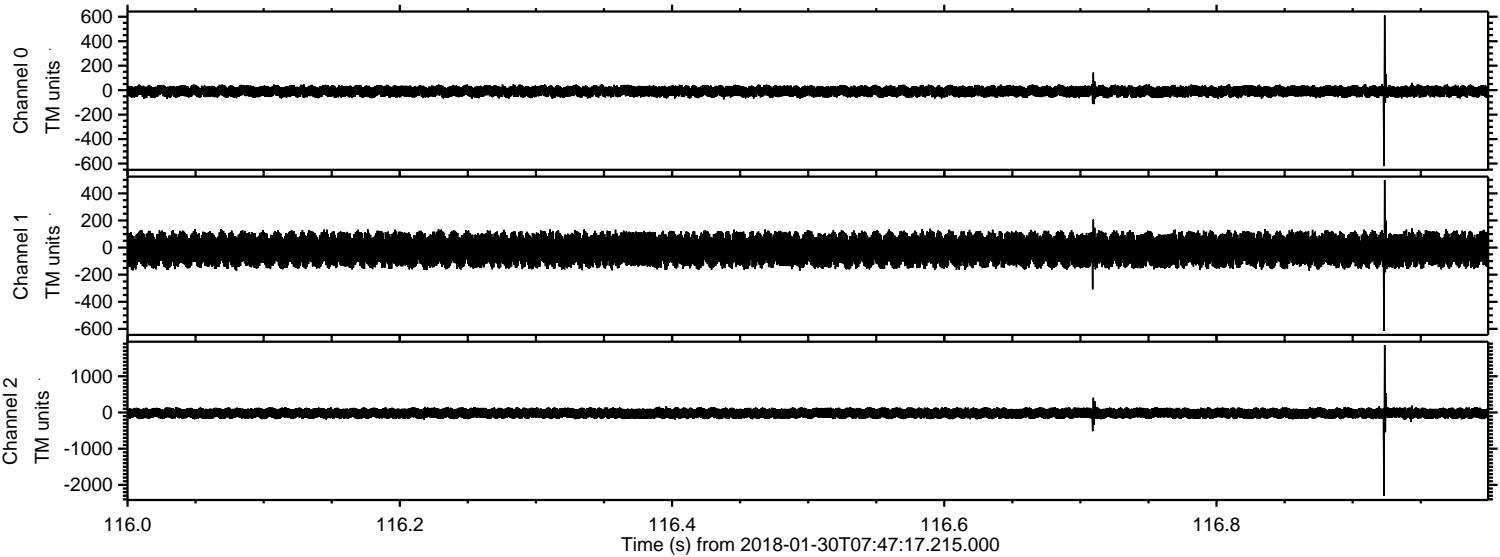


Processed Tue Jan 30 08:55:25 2018 by ELM ver.2012-10-06 from 001__elm20180130_074716__dat00.bin



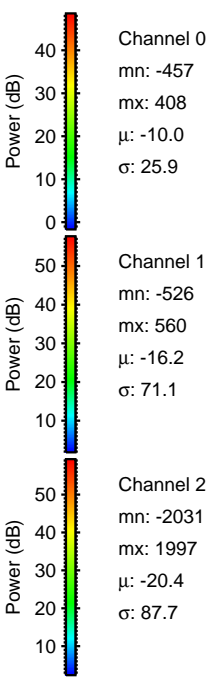
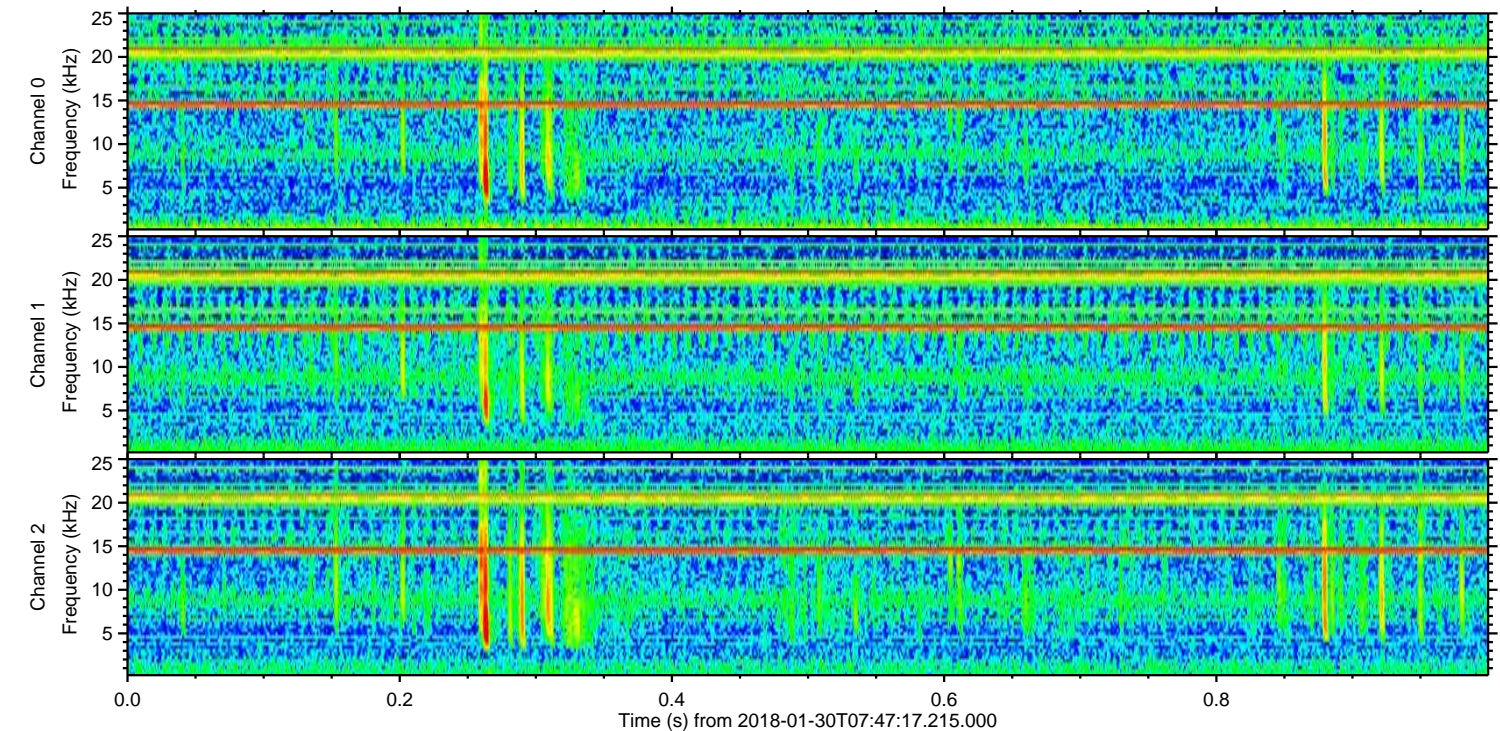
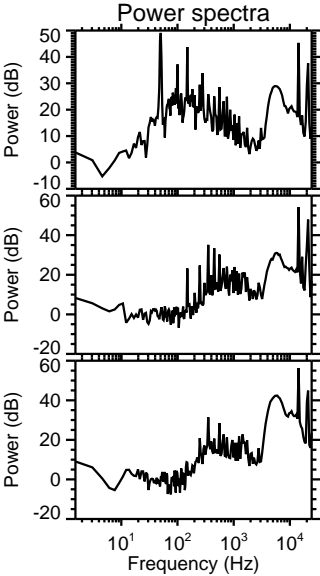
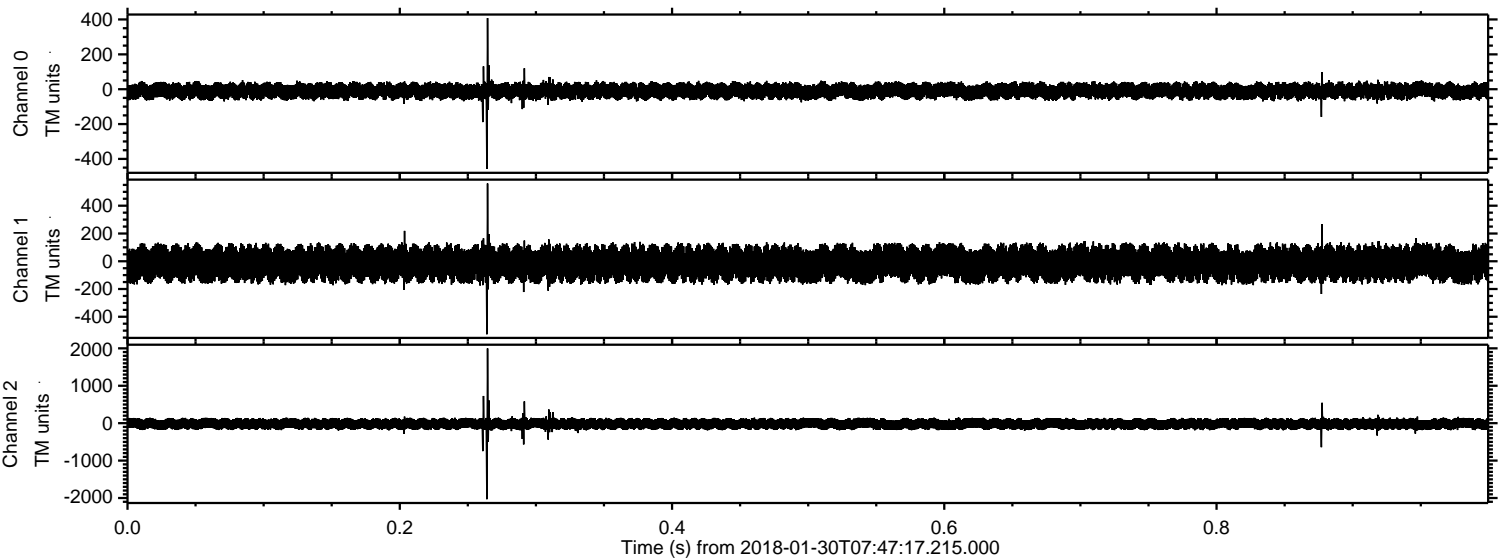
ELMAVAN 3D WAVEFORMS (Measured data sampled at 50 kHz) 51000 packets of 144 samples from 2018-01-30T07:47:17.215.000. Part 117/147

Processed Tue Jan 30 08:55:26 2018 by ELM ver.2012-10-06 from 001__elm20180130_074716__dat00.bin



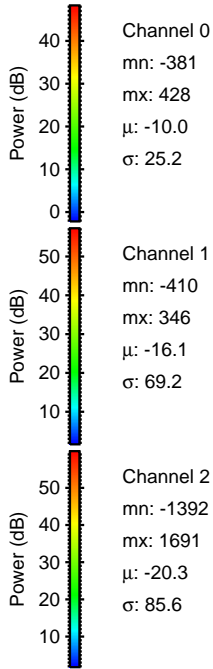
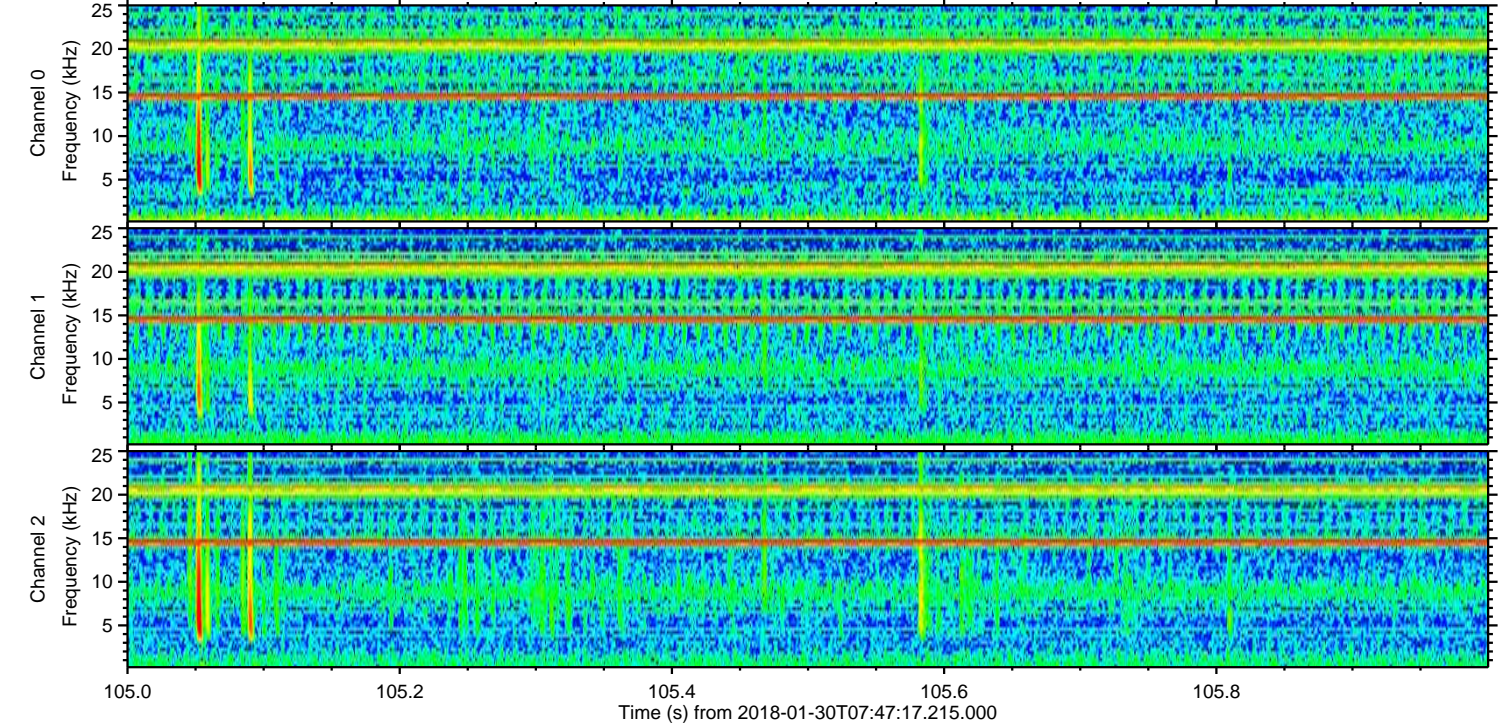
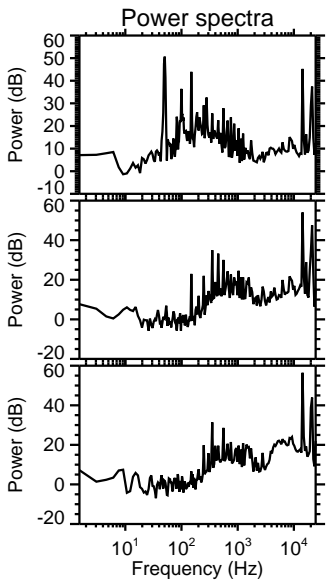
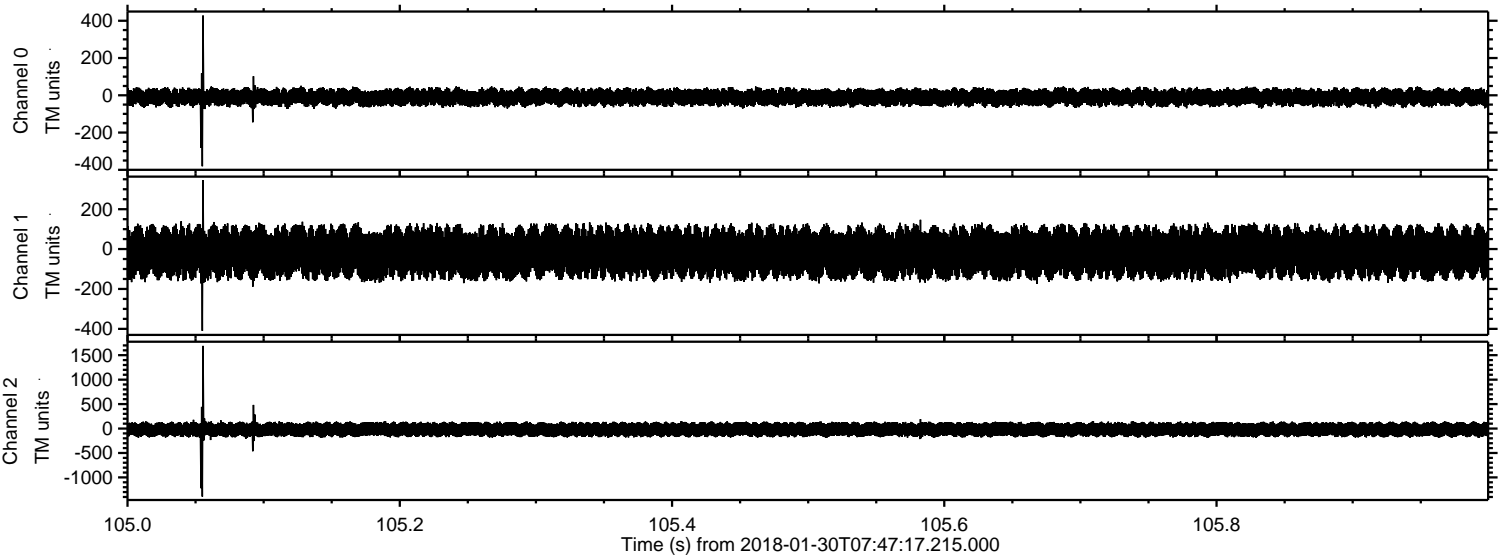
ELMAVAN 3D WAVEFORMS (Measured data sampled at 50 kHz) 51000 packets of 144 samples from 2018-01-30T07:47:17.215.000. Part 1/147

Processed Tue Jan 30 08:55:27 2018 by ELM ver.2012-10-06 from 001__elm20180130_074716__dat00.bin

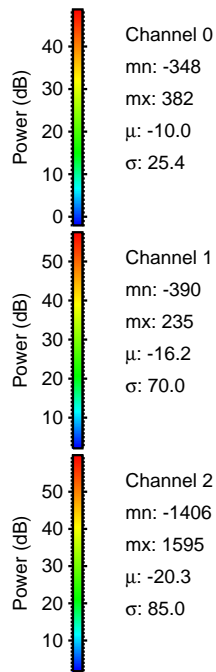
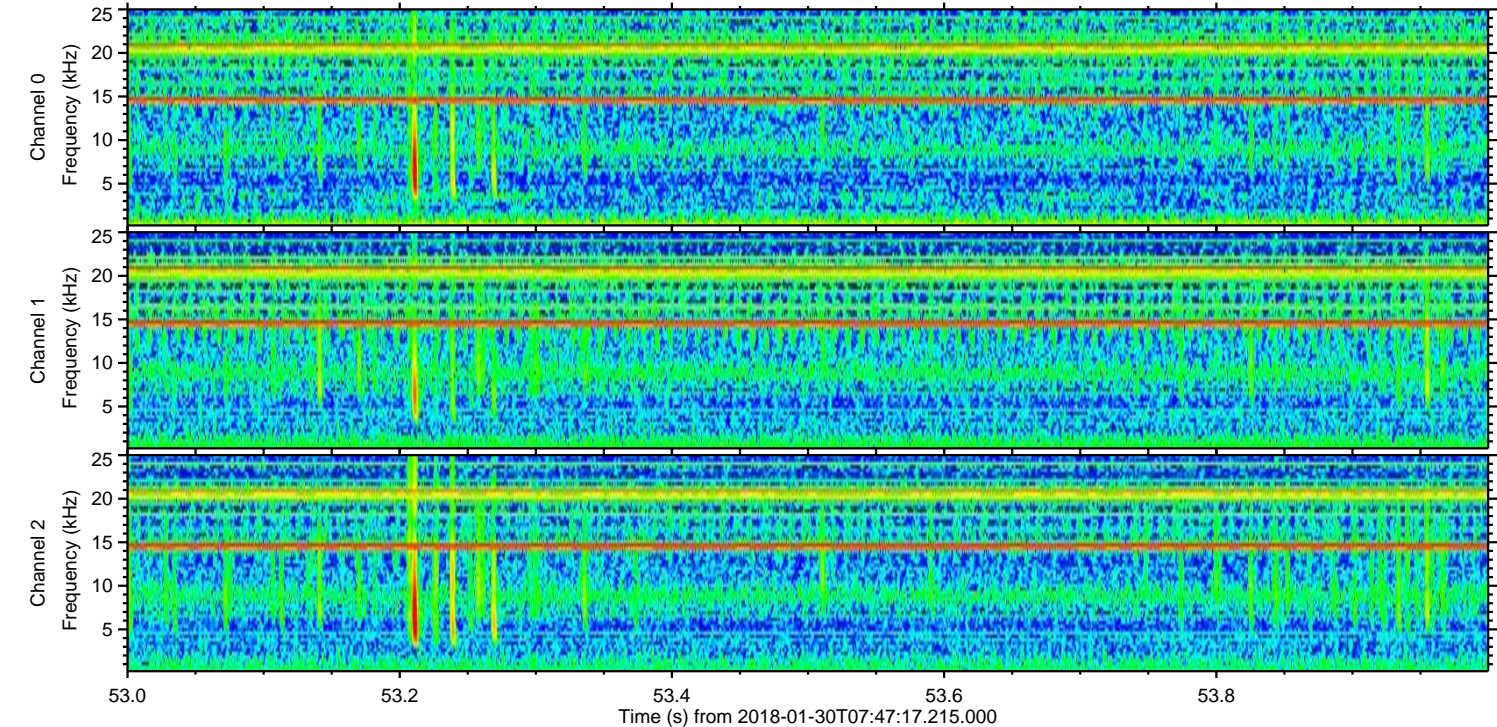
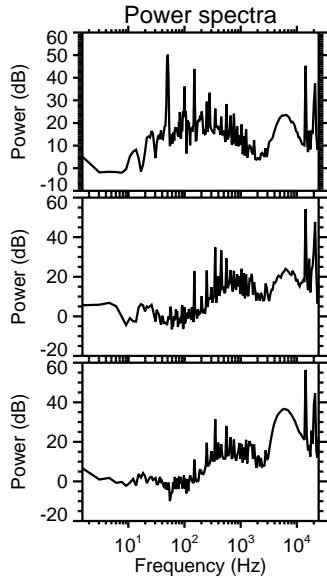
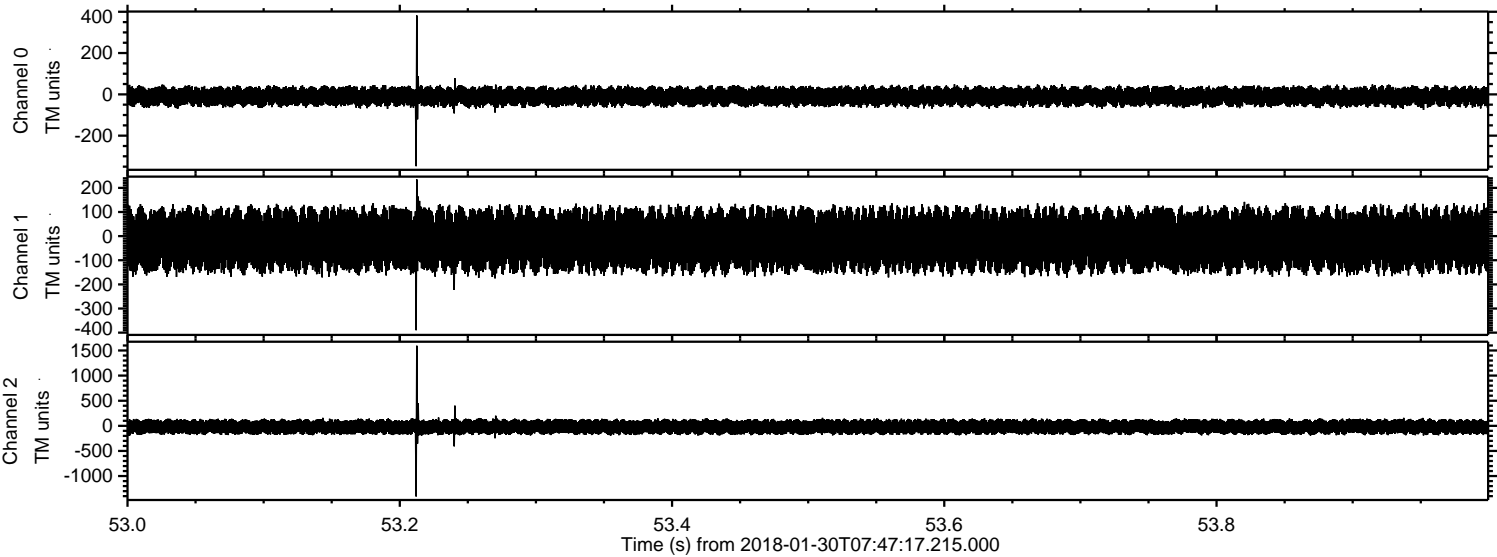


ELMAVAN 3D WAVEFORMS (Measured data sampled at 50 kHz) 51000 packets of 144 samples from 2018-01-30T07:47:17.215.000. Part 106/147

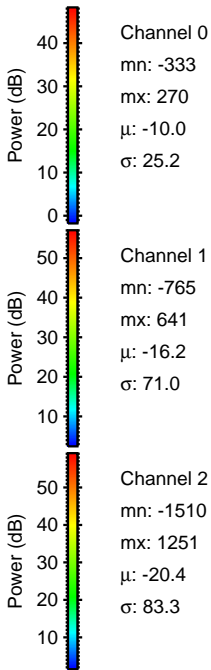
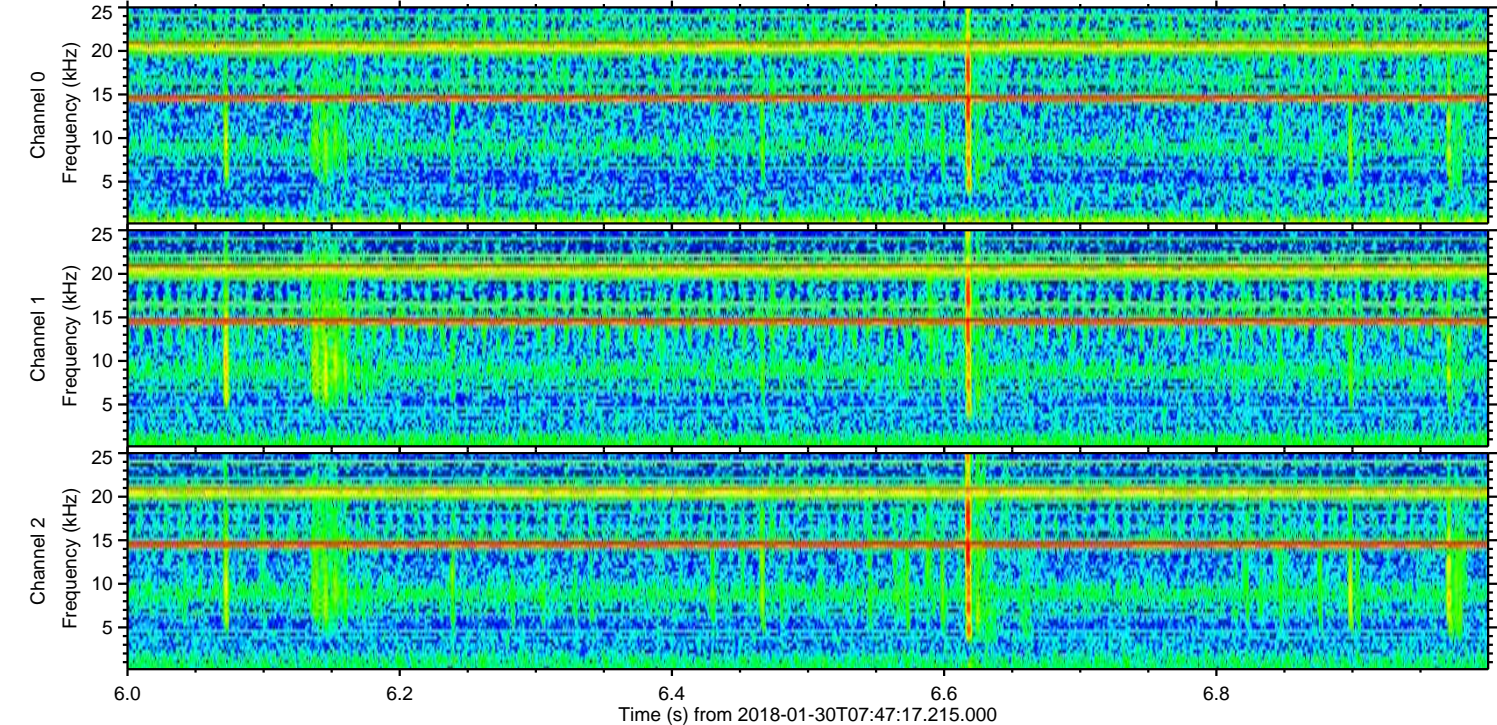
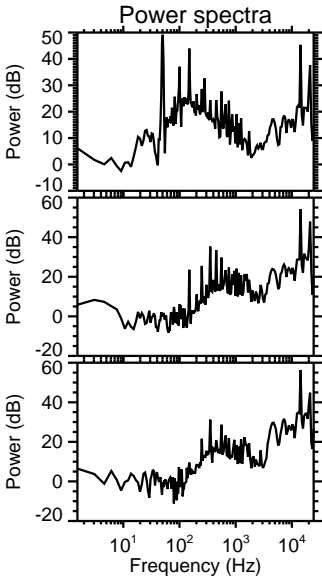
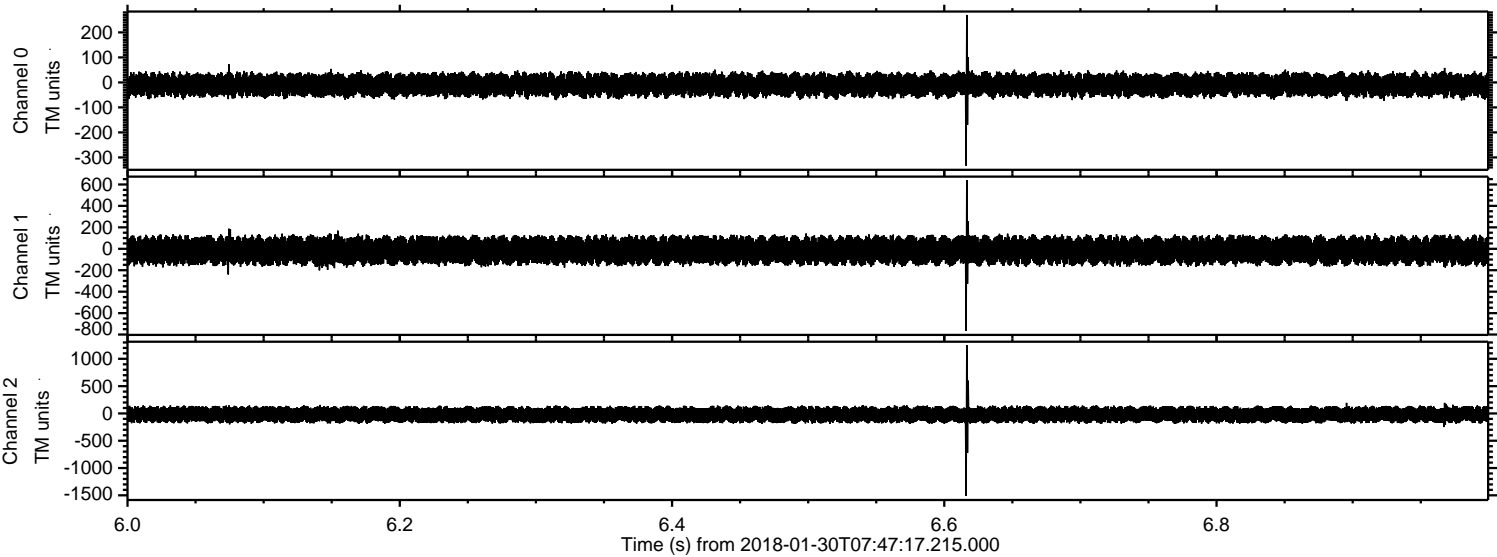
Processed Tue Jan 30 08:55:28 2018 by ELM ver.2012-10-06 from 001__elm20180130_074716__dat00.bin



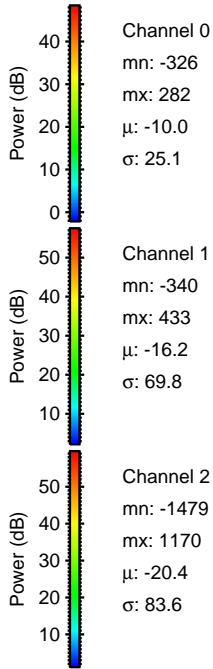
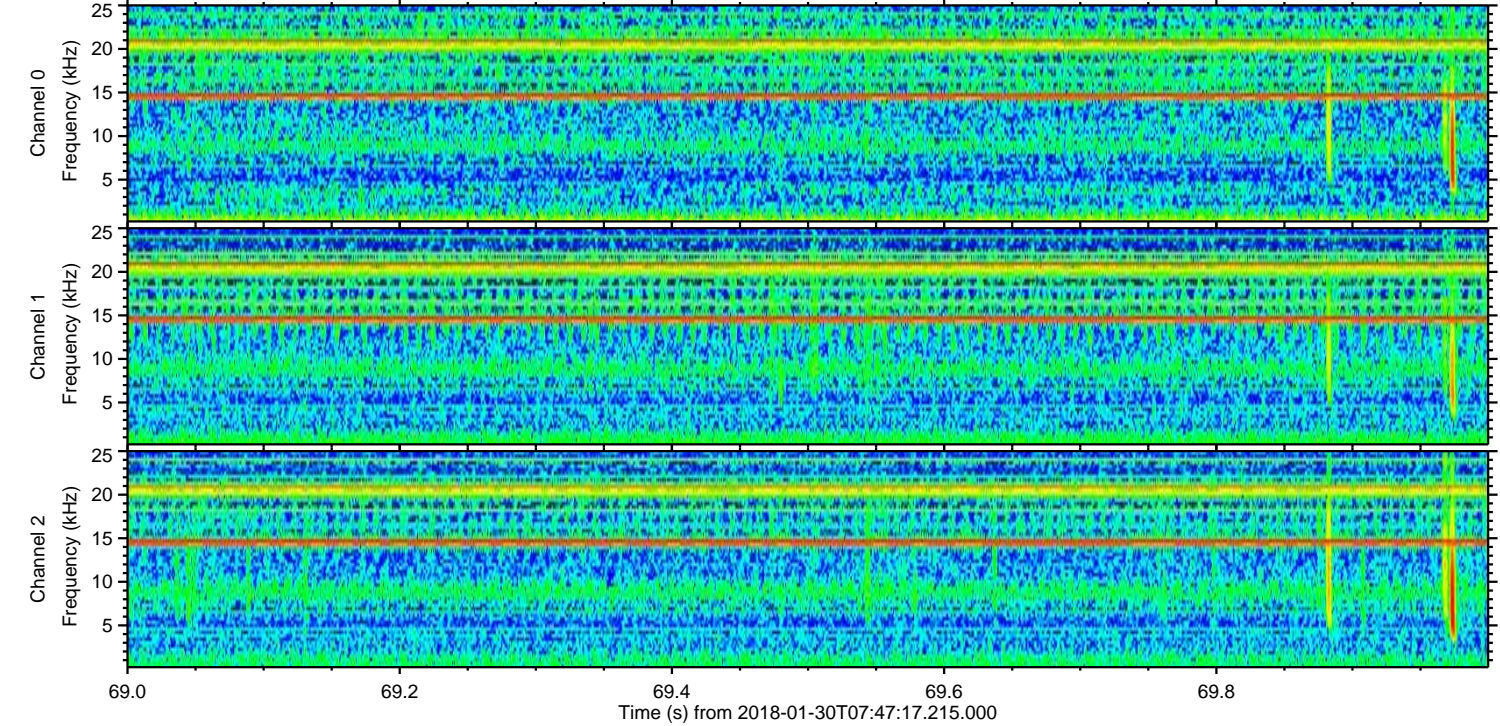
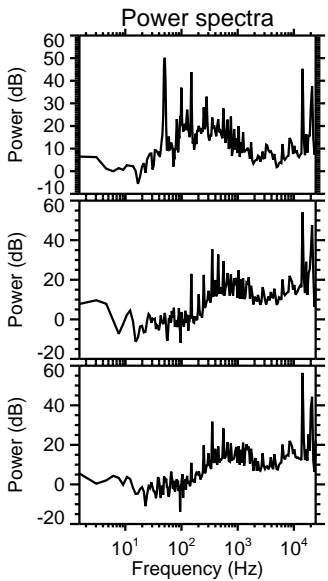
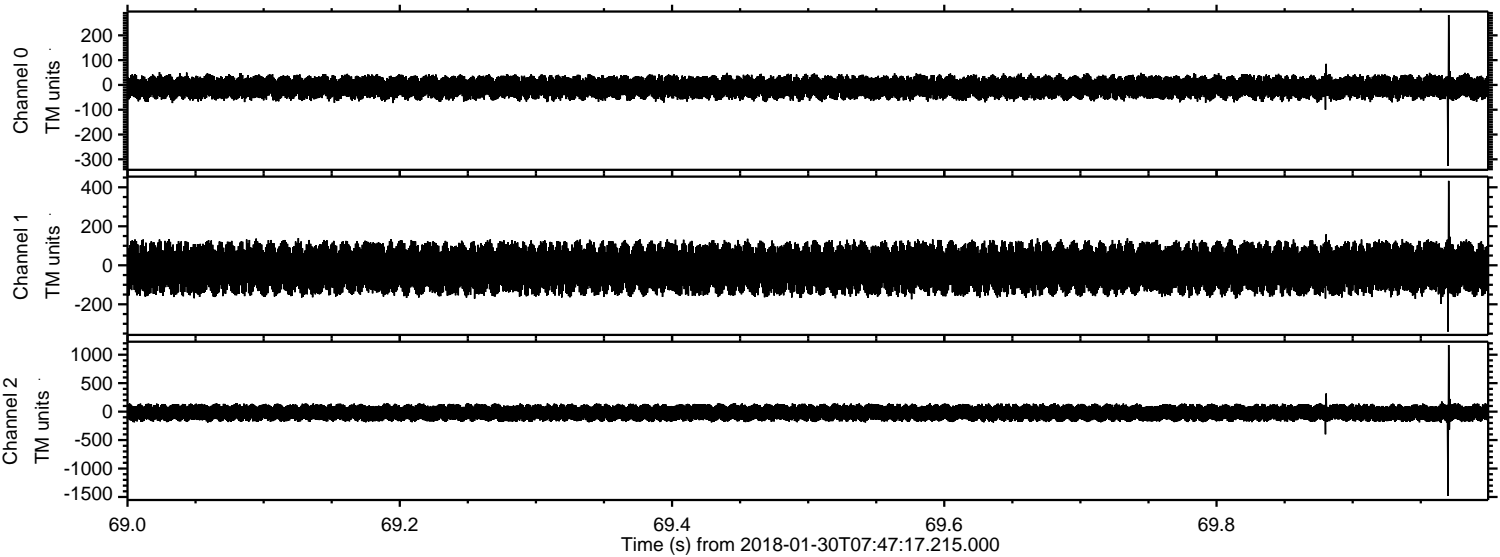
Processed Tue Jan 30 08:55:28 2018 by ELM ver.2012-10-06 from 001__elm20180130_074716__dat00.bin



Processed Tue Jan 30 08:55:29 2018 by ELM ver.2012-10-06 from 001__elm20180130_074716__dat00.bin



Processed Tue Jan 30 08:55:30 2018 by ELM ver.2012-10-06 from 001__elm20180130_074716__dat00.bin

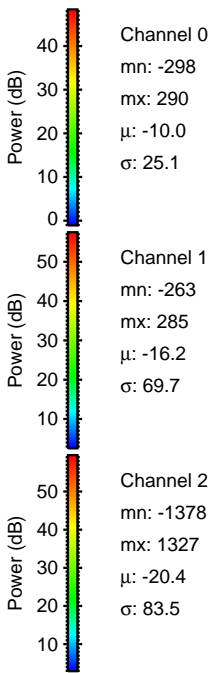
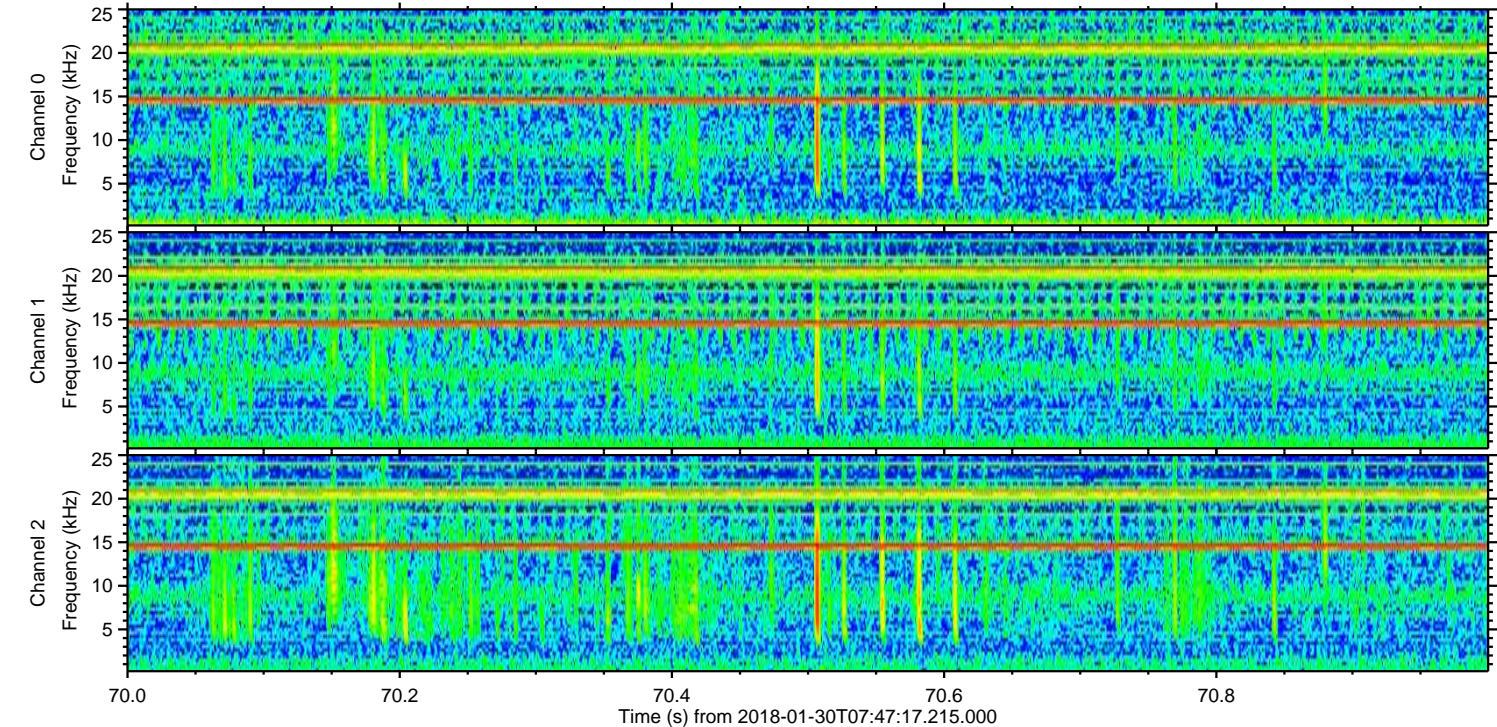
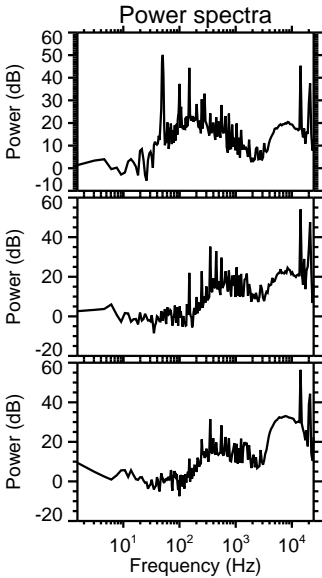
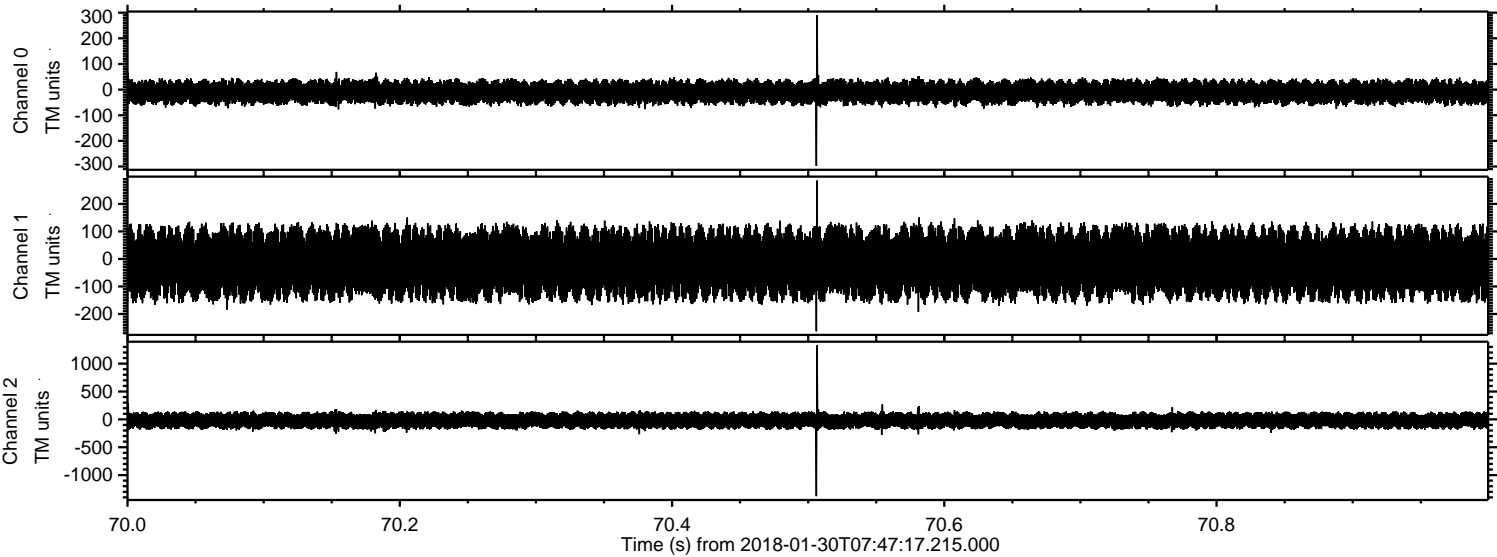


Channel 0
mn: -326
mx: 282
 μ : -10.0
 σ : 25.1

Channel 1
mn: -340
mx: 433
 μ : -16.2
 σ : 69.8

Channel 2
mn: -1479
mx: 1170
 μ : -20.4
 σ : 83.6

Processed Tue Jan 30 08:55:31 2018 by ELM ver.2012-10-06 from 001__elm20180130_074716__dat00.bin



Processed Tue Jan 30 08:55:31 2018 by ELM ver.2012-10-06 from 001__elm20180130_074716__dat00.bin

