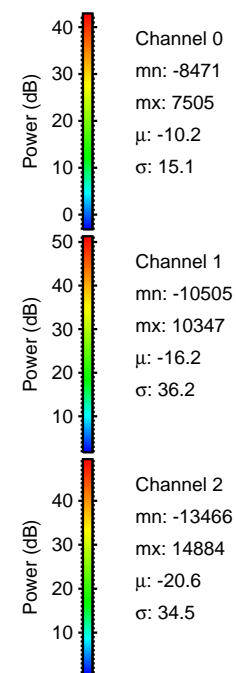
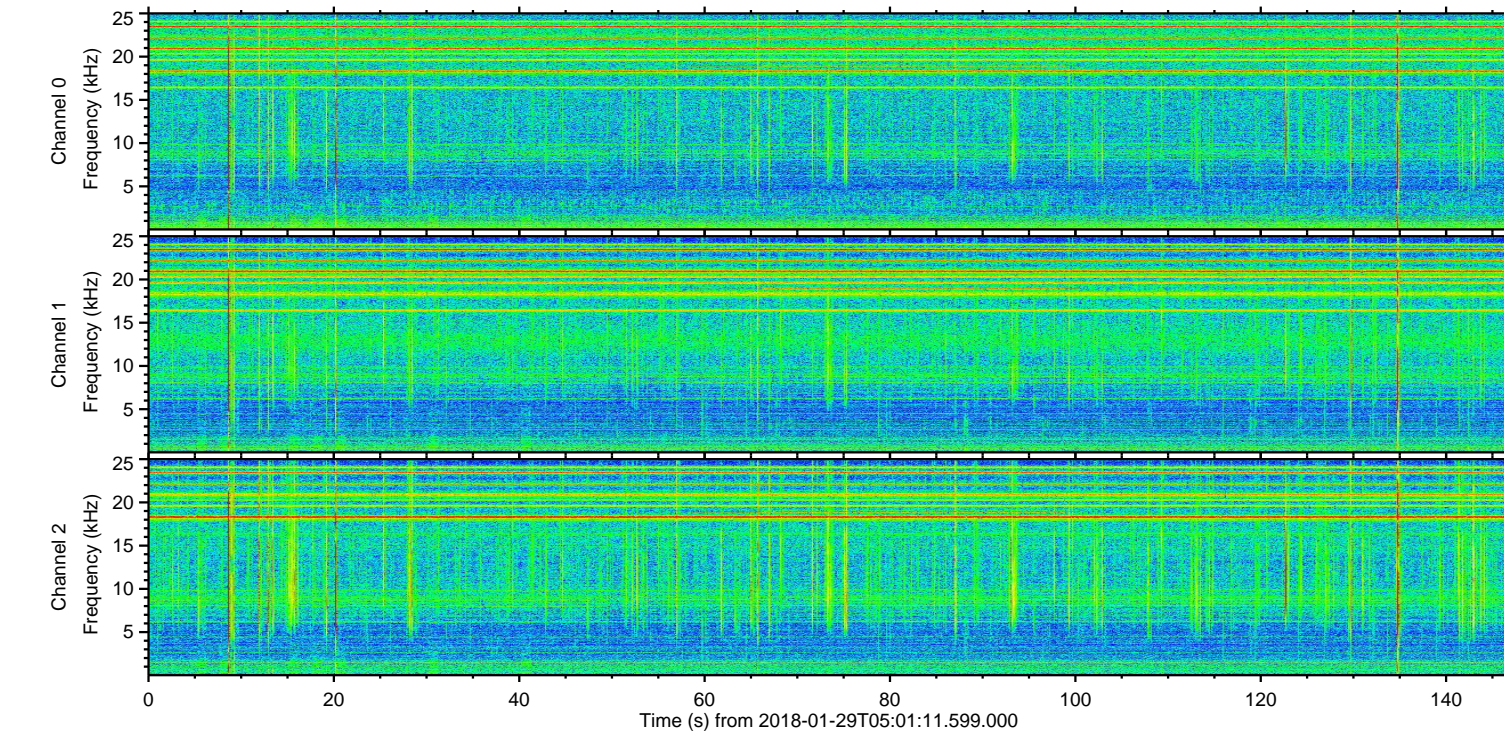
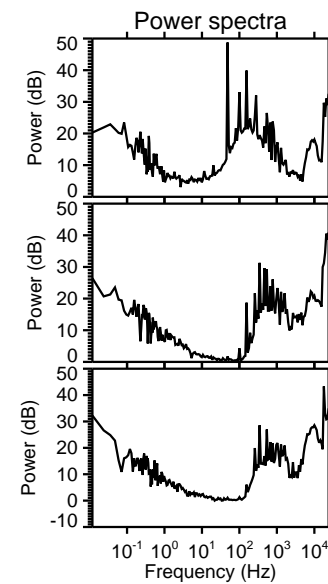
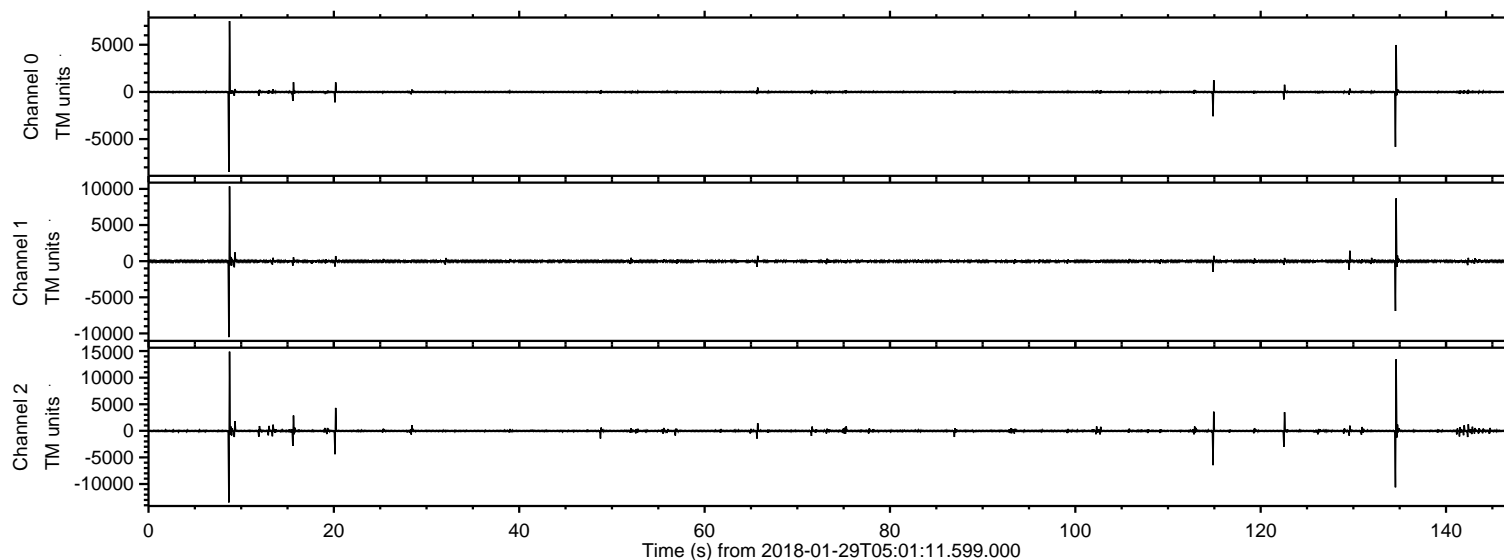
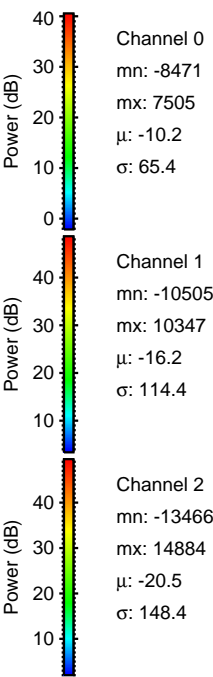
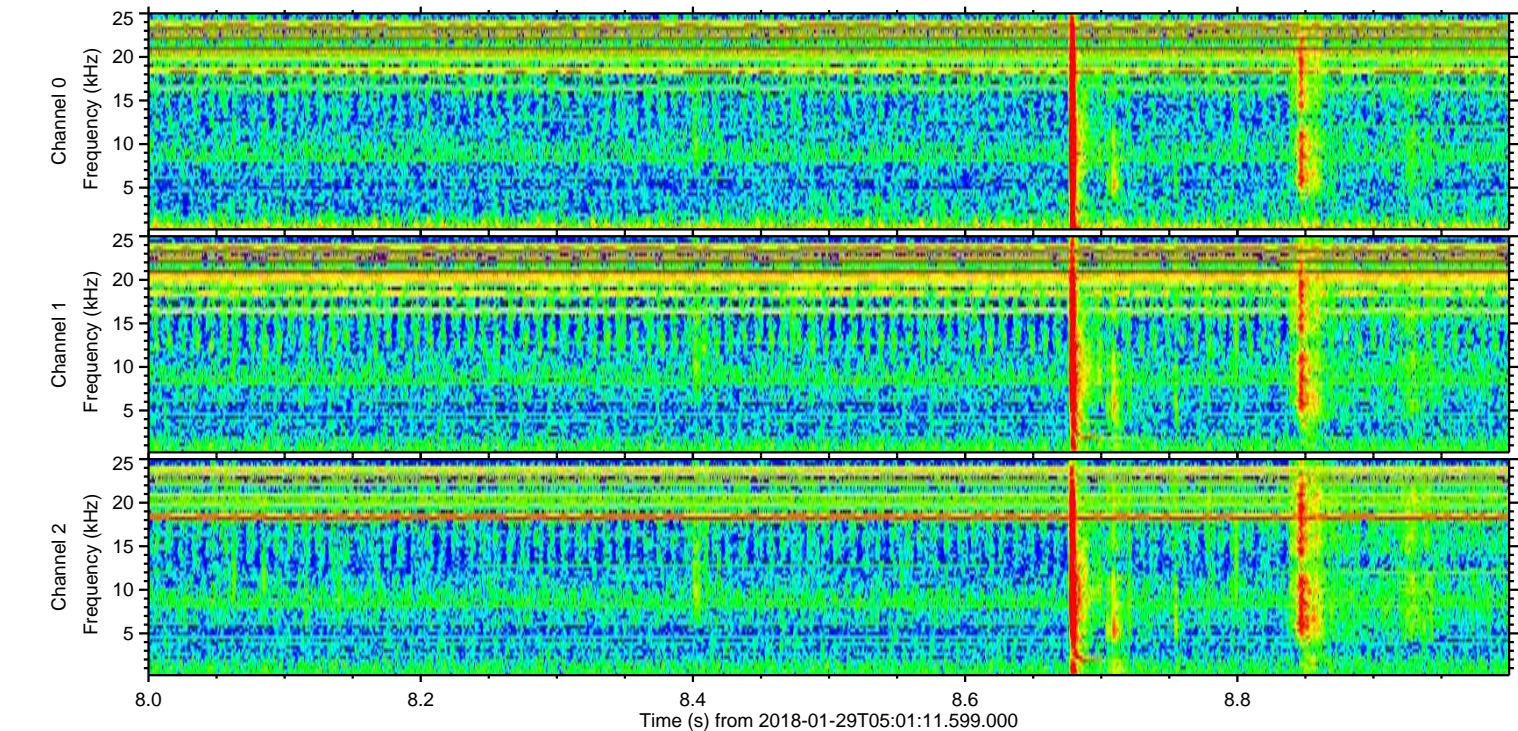
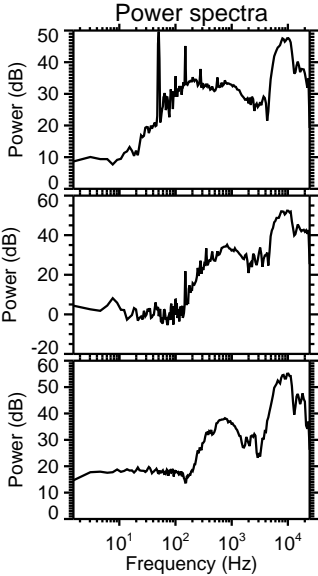
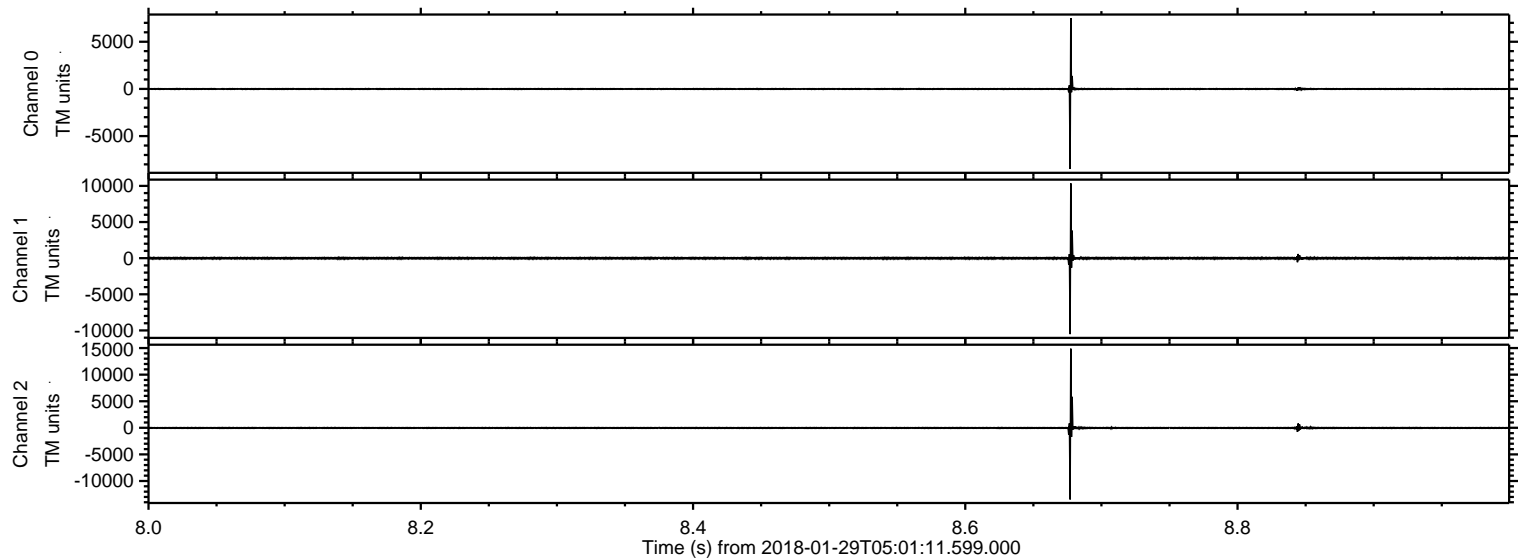


ELMAVAN 3D WAVEFORMS (Measured data sampled at 50 kHz) 51000 packets of 144 samples from 2018-01-29T05:01:11.599.000.

Processed Mon Jan 29 06:08:42 2018 by ELM ver.2012-10-06 from 001__elm20180129_050110__dat00.bin

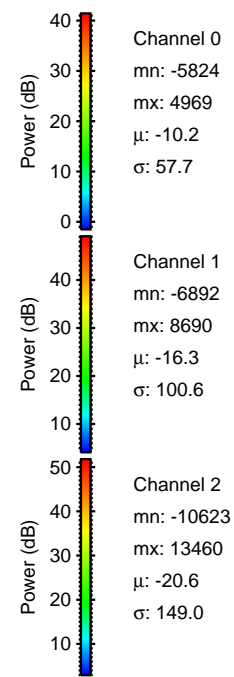
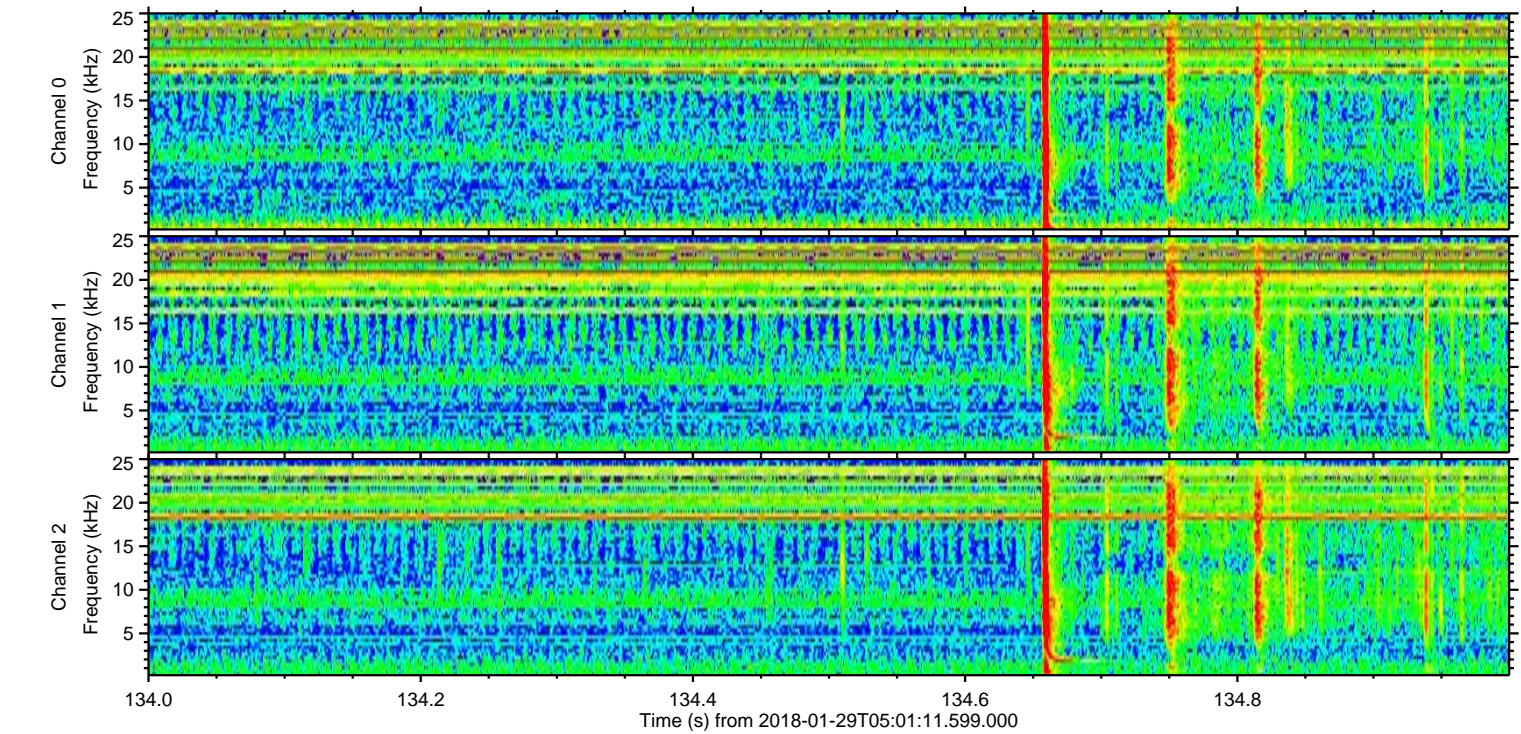
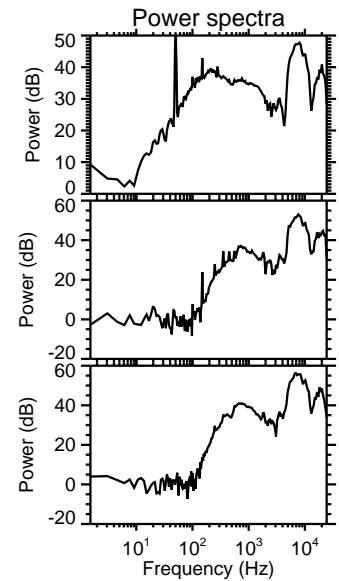
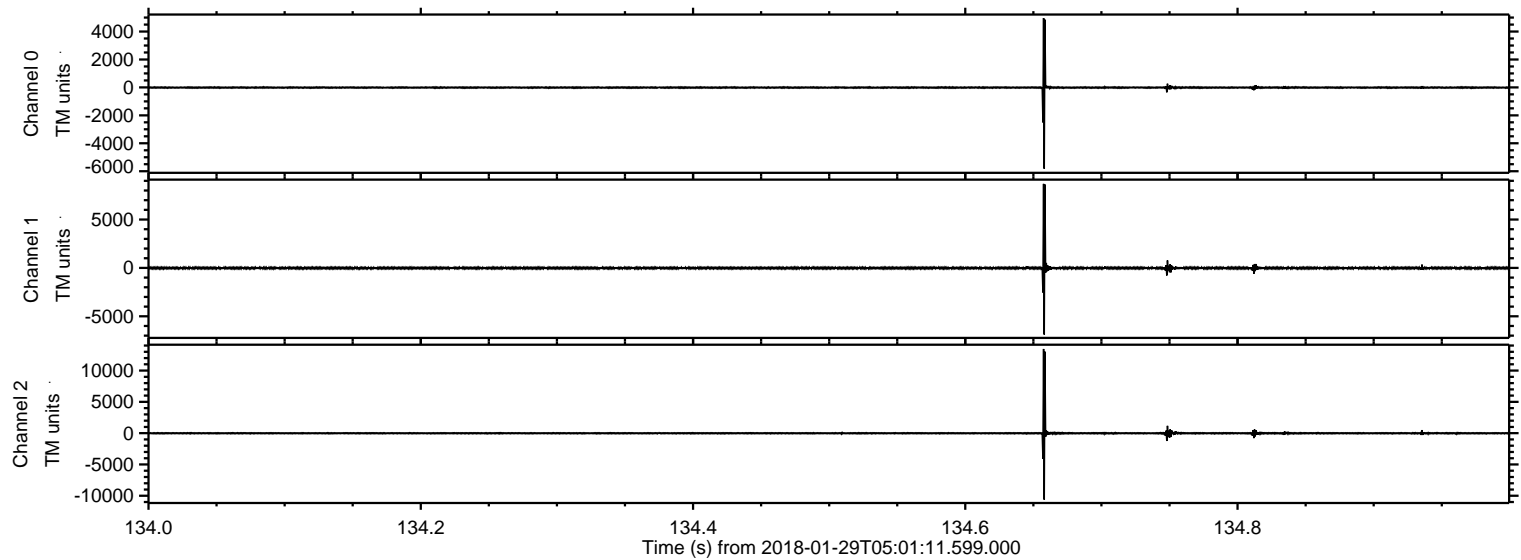


Processed Mon Jan 29 06:08:50 2018 by ELM ver.2012-10-06 from 001__elm20180129_0501110__dat00.bin



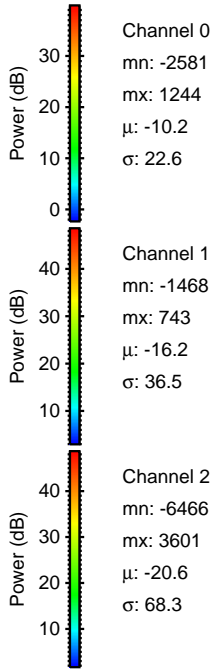
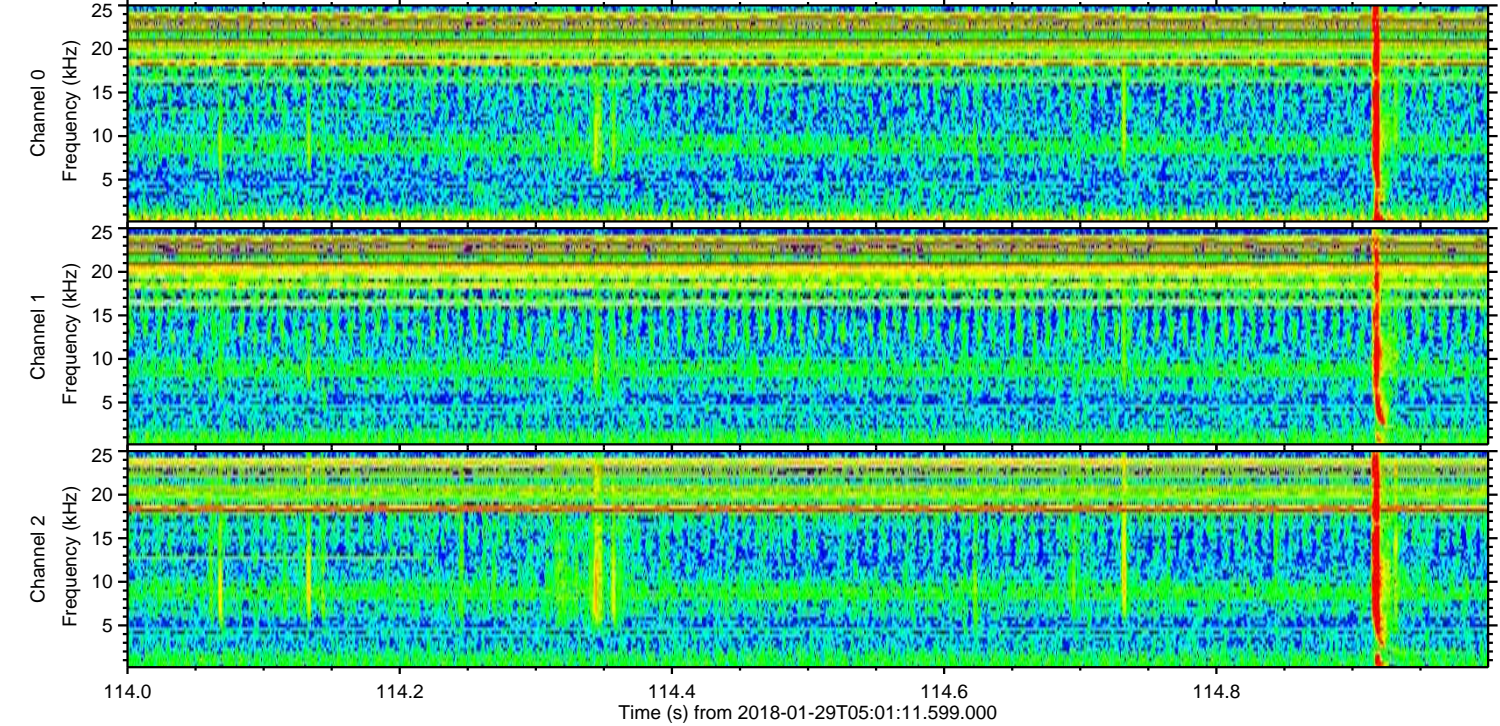
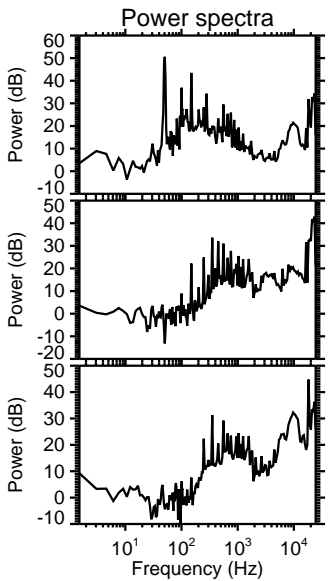
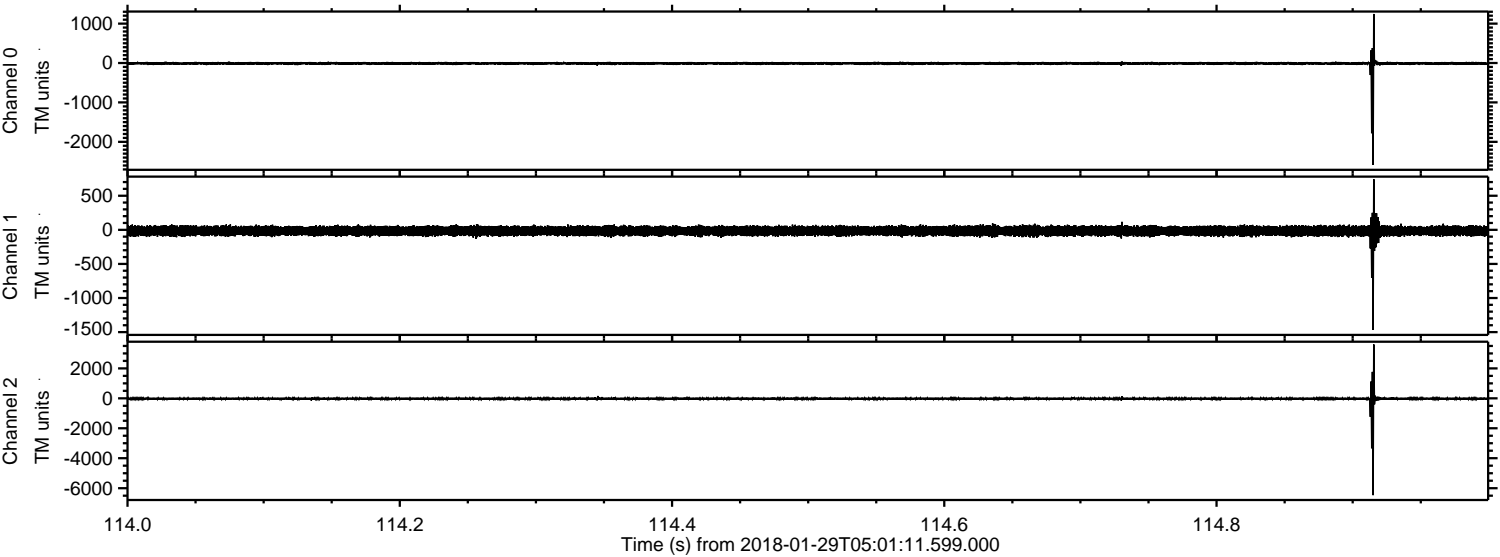
ELMAVAN 3D WAVEFORMS (Measured data sampled at 50 kHz) 51000 packets of 144 samples from 2018-01-29T05:01:11.599.000. Part 135/147

Processed Mon Jan 29 06:08:51 2018 by ELM ver.2012-10-06 from 001__elm20180129_0501110__dat00.bin



ELMAVAN 3D WAVEFORMS (Measured data sampled at 50 kHz) 51000 packets of 144 samples from 2018-01-29T05:01:11.599.000. Part 115/147

Processed Mon Jan 29 06:08:52 2018 by ELM ver.2012-10-06 from 001__elm20180129_0501110__dat00.bin

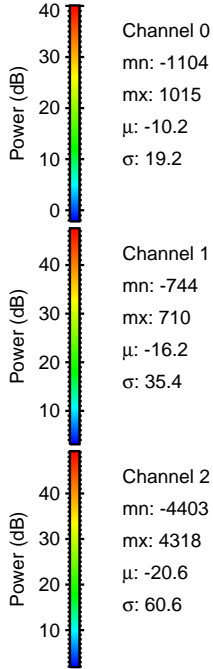
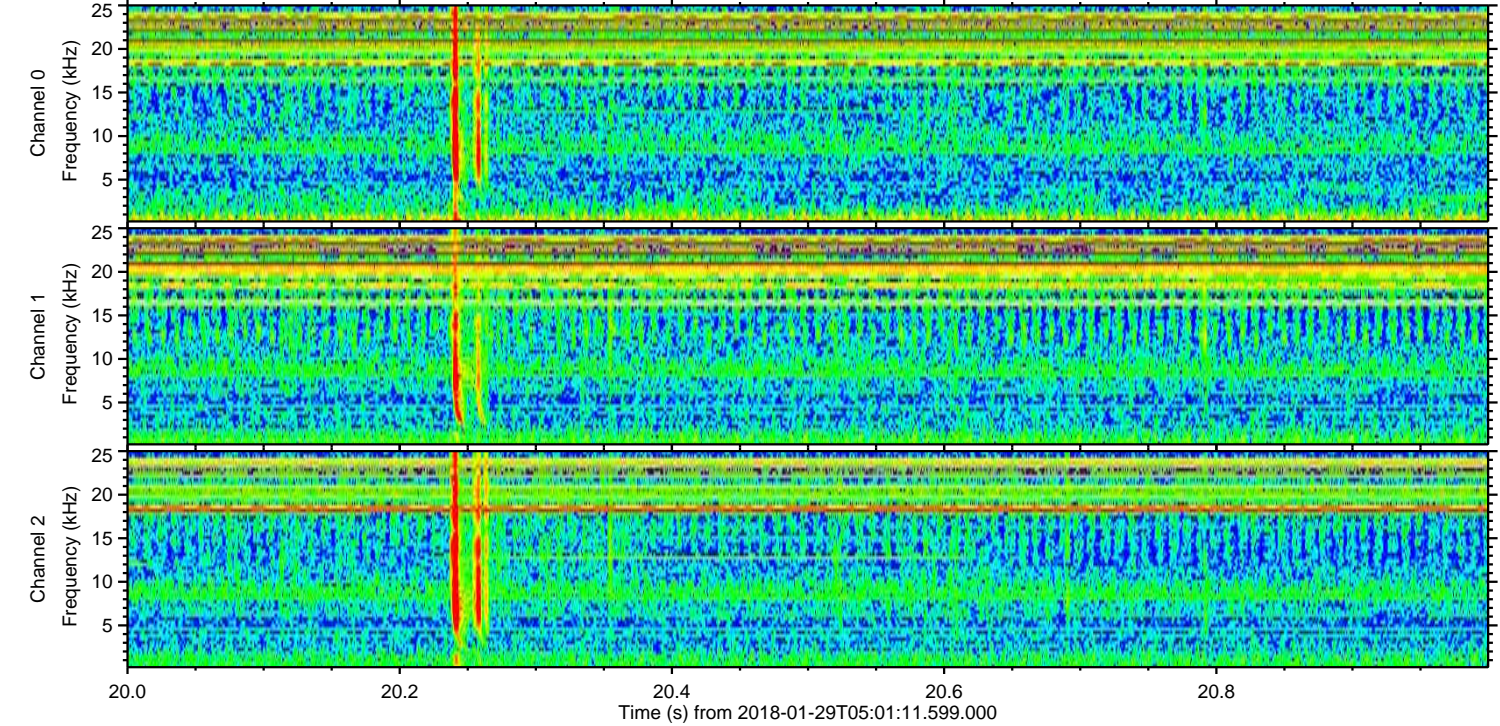
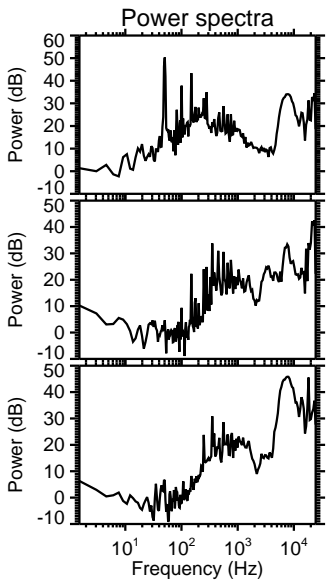
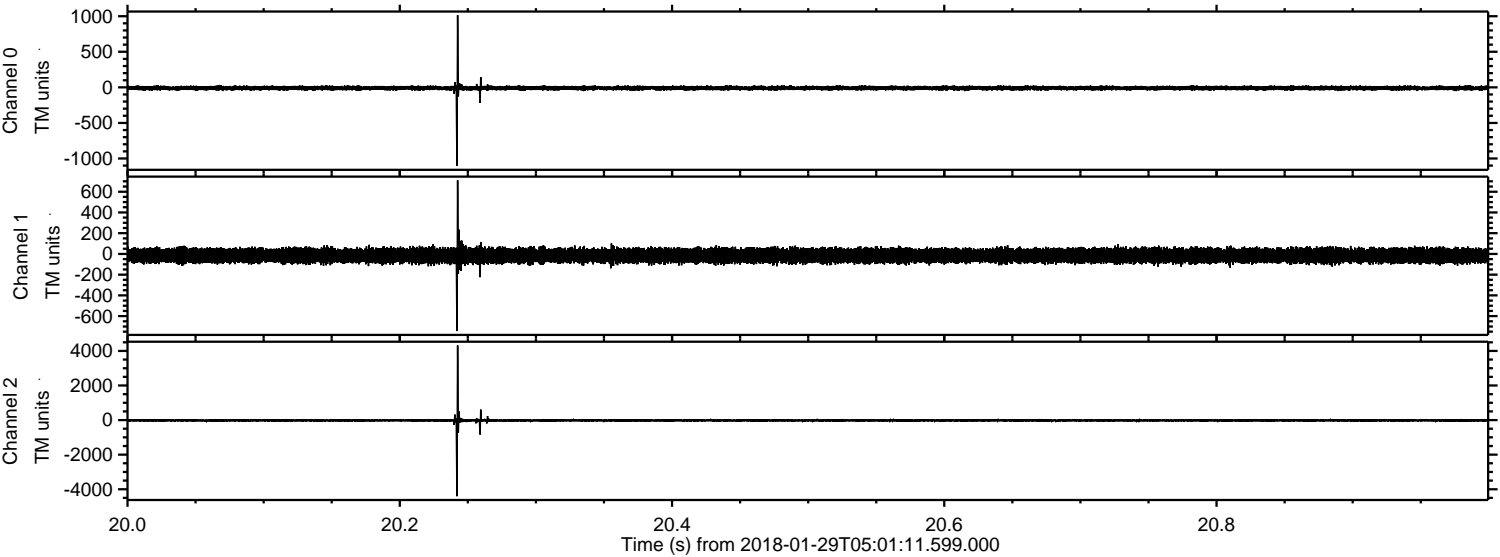


Channel 0
mn: -2581
mx: 1244
 μ : -10.2
 σ : 22.6

Channel 1
mn: -1468
mx: 743
 μ : -16.2
 σ : 36.5

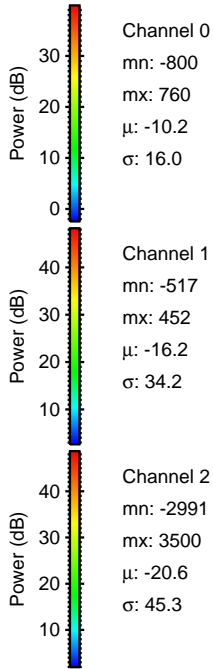
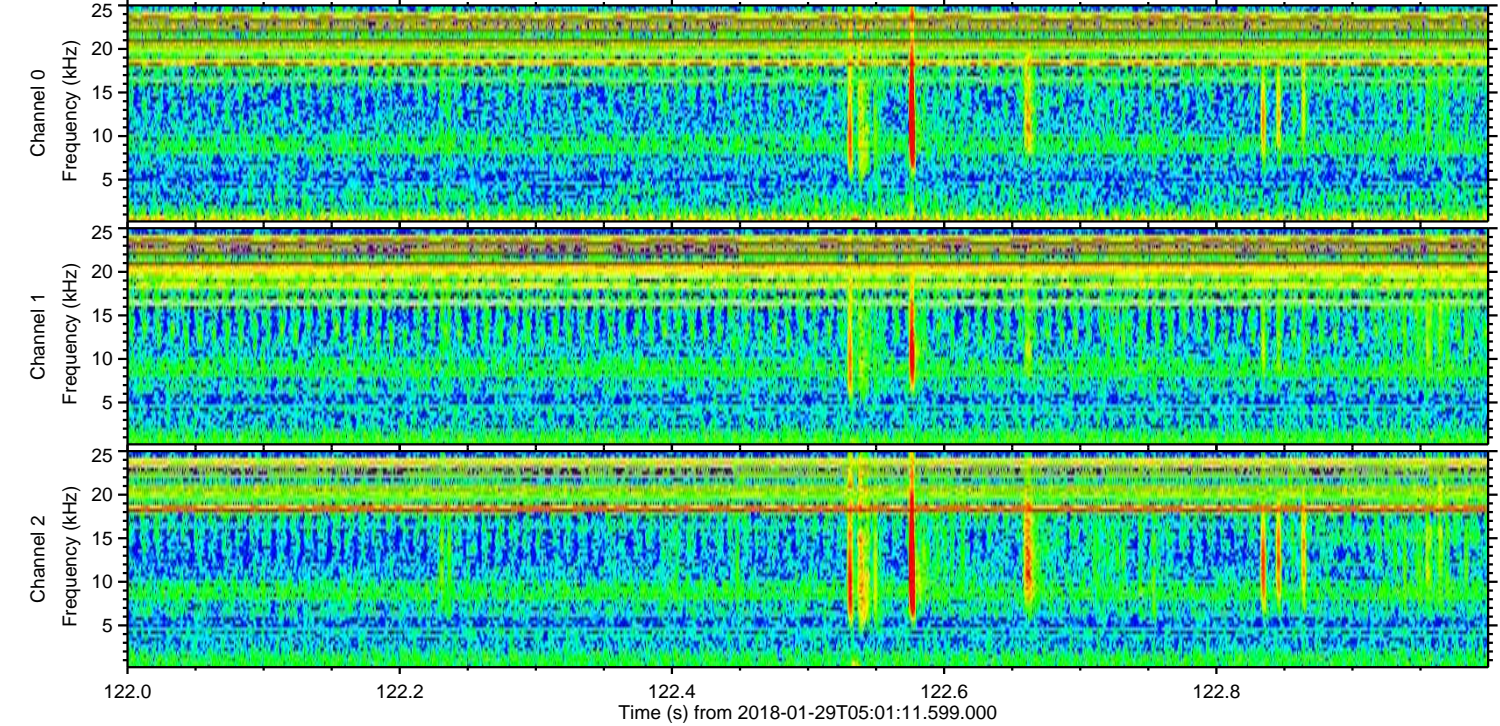
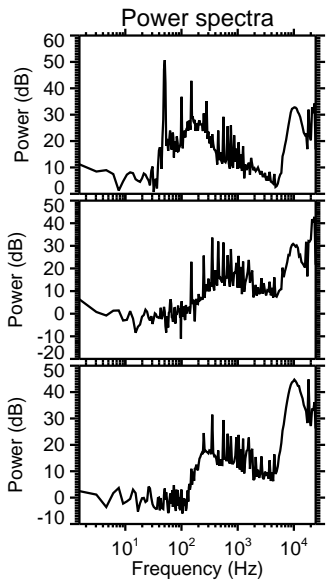
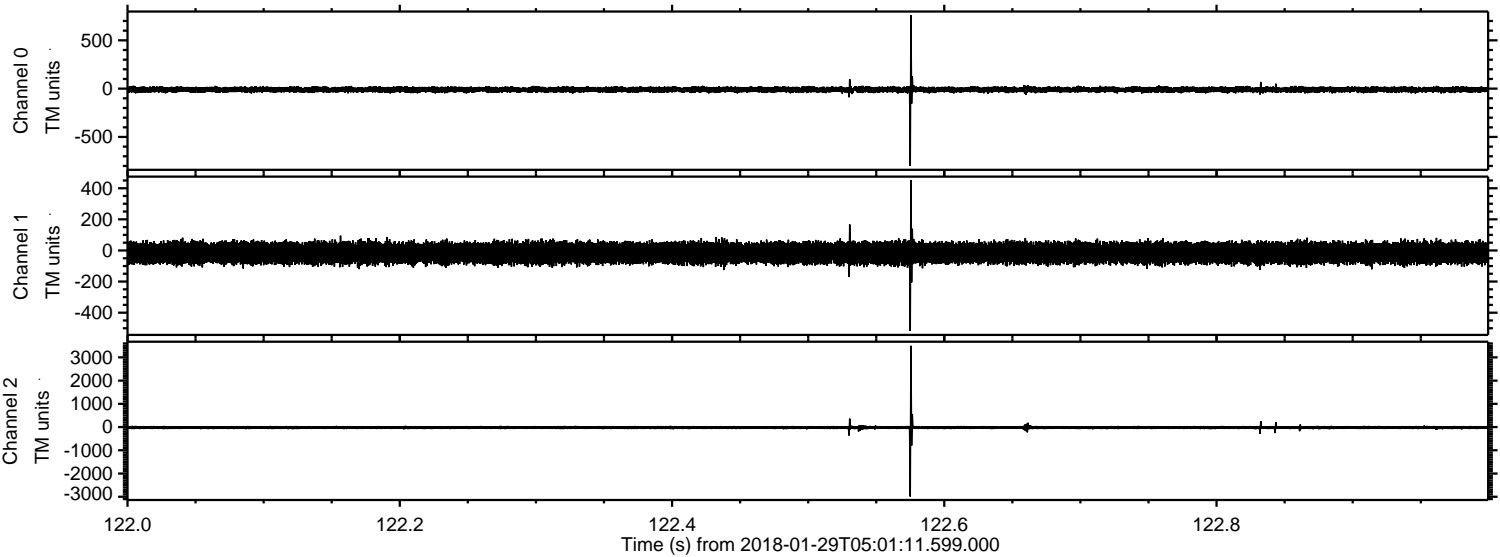
Channel 2
mn: -6466
mx: 3601
 μ : -20.6
 σ : 68.3

Processed Mon Jan 29 06:08:53 2018 by ELM ver.2012-10-06 from 001__elm20180129_050110__dat00.bin

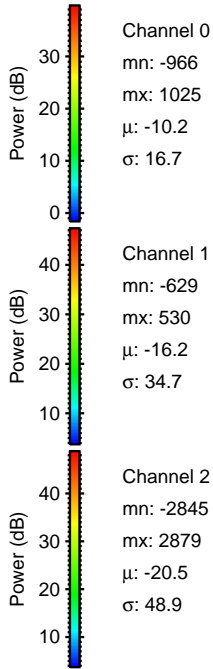
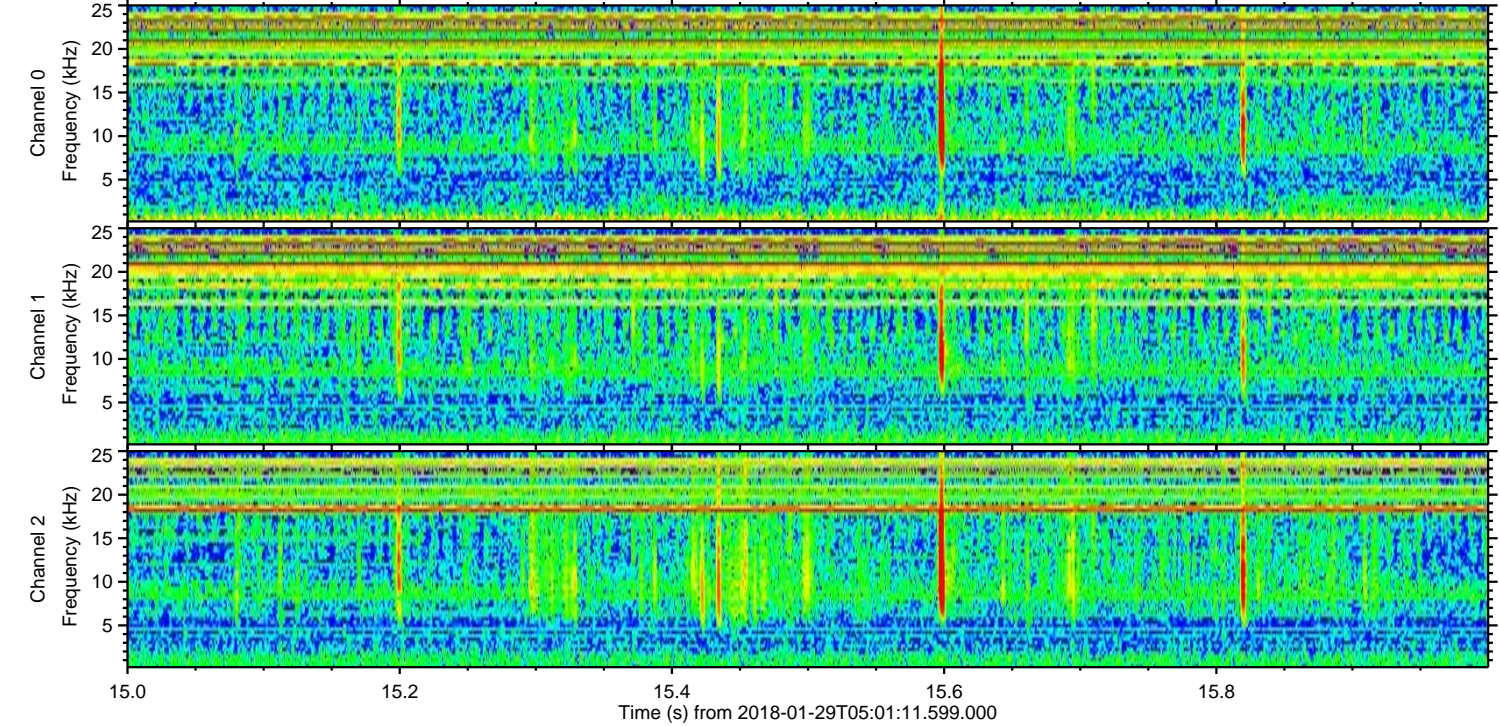
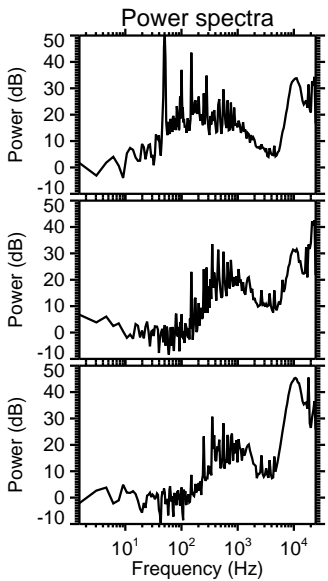
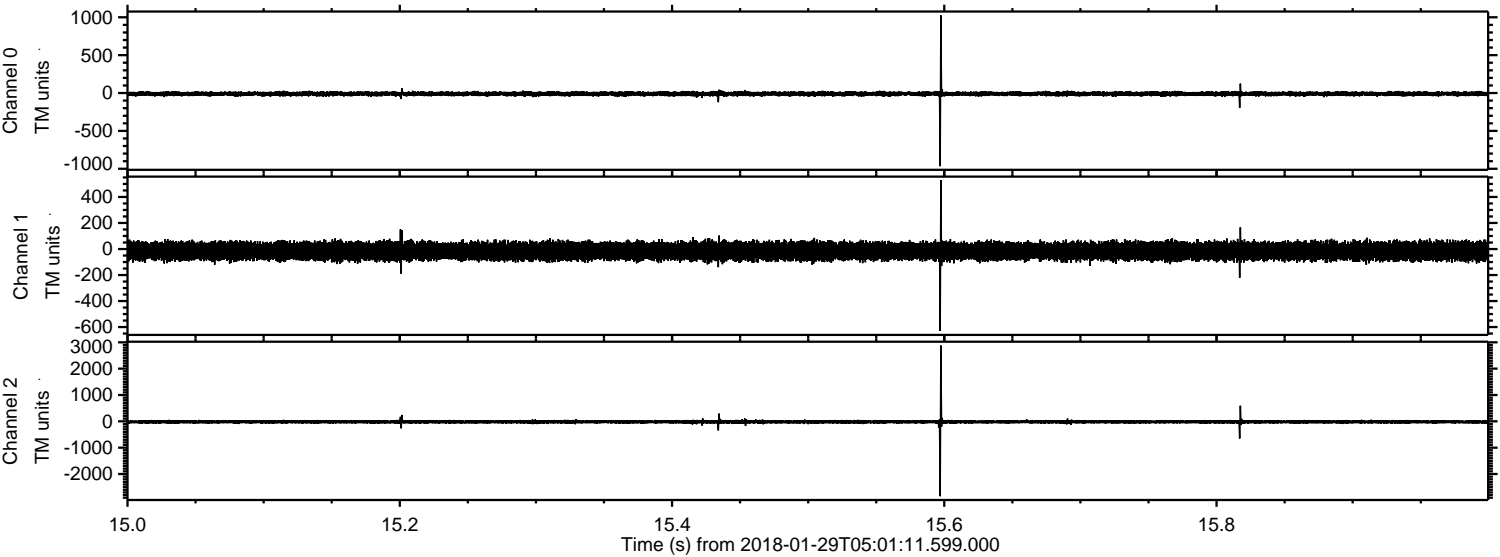


ELMAVAN 3D WAVEFORMS (Measured data sampled at 50 kHz) 51000 packets of 144 samples from 2018-01-29T05:01:11.599.000. Part 123/147

Processed Mon Jan 29 06:08:54 2018 by ELM ver.2012-10-06 from 001__elm20180129_050110__dat00.bin



Processed Mon Jan 29 06:08:55 2018 by ELM ver.2012-10-06 from 001_elm20180129_050110__dat00.bin

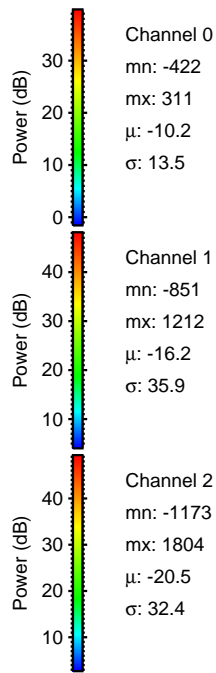
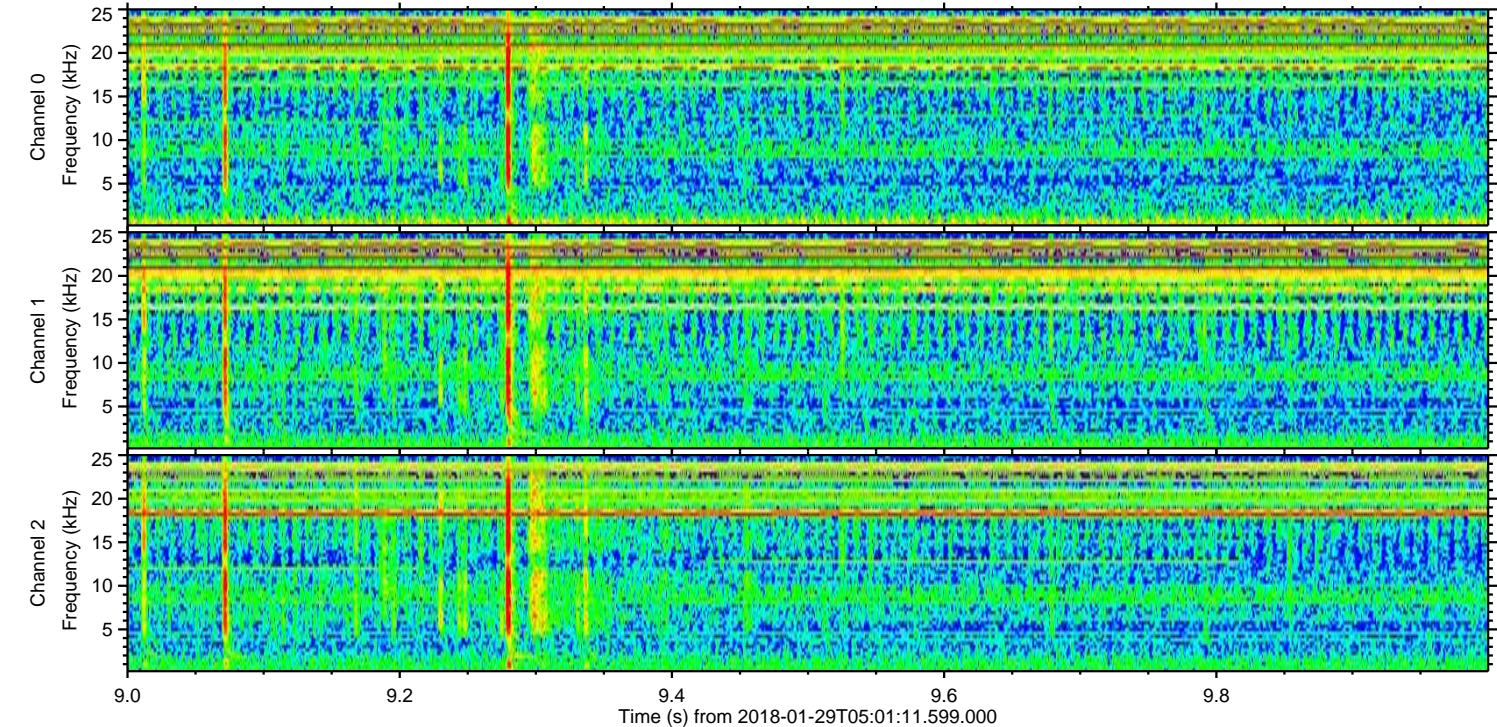
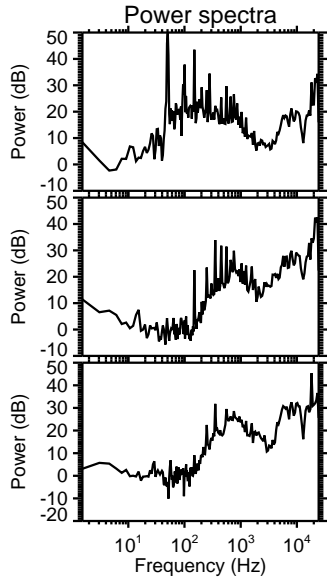
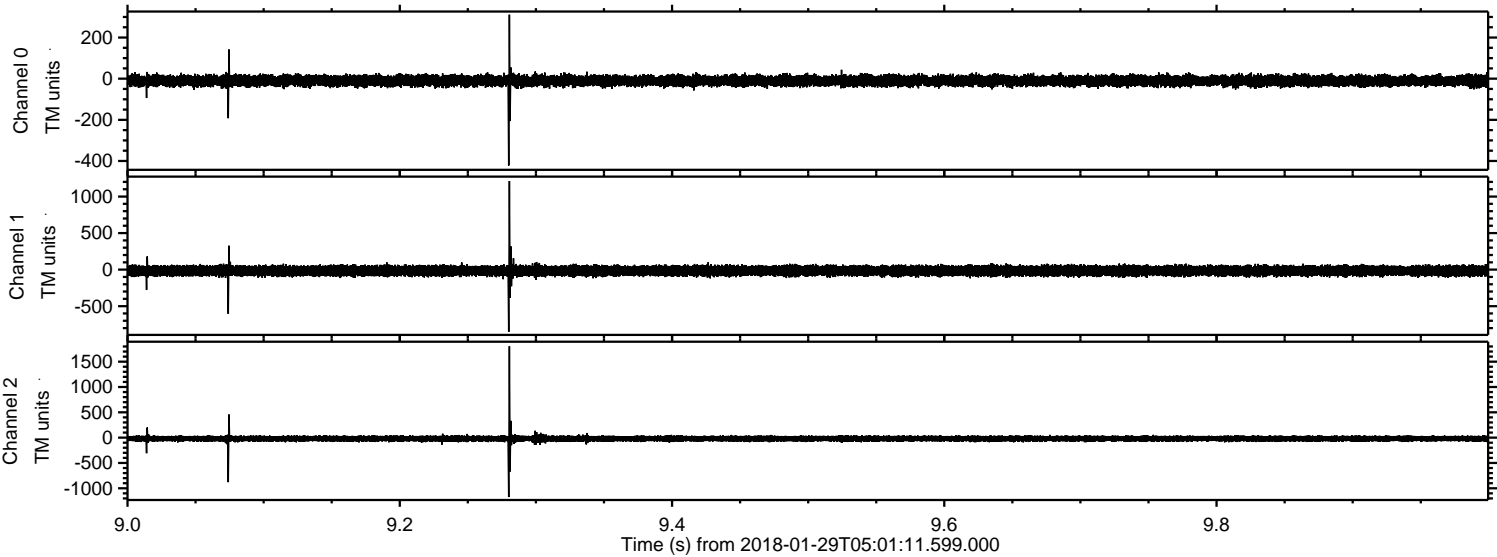


Channel 0
mn: -966
mx: 1025
 μ : -10.2
 σ : 16.7

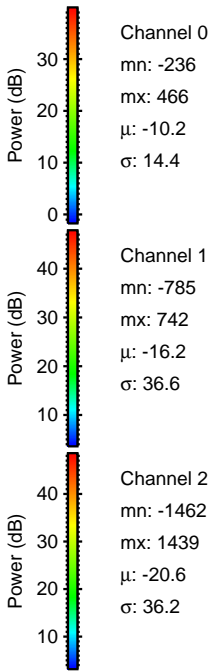
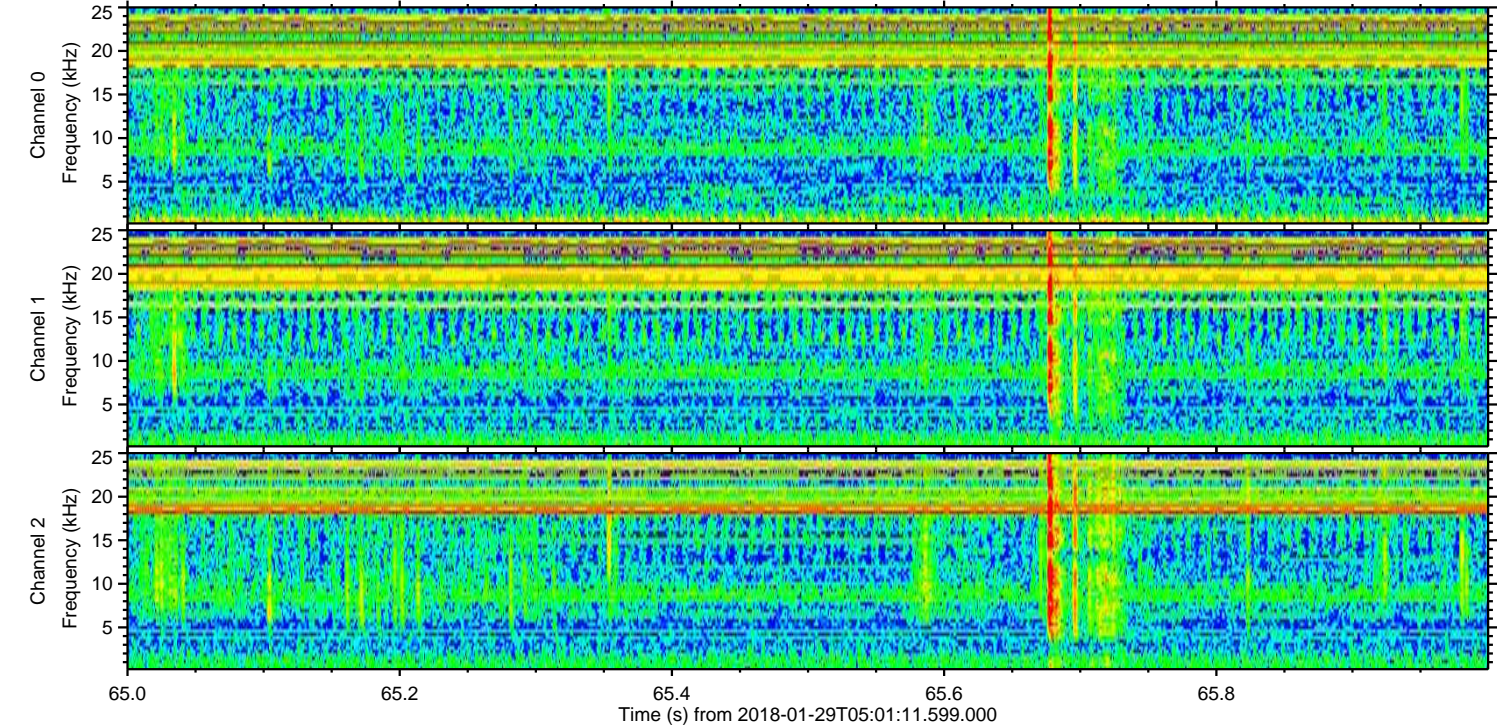
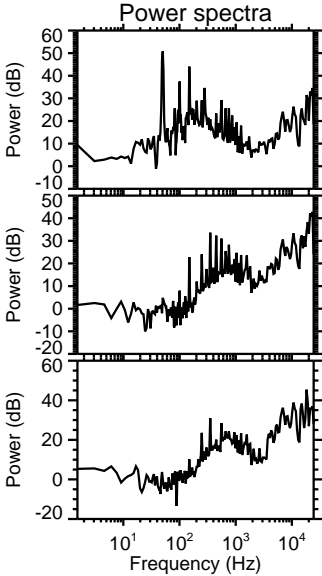
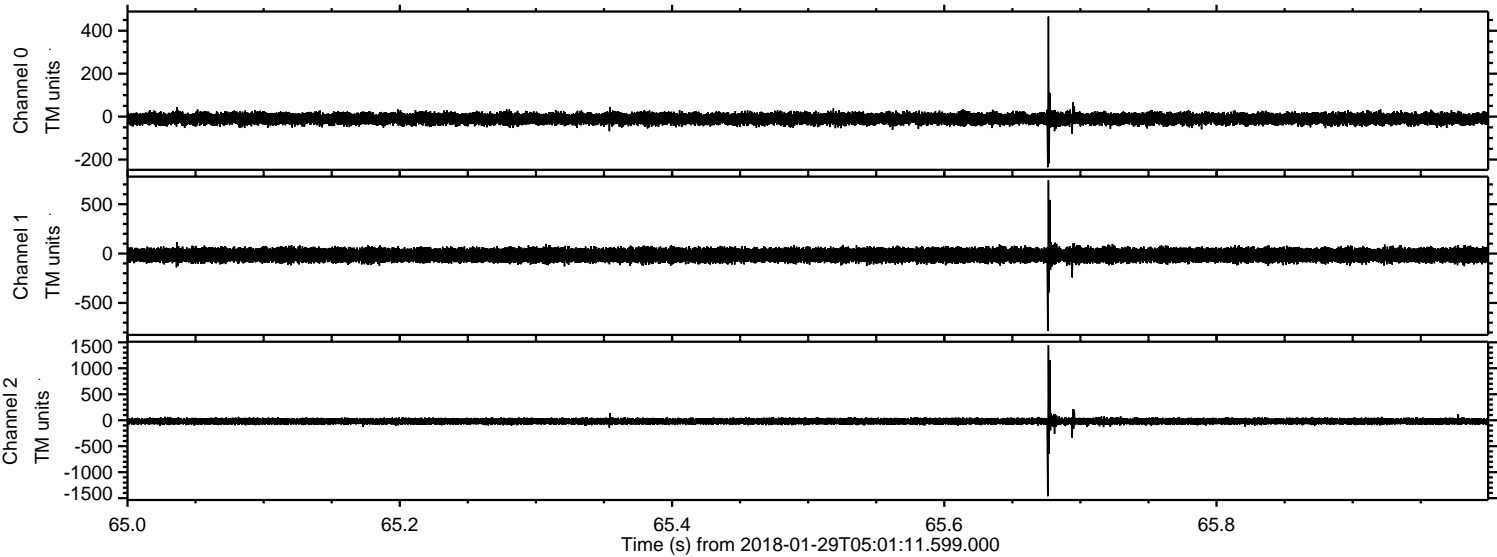
Channel 1
mn: -629
mx: 530
 μ : -16.2
 σ : 34.7

Channel 2
mn: -2845
mx: 2879
 μ : -20.5
 σ : 48.9

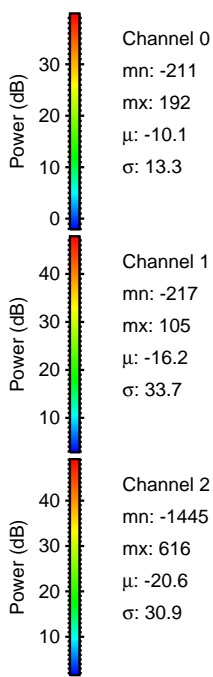
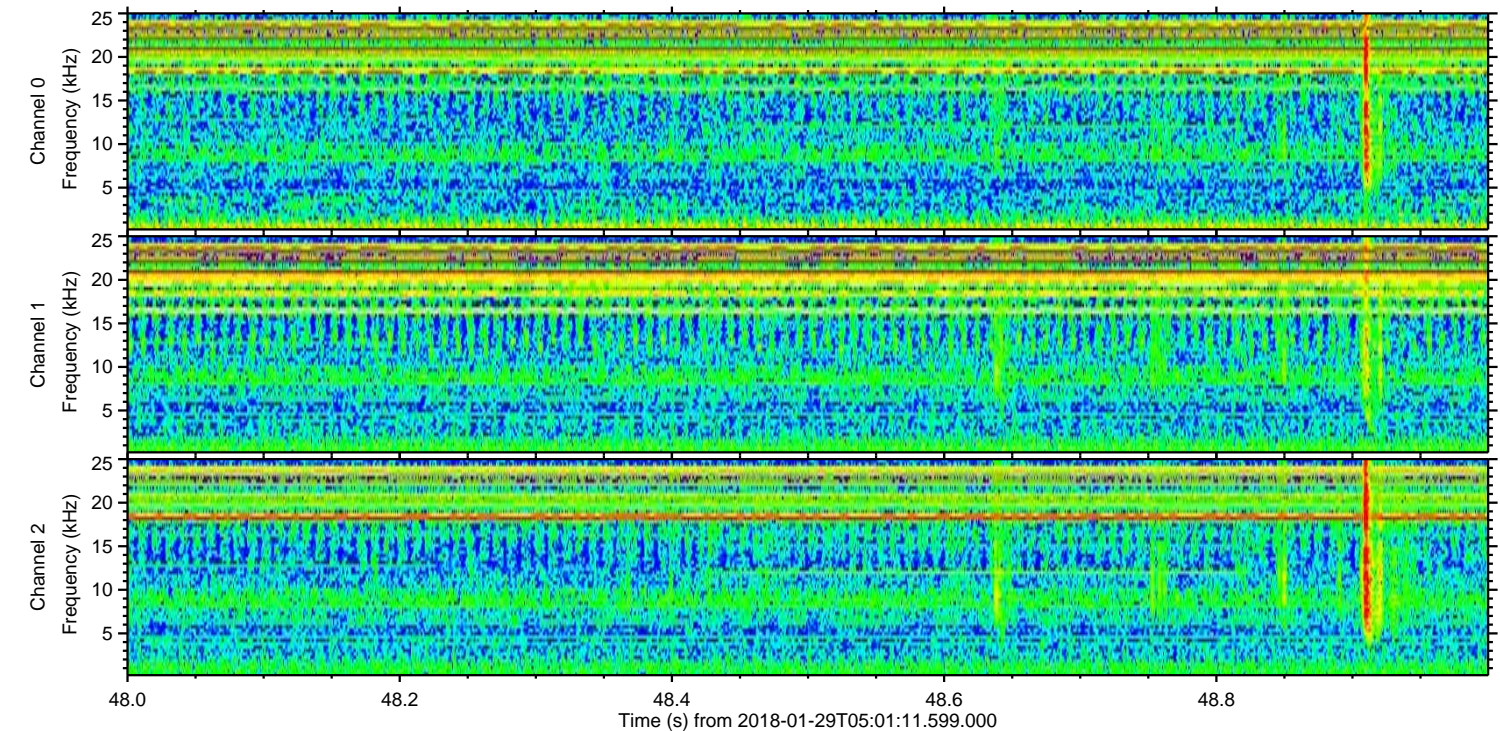
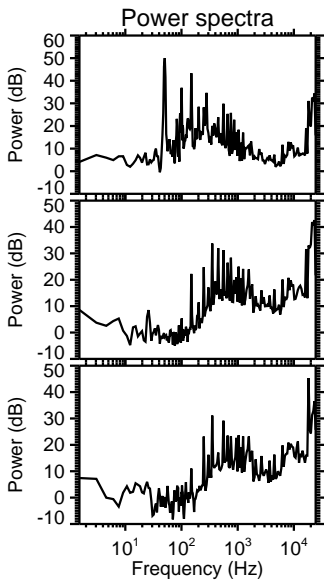
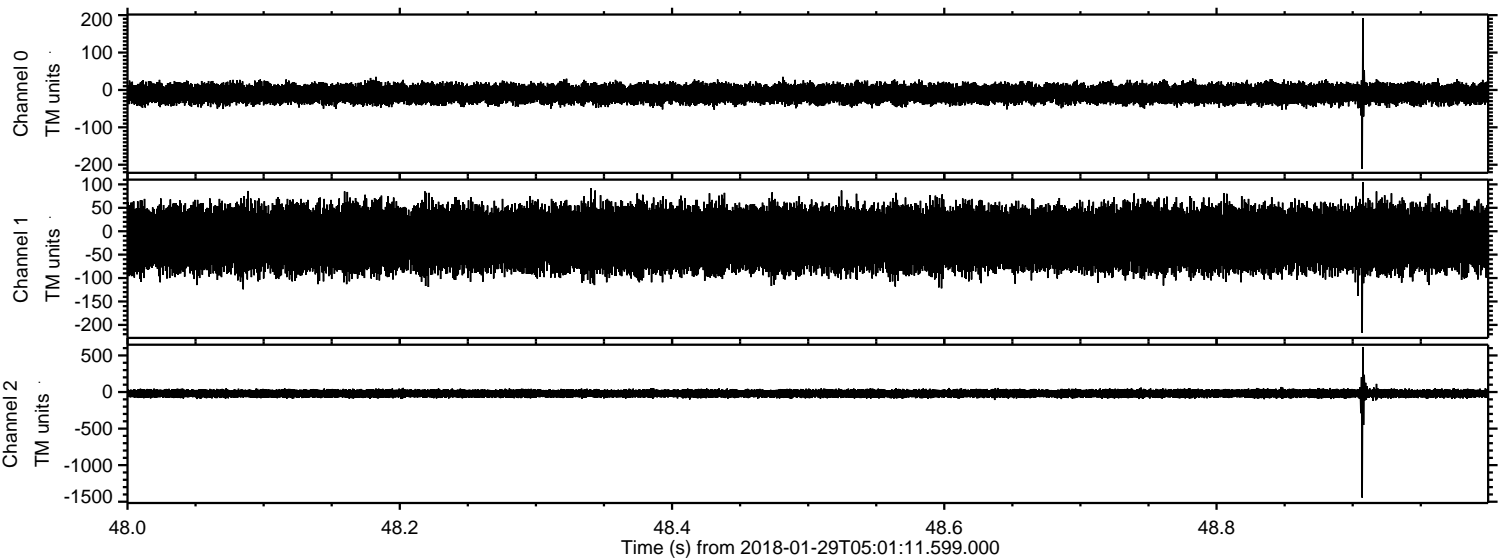
Processed Mon Jan 29 06:08:56 2018 by ELM ver.2012-10-06 from 001__elm20180129_050110__dat00.bin



Processed Mon Jan 29 06:08:57 2018 by ELM ver.2012-10-06 from 001__elm20180129_0501110__dat00.bin



Processed Mon Jan 29 06:08:57 2018 by ELM ver.2012-10-06 from 001__elm20180129_0501110__dat00.bin



Processed Mon Jan 29 06:08:58 2018 by ELM ver.2012-10-06 from 001__elm20180129_0501110__dat00.bin

