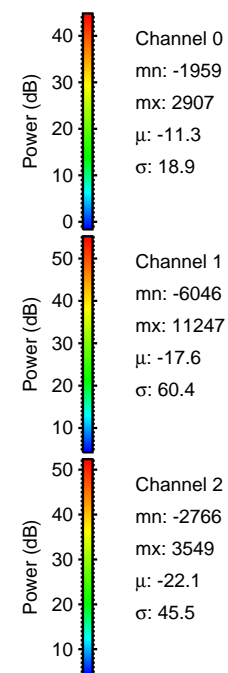
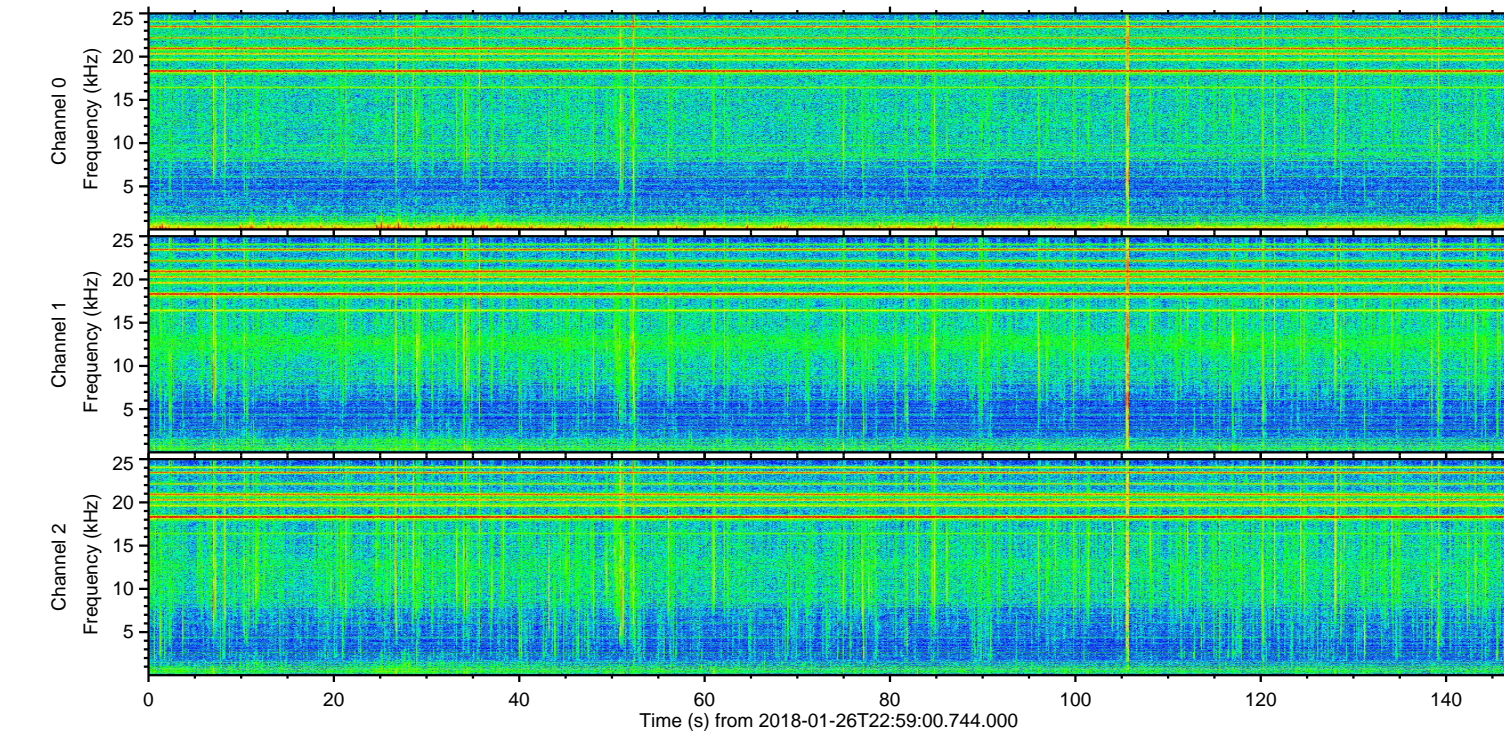
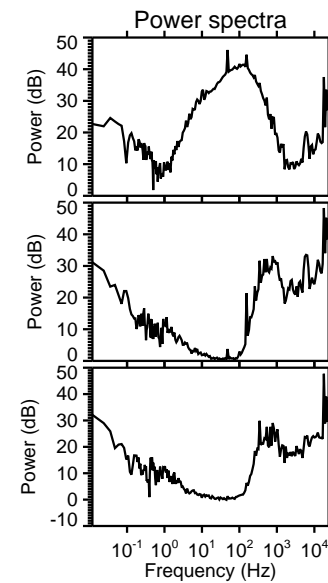
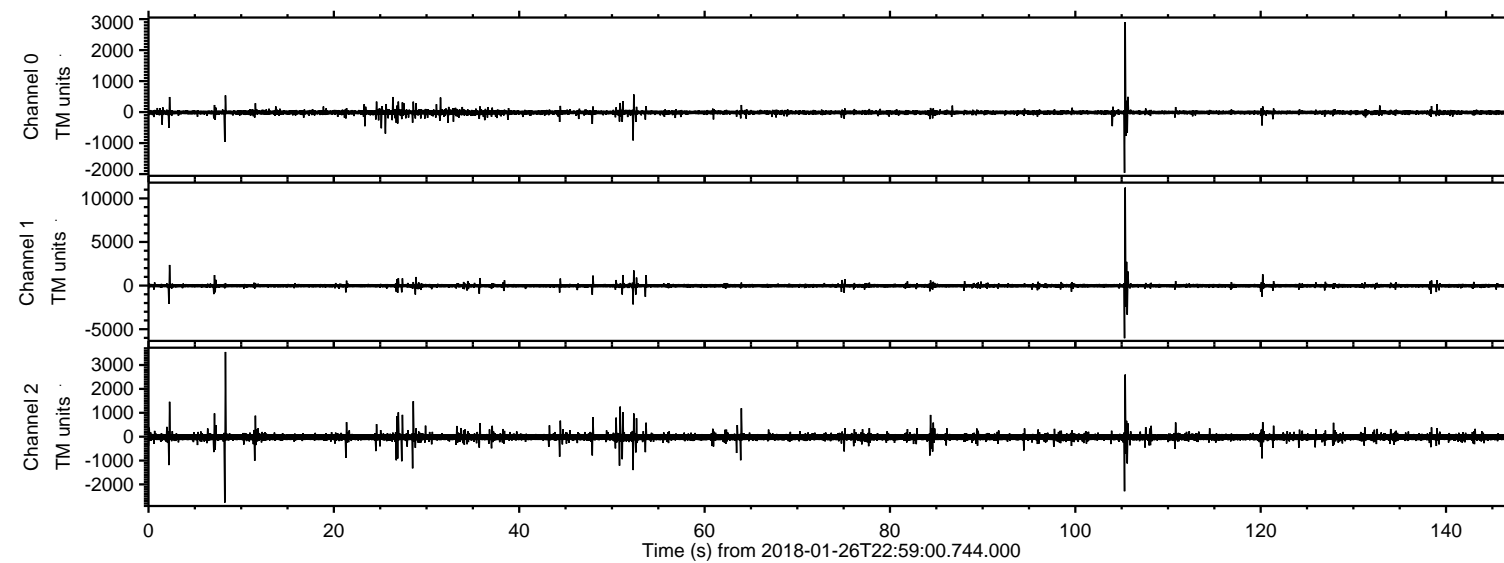


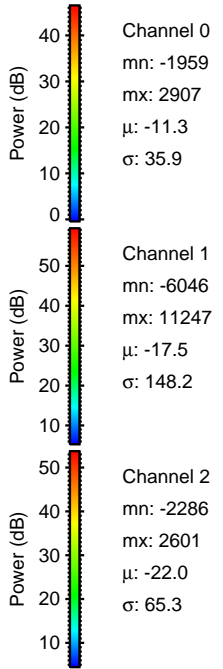
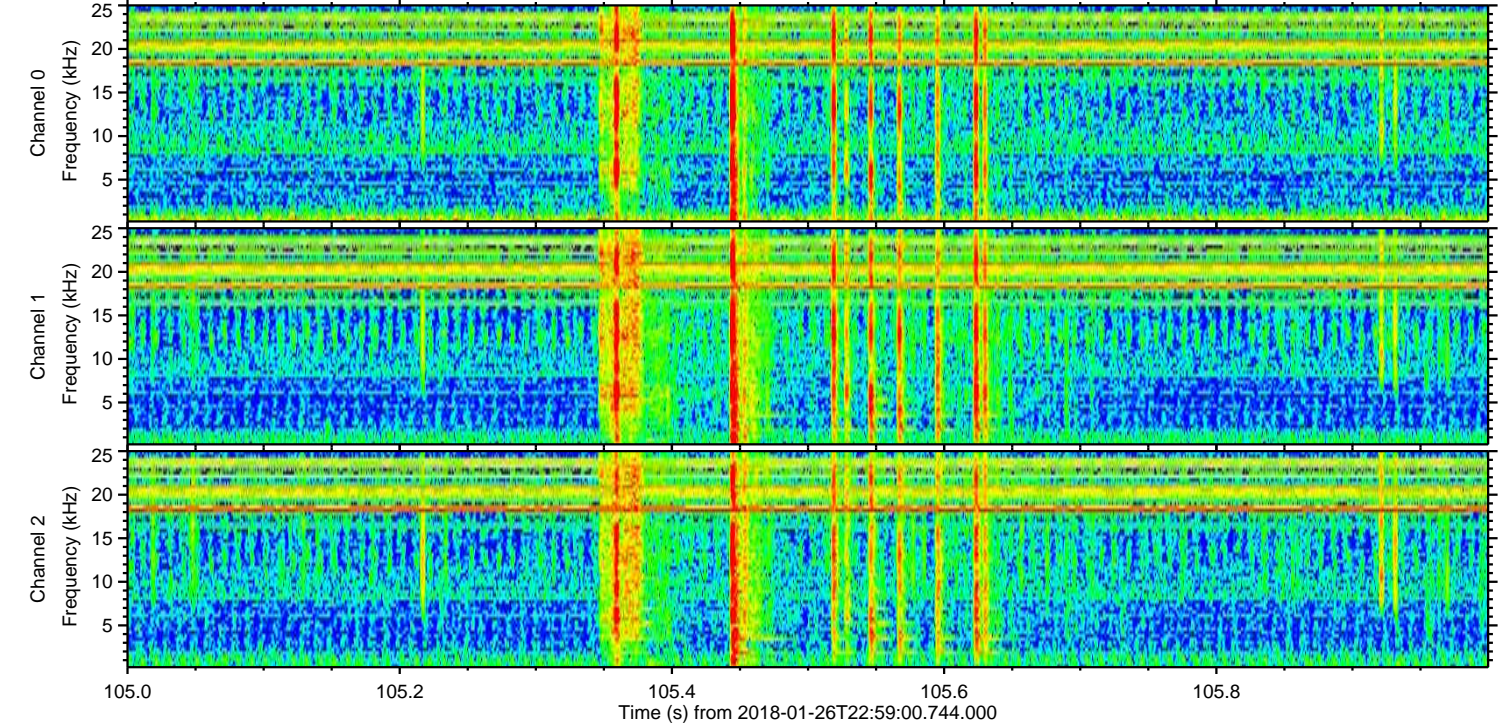
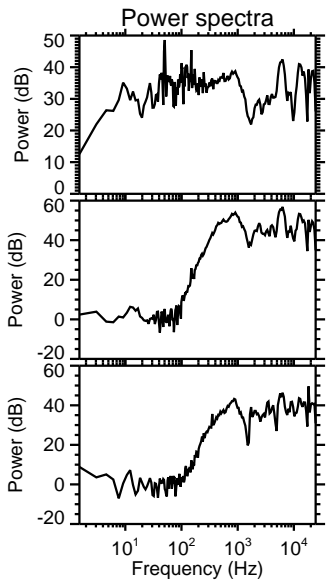
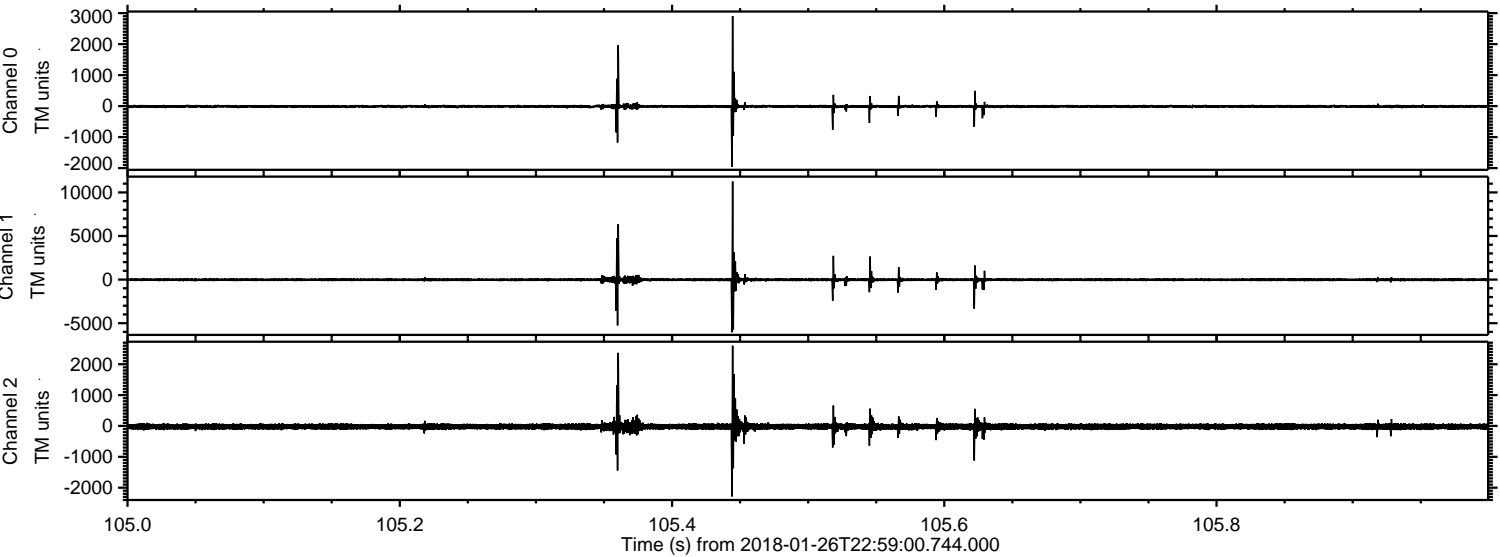
ELMAVAN 3D WAVEFORMS (Measured data sampled at 50 kHz) 51000 packets of 144 samples from 2018-01-26T22:59:00.744.000.

Processed Sat Jan 27 00:06:46 2018 by ELM ver.2012-10-06 from 001__elm20180126_225859__dat00.bin

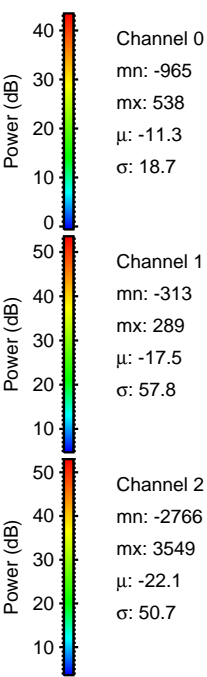
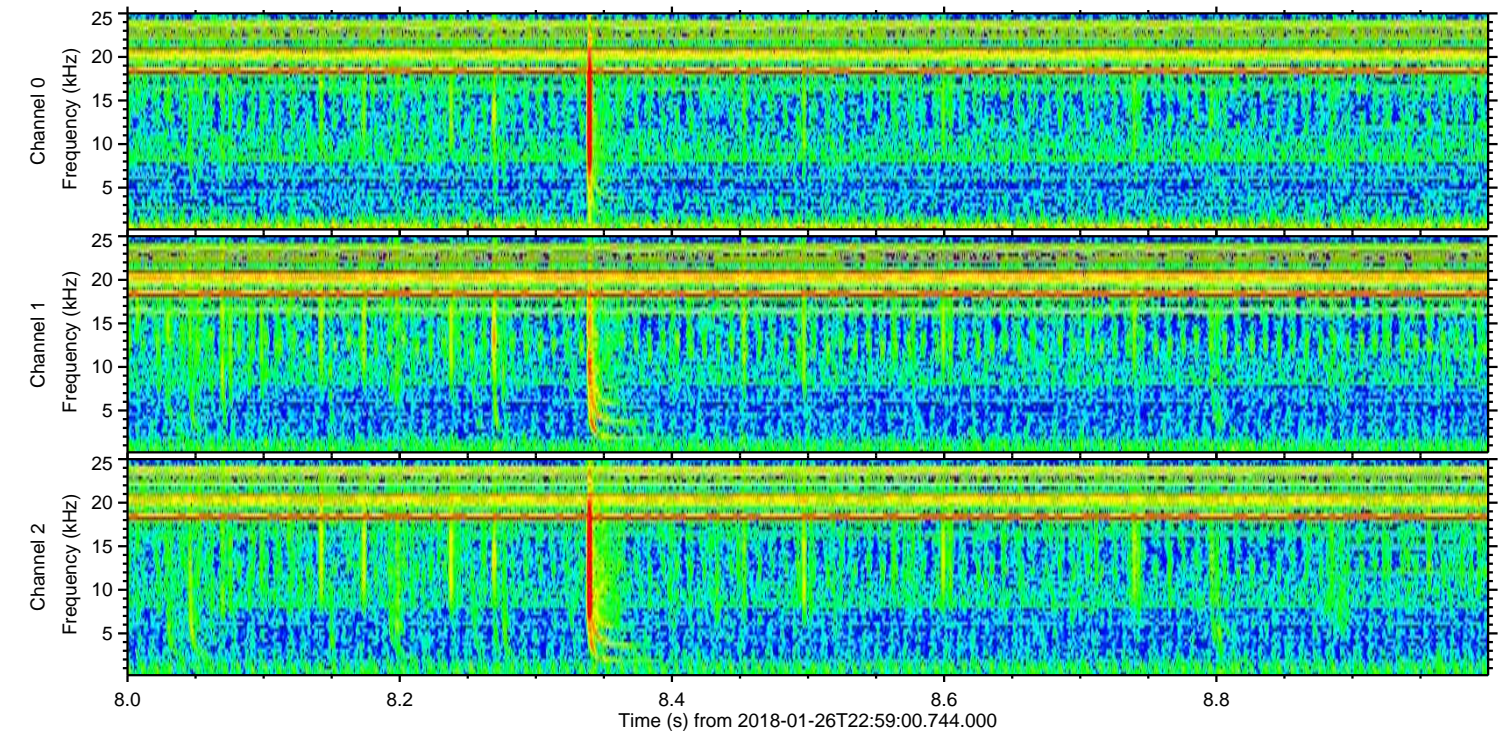
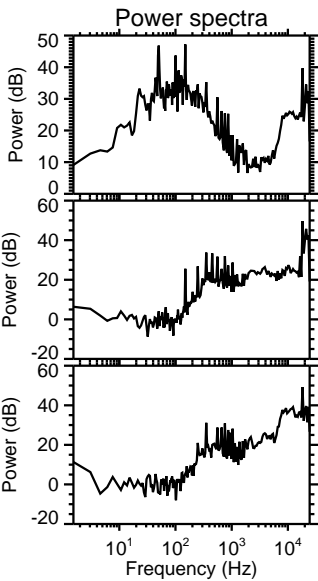
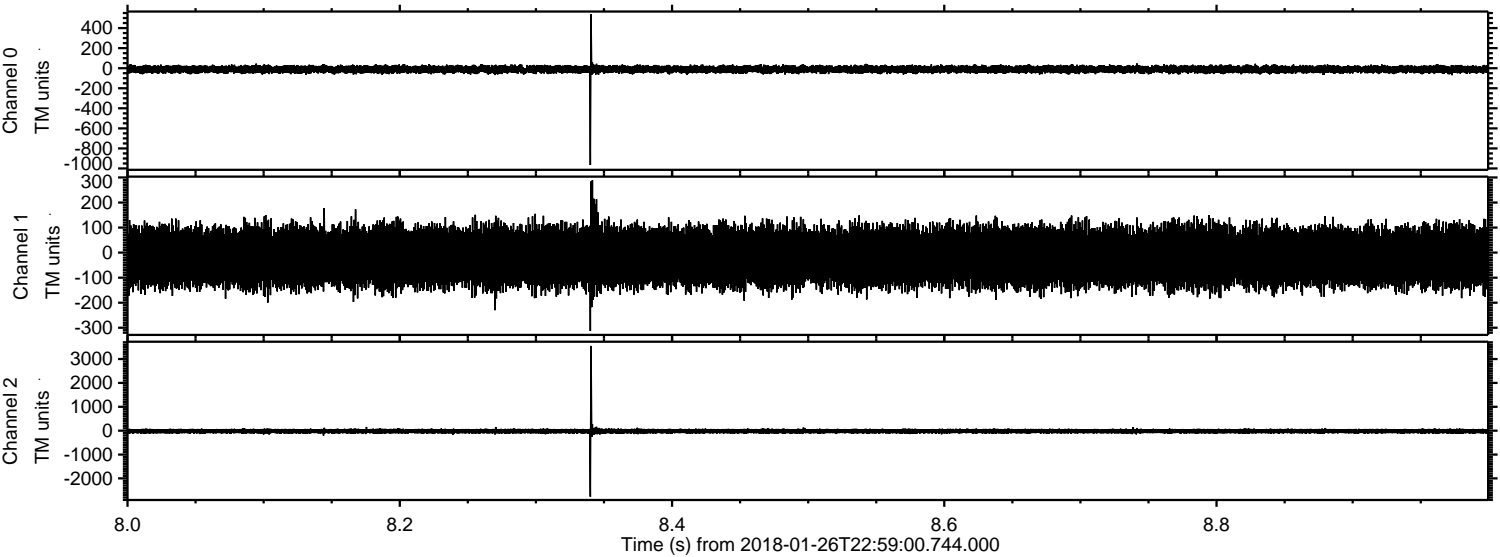


ELMAVAN 3D WAVEFORMS (Measured data sampled at 50 kHz) 51000 packets of 144 samples from 2018-01-26T22:59:00.744.000. Part 106/147

Processed Sat Jan 27 00:06:54 2018 by ELM ver.2012-10-06 from 001__elm20180126_225859__dat00.bin



Processed Sat Jan 27 00:06:55 2018 by ELM ver.2012-10-06 from 001__elm20180126_225859__dat00.bin



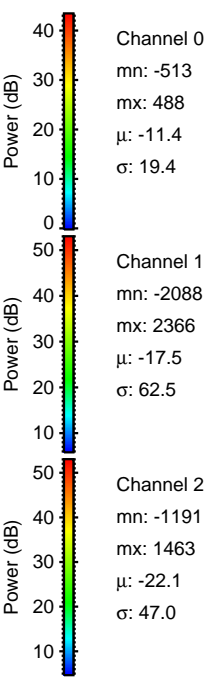
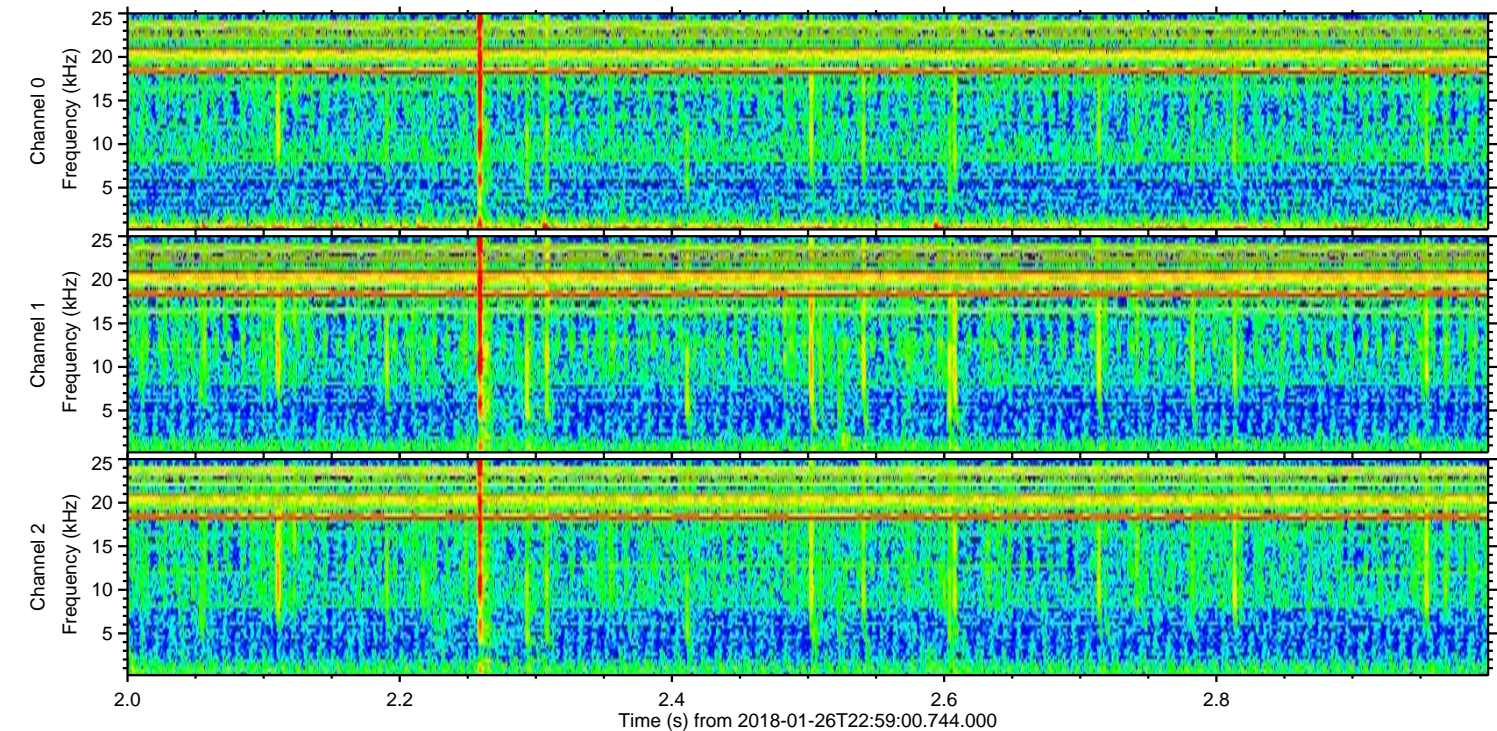
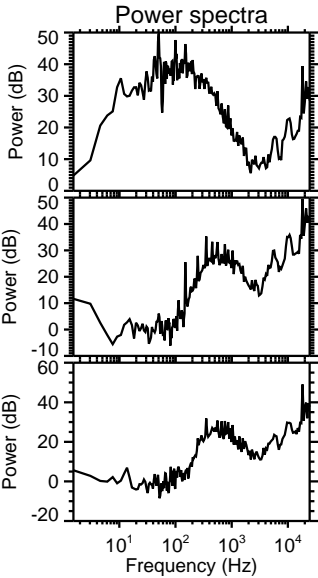
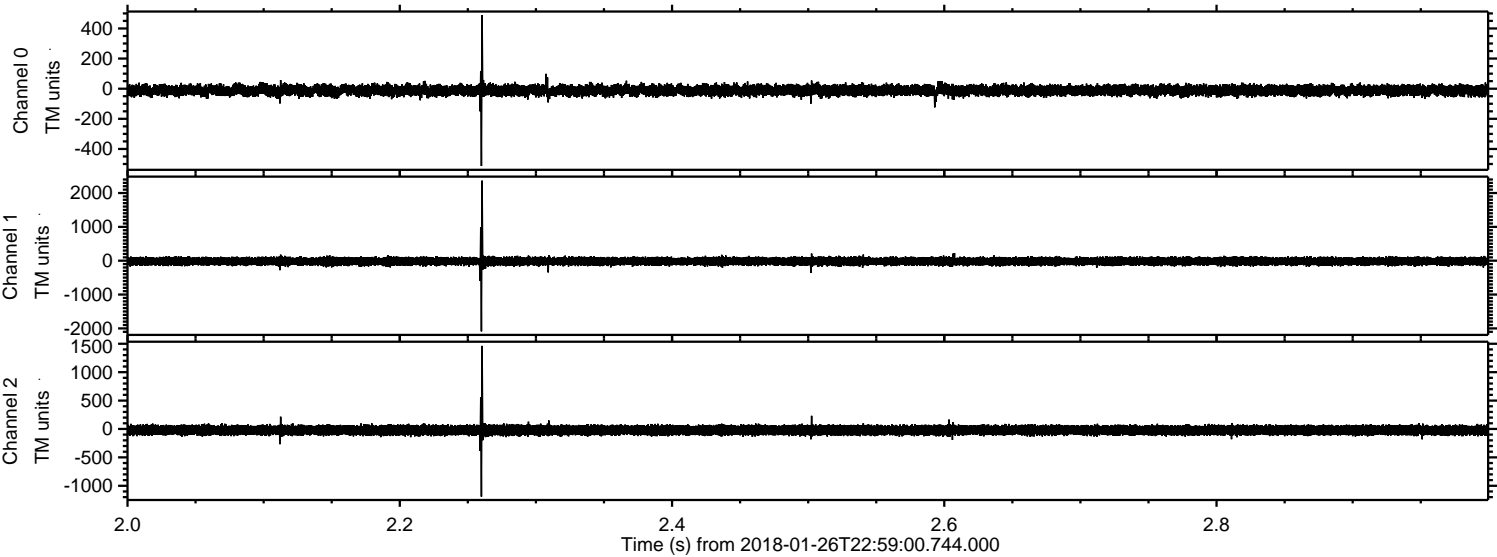
Channel 0
mn: -965
mx: 538
 μ : -11.3
 σ : 18.7

Channel 1
mn: -313
mx: 289
 μ : -17.5
 σ : 57.8

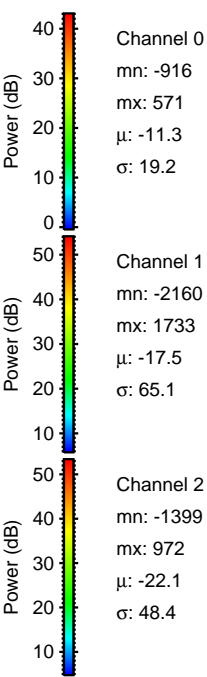
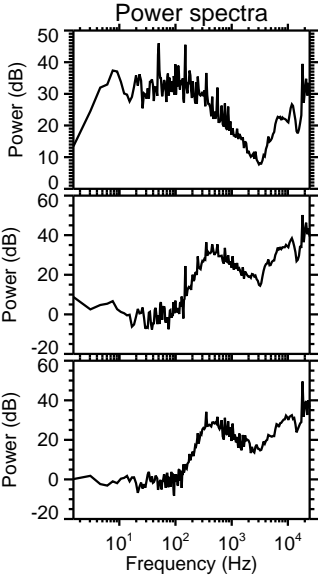
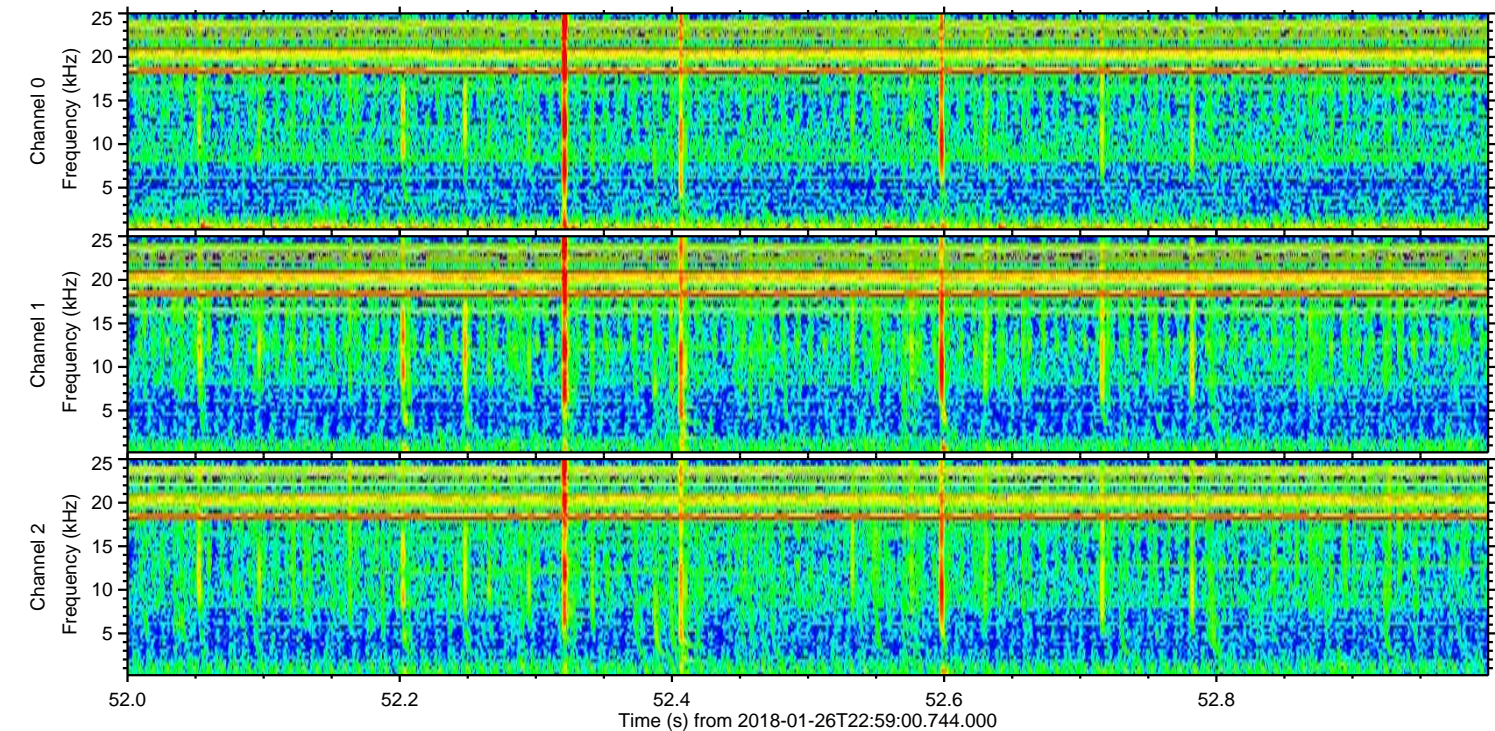
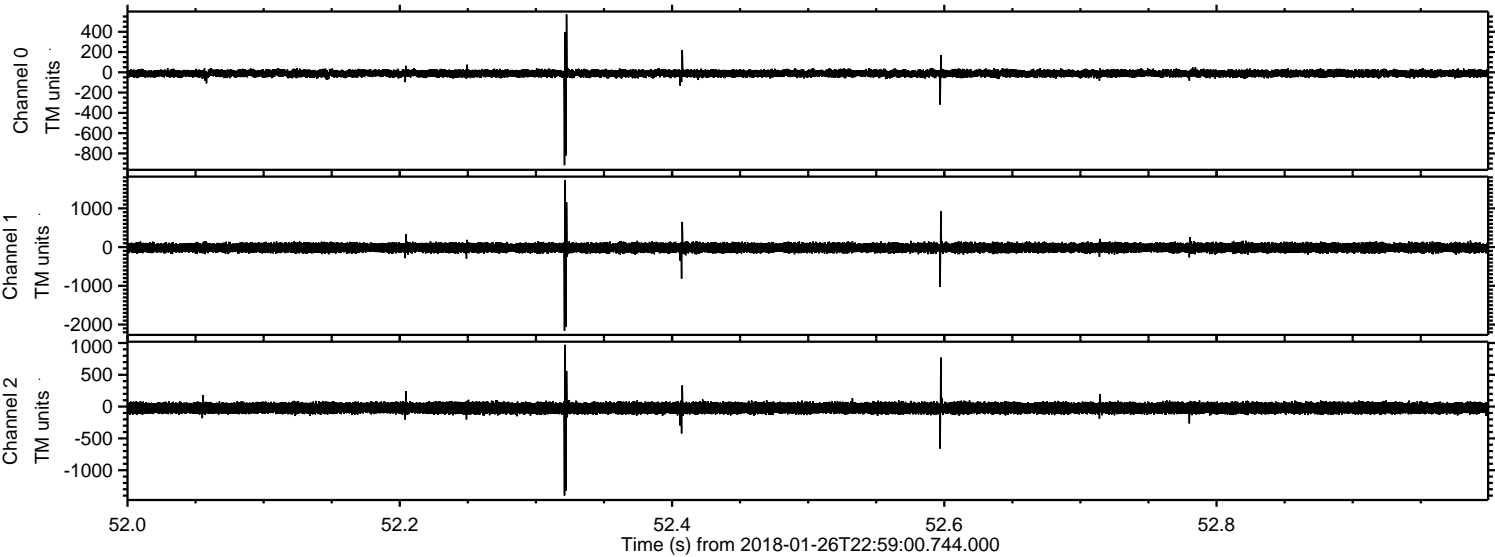
Channel 2
mn: -2766
mx: 3549
 μ : -22.1
 σ : 50.7

ELMAVAN 3D WAVEFORMS (Measured data sampled at 50 kHz) 51000 packets of 144 samples from 2018-01-26T22:59:00.744.000. Part 3/147

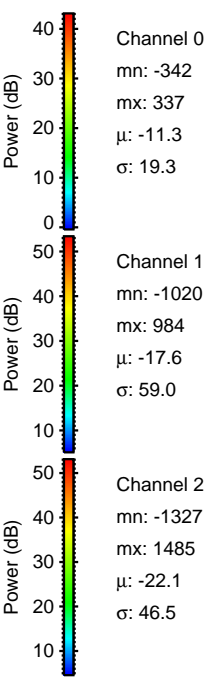
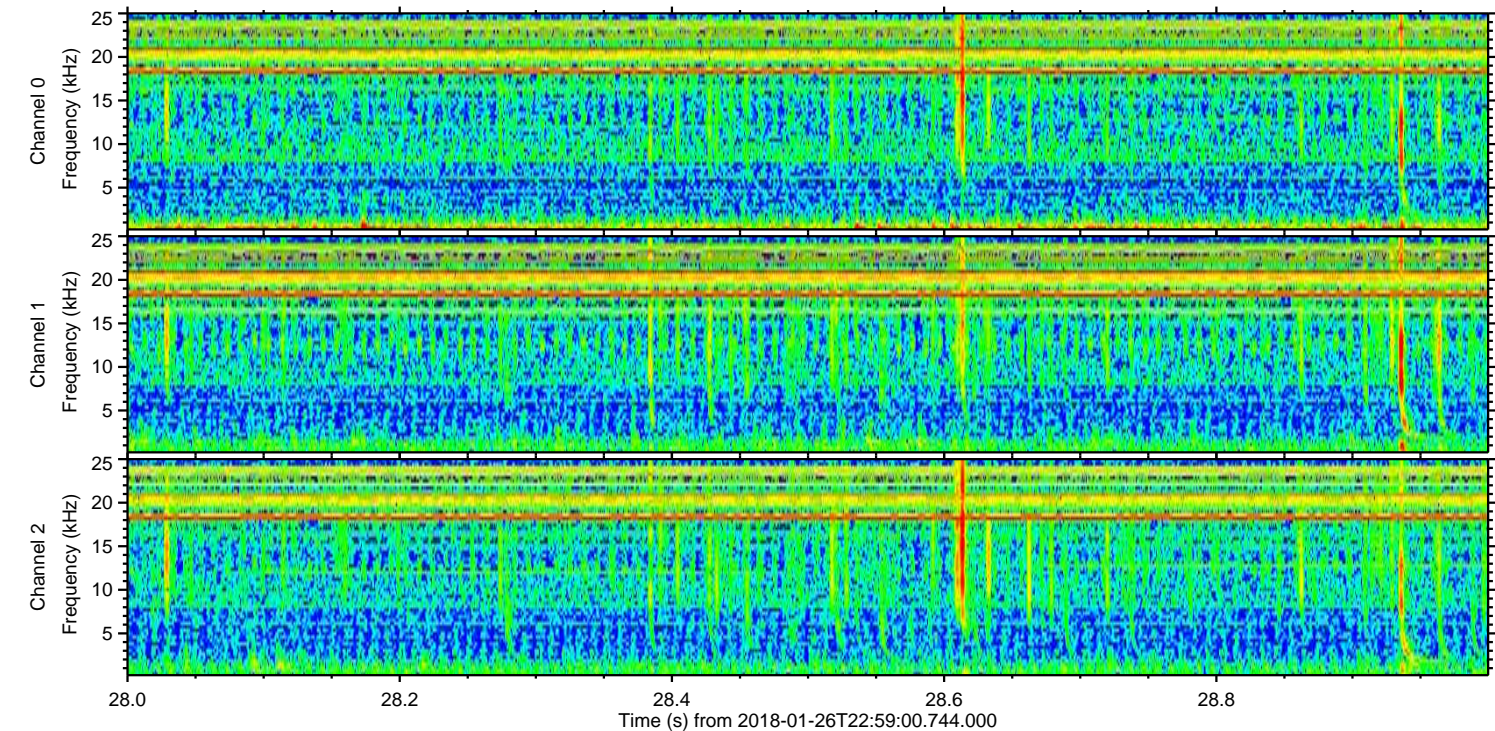
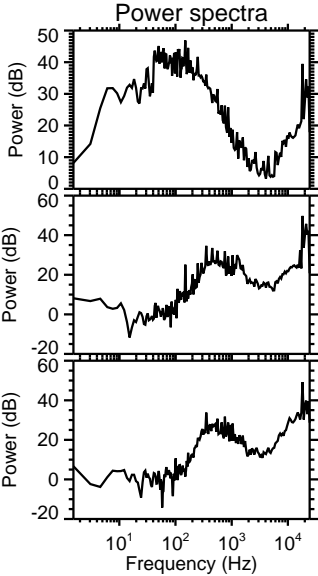
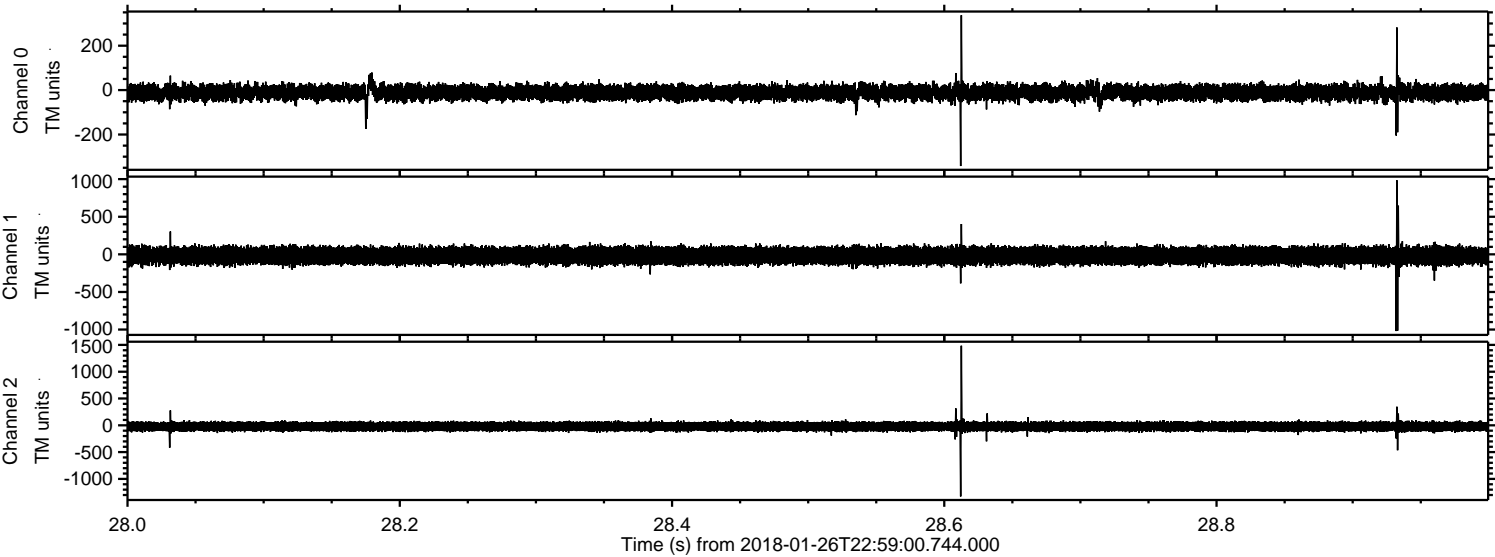
Processed Sat Jan 27 00:06:55 2018 by ELM ver.2012-10-06 from 001__elm20180126_225859__dat00.bin



Processed Sat Jan 27 00:06:56 2018 by ELM ver.2012-10-06 from 001__elm20180126_225859__dat00.bin

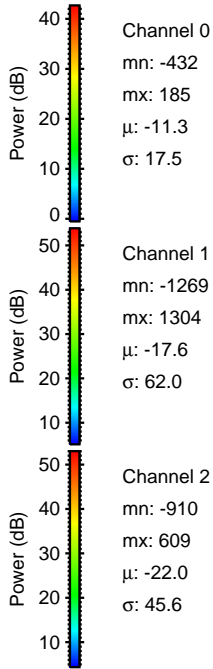
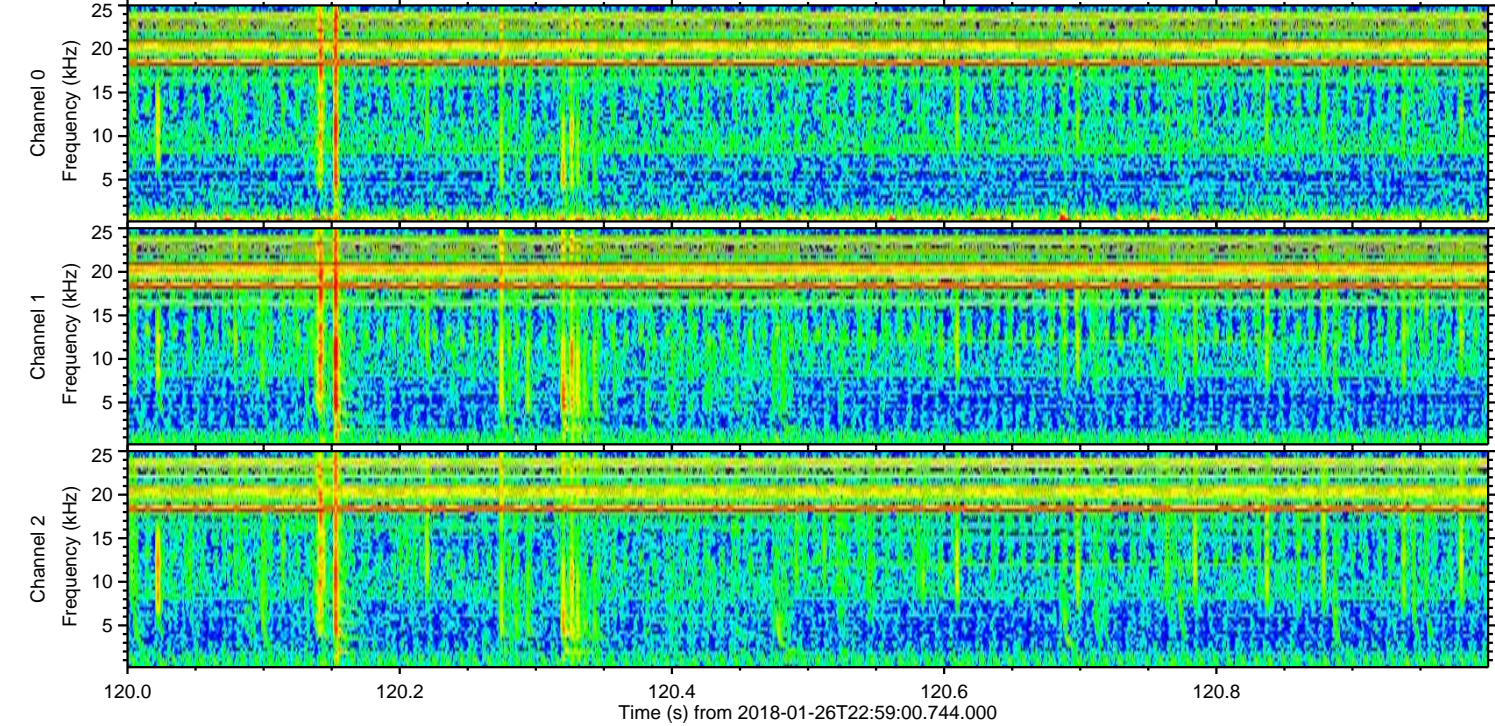
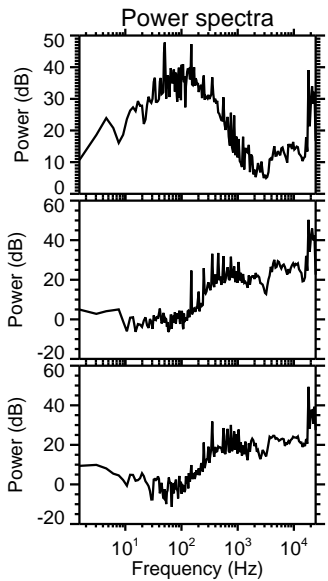
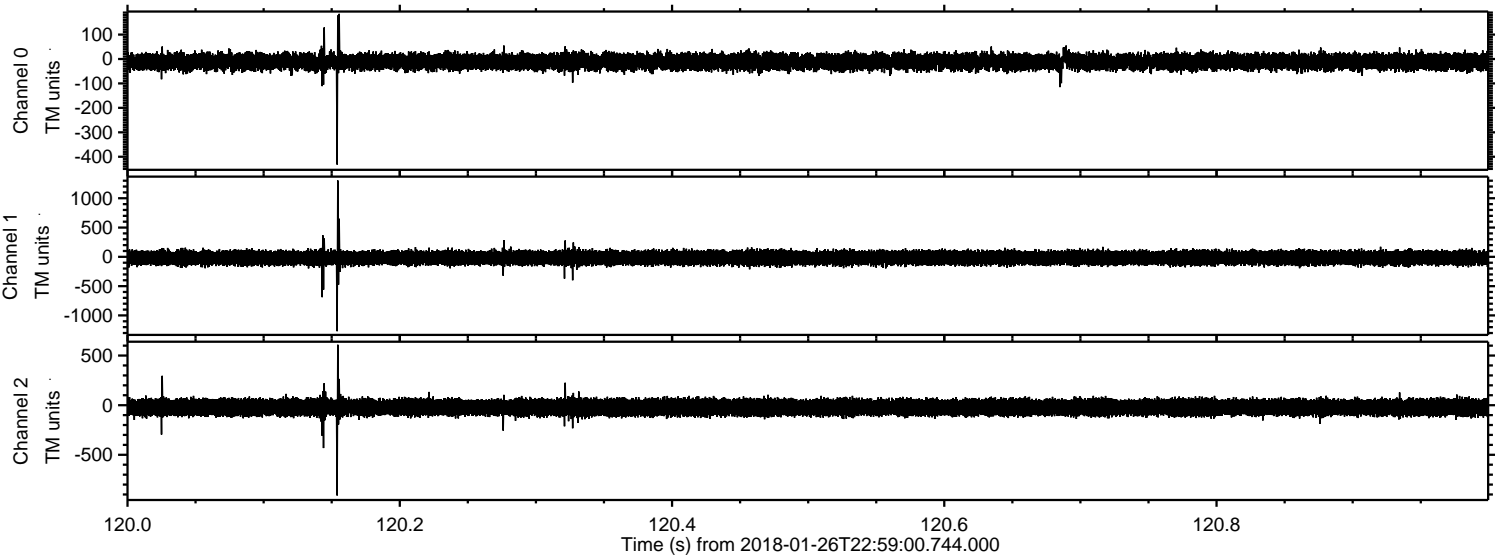


Processed Sat Jan 27 00:06:57 2018 by ELM ver.2012-10-06 from 001__elm20180126_225859__dat00.bin

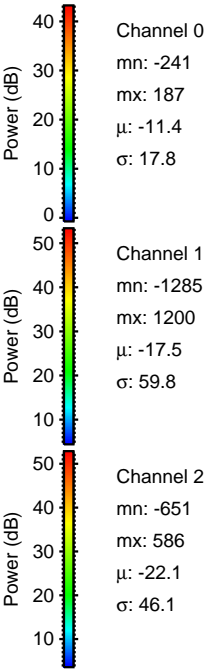
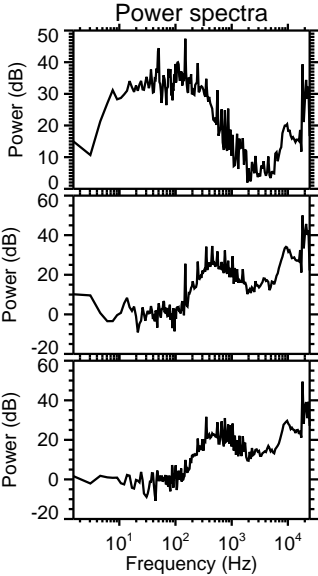
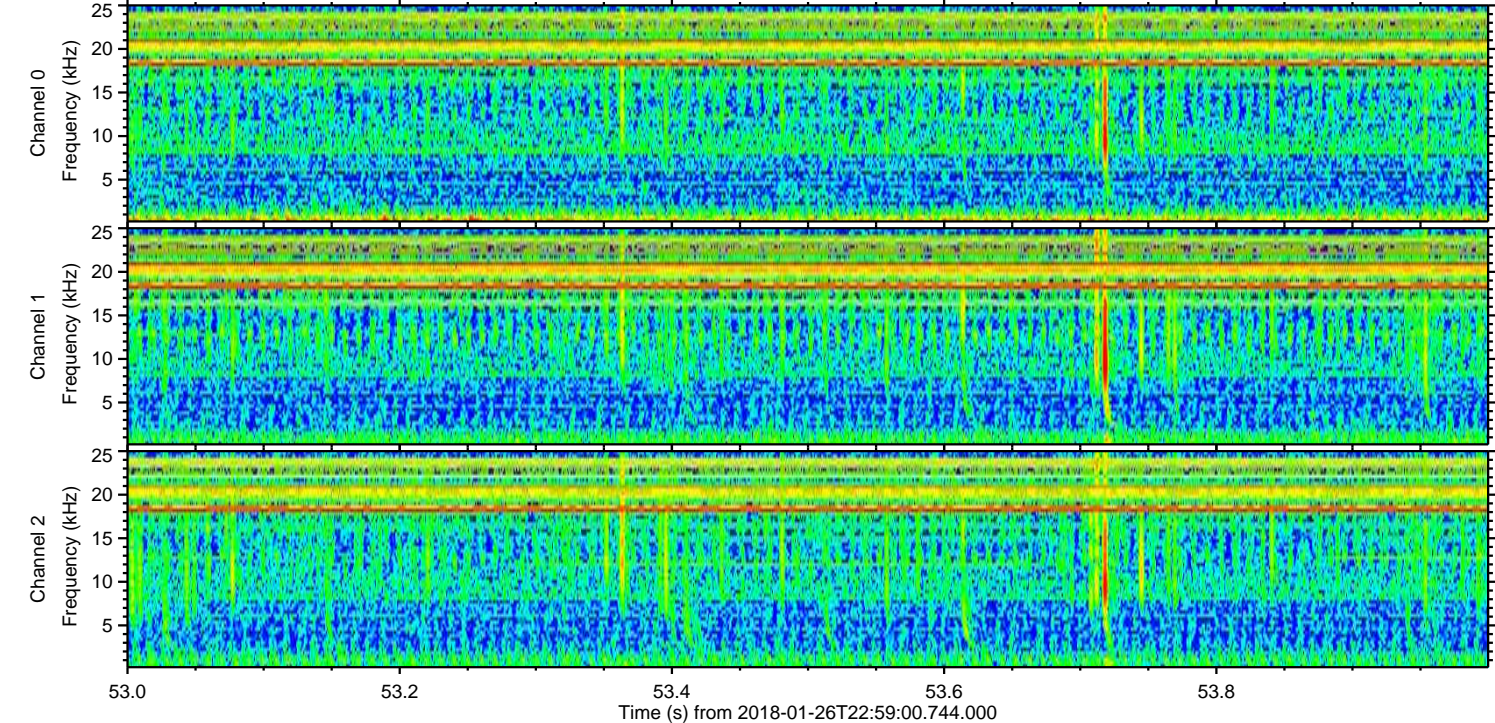
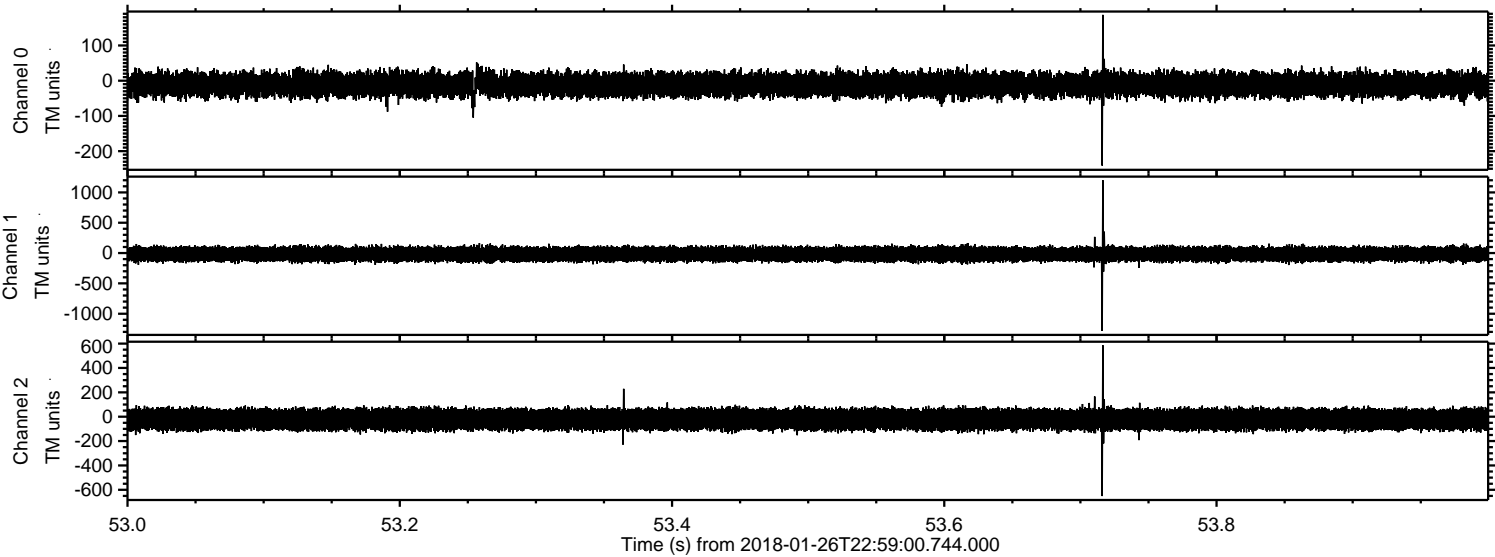


ELMAVAN 3D WAVEFORMS (Measured data sampled at 50 kHz) 51000 packets of 144 samples from 2018-01-26T22:59:00.744.000. Part 121/147

Processed Sat Jan 27 00:06:58 2018 by ELM ver.2012-10-06 from 001__elm20180126_225859__dat00.bin



Processed Sat Jan 27 00:06:59 2018 by ELM ver.2012-10-06 from 001__elm20180126_225859__dat00.bin

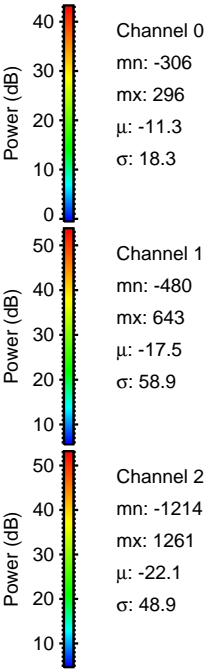
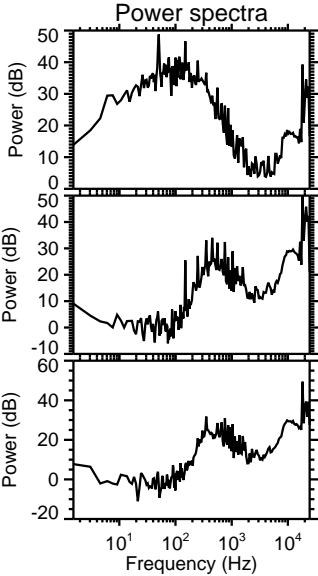
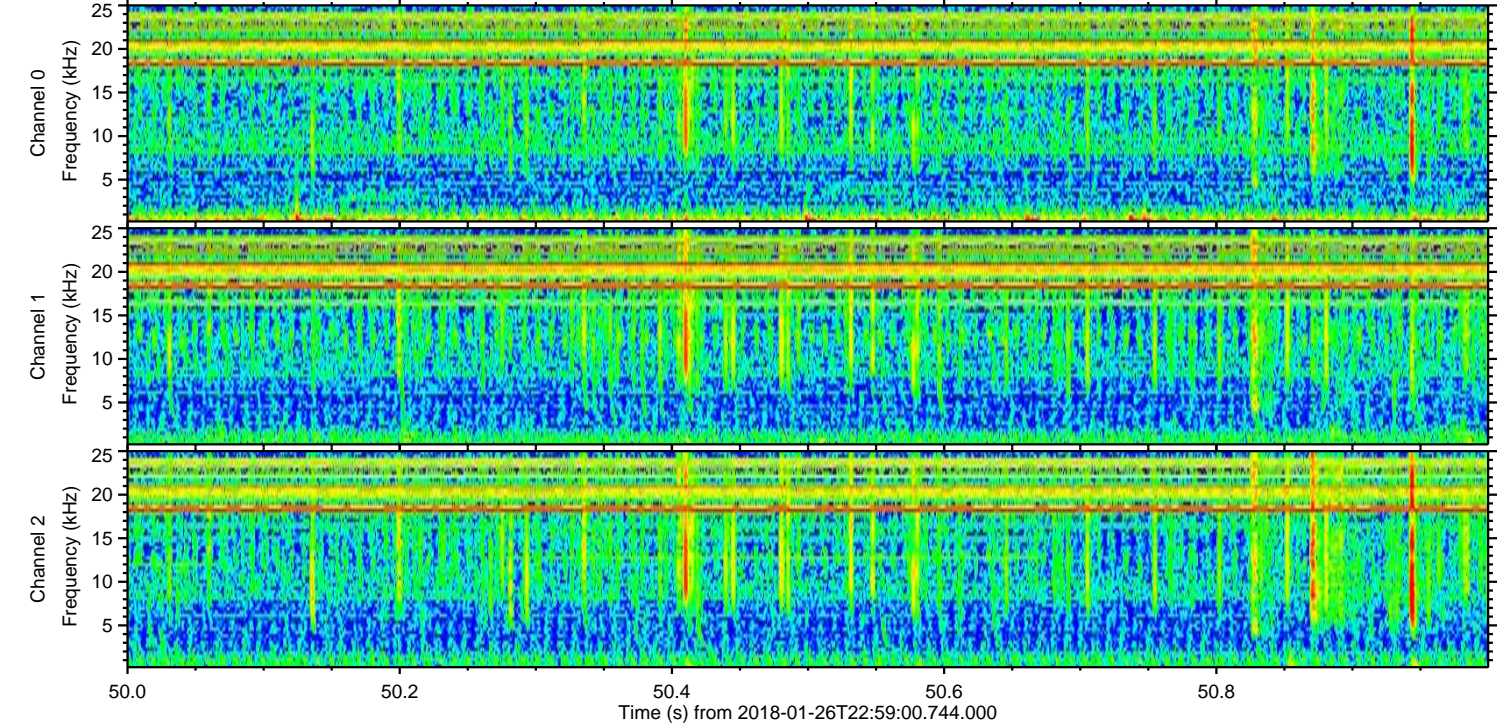
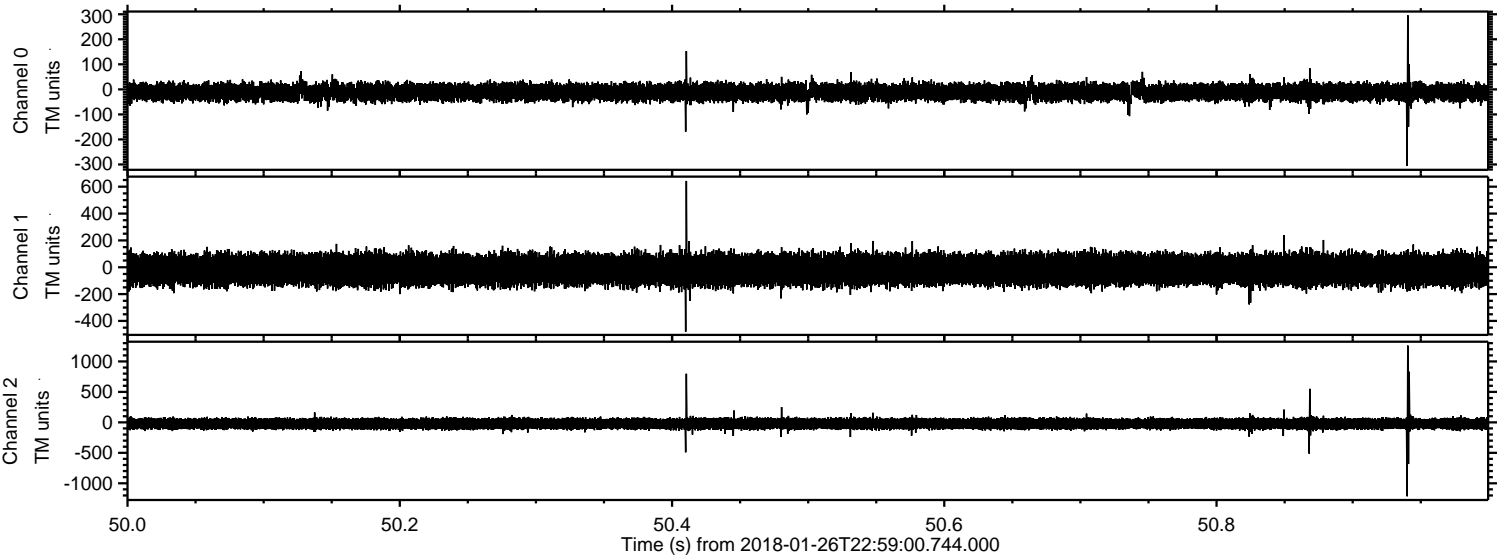


Channel 0
mn: -241
mx: 187
 μ : -11.4
 σ : 17.8

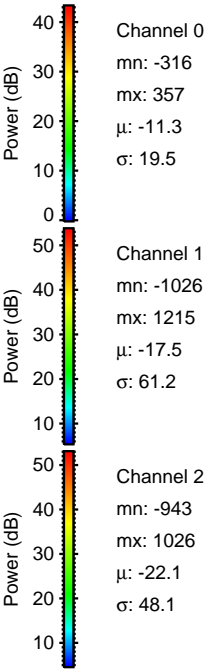
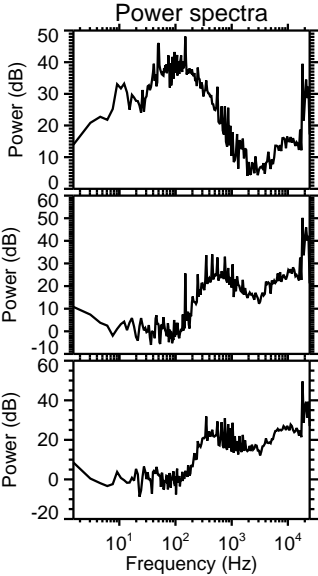
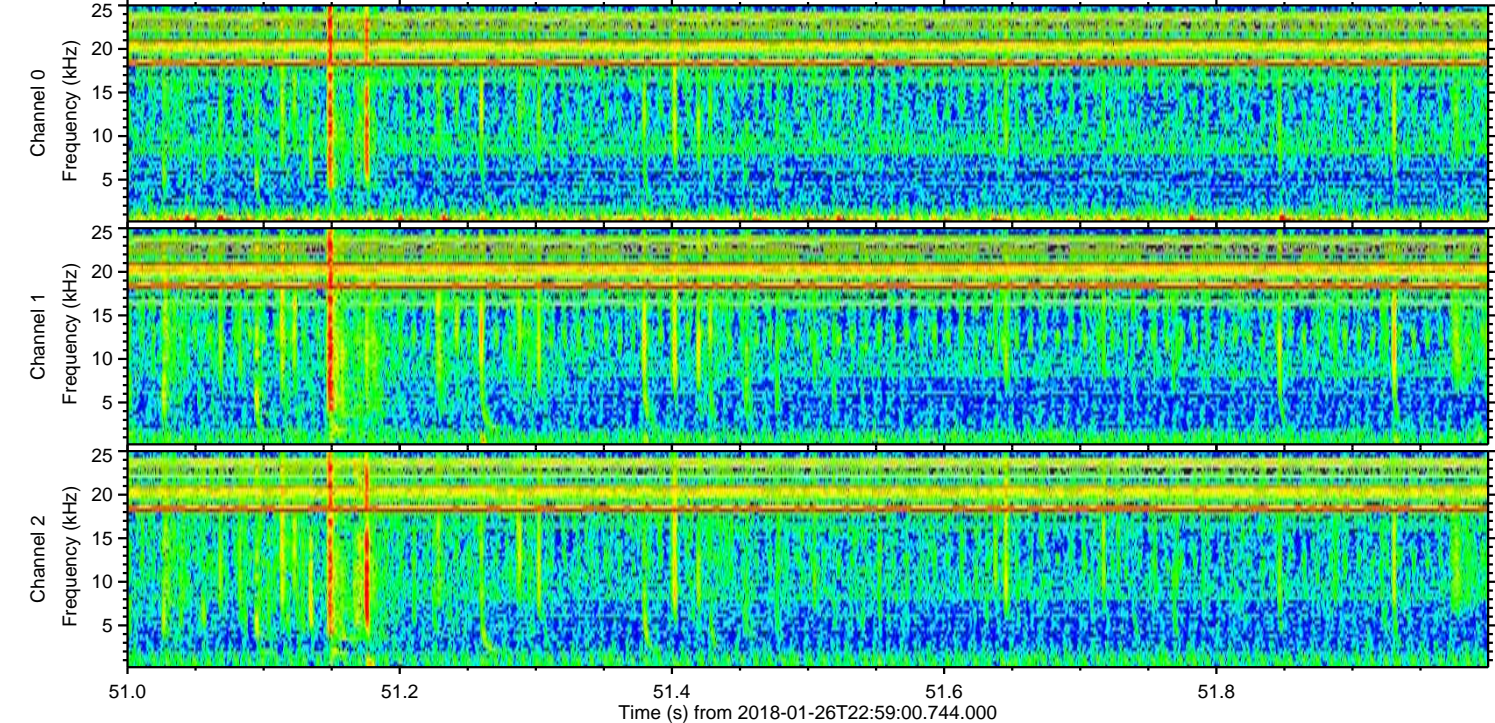
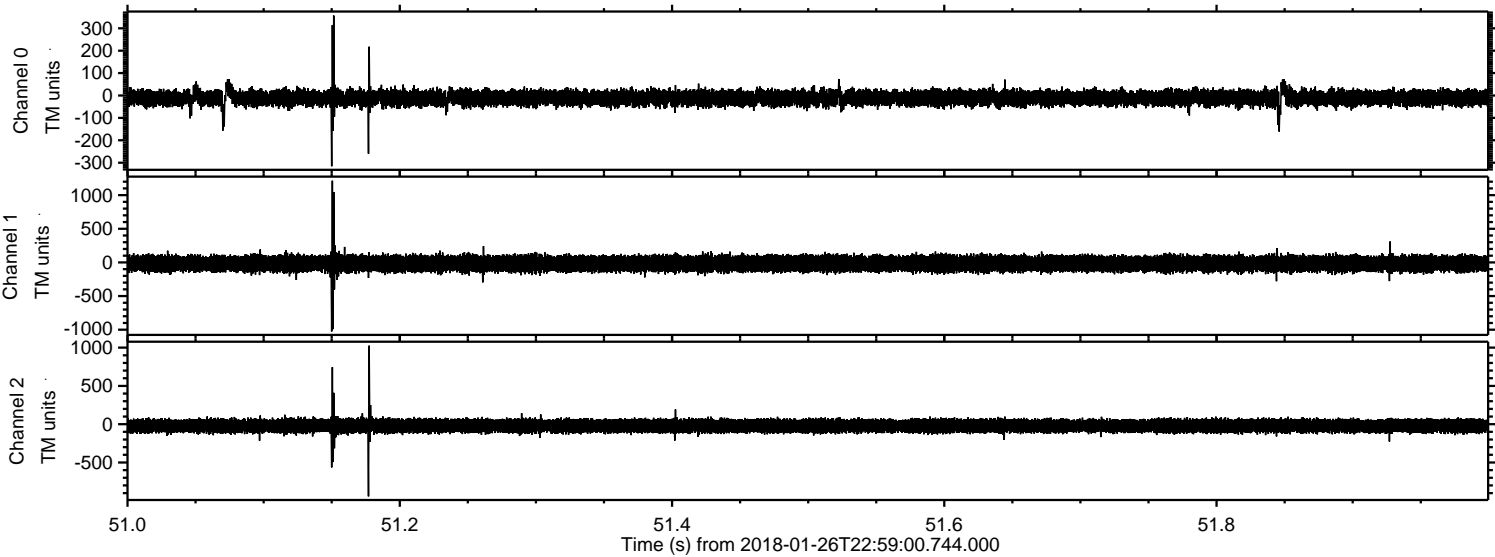
Channel 1
mn: -1285
mx: 1200
 μ : -17.5
 σ : 59.8

Channel 2
mn: -651
mx: 586
 μ : -22.1
 σ : 46.1

Processed Sat Jan 27 00:06:59 2018 by ELM ver.2012-10-06 from 001__elm20180126_225859__dat00.bin



Processed Sat Jan 27 00:07:00 2018 by ELM ver.2012-10-06 from 001__elm20180126_225859__dat00.bin



Processed Sat Jan 27 00:07:01 2018 by ELM ver.2012-10-06 from 001__elm20180126_225859__dat00.bin

