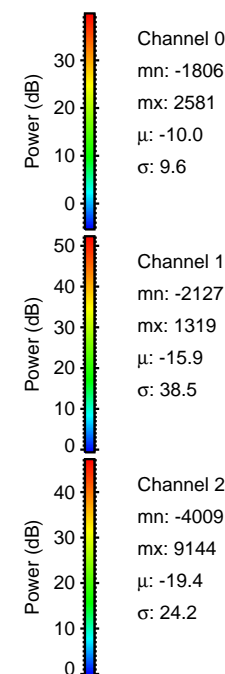
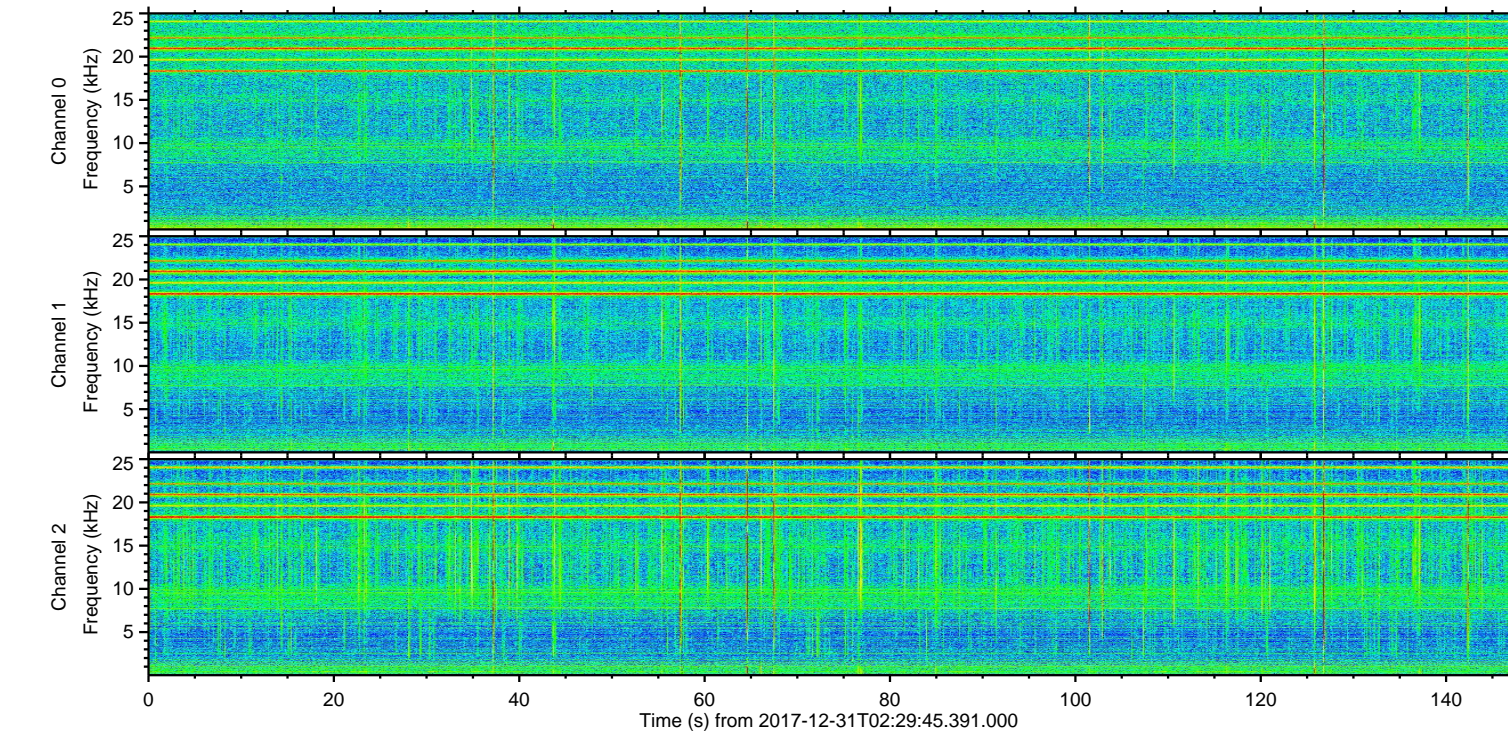
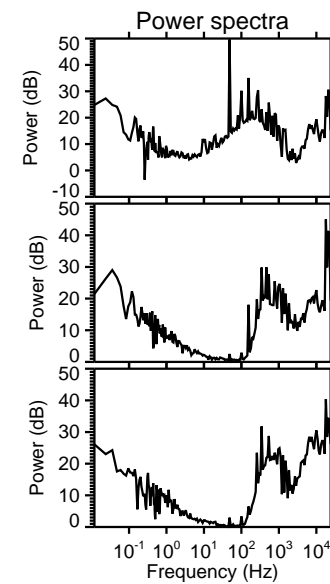
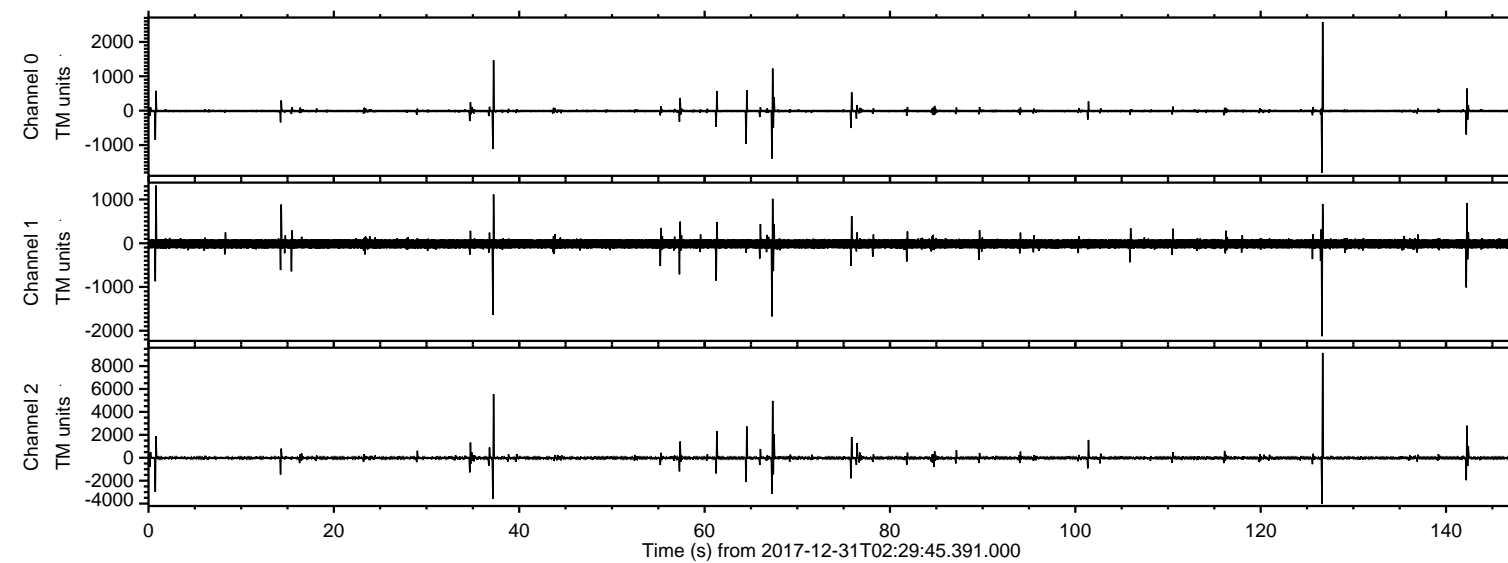


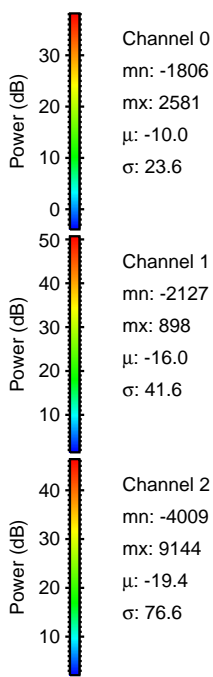
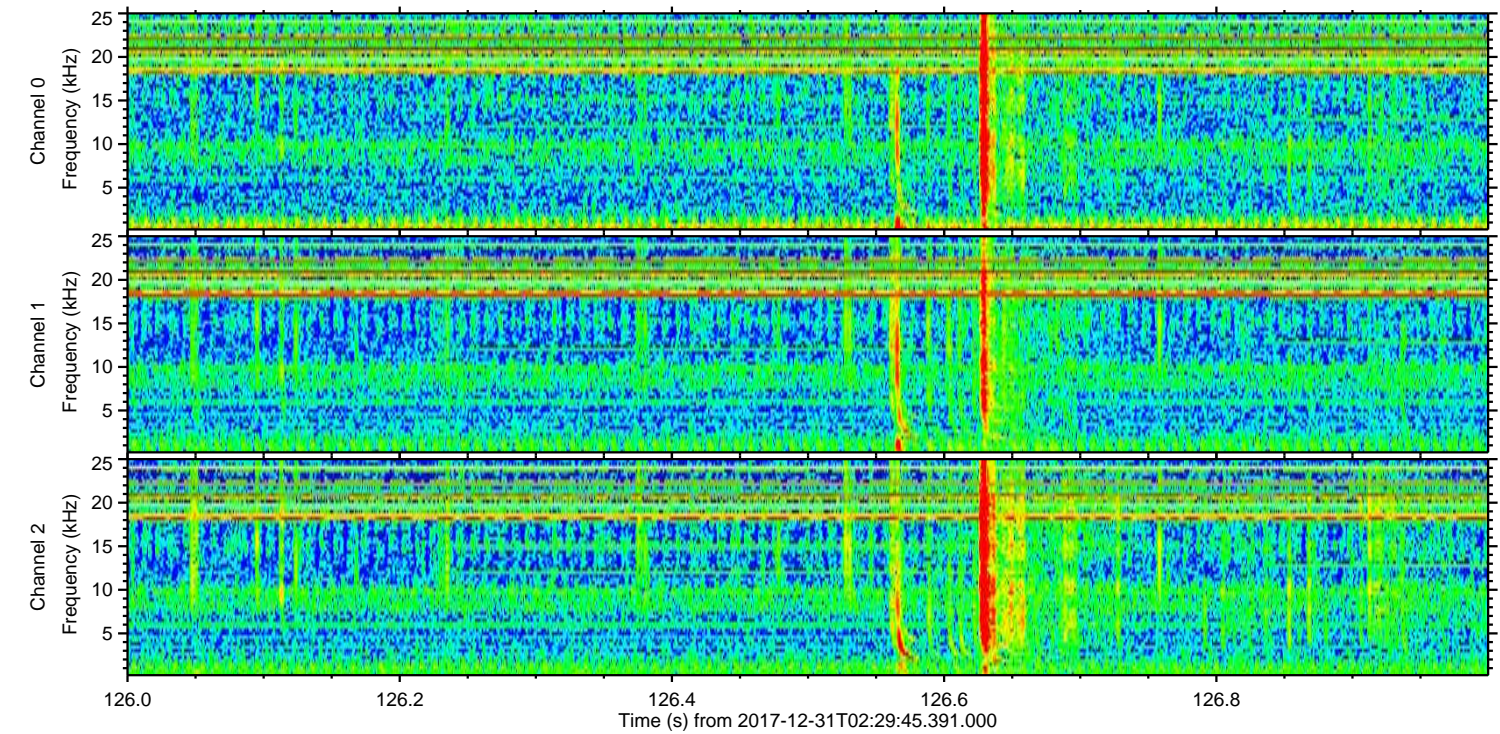
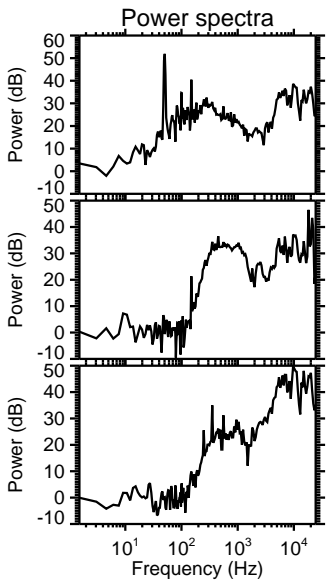
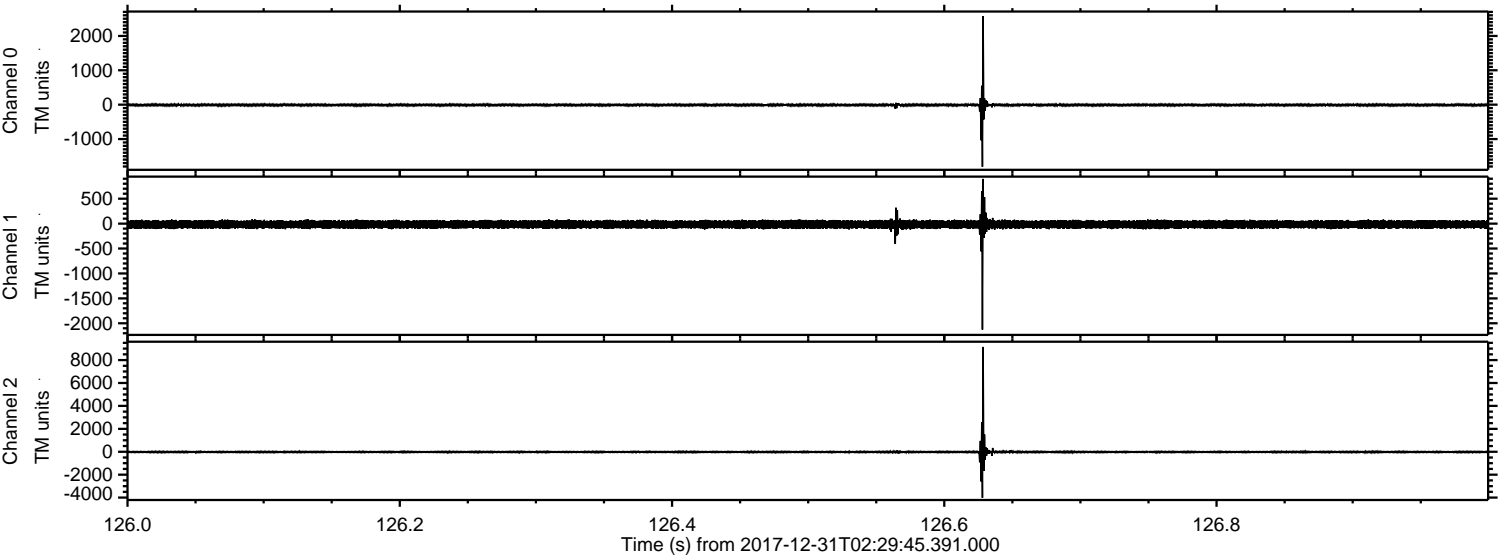
# ELMAVAN 3D WAVEFORMS (Measured data sampled at 50 kHz) 51000 packets of 144 samples from 2017-12-31T02:29:45.391.000.

Processed Sun Dec 31 03:38:01 2017 by ELM ver.2012-10-06 from 001\_\_elm20171231\_022944\_\_dat00.bin



ELMAVAN 3D WAVEFORMS (Measured data sampled at 50 kHz) 51000 packets of 144 samples from 2017-12-31T02:29:45.391.000. Part 127/147

Processed Sun Dec 31 03:38:10 2017 by ELM ver.2012-10-06 from 001\_\_elm20171231\_022944\_\_dat00.bin



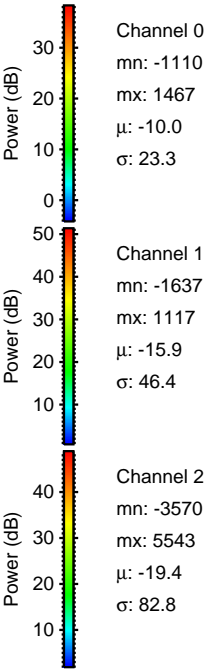
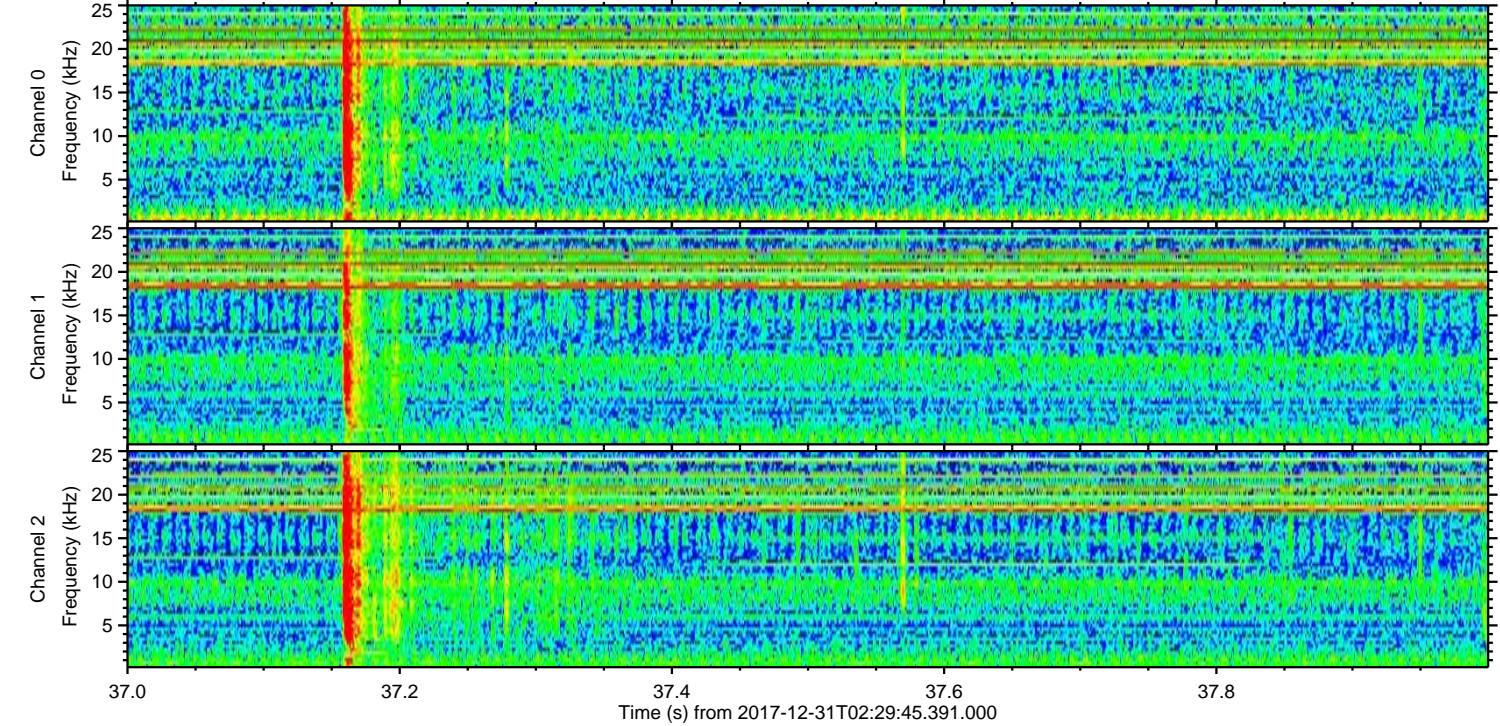
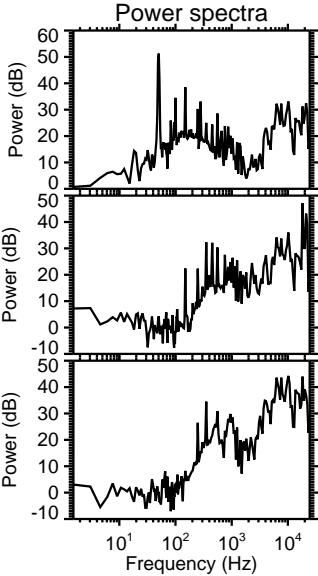
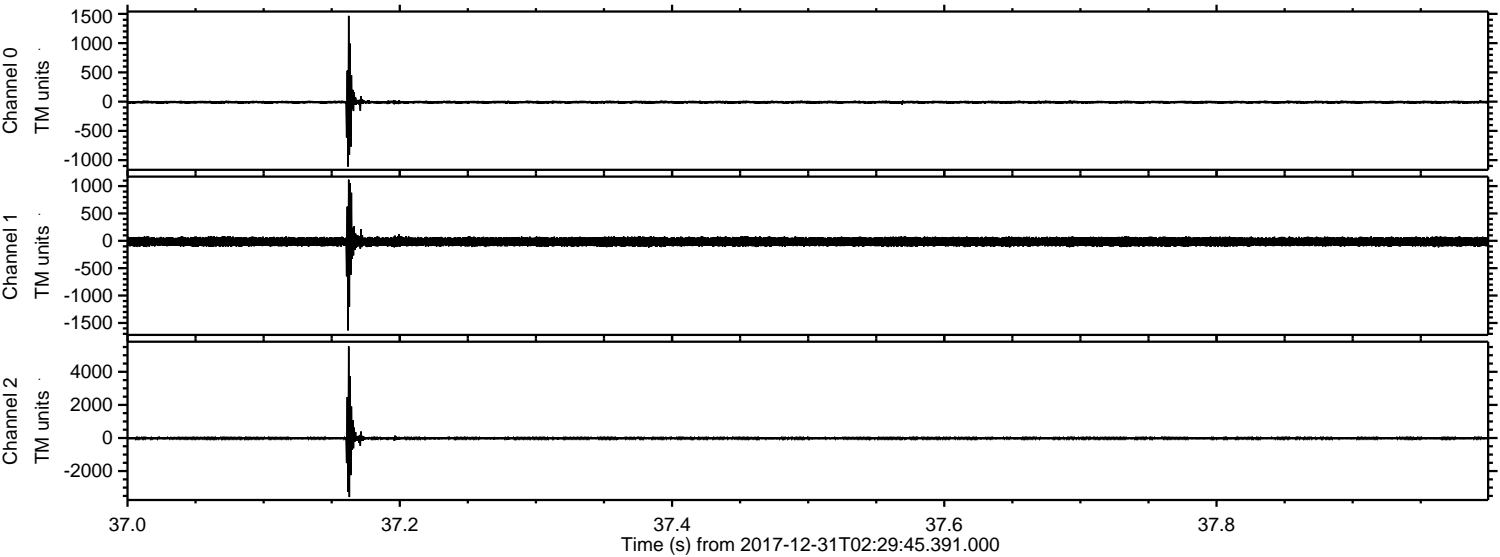
Channel 0  
mn: -1806  
mx: 2581  
 $\mu$ : -10.0  
 $\sigma$ : 23.6

Channel 1  
mn: -2127  
mx: 898  
 $\mu$ : -16.0  
 $\sigma$ : 41.6

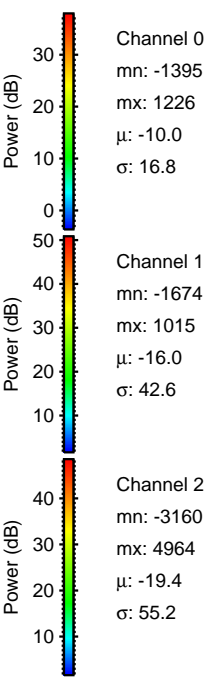
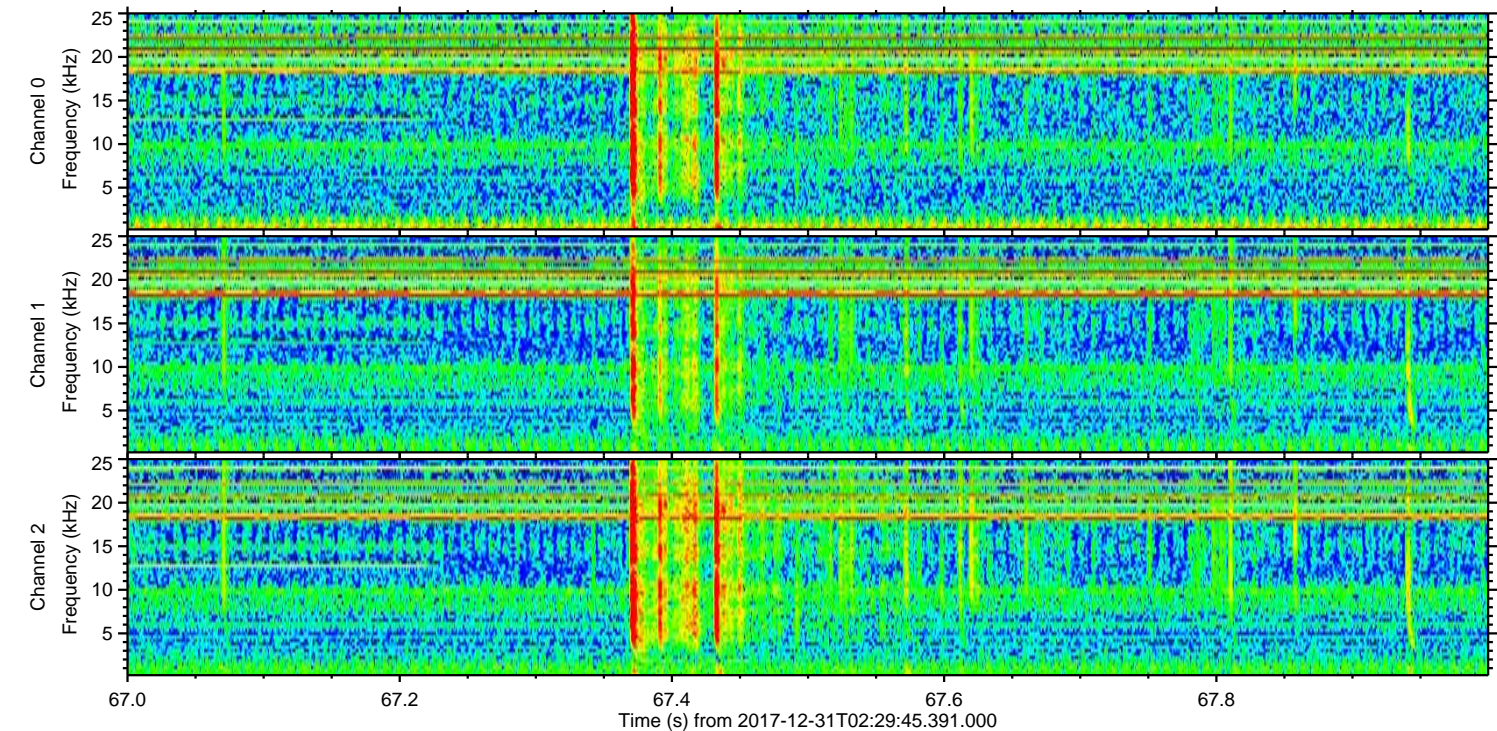
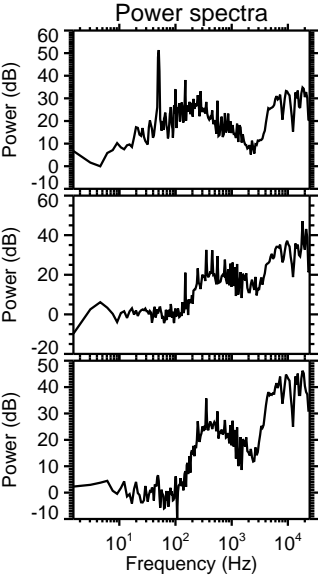
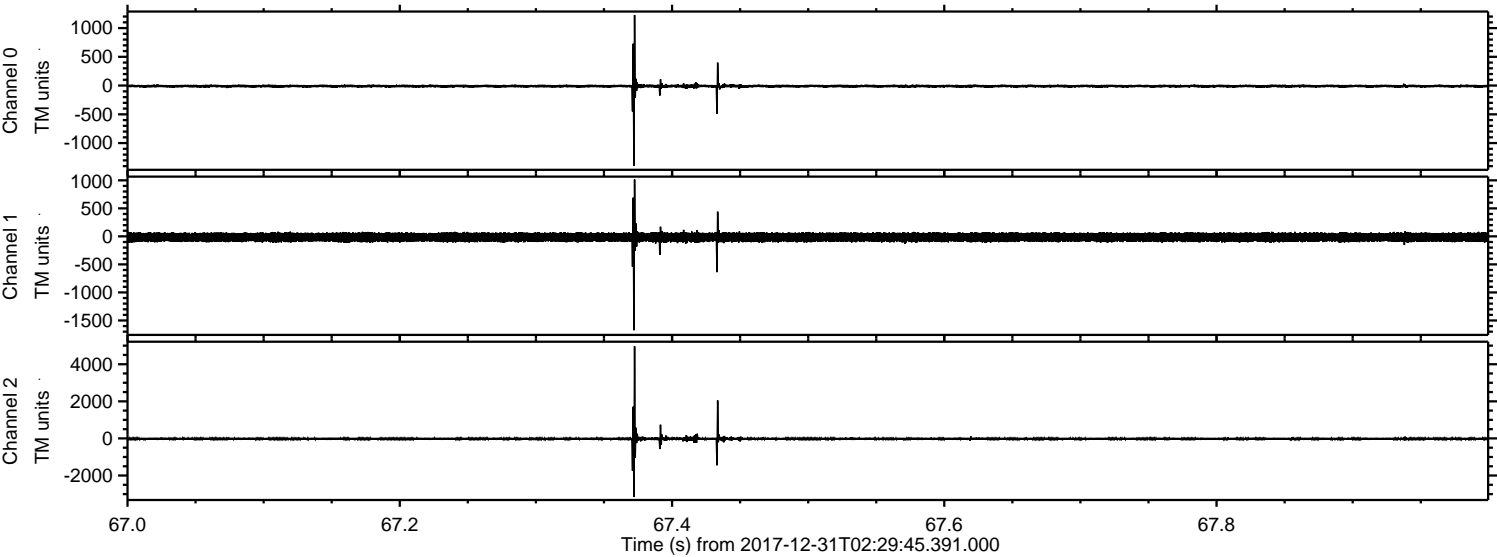
Channel 2  
mn: -4009  
mx: 9144  
 $\mu$ : -19.4  
 $\sigma$ : 76.6

ELMAVAN 3D WAVEFORMS (Measured data sampled at 50 kHz) 51000 packets of 144 samples from 2017-12-31T02:29:45.391.000. Part 38/147

Processed Sun Dec 31 03:38:11 2017 by ELM ver.2012-10-06 from 001\_\_elm20171231\_022944\_\_dat00.bin

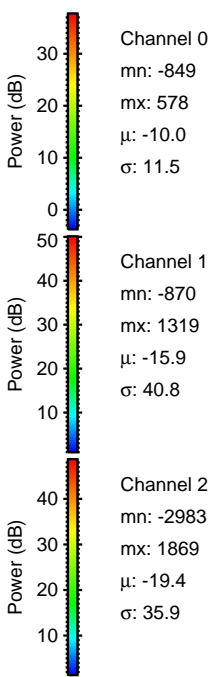
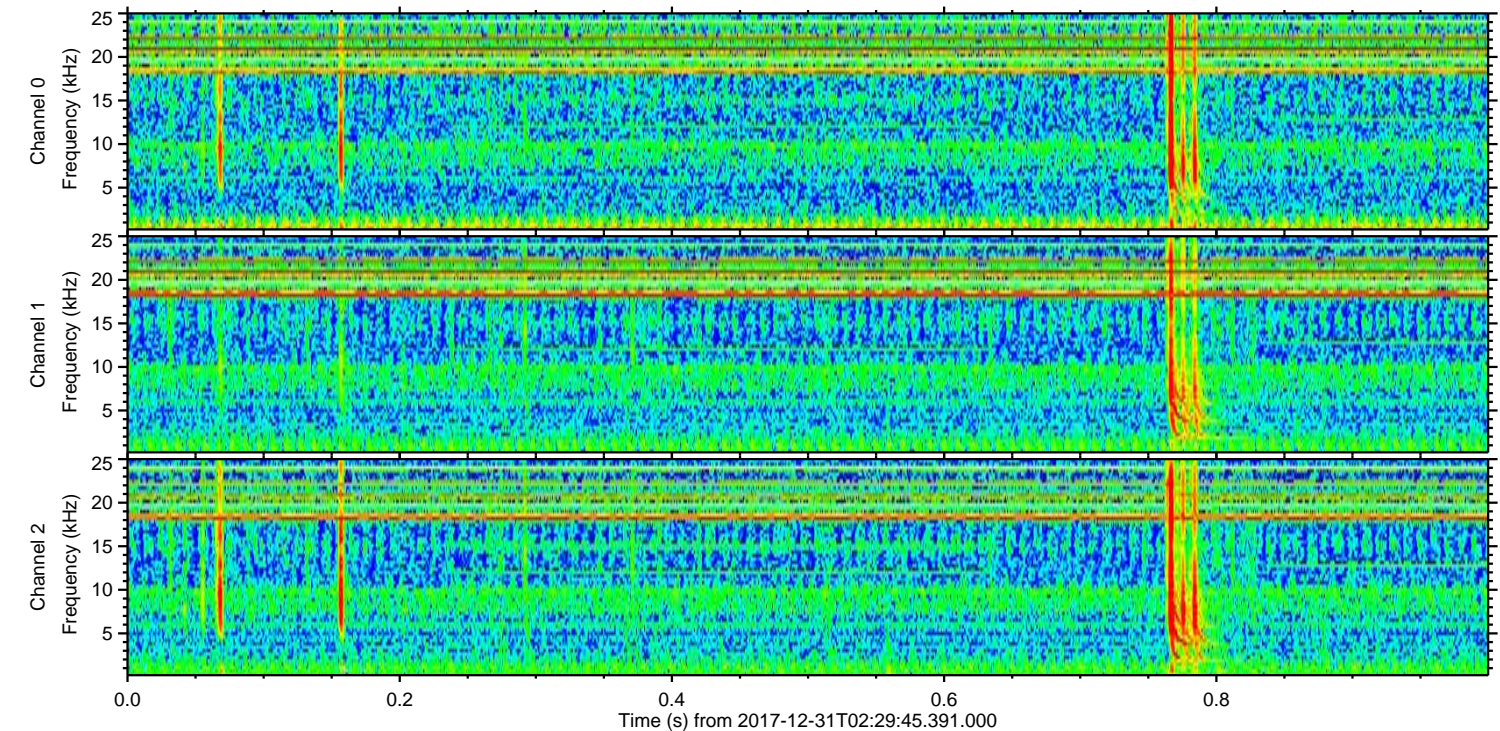
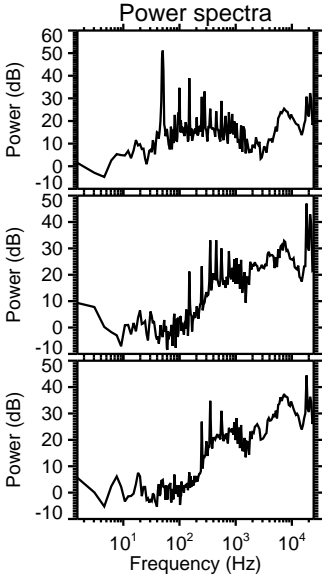
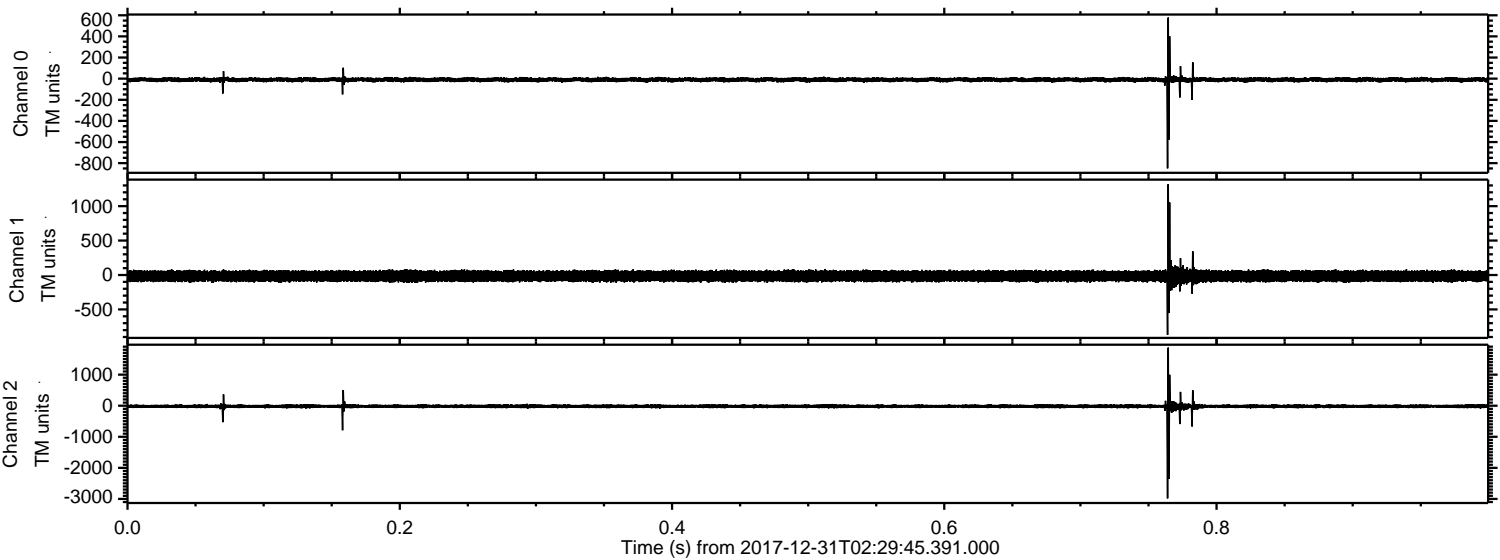


Processed Sun Dec 31 03:38:12 2017 by ELM ver.2012-10-06 from 001\_\_elm20171231\_022944\_\_dat00.bin



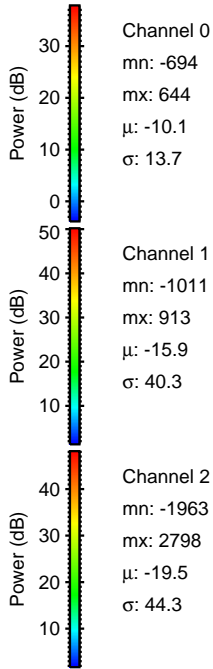
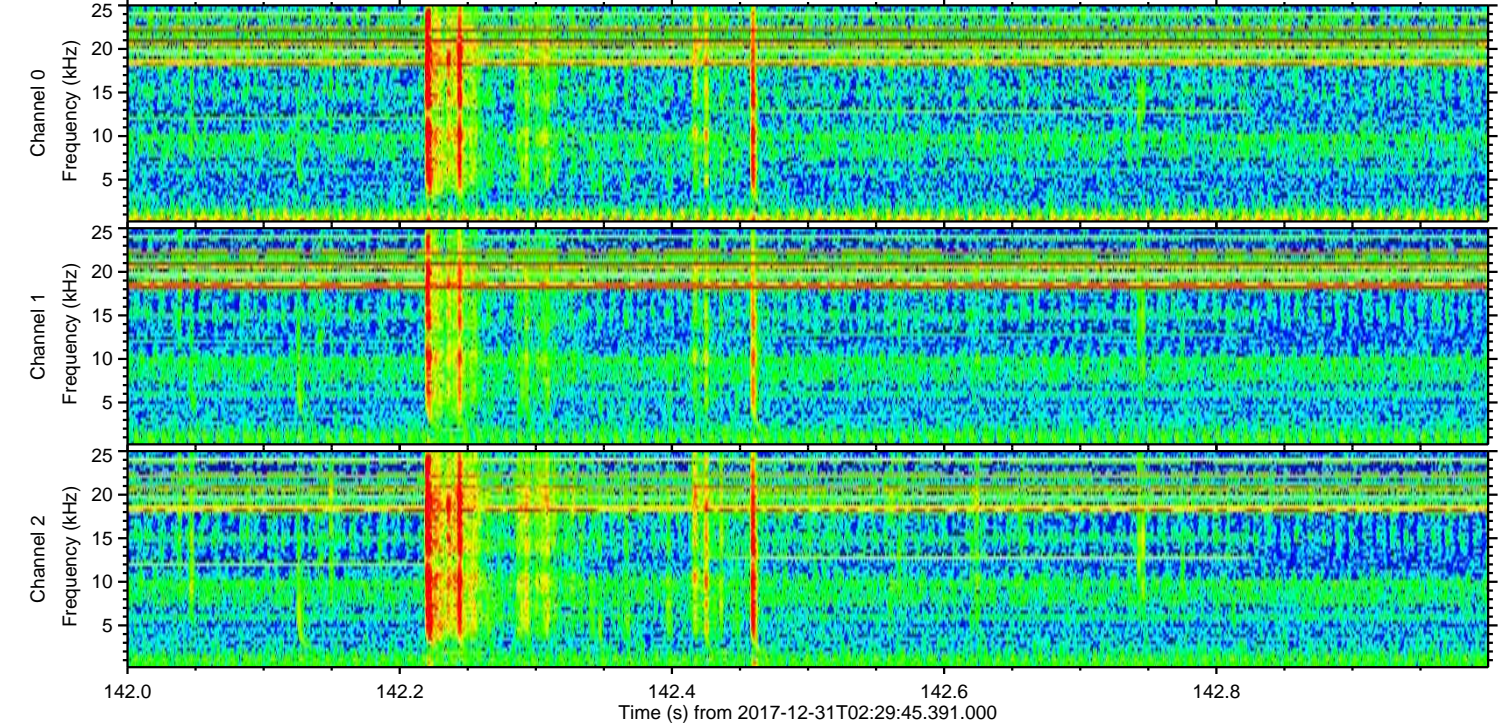
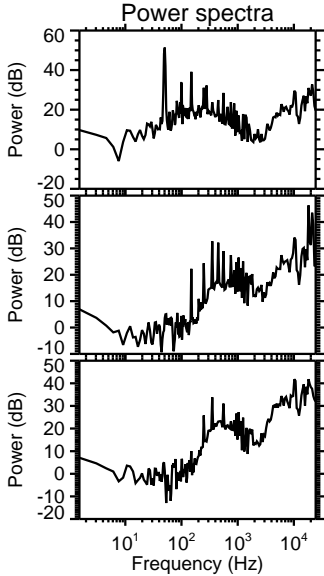
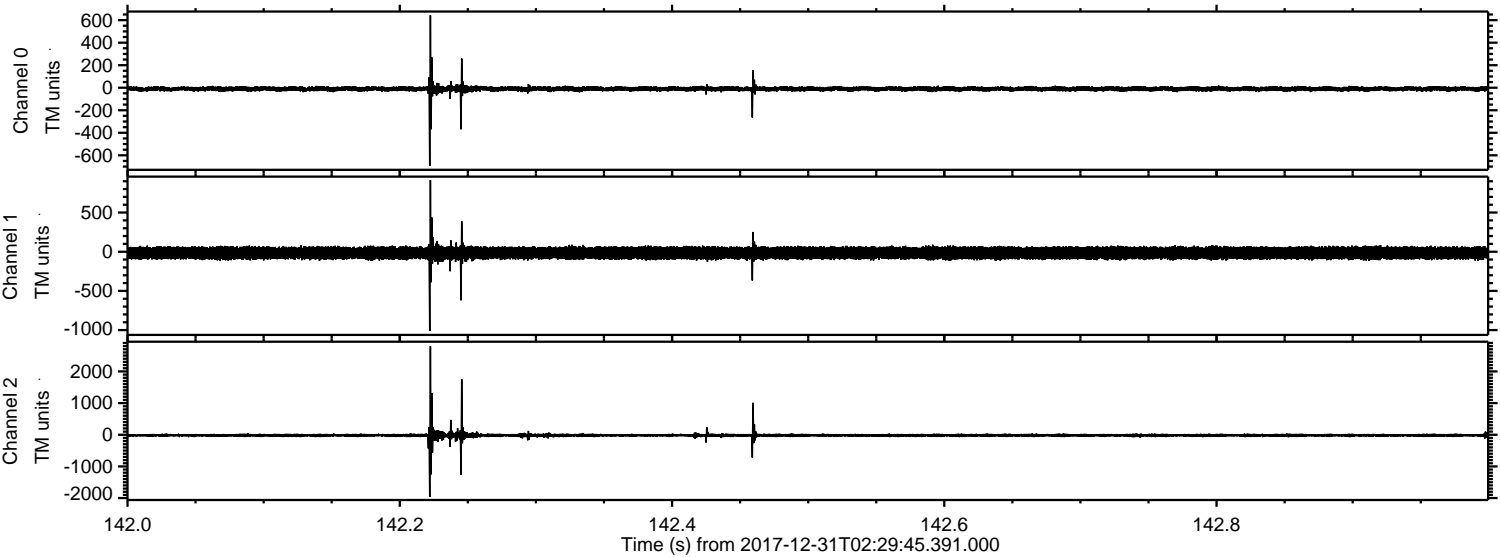
ELMAVAN 3D WAVEFORMS (Measured data sampled at 50 kHz) 51000 packets of 144 samples from 2017-12-31T02:29:45.391.000. Part 1/147

Processed Sun Dec 31 03:38:13 2017 by ELM ver.2012-10-06 from 001\_\_elm20171231\_022944\_\_dat00.bin



ELMAVAN 3D WAVEFORMS (Measured data sampled at 50 kHz) 51000 packets of 144 samples from 2017-12-31T02:29:45.391.000. Part 143/147

Processed Sun Dec 31 03:38:14 2017 by ELM ver.2012-10-06 from 001\_\_elm20171231\_022944\_\_dat00.bin

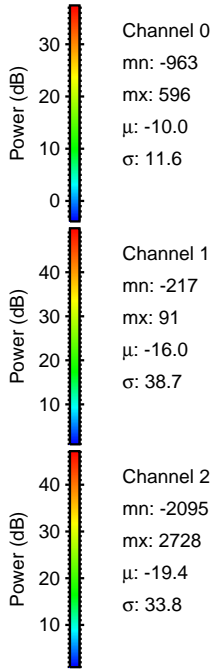
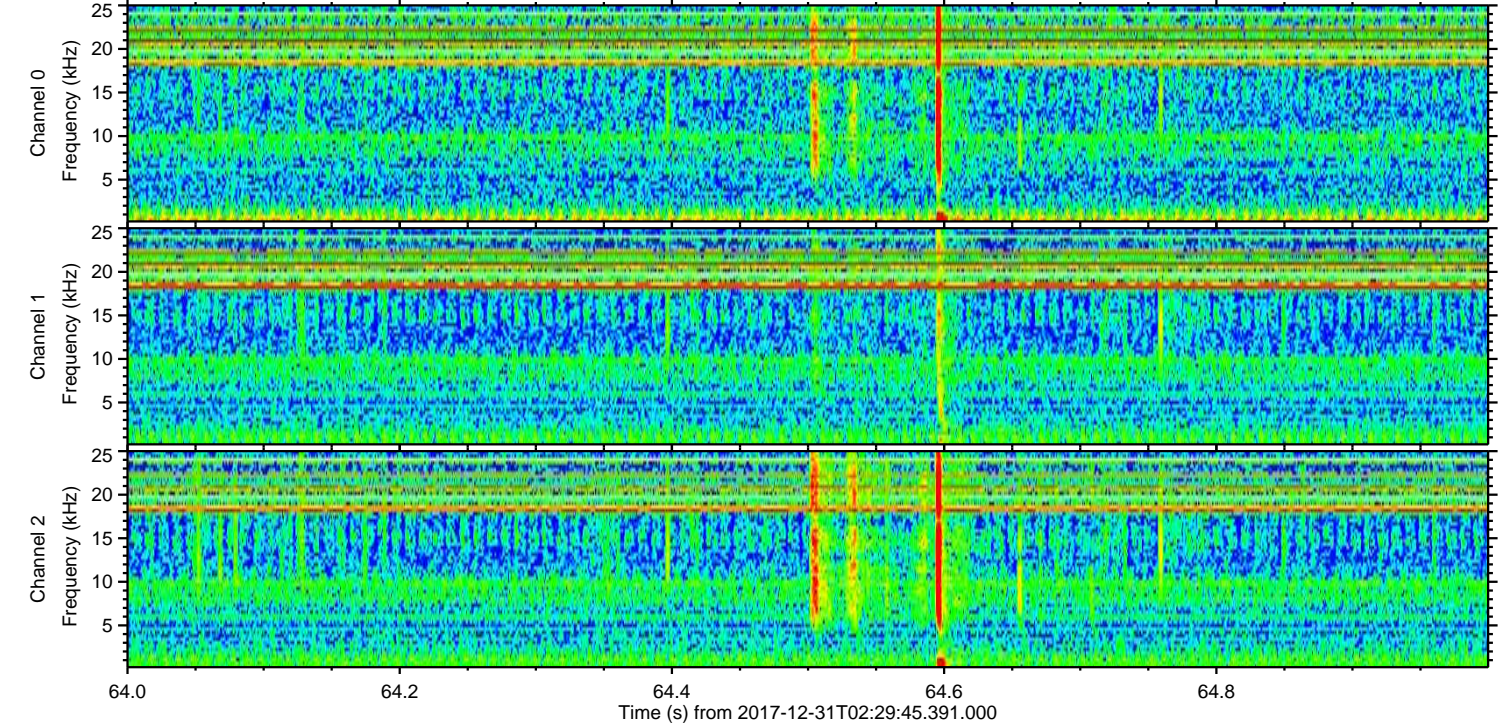
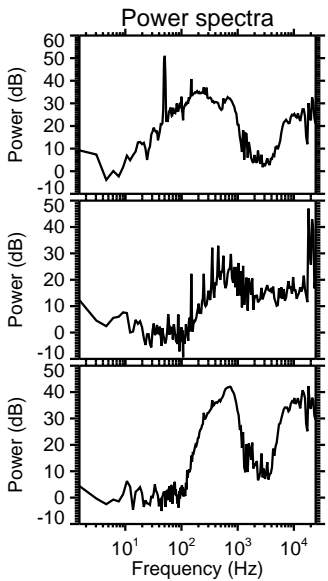
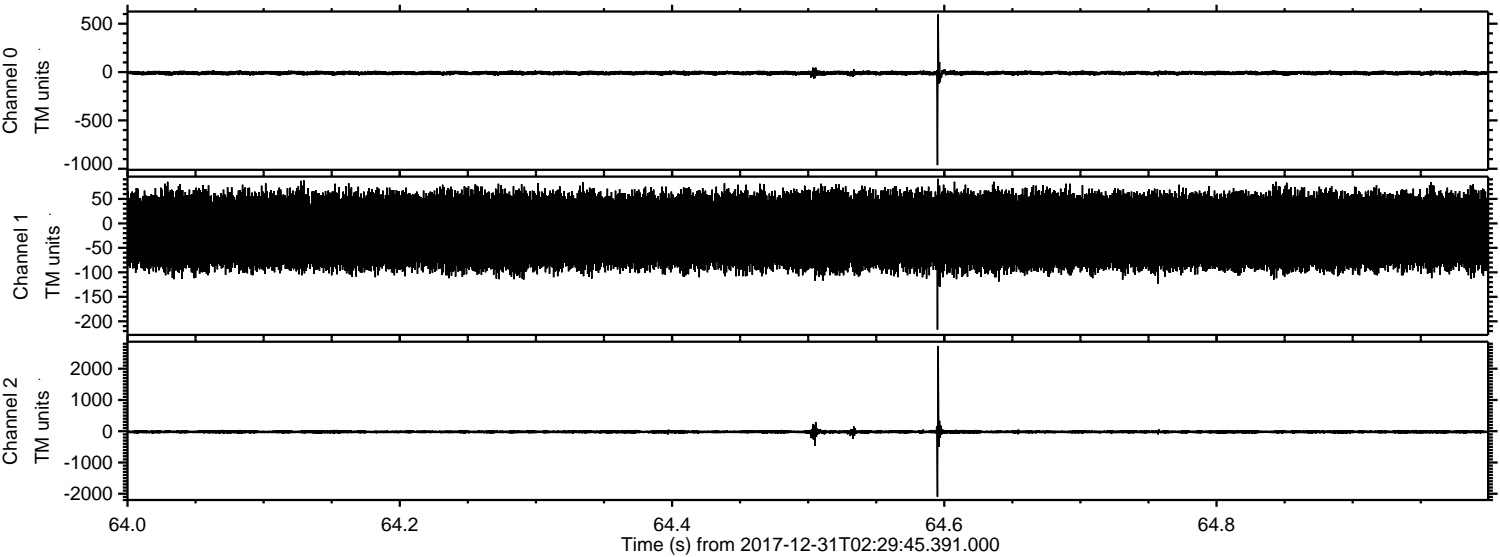


Channel 0  
mn: -694  
mx: 644  
 $\mu$ : -10.1  
 $\sigma$ : 13.7

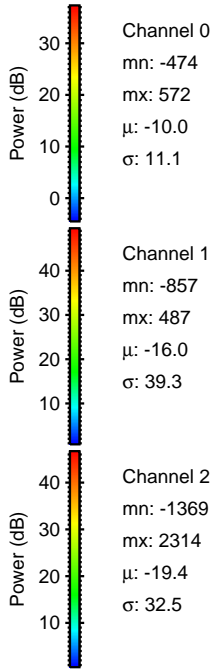
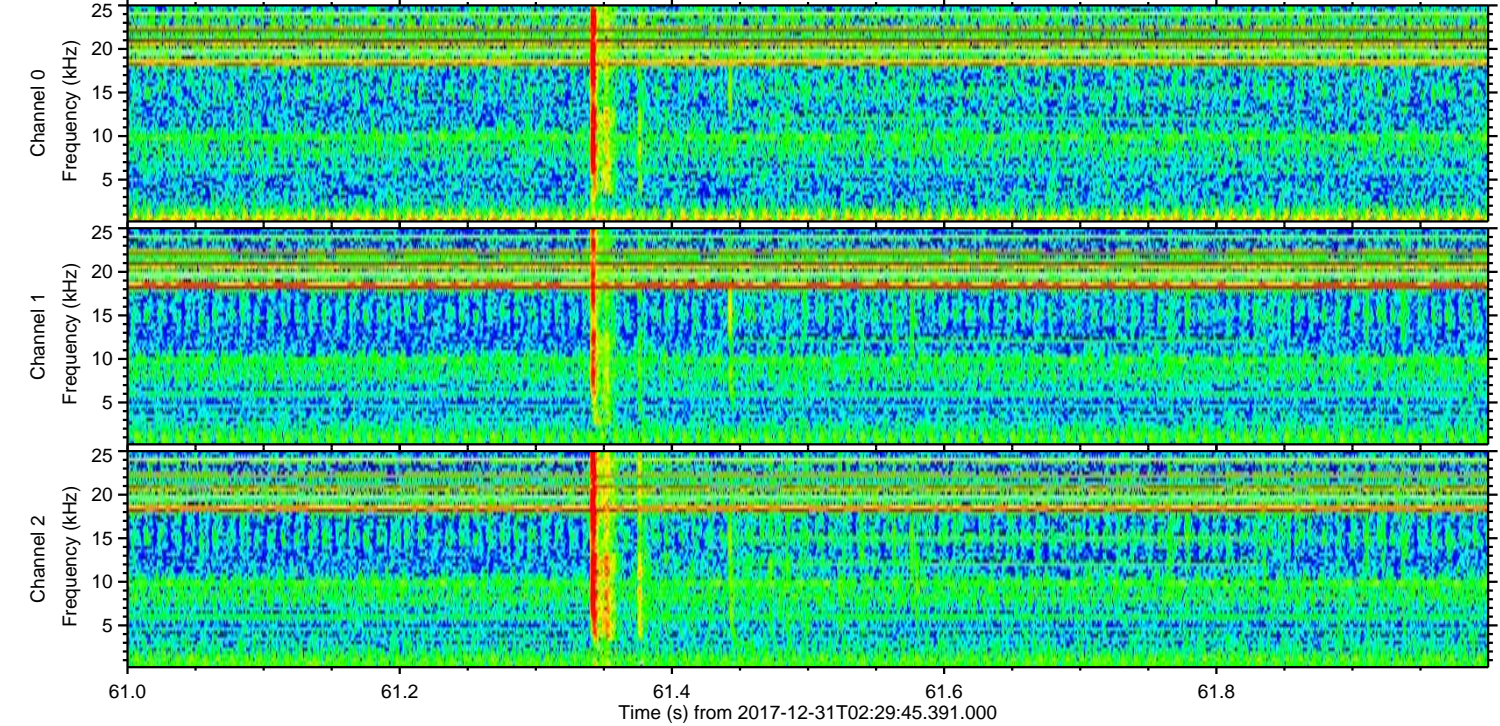
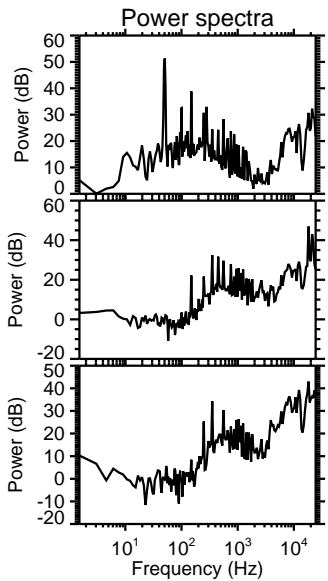
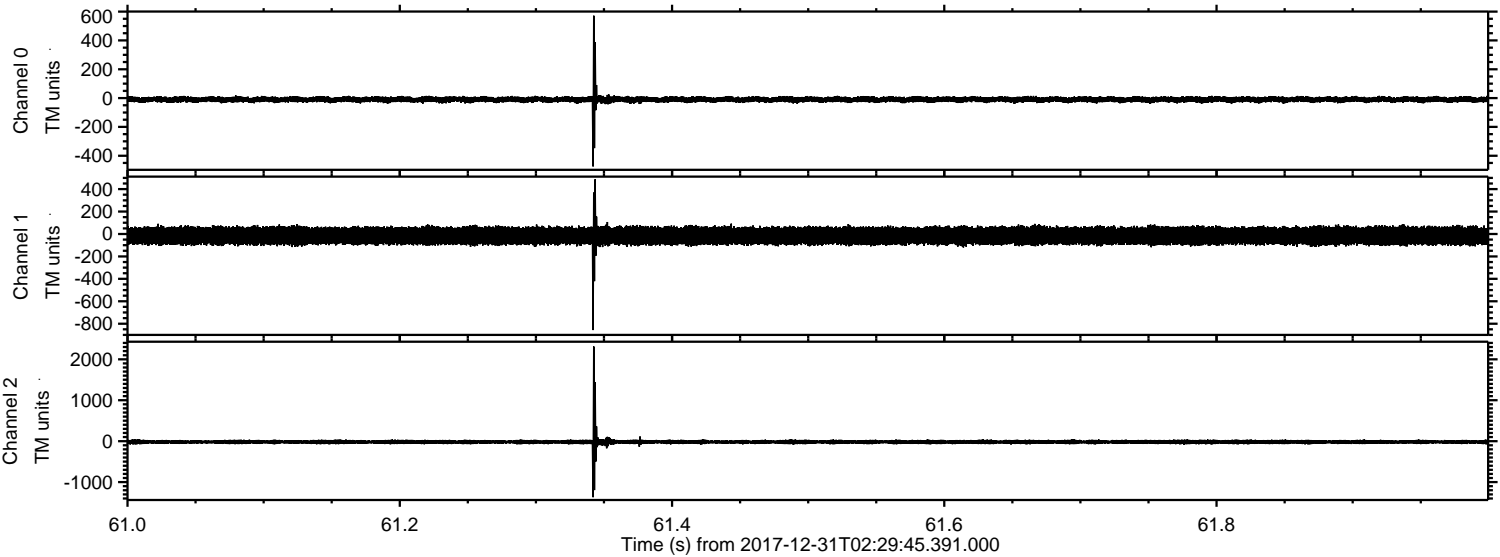
Channel 1  
mn: -1011  
mx: 913  
 $\mu$ : -15.9  
 $\sigma$ : 40.3

Channel 2  
mn: -1963  
mx: 2798  
 $\mu$ : -19.5  
 $\sigma$ : 44.3

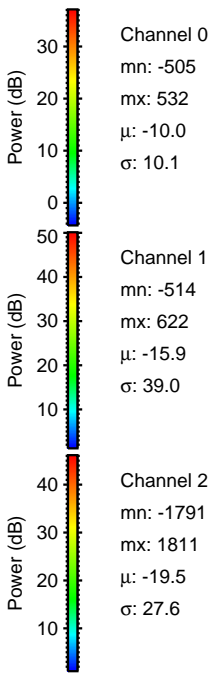
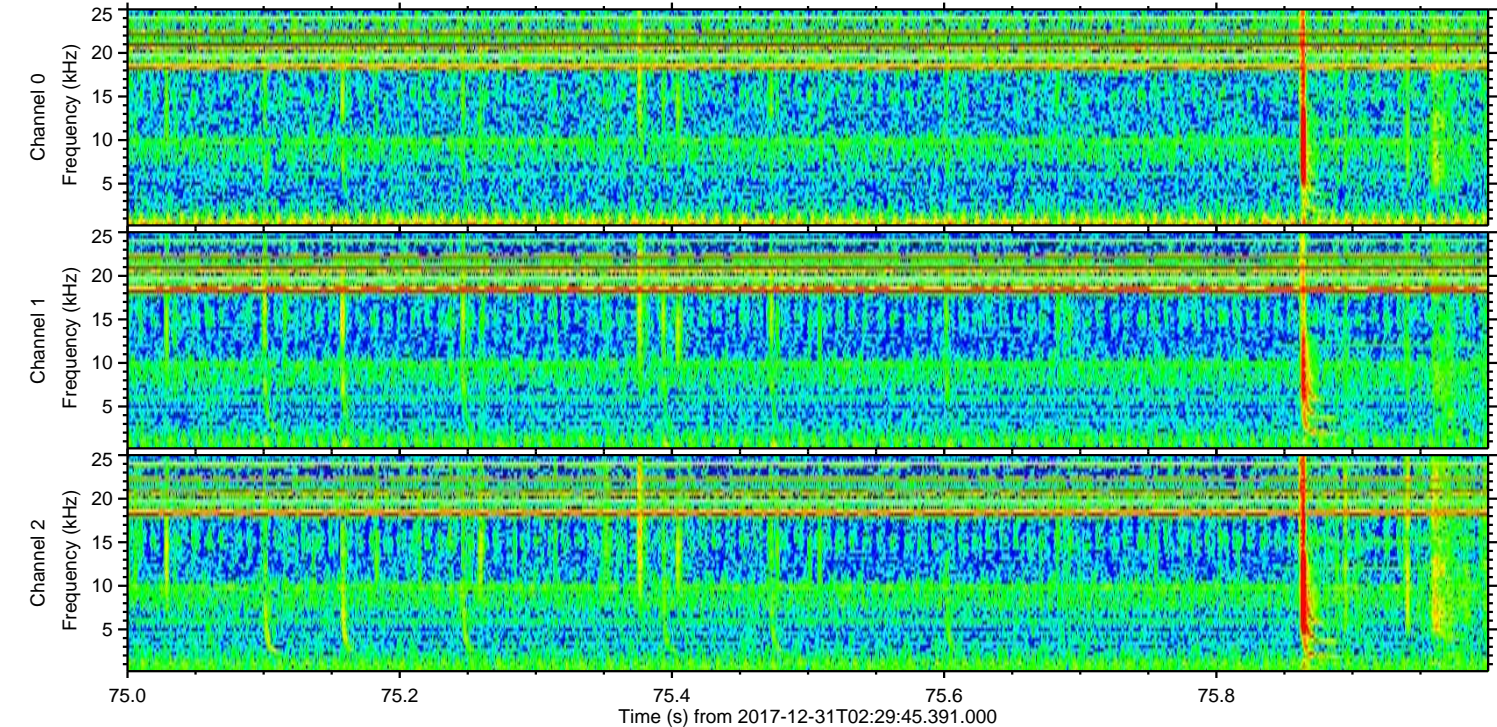
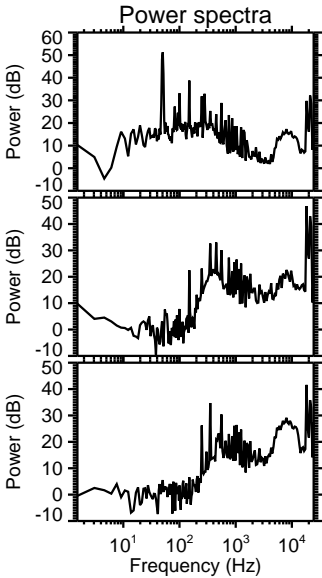
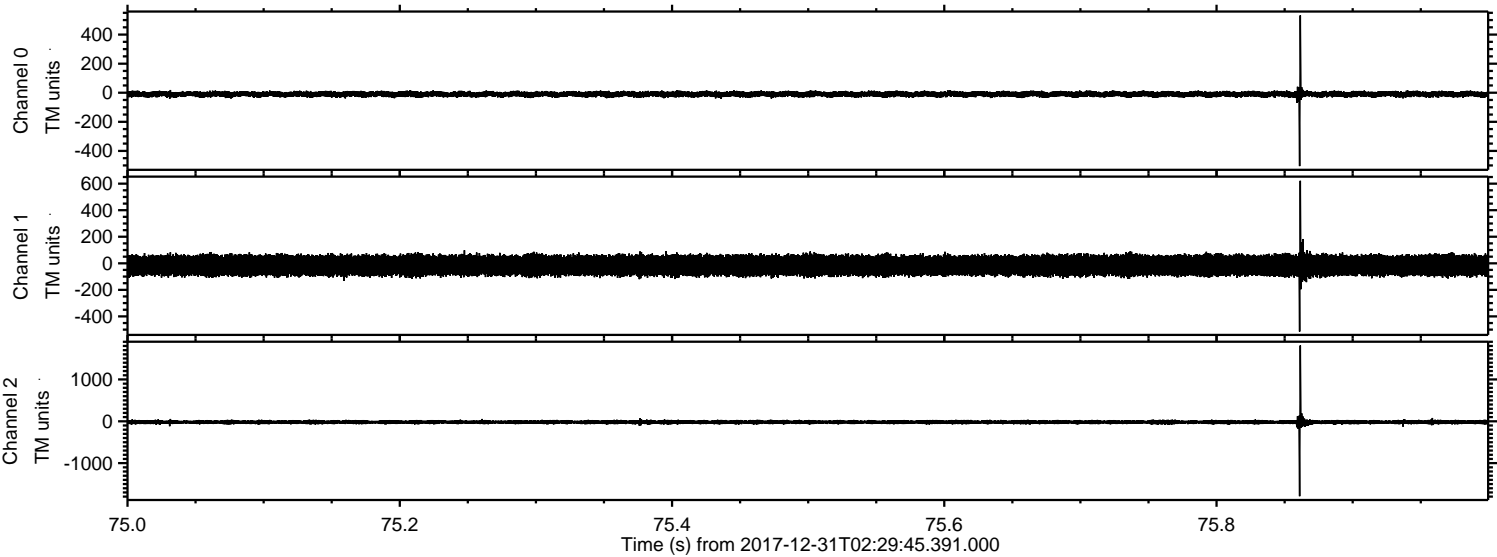
Processed Sun Dec 31 03:38:15 2017 by ELM ver.2012-10-06 from 001\_\_elm20171231\_022944\_\_dat00.bin



Processed Sun Dec 31 03:38:16 2017 by ELM ver.2012-10-06 from 001\_\_elm20171231\_022944\_\_dat00.bin



Processed Sun Dec 31 03:38:17 2017 by ELM ver.2012-10-06 from 001\_\_elm20171231\_022944\_\_dat00.bin



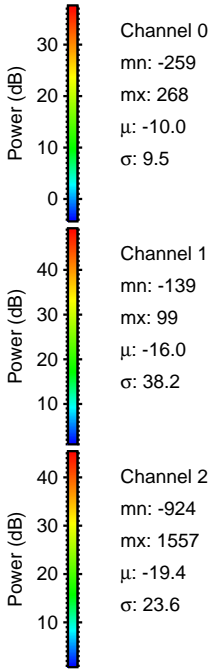
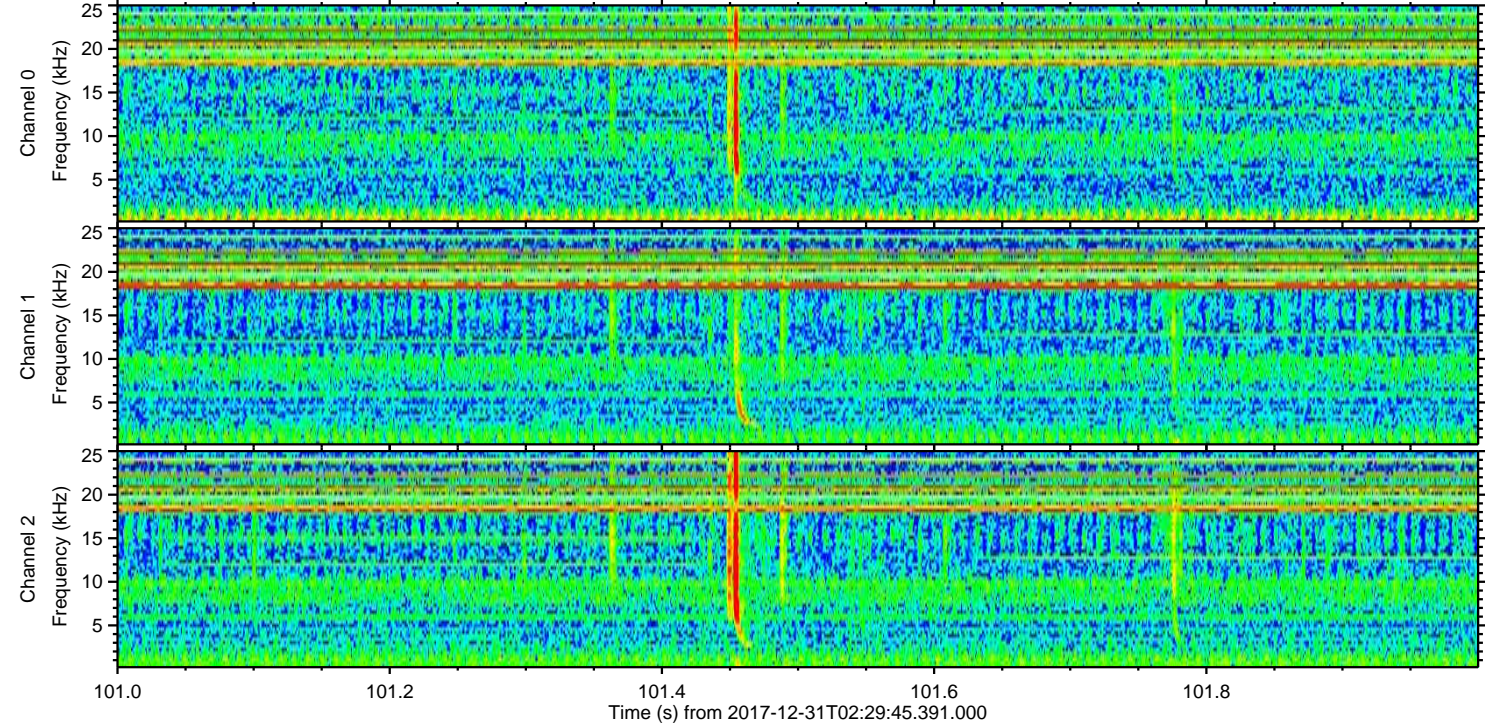
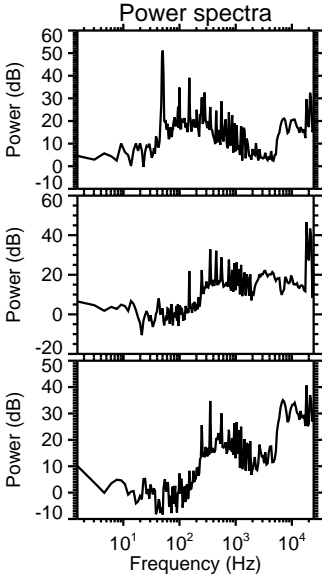
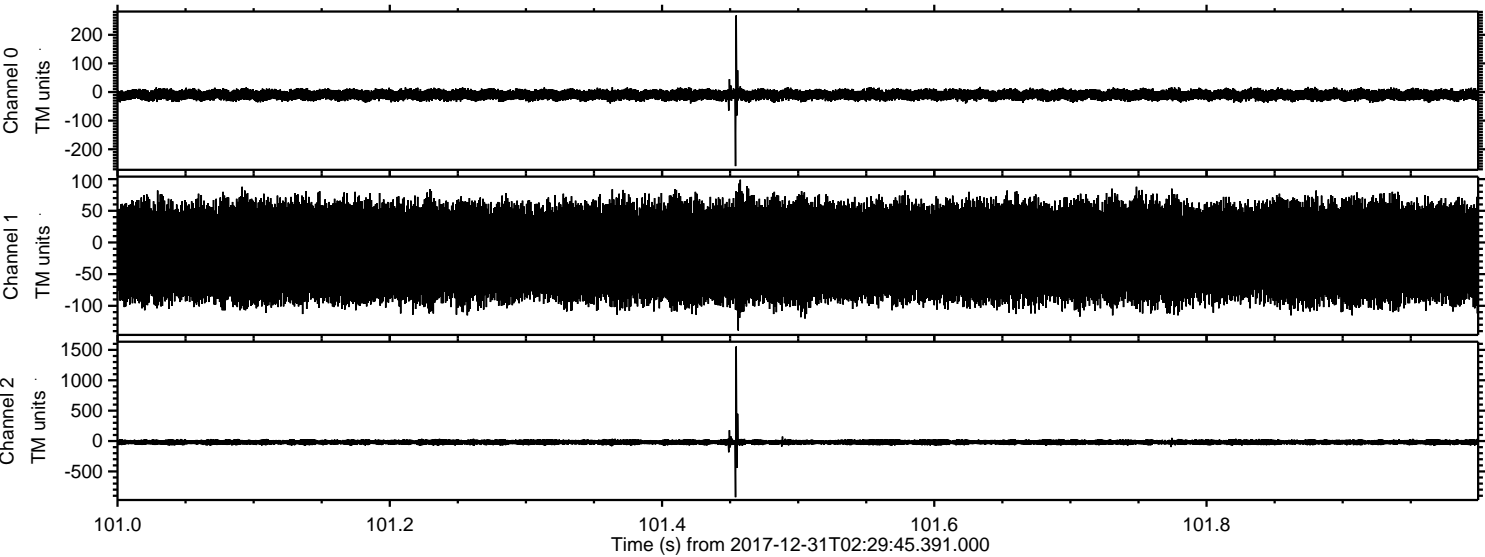
Channel 0  
mn: -505  
mx: 532  
 $\mu$ : -10.0  
 $\sigma$ : 10.1

Channel 1  
mn: -514  
mx: 622  
 $\mu$ : -15.9  
 $\sigma$ : 39.0

Channel 2  
mn: -1791  
mx: 1811  
 $\mu$ : -19.5  
 $\sigma$ : 27.6

ELMAVAN 3D WAVEFORMS (Measured data sampled at 50 kHz) 51000 packets of 144 samples from 2017-12-31T02:29:45.391.000. Part 102/147

Processed Sun Dec 31 03:38:18 2017 by ELM ver.2012-10-06 from 001\_\_elm20171231\_022944\_\_dat00.bin



ELMAVAN 3D WAVEFORMS (Measured data sampled at 50 kHz) 51000 packets of 144 samples from 2017-12-31T02:29:45.391.000. Part 42/147

Processed Sun Dec 31 03:38:19 2017 by ELM ver.2012-10-06 from 001\_\_elm20171231\_022944\_\_dat00.bin

