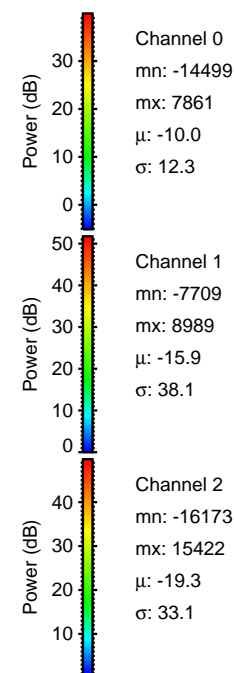
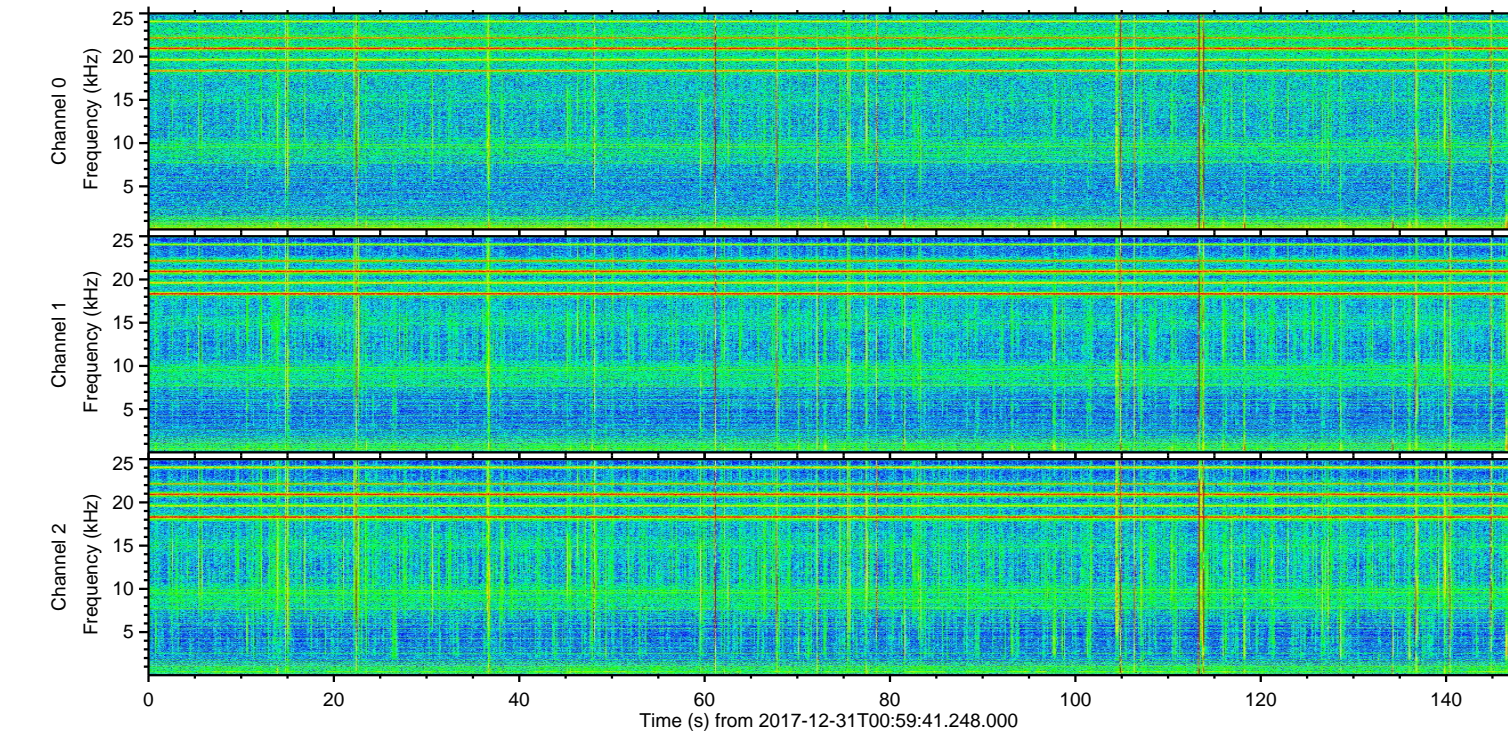
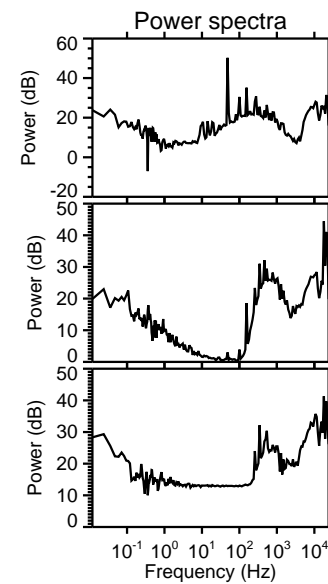
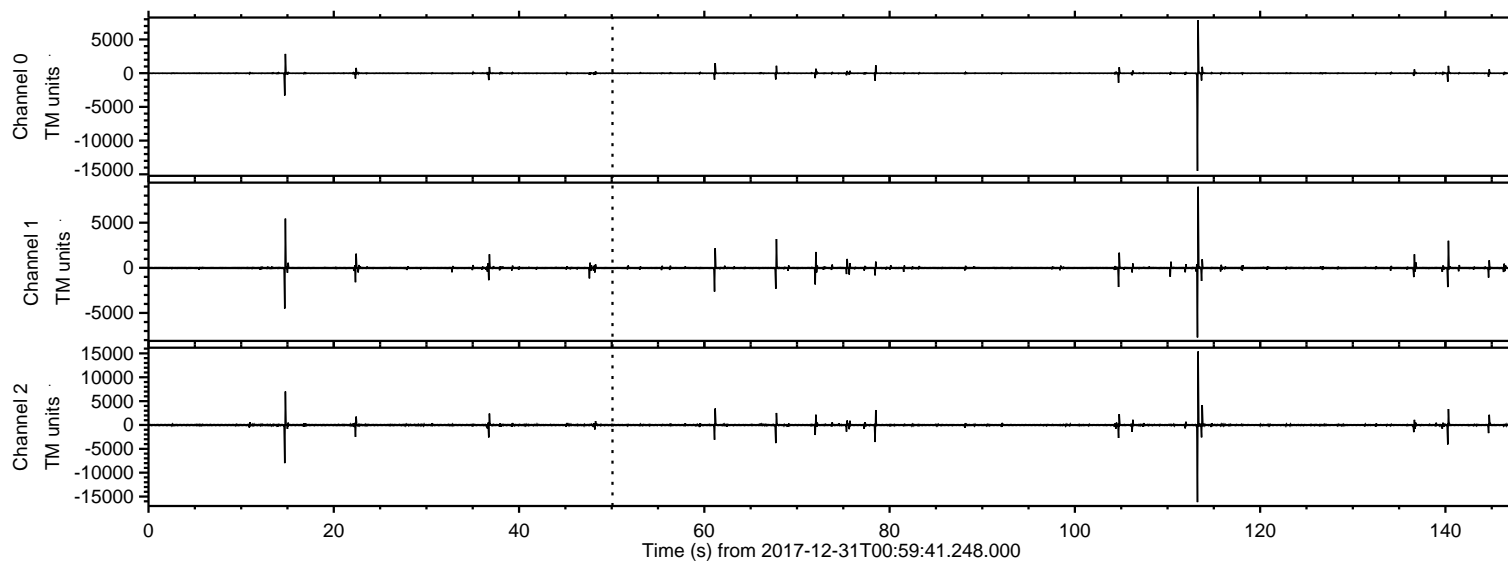


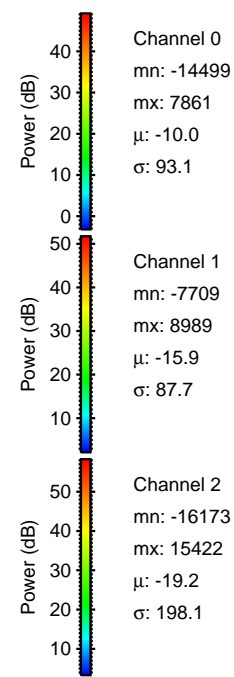
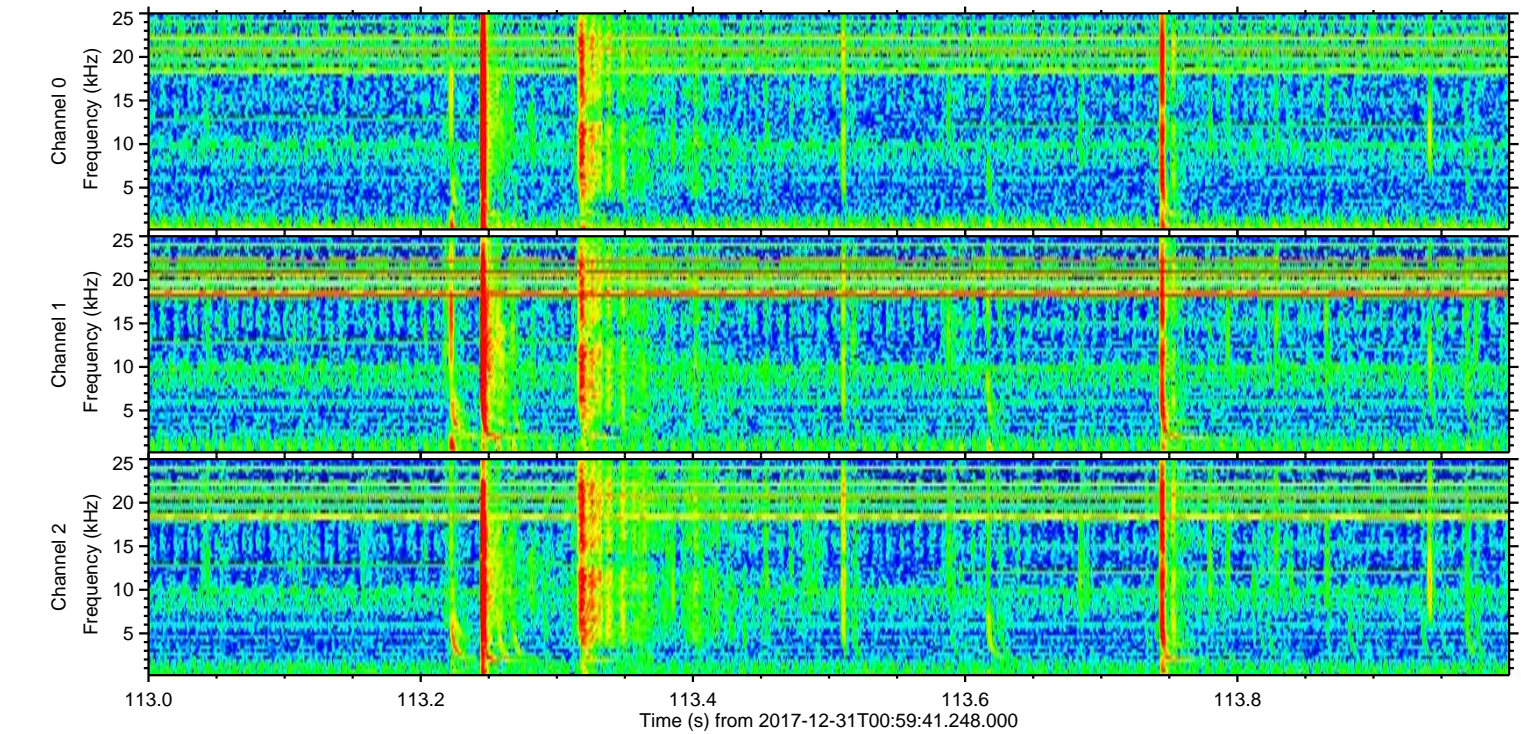
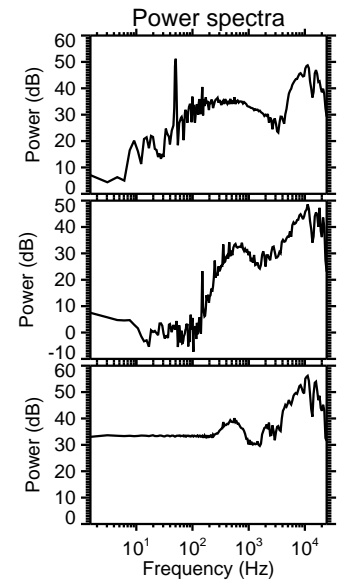
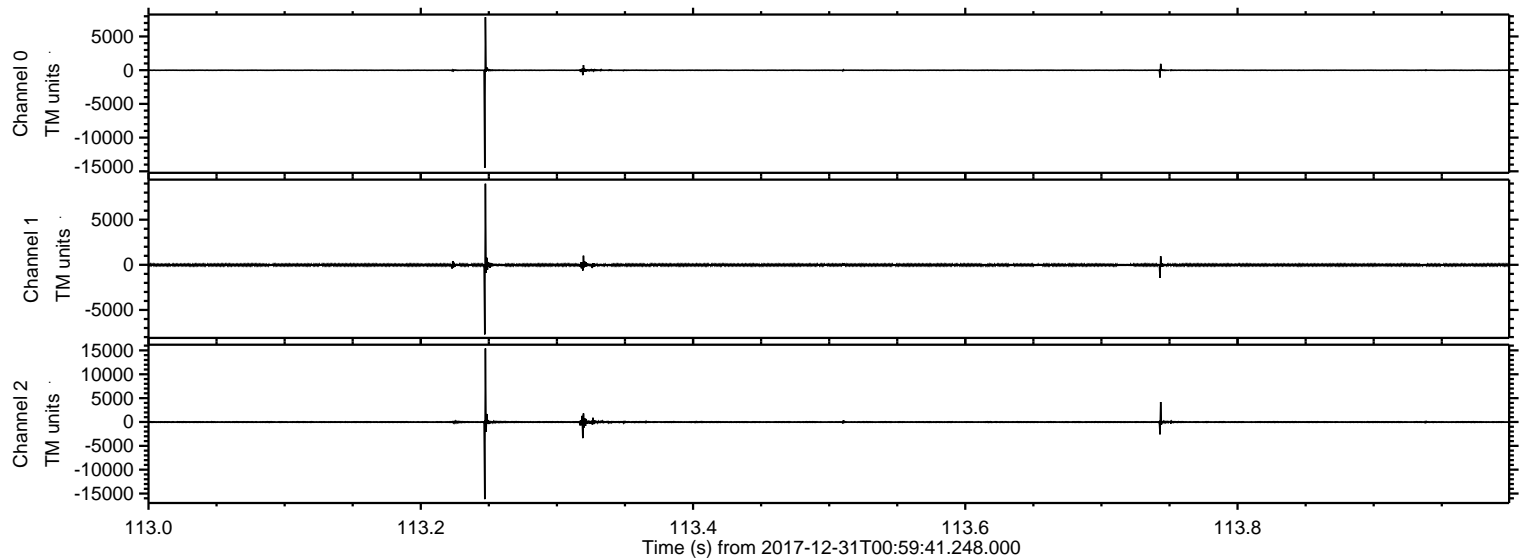
ELMAVAN 3D WAVEFORMS (Measured data sampled at 50 kHz) 50999 packets of 144 samples from 2017-12-31T00:59:41.248.000.

Processed Sun Dec 31 02:07:54 2017 by ELM ver.2012-10-06 from 001__elm20171231_005940__dat00.bin

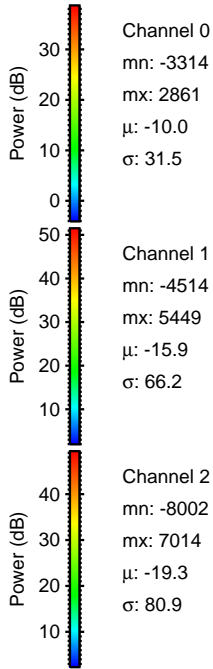
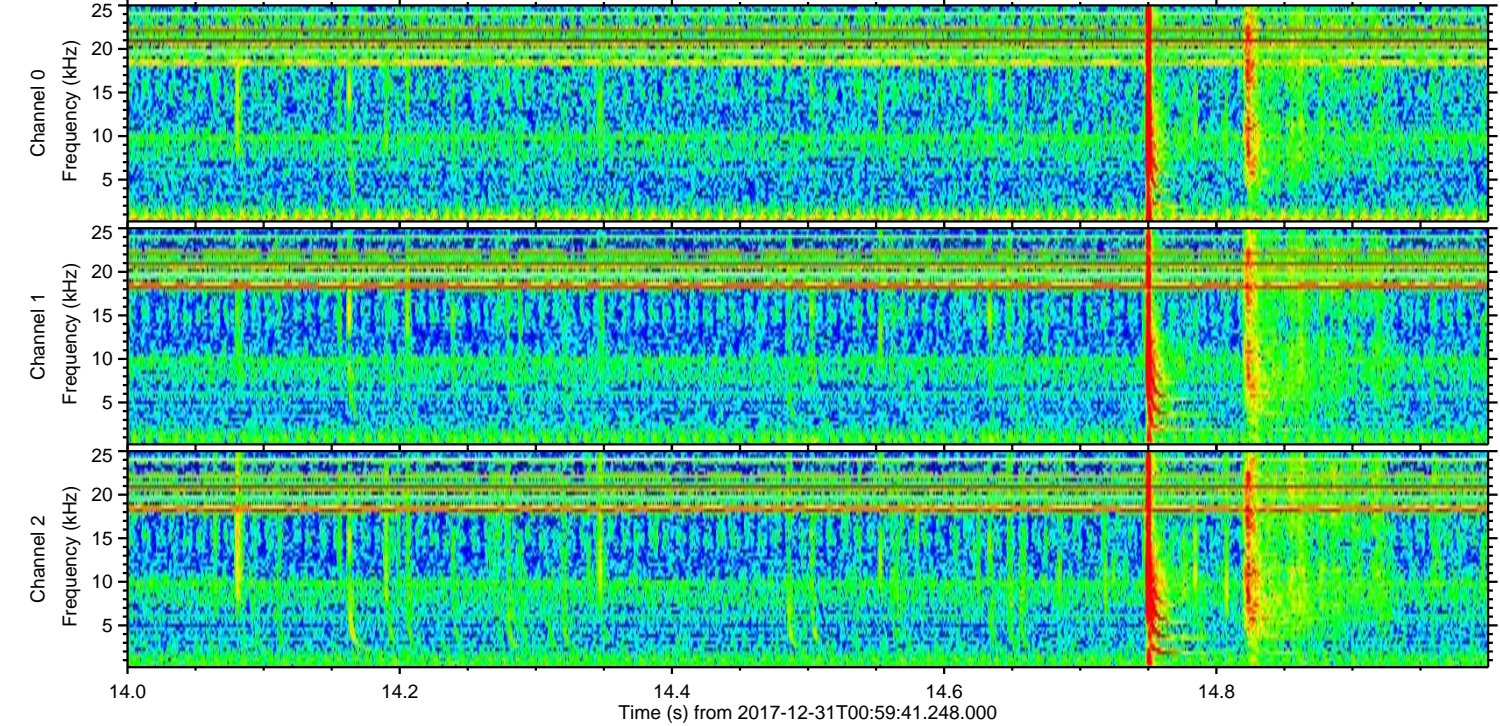
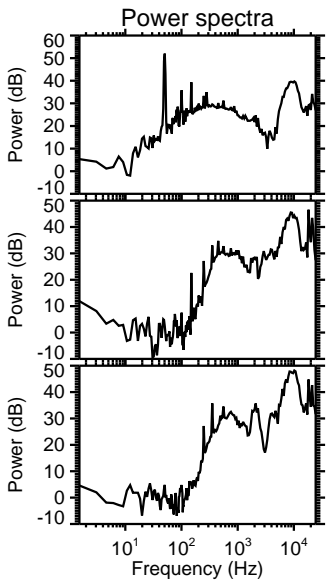
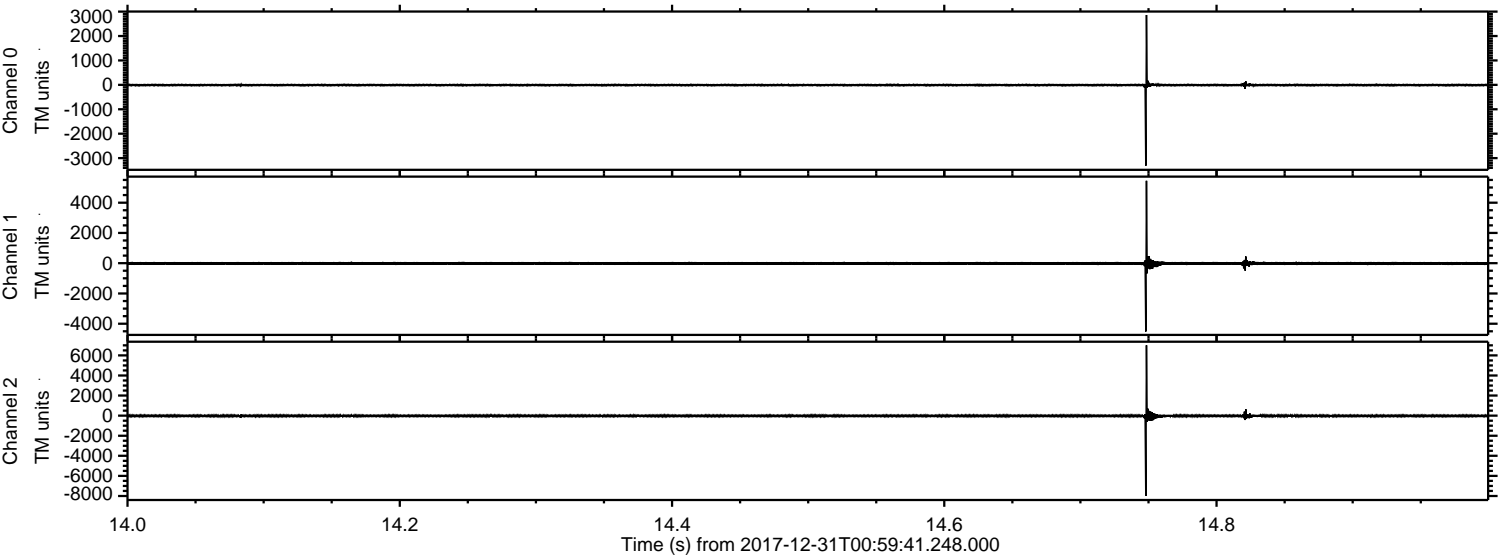


ELMAVAN 3D WAVEFORMS (Measured data sampled at 50 kHz) 50999 packets of 144 samples from 2017-12-31T00:59:41.248.000. Part 114/147

Processed Sun Dec 31 02:08:03 2017 by ELM ver.2012-10-06 from 001__elm20171231_005940__dat00.bin

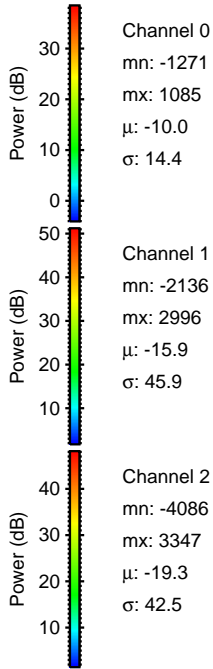
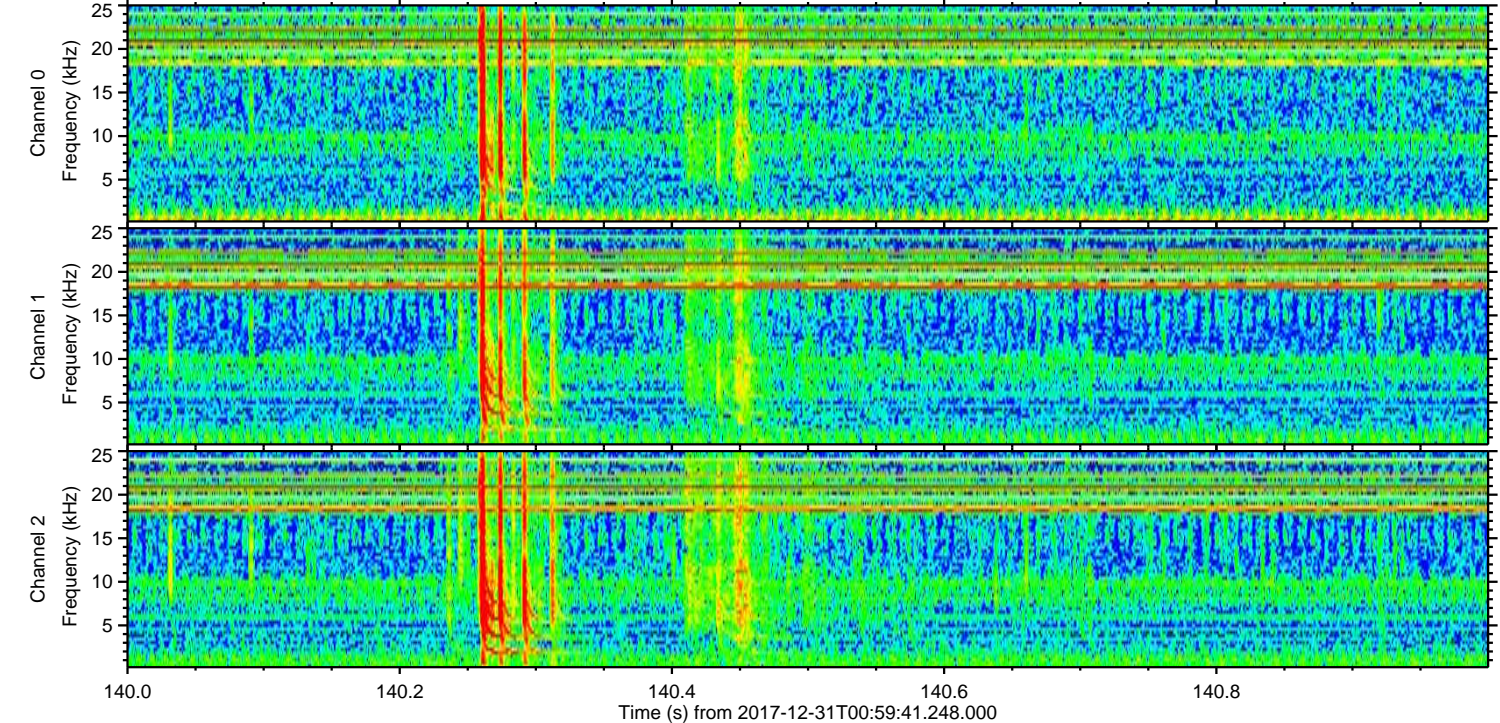
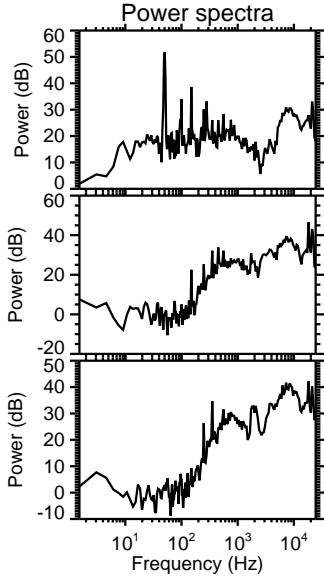
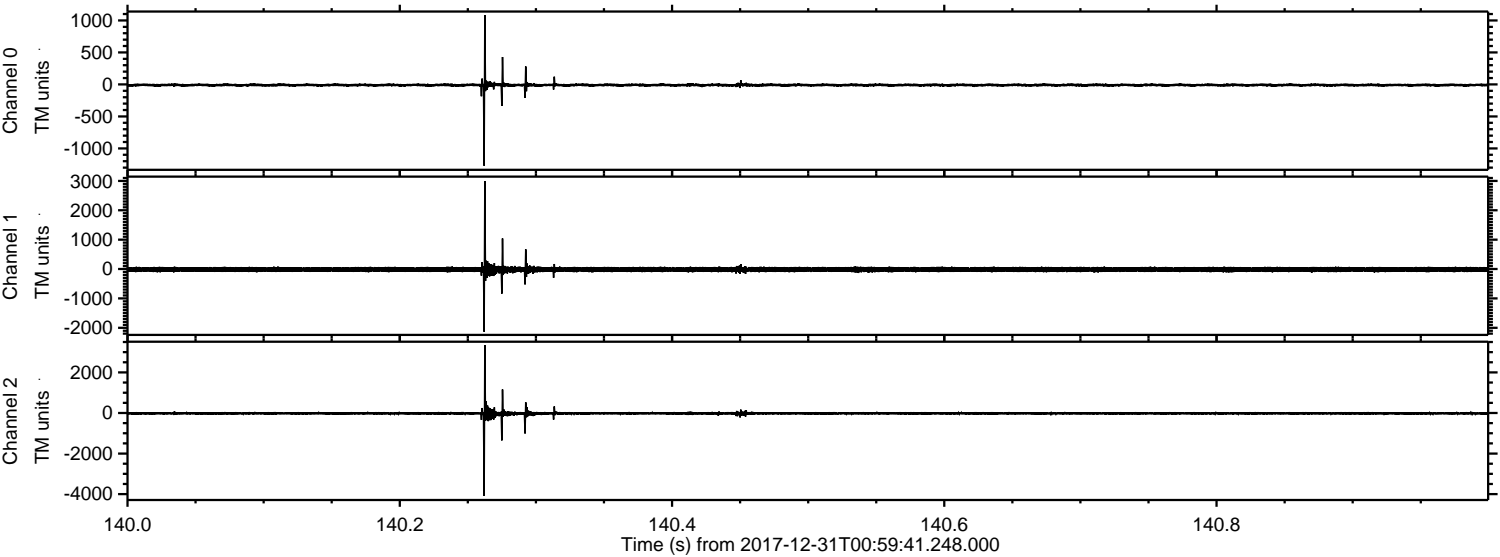


Processed Sun Dec 31 02:08:04 2017 by ELM ver.2012-10-06 from 001__elm20171231_005940__dat00.bin

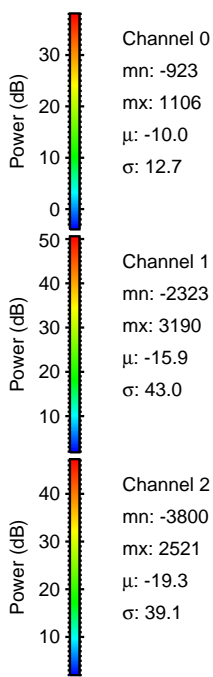
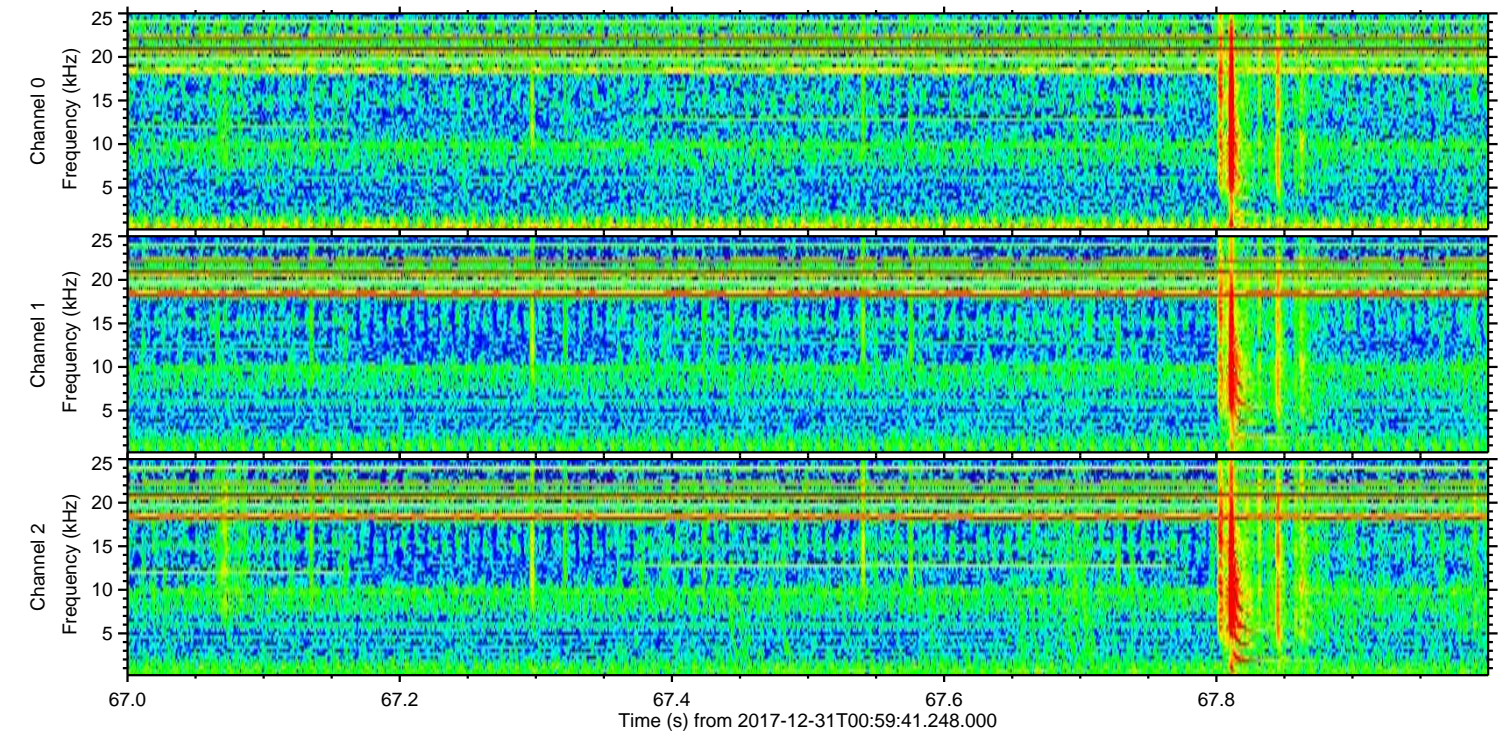
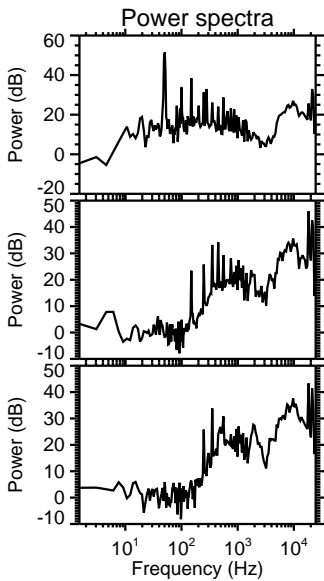
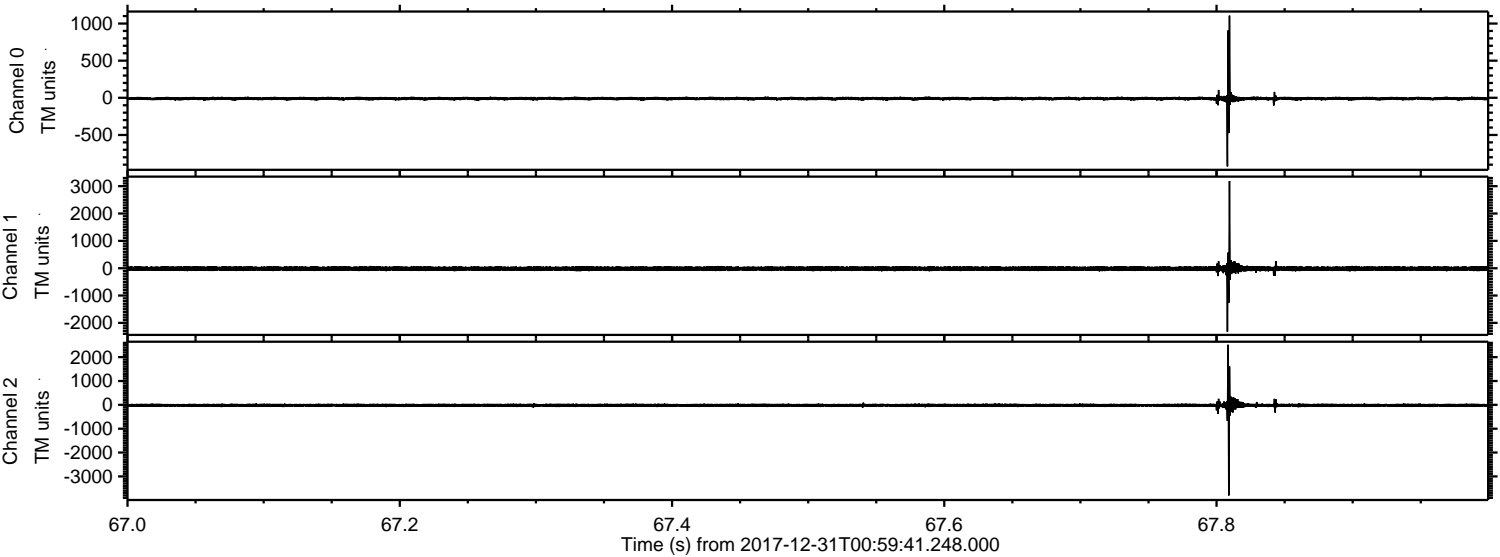


ELMAVAN 3D WAVEFORMS (Measured data sampled at 50 kHz) 50999 packets of 144 samples from 2017-12-31T00:59:41.248.000. Part 141/147

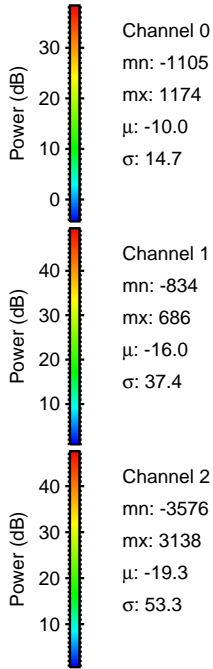
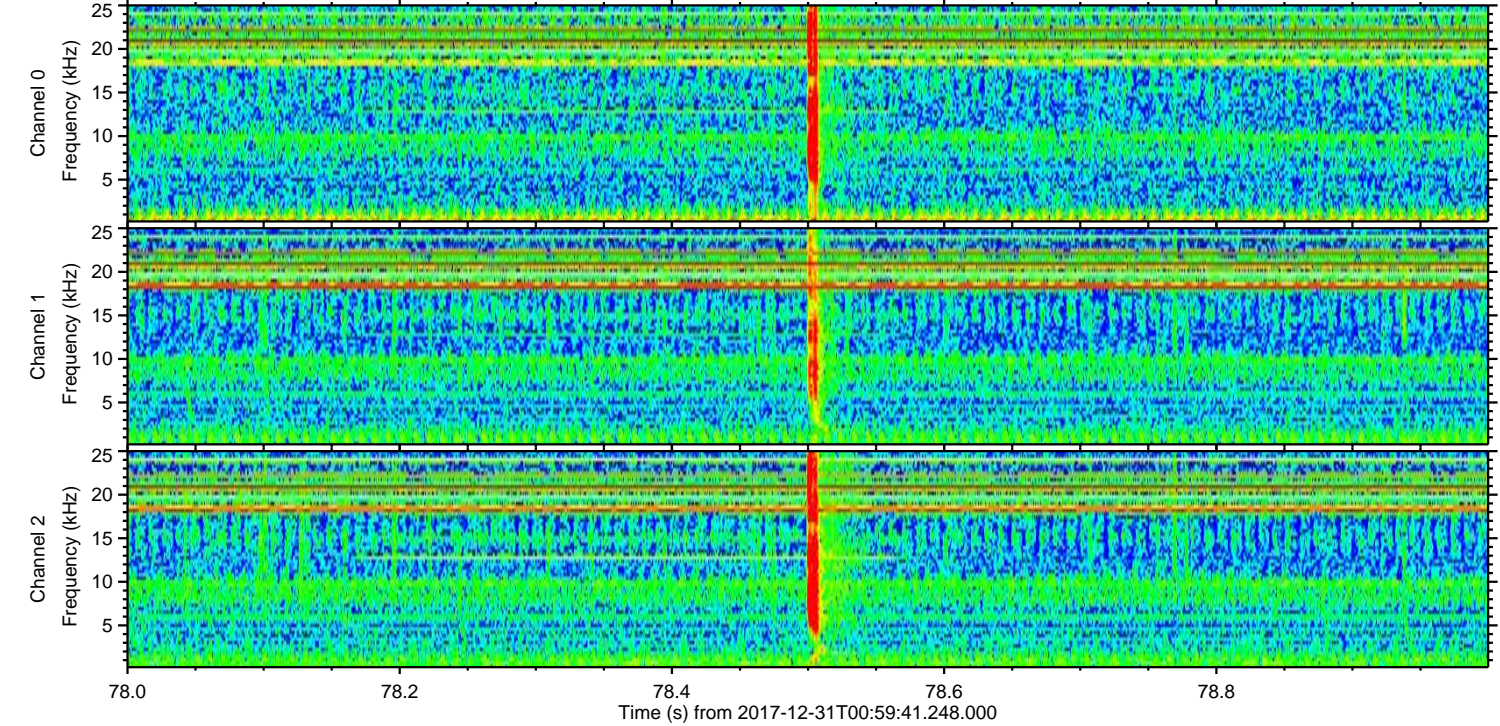
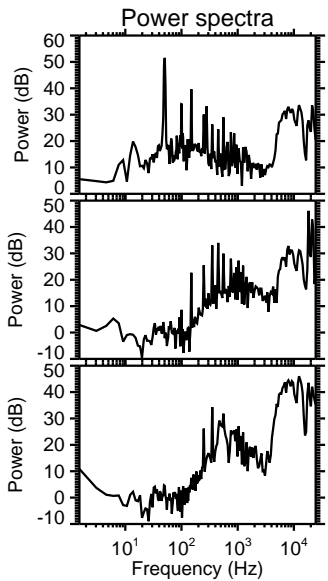
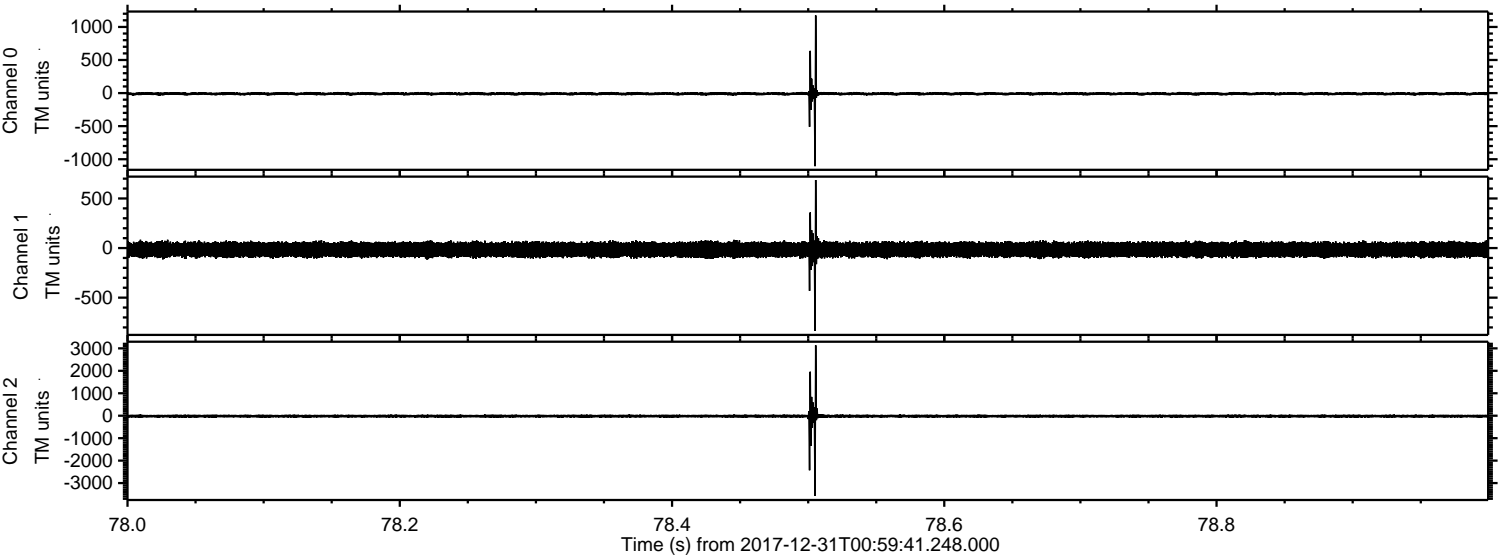
Processed Sun Dec 31 02:08:05 2017 by ELM ver.2012-10-06 from 001__elm20171231_005940__dat00.bin



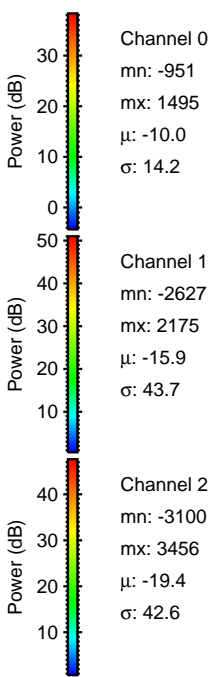
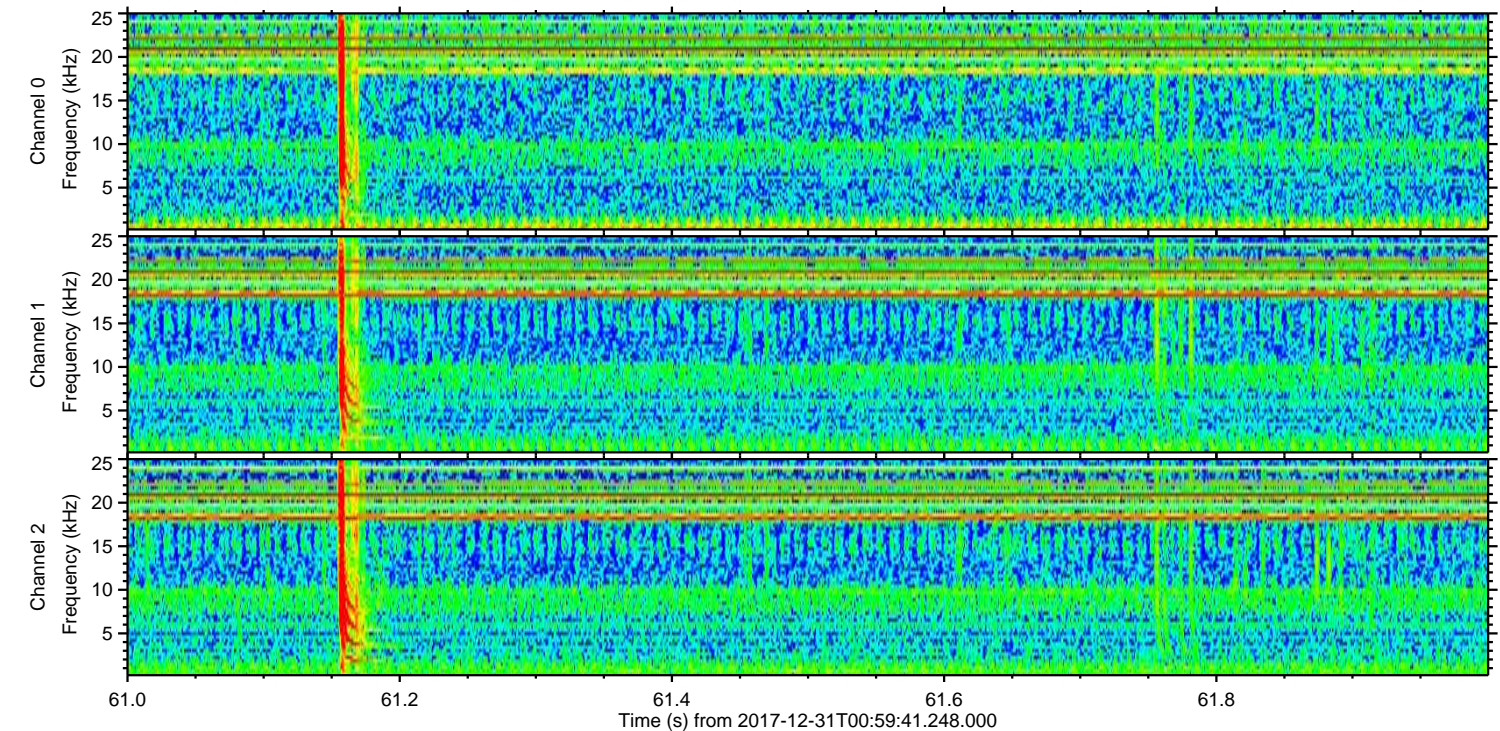
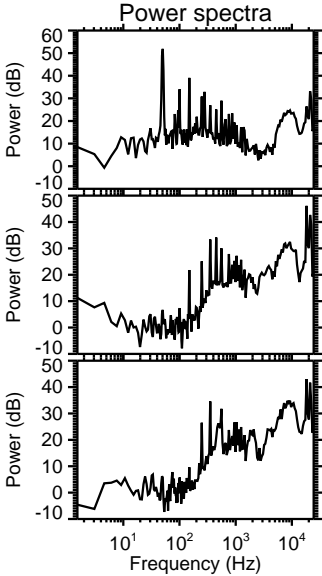
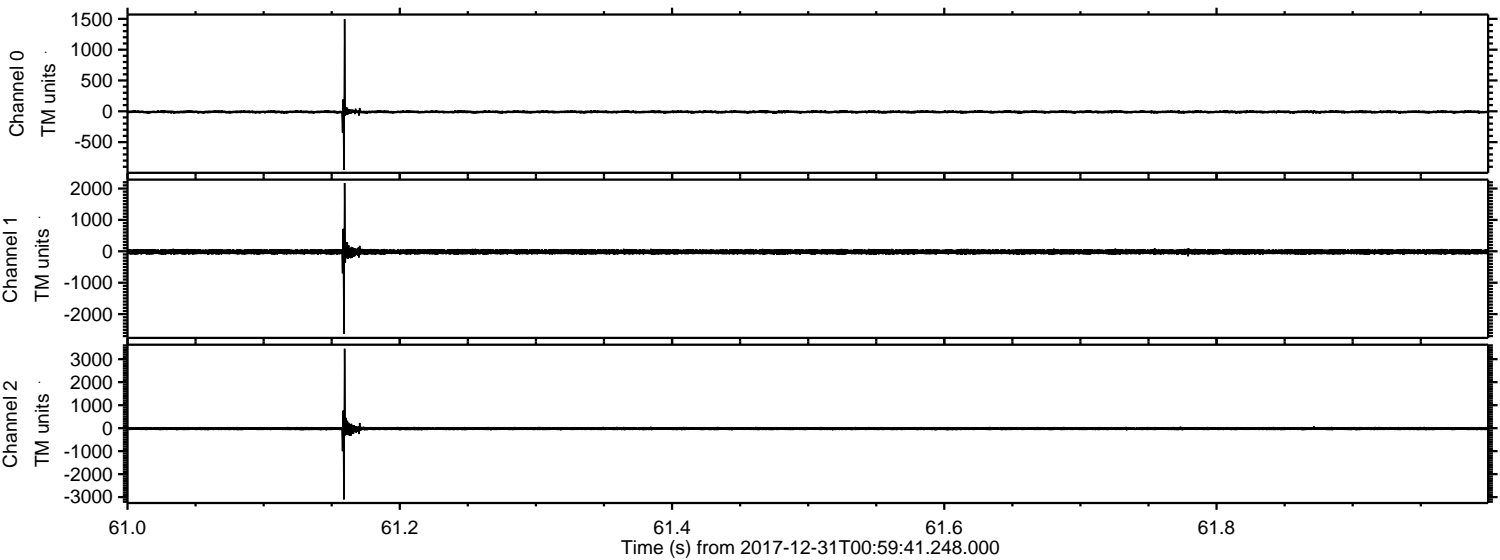
Processed Sun Dec 31 02:08:06 2017 by ELM ver.2012-10-06 from 001__elm20171231_005940__dat00.bin



Processed Sun Dec 31 02:08:07 2017 by ELM ver.2012-10-06 from 001__elm20171231_005940__dat00.bin

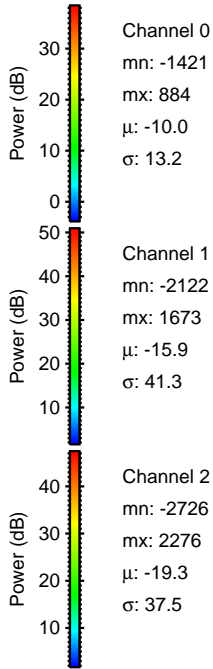
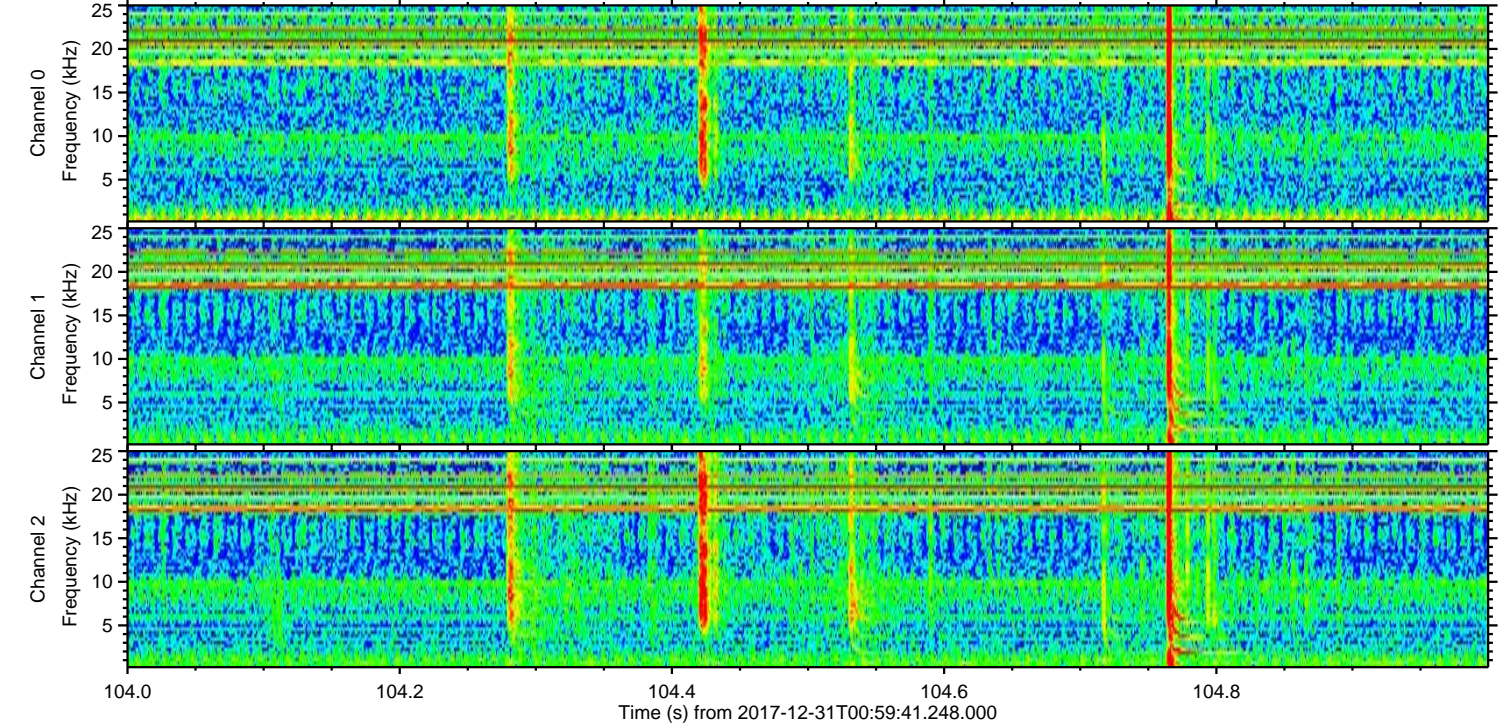
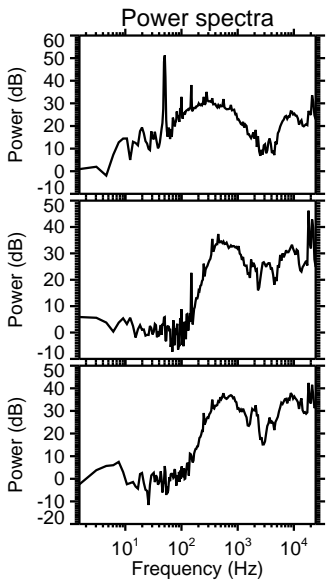
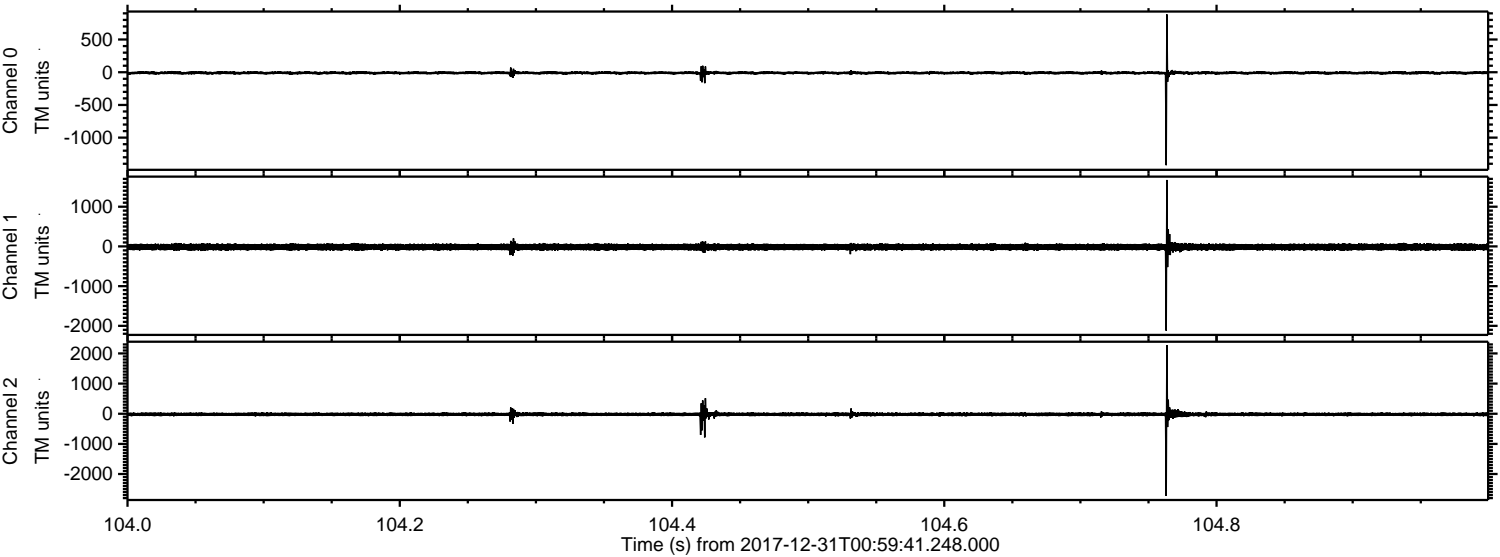


Processed Sun Dec 31 02:08:08 2017 by ELM ver.2012-10-06 from 001__elm20171231_005940__dat00.bin

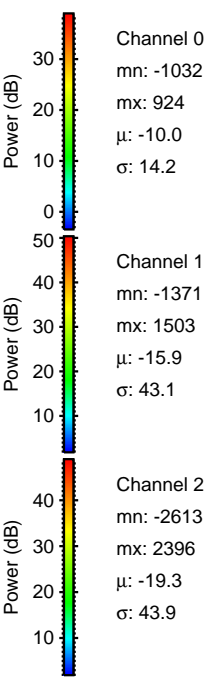
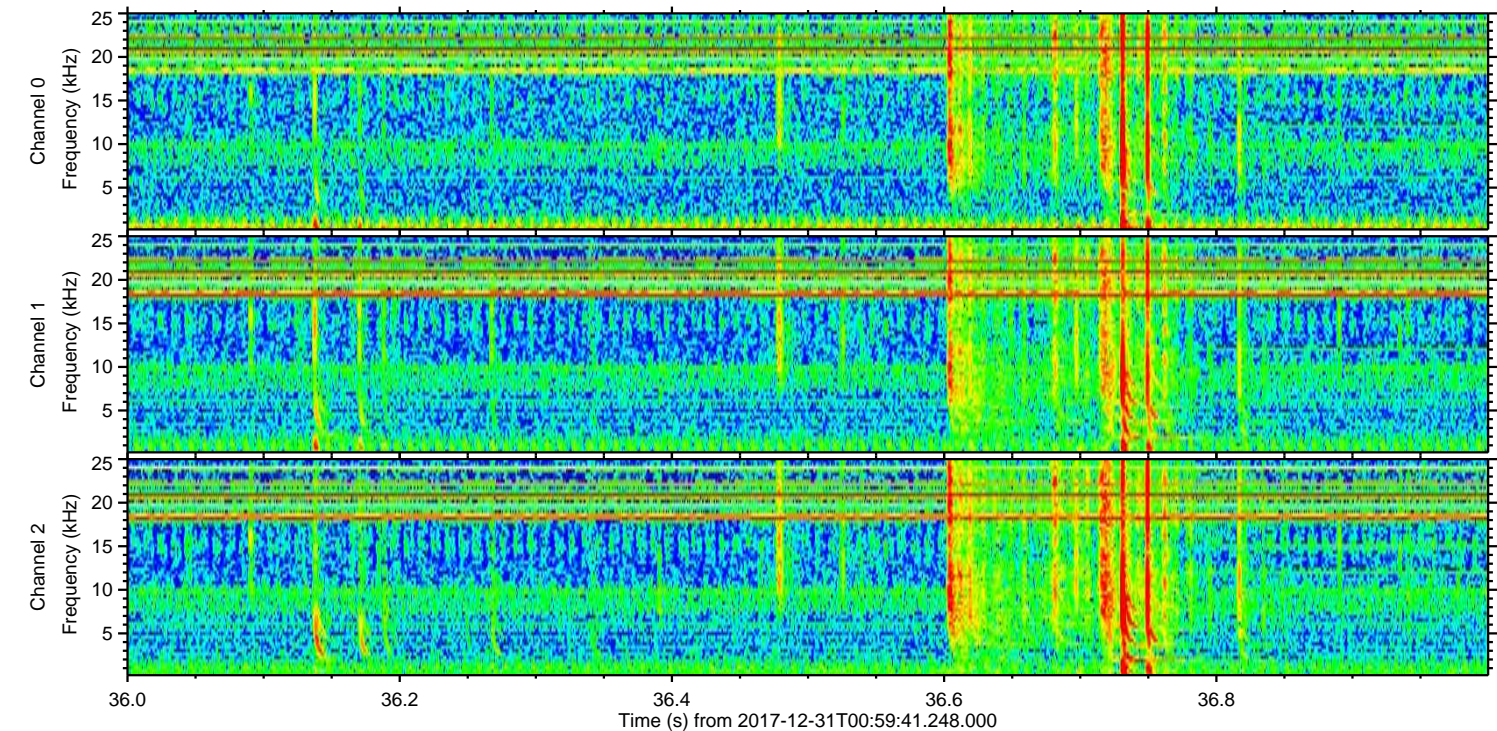
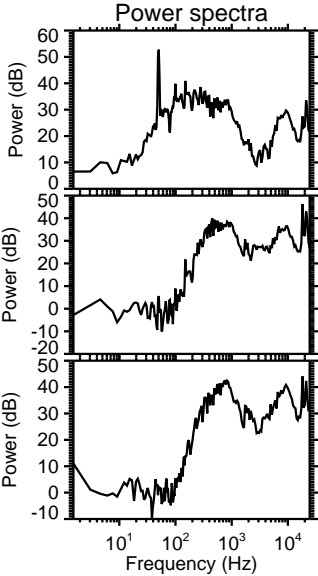
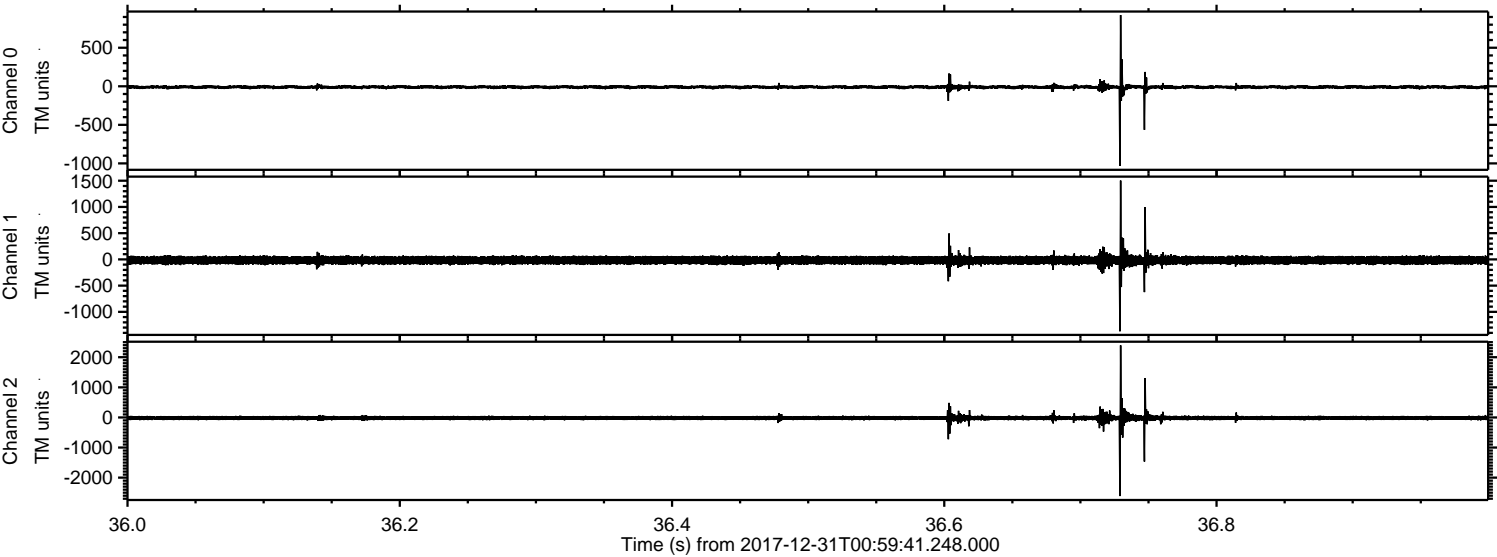


ELMAVAN 3D WAVEFORMS (Measured data sampled at 50 kHz) 50999 packets of 144 samples from 2017-12-31T00:59:41.248.000. Part 105/147

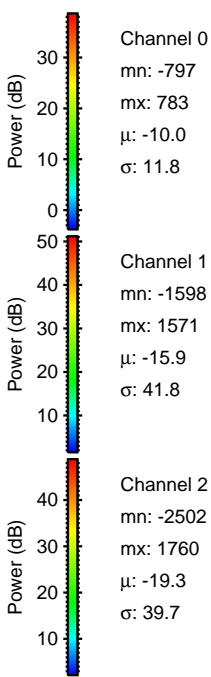
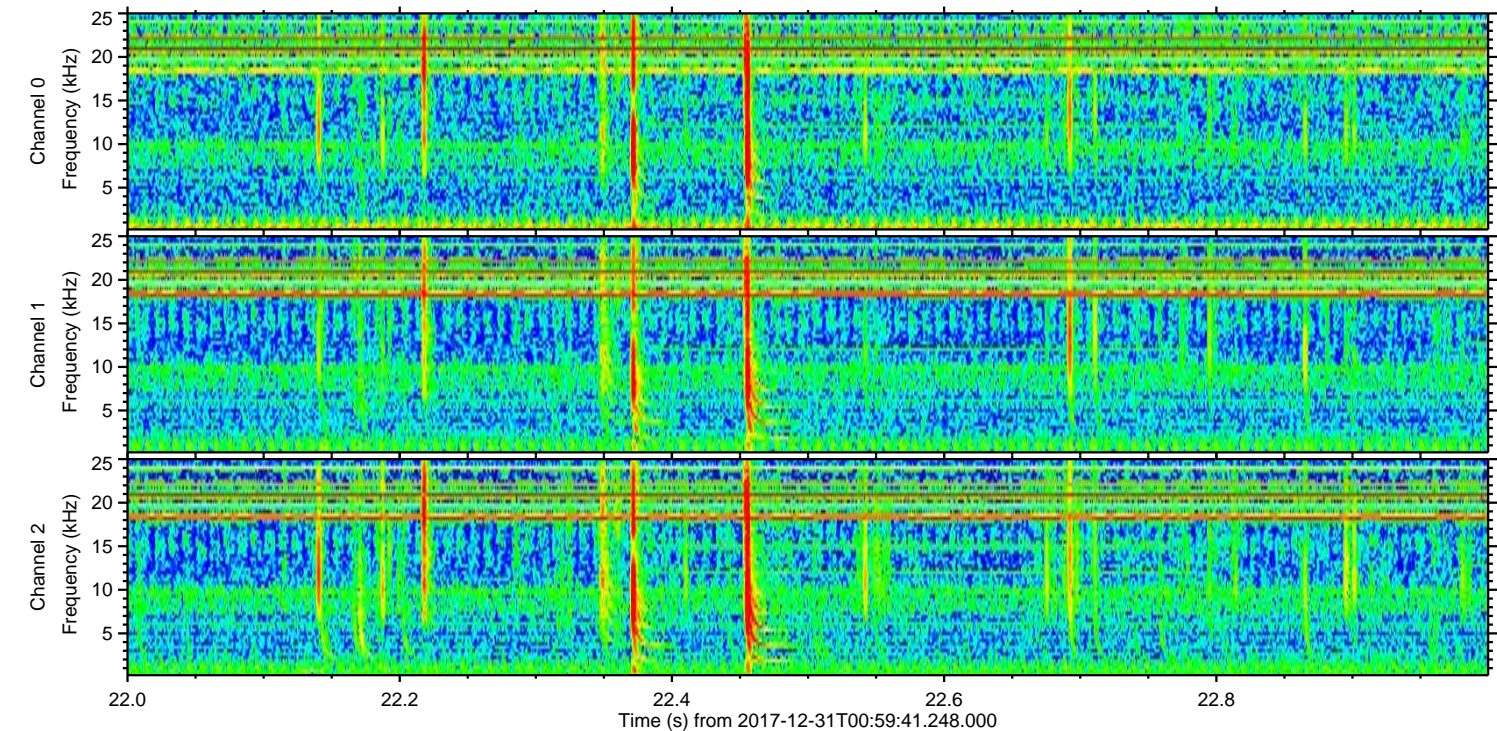
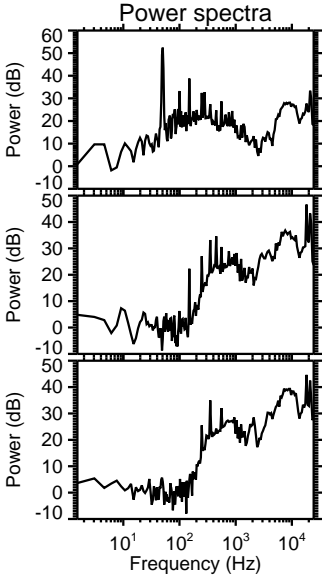
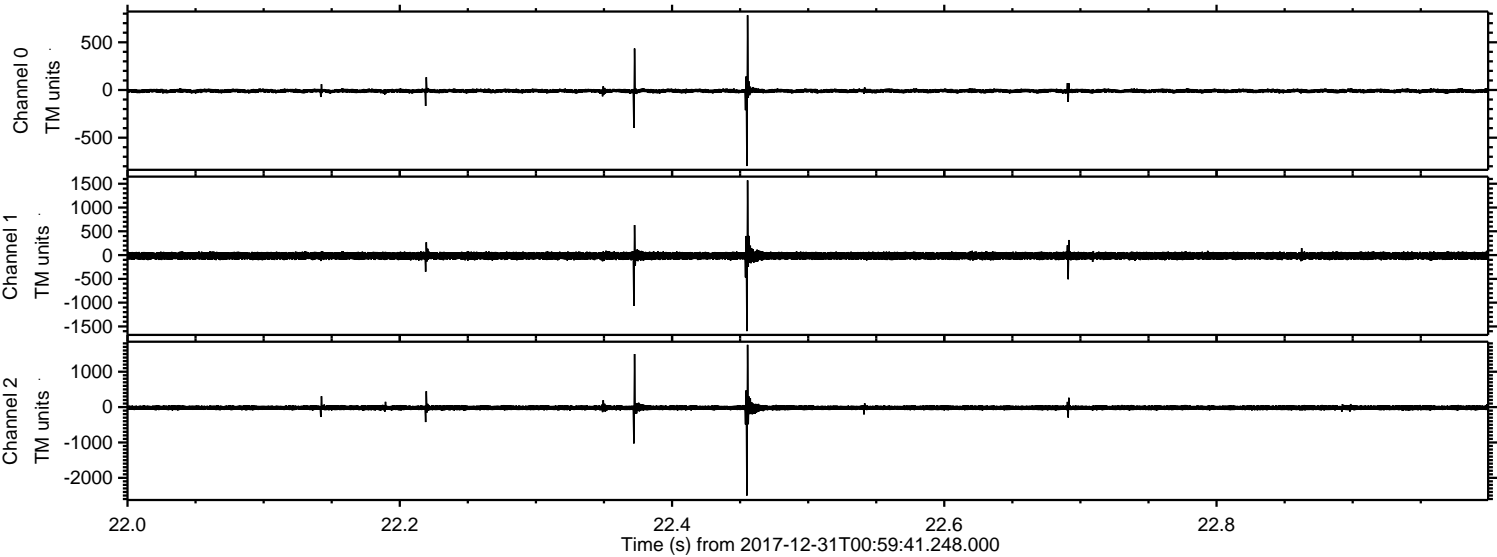
Processed Sun Dec 31 02:08:08 2017 by ELM ver.2012-10-06 from 001__elm20171231_005940__dat00.bin



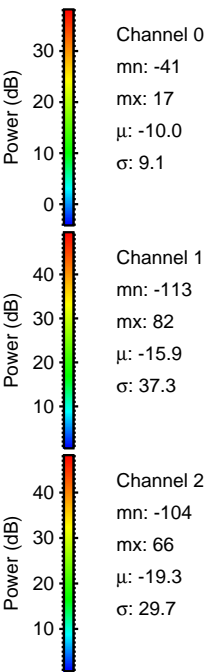
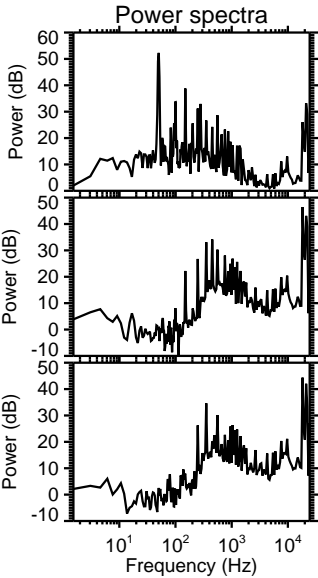
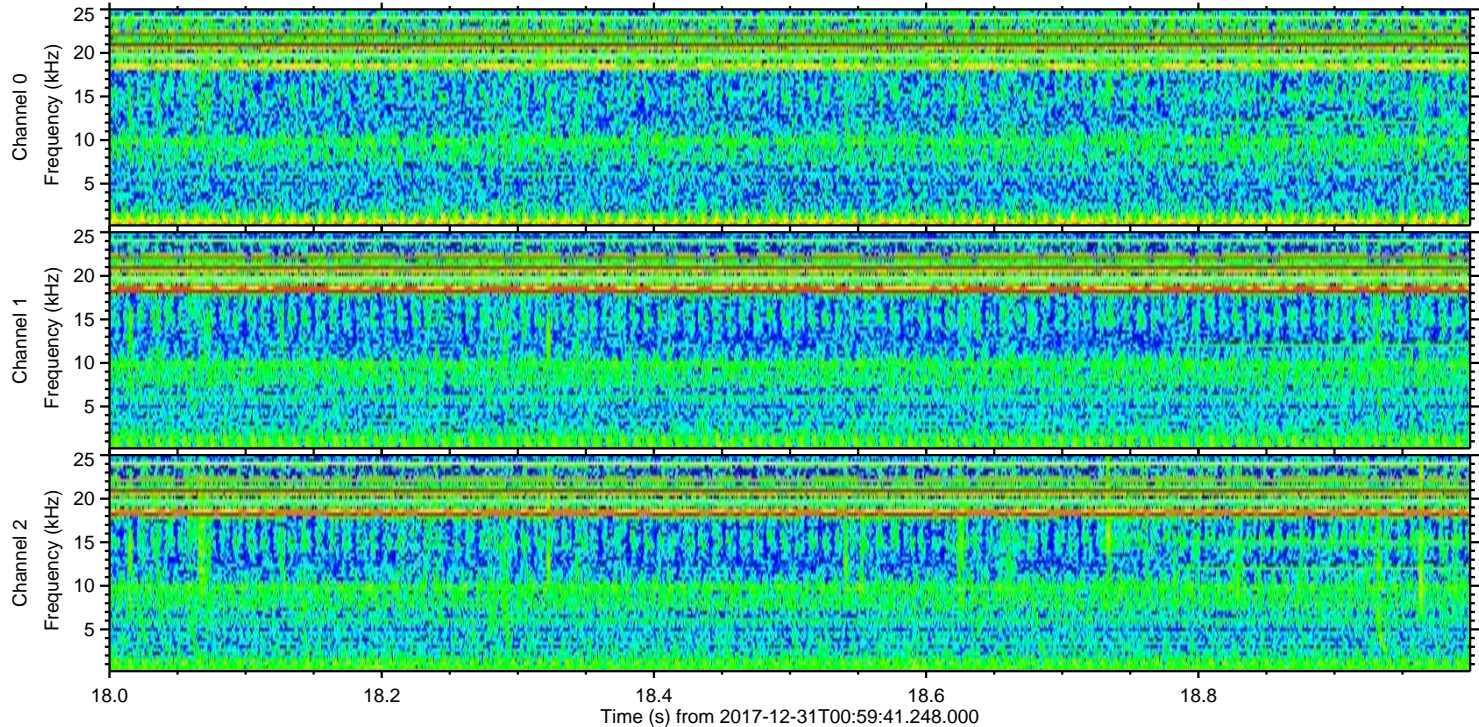
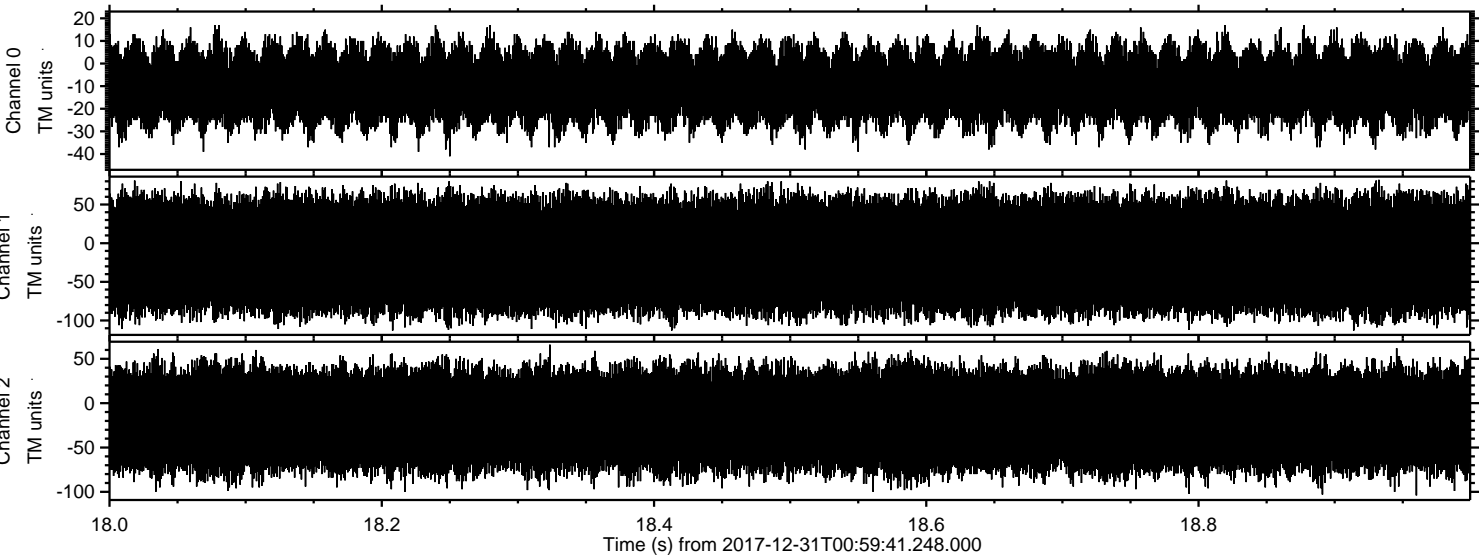
Processed Sun Dec 31 02:08:09 2017 by ELM ver.2012-10-06 from 001__elm20171231_005940__dat00.bin



Processed Sun Dec 31 02:08:10 2017 by ELM ver.2012-10-06 from 001__elm20171231_005940__dat00.bin



Processed Sun Dec 31 02:08:11 2017 by ELM ver.2012-10-06 from 001__elm20171231_005940__dat00.bin



Channel 0
mn: -41
mx: 17
 μ : -10.0
 σ : 9.1

Channel 1
mn: -113
mx: 82
 μ : -15.9
 σ : 37.3

Channel 2
mn: -104
mx: 66
 μ : -19.3
 σ : 29.7