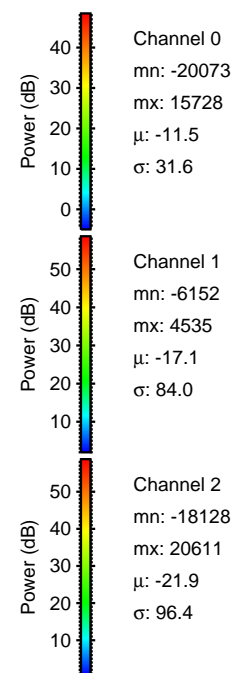
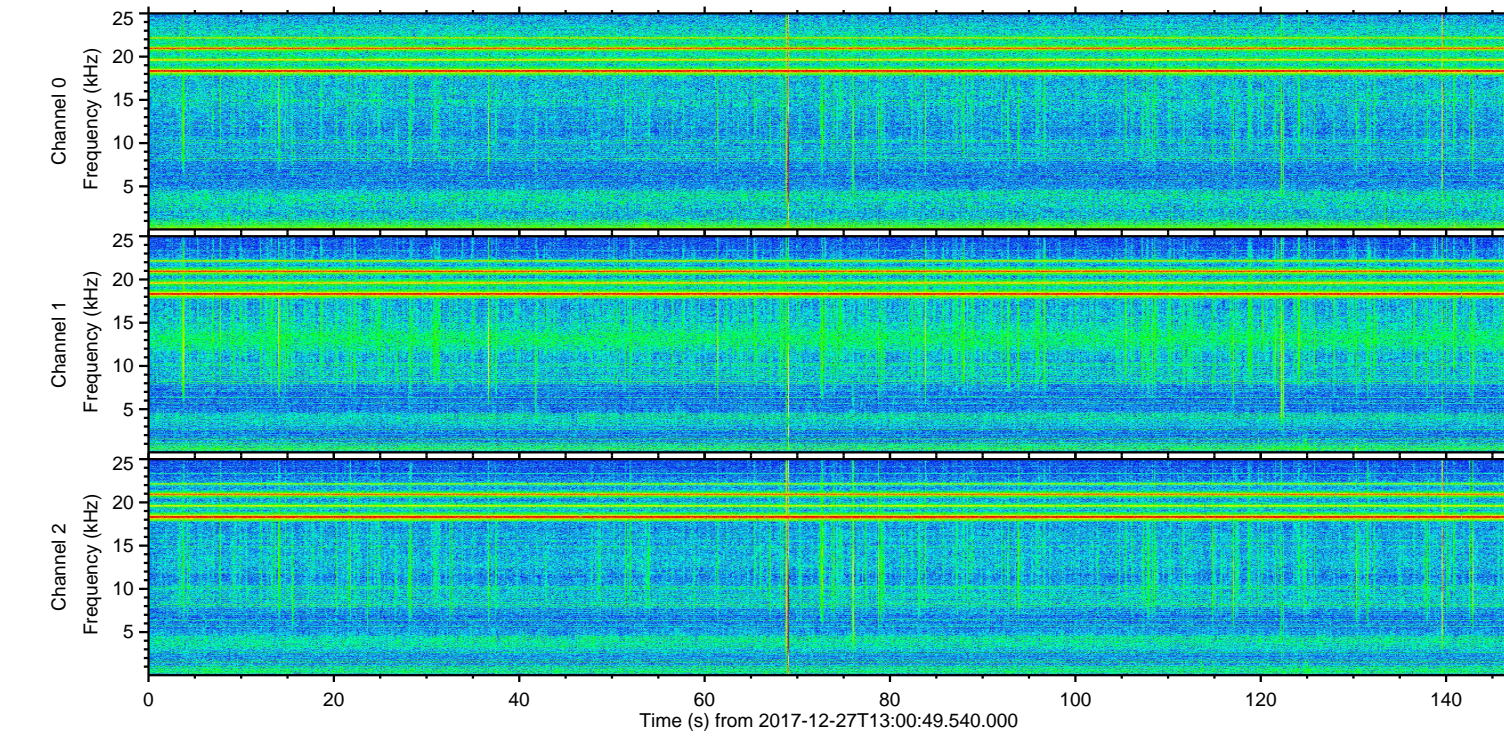
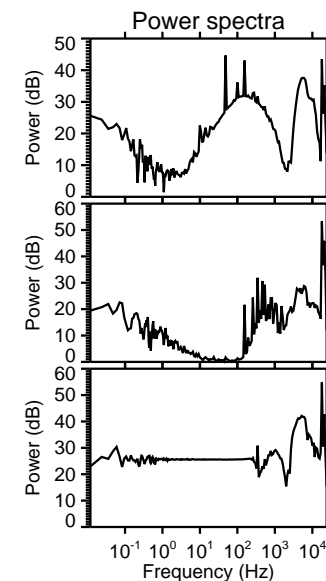
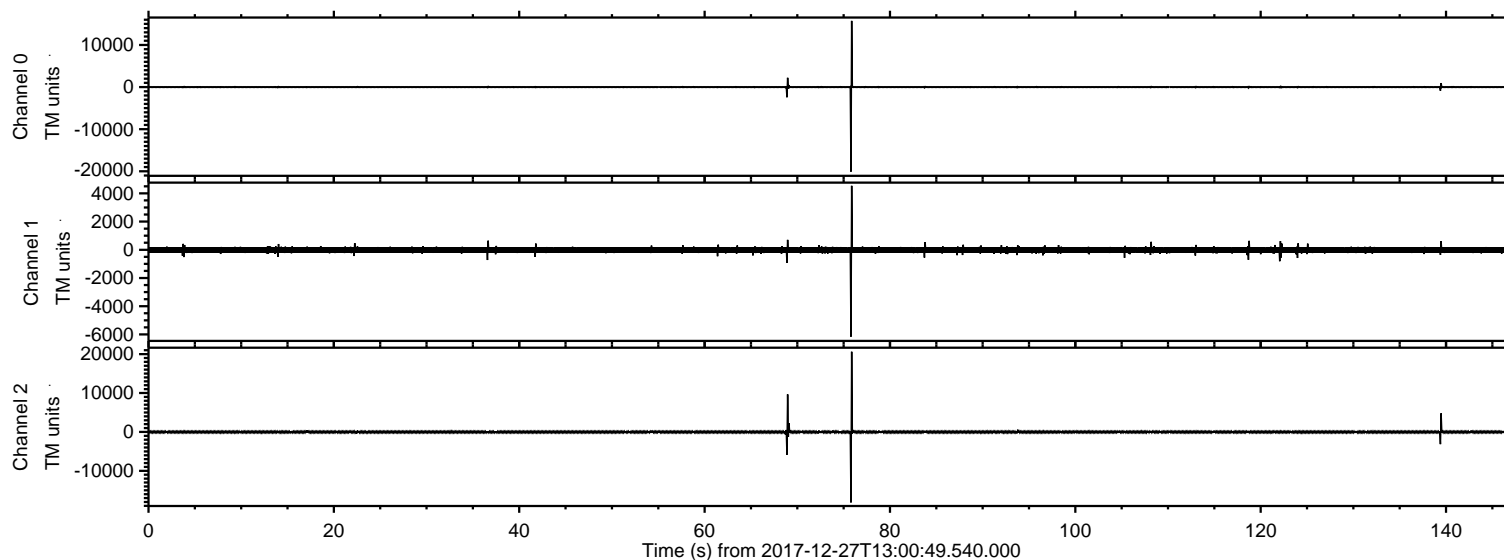


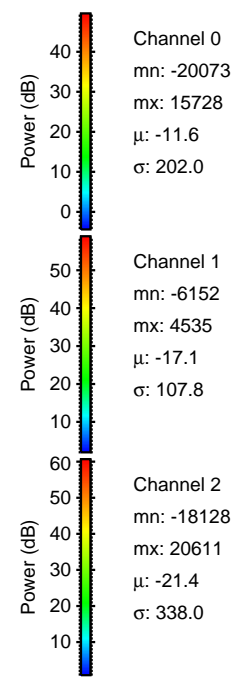
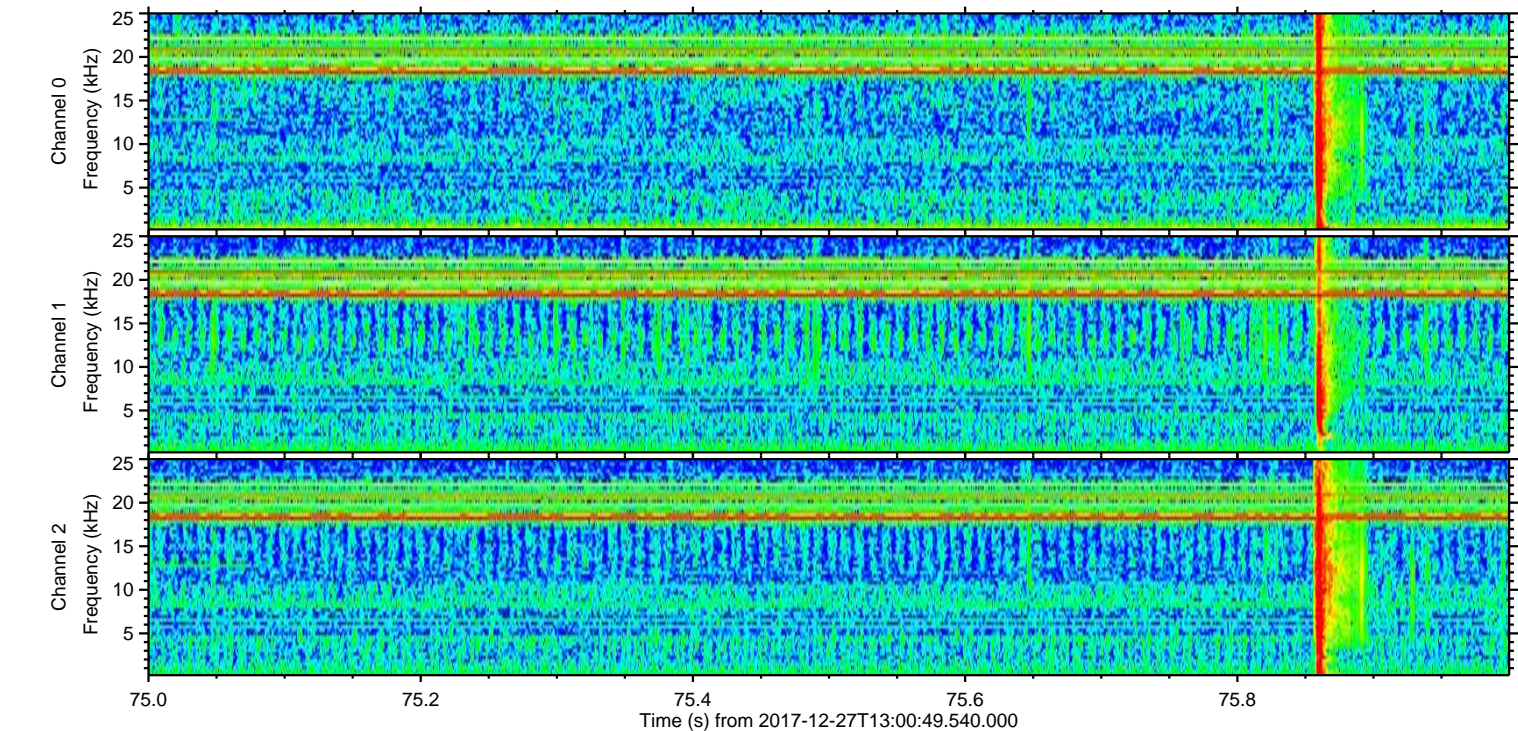
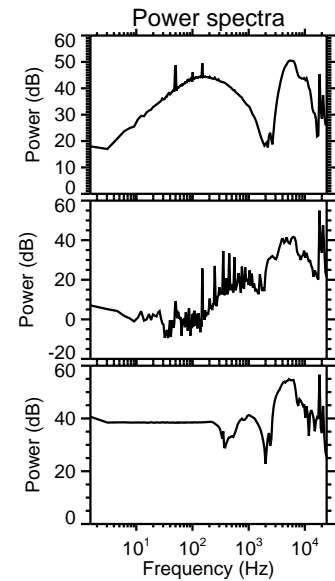
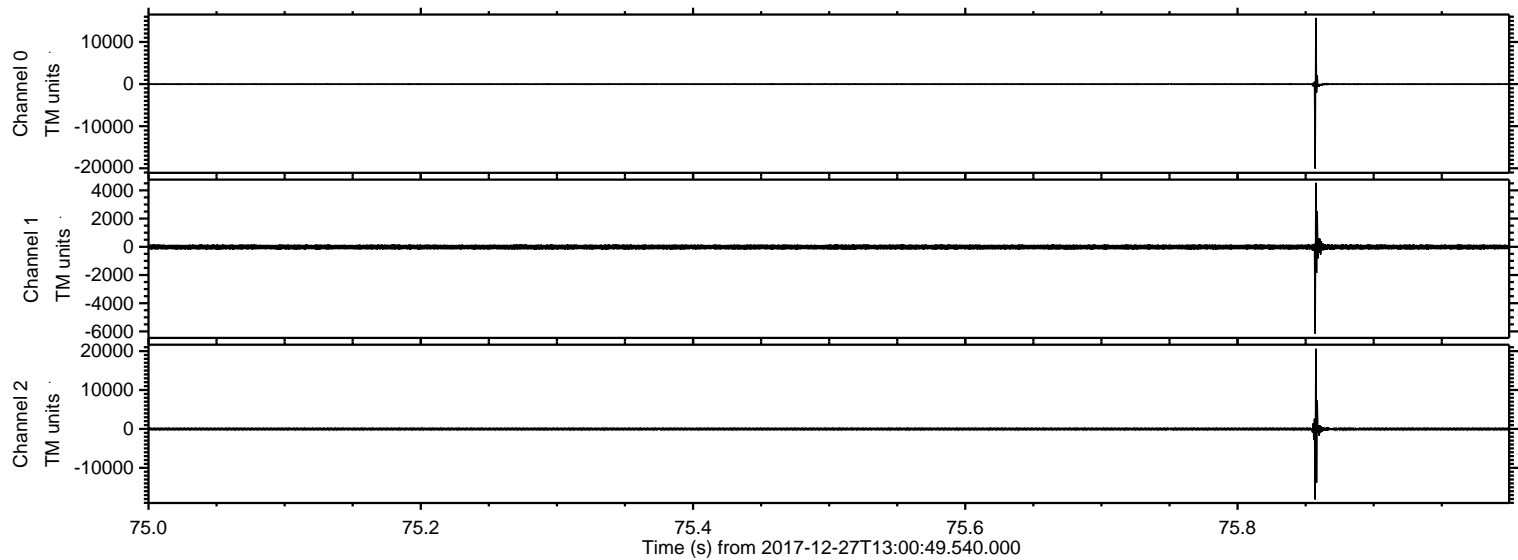
# ELMAVAN 3D WAVEFORMS (Measured data sampled at 50 kHz) 51000 packets of 144 samples from 2017-12-27T13:00:49.540.000.

Processed Wed Dec 27 14:09:04 2017 by ELM ver.2012-10-06 from 001\_\_elm20171227\_130048\_\_dat00.bin



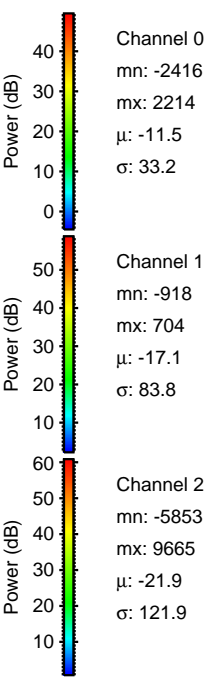
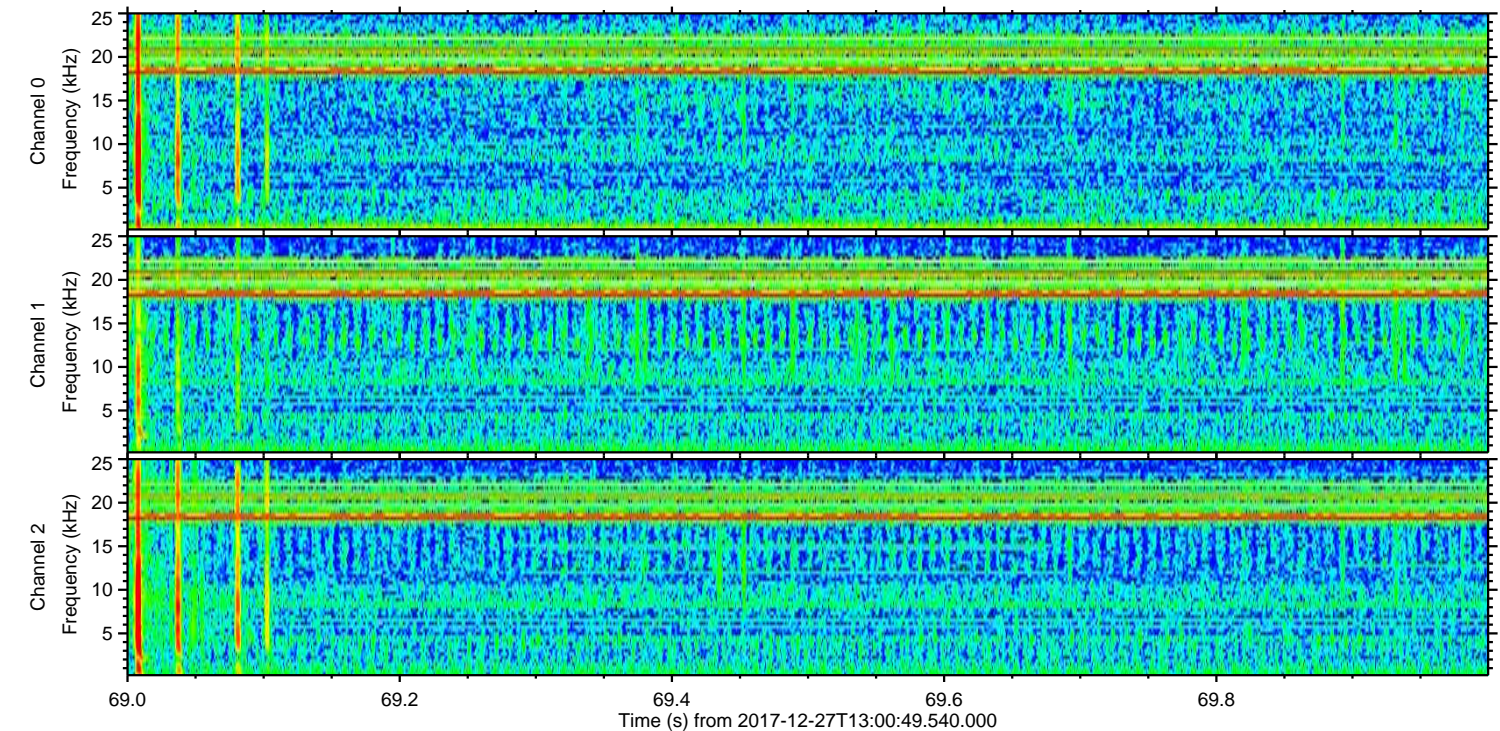
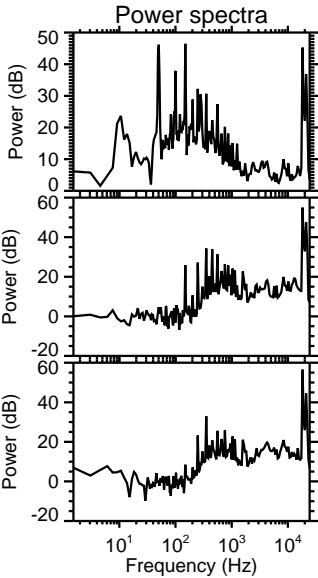
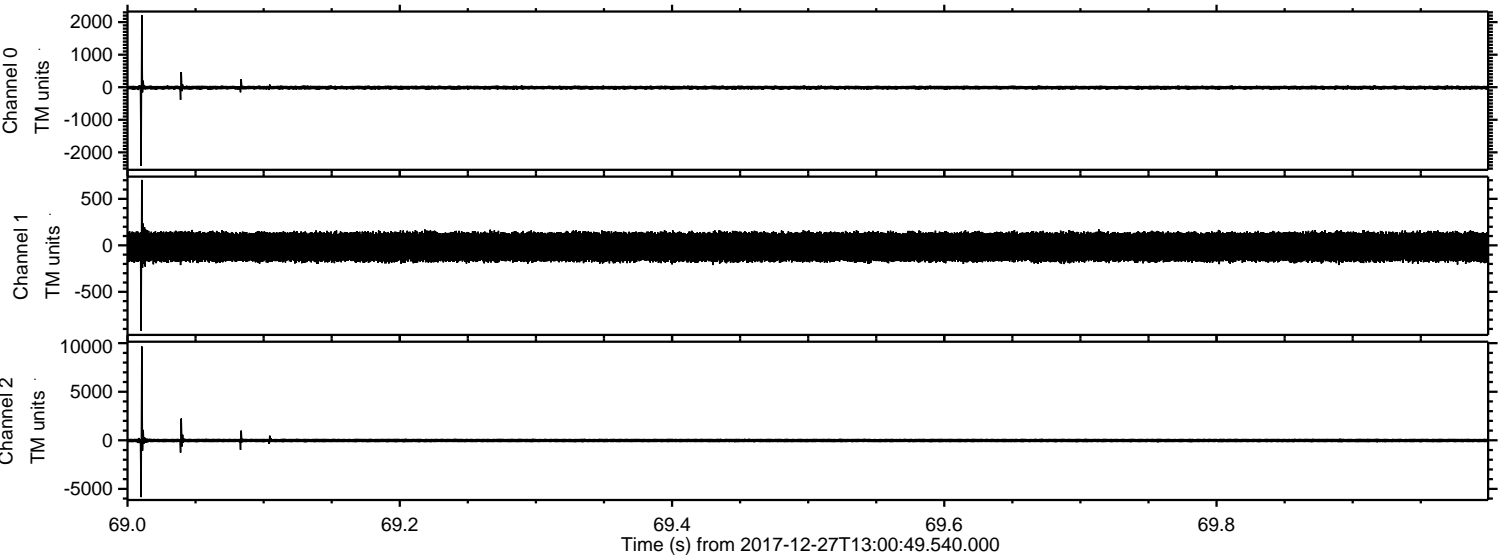


Processed Wed Dec 27 14:09:12 2017 by ELM ver.2012-10-06 from 001\_\_elm20171227\_130048\_\_dat00.bin





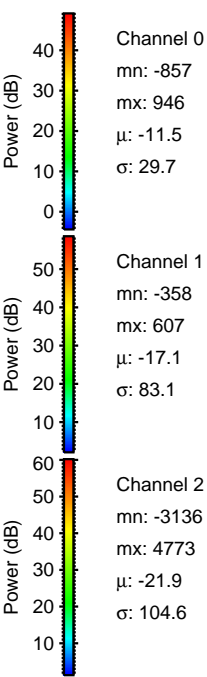
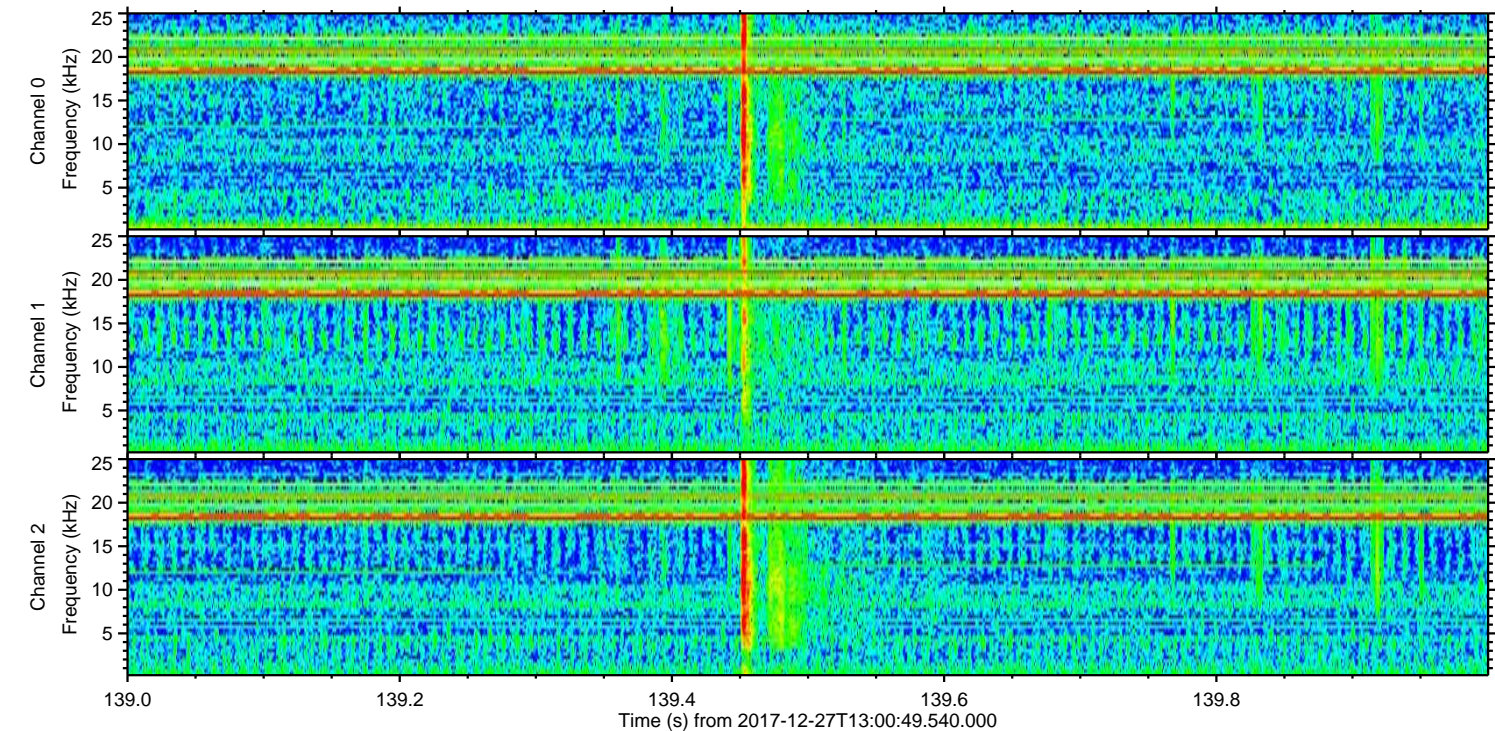
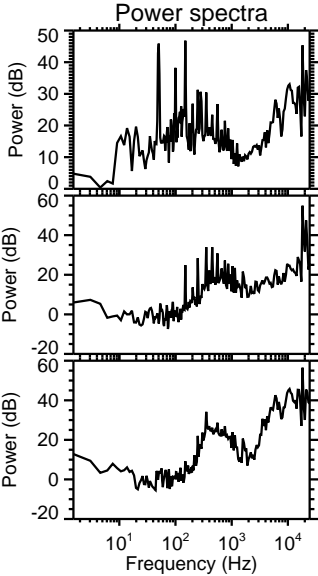
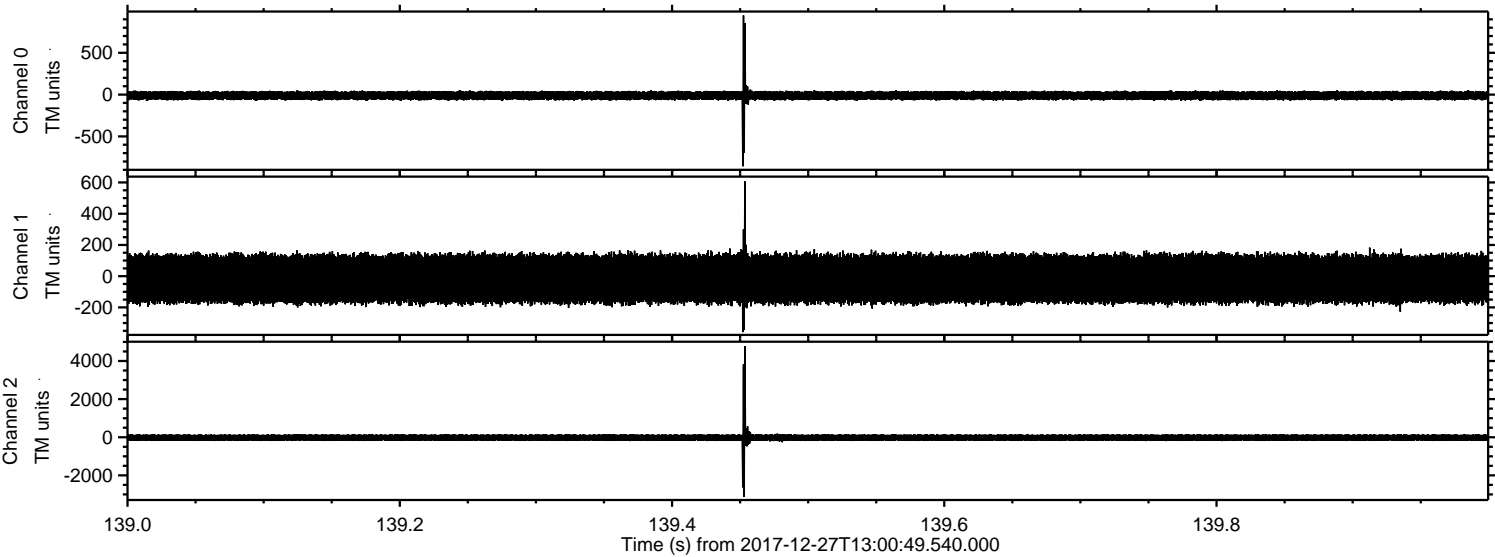
Processed Wed Dec 27 14:09:13 2017 by ELM ver.2012-10-06 from 001\_\_elm20171227\_130048\_\_dat00.bin





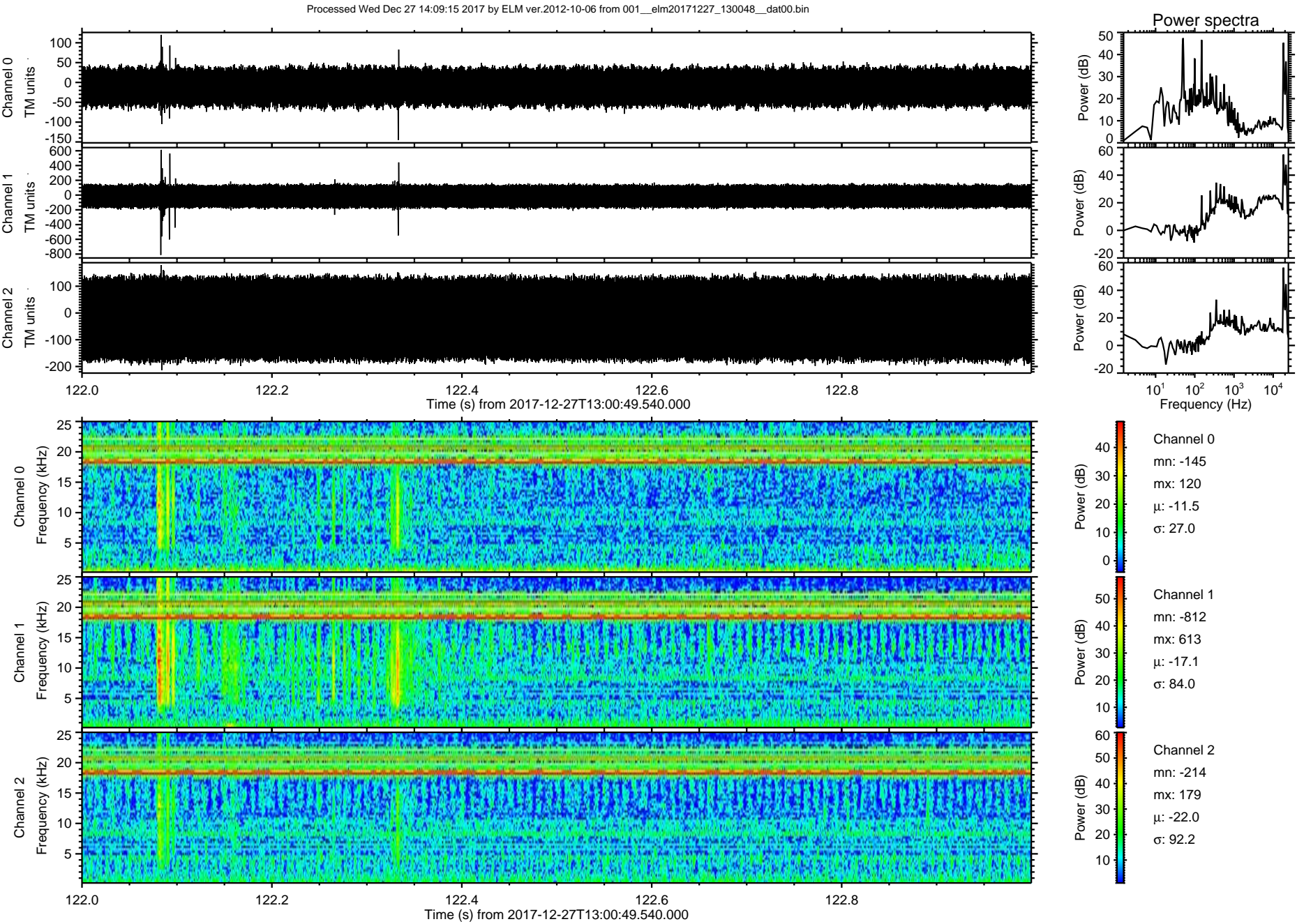
ELMAVAN 3D WAVEFORMS (Measured data sampled at 50 kHz) 51000 packets of 144 samples from 2017-12-27T13:00:49.540.000. Part 140/147

Processed Wed Dec 27 14:09:14 2017 by ELM ver.2012-10-06 from 001\_\_elm20171227\_130048\_\_dat00.bin



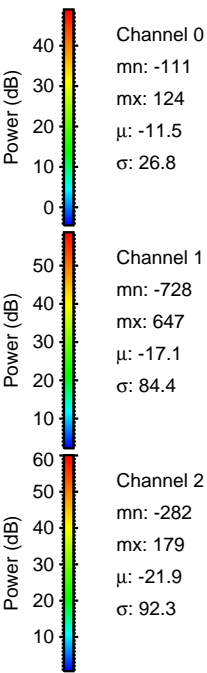
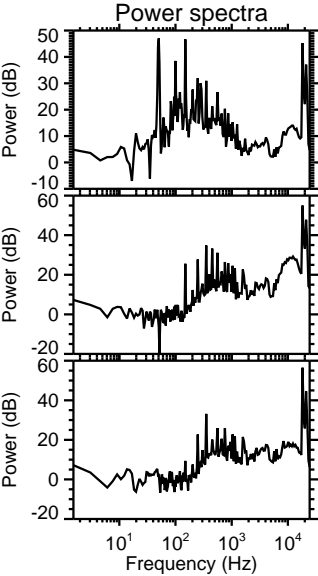
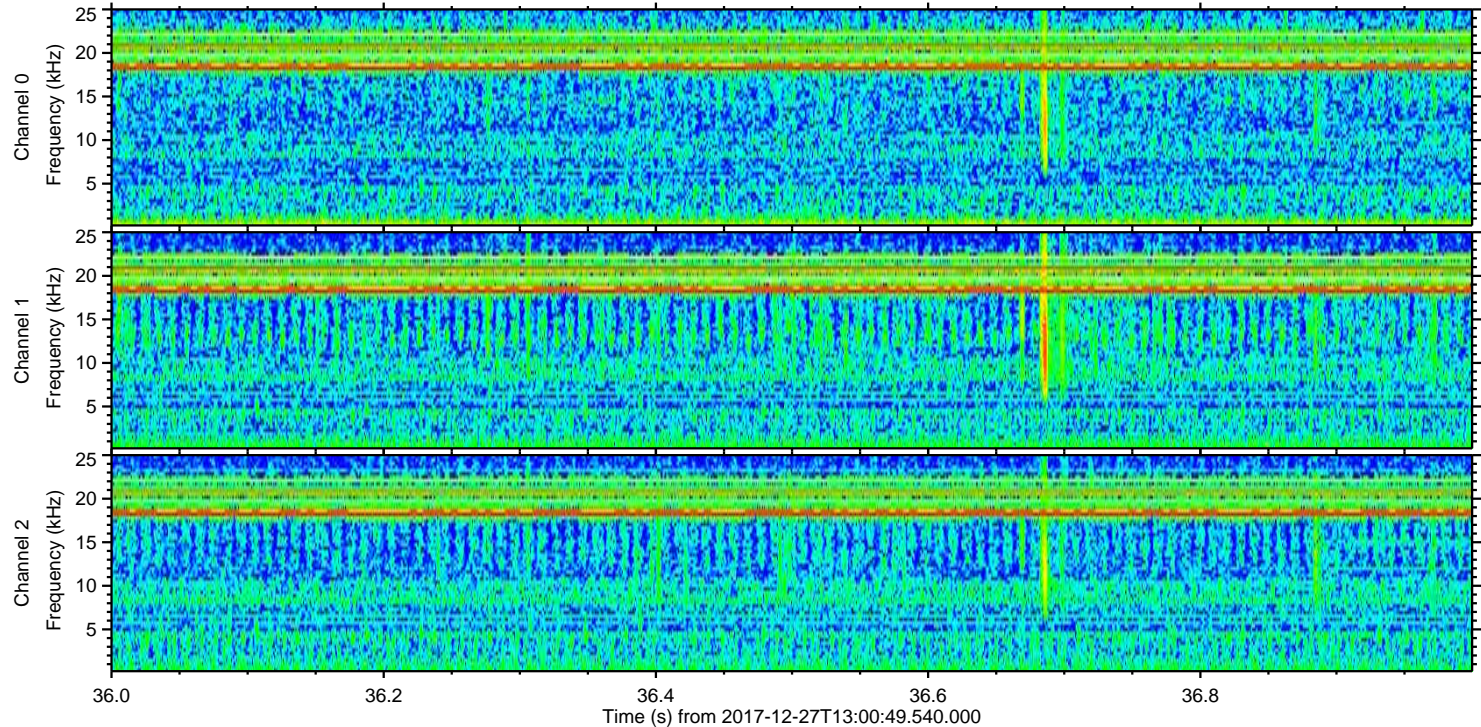
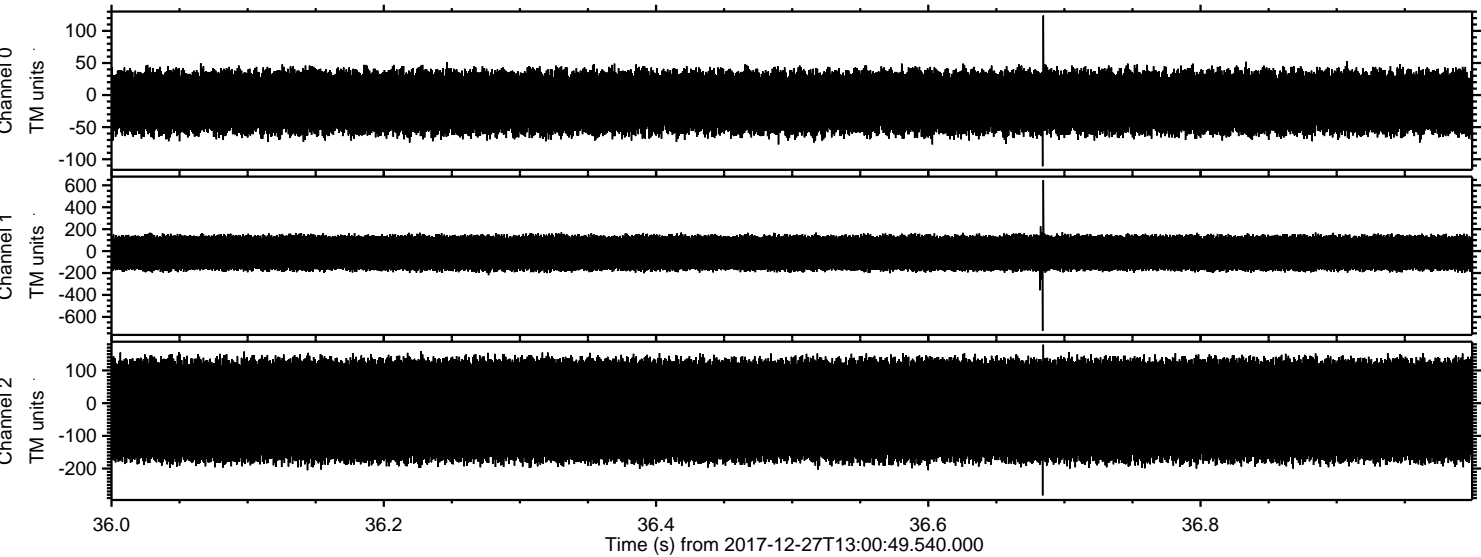


ELMAVAN 3D WAVEFORMS (Measured data sampled at 50 kHz) 51000 packets of 144 samples from 2017-12-27T13:00:49.540.000. Part 123/147



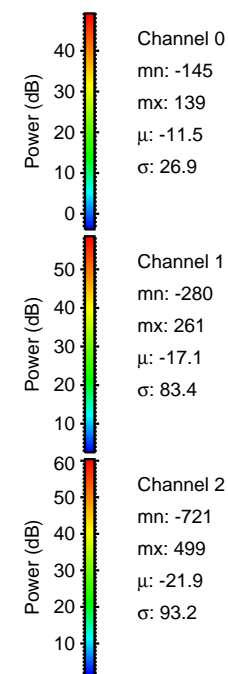
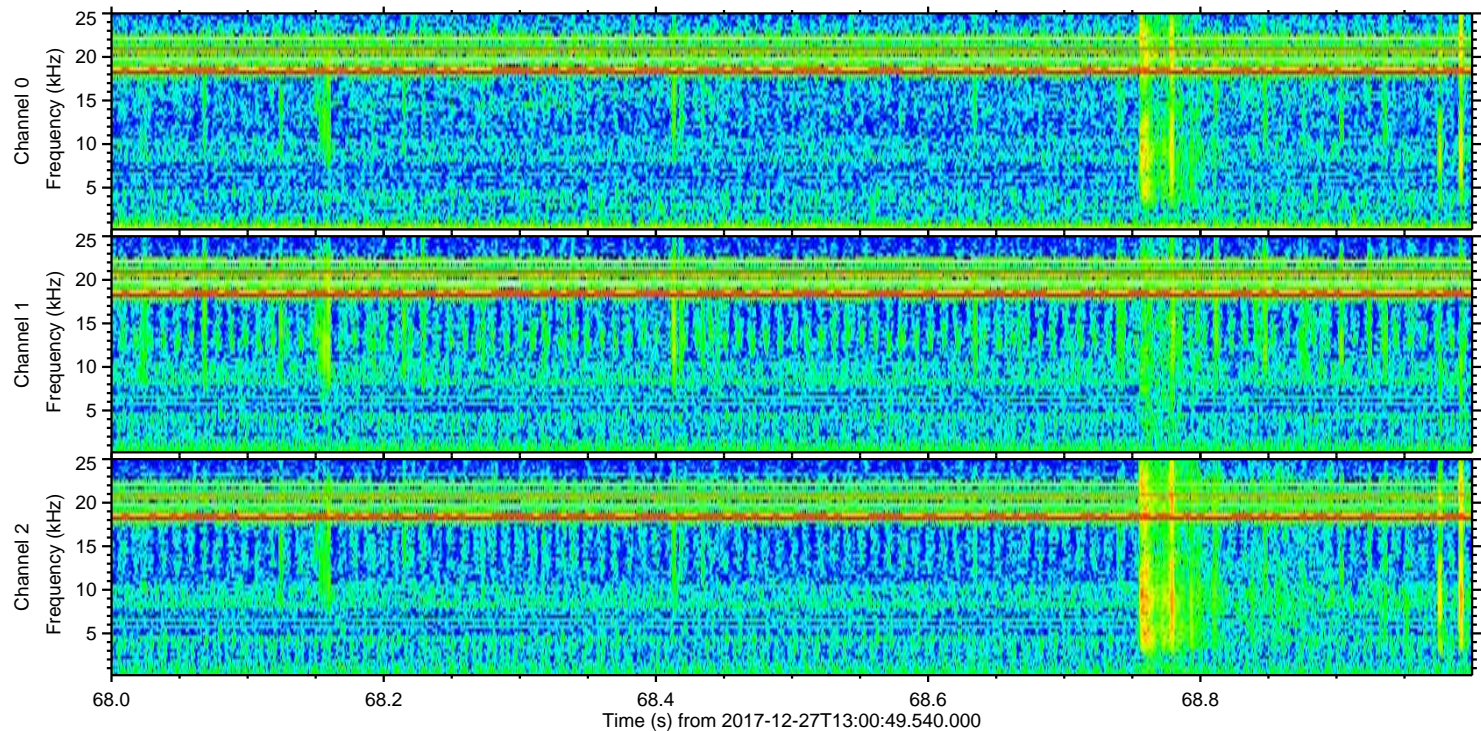
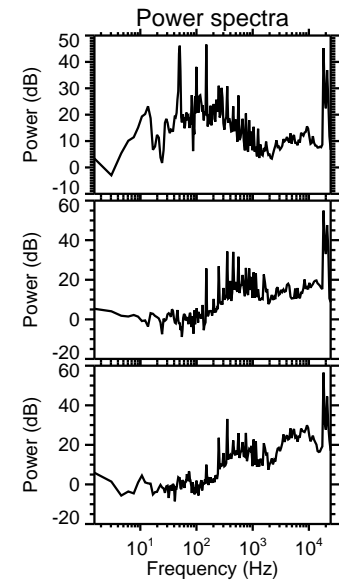
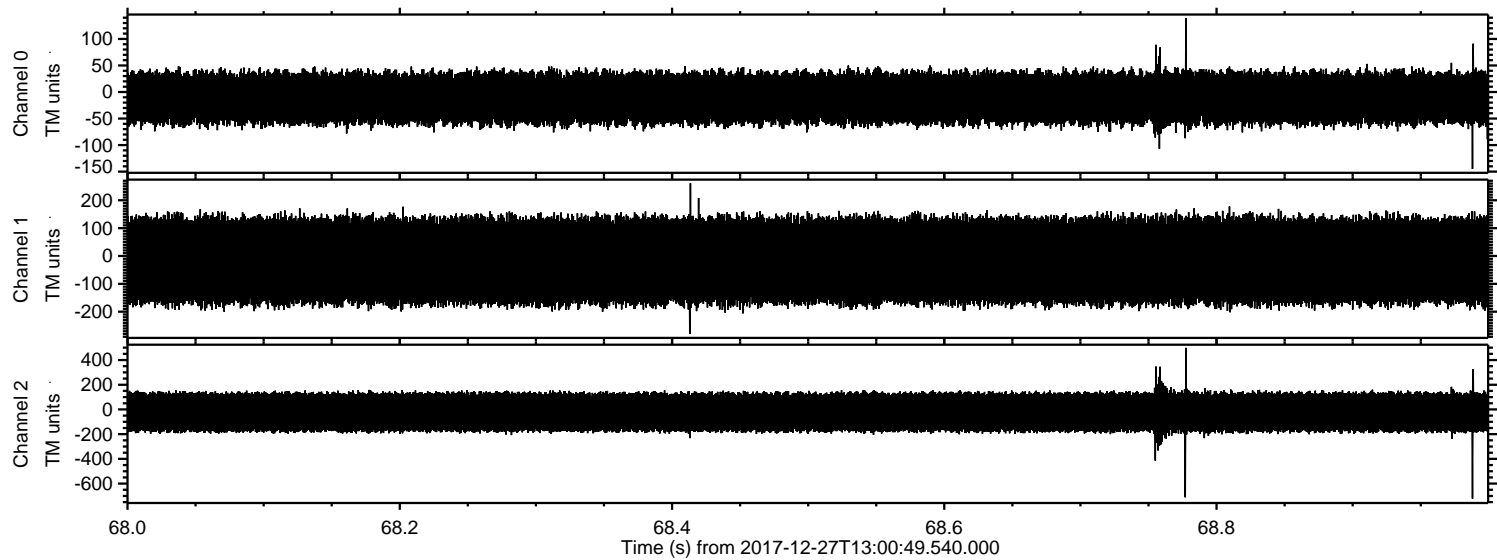


Processed Wed Dec 27 14:09:15 2017 by ELM ver.2012-10-06 from 001\_\_elm20171227\_130048\_\_dat00.bin



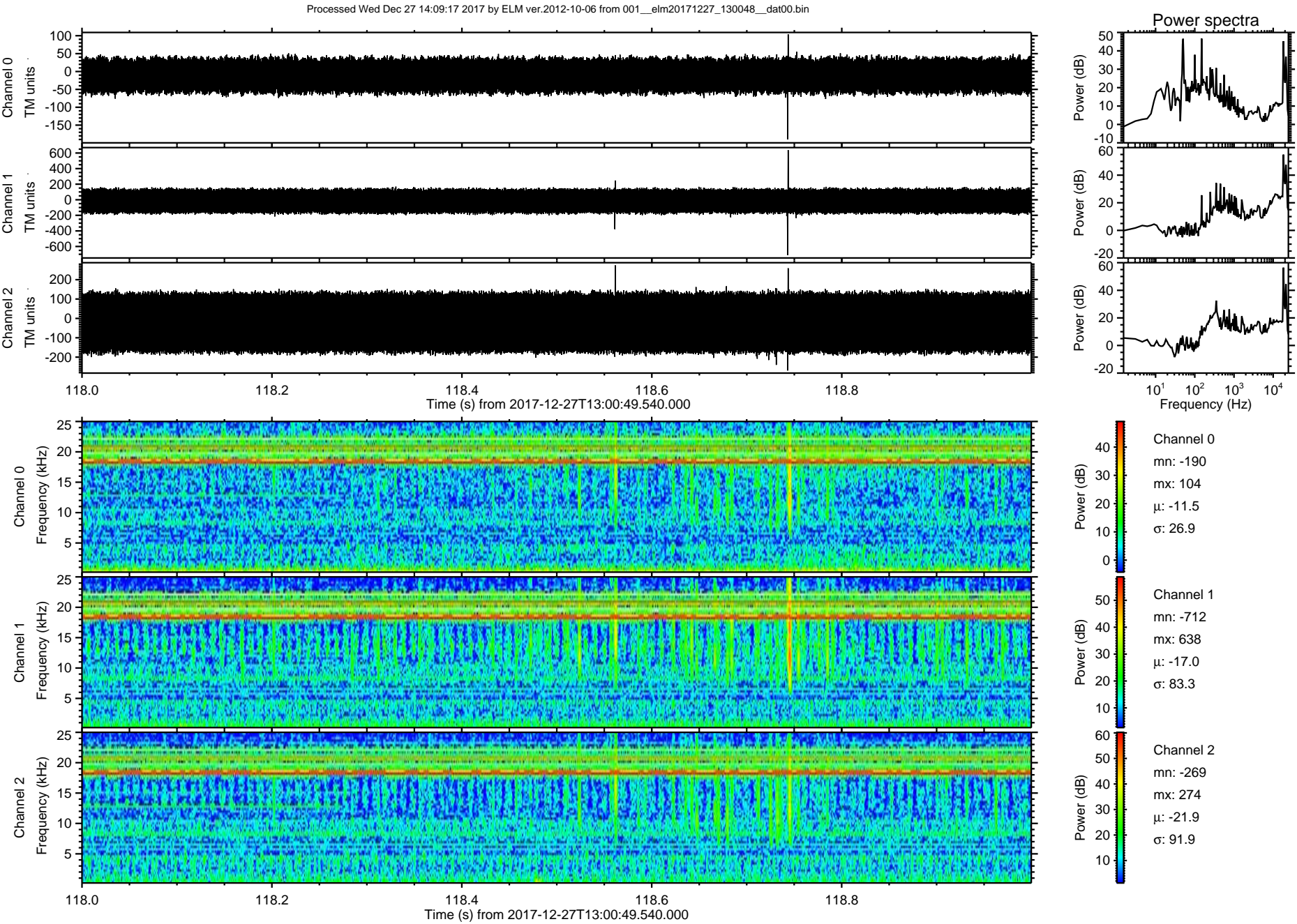


Processed Wed Dec 27 14:09:16 2017 by ELM ver.2012-10-06 from 001\_\_elm20171227\_130048\_\_dat00.bin



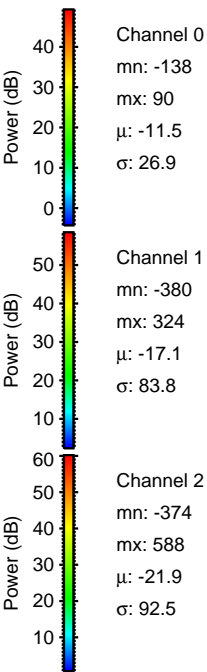
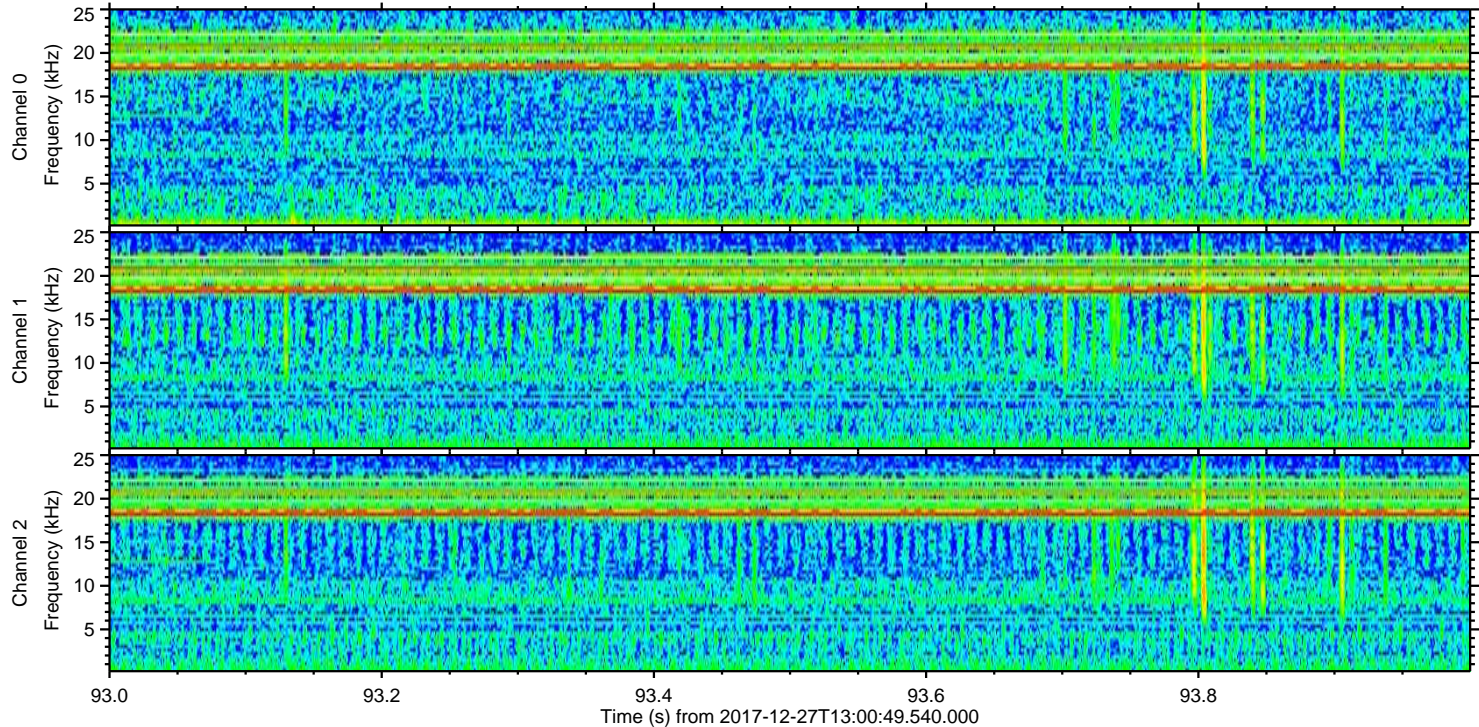
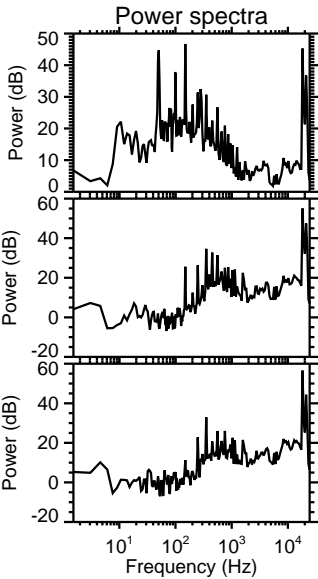
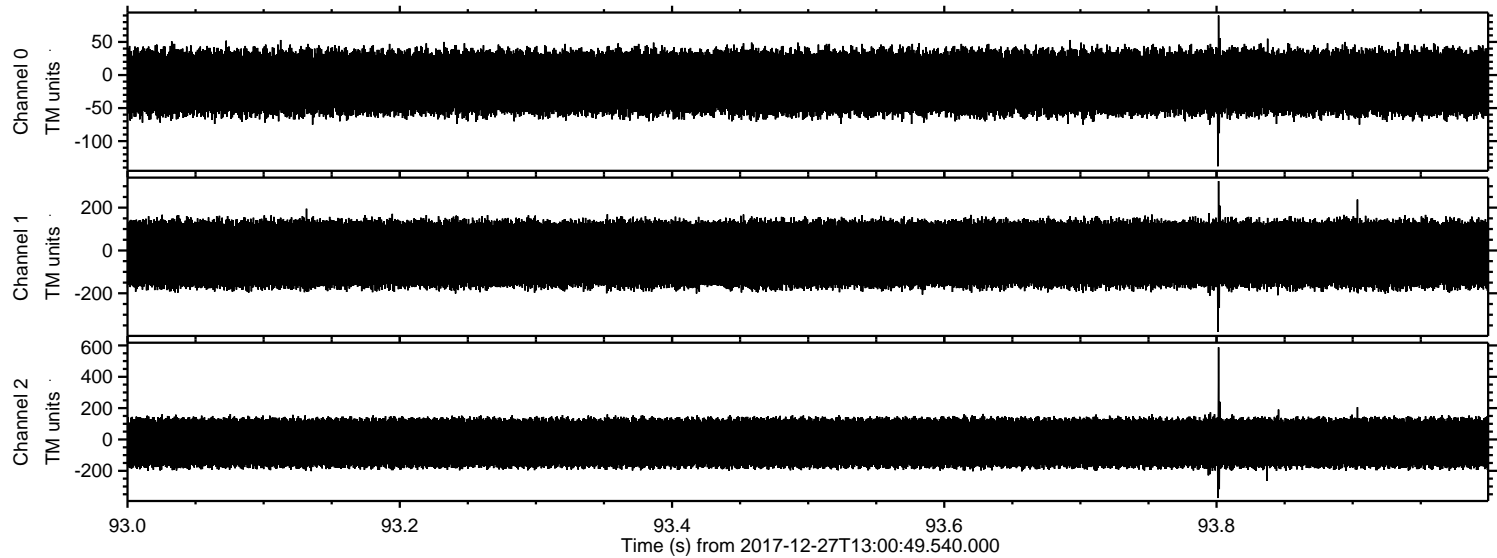


ELMAVAN 3D WAVEFORMS (Measured data sampled at 50 kHz) 51000 packets of 144 samples from 2017-12-27T13:00:49.540.000. Part 119/147



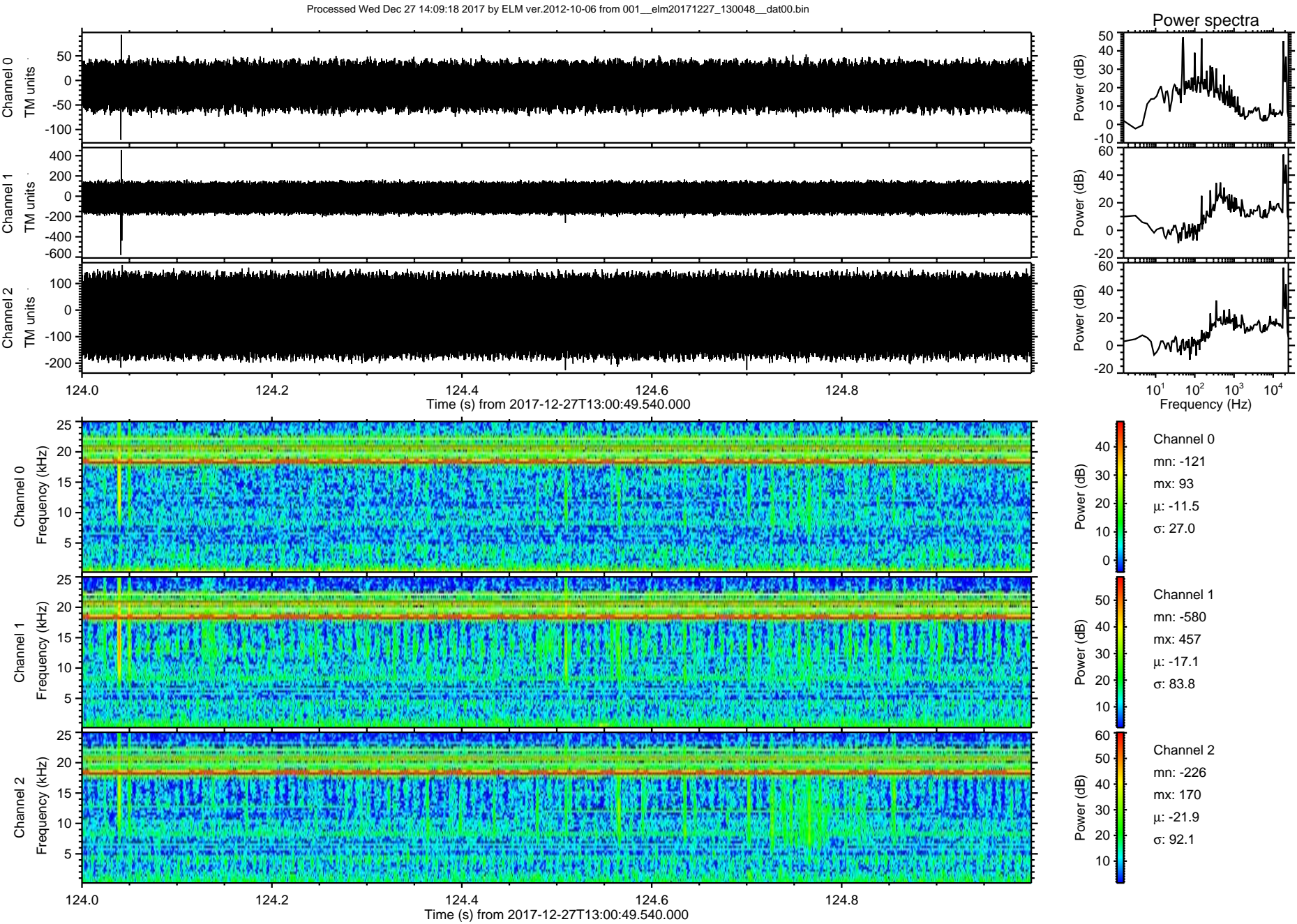


Processed Wed Dec 27 14:09:18 2017 by ELM ver.2012-10-06 from 001\_\_elm20171227\_130048\_\_dat00.bin





ELMAVAN 3D WAVEFORMS (Measured data sampled at 50 kHz) 51000 packets of 144 samples from 2017-12-27T13:00:49.540.000. Part 125/147





ELMAVAN 3D WAVEFORMS (Measured data sampled at 50 kHz) 51000 packets of 144 samples from 2017-12-27T13:00:49.540.000. Part 139/147

