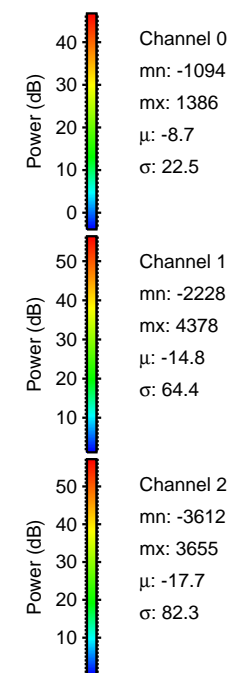
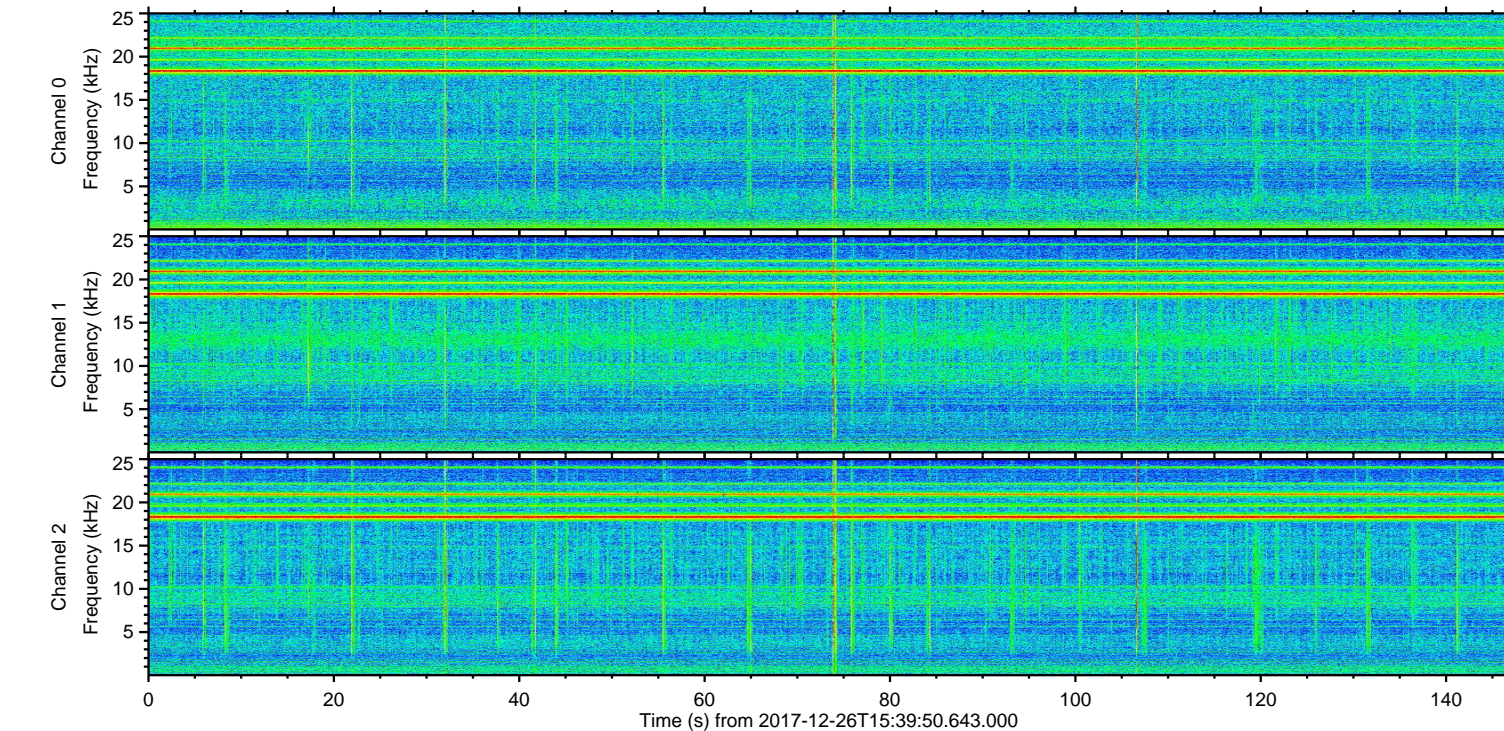
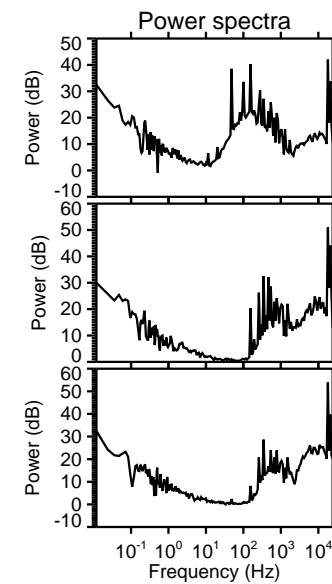
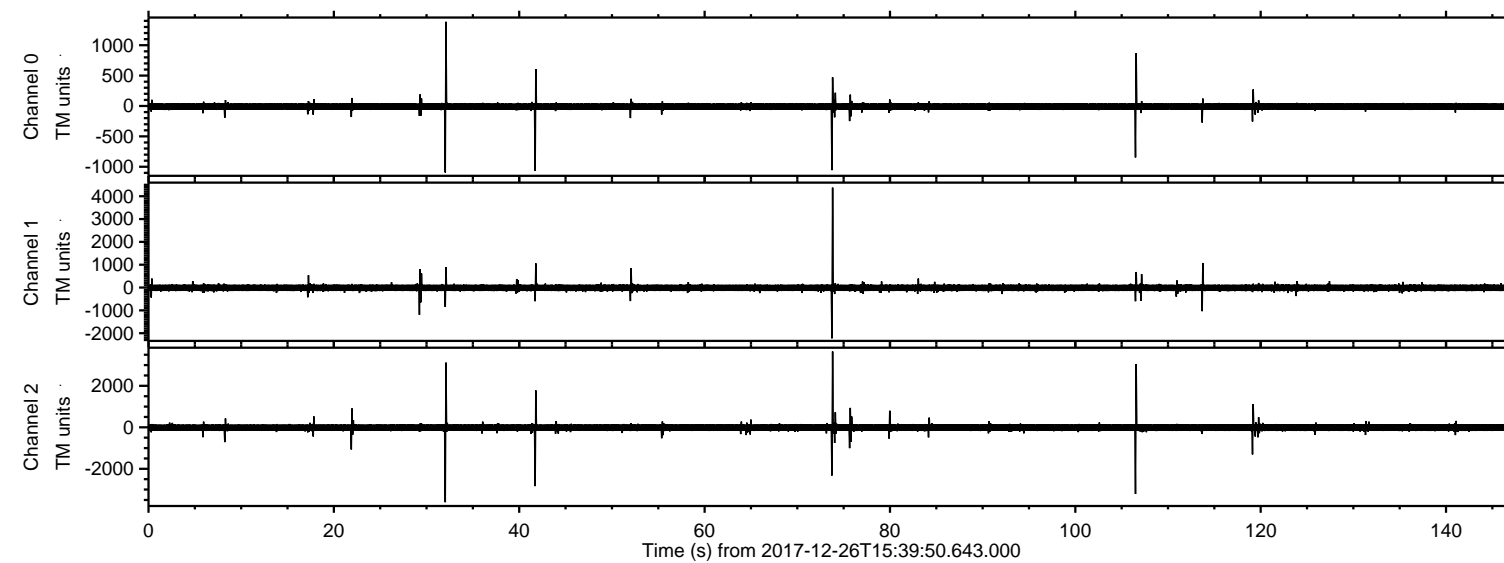
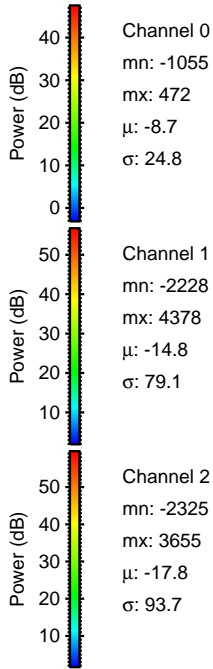
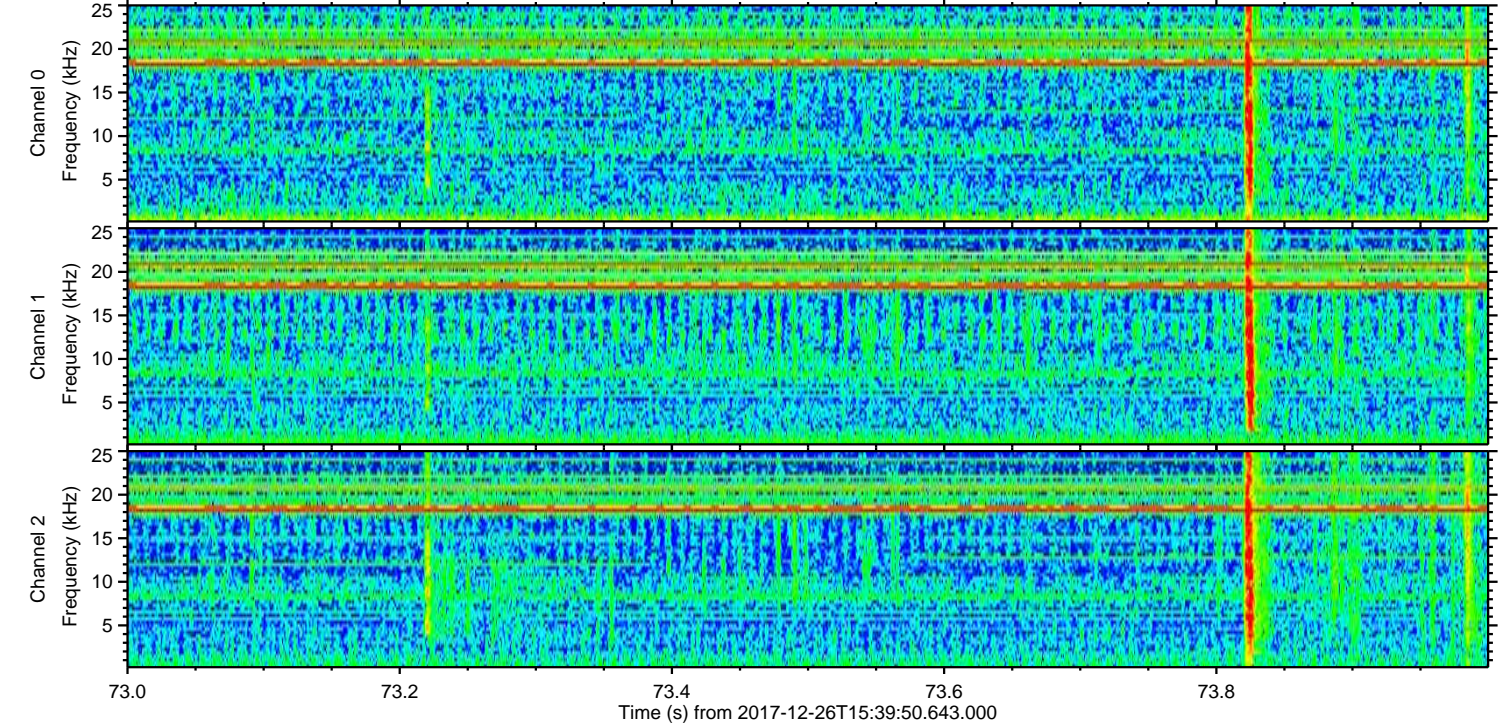
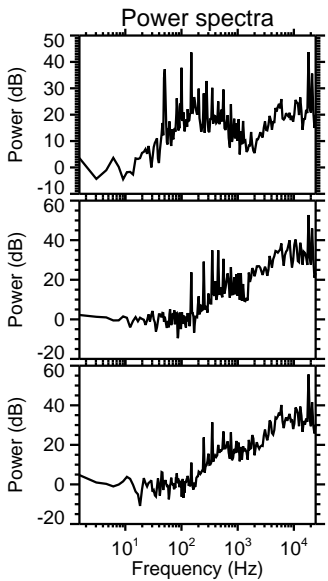
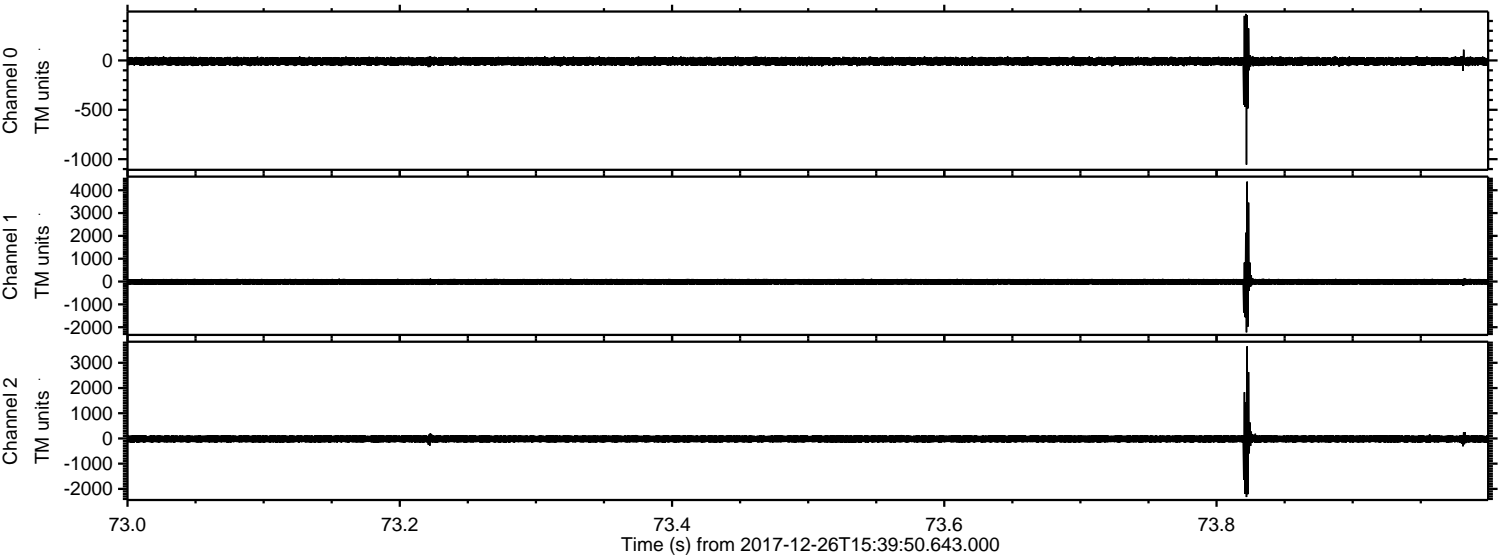


ELMAVAN 3D WAVEFORMS (Measured data sampled at 50 kHz) 51000 packets of 144 samples from 2017-12-26T15:39:50.643.000.

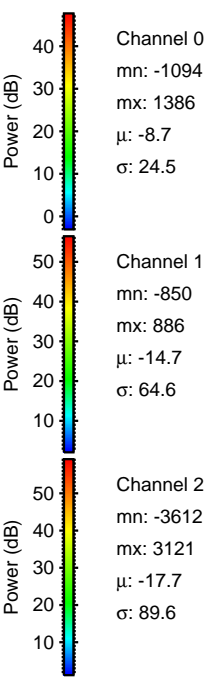
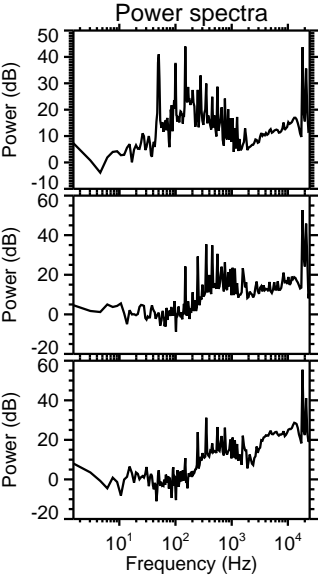
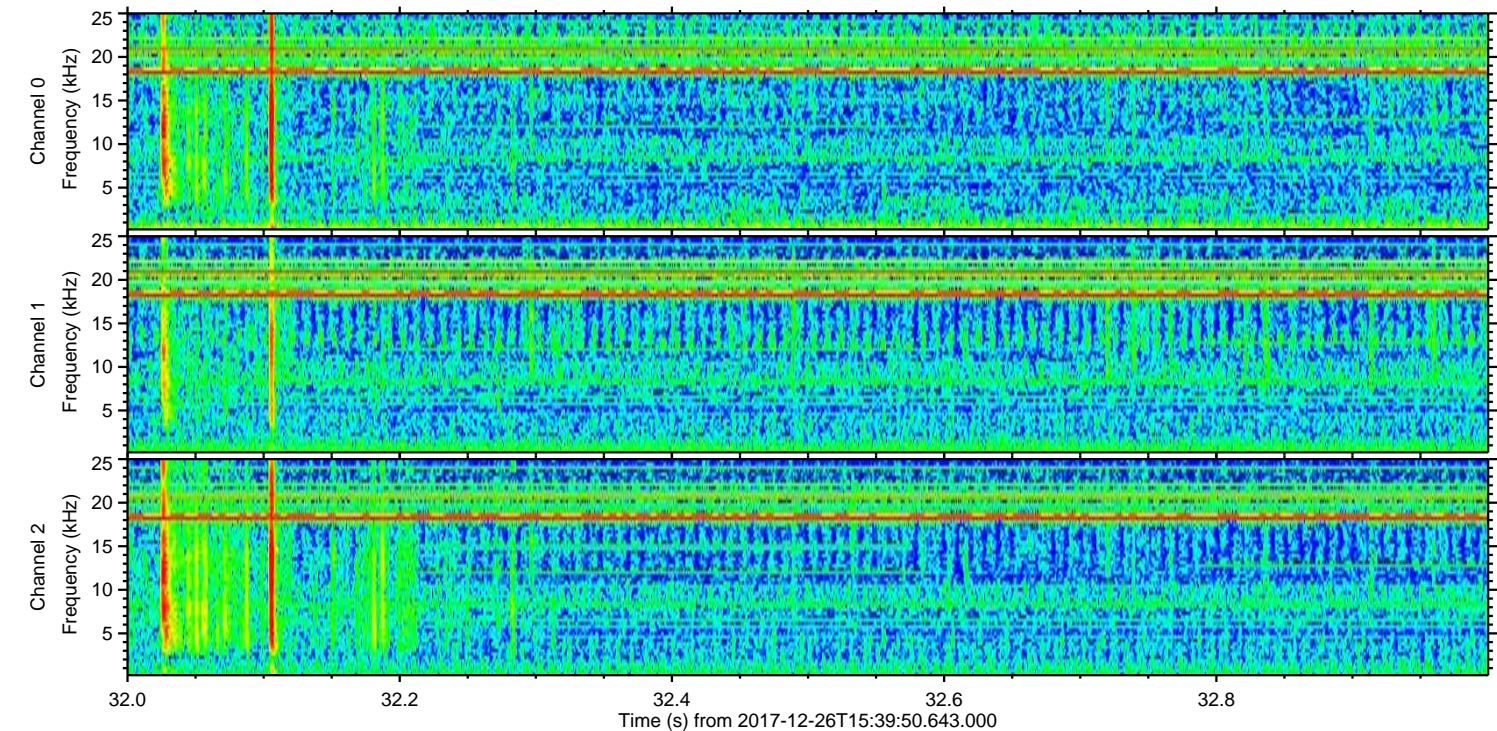
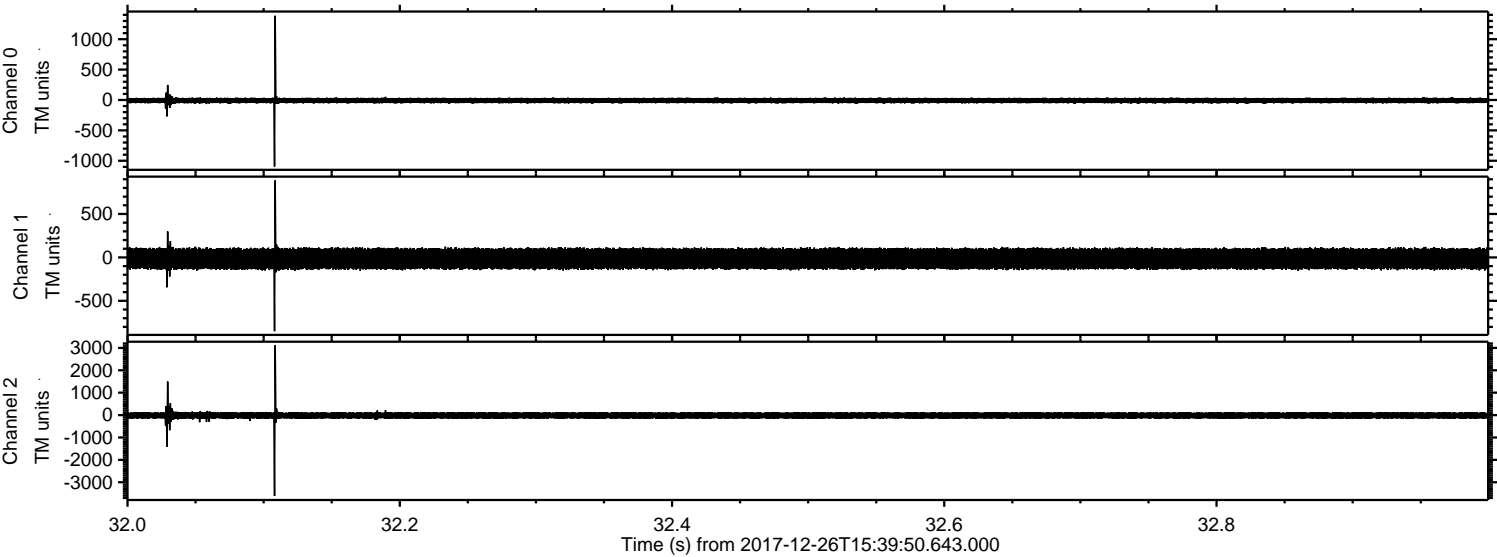
Processed Tue Dec 26 16:47:43 2017 by ELM ver.2012-10-06 from 001__elm20171226_153949__dat00.bin



Processed Tue Dec 26 16:47:51 2017 by ELM ver.2012-10-06 from 001__elm20171226_153949__dat00.bin

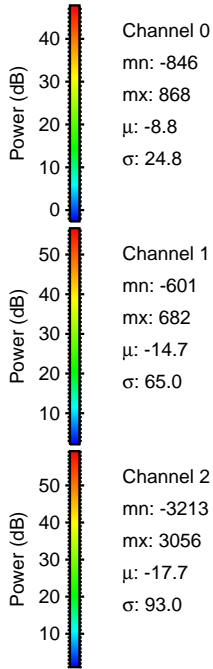
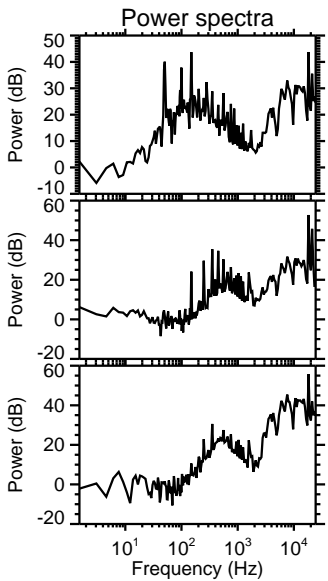
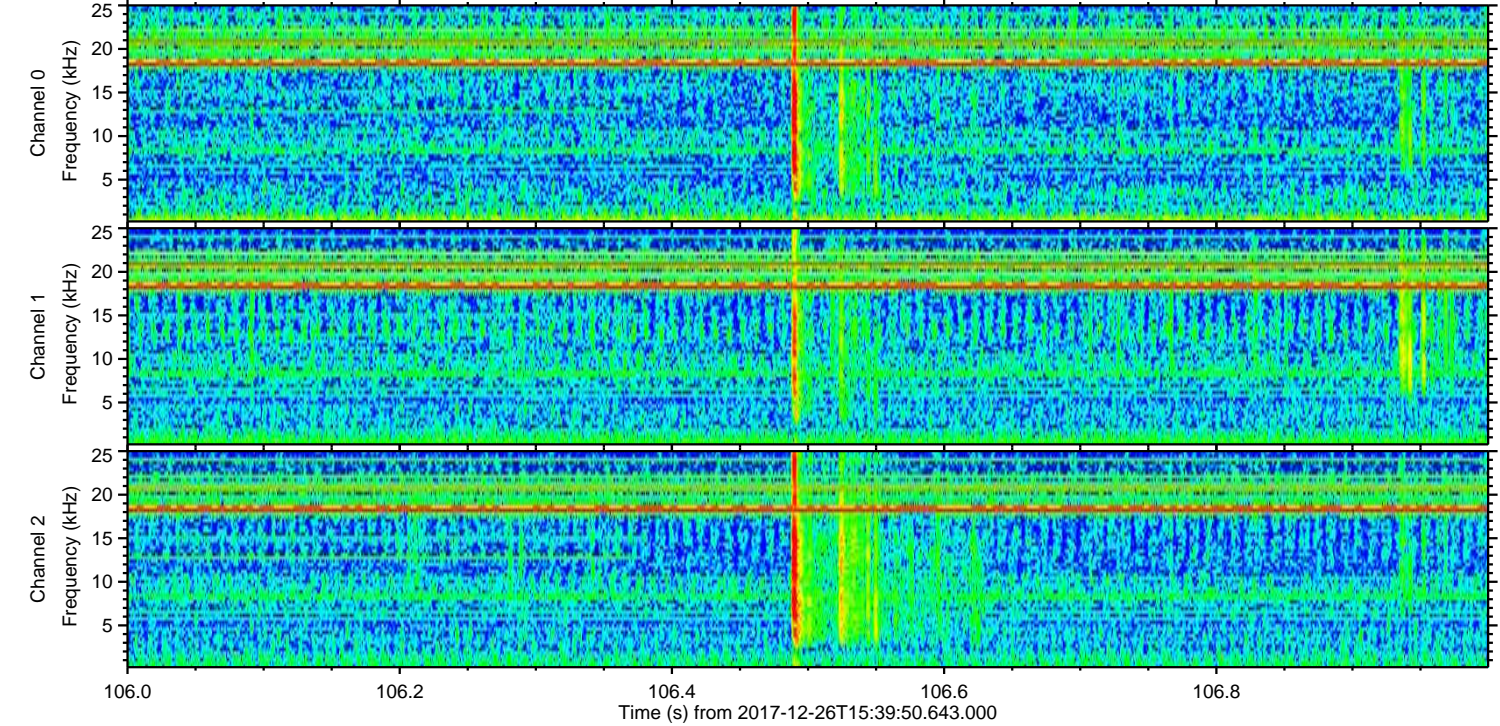
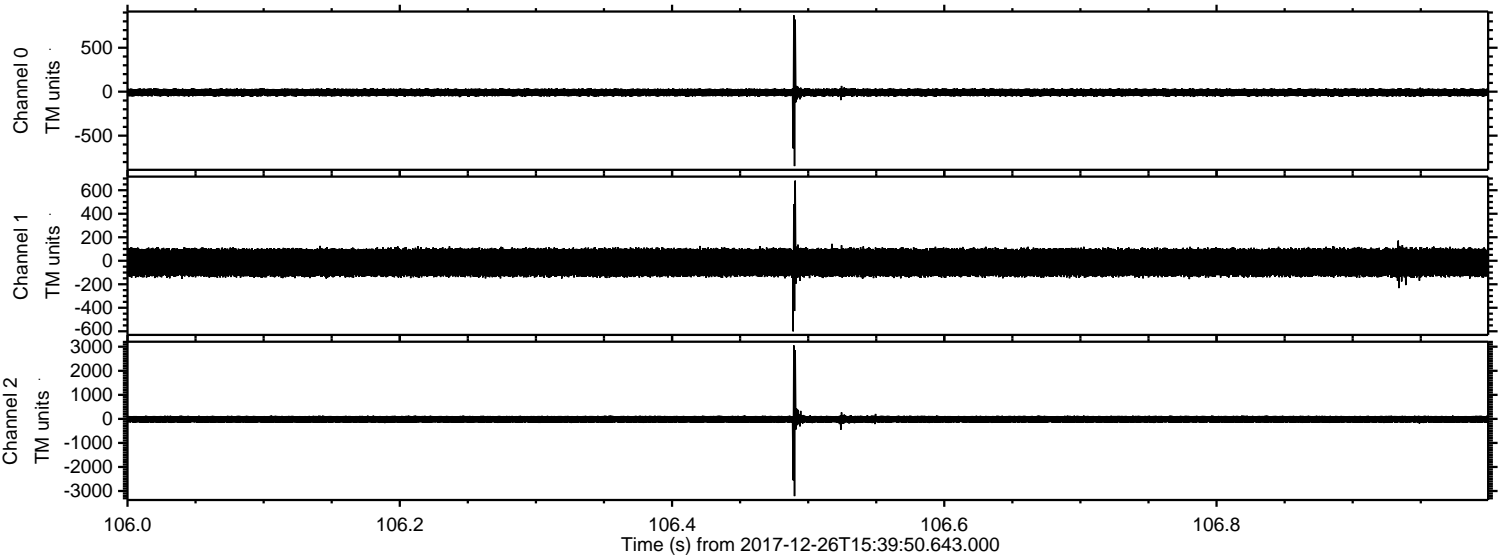


Processed Tue Dec 26 16:47:52 2017 by ELM ver.2012-10-06 from 001__elm20171226_153949__dat00.bin

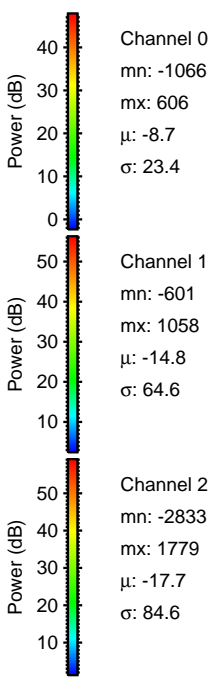
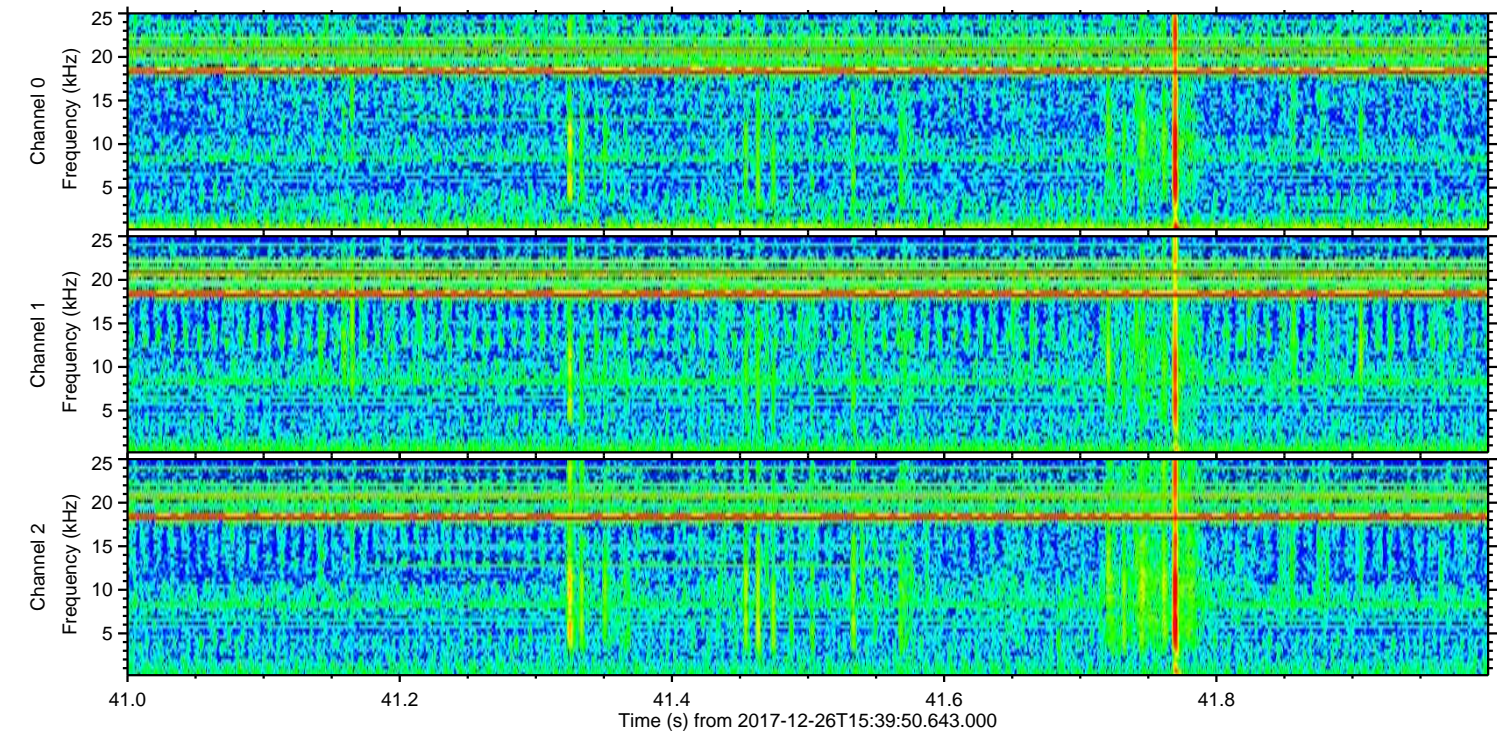
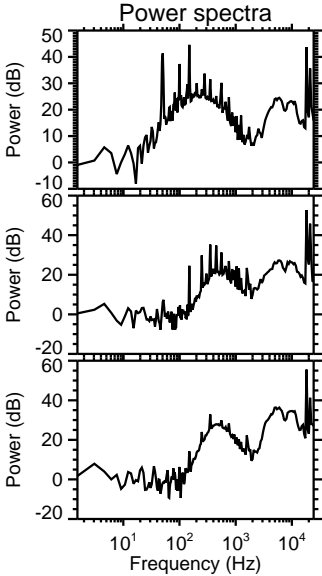
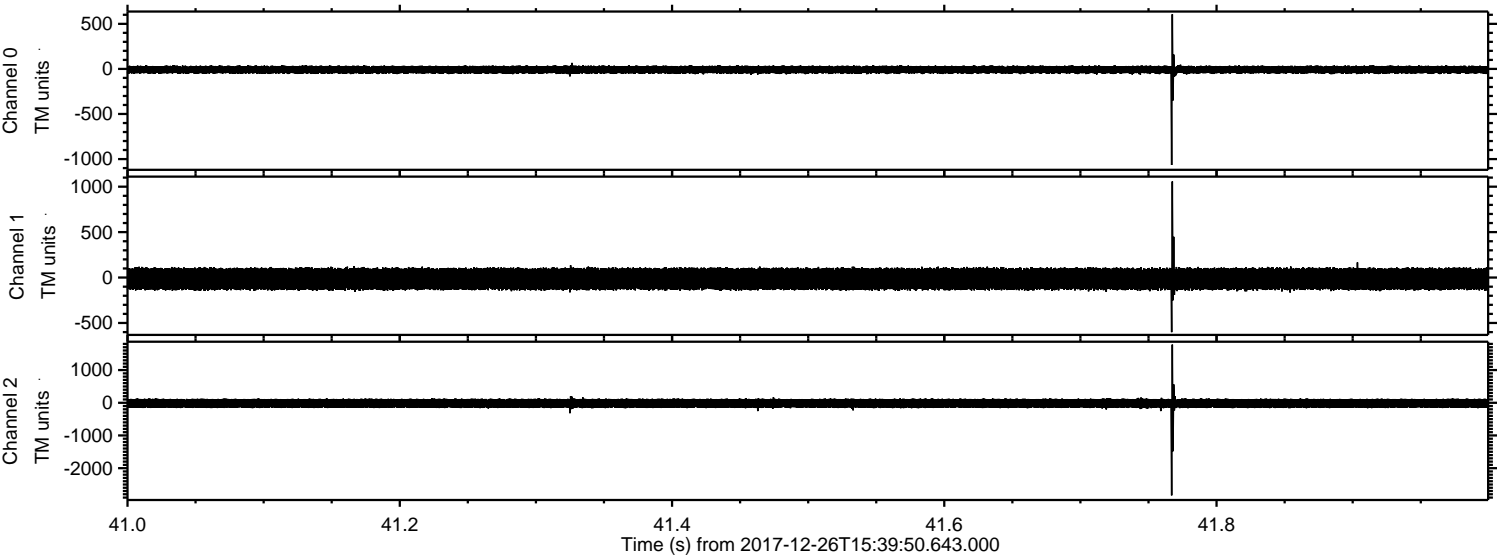


ELMAVAN 3D WAVEFORMS (Measured data sampled at 50 kHz) 51000 packets of 144 samples from 2017-12-26T15:39:50.643.000. Part 107/147

Processed Tue Dec 26 16:47:52 2017 by ELM ver.2012-10-06 from 001__elm20171226_153949__dat00.bin

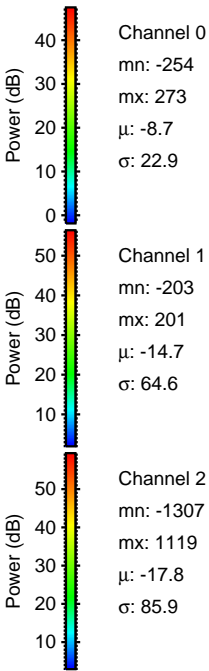
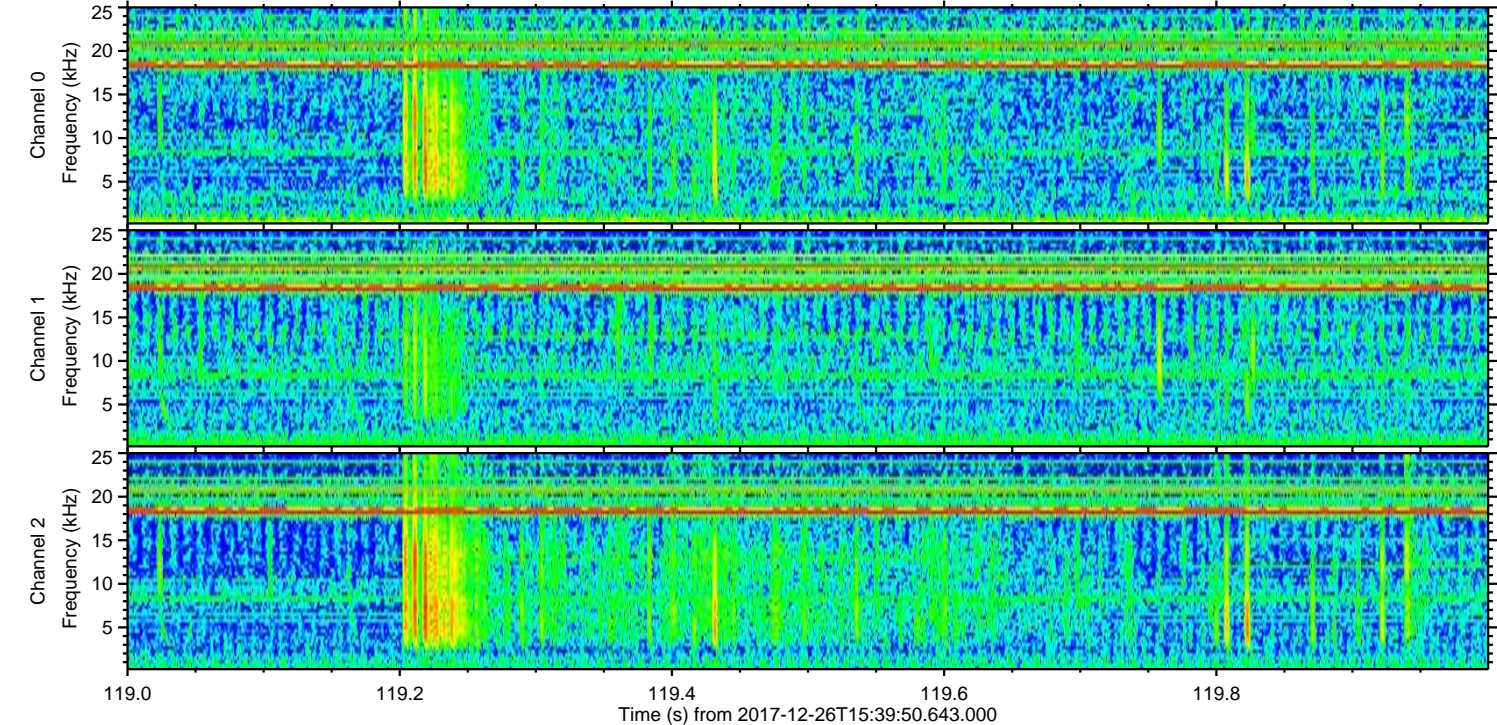
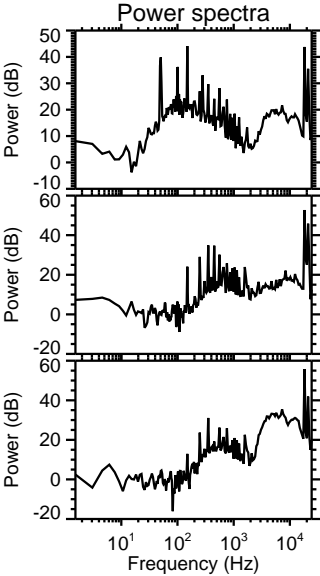
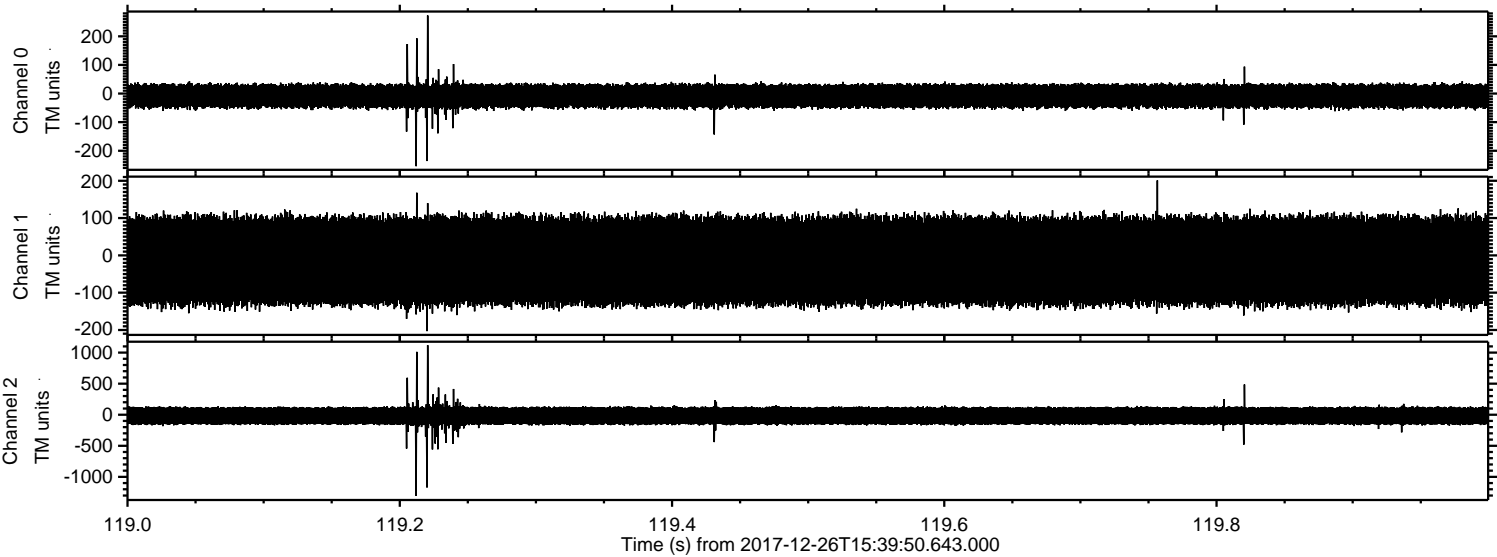


Processed Tue Dec 26 16:47:53 2017 by ELM ver.2012-10-06 from 001__elm20171226_153949__dat00.bin

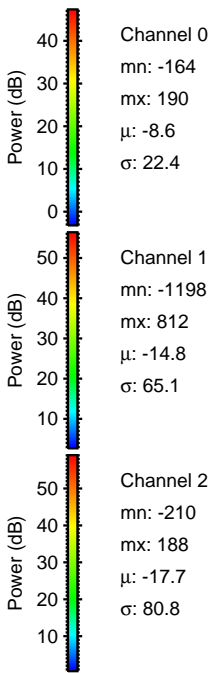
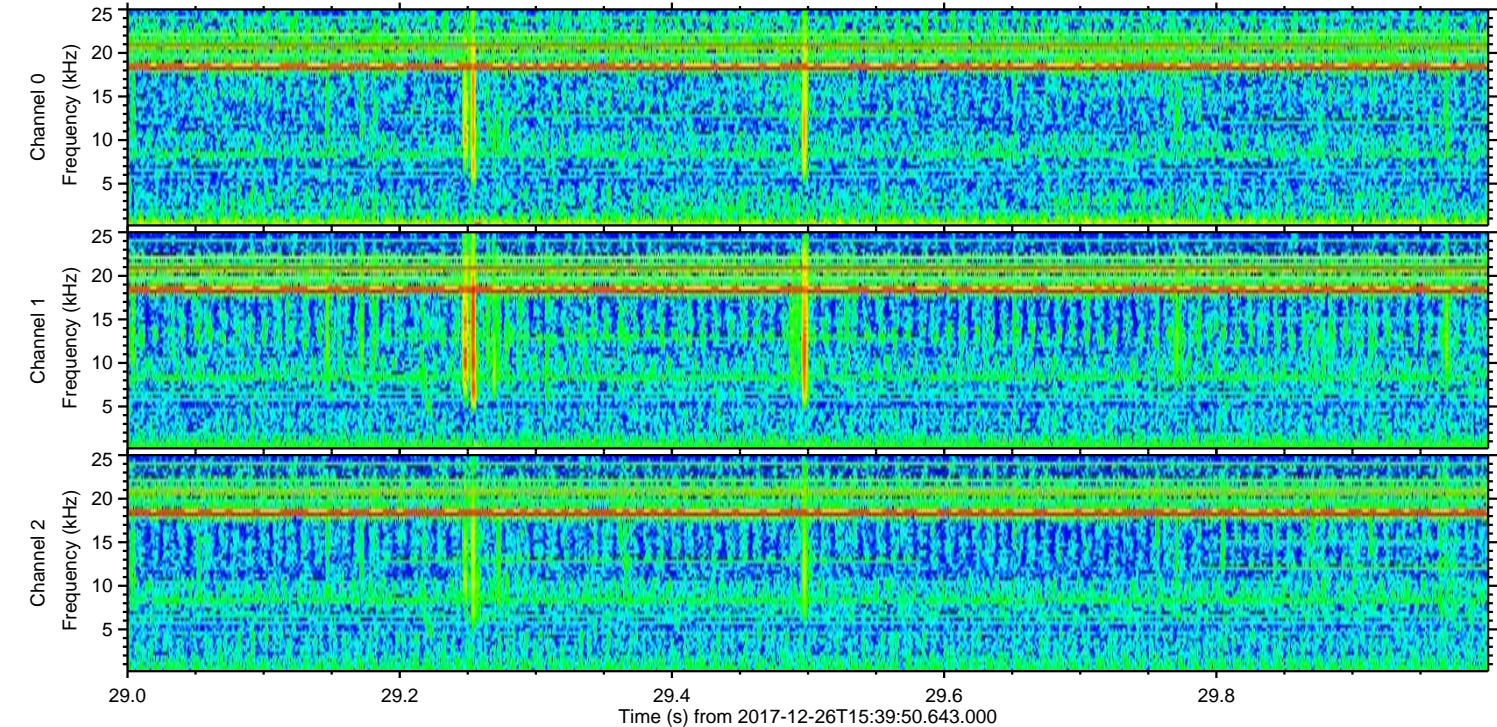
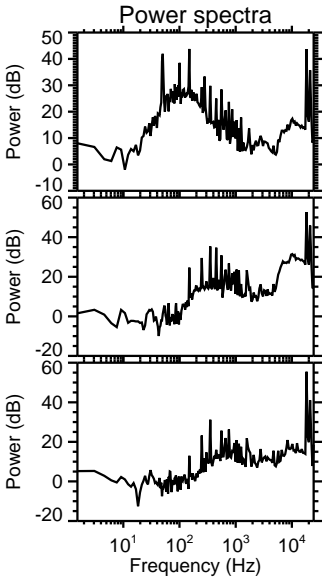
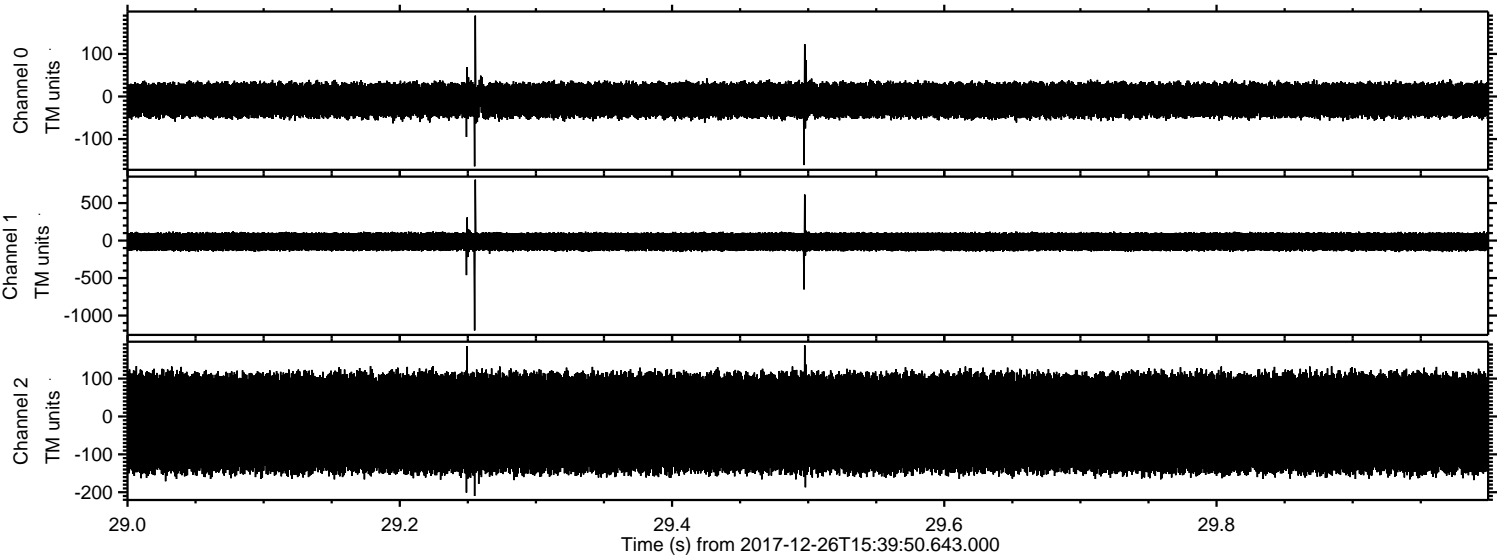


ELMAVAN 3D WAVEFORMS (Measured data sampled at 50 kHz) 51000 packets of 144 samples from 2017-12-26T15:39:50.643.000. Part 120/147

Processed Tue Dec 26 16:47:54 2017 by ELM ver.2012-10-06 from 001__elm20171226_153949__dat00.bin

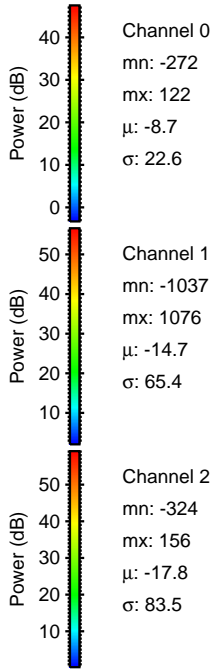
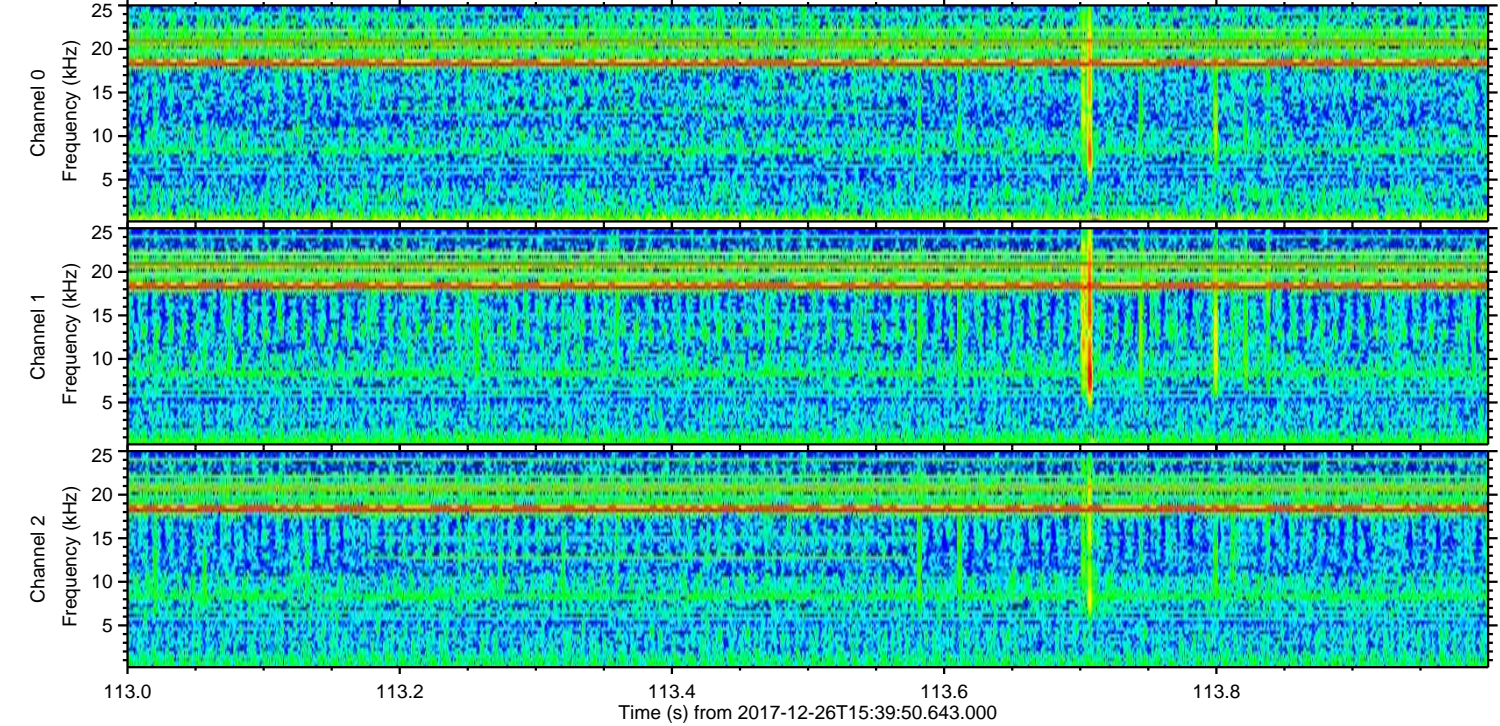
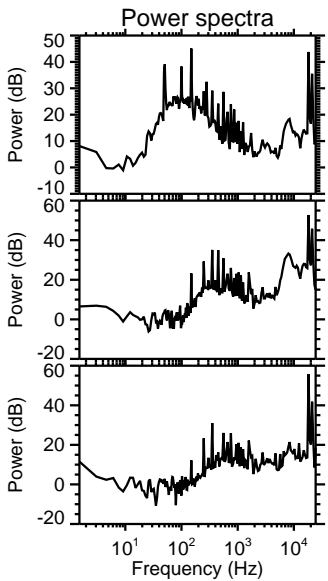
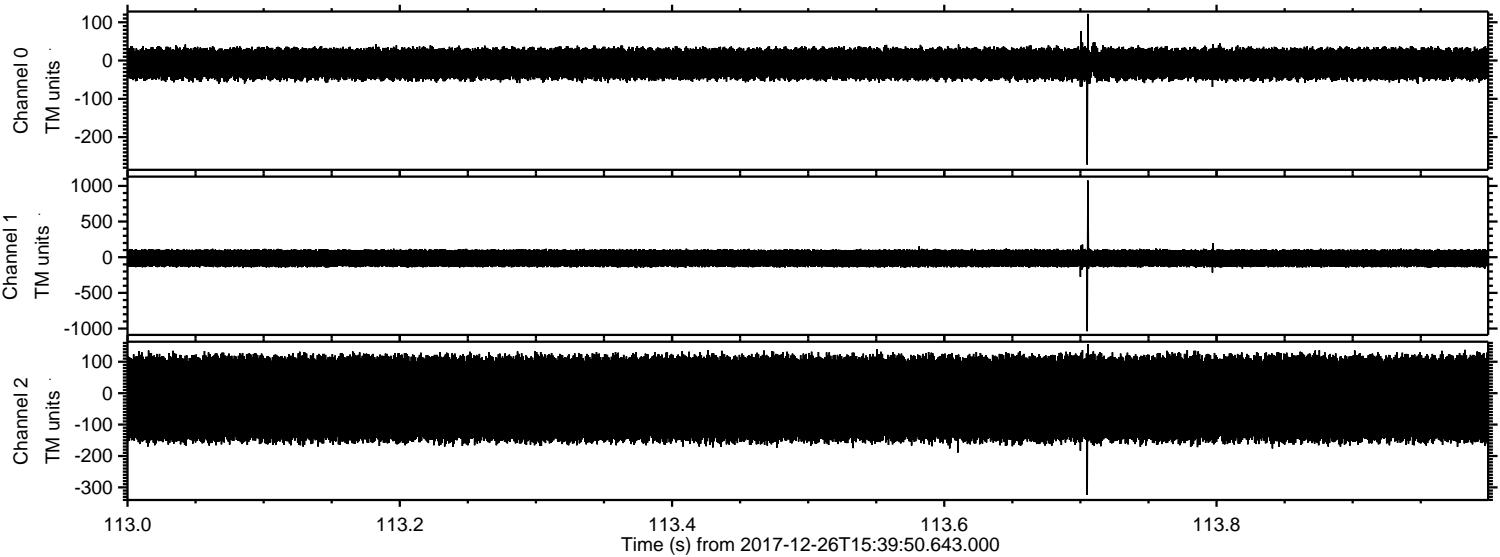


Processed Tue Dec 26 16:47:55 2017 by ELM ver.2012-10-06 from 001__elm20171226_153949__dat00.bin



ELMAVAN 3D WAVEFORMS (Measured data sampled at 50 kHz) 51000 packets of 144 samples from 2017-12-26T15:39:50.643.000. Part 114/147

Processed Tue Dec 26 16:47:56 2017 by ELM ver.2012-10-06 from 001__elm20171226_153949__dat00.bin

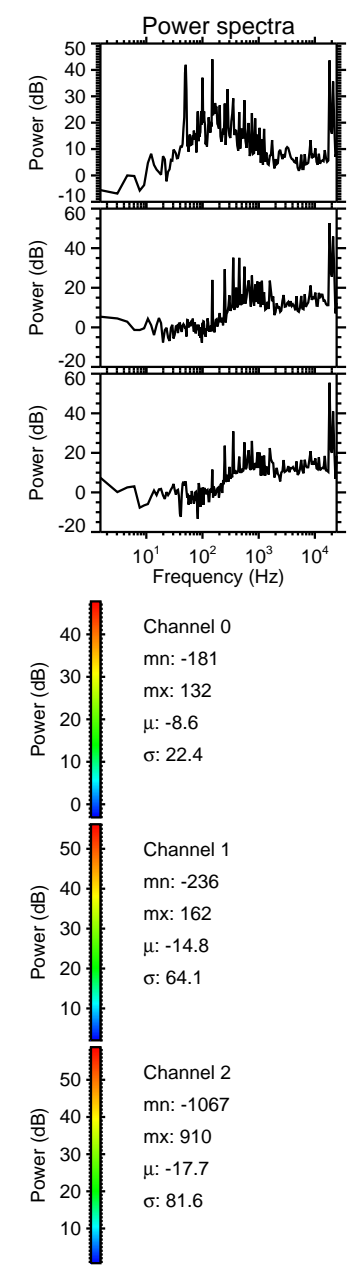
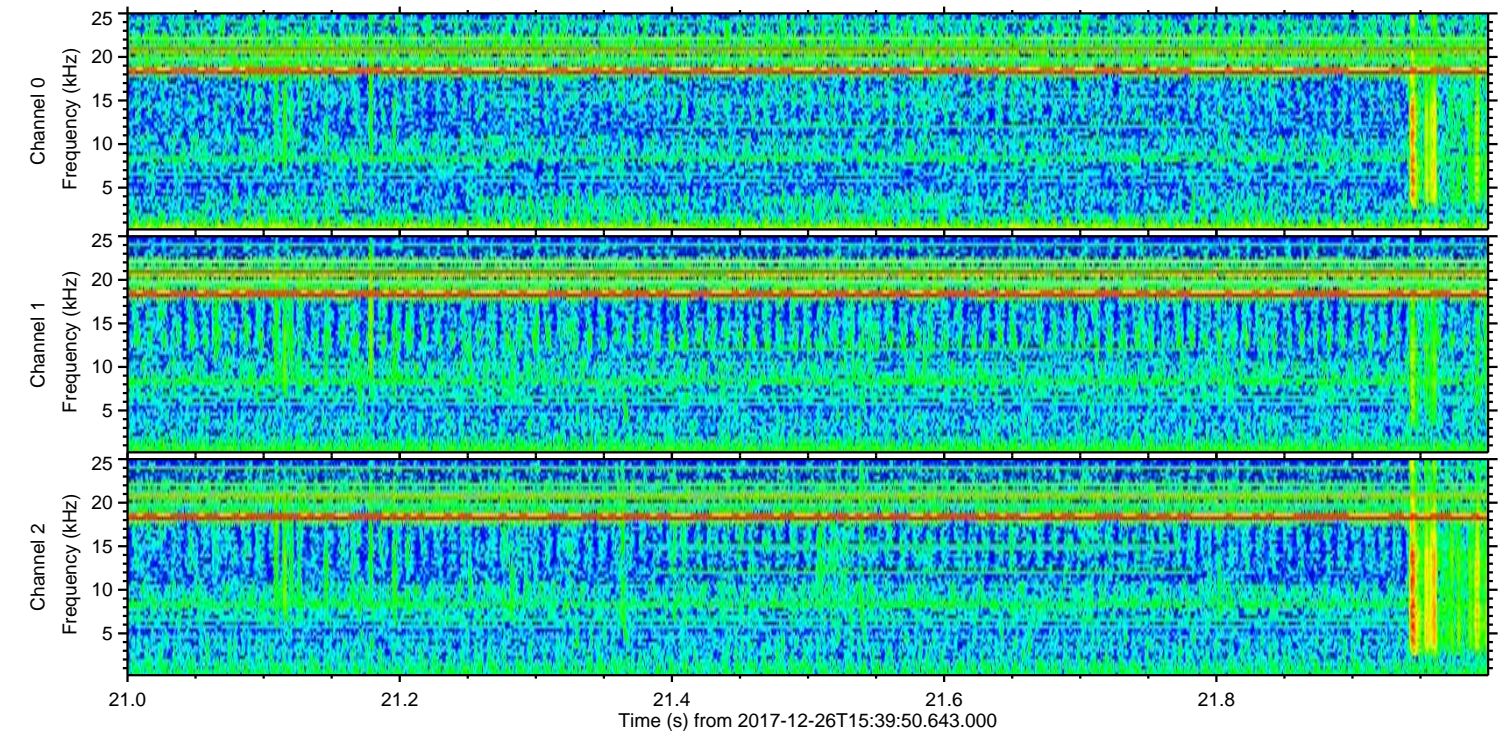
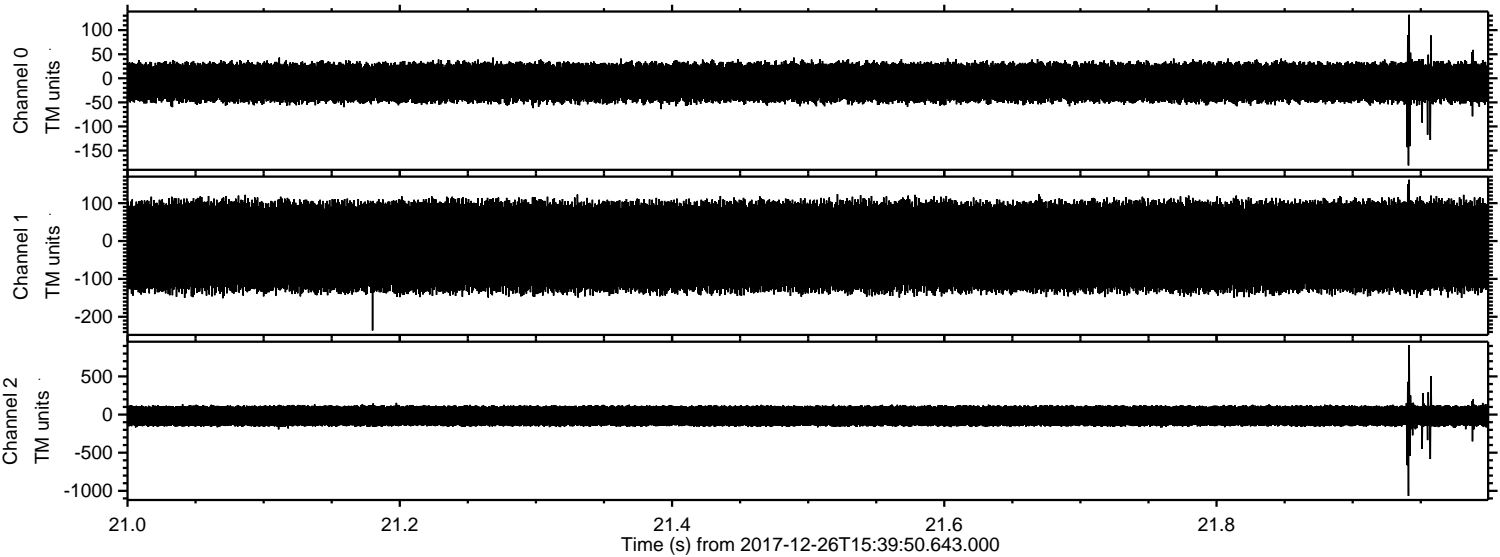


Channel 0
mn: -272
mx: 122
 μ : -8.7
 σ : 22.6

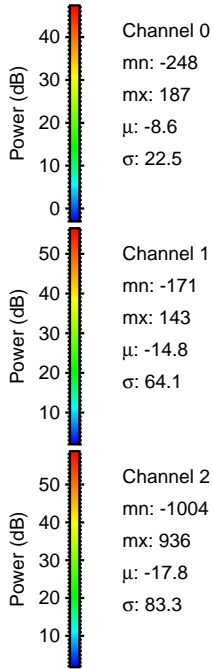
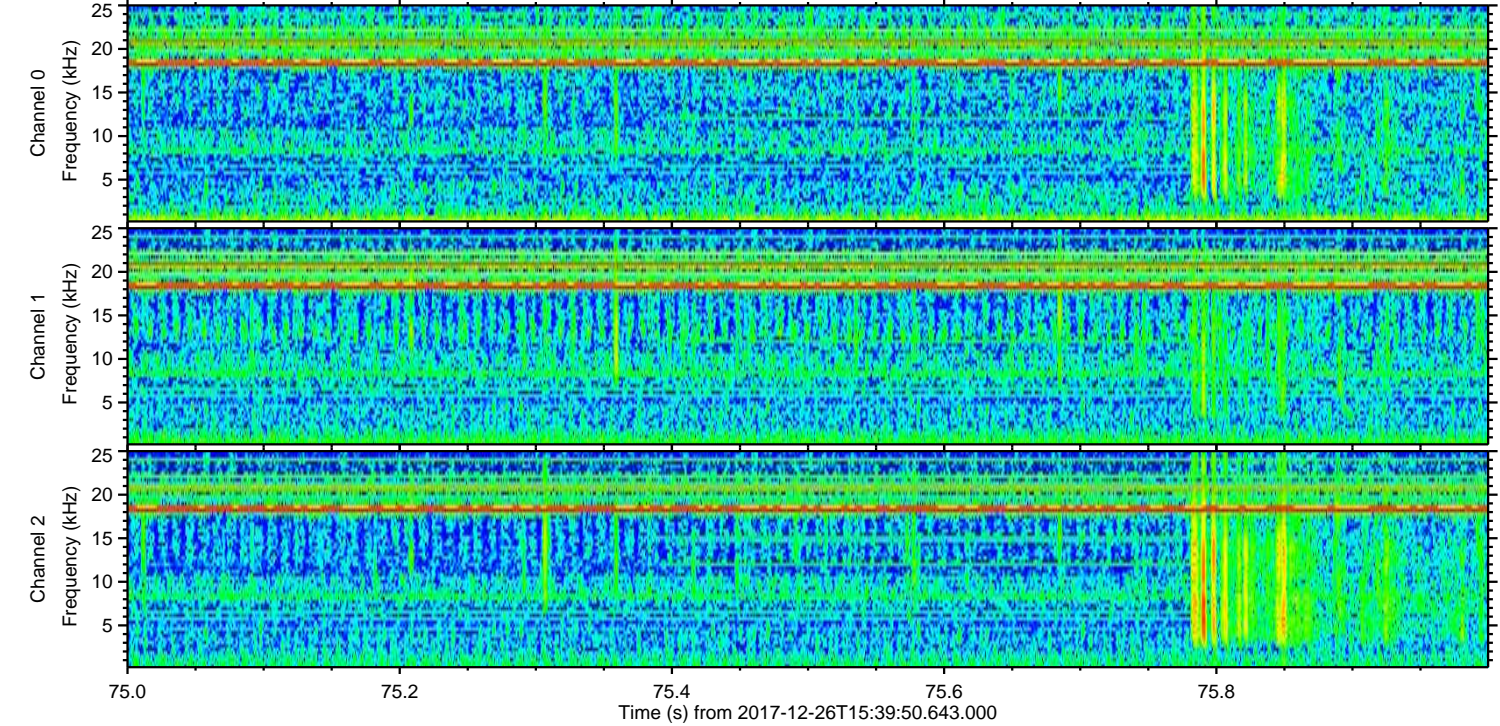
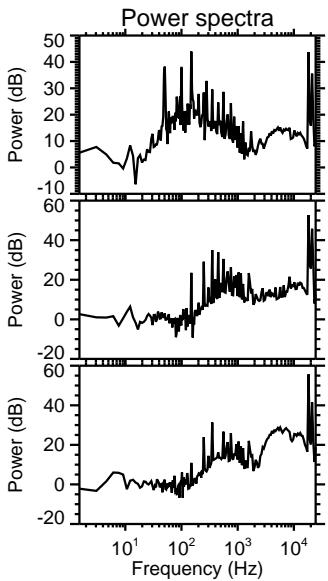
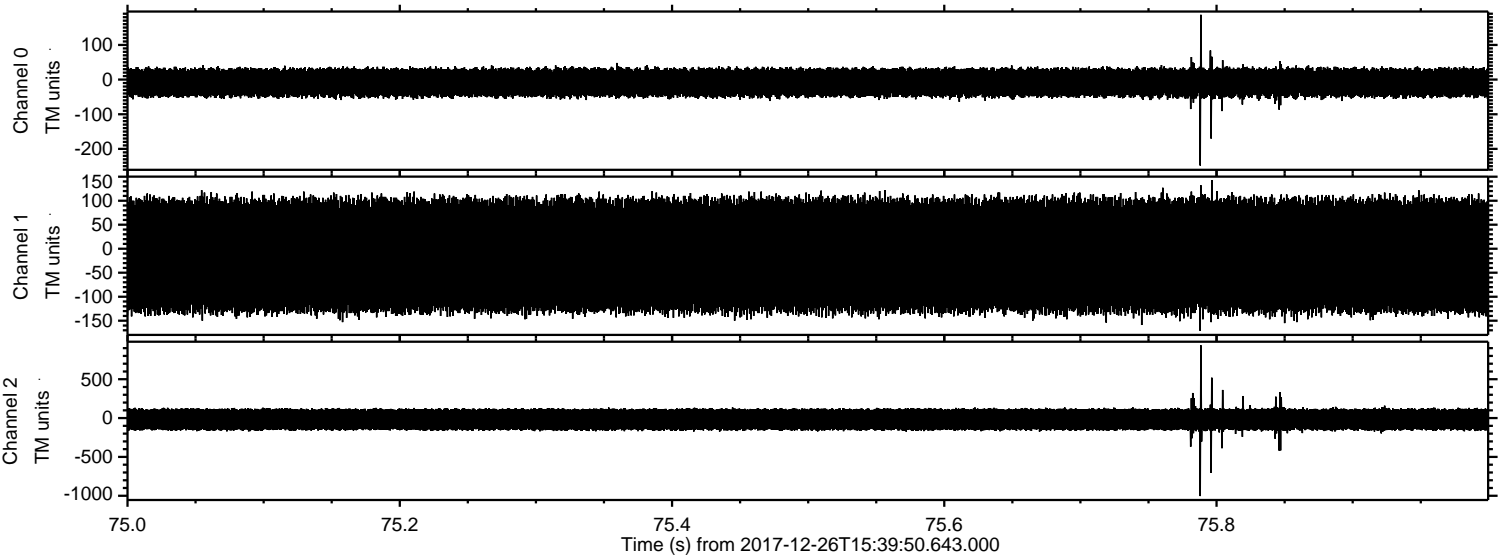
Channel 1
mn: -1037
mx: 1076
 μ : -14.7
 σ : 65.4

Channel 2
mn: -324
mx: 156
 μ : -17.8
 σ : 83.5

Processed Tue Dec 26 16:47:57 2017 by ELM ver.2012-10-06 from 001__elm20171226_153949__dat00.bin



Processed Tue Dec 26 16:47:58 2017 by ELM ver.2012-10-06 from 001__elm20171226_153949__dat00.bin



Processed Tue Dec 26 16:47:58 2017 by ELM ver.2012-10-06 from 001__elm20171226_153949__dat00.bin

