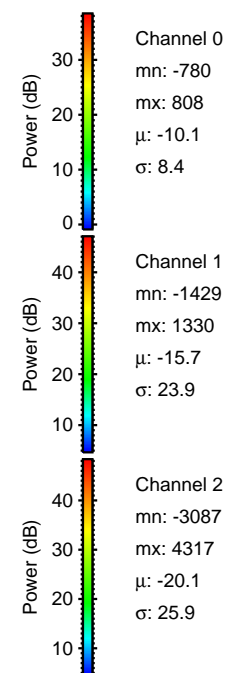
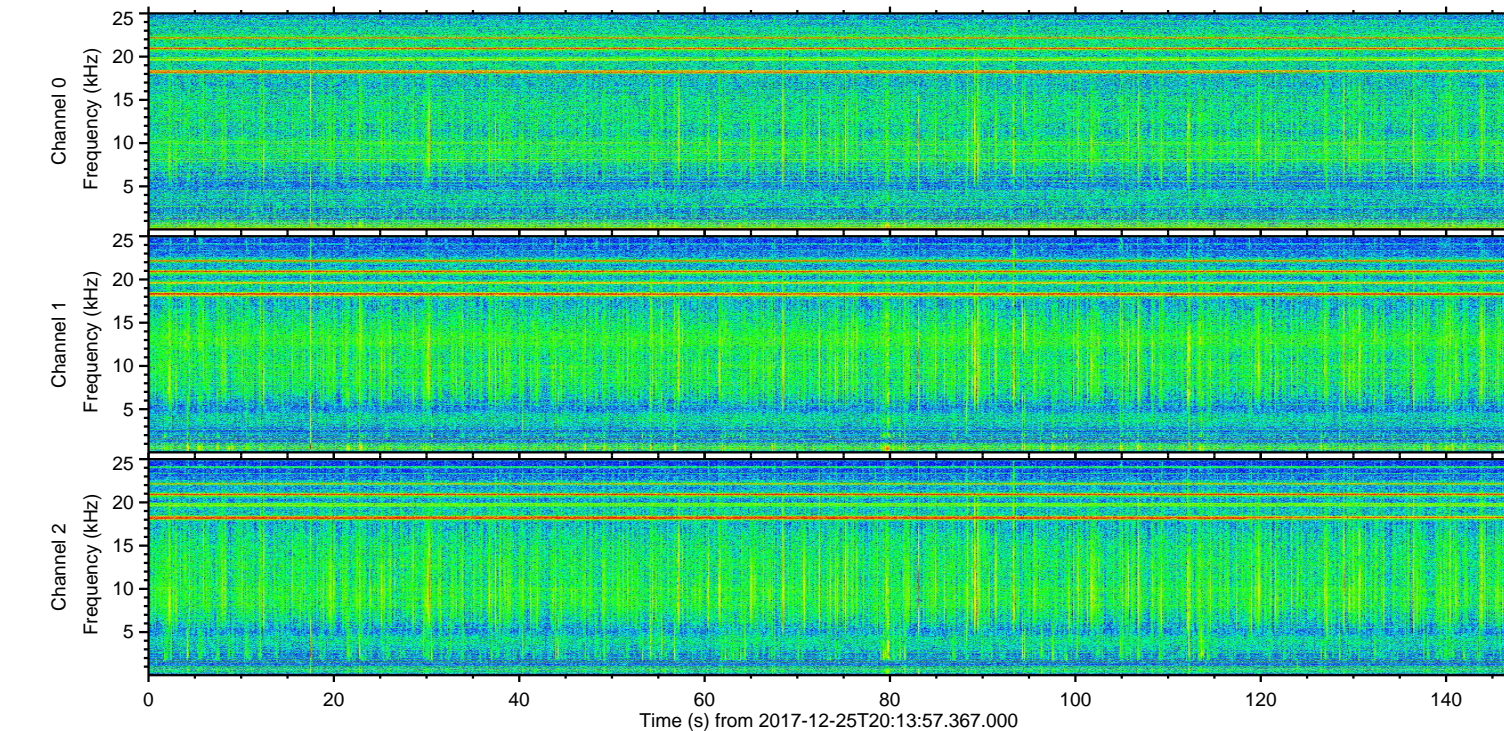
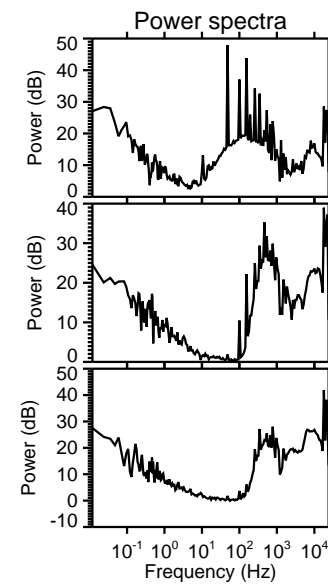
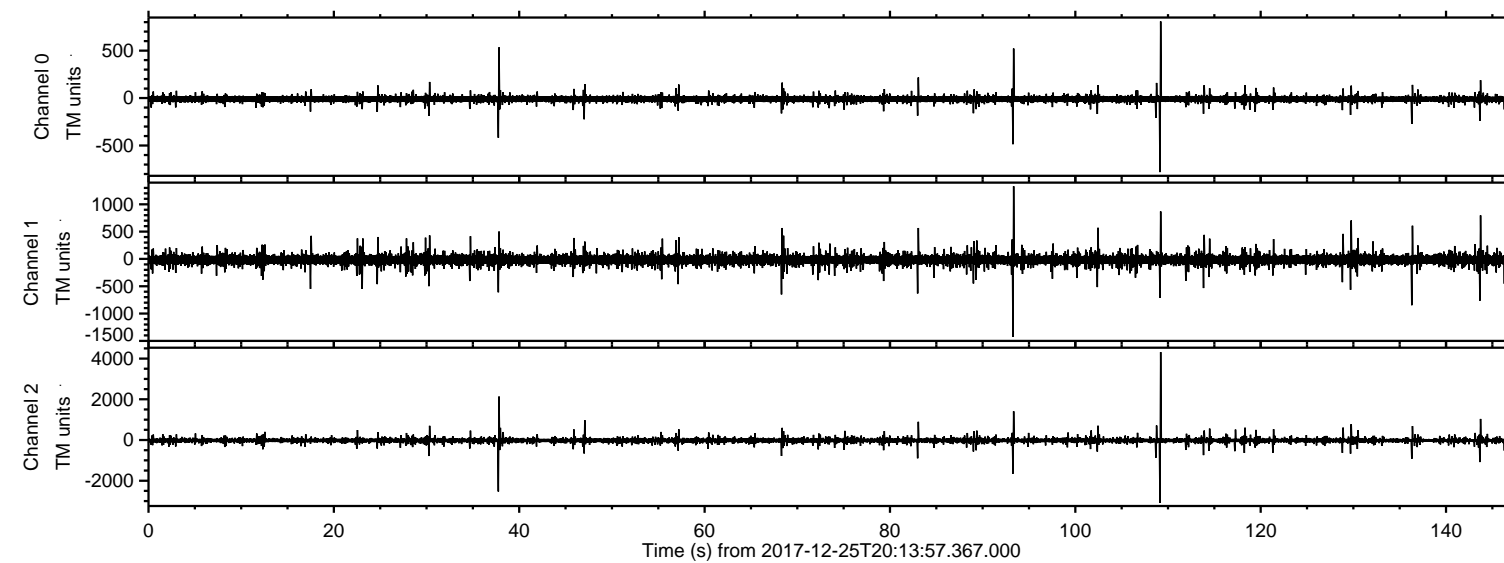


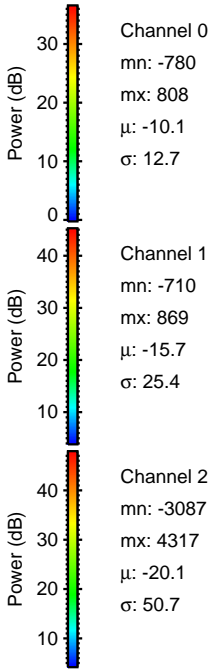
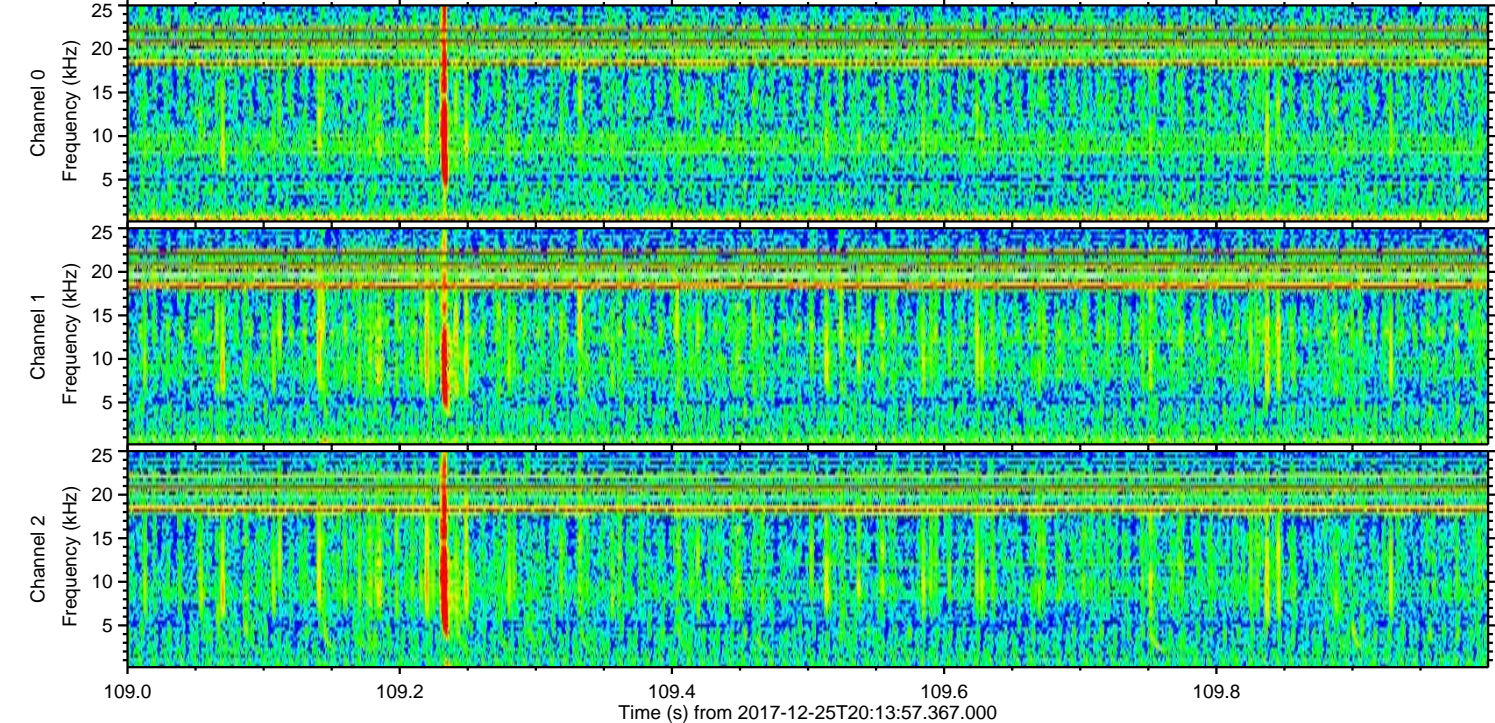
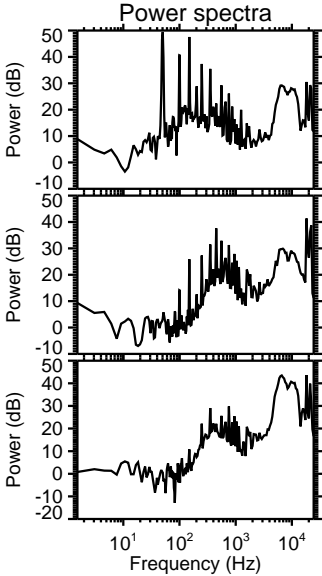
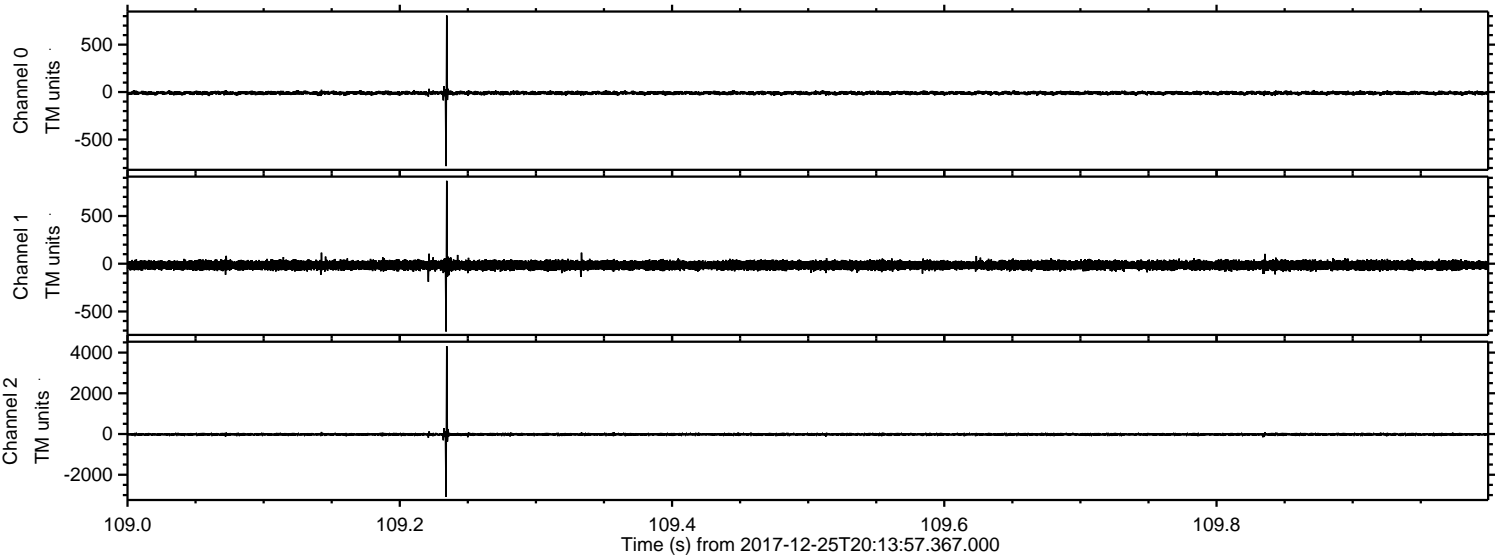
ELMAVAN 3D WAVEFORMS (Measured data sampled at 50 kHz) 51000 packets of 144 samples from 2017-12-25T20:13:57.367.000.

Processed Mon Dec 25 21:22:02 2017 by ELM ver.2012-10-06 from 001__elm20171225_201356__dat00.bin

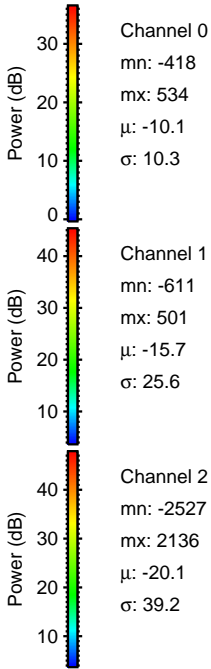
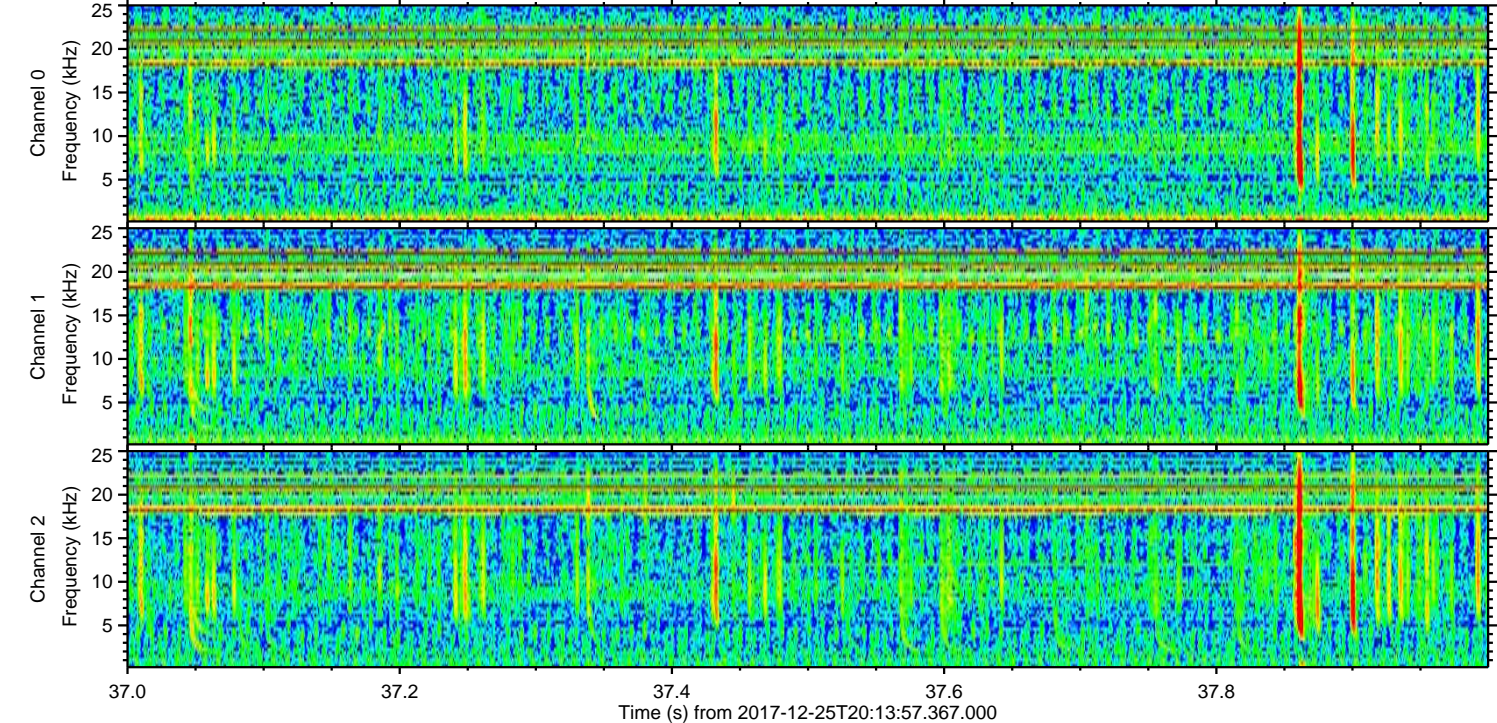
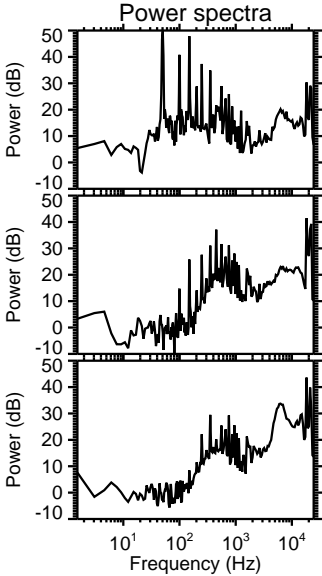
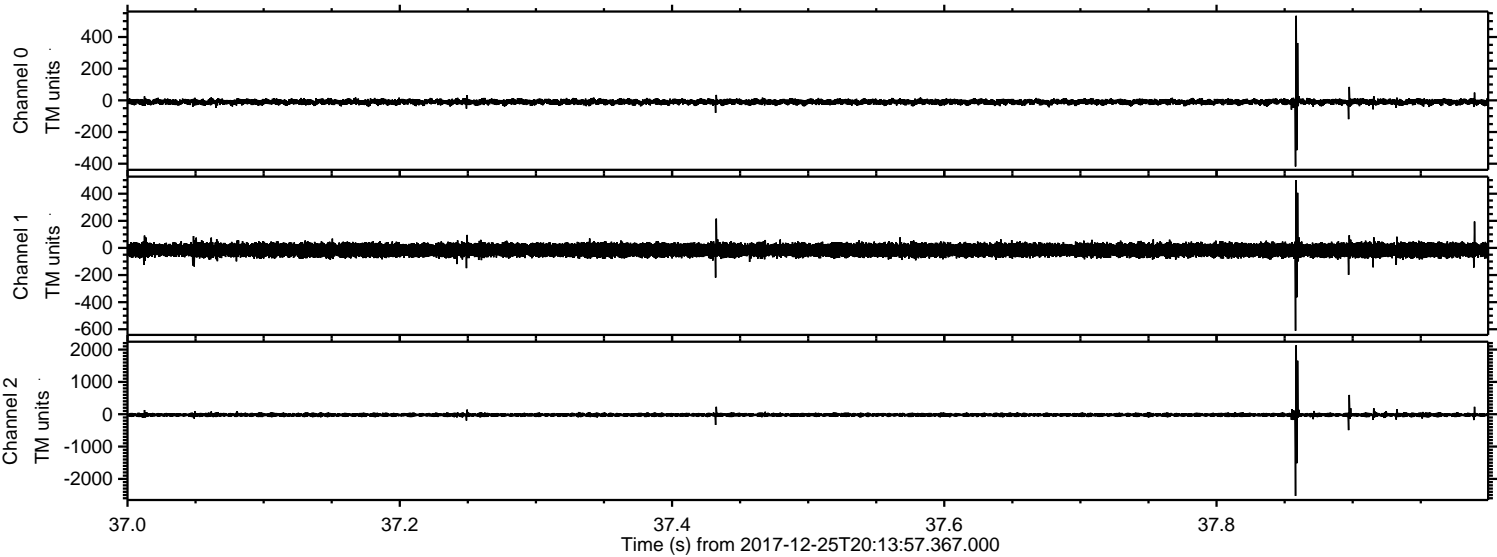


ELMAVAN 3D WAVEFORMS (Measured data sampled at 50 kHz) 51000 packets of 144 samples from 2017-12-25T20:13:57.367.000. Part 110/147

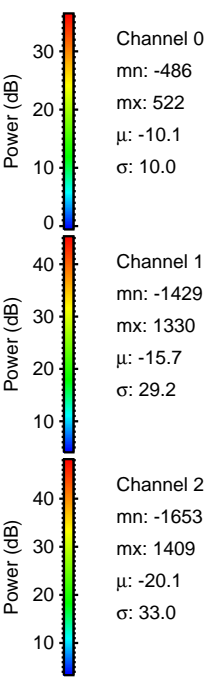
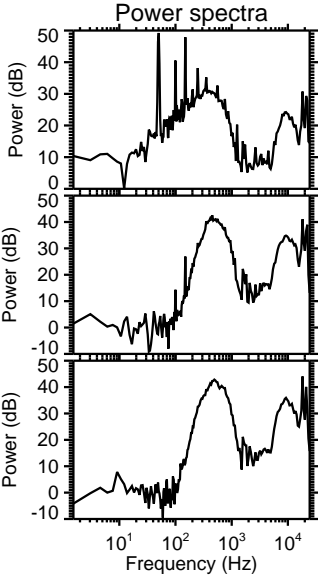
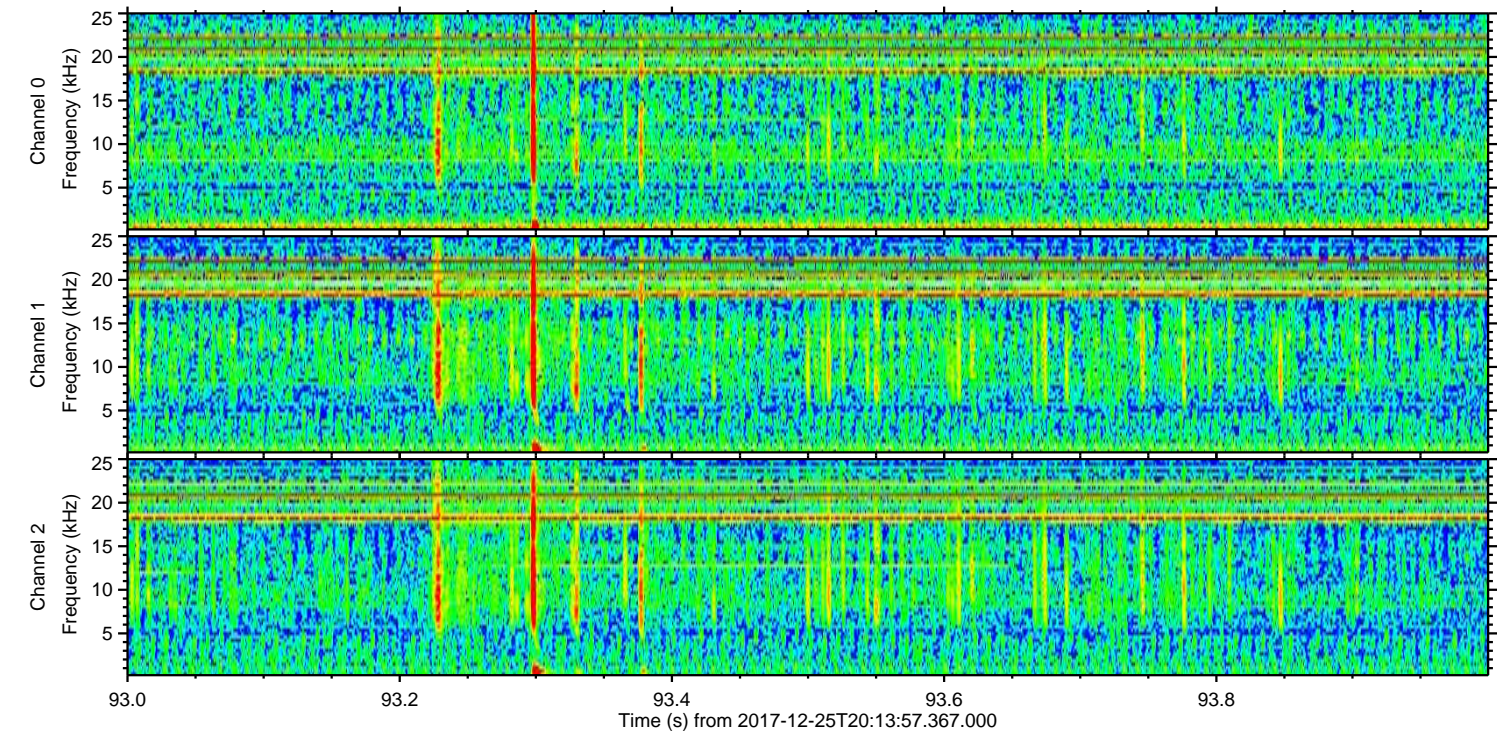
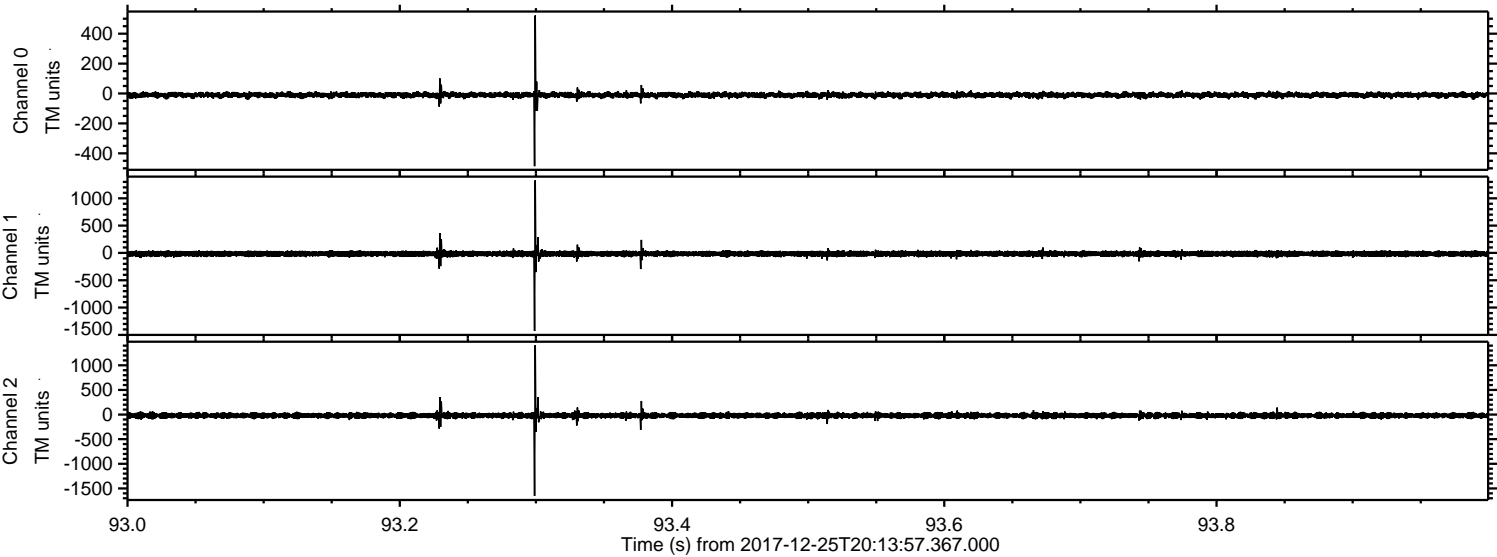
Processed Mon Dec 25 21:22:10 2017 by ELM ver.2012-10-06 from 001__elm20171225_201356__dat00.bin



Processed Mon Dec 25 21:22:11 2017 by ELM ver.2012-10-06 from 001__elm20171225_201356__dat00.bin

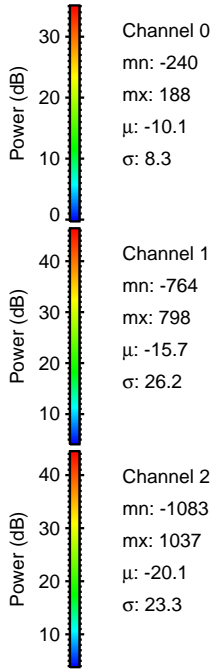
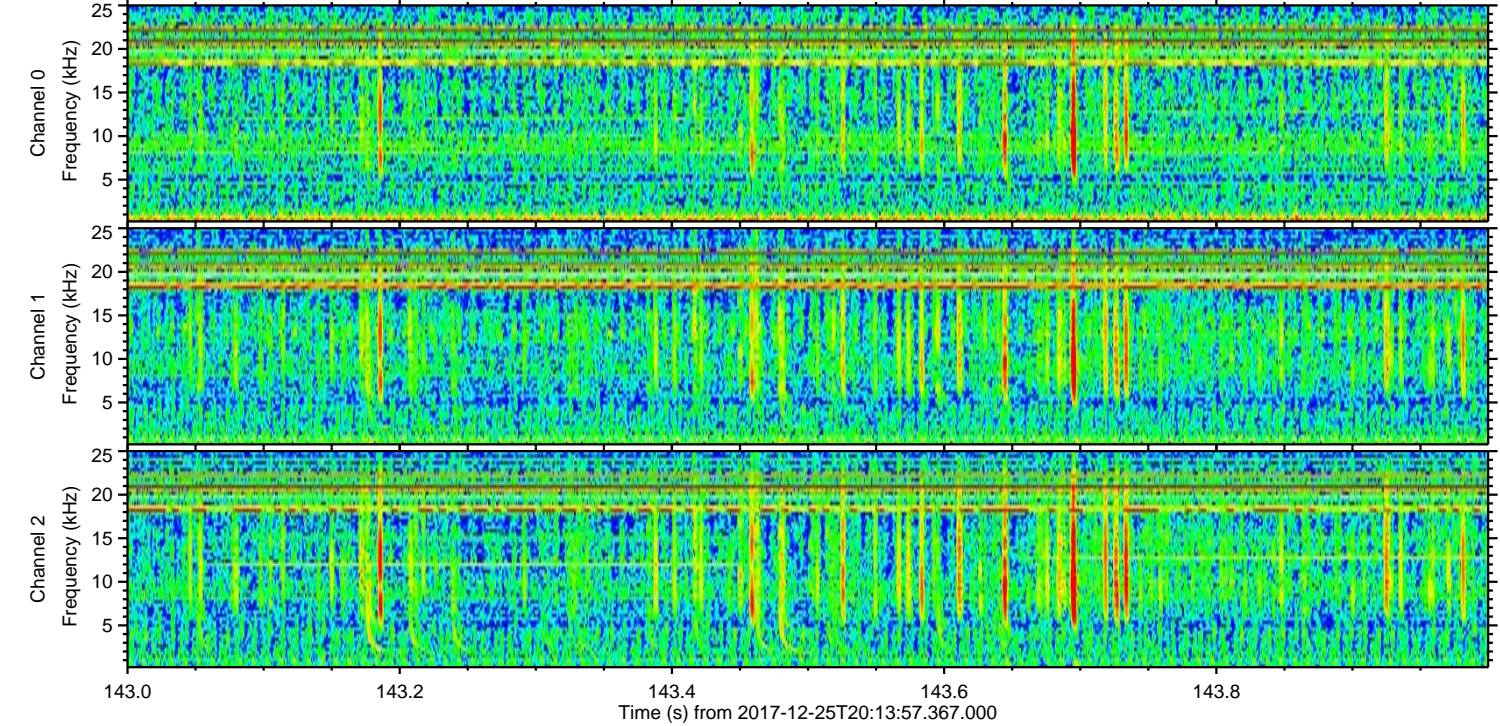
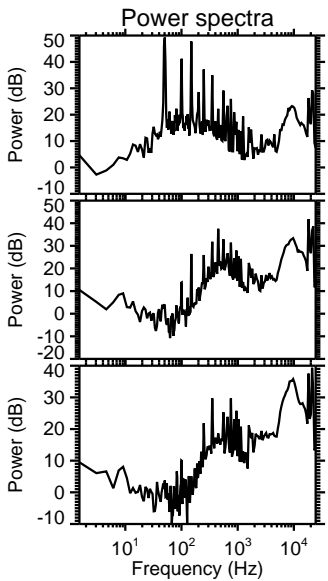
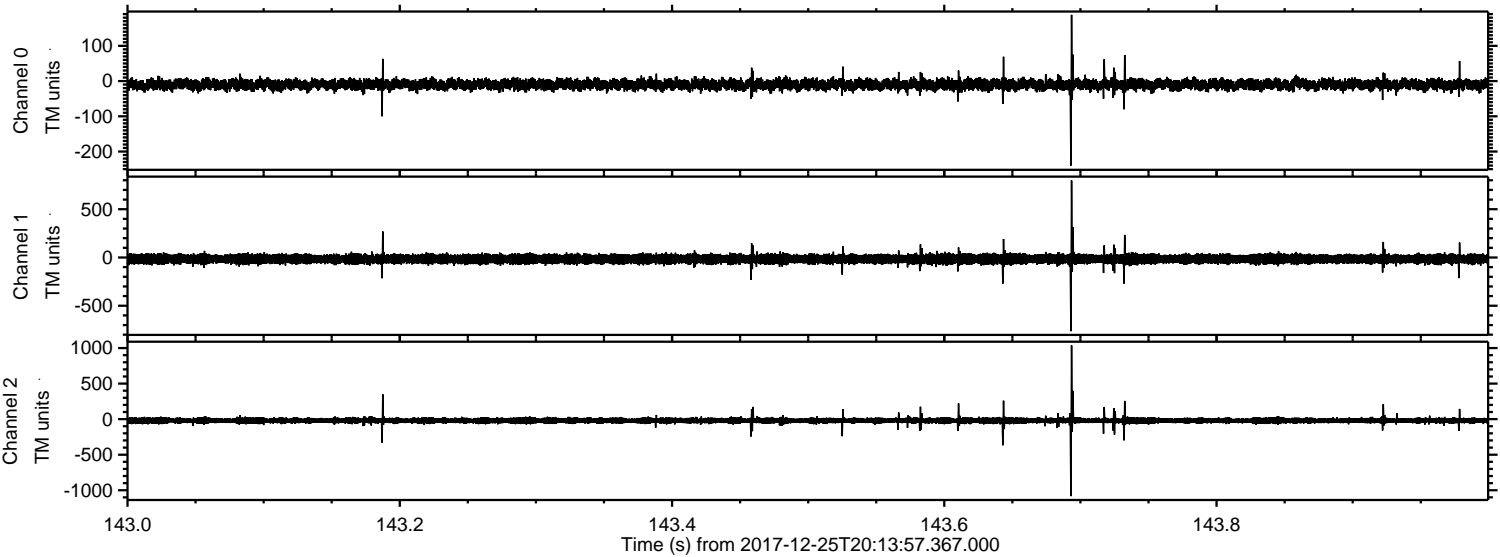


Processed Mon Dec 25 21:22:12 2017 by ELM ver.2012-10-06 from 001__elm20171225_201356__dat00.bin

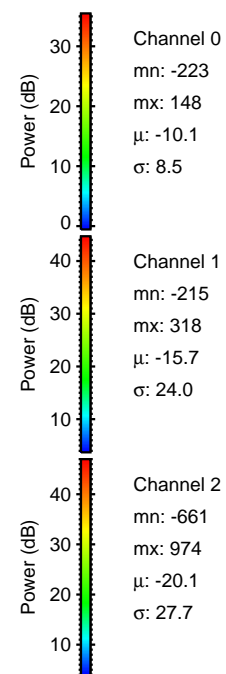
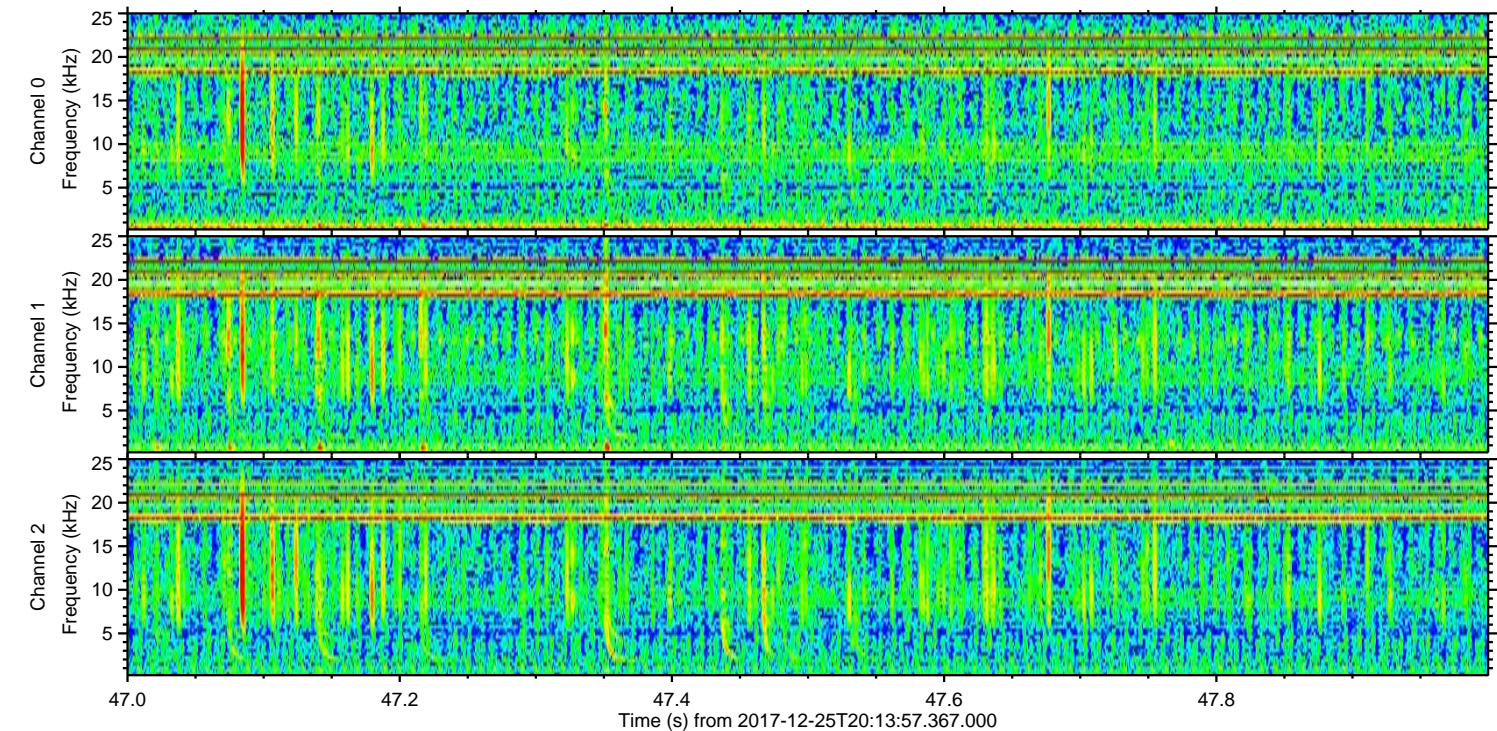
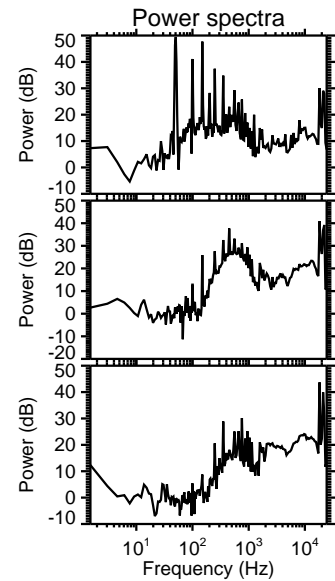
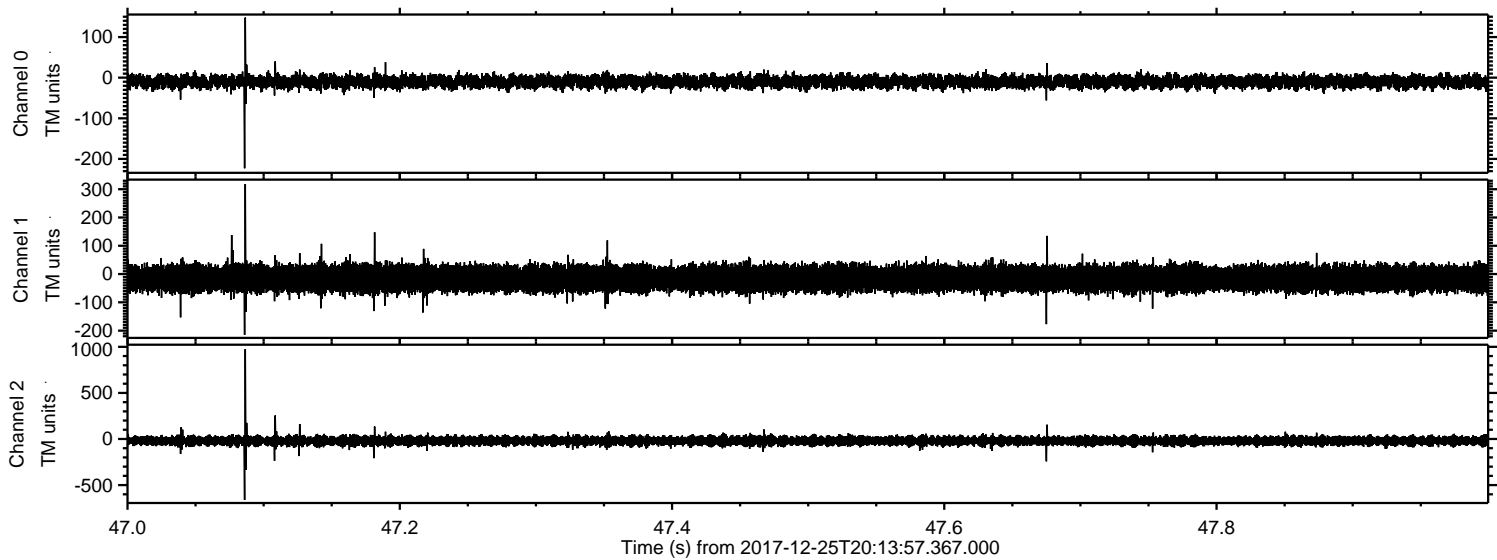


ELMAVAN 3D WAVEFORMS (Measured data sampled at 50 kHz) 51000 packets of 144 samples from 2017-12-25T20:13:57.367.000. Part 144/147

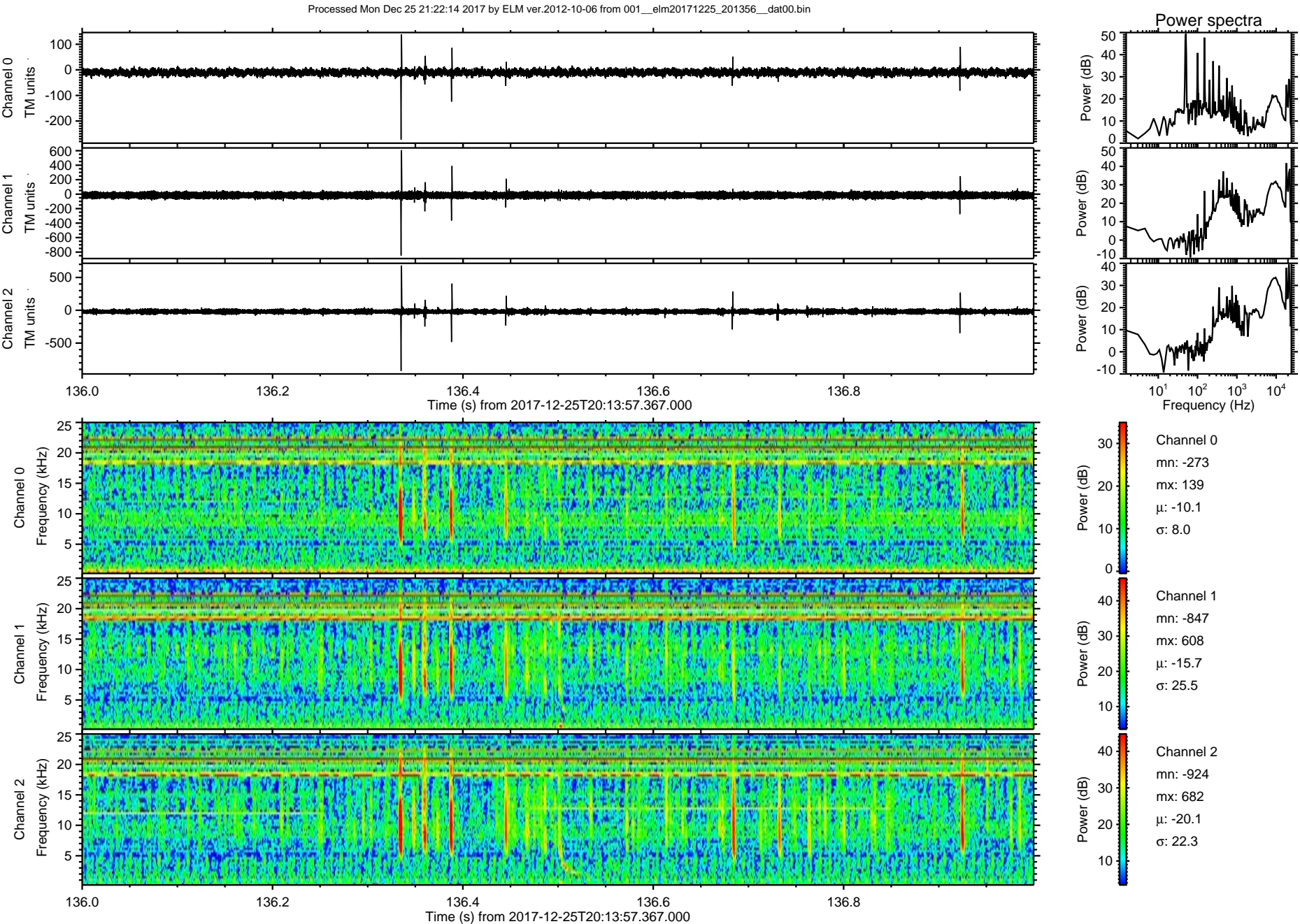
Processed Mon Dec 25 21:22:13 2017 by ELM ver.2012-10-06 from 001__elm20171225_201356__dat00.bin



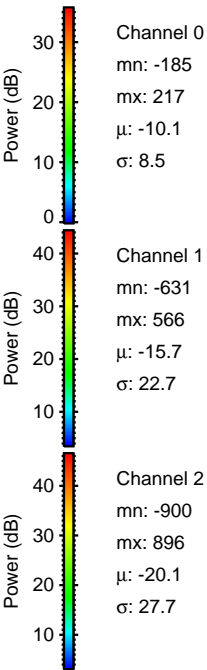
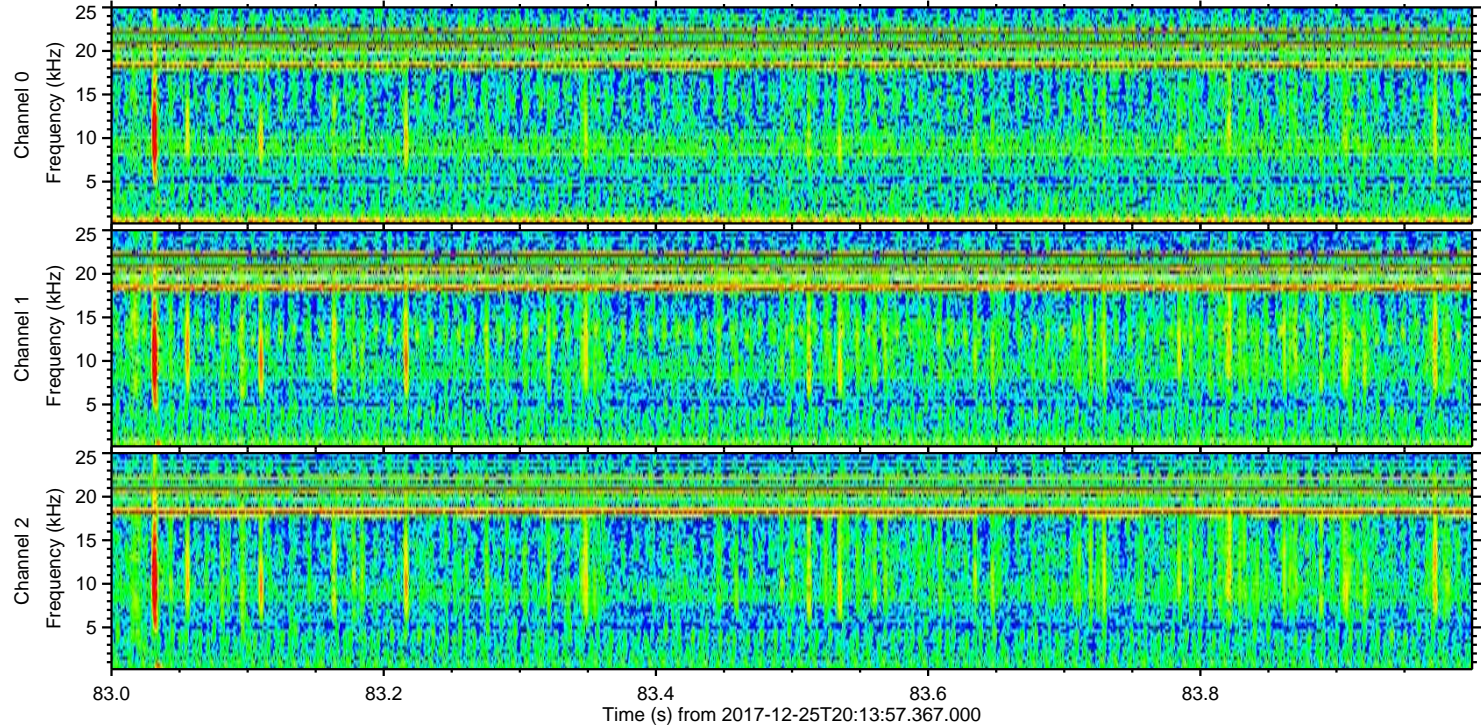
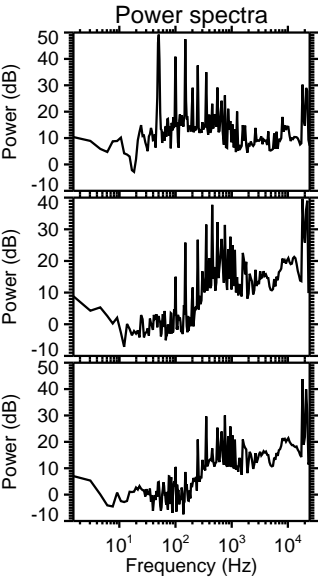
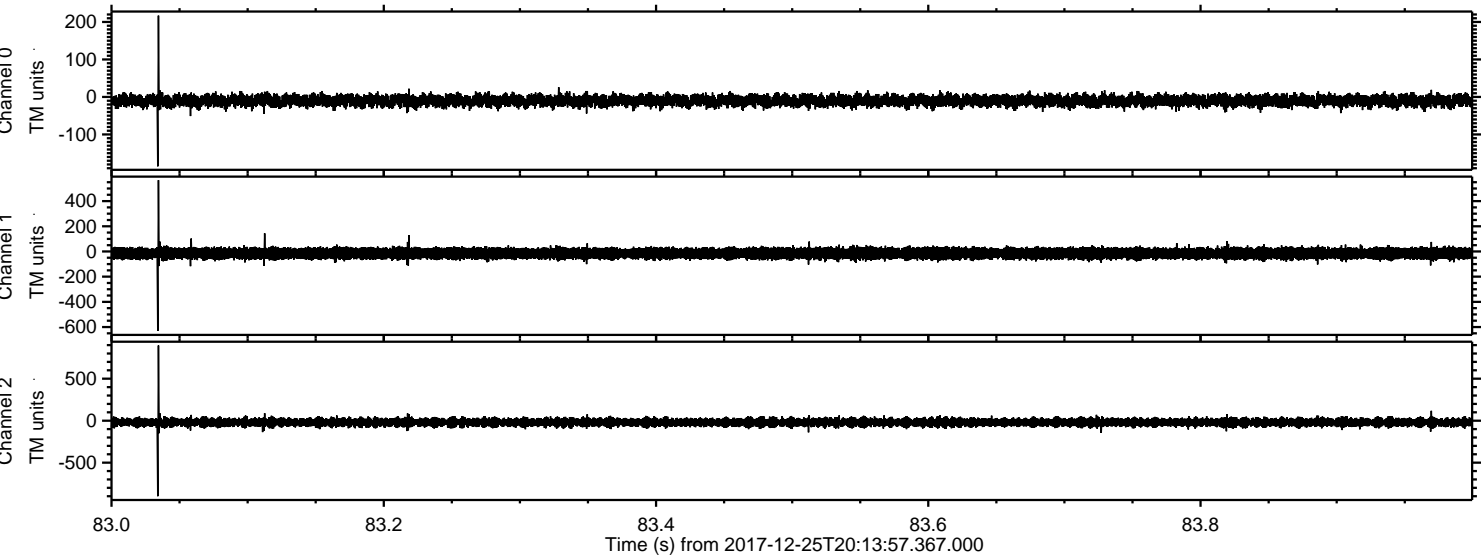
Processed Mon Dec 25 21:22:14 2017 by ELM ver.2012-10-06 from 001__elm20171225_201356__dat00.bin



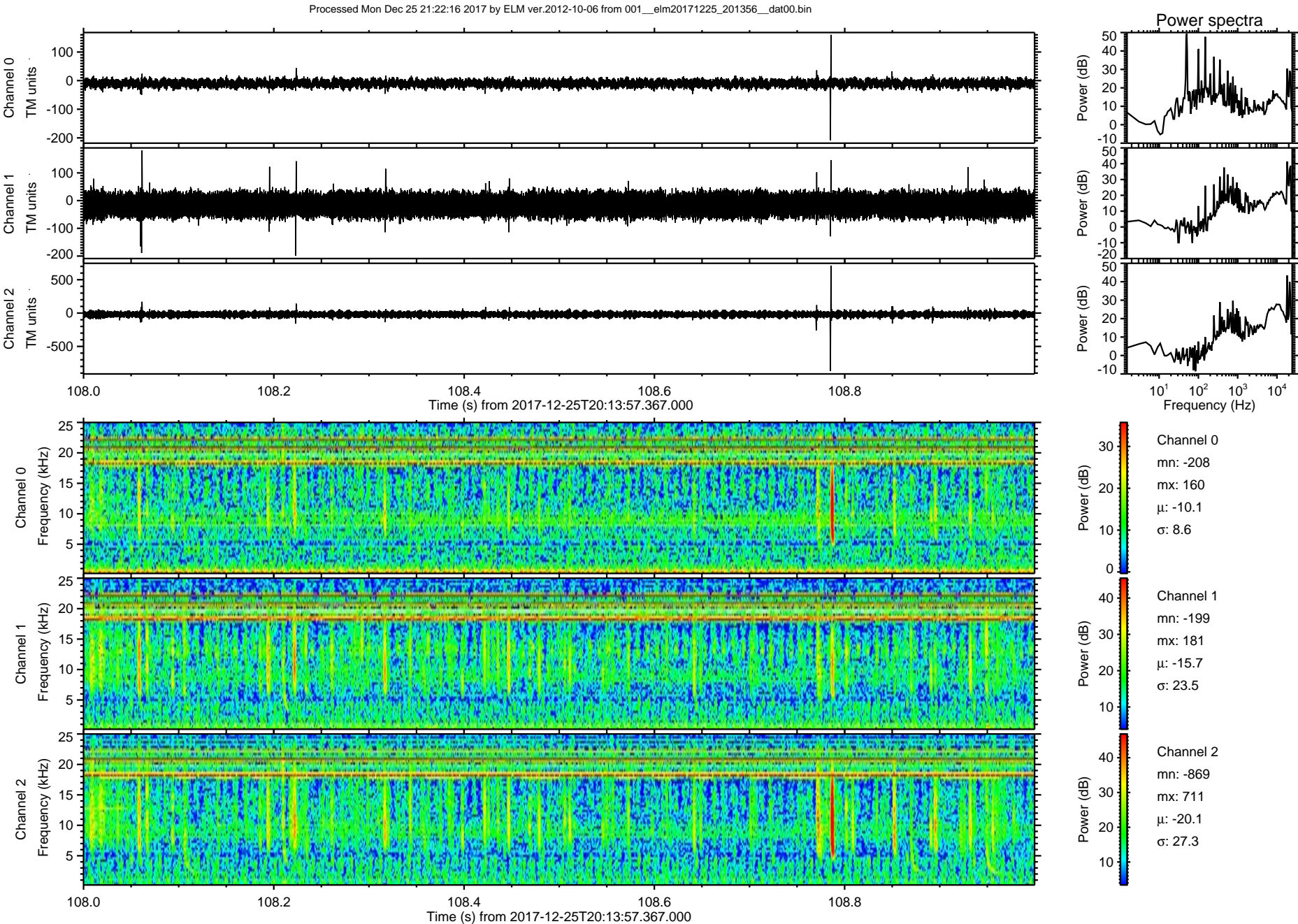
ELMAVAN 3D WAVEFORMS (Measured data sampled at 50 kHz) 51000 packets of 144 samples from 2017-12-25T20:13:57.367.000. Part 137/147



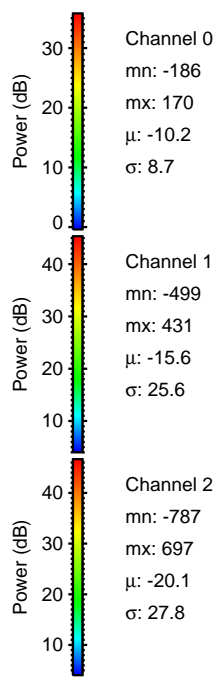
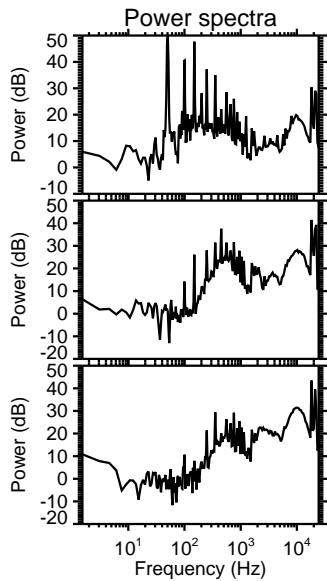
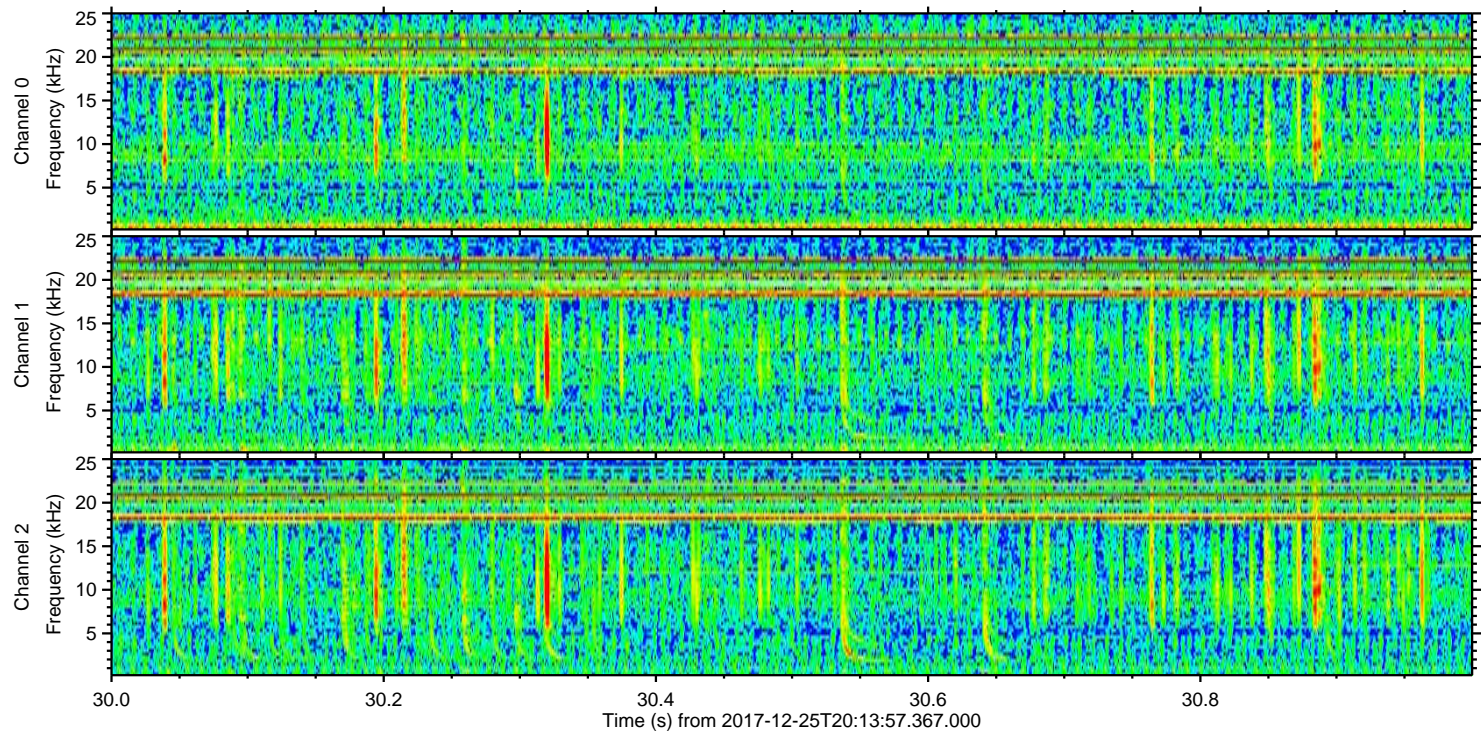
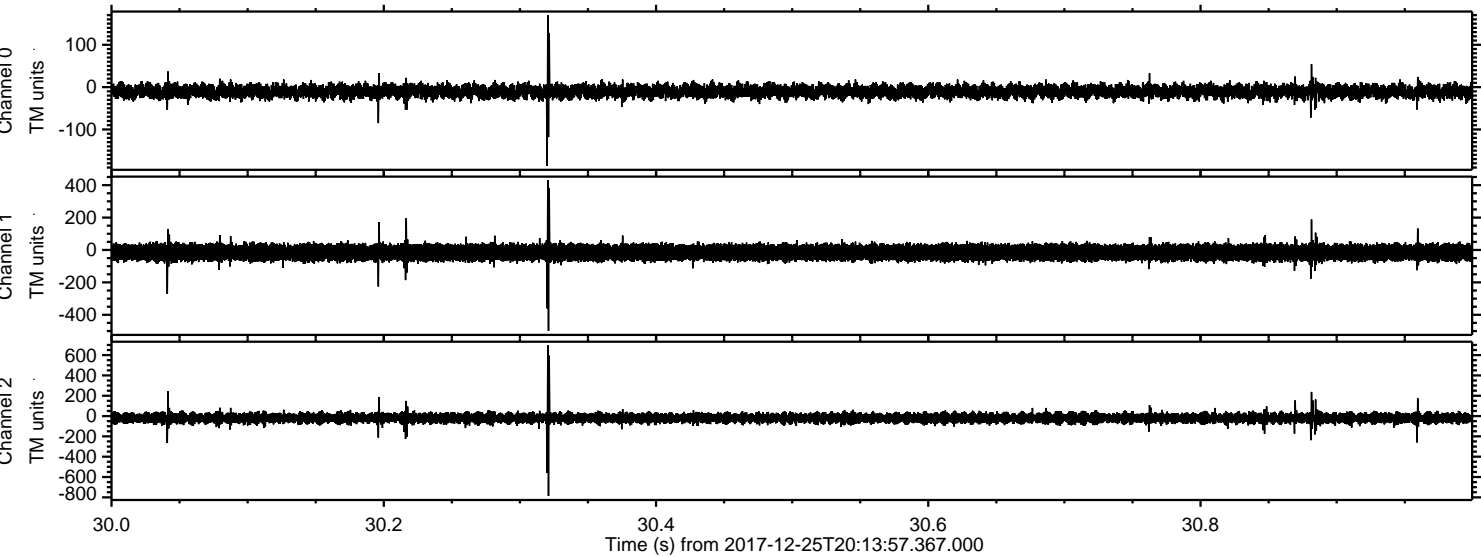
Processed Mon Dec 25 21:22:15 2017 by ELM ver.2012-10-06 from 001__elm20171225_201356__dat00.bin



ELMAVAN 3D WAVEFORMS (Measured data sampled at 50 kHz) 51000 packets of 144 samples from 2017-12-25T20:13:57.367.000. Part 109/147



Processed Mon Dec 25 21:22:17 2017 by ELM ver.2012-10-06 from 001__elm20171225_201356__dat00.bin



Power spectra

Channel 0
mn: -186
mx: 170
 μ : -10.2
 σ : 8.7

Channel 1
mn: -499
mx: 431
 μ : -15.6
 σ : 25.6

Channel 2
mn: -787
mx: 697
 μ : -20.1
 σ : 27.8

Processed Mon Dec 25 21:22:18 2017 by ELM ver.2012-10-06 from 001__elm20171225_201356__dat00.bin

