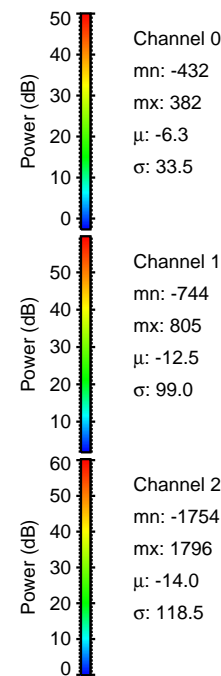
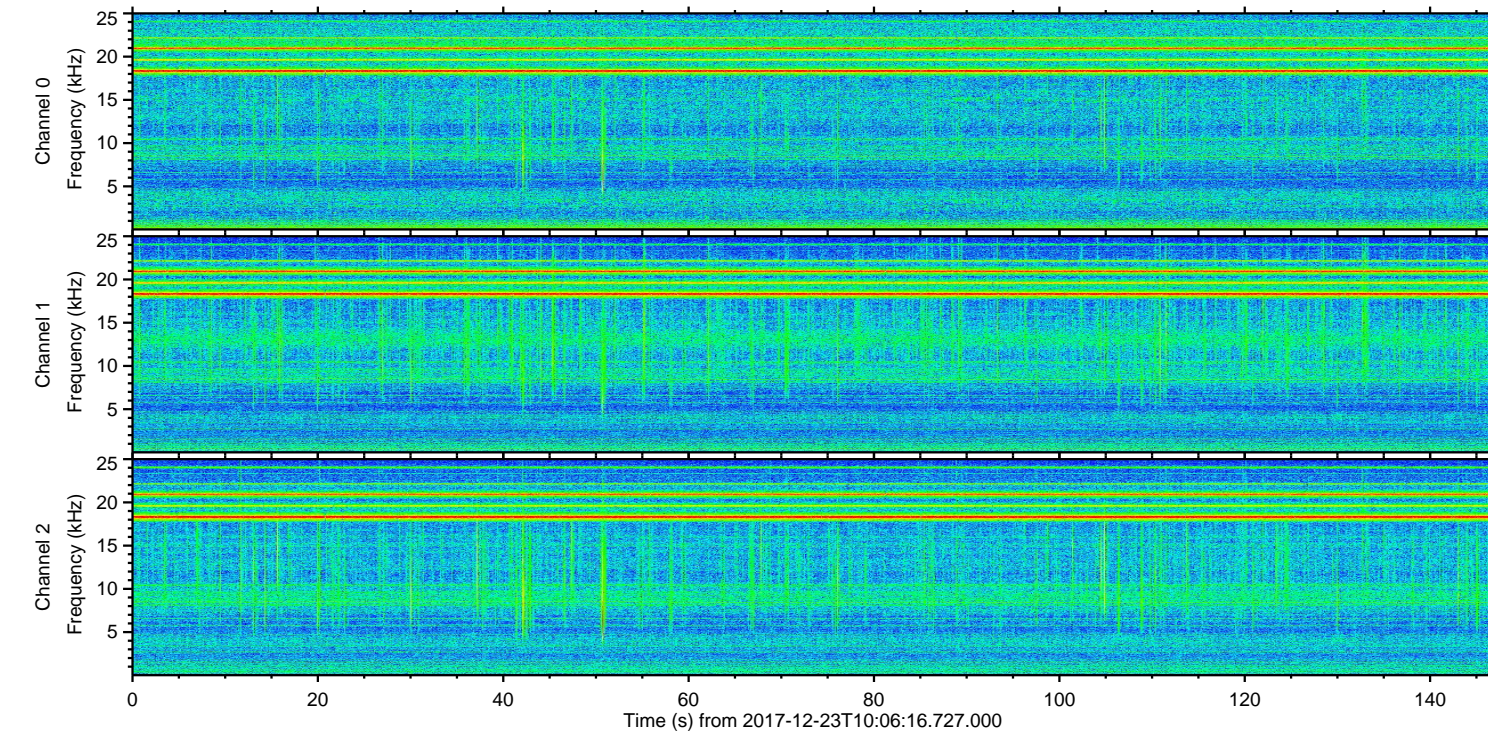
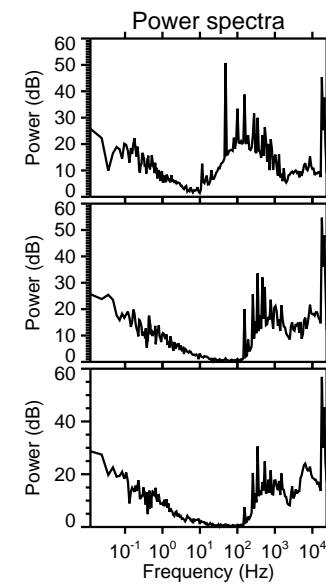
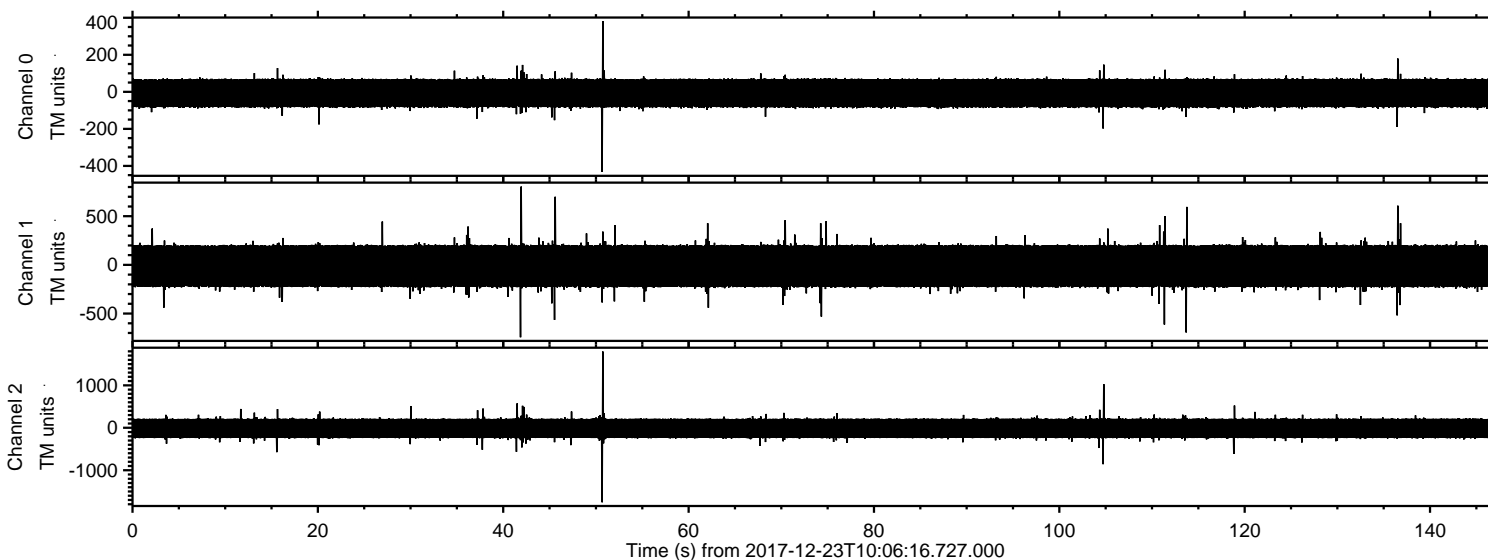


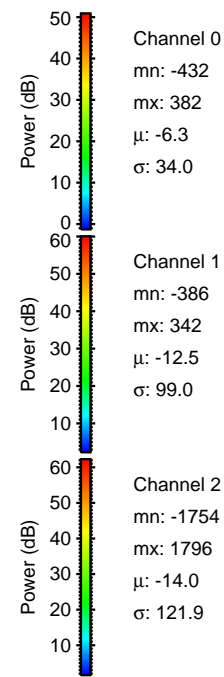
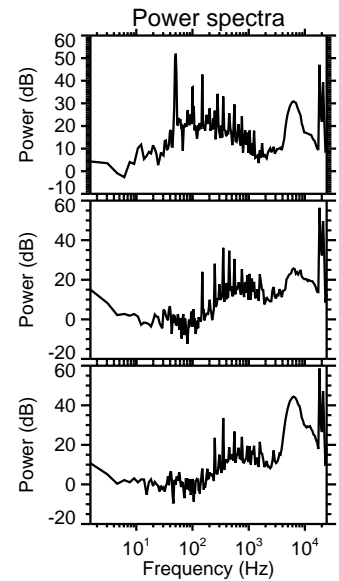
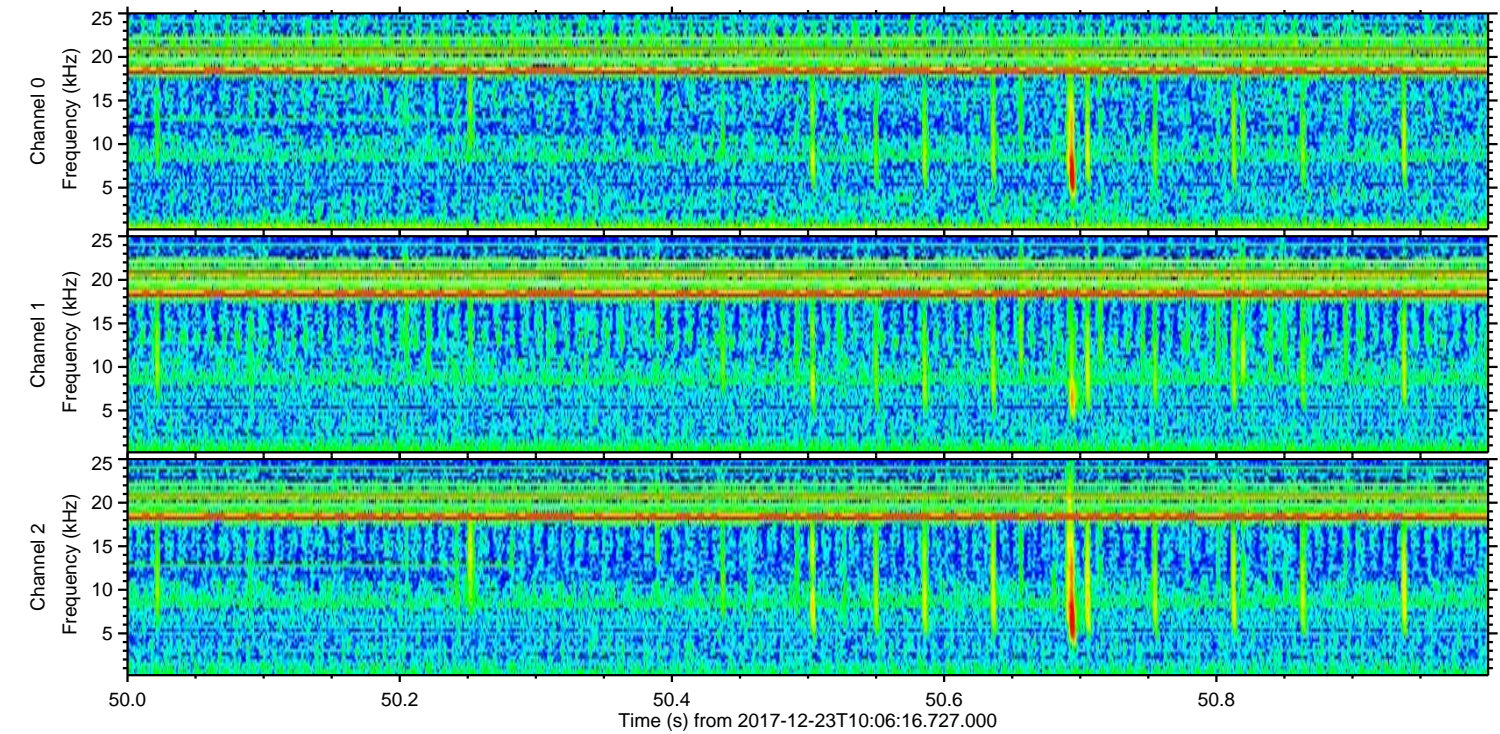
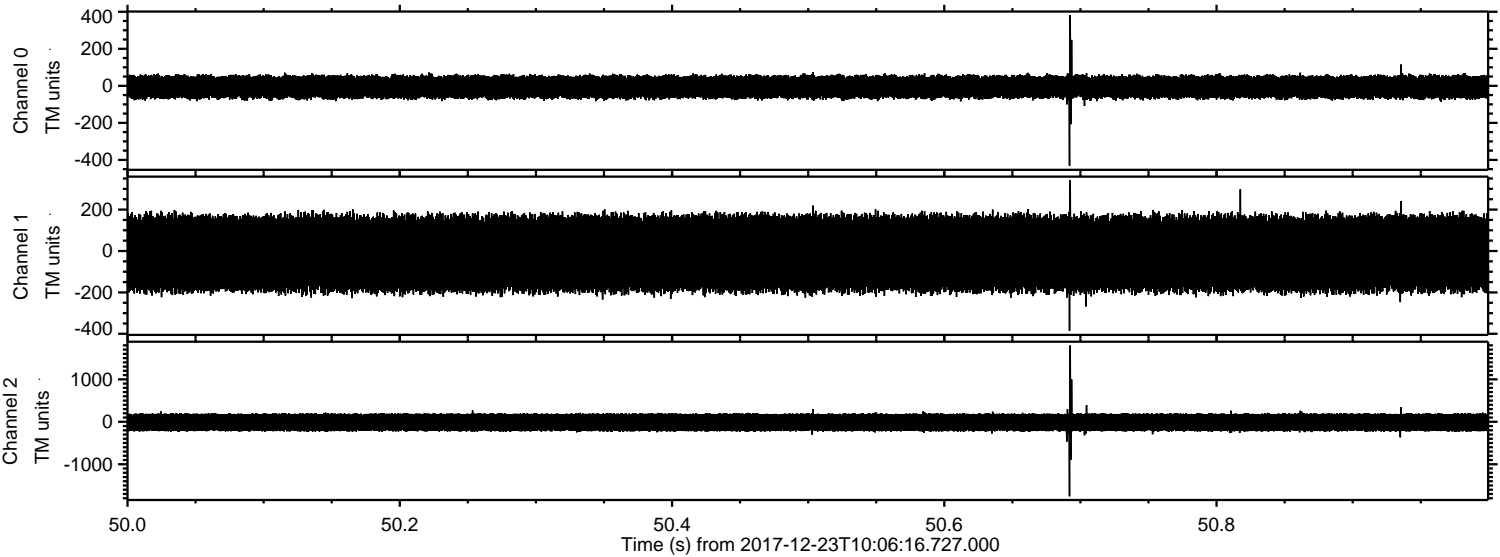
# ELMAVAN 3D WAVEFORMS (Measured data sampled at 50 kHz) 51000 packets of 144 samples from 2017-12-23T10:06:16.727.000.

Processed Sat Dec 23 11:14:54 2017 by ELM ver.2012-10-06 from 001\_\_elm20171223\_100615\_\_dat00.bin



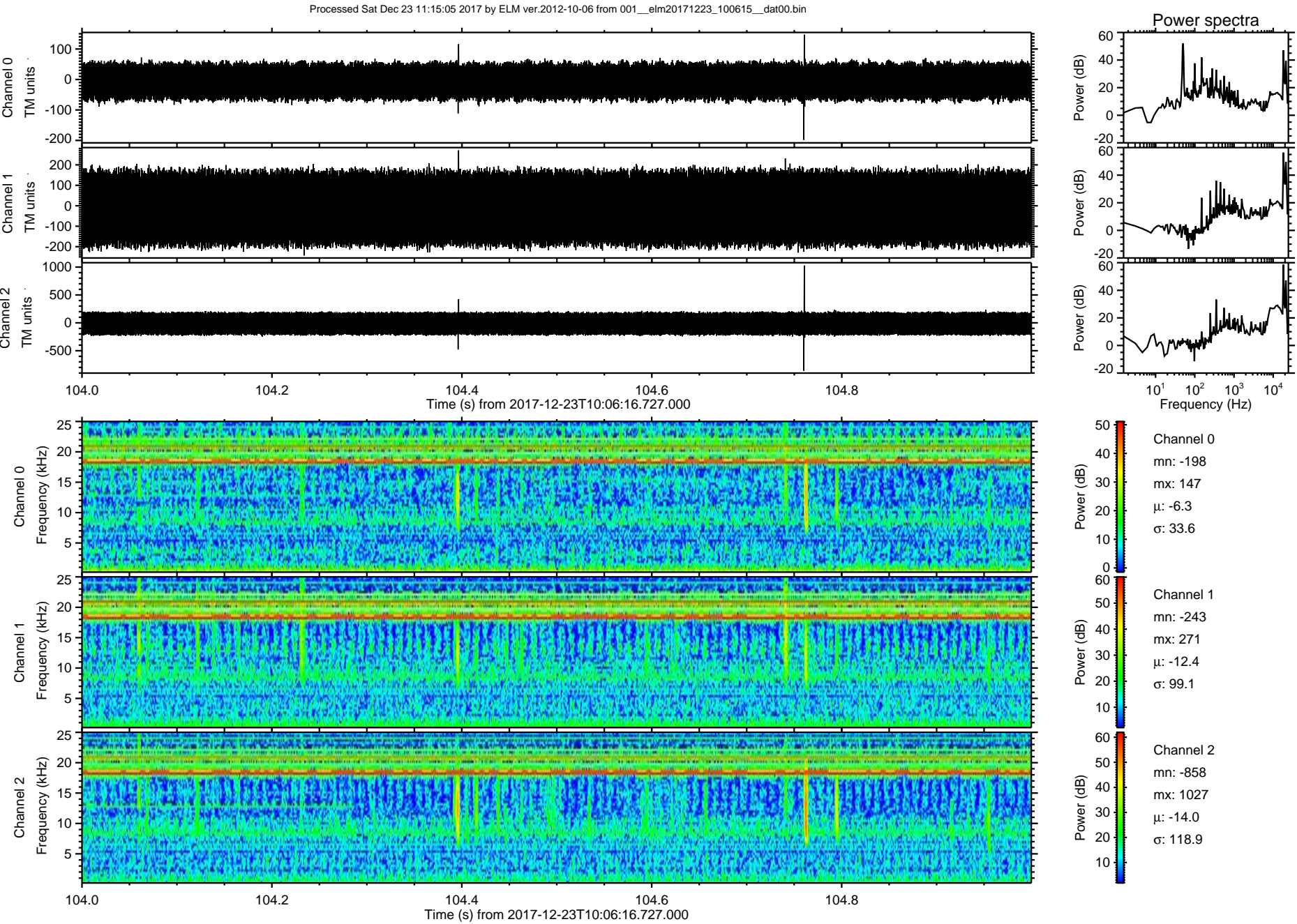


Processed Sat Dec 23 11:15:04 2017 by ELM ver.2012-10-06 from 001\_\_elm20171223\_100615\_\_dat00.bin





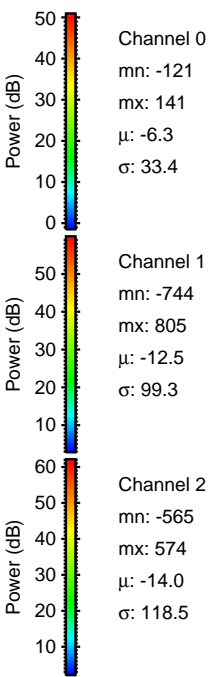
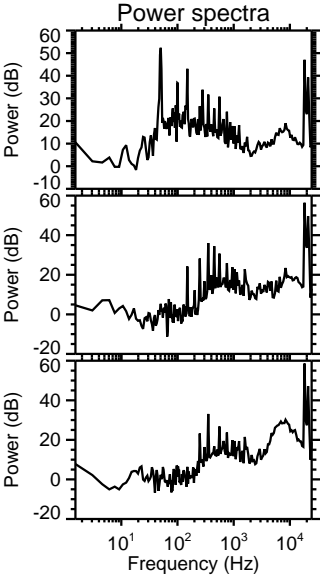
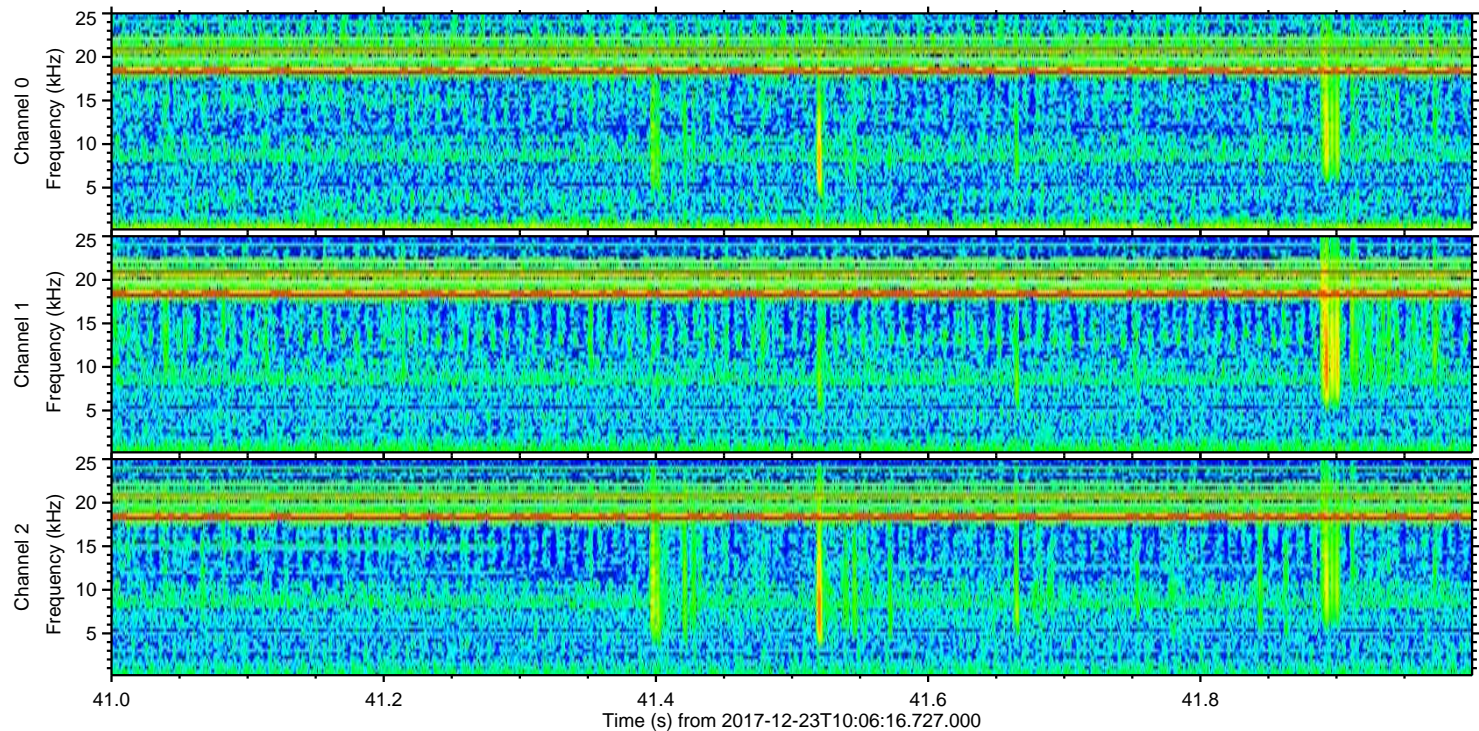
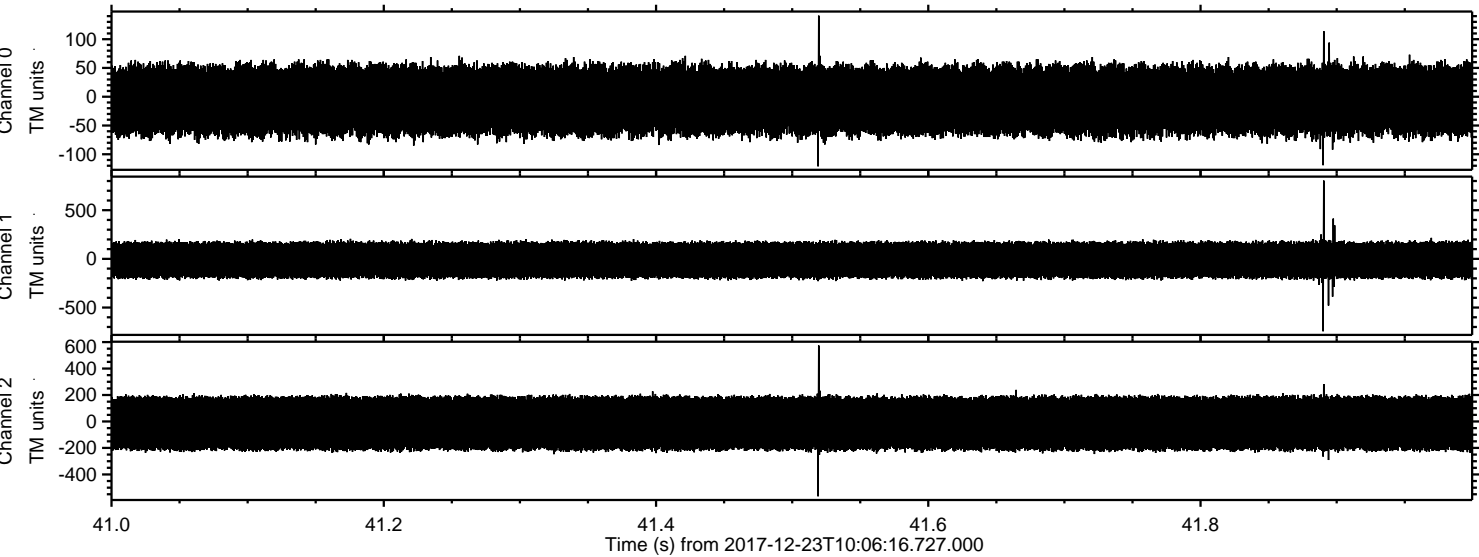
ELMAVAN 3D WAVEFORMS (Measured data sampled at 50 kHz) 51000 packets of 144 samples from 2017-12-23T10:06:16.727.000. Part 105/147





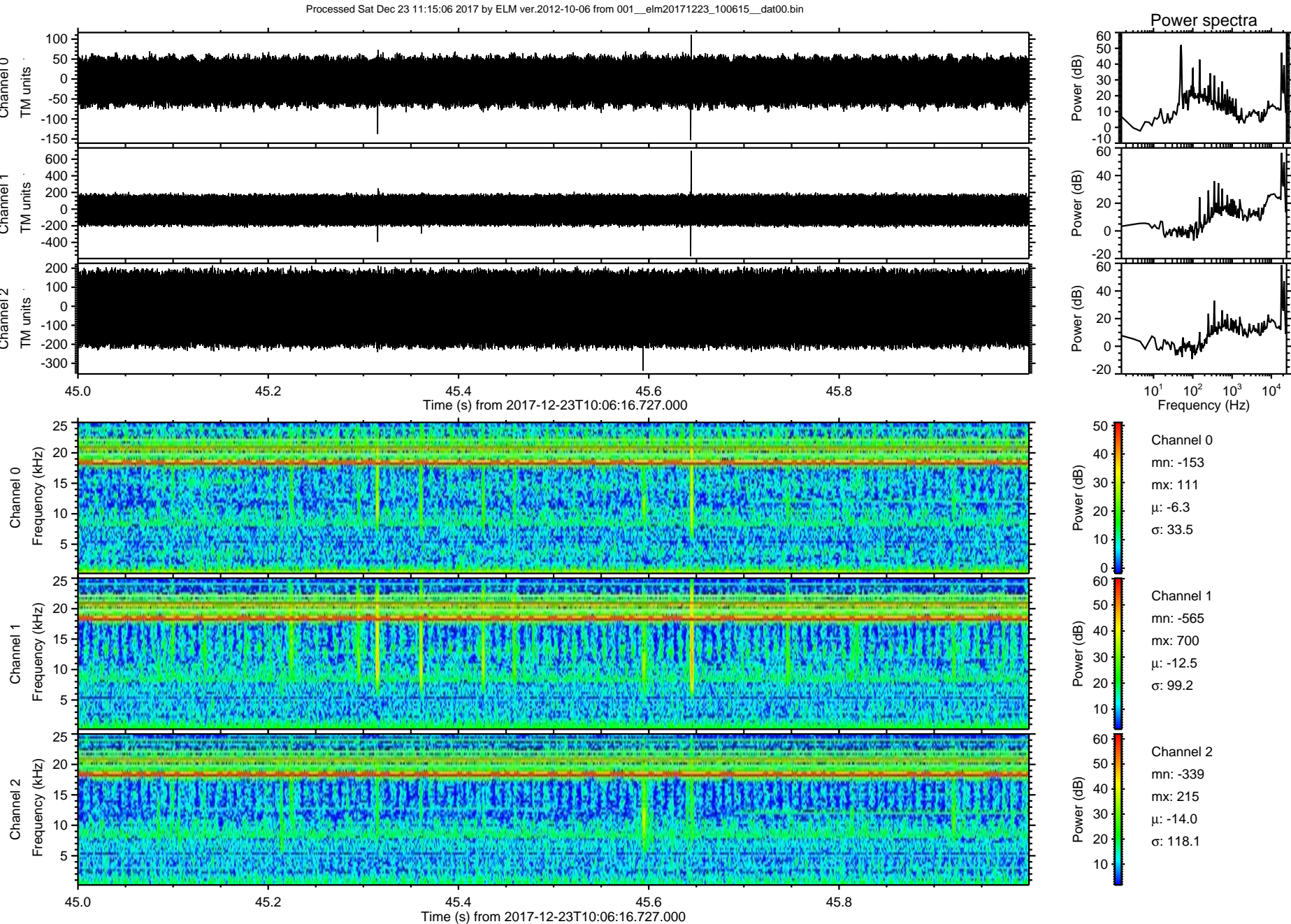
ELMAVAN 3D WAVEFORMS (Measured data sampled at 50 kHz) 51000 packets of 144 samples from 2017-12-23T10:06:16.727.000. Part 42/147

Processed Sat Dec 23 11:15:06 2017 by ELM ver.2012-10-06 from 001\_\_elm20171223\_100615\_\_dat00.bin



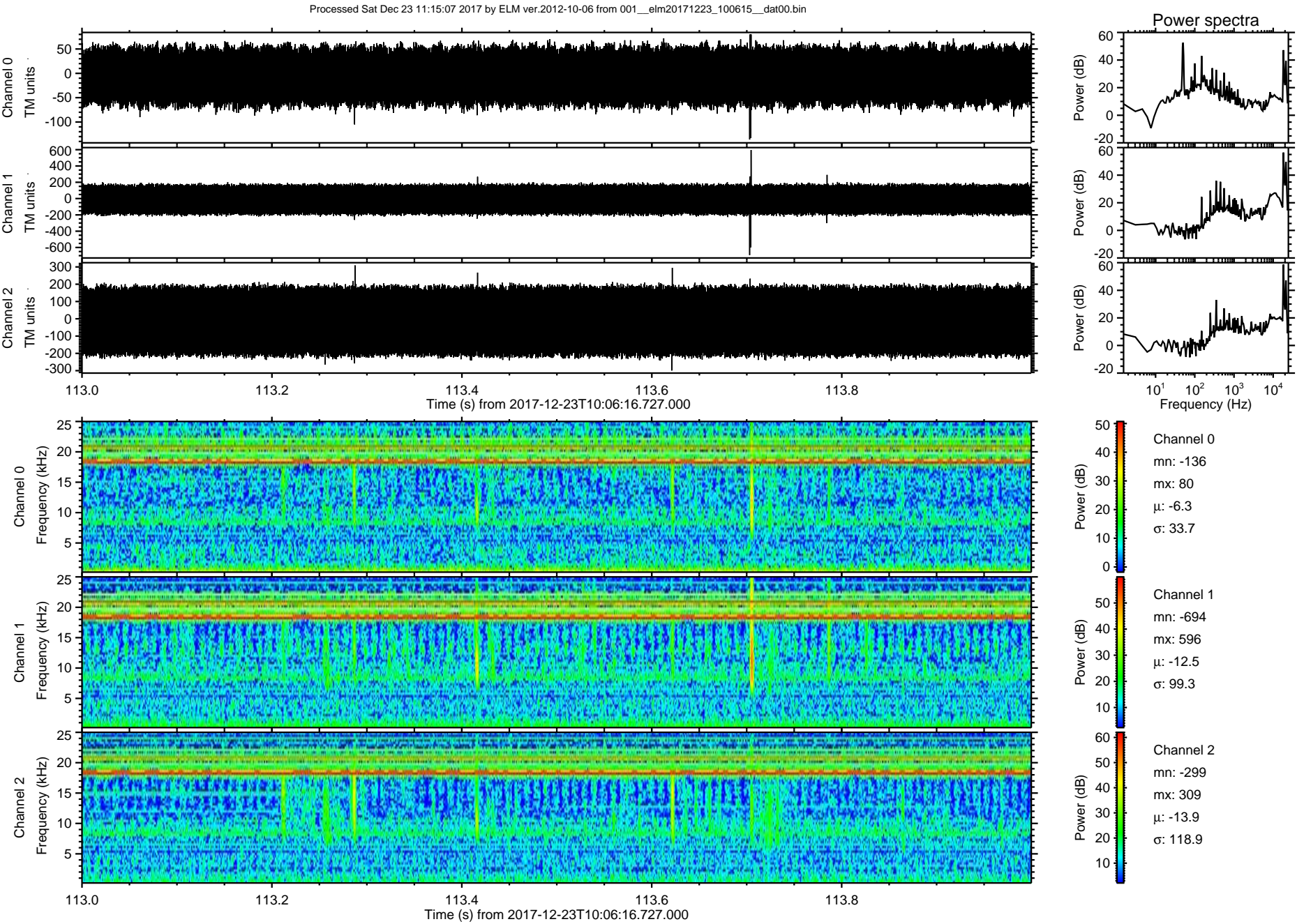


ELMAVAN 3D WAVEFORMS (Measured data sampled at 50 kHz) 51000 packets of 144 samples from 2017-12-23T10:06:16.727.000. Part 46/147



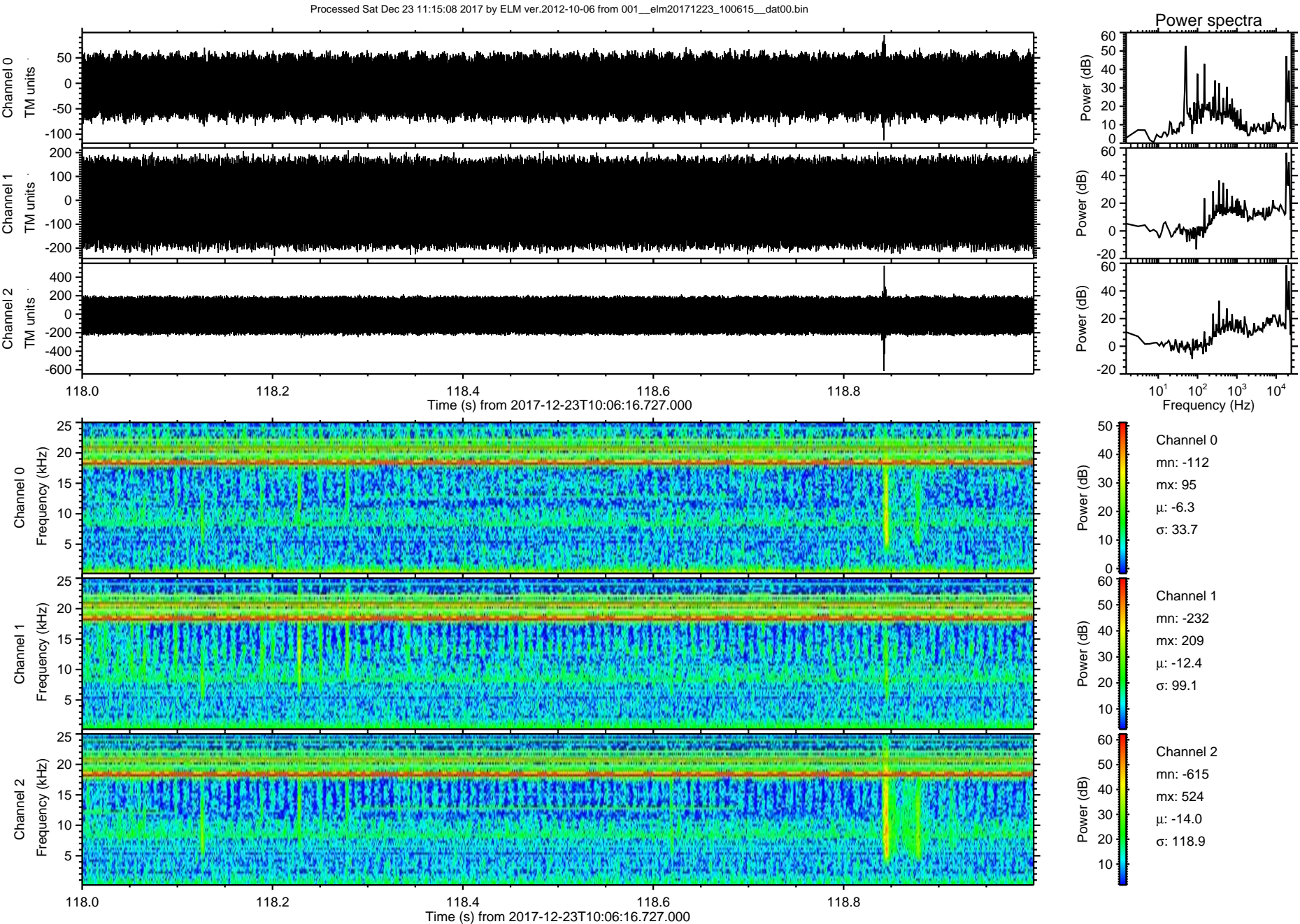


ELMAVAN 3D WAVEFORMS (Measured data sampled at 50 kHz) 51000 packets of 144 samples from 2017-12-23T10:06:16.727.000. Part 114/147



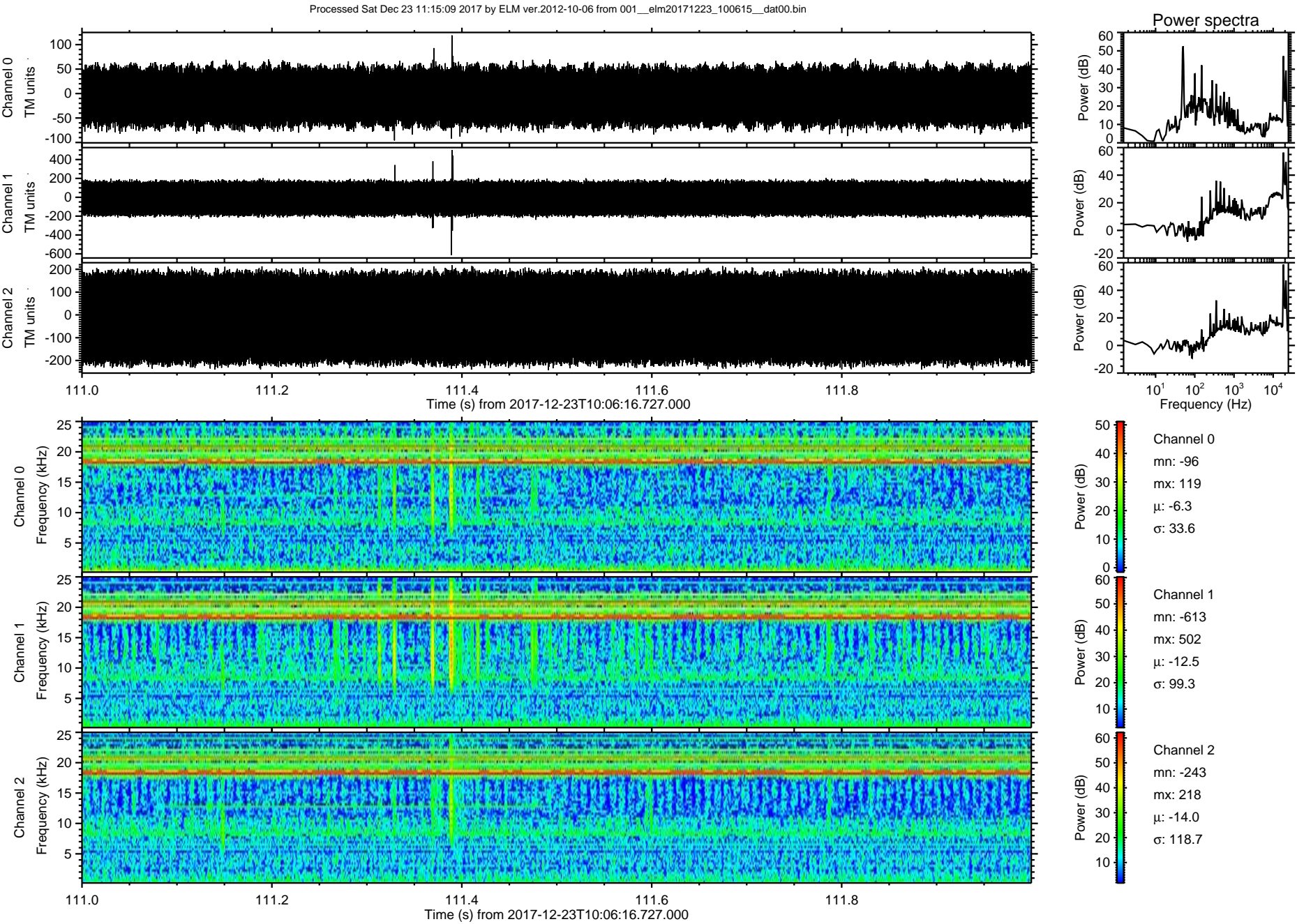


ELMAVAN 3D WAVEFORMS (Measured data sampled at 50 kHz) 51000 packets of 144 samples from 2017-12-23T10:06:16.727.000. Part 119/147



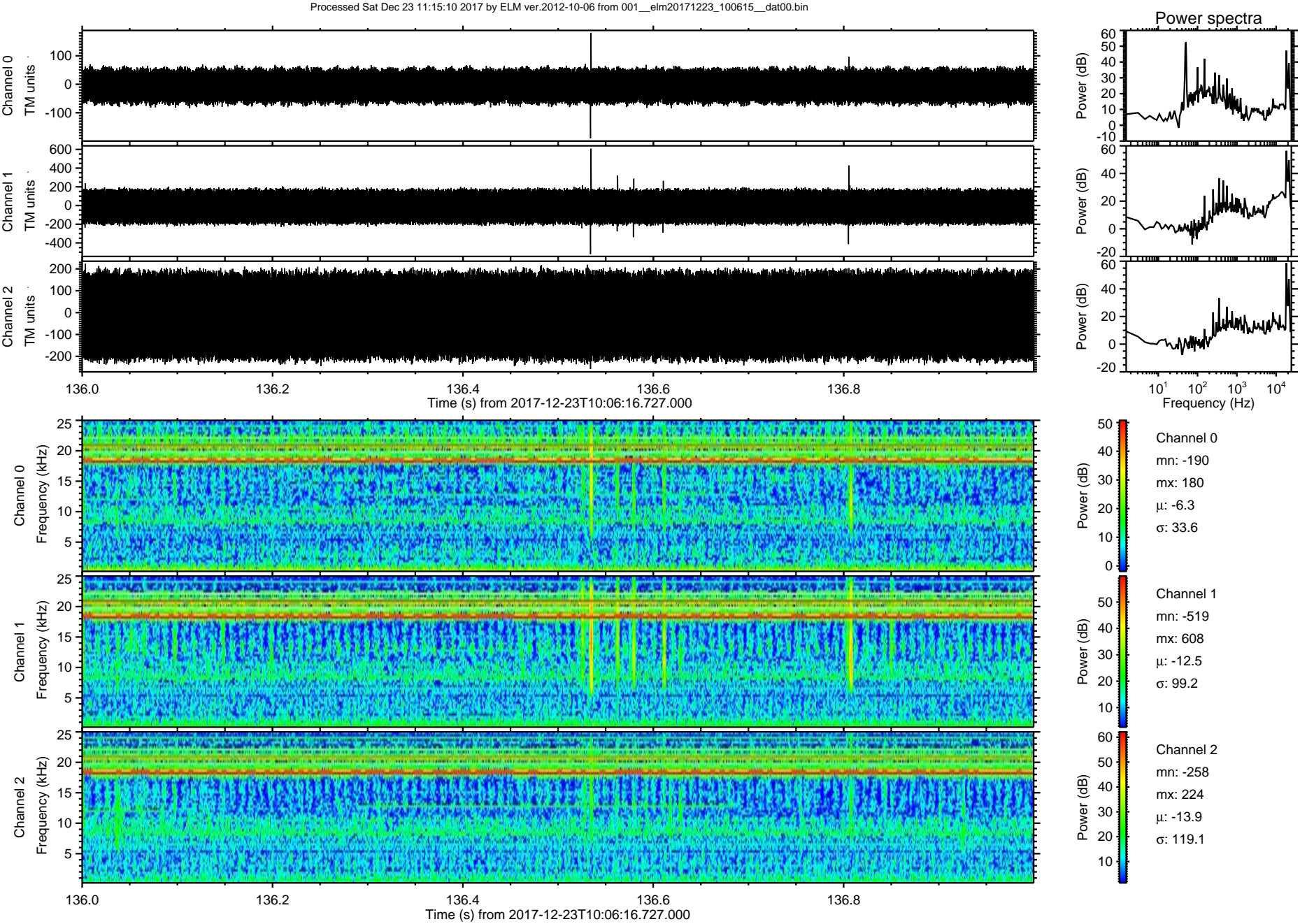


ELMAVAN 3D WAVEFORMS (Measured data sampled at 50 kHz) 51000 packets of 144 samples from 2017-12-23T10:06:16.727.000. Part 112/147





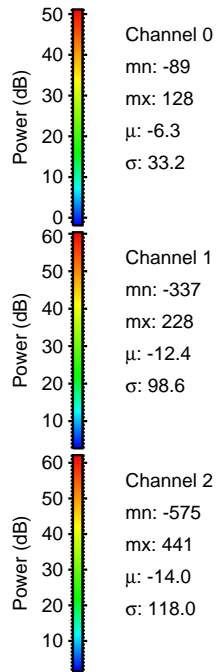
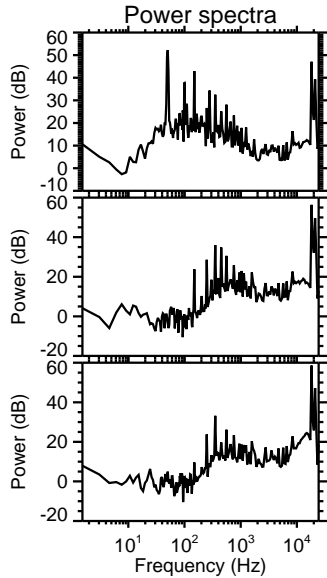
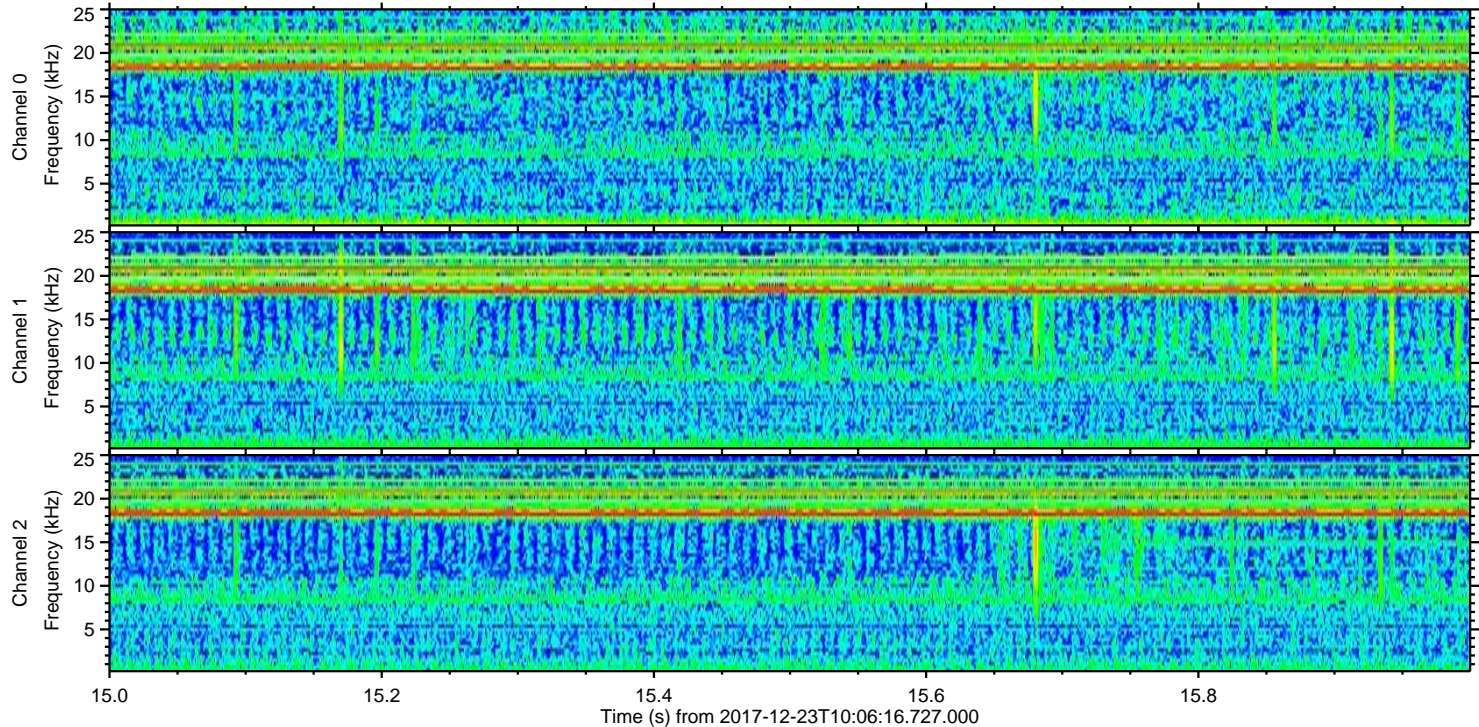
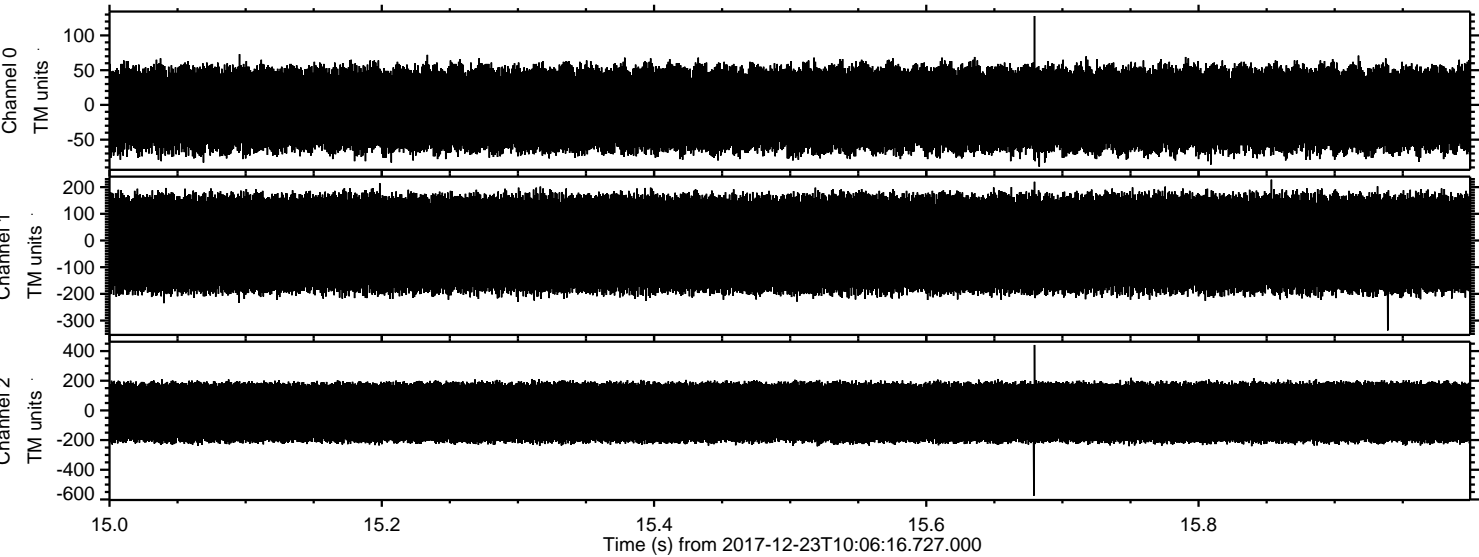
ELMAVAN 3D WAVEFORMS (Measured data sampled at 50 kHz) 51000 packets of 144 samples from 2017-12-23T10:06:16.727.000. Part 137/147





ELMAVAN 3D WAVEFORMS (Measured data sampled at 50 kHz) 51000 packets of 144 samples from 2017-12-23T10:06:16.727.000. Part 16/147

Processed Sat Dec 23 11:15:11 2017 by ELM ver.2012-10-06 from 001\_\_elm20171223\_100615\_\_dat00.bin



Channel 0  
mn: -89  
mx: 128  
 $\mu$ : -6.3  
 $\sigma$ : 33.2

Channel 1  
mn: -337  
mx: 228  
 $\mu$ : -12.4  
 $\sigma$ : 98.6

Channel 2  
mn: -575  
mx: 441  
 $\mu$ : -14.0  
 $\sigma$ : 118.0



Processed Sat Dec 23 11:15:12 2017 by ELM ver.2012-10-06 from 001\_\_elm20171223\_100615\_\_dat00.bin

