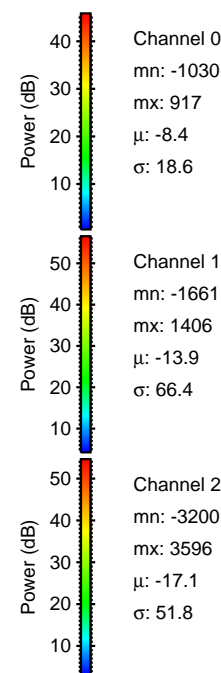
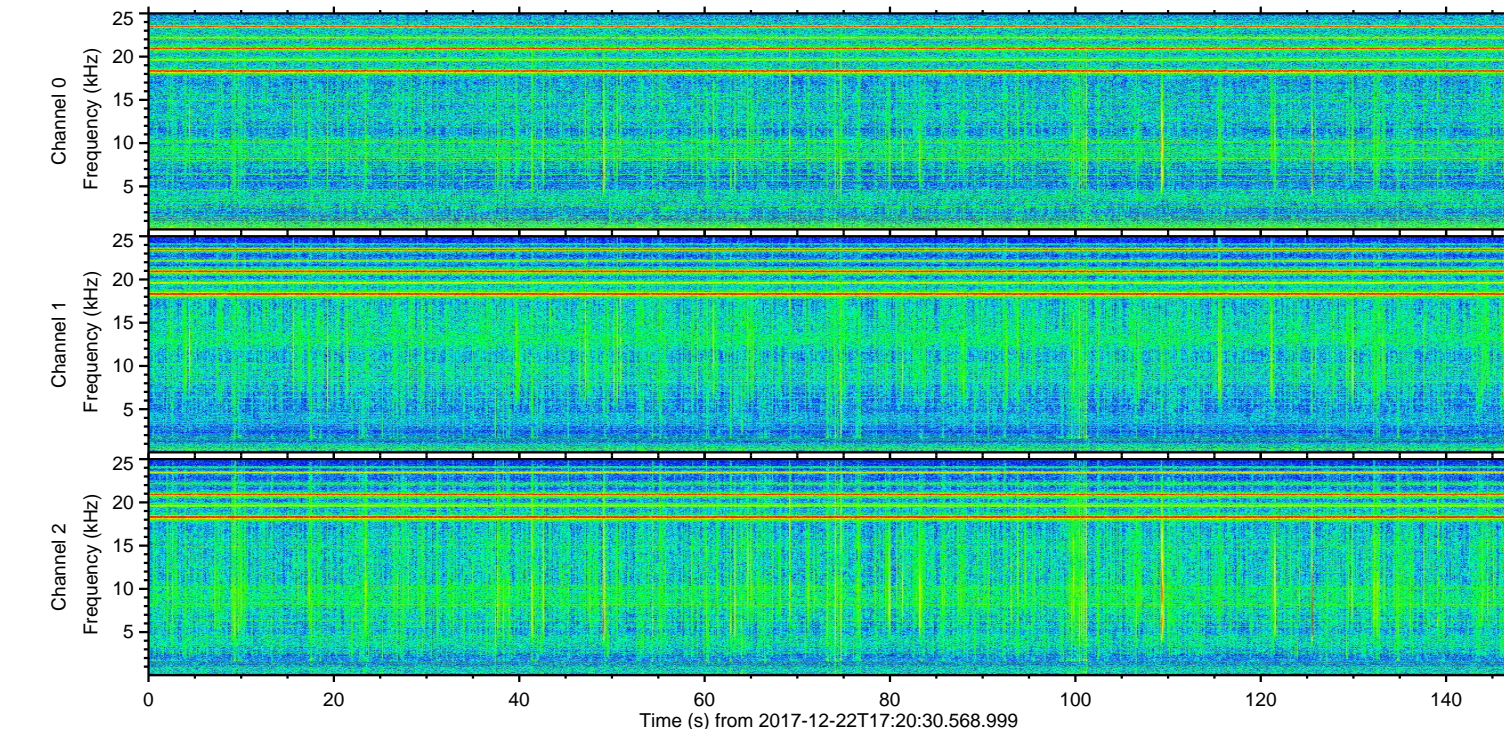
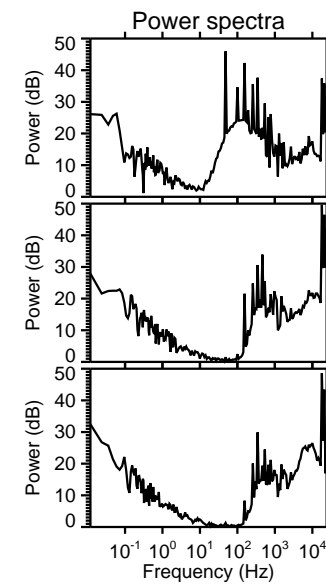
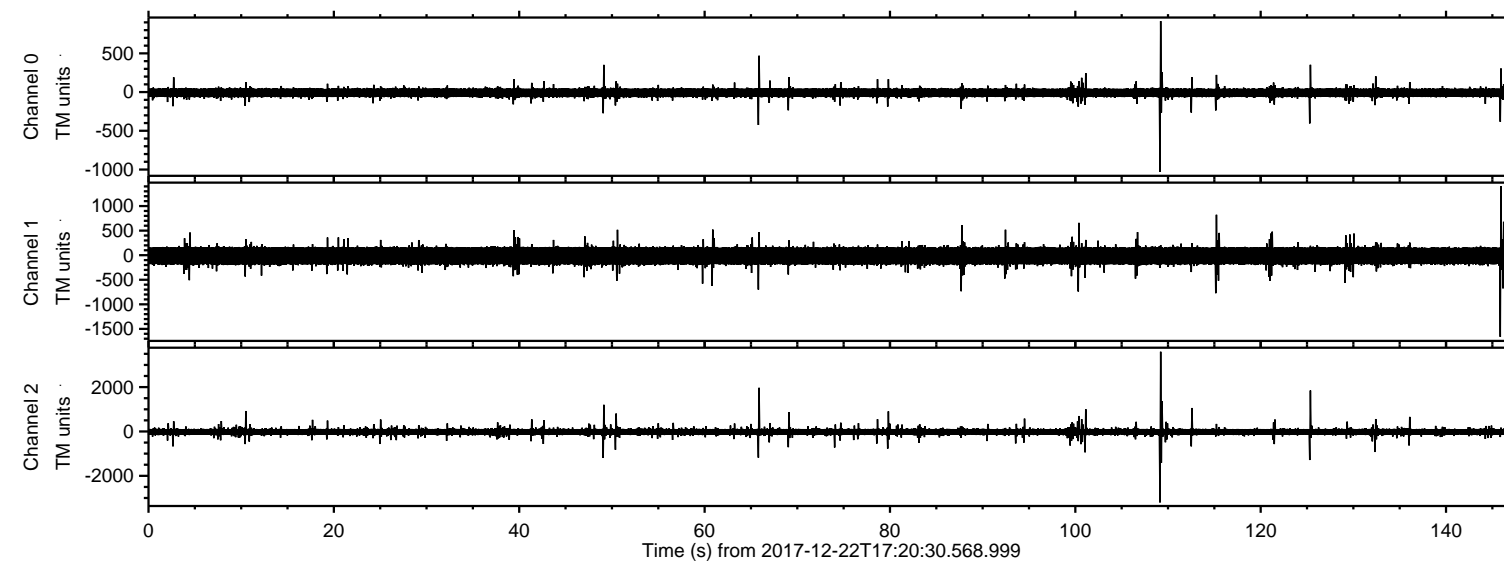


ELMAVAN 3D WAVEFORMS (Measured data sampled at 50 kHz) 51000 packets of 144 samples from 2017-12-22T17:20:30.568.999.

Processed Fri Dec 22 18:28:29 2017 by ELM ver.2012-10-06 from 001__elm20171222_172029__dat00.bin



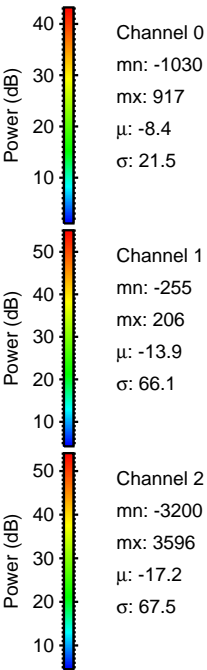
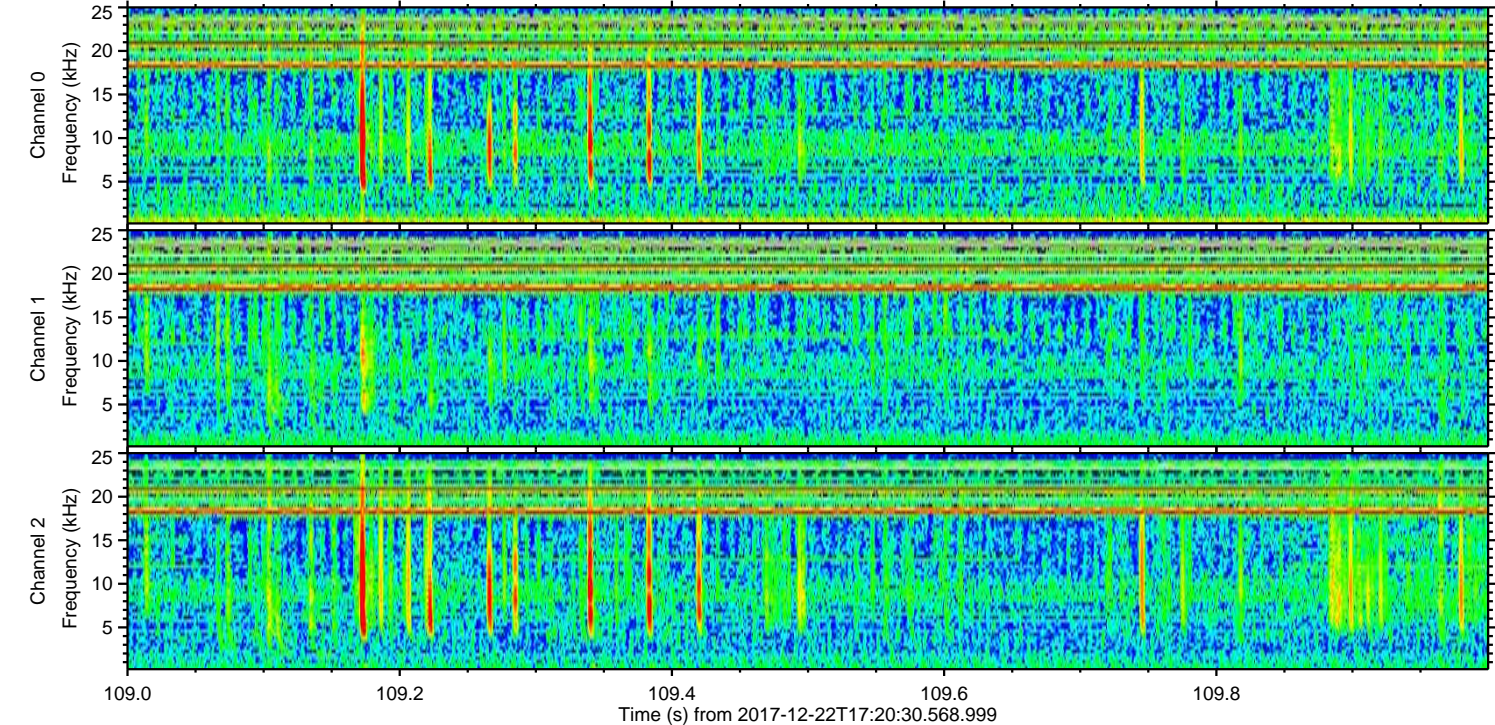
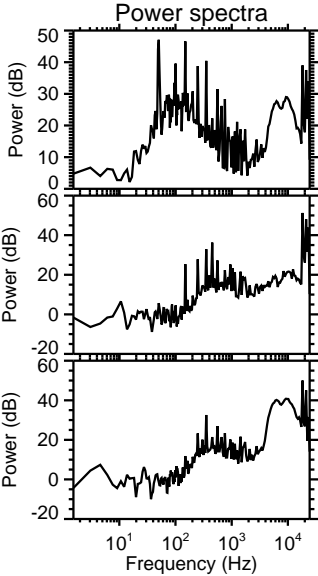
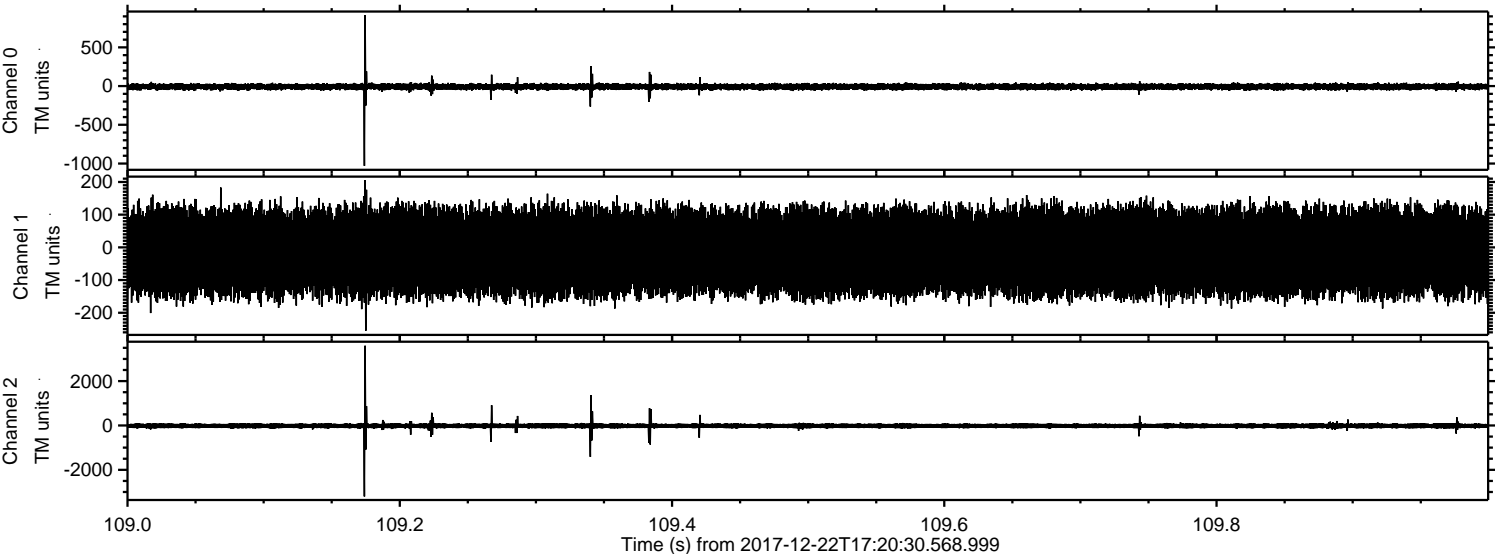
Channel 0
mn: -1030
mx: 917
 μ : -8.4
 σ : 18.6

Channel 1
mn: -1661
mx: 1406
 μ : -13.9
 σ : 66.4

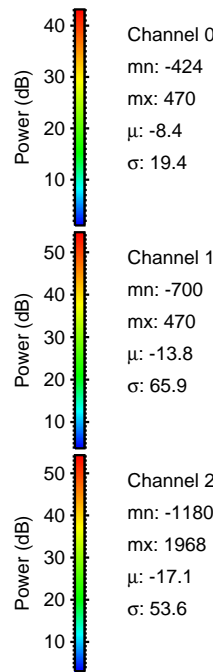
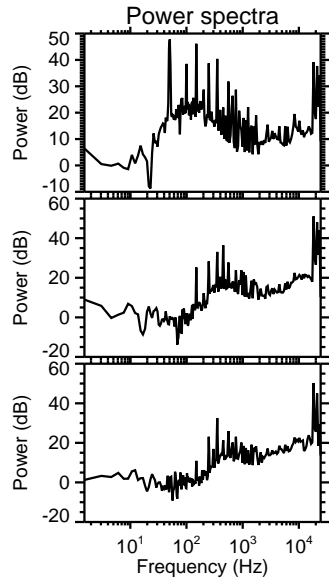
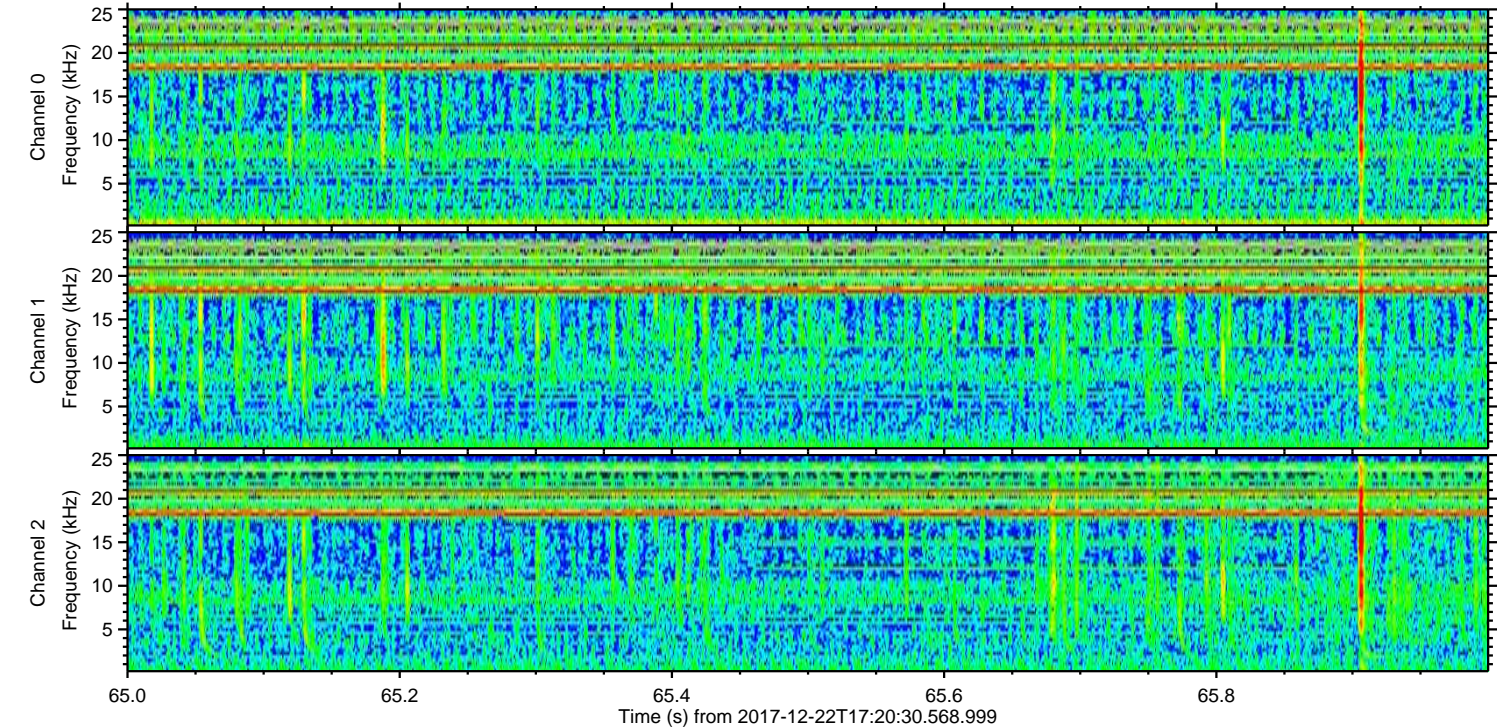
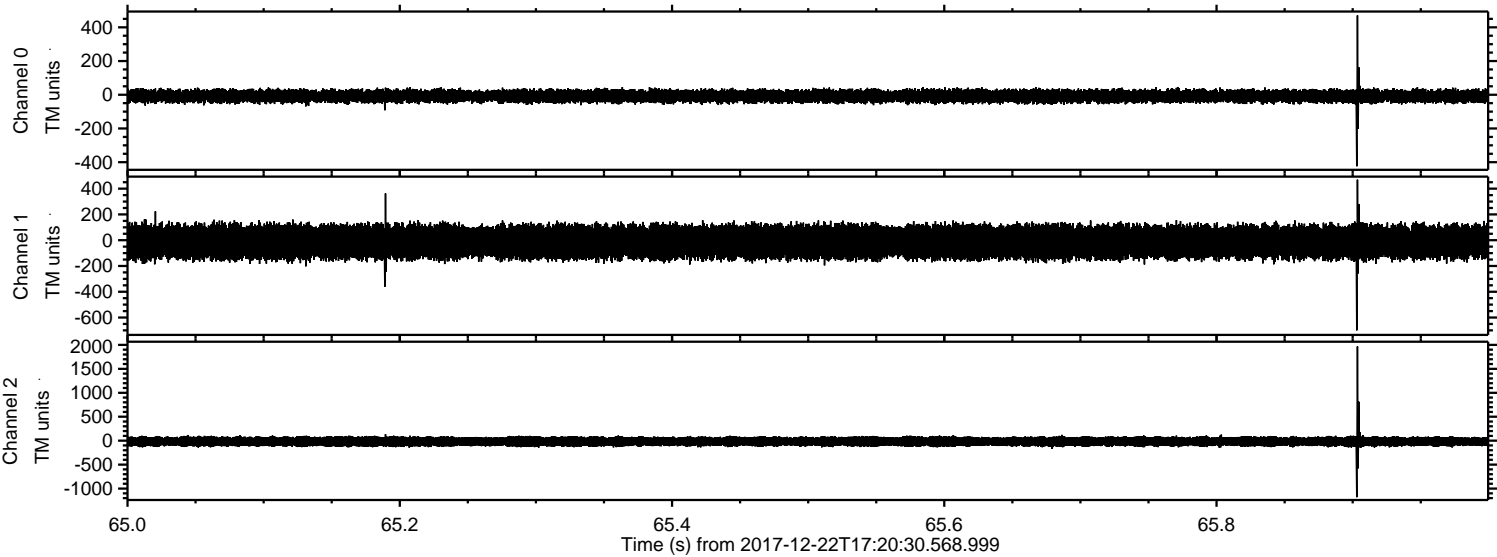
Channel 2
mn: -3200
mx: 3596
 μ : -17.1
 σ : 51.8

ELMAVAN 3D WAVEFORMS (Measured data sampled at 50 kHz) 51000 packets of 144 samples from 2017-12-22T17:20:30.568.999. Part 110/147

Processed Fri Dec 22 18:28:37 2017 by ELM ver.2012-10-06 from 001__elm20171222_172029__dat00.bin

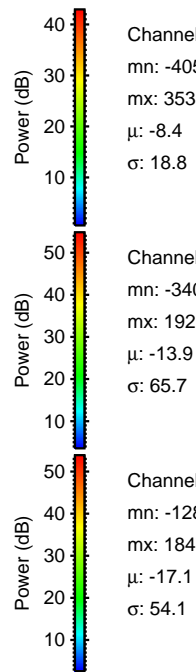
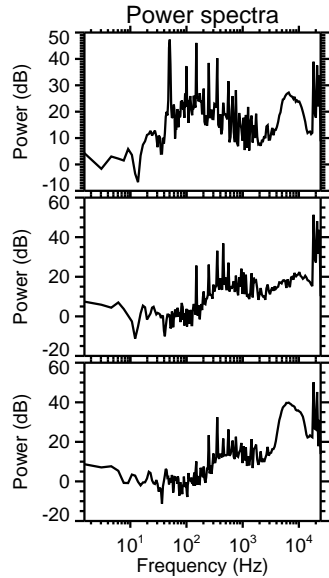
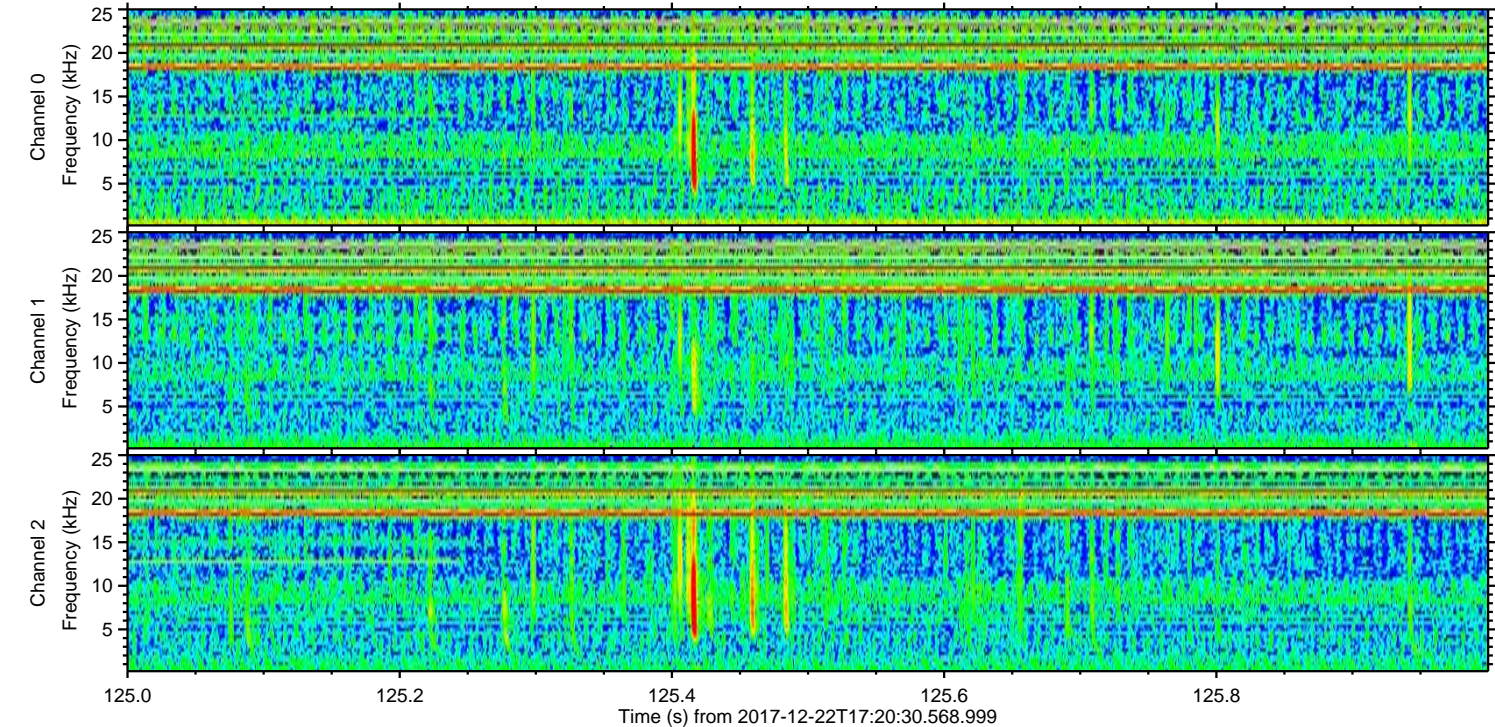
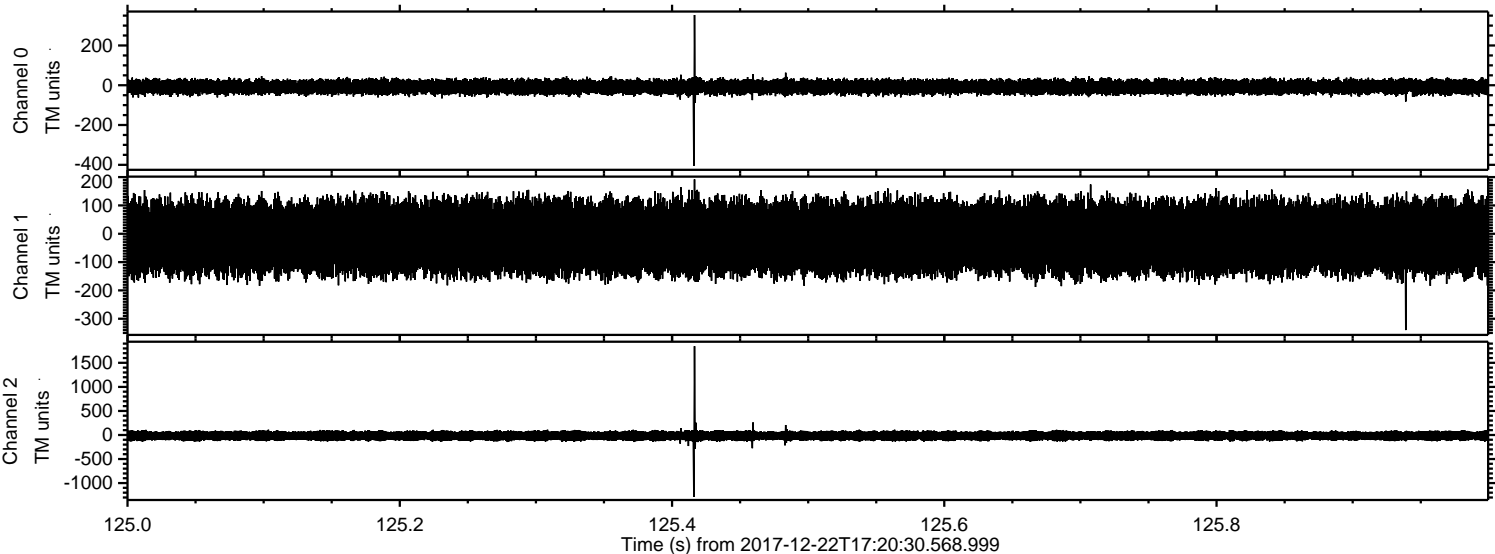


Processed Fri Dec 22 18:28:37 2017 by ELM ver.2012-10-06 from 001__elm20171222_172029__dat00.bin



ELMAVAN 3D WAVEFORMS (Measured data sampled at 50 kHz) 51000 packets of 144 samples from 2017-12-22T17:20:30.568.999. Part 126/147

Processed Fri Dec 22 18:28:38 2017 by ELM ver.2012-10-06 from 001__elm20171222_172029__dat00.bin



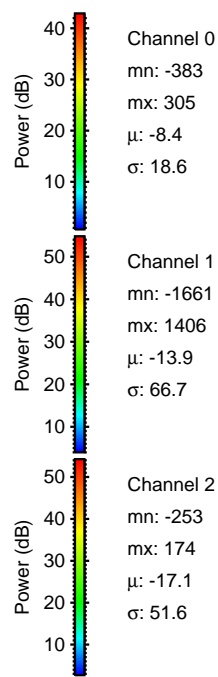
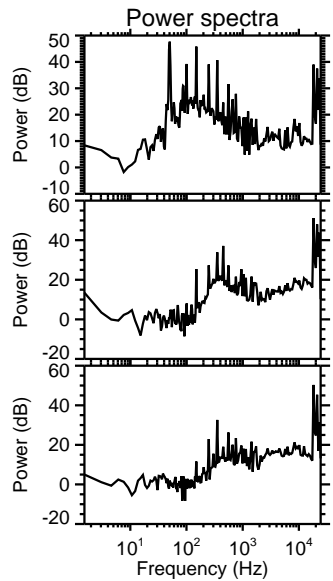
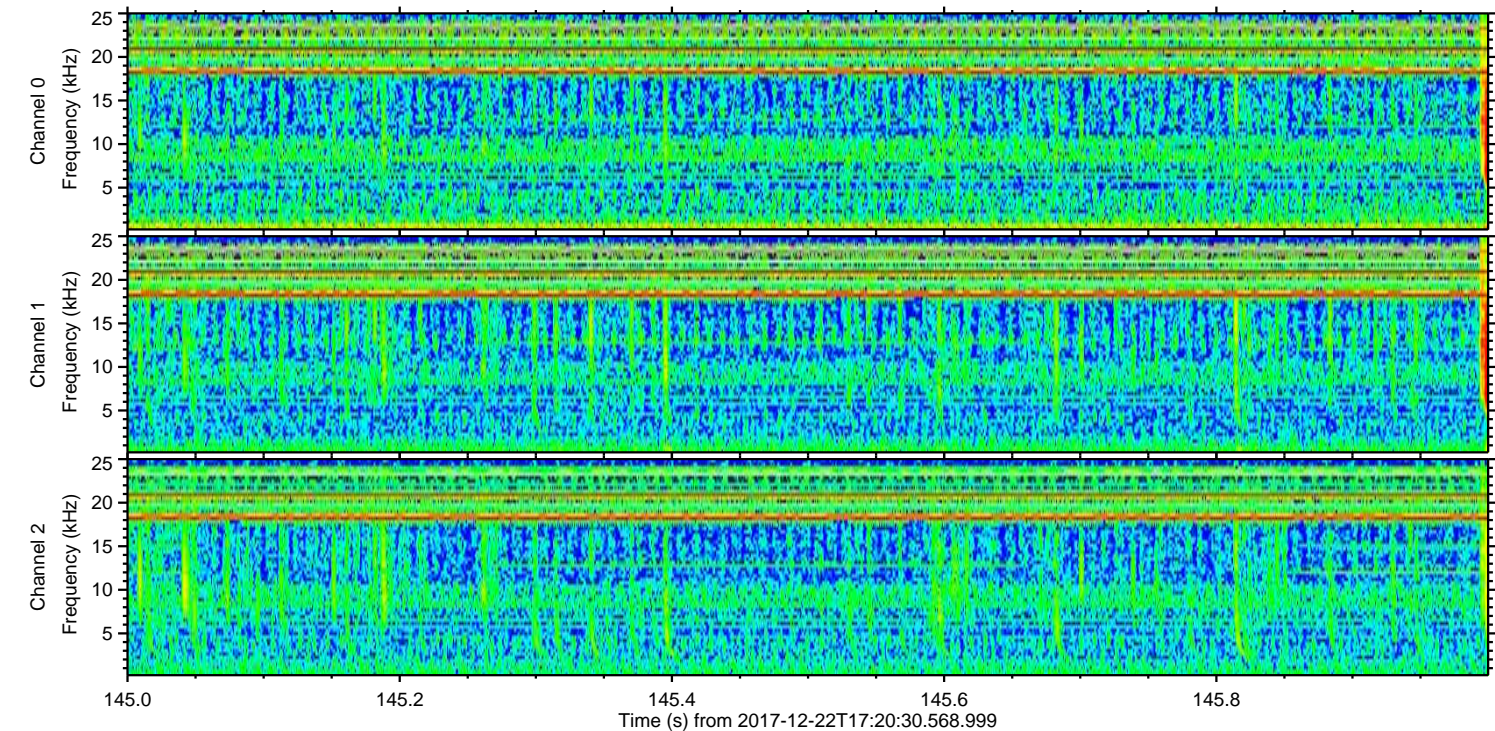
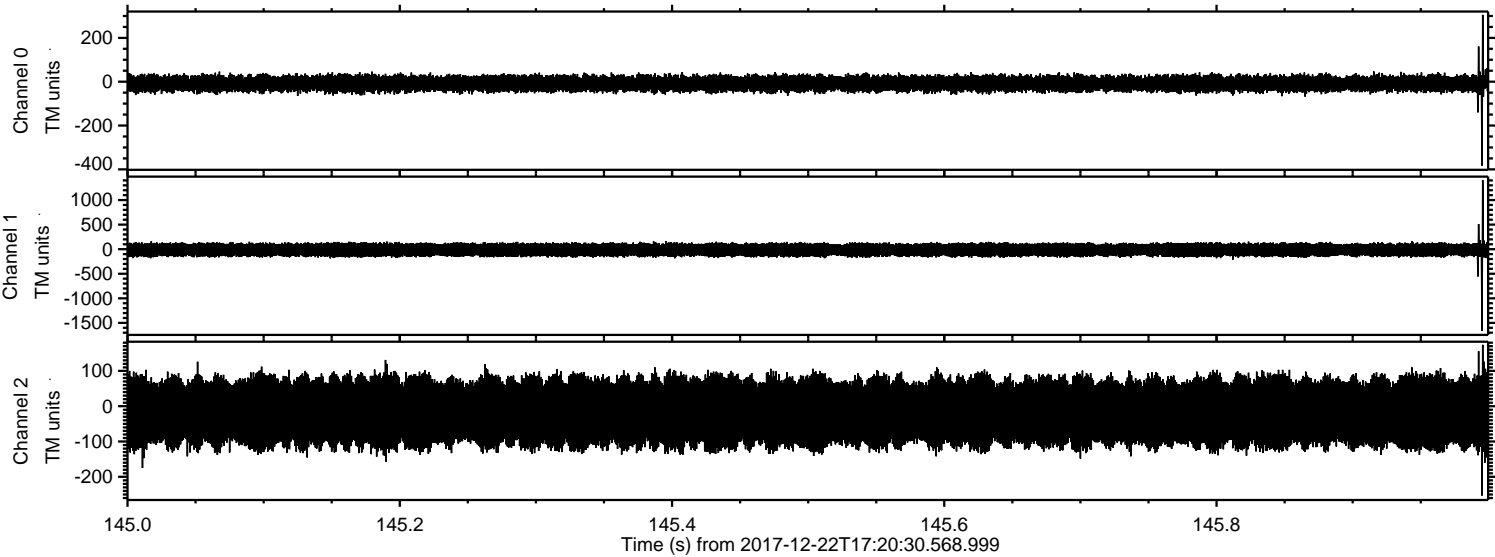
Channel 0
mn: -405
mx: 353
 μ : -8.4
 σ : 18.8

Channel 1
mn: -340
mx: 192
 μ : -13.9
 σ : 65.7

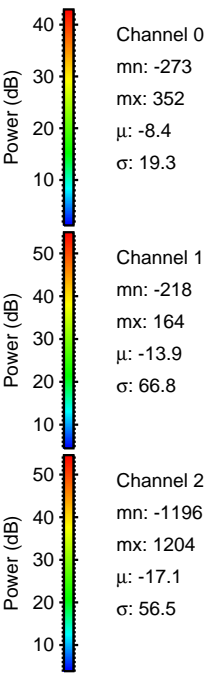
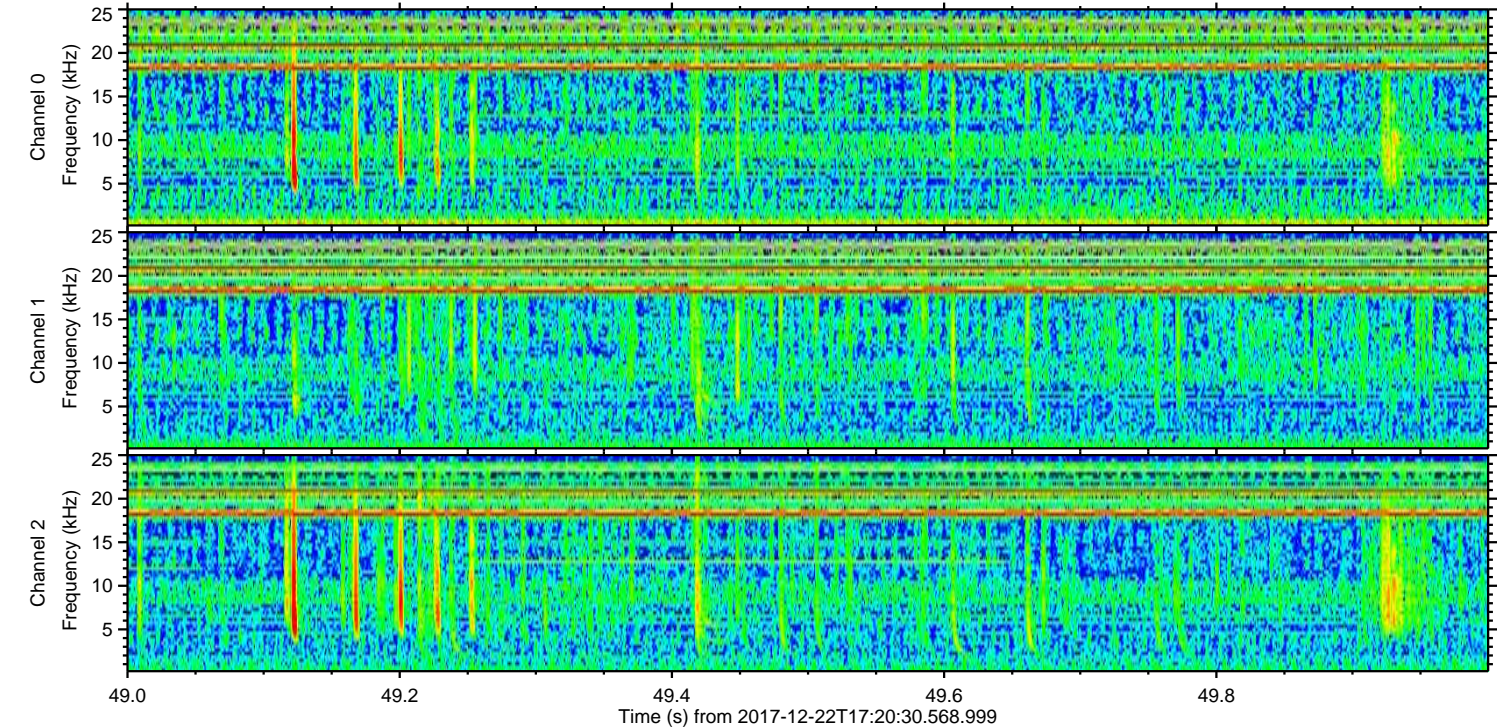
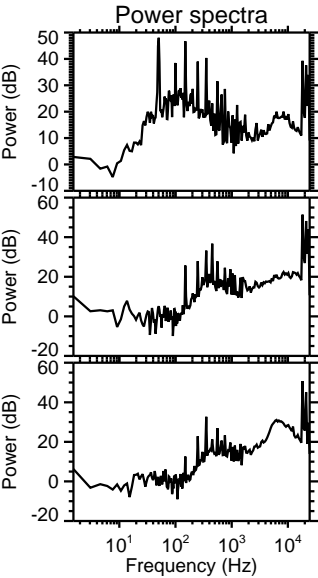
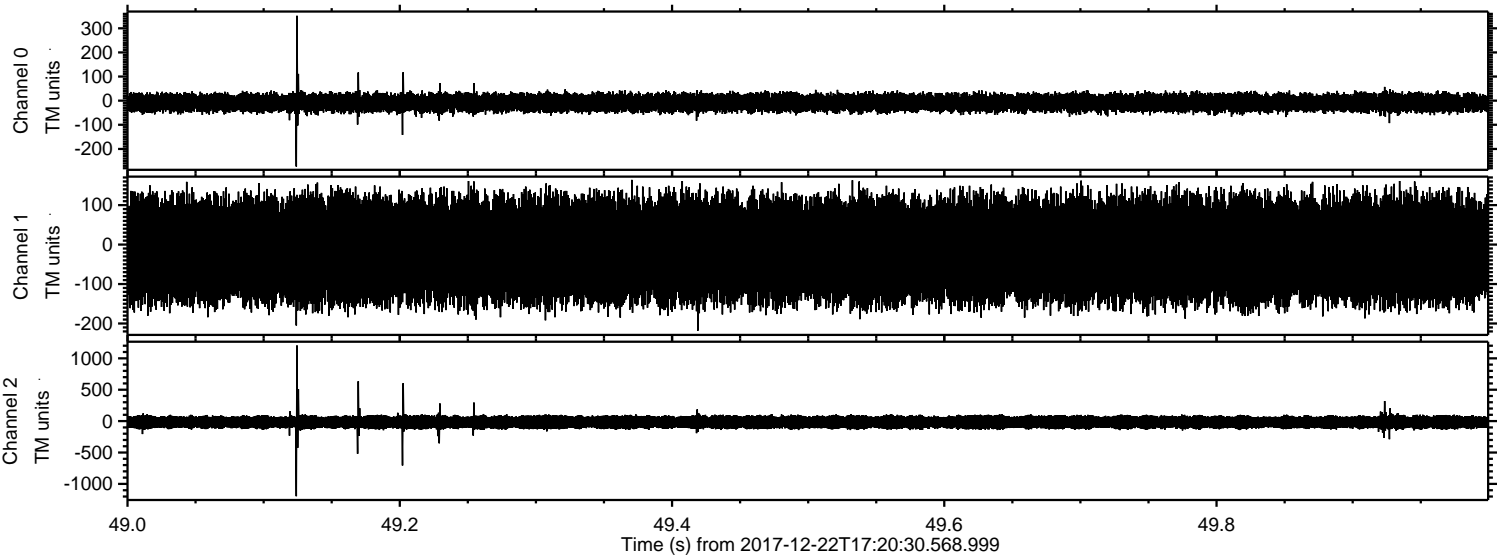
Channel 2
mn: -1288
mx: 1847
 μ : -17.1
 σ : 54.1

ELMAVAN 3D WAVEFORMS (Measured data sampled at 50 kHz) 51000 packets of 144 samples from 2017-12-22T17:20:30.568.999. Part 146/147

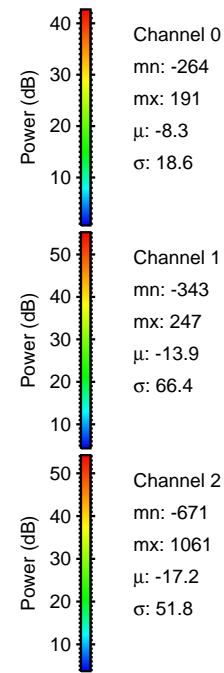
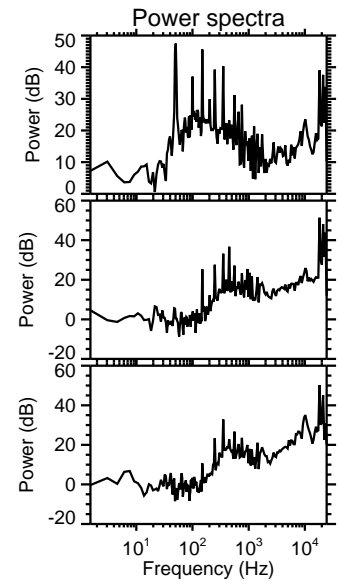
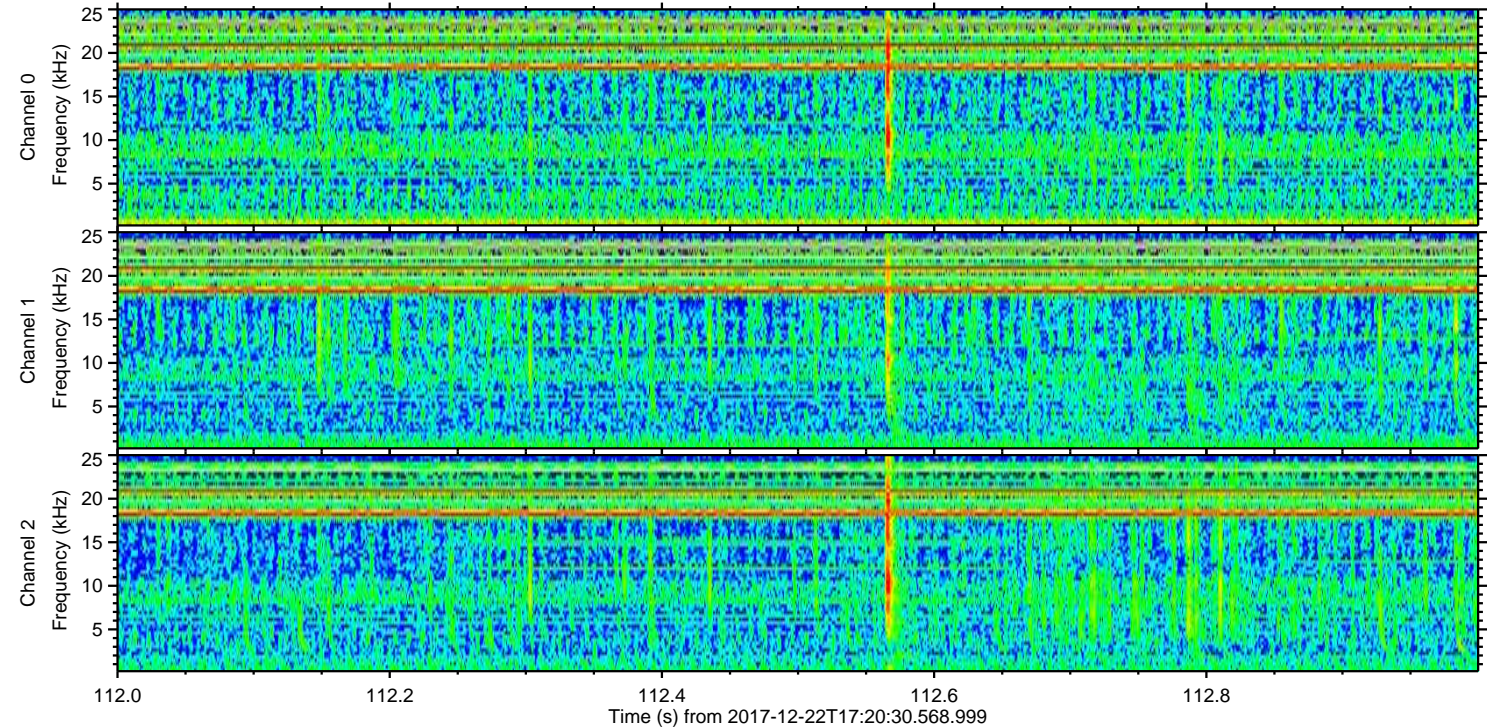
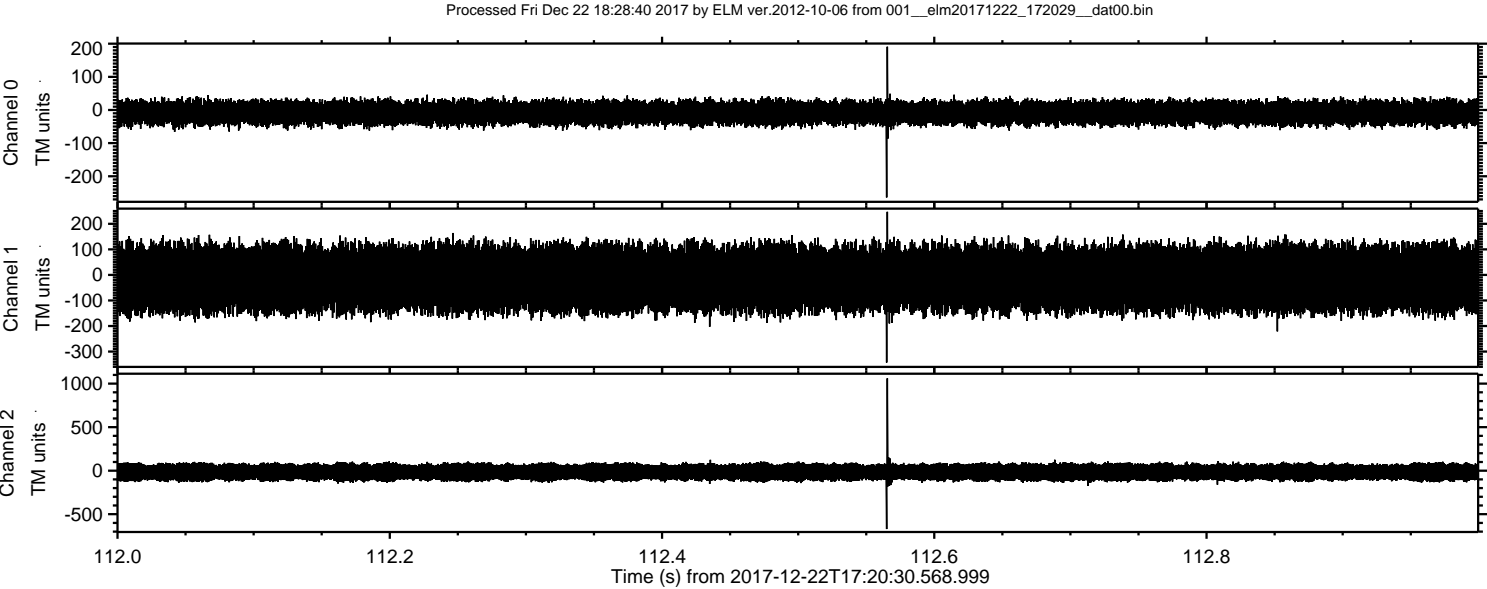
Processed Fri Dec 22 18:28:39 2017 by ELM ver.2012-10-06 from 001__elm20171222_172029__dat00.bin



Processed Fri Dec 22 18:28:40 2017 by ELM ver.2012-10-06 from 001__elm20171222_172029__dat00.bin

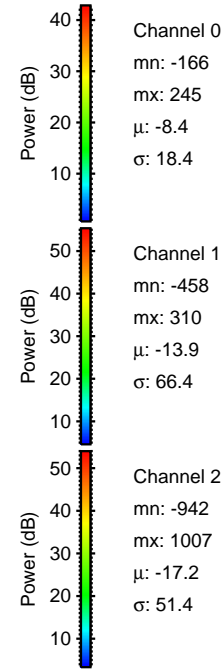
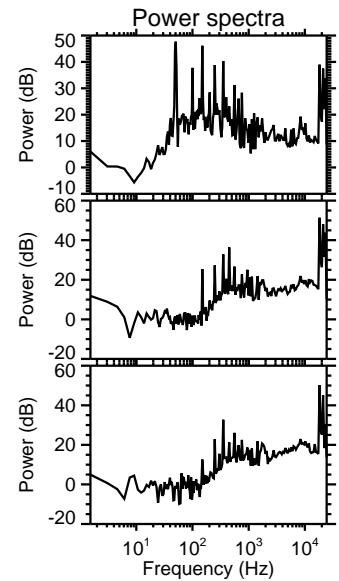
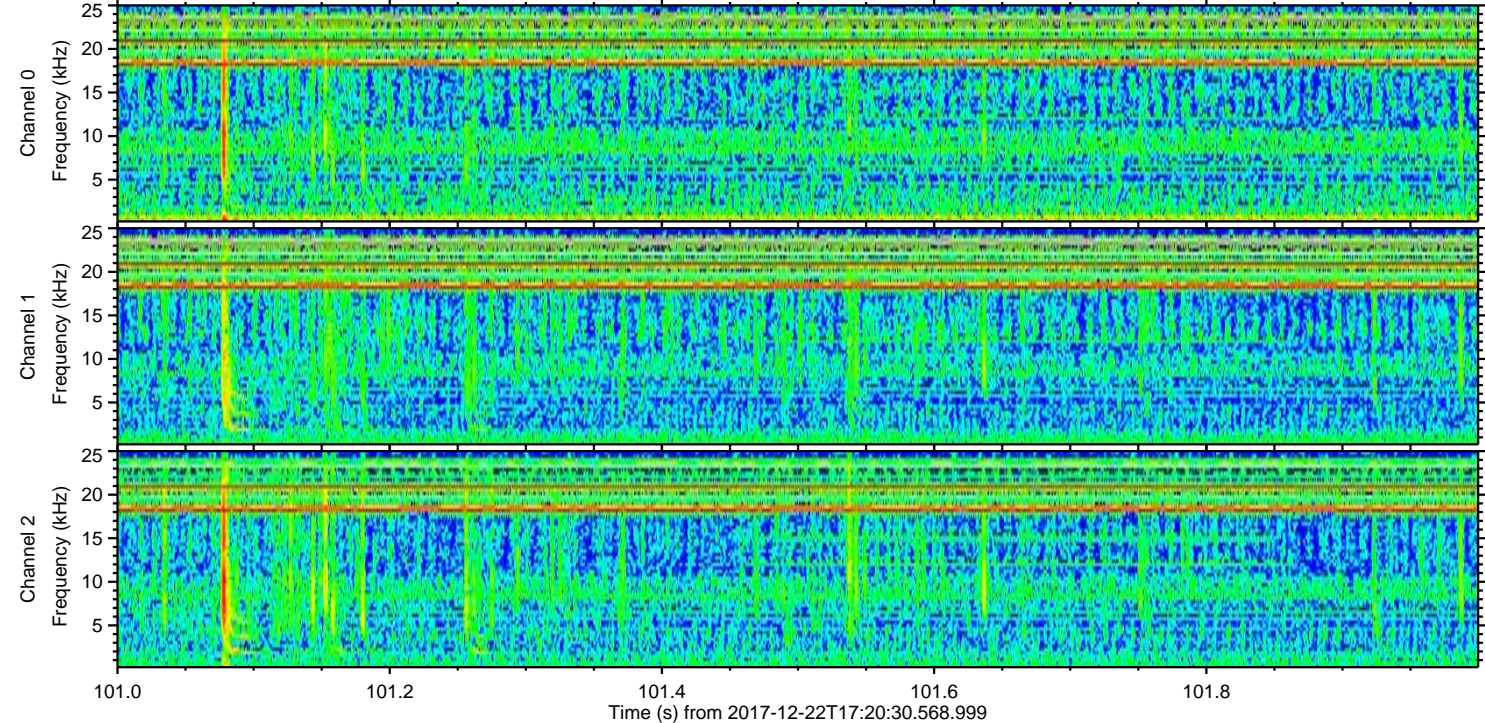
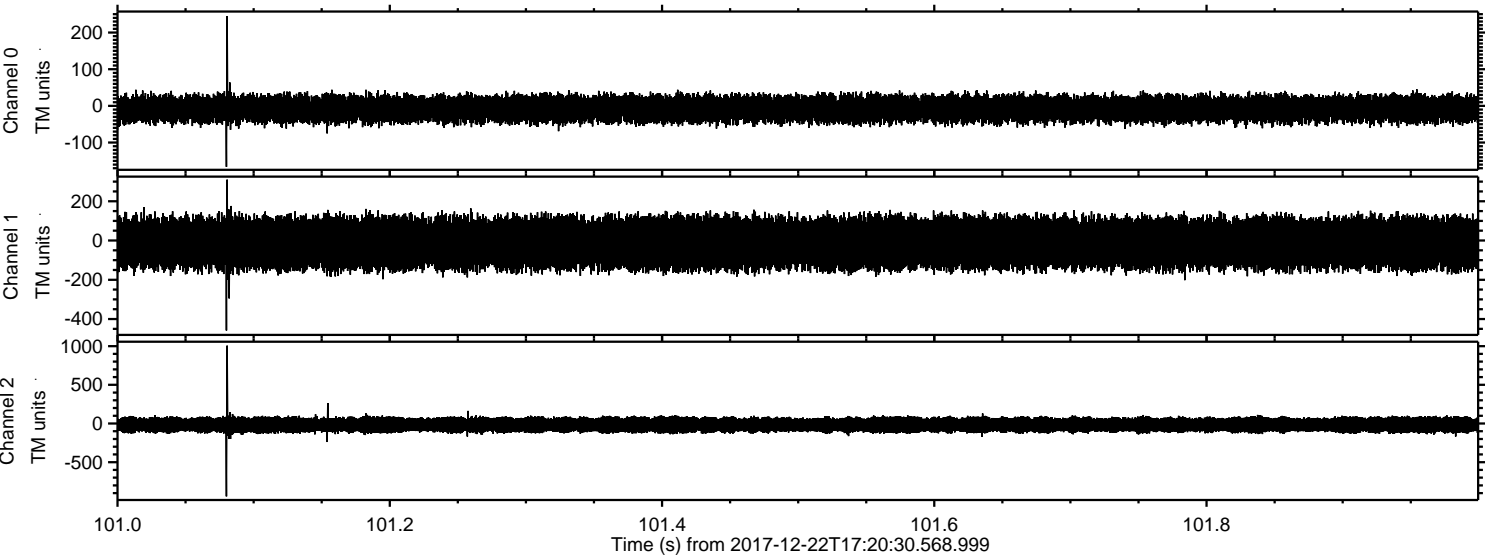


ELMAVAN 3D WAVEFORMS (Measured data sampled at 50 kHz) 51000 packets of 144 samples from 2017-12-22T17:20:30.568.999. Part 113/147



ELMAVAN 3D WAVEFORMS (Measured data sampled at 50 kHz) 51000 packets of 144 samples from 2017-12-22T17:20:30.568.999. Part 102/147

Processed Fri Dec 22 18:28:41 2017 by ELM ver.2012-10-06 from 001__elm20171222_172029__dat00.bin

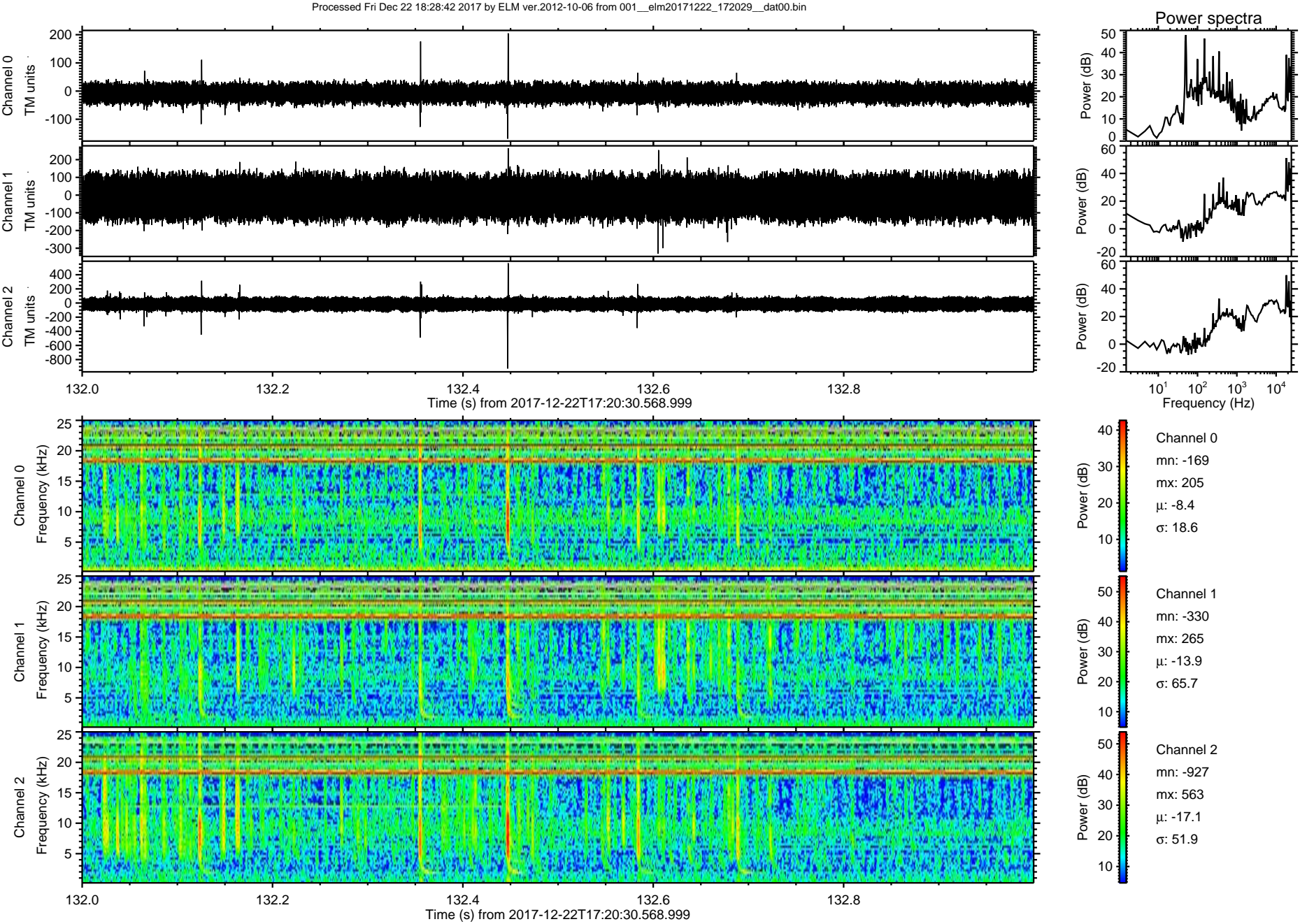


Channel 0
mn: -166
mx: 245
 μ : -8.4
 σ : 18.4

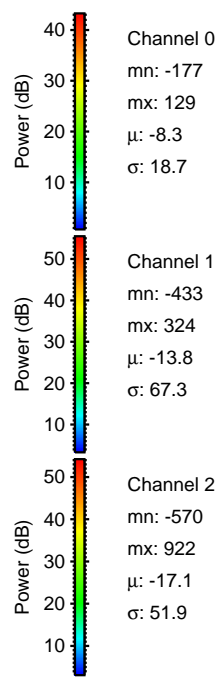
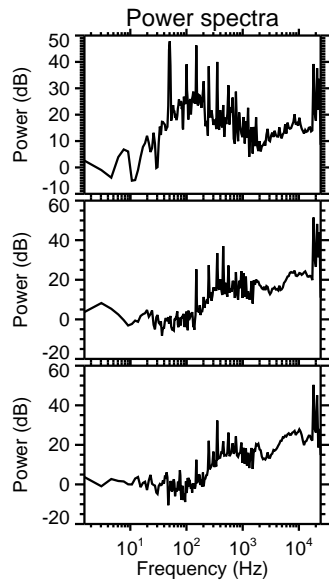
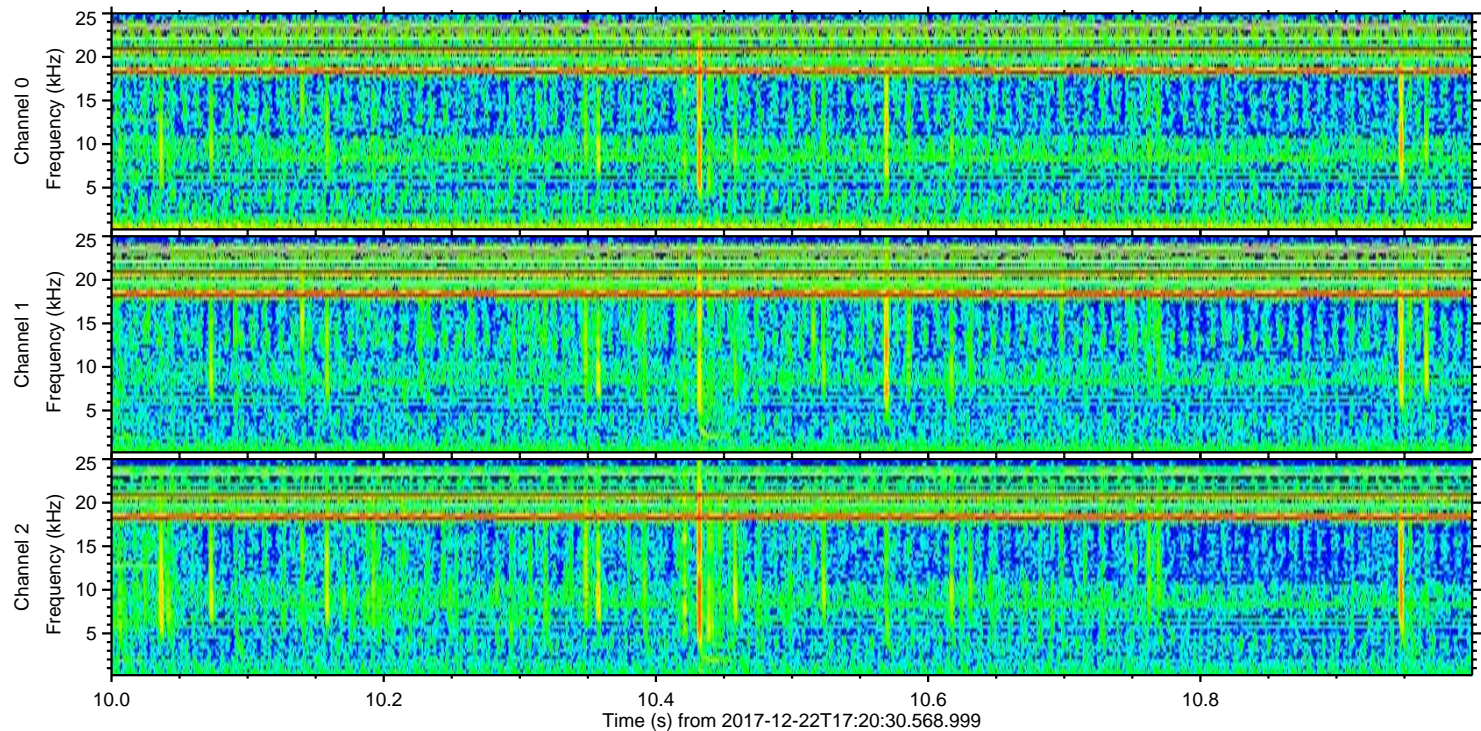
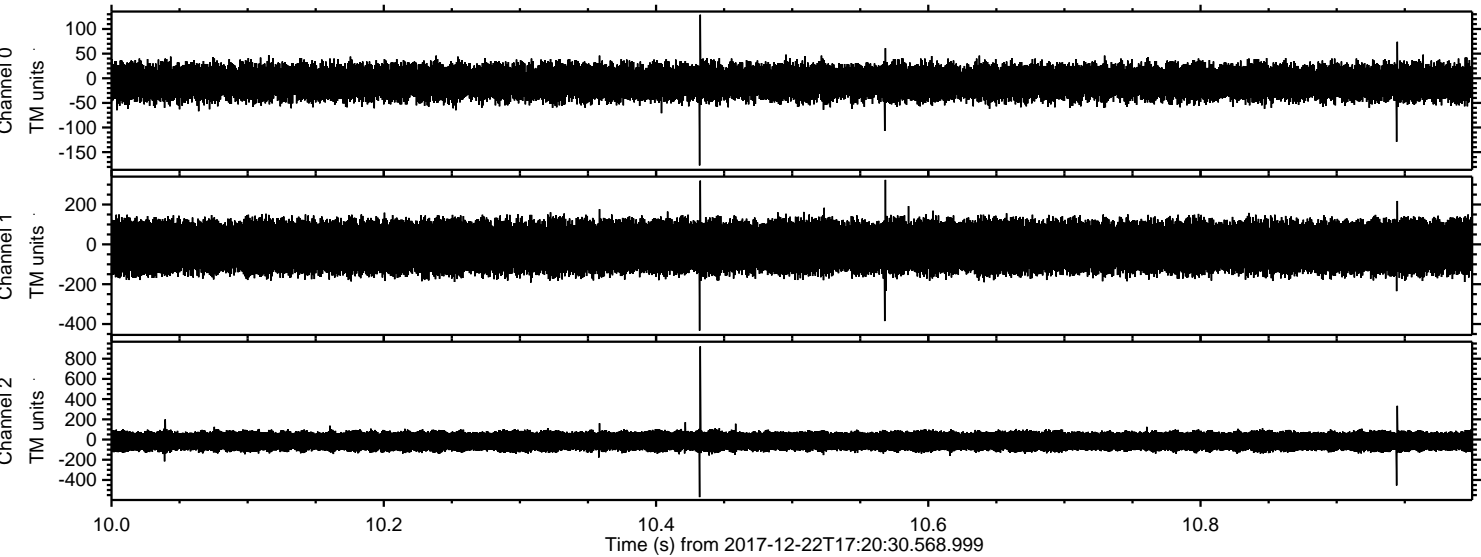
Channel 1
mn: -458
mx: 310
 μ : -13.9
 σ : 66.4

Channel 2
mn: -942
mx: 1007
 μ : -17.2
 σ : 51.4

ELMAVAN 3D WAVEFORMS (Measured data sampled at 50 kHz) 51000 packets of 144 samples from 2017-12-22T17:20:30.568.999. Part 133/147



Processed Fri Dec 22 18:28:43 2017 by ELM ver.2012-10-06 from 001__elm20171222_172029__dat00.bin



Channel 0
mn: -177
mx: 129
 μ : -8.3
 σ : 18.7

Channel 1
mn: -433
mx: 324
 μ : -13.8
 σ : 67.3

Channel 2
mn: -570
mx: 922
 μ : -17.1
 σ : 51.9

ELMAVAN 3D WAVEFORMS (Measured data sampled at 50 kHz) 51000 packets of 144 samples from 2017-12-22T17:20:30.568.999. Part 142/147

