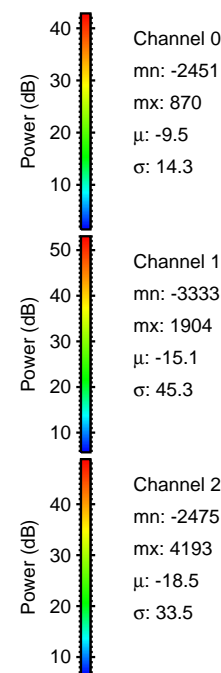
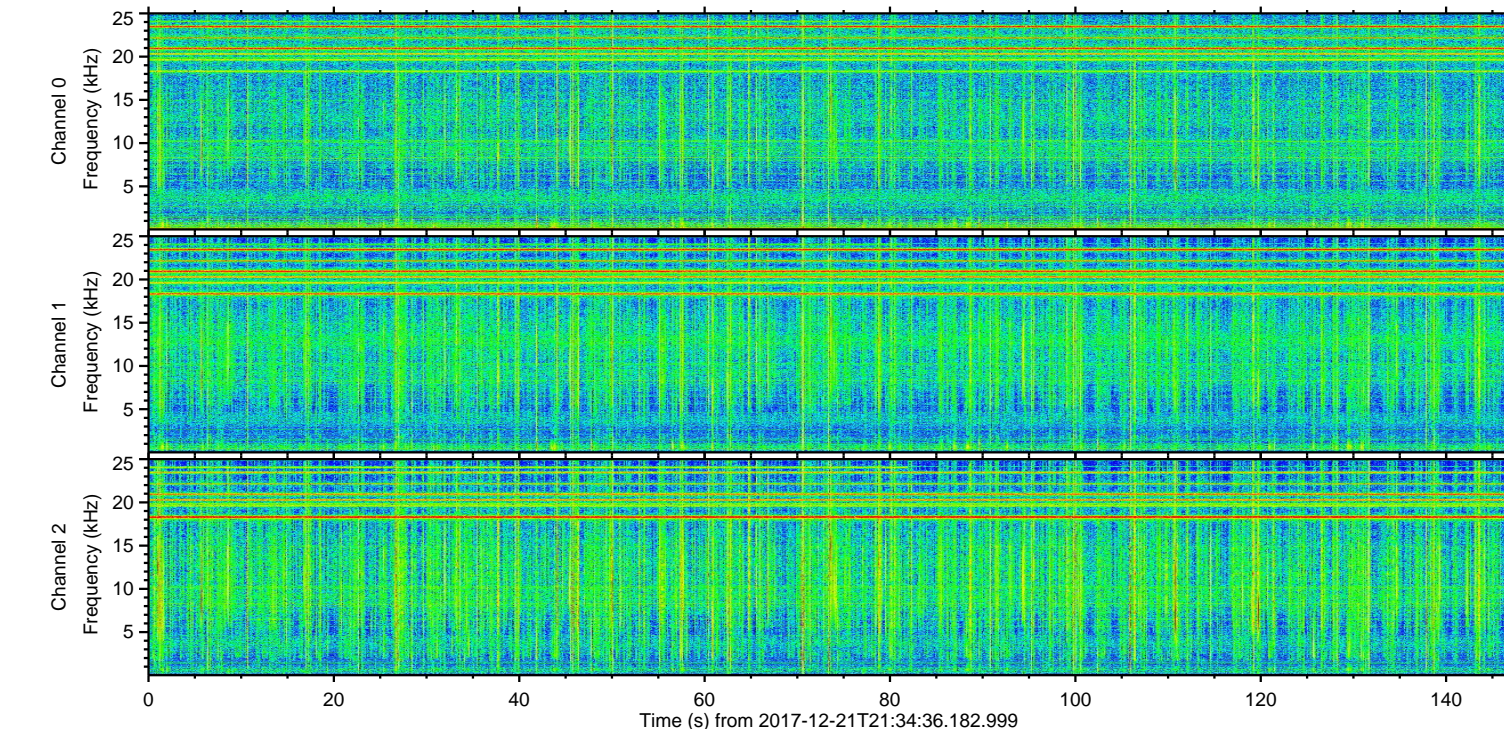
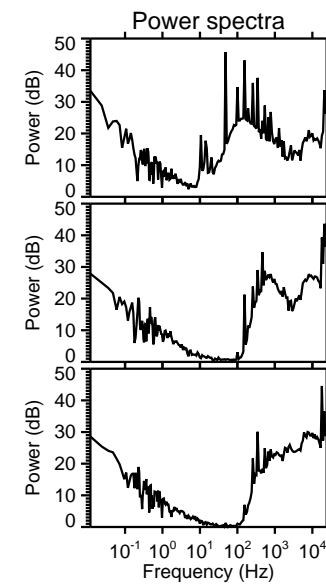
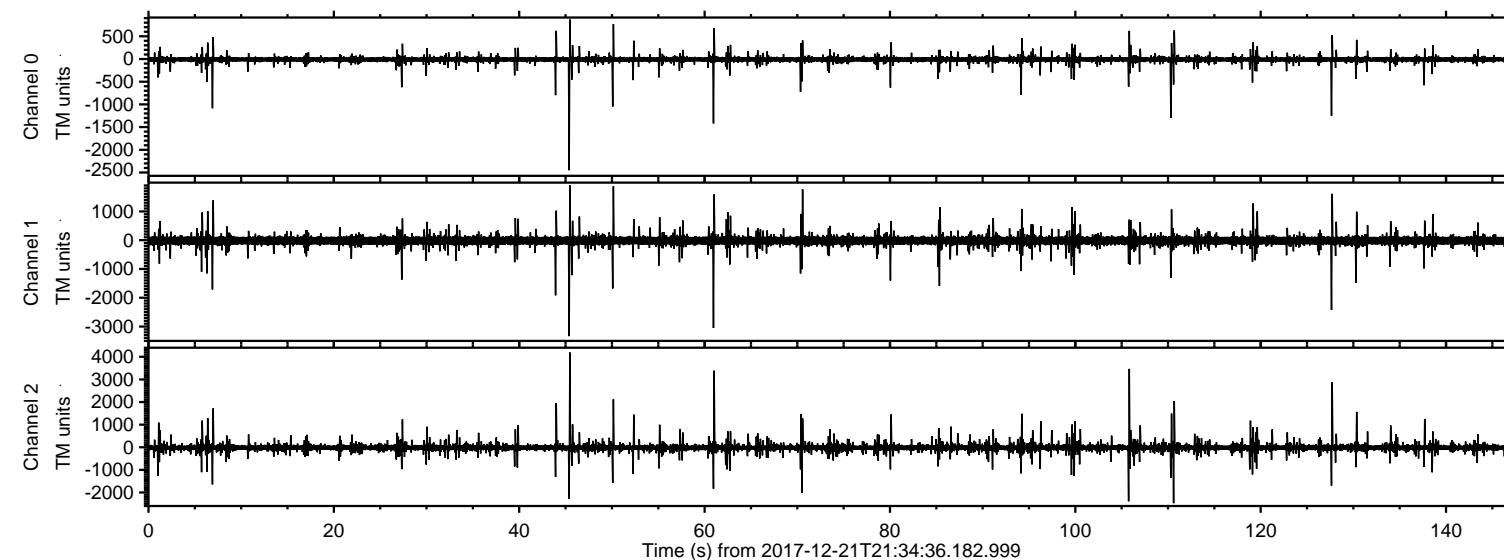


# ELMAVAN 3D WAVEFORMS (Measured data sampled at 50 kHz) 51000 packets of 144 samples from 2017-12-21T21:34:36.182.999.

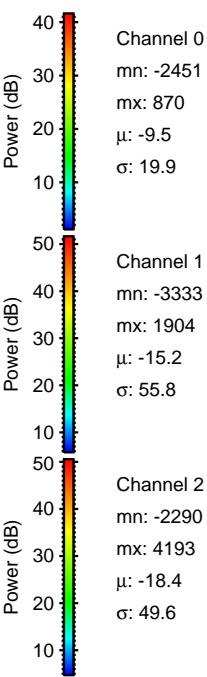
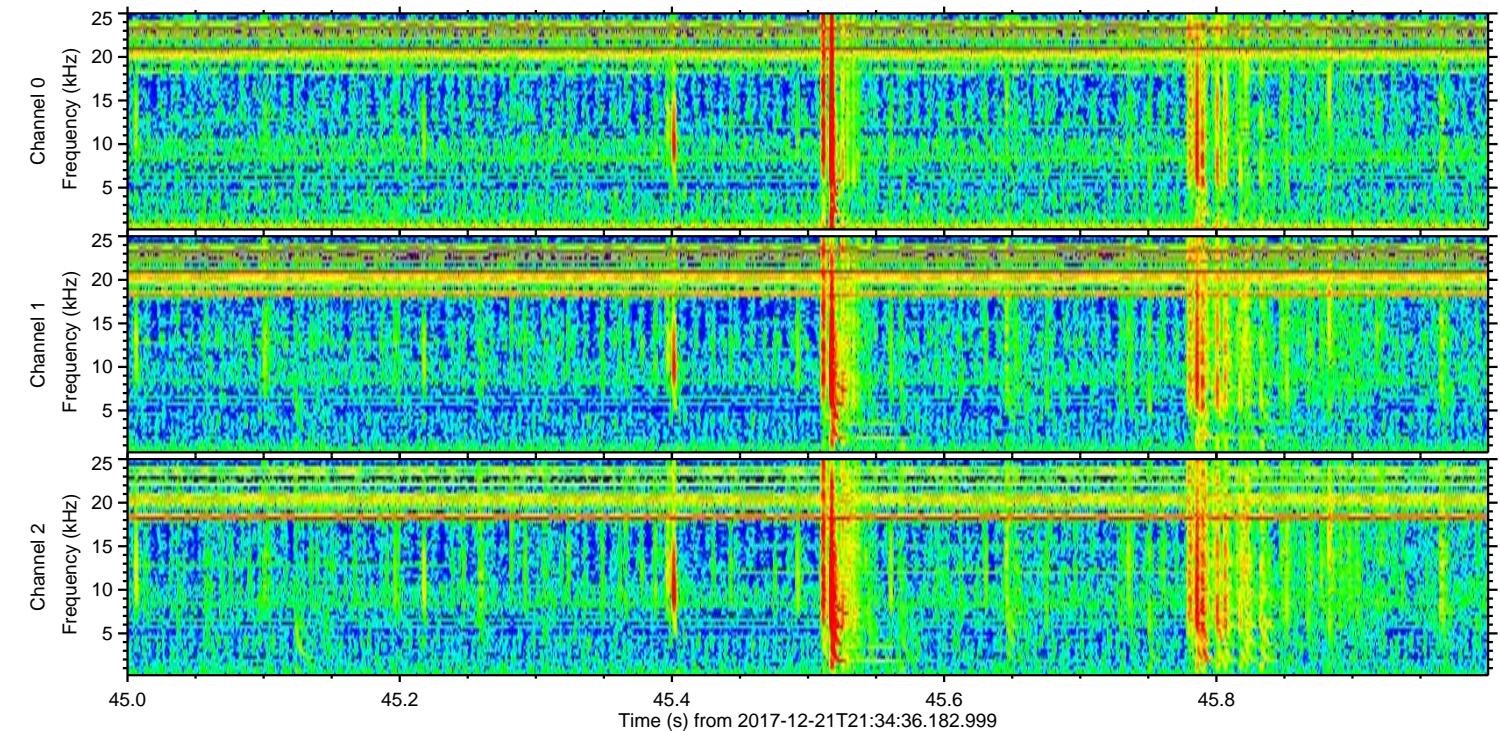
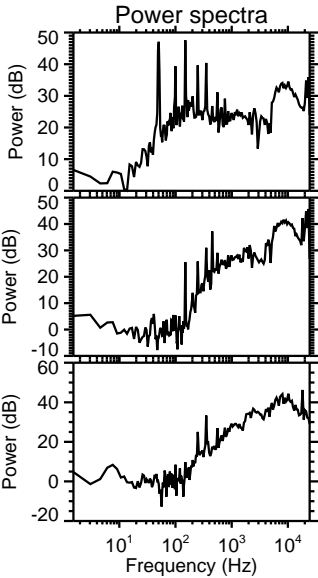
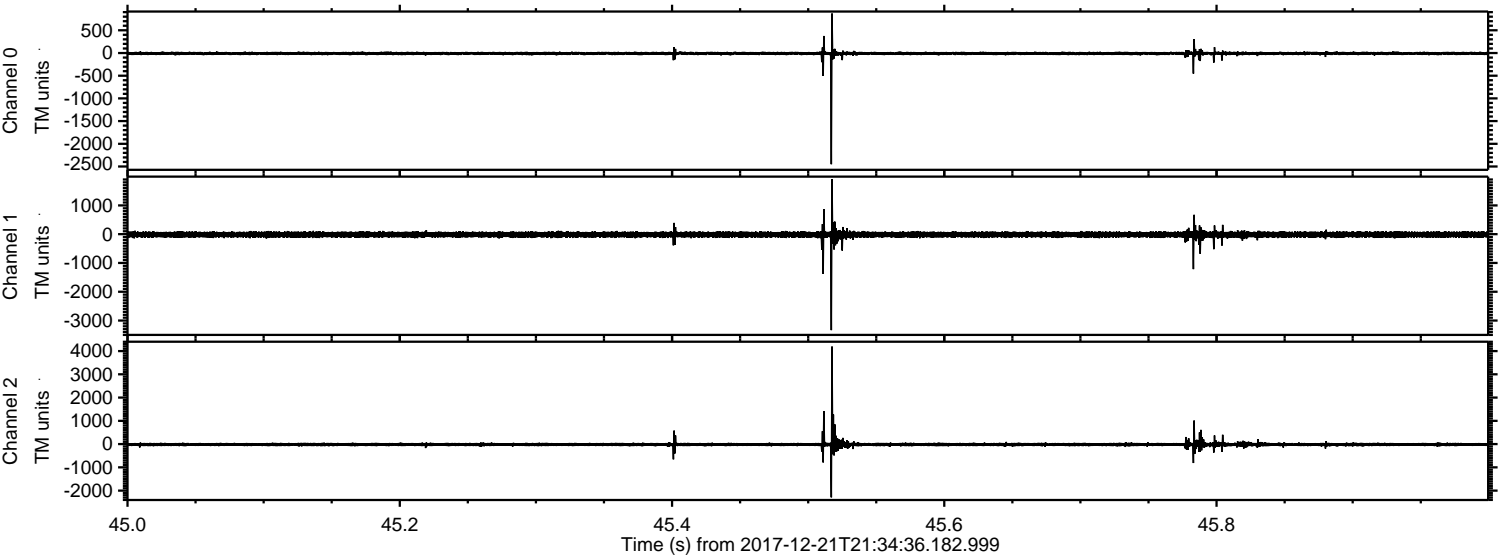
Processed Thu Dec 21 22:42:51 2017 by ELM ver.2012-10-06 from 001\_\_elm20171221\_213435\_\_dat00.bin





ELMAVAN 3D WAVEFORMS (Measured data sampled at 50 kHz) 51000 packets of 144 samples from 2017-12-21T21:34:36.182.999. Part 46/147

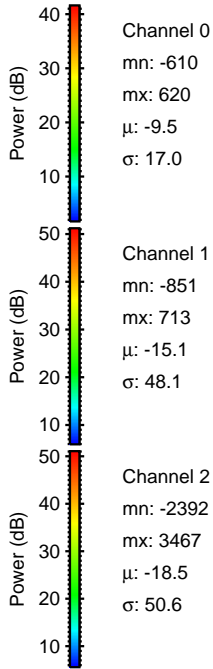
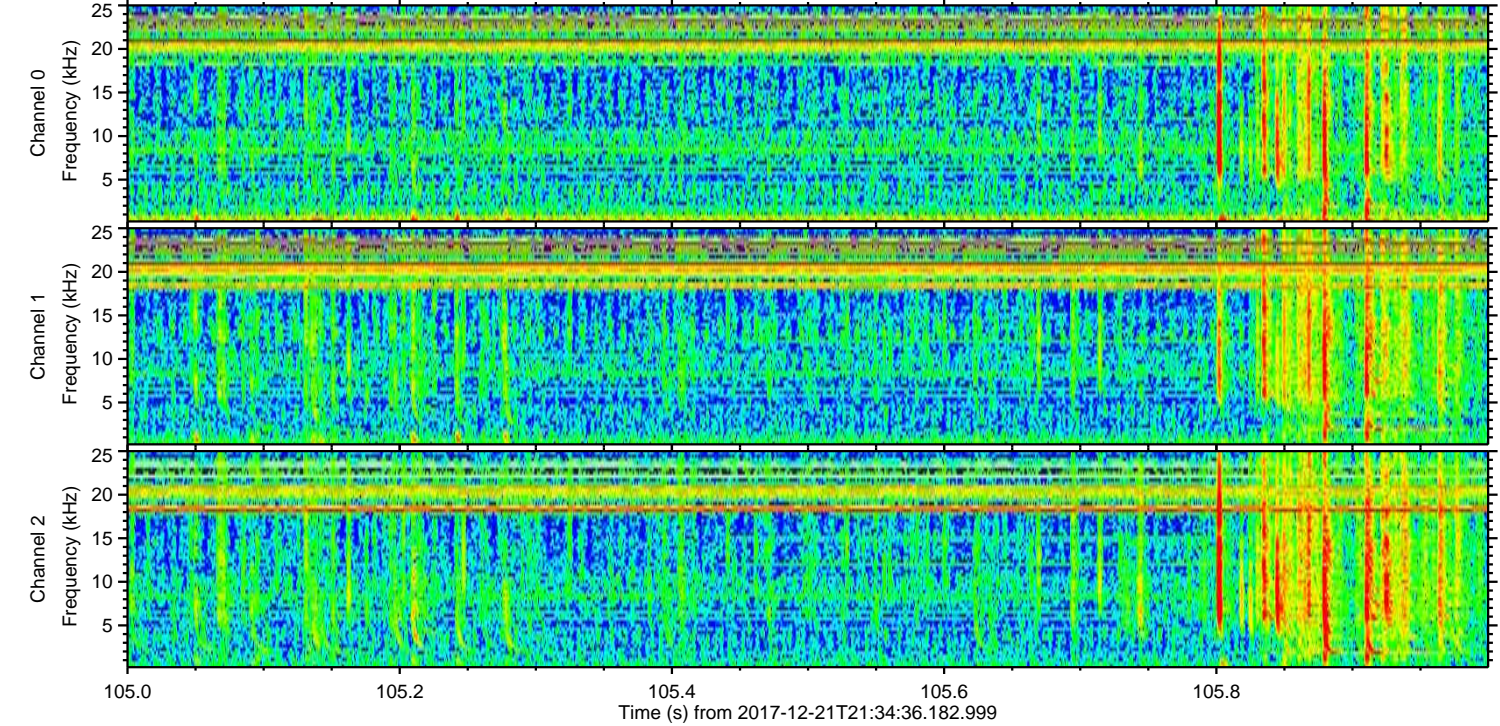
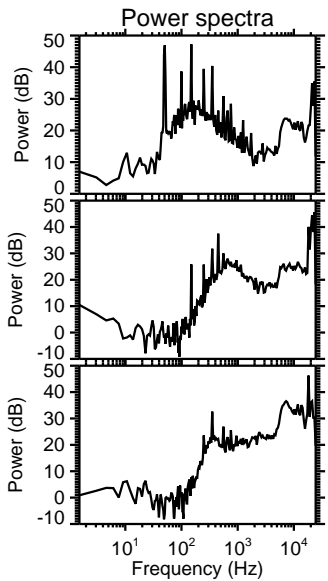
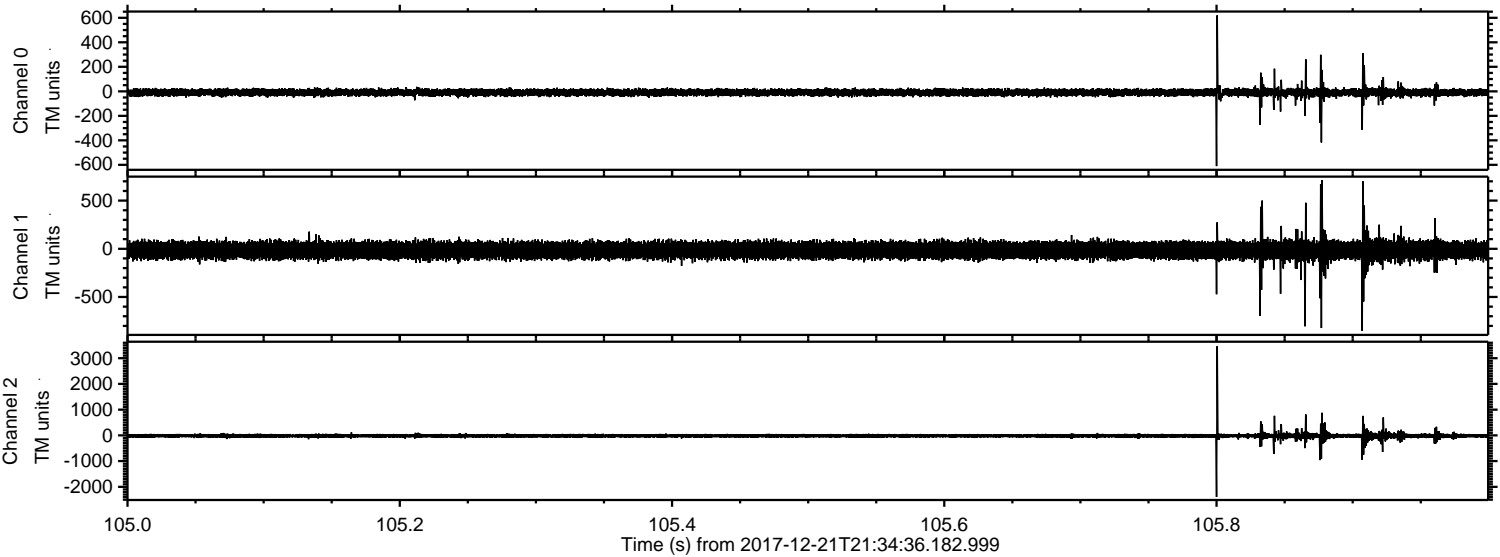
Processed Thu Dec 21 22:43:01 2017 by ELM ver.2012-10-06 from 001\_\_elm20171221\_213435\_\_dat00.bin





ELMAVAN 3D WAVEFORMS (Measured data sampled at 50 kHz) 51000 packets of 144 samples from 2017-12-21T21:34:36.182.999. Part 106/147

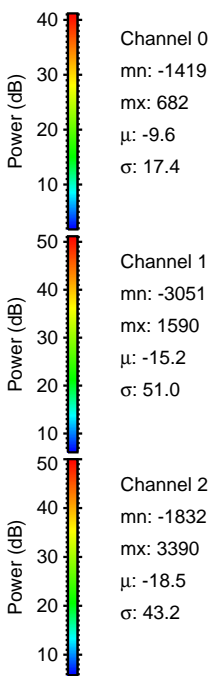
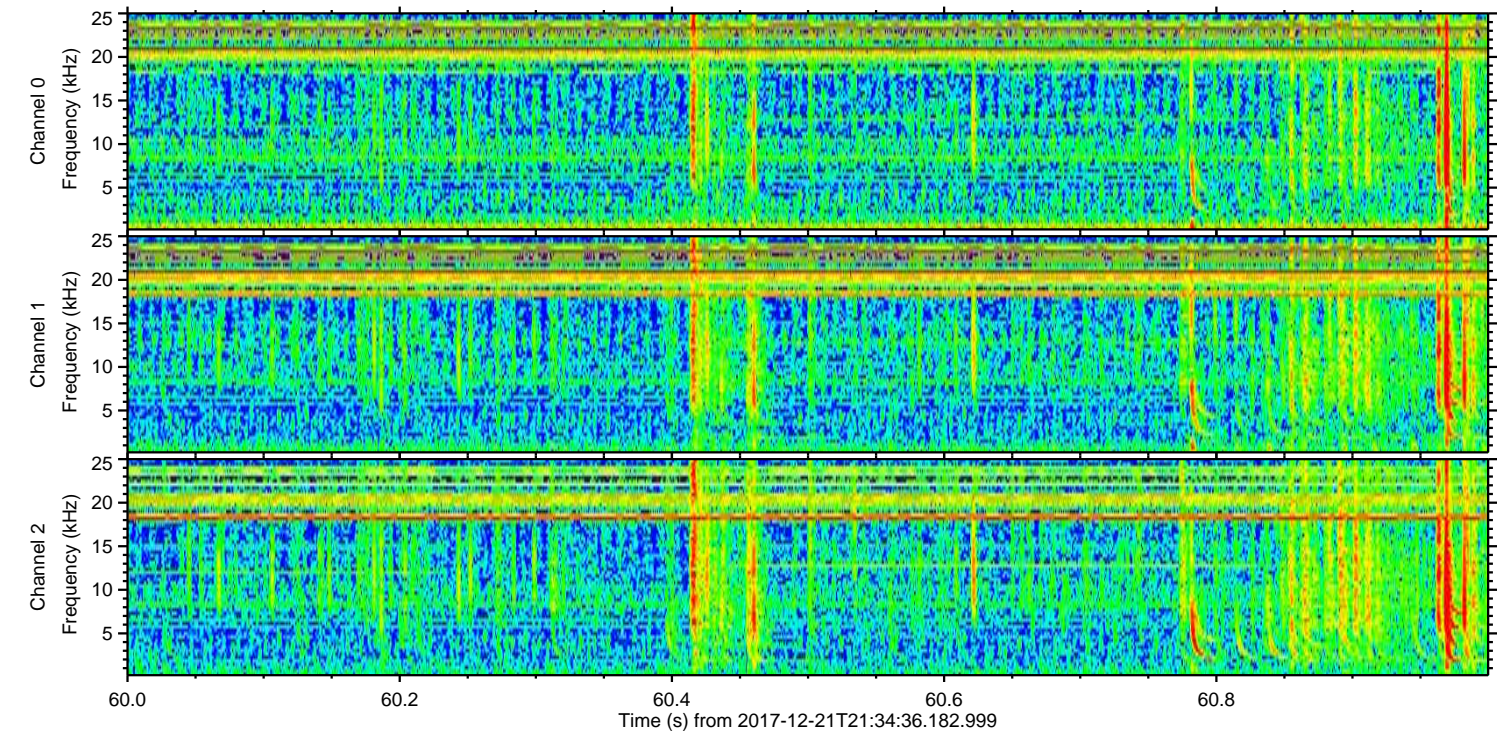
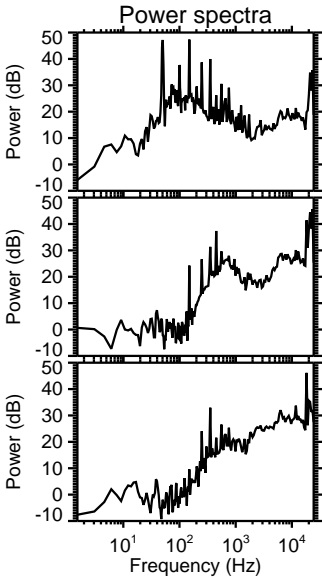
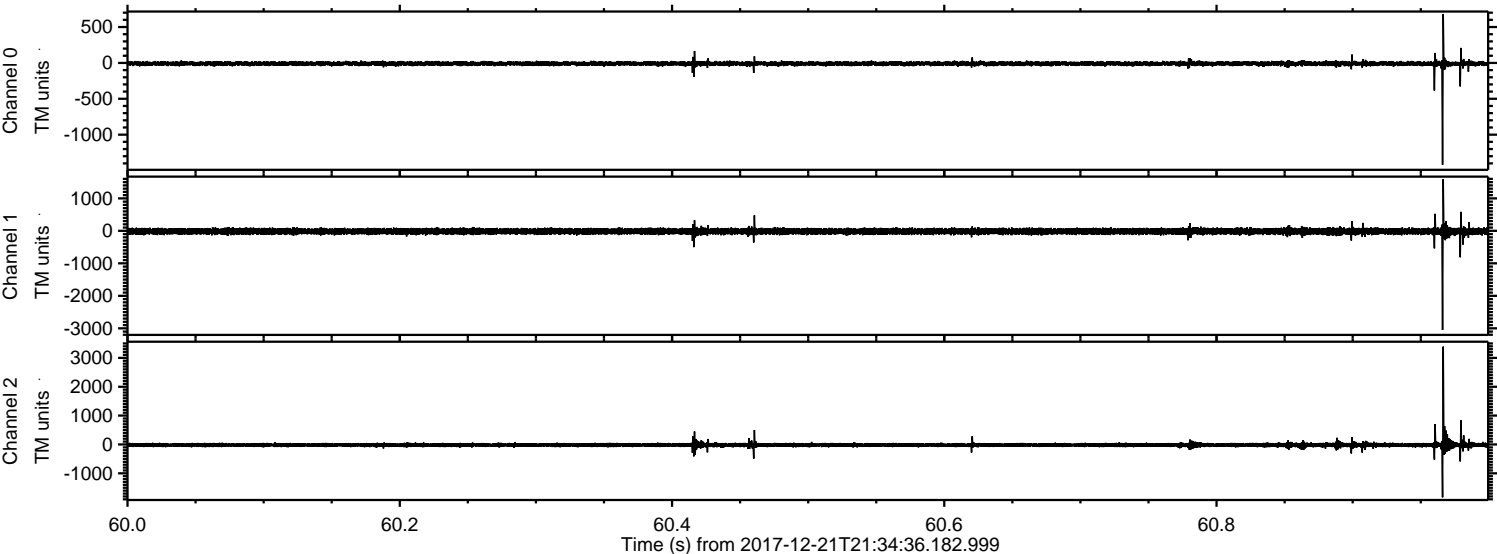
Processed Thu Dec 21 22:43:02 2017 by ELM ver.2012-10-06 from 001\_\_elm20171221\_213435\_\_dat00.bin





ELMAVAN 3D WAVEFORMS (Measured data sampled at 50 kHz) 51000 packets of 144 samples from 2017-12-21T21:34:36.182.999. Part 61/147

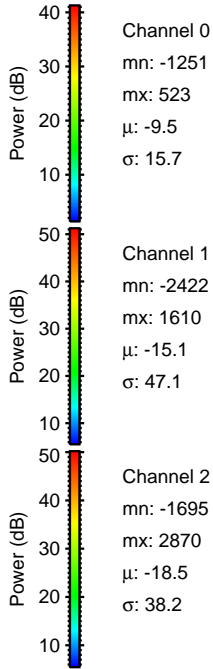
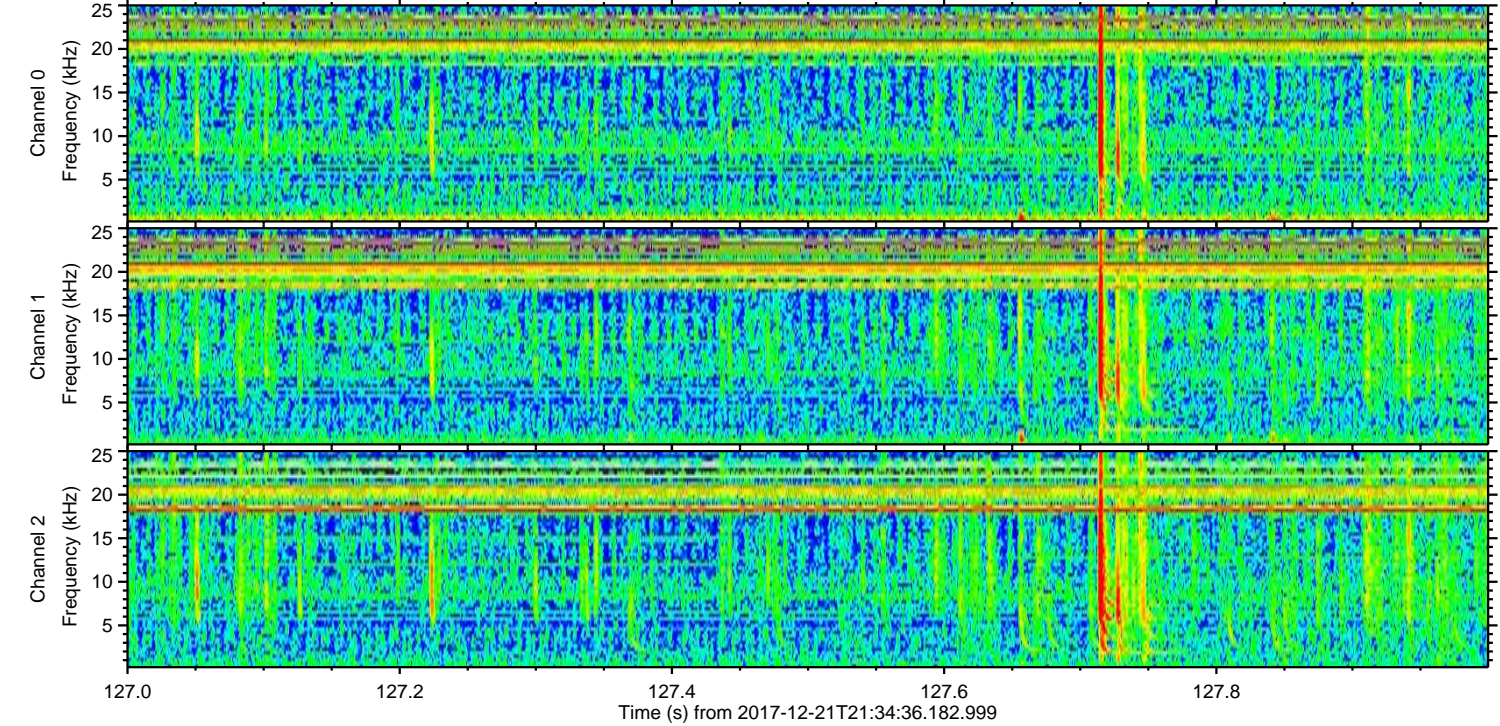
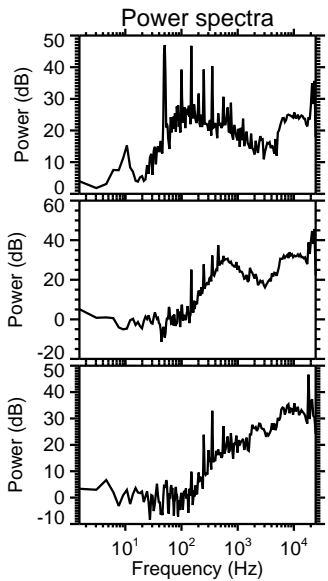
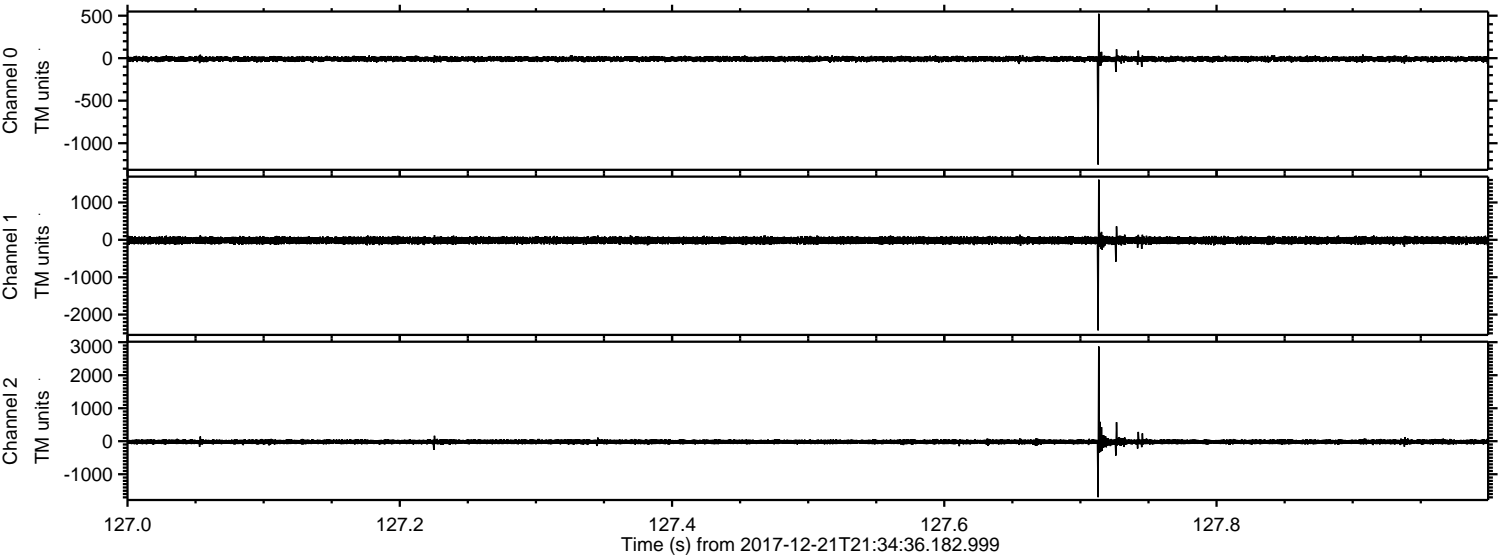
Processed Thu Dec 21 22:43:02 2017 by ELM ver.2012-10-06 from 001\_\_elm20171221\_213435\_\_dat00.bin





ELMAVAN 3D WAVEFORMS (Measured data sampled at 50 kHz) 51000 packets of 144 samples from 2017-12-21T21:34:36.182.999. Part 128/147

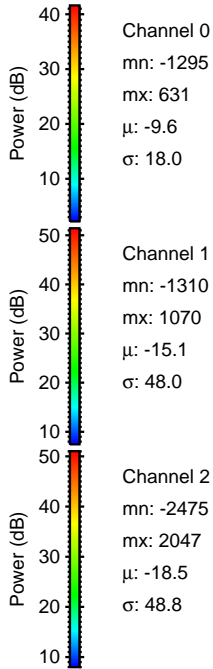
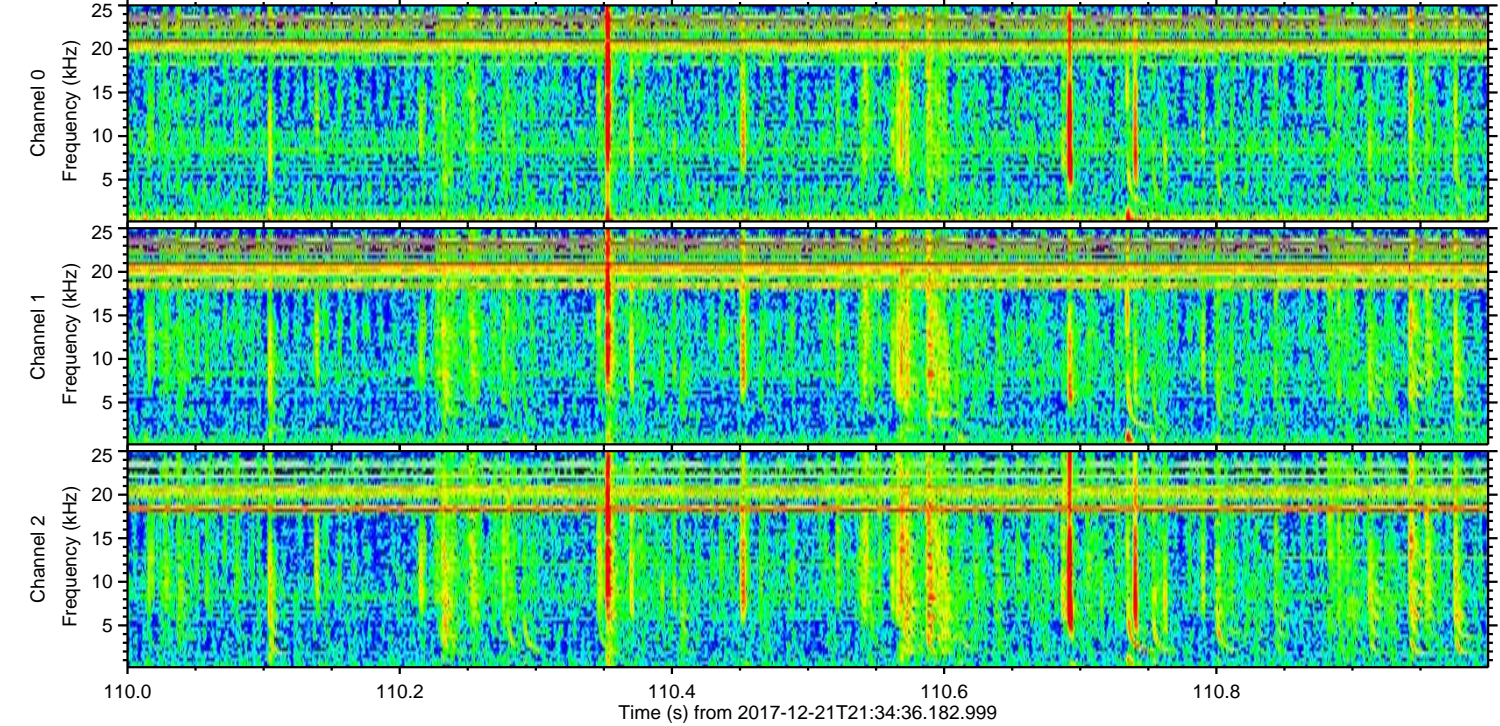
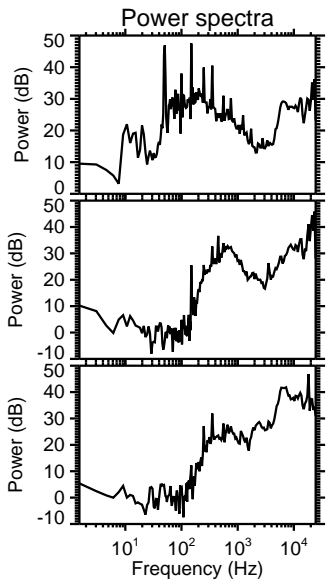
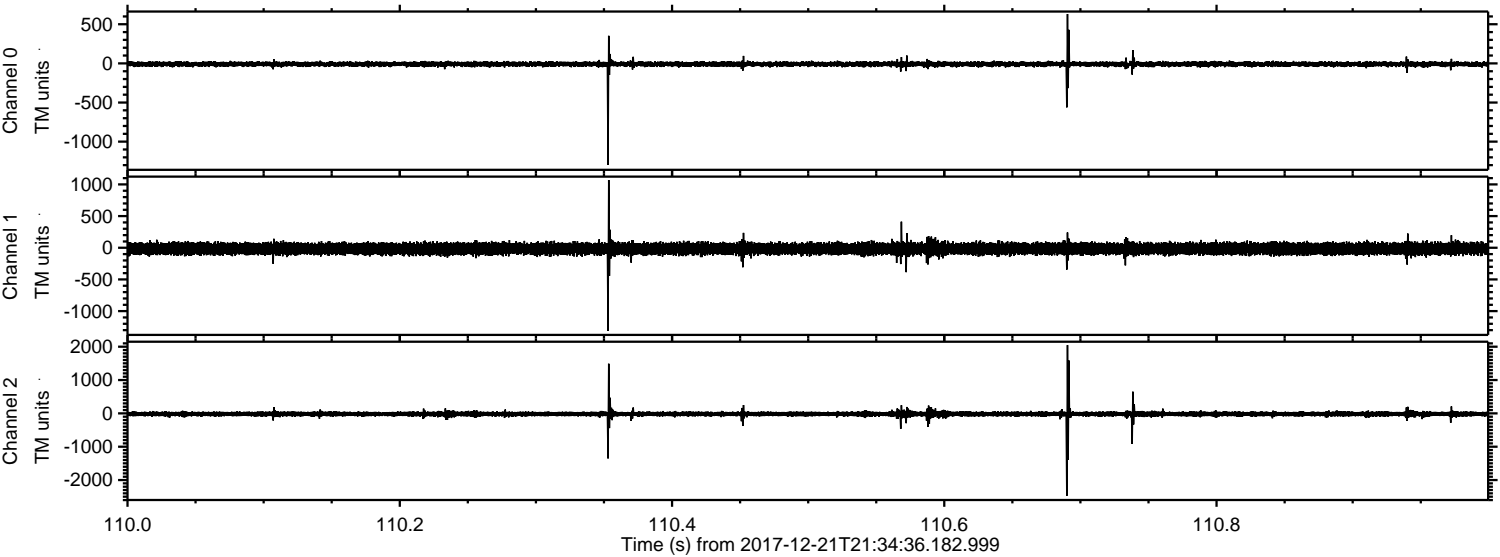
Processed Thu Dec 21 22:43:03 2017 by ELM ver.2012-10-06 from 001\_\_elm20171221\_213435\_\_dat00.bin





ELMAVAN 3D WAVEFORMS (Measured data sampled at 50 kHz) 51000 packets of 144 samples from 2017-12-21T21:34:36.182.999. Part 111/147

Processed Thu Dec 21 22:43:04 2017 by ELM ver.2012-10-06 from 001\_\_elm20171221\_213435\_\_dat00.bin



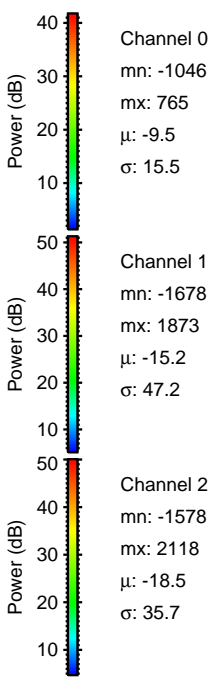
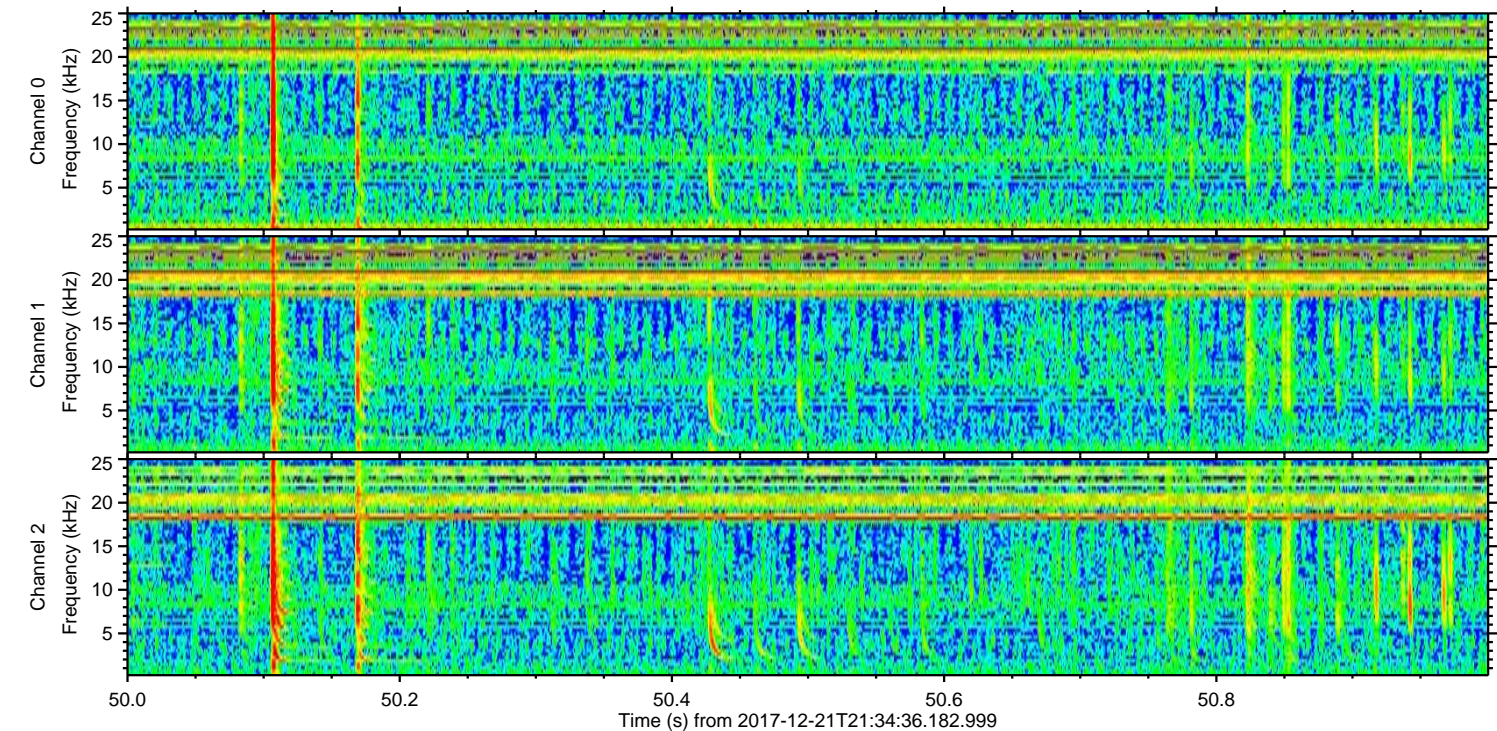
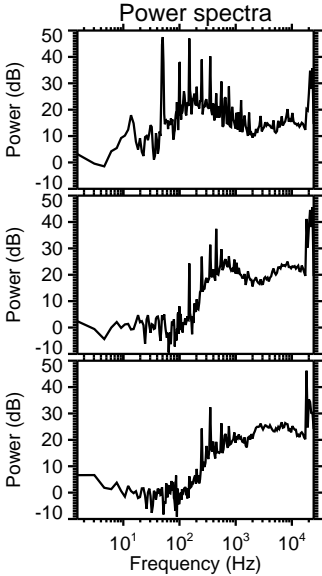
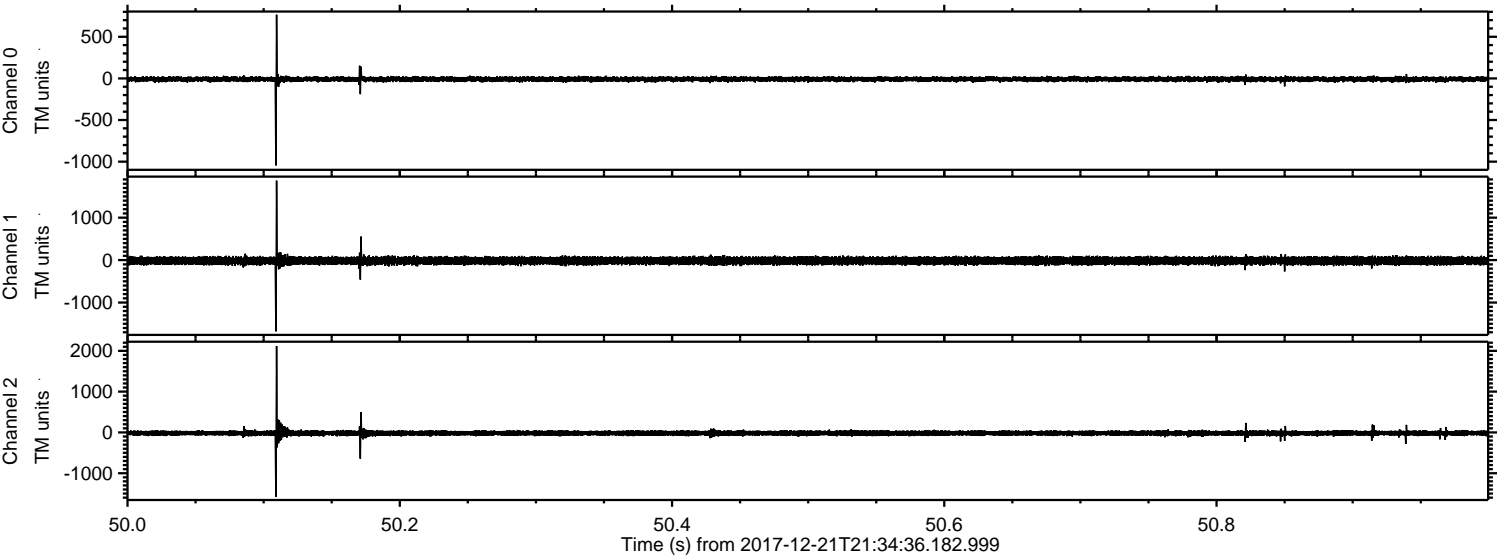
Channel 0  
mn: -1295  
mx: 631  
 $\mu$ : -9.6  
 $\sigma$ : 18.0

Channel 1  
mn: -1310  
mx: 1070  
 $\mu$ : -15.1  
 $\sigma$ : 48.0

Channel 2  
mn: -2475  
mx: 2047  
 $\mu$ : -18.5  
 $\sigma$ : 48.8

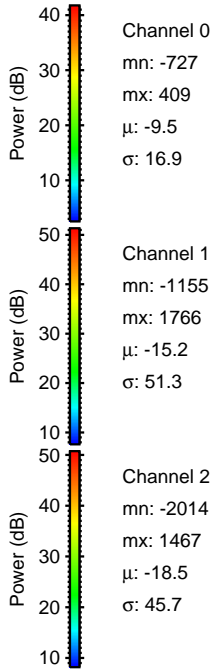
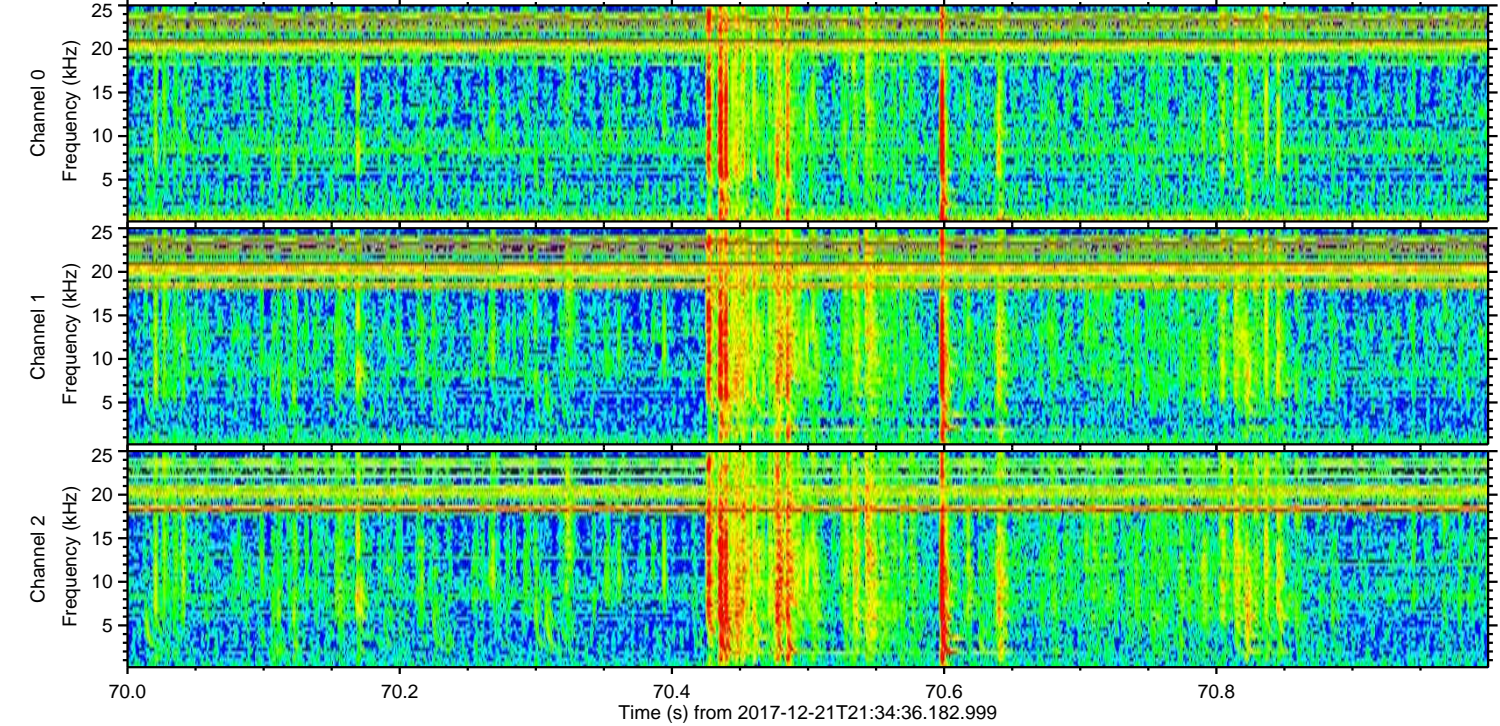
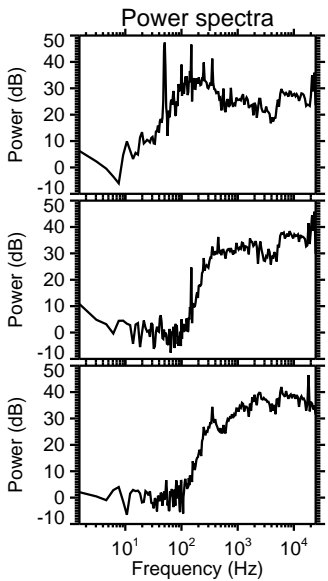
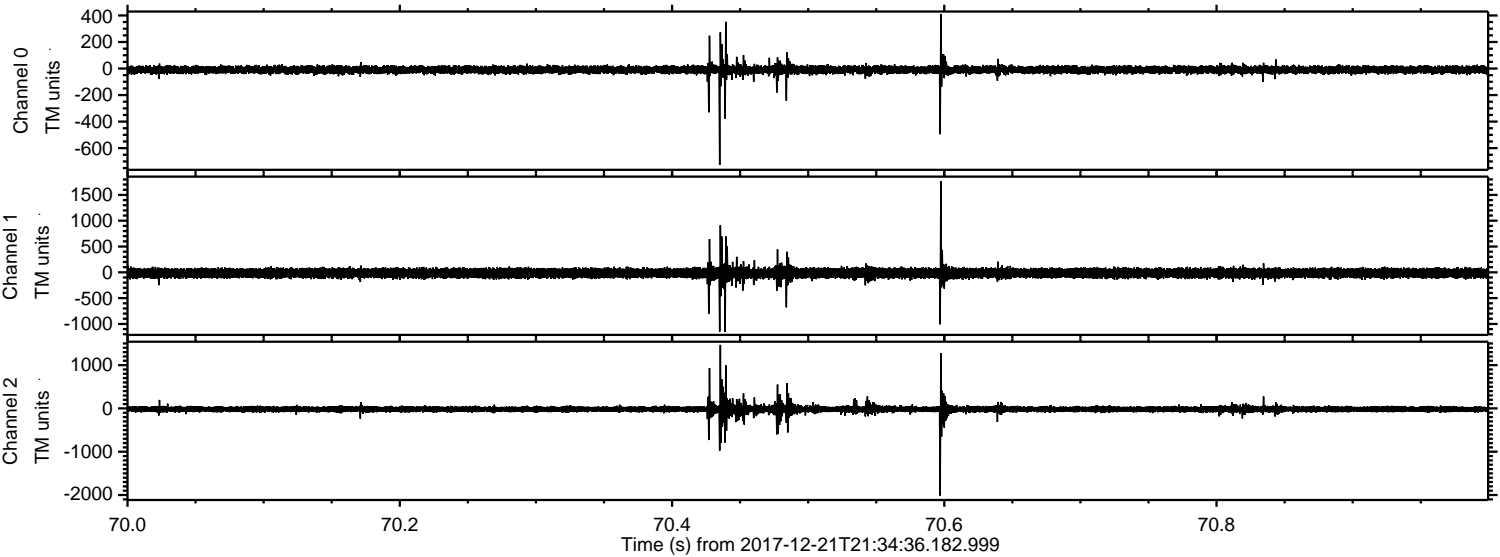


Processed Thu Dec 21 22:43:05 2017 by ELM ver.2012-10-06 from 001\_\_elm20171221\_213435\_\_dat00.bin





Processed Thu Dec 21 22:43:06 2017 by ELM ver.2012-10-06 from 001\_\_elm20171221\_213435\_\_dat00.bin



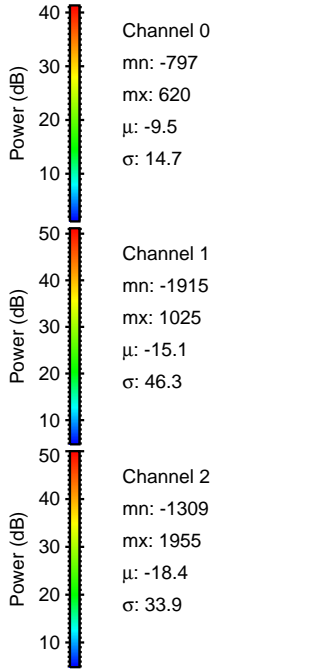
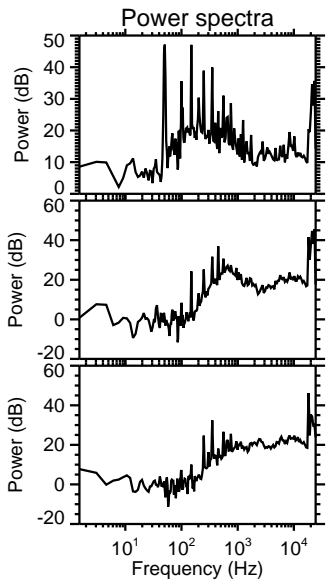
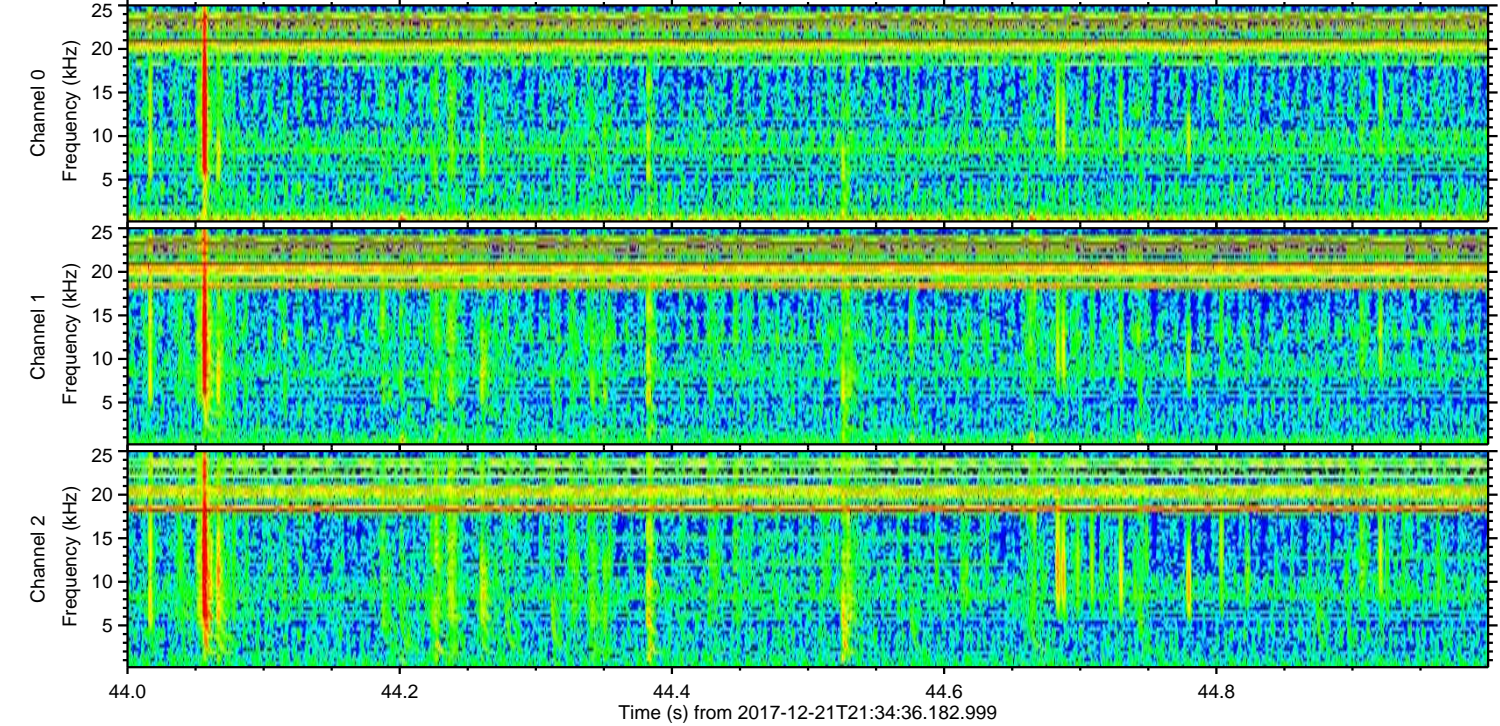
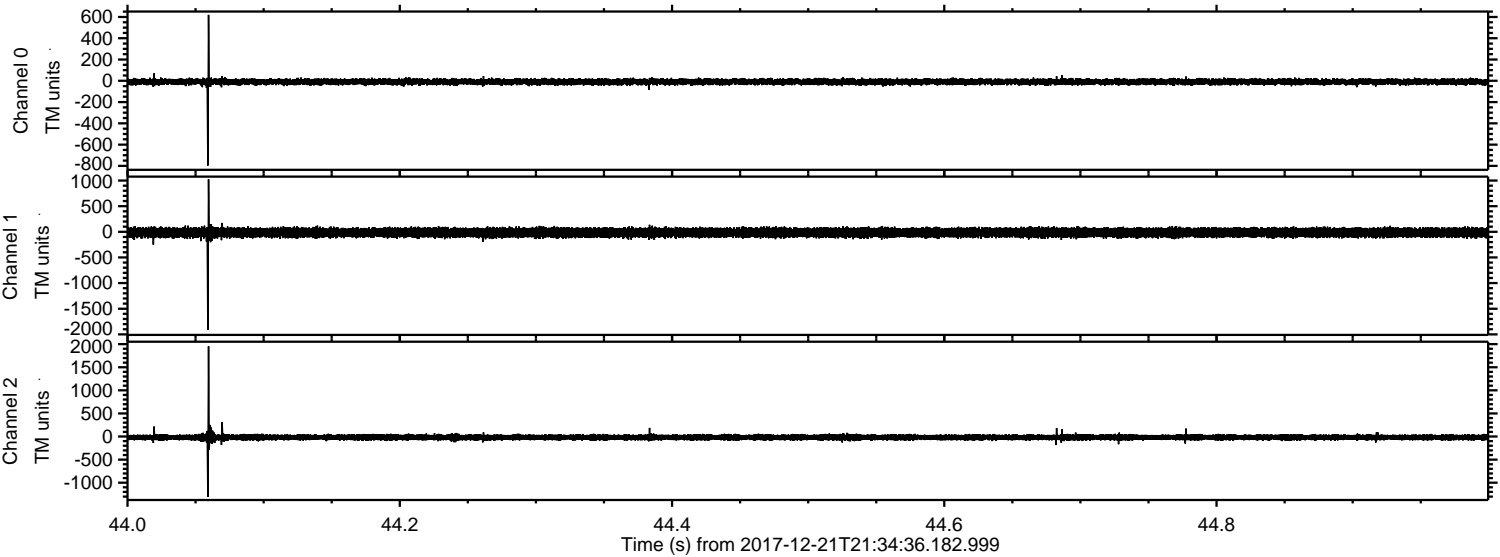
Channel 0  
mn: -727  
mx: 409  
 $\mu$ : -9.5  
 $\sigma$ : 16.9

Channel 1  
mn: -1155  
mx: 1766  
 $\mu$ : -15.2  
 $\sigma$ : 51.3

Channel 2  
mn: -2014  
mx: 1467  
 $\mu$ : -18.5  
 $\sigma$ : 45.7

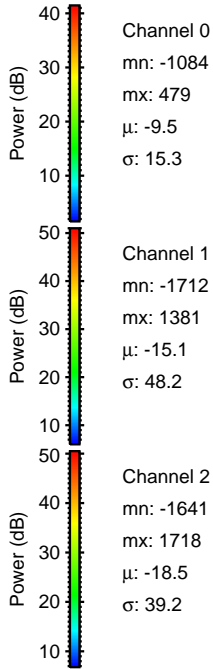
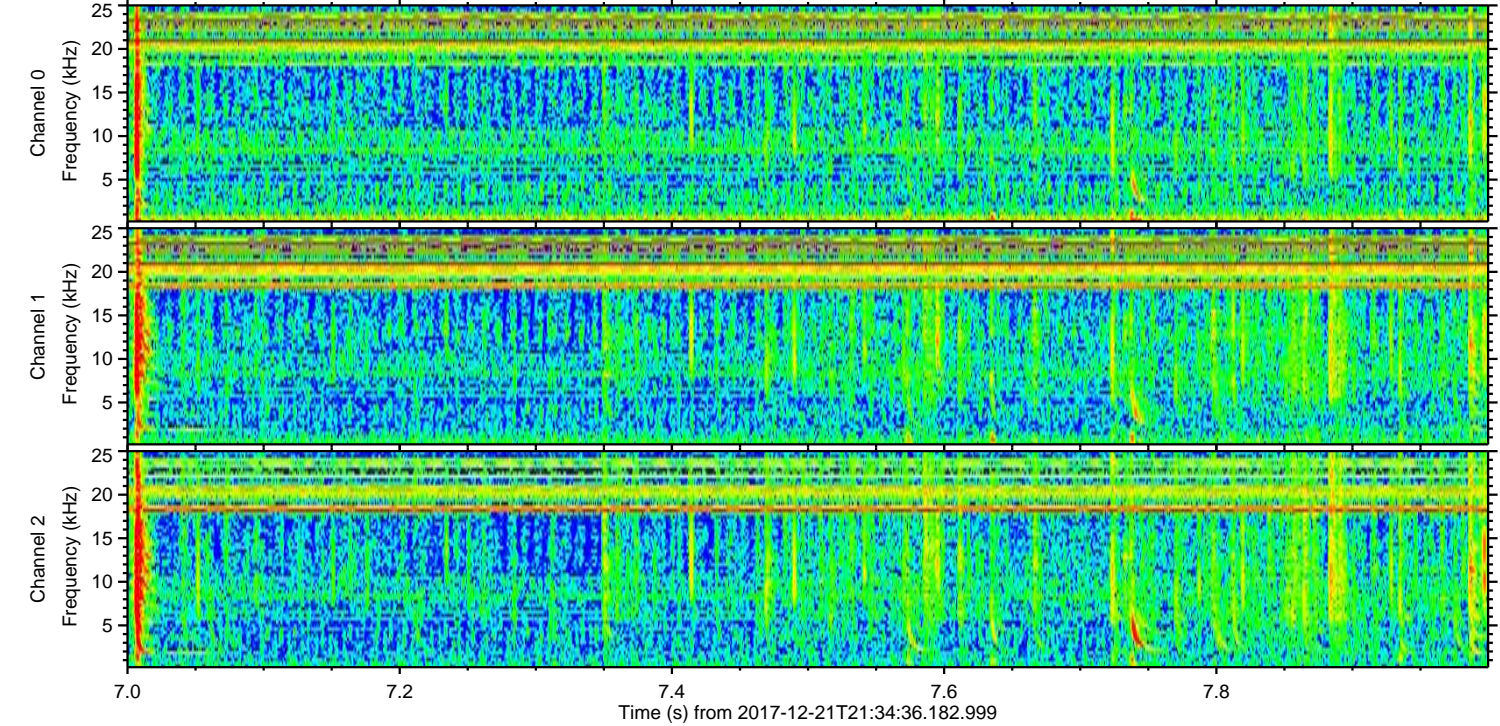
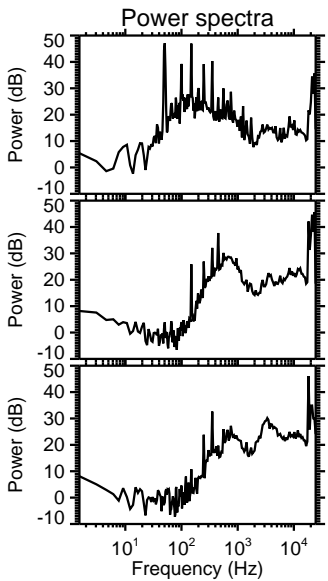
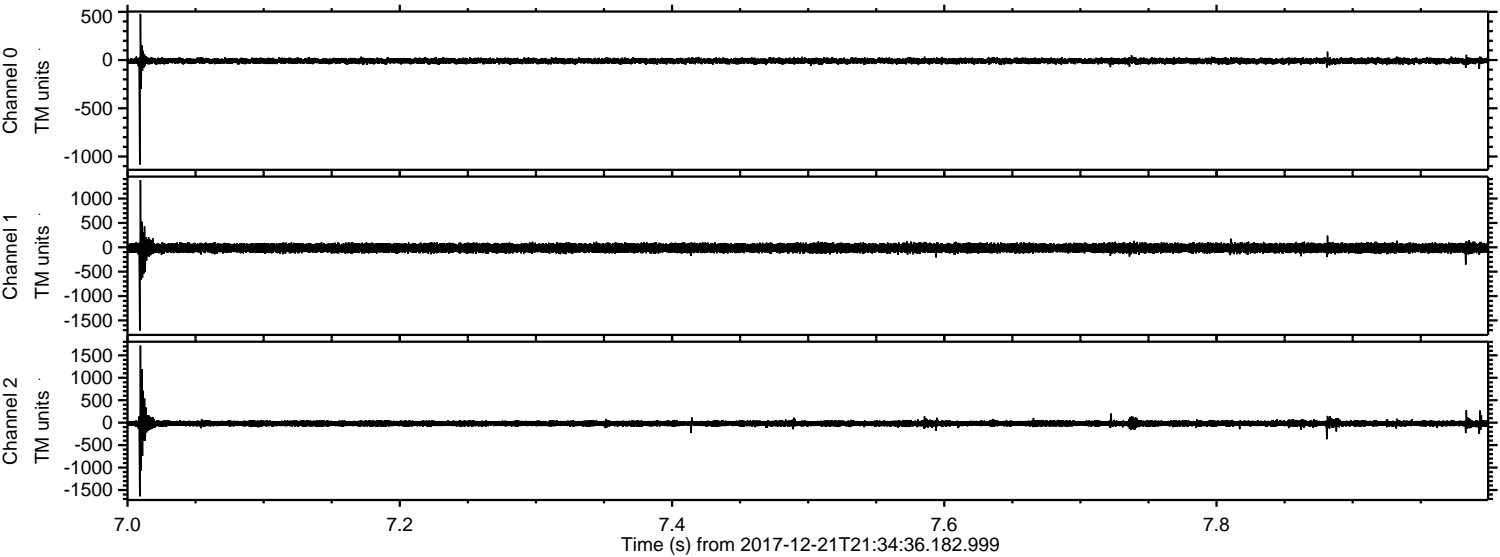


Processed Thu Dec 21 22:43:07 2017 by ELM ver.2012-10-06 from 001\_\_elm20171221\_213435\_\_dat00.bin





Processed Thu Dec 21 22:43:07 2017 by ELM ver.2012-10-06 from 001\_\_elm20171221\_213435\_\_dat00.bin





Processed Thu Dec 21 22:43:08 2017 by ELM ver.2012-10-06 from 001\_\_elm20171221\_213435\_\_dat00.bin

