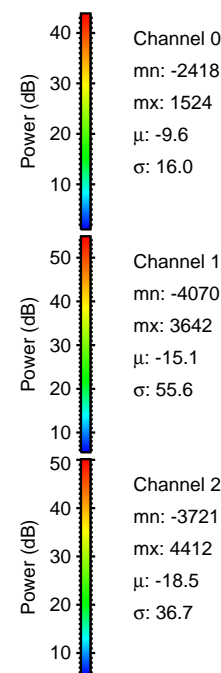
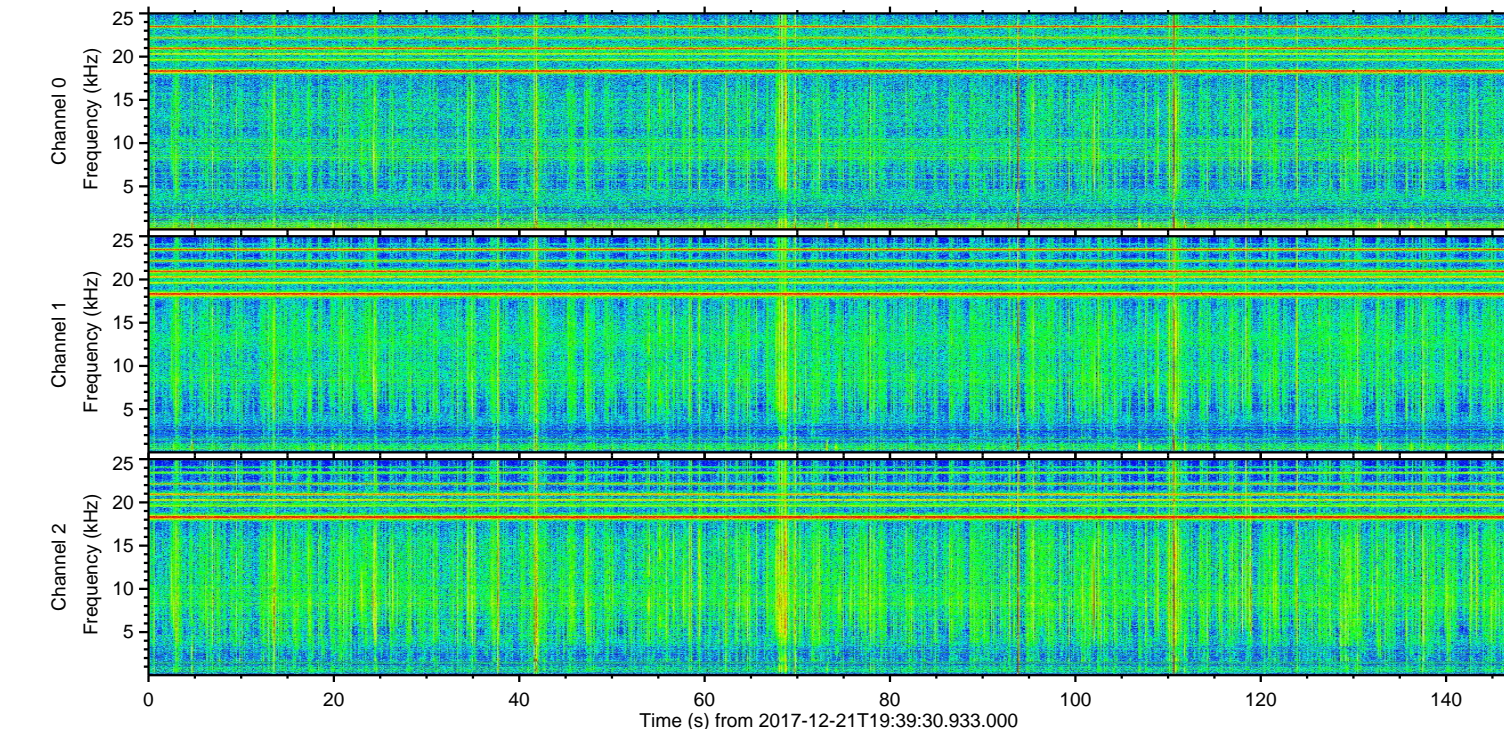
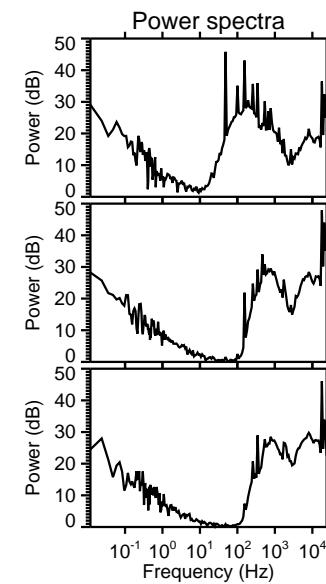
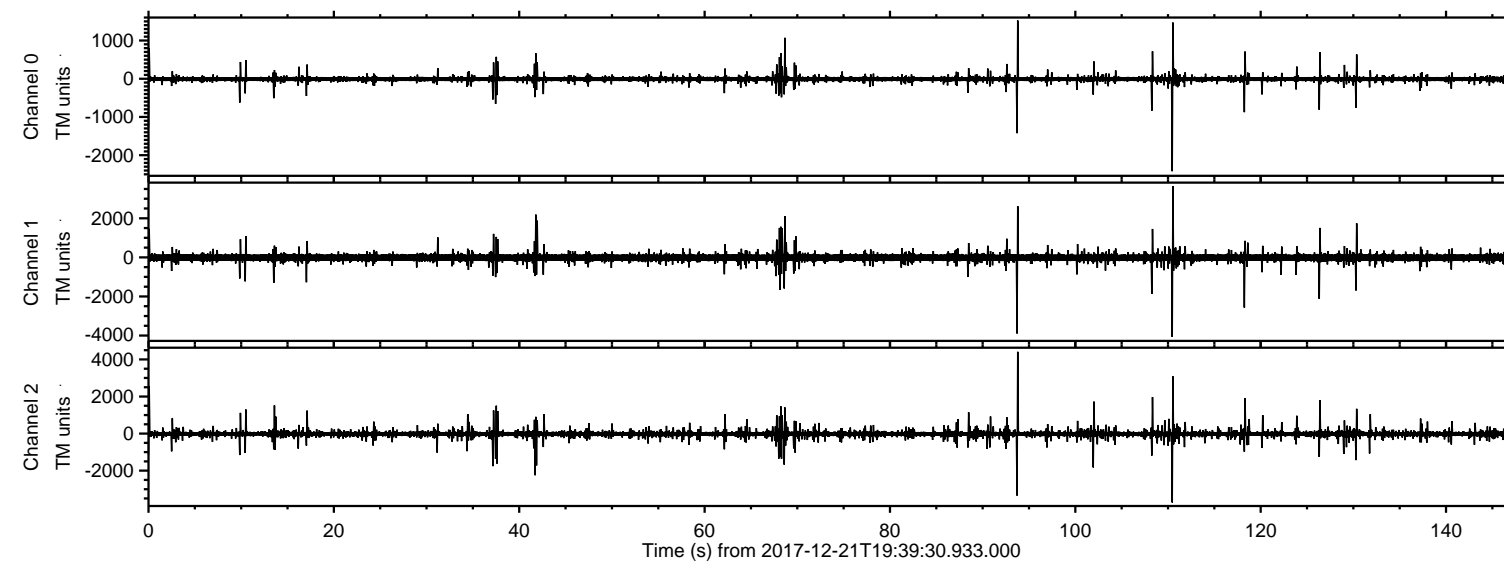
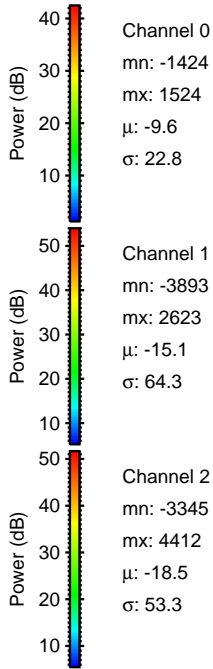
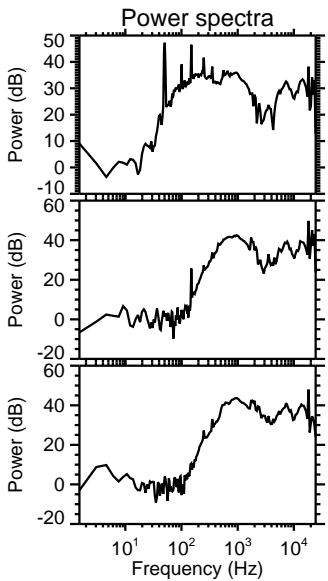
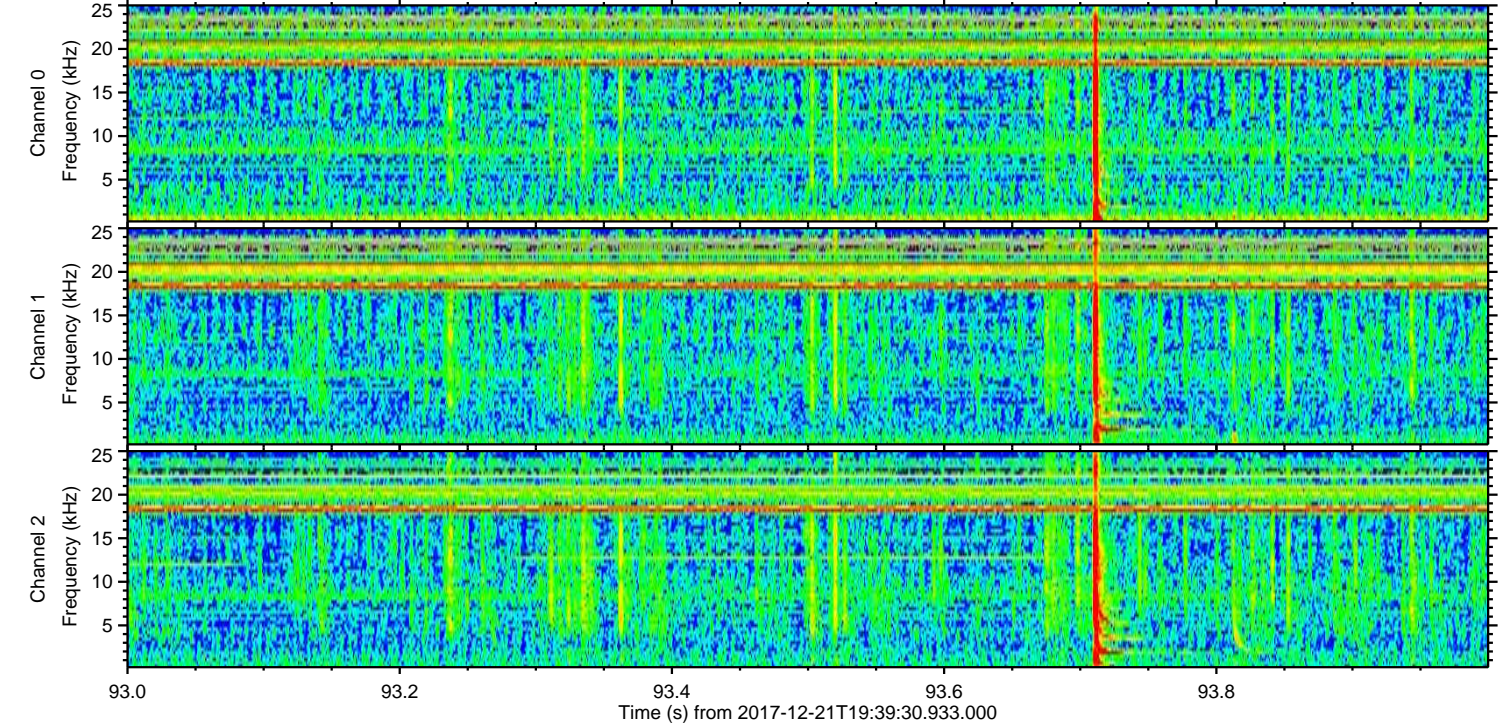
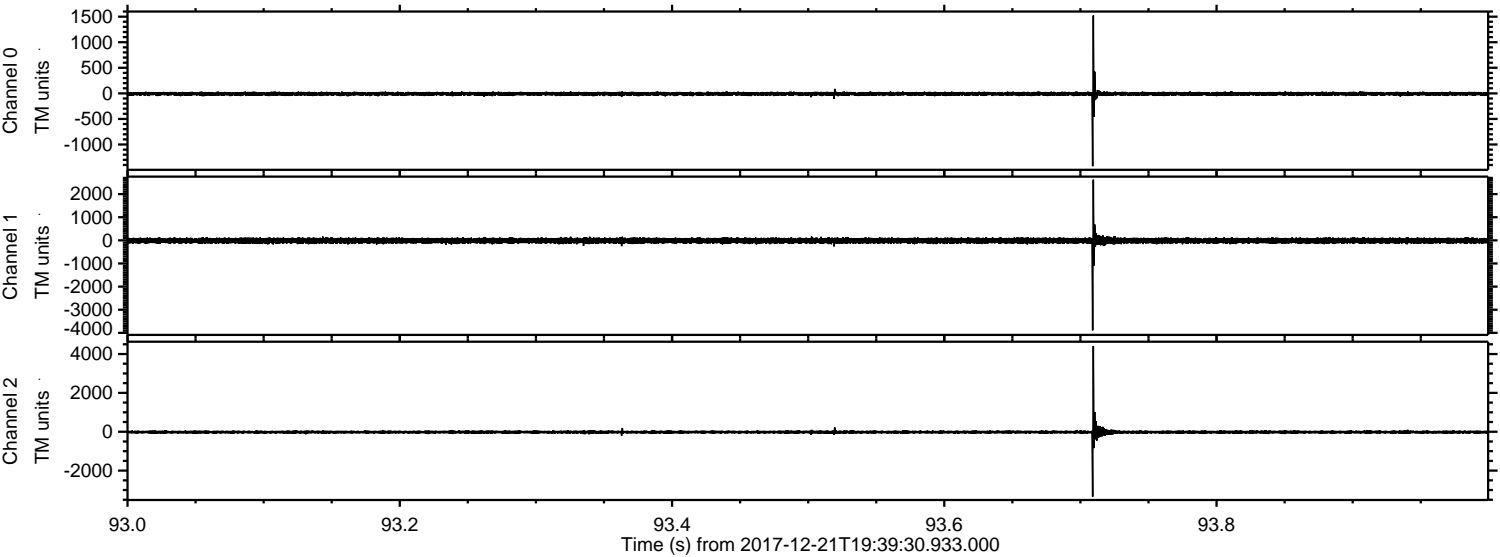


ELMAVAN 3D WAVEFORMS (Measured data sampled at 50 kHz) 51000 packets of 144 samples from 2017-12-21T19:39:30.933.000.

Processed Thu Dec 21 20:47:47 2017 by ELM ver.2012-10-06 from 001__elm20171221_193929__dat00.bin

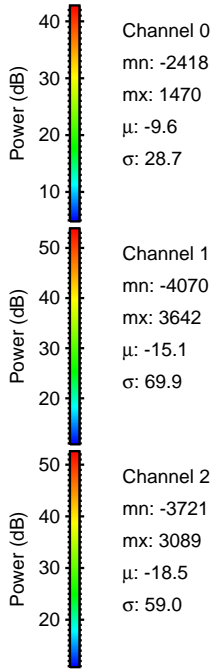
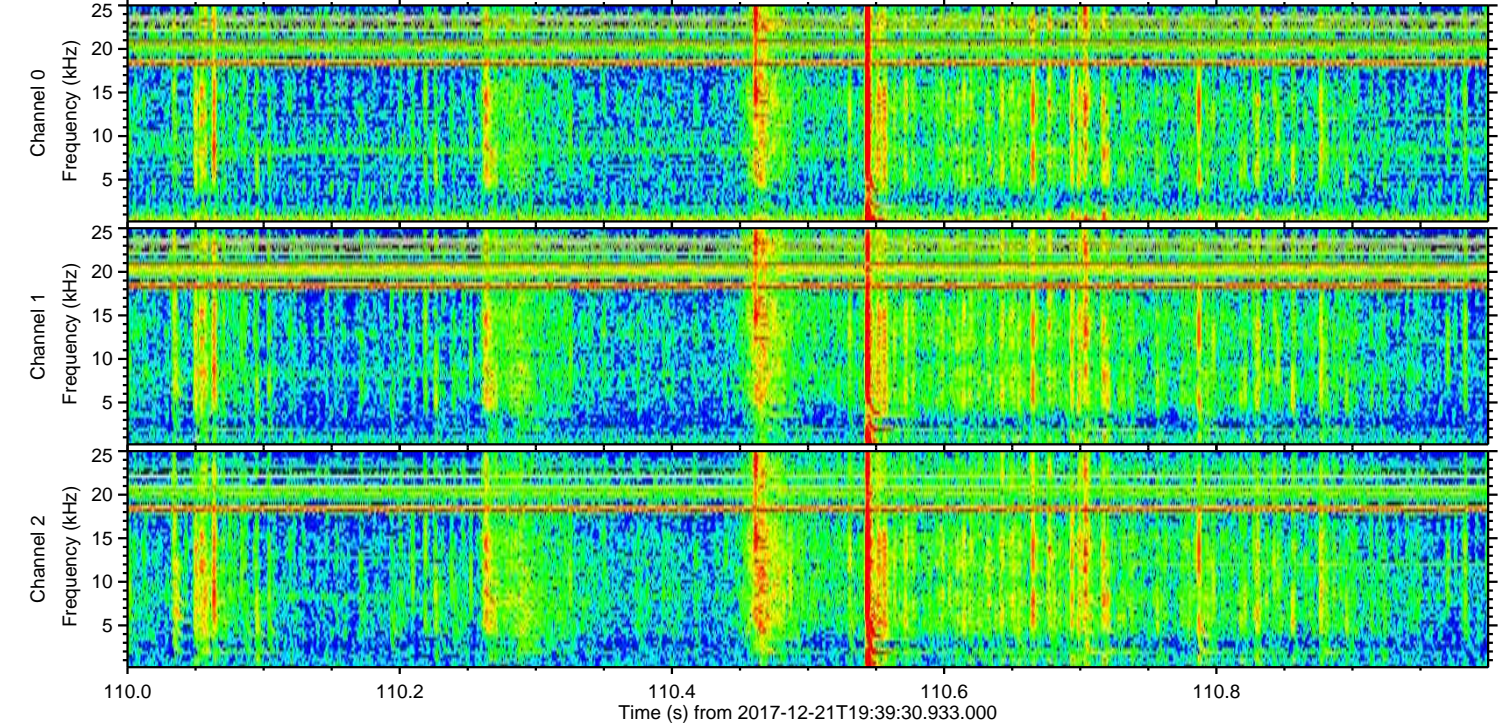
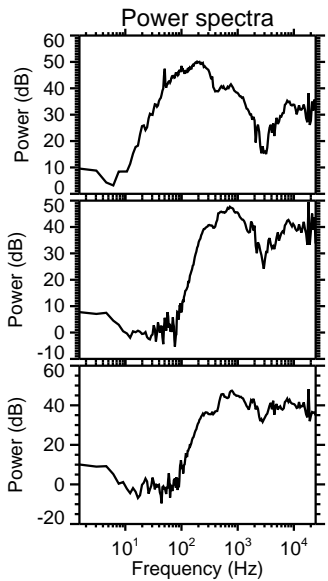
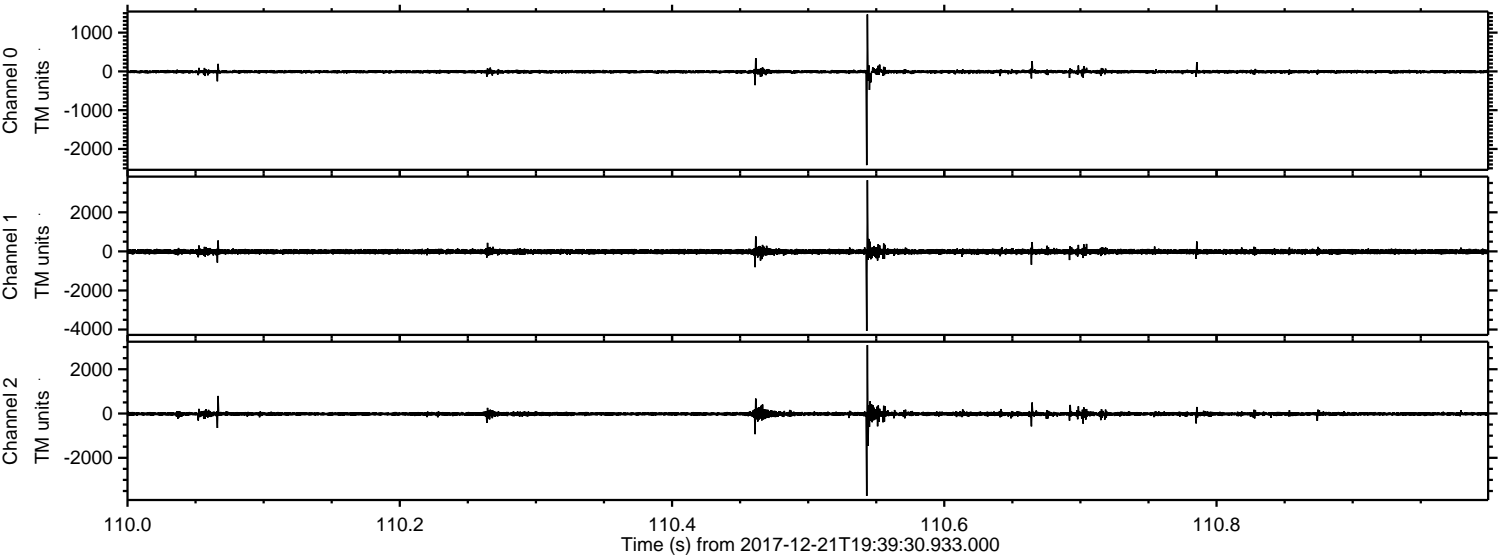


Processed Thu Dec 21 20:47:55 2017 by ELM ver.2012-10-06 from 001__elm20171221_193929__dat00.bin

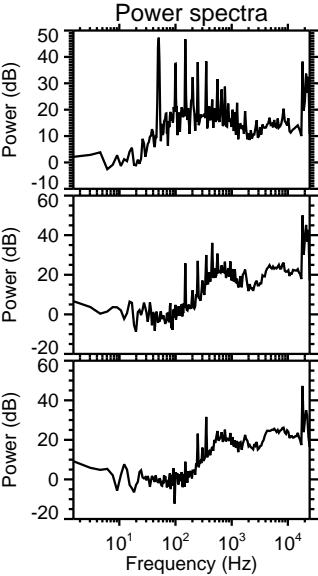
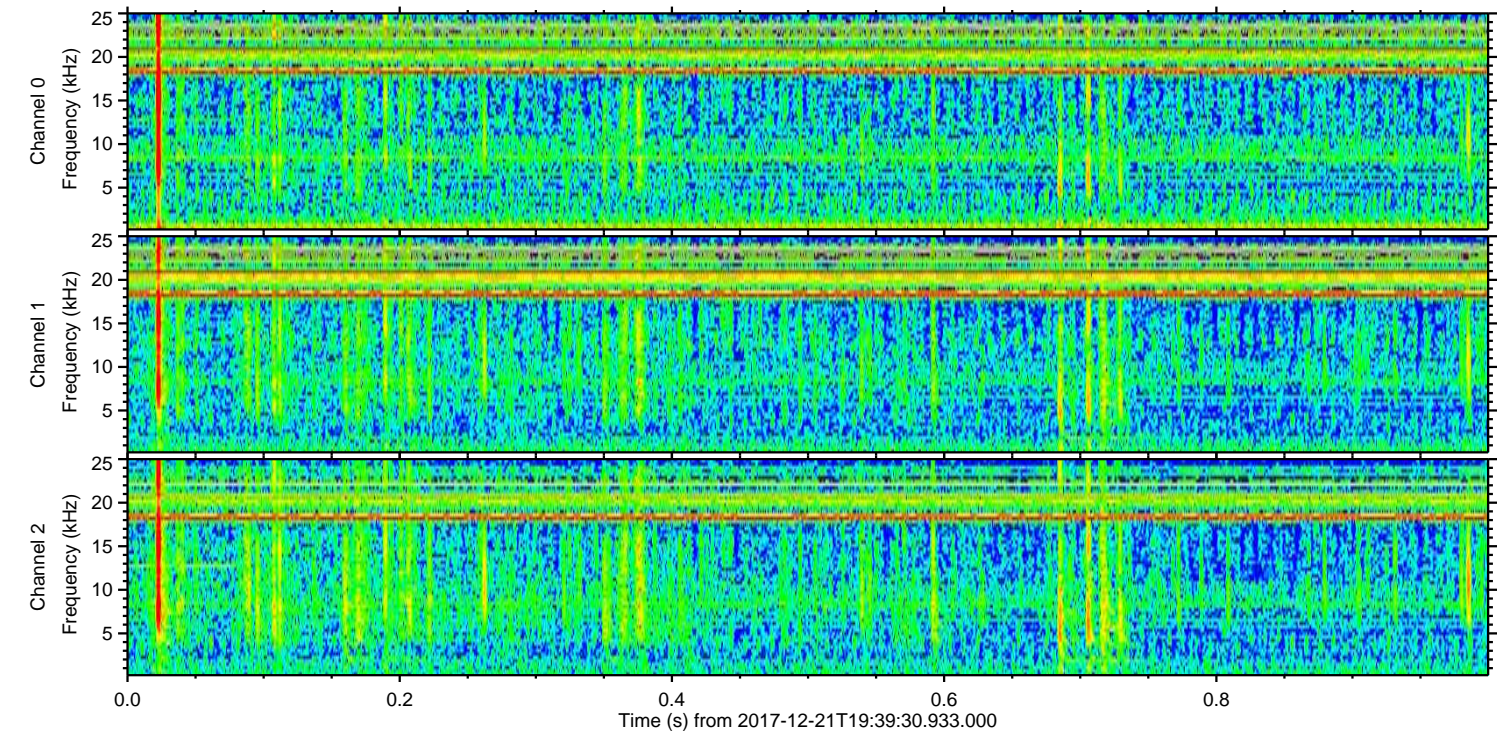
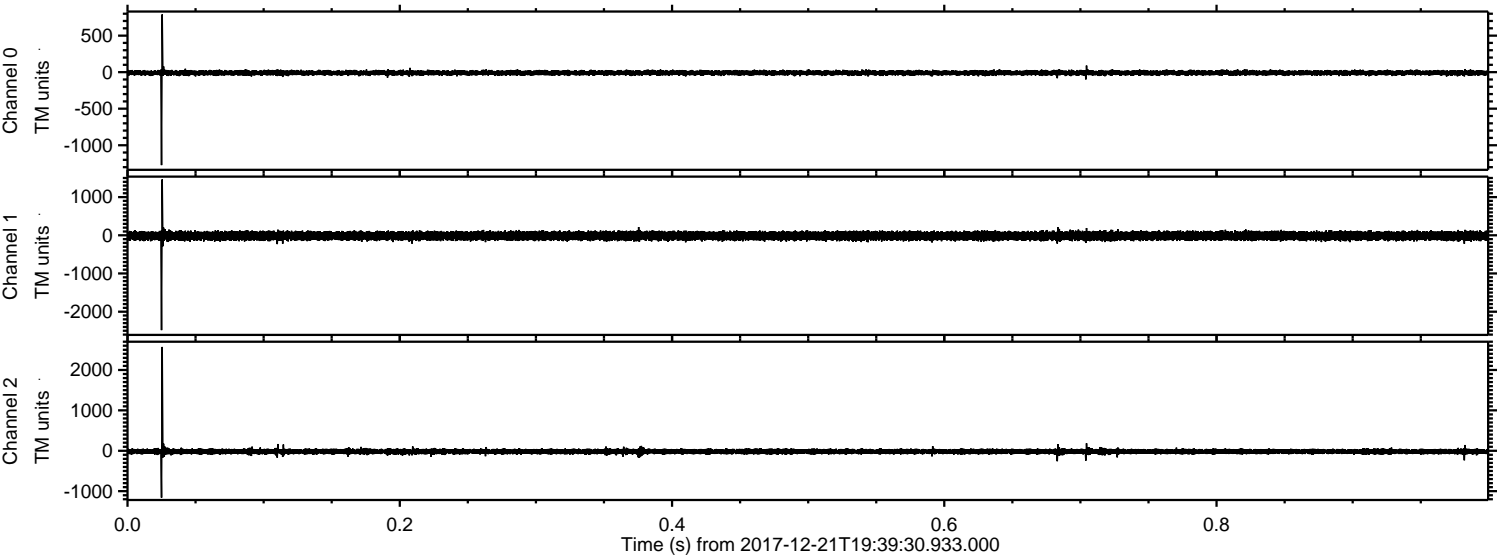


ELMAVAN 3D WAVEFORMS (Measured data sampled at 50 kHz) 51000 packets of 144 samples from 2017-12-21T19:39:30.933.000. Part 111/147

Processed Thu Dec 21 20:47:56 2017 by ELM ver.2012-10-06 from 001__elm20171221_193929__dat00.bin



Processed Thu Dec 21 20:47:57 2017 by ELM ver.2012-10-06 from 001__elm20171221_193929__dat00.bin



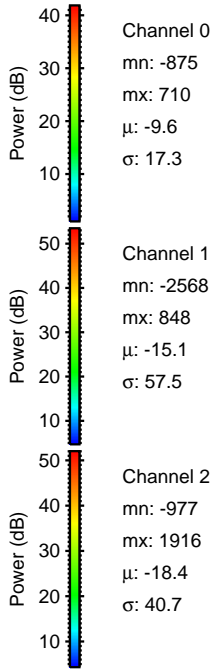
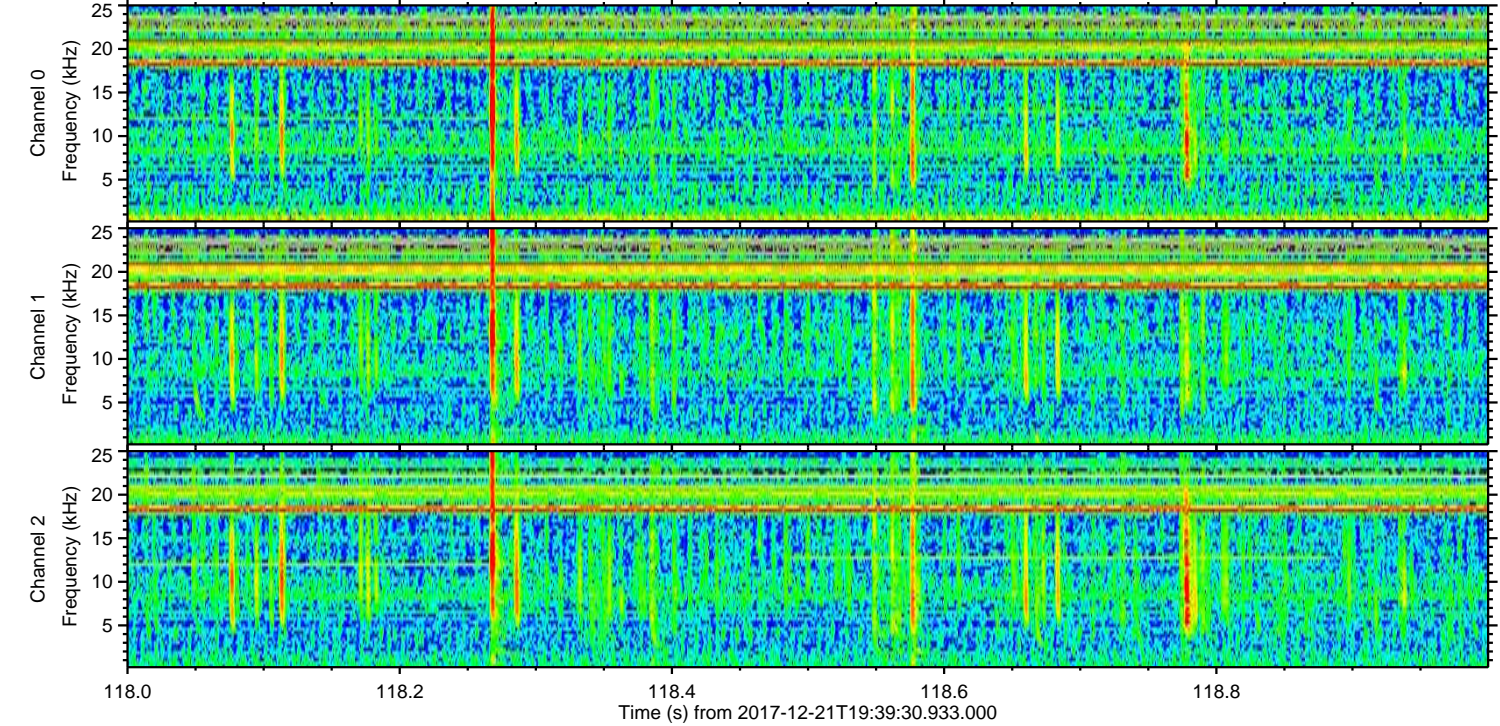
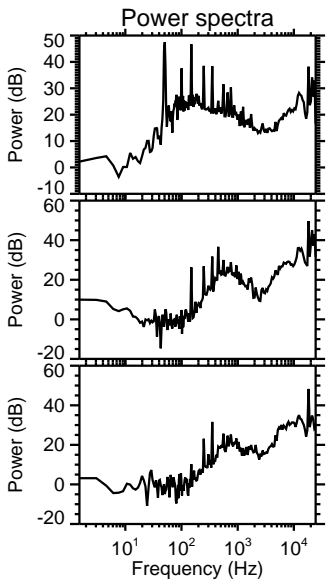
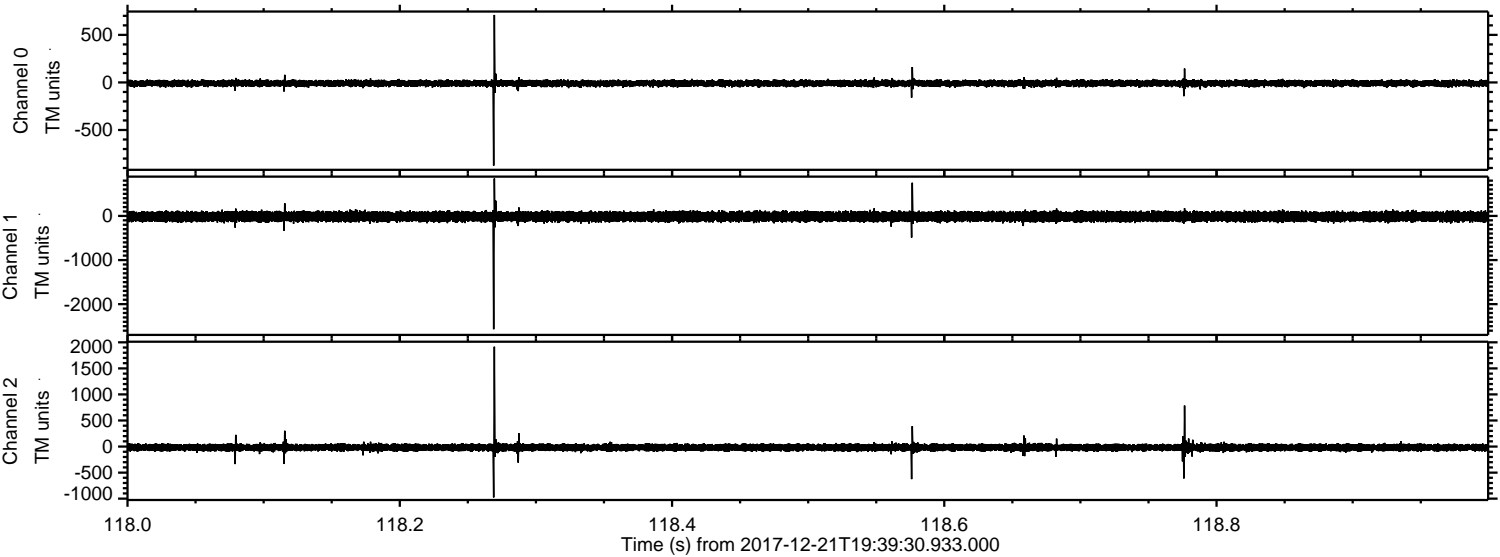
Channel 0
mn: -1273
mx: 790
 μ : -9.6
 σ : 17.3

Channel 1
mn: -2484
mx: 1463
 μ : -15.1
 σ : 58.7

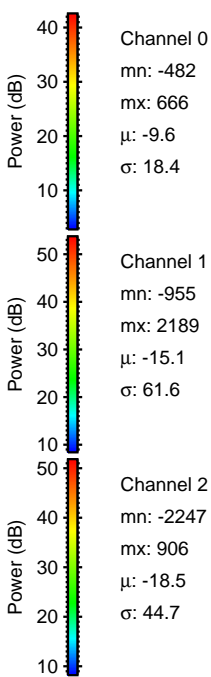
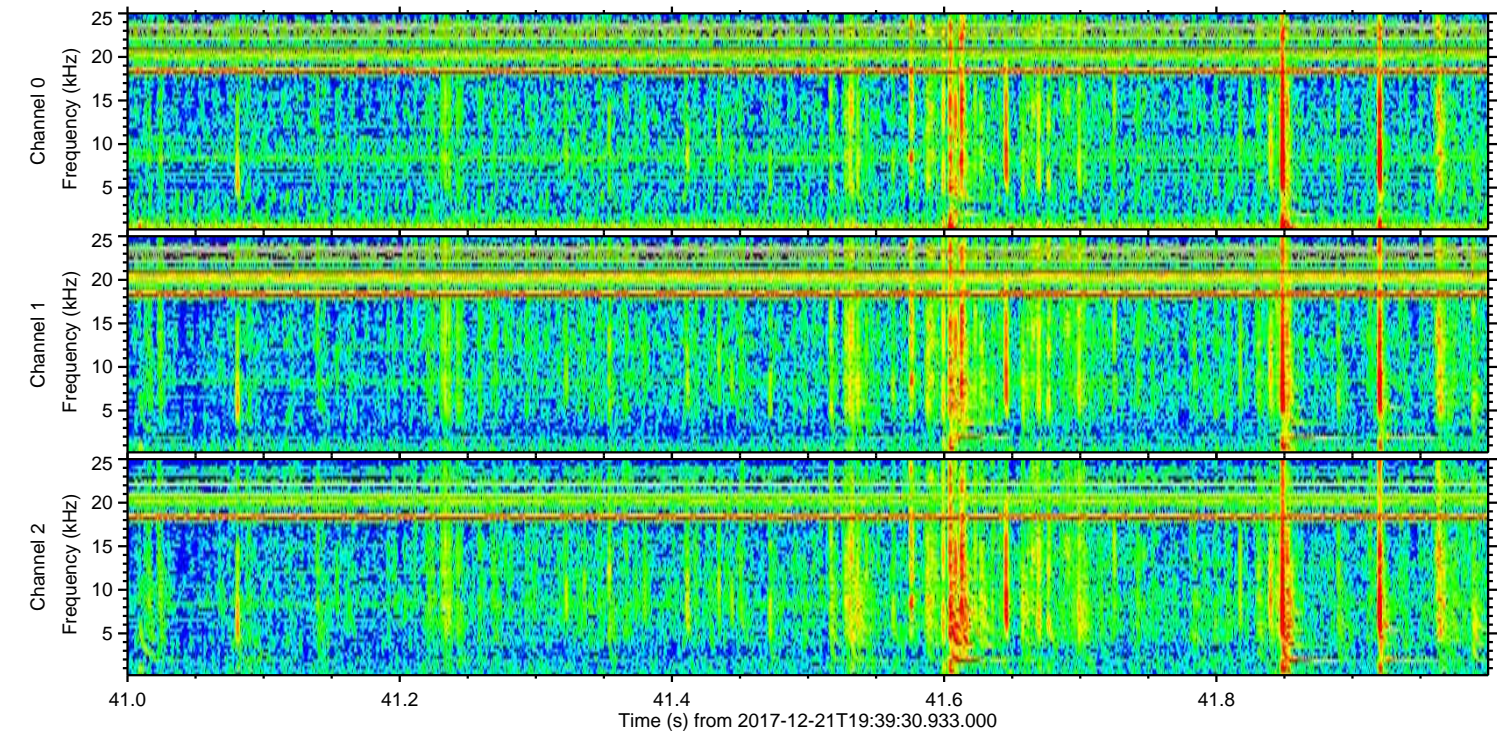
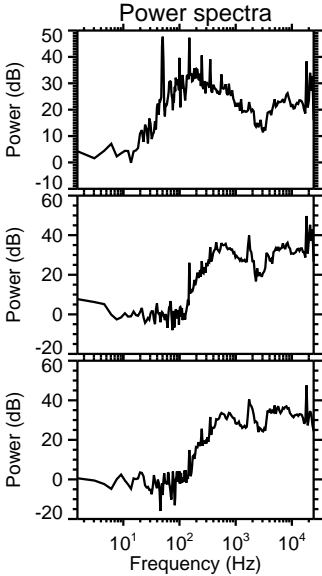
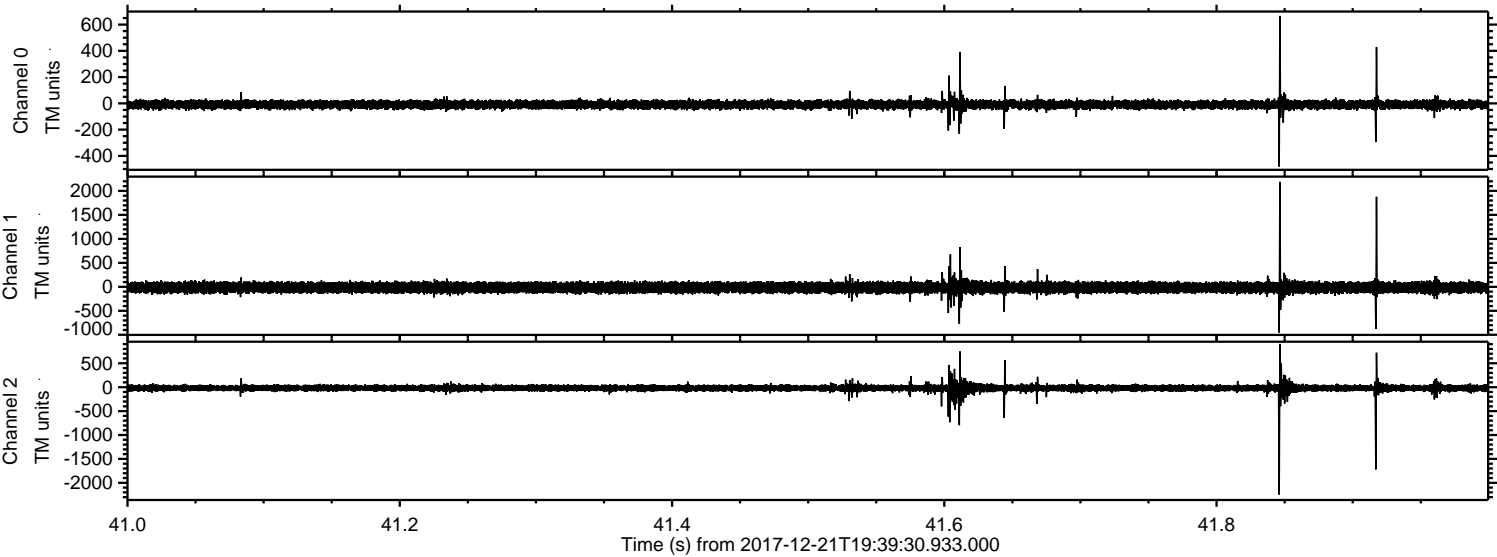
Channel 2
mn: -1160
mx: 2571
 μ : -18.5
 σ : 37.0

ELMAVAN 3D WAVEFORMS (Measured data sampled at 50 kHz) 51000 packets of 144 samples from 2017-12-21T19:39:30.933.000. Part 119/147

Processed Thu Dec 21 20:47:58 2017 by ELM ver.2012-10-06 from 001__elm20171221_193929__dat00.bin

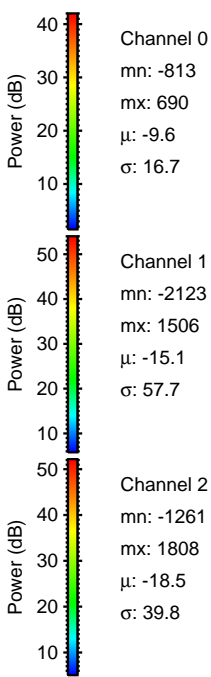
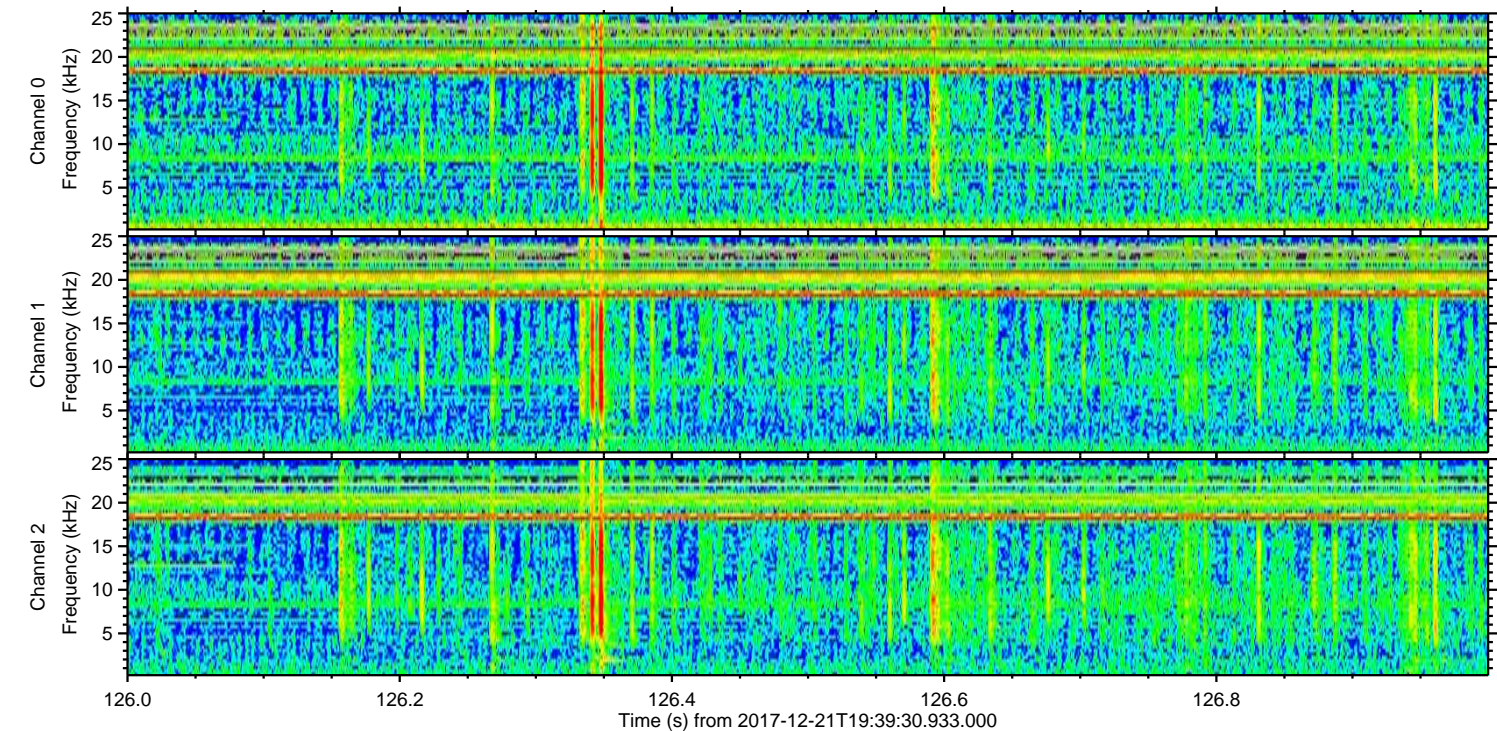
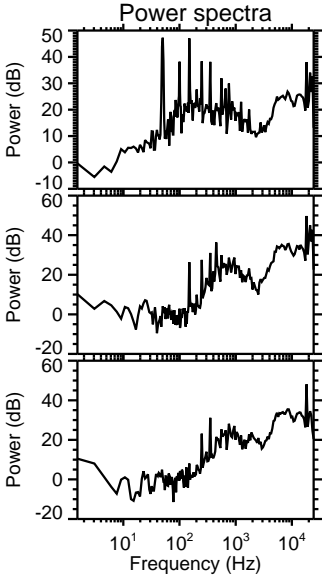
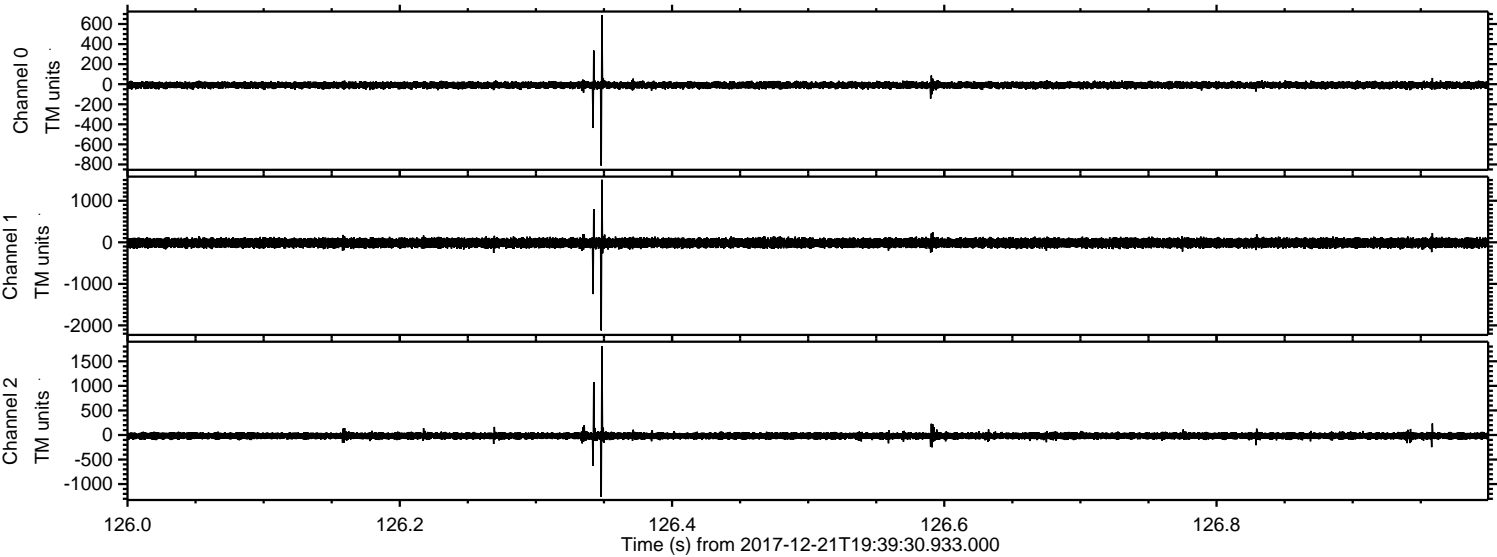


Processed Thu Dec 21 20:47:58 2017 by ELM ver.2012-10-06 from 001__elm20171221_193929__dat00.bin

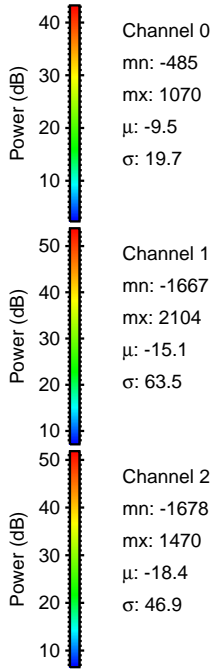
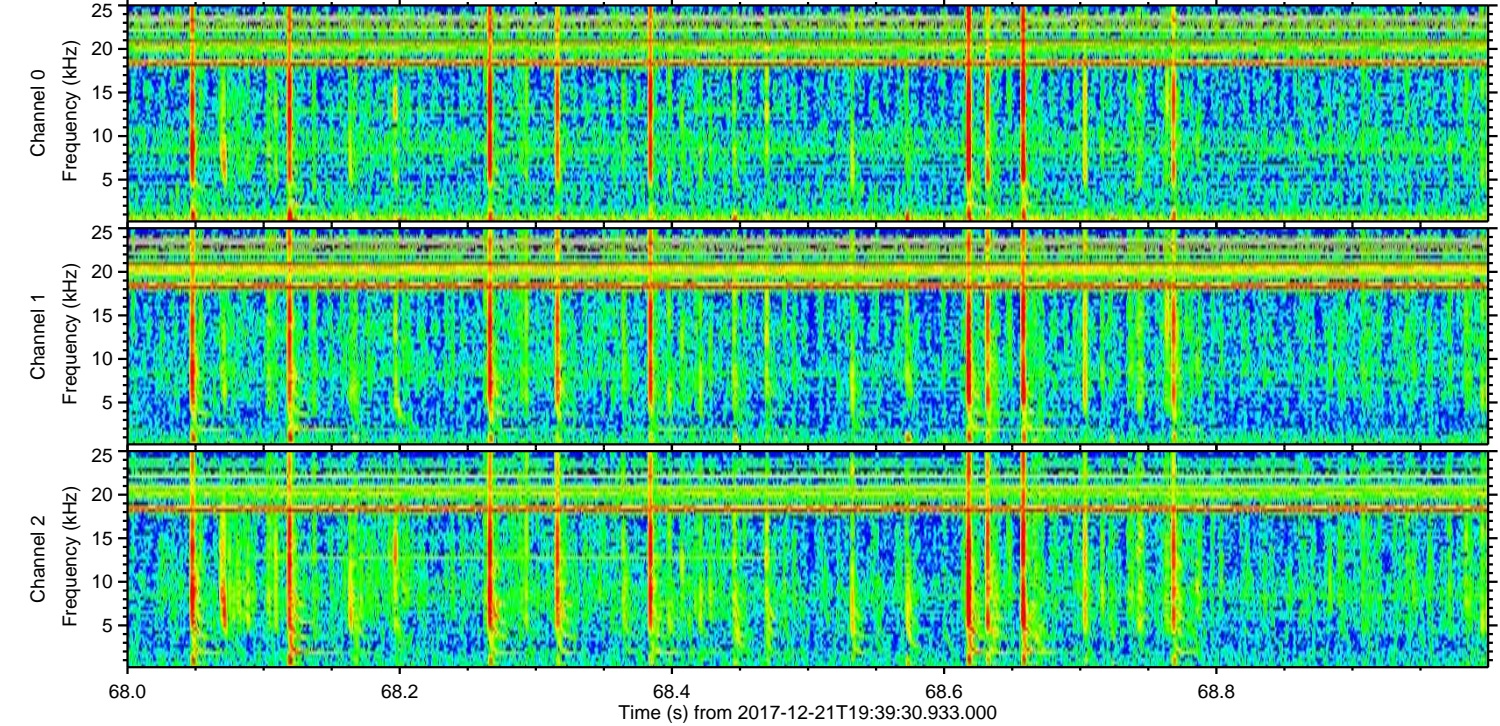
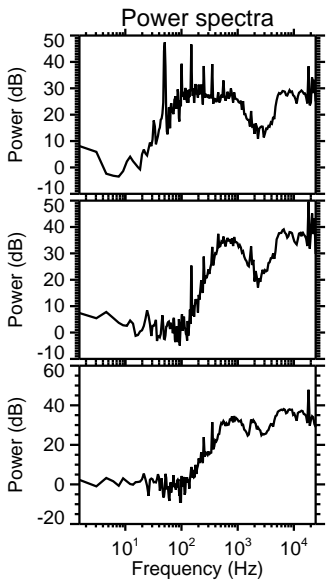
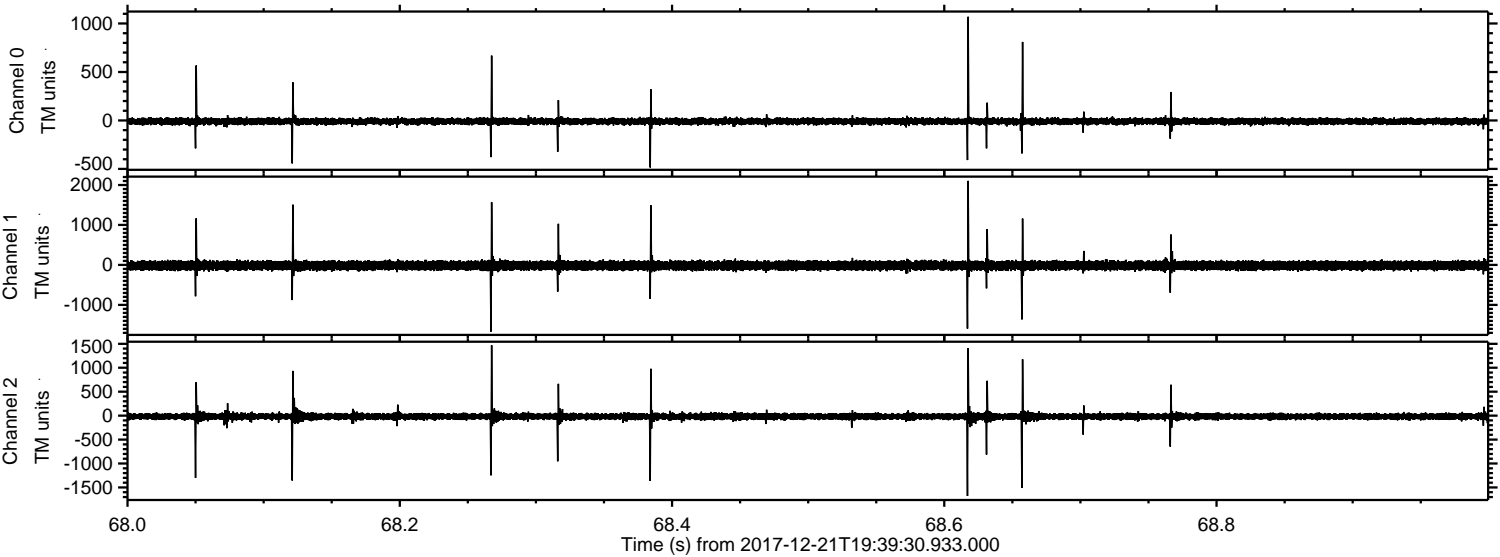


ELMAVAN 3D WAVEFORMS (Measured data sampled at 50 kHz) 51000 packets of 144 samples from 2017-12-21T19:39:30.933.000. Part 127/147

Processed Thu Dec 21 20:47:59 2017 by ELM ver.2012-10-06 from 001__elm20171221_193929__dat00.bin



Processed Thu Dec 21 20:48:00 2017 by ELM ver.2012-10-06 from 001__elm20171221_193929__dat00.bin



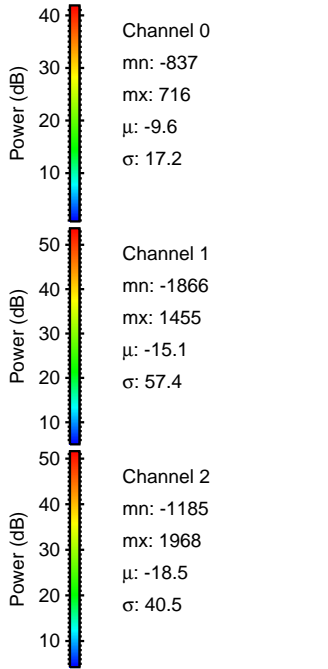
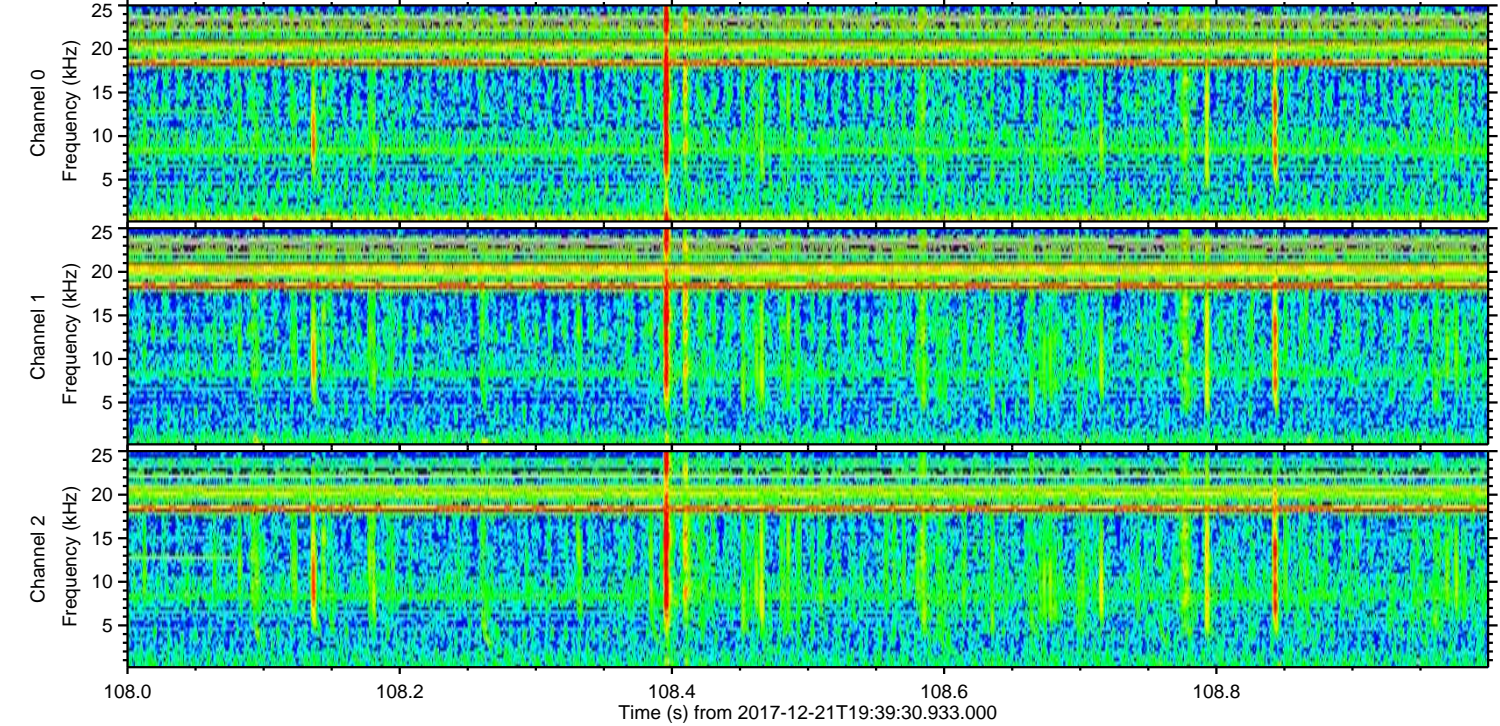
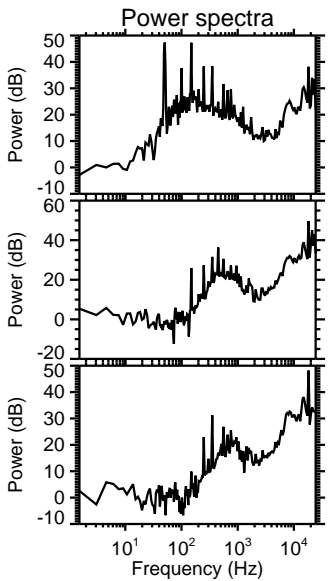
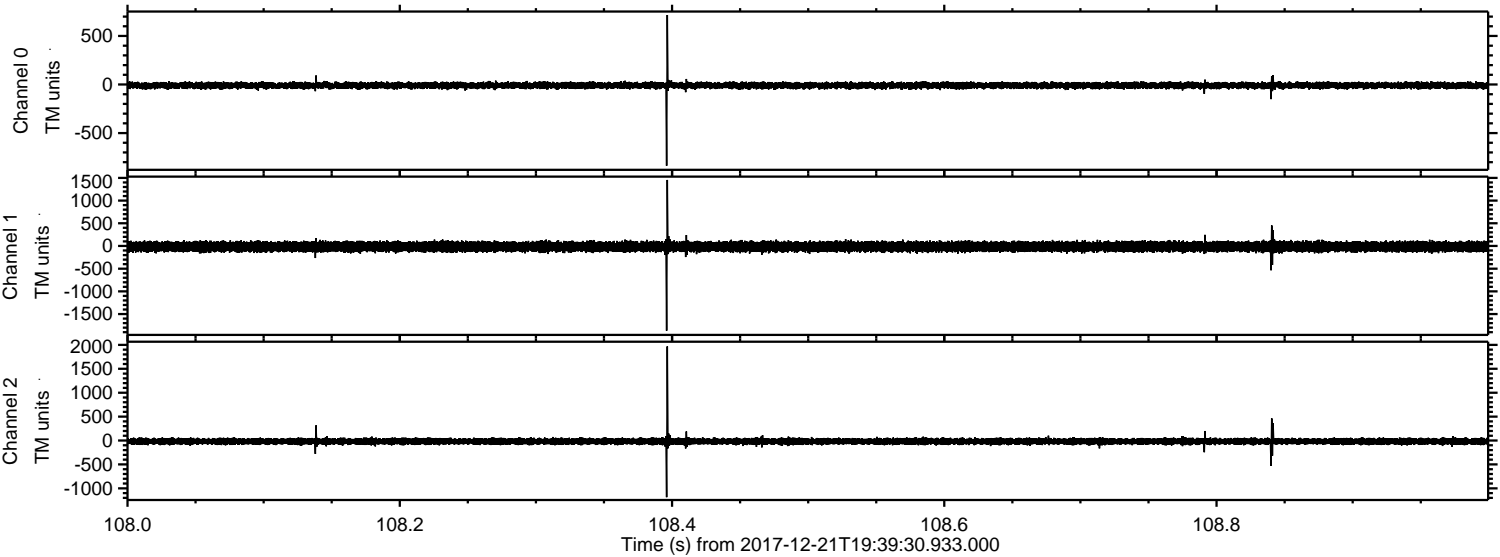
Channel 0
mn: -485
mx: 1070
 μ : -9.5
 σ : 19.7

Channel 1
mn: -1667
mx: 2104
 μ : -15.1
 σ : 63.5

Channel 2
mn: -1678
mx: 1470
 μ : -18.4
 σ : 46.9

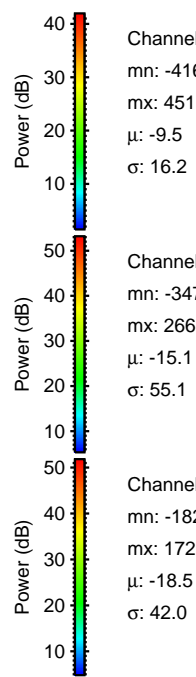
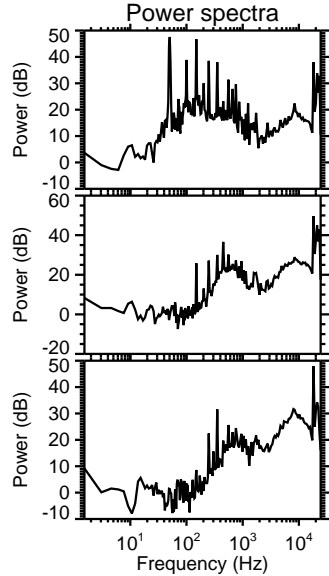
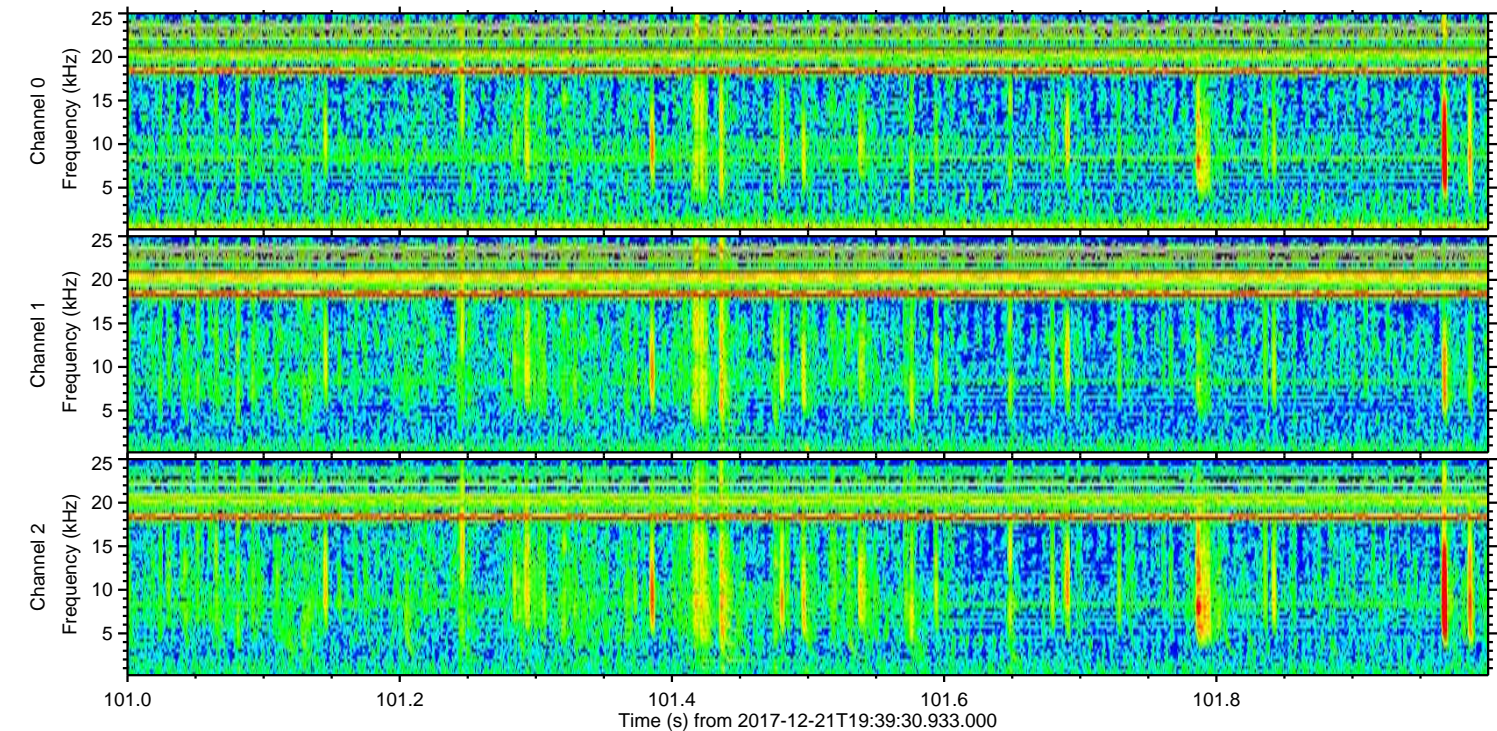
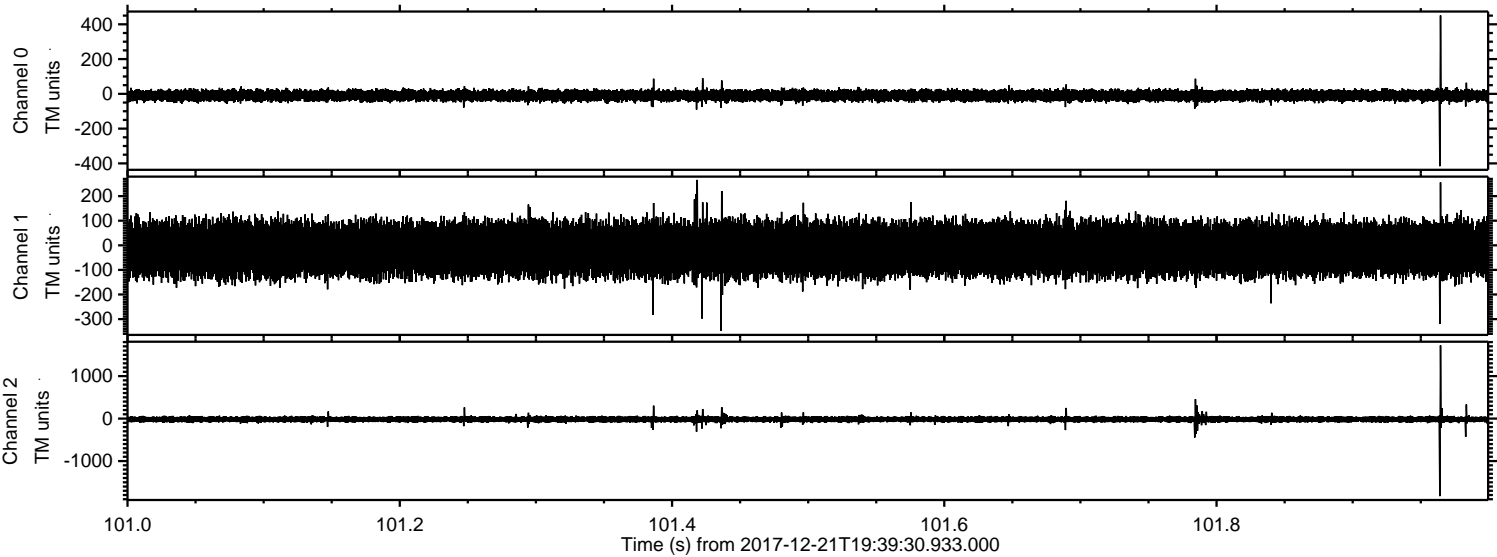
ELMAVAN 3D WAVEFORMS (Measured data sampled at 50 kHz) 51000 packets of 144 samples from 2017-12-21T19:39:30.933.000. Part 109/147

Processed Thu Dec 21 20:48:01 2017 by ELM ver.2012-10-06 from 001__elm20171221_193929__dat00.bin



ELMAVAN 3D WAVEFORMS (Measured data sampled at 50 kHz) 51000 packets of 144 samples from 2017-12-21T19:39:30.933.000. Part 102/147

Processed Thu Dec 21 20:48:01 2017 by ELM ver.2012-10-06 from 001__elm20171221_193929__dat00.bin



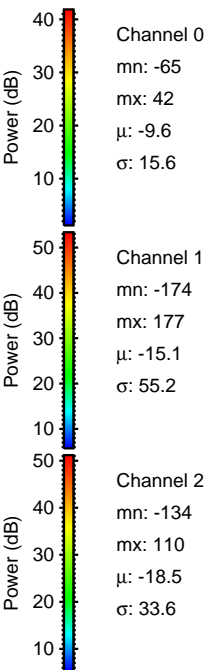
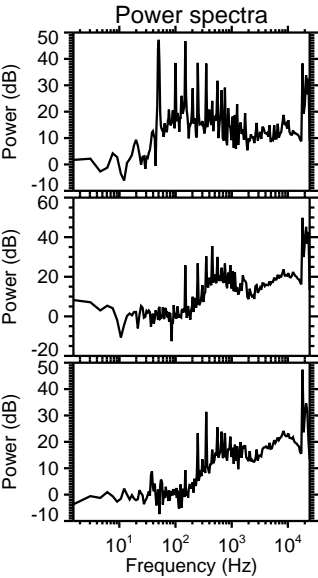
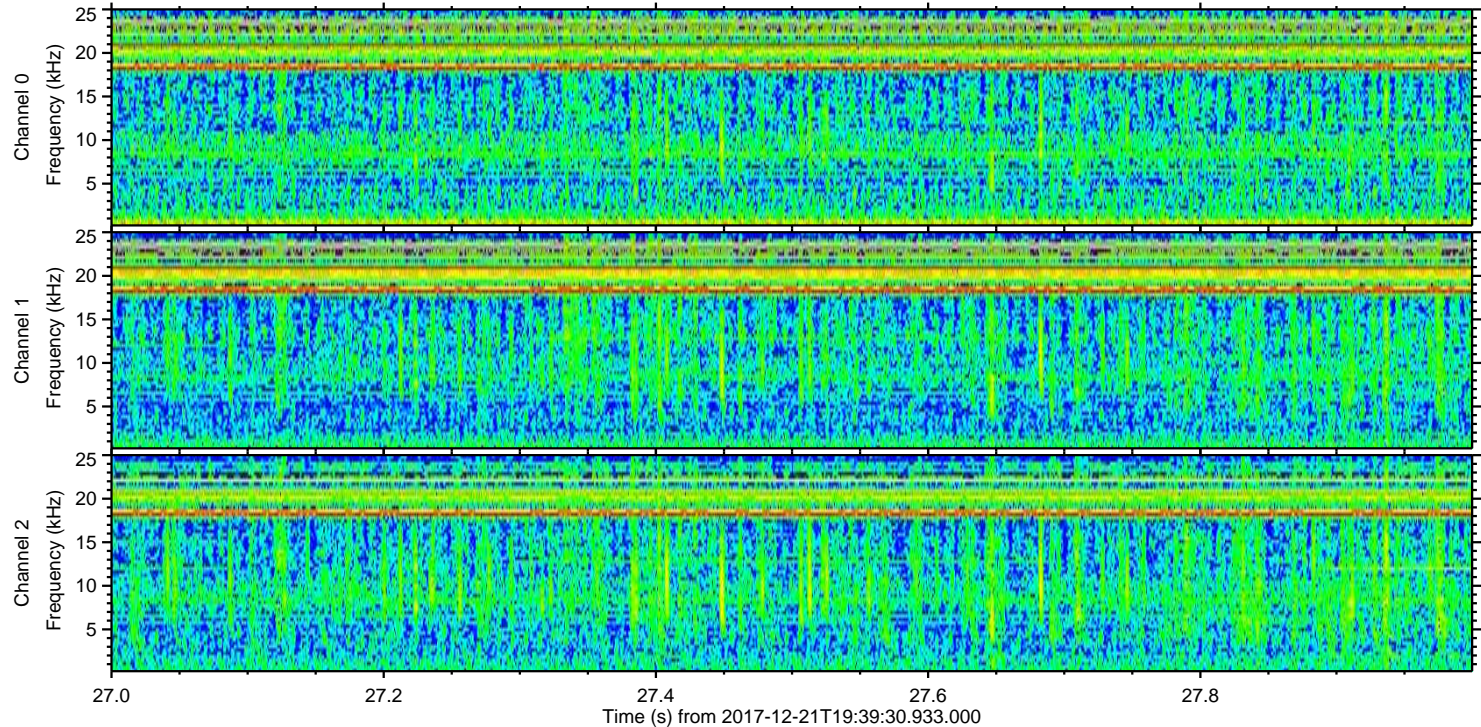
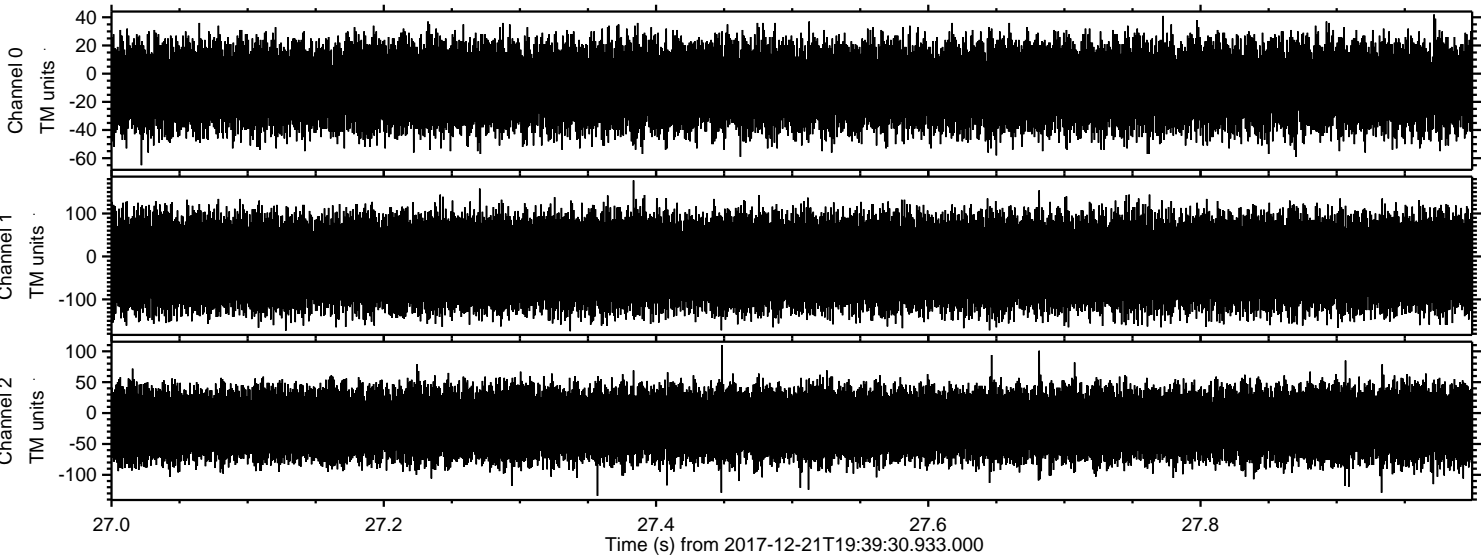
Channel 0
mn: -416
mx: 451
 μ : -9.5
 σ : 16.2

Channel 1
mn: -347
mx: 266
 μ : -15.1
 σ : 55.1

Channel 2
mn: -1826
mx: 1723
 μ : -18.5
 σ : 42.0

ELMAVAN 3D WAVEFORMS (Measured data sampled at 50 kHz) 51000 packets of 144 samples from 2017-12-21T19:39:30.933.000. Part 28/147

Processed Thu Dec 21 20:48:02 2017 by ELM ver.2012-10-06 from 001__elm20171221_193929__dat00.bin



Power spectra

Channel 0
mn: -65
mx: 42
 μ : -9.6
 σ : 15.6

Channel 1
mn: -174
mx: 177
 μ : -15.1
 σ : 55.2

Channel 2
mn: -134
mx: 110
 μ : -18.5
 σ : 33.6