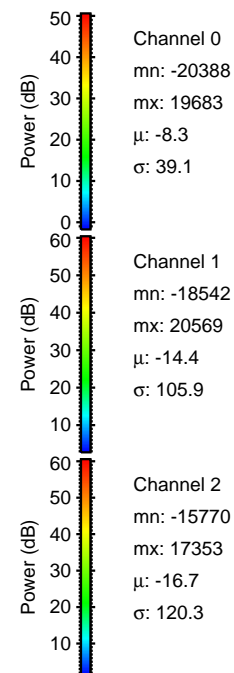
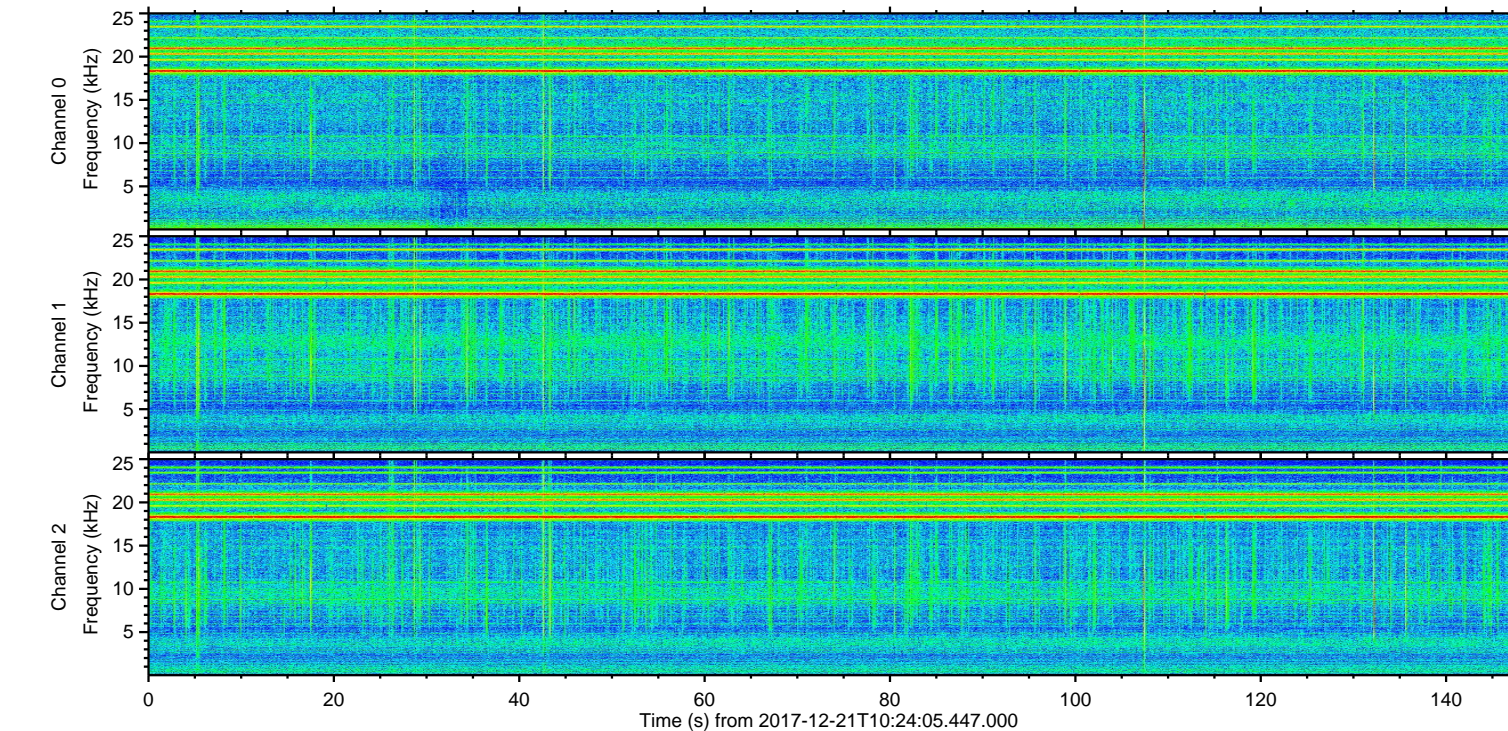
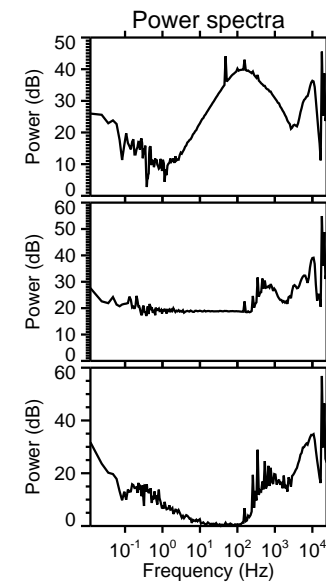
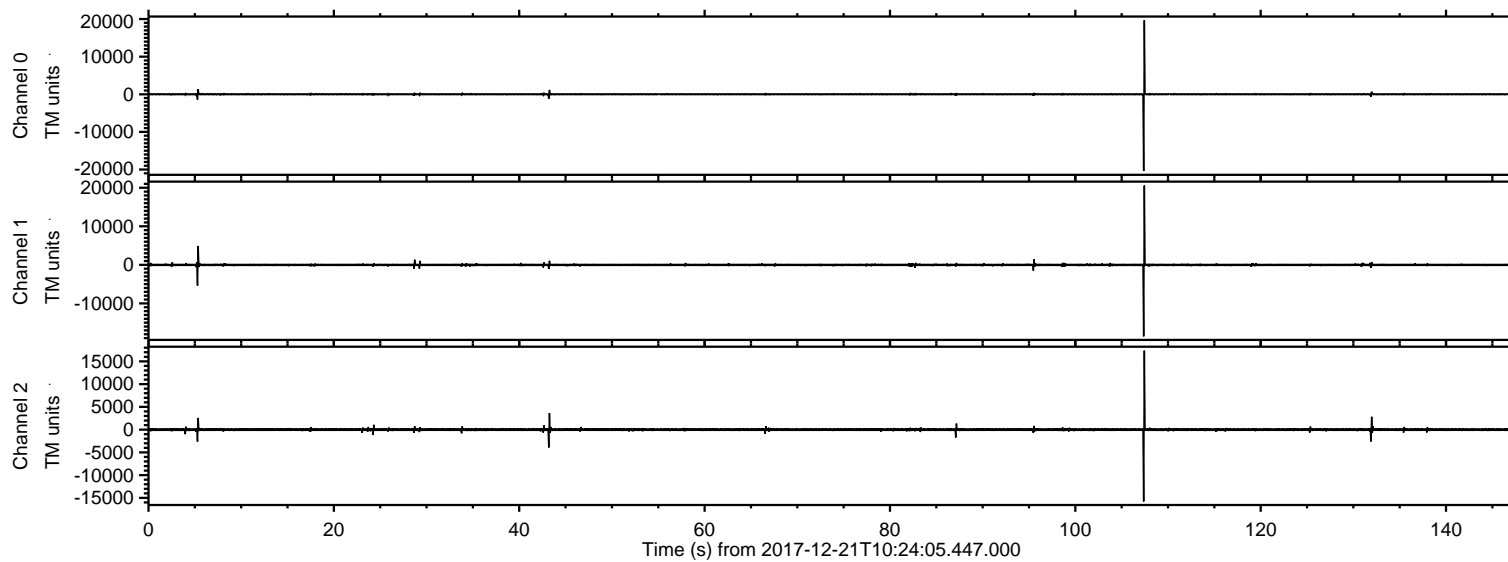


# ELMAVAN 3D WAVEFORMS (Measured data sampled at 50 kHz) 51000 packets of 144 samples from 2017-12-21T10:24:05.447.000.

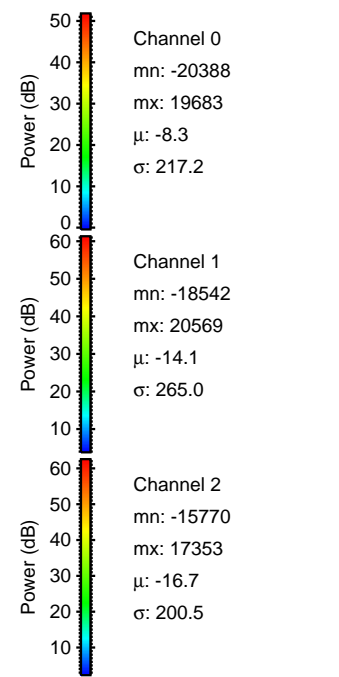
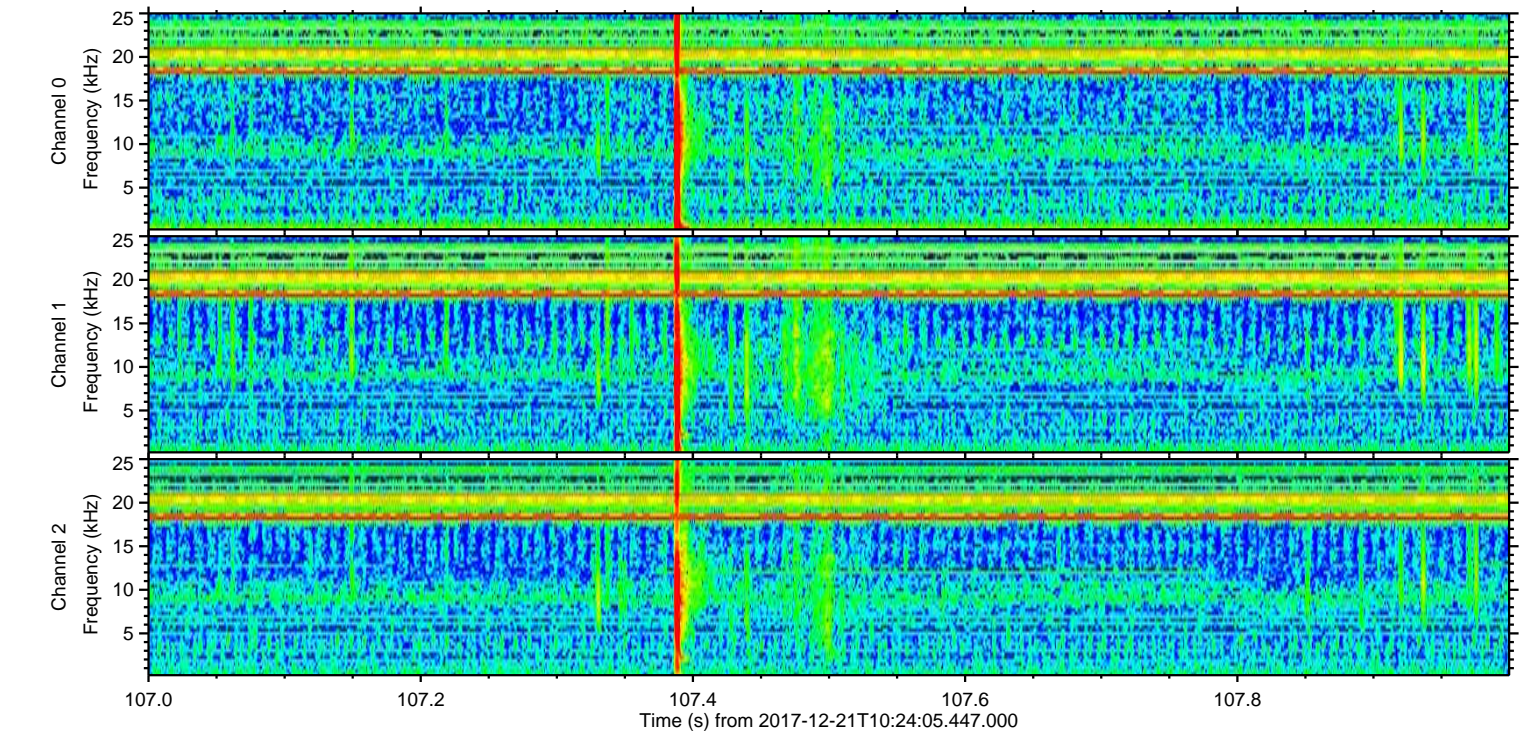
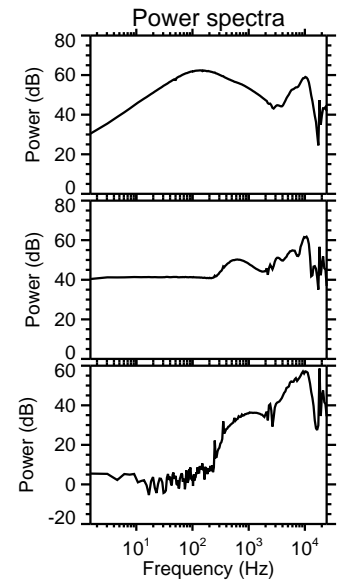
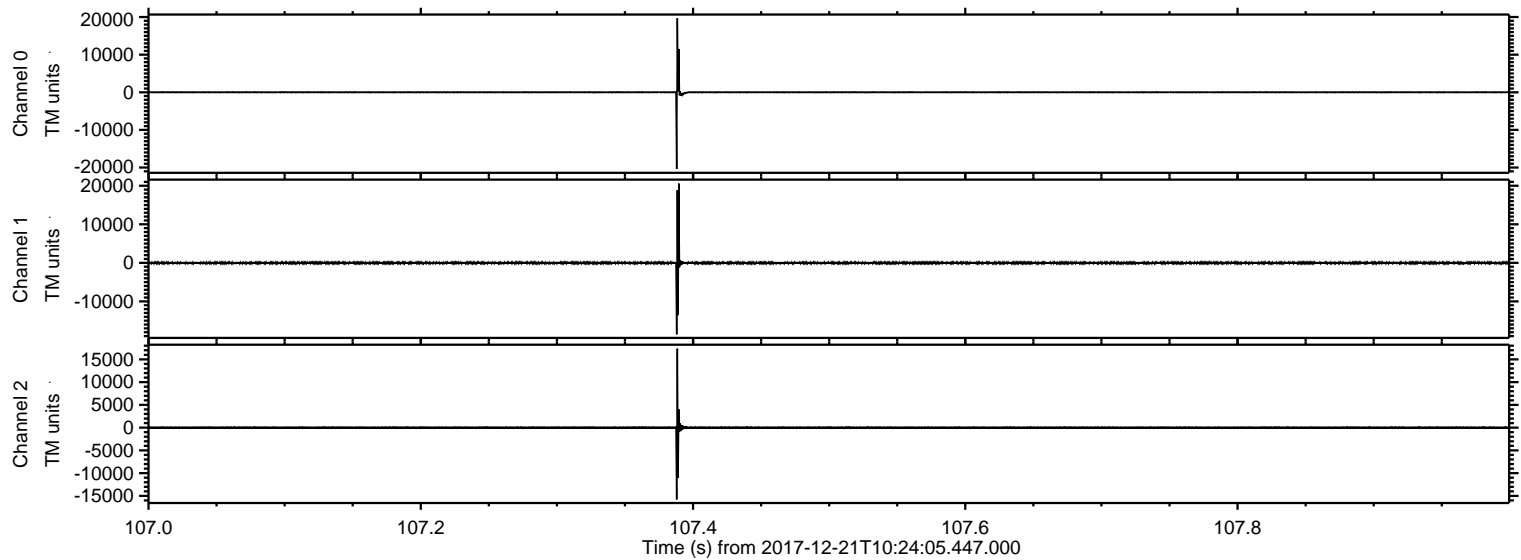
Processed Thu Dec 21 11:32:30 2017 by ELM ver.2012-10-06 from 001\_\_elm20171221\_102404\_\_dat00.bin





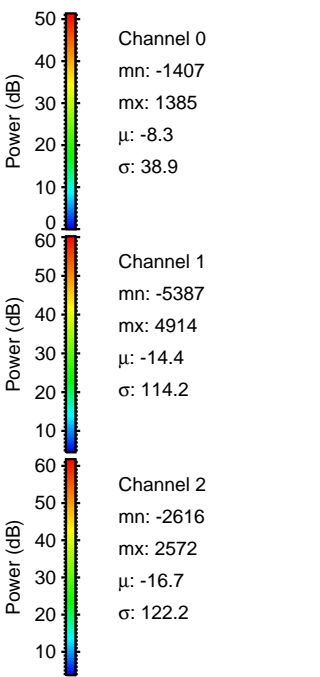
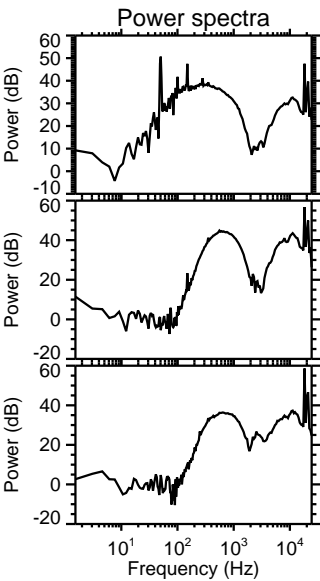
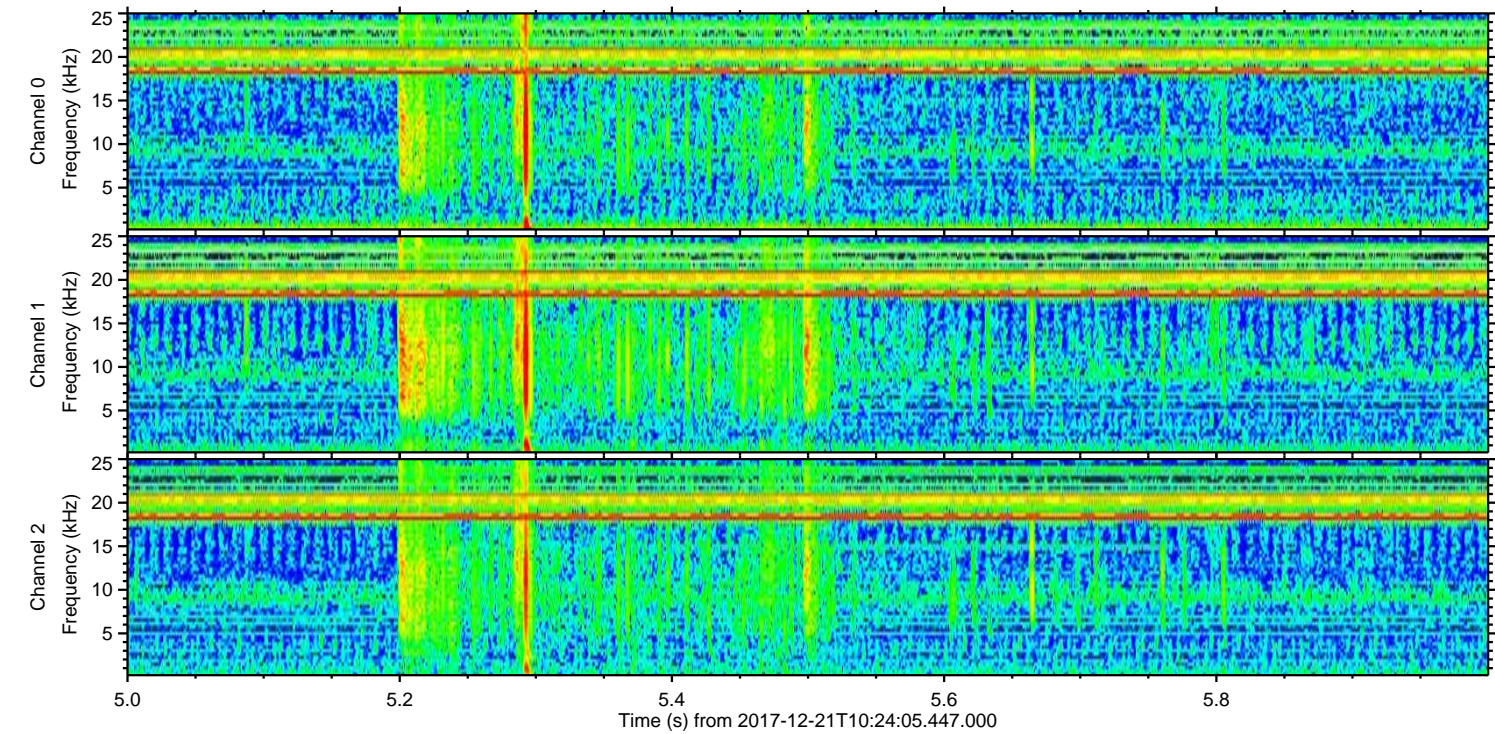
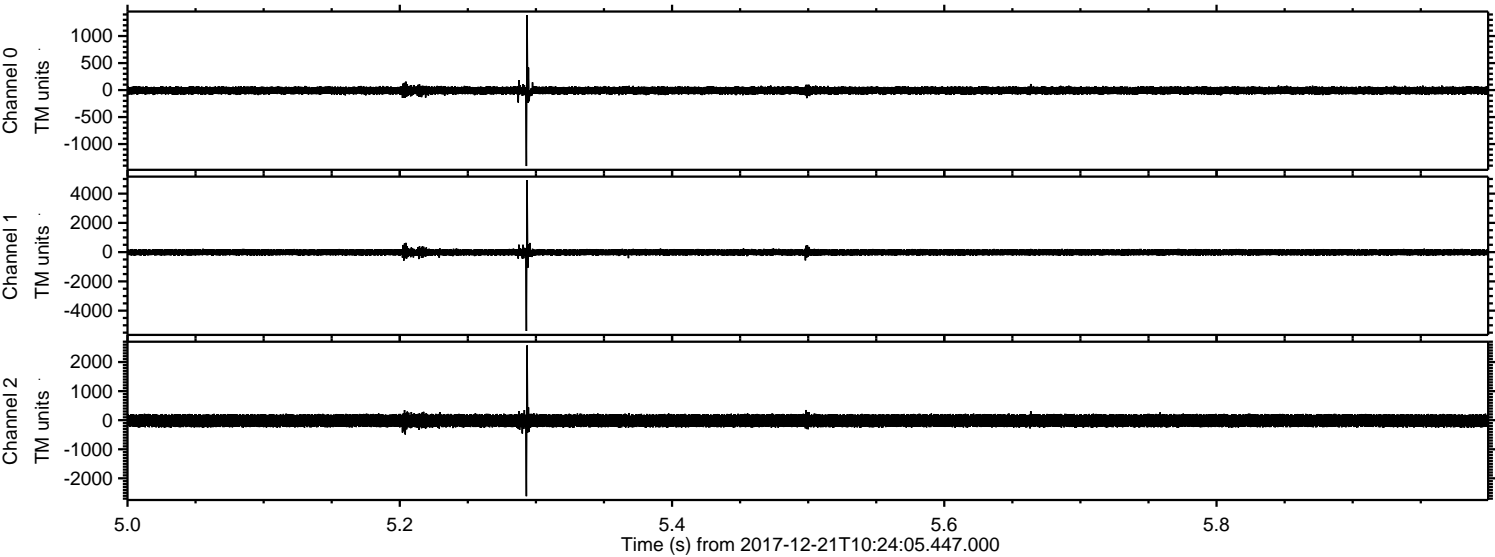
ELMAVAN 3D WAVEFORMS (Measured data sampled at 50 kHz) 51000 packets of 144 samples from 2017-12-21T10:24:05.447.000. Part 108/147

Processed Thu Dec 21 11:32:38 2017 by ELM ver.2012-10-06 from 001\_\_elm20171221\_102404\_\_dat00.bin



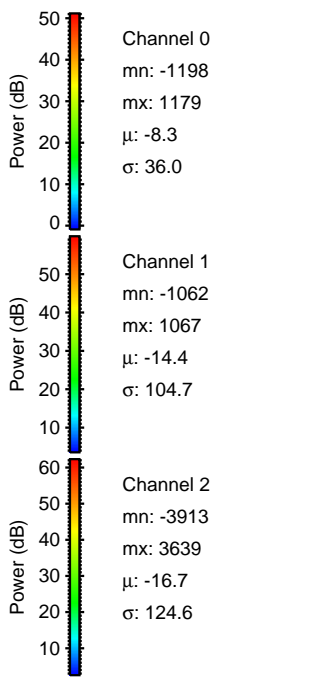
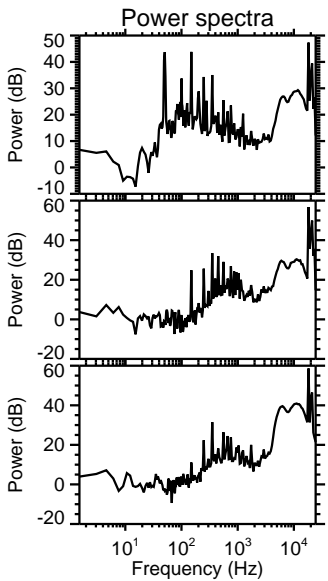
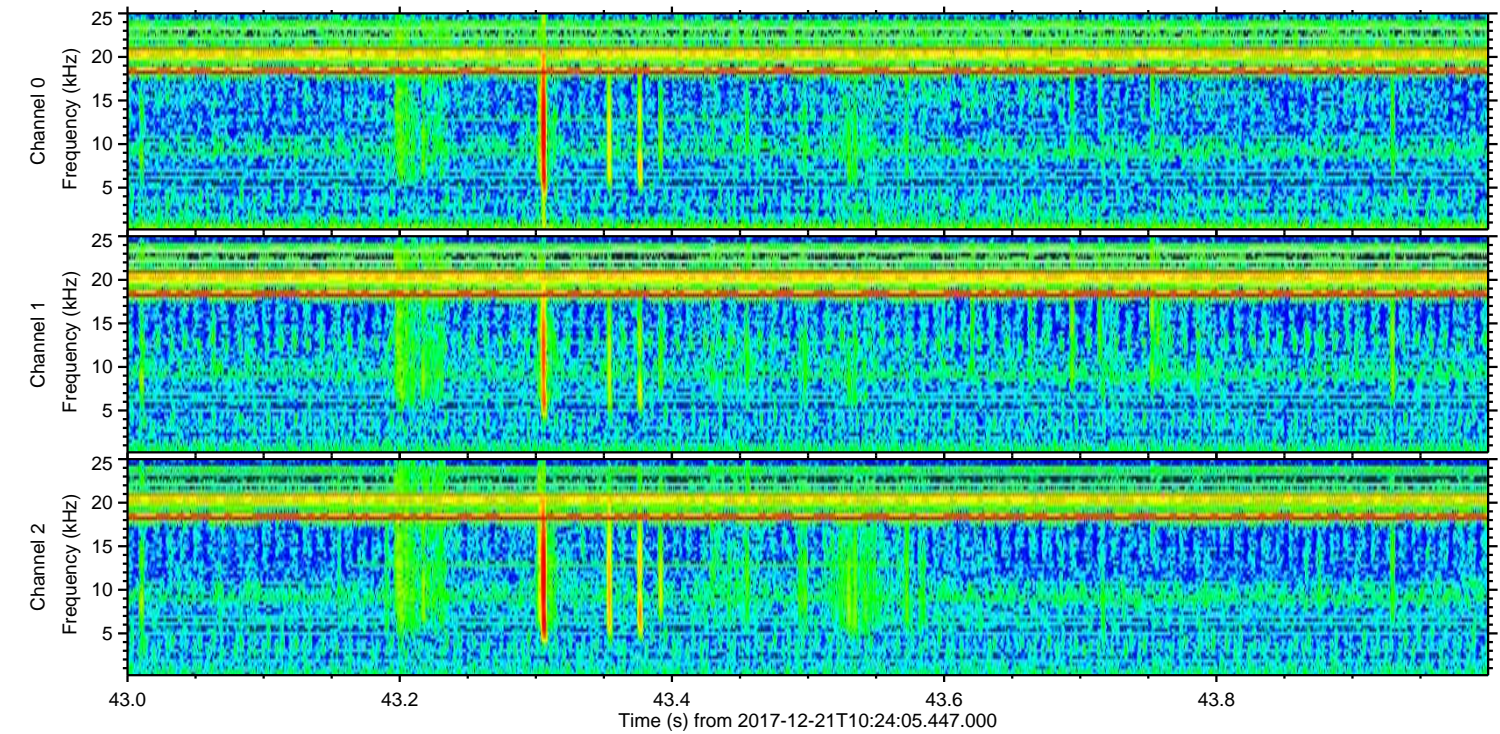
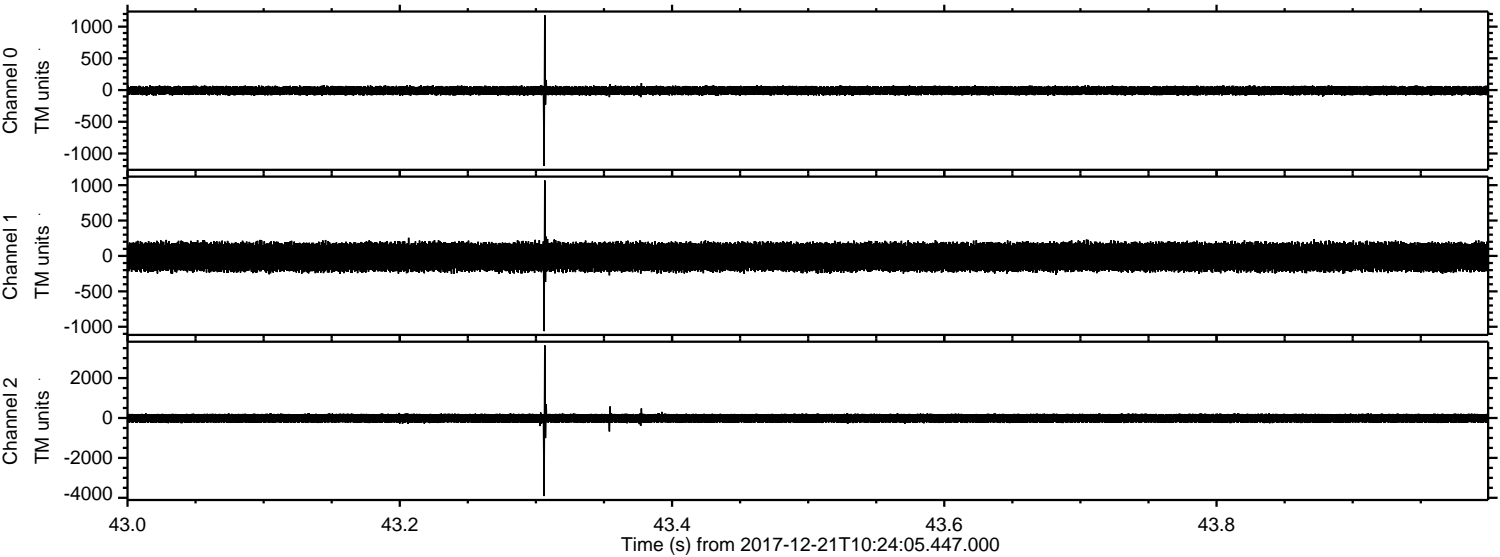


Processed Thu Dec 21 11:32:39 2017 by ELM ver.2012-10-06 from 001\_\_elm20171221\_102404\_\_dat00.bin





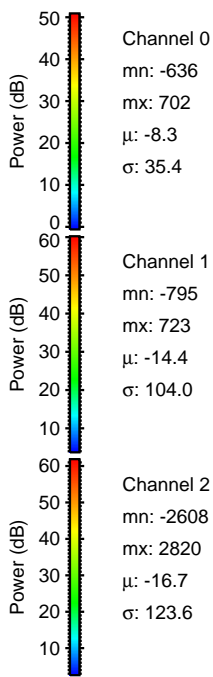
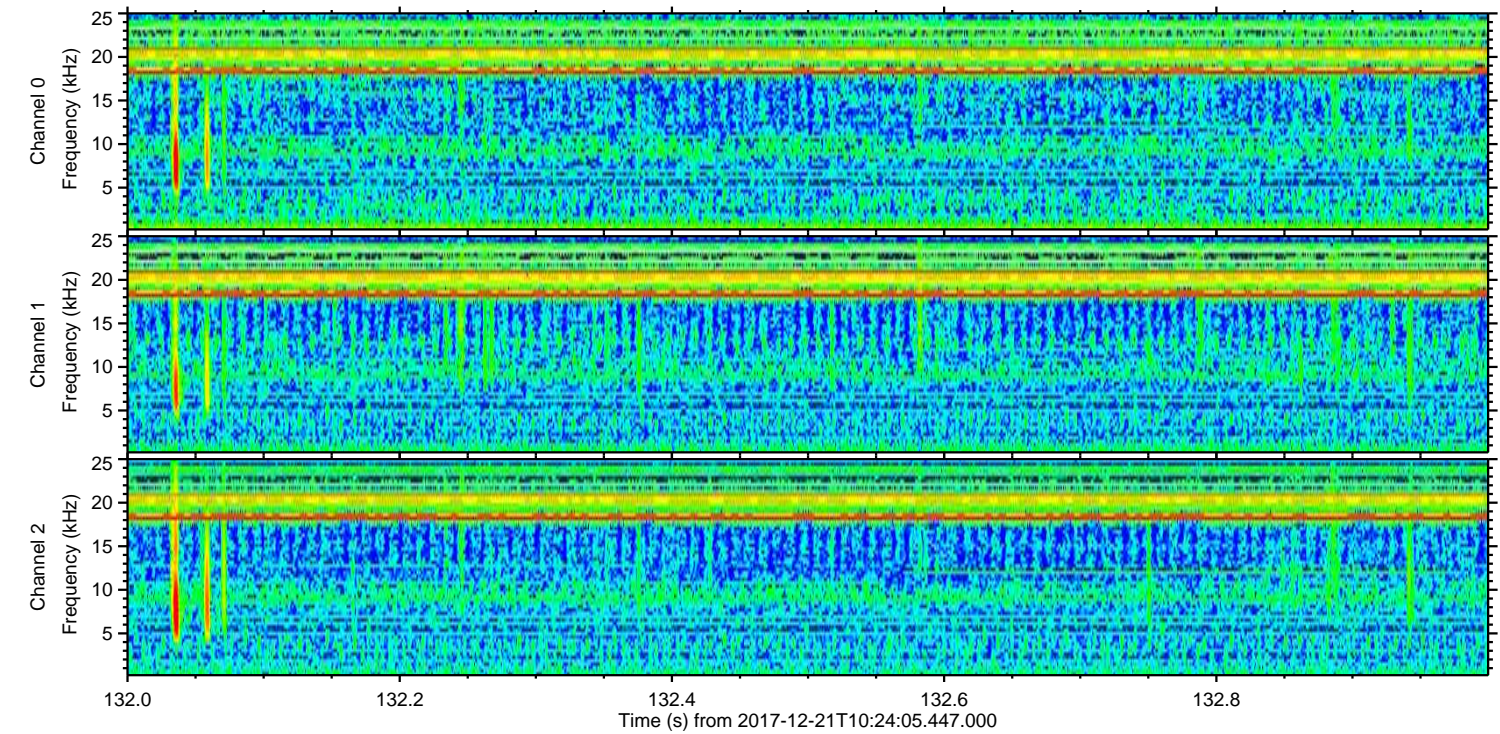
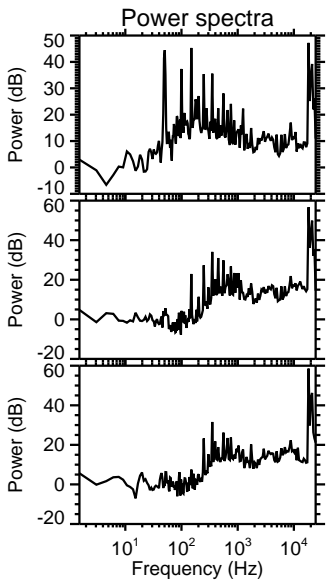
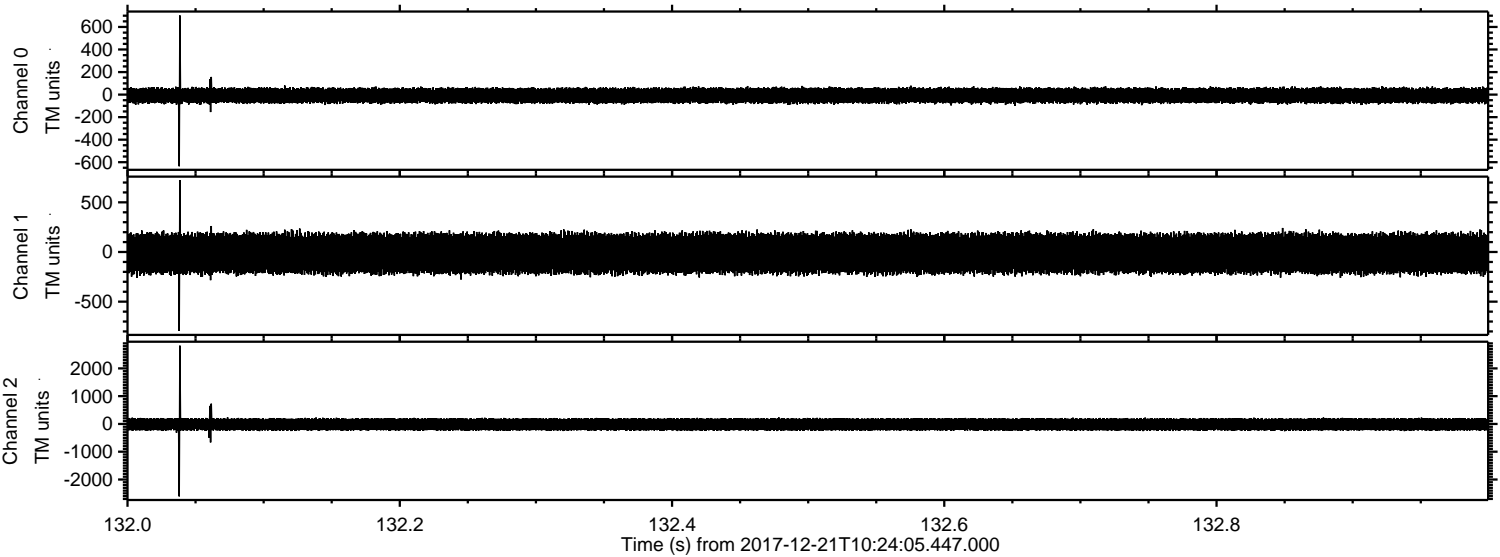
Processed Thu Dec 21 11:32:39 2017 by ELM ver.2012-10-06 from 001\_\_elm20171221\_102404\_\_dat00.bin





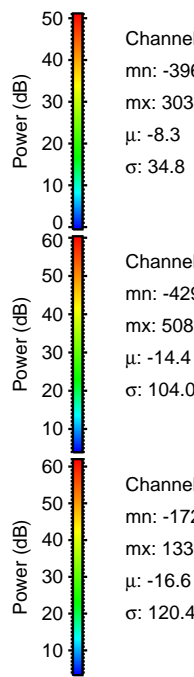
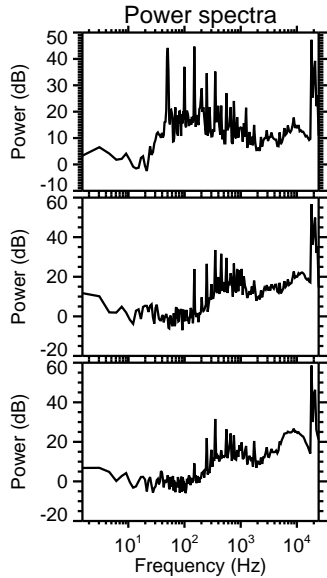
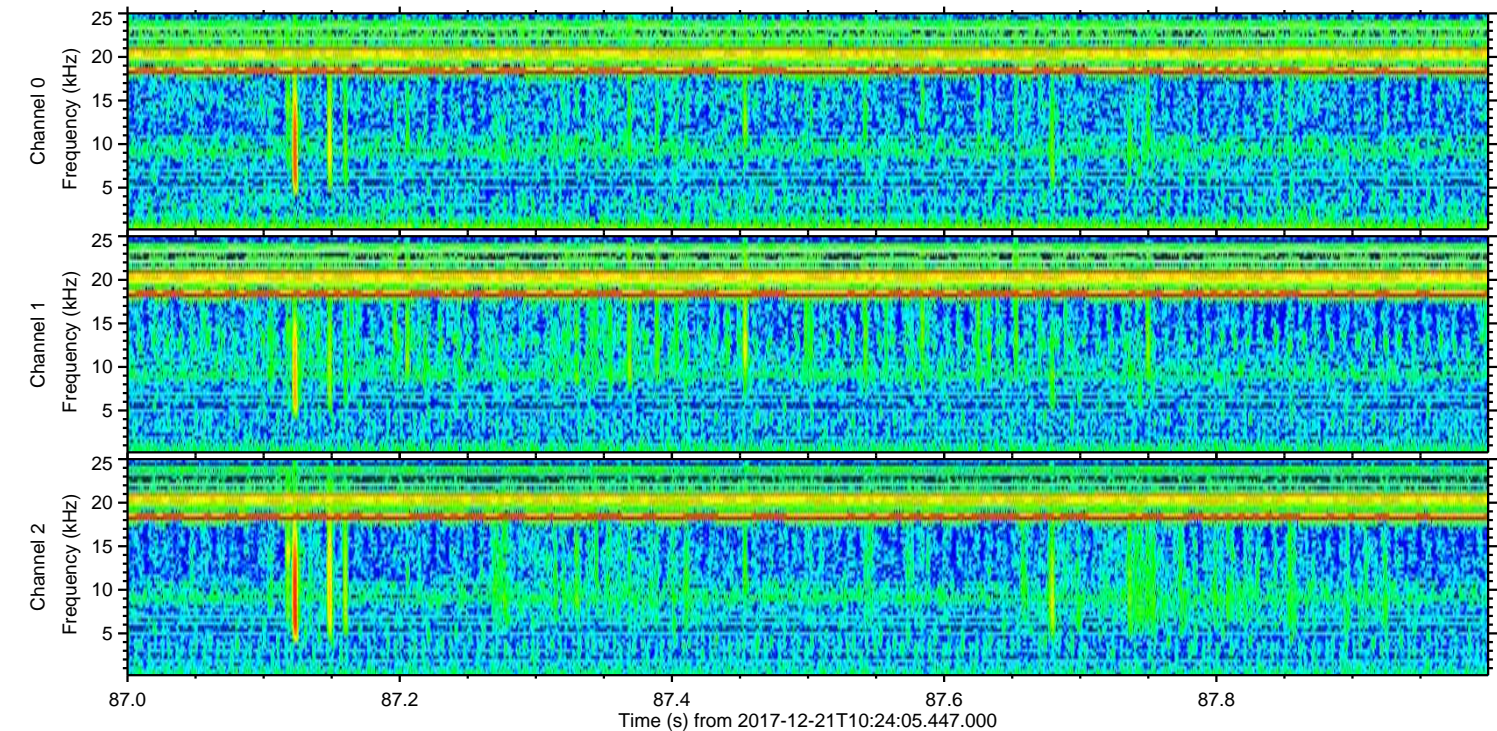
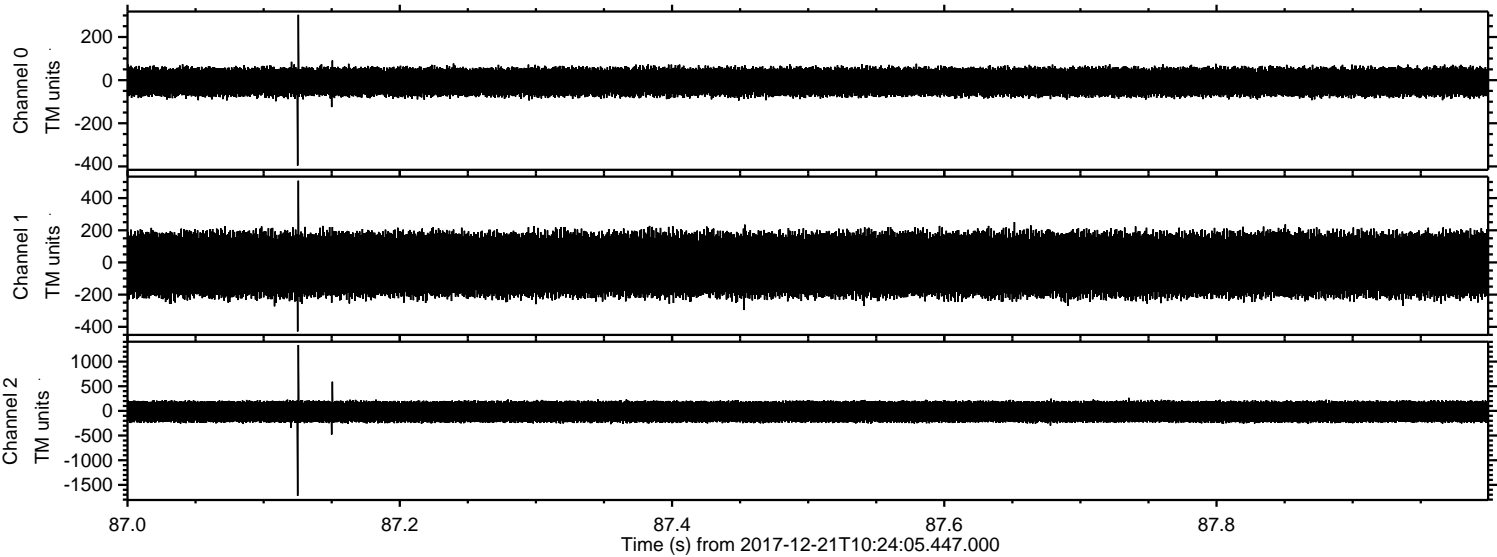
ELMAVAN 3D WAVEFORMS (Measured data sampled at 50 kHz) 51000 packets of 144 samples from 2017-12-21T10:24:05.447.000. Part 133/147

Processed Thu Dec 21 11:32:40 2017 by ELM ver.2012-10-06 from 001\_\_elm20171221\_102404\_\_dat00.bin





Processed Thu Dec 21 11:32:41 2017 by ELM ver.2012-10-06 from 001\_\_elm20171221\_102404\_\_dat00.bin



Channel 0  
mn: -396  
mx: 303  
 $\mu$ : -8.3  
 $\sigma$ : 34.8

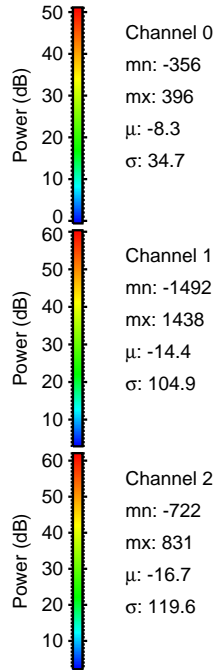
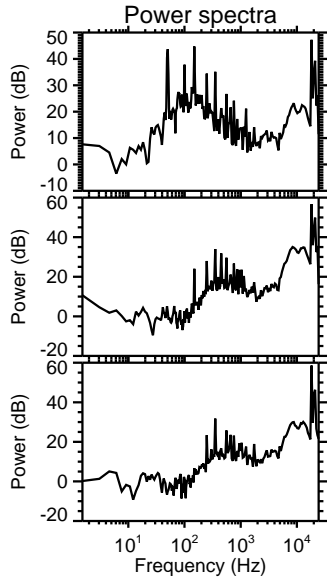
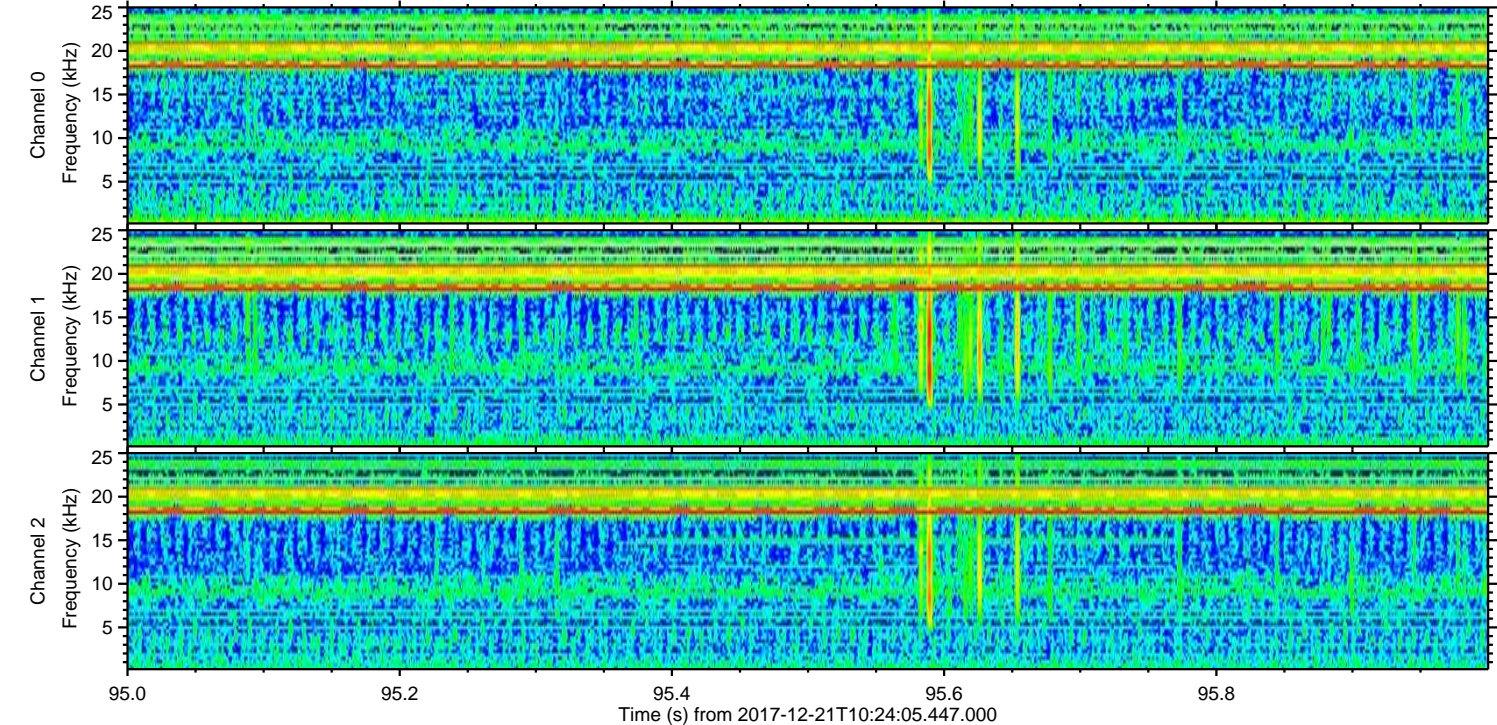
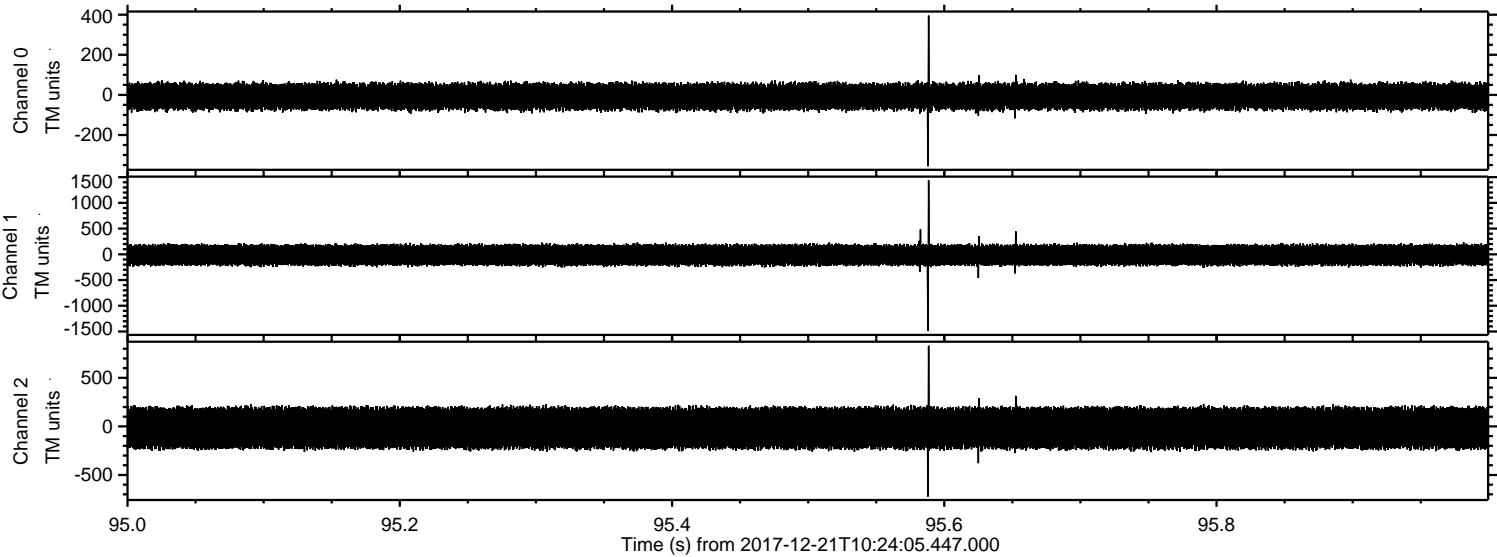
Channel 1  
mn: -429  
mx: 508  
 $\mu$ : -14.4  
 $\sigma$ : 104.0

Channel 2  
mn: -1721  
mx: 1336  
 $\mu$ : -16.6  
 $\sigma$ : 120.4



ELMAVAN 3D WAVEFORMS (Measured data sampled at 50 kHz) 51000 packets of 144 samples from 2017-12-21T10:24:05.447.000. Part 96/147

Processed Thu Dec 21 11:32:42 2017 by ELM ver.2012-10-06 from 001\_\_elm20171221\_102404\_\_dat00.bin



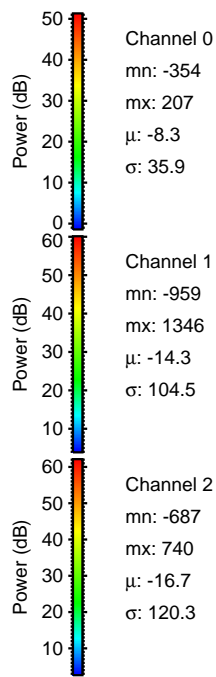
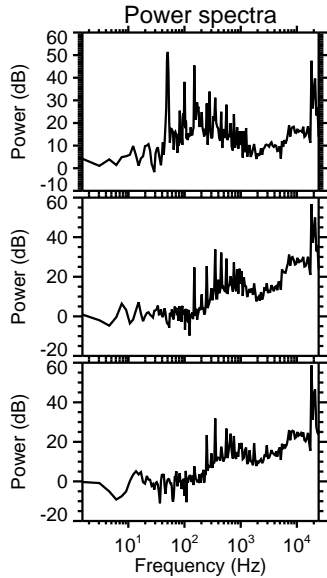
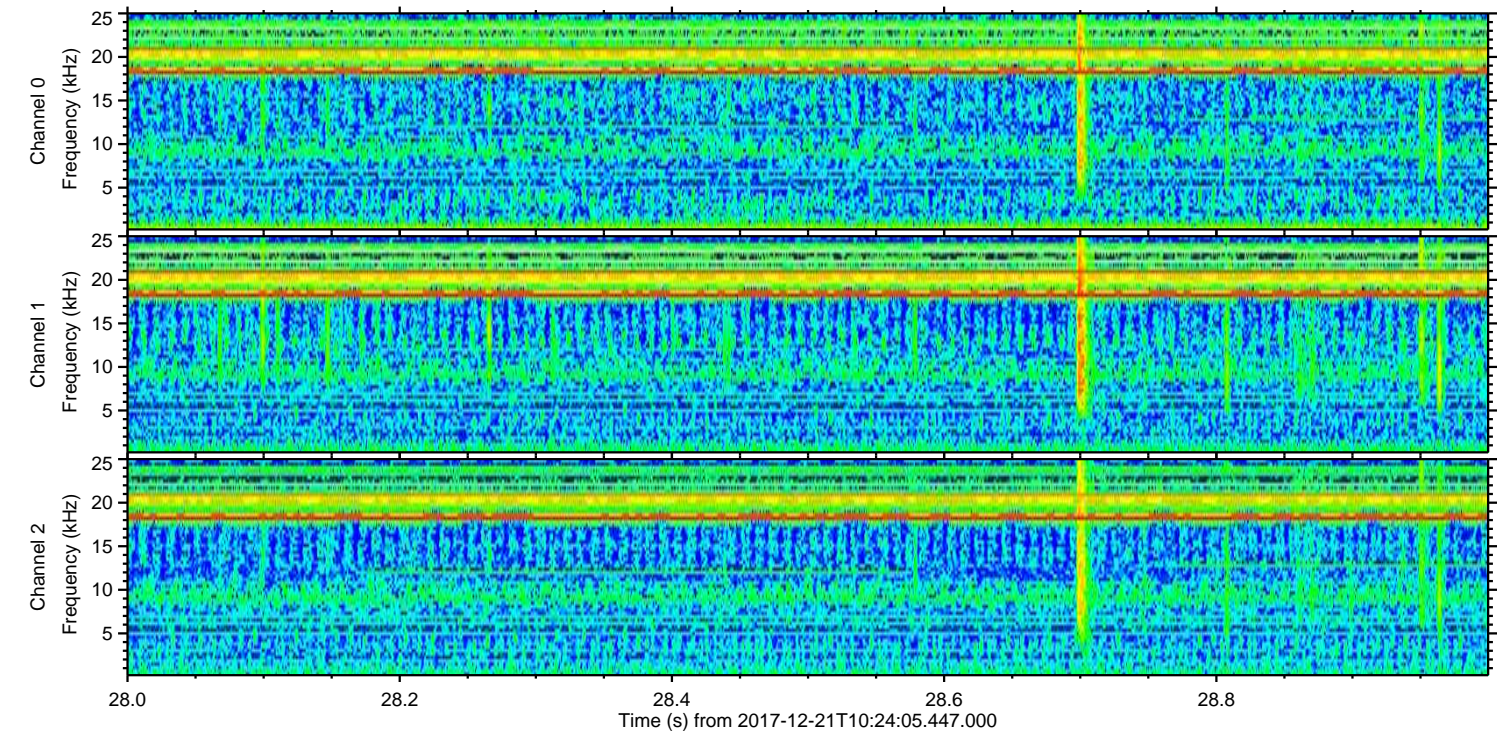
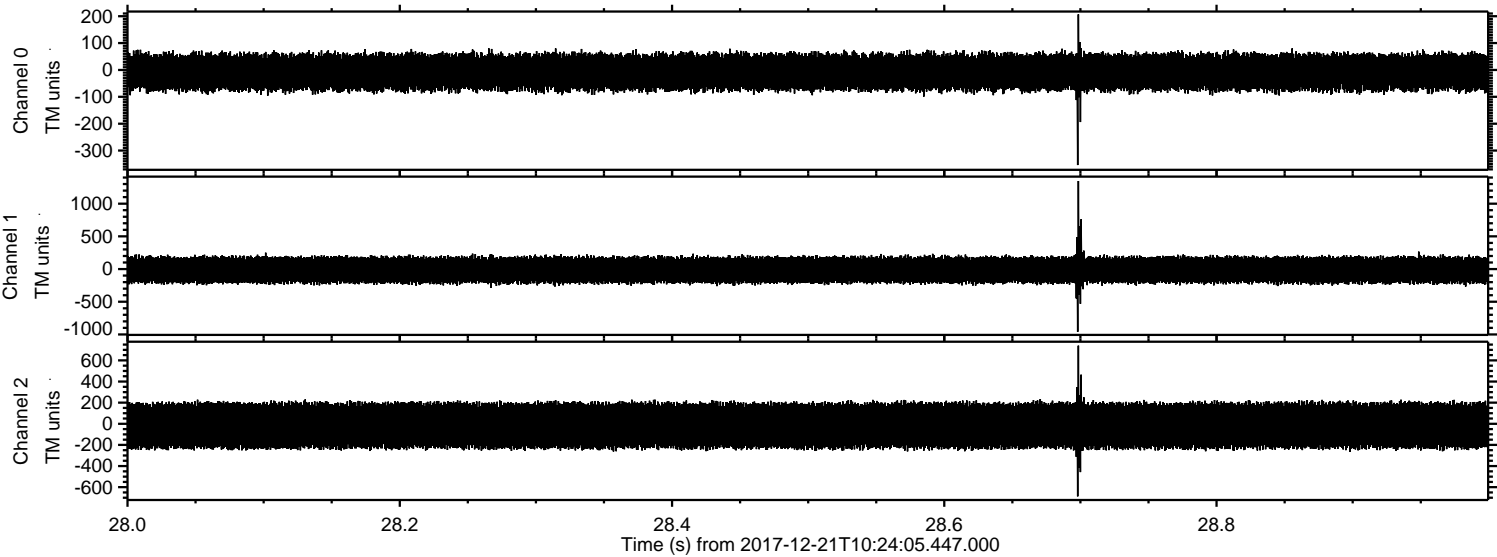
Channel 0  
mn: -356  
mx: 396  
 $\mu$ : -8.3  
 $\sigma$ : 34.7

Channel 1  
mn: -1492  
mx: 1438  
 $\mu$ : -14.4  
 $\sigma$ : 104.9

Channel 2  
mn: -722  
mx: 831  
 $\mu$ : -16.7  
 $\sigma$ : 119.6

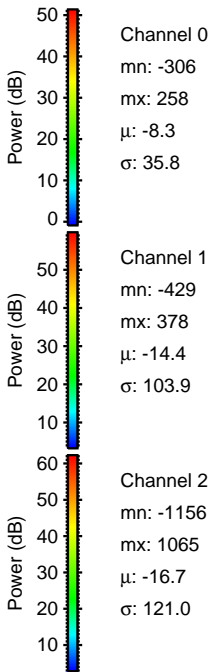
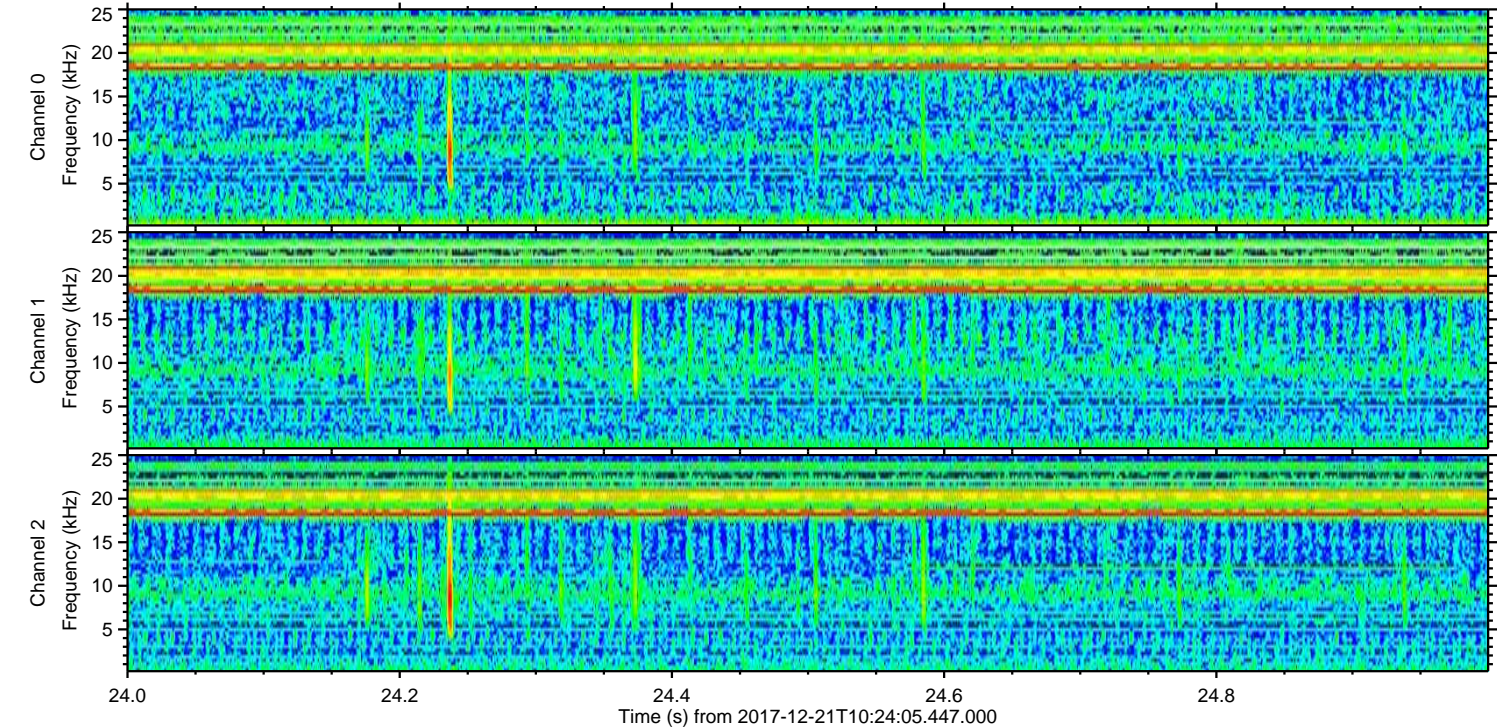
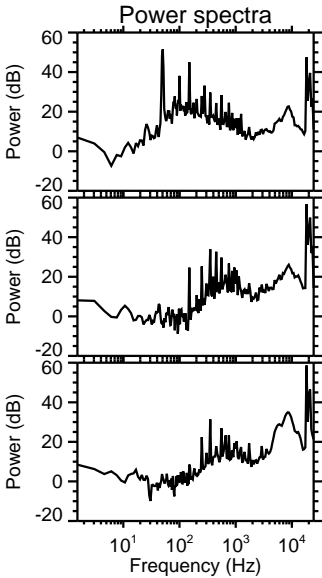
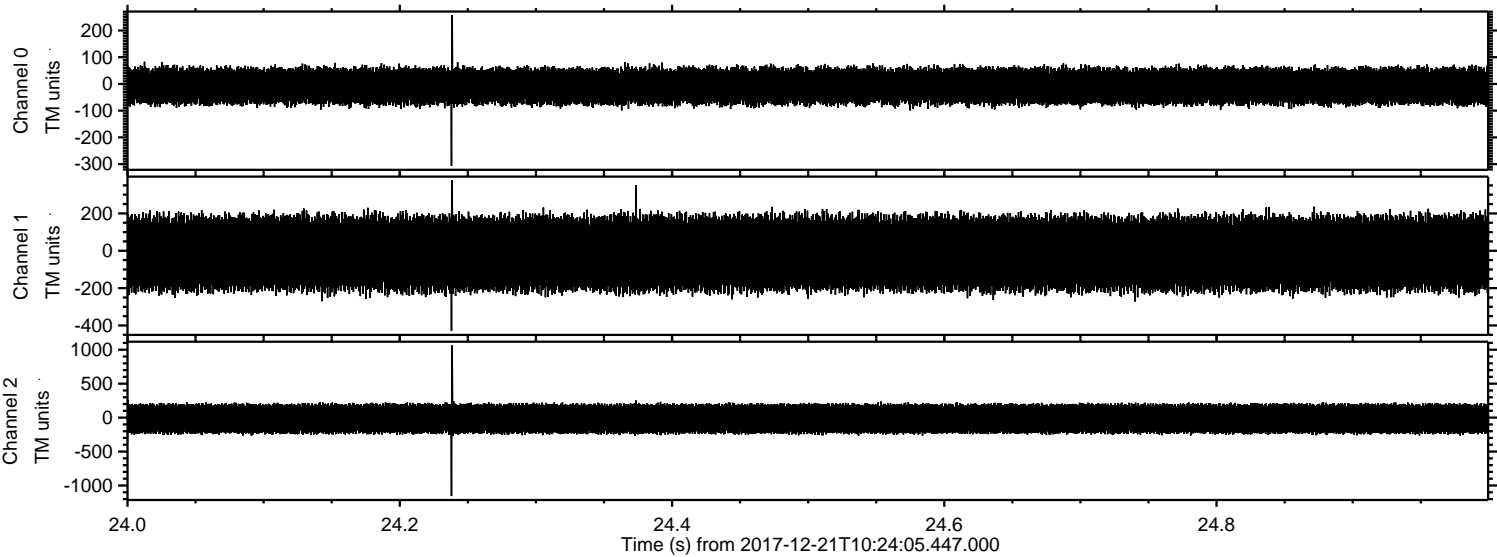


Processed Thu Dec 21 11:32:42 2017 by ELM ver.2012-10-06 from 001\_\_elm20171221\_102404\_\_dat00.bin



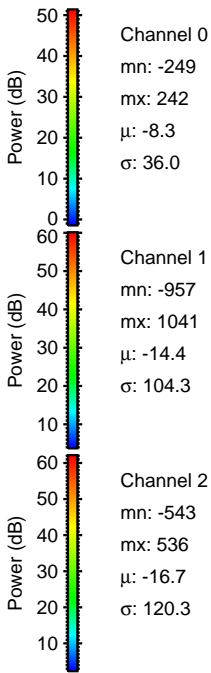
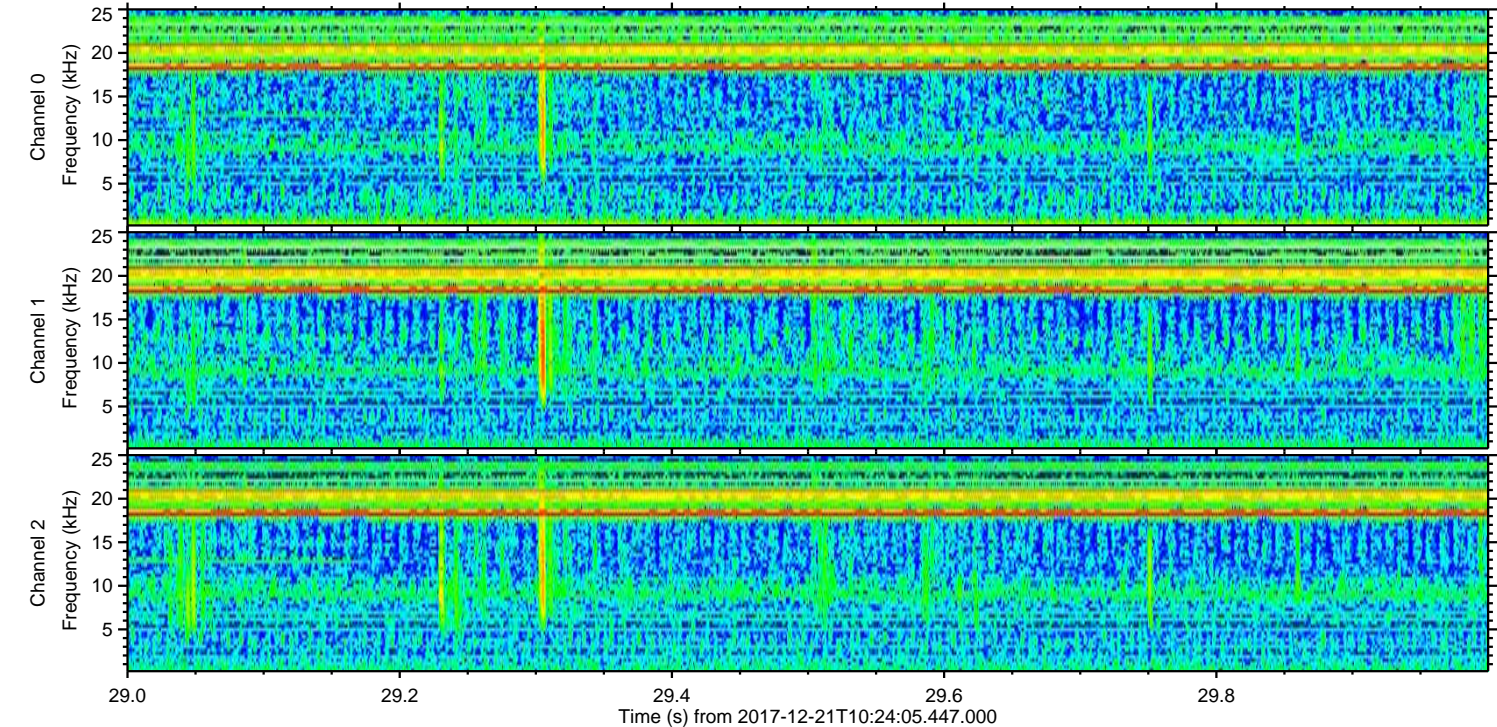
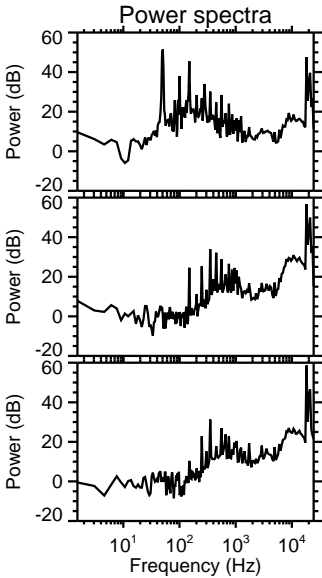
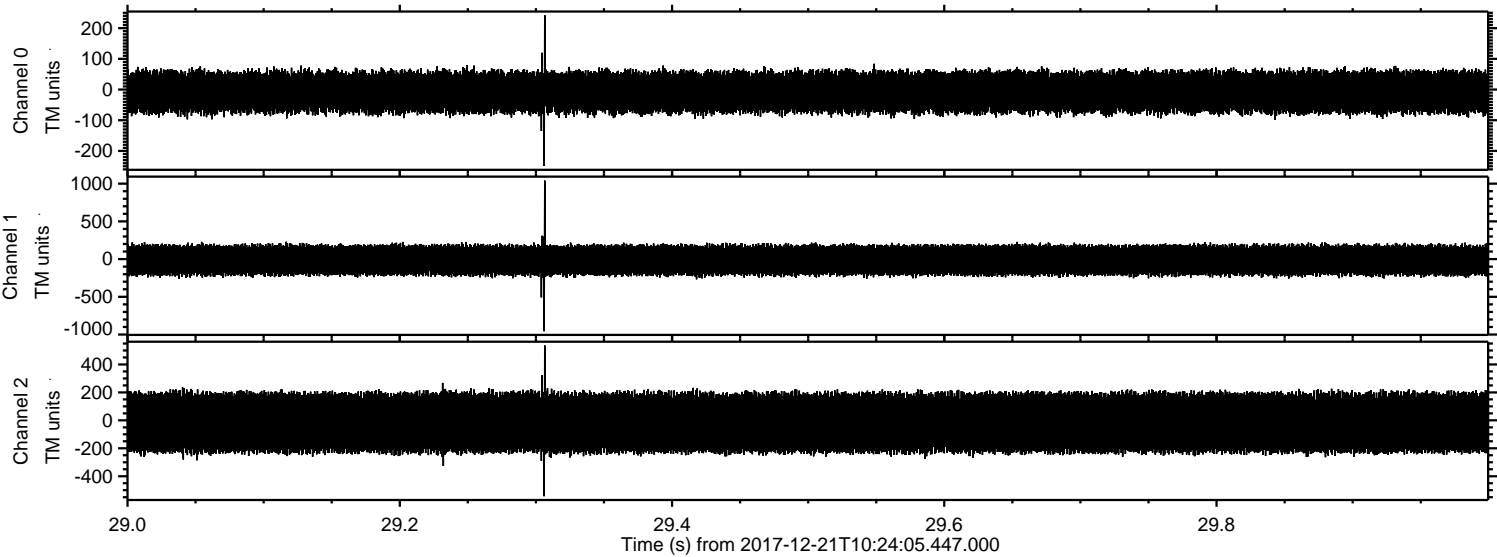


Processed Thu Dec 21 11:32:43 2017 by ELM ver.2012-10-06 from 001\_\_elm20171221\_102404\_\_dat00.bin





Processed Thu Dec 21 11:32:44 2017 by ELM ver.2012-10-06 from 001\_\_elm20171221\_102404\_\_dat00.bin





Processed Thu Dec 21 11:32:45 2017 by ELM ver.2012-10-06 from 001\_\_elm20171221\_102404\_\_dat00.bin

