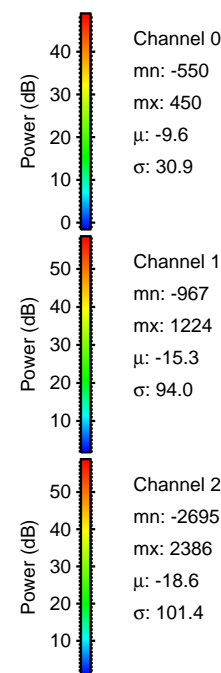
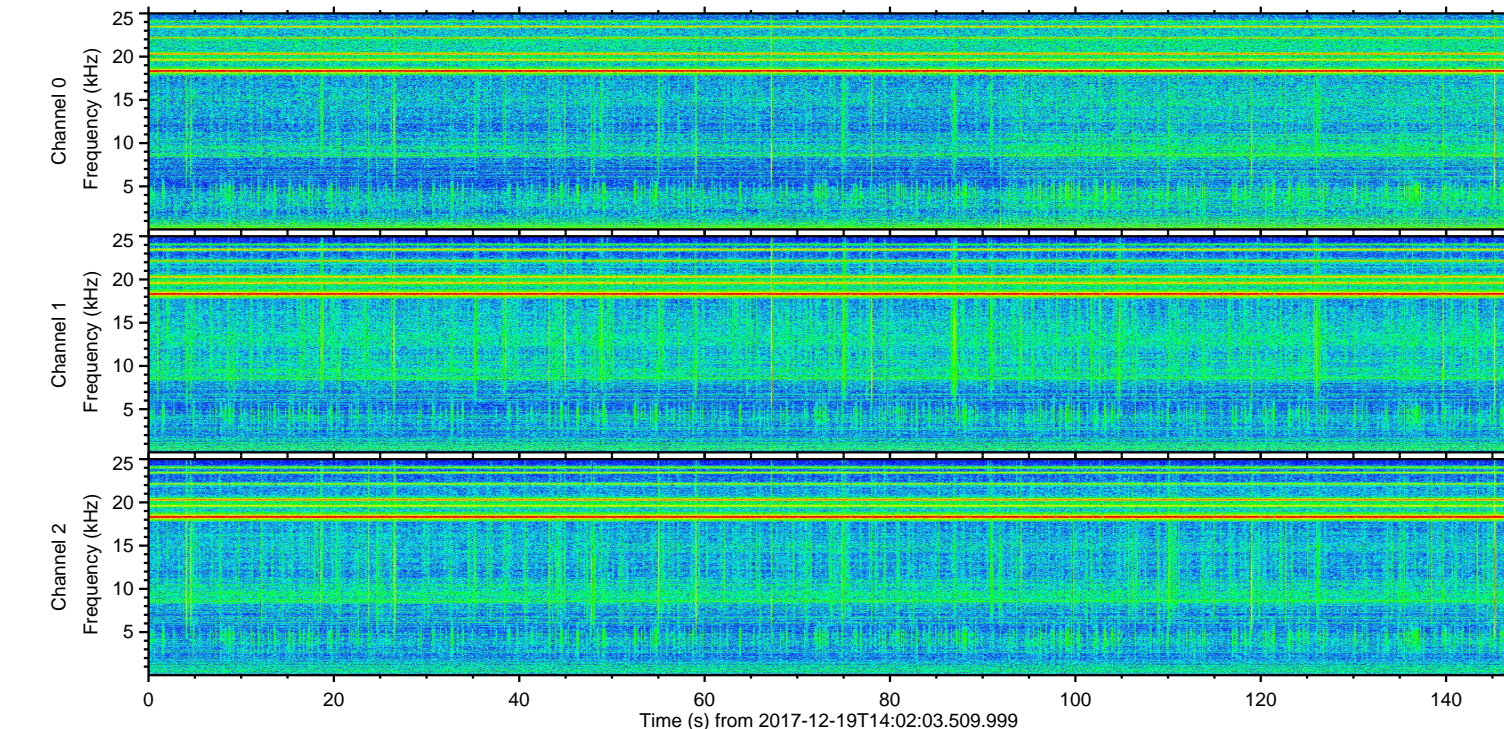
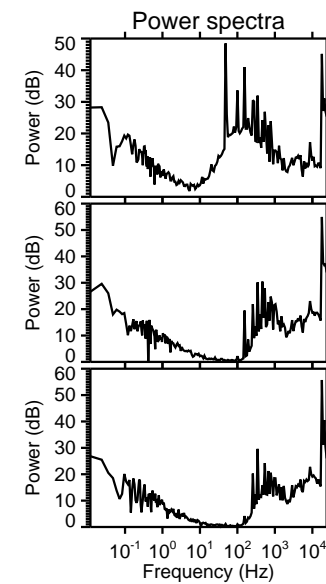
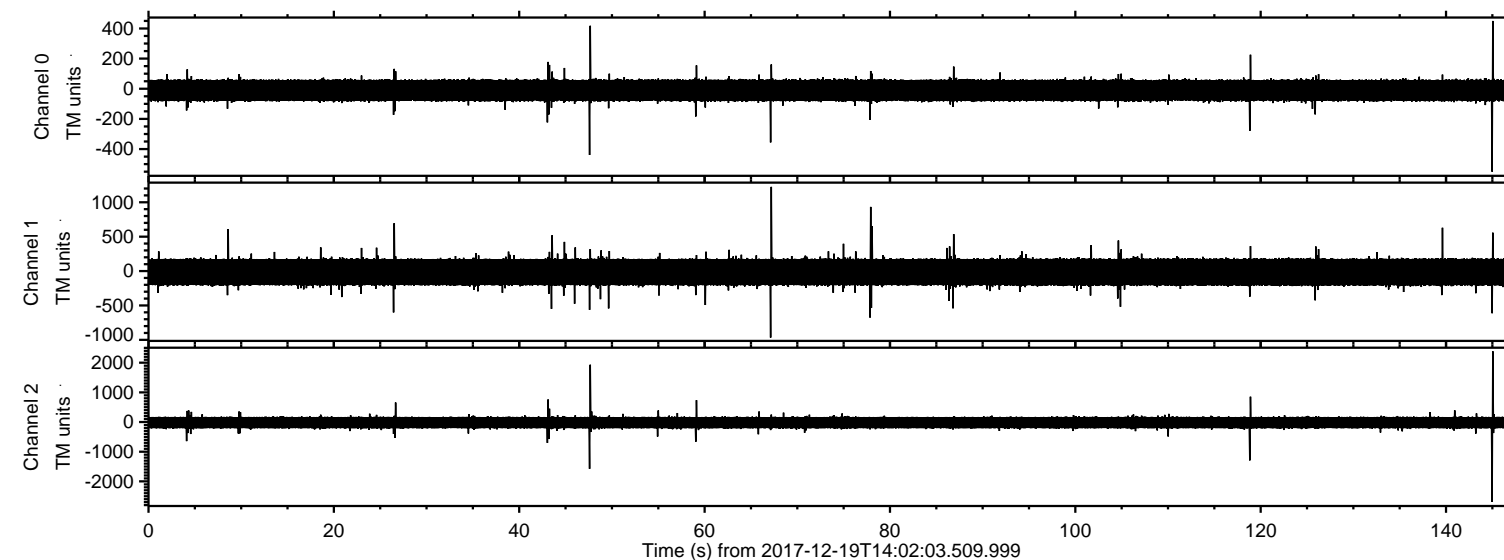


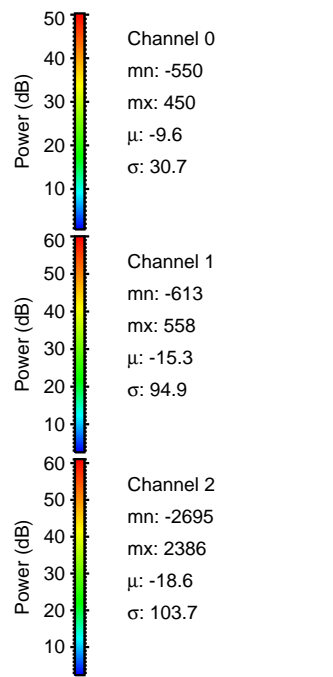
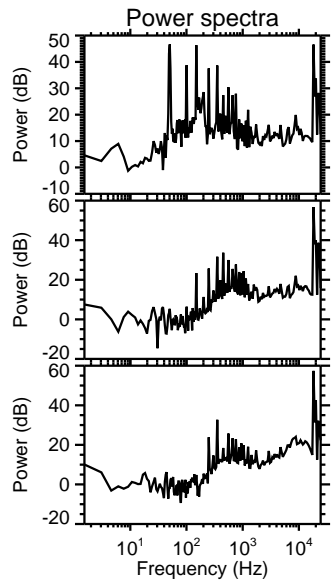
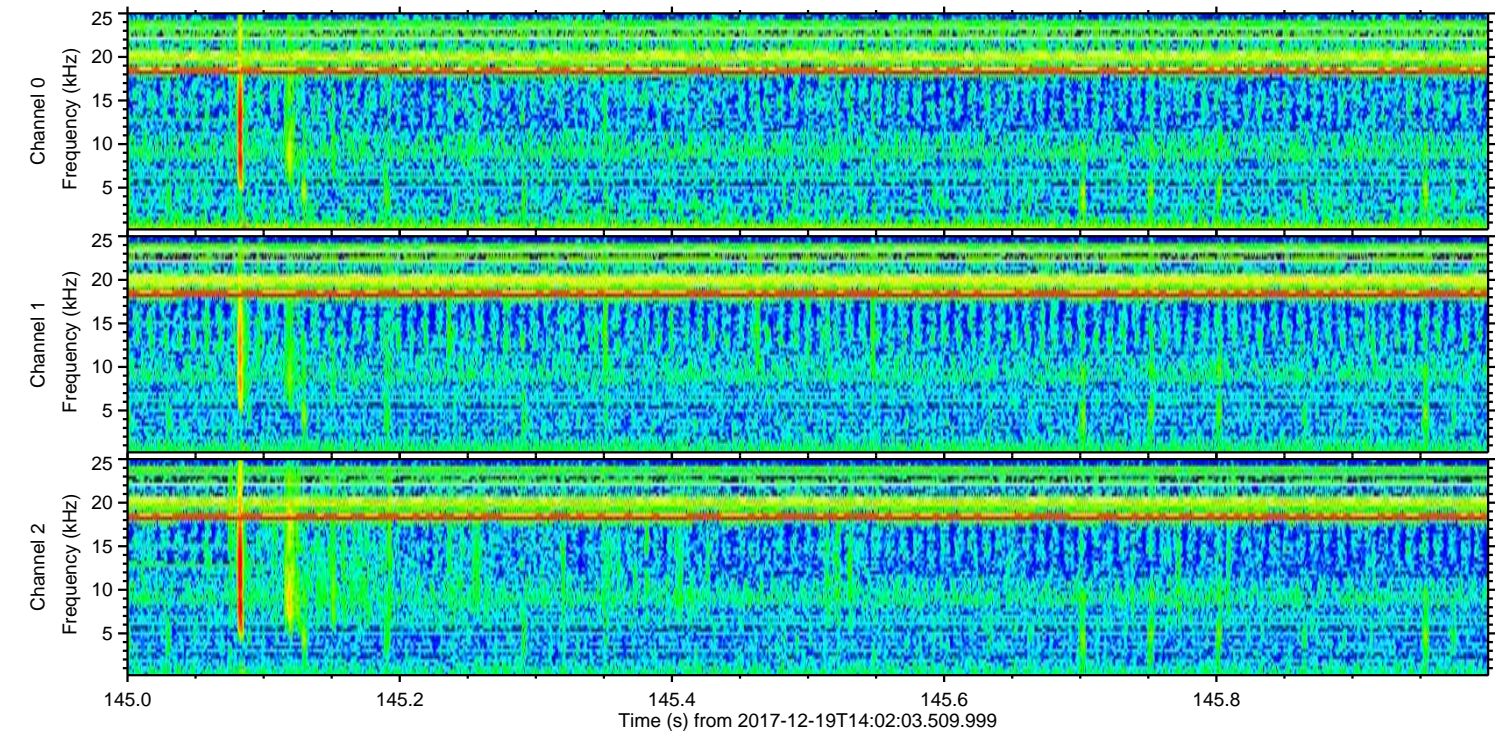
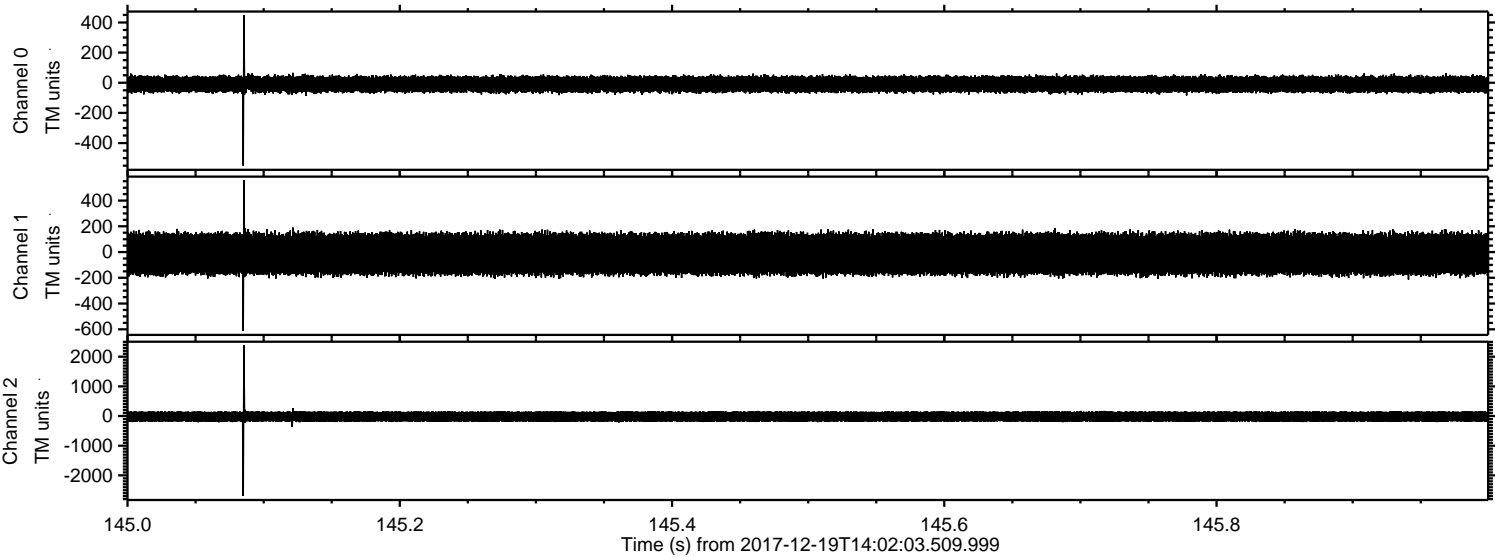
ELMAVAN 3D WAVEFORMS (Measured data sampled at 50 kHz) 51000 packets of 144 samples from 2017-12-19T14:02:03.509.999.

Processed Tue Dec 19 15:13:22 2017 by ELM ver.2012-10-06 from 001__elm20171219_140202__dat00.bin



ELMAVAN 3D WAVEFORMS (Measured data sampled at 50 kHz) 51000 packets of 144 samples from 2017-12-19T14:02:03.509.999. Part 146/147

Processed Tue Dec 19 15:13:31 2017 by ELM ver.2012-10-06 from 001__elm20171219_140202__dat00.bin



Power spectra

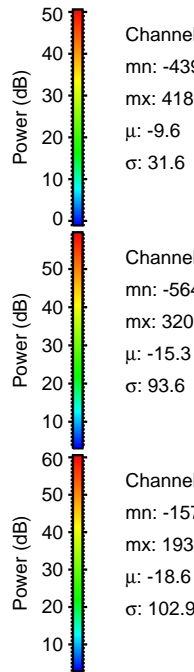
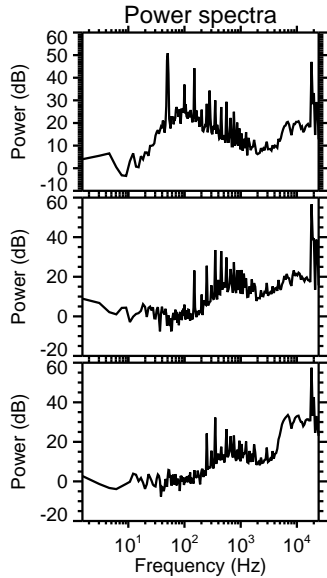
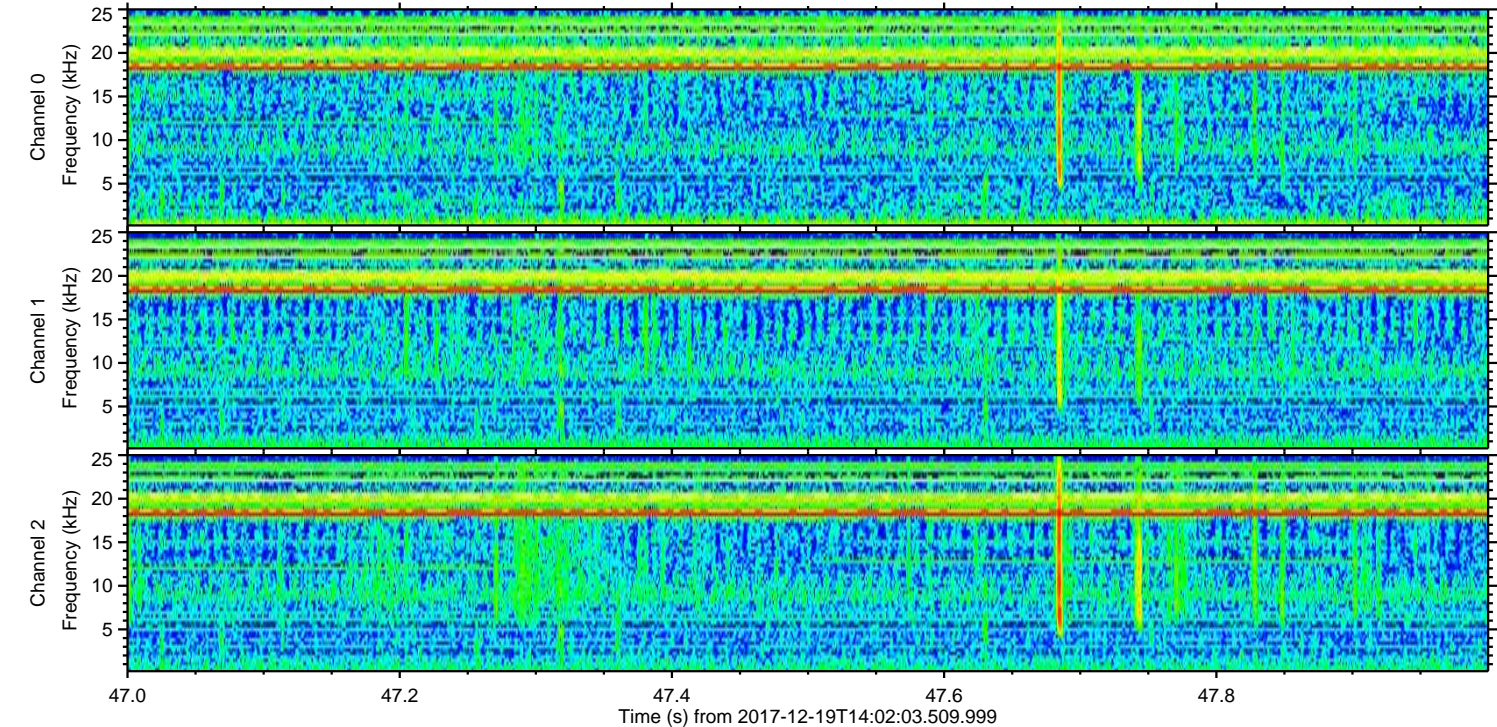
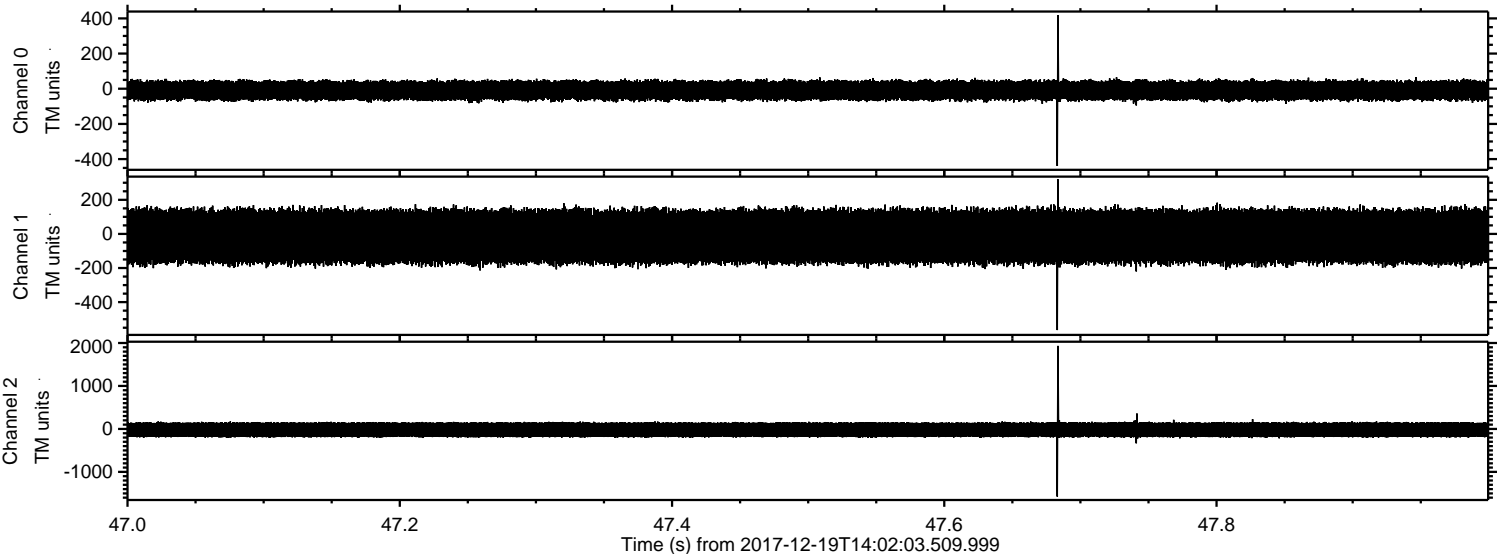
Channel 0
mn: -550
mx: 450
 μ : -9.6
 σ : 30.7

Channel 1
mn: -613
mx: 558
 μ : -15.3
 σ : 94.9

Channel 2
mn: -2695
mx: 2386
 μ : -18.6
 σ : 103.7

ELMAVAN 3D WAVEFORMS (Measured data sampled at 50 kHz) 51000 packets of 144 samples from 2017-12-19T14:02:03.509.999. Part 48/147

Processed Tue Dec 19 15:13:32 2017 by ELM ver.2012-10-06 from 001__elm20171219_140202__dat00.bin



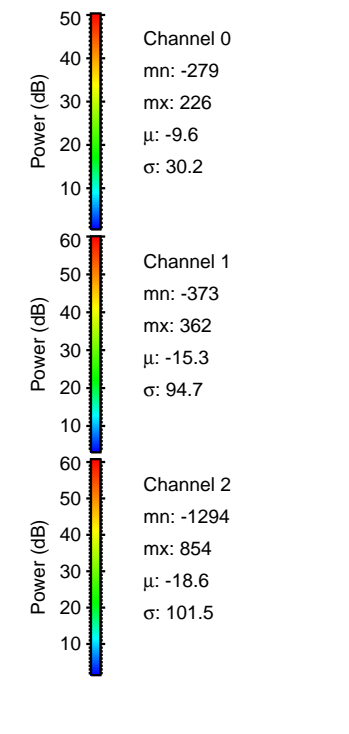
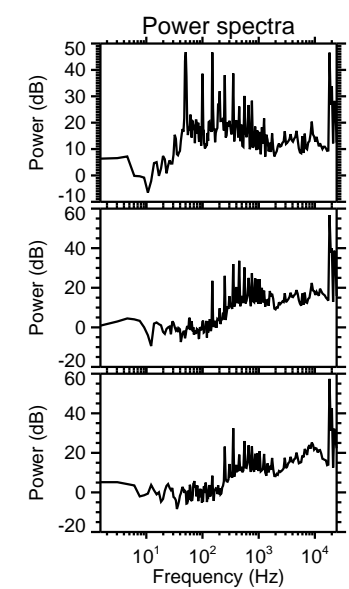
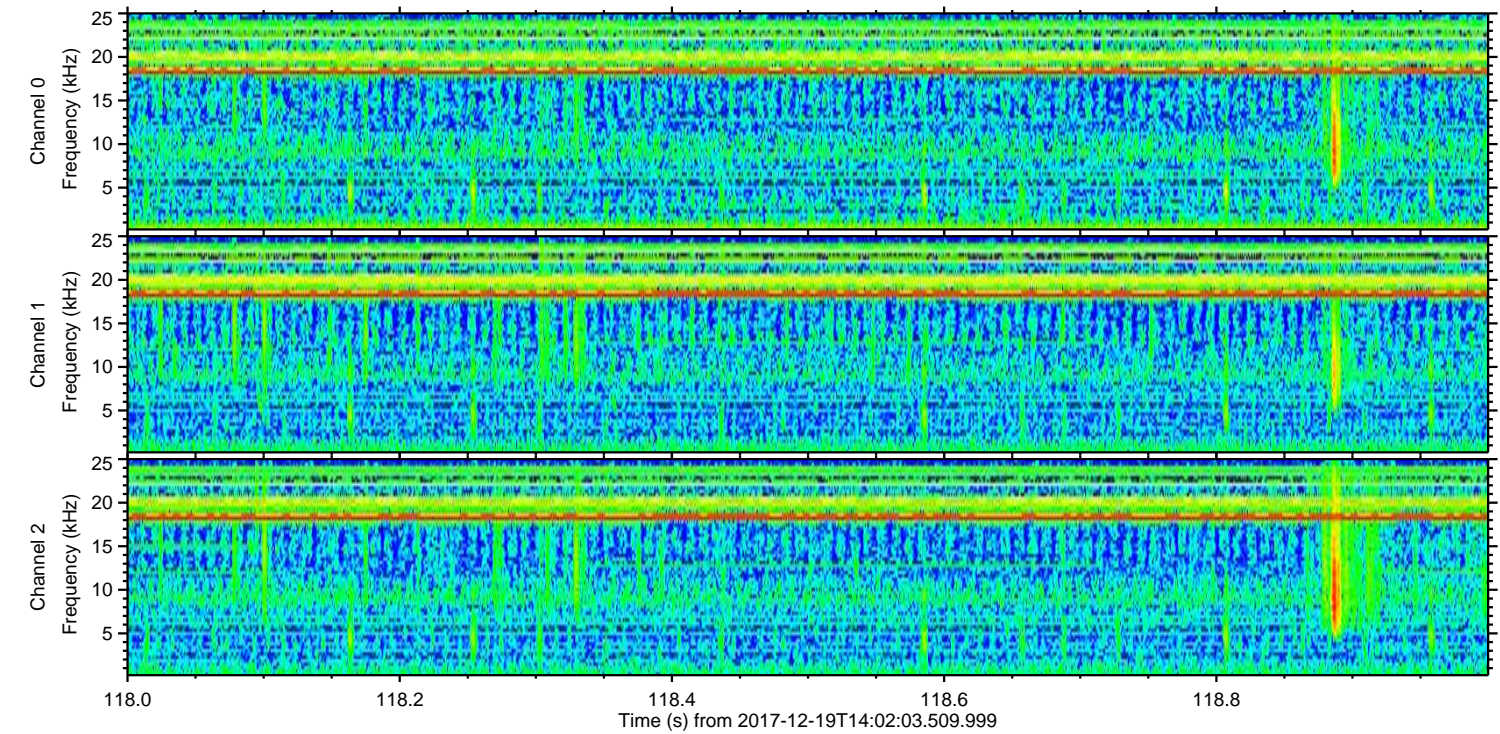
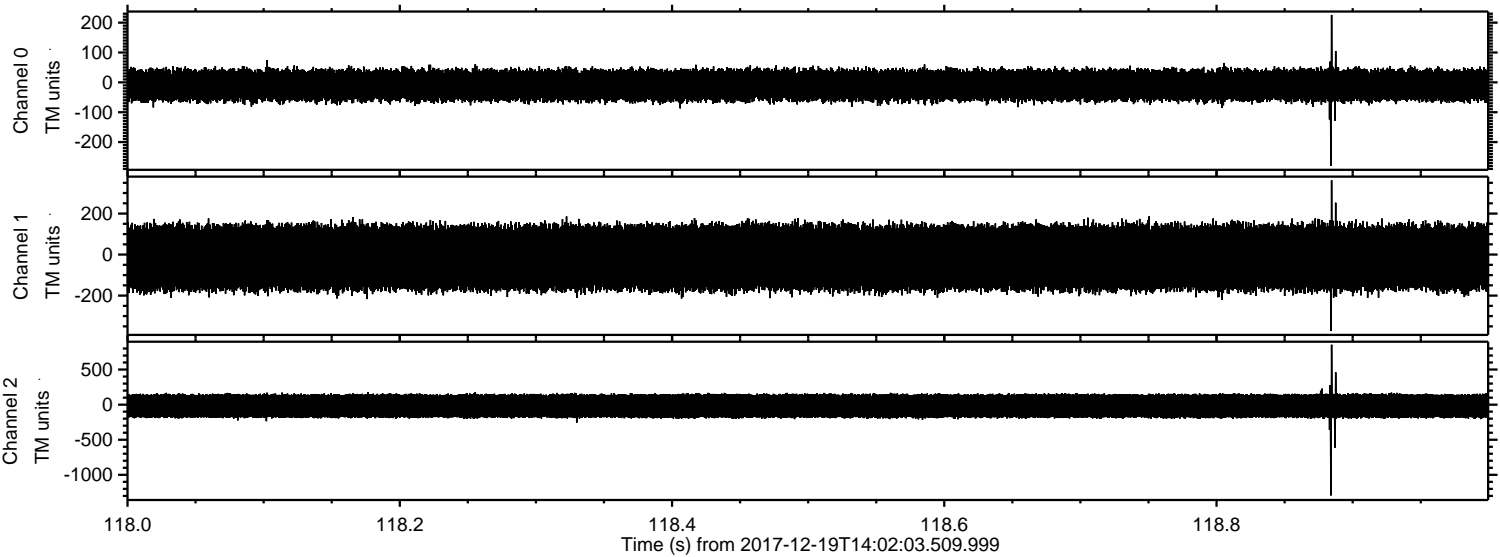
Channel 0
mn: -439
mx: 418
 μ : -9.6
 σ : 31.6

Channel 1
mn: -564
mx: 320
 μ : -15.3
 σ : 93.6

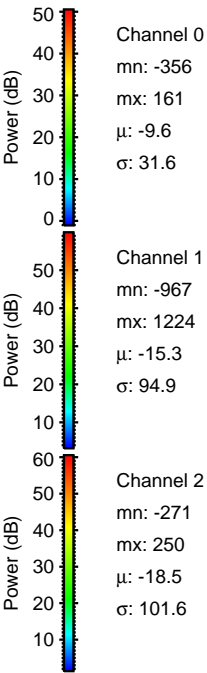
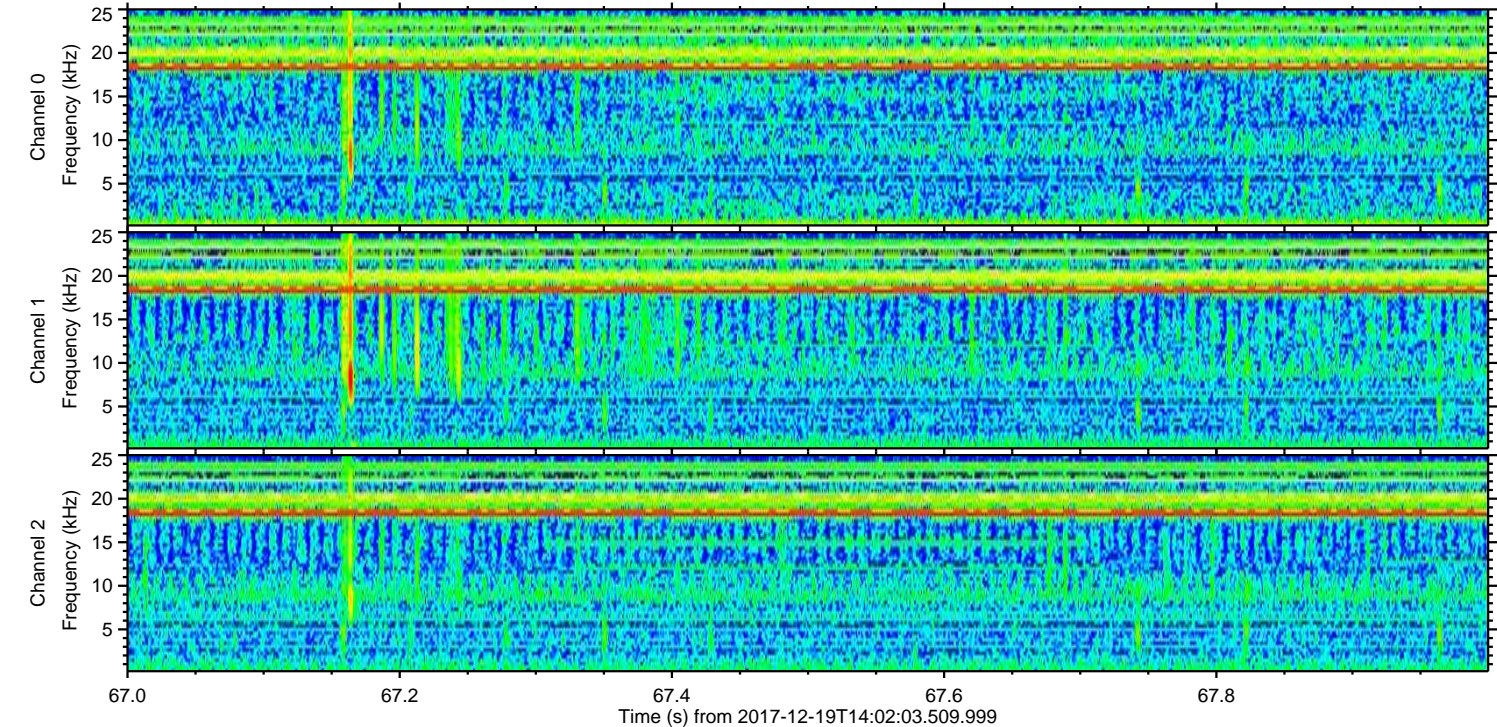
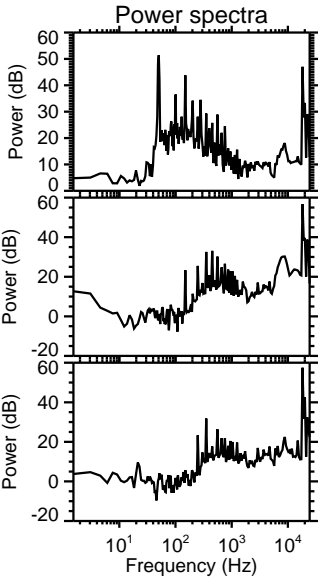
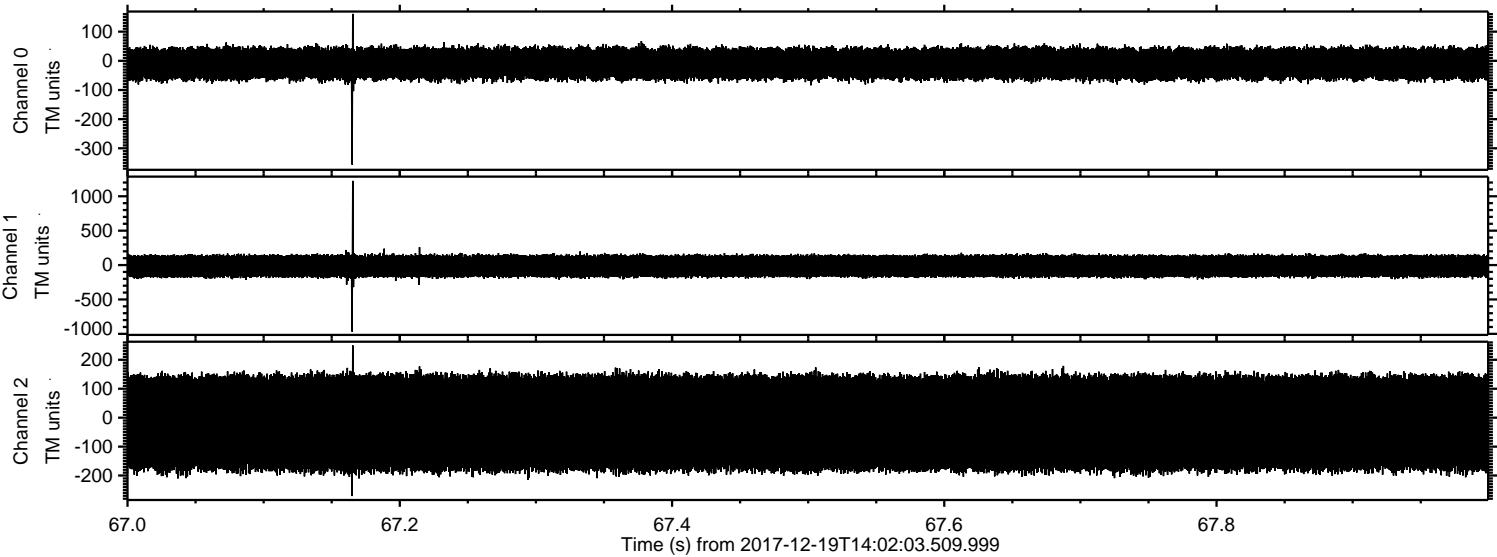
Channel 2
mn: -1575
mx: 1933
 μ : -18.6
 σ : 102.9

ELMAVAN 3D WAVEFORMS (Measured data sampled at 50 kHz) 51000 packets of 144 samples from 2017-12-19T14:02:03.509.999. Part 119/147

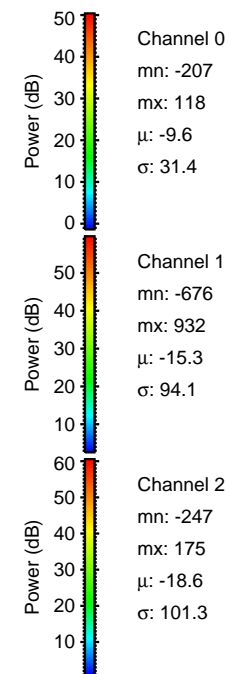
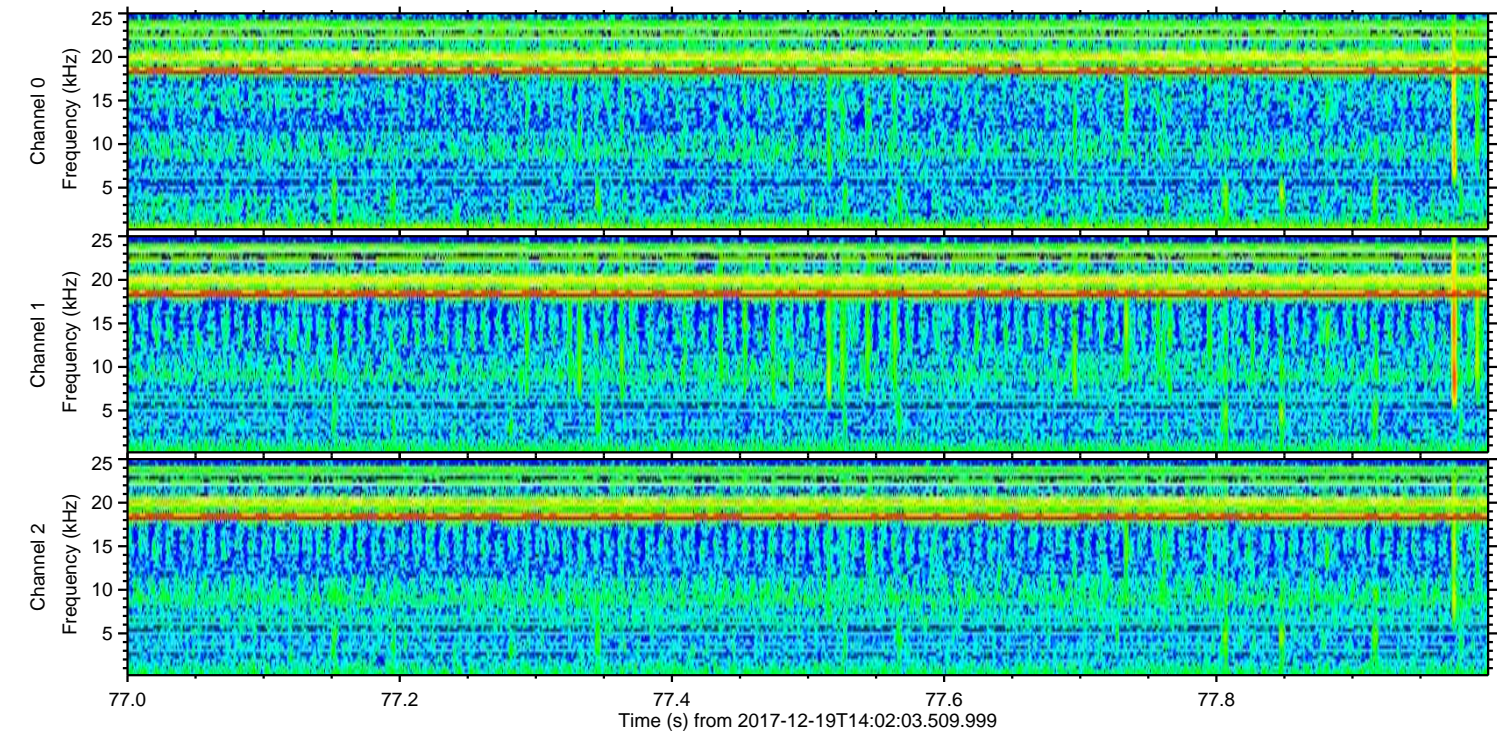
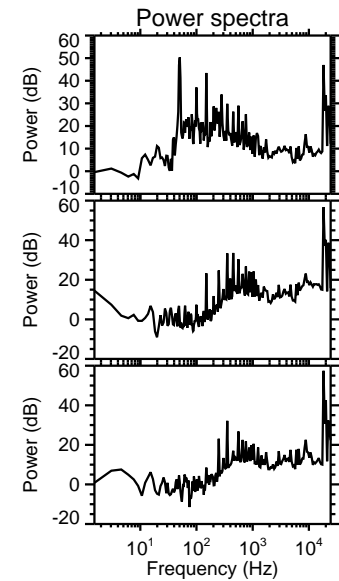
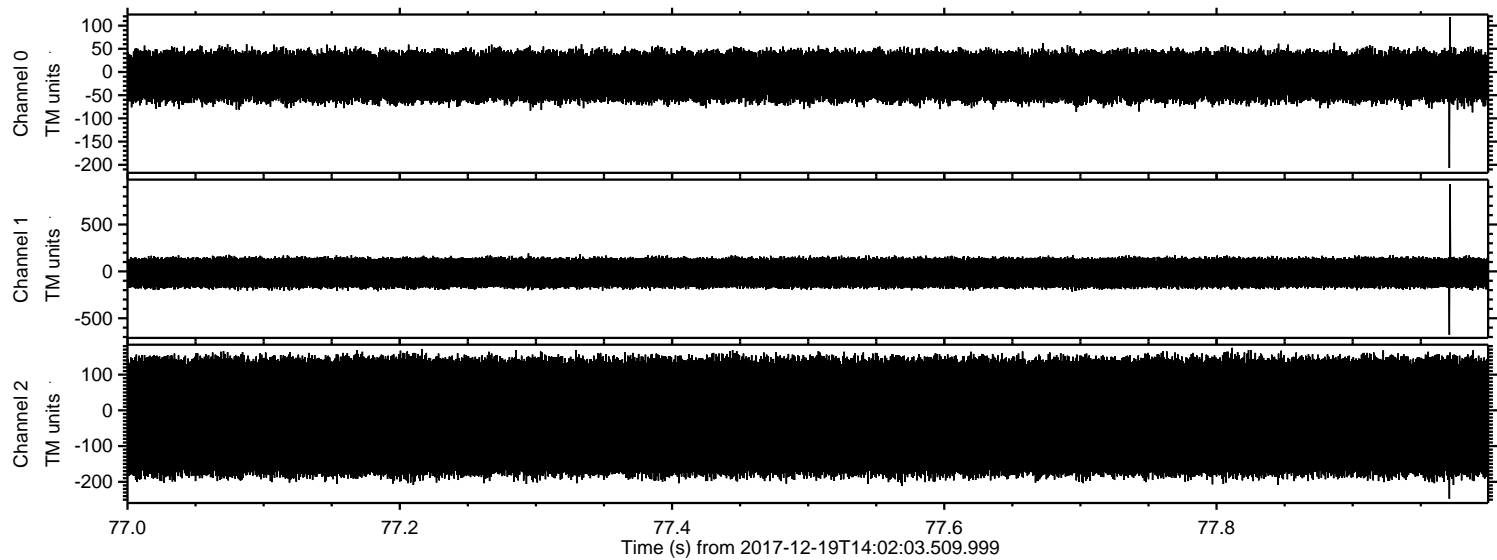
Processed Tue Dec 19 15:13:32 2017 by ELM ver.2012-10-06 from 001__elm20171219_140202__dat00.bin



Processed Tue Dec 19 15:13:33 2017 by ELM ver.2012-10-06 from 001__elm20171219_140202__dat00.bin

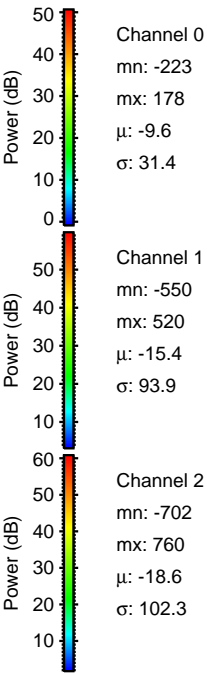
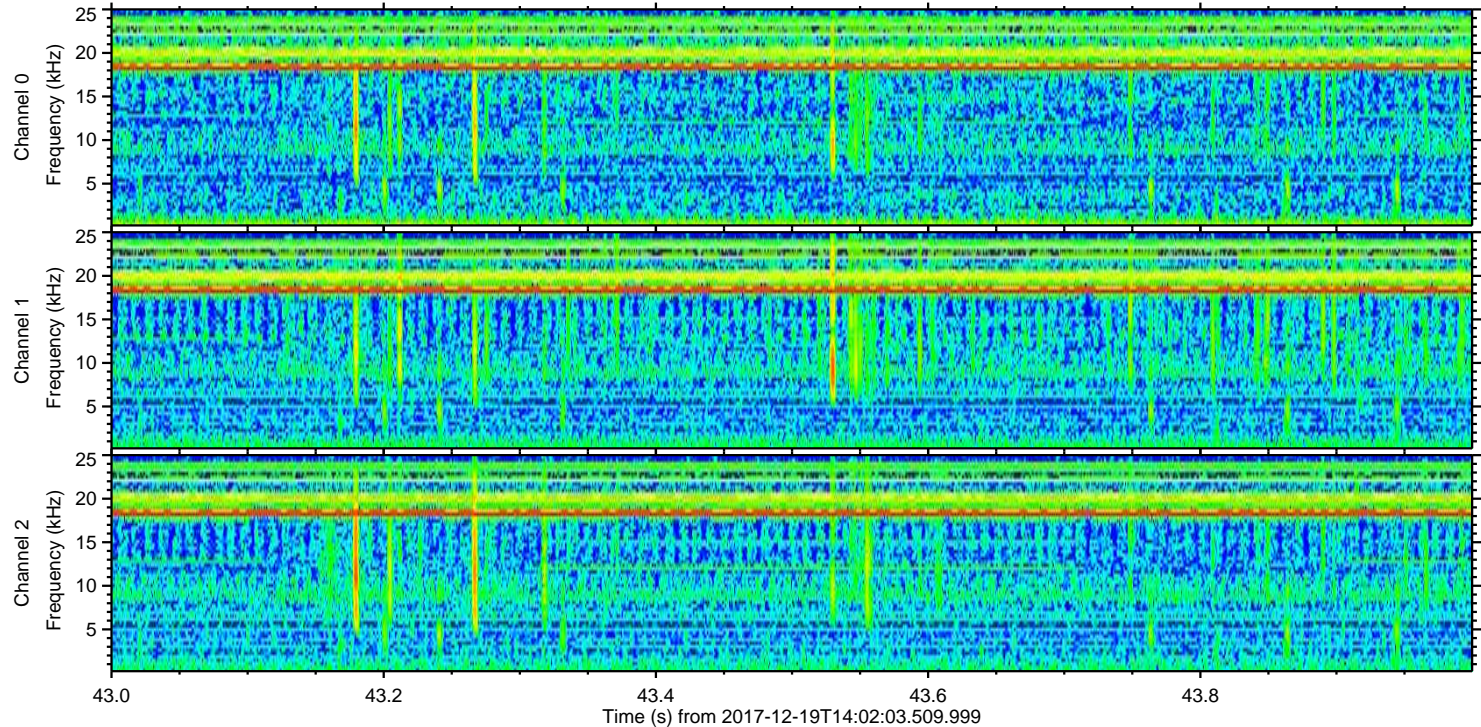
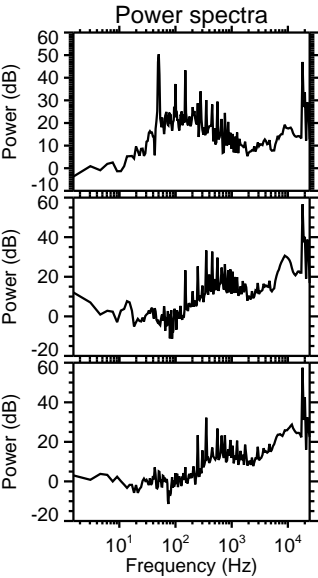
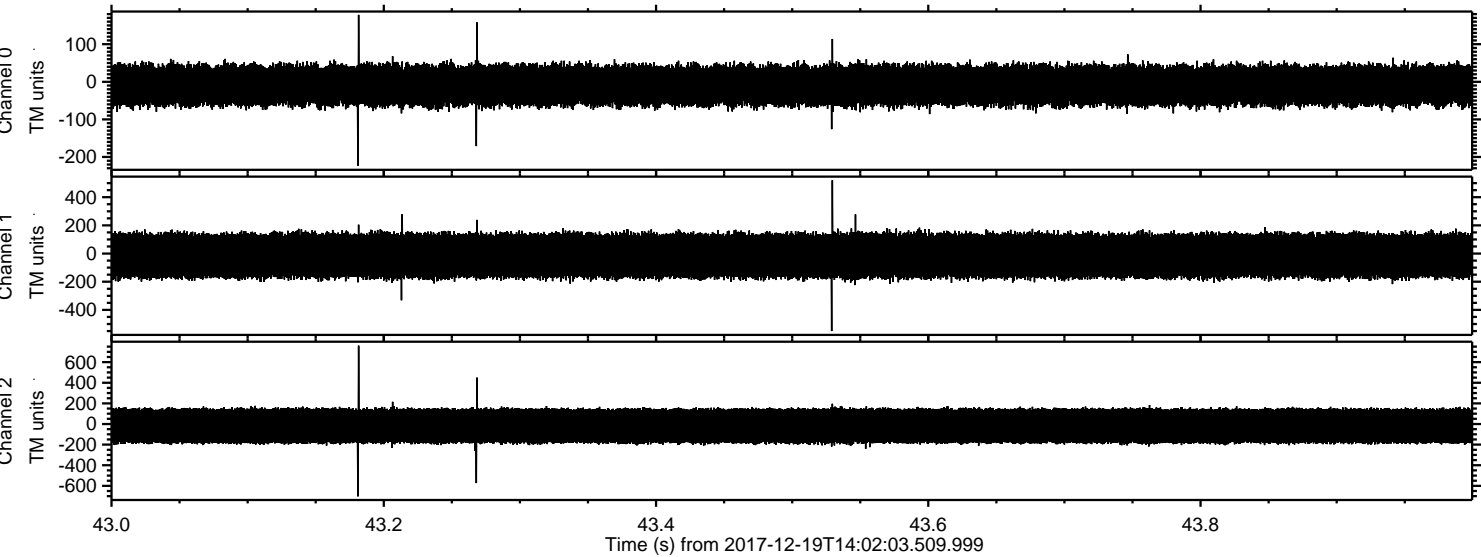


Processed Tue Dec 19 15:13:34 2017 by ELM ver.2012-10-06 from 001__elm20171219_140202__dat00.bin

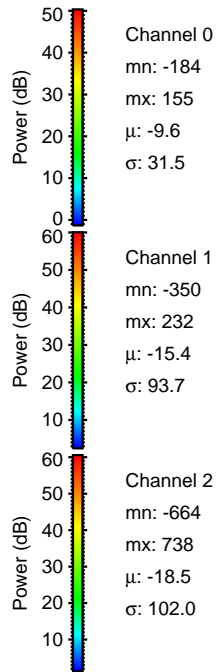
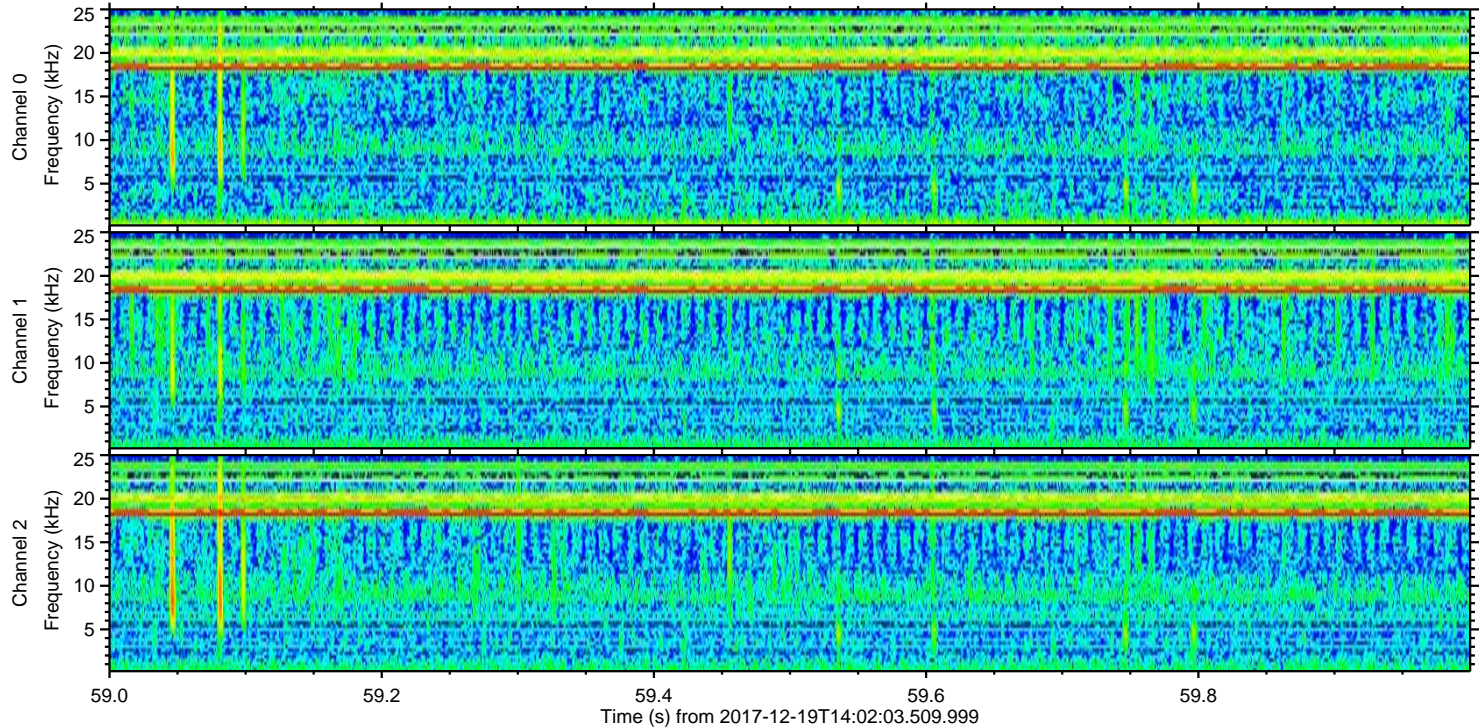
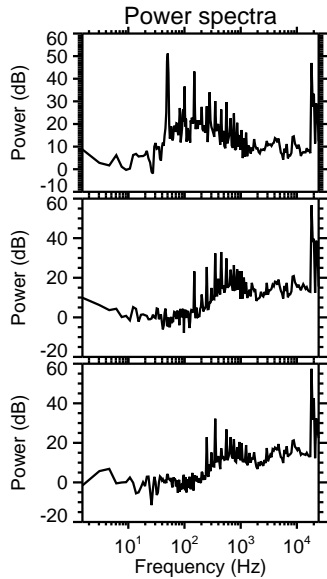
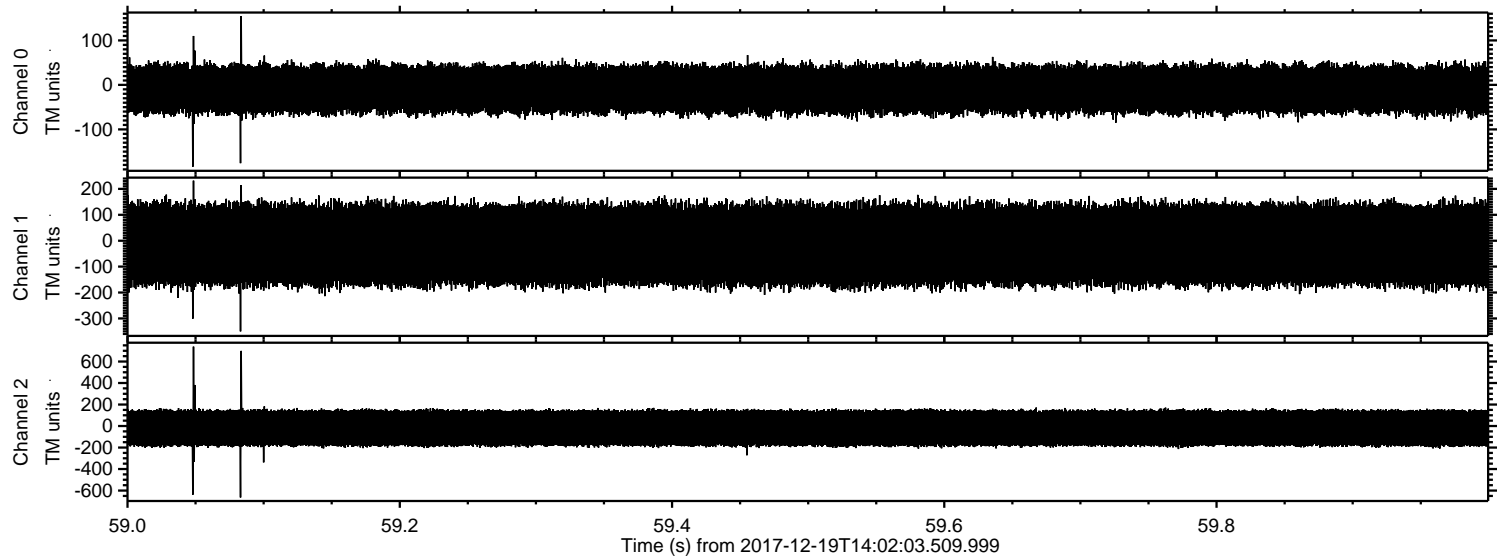


ELMAVAN 3D WAVEFORMS (Measured data sampled at 50 kHz) 51000 packets of 144 samples from 2017-12-19T14:02:03.509.999. Part 44/147

Processed Tue Dec 19 15:13:35 2017 by ELM ver.2012-10-06 from 001__elm20171219_140202__dat00.bin

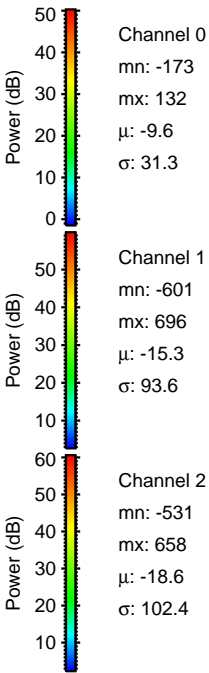
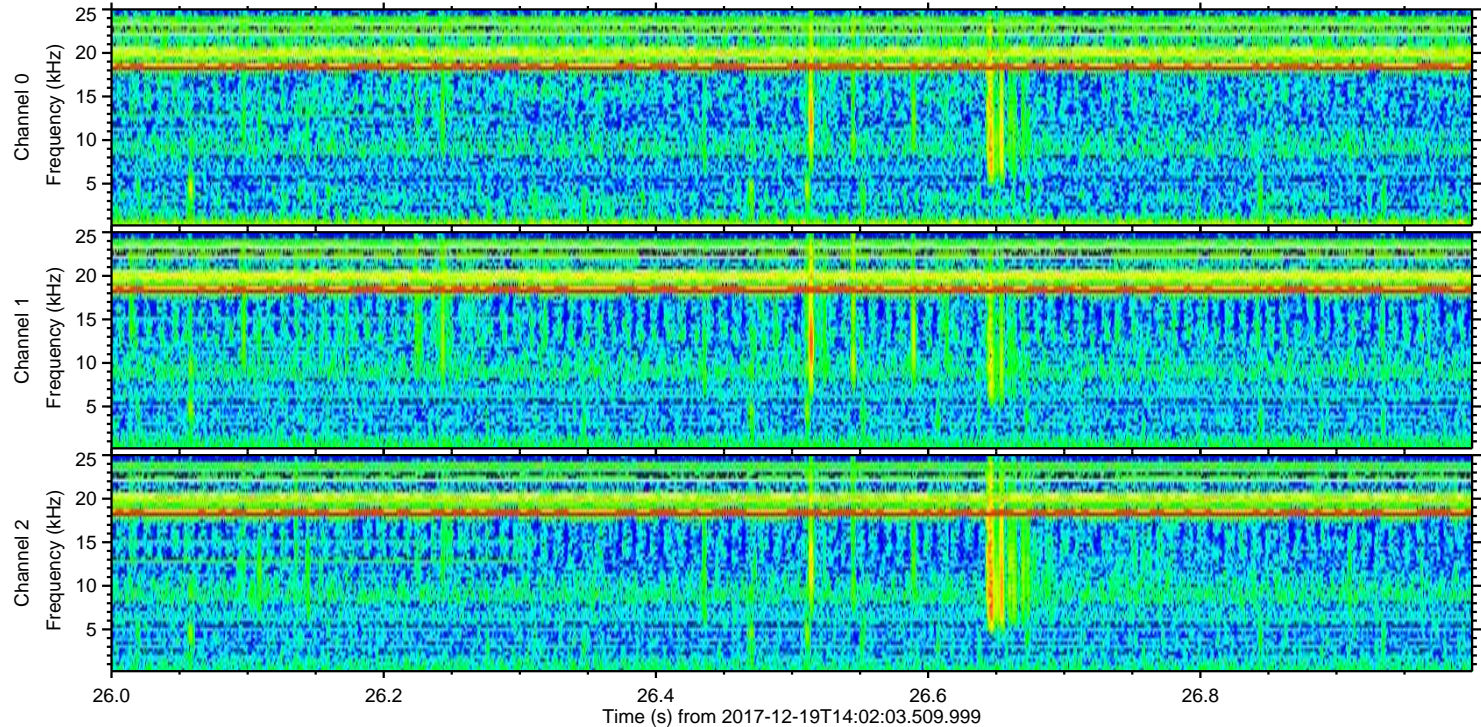
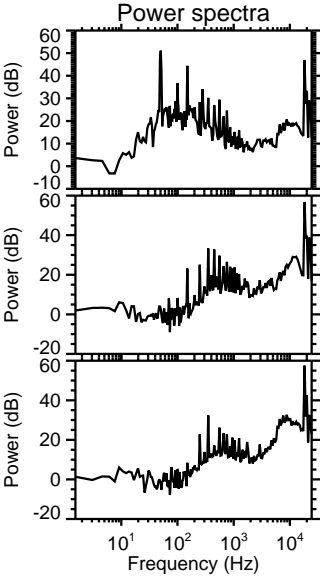
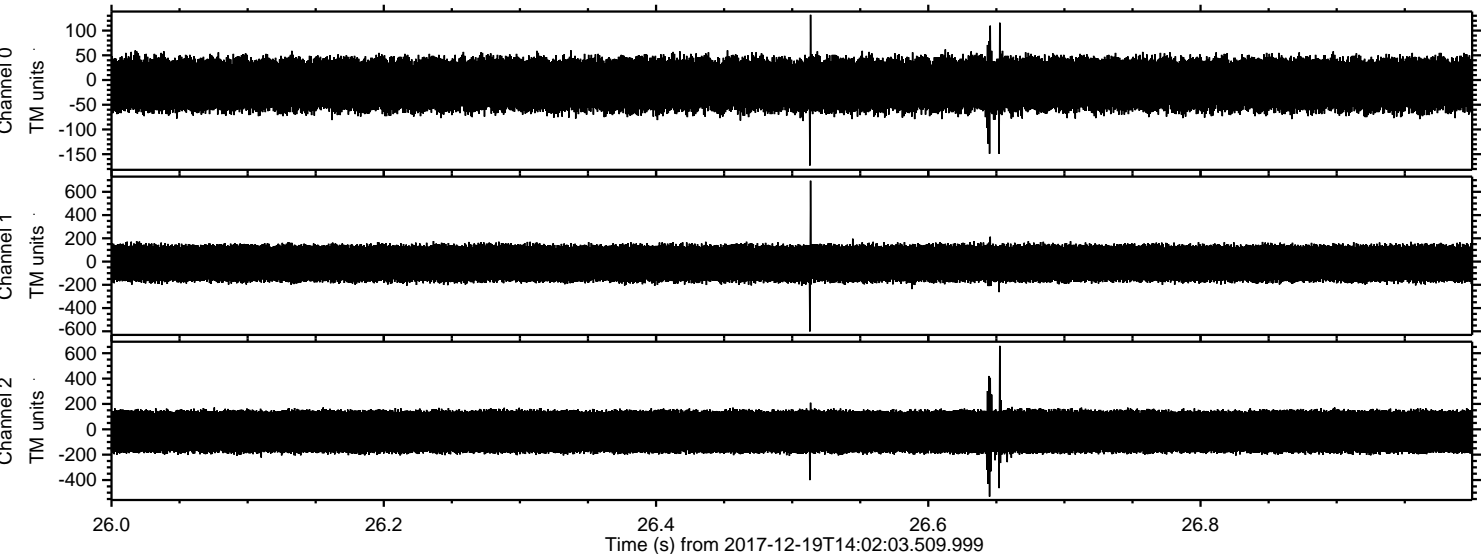


Processed Tue Dec 19 15:13:36 2017 by ELM ver.2012-10-06 from 001__elm20171219_140202__dat00.bin

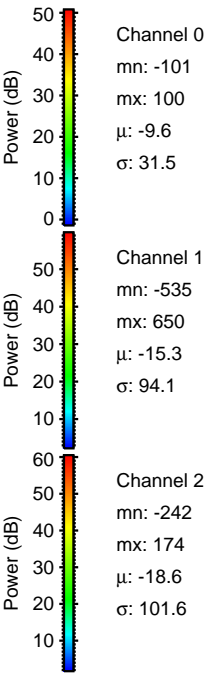
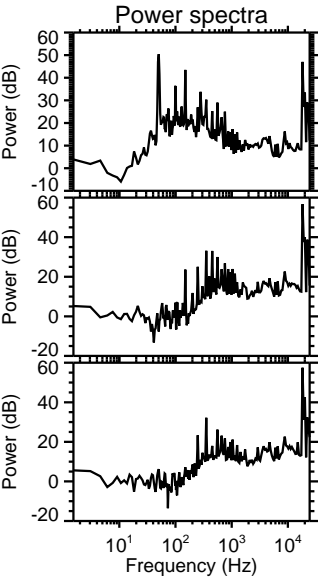
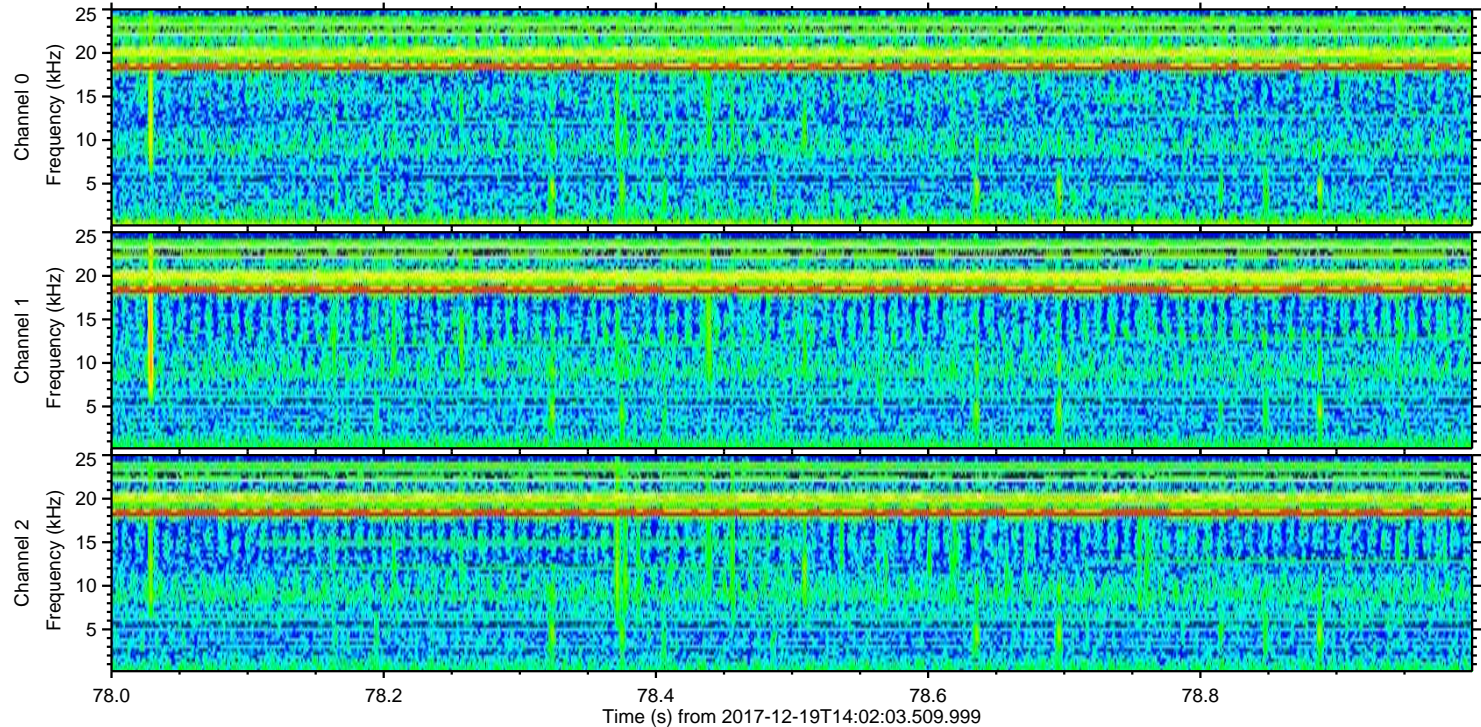
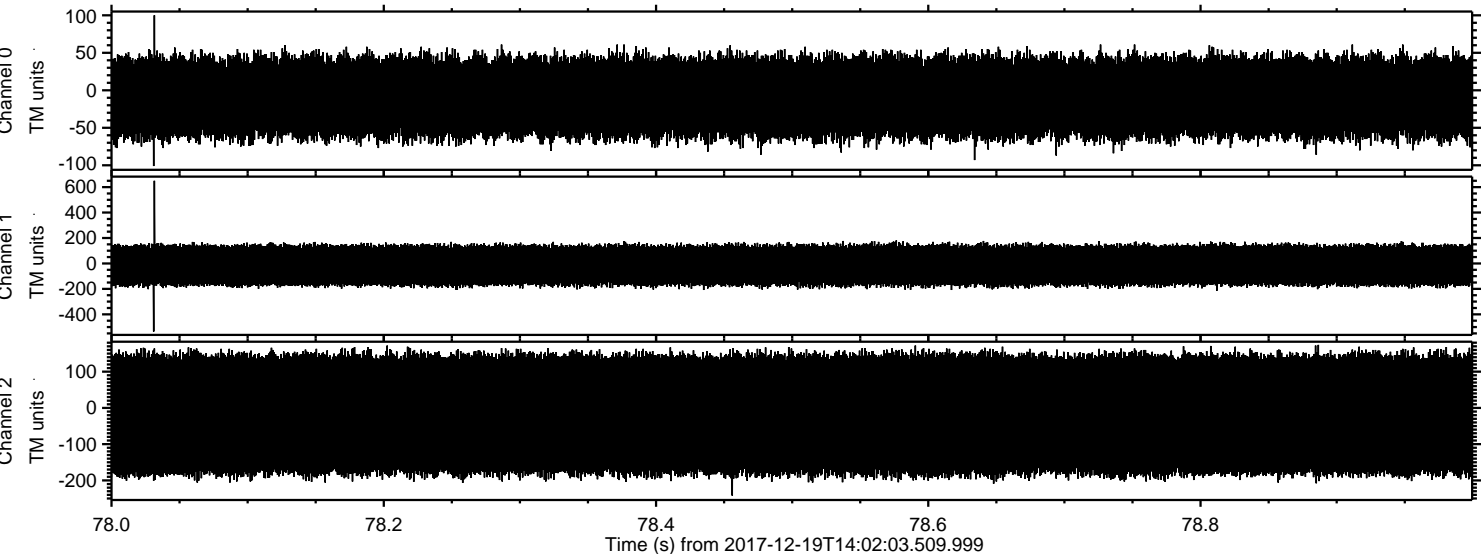


ELMAVAN 3D WAVEFORMS (Measured data sampled at 50 kHz) 51000 packets of 144 samples from 2017-12-19T14:02:03.509.999. Part 27/147

Processed Tue Dec 19 15:13:36 2017 by ELM ver.2012-10-06 from 001__elm20171219_140202__dat00.bin

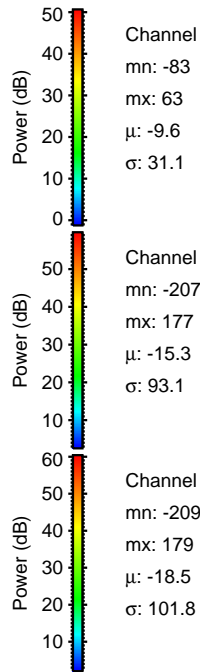
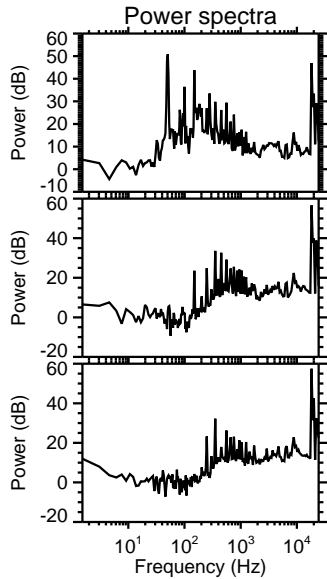
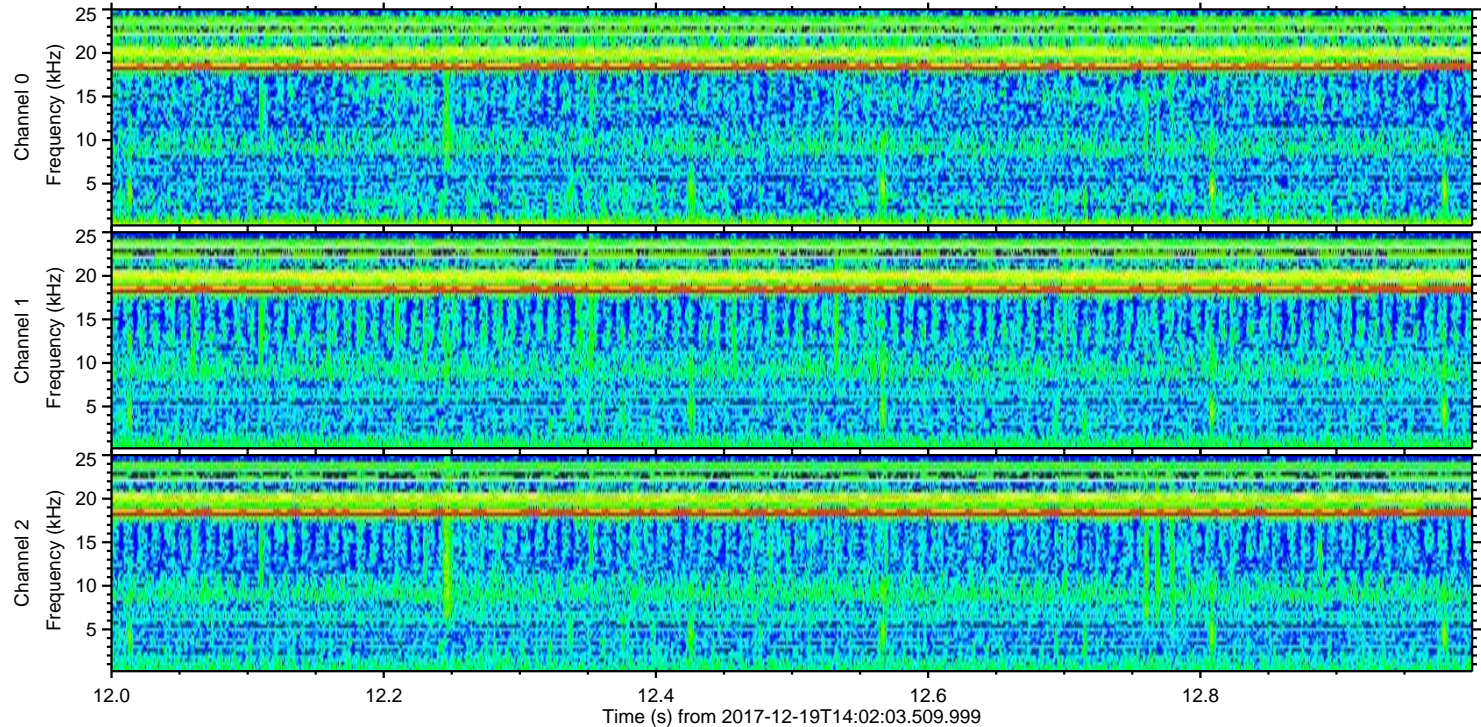
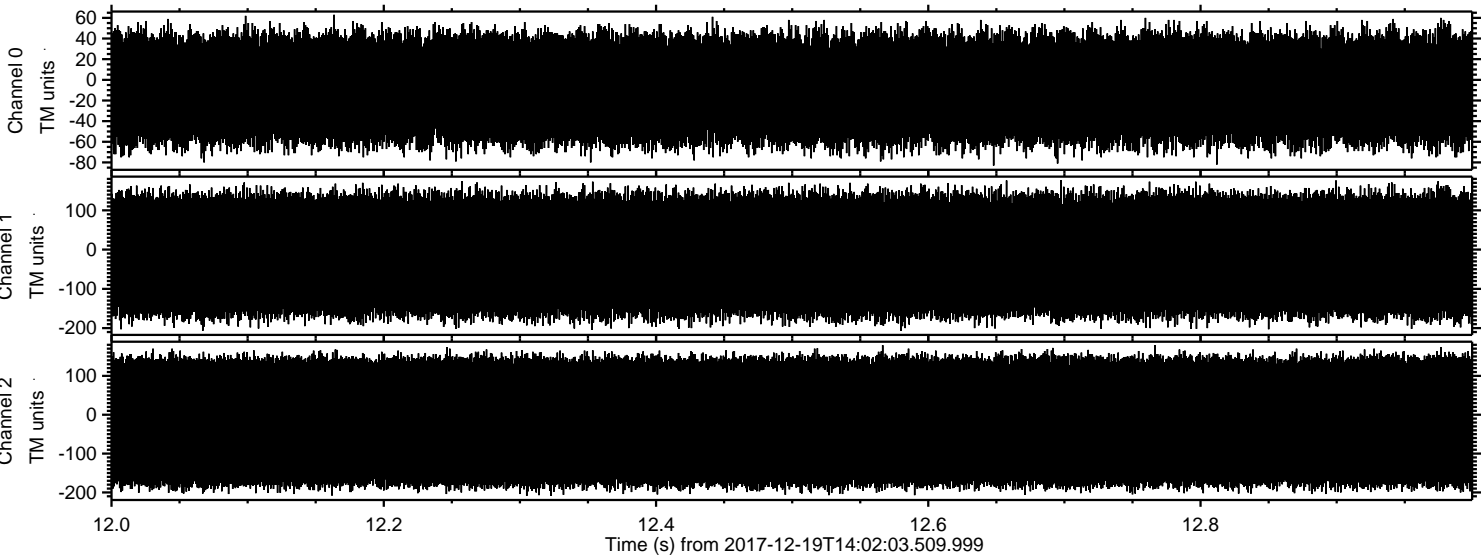


Processed Tue Dec 19 15:13:37 2017 by ELM ver.2012-10-06 from 001__elm20171219_140202__dat00.bin



ELMAVAN 3D WAVEFORMS (Measured data sampled at 50 kHz) 51000 packets of 144 samples from 2017-12-19T14:02:03.509.999. Part 13/147

Processed Tue Dec 19 15:13:38 2017 by ELM ver.2012-10-06 from 001__elm20171219_140202__dat00.bin



Channel 0
mn: -83
mx: 63
 μ : -9.6
 σ : 31.1

Channel 1
mn: -207
mx: 177
 μ : -15.3
 σ : 93.1

Channel 2
mn: -209
mx: 179
 μ : -18.5
 σ : 101.8