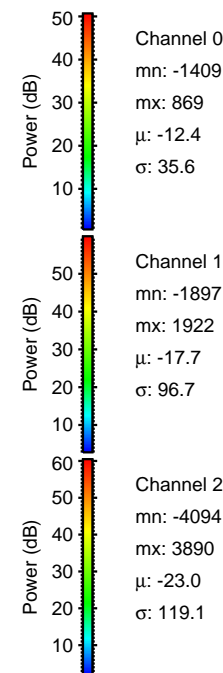
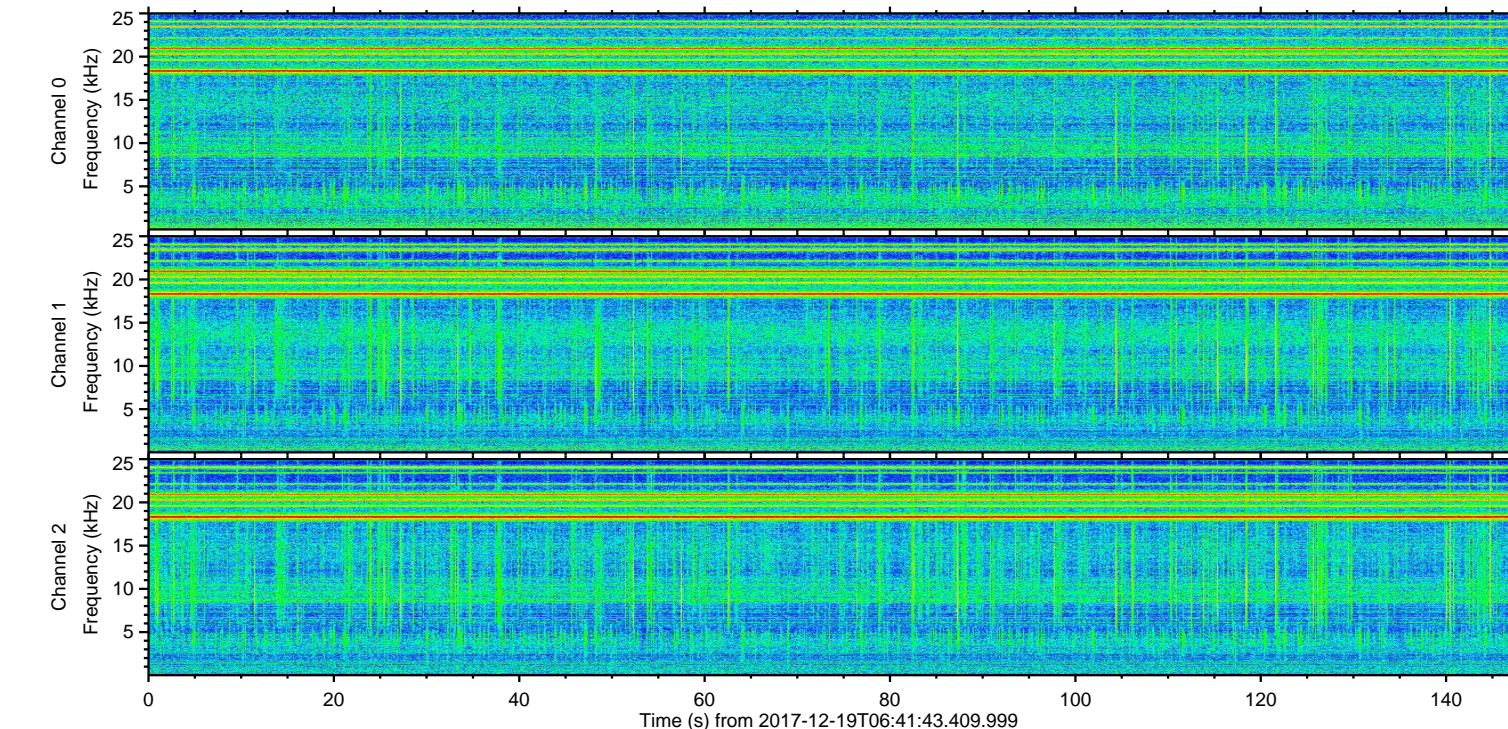
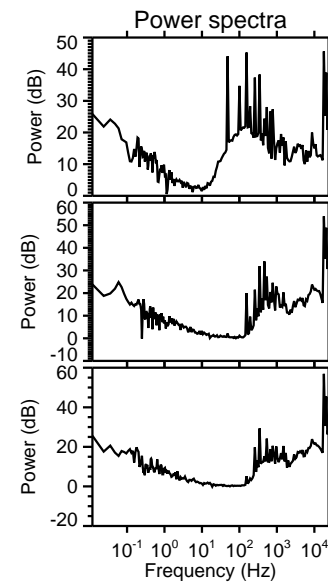
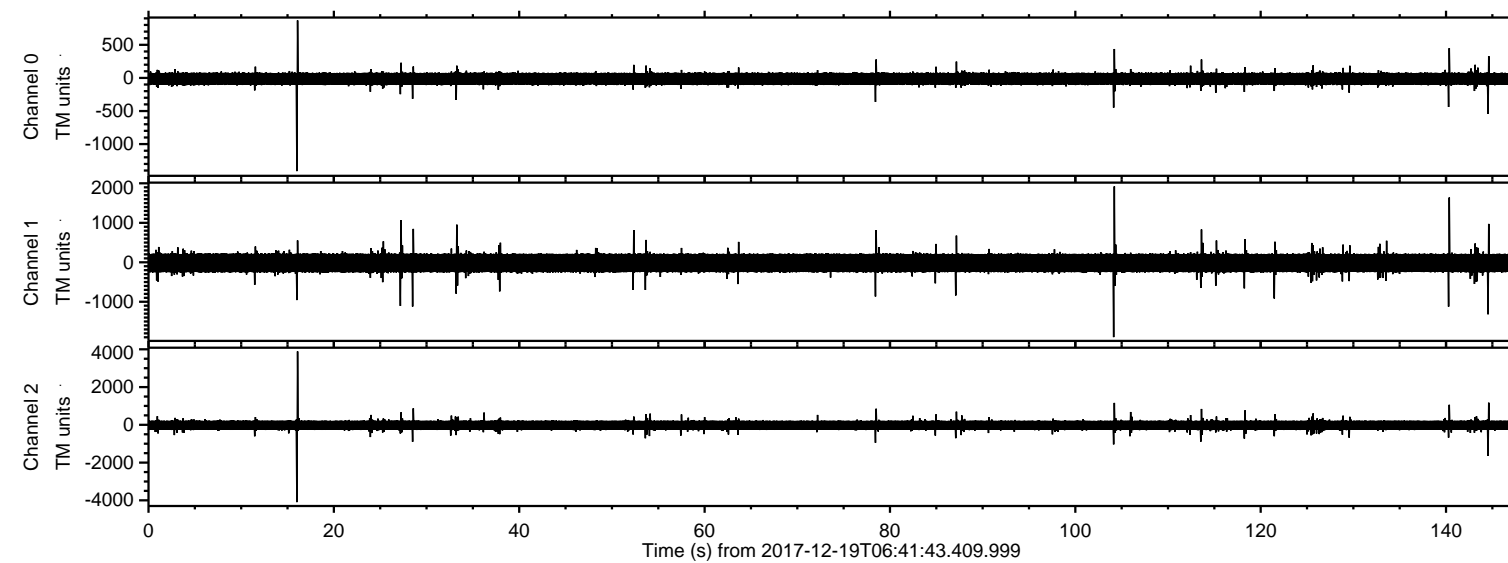


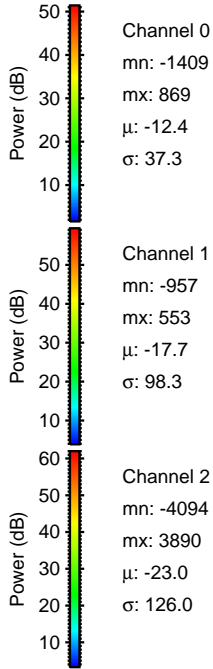
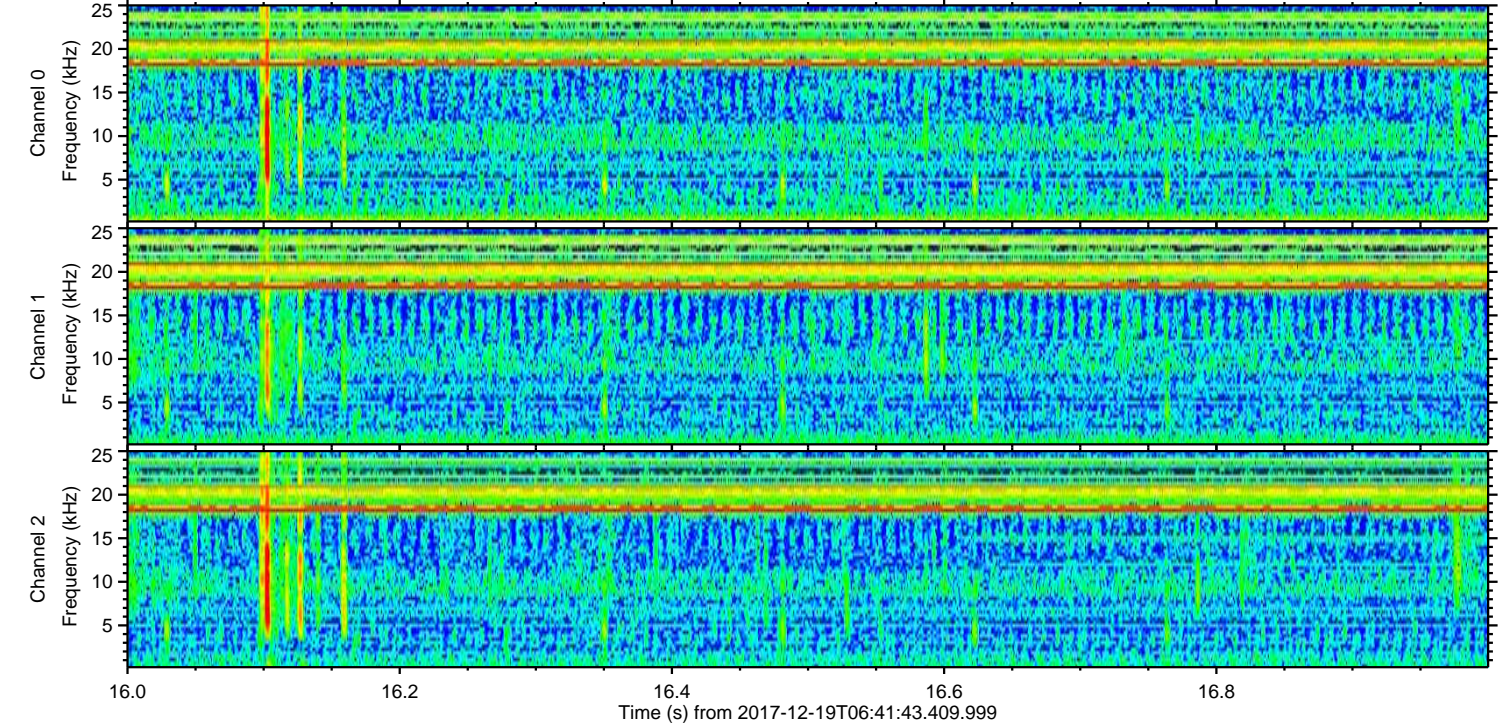
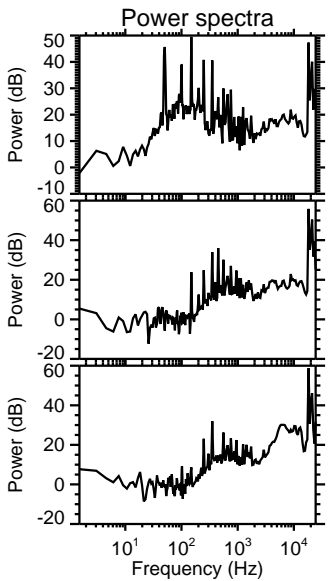
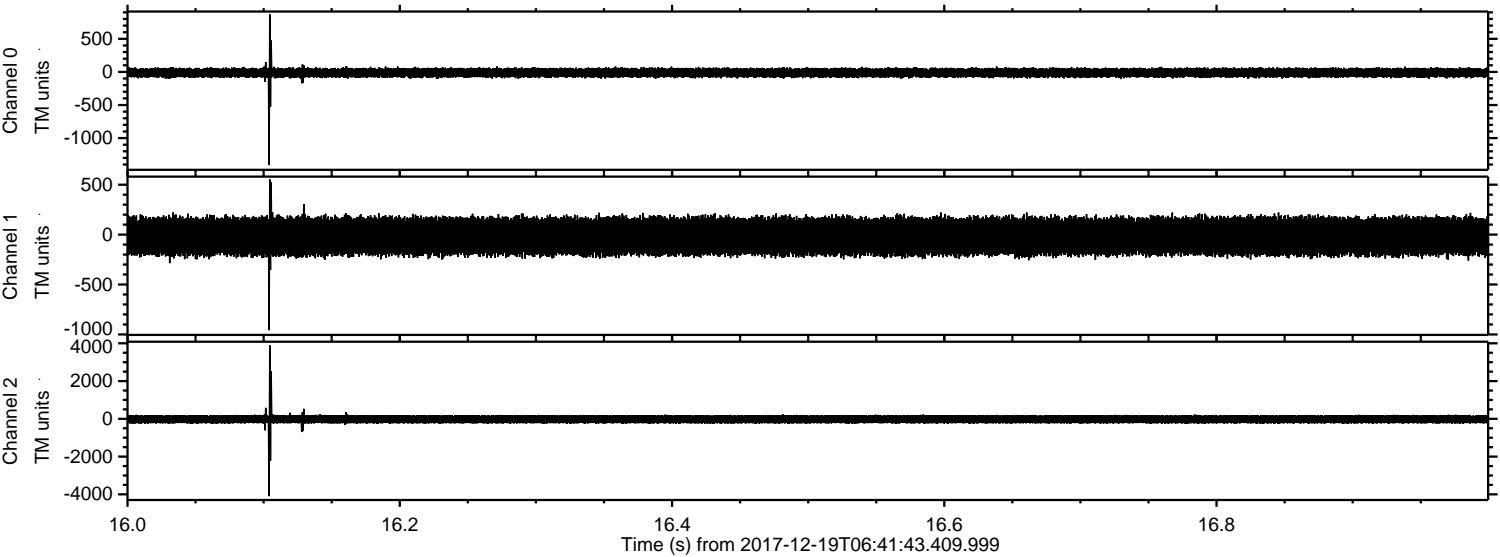
ELMAVAN 3D WAVEFORMS (Measured data sampled at 50 kHz) 51000 packets of 144 samples from 2017-12-19T06:41:43.409.999.

Processed Tue Dec 19 07:55:27 2017 by ELM ver.2012-10-06 from 001__elm20171219_064142__dat00.bin



ELMAVAN 3D WAVEFORMS (Measured data sampled at 50 kHz) 51000 packets of 144 samples from 2017-12-19T06:41:43.409.999. Part 17/147

Processed Tue Dec 19 07:55:35 2017 by ELM ver.2012-10-06 from 001__elm20171219_064142__dat00.bin



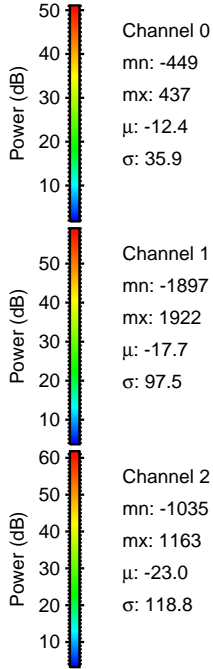
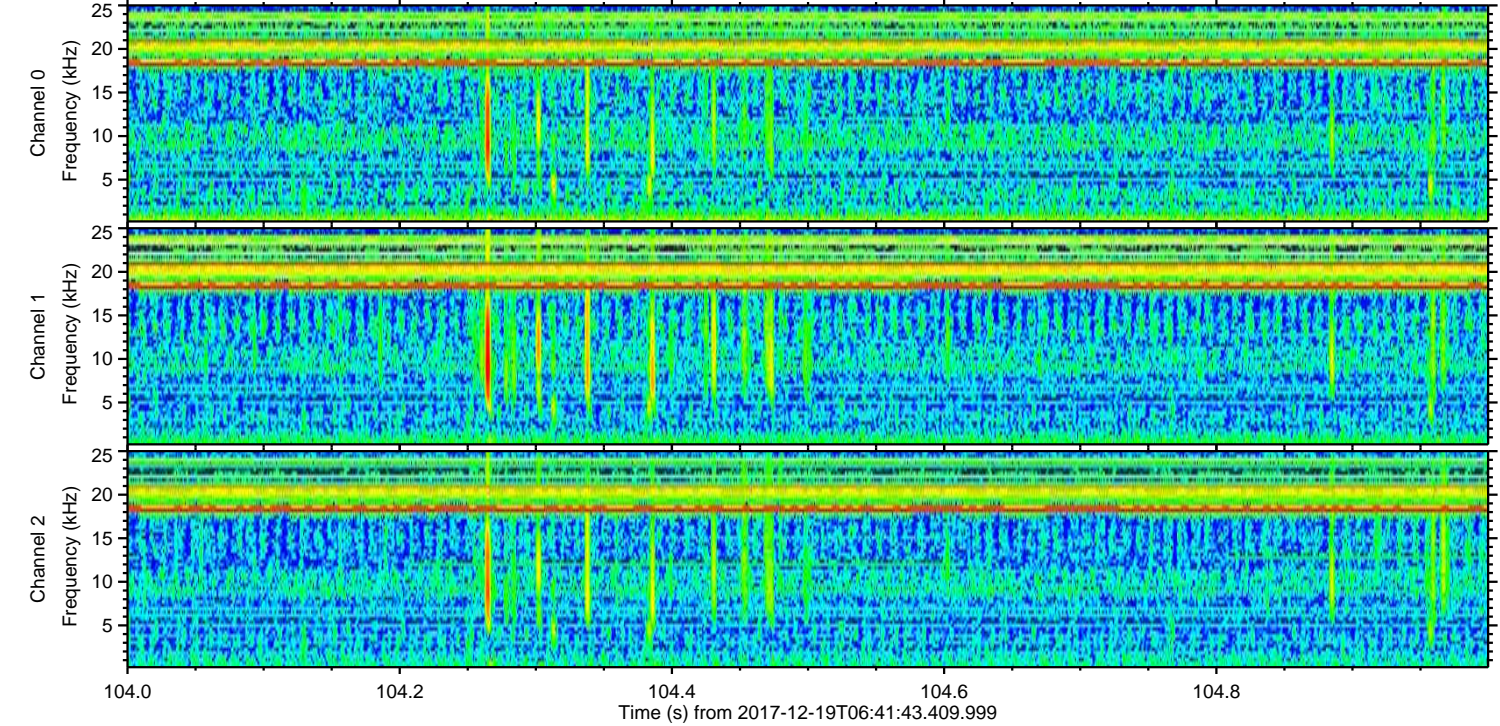
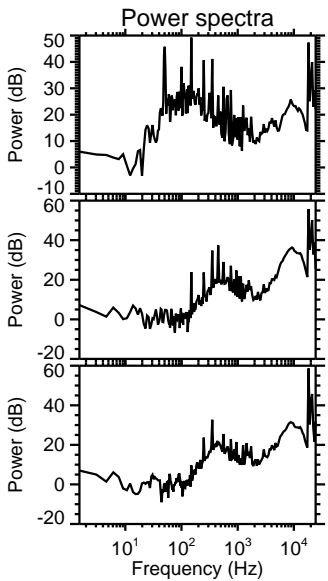
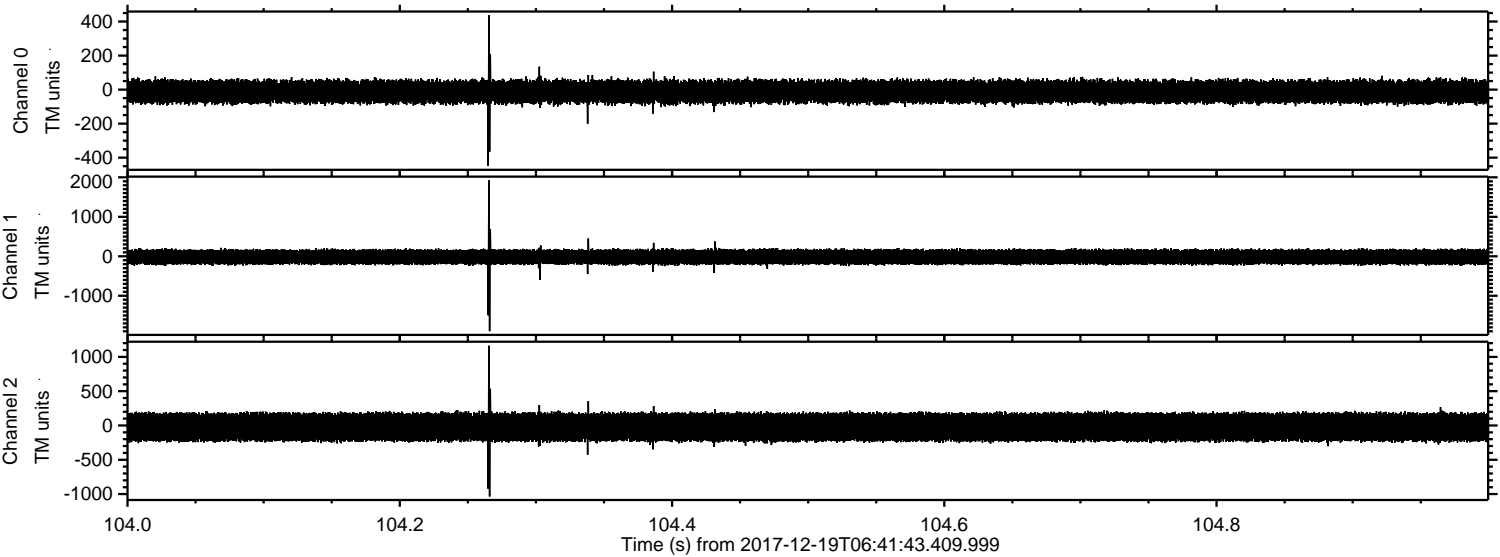
Channel 0
mn: -1409
mx: 869
 μ : -12.4
 σ : 37.3

Channel 1
mn: -957
mx: 553
 μ : -17.7
 σ : 98.3

Channel 2
mn: -4094
mx: 3890
 μ : -23.0
 σ : 126.0

ELMAVAN 3D WAVEFORMS (Measured data sampled at 50 kHz) 51000 packets of 144 samples from 2017-12-19T06:41:43.409.999. Part 105/147

Processed Tue Dec 19 07:55:36 2017 by ELM ver.2012-10-06 from 001__elm20171219_064142__dat00.bin



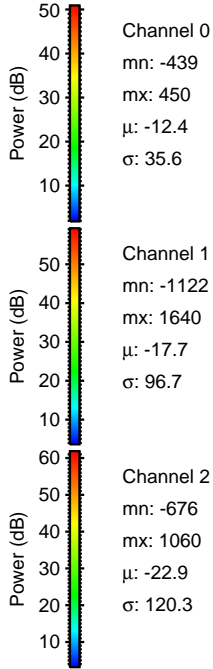
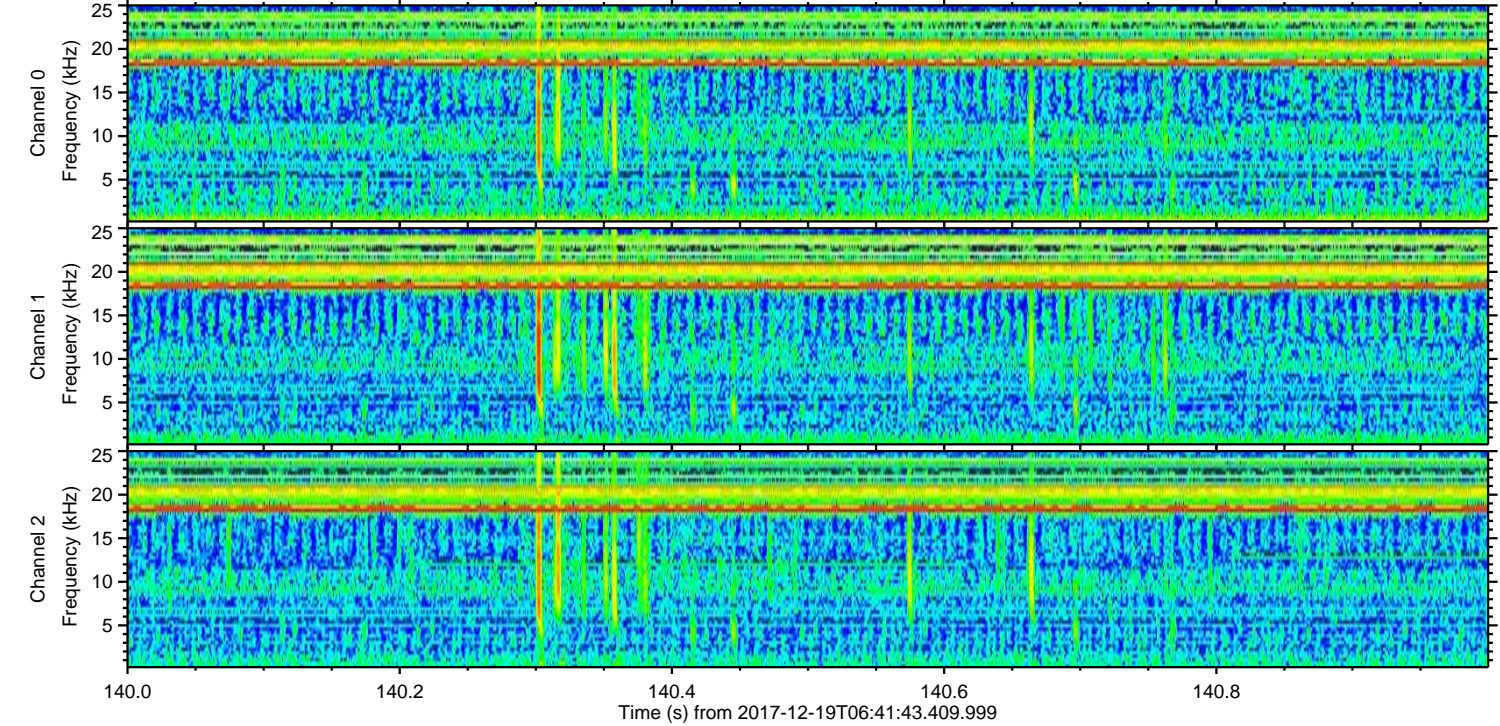
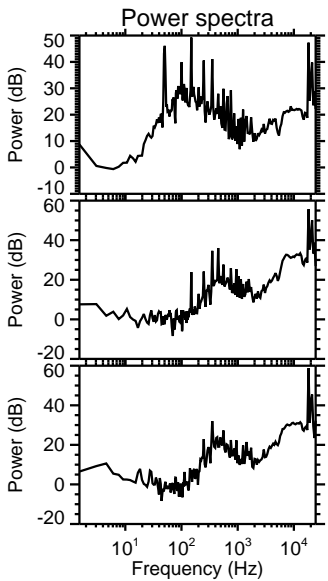
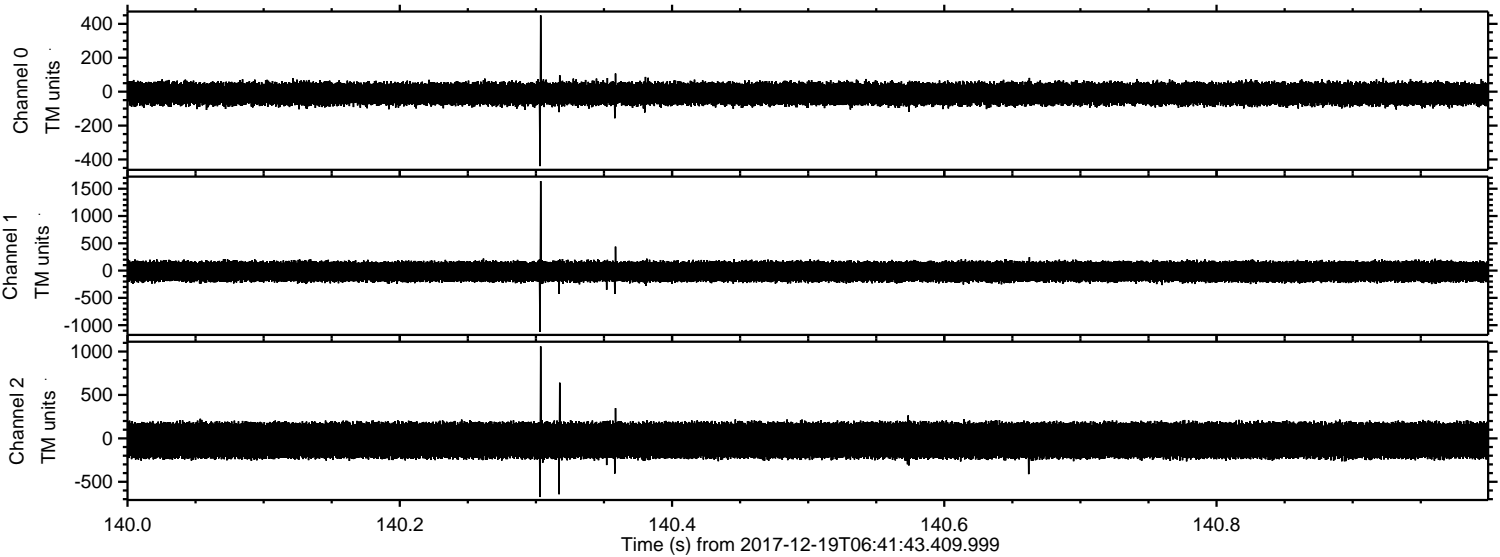
Channel 0
mn: -449
mx: 437
 μ : -12.4
 σ : 35.9

Channel 1
mn: -1897
mx: 1922
 μ : -17.7
 σ : 97.5

Channel 2
mn: -1035
mx: 1163
 μ : -23.0
 σ : 118.8

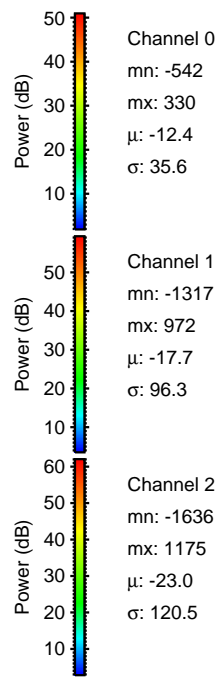
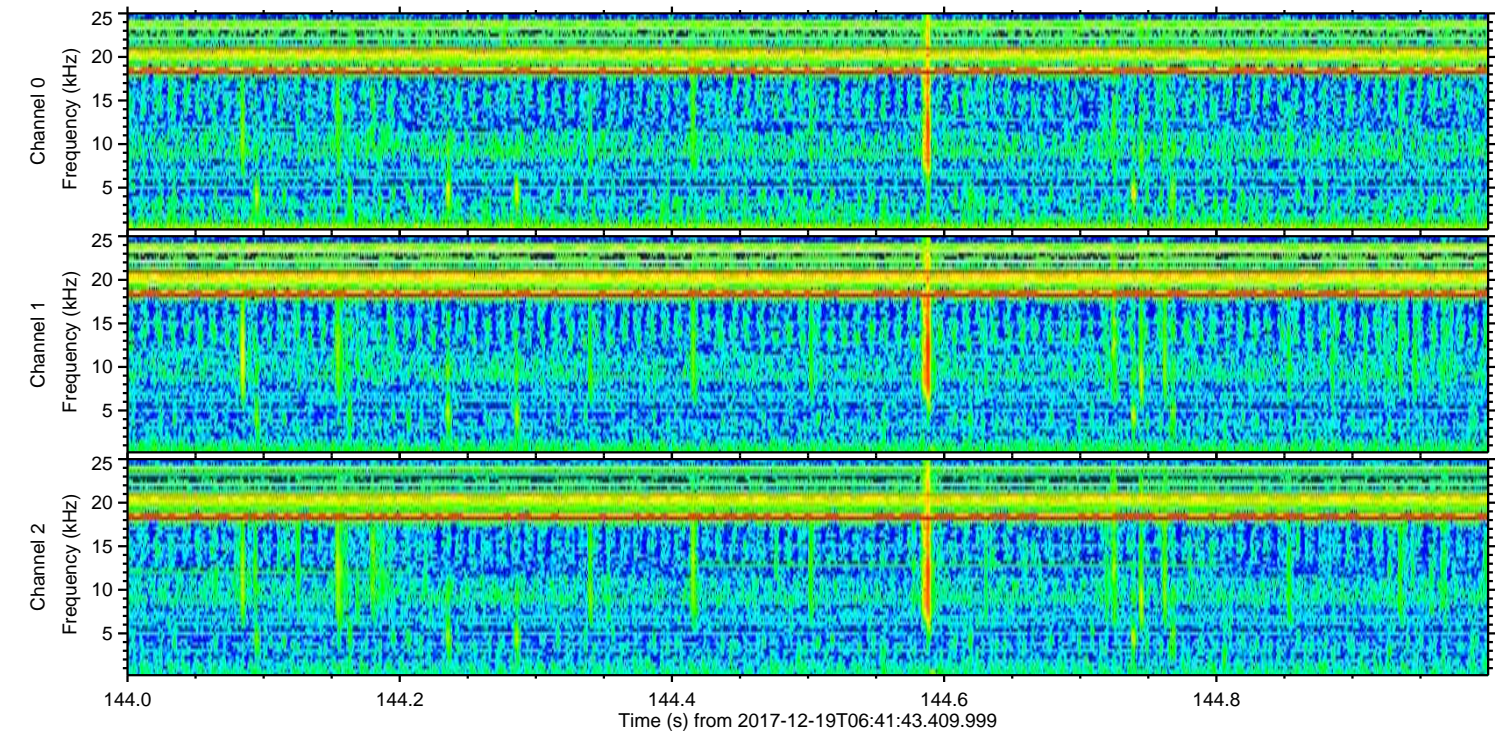
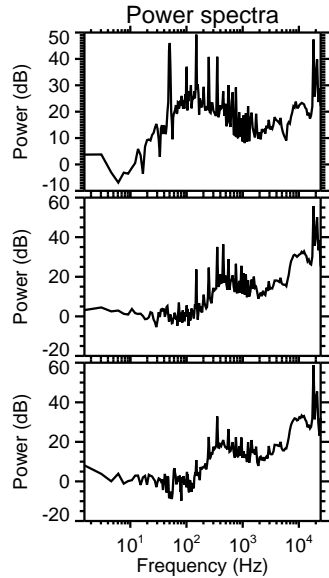
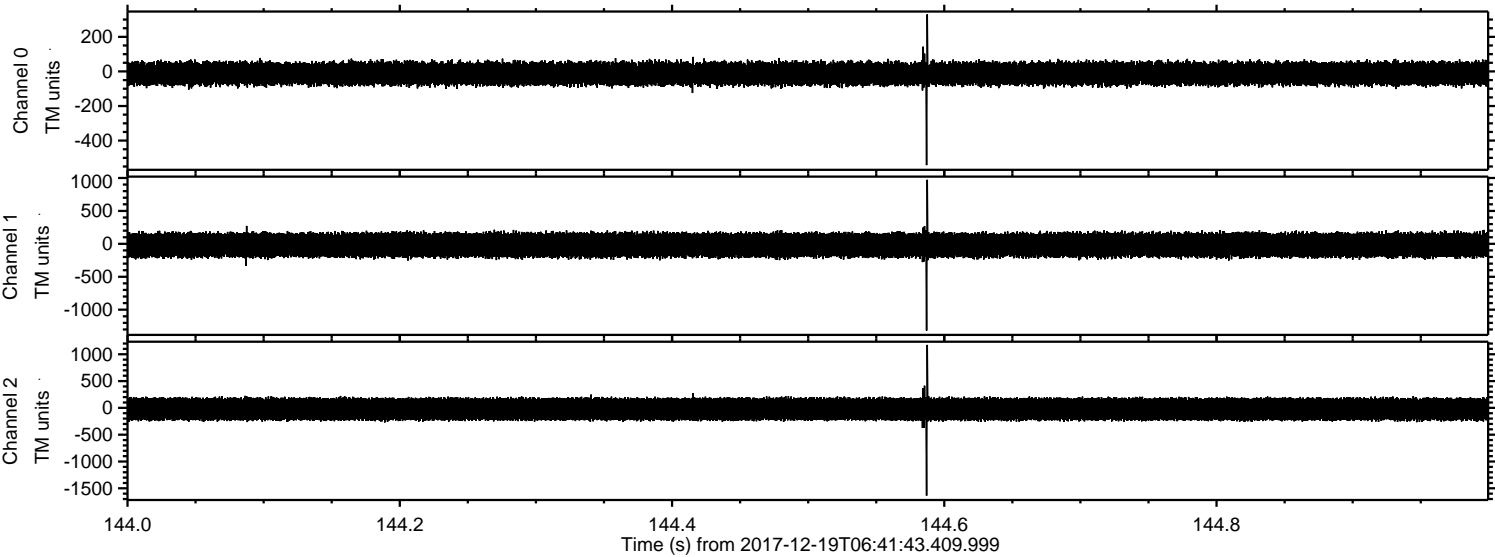
ELMAVAN 3D WAVEFORMS (Measured data sampled at 50 kHz) 51000 packets of 144 samples from 2017-12-19T06:41:43.409.999. Part 141/147

Processed Tue Dec 19 07:55:37 2017 by ELM ver.2012-10-06 from 001__elm20171219_064142__dat00.bin

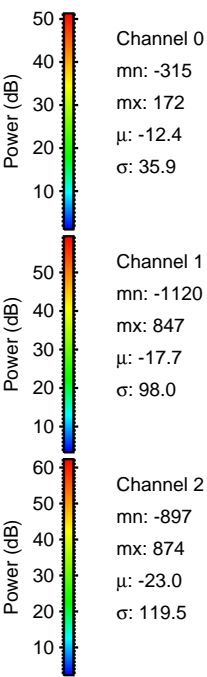
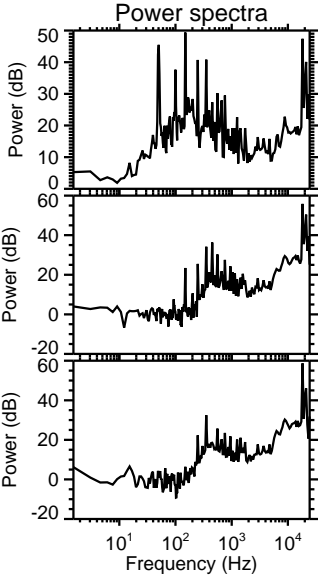
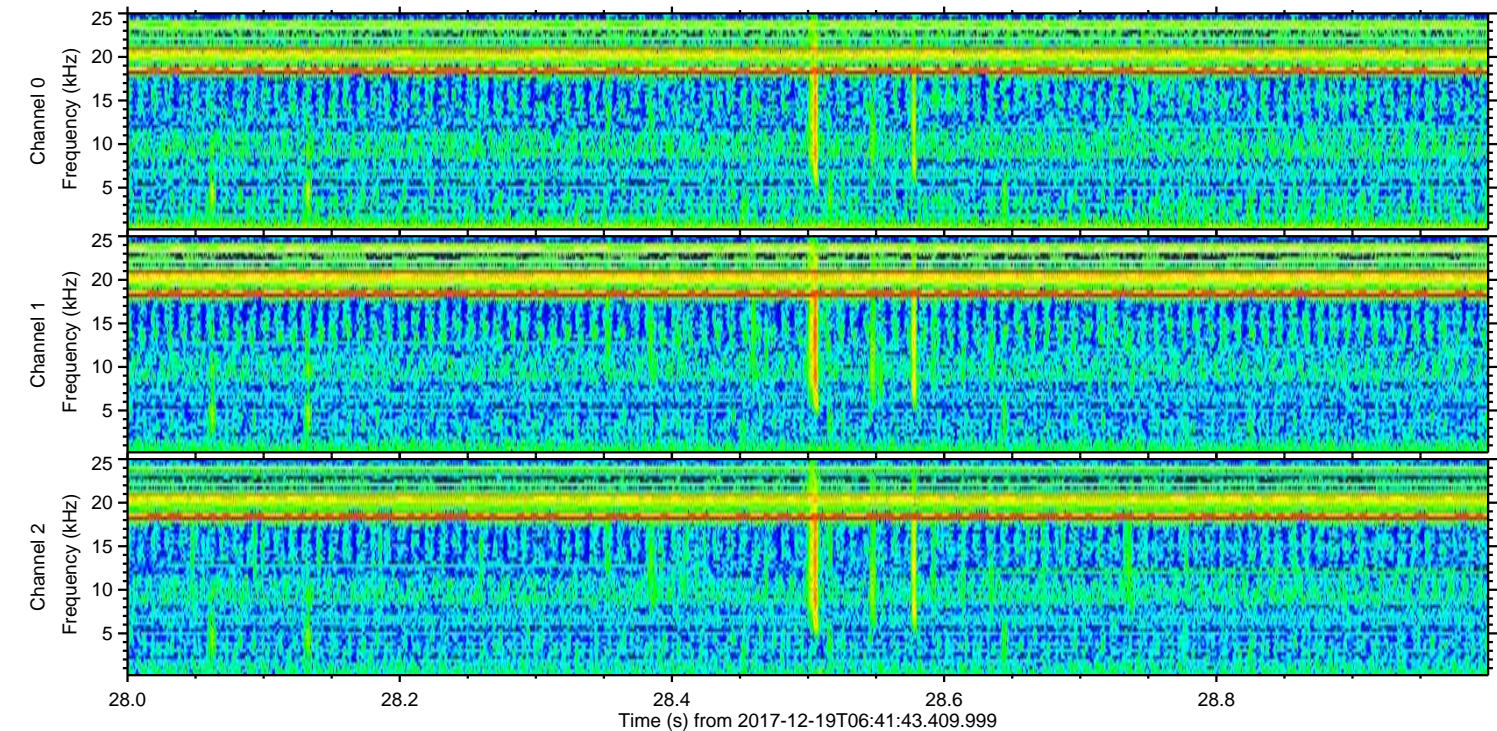
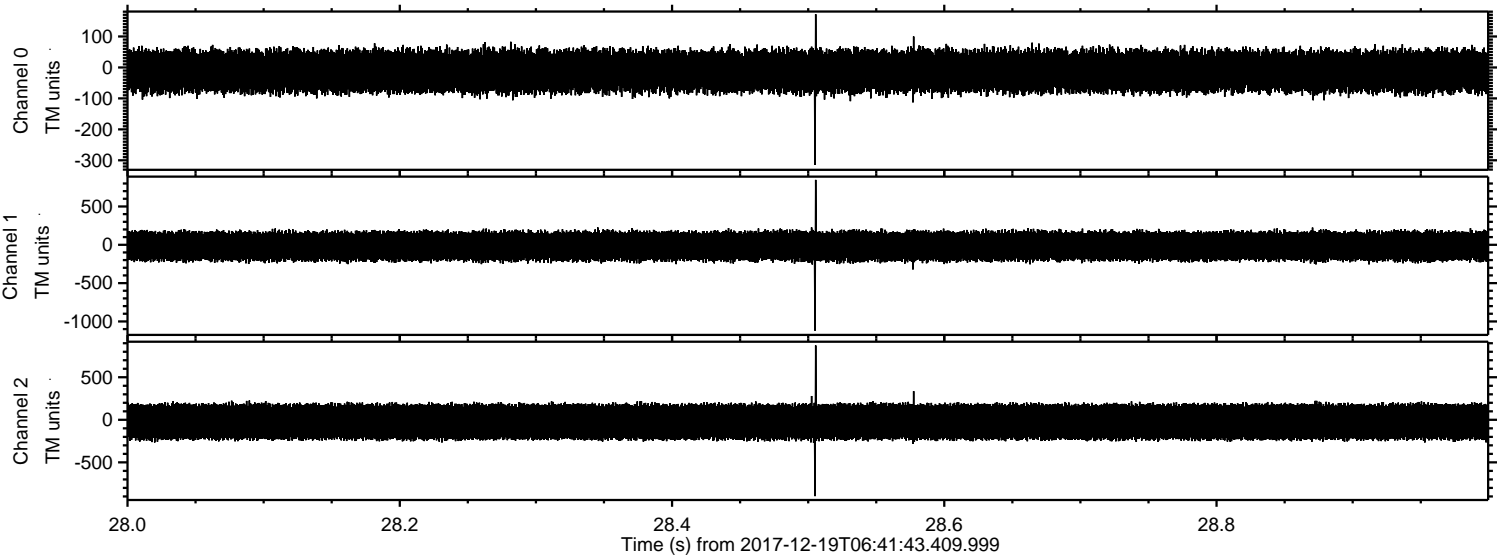


ELMAVAN 3D WAVEFORMS (Measured data sampled at 50 kHz) 51000 packets of 144 samples from 2017-12-19T06:41:43.409.999. Part 145/147

Processed Tue Dec 19 07:55:38 2017 by ELM ver.2012-10-06 from 001__elm20171219_064142__dat00.bin



Processed Tue Dec 19 07:55:39 2017 by ELM ver.2012-10-06 from 001__elm20171219_064142__dat00.bin

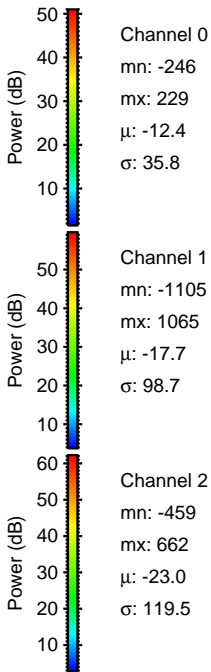
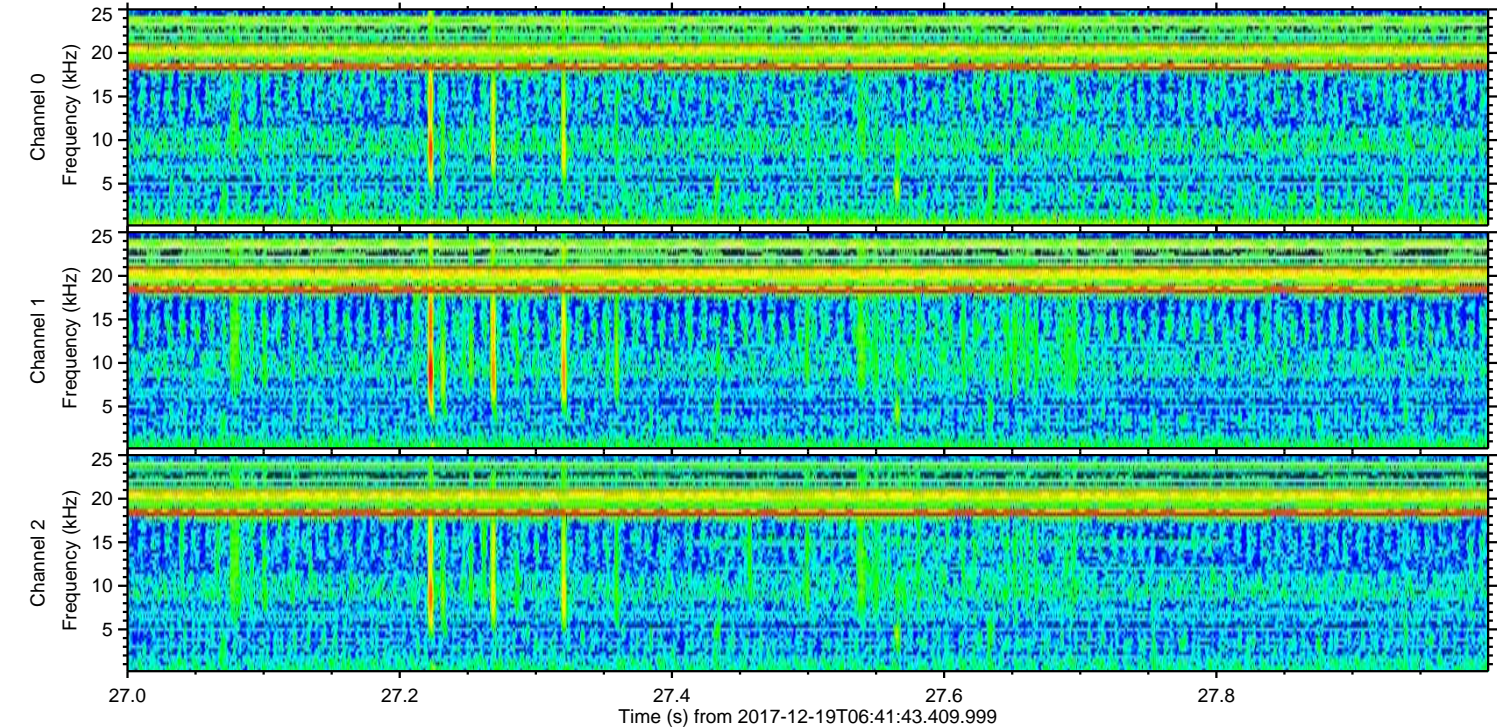
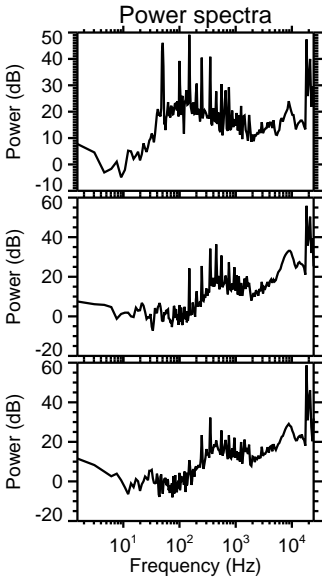
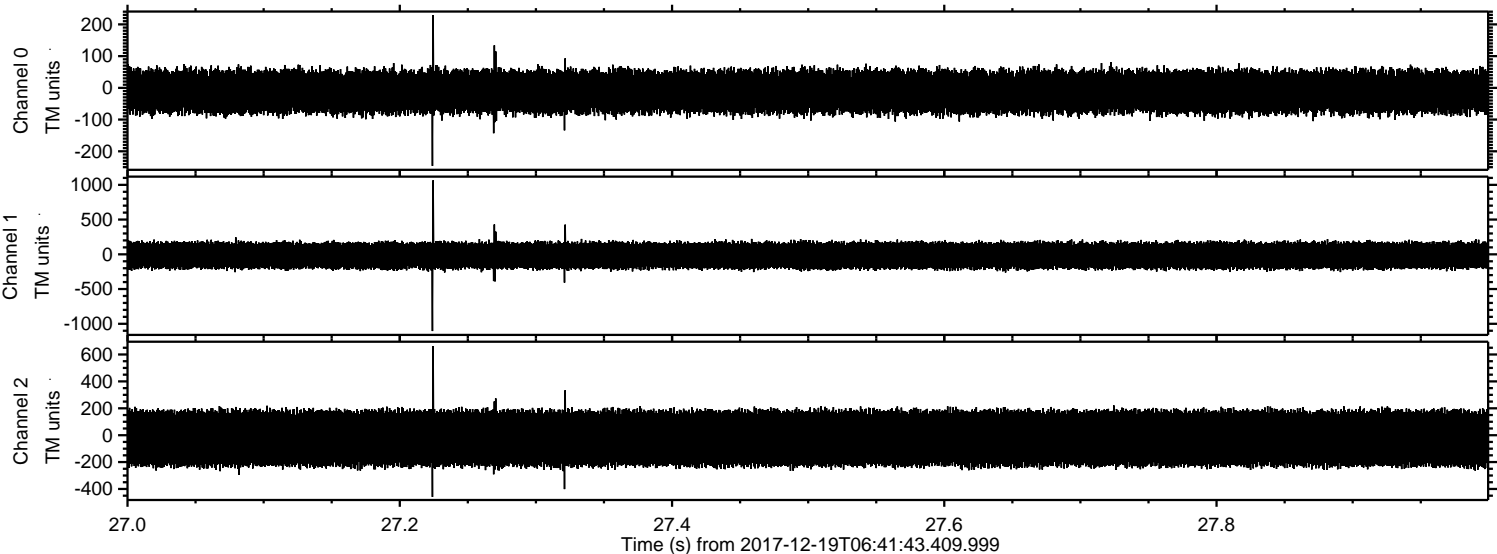


Channel 0
mn: -315
mx: 172
 μ : -12.4
 σ : 35.9

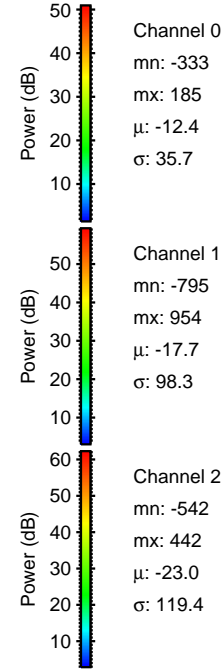
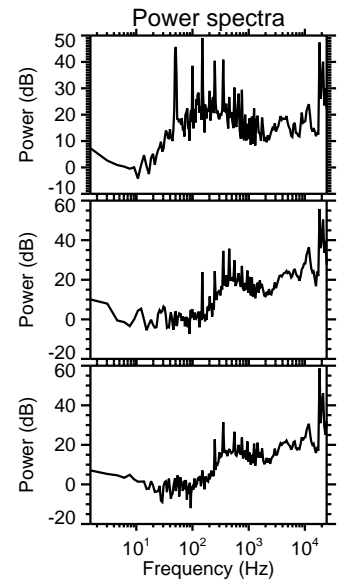
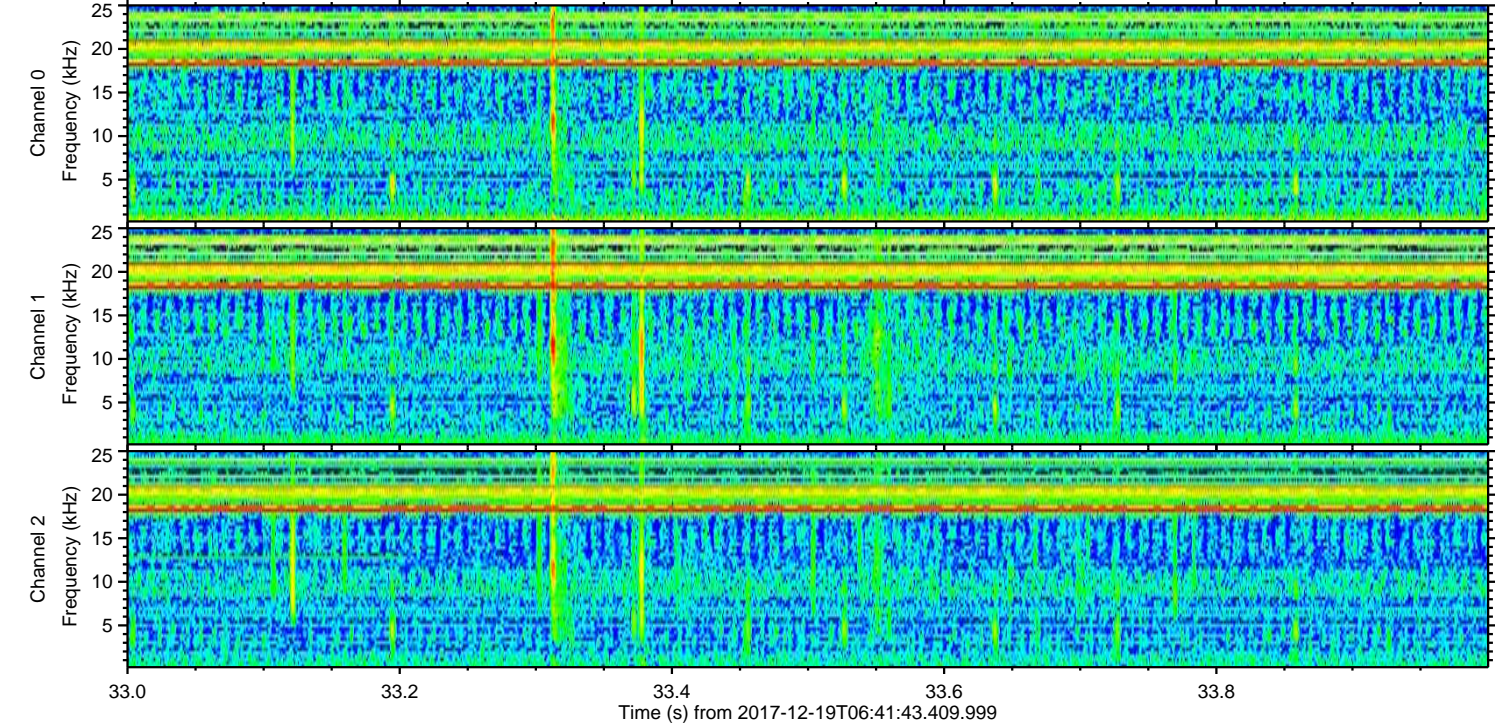
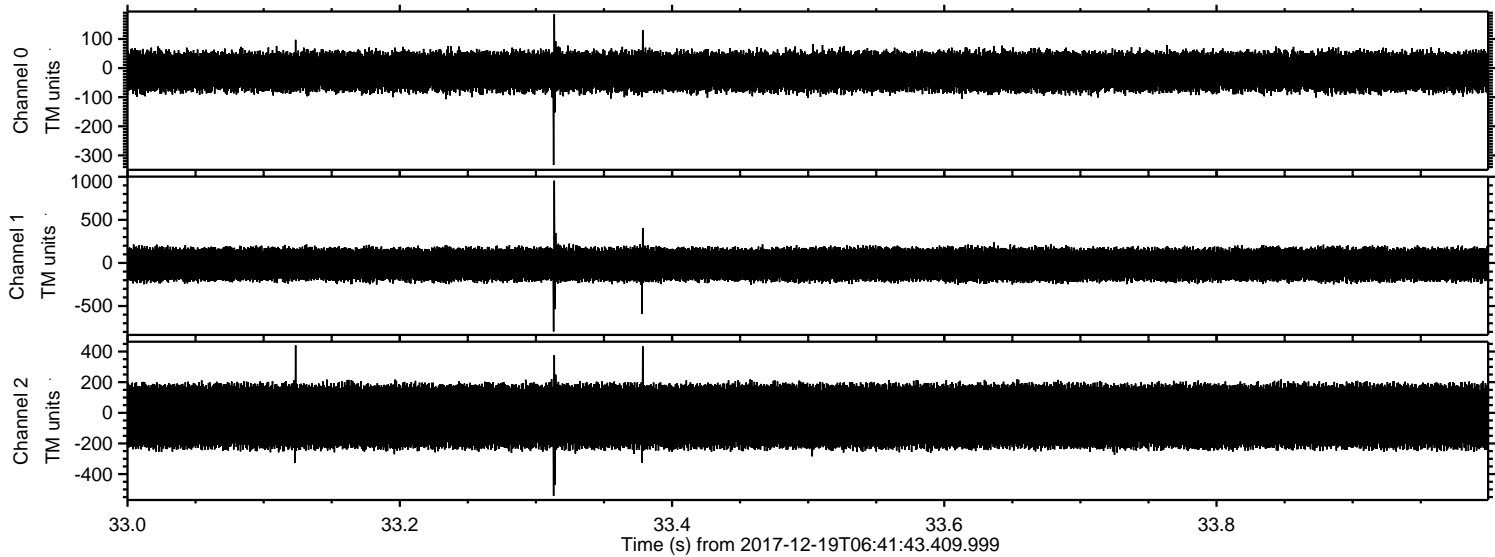
Channel 1
mn: -1120
mx: 847
 μ : -17.7
 σ : 98.0

Channel 2
mn: -897
mx: 874
 μ : -23.0
 σ : 119.5

Processed Tue Dec 19 07:55:40 2017 by ELM ver.2012-10-06 from 001__elm20171219_064142__dat00.bin



Processed Tue Dec 19 07:55:41 2017 by ELM ver.2012-10-06 from 001__elm20171219_064142__dat00.bin

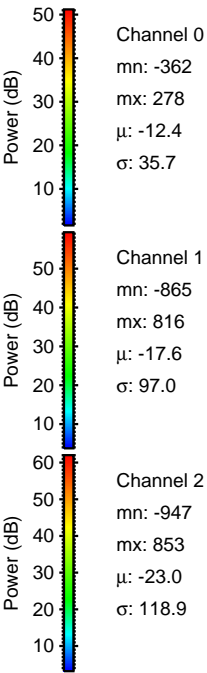
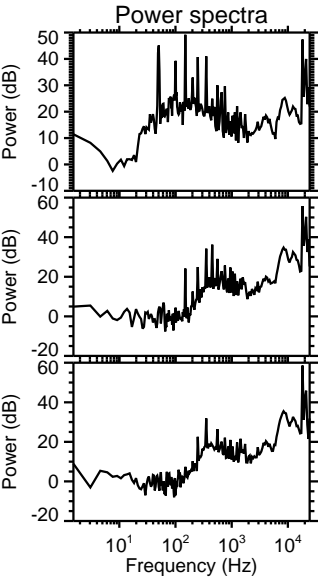
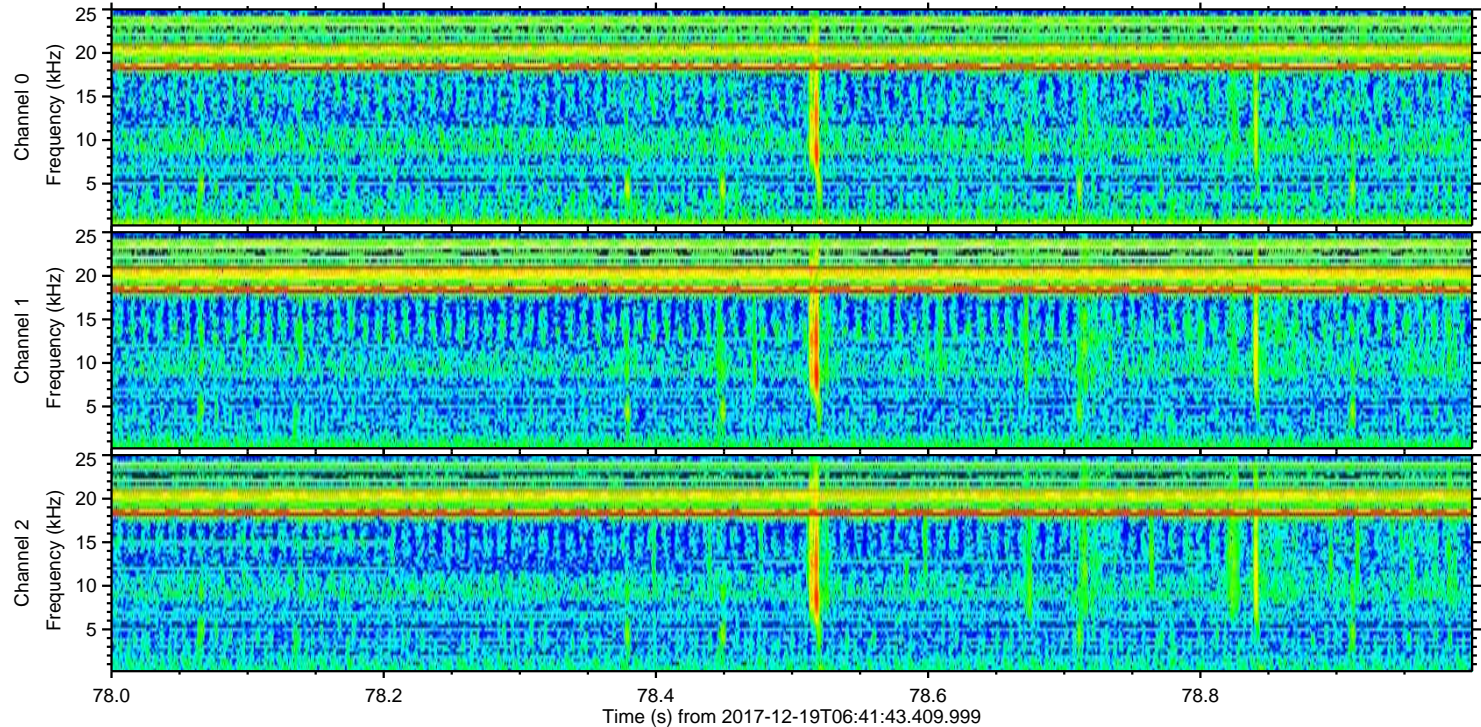
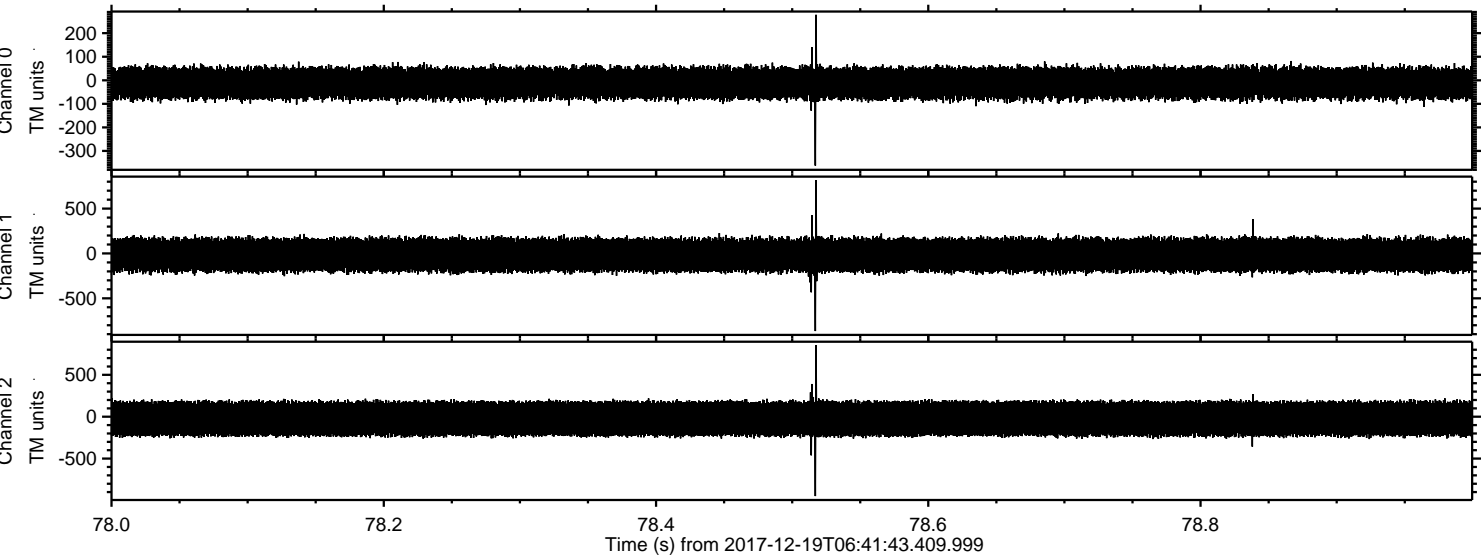


Channel 0
mn: -333
mx: 185
 μ : -12.4
 σ : 35.7

Channel 1
mn: -795
mx: 954
 μ : -17.7
 σ : 98.3

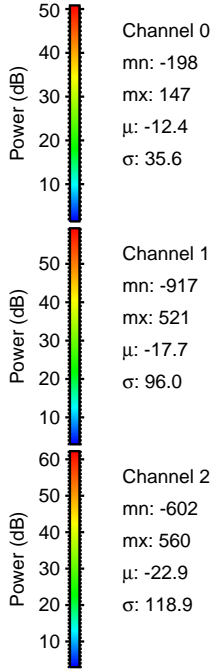
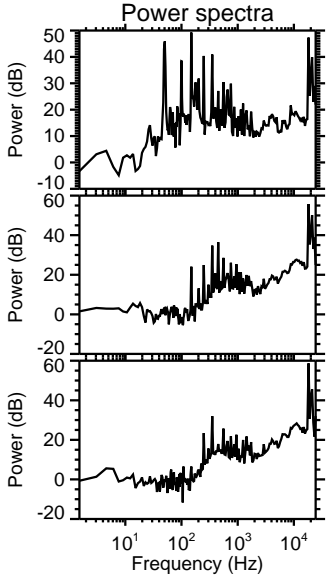
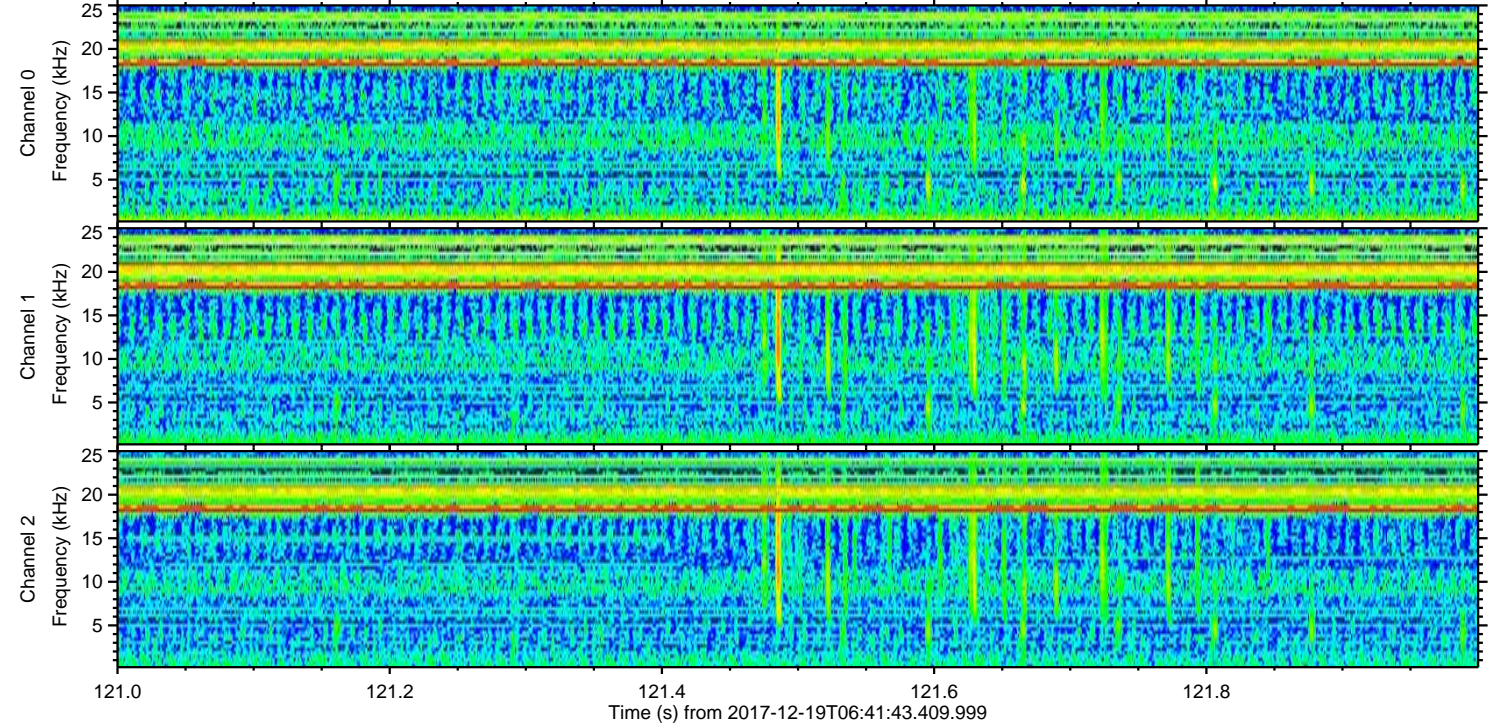
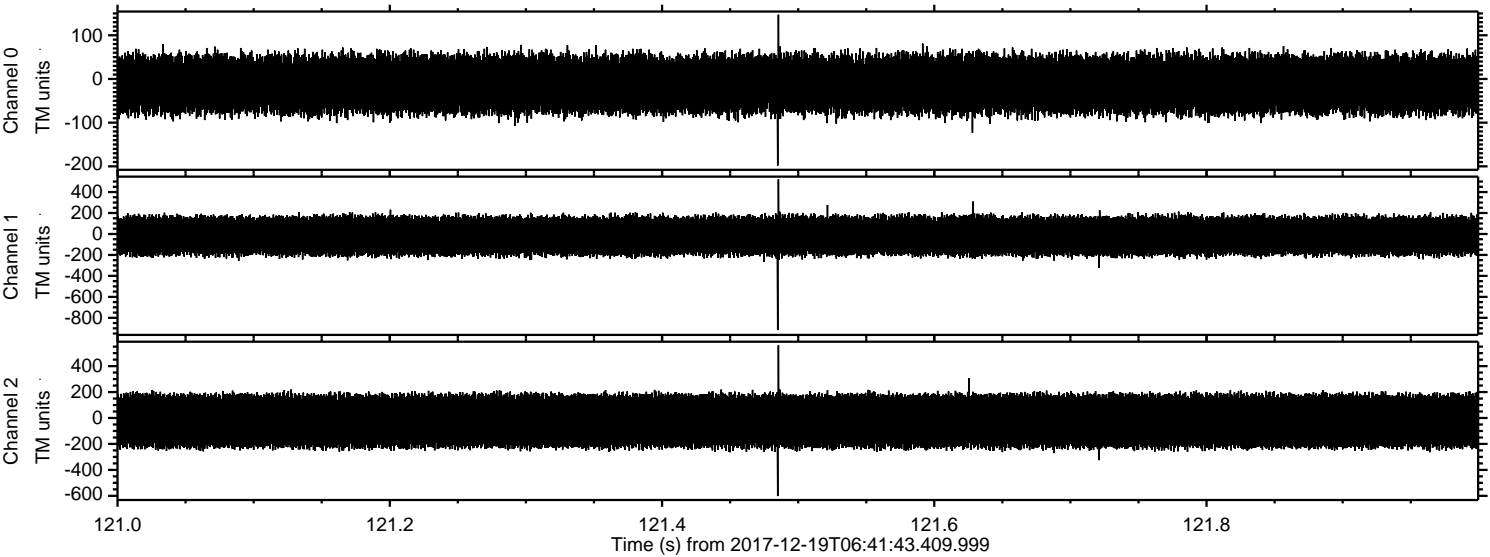
Channel 2
mn: -542
mx: 442
 μ : -23.0
 σ : 119.4

Processed Tue Dec 19 07:55:42 2017 by ELM ver.2012-10-06 from 001__elm20171219_064142__dat00.bin



ELMAVAN 3D WAVEFORMS (Measured data sampled at 50 kHz) 51000 packets of 144 samples from 2017-12-19T06:41:43.409.999. Part 122/147

Processed Tue Dec 19 07:55:42 2017 by ELM ver.2012-10-06 from 001__elm20171219_064142__dat00.bin



Channel 0
mn: -198
mx: 147
 μ : -12.4
 σ : 35.6

Channel 1
mn: -917
mx: 521
 μ : -17.7
 σ : 96.0

Channel 2
mn: -602
mx: 560
 μ : -22.9
 σ : 118.9

Processed Tue Dec 19 07:55:43 2017 by ELM ver.2012-10-06 from 001__elm20171219_064142__dat00.bin

