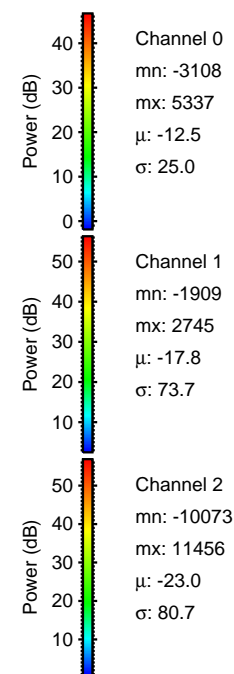
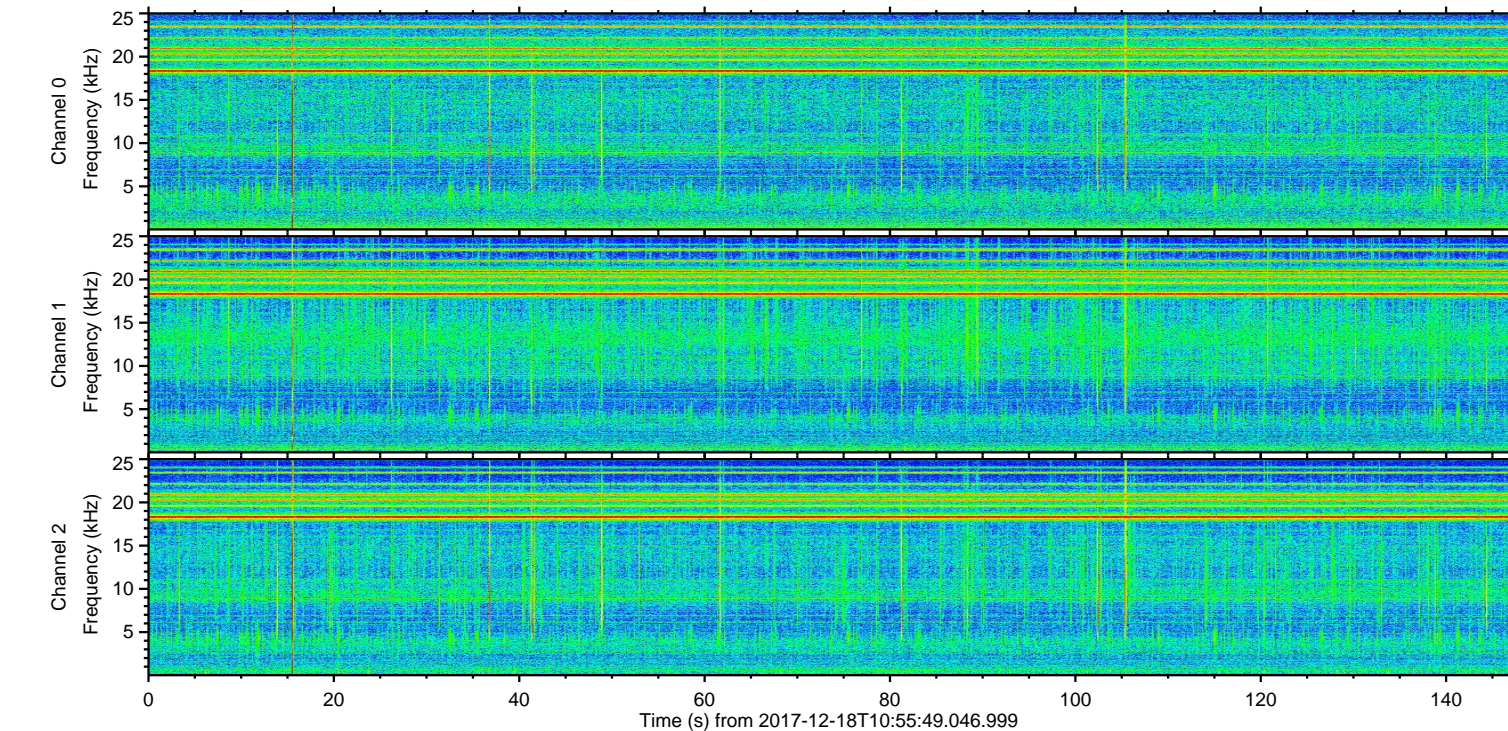
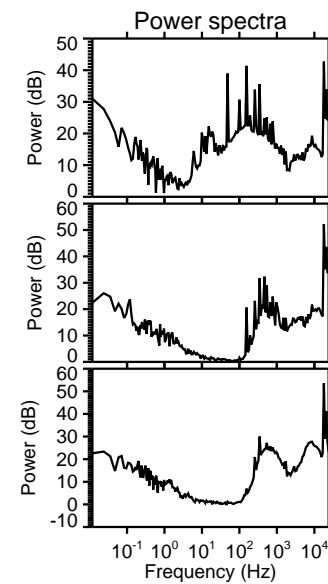
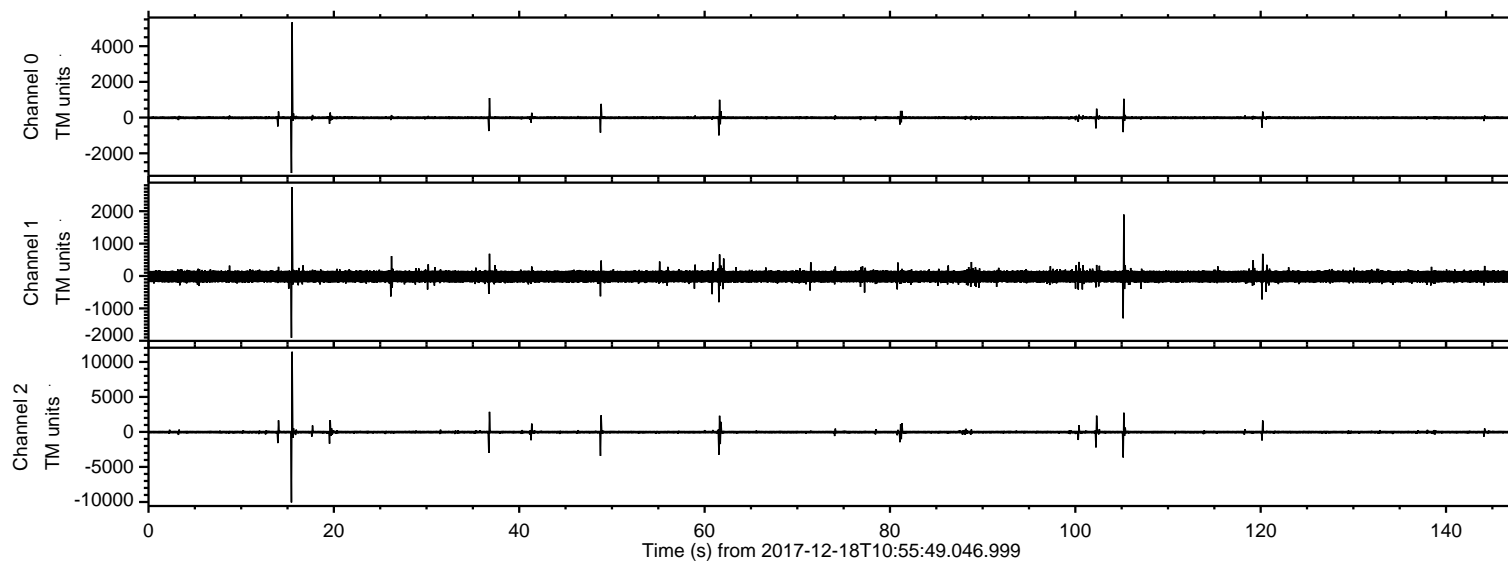


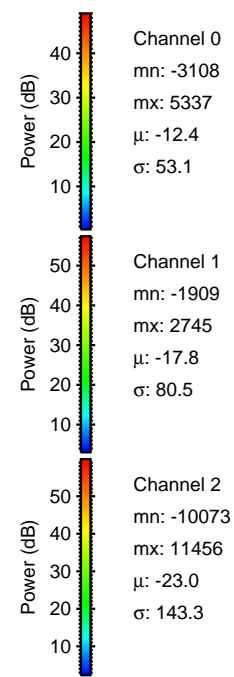
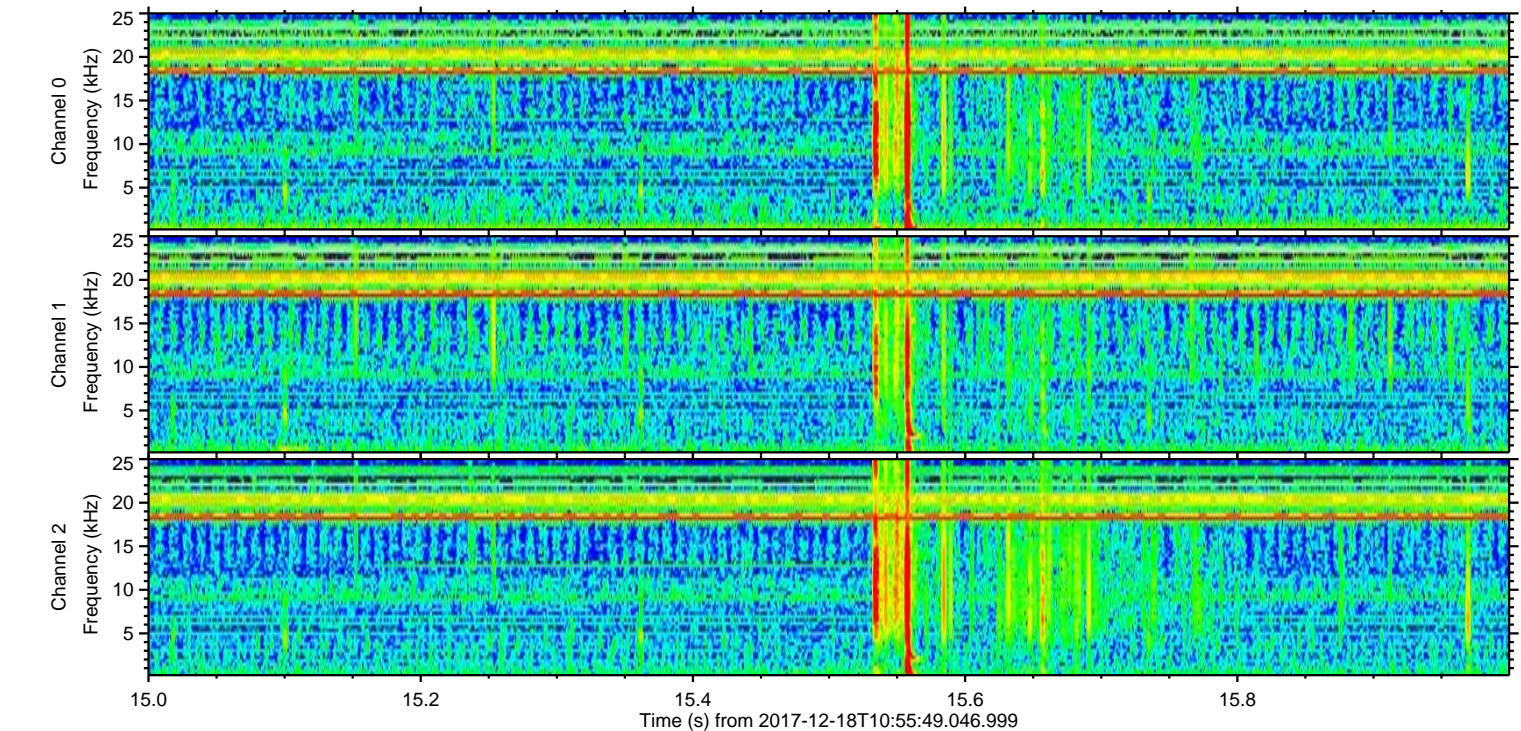
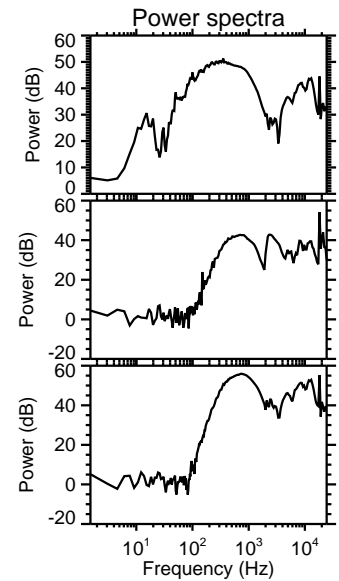
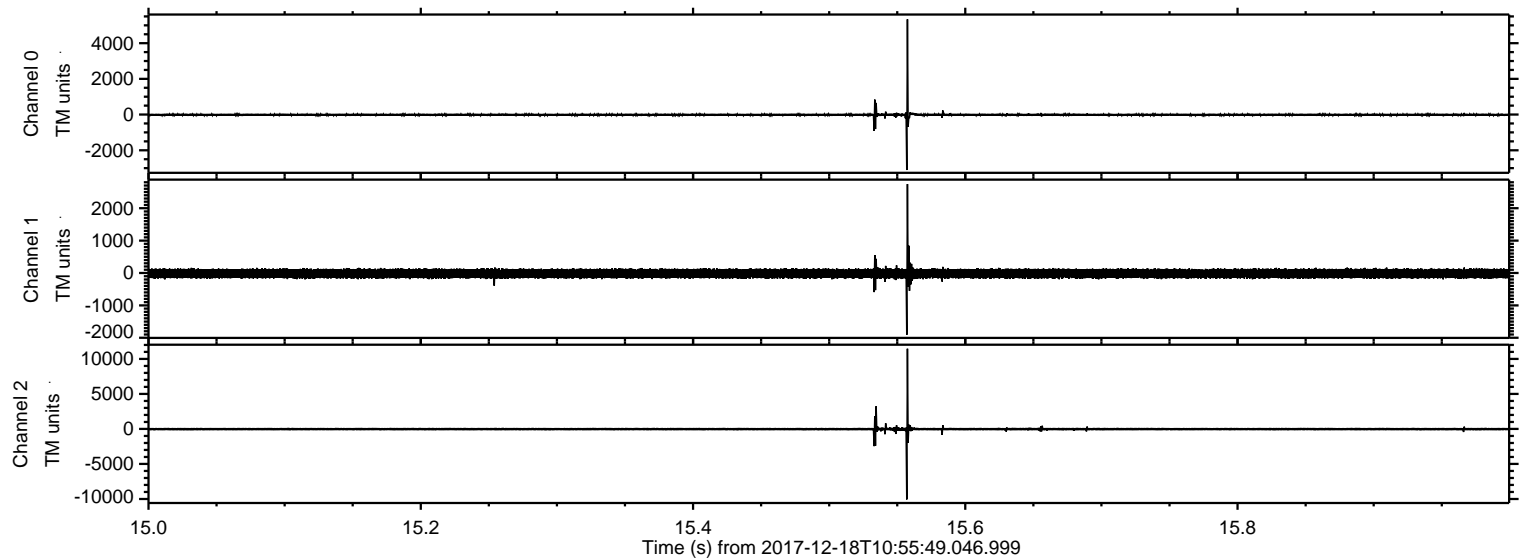
ELMAVAN 3D WAVEFORMS (Measured data sampled at 50 kHz) 51000 packets of 144 samples from 2017-12-18T10:55:49.046.999.

Processed Mon Dec 18 12:04:33 2017 by ELM ver.2012-10-06 from 001__elm20171218_105548__dat00.bin



ELMAVAN 3D WAVEFORMS (Measured data sampled at 50 kHz) 51000 packets of 144 samples from 2017-12-18T10:55:49.046.999. Part 16/147

Processed Mon Dec 18 12:04:40 2017 by ELM ver.2012-10-06 from 001__elm20171218_105548__dat00.bin



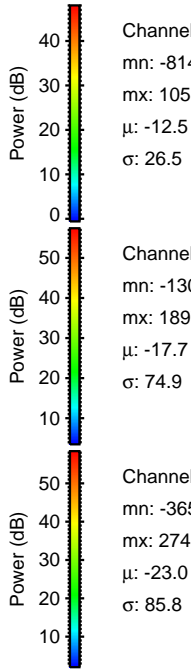
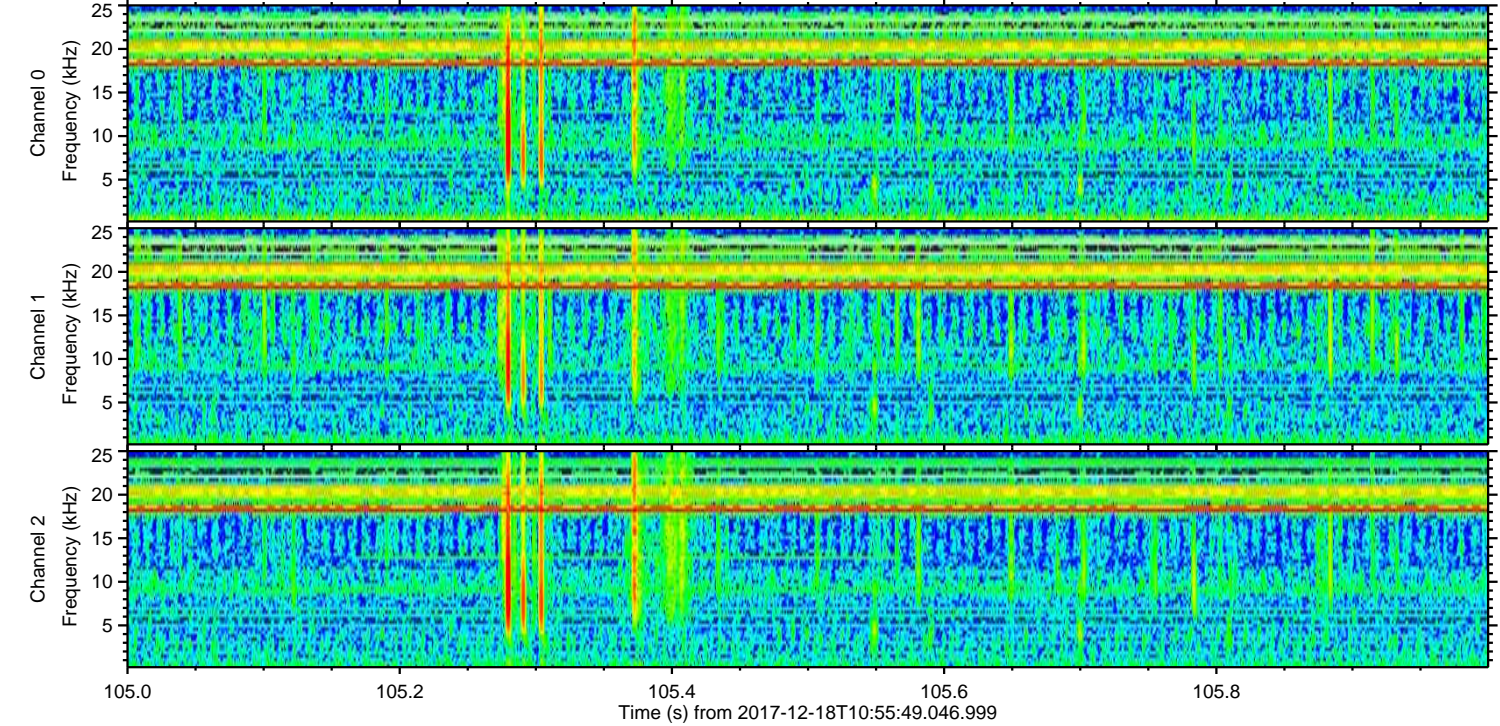
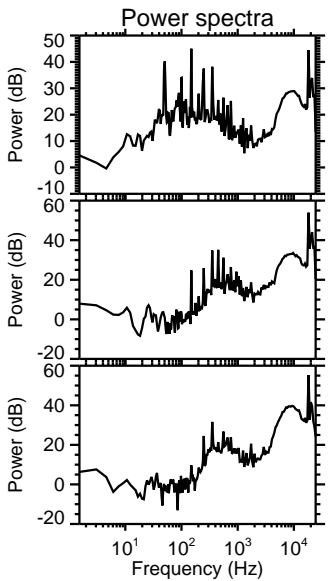
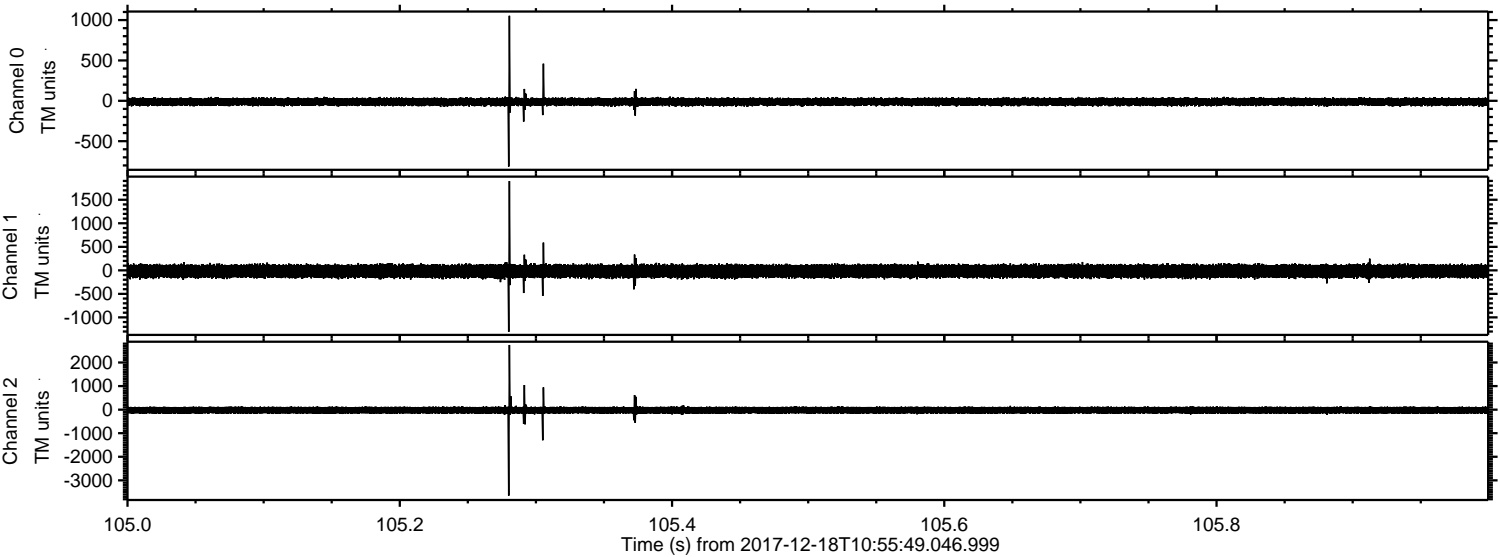
Channel 0
mn: -3108
mx: 5337
 μ : -12.4
 σ : 53.1

Channel 1
mn: -1909
mx: 2745
 μ : -17.8
 σ : 80.5

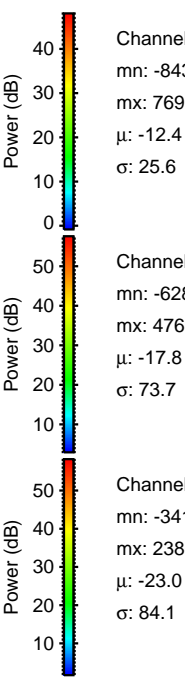
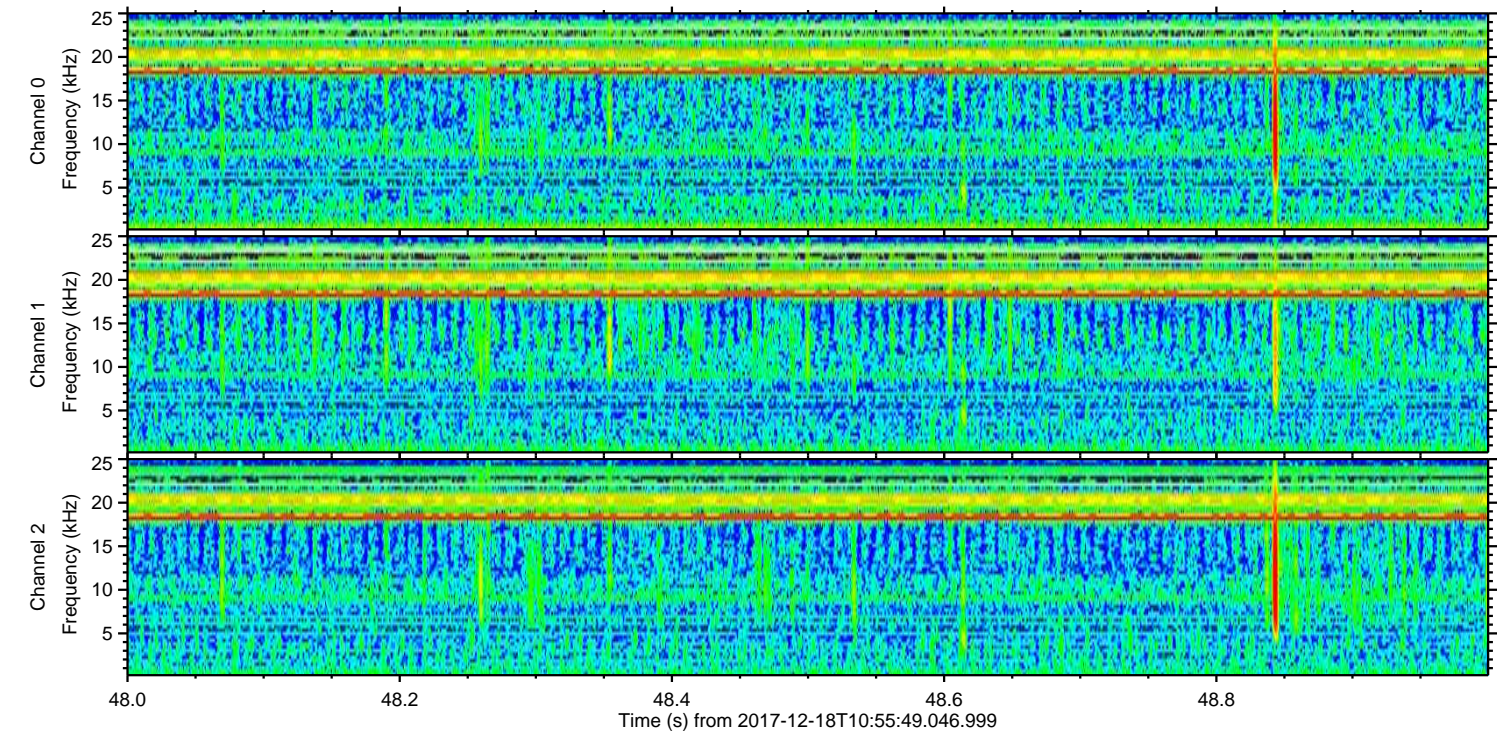
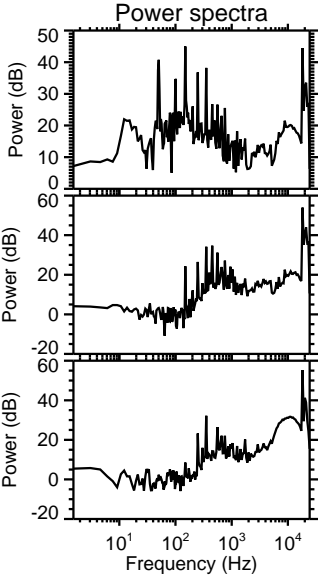
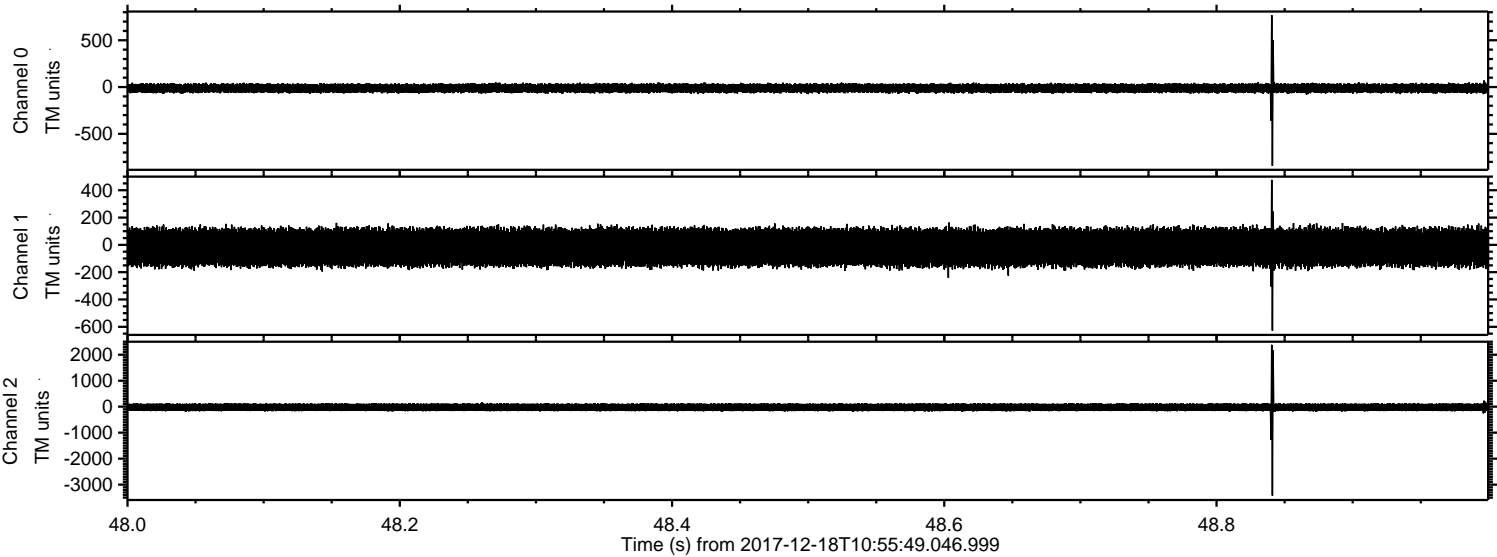
Channel 2
mn: -10073
mx: 11456
 μ : -23.0
 σ : 143.3

ELMAVAN 3D WAVEFORMS (Measured data sampled at 50 kHz) 51000 packets of 144 samples from 2017-12-18T10:55:49.046.999. Part 106/147

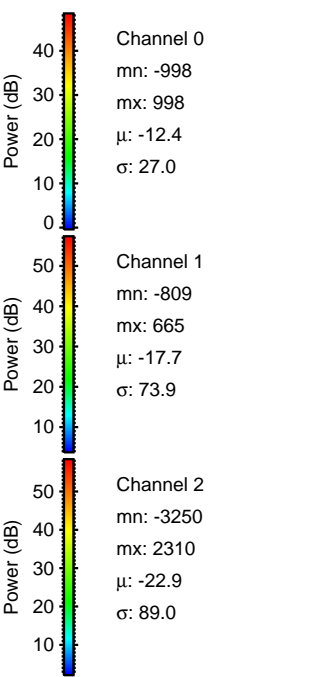
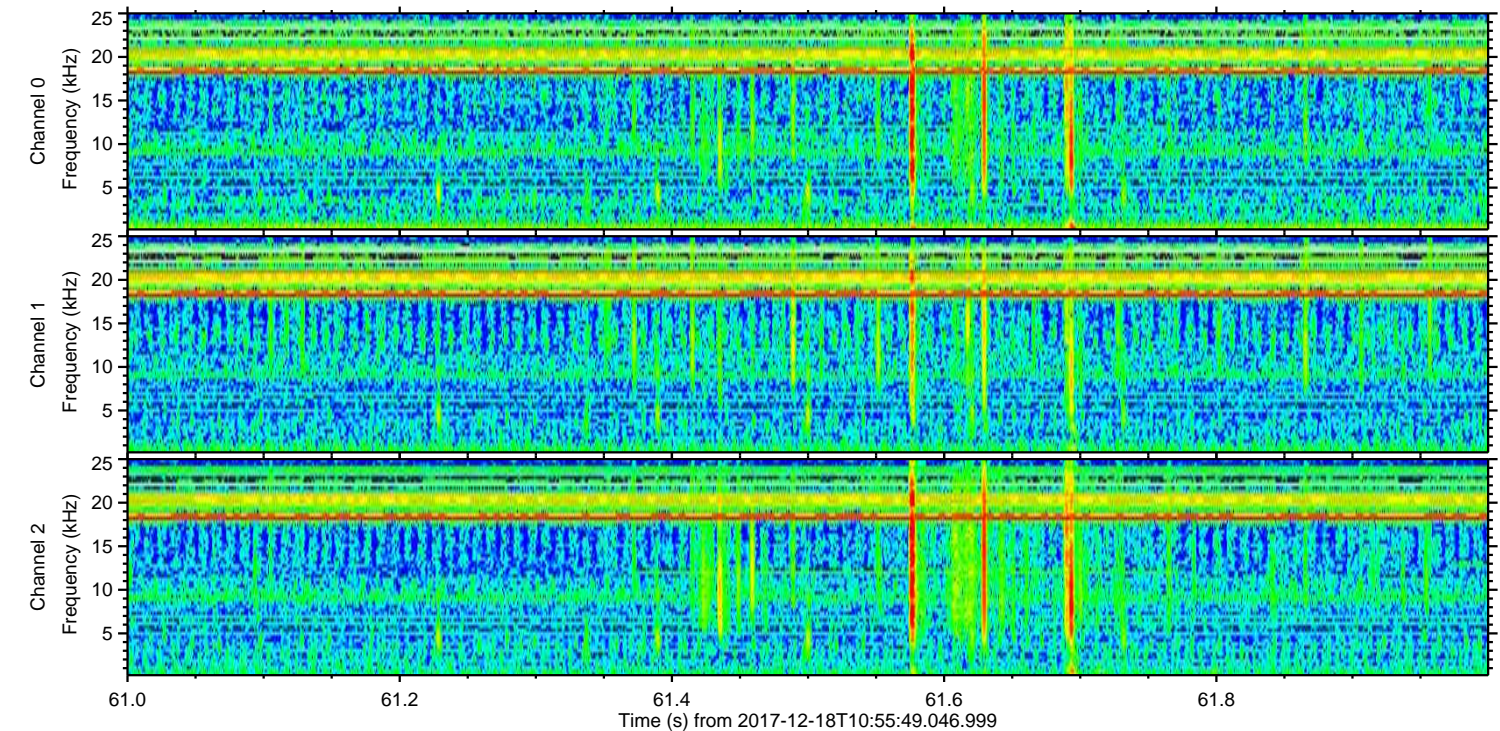
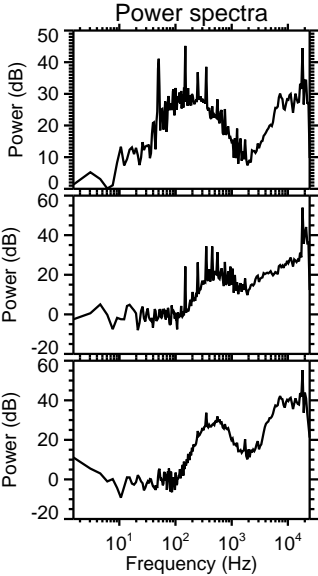
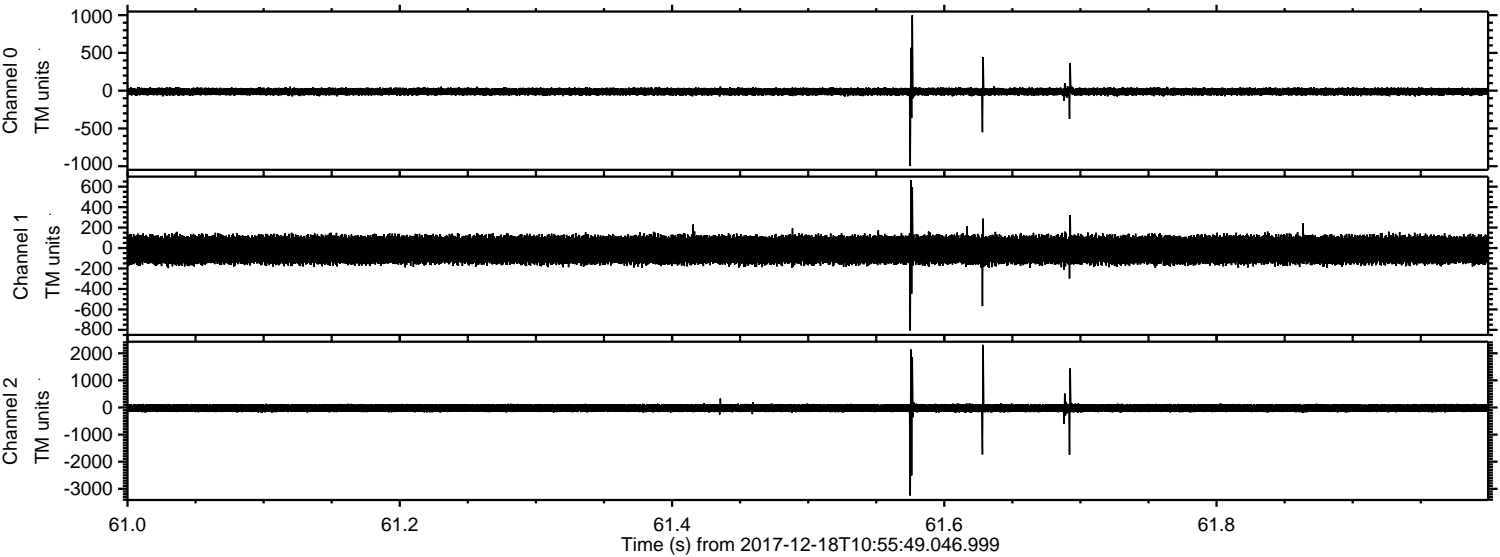
Processed Mon Dec 18 12:04:41 2017 by ELM ver.2012-10-06 from 001__elm20171218_105548__dat00.bin



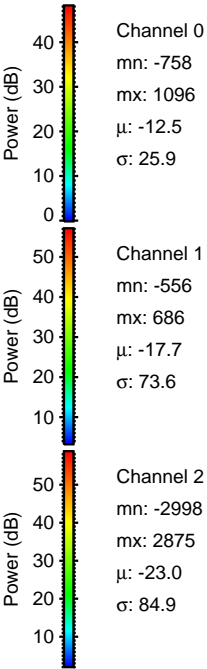
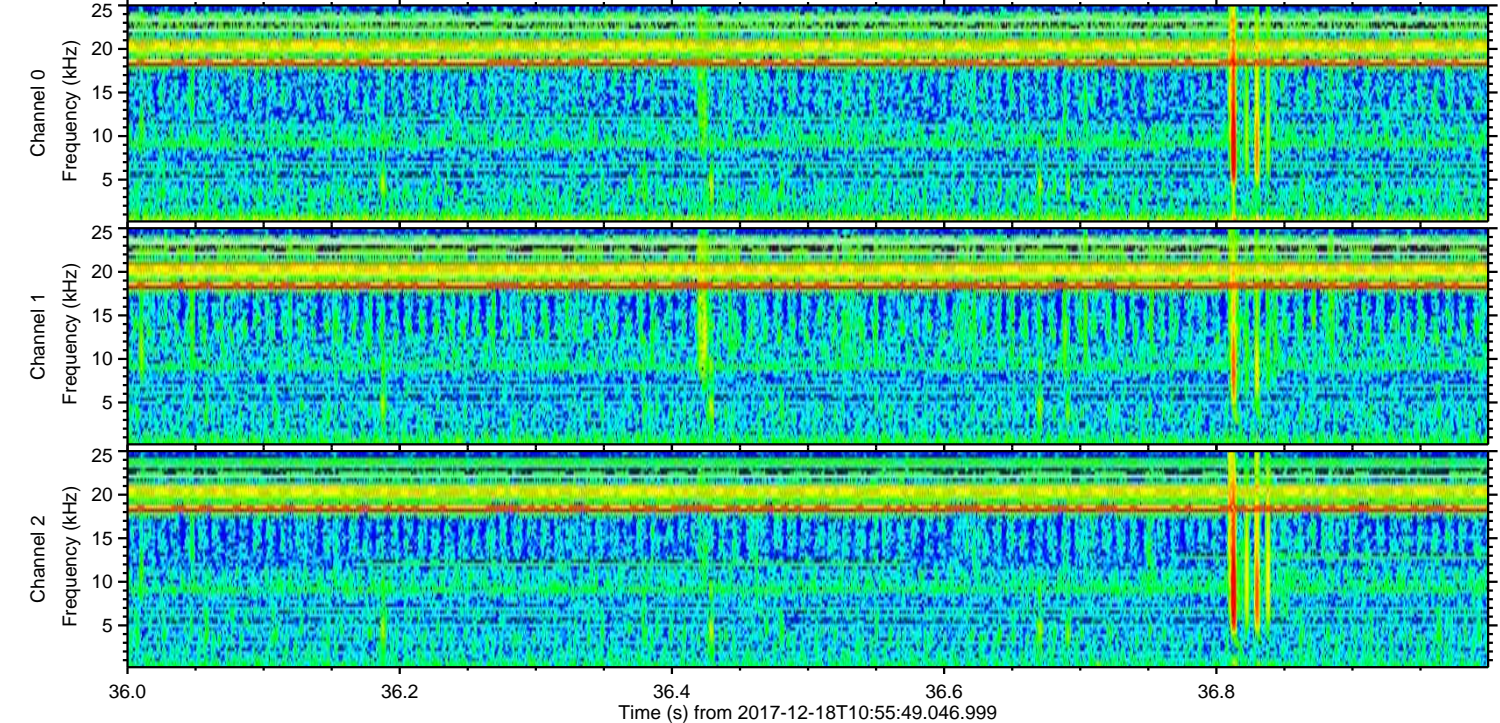
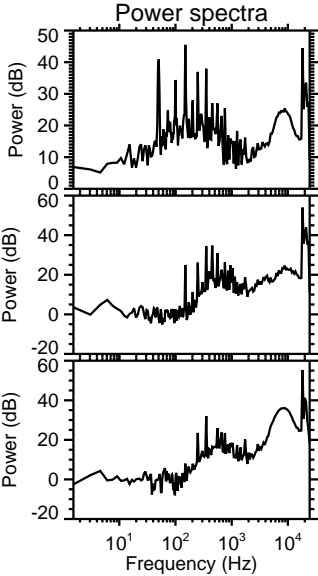
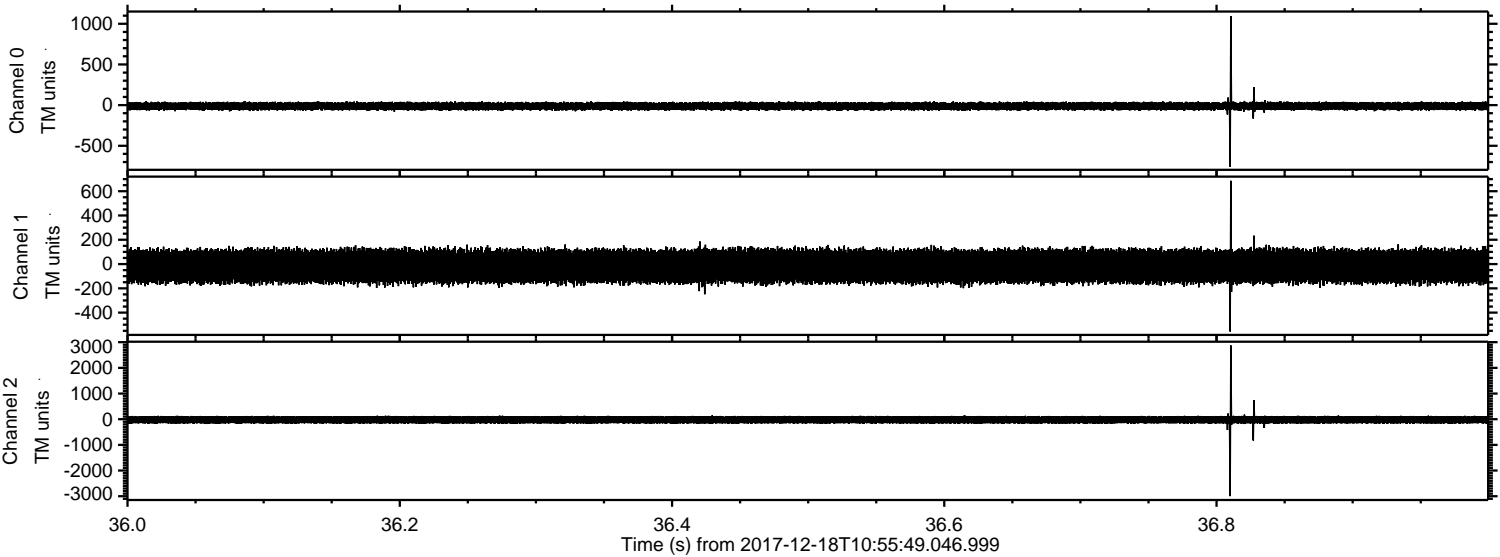
Processed Mon Dec 18 12:04:42 2017 by ELM ver.2012-10-06 from 001__elm20171218_105548__dat00.bin



Processed Mon Dec 18 12:04:43 2017 by ELM ver.2012-10-06 from 001__elm20171218_105548__dat00.bin

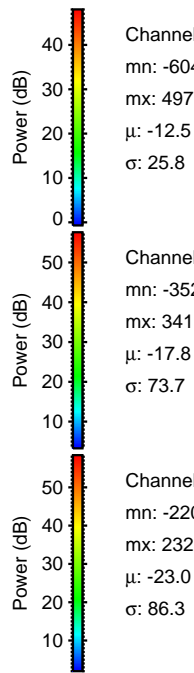
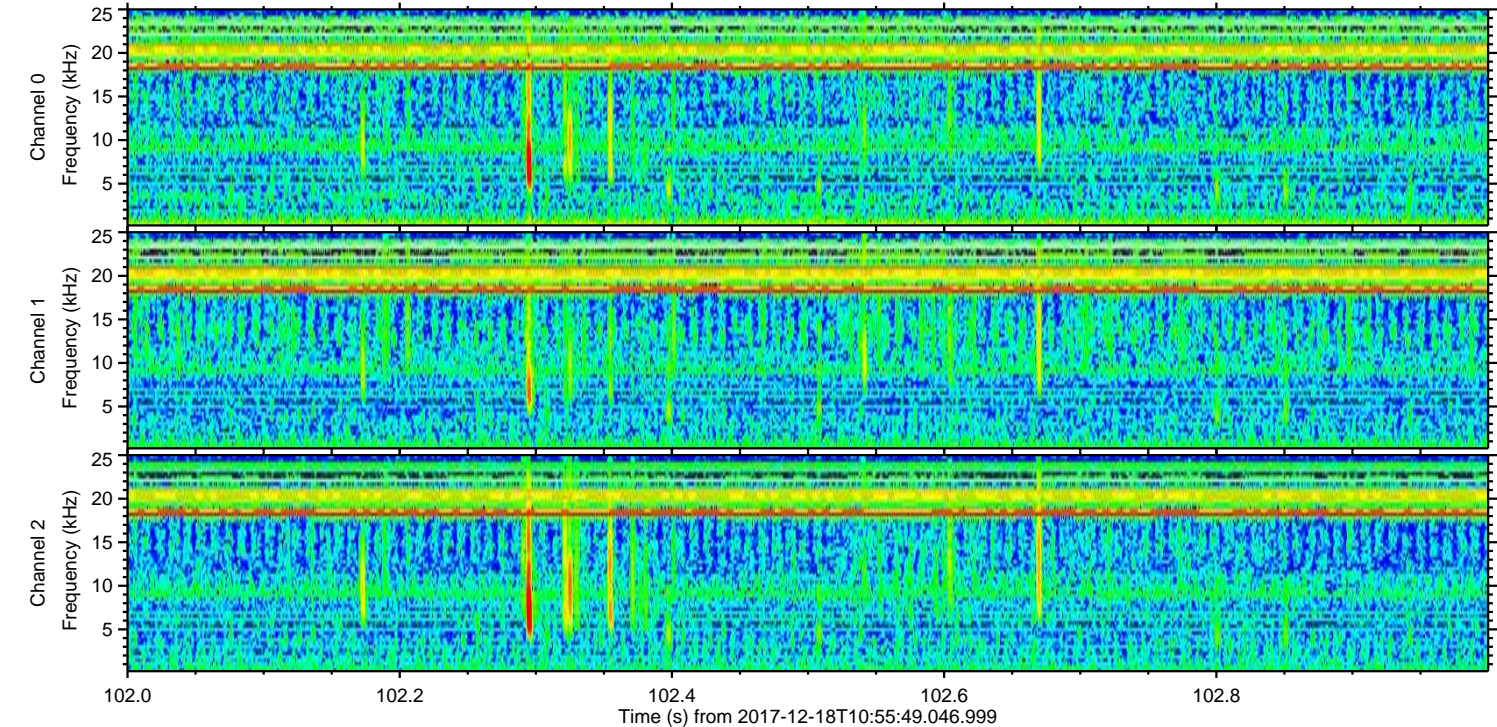
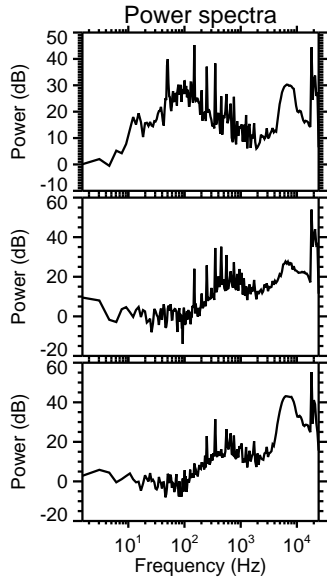
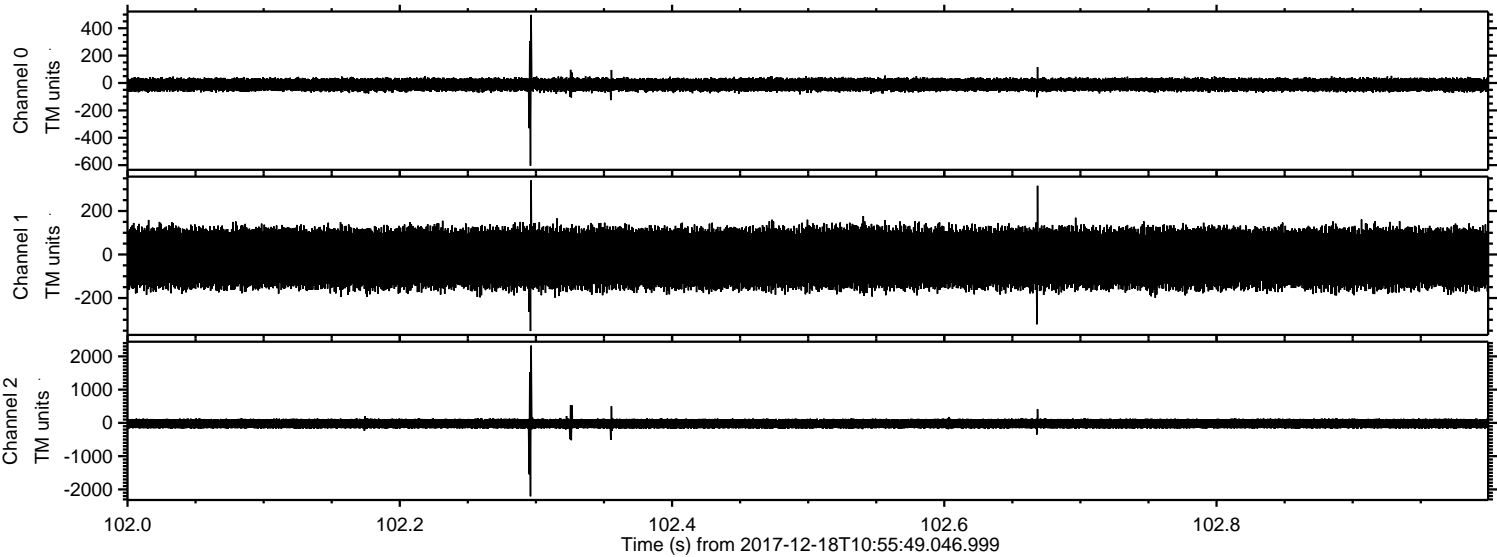


Processed Mon Dec 18 12:04:44 2017 by ELM ver.2012-10-06 from 001__elm20171218_105548__dat00.bin



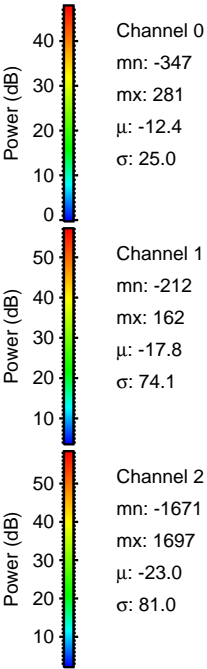
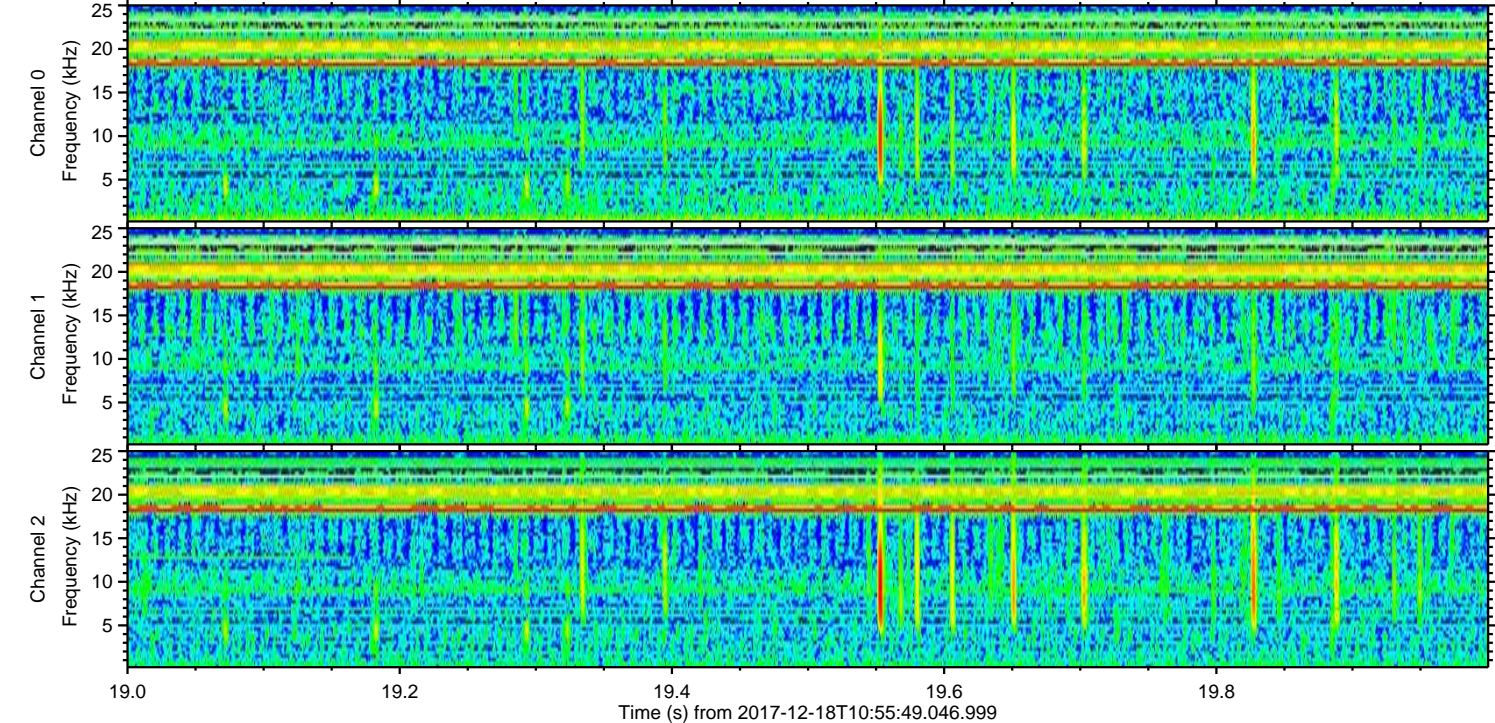
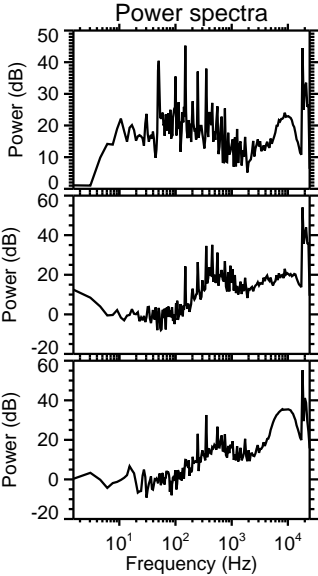
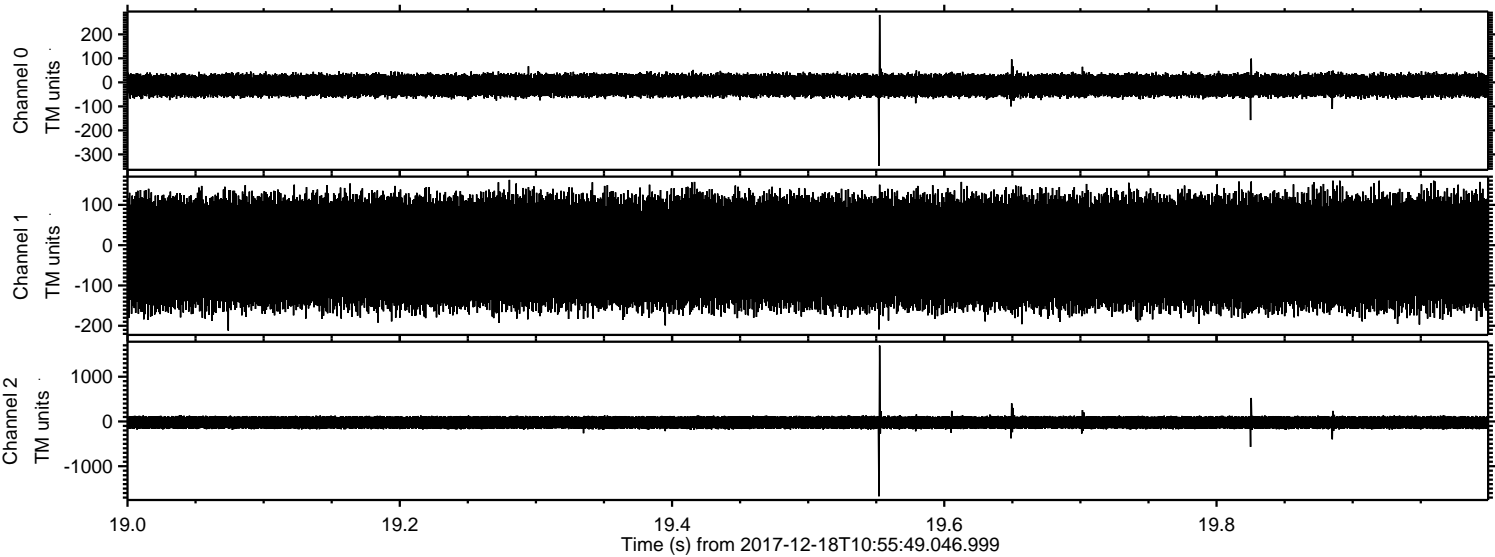
ELMAVAN 3D WAVEFORMS (Measured data sampled at 50 kHz) 51000 packets of 144 samples from 2017-12-18T10:55:49.046.999. Part 103/147

Processed Mon Dec 18 12:04:44 2017 by ELM ver.2012-10-06 from 001__elm20171218_105548__dat00.bin

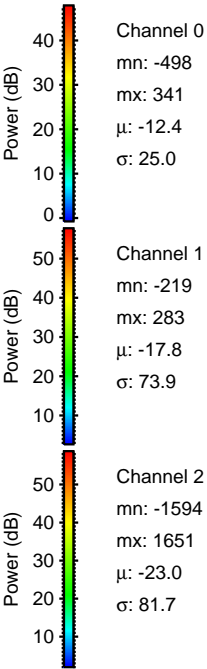
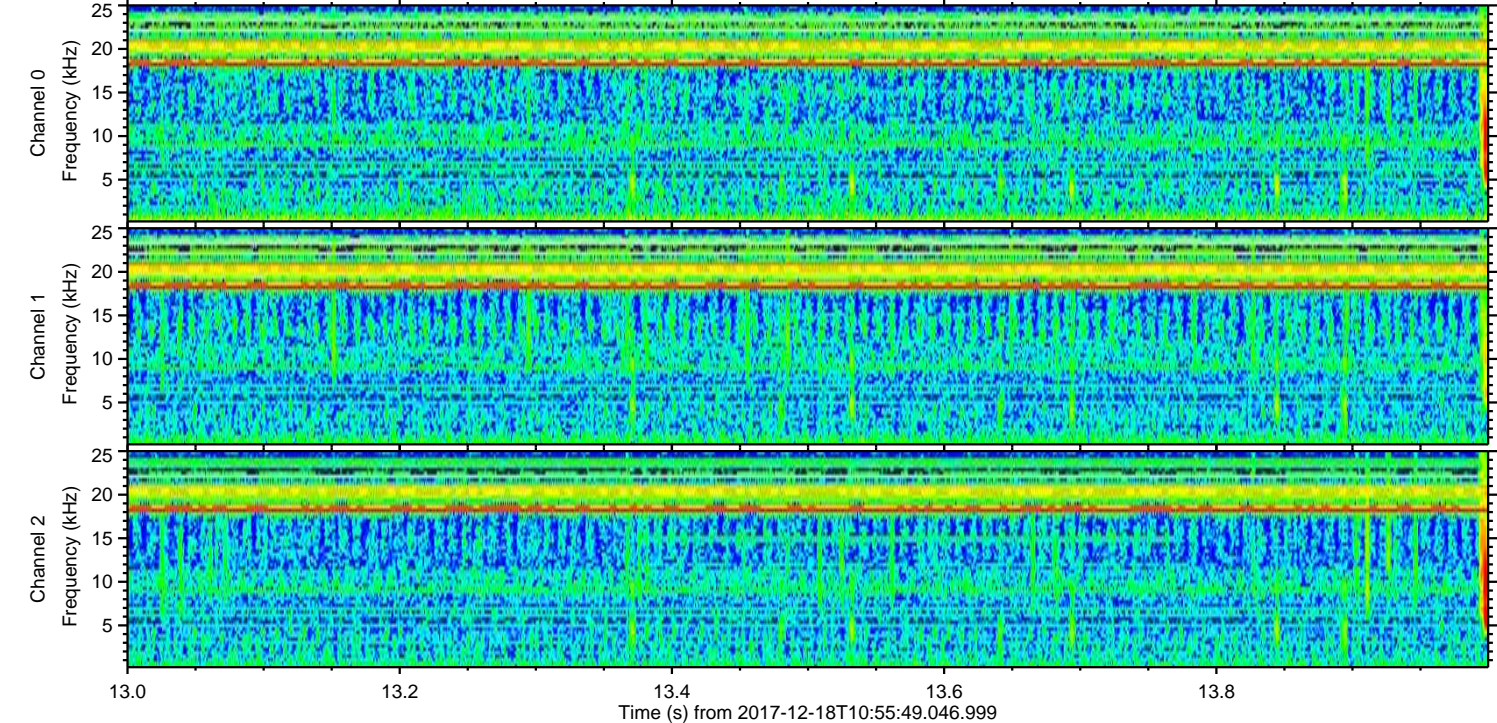
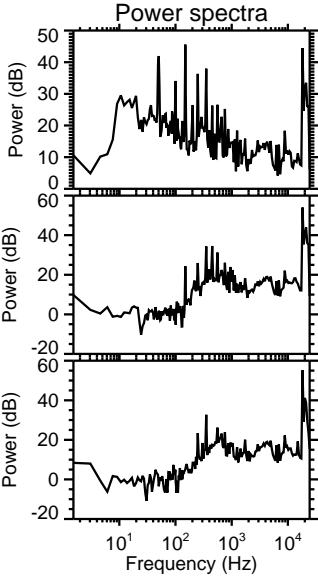
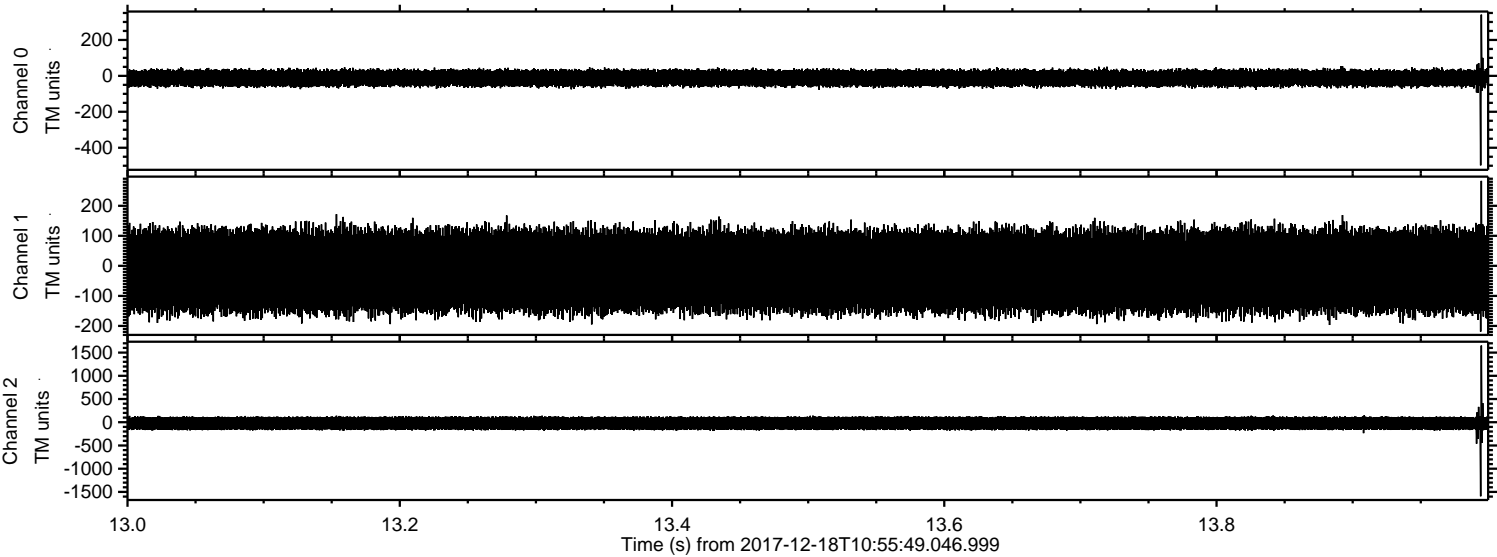


ELMAVAN 3D WAVEFORMS (Measured data sampled at 50 kHz) 51000 packets of 144 samples from 2017-12-18T10:55:49.046.999. Part 20/147

Processed Mon Dec 18 12:04:45 2017 by ELM ver.2012-10-06 from 001__elm20171218_105548__dat00.bin

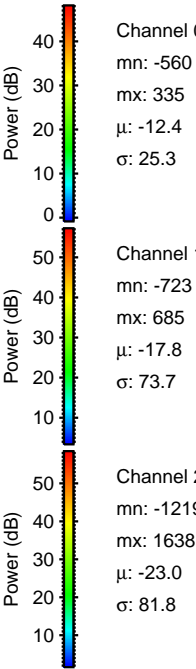
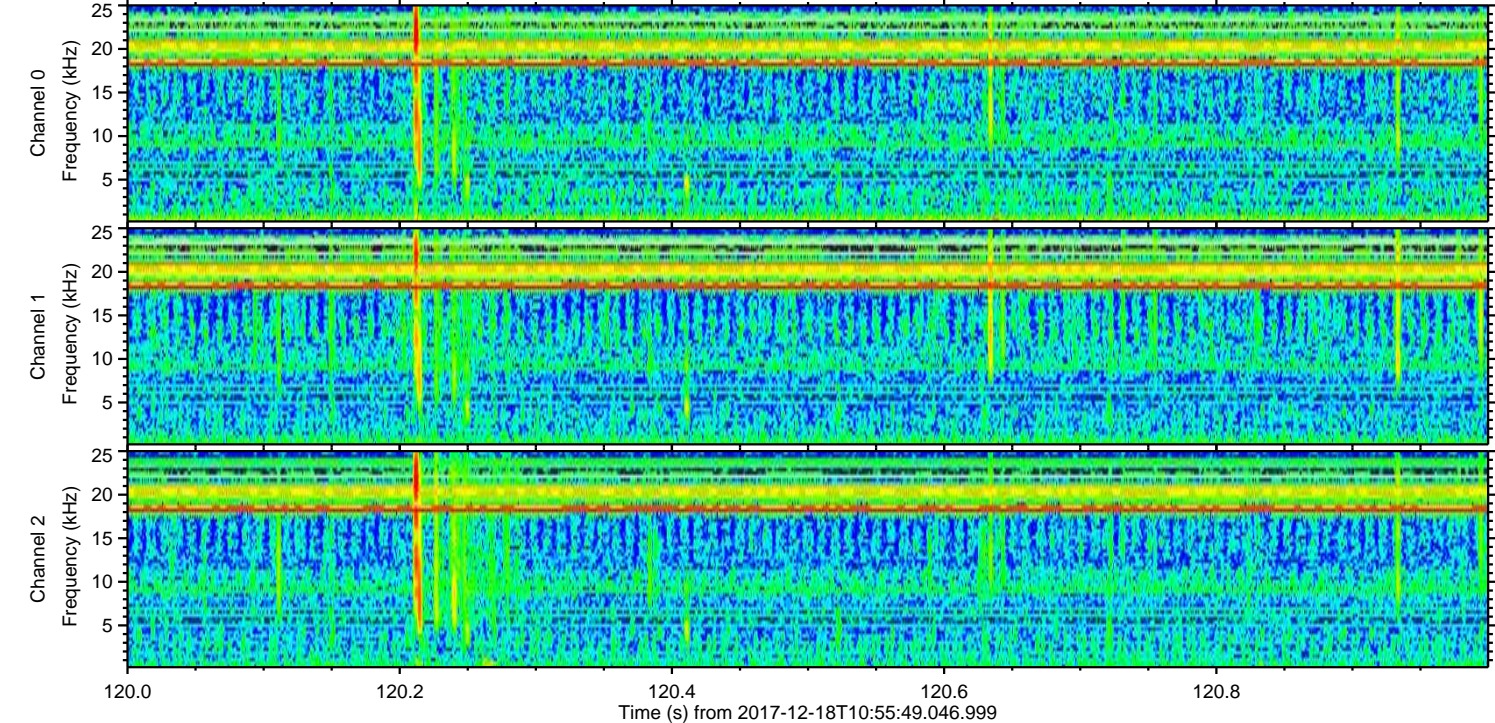
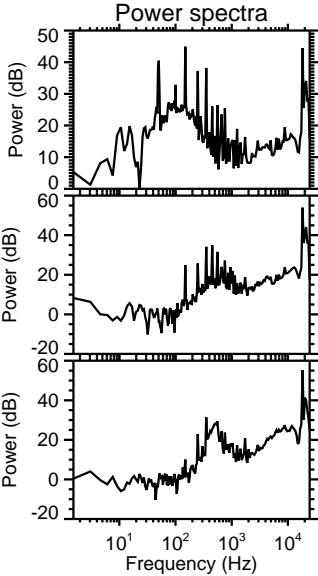
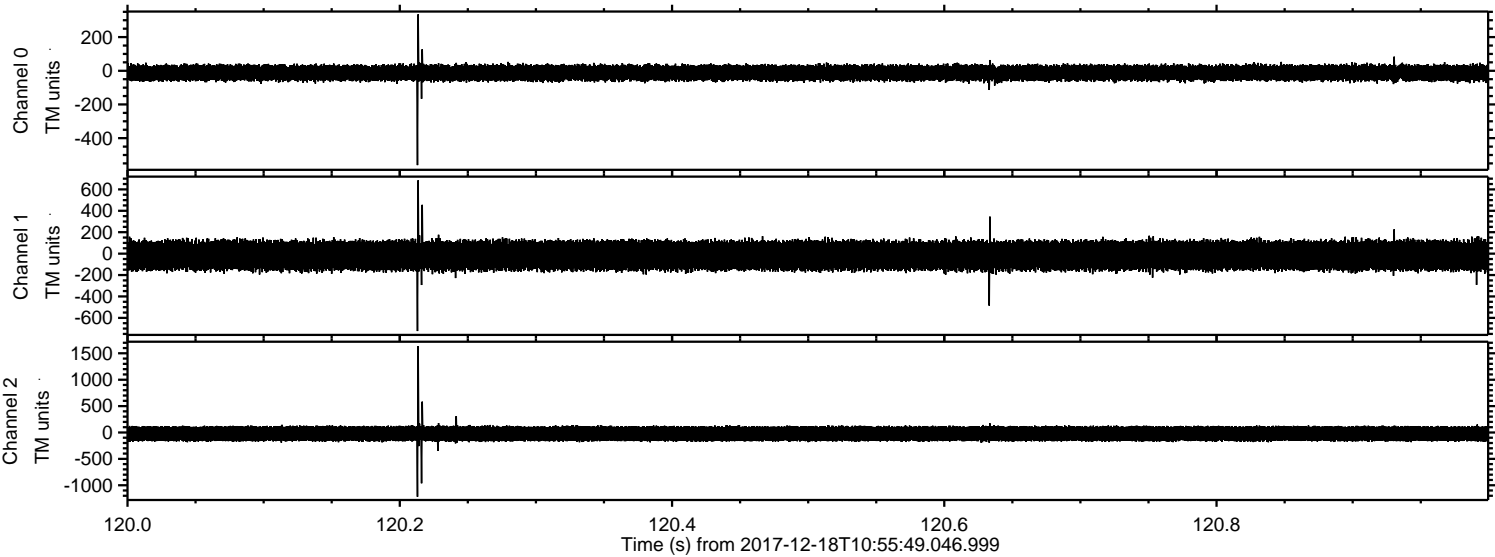


Processed Mon Dec 18 12:04:46 2017 by ELM ver.2012-10-06 from 001__elm20171218_105548__dat00.bin



ELMAVAN 3D WAVEFORMS (Measured data sampled at 50 kHz) 51000 packets of 144 samples from 2017-12-18T10:55:49.046.999. Part 121/147

Processed Mon Dec 18 12:04:47 2017 by ELM ver.2012-10-06 from 001__elm20171218_105548__dat00.bin



Channel 0
mn: -560
mx: 335
 μ : -12.4
 σ : 25.3

Channel 1
mn: -723
mx: 685
 μ : -17.8
 σ : 73.7

Channel 2
mn: -1219
mx: 1638
 μ : -23.0
 σ : 81.8

ELMAVAN 3D WAVEFORMS (Measured data sampled at 50 kHz) 51000 packets of 144 samples from 2017-12-18T10:55:49.046.999. Part 2/147

Processed Mon Dec 18 12:04:48 2017 by ELM ver.2012-10-06 from 001__elm20171218_105548__dat00.bin

